

1 **Bone changes assessed with High-Resolution peripheral Quantitative Computed**
2 **Tomography (HR-pQCT) in early inflammatory arthritis: a 12-month cohort study**

3

4

5 Running Title: Bone changes in early inflammatory arthritis

6

7 Scott C. Brunet^{1,2*}, Stephanie Finzel^{3*}, MD, Klaus Engelke⁴, Steven K. Boyd^{1,2}, PhD, Cheryl
8 Barnabe, MSc, MD^{1,5,6}, Sarah L. Manske^{1,2}, PhD

9

10 ¹McCaig Institute for Bone and Joint Health, Cumming School of Medicine, University of
11 Calgary, Calgary AB, Canada

12 ²Biomedical Engineering Graduate Program and Department of Radiology, Cumming
13 School of Medicine, University of Calgary, Calgary AB, Canada

14 ³Department of Rheumatology and Clinical Immunology, Medical Center - University of
15 Freiburg, Faculty of Medicine, University of Freiburg, Freiburg, Germany

16 ⁴Department of Medicine, FAU University Erlangen-Nürnberg and Universitätsklinikum
17 Erlangen, Erlangen, Germany

18 ⁵Department of Medicine, Cumming School of Medicine, University of Calgary, Calgary
19 AB, Canada

20 ⁶Department of Community Health Sciences, Cumming School of Medicine, University of
21 Calgary, Calgary AB, Canada

22

23 *SCB and SF contributed equally to this paper.

24

25

26 **Submitted to Annals of the Rheumatic Diseases**

27

28 **Number of words in abstract: 250**

29 **Number of words in manuscript: 2991**

30 **Number of figures: 5 + 1 Supplementary Figure**

31 **Address for correspondence:**

32 Sarah Manske

33 3280 Hospital Dr NW

34 Calgary, Alberta, Canada

Bone Changes in Early Inflammatory Arthritis

- 1 T2N 4Z6
- 2 Phone: 403-210-6046
- 3 Email: smanske@ucalgary.ca

Bone Changes in Early Inflammatory Arthritis

1 **ABSTRACT**

2 **Objectives:** We sought to determine the sensitivity of high resolution peripheral
3 quantitative computed tomography (HR-pQCT) to detect change and identify erosions in
4 comparison with conventional radiography (CR) in early inflammatory arthritis patients.
5 We also explored which prognostic factors contribute to bone damage assessed by HR-
6 pQCT in the first year of diagnosis.

7 **Methods:** 46 patients with arthritic symptoms less than one year, and a clinical diagnosis
8 of inflammatory arthritis were prospectively imaged at baseline and 12-months. HR-
9 pQCT scans of the 2nd and 3rd MCP joints and CR of the hands and feet were performed.
10 Joint space width (JSW), total bone mineral density (Tt.BMD), erosion presence and
11 volume were assessed with HR-pQCT. Scan-rescan precision was assessed to define an
12 individual-level least significant change (LSC) criterion. Regression analyses explored
13 prognostic factors for bone damage progression.

14 **Results:** We observed no significant group-level changes in JSW, Tt.BMD or erosion
15 volume. 20% or fewer joints demonstrated individual-level changes greater than the LSC
16 criterion for mean JSW, Tt.BMD and erosion volume. HR-pQCT detected more erosions
17 than CR in the 2nd and 3rd MCP. Increased symptom duration at diagnosis was associated
18 ($p < 0.10$) with lower JSW minimum and higher JSW standard deviation.

19 **Conclusions:** We have demonstrated stability in erosion, bone density and JSW over 12-
20 months in most patients receiving treatment for inflammatory arthritis using a LSC
21 criterion, although patients with longer symptom duration prior to treatment initiation
22 had demonstrable negative effects on JSW estimates. HR-pQCT captures bone damage
23 and progression undetectable by CR in the imaged joints.

24

25 **KEYWORDS:** early rheumatoid arthritis, rheumatoid arthritis, bone mineral density

Bone Changes in Early Inflammatory Arthritis

1 INTRODUCTION

2 Early diagnosis and tight monitoring of disease progression are important clinical
3 targets in patients with inflammatory arthritis to optimize treatment response and
4 prevent future damage.[1-3] Conventional radiographs (CR) are traditionally used to
5 assess erosive disease and joint space loss, however may not be sufficiently sensitive to
6 detect changes early in the disease course.

7 High-resolution peripheral quantitative computed tomography (HR-pQCT) is a
8 highly sensitive bone imaging tool, capable of capturing 3D volumetric bone images at
9 61 or 82 μm nominal isotropic resolution.[4,5] Quantitative measurement techniques
10 have been developed and validated to assess metacarpophalangeal (MCP) joint space
11 width, erosion number and size as well as periarticular bone density and
12 microarchitecture.[6-9] We previously found that HR-pQCT-assessed joint space width
13 outcomes are associated with van der Heijde-modified total Sharp scores (vdHSS) from
14 conventional radiography in patients with advanced disease.[10] These studies provide
15 a strong rationale to investigate the use of HR-pQCT in early inflammatory arthritis
16 patients. The initial disease course in RA is highly heterogenous;[11] predicting who
17 may benefit from aggressive therapy is important to reduce medical risk and cost, as
18 well as preserve function and productivity.[12] While HR-pQCT has been used to
19 demonstrate repair effects at the group level,[13-16] to our knowledge, whether there is
20 utility in monitoring progression with HR-pQCT in the early course of inflammatory
21 arthritis has not been determined. Further, whether established risk factors for
22 aggressive disease, including seropositivity, number of swollen joints and radiographic
23 evidence of erosions [17-20] are also associated with progression of outcomes
24 measured by HR-pQCT is not known.

Bone Changes in Early Inflammatory Arthritis

1 The purposes of this study were two-fold. First, we sought to demonstrate the
2 relative ability of HR-pQCT to identify erosions in comparison with CR. Second, we
3 explored which factors typically associated with aggressive RA, were associated with
4 baseline bone damage and progression assessed by HR-pQCT, in patients with a recent
5 (< 1 month) diagnosis of early inflammatory arthritis.

Bone Changes in Early Inflammatory Arthritis

1 **METHODS**

2 **Patients**

3 We recruited 46 patients with early inflammatory arthritis (EIA) from the University of
4 Calgary Division of Rheumatology specialty EIA clinic between 2011 and 2014. Eligible
5 patients had experienced inflammatory arthritis symptoms for less than one year, had a
6 clinical diagnosis of early rheumatoid arthritis (RA) or undifferentiated arthritis by a
7 rheumatologist, and were beginning disease-modifying therapy according to standard
8 clinical practice. All patients provided written informed consent prior to study
9 participation. Approval for all procedures was obtained by the Conjoint Health Research
10 Ethics Board at the University of Calgary (REB 15-0582). Study visits were conducted at
11 baseline and 12-months. Patients were not involved in the design, conduct, reporting, or
12 dissemination plans of our research.

13

14 **Demographic and Clinical Outcomes**

15 Demographic information (age, sex, BMI, handedness, occupation, dates of symptom
16 onset and diagnosis) were recorded. Patients were classified according to the 2010
17 ACR/EULAR Classification for RA [21]. Laboratory diagnostics comprised rheumatoid
18 factor (RF), anti-cyclic citrullinated peptide antibody (ACPA), C-reactive protein (CRP)
19 and erythrocyte sedimentation rate (ESR). Disease activity assessment included tender
20 and swollen joint counts, physician and patient global scores, duration of morning
21 stiffness, Health Assessment Questionnaire (HAQ) scores [22] and 28-joint Disease
22 Activity Score (DAS28).[23] Remission status (DAS28 < 2.6)[24] was also recorded as
23 well as treatments received.

24

Bone Changes in Early Inflammatory Arthritis

1 **Conventional Radiographs**

2 Routine conventional plain film radiographs of the hands, wrist and feet were
3 performed. All CR were scored for erosions, joint space narrowing (JSN) and
4 subluxation using the vdHSS by a single experienced reader from Imaging
5 Rheumatology International (Meersan, Netherlands), blinded to all other patient
6 data.[25] Radiographic progression was defined as a single unit increase in vdHSS
7 score.[26]

9 **HR-pQCT Image Acquisition**

10 HR-pQCT scans were performed on the dominant 2nd and 3rd MCP joints secured in a
11 custom positioning device (XtremeCT, Scanco Medical, Brüttisellen, Switzerland).[27]
12 We obtained a scout view (coronal plane x-ray) to identify the reference line. HR-pQCT
13 scans are acquired in 110 slice increments (“stacks”). For the first 13 baseline scans, the
14 reference line was placed at the distal surface of the 3rd proximal phalangeal bone
15 covering 9 mm distal and 9 mm proximal to the line for a total of 1.8 mm (2 stacks = 220
16 slices). For the remaining patients, to comply with the Study group for eXtreme
17 Computed Tomography in Rheumatoid Arthritis (SPECTRA) recommendations for
18 standard positioning which were agreed to shortly after study initiation [28] and to
19 ensure the joint space was captured by a single acquisition, the reference line was
20 placed on the distal surface of the 2nd or 3rd metacarpal, whichever was more distal, and
21 the scan region of interest included 9.02 mm distal and 18.04 mm proximal to the line
22 for a total of 2.7 cm (3 stacks or 330 slices). Images with a nominal isotropic resolution

Bone Changes in Early Inflammatory Arthritis

1 of 82.0 μm were acquired using the manufacturer's standard settings (60 kVp, 1000 μA ,
2 100 ms integration time).

3

4 **HR-pQCT Image Processing**

5 HR-pQCT image processing details are provided in Appendix 1. Briefly, we assessed
6 total bone mineral density (Tt.BMD, mg/cm^3) from grey-scale images. Volumetric joint
7 space was quantified using an algorithm developed by consensus from the SPECTRA
8 collaboration.[29] 3D JSW including mean (JSW.Mean, mm), maximum (JSW.Max, mm),
9 minimum (JSW.Min, mm), standard deviation (JSW.SD, mm), asymmetry (defined as
10 $\text{JSW.Asymm} = \text{ratio of JSW.Max/JSW.Min}$, [1]) as well as volume (JSV, mm^3) were
11 calculated. Erosion presence was identified by a rheumatologist with extensive HR-
12 pQCT expertise (SF). Semi-automated assessment of erosion volume was performed
13 using the Medical Image Analysis Framework (University of Erlangen, Erlangen
14 Germany).[9]

15

16 **Precision Analyses**

17 Short-term *in vivo* precision data were obtained by performing a second scan on the
18 same day with repositioning.[30] In addition, intra-operator precision was assessed for
19 the erosion analysis. Precision of JSW outcomes was previously reported in this cohort.
20 [29] Here precision of erosion volume and Tt.BMD are reported.

21

22 **Statistical Analyses**

23 For all demographic, clinical and HR-pQCT outcomes, results are reported as mean and
24 standard deviation (SD) unless otherwise indicated. For HR-pQCT precision, we
25 calculated the precision error as the root-mean square standard deviation (RMSSD) and

Bone Changes in Early Inflammatory Arthritis

1 the root-mean square coefficient of variation (RMSCV).[31] For erosion volume,
2 precision was calculated separately for erosions less than 10 mm³ and erosions greater
3 than 10 mm³ for comparison with previously published values.[9] In addition, the
4 distribution of the difference between scan-rescan values were compared to determine
5 whether they met the criteria required to compute the least-significant change (LSC) at
6 the 95% confidence level (i.e., 2.77 x RMSSD).[32]

7 Paired Welch's t-tests were used to examine changes over time at the group level,
8 and tested against an alpha level of 0.05. For paired differences that were not normally
9 distributed, a paired Wilcoxon signed-rank test was used. Beeswarm plots were used to
10 examine the heterogeneity of the data.[33] To determine whether an individual change
11 exceeded measurement error at a 95% confidence level, the changes in mean JSW, JSV,
12 TtBMD and erosion volume were evaluated against the LSC, as described above.[32]
13 Using the LSC criteria, patients were classified into one of three groups for each
14 outcome measure: improvement, stable, or progression. Based on these criteria, Fisher's
15 exact test was used to determine whether patients with a diagnosis of RA differed from
16 those with self-limited or undifferentiated arthritis, as well to compare patients with
17 and without: high disease activity at baseline (DAS28 > 5.1),[34] progression to biologic
18 therapy, and remission (DAS28 < 2.6) [24] at follow-up.

19 To understand whether HR-pQCT outcomes are associated with known prognostic
20 factors and disease activity markers, we performed exploratory analyses using simple
21 linear regressions to examine the relationship between prognostic factors and joint
22 space, erosion volume and bone density. Regressions were performed for the 2nd and 3rd
23 MCPs independently and tested against an alpha value of 0.1 due to the exploratory
24 nature of the analyses. Linear regression relationships with an adjusted r-squared
25 greater than zero and statistical significance across both joints were investigated

Bone Changes in Early Inflammatory Arthritis

1 further. Similarly, binomial logistic regression was used to evaluate the relationship
2 between prognostic factors and erosion presence and tested against an alpha value of
3 0.1. These analyses were performed for both baseline HR-pQCT outcomes and change in
4 HR-pQCT outcomes. All statistical analyses were performed using R (v3.5.3), RStudio
5 (v1.1.463)[35] and RMarkdown.[36,37]
6

Bone Changes in Early Inflammatory Arthritis

1 **RESULTS**

2 **Demographics and Clinical Characteristics**

3 Of the 46 patients recruited, one withdrew from the study prior to follow-up and two
4 were lost to follow-up. Table 1 shows characteristics of the 43 patients who attended
5 both study visits. At baseline, 33 (77%) patients met the 2010 American College of
6 Rheumatology criteria for RA [21] and 10 (23%) were thus assessed to have
7 undifferentiated arthritis. At 12-month follow-up, several patients were reclassified,
8 resulting in a final distribution of 37 (86%) with RA, 2 (5%) still being assessed as
9 having undifferentiated arthritis, 1 (2%) with Adult Onset Still's, 1 (2%) with psoriatic
10 arthritis, and 2 (5%) with self-limited arthritis. At baseline, 4 (10%) of patients had
11 been exposed to a conventional disease-modifying anti-rheumatic drug (cDMARD),
12 while 38 (88%) utilized a cDMARD over the 12-month follow-up. Eleven (26%) of
13 patients progressed to requiring a biologic DMARD (bDMARD) over the 12-month
14 follow-up. 38 (97%) of patients had active disease ($DAS28 \geq 2.6$) at baseline, while 13
15 (35%) had active disease at follow-up, with mean reductions in the tender and swollen
16 joint counts over one year (Table 1).

17

18 **Precision**

19 Seventeen joints from 13 patients were used for precision analysis as they had at least
20 one erosion, as well as two scans without motion artifacts acquired on the same day.
21 Intra-rater precision of erosion volume determined as RMSSD was 1.89 mm^3 for total
22 erosion volume per joint, and 2.52 mm^3 when evaluating by individual erosion volume.
23 RMSSD for erosions $> 10 \text{ mm}^3$ was 3.49 mm^3 and for erosions $< 10 \text{ mm}^3$ was 1.25 mm^3
24 (Table 2).

Bone Changes in Early Inflammatory Arthritis

1 Analysis of scan-rescan precision revealed smaller precision errors; RMSSD was
2 0.72 mm³ for total erosion volume per joint and 1.04 mm³ when evaluating by
3 individual erosion volume. RMSSD for erosions > 10 mm³ was 1.72 mm³ and for
4 erosions < 10 mm³ was 0.63 mm³ (Table 2). RMSSD for Tt.BMD was 11 mgHA/cm³. LSC
5 are reported for those variables that met the required assumptions (mean JSW, JSV,
6 total erosion volume, Tt.BMD, Table 2).

7

8 **Relationship between Prognostic Factors and Baseline JSW, TtBMD and Erosion**

9 **Volume**

10 For quantitative analyses, 4 joints were excluded from baseline JSW, Tt.BMD and
11 erosion volume analysis due to motion artifact or segmentation errors. Males had
12 greater JSV (52 mm³ in 2nd MCP), mean JSW (0.3 mm in 2nd MCP) and max JSW (0.1 mm
13 in 2nd MCP) than females in both 2nd and 3rd MCPs at baseline ($p < 0.005$, adjusted R^2
14 varying from 0.19 to 0.69). Increased symptom duration at diagnosis was significantly
15 associated ($p < 0.10$) with lower minimum JSW (adjusted $R^2 = 0.12$ and 0.05) suggesting
16 that for every 100 days of symptoms, there is a 0.01 mm decrease in minimum JSW.
17 Similarly, symptom duration was associated with increased SD of JSW (adjusted $R^2 =$
18 0.06 and 0.24) for 2nd and 3rd MCPs at baseline, suggesting that for every 100 days of
19 symptoms, there is a 0.002 increase in SD. We found no significant associations between
20 baseline age, duration of time between diagnosis and scan, BMI, seropositivity, HAQ
21 score, patient global score, morning stiffness duration, exposure to steroids, or DAS28
22 score and JSW, Tt.BMD or erosion volume outcomes.

23

24 **HR-pQCT Comparison with Conventional Radiography**

Bone Changes in Early Inflammatory Arthritis

1 Seventeen (40%) of patients had erosions identified by HR-pQCT in the 2nd or 3rd MCP
2 at baseline. Two individuals (4%) with erosions at the 2nd or 3rd MCP were identified by
3 CR, but HR-pQCT allowed identification of erosions in an additional 16 patients (38%)
4 with HR-pQCT. Although HR-pQCT was more sensitive to identifying erosions at these
5 joints, there were 11 patients (26%) with erosions captured in additional joints by CR
6 included in the vdHSS scoring system (Figure 1). In the participant with the highest
7 vdHSS, HR-pQCT revealed a “pseudoerosion” (i.e., no cortical break) in the 2nd MCP, but
8 no erosions that met the SPECTRA erosion definition in the 2nd or 3rd MCP (Figure 2).

9 Minimum JSW by HR-pQCT was not associated with the vdHSS total JSN score (data
10 not shown). One participant had a non-zero vdHSS JSN score in the 2nd or 3rd MCPs; thus
11 a direct comparison between JSW and vdHSS joint score at these joints could not be
12 made.

13

14 **Longitudinal Changes in JSW, Tt.BMD, Erosion Number and Erosion Volume by** 15 **HR-pQCT**

16 Examination of raw images found two patients who developed erosions by 12-month
17 follow-up. After image registration, the appearance of new erosions was less convincing
18 (Figure 3). The overall number of erosions increased from 28 to 36 between baseline
19 and 12-month follow-up.

20 Five and three additional joints were excluded from JSW and Tt.BMD analyses at
21 follow-up, respectively. There were no significant group-level changes in JSW, Tt.BMD
22 or erosion volume over time at the 2nd or 3rd MCP ($p > 0.05$, Figure 4, Supplementary
23 Figure 1). At the individual level, most joints did not exceed the LSC. However, four
24 joints had decreased mean JSW and JSV, two had decreased BMD and four an increased

Bone Changes in Early Inflammatory Arthritis

1 erosion volume. Five joints had increased mean JSW, four had increased JSV, two had
2 increased BMD and 2 had decreased erosion volume (Figure 4, Figure 5).

3 Patients who had a significant change in an HR-pQCT outcome were pooled into
4 groups of improved (n = 7), stable (n = 16) or worsened (n = 9). No patient had both an
5 improvement and worsening. Biologic DMARD-naïve patients were more likely to
6 worsen, while bDMARD-treated patients were more likely to improve (p = 0.02). There
7 was no difference in progress or improvement and disease activities at baseline or
8 follow-up. Further, patients with undifferentiated or self-limited arthritis did not
9 progress or improve differently from those with RA. Based on exploratory linear
10 regression analyses, there were no other significant associations between baseline
11 clinical measures and bone changes that were consistent among both the 2nd and 3rd
12 MCPs.

13

14 **Radiographic Progression**

15 Three patients increased in total vdHSS over 12-months. Of these patients, one had no
16 HR-pQCT erosions but joint space progression on CR, one had no HR-pQCT erosions at
17 baseline but developed one at follow-up, and one had erosions in the feet but not hands
18 or wrists. No patient with only HR-pQCT-identified erosions showed an increase in
19 vdHSS score.

20

Bone Changes in Early Inflammatory Arthritis

1 **DISCUSSION**

2 In this exploratory study in an EIA-cohort, HR-pQCT identified more erosions than
3 CR in the specific joints examined, and could better characterize mimickers of erosions,
4 such as pseudo-erosions. Despite clinical improvement over 12-months, we observed
5 no group level changes in HR-pQCT-measured JSW, BMD or erosion volume, supporting
6 that stability of disease both clinically and by imaging was common in our cohort.

7 While HR-pQCT is highly sensitive to changes in the joints we examined, the limited
8 coverage presents challenges for full-patient assessment when compared with CR.
9 Based on the few patients (3) who sustained radiographic progression, it is challenging
10 to draw conclusions regarding the ability of HR-pQCT to predict radiographic
11 progression. HR-pQCT is clearly best-suited to assessing erosion volume; the evaluation
12 of the clinical relevance of detecting more erosions and changes in erosion volume in a
13 small number of joints or detecting fewer erosions across a large number of joints will
14 be the subject of future studies.

15 We sought to determine the relevance of pathology detected on HR-pQCT in early
16 inflammatory arthritis. The correlation between minimum JSW and disease duration,
17 while not strong, is consistent with findings of decreased radiographic JSN with disease
18 duration.[38] Biologic DMARD-treated patients were more likely to demonstrate
19 improvement in HR-pQCT outcomes, which is consistent with previous findings
20 demonstrating decreases in erosion volumes under biologic therapies.[13,14,16]
21 However, we did not observe any association with HR-pQCT outcomes and disease
22 activity. The threshold for defining a significant change was based on precision of the
23 outcomes at the 95% confidence level. We explored defining LSC at the 80% confidence
24 level,[39] and although altering this threshold increased the number of patients
25 experiencing a significant change, it did not reveal any additional associations with

Bone Changes in Early Inflammatory Arthritis

1 disease status. This suggests that determination of minimal clinically important
2 differences for HR-pQCT is still required.

3 Our exploratory analysis found several prognostic factors associated with baseline
4 HR-pQCT outcomes. The larger JSV, mean JSW and max JSW in males suggests that these
5 outcomes are likely correlated with overall joint size. Therefore, sex and joint size may
6 need to be considered in future HR-pQCT studies.

7 Our study has allowed us to demonstrate several technical advances in applying
8 this imaging modality. We examined scan-rescan precision for HR-pQCT erosion and
9 BMD analysis. Overall, the magnitude of the precision errors for erosion analysis, and
10 poorer precision for scan-rescan than intra-rater analyses, reflect that the operator's
11 judgement is still required to delineate the surface of the erosion. This can be partly
12 explained by using the first segmented image to guide the second analysis for scan-
13 rescan analyses. In contrast, intra-rater analyses were performed without the guide of
14 the previous erosion segmentation, three months apart. The poorer intra-rater
15 precision in this study than previously reported by Töpfer et al. [9] may also have
16 resulted from the time delay between intra-rater analyses, differences in analysis
17 experience, and the larger mean erosion volume in our cohort (15.4 mm³ vs 9.3 mm³).
18 The high RMSCV particularly for small erosions suggest that absolute precision errors
19 should be reported alongside relative precision errors. And finally, with a greater
20 number of erosions available for precision analysis, it would likely be prudent to
21 calculate least-significant change values that are stratified by erosion size.

22 A limitation of the study was that there were a considerable number of
23 observations that had to be discarded due to motion artifacts. Additionally, the
24 discrepancy between new erosion identification from raw images to registered images

Bone Changes in Early Inflammatory Arthritis

1 suggests that registration of baseline to follow-up HR-pQCT images is critical to
2 investigating subtle changes in erosion presence and volume.

3 In conclusion, HR-pQCT captures bone damage and progression undetectable by CR
4 in the imaged joints. Incorporation of image registration and less operator-dependent
5 erosion analyses will improve the ability to monitor change at the individual level.
6 Future studies of larger early inflammatory arthritis cohorts should investigate the
7 minimal clinically important differences for HR-pQCT-assessed bone damage to
8 determine what levels are associated with disease progression.

9

10 **ACKNOWLEDGEMENTS**

11 We thank Tessa Linkert for assistance with patient recruitment and data collection, the
12 staff and imaging technologists at the Centre for Mobility and Joint Health for data
13 collection, as well as Sybren de Vries and Alicia Gabilondo for assistance with image
14 analysis. We thank Dr. Charlie Goldsmith for assistance with statistical analysis. Study
15 funding was provided by the University of Calgary. Scott Brunet was supported by the
16 Natural Sciences and Engineering Research Council of Canada.

Bone Changes in Early Inflammatory Arthritis

17 **FIGURE LEGENDS**

18 Figure 1. Erosion count by HR-pQCT in MCP2 and 3 compared with vdHSS Total Erosion
19 scores from CR at baseline. (n = 41)

20
21 Figure 2. A) Pseudo-erosion (yellow arrow) identified in an axial HR-pQCT of the 2nd MCP.
22 B) Corresponding conventional radiograph (CR) with the 2nd MCP erosion indicated with a
23 black arrow.

24
25 Figure 3. Axial HR-pQCT images of the 2nd phalangeal base demonstrating an apparent new
26 erosion development over the 12-month follow-up. Image registration and transformation
27 of the baseline image to align with the 12-month follow-up image suggests that the
28 observation of a new erosion was likely artifactual. Arrow indicates the location of the
29 cortical break.

30
31 Figure 4. 12-month changes in Mean JSW, JSV, TtBMD and Total Erosion Volume in the 2nd
32 MCP and 3rd MCPs. Solid lines represent mean and inter-quartile range (IQR). Dashed lines
33 represent least significant change (LSC).

34
35 Figure 5. Axial HR-pQCT images of the 2nd metacarpal demonstrating an erosion that
36 increased in volume greater than the least significant change criterion. The 12-month
37 follow-up image was registered and transformed to align with the baseline image to
38 visually confirm the erosion change.

39
40 Supplementary Figure 1. 12-month changes in minimum, maximum, SD and asymmetry of
41 JSW. Solid lines represent mean and inter-quartile range (IQR). Dashed lines represent
42 least significant change (LSC).

43
44
45

46 **TABLES**

47 Table 1. Characteristics of cohort. Mean (SD) for continuous variables. P-values represent significance levels for paired t-tests (*) or
 48 Wilcoxon paired signed-rank test (#) comparing baseline to 12-month follow-up. BMI = body mass index, DAS-28 = disease activity
 49 score with 28 joint count, HAQ = Health Assessment Questionnaire, AM = morning, cDMARD = conventional disease modifying anti-
 50 rheumatic drug, bDMARD = biologic DMARD, RF = rheumatoid factor, ACPA = anti-cyclic citrullinated peptide antibody, ESR =
 51 erythrocyte sedimentation rate, CRP = c-reactive protein. (n = 43).

| | Baseline | 12-month Follow-up | p-value |
|--------------------------------|-------------|--------------------|----------|
| Age (years) | 46.4 (14.8) | - | |
| Sex (female:male) | 29:14 | - | |
| BMI (kg/m ²) | 27.5 (6.5) | - | |
| Symptom Duration (days) | 200 (118) | - | |
| Diagnosis Duration (days) | 33 (47) | - | |
| Clinical | | | |
| DAS-28 | 5.3 (1.2) | 2.3 (1.1) | < 0.001* |
| 28 Swollen Joint Count | 10 (7) | 1 (3) | < 0.001* |
| 28 Tender Joint Count | 11 (8) | 1 (3) | < 0.001# |
| HAQ (0-3) | 1.2 (0.7) | 0.5 (0.5) | < 0.001* |
| Patient Global Score (0 -100) | 55 (23) | 24 (19) | < 0.001* |
| Duration of AM stiffness (min) | 141 (140) | 34 (49) | < 0.001# |
| Remission (DAS28 < 2.6) | 1/39 (3%) | 13/37 (35%) | |
| Use of cDMARDs | 4/42 (10%) | 38/43 (88%) | |
| Use of steroids | 13/42 (31%) | 18/43 (42%) | |
| Use of bDMARDs | 0 | 11/43 (26%) | |
| Serological | | | |
| RF+ | 19/42 (45%) | - | |
| ACPA+ | 28/40 (70%) | - | |
| ESR (mm/hr, normal < 20) | 24.7 (18.8) | 11.0 (10.0) | < 0.001# |
| CRP (mg/L, normal < 8) | 22.0 (47.5) | 5.1 (11.0) | < 0.001# |

53 Table 2. Precision errors calculated for scan-rescan results with repositioning. Intra-rater
 54 precision is also presented for erosion volume. JSW precision was previously reported in
 55 this cohort in [29]. SD = standard deviation, AS = asymmetry. n = 42 joints for JSW, 30 for
 56 Tt.BMD and 17 for Erosion Volume. LSC values are noted as missing (-) when the
 57 measurements failed to reach the criteria to calculate the LSC at the 95% confidence
 58 interval.

| | Scan-Rescan | | | Intra-Rater | | |
|--|-------------|-----------|------|-------------|-----------|-----|
| | RMSSD | RMSCV (%) | LSC | RMSSD | RMSCV (%) | LSC |
| JSW | | | | | | |
| Mean (mm) | 0.06 | 3.6 | 0.18 | | | |
| Volume (mm ³) | 4.26 | 4.3 | 11.8 | | | |
| Minimum (mm) | 0.25 | 26.2 | - | | | |
| Maximum (mm) | 0.09 | 3.1 | - | | | |
| SD (mm) | 0.04 | 11.1 | - | | | |
| AS (1) | 2.1 | 53.7 | - | | | |
| Tt.BMD (mg HA/cm ³) | 11 | 3.6 | 30 | | | |
| Erosion Volume | | | | | | |
| Total Erosion Volume (mm ³) | 0.72 | 4.1 | 2.0 | 1.89 | 10.1 | - |
| Individual Erosion (mm ³) | 1.04 | 7.6 | - | 2.52 | 15.9 | - |
| Erosions < 10 mm ³ (mm ³) | 0.63 | 18.7 | - | 1.25 | 38.4 | - |
| Erosions > 10 mm ³ (mm ³) | 1.72 | 4.1 | - | 3.49 | 11.2 | - |

60
61

62 **REFERENCES**

- 63 1 Cush JJ. Early rheumatoid arthritis -- is there a window of opportunity? *J Rheumatol*
64 *Suppl* 2007;**80**:1-7.
- 65 2 Lard LR, Visser H, Speyer I, *et al.* Early versus delayed treatment in patients with
66 recent-onset rheumatoid arthritis: comparison of two cohorts who received different
67 treatment strategies. *Am J Med* 2001;**111**:446-51.
- 68 3 Korpela M, Laasonen L, Hannonen P, *et al.* Retardation of joint damage in patients with
69 early rheumatoid arthritis by initial aggressive treatment with disease-modifying
70 antirheumatic drugs: five-year experience from the FIN-RACo study. 2004;**50**:2072-
71 81. doi:10.1002/art.20351
- 72 4 Manske SL, Zhu Y, Sandino C, *et al.* Human trabecular bone microarchitecture can be
73 assessed independently of density with second generation HR-pQCT. *Bone*
74 2015;**79**:213-21. doi:10.1016/j.bone.2015.06.006
- 75 5 Boutroy S, Bouxsein ML, Munoz F, *et al.* In vivo assessment of trabecular bone
76 microarchitecture by high-resolution peripheral quantitative computed tomography. *J*
77 *Clin Endocrinol Metab* 2005;**90**:6508-15. doi:10.1210/jc.2005-1258
- 78 6 Burghardt AJ, Lee CH, Kuo D, *et al.* Quantitative in vivo HR-pQCT imaging of 3D wrist
79 and metacarpophalangeal joint space width in rheumatoid arthritis. 2013;**41**:2553-
80 64. doi:10.1007/s10439-013-0871-x
- 81 7 Barnabe C, Szabo E, Martin L, *et al.* Quantification of small joint space width,
82 periarticular bone microstructure and erosions using high-resolution peripheral
83 quantitative computed tomography in rheumatoid arthritis. *Clin Exp Rheumatol*
84 2013;**31**:243-50.
- 85 8 Peters M, Scharmga A, van Tubergen A, *et al.* The Reliability of a Semi-automated
86 Algorithm for Detection of Cortical Interruptions in Finger Joints on High Resolution
87 CT Compared to MicroCT. *Calcif Tissue Int* 2017;:1-9. doi:10.1007/s00223-017-0264-
88 5
- 89 9 Töpfer D, Finzel S, Museyko O, *et al.* Segmentation and quantification of bone erosions
90 in high-resolution peripheral quantitative computed tomography datasets of the
91 metacarpophalangeal joints of patients with rheumatoid arthritis. *Rheumatology*
92 (*Oxford*) 2014;**53**:65-71. doi:10.1093/rheumatology/ket259
- 93 10 Manske SL, Brunet SC, Finzel S, *et al.* The SPECTRA Collaboration OMERACT Working
94 Group: Criterion Validity of Joint Space Outcomes with High Resolution Peripheral
95 Quantitative Computed Tomography. *J Rheumatol* 2019;:jrheum.180870.
96 doi:10.3899/jrheum.180870

- 97 11 Barnabe C, Sun Y, Boire G, *et al.* Heterogeneous Disease Trajectories Explain Variable
98 Radiographic, Function and Quality of Life Outcomes in the Canadian Early Arthritis
99 Cohort (CATCH). *PLoS ONE* 2015;**10**:e0135327. doi:10.1371/journal.pone.0135327
- 100 12 Skapenko A, Prots I, Schulze-Koops H. Prognostic factors in rheumatoid arthritis in the
101 era of biologic agents. *Nat Rev Rheumatol* 2009;**5**:491–6.
102 doi:10.1038/nrrheum.2009.157
- 103 13 Finzel S, Rech J, Schmidt S, *et al.* Repair of bone erosions in rheumatoid arthritis
104 treated with tumour necrosis factor inhibitors is based on bone apposition at the base
105 of the erosion. *Ann Rheum Dis* 2011;**70**:1587–93. doi:10.1136/ard.2010.148395
- 106 14 Shimizu T, Choi HJ, Heilmeyer U, *et al.* Assessment of 3-month changes in bone
107 microstructure under anti-TNF α therapy in patients with rheumatoid arthritis using
108 high-resolution peripheral quantitative computed tomography (HR-pQCT). *Arthritis
109 Res Ther* 2017;**19**:222. doi:10.1186/s13075-017-1430-x
- 110 15 Yue J, Griffith JF, Xiao F, *et al.* Repair of Bone Erosion in Rheumatoid Arthritis by
111 Denosumab: A High-Resolution Peripheral Quantitative Computed Tomography Study.
112 *Arthritis Care Res (Hoboken)* 2017;**69**:1156–63. doi:10.1002/acr.23133
- 113 16 Finzel S, Rech J, Schmidt S, *et al.* Interleukin-6 receptor blockade induces limited repair
114 of bone erosions in rheumatoid arthritis: a micro CT study. *Ann Rheum Dis*
115 2013;**72**:396–400. doi:10.1136/annrheumdis-2011-201075
- 116 17 Fautrel B, Granger B, Combe B, *et al.* Matrix to predict rapid radiographic progression
117 of early rheumatoid arthritis patients from the community treated with methotrexate
118 or leflunomide: results from the ESPOIR cohort. *Arthritis Res Ther* 2012;**14**:R249.
119 doi:10.1186/ar4092
- 120 18 Visser K, Goekoop-Ruiterman YPM, de Vries-Bouwstra JK, *et al.* A matrix risk model for
121 the prediction of rapid radiographic progression in patients with rheumatoid arthritis
122 receiving different dynamic treatment strategies: post hoc analyses from the BeSt
123 study. *Ann Rheum Dis* 2010;**69**:1333–7. doi:10.1136/ard.2009.121160
- 124 19 Machold KP, Stamm TA, Nell VPK, *et al.* Very recent onset rheumatoid arthritis: clinical
125 and serological patient characteristics associated with radiographic progression over
126 the first years of disease. *Rheumatology (Oxford)* 2007;**46**:342–9.
127 doi:10.1093/rheumatology/kel237
- 128 20 Dixey J, Solymossy C, Young A, *et al.* Is it possible to predict radiological damage in
129 early rheumatoid arthritis (RA)? A report on the occurrence, progression, and
130 prognostic factors of radiological erosions over the first 3 years in 866 patients from
131 the Early RA Study (ERAS). *J Rheumatol Suppl* 2004;**69**:48–54.

- 132 21 Aletaha D, Neogi T, Silman AJ, *et al.* 2010 Rheumatoid arthritis classification criteria:
133 an American College of Rheumatology/European League Against Rheumatism
134 collaborative initiative. 2010;**62**:2569–81. doi:10.1002/art.27584
- 135 22 Bruce B, Fries JF. The Health Assessment Questionnaire (HAQ). *Clin Exp Rheumatol*
136 2005;**23**:S14–8.
- 137 23 Wells G, Becker J-C, Teng J, *et al.* Validation of the 28-joint Disease Activity Score
138 (DAS28) and European League Against Rheumatism response criteria based on C-
139 reactive protein against disease progression in patients with rheumatoid arthritis, and
140 comparison with the DAS28 based on erythrocyte sedimentation rate. *Ann Rheum Dis*
141 2009;**68**:954–60. doi:10.1136/ard.2007.084459
- 142 24 Fransen J, van Riel PLCM. DAS remission cut points. *Clin Exp Rheumatol* 2006;**24**:S-
143 29–32.
- 144 25 van der Heijde D, Paulus H, Shekelle P. How to read radiographs according to the
145 Sharp/van der Heijde method. Discussion : Heterogeneity in rheumatoid arthritis
146 radiographic trials. Issues to consider in a metaanalysis. *J Rheumatol* 2000;**27**:261–3.
- 147 26 Krabben A, Stomp W, van Nies JAB, *et al.* MRI-detected subclinical joint inflammation is
148 associated with radiographic progression. *Ann Rheum Dis* 2014;**73**:2034–7.
149 doi:10.1136/annrheumdis-2014-205208
- 150 27 Barnabe C, Buie H, Kan M, *et al.* Reproducible metacarpal joint space width
151 measurements using 3D analysis of images acquired with high-resolution peripheral
152 quantitative computed tomography. *Med Eng Phys* 2013;**35**:1540–4.
153 doi:10.1016/j.medengphy.2013.04.003
- 154 28 Barnabe C, Feehan L, SPECTRA (Study Group for XTrEme-CT in RA). High-resolution
155 peripheral quantitative computed tomography imaging protocol for
156 metacarpophalangeal joints in inflammatory arthritis: the SPECTRA collaboration. *J*
157 *Rheumatol* 2012;**39**:1494–5. doi:10.3899/jrheum.120218
- 158 29 Stok KS, Burghardt AJ, Boutroy S, *et al.* Consensus approach for 3D joint space width of
159 metacarpophalangeal joints of rheumatoid arthritis patients using high-resolution
160 peripheral quantitative computed tomography. *Quant Imaging Med Surg*
- 161 30 International Society for Clinical Densitometry Committee on Standards of Bone
162 Measurement. 2015 ISCD Official Positions - Adult. Published Online First:
163 2015.<http://www.iscd.org/official-positions/2015-iscd-official-positions-adult/>
- 164 31 Glüer CC, Blake G, Lu Y, *et al.* Accurate assessment of precision errors: how to measure
165 the reproducibility of bone densitometry techniques. *Osteoporos Int* 1995;**5**:262–70.
- 166 32 Glüer CC. Monitoring skeletal changes by radiological techniques. *J Bone Miner Res*
167 1999;**14**:1952–62. doi:10.1359/jbmr.1999.14.11.1952

- 168 33 Eklund A. beeswarm. <http://www.cbs.dtu.dk/eklundbeeswarm>.
- 169 34 Prevoo ML, van 't Hof MA, Kuper HH, *et al.* Modified disease activity scores that include
170 twenty-eight-joint counts. Development and validation in a prospective longitudinal
171 study of patients with rheumatoid arthritis. 1995;**38**:44–8.
- 172 35 Team RS. RStudio: Integrated Development for R. RStudio, Inc.
173 2015.<http://www.rstudio.com/> (accessed 26 Apr2019).
- 174 36 Allaire JJ, Xie Y, McPherson J, *et al.* rmarkdown: Dynamic Documents for R. R package
175 version 1.12. 2019.<https://rmarkdown.rstudio.com> (accessed 26 Apr2019).
- 176 37 Xie Y, Allaire JJ, Golemund G. *R Markdown: The Definitive Guide*. Chapman and
177 Hall/CRC 2018. <https://bookdown.org/yihui/rmarkdown>
- 178 38 Fuchs HA, Kaye JJ, Callahan LF, *et al.* Evidence of significant radiographic damage in
179 rheumatoid arthritis within the first 2 years of disease. *J Rheumatol* 1989;**16**:585–91.
- 180 39 Navarro-Compán V, van der Heijde D, Ahmad HA, *et al.* Measurement error in the
181 assessment of radiographic progression in rheumatoid arthritis (RA) clinical trials: the
182 smallest detectable change (SDC) revisited. *Ann Rheum Dis* 2014;**73**:1067–70.
183 doi:10.1136/annrheumdis-2012-202939

184

Figure 1

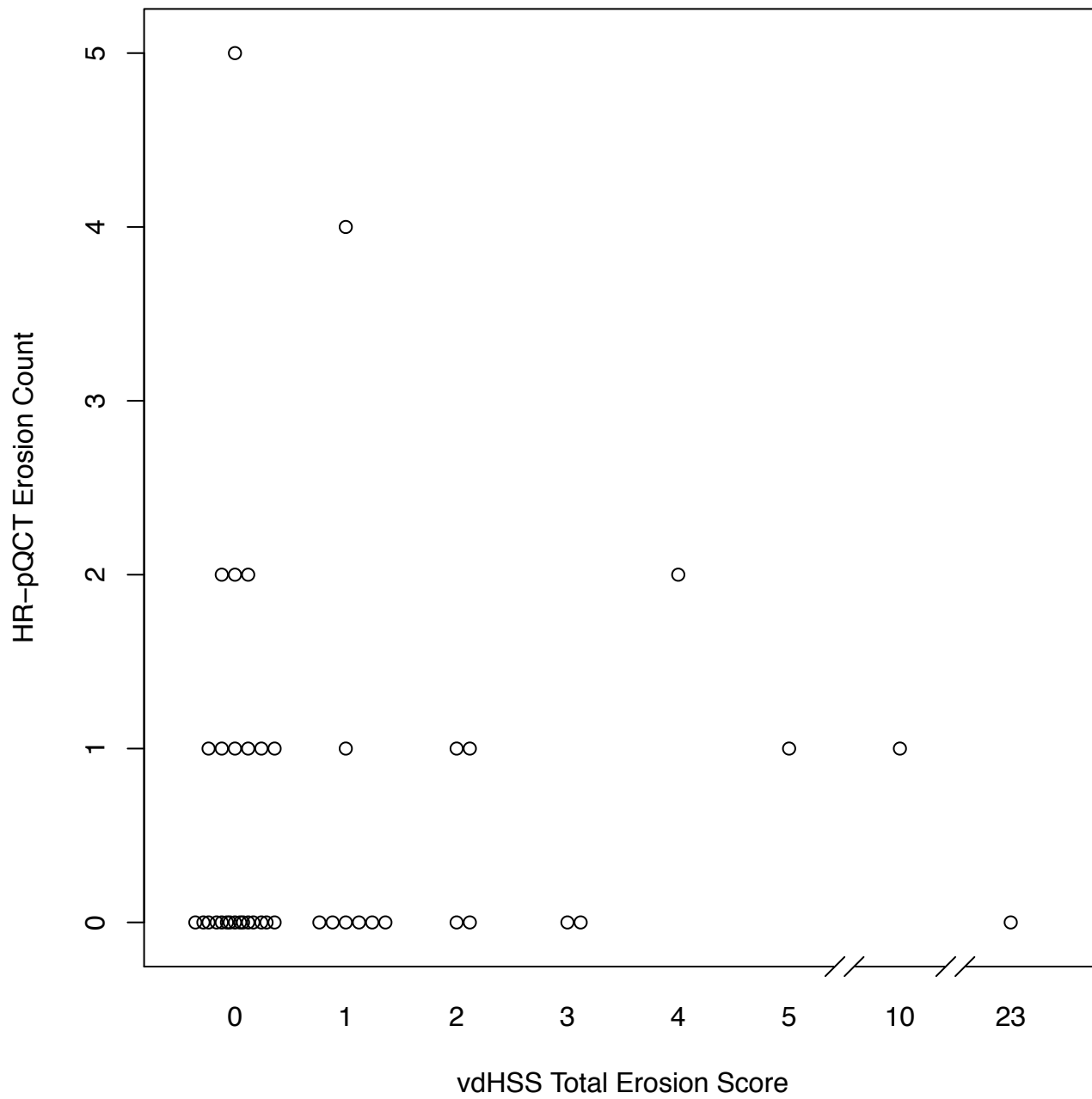
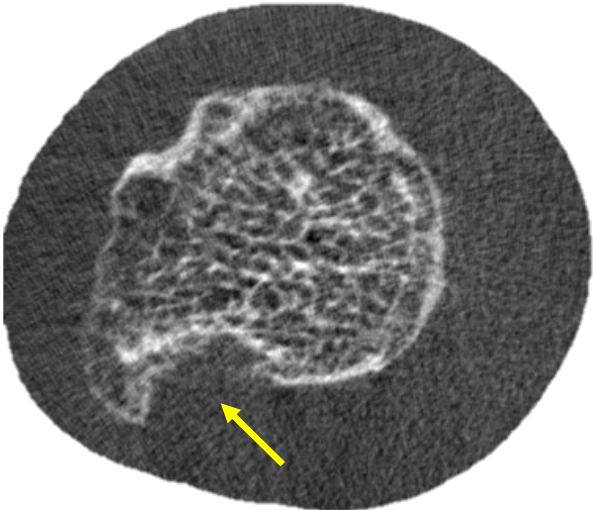


Figure 2

A) HR-pQCT

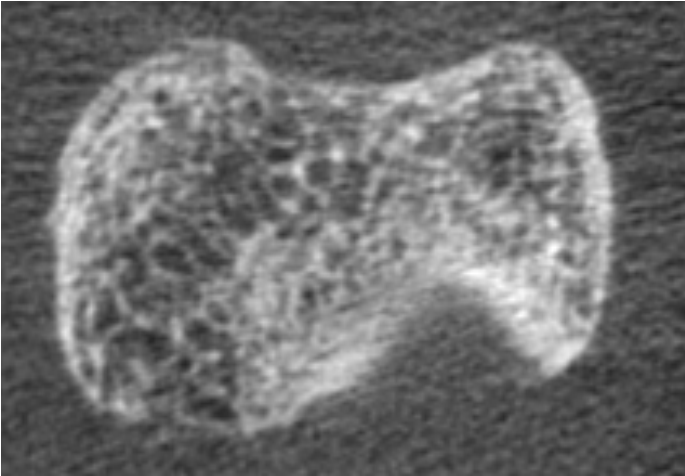


B) CR

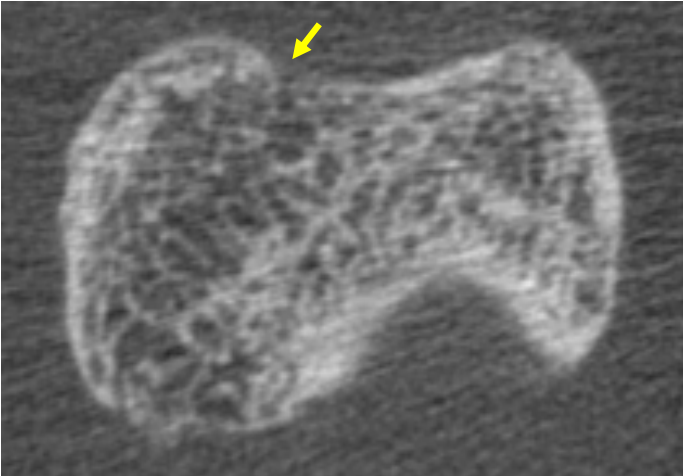


Figure 3

A) Baseline



B) 12-month follow-up



C) Baseline aligned with follow-up image

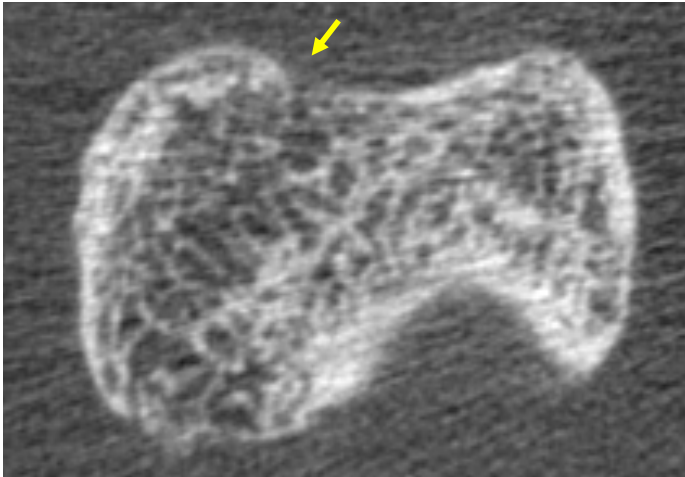


Figure 4

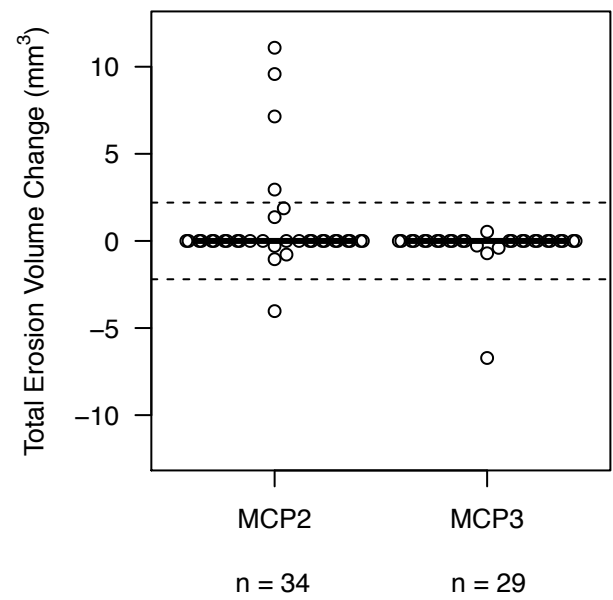
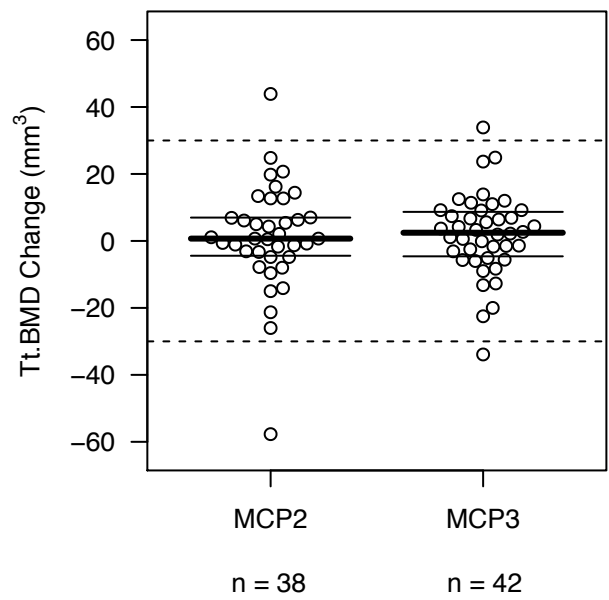
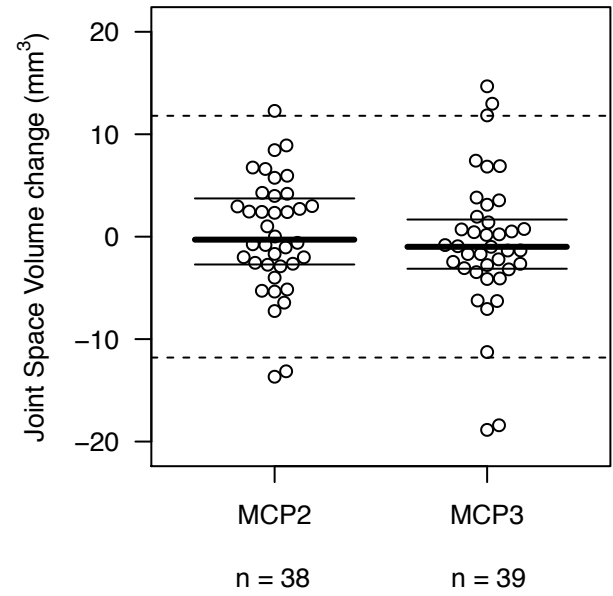
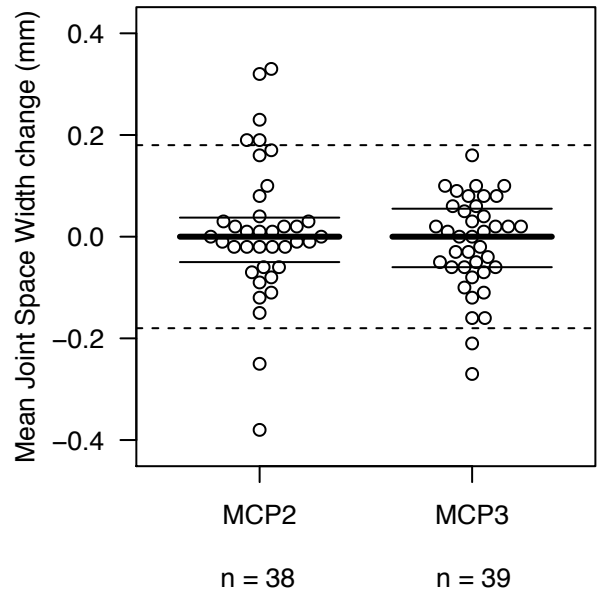
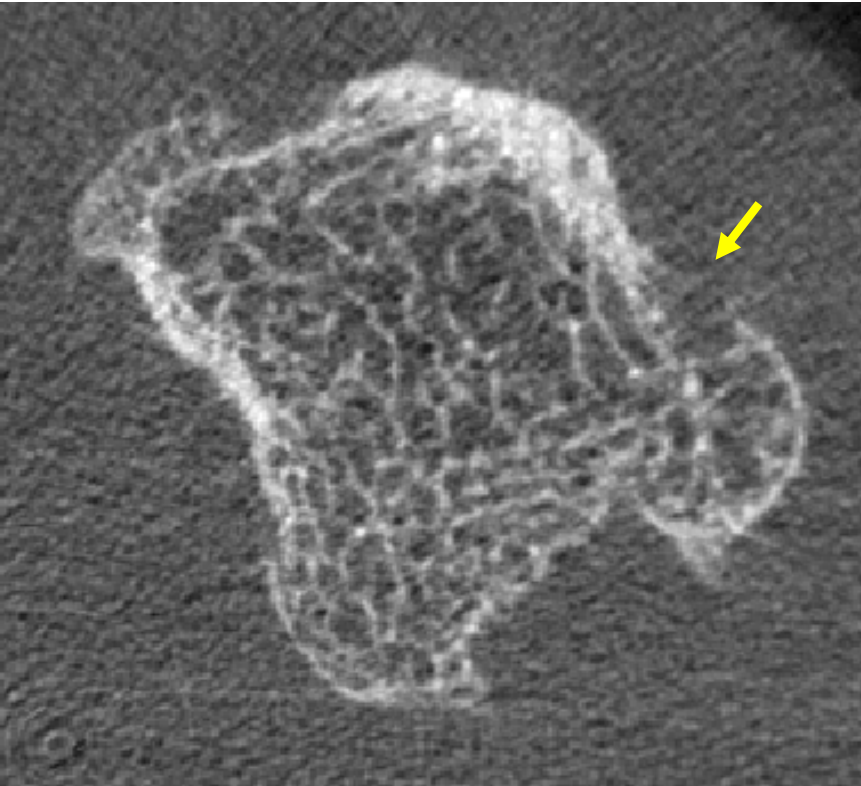


Figure 5

A) Baseline



B) 12-month follow-up

