

Genetically predicted serum urate, blood pressure and cardiovascular disease: an updated Mendelian randomization investigation

Gill *et al.* Urate, blood pressure and cardiovascular disease

Dipender Gill MD¹, Stephen Burgess PhD^{2,3}, Xue Li PhD⁴, Ville Karhunen MSc¹, Alan Cameron MD PhD⁵, Verena Zuber PhD^{1,2}, Philip S. Tsao PhD^{6,7}, Derek Klarin MD⁸⁻¹¹, VA Million Veteran Program, Evangelos Evangelou PhD^{1,12}, Paul Elliott FMedSci^{1,13-16}, Scott M. Damrauer MD^{17,18}, Terry Quinn MD⁵, Abbas Dehghan MD PhD^{1,13,14}, Evropi Theodoratou PhD^{4,19*}, Jesse Dawson MD PhD^{5*}, Ioanna Tzoulaki PhD^{1,12-14*}

*These authors contributed equally and are joint last

Affiliations

¹Department of Epidemiology and Biostatistics, School of Public Health, Imperial College London, London, UK.

²MRC Biostatistics Unit, Cambridge Institute of Public Health, Cambridge, UK.

³Cardiovascular Epidemiology Unit, Department of Public Health and Primary Care, University of Cambridge, Cambridge, UK.

⁴Centre for Global Health, Usher Institute, University of Edinburgh, Edinburgh, UK.

⁵University of Glasgow, Institute of Cardiovascular & Medical Sciences, Glasgow, UK.

⁶VA Palo Alto Health Care System, California, USA.

⁷Department of Medicine, Stanford University School of Medicine, California, USA.

⁸Malcom Randall VA Medical Center, Gainesville, Florida, USA.

⁹Center for Genomic Medicine, Massachusetts General Hospital, Harvard Medical School, Massachusetts, USA.

¹⁰Program in Medical and Population Genetics, Broad Institute of MIT and Harvard, Massachusetts, USA.

¹¹Division of Vascular Surgery and Endovascular Therapy, University of Florida School of Medicine, Gainesville, Florida, USA.

¹²Department of Hygiene and Epidemiology, University of Ioannina Medical School, Ioannina, Greece.

¹³MRC Centre for Environment and Health, School of Public Health, Imperial College London, London, UK.

¹⁴UK Dementia Research Institute at Imperial College London, London, UK.

¹⁵Imperial Biomedical Research Centre, Imperial College London and Imperial College NHS Healthcare Trust, London, UK.

¹⁶Health Data Research UK-London, London, UK.

¹⁷Corporal Michael J. Crescenz VA Medical Center, Philadelphia, USA.

¹⁸Department of Surgery, University of Pennsylvania Perelman School of Medicine, Philadelphia, USA.

¹⁹Edinburgh Cancer Research Centre, Institute of Genetics and Molecular Medicine, University of Edinburgh, Edinburgh, United Kingdom.

Corresponding author

Dr Dipender Gill

Department of Epidemiology and Biostatistics, School of Public Health, Medical School Building, St

Mary's Hospital, Imperial College London, United Kingdom, W2 1PG

Fax: +44 (0) 20 3313 8223

Telephone: +44 (0) 7904843810

E-mail: dipender.gill@imperial.ac.uk

Total word count: 9,038

Abstract

Background: Elevated serum urate has been associated with an increased risk of cardiovascular disease (CVD), but it is not known whether this relationship is causal, non-linear or sex-specific. Basic science and clinical trial data have supported an effect of serum urate on systolic blood pressure (SBP), which may in turn mediate an effect on CVD risk.

Methods: Using recently available data from the Million Veterans Program and UK Biobank, we applied improved genetic instruments for serum urate in one and two-sample Mendelian randomization (MR) analyses to investigate for effects on risk of coronary heart disease (CHD), peripheral artery disease (PAD), and stroke. Potential mediation through SBP was explored, as well as evidence of non-linear and sex-specific effects. We performed a number of sensitivity analyses using different MR methodologies and populations to investigate consistency of our findings.

Results: Higher genetically predicted serum urate was associated with an increased risk of CHD (odds ratio [OR] per 1-standard deviation increase in genetically predicted urate 1.19, 95% confidence interval [CI] 1.10-1.30, $P=4\times 10^{-5}$), PAD (OR 1.12, 95% CI 1.03-1.21, $P=9\times 10^{-3}$), and stroke (OR 1.11, 95% CI 1.05-1.18, $P=2\times 10^{-4}$). Similar estimates were produced when applying MR methods that make distinct assumptions, or when considering different populations. SBP was estimated to mediate 29%, 44% and 45% of the effect of urate on CHD, PAD and stroke respectively. There was no evidence of non-linear or sex-specific effects of genetically predicted urate on CVD risk.

Conclusions: Using contemporary data and MR methods, we provide support for an effect of serum urate on CVD risk that may partly be mediated through SBP. High-quality trials are necessary to provide definitive evidence on the cardiovascular benefit of urate lowering.

Background

Urate is a breakdown product of purine metabolism. Its raised levels have been associated with a number of adverse health outcomes including gout, hypertension and cardiovascular disease (CVD)¹. Efficacious treatments such as allopurinol and probenecid are available for lowering serum urate in the prevention and treatment of gout. While observational studies consistently support associations of urate with diseases other than gout², it remains unclear whether these represent causal effects. The relationship between serum urate, obesity, diet and other cardiovascular risk factors raises considerable potential for confounding and reverse causation³.

Pre-clinical studies support a causal role for urate in hypertension⁴. Randomized clinical trial data have shown that both allopurinol and probenecid reduce systolic blood pressure (SBP) in hyperuricemic adolescents^{1, 5}. As elevated blood pressure is a risk factor for CVD, it is important to clarify any role of SBP in mediating an effect of urate on cardiovascular outcomes. Recent trials have highlighted potential non-linear effects of urate lowering⁶, and numerous observational studies have suggested that the relationship between serum urate and CVD is stronger in women than men⁷⁻⁹. The presence of non-linear or sex-specific relationships between urate and cardiovascular risk therefore also require further exploration.

The genetic determinants of serum urate levels have been increasingly well-characterized³. This has made it possible to identify better instruments for Mendelian randomization (MR) analyses investigating the effect of genetically predicted serum urate on cardiovascular outcomes than in previous efforts¹⁰⁻¹⁶. The use of variants randomly allocated at conception to proxy the effect of modifying serum urate means that MR is less susceptible to the environmental confounding, measurement error and reverse causation bias that can limit causal inference in traditional epidemiological approaches. Previous MR studies have relied on much smaller genome-wide association studies (GWASs) for serum urate than are currently available^{3, 10-17}, and furthermore did not incorporate recently developed mediation analysis and non-linear MR methods¹⁸⁻²⁰.

Using the largest available GWASs of serum urate and the increased number of instruments available^{3, 17}, we update previous MR analyses investigating the effect of serum urate on coronary heart disease (CHD) and stroke with improved precision, and now also investigate peripheral arterial disease (PAD) as an outcome. MR methods that are robust to pleiotropic effects of the genetic variants employed as instruments for urate are applied, with formal mediation analyses integrated to investigate for any role of SBP in mediating the effect of urate on risk of CVD outcomes. Finally, we explore for potential non-linear and sex-specific effects of urate on CVD outcomes. Our aim was to perform a comprehensive investigation into the effect of genetically predicted serum urate on cardiovascular outcomes, and thus provide crucial insight to guide the design of future clinical trials.

Methods

Genetic association estimates

In two-sample MR, genetic association estimates for serum urate were obtained by using PLINK software to meta-analyze summary data from GWAS analyses of 110,347 European-ancestry individuals and 343,836 White British UK Biobank participants respectively^{17, 21, 22}. Urate estimates are provided per 1-standard deviation (SD) increase throughout, which corresponds to 80.3 μ mol/L. For consideration of SBP as a mediator in the two-sample multivariable MR, genetic association estimates were obtained from a GWAS of 317,195 White British UK Biobank participants, where SBP was measured using automated readings with correction made for any anti-hypertensive drug use by adding 10mmHg to the measured reading²³. In contrast, when investigating SBP as an outcome, genetic association estimates were obtained from the International Consortium for Blood Pressure (ICBP) GWAS analysis of 287,245 European-ancestry individuals (excluding UK Biobank participants)²⁴. A different population was considered when studying SBP as an outcome to avoid overlap with the UK Biobank participants used to obtain genetic association estimates for urate, as this can bias MR estimates²⁵. The ICBP study adjusted for body mass index (BMI) when obtaining

genetic association estimates for SBP, and hence these data were not meta-analyzed with UK Biobank SBP genetic association estimates in the study of SBP as a mediator, as such BMI adjustment can also bias MR estimates²⁶. SBP estimates are provided per 1-SD increase, which corresponds to 18.6mmHg. Genetic association estimates for CHD were obtained from the CARDIoGRAMplusC4D Consortium 1000G multi-ethnic GWAS (77% European-ancestry) of 60,801 cases and 123,504 controls, with a broad and inclusive definition of CHD applied²⁷. Genetic association estimates for PAD were obtained from the Million Veterans Program (MVP) multi-ethnic (72% European-ancestry) GWAS of 31,307 cases and 211,753 controls, with case definitions made using hospital diagnosis and procedure codes²⁸. Genetic association estimates for stroke were obtained from the MEGASTROKE multi-ethnic (86% European-ancestry) GWAS of 67,162 cases and 454,450 controls²⁹, with the stroke definition including both ischemic and hemorrhagic etiologies.

One-sample MR analysis was performed in the UK Biobank, a prospective cohort study of approximately 500,000 participants recruited between 2006 and 2010 from 22 assessment centers across the UK³⁰. Self-reported, physical, biochemical and genetic information was collected and participants were linked retrospectively and prospectively to their hospital episode statistics as previously described³⁰. Analysis was restricted to self-reported White British participants. In order to increase statistical power while also maintaining consistency with the disease outcomes considered in the two-sample MR, CHD, PAD and stroke cases were pooled as CVD events. International Classification of Diseases version 10 codes were used to identify cases (Supplementary Table 1). To obtain estimates for the association between the urate GRS and serum urate in UK Biobank participants, the score was regressed in a linear model against measured levels, with adjustment made for age, age², sex, recruitment center and the first four principal components. To obtain genetic association estimates for the urate GRS with risk of incident CVD, a Cox proportional hazards regression was used, with adjustment similarly made for age, age², sex, recruitment center and the first four principal components. Cases where death occurred prior to any incident CVD event were censored. Genetic association estimates of the urate GRS with SBP were obtained by performing a

linear regression against SBP with the same adjustments as above. SBP was calculated as the mean of the two automated readings taken on the initial assessment.

Genetic variants used as instruments

Genetic instruments for the two-sample MR were identified as single-nucleotide polymorphisms (SNPs) that were associated with urate (or SBP, in mediation analyses) at genome-wide significance ($P < 5 \times 10^{-8}$) and were in pair-wise linkage disequilibrium (LD) with $r^2 < 0.001$. Clumping was performed using the TwoSampleMR package of R³¹. For univariable MR, instrument strength was estimated using the *F*-statistic, with variance in the exposure explained assessed using the R^2 value¹¹.

A weighted genetic risk score (GRS) for serum urate was used as the instrument in the one-sample MR analysis. This was constructed using SNPs with minor allele frequency > 0.05 that were associated with urate at $P < 5 \times 10^{-8}$ in the summary data from a GWAS performed in 288,666 European-ancestry individuals, clumped to a pairwise LD $r^2 < 0.001$ using the TwoSampleMR package of R^{3, 31}. The UK Biobank population used to select instruments in the two-sample MR analysis was not included here to avoid overlap with the UK Biobank cohort used to obtain genetic association estimates with outcomes²⁵. Similarly, the population used to derive the weighted GRS for urate in the one-sample analysis was not also included when deriving instruments for the two-sample analysis because this would have resulted in overlap of the MVP population that was also used to obtain genetic association estimates for PAD^{3, 25, 28}. The GRS in the one-sample MR was weighted for the association of the constituent variants with serum urate, and for each individual participant was measured as the sum of the imputed number of alleles present multiplied by their variant's weight.

Statistical analysis

In all analyses, SNPs were aligned by their effect alleles and no additional consideration was made for palindromic variants. Two-sample MR analyses were performed to investigate the effect of

genetically predicted serum urate on CHD, PAD, stroke and SBP respectively. A Bonferroni threshold ($P < 0.01$) that corrected for multiple testing related to the four outcomes was used to ascertain statistical significance in the main analysis. Inverse-variance weighted MR was used in the main analysis, with the simple median³², contamination-mixture method³³, PRESSO³⁴ and multivariable MR³⁵ (only for CVD outcomes) sensitivity analyses used to explore the robustness of the findings to potential pleiotropy of the genetic variants. Given the previously demonstrated overlap in the genetic determinants of urate with other metabolic traits³, the multivariable MR sensitivity analysis adjusted for genetic associations of the instruments with BMI, estimated glomerular filtration rate, type 2 diabetes mellitus, serum low-density lipoprotein cholesterol, serum high-density lipoprotein cholesterol and serum triglycerides together in the same model. Such multivariable MR was not performed when considering SBP as an outcome, due to population overlap with the cohorts used to obtain genetic association estimates for the metabolic exposures²⁵. It was expected that any direct effects of the instruments on the considered cardiovascular outcomes might be related to their effect on serum urate³. Thus, the simple median estimator was preferred to its precision weighted counterpart and the MR-Egger method was avoided, as these methods are unreliable in such scenarios^{32, 36}. In MR mediation analyses, multivariable MR was applied in the two-sample setting to adjust for the genetic association of the instruments with SBP, and network MR was used to estimate the proportion of the total effect of urate on each cardiovascular outcome that is mediated through SBP³⁷. Standard errors were estimated using the propagation of error method. Further details on these analyses are provided in the Supplementary Methods.

To obtain MR estimates in the one-sample analysis, the ratio method was used, with first order weights for estimating standard errors³⁸. To investigate for any discrepancy in the effects of urate on CVD risk and SBP respectively based on observed urate levels (non-linear effects) and sex (sex-specific effects), the cohort was stratified based on these traits and MR analysis was performed for each stratum separately. Rather than stratify on measured urate itself however, the cohort was divided into four quantiles based on residual urate, which is the measured urate minus the

genetically raised urate as determined by each individual's weighted GRS. Such stratification by residual urate is necessary, as stratifying on measured urate directly would introduce collider bias if urate is on the causal pathway from the genetic variants to the outcomes¹⁸. For consideration of sex-specific effects, the cohort was simply divided by self-reported sex. Exposure and outcome genetic association estimates for each stratum were calculated separately. The Cochran's Q test was used to investigate heterogeneity between strata based on residual urate and sex respectively, with $P < 0.05$ denoting statistical significance.

Ethical approval, data availability and reporting

All data used in this work are either publicly accessible or available on request from their original studies, which obtained appropriate patient consent and ethical approval. The UK Biobank data were accessed through application 236. All results generated in this work are presented in either the manuscript or its supplementary files. This study has been reported as per the STROBE-MR guidelines (Supplementary Checklist)³⁹. The study protocol and details were not pre-registered.

Results

Two-sample Mendelian randomization

The instruments for urate that were used in the two-sample MR are presented in Supplementary Table 2. The main IVW MR showed that higher genetically predicted serum urate levels were associated with an increased risk of CHD, with odds ratio (OR) per 1-SD increase in genetically predicted urate 1.19, 95% confidence interval (CI) 1.10-1.30, $P = 4 \times 10^{-5}$. Consistent results were obtained in MR sensitivity analyses (Figure 1). Higher genetically predicted serum urate was also associated with increased risk of both PAD (OR 1.12, 95% CI 1.03-1.21, $P = 9 \times 10^{-3}$) and stroke (OR 1.11, 95% CI 1.05-1.18, $P = 2 \times 10^{-4}$) in the main IVW analysis, with similar results again obtained in MR sensitivity analyses that are more robust to the inclusion of pleiotropic variants (Figure 1). For the

multivariable MR adjusting for genetic confounding through BMI, estimated glomerular filtration rate, type 2 diabetes and lipid traits, direct effects of these exposures on risk of the respective CVD outcomes are presented in Supplementary Table 3. Considering SBP, the main IVW and sensitivity MR analyses all provided supporting evidence of a causal effect of serum urate (IVW estimate in SD units per 1-SD increase in genetically predicted urate 0.09, 95% CI 0.05-0.12, $P=6 \times 10^{-7}$; Figure 2). Scatter plots depicting the association of the instruments variants with serum urate and the respective outcomes are presented in Supplementary Figures 1-4.

Performing multivariable MR to adjust for genetically predicted SBP showed attenuation of the urate effect estimates for the CVD outcomes as compared to the main IVW univariable MR (Figure 3), supporting that part of the effect of urate on these outcomes is mediated through SBP. Network MR mediation analysis quantified this as 29% (95% CI 9%-48%) for CHD, 44% (95% CI 5%-83%) for PAD and 45% (95% CI 14%-76%) for stroke. For CHD there remained evidence of a direct effect of urate even after adjusting for SBP (OR 1.13, 95% CI 1.03-1.23, $P=0.01$). In contrast for PAD and stroke, although the estimate for the direct effect of urate that is not mediated through SBP was positive, the confidence interval crossed the null and the results were not statistically significant (PAD OR 1.08, 95% CI 1.00-1.17, $P=0.07$; stroke OR 1.06, 95% CI 0.99-1.12, $P=0.10$). Direct effects of SBP on the outcomes after adjusting for genetically predicted serum urate are presented in Supplementary Table 4.

One-sample Mendelian randomization

Baseline characteristics for the UK Biobank population considered in the one-sample MR analysis are detailed in Supplementary Table 5. A total of 373,167 participants were included in analyses after accounting for missing data (Supplementary Table 6). Included participants had similar characteristics to the UK Biobank population more generally (Supplementary Table 5). The first participant was recruited on 19 December 2006 and outcomes data were available up to 31 March

2017. A total of 29,903 incident CVD events (26,280 CHD, 420 PAD, and 3,203 stroke) were identified in the analysis, with a mean follow up time of 2,928 days. The 107 SNPs included in the urate GRS for the one-sample MR and their respective weights are detailed in Supplementary Figure 7. Considering the whole population, the OR of CVD per 1-SD increase in genetically predicted urate was 1.13 (95% CI 1.07-1.19, $P=1 \times 10^{-6}$) and the SD change in SBP per 1-SD increase in genetically predicted urate was 0.06 (95% CI 0.05-0.07, $P < 1 \times 10^{-10}$).

After splitting the cohort into four quantiles based on residual urate (observed urate corrected for genetic predisposition), MR estimates for the causal effect of genetically predicted urate on CVD risk were similar between quantiles (Figure 4), with Cochran's Q test for heterogeneity $P=0.62$. In contrast, there was statistically significant evidence of heterogeneity between the four quantiles when considering SBP as an outcome (Cochran's Q $P=0.02$), with the quantile that had lowest residual urate levels having a higher estimate, and 95% CIs that did not overlap with those for the quantile with highest residual urate levels (Figure 4). When stratifying by sex, there was no evidence of any discrepancy in the effect of genetically predicted urate levels on CVD risk (Cochran's Q $P=0.37$), but there was evidence of a greater effect on SBP for women as compared to men (Cochran's Q $P=0.01$) (Figure 4). Supplementary Table 7 details stratum specific characteristics and results.

Discussion

We used a comprehensive framework of MR methodologies to perform detailed investigation into the association of genetically predicted serum urate with CVD outcomes, and replicated findings in the independent UK Biobank population. The two-sample MR analyses identified consistent evidence of an effect of higher genetically predicted serum urate levels and risk of CHD, PAD, stroke and SBP. Performing multivariable MR to adjust for genetic association with SBP attenuated the estimates for the CVD outcomes to support that at least some of the effect of urate may be mediated through raised blood pressure. One-sample MR in the UK Biobank using individual participant data did not provide evidence to support non-linear or sex-specific effects of urate on CVD risk, although there was some suggestion that a fixed increase in genetically predicted urate may raise SBP more in those with lower urate levels, and in women as compared to men.

Hyperuricemia has been postulated to cause endothelial dysfunction by increasing oxidative stress¹. Consistent with our findings, this could directly increase risk of CHD, PAD and stroke through effects on the vascular endothelium, as well as indirectly by raising blood pressure via impairment of renal function¹. In an animal model where hyperuricemia was induced using a uricase inhibitor, hypertension followed after three weeks while controls remained normotensive⁴. A systematic review and meta-analysis of 81 trials including 10,684 participants showed a significant decrease in total cardiovascular events with allopurinol use, although the reduction in major adverse cardiovascular events and mortality did not reach statistical significance⁶. However, the majority of trial evidence was of low or moderate quality⁶. The results of the Febuxostat and Allopurinol Streamlined Trial (FAST) and the Allopurinol and cardiovascular outcomes in patients with ischemic heart disease (ALL-HEART) trials will help provide further insight on potential re-purposing of these existing agents for CVD prevention^{40, 41}. Allopurinol could represent an inexpensive, safe and well-tolerated drug for reducing cardiovascular risk⁴².

Our current study has several strengths. Some previous MR analyses, including from our group^{12, 13}, have suggested that there may not be any causal effect of genetically predicted serum urate on CVD outcomes. These findings may have been due to any effect of genetically predicted urate on CVD risk being concealed by pleiotropic effects on other metabolic traits³, as well as insufficient statistical power. In the current study, we were not overly reliant on MR methods that are vulnerable to violations of the instrument-strength independent of direct effect ('InSIDE') assumption, such as MR-Egger³⁶, as the genetic determinants of serum urate have been shown to share their etiology with other cardiometabolic risk factors, thus rendering this likely violated³. Instead, we used the contamination-mixture, simple median and MR-PRESSO methods as sensitivity analyses, which typically perform better than MR-Egger⁴³. Our present analysis also incorporated more powerful instruments for serum urate than were available previously. The variants used as instruments in our one-sample MR analysis of UK Biobank participants explained approximately 7.7% of the variance in serum urate³, in contrast to the 5.3% explained when selecting instrument variants from the previous largest published GWAS of serum urate²¹. Furthermore, to our knowledge this is the first MR study to investigate for non-linear and sex-specific effects of genetically predicted serum urate on CVD risk, as well as potential mediation through SBP. The absence of evidence to support a greater effect of changes in genetically predicted urate levels on CVD outcomes in those with higher baseline urate levels supports that relative risk reduction may be similar across the clinically observed range of urate levels (although absolute risk reduction could differ). The consistent findings for CVD risk reduction in both men and women can similarly inform trial inclusion and exclusion criteria.

Our work also has limitations. The MR approach makes a series of modelling assumptions, and in particular requires that the genetic variants used as instruments do not affect the considered outcomes through pathways that are independent of urate. While this can never be completely excluded, we performed a range of MR sensitivity analyses that make distinct assumptions on the presence of pleiotropic variants and found consistent estimates. MR estimates also represent the

lifelong cumulative effect of genetically predicted variation in serum urate levels, and may overestimate the consequence of a clinical intervention aimed at altering urate levels in adult life⁴⁴. Finally, we investigated SBP in mediating the effect of genetically predicted urate on CVD outcomes, rather than diastolic blood pressure. These two traits are highly genetically and phenotypically correlated²⁴, and it follows that a similar mediating role may be found for diastolic blood pressure, as has been highlighted previously⁴⁵.

To summarize, we have found consistent evidence for an effect of genetically predicted serum urate levels on risk of CHD, PAD, stroke and SBP. Our analyses suggest that urate may be causally associated with increased cardiovascular risk via both blood pressure dependent and independent mechanisms, with no evidence of non-linear or sex-specific effects. High-quality trial data are now necessary to provide definitive evidence on the cardiovascular benefit of urate lowering, with some large-scale studies already underway^{40, 41}.

Contributors

DG, JD, ET and IT designed the study. DG and XL had full access to the data and performed the analysis. All authors interpreted the results. DG, JD and IT drafted the manuscript. All authors critically revised the manuscript for intellectual content. All authors approved the submitted version and are accountable for the integrity of the work.

Acknowledgements

The authors acknowledge the contributors of the data used in this work: CARDIoGRAMplusC4D, CKDGen, DIAGRAM, Genetic Investigation of ANthropometric Traits, Global Lipids Genetics Consortium, International Consortium for Blood Pressure, MEGASTROKE, Million Veterans Program and UK Biobank.

Sources of Funding

This work was supported by funding from the US Department of Veterans Affairs Office of Research and Development, Million Veteran Program Grant MVP003 (I01-BX003362). This publication does not represent the views of the Department of Veterans Affairs of the US Government. DG is funded by the Wellcome 4i Clinical PhD Program at Imperial College London. VK is funded by the European Union's Horizon 2020 research and innovation program under the Marie Skłodowska-Curie grant (721567). PE acknowledges support from the Medical Research Council (MR/S019669/1), the National Institute for Health Research Imperial Biomedical Research Centre, Imperial College London (RDF03), the UK Dementia Research Institute (DRI) at Imperial College London funded by UK DRI Ltd (funded by Medical Research Council, Alzheimer's Society, Alzheimer's Research UK), and Health Data Research (HDR) UK London funded by HDR UK Ltd (funded by a consortium led by the Medical Research Council 1004231). SMD was supported by the Department of Veterans Affairs Office of

It is made available under a [CC-BY 4.0 International license](#) .

Research and Development (IK2-CX001780). ET is funded by a Cancer Research UK Career Development Fellowship (C31250/A22804). The MEGASTROKE project received funding from sources specified at <http://www.megastroke.org/acknowledgments.html>. Details of all MEGASTROKE authors are available at <http://www.megastroke.org/authors.html>.

Disclosures

JD and TQ have received charitable research income to conduct clinical trials of allopurinol use in people with stroke. The remaining authors have no conflicts of interest to declare.

References

1. Feig DI, Kang DH and Johnson RJ. Uric acid and cardiovascular risk. *N Engl J Med*. 2008;359:1811-21.
2. Li X, Meng X, Timofeeva M, Tzoulaki I, Tsilidis KK, Ioannidis JP, Campbell H and Theodoratou E. Serum uric acid levels and multiple health outcomes: umbrella review of evidence from observational studies, randomised controlled trials, and Mendelian randomisation studies. *BMJ*. 2017;357:j2376.
3. Tin A, Marten J, Halperin Kuhns VL, Li Y, Wuttke M, Kirsten H, Sieber KB, Qiu C, Gorski M, Yu Z, Giri A, Sveinbjornsson G, Li M, Chu AY, Hoppmann A, O'Connor LJ, Prins B, Nutile T, Noce D, Akiyama M, Cocca M, Ghasemi S, van der Most PJ, Horn K, Xu Y, Fuchsberger C, Sedaghat S, Afaq S, Amin N, Arnlov J, Bakker SJL, Bansal N, Baptista D, Bergmann S, Biggs ML, Biino G, Boerwinkle E, Bottinger EP, Boutin TS, Brumat M, Burkhardt R, Campana E, Campbell A, Campbell H, Carroll RJ, Catamo E, Chambers JC, Ciullo M, Concas MP, Coresh J, Corre T, Cusi D, Felicita SC, de Borst MH, De Grandi A, de Mutsert R, de Vries APJ, Delgado G, Demirkan A, Devuyst O, Dittrich K, Eckardt KU, Ehret G, Endlich K, Evans MK, Gansevoort RT, Gasparini P, Giedraitis V, Gieger C, Girotto G, Gogele M, Gordon SD, Gudbjartsson DF, Gudnason V, German Chronic Kidney Disease S, Haller T, Hamet P, Harris TB, Hayward C, Hicks AA, Hofer E, Holm H, Huang W, Hutri-Kahonen N, Hwang SJ, Ikram MA, Lewis RM, Ingelsson E, Jakobsdottir J, Jonsdottir I, Jonsson H, Joshi PK, Josyula NS, Jung B, Kahonen M, Kamatani Y, Kanai M, Kerr SM, Kiess W, Kleber ME, Koenig W, Kooner JS, Korner A, Kovacs P, Kramer BK, Kronenberg F, Kubo M, Kuhnel B, La Bianca M, Lange LA, Lehne B, Lehtimaki T, Lifelines Cohort S, Liu J, Loeffler M, Loos RJF, Lyytikainen LP, Magi R, Mahajan A, Martin NG, Marz W, Mascalzoni D, Matsuda K, Meisinger C, Meitinger T, Metspalu A, Milanesechi Y, Program VAMV, O'Donnell CJ, Wilson OD, Gaziano JM, Mishra PP, Mohlke KL, Mononen N, Montgomery GW, Mook-Kanamori DO, Muller-Nurasyid M, Nadkarni GN, Nalls MA, Nauck M, Nikus K, Ning B, Nolte IM, Noordam R, O'Connell JR, Olafsson I, Padmanabhan S, Penninx B, Perls T, Peters A, Pirastu M, Pirastu

N, Pistis G, Polasek O, Ponte B, Porteous DJ, Poulain T, Preuss MH, Rabelink TJ, Raffield LM, Raitakari OT, Rettig R, Rheinberger M, Rice KM, Rizzi F, Robino A, Rudan I, Krajcoviechova A, Cifkova R, Rueedi R, Ruggiero D, Ryan KA, Saba Y, Salvi E, Schmidt H, Schmidt R, Shaffer CM, Smith AV, Smith BH, Spracklen CN, Strauch K, Stumvoll M, Sulem P, Tajuddin SM, Teren A, Thiery J, Thio CHL, Thorsteinsdottir U, Toniolo D, Tonjes A, Tremblay J, Uitterlinden AG, Vaccargiu S, van der Harst P, van Duijn CM, Verweij N, Volker U, Vollenweider P, Waeber G, Waldenberger M, Whitfield JB, Wild SH, Wilson JF, Yang Q, Zhang W, Zonderman AB, Bochud M, Wilson JG, Pendergrass SA, Ho K, Parsa A, Pramstaller PP, Psaty BM, Boger CA, Snieder H, Butterworth AS, Okada Y, Edwards TL, Stefansson K, Susztak K, Scholz M, Heid IM, Hung AM, Teumer A, Pattaro C, Woodward OM, Vitart V and Kottgen A. Target genes, variants, tissues and transcriptional pathways influencing human serum urate levels. *Nat Genet.* 2019.

4. Mazzali M, Hughes J, Kim YG, Jefferson JA, Kang DH, Gordon KL, Lan HY, Kivlighn S and Johnson RJ. Elevated uric acid increases blood pressure in the rat by a novel crystal-independent mechanism. *Hypertension.* 2001;38:1101-6.
5. Feig DI, Soletsky B and Johnson RJ. Effect of allopurinol on blood pressure of adolescents with newly diagnosed essential hypertension: a randomized trial. *JAMA.* 2008;300:924-32.
6. Bredemeier M, Lopes LM, Eisenreich MA, Hickmann S, Bongiorno GK, d'Avila R, Morsch ALB, da Silva Stein F and Campos GGD. Xanthine oxidase inhibitors for prevention of cardiovascular events: a systematic review and meta-analysis of randomized controlled trials. *BMC Cardiovasc Disord.* 2018;18:24.
7. Culleton BF, Larson MG, Kannel WB and Levy D. Serum uric acid and risk for cardiovascular disease and death: the Framingham Heart Study. *Ann Intern Med.* 1999;131:7-13.
8. Tuttle KR, Short RA and Johnson RJ. Sex differences in uric acid and risk factors for coronary artery disease. *Am J Cardiol.* 2001;87:1411-4.

9. Cicero AF, Salvi P, D'Addato S, Rosticci M, Borghi C and Brisighella Heart Study g. Association between serum uric acid, hypertension, vascular stiffness and subclinical atherosclerosis: data from the Brisighella Heart Study. *J Hypertens*. 2014;32:57-64.
10. Kleber ME, Delgado G, Grammer TB, Silbernagel G, Huang J, Kramer BK, Ritz E and Marz W. Uric Acid and Cardiovascular Events: A Mendelian Randomization Study. *J Am Soc Nephrol*. 2015;26:2831-8.
11. Palmer TM, Lawlor DA, Harbord RM, Sheehan NA, Tobias JH, Timpson NJ, Davey Smith G and Sterne JA. Using multiple genetic variants as instrumental variables for modifiable risk factors. *Stat Methods Med Res*. 2012;21:223-42.
12. Efstathiadou A, Gill D, McGrane F, Quinn T and Dawson J. Genetically Determined Uric Acid and the Risk of Cardiovascular and Neurovascular Diseases: A Mendelian Randomization Study of Outcomes Investigated in Randomized Trials. *J Am Heart Assoc*. 2019;8:e012738.
13. Li X, Meng X, He Y, Spiliopoulou A, Timofeeva M, Wei WQ, Gifford A, Yang T, Varley T, Tzoulaki I, Joshi P, Denny JC, McKeigue P, Campbell H and Theodoratou E. Genetically determined serum urate levels and cardiovascular and other diseases in UK Biobank cohort: A phenome-wide mendelian randomization study. *PLoS Med*. 2019;16:e1002937.
14. Sedaghat S, Pazoki R, Uitterlinden AG, Hofman A, Stricker BH, Ikram MA, Franco OH and Dehghan A. Association of uric acid genetic risk score with blood pressure: the Rotterdam study. *Hypertension*. 2014;64:1061-6.
15. White J, Sofat R, Hemani G, Shah T, Engmann J, Dale C, Shah S, Kruger FA, Giambartolomei C, Swerdlow DI, Palmer T, McLachlan S, Langenberg C, Zabaneh D, Lovering R, Cavadino A, Jefferis B, Finan C, Wong A, Amuzu A, Ong K, Gaunt TR, Warren H, Davies TL, Drenos F, Cooper J, Ebrahim S, Lawlor DA, Talmud PJ, Humphries SE, Power C, Hypponen E, Richards M, Hardy R, Kuh D, Wareham N, Ben-Shlomo Y, Day IN, Whincup P, Morris R, Strachan MW, Price J, Kumari M, Kivimaki M, Plagnol V, Whittaker JC, International Consortium for Blood P, Smith GD, Dudbridge F, Casas JP, Holmes MV,

Hingorani AD and Ucleb. Plasma urate concentration and risk of coronary heart disease: a Mendelian randomisation analysis. *Lancet Diabetes Endocrinol*. 2016;4:327-36.

16. Li X, Meng XR, Spiliopoulou A, Timofeeva M, Wei WQ, Gifford A, Shen X, He YZ, Varley T, McKeigue P, Tzoulaki I, Wright AF, Joshi P, Denny JC, Campbell H and Theodoratou E. MR-PheWAS: exploring the causal effect of SUA level on multiple disease outcomes by using genetic instruments in UK Biobank. *Ann Rheum Dis*. 2018;77:1039-1047.

17. Neale Lab. Accessed 2019 January 16. Rapid GWAS of thousands of phenotypes for 337,000 samples in the UK Biobank 2018. <http://www.nealelab.is/blog/2017/7/19/rapid-gwas-of-thousands-of-phenotypes-for-337000-samples-in-the-uk-biobank>.

18. Burgess S, Davies NM, Thompson SG and Consortium EP-I. Instrumental variable analysis with a nonlinear exposure-outcome relationship. *Epidemiology*. 2014;25:877-85.

19. Burgess S, Thompson DJ, Rees JMB, Day FR, Perry JR and Ong KK. Dissecting causal pathways using mendelian randomization with summarized genetic data: Application to age at menarche and risk of breast cancer. *Genetics*. 2017;207:481-487.

20. Burgess S. Estimating and contextualizing the attenuation of odds ratios due to non collapsibility. *Commun Stat-Theor M*. 2017;46:786-804.

21. Kottgen A, Albrecht E, Teumer A, Vitart V, Krumsiek J, Hundertmark C, Pistis G, Ruggiero D, O'Seaghdha CM, Haller T, Yang Q, Tanaka T, Johnson AD, Kutalik Z, Smith AV, Shi J, Struchalin M, Middelberg RP, Brown MJ, Gaffo AL, Pirastu N, Li G, Hayward C, Zemunik T, Huffman J, Yengo L, Zhao JH, Demirkan A, Feitosa MF, Liu X, Malerba G, Lopez LM, van der Harst P, Li X, Kleber ME, Hicks AA, Nolte IM, Johansson A, Murgia F, Wild SH, Bakker SJ, Peden JF, Dehghan A, Steri M, Tenesa A, Lagou V, Salo P, Mangino M, Rose LM, Lehtimaki T, Woodward OM, Okada Y, Tin A, Muller C, Oldmeadow C, Putku M, Czamara D, Kraft P, Frogger L, Thun GA, Grotevendt A, Gislason GK, Harris TB, Launer LJ, McArdle P, Shuldiner AR, Boerwinkle E, Coresh J, Schmidt H, Schallert M, Martin NG, Montgomery GW, Kubo M, Nakamura Y, Tanaka T, Munroe PB, Samani NJ, Jacobs DR, Jr., Liu K, D'Adamo P, Ulivi S, Rotter JI, Psaty BM, Vollenweider P, Waeber G, Campbell S, Devuyst O, Navarro P, Kolcic I, Hastie N,

Balkau B, Froguel P, Esko T, Salumets A, Khaw KT, Langenberg C, Wareham NJ, Isaacs A, Kraja A, Zhang Q, Wild PS, Scott RJ, Holliday EG, Org E, Viigimaa M, Bandinelli S, Metter JE, Lupo A, Trabetti E, Sorice R, Doring A, Lattka E, Strauch K, Theis F, Waldenberger M, Wichmann HE, Davies G, Gow AJ, Bruinenberg M, LifeLines Cohort S, Stolk RP, Kooner JS, Zhang W, Winkelmann BR, Boehm BO, Lucae S, Penninx BW, Smit JH, Curhan G, Mudgal P, Plenge RM, Portas L, Persico I, Kirin M, Wilson JF, Mateo Leach I, van Gilst WH, Goel A, Ongen H, Hofman A, Rivadeneira F, Uitterlinden AG, Imboden M, von Eckardstein A, Cucca F, Nagaraja R, Piras MG, Nauck M, Schurmann C, Budde K, Ernst F, Farrington SM, Theodoratou E, Prokopenko I, Stumvoll M, Jula A, Perola M, Salomaa V, Shin SY, Spector TD, Sala C, Ridker PM, Kahonen M, Viikari J, Hengstenberg C, Nelson CP, Consortium CA, Consortium D, Consortium I, Consortium M, Meschia JF, Nalls MA, Sharma P, Singleton AB, Kamatani N, Zeller T, Burnier M, Attia J, Laan M, Klopp N, Hillege HL, Kloiber S, Choi H, Pirastu M, Tore S, Probst-Hensch NM, Volzke H, Gudnason V, Parsa A, Schmidt R, Whitfield JB, Fornage M, Gasparini P, Siscovick DS, Polasek O, Campbell H, Rudan I, Bouatia-Naji N, Metspalu A, Loos RJ, van Duijn CM, Borecki IB, Ferrucci L, Gambaro G, Deary IJ, Wolffenbuttel BH, Chambers JC, Marz W, Pramstaller PP, Snieder H, Gyllenstein U, Wright AF, Navis G, Watkins H, Witteman JC, Sanna S, Schipf S, Dunlop MG, Tonjes A, Ripatti S, Soranzo N, Toniolo D, Chasman DI, Raitakari O, Kao WH, Ciullo M, Fox CS, Caulfield M, Bochud M and Gieger C. Genome-wide association analyses identify 18 new loci associated with serum urate concentrations. *Nat Genet.* 2013;45:145-54.

22. Purcell S, Neale B, Todd-Brown K, Thomas L, Ferreira MA, Bender D, Maller J, Sklar P, de Bakker PI, Daly MJ and Sham PC. PLINK: a tool set for whole-genome association and population-based linkage analyses. *Am J Hum Genet.* 2007;81:559-75.

23. Carter AR, Gill D, Davies NM, Taylor AE, Tillmann T, Vaucher J, Wootton RE, Munafo MR, Hemani G, Malik R, Seshadri S, Woo D, Burgess S, Davey Smith G, Holmes MV, Tzoulaki I, Howe LD and Dehghan A. Understanding the consequences of education inequality on cardiovascular disease: mendelian randomisation study. *BMJ.* 2019;365:l1855.

24. Evangelou E, Warren HR, Mosen-Ansorena D, Mifsud B, Pazoki R, Gao H, Ntritsos G, Dimou N, Cabrera CP, Karaman I, Ng FL, Evangelou M, Witkowska K, Tzani E, Hellwege JN, Giri A, Velez Edwards DR, Sun YV, Cho K, Gaziano JM, Wilson PWF, Tsao PS, Kovesdy CP, Esko T, Magi R, Milani L, Almgren P, Boutin T, Debette S, Ding J, Giulianini F, Holliday EG, Jackson AU, Li-Gao R, Lin WY, Luan J, Mangino M, Oldmeadow C, Prins BP, Qian Y, Sargurupremraj M, Shah N, Surendran P, Theriault S, Verweij N, Willems SM, Zhao JH, Amouyel P, Connell J, de Mutsert R, Doney ASF, Farrall M, Menni C, Morris AD, Noordam R, Pare G, Poulter NR, Shields DC, Stanton A, Thom S, Abecasis G, Amin N, Arking DE, Ayers KL, Barbieri CM, Batini C, Bis JC, Blake T, Bochud M, Boehnke M, Boerwinkle E, Boomsma DI, Bottinger EP, Braund PS, Brumat M, Campbell A, Campbell H, Chakravarti A, Chambers JC, Chauhan G, Ciullo M, Cocca M, Collins F, Cordell HJ, Davies G, Borst MH, Geus EJ, Deary IJ, Deelen J, Del Greco MF, Demirkale CY, Dorr M, Ehret GB, Elosua R, Enroth S, Erzurumluoglu AM, Ferreira T, Franberg M, Franco OH, Gandin I, Gasparini P, Giedraitis V, Gieger C, Grotto G, Goel A, Gow AJ, Gudnason V, Guo X, Gyllensten U, Hamsten A, Harris TB, Harris SE, Hartman CA, Havulinna AS, Hicks AA, Hofer E, Hofman A, Hottenga JJ, Huffman JE, Hwang SJ, Ingelsson E, James A, Jansen R, Jarvelin MR, Joehanes R, Johansson A, Johnson AD, Joshi PK, Jousilahti P, Jukema JW, Jula A, Kahonen M, Kathiresan S, Keavney BD, Khaw KT, Knekt P, Knight J, Kolcic I, Kooner JS, Koskinen S, Kristiansson K, Kutalik Z, Laan M, Larson M, Launer LJ, Lehne B, Lehtimaki T, Liewald DCM, Lin L, Lind L, Lindgren CM, Liu Y, Loos RJF, Lopez LM, Lu Y, Lyytikainen LP, Mahajan A, Mamasoula C, Marrugat J, Marten J, Milaneschi Y, Morgan A, Morris AP, Morrison AC, Munson PJ, Nalls MA, Nandakumar P, Nelson CP, Niiranen T, Nolte IM, Nutile T, Oldehinkel AJ, Oostra BA, O'Reilly PF, Org E, Padmanabhan S, Palmas W, Palotie A, Pattie A, Penninx B, Perola M, Peters A, Polasek O, Pramstaller PP, Nguyen QT, Raitakari OT, Ren M, Rettig R, Rice K, Ridker PM, Ried JS, Riese H, Ripatti S, Robino A, Rose LM, Rotter JI, Rudan I, Ruggiero D, Saba Y, Sala CF, Salomaa V, Samani NJ, Sarin AP, Schmidt R, Schmidt H, Shrine N, Siscovick D, Smith AV, Snieder H, Sober S, Sorice R, Starr JM, Stott DJ, Strachan DP, Strawbridge RJ, Sundstrom J, Swertz MA, Taylor KD, Teumer A, Tobin MD, Tomaszewski M, Toniolo D, Traglia M, Trompet S, Tuomilehto J, Tzourio C, Uitterlinden AG, Vaez A, van der Most PJ, van Duijn

CM, Vergnaud AC, Verwoert GC, Vitart V, Volker U, Vollenweider P, Vuckovic D, Watkins H, Wild SH, Willemsen G, Wilson JF, Wright AF, Yao J, Zemunik T, Zhang W, Attia JR, Butterworth AS, Chasman DI, Conen D, Cucca F, Danesh J, Hayward C, Howson JMM, Laakso M, Lakatta EG, Langenberg C, Melander O, Mook-Kanamori DO, Palmer CNA, Risch L, Scott RA, Scott RJ, Sever P, Spector TD, van der Harst P, Wareham NJ, Zeggini E, Levy D, Munroe PB, Newton-Cheh C, Brown MJ, Metspalu A, Hung AM, O'Donnell CJ, Edwards TL, Million Veteran P, Psaty BM, Tzoulaki I, Barnes MR, Wain LV, Elliott P and Caulfield MJ. Genetic analysis of over 1 million people identifies 535 new loci associated with blood pressure traits. *Nat Genet.* 2018;50(10):1412-1425.

25. Burgess S, Davies NM and Thompson SG. Bias due to participant overlap in two-sample Mendelian randomization. *Genet Epidemiol.* 2016;40:597-608.

26. Holmes MV and Davey Smith G. Problems in interpreting and using GWAS of conditional phenotypes illustrated by 'alcohol GWAS'. *Mol Psychiatry.* 2018.

27. Nikpay M, Goel A, Won HH, Hall LM, Willenborg C, Kanoni S, Saleheen D, Kyriakou T, Nelson CP, Hopewell JC, Webb TR, Zeng L, Dehghan A, Alver M, Armasu SM, Auro K, Bjornes A, Chasman DI, Chen S, Ford I, Franceschini N, Gieger C, Grace C, Gustafsson S, Huang J, Hwang SJ, Kim YK, Kleber ME, Lau KW, Lu X, Lu Y, Lyytikainen LP, Mihailov E, Morrison AC, Pervjakova N, Qu L, Rose LM, Salfati E, Saxena R, Scholz M, Smith AV, Tikkanen E, Uitterlinden A, Yang X, Zhang W, Zhao W, de Andrade M, de Vries PS, van Zuydam NR, Anand SS, Bertram L, Beutner F, Dedoussis G, Frossard P, Gauguier D, Goodall AH, Gottesman O, Haber M, Han BG, Huang J, Jalilzadeh S, Kessler T, Konig IR, Lannfelt L, Lieb W, Lind L, Lindgren CM, Lokki ML, Magnusson PK, Mallick NH, Mehra N, Meitinger T, Memon FU, Morris AP, Nieminen MS, Pedersen NL, Peters A, Rallidis LS, Rasheed A, Samuel M, Shah SH, Sinisalo J, Stirrups KE, Trompet S, Wang L, Zaman KS, Ardisino D, Boerwinkle E, Borecki IB, Bottinger EP, Buring JE, Chambers JC, Collins R, Cupples LA, Danesh J, Demuth I, Elosua R, Epstein SE, Esko T, Feitosa MF, Franco OH, Franzosi MG, Granger CB, Gu D, Gudnason V, Hall AS, Hamsten A, Harris TB, Hazen SL, Hengstenberg C, Hofman A, Ingelsson E, Iribarren C, Jukema JW, Karhunen PJ, Kim BJ, Kooner JS, Kullo IJ, Lehtimaki T, Loos RJF, Melander O, Metspalu A, Marz W, Palmer CN, Perola M,

Quertermous T, Rader DJ, Ridker PM, Ripatti S, Roberts R, Salomaa V, Sanghera DK, Schwartz SM, Seedorf U, Stewart AF, Stott DJ, Thiery J, Zalloua PA, O'Donnell CJ, Reilly MP, Assimes TL, Thompson JR, Erdmann J, Clarke R, Watkins H, Kathiresan S, McPherson R, Deloukas P, Schunkert H, Samani NJ and Farrall M. A comprehensive 1,000 Genomes-based genome-wide association meta-analysis of coronary artery disease. *Nat Genet.* 2015;47:1121-1130.

28. Klarin D, Lynch J, Aragam K, Chaffin M, Assimes TL, Huang J, Lee KM, Shao Q, Huffman JE, Natarajan P, Arya S, Small A, Sun YV, Vujkovic M, Freiberg MS, Wang L, Chen J, Saleheen D, Lee JS, Miller DR, Reaven P, Alba PR, Patterson OV, DuVall SL, Boden WE, Beckman JA, Gaziano JM, Concato J, Rader DJ, Cho K, Chang KM, Wilson PWF, O'Donnell CJ, Kathiresan S, Program VAMV, Tsao PS and Damrauer SM. Genome-wide association study of peripheral artery disease in the Million Veteran Program. *Nat Med.* 2019;25:1274-1279.

29. Malik R, Chauhan G, Traylor M, Sargurupremraj M, Okada Y, Mishra A, Rutten-Jacobs L, Giese AK, van der Laan SW, Gretarsdottir S, Anderson CD, Chong M, Adams HHH, Ago T, Almgren P, Amouyel P, Ay H, Bartz TM, Benavente OR, Bevan S, Boncoraglio GB, Brown RD, Jr., Butterworth AS, Carrera C, Carty CL, Chasman DI, Chen WM, Cole JW, Correa A, Cotlarciuc I, Cruchaga C, Danesh J, de Bakker PIW, DeStefano AL, den Hoed M, Duan Q, Engelter ST, Falcone GJ, Gottesman RF, Grewal RP, Gudnason V, Gustafsson S, Haessler J, Harris TB, Hassan A, Havulinna AS, Heckbert SR, Holliday EG, Howard G, Hsu FC, Hyacinth HI, Ikram MA, Ingelsson E, Irvin MR, Jian X, Jimenez-Conde J, Johnson JA, Jukema JW, Kanai M, Keene KL, Kissela BM, Kleindorfer DO, Kooperberg C, Kubo M, Lange LA, Langefeld CD, Langenberg C, Launer LJ, Lee JM, Lemmens R, Leys D, Lewis CM, Lin WY, Lindgren AG, Lorentzen E, Magnusson PK, Maguire J, Manichaikul A, Mc Ardle PF, Meschia JF, Mitchell BD, Mosley TH, Nalls MA, Ninomiya T, O'Donnell MJ, Psaty BM, Pulit SL, Rannikmae K, Reiner AP, Rexrode KM, Rice K, Rich SS, Ridker PM, Rost NS, Rothwell PM, Rotter JJ, Rundek T, Sacco RL, Sakaue S, Sale MM, Salomaa V, Sapkota BR, Schmidt R, Schmidt CO, Schminke U, Sharma P, Slowik A, Sudlow CLM, Tanislav C, Tatlisumak T, Taylor KD, Thijs VNS, Thorleifsson G, Thorsteinsdottir U, Tiedt S, Trompet S, Tzourio C, van Duijn CM, Walters M, Wareham NJ, Wassertheil-Smoller S, Wilson JG, Wiggins KL,

Yang Q, Yusuf S, Bis JC, Pastinen T, Ruusalepp A, Schadt EE, Koplev S, Bjorkegren JLM, Codoni V, Civelek M, Smith NL, Tregouet DA, Christophersen IE, Roselli C, Lubitz SA, Ellinor PT, Tai ES, Kooner JS, Kato N, He J, van der Harst P, Elliott P, Chambers JC, Takeuchi F, Johnson AD, Sanghera DK, Melander O, Jern C, Strbian D, Fernandez-Cadenas I, Longstreth WT, Jr., Rolfs A, Hata J, Woo D, Rosand J, Pare G, Hopewell JC, Saleheen D, Stefansson K, Worrall BB, Kittner SJ, Seshadri S, Fornage M, Markus HS, Howson JMM, Kamatani Y, Debette S, Dichgans M, Malik R, Chauhan G, Traylor M, Sargurupremraj M, Okada Y, Mishra A, Rutten-Jacobs L, Giese AK, van der Laan SW, Gretarsdottir S, Anderson CD, Chong M, Adams HHH, Ago T, Almgren P, Amouyel P, Ay H, Bartz TM, Benavente OR, Bevan S, Boncoraglio GB, Brown RD, Jr., Butterworth AS, Carrera C, Carty CL, Chasman DI, Chen WM, Cole JW, Correa A, Cotlarciuc I, Cruchaga C, Danesh J, de Bakker PIW, DeStefano AL, Hoed MD, Duan Q, Engelter ST, Falcone GJ, Gottesman RF, Grewal RP, Gudnason V, Gustafsson S, Haessler J, Harris TB, Hassan A, Havulinna AS, Heckbert SR, Holliday EG, Howard G, Hsu FC, Hyacinth HI, Ikram MA, Ingelsson E, Irvin MR, Jian X, Jimenez-Conde J, Johnson JA, Jukema JW, Kanai M, Keene KL, Kissela BM, Kleindorfer DO, Kooperberg C, Kubo M, Lange LA, Langefeld CD, Langenberg C, Launer LJ, Lee JM, Lemmens R, Leys D, Lewis CM, Lin WY, Lindgren AG, Lorentzen E, Magnusson PK, Maguire J, Manichaikul A, McArdle PF, Meschia JF, Mitchell BD, Mosley TH, Nalls MA, Ninomiya T, O'Donnell MJ, Psaty BM, Pulit SL, Rannikmae K, Reiner AP, Rexrode KM, Rice K, Rich SS, Ridker PM, Rost NS, Rothwell PM, Rotter JJ, Rundek T, Sacco RL, Sakaue S, Sale MM, Salomaa V, Sapkota BR, Schmidt R, Schmidt CO, Schminke U, Sharma P, Slowik A, Sudlow CLM, Tanislav C, Tatlisumak T, Taylor KD, Thijs VNS, Thorleifsson G, Thorsteinsdottir U, Tiedt S, Trompet S, Tzourio C, van Duijn CM, Walters M, Wareham NJ, Wassertheil-Smoller S, Wilson JG, Wiggins KL, Yang Q, Yusuf S, Amin N, Aparicio HS, Arnett DK, Attia J, Beiser AS, Berr C, Buring JE, Bustamante M, Caso V, Cheng YC, Choi SH, Chowhan A, Cullell N, Dartigues JF, Delavaran H, Delgado P, Dorr M, Engstrom G, Ford I, Gurpreet WS, Hamsten A, Heitsch L, Hozawa A, Ibanez L, Ilinca A, Ingelsson M, Iwasaki M, Jackson RD, Jood K, Jousilahti P, Kaffashian S, Kalra L, Kamouchi M, Kitazono T, Kjartansson O, Kloss M, Koudstaal PJ, Krupinski J, Labovitz DL, Laurie CC, Levi CR, Li L, Lind L, Lindgren CM, Lioutas V, Liu YM, Lopez OL,

Makoto H, Martinez-Majander N, Matsuda K, Minegishi N, Montaner J, Morris AP, Muino E, Muller-Nurasyid M, Norrving B, Ogishima S, Parati EA, Peddareddygar LR, Pedersen NL, Pera J, Perola M, Pezzini A, Pileggi S, Rabionet R, Riba-Llena I, Ribases M, Romero JR, Roquer J, Rudd AG, Sarin AP, Sarju R, Sarnowski C, Sasaki M, Satizabal CL, Satoh M, Sattar N, Sawada N, Sibolt G, Sigurdsson A, Smith A, Sobue K, Soriano-Tarraga C, Stanne T, Stine OC, Stott DJ, Strauch K, Takai T, Tanaka H, Tanno K, Teumer A, Tomppo L, Torres-Aguila NP, Touze E, Tsugane S, Uitterlinden AG, Valdimarsson EM, van der Lee SJ, Volzke H, Wakai K, Weir D, Williams SR, Wolfe CDA, Wong Q, Xu H, Yamaji T, Sanghera DK, Melander O, Jern C, Strbian D, Fernandez-Cadenas I, Longstreth WT, Jr., Rolfs A, Hata J, Woo D, Rosand J, Pare G, Hopewell JC, Saleheen D, Stefansson K, Worrall BB, Kittner SJ, Seshadri S, Fornage M, Markus HS, Howson JMM, Kamatani Y, Debette S, Dichgans M, Consortium AF, Cohorts for H, Aging Research in Genomic Epidemiology C, International Genomics of Blood Pressure C, Consortium I, Starnet, BioBank Japan Cooperative Hospital G, Consortium C, Consortium E-C, Consortium EP-I, International Stroke Genetics C, Consortium M, Neurology Working Group of the CC, Network NSG, Study UKYLD, Consortium M and Consortium M. Multiancestry genome-wide association study of 520,000 subjects identifies 32 loci associated with stroke and stroke subtypes. *Nat Genet.* 2018;50:524-537.

30. Sudlow C, Gallacher J, Allen N, Beral V, Burton P, Danesh J, Downey P, Elliott P, Green J, Landray M, Liu B, Matthews P, Ong G, Pell J, Silman A, Young A, Sprosen T, Peakman T and Collins R. UK Biobank: An Open Access Resource for Identifying the Causes of a Wide Range of Complex Diseases of Middle and Old Age. *PLoS Med.* 2015;12(3):e1001779.

31. Hemani G, Zheng J, Elsworth B, Wade KH, Haberland V, Baird D, Laurin C, Burgess S, Bowden J, Langdon R, Tan VY, Yarmolinsky J, Shihab HA, Timpson NJ, Evans DM, Relton C, Martin RM, Davey Smith G, Gaunt TR and Haycock PC. The MR-Base platform supports systematic causal inference across the human phenome. *eLife.* 2018;7.

32. Bowden J, Davey Smith G, Haycock PC and Burgess S. Consistent Estimation in Mendelian Randomization with Some Invalid Instruments Using a Weighted Median Estimator. *Genet Epidemiol.* 2016;40:304-14.
33. Burgess S, Foley CN, Allara E, Staley JR and Howson JM. A robust and efficient method for Mendelian randomization with hundreds of genetic variants: unravelling mechanisms linking HDL-cholesterol and coronary heart disease. *bioRxiv.* 2019:566851.
34. Verbanck M, Chen CY, Neale B and Do R. Detection of widespread horizontal pleiotropy in causal relationships inferred from Mendelian randomization between complex traits and diseases. *Nat Genet.* 2018;50:693-698.
35. Burgess S, Dudbridge F and Thompson SG. Re: "Multivariable Mendelian randomization: the use of pleiotropic genetic variants to estimate causal effects". *Am J Epidemiol.* 2015;181:290-1.
36. Bowden J, Davey Smith G and Burgess S. Mendelian randomization with invalid instruments: effect estimation and bias detection through Egger regression. *Int J Epidemiol.* 2015;44:512-25.
37. Carter AR, Sanderson E, Hammerton G, Richmond RC, Smith GD, Heron J, Taylor AE, Davies NM and Howe LD. Mendelian randomisation for mediation analysis: current methods and challenges for implementation. *bioRxiv.* 2019:835819.
38. Palmer TM, Sterne JA, Harbord RM, Lawlor DA, Sheehan NA, Meng S, Granell R, Smith GD and Didelez V. Instrumental variable estimation of causal risk ratios and causal odds ratios in Mendelian randomization analyses. *Am J Epidemiol.* 2011;173:1392-403.
39. Davey Smith G, Davies NM, Dimou N, Egger M, Gallo V, Golub R, Higgins JP, Langenberg C, Loder EW, Richards JB, Richmond RC, Skrivankova VW, Swanson SA, Timpson NJ, Tybjaerg-Hansen A, VanderWeele TJ, Woolf BA and J. Y. STROBE-MR: Guidelines for strengthening the reporting of Mendelian randomization studies. <https://doi.org/10.7287/peerj.preprints.27857v1>. *PeerJ Preprints.* 2019;7:e27857v1.
40. MacDonald TM, Ford I, Nuki G, Mackenzie IS, De Caterina R, Findlay E, Hallas J, Hawkey CJ, Ralston S, Walters M, Webster J, McMurray J, Perez Ruiz F, Jennings CG and Members of the FSG.

Protocol of the Febuxostat versus Allopurinol Streamlined Trial (FAST): a large prospective, randomised, open, blinded endpoint study comparing the cardiovascular safety of allopurinol and febuxostat in the management of symptomatic hyperuricaemia. *BMJ Open*. 2014;4:e005354.

41. Mackenzie IS, Ford I, Walker A, Hawkey C, Begg A, Avery A, Taggar J, Wei L, Struthers AD, MacDonald TM and group A-Hs. Multicentre, prospective, randomised, open-label, blinded end point trial of the efficacy of allopurinol therapy in improving cardiovascular outcomes in patients with ischaemic heart disease: protocol of the ALL-HEART study. *BMJ Open*. 2016;6:e013774.

42. Noman A, Ang DS, Ogston S, Lang CC and Struthers AD. Effect of high-dose allopurinol on exercise in patients with chronic stable angina: a randomised, placebo controlled crossover trial. *Lancet*. 2010;375:2161-7.

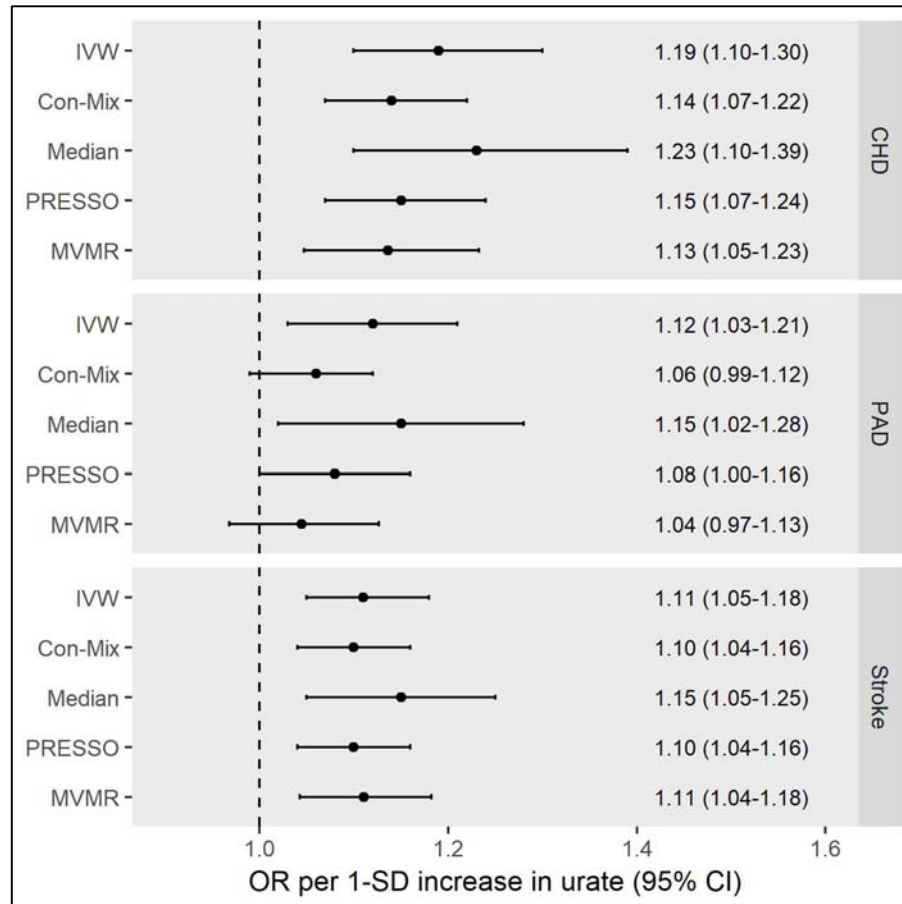
43. Slob EAW and Burgess S. A Comparison Of Robust Mendelian Randomization Methods Using Summary Data. *bioRxiv*. 2019:577940.

44. Burgess S, Ference BA, Staley JR, Freitag DF, Mason AM, Nielsen SF, Willeit P, Young R, Surendran P, Karthikeyan S, Bolton TR, Peters JE, Kamstrup PR, Tybjaerg-Hansen A, Benn M, Langsted A, Schnohr P, Vedel-Krogh S, Kobylecki CJ, Ford I, Packard C, Trompet S, Jukema JW, Sattar N, Di Angelantonio E, Saleheen D, Howson JMM, Nordestgaard BG, Butterworth AS, Danesh J, European Prospective Investigation Into C and Nutrition-Cardiovascular Disease C. Association of LPA Variants With Risk of Coronary Disease and the Implications for Lipoprotein(a)-Lowering Therapies: A Mendelian Randomization Analysis. *JAMA Cardiol*. 2018;3:619-627.

45. Grant A and Burgess S. An efficient and robust approach to Mendelian randomization with measured pleiotropic effects in a high-dimensional setting. *arXiv*. 2019:1911.00347.

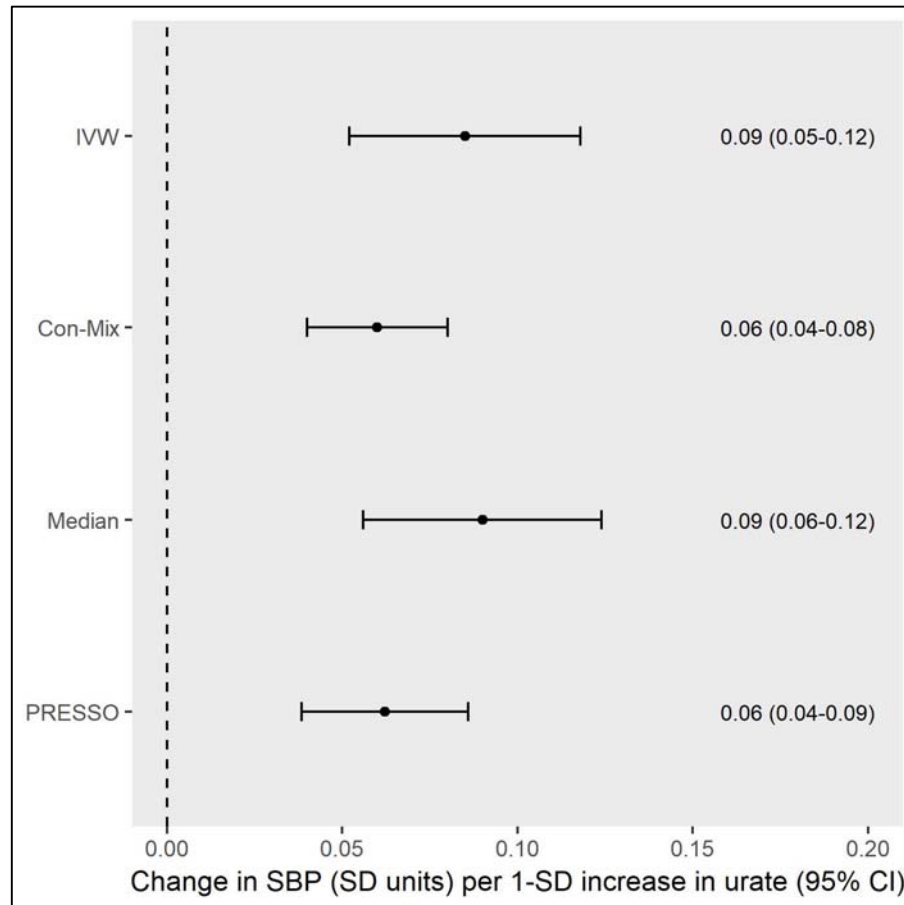
Figures

Figure 1 - Mendelian randomization estimates for the effect of 1-standard deviation (SD) increase in genetically determined serum urate levels on risk of coronary heart disease (CHD), peripheral artery disease (PAD) and stroke.



CI: confidence interval; Con-Mix: contamination-mixture; IVW: inverse-variance weighted; MVMR: multivariable Mendelian randomization (adjusting for genetic association of the instrument variants with body mass index, estimated glomerular filtration rate, type 2 diabetes mellitus, low-density lipoprotein cholesterol, high-density lipoprotein cholesterol and triglycerides); OR: odds ratio; PRESSO: pleiotropy residual sum and outlier. The outlier-corrected PRESSO results are presented (five outlier variants were identified for CHD, eight for PAD, and one for stroke).

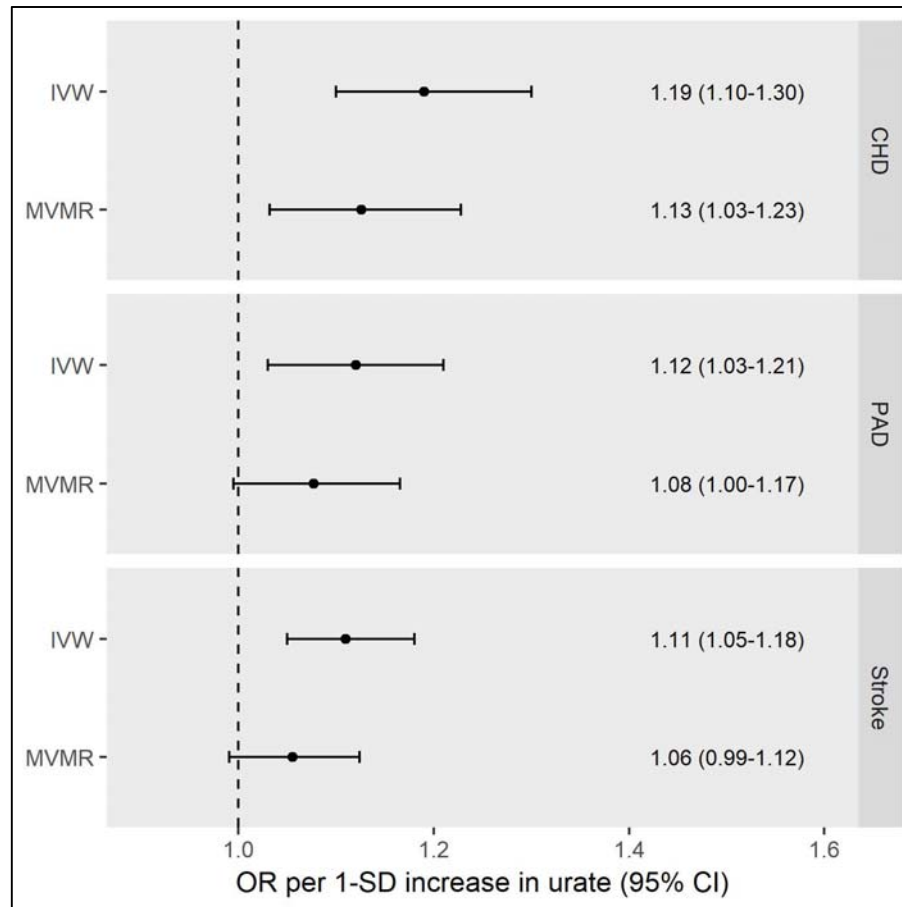
Figure 2 – Mendelian randomization estimates for the effect of 1-standard deviation (SD) increase in genetically determined serum urate levels on systolic blood pressure.



CI: confidence interval; Con-Mix: contamination-mixture; IVW: inverse-variance weighted;

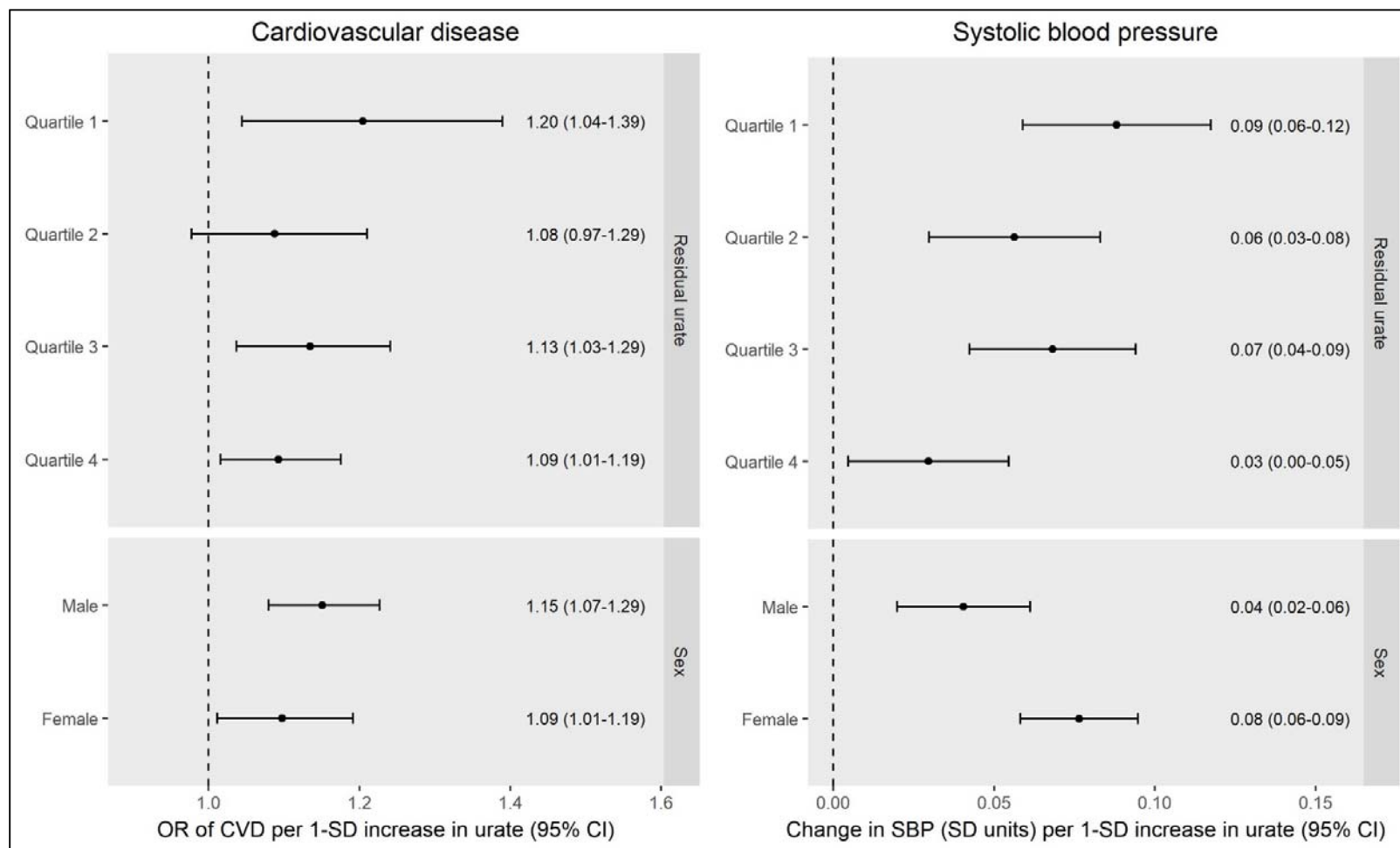
OR: odds ratio; PRESSO: pleiotropy residual sum and outlier. The outlier-corrected PRESSO results are presented (21 outlier variants were identified).

Figure 3 – Inverse-variance weighted (IVW) and multivariable Mendelian randomization (MVMR) estimates for the effect of 1-standard deviation (SD) increase in genetically determined serum urate levels on risk of coronary heart disease (CHD), peripheral artery disease (PAD) and stroke. The MVMR analysis adjusts for the association of the genetic instruments with systolic blood pressure.



CI: confidence interval; OR: odds ratio.

Figure 4 – Stratum specific Mendelian randomization (MR) estimates for the effect of genetically predicted serum urate on cardiovascular disease (CVD) risk and systolic blood pressure (SBP) respectively.



Quantile 1 contains those with the lowest residual urate level and Quantile 4 contains those with the highest. CI: confidence interval; OR: odds ratio; SD: standard deviation.