

Syafruddin et al., Spatial repellent RCT, Sumba

1 **Efficacy of a spatial repellent for control of malaria in Indonesia:**
2 **a cluster-randomized controlled trial**

3 Din Syafruddin¹, Puji BS Asih¹, Ismail Ekoprayitno Rozi¹, Dendi Hadi Permana¹, Anggi Puspa
4 Nur Hidayati¹, Lepa Syahrani¹, Siti Zubaidah¹, Dian Sidik², Michael J. Bangs³, Claus Bøgh⁴,
5 Fang Liu⁵, Evercita C. Eugenio⁵, Jared Hendrickson⁶, Timothy Burton⁷, JK Baird⁸, Frank
6 Collins⁷, John P. Grieco⁷, Neil F. Lobo^{7±} and Nicole L. Achee^{7±*}

7 ¹*Eijkman Institute for Molecular Biology, Jakarta, Indonesia; Department of*
8 *Parasitology, Faculty of Medicine, Universitas Hasanuddin, Makassar,*
9 *Indonesia;*

10 ²*Department of Epidemiology, Faculty of Public Health, Universitas*
11 *Hasanuddin, Makassar, Indonesia*

12 ³*Public Health and Malaria Control, International SOS, Kuala Kencana,*
13 *Papua Indonesia;*

14 ⁴*The Sumba Foundation, Public Health and Malaria Control, Bali,*
15 *Indonesia;*

16 ⁵*Department of Applied Mathematics, University of Notre Dame, Indiana;*

17 ⁶*Center for Computer Research, University of Notre Dame, Notre Dame,*
18 *Indiana;*

19 ⁷*Department of Biological Sciences, Eck Institute for Global Health,*
20 *University of Notre Dame, Notre Dame, Indiana;*

21 ⁸*Eijkman-Oxford Clinical Research Unit, Jakarta, Indonesia, and the Centre*
22 *for Tropical Medicine, Nuffield Department of Medicine, University of*
23 *Oxford, Oxford, United Kingdom;*

24
25 ±Indicates equal seniority

26
27 *Corresponding author:

28
29 Nicole L. Achee, PhD
30 Research Professor
31 Eck Institute for Global Health
32 Department of Biological Sciences
33 239 Galvin Life Science Center
34 Notre Dame, Indiana 46556
35 Ph: 574.631.1561
36 Email: nachee@nd.edu
37

Syafruddin et al., Spatial repellent RCT, Sumba

38 **Abstract.** A randomized cluster, double-blinded, placebo-controlled trial was conducted to
39 estimate protective efficacy of a spatial repellent against malaria infection at Sumba, Indonesia.
40 Following radical cure in 1,332 children aged 6mo-5yrs in 24 clusters, households were given
41 transfluthrin or placebo passive emanators. Monthly blood screening and biweekly human-
42 landing mosquito catches (HLC) were performed during 10-months baseline (June 2015 to
43 March 2016) and a 24-month intervention period (April 2016 to April 2018). Screening detected
44 164 first-time malaria infections and an accumulative total of 459 infections in 667 subjects in
45 placebo-control households; and 134 first-time and 253 accumulative total infections among 665
46 subjects in active intervention households. The 24-cluster protective effect of 27.7% and 31.3%,
47 for time to first-event and overall (total new) infections, respectively, was not statistically
48 significant. Purportedly, this due in part to zero to low incidence in some clusters during
49 intervention undermining the ability to detect an effect. Subgroup analysis of 19 clusters where
50 at least one malaria infection occurred showed 36.0% and 40.9% (statistically significant at 1-
51 sided 5% significance level; $p=0.0236$) protective effect for time to first-event and overall
52 infections, respectively. Primary entomological analysis of impact proved not statistically
53 significant, with indoor and outdoor anopheline HLC reduced by 16.4% and 11.3%, respectively.
54 Among 12 high-risk clusters, a significant impact on infection was detected (about 60%
55 protective efficacy). While this study suggests protective effects of the intervention, additional
56 evidence is required to demonstrate that spatial repellents provide a practical and effective means
57 in reducing malaria transmission.

58

59

60 **INTRODUCTION**

61 It has been nearly 75 years since the role of spatial repellency (deterrence or avoidance)
62 was first described as a potentially beneficial attribute in malaria control, showing chemicals
63 could effectively disrupt normal mosquito behavior and interrupt contact with humans, thus
64 preventing disease transmission without actually killing the insect.¹⁻³ Spatial repellency is used
65 here as a general term to refer to a range of insect behaviors induced by airborne chemicals that
66 ultimately result in a reduction in human-vector contact. This can include movement away from
67 a chemical stimulus, and interference with host detection (attraction-inhibition) and/or feeding
68 response.⁴⁻⁷ Spatial repellency action can be measured and distinguished from other chemical
69 actions, primarily contact irritancy and toxicity, in the laboratory^{8,9} and in semi-field
70 evaluations.^{10,11} A repellent action drives mosquitoes away from a treated space. Toxic
71 chemical properties can ultimately kill mosquitoes while irritants rely on brief physical contact
72 between mosquito (tarsal segments) and a treated surface to promote excitation and avert
73 prolonged resting. Many compounds can exhibit two or more modes of action and can be
74 distinguished by the concentration or dose exposure required to achieve a specific outcome.¹²
75 Currently, the majority of commercial spatial repellent products utilize either low concentrations
76 of short-duration USEPA registered synthetic pyrethroids (pyrethrin, metofluthrin or most most
77 recently transfluthrin¹³) or botanical-based compounds.^{14,15}

78 The World Health Organization (WHO) Vector Control Advisory Group (VCAG) is the
79 WHO advisory group that assesses evidence on the epidemiological effectiveness of new vector
80 control interventions and by doing so supports WHO's development of policy recommendations,
81 including the potential use of spatial repellents as a public health vector control strategy.¹⁶
82 Reviewed by VCAG since 2014, the assessment of rigorous epidemiological evidence for

Syafruddin et al., Spatial repellent RCT, Sumba

83 endorsing a policy recommendation of a spatial repellent intervention class remains limited and
84 deemed insufficient. A malaria prevalence study in China evaluating mosquito coils containing
85 0.03% transfluthrin demonstrated a 77% reduction in human *Plasmodium falciparum* cases¹⁷
86 and the use of coils containing 0.00975% metofluthrin provided 52% protective efficacy (PE)
87 against new (incident) malaria infections in Indonesia.¹⁸ Although primary outcomes from both
88 studies were encouraging, neither met the VCAG requirements of rigor due to study design¹⁹
89 (non-RCT for China) and/or being underpowered. The importance of a WHO policy for
90 implementation of spatial repellents in malaria control programs could dramatically increase
91 investments and efforts by private industry to develop chemicals that operate through different
92 modes of actions other than acute kill. This would potentially introduce a new generation of
93 effective active ingredients and product formulations into the disease control/eradication
94 arsenal.^{20, 21} In combination with existing WHO-recommended malaria control interventions,
95 spatial repellents have the potential to add significant protective benefit, especially where
96 traditional long-lasting insecticidal nets (LLINs) or indoor residual spraying (IRS) may not be
97 protective, be unavailable, or are impractical and/or feasible. Control or elimination of malaria in
98 these circumstances will require innovative approaches, as example spatial repellents providing a
99 highly protective role against transmission and this may be where spatial repellents may be most
100 beneficial.^{22, 23}

101 The current claim of a spatial repellent intervention class for public health value is
102 *'deployment of a spatial repellent will prevent human-vector contact to reduce pathogen*
103 *transmission'*. With this epidemiological primary endpoint in mind, the current large-scale study
104 aimed to build upon previous epidemiological findings and provide rigorous evidence of a spatial

Syafruddin et al., Spatial repellent RCT, Sumba

105 repellent to provide a sufficient protective effect against malaria infection risk by decreasing the
106 mean anopheline human landing (biting) rates in endemic communities.

107

108 **MATERIALS AND METHODS**

109 The study was registered in clinicaltrials.gov (Identifier: NCT02294188) and performed
110 according to Good Laboratory Practice (GLP) and Good Clinical Practice (GCP) guidelines.

111

112 **Ethics statement.** Ethical review and approval for this study was granted by the Ethics
113 Committee (EC) of the Faculty of Medicine, Universitas Hasanuddin (Protocol #UH14070385),
114 the University of Notre Dame (Protocol #14-01-1448) and endorsed by the Eijkman Institute
115 Research Ethics Committee, Jakarta, Indonesia. Consent was obtained from parents or guardians
116 of child recruits following EC guidelines. During the consenting process, the study was
117 described and the consent form read. The consent form detailed the design of the study including
118 the purpose of collecting and storage of blood samples (towards laboratory-based malaria
119 diagnosis), descriptions of the study risks, benefits, and procedures of therapeutic radical cure
120 and follow-up. All households were provided with a signed copy of the consent form after
121 agreeing to participate in the study. For sentinel households participating in entomological
122 collections, a script was read that explained the mosquito collection techniques and signed
123 consent was sought from the head-of-household. No data on individuals was collected during the
124 entomological collections. Adverse events were captured during participant follow-up and
125 reported to monitoring authorities in accordance with the approved protocol.

126

Syafruddin et al., Spatial repellent RCT, Sumba

127 **Study site.** The study was conducted in Southwest and West Sumba Districts, East Nusa
128 Tenggara Province, Indonesia (**Figure 1**). The ca. 400,000 residents²⁴ of the two districts occupy
129 175 village ‘groups’ (Desas) and several small-sized towns. Thirteen village groups, with
130 populations ranging 1,067 to 3,904 (avg. 2,132), served as study locations for the final selection
131 of the 24 study clusters. Organized bed net campaigns were recently introduced with the last
132 mass distribution occurring in February-March 2018 across the study area. A mass distribution of
133 long-lasting insecticidal nets (LLINs) occurred in October-December 2014 in all districts (Olyset
134 Net® (Olyset Net®, permethrin 2.0% w/w) with > 95% coverage (1 -3 nets per household). A
135 second round of LLIN mass distribution occurred February-March 2018 (PermaNet® 3.0,
136 deltamethrin 180mg/m² + PBO). The last round of focal IRS occurred in 2003 (pyrethroid-
137 based). The malaria prevalence based on microscopically diagnosed parasitemia drawn from a
138 random sampling (50% of residents) in 13 villages conducted in 2015, 10 months before the start
139 of the trial intervention, averaged 15.5% (2.5% to 37.3%) (**Table 1**).

140 Although very little is known about the malaria vector distribution and bionomics in this
141 study area,²⁵ an earlier (August 2007) entomologic survey documented 13 species of
142 anophelines occurring in West Sumba District: *Anopheles sundaicus* s.l. (Rodewaldt),
143 *Anopheles subpictus* s.l. (Grassi), *Anopheles barbirostris* s.l. (Van der Wulp), *Anopheles*
144 *hyrcanus* group species (Pallas), *Anopheles aconitus* (Doenitz), *Anopheles flavirostris* (Ludlow),
145 *Anopheles annularis* (Van der Wulp), *Anopheles maculatus* (Theobald), *Anopheles tessellatus*
146 (Theobald), *Anopheles vagus* (Doenitz), *Anopheles leucosphyrus* group species (Doenitz),
147 *Anopheles maculatus* s.l. (Theobald) and *Anopheles kochi* (Doenitz).^{26,27} These species vary
148 spatially in relative abundance in accordance with their respective preferred habitats ranging
149 from coastal brackish and freshwater marshes and ponds, seasonally productive rice paddies, to

Syafruddin et al., Spatial repellent RCT, Sumba

150 forested hillsides with perennial running streams and small rivers. At the time of the survey,
151 human-landing collections revealed *An. subpictus* and *An. vagus* the predominant species in the
152 upland interior locations and *An. sundaicus* the most common species along the coastal plain.
153 The majority of residents in study villages work in small-holder agriculturalist pursuits, lack
154 public electricity or articulated water supply, and reside predominately in traditional large,
155 thatched-roof homes raised ~1m above ground and averaging 80 m³ in size with bamboo walls
156 and floor that offer little protection from mosquito entry (**Figure 2**).

157
158 **Sample size.** Previous malaria incidence rates collected in a portion of the study area in coastal
159 Kodi Subdistrict¹⁸ were used to estimate the likely malaria attack rate in the current study
160 villages at 0.3 infections/person-year. Sample size determination was based on the hazard rate
161 comparison in the proportional hazards regression model.²⁸ The required number of first-time
162 infections was estimated at 417 to permit detection of a 30% protective effect by the spatial
163 repellent intervention compared to placebo with 80% power at the type-I error rate, assuming a
164 between-cluster coefficient of variance (CV) of 30% and a baseline hazard rate of 0.3 per person-
165 year. With 12 clusters per treatment arm (active or placebo), with 2-month accrual and 22
166 months follow-up, and an estimated 20% loss-to-follow-up (LTFU) during intervention, a total
167 of 54 subjects per cluster was required (n=1,296).

168
169 **Study design.** The study was a cluster-randomized, double-blind, placebo-controlled, clinical
170 trial with a total of 24 clusters divided into 12 clusters per intervention arm. Clusters were based
171 on housing type, focusing on traditional houses (with or without thatch roofing) (**Figure 2**),
172 mitigation of potential chemical dispersion 'spillover' effect (i.e., distance between nearest homes

Syafruddin et al., Spatial repellent RCT, Sumba

173 in different clusters ~500 m apart), and logistical considerations (i.e., position of field-based
174 satellite laboratories). About fifty-four households were recruited within each cluster based on
175 human sample size requirements. Households from 13 villages were stratified into 24 clusters
176 before randomization: Gaura (pop. 2,831; houses 432), Kahale (pop. 3,904, houses 253), Karang
177 Indah (pop. 1,169, houses 139), Manutoghi (pop. 1,067; houses 165), Matakapore (pop. 2,805;
178 houses 209), Panenggo Ede (pop. 1,271; houses 90), Rada Malando (pop. 1,842; houses 133),
179 Tana Mete (pop. 2,124; houses 213), Waikarara (pop. 2,709; houses 446), Wailangira (pop.
180 1,878; houses 226), Waimakaha (pop. 2,334; houses 211), Waimaringi (pop. 2,598; houses 116),
181 and Weetana (pop. 2,670; houses 275) (**Figure 3**).

182 Clusters were allocated to receive either active or placebo treatment using a random
183 number generator (<https://www.random.org>). The cluster allocation code was made available
184 from the intervention manufacturer to the Data Safety Monitoring Board (DSMB) for use in
185 safety assessments. The site database manager assigned a unique identification number to each
186 household (HIN) and the site intervention administrator coordinated distribution of blinded
187 active or placebo to enrolled households within each cluster corresponding to the pre-labeled
188 package code. Unblinded assignments were shared with a site administrator in a sealed envelope
189 placed in a secure location within the managing center of the research project (Jakarta) for
190 purposes of emergency unblinding related to adverse and/or serious adverse events. Thus, the
191 investigators, research team, study subjects, and residents were blinded as to which cluster
192 received active versus placebo devices until after completion of the study.

193 The primary endpoint for estimating the protective efficacy (PE) of the spatial repellent
194 intervention was malaria incidence (time to first infection) among the enrolled sentinel residents
195 study participants in each of the 24 clusters, i.e., 1,332 subjects in all. These sentinel subjects,

Syafruddin et al., Spatial repellent RCT, Sumba

196 each living in separate households, received a directly observed, presumptive radical cure to
197 clear them of any standing (patent, sub-patent, or latent) malaria infections. Biweekly blood film
198 exams were conducted from subjects reporting fever within the previous 48hrs (passive case
199 detection) with active screening for malaria infection in all subjects occurring every 4 weeks for
200 the duration of the study.

201
202 **Enrollment for incidence cohort and radical cure.** The average number of children <5 y.o. in
203 each cluster was 68 (57-79). From individual households in study clusters, one child, aged 6 to
204 59 months old at time of recruitment, were provided the opportunity to enroll as subjects in the
205 study. Following informed consent, screening consisted of physical examination by a study
206 physician and a qualitative NADPH spot test for G6PD deficiency (Trinity Biotech qualitative
207 G6PD assayTM, ref 345-UV, Trinity Biotech, St. Louis, MO)²⁹. Additional to G6PD normal
208 status, eligibility requirements included a bodyweight 40 kg, hemoglobin > 5mg/dL (Hb201+,
209 HemoCue AB, Angelholm, Sweden)³⁰, no severe acute illness/infection on the day of inclusion,
210 temperature ≤ 38°C, participant acknowledging sleeping in the village > 90% of nights during
211 any given month, not participating in another clinical trial, and no plans for extended travel
212 during the study period. A total of 1,451 subjects were presumptively radically treated using a
213 fixed combination formulation of dihydroartemisinin (DHA)-piperaquine (P) (containing 40 mg
214 dihydroartemisinin and 320 mg piperaquine; Zhejiang Holley Nanhu, Beijing Holley Cotec)
215 administered as a weight per dose regimen of 2.25 and 18 mg/kg per dose of dihydroartemisinin
216 and piperaquine, once daily for 3 days, and primaquine 0.25 mg/kg body weight (PT, Pharos
217 Tbk, Semarang, Indonesia) for the 14 days immediately before implementing intervention. The

Syafruddin et al., Spatial repellent RCT, Sumba

218 DHA+P combination is currently the first-line antimalarial drug for malaria treatment in
219 Indonesia.

220 All subjects were examined for *Plasmodium* spp. infection by expert microscopy, and
221 polymerase chain reaction (PCR) from matched blood spot samples on filter paper.³¹ New
222 malaria infections among the participants were monitored every 4 weeks using microscopic
223 examination of Giemsa-stained blood films according to WHO guidelines³² based on 200 high
224 magnification (1000x oil-immersion) thick blood film fields. Two certified expert microscopists
225 independently (blinded) examined slides on-site at project-dedicated field laboratories. PCR
226 detection of parasites was conducted at the Eijkman Institute for Molecular Biology (EIMB)
227 central laboratory in Jakarta using PCR techniques for detection of DNA of all four *Plasmodium*
228 species.³¹ A blood sample was defined as ‘positive’ for inclusion in incidence analyses if
229 meeting criteria of having two diagnostic outcomes indicating presence of parasite (e.g., 2x
230 microscopy; 1x microscopy + 1x PCR; or 2x PCR). All positive and 10% randomly selected
231 negative samples diagnosed at EIMB were re-tested at the University of Notre Dame.
232 Discordant microscopy and PCR results prompted reexamination of both initial findings.
233 Participants found malaria infected at point-of-care were immediately treated with DHA+P and
234 were removed from contributing to further person-time at risk of first-time infection; however,
235 remained in the study to monitor cumulative incidence for analyses of overall (total new)
236 infections and estimate number of cases averted.

237
238 **Intervention.** Immediately after completion of radical cure, intervention was simultaneously
239 initiated in all subject households and non-subject households that consented to receive
240 intervention. The spatial repellent intervention is a transfluthrin-based passive emanator

Syafruddin et al., Spatial repellent RCT, Sumba

241 produced by S.C. Johnson & Son, Inc (SCJ) designed to release a volatile chemical into the air
242 and prevent human–vector contact within the treated space. Transfluthrin is a registered
243 compound commonly found in commercially available mosquito coils globally based on WHO
244 specifications.³³ Emanators (active and placebo) of identical packaging and color were
245 distributed by study personnel every 2 weeks at the individual household application rate of 2
246 units / 9m² according to SCJ specifications. There was a median of 1 room (range 1,9) and 10
247 emanators (range 4,56) per household. Interventions were positioned indoors of houses by
248 hanging on two metal hooks attached to walls. Each position remained static throughout the
249 study. The hooks facilitated stabilization of the interventions so the chemical-treated surface was
250 consistently exposed facing the interior space. Research staff placed, removed and replaced
251 emanators in households at set intervals and recorded attrition during each replacement period to
252 ascertain application rate for use in estimating cluster coverage. Potential adverse health effects
253 (AEs), possibly related to transfluthrin exposure, in subjects and other household members, were
254 reported by the study team during both active and passive blood sampling using a standard
255 survey according to protocol. Investigation of study-related AEs was performed by the on-site
256 study clinician. Severe adverse health events (SAE) were also recorded according to protocol,
257 regardless of possible relationship to intervention. Health clinic data were compiled on a
258 quarterly basis starting in Dec 2017 for DSMB safety assessment of the study population. During
259 the period of the trial, quality control analysis was performed by Ross Laboratories, India on
260 used (after 2-week deployment) and unused (in storage) emanators representing each cluster to
261 check for appropriate amounts of transfluthrin in actives and the absence of transfluthrin in
262 placebos. At the end of follow-up period (April 2018), used, unused and expired emanators

Syafruddin et al., Spatial repellent RCT, Sumba

263 (approximately >2 tons of material) were incinerated by PT. Wahana Pamunah Limba Industri,
264 Jakarta according to Indonesian regulations.

265

266 **Entomologic surveys.** Adult mosquito diversity and densities were measured using human-
267 landing catches (HLC) every two weeks from start of baseline through end of follow-up period
268 in a subset of 12 clusters. Clusters for entomological sampling were hierarchically stratified
269 based on human landing rate and blindly allocated to treatment arm to ensure a balanced
270 recruitment (6 clusters in each treatment group). Four neighboring sentinel houses within each of
271 the 12 clusters were randomly selected for mosquito collections (n=48). Collections were
272 conducted at sentinel houses for 1 night every 2 weeks from paired active/placebo clusters (e.g.,
273 3 pairs on Monday night and 3 pairs on Wednesday night) during intervention. All mosquito
274 collectors were trained and assessed as competent to perform duties required. Each collector
275 provided informed consent at beginning of the study. Teams of two collectors were assigned per
276 house, one positioned indoors near the center of the house and one located outside on the house
277 verandah, approximately ~1 m from the exterior wall. Collectors removed all mosquitoes landing
278 on their exposed lower legs using a mouth aspirator. Collections were conducted from 1800 to
279 0600 h for 50 min every hour. Paired collectors rotated the indoor and outdoor position every
280 hour. Samples were placed into individual holding containers labeled by collection hour interval,
281 unique house code (linked to blinded treatment code), and collection location (indoor or outside).
282 Captured mosquitoes were immediately killed by organic compound vapor in the field and
283 initially identified to species (or species complex) using morphological characters.³⁴ All
284 specimens were transported to an on-site study base laboratory upon completion of the 12 h
285 collection and a random sample of representative anopheline species (up to 30 per cluster and

Syafruddin et al., Spatial repellent RCT, Sumba

286 hour of collection) were dissected for parity and scored as either gravid/parous or nulliparous.³⁵
287 Partial (head-thorax for those dissected for parity) or whole anopheline specimens were placed
288 singly into individual Eppendorf® 1.5ml vials and stored over silica gel desiccant until further
289 processing at EIMB, Jakarta, for detection of malaria sporozoites and molecular-based species
290 identification,^{36,37} where applicable. Mosquito samples were evaluated for *Plasmodium spp.*
291 infection using polymerase chain reaction (PCR) methodologies³⁸ to derive corresponding
292 malaria sporozoite infection rates by parasite species and vector species. Together with time-
293 adjusted HLC densities (anophelines/person-night), matched sporozoite rates were used to derive
294 the entomological inoculation rates (EIRs) for each treatment arm.³⁹ Anopheline species
295 identification was verified at the University of Notre Dame following previous protocols.^{36,37}
296
297 **Insecticide susceptibility assays.** Permethrin was evaluated using WHO tube and CDC bottle
298 assay during baseline, intervention and post-intervention periods at the WHO recommended
299 diagnostic concentration for anophelines 0.75% and CDC recommended dose 21.5µg/ml active
300 ingredient. Both WHO tube assays and CDC bottle assays were performed on F0 mixed
301 anopheline species collected as immatures from 13 clusters (23 locations) during baseline,
302 intervention and 6-mo post-intervention period (ended Oct 2018). Assays were conducted using
303 non-bloodfed, 3-5 day old females according to established guidelines.^{40,41} After each test
304 period, all chemical and control specimens were stored individually over silica gel for analysis at
305 EIMB to confirm species identification and for detection of target-site mechanisms (e.g., *kdr*
306 mutations) of resistance.
307

Syafruddin et al., Spatial repellent RCT, Sumba

308 **Data management and verification.** Data collection was designed around a tablet-based survey
309 platform linked to a custom-built database and web portal. CommCare (Dimagi Inc, MA) was
310 selected as the frontend form application, providing critical capabilities, such as: a parent-child
311 case structure, the ability to store forms when offline, update form versions after deployment,
312 build forms with complex logic in a web browser, and export form data to other tools. Data was
313 cleaned according to rules specified in the study protocol to ensure data integrity. Study data
314 related to participating subjects, participating households, intervention (placement/replacement),
315 collected mosquitos, and lab analyses was cross checked, identifying missing, incomplete, or
316 suspect data submissions. These were sent back to the site data manager to be resubmitted or
317 corrected. Once data correction was complete, data was verified and requested for analyses.

318
319 **Statistical analyses (S1. Statistical Analyses Plan).** Subjects were excluded from analyses when
320 a subject had no blood sample taken during the intervention period or when a household might
321 have contributed more than two subjects (rarely) when there was LTFU on the first recruited
322 subject and a 2nd subject was recruited as a replacement. In the latter case, only the subject with a
323 longer follow-up period was used based on per-protocol allowing only one subject per household.

324 The *primary hypothesis* on PE against first-time malaria infection was tested by comparing
325 the hazard rates of the first-time malaria infection between active and placebo (blank) intervention.

326 The complementary log-log (cloglog) regression model $\log(-\log(1 - \theta_{ijt})) = \beta_{0t} + \mathbf{x}_{ijt}^t \beta + z_i$
327 was.⁴²⁻⁴⁵ θ_{ijt} is the discrete time hazard rate of subject j in cluster I at time t , \mathbf{x}_{ijt} contains visit (as
328 a categorical predictor), the individual-level (age, gender), household-level (number of doors, open
329 eaves Y or N, wall type), and cluster-level (baseline incidence rate, cluster population size,
330 intervention group) covariates, and $z_i \sim N(0, \sigma^2)$ is the cluster-level random effect. PE was

Syafruddin et al., Spatial repellent RCT, Sumba

331 estimated by $(1 - \exp(\hat{\beta})) \times 100\%$ with a 90% confidence interval (CI) based on the Wald test,
332 where $\hat{\beta}$ is the estimated regression coefficient associated with the intervention group, and $\exp(\hat{\beta})$
333 is the estimated hazard ratio (HR) between active and placebo. The null hypothesis of PE is 0 was
334 tested by the Wald's test $z = \hat{\beta}/s$, where s is the estimated standard error of $\hat{\beta}$. It was concluded
335 that active intervention reduces the first-time malaria hazard rate compared to placebo if
336 $z < z_{0.05} = -1.645$; otherwise, the study would not have enough evidence to suggest that active
337 intervention reduces the first-time malaria hazard rate compared to placebo at a one-sided
338 significance level of 5%. The Kaplan-Meier (KM) curves on first-time malaria infection per cluster
339 was provided for the active and placebo arms, respectively.

340 The statistical method for analyzing *the secondary endpoint* of the overall (total new)
341 malaria infections detected in study subjects was similar to that used for analyzing the primary
342 endpoint of the first-time malaria infection except that the above cloglog model has additional term
343 $z_{j(i)}$ the random effect at the individual level to account for the dependence among multiple
344 malaria infections per individual. The same set of analyses as the above were performed in a
345 subgroup analysis in clusters with non-zero baseline incidence rates in clusters used for
346 entomology data collection.

347 The effects of active intervention on the *secondary entomological endpoints* were
348 estimated by applying the negative binomial regression model, if applicable. Specifically, *the*
349 *anopheline landing rate* (surrogate 'bite' based on HLC and indicator of human-vector contact) is
350 defined as the number of mosquitos caught during the 12-hr interval overnight. The covariates in
351 the model for analyzing the landing rate includes the fixed effects of intervention group, the
352 interaction between treatment and location of collection (inside or outside), visit (as categorical),
353 baseline incidence rate, baseline vector count, cluster population, and random effects for household

Syafruddin et al., Spatial repellent RCT, Sumba

354 nested within cluster and for cluster. The % change in landing rate by intervention was estimated
355 from the model. The frequencies and percentages of the captured anophelines were also
356 summarized by species. The set of the covariates in the model for analyzing *the parity rate* are
357 similar to the model for analyzing the landing rate, with an additional offset term of the daily
358 landing rate. Due to the data sparsity issue in the *sporozoite positivity rate* (>99% of the collected
359 mosquitos were uninfected), no model-based analysis was performed and only summary statistics
360 are provided for the sporozoite positivity rate data. The *entomological inoculation rate (EIR)* is
361 defined as the number of infective mosquito bites a person receives per a unit time (typically
362 annually) and is calculated as $EIR = \text{sporozoite positivity rate} \times \text{human biting rate}$. The data
363 sparsity issue experienced by the sporozoite positivity rate data also exists in the EIR data, and
364 thus only summary statistics are provided on EIR.

365

366 **RESULTS**

367 **Figure 4** summarizes screening, enrollment, and follow-up of the 1,332 subjects of the incidence
368 density cohorts among the 24 clusters. All subjects completed radical cure and were followed 24
369 months.

370

371 **Protective effect against malaria infection among 24 clusters (pre-planned).**

372 Trial outcomes show baseline covariates regarding subject, house construction, population and
373 baseline malaria incidence between the active and placebo arms were balanced at the individual-,
374 household-, and cluster-level (**Table 2**). The intervention coverage rate, defined as the proportion
375 of actually placed emanators over the total number required per household, ranged from 82.2%

Syafruddin et al., Spatial repellent RCT, Sumba

376 to 98.6% by cluster over the entire intervention period, with a mean application rate of 93.2%
377 and 92.3% for the active and placebo arms, respectively.

378 There were 134 and 164 first-time infections in active and placebo treatment arms,
379 respectively, with a hazard ratio of 0.72 (90% CI: 0.43, 1.21) (**Table 3**). A 27.7% decrease in the
380 first-time malaria hazard risk was estimated using active compared with placebo (90% CI: -
381 21.3%, 56.9%). The 27.7% PE was not statistically significant at the 5% one-sided significance
382 level. The estimated PE of active intervention against overall (total) malaria infections (first and
383 subsequent) was 31.3% (90% CI: -10.8, 57.4%) with a one-sided p-value = 0.098 (**Table 3**).
384 Investigation of potential shift in parasite species infection frequency (*P. falciparum* vs. *P. vivax*)
385 between active and placebo will be reported in subsequent publications.

386 A total of 164 first-time malaria infections occurred during approximately 1032 person-
387 years at risk in study participants whose households were given placebo, with a calculated
388 incidence density ⁴⁶ of 0.159 infections/person-year (**Table 3, Figure 5**). In contrast, 134 total
389 malaria attacks occurred in transfluthrin-active households with approximately 1079 person-
390 years at risk resulting in a calculated 0.124 infections/person-year. A cumulative 439 malaria
391 infections (first-time and subsequent) during approximately 1216 person-years at risk were
392 detected in participants whose households were given placebo, with an incidence density of
393 0.361 infections/person-year. Contrastingly, 253 total malaria attacks occurred among
394 participants living in active households with approximately 1216 person-years at risk equaling
395 0.209 infections/person-year (**Table 3**).

396
397 **Subgroup analyses of protective effect against malaria infection among non-zero baseline**
398 **incidence and entomology clusters (not pre-planned).**

Syafruddin et al., Spatial repellent RCT, Sumba

399 Among the 24 clusters, there were five clusters with zero baseline incidence which had zero to
400 very low incidence rates during intervention. The first subgroup analysis used the 19 clusters
401 with non-zero baseline incidence rate as the remaining five clusters would have been excluded
402 from the intervention if baseline analysis had been performed before the randomization.
403 Excluding these five clusters, the estimated PE for overall (total new) infections in the remaining
404 subgroup of 19 clusters with non-zero baseline incidence rates was 40.9% (90% CI: 8.61, 61.8%)
405 resulting in a one-sided p-value of 0.0236 (**Table 3**). The second subgroup analyses included
406 incidence from the 12 clusters having entomology collection data (i.e., mean anopheline landing
407 rate), and where the average baseline incidence was ~ 4 folds greater than the other clusters. The
408 PE using active intervention against time to first-event and overall (total new) malaria infections
409 in this subgroup was 55.3% and 66%, respectively (**Table 3**). The data indicate the baseline
410 covariates (subject, house construction, population and baseline malaria incidence) between the
411 active and placebo arms were balanced at the individual-, household-, and cluster-level in both of
412 the subgroup analyses (not shown).

413

414 **Effects on entomological endpoints.**

415 *Anopheline landing rates.* A total of 26 weeks of HLC were performed within a small subset of
416 12 clusters during the intervention period. Initial results based on morphological species
417 identification detected 19 putative malaria vector species showing spatial and temporal variation
418 across monitored clusters. The most common species attracted to humans included: *Anopheles*
419 *aconitus*, *An. annularis*, *An. barbirostris*, *An. flavirostris*, *An. kochi*, *An. maculatus*, *An.*
420 *subpictus*, *An. sundaicus*, *An. tessellatus* and *An. vagus* (**Table 4**). The cumulative indoor and
421 outdoor anopheline biting rates are shown in **Figure 6**. There was a numerical reduction in

Syafruddin et al., Spatial repellent RCT, Sumba

422 indoor and outdoor landing density from collections performed at sentinel households containing
423 active intervention as compared with those assigned to placebos. This difference resulted in
424 16.4% and 11.3% reduction in anopheline attack rate on collectors positioned indoors and
425 outdoors, respectively, at sentinel households with active intervention compared with placebo
426 houses, although this reduction was not statistically significant (**Table 5**).

427
428 *Sporozoite positivity and Entomological Inoculation Rate (EIR)*. The frequency of sporozoite
429 positive anophelines is given in **Table 6**. Only *P. falciparum* and *P. vivax* infections were
430 detected in captured mosquitoes. During baseline and intervention period, the sporozoite rate was
431 less than 0.5% for both treatment and placebo arms. Data sparsity regarding comparison of
432 sporozoite rates precluded formal statistical analyses. The EIR, defined as the number of
433 infective mosquito bites a person receives per unit time (for example, nightly, monthly or
434 annually) ³⁹ was <1 bite per year in both treatment arms during baseline and intervention periods.

435
436 *Parity rate (age-grading)*. The proportion of sampled females categorized as “older,” combining
437 parous and gravid states (mosquitoes with advanced ovarian follicle development as evidence of
438 recent blood meal), and those “younger” as nulliparous (non-bloodfed) and recently emerged
439 were compared between active and placebo treatment for the 12 clusters where entomological
440 monitoring was conducted. Overall, transfluthrin-active emanators proportionally increased
441 nulliparity in the sampled anopheline populations compared to placebo for both indoor and
442 outdoor locations (**Table 7**).

443

Syafruddin et al., Spatial repellent RCT, Sumba

444 **Insecticide resistance.** A total of 5,091 adult female anophelines (chemical and control assays)
445 were evaluated for susceptibility: 700 samples during baseline, 1,805 during intervention and
446 2,586 post-intervention. *Anopheles vagus* was the most widely distributed and tested anopheline
447 (56%), followed by *An. sundaicus* (12.6%) and *An. subpictus*, *An. barbirostris*, *An. kochi*, *An.*
448 *aconitus*, *An. maculatus*, and *An. tessellatus* (proportionally, all <10%). Baseline, intervention
449 and post-intervention tests using permethrin (21.5ng/ml) showed 100% knockdown in the CDC
450 bottle assay between 15-30 min, and 100% 24hr mortality (permethrin 0.75% at 60 min) in the
451 WHO tube assay. Based on the assumption of predominately pyrethroid-susceptible wild
452 populations of *Anopheles* spp. present in trial sites, there was no conclusive evidence of
453 development or increase in phenotypic resistance to pyrethroid class chemicals between pre-and
454 post-intervention periods. In several clusters during the post-intervention phase, there were
455 indications of reduced susceptibility in a few *An. barbirostris* populations to permethrin.
456 Follow-up investigations provided inconsistent results, thus confirmation that these populations
457 showed low levels of resistance could not be verified.

458

459 **Adverse Events (AE) and Severe Adverse Events (SAE).**

460 A total of 523 and 144 AEs were reported from non-participants (using government clinic health
461 records) and the intervention study cohort (collected by the study team), respectively. General
462 respiratory complaints were most common, followed by general fever. There were 6 total SAEs
463 reported in the study cohort during follow-up: 2 deaths of unknown cause; 1 case suspected brain
464 infection; 1 case respiratory infection; 1 case malaria with concomitant bacterial or viral
465 infection; and 1 case of drowning.

466

Syafruddin et al., Spatial repellent RCT, Sumba

467 **Intervention Quality Control.**

468 A total of 180 emanator samples were analyzed in 2017 taken from different active and placebo
469 clusters with manufacturing dates ranging from April to November 2016 (15mo - 8mo-old
470 samples). All sampled placebo interventions were found to be absent for transfluthrin. The
471 average transfluthrin quantity from all sampled active interventions was within specification
472 range (55.00 ± 2.75 mg).

473

474 **DISCUSSION**

475 Malaria remains a significant global public health burden despite recent progress in
476 reducing disease rates.⁴⁷ The primary objective of this large-scale RCT conducted on Sumba
477 Island, Indonesia was to demonstrate and quantify the protective efficacy (PE) of a passive
478 emanating spatial repellent intervention (transfluthrin-treated), for reducing malaria incidence
479 (transmission) in humans. Such evidence of human health impact is a fundamental and essential
480 requirement in the critical path of development of new vector control intervention classes being
481 assessed by the WHO VCAG to recommend a global public health policy.¹⁶ Outcomes reported
482 here are promising for malaria control, despite the study being unable to demonstrate clear,
483 statistical protective efficacy on primary analysis. The primary per-protocol analyses provides an
484 estimate of 27% PE against malaria infection, which is near the efficacy of 30% selected in the
485 power calculations. This effect, however, was not statistically significant with confidence
486 intervals that include zero. There were 298 first-time infections, in contrast to an expected
487 number of at least 417 assumed in the sample size calculations, thus resulting on the trial being
488 underpowered. This study highlights three primary challenges for consideration in future spatial
489 repellent trials as well for new vector control intervention classes more broadly. Firstly, having

Syafruddin et al., Spatial repellent RCT, Sumba

490 ‘adaptive’ study designs, especially for evaluation in low to moderate malaria transmission
491 settings and settings with large cluster-to-cluster variance on transmission intensity; second,
492 defining and identification of the ‘key’ entomological correlates of protection; and third,
493 ensuring reliability and feasibility in AE/SAE reporting for accurate safety assessment.

494 Regarding adaptive study designs, our assumptions for power and sample size
495 calculations were based on a previous proof-of-concept study that was spatially very near
496 (border) of the current study area¹⁸ and study villages were selected with the assumption that all
497 clusters would experience malaria transmission during the intervention period, which,
498 unfortunately was not the case. Baseline data indicated zero-incidence for five of the 24 selected
499 study clusters with a 5-folds higher between-cluster variability than assumed in the original
500 sample size calculation. The 5 clusters with zero baseline incidence (two allocated to receive
501 active and three allocated to receive placebo) also had either zero or low incidence rates during
502 intervention and ranked in the top 8 among all 24 clusters in terms of lowness in intervention
503 incidence (data not shown). In retrospect, a pre-planned analysis of the baseline data would have
504 allowed adjustment of the study design by filtering out the zero-incidence clusters, or increasing
505 the study duration (time of follow-up), the number of subjects recruited per cluster, or the
506 number of clusters to better satisfy requirements of power and capture the necessary number of
507 outcome events (infections). However, given the updated baseline incidence rate of 0.131 per
508 person-year and 97.1% CV, to maintain 80% power with the originally assumed 30% PE, 100
509 clusters per arm with 144 households (HHs; i.e. subjects) would have been required to be
510 recruited to collect 5,550 first-time malaria events – an unmanageable scale that could not have
511 been supported due to geographical, logistical and funding constraints. Moreover, increasing
512 the follow-up time to collect more first-time malaria events would have neither counterbalanced

Syafruddin et al., Spatial repellent RCT, Sumba

513 the large variability nor the longer duration required to collect the additional events due to the
514 seasonally-influenced low to moderate malaria transmission among clusters. For this reason,
515 when planning future trials in low or moderate endemic transmission settings, investigators
516 should consider a greater number of clusters per arm and/or building into the statistical analyses
517 plan an interim and final analyses of *baseline* incidence with pre-determined study design
518 adaptations, to include down-selection of clusters with predetermined incidence thresholds. Early
519 exercises of the impact of a lower than assumed incidence (or greater CV) during study planning
520 should be explored amongst investigators, industry and funding partners to ensure that the study
521 area context, intervention manufacturing, program period and/or funding can sufficiently meet
522 the demands of power requirements if adjustments are to be made once the study
523 begins. Stakeholders should also discuss supporting and adopting adaptive designs so to allow
524 decision-making after planned interim analysis of *intervention* data, to either stop the trial for
525 futility or to continue the trial with adjusted design parameters, such as sample size.^{48,49} Perhaps
526 just as important in the context of vector control, although RCTs are rated as high-quality
527 evidence,⁵⁰ considerations to RCT alternatives are prudent in the trial planning phase as these
528 may offer assurances of adequate data rigor while balancing cost and time constraints of
529 traditional RCTs.^{51,52} Alternatives study designs include large observational studies for
530 detecting population-level effects using analytical cross-sectional studies, or operational
531 program-based evidence; the latter perhaps especially for interventions containing an existing
532 registered chemical active ingredient (i.e., meets human safety thresholds) and where the
533 intervention is implemented in pilot trials and impact monitored through case reports, as
534 compared to a contemporaneous control group.⁵²

Syafruddin et al., Spatial repellent RCT, Sumba

535 The inclusion of entomological endpoints in the Sumba RCT was, in part, to help
536 understand and validate the intervention's mode of action for the VCAG claim of a health impact
537 through a reduction in human-vector contact. Spatial repellent chemicals may cause initial
538 knockdown and direct kill by exposure to toxic doses at close range to the active ingredient, or a
539 delayed kill or behavioral avoidance response, through exposure to sub-lethal doses at distances
540 further away from the stimulus source. Therefore, entomological measurements for detecting
541 reductions in human landing density with active intervention, and a possible change in
542 anopheline age structure (parity rate) indicating older populations not surviving as long as in
543 placebo areas, was built into this study. Additionally, a reduction in sporozoite infection rates
544 because of lower blood feeding success, and/or an inability to survive the required time interval
545 (parasite incubation period) to become infective to a susceptible host represent other endpoint
546 measures of impact on the vector. A causal relationship with one, several or all, of these
547 endpoints would allow future trials evaluating non-inferiority of a 'second-in-class' spatial
548 repellent to integrate entomological measures only to predict protective efficacy and provide
549 assurances of meeting minimum thresholds of acceptance for public health use.

550 Sporozoite positivity rates and EIR estimates from the current trial were low, with a total
551 of 42 of 11,650 (0.36%) anophelines tested during baseline (10mo) and 19 of 17,971 (0.11%)
552 found infected during intervention (24mo). These findings are not unusual or unexpected in low
553 to moderate malaria transmission settings.²⁵ As example, the previous Sumba study (using
554 metofluthrin coils) reported just 15 out of 1,825 (0.82%) HLC anopheline samples sporozoite
555 infected.¹⁸ The challenges for assessing sporozoite infectivity and using EIR as a measure of
556 intervention effect in such settings should be factored into study pre-planning to carefully
557 balance cost of sample processing with potential information gained.

Syafruddin et al., Spatial repellent RCT, Sumba

558 These study findings showed a 16.4% reduction in indoor landing mosquitoes at sentinel
559 collection houses with active treatment compared to placebo-control. This result differs from the
560 previous study on Sumba evaluating a metofluthrin-active coil where a significant 32% reduction
561 in *An. sundaicus* indoor landing rates was found compared to blank coil control.¹⁸ In the previous
562 and smaller study, *An. sundaicus* was the overwhelmingly predominate human-feeding
563 anopheline; whereas in the current study this species was relatively uncommon during the
564 intervention trial. The greater complexity of anopheline diversity in the current study area may
565 have contributed to the discordant findings between the two studies. Specifically, the range of
566 ecologies (coastal plains to upland forested hills) varied greatly across the 12 clusters used for
567 entomology collections in this trial compared to that of the earlier Sumba study where collections
568 were confined to only 4 adjoining clusters along similar coastal habitats. This variability in
569 ecology witnessed in the current study resulted in a broad range of species diversity (19 species,
570 group species captured), each with unique habitat requirements, bionomic and behavioral
571 characteristics (e.g., biting habits, host preferences). Similar results may occur in future trials that
572 are conducted in settings with diverse vector populations and/or as cluster size increases thereby
573 increasing the probability of greater habitat diversity. Other potential reasons for differences in
574 the effect on anopheline landing rates between the two studies on Sumba include intervention
575 formulation (i.e., coil vs. passive emanator) as well as species-specific effects by active
576 ingredients (i.e., metofluthrin vs. transfluthrin). Perhaps just as important as measuring a
577 reduction in indoor landing rates was the ability to demonstrate an effect on outdoor landing
578 rates (11% reduction) – on the exposed verandah of houses. Measuring an apparent effect on
579 outdoor landing is encouraging as many Sumba residents often sleep on the verandah without the

Syafruddin et al., Spatial repellent RCT, Sumba

580 protection of a bed net. Results from further data analyses on effects of this intervention on non-
581 anopheline populations are forthcoming.

582 Pertaining to monitoring of insecticide resistance, this labor-intensive activity was
583 integrated into the study to characterize the wild-type anopheline populations and monitor
584 changes in susceptibility due to continual exposure of the transfluthrin-active intervention.
585 Although we are confident in the data presented, there were limitations in sampling from
586 multiple sites with multiple species during pre-, within, and post-intervention periods to obtain a
587 clear (“useful”) profile of susceptibility background and shift in phenotypic (and molecular)
588 frequencies. Future trials requiring assessment of insecticide resistance should allow careful
589 planning and budgeting.

590 The third ‘lesson-learned’ from the current study relates to AE and SAE monitoring.
591 Reports of intervention safety in this study should take into account possible limitations of the
592 data collection. The DSMB was provided with clinic attendance data from January 2015 to
593 December 2018, for upper respiratory infection (URI), pneumonia, and malaria, as classified by
594 month, health center, and village within health center coverage. Although not gathered as part of
595 the study, the DSMB was keenly interested in these data because of the surprisingly low number
596 of illnesses/deaths reported from the study population during the entire 24-month intervention
597 period. For some periods, particularly for malaria infection, the case data were missing or the
598 health center totals were not available by village. Of the 13 villages represented in the dataset,
599 all but four comprised clusters (or parts of clusters) from both study intervention arms (i.e., some
600 allocated to active, and others to placebo); therefore, it was not possible to infer the allocation
601 status of the corresponding cases. For this reason, the DSMB was unable to make a reliable
602 assessment of any possible association between active intervention and clinic attendance for

Syafruddin et al., Spatial repellent RCT, Sumba

603 those health conditions reported. The respiratory illnesses in the clinic data are more reflective
604 of the magnitude of numbers of cases one would expect from this population; however, the
605 DSMB was again unable to parse them into test and control clusters due to reasons stated above,
606 and therefore the data was of little use for monitoring purposes. The number of SAEs reported, a
607 total of only six, is well below the expected in a study population of this size. The WHO
608 estimates the crude death rate in Indonesia to be approximately 6.2 per thousand per year.⁵³
609 Based on this, for a population of 1,296 children enrolled (the sample size calculation in the
610 protocol), the probability of having zero deaths in a year is less than one in 1,000. Although open
611 commemoration of deaths is commonly practiced in the study area, it seems apparent that they
612 were not completely reported/recorded as SAEs.

613 Overall, the point to apply for future spatial repellent trials (and perhaps other trials of
614 new vector control interventions) is to improve the mechanism for capturing adverse events
615 before the initiation of the study such that all deaths and hospitalizations are reliably reported
616 and regular monitoring in place for unusual numbers of complaints. If these trials are regarded as
617 a clinical trial with a placebo that requires comparative AE an SAE data, then almost anything at
618 this scale could fail simply on the mass of data, however imperfectly collected. Any safety
619 signal detected would most likely be due to bias in reporting or collection and would have little
620 to do with the investigational intervention. Trials evaluating a spatial repellent intervention with
621 a currently registered active ingredient (i.e., a chemical meets regulatory approvals for
622 acceptable levels of human risk) such as transfluthrin, could focus on a small number of
623 complaints that might be expected due to inhalation (i.e., volatilization) and develop a
624 monitoring scheme that collects consistent data across the population. Clinic-based complaints

Syafruddin et al., Spatial repellent RCT, Sumba

625 of respiratory illness such as pneumonia and asthma might be possible, but the variability in their
626 collection (clinic or survey) will likely be highly dependent on study site infrastructure.

627 In conclusion, while more evidence will be required to determine whether spatial
628 repellents can serve as a viable malaria control intervention, both the primary and secondary
629 results of this Sumba Island trial have generated valuable data and observations that can
630 contribute to the overall assessment and improvement of testing protocols of a spatial repellent
631 intervention class. The VCAG has recommended that data from at least one additional trial
632 evaluating the spatial repellent be generated,⁵⁴ and once available, the panel will be able to
633 assess the available evidence for judging public health value. If the crude estimate of PE shown
634 here, near 30%, is replicated in future statistically robust cluster-randomized trials, the
635 intervention prototype evaluated in this RCT would approximate the benefit associated with
636 LLINs.⁵⁵ Perhaps just as important for endemic countries, the difference in the overall (total
637 new) infection rate between transfluthrin-active and placebo-control – the number of cases
638 averted - indicates 361 expected cases per 1000 persons per year ($0.361 \times 1000 \times 1$) without the
639 spatial repellent and 152 less cases expected when using the active intervention ($(0.361 -$
640 $0.209) \times 1000 \times 1$). The cost-savings of averting these 152 less cases per 1000 person-years is an
641 important consideration for health-systems strengthening. These results have encouraged further
642 and substantial investment to validate spatial repellent efficacy through larger RCTs, including
643 an investigation of possible diversionary effects on human health (i.e., greater than expected
644 malaria incidence in households near intervention not receiving product), and evaluation of the
645 optimal delivery systems for humanitarian assistance use-case scenarios.⁵⁶

646

Syafruddin et al., Spatial repellent RCT, Sumba

647 **Acknowledgments:** We extend sincere appreciation to DSMB members: Dennis Shanks, Chris
648 Drakeley, and Neal Alexander for assurances on data integrity and safety assessments. We also
649 express our gratitude to fhi360 partners Kathy Bowerman, Ahmed Goolam and Zen Hafy for
650 trial oversight and monitoring of protocol compliance. We thank the WHO VCAG for their
651 comments from recurrent project data assessments. We are grateful for the tireless efforts of
652 Wirda Damanik, study administrator at the Eijkman Institute for Molecular Biology in Jakarta,
653 and Marianne Kent, Program Coordinator at the University of Notre Dame, for their expert
654 administrative, logistical, and financial management support of this endeavor. We thank Julie
655 Neidbalski, Katie Cybulski, Diane Lovin, Joanne Cunningham, Jenna Davidson, and Allison
656 Hendershot at the University of Notre Dame for their contribution to human blood and mosquito
657 sample quality control processing as well as David Pettifor of the University of Notre Dame
658 Center for Research Computing for assisting with central database development and data
659 verification. We gratefully thank the residents in the study area for their time and patience
660 participating in this trial. Special gratitude is extended to the Southwest and West Sumba
661 Districts Health Department for their kind support, the parasitology and entomology teams, local
662 field workers, data entry clerks, and the numerous local volunteers for their long-serving
663 dedication to quality of data and meeting the project goals.

664
665 **Financial support:** This study was funded by a substantial award from the Bill & Melinda Gates
666 Foundation (BMGF) to the University of Notre Dame (Grant# OPP1081737). We express our
667 gratitude to the Foundation for their long-term generosity and support of spatial repellent product
668 evaluation and development, especially Kate Aultman, Dan Strickman and Alan Magill. We are
669 also deeply grateful to SC Johnson for its financial support. The company provided integral

Syafruddin et al., Spatial repellent RCT, Sumba

670 industry and product expertise including the development, manufacturing, delivery and shipment
671 of the intervention (active and placebo) used in the study. Additionally, SC Johnson provided
672 expertise in ensuring intervention quality, storage, application and disposal assurances
673 throughout the trial.

674

675 **Disclaimer:** The contents are the responsibility of the authors.

676

677

678

REFERENCES

- 679 1. Kennedy JS, 1947. The Excitant and Repellent Effects on Mosquitos of Sub-lethal Contacts
680 with DDT. *Bull Entomol Res* 37: 593-607.
- 681 2. Muirhead-Thomson RC, 1951. Mosquito Behaviour in relation to Malaria Transmission and
682 Control in the Tropics. London : Edward Arnold & Co., 41, Maddox Street, W.I., 219.
- 683 3. De Zulueta J, Cullen JR, Smith A, 1963. Deterrent Effect of Insecticides on Malaria Vectors
684 . *Nature* 200: 860-862.
- 685 4. Dethier VG, Browne BL, Smith CN, 1960. The Designation of Chemicals in Terms of the
686 Responses They Elicit from Insects. *J Econ Entomol* 53: 134-136.
- 687 5. Miller JR, Siegert PY, Amimo FA, Walker ED, 2009. Designation of Chemicals in Terms of
688 the Locomotor Responses they Elicit from Insects: an Update of Dethier et al. (1960). *J Econ*
689 *Entomol* 102: 2056-2060.
- 690 6. Roberts DR, Alecrim WD, Hshieh P, Grieco JP, Bangs M, Andre RG, Chareonviriphap T,
691 2000. A Probability Model of Vector Behavior: Effects of DDT Repellency, Irritancy, and
692 Toxicity in Malaria Control. *J Vector Ecol* 25: 48-61.
- 693 7. World Health Organization, WHO Pesticide Evaluation Scheme, 2013. Guidelines for
694 Efficacy Testing of Spatial Repellents.
- 695 8. Grieco JP, Achee NL, Sardelis MR, Chauhan KR, Roberts DR, 2005. A Novel High-
696 Throughput Screening System to Evaluate the Behavioral Response of Adult Mosquitoes to
697 Chemicals. *J Am Mosq Control Assoc* 21: 404-411.
- 698 9. Achee NL, Sardelis MR, Dufour I, Chauhan KR, Grieco JP, 2009. Characterization of Spatial
699 Repellent, Contact Irritant, and Toxicant Chemical Actions of Standard Vector Control
700 Compounds. *J Am Mosq Control Assoc* 25: 156-167.
- 701 10. Ogoma SB, Ngonyani H, Simfukwe ET, Mseka A, Moore J, Maia MF, Moore SJ, Lorenz
702 LM, 2014. The Mode of Action of Spatial Repellents and Their Impact on Vectorial Capacity of
703 *Anopheles gambiae sensu stricto*. *PLoS ONE* 9: e110433.
- 704 11. Ogoma SB, et al, 2014. An Experimental Hut Study to Quantify the Effect of DDT and
705 Airborne Pyrethroids on Entomological Parameters of Malaria Transmission. *Malar J* 13: 131.
- 706 12. Grieco JP, Achee NL, Chareonviriyaphap T, Suwonkerd W, Chauhan K, Sardelis MR,
707 Roberts DR, 2007. A New Classification System for the Actions of IRS Chemicals Traditionally
708 Used For Malaria Control. *PLoS One* 2: e716.
- 709 13. U.S EPA Office of Pesticide Programs, 2018. Conventional New Chemical Registration
710 Decisions - Completed FY 2018.

Syafruddin et al., Spatial repellent RCT, Sumba

- 711 14. Norris E, Coats J, 2017. Current and Future Repellent Technologies: The Potential of Spatial
712 Repellents and Their Place in Mosquito-Borne Disease Control. *International Journal of*
713 *Environmental Research and Public Health* 14: 124.
- 714 15. Debboun M, Frances SP, Strickman D, Frances SP, Strickman D, 2006. Insect Repellents:
715 Principles, Methods, and Uses. CRC Press, 495.
- 716 16. WHO, 2017. The Evaluation Process for Vector Control Products. *WHO*.
- 717 17. Hill N, Zhou HN, Wang P, Guo X, Carneiro I, Moore SJ, 2014. A Household Randomized,
718 Controlled Trial of the Efficacy of 0.03% Transfluthrin Coils Alone and in Combination with
719 Long-Lasting Insecticidal Nets on the Incidence of *Plasmodium falciparum* and *Plasmodium*
720 *vivax* Malaria in Western Yunnan Province, China. *Malar J* 13: 208.
- 721 18. Syafruddin D, et al, 2014. Impact of a Spatial Repellent on Malaria Incidence in Two
722 Villages in Sumba, Indonesia. *Am J Trop Med Hyg* 91: 1079-1087.
- 723 19. WHO-Department of Control of Neglected Tropical Diseases, 2017. How to Design Vector
724 Control Efficacy Trials. Guidance on Phase III Vector Control Field Trial Design. *WHO* 62.
- 725 20. Ogoma SB, Moore SJ, Maia MF, 2012. A Systematic Review of Mosquito Coils and Passive
726 Emanators: Defining Recommendations for Spatial Repellency Testing Methodologies. *Parasit*
727 *Vectors* 5: 287.
- 728 21. Achee NL, Grieco JP, 2012. Is It Time to Formally Recognize Spatial Repellency for Disease
729 Prevention? *Outlooks on Pest Management* 23: 283-286.
- 730 22. Achee NL, et al, 2012. Spatial Repellents: from Discovery and Development to Evidence-
731 Based Validation. *Malar J* 11: 164.
- 732 23. Hemingway J, Shretta R, Wells TNC, Bell D, Djimdé AA, Achee N, Qi G, 2016. Tools and
733 Strategies for Malaria Control and Elimination: What Do We Need to Achieve a Grand
734 Convergence in Malaria? *PLoS Biol* 14: e1002380.
- 735 24. Badan Pusat Statistik, 2010 Population Census - Indonesia. . Available from:
736 <http://sp2010.bps.go.id/>. Accessed Jul 10, 2019.
- 737 25. Elyazar IRF, Sinka ME, Gething PW, Tarmidzi SN, Surya A, Kusriastuti R, Winarno n,
738 Baird JK, Hay SI, Bangs MJ, 2013. The Distribution and Bionomics of Anopheles Malaria
739 Vector Mosquitoes in Indonesia. *Anonymous Advances in Parasitology* ., 173-266.
- 740 26. Barbara KA, Sukowati S, Rusmiarto S, Susapto D, Bangs MJ, Kinzer MH, 2011. Survey of
741 *Anopheles* Mosquitoes (Diptera:Culicidae) in West Sumba District, Indonesia. *Southeast Asian J*
742 *Trop Med Public Health* 42: 71-82.

Syafruddin et al., Spatial repellent RCT, Sumba

- 743 27. Asih PBS, Dewi RM, Tuti S, Sadikin M, Sumarto W, Sinaga B, van der Ven, Andre J. A. M.,
744 Sauerwein RW, Syafruddin D, 2009. Efficacy of Artemisinin-Based Combination Therapy for
745 Treatment of Persons with Uncomplicated *Plasmodium falciparum* Malaria in West Sumba
746 District, East Nusa Tenggara Province, Indonesia, and Genotypic Profiles of the Parasite. *Am J*
747 *Trop Med Hyg* 80: 914-918.
- 748 28. Lievens M, Aponte JJ, Williamson J, Mmbando B, Mohamed A, Bejon P, Leach A, 2011.
749 Statistical Methodology for the Evaluation of Vaccine Efficacy in a Phase III Multi-centre Trial
750 of the RTS, S/AS01 Malaria Vaccine in African Children. *Malar J* 10: 222.
- 751 29. Kim HC, et al, 2011. Japanese Encephalitis Virus in Culicine mosquitoes (Diptera:
752 Culicidae) Collected at Daeseongdong, a Village in the Demilitarized Zone of the Republic of
753 Korea. *J Med Entomol* 48: 1250-1256.
- 754 30. Bernard Nkrumah, Samuel Blay Nguah, Nimako Sarpong, Denise Dekker, Ali Idriss, Juergen
755 May and Yaw Adu-Sarkodie, 2011. Hemoglobin Estimation by the HemoCue® Portable
756 Hemoglobin Photometer in a Resource Poor Setting. *BMC Clinical Pathology* 11:.
- 757 31. Echeverry DF, et al, 2016. Human Malaria Diagnosis Using a Single-step Direct-PCR Based
758 on the *Plasmodium* cytochrome oxidase III gene. *Malar J* 15: 128.
- 759 32. World Health Organization & UNICEF/UNDP/World Bank/WHO Special Programme for
760 Research and Training in Tropical Diseases, 2015. Microscopy for the Detection, Identification
761 and Quantification of Malaria Parasites on Stained Thick and Thin Blood Films in Research
762 Settings. *World Health Organization* 33.
- 763 33. WHO Specifications and Evaluations for Public Health Pesticides, 2016. Transfluthrin.
764 *World Health Organization*.
- 765 34. O'Connors CT, Soepanto A, 1979. Kunci kunci bergambar untuk Anopheles betina dari
766 Indonesia. Translated and revised by Atmosoedjono S, Bangs, MJ, 1989. Illustrated key to the
767 *Anopheles* of Indonesia. 1989. 1-40.
- 768 35. Detinova TS, 1962. Age-grouping Methods in Diptera of Medical Importance with Special
769 Reference to some Vectors of Malaria. *Monogr Ser World Health Organ* 47: 13-191.
- 770 36. Lobo NF, et al, 2015. Unexpected Diversity of *Anopheles* Species in Eastern Zambia:
771 Implications for Evaluating Vector Behavior and Interventions using Molecular Tools. *Sci Rep*
772 5: 17952.
- 773 37. St Laurent B, et al, 2016. Behaviour and Molecular Identification of *Anopheles* Malaria
774 Vectors in Jayapura District, Papua Province, Indonesia. *Malar J* 15: 192.
- 775 38. Echeverry DF, et al, 2017. Fast and Robust Single PCR for *Plasmodium* sporozoite Detection
776 in Mosquitoes using the Cytochrome Oxidase I Gene. *Malar J* 16: 230.

Syafruddin et al., Spatial repellent RCT, Sumba

- 777 39. Beier JC, 2002. Vector Incrimination and Entomological Inoculation Rates. *Methods Mol*
778 *Med* 72: 3-11.
- 779 40. WHO, 2018. Test Procedures for Insecticide Resistance Monitoring in Malaria Vector
780 Mosquitoes (Second edition).
- 781 41. Center for Disease Control and Prevention, Guideline for Evaluating Insecticide Resistance
782 in Vectors Using the CDC Bottle Bioassay.
- 783 42. John D. Kalbfleisch, Ross L. Prentice, 2002. The Statistical Analysis of Failure Time Data.
784 John Wiley and Sons, 462.
- 785 43. Paul D. Allison, 1982. Discrete-Time Methods for the Analysis of Event Histories.
786 *Sociological Methodology* 13: 61-98.
- 787 44. David Collett, 2002. Modelling Binary Data. Chapman and Hall/CRC, 408.
- 788 45. Redmond, C. and Colton, T., ed., 2001. Biostatistics in Clinical Trials. John Wiley & Sons.
- 789 46. Baird JK, Bangs MJ, Maguire JD, Barcus MJ, 2002. Epidemiological Measures of Risk of
790 Malaria. *Methods Mol Med* 72: 13-22.
- 791 47. World Health Organization, 2018. World Malaria Report 2018. *WHO*.
- 792 48. Brown CH, Ten Have TR, Jo B, Dagne G, Wyman PA, Muthén B, Gibbons RD, 2009.
793 Adaptive Designs for Randomized Trials in Public Health. *Annu Rev Public Health* 30: 1-25.
- 794 49. Shein-Chung Chow MC, 2011. Adaptive Design Methods in Clinical Trials. Chapman and
795 Hall/CRC Biostatistics Series, 375.
- 796 50. Guyatt GH, Oxman AD, Vist GE, Kunz R, Falck-Ytter Y, Alonso-Coello P, Schünemann HJ,
797 2008. GRADE: an Emerging Consensus on Rating Quality of Evidence and Strength of
798 Recommendations. *BMJ* 336: 924-926.
- 799 51. Frieden TR, 2017. Evidence for Health Decision Making - Beyond Randomized, Controlled
800 Trials. *N Engl J Med* 377: 465-475.
- 801 52. Wilson AL, Boelaert M, Kleinschmidt I, Pinder M, Scott TW, Tusting LS, Lindsay SW,
802 2015. Evidence-based Vector Control? Improving the Quality of Vector Control Trials. *Trends*
803 *Parasitol* 31: 380-390.
- 804 53. WHO-Global Health Observatory Data Repository, 2015. Crude Birth and Death Rate
805 Data by Country. . Available from: <http://apps.who.int/gho/data/view.main.CBDR2040>.
806 Accessed 07/08/2019.

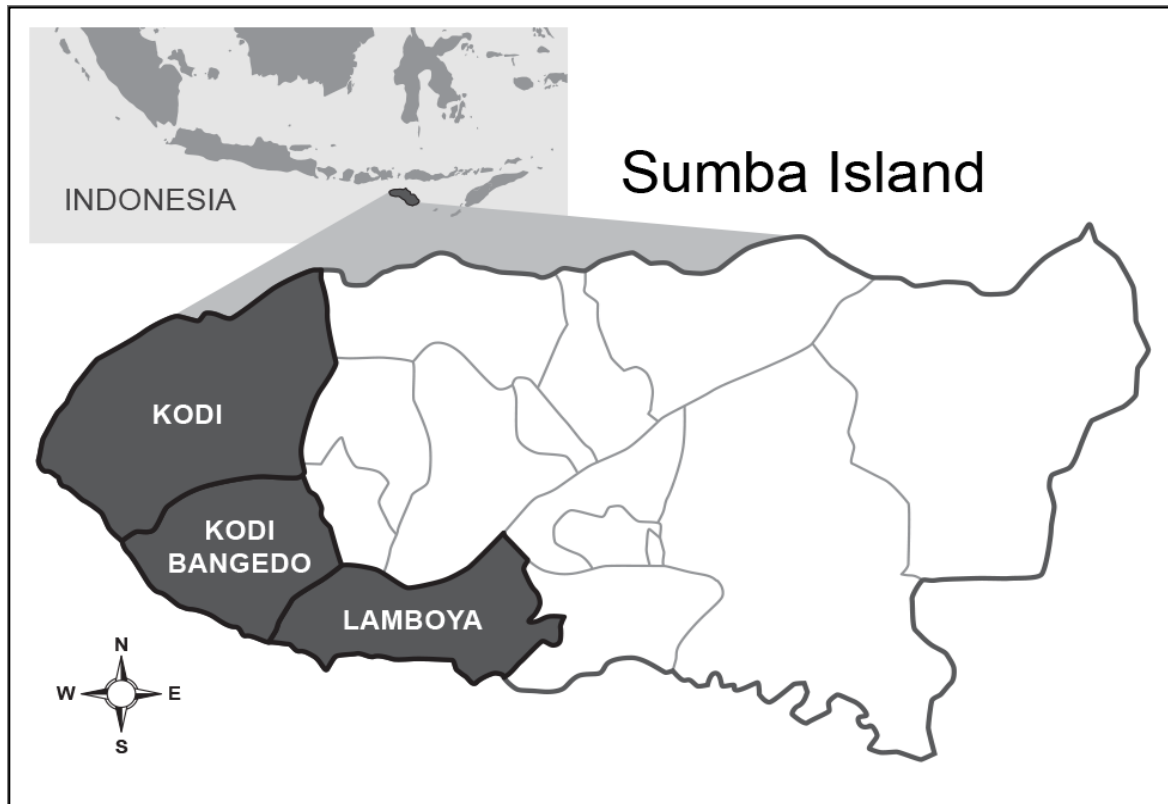
Syafruddin et al., Spatial repellent RCT, Sumba

- 807 54. VCAG, Vector Control Advisory Group. . Available from: [http://www.who.int/vector-](http://www.who.int/vector-control/vcag/en/)
808 [control/vcag/en/](http://www.who.int/vector-control/vcag/en/). Accessed Jul 10, 2019.
- 809 55. Lengeler C, 2004. Insecticide-treated Bed Nets and Curtains for Preventing Malaria.
810 *Cochrane Database Syst Rev* CD000363.
- 811 56. Unitaid, Innovative Repellents for Disease-carrying Mosquitoes. . Available from:
812 <https://unitaid.org/project/innovative-repellents-for-disease-carrying-mosquitoes/>. Accessed Jul
813 10, 2019.
- 814

Syafruddin et al. Spatial repellent RCT, Sumba

FIGURES

Figure 1. Study site areas in Southwest and West Sumba districts located in Kodi, Kodi Bangedo and Lamboya sub-districts of Sumba Island, Nusa Tenggara Timur Province (eastern Lesser Sunda islands), Indonesia (map not to scale).



Syafruddin et al. Spatial repellent RCT, Sumba

Figure 2. Traditional Sumba house structure (A) raised ~1m above ground and averaging 80 m³ in size with thatch roof, bamboo floors and walls (B), that offer little protection from mosquito entry.



Syafruddin et al. Spatial repellent RCT, Sumba

Figure 3. Location of 24 study clusters. Clusters were selected for enrolling the incidence cohort, each consisted of ca. 100 households with an average distance of 500m between clusters. A total of 48 sentinel houses from 12 clusters were selected for routine entomological collections.

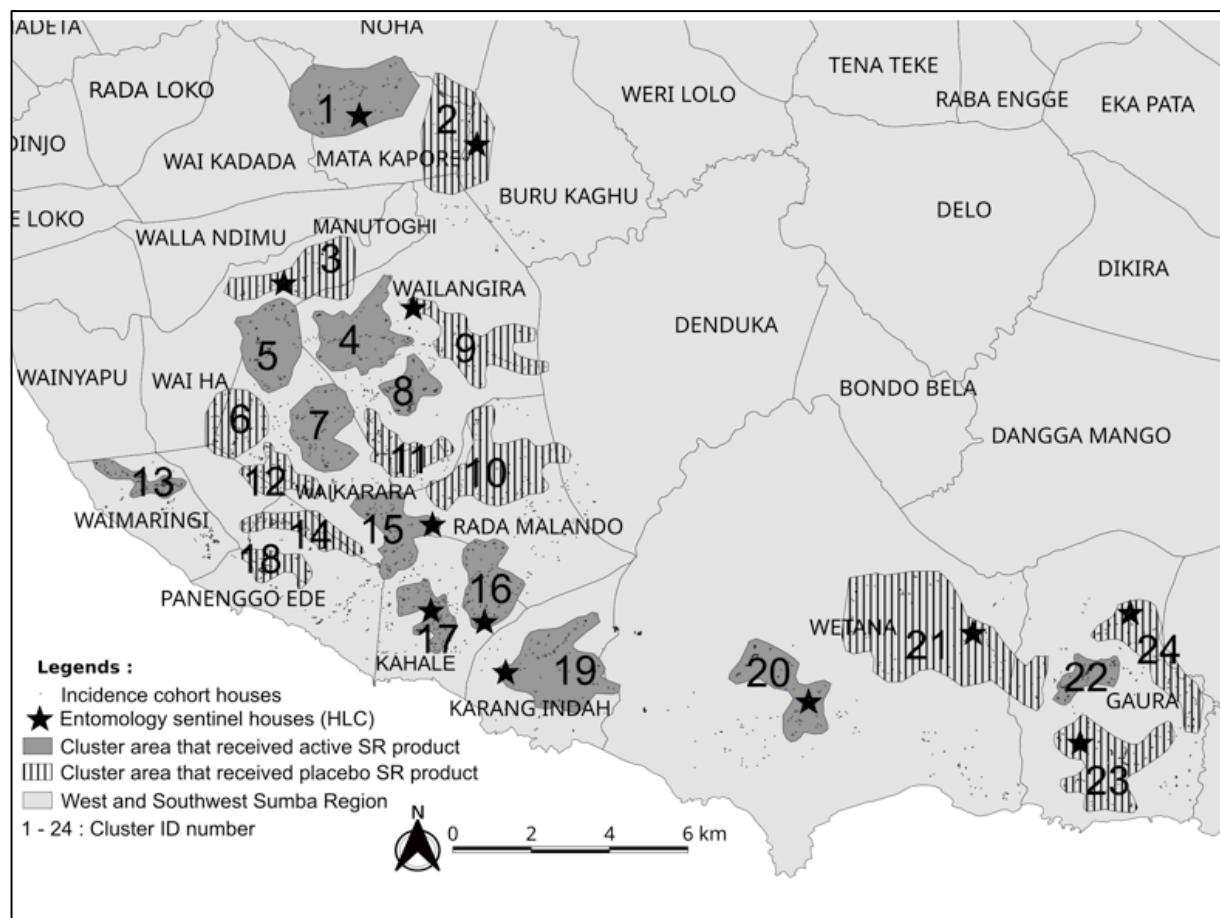
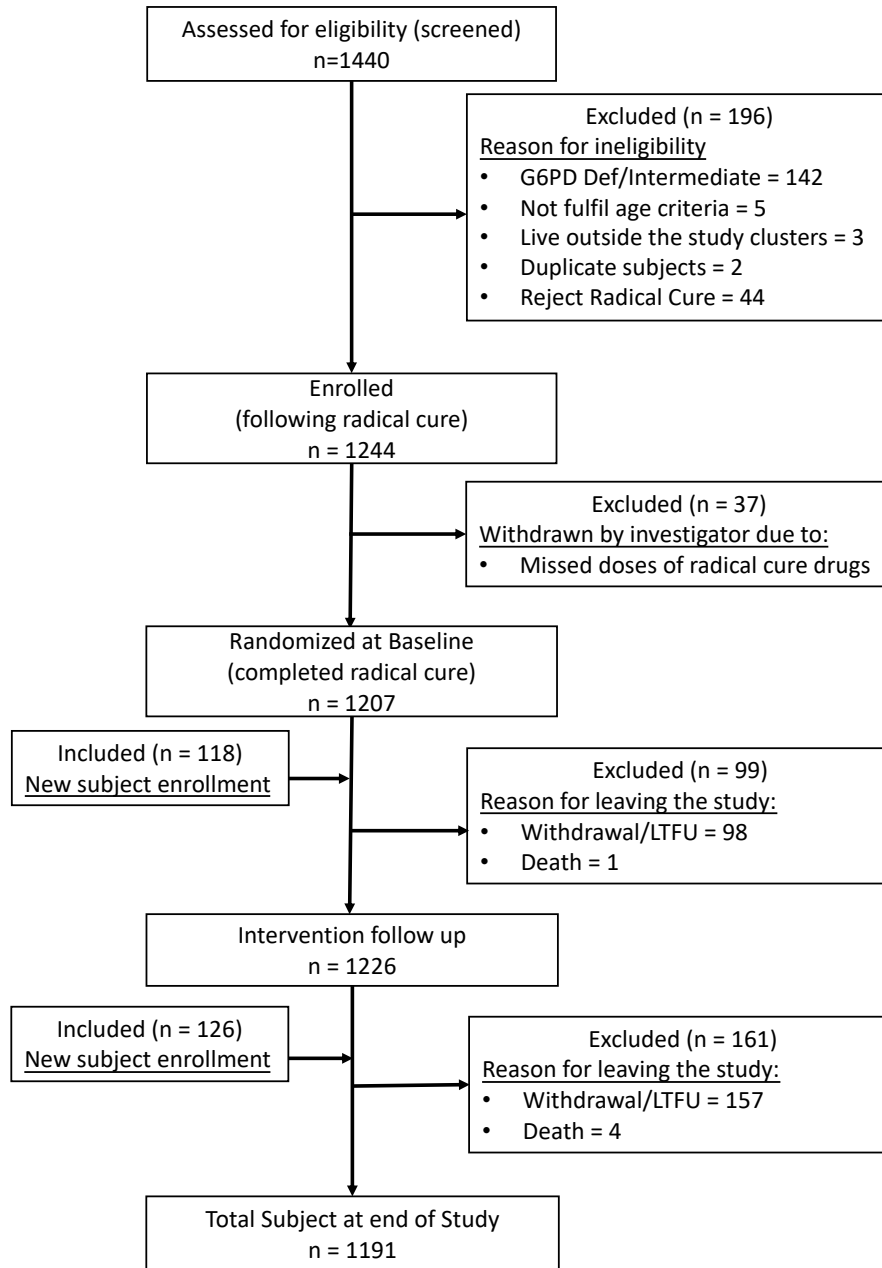
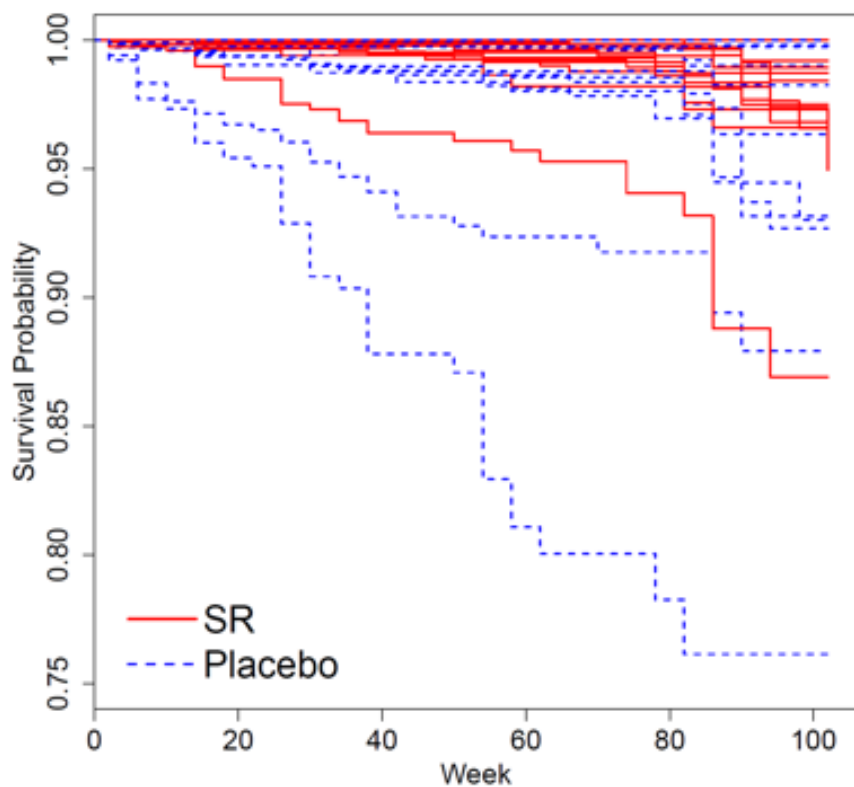


Figure 4. Flowchart of enrollment of study volunteers. A total of 1,684 subjects were screened for G6PD deficiency and 1,488 consented to be enrolled and provided radical cure for active or presumptive malaria of which 1,451 completed the treatment and subsequently followed-up for 24 months during intervention.



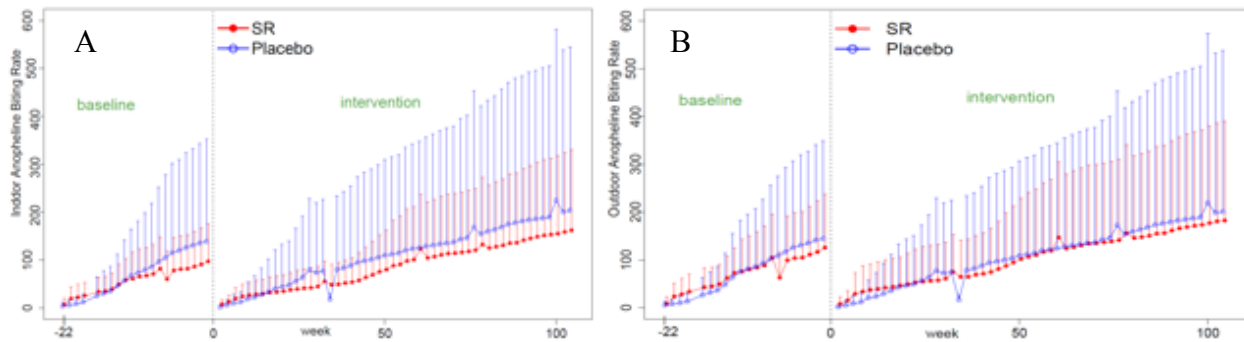
Syafruddin et al. Spatial repellent RCT, Sumba

Figure 5: Cumulative incidence of first-time malaria infection by cluster (12 per treatment arm).



Syafruddin et al. Spatial repellent RCT, Sumba

Figure 6. Cumulative biweekly indoor (A) and outdoor (B) anopheline landing rates by treatment group (averaged over 20 to 24 households per treatment group).



Syafruddin et al. Spatial Repellent RCT, Sumba

TABLES

Table 1. Parasitological prevalence data of the 13 study villages on Sumba Island conducted in 10 months before cluster randomization.

Village	Number of samples	Number of malaria infections	Slide Positive Rate (%)
Matakapore	806	110	13.65
Manutoghi	622	217	34.88
Waimakaha	621	149	23.99
Wailangira	857	52	6.07
Waikarara	1,420	63	4.44
Panenggo Ede	610	15	2.46
Waimaringi	649	67	10.32
Tana Mete	810	81	10.00
Kahale	903	202	22.37
Rada Malando	402	150	37.31
Karang Indah	523	195	37.28
Gaura	1,297	165	12.70
Weetana	1,129	163	14.40

Table 2. Summary baseline covariates by treatment arm for the primary analysis.

Individual level		
	SR (n = 665)	Placebo (n = 667)
Age in months (mean \pm SD, (min, max))	34.0 \pm 15.1 (6, 59)	34.2 \pm 14.8 (6, 59)
Gender (% of male subjects)	54.1%	51.1%
Household level		
	SR (n = 665)	Placebo (n = 667)
House wall type (Wood %)	91.6%	94.0%
Open eaves (Yes %)	98.0%	99.6%
# of doors (mean \pm SD, (min, max))	2.06 \pm 0.38 (1, 4)	2.06 \pm 0.30 (0, 4)
Cluster level		
	SR (n = 12)	Placebo (n = 12)
Cluster population (mean \pm SD, (min, max))	694.3 \pm 59.2 (624, 820)	730.8 \pm 129.0 (616, 1117)
Baseline incidence rate per person-year (mean \pm SD, (min, max))	0.096 \pm 0.115 (0, 0.426)	0.089 \pm 0.088 (0, 0.265)
Baseline overall (total new) infection incidence per person-year (mean \pm SD, (min, max))	0.094 \pm 0.111 (0, 0.412)	0.089 \pm 0.087 (0, 0.261)

Syafruddin et al. Spatial Repellent RCT, Sumba

Table 3. Summary first-time and overall (total) malaria incidence.

	First-time infection			Overall (total new) infection		
	All clusters	Subgroup 1 [#]	Subgroup 2 [#]	All clusters	Subgroup 1 [#]	Subgroup 2 [#]
	SR : Placebo					
Cluster	12:12	10:9	6:6	12:12	10:9	6:6
Households	665: 667	557: 500	335:335	665: 667	557: 500	335 : 335
Malaria infections	134 : 164	130 : 158	93 : 140	253 : 439	249 : 433	196 : 408
person years	1079 : 1032	873 : 722	506 : 444	1216 :1216	1015 : 909	609 : 607
Incidence rate (ppy)	0.124 : 0.159	0.149 : 0.219	0.184 : 0.315	0.208 : 0.361	0.245 : 0.476	0.322 : 0.672
Hazard ratio (90% CI)	0.723 (0.431,1.213)	0.64 (0.299, 1.367)	0.447 (0.302, 0.664)	0.687 (0.426,1.108)	0.591 (0.382, 0.914)	0.344 (0.233, 0.508)
PE (%) (90% CI)	27.7 (-21.3, 56.9)	33.3 (-7.8, 58.7)	55.3 (33.6, 69.9)	31.3 (-10.8, 57.4)	40.9 (8.61, 61.8)	65.6 (49.2, 76.7)
1-sided p-value	0.151	0.083	0.0004	0.098	0.0236	<0.0001
[#] Subgroup 1: clusters with non-zero baseline incidence [#] Subgroup 2: clusters with entomology data						

Table 4. Frequency (percentage) of anopheline species captured during sentinel human-landing catch (HLC) based on adult morphological character identification*.

Anophelines	Baseline Period				Intervention Period			
	Indoor		Outdoor		Indoor		Outdoor	
	SR	Placebo	SR	Placebo	SR	Placebo	SR	Placebo
Total	2243 (100%)	3327 (100%)	2896 (100%)	3462 (100%)	3883 (100%)	4897 (100%)	4372 (100%)	4834 (100%)
<i>An. aconitus</i>	467 (20.82%)	80 (2.40%)	768 (26.52%)	78 (2.25%)	2015 (51.89%)	173 (3.53%)	2249 (51.44%)	162 (3.35%)
<i>An. annularis</i>	55 (2.45%)	633 (19.03%)	70 (2.42%)	567 (16.38%)	82 (2.11%)	544 (11.11%)	99 (2.26%)	493 (10.20%)
<i>An. balabacensis</i>	0 (0%)	0 (0%)	0 (0%)	0 (0%)	2 (0.05%)	1 (0.02%)	0 (0%)	0 (0%)
<i>An. barbirostris</i>	41 (1.83%)	148 (4.45%)	49 (1.69%)	132 (3.81%)	62 (1.60%)	360 (7.35%)	56 (1.28%)	322 (6.66%)
<i>An. barbumbrosus</i>	0 (0%)	0 (0%)	0 (0%)	0 (0%)	1 (0.03%)	0 (0%)	0 (0%)	3 (0.06%)
<i>An. flavirostris</i>	355 (15.83%)	417 (12.53%)	523 (18.06%)	504 (14.56%)	757 (19.50%)	430 (8.78%)	1001 (22.90%)	482 (9.97%)
<i>An. indefinitus</i>	0 (0%)	1 (0.03%)	0 (0%)	1 (0.03%)	2 (0.05%)	12 (0.25%)	4 (0.09%)	20 (0.41%)
<i>An. karwari</i>	0 (0%)	0 (0%)	0 (0%)	0 (0%)	0 (0%)	0 (0%)	1 (0.02%)	0 (0%)
<i>An. kochi</i>	47 (2.10%)	501 (15.06%)	36 (1.24%)	392 (11.32%)	90 (2.32%)	803 (16.40%)	88 (4.71%)	836 (17.29%)
Leucosphyrus Group	0 (0%)	1 (0.03%)	0 (0%)	0 (0%)	2 (0.05%)	16 (1.61%)	1 (0.02%)	26 (0.54%)
<i>An. maculatus</i>	61 (2.72%)	88 (2.65%)	95 (3.28%)	88 (2.54%)	209 (5.38%)	79 (1.61%)	206 (4.71%)	94 (1.94%)
<i>An. montanus</i>	0 (0%)	0 (0%)	0 (0%)	0 (0%)	1 (0.03%)	0 (0%)	1 (0.02%)	0 (0%)
<i>An. parangensis</i>	0 (0%)	0 (0%)	0 (0%)	0 (0%)	0 (0%)	1 (0.02%)	0 (0%)	0 (0%)
Hyrcanus Group	0 (0%)	0 (0%)	0 (0%)	0 (0%)	0 (0%)	4 (0.08%)	0 (0%)	2 (0.04%)
<i>An. subpictus</i>	15 (0.67%)	7 (0.21%)	13 (0.45%)	15 (0.43%)	3 (0.08%)	105 (2.14%)	10 (0.23%)	85 (1.76%)
<i>An. sundaicus</i>	1001 (44.63%)	401 (12.05%)	1154 (39.85%)	562 (16.23%)	136 (3.50%)	61 (1.25%)	128 (2.93%)	62 (1.28%)
<i>An. tessellatus</i>	94 (4.19%)	317 (9.53%)	89 (3.07%)	295 (8.52%)	205 (5.28%)	1246 (25.44%)	192 (4.39%)	1215 (25.13%)
<i>An. umbrosus</i>	0 (0%)	0 (0%)	1 (0.03%)	0 (0%)	0 (0%)	0 (0%)	0 (0%)	0 (0%)
<i>An. vagus</i>	107 (4.77%)	733 (22.03%)	98 (3.38%)	828 (23.92%)	315 (8.11%)	1061 (21.67%)	334 (7.64%)	1031 (21.33%)
Unknown	0 (0%)	0 (0%)	0 (0%)	0 (0%)	1 (0.03%)	1 (0.02%)	2 (0.046%)	1 (0.02%)

*Misidentification possible depending on physical condition of specimen, molecular methods required to separate out some members in species groups and complexes.

Syafruddin et al. Spatial Repellent RCT, Sumba

Table 5: Intervention effect on anopheline mosquito landing rates by collection location¹.

Location ¹	Active (mean \pm SD)	Placebo (mean \pm SD)	% Change (95% CI) Active vs. Placebo	p-value
Indoor	3.14 \pm 5.84	3.97 \pm 8.73	-16.4 (-75.2, 182.7)	0.774
Outdoor	3.54 \pm 7.13	3.93 \pm 8.64	-11.3 (-73.7, 199.4)	0.847

¹Position at each HLC sentinel house where sample was captured (indoor = near center of house; outdoor = on verandah ~1m from edge of exterior wall).

Syafruddin et al. Spatial Repellent RCT, Sumba

Table 6. Frequency of anopheline (all species) sporozoite positivity status.

Treatment Allocation	Pf ₁	Pv ₂	Indeterminate ₃	Noninfected	Sporozoite Positivity Rate =
					$\frac{Pf + Pv}{Pf + Pv + unclear + uninfected} \times 100\%$
Baseline					
Active	12	9	0	4706	0.44%
Placebo	12	9	0	6244	0.34%
Intervention					
Active	3	8	0	8130	0.14%
Placebo	6	1	1	9615	0.07%

¹Pf = *Plasmodium falciparum*

²Pv= *Plasmodium vivax*

³Indeterminate= *Plasmodium* positive sample but parasite species not identifiable.

Syafruddin et al. Spatial Repellent RCT, Sumba

Table 7. Intervention effect on parity and nulliparity rates (all anopheline species).¹

	HLC Location ²	Active (mean \pm SD)	Placebo (mean \pm SD)	% Change (95% CI) Active vs. Placebo
Parous	Indoor	0.41 \pm 0.44	0.41 \pm 0.45	-10.2 (-62.1, 113.2)
	Outdoor	0.40 \pm 0.44	0.43 \pm 0.45	-25.9 (-68.8, 75.6)
Nulliparous	Indoor	0.16 \pm 0.29	0.12 \pm 0.26	58.3 (-37.0, 298.0)
	Outdoor	0.17 \pm 0.30	0.11 \pm 0.25	54.9 (-37.6, 284.3)

¹ Mean and SD are descriptive statistics; % change was calculated from fitting negative binomial models.

² Position of Human Landing Catch (HLC) collector (indoor = near center of house; outdoor = on house verandah ~1m from edge of exterior wall).