

1 **Intermittent Lactobacilli-containing Vaginal Probiotic or Metronidazole Use to Prevent**
2 **Bacterial Vaginosis Recurrence: Safety and Preliminary Efficacy by Microscopy and**
3 **Sequencing**

4
5 Janneke H.H.M. van de Wijgert^{1,2,*†}, Marijn C. Verwijs^{1†}, Stephen K. Agaba³, Christina
6 Bronowski¹, Lambert Mwambarangwe³, Mireille Uwineza³, Elke Lievens⁴, Adrien Nivoliez⁵,
7 Jacques Ravel⁶ and Alistair C. Darby⁷

8
9 ¹Institute of Infection and Global Health, University of Liverpool, Liverpool, UK

10 ²Julius Center for Health Sciences and Primary Care, University Medical Center Utrecht, Utrecht
11 University, Utrecht, The Netherlands

12 ³Rinda Ubuzima, College of Medicine and Health Sciences, University of Rwanda, Kigali,
13 Rwanda

14 ⁴Winclove Probiotics, Amsterdam, The Netherlands

15 ⁵Biose, Arpajon-sur-Cère, France

16 ⁶Institute of Genome Sciences, University of Maryland, Baltimore, USA

17 ⁷Centre for Genomic Research, Institute of Integrative Biology, University of Liverpool,
18 Liverpool, UK

19
20 *Correspondence and requests for materials should be addressed to JvdW (email:

21 j.vandewijgert@liverpool.ac.uk; j.h.h.vandewijgert@umcutrecht.nl).

22 †Janneke H.H.M. van de Wijgert and Marijn C. Verwijs contributed equally to this work.

25 **ABSTRACT**

26 Bacterial vaginosis (BV) is associated with HIV acquisition and adverse pregnancy outcomes.
27 Recurrence after metronidazole treatment is high. HIV-negative, non-pregnant Rwandan BV
28 patients were randomized to four groups (n=17/group) after seven-day oral metronidazole
29 treatment: behavioral counseling only (control), or counseling plus intermittent use of oral
30 metronidazole, Ecologic Femi+ vaginal capsule (containing multiple *Lactobacillus* and one
31 *Bifidobacterium* species), or Gynophilus LP vaginal tablet (*L. rhamnosus* 35) for two months.
32 Vaginal microbiota assessments at all visits included Gram stain Nugent scoring and 16S rRNA
33 gene qPCR and HiSeq sequencing. All interventions were safe. BV (Nugent 7-10) incidence was
34 10.18 per person-year at risk in the control group, and lower in the metronidazole (1.41/person-
35 year; p=0.004), Ecologic Femi+ (3.58/person-year; p=0.043), and Gynophilus LP groups
36 (5.36/person-year; p=0.220). In mixed effects models adjusted for hormonal
37 contraception/pregnancy, sexual risk-taking, and age, metronidazole and Ecologic Femi+ users,
38 each compared to controls, had higher *Lactobacillus* and lower BV-anaerobes concentrations
39 and/or relative abundances, and were less likely to have a dysbiotic vaginal microbiota type by
40 sequencing. Inter-individual variability was high and effects disappeared soon after intervention
41 cessation. Lactobacilli-based vaginal probiotics warrant further evaluation because, in contrast to
42 antibiotics, they are not expected to negatively affect microbiota or cause antimicrobial
43 resistance.

44

45 INTRODUCTION

46 Most women have a vaginal microbiota (VMB) that consists predominantly of lactobacilli¹. The
47 most common type of vaginal dysbiosis is bacterial vaginosis (BV), characterized by a decrease
48 in lactobacilli and increase in other anaerobes, which affects 30-40% of women worldwide².
49 Other types of bacterial dysbiosis, vulvovaginal candidiasis, and *Trichomonas vaginalis* (TV) are
50 also common. These conditions are associated with vaginal inflammation, thereby increasing the
51 risk of HIV acquisition³. They are also associated with pelvic inflammatory disease, infertility,
52 and adverse pregnancy outcomes².

53
54 The majority of women seeking care for vaginal symptoms receive antibiotic or antifungal
55 treatment empirically or syndromically without any diagnostic testing⁴. In some specialized
56 clinics, women might be offered limited diagnostic testing, such as vaginal pH determination
57 and/or wet mount microscopy. In research settings, BV is typically diagnosed by the Amsel
58 criteria or Nugent scoring^{5,6}, with the latter currently being considered the gold standard: Gram-
59 stained vaginal smears are scored based on microscopic visualization of three bacterial
60 morphotypes with a score of 0-3 considered normal, 4-6 intermediate, and 7-10 BV regardless of
61 symptoms. In the last 15 years, molecular methods have become more widely available, and
62 have been applied to the VMB, although mostly in descriptive studies to date¹.

63
64 Evidence is mounting that ‘microbiological-BV’ (by Nugent scoring or molecular methods) can
65 cause long-term adverse outcomes in the presence or absence of vaginal symptoms². BV is
66 notoriously difficult to treat⁷⁻⁹. About 60-80% of patients are cured after a course of oral or
67 vaginal metronidazole or clindamycin, but recurrence rates are high⁷. Therapies to restore and
68 maintain an optimal lactobacilli-dominated VMB after antibiotic treatment are not standard

69 practice, but some clinicians in Europe and North America recommend twice weekly 0.75%
70 metronidazole vaginal gel for 4-6 months to lower the risk of BV recurrence⁷. This
71 recommendation was tested in a randomized controlled trial in the USA, which showed a
72 statistically significant reduction in BV recurrence (34% by Nugent scoring)¹⁰. In addition, two
73 African trials evaluating oral (2g monthly) and vaginal metronidazole (five nights every three
74 months) for BV prevention showed significant beneficial effects, but the effects were modest,
75 most likely due to infrequent dosing^{11,12}.

76

77 Probiotic lactobacilli may be able to restore and maintain a lactobacilli-dominated VMB, may be
78 better able to prevent or disrupt BV-associated biofilms than antibiotics, and can likely be used
79 safely for long periods without the risk of causing antimicrobial resistance¹³. Lactobacilli-
80 containing vaginal probiotic clinical trials to date have shown mixed results, but eight of the 12
81 trials showed sufficiently promising efficacy for BV prevention to warrant further
82 investigation¹³⁻²⁴. Some trials used commercially available probiotic strains (mostly derived
83 from the gut or fermented foods) and others vaginal strains isolated from healthy women²⁵, but
84 efficacy signals were similar for the two probiotic strain categories¹³⁻²⁴. None of the trials
85 reported major safety concerns or colonization beyond the dosing period. Because ‘natural’
86 strains do not seem to outperform commercially available strains, and for pragmatic reasons, we
87 chose to evaluate two vaginal probiotics that are currently on the market. Our aim was to assess
88 their safety and impact on the VMB in much more detail than previous trials had done, and to
89 develop data analytic methods to enable use of high-dimensional 16S rRNA gene sequencing
90 data for this purpose. The two probiotics that we evaluated were Ecologic Femi+ vaginal capsule
91 (EF+; Winclove Probiotics, Amsterdam, The Netherlands) and Gynophilus LP vaginal tablet
92 (GynLP; Biose, Arpajon-sur-Cère, France). EF+ contains multiple lyophilized bacteria

93 (*Bifidobacterium bifidum* W28, *Lactobacillus acidophilus* W70, *L. helveticus* W74, *L. brevis*
94 W63, *L. plantarum* W21, and *L. salivarius* W24) in a total dose of 1.5×10^9 colony forming units
95 (CFU). GynLP contains 1.6×10^9 CFU of Lcr Regenerans, a culture of the *L. rhamnosus* 35
96 (Lcr35) strain. The tablet disintegrates in the vagina after forming a gel to release Lcr35.
97 Gynophilus (the same active ingredient as GynLP but a different formulation) had shown
98 promise in preventing BV recurrence in a previous trial, but EF+ had not previously been studied
99 for this indication¹⁵.

100

101 **METHODS**

102 From June 2015 until February 2016, we conducted a randomized clinical trial in Kigali,
103 Rwanda, to evaluate intermittent use of the above-mentioned vaginal probiotics as well as oral
104 metronidazole (Tricozole, Laboratory & Allied Ltd, Nairobi, Kenya) to prevent the recurrence of
105 microbiological-BV after metronidazole treatment. The trial was a pilot trial with a modest
106 sample size (N=68) at the request of the funder.

107

108 **Eligibility**

109 Women were eligible for screening if they were aged 18-45, in good overall physical and mental
110 health, and at high urogenital infection risk defined as having had more than one sex partner in
111 the last 12 months or having been treated for a sexually transmitted infection and/or BV in the
112 last 12 months. They were eligible for enrollment if they were confirmed HIV-negative and non-
113 pregnant, were diagnosed with BV (by Nugent score and/or Amsel criteria) and/or TV (by wet
114 mount and/or culture), and were cured after seven days of oral metronidazole treatment (500 mg
115 twice per day)⁵. Cure was defined as no BV by Amsel criteria and no TV by wet mount⁶. We did
116 not use Nugent scores and TV culture as tests-of-cure to allow for same day enrollment but

117 results became available after enrollment. At enrollment, 51/68 women were BV-negative by
118 Amsel and Nugent criteria, 17/68 women were BV-negative by Amsel but BV-positive by
119 Nugent criteria, and all women were TV-negative by both wet mount and culture and free of
120 symptomatic vulvovaginal candidiasis, urinary tract infection, syphilis, and clinician-observed
121 genital abnormalities or vaginal discharge. We did not exclude women with gonorrhea and/or
122 chlamydia because the local testing turn-around time was slow. Positive herpes simplex type 2
123 serology was not a reason for exclusion. Additional exclusion criteria applied but these were rare
124 (Figure 1, Supplement 1).

125

126 **Randomization groups and visit schedule**

127 Women were randomized to four groups (17 women per group) within three days of completing
128 oral metronidazole treatment: 1) behavioral counseling only (control group); 2) counseling plus
129 500 mg oral metronidazole twice weekly for two months; 3) counseling plus EF+ vaginal capsule
130 once per day for the first five days followed by thrice weekly for a total of two months; and 4)
131 counseling plus GynLP once every four days for two months. Participants applied the first dose
132 of their intervention under direct observation at the enrollment visit, and returned to the clinic
133 after seven days (D7), one month (M1), two months (M2; cessation of product use), and six
134 months (M6). They were allowed to cease vaginal product use temporarily during menstruation.
135 Product adherence was assessed by review of diary cards, used and unused products, and by a
136 self-rating adherence scale. Symptomatic BV, vulvovaginal candidiasis, and urinary tract
137 infections, and laboratory-confirmed sexually transmitted infections, diagnosed during follow-up
138 were treated using standard oral therapies, and women were urged to continue their interventions
139 during treatment. Visit procedures are summarized in Figure 1 and described in Supplement 1.

140

141 **Diagnostic testing**

142 Women were tested for BV, TV, and vulvovaginal candidiasis at each visit. BV was diagnosed by
143 Gram stain Nugent scoring⁵ and Amsel criteria⁶; the vaginal pH was measured by pressing a pH
144 paper strip (pH range 3.6 – 6.1 with 0.3 increments; Machery-Nagel, Düren, Germany) against
145 the vaginal wall. TV was diagnosed when motile trichomonads were observed on wet mount and
146 by InPouch culture (Biomed Diagnostics, White City, OR, USA). Vulvovaginal candidiasis was
147 diagnosed when budding yeasts and/or (pseudo)hyphae were observed on wet mount. All other
148 diagnostic tests (Supplement 1) were only done at screening, M6, and when judged clinically
149 necessary by the physician, with the exception of pregnancy and urinalysis tests, which were
150 repeated at enrollment prior to randomization.

151

152 **16S rRNA gene sequencing and qPCR**

153 We collected vaginal swabs at 639 time points, including study visits of all 68 women and self-
154 sampled swabs from 12 women (three per group) who had been asked to self-sample at home
155 every Monday, Wednesday, and Friday during the first month. Self-sampled swabs were
156 processed but were not included in analyses unless stated. DNA was extracted from one swab per
157 time point per woman. Briefly, DNA was extracted using a combination of lysozyme lysis,
158 Qiagen DNeasy Blood and Tissue kit (Qiagen, Manchester, UK), and bead-beating procedures.
159 Purified DNA underwent two PCR rounds: amplification of the 16S rRNA gene V3-V4 region
160 and dual-index barcoding allowing multiplexing of up to 384 samples. Samples were sequenced
161 on an Illumina HiSeq 2500 instrument (Illumina, San Diego, CA, USA), run in rapid mode,
162 2x300bp using a 250PE and 50PE kit. All samples collected from the same participant were
163 included in the same run. Negative and positive controls (ZymoBiomics Microbial Community
164 DNA standard; Zymo Research Corp, Irvine, USA) were incorporated throughout. The

165 panbacterial 16S rRNA gene copy concentrations of physician-collected samples of enrolled
166 women with valid sequencing results (N=393) were determined by BactQuant qPCR assay as
167 previously described²⁶.

168

169 **Molecular data processing**

170 Reads were demultiplexed, and primer sequences removed using Cutadapt v1.2.1²⁷. Error
171 correction, dereplication, denoising, merging, removal of chimeras, and taxonomic assignment
172 were performed in DADA2 v1.4.0 using Silva v128 as the reference database (Supplement
173 1)^{28,29}. Further data processing included removal of rare, non-bacterial, and contaminant
174 amplicon sequence variants (ASVs), and identification of vaginal and probiotic sequences that
175 are not included in the Silva database using the NCBI *Needleman-Wunsch Global Align*
176 *Nucleotide Sequences* function¹⁵ (Supplement 1). Silva-based taxonomic assignments of non-
177 minority ASVs were double-checked using the NCBI *Microbial Nucleotide BLAST* function,
178 using the non-redundant V3-V4 version of the Vaginal 16S rDNA Reference Database as a
179 tiebreaker^{30,31}. We rarefied at 1,111 reads using the *GUniFrac 1.0* package in R³². This yielded
180 401 unique ASVs in 629 samples, mapping to species (n=255; 63.6%), genus (n=116; 28.9%), or
181 higher taxonomic level (n=30; 7.5%). Concentrations in cells/ μ l per ASV per sample were
182 estimated by multiplying the ASV-specific copy-normalized relative abundance by the sample-
183 specific 16S rRNA gene copies concentration^{33,34}. Heatmaps of the 20 most common ASVs by
184 sample are shown in Figure S1A for relative abundances and Figure S1B for concentrations.
185 VMB data reduction was required for molecular efficacy analyses, and was done in three
186 different ways. First, the Simpson diversity index (1-D) was calculated for each sample. Second,
187 each ASV was assigned to one of four ‘bacterial groups’ based on the published literature
188 (Supplement 2): 1) lactobacilli (all species combined, but with subcategorization into EF+

189 strains, the GynLP strain, and ‘natural lactobacilli’ in some analyses); 2) BV-anaerobes
190 (anaerobic bacteria that have consistently been associated with BV); 3) pathobionts (bacteria that
191 are considered to have higher intrinsic pathogenicity than BV-anaerobes and have not
192 consistently been associated with BV³⁵); and 4) ‘other bacteria’ (a rest group, consisting mostly
193 of skin bacteria and *Bifidobacterium* species). Within each sample, read counts of ASVs
194 belonging to the same bacterial group were summed. This resulted in four relative abundances
195 (one for each bacterial group) per sample, which sum to 1.0 for each sample. Third, we used
196 hierarchical clustering based on Euclidean distance to pool samples into eight mutually exclusive
197 VMB types (each sample was assigned to only one VMB type): 1) *L. iners*-dominated (Li, n=247
198 samples); 2) *L. crispatus*-dominated (Lcr, n=17); 3) other lactobacilli-dominated (Lo, n=28); 4)
199 lactobacilli and anaerobes (LA, n=86); 5) polybacterial *Gardnerella vaginalis*-containing
200 (BV_GV, n=138), 6) polybacterial but low-*G. vaginalis* (BV_noGV, n=23), 7) *G. vaginalis*-
201 dominated (GV, n=41); and 8) pathobionts-containing (PB, n=49) (Supplement 1).

202

203 **Downstream statistical analysis**

204 Adverse events were coded using the Medical Dictionary for Regulatory Activities v19.1
205 (McLean, VA, USA). Data were analyzed using STATA v13.0 (StataCorp, College Station, TX,
206 USA). Most statistical comparisons were between randomization groups (each intervention
207 group compared to the control group) at screening, enrollment, and longitudinally over time. For
208 cross-sectional analyses, we used Fisher’s exact test for binary and categorical variables, and
209 Kruskal-Wallis and Mann Whitney U tests for continuous variables. For longitudinal analyses,
210 we used incidence rates, incidence rate ratios, and mixed effects models. We conducted intent-to-
211 treat (ITT) analyses, and modified ITT analyses limited to women who were BV-negative by
212 both Amsel and Nugent criteria at the time of randomization (n=51 of 68). All mixed models

213 included one VMB endpoint at a time as the outcome, participant identification number as the
214 random effect, and randomization group (an indicator variable with the control group as the
215 reference group) as the main fixed effect. Models included samples collected during the
216 intervention period only (including self-sampled time points), and adjusted for covariates that
217 were associated with VMB composition in mixed effects models at $p < 0.05$.

218

219 **Ethical statement**

220 All participants provided written informed consent. The study was conducted in accordance with
221 the Declaration of Helsinki, sponsored by the University of Liverpool, approved by the Rwanda
222 National Ethics Committee and the University of Liverpool Research Ethics Subcommittee for
223 Physical Interventions, and registered on ClinicalTrials.gov (NCT02459665).

224

225 **Data availability**

226 All data will be made available via the University of Liverpool Data Research Catalogue
227 (<https://datacat.liverpool.ac.uk/>) with publication.

228

229 **RESULTS**

230 **Participant disposition**

231 Of the 68 randomized women, only four did not complete the trial (Figure 1), resulting in 29.93
232 person-years of data. The median age was 31 (interquartile range (IQR) 27-35) (Table 1, Table
233 S1). The majority of women (92.6%) had exchanged sex for money or goods, and had had a
234 median of five (IQR 2-18) sex partners, in the past month. All but three women used condoms,
235 but mostly inconsistently. Two-thirds of the women (61.8%) were using hormonal contraception,
236 and four women became pregnant during the trial. Short course metronidazole/tinidazole use for

237 other indications during the intervention period was evenly distributed among randomization
238 groups (Table S2: n=1-3 per group; p=0.688), as was short course use of other oral antibiotics
239 (Table S2: n=2-4 per group; p=0.781). Furthermore, these other antibiotics did not impact
240 lactobacilli and BV-anaerobes concentrations significantly (Table S2, Figure S2). No antifungals
241 were used. Most women were adherent with their study product >90% of the time, but this
242 percentage was non-significantly lower in the GynLP group (68.8%) than in the metronidazole
243 (82.4%; Fisher's exact p=0.438) and EF+ groups (88.2%, Fisher's exact p=0.225; Table S3).

244

245 **VMB compositions at baseline**

246 By design, all randomized women at screening had BV (by Nugent and/or Amsel criteria) and/or
247 TV (by wet mount and/or culture): 82.4% had BV alone, 14.7% had BV and TV, and 2.9% had
248 TV alone. Therefore, as expected, most women had dysbiotic VMB types by 16S rRNA gene
249 sequencing at screening: BV_GV (41.8%), LA (17.9%), BV_noGV (11.9%), GV (11.9%), and
250 PB (1.5%). However, 14.9% had a lactobacilli-dominated Li VMB type, of whom 60% were TV-
251 negative, and these women would not have needed metronidazole treatment. Also by design, all
252 randomized women were BV-negative (by Amsel criteria) and TV-negative (by wet mount and
253 culture) at the time of randomization. However, almost half of the women (44.8%) were not
254 lactobacilli-dominated by sequencing at the time of randomization, and none of them were *L.*
255 *crispatus*-dominated (which is considered the most optimal VMB state): their VMB types were
256 Li (52.2%), Lo (3.0%), LA (26.9%), PB (9.0%), GV (6.0%), and BV_GV (3.0%) (Table 1).

257

258 At randomization, the mean total bacterial concentration ranged from 5.54-6.34 log₁₀ cells/μl in
259 the four randomization groups, and these ranges were 5.22-5.97 for lactobacilli, 3.36-5.62 for
260 BV-anaerobes, 1.34-2.36 for pathobionts, and 0.57-2.20 for 'other bacteria' (Table S4; relative

261 abundance data in Table S5). The mean richness ranged from 7.5-17.8, and the mean Simpson
262 diversity from 0.15-0.38. Randomization did not completely balance the baseline VMB
263 compositions of the four groups: the concentrations total bacteria and BV-anaerobes were higher
264 in the GynLP group than the control group (Mann Whitney U test $p < 0.05$), and the BV-anaerobes
265 concentration ($p < 0.01$) and Simpson diversity ($p < 0.05$) were lower in the EF+ group than the
266 control group (Table 1).

267
268 Variables that were associated with at least one VMB composition variable in unadjusted mixed
269 effects models (Table S6) included currently using hormonal contraception or being pregnant
270 (associated with a higher pathobionts concentration), above-average sexual risk taking based on
271 reported numbers of partners and condom use (higher pathobionts concentration), aged 30 years
272 or older (lower BV-anaerobes and pathobionts concentrations), and managing menses with a
273 sanitary pad compared to other methods (higher Nugent score). Reporting current urogenital
274 symptoms was also associated with VMB composition but this likely represents reverse
275 causality. We could not exclude women with ongoing chlamydia and/or gonorrhea infections at
276 randomization because the turn-around time of diagnostic testing was slow, but the VMB
277 compositions after metronidazole treatment of women with and without ongoing chlamydia
278 and/or gonorrhea infection were similar (Figure S2). As mentioned earlier, short course antibiotic
279 use that was not part of the study interventions was not associated with VMB composition either
280 (Tables S2 and S6; Figure S2).

281

282 **Safety**

283 Two serious adverse events occurred but these were judged not to be related to study
284 participation: one woman in the oral metronidazole group was hospitalized for typhoid fever and

285 one woman in the EF+ group for malaria during pregnancy. Both events occurred after the
286 intervention period and both women recovered completely. Two women reported non-serious
287 social harms that were judged related to study participation. One woman in the control group was
288 beaten by her partner because she engaged in self-sampling; she withdrew from self-sampling
289 but continued participation in the study. One woman in the GynLP group suffered verbal
290 harassment from her partner and her sister for taking part in the study and elected to withdraw.
291

292 During the intervention period, urogenital symptoms were reported by 13.4% of participants
293 (genital itching, burning, and pain during sex but no vaginal discharge) with no differences
294 between groups, and only two speculum exam and no bimanual exam findings were reported by
295 the physician (Table 2). After product cessation, urogenital symptom reporting was similar
296 compared to the intervention period (10.8%), but the number of speculum exam findings
297 increased (32.8%), likely reflecting the high urogenital infection incidence in this cohort. A total
298 of 41 adverse events were spontaneously reported between enrollment and M6. All of them were
299 judged definitely not or unlikely to be related to trial participation, and they were evenly
300 distributed among groups.

301

302 **Preliminary efficacy: microscopy endpoints**

303 In modified ITT analyses, the BV incidence rate by Nugent score during the intervention period
304 was 10.18 per person-year at risk (PY) in the control group, and lower in the metronidazole
305 (1.41/PY; $p=0.004$), EF+ (3.58/PY; $p=0.043$), and GynLP groups (5.36/PY; $p=0.220$) (Table 3).
306 Mean Nugent scores during the intervention period were highest in the control group, lowest in
307 the metronidazole group, and in-between in the two vaginal probiotics groups (Figure 2A). By
308 the end of the intervention period, many women had developed microbiological-BV without

309 symptoms. In line with standard practice, they were not treated, but they were also no longer
310 included in the ‘person-years at risk’ denominator because they had already developed the
311 endpoint. BV incidence rates were therefore much lower (1.26/PY overall) after cessation of the
312 intervention, and similar between groups. The results for BV incidence by modified Amsel
313 criteria were similar to those for Nugent scores (Table 3), and no vulvovaginal candidiasis was
314 diagnosed after randomization.

315

316 **Preliminary efficacy: sequencing endpoints**

317 We took the baseline VMB composition imbalances into account by not only showing bacterial
318 group means at each visit but also mean differences with enrollment (Figure 2 and Table S4 for
319 concentrations, and Figure S3 and Table S5 for relative abundances), and by using mixed effects
320 models including participant identification number as the random effect to determine if any
321 changes were statistically significant (Table 4). Immediately after BV treatment completion, the
322 VMBs of most women gradually worsened (lactobacilli declined and BV-anaerobes expanded)
323 due to the high-risk nature of the cohort. The mean lactobacilli concentration declined to a low of
324 3.86 log₁₀ cells/μl at M2 in the control group, but less so in the intervention groups (ranging from
325 4.60-5.58 log₁₀ cells/μl at follow-up visits). In unadjusted mixed effects models using data from
326 the intervention period only, metronidazole users had a higher lactobacilli concentration
327 (p=0.043) and relative abundance (p=0.006) than controls, EF+ users had a higher relative
328 abundance (p=0.014) but not concentration than controls, and GynLP users had trends in the
329 same directions that were not statistically significant. The expansion of BV-anaerobes was
330 significantly lower in oral metronidazole users (relative abundance; p=0.023), and in EF+ users
331 (concentration; p=0.041), compared to controls. Mean pathobionts concentrations were low in all
332 groups throughout, ranging from 1.61-3.35 log₁₀ cells/μl at follow-up visits. Mixed effects

333 models did not identify any significant associations between randomization groups and
334 pathobionts concentrations or relative abundances, but showed trends ($0.05 < p < 0.1$) towards
335 lower pathobionts relative abundances in the two vaginal probiotics groups compared to controls
336 (Table 4). Mean concentrations of ‘other bacteria’ were also low throughout, but highest in the
337 EF+ group at the D7 and M1 visits (EF+ contains a *Bifidobacterium* strain). This was significant
338 in unadjusted mixed effects models for relative abundances ($p=0.023$) but not concentrations.
339

340 The proportions of women in each group at each visit having a particular VMB type
341 corresponded with the concentration and relative abundance data, and additionally showed that –
342 in lactobacilli-dominated women – the Li VMB type was far more common than the Lcr and Lo
343 VMB types throughout (Figure S4). Among women with dysbiosis, the LA and BV_GV VMB
344 types continued to be the most common dysbiosis types during follow-up. In unadjusted mixed
345 effects models using intervention period data only, metronidazole users and EF+ users, each
346 compared to controls, were significantly less likely to have dysbiotic VMB types (BV_GV,
347 BV_noGV, and GV combined; $p=0.012$ and $p=0.029$, respectively) (Table 4).
348

349 The associations in unadjusted mixed effects models persisted after adjustment for hormonal
350 contraception use/pregnancy, sexual risk taking, and age, except for the association with
351 *Lactobacillus* concentration among metronidazole users. Metronidazole users compared to
352 controls had a significantly higher *Lactobacillus* relative abundance ($p=0.014$), a significantly
353 lower BV-associated bacteria relative abundance ($p=0.049$), and were significantly less likely to
354 have BV by Nugent scoring ($p=0.031$) or by VMB types (BV_GV, BV_noGV, and GV
355 combined; $p=0.017$) (Table 4). EF+ users compared to controls had a significantly higher
356 *Lactobacillus* relative abundance ($p=0.025$), a significantly lower BV-associated bacteria

357 concentration ($p=0.046$), a significantly higher relative abundance of ‘other bacteria’ ($p=0.009$),
358 and were significantly less likely to have BV-like VMB types ($p=0.027$).

359

360 **Detection of probiotic strains**

361 During the intervention period, relevant probiotic strains were detected in 39% of samples from
362 EF+ users and 20% of samples from GynLP users (all swabs combined, including self-sampled
363 swabs). The detection percentages were 58% and 31%, respectively, in sensitivity analyses using
364 non-rarefied data. Some of the EF+ strains cannot be differentiated from naturally occurring
365 strains, and EF+-like strains were therefore detected (at low levels) in all groups at most time
366 points (Figure 3, Table S4). However, the mean concentrations were highest in the EF+ group
367 during the intervention period (mean concentrations 0.48-1.92 \log_{10} cells/ μl per visit for all
368 women combined, and 3.62-4.28 \log_{10} cells/ μl per visit for women who did have EF+ strains
369 detected using rarefied data). The GynLP strain was only detected in the GynLP group during the
370 intervention period (mean concentrations 0.25-1.05 \log_{10} cells/ μl per visit for all women
371 combined, and 3.72-4.55 \log_{10} cells/ μl per visit for women who did have GynLP detected using
372 rarefied data). Inter- and intra-individual differences between participants were high: the highest
373 vaginal probiotic concentration detected in an individual EF+ user was 5.51 \log_{10} cells/ μl , and in
374 an individual GynLP user was 6.17 \log_{10} cells/ μl . During the intervention period, the mean
375 relative abundances of the probiotic strains were 0.03 in both EF+ and GynLP users, and 0.08
376 and 0.15, respectively, if only samples in which any strains were detected were included.

377

378 **VMB transitions**

379 The stacked graph and alluvial diagrams (Figure S4) show that transitions from one VMB type to
380 another were common. As expected, most transitions during the intervention period were from

381 *Lactobacillus*-dominated states to dysbiotic states, but the reverse also occurred. Transitions
382 between VMB types were common in all randomization groups. The percentage of actual
383 transitions divided by potential transitions between D7 and M6 were 29/66 (43.9%) in the
384 control group, 32/64 (50.0%) in the metronidazole group, 28/67 (41.8%) in the EF+ group and
385 24/56 (42.9%) in the GynLP group (Fisher's exact p=0.792).

386

387 **Incidence of sexually transmitted and urinary tract infections**

388 As expected, the incidences of HIV (n=2), herpes simplex type 2 (n=1), syphilis (n=1),
389 gonorrhea (n=5), chlamydia (n=6), TV (n=5) and urinary tract infection (n=7) were too low to
390 determine differences between randomization groups (Table S7).

391

392 **DISCUSSION**

393 This trial showed that all three interventions were safe. Our preliminary efficacy results confirm
394 that intermittent use of metronidazole reduces BV recurrence¹⁰⁻¹², and suggest that intermittent
395 use of lactobacilli-containing vaginal probiotics may also reduce BV recurrence. We also found
396 that vaginal probiotic use is acceptable and feasible in African settings (to be reported
397 elsewhere). These findings are important because many women and clinicians would prefer safe
398 and efficacious vaginal probiotics to metronidazole as they are not expected to negatively affect
399 other body niche microbiotas or cause antimicrobial resistance, and may have fewer side effects.

400

401 Our trial was funded as a pilot study and therefore had a modest sample size. Despite this, many
402 of the preliminary efficacy associations for intermittent metronidazole and EF+ use reached
403 statistical significance. While this was not the case for intermittent GynLP use, all of the trends
404 in this group were in the same directions. We believe that the GynLP group suffered a few

405 disadvantages compared to the other randomization groups, which may explain the lack of
406 statistical significance. Randomization imbalances commonly occur in small trials³⁶, and in our
407 trial, this led to women in the GynLP group being more dysbiotic at baseline than controls. We
408 ameliorated this disadvantage in our analysis strategy, but we may not have been able to
409 eradicate it. In addition, GynLP users were less adherent on average than metronidazole and EF+
410 users. Differences in adherence using triangulated data did not reach statistical significance, but
411 probiotic strain detection rates (58% for EF+ samples and 31% for GynLP samples using non-
412 rarefied data) support this claim. Biose has since simplified the dosing regimen of next
413 generation Gynophilus products to two fixed days a week to boost adherence. Finally, GynLP
414 dosing (once every four days) was similar to metronidazole dosing (twice weekly) but less
415 frequent than EF+ dosing (once per day for the first five days followed by thrice weekly for the
416 remainder of the intervention period).

417
418 Probiotic detection rates were 58% for EF+ samples and 31% for GynLP samples, and inter- and
419 intra-individual variabilities were high (with probiotic concentrations ranging from zero to 6.17
420 log₁₀ cells/μl). This detection variability is consistent with most other vaginal probiotic studies
421 that used sampling at non-daily intervals and molecular assessment methods^{21,37-39}. A major
422 drawback of all of those studies, including ours, is that product use was not directly observed but
423 self-reported, and precise information about the time period between last product insertion and
424 sample collection was lacking. The average total bacterial load of a healthy vagina is currently
425 not known⁴⁰. The average vaginal surface area was estimated to be 87.5 cm⁴¹. One Dacron swab
426 head in this study absorbed about 10⁶/μL bacteria. If we assume that one swab head absorbs on
427 average 200 μL⁴², and that this covers about one cm² of a total of about 100 cm² vaginal surface,
428 the total bacterial load in the vagina would be in the order of 2x10¹⁰ bacteria. The vaginal

429 probiotic strain(s) in our trial were both applied at about 1.5×10^9 CFU per dose, which would be
430 about 7.5% of the total vaginal load after application if all probiotic bacteria were to remain in
431 the vagina. We detected mean relative abundances of 7.7% for EF+ strains and 15.1% for GynLP
432 when only samples with any relevant probiotic strains detected during product use were included
433 (thereby eliminating any potential non-adherence). A recently published study of Gynophilus
434 Slow Release tablet (which is almost identical to GynLP) in which women self-sampled every
435 day showed that mean vaginal concentrations of Lcr35 by qPCR were between 10^4 and 10^6
436 CFU/ μ l in women who used the tablet once every four or five days⁴³. Using our estimated
437 concentration data, we detected a similar concentration range in samples with any GynLP
438 detected. This consistency is reassuring, but the question remains whether probiotic
439 concentrations of this order of magnitude optimally prevent BV recurrence in the long-term.
440 Furthermore, all studies referenced in this paragraph, including ours, have shown that probiotic
441 strains do not persist in the vagina after dosing has ceased. The second question then is whether
442 the colonization capacity of probiotic bacteria should be improved. Our data suggest that
443 probiotic lactobacilli may boost ‘natural’ lactobacilli indirectly, which may be sufficient. Indirect
444 effects may include increased localized lactic acid production, modulation of cervicovaginal
445 mucosal immune responses, and/or inhibition of biofilm formation, by probiotic bacteria^{3,44,45}.
446
447 Additional limitations of our study include the high urogenital infection risk of this cohort
448 (which makes prevention more challenging), and our inability to fully control for potential
449 confounders. However, the mixed effects models were controlled for some of the best known
450 VMB determinants (hormonal contraception, pregnancy, sexual risk taking, and age)^{1,46–48}. We
451 were not able to exclude women with gonorrhea and/or chlamydia infection at the time of
452 randomization due to the slow laboratory turn-around time, but the VMB compositions of

453 women with and without infection were similar, and we therefore think that this did not
454 negatively affect our results.

455
456 With the development of better genomic and culturing methods, we are now on the cusp of a new
457 era in vaginal probiotic research. Past vaginal probiotic studies have shown mixed results¹³⁻²⁴,
458 but almost all of these studies used imprecise VMB assessments based on clinical symptoms and
459 microscopy. The addition of sequencing methods showed that many more women than
460 previously thought are not lactobacilli-dominated after standard antibiotic BV treatment, that
461 host responses to antibiotic and probiotic treatment are highly variable, and that it is possible to
462 differentiate between probiotic strains and ‘natural’ lactobacilli. Furthermore, others have shown
463 that quantifying relative abundance data in the same manner as we have done in this study
464 correlates well with species-specific quantitative PCRs of non-minority species^{33,34}. This then
465 allows for microbiota data reduction into quantitative variables that can be analyzed in mixed
466 effects models that adjust for repeated measures and confounding. We recommend that future
467 trials incorporate these or other rigorous methods, optimize dosing and timing of product
468 insertion versus sample collection, and enroll women with various urogenital risk profiles.
469 Ideally, these trials would also evaluate the effects of interventions on vaginal biofilm formation,
470 and – eventually – the impact on pregnancy complications, HIV epidemics, and other adverse
471 outcomes.

472 **Acknowledgments**

473 We thank the study participants, the Rinda Ubuzima team, the National Reference Laboratory in
474 Kigali, the Centre for Genomic Research and research support staff at the University of
475 Liverpool, Christina Gill, Robert Meester, Mike Humphreys, Jessica Younes, Vicky Jespers,
476 Tania Crucitti, and Anna Maria Geretti. This work was funded by the DFID/MRC/Wellcome
477 Trust Joint Global Health Trials Scheme as a Development Project (grant reference
478 MR/M017443/1; grant title: “Preparing for a clinical trial of interventions to maintain normal
479 vaginal microbiota for preventing adverse reproductive health outcomes in Africa”) and the
480 University of Liverpool (Technology Directorate Voucher). Vaginal probiotics for use in the trial
481 were donated free of charge by Winlove Probiotics (Amsterdam, The Netherlands) and Biose
482 (formerly Probionov, Aurillac, France). The findings and conclusions in this paper are those of
483 the authors and do not necessarily represent the views of the authors’ institutions or companies,
484 or the funders.

485

486 **Authors’ contributions**

487 JvdW obtained the research funding and wrote the study protocol and data collection documents.
488 JvdW, AN, EL, and JR were members of the Trial Steering Committee. SA, LM, VM, MU, and
489 JvdW collected the primary data. LM and VM performed the diagnostic testing. MV, CB, AD,
490 and JR conducted or oversaw the 16S rRNA gene sequencing and qPCRs. JvdW and MV
491 developed the analytical approach and performed the statistical analyses. JvdW and MV wrote
492 the manuscript. All authors commented on and approved the final manuscript. JvdW had full
493 access to the data and had final responsibility for the decision to submit for publication.

494

495 **Competing interests**

496 AN is employed by Biose (owner of trial product GynLP) and EL by Winlove Probiotics BV
497 (owner of trial product EF+). AN and JR have financial and/or intellectual investments in
498 competing products. The other authors report no competing interests.

499 **References**

- 500 1. van de Wijkert, J. H. H. M. *et al.* The vaginal microbiota: what have we learned after a
501 decade of molecular characterization? *PLoS One* **9**, e105998 (2014).
- 502 2. van de Wijkert, J. H. H. M. & Jaspers, V. The global health impact of vaginal dysbiosis. *Res.*
503 *Microbiol.* **168**, 859–864 (2017).
- 504 3. Borgdorff, H. *et al.* Cervicovaginal microbiome dysbiosis is associated with proteome
505 changes related to alterations of the cervicovaginal mucosal barrier. *Mucosal Immunol.* **9**,
506 621–633 (2016).
- 507 4. World Health Organization. Guidelines for the management of sexually transmitted
508 infections. (2003). Available at: <http://applications.emro.who.int/aiecf/web79.pdf>. (Accessed:
509 12th March 2019)
- 510 5. Nugent, R. P., Krohn, M. A. & Hillier, S. L. Reliability of diagnosing bacterial vaginosis is
511 improved by a standardized method of gram stain interpretation. *J. Clin. Microbiol.* **29**, 297–
512 301 (1991).
- 513 6. Amsel, R. *et al.* Nonspecific vaginitis. Diagnostic criteria and microbial and epidemiologic
514 associations. *Am. J. Med.* **74**, 14–22 (1983).
- 515 7. Hay, P. Recurrent bacterial vaginosis. *Curr. Opin. Infect. Dis.* **22**, 82–86 (2009).
- 516 8. Verstraelen, H. & Verhelst, R. Bacterial vaginosis: an update on diagnosis and treatment.
517 *Expert Rev. Anti Infect. Ther.* **7**, 1109–1124 (2009).
- 518 9. Donders, G. Diagnosis and management of bacterial vaginosis and other types of abnormal
519 vaginal bacterial flora: a review. *Obstet. Gynecol. Surv.* **65**, 462 (2010).
- 520 10. Sobel, J. D. *et al.* Suppressive antibacterial therapy with 0.75% metronidazole vaginal gel to
521 prevent recurrent bacterial vaginosis. *Am. J. Obstet. Gynecol.* **194**, 1283–1289 (2006).
- 522 11. Taha, T. E. *et al.* Intermittent intravaginal antibiotic treatment of bacterial vaginosis in HIV-

- 523 uninfected and -infected women: a randomized clinical trial. *PLoS Clin. Trials* **2**, (2007).
- 524 12. McClelland, R. S. *et al.* Improvement of vaginal health for Kenyan women at risk for
525 acquisition of Human Immunodeficiency Virus type 1: results of a randomized trial. *J. Infect.*
526 *Dis.* **197**, 1361–1368 (2008).
- 527 13. Mastromarino, P. *et al.* Effectiveness of *Lactobacillus*-containing vaginal tablets in the
528 treatment of symptomatic bacterial vaginosis. *Clin. Microbiol. Infect.* **15**, 67–74 (2009).
- 529 14. Larsson, P.-G., Stray-Pedersen, B., Rytting, K. R. & Larsen, S. Human lactobacilli as
530 supplementation of clindamycin to patients with bacterial vaginosis reduce the recurrence
531 rate; a 6-month, double-blind, randomized, placebo-controlled study. *BMC Womens Health*
532 **8**, (2008).
- 533 15. Petricevic, L. & Witt, A. The role of *Lactobacillus casei rhamnosus* Lcr35 in restoring the
534 normal vaginal flora after antibiotic treatment of bacterial vaginosis. *Br. J. Obstet. Gynaecol.*
535 **115**, 1369–1374 (2008).
- 536 16. Bradshaw, C. S. *et al.* Efficacy of oral metronidazole with vaginal clindamycin or vaginal
537 probiotic for bacterial vaginosis: randomised placebo-controlled double-blind trial. *PLoS*
538 *ONE* **7**, e34540 (2012).
- 539 17. Eriksson, K., Carlsson, B., Forsum, U. & Larsson, P.-G. A double-blind treatment study of
540 bacterial vaginosis with normal vaginal lactobacilli after an open treatment with vaginal
541 clindamycin ovules. *Acta Derm. Venereol.* **85**, 42–46 (2005).
- 542 18. Anukam, K. C. *et al.* Clinical study comparing probiotic *Lactobacillus* GR-1 and RC-14 with
543 metronidazole vaginal gel to treat symptomatic bacterial vaginosis. *Microbes Infect.* **8**, 2772–
544 2776 (2006).
- 545 19. Hemalatha, R., Mastromarino, P., Ramalaxmi, B. A., Balakrishna, N. V. & Sesikeran, B.
546 Effectiveness of vaginal tablets containing lactobacilli versus pH tablets on vaginal health

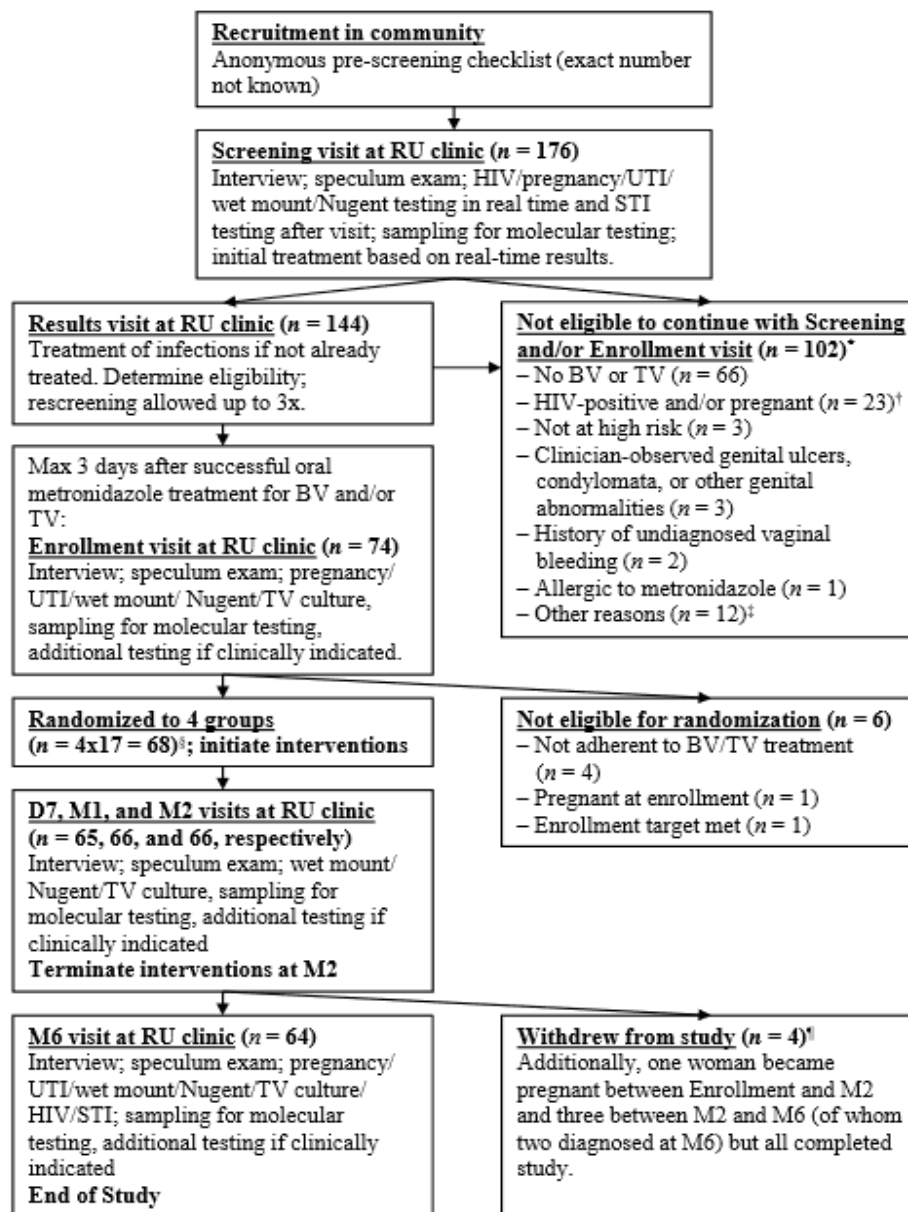
- 547 and inflammatory cytokines: a randomized, double-blind study. *Eur. J. Clin. Microbiol.*
548 *Infect. Dis.* **31**, 3097–3105 (2012).
- 549 20. Ling, Z. *et al.* The restoration of the vaginal microbiota after treatment for bacterial
550 vaginosis with metronidazole or probiotics. *Microb. Ecol.* **65**, 773–780 (2013).
- 551 21. Bisanz, J. E. *et al.* A systems biology approach investigating the effect of probiotics on the
552 vaginal microbiome and host responses in a double blind, placebo-controlled clinical trial of
553 post-menopausal women. *PLoS One* **9**, e104511 (2014).
- 554 22. Verdenelli, M. C. *et al.* Impact of probiotic SYN BIO® administered by vaginal suppositories
555 in promoting vaginal health of apparently healthy women. *Curr. Microbiol.* **73**, 483–490
556 (2016).
- 557 23. Bohbot, J. M. *et al.* Efficacy and safety of vaginally administered lyophilized *Lactobacillus*
558 *crispatus* IP 174178 in the prevention of bacterial vaginosis recurrence. *J. Gynecol. Obstet.*
559 *Hum. Reprod.* **47**, 81–86 (2018).
- 560 24. Rapisarda, A. M. C. *et al.* Efficacy of vaginal preparation containing *Lactobacillus*
561 *acidophilus*, lactic acid and deodorized garlic extract in treatment and prevention of
562 symptomatic bacterial vaginitis: result from a single-arm pilot study. *Ital. J. Gynaecol.*
563 *Obstet.* **30**, 21–31 (2018).
- 564 25. O’Toole, P. W., Marchesi, J. R. & Hill, C. Next-generation probiotics: the spectrum from
565 probiotics to live biotherapeutics. *Nat. Microbiol.* **2**, 17057 (2017).
- 566 26. Liu, C. M. *et al.* BactQuant: an enhanced broad-coverage bacterial quantitative real-time
567 PCR assay. *BMC Microbiol.* **12**, 56 (2012).
- 568 27. Martin, M. Cutadapt removes adapter sequences from high-throughput sequencing reads.
569 *EMBnet.journal* **17**, 10–12 (2011).
- 570 28. Callahan, B. J. *et al.* DADA2: high resolution sample inference from Illumina amplicon data.

- 571 *Nat. Methods* **13**, 581–583 (2016).
- 572 29. Pruesse, E. *et al.* SILVA: a comprehensive online resource for quality checked and aligned
573 ribosomal RNA sequence data compatible with ARB. *Nucleic Acids Res.* **35**, 7188–7196
574 (2007).
- 575 30. Altschul, S. F., Gish, W., Miller, W., Myers, E. W. & Lipman, D. J. Basic local alignment
576 search tool. *J. Mol. Biol.* **215**, 403–410 (1990).
- 577 31. Fettweis, J. M. *et al.* Species-level classification of the vaginal microbiome. *BMC Genomics*
578 **13 (Suppl 8)**, S17 (2012).
- 579 32. Chen, J. *et al.* Associating microbiome composition with environmental covariates using
580 generalized UniFrac distances. *Bioinformatics* **28**, 2106–2113 (2012).
- 581 33. Boshier, F. A. T. *et al.* Complementing 16S rRNA gene amplicon sequencing with estimates
582 of total bacterial load can infer absolute bacterial species concentrations as measured by
583 targeted assays in the vaginal microbiome. Conference abstract presented at: Keystone
584 Symposia Role of the Genital Tract Microbiome in Sexual and Reproductive Health; 11-15
585 December 2018; Cape Town, South Africa. Available at:
586 [https://www.keystonesymposia.org/views/Web/Meetings/dsp_PrintAllAbstracts.cfm?Meeting](https://www.keystonesymposia.org/views/Web/Meetings/dsp_PrintAllAbstracts.cfm?MeetingID=1660)
587 [gID=1660](https://www.keystonesymposia.org/views/Web/Meetings/dsp_PrintAllAbstracts.cfm?MeetingID=1660). (Accessed: 6th March 2019).
- 588 34. Jian, C., Luukkonen, P., Yki-Jarvinen, H., Salonen, A. & Korpela, K. Quantitative PCR
589 provides a simple and accessible method for quantitative microbiome profiling: *bioRxiv*
590 (2018). doi:10.1101/478685
- 591 35. van de Wijkert, J. H. H. M. The vaginal microbiome and sexually transmitted infections are
592 interlinked: consequences for treatment and prevention. *PLoS Med.* **14**, e1002478 (2017).
- 593 36. Schulz, K. F. & Grimes, D. A. Generation of allocation sequences in randomised trials:
594 chance, not choice. *Lancet* **359**, 515–519 (2002).

- 595 37. Antonio, M. A. D. & Hillier, S. L. DNA fingerprinting of *Lactobacillus crispatus* strain CTV-
596 05 by repetitive element sequence-based PCR analysis in a pilot study of vaginal
597 colonization. *J. Clin. Microbiol.* **41**, 1881–1887 (2003).
- 598 38. Antonio, M. A. D., Meyn, L. A., Murray, P. J., Busse, B. & Hillier, S. L. Vaginal colonization
599 by probiotic *Lactobacillus crispatus* CTV-05 is decreased by sexual activity and endogenous
600 lactobacilli. *J. Infect. Dis.* **199**, 1506–1513 (2009).
- 601 39. Tomusiak, A. *et al.* Efficacy and safety of a vaginal medicinal product containing three
602 strains of probiotic bacteria: a multicenter, randomized, double-blind, and placebo-controlled
603 trial. *Drug Des. Devel. Ther.* 5345 (2015). doi:10.2147/DDDT.S89214
- 604 40. Sender, R., Fuchs, S. & Milo, R. Revised estimates for the number of human and bacteria
605 cells in the body. *PLoS Biol.* **14**, e1002533 (2016).
- 606 41. Pendergrass, P. B., Belovicz, M. W. & Reeves, C. A. Surface area of the human vagina as
607 measured from vinyl polysiloxane casts. *Gynecol. Obstet. Invest.* **55**, 110–113 (2003).
- 608 42. Jespers, V., Francis, S. C., van de Wijgert, J. & Crucitti, T. Methodological issues in
609 sampling the local immune system of the female genital tract in the context of HIV
610 prevention trials. *Am. J. Reprod. Immunol.* **65**, 368–376 (2011).
- 611 43. Dausset, C. *et al.* Comparative phase I randomized open-label pilot clinical trial of
612 Gynophilus® (Lcr regenerans®) immediate release capsules versus slow release muco-
613 adhesive tablets. *Eur. J. Clin. Microbiol. Infect. Dis.* **37**, 1869–1880 (2018).
- 614 44. Petrova, M. I. *et al.* Lectin-like molecules of *Lactobacillus rhamnosus* GG inhibit pathogenic
615 *Escherichia coli* and *Salmonella* biofilm formation. *PLoS One* **11**, (2016).
- 616 45. Tachedjian, G., Aldunate, M., Bradshaw, C. S. & Cone, R. A. The role of lactic acid
617 production by probiotic *Lactobacillus* species in vaginal health. *Res. Microbiol.* **168**, 782–
618 792 (2017).

- 619 46. Gajer, P. *et al.* Temporal dynamics of the human vaginal microbiota. *Sci. Transl. Med.* **4**,
620 132ra52-132ra52 (2012).
- 621 47. Borgdorff, H. *et al.* The association between ethnicity and vaginal microbiota composition in
622 Amsterdam, the Netherlands. *PLoS One* **12**, e0181135 (2017).
- 623 48. Noyes, N., Cho, K.-C., Ravel, J., Forney, L. J. & Abdo, Z. Associations between sexual
624 habits, menstrual hygiene practices, demographics and the vaginal microbiome as revealed
625 by Bayesian network analysis. *PLoS One* **13**, (2018).
- 626

Figure 1. Flow diagram of numbers of women seen and study procedures at each visit



Abbreviations: BV, bacterial vaginosis; D7, day 7 visit; M1/2/6, month 1/2/6 visit; RU, Rinda Ubuzima; STI, sexually transmitted infection; TV, *Trichomonas vaginalis*; UTI, urinary tract infection. *Totals to 110 reasons among 102 women because there could be more than one reason per woman. †No speculum exam performed; molecular testing of self-sampled vaginal swabs. ‡Reasons: outside of metronidazole treatment window (n=5), enrollment target already met (n=4), has a mental disorder (n=1), did not complete screening procedures and was subsequently lost to follow-up (n=1), withdrew consent during the Screening visit because she thought the reimbursement was too low (n=1). §Three women in each randomization group were selected for self-sampling every other day during the first month of follow-up. ¶Reasons: moved away from Kigali (n=2), lost interest because symptoms resolved (n=1), and was verbally harassed by partner and sister about study participation (n=1).

Table 1. Baseline characteristics

Sociodemographic characteristics at Scr/Enr	Screened (n = 175)	Enrolled (n = 68)	Controls (n = 17)	Metro (n = 17)	EF+ (n = 17)	GynLP (n = 17)	p*
Age in years, median (IQR)	30 (27 – 34)	31 (27 – 35)	29 (24 – 36)	30 (27 – 34)	33 (28 – 35)	30 (27 – 35)	0.563
Sex partners last mo, median (IQR)	5 (2 – 16)	5 (2 – 18)	5 (3 – 20)	5 (2 – 10)	3 (2 – 15)	3 (2 – 20)	0.624
Condom during last sex act, n (%) [†]	95 (54.6)	36 (52.9)	11 (64.7)	8 (47.1)	6 (35.3)	11 (64.7)	0.279
Currently using contraception, n (%):							
- None	69 (40.2)	24 (35.3)	6 (35.3)	6 (35.3)	4 (23.5)	8 (47.1)	0.750
- Hormonal contraception	99 (57.6)	42 [‡] (61.8)	10 (58.8)	11 (64.7)	12 (70.6)	9 (52.9)	
- Copper IUD	4 (2.3)	2 (2.9)	1 (5.9)	0	1 (5.9)	0	
Laboratory results at Scr	Screened (n = 173)	Enrolled (n = 68)	Controls (n = 17)	Metro (n = 17)	EF+ (n = 17)	GynLP (n = 17)	p*
Nugent score, mean (95% CI) [†]	4.7 (4.1 – 5.3)	7.4 (6.8 – 8.0)	7.6 (6.5 – 8.6)	6.8 (5.3 – 8.3)	7.1 (5.5 – 8.6)	8.2 (7.4 – 9.0)	0.333
Nugent categories, n (%) [†]							
- 0-3	55 (38.2) [§]	5 (7.5)	1 (5.9)	2 (11.8)	2 (12.5)	0	0.075
- 4-6	20 (13.9)	6 (9.0)	0	4 (23.5)	0	2 (11.8)	
- 7-10	69 (47.9)	56 (83.5)	16 (94.1)	11 (64.7)	14 (87.5)	15 (88.2)	
BV by Amsel criteria, n (%)	30 (20.6)	20 (29.4)	4 (23.5)	6 (35.5)	3 (17.7)	7 (41.2)	0.486
Candida on wet mount, n (%)	14 (9.6)	6 (8.8)	1 (5.9)	2 (11.8)	3 (17.7)	0	0.493
TV on wet mount, n (%)	9 (6.2)	6 (8.8)	3 (17.7)	1 (5.9)	1 (5.9)	1 (5.9)	0.707
TV by InPouch culture, n (%)	17 (11.8) [§]	11 (16.4)	3 (18.8)	1 (5.9)	5 (29.4)	2 (11.8)	0.282
UTI by dipstick, n (%)	33 (19.1)	17 (25.0)	4 (23.5)	6 (35.3)	4 (23.5)	3 (17.7)	0.760
CT by PCR, n (%)	30 (20.8) [§]	20 (29.4)	5 (29.4)	7 (41.2)	3 (17.7)	5 (29.4)	0.560
NG by PCR, n (%)	18 (12.5) [§]	13 (19.1)	5 (29.4)	4 (23.5)	2 (11.8)	2 (11.8)	0.555
HIV serology positive, n (%)	17 (9.8)	0	0	0	0	0	NA
HSV2 serology positive, n (%)	117 (67.6)	44 (64.7)	9 (52.9)	12 (70.6)	11 (64.7)	12 (70.6)	0.780
Syphilis serology positive, n (%)	13 (7.5)	4 (5.9)	0	1 (5.9)	0	3 (17.7)	0.182
Pregnancy test positive, n (%)	7 (4.1)	0	0	0	0	0	NA
Laboratory results at Enr**	Screened (n = 176)	Enrolled (n = 68)	Controls (n = 17)	Metro (n = 17)	EF+ (n = 17)	GynLP (n = 17)	p*
Nugent score, mean (95% CI) [†]	NA	3.1 (2.2 – 3.9)	3 (1.2 – 4.8)	3.3 (1.4 – 5.2)	1.7 (0.1 – 3.3)	4.3 (2.6 – 6.0)	0.187
Nugent categories, n (%) [†]							
- 0-3	NA	36 (54.6)	8 (53.3)	9 (52.9)	13 (76.5)	6 (35.3)	0.149
- 4-6		13 (19.7)	5 (33.3)	2 (11.8)	1 (5.9)	5 (29.4)	
- 7-10		17 (25.8)	2 (13.3)	6 (35.3)	3 (17.7)	6 (35.3)	
BV by Amsel criteria, n (%)	NA	0	0	0	0	0	NA
Candida on wet mount, n (%)	NA	4 (5.9)	2 (11.8)	1 (5.9)	0	1 (5.9)	0.897
TV by wet mount/culture, n (%)	NA	0	0	0	0	0	NA
VMB outcomes at Enr	Screened (n = 176)	Enrolled (n = 67)	Controls (n = 17)	Metro (n = 17)	EF+ (n = 17)	GynLP (n = 16)	p*
Richness, mean (95% CI)	NA	12.8 (10.7 – 14.8)	17.8 (12.1 – 23.5)	12.1 (8.7 – 15.5)	7.5 ^{‡‡} (4.9 – 10.2)	13.7 (10.3 – 17.1)	0.003
Simpson diversity index, mean (95% CI)	NA	0.31 (0.25 – 0.38)	0.38 (0.21 – 0.54)	0.35 (0.20 – 0.50)	0.15 ^{§§} (0.05 – 0.25)	0.38 (0.25 – 0.50)	0.022
Total bacteria concentration in log ₁₀ /μL, mean (95% CI) ^{††}	NA	5.85 (5.66 – 6.04)	5.75 (5.30 – 6.20)	5.79 (5.39 – 6.19)	5.54 (5.28 – 5.80)	6.34 ^{‡‡} (5.95 – 6.73)	0.019
Total <i>Lactobacillus</i> concentration in log ₁₀ /μL, mean (95% CI) ^{††}	NA	5.56 (5.34 – 5.78)	5.22 (4.63 – 5.82)	5.59 (5.20 – 5.97)	5.46 (5.19 – 5.73)	5.97 (5.44 – 6.49)	0.092
Total BV-anaerobes concentration in log ₁₀ /μL, mean (95% CI) ^{††}	NA	4.55 (4.15 – 4.95)	4.78 (4.17 – 5.39)	4.50 (3.77 – 5.24)	3.36 ^{‡‡} (2.43 – 4.29)	5.62 ^{‡‡} (4.99 – 6.25)	0.002
Total pathobionts concentration in log ₁₀ /μL, mean (95% CI) ^{††}	NA	2.01 (1.48 – 2.54)	2.36 (1.28 – 3.44)	2.08 (1.00 – 3.17)	1.34 (0.29 – 2.39)	2.30 (0.98 – 3.62)	0.447
Total other bacteria concentration in log ₁₀ /μL, mean (95% CI) ^{††}	NA	1.46 (1.01 – 1.92)	1.80 (0.84 – 2.76)	1.30 (0.36 – 2.24)	0.57 (-0.10 – 1.24)	2.20 (1.07 – 3.34)	0.066
VMB types, n (%):							
- Li	NA	35 (52.2)	7 (41.2)	9 (52.9)	14 (82.4)	5 (31.3)	0.048
- Lcr		0	0	0	0	0	
- Lo		2 (3.0)	1 (5.9)	1 (5.9)	0	0	
- LA		18 (26.9)	3 (17.7)	5 (29.4)	2 (11.8)	8 (50.0)	

- BV_GV		2 (3.0)	1 (5.9)	0	0	1 (5.9)	
- BV_noGV		0	0	0	0	0	
- GV		4 (6.0)	2 (11.8)	0	0	2 (12.5)	
- PB		6 (9.0)	3 (17.7)	2 (11.8)	1 (5.9)	0	

Abbreviations: BV, bacterial vaginosis-like; BV_GV, polybacterial *Gardnerella vaginalis*-containing; BV_noGV, polybacterial but low *G. vaginalis*; CI, confidence interval; conc, concentration; CT, *Chlamydia trachomatis*; EF+, Ecologic Femi+; Enr, enrollment visit; GV, *G. vaginalis*-dominated; GynLP, Gynophilus LP; HSV2, herpes simplex virus type 2; IQR, inter-quartile range; LA, lactobacilli and anaerobes; Lcr, *Lactobacillus crispatus*-dominated; Li, *L. iners*-dominated; Lo, other lactobacilli-dominated; Metro, metronidazole; Mo, month; NA, not applicable; NG, *Neisseria gonorrhoeae*; PB, pathobionts-containing; Scr, screening visit; TV, *Trichomonas vaginalis*; UTI, urinary tract infection; VMB, vaginal microbiota. *Fisher's exact test for binary/categorical outcomes and Kruskal Wallis test for continuous outcomes, between randomization groups. †Total numbers are slightly lower due to 1-4 missing values. ‡Seven women reported using oral contraception, 18 hormonal injections, and 17 hormonal implants. §n=144; women at the screening visit that were HIV-positive and/or pregnant, or were otherwise ineligible, did not undergo testing for this urogenital disease. ||n = 146; women at the screening visit who were HIV-positive and/or pregnant, or were otherwise ineligible, did not undergo testing for this urogenital disease. **All enrolled participants were negative for HIV and pregnancy, and were treated for UTI and syphilis if positive at screening. Twenty-three enrolled participants (six controls, seven in the metronidazole group, four in the EF+ group, and six in the GynLP group) were positive for CT and/or NG at screening and had not received treatment by the enrollment visit. ††Total numbers are slightly lower due to invalid qPCR results: overall enrollment population is n=63, control group n = 16, and metronidazole group n = 14. ‡‡p<0.05 by Mann Whitney U test, compared to control group. §§p<0.01 by Mann Whitney U test, compared to control group.

Table 2. Safety endpoints

Patient-reported symptoms and clinician-observed signs at Scr and Enr	Total (n = 68)	Controls (n = 17)	Metro (n = 17)	EF+ (n = 17)	GynLP (n = 17)	P*
Any (current or in last 2 weeks) urogenital symptoms at Scr, n (%)	49 (72.1) [†]	11 (64.7)	13 (76.5)	13 (76.5)	12 (70.6)	0.933
Any (current) urogenital symptoms at Enr, n (%)	0	0	0	0	0	NA
Any abnormal speculum exam findings at Scr, n (%) [‡]	3 (4.4) [§]	1 (5.9)	1 (5.9)	0	1 (5.9)	1.00
Any abnormal speculum exam findings at Enr, n (%) [‡]	1 (1.5) [¶]	0	0	0	1 (5.9)	1.00
AEs – Structurally assessed between Enr and M2 (during product use)						
Any current urogenital symptoms, n (%)	9 (13.4) ^{**}	2 (11.8)	2 (11.8)	2 (11.8)	3 (18.8)	0.894
Any abnormal speculum exam findings, n (%)	2 (3.0) ^{††}	0	0	0	2 (12.5)	0.054
Any abnormal bimanual exam findings n (%)	0	0	0	0	0	NA
AEs – Structurally assessed between M2 and M6 (after product cessation)						
Any current urogenital symptoms, n (%)	7 (10.8) ^{‡‡}	3 (17.7)	1 (5.9)	1 (6.3)	2 (13.3)	0.700
Any abnormal speculum exam findings, n (%)	21 (32.8) ^{§§}	6 (35.3)	5 (31.3)	6 (37.5)	4 (26.7)	0.951
Any abnormal bimanual exam findings n (%)	1 (1.6) ^{¶¶}	0	0	0	1 (6.7)	0.234
AEs – Not structurally assessed	Total (N)	Controls (N)	Metro (N)	EF+ (N)	GynLP (N)	p*
Number of women with reported AEs	27	8	4	8	7	0.439
Total number reported AEs between Enr-M6	41	13	6	9	13	0.324
Total number reported AEs between Enr-M2	32	12	4	5	11	NA
Total number reported AEs between M2-M6 ^{***}	9	1	2	4	2	NA
AEs – Not structurally assessed	Total AEs (n = 41)	Controls (n = 13)	Metro (n = 6)	EF+ (n = 9)	GynLP (n = 13)	p*
Severity of reported AEs, n (%):						
- Mild	2 (4.9)	0	0	1 (11.1)	1 (7.7)	NA
- Moderate	36 (87.8)	13 (100)	5 (83.3)	6 (66.7)	12 (92.3)	
- Severe	3 (7.3)	0	1 (16.7)	2 (22.2)	0	
- Life-threatening	0	0	0	0	0	
Deemed related to study by physician, n (%):						NA
- Definitely not related	10 (24.4)	3 (23.1)	2 (33.3)	3 (33.3)	2 (15.4)	
- Unlikely	31 (75.6)	10 (76.9)	4 (66.7)	6 (66.7)	11 (84.6)	
- Possible/probable/definitely related	0	0	0	0	0	
Outcome of reported AE, n (%):						NA
- Fully recovered	40 (97.6)	12 (92.3)	6 (100)	9 (100)	13 (100)	
- Not fully recovered, deteriorated, permanent damage, or death	0	0	0	0	0	
- Ongoing	1 (2.4)	1 (7.7) ^{†††}	0	0	0	
Action taken by physician, n (%):						NA
- None	6 (14.6)	1 (7.7)	0	2 (22.2)	3 (23.1)	
- Medication given	35 (85.4)	12 (92.3)	6 (100)	7 (77.8)	10 (76.9)	
- Study discontinuation	0	0	0	0	0	
- Hospitalization ^{‡‡‡}	0	0	0	0	0	

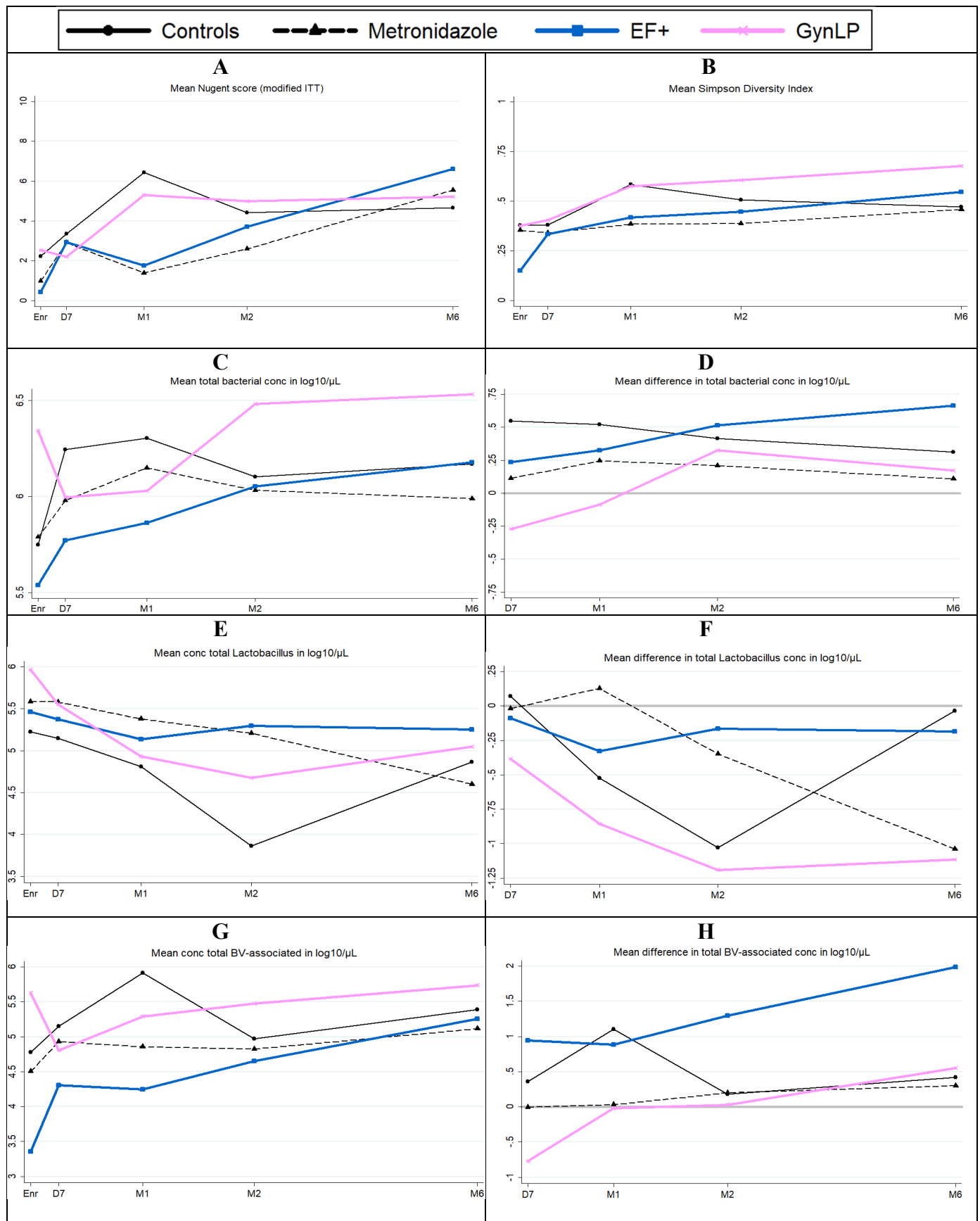
Abbreviations: AE, adverse event; EF+, Ecologic Femi+; Enr, enrollment visit; GynLP, Gynophilus LP; M2/6, month 2/6 visit; Metro, metronidazole; NA, not applicable; Scr, screening visit. *Fisher's exact test for binary outcomes and Kruskal Wallis test for continuous outcomes, between groups. †Most common symptom (89.8%) was genital itching. ‡No abnormal findings observed during bimanual exams. §Includes vaginal discharge (n=2) and cervical polyps (n=1). ¶Unusual cervical discharge. ||Total numbers are slightly lower due to loss to follow-up (Figure 1). No missing values. **Includes genital itching (n=8) and burning (n=3), pain during sex (n=4), and burning when urinating, lower abdominal pain, unusual vaginal discharge, and genital/anal sores (all n=1). ††One had ulcers/blisters in the vagina, one had lesions on the perineum and labia majora. ‡‡Includes genital itching (n=5) and burning (n=3), lower abdominal pain (n=4), pain during sex, burning when urinating, urinary frequency/urgency (all n=2), and unusual vaginal discharge (n=1). §§Includes unusual vaginal (n=4) and cervical (n=13) discharge, and cervicitis (n=10). ¶¶Cervical motion tenderness. |||Most common AE according to MedDRA coding was "Infections and infestations" (n=14), followed by "Reproductive system and breast disorders" (n=9) and "Gastrointestinal disorders" (n=7). Sexually transmitted infections were not considered AEs but secondary outcomes. ***No AEs were reported after the M6 visit. †††Case of dental caries. ‡‡‡Both serious AEs involved hospitalizations that were not initiated by the study physician.

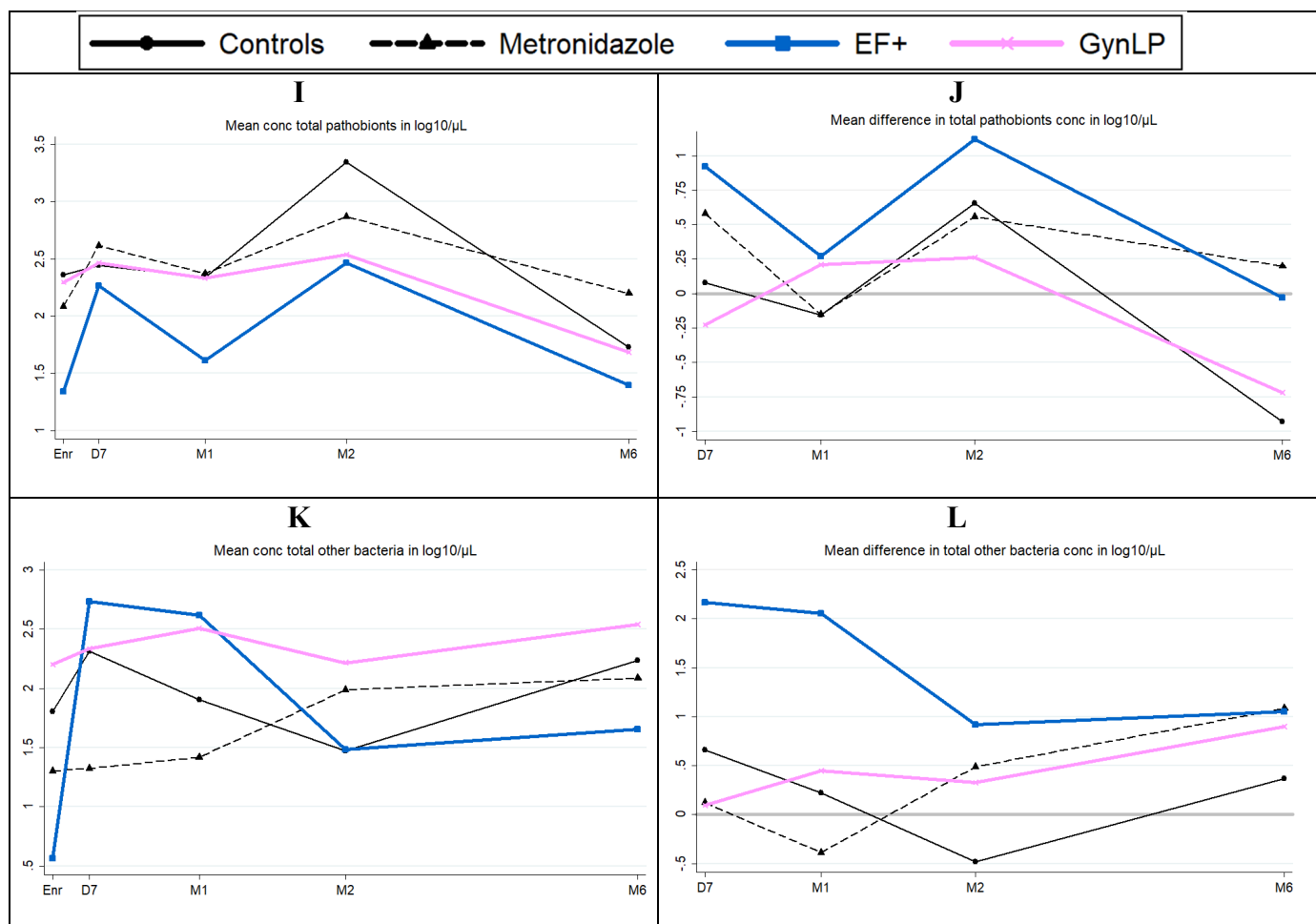
Table 3. Preliminary efficacy – microscopy endpoints (modified ITT analyses)

BV IR Enr–M2	Controls		Metronidazole		EF+		GynLP	
	n/N*	IR (95% CI) [†]	n/N*	IR (95% CI) [†]	n/N*	IR (95% CI) [†]	n/N*	IR (95% CI) [†]
Nugent 7-10	9/11	10.18 (5.48 – 18.92)	2/10	1.41 (0.35 – 5.62)	5/12	3.58 (1.61 – 7.96)	6/10	5.36 (2.41 – 11.93)
Modified Amsel [¶]	11/15	7.53 (4.28 – 13.26)	3/11	2.04 (0.66 – 6.31)	6/13	3.36 (1.51 – 7.48)	4/9	3.35 (1.26 – 8.92)
BV IR M2–M6								
Nugent 7-10	4/11	0.91 (0.34 – 2.41)	5/8	1.86 (0.78 – 4.48)	6/9	1.58 (0.71 – 3.52)	2/7	0.76 (0.19 – 3.03)
Modified Amsel [¶]	3/12	2.96 (0.33 – 3.15)	5/10	2.25 (0.94 – 5.40)	6/8	3.84 (1.72 – 8.54)	3/8	1.83 (0.59 – 5.67)
BV IRR Enr–M2	Controls		Metronidazole		EF+		GynLP	
			IRR (95% CI) [‡]		IRR (95% CI) [‡]		IRR (95% CI) [‡]	
Nugent 7-10	NA		0.14 (0.01 – 0.65)		0.35 (0.10 – 1.07)		0.53 (0.16 – 1.60)	
Modified Amsel [¶]	NA		0.27 (0.05 – 1.00)		0.45 (0.14 – 1.28)		0.44 (0.10 – 1.47)	
BV IRR M2–M6								
Nugent 7-10	NA		2.06 (0.44 – 10.37)		1.74 (0.41 – 8.41)		0.84 (0.08 – 5.85)	
Modified Amsel [¶]	NA		2.22 (0.43 – 14.27)		3.78 (0.81 – 23.35)		1.80 (0.24 – 13.46)	

Abbreviations: BV, bacterial vaginosis; CI, confidence interval; EF+, Ecologic Femi+; Enr, enrollment visit; GynLP, Gynophilus LP; IR, incidence rate; IRR, incidence rate ratio; ITT, intent to treat; M2/6, month 2/6 visit; NA, not applicable. There were no cases of vulvovaginal candidiasis during follow-up. Participants who were BV-negative by Amsel but BV-positive by Nugent criteria at the enrollment visit (n=17) were omitted from modified ITT analyses. *Number of women (n) who developed at least one incident infection during the specified time period as a proportion of the women who had at least one follow-up visit in that time period (N). [†]Incident infections divided by person-years at risk. Three participants in the Enr–M2 BV by modified Amsel model, seven in the Enr – M2 BV by Nugent model, 10 in the M2–M6 BV by modified Amsel model, and 11 in the M2–M6 BV by Nugent model were omitted due to having been at risk for less than 10 person-days. [¶]The modified Amsel criteria are positive when at least two of the three laboratory criteria are positive: vaginal pH>4.5, whiff test positive, and/or presence of >20% clue cells on wet mount. [‡]Compared to the control group.

Figure 2. Preliminary efficacy by Nugent score, alpha diversity, and bacterial group concentration





Abbreviations: Conc, concentration; D7, Day 7 visit; EF+, Ecologic Femi+; Enr, enrollment visit; GynLP, Gynophilus LP; ITT, intention to treat; M1/2/6, month 1/2/6 visit; Scr, screening visit; VMB, vaginal microbiota.

Changes in VMB outcomes over time per randomization group. See Supplement Table S4 for 95% confidence intervals.

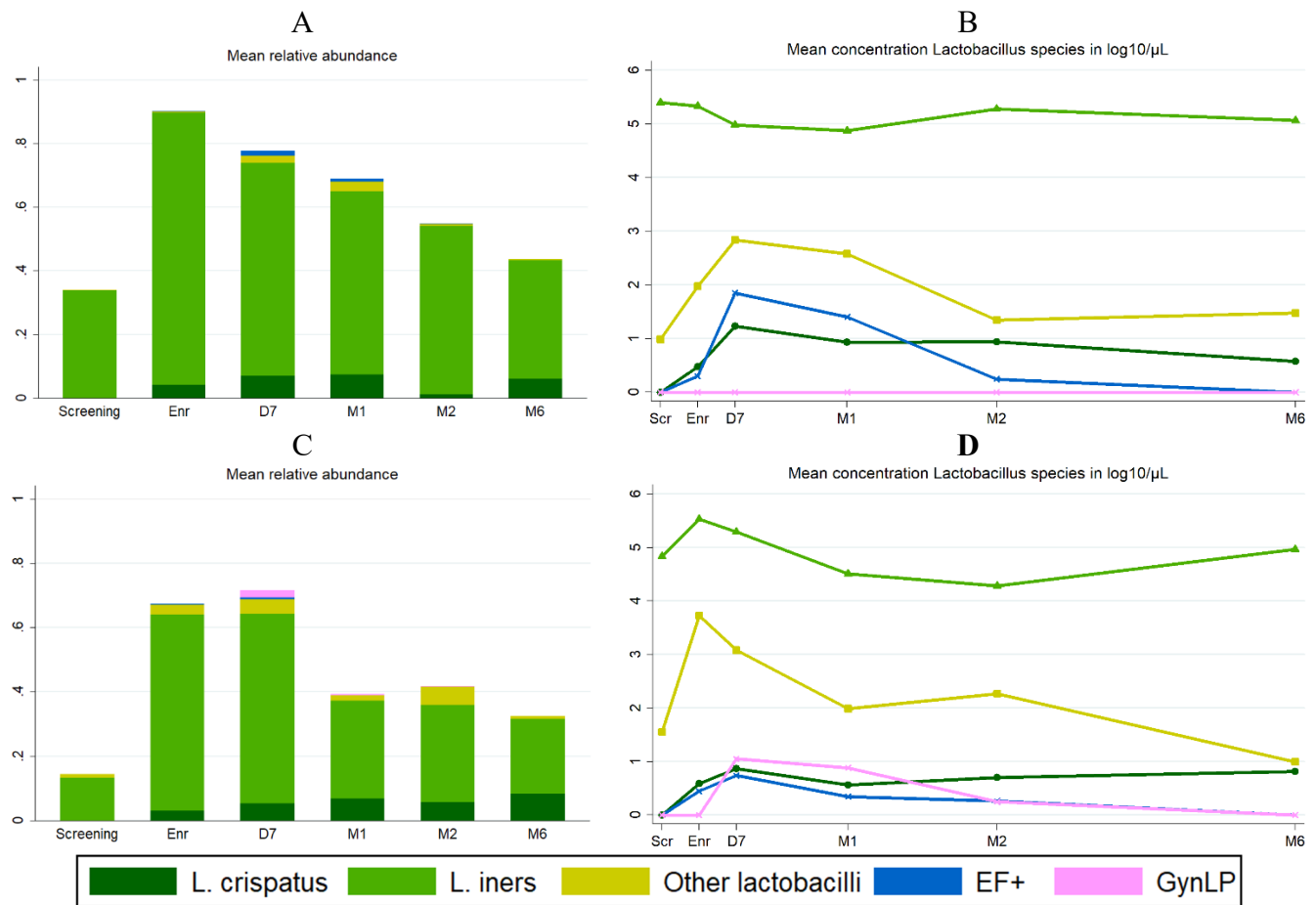
(A) Mean Nugent scores over time, only including women (n=51) who were BV-negative by Amsel and Nugent criteria (modified ITT analysis). (B) Mean alpha diversity over time. (C) Mean bacterial cell concentration over time. (D) Difference in mean bacterial cell concentration with enrollment, over time. (E) Mean lactobacilli concentration over time. (F) Difference in mean lactobacilli concentration with enrollment, over time. (G) Mean BV-associated anaerobes concentration over time. (H) Difference in mean BV-associated anaerobes concentration with enrollment, over time. (I) Mean pathobionts concentration over time. (J) Difference in mean pathobionts concentration with enrollment, over time. (K) Mean other bacteria concentration over time. (L) Difference in mean other bacteria concentration with enrollment, over time.

Table 4. Preliminary efficacy – mixed effects models

Unadjusted mixed effects models	Metro		EF+		GynLP	
	OR (95% CI)*	p*	OR (95% CI)*	p*	OR (95% CI)*	p*
Nugent score [†]	0.16 (0.02 – 1.09)	0.062	0.25 (0.04 – 1.66)	0.151	1.68 (0.24 – 11.56)	0.599
Nugent score categories [†]						
- 4-6 vs 0-3	1.04 (0.20 – 5.50)	0.960	0.36 (0.05 – 2.43)	0.293	2.16 (0.38 – 12.31)	0.387
- 7-10 vs 0-3	0.08 (0.01 – 0.80)	0.032	2.16 (0.38 – 12.31)	0.148	1.12 (0.15 – 8.28)	0.913
Total bacterial conc [†]	0.85 (0.53 – 1.36)	0.497	0.72 (0.45 – 1.14)	0.160	0.96 (0.60 – 1.55)	0.877
Total <i>Lactobacillus</i> conc [†]	2.14 (1.02 – 4.49)	0.043	1.86 (0.90 – 3.86)	0.095	1.43 (0.67 – 3.04)	0.352
Total BV-associated conc [†]	0.58 (0.23 – 1.49)	0.260	0.38 (0.15 – 0.96)	0.041	0.89 (0.34 – 2.31)	0.812
Total pathobionts conc [†]	0.91 (0.30 – 2.75)	0.865	0.57 (0.19 – 1.71)	0.318	0.79 (0.25 – 2.43)	0.676
Total other bacteria conc [†]	0.72 (0.27 – 1.90)	0.507	1.42 (0.55 – 3.70)	0.471	1.60 (0.60 – 4.29)	0.349
Total <i>Lactobacillus</i> RA [‡]	1.36 (1.09 – 1.70)	0.006	1.32 (1.06 – 1.64)	0.014	1.10 (0.88 – 1.38)	0.408
Total BV-associated RA [‡]	0.79 (0.65 – 0.97)	0.023	0.83 (0.68 – 1.01)	0.067	1.00 (0.81 – 1.22)	0.973
Total pathobionts RA [‡]	0.93 (0.84 – 1.03)	0.159	0.92 (0.83 – 1.01)	0.093	0.92 (0.83 – 1.02)	0.100
Total other bacteria RA [‡]	1.00 (1.00 – 1.01)	0.739	1.01 (1.00 – 1.01)	0.023	1.00 (1.00 – 1.01)	0.671
Pooled VMB type [‡]						
- LA vs LD	1.17 (0.24 – 5.78)	0.849	1.20 (0.24 – 5.92)	0.823	1.72 (0.33 – 9.04)	0.520
- BV vs LD	0.02 (0.00 – 0.43)	0.012	0.04 (0.00 – 0.73)	0.029	0.39 (0.03 – 5.50)	0.487
- PB vs LD	0.06 (0.00 – 1.54)	0.090	0.08 (0.00 – 1.77)	0.109	0.14 (0.01 – 3.34)	0.225
Simpson diversity [‡]	0.90 (0.77 – 1.06)	0.200	0.94 (0.80 – 1.10)	0.454	1.07 (0.91 – 1.26)	0.429
Adjusted mixed effects models[§]						
Nugent score [†]	0.19 (0.03 – 1.31)	0.092	0.26 (0.04 – 1.85)	0.178	2.05 (0.30 – 13.92)	0.464
Nugent score categories [†]						
- 4-6 vs 0-3	1.24 (0.20 – 7.82)	0.821	0.36 (0.04 – 3.13)	0.353	2.42 (0.36 – 16.26)	0.362
- 7-10 vs 0-3	0.06 (0.00 – 0.77)	0.031	0.19 (0.02 – 1.90)	0.156	1.42 (0.17 – 11.81)	0.747
Total bacterial conc [†]	0.75 (0.47 – 1.18)	0.208	0.64 (0.40 – 1.02)	0.061	0.90 (0.57 – 1.43)	0.666
Total <i>Lactobacillus</i> conc [†]	1.74 (0.83 – 3.67)	0.142	1.47 (0.69 – 3.16)	0.319	1.26 (0.60 – 2.68)	0.541
Total BV-associated conc [†]	0.57 (0.22 – 1.47)	0.243	0.37 (0.14 – 0.98)	0.046	0.91 (0.35 – 2.36)	0.848
Total pathobionts conc [†]	0.99 (0.35 – 2.77)	0.980	0.66 (0.23 – 1.81)	0.445	0.98 (0.36 – 2.90)	0.965
Total other bacteria conc [†]	0.65 (0.25 – 1.69)	0.374	1.31 (0.49 – 3.50)	0.591	1.79 (0.68 – 4.71)	0.239
Total <i>Lactobacillus</i> RA [‡]	1.32 (1.06 – 1.65)	0.014	1.30 (1.03 – 1.64)	0.025	1.06 (0.85 – 1.33)	0.601
Total BV-associated RA [‡]	0.81 (0.66 – 1.00)	0.049	0.83 (0.67 – 1.03)	0.098	1.02 (0.83 – 1.26)	0.855
Total pathobionts RA [‡]	0.93 (0.84 – 1.03)	0.180	0.92 (0.83 – 1.02)	0.120	0.93 (0.84 – 1.03)	0.147
Total other bacteria RA [‡]	1.00 (1.00 – 1.01)	0.436	1.01 (1.00 – 1.01)	0.009	1.00 (1.00 – 1.01)	0.439
Pooled VMB type [‡]						
- LA vs LD	1.46 (0.26 – 8.11)	0.665	1.59 (0.27 – 9.55)	0.610	2.11 (0.37 – 12.15)	0.401
- BV vs LD	0.02 (0.00 – 0.48)	0.017	0.02 (0.00 – 0.64)	0.027	0.44 (0.02 – 7.84)	0.575
- PB vs LD	0.08 (0.00 – 1.49)	0.090	0.11 (0.01 – 2.02)	0.136	0.21 (0.01 – 3.71)	0.284
Simpson diversity [‡]	0.93 (0.78 – 1.09)	0.359	0.96 (0.81 – 1.13)	0.597	1.10 (0.93 – 1.30)	0.272

Abbreviations: BV, bacterial vaginosis; CI, confidence interval; conc, concentration; EF+, Ecologic Femi+; Enr, enrollment visit; GynLP, Gynophilus LP; LA, lactobacilli and anaerobes VMB type; LD, *Lactobacillus*-dominated VMB type; Metro, metronidazole group; OR, odds ratio; PB, pathobionts VMB type; VMB, vaginal microbiota. *Compared to the control group. †Including all valid samples during product use (D7, M1, and M2 visits). Self-sampled samples were also taken during product use, but were not Gram stained nor tested by 16S rRNA gene qPCR (see Methods). ‡Including all valid samples during product use (D7, M1, and M2 visits, and self-sampled samples). §Model adjusted for hormonal/pregnancy status, sexual risk taking, and age (see Methods).

Figure 3. Detection of probiotic strains during the trial



Abbreviations: D7, Day 7 visit; EF+, Ecologic Femi+; Enr, enrollment visit; GynLP, Gynophilus LP; M1/2/6, month 1/2/6 visit; Scr, screening visit. Mean relative abundance (A) and mean concentration (B) of *Lactobacillus* species over time in the EF+ group; mean relative abundance (C) and mean concentration (D) of *Lactobacillus* species over time in the GynLP group. The length of bars in (A) and (C) depicts total relative abundance of all *Lactobacillus* species combined.