

## Original article

Health workers' experiences of coping with the Ebola epidemic in the Democratic Republic of the Congo's health system: a qualitative study of variables of hospital activities on infection control practices in Kinshasa city

Guyguy Kabundi Tshima<sup>1,2,3,4,5,6,\*</sup>, Kaleb Tshimungu Kalala<sup>7,8</sup>, Paul Madishala Mulumba<sup>1,+ (dcd)</sup>

Expérience des agents de santé face à l'épidémie d'Ebola dans le système de santé de la République Démocratique du Congo : étude qualitative des variables des activités des hôpitaux en matière de lutte contre les infections dans la ville de Kinshasa.

## Affiliations

<sup>1</sup> Service de Parasitologie, Département de Médecine Tropicale, Maladies Infectieuses et Parasitaires, Faculté de Médecine, Université de Kinshasa, Democratic Republic of the Congo

<sup>2</sup> Alumnus of the Interuniversity Diploma on HIV and AIDS of the University of Ouagadougou

<sup>3</sup> Alumnus of the Nutrition program of Faculty of Bioscience Engineering of the Ghent University

<sup>4</sup> Free Student at the School of Public Health of the University of Montreal

<sup>5</sup> CT (Chargé des cours et des travaux) à l'Université de Bandundu/Kikwit, Titulaire du cours de parasitologie et d'entomologie (2005-2006)

<sup>6</sup> Fondateur de l'OEUVRE GUYGUY, organisme non gouvernemental de soutien au projet PROREHABILITER RDC pour la santé des mères et des enfants en RDC

<sup>7</sup> Free Student at the School of Public Health of the University of Kinshasa

<sup>8</sup> Président de l'OEUVRE GUYGUY, organisme non gouvernemental de soutien au projet PROREHABILITER RDC pour la santé des mères et des enfants en RDC

\* Correspondence: [guyguy.kabundi.tshima@umontreal.ca](mailto:guyguy.kabundi.tshima@umontreal.ca) or [guyguytshimakabundi@gmail.com](mailto:guyguytshimakabundi@gmail.com) (Guyguy Kabundi Tshima)

## Availability of data and materials

The dataset is available in the manuscript in tables and figures. Add information on the ongoing Ebola outbreak is available from the update message of Press Team of the Ministry of Health Democratic Republic of the Congo on reasonable request.

## Abstract

---

**Background** . Health workers play an important role during epidemics but there is limited research on hospital activities on infection control practices in the Democratic Republic of the Congo and how health workers can cope during a probable health epidemic in Kinshasa city.

The 2019 Ebola Virus Disease epidemic evolve in alarming ways in the Democratic Republic of the Congo with the recently **involvement** of 2 cases to Uganda, a neighbouring country making this outbreak the most complex and high risk ever experienced by the Democratic Republic of the Congo. The country struggles to control it against a backdrop of a health system that is already overburdened.

This paper explores the challenges of a contamination in the context of an Ebola outbreak that may face health workers and their coping strategies in thirteen hospitals of reference in Kinshasa hoping to educate or remember good practices for health workers in Kinshasa that is also available for health workers in the East Area of the country where actually the Ebola outbreak is spreading (North Kivu and Ituri).

We provide early epidemiological information arising from the ongoing investigation of this outbreak and the unpublished data in the evaluation of the level

of biosecurity (BS) in the emergency rooms and laboratories of 13 hospitals of reference of the capital city.

## Methods

We classified cases as suspected, probable, or confirmed using national case definitions of the Democratic Republic of the Congo Ministère de la Santé Publique. We obtain data from the Ministère de la Santé Publique that determine Uganda cases possible exposures in health zones.

We also estimated the Health workers' experiences of coping with the Ebola epidemic in the Democratic Republic of the Congo's health system. We used a qualitative study of variables of hospital activities on infection control practices in thirteen reference health facilities in Kinshasa.

We used key informant interviews with health facility managers; and in depth interviews with health workers working in public and private reference hospitals in Kinshasa. With this intention, 20 parameters were the subject of the investigation. In order to characterize the profile of these health facilities, the collected data were submitted, on the one hand, with the analysis in principal components, and, other hand, with the technique of ascending hierarchical.

## Findings

The unidimensional analysis, led parameter by parameter, showed that the standards of BS were respected by at least 75 % of the health facilities for the 6 following parameters: (1) material of taking away of single use; (2) disinfection of material and the desk; (3) good lighting of the rooms; (4) not encumbered waiting room; (5) adequate conservation of the biological specimens and (6) regular emptying of the baskets. With the extreme, for 2 following parameters, the standards of BS were respected only by at most 25 % of the health facilities: (1) wearing of gloves by the health workers and (2) disinfection of the instruments of examination. The other parameters had obtained a note going from weak to bad.

## Interpretation

The ongoing Ebola virus outbreak in the Democratic Republic of the Congo has similar epidemiological features to previous Ebola virus disease outbreak in Sierra Leone [1]. Early detection, rapid patient isolation, contact tracing, and the ongoing vaccination programme should sufficiently control the outbreak. The forecast of the number of health workers (119 cases) remember the contamination risk. The information presented, although preliminary, is essential in guiding the ongoing investigation and response to this outbreak. The health workforce is inadequate and ill-equipped to deal with an outbreak including limited national means for research support for 40 years by the Congolese government. In the Democratic Republic of

the Congo, the research is not funded; researchers are struggling themselves, so without means, we did this qualitative study that began in a functional parasitology disease unit in the Kinshasa University Hospital headed by the late Pr. Dr. Paul Mulumba Madishala.

## Conclusions

With regard to the characterization of the profile of the hospitals in the field of the respect of the standards of BS, all the 20 parameters considered overall, this one showed that this profile went from excellent to poor. The Bondeko-Ngaliema-Monkole group has occupied the first rank, while the group Kintambo-King Baudouin-Ndjili-Makala occupied the other end of the scale; the other health facilities occupied an intermediate position. Among the 7 hospitals which were placed at the top of this classification of BS, 5 were massively subsidized by international NGO, which explains to a great extent their performances in one hand, another hand finding its explanation in the quality of their management. It is the case of Bondeko, Monkole, Kalembe-Lembe, St Joseph and Kingasani 2.

**Keywords:** Health workforce, Biosecurity, Epidemic, Democratic Republic of the Congo

## Résumé

### Contexte

L'épidémie de la maladie à virus Ebola 2019 évolue de manière alarmante en République Démocratique du Congo et s'est récemment étendue en Ouganda. Le pays lutte pour le contrôler dans le contexte d'un système de santé déjà surchargé. Les agents de santé jouent un rôle considérable face aux épidémies; mais les recherches sur les activités des hôpitaux en matière de contrôle des infections en République Démocratique du Congo sont limitées. Et aussi la contre-offensive face à la migration territoriale de ces épidémies pose un sérieux problème de santé publique.

Cet article explore les défis de la contamination dans le contexte d'une épidémie d'Ébola qui pourrait toucher les agents de santé et leurs stratégies d'adaptation dans treize hôpitaux de référence à Kinshasa dans l'espoir de sensibiliser ou de rappeler les bonnes pratiques pour les agents de santé à Kinshasa. Ceci est aussi applicable dans l'Est de la République Démocratique du Congo, où l'épidémie d'Ebola continue à se propager (Nord-Kivu et Ituri). Ce travail vise à revoir les données non publiées dans l'évaluation du niveau de biosécurité (BS) dans les salles d'urgence et les laboratoires de 13 hôpitaux de référence de la ville de Kinshasa.

### Méthodes

Nous avons utilisé une méthodologie d'étude qualitative : entretiens avec des responsables d'établissements de santé ; et entretiens approfondis avec des agents de santé travaillant dans des hôpitaux de référence publics et privés à Kinshasa. Pour ce faire, 20 paramètres ont fait l'objet de l'enquête. Afin de caractériser le profil de ces établissements médicaux, les données collectées ont été soumises

d'une part avec l'analyse en composantes principales et, d'autre part, avec la technique de la classification hiérarchique ascendante.

## Résultats

L'analyse unidimensionnelle, paramètre par paramètre, a montré que les normes de BS étaient respectées par au moins 75% des établissements médicaux pour les 6 paramètres suivants : (1) utilisation du matériel à usage unique ; (2) désinfection du matériel et du bureau; (3) un bon éclairage des chambres; 4) salle d'attente non encombrée; (5) conservation adéquate des échantillons biologiques ; (6) vidange régulier des poubelles.

## Conclusions

En ce qui concerne la caractérisation du profil des hôpitaux dans le domaine du respect des normes de BS, l'ensemble des 20 paramètres considérés globalement, celui-ci a montré que ce profil est passé d'excellent à mauvais. Le groupe Bondeko-Ngaliema-Monkole occupe le premier rang, tandis que le groupe Kintambo-Roi Baudouin-Ndjili-Makala occupe l'autre extrémité du classement ; les autres établissements occupaient une position intermédiaire. Parmi les 7 hôpitaux qui figuraient au sommet de cette classification de BS, 5 ont été subventionnés massivement par des ONG internationales, ce qui explique en grande partie leurs performances, une autre part trouvant son explication à la qualité de leur gestion. C'est le cas de la clinique Bondeko, le centre de santé Monkole, l'hôpital pédiatrique Kalembe-Lembe, l'hôpital St Joseph et l'hôpital Kingasani 2.

**Mots-clés :** Biosécurité, hôpitaux de référence, Kinshasa



# Introduction

---

## Background

There are five identified subtypes of Ebola virus. The subtypes have been named after the location where they have been first detected. Three of the five subtypes have been associated with large Ebola haemorrhagic fever (EHF) outbreaks in Africa. Ebola–Zaire, Ebola–Sudan and Ebola–Bundibugyo. EHF is a febrile haemorrhagic illness which causes death in 25–90% of all cases [1].

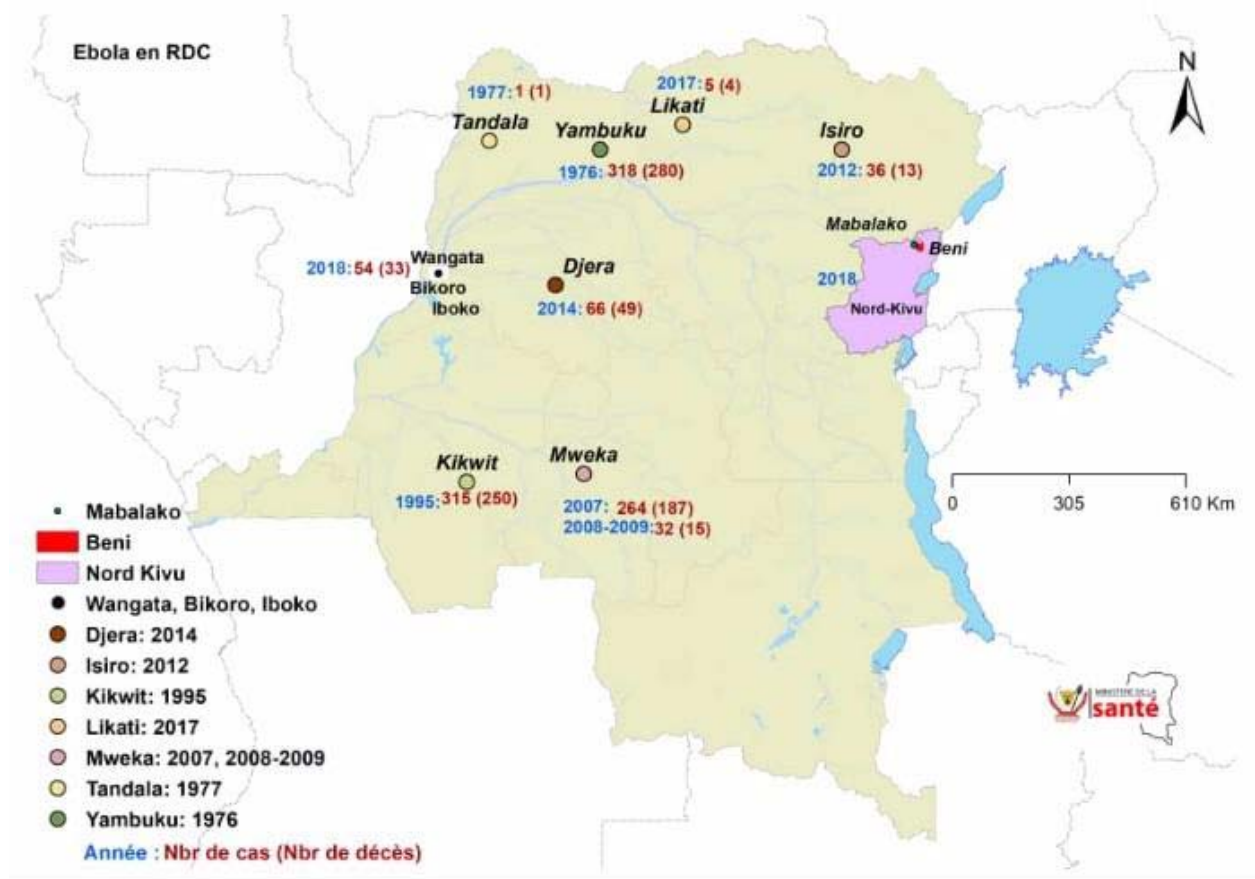
The Zaire strain is the most fatal, with an overall case fatality ratio ranging from 69% to 88% [1].

Ebola virus disease is transmitted primarily through contact with the body fluids of symptomatic patients, most commonly in adults aged 17–44 years, with relative sparing of children younger than 16 years [1].

Transmission can be stopped by early diagnosis, patient isolation and care, infection control, safe and dignified burial of people who had died from Ebola virus disease, rigorous tracing of contacts, and, more recently, promising evidence on the use of targeted vaccination [2].

The Democratic Republic of the Congo has had nine recorded Ebola virus disease outbreaks since 1976 ([figure 1](#)). The remoteness of most affected communities and the involvement of 2 deaths in Uganda, a neighboring country connected to the risk

zone make this outbreak the most complex and high risk ever experienced by the Democratic Republic of the Congo [3].



**Figure 1 Outbreaks of Ebola virus disease in the Democratic Republic of the Congo, 1976–2019**

Source: Ministry of Health of the Democratic Republic of the Congo

### The ongoing outbreak

The ongoing outbreak occurred in January, 2019, in the North-Kivu Province, in the East of the country, causing a total of 1,449 deaths with 1,355 confirmed. Most of the previous outbreaks have been confined to remote rural areas, with the

exception of an outbreak in Kikwit, a town with a population of nearly 400 000 that resulted in 315 cases and 250 deaths [4].

The ongoing response to the current outbreak in North-Kivu Province includes use of traditional measures such as early identification, isolation and care of cases, contact tracing, safe and dignified burials, and culturally appropriate community mobilisation (including risk communication, community engagement, and social mobilisation). These traditional measures are being supplemented by use of the recombinant vesicular stomatitis virus–Zaire Ebola virus (rVSV-ZEBOV) vaccine, with vaccination of first-line and second-line contacts [5].

Being an ongoing-conflict country, the health system in the Democratic Republic of the Congo can be described as fragile and sub-optimal in the face of a disease outbreak as shown by its poor health outcomes [1].

In hospital settings, the primary level of infectious risk concerns the family members [6]. These naturally maintain diverse or intimate relationships with other members of their families thus exposing them to the secondary infectious risk. These in turn may transmit the infection to others in their neighborhood (tertiary infectious risk), and so on [7]. It brings the concept of biosecurity (BS).

### The concept of biosecurity (BS)

It brings together knowledge, attitudes and individual or collective practices in the rational management of biological, infectious or toxic risk. BS touches on many fields of activity, including the agro-food industries, animal production, air conditioning, drinking water supply, medical activities (care and vaccination), biomedical research, military... [8].

The common point is the risk of contamination by pathogenic microorganisms or biological products harmful to exposed individuals. The emergence of new pathogens as Ebola virus and the prodigious development of exchanges between countries and continents because of air transport raise the issue of BS in apocalyptic terms [9].

### Depth survey

In deep, BS concept incorporates a dozen variables, namely: (1) the respect of the standards of hygiene, (2) the posted written instructions, (3) the measures of individual protections (mask, glasses, gloves), (4) the cleanliness of hygienic facilities, (5) respect for the principles of teamwork, (6) asepsis, (7) sanitation, (8) basic education, (9) training, and (10) ease of access to care [10].

This deep survey was conducted to inquire into what is concretely done regarding BS in the reference hospitals of the city of Kinshasa [11].

## Methods

---

This study was conducted between September and December 2003 and the last three months of March 2004 as a preliminary study. It used qualitative research methods - in depth interviews (IDI) with health workers and key informant interviews (KII) [2] – to explore workers experiences during their normal working days that is from 2004 to June 2019 [2]. Qualitative interviews facilitate generation of in-depth and contextual information about an individual's experience, beliefs and perceptions as well as exploration of reasons behind their answers through probing questions [2].

The study was conducted in thirteen health facilities in Kinshasa. The selected study health facilities were selected for being the reference hospitals health, as they represent different health centers of Kinshasa. This survey targeted the emergency departments and laboratories of the 13 reference institutions in the city of Kinshasa.

### In depth interviews with health workers

Contextual information about the ongoing health situation in the country is checked using the press team service of communication of the Ministry of Health of the Democratic Republic of the Congo [1] as well as exploration of other media sources reasons through probing updates [2]. In the preliminary study, the

investigators' job was to record the results of their observations, as well as the answers to the questions provided by the health workers found at the targeted places (laboratories, emergency rooms) following a pre-established questionnaire. Our database contained 20 variables (Table 2).

### Key informant interviews

Doctors themselves were often surprised when asked if their blood pressure monitors and stethoscopes were disinfected after each patient consulted or if they washed their hands with soap or bleach before moving on to another patient.

### Data collection and analysis

The interviews were conducted in French, in a private room in the health facility, office or in corridor where the participant felt most comfortable. Separate topic guides were used for the in-depth interviews with health workers and key informant interviews.

The data were synthesized in the form of principal components (PC) from which a projection map of the various hospitals following their BS performance was constructed. Each health facility was represented by one point. The proximity of the points on the map signified their resemblance, while their distance emphasized their dissimilarity. Hospitals were then grouped into a small number of categories given their similarity. This grouping was done using the hierarchical ascending

classification technique described by Ward where the results appear as a dendrogram. The analyzes were performed using SPSS software version 10.0.7.

## Ethics

Ethical approval was obtained from the University of Kinshasa Scientific and Ethics Committee and the Tropical Medicine Department Research Ethics Committee. Rigorous informed consent process was followed: all participants were given verbal and detailed written information about the nature and purpose of the research before taking part; participants were made aware of their right to decline to answer questions, and were assured that measures are in place to anonymise responses. All participants gave written consent. All data were anonymised.

## Role of the funding source

There was no funding source for this study. The corresponding author had full access to all the data in the study and had final responsibility for the decision to submit for publication.

## Results

### The epidemiological situation of the Ebola Virus Disease dated June 19, 2019:

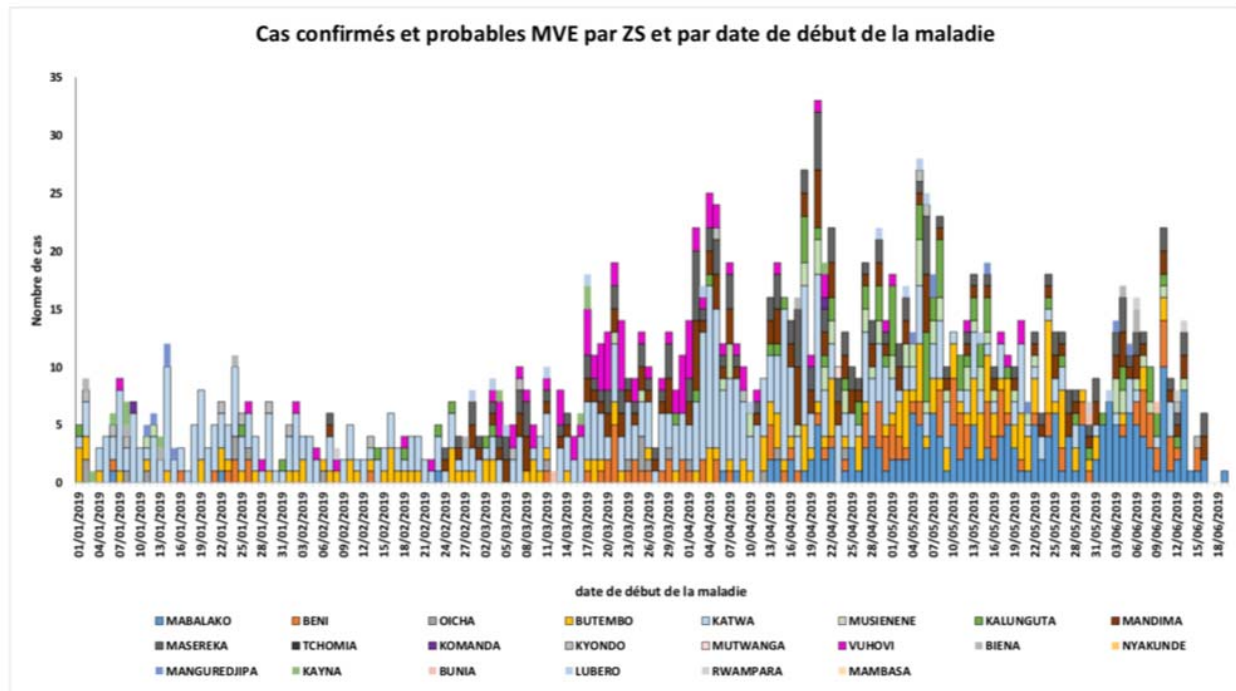
On June 19, 2019, the Government of the Democratic Republic of the Congo reported since the beginning of the epidemic, the cumulative number of cases is 2,204 of which 2,110 are confirmed and 94 probable. In total, there were 1,479 deaths (1,385 confirmed and 94 probable) and 606 people healed. 349 suspected cases under investigation; 14 new confirmed cases, including 5 in Beni, 4 in Mabalako, 3 in Kalunguta, 1 in Alimbongo, 1 in Katwa; The new confirmed case of Alimbongo is a boy of 6 months listed as contact of a probable case being validated at Musienene; 9 new confirmed case deaths: 2 community deaths, 1 in Kalunguta and 1 in Beni; 7 deaths at CTE, including 3 in Beni, 2 in Butembo and 2 in Mabalako (Table 1). The 2 deaths of Uganda (Bwera) were the 5-year-old boy and the 50-year-old grandmother who were classified in Mabalako. The 3-year-old brother of the index case tested in Uganda died on his arrival at the CTE of Beni on Thursday, June 13, 2019 [26].



**Table 1. Epidemiological Situation of Ebola virus disease (19-06-2019)**

EPIDEMIOLOGICAL SITUATION EBOLA VIRUS DISEASE (18/06/2019)							
PROVINCES	HEALTH ZONES	Cumulative cases			Deaths		Suspected cases
		Confirmed cases	Probable cases	TOTAL	Confirmed cases	TOTAL	
North-Kivu	Alimbongo	2	0	2	0	0	1
	Beni	333	9	342	199	208	56
	Biena	11	1	12	10	11	24
	Butembo	243	0	243	265	265	17
	Goma	0	0	0	0	0	20
	Kalunguta	119	1	134	52	67	17
	Katwa	602	16	618	405	421	39
	Kayna	8	0	8	5	5	1
	Kyondo	21	2	23	13	15	19
	Lubero	12	2	14	3	5	16
	Mabalako	295	16	311	208	224	13
	Mangurujipa	15	0	15	7	7	14
	Masereka	38	6	44	15	21	10
	Musienene	68	1	69	29	30	39
	Mutwanga	8	0	8	6	6	19
	Oicha	41	0	41	20	20	3
	Vuhovi	85	13	98	31	44	4
Ituri	Bunia	2	0	2	2	2	16
	Komanda	29	9	38	12	21	9
	Mambasa	0	0	0	0	0	0
	Mandima	164	4	168	94	98	10
	Nyankunde	1	0	1	1	1	0
	Rwampara	6	0	6	2	2	2
	Tchomia	2	0	2	2	2	0
<b>TOTAL</b>		<b>2110</b>	<b>94</b>	<b>2204</b>	<b>1385</b>	<b>1479</b>	<b>349</b>

*//\ The data presented in this table are subject to change after extensive investigation and after redistribution of cases and deaths in their respective health areas. Source: Ministry of Health DR Congo*



**Figure 1 Epidemiological curve of EVD Cases by Health Zone in the Provinces of Ituri and North Kivu since January 2019**

Source: Ministry of Health of the Democratic Republic of the Congo

The cumulative number of confirmed / probable cases among health workers is 119 (5.4% of all confirmed / probable cases), including 39 deaths. The objective of this paper is to educate health workers by revisiting or reminding the evaluation of the level of biosecurity (BS) in the emergency rooms and laboratories of 13 hospitals of reference of the city of Kinshasa.

In this problem, health facilities have a very special dimension. Indeed, they constitute real bio-reactors that concentrate, cross and multiply, by a factor of

several orders of magnitude, the dangerousness of many germs brought by the patients or that circulate there.

Thus, any stay, even for a very short period, in these eminently dangerous places, can be of great consequence for an imprudent visitor, that directly or indirectly. In addition, gaseous or liquid effluents, as well as solid wastes emanating from these places pose a serious threat to the populations living in its immediate surroundings

### Details of hospital participants

Of the 13 health facilities surveyed, 6 had no instructions on BS, 9 had bleach in the laboratory and only 3 had bleach in the emergency room. In 7 hospitals, we saw active laboratory technicians wearing gloves; 10 had automatic pipettes. According to the answers of the health workers, the laboratory equipment was disinfected the same day in 12 health facilities. Ten regularly emptied their baskets. Seven had an incinerator. Room ventilation was satisfactory in 9 cases and enough lighting in 12 cases (Table 2).

**Table 2.** Exploration of variables of hospital activities on infection control practices

VARIABLES	FREQUENCE	%
LABORATORIES:		
1. Basin containing bleach in the laboratory	9	69,2
2. Wearing gloves by technicians in activity	7	83,8
3. Proper storage of samples	11	84,6
4. Automatic pipetting	10	76,9
5. Regular emptying of garbage cans	10	76,9
6. Disinfection of equipment and bench	12	93,2
7. Existence of documents on BS	6	46,2
8. BS instructions posted	8	61,5
9. Proper place of restoration of staff	7	53,8
10. Disposable sampling equipment	13	100,0
11. Existence of an incinerator	7	53,8
EMERGENCY ROOMS :		
12. Waiting room unencumbered	11	84,6
13. Good ventilation of the premises	9	69,2
14. Good lighting of premises	12	90,3
15. Disinfection of the sphygmomanometer, stethoscopes and thermometers after use	2	15,4
16. Sheets for single use	4	30,8
17. Cleaning hands with bleach or soap after examination of patients	3	23,1
18. BS instructions posted	5	38,5
19. Gloves worn by examiners	2	15,4
20. Well-kept toilets	5	38,5

In emergency rooms, examination equipment (sphygmomanometer, stethoscope and thermometer) was not regularly disinfected after use in only 2 facilities. The change of sheets after examination of each patient was only observed in 4 establishments. In 2 cases, the examiners wore gloves. The toilet was well kept in 5 cases (Table 2).

Overall, for each parameter studied, the achievement performance for all health facilities was classified into 4 categories: excellent, if performed by more than 75% of hospitals; average, if carried out by 50 to 75% of hospitals; low, if carried out by 25 to 50% of hospitals; bad, if done by less than 25% of hospitals.

Thus, the following 6 parameters had obtained the excellent score: disposable sampling equipment; disinfection of equipment and the bench; good lighting of premises; waiting room unencumbered; adequate preservation of biological specimens; regular emptying of baskets.

In the extreme, the following 2 parameters were rated bad: gloves worn by examiners; disinfection of examination instruments.

The other parameters had a rating from low to medium.

## Hospitals profile

The 1st principal component (PC) represented the direction of the increase of the BS performance at the top of which the Bondeko-Ngaliema-Monkole group was standing, as opposed to the other hospitals surveyed, notably the Makala-Ndjili-King Baudouin group. Kintambo in extreme position. The Kinshasa General Hospital was in a position close to the middle.

The 2nd PC represented the direction of the increased contrast between labs and emergency rooms in terms of BS.

Following this axis, Monkole, Kintambo, Bondeko, King Baudouin and Ngaliema were opposed to other hospitals.

Considering the groupings provided by the dendrogram, it was noted that for a relative distance of 15 units, health facilities formed the following three aggregates:

☐ Group 1: Makala, King Baudouin, Ndjili and Kintambo

☐ Group 2: Ngaliema, Bondeko

☐ Group 3: General Hospital, Monkole, Kingasani, Kinois, CUK, Kalembe-lembe, St Joseph

Group 1 was away from the other two groups by 19 units of distance. Thus, a relative distance of 10 units corresponded to the following 6 aggregates:

☐ Group 1: Makala

☐ Group 2: King Baudouin, Ndjili, Kintambo

☐ Group 3: Ngaliema, Bondeko

☐ Group 4: Kinshasa General Hospital

☐ Group 5: Monkole, Kingasani, Kinois

☐ Group 6: CUK, Kalembe-lembe, St Joseph

Following this second grouping, it was noted that Makala stood out from the group it formed with King Baudouin and Kintambo.

Former group 3 was broken into three pieces (groups 4, 5 and 6).

The General Hospital of Kinshasa was isolated from the others.

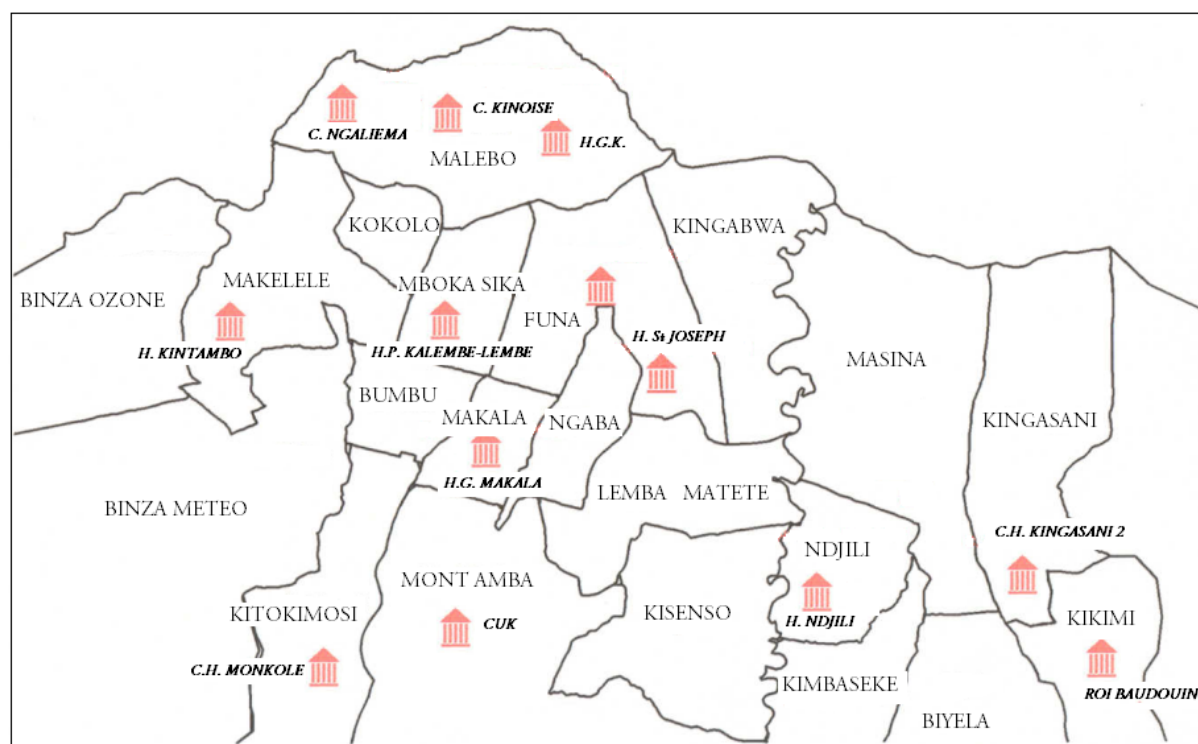
The group Monkole-Kingasani-Kinois (group 5) was away from the group CUK-Kalembe-lembe-St Joseph (group 6) by 11 units of distance.

Considered according to the performance achieved, the group Bondeko-Ngaliema (group 2 in the first ranking) had the best score with 15 parameters of excellent level, 4 of average level and none of mediocre level.

In second place came Group 3 with 10 excellent level parameters and 3 parameters at each of the lower levels.

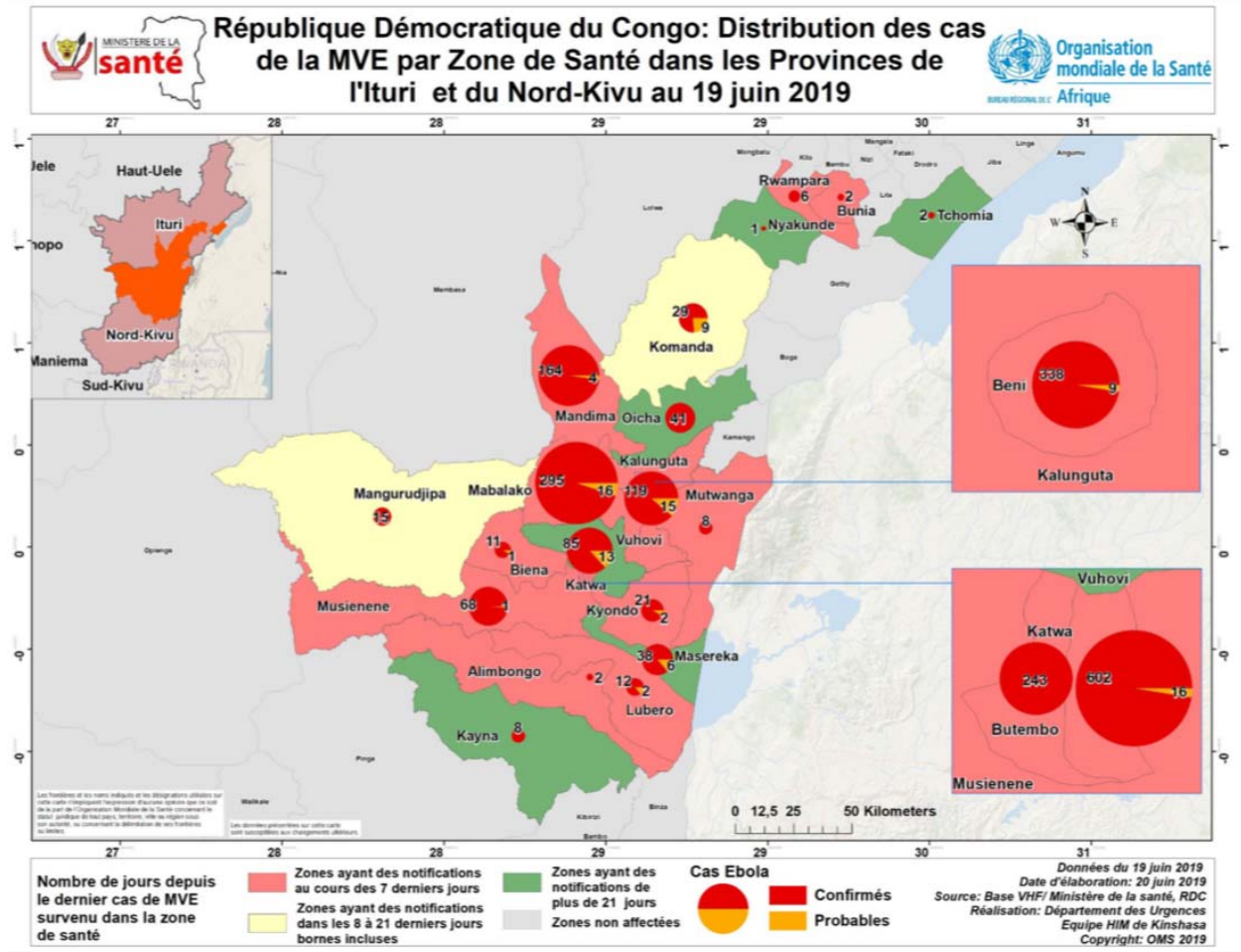
In third place was group 1, which had 5, 3, 4 and 7 parameters, respectively excellent, medium, low and mediocre.

The difference in the distribution of performance frequencies between groups was highly significant (chi-squared = 12.5, 2 degrees of freedom,  $p = 0.002$ ).



**Figure 2 Topography of the 13 health institutions of reference surveyed in the health zones of Kinshasa**





**Figure 3 Distribution of EVD Cases by Health Zone in the Provinces of Ituri and North Kivu of 19 June 2019**

Source: Ministry of Health of the Democratic Republic of the Congo

## Discussion

This survey showed that health facilities in Kinshasa have a very variable level of BS ranging from excellent to poor [13].

The Bondeko-Ngaliema-Monkole group undoubtedly occupied the first rank, while the Kintambo-Roi Baudouin-Ndjili-Makala group occupied the other end of the scale; the other hospitals were in an intermediate position.

It is important to note that the University Hospital of Kinshasa is placed 8th in this classification, between the Kingasani Hospital and the General Hospital. It is far from the time when this hospital was presented as "the top of medicine" in the DRC. The consequences of such a fall are incalculable when one thinks that this hospital more than another is eminently involved in the process of training doctors in our country.

Its deliquescence is only the logical reflection of the difficulties known to all that our country is currently going through. Of the seven hospitals that placed before the University hospital in this classification of BS, five are heavily subsidized by international NGOs, which largely explains their performance, another party finding its explanation in the quality of their management. They are: Bondeko, Monkole, Kalembe-Lembe, St Joseph and Kingasani 2.

## **In depth interviews with health workers**

To be contaminated, there is no need to transgress all the elements of this chain of security: the transgression of only one of them is enough to lead to a catastrophe. The wearing of gloves in the laboratory was highly rated with a rate of 83.8% for all health facilities. It is a manifestation of an awareness translated positively act against the risk of infection. This good practice has been adopted by the maintenance staff to the point of perverting it. Indeed, we even saw a cleaner, with gloved hands, move from one room to another opening doors after doors, without anyone having to call him.

The state of the toilets, often disastrous in many of the hospitals, is betrayed by the pestilential odors that emerge, and the presence of the bins not regularly emptied, besides the presence of the cockroaches, makes the stay in the hospital more that formidable.

## **Key informant interviews**

Doctors themselves were often surprised when asked if their blood pressure monitors and stethoscopes were disinfected after each patient consulted or if they washed their hands with soap or bleach before moving on to another patient.

## Data collection and analysis

The interviews, were conducted in French, in a private room in the health facility, office or in corridor where the participant felt most comfortable. Separate topic guides were used for the in-depth interviews with health workers and key informant interviews. The topic guides for the in-depth interviews covered health workers' perceptions and experiences of working during their normal working day, any constraints that they faced, challenges in the health systems, their coping mechanisms, and options to increase the resilience of workers and the health system in the future. The topic guides for the key informants included the following areas: perceptions and experiences of the risk contamination, of Ebola outbreak; its impact on health workers; constraints, challenges and opportunities in relation to leadership and governance, health workforce and service delivery during the normal working day; and options to increase the resilience of workers and the health system in the fear of an Ebola epidemic phase.

The interviews were manually recorded after gaining permission from the participants. The recordings of the interviews were transcribed verbatim and analysed using the framework approach which facilitates rigorous and transparent analysis. The coding framework was developed using themes emerging from the data, the topic guides and study objectives. The authors applied the coding framework to the transcripts, charts were developed for each theme, and these

charts were used to describe the themes. Ministry of Health DRC Press team update information was used to support the analysis.

In the great majority of laboratories, according to workers answers, disinfection of the bench would be done regularly, practically every day with alcohol. The disinfection of the instruments, the bench is not a simple question. It must be subject to a rigorous protocol specific to each case. The products used are chosen according to their effectiveness against microorganisms, their safety and their non-reactivity with the equipment. This aspect of the issue has not been addressed in this study.

The use of disposable sheets is also not a widespread practice in our hospitals, to the point where we have seen the patients' parents spontaneously use their loincloths to have their sick child examined.

Other considerations include the cockroaches that are legion in hospitals: These undesirable companions of man deserve a whole study. In fact, these intrepid insects impose their law in the buildings they occupy, passing sewers at any place where they are not expected, making a real problem face to all BS measures taken in hospitals [14].

The promiscuity that reigns in our emergency rooms adds an extra dimension to the drama that is playing out. The patients, not isolated from each other, are seated on

benches, for those who can, where most of the time they are on the floor, joined together, pell-mell, according to the chance of the arrivals. In some hospitals, an effort has been made to ensure that each patient has an individual plastic chair that is easy to clean and disinfect.

Those who did not have were simply examined by the leatherette or what was left of it. The risk of transmission of the pathogenic germs of a patient is, so to speak, amplified dramatically. We even surprised a head of Department to give instructions, during the visit of an authority of the place, so that the beds of the patients are covered with sheets clean and new leaves to remove them immediately after the visit.

Authentic! Some of our young doctors have never seen a clean sheet throughout their training. What do they know about BS if no one has ever talked to them about it, as this is not part of their curriculum? They will reproduce, where they will be, what they have been taught unfortunately carelessness. The responsibility of trainers and public authorities is total.

The lack of an incinerator is another observed aberration whose consequence on the environment is immeasurable. Who can understand that a hospital may lack an incinerator? And yet, it is unfortunately the case. This question is part of the problem of waste management at the health facility level. Liquid waste is

discharged through public sewers; solids are either buried or simply thrown into dumps in the immediate vicinity.

In fact, no regulation seems to compel health facilities to manage orthodox waste. As if that were not enough, it is also necessary to add to this tragedy the almost chronic water supply disruption that strikes severely all the institutions that do not have enough water reserves. On this point, the excellence rating goes to the Monkole Hospital Center, which has an artesian well that protects it from untimely and prolonged breaks in water supply through the network to which it is connected.

It seemed to us that compliance with BS's instructions was, so to speak, left to everyone's discretion. We did not feel the existence of a constraint forcing the different actors to pay more attention. For example, while almost all facilities have internal or external refectories, in some hospitals it was quite amazing to see caregivers or health workers take their meals on the job site itself.

What can be the life expectancy of health workers in such conditions? The absence of instructions posted does not contribute to the promotion of the BS. Having instructions posted is one thing, respecting them is another.

This is a deep survey, however, highlighted serious failure to meet BS standards in most referral hospitals. This necessitates the taking of urgent decisions at all levels of responsibility so that eventually a BS audit is instituted within each hospital. The

latter will be planning a more in-depth exploration of impacts of hospital activities on infection control practices [12-23].

There are serious deficiencies in contamination risk communication and infection in the Democratic Republic of the Congo. For example, the meaning of "Draconian precautions should be taken in the health facilities to protect all people called to evolve participate in the concept of biosecurity (BS)" is unknown maybe it is an expression appropriate for a scientific report. Overall, it is interest to publish such paper with the appreciation of the relevance of the biosecurity findings to the Ebola outbreak [24,25].

## Meeting of the Emergency Committee of the International Health Regulations

The meeting of the Emergency Committee for International Health Regulations, convened by the Director-General of WHO, was held on Friday, June 14, 2019. The Emergency Committee concluded that the Ebola outbreak in the provinces of North Kivu and Ituri did not constitute a public health emergency of international concern, although it constitutes a health emergency for the Democratic Republic of the Congo [26].

The Committee noted that epidemiological trends are evolving positively in the Butembo and Katwa epicentres. However, the response is beginning to face



challenges related to community acceptance and security in areas such as Mabalako where the epidemic has resumed recently. On the other hand, the response continues to be limited by the lack of adequate funding and limited human resources [27].

The Committee commended the communication and collaboration between the DRC and Uganda that rapidly contained Ebola cases that crossed the border. Uganda's rapid response proves the importance of preparing border countries for DRC [26].

After lengthy discussions, the Committee considered that the criteria for declaring a public health emergency of international concern were not fulfilled. The Committee considered that all public health measures and recommendations needed to end the epidemic were already being implemented by WHO and the affected countries [26].

## Conclusions

---

We address an important topic: contamination in the context of an Ebola outbreak. We offer a survey of infection control practices and suggest more in-depth exploration of the impacts of hospital activities on infection control. There are serious deficiencies in contamination risk communication and infection in the Democratic Republic of the Congo. Overall, there is interest in publishing a such

paper with the appreciation of the relevance of the biosecurity findings to the Ebola outbreak. Our investigation did not address or deepen all aspects of BS. We did not investigate all hospital sectors (delivery rooms, internal medicine, pediatrics, surgery, etc.).

## Perspective

---

### The Social responsibility in the control of an infection risk

We hope to conduct a KAP (Knowledge, Attitude and Practices) survey of health workers, including students, on biosecurity issues, particularly communication on risks contamination in meat consumption of animals found dead in forests, and issues related to the transmission of Ebola Virus disease and food insecurity.

### Communication on risks contamination in meat consumption of dead animals

The overall aim for this perspective will to develop the foundation of an education campaign on prevention of risks and the methodology for a comprehensive study of the communication risks and the evaluation of community behaviour change in the Democratic Republic of the Congo about eating meat from animals found dead in the forest because the Democratic Republic of the Congo has many forests. We will analyse that rising incidence and large-scale outbreaks are largely due to foods insecurity, inadequate living conditions, naïve populations, meat trade and

population mobility, climate change making the hunters, the principal vectors of contaminated meat of dead animals.

Thinking on meat risk contamination was evidenced by the past Ebola Virus Disease outbreaks. We will highlight the first goal of sustainable development: no poverty because based on poverty, the interdiction of eating meats of dead animals (in forest which may be identified responsible for transmitting Ebola Virus Disease) cannot work as these circulating contaminated meats are difficult to control without means and efficiently transmit diseases.

### Acknowledgements

We thank Drs: Zinszer Kate, Mvumbi Lelo Georges, Mafuta Eric, Ahuka-Mundeke Steve, Justus Nsio, Kalala Lunganza Richard, Odio Wobin Taddhée, Bobanga Lengu Thierry, Situakibanza Nani-Tuma Hippolyte, Lutumba Pascal, Kayembe Ntumba JM, Mulumba Madishala Paul, Kisasa Kafutshi Robert, Sylvie-Mireille Bambi, Onyamboko Akatshi Marie, Lebware Massamba Bienvenu, Kamangu Ntambwe Erick, Wumba Roger, Patrick Mitashi, Tonduang Daniel for supporting this study aiming to save people life and understanding our meaning plan of getting into academia and our leadership during our research process using data routinely collected in health centers and epidemiological surveys.

## Funding

This work was not supported by the Tropical Medicine Department of the University of Kinshasa. We received no funds. No funder played a role in the design of the study and in collection, analysis, and interpretation of data and in writing the manuscript.

## Availability of data and materials

The dataset is available in the manuscript in tables and figures. Add information on the ongoing Ebola outbreak is available from the update message of Press Team of the Ministry of Health Democratic Republic of the Congo on reasonable request.

## Abbreviations

EVD Ebola Virus Disease

CTE Centre Traitement Ebola

HW Health worker

IDI In-depth interview

PC Principal Component

KI Key informant

KII Key informant interview

BS Biosecurity

## Authors' contributions

GTK contributed to the design of the study, coordinated the data collection, supported the analysis and interpretation of the data and drafted the manuscript. PMM contributed to the design of the study, collected and analysed the data, reviewed drafts of the manuscript. KTK contributed to the design of the study, the analysis and interpretation of the data, and reviewed update drafts of the manuscript. All authors read and approved the final manuscript.

## Notes

---

### Consent for publication

Not applicable.

### Competing interests

The authors declare that they have no competing interests.

## Contributor Information

---

Guyguy Kabundi Tshima, Email: [guyguy.kabundi.tshima@umontreal.ca](mailto:guyguy.kabundi.tshima@umontreal.ca)  
(institutional); [guyguytshimakabundi@gmail.com](mailto:guyguytshimakabundi@gmail.com) (private)

Kaleb Tshimungu Kalala, Email: [kalalakaleb@googlemail.com](mailto:kalalakaleb@googlemail.com)

Paul Mulumba Madishala, [former supervisor \(deceased\)](#)

From the former supervisor's last advice to transmit his science to another generation of young scientists, the first author living in Canada transmits the training to the second author living in the Democratic Republic of the Congo. This is the transmission of science from one generation to another with the old data analysed with the former supervisor that are relevant today after field verification.

## References

1. Raven J, Wurie H, Witter S. Health workers' experiences of coping with the Ebola epidemic in Sierra Leone's health system: a qualitative study. *BMC Health Serv Res*. 2018;18(1):251. 2018. doi:10.1186/s12913-018-3072-3
2. WHO. Ebola virus disease—the Democratic Republic of the Congo. <http://www.who.int/csr/don/13-may-2017-ebola-drc/en/> (accessed June 20, 2019); The Ebola outbreak Epidemiology Team. Outbreak of the Ebola virus in the Democratic Republic of the Congo, April-May 2018: an epidemiological study. *Lancet*. June 29, 2018. [http://dx.doi.org/10.1016/S0140-6736\(18\)31387-4](http://dx.doi.org/10.1016/S0140-6736(18)31387-4)
3. WHO. Health worker Ebola infections in Guinea, Liberia and Sierra Leone. Preliminary report. May, 2015.
4. Khan AS, Tshioko FK, Heymann DL, et al. The reemergence of Ebola hemorrhagic fever, *Democratic Republic of the Congo, 1995*. *J Infect Dis* 1999; **179**: S76–86.
5. De Roo A, Ado B, Rose B, Guimard Y, Fonck K. Survey among survivors of the 1995 Ebola epidemic in Kikwit, Democratic Republic of Congo: their

- feelings and experiences. *Trop Med Int Health*. 1998;3:883–885. doi: 10.1046/j.1365-3156.1998.00322.x.
6. Kruk ME, Myers M, Varpilah ST, Dahn BT. What is a resilient health system? Lessons from Ebola. *Lancet*. 2015;385:1910–1912. doi: 10.1016/S0140-6736(15)60755-3.
7. Kieny M, Evans DB, Kadandale S. Health-system resilience: reflections on the Ebola crisis in western Africa. *Bull World Health Organ*. 2014;92:149278.
8. World Health Organization. Health worker Ebola infections in Guinea, Liberia and Sierra Leone - a preliminary report. Geneva: WHO; 2015.
9. Kucharski AJ, Camacho A, Flasche S, Glover RE, Edmunds WJ, Funk S. Measuring the impact of Ebola control measures in Sierra Leone. *Proc Natl Acad Sci*. 2015;112:201508814. doi: 10.1073/pnas.1508814112.
10. Koh Y, Hegney DG, Drury V. Comprehensive systematic review of healthcare workers' perceptions of risk and use of coping strategies towards emerging respiratory infectious diseases. *Int J Evid Based Healthc*. 2011;9:403–419. doi: 10.1111/j.1744-1609.2011.00242.x.
11. Hewlett BL, Hewlett BS. Providing care and facing death: nursing during Ebola outbreaks in Central Africa. *J Transcult Nurs*. 2005;16:289–297. doi: 10.1177/1043659605278935.
12. Kinsman J. “A time of fear”: local, national, and international responses to a large Ebola outbreak in Uganda. *Glob Health*. 2012;527:1–12.
13. McMahon SA, Ho LS, Brown H, Miller L, Ansumana R, Kennedy CE. Healthcare providers on the frontlines: a qualitative investigation of the social and emotional impact of delivering health services during Sierra Leone's Ebola epidemic. *Health Policy Plan*. 2016;31:1–8.

14. Wurie HR, Samai M, Witter S. Retention of health workers in rural Sierra Leone : findings from life histories. *Hum Resour Health*. 2016;14:1–15.
15. Snape D, Spencer L. The foundations of qualitative research. In: Ritchie J, Lewis J, editors. *Qualitative research practice. A guide for social science students and researchers*. Thousand Oaks: Sage Publications; 2003. pp. 1–23.
16. Legard R, Keegan J, Ward K. In-depth interviews. In: Ritchie J, Lewis J, editors. *Qualitative research practice. A guide for social science students and researchers*. Thousand Oaks: Sage Publications; 2003. pp. 138–169.
17. Ritchie J, Spencer L, O'Connor W. Carrying out qualitative analysis. In: Ritchie J, Lewis J, editors. *Qualitative research practice. A guide for social science students and researchers*. Thousand Oaks: Sage Publications; 2003. pp. 219–262.
18. Witter S, Wurie H, Chandiwana P, Namakula J, So S, Alonso-Garbayo A, et al. How do health workers experience and cope with shocks? Learning from four fragile and conflict-affected states on resilience in the health workforce. *Health Policy Plan*. 2017;32(suppl 3):iii3.
19. Cancedda C, Farmer PE, Kerry V, Nuthulaganti T, Scott KW, Goosby E, et al. Maximizing the impact of training initiatives for health professionals in low-income countries: frameworks, challenges, and best practices. *PLoS Med*. 2015;12:e1001840. doi: 10.1371/journal.pmed.1001840.
20. Krech R, Kieny M. The 2014 Ebola outbreak: ethical use of unregistered interventions. *Bull World Health Organ*. 2014;92:622. doi: 10.2471/BLT.14.145789.
21. Cancedda C, Davis SM, Dierberg KL, Lascher J, Kelly JD, Barrie MB, et al. Strengthening health systems while responding to a health crisis : lessons learned by a nongovernmental organization during the Ebola virus disease



- epidemic in Sierra Leone. *J Infectious Dis.* 2016;214(Suppl 3):153–163. doi: 10.1093/infdis/jiw345.
- 22.The Statistics Portal. Ebola cases and deaths among health care workers due to the outbreaks in West African countries as of November 4, 2015. <https://www.statista.com/statistics/325347/west-africa-ebola-cases-and-deaths-among-health-care-workers/>. Accessed 14 June 2019.
- 23.Van Bortel T, Basnayake A, Wurie F, Jambai M, Koromo A, Muana A, et al. Psychosocial effects of an Ebola outbreak at individual, community and international levels. *Bull World Health Organ.* 2016;94(3):210–214. doi: 10.2471/BLT.15.158543.
- 24.WHO Ebola Response Team. West African Ebola epidemic after one year—slowing but not yet under control. *N Engl J Med* 2015; **372**: 584–87.
- 25.Shears P, O’Dempsey T. Ebola virus disease in Africa: epidemiology and nosocomial transmission. *J HospInf* 2015; **90**: 1–9.
- 26.Team Press. Ministère de la Santé Publique. Democratic Republic of the Congo. Every day update on the ongoing of Ebola virus disease and Nosocomial transmission of Ebola virus disease on health workers in: North-Kivu and Ituri, Democratic Republic of the Congo, 2019 (mailing messages).
- 27.Kentikelenis A, King L, McKee M, Stuckler D. The International Monetary Fund and the Ebola outbreak. *Lancet Glob Health.* 2015;3:e69–e70. doi: 10.1016/S2214-109X(14)70377-8.