

Polygenic Health Index, General Health, and Disease Risk

Erik Widen^{1,2,†}, Louis Lello^{1,2,‡}, Timothy G. Raben¹,
Laurent C. A. M. Tellier^{1,2}, Stephen D. H. Hsu^{1,2}

¹ Department of Physics and Astronomy, Michigan State University, 567 Wilson Rd,
East Lansing, MI 48824, USA

² Genomic Prediction, Inc., 671 US Highway One, North Brunswick, NJ 08902, USA

[†]wideneri@msu.edu, [‡]lellolou@msu.edu

Abstract

We construct a polygenic health index as a weighted sum of polygenic risk scores for 20 major disease conditions, including, e.g., coronary artery disease, type 1 and 2 diabetes, schizophrenia, etc. Individual weights are determined by population-level estimates of impact on life expectancy. We validate this index in odds ratios and selection experiments using unrelated individuals and siblings (pairs and trios) from the UK Biobank. Individuals with higher index scores have decreased disease risk across almost all 20 diseases (no significant risk increases), and longer calculated life expectancy. When estimated Disability Adjusted Life Years (DALYs) are used as the performance metric, the gain from selection among 10 individuals (highest index score vs average) is found to be roughly 4 DALYs. We find no statistical evidence for antagonistic trade-offs in risk reduction across these diseases. Correlations between genetic disease risks are found to be mostly positive and generally mild. These results have important implications for public health and also for fundamental issues such as pleiotropy and genetic architecture of human disease conditions.

1 Introduction

Interest in polygenic risk scores (PRS) and the ability to estimate disease risks from genotypes has increased steadily over the past decade. A polygenic risk score maps an individual genotype to a score that reflects genetic risk for a particular disease; most PRS depend on hundreds or thousands of individual loci in the genome. As biobank data sets have grown larger, so have the performances and applicability of PRS. There are now a multitude of predictors that can assign estimated disease risks with an accuracy that has reached clinical utility. Disease conditions as diverse as coronary artery disease, breast cancer, and schizophrenia can be predicted with a useful accuracy from genetic information alone [1–21]. Typically, PRS are trained on and applied to a single disease but with many such risk predictions available it is natural to ask whether they could be combined into a general health index — a single number to describe the overall health of an individual. This question has already been explored in [22], where the authors created a composite PRS using a cox-hazard model, utilizing diseased participants of the UK Biobank (UKB). This composite PRS was found to predict longevity.

36 The impact on longevity and individual disease burdens from individual variants has also
37 been studied, using the Finish databank FinnGen [23].

38 In this paper, we construct a general health index by combining PRS for 20 diseases (**Table**
39 **1**), choosing the individual disease weights in an attempt to minimize the number of life years
40 lost due to illness. We evaluate whether such a single number is a useful reflection of an
41 individual’s various disease risks and their combined effect on estimated life years. If true,
42 it could be a valuable tool for clinicians and patients to assess combined risks and genetic
43 health predisposition. For a wide range of reasons, interpreting clinical risk based on genetic
44 data can be difficult for both patients [24–29] and clinicians [30–32]. Combining PRS into a
45 single metric can greatly simplify the process of evaluating genetic risk reports.

46 A priori, it is not given that such a health index would be useful. A common preliminary
47 objection is that an index or single PRS, while reducing the disease for one disease, could
48 inadvertently increase the risk for another [33, 34]. However, it has long been known that
49 many diseases in reality tend to come together [35–46]. This could, at least for some broad
50 categories of diseases, allow for useful indices. The specific concern raised for polygenic health
51 indices has been the possibility of antagonistic pleiotropy, i.e., that a single gene may affect
52 more than one disease risk simultaneously and in such a way that it decreases one disease
53 risk while increasing another. If such pleiotropy were very common, there would not be much
54 point of a genetically based health index.

55 In this paper, we examine both the underlying phenotypic comorbidities and genetic
56 pleiotropy. The 20 studied diseases frequently occur together, sometimes with strong positive
57 phenotypic correlation, while the genetic pleiotropy is usually small and slightly *positive*,
58 or negligible. More importantly, we show in practice, using real genetic and health data, that
59 the proposed health index can identify individuals at high or low risk for almost all diseases
60 simultaneously. We observed individual disease risk reductions even beyond 40% (CAD, heart
61 attack, diabetes type II) when selecting the highest index among five individuals, as compared
62 to the general population. We further see no statistically significant evidence for inadvertent
63 risk increments among any of the 20 diseases.

64 These conclusions are drawn from several experiments. We apply the constructed index to
65 about 40,000 late-life individuals of European ancestry for whom both genotypes and medical
66 history are known, using the UK biobank (UKB). Odds (prevalence) plots are shown for the
67 most common diseases but the majority of the results are in form of selection experiments.
68 The test data samples are grouped, using different group sizes in different experiments, and
69 the sample with the highest health index is selected from each group. The selected individuals
70 are then compared to the total test set to see the health differences in the medical history data,
71 computing metrics like Relative Risk Reduction (RRR) and estimated gained life years. These
72 experiments are repeated and confirmed with a very strong test of the genetic signal: selection
73 among pairs (21,539) and trios (969) of genetic siblings. Siblings have both less genetic
74 variation and typically share similar family environments, thus constituting an excellent test
75 set. Finally, the underlying phenotypic and PRS dependencies are analyzed.

76 It is well-established that PRS are more accurate within a population ancestrally homo-
77 geneous and similar to the training population — however, generally a positive effect in one
78 ancestry will persist in more distant ancestries. Research on this topic is ongoing and of high
79 interest [7, 47–50]. The primary motivation for this paper is to investigate whether a com-
80 posite genetic health index is reflective of general health in principle and we therefore focused

Table 1: Disease abbreviations and predictor AUCs. AUCs are listed with the standard deviations in parentheses, as computed by 30 bootstrap runs (see Supplementary Information).

Abbr.	Disease	AUC	Abbr.	Disease	AUC	Abbr.	Disease	AUC
AD	Alzheimer’s disease	.686 _(.004)	HA	heart attack	.580 _(.008)	Obes	obesity	.669 _(.002)
AFib	atrial fibrillation	.623 _(.004)	HCL	hypercholesterolemia	.616 _(.003)	PC	prostate cancer	.64 _(.02)
ASA	asthma	.626 _(.004)	HTN	hypertension	.635 _(.003)	SCZ	schizophrenia	.67 _(.03)
BC	breast cancer	.594 _(.008)	IBD	inflammatory bowel disease	.647 _(.003)	T1D	type I diabetes	.63 _(.02)
BCC	basal cell carcinoma	.62 _(.01)	IS	ischemic stroke	.541 _(.002)	T2D	type II diabetes	.616 _(.004)
CAD	coronary artery disease	.616 _(.005)	MDD	major depressive disorder	.534 _(.001)	TC	testicular cancer	.61 _(.04)
Gout	gout	.65 _(.01)	MM	malignant melanoma	.57 _(.02)			

81 on a single ancestry with maximum amount of data.

82 All analyses, except where otherwise indicated, are performed on self-reported white sam-
83 ples from the full UKB release (2021-04); these are almost exclusively of European ancestry.
84 We set aside 39,913 samples as a pure test set, withheld from all training and hyperparame-
85 ter tuning¹. The PRS are constructed through a previously published LASSO-algorithm [7]
86 trained on $\sim 200\text{k}-400\text{k}$ samples from the training portion of the same UKB data, except for
87 the predictors for AD, IBD, IS, MDD, and SCZ. More details on the predictors can be found
88 in the Supplementary Information.

89 2 Results

90 2.1 Overview of Methods

91 **Polygenic health index** There are many ways to construct a polygenic health index from
92 multiple PRS. Here we investigate the performance of a single linear combination of risk
93 estimates, attempting to reduce lost life years. Let l_d be the estimated reduction in life
94 expectancy for an individual having a disease d as compared to the general population, and
95 let ρ_d be the lifetime risk in the general population of getting the disease. For the predicted
96 risks r_d , we define the health index to be

$$I = \sum_{d \in \mathcal{D}} l_d (\rho_d - r_d), \quad (1)$$

97 for a selected set of diseases \mathcal{D} (this paper consistently uses the 20 diseases in **Table 1**). As
98 such, a higher I should correspond to a healthier individual. As a proxy for ground truth
99 in our test data set, we also define a case/control-based version, I^c , which instead of the
100 risk r_d uses the recorded case/control status c .² We use this quantity as measure of the real
101 world outcome value of the index. We note that the majority of our UKB test set is still
102 alive (age $\mu = 70, \sigma = 7$ years) making I^c an imperfect measure of lifetime outcomes and

¹See the Supplementary Information for details on the test set.

²Since there is a very large overlap between the case definitions we used for CAD and HA, we choose to exclude HA from the case/control based index I^c . Otherwise HA would practically be double-counted in the performance evaluation.

103 skewed towards diseases with early onset. Still, since the mean age is not more than about
104 one standard deviation (SD) from the average lifespan and the incomplete data masks cases
105 as controls, rather than vice versa, we expect that a health index validated on an I^c using
106 complete data (with perfect lifetime medical records and age of death) would have a better
107 performance than what is measured in the UKB data.³

108 The index parameters l_d and ρ_d were taken from literature studies, using the average
109 values if more than one source was used (see Supplementary Information).

110 **Gaussian risk model** The health index definition (1) requires an estimated absolute (life-
111 time) risk r for each disease, modeled from the PRS as input. Depending on disease and
112 predictor specifics, there are different possible choices for this modeling. A fairly general
113 model, which works very well for sufficiently polygenic PRS (i.e., such that the Central Limit
114 Theorem can be applied), models the PRS as drawn from a sum of two normal distributions
115 with case/control status dependent means (μ_1/μ_0) and joint variance. The PRS probability
116 distribution can then be written as

$$\phi(\text{PRS}) = (1 - \pi)\mathcal{N}(\mu_0, \sigma) + \pi\mathcal{N}(\mu_1, \sigma), \quad (2)$$

117 where π is the population prevalence and \mathcal{N} is the normal distribution. This leads to the
118 Gaussian risk model

$$r(\text{PRS}) = \frac{1}{1 + \frac{1-\pi}{\pi} \exp \left[\frac{1}{2\sigma^2} ((\text{PRS} - \mu_1)^2 - (\text{PRS} - \mu_0)^2) \right]}. \quad (3)$$

119 The case and control variances do not need to be equal in principle⁴ but in practice tend to
120 be close in value (see Supplementary Information). We use estimates of μ_0, μ_1 , and σ based
121 on the PRS in test set controls and cases.

122 **Selection experiment from groups of unrelated individuals** To evaluate the perfor-
123 mance of the health index, we created sets of groups and carried out selection experiments,
124 i.e., we grouped together random individuals in the test set into groups of a specific size
125 and then picked one individual from each group. In index selection experiments, we selected
126 the individual with the highest index value. In PRS selection experiments we selected the
127 individual with the lowest PRS (lowest risk) for a specific disease.

We created 40k random groups from the samples belonging to the intersection of all predictor test sets, such that no sample was used in any type of training nor hyperparameter tuning. Each sample was scored and assigned a raw and a sex-adjusted (see Supplementary Information) health index, as in equation (1). For each selection outcome, we calculated the relative risk reduction (RRR) for each individual disease and the index gain as measured in the case/control-based index I^c , as compared to a completely random selection (i.e., the general population statistics):

$$\text{RRR} = \frac{\pi_{\text{rand}} - \pi_{\text{sel}}}{\pi_{\text{rand}}}; \quad \Delta I^c = \frac{1}{N_{\text{group}}} \sum_{g \in \text{groups}} \left(I_{g_{\text{sel}}}^c - \langle I^c \rangle_g \right) \stackrel{*}{=} \langle I^c \rangle_{\text{sel}} - \langle I^c \rangle. \quad (4)$$

³The Supplementary Information contains more characterization of the test data.

⁴Unequal variances can lead to unrealistic behavior in the tails.

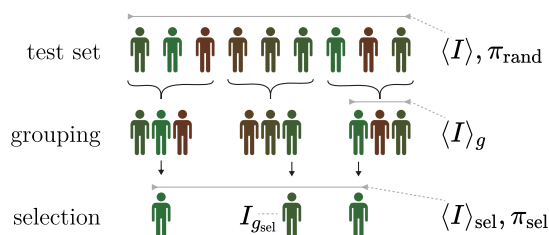


Figure 1: The selection experiments. The test set is scored with the health index I or a single PRS and is randomly divided into groups of equal size. The individual with the best score in each group is selected and the health status among the selected are then compared with the general test set. The symbols in equation (4) refer to indicated subsets.

128 Here g sums over all N_{group} groups, $I_{g_{\text{sel}}}^c$ is the health index for the selected individual in group
 129 g , and $\langle \cdot \rangle$ denotes the sample means, i.e., $\langle I^c \rangle_g$ is the average health index value in group g ,
 130 $\langle I^c \rangle_{\text{sel}}$ is the average among all selected individuals, and $\langle I^c \rangle$ is the average in the total test
 131 set. The index gain ΔI^c can be viewed either as the average index difference between the
 132 selected individual and its group average or as the difference between the average selected
 133 index and the general population average (* holds for constant group size). Note here that we
 134 are using the case/control status based index, I^c , as evaluation metric which does not use any
 135 genetic information but only individual lifetime⁵ disease status, together with the population
 136 based lifespan impact and lifetime risk estimates. The full selection experiment procedure is
 137 illustrated in **Figure 1**.

138 We repeated all selection experiments 25 times to get a bootstrap estimate of the errors,
 139 reusing the same samples but grouping them into different groups. Thus, these are under-
 140 estimates neglecting the additional variance that would come from also using other samples,
 141 while the group constellations are practically unique.

142 For the three sex specific diseases (breast, prostate and testicular cancer), we compared
 143 only the subsets with the relevant sex of the selected and random sets when calculating the
 144 RRR and index gain.

145 **Genetic sibling selection** The selection experiments on unrelated individuals provide good
 146 metrics for how the health index performs in the general population. A much stronger test is
 147 to repeat the same experiments using real world siblings, sharing half their genetic material.
 148 Accurate prediction within siblings is challenged both by this reduced genetic variance and
 149 by more similar environments; it is thus a rigorous test of genetic prediction performance.

150 We repeated the selection experiments for 21,539 pairs and 969 trios of genetic siblings.
 151 Since the sibling data cannot be re-grouped as in the unrelated selection experiments, we opted
 152 to not use bootstrap errors but instead calculate the theoretical 95% confidence interval for the
 153 prevalence among the selected siblings, based on the Wilson score interval. It was translated
 154 to the RRR metric through equation (4), keeping the population prevalence π_{rand} fixed. We
 155 did not estimate the errors for the index gain metric when selecting among genetic siblings.

156 2.2 Selection experiment using groups of unrelated individuals

157 We report the overall index gain (ΔI^c from eq. (4)) from the selection experiments on
 158 unrelated individuals in **Figure 2**. It documents a well-established and consistent gain that
 159 increases with group size, maintaining a positive increment even when selecting among more
 160 than 10 people. The health index distribution is non-Gaussian with standard deviation (SD)

⁵see Supplementary Information for details

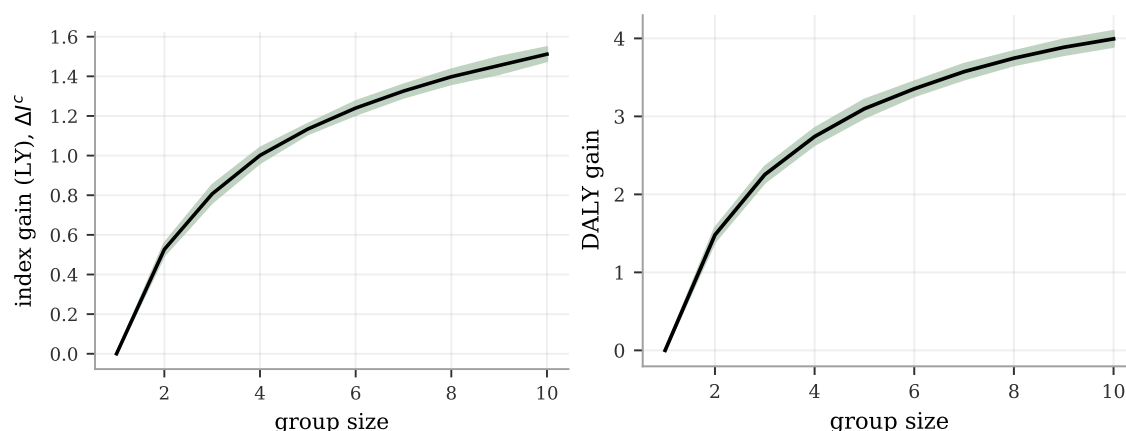


Figure 2: The estimated gain from index selection is a clearly positive function of group size, both using disease weights as defined by population estimates of lost life years or using disease weights based on disability-adjusted life years (DALY). **Left:** The index gain, as measured as the average health index difference between selected and random individuals (ΔI^c in eq. (4)), is growing monotonically with group size and with a continued clear positive derivative at group sizes of 10. Notably, there is a strongly significant gain for all group sizes, even at a group size of 2. The error band is a 95% C.I. as computed by 25 experiments with independent selection groupings. **Right:** While still selecting on the same index (1), we evaluated it on a case/control status metric using DALY-weights, taking quality of life into account. Again, there is a clear and steady gain, with the gain at a group size at 10 reaching about 4 years. The error band is a 95% C.I. as computed by 25 experiments with independent selection groupings.

161 of 1.56 estimated life years and with a skewness of -0.49 . The difference between the mean
 162 health index values for the top and bottom 5% of the index I was 5.10 predicted life years.
 163 The corresponding difference between these groups was 3.49 years when measured with the
 164 case/control based index I^c (a smaller difference is to be expected due to the incomplete
 165 case/control data). Despite different methods and disease sets, we note the connection to [22]
 166 which reported similar values in lost life years per SD and difference between top and bottom
 167 5% of composite PRS. In **Figure 3**, the selection experiment result at the group size of five
 168 is broken down into the RRR and the component-wise index gain for each disease, allowing
 169 a more fine-grained view of the performance. Strikingly, the RRR graph is overwhelmingly
 170 positive thus demonstrating compelling evidence that selected individuals with higher health
 171 index score have lower incidence for almost all diseases at the same time. 15 out of the 20
 172 disease have statistically significant positive RRR, reaching over 40% for the most reduced
 173 disease risks (CAD, HA, T2D), whereas none is significantly negative or even has a negative
 174 central value. It is important to note that although the weights l_d matter for how the index is
 175 constructed and thus for whom is selected, they have no direct impact on the RRR metric itself
 176 — only the actual disease status is measured. As such, the RRR plot is a true measurement
 177 of the reduced disease incidence. In contrast, the right plot in **Figure 3** of the index gain
 178 ΔI^c involves the weights both in selection and in evaluation. Using the weights based on
 179 estimated lost life years, we get a disease-by-disease breakdown of the index gain. Again,
 180 there is a statistically significant positive contribution from almost all diseases with obesity,
 181 type II diabetes, major depressive disorder and CAD as the strongest contributors.

182 The average component gains in **Figure 3** depend both on the quality of the individual

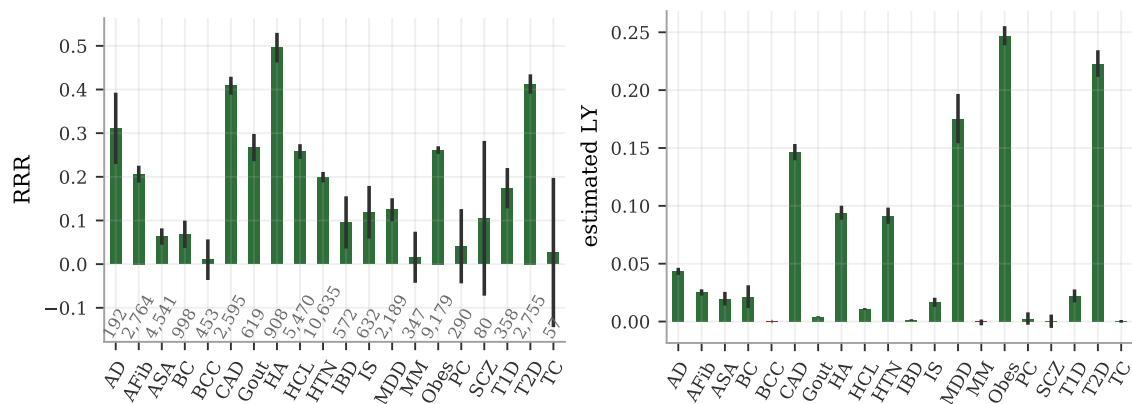


Figure 3: Selecting on health index among 5 randomly grouped individuals reduces simultaneously the risk of almost all the studied diseases. Left: The RRR among the selected individuals as compared to random selection is dominantly positive, ranging from a few risks reductions statistically consistent with zero up to more than 40%. No disease risk is demonstrably increased. The case numbers for each disease are printed just above the x-axis and the error bars are 95% C.I. estimates from 25 repeated experiments with different selection groupings. **Right:** The estimated index gain for each of the index components (diseases), i.e., the disease component breakdown of equation (4), also shows non-negative gains across the board with most component gains being statistically significant. The unit on the y-axis is estimated life years (LY), as is the unit of I^c . This index is primarily driven by CAD, heart attack, hypertension, major depressive disorder, obesity and type II diabetes, due to their combinations of strong impacts l_d and high population prevalence.

183 PRS, the weights l_d and the test set prevalences. For example, the AD predictor has a
 184 much stronger individual performance than MDD (AUC $\sim .69$ vs $\sim .53$) while MDD has
 185 stronger weights than AD in the index ($l_{\text{MDD}}/l_{\text{AD}} \approx 1.6$). The index achieves a RRR of
 186 about 31% for AD and 12% for MDD, with the individual PRS-performance having a larger
 187 impact on the RRR metric. Meanwhile, MDD has about 4 times the AD contribution to the
 188 index gain, largely due to it being about 10 times more prevalent in the test set. Naturally,
 189 common diseases contribute more to the average index difference than rare ones. Both AD
 190 and MDD have some strong comorbidities and milder PRS-correlations with other diseases;
 191 this is discussed further in section 2.4. See also the Supplementary Information for a deeper
 192 discussion of the test set prevalences and their influence on the quantitative results.

193 The RRR and index gain metrics offer complementary information of the potential bene-
 194 fits: the RRR captures how much the risk can be reduced simultaneously, while the index gain
 195 translates this into estimates of the corresponding life years gained on average. All selection
 196 experiments selected on the index in equation (1), using lost life years l_d as weights. A com-
 197 mon alternative for assigning relative importance to diseases is the unit Disability Adjusted
 198 Life Years (DALY). While still *selecting on our index* (1), we make contact to the existing
 199 DALY-literature by *evaluating the index gain* using a DALY-scale to the right in **Figure 2**.
 200 The weights in the evaluating index difference ΔI^c were computed as population level DALY-
 201 coefficients $l_d + q_d \Delta y_d$, where q_d is a disability factor between 0 and 1 and Δy is the number
 202 of years between average age of onset and average age of death. The individuals selected from
 203 groups of size 10 had an increase of 4 DALY as compared to randomly selected individuals.
 204 This magnitude scale comports with previous studies [23].

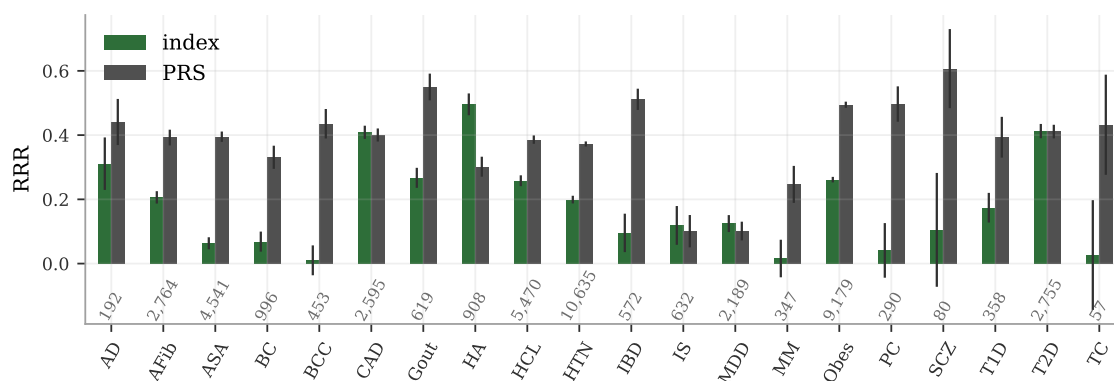


Figure 4: RRR comparison between selection on index and selecting on individual disease PRS. The individual disease RRR obtained by index selection contrasted with selection directly on the individual PRS, using a group size of 5. The case numbers in the test set for each disease are shown above the x-axis and the error bars are 95% C.I. as computed by 25 independent experiment runs.

205 The index tries to minimize the risk for several diseases simultaneously. In **Figure 4** we
 206 demonstrate how all the RRR from index selection compare to the RRR when selecting di-
 207 rectly on the individual disease PRS, i.e., how much the index retains of the maximal risk
 208 reduction you would achieve if you focused on reducing a single disease. The direct PRS-
 209 selection tend — as naively expected — to reduce the specific diseases risk more than the
 210 index, especially for those diseases with very small weights (BCC, IBD). Yet, there are several
 211 examples where the index actually matches or even surpasses the direct PRS performance,
 212 most notably HA (probably because the strong/large comorbidity with CAD, HTN and obe-
 213 sity).

214 The PRS-comparison in **Figure 4** is a cross-section of the results at a group size of 5. The
 215 patterns are however consistent across all tested sizes, as seen in **Figure 5**. The index reduces
 216 the risk of both T2D and CAD by about 50% at group size 10, consistently matching both
 217 the individual PRS-performances simultaneously. The consistent difference between PRS and
 218 index selection are also shown for Alzheimer’s disease and obesity.

219 For the most prevalent diseases (ASA, HCL, HTN and obesity), we also provide prevalence-
 220 per-index quantile plots (odds ratio plots if divided by the general prevalence) in **Figure 6**; the
 221 less prevalent diseases did not have enough cases for such high resolution. The top 4 percentiles
 222 have about half the risk of the bottom 4 percentiles to have either of hypercholesterolemia,
 223 hypertension, and obesity, while the risk reducing trend for asthma is less dramatic.

224 2.3 Genetic sibling pairs and trios

225 The primary results for the selection experiment on pairs of siblings is shown in **Figure 7**,
 226 broken down into RRR and component index gain for each disease. The same graphs also
 227 include as reference the results from the selection among unrelated samples at group size
 228 2. The sibling with the largest health index was selected from each of the 21,539 sibling
 229 pairs; no bootstrap was carried out. Instead the RRR error bars for the genetic siblings are
 230 theoretical 95% confidence intervals using the Wilson score interval for the prevalences among
 231 the selected siblings. They are generally larger than the corresponding error bars for the group

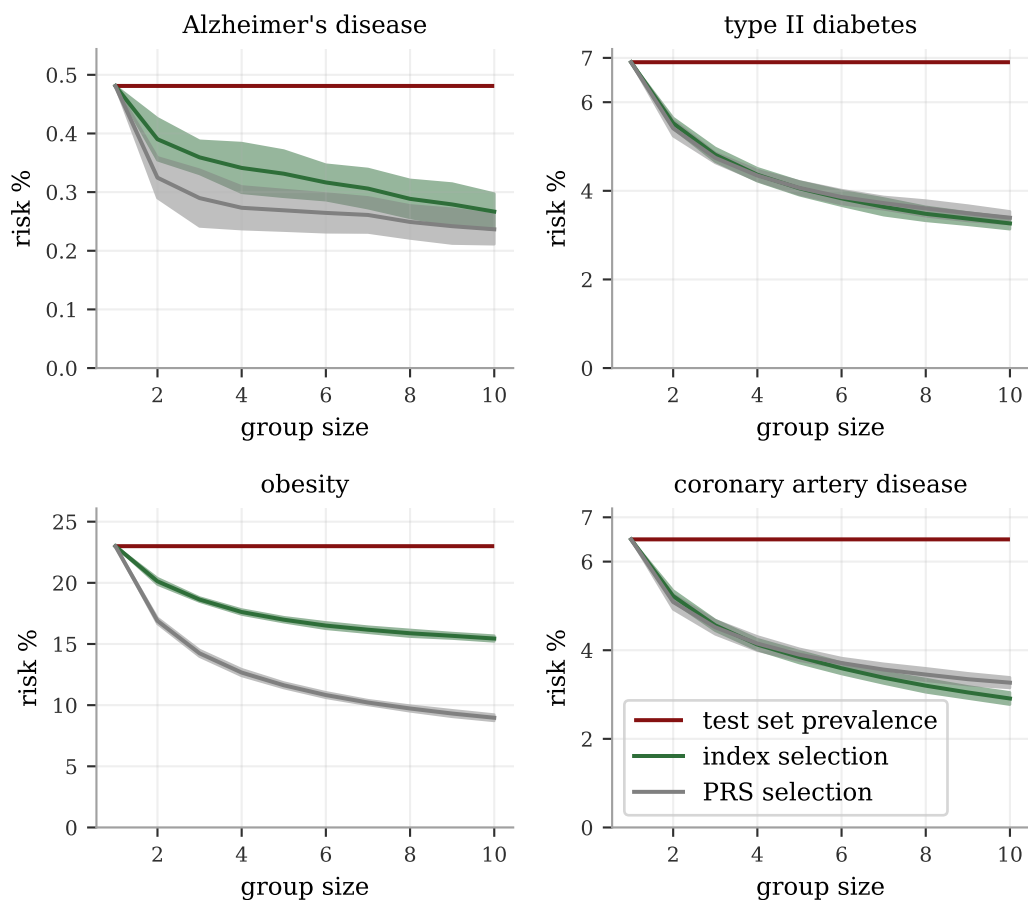


Figure 5: The disease risk reduction from index and PRS selection for different group sizes. The relative performance between index selection and PRS for individual diseases varies, as seen in **Figure 4**. Here shown as functions of the group size, we see the strongest performance step between having no selection (group size 1) and selecting between two and also the continued, but less dramatic, benefits with larger group sizes. Notably, for the chosen examples type II diabetes and CAD, the full health index consistently perform as well as selecting directly on the specific PRS, showing no reduced effects on these disease from taking all the other into account. The index performance for Alzheimer's disease and obesity, while not achieving the full risk reduction of their corresponding PRS, retain significant risk reductions for all group sizes. The error bars represent estimated 95% C.I. as computed by 25 selection experiments using different selection groupings.

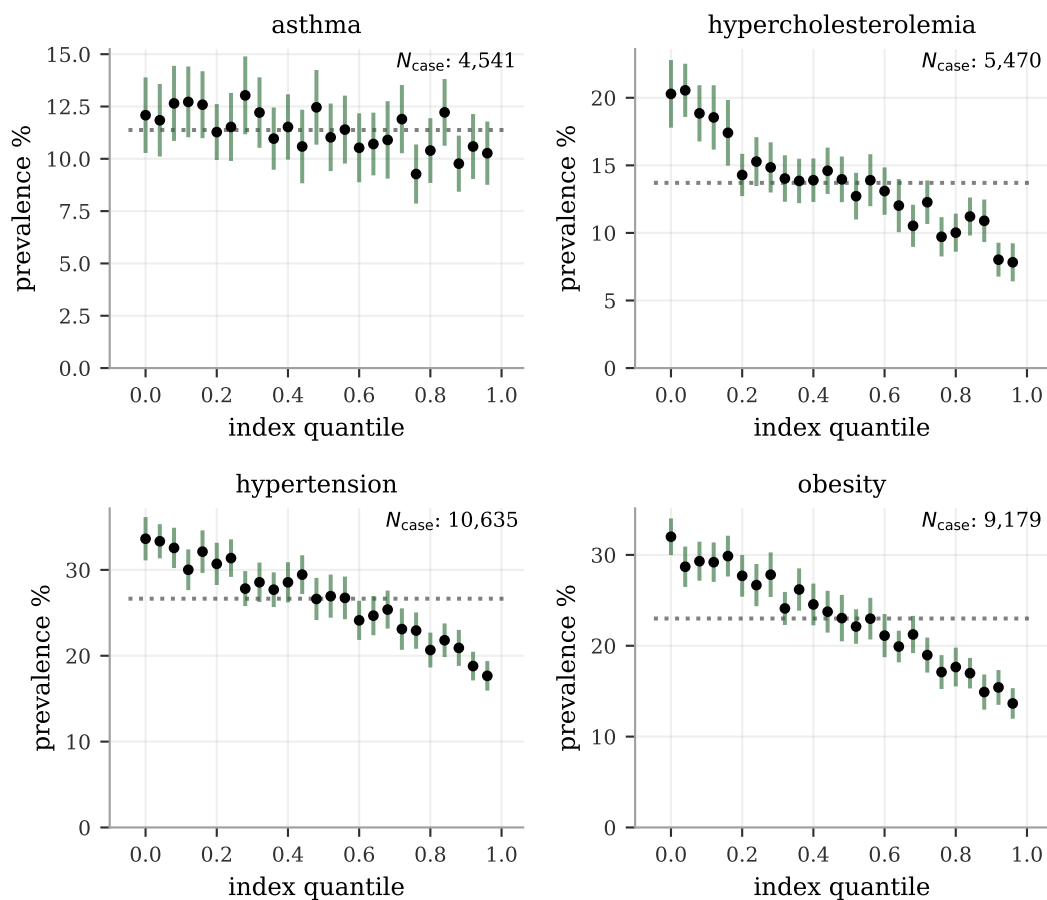


Figure 6: Prevalence in health index quantile bins for the most common diseases. We binned the test set according the health index into 25 equally distributed quantiles and plot the prevalence within each bin for the most prevalent diseases (allowing enough cases for the bin resolution to be meaningful). The general population prevalences are plotted as dotted reference lines (dividing with this number would give odds ratio plots) and the y-axis start at 0 to give a visual representation of the (odds) scales. For the intermediately risk reduced diseases (according to RRR **Figure 3**) hypercholesterolemia, hypertension and obesity, there is a clear and systematic risk relationship across the entire range of the health index. For asthma, there is only a weak, detectable trend for the center values consistent with its existing but smaller RRR. The error bars are 95% C.I. estimates obtained through 100-fold bootstrap calculations of the prevalence within each bin (no re-binning was done).

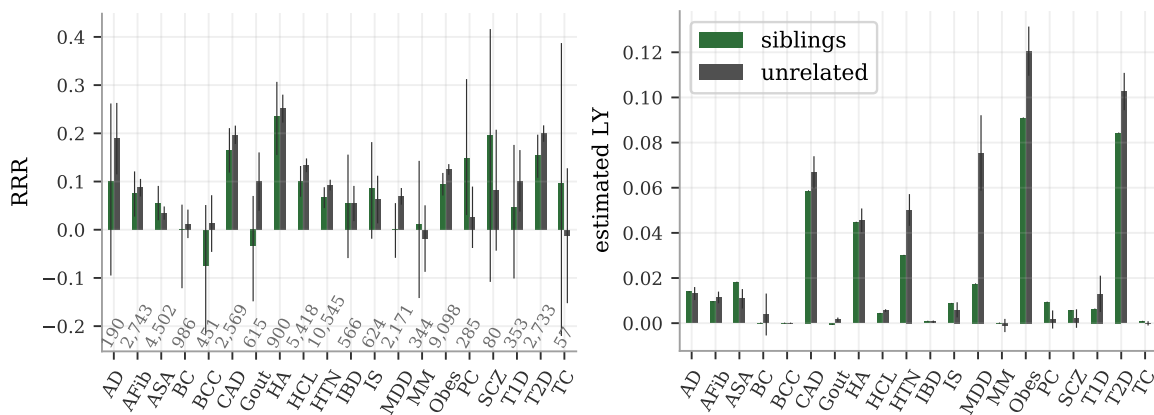


Figure 7: Index selection between 22,667 pairs of genetic siblings retain the overall benefits. In both figures, selection experiments among pairs of genetic siblings are compared to selection among pairs of unrelated individuals. The index performances are qualitatively very similar despite that siblings share half their genomes and have more similar environments. As expected, we do see a general performance attenuation among siblings, but also a few exceptions. **Left:** The RRR for each disease. The error bars for siblings are theoretical 95% C.I. using Wilson score interval for the prevalences among the selected siblings. The error bars for the selection among the unrelated pairs are again estimated 95% C.I. from 25 separate runs. The case numbers are shown above the x-axis. **Right:** The component-wise index gain for the selections among pairs of siblings and among pairs of unrelated individuals. The sibling results are presented without error bars since no theoretic uncertainty was calculated; statistical significance is therefore not established from this data. The error bars for the selection among unrelated individuals are 95% C.I. from 25 separate runs.

size 2 bootstrap experiment. The limited data, for the rarest diseases in particular, decrease the certainty and result in the large error bars. Yet, we conclude from **Figure 7** that even in the most challenging task of minimizing the disease risk among only two genetic siblings the index provides a simultaneous and verifiable reduction of many diseases, while others are left inconclusive in this data set. Among the 20 studied diseases, there is no example of verified increased disease risk. Similarly, the estimated index gain is non-negative for all disease components and sum up to a significant gain also among pairs of genetic siblings.⁶

The index selection experiment result on the 969 trios had to the most part large uncertainties due the smallness of the data set and low case counts. Only two disease RRR reached statistical significance, according to the theoretical RRR confidence intervals. Hypercholesterolemia and obesity were confirmed with positive RRR, while hypertension and type II diabetes bordered to positive significance. No disease was confirmed to have negative RRR. The full RRR and index gain plots for trios are to be found in the Supplementary Information.

2.4 Characterization of phenotypic and genetic dependencies

The simultaneous disease risk reduction demonstrated for the index selection is bounded by potential disease dependencies, i.e., if two or more diseases tend to occur together (comorbidity) or are mutually exclusive. A commonly raised concern for PRS, and even more so

⁶The mean values for BCC and Gout are negative but much smaller in magnitude than the uncertainty.

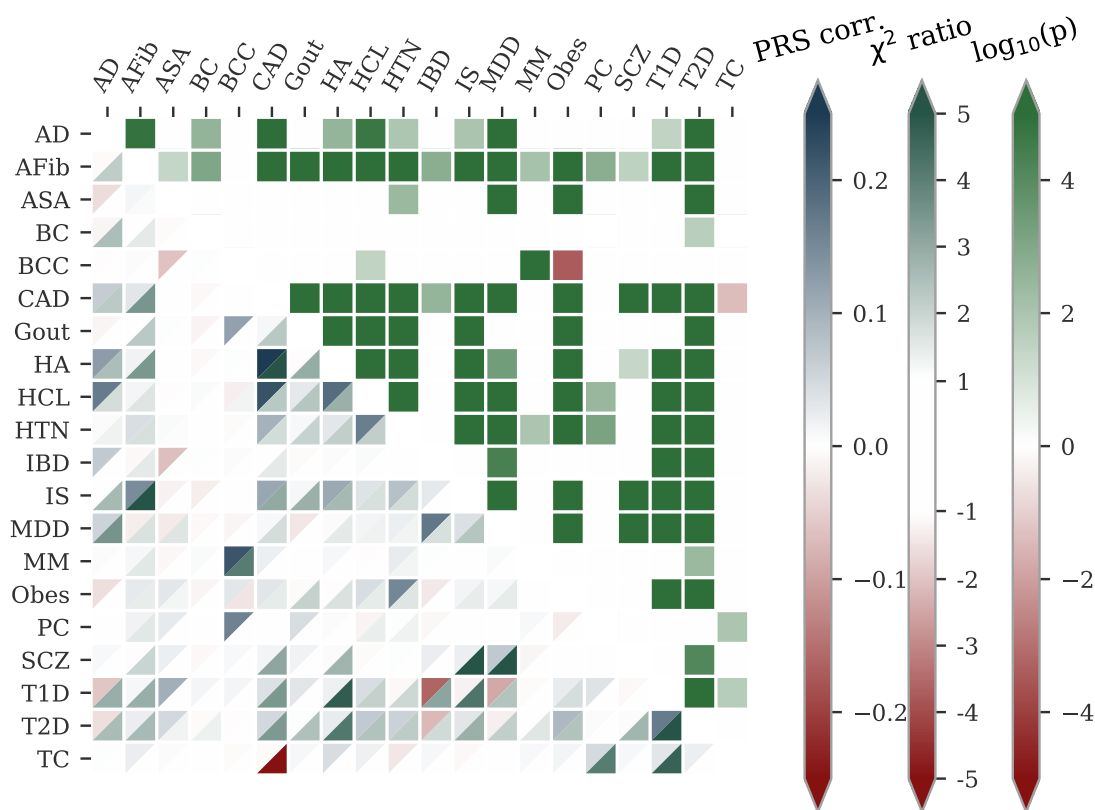


Figure 8: Phenotype dependencies and PRS correlation comparisons. This figure visualizes three different quantities for each pair of disease: the PRS correlation, a comorbidity metric, and a χ^2 independence test p-value. Each tile **below the diagonal** is split into two halves where $\blacktriangledown = \text{PRS corr.}$ is the correlation between the two diseases' PRS, i.e., the genetic correlations as inferred by the predictors. The other half, $\blacktriangleleft = \chi^2 \text{ ratio}$, is a metric of the actual disease comorbidity: how many more times is disease coincidence observed compared to what would be expected if the diseases were completely independent, where a positive (negative) sign indicates higher (lower) comorbid frequency (this is based on the ratio between the observed and expected case-case cell in a χ^2 -test contingency table, hence referred to as the χ^2 ratio). The squares, $\blacksquare = \log(p)$, **above the diagonal** indicate the statistical significance of the dependence: the (signed) logarithm of the p-value in a χ^2 -test. The sign is positive (negative) for more (less) frequent coincidence. Both the p-value and the χ^2 ratios are masked for disease pairs without statistically significant ($p = .05$) dependence. For example, the deep green square above the diagonal at (CAD, HCL) indicates that the CAD-hypercholesterolemia comorbidity is highly significant (we can reject phenotype independence at p-value $< 10^{-4}$). Below the diagonal, we see for the same disease pair that the lower triangle is gently blue-green, i.e., case coincidence for CAD-hypercholesterolemia is about 2.3 times more common than random chance. Lastly, the upper triangle is dark blue meaning that the PRS correlation between CAD and hypercholesterolemia is among the very strongest, at about 0.22. Overall, we see that most disease pairs have statistically significant comorbidity with 1-2 times more coincidence than chance, and that their PRS are not, or slightly positively, correlated. This phenotypic and genetic background not only allows but facilitates the construction of a useful health index. The most prominent outliers are discussed in the main text.

250 for a composite health index, is the risk of antagonistic pleiotropy, i.e., that the same gene
251 simultaneously increases the risk for one disease while decreasing the risk for another. Such a
252 situation (or any cause of negatively correlated disease incidence) would impede simultaneous
253 risk reduction. We examined this question for the 20 chosen diseases within our test set both
254 on a genetic and phenotypic level. The result is presented in **Figure 8** through three quantities
255 for each pair of diseases: the correlation between the PRS, the ratio between observed and
256 expected comorbidity (called the χ^2 ratio), and the p-value of a χ^2 independence test (see fig-
257 ure caption for the details of the quantity visualization). The high information density in the
258 plot requires some explanation but allows for quick comparison between all three quantities,
259 both for individual pairs and for the disease set as a whole.

260 Contrary to the concern about strong impacts of antagonistic pleiotropy, we find that
261 the disease incidences typically are pairwise dependent and overwhelmingly occur together.
262 The predominantly solid green squares above the diagonal confirm that most of the disease
263 pairs have comorbidities of statistical significance, in line with longstanding results such as
264 coincidence of CAD and hypercholesterolemia. This makes a health index not only possible
265 but an almost natural concept. The χ^2 ratio, \blacktriangleleft -triangles below the diagonal, demonstrates
266 the magnitude of the comorbidities, for example the very strong coincidences of (HA, CAD),
267 (SCZ, MDD) and (T2D, T1D), and the moderate (HTN, AFib), (HTN, CAD) and (HCL,
268 HA). The PRS correlations (\blacktriangleright -triangles) are relatively small in magnitude and in general
269 agreement with the phenotypic coincidences. As such, most PRS are relatively uncorrelated.
270 Some notable exceptions are (HCL, CAD) and (MM, BCC). Just as the large amount of
271 comorbidity facilitates the simultaneous positive RRRs, there are also some explanations
272 for the lesser reductions here. The mutually exclusive tendency of (TC, CAD) complicates
273 simultaneous risk reduction on a phenotypic level⁷. This is in accordance with **Figure 4**, where
274 the RRR of TC is much stronger in PRS selection than index selection. The only examples
275 of PRS level conflicts are the moderate anti-correlations between (T1D, IBD), (T1D, MDD)
276 and (T2D, IBD), and the milder (BCC, ASA) and (IBD, ASA) anti-correlations, despite that
277 these disease pairs are independent or have mild comorbidities. The combined index weights
278 for ASA, T1D and T2D dwarf the impact of IBD on the index while BCC has no weight and is
279 almost independent from everything else but MM (which is also independent from everything
280 else). This contributes to the stronger RRR of PRS selection for ASA, BCC, IBD, and MM
281 as compared to index selection.

282 3 Discussion

283 It is commonly believed that some individuals, in part due to genetic causes, enjoy robust
284 good health, while others are sickly and prone to disease. Longevity is said to run in families.
285 With modern genomic methods we can test the scientific veracity of these ideas.

286 By combining Polygenic Risk Scores (PRS) across the most impactful disease conditions,
287 we can build a composite predictor of overall health. The specific implementation studied in
288 this paper used lifespan impact of each disease condition as the weighting factor in the index.

⁷We are not aware of any research supporting this finding in other data sets. On the contrary, there are several examples of either inconclusive results or increased comorbidity of CAD among patients having undergone chemotherapy in TC treatment [51–53]. With our barely significant finding and small TC statistics, we view this result as peculiarity of the test set rather than a general epidemiological result.

289 We could then test whether this index predicts individual disease risks, as well as estimated
290 longevity or disability adjusted life years.

291 Specifically, we validated this index in selection experiments using unrelated individuals
292 and sibling pairs and trios from the UK Biobank. Individuals with higher index scores have
293 decreased risk of individual diseases across almost all 20 diseases, with no significant risk
294 increases, and longer calculated life expectancy. When Disability Adjusted Life Years (DALYs)
295 were used as the performance metric, the gain from genetic selection (highest index score vs
296 average) among 10 individuals was found to be roughly 4 DALYs, and among 5 individuals
297 was found to be 3 DALYs.

298 We found no statistical evidence for strong antagonistic trade-offs in risk reduction across
299 these diseases. Correlations between disease risks are found to be mostly positive, and gener-
300 ally mild. This supports the folk notion of a general factor which characterizes overall health,
301 sometimes described as synergistic pleiotropy.

302 These results have important implications for public health and also for fundamental
303 biological questions such as genetic architecture of human disease conditions.

304 The concept of pleiotropy was formulated before the notion of high dimensional spaces of
305 genetic variation became familiar. The conventional logic is that, because a single gene can
306 affect many different complex traits, it must be the case that different complex traits, such
307 as disease risks, are themselves correlated, perhaps antagonistically (e.g., due to balancing
308 selection, or for some deeper biochemical reason). This would entail specific tradeoffs, hy-
309 pothetically: an individual with low diabetes risk might necessarily have higher cancer risk,
310 etc.

311 However, results from the modern era of GWAS and machine learning on large data sets
312 show that the number of genetic loci which control a specific complex trait is typically in the
313 thousands, and that these SNP sets are largely disjoint for different traits or disease risks
314 [54]. The fact that most of the variance can be disjoint across different complex traits is a
315 manifestation of high dimensionality.

316 In an earlier paper [54], we looked at the extent to which SNPs used in polygenic predictors
317 of risk are correlated across pairs of disease conditions. Here we went further and investigated
318 pairwise correlations between each of 20 major disease PRS. The results, as summarized in
319 **Figure 8**, can be expressed in words as: most correlations are modest⁸, and tend to be positive
320 rather than negative (antagonistic). We also concluded, on a phenotypic level, that the 20
321 diseases tend to have positive significant pairwise comorbidity.

322 We focused this paper on index performance in a single cohort, and carried out cross-
323 cohort analyses in other populations. With increased data availability, these cross-cohort
324 analyses will be expanded in scope.

325 4 Acknowledgements

326 Computational resources provided by the Michigan State University High-Performance Com-
327 puting Center. The authors acknowledge acquisition of data sets via UK Biobank Main
328 Application 15326.

⁸Modest correlation is consistent with mostly but not entirely disjoint variance in the two PRS.

329 5 Conflicts of Interest

330 The authors declare the following competing interests: SH is a founder, shareholder, and serves
331 on the Board of Directors of Genomic Prediction, Inc. (GP). LT is a founder, shareholder,
332 serves on the Board of Directors of Genomic Prediction, Inc. (GP), and is the CEO of GP.
333 EW and LL are employees and shareholders of GP. TR declares no competing interests.

334 References

- 335 1. Lewis, C. M. & Vassos, E. Polygenic risk scores: from research tools to clinical instru-
336 ments. *Genome medicine* **12**, 1–11 (2020) (cit. on p. 1).
- 337 2. Lewis, A. C. & Green, R. C. Polygenic risk scores: from research tools to clinical instru-
338 ments. *Genome medicine* **13**, 14 (2021) (cit. on p. 1).
- 339 3. Richardson, T. G., Harrison, S., Hemani, G. & Smith, G. D. An atlas of polygenic risk
340 score associations to highlight putative causal relationships across the human phenome.
341 *eLife* **8**, e43657 (2019) (cit. on p. 1).
- 342 4. Wray, N. R. *et al.* From Basic Science to Clinical Application of Polygenic Risk Scores: A
343 Primer. *JAMA Psychiatry*. ISSN: 2168-622X. [https://doi.org/10.1001/jamapsychiatry.](https://doi.org/10.1001/jamapsychiatry.2020.3049)
344 2020.3049 (Sept. 2020) (cit. on p. 1).
- 345 5. Torkamani, A., Wineinger, N. E. & Topol, E. J. The personal and clinical utility of
346 polygenic risk scores. *Nature Reviews Genetics* **19**, 581 (2018) (cit. on p. 1).
- 347 6. Lello, L., Raben, T. G., Yong, S. Y., Tellier, L. C. & Hsu, S. D. H. Genomic prediction
348 of 16 complex disease risks including heart attack, diabetes, breast and prostate cancer.
349 *Sci Rep* **9**. [PMC6814833], 1–16 (2019) (cit. on p. 1).
- 350 7. Widen, E., Raben, T. G., Lello, L. & Hsu, S. D. H. Machine Learning Prediction of
351 Biomarkers from SNPs and of Disease Risk from Biomarkers in the UK Biobank. *Genes*
352 **12**. ISSN: 2073-4425. <https://www.mdpi.com/2073-4425/12/7/991> (2021) (cit. on
353 pp. 1–3).
- 354 8. Wray, N. R., Yang, J., Goddard, M. E. & Visscher, P. M. The genetic interpretation of
355 area under the ROC curve in genomic profiling. *PLoS genetics* **6** (2010) (cit. on p. 1).
- 356 9. Veenstra, D. L., Roth, J. A., Garrison Jr, L. P., Ramsey, S. D. & Burke, W. A formal risk-
357 benefit framework for genomic tests: facilitating the appropriate translation of genomics
358 into clinical practice. *Genetics in Medicine* **12**, 686 (2010) (cit. on p. 1).
- 359 10. Amir, E., Freedman, O. C., Seruga, B. & Evans, D. G. Assessing women at high risk of
360 breast cancer: a review of risk assessment models. *JNCI: Journal of the National Cancer*
361 *Institute* **102**. Oxford University Press, 680–691 (2010) (cit. on p. 1).
- 362 11. Euesden, J., Lewis, C. M. & O'reilly, P. F. PRSice: polygenic risk score software. *Bioin-*
363 *formatics* **31**, 1466–1468 (2014) (cit. on p. 1).
- 364 12. Abraham, G. *et al.* Accurate and Robust Genomic Prediction of Celiac Disease Using
365 Statistical Learning. *PLOS Genetics* **10**, 1–15. [https://doi.org/10.1371/journal.](https://doi.org/10.1371/journal.pgen.1004137)
366 [pgen.1004137](https://doi.org/10.1371/journal.pgen.1004137) (Feb. 2014) (cit. on p. 1).
- 367 13. Priest, J. R. & Ashley, E. A. *Genomics in clinical practice* 2014 (cit. on p. 1).

- 368 14. Jacob, H. J. *et al.* Genomics in clinical practice: lessons from the front lines. *Science*
369 *translational medicine* **5**, 194cm5–194cm5 (2013) (cit. on p. 1).
- 370 15. Shieh, Y. *et al.* Breast cancer risk prediction using a clinical risk model and polygenic
371 risk score. *Breast Cancer Research and Treatment* **159**, 513–525 (2016) (cit. on p. 1).
- 372 16. Bowdin, S. *et al.* Recommendations for the integration of genomics into clinical practice.
373 *Genetics in Medicine* **18**, 1075 (2016) (cit. on p. 1).
- 374 17. Chatterjee, N., Shi, J. & García-Closas, M. Developing and evaluating polygenic risk
375 prediction models for stratified disease prevention. *Nature Reviews Genetics* **17**, 392
376 (2016) (cit. on p. 1).
- 377 18. Liu, L. & Kiryluk, K. Genome-wide polygenic risk predictors for kidney disease. *Nature*
378 *Reviews Nephrology* **14**, 723–724 (2018) (cit. on p. 1).
- 379 19. Nelson, H. D., Pappas, M., Cantor, A., Haney, E. & Holmes, R. Risk assessment, genetic
380 counseling, and genetic testing for BRCA-related cancer in women: updated evidence
381 report and systematic review for the US Preventive Services Task Force. *Jama* **322**,
382 666–685 (2019) (cit. on p. 1).
- 383 20. Kulm, S., Marderstein, A., Mezey, J. & Elemento, O. A systematic framework for as-
384 sessing the clinical impact of polygenic risk scores. *medRxiv*, 2020–04 (2021) (cit. on
385 p. 1).
- 386 21. Wray, N. R. *et al.* From basic science to clinical application of polygenic risk scores: a
387 primer. *JAMA psychiatry* **78**, 101–109 (2021) (cit. on p. 1).
- 388 22. Meisner, A. *et al.* Combined Utility of 25 Disease and Risk Factor Polygenic Risk Scores
389 for Stratifying Risk of All-Cause Mortality. *American Journal of Human Genetics* **107**,
390 418–431. ISSN: 15376605 (2020) (cit. on pp. 1, 6).
- 391 23. Jukarainen, S., Kiiskinen, T., Havulinna, A. S. & Karjalainen, J. Genetic risk factors
392 have a substantial impact on healthy life years. *medRxiv*, 1–55. [https://www.medrxiv.](https://www.medrxiv.org/content/10.1101/2022.01.25.22269831v1)
393 [org/content/10.1101/2022.01.25.22269831v1](https://www.medrxiv.org/content/10.1101/2022.01.25.22269831v1) (2022) (cit. on pp. 2, 7).
- 394 24. Crawford, D. C., Cooke Bailey, J. N. & Briggs, F. Mind the gap: resources required
395 to receive, process and interpret research-returned whole genome data. *Human genetics*
396 **138**, 691–701 (2019) (cit. on p. 2).
- 397 25. Haga, S. B. *et al.* Public knowledge of and attitudes toward genetics and genetic testing.
398 *Genetic testing and molecular biomarkers* **17**, 327–335 (2013) (cit. on p. 2).
- 399 26. Hurlb, B. *et al.* What does it mean to be genomically literate?: National Human Genome
400 Research Institute meeting report. *Genetics in Medicine* **15**, 658–663 (2013) (cit. on p. 2).
- 401 27. Lea, D. H., Kaphingst, K. A., Bowen, D., Lipkus, I. & Hadley, D. W. Communicating
402 genetic and genomic information: health literacy and numeracy considerations. *Public*
403 *health genomics* **14**, 279–289 (2011) (cit. on p. 2).
- 404 28. Dwyer, A. A. *et al.* Evaluating co-created patient-facing materials to increase under-
405 standing of genetic test results. *Journal of Genetic Counseling* **30**, 598–605 (2021) (cit.
406 on p. 2).
- 407 29. Moscarello, T., Murray, B., Reuter, C. M. & Demo, E. Direct-to-consumer raw genetic
408 data and third-party interpretation services: more burden than bargain? *Genetics in*
409 *Medicine* **21**, 539–541 (2019) (cit. on p. 2).

- 410 30. Davis, K. W., Hamby Erby, L., Fiallos, K., Martin, M. & Wassman, E. R. A comparison
411 of genomic laboratory reports and observations that may enhance their clinical utility for
412 providers and patients. *Molecular genetics & genomic medicine* **7**, e00551 (2019) (cit. on
413 p. 2).
- 414 31. Kaye, C. & Korf, B. Genetic literacy and competency. *Pediatrics* **132**, S224–S230 (2013)
415 (cit. on p. 2).
- 416 32. Henneman, L., Marteau, T. M. & Timmermans, D. R. Clinical geneticists' and genetic
417 counselors' views on the communication of genetic risks: a qualitative study. *Patient*
418 *education and counseling* **73**, 42–49 (2008) (cit. on p. 2).
- 419 33. the alarming rise of complex genetic testing in human embryo selection. *Nature* **603**,
420 549–550 (2022) (cit. on p. 2).
- 421 34. (Cit. on p. 2).
- 422 35. Buddeke, J. *et al.* Comorbidity in patients with cardiovascular disease in primary care:
423 a cohort study with routine healthcare data. eng. *Br J Gen Pract* **69**, e398–e406. ISSN:
424 1478-5242 (Electronic); 0960-1643 (Print); 0960-1643 (Linking) (2019) (cit. on p. 2).
- 425 36. Of Medicine, I. *Cardiovascular Disability: Updating the Social Security Listings* ISBN:
426 978-0-309-15698-1. [https://nap.nationalacademies.org/catalog/12940/cardiovascular-](https://nap.nationalacademies.org/catalog/12940/cardiovascular-disability-updating-the-social-security-listings)
427 [disability-updating-the-social-security-listings](https://nap.nationalacademies.org/catalog/12940/cardiovascular-disability-updating-the-social-security-listings) (The National Academies
428 Press, Washington, DC, 2010) (cit. on p. 2).
- 429 37. Long, A. N. & Dagogo-Jack, S. Comorbidities of diabetes and hypertension: mechanisms
430 and approach to target organ protection. eng. *J Clin Hypertens (Greenwich)* **13**, 244–
431 251. ISSN: 1751-7176 (Electronic); 1524-6175 (Print); 1524-6175 (Linking) (2011) (cit. on
432 p. 2).
- 433 38. Bähler, C., Schoepfer, A. M., Vavricka, S. R., Brünger, B. & Reich, O. Chronic comor-
434 bidities associated with inflammatory bowel disease: prevalence and impact on healthcare
435 costs in Switzerland. *European Journal of Gastroenterology & Hepatology* **29**. [https://](https://journals.lww.com/eurojgh/Fulltext/2017/08000/Chronic_comorbidities_associated_with_inflammatory.8.aspx)
436 [journals.lww.com/eurojgh/Fulltext/2017/08000/Chronic_comorbidities_](https://journals.lww.com/eurojgh/Fulltext/2017/08000/Chronic_comorbidities_associated_with_inflammatory.8.aspx)
437 [associated_with_inflammatory.8.aspx](https://journals.lww.com/eurojgh/Fulltext/2017/08000/Chronic_comorbidities_associated_with_inflammatory.8.aspx) (2017) (cit. on p. 2).
- 438 39. Wang, J.-H., Wu, Y.-J., Tee, B. L. & Lo, R. Y. Medical Comorbidity in Alzheimer's
439 Disease: A Nested Case-Control Study. eng. *J Alzheimers Dis* **63**, 773–781. ISSN: 1875-
440 8908 (Electronic); 1387-2877 (Linking) (2018) (cit. on p. 2).
- 441 40. Santiago, J. A. & Potashkin, J. A. The Impact of Disease Comorbidities in Alzheimer's
442 Disease. eng. *Front Aging Neurosci* **13**, 631770. ISSN: 1663-4365 (Print); 1663-4365 (Elec-
443 tronic); 1663-4365 (Linking) (2021) (cit. on p. 2).
- 444 41. Al-Asadi, A. M., Klein, B. & Meyer, D. Multiple comorbidities of 21 psychological disor-
445 ders and relationships with psychosocial variables: a study of the online assessment and
446 diagnostic system within a web-based population. *Journal of medical Internet research*
447 **17**, e55–e55. <https://pubmed.ncbi.nlm.nih.gov/25803420> (Feb. 2015) (cit. on p. 2).
- 448 42. Kessler, R. C., Chiu, W. T., Demler, O., Merikangas, K. R. & Walters, E. E. Prevalence,
449 severity, and comorbidity of 12-month DSM-IV disorders in the National Comorbidity
450 Survey Replication. eng. *Arch Gen Psychiatry* **62**, 617–627. ISSN: 0003-990X (Print);
451 1538-3636 (Electronic); 0003-990X (Linking) (2005) (cit. on p. 2).

- 452 43. Farabaugh, A. *et al.* Relationships between major depressive disorder and comorbid
453 anxiety and personality disorders. eng. *Compr Psychiatry* **46**, 266–271. ISSN: 0010-440X
454 (Print); 0010-440X (Linking) (2005) (cit. on p. 2).
- 455 44. Slade, T. & Watson, D. The structure of common DSM-IV and ICD-10 mental disorders
456 in the Australian general population. eng. *Psychol Med* **36**, 1593–1600. ISSN: 0033-2917
457 (Print); 0033-2917 (Linking) (2006) (cit. on p. 2).
- 458 45. Vollebergh, W. A. *et al.* The structure and stability of common mental disorders: the
459 NEMESIS study. eng. *Arch Gen Psychiatry* **58**, 597–603. ISSN: 0003-990X (Print); 0003-
460 990X (Linking) (2001) (cit. on p. 2).
- 461 46. Buckley, P. F., Miller, B. J., Lehrer, D. S. & Castle, D. J. Psychiatric comorbidities
462 and schizophrenia. eng. *Schizophr Bull* **35**, 383–402. ISSN: 0586-7614 (Print); 1745-1701
463 (Electronic); 0586-7614 (Linking) (2009) (cit. on p. 2).
- 464 47. Martin, A. R. *et al.* Clinical use of current polygenic risk scores may exacerbate health
465 disparities. *Nature genetics* **51**. PMC6563838, 584 (2019) (cit. on p. 2).
- 466 48. Privé, F. *et al.* Portability of 245 polygenic scores when derived from the UK Biobank
467 and applied to 9 ancestry groups from the same cohort. *American Journal of Human*
468 *Genetics* **109**, 12–23. ISSN: 15376605 (2022) (cit. on p. 2).
- 469 49. Weissbrod, O. *et al.* Leveraging fine-mapping and multipopulation training data to im-
470 prove cross-population polygenic risk scores. *Nature Genetics* **54**. ISSN: 1061-4036 (2022)
471 (cit. on p. 2).
- 472 50. Shi, H. *et al.* Population-specific causal disease effect sizes in functionally important
473 regions impacted by selection. *Nature Communications* **12**. ISSN: 20411723. [http://dx.](http://dx.doi.org/10.1038/s41467-021-21286-1)
474 [doi.org/10.1038/s41467-021-21286-1](http://dx.doi.org/10.1038/s41467-021-21286-1) (2021) (cit. on p. 2).
- 475 51. Gugic, J., Zaletel, L. Z. & Oblak, I. Treatment-related Cardiovascular Toxicity in Long-
476 term Survivors of Testicular Cancer. eng. *Radiol Oncol* **51**, 221–227. ISSN: 1318-2099
477 (Print); 1581-3207 (Electronic); 1318-2099 (Linking) (2017) (cit. on p. 13).
- 478 52. Feldman, D. R. *et al.* Predicting Cardiovascular Disease Among Testicular Cancer Sur-
479 vivors After Modern Cisplatin-based Chemotherapy: Application of the Framingham
480 Risk Score. *Clinical genitourinary cancer* **16**, e761–e769. [https://pubmed.ncbi.nlm.](https://pubmed.ncbi.nlm.nih.gov/29534941)
481 [nih.gov/29534941](https://pubmed.ncbi.nlm.nih.gov/29534941) (Aug. 2018) (cit. on p. 13).
- 482 53. Zaid, M. A. *et al.* Clinical and Genetic Risk Factors for Adverse Metabolic Outcomes
483 in North American Testicular Cancer Survivors. *Journal of the National Comprehensive*
484 *Cancer Network J Natl Compr Canc Netw* **16**, 257–265 (2018) (cit. on p. 13).
- 485 54. Yong, S. Y., Raben, T. G., Lello, L. & Hsu, S. D. Genetic Architecture of Complex Traits
486 and Disease Risk Predictors. *Scientific Reports* **10**. [PMC7374622] (2020) (cit. on p. 14).