

Trajectories of imitation skills in preschoolers with Autism Spectrum Disorders

Irène Pittet¹, Nada Kojovic¹, Martina Franchini² & Marie Schaer^{1,2}

1. Autism Brain and Behavior (ABB) Lab, Department of Psychiatry, Faculty of Medicine, University of Geneva, Geneva, Switzerland; Irene.Pittet@unige.ch (I.P.); Nada.Kojovic@unige.ch (N.K.); Marie.Schaer@unige.ch (M.S.);

2. Fondation Pôle Autisme, Geneva, Switzerland; martina.franchini@pole-autisme.ch (M.F.)

Abstract

Imitation skills play a crucial role in social cognitive development from early childhood. Many studies have shown a deficit in imitation skills in children with Autism Spectrum Disorders (ASD). Little is known about the development of imitation behaviors in children with ASD. This study aims to measure the trajectories of early imitation skills in preschoolers with ASD and how these skills impact other areas of early development. For this purpose, we assessed imitation, language and cognition skills in 177 children with ASD and 43 typically developing children (TD) aged 2 to 5 years old, 126 of which were followed longitudinally, yielding a total of 396 time-points. Our results confirmed the presence of an early imitation deficit in toddlers with ASD compared to TD children. The study of the trajectories showed that these difficulties were marked at the age of two years, and gradually decreased until the age of 5 years old. Imitation skills were strongly linked with cognitive, language skills and level of symptoms in our ASD group at baseline. Moreover, the imitation skills at baseline were predictive of the language gains a year later in our ASD group. Using a data-driven clustering method, we delineated different developmental trajectories of imitation skills within the ASD group. The clinical implications of the findings are discussed, particularly the impact of an early imitation deficit on other areas of competence of the young child.

Background

Imitation skills play a crucial role in early development and are considered an essential component of social and cognitive development during the first years of life. Indeed, newborns begin to imitate tongue profusion and mouth opening after only a few hours of life (Heimann & Tjus, 2019; Meltzoff & Moore, 1989). Later, infants begin to imitate vocalisations, actions on objects and gestures. During the two first years of life, children gradually increase their imitative behaviors both in frequency and complexity, along with the development of

NOTE: This preprint reports new research that has not been certified by peer review and should not be used to guide clinical practice.

34 their cognitive and social abilities (Vivanti & Hamilton, 2014). Children imitate their siblings,
35 peers and parents at every moment to learn new abilities (Howe et al., 2018; Zmyj & Seehagen,
36 2013). Imitation is an essential lever for learning of new motor skills (Pfeifer et al., 2008), and
37 cognitive skills (Hurley & Chater, 2005; Strid et al., 2006; Vivanti et al., 2013). Besides the role
38 in learning, imitation has an important social function (Uzgiris, 1981, as cited in Ingersoll,
39 2008). From the earliest moments, caregivers and infants engage in reciprocal imitation during
40 face-to-face interactions. Through this choreography of imitating each other's vocalisations
41 and facial expressions they will share social interest, affective states, take turns and build a
42 fundament for the development of complex social skills. Indeed, the literature has amply
43 demonstrated that imitation plays a vital role in the development of social communication
44 (Hanika & Boyer, 2019; Toth et al., 2006).

45

46 The disruption in early imitation skills can have a tremendous repercussion on various
47 developmental aspects, especially socio-communicative development that is altered in
48 autism. Autism Spectrum Disorder (ASD) is a neurodevelopmental disorder characterized by
49 impairments in social communication, interaction and restricted patterns of interests and
50 activities (American Psychiatric Association, 2013). Indeed, a large body of literature has
51 highlighted broad imitation deficits in children with ASD (Girardot et al., 2009; McDuffie et
52 al., 2007; Plavnick & Hume, 2014; Rogers et al., 1996; Thurm et al., 2007; Vivanti & Hamilton,
53 2014; Zwaigenbaum et al., 2005) using various imitation measures (Vivanti & Hamilton, 2014).
54 Early imitation deficits were linked to difficulties in social communication skills, such as
55 language (Ingersoll & Meyer, 2011; Poon et al., 2012), joint attention (Villalobos et al., 2005)
56 and social interaction difficulties (Ingersoll, 2008). In addition, such a deficit could hinder the
57 effectiveness of intervention methods for children with ASD, as many of them rely upon
58 imitation to teach new abilities (Dawson et al., 2010; Delano, 2007; Espanola Aguirre &
59 Gutierrez, 2019). Given the critical role that the imitation skills play in typical development,
60 precise characterization of the deficit in this domain in ASD is of utmost importance.

61

62 Even though imitation difficulties in ASD are relatively well documented, the developmental
63 trajectories of imitation have received less attention to date in this population. Prospective
64 studies following infants at risk of developing ASD report difficulties in imitation skills in
65 children later diagnosed with ASD from 12 months of age. For example, Young and colleagues
66 (2011) conducted a longitudinal study with 248 children between 12 and 24 months of age and
67 found a delayed imitation development in children who developed ASD by age 3 years
68 compared to the TD group. Likewise, Poon and colleagues (2012) found that infants of 9–12
69 months of age who are later diagnosed with ASD show a considerable delay in imitation skills.
70 These results have led some research groups to explore if imitation could be used for screening
71 ASD in high-risk siblings. Rowberry and colleagues (2015), for instance, found that poor
72 imitation reported by parents in the First Year Inventory (FYI) (Baranek, Watson, Crais, &
73 Reznick, 2003) can be an early marker of ASD in 12-months-old high-risk siblings. The results
74 of the various studies cited above highlight this imitative deficit in young children with ASD

75 and the importance of increasing and detailing knowledge about the development of this
76 crucial skill and the consequences of such difficulties.

77

78 The present study aims to compare the developmental trajectories of imitative skills between
79 preschoolers with ASD and a group of matched TD children, using a total of 396 longitudinal
80 assessments collected between the age of 2 and 5 years old. Based on previous literature
81 (Girardot et al., 2009; McDuffie et al., 2007; Plavnick & Hume, 2014; Rogers et al., 1996; Thurm
82 et al., 2007; Vivanti & Hamilton, 2014; Zwaigenbaum et al., 2005), we expected a delayed
83 development of imitation skills in children with ASD in comparison to TD children. Second,
84 we investigated how imitation skills related to the level of symptoms, cognitive and
85 communication skills in the ASD group at baseline and after one year to explore the
86 consequences of this deficit on the different development areas. We hypothesized that a deficit
87 in imitation skills is linked with severity of symptoms and difficulties in developmental
88 domains at the baseline and one year after (Ingersoll & Meyer, 2011; Poon et al., 2012). Finally,
89 we explored the extent to which there could be different imitation trajectories inside the ASD
90 group, as this population is characterized by a great heterogeneity of profiles and
91 manifestations (Wiggins et al., 2012).

92 Material & methods

93 Participants

94 The participants in this study were recruited as part of the Geneva Autism Cohort (Franchini
95 & al., 2016, 2017, 2018; Kojovic & al., 2019; Robain & al., 2020; Sperdin & al., 2018). The
96 University's Institutional Review Board approved this study. All families provided written
97 informed consent to participate. For the current study, a total of 220 participants were
98 included, 177 with ASD and 43 typically developing children (TD) (see *Table 1* and *Table S1* in
99 *Supplementary Materials*). Among these, 126 were followed longitudinally, yielding a total of
100 396 time-points (78 subjects had 2, 46 had 3, and 2 participants had 4 time-points), each time-
101 point was separated by 12 months, except for two children for whom the two time-points are
102 separated by 24 months (see *Figure 1*). The inclusion criteria for ASD group was a clinical
103 diagnosis of autism according to the DSM-5 criteria (American Psychiatric Association, 2013).
104 The clinical diagnosis was confirmed by the scores exceeding the cut-off for autism at the
105 ADOS-G (Lord et al., 2000) or ADOS-2 (Lord & al., 2012) (see *Measures* for more details).
106 Children from the TD group had no developmental concerns, no first or second-degree family
107 member diagnosed with autism, and were all administered the ADOS diagnostic test to
108 exclude the presence of ASD symptoms (see *Table 1*). Participants were aged between 2.0 and
109 5.0 years, and the two groups did not differ by age ($U = 351, p = 0.429$) nor sex ($p = 0.156$).

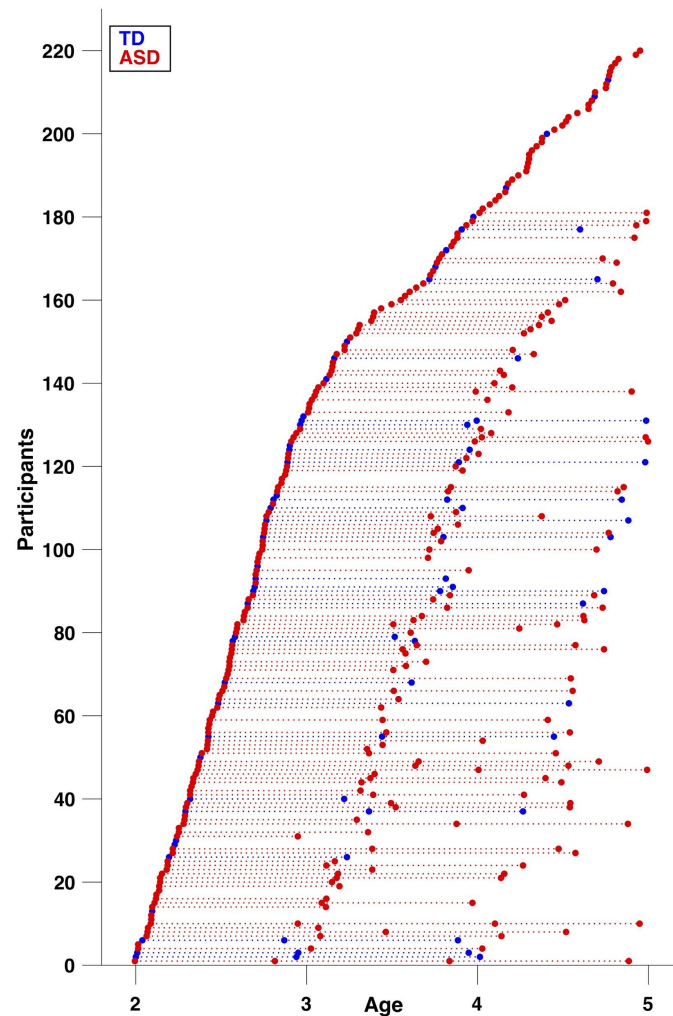
110

111

112 **Table 1.** *Statistical Comparison Between Children With ASD and Children with TD at Baseline in*
 113 *Terms of Demographic, Clinical, Cognitive Features*
 114

	ASD - Mean (SD) n = 177	TD - Mean (SD) n = 43	p-value*
Sex	24 ♀ / 153 ♂	10 ♀ / 33 ♂	0.156 ¹
Age (years old)	3.09 (0.8)	2.93 (0.7)	0.429 ²
ADOS Total symptom severity	7.7 (1.8)	1.02 (1.2)	<0.001²
PEP-3			
VPC (raw score)	28.47 (15)	45 (9.4)	<0.001²
EL (raw score)	9.22 (10.2)	25.77 (8.8)	<0.001²
RL (raw score)	13.41 (10.8)	30.57 (5.2)	<0.001²
VABS-II Adaptive Behavior Composite	77.61 (11.5)	102.9 (8.5)	<0.001²

115
 116 *Note.* ADOS = Autism Diagnosis Observation Schedule ; PEP-3 = PsychoEducational Profile, 3rd edition ; VPC =
 117 Verbal and Preverbal Cognition ; EL = Expressive language ; RL = Receptive language ; VABS-II = Vineland
 118 Adaptive Behavior Scales, 2nd edition.
 119 * p value of *Fisher's exact test*¹ and *Mann-Whitney tests*² of differences between the ASD and TD groups. Significant
 120 results are shown in bold.
 121



122
123 **Figure 1.** Data distribution available for each group from our longitudinal study. Circles (red = ASD,
124 blue = TD) denote visits/time-points, repeated visits of the same subject are connected with a dotted
125 line.

126 Measures

127

128 Imitation

129

130 For the measure of imitation skills we used the Visuo-Motor Imitation scale of the PEP-3
131 (Schopler & al., 2005) (for a detailed description of this test please refer to Supplementary
132 Materials). This scale includes 10 items of imitation, assessed on a 3 point scale (0 = absence of
133 imitation, 1 = equivoque, partial or prompted imitation, 2 = complete imitation of the skill).
134 Raw scores range between 0 and 20, which allows enough variability to highlight the
135 heterogeneity of imitation profiles.

136

137 The scale comprises the imitation of familiar actions and imitation with explicit instruction.
138 Vivanti & Hamilton (2014) distinguished two types of imitation that we find in this scale : *true*
139 *imitation* (copying both the mean and the goal of the action) and *stimulus enhancement* (perform

140 a specific action on a stimulus after having been made attentive to this stimulus by another
141 person). For instance, one item of the PEP-3 is to organize a fake birthday party to explore
142 imitation of daily actions like eating etc. (*stimulus enhancement*). For another one, the examiner
143 touches her/his nose and says “Now it's your turn” (*true imitation* of meaningless actions).

144

145 **Level of symptoms of autism**

146

147 Each participant was assessed with the Autism Diagnosis Observation Schedule, 2nd edition
148 (Lord et al., 2012) or Autism Diagnosis Observation Schedule, Generic (ADOS-G; Lord et al.,
149 2000). For subjects who underwent the earlier ADOS version (ADOS-G) assessment, the scores
150 were transformed according to the revised ADOS algorithm (Gotham et al., 2009) to ensure
151 comparability with ADOS-2. The ADOS Calibrated Severity Score (ADOS-CCS; Gotham et al.,
152 2009), a measure of symptom severity relatively independent of language levels and age, was
153 then used for all subjects included in this study.

154 **Developmental functioning**

155 **Mullen Scale of Early Learning**

156 Developmental functioning of all children included in the present study was assessed with
157 the Psychoeducational Profile, 3rd edition (Schopler et al., 2005). Nevertheless, as our aim was
158 to test the relation between the imitation skills (VMI subscale of PEP-3) and the developmental
159 functioning, we decided to use another measure than the PEP-3 to estimate the level of
160 developmental functioning. We thus used the Mullen Scale of Early Learning-MSEL (Mullen,
161 1995), which was available for 133 out of the 177 children with ASD included in this study
162 (this measure was indeed added at a later point in our cohort protocol and was thus missing
163 for the data collected earlier).

164

165 The MSEL scale is developed for the assessment of typically developing children consists of 5
166 domains with items organized according to developmental stages and their level of difficulty
167 : Gross Motor (GM), Visual Reception (VR), Fine Motor (FM), Receptive Language (RL) and
168 Expressive Language (EL). This assessment yields a global composite score (Early Learning
169 Composite ; ELC) by adding the four cognitive subscales (VR, FM, RL, EL), and has a mean of
170 100 and standard deviation of 15. For the global developmental functioning in this study, we
171 considered the standard composite score (ELC). For the measure of individual domains
172 (Receptive and Expressive language), we used the measure of age equivalents (AE). We opted
173 for the AE scores as the standard T scores of the MSEL subscales show poor sensitivity in the
174 lower functioning end of the continuum (floor of 20), and an important number of our
175 participants had this lowest score.

176 Statistical Analyses

177 Between-group analyses (ASD vs TD)

178 Group comparison of imitation skills

179 To compare imitation skills at baseline between children with ASD ($n = 177$) and TD children
180 ($n = 43$), we conducted a *t*-test using the raw scores obtained from the Visuo-Motor Imitation
181 scale of PEP-3 (Schopler & al., 2005).

182 Imitation trajectories over time

183 To compare trajectories of imitation skills over time between ASD and TD children, we used
184 mixed model regression analysis applied on raw imitation scores including all available time
185 points (total of 396 time-points, $N=220$, $n_{ASD}=177$, $n_{TD}=43$). This model is particularly adapted
186 for dealing with nested data, such as multiple time points, and has been applied in our
187 previous studies involving a variable number of time points (Franchini & al., 2018; Maeder &
188 al., 2016; Mancini & al., 2019; Mutlu & al., 2013; Schneider & al., 2014). This analysis estimates
189 developmental trajectories by fitting random-slope models to the data, taking into account
190 both within-subject and between-subject effects. Different models (constant, linear, quadratic,
191 or cubic) were fitted using the *nlmefit* function in MATLAB R2011b (MathWorks) for each
192 variable. A Bayesian Information Criterion (BIC)-based model selection method was then
193 employed.

194 Within-group analyses (ASD group)

195 Relation of imitation to the symptom severity and developmental levels at baseline

196 To explore how an imitation deficit is related to difficulties in other areas of development, we
197 used the cross-sectional data obtained from the ASD group for whom the Mullen Scale of
198 Early Learning was available ($n = 133$, 113 males / 20 females, age range: 2.0 - 4.8 years old).
199 The association of imitation with the level of autistic symptoms (CSS ADOS), global cognitive
200 functioning (the Early Learning Composite of MSEL) and more specifically, communication
201 skills (age equivalents on Receptive and Expressive Language subscales of MSEL) was
202 assessed using spearman's correlations. Results were considered significant at the level of $p <$
203 $.0125$ (after applying the Bonferroni correction for multiple comparisons).

204 Imitation at baseline as a predictor of symptom severity and developmental levels

205 We then explored the predictive power of the early imitative skills at baseline on the evolution
206 of autistic symptoms and developmental domains in our ASD group one year after the initial
207 measurement. More specifically, we tested how the imitation predicted the symptom change,

208 change in cognitive skills and communication. To obtain a measure of change, we subtracted
209 the scores at time-point 2 from the ones at time-point 1 (the ADOS-CSS for the level of
210 symptoms, the standard score for the cognitive skills and the age equivalents for
211 communication skills). We then used Spearman partial correlations to assess the relation
212 between imitation skills at baseline and subsequent change in symptoms of autism, cognitive
213 and communication levels a year later, while controlling for the baseline levels.

214 Imitation trajectories within the ASD group

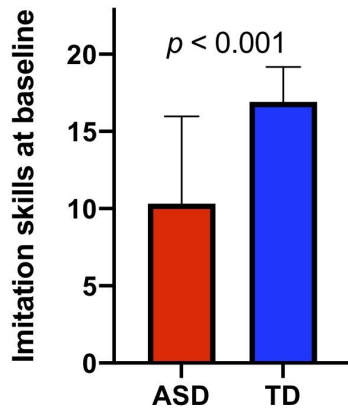
215 Given the tremendous heterogeneity of the ASD phenotype (Wiggins et al., 2012), we wanted
216 to better understand the diversity of imitation profiles and their evolution in the sample of
217 children with ASD for whom we had longitudinal data (102 subjects). To this end, we used a
218 K-means clustering method, which allows grouping together subjects similar throughout
219 multiple dimensions (i.e. imitation skills at different ages) (Bair, 2013; Sandini et al., 2018). We
220 employed a two-step approach: First, to distinguish between children starting at different
221 levels of imitation skills we employed a K-means clustering on raw scores at the first time-
222 point. To obtain an optimal cluster number among several solutions (2-6 clusters), we used a
223 silhouette approach (Rousseeuw, 1987). Second, we applied a K-means clustering on the
224 slopes of imitation skills by age in the subgroup of children with initially lower levels of
225 imitation skills to test for divergent trajectories over time.

226 Results

227 Between-group analyses (ASD vs TD)

228 Group comparison of imitation skills

229 Using a cross-sectional sample ($N = 220$, 177 children with ASD, 43 with TD, age range: 2.0 -
230 5.0 years old), we were able to show that the two groups differed significantly in their
231 imitations skills ($U = 1270$, $p < 0.001$). Indeed, children with ASD had markedly lower imitation
232 skills than typically developing children (see *Figure 2*).
233

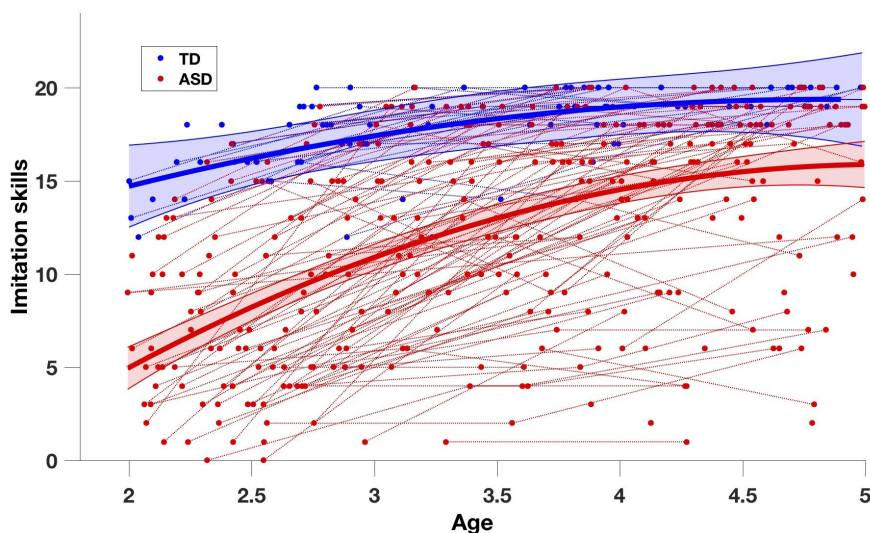


234
235
236
237

Figure 2. Group comparison of imitation skills obtained from Visuo-Motor Imitation scale of PEP-3 (raw scores).

238 Imitation trajectories over time

239 Using all available visits for our cross-sectional sample (total of 396 time-points, $N=220$,
240 $n_{ASD}=177$, $n_{TD}=43$) we tested the between-group differences in trajectories of imitation. As
241 shown in *Figure 3*, the group trajectories in imitation skills estimated using mixed-models
242 were significantly different (group effect : $p < .001$; interaction : $p < .001$). The best fitted model
243 was of the 2nd order, meaning that the relation of the imitation with age was quadratic.
244 Indeed, the TD children showed good imitation skills at two years old with only a slight
245 improvement thereafter. In contrast, at the group level, children with ASD present markedly
246 low imitation skills at a young age with substantial improvement between the ages of two and
247 five (see *Figure 3*). However, we also observe that trajectories of children with ASD are very
248 heterogeneous and this point is addressed in our later analyses.



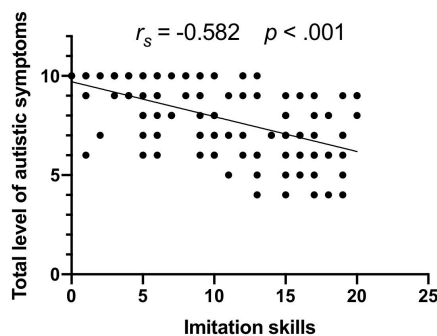
249
250
251
252
253

Figure 3. Imitation trajectories over time in the ASD and TD groups. The trajectory on the group level (solid lines, red=ASD, blue=TD) is obtained using mixed-effect models (Mancini & al., 2019; Mutlu & al., 2013). The 95% confidence interval of estimated group-level trajectory is represented in colored bands. Repeated time-points of the same subjects are connected with dotted lines.

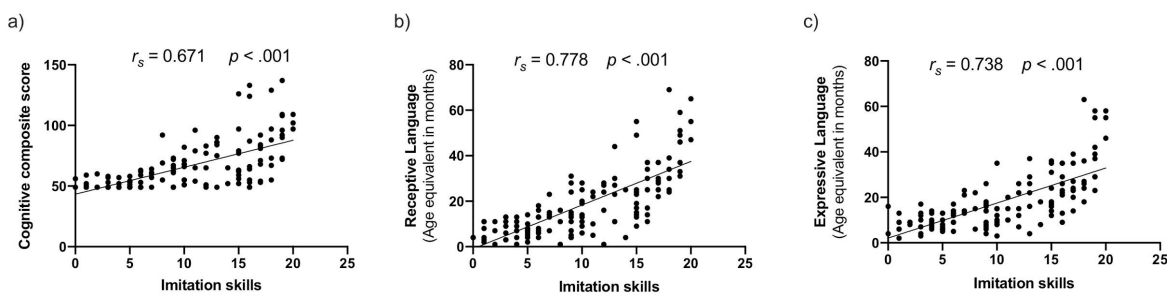
254 Results within the ASD group

255 Relation of imitation with level of symptoms and developmental domains 256 at baseline

257 Within our ASD group for whom the Mullen Scales of Early Learning was available ($n = 133$,
258 113 males / 20 females, age range: 2.0 - 4.8 years old), imitation skills were moderately
259 negatively related to the level of symptoms ($r_s = -0.583$, $p < .001$), as the children who show
260 the most of symptoms are also those with more imitation difficulties (see *Figure 4*). In addition,
261 imitation skills were strongly positively correlated with the composite score of cognitive skills
262 at baseline, as well as communication skills (Receptive and Expressive Language) (ELC : $r_s =$
263 0.671 , $p < .001$, RL : $r_s = 0.778$, $p < .001$, EL : $r_s = 0.738$, $p < .001$), that is, children with lower
264 imitation skills were also those with lower skills in these domains (see *Figure 5*).
265



266
267 **Figure 4.** Spearman correlation between imitation and level of symptoms within the ASD group (Visuo-
268 Motor Imitation scale of PEP-3 and Calibrated Severity Score of ADOS-G or 2)
269

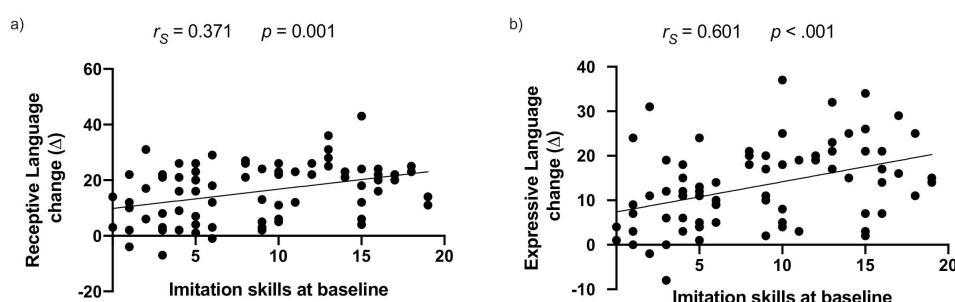


270
271 **Figure 5.** Spearman correlations between baseline imitation skills (raw scores of Visuo-Motor Imitation
272 scale of PEP-3) and (a) Early Learning Composite of MSEL, (b) Receptive language age equivalent
273 scores and (c) Expressive language age equivalent scores.

274 Imitation at baseline as a predictor of the autistic symptoms and 275 developmental changes

276 Imitation skills at baseline were predictive of the gains in communication skills (Receptive
277 and Expressive Language) a year later in our preschoolers with ASD (RL : $r_s = 0.371$, $p = .001$,

278 EL : $r_s = 0.601$, $p < .001$). Indeed, children with better imitation skills at baseline showed a
279 greater improvement in these domains a year later (see *Figure 6*). This improvement was the
280 most evident in the domain of expressive language. Further correlations between imitations
281 skills and the composite cognitive score or the level of symptoms did not survive after
282 correction for multiple comparisons (considering a stringent significance level at $p < .0125$
283 using Bonferroni correction).
284



285
286

287 **Figure 6.** Spearman partial correlations between imitation skills (raw scores of the Visuo-Motor
288 Imitation scale of PEP-3) and a one year gain in the ASD group for receptive language (a) and expressive
289 language (b) (difference in age equivalent scores of the Mullen Scale of Early Learning).

290 Imitation trajectories within the ASD group

291 The first step of K-means clustering on the baseline raw imitation scores yielded two optimal
292 clusters (silhouette score of 0.828). The first cluster (sub-group) of ASD children (named ASD1,
293 $n = 46$) (see *Figure 7*) had less difficulties with imitation at baseline and followed a trajectory
294 highly similar to the one seen in our TD group (*Figure 3*) while the other cluster started
295 significantly lower at baseline.

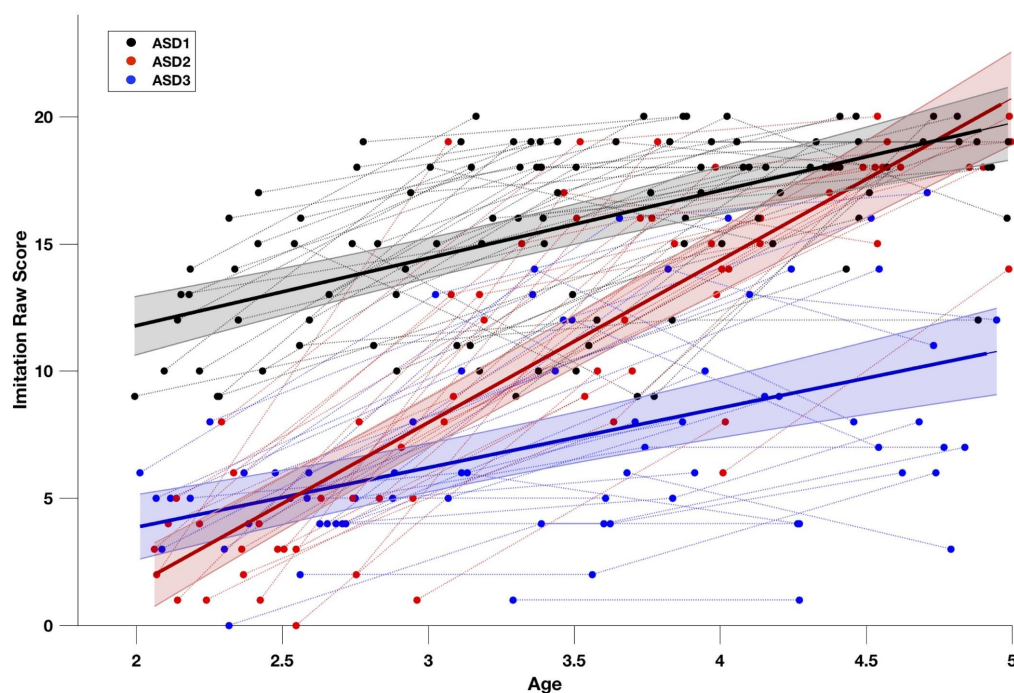
296

297 To better understand developmental trajectory in children who start lower on imitation skills,
298 we then applied a second K-means clustering on the developmental slopes on imitation scores
299 in our remaining group of ASD children. These children belonged to the cluster that showed
300 less imitation skills at baseline (Total - ASD1 = 56 participants). This second clustering step
301 yielded the two groups which we denote ASD2 and ASD3 ($n_{ASD2} = 27$, $n_{ASD3} = 29$). The
302 trajectories of the two clusters from the second clustering step were significantly different (see
303 *Figure 7*), one subgroup (ASD2) had a deficit on imitation skills at two years old, but showed
304 a great improvement until five years old while the other subgroup in ASD children (ASD3)
305 showed many difficulties in imitation at two years old and these difficulties continue over the
306 time (group effect : $p < .001$; interaction : $p < .001$).

307

308 Finally, we wanted to understand which clinical characteristics were related to the distinct
309 imitation trajectories in our sub-samples ASD2 and ASD3. In particular, we tested the baseline
310 differences between the two groups (ASD2 and ASD3) with regards to the level of symptoms,

311 cognitive and language skills, type of intervention and social orientation measured with an
312 eye-tracking task (Franchini et al., 2017) (see *Table S2* in Supplementary Materials). We found
313 no significant baseline differences between the ASD2 and the ASD3 according to all tested
314 clinical variables. However, by analyzing these two groups' trajectories in terms of many other
315 aspects (communication skills, cognitive skills and adaptive behaviors), we observed that the
316 subgroup ASD2 showed an overall improvement in all domains. This pattern suggests that
317 imitation improvement in this group indicates an overall enhancement rather than the specific
318 link of imitation skills progress and a particular developmental measure.



319
320 **Figure 7.** Imitation trajectories over time within the ASD group ($n = 102$). The trajectories at the group
321 level (solid lines black=ASD1, $n_{ASD1} = 46$, red=ASD2, $n_{ASD2} = 27$, blue=ASD3, $n_{ASD3} = 29$) are obtained using
322 mixed-effect models (Mancini & al., 2019; Mutlu & al., 2013). The 95% confidence interval of estimated
323 group-level trajectory is represented in colored bands. Repeated time-points of the same subjects are
324 connected with dotted lines. The distribution in the sub-groups was defined by the K-means clustering
325 method in two steps. First clustering step yielded two clusters based on imitation skills raw scores at
326 first time-point. We retained the higher cluster (ASD1), and proceeded to the second clustering step
327 performed on the slopes of imitation skills, yielding ASD2 and ASD3 subgroups.

328 Discussion

329 Our results corroborate previous findings on the imitative deficit in preschoolers with Autism
330 Spectrum Disorder (ASD) in comparison with typically developing children (TD) (Colombi &
331 al., 2009; Girardot & al., 2009; Ingersoll, 2008; McDuffie & al., 2007; Plavnick & Hume, 2014;
332 Rogers & al., 1996; Thurm & al., 2007; Vivanti & Hamilton, 2014; Zwaigenbaum & al., 2005).

333 Compared with our TD group, preschoolers with ASD showed significantly lower imitation
334 skills as measured by the Visuo-Motor Imitation scale of the PEP-3 (Schopler & al., 2005). We
335 then explored the trajectory of imitation skills over time, which is poorly documented in the
336 literature until now (Young & al., 2011). Our results showed that TD children present good
337 imitation skills, as measured with the PEP-3, already at the age of 2 years old, with only a
338 slight improvement thereafter. In comparison, children with ASD presented a major imitative
339 deficit at two years old, with a considerable gain up to five years old. We further confirmed
340 that imitation skills in children with ASD at baseline were negatively related to the overall
341 levels of symptoms while showing a positive relation with cognitive skills and language. We
342 also showed that early imitation skills predicted the gains in communication skills one year
343 after. Finally, we were able to delineate three different imitation trajectories in our sample of
344 children with ASD. A subgroup of children (ASD1) presented fewer difficulties in imitation
345 at two years old. In contrast, others (ASD2) showed major deficits in imitation at 2 years old,
346 followed by accelerated gains up to the age of five. Lastly, we also identified a subgroup of
347 children (ASD3) who had significant difficulties at baseline and showed less progress over the
348 years.

349 Developmental trajectory of imitation in ASD and TD

350 Besides showing lower baseline imitative skills, we found that the acquisition of imitation
351 skills in children with ASD did not follow the same trajectory as in TD children. In ASD
352 children, we observed the steep progress between the age of 2 and 3.5 years, highlighting the
353 importance of this early sensitive period for learning new skills (Dawson, 2008; Guralnick,
354 1997; Johnson & Munakata, 2005; Lovaas, 1987; Vivanti et al., 2016). While most TD children
355 reach the ceiling on this measure around the age of 5 years, the ASD group showed a lower
356 average skill level at this age. Previous studies have suggested that the imitation deficits in
357 ASD are more specific than broad (Rogers & Williams, 2006), concerning for example, more
358 meaningless gestures than actions on the objects. Nevertheless, our results speak in favor of a
359 more broad impairment as most of the actions measured by the imitation scale we used are
360 rather simple one-step actions on objects and relatively few concern more abstract
361 meaningless gestures. These difficulties in imitation of simple actions with objects can have
362 deleterious effects on learning (Ingersoll, 2008; Ingersoll & Meyer, 2011; Poon et al., 2012;
363 Villalobos et al., 2005). Indeed, our results showed that imitation skills were related to
364 composite cognitive skills and communication skills (receptive and expressive language) in
365 toddlers with ASD. As proposed by several authors (e.g. Wadsworth & al., 2017) a child with
366 major imitative difficulties shows delay in the acquisition of new skills, especially because
367 he/she does not use this channel to learn from her/his parents, siblings and peers (e.g. Howe
368 & al., 2018; Zmyj & Seehagen, 2013).

369
370 In addition, confirming previous studies (McDuffie et al., 2007; Rogers et al., 2003; Zachor et
371 al., 2010), our results showed a strong correlation between imitation skills and the level of

372 symptoms measured by the ADOS-2 (Lord & al., 2012), whereby the children with more
373 difficulties in imitation had also more symptoms of ASD at baseline. Thus, imitation skills
374 were clinically informative of the severity of the level of autistic symptoms. This result
375 corroborates findings claiming the importance of imitation in the acquisition of early tools of
376 communication and its contribution to autistic symptoms (Hanika & Boyer, 2019; Ingersoll,
377 2008; Toth et al., 2006; Villalobos et al., 2005). Indeed, difficulties of engagement in reciprocal
378 imitation early on may greatly limit social learning opportunities, lower the experiences of
379 sharing and joint attention, important for socio-communicative development (Franchini et al.,
380 2017). Moreover, taking part in imitation activities prepares the first basis of communication
381 turns. Thus from the earliest moments, the reciprocal imitation of vocalisations and facial
382 expressions in face-to-face interactions paves the way for the development of a more complex
383 social interchange (Trevarthen et al., 1999, as cited by Ingersoll, 2008).

384 Imitation as a predictor of developmental domains in children 385 with ASD

386 While previous studies demonstrated that imitation predicts future cognitive skills (Hurley &
387 Chater, 2005; Rogers & Pennington, 1991; Strid et al., 2006; Vivanti et al., 2013), the correlation
388 that we observed in our sample did not hold after Bonferroni correction. The same was true
389 for the relationship between imitation and change in the severity of autistics symptoms.
390 Nevertheless, the baseline imitation skills were predictive of communication development
391 one year later. Especially, gains in expressive language were greater in children with better
392 imitation skills at baseline. The link between imitation and language has already been
393 explored in previous studies (Heimann & al., 2016; Stone & al., 1997; Stone & Yoder, 2001;
394 Toth & al., 2006). Indeed, infants start by imitating vocalizations, exchanges of vocalizations,
395 then later words and sentences (e.g. Jones, 2007). Some studies found that verbal imitation
396 (Smith et al., 2007) but also body movements imitation (Stone et al., 1997) are predictors of
397 expressive language development.

398
399 Although children with ASD at a group level showed important gains in imitation skills,
400 between two and five years old, the early difficulties in this domain presented at the age of
401 two could still have an important influence on learning later on. Imitation is important not
402 only for children's current achievements, but also for their future skills. Learning to imitate
403 can then be considered as one of the primary goals in early intervention programs for children
404 with ASD (Rogers & Dawson, 2010), which can then be used to build on this skill for future
405 acquisitions.

406

407 Imitation trajectories within the ASD group

408 Given the important heterogeneity of the ASD phenotype (Wiggins et al., 2012), we explored
409 the extent to which there might be different developmental trajectories of imitation within our
410 sample of children with ASD. Although some authors have studied the trajectories of different
411 types of imitation in children with ASD (Sanefuji & Yamamoto, 2014), to the best of our
412 knowledge, no study to date tried to parse the heterogeneity of the early imitation
413 development in ASD. Here, using a clustering approach, we observed three separate imitation
414 trajectories in children with ASD. Similar to previous studies (Charman et al., 2003; Stone et
415 al., 1997; Stone & Yoder, 2001; Vivanti et al., 2013), we found that good early imitation skills
416 are linked to better outcomes, while early difficulties predict impairment in developmental
417 domains. Nevertheless, our study showed that some children with ASD have major
418 difficulties in imitation at 2 years old, but show a great improvement until 5 years of age. As
419 mentioned previously, we were not able to find a characteristic that would differentiate these
420 two groups at baseline and predict whether a child with imitation difficulties at baseline will
421 follow one trajectory or the other. However, our results support that imitation improvement
422 is an indicator of an overall enhancement, without a clear causal relationship with the used
423 measures. More investigation should be done to understand the mechanisms through which
424 a child's development is set on one trajectory or the other. The absence of evidence for specific
425 differences between the two groups with a divergent imitation trajectory is interpreted with
426 caution. Indeed, imitation is often used to incite and encourage the child to do the exercises in
427 assessments such as the one used in this study (MSEL; Mullen, 1995), specifically when there
428 are difficulties of language comprehension, as it is frequently the case in young children with
429 ASD (Kwok et al., 2015). Thus, a low score on domains of cognitive or language skills could,
430 in some cases, be better explained by maladaptive behaviors than by real difficulties in these
431 areas (Robain et al., 2020).

432 Perspectives and limitations

433 As a limitation to this study, we would like to emphasize that the imitation skills measured in
434 the context of our study are elementary skills, and concern mainly actions with objects. Thus,
435 it would be particularly interesting to refine the analyses using a scale adapted for a larger
436 age range, with a broader variety of activities, allowing differentiation of different imitation
437 types as described by Vivanti & Hamilton (2014).

438
439 There are many avenues to pursue to better understand the mechanisms underlying imitation
440 in young children with ASD. Indeed, as discussed, it would be particularly interesting and
441 valuable to find an early predictor of the developmental trajectory in children with early
442 imitation difficulties. We showed that the children with an imitation deficit at 2 years will
443 either maintain their difficulties in a rather global way in the years to come, or show significant

444 improvement in imitation but also in other areas in general. It would then be a question of
445 finding which characteristics of the behavioral phenotype, or the interventions received
446 allowed the positive evolution in some cases. One of the avenues to follow in this sense could
447 be to explore earlier milestones of imitation than one measured in our study. Indeed, imitation
448 is very linked to other skills such as social orientation, joint attention and social reciprocity as
449 demonstrated by some authors (Girardot et al., 2009; McDuffie et al., 2007). Despite our
450 unsuccessful attempt to distinguish our two groups in terms of social orientation using an
451 eye-tacking task (Franchini et al., 2017), more investigations could be done in this sense with
452 a younger sample.

453 Conclusions

454 Our study confirmed a delay in the acquisition of imitation skills in preschoolers with ASD
455 who present a different developmental trajectory than children with typical development. We
456 also showed that these difficulties are related to levels of autistic symptoms, developmental
457 deficits, and long-term consequences on the development of communication and composite
458 cognitive skills. Moreover, our analyses identified subgroups of children with ASD in terms
459 of imitative development, reflecting the heterogeneity that characterizes this population.
460 Thus, our study confirms the status of imitation as a prerequisite for the development of other
461 skill areas and the importance of including its learning in early intervention programs, for
462 example.

463 Acknowledgements

464 The authors are particularly grateful to all the families who participated in this study.
465 Furthermore, the authors thank Lylia Ben Hadid, François Robain, Sonia Richetin, Sara
466 Maglio, Aurélie Bochet, Michel Godel, Stefania Solazzo, Ornella Vico Begara, Chiara Usuelli,
467 Eva Micol, Laura Sallin, Lisa Esposito, Kenza Latrèche, Oriane Grosvernier and Constance
468 Ferrat for their implication in data collection.

469 Funding

470 This research was funded by the National Center of Competence in Research “Synapsy” of
471 the Swiss National Science Foundation (SNF, grant number: 51AU40_125759), and by a SNF
472 grant to M.S. (#163859). This work was also partially supported by the Foundation of the
473 Geneva University Hospital (<http://www.fondationhug.org>) and by the “Fondation Pôle
474 Autisme” (<http://www.pole-autisme.ch>).

475 Conflicts of Interest

476 The authors declare no conflict of interest. The funders had no role in the design of the study;
477 in the collection, analysis, or interpretation of data; in the writing of the manuscript, or in the
478 decision to publish the results.

479 Bibliography

480

481 American Psychiatric Association. (2013). *Diagnostic and statistical manual of mental disorders*
482 (DSM-5®). American Psychiatric Pub.

483 Bair, E. (2013). Semi-supervised clustering methods. *WIREs Computational Statistics*, 5(5),
484 349–361. <https://doi.org/10.1002/wics.1270>

485 Charman, T., Baron-Cohen, S., Swettenham, J., Baird, G., Drew, A., & Cox, A. (2003).

486 Predicting language outcome in infants with autism and pervasive developmental
487 disorder. *International Journal of Language & Communication Disorders*, 38(3), 265–285.

488 <https://doi.org/10.1080/13682031000104830>

489 Colombi, C., Liebal, K., Tomasello, M., Young, G., Warneken, F., & Rogers, S. J. (2009).

490 Examining correlates of cooperation in autism: Imitation, joint attention, and
491 understanding intentions. *Autism*, 13(2), 143–163.

492 <https://doi.org/10.1177/1362361308098514>

493 Dawson, G. (2008). Early behavioral intervention, brain plasticity, and the prevention of
494 autism spectrum disorder. *Development and Psychopathology*, 20(3), 775–803.

495 <https://doi.org/10.1017/S0954579408000370>

496 Dawson, G., Rogers, S., Munson, J., Smith, M., Winter, J., Greenson, J., Donaldson, A., &

497 Varley, J. (2010). Randomized, Controlled Trial of an Intervention for Toddlers With
498 Autism: The Early Start Denver Model. *Pediatrics*, 125(1), e17–e23.

- 499 <https://doi.org/10.1542/peds.2009-0958>
- 500 Delano, M. E. (2007). Video Modeling Interventions for Individuals with Autism. *Remedial*
501 *and Special Education*, 28(1), 33–42. <https://doi.org/10.1177/07419325070280010401>
- 502 Espanola Aguirre, E., & Gutierrez, A. (2019). An Assessment and Instructional Guide for
503 Motor and Vocal Imitation. *Journal of Autism and Developmental Disorders*, 49(6), 2545–
504 2558. <https://doi.org/10.1007/s10803-019-04008-x>
- 505 Franchini, M., Glaser, B., Wilde, H. W. de, Gentaz, E., Eliez, S., & Schaer, M. (2017). Social
506 orienting and joint attention in preschoolers with autism spectrum disorders. *PLOS*
507 *ONE*, 12(6), e0178859. <https://doi.org/10.1371/journal.pone.0178859>
- 508 Franchini, M., Wood de Wilde, H., Glaser, B., Gentaz, E., Eliez, S., & Schaer, M. (2016). Brief
509 Report: A Preference for Biological Motion Predicts a Reduction in Symptom
510 Severity 1 Year Later in Preschoolers with Autism Spectrum Disorders. *Frontiers in*
511 *Psychiatry*, 7. <https://doi.org/10.3389/fpsy.2016.00143>
- 512 Franchini, M., Zöllner, D., Gentaz, E., Glaser, B., Wood de Wilde, H., Kojovic, N., Eliez, S., &
513 Schaer, M. (2018). Early Adaptive Functioning Trajectories in Preschoolers With
514 Autism Spectrum Disorders. *Journal of Pediatric Psychology*, 43(7), 800–813.
515 <https://doi.org/10.1093/jpepsy/jsy024>
- 516 G. T. Baranek, Watson, L. R., Crais, E., & Reznick, S. (2003). *First-year inventory (FYI)*. Chapel
517 Hill, NC: University of North Carolina at Chapel Hill.
- 518 Girardot, A. M., De Martino, S., Rey, V., & Poinso, F. (2009). Étude des relations entre
519 l’imitation, l’interaction sociale et l’attention conjointe chez les enfants autistes.
520 *Neuropsychiatrie de l’Enfance et de l’Adolescence*, 57(4), 267–274.
521 <https://doi.org/10.1016/j.neurenf.2008.09.009>
- 522 Gotham, K., Pickles, A., & Lord, C. (2009). Standardizing ADOS Scores for a Measure of

- 523 Severity in Autism Spectrum Disorders. *Journal of Autism and Developmental Disorders*,
- 524 39(5), 693–705. <https://doi.org/10.1007/s10803-008-0674-3>
- 525 Guralnick, M. J. (1997). Effectiveness of Early Intervention for Vulnerable Children: A
- 526 Developmental Perspective. *American Journal on Mental Retardation*, 102(4), 319–345.
- 527 [https://doi.org/10.1352/0895-8017\(1998\)102<0319:EOEIFV>2.0.CO;2](https://doi.org/10.1352/0895-8017(1998)102<0319:EOEIFV>2.0.CO;2)
- 528 Hanika, L., & Boyer, W. (2019). Imitation and Social Communication in Infants. *Early*
- 529 *Childhood Education Journal*, 47(5), 615–626. <https://doi.org/10.1007/s10643-019-00943-7>
- 530 Heimann, M., Nordqvist, E., Strid, K., Almrot, J. C., & Tjus, T. (2016). Children with autism
- 531 respond differently to spontaneous, elicited and deferred imitation. *Journal of*
- 532 *Intellectual Disability Research*, 60(5), 491–501. <https://doi.org/10.1111/jir.12272>
- 533 Heimann, M., & Tjus, T. (2019). Neonatal imitation: Temporal characteristics in imitative
- 534 response patterns. *Infancy*, 24(5), 674–692. <https://doi.org/10.1111/infa.12304>
- 535 Howe, N., Rosciszewska, J., & Persram, R. J. (2018). “I’m an ogre so I’m very hungry!” “I’m
- 536 assistant ogre”: The Social Function of Sibling Imitation in Early Childhood. *Infant*
- 537 *and Child Development*, 27(1). <https://doi.org/10.1002/icd.2040>
- 538 Hurley, S. L., & Chater, N. (2005). *Perspectives on Imitation: Imitation, human development, and*
- 539 *culture*. MIT Press.
- 540 Ingersoll, B. (2008). The Social Role of Imitation in Autism: Implications for the Treatment of
- 541 Imitation Deficits. *Infants & Young Children*, 21(2), 107.
- 542 <https://doi.org/10.1097/01.IYC.0000314482.24087.14>
- 543 Ingersoll, B., & Meyer, K. (2011). Examination of correlates of different imitative functions in
- 544 young children with autism spectrum disorders. *Research in Autism Spectrum*
- 545 *Disorders*, 5(3), 1078–1085. <https://doi.org/10.1016/j.rasd.2010.12.001>
- 546 Johnson, M. H., & Munakata, Y. (2005). Processes of change in brain and cognitive

- 547 development. *Trends in Cognitive Sciences*, 9(3), 152–158.
- 548 <https://doi.org/10.1016/j.tics.2005.01.009>
- 549 Jones, S. S. (2007). Imitation in Infancy: The Development of Mimicry. *Psychological Science*,
- 550 18(7), 593–599. <https://doi.org/10.1111/j.1467-9280.2007.01945.x>
- 551 Kojovic, N., Ben Hadid, L., Franchini, M., & Schaer, M. (2019). Sensory Processing Issues and
- 552 Their Association with Social Difficulties in Children with Autism Spectrum
- 553 Disorders. *Journal of Clinical Medicine*, 8(10), 1508. <https://doi.org/10.3390/jcm8101508>
- 554 Kwok, E. Y. L., Brown, H. M., Smyth, R. E., & Oram Cardy, J. (2015). Meta-analysis of
- 555 receptive and expressive language skills in autism spectrum disorder. *Research in*
- 556 *Autism Spectrum Disorders*, 9, 202–222. <https://doi.org/10.1016/j.rasd.2014.10.008>
- 557 Lord, C., Rutter, M., DiLavore, P., Risi, S., Gotham, K., & Bishop, S. (2012). Autism
- 558 diagnostic observation schedule—2nd edition (ADOS-2). *Los Angeles, CA: Western*
- 559 *Psychological Corporation*.
- 560 Lord, Catherine, Risi, S., Lambrecht, L., Cook, E. H., Leventhal, B. L., DiLavore, P. C.,
- 561 Pickles, A., & Rutter, M. (2000). The Autism Diagnostic Observation Schedule—
- 562 Generic: A Standard Measure of Social and Communication Deficits Associated with
- 563 the Spectrum of Autism. *Journal of Autism and Developmental Disorders*, 30(3), 205–223.
- 564 <https://doi.org/10.1023/A:1005592401947>
- 565 Lovaas, O. I. (1987). Behavioral treatment and normal educational and intellectual
- 566 functioning in young autistic children. *Journal of Consulting and Clinical Psychology*,
- 567 55(1), 3–9. <https://doi.org/10.1037/0022-006X.55.1.3>
- 568 Maeder, J., Schneider, M., Bostelmann, M., Debbané, M., Glaser, B., Menghetti, S., Schaer, M.,
- 569 & Eliez, S. (2016). Developmental trajectories of executive functions in 22q11.2
- 570 deletion syndrome. *Journal of Neurodevelopmental Disorders*, 8(1), 10.

- 571 <https://doi.org/10.1186/s11689-016-9141-1>
- 572 Mancini, V., Sandini, C., Padula, M. C., Zöllner, D., Schneider, M., Schaer, M., & Eliez, S.
573 (2019). Positive psychotic symptoms are associated with divergent developmental
574 trajectories of hippocampal volume during late adolescence in patients with
575 22q11DS. *Molecular Psychiatry*, 1–16. <https://doi.org/10.1038/s41380-019-0443-z>
- 576 McDuffie, A., Turner, L., Stone, W., Yoder, P., Wolery, M., & Ulman, T. (2007).
577 Developmental Correlates of Different Types of Motor Imitation in Young Children
578 with Autism Spectrum Disorders. *Journal of Autism and Developmental Disorders*, 37(3),
579 401–412. <https://doi.org/10.1007/s10803-006-0175-1>
- 580 Meltzoff, A. N., & Moore, M. K. (1989). Imitation in newborn infants: Exploring the range of
581 gestures imitated and the underlying mechanisms. *Developmental Psychology*, 25(6),
582 954. <https://doi.org/10.1037/0012-1649.25.6.954>
- 583 Mullen, E. (1995). Mullen Scales of Early Learning (MSEL) manual. *Circle Pines, NY:*
584 *American.*
- 585 Mutlu, A. K., Schneider, M., Debbané, M., Badoud, D., Eliez, S., & Schaer, M. (2013). Sex
586 differences in thickness, and folding developments throughout the cortex.
587 *NeuroImage*, 82, 200–207. <https://doi.org/10.1016/j.neuroimage.2013.05.076>
- 588 Pfeifer, J. H., Iacoboni, M., Mazziotta, J. C., & Dapretto, M. (2008). Mirroring others'
589 emotions relates to empathy and interpersonal competence in children. *NeuroImage*,
590 39(4), 2076–2085. <https://doi.org/10.1016/j.neuroimage.2007.10.032>
- 591 Plavnick, J. B., & Hume, K. A. (2014). Observational learning by individuals with autism: A
592 review of teaching strategies. *Autism*, 18(4), 458–466.
593 <https://doi.org/10.1177/1362361312474373>
- 594 Poon, K. K., Watson, L. R., Baranek, G. T., & Poe, M. D. (2012). To What Extent Do Joint

- 595 Attention, Imitation, and Object Play Behaviors in Infancy Predict Later
596 Communication and Intellectual Functioning in ASD? *Journal of Autism and*
597 *Developmental Disorders*, 42(6), 1064–1074. <https://doi.org/10.1007/s10803-011-1349-z>
- 598 Robain, F., Franchini, M., Kojovic, N., Wood de Wilde, H., & Schaer, M. (2020). Predictors of
599 Treatment Outcome in Preschoolers with Autism Spectrum Disorder: An
600 Observational Study in the Greater Geneva Area, Switzerland. *Journal of Autism and*
601 *Developmental Disorders*. <https://doi.org/10.1007/s10803-020-04430-6>
- 602 Rogers, S. J., Bennetto, L., McEvoy, R., & Pennington, B. F. (1996). Imitation and Pantomime
603 in High-Functioning Adolescents with Autism Spectrum Disorders. *Child*
604 *Development*, 67(5), 2060–2073. <https://doi.org/10.1111/j.1467-8624.1996.tb01843.x>
- 605 Rogers, S. J., & Dawson, G. (2010). Early Start Denver Model for young children with autism.
606 *New York, NY: Guilford.*
- 607 Rogers, S. J., Hepburn, S. L., Stackhouse, T., & Wehner, E. (2003). Imitation performance in
608 toddlers with autism and those with other developmental disorders. *Journal of Child*
609 *Psychology and Psychiatry*, 44(5), 763–781. <https://doi.org/10.1111/1469-7610.00162>
- 610 Rogers, S. J., & Pennington, B. F. (1991). A theoretical approach to the deficits in infantile
611 autism. *Development and Psychopathology*, 3(2), 137–162.
612 <https://doi.org/10.1017/S0954579400000043>
- 613 Rogers, S. J., & Williams, J. H. G. (2006). *Imitation and the Social Mind: Autism and Typical*
614 *Development*. Guilford Press.
- 615 Rousseeuw, P. J. (1987). Silhouettes: A graphical aid to the interpretation and validation of
616 cluster analysis. *Journal of Computational and Applied Mathematics*, 20, 53–65.
617 [https://doi.org/10.1016/0377-0427\(87\)90125-7](https://doi.org/10.1016/0377-0427(87)90125-7)
- 618 Rowberry, J., Macari, S., Chen, G., Campbell, D., Leventhal, J. M., Weitzman, C., &

- 619 Chawarska, K. (2015). Screening for Autism Spectrum Disorders in 12-Month-Old
620 High-Risk Siblings by Parental Report. *Journal of Autism and Developmental Disorders*,
621 45(1), 221–229. <https://doi.org/10.1007/s10803-014-2211-x>
- 622 Sandini, C., Zöllner, D., Scariati, E., Padula, M. C., Schneider, M., Schaer, M., Van De Ville, D.,
623 & Eliez, S. (2018). Development of Structural Covariance From Childhood to
624 Adolescence: A Longitudinal Study in 22q11.2DS. *Frontiers in Neuroscience*, 12.
625 <https://doi.org/10.3389/fnins.2018.00327>
- 626 Sanefuji, W., & Yamamoto, T. (2014). The Developmental Trajectory of Imitation in Infants
627 with Autism Spectrum Disorders: A Prospective Study. *Psychology*, 05(11), 1313.
628 <https://doi.org/10.4236/psych.2014.511142>
- 629 Schneider, M., Schaer, M., Mutlu, A. K., Menghetti, S., Glaser, B., Debbané, M., & Eliez, S.
630 (2014). Clinical and cognitive risk factors for psychotic symptoms in 22q11.2 deletion
631 syndrome: A transversal and longitudinal approach. *European Child & Adolescent*
632 *Psychiatry*, 23(6), 425–436. <https://doi.org/10.1007/s00787-013-0469-8>
- 633 Schopler, E., Lansing, M. D., Reichler, R. J., & Marcus, L. M. (2005). *PEP-3, Psychoeducational*
634 *Profile*. Pro-Ed.
- 635 Smith Veronica, Mirenda Pat, & Zaidman-Zait Anat. (2007). Predictors of Expressive
636 Vocabulary Growth in Children With Autism. *Journal of Speech, Language, and Hearing*
637 *Research*, 50(1), 149–160. [https://doi.org/10.1044/1092-4388\(2007/013\)](https://doi.org/10.1044/1092-4388(2007/013))
- 638 Sperdin, H. F., Coito, A., Kojovic, N., Rihs, T. A., Jan, R. K., Franchini, M., Plomp, G.,
639 Vulliamoz, S., Eliez, S., Michel, C. M., & Schaer, M. (2018). Early alterations of social
640 brain networks in young children with autism. *ELife*, 7, e31670.
641 <https://doi.org/10.7554/eLife.31670>
- 642 Stone, W. L., Ousley, O. Y., & Littleford, C. D. (1997). Motor Imitation in Young Children

- 643 with Autism: What's the Object? *Journal of Abnormal Child Psychology*, 25(6), 475–485.
644 <https://doi.org/10.1023/A:1022685731726>
- 645 Stone, W. L., & Yoder, P. J. (2001). Predicting Spoken Language Level in Children with
646 Autism Spectrum Disorders. *Autism*, 5(4), 341–361.
647 <https://doi.org/10.1177/1362361301005004002>
- 648 Strid, K., Tjus, T., Smith, L., Meltzoff, A. N., & Heimann, M. (2006). Infant recall memory and
649 communication predicts later cognitive development. *Infant Behavior and*
650 *Development*, 29(4), 545–553. <https://doi.org/10.1016/j.infbeh.2006.07.002>
- 651 Thurm, A., Lord, C., Lee, L.-C., & Newschaffer, C. (2007). Predictors of Language
652 Acquisition in Preschool Children with Autism Spectrum Disorders. *Journal of Autism*
653 *and Developmental Disorders*, 37(9), 1721–1734. [https://doi.org/10.1007/s10803-006-](https://doi.org/10.1007/s10803-006-0300-1)
654 0300-1
- 655 Toth, K., Munson, J., N. Meltzoff, A., & Dawson, G. (2006). Early Predictors of
656 Communication Development in Young Children with Autism Spectrum Disorder:
657 Joint Attention, Imitation, and Toy Play. *Journal of Autism and Developmental*
658 *Disorders*, 36(8), 993–1005. <https://doi.org/10.1007/s10803-006-0137-7>
- 659 Trevarthen, C., Kokkinaki, T., & Fiamenghi Jr., G. A. (1999). What infants' imitations
660 communicate: With mothers, with fathers and with peers. In *Imitation in infancy* (pp.
661 127–185). Cambridge University Press.
- 662 Uzgiris, I. C. (1981). Two Functions of Imitation During Infancy. *International Journal of*
663 *Behavioral Development*, 4(1), 1–12. <https://doi.org/10.1177/016502548100400101>
- 664 Villalobos, M. E., Mizuno, A., Dahl, B. C., Kemmotsu, N., & Müller, R.-A. (2005). Reduced
665 functional connectivity between V1 and inferior frontal cortex associated with
666 visuomotor performance in autism. *NeuroImage*, 25(3), 916–925.

- 667 <https://doi.org/10.1016/j.neuroimage.2004.12.022>
- 668 Vivanti, G., Dissanayake, C., & The Victorian ASELCC Team. (2016). Outcome for Children
669 Receiving the Early Start Denver Model Before and After 48 Months. *Journal of*
670 *Autism and Developmental Disorders*, 46(7), 2441–2449. [https://doi.org/10.1007/s10803-](https://doi.org/10.1007/s10803-016-2777-6)
671 [016-2777-6](https://doi.org/10.1007/s10803-016-2777-6)
- 672 Vivanti, G., Dissanayake, C., Zierhut, C., Rogers, S. J., & Victorian ASELCC Team. (2013).
673 Brief report: Predictors of outcomes in the Early Start Denver Model delivered in a
674 group setting. *Journal of Autism and Developmental Disorders*, 43(7), 1717–1724.
675 <https://doi.org/10.1007/s10803-012-1705-7>
- 676 Vivanti, G., & Hamilton, A. (2014). Imitation in Autism Spectrum Disorders. In *Handbook of*
677 *Autism and Pervasive Developmental Disorders, Fourth Edition*. American Cancer
678 Society. <https://doi.org/10.1002/9781118911389.hautc12>
- 679 Wadsworth, H. M., Maximo, J. O., Lemelman, A. R., Clayton, K., Sivaraman, S., Deshpande,
680 H. D., Ver Hoef, L., & Kana, R. K. (2017). The Action Imitation network and motor
681 imitation in children and adolescents with autism. *Neuroscience*, 343, 147–156.
682 <https://doi.org/10.1016/j.neuroscience.2016.12.001>
- 683 Wiggins, L. D., Robins, D. L., Adamson, L. B., Bakeman, R., & Henrich, C. C. (2012). Support
684 for a Dimensional View of Autism Spectrum Disorders in Toddlers. *Journal of Autism*
685 *and Developmental Disorders*, 42(2), 191–200. <https://doi.org/10.1007/s10803-011-1230-0>
- 686 Young, G. S., Rogers, S. J., Hutman, T., Rozga, A., Sigman, M., & Ozonoff, S. (2011). Imitation
687 from 12 to 24 months in autism and typical development: A longitudinal Rasch
688 analysis. *Developmental Psychology*, 47(6), 1565. <https://doi.org/10.1037/a0025418>
- 689 Zachor, D. A., Ilanit, T., & Itzchak, E. B. (2010). Autism severity and motor abilities correlates
690 of imitation situations in children with autism spectrum disorders. *Research in Autism*

- 691 *Spectrum Disorders*, 4(3), 438–443. <https://doi.org/10.1016/j.rasd.2009.10.016>
- 692 Zmyj, N., & Seehagen, S. (2013). The Role of a Model's Age for Young Children's Imitation:
693 A Research Review. *Infant and Child Development*, 22(6), 622–641.
694 <https://doi.org/10.1002/icd.1811>
- 695 Zwaigenbaum, L., Bryson, S., Rogers, T., Roberts, W., Brian, J., & Szatmari, P. (2005).
696 Behavioral manifestations of autism in the first year of life. *International Journal of*
697 *Developmental Neuroscience*, 23(2), 143–152.
698 <https://doi.org/10.1016/j.ijdevneu.2004.05.001>
699