

1 **The lockdown of Hubei Province causing different transmission** 2 **dynamics of the novel coronavirus (2019-nCoV) in Wuhan and** 3 **Beijing**

4 Xinhai Li^{1,2*}, Xumao Zhao^{3*}, Yuehua Sun^{1,2}

5 ¹ Key Laboratory of Animal Ecology and Conservation Biology, Institute of Zoology,
6 Chinese Academy of Sciences, Beijing, 100101, China

7 ² University of Chinese Academy of Sciences, Yuquan Road, Beijing 100049, China

8 ³ State Key Laboratory of Grassland Agro-Ecosystem/Institute of Innovation Ecology,
9 Lanzhou University, Lanzhou, 730020, China

10 *The authors have the same contribution to the manuscript.

11 Correspondence to: sunyh@ioz.ac.cn; lixh@ioz.ac.cn

12 **Abstract**

13 After the outbreak of novel coronavirus (2019-nCoV) starting in late 2019, a number
14 of researchers have reported the predicted the virus transmission dynamics. However,
15 under the strict control policy the novel coronavirus does not spread naturally outside
16 Hubei Province, and none of the prediction closes to the real situation. We used the
17 traditional SEIR model, fully estimated the effect of control measures, to predict the
18 virus transmission in Wuhan, the capital city of Hubei Province, and Beijing. We
19 forecast that the outbreak of 2019-nCoV would reach its peak around $March\ 10 \pm 20$
20 in Wuhan and $March\ 31 \pm 16$ in Beijing, respectively. The infectious population in
21 Beijing would be much less (only 0.3%) than those in Wuhan at the peak of this
22 transmission wave. The unprecedented province lockdown substantially suspends the
23 national and global outbreak of 2019-nCoV.

24 **Key words:** city closure, quarantine, pandemic, public health, SEIR model,
25 transmission

26 **1. Introduction**

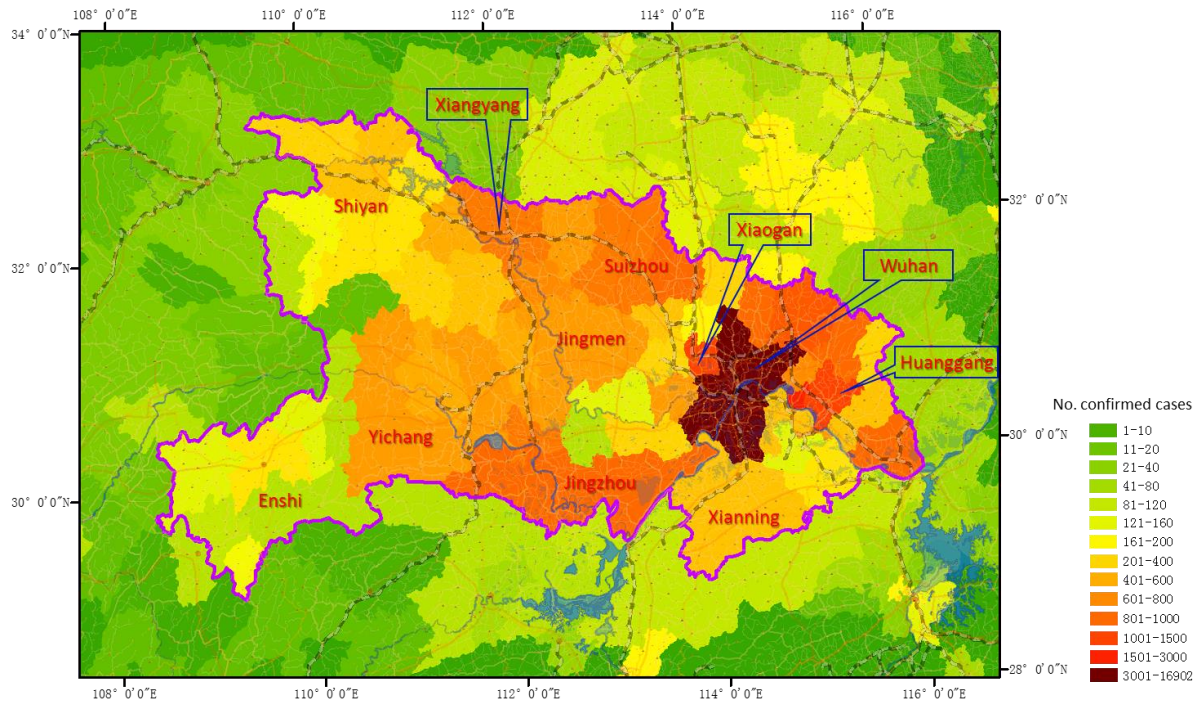
27 A novel coronavirus (2019-nCoV) appeared in December 2019 in Wuhan, Hubei
28 Province in central China had triggered city closure on Jan. 23, 2020, and lockdown
29 of all major cities in the province a few days later (Fig. 1). At present, over 50 million
30 people are constrained locally. Due to the threat of 2019-nCoV to public health, World
31 Health Organization (WHO) declared novel coronavirus (2019-nCoV) outbreak to be

32 “public health emergency of international concern” on Jan. 30, 2020 (Kupferschmidt
33 2020a)

34 It is always a great challenge to fight effectively against a pandemic (Shetty
35 2009; Van Kerkhove et al. 2010), especially when little is known about the new virus
36 (Kamigaki & Oshitani 2010). Ideally, governments, communities and medical
37 services take rapid, effective, rational, and proportionate responses to such health
38 emergencies; either minimalist or maximalist responses may potentially be very
39 harmful (Doyle et al. 2006; Tarantola et al. 2009).

40 To facilitate decision making against the 2019-nCoV, researchers had predicted
41 the transmission dynamics in different scenarios. Read et al. (2020) estimated that
42 only 5.1% (95% CI, 4.8–5.5) of infections in Wuhan were identified; ahead of 14
43 days, they predicted the number of infected people in Wuhan to be greater than 250
44 thousand on Feb. 4, 2020. Read et al. (2020) suggested, before the city closure of
45 Wuhan, that travel restrictions from and to Wuhan city are unlikely to be effective and
46 2019-nCoV would outbreak in Beijing, Shanghai, etc. with much larger sizes. Leung
47 et al. (2020) estimated the transmission dynamics of 2019-nCoV in six major cities in
48 China under six scenarios: 0%, 25%, 50% transmission reduction with and without
49 50% mobility reduction. However, the assumption of 50% mobility reduction is much
50 lower than the real situation. China government enforced tourism ban on Jan. 24, and
51 carried out other control measures such as extending holidays, closing schools,
52 cancelling meetings, suggesting a 14-day quarantine after travel. In particular,
53 highway traffic control is strictly implemented in many cities, towns, and villages.
54 The majority of communities in large cities such as Beijing and Shanghai have closed
55 to visitors.

56 Under the circumstance of strict control measures, we forecast the transmission
57 dynamics of Wuhan and Beijing. Wuhan is the source of 2019-nCoV, suffered a long
58 history (two months) of virus transmission, with lack of medical resources to
59 quarantine exposed and suspect people. Beijing is a larger city with 22 million
60 residents, including 10 million inbound passengers after the holidays of Chinese New
61 Year. We believe our estimation is close to the real situation and is helpful for 2019-
62 nCoV control.



63 Fig. 1 Lockdown of Hubei Province to enclose novel coronavirus (2019-nCoV). The
 64 gradient color represents the number of confirmed cases in Hubei Province and adjacent
 65 areas on Feb. 9 (24:00), 2020.

66 2. Methods

67 We used the Susceptible-Exposed-Infectious-Recovered (SEIR) model to estimate the
 68 dynamics of the novel coronavirus (2019-nCoV).

69 2.1. The SEIR Model

70 The SEIR model has the form (Hethcote 2000):

$$\begin{aligned}
 \frac{dS}{dt} &= -\beta \frac{I}{N} S \\
 \frac{dE}{dt} &= \beta \frac{I}{N} S - \alpha E \\
 \frac{dI}{dt} &= \alpha E - \nu I \\
 \frac{dR}{dt} &= \nu I
 \end{aligned}
 \tag{Equation 1}$$

71 where S is the susceptible population, E is the exposed population, I is the infectious
 72 population, R is the recovered population, t is time (the number of days after the

73 emergence of the first case), N is the total population, β is the average number of
74 infected individuals per infectious subject per unit time, α is the reciprocal of average
75 latent period, ν is the rate of recovery (reciprocal of duration of the infection).

76 We assumed the infection rate of the novel coronavirus decreased when
77 temperature goes up starting from March 1, 2020, since other viruses have a seasonal
78 pattern (wave), such as the 2009 H1N1 pandemic (Fang et al. 2012). As such, we
79 defined the decreasing infection rate exponentially as below:

$$\beta_t = \beta \times (1 - C)^{t-90} \text{ (Equation 2)}$$

80 where β_t is the infect rate at the time t (the first day, $t = 1$, is Dec. 1, 2019, based on
81 the first confirmation of 2019-nCoV on Dec. 8); C is a constant (simulated at 0.01-
82 0.1) defining the decreasing rate of transmission per day.

83 For the cities with continuous imported infected people, we modify the growth
84 rate of infectious population as:

$$\frac{dI}{dt} = \alpha E - \nu I + \text{imported} \text{ (Equation 3)}$$

86 where *imported* is the daily number of imported infections.

87 2.2. Determination of Model Parameters

88 The basic reproductive number R_0 for 2019-nCoV had been estimated in several
89 independent studies (Table 1). It was noticed that changes in reporting rate of
90 confirmed cases substantially affected R_0 estimation (Zhao et al. 2020). In fact, R_0 is
91 highly associated with the intensity of control measures. We used a series values of R_0
92 to fit the number of cases in Wuhan and Beijing.

93 Table 1. The estimated basic reproductive number R_0 for 2019-nCoV

R_0	Lower CI	Upper CI	CV	Citations
3.8	3.6	4.0	0.05	(Read et al. 2020)
2.68	2.47	2.86	0.07	(Leung et al. 2020)
2.24	1.96	2.55	0.13	(Zhao et al. 2020)
3.58	2.89	4.39	0.20	(Zhao et al. 2020)
2.90	2.32	3.63	0.22	(Liu et al. 2020)
2.92	2.28	3.67	0.23	(Liu et al. 2020)
6.47	5.71	7.23	0.12	(Tang et al. 2020)

94 The mean value of R_0 in Table 1 is 3.51, and the mean CV (coefficient of
95 variation) is 0.15.

96 The incubation period ($1/\alpha$ in SEIR model) was estimated as 6.4 (95% CI: 5.6 -
97 7.7) days, ranging from 2.1 to 11.1 days (Backer et al. 2020). Liu et al. (2020)
98 provided a lower value, 4.8 days, for the period. Based on information from other
99 coronavirus diseases, such as SARS and MERS, the incubation period of 2019-nCoV
100 could be up to 14 days (WHO 2020). We used 6 days as the incubation period for our
101 simulation.

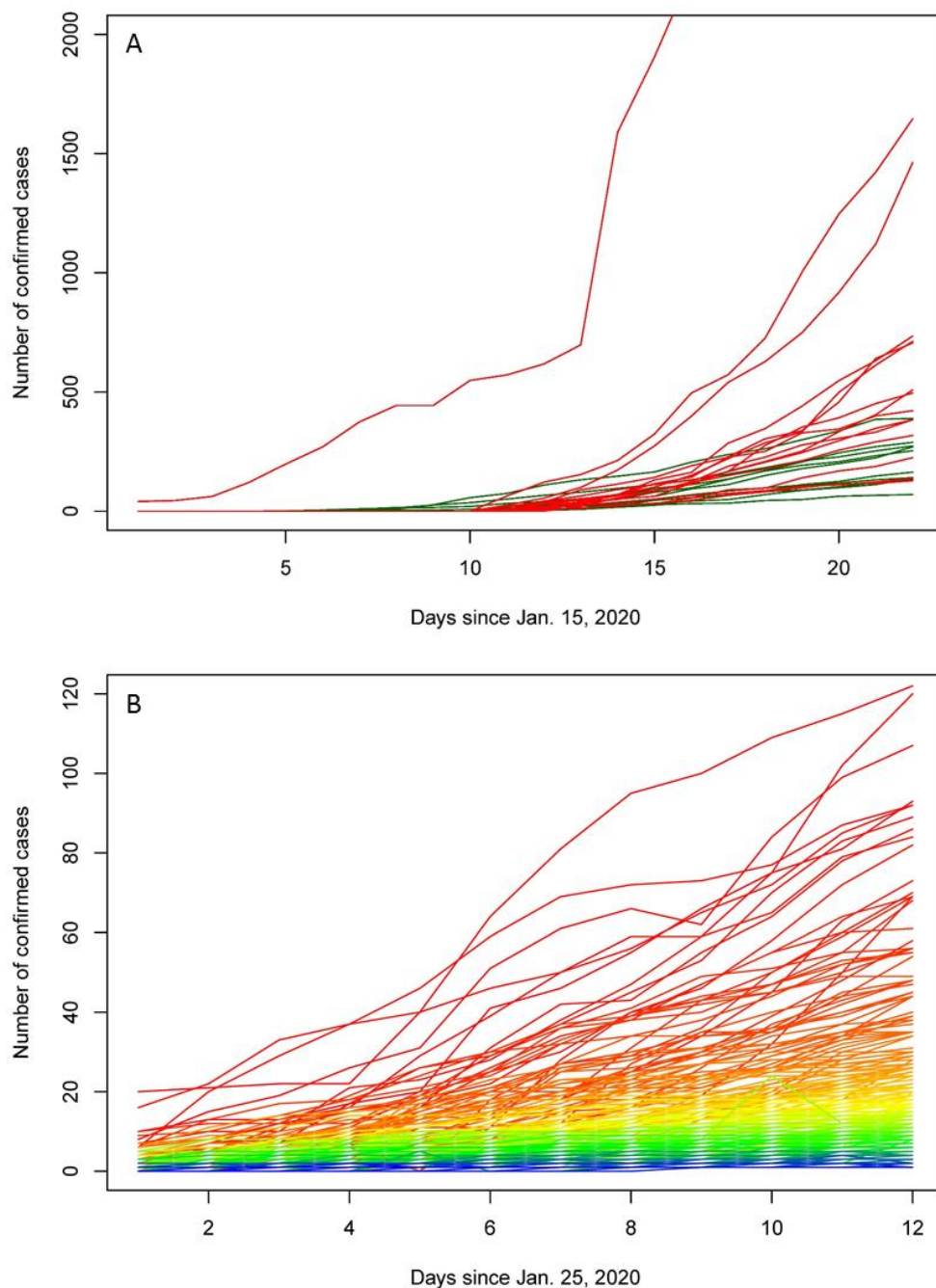
102 Other model parameters are: population size of Beijing and Wuhan are 22
103 million and 10 million, respectively, based on the data (for 2018) provided by
104 National Bureau of Statistics of China at
105 <http://data.stats.gov.cn/easyquery.htm?cn=E0105>. The proportion of susceptible is
106 50% of the total population. The rate of recovery $\nu = 1/5$ per day. The basic
107 reproductive number R_0 does not directly used in the SEIR model. It has the following
108 function with the model variables and parameters: $R_0 = \beta/\nu \times S/N$.

109 To make our analysis repeatable, we posted the data used in this study and R
110 code for the SEIR model at <https://github.com/Xinhai-Li/2019-nCoV>.

111 3. Results

112 Until 9:00 on Feb. 9, the number of confirmed cases reaches 37251
113 (https://voice.baidu.com/act/newpneumonia/newpneumonia/?from=osari_pc_1). In
114 Hubei Province, the number of confirmed cases in the capital city Wuhan and other

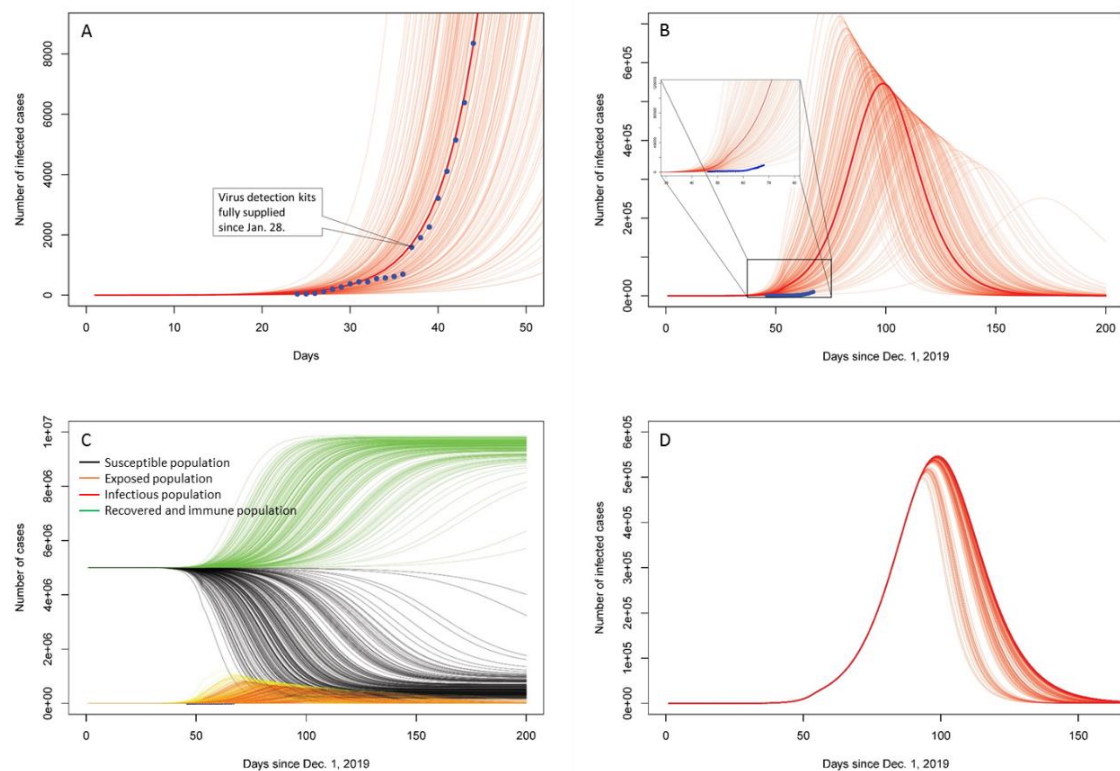
115 prefecture-level cities grow exponentially; whereas in other cities in China, the
116 number of infections increase linearly (Fig. 2).



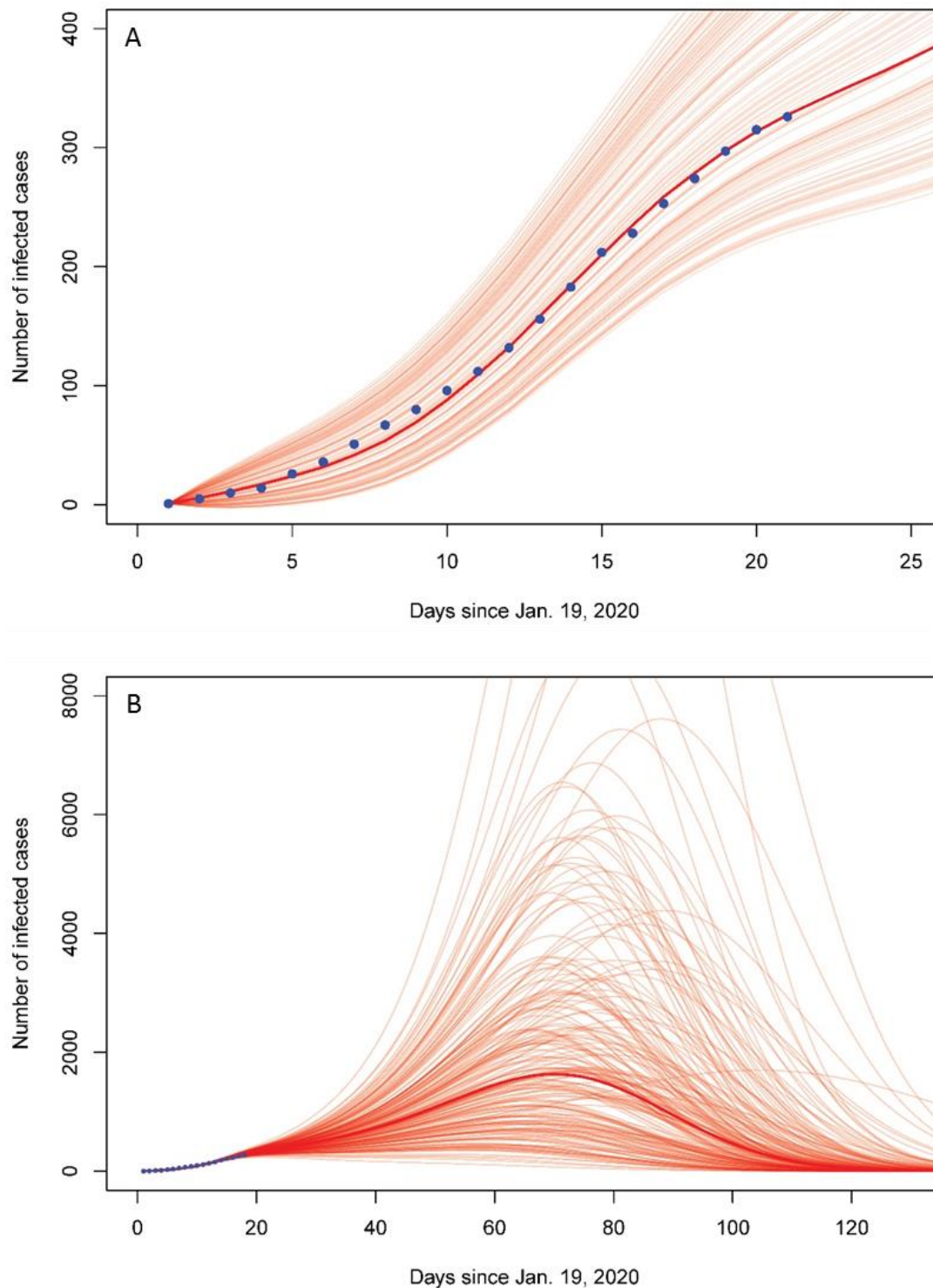
117 Fig. 2 The number of confirmed cases of 2019-nCoV in 332 cities in China. A. The
118 number of cases in top 26 cities. The red lines show the numbers of cases in cities inside
119 Hubei Province, and the green lines demonstrate those in other cities in China. B. The
120 number of cases in other 306 cities.

121 We simulated the virus transmission process using the SEIR model and
122 estimated the model parameters for Wuhan (Fig. 3) and Beijing (Fig. 4). For Wuhan,
123 we first fit the number of confirmed cases (Fig. 3A), where the R_0 is 5.75, much
124 higher than that in most studies yet lower than Tang et al.'s result (Table 1). Due to
125 the reality that a number of infected people in Hubei Province have not been checked
126 (Leung et al. 2020; Read et al. 2020), we fit a more realistic transmission dynamics,
127 under a condition of a fixed starting day on Dec. 1, 2019 (Fig. 3B). The best fit model
128 having the R_0 5.0. After the city closure on Jan. 23, the residents of Wuhan performed
129 strong self-protection by isolating themselves at home, so that we halved basic
130 reproductive number to 2.5, reflecting the pattern of family cluster infection of the
131 virus. With this transmission rate, the infectious population could reach the peak of
132 600,000 on March 10 ± 20 , 2020. The warming climate, based on Equation 2, may
133 shorten the transmission duration by 20-30 days (Fig. 3D).

134 For Beijing, about half of the infections were directly imported from Wuhan
135 (Leung et al. 2020). We assume the infection flow would last for 30 days (from Jan.
136 19 to Feb. 18), caused by the 10 million people leaving the returning Beijing for
137 holidays. We simulated the numbers of imported cases and found the best fit of daily
138 imported cases for the 30 days following a normal distribution, with mean value and
139 SD to be 19 ± 12.7 individuals / day. To estimate the fluctuation of this time series of
140 imported cases, we calculated the standard deviation of the mean value (19
141 individuals / day) of the daily imported patients from Jan. 19 to Feb. 8, which is 3.67.
142 We adopted this uncertainty to run 200 simulation, and found the R_0 1.4 is the perfect
143 fit (Fig. 4A). Considering the uncertainty of R_0 , we run the simulation with $R_0 = 1.4 \pm$
144 0.21 (CV = 15%, see Table 1), and the results indicate that the infectious population
145 may reach 2651 on March 31 ± 16 (Fig. 4B). The uncertainty of the transmission
146 dynamics, as simulated by the SEIR model, is very high due to large variance in
147 imported cases and R_0 (Fig. 4).



148 Fig. 3 Simulated 2019-nCoV transmission dynamics in Wuhan. The blue dots are number
 149 of confirmed cases. The CV of R_0 is 15% for 200 simulations. A. Fit SEIR model to the
 150 published confirmed number of cases in Wuhan. The R_0 is 5.75; the 2019-nCoV outbreak
 151 started on Dec. 24, 2019. B. Fit SEIR model based on the “real” starting date on Dec. 1,
 152 2019. The infectious population might reach 100,000 on Feb. 5, 2020. The R_0 is 5 before
 153 Jan. 23, and 2.5 after Jan. 23. C. The dynamics of susceptible, exposed, infectious and
 154 recover/immune populations. Fig. 3B is a part of Fig. 3C. D. The dynamics of infectious
 155 population under the effect of warning climate ($C = 0.1$, $SD = 0.03$).



156 Fig. 4 Predicted infectious population of 2019-nCoV in Beijing using SEIR. A. Predicted
157 infectious population at the early stage of transmission. The mean imported cases of
158 infection is 19 persons / day for 30 days, and the standard deviation of this mean value is
159 3.67. The R_0 is fixed at 1.4. B. Predicted infectious population at the whole transmission
160 period. The R_0 is simulated at 1.4 ± 0.21 . The parameter C (for temperature effect) in
161 Equation 3 is 0.001.

162 4. Discussion

163 We simulated the transmission dynamics of 2019-nCoV, with taking into account of
164 the strict control measures enforced in the two cities. For Wuhan, city closure was a
165 chock upon the local residents and they took much better protection than before.
166 Accordingly, we halved the R_0 after the city closure. As to Beijing, strict control
167 measures have been implemented. As a result, the local infection happened only 41
168 times until Feb. 3, with 124 people infected, which equals to half of the confirmed
169 cases (He 2020). The dynamics of virus transmission are dramatically different within
170 and without Hubei Province (Fig. 2), so that we gave different model parameters for
171 the two cities. Our results about infectious population in Wuhan is lower than Read et
172 al.'s estimation by 60%. Our estimation for Beijing is also much lower than the
173 prediction of other studies (e.g. Leung et al. 2020; Read et al. 2020). We believe we
174 provide a more realistic forecast, as we are witnessing the strict prevention activities
175 carried out by all organizations and local communities in Beijing, and the linear
176 increase (not exponential increase) of daily confirmed cases has proved the
177 effectiveness of control measures.

178 China is running an antivirus campaign against 2019-nCoV. Besides the
179 lockdown of Hubei Province, many cities blocked the highway and stopped the traffic
180 through their domain. The longest vacation (for Chinese New Year) had been
181 extended twice. The majority of people quarantine themselves at home for 14 days
182 after travel. All domestic and international tourism were cancelled and banned.
183 Numerous meetings, games, shows have been postponed. Schools are still closed.

184 There are three difficulties in the antivirus campaign. 1. The incubation period
185 of 2019-nCoV is long. 2. Some patients have no symptoms yet they are infectious.
186 Although a case of no symptom transmission (Rothe et al. 2020) had been proved
187 flaw (Kupferschmidt 2020b), more other cases had been reported in many sources
188 such as newspapers, website, and Wechat, etc. The current prevention method, body
189 temperature checking, could not detect such people. 3. The false negative rate of
190 2019-nCoV diagnosis is high. For example, Dr. Wenliang Li (WHO Twitter mourned
191 his death due to 2019-nCoV on Feb. 6, 2020) had mentioned at his Wechat account
192 that the nucleic acid detection for him was negative, when he suffered breath

193 difficulty. We think it would have a longer fight (Fig. 3 & 4) against 2019-nCoV than
194 SARS and MERS.

195 Wuhan can represent the situation of other cities in Hubei Province. After the
196 lockdown, these cities are isolated. Even over ten thousand medical workers from
197 other cities all over China have entered Wuhan for help, the infectious population is
198 still too large to be taken care of. However, starting from Feb. 2 and Feb. 8, two newly
199 established hospitals (Huoshenshan and Leishenshan Hospitals) with altogether 2500
200 beds for infectious patients have been already in service. With square bay hospitals
201 having been built and coming into use, and a door to door checking of all residents in
202 Wuhan started, and all infected and suspected people in Wuhan would be under
203 medical care. The infectious population in Wuhan should be much lower than our
204 estimation under the new prevention activity.

205 Beijing is a representative of other large cities outside Hubei Province in China.
206 In Beijing, all confirmed and suspected cases have been taken into designated
207 hospitals, with their close contactors being tracked and quarantined in hotels or at
208 home. Similar controls are being implemented in other Chinese cities. The linear
209 increases of total number of confirmed cases (Fig. 2) indicates the spread of the virus
210 is under strictly control. The lockdown of Hubei Province substantially decreased the
211 imported infections, ensure the situation under control outside the province.

212 We kept the parameters of incubation period and serial interval constant for all
213 simulations. The uncertainty of these parameters also influences the results. The
214 estimation of R_0 , its variance, and the rate of susceptible population, as well as the
215 effect of control measures and warming climate, are relatively arbitrary. In spite of the
216 weakness, we provide a more accurate estimation than previous studies. We hope our
217 results are valuable for instructing further antivirus activities.

218 **References**

- 219 Backer JA, Klinkenberg D, Wallinga J. 2020. The incubation period of 2019-nCoV
220 infections among travellers from Wuhan, China. medRxiv.
221 Doyle A, Bonmarin I, Levy-Bruhl D, Le Strat Y, Desenclos JC. 2006. Influenza
222 pandemic preparedness in France: modelling the impact of interventions.
223 *Journal of Epidemiology and Community Health* **60**:399-404.

- 224 Fang L-Q, et al. 2012. Distribution and risk factors of 2009 pandemic influenza A
225 (H1N1) in mainland china. *American Journal of Epidemiology* **175**:890-897.
- 226 He X. 2020. The local infection of novel coronavirus in Beijing Beijing Business
227 Newspaper, Beijing, Feb. 3, 2020.
- 228 Hethcote HW. 2000. The mathematics of infectious diseases. *Siam Review* **42**:599-653.
- 229 Kamigaki T, Oshitani H. 2010. Influenza pandemic preparedness and severity
230 assessment of pandemic (H1N1) 2009 in South-east Asia. *Public Health* **124**:5-
231 9.
- 232 Kupferschmidt K. 2020a. Outbreak of virus from China declared global emergency.
233 *Science*.
- 234 Kupferschmidt K. 2020b. Study claiming new coronavirus can be transmitted by people
235 without symptoms was flawed. *Science*.
- 236 Leung K, Wu J, Leung G. 2020. Nowcasting and forecasting the Wuhan 2019-nCoV
237 outbreak. Preprint published by the School of Public Health of the University
238 of Hong Kong.
- 239 Liu T, Hu J, Kang M, Lin L, Zhong H, Xiao J, He G, Song T, Huang Q, Rong Z. 2020.
240 Transmission dynamics of 2019 novel coronavirus (2019-nCoV). *bioRxiv*.
- 241 Read JM, Bridgen JR, Cummings DA, Ho A, Jewell CP. 2020. Novel coronavirus 2019-
242 nCoV: early estimation of epidemiological parameters and epidemic predictions.
243 *medRxiv*.
- 244 Rothe C, Schunk M, Sothmann P, Bretzel G, Froeschl G, Wallrauch C, Zimmer T, Thiel
245 V, Janke C, Guggemos W. 2020. Transmission of 2019-nCoV Infection from
246 an Asymptomatic Contact in Germany. *New England Journal of Medicine*.
- 247 Shetty P. 2009. Preparation for a pandemic: influenza A H1N1. *Lancet Infectious
248 Diseases* **9**:339-340.
- 249 Tang B, Wang X, Li Q, Bragazzi NL, Tang S, Xiao Y, Wu J. 2020. Estimation of the
250 transmission risk of 2019-ncov and its implication for public health
251 interventions. Available at SSRN 3525558.
- 252 Tarantola D, Amon J, Zwi A, Gruskin S, Gostin L. 2009. H1N1, public health security,
253 bioethics, and human rights. *Lancet* **373**:2107-2108.
- 254 Van Kerkhove MD, et al. 2010. Studies needed to address public health challenges of
255 the 2009 H1N1 influenza pandemic: insights from modeling. *Plos Medicine* **7**.
- 256 WHO. 2020. Q&A on coronaviruses: How long is the incubation period?, Available
257 from <https://www.who.int/news-room/q-a-detail/q-a-coronaviruses> (accessed
258 2020-2-5).
- 259 Zhao S, et al. 2020. Preliminary estimation of the basic reproduction number of novel
260 coronavirus (2019-nCoV) in China, from 2019 to 2020: A data-driven analysis
261 in the early phase of the outbreak. *International Journal of Infectious Diseases*.