

Reduction of Microbial Diversity During Artisanal Fermentation and Detection of Multidrug-Resistant *Salmonella* in Commercially Imported Beef in Puerto Rico

Milliani Carmona-Ortiz^{1^}, Joyce Cartagena-Teruel^{1^}, Ariadna Maldonado-Maldonado^{1^}, Lorenid Martínez-Pacheco^{1^}, Lizel Ortiz-Cartagena^{1^}, Gian Rodriguez-Plata^{1^} & Gustavo Santiago-Collazo^{1#}

¹Department of Biology, University of Puerto Rico, Ponce, PR 00716

#Corresponding author:

gustavo.santiago15@upr.edu

939-275-2478

[^]All authors contributed equally to this work.

Running title.

Fermentation and AMR Pathogens in Puerto Rican Embutidos

Abbreviations.

TSA-Tryptic Soy Agar, MAC-MacConkey, SDA-Sabouraud Dextrose Agar, RODAC-Replicate Organism Detection and Counting, IMViC- Indole, Methyl Red, Voges-Proskauer, Citrate, CLSI- Clinical and Laboratory Standards Institute, MDR-Multi Drug Resistant

1 **Abstract.**

2 Artisanally produced *embutidos* are a culturally significant fermented meat product
3 widely consumed in Puerto Rico, yet their microbiological safety remains largely
4 uncharacterized. This preliminary study evaluated the effect of artisanal fermentation on
5 microbial diversity and assessed the presence of potentially pathogenic and
6 antimicrobial-resistant *Proteobacteria* in locally produced embutidos. Raw pork (locally
7 sourced) and beef (commercially imported) were obtained from retail supermarkets and
8 processed at a small-scale production facility under standard artisanal conditions.
9 Surface sampling using RODAC contact plates on TSA, MAC, and SDA media was
10 performed before and after fermentation. Fermentation reduced overall microbial
11 diversity in both meat types. Two Gram-negative isolates recovered from pre-
12 fermentation samples were characterized using selective and differential media (MAC,
13 MSA, EMB) and the IMViC biochemical test series. A *Salmonella* species was
14 presumptively identified from imported beef, and an *Enterobacter* species from locally
15 sourced pork. Kirby-Bauer disk diffusion testing revealed that the *Salmonella* isolate
16 was resistant to five antibiotics (ampicillin, methicillin, penicillin, streptomycin,
17 tetracycline) and showed intermediate susceptibility to chloramphenicol and gentamicin.
18 The *Enterobacter* isolate was resistant to five antibiotics (ampicillin, methicillin,
19 penicillin, streptomycin, tetracycline) and showed intermediate susceptibility to
20 chloramphenicol and gentamicin. Both isolates met MDR criteria, highlighting the need
21 for enhanced microbiological oversight of artisanally produced embutidos in Puerto
22 Rico.

23 **Keywords.**

24 fermented meat products, embutidos, *Salmonella*, *Enterobacter*, antimicrobial
25 resistance, multidrug resistance, food safety, Puerto Rico, artisanal production

26

27 **Introduction.**

28 Fermented meat products, commonly known as embutidos, represent a cornerstone of
29 Puerto Rican culinary culture and are consumed year-round across the island. Unlike
30 industrially produced products, the majority of embutidos available in Puerto Rico are
31 produced artisanally by small-scale producers who often source raw meat directly from
32 local supermarkets, operating outside the scope of rigorous microbiological quality
33 control. As a result, the microbiological safety of these products remains largely
34 unknown, posing a potential public health concern that has received limited scientific
35 attention in the local context.

36 Fermentation has long been recognized as one of the most effective traditional
37 preservation strategies for meat products, contributing to extended shelf life, enhanced
38 organoleptic properties, and the reduction of spoilage and pathogenic microorganisms
39 through acidification and microbial competition (Wang et al., 2021; Leistner, 2000).
40 However, the effectiveness of fermentation as a barrier against pathogenic bacteria is
41 not absolute, particularly when the raw material harbors microorganisms capable of
42 tolerating or adapting to the fermentation environment. Understanding whether artisanal
43 fermentation practices are sufficient to reduce microbial diversity and control pathogenic
44 genera is therefore essential for evaluating the safety of locally produced embutidos.

45 Of particular concern is the presence of pathogenic *Proteobacteria*, such
46 as *Salmonella* spp. and *Enterobacter* spp., which have been associated with raw meat
47 and meat products globally (Terentjeva et al., 2017; Conceição et al., 2023). Beyond
48 their pathogenic potential, these genera are increasingly documented as carriers of
49 antimicrobial resistance determinants, raising serious public health concerns within the
50 One Health framework (WHO, 2015; CDC, 2022). In the United States, the USDA Food
51 Safety and Inspection Service (FSIS) actively monitors *Salmonella* in meat and poultry
52 through the Pathogen Reduction/Hazard Analysis and Critical Control Point
53 (PR/HACCP) framework (USDA-FSIS, 2013). The National Antimicrobial Resistance
54 Monitoring System (NARMS), a collaborative initiative between USDA, FDA, and CDC,
55 tracks antimicrobial resistance in foodborne enteric bacteria from retail meats and food-
56 producing animals (NARMS, 2024). Despite these federal surveillance mechanisms,
57 artisanally produced embutidos in Puerto Rico falls largely outside the scope of formal
58 microbiological oversight, representing an important gap in the FSIS regulatory
59 framework.

60 Despite the cultural and economic relevance of artisanally produced embutidos in
61 Puerto Rico, no preliminary microbiological characterization of these products from raw
62 material to fermented product has been reported using locally sourced pork and
63 imported beef. This knowledge gap limits evidence-based risk assessment and the
64 development of targeted safety interventions for small-scale producers.

65 The present study aimed to conduct a preliminary microbiological evaluation of
66 artisanally fermented embutidos produced from local pork and imported beef.

67 Specifically, we sought to: (1) assess whether fermentation reduces overall microbial
68 diversity by comparing microbiological profiles before and after fermentation; (2) isolate
69 and presumptively identify potentially pathogenic *Proteobacteria* from pre-fermentation
70 samples using differential and selective media (MAC, MSA, EMB) and the IMViC test
71 series; and (3) determine the antimicrobial resistance profiles of the identified isolates
72 through antibiogram testing. Findings provide preliminary evidence relevant to public
73 health risk assessment for artisanally produced fermented meat products in Puerto
74 Rico.

75 **Materials and Methods.**

76

77 **Sample Collection and Source**

78 Raw meat was purchased directly from local supermarkets in Puerto Rico, reflecting the
79 actual sourcing practices of artisanal embutido producers. Two meat types were
80 obtained: locally sourced pork (*Sus scrofa domesticus*) and commercially imported beef.
81 Samples were transported under refrigeration ($\leq 4^{\circ}\text{C}$) to a local small-scale embutido
82 producer, where the fermentation process was carried out under standard artisanal
83 production conditions. All sampling was performed at the production facility immediately
84 before and after the fermentation process. All laboratory procedures were carried out by
85 undergraduate students enrolled in the Undergraduate Research Course BIOL 3108 at
86 the University of Puerto Rico at Ponce, under the direct supervision of the course
87 instructor and Principal Investigator.

88

89

90 **Experimental Design**

91 A before-and-after fermentation design was employed to assess changes in the
92 microbiological profile associated with the fermentation process. Pre-fermentation
93 samples (raw meat) served as the baseline for microbial load assessment and pathogen
94 isolation. Post-fermentation samples (finished fermented product) were used to evaluate
95 whether the fermentation process resulted in a measurable reduction of overall
96 microbial diversity.

97

98 **Surface Sampling Using RODAC Plates**

99 Surface microbial sampling was performed using Replicate Organism Detection and
100 Counting (RODAC) contact plates directly on the meat surface at the production facility.
101 Although RODAC plates are primarily designed for surface sampling of environmental
102 and food contact surfaces, this method was employed as a practical preliminary
103 approach to capture the microbial communities present on the meat surface at the point
104 of production.

105 Three types of RODAC plates were used: Tryptic Soy Agar (TSA): For enumeration of
106 total aerobic mesophilic bacteria. MacConkey Agar (MAC): Selective and differential
107 medium for Gram-negative enteric bacteria. Sabouraud Dextrose Agar (SDA): For
108 detection of yeasts and molds. Fungal diversity was detected but was not further
109 characterized in the present study, as fungal ecology falls outside the scope of this
110 report.

111 TSA and MAC plates were incubated at 37°C for 24–48 hours. SDA plates were
112 incubated at 25°C for 48–72 hours. Colony counts and morphologies were recorded for
113 all plates. It is acknowledged that RODAC contact plates represent a surface sampling
114 approach and may not fully capture the microbial communities present within the meat
115 matrix; results should therefore be interpreted as preliminary and indicative of the
116 surface microbiome at the time of sampling.

117

118 **Isolation of Gram-Negative Bacteria**

119 Following incubation, MacConkey agar RODAC plates were used as the primary source
120 for the isolation of Gram-negative bacteria. Morphologically distinct colonies were
121 selected from MAC plates and sub-cultured onto fresh MacConkey agar plates to enrich
122 for Gram-negative diversity and obtain pure isolates. Two colonies presenting distinct
123 and contrasting morphologies one from the pre-fermentation pork sample and one from
124 the pre-fermentation beef sample were selected for further biochemical characterization
125 based on their differential reactions on MAC agar. Each isolate was subsequently sub-
126 cultured onto Tryptic Soy Agar to confirm purity prior to the biochemical test series.

127

128 **Presumptive Biochemical Identification**

129 Each pure isolate was subjected to a series of differential and selective tests to
130 presumptively identify the bacterial genus and species.

131

132

133 **Selective and Differential Media**

134

135 Each isolate was independently streaked onto three selective and differential media to
136 assess biochemical and growth characteristics. MacConkey Agar (MAC) was used for
137 Gram-negative selection and lactose fermentation differentiation, with pink or red
138 colonies indicating lactose fermentation and colorless colonies indicating lactose-
139 negative reactions. Mannitol Salt Agar (MSA) was included as a selective medium for
140 *Staphylococcus* spp., allowing confirmation of the absence of halotolerant Gram-
141 positive contaminants among the selected isolates. Eosin Methylene Blue Agar (EMB)
142 was used for Gram-negative differentiation; production of a metallic green sheen is
143 characteristic of *Escherichia coli*, while other colony morphologies and colorations on
144 EMB support the presumptive identification of alternative enteric genera.

145

146 **IMViC Biochemical Test Series**

147

148 The IMViC test series was performed to differentiate among members of the family
149 *Enterobacteriaceae* based on four core metabolic reactions. The Indole test was
150 conducted using tryptone broth with Kovács reagent; a red ring at the broth surface
151 indicates a positive result, reflecting the ability of the organism to produce indole from
152 tryptophan. The Methyl Red (MR) test was performed using MR-VP broth with Methyl
153 Red indicator; a red color development (pH \leq 4.4) constitutes a positive result, indicative
154 of stable acid end-products from mixed acid fermentation. The Voges-Proskauer (VP)

155 test was carried out in MR-VP broth using Barritt's reagents A and B; a red-pink color
156 reaction indicates acetoin production, a characteristic feature of organisms that use the
157 butanediol fermentation pathway. The Citrate utilization test was performed on
158 Simmons Citrate Agar; blue coloration of the medium or visible growth indicates a
159 positive result, reflecting the organism's ability to use citrate as its sole carbon source.
160 Results were interpreted collectively using standard *Enterobacteriaceae* identification
161 keys to assign presumptive genus-level identification to each isolate.

162

163 **Antimicrobial Susceptibility Testing**

164

165 Antimicrobial resistance profiles of both isolates were determined using the disk
166 diffusion method (Kirby-Bauer), in accordance with the guidelines of the Clinical and
167 Laboratory Standards Institute (CLSI). Bacterial suspensions were prepared to a ~0.5
168 McFarland turbidity standard and uniformly inoculated onto Mueller-Hinton Agar (MHA)
169 plates by sterile swabbing. Antibiotic disks were positioned on inoculated plates, which
170 were subsequently incubated at 37°C for 18–24 hours. Inhibition zone diameters were
171 measured and interpreted as Susceptible (S), Intermediate (I), or Resistant (R)
172 according to current CLSI breakpoints. All susceptibility tests were performed in
173 triplicate. Mean zone diameters and standard deviations are reported.

174 A panel of seven (7) antibiotics representing clinically and veterinary relevant
175 antimicrobial classes was evaluated. Ampicillin (10mcg), Chloramphenicol (30mcg),
176 Gentamycin (10mcg), Penicillin (10mcg), Streptomycin (10mcg) and, Tetracycline

177 (30mcg). Isolates demonstrating resistance to antibiotics belonging to three or more
178 antimicrobial classes were classified as multidrug-resistant (MDR), consistent with the
179 standard definition proposed by Magiorakos et al. (2012).

180

181 **Results.**

182

183 **Effect of Fermentation on Microbial Diversity**

184 Comparison of RODAC contact plates obtained before and after fermentation revealed
185 a notable shift in the microbiological profile of both meat types. Pre-fermentation plates
186 displayed a heterogeneous colonial morphology, characterized by the presence of
187 multiple colony types differing in size, color, and surface texture, indicative of a diverse
188 microbial community (Figure 1A). Post-fermentation plates, in contrast, exhibited a
189 markedly homogeneous colonial appearance, with predominance of a single or limited
190 colony morphotype, suggesting a substantial reduction in overall microbial diversity
191 associated with the fermentation process (Figure 1B). This pattern was observed
192 consistently across both locally sourced pork and commercially imported beef samples.

193

194 **Isolation and Colonial Morphology of Target Isolates**

195

196 Initial surface sampling was performed using TSA RODAC plates (Figure 1);
197 morphologically distinct colonies were subsequently sub-cultured onto MacConkey agar
198 for Gram-negative isolation and differential characterization (Figure 2). The isolate

199 recovered from imported beef (Unknown 1) produced pink colonies on MAC agar,
200 consistent with lactose fermentation (Figure 2A). The isolate recovered from locally
201 sourced pork (Unknown 2) also produced pink colonies on MAC agar; however, the
202 plate exhibited a characteristic orange discoloration, a pattern associated with acid
203 overproduction from lactose fermentation by members of the genus *Enterobacter* (Winn
204 et al., 2006) (Figure 2B). On Eosin Methylene Blue agar, Unknown 1 produced
205 dark/black colonies (Figure 2C) and Unknown 2 produced pink colonies (Figure 2D),
206 consistent with differential enteric reactions on EMB and supporting distinct genus-level
207 identities for the two isolates (Forbes et al., 2007).

208

209 **Biochemical Characterization**

210

211 ***Unknown 1: Presumptive Salmonella spp. (Beef Isolate)***

212 SIM medium results revealed negative indole production, positive motility, and positive
213 hydrogen sulfide (H₂S) production, evidenced by blackening of the medium. Triple
214 Sugar Iron (TSI) agar results were positive for butt acidification with gas production and
215 formation of a black precipitate, consistent with H₂S production (Winn et al., 2006). The
216 Methyl Red (MR) test yielded a partial positive result and the Voges-Proskauer (VP) test
217 was negative. Nitrate reduction was positive. The combined biochemical profile H₂S
218 production, gas formation in TSI, negative indole, positive motility, and partial MR
219 reaction is consistent with the presumptive identification of a *Salmonella* species (Table
220 1B) (Whitman, 2015; Forbes et al., 2007).

221 ***Unknown 2: Presumptive Enterobacter spp. (Pork Isolate)***

222

223 SIM medium results revealed negative indole production, negative H₂S production, and

224 positive motility. TSI agar results were positive for butt acidification without gas

225 production or black precipitate formation, confirming absence of H₂S activity. The Methyl

226 Red (MR) and Voges-Proskauer (VP) tests were both negative. Nitrate reduction was

227 positive. The biochemical profile absence of H₂S and gas in TSI, negative indole,

228 negative MR and VP, positive motility, and characteristic orange discoloration on

229 MacConkey agar is consistent with the presumptive identification of

230 an *Enterobacter* species (Table 1B) (Whitman, 2015; Winn et al., 2006).

231

232 **Antimicrobial Susceptibility**

233

234 Kirby-Bauer disk diffusion testing was performed in accordance with CLSI guidelines

235 (CLSI, 2023), demonstrating distinct antimicrobial resistance profiles between the two

236 isolates. The presumptive *Salmonella* isolate (Unknown 1, beef) was resistant (R) to five

237 of the seven antibiotics tested ampicillin, methicillin, penicillin, streptomycin, and

238 tetracycline and intermediate (I) for chloramphenicol (mean 13.72 mm) and gentamicin

239 (mean 15.08 mm) (Figure 3, Table 2). Resistance spanning three antimicrobial classes

240 (beta-lactams: ampicillin, methicillin, penicillin; aminoglycosides: streptomycin;

241 tetracyclines: tetracycline) confirmed classification of this isolate as multidrug-resistant

242 (MDR) per Magiorakos et al. (2012). The presumptive *Enterobacter* isolate (Unknown 2,

243 pork) demonstrated to be resistant (R) to ampicillin, methicillin, penicillin, streptomycin,
244 and tetracycline; intermediate for chloramphenicol (mean 14.26 mm) and gentamicin
245 (mean 15.41 mm), also meeting MDR criteria. (Figure 3, Table 2)

246

247 **Discussion.**

248

249 **Fermentation as a Microbial Diversity Reduction Strategy**

250

251 The observed shift from heterogeneous to homogeneous colonial morphology following
252 fermentation is consistent with the well-documented role of lactic acid fermentation as a
253 selective preservation mechanism in meat products (Wang et al., 2021; Leistner, 2000).
254 Acidification of the meat matrix suppresses diverse microbial communities while
255 favoring acid-tolerant organisms, typically lactic acid bacteria. These findings support
256 the premise that artisanal fermentation, even under non-standardized conditions, can
257 effectively reduce overall microbial diversity. However, the persistence of potentially
258 pathogenic isolates in pre-fermentation samples underscores that fermentation alone
259 cannot be relied upon as the sole food safety intervention when the raw material
260 harbors resistant organisms. Biochemical characterization of the Gram-negative isolates
261 recovered from pre-fermentation samples further revealed notable discrepancies
262 between selective and confirmatory media, warranting careful interpretation of individual
263 test results.

264

265 **Biochemical Identification and Profile Interpretation**

266

267 The biochemical profile of Unknown 1 is consistent with the genus *Salmonella*, as
268 characterized in standard microbiological references (Whitman, 2015; Winn et al.,
269 2006). H₂S production in SIM and TSI reflects thiosulfate reductase activity, a hallmark
270 of *Salmonella* (Forbes et al., 2007). Gas in TSI, negative indole, partial MR, and
271 negative VP further support this identification. Detection of presumptive *Salmonella* in
272 commercially imported beef suggests contamination introduced through the import
273 supply chain (Terentjeva et al., 2017), consistent with NARMS retail beef surveillance
274 data (NARMS, 2024). The biochemical profile of Unknown 2 aligns with the
275 genus *Enterobacter*, particularly based on characteristic orange discoloration on MAC
276 resulting from strong lactose-fermenting acid-overproducing activity typical of this genus
277 (Winn et al., 2006; Jorgensen et al., 2015). Negative H₂S, negative indole, and positive
278 motility are consistent with established *Enterobacter* keys (Whitman, 2015; Forbes et
279 al., 2007). The negative VP result, while atypical, does not exclude this genus, as VP-
280 negative strains have been documented (Jorgensen et al., 2015), reinforcing the need
281 for molecular confirmation.

282

283 **Antimicrobial Resistance Profiles and Public Health Implications**

284

285 The MDR profile of the presumptive *Salmonella* isolate, resistant to beta-lactam
286 antibiotics, streptomycin, and tetracycline, with intermediate susceptibility to

287 chloramphenicol and gentamicin, is consistent with MDR patterns previously
288 documented in *Salmonella* recovered from food animal products globally (Terentjeva et
289 al., 2017; Conceição et al., 2023) and aligns with antimicrobial resistance trends
290 reported by NARMS in retail meat surveillance across the United States (NARMS,
291 2024). FSIS has identified *Salmonella* control as a top food safety priority; however,
292 artisanally produced products in U.S. territories are not systematically included in
293 federal sampling programs (USDA-FSIS, 2013), representing a critical surveillance gap.
294 The global threat of antimicrobial resistance in foodborne pathogens further
295 underscores the public health significance of this finding (WHO, 2015; CDC, 2022) and
296 highlights the urgent need to extend federal surveillance frameworks to small-scale
297 artisanal producers in Puerto Rico.

298 The presumptive *Enterobacter* isolate also met MDR criteria, demonstrating resistance
299 to beta-lactam antibiotics, streptomycin, and tetracycline, with intermediate susceptibility
300 to chloramphenicol and gentamicin, a profile with significant clinical implications.

301 Intermediate susceptibility to chloramphenicol and gentamicin in both isolates warrants
302 clinical caution, as intermediate results may reflect reduced drug efficacy at standard
303 dosing and could mask the emergence of full resistance under sustained therapeutic
304 pressure (CLSI, 2023). *Enterobacter* species are recognized opportunistic pathogens,
305 particularly in immunocompromised individuals, and their detection in artisanally
306 processed meat products warrants close attention within the One Health framework
307 (Jorgensen et al., 2015). The breadth of resistance observed in both isolates suggests
308 prior selective pressure from antimicrobial use within the production chain, potentially

309 operating at multiple points across both import and local supply networks (Ahmed et al.,
310 2025).

311 Notably, both isolates exhibited largely overlapping MDR profiles despite originating
312 from distinct meat sources, commercially imported beef and locally sourced pork,
313 respectively. This convergence suggests that antimicrobial selective pressure may not
314 be restricted to imported products but may also be present within the local pork supply
315 chain in Puerto Rico. These findings underscore the need for systematic microbiological
316 surveillance of artisanally produced embutidos regardless of meat origin and support
317 the integration of small-scale artisanal producers into existing federal food safety
318 monitoring frameworks.

319

320 **Limitations and Future Directions.**

321

322 Several limitations merit consideration. First, RODAC contact plates are suited for
323 surface monitoring and may underestimate the full microbial diversity within the meat
324 matrix (Jorgensen et al., 2015). Second, species-level identification was based
325 exclusively on biochemical characterization; molecular confirmation via 16S rRNA
326 sequencing and targeted PCR will be employed (Whitman, 2015). Third, the sample
327 size one production batch per meat type restricts generalizability. Future studies should
328 expand sampling to multiple producers, batches, and seasons to characterize the
329 broader microbiological landscape of artisanally produced embutidos in Puerto Rico.
330 Notably, considerable variability was observed among triplicates for certain antibiotic-

331 isolate combinations (e.g., chloramphenicol for Unknown 1: 10.16, 11.00, 20.00 mm; SD
332 = 5.45), which may reflect technical variation inherent to surface-sampled colonies or
333 inconsistencies in inoculum density. Future work should include standardized inoculum
334 preparation and replicate confirmation to reduce measurement variability. Integration
335 with NARMS data and alignment with USDA-FSIS frameworks would contextualize local
336 findings within national surveillance systems (NARMS, 2024; USDA-FSIS, 2013).
337 Metagenomic approaches would additionally allow comprehensive resistome and
338 microbial diversity profiling before and after fermentation

339

340 **Acknowledgements.**

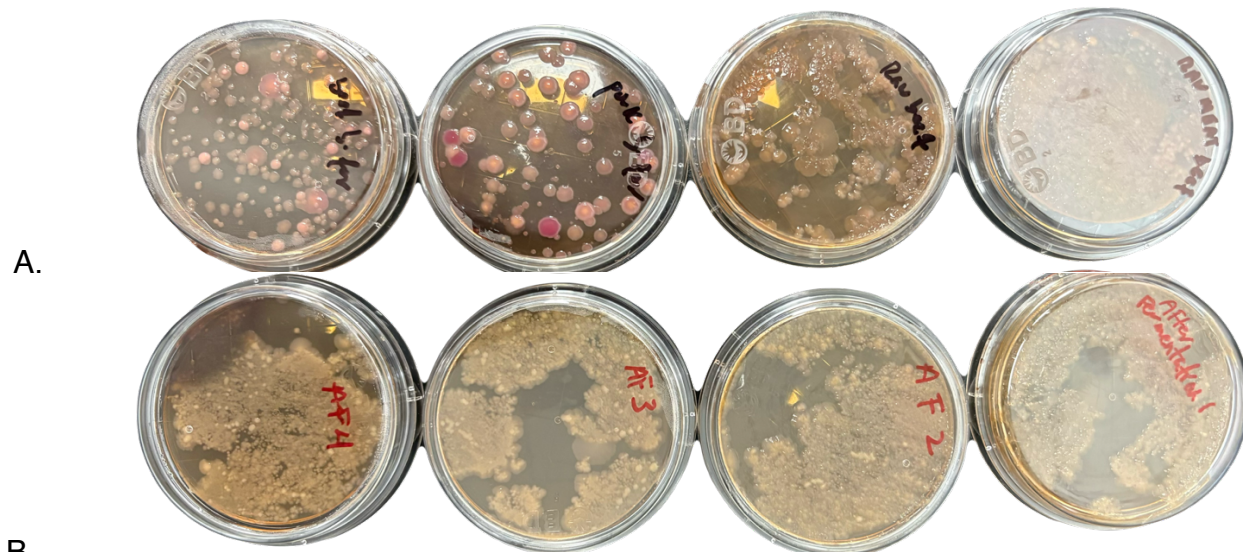
341

342 This study was conducted as part of an undergraduate research course at the
343 University of Puerto Rico at Ponce (UPRP) under the supervision and leadership of Dr.
344 Gustavo Santiago-Collazo who served as Principal Investigator. The authors thank the
345 participating students for their contributions to sample collection, laboratory work, and
346 data recording. The authors also thank Charcutería Coameña for letting us their
347 facilities for sampling and fermentation process and drying process.

348 References

- 349 Ahmed, M. J., Hossain, M. I., Bhuiyan, M. I. H., Rahman, M. A., Kaderi, I. J., Nirob, A. I.,
350 Rahi, M. A. I., Mamun, M., Alam, K. E., Chowdhury, M. J., Bhandari, P., Chalise, R.,
351 Alam, M. J., Chowdhury, M. T. I., Ali, M., & Hossain, D. (2025). Antimicrobial resistance
352 in meat and meat products from Asia: An urgent one health challenge- a systematic
353 review and meta-analysis. *Poultry science*, *104*(11), 105811.
354 <https://doi.org/10.1016/j.psj.2025.105811>
355
- 356 Centers for Disease Control and Prevention. (2022). *Antibiotic resistance threats in the*
357 *United States, 2019*. U.S. Department of Health and Human Services.
358 <https://www.cdc.gov/drugresistance>
359
- 360 Clinical and Laboratory Standards Institute. (2023). *Performance standards for*
361 *antimicrobial susceptibility testing* (33rd ed.; CLSI supplement M100). CLSI.
362
- 363 Conceição, S., Queiroga, M. C., & Laranjo, M. (2023). Antimicrobial Resistance in
364 Bacteria from Meat and Meat Products: A One Health
365 Perspective. *Microorganisms*, *11*(10), 2581.
366 <https://doi.org/10.3390/microorganisms11102581>
367
- 368 Forbes, B. A., Sahm, D. F., & Weissfeld, A. S. (2007). *Bailey & Scott's diagnostic*
369 *microbiology* (12th ed.). Mosby Elsevier.
370
- 371 Jorgensen, J. H., Pfaller, M. A., Carroll, K. C., Funke, G., Landry, M. L., Richter, S. S., &
372 Warnock, D. W. (Eds.). (2015). *Manual of clinical microbiology* (11th ed.). ASM Press.
373
- 374 Leistner, L. (2000). Basic aspects of food preservation by hurdle
375 technology. *International Journal of Food Microbiology*, *55*(1–3), 181–186.
376 [https://doi.org/10.1016/S0168-1605\(00\)00161-6](https://doi.org/10.1016/S0168-1605(00)00161-6)
377
- 378 Magiorakos, A. P., Srinivasan, A., Carey, R. B., Carmeli, Y., Falagas, M. E., Giske, C.
379 G., ... & Monnet, D. L. (2012). Multidrug-resistant, extensively drug-resistant and
380 pandrug-resistant bacteria. *Clinical Microbiology and Infection*, *18*(3), 268–281.
381 <https://doi.org/10.1111/j.1469-0691.2011.03570.x>
382
- 383 Munekata, P. E. S., Domínguez, R., & Lorenzo, J. M. (2022). Functional fermented
384 meat products with probiotics — A review. *Journal of Applied Microbiology*, *133*(1), 91–
385 104. <https://doi.org/10.1111/jam.15337>
386
- 387 National Antimicrobial Resistance Monitoring System. (2024). *NARMS integrated report*.
388 USDA, FDA, & CDC. <https://www.fda.gov/narms>
389

- 390 Terentjeva, M., Avsejenko, J., Streikiša, M., Utināne, A., Kovaļenko, K. & Bērziņš, A.
391 (2017). Prevalence and antimicrobial resistance of Salmonella in meat and meat
392 products in Latvia. *Ann Agric Environ Med.*, 24(2), 317–321.
393 <https://doi.org/10.5604/12321966.1235180>
394
- 395 USDA Food Safety and Inspection Service. (2013). *USDA's Salmonella action plan*.
396 U.S. Department of Agriculture. <https://www.fsis.usda.gov>
397
- 398 Wang, Z., Li, C., Li, F., & Chen, J. (2021). A review: Microbial diversity and function of
399 fermented meat products. *Frontiers in Microbiology*, 12, 645435.
400 <https://doi.org/10.3389/fmicb.2021.645435>
401
- 402 Whitman, W. B. (Ed.). (2015). *Bergey's manual of systematics of archaea and bacteria*.
403 Wiley-Blackwell.
404
- 405 Winn, W. C., Allen, S., Janda, W., Koneman, E., Procop, G., Schreckenberger, P., &
406 Woods, G. (2006). *Koneman's color atlas and textbook of diagnostic microbiology* (6th
407 ed.). Lippincott Williams & Wilkins.
408
- 409 World Health Organization. (2015). *Global action plan on antimicrobial resistance*.
410 WHO. <https://www.who.int/antimicrobial-resistance/global-action-plan>



411
412 **Figure 1. Effect of artisanal fermentation on microbial diversity as assessed by**
413 **RODAC contact plate sampling.**
414 Representative RODAC plates on Tryptic Soy Agar (TSA) obtained from (A) locally
415 sourced pork and commercially imported beef pre-fermentation (B) locally sourced pork
416 and commercially imported beef post-fermentation. Pre-fermentation plates display
417 heterogeneous colonial morphology indicative of diverse microbial communities. Post-
418 fermentation plates exhibit homogeneous colonial morphology consistent with a reduction
419 in overall microbial diversity. Plates were incubated at 37°C for 24–48 hours.

Test / Medium	Unknown 1 (Beef)	Unknown 2 (Pork)
MacConkey (MAC)	Positive (+); lactose fermenter	Partially positive; variable lactose reaction with orange agar discoloration
MSA – Growth in NaCl	Positive (limited growth; no mannitol fermentation)	Negative
MSA – Mannitol Fermentation	Negative	Negative
EMB	Negative metallic sheen; non- <i>E. coli</i> morphology	Negative metallic sheen; non- <i>E. coli</i> morphology

421

422 **Table 1A. Results of selective and differential media testing for Gram-negative**

423 **isolates recovered from pre-fermentation meat samples**

424 Selective and differential medium reactions of Unknown 1 (commercially imported beef)

425 and Unknown 2 (locally sourced pork). MacConkey Agar (MAC) was used for Gram-

426 negative selection and lactose fermentation differentiation. Mannitol Salt Agar (MSA) was

427 used to assess halotolerance and mannitol fermentation, confirming the absence

428 of *Staphylococcus* spp. among the selected isolates. Eosin Methylene Blue Agar (EMB)

429 was used for Gram-negative differentiation; absence of metallic green sheen

430 excludes *Escherichia coli* and supports the presumptive identification of alternative

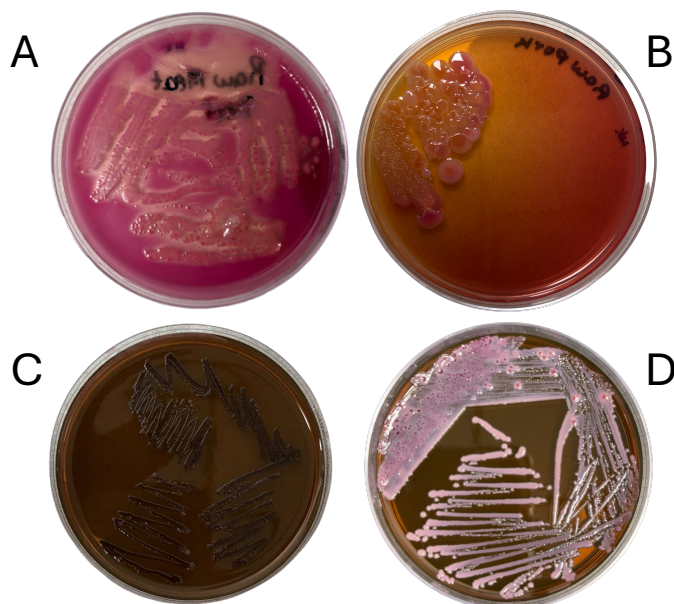
431 enteric genera. Unknown 1 exhibited limited growth on MSA without mannitol

432 fermentation, suggesting incidental salt tolerance rather than the characteristic

433 halotolerance of *Staphylococcus* spp. (+) = positive reaction; (-) = negative reaction. All

434 plates were incubated at 37°C for 24–48 hours.

436



437

438

439 **Figure 2. Colonial morphology of Gram-negative isolates on MacConkey Agar**
440 **(MAC) and Eosin Methylene Blue Agar (EMB).**

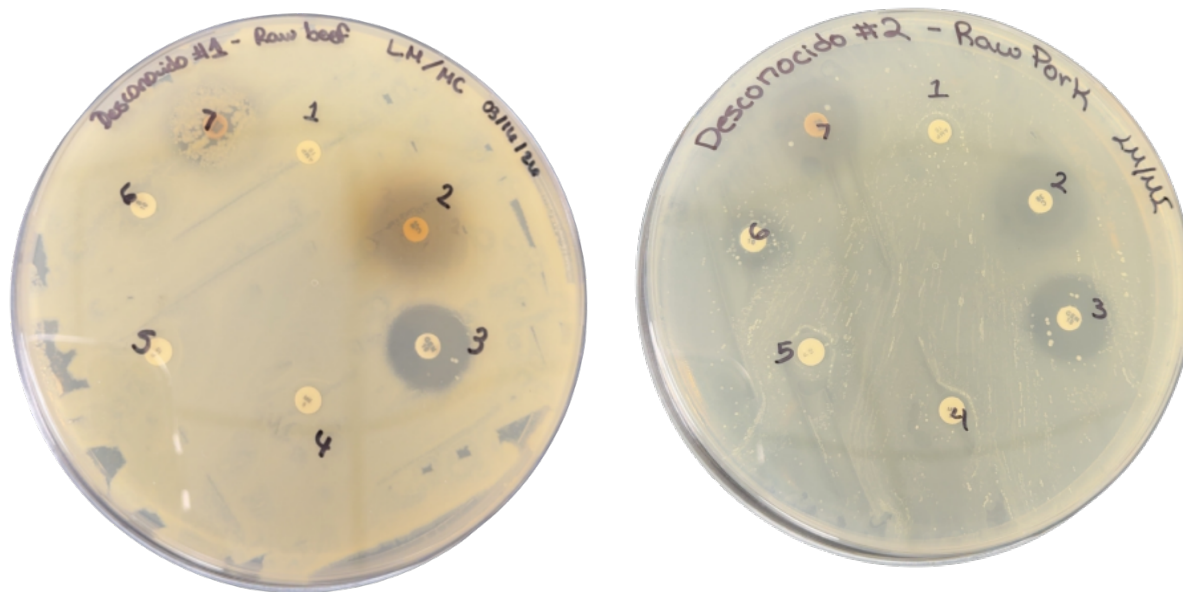
441

442 (A) Unknown 1 (beef isolate) on MAC, displaying positive lactose fermentation. (B)
443 Unknown 2 (pork isolate) on MAC, displaying partially positive lactose reaction with
444 characteristic orange agar discoloration consistent with variable lactose fermentation in
445 members of the genus *Enterobacter* (Winn et al., 2006). (C) Unknown 1 on EMB,
446 displaying non-*E. coli* colonial morphology without metallic green sheen. (D) Unknown 2
447 on EMB, displaying non-*E. coli* colonial morphology without metallic green sheen. Plates
448 were incubated at 37°C for 24–48 hours.

449

Test	Reagent / Medium	Unknown 1 (Beef)	Unknown 2 (Pork)
Indole (I)	Tryptone broth + Kovács reagent	Negative (-)	Negative (-)
Methyl Red (M)	MR-VP broth + MR indicator	Partially positive (+/-)	Negative (-)
Voges-Proskauer (V)	MR-VP broth + Barritt's A & B	Negative (-)	Negative (-)
Citrate (C)	Simmons Citrate Agar	Positive (+)	Positive (+)
H₂S Production	SIM medium	Positive (+)	Negative (-)
Motility	SIM medium	Positive (+)	Positive (+)
TSI – Slant/Butt	Triple Sugar Iron Agar	K (-) / A (+)	K (-) / A (+)
TSI – Glucose	Triple Sugar Iron Agar	Positive (+)	Positive (+)
TSI – Sucrose	Triple Sugar Iron Agar	Negative (-)	Negative (-)
TSI – Lactose	Triple Sugar Iron Agar	Negative (-)	Negative (-)
TSI – H₂S	Triple Sugar Iron Agar	Positive (+)	Negative (-)
Presumptive ID		<i>Salmonella</i> spp.	<i>Enterobacter</i> spp.

450 **Table 1B. IMViC biochemical reactions and confirmatory test results for Unknown**
451 **Sample #1 (raw beef) and Unknown Sample #2 (raw pork).** Indole production was
452 assessed using Kovács reagent. Methyl Red (MR) and Voges-Proskauer (VP) reactions
453 were performed using MR-VP broth with their respective indicators; VP was negative for
454 both isolates, consistent with the absence of acetoin production. Citrate utilization was
455 assessed on Simmons Citrate Agar; both isolates were positive. H₂S production and
456 motility were assessed simultaneously using SIM medium. Triple Sugar Iron (TSI) agar
457 reactions are reported as slant/butt: K = alkaline (-); A = acid (+). Presumptive genus-
458 level identification was assigned based on the combined biochemical profile per
459 standard *Enterobacteriaceae* identification keys (Winn et al., 2006; Forbes et al., 2007;
460 Whitman, 2015). (+) = positive; (-) = negative; (+/-) = partially positive.



461
462
463 **Figure 3. Kirby-Bauer disk diffusion antibiogram results for both isolates on**
464 **Mueller Hinton Agar (MH).**
465 (A) Unknown 1 (presumptive *Salmonella*, beef isolate) showing resistance to ampicillin
466 (1), methicillin (4), penicillin (5), streptomycin (6), and tetracycline (7) (absent or reduced
467 inhibition zones) and susceptibility to chloramphenicol and gentamicin (clear inhibition
468 zones). (B) Unknown 2 (presumptive *Enterobacter*, pork isolate) showing resistance to
469 beta-lactam antibiotics ampicillin (1), methicillin (4), penicillin (5); and streptomycin (6)
470 and tetracycline (7) and intermediate to chloramphenicol (2) and gentamicin (3). Plates
471 were incubated at 37°C for 18–24 hours. Zone diameters were interpreted per CLSI
472 (2023) breakpoints.

Antibiotic	Disk	U1 Mean \pm SD (mm)	U1 Interp.	U2 Mean \pm SD (mm)	U2 Interp.
Ampicillin	10 μ g	0.00 \pm 0.00	R	0.00 \pm 0.00	R
Chloramphenicol	30 μ g	13.72 \pm 5.45	I	14.26 \pm 3.40	I
Gentamicin	10 μ g	15.08 \pm 5.00	I	15.41 \pm 2.50	I
Methicillin	5 μ g	0.00 \pm 0.00	R*	0.00 \pm 0.00	R*
Penicillin	10 μ g	0.00 \pm 0.00	R*	0.00 \pm 0.00	R*
Streptomycin	10 μ g	0.00 \pm 0.00	R	5.54 \pm 4.85	R
Tetracycline	30 μ g	0.00 \pm 0.00	R	10.41 \pm 4.30	R
MDR Classification			MDR \checkmark		MDR \checkmark

474

475 **Table 2.** Antimicrobial susceptibility profiles of Unknown 1 (presumptive *Salmonella* spp.,
476 beef isolate) and Unknown 2 (presumptive *Enterobacter* spp., pork isolate) determined
477 by Kirby-Bauer disk diffusion on Mueller-Hinton Agar. Zone diameters are reported in
478 millimeters (mm). Interpretations were assigned as Susceptible (S), Intermediate (I), or
479 Resistant (R) per Clinical and Laboratory Standards Institute breakpoints (CLSI, 2023).
480 MDR classification was assigned to isolates demonstrating resistance to antibiotics
481 belonging to three or more distinct antimicrobial classes per Magiorakos et al. (2012).
482 Conc. = concentration; R = resistant; S = susceptible; I = intermediate; MDR = multidrug-
483 resistant. *R** = *Resistant, no CLSI breakpoints established for Enterobacteriaceae*. All
484 tests were performed in triplicate. Values represent mean zone diameters \pm standard
485 deviation (SD).