

Title Page

Full title:

Machine Learning–Assisted Feature Selection Identifies the Joint Association of Body Mass Index and Periaortic Adipose Tissue as a Risk Factor for Aortic Dissection: A Multicenter Retrospective Study

Shuangjing Wang, MD^{1,2,3}; Heyue Jia, MD⁴; Pengfei Yuan, MD⁵; Luxia Ren, MD⁵; Mingwei Wu, MD⁵; Haonan Zhang, MD⁶; Peidong Qian, MD⁶; Huan Luo, MD⁶; Yuanming Luo, MD⁷; Zechen Guan, MD⁸; Kai Hou, MD⁸; Min Zhou, MD^{1,2,3}; Chengkai Hu, MD^{1,2,3}; Jiang Xiong, MD, PhD⁵; Lixin Wang, MD^{1,2,3}; Weiguo Fu, MD^{1,2,3}

¹Department of Vascular Surgery, Zhongshan Hospital, Fudan University, Shanghai, China

²Institute of Vascular Surgery, Zhongshan Hospital, Fudan University, Shanghai, China

³National Clinical Research Center for Interventional Medicine, Shanghai, China

⁴Department of Emergency Surgery, The People's Hospital of Peking University, Beijing, China.

⁵Department of Vascular and Endovascular Surgery, The First Medical Centre, Chinese PLA General Hospital, Beijing, China.

⁶Department of Technology, Boea Wisdom (Hangzhou) Network Technology Co., Ltd. Hangzhou, China

⁷Department of Mechanical Engineering, The University of Iowa, Iowa City, USA

⁸Department of Radiology, Zhongshan Hospital, Fudan University, Shanghai, China.

NOTE: This preprint reports new research that has not been certified by peer review and should not be used to guide clinical practice.

Short title:

BMI–Periaortic Adipose Tissue Synergy in AD

Corresponding Author:

WeiGuo Fu, MD

Email address: fu.weiguo@zs-hospital.sh.cn

Complete address: NO.180 Fenglin Road, Xuhui District, Shanghai, China.

Co-corresponding Author:

LiXin Wang, MD

Email address: wang.lixin@zs-hospital.sh.cn

Complete address: NO.180 Fenglin Road, Xuhui District, Shanghai, China.

Word count: 4, 999 words from Title to Figure Legends.

Abstract

BACKGROUND: Aortic dissection (AD) is a life-threatening emergency with high mortality. Although elevated body mass index (BMI) is associated with both AD incidence and mortality, the underlying mechanisms remain unclear. Periaortic adipose tissue (PAAT) increases with BMI, and the PAAT of AD shows marked inflammatory infiltration, suggesting PAAT-driven inflammation may contribute to the development of AD. However, no direct evidence links BMI and PAAT to AD. To further elucidate the obesity-inflammation-AD relationship, we aim to quantify the contributions of BMI, PAAT, and their derived indices to the risk of AD.

METHODS: This retrospective multicenter study (June–November 2025) quantified PAAT around the descending thoracic aorta with CT angiography (CTA). Logistic regression analyses were performed to identify AD risk factors. Based on the Boruta algorithm (a machine learning feature selection method) and ROC curve analysis, the variable importance for AD risk was assessed. The dose–response relationship between BMI–Volume-derived metric (BMV) and AD risk was further characterized by quartile stratification and restricted cubic spline (RCS).

RESULTS: This study enrolled 376 consecutive participants. After adjusting for potential confounders, BMI, smoking, systolic blood pressure (SBP), diabetes mellitus (DM), TC/HDL, ApoE, PAAT volume (Volume), PAAT fat attenuation index (FAI), and BMV were identified as independent predictors of AD. Volume was the strongest AD predictor with the highest Z-score. Compared with BMI [AUC 0.627, 95% confidence interval (CI): 0.569–0.687] and Volume (AUC 0.716, 95% CI: 0.662–0.772), BMV showed better discriminatory performance (AUC 0.726, 95% CI: 0.673–0.778). RCS showed an approximately linear positive association between BMV and AD risk (P-overall < 0.001, P-non-linear = 0.09).

CONCLUSIONS: In this retrospective multicenter study, BMV, a composite measure integrating systemic and periaortic adipose tissue factor, showed a positive association with AD risk, and improved predictive performance beyond BMI, indicating incremental predictive value, pending external validation.

GRAPHIC ABSTRACT: A graphic abstract is available for this article.

Key Words: aortic dissection; machine learning; body mass index; periaortic adipose tissue;

WHAT IS KNOWN

- Body-mass index (BMI) appears to be associated with an increased risk of aortic dissection (AD) and higher all-cause mortality, but a definitive consensus remains elusive.
- PAAT has been identified as an independent cardiovascular risk factor, with marked inflammatory cell infiltration observed in the PAAT of PAAT has been identified as an independent cardiovascular risk factor, with marked inflammatory cell infiltration observed in the PAAT of aortic diseases patients.
- PAAT increases with BMI, and its pro-inflammatory function may destabilize the aortic wall, but relationship of BMI–PAAT synergy and AD remains to be demonstrated.

WHAT THE STUDY ADDS

- BMI, PAAT volume, and its FAI were independent predictors of AD, with volume ranked as the strongest predictor by the Boruta algorithm.
- The BMV, a composite metric that integrated systemic and periaortic adipose tissue factor, was positively associated with AD risk and improved predictive performance beyond BMI alone.

Non-standard Abbreviations and Acronyms

PAAT perivascular adipose tissue

RCS restricted cubic spline modeling

BMV body-mass-index-volume

Introduction

An aortic dissection (AD) is characterized by an intimal tear that allows blood to propagate within the medial layer and create a false lumen.¹ The pooled incidence of AD was 3.6 to 6.1 per 100,000 person-years with individual studies ranging from 2.0 to 15.0 per 100,000 person-years.² Despite continuous advances in open surgical techniques, endovascular repair, and perioperative management, AD remains a catastrophic event with high mortality.¹ Therefore, systematically identifying various risk factors combined with rigorous lifelong risk-factor management is essential to reduce both the incidence and the overall burden of AD.³

Advanced age, tobacco use, hypertension, and other risk factors are traditionally regarded as the main risk factors for AD, characterized by structural and functional derangements in the aortic intima and media.¹ According to epidemiological evidence, body mass index (BMI) is not only significantly associated with the incidence of AD, but also with higher all-cause mortality.⁴⁻⁶ Periaortic adipose tissue (PAAT) increases with BMI.⁷ Moreover, histopathological analysis of human aneurysm specimens has revealed marked inflammatory infiltration in PAAT,⁸ and multiple studies have implicated PAAT as an independent cardiovascular risk factor.^{7,9} These observations suggest that PAAT may promote AD through proinflammatory pathways and hence represents a potential therapeutic target.^{10,11} The

synergistic effect between PAAT and BMI has not been demonstrated to be related to the development of AD, however. The objective of this study is to systematically evaluate the effect of BMI, PAAT, and their derived indices on AD risk macroscopically.

Methods

The data that support the findings of this study are available from the corresponding author upon reasonable request. This retrospective observational study consecutively recruited inpatients who underwent aortic CT angiography (CTA) between June and November 2025. Chart review of patients ultimately found to be free of AD showed that aortic CTA was ordered for indications including (1) non-contrast chest CT demonstrating aortic dilatation with wall thickening or a possible intimal flap, prompting CTA for clarification; (2) abrupt onset of tearing chest and back pain prompting exclusion of acute aortic syndrome; and (3) pre-operative mapping of the entire aorta prior to coronary artery bypass grafting, valve surgery, or transcatheter aortic valve replacement to guide procedural planning. Based on a three-center CTA database, patients were stratified into two groups according to whether they were diagnosed with AD or not, and risk factors for AD were evaluated. The study protocol adhered to the ethical guidelines of the 1975 Declaration of Helsinki and received approval from the Human Research Ethics Review Board (S2023-597-01). Written informed consent was obtained from all participants. Complete protocols for PAAT quantification (Figure 1), data collection and statistical analysis were provided in the Supplemental Methods.

Results

Baseline characteristics

This multicentre study was conducted at three tertiary referral centres. Between 1 June 2025

and 30 November 2025, 376 consecutive patients (median age 61 years, 64 % male) who met all eligibility criteria were enrolled (Figure 2). As shown in Table S1, the AD group had a higher male proportion, and higher prevalence of smoking, alcohol consumption, hypertension, CHD, and prior stroke, but a lower prevalence of DM. BMI (24.9 vs 23.6 kg/m², P < 0.001) and SBP were significantly higher in the AD group. Inflammatory and thrombotic markers (WBC, hsCRP, D-dimer, fibrinogen) were markedly increased, whereas GA, HDLC, ApoA-I, and ApoE were significantly reduced. The lipid ratio TC/HDLC was correspondingly less favourable, and Volume, Area, and FAI were all significantly larger (all P < 0.05). Notably, among the derived indices, BMV was higher (137.14 vs 99.30, P < 0.001) and BMA was lower (4.58 vs 4.64, P = 0.017).

Logistic regression analysis

Thirty two candidate predictors of AD were first examined by univariable logistic regression (Table S2). Covariates with P < 0.05 and clinical relevance were considered for inclusion in the multivariable model. Since no severe multicollinearity was detected among BMI, Volume, and BMV (variance inflation factor < 5, Figure S1 and Table S3), BMV was included in the final multivariable logistic regression model. As shown in Table S4, independent predictors of AD included BMI [odds ratio (OR): 1.131; 95% confidence interval (CI): 1.000-1.280; P = 0.049], smoking (OR, 10.511; 95% CI: 2.367-46.687; P = 0.002), SBP (OR, 1.036; 95% CI: 1.003-1.070; P = 0.034), DM (OR, 0.162; 95% CI: 0.028-0.924; P = 0.040), TC/HDLC (OR, 5.371; 95% CI: 1.039-27.772; P = 0.045), ApoE (OR, 0.858; 95% CI: 0.784-0.939; P = 0.001), Volume (OR, 1.156; 95% CI: 1.063-1.257; P = 0.001), FAI (OR, 1.167; 95% CI: 1.057-1.289; P = 0.002), and BMV (OR, 1.020; 95% CI: 1.014-1.026, P < 0.001).

Importance of factors in the impact on AD ranked by Boruta algorithm

The Boruta algorithm was used to evaluate the importance of factors affecting AD (Figure 3). After 500 iterations it was determined that the variables most closely associated with AD risk (in order of Z-value) were Volume, FAI, TC/HDLC, BMV, GA, SBP, hypertension, ApoE, smoking, DBP, male, Area, ApoA-I, BG, BMI, BMA and alcohol consumption. Notably, Volume achieved the highest importance score and emerged as the strongest predictor of AD.

ROC curves of independent risk factors for AD

For the continuous variables, Volume, FAI, TC/HDLC, BMV, GA, SBP, ApoE, DBP, Area, ApoA-I, BMI, and BG, ROC curve were conducted (Figure 4, Table S5). ROC curves identified four variables with an AUC greater than 0.70, including SBP (AUC, 0.734; 95% CI: 0.683-0.785), BMV (AUC, 0.726; 95% CI: 0.673-0.778), Volume (AUC, 0.716; 95% CI: 0.662-0.772), and DBP (AUC, 0.707; 95% CI: 0.654-0.759). Notably, compared to BMI (AUC 0.627, 95% CI 0.569-0.687), BMV showed superior discriminatory performance ($P < 0.001$) (Table S6).

Stratification of Patients by BMV Quartiles

Patients were stratified into quartiles based on BMV, including Q1 ($BMV < 86.7$), Q2 ($86.7 \leq BMV < 114.4$), Q3 ($114.4 \leq BMV < 148.7$), and Q4 ($BMV \geq 148.7$). The characteristics of the four groups were presented in Table 1. The incidence of AD was 29.5% in both Q1 and Q2, then rose to 58.1% in Q3 and 78.5% in Q4. Significant differences were observed across the quartiles for sex, vital signs (SBP, DBP), lifestyle factors (smoking status), comorbidities (hypertension and CHD), laboratory parameters (BG, HbA1c, GA, WBC, Neutrophil, hsCRP, TC, TG, HDLC, TC/HDLC, LDLC, ApoA-I, ApoB, Hcy, Lp(a), ApoE, D-dimer, fibrinogen),

PAAT characteristics, BMI, BMA, and BMF (all $P < 0.05$).

Association between BMV and AD

As shown in Table 2, in the fully adjusted Model 3, each unit increase in BMV was associated with an increased risk of AD (OR = 1.046, 95% CI: 1.025–1.067; $P < 0.001$). Across all adjusted models, the change observed in Q2 did not differ significantly from Q1 ($P > 0.05$), whereas both Q3 and Q4 were significantly higher than Q1 ($P < 0.05$). Across all three models, the odds ratios increased progressively in the order $Q1 < Q2 < Q3 < Q4$.

Dose–response Relationship

RCS showed that the overall association between BMV level and AD risk was statistically significant (P overall < 0.001) and revealed no significant non-linearity (P nonlinear = 0.09), indicating that the relationship can be regarded as approximately linear, consistent across all three models (Figure 5).

Subgroup analysis and interaction tests

Subgroup analyses were performed to assess the relationship between BMV and AD across different patient strata (Figure 6). Except for stroke subgroup, prespecified subgroups (age, sex, CHD, DM, alcohol consumption, smoking status, and hypertension) exhibited a significant positive association between BMV and AD risk (OR > 1 , $P < 0.05$). Within the stroke stratum, the *Yes* subgroup achieved conventional statistical significance ($P < 0.001$), whereas the *No* subgroup did not ($P = 0.0588$). Except for hypertension subgroup (P for interaction = 0.033), no significant effect modification was detected in any other subgroup.

Discussion

This multicenter study indicated that systemic and periaortic adiposity, hemodynamic status,

and lipid profile were significantly associated with AD. According to multivariate logistic regression, BMI, smoking status, SBP, DM, TC/HDLC, ApoE, Volume, FAI, and BMV were independent predictors of AD. Additionally, BMV exhibited a linear, positive association with AD risk. The ROC curve for BMV yielded an AUC of 0.728 (95 % CI 0.674–0.782). Using the maximum Youden index criterion, the optimal cutoff was 116.967. This threshold remained predictive after adjustment for conventional risk factors and proved robust across major clinical subgroups.

Obesity is well established as a central determinant of traditional cardiovascular events, such as hypertension, CHD, and heart failure,^{12,13} but its influence on AD remains complex and, at times, paradoxical. On the one hand, obesity may act as a precipitating factor, particularly in younger patients.¹⁴ A nationwide cohort of 2.56 million individuals without prior aortic disease revealed that obesity may potentiate AD among patients with autosomal dominant polycystic kidney disease.¹⁵ In addition, epidemiological data indicate that BMI is positively associated with both the incidence of thoracic AD and subsequent all-cause mortality.^{5,6,16} On the other, the ‘obesity paradox’ has challenged these observations.¹⁷ Obesity did not increase mortality or morbidity following surgery for Stanford type A dissection,¹⁸ and no significant relationship was found between BMI and in-hospital death or post-operative complications after emergent open repair for acute thoracic AD.¹⁹ Studies leveraging international databases have shown no temporal correlation between BMI and AD mortality in men, and even an inverse linear association in women.²⁰ Pathobiologically, the putative link between BMI and aortic disease may be partially mediated by PAAT. Pro-inflammatory mediators released from PAAT can accelerate medial degeneration, the histopathological hallmark of AD.^{8,21} Due to the correlation

between BMI and PAAT,⁷ the resultant inflammatory milieu may serve as a mechanistic link between obesity and AD. In this study, although Boruta algorithm identifies Volume as the strongest predictor among all candidates in multivariable logistic regression, ROC analysis indicates BMV achieved a higher AUC than either BMI or Volume, indicating incremental predictive value in capturing AD risk.

In mice, PAAT envelops aorta with asymmetric tri-columnar architecture, leaving the vessel incompletely encased and lacking a continuous circumferential sheath.²² Systematic descriptions of the macroscopic distribution of human PAAT are still lacking. Previous investigations have generally adopted 5 mm (from the posterior aortic arch to the diaphragm)²³ or 10 mm (from 5 cm distal to the aortic root along the ascending aorta)²⁴ radial distances to calculate PAAT volume. Given the proportion of PAAT relative to aortic diameter in mice, direct application of a 5-10 mm threshold to humans is likely to underestimate true PAAT volume. We extended the radial boundary to 20 mm from the outer aortic wall and the axial range continuously from the distal left subclavian artery to the aortic bifurcation, thus achieving, a full-length, full-coverage quantification of thoraco-abdominal PAAT. Under this expanded definition, both FAI and Volume remained independent predictors of AD, indicating that the broader measurement strategy did not dilute predictive power, rather, it more faithfully captured the patho-mechanical contribution of PAAT.

Adipose tissue acts as an external cushion that provides physical protection to thoracic and abdominal organs and alters their biomechanical response to external forces.²⁵ As reported, *ex vivo* thoracic aortic rings surrounded by PAAT exhibited a marked reduction in circumferential stress under identical loading, and PAAT lowers aortic stiffness.²⁶ Notably, the mechanical

effect of PAAT diminishes with age²⁷ and becomes dysfunctional from volume expansion in pathological states.^{11,28} Furthermore, adipose tissue composed of larger adipocytes has attenuation values approaching -190 HU, whereas tissue with smaller adipocytes approaches the water-equivalent value of -30 HU.²⁹ Inflammatory cytokines released by diseased vessel walls can diffuse into PAAT, inhibit adipocyte differentiation, and trigger lipolysis, leading to reduced lipid content, increased water fraction, and a leftward shift of CT attenuation toward -30 HU.²⁹ Pericoronary FAI has already been validated to quantify this adipose attenuation and to serve as a molecular sensor of coronary inflammation, independent of traditional obesity indices such as BMI and waist circumference.³⁰ In this study, we further suggest that when PAAT undergoes lipid loss and relative collagen accumulation secondary to inflammation, its buffering capacity declines. This contributes directly to stress concentration within the aortic wall and the initiation of AD.

This multicenter study, a three-stage dimension-reduction pipeline was applied: (1) univariate pre-screening, (2) collinearity diagnosis (after centering the interaction term, VIF < 5), and (3) multivariable logistic regression adjusting for age, sex, blood pressure, and other traditional risk factors, followed by Boruta machine-learning confirmation that BMV ranked among the top four key features. ROC showed that BMV reclassified risk better than BMI or Volume alone. RCS demonstrated a linear dose-response relationship, avoiding black-box effects. However, these findings should be interpreted with caution.

Nevertheless, This study has several limitations. This cross-sectional retrospective study can only demonstrate associations between AD and the examined exposures, it is insufficient for causal inference and requires confirmation in prospective cohort studies. Due to the limited

sample size, propensity-score matching was not performed, so baseline imbalances were not fully adjusted for, potentially introducing confounding bias that should be addressed through cross-validation or external validation. Furthermore, the lack of a systematic assessment of AD severity prevents stratified analyses, thus limiting in-depth exploration of the relationship between disease heterogeneity and prognosis.

Conclusion

In this retrospective multicenter study, the BMV index, the composite measure integrating systemic and local adipose tissue factors, showed a positive association with AD risk, and improved predictive performance compared with BMI, indicating incremental predictive value, pending validation in external cohorts.

Acknowledgements

The authors appreciate the Department of Technology staff at Boea Wisdom (Hangzhou) Network Technology Co., Ltd. for generously providing the software and technical guidance required for the calculation of aortic PAAT parameters.

Sources of Funding

This study was supported by the Noncommunicable Chronic Diseases-National Science and Technology Major Project (2024ZD0537800), National Natural Science Foundation of China (grant number: 82270415, and U24A20651), Shanghai Municipal Science and Technology Commission Fund (grant number: 20234Z00120 and 22S31904800), and Shanghai Sailing Program (grant number: 22QA1408600).

Disclosures

None.

Supplemental Material

Supplemental Methods

Table S1–S6

Figures S1

References

- 1 Carrel T, Sundt TM, 3rd, von Kodolitsch Y & Czerny M. Acute aortic dissection. *Lancet*. 2023; 401: 773-788, doi:10.1016/s0140-6736(22)01970-5.
- 2 Gouveia EMR, Mourão M, Caldeira D, Alves M, Lopes A, Duarte A, Fernandes EFR & Mendes Pedro L. A systematic review and meta-analysis of the incidence of acute aortic dissections in population-based studies. *J Vasc Surg*. 2022; 75: 709-720, doi:10.1016/j.jvs.2021.08.080.
- 3 Howard DP, Banerjee A, Fairhead JF, Perkins J, Silver LE & Rothwell PM. Population-based study of incidence and outcome of acute aortic dissection and premorbid risk factor control: 10-year results from the Oxford Vascular Study. *Circulation*. 2013; 127: 2031-2037, doi:10.1161/circulationaha.112.000483.
- 4 Berrington de Gonzalez A, Hartge P, Cerhan JR, Flint AJ, Hannan L, MacInnis RJ, Moore SC, Tobias GS, Anton-Culver H, Freeman LB, *et al*. Body-mass index and mortality among 1.46 million white adults. *N Engl J Med*. 2010; 363: 2211-2219, doi:10.1056/NEJMoa1000367.
- 5 Aune D, Sen A, Prasad M, Norat T, Janszky I, Tonstad S, Romundstad P & Vatten LJ. BMI and all cause mortality: systematic review and non-linear dose-response meta-analysis of 230 cohort studies with 3.74 million deaths among 30.3 million participants. *Bmj*. 2016; 353: i2156, doi:10.1136/bmj.i2156.
- 6 Global BMIMC, Di Angelantonio E, Bhupathiraju Sh N, Wormser D, Gao P, Kaptoge S, Berrington de Gonzalez A, Cairns BJ, Huxley R, Jackson Ch L, *et al*. Body-mass index and all-cause mortality: individual-participant-data meta-analysis of 239

- prospective studies in four continents. *Lancet*. 2016; 388: 776-786, doi:10.1016/s0140-6736(16)30175-1.
- 7 Lehman SJ, Massaro JM, Schlett CL, O'Donnell CJ, Hoffmann U & Fox CS. Peri-aortic fat, cardiovascular disease risk factors, and aortic calcification: the Framingham Heart Study. *Atherosclerosis*. 2010; 210: 656-661, doi:10.1016/j.atherosclerosis.2010.01.007.
- 8 Folkesson M, Vorkapic E, Gulbins E, Japtok L, Kleuser B, Welander M, Länne T & Wågsäter D. Inflammatory cells, ceramides, and expression of proteases in perivascular adipose tissue adjacent to human abdominal aortic aneurysms. *J Vasc Surg*. 2017; 65: 1171-1179.e1171, doi:10.1016/j.jvs.2015.12.056.
- 9 Robbins N, Hooker EA, Hart KW, Kapur S & Blomkalns A. Computed tomographic quantification of periaortic adipose tissue volume as a correlate of cardiovascular disease. *Cardiol J*. 2019; 26: 802-804, doi:10.5603/cj.2019.0119.
- 10 Wang A, Dong S, Liu B, Liu D, Zou M, Han Y, Yang L & Wang Y. The role of RUNX1/NF- κ B in regulating PVAT inflammation in aortic dissection. *Sci Rep*. 2024; 14: 9960, doi:10.1038/s41598-024-60737-9.
- 11 Nosalski R & Guzik TJ. Perivascular adipose tissue inflammation in vascular disease. *Br J Pharmacol*. 2017; 174: 3496-3513, doi:10.1111/bph.13705.
- 12 Poirier P, Giles TD, Bray GA, Hong Y, Stern JS, Pi-Sunyer FX & Eckel RH. Obesity and cardiovascular disease: pathophysiology, evaluation, and effect of weight loss: an update of the 1997 American Heart Association Scientific Statement on Obesity and Heart Disease from the Obesity Committee of the Council on Nutrition, Physical Activity, and Metabolism. *Circulation*. 2006; 113: 898-918,

- doi:10.1161/circulationaha.106.171016.
- 13 De Santo LS, Moscariello C & Zebele C. Implications of obesity in cardiac surgery: pattern of referral, physiopathology, complications, prognosis. *J Thorac Dis.* 2018; 10: 4532-4539, doi:10.21037/jtd.2018.06.104.
 - 14 Aizawa K, Sakano Y, Ohki S, Saito T, Konishi H & Misawa Y. [Obesity is a risk factor of young onset of acute aortic dissection and postoperative hypoxemia]. *Kyobu Geka.* 2013; 66: 437-444.
 - 15 Nakayama T, Kaneko H, Suzuki Y, Okada A, Morita H, Fujiu K, Takeda N, Azegami T, Yokoo T, Takeda N, *et al.* Association of Autosomal Dominant Polycystic Kidney Disease With Incident Aortic Dissection or Aneurysm. *Am J Kidney Dis.* 2026, doi:10.1053/j.ajkd.2025.12.004.
 - 16 Afshin A, Forouzanfar MH, Reitsma MB, Sur P, Estep K, Lee A, Marczak L, Mokdad AH, Moradi-Lakeh M, Naghavi M, *et al.* Health Effects of Overweight and Obesity in 195 Countries over 25 Years. *N Engl J Med.* 2017; 377: 13-27, doi:10.1056/NEJMoa1614362.
 - 17 Liu Y, Zhang B, Liang S, Dun Y, Wang L, Gao H, Ren J, Guo H & Sun X. Impact of body mass index on early and mid-term outcomes after surgery for acute Stanford type A aortic dissection. *J Cardiothorac Surg.* 2021; 16: 179, doi:10.1186/s13019-021-01558-z.
 - 18 Kreibich M, Rylski B, Bavaria JE, Branchetti E, Dohle D, Moeller P, Vallabhajosyula P, Szeto WY & Desai ND. Outcome After Operation for Aortic Dissection Type A in Morbidly Obese Patients. *Ann Thorac Surg.* 2018; 106: 491-497,

- doi:10.1016/j.athoracsur.2018.03.035.
- 19 Li Y, Jiang H, Xu H, Li N, Zhang Y, Wang G & Xu Z. Impact of a Higher Body Mass Index on Prolonged Intubation in Patients Undergoing Surgery for Acute Thoracic Aortic Dissection. *Heart Lung Circ.* 2020; 29: 1725-1732, doi:10.1016/j.hlc.2020.02.008.
- 20 Sidloff D, Choke E, Stather P, Bown M, Thompson J & Sayers R. Mortality from thoracic aortic diseases and associations with cardiovascular risk factors. *Circulation.* 2014; 130: 2287-2294, doi:10.1161/circulationaha.114.010890.
- 21 Allaire E, Schneider F, Saucy F, Dai J, Cochenec F, Michineau S, Zidi M, Becquemin JP, Kirsch M & Gervais M. New insight in aetiopathogenesis of aortic diseases. *Eur J Vasc Endovasc Surg.* 2009; 37: 531-537, doi:10.1016/j.ejvs.2009.02.002.
- 22 Wang Z, Mu W, Xu R, Zhong J, Xiong W, Zhao X, Liang X, Guo Y, Zhang J, Jiang ZS, *et al.* Perivascular adipose tissue dysfunction contributes to thoracic aortic aneurysm development. *Cardiovasc Diabetol.* 2025; 24: 223, doi:10.1186/s12933-025-02765-x.
- 23 Adachi Y, Ueda K, Otaki Y, Hashimoto M, Sowa H, Kawahara T, Numata G, Nakamura S, Hinata M, Uehara M, *et al.* Prognostic Implications of the Periaortic Fat Attenuation Index in Uncomplicated Type B Aortic Dissection. *Radiol Cardiothorac Imaging.* 2025; 7: e240521, doi:10.1148/ryct.240521.
- 24 Sowa H, Yagi H, Ueda K, Hashimoto M, Karasaki K, Liu Q, Kurozumi A, Adachi Y, Yanase T, Okamura S, *et al.* Perivascular inflammation in the progression of aortic aneurysms in Marfan syndrome. *JCI Insight.* 2025; 10, doi:10.1172/jci.insight.184329.
- 25 Zwick RK, Guerrero-Juarez CF, Horsley V & Plikus MV. Anatomical, Physiological,

- and Functional Diversity of Adipose Tissue. *Cell Metab.* 2018; 27: 68-83, doi:10.1016/j.cmet.2017.12.002.
- 26 Watts SW, Flood ED, Garver H, Fink GD & Roccabianca S. A New Function for Perivascular Adipose Tissue (PVAT): Assistance of Arterial Stress Relaxation. *Sci Rep.* 2020; 10: 1807, doi:10.1038/s41598-020-58368-x.
- 27 Schosserer M, Grillari J, Wolfrum C & Scheideler M. Age-Induced Changes in White, Brite, and Brown Adipose Depots: A Mini-Review. *Gerontology.* 2018; 64: 229-236, doi:10.1159/000485183.
- 28 Akoumianakis I, Tarun A & Antoniadis C. Perivascular adipose tissue as a regulator of vascular disease pathogenesis: identifying novel therapeutic targets. *Br J Pharmacol.* 2017; 174: 3411-3424, doi:10.1111/bph.13666.
- 29 Antonopoulos AS, Sanna F, Sabharwal N, Thomas S, Oikonomou EK, Herdman L, Margaritis M, Shirodaria C, Kampoli AM, Akoumianakis I, *et al.* Detecting human coronary inflammation by imaging perivascular fat. *Sci Transl Med.* 2017; 9, doi:10.1126/scitranslmed.aal2658.
- 30 Tu YB, Gu M, Zhou SQ, Xie G, Liu LL, Deng FB & Li K. Pericoronary adipose tissue attenuation in patients with acute aortic dissection based on coronary computed tomography angiography. *Quant Imaging Med Surg.* 2024; 14: 31-42, doi:10.21037/qims-23-253.

Tables

Table 1. Characteristics of participants categorized by BMV variability

Characteristic	Overall(n=376)	Q1: BMV<86.7 (n=95)	Q2:86.7≤BMV<114.4 (n=95)	Q3:114.4≤BMV<148.7 (n=93)	Q4:BMV≥148.7 (n=93)	P
AD, n (%)	183(48.7)	28(29.5)	28(29.5)	54(58.1)	73(78.5)	<0.001
Age (years)	61.0(51.5, 70.0)	65.0(51.0, 70.0)	64.0(52.0, 72.0)	59.0(50.0, 68.0)	61.0(47.0, 70.0)	0.183
Male, n (%)	242(64.4)	55(57.9)	49(51.6)	63(67.7)	75(80.6)	<0.001
Smoking, n (%)	69(18.4)	15(15.8)	10(10.5)	9(9.7)	35(37.6)	<0.001
Alcohol consumption, n (%)	36(9.6)	9(9.5)	7(7.4)	6(6.5)	14(15.1)	0.201
Hypertension, n (%)	221(58.8)	43(45.3)	48(50.5)	60(64.5)	70(75.3)	<0.001
SBP (mmHg)	143(126,160)	135(125, 158)	138(121, 160)	141(129, 160)	160(136, 180)	<0.001
DBP (mmHg)	85(75, 100)	80(73, 93)	80(77, 95)	88(72, 100)	90(80, 100)	0.001
DM, n (%)	47(12.5)	11(11.6)	15(15.8)	12(12.9)	9(9.7)	0.612

BG (mmol/L)	5.3(4.7, 6.1)	5.2(4.7, 6.3)	5.1(4.6, 6.0)	5.5(4.9, 6.3)	5.5(4.7, 6.3)	0.112
HbA1c, (%)	5.9(5.7, 6.1)	5.79(5.70, 5.94)	5.82(5.70, 6.00)	5.95(5.60, 6.10)	6.00(5.82, 6.14)	<0.001
GA, (%)	15.4(14.8, 16.1)	15.9(15.3, 16.3)	15.8(15.3, 16.1)	15.1(14.7, 15.6)	14.9(14.5, 15.5)	<0.001
CHD, n (%)	32(8.5)	2(2.1)	11(11.6)	6(6.5)	13(14.0)	0.016
Stroke, n (%)	22(5.9)	5(5.3)	4(4.2)	6(6.5)	7(7.5)	0.754
WBC (10 ⁹ /L)	6.60(4.97, 8.50)	6.68(4.78, 8.56)	5.43(4.60, 6.84)	6.15(5.03, 8.07)	8.11 (6.61, 9.89)	<0.001
Monocyte (10 ⁹ /L)	0.51(0.36, 0.68)	0.54(0.41, 0.70)	0.42(0.32, 0.56)	0.44(0.35, 0.63)	0.65(0.48, 0.87)	<0.001
Neutrophil (10 ⁹ /L)	4.30(2.90, 6.33)	4.30(2.90, 6.70)	3.30(2.40, 4.80)	4.10(2.85, 5.60)	5.90(4.20, 7.38)	<0.001
hsCRP (mg/L)	21.73(3.93, 25.40)	20.34(5.60, 26.37)	20.26(1.55, 22.28)	23.05(74.40, 25.33)	24.15(8.65, 26.20)	<0.001
TC (mmol/L)	4.07(3.94, 4.20)	4.14(4.02, 4.21)	4.12(4.01, 4.20)	4.00(3.81, 4.25)	3.97(3.42, 4.14)	<0.001
TG (mmol/L)	1.51(1.26, 1.65)	1.45(1.26, 1.57)	1.49(1.42, 1.55)	1.58(1.09, 1.67)	1.63(1.29, 1.70)	<0.001
HDLC (mmol/L)	1.09(0.99, 1.20)	1.17(1.05, 1.22)	1.14(1.04, 1.20)	1.06(0.98, 1.19)	1.00(0.94, 1.09)	<0.001
TC/HDLC	3.67(3.47, 3.96)	3.58(3.45, 3.82)	3.58(3.48, 3.75)	3.81(3.52, 4.19)	3.87(3.55, 4.09)	<0.001
LDLC (mmol/L)	2.30(2.20, 2.37)	2.35(2.28, 2.38)	2.33(2.26, 2.36)	2.27(2.12, 2.41)	2.26(1.78, 2.42)	<0.001

ApoA-I (g/L)	1.28(1.21, 1.36)	1.33(1.26, 1.38)	1.33(1.27, 1.37)	1.25(1.21, 1.30)	1.20(1.18, 1.27)	<0.001
ApoB (g/L)	0.80(0.78, 0.82)	0.79(0.78, 0.81)	0.79(0.78, 0.80)	0.81(0.79, 0.82)	0.82(0.76, 0.83)	<0.001
Hcy (umol/L)	18.95(12.21, 26.06)	24.60(16.81, 30.15)	24.39(19.90, 27.76)	15.12(11.72, 20.53)	12.60(8.98, 18.39)	<0.001
Lp(a) (nmol/L)	58.44(55.16, 61.78)	56.89(55.06, 60.70)	56.92(55.48, 58.96)	60.51(55.99, 61.96)	60.60(48.50, 62.53)	0.001
ApoE (mg/L)	34.79(33.74, 35.97)	35.71(34.60, 36.36)	35.34(34.15, 36.00)	34.20(33.80, 35.07)	34.00(33.47, 34.91)	<0.001
D-dimer (mg/L)	0.89(0.31, 3.57)	0.82(0.34, 2.63)	0.45(0.23, 1.99)	1.20(0.28, 4.34)	1.73(0.50, 5.77)	0.004
Fibrinogen (mg/dL)	307.3(246.0, 398.8)	331.0(246.0, 437.0)	285.0 (237.0, 332.0)	296.0(242.0, 398.5)	337.0(278.5, 452.0)	0.001
PAAT						
Volume(cm ³)	47.98(39.00, 55.46)	29.25(21.62, 34.43)	45.83 (41.92, 47.60)	51.16(49.25, 53.03)	69.75(59.94, 80.46)	<0.001
Area (cm ²)	536.03(372.0, 663.8)	286.39(188.4, 419.8)	502.68 (447.7, 517.7)	545.44(527.3, 619.2)	699.51(598.1, 841.5)	<0.001
FAI (HU)	-77.6(-82.4, -72.1)	-79.2(-83.0, -76.7)	-77.1(-81.5, -76.8)	-76.7(-77.6, -76.5)	-74.1(-78.1, -68.8)	<0.001
BMI (kg/m ²)	24.38(22.15, 26.57)	22.54(20.22, 24.69)	22.58(21.32, 23.92)	25.78(24.22, 27.04)	26.72(24.50, 29.89)	<0.001
BMA	4.61(3.90, 5.72)	7.42(5.43, 10.91)	4.43(-4.14, 5.00)	4.69(3.93, 4.97)	3.78(3.21,4.68)	<0.001
BMF	-185.1(-207.9, -167.5)	-213.7(-238.0, -189.9)	-198.9(-213.0, -184.6)	-172.6(-182.2, -162.8)	-167.8 (-184.3, -143.7)	<0.001

Medians with IQRs for continuous variables; n (%) for categorical variables. AD, aortic dissection; SBP, systolic blood pressure; DBP, diastolic blood pressure; DM, diabetes mellitus; BG, blood glucose; HbA1c, hemoglobin A1c; GA, glycated albumin; CHD, coronary heart disease; WBC, white blood cell; hsCRP, high-sensitivity C-reactive protein; TC, total cholesterol; TG, triglycerides; HDLC, high-density lipoprotein cholesterol; LDLC, low-density lipoproteins cholesterol; ApoA-I, Apolipoprotein-I; ApoB, Apolipoprotein B; Hcy, homocysteine; Lp(a), lipoprotein(a); ApoE, apolipoprotein E; PAAT, perivascular adipose tissue; FAI, fat attenuation index; BMI, body mass index.

Table 2. Association between BMV quartiles and AD

Characteristic	Model 1		Model 2		Model 3	
	OR (95%CI)	P	OR (95%CI)	P	OR (95%CI)	P
BMV	1.019(1.013-1.024)	<0.001	1.015(1.008-1.021)	<0.001	1.046(1.025-1.067)	<0.001
Q1: BMV < 86.7	-	-	-	-	-	-
Q2: 86.7 ≤ BMV < 114.4	1.000(0.536-1.866)	1.000	0.981(0.444-2.168)	0.962	1.697(0.558-5.158)	0.351
Q3: 114.4 ≤ BMV < 148.7	3.313(1.812-6.258)	<0.001	2.645(1.243-5.627)	0.012	7.656(1.946-30.125)	0.004
Q4: BMV ≥ 148.7	8.734(4.502-16.945)	<0.001	5.191(2.346-11.486)	<0.001	34.286(4.788-245.497)	<0.001

Model 1: No variable adjustment; Model 2: Adjusted for sex, age, DM, CHD, stroke, alcohol consumption, smoking, hypertension; Model 3: Fully adjusted for variables, including sex, age, DM, CHD, stroke, alcohol consumption, smoking, hypertension, BMI, TC/HDL, ApoA-I, ApoE, Volume, Area, FAI. OR, odds ratio; CI, confidence interval.

Figures with Figure Legends

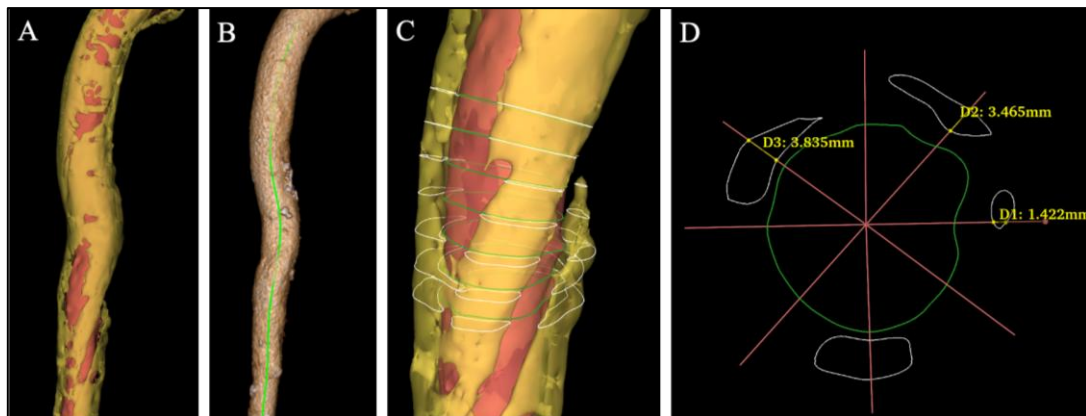


Figure 1. Quantification for PAAT. A, Voxels -190 to -30 HU extracted as PAAT, clipped to 20 mm from wall. B, Three-dimensional thinning, pruning and spline-fitted aortic centerline. C, Minimum Euclidean distance map of adipose voxels to aortic wall. D, 360-ray radial thickness, infiltration angle and circumferential PAAT metrics.

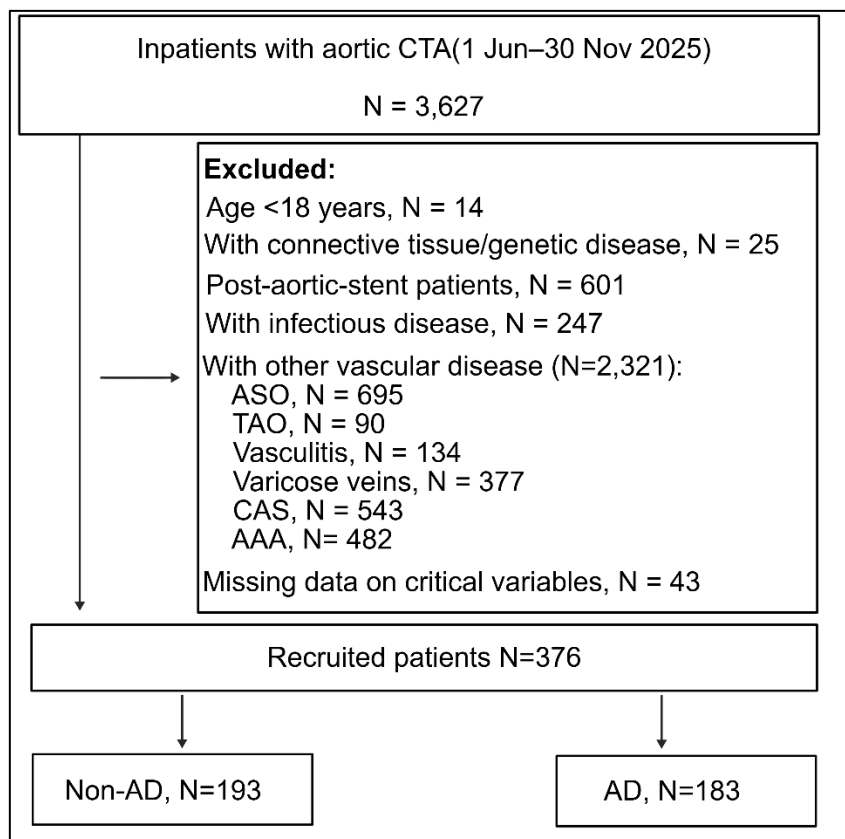


Figure 2. Patient enrollment diagram. ASO, lower-limb atherosclerotic occlusion; TAO, thromboangiitis obliterans; CAS, carotid artery stenosis, AAA, abdominal aortic aneurysm.

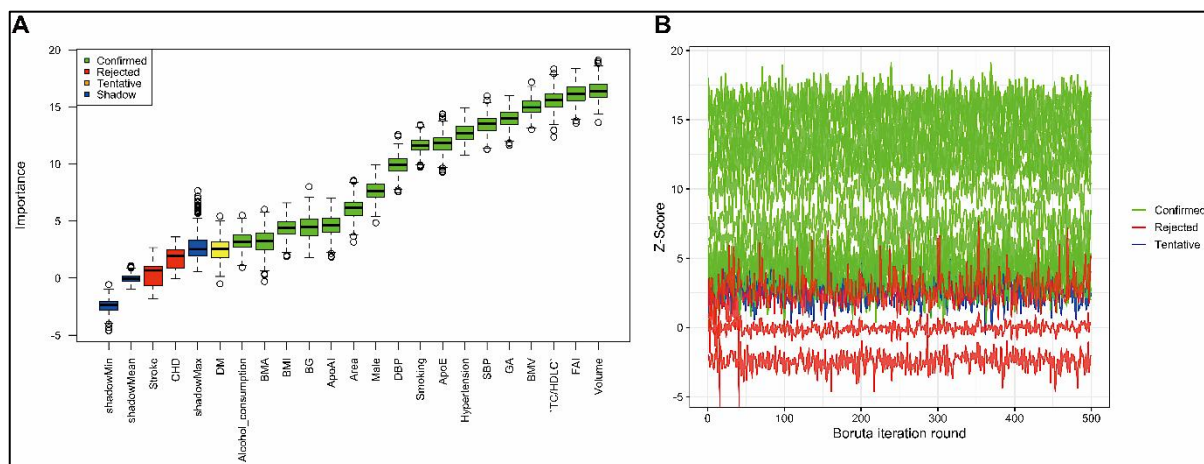


Figure 3. Boruta feature selection between relevant covariates with on AD. A, Importance of factors in the impact on AD ranked by Boruta algorithm. B, Z-Score evolution during Boruta feature selection. SBP, systolic blood pressure; DBP, diastolic blood pressure; DM, diabetes mellitus; BG, blood glucose; GA, glycated albumin; CHD, coronary heart disease; WBC, white blood cell; hsCRP, high-sensitivity C-reactive protein; TC, total cholesterol; HDLC, high-density lipoprotein cholesterol; ApoA-I, Apolipoprotein-I; ApoE, apolipoprotein E; FAI, fat attenuation index; BMI, body mass index.

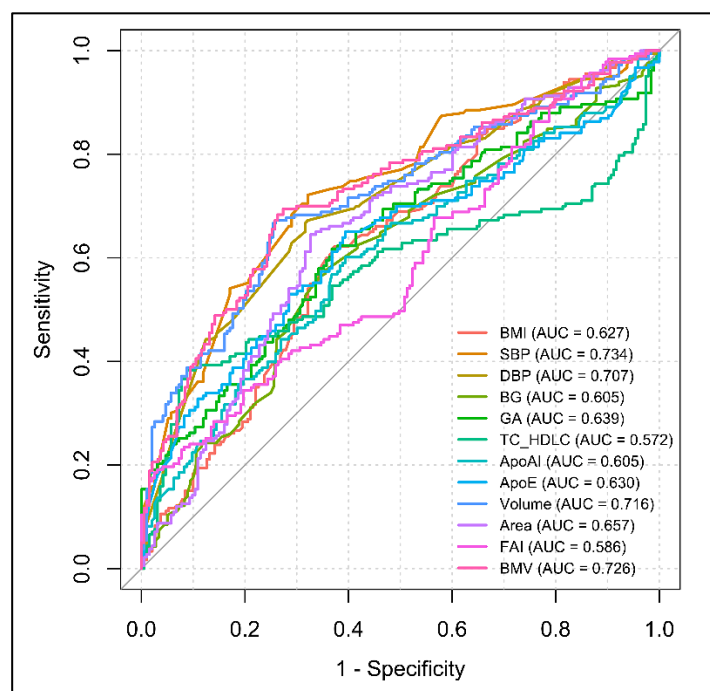


Figure 4. ROC curves for AD prediction. SBP, systolic blood pressure; DBP, diastolic blood pressure; DM, diabetes mellitus; BG, blood glucose; GA, glycated albumin; CHD, coronary heart disease; WBC, white blood cell; hsCRP, high-sensitivity C-reactive protein; TC, total cholesterol; HDLC, high-density lipoprotein cholesterol; ApoA-I, Apolipoprotein-I; ApoE, apolipoprotein E; FAI, fat attenuation index; BMI, body mass index.

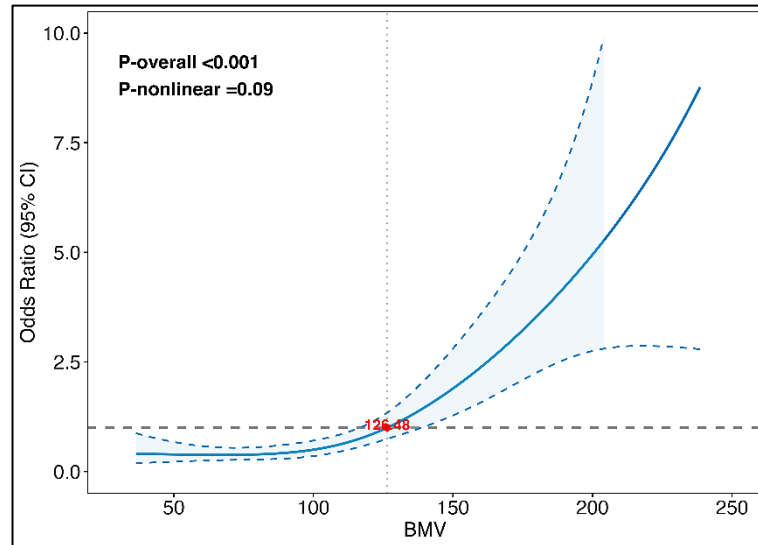


Figure 5. Dose–response relationship between BMV and incident risk of AD.

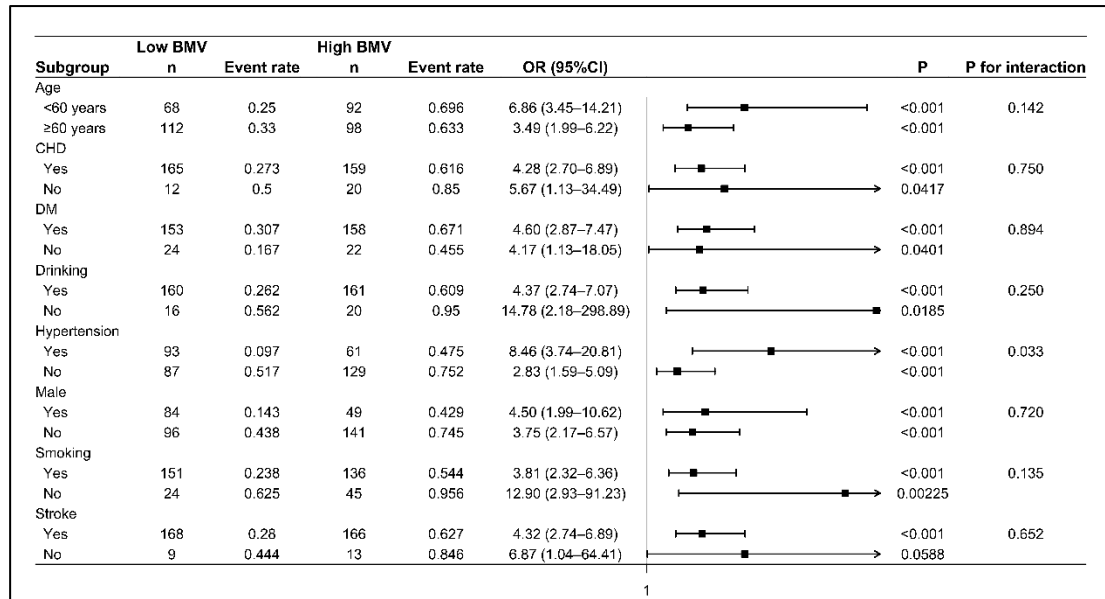


Figure 6. Subgroup analyses of the interaction between BMV and AD. CHD, coronary heart disease; DM, diabetes mellitus.