

1 **DELTA: Fortifying Human Biological Resilience with an N=1 Digital Health and Dynamic**
2 **Biomarker Protocol**

3
4 Peter Wang^{1,2,3*#}, Nigel Foo^{1,2,3*}, Chengxun Su^{2,3*}, Nicole Yong Ting Leung^{2,3*}, Shang Wei Song^{1,2,3*},
5 Gyula Seres^{2,3*}, Yoann Sapanel^{2,3}, Lissa Hooi^{1,2,3}, Avelle Wong^{1,2,3}, Yoong Hun Ong^{2,3}, Poonam
6 Rai^{2,3}, Hyunjin Park^{1,2,3}, Han Shi Jocelyn Chew⁴, Lauren Yi Ting Wang^{5,6}, Jonathan Wei Jie Lee^{7,8,9},
7 Xavier Tadeo^{1,2,3#}, Dean Ho^{1,2,3,10,11#}

8
9 ¹Department of Biomedical Engineering, College of Design and Engineering, National University of
10 Singapore, Singapore, Singapore 117583

11
12 ²Institute for Digital Medicine (WisDM), Yong Loo Lin School of Medicine, National University of
13 Singapore, Singapore, Singapore 117456

14
15 ³The N.1 Institute for Health (N.1), National University of Singapore, Singapore, Singapore 117456

16
17 ⁴Alice Lee Centre for Nursing Studies, Yong Loo Lin School of Medicine, National University of
18 Singapore, Singapore, 117597 Singapore

19
20 ⁵Well Programme, Alexandra Hospital, National University Health System, Singapore, Singapore
21 159964

22
23 ⁶Department of Cardiology, National University Heart Centre, National University Health System,
24 Singapore, Singapore 119074

25
26 ⁷Department of Medicine, Yong Loo Lin School of Medicine, National University of Singapore,
27 Singapore, 117597 Singapore

28
29 ⁸Division of Gastroenterology and Hepatology, Department of Medicine, National University Health
30 System, Singapore, Singapore 119228

31
32 ⁹iHealthtech, National University of Singapore, Singapore, Singapore 117599

33
34 ¹⁰Department of Pharmacology, Yong Loo Lin School of Medicine, National University of Singapore,
35 Singapore, 117600 Singapore

36
37 ¹¹The Bia-Echo Asia Centre for Reproductive Longevity and Equality, Yong Loo Lin School of
38 Medicine, National University of Singapore, Singapore 117456 Singapore

39
40 *These authors contributed to this study equally.

41 #Co-Corresponding Authors: D.H. (biedh@nus.edu.sg); X.T. (lsixtc@nus.edu.sg); P.W.
42 (lsipww@nus.edu.sg)

43
44 **KEYWORDS:** Biological Resilience, Intermittent Fasting, Metabolic Switching, Microbiome, Digital
45 Health

46
47
48
49
50
51
52
53
54
55
56
57

NOTE: This preprint reports new research that has not been certified by peer review and should not be used to guide clinical practice.

58 **ABSTRACT**

59

60 Societies are aging rapidly in parallel with the increasingly earlier onset of serious diseases in
61 younger populations. These and other factors are creating a substantial disparity between
62 healthspan, the period of life where an individual is free from serious chronic disease or disability,
63 and lifespan — expanding the morbidity span. Extending healthspan has thus become a major
64 priority. To pursue an integrated strategy toward healthspan support, we launched DELTA, a
65 prospective, open-label, interventional, and participatory N=1 study (NCT06630637) conducted on
66 a healthy individual (DELTA001, author D.H.). The study was conducted with methodological rigor
67 to support repeatability, transparency, and balanced reporting. The core focus of the DELTA protocol
68 was to assess and enhance human biological resilience. This was demonstrated through the
69 subject's adaptive capacity, revealed through changes and trajectories in cardiometabolic and
70 pleiotropic biomarker levels based upon systematically administered challenges (e.g., fasting).
71 Specifically, the interventional DELTA protocol integrates time-restricted eating (TRE, fasting),
72 strength and cardiovascular fitness regimens, a Mediterranean-inspired dietary protocol, and
73 supplementation alongside an analytics and reporting framework comprised of artificial intelligence
74 (AI), digital health, and wearables-based sleep performance monitoring, microbiome assessment,
75 and longitudinal tracking of biomarker dynamics and performance outcomes. This study introduces
76 new methods and metrics for assessing these biomarker dynamics, including the development of
77 digital biomarkers that reflect dynamic human functional resilience. Findings from DELTA may
78 actionably guide the design of larger participatory human trials to monitor biomarker resilience,
79 design appropriate interventions for dynamic administration, and subsequently fortify healthspan at
80 a population level.

81

82 **INTRODUCTION**

83

84 On a global scale, human lifespan continues to increase[1, 2]. However, extending human
85 healthspan – the duration of life lived free from serious chronic disease – continues to be a challenge.
86 Globally, the mean healthspan-lifespan gap is 9.6 years, while the US presents 12.4 years[3].
87 Increasing healthcare costs and reducing productivity, the widening gap poses a threat to a
88 sustainable healthcare system[4]. Studies exploring healthspan improvement have taken diverse
89 approaches, from preventive health measures to address chronic diseases and lifestyle
90 management (e.g., sleep, diet, and exercise), to exploring biological mechanisms underlying aging
91 processes, as well as pharmacologic and supplement-based geroprotection[5-65]. Unfortunately, as
92 the field of medicine attempts to enact more pre-emptive measures to prevent the onset of chronic
93 disease, relying on human compliance to prevent illness (e.g., “well care”) over conventional
94 treatment that is implemented after a diagnosis (e.g., “sick care”) will be particularly challenging[66-
95 69]. With the emergence of artificial intelligence (AI) and digital medicine alongside improved access
96 to health monitoring methods, new approaches encompassing wearables and participatory health
97 may potentially improve the frameworks with which humans can pre-emptively improve their
98 healthspan. Among the approaches being explored to improve healthspan, digital solutions such as
99 wearables have gained substantial traction due to longitudinal monitoring capabilities. From sleep,
100 performance, to glucose and other markers, the field of digital health has democratized health
101 insights and may also be harnessed for participatory routes to support sustained behavior change
102 and efficacy of interventions.

103

104 In the clinical setting, healthcare decisions are still commonly made using snapshots of information,
105 such as an annual blood test, which often includes the lipid panel, used frequently with
106 cardiovascular risk calculators for screening cardiovascular health[70, 71]. This panel examines low-
107 density lipoprotein cholesterol (LDL-C, commonly coined as “bad cholesterol”), high-density
108 lipoprotein (HDL, or “good cholesterol”), triglycerides (TG), and total cholesterol levels. Despite
109 serving as an evidence-based standard for patient management, static measurements may overlook
110 lipid dynamics that can potentially uncover new insights into health status.

111

112 Longitudinal blood testing for preventive health beyond the annual health screen is rarely
113 implemented due to logistical and economic constraints. Also, it is unclear which longitudinal
114 information may be actionable toward refining treatment protocols. In particular, there is a scarcity

115 of insight into the dynamics, or timescale of change and/or recovery to baseline levels for individual
116 biomarkers in response to intervention. Furthermore, prior studies have shown that subjects evolve
117 over time, with optimal drug dosing and other interventions being modulated dynamically[72-75].
118 Even drug synergy is a dynamic process that is dose-, time-, and patient-dependent[76-78].
119 However, it is established that biomarker response to therapy changes over time, the timescale of
120 biomarker changes and recovery in response to interventions can both serve as potential
121 biomarkers. For example, monitoring biomarker elevation to established interventions (e.g.,
122 pharmacologic, lifestyle, etc.) and subsequent return to baseline levels can offer insight into
123 biological resilience for cardiometabolic, inflammatory, and other functions. Studies that examine
124 these dynamics may lead to novel resilience biomarkers.

125
126 In addition to these considerations for longitudinal testing, it is important to determine which
127 biomarkers may be suitable for resilience testing. Emerging studies have also explored
128 apolipoprotein B (ApoB), the primary protein component of atherogenic lipoproteins (e.g., LDL), due
129 to its potential for more accurately predicting cardiovascular disease than LDL as it directly reflects
130 the number of cholesterol-bearing particles that can drive atherosclerosis[79-81]. In addition to
131 serving as a potential predictor of cardiovascular disease, ApoB may also reveal key insights into
132 lipoprotein metabolism in response to time-restricted eating (TRE) or fasting.

133
134 To assess interventions and longitudinal biomarker trajectories that may impact healthspan, we
135 report the results of DELTA, a prospective, open-label, and interventional N=1 study conducted on
136 a healthy individual (DELTA001) (Fig. S1). The rationale for conducting this open-label, unblinded,
137 and participatory N=1 trial (DELTA001; author D.H.) was to personalize the DELTA regimen to
138 DELTA001 with high adherence and participant awareness of each intervention's (e.g., fasting, diet,
139 fitness, sleep, etc.) role in fortifying healthspan. Moreover, methodological rigor was ensured with
140 biological replicates to confirm the dynamics observed in this study. Additionally, DELTA001's prior
141 demonstration of metabolic switching in response to a health intervention provides a strong basis for
142 interventionally supporting metabolic resilience during the current DELTA regimen[82]. By ensuring
143 rigorous and detailed data collection, this N=1 study generated evidence that was directly relevant
144 to individual health management, and may also help inform the design of future health optimization
145 studies at the population level. The DELTA study was conducted using dynamic interventions such
146 as TRE and coupled with longitudinal digital health and clinical biomarker measurement.
147 Cardiometabolic health, sleep performance, microbiome dynamics, and performance metrics served
148 as the primary outcomes of DELTA. Biomarkers were selected due to their evidence-based
149 relevance as indicators of cardiometabolic and brain health, systemic inflammation, and increasing
150 interest as predictors of healthspan. In addition, while these markers are also receiving broader
151 attention in population-level studies in seniors, their profiling in young adults is less common, and
152 the development of resilience biomarkers based upon the timescales of their dynamics in response
153 to interventions may be important for addressing healthspan at a population scale. To provide
154 ongoing feedback from biomarker monitoring in the context of healthspan impact, a custom
155 generative pre-trained transformer (GPT)-based Healthspan Copilot was developed to assess
156 biological age as an exploratory means of gamification toward regimen adherence. This work sought
157 to derive potential population-relevant learnings toward possible wider-scale studies into biomarker
158 development, gamification, and other factors that can contribute toward positive impact on
159 healthspan outcomes.

160
161 The DELTA study and protocol are outlined in Fig. 1. The DELTA regimen comprised of a feeding
162 window of 4 hours (minimum of 20-hour fast). Meals were typically consumed between 11am and
163 3pm, with limited exceptions for travel and professional obligations. This timeframe was also
164 developed to provide sufficient time for digestion prior to sleep. For biomarker resilience and flexibility
165 testing, as well as acute microbiome dynamics analysis, the primary intervention was a 48-hour
166 water-only fast (no calories consumed, no supplementation) with serum biomarker readings taken
167 before and after the fast. Daily physical activity was undertaken, with a primary focus on strength
168 training (one focus muscle group per day), with 2-3 cardiovascular training events 3 times per week
169 in addition to daily strength training (Norwegian protocol high-intensity interval training (HIIT)).
170 Importantly, the strength training was classified between "Light" and "All Out" on the WHOOP
171 wearable, with a majority of sessions classified between "Moderate" and "Strenuous" to prevent

172 injury. The dietary regimen was Mediterranean-inspired, consisting of lean protein (fish, chicken,
173 chickpea), leafy greens, red cabbage, extra virgin olive oil (no other oils were used for cooking), a
174 daily blended shake (blueberries, red cabbage, broccoli, ginger), and pudding (unsweetened almond
175 milk, chia seeds, flaxseeds, psyllium husk, and organic/unsweetened cacao, monkfruit sweetener)
176 (Fig. 1B and Supplementary File 1). A comprehensive supplement regimen was also taken (Table
177 S1). The general DELTA protocol is summarized in Fig. 1, and the key takeaways from this study
178 are outlined in Fig. 1C. Summaries of food and supplement intake are shown in Figs. S2-S5, Table
179 S1, and Supplementary File 1.

180
181 The DELTA protocol was developed to render biomarkers (e.g., ketones, glucose, ApoB, ApoA,
182 homocysteine) in a labile state such that their dynamics could be straightforwardly modulated based
183 on interventions that range from straightforward (e.g., single set of push-ups), to challenging (e.g.
184 48-hour water fast) (Table S2). As such, while the absolute value of the biomarkers was monitored
185 to assess for outcomes, the foundation of the DELTA protocol was to observe the magnitude of
186 biomarker change, rate of change, and related factors to longitudinally reveal meaningful feedback
187 in response to healthspan-supporting interventions. For example, subject DELTA001 previously
188 undertook an N=1 study to understand the role of biomarker dynamics and frequent biomarker
189 feedback as a strategy to gamify adherence to healthspan-supporting activities[82]. This first study
190 pertained only to 2 biomarkers (ketone and glucose dynamics). The DELTA trial sought to markedly
191 expand this protocol to address multiple pillars associated with healthspan outcomes, including
192 cardiometabolic, neurological, microbiome, sleep, and performance assessment (Fig. 1).

193
194 The biomarkers selected for this study included ApoB, apolipoprotein A (ApoA), high-sensitivity C-
195 reactive protein (hs-CRP), homocysteine, blood glucose, and blood ketones (Table S2). ApoB was
196 selected due to its emerging promise as a superior marker over LDL-C to assess cardiovascular risk
197 as well as an indicator of atherogenic particle burden[83-86]. ApoA was selected due to its accurate
198 indication of HDL function, cardiovascular protection, and metabolic resilience[87, 88]. We selected
199 hs-CRP as it accurately reflects systemic inflammation, which is an important driver of cardiovascular
200 disease, inflammaging, and cognitive decline[89, 90]. Homocysteine was selected as it is a broadly
201 applicable indicator of methylation and B-vitamin status, efficiency of detox pathways, as well as
202 cardiovascular and neurological aging risk[85, 86]. Importantly, a number of large-scale trials have
203 demonstrated the real-world actionability of these markers. The INTERHEART and AMORIS trials
204 have placed ApoB above LDL-C as a stronger predictor of cardiovascular risk[79, 80]. For hs-CRP,
205 the JUPITER trial, among others, demonstrated its ability to independently predict strokes and heart
206 attacks in patients with normal LDL. For homocysteine, the Framingham Study demonstrated that
207 elevated levels can predict dementia, stroke, and mortality risk[91, 92].

208
209 As previously noted, for biological resilience testing, a 48-hour fast served as the primary intervention
210 to assess the dynamics of blood glucose, blood ketones, ApoB, ApoA, and the ApoB/ApoA ratio[84].
211 To assess broader biological resilience in the context of neurological, methylation, cardiometabolic,
212 inflammaging, and other systems, homocysteine and hs-CRP served as pleiotropic markers to
213 observe stress and rebound responses. A 48-hour fast also served as the primary intervention to
214 assess biomarker resilience, with resulting changes observed, and an additional reading was
215 conducted to assess the return to baseline. For sleep performance optimization, the primary
216 intervention, alongside the multiple facets of the DELTA protocol, was a sleep phase
217 advance/circadian intervention of moving the sleep time earlier by approximately 2.5 hours (9:15pm
218 to bed/asleep by 9:45pm) compared to the control sleep time (12:00am). Systematic efforts were
219 also made by DELTA001 to adapt to multiple time zones during international travel. Sleep duration,
220 stages, time awake, scoring, heart rate variability (HRV), resting heart rate (RHR), and other relevant
221 markers were monitored with a WHOOP 4.0, Garmin Epix Pro 2, and Apple Watch 9. Physical
222 performance assessment was conducted via run speed, grip strength, and cardiovascular
223 assessment spanning blood and pulse pressure. The 48-hour water fast also served as the primary
224 intervention for the microbiome dynamics portion of the study, with samples taken prior to and at the
225 conclusion of the fast. Next-generation sequencing was used to assess gut microbe composition
226 changes.

227

228 Overall, the DELTA study provides insights into biomarker dynamics and resilience, sleep and
229 physical performance as part of a combinatorial protocol consisting of TRE, fitness, and rationally-
230 designed dietary regimen. Cardiometabolic flexibility, sleep, microbiome dynamics, and performance
231 outcomes were assessed, with evidence of dose-dependent biomarker responses, exceptional
232 cardiometabolic and pleiotropic biomarker resilience, marked sleep performance improvement, and
233 platforms for longitudinal monitoring adherence. While this is an N=1 study, potentially generalizable
234 frameworks for population-level investigation were observed.

235

236 RESULTS

237

238 Metabolic Resilience and Flexibility

239

240 In this portion of the study, high-resolution insight into metabolic resilience and flexibility were
241 studied, with blood glucose and blood ketones readings taken when both markers were highly and
242 DELTA001 was metabolically flipped in ketosis, at approximately 40-42 hours of fasting (Figs. 2 and
243 S6-S13). In these studies, DELTA001 performed weightlifting, with biomarker readings taken before
244 exercise start, and continuously in 5-20-minute intervals until exercise completion to monitor
245 biomarker dynamics during glycolysis and recovery (Fig. 2A and S6-S8). Three segments are noted
246 in Fig. 2A. Segment 1 represents exercise start. Segment 2 represents the peak of the glucose
247 ketone index (GKI), a reflection of the state of ketosis. Segment 3 represents ketotic recovery. Of
248 note, rapid glycogenesis and exit from ketosis were observed immediately following the start of
249 exercise (Fig. 2A, Segment 1), with glucose levels rising and ketone levels dropping, indicating rapid
250 substrate switching in response to physical stress. Post-exercise, we observed sustained ketone
251 rebound (Fig. 2A Segment 2), with levels rising continuously for at least ~100 minutes post-
252 exercise before reaching a plateau (Fig. 2A, Segment 3). Notably, we observed that ketone level
253 during the exercise-recovery period followed a consistent second-order polynomial pattern (Fig.
254 S14).

255

256 Asymmetric substrate switching kinetics were observed across the three sessions outlined in Fig.
257 2A, where ketone decline during exercise consistently exceeded the rate of post-exercise ketotic
258 recovery, indicating rapid exit from ketosis under physical stress and moderate re-entry during
259 recovery (Fig. 2B). Of note, a dose-dependent correlation of glycolytic onset rate, ketotic recovery
260 rate, and total substrate switch rate were observed (Fig. 2C). More specifically, these 3 rates are
261 positively correlated with the exercise duration, indicating the potential of this metric as a metabolic
262 resilience biomarker.

263

264 The speed of metabolic switching across single cycles of OMAD ketosis entry sessions was
265 monitored (Figs. 2D and S9-S13). In total, 5 independent sessions revealed initial switches into
266 ketosis between 20 hours to a recent reading of approximately 16.5 hours. No claims are made in
267 this study with regards to gradually increasing rates of metabolic switch. However, metabolic
268 adaptation, metabolic memory, and physiological priming toward increased metabolic switch
269 efficiency has been previously documented[93-95]. Furthermore, similar to the trajectories observed
270 in Fig. 2A, ketone level during the exercise-recovery period in Fig. 2D also followed a consistent
271 second-order pattern (Fig. S14).

272

273 Cardiometabolic and Pleiotropic Markers

274

275 The fasting dynamics of ApoB, ApoA, ApoB/ApoA ratio, homocysteine, and hs-CRP were assessed
276 as a function of pre-48-hour fasting (PRE48), post-48-hour fasting (POST48) and unfasted states
277 that were measured as part of a 3-meal-a-day regimen (3MAD) (Fig. 3A-C and Supplementary Data
278 1). Please note that for the purposes of comparison between groups, data sets are repeated across
279 different subfigures. Fig. 3A examines post fasting levels against unfasted controls, POST48 ApoB
280 was 84 ± 3.1 mg/dL and 3MAD ApoB was 74 ± 2.7 mg/dL. POST48 ApoA was 17 ± 4.9 mg/dL and
281 3MAD ApoA was 167 ± 2.5 mg/dL. The POST48 ApoB/ApoA ratio was 0.48 ± 0.02 and 3MAD
282 ApoB/ApoA ratio was 0.44 ± 0.02 . A statistically significant reduction in ApoB was observed when
283 comparing POST48 ApoB with 3MAD ApoB, while visible but non-significant reductions in ApoA and
284 ApoB/ApoA ratio were observed.

285

286 Fig. 3B examines PRE48 and POST48 differences in ApoB, ApoA, and ApoB/ApoA ratio. PRE48
287 ApoB was 75 ± 3.9 mg/dL, and POST48 ApoB was 84 ± 3.1 mg/dL. PRE48 ApoA was 172 ± 5.7 mg/dL
288 and POST48 ApoA was 175 ± 4.9 mg/dL. The PRE48 ApoB/ApoA ratio was 0.44 ± 0.02 and POST48
289 ApoB/ApoA ratio was 0.48 ± 0.02 . Visible but non-significant increases in ApoB, ApoA, and
290 ApoB/ApoA ratios were observed.

291

292 Fig. 3C assessed ApoB changes between day 3 (3MAD-3) and day 5 (3MAD-5), visible but non-
293 significant reductions were observed. The same was observed for ApoB/ApoA ratio for 3MAD-3 and
294 3MAD-5. The 3MAD-3 ApoB was 79 ± 3.3 mg/dL and 3MAD-5 ApoB was 70 ± 2.0 mg/dL. The 3MAD-
295 3 ApoA was 16 ± 5.2 mg/dL and 3MAD-5 ApoA was 168 ± 1.9 mg/dL. The 3MAD-3 ApoB/ApoA ratio
296 was 0.47 ± 0.02 and 3MAD-5 ApoB/ApoA ratio was 0.41 ± 0.01 .

297

298 It should be noted that baseline ApoB values, represented by the PRE48 values, were within the
299 optimal range of 60-80 mg/dL. A temporary rise of POST48 ApoB levels was observed and return to
300 baseline as an indicator of metabolic flexibility and lipoprotein clearance will be discussed (Fig. 3B).
301 Interestingly, some unfasted ApoB readings were observed to be near the lower limit of the normal
302 ApoB range (65mg/dL), and included a reading of 65mg/dL, 66 mg/dL, and 70 mg/dL, potentially
303 signifying efficient ApoB metabolism. The unfasted dynamics of ApoB, ApoA, and ApoB:ApoA ratio
304 levels did not result in the rise that was seen during the fasting dynamics study (Fig. 3C).

305

306 hs-CRP levels PRE48, POST48, post-refeeding (POST-RF), and during the baseline regimen
307 (CONTROL) were recorded (Fig. 3D and Supplementary Data 1). PRE48 levels were 0.41 ± 0.13
308 mg/L, POST48 levels were 0.28 ± 0.06 mg/L, POST-RF levels were 0.23 ± 0.02 , and CONTROL levels
309 were 0.26 ± 0.02 . Of note, no apparent increases in inflammation were observed between the PRE48
310 and POST48 hs-CRP levels. Of note, initial inflammation readings were assessed via C-Reactive
311 Protein (CRP) (Supplementary Data 1). With the exception of the first 2 readings ($1.0 \mu\text{mol/L}$ and
312 $1.2 \mu\text{mol/L}$), and another reading of 0.6, which proceeded an intense workout of over 1,500 pushups
313 performed by DELTA001, all CRP values were $< 0.6 \mu\text{mol/L}$ and undetectable, which resulted in a
314 change to hs-CRP measurements.

315

316 Homocysteine levels were also monitored under the same conditions (Fig. 3E and Supplementary
317 Data 1). PRE48 homocysteine was $6.6 \pm 0.9 \mu\text{mol/L}$, POST48 homocysteine was $9.6 \pm 1.8 \mu\text{mol/L}$,
318 POST-RF homocysteine was $7.4 \pm 0.3 \mu\text{mol/L}$ and CONTROL homocysteine was $6.3 \pm 0.2 \mu\text{mol/L}$.

319

320 Homocysteine resilience monitoring revealed an interesting outcome (Fig. 3E-G). Following the first
321 cycle of 48-hour fasting, homocysteine rose from 6.6 to $13.2 \mu\text{mol/L}$, which is considered elevated
322 and well outside of the optimal (low-risk) levels of $10 \mu\text{mol/L}$ or below ($7-10 \mu\text{mol/L}$ considered
323 optimal)[96, 97]. However, a follow-up homocysteine test post-refeeding within the next 2-3 days
324 revealed a return to baseline, potentially signifying strong methylation efficiency and metabolic
325 resilience (Fig. 3F). Of note, this homocysteine resilience test was repeated for 2 additional cycles.
326 In the first repeat, the pre-fast homocysteine level was $8.1 \mu\text{mol/L}$. The POST48 homocysteine was
327 $7.7 \mu\text{mol/L}$, a markedly reduced value compared to the level observed during the first cycle. The
328 POST-RF homocysteine recovery level was $8.0 \mu\text{mol/L}$, effectively revealing no apparent change
329 despite a 48-hour fast, further indicating potential methylation and metabolic adaptation (Fig. 3F).
330 Interestingly, the 3rd cycle also revealed the potential of sustained methylation and metabolic
331 adaptation. In this cycle, the PRE48 homocysteine was $5.0 \mu\text{mol/L}$, the POST48 homocysteine was
332 $8.0 \mu\text{mol/L}$, and the POST-RF homocysteine was $6.9 \mu\text{mol/L}$, all within optimal levels (Fig. 3F).
333 Subsequent baseline readings of homocysteine were $6.1 \mu\text{mol/L}$, $7.0 \mu\text{mol/L}$, $6.4 \mu\text{mol/L}$, $5.9 \mu\text{mol/L}$,
334 and $6.1 \mu\text{mol/L}$. These values are classified as elite, signifying exceptional methylation efficiency, B-
335 vitamin stores, and metabolic health[98, 99]. Additionally, Area Under the Curve (AUC) analysis was
336 performed for homocysteine vs. days across the three cycles. AUC values decreased across cycles
337 ($45.4 \rightarrow 31.5 \rightarrow 27.9 \mu\text{mol}\cdot\text{day/L}$) (Fig. 3F). Using the AUC values, a resilience index (RI), defined
338 as a quantitative measure of an individual's ability to maintain durable homocysteine response
339 following exposure to a stressor (TRE), was calculated as $22.1 \rightarrow 28.5 \rightarrow 32.1 \mu\text{mol}\cdot\text{day/L}$ (Fig. 3G).
340 This suggests attenuated responses to the stressor and the development of adaptive and durable

341 methylation resilience. Please note that the AUC's and RI were derived from homocysteine levels
342 shown in Fig. 3E.
343

344 **General Health Outcomes**

345
346 General health outcomes were assessed using overnight HRV trends (Garmin Epix Pro (Gen2)),
347 highest 5-minute overnight HRV average (Garmin Epix Pro (Gen2)), blood and pulse pressure, and
348 longitudinal weight assessments (Fig. 4 and Supplementary Data 1). Overnight HRV readings and
349 baseline HRV range data showed standard day-to-day variation (red dots) with a 7-day smoothed
350 baseline (red line) and baseline range (gray shaded region) (Fig. 4A). DELTA001's HRV fluctuated
351 over time with noticeable dips and increases, which potentially indicate interspersed periods of
352 recovery (rising) and possible stress or fatigue episodes (HRV dips). The highest overnight 5-minute
353 averages were also plotted (Fig. 4B). Some nights were not recorded due to rare instances of
354 DELTA001 not wearing the device (forgetting to wear the device), or the device not recording for
355 unknown reasons.
356

357 Daily blood pressure (BP) readings were taken, with the daily average and trendlines shown (Fig.
358 4C and Supplementary Data 1). DELTA001 did not take any prescription anti-hypertensive or
359 cholesterol medication. Systolic pressure (red) was shown to be generally stable (110–120 mmHg).
360 Diastolic pressure (blue) was generally stable between 70–80 mmHg. While modestly declining
361 trends were shown for both systolic and diastolic pressure, no claims are made causation by the
362 DELTA protocol. Pulse pressure was also recorded longitudinally (Fig. 4D and Supplementary Data
363 1). DELTA001 pulse pressure (Systolic pressure-diastolic pressure) remained within the healthy
364 range of 40–60 mmHg (green shaded area)[100], indicating generally healthy arterial compliance.
365 Longitudinal weight readings and daily averages were taken (Fig. 4E and Supplementary Data 1).
366 Weight fluctuates between 71 kg and 76 kg were observed, ending at approximately 72.5 kg.
367

368 **Performance Outcomes**

369
370 DELTA001's performance was assessed longitudinally with grip strength, correlation of grip strength
371 with blood pressure, and running speed as part of a Norwegian protocol of HIIT, with 4 sets of 4-
372 minute run cycles and 3-minute low intensity cycles. Dominant (right) and left hand measurements
373 were taken with daily averages and standard error of the mean (Fig. 5A and Supplementary Data 1).
374 Of note, an industrial grade grip strength meter with improved resistance against grip slippage was
375 intermittently used toward the end of the study, with some dominant hand readings as high as
376 79.65kg also recorded (Fig. S15). Normalized grip strength (grip strength divided by body weight)
377 was also plotted over time (Fig. 5B and Supplementary Data 1). The daily grip strength as well as
378 normalized grip strength trends showed a gradually increasing trend. No claims are made with
379 regards to the impact of the DELTA protocol on this trend. Normalized right and left grip strength
380 was also plotted against diastolic and systolic pressure to observe correlations, which have also
381 been previously reported in prior studies (Fig. 5C)[101]. The HIIT run times showed a gradual
382 increase over time (Fig. 5D and Supplementary Data 1). During the course of training, the starting
383 set of run speeds was gradually increased in order to sufficiently advance toward the highest running
384 speed on the 4th set. This training approach of stepwise increases in training difficulty may have
385 played a role in the performance improvement over time. We also do not discount the possibility that
386 the gradual increase in time was due to DELTA001 not running at his absolute full capacity during
387 each running trial.
388

389 **Sleep Performance**

390
391 A sleep study spanning the start of DELTA through April (nearly 7 months) was conducted. The
392 sleep intervention regimen included multiple elements. While the primary intervention was moving
393 the sleep time earlier by approximately 2 hours and 45 minutes (from a control time of 12am midnight
394 to 9:15pm), the DELTA regimen included consistent morning fitness sessions, a Mediterranean-
395 based dietary regimen, and other factors that may have collectively enabled the sleep outcomes
396 observed. These included the stoppage of caffeine intake from coffee at 7am on weekdays and 8am
397 on weekends to allow for sufficient clearance, the elimination of afternoon naps, and the prohibition

398 of screen time before bed. It is important to note that prior to and during the study, DELTA001 slept
399 alone.
400
401 Unless otherwise stated, Fig. 6 contains data from the Apple Watch 9 (Supplementary Data 1). A
402 control period of sleep undertaken by DELTA001, with sleep times of approximately 12 am midnight,
403 was analyzed retrospectively (Fig. 6A). The sleep patterns were shown to be fragmented, with
404 generally inconsistent sleep onset time, variability in wake-up times. Sleep architecture was
405 suboptimal, with sparse and insufficient deep sleep, insufficient rapid eye movement (REM) sleep,
406 and light sleep comprising a large proportion of sleep architecture. This baseline sleep regimen was
407 comprised of irregular sleep patterns, potentially due to a lack of interventions.
408
409 During the DELTA intervention period, the consistent presence of deep sleep during the early
410 segment of the sleep architecture was clearly noted (Fig. 6B). Also, a consolidation in sleep timing
411 was apparent after study initiation. Sleep continuity was also shown to improve compared to the
412 control sleep period.
413
414 This study was not without sleep disturbances. DELTA001's travel sleep performance across diverse
415 time zones is also shown. This portion of the study represents concerted efforts to adapt to
416 international travel. Key interventions included: (1) Using evening long-haul flights where possible;
417 (2) Immediate sleep with eye shades and earplugs upon take-off; (3) Consolidation of take-off meals
418 with landing meals, served as close as possible to landing; (4) Where applicable, if arriving to long-
419 haul destinations in the morning, additional feeding to ensure sufficient caloric intake, with no eating
420 through the rest of the day and evening in order to resume DELTA feeding window; (5) Immediate
421 resumption of morning fitness routine. The hours recorded are presented according to the Singapore
422 time zone (UTC+8:00), and international travel periods are highlighted by shaded green regions.
423 Sleep data in Fig. 6 is derived from the Apple Watch 9 to visualize sleep performance. HRV data is
424 from the Garmin Epix Pro (Gen 2) (Supplementary Data 1).
425
426 Across all three travel legs, aggregate sleep duration and architecture were generally preserved,
427 suggesting strong sleep resilience (Fig. 6C-E). However, a key exception was the multiple short red-
428 eye flights from Mumbai and Hyderabad to Singapore where total sleep was acutely impacted (Fig.
429 6C,D). Resilience and recovery from these flights are to be discussed. The first travel is represented
430 by consecutive trips between Singapore, Morocco (via Türkiye), Australia (Brisbane), and India
431 (Hyderabad), with return trips to Singapore between each leg (Fig. 6C). Sleep duration was generally
432 robust, with multiple days showing 7+ hours of sleep. Sleep architecture also appeared robust, with
433 all sleep stages consistently represented. Sleep fragmentation was visible in higher quantities across
434 specific days but did not suggest substantial sleep disruption. Despite having a red-eye flight of short
435 duration (< 4 hours), where a clear sleep disruption was noted, HRV remained within a balanced
436 level, suggesting favorable autonomic balance and resilience. For this segment, despite multi-
437 country travel across diverse time zones, sleep architecture and duration were strong.
438
439 In the subsequent sleep segment, which included travel to India (Mumbai) and San Francisco, the
440 sleep duration was consistent, averaging 7-8 hours of sleep per night (Fig. 6D). Of note, the sleep
441 stages were exceptionally well distributed, with strong sleep architecture and patterns of deep and
442 REM sleep. Importantly, sleep fragmentation was minimal, which represented consolidated and
443 high-quality sleep. It should be noted, however, that a period of sustained HRV suppression was
444 observed following the return to Singapore from San Francisco. It is possible that this was due to the
445 exceptional sleep experienced while in San Francisco, suggesting that while DELTA001 was able to
446 maintain strong sleep adaptivity across time zones, exceptional sleep while on travel may result in
447 delayed restoration of autonomic balance, resulting in a temporary HRV imbalance. This may also
448 demonstrate that in some cases, "jet lag" is unavoidable.
449
450 The third sleep segment included travel between Singapore and Portugal (Fig. 6E). Again, sleep
451 consistency, efficiency, and architecture were strong, and fragmentation was minimal. This travel
452 segment also exhibited relatively stable, though not always balanced HRV.
453

454 In summary, the travel sleep segment of this study revealed strong sleep resilience and adaptivity
455 across diverse time zones. Sleep architecture, fragmentation, and consistency were generally
456 strong, but these factors also highlighted the importance of maintaining sufficient sleep hygiene and
457 opportunity. Sustaining a balanced HRV, despite red-eye travel, was potentially due to DELTA001's
458 systematic regimen of fitness, TRE, and other interventions. Nonetheless, travel sleep findings
459 reinforce the important relationship between consistent and efficient sleep with autonomic function
460 (HRV), heart health, human performance, and other factors. The overall findings of DELTA001
461 international travel suggest that strong sleep is possible across multi-time zone travel, and disruption
462 was related primarily to travel modality instead of time zone change.

463
464 A comparison of sleep trajectory between retrospective (RETRO), start (START) and end (END) of
465 the sleep study also revealed clear improvements (Fig. 6F). For total sleep, RETRO was $372.3 \pm$
466 12.3 minutes. START was 454.6 ± 8.2 minutes, and END was 493.3 ± 5.0 minutes. For REM sleep,
467 RETRO was 65.2 ± 2.7 minutes, START was 90.6 ± 4.5 minutes, and END was 108.0 ± 4.8 minutes.
468 For light sleep, RETRO was 286.7 ± 8.3 minutes, START was 324.4 ± 6.4 minutes, and END was
469 341.6 ± 5.7 minutes. For deep sleep, RETRO was 28.9 ± 1.8 minutes, START was 43.0 ± 2.5 minutes,
470 and END was 43.3 ± 2.9 minutes. For awake time, RETRO was 26.6 ± 3.5 minutes, START was
471 19.2 ± 3.7 minutes, and END was 13.2 ± 1.4 minutes. Total sleep, deep sleep, REM sleep, and light
472 sleep showed general trends of improvement. Awake time also showed substantial drops across
473 devices. These observations imply that the DELTA sleep intervention as part of the general DELTA
474 protocol was effective at improving sleep performance, with statistical significance observed across
475 certain sleep stages.

476
477 While sleep architecture and duration served as the key metrics for this study, the average sleep
478 duration in each stage was recorded across all three devices (WHOOP, Garmin, Apple) (Fig. 7 and
479 Table S3). This study did not compare device performance. Sleep scores were also recorded on the
480 WHOOP and Garmin devices (Fig. S16 and Supplementary Data 1). As a potential gamification
481 opportunity, DELTA001 sought to achieve a score of at least 80 on at least one of the 2 devices
482 during each sleep event (Fig. S16). A longitudinal record of these scores revealed a majority of sleep
483 scores achieving this objective. While sleep scores may not always align with user perceptions of
484 sleep outcomes, they may serve as an effective gamification tool, particularly if to enable acute
485 and/or long-term and healthy behavior change.

487 **Microbiome Dynamics**

488
489 Microbiome composition and changes were studied as a function of a pre-48-hour fast (PRE48),
490 post-48-hour fast (POST48), as well as 3-meals-a-day (3MAD). Dominant bacteria phyla included
491 *Actinobacteria*, *Bacteroidetes*, *Firmicutes*, and *Proteobacteria* (Supplementary Data 2). The relative
492 abundance of each phylum was plotted in accordance with varied testing conditions over time (Fig.
493 8A). It is interesting to note that for all samples across all timepoints, *Fusobacteria*, a prevalent
494 microbial phylum often associated with poor diabetes control and serious gastrointestinal disorders,
495 was not detected in any samples across all timepoints[102]. Kruskal-Wallis testing showed non-
496 significant differences in the bacteria phyla relative abundances from each feeding condition (Fig.
497 8B). Shannon, Chao1, and Inverse Simpson diversity indexes and changes over time were also
498 plotted, and Kruskal-Wallis testing also showed non-significant differences between microbe alpha
499 diversity across the feeding conditions (Figs. 8C and S17). Pre- and post-fast (48 hours) showed
500 non-significant relative changes in bacteria phyla across seven time points during a one-meal-a-day
501 (OMAD) week (Fig. 8D). The *Firmicutes/Bacteroidetes* (F/B) ratio was also calculated, showing no
502 significant difference between feeding conditions (Fig. 8E).

503
504 Functional pathway abundance predictions were also conducted (Fig. 9 and Supplementary Data 2).
505 The paired line plots show the relative abundances of two PICRUSt2-predicted pathways (PWY-
506 5532 and PWY490-3) in stool samples collected before (PRE48) and after (POST48) a 48-hour fast.
507 A total of 327 pathways were analyzed, with the selected pathways displayed as they showed
508 statistically significant differences based on a two-tailed paired t-test (p -value < 0.05). Each line ($n=7$)
509 matches samples from the same participant. Predicted pathway abundances are expressed in
510 arbitrary units derived from PICRUSt2. Some pathways that were important for microbial survival but

511 displayed no significant change between fasting conditions include — GLYCOLYSIS, PWY-5505
512 and SER-GLYSYN-PWY.

513

514 **Healthspan Copilot GPT**

515

516 The “Healthspan Copilot”, a custom GPT designed to promote adherence and behavior change
517 throughout the user’s health optimization journey, was tested through user-chatbot interactions to
518 verify the correct execution of its configured logic (Fig. 10A and Supplementary File 2). The GPT
519 supports biomarker benchmarking against the subject (DELTA001), provides recommendations for
520 tracking delta values of biomarkers across different fasting states (denoted as ‘DELTA markers’
521 thereafter), and estimates biological age followed by an add-on analysis of the user’s biological
522 resilience. The GPT was incorporated with DELTA001’s representative data on ketosis onset speed
523 and DELTA markers that are potential indicators of biological resilience, including Δ ApoB,
524 Δ Homocysteine, and Δ hs-CRP across different fasting states[103-105].

525

526 During user-chatbot interactions, when the conversation starter "Compare my ApoB and ApoA levels
527 with those of DELTA001" was selected, the GPT prompted for ApoB and ApoA values, identified the
528 fasting state, and generated a structured comparison against DELTA001’s benchmark values with
529 interpretive feedback on lipid clearance efficiency, as well as recommendation on the relevant DELTA
530 marker to track (Fig. 10B). For the biological age estimation, the GPT consistently requested the
531 required set of 10 health metrics upon user prompt and returned an estimate based on a population
532 sample-trained regression model (Fig. 10C and Supplementary File 2). In the case of DELTA001,
533 the estimated biological age using his health metrics from April 2025 was consistently 31.8 years,
534 with potential further reductions due to his strong resilience profile. The estimate obtained from GPT
535 matched the output of standard statistical software. Notably, the estimated biological age of
536 DELTA001 is substantially lower than his chronological age of 45 years and corresponded with
537 favorable biomarker data, including an HbA1c of 4.6%, body weight of 74 kg, waist circumference of
538 73.7 cm, hs-CRP of 0.28 mg/L, HDL of 65 mg/dL, systolic blood pressure of 109 mmHg, diastolic
539 blood pressure of 63 mmHg, and a pulse rate of 57 bpm (Supplementary File 2). Although no
540 quantitative performance evaluation was conducted, these test interactions showed that the GPT
541 reliably executed its configured logic and produced consistent, context-aware outputs aligned with
542 its intended purpose.

543

544 **Participant Experience: A Qualitative Assessment**

545

546 Detailed and semi-structured interviews were conducted with DELTA001 at the study start (baseline),
547 midpoint (after a 3MAD routine), and at the end of the study. Interview questions were not provided
548 to DELTA001 in advance. The initial analysis outlined a baseline routine summary, detailing key
549 pillars of exercise, food consumption, and sleep hygiene (Table 1). The DELTA001 participant
550 experience was comprehensively detailed, outlining main study themes, sub-themes, and codes
551 (Fig. 11). Four main themes emerged across the three interviews: “sustained engagement in routine
552 and healthy lifestyle”, “engagement with digital health technologies”, “impact of changing mealtimes”,
553 and “biomarkers.” Sub-themes included DELTA001’s motivation and challenges pertaining to
554 adhering to the regimen, as well as additional concepts such as the use of technology to drive healthy
555 changes, experiences while undertaking the fasting and fitness regimens, and the impact such data
556 collection and interpretation had on the participant over the course of the study. Source files including
557 transcripts can be found in Supplementary File 3.

558

559 From the qualitative assessment of three interviews, DELTA001 described his experiences,
560 motivations, and adaptive strategies. At baseline, DELTA001 reported extensive experience with
561 TRE, OMAD, and healthy diet, aligning with the DELTA protocol, and also reported sustained
562 adherence to the protocol with minimal difficulty in maintaining the lifestyle. Furthermore, increased
563 awareness of aging and the impact of unhealthy diet on cardiovascular health contributed to a
564 stronger commitment to maintaining a healthy lifestyle, thus deterring unhealthy behaviors.

565

566 *“...but it's like, as I get older too, I am very mindful of things like cardiovascular health and the impact of*
567 *having, like one meal that's not great, two meal that's not great, three meal that's not great, you don't*
568 *get kind of the flexibility to reverse that.”*
569

570 However, concerns were raised regarding the long-term sustainability of such lifestyle (e.g.,
571 navigating family dynamics and social engagements while practicing TRE, maintaining ideal sleep
572 routine along with family responsibilities).
573

574 *“Sometimes I had social engagements in the evening where I did not eat a single bite and by and large*
575 *people joked about it with me. I was cool, I knew most of them. I don't know if – that's not going to be*
576 *possible for every social event moving forward and I am ok with that.”*
577

578 In this study, adopting wearables led to multiple outcomes: (1) prompting positive behavior change
579 through activity reminders and goal tracking, (2) receiving data (e.g., workouts and sleep) perceived
580 to be rewarding, and (3) data tracking from wearables leading to consistent monitoring and
581 reinforcing a sense of accountability.
582

583 *“...it really has become a part of my life in terms of closing the rings (Apple Health feature) to make sure*
584 *I burn minimum number of calories, stand a minimum number of minutes and get a specific amount of*
585 *exercise in. I, I look to the data every day.”*
586

587 DELTA001 actively engaged in data sense-making when interpreting results and outcomes, which
588 influenced decision-making. Particularly, time to reach ketosis was used as feedback on
589 carbohydrate intake, while homocysteine dynamics motivated the targeted consumption of specific
590 vitamins.
591

592 *“I think having some insight into homocysteine status, for me, I something that I didn't realize would*
593 *come out of this was how it would prioritize my B vitamin consumption. I don't I'll never stop ensuring*
594 *that I take enough vitamin B now.”*
595

596 During the 3MAD phase, changes in mealtimes impacted all components of the routine for
597 DELTA001, resulting in slight anxiety and nervousness. For instance, he experienced minor impact
598 on sleep, marked by slight morning grogginess and mild waking discomfort. Additionally, DELTA001
599 also made adjustments in his exercise routine, prioritizing more high intensity training to processed
600 food.
601

602 **DISCUSSION**

603

604 **DELTA Protocol**

605

606 The DELTA protocol was developed by and solely for DELTA001 (author D.H.). The protocol
607 included TRE (fasting), a daily fitness regimen, a daily dietary regimen, and a sleep protocol (9:15pm
608 to bed, 6:00am wake-up, with variations for travel and work-related schedule changes). It should be
609 noted that DELTA001 practiced the fasting and fitness regimen prior to the start of the DELTA study.
610 However, the 4-hour eating window was shifted from a dinner-centric feeding window (5pm start)[82]
611 to a mid-day eating window (11:00am – 3:00pm) in order to complete feeding with ample time for
612 digestion prior to sleep. Also, the dietary regimen was largely practiced prior to the study, except
613 with efforts to ensure that the polyphenol-based drink, chia pudding, and red cabbage salad were
614 consumed as consistently as possible during DELTA. Changes to DELTA001's sleep regimen, which
615 included moving the sleep time to 9:15pm, were implemented as part of this study. Therefore, in the
616 absence of a control subject or dataset, with the exception of the sleep performance assessment,
617 no claims are made regarding the efficacy of the DELTA protocol in mediating substantial
618 improvements to the health and performance profile of DELTA001. Nonetheless, these specific
619 elements of the DELTA protocol were selected, as DELTA001 was capable of sustaining this
620 protocol consistently.
621

622 Fasting was incorporated as a cornerstone of the DELTA protocol, as prior studies have shown that
623 fasting, when done safely, may support insulin sensitivity[106]. Prior studies have also shown that

624 fasting may reduce hepatic fat, improve fasting insulin and glucose levels, as well as reduce
625 inflammation[107, 108]. Mitochondrial health and insulin signaling efficiency were also shown to
626 improve under fasting regimens[49]. With regards to the feeding window and sleep, prior studies
627 have shown that feeding windows that conclude with sufficient digestion time prior to sleep supported
628 circadian insulin sensitivity resulting in favorable HOMA-IR and insulin levels even in the absence of
629 weight loss[109]. Therefore, shifting the feeding window early was also intended to support the study
630 sleep intervention.

631
632 The DELTA fitness regimen was comprised of daily strength training and HIIT 2-3 times per
633 week[110]. The strength training focused on a primary muscle group per day. Prior studies have
634 shown that high-frequency and high-volume training in older adults can enhance lean mass and
635 strength[111, 112].

636
637 The DELTA dietary regimen was similar to a Mediterranean diet to support biomarker and functional
638 health. A photo library of dietary items is provided (Figs. S2-S5 and Supplementary File 1). Extra
639 virgin olive oil (EVOO) was the sole oil used for the entire study. Prior studies have shown that the
640 Mediterranean diet has been effective in reducing major cardiovascular events atherosclerotic
641 progression, reducing age-related brain atrophy, and improving biomarkers associated with
642 cardiovascular disease risk[113-117].

643 644 **Cardiometabolic, Metabolic, and Pleiotropic Marker Flexibility**

645
646 Participatory approaches to monitoring cardiometabolic, metabolic, and pleiotropic markers may be
647 effective for some in the interventional optimization of health profiles. The development of novel
648 biological resilience biomarkers based on the timescale of biomarker change and trajectories may
649 also be possible. In this study, the rise of markers during fasting, followed by a return to baseline
650 levels, is an indicator of cardiometabolic resilience. Methylation pathway resilience, which is an
651 indicator of cardiometabolic through neurological health, is also reflected by the return to baseline
652 levels.

653
654 The ApoB, ApoA, and ApoB/ApoA ratio dynamics observed in this study are indicative of metabolic
655 agility and biological resilience. Specifically, the rise of ApoB following a prolonged 48-hour fast can
656 be due to the efficient use of stored lipids as the body switches to fat-based energy. This can be
657 reflected in an ApoB rise as it is present in all atherogenic particles. Importantly, this observation
658 may reflect a functional response to energy demands during fasting, and appears to have a
659 physiological and not pathological basis. The return to baseline following refeeding serves as a
660 positive indicator of metabolic flexibility and efficiency of lipid metabolism[103-105]. This return could
661 signify the efficient clearance of lipoproteins following physiological stress (fasting) and efficient
662 insulin signaling, as ApoB catabolism is insulin-sensitive. Importantly, this return to baseline is also
663 indicative that the POST48 rise of ApoB is not chronic, which may further reflect efficient functional
664 metabolic flexibility[118-122].

665
666 The homocysteine and hs-CRP results observed for DELTA001 revealed an exceptional profile for
667 cardiometabolic, inflammation, and potentially neurological health. The DELTA001 hs-CRP profile
668 resided well beneath the low-risk threshold of 1.0 mg/L, and showed strong resilience to 48 hours of
669 fasting. Prior studies have shown that in a healthy population (3672 male subjects) of similar average
670 age and ethnicity, serum hs-CRP levels were closer to an average of 1.24 mg/L, with a positive
671 correlation between hs-CRP levels and age[123]. Of note, prior studies have reported either no
672 change or an increase in inflammatory biomarkers during prolonged fasting. In addition, CRP levels
673 frequently rose, often significantly, during fasting periods, particularly in obese individuals.
674 Importantly, several studies showed a reduction or normalization of CRP levels after refeeding,
675 suggesting that the inflammatory response to fasting may be transient or adaptive[124-126].

676
677 The DELTA001 homocysteine readings largely resided within levels that have been classified as
678 elite or optimal (Elite: 5-7 μ mol/L; Low-risk: Below 10 μ mol/L). Population studies have shown a
679 median homocysteine level of 10.2 μ mol/L in men aged 40-59[127], and the Framingham Study
680 revealed that homocysteine levels below 6 μ mol/L is rare amongst the participant population and a

681 lower homocysteine level is associated with a lower risk of age-related conditions[91, 92].
682 DELTA001's profile may have been a reflection of strong B-vitamin stores and efficient functional
683 methylation. This was observed across the multiple cycles of homocysteine fasting and refeeding
684 dynamics, revealing the eventual elimination of the substantial post-fast rise of homocysteine seen
685 in the first cycle. Additional factors may include high metabolic flexibility, and the dietary and fitness
686 components of the DELTA protocol playing a supportive role.

687
688 These findings support the use of controlled stressors, such as fasting, with biomarker monitoring to
689 assess functional resilience. For markers like hs-CRP and homocysteine, a normalizing spike may
690 indicate a favorable response, while no spike represents an optimal response. Fluctuations within a
691 single cycle can be summarized by metrics such as AUC and tracked longitudinally until stable
692 patterns emerge. This approach provides a potential basis for digital twin models or digital
693 biomarkers of metabolic resilience, though further validation is required.

694

695 **General Health Outcomes**

696
697 The DELTA001 health profile was generally favorable, with BP and pulse pressure residing within
698 healthy ranges. DELTA001 weight management appeared to be consistent. While some positive
699 health profile trends were observed, we cannot determine if they were attributable to the DELTA
700 protocol, especially due to DELTA001 entering the study as a healthy subject. However, it is possible
701 that the DELTA protocol may have played a supportive role in sustaining the health profile observed.
702 As noted, prior studies have shown that consistent exercise, Mediterranean diet, and favorable sleep
703 health have resulted in positive health outcomes[82, 128-135].

704

705 **Performance Outcomes**

706
707 Grip strength as a function of blood pressure, and run performance are among the many metrics that
708 can be used to assess human performance[101, 136-139]. One metric that is commonly used, but
709 was not assessed in this study, was VO₂ max (Maximal aerobic capacity). Favorable VO₂ max
710 profiles have been correlated with the reduction of all-cause mortality and are frequently cited as a
711 major objective for healthy longevity[140, 141]. We did not use VO₂ max for this study, including with
712 the wearable platforms due to running sessions being conducted in the early morning and in
713 consideration of DELTA001 safety and avoidance of training during darkness. However, VO₂ max
714 will serve as a primary objective of a subsequent participatory DELTA trial that is being designed.
715 Nonetheless, run performance was assessed based on the documentation of run speeds maintained
716 at 4-minute intervals, with corresponding heart rate as proxies. While VO₂ max can be estimated
717 from these metrics, we refrain from making these estimates as the subsequent trial will provide more
718 definitive data. There are a number of ways to assess human performance outcomes as a function
719 of health protocols. For this study, no claims are made as to whether or not the DELTA protocol was
720 globally optimal for DELTA001. The primary outcome of the effectiveness of the protocol reported
721 here is that it was sustainable for DELTA001.

722

723 **Sleep Performance**

724
725 Making concerted efforts to address sleep consistency, sleep efficiency, and sleep architecture can
726 significantly protect long-term brain, metabolic, and heart health. This may be particularly important
727 for late sleepers. Importantly, prioritizing sleep as part of a health regimen, when possible, represents
728 a low-risk, high-benefit intervention that is widely supported by population and mechanistic
729 findings[5, 6, 9, 142].

730
731 We estimate that moving sleep time earlier may have been a key driver toward clear improvements
732 in DELTA001 sleep performance. Additional supportive pillars of the DELTA sleep regimen may
733 have included improved sleep hygiene, morning fitness, TRE regimen, and possible gamification
734 driven by wearables use that could have influenced the behavior of DELTA001. The sleep study can
735 be assessed by the following core domains: overall sleep architecture, changes in the sleep stages
736 during the study, the role that adjacent interventions may have had on sleep improvement, and the
737 role of wearables, among other factors.

738

739 Sleep architecture is comprised of the pattern and structure of sleep cycles, including N1-N3 and
740 REM sleep. Previous studies have shown that sleep architecture, in particular slow-wave and REM
741 sleep can be improved by consistent physical activity[143, 144]. Other studies have shown that
742 sleeping earlier may have supported favorable circadian alignment, which is also known to regulate
743 metabolism, hormone release, and inflammation. Conversely, circadian misalignment (e.g., late
744 sleep) has been known to disrupt insulin sensitivity and glucose metabolism[145]. The DELTA001
745 cardiometabolic profile, metabolic switch efficiency, and resilience may further support the notion
746 that moving sleep earlier was potentially supportive of these outcomes.

747

748 In this study, we estimate that moving sleep time earlier may have helped DELTA001 achieve
749 consistent sleep patterns that is known to be protective against metabolic disease, cognitive decline,
750 and improve cardiovascular health[146-148]. This is supported by a growing collection of evidence,
751 especially in individuals with evening chronotypes. For example, prior studies have shown that slow-
752 wave sleep (SWS) is critical for memory consolidation[149], among other factors.

753

754 For deeper assessment, the DELTA protocol, which included shifting sleep earlier (from midnight to
755 ~9:15pm), exercising daily in the morning, and finishing dinner by ~3pm), may have supported
756 factors such as circadian alignment, metabolic resilience and flexibility, as well as autonomic
757 balance. These parameters were potentially reflected by the marker profiles observed, such as the
758 HRV trajectory (Fig. 4A,B), as well as the sleep architecture and efficiency (Fig. S16).

759

760 More specifically, the adoption of earlier sleep and potential circadian alignment may have enabled
761 the HRV trajectory observed, improvement in deep and REM sleep, and potentially the earlier onset
762 and stability of sleep that was observed. Mechanistically, this has been supported by studies showing
763 that circadian alignment may improve parasympathetic activity during SWS in the early stages of
764 sleep, which can improve HRV and cardiometabolic markers. Adopting consistent and properly timed
765 sleep chronotypes (e.g., Generally 8:00pm to 10:00pm, subject to individual considerations)
766 alongside sufficient sleep duration of 7-8 hours have also been shown to reduce coronary heart
767 disease risk[150]. Melatonin has also been shown to peak earlier with earlier sleep, which may
768 improve sleep efficiency[151, 152].

769

770 Morning exercise, a consistent pillar of the DELTA protocol, has been shown to stabilize HRV,
771 reduce sleep fragmentation, and potentially increase REM sleep, which were observed in the study.
772 This may be explained by morning fitness regimens having been previously shown to improve sleep-
773 wake cycling and evening parasympathetic tone, which can also improve HRV and sleep
774 performance, even without delaying melatonin release[153]. Furthermore, studies have shown that
775 evening fitness regimens may negatively impact HRV and REM sleep whereas morning workouts
776 may support HRV and REM sleep improvement[154]. However, the DELTA study did not assess this
777 comparison as workouts were solely done in the morning.

778

779 As previously noted, regarding sleep travel, substantial efforts were undertaken to adapt to the
780 different time zones. Deferring late-night eating during evening flights prior to sleep, resuming
781 morning fitness on arrival, maintaining a sensible, Mediterranean-inspired diet, and observing early
782 chronotype sleep times likely played a key role in circadian alignment, strong sleep architectures,
783 and balanced HRV during travel. In summary, maintaining a comprehensive approach to sleep
784 health, including both domestic sleep and sleep during travel across diverse time zones, may
785 potentially have collectively driven the sustained improvements in sleep performance, which was
786 observed across all three wearables, reduced fragmentation, and favorable RHR, among other
787 positive health characteristics.

788

789 **Microbiome Dynamics**

790

791 Key findings from this study imply that for DELTA001, a 48-hour fasting event does not significantly
792 alter bacteria group levels and consequently, the *Firmicutes/Bacteroidetes* ratio. Additionally, for
793 DELTA001, 48-hour fasting did not significantly change the level of microbe diversity as observed
794 across 3 different diversity indices — Shannon, Chao1, and Inverse Simpson. Furthermore, the

795 notable absence of *Fusobacteria* observed at all collection timepoints might imply that the DELTA001
796 protocol diet, and possibly DELTA001's fasting protocol could potentially play a role in maintaining
797 low/no *Fusobacteria* levels — thus, potentially lowering pathogenic risk.

798
799 Regarding metabolic pathways that presented significance due to fasting conditions, PWY-5532
800 refers to a microbial salvage pathway associated with Archaea domain for recycling nucleosides and
801 nitrogenous bases by degrading them into sugar phosphates. An upregulation of this pathway will
802 result in an increase in 3-phospho-D-glycerate (G3P), which is a necessary intermediate for
803 glycolysis. By extension, it is possible that the upregulation of this pathway contributes to carbon and
804 energy recycling[155], by upregulating glycolysis and consequently also generating energy and
805 metabolic intermediates for other pathways during fasting conditions when sugar (and thus carbon)
806 sources are limited. Aside from being directly associated with gut archaea, such pathways may also
807 be associated with horizontal gene transfer occurring between archaea and bacteria within the
808 favorable environment of the gut[156]. PWY490-3 refers to an assimilatory nitrate reduction pathway,
809 reducing nitrate to nitrite and ammonium. The latter will potentially contribute to nitrogen recycling
810 via ammonia assimilation pathways and incorporation into amino acid production (e.g., glutamine
811 and glutamate)[157], which act as core building blocks for microbial protein synthesis and
812 growth[158]. Upregulation may also help manage redox stress by siphoning nitrate away from pro-
813 oxidative pathways (e.g., nitrosamine formation — which can be carcinogenic). The DELTA fasting
814 protocol may have contributed to limited carbon and nitrogen availability which potentially resulted
815 in the upregulation of this assimilatory pathway in order to maintain microbiome survival and by
816 extension, host-microbe homeostasis.

817
818 The upregulation of PWY-5532 and PWY490-3 likely contributed to the lack of significant changes
819 in key metabolic pathways by serving as compensatory mechanisms that maintain essential
820 metabolic functions under fasting conditions. PWY-5532 produces G3P, a necessary intermediate
821 for glycolysis from glucose-6-phosphate (GLYCOLYSIS), while PWY-490-3 generates ammonium,
822 which is required for PWY-5505, the biosynthesis of L-glutamate and L-glutamine. These metabolites
823 also feed into SER-GLYSYN-PWY (superpathway of L-serine and glycine biosynthesis I), which
824 depends on both G3P and L-glutamate for the production of serine and glycine, key precursors for
825 one-carbon metabolism and nucleotide biosynthesis. Together, the compensatory roles of PWY-
826 5532 and PWY-490-3 suggest a degree of metabolic flexibility that supports energy production and
827 sustains key biosynthetic processes during nutrient deprivation, such as a 48-hour fast.

828

829 **Qualitative Assessment of Participant Experience**

830
831 The interview findings are limited by the N=1 design, which restricts the generalizability of said
832 findings. Furthermore, DELTA001 represents a unique case, as the baseline level of health literacy,
833 familiarity with dietary practices (e.g., OMAD and TRE), and engagement with self-tracking
834 technologies are not typical of the general public. This pre-existing alignment with the DELTA routine
835 may have contributed to smoother adoption and fewer challenges compared to what others may
836 experience. Despite this limitation, the qualitative component significantly enhanced the study by
837 providing rich, context-specific insights into the participant's experiences, motivations, and adaptive
838 strategies. The case study design allowed for the identification of nuanced barriers and facilitators –
839 such as family dynamics, time management, and social engagements – that might challenge
840 individuals attempting to follow a similar routine. These findings may thus serve as a guide for
841 designing future protocols tailored to individuals at different readiness levels.

842

843 **The Paradigmatic Shift Toward Longitudinal Biomarkers**

844
845 The findings of this study underscore the critical importance of longitudinal data in providing temporal
846 context and revealing patterns of the authentic biological narrative of disease progression, advancing
847 toward more preventive and personalized healthcare[159-161]. Digital biomarkers offer crucial
848 “protection against health-to-disease transitions”[162].

849

850 Unlike single-point measurements that capture static physiological snapshots, longitudinal biomarker
851 monitoring enables continuous biological surveillance that captures temporal patterns over extended
852 periods, such as the comparison between blood glucose measurements versus HbA1c in diabetes
853 care. Evidence supports longitudinal biomarkers applications across diverse therapeutic areas,
854 including asthma, sleep disorders, diabetes, cardiovascular diseases, and chronic obstructive
855 pulmonary disease (COPD) management[162, 163]. However, longitudinal biomarkers in aging,
856 longevity, and preventive medicine represent an emerging paradigm with substantial untapped
857 potential[28].

858
859 Consumer wearables increasingly provide clinically validated measurements, thereby establishing
860 novel digital biomarkers. HRV demonstrates particular promise for cardiovascular risk stratification
861 and early detection. Large-scale validation studies, including the U.S. National Health and Nutrition
862 Examination Survey population cohorts, have established wearable-derived biomarkers for
863 predicting inflammation, biological aging, and mortality outcomes[164], thus expanding beyond
864 traditional laboratory-based measurements. The integration of traditional biomarker data with
865 wearable-derived metrics enables hyper-personalized healthcare through real-time physiological
866 monitoring. Automated insulin delivery systems exemplify this integration, combining continuous
867 glucose monitoring (CGM) with insulin pump technology for closed-loop glycemic control.

868
869 Optimal strategies to fortify healthspan are unlikely to be fixed or static, as aging is a dynamic and
870 adaptive process influenced by internal and external stressors over time. Although biological age is
871 a holistic measure of functional health that can encourage adherence to interventions, most current
872 approaches rely on static snapshot-based assessments[165]. Given that biological aging reflects the
873 cumulative and ongoing adaptations to stressors, incorporating longitudinal assessments –
874 particularly those capturing resilience and dynamic responses – could provide a more
875 comprehensive perspective on optimizing healthspan[10, 11]. Such an approach could also combine
876 factors including but not limited to longitudinally monitored biomarkers, their respective response
877 time constants and recovery kinetics, performance assessments, and measures of biological
878 resilience. While current biological age clocks are becoming more established, the incorporation of
879 resilience metrics and longitudinal monitoring remains relatively underdeveloped, presenting an
880 opportunity to explore a hybrid framework that leverages both[12, 166].

881
882 Past studies have demonstrated the potential of AI chatbot-based tools in promoting long-term
883 behavior change and health engagement[167, 168]. With appropriate design grounded in behavioral
884 science and evidence-based biomedical data, GPT-based system could potentially support
885 longitudinal health monitoring effectively, with and without resilience-focused monitoring, to bolster
886 biological age assessment and potentially gamify adherence to continuous monitoring[169, 170].
887 Moreover, the data from this monitoring may itself even serve as an intervention to fortify healthspan,
888 serving simultaneously as feedback and a motivational incentive.

889 **Beyond N=1 Data**

890
891 While DELTA was an N=1 study, learnings may be applicable toward population-level studies.
892 Firstly, the DELTA protocol was a combinatorial regimen, which may have played a role in driving
893 the positive sleep and biomarker outcomes observed. Systematically designing combination
894 regimens, including regimens comprised of micro-adjustments, for subsets of participants may be
895 effective and warrants further study. Emerging studies are starting to look at health impact due to
896 potential synergies[171, 172].

897
898 Beyond combination approaches, even single interventions, such as micro-adjustments in advancing
899 sleep times, particularly for late chronotype sleepers, could drive substantial health improvements
900 when sustained even for one week. Late chronotype sleepers (e.g., midnight) can consider small,
901 systematically implemented steps to advance sleep times earlier (e.g., by 15 to 30-minute
902 increments). Consistently sleeping earlier (e.g., 10:00pm-11:00pm) has been shown to boost SWS,
903 which may improve glymphatic elimination of β -amyloid and protect against cognitive decline by
904 reducing sleep fragmentation[173]. Importantly, sleeping earlier may also reduce RHR and BP
905 variability, as well as lower stroke and coronary artery disease (CAD) and stroke risk[174].
906

907 Wearables may help with gamification of adherence to gradually moving up sleep time due to their
908 ability to rapidly provide feedback and nightly data[175]. Micro-adjustments may also be more
909 sustainable compared to substantial shifts. A prior study showed that subtle sleep times advances
910 of 15-minutes every few days resulted in improved sleep quality, mood, and energy within 1-2
911 weeks[176]. Improved circadian alignment and melatonin secretion to address jet-lag and late shift
912 work, was also shown with micro-adjustments of 15-20 minutes when combined with consistent wake
913 times, avoiding screen time and late caffeine consumption[177]. 30-minute shifts have improved
914 sleep efficiency[178]. Importantly, a 1-hour shift can markedly reduce depression risk[179]. Larger
915 shifts of 2 hours for very late sleepers (2:30am) can result in measurably improved health that
916 included reduced depression scores and cognitive performance improvement. Of note, results
917 appear as quickly as 1 week into intervention[180].

918
919 With regards to biomarker readings, this and other studies reveal potential opportunities to explore
920 population-scale trials to better determine if earlier monitoring (e.g., young and middle-aged adult
921 screening) can enhance the impact of preventive care toward healthy aging in later years. For
922 example, homocysteine screening in young adults is not prevalent and has largely focused on the
923 senior community[181-184]. However, the incidence of metabolic disease is increasing in young
924 adults. This can also eventually lead to neurological and neurodegenerative disorders. Expanding
925 homocysteine screening in young adults and middle-aged adults may lead to improved prevention
926 of cognitive decline at a population level. Expanding the range of markers taken as a part of standard
927 care, following adequate clinical validation, may eventually be justified. Beyond expanding the range
928 of single biomarkers that may be screened, developing novel biomarkers based on resilience
929 dynamics may also offer insights into general health and biological aging. While these analyses
930 would require more blood draws and other logistical considerations, the insights realized from these
931 biomarkers may find interest beyond N=1 studies.

932
933 The DELTA trial also offers insights into the need for expanded sets of biomarkers available for
934 accessible laboratory, wearable, and home-based monitoring. In addition to point-of-care biomarker
935 testing, it will be increasingly important to develop predictive approaches that use digital technologies
936 to quantify biomarkers derived from biological samples, and vice versa. Furthermore, due to some
937 correlations that exist between biomarkers, more studies are needed to harness these relationships
938 so that levels of one biomarker can potentially be used to predict levels of another biomarker.
939 Realizing a markedly expanded repertoire of biomarkers may play a major role in democratizing
940 preventive health.

941 942 **Economic Implications**

943
944 Emerging evidence demonstrates the economic value of longitudinal biomarker monitoring. CGM
945 has proven cost-effective, reducing hospitalizations while improving quality of life in diabetes
946 patients[185-187]. Additionally, home-based blood pressure monitoring proves more cost-effective
947 than in-clinic monitoring[188, 189], while early screening and diagnostic interventions demonstrate
948 significant economic benefits consistent across multiple scenarios, including strata of sex and
949 age[190, 191].

950
951 Furthermore, the transition toward longitudinal monitoring creates economic value through multiple
952 complementary pathways beyond traditional healthcare cost savings. Longitudinal data streams
953 generate proprietary datasets that could be monetized through pharmaceutical partnerships,
954 providing unprecedented granularity for drug development, clinical trial optimization, and real-world
955 evidence generation[192]. Healthcare systems can leverage these datasets for risk stratification
956 algorithms, population health analytics, and predictive modeling services that command premium
957 pricing in the emerging health data economy.

958
959 Longitudinal biomarkers facilitate the transition from fee-for-service to value-based care paradigms,
960 including subscription-based preventive care models, realigning provider incentives with health
961 maintenance rather than episodic illness treatment[193]. Contemporary healthcare reforms,
962 including the UK's NHS prevention-focused initiatives and Singapore's Healthier SG program,

963 demonstrate how continuous monitoring data enables outcome-based payment structures that drive
964 sustainable, prevention-oriented healthcare delivery.
965

966 Furthermore, insurance companies increasingly recognize the actuarial value of longitudinal
967 biomarker data, offering premium discounts and coverage expansions for continuous monitoring
968 participants, creating direct consumer benefits while reducing long-term claims exposure.
969

970 **Participatory Health Considerations**

971
972 In the DELTA trial, biomarker data and performance outcomes were readily visible to DELTA001.
973 This raises an important consideration for this and future trials for both DELTA001 and population
974 studies. In particular, a potential tradeoff between conventional trial designs accounting for scientific
975 control, and a participatory approach. In conventional trial designs, participants are blinded from their
976 data in order to maintain objectivity, potentially influencing their behavior. This may confound results,
977 making it difficult to determine the efficacy of an intervention. However, this design may also end up
978 with a result that is already known, without offering a solution, the efficacy of which may in fact be
979 the ability to influence the participant's behavior.
980

981 This study used a participatory health approach, where the real-time data is visible to the participant,
982 and the data itself may serve as an intervention[82, 194]. Participatory health approaches have been
983 previously explored to empower participants to play a first-hand role, driven by agency, in co-
984 designing their own health improvement through behavior change[195-197]. Current qualified self-
985 studies are also harnessing this approach, whereby digital health devices are catalyzing health
986 improvements outside of conventional trial designs[82, 198].
987

988 This study opens doors to potential downstream participatory health studies that are both
989 interventional and preventive. Current large-scale biomarker studies have focused on middle-aged
990 adults or seniors, when the biomarkers generally trend higher due to their positive correlation with
991 age. This would render interventional studies that are reactive, versus preventive. It is possible that
992 expanding these studies toward young adults, where participatory health studies may be more well-
993 received, will also support larger effect sizes if the participatory approaches result in behavior
994 changes that occur earlier at an earlier life stage.
995

996 Substantially more validation is needed, but this work illuminates possibilities to potentially harness
997 data as the intervention to drive sustainable disease prevention, at least for a segment of the broader
998 population.
999

1000 **Study Limitations**

1001
1002 There are a number of limitations to this study. Firstly, this study was conducted on a single subject.
1003 Therefore, population-level conclusions should not be derived from this work. With regards to the
1004 DELTA protocol, the primary intervention of 48-hour fasting, daily eating window, as well as fitness,
1005 supplementation, and dietary regimen were designed for DELTA001, and is not meant for
1006 widespread adoption due to fundamental differences between individuals (e.g., age, biological sex,
1007 race, baseline health, etc.).
1008

1009 As discussed, data was visible to DELTA001 throughout the study. It is highly probable that the study
1010 data directly influenced DELTA001 behavior. As a participatory study, DELTA differs from
1011 conventional trial designs. Objectivity was not a component of this study by design. As the field of
1012 participatory health continues to expand, it is critically important to draw clearer and defensible links
1013 between interventions and outcomes, and to develop solutions that can be sustained beyond initial
1014 participatory behavior change. Furthermore, sustaining a feeding regimen that concludes by
1015 approximately 3:00pm raises the issue of sustainability due to the importance of maintaining social
1016 bonds and connections that are evidence-backed drivers of healthy longevity. While early completion
1017 of feeding may support positive sleep outcomes, it is important to carefully weigh the importance of
1018 maintaining a balance of key pillars that promote positive wellbeing.
1019

1020 We cannot conclude if the DELTA protocol and or its components are responsible for the biomarker
1021 outcomes, and if so, which components were primarily responsible. Variability and confounding
1022 factors are also to be considered. While effort was made to keep meal composition consistent,
1023 variability was implicit. The biomarkers selected for this study are not meant to be exhaustive, nor
1024 do we imply that they represent actionable routes toward maximizing healthspan. It is also important
1025 to note that biomarker classification (e.g., elite, optimal, normal etc.) may not be internationally
1026 standardized, and further trials and consensus are needed in order for the adoption of non-standard
1027 biomarkers into practice[97, 199, 200]. More work is needed to determine their population-scale
1028 impact, if any, toward driving improved human longevity outcomes. With regards to fasting, it is not
1029 recommended for everyone, and some subjects should not fast. While fasting has been shown in
1030 previous studies to benefit the metabolic health of suitable subjects, outside of being sustainable for
1031 DELTA001, we cannot conclude that the DELTA fasting regimens are suitable for other participants.
1032 We also do not conclude that the fitness duration and regimen employed are suitable for all
1033 participants. It is important to note that inter- and intra-individual differences make personalization
1034 an important aspect of regimen design, and the same individual is likely to require dynamic changes
1035 to their regimen to sustain optimal outcomes.
1036

1037 This study used grip strength and run speed as additional proxy markers for performance outcomes.
1038 These markers provide some insight into performance trajectory over time while on the DELTA
1039 protocol, but they are not exhaustive. A number of additional markers could have been included, and
1040 will be explored in subsequent DELTA trials for DELTA001.
1041

1042 With regards to the microbiome dynamics study, we are unable to determine if the daily DELTA
1043 fasting protocol, which is DELTA001's baseline regimen, resulted in a major gut microbiome
1044 composition change compared to a sustained non-fasting protocol. This study did not determine if
1045 DELTA001 gut health was optimal or suboptimal. It should be noted that some gut microbes that are
1046 associated with metabolism, heart health, and others were found, at some points, to be relatively
1047 low. However, since DELTA also provided functional readouts of cardiometabolic health, future
1048 studies may shed light on potential compensatory mechanisms that can sustain favorable phenotypic
1049 health outcomes. While DELTA001 did undertake 3 separate weeks of a 3MAD regimen, we do not
1050 know if the gut microbiome compositions during these weeks are truly representative of a sustained
1051 3MAD regimen. While we do not observe major changes in gut microbe composition between the
1052 PRE48 and POST48 conditions, which imply that the fasting regimen does not have apparent
1053 negative impacts on DELTA001 gut health, in the absence of a true baseline, it is difficult to conclude
1054 if a continuous 3MAD regimen would result in markedly different microbe diversity. Furthermore, the
1055 upregulation of a metabolic pathway associated with the Archaea domain (PWY-5532) highlights the
1056 need to investigate not only the gut bacteriome but also the lesser-studied – yet equally important –
1057 gut archaeome[201], which was not specifically examined in this study. This is particularly relevant
1058 given emerging evidence linking the archaeome to various health and disease states, including
1059 diabetes, cardiovascular conditions, and even immune system regulation[202-204]. Nonetheless,
1060 the persistent and longitudinally validated absence of *Fusobacteria* serves as a positive indicator of
1061 the tolerance of the DELTA regimen.
1062

1063 The substantial longitudinal biomarker testing in this study was enabled by external funding as
1064 disclosed. Bringing longitudinal biomarker monitoring into standard testing protocols, even with
1065 sufficient evidence and validation, will require profound financial resources. Advancing longitudinal
1066 blood testing into real-world applications will require substantial further investigation that not only
1067 confirms what clinical actionability, if any, can be translated toward improved health outcomes and
1068 prevention of disease. Bringing these studies to fruition will also require health economics,
1069 implementation, and other factors to be addressed.
1070

1071 The GPT-based Healthspan Copilot was retrospectively applied to DELTA001's data. As such, it has
1072 not yet been prospectively validated. In addition, the biomarker data used by the GPT for biological
1073 age estimation relied on conventional markers based on the available biomarker data in the
1074 population sample dataset. While the emerging set of biological resilience markers selected for the
1075 DELTA study (e.g., homocysteine, metabolic switch dynamics, etc.) were used to add additional
1076 support for potential further reductions in biological age, additional evidence will be needed to

1077 definitively support the use of these newer markers toward biological age estimation. Biological age
1078 is also not a universally applicable incentive to drive longitudinal biomarker collection or adherence
1079 toward healthspan-fortifying regimens. Additional incentives or approaches will likely be needed for
1080 future Copilot iterations.

1081
1082 When elective health studies or biomarker testing are conducted, caution should be taken. Risks
1083 associated with longitudinal blood draws include overdiagnosis, and special attention should be paid
1084 to ensuring that blood draw volumes remain within safe limits (10.5 mL/kg or 550 mL over an 8-week
1085 period, whichever is lower)[205].

1086 1087 **CONCLUSION**

1088
1089 The DELTA trial served as an interventional, open-label prospective, and participatory approach
1090 toward assessing human biological resilience. A combinatorial regimen of fasting, fitness,
1091 Mediterranean-inspired diet, and substantially advancing sleep timing was combined with wearable,
1092 point-of-care, and clinical biomarker monitoring to longitudinally assess DELTA001's
1093 cardiometabolic and pleiotropic biomarker resilience in response to stress intervention (e.g., fasting).
1094 Sleep and performance were also comprehensively assessed. A GPT-based framework was
1095 developed to address the potential of hybridizing emerging biological aging approaches with dynamic
1096 human resilience and performance testing to strengthen the actionability of these approaches. This
1097 was viewed specifically through potential gamification of adherence to longitudinal testing, with the
1098 data itself potentially serving as an intervention to encourage healthspan fortification. DELTA001
1099 user experience was also assessed via a qualitative study. Biomarker resilience served as a
1100 cornerstone component of the DELTA study, and may open doors toward novel biomarker
1101 development based on individualized dynamics and recovery properties that can potentially be used
1102 for healthspan monitoring. In the DELTA study, DELTA001 cardiometabolic markers revealed highly
1103 agile metabolic flexibility in the form of ApoB, ApoA, and ApoB/ApoA ratio dynamics. Homocysteine
1104 and hs-CRP pleiotropic marker dynamics revealed resilience to metabolic stress (fasting) as shown
1105 by their optimal/elite levels. Clear sleep improvements were observed across the full architecture of
1106 sleep stages, and microbiome analysis revealed the sustained absence of fusobacteria. These
1107 findings imply that health biomarkers and regimens for the optimization of healthspan are unlikely to
1108 be a static process. Instead, the dynamic modulation of interventions may be essential for both
1109 biological optimization and potentially behavioral adherence. This study has also highlighted the
1110 need for solutions that can support quantified-self frameworks to promote longitudinal and expanded
1111 monitoring of healthspan-relevant biomarkers. These can range from improved infrastructure for
1112 decentralized collection of biological fluids for biomarker analysis, to wearables that either directly
1113 assess biomarker dynamics, or can also be used for predictive analytics of expanded biomarkers. In
1114 sum, the DELTA trial has illuminated the potential of leveraging participatory approaches to drive
1115 and sustain behaviors that can fortify the healthspan.

1116 1117 **METHODS**

1118 1119 **Recruitment**

1120
1121 This study is approved by the Institutional Review Board (IRB) of the National University of Singapore
1122 (NUS) under IRB-2023-801 and IRB-2024-397. The study was registered on ClinicalTrials.gov
1123 (NCT06630637) under the title "Monitoring Intermittent Fasting for Human Optimization Using
1124 Wearable Technology: An N-of-1 Study." Recruitment period was from October 7, 2024 to July 2,
1125 2025. Written informed consent was obtained from the participant (DELTA001; Author D.H.).
1126 Retrospective sleep data of the participant from first quarter of 2024 (IRB-2023-801) was accessed
1127 on April 3, 2025, and the study team had access to information that could identify the participant.
1128 DELTA001 (Author D.H.) is a healthy subject (Male, 45 years old at the time of recruitment and 46
1129 years old at reporting) cleared by licensed medical professionals for the study, and had an estimated
1130 HbA1c of 4.6% (Abbott Freestyle Libre) (Fig. S1), no history of chronic/metabolic disease, and no
1131 prescription medication. No alcohol was consumed during the entire duration of the study. During
1132 the study period, the subject was clinically healthy with no reported or documented history of acute
1133 or chronic illness. Importantly, biomarker resilience studies and baseline biomarker readings were

1134 conducted in triplicate at a minimum, an uncommon feature in RCTs, but important for the evaluation
1135 of durable responses seen within an individual. This also serves to strengthen the design of larger
1136 studies based on N=1 findings.

1137

1138 **Adherence to Reporting Guidelines**

1139

1140 In alignment with standard reporting practices, the SPIRIT extension for the N-of-1 trials (SPENT)
1141 guidelines were used to inform study design[206]. The CONSORT extension for reporting N-of-1
1142 trials (CENT) guidelines were used to guide the writing of the manuscript[207, 208]. The SPIRIT-
1143 SPENT and CONSORT-CENT checklists and the CENT participant flow diagram can be found in
1144 the Supplementary Information (Tables S4-S5 and Fig. S18).

1145

1146 **Wearable Selection**

1147

1148 DELTA001 used a WHOOP (4.0) (WHOOP Inc.), Garmin Epix Pro (Gen 2) (Garmin Ltd.), and Apple
1149 Watch 9 (Apple Inc.) for this study. This study did not assess device accuracy or compare device
1150 performance. Wearables were worn as frequently as possible during awake and sleep time with
1151 exceptions due to battery charging.

1152

1153 **Biomarker Measurement**

1154

1155 Blood ketones and glucose were primarily measured by finger stick (Abbott Optium Neo). HbA1c
1156 estimates were provided by CGM (Abbott Freestyle Libre). Clinical biomarkers were taken by a
1157 Ministry of Health-certified medical clinic via orders placed by a licensed medical professional
1158 following assessment for participant health. Every effort was made to take blood at approximately
1159 the same timeframe (between 8:30am – 9:00am). For rapid testing of glucose and ketone dynamics,
1160 repeat finger sticks were not necessary between each reading. Clinical biomarkers were evaluated
1161 by a Ministry of Health-certified commercial laboratory. AUC of homocysteine was computed using
1162 the trapezoidal rule between successive timepoints (PRE48, POST48, POST-RF) and expressed in
1163 $\mu\text{mol}\cdot\text{day}/\text{L}$. The resilience index (RI) was defined using the equation below:

1164

1165

$$RI = D \cdot (15 \mu\text{mol}/\text{L}) - AUC \quad (1)$$

1166

1167 Where:

1168 D is the total number of days during a fast and the refeeding period.

1169 $15 \mu\text{mol}/\text{L}$ is the upper limit of a normal homocysteine level.

1170 RI is expressed in $\mu\text{mol}\cdot\text{day}/\text{L}$.

1171

1172 **Metabolic Switching: Glucose-Ketone Dynamics**

1173

1174 Glucose and ketone dynamics were longitudinally monitored following two distinct regimens: the 48-
1175 hour fasting strength training regimen and the OMAD ketosis entry regimen. The 48-hour fasting
1176 strength training sessions were conducted on the second day of a 48-hour fast (on Sep 20, Oct 10,
1177 and Oct 25 2024), each involving a weightlifting session lasting 45, 70, and 80 minutes, respectively.
1178 This was followed by a 3- to 4-hour recovery period during which blood ketone levels plateaued.
1179 Glucose and ketone measurements began in the early morning, with 2–4 baseline samples collected
1180 prior to exercise. Subsequent measurements were taken approximately every 5 to 20 minutes
1181 throughout the exercise and recovery phases. The OMAD ketosis entry regimen was conducted over
1182 two consecutive days for 6 sessions. On Day 1, the first measurement was taken immediately after
1183 consuming the day's single meal, followed by 3–6 additional measurements until bedtime. On Day
1184 2, the subject resumed glucose and ketone monitoring while performing a structured workout session
1185 lasting approximately two hours, consisting of yoga, weightlifting, and intermittent sessions of
1186 walking and running. This was followed by a recovery period lasting 2.5 to 5 hours to ensure ketosis
1187 state is entered. Time to ketosis is defined as the duration from post-meal measurement on day 1 to
1188 post-workout ketosis entry (blood ketone level reaches $\geq 0.5 \text{ mmol}/\text{L}$) on day 2. The glucose and
1189 ketone readings for both regimens were consistently photographically recorded for documentation

1190 purposes (Figs. S6–S13). For the 48-hour fasting strength training regimen, three phase-specific
1191 metabolic switching rates were computed to characterize substrate dynamics in response to exercise
1192 and post-exercise recovery: The Glycolytic Onset Rate, the Ketotic Recovery Rate, and the Total
1193 Substrate Switch Rate.

1194
1195 The Glycolytic Onset Rate was defined as the combined rate of glucose increase and ketone decline
1196 from the start of exercise to the time of GKI peak. GKI was calculated as follows:
1197

$$1198 \quad GKI = \frac{\text{Glucose} \left(\frac{\text{mmol}}{\text{L}} \right)}{\text{Ketone} \left(\frac{\text{mmol}}{\text{L}} \right)} \quad (2)$$

1199
1200 Glycolytic Onset Rate was calculated as follows:
1201

$$1202 \quad R_{\text{Glu}} = \frac{\Delta \text{Glu}_{\text{onset}} \left(\frac{\text{mmol}}{\text{L}} \right)}{\Delta t_{\text{onset}} \text{ (hr)}}, \quad (3)$$

$$1203 \quad R_{\text{Ket}} = \frac{\Delta \text{Ket}_{\text{onset}} \left(\frac{\text{mmol}}{\text{L}} \right)}{\Delta t_{\text{onset}} \text{ (hr)}}, \quad (4)$$

$$1204 \quad \text{Glycolytic Onset Rate} = \sqrt{R_{\text{Glu}}^2 + R_{\text{Ket}}^2} \quad (5)$$

1205
1206 Where:

1207 $\Delta \text{Glu}_{\text{onset}}$ is the change in glucose level from pre-exercise baseline to GKI peak.

1208 $\Delta \text{Ket}_{\text{onset}}$ is the change in ketone level from pre-exercise baseline to GKI peak.

1209 Δt_{onset} is the elapsed time from exercise start to GKI peak.

1210
1211 Ketotic Recovery Rate was defined as the combined rate of glucose decline and ketone increase
1212 from GKI peak to post-exercise ketotic recovery. Ketotic recovery is defined as the moment when
1213 ketone level stops increasing post-exercise. It was calculated as follows:
1214

$$1215 \quad R_{\text{Glu}} = \frac{\Delta \text{Glu}_{\text{recovery}} \left(\frac{\text{mmol}}{\text{L}} \right)}{\Delta t_{\text{recovery}} \text{ (hr)}}, \quad (6)$$

$$1216 \quad R_{\text{Ket}} = \frac{\Delta \text{Ket}_{\text{recovery}} \left(\frac{\text{mmol}}{\text{L}} \right)}{\Delta t_{\text{recovery}} \text{ (hr)}}, \quad (7)$$

$$1217 \quad \text{Ketotic Recovery Rate} = \sqrt{R_{\text{Glu}}^2 + R_{\text{Ket}}^2} \quad (8)$$

1218
1219 Where:

1220 $\Delta \text{Glu}_{\text{recovery}}$ is the change in glucose level from GKI peak to post-exercise ketotic recovery.

1221 $\Delta \text{Ket}_{\text{recovery}}$ is the change in ketone level from GKI peak to post-exercise ketotic recovery.

1222 $\Delta t_{\text{recovery}}$ is the elapsed time from GKI peak to post-exercise ketotic recovery.

1223
1224 The Total Substrate Switch Rate was defined as the combined rate of glucose change and ketone
1225 change during the glycolytic onset and ketotic recovery phases. It was calculated as follows:
1226

$$1227 \quad R_{\text{Glu}} = \frac{|\Delta \text{Glu}_{\text{onset}} \left(\frac{\text{mmol}}{\text{L}} \right)| + |\Delta \text{Glu}_{\text{recovery}} \left(\frac{\text{mmol}}{\text{L}} \right)|}{\Delta t_{\text{total}} \text{ (hr)}}, \quad (9)$$

$$1228 \quad R_{\text{Ket}} = \frac{|\Delta \text{Ket}_{\text{onset}} \left(\frac{\text{mmol}}{\text{L}} \right)| + |\Delta \text{Ket}_{\text{recovery}} \left(\frac{\text{mmol}}{\text{L}} \right)|}{\Delta t_{\text{total}} \text{ (hr)}}, \quad (10)$$

$$1229 \quad \text{Total Substrate Switch Rate} = \sqrt{R_{\text{Glu}}^2 + R_{\text{Ket}}^2} \quad (11)$$

1230
1231 Where:

1232 Δt_{total} is the total elapsed time from exercise start to post-exercise ketotic recovery.

1233

1234 Health Profile Measurement

1235

1236 Blood pressure measurements were conducted (n=3 per session) in the morning, typically between
1237 6:00am to 9:00am via arm cuff (Omron Intellisense BP7350). Body weight measurements were taken
1238 (n=3 per session) without shoes, typically between 6:00am-9:00am (KaradaScan).

1239

1240 Heart Rate Variability Baseline Determination

1241

1242 HRV was assessed using the natural logarithm of the root mean square of successive differences
1243 (LnRMSSD) between heartbeats. To determine HRV baseline range, overnight HRV values were
1244 transformed using the natural logarithm: $LnRMSSD_t = \ln HRV_t$

1245

1246 A 21-day rolling average (μ_t) and standard deviation (σ_t) were then calculated using:

1247

$$1248 \quad \mu_t = \frac{1}{N} \sum_{i=t-N+1}^t LnRMSSD_i, \quad \sigma_t = \sqrt{\frac{1}{N} \sum_{i=t-N+1}^t (LnRMSSD_i - \mu_t)^2} \quad (12)$$

1249

1250 where $N = 21$ and a minimum of 14 days of data was required. The individual's expected HRV range
1251 was then estimated by:

1252

$$1253 \quad LowerBound_t = \exp(\mu_t - 0.7 \cdot \sigma_t) \quad (13)$$

1254

$$1254 \quad UpperBound_t = \exp(\mu_t + 0.7 \cdot \sigma_t) \quad (14)$$

1255

1256 These bounds represent the typical HRV baseline range for the individual based on recent trends.

1257

1258 Performance Analysis

1259

1260 Grip strength measurements were primarily taken (n=3 per session) for both the dominant (R) and
1261 non-dominant (L) hands (Camry EH101), typically between 6:00am to 9:00am. Toward the end of
1262 the study, dominant grip strength measurements were also taken due to the device's improved
1263 resistance to grip slippage compared to the primary device (GD DYNO 200). Run performance was
1264 assessed primarily on the LifeFitness 95T and LifeFitness INT-SE4-BLKHF-14 treadmills, with the
1265 exception of rare instances of treadmill assessment on treadmills during travel (LifeFitness Elevation
1266 Series SE3; LifeFitness Club Series+ SL).

1267

1268 Sleep Performance

1269

1270 DELTA001's standard sleep regimen was a bedtime of 9:15pm, with estimated sleep time by
1271 9:45pm, with a wake alarm of 5:45am-6:00pm depending on work schedule. The WHOOP, Garmin,
1272 and Apple Watch were all worn to sleep. A wrist strap that allowed for simultaneous wearing of the
1273 WHOOP (under wrist) and Apple Watch (top of wrist) on one hand (Fresh Strap Hybrid). The long-
1274 haul sleep travel regimen consisted of immediate sleep on take-off for evening flights, with meals
1275 consolidated to be taken on landing. Exercise was consistently undertaken in the morning of both
1276 evening and morning flights. In the event of consecutive flights consisting of early evening landings
1277 and late evening (red-eye) travel, intense exercise was also undertaken in between flights to allow
1278 for energy usage to enable subsequent sleep. For short haul flights, every effort was made to fly
1279 during the middle of day to reduce the need for early morning wake-ups/reduced morning exercise.
1280 Of note, melatonin (5mg) was taken sparingly, with an estimated 15 doses taken during the entire
1281 course of the study. The study was unable to confirm if it was effective. No prescription sleep
1282 medications were used.

1283

1284 Gut Microbiome Dynamics

1285

1286 Stool was self-collected by DELTA001 based on PRE48 and POST48 fasting schedules as well as
1287 during the 3rd and 5th day of a 3MAD week in accordance with manufacturer specifications and
1288 submitted for processing (AM-002, Enhanced AMILI Gut Health Test Kit; Amili Pte. Ltd.). Stool
1289 samples were sent to Amili for laboratory processing via post mail and were then processed via
1290 Amili's proprietary 16S rRNA sequencing pipeline[209]. Data described in Figs. 8, 9, and S17 were
1291 analyzed based on data (i.e., ASV values and associated matched microbial strains, FASTQ reads)
1292 provided by Amili.

1293
1294 Alpha diversity was assessed using three indices to characterize microbial diversity within individual
1295 samples. The Shannon diversity index was calculated to capture both species richness and
1296 evenness[210], using the formula:

$$1297 \quad H' = - \sum_{i=1}^s p_i \ln(p_i) \quad (15)$$

1298
1299 where p_i is the relative abundance of each taxon. The Chao1 richness estimator was used to
1300 estimate total species richness[211], including undetected rare taxa, based on the formula:

$$1302 \quad \text{Chao1} = S_{\text{obs}} + \frac{F_1^2}{2F_2} \quad (16)$$

1303
1304 where S_{obs} is the number of observed taxa, and F_1 and F_2 are the numbers of singletons and
1305 doubletons, respectively. When no doubletons were present (i.e., $F_2 = 0$), the bias-corrected formula
1306 was then applied[212]:

$$1308 \quad \text{Chao1} = S_{\text{obs}} + \frac{F_1(F_1 - 1)}{2} \quad (17)$$

1309
1310 Finally, Simpson's Diversity Index and its inverse were calculated with the formulas respectively to
1311 quantify species dominance and diversity[213]:

$$1313 \quad \text{Simpson} = \lambda = \sum_{i=1}^s p_i^2 \quad (18)$$

$$1314 \quad \text{Inverse Simpson} = \frac{1}{\lambda} \quad (19)$$

1315
1316 Custom Python scripts were used to compute each metric from ASV count data across samples,
1317 and results were exported for downstream analysis (pandas, numpy).

1318
1319 Demultiplexed sequences originally in FASTQ format were imported into QIIME2 (v2024.5)[214],
1320 trimmed using Cutadapt[215], and denoised using DADA2[216]. Representative sequences and
1321 feature tables were exported to PICRUST2 (v2.5.3) for functional pathway prediction[217-221].
1322 Normalization of pathway abundances was performed using predicted 16S rRNA copy numbers from
1323 PICRUST2. Statistical analyses were performed including paired t-tests and Kruskal-Wallis tests with
1324 Dunn post-hoc analyses to identify significant functional pathways (p-value ≤ 0.05). All analyses
1325 were performed with Python (pandas, SciPy, scikit-posthocs)[222].
1326

1327 **Healthspan Copilot GPT**

1328
1329 The custom GPT 'Healthspan Copilot' was created using OpenAI's Custom GPT interface. The GPT
1330 was configured through structured system instructions to deliver personalized, evidence-based
1331 guidance in the domain of healthy longevity (Supplementary File 2). Responses are constrained to
1332 be non-diagnostic, evidence-based, actionable, personalized, transparent, professional, and
1333 engaging. Three core GPT customizations were implemented. First, representative benchmark
1334 biomarker values from DELTA001 were included to enable comparative analysis of user data, with
1335 contextual interpretation based on fasting states. Second, the system was configured to recommend
1336 users track DELTA markers as individualized indicators of biological resilience. Third, the GPT

1337 incorporated a biological age estimation module with add-on analysis on biological resilience using
1338 user-input data. The biological age estimation module is constructed using a population dataset
1339 containing anonymized biomarker data (U.S. National Health and Nutrition Examination Survey,
1340 2021–2023 cycle)[223]. The biological age of the population sample was estimated using ordinary
1341 least square regressions by eliminating insignificant variables from variables for which there is
1342 clinical evidence that they affect biological aging. The model includes up to 10 variables (HbA1c,
1343 weight, waist circumference, hs-CRP, HDL, systolic and diastolic blood pressure, pulse rate, gender,
1344 chronological age), and the respective biological age estimates for each individual. This output was
1345 compiled into a table (Supplementary File 2), and uploaded to the knowledge base of the GPT,
1346 enabling file-based retrieval augmentation during GPT responses. Any subset of the relevant
1347 biomarkers is compared to the relevant population subsample that matches the user’s race, using
1348 coefficients obtained from ordinary least squares estimates. The GPT estimates were validated by
1349 comparing them with the estimates from a statistical software package (Stata 18; StataCorp LLC).
1350

1351 **Participant Experience**

1352
1353 This study adopted a descriptive case-study design, focusing on a single participant. DELTA001 was
1354 interviewed at three timepoints over the course of the study: at baseline, after a 3MAD routine, and
1355 at the end of the study. Semi-structured interviews were conducted, each lasting an average of 59
1356 minutes (range: 40–71 minutes). All interviews were audio-recorded and transcribed verbatim. The
1357 interview prompts were designed to (1) explore the participant’s experiences, motivations, and
1358 challenges in maintaining the DELTA protocol; (2) to examine his engagement with digital
1359 technology; and (3) to assess the impact of changes in the fasting schedule on daily routine. A
1360 thematic analysis was conducted to identify key patterns across the interviews. Transcripts are
1361 provided in Supplementary File 3.
1362

1363 **DATA AVAILABILITY**

1364
1365 All the data supporting the findings of the study are available in the manuscript and in the
1366 supplementary information (Tables S1-S5, Figs. S1-S18, Supplementary Data 1-2, and
1367 Supplementary Files 1-3). Data visualization and statistical analyses were performed either on
1368 GraphPad Prism 10.4.2 (GraphPad Software Inc.) or via Python (scikit-posthocs)[222].
1369

1370 **ACKNOWLEDGEMENTS**

1371
1372 The DELTA team gratefully acknowledges the community of researchers engaged in studies that are
1373 relevant to DELTA findings. Due to the multiple parameters studied as part of the DELTA trial, we
1374 acknowledge the continuously growing body of work that we were inadvertently unable to cite due
1375 to space constraints. The DELTA study team gratefully acknowledges Prof. Jeremy Lim, Dr.
1376 Germaine Yong, Dr. Shiang Chiet Tan, Dr. Jeannie Lee, Jonathan San, the AMILI Health team, and
1377 the AMILI Lab team for assistance with microbiome data.
1378

1379 **AUTHOR CONTRIBUTIONS**

1380
1381 P.W. led the acquisition of funding (NUS-NUHS HPHSR Enabling Grant Call) to support the DELTA
1382 study, conceived the study, contributed to the mathematical analysis of metabolic flexibility and
1383 digital biomarkers, and oversaw DELTA’s study design, data collection, and data analysis. N.F.
1384 performed in-depth analysis of fitness performance, sleep performance, and cardiovascular health,
1385 and co-led microbiome functional pathway abundance predictions. C.S. led the analysis of
1386 cardiometabolic health and digital biomarkers derived from blood markers and developed the GPT-
1387 enabled Healthspan Copilot framework. N.Y.T.L. led the microbiome analysis including microbiome
1388 compositions and diversity, co-led microbiome functional pathway abundance predictions, and
1389 contributed to the qualitative assessment of participant experience. S.W.S analyzed sleep
1390 performance, performed comparisons across wearable devices, and led the qualitative assessment
1391 of participant experience. G.S. contributed to the development of GPT-enabled Healthspan Copilot
1392 framework. N.F., N.Y.T.L., S.W.S., Y.H., and J.W.J.L. helped acquired funding (NUS-NUHS HPHSR
1393 Enabling Grant Call) to support the DELTA study. Y.S. provided insights into the economic

1394 implications of the study. P.W., N.F., C.S., N.Y.T.L., S.W.S., G.S., Y.S., L.H., A.W., Y.H.O., X.T.,
1395 and D.H. wrote early drafts. P.W., N.F., C.S., N.Y.T.L., S.W.S., and D.H. created figures for the
1396 manuscript. L.H., A.W., P.R., H.P. contributed to scientific discussions and critical review of the final
1397 manuscript. H.S.J.C., L.Y.T.W., and J.W.J.L. provided clinically relevant inputs and scientific
1398 discussions for the study. Y.H.O. and X.T. worked on the IRB and ethics approval. D.H. designed
1399 the DELTA001 protocol, analyzed the data, supervised the study team, and acquired funding to
1400 support this study. All authors contributed to the final draft of the manuscript. All co-first authors
1401 independently and equally contributed to the DELTA study.

1402 **FUNDING**

1403 The DELTA study team gratefully acknowledges support from the Institute for Digital Medicine
1404 (WisDM) Translational Research Programme (grant no. A-0001319-00-00) at NUS Yong Loo Lin
1405 School of Medicine, NUS-NUHS HPHSR Enabling Grant Call (grant no. A-8002819-00-00), and NUS
1406 Start-Up Grant (funding no. A-0009368-05-00).
1407
1408

1409 **COMPETING INTERESTS**

1410 P.W., N.F., C.S., N.Y.T.L., S.W.S., G.S., Y.S., L.H., Y.H.O., X.T., and D.H. are co-inventors of a digital
1411 resilience biomarker and digital twin-based health optimization platform, and are also co-inventors
1412 of a pending patent pertaining to GPT-based Healthspan Copilot. P.W., N.Y.T.L., Y.S., Y.H.O.,
1413 H.S.J.C., X.T., and D.H. are co-inventors of a platform for data-driven adherence gamification. D.H.
1414 is a scientific co-founder of KYAN Technologies, which is developing AI-based oncology clinical
1415 decision support. D.H. is co-founder and chair of the scientific advisory board of Eternami Global
1416 Pte. Ltd., which is a longevity medicine technology platform. D.H. is advisor to Prelude Health Pte.
1417 Ltd. and Medicia. J.W.J.L. is a co-Founder of Amili Pte. Ltd. Amili Pte. Ltd. did not play a role in the
1418 funding of this work.
1419
1420
1421
1422
1423
1424
1425
1426
1427
1428
1429
1430
1431
1432
1433
1434
1435
1436
1437
1438
1439
1440
1441
1442
1443
1444
1445
1446
1447
1448
1449
1450

1451 REFERENCES

- 1452
- 1453 1. Organization WH. GHE: Life expectancy and healthy life expectancy 2020. Available from:
- 1454 <https://www.who.int/data/gho/data/themes/mortality-and-global-health-estimates/ghe-life->
- 1455 [expectancy-and-healthy-life-](https://www.who.int/data/gho/data/themes/mortality-and-global-health-estimates/ghe-life-)
- 1456 [expectancy#:~:text=Situation%20and%20trends,and%2061.9%20years%2C%20respectively\).](https://www.who.int/data/gho/data/themes/mortality-and-global-health-estimates/ghe-life-)
- 1457 2. Olshansky SJ. From lifespan to healthspan. *Jama*. 2018;320(13):1323-4.
- 1458 3. Garmany A, Terzic A. Global healthspan-lifespan gaps among 183 World Health
- 1459 Organization member states. *JAMA Network Open*. 2024;7(12):e2450241-e.
- 1460 4. Nations U. Ensure healthy lives and promote well-being for all at all ages 2023. Available
- 1461 from: <https://sdgs.un.org/goals/goal3>.
- 1462 5. Mattis J, Sehgal A. Circadian rhythms, sleep, and disorders of aging. *Trends in Endocrinology*
- 1463 *& Metabolism*. 2016;27(4):192-203.
- 1464 6. Duffy JF, Czeisler CA. Age-related change in the relationship between circadian period,
- 1465 circadian phase, and diurnal preference in humans. *Neuroscience letters*. 2002;318(3):117-20.
- 1466 7. G Ravindran KK, Della Monica C, Atzori G, Lambert D, Hassanin H, Revell V, et al. Reliable
- 1467 Contactless Monitoring of Heart Rate, Breathing Rate, and Breathing Disturbance During Sleep in
- 1468 Aging: Digital Health Technology Evaluation Study. *JMIR mHealth and uHealth*. 2024;12:e53643.
- 1469 8. Van Cauter E, Spiegel K, Tasali E, Leproult R. Metabolic consequences of sleep and sleep
- 1470 loss. *Sleep medicine*. 2008;9:S23-S8.
- 1471 9. Zee PC, Turek FW. Sleep and health: everywhere and in both directions. *Archives of internal*
- 1472 *medicine*. 2006;166(16):1686-8.
- 1473 10. Belsky DW, Caspi A, Arseneault L, Baccarelli A, Corcoran DL, Gao X, et al. Quantification of
- 1474 the pace of biological aging in humans through a blood test, the DunedinPoAm DNA methylation
- 1475 algorithm. *elife*. 2020;9:e54870.
- 1476 11. Belsky DW, Caspi A, Corcoran DL, Sugden K, Poulton R, Arseneault L, et al. DunedinPACE,
- 1477 a DNA methylation biomarker of the pace of aging. *Elife*. 2022;11:e73420.
- 1478 12. Schorr A, Carter C, Ladiges W. The potential use of physical resilience to predict healthy
- 1479 aging. *Pathobiology of aging & age-related diseases*. 2018;8(1):1403844.
- 1480 13. Sberro H, Fremin BJ, Zlitni S, Edfors F, Greenfield N, Snyder MP, et al. Large-scale analyses
- 1481 of human microbiomes reveal thousands of small, novel genes. *Cell*. 2019;178(5):1245-59. e14.
- 1482 14. Moqri M, Herzog C, Poganik JR, Justice J, Belsky DW, Higgins-Chen A, et al. Biomarkers of
- 1483 aging for the identification and evaluation of longevity interventions. *Cell*. 2023;186(18):3758-75.
- 1484 15. Shen X, Wang C, Zhou X, Zhou W, Hornburg D, Wu S, et al. Nonlinear dynamics of multi-
- 1485 omics profiles during human aging. *Nature aging*. 2024:1-16.
- 1486 16. Barzilai DA. Mikhail 'Misha' Blagosklonny's enduring legacy in geroscience: the hyperfunction
- 1487 theory and the therapeutic potential of rapamycin. *Aging (Albany NY)*. 2025;17(1):1.
- 1488 17. Andrawus M, David GB, Terziyska I, Sharvit L, Bergman A, Barzilai N, et al. Genome integrity
- 1489 as a potential index of longevity in Ashkenazi Centenarian's families. *GeroScience*.
- 1490 2024;46(5):4147-62.
- 1491 18. Couteur DGL, Barzilai N. New horizons in life extension, healthspan extension and
- 1492 exceptional longevity. *Age and Ageing*. 2022;51(8):afac156.
- 1493 19. Jacques E, Herzog C, Ying K, Tomusiak A, Kasamoto J, Sehgal R, et al. Invigorating
- 1494 discovery and clinical translation of aging biomarkers. *Nature Aging*. 2025:1-5.
- 1495 20. Furman D, Campisi J, Verdin E, Carrera-Bastos P, Targ S, Franceschi C, et al. Chronic
- 1496 inflammation in the etiology of disease across the life span. *Nature medicine*. 2019;25(12):1822-32.
- 1497 21. Levine ME, Lu AT, Quach A, Chen BH, Assimes TL, Bandinelli S, et al. An epigenetic
- 1498 biomarker of aging for lifespan and healthspan. *Aging (albany NY)*. 2018;10(4):573.
- 1499 22. Gong Z, Faulkner ME, Akhonda MA, Guo A, Bae J, Laporte JP, et al. White matter integrity
- 1500 and motor function: a link between cerebral myelination and longitudinal changes in gait speed in
- 1501 aging. *GeroScience*. 2024:1-14.
- 1502 23. Green CL, Lamming DW, Fontana L. Molecular mechanisms of dietary restriction promoting
- 1503 health and longevity. *Nature Reviews Molecular Cell Biology*. 2022;23(1):56-73.
- 1504 24. Saavedra D, Añé-Kourí AL, Barzilai N, Caruso C, Cho K-H, Fontana L, et al. Aging and
- 1505 chronic inflammation: highlights from a multidisciplinary workshop. *Immunity & Ageing*.
- 1506 2023;20(1):25.

- 1507 25. Clifton KK, Ma CX, Fontana L, Peterson LL. Intermittent fasting in the prevention and
1508 treatment of cancer. *CA: a cancer journal for clinicians*. 2021;71(6):527-46.
- 1509 26. Wang T, Kroeger CM, Cassidy S, Mitra S, Ribeiro RV, Jose S, et al. Vegetarian dietary
1510 patterns and cardiometabolic risk in people with or at high risk of cardiovascular disease: a
1511 systematic review and meta-analysis. *JAMA Network Open*. 2023;6(7):e2325658-e.
- 1512 27. Fried LP, Cohen AA, Xue Q-L, Walston J, Bandeen-Roche K, Varadhan R. The physical
1513 frailty syndrome as a transition from homeostatic symphony to cacophony. *Nature aging*.
1514 2021;1(1):36-46.
- 1515 28. Lu JK, Wang W, Mahadzir MDA, Poganik JR, Moqri M, Herzog C, et al. Digital biomarkers of
1516 ageing for monitoring physiological systems in community-dwelling adults. *The Lancet Healthy
1517 Longevity*. 2025.
- 1518 29. Lore S, Poganik JR, Atala A, Church G, Gladyshev VN, Scheibye-Knudsen M, et al.
1519 Replacement as an aging intervention. *Nature Aging*. 2025;5(5):750-64.
- 1520 30. Kroemer G, Maier AB, Cuervo AM, Gladyshev VN, Ferrucci L, Gorbunova V, et al. From
1521 geroscience to precision geromedicine: Understanding and managing aging. *Cell*.
1522 2025;188(8):2043-62.
- 1523 31. Newman JC, Covarrubias AJ, Zhao M, Yu X, Gut P, Ng C-P, et al. Ketogenic diet reduces
1524 midlife mortality and improves memory in aging mice. *Cell metabolism*. 2017;26(3):547-57. e8.
- 1525 32. Taekema DG, Gussekloo J, Maier AB, Westendorp RG, de Craen AJ. Handgrip strength as
1526 a predictor of functional, psychological and social health. A prospective population-based study
1527 among the oldest old. *Age and ageing*. 2010;39(3):331-7.
- 1528 33. Lee DJ, Kuerec AH, Maier AB. Targeting ageing with rapamycin and its derivatives in
1529 humans: a systematic review. *The Lancet Healthy Longevity*. 2024;5(2):e152-e62.
- 1530 34. Kennedy BK, Berger SL, Brunet A, Campisi J, Cuervo AM, Epel ES, et al. Geroscience:
1531 linking aging to chronic disease. *Cell*. 2014;159(4):709-13.
- 1532 35. Schafer S, Viswanathan S, Widjaja AA, Lim W-W, Moreno-Moral A, DeLaughter DM, et al.
1533 IL-11 is a crucial determinant of cardiovascular fibrosis. *Nature*. 2017;552(7683):110-5.
- 1534 36. Baur JA, Pearson KJ, Price NL, Jamieson HA, Lerin C, Kalra A, et al. Resveratrol improves
1535 health and survival of mice on a high-calorie diet. *Nature*. 2006;444(7117):337-42.
- 1536 37. Martin-Montalvo A, Mercken EM, Mitchell SJ, Palacios HH, Mote PL, Scheibye-Knudsen M,
1537 et al. Metformin improves healthspan and lifespan in mice. *Nature communications*. 2013;4(1):2192.
- 1538 38. Imai S-i, Armstrong CM, Kaeberlein M, Guarente L. Transcriptional silencing and longevity
1539 protein Sir2 is an NAD-dependent histone deacetylase. *Nature*. 2000;403(6771):795-800.
- 1540 39. Qiu W, Chen H, Kaeberlein M, Lee S-I. ExplainABLE BioLogical Age (ENABL Age): an
1541 artificial intelligence framework for interpretable biological age. *The Lancet Healthy Longevity*.
1542 2023;4(12):e711-e23.
- 1543 40. Teo JX, Davila S, Yang C, Hii AA, Pua CJ, Yap J, et al. Digital phenotyping by consumer
1544 wearables identifies sleep-associated markers of cardiovascular disease risk and biological aging.
1545 *Communications Biology*. 2019;2(1):361.
- 1546 41. Walker MP, Brakefield T, Morgan A, Hobson JA, Stickgold R. Practice with sleep makes
1547 perfect: sleep-dependent motor skill learning. *Neuron*. 2002;35(1):205-11.
- 1548 42. Greer SM, Goldstein AN, Walker MP. The impact of sleep deprivation on food desire in the
1549 human brain. *Nature communications*. 2013;4(1):2259.
- 1550 43. Chen CX, Li TMH, Zhang J, Li SX, Yu MWM, Tsang CC, et al. The impact of sleep-corrected
1551 social jetlag on mental health, behavioral problems, and daytime sleepiness in adolescents. *Sleep
1552 Medicine*. 2022;100:494-500.
- 1553 44. Wong AKC, Lee JHT, Zhao Y, Lu Q, Yang S, Hui VCC. Exploring Older Adults' Perspectives
1554 and Acceptance of AI-Driven Health Technologies: Qualitative Study. *JMIR aging*. 2025;8:e66778.
- 1555 45. Olson CA, Vuong HE, Yano JM, Liang QY, Nusbaum DJ, Hsiao EY. The gut microbiota
1556 mediates the anti-seizure effects of the ketogenic diet. *Cell*. 2018;173(7):1728-41. e13.
- 1557 46. Fang Y, Zou Y, Xu J, Chen G, Zhou Y, Deng W, et al. Ambulatory cardiovascular monitoring
1558 via a machine-learning-assisted textile triboelectric sensor. *Advanced Materials*.
1559 2021;33(41):2104178.
- 1560 47. Min J, Ahn H, Lukas H, Ma X, Bhansali R, Sunwoo S-H, et al. Continuous biochemical
1561 profiling of the gastrointestinal tract using an integrated smart capsule. *Nature Electronics*. 2025:1-
1562 12.

- 1563 48. Wang M, Yang Y, Min J, Song Y, Tu J, Mukasa D, et al. A wearable electrochemical
1564 biosensor for the monitoring of metabolites and nutrients. *Nature Biomedical Engineering*.
1565 2022;6(11):1225-35.
- 1566 49. De Cabo R, Mattson MP. Effects of intermittent fasting on health, aging, and disease. *New*
1567 *England Journal of Medicine*. 2019;381(26):2541-51.
- 1568 50. Gilbert JA, Blaser MJ, Caporaso JG, Jansson JK, Lynch SV, Knight R. Current understanding
1569 of the human microbiome. *Nature medicine*. 2018;24(4):392-400.
- 1570 51. Lax S, Smith DP, Hampton-Marcell J, Owens SM, Handley KM, Scott NM, et al. Longitudinal
1571 analysis of microbial interaction between humans and the indoor environment. *Science*.
1572 2014;345(6200):1048-52.
- 1573 52. Qin S, Ng EKK, Soon CS, Chua XY, Zhou JH, Koh W-P, et al. Association between
1574 objectively measured, multidimensional sleep health and cognitive function in older adults: cross-
1575 sectional wearable tracker study. *Sleep Medicine*. 2025:106569.
- 1576 53. Willoughby AR, Vallat R, Ong JL, Chee MW. Insights about travel-related sleep disruption
1577 from 1.5 million nights of data. *Sleep*. 2025:zsaf077.
- 1578 54. Wang C, Fan K, Shirzaei Sani E, Lasalde-Ramírez JA, Heng W, Min J, et al. A microfluidic
1579 wearable device for wound exudate management and analysis in human chronic wounds. *Science*
1580 *Translational Medicine*. 2025;17(795):eadt0882.
- 1581 55. Brasier N, Sempionatto JR, Bourke S, Havenith G, Schaffarczyk D, Goldhahn J, et al.
1582 Towards on-skin analysis of sweat for managing disorders of substance abuse. *Nature Biomedical*
1583 *Engineering*. 2024;8(8):925-9.
- 1584 56. Ye C, Wang M, Min J, Tay RY, Lukas H, Sempionatto JR, et al. A wearable aptamer
1585 nanobiosensor for non-invasive female hormone monitoring. *Nature nanotechnology*.
1586 2024;19(3):330-7.
- 1587 57. Moon J-M, Del Caño R, Moonla C, Sakdaphetsiri K, Saha T, Francine Mendes Lc, et al. Self-
1588 testing of ketone bodies, along with glucose, using touch-based sweat analysis. *ACS sensors*.
1589 2022;7(12):3973-81.
- 1590 58. Min S, An J, Lee JH, Kim JH, Joe DJ, Eom SH, et al. Wearable blood pressure sensors for
1591 cardiovascular monitoring and machine learning algorithms for blood pressure estimation. *Nature*
1592 *Reviews Cardiology*. 2025:1-20.
- 1593 59. Spinelli JC, Suleski BJ, Wright DE, Grow JL, Fagans GR, Buckley MJ, et al. Wearable
1594 microfluidic biosensors with haptic feedback for continuous monitoring of hydration biomarkers in
1595 workers. *npj Digital Medicine*. 2025;8(1):76.
- 1596 60. Bhandodkar AJ, Gutruf P, Choi J, Lee K, Sekine Y, Reeder JT, et al. Battery-free, skin-
1597 interfaced microfluidic/electronic systems for simultaneous electrochemical, colorimetric, and
1598 volumetric analysis of sweat. *Science advances*. 2019;5(1):eaav3294.
- 1599 61. Khazaei S, Faghih RT. Eye tracking is more sensitive than skin conductance response in
1600 detecting mild environmental stimuli. *PNAS nexus*. 2024;3(9):pgae370.
- 1601 62. Amin MR, Alam S, Khazaei S, Azgomi HF, Faghih RT. Skin Conductance Response Artifact
1602 Reduction: Leveraging Accelerometer Noise Reference and Deep Breath Detection. *IEEE Access*.
1603 2024;12:68208-31.
- 1604 63. Sun LY, Spong A, Swindell WR, Fang Y, Hill C, Huber JA, et al. Growth hormone-releasing
1605 hormone disruption extends lifespan and regulates response to caloric restriction in mice. *Elife*.
1606 2013;2:e01098.
- 1607 64. Koopman JJ, van Heemst D, van Bodegom D, Bonkowski MS, Sun LY, Bartke A. Measuring
1608 aging rates of mice subjected to caloric restriction and genetic disruption of growth hormone
1609 signaling. *Aging (Albany NY)*. 2016;8(3):539.
- 1610 65. Curran S. Diet-based strategies, informed by genetics, to improve healthspan. *Innovation in*
1611 *Aging*. 2020;4(Suppl 1):866.
- 1612 66. Espinosa-Salas S, Gonzalez-Arias M. Behavior modification for lifestyle improvement. 2023.
- 1613 67. Schwarzer R. Modeling health behavior change: How to predict and modify the adoption and
1614 maintenance of health behaviors. *Applied psychology*. 2008;57(1):1-29.
- 1615 68. Middleton KR, Anton SD, Perri MG. Long-term adherence to health behavior change.
1616 *American journal of lifestyle medicine*. 2013;7(6):395-404.
- 1617 69. Kelly MP, Barker M. Why is changing health-related behaviour so difficult? *Public health*.
1618 2016;136:109-16.

- 1619 70. Hippisley-Cox J, Coupland C, Brindle P. Development and validation of QRISK3 risk
1620 prediction algorithms to estimate future risk of cardiovascular disease: prospective cohort study. *bmj*.
1621 2017;357.
- 1622 71. Cardiology ACo. ASCVD risk estimator. Available in: [https://tools acc org/ASCVD-Risk-](https://tools.acc.org/ASCVD-Risk-Estimator-Plus)
1623 *Estimator-Plus*. 2014.
- 1624 72. Pantuck AJ, Lee DK, Kee T, Wang P, Lakhotia S, Silverman MH, et al. Modulating BET
1625 bromodomain inhibitor ZEN-3694 and enzalutamide combination dosing in a metastatic prostate
1626 cancer patient using CURATE. AI, an artificial intelligence platform. *Advanced Therapeutics*.
1627 2018;1(6):1800104.
- 1628 73. Kee T, Weiyang C, Blasiak A, Wang P, Chong JK, Chen J, et al. Harnessing CURATE. AI as
1629 a digital therapeutics platform by identifying N-of-1 learning trajectory profiles. *Advanced*
1630 *Therapeutics*. 2019;2(9):1900023.
- 1631 74. Chong LM, Wang P, Lee VV, Vijayakumar S, Tan HQ, Wang FQ, et al. Radiation therapy
1632 with phenotypic medicine: towards N-of-1 personalization. *British Journal of Cancer*. 2024;131(1):1-
1633 10.
- 1634 75. Blasiak A, Truong AT, Foo N, Tan LW, Kumar KS, Tan S-B, et al. Personalized dose selection
1635 platform for patients with solid tumors in the PRECISE CURATE. AI feasibility trial. *npj Precision*
1636 *Oncology*. 2025;9(1):49.
- 1637 76. Zarrinpar A, Lee D-K, Silva A, Datta N, Kee T, Eriksen C, et al. Individualizing liver transplant
1638 immunosuppression using a phenotypic personalized medicine platform. *Science translational*
1639 *medicine*. 2016;8(333):333ra49-ra49.
- 1640 77. Blasiak A, Tan LW, Chong LM, Tadeo X, Truong AT, Senthil Kumar K, et al. Personalized
1641 dose selection for the first Waldenström macroglobulinemia patient on the PRECISE CURATE. AI
1642 trial. *NPJ Digital Medicine*. 2024;7(1):223.
- 1643 78. Rashid MBMA, Toh TB, Hooi L, Silva A, Zhang Y, Tan PF, et al. Optimizing drug
1644 combinations against multiple myeloma using a quadratic phenotypic optimization platform (QPOP).
1645 *Science translational medicine*. 2018;10(453):eaan0941.
- 1646 79. Walldius G, de Faire U, Alfredsson L, Leander K, Westerholm P, Malmström H, et al. Long-
1647 term risk of a major cardiovascular event by apoB, apoA-1, and the apoB/apoA-1 ratio—Experience
1648 from the Swedish AMORIS cohort: A cohort study. *PLoS medicine*. 2021;18(12):e1003853.
- 1649 80. Yusuf S, Hawken S, Ôunpuu S, Dans T, Avezum A, Lanas F, et al. Effect of potentially
1650 modifiable risk factors associated with myocardial infarction in 52 countries (the INTERHEART
1651 study): case-control study. *The lancet*. 2004;364(9438):937-52.
- 1652 81. Johannesen CDL, Langsted A, Nordestgaard BG, Mortensen MB. Excess apolipoprotein B
1653 and cardiovascular risk in women and men. *Journal of the American College of Cardiology*.
1654 2024;83(23):2262-73.
- 1655 82. Wang P, Tadeo X, Chew HSJ, Sapanel Y, Ong YH, Leung NYT, et al. N-of-1 health
1656 optimization: Digital monitoring of biomarker dynamics to gamify adherence to metabolic switching.
1657 *PNAS nexus*. 2024;3(6):pgae214.
- 1658 83. Giannakopoulou SP, Antonopoulou S, Barkas F, Liberopoulos E, Chrysohoou C, Sfikakis PP,
1659 et al. Concordance-discordance between apolipoprotein B and lipid biomarkers in predicting 20-year
1660 atherosclerotic cardiovascular disease risk: The ATTICA study (2002–2022). *European Journal of*
1661 *Clinical Investigation*. 2025:e70077.
- 1662 84. Sniderman AD, Thanassoulis G, Glavinovic T, Navar AM, Pencina M, Catapano A, et al.
1663 Apolipoprotein B particles and cardiovascular disease: a narrative review. *JAMA cardiology*.
1664 2019;4(12):1287-95.
- 1665 85. Ganguly P, Alam SF. Role of homocysteine in the development of cardiovascular disease.
1666 *Nutrition journal*. 2015;14:1-10.
- 1667 86. Duthie SJ, Whalley LJ, Collins AR, Leaper S, Berger K, Deary IJ. Homocysteine, B vitamin
1668 status, and cognitive function in the elderly¹²³. *The American journal of clinical nutrition*.
1669 2002;75(5):908-13.
- 1670 87. Boekholdt SM, Arsenault BJ, Hovingh GK, Mora S, Pedersen TR, LaRosa JC, et al. Levels
1671 and changes of HDL cholesterol and apolipoprotein AI in relation to risk of cardiovascular events
1672 among statin-treated patients: a meta-analysis. *Circulation*. 2013;128(14):1504-12.
- 1673 88. Borja MS, Hammerson B, Tang C, Savinova OV, Shearer GC, Oda MN. Apolipoprotein AI
1674 exchange is impaired in metabolic syndrome patients asymptomatic for diabetes and cardiovascular
1675 disease. *PLoS One*. 2017;12(8):e0182217.

- 1676 89. Komulainen P, Lakka TA, Kivipelto M, Hassinen M, Penttilä IM, Helkala E-L, et al. Serum
1677 high sensitivity C-reactive protein and cognitive function in elderly women. *Age and ageing*.
1678 2007;36(4):443-8.
- 1679 90. Banait T, Wanjari A, Danade V, Banait S, Jain J. Role of high-sensitivity C-reactive protein
1680 (Hs-CRP) in non-communicable diseases: a review. *Cureus*. 2022;14(10).
- 1681 91. Selhub J, Jacques PF, Bostom AG, D'Agostino RB, Wilson PW, Belanger AJ, et al.
1682 Association between plasma homocysteine concentrations and extracranial carotid-artery stenosis.
1683 *New England journal of medicine*. 1995;332(5):286-91.
- 1684 92. Selhub J. The many facets of hyperhomocysteinemia: studies from the Framingham cohorts.
1685 *The Journal of nutrition*. 2006;136(6):1726S-30S.
- 1686 93. Rangan P, Choi I, Wei M, Navarrete G, Guen E, Brandhorst S, et al. Fasting-mimicking diet
1687 modulates microbiota and promotes intestinal regeneration to reduce inflammatory bowel disease
1688 pathology. *Cell reports*. 2019;26(10):2704-19. e6.
- 1689 94. Volek JS, Freidenreich DJ, Saenz C, Kunces LJ, Creighton BC, Bartley JM, et al. Metabolic
1690 characteristics of keto-adapted ultra-endurance runners. *Metabolism*. 2016;65(3):100-10.
- 1691 95. Hoddy KK, Kroeger CM, Trepanowski JF, Barnosky AR, Bhutani S, Varady KA. Safety of
1692 alternate day fasting and effect on disordered eating behaviors. *Nutrition journal*. 2015;14:1-3.
- 1693 96. Smith AD, Refsum H. Homocysteine—from disease biomarker to disease prevention. *Journal*
1694 *of internal medicine*. 2021;290(4):826-54.
- 1695 97. Malinow MR, Bostom AG, Krauss RM. Homocyst(e)ine, diet, and cardiovascular diseases:
1696 a statement for healthcare professionals from the Nutrition Committee, American Heart Association.
1697 *Circulation*. 1999;99(1):178-82.
- 1698 98. Pizzorno J. Homocysteine: friend or foe? *Integrative Medicine: A Clinician's Journal*.
1699 2014;13(4):8.
- 1700 99. Ward M, McNulty H, McPartlin J, Strain J, Weir D, Scott J. Plasma homocysteine, a risk factor
1701 for cardiovascular disease, is lowered by physiological doses of folic acid. *QJM: monthly journal of*
1702 *the Association of Physicians*. 1997;90(8):519-24.
- 1703 100. Safar ME, St Laurent S, Safavian AL, Pannier BM, London GM. Pulse pressure in sustained
1704 essential hypertension: a haemodynamic study. *Journal of hypertension*. 1987;5(2):213-8.
- 1705 101. Leong DP, Teo KK, Rangarajan S, Lopez-Jaramillo P, Avezum A, Orlandini A, et al.
1706 Prognostic value of grip strength: findings from the Prospective Urban Rural Epidemiology (PURE)
1707 study. *The lancet*. 2015;386(9990):266-73.
- 1708 102. Zhu Q, Gao R, Wu W, Qin H. The role of gut microbiota in the pathogenesis of colorectal
1709 cancer. *Tumor Biology*. 2013;34:1285-300.
- 1710 103. Zheng C, Andraski AB, Khoo C, Furtado JD, Sacks FM. Food Intake Suppresses ApoB
1711 Secretion and Fractional Catabolic Rates in Humans. *Arteriosclerosis, Thrombosis, and Vascular*
1712 *Biology*. 2024;44(2):435-51.
- 1713 104. Haas ME, Attie AD, Biddinger SB. The regulation of ApoB metabolism by insulin. *Trends in*
1714 *Endocrinology & Metabolism*. 2013;24(8):391-7.
- 1715 105. Subramanian S, Chait A. Hypertriglyceridemia secondary to obesity and diabetes.
1716 *Biochimica et Biophysica Acta (BBA)-Molecular and Cell Biology of Lipids*. 2012;1821(5):819-25.
- 1717 106. Longo VD, Panda S. Fasting, circadian rhythms, and time-restricted feeding in healthy
1718 lifespan. *Cell metabolism*. 2016;23(6):1048-59.
- 1719 107. Taylor R. Type 2 diabetes: etiology and reversibility. *Diabetes care*. 2013;36(4):1047-55.
- 1720 108. Horne BD, Anderson JL, May HT, Bair TL, Le VT, Iverson L, et al. Insulin resistance
1721 reduction, intermittent fasting, and human growth hormone: secondary analysis of a randomized
1722 trial. *npj Metabolic Health and Disease*. 2024;2(1):26.
- 1723 109. Sutton EF, Beyl R, Early KS, Cefalu WT, Ravussin E, Peterson CM. Early time-restricted
1724 feeding improves insulin sensitivity, blood pressure, and oxidative stress even without weight loss in
1725 men with prediabetes. *Cell metabolism*. 2018;27(6):1212-21. e3.
- 1726 110. Helgerud J, Høydal K, Wang E, Karlsen T, Berg P, Bjerkaas M, et al. Aerobic high-intensity
1727 intervals improve V̇O₂max more than moderate training. *Medicine & science in sports & exercise*.
1728 2007;39(4):665-71.
- 1729 111. Li R, Xia J, Zhang X, Gathirua-Mwangi WG, Guo J, Li Y, et al. Associations of muscle mass
1730 and strength with all-cause mortality among US older adults. *Medicine and science in sports and*
1731 *exercise*. 2018;50(3):458.

- 1732 112. Radaelli R, Rech A, Molinari T, Markarian AM, Petropoulou M, Granacher U, et al. Effects of
1733 resistance training volume on physical function, lean body mass and lower-body muscle hypertrophy
1734 and strength in older adults: a systematic review and network meta-analysis of 151 randomised
1735 trials. *Sports Medicine*. 2025;55(1):167-92.
- 1736 113. Estruch R, Ros E, Salas-Salvadó J, Covas M-I, Corella D, Arós F, et al. Primary prevention
1737 of cardiovascular disease with a Mediterranean diet supplemented with extra-virgin olive oil or nuts.
1738 *New England journal of medicine*. 2018;378(25):e34.
- 1739 114. Jimenez-Torres J, Alcalá-Díaz JF, Torres-Peña JD, Gutierrez-Mariscal FM, Leon-Acuña A,
1740 Gómez-Luna P, et al. Mediterranean diet reduces atherosclerosis progression in coronary heart
1741 disease: an analysis of the CORDIOPREV randomized controlled trial. *Stroke*. 2021.
- 1742 115. Pachter D, Kaplan A, Tsaban G, Zelicha H, Meir AY, Rinott E, et al. Glycemic control
1743 contributes to the neuroprotective effects of Mediterranean and green-Mediterranean diets on brain
1744 age: the DIRECT PLUS brain-magnetic resonance imaging randomized controlled trial. *The
1745 American Journal of Clinical Nutrition*. 2024;120(5):1029-36.
- 1746 116. Martínez-González MÁ, Ros E, Estruch R. Effects of a Mediterranean-style diet on
1747 cardiovascular risk factors. *Annals of internal medicine*. 2007;146(1):73-4.
- 1748 117. Martínez-González MA, Gea A, Ruiz-Canela M. The Mediterranean diet and cardiovascular
1749 health: A critical review. *Circulation research*. 2019;124(5):779-98.
- 1750 118. Grundler F, Plonné D, Mesnage R, Müller D, Sirtori CR, Ruscica M, et al. Long-term fasting
1751 improves lipoprotein-associated atherogenic risk in humans. *European Journal of Nutrition*.
1752 2021;60(7):4031-44.
- 1753 119. Bissonnette S, Saint-Pierre N, Lamantia V, Leroux C, Provost V, Cyr Y, et al. High plasma
1754 apolipoprotein B identifies obese subjects who best ameliorate white adipose tissue dysfunction and
1755 glucose-induced hyperinsulinemia after a hypocaloric diet. *The American journal of clinical nutrition*.
1756 2018;108(1):62-76.
- 1757 120. Conn MO, Marko DM, Schertzer JD. Intermittent fasting increases fat oxidation and promotes
1758 metabolic flexibility in lean mice but not obese type 2 diabetic mice. *American Journal of Physiology-
1759 Endocrinology and Metabolism*. 2024;327(4):E470-E7.
- 1760 121. Nagata T, Sugiyama D, Kise T, Tsuji S, Ohira H, Sato I, et al. Fasting remnant lipoproteins
1761 can predict postprandial hyperlipidemia. *Lipids in Health and Disease*. 2012;11:1-11.
- 1762 122. Chen Y-E, Tsai H-L, Tu Y-K, Chen L-W. Effects of different types of intermittent fasting on
1763 metabolic outcomes: an umbrella review and network meta-analysis. *BMC medicine*.
1764 2024;22(1):529.
- 1765 123. Tang Y, Liang P, Chen J, Fu S, Liu B, Feng M, et al. The baseline levels and risk factors for
1766 high-sensitive C-reactive protein in Chinese healthy population. *Immunity & Ageing*. 2018;15:1-8.
- 1767 124. de Ciutiis I, Djakovic S, Cagigas ML, Masedunskas A, Smith L, Franceschi C, et al. Long-
1768 Term Fasting and Its Influence on Inflammatory Biomarkers: A Comprehensive Scoping Review.
1769 *Ageing Research Reviews*. 2025:102797.
- 1770 125. Scharf E, Zeiler E, Ncube M, Kolbe P, Hwang S-Y, Goldhamer A, et al. The effects of
1771 prolonged water-only fasting and refeeding on markers of cardiometabolic risk. *Nutrients*.
1772 2022;14(6):1183.
- 1773 126. Commissati S, Cagigas ML, Masedunskas A, Petrucci G, Tosti V, De Ciutiis I, et al. Prolonged
1774 fasting promotes systemic inflammation and platelet activation in humans: A medically supervised,
1775 water-only fasting and refeeding study. *Molecular Metabolism*. 2025:102152.
- 1776 127. CDC U. National Health and Nutrition Examination Survey.
- 1777 128. Estruch R, Ros E, Salas-Salvadó J, Covas M-I, Corella D, Arós F, et al. Primary prevention
1778 of cardiovascular disease with a Mediterranean diet. *New England Journal of Medicine*.
1779 2013;368(14):1279-90.
- 1780 129. Salas-Salvadó J, Bulló M, Estruch R, Ros E, Covas M-I, Ibarrola-Jurado N, et al. Prevention
1781 of diabetes with Mediterranean diets: a subgroup analysis of a randomized trial. *Annals of internal
1782 medicine*. 2014;160(1):1-10.
- 1783 130. Jaacks LM, Sher S, De Staercke C, Porkert M, Alexander WR, Jones DP, et al. Pilot
1784 randomized controlled trial of a Mediterranean diet or diet supplemented with fish oil, walnuts, and
1785 grape juice in overweight or obese US adults. *BMC nutrition*. 2018;4:1-8.
- 1786 131. Cappuccio FP, D'Elia L, Strazzullo P, Miller MA. Sleep duration and all-cause mortality: a
1787 systematic review and meta-analysis of prospective studies. *Sleep*. 2010;33(5):585-92.

- 1788 132. Rangaraj VR, Knutson KL. Association between sleep deficiency and cardiometabolic
1789 disease: implications for health disparities. *Sleep medicine*. 2016;18:19-35.
- 1790 133. Ihalainen JK, Inglis A, Mäkinen T, Newton RU, Kainulainen H, Kyröläinen H, et al. Strength
1791 training improves metabolic health markers in older individual regardless of training frequency.
1792 *Frontiers in physiology*. 2019;10:32.
- 1793 134. Geliebter A, Maher MM, Gerace L, Gutin B, Heymsfield SB, Hashim SA. Effects of strength
1794 or aerobic training on body composition, resting metabolic rate, and peak oxygen consumption in
1795 obese dieting subjects. *The American journal of clinical nutrition*. 1997;66(3):557-63.
- 1796 135. Myers J. Exercise and cardiovascular health. *Circulation*. 2003;107(1):e2-e5.
- 1797 136. Hu S, Gu Y, Lu Z, Zhang Q, Liu L, Meng G, et al. Relationship between grip strength and
1798 prediabetes in a large-scale adult population. *American journal of preventive medicine*.
1799 2019;56(6):844-51.
- 1800 137. Maron BJ, Thompson PD. Longevity in elite athletes: the first 4-min milers. *Lancet*.
1801 2018;392(913):913.
- 1802 138. Lee D-c, Brellenthin AG, Thompson PD, Sui X, Lee I-M, Lavie CJ. Running as a key lifestyle
1803 medicine for longevity. *Progress in cardiovascular diseases*. 2017;60(1):45-55.
- 1804 139. Mandsager K, Harb S, Cremer P, Phelan D, Nissen SE, Jaber W. Association of
1805 cardiorespiratory fitness with long-term mortality among adults undergoing exercise treadmill testing.
1806 *JAMA network open*. 2018;1(6):e183605-e.
- 1807 140. Clausen JS, Marott JL, Holtermann A, Gyntelberg F, Jensen MT. Midlife cardiorespiratory
1808 fitness and the long-term risk of mortality: 46 years of follow-up. *Journal of the American College of*
1809 *Cardiology*. 2018;72(9):987-95.
- 1810 141. Laukkanen JA, Isiozor NM, Kunutsor SK, editors. Objectively assessed cardiorespiratory
1811 fitness and all-cause mortality risk: an updated meta-analysis of 37 cohort studies involving
1812 2,258,029 participants. *Mayo Clinic Proceedings*; 2022: Elsevier.
- 1813 142. Windred DP, Burns AC, Lane JM, Saxena R, Rutter MK, Cain SW, et al. Sleep regularity is
1814 a stronger predictor of mortality risk than sleep duration: a prospective cohort study. *Sleep*.
1815 2024;47(1):zsad253.
- 1816 143. Zapalac K, Miller M, Champagne FA, Schnyer DM, Baird B. The effects of physical activity
1817 on sleep architecture and mood in naturalistic environments. *Scientific Reports*. 2024;14(1):5637.
- 1818 144. Park I, Díaz J, Matsumoto S, Iwayama K, Nabekura Y, Ogata H, et al. Exercise improves the
1819 quality of slow-wave sleep by increasing slow-wave stability. *Scientific reports*. 2021;11(1):4410.
- 1820 145. Reutrakul S, Van Cauter E. Interactions between sleep, circadian function, and glucose
1821 metabolism: implications for risk and severity of diabetes. *Annals of the New York Academy of*
1822 *Sciences*. 2014;1311(1):151-73.
- 1823 146. Cappuccio FP, Miller MA. Sleep and cardio-metabolic disease. *Current cardiology reports*.
1824 2017;19(11):110.
- 1825 147. McSorley VE, Bin YS, Lauderdale DS. Associations of sleep characteristics with cognitive
1826 function and decline among older adults. *American journal of epidemiology*. 2019;188(6):1066-75.
- 1827 148. Eshera YM, Gavrilova L, Hughes JW. Sleep is essential for cardiovascular health: an analytic
1828 review of the relationship between sleep and cardiovascular mortality. *American Journal of Lifestyle*
1829 *Medicine*. 2024;18(3):340-50.
- 1830 149. Born J. Slow-wave sleep and the consolidation of long-term memory. *The World Journal of*
1831 *Biological Psychiatry*. 2010;11(sup1):16-21.
- 1832 150. Nambiema A, Lisan Q, Vaucher J, Perier M-C, Boutouyrie P, Danchin N, et al. Healthy sleep
1833 score changes and incident cardiovascular disease in European prospective community-based
1834 cohorts. *European Heart Journal*. 2023;44(47):4968-78.
- 1835 151. Walker WH, Walton JC, DeVries AC, Nelson RJ. Circadian rhythm disruption and mental
1836 health. *Translational psychiatry*. 2020;10(1):28.
- 1837 152. Stothard ER, McHill AW, Depner CM, Birks BR, Moehlman TM, Ritchie HK, et al. Circadian
1838 entrainment to the natural light-dark cycle across seasons and the weekend. *Current Biology*.
1839 2017;27(4):508-13.
- 1840 153. Thosar SS, Shea SA. Circadian control of human cardiovascular function. *Current opinion in*
1841 *pharmacology*. 2021;57:89-97.
- 1842 154. Myllymäki T, Kyröläinen H, Savolainen K, Hokka L, Jakonen R, Juuti T, et al. Effects of
1843 vigorous late-night exercise on sleep quality and cardiac autonomic activity. *Journal of sleep*
1844 *research*. 2011;20(1pt2):146-53.

- 1845 155. Xie Y-G, Luo Z-H, Fang B-Z, Jiao J-Y, Xie Q-J, Cao X-R, et al. Functional differentiation
1846 determines the molecular basis of the symbiotic lifestyle of Ca. Nanohaloarchaeota. *Microbiome*.
1847 2022;10(1):172.
- 1848 156. Fuchsman CA, Collins RE, Rocap G, Brazelton WJ. Effect of the environment on horizontal
1849 gene transfer between bacteria and archaea. *PeerJ*. 2017;5:e3865.
- 1850 157. Koch CD, Gladwin MT, Freeman BA, Lundberg JO, Weitzberg E, Morris A. Enterosalivary
1851 nitrate metabolism and the microbiome: Intersection of microbial metabolism, nitric oxide and diet in
1852 cardiac and pulmonary vascular health. *Free Radical Biology and Medicine*. 2017;105:48-67.
- 1853 158. Newsholme P, Lima M, Procópio J, Pithon-Curi T, Bazotte R, Curi R. Glutamine and
1854 glutamate as vital metabolites. *Brazilian journal of medical and biological research*. 2003;36:153-63.
- 1855 159. Guthrie NL, Carpenter J, Edwards KL, Appelbaum KJ, Dey S, Eisenberg DM, et al.
1856 Emergence of digital biomarkers to predict and modify treatment efficacy: machine learning study.
1857 *Bmj Open*. 2019;9(7):e030710.
- 1858 160. Powell D. Walk, talk, think, see and feel: harnessing the power of digital biomarkers in
1859 healthcare. *npj Digital Medicine*. 2024;7(1):45.
- 1860 161. Su C, Wang P, Foo N, Ho D. Optimizing metabolic health with digital twins. *npj Aging*.
1861 2025;11(1):20.
- 1862 162. Smokovski I, Steinle N, Behnke A, Bhaskar SM, Grech G, Richter K, et al. Digital biomarkers:
1863 3PM approach revolutionizing chronic disease management—EPMA 2024 position. *EPMA Journal*.
1864 2024;15(2):149-62.
- 1865 163. Cokorudy B, Harrison J, Chan AHY. Digital markers of asthma exacerbations: a systematic
1866 review. *ERJ Open Research*. 2024;10(6).
- 1867 164. Shim J, Fleisch E, Barata F. Wearable-based accelerometer activity profile as digital
1868 biomarker of inflammation, biological age, and mortality using hierarchical clustering analysis in
1869 NHANES 2011–2014. *Scientific Reports*. 2023;13(1):9326.
- 1870 165. Chen BH, Marioni RE, Colicino E, Peters MJ, Ward-Caviness CK, Tsai P-C, et al. DNA
1871 methylation-based measures of biological age: meta-analysis predicting time to death. *Aging (Albany*
1872 *NY)*. 2016;8(9):1844.
- 1873 166. Ferrucci L, Gonzalez-Freire M, Fabbri E, Simonsick E, Tanaka T, Moore Z, et al. Measuring
1874 biological aging in humans: A quest. *Aging cell*. 2020;19(2):e13080.
- 1875 167. Aggarwal A, Tam CC, Wu D, Li X, Qiao S. Artificial intelligence–based chatbots for promoting
1876 health behavioral changes: systematic review. *Journal of medical Internet research*.
1877 2023;25:e40789.
- 1878 168. Harrison RM, Lapteva E, Bibin A. Behavioral Nudging With Generative AI for Content
1879 Development in SMS Health Care Interventions: Case Study. *JMIR AI*. 2024;3(1):e52974.
- 1880 169. Curland RA, Muñoz RF, Leykin Y. Gamification of an Automated Internet Intervention to
1881 Enhance Engagement and Adherence. *Journal of Technology in Behavioral Science*. 2025:1-10.
- 1882 170. Patel MS, Bachireddy C, Small DS, Harrison JD, Harrington TO, Oon AL, et al. Effect of goal-
1883 setting approaches within a gamification intervention to increase physical activity among
1884 economically disadvantaged adults at elevated risk for major adverse cardiovascular events: the
1885 ENGAGE randomized clinical trial. *JAMA cardiology*. 2021;6(12):1387-96.
- 1886 171. Stamatakis E, Koemel NA, Biswas RK, Ahmadi MN, Allman-Farinelli M, Trost SG, et al.
1887 Minimum and optimal combined variations in sleep, physical activity, and nutrition in relation to all-
1888 cause mortality risk. *BMC medicine*. 2025;23(1):111.
- 1889 172. Alruwaili NW, Alqahtani N, Alanazi MH, Alanazi BS, Aljrbua MS, Gatar OM. The effect of
1890 nutrition and physical activity on sleep quality among adults: a scoping review. *Sleep Science and*
1891 *Practice*. 2023;7(1):8.
- 1892 173. Lucey BP, Wisch J, Boerwinkle AH, Landsness EC, Toedebusch CD, McLeland JS, et al.
1893 Sleep and longitudinal cognitive performance in preclinical and early symptomatic Alzheimer's
1894 disease. *Brain*. 2021;144(9):2852-62.
- 1895 174. Fan M, Sun D, Zhou T, Heianza Y, Lv J, Li L, et al. Sleep patterns, genetic susceptibility, and
1896 incident cardiovascular disease: a prospective study of 385 292 UK biobank participants. *European*
1897 *heart journal*. 2020;41(11):1182-9.
- 1898 175. Berryhill S, Morton CJ, Dean A, Berryhill A, Provencio-Dean N, Patel SI, et al. Effect of
1899 wearables on sleep in healthy individuals: a randomized crossover trial and validation study. *Journal*
1900 *of Clinical Sleep Medicine*. 2020;16(5):775-83.

- 1901 176. Edinger JD, Means MK. Cognitive-behavioral therapy for primary insomnia. *Clinical*
1902 *psychology review*. 2005;25(5):539-58.
- 1903 177. Lewy AJ, Lefler BJ, Emens JS, Bauer VK. The circadian basis of winter depression.
1904 *Proceedings of the National Academy of Sciences*. 2006;103(19):7414-9.
- 1905 178. Monk TH, Buysse DJ, Billy BD. Using daily 30-min phase advances to achieve a 6-hour
1906 advance: circadian rhythm, sleep, and alertness. *Aviation, space, and environmental medicine*.
1907 2006;77(7):677-86.
- 1908 179. Daghlas I, Lane JM, Saxena R, Vetter C. Genetically proxied diurnal preference, sleep timing,
1909 and risk of major depressive disorder. *JAMA psychiatry*. 2021;78(8):903-10.
- 1910 180. Facer-Childs ER, Middleton B, Skene DJ, Bagshaw AP. Resetting the late timing of 'night
1911 owls' has a positive impact on mental health and performance. *Sleep medicine*. 2019;60:236-47.
- 1912 181. Ostrakhovitch E, Tabibzadeh S. Homocysteine and age-associated disorders. *Ageing*
1913 *research reviews*. 2019;49:144-64.
- 1914 182. Rolita L, Holtzer R, Wang C, Lipton RB, Derby CA, Verghese J. Homocysteine and mobility
1915 in older adults. *Journal of the American Geriatrics Society*. 2010;58(3):545-50.
- 1916 183. Fu S, Yao Y, Lv F, Zhang F, Zhao Y, Luan F. Serum homocysteine levels had important
1917 associations with activity and quality of daily living in Chinese centenarians. *The journal of nutrition,*
1918 *health & aging*. 2019;23:479-82.
- 1919 184. Xu R, Huang F, Wang Y, Liu Q, Lv Y, Zhang Q. Gender-and age-related differences in
1920 homocysteine concentration: a cross-sectional study of the general population of China. *Scientific*
1921 *reports*. 2020;10(1):17401.
- 1922 185. Ann JJKE-O, Svensson M. Cost-Effectiveness of the FreeStyle Libre $\text{\textcircled{O}}$ System Versus Blood
1923 Glucose Self-Monitoring in Individuals with Type 2 Diabetes on Insulin Treatment in Sweden. 2021.
- 1924 186. Jiao Y, Lin R, Hua X, Churilov L, Gaca MJ, James S, et al. A systematic review: Cost-
1925 effectiveness of continuous glucose monitoring compared to self-monitoring of blood glucose in type
1926 1 diabetes. *Endocrinology, diabetes & metabolism*. 2022;5(6):e369.
- 1927 187. Molaei MC, Naseri ZG, Karami MA. Long-term cost-effectiveness of continuous glucose
1928 monitoring versus self-monitoring of blood glucose in adults with type 1 diabetes in Iran. *Value in*
1929 *Health Regional Issues*. 2024;43:101002.
- 1930 188. Hayek MA, Giannouchos T, Lawley M, Kum H-C. Economic evaluation of blood pressure
1931 monitoring techniques in patients with hypertension: a systematic review. *JAMA Network Open*.
1932 2023;6(11):e2344372-e.
- 1933 189. van Steenkiste J, Verberk I, Versmissen J, Dohmen D, Jainandunsing S. Home blood
1934 pressure telemonitoring in the Netherlands: a pilot study in GP practices. *BMC Digital Health*.
1935 2024;2(1):16.
- 1936 190. Oude Wolcherink MJ, Behr CM, Pouwels XG, Doggen CJ, Koffijberg H. Health economic
1937 research assessing the value of early detection of cardiovascular disease: a systematic review.
1938 *Pharmacoeconomics*. 2023;41(10):1183-203.
- 1939 191. Chen W, Khurshid S, Singer DE, Atlas SJ, Ashburner JM, Ellinor PT, et al., editors. Cost-
1940 effectiveness of screening for atrial fibrillation using wearable devices. *JAMA Health Forum*; 2022:
1941 American Medical Association.
- 1942 192. Dealmakers B. Generative AI platforms drive drug discovery dealmaking. *Biopharm Deal*.
- 1943 193. Johnson KS, Patel P. Whole Health Revolution: Value-Based Care+ Lifestyle Medicine.
1944 *American Journal of Lifestyle Medicine*. 2024;18(6):766-78.
- 1945 194. Thorat V, Kakade SV. Applications of Real-Time Data in Healthcare Interventions:
1946 Pharmacological Interventions Based on Real-Time Data Analytics. *Internet of Medicine for Smart*
1947 *Healthcare*. 2024:317-45.
- 1948 195. Sands DZ. Beyond the EHR: how digital health tools foster participatory health and self-care
1949 for patients with diabetes. *American Journal of Medicine Open*. 2023;10:100043.
- 1950 196. (HPB) SHPB. Healthy 365 2025. Available from: [https://www.hpb.gov.sg/healthy-](https://www.hpb.gov.sg/healthy-living/healthy-365)
1951 [living/healthy-365](https://www.hpb.gov.sg/healthy-living/healthy-365).
- 1952 197. CDC U. National Diabetes Prevention Program 2025. Available from:
1953 [https://www.cdc.gov/diabetes-prevention/lifestyle-change-program/lifestyle-change-program-](https://www.cdc.gov/diabetes-prevention/lifestyle-change-program/lifestyle-change-program-details.html)
1954 [details.html](https://www.cdc.gov/diabetes-prevention/lifestyle-change-program/lifestyle-change-program-details.html).
- 1955 198. Baker BJ, Zhou X, Pizzo AD, Du J, Funk DC. Collaborative self-study: Lessons from a study
1956 of wearable fitness technology and physical activity. *Sport Management Review*. 2017;20(1):114-
1957 27.

- 1958 199. McCully KS. Homocysteine and vascular disease. *Nature medicine*. 1996;2(4):386-9.
- 1959 200. Nygård O, Nordrehaug JE, Refsum H, Ueland PM, Farstad M, Vollset SE. Plasma
1960 homocysteine levels and mortality in patients with coronary artery disease. *New England Journal of*
1961 *Medicine*. 1997;337(4):230-7.
- 1962 201. Barron M. The Archaeome: An Emerging Player in Health and Disease: American Society
1963 for Microbiology; 2024. Available from: [https://asm.org/articles/2024/july/the-archaeome-emerging-](https://asm.org/articles/2024/july/the-archaeome-emerging-player-health-disease)
1964 [player-health-disease](https://asm.org/articles/2024/july/the-archaeome-emerging-player-health-disease).
- 1965 202. Mohammadzadeh R, Mahnert A, Duller S, Moissl-Eichinger C. Archaeal key-residents within
1966 the human microbiome: characteristics, interactions and involvement in health and disease. *Current*
1967 *Opinion in Microbiology*. 2022;67:102146.
- 1968 203. Ramezani A, Nolin TD, Barrows IR, Serrano MG, Buck GA, Regunathan-Shenk R, et al. Gut
1969 colonization with methanogenic archaea lowers plasma trimethylamine N-oxide concentrations in
1970 apolipoprotein e-/- mice. *Scientific reports*. 2018;8(1):14752.
- 1971 204. Kuehnast T, Kumpitsch C, Mohammadzadeh R, Weichhart T, Moissl-Eichinger C, Heine H.
1972 Exploring the human archaeome: its relevance for health and disease, and its complex interplay with
1973 the human immune system. *The FEBS journal*. 2025;292(6):1316-29.
- 1974 205. Center D-FHC. New DF/HCC Guidance - Maximum Blood Draw for Research Purposes
1975 2021. Available from:
1976 [https://www.dfhcc.harvard.edu/news/detail?tx_news_pi1%5Baction%5D=detail&tx_news_pi1%5Bc](https://www.dfhcc.harvard.edu/news/detail?tx_news_pi1%5Baction%5D=detail&tx_news_pi1%5Bcontroller%5D=News&tx_news_pi1%5Bnews%5D=985&cHash=ae8fd1c2f5d599070b1d27c7201dbf68)
1977 [ontroller%5D=News&tx_news_pi1%5Bnews%5D=985&cHash=ae8fd1c2f5d599070b1d27c7201dbf](https://www.dfhcc.harvard.edu/news/detail?tx_news_pi1%5Baction%5D=detail&tx_news_pi1%5Bcontroller%5D=News&tx_news_pi1%5Bnews%5D=985&cHash=ae8fd1c2f5d599070b1d27c7201dbf68)
1978 [68](https://www.dfhcc.harvard.edu/news/detail?tx_news_pi1%5Baction%5D=detail&tx_news_pi1%5Bcontroller%5D=News&tx_news_pi1%5Bnews%5D=985&cHash=ae8fd1c2f5d599070b1d27c7201dbf68).
- 1979 206. Porcino AJ, Shamseer L, Chan A-W, Kravitz RL, Orkin A, Punja S, et al. SPIRIT extension
1980 and elaboration for n-of-1 trials: SPENT 2019 checklist. *bmj*. 2020;368.
- 1981 207. Vohra S, Shamseer L, Sampson M, Bukutu C, Schmid CH, Tate R, et al. CONSORT
1982 extension for reporting N-of-1 trials (CENT) 2015 Statement. *bmj*. 2015;350.
- 1983 208. Shamseer L, Sampson M, Bukutu C, Schmid CH, Nikles J, Tate R, et al. CONSORT
1984 extension for reporting N-of-1 trials (CENT) 2015: explanation and elaboration. *Bmj*. 2015;350.
- 1985 209. Toh KY, Toh TS, Chua KP, Rajakumar P, Lee JWJ, Chong CW. Identification of age-
1986 associated microbial changes via long-read 16S sequencing. *Gut Pathogens*. 2024;16(1):56.
- 1987 210. Ortiz-Burgos S. Shannon-weaver diversity index. *Encyclopedia of estuaries*: Springer; 2016.
1988 p. 572-3.
- 1989 211. Chao A. Non-parametric estimation of the classes in a population. *Scand J Statist*. 2023:265-
1990 70.
- 1991 212. Magurran AE, McGill BJ. *Biological diversity: frontiers in measurement and assessment*:
1992 OUP Oxford; 2010.
- 1993 213. Simpson EH. Measurement of diversity. *nature*. 1949;163(4148):688-.
- 1994 214. Bolyen E, Rideout JR, Dillon MR, Bokulich NA, Abnet CC, Al-Ghalith GA, et al. Reproducible,
1995 interactive, scalable and extensible microbiome data science using QIIME 2. *Nature biotechnology*.
1996 2019;37(8):852-7.
- 1997 215. Martin M. Cutadapt removes adapter sequences from high-throughput sequencing reads.
1998 *EMBnet journal*. 2011;17(1):10-2.
- 1999 216. Callahan BJ, McMurdie PJ, Rosen MJ, Han AW, Johnson AJA, Holmes SP. DADA2: High-
2000 resolution sample inference from Illumina amplicon data. *Nature methods*. 2016;13(7):581-3.
- 2001 217. Douglas GM, Maffei VJ, Zaneveld JR, Yurgel SN, Brown JR, Taylor CM, et al. PICRUSt2 for
2002 prediction of metagenome functions. *Nature biotechnology*. 2020;38(6):685-8.
- 2003 218. Barbera P, Kozlov AM, Czech L, Morel B, Darriba D, Flouri T, et al. EPA-ng: massively
2004 parallel evolutionary placement of genetic sequences. *Systematic biology*. 2019;68(2):365-9.
- 2005 219. Czech L, Barbera P, Stamatakis A. Genesis and Gappa: processing, analyzing and
2006 visualizing phylogenetic (placement) data. *Bioinformatics*. 2020;36(10):3263-5.
- 2007 220. Louca S, Doebeli M. Efficient comparative phylogenetics on large trees. *Bioinformatics*.
2008 2018;34(6):1053-5.
- 2009 221. Ye Y, Doak TG. A parsimony approach to biological pathway reconstruction/inference for
2010 genomes and metagenomes. *PLoS computational biology*. 2009;5(8):e1000465.
- 2011 222. Terpilowski MA. scikit-posthocs: Pairwise multiple comparison tests in Python. *Journal of*
2012 *Open Source Software*. 2019;4(36):1169.
- 2013 223. CDC U. NHANES August 2021-August 2023 2024. Available from:
2014 <https://wwwn.cdc.gov/nchs/nhanes/ContinuousNhanes/default.aspx?Cycle=2021-2023#print>.

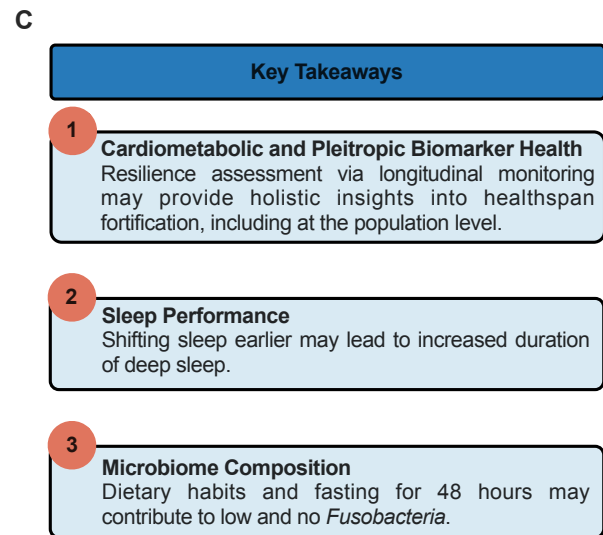
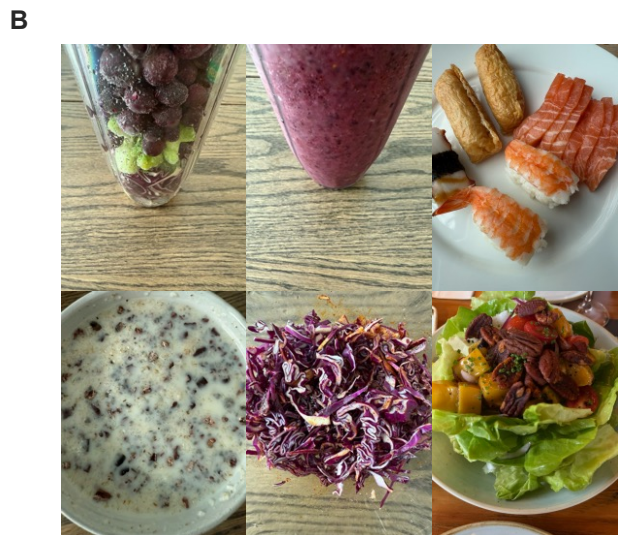
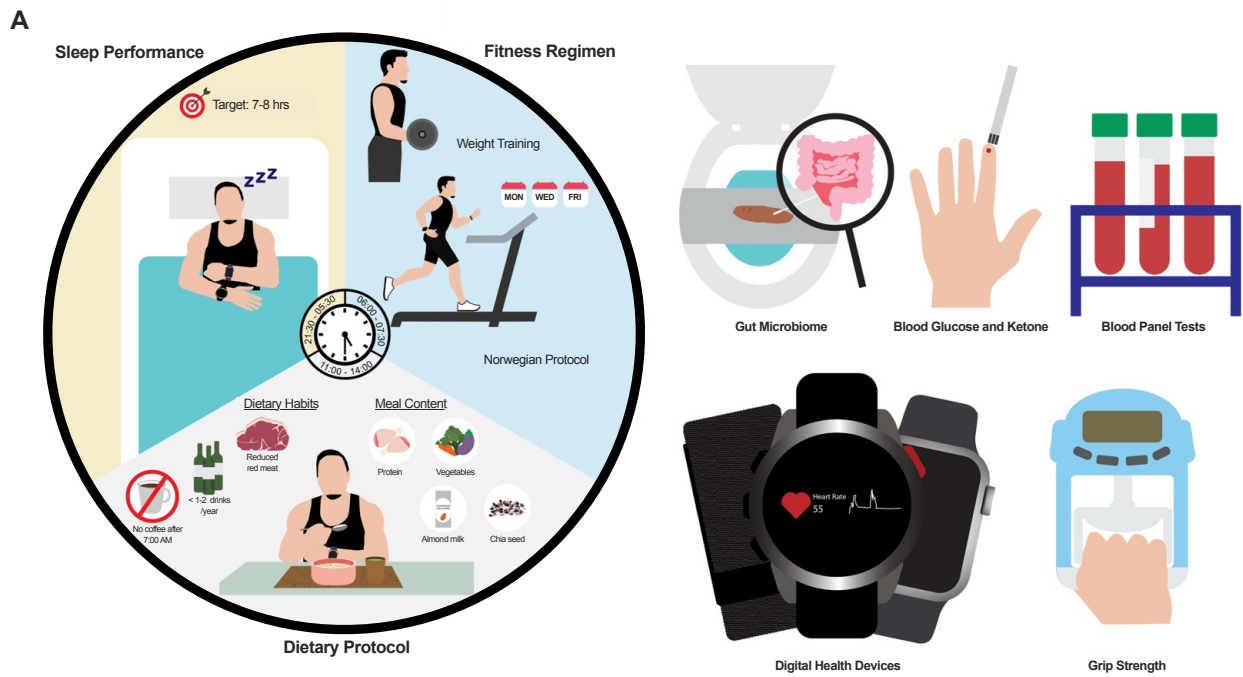
2015
2016
2017
2018

TABLE AND FIGURES

Table 1. Summary of key characteristics of DELTA001’s experience from qualitative assessment of participant experience.

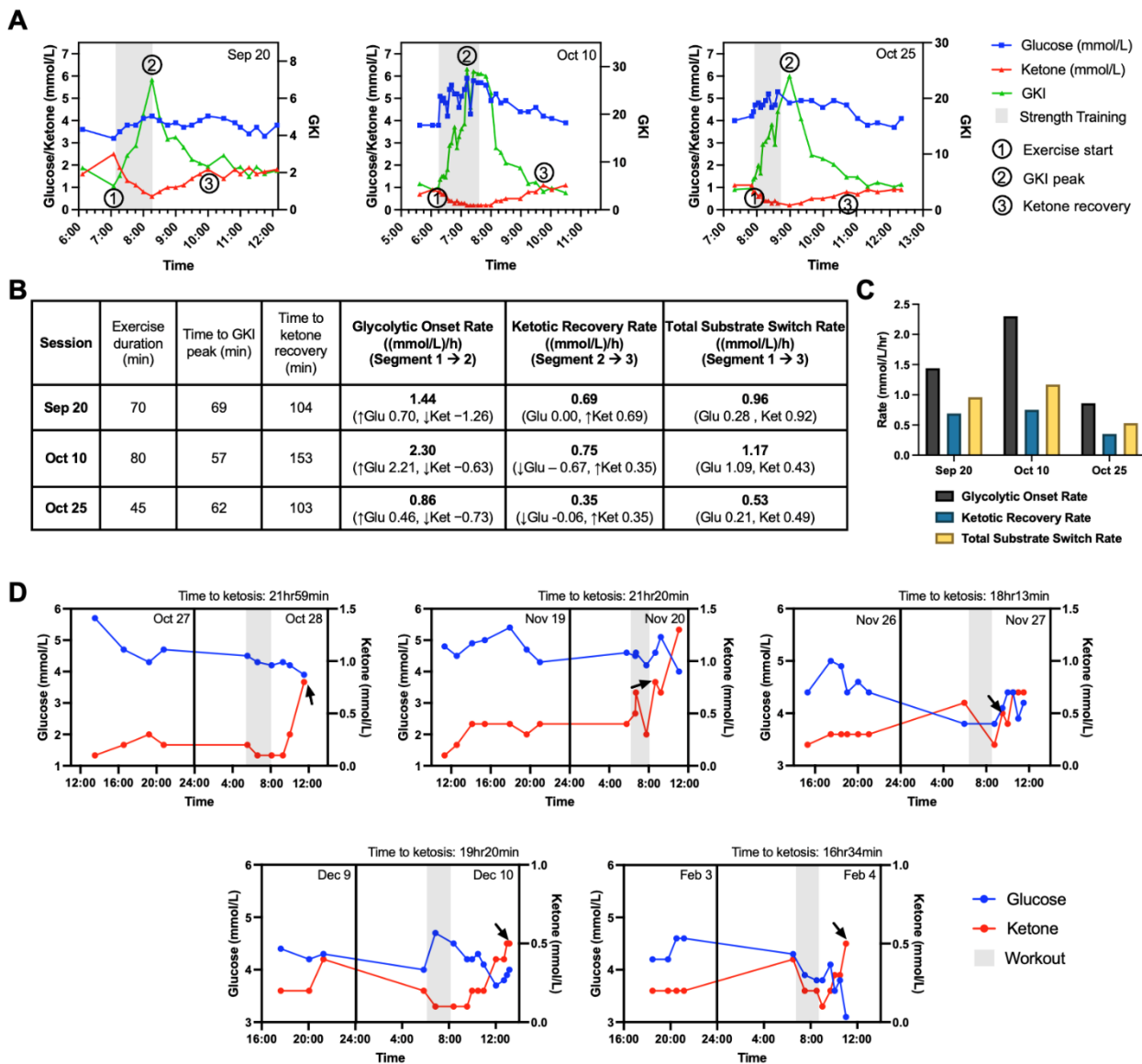
<p>Exercise</p>	<ul style="list-style-type: none"> • Arrive at the gym between 6:50am – 7:00am • Perform stretching exercises before starting the workout • Follow the Norwegian protocol on Monday, Wednesday Friday (3x 40 minutes of cardio each week) • Measure body weight (in triplicate) before strength workouts. • Focus on one primary muscle group per workout, avoids full body workouts
<p>Food Consumption</p>	<ul style="list-style-type: none"> • Stop drinking coffee after 7am, to ensure good sleep • Consumes food between 11am – 3pm • During vacation, practices 16/8 fasting schedule <p><u>Daily Diet Overview</u></p> <ul style="list-style-type: none"> • High in protein • Includes plenty of green vegetables • Rich in fiber • Chia seeds and flax seeds consumed together • Sourdough bread as main source of carbohydrate, or increase amount of rolled oats • Uses unsweetened almond milk • Cooks only with olive oil — no other oils used • Drinks a daily blend of: Celery Red cabbage Ginger A small amount of broccoli Water No sweeteners of any kind added
<p>Sleep Hygiene</p>	<ul style="list-style-type: none"> • Generally sleep from 9:30pm – 5:30am, about for 7–8 hours, • Does not take afternoon naps • Eliminate screen time and set room temperature to 21-22 degrees Celsius before sleeping • Do deeper breathing • Finish eating by 2pm and try not to drink water by 6:30pm

2019
2020
2021
2022



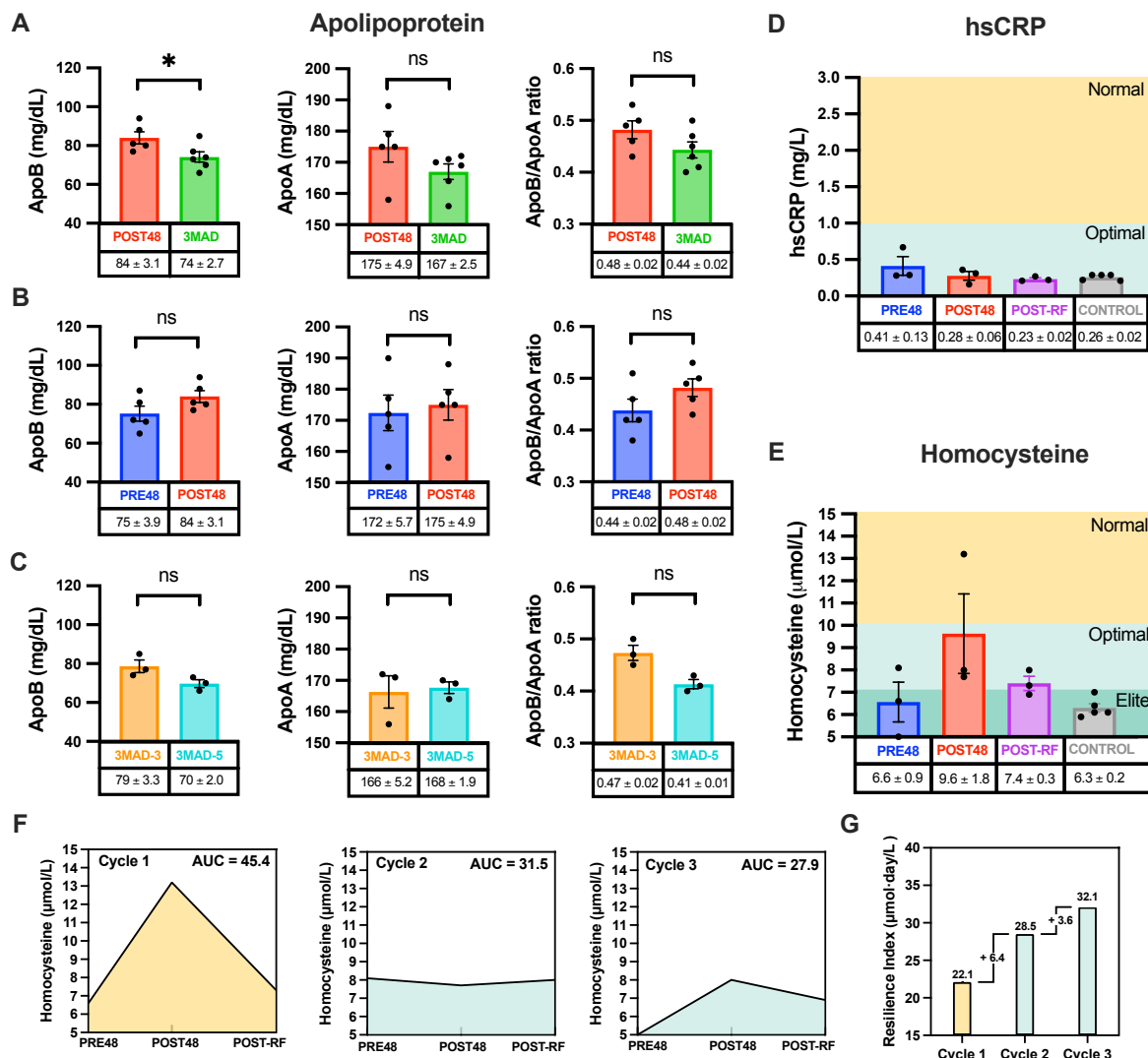
2023
2024
2025
2026
2027
2028

Fig. 1. DELTA protocol. (A) Schematic summary of the DELTA protocol comprising of dietary protocol, fitness regimen, sleep schedule, gut microbiome and blood tests, sleep and fitness performance evaluation, and usage of digital health devices. (B) Representative food pictures. Photo library of DELTA001's dietary regimen can be found in Supplementary File 1. (C) Key takeaways from this study.



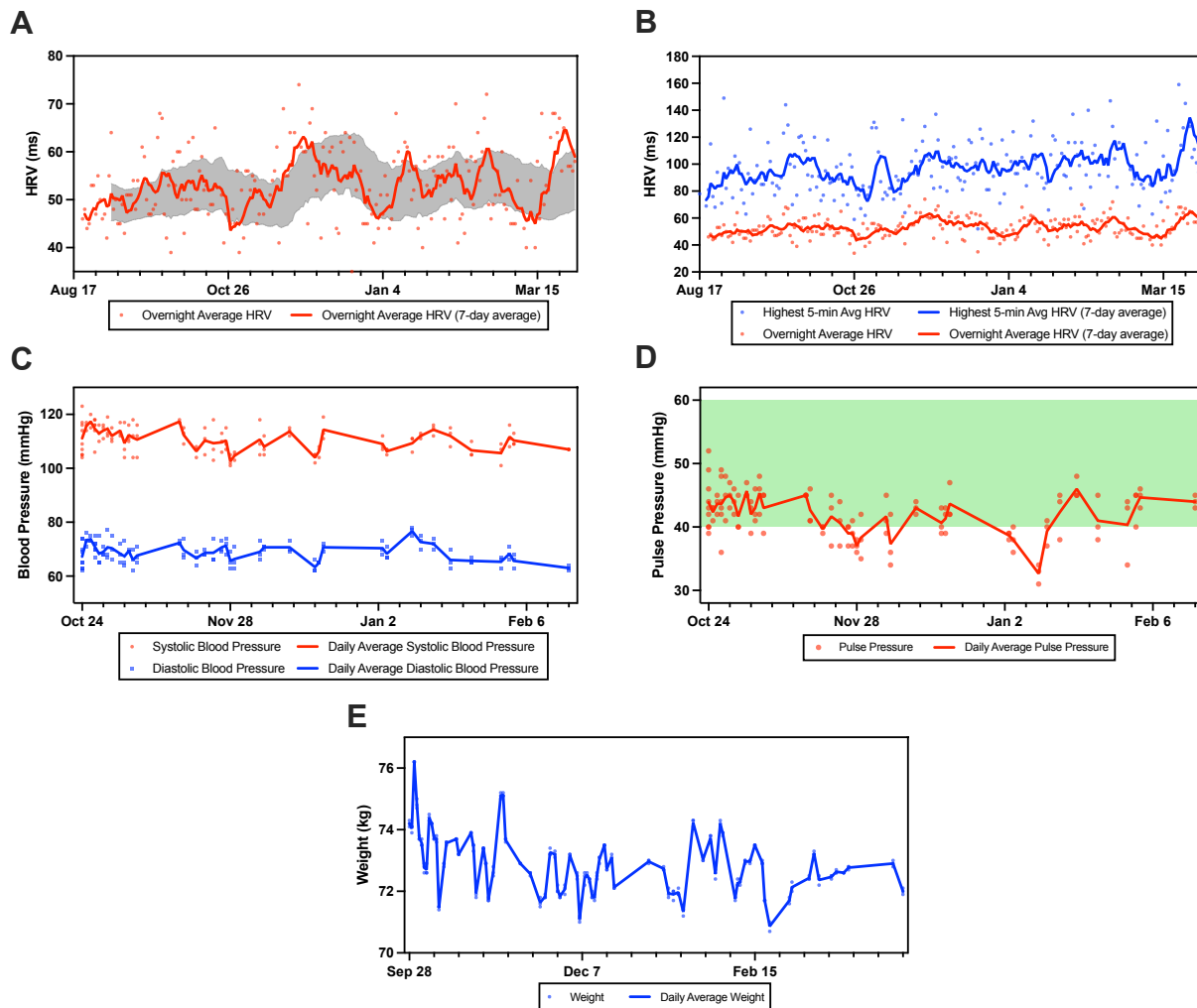
2029
2030
2031
2032
2033
2034
2035
2036
2037
2038
2039

Fig. 2. Metabolic flexibility. (A) Glucose-ketone dynamics during the 48-hour fasting strength training regimen. All sessions were performed on the 2nd day of a 48-hour fast. (B) Analysis of metabolic switches for the 48-hour fasting strength training regimen based on changing rates of glucose and ketone. (C) The glycolytic onset rate, ketotic recovery rate, and total substrate switch rate during the 48-hour fasting strength training regimen. (D) Glucose-ketone dynamics during the one-meal-a-day (OMAD) ketosis entry regimen. The workout consists of yoga, weightlifting, and intermittent sessions of walking and running. The first measurement on day 1 was taken immediately after meal consumption. Black arrow indicates post-exercise ketosis state (ketone level ≥ 0.5 mmol/L). Source data can be found in Figs. S6-S13.



2040
2041
2042
2043
2044
2045
2046
2047
2048
2049
2050
2051
2052
2053
2054
2055
2056
2057
2058
2059
2060
2061
2062

Fig. 3. Cardiometabolic health biomarkers. (A) Fasted and unfasted apolipoprotein levels. Fasted measurements were obtained after a 48-hour fast (POST48), while unfasted measurements were collected on either day 3 or day 5 during an intervention period of a 3-meals-a-day (3MAD) regimen. **(B)** Apolipoprotein levels before and after a 48-hour fast (PRE48 vs. POST48). **(C)** Apolipoprotein levels on day 3 and day 5 of a 3MAD regimen (3MAD-3 vs. 3MAD-5). Data points in the POST48 group were used for analysis in both PRE48 vs. POST48, and POST48 vs. 3MAD. Data points in the 3MAD-3 and 3MAD-5 groups were pooled into one group (3MAD) for analysis in POST48 vs. 3MAD. Statistical significance between groups was assessed using non-parametric t-tests (* represents $p < 0.05$, 'ns' represents non-significant). **(D)** Hs-CRP levels measured before, after a 48-hour fast, and after 2-3 days of refeeding (PRE48 vs. POST48 vs. POST-RF). The normal range is indicated as 1.0-3.0 mg/L, and the optimal (low-risk) range is indicated as below 1.0 mg/L. **(E)** Homocysteine levels measured before, after a 48-hour fast, and after 2-3 days of refeeding. The normal range is indicated as 10-15 $\mu\text{mol/L}$, the optimal (low-risk) range is indicated as 7-10 $\mu\text{mol/L}$, and the elite range is indicated as 5-7 $\mu\text{mol/L}$. The refeeding period and control samples both follow a one-meal-a-day regimen. **(F)** Expanded analysis of homocysteine dynamics across three cycles. Shaded areas represent the AUC of homocysteine across PRE48, POST48, and POST-RF, expressed in $\mu\text{mol}\cdot\text{day/L}$. **(G)** Resilience index computed from homocysteine dynamics across three cycles. Yellow (cycle 1) indicates a normal response, while green (cycle 2 and 3) indicates an optimal response. Data in (F, G) are derived from homocysteine levels shown in (E). Statistical significance between groups was assessed using non-parametric one-way ANOVA. Only statistically significant comparisons are annotated. Data is represented by mean \pm standard error of mean (SEM). Source data can be found in Supplementary Data 1.



2063
2064
2065
2066
2067
2068
2069
2070
2071
2072

Fig. 4. Cardiovascular health and weight. (A) Overnight heart rate variability (HRV) readings plotted daily (blue dots), with smoothed 7-day baseline (solid blue line), and a baseline range (shaded area between red dashed lines). (B) Overnight highest 5-min average HRV. (C) Systolic (SYS) and diastolic (DIA) blood pressure readings plotted over time, with the corresponding daily averages (solid lines) and linear trendlines (dotted lines). (D) Pulse pressure values (difference between SYS and DIA) are shown with individual readings and the daily average. The shaded green zone denotes the clinically healthy pulse pressure range of 40-60 mmHg. (E) Daily weight readings with their corresponding daily averages. Source data can be found in Supplementary Data 1.

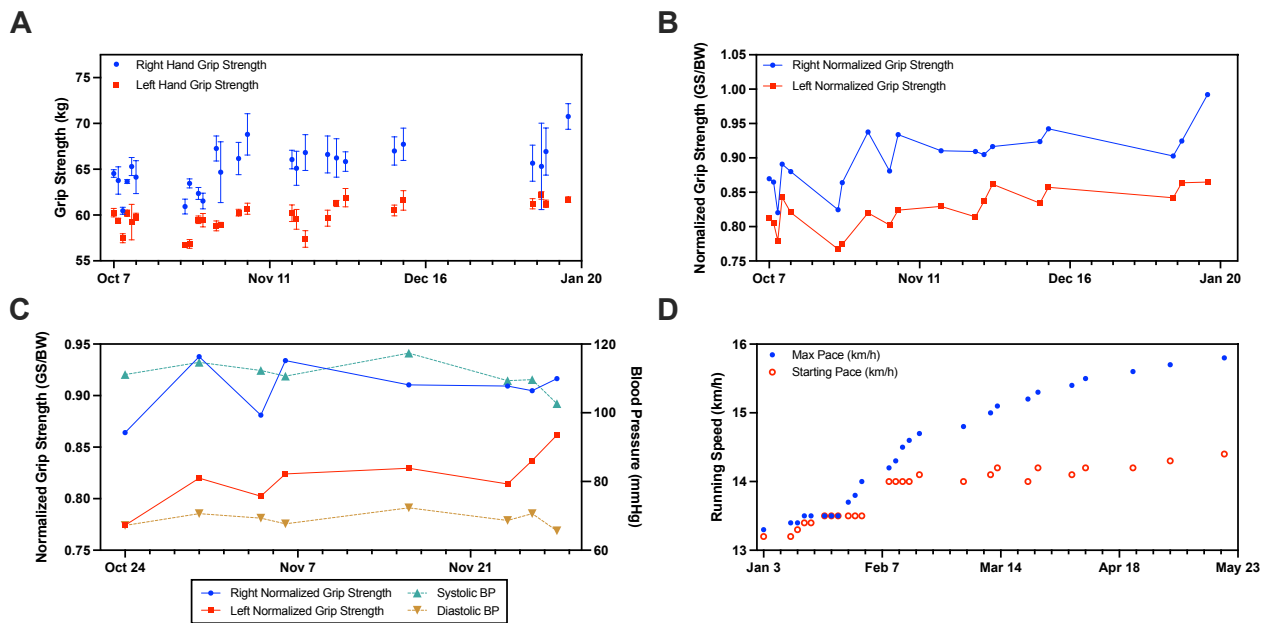
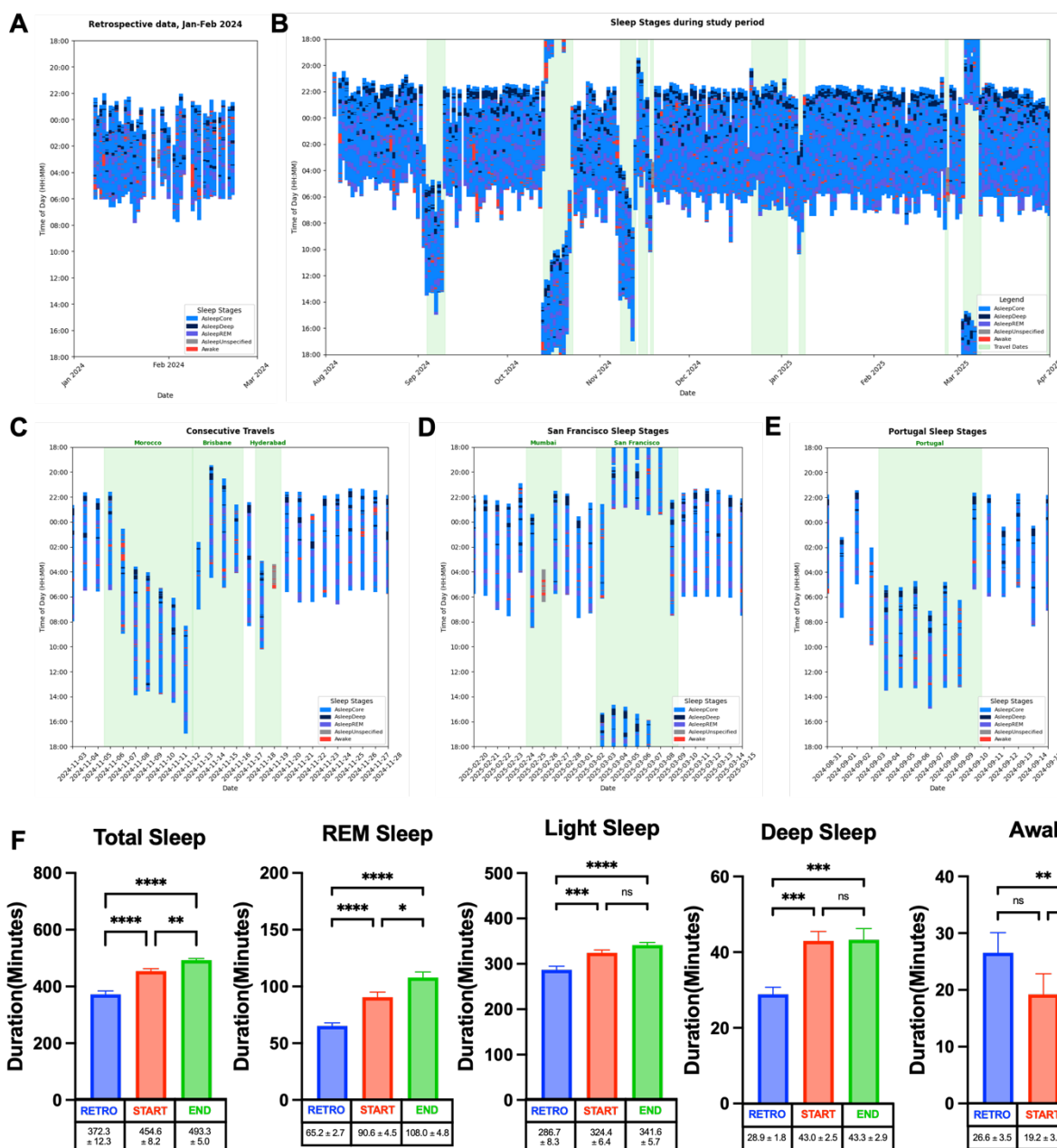


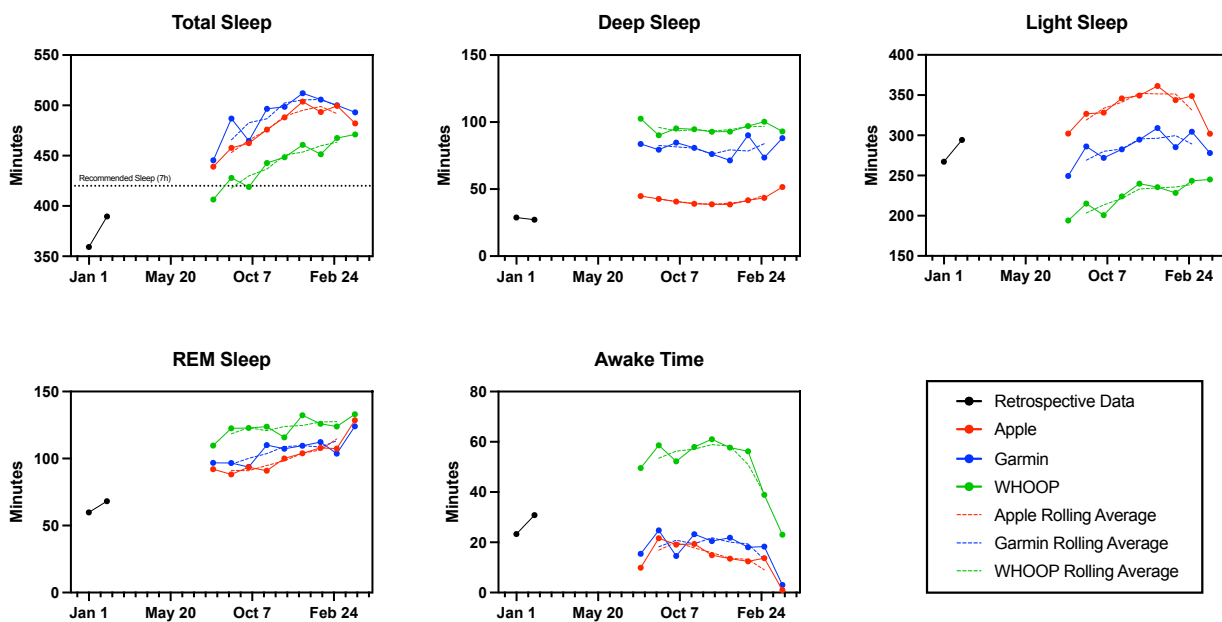
Fig. 5. Fitness performance. (A) Grip strength readings for the left (green) and right (blue) hands over time, with individual measurements and daily averages where the error bars denote the SEM. (B) Normalized grip strength (grip strength (GS) divided by body weight (BW)) for each hand plotted over time. (C) Normalized grip strength (left and right) plotted alongside systolic and diastolic blood pressure readings to explore their temporal relationship. (D) Treadmill run performance over time, showing both maximum speed and starting speed. The subject demonstrated a consistent upward trend in both starting and maximum speed. Source data can be found in Supplementary Data 1.

2073
2074
2075
2076
2077
2078
2079
2080
2081
2082
2083
2084
2085
2086
2087
2088
2089
2090
2091
2092
2093
2094
2095
2096
2097
2098
2099
2100
2101
2102
2103
2104
2105
2106
2107
2108
2109
2110
2111



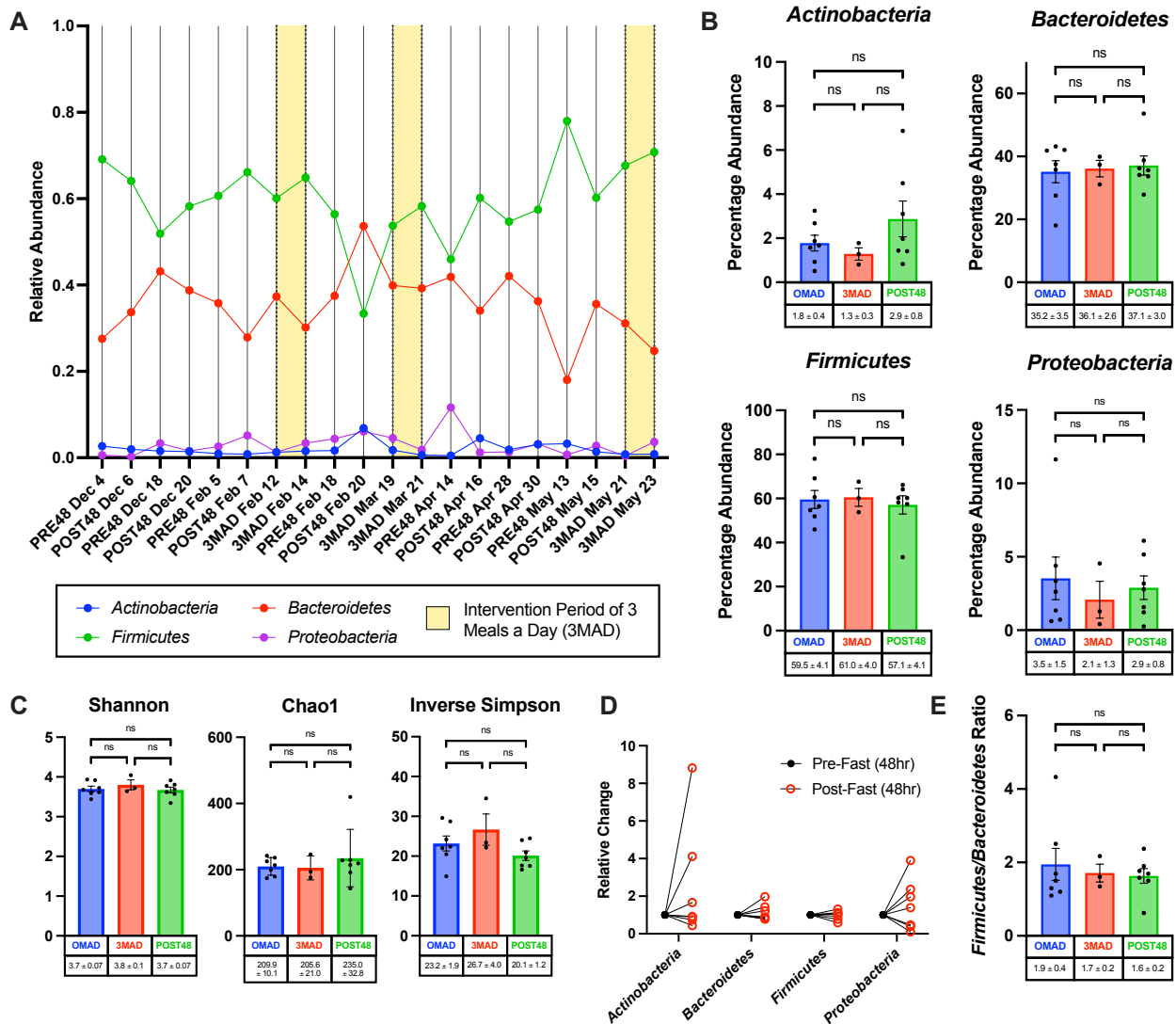
2112
2113
2114
2115
2116
2117
2118
2119
2120
2121
2122

Fig. 6. Sleep performance. (A) Retrospective sleep data from first quarter of 2024. (B) Overview of sleep data during the study from August 2024 to April 2025, where hours recorded are according to the Singapore time zone (UTC+8:00). Sleep data collected over periods of international travel are highlighted in green. (C-E) Sleep data during international travels with inset HRV data. (F) Comparison of duration of sleep stages over three distinct time points: retrospective data (RETRO), start of study (START), and end of study (END). An ordinary one-way ANOVA followed by Tukey's multiple comparisons was used to assess differences between groups. P-values are represented as follows: p-value ≤ 0.05 (*), p-value ≤ 0.01 (**), p-value ≤ 0.001 (***), and p-value < 0.0001 (****), with "ns" representing non-significance. Data is represented by mean ± SEM. Source data can be found in Supplementary Data 1.



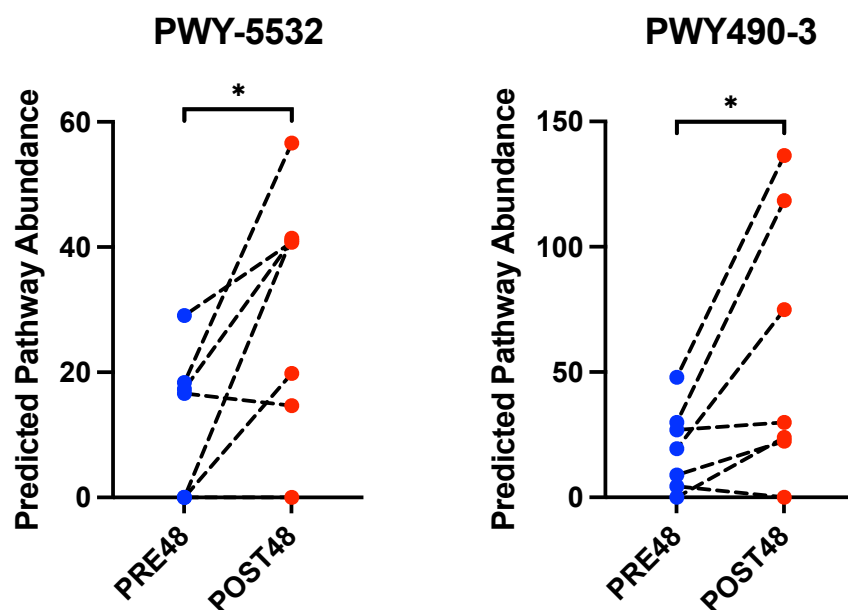
2123
2124
2125
2126
2127
2128
2129
2130
2131

Fig. 7. Sleep stages comparison across wearables. Sleep duration in each stage retrospectively and over the course of the study compared across Apple Watch, Garmin, and WHOOP devices. Source data can be found in Supplementary Data 1.



2132
2133
2134
2135
2136
2137
2138
2139
2140
2141
2142
2143
2144
2145
2146
2147
2148
2149

Fig. 8. Microbiome compositions and diversity. (A) Relative abundance of bacterial phyla over the course of the study at PRE48 (pre-48-hour fast during OMAD week), POST48 (post-48-hour fast during OMAD week), and 3MAD (during three-meals-a-day week; highlighted with yellow background) timepoints. *Fusobacteria* were not detected in all samples across all timepoints. (B) Relative change in percentage abundance of bacteria groups – *Actinobacteria*, *Bacteroidetes*, *Firmicutes* and *Proteobacteria* – normalized to total amplicon sequence variant (ASV) values. A Kruskal-Wallis test was conducted, showing no statistically significant differences in bacteria group percentage abundances amongst feeding condition (p-value > 0.05). (C) Bar plots of Shannon, Chao1 and Inverse Simpson diversity indexes. A Kruskal-Wallis test was conducted, with each index showing no significant difference (p-value > 0.05) in diversity amongst feeding conditions. (D) Relative change in bacteria groups of *Actinobacteria*, *Bacteroidetes*, *Firmicutes* and *Proteobacteria* normalized to total ASV counts and then to pre-fast levels across seven time points during the OMAD week. (E) *Firmicutes*-to-*Bacteroidetes* (F/B) ratio based on percentage abundance normalized to total ASV count. A Kruskal-Wallis test was conducted, showing no significant difference (p-value > 0.05) in F/B ratios between feeding conditions. Data is represented by mean ± SEM. Source data can be found in Supplementary Data 2.



2150

2151

Fig. 9. Microbiome functional pathway abundance predictions. Paired line plots show the relative abundances of two PICRUSt2-predicted pathways (PWY-5532 and PWY490-3) in stool samples collected before (PRE48) and after (POST48) a 48-hour fast. The selected pathways were displayed as they showed statistically significant differences based on a two-tailed paired t-test (p -value < 0.05). Each line ($n=7$) matches samples from the same participant. Predicted pathway abundances are expressed in arbitrary units derived from PICRUSt2. Source data can be found in Supplementary Data 2.

2154

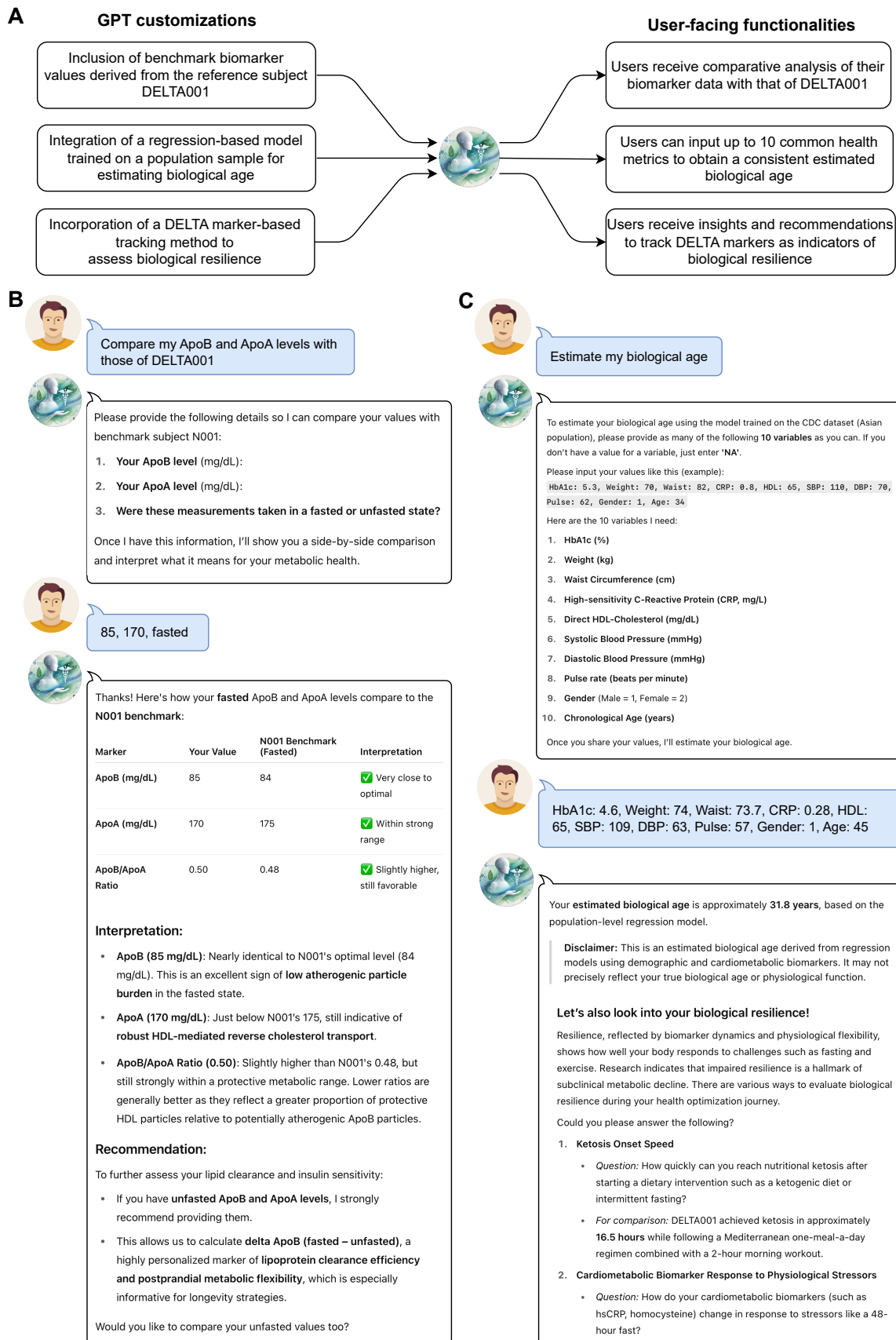
2155

2156

2157

2158

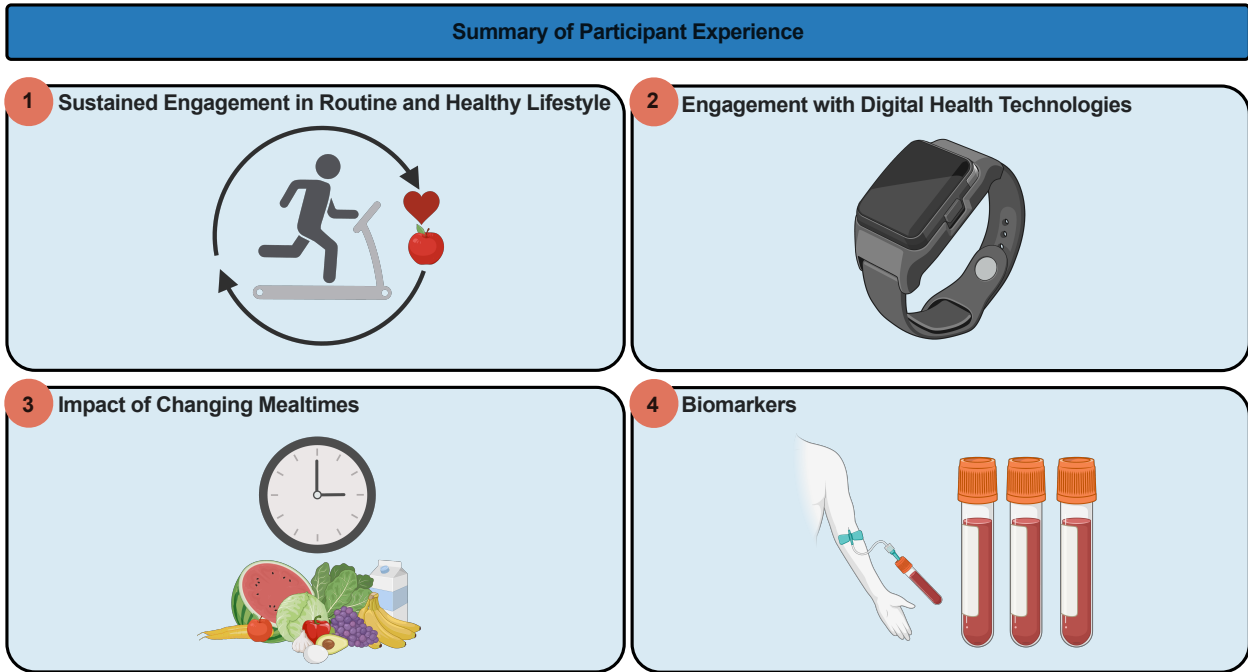
2159



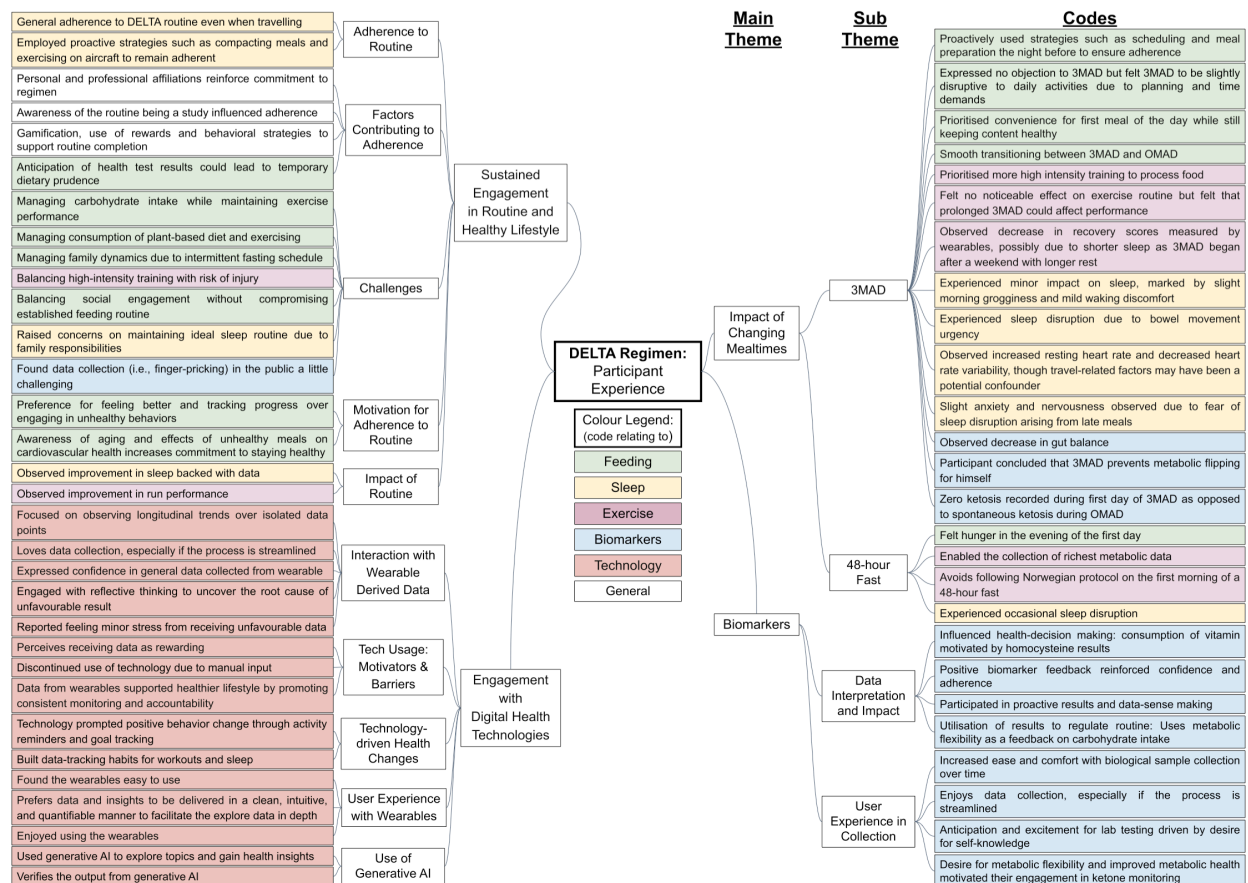
2160
2161
2162
2163
2164
2165

Fig. 10. GPT-enabled dynamic health tracking. (A) Overview of the GPT-enabled platform for dynamic health tracking and behavioral adherence support, including system customizations and the corresponding user-facing functionalities. Example conversations with the custom GPT 'Healthspan Copilot' for (B) ApoB and ApoA analysis and (C) Biological age estimation with add-on module for resilience analysis. Source files can be found in Supplementary File 2.

A



B



2166
2167
2168
2169
2170

Fig. 11. Coding tree of DELTA001's participant experience of the DELTA regimen. (A) Summary of participant experience. **(B)** Codes are grouped according to main themes and subsequently further grouped into sub-themes. Transcripts from interviews can be found in Supplementary File 3. Figure 11A is created in BioRender (<https://BioRender.com>).