

# 1 Precision Immunosuppression and Long-Term Kidney Transplant Outcomes: 2 A Dual Survival Modeling Framework

3 Kunle Timothy Apanisile<sup>1\*</sup>, Meng-Hao Li<sup>2</sup>, Hadi El-Amine<sup>3</sup>, Naoru Koizumi<sup>4</sup>

4 <sup>1</sup>Computational and Data Sciences Department, George Mason University, Fairfax, VA, USA

5 <sup>2</sup>Center for Biomedical Science and Policy, George Mason University, Fairfax, VA, USA

6 <sup>3</sup>Department of Systems Engineering and Operations Research, George Mason University,  
7 Fairfax, VA, USA

8 <sup>4</sup>Schar School of Policy and Government, George Mason University, Fairfax, VA, USA

9 \*Corresponding author: [kunle.apanisile@gmail.com](mailto:kunle.apanisile@gmail.com)

10

11

## 12 Abstract

13 Optimizing immunosuppressive therapy remains central to improving long-term outcomes after  
14 kidney transplantation. Both induction and maintenance therapies are widely used, yet their  
15 comparative effectiveness across heterogeneous populations requires further evaluation. To this  
16 end, this national retrospective cohort study analyzed 228,855 deceased-donor kidney transplant  
17 recipients using the over two-decade data (2000-2024). We employed multivariable Cox  
18 proportional hazards (PH) models for clinical inference and four machine learning (ML) survival  
19 models: random survival forest (RSF), support vector machine (SVM), penalized Cox regression  
20 (CoxNet), and extreme gradient boosting optimized with the Cox partial likelihood (XGBoost-  
21 Cox) to assess predictive performance of death-censored graft failure and all-cause patient  
22 mortality. Model performance was evaluated using the concordance index (C-index) and time-  
23 dependent area under the curve (tdAUC).

24 Maintenance regimens with calcineurin inhibitors (CNI) and mycophenolate mofetil (MMF)  
25 demonstrated protective effects for both graft failure (CNI+MMF: hazard ratio [HR] 0.72, 95%  
26 confidence interval [CI] 0.70-0.74; CNI+MMF+steroids: HR 0.84, 95% CI 0.82-0.87) and patient  
27 mortality (CNI+MMF: HR 0.78, 95% CI 0.76-0.81; CNI+MMF+steroids: HR 0.90, 95% CI 0.88-  
28 0.93). Among induction therapies, antithymocyte globulin (ATG) showed protective associations  
29 (HR 0.93 for both outcomes), while interleukin-2 receptor (IL-2R) antagonists and Alemtuzumab  
30 demonstrated neutral effects. Combined ATG + IL-2R therapy comparatively increased the hazard  
31 of graft failure (HR 1.09). Recipient diabetes, dialysis dependence, older age, and higher Kidney  
32 Donor Profile Index (KDPI) were strong adverse predictors. Traditional Cox regression achieved  
33 robust discrimination (graft failure concordance index: 0.685; patient mortality concordance  
34 index: 0.704) comparable to ML survival models.

35 These findings reinforce CNI and MMF maintenance regimens as foundational to contemporary  
36 immunosuppression while demonstrating differential effectiveness across induction strategies.  
37 The dual analytical framework, which integrates classical Cox PH modeling with ML survival  
38 models, shows that Cox models remain highly competitive for clinical inference while ML  
39 approaches offer complementary predictive value to support individualized post-transplant risk  
40 stratification.

41

42

43

## 44 **Introduction**

45 Kidney transplantation is the gold standard treatment for end-stage renal disease, offering superior  
46 survival, cost-effectiveness, and quality of life compared to long-term dialysis [1,2]. The long-  
47 term success of a transplant, however, is threatened by the recipient's immune response to the  
48 foreign graft. This response is primarily triggered by the disparity in human leukocyte antigens  
49 (HLAs) between the donor and recipient, which activates the recipient's T cells and can lead to  
50 graft failure through two principal pathways: antibody-mediated and cellular-mediated rejection  
51 [3]. Antibody-mediated rejection involves B-cells producing donor-specific antibodies, a process  
52 dependent on CD4<sup>+</sup> T-cell help [4,5]. In contrast, cellular rejection is driven directly by the  
53 cytotoxic activity of T cells, alongside other immune cells such as macrophages and natural killer  
54 cells [6]. Without tailored immunosuppressive medications to modulate the immune response, a  
55 persistent immune attack leads to progressive immune-mediated injury, marked by inflammation,  
56 tissue damage, and potential graft failure [7]. Such injury may present as acute rejection early after  
57 transplantation or evolve into chronic rejection over time, thereby highlighting the vital role of  
58 immunosuppressive treatment.

59       Immunosuppressive therapies aim to prevent or control this immune-mediated injury by  
60 suppressing the recipient's immune system. By doing so, they reduce the immune response against  
61 the allograft, attenuate inflammation, and help preserve its function and viability. Thus, the  
62 imperative for post-transplant immunosuppression emerges, with the principal objective of  
63 modulating and mitigating immune responses to safeguard the viability and functionality of the  
64 transplanted kidney within the recipient's body.

65       Despite the crucial role of immunosuppressive therapy, it carries potential risks and side  
66 effects, emphasizing the need to balance immune suppression and complications. The definitive

67 protocol remains undetermined [8-10], with most centers employing an approach involving  
68 induction therapy with interleukin-2 receptor (IL-2R) antibodies or antithymocyte globulin (ATG),  
69 along with a maintenance regimen comprising steroids, calcineurin inhibitors (CNIs), and  
70 mycophenolate mofetil (MMF) [11,12]. Although these advances have substantially improved  
71 short-term graft survival, the challenge of achieving durable long-term outcomes persists [13-15].  
72 Therefore, ongoing research continues to seek regimens that maximize short-term benefits while  
73 minimizing the risk of long-term deterioration [16].

74 Predicting long-term outcomes is fundamental to personalizing care and improving graft  
75 survival. For decades, survival analysis methods, particularly Cox proportional hazards (PH)  
76 regression, has been the cornerstone of outcome evaluation in kidney transplantation. Cox models  
77 allow estimation of hazard ratios (HRs), providing clinicians with interpretable measures of the  
78 relative risk of graft failure or patient death associated with specific therapies or clinical covariates  
79 [17-19]. These models are well-suited to accommodate censoring, varying follow-up times, and  
80 the multifactorial nature of post-transplant outcomes.

81 At the same time, the growing availability of large-scale transplant datasets has created  
82 opportunities for machine learning (ML) methods to complement traditional survival models.  
83 More recently, ML survival models such as random survival forests (RSFs), support vector  
84 machines (SVMs), and gradient boosting survival models, have demonstrated the potential to  
85 improve risk prediction in transplantation by modeling nonlinear interactions and high-  
86 dimensional patterns that may not be fully represented in standard Cox regression [20-22]. Yet,  
87 many prior ML studies in kidney transplantation have been limited by small sample sizes, older  
88 cohorts, or lack of direct comparison with classical survival models using the same covariate  
89 structure [23-26]. Additionally, few have explicitly examined both induction and maintenance

90 immunosuppressive strategies within ML frameworks, and even fewer have evaluated their  
91 performance against death-censored graft survival and patient mortality outcomes using  
92 contemporary national data.

93         The current study addresses these gaps by leveraging a large and recent national cohort of  
94 deceased-donor kidney transplant recipients and examining both induction and maintenance  
95 immunosuppressive therapies in relation to long-term outcomes. Death-censored graft survival and  
96 all-cause patient mortality were evaluated using multivariable Cox proportional hazards models to  
97 provide clinically interpretable estimates of relative risk associated with specific therapeutic  
98 regimens. In parallel, multiple ML survival models were developed using the same covariate  
99 structure to determine whether they offer incremental predictive value beyond classical Cox  
100 regression. Model performance was evaluated using concordance index (C-index) and time-  
101 dependent area under the curve (tdAUC) metrics at clinically relevant follow-up intervals, enabling  
102 direct comparison of inference-focused and prediction-focused approaches within a unified  
103 analytical framework.

104         By integrating classical survival modeling with contemporary ML survival methods in a  
105 large and up-to-date national dataset, this study provides a rigorous evaluation of  
106 immunosuppressive regimen effectiveness while simultaneously assessing the extent to which  
107 advanced predictive algorithms offer added clinical value. This dual analytical perspective is  
108 intended to support both evidence-based regimen selection and the advancement of individualized  
109 post-transplant risk stratification.

110

## 111 **Materials and Methods**

### 112 **Data Source and Study Population**

113 This retrospective cohort study used data from the United Network for Organ Sharing (UNOS)  
114 registry. Two data extracts were provided: an earlier file covering January 1, 2000, through May  
115 29, 2021, and a subsequent update containing transplants from January 1, 2015, through October  
116 30, 2024. These datasets were merged using transplant recipient identifiers and procedure-level  
117 record keys, with harmonization of variable definitions and removal of duplicate entries during  
118 overlapping years, to create a unified dataset spanning January 1, 2000, to October 30, 2024. The  
119 analysis was restricted to adult recipients of deceased-donor kidney transplants, identified using  
120 the donor type variable. Living-donor kidney transplants were excluded, as were observations with  
121 incomplete or non-positive follow-up times as well as extensive missing values for some critical  
122 variables. The final analytic cohort included 228,855 deceased-donor kidney transplant recipients.

### 123 **Study Outcome**

124 Two clinically relevant post-transplant outcomes were examined. The primary endpoint was death-  
125 censored graft failure, defined as the time from kidney transplantation to return to dialysis or re-  
126 transplantation, with deaths occurring in the presence of a functioning graft treated as censored  
127 events at the time of death. The secondary endpoint was all-cause patient mortality, defined as  
128 time from transplantation to death from any cause, regardless of graft function. Follow-up time for  
129 both outcomes was calculated from transplantation date to event occurrence or administrative  
130 censoring on October 30, 2024, whichever occurred first. Both outcomes were analyzed using  
131 time-to-event methods appropriate for right-censored data.

### 132 **Predictor Variables and Data Preprocessing**

133 Candidate predictors encompassed donor, recipient, and transplant characteristics, including  
134 demographic, clinical, and immunologic factors (e.g., age, Kidney Donor Profile Index [KDPI],  
135 HLA mismatches, calculated panel-reactive antibody [cPRA]). Immunosuppressive regimens

136 were the key focus. ATG constituted the predominant induction therapy in the cohort (59.6%, n =  
137 136,458), with IL-2R antagonists (19.4%, n = 44,512) and Alemtuzumab (12.2%, n = 27,982) used  
138 less frequently. For maintenance therapy, a triple regimen of CNI, MMF, and steroids  
139 predominated (67.1%, n = 153,515), while a steroid-free combination of CNI + MMF accounted  
140 for 24.3% (n = 55,637). Other regimens were used less frequently.

141 Missing data were handled with a combination of complete-case analysis and imputation.  
142 The proportion of missing data was low (<1%) for most variables. Continuous variables (e.g.,  
143 serum creatinine, body mass index [BMI]) were imputed with medians, and categorical variables  
144 (e.g., diabetes) were imputed with modes. Missing cPRA values (14.8%) was imputed as 0  
145 (unsensitized) and flagged with a binary indicator; Cold ischemic time (1.4%) was imputed with  
146 the median and similarly flagged.

147

## 148 **Statistical Analysis**

### 149 **Descriptive and Survival Analysis**

150 Continuous variables were presented as medians with interquartile ranges (IQRs), whereas  
151 categorical measures were reported as counts and corresponding percentages. Kaplan–Meier  
152 survival curves were generated for graft and patient survival, including subgroup comparisons by  
153 donor and recipient factors (e.g., donation after circulatory death [DCD] vs. non-DCD, expanded  
154 criteria donor [ECD], KDPI quartiles, recipient diabetes). Group differences in survival were  
155 assessed using the log-rank test.

### 156 **Multicollinearity Assessment and Model Specification**

157 Prior to multivariable modeling, variance inflation factors (VIF) were calculated to assess  
158 multicollinearity among candidate predictors. A systematic approach was employed where

159 categorical variables with inherent collinearity (geographic sharing, recipient race, donor race)  
160 were coded using reference category exclusion. Geographic sharing utilized 'local' as reference,  
161 while race variables used 'white' as reference category for both recipient and donor. Variables with  
162 VIF exceeding 10 were iteratively removed until all remaining predictors demonstrated acceptable  
163 collinearity levels ( $VIF < 10$ ). Continuous variables were maintained in their natural units to  
164 preserve clinical interpretability of HRs.

### 165 **Cox Regression**

166 A multivariable Cox PH model was fitted separately for death-censored graft failure and all-cause  
167 patient mortality. All models were constructed using the final predictor set identified after  
168 assessing and addressing multicollinearity among covariates. HRs with 95% confidence intervals  
169 (CIs) were estimated. The PH assumptions were assessed using Schoenfeld residuals and graphical  
170 diagnostics. Final models balanced clinical interpretability and statistical parsimony.

171

### 172 **Machine Learning Survival Models**

173 Multiple ML survival algorithms were implemented using identical predictor variables to enable  
174 direct comparison with classical Cox regression. The ensemble included: RSF with memory-  
175 optimized implementation using warm-start and batch training to prevent computational overload;  
176 SVM with kernel optimization; extreme gradient boosting optimized with the Cox partial  
177 likelihood (XGBoost-Cox); and penalized Cox regression (CoxNet) with elastic net regularization.  
178 Data were randomly split into training (75%) and testing (25%) sets stratified by event status to  
179 maintain outcome distribution. Model parameters were selected based on established defaults and  
180 transplantation literature, with computational efficiency considerations for the large-scale national

181 dataset. Continuous predictors were standardized for algorithms requiring feature scaling (CoxNet,  
182 SVM), while tree-based methods utilized natural units.

### 183 **Model Evaluation**

184 Each model's predictive accuracy was assessed using the independent test set not used during  
185 training. The concordance index (C-index) was used to evaluate overall discrimination. Time-  
186 dependent Area Under the Curve (tdAUC) was computed at 1-, 3-, 5-, and 10-years post-transplant,  
187 and the mean tdAUC was used as a summary measure of longitudinal predictive performance. All  
188 analyses were performed in Python 3.13.7 using lifelines, scikit-survival, and scikit-learn libraries.

189

## 190 **Results**

### 191 **Cohort Characteristics**

192 The study cohort comprised 228,855 recipients of deceased-donor kidney transplants from 2000-  
193 2024. Recipients had a median age of 55 years (interquartile range [IQR] 44-63), with 60.4% male  
194 and 36.3% with diabetes. Racial distribution included 39.5% White, 33.5% Black, 17.8% Hispanic,  
195 and 7.0% Asian recipients. Diabetes was present in 36.3% of recipients, and 83.0% were receiving  
196 dialysis at the time of transplantation. The median BMI was 27.8 kg/m<sup>2</sup> (IQR 24.2–32.0), and the  
197 median cPRA was 0% (IQR 0–29). Approximately 12.2% were retransplants, and the median  
198 waiting time prior to transplantation was 639 days (IQR 193–1314).

199 Donor characteristics reflected a median age of 41 years (IQR 29–52), with 61.3% male donors.  
200 DCD accounted for 22.2% of transplants, while 16.2% met expanded-criteria donor ECD  
201 definitions. The median KDPI was 40% (IQR 20–62), and the median donor creatinine was 1.0  
202 mg/dL (IQR 0.7–1.4).

203            Immunosuppressive regimens were heterogeneous: ATG was the most common induction  
204 agent (59.6%), followed by IL-2R (19.4%) and Alemtuzumab (12.2%). For maintenance therapy,  
205 the majority received a triple regimen of CNI + MMF + steroids (67.1%), with an additional 24.3%  
206 maintained on CNI + MMF without steroids. Full characteristics are presented in *Table 1*.

207

208 **Table 1. Baseline characteristics of the transplant cohort**

<b>Characteristic</b>	<b>Value</b>
Study cohort	228,855 recipients
<b>Recipient characteristics</b>	
Age (years), median (IQR)	55.0 (44.0–63.0)
Male	138,269 (60.4%)
White	90,383 (39.5%)
Black	76,765 (33.5%)
Hispanic	40,658 (17.8%)
Asian	16,069 (7.0%)
Retransplant	27,819 (12.2%)
On dialysis	189,966 (83.0%)
Diabetes	82,998 (36.3%)
BMI (kg/m <sup>2</sup> ), median (IQR)	27.8 (24.2–32.0)
cPRA (%), median (IQR)	0.0 (0.0–29.0)
Wait time (days), median (IQR)	639.0 (193.0–1314.0)
Creatinine (mg/dL), median (IQR)	8.0 (5.9–10.5)
<b>Donor characteristics</b>	
Age (years), median (IQR)	41.0 (29.0–52.0)
Male donor	140,221 (61.3%)
White donor	157,516 (68.8%)
Black donor	29,915 (13.1%)
Hispanic donor	32,546 (14.2%)
Asian donor	5,525 (2.4%)
DCD (%)	50,907 (22.2%)
ECD (%)	37,092 (16.2%)
Donor diabetes	18,102 (7.9%)
Donor hypertension	66,879 (29.2%)
BMI (kg/m <sup>2</sup> ), median (IQR)	27.1 (23.5–31.7)
KDPI, median (IQR)	40% (20–62%)
Donor creatinine (mg/dL), median (IQR)	1.0 (0.7–1.4)
<b>Induction regimen</b>	
ATG	136,458 (59.6%)

IL-2R	44,512 (19.4%)
Alemtuzumab	27,982 (12.2%)
ATG + IL-2R	8,226 (3.6%)
No induction	11,677 (5.1%)
<b>Maintenance regimen</b>	
CNI + MMF + Steroids	153,515 (67.1%)
CNI + MMF	55,637 (24.3%)
Other/atypical regimens	19,703 (8.6%)
Cold ischemia time (hours), median (IQR)	18.0 (12.9–23.1)
<b>Transplant factors</b>	
Local allocation (%)	147,075 (64.3%)
Regional allocation (%)	34,192 (14.9%)
National allocation (%)	47,588 (20.8%)

209 Values are presented as median interquartile range (IQR) or n (%), as appropriate. Abbreviations: ATG = anti-  
210 thymocyte globulin; IL-2R = interleukin-2 receptor; CNI = calcineurin inhibitor; MMF = mycophenolate mofetil;  
211 KDPI = Kidney Donor Profile Index; DCD = donation after circulatory death; ECD = expanded criteria donor; BMI  
212 = body mass index; cPRA = calculated panel-reactive antibody.  
213

## 214 Overall Graft and Patient Survival

215 During a median follow-up of 4.0 years (IQR 1.9–7.0), there were 55,346 death-censored graft  
216 failures (24.2%) and 43,772 all-cause patient deaths (19.1%) among 228,855 deceased-donor  
217 kidney transplant recipients. The distribution of events, censoring, and follow-up time is  
218 summarized in *Table 2*.

219 Kaplan–Meier analyses demonstrated progressive decline in both graft and patient survival  
220 over time, with relatively high early post-transplant survival that gradually decreased during long-  
221 term follow-up (*Table 3, Figs 1–2*). The estimated death-censored graft survival was 95.7% at 1  
222 year, 88.5% at 3 years, 80.1% at 5 years, and 57.8% at 10 years, corresponding to a median graft  
223 survival of approximately 12.0 years (95% CI, 11.9–12.0). In comparison, patient survival was  
224 96.8% at 1 year, 91.4% at 3 years, 85.1% at 5 years, and 66.5% at 10 years, with a median all-  
225 cause survival of approximately 15.0 years.

226

227 **Table 2. Event and Follow-Up Summary**

Outcome	N (analysis set)	Events n (%)	Censored n (%)	Median follow-up, years (IQR)
Graft failure (death-censored)	228,855	55,346 (24.2)	173,509 (75.8)	4.0 (1.9–7.0)
Patient mortality (all-cause)	228,855	43,772 (19.1)	185,083 (80.9)	4.3 (2.0–7.2)

228 Follow-up duration was calculated from the date of transplantation to event occurrence or administrative censoring.  
229

230 **Table 3. Kaplan–Meier Survival Estimates at Selected Time Points**

Time (years)	N at risk – Graft	Graft survival (95% CI)	N at risk – Patient	Patient survival (95% CI)
1	197,478	0.957 (0.956–0.958)	201,096	0.968 (0.968–0.969)
3	140,017	0.885 (0.883–0.886)	146,458	0.914 (0.913–0.916)
5	94,936	0.801 (0.799–0.803)	101,904	0.851 (0.849–0.852)
10	20,935	0.578 (0.574–0.581)	23,944	0.665 (0.662–0.669)

231 Values represent Kaplan–Meier survival probabilities at specific post-transplant time points with 95% confidence  
232 intervals. CI = confidence interval. Median graft survival  $\approx$  12.0 years; median patient survival  $\approx$  15.0 years. N at  
233 risk indicates the number of recipients remaining under observation and event-free at each interval.  
234

235 **Fig 1. Kaplan–Meier curve for death-censored graft survival among deceased-donor kidney**  
236 **transplants**

237 **Fig 2. Kaplan–Meier curve for all-cause patient survival among deceased-donor kidney**  
238 **transplants**

239

### 240 **Subgroup Survival Analyses**

241 Graft and patient survival differed significantly across key donor and recipient subgroups (**Fig 3–**  
242 **10**). Recipients of kidneys from DCD had slightly shorter graft survival compared with non-DCD  
243 transplants (median 12.1 vs 12.0 years; log-rank  $\chi^2 = 4.87$ ,  $p = 0.027$ ). Differences in patient  
244 survival were more pronounced, with DCD recipients exhibiting a shorter median survival (14.3  
245 vs 14.9 years; log-rank  $\chi^2 = 40.11$ ,  $p < 0.001$ ). In contrast, kidneys from ECD showed markedly  
246 reduced outcomes. Median graft survival was 8.1 years for ECD versus 13.0 years for non-ECD

247 donors (log-rank  $\chi^2 = 4150.03$ ,  $p < 0.001$ ), and median patient survival was 10.4 vs 15.8 years,  
248 respectively (log-rank  $\chi^2 = 2961.72$ ,  $p < 0.001$ ).

249 Recipient diabetes was associated with striking survival disparities. Graft survival differed  
250 sharply by diabetic status, with recipients who had diabetes experiencing a median survival of 8.4  
251 years, whereas those without diabetes reached 15.3 years (log-rank  $\chi^2 = 8463.18$ ,  $p < 0.001$ ).  
252 Median patient survival followed a similar pattern (10.1 vs 17.9 years; log-rank  $\chi^2 = 7871.70$ ,  $p <$   
253  $0.001$ ). The KDPI quartiles showed a stepwise gradient (*Fig 9–10*). Graft and patient survival  
254 declined progressively from the lowest KDPI quartile (Q1) to the highest (Q4) (multigroup log-  
255 rank  $\chi^2 = 5420.45$  and  $3746.92$ , respectively;  $p < 0.001$  for both).

256

257 **Fig 3. Graft survival by donor type (DCD vs non-DCD).**

258 Kaplan–Meier curves comparing graft survival between DCD and non-DCD donors. Log-rank  $\chi^2$   
259 and  $p$ -values are derived from univariate comparisons.

260 **Fig 4. Patient survival by donor type (DCD vs non-DCD).**

261 Kaplan–Meier curves comparing patient survival between DCD and non-DCD donors. Log-rank  
262  $\chi^2$  and  $p$ -values are derived from univariate comparisons.

263 **Fig 5. Graft survival by donor quality (ECD vs non-ECD).**

264 Kaplan–Meier curves comparing graft survival for expanded-criteria donors (ECD) versus non-  
265 ECD donors. Log-rank  $\chi^2$  and  $p$ -values are derived from univariate comparisons.

266 **Fig 6. Patient survival by donor quality (ECD vs non-ECD).**

267 Kaplan–Meier curves comparing patient survival for ECD versus non-ECD donors. Log-rank  $\chi^2$   
268 and  $p$ -values are derived from univariate comparisons.

269 **Fig 7. Graft survival by recipient diabetes status.**

270 Kaplan–Meier curves comparing graft survival between diabetic and non-diabetic recipients at the  
271 time of transplantation. Log-rank  $\chi^2$  and  $p$ -values are derived from univariate comparisons.

272 **Fig 8. Patient survival by recipient diabetes status.**

273 Kaplan–Meier curves comparing patient survival between diabetic and non-diabetic recipients.  
274 Log-rank  $\chi^2$  and  $p$ -values are derived from univariate comparisons.

275 **Fig 9. Graft survival by KDPI quartiles.**

276 Kaplan–Meier curves stratified by KDPI quartiles (Q1–Q4). Log-rank  $\chi^2$  and  $p$ -values are derived  
277 from a multigroup comparison.

278 **Fig 10. Patient survival by KDPI quartiles.**

279 Kaplan–Meier curves stratified by KDPI quartiles (Q1–Q4). Log-rank  $\chi^2$  and  $p$ -values are derived  
280 from a multigroup comparison.

281

282 **Multivariable Cox Proportional Hazards Models**

283 Multivariable Cox regression models identified distinct risk factor profiles for graft failure and  
284 patient mortality while controlling for comprehensive donor, recipient, and transplant  
285 characteristics (*Table 4-5*). Immunosuppressive regimens demonstrated significant associations  
286 with both outcomes, though with varying effect magnitudes across therapeutic classes. For  
287 maintenance immunosuppression, CNI + MMF regimens provided substantial protection against  
288 both graft failure (HR 0.72, 95% CI 0.70-0.74,  $p < 0.001$ ) and patient mortality (HR 0.78, 95% CI  
289 0.76-0.81,  $p < 0.001$ ). The addition of steroids to this backbone in triple-therapy regimens (CNI +  
290 MMF + steroids) also conferred significant protection, though with more modest effect sizes (graft  
291 failure HR 0.84, 95% CI 0.82-0.87; patient mortality HR 0.90, 95% CI 0.88-0.93; both  $p < 0.001$ ).

292 Among induction therapies, ATG demonstrated protective effects for both graft failure (HR 0.93,  
293 95% CI 0.89-0.97,  $p = 0.002$ ) and patient mortality (HR 0.93, 95% CI 0.89-0.98,  $p = 0.004$ ). IL-  
294 2R showed neutral association with graft failure (HR 1.04, 95% CI 0.99-1.09,  $p = 0.102$ ) and  
295 patient mortality (HR 0.95, 95% CI 0.91-1.00,  $p = 0.070$ ). Alemtuzumab demonstrated neutral  
296 effects for both outcomes (graft failure HR 0.97, 95% CI 0.92-1.02,  $p = 0.234$ ; patient mortality  
297 HR 0.95, 95% CI 0.90-1.01,  $p = 0.103$ ). Combination therapy with ATG + IL-2R was associated  
298 with increased hazard for graft failure (HR 1.09, 95% CI 1.03-1.16,  $p = 0.002$ ) but showed neutral  
299 association with patient mortality (HR 1.02, 95% CI 0.96-1.09,  $p = 0.470$ ).

300 Recipient diabetes was among the strongest predictors of adverse outcomes, increasing the  
301 risk of graft failure by 63 % (HR 1.63, 95 % CI 1.60–1.66,  $p < 0.001$ ) and patient mortality by  
302 67 % (HR 1.67, 95 % CI 1.63–1.70,  $p < 0.001$ ). Older recipient age was also independently  
303 associated with higher hazards for both graft failure (HR 1.04 per year, 95 % CI 1.04–1.04) and  
304 mortality (HR 1.05 per year, 95 % CI 1.05–1.05; both  $p < 0.001$ ). Being on dialysis at the time of  
305 transplantation conferred approximately 1.5-fold greater risk for both outcomes. Both  
306 retransplantation (graft HR 1.27; mortality HR 1.22) and male recipient (graft HR 1.15; mortality  
307 HR 1.19) showed increased risks for each outcome. By contrast, recipients of Asian and Hispanic  
308 ancestry experienced significantly lower hazards for both graft loss and death compared with  
309 White recipients (graft: HR 0.61 and 0.74; patient: HR 0.64 and 0.76, all  $p < 0.001$ ). Black  
310 recipients showed modest protection for graft failure (HR 0.97, 95% CI 0.95-0.99,  $p = 0.010$ ) but  
311 more substantial protection for mortality (HR 0.92, 95% CI 0.90-0.94,  $p < 0.001$ ).

312 Among donor factors, a higher KDPI was consistently associated with 68 % higher risk of  
313 graft failure (HR 1.68, 95% CI 1.57–1.81) and 37% higher risk of mortality (HR 1.37, 95% CI  
314 1.26–1.48; both  $p < 0.001$ ). Older donor age demonstrated a small but significant association with

315 graft failure (HR 1.00 per year, 95% CI 1.00–1.00,  $p < 0.001$ ) and patient mortality (HR 1.00 per  
316 year, 95% CI 1.00–1.00,  $p < 0.001$ ). Higher donor serum creatinine was weakly but significantly  
317 associated with greater risk of graft failure (HR 0.99 per mg/dL, 95% CI 0.98–1.00,  $p = 0.027$ ) and  
318 neutral association with mortality (HR 1.00, 95% CI 0.99–1.01,  $p = 0.420$ ). Donor diabetes  
319 conferred a higher risk of both graft failure and patient mortality (graft HR 1.05,  $p = 0.002$ ; patient  
320 HR 1.05,  $p = 0.013$ ). Black donor race modestly increased hazards for both outcomes (graft failure  
321 HR 1.08, 95% CI 1.05–1.11; mortality HR 1.05, 95% CI 1.02–1.09), whereas Hispanic donor  
322 ethnicity conferred a small protective effect for graft failure (HR 0.96, 95% CI 0.94–0.99,  $p =$   
323 0.006).

324 Among transplant-related factors, prolonged cold ischemia time showed a small but  
325 statistically meaningful increase in risk for both graft failure and patient death (HR  $\approx 1.00$  per  
326 hour,  $p < 0.001$ ), reflecting cumulative ischemic injury over time. Interestingly, after adjustment,  
327 DCD status was associated with slightly lower hazards for graft loss (HR 0.91, 95% CI 0.89–0.93,  
328  $p < 0.001$ ) and neutral association with patient mortality (HR 1.01, 95% CI 0.98–1.04,  $p = 0.488$ ).  
329 This reversal from the unadjusted Kaplan–Meier results reflects adequate model control for  
330 confounding donor and recipient variables. As shown in **Fig 11**, the pattern of risk differs between  
331 graft failure and patient mortality, with several predictors demonstrating distinct effect sizes for  
332 the two endpoints.

333

334 **Table 4. Multivariable Cox proportional hazards model for graft failure**

Covariate	HR (95% CI)	P-value
<b>Immunosuppression</b>		
CNI + MMF (no steroids)	0.72 (0.70–0.74)	<0.001
CNI + MMF + steroids	0.84 (0.82–0.87)	<0.001
ATG induction	0.93 (0.89–0.97)	0.002
IL-2R induction	1.04 (0.99–1.09)	0.101

IL-2R + ATG induction	1.09 (1.03–1.16)	0.002
Alemtuzumab induction	0.97 (0.92–1.02)	0.234
<b>Recipient factors</b>		
Age (per year)	1.04 (1.04–1.04)	<0.001
Male	1.15 (1.13–1.18)	<0.001
Black race	0.97 (0.95–0.99)	0.010
White race	Reference	–
Hispanic ethnicity	0.74 (0.72–0.76)	<0.001
Asian race	0.61 (0.59–0.64)	<0.001
Diabetes	1.63 (1.60–1.66)	<0.001
Retransplant	1.27 (1.24–1.31)	<0.001
On dialysis at transplant	1.57 (1.53–1.61)	<0.001
Serum creatinine at transplant (mg/dL)	0.97 (0.97–0.97)	<0.001
BMI (per kg/m <sup>2</sup> )	1.00 (1.00–1.01)	<0.001
cPRA (per %)	1.00 (1.00–1.00)	<0.001
Wait time (per day)	1.00 (1.00–1.00)	<0.001
<b>Donor factors</b>		
Age (per year)	1.00 (1.00–1.00)	<0.001
Male	1.00 (0.98–1.01)	0.633
White race	Reference	–
Black race	1.08 (1.05–1.11)	<0.001
Hispanic ethnicity	0.96 (0.94–0.99)	0.006
Asian race	1.01 (0.95–1.06)	0.829
Diabetes	1.05 (1.02–1.09)	0.002
Hypertension	1.00 (0.98–1.03)	0.726
BMI (per kg/m <sup>2</sup> )	1.00 (1.00–1.00)	0.010
Serum creatinine (mg/dL)	0.99 (0.98–1.00)	0.027
ECD donor	1.01 (0.98–1.04)	0.478
DCD donor	0.91 (0.89–0.93)	<0.001
KDPI (per 10 units)	1.68 (1.57–1.81)	<0.001
<b>Transplant factors</b>		
Cold ischemia time (per hour)	1.00 (1.00–1.00)	<0.001
Local allocation	Reference	–
Regional allocation	1.00 (0.97–1.03)	0.968
National allocation	1.00 (0.98–1.03)	0.713

335 Abbreviations: ATG = anti-thymocyte globulin; IL-2R = interleukin-2 receptor; CNI = calcineurin inhibitor; MMF =  
 336 mycophenolate mofetil; ECD = expanded criteria donor; DCD = donation after circulatory death; KDPI = Kidney  
 337 Donor Profile Index; BMI = body mass index; cPRA = calculated panel reactive antibody. Hazard ratios adjusted for  
 338 donor, recipient, and transplant factors.  
 339

340 **Table 5. Multivariable Cox proportional hazards model for patient mortality.**

Covariate	HR (95% CI)	P-value
<b>Immunosuppression</b>		
CNI + MMF (no steroids)	0.78 (0.76–0.81)	<0.001
CNI + MMF + steroids	0.90 (0.88–0.93)	<0.001
ATG induction	0.93 (0.89–0.98)	0.004
IL-2R induction	0.95 (0.91–1.00)	0.070
IL-2R + ATG	1.02 (0.96–1.09)	0.470
Alemtuzumab induction	0.95 (0.90–1.01)	0.103
<b>Recipient factors</b>		
Age (per year)	1.05 (1.05–1.05)	<0.001
Male	1.19 (1.17–1.22)	<0.001
Black race	0.92 (0.90–0.94)	<0.001
White race	Reference	–
Hispanic ethnicity	0.76 (0.74–0.78)	<0.001
Asian race	0.64 (0.61–0.66)	<0.001
Diabetes	1.67 (1.63–1.70)	<0.001
Retransplant	1.22 (1.18–1.26)	<0.001
On dialysis at transplant	1.54 (1.50–1.58)	<0.001
Serum creatinine at transplant (mg/dL)	0.97 (0.96–0.97)	<0.001
BMI (per kg/m <sup>2</sup> )	1.00 (1.00–1.01)	<0.001
cPRA (per %)	1.00 (1.00–1.00)	<0.001
Wait time (per day)	1.00 (1.00–1.00)	<0.001
<b>Donor factors</b>		
Age (per year)	1.00 (1.00–1.00)	<0.001
Male	0.99 (0.97–1.01)	0.563
White race	Reference	–
Black race	1.05 (1.02–1.09)	0.006
Hispanic ethnicity	0.98 (0.95–1.01)	0.111
Asian race	1.01 (0.95–1.08)	0.722
Diabetes	1.05 (1.01–1.09)	0.013
Hypertension	1.04 (1.01–1.06)	0.004
BMI (per kg/m <sup>2</sup> )	1.00 (1.00–1.00)	0.421
Serum creatinine (mg/dL)	1.00 (0.99–1.01)	0.420
ECD donor	0.99 (0.96–1.03)	0.740
DCD donor	1.01 (0.98–1.04)	0.488
KDPI (per 10 units)	1.37 (1.26–1.48)	<0.001
<b>Transplant factors</b>		
Cold ischemia time (per hour)	1.00 (1.00–1.00)	<0.001
Local allocation	Reference	–
Regional allocation	1.03 (1.00–1.06)	0.037
National allocation	1.02 (0.99–1.04)	0.261

341 Abbreviations: ATG = anti-thymocyte globulin; IL-2R = interleukin-2 receptor; CNI = calcineurin inhibitor; MMF =  
342 mycophenolate mofetil; ECD = expanded criteria donor; DCD = donation after circulatory death; KDPI = Kidney  
343 Donor Profile Index; BMI = body mass index; cPRA = calculated panel reactive antibody. Hazard ratios adjusted for  
344 donor, recipient, and transplant factors.  
345

### 346 **Fig 11. Comparative Forest plot: Graft Failure Vs Patient Mortality.**

347 Forest plot depicting adjusted hazard ratios (HRs) and 95% confidence intervals (CIs) for major  
348 predictors of graft failure. Values to the left of the vertical line (HR = 1) indicate lower risk and  
349 those to the right indicate higher risk. Model adjusted for donor, recipient, and transplant factors.

350

### 351 **Prediction Performance**

352 The predictive performance of the classical Cox PH model was benchmarked against four ML-  
353 based survival algorithms using an independent test cohort (**Table 6**). For graft failure, the classical  
354 Cox PH model achieved a C-index of 0.687 and mean tdAUC of 0.706, with horizon-specific  
355 AUCs of 0.692, 0.688, 0.699, and 0.746 at 1, 3, 5, and 10 years, respectively.

356 Among the ML survival models, XGB-Cox demonstrated the best overall discrimination  
357 (C-index = 0.689, mean tdAUC = 0.710), followed closely by CoxNet (C-index = 0.686, mean  
358 tdAUC = 0.707) and SVM (C-index = 0.687, mean tdAUC = 0.705). The RSF yielded slightly  
359 lower but comparable performance (C-index = 0.680, mean tdAUC = 0.703).

360 For patient mortality, all models achieved higher concordance than in graft prediction, with  
361 C-index values above 0.70. XGB-Cox again outperformed other models (C-index: 0.705, mean  
362 tdAUC: 0.727), followed closely by the Cox PH (C-index: 0.703, mean tdAUC: 0.726) and CoxNet  
363 (C-index: 0.703, mean tdAUC: 0.725). The SVM (C-index: 0.703, mean tdAUC: 0.724) and RSF  
364 (C-index: 0.700, mean tdAUC: 0.723) models also showed stable predictive accuracy across time  
365 horizons.

366

367 **Table 6. Model performance comparison for graft failure and patient mortality**

Model	C-index	tdAUC @ 1 yr	tdAUC @ 3 yr	tdAUC @ 5 yr	tdAUC @ 10 yr	Mean tdAUC
<b>Graft Failure</b>						
XGB-Cox	0.689	0.695	0.691	0.703	0.749	<b>0.710</b>
CoxNet	0.686	0.691	0.688	0.699	0.749	0.707
Cox PH (Classical)	0.687	0.692	0.688	0.699	0.746	0.706
SVM	0.687	0.696	0.690	0.698	0.736	0.705
RSF	0.680	0.685	0.682	0.695	0.750	0.703
<b>Patient Mortality</b>						
XGB-Cox	0.705	0.708	0.708	0.721	0.771	<b>0.727</b>
Cox PH (Classical)	0.703	0.707	0.706	0.719	0.770	0.726
CoxNet	0.703	0.706	0.705	0.719	0.769	0.725
SVM	0.703	0.709	0.707	0.718	0.763	0.724
RSF	0.700	0.703	0.702	0.717	0.768	0.723

368 Abbreviations: C-index = concordance index; tdAUC = time-dependent area under the curve; Cox PH = Cox  
369 proportional hazards model; RSF = Random Survival Forest; SVM = Support Vector Machine; XGB-Cox =  
370 Extreme Gradient Boosting optimized with the Cox partial likelihood.; CoxNet = L1-penalized Cox regression.

371

## 372 **Discussion**

373 In this large, contemporary national cohort of deceased-donor kidney transplant recipients,  
374 immunosuppressive regimen selection emerged as a critical determinant of long-term graft and  
375 patient survival. Standard maintenance therapy comprising a CNI and MMF, with or without  
376 steroids, was consistently associated with lower risks of graft failure and patient mortality,  
377 confirming these as the predominant maintenance strategies associated with optimal long-term  
378 outcomes in contemporary practice. The substantial protective effects of CNI + MMF regimens  
379 (graft failure HR 0.72, patient mortality HR 0.78) align with established evidence supporting CNI  
380 and MMF based combinations as the cornerstone of contemporary maintenance  
381 immunosuppression, which balance effective rejection prevention with manageable toxicity  
382 profiles [27, 28]. The observed protective effect of CNI+MMF+steroid triple therapy (graft HR  
383 0.84; mortality HR 0.90) is consistent with clinical trials and registry studies that support the use

384 of steroid-containing regimens, particularly in the early post-transplant period for  
385 immunologically high-risk recipients [12, 29-31].

386 Among induction strategies, ATG only induction demonstrated consistent protective  
387 effects across both outcomes (HR 0.93), supporting its established role in high-risk or sensitized  
388 recipients where potent T-cell depletion is warranted [10,11,32]. In contrast, IL-2R antagonists  
389 showed neutral associations with both graft failure and patient mortality, reflecting their  
390 appropriate application in lower-risk populations where safety profile may outweigh efficacy  
391 considerations [8,33,34]. Similarly, Alemtuzumab demonstrated neutral effects, consistent with  
392 prior reports indicating that its benefits may be limited to specific induction scenarios (8). Notably,  
393 combination therapy with ATG + IL-2R antagonists was associated with increased hazard for graft  
394 loss but not for patient death, suggesting potential immunologic redundancy or excessive  
395 immunosuppression from dual antibody exposure.

396 Recipient characteristics also exerted profound influence on long-term outcomes. Diabetes  
397 mellitus was the most potent adverse predictor, increasing the hazards of graft loss and mortality  
398 by more than 60%. This finding aligns with prior studies linking diabetic nephropathy and systemic  
399 metabolic inflammation to accelerated graft loss [18,35,36]. Older age, dialysis dependence, and  
400 retransplantation were similarly associated with increased hazards, reflecting cumulative vascular  
401 and immunologic injury in these populations [37,38]. In contrast, recipients of Asian and Hispanic  
402 ancestry demonstrated superior adjusted survival for both graft and patient outcomes relative to  
403 White recipients. This observation, replicated in prior registry analyses, may reflect complex  
404 interactions between pharmacogenomics, socioeconomic access, and immunologic adaptation [39].  
405 The finding of modestly reduced mortality among Black recipients requires careful interpretation

406 within the context of documented higher immunologic graft loss in this population, suggesting  
407 influences from strong selection factors and competing risks.

408 Among donor characteristics, a higher KDPI was associated with substantially elevated  
409 risk of graft failure and mortality, reaffirming the prognostic utility of this composite measure in  
410 organ allocation and risk counseling [40,41]. Donor age showed a statistically significant but  
411 clinically small association with both graft failure and mortality (HR  $\approx$  1.00 per year), consistent  
412 with donor age being a primary, though not exclusive, component of the KDPI score [40,42].  
413 Donor terminal serum creatinine demonstrated a statistically borderline, inverse association with  
414 graft failure (HR 0.99, 95% CI 0.98–1.00,  $p = 0.027$ ) and a neutral association with patient  
415 mortality (HR 1.00,  $p = 0.420$ ). Although the graft-related association reached statistical  
416 significance, the extremely small effect size suggests this finding more likely reflects clinical  
417 allocation patterns, such as younger DCD donors with transient creatinine elevation rather than a  
418 physiologic benefit.

419 Donor diabetes was associated with modestly increased hazards for both outcomes (HR  
420 1.05 each), a finding that is consistent with the established microvascular pathology observed in  
421 diabetic donor kidneys [43,44]. The modest effect size likely reflects the heterogeneity of diabetic  
422 donor organs; while some studies show excellent outcomes when diabetic donor kidneys are  
423 carefully selected [43], others document poorer survival when diabetes is long-standing or  
424 accompanied by marked histopathologic injury [44]. The present findings therefore reflect this  
425 heterogeneity, indicating a small population-level risk rather than a uniformly detrimental effect.  
426 Black donor race was also associated with slightly higher hazards of graft loss and mortality (graft  
427 HR 1.08; mortality HR 1.05). In contrast, Hispanic donor ethnicity conferred a small protective  
428 effect for graft failure (HR 0.96, 95% CI 0.94–0.99,  $p = 0.006$ ). The biologic and

429 sociodemographic underpinnings of these donor race-based associations warrant further  
430 investigation.

431 Transplant-specific factors, particularly prolonged cold ischemia time, were also  
432 associated with marginally increased hazards for both endpoints (HR  $\approx$  1.00 per hour,  $p < 0.001$ ),  
433 underscoring the ongoing relevance of logistical efficiency and rapid organ revascularization in  
434 optimizing graft preservation [45,46]. Notably, after adjustment, kidneys from DCD donors  
435 demonstrated slightly lower hazards for graft loss (HR 0.91, 95% CI 0.89–0.93) and a neutral  
436 association with patient mortality (HR 1.01, 95% CI 0.98–1.04). This contrasts with unadjusted  
437 Kaplan–Meier findings and highlights the role of confounding factors, particularly donor age,  
438 ischemia times, and recipient selection in shaping observed outcomes.

439 Beyond these clinical associations, the present analysis introduces a novel dual-framework  
440 modeling approach that integrates classical Cox PH modeling with a suite of ML survival models.  
441 Prior transplant survival studies have typically employed either traditional Cox PH regression  
442 [17,19] or, more recently, small-scale ML models limited to single outcomes or older datasets  
443 [23,25,26,47]. To our knowledge, few if any national analyses have concurrently applied multiple  
444 ML survival algorithms including, XGB-Cox, CoxNet, SVM, and RSF alongside Cox model in a  
445 dataset exceeding 228,000 recipients and extending to 2024. This dual analytical framework  
446 provides both interpretability and predictive benchmarking, addressing the interpretability  
447 accuracy tradeoff that often limits ML adoption in clinical transplant research [20–22].

448 Across both outcomes, ML survival models achieved performance metrics comparable to  
449 or slightly exceeding the classical Cox model (C-index  $\approx$  0.69–0.71; mean tAUC  $\approx$  0.71–0.73).  
450 While the marginal improvement in discrimination was modest, these results represent an  
451 improvement in predictive accuracy over earlier national registry analyses, where traditional Cox

452 and tree-based ML approaches typically achieved C-indices of 0.63–0.68 [48,49]. Recent deep  
453 learning applications to Scientific Registry of Transplant Recipients (SRTR) data have similarly  
454 shown only modest improvements compared to their own baseline Cox models, with reported C-  
455 indices of 0.65–0.66 [50]. International efforts such as the Australian Registry study by [51]  
456 reported comparable performance for Cox and RSF models (C-index  $\approx$ 0.67), reinforcing the  
457 observation that ML survival algorithms frequently offer incremental rather than transformative  
458 gains when applied to clinical registry data. The enhanced model performance observed in the  
459 present analysis likely reflects both methodological refinement and the use of a temporally  
460 expansive dataset extending to 2024, which captures contemporary shifts in donor utilization,  
461 immunosuppressive practice, and organ allocation. Collectively, the results affirm the continued  
462 value of Cox regression for clinical inference while demonstrating the feasibility and robustness  
463 of ML survival models as complementary tools for risk stratification in modern transplant research.

464

### 465 **Strengths and Limitations**

466 This study offers several important strengths. It leverages a large, contemporary national cohort  
467 spanning 2000–2024, providing exceptional statistical power and broad generalizability across  
468 diverse transplant populations. The dual outcome analysis examining both death-censored graft  
469 failure and patient mortality provides comprehensive insights into transplant success, allowing a  
470 more complete characterization of long-term transplant outcomes than studies limited to a single  
471 metric. A major methodological strength is the use of a dual analytical framework that integrates  
472 classical Cox PH modeling with multiple ML survival algorithms. This approach enables a direct  
473 comparison of inference-driven and data-driven methods, addressing a frequent gap in transplant  
474 analytics where interpretability and predictive performance are rarely examined in parallel.

475           These findings should, however, be interpreted in the context of certain limitations. The  
476 observational nature of this retrospective analysis limits causal interpretation, and the potential for  
477 residual confounding persists due to unmeasured variables including medication compliance,  
478 immunosuppressive drug levels, detailed biopsy results, and granular center-specific practice  
479 patterns. Furthermore, immunosuppressive therapy was assessed based on the regimen recorded  
480 at the time of transplantation, which may not reflect subsequent dose adjustments, medication  
481 switches, or discontinuations over the follow-up period. Finally, while the study captures long-  
482 term graft and patient survival with high completeness, it does not include other clinically relevant  
483 outcomes such as rejection episodes, patient-reported quality of life or specific adverse events  
484 related to immunosuppression.

485

## 486 **Conclusion**

487 In this large national analysis of deceased-donor kidney transplant recipients, maintenance  
488 regimens incorporating a CNI and MMF either as dual therapy or as part of a steroid-containing  
489 triple regimen, were consistently associated with superior long-term graft and patient survival  
490 compared with alternative combinations, reinforcing their status as the foundation of modern  
491 immunosuppressive therapy. T-cell-depleting induction with ATG demonstrated protective  
492 associations for both endpoints, whereas IL-2R antagonists and Alemtuzumab showed neutral  
493 effects. These results highlight the dominant influence of maintenance immunosuppression on  
494 long-term graft survival and emphasize the need for personalized induction strategies.

495           Beyond identifying clinical determinants of long-term outcomes, this study makes several  
496 methodological contributions. The comparative modeling framework revealed that the traditional  
497 Cox PH model achieved discrimination comparable to ML survival models, while providing

498 superior clinical interpretability through HR estimation. This supports the continued primacy of  
499 Cox models for clinical inference in transplantation research, with machine learning serving  
500 complementary roles for specific prediction tasks requiring complex feature interactions.

501         This study advances kidney transplantation analytics through three principal contributions.  
502 First, it provides one of the most extensive and temporally comprehensive national evaluations of  
503 immunosuppressive therapy to date. Second, it introduces a comparative modeling paradigm that  
504 bridges interpretable hazard-based inference with predictive ML approaches, offering a practical  
505 template for future transplant analytics. Third, it highlights the translational potential of ML  
506 survival frameworks to support individualized risk stratification, particularly as transplant  
507 registries evolve to include richer clinical and biomarker data.

508         Future research should build upon these foundations by incorporating time-varying  
509 immunosuppressive exposures, therapeutic drug monitoring, center effects, and dynamic clinical  
510 variables. Integration of molecular, genomic, and digital biomarkers may ultimately enable the  
511 development of precision immunosuppressive strategies and refined prognostic tools that support  
512 personalized care throughout the post-transplant lifespan.

513

## 514 **Author Contributions**

515 Conceptualization: Kunle Timothy Apanisile, Naoru Koizumi  
516 Methodology: Kunle Timothy Apanisile, Hadi El-Amine, Meng-Hao Li, Naoru Koizumi  
517 Formal analysis: Kunle Timothy Apanisile, Meng-Hao Li  
518 Writing – original draft: Kunle Timothy Apanisile  
519 Writing – review & editing: Naoru Koizumi, Hadi El-Amine  
520 Supervision: Naoru Koizumi, Hadi El-Amine, Meng-Hao Li

## 521 **Funding**

522 This study was partially funded by the National Science  
523 Foundation (NSFeIIS/ENG: SCH:/2123683).

524

## 525 **Competing Interests**

526 The authors declare that they have no competing interests.

527

## 528 **Ethics Statement**

529 This study used de-identified, publicly available registry data from the United Network for  
530 Organ Sharing (UNOS). Therefore, institutional review board approval and informed consent  
531 were not required.

532

## 533 **Data Availability**

534 All relevant data are available from the United Network for Organ Sharing (UNOS) database,  
535 subject to data access agreements.

536

## 537 **Acknowledgments**

538 The authors acknowledge that this work originated from the doctoral research of Kunle Apanisile  
539 under the supervision of Dr. Naoru Koizumi at George Mason University. The study was  
540 independently developed and refined by the authors for publication.

541

542

## 543 References

- 544 1. Abecassis M, Bartlett ST, Collins AJ, Davis CL, Delmonico FL, Friedewald JJ, et al. Kidney  
545 transplantation as primary therapy for end-stage renal disease: a National Kidney  
546 Foundation/Kidney Disease Outcomes Quality Initiative (NKF/KDOQITM) conference.  
547 Clin J Am Soc Nephrol CJASN. 2008 Mar;3(2):471–80.
- 548 2. Baid-Agrawal S, Frei UA. Living donor renal transplantation: recent developments and  
549 perspectives. Nat Clin Pract Nephrol [Internet]. 2007 Jan [cited 2025 Sept 26];3(1):31–  
550 41. Available from: <https://www.nature.com/articles/ncpneph0383>
- 551 3. Halloran PF. Immunosuppressive Drugs for Kidney Transplantation. N Engl J Med  
552 [Internet]. 2004 Dec 23 [cited 2025 Sept 27];351(26):2715–29. Available from:  
553 <https://www.nejm.org/doi/full/10.1056/NEJMra033540>
- 554 4. Loupy A, Lefaucheur C. Antibody-Mediated Rejection of Solid-Organ Allografts. N Engl J  
555 Med [Internet]. 2018 Sept 20 [cited 2025 Sept 27];379(12):1150–60. Available from:  
556 <https://www.nejm.org/doi/full/10.1056/NEJMra1802677>
- 557 5. Matsuda Y, Watanabe T, Li XK. Approaches for Controlling Antibody-Mediated Allograft  
558 Rejection Through Targeting B Cells. Front Immunol [Internet]. 2021 July 1 [cited 2025  
559 Sept 27];12. Available from:  
560 <https://www.frontiersin.org/journals/immunology/articles/10.3389/fimmu.2021.682334/full>  
561 [4/full](https://www.frontiersin.org/journals/immunology/articles/10.3389/fimmu.2021.682334/full)
- 562 6. Ingulli E. Mechanism of cellular rejection in transplantation. Pediatr Nephrol [Internet].  
563 2010 Jan [cited 2025 Sept 27];25(1):61–74. Available from:  
564 <https://link.springer.com/10.1007/s00467-008-1020-x>
- 565 7. Denton MD, Magee CC, Sayegh MH. Immunosuppressive strategies in transplantation.  
566 The Lancet [Internet]. 1999 Mar [cited 2025 Sept 27];353(9158):1083–91. Available  
567 from: <https://linkinghub.elsevier.com/retrieve/pii/S0140673698074935>
- 568 8. Gabardi S, Martin ST, Roberts KL, Grafals M. Induction immunosuppressive therapies in  
569 renal transplantation. Am J Health Syst Pharm [Internet]. 2011 Feb 1 [cited 2025 Sept  
570 26];68(3):211–8. Available from:  
571 <https://academic.oup.com/ajhp/article/68/3/211/5129654>
- 572 9. Kahan BD. Individuality: the barrier to optimal immunosuppression. Nat Rev Immunol  
573 [Internet]. 2003 Oct [cited 2025 Sept 26];3(10):831–8. Available from:  
574 <https://www.nature.com/articles/nri1204>
- 575 10. Neuwirt H, Rudnicki M, Schratzberger P, Pirklbauer M, Kronbichler A, Mayer G.  
576 Immunosuppression after renal transplantation. Memo - Mag Eur Med Oncol [Internet].  
577 2019 Sept 1 [cited 2025 Sept 26];12(3):216–21. Available from:  
578 <https://doi.org/10.1007/s12254-019-0507-4>

- 579 11. Hellemans R, Bosmans JL, Abramowicz D. Induction Therapy for Kidney Transplant  
580 Recipients: Do We Still Need Anti-IL2 Receptor Monoclonal Antibodies? Am J Transplant  
581 [Internet]. 2017 Jan 1 [cited 2025 Sept 26];17(1):22–7. Available from:  
582 <https://www.sciencedirect.com/science/article/pii/S1600613522248059>
- 583 12. Kasiske BL, Zeier MG, Chapman JR, Craig JC, Ekberg H, Garvey CA, et al. KDIGO clinical  
584 practice guideline for the care of kidney transplant recipients: a summary. Kidney Int  
585 [Internet]. 2010 Feb 2 [cited 2025 Sept 26];77(4):299–311. Available from:  
586 <https://www.sciencedirect.com/science/article/pii/S0085253815542439>
- 587 13. Ciancio G, Burke GW, Suzart K, Roth D, Kupin W, Rosen A, et al. Daclizumab induction,  
588 tacrolimus, mycophenolate mofetil and steroids as an immunosuppression regimen for  
589 primary kidney transplant recipients1. Transplantation [Internet]. 2002 Apr 15 [cited  
590 2025 Sept 26];73(7):1100. Available from:  
591 [https://journals.lww.com/transplantjournal/abstract/2002/04150/daclizumab\\_inductio  
592 n,\\_tacrolimus,\\_mycophenolate.15.aspx](https://journals.lww.com/transplantjournal/abstract/2002/04150/daclizumab_induction,_tacrolimus,_mycophenolate.15.aspx)
- 593 14. Hariharan S, Johnson CP, Bresnahan BA, Taranto SE, McIntosh MJ, Stablein D. Improved  
594 Graft Survival after Renal Transplantation in the United States, 1988 to 1996. N Engl J  
595 Med [Internet]. 2000 Mar 2 [cited 2025 Sept 26];342(9):605–12. Available from:  
596 <https://www.nejm.org/doi/full/10.1056/NEJM200003023420901>
- 597 15. Pirsch JD, Miller J, Deierhoi MH, Vincenti F, Filo RS. A COMPARISON OF TACROLIMUS  
598 (FK506) AND CYCLOSPORINE FOR IMMUNOSUPPRESSION AFTER CADAVERIC RENAL  
599 TRANSPLANTATION1. Transplantation [Internet]. 1997 Apr 15 [cited 2025 Sept  
600 26];63(7):977. Available from:  
601 [https://journals.lww.com/transplantjournal/abstract/1997/04150/a\\_comparison\\_of\\_tac  
602 crolimus\\_fk506\\_and.13.aspx](https://journals.lww.com/transplantjournal/abstract/1997/04150/a_comparison_of_tacrolimus_fk506_and.13.aspx)
- 603 16. Ciancio G, Burke GW, Gaynor JJ, Mattiazzi A, Roth D, Kupin W, et al. A randomized long-  
604 term trial of tacrolimus/sirolimus versus tacrolimus/mycophenolate mofetil versus  
605 cyclosporine (NEORAL)/sirolimus in renal transplantation. Ii. Survival, function, and  
606 protocol compliance at 1 year. Transplantation [Internet]. 2004 Jan 27 [cited 2025 Sept  
607 26];77(2):252. Available from:  
608 [https://journals.lww.com/transplantjournal/abstract/2004/01270/a\\_randomized\\_long  
609 term\\_trial\\_of.16.aspx](https://journals.lww.com/transplantjournal/abstract/2004/01270/a_randomized_long_term_trial_of.16.aspx)
- 610 17. Heldal K, Hartmann A, Leivestad T, Svendsen MV, Foss A, Lien B, et al. Clinical Outcomes  
611 in Elderly Kidney Transplant Recipients are Related to Acute Rejection Episodes Rather  
612 Than Pretransplant Comorbidity. Transplantation [Internet]. 2009 Apr 15 [cited 2025  
613 Sept 26];87(7):1045. Available from:  
614 [https://journals.lww.com/transplantjournal/abstract/2009/04150/clinical\\_outcomes\\_in  
615 \\_elderly\\_kidney\\_transplant.16.aspx](https://journals.lww.com/transplantjournal/abstract/2009/04150/clinical_outcomes_in_elderly_kidney_transplant.16.aspx)

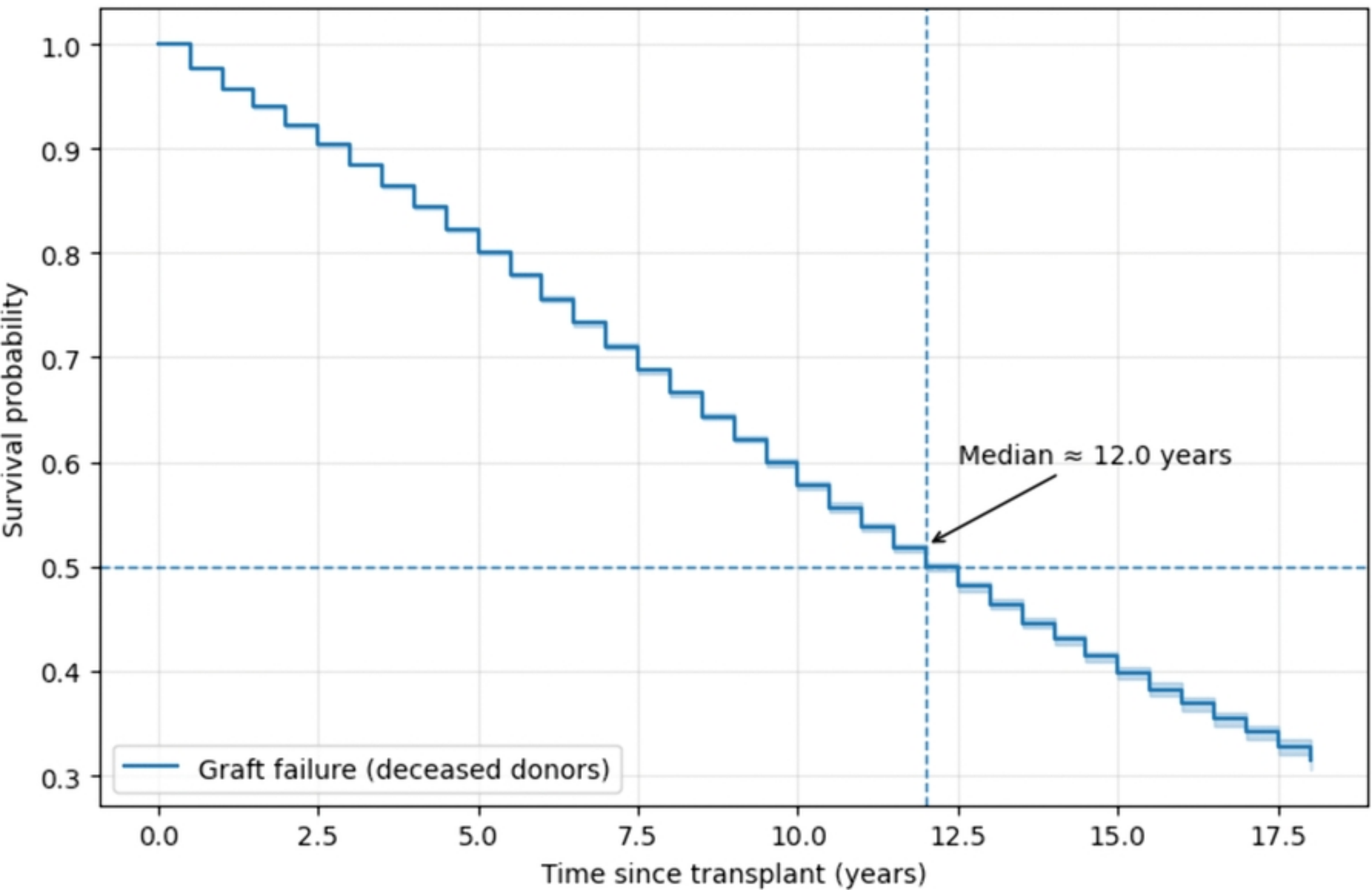
- 616 18. Kasiske BL, Snyder JJ, Gilbertson D, Matas AJ. Diabetes Mellitus after Kidney  
617 Transplantation in the United States. *Am J Transplant* [Internet]. 2003 Feb 1 [cited 2025  
618 Sept 27];3(2):178–85. Available from:  
619 <https://www.sciencedirect.com/science/article/pii/S1600613522077309>
- 620 19. Van Walraven C, Austin PC, Knoll G. Predicting potential survival benefit of renal  
621 transplantation in patients with chronic kidney disease. *Can Med Assoc J* [Internet].  
622 2010 Apr 20 [cited 2025 Sept 26];182(7):666–72. Available from:  
623 <http://www.cmaj.ca/cgi/doi/10.1503/cmaj.091661>
- 624 20. Christodoulou E, Ma J, Collins GS, Steyerberg EW, Verbakel JY, Van Calster B. A  
625 systematic review shows no performance benefit of machine learning over logistic  
626 regression for clinical prediction models. *J Clin Epidemiol* [Internet]. 2019 June 1 [cited  
627 2025 Sept 26];110:12–22. Available from:  
628 <https://www.sciencedirect.com/science/article/pii/S0895435618310813>
- 629 21. Dhiman P, Ma J, Andaur Navarro CL, Speich B, Bullock G, Damen JAA, et al. Risk of bias of  
630 prognostic models developed using machine learning: a systematic review in oncology.  
631 *Diagn Progn Res* [Internet]. 2022 July 7 [cited 2025 Sept 26];6(1):13. Available from:  
632 <https://doi.org/10.1186/s41512-022-00126-w>
- 633 22. van der Ploeg T, Austin PC, Steyerberg EW. Modern modelling techniques are data  
634 hungry: a simulation study for predicting dichotomous endpoints. *BMC Med Res*  
635 *Methodol* [Internet]. 2014 Dec 22 [cited 2025 Sept 26];14(1):137. Available from:  
636 <https://doi.org/10.1186/1471-2288-14-137>
- 637 23. Brown TS, Elster EA, Stevens K, Graybill JC, Gillern S, Phinney S, et al. Bayesian Modeling  
638 of Pretransplant Variables Accurately Predicts Kidney Graft Survival. *Am J Nephrol*  
639 [Internet]. 2012 [cited 2025 Sept 26];36(6):561–9. Available from:  
640 <https://karger.com/article/doi/10.1159/000345552>
- 641 24. Decruyenaere A, Decruyenaere P, Peeters P, Vermassen F, Dhaene T, Couckuyt I.  
642 Prediction of delayed graft function after kidney transplantation: comparison between  
643 logistic regression and machine learning methods. *BMC Med Inform Decis Mak*  
644 [Internet]. 2015 Oct 14 [cited 2025 Sept 26];15(1):83. Available from:  
645 <https://doi.org/10.1186/s12911-015-0206-y>
- 646 25. Topuz K, Zengul FD, Dag A, Almehti A, Yildirim MB. Predicting graft survival among  
647 kidney transplant recipients: A Bayesian decision support model. *Decis Support Syst*  
648 [Internet]. 2018 Feb 1 [cited 2025 Sept 26];106:97–109. Available from:  
649 <https://www.sciencedirect.com/science/article/pii/S0167923617302233>
- 650 26. Yoo KD, Noh J, Lee H, Kim DK, Lim CS, Kim YH, et al. A Machine Learning Approach Using  
651 Survival Statistics to Predict Graft Survival in Kidney Transplant Recipients: A Multicenter  
652 Cohort Study. *Sci Rep* [Internet]. 2017 Aug 21 [cited 2025 Sept 30];7(1):8904. Available  
653 from: <https://www.nature.com/articles/s41598-017-08008-8>

- 654 27. Ekberg H, Tedesco-Silva H, Demirbas A, Vítko Š, Nashan B, Gürkan A, et al. Reduced  
655 Exposure to Calcineurin Inhibitors in Renal Transplantation. *N Engl J Med* [Internet].  
656 2007 Dec 20 [cited 2025 Oct 6];357(25):2562–75. Available from:  
657 <https://www.nejm.org/doi/full/10.1056/NEJMoa067411>
- 658 28. Knight SR, Russell NK, Barcena L, Morris PJ. Mycophenolate Mofetil Decreases Acute  
659 Rejection and may Improve Graft Survival in Renal Transplant Recipients When  
660 Compared with Azathioprine: A Systematic Review. *Transplantation* [Internet]. 2009  
661 Mar 27 [cited 2025 Oct 6];87(6):785. Available from:  
662 [https://journals.lww.com/transplantjournal/abstract/2009/03270/mycophenolate\\_mofetil\\_decreases\\_acute\\_rejection.1.aspx](https://journals.lww.com/transplantjournal/abstract/2009/03270/mycophenolate_mofetil_decreases_acute_rejection.1.aspx)
- 663  
664 29. Ciancio G, Miller J, Gonwa TA. Review of Major Clinical Trials with Mycophenolate  
665 Mofetil in Renal Transplantation. *Transplantation* [Internet]. 2005 Oct 15 [cited 2025 Oct  
666 6];80(2S):S191. Available from:  
667 [https://journals.lww.com/transplantjournal/abstract/2005/10151/review\\_of\\_major\\_clinical\\_trials\\_with\\_mycophenolate.5.aspx](https://journals.lww.com/transplantjournal/abstract/2005/10151/review_of_major_clinical_trials_with_mycophenolate.5.aspx)
- 668  
669 30. Squifflet JP, Vanrenterghem Y, van Hooff JP, Salmela K, Rigotti P. Safe withdrawal of  
670 corticosteroids or mycophenolate mofetil: results of a large, prospective, multicenter,  
671 randomized study. *Transplant Proc* [Internet]. 2002 Aug 1 [cited 2025 Oct  
672 6];34(5):1584–6. Available from:  
673 <https://www.sciencedirect.com/science/article/pii/S0041134502030324>
- 674 31. Vanrenterghem Y, Lebranchu Y, Hené R, Oppenheimer F, Ekberg H, Group SDS. DOUBLE-  
675 BLIND COMPARISON OF TWO CORTICOSTEROID REGIMENS PLUS MYCOPHENOLATE  
676 MOFETIL AND CYCLOSPORINE FOR PREVENTION OF ACUTE RENAL ALLOGRAFT  
677 REJECTION1. *Transplantation* [Internet]. 2000 Nov 15 [cited 2025 Oct 7];70(9):1352.  
678 Available from:  
679 [https://journals.lww.com/transplantjournal/abstract/2000/11150/double\\_blind\\_comparison\\_of\\_two\\_corticosteroid.15.aspx](https://journals.lww.com/transplantjournal/abstract/2000/11150/double_blind_comparison_of_two_corticosteroid.15.aspx)
- 680  
681 32. Andress L, Gupta A, Siddiqi N, Marfo K. Rabbit anti-thymocyte globulin induction in renal  
682 transplantation: review of the literature. *Transpl Res Risk Manag* [Internet]. 2014 Jan 15  
683 [cited 2025 Oct 6];6:9–21. Available from:  
684 <https://www.tandfonline.com/doi/abs/10.2147/TRRM.S36734>
- 685 33. Chapman TM, Keating GM. Basiliximab: A Review of its Use as Induction Therapy in  
686 Renal Transplantation. *Drugs* [Internet]. 2003 [cited 2025 Oct 7];63(24):2803–35.  
687 Available from: <http://link.springer.com/10.2165/00003495-200363240-00009>
- 688 34. Cunningham KC, Hager DR, Fischer J, D’Alessandro AM, Levenson GE, Kaufman DB, et al.  
689 Single-Dose Basiliximab Induction in Low-Risk Renal Transplant Recipients.  
690 *Pharmacother J Hum Pharmacol Drug Ther* [Internet]. 2016 July [cited 2025 Oct  
691 6];36(7):823–9. Available from: <https://onlinelibrary.wiley.com/doi/10.1002/phar.1774>

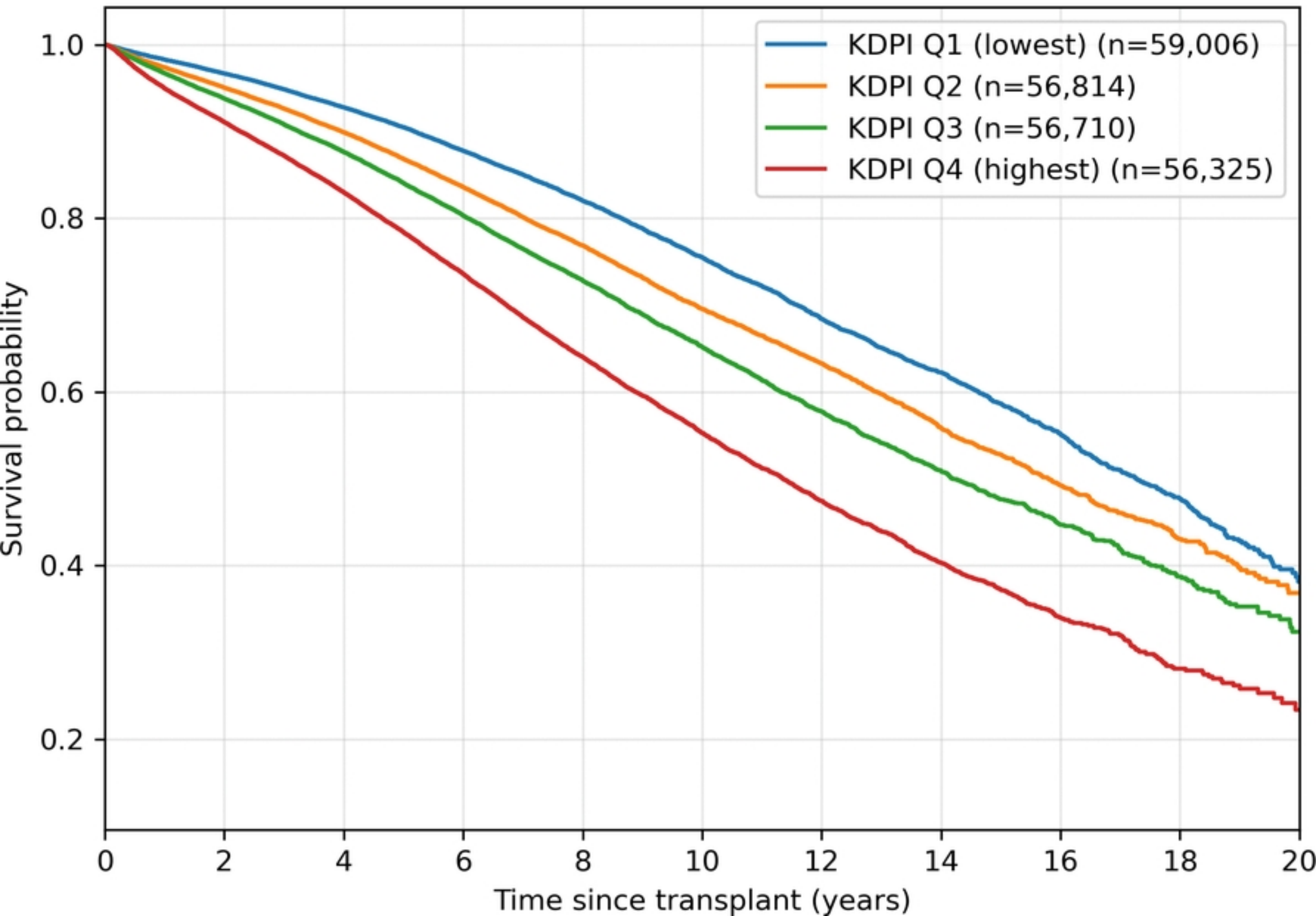
- 692 35. Heldal TF, Åsberg A, Ueland T, Reisæter AV, Pischke SE, Mollnes TE, et al. Systemic  
693 inflammation early after kidney transplantation is associated with long-term graft loss: a  
694 cohort study. *Front Immunol* [Internet]. 2023 Oct 2 [cited 2025 Oct 6];14. Available  
695 from:  
696 [https://www.frontiersin.org/journals/immunology/articles/10.3389/fimmu.2023.12539](https://www.frontiersin.org/journals/immunology/articles/10.3389/fimmu.2023.1253991/full)  
697 [91/full](https://www.frontiersin.org/journals/immunology/articles/10.3389/fimmu.2023.1253991/full)
- 698 36. Kelly KJ, Dominguez JH. Rapid Progression of Diabetic Nephropathy Is Linked to  
699 Inflammation and Episodes of Acute Renal Failure. *Am J Nephrol* [Internet]. 2010 Oct 19  
700 [cited 2025 Oct 6];32(5):469–75. Available from: <https://doi.org/10.1159/000320749>
- 701 37. Gerbase-DeLima M, de Marco R, Monteiro F, Tedesco-Silva H, Medina-Pestana JO, Mine  
702 KL. Impact of Combinations of Donor and Recipient Ages and Other Factors on Kidney  
703 Graft Outcomes. *Front Immunol* [Internet]. 2020 May 22 [cited 2025 Oct 6];11. Available  
704 from:  
705 [https://www.frontiersin.org/journals/immunology/articles/10.3389/fimmu.2020.00954](https://www.frontiersin.org/journals/immunology/articles/10.3389/fimmu.2020.00954/full)  
706 [/full](https://www.frontiersin.org/journals/immunology/articles/10.3389/fimmu.2020.00954/full)
- 707 38. Veroux M, Grosso G, Corona D, Mistretta A, Giaquinta A, Giuffrida G, et al. Age is an  
708 important predictor of kidney transplantation outcome. *Nephrol Dial Transplant*  
709 [Internet]. 2012 Apr 1 [cited 2025 Oct 6];27(4):1663–71. Available from:  
710 <https://doi.org/10.1093/ndt/gfr524>
- 711 39. Rhee CM, Lertdumrongluk P, Streja E, Park J, Moradi H, Lau WL, et al. Impact of Age,  
712 Race and Ethnicity on Dialysis Patient Survival and Kidney Transplantation Disparities.  
713 *Am J Nephrol* [Internet]. 2014 Feb 15 [cited 2025 Oct 6];39(3):183–94. Available from:  
714 <https://doi.org/10.1159/000358497>
- 715 40. Dahmen M, Becker F, Pavenstädt H, Suwelack B, Schütte-Nütgen K, Reuter S. Validation  
716 of the Kidney Donor Profile Index (KDPI) to assess a deceased donor’s kidneys’ outcome  
717 in a European cohort. *Sci Rep* [Internet]. 2019 Aug 2 [cited 2025 Oct 7];9:11234.  
718 Available from: <https://pmc.ncbi.nlm.nih.gov/articles/PMC6677881/>
- 719 41. Zhong Y, Schaubel DE, Kalbfleisch JD, Ashby VB, Rao PS, Sung RS. Reevaluation of the  
720 Kidney Donor Risk Index (KDRI). *Transplantation* [Internet]. 2019 Aug [cited 2025 Oct  
721 7];103(8):1714–21. Available from: <https://pmc.ncbi.nlm.nih.gov/articles/PMC6522334/>
- 722 42. Bachmann Q, Habermann F, Büttner-Herold M, Torrez C, Haller B, Assfalg V, et al. The  
723 Kidney Donor Profile Index (KDPI) Correlates With Histopathologic Findings in Post-  
724 reperfusion Baseline Biopsies and Predicts Kidney Transplant Outcome. *Front Med*  
725 [Internet]. 2022 Apr 29 [cited 2025 Nov 20];9:875206. Available from:  
726 <https://pmc.ncbi.nlm.nih.gov/articles/PMC9100560/>
- 727 43. Chen Q, Guo J, Han S, Wang T, Xia K, Yu B, et al. The impact of donor diabetes on  
728 recipient postoperative complications, renal function, and survival rate in deceased  
729 donor kidney transplantation: a single-center analysis. *Ren Fail* [Internet]. 2024 Dec 31

- 730 [cited 2025 Oct 7];46(2):2391067. Available from:  
731 <https://doi.org/10.1080/0886022X.2024.2391067>
- 732 44. Gilbert A, Scott D, Stack M, de Mattos A, Norman D, Rehman S, et al. Long-standing  
733 donor diabetes and pathologic findings are associated with shorter allograft survival in  
734 recipients of kidney transplants from diabetic donors. *Mod Pathol* [Internet]. 2022 Jan  
735 [cited 2025 Nov 20];35(1):128–34. Available from:  
736 <https://www.nature.com/articles/s41379-021-00927-2>
- 737 45. Debout A, Foucher Y, Trébern-Launay K, Legendre C, Kreis H, Mourad G, et al. Each  
738 additional hour of cold ischemia time significantly increases the risk of graft failure and  
739 mortality following renal transplantation. *Kidney Int* [Internet]. 2015 Feb 1 [cited 2025  
740 Oct 7];87(2):343–9. Available from:  
741 <https://www.sciencedirect.com/science/article/pii/S0085253815300648>
- 742 46. Peters-Sengers H, Houtzager JHE, Idu MM, Heemskerk MBA, van Heurn ELW, Homan  
743 van der Heide JJ, et al. Impact of Cold Ischemia Time on Outcomes of Deceased Donor  
744 Kidney Transplantation: An Analysis of a National Registry. *Transplant Direct* [Internet].  
745 2019 Apr 25 [cited 2025 Oct 7];5(5):e448. Available from:  
746 <https://pmc.ncbi.nlm.nih.gov/articles/PMC6511440/>
- 747 47. Mark E, Goldsman D, Gurbaxani B, Keskinocak P, Sokol J. Using machine learning and an  
748 ensemble of methods to predict kidney transplant survival. Hatt M, editor. *PLOS ONE*  
749 [Internet]. 2019 Jan 9 [cited 2025 Nov 22];14(1):e0209068. Available from:  
750 <https://dx.plos.org/10.1371/journal.pone.0209068>
- 751 48. Bae S, Massie AB, Caffo BS, Jackson KR, Segev DL. Machine learning to predict transplant  
752 outcomes: helpful or hype? A national cohort study. *Transpl Int Off J Eur Soc Organ*  
753 *Transplant*. 2020 Nov;33(11):1472–80.
- 754 49. Paquette FX, Ghassemi A, Bukhtiyarova O, Cisse M, Gagnon N, Vecchia AD, et al.  
755 Machine Learning Support for Decision-Making in Kidney Transplantation: Step-by-step  
756 Development of a Technological Solution. *JMIR Med Inform* [Internet]. 2022 June 14  
757 [cited 2025 Nov 22];10(6):e34554. Available from:  
758 <https://medinform.jmir.org/2022/6/e34554>
- 759 50. Luck M, Sylvain T, Cardinal H, Lodi A, Bengio Y. Deep Learning for Patient-Specific Kidney  
760 Graft Survival Analysis [Internet]. arXiv; 2017 [cited 2025 Nov 22]. Available from:  
761 <https://arxiv.org/abs/1705.10245>
- 762 51. Senanayake S, Kularatna S, Healy H, Graves N, Baboolal K, Sypek MP, et al. Development  
763 and validation of a risk index to predict kidney graft survival: the kidney transplant risk  
764 index. *BMC Med Res Methodol* [Internet]. 2021 June 21 [cited 2025 Nov 22];21(1):127.  
765 Available from: <https://doi.org/10.1186/s12874-021-01319-5>  
766

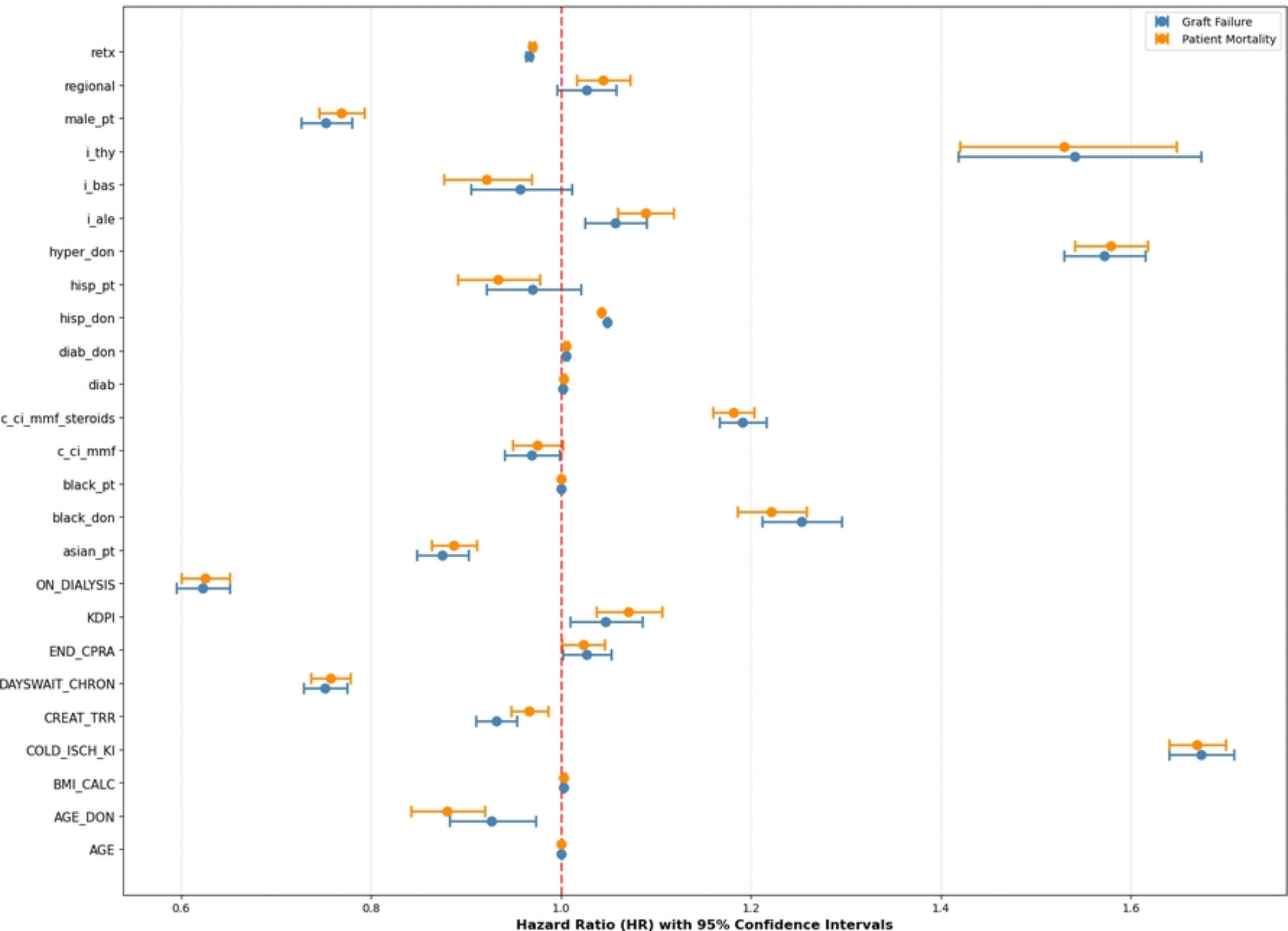
# Graft Survival – Deceased Donor Kidney Transplants



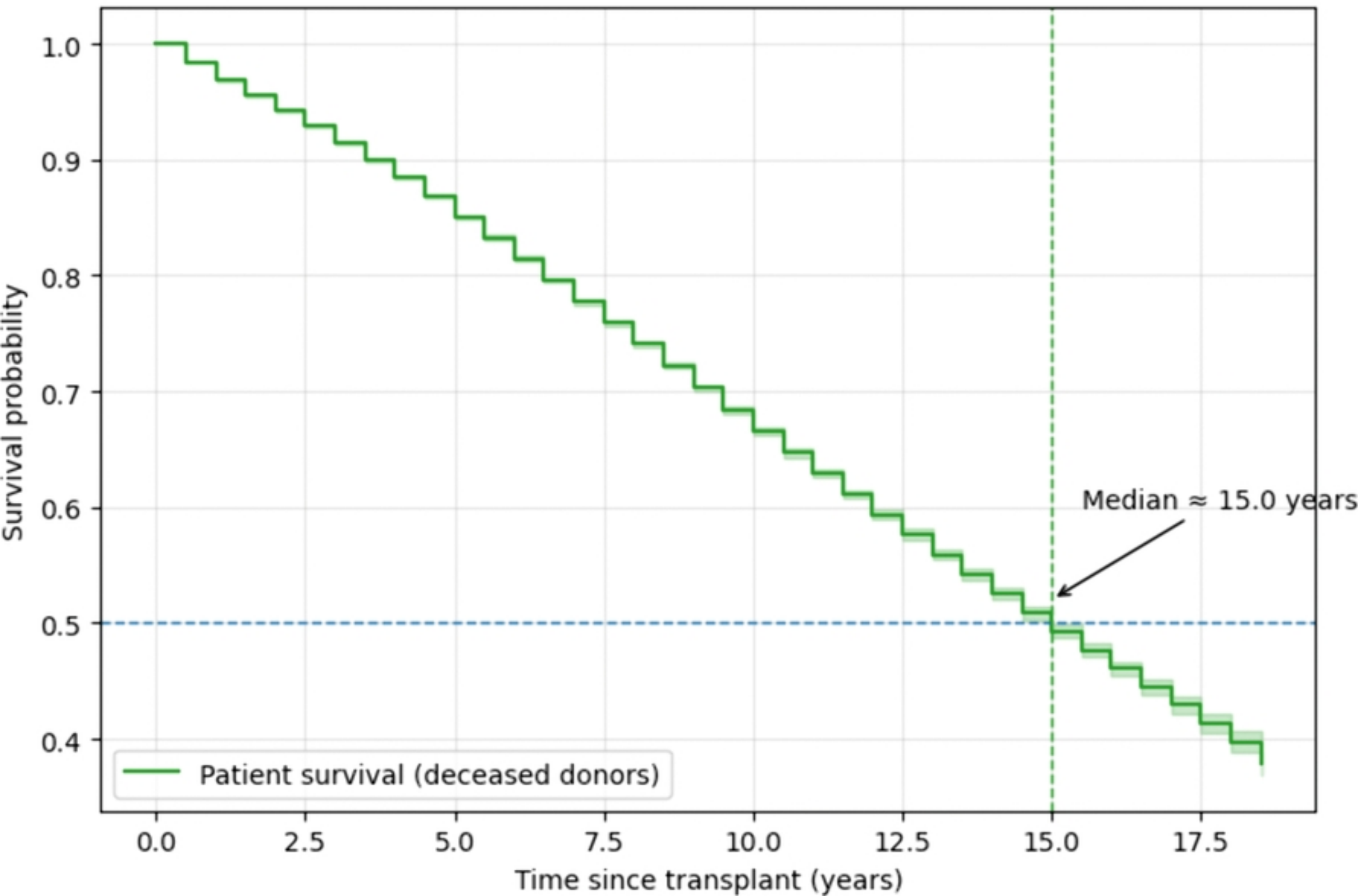
# Patient Survival by KDPI Quartile



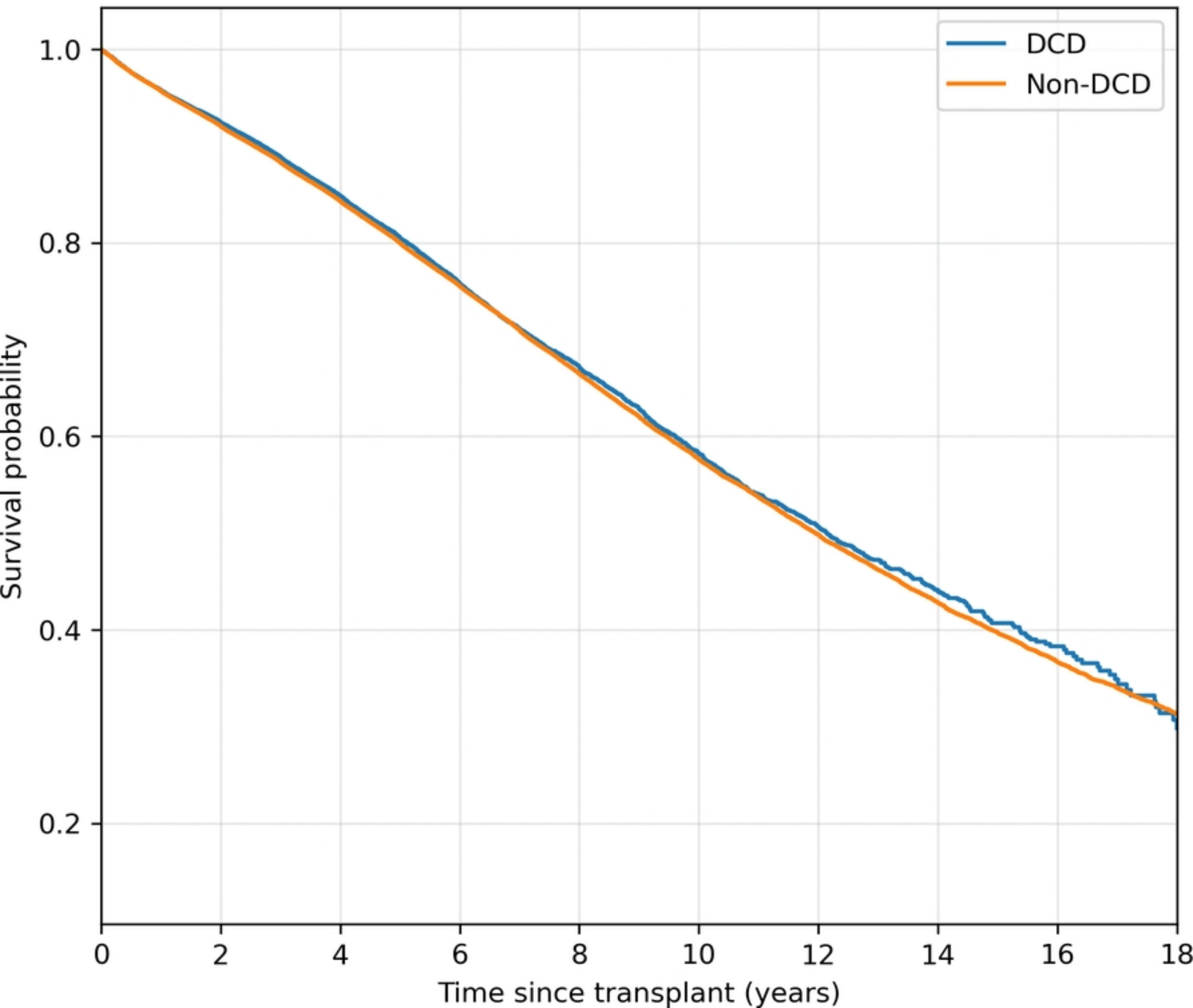
Comparative Forest Plot: Graft Failure vs Patient Mortality



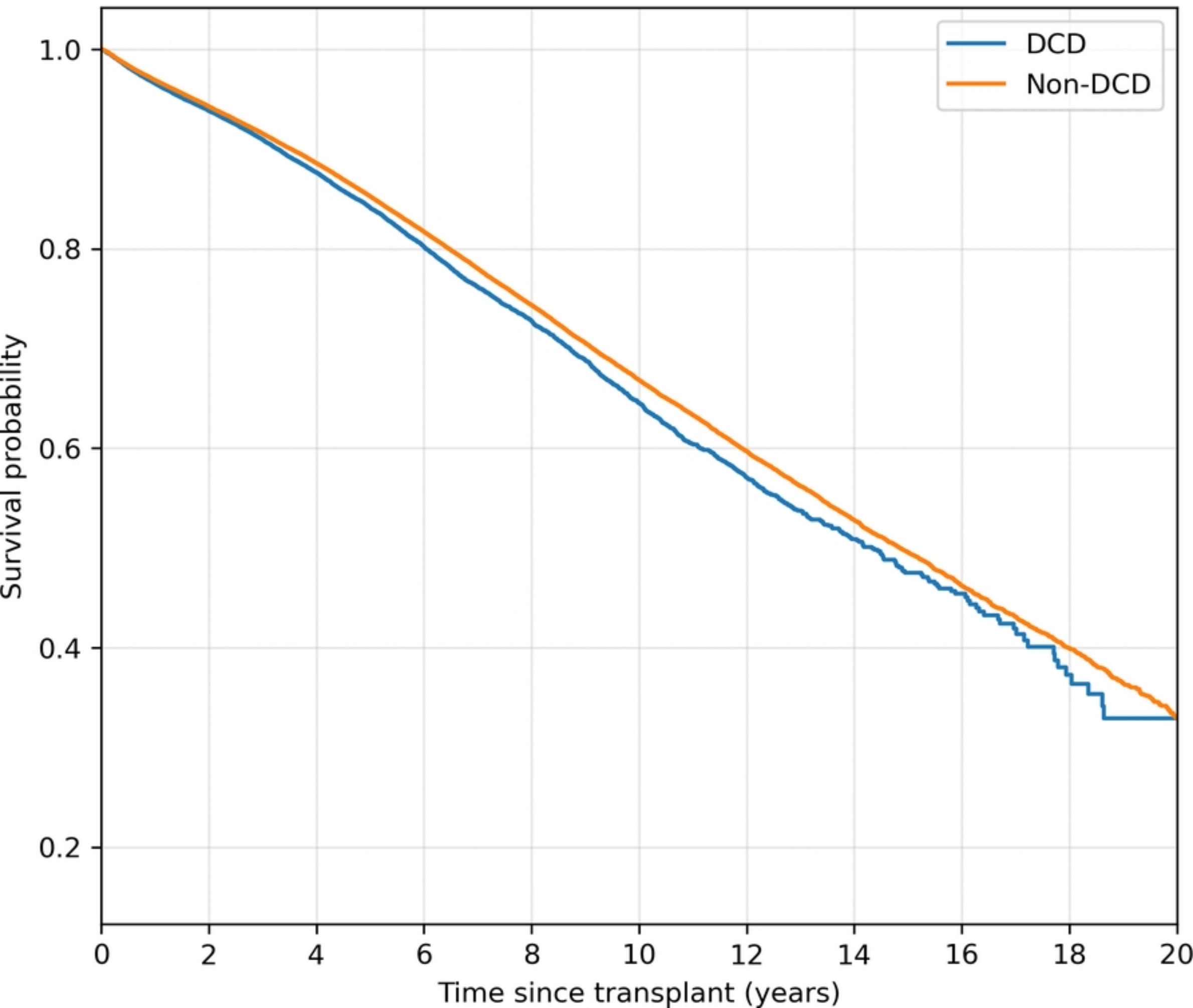
# Patient Survival — Deceased Donor Kidney Transplants



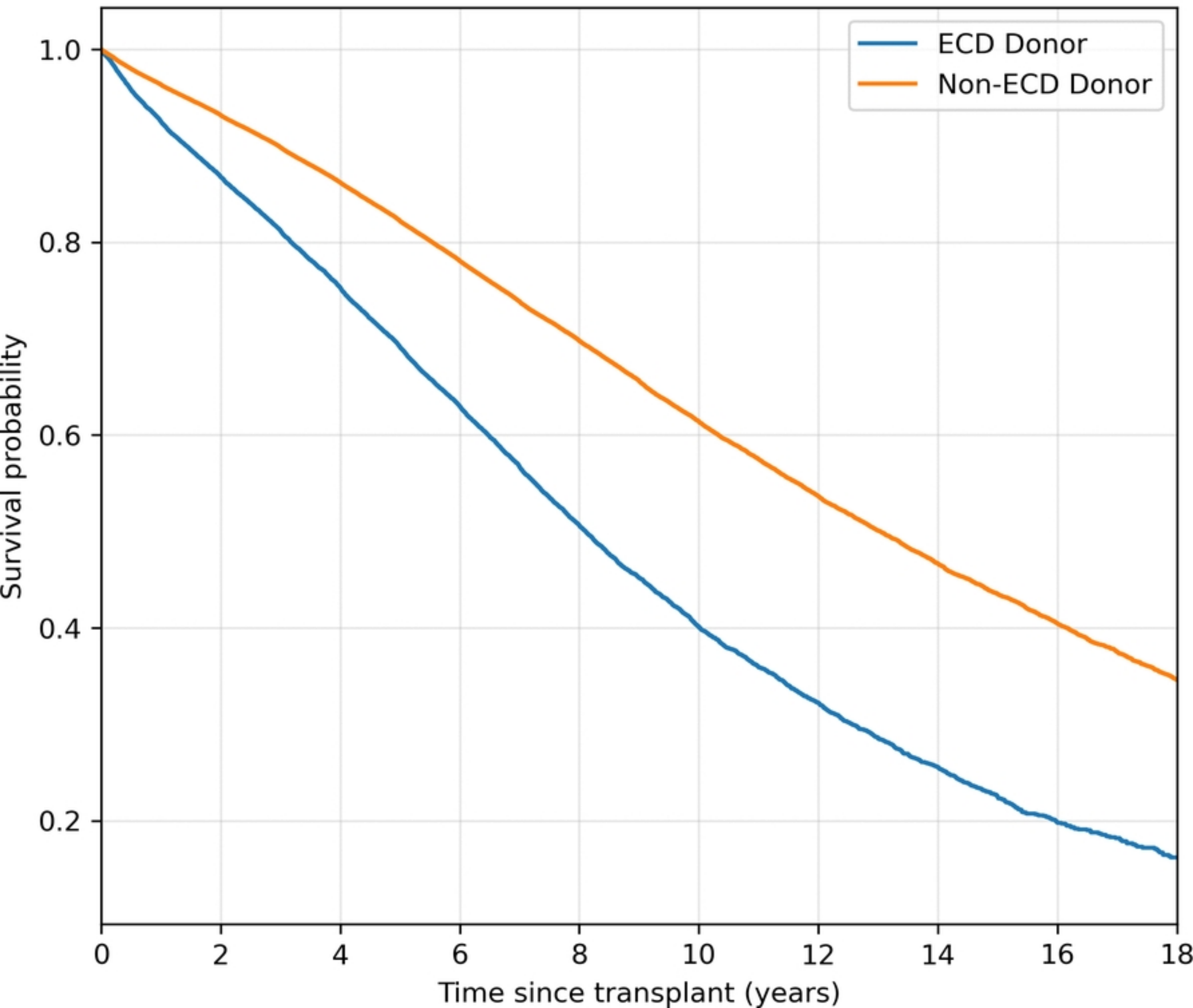
# Graft Survival by Donor Type (DCD vs Non-DCD)



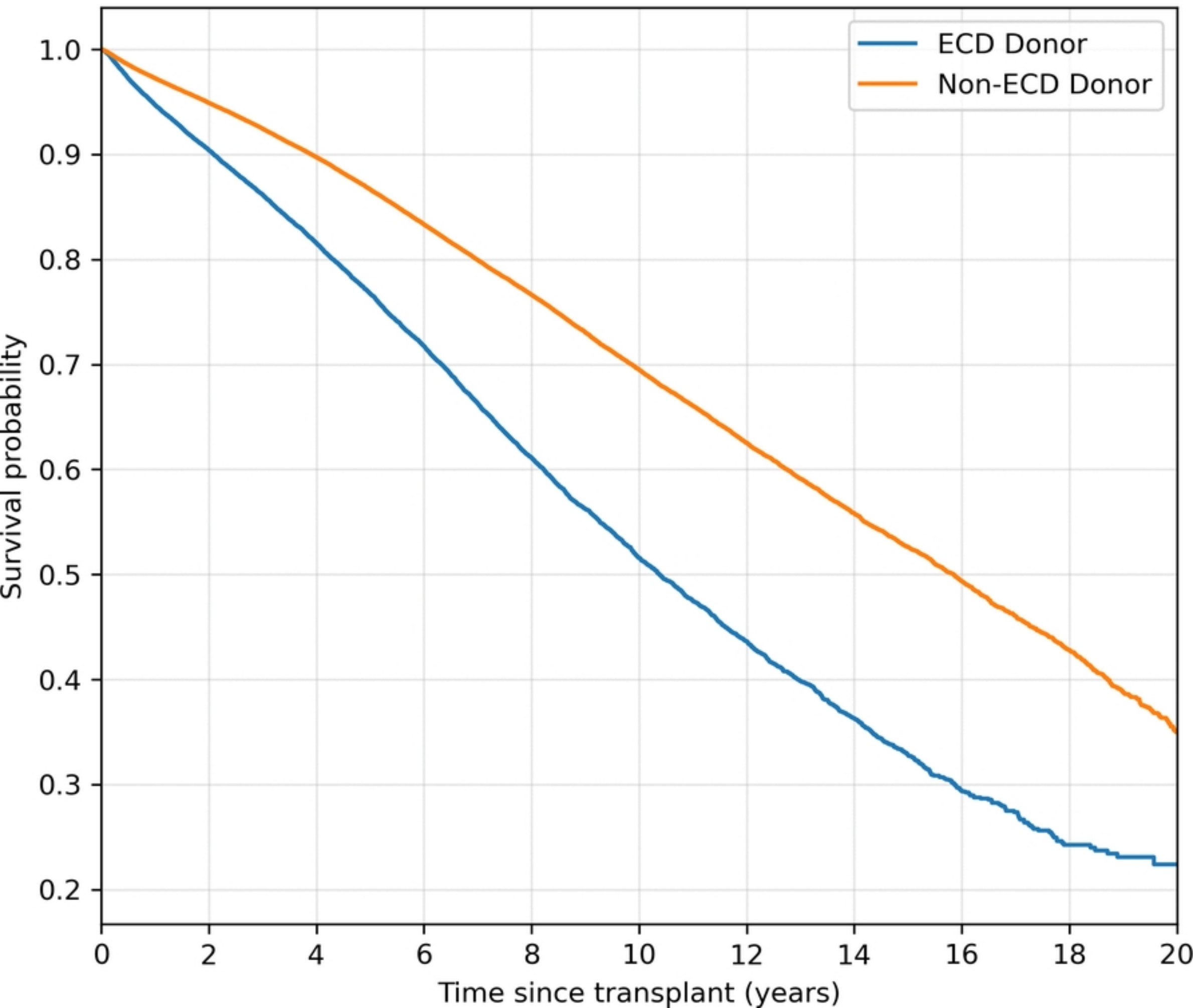
# Patient Survival by Donor Type (DCD vs Non-DCD)



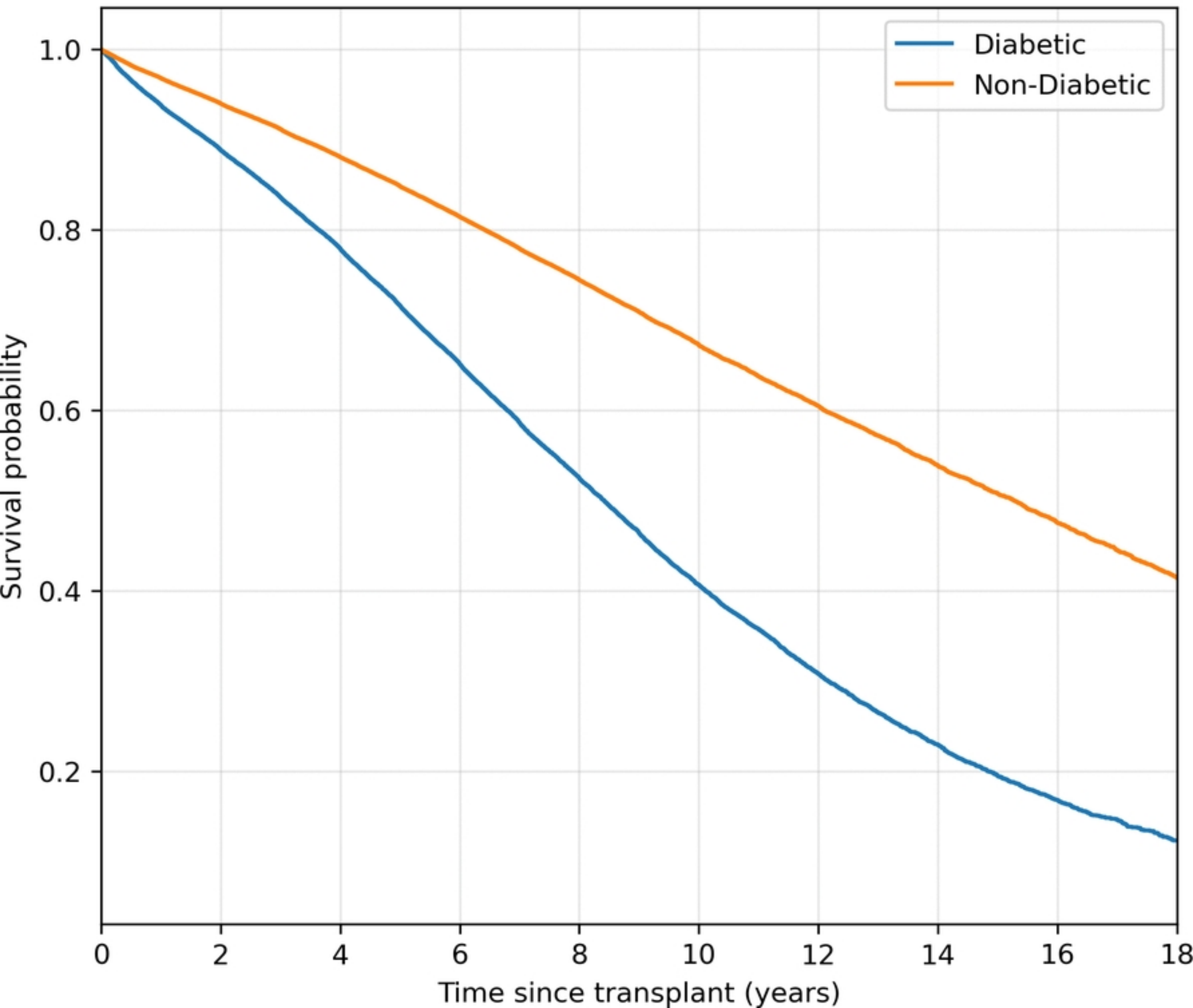
# Graft Survival by Donor Type (ECD vs Non-ECD)



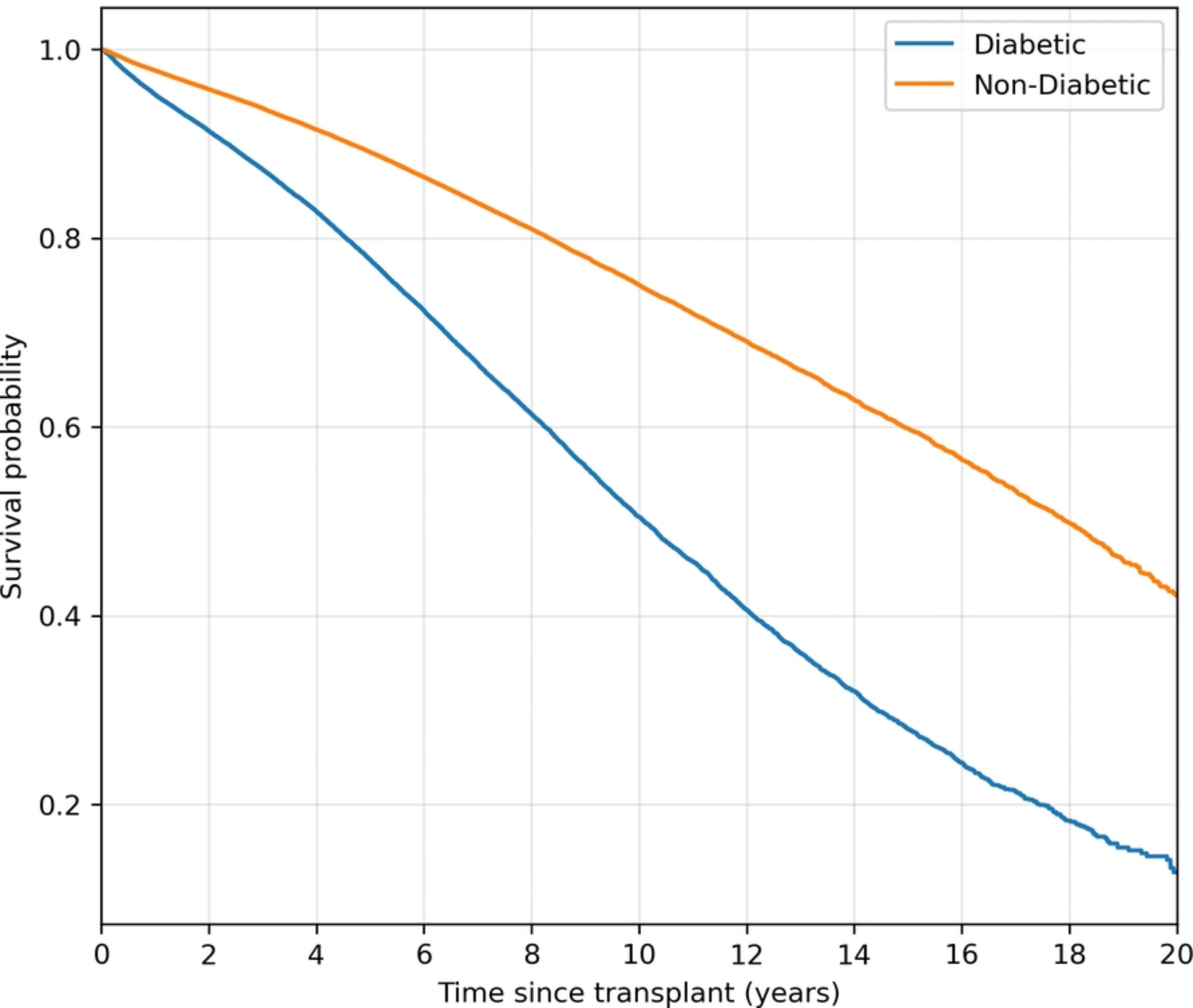
# Patient Survival by Donor Type (ECD vs Non-ECD)



# Graft Survival by Recipient Diabetes Status



# Patient Survival by Recipient Diabetes Status



# Graft Survival by KDPI Quartile

