

1 **Global burden, trends, and projections of pelvic organ prolapse in**  
2 **postmenopausal elderly women from 1990 to 2021: a systematic**  
3 **analysis based on GBD and Mendelian randomization**

4

5 Zhengkun Wang<sup>1,2</sup>, Qiwei Wang<sup>1,2</sup>, Yi Rong<sup>1,2</sup>, Yikai Wang<sup>1,2</sup>, Weibing Shuang<sup>1\*</sup>

6 <sup>1</sup>. The First hospital of Shanxi Medical University, Jiefang Rd, Shanxi 030000, China

7 <sup>2</sup> Shanxi Medical University. Jiefang Rd, Shanxi 030000, China

8 \*Corresponding Author: Weibing Shuang, Email: [shuangweibing@126.com](mailto:shuangweibing@126.com)

9

10 **Abstract**

11 **Background** Pelvic organ prolapse (POP) is a widespread disease in women;  
12 however, the global burden and trend of POP in postmenopausal women (PMW)  
13 remain poorly characterized.

14 **Methods** Based on the Global Burden of Disease (GBD) 2021 database and  
15 genome-wide association studies (GWAS), this study assessed the burden and risk  
16 factors of POP in PMW worldwide. We employed the slope index of inequality (SII)  
17 and concentration index (CI) to evaluate regional health inequalities. Additionally,  
18 age-period-cohort (APC) analysis was integrated with the Bayesian age-period-cohort  
19 (BAPC) model to examine temporal trends and project future disease burden trends.  
20 Furthermore, we conducted a two-sample Mendelian randomization (MR) analysis to  
21 evaluate the causal relationships between risk factors and POP.

22 **Results** From 1990 to 2021, the global incidence, prevalence, and disability-adjusted

**NOTE: This preprint reports new research that has not been certified by peer review and should not be used to guide clinical practice.**

23 life years (DALYs) of POP in PMW increased by 92.96%, 85.21%, and 83.78%,  
24 respectively. However, in 2021, the global age-standardized disability rate (ASDR) of  
25 POP was 16.21% lower than in 1990. Notably, regions with a low sociodemographic  
26 index (SDI) experienced statistically significant increases in disease burden.  
27 Additionally, individuals with obesity faced a higher risk of POP, while those with  
28 higher education levels had a lower risk. According to the BAPC model, global cases  
29 of POP among PMW are projected to reach 114.67 million by 2050, while the  
30 age-standardized incidence rate (ASIR) is expected to decline by only 3.49%.

31 **Conclusion** The global burden of POP among PMW has increased in total cases,  
32 despite declining age-standardized rates. Aging populations are projected to further  
33 exacerbate this burden, underscoring the need for targeted strategies to address  
34 high-risk populations.

35

36 **Keywords** Pelvic organ prolapse; Global disease burden; Postmenopausal women;  
37 Aging; Mendelian randomization.

38

## 39 **Introduction**

40 Pelvic organ prolapse (POP) is a common manifestation of dysfunction in the  
41 female pelvic floor support system. It is characterized by the abnormal descent of  
42 pelvic organs, such as the uterus, bladder, and rectum, caused by structural damage to  
43 the pelvic ligaments, fascia, and muscles. The primary clinical features include  
44 vaginal wall protrusion and uterine prolapse, which are often accompanied by

45 intestinal and urinary dysfunction <sup>[1]</sup>.

46 Menopause, marking the end of a woman's reproductive age, is characterized  
47 by a significant decline in estrogen levels, which leads to the degeneration of pelvic  
48 floor support structures <sup>[2]</sup>. Epidemiological data from the Global Burden of Disease  
49 (GBD) database indicate that POP affected approximately 127.68 million individuals  
50 worldwide in 2021. Of these, postmenopausal women (PMW) (55+ years) comprised  
51 76.44 million cases, accounting for 61.46%. Research has established that aging  
52 represents the most significant risk factor for POP, followed by parity and obesity.  
53 Epidemiological studies indicate that women aged 70–79 are most likely to seek  
54 medical attention for symptomatic POP <sup>[3]</sup>. In the United States, about 40% of POP  
55 patients are over 65 years old <sup>[4]</sup>. Due to the global trend of population aging, the  
56 average life expectancy has increased from 65.42 years in 1990 to 73.52 years in 2019  
57 <sup>[5]</sup>. By 2050, projections indicate that the population aged over 60 will double to 2.1  
58 billion, with the number of individuals over 80 reaching 426 million <sup>[6]</sup>. As a result,  
59 the number of postmenopausal elderly women affected by POP is projected to rise  
60 significantly.

61 The GBD study provides the most comprehensive epidemiological assessment  
62 of POP to date <sup>[7]</sup>. Previous research primarily focused on females across all age  
63 groups, and thus the global burden and temporal trends of POP in PMW have  
64 remained poorly characterized. Using the latest GBD 2021 data, this study  
65 systematically quantifies the burden of POP among PMW across 204 countries and  
66 territories, performing granular stratified analyses based on the Socio-demographic

67 Index (SDI).

68

## 69 **Materials and methods**

### 70 **Data sources**

71 The data are derived from the GBD 2021 database  
72 (<https://vizhub.healthdata.org/gbd-results/>, accessed on June 23, 2025) and the MRC  
73 Integrative Epidemiology Unit (IEU) OpenGWAS project (<https://gwas.mrcieu.ac.uk/>,  
74 accessed on June 26, 2025).

75 The study analyzed indicators associated with POP, including incidence,  
76 prevalence, and Disability-Adjusted Life Years (DALYs), across all countries and  
77 territories from 1990 to 2021. The data were stratified by location, SDI, and age group  
78 to examine temporal and spatial patterns in the disease burden among PMW aged 55  
79 and older. DALYs are used as a metric to measure the total health loss caused by  
80 specific diseases or risk factors in population health. The SDI quantifies the  
81 socio-economic status of a country or location, reflecting its association with health  
82 outcomes. The SDI scale ranges from 0 (indicating high fertility, low education, and  
83 low income) to 1 (low fertility, high education, and high income) [8].

84 Since the GBD database is publicly accessible and contains no personally  
85 identifiable or sensitive data, and all genome-wide association studies (GWAS)  
86 included in this Mendelian Randomization (MR) study were approved by their  
87 respective institutional review boards, this study was exempt from institutional ethical  
88 review.

89

## 90 **Statistical analysis**

91 POP primarily affects the quality of life of patients and is rarely associated  
92 with direct mortality. The crude rates (prevalence, incidence, and DALYs) obtained in  
93 this study provide fundamental metrics to measure the epidemiological trends of  
94 diseases; however, differences in population age distribution may lead to variations in  
95 the burden of POP. To enhance the consistency of statistical measures, the crude rates  
96 were adjusted by applying different weights based on the age composition of the  
97 population, resulting in the age-standardized rate (ASR). To reflect the annual trends  
98 in the global burden of POP from 1990 to 2021, we calculated the Estimated Annual  
99 Percentage Change (EAPC) for the ASIR, ASPR, and ASDR. The rates are expressed  
100 as the mean estimated value per 100,000 population, along with a 95% uncertainty  
101 interval (UI).

102 By analyzing data from 1990 to 2021, this study quantifies changes in each  
103 index and systematically examines the evolution of epidemiological characteristics  
104 related to POP among PMW across multidimensional classifications, including  
105 region, age and year, through descriptive analysis and visual presentation. All  
106 statistical analyses were performed using R software (version 4.3.3,  
107 <http://www.r-project.org/>).

108

## 109 **Health inequality analysis**

110 In this study, health inequalities were analyzed using DALYs and ASDR.

111 Absolute and relative income-related inequalities were assessed using the Slope Index  
112 of Inequality (SII) and the Concentration Index (CI). The SII was calculated using a  
113 weighted regression model ranking ASDR and SDI nationally, while CI was derived  
114 from a Lorenz concentration curve, plotting cumulative population ratio against  
115 cumulative SDI-related DALYs, and was computed through area integration.  
116 Negative values for both the SII and CI indicate that a lower SDI corresponds to a  
117 higher disease burden; larger absolute magnitudes signify greater inequality <sup>[9]</sup>.

118

### 119 **Frontier analysis**

120 To investigate the relationship between POP disease burden and the SDI, this  
121 study applied frontier analysis using the GBD database. The analysis aimed to  
122 identify opportunities for reducing disease burden across various countries and  
123 territories through SDI assessment <sup>[10]</sup>. The frontier reflects the theoretical minimum  
124 burden achievable at a given SDI level, while the effective difference—defined as the  
125 deviation from this frontier—quantifies the gap between observed and optimal burden  
126 levels. Countries closer to the frontier demonstrate efficient disease control, while  
127 those further from the frontier highlight substantial potential for improvement.

128

### 129 **Age-Period-Cohort analysis**

130 This study employed an Age-Period-Cohort (APC) model to analyze the data,  
131 treating age, period, and cohort as independent variables. Within this framework, the  
132 age effect represents variations in outcome risk across different age groups. The

133 period effect quantifies temporal changes that concurrently affect all age groups. The  
134 cohort effect reflects differences in outcome risk among individuals born in the same  
135 year. To ensure smooth time-effect curves and reduce the number of parameters,  
136 age-specific incidence rates were aggregated into 5-year blocks (55–59, 60–64, ...,  
137 95+ years). Consistent with APC modeling requirements for equal interval  
138 categorization, calendar periods were similarly grouped into contiguous 5-year blocks  
139 (1992–1996 through 2017–2021). Key estimable functions included: (1) Net drift,  
140 representing the overall annual percentage change in incidence rates; (2) Local drifts,  
141 detailing age-specific annual percentage changes across periods and cohorts; (3)  
142 Longitudinal age curves, depicting fitted age-specific rates over time within the  
143 referent cohort (adjusted for period deviations); and (4) Period/cohort rate ratios  
144 (RRs), indicating age-specific rate ratios relative to reference periods or cohorts. An  
145  $RR > 1$  indicates an elevated incidence rate, while an  $RR < 1$  indicates a reduced  
146 incidence rate <sup>[11]</sup>.

147

## 148 **Bayesian age-period-cohort analysis**

149 We employed the Bayesian age-period-cohort (BAPC) model to project the  
150 future burden of POP among PMW. This model, accessible through the BAPC R  
151 package, integrates age, period, and cohort effects within a comprehensive Bayesian  
152 framework. For Bayesian inference, we utilized the Integrated Nested Laplace  
153 Approximation (INLA) method. INLA efficiently approximates the marginal  
154 posterior distributions of model parameters, thereby providing a computationally

155 efficient alternative to conventional Markov Chain Monte Carlo (MCMC) methods.

156

## 157 **Mendelian randomization analysis**

158 The Mendelian randomization (MR) method evaluates causal relationships  
159 between environmental exposures and outcomes using genetic variants from GWAS  
160 as instrumental variables (IVs). The datasets were obtained from the MRC Integrative  
161 Epidemiology Unit (IEU) OpenGWAS project (<https://gwas.mrcieu.ac.uk/>). The  
162 significance threshold was set at  $P < 5 \times 10^{-8}$  to satisfy the instrument strength  
163 assumption. Single-nucleotide polymorphisms (SNPs) in linkage disequilibrium (LD)  
164 ( $r^2 < 0.001$ ) were excluded to ensure genetic independence. All selected SNPs had  
165 F-statistics  $> 10$ , indicating sufficient instrumental variable strength. The  
166 inverse-variance weighted (IVW) method served as the primary approach,  
167 supplemented by MR-Egger regression and weighted median methods for sensitivity  
168 analyses.

169

## 170 **Results**

### 171 **Global POP burden from 1990 to 2021**

172 From 1990 to 2021, the global number of POP incidence among PMW  
173 increased from 3.33 million to 6.44 million, representing a 92.96% increase.  
174 Similarly, the number of prevalent cases rose from 41.27 million to 76.44 million ,  
175 marking a 85.21% increase. Additionally, DALYs increased from 0.13 million to 0.24  
176 million, reflecting a 83.78% increase. Conversely, the global ASIR decreased from

177 927.64 to 816.74 per 100,000 population in 2021, EAPC = -0.256. Similarly, the  
 178 ASPR declined from 11499.41 to 9712.94 per 100,000 population, EAPC = -0.373.  
 179 The ASDR per 100,000 population declined from 36.03 to 30.19, EAPC = -0.391  
 180 (Table 1 and S1 Table).

181 **Table 1. Age-standardized DALYs rates and corresponding EAPC of POP in**  
 182 **postmenopausal women globally and regions in 1990 and 2021.**

| Location                   | 1990                              |                           | 2021                               |                           | 1990-2021                 |
|----------------------------|-----------------------------------|---------------------------|------------------------------------|---------------------------|---------------------------|
|                            | DALYs                             | ASDR                      | DALYs                              | ASDR                      | EAPC                      |
|                            | n (95% UI)                        | per 100,000<br>n (95% UI) | n (95% UI)                         | per 100,000<br>n (95% UI) | n (95% CI)                |
| Global                     | 129267.23<br>(62917.30-245459.07) | 36.03<br>(17.21-68.84)    | 237569.52<br>(115389.49-451022.01) | 30.19<br>(14.42-57.75)    | -0.391<br>(-0.461,-0.322) |
| <b>SDI region</b>          |                                   |                           |                                    |                           |                           |
| High SDI                   | 35726.78<br>(17326.77-66956.53)   | 33.06<br>(15.68-63.30)    | 59382.46<br>(28459.70-110782.57)   | 31.37<br>(14.55-60.93)    | -0.144<br>(-0.252,-0.036) |
| High-middle SDI            | 28941.07<br>(13879.73-54733.64)   | 29.80<br>(13.99-57.58)    | 48889.46<br>(23348.49-92037.03)    | 25.88<br>(12.10-50.08)    | -0.109<br>(-0.279,0.060)  |
| Middle SDI                 | 28303.49<br>(13797.78-53548.10)   | 32.63<br>(15.71-62.36)    | 66163.09<br>(32160.18-125143.97)   | 27.28<br>(13.10-52.07)    | -0.418<br>(-0.477,-0.359) |
| Low-middle SDI             | 25856.79<br>(12806.75-47256.2)    | 52.70<br>(25.62-99.46)    | 44873.55<br>(22318.22-81735.25)    | 36.11<br>(17.85-67.91)    | -0.993<br>(-1.080,-0.905) |
| Low SDI                    | 10289.21<br>(5111.25-18601.25)    | 56.99<br>(27.16-108.30)   | 18036.11<br>(9062.06-32820.40)     | 43.66<br>(21.30-83.90)    | -0.727<br>(-0.837,-0.617) |
| <b>GBD region</b>          |                                   |                           |                                    |                           |                           |
| Andean Latin America       | 1070.21<br>(507.72-2024.83)       | 62.77<br>(29.23-119.46)   | 2428.59<br>(1122.83-4557.69)       | 47.07<br>(21.48-90.42)    | -0.833<br>(-0.889,-0.776) |
| Australasia                | 699.73<br>(358.55-1265.76)        | 31.94<br>(15.68-60.58)    | 1423.03<br>(690.90-2654.87)        | 30.09<br>(13.60-59.21)    | -0.037<br>(-0.229,0.155)  |
| Caribbean                  | 1039.57<br>(517.23-1907.07)       | 46.83<br>(22.33-88.64)    | 1776.82 (889.53-3261.56)           | 36.15<br>(17.39-69.18)    | -0.810<br>(-0.868,-0.752) |
| Central Asia               | 1325.71<br>(617.57-2522.41)       | 27.96<br>(12.55-55.37)    | 1943.47 (926.28-3707.34)           | 24.14<br>(11.12-47.46)    | 0.012<br>(-0.224,0.250)   |
| Central Europe             | 5028.87<br>(2396.26-9673.39)      | 33.46<br>(15.31-65.18)    | 6779.31<br>(3245.98-12934.13)      | 32.45<br>(14.83-63.81)    | 0.307<br>(-0.034,0.648)   |
| Central Latin America      | 4240.62<br>(2227.97-7709.25)      | 61.97<br>(32.64-113.28)   | 10216.84<br>(4939.55-19159.34)     | 44.44<br>(21.19-84.61)    | -1.030<br>(-1.132,-0.929) |
| Central Sub-Saharan Africa | 970.57 (469.21-1765.42)           | 49.33<br>(22.75-92.38)    | 1928.65 (964.96-3497.15)           | 40.66<br>(18.95-77.45)    | -0.542<br>(-0.626,-0.458) |

|                     |                                 |                         |                                 |                        |                           |
|---------------------|---------------------------------|-------------------------|---------------------------------|------------------------|---------------------------|
| East Asia           | 17997.49<br>(8604.54-34129.99)  | 24.66<br>(11.38-48.28)  | 43504.01<br>(21202.62-82340.94) | 21.82<br>(10.27-42.61) | -0.214<br>(-0.357,-0.072) |
| Eastern Europe      | 10411.61<br>(5066.36-19844.59)  | 32.83<br>(15.63-62.94)  | 12298.40<br>(5966.87-23374.80)  | 31.97<br>(15.44-61.42) | 0.723<br>(0.350,1.097)    |
| Eastern             | 2539.75                         | 42.27                   | 4959.66                         | 35.53                  | -0.495                    |
| Sub-Saharan Africa  | (1228.66-4731.12)               | (19.80-80.95)           | (2343.99-9244.31)               | (16.73-68.89)          | (-0.546,-0.444)           |
| Southern            | 1027.98                         | 41.16                   | 1937.61 (957.22-3635.82)        | 34.67                  | -0.511                    |
| Sub-Saharan Africa  | (511.45-1919.12)                | (19.98-77.96)           |                                 | (17.04-65.30)          | (-0.564,-0.458)           |
| North Africa and    | 5978.60                         | 42.80                   | 12481.87                        | 32.86                  | -0.874                    |
| Middle East         | (2697.75-11457.55)              | (19.10-84.41)           | (5588.7-23784.96)               | (14.58-64.27)          | (-0.896,-0.853)           |
| Oceania             | 62.96<br>(28.55-118.17)         | 28.74<br>(12.97-56.50)  | 151.30<br>(72.22-284.25)        | 27.17<br>(12.38-53.23) | -0.135<br>(-0.147,-0.123) |
| South Asia          | 26509.83<br>(13252.67-48228.18) | 59.17<br>(28.95-110.28) | 46275.73<br>(23655.95-83695.61) | 36.75<br>(18.38-68.25) | -1.207<br>(-1.334,-1.080) |
| Southeast Asia      | 5444.30<br>(2551.94-10356.93)   | 24.99<br>(11.63-48.46)  | 12473.15<br>(6106.11-23332.15)  | 21.08<br>(10.09-40.08) | -0.449<br>(-0.489,-0.409) |
| Southern Latin      | 1899.19                         | 43.10                   | 2991.63                         | 36.62                  | -0.504                    |
| America             | (887.35-3632.64)                | (19.24-84.70)           | (1371.48-5600.04)               | (15.99-71.83)          | (-0.564,-0.444)           |
| Southern            | 1027.98                         | 41.16                   | 1937.61 (957.22-3635.82)        | 34.67                  | -0.511                    |
| Sub-Saharan Africa  | (511.45-1919.12)                | (19.98-77.96)           |                                 | (17.04-65.30)          | (-0.564,-0.458)           |
| Tropical Latin      | 2448.66                         | 30.98                   | 7116.07                         | 29.27                  | -0.343                    |
| America             | (1202.61-4528.54)               | (15.33-57.76)           | (3549.10-13182.73)              | (14.49-54.13)          | (-0.416,-0.270)           |
| Western Europe      | 20404.71<br>(9866.08-38266.72)  | 36.09<br>(16.90-69.81)  | 28701.97<br>(13459.46-53961.43) | 35.26<br>(16.00-68.49) | 0.130<br>(0.038,0.223)    |
| Western Sub-Saharan | 4236.82                         | 60.97                   | 8241.83                         | 49.40                  | -0.639                    |
| Africa              | (2006.72-7998.73)               | (28.29-118.40)          | (3936.76-15398.99)              | (23.07-95.31)          | (-0.708,-0.570)           |
| Northern Africa     | 2131.54<br>(946.88-4123.02)     | 41.66<br>(18.20-82.98)  | 4380.61<br>(1982.14-8509.54)    | 33.42<br>(14.49-66.03) | -0.590<br>(-0.624,-0.557) |
| Central Africa      | 1277.31<br>(615.42-2339.69)     | 51.43<br>(23.52-98.17)  | 2361.91<br>(1189.69-4309.21)    | 42.79<br>(20.02-81.95) | -0.500<br>(-0.589,-0.411) |
| Southern Africa     | 1610.01<br>(778.43-2985.48)     | 41.93<br>(20.20-79.65)  | 3142.12<br>(1518.57-5885.81)    | 35.74<br>(17.25-67.78) | -0.465<br>(-0.519,-0.412) |
| North America       | 12393.21<br>(6148.75-22919.31)  | 36.49<br>(17.30-69.85)  | 23116.39<br>(11509.07-42699.19) | 37.44<br>(17.71-72.67) | -0.181<br>(-0.381,0.019)  |
| Western Africa      | 3816.19<br>(1812.70-7216.09)    | 61.08<br>(28.35-118.37) | 7442.36<br>(3552.16-13892.53)   | 49.39<br>(23.08-95.11) | -0.653<br>(-0.720,-0.585) |
| Eastern Africa      | 2362.80<br>(1142.35-4392.64)    | 42.73<br>(19.93-81.96)  | 4582.01<br>(2163.01-8545.12)    | 35.22<br>(16.53-68.59) | -0.578<br>(-0.629,-0.527) |
| Region of the       | 22907.69                        | 40.55                   | 47384.52                        | 37.59                  | -0.390                    |
| Americas            | (11392.74-42476.91)             | (19.62-76.97)           | (23300.52-88334.42)             | (17.97-72.00)          | (-0.502,-0.277)           |

183 DALYs, disability-adjusted life years; ASDR, age-standardized DALY rate; SDI,

184 sociodemographic index; EAPC, estimated annual percentage change.

185

## 186 **POP burden in SDI regions**

187 Analysis stratified by SDI level demonstrates that the overall burden of POP  
188 among PMW declined from 1990 to 2021. In 2021, the highest burden of disease was  
189 observed in the Low SDI region, with ASIR, ASPR, and ASDR rates of 1000.79,  
190 13723.76, and 43.66 per 100,000 population respectively. Conversely, the lowest  
191 burden was found in the High-middle SDI region, with corresponding rates of 738.80,  
192 8434.79, and 25.88 per 100,000 population. The most rapid declines in EAPC  
193 occurred in the Low-middle SDI region, with values of -0.814 (ASIR), -1.032  
194 (ASPR), and -0.993 (ASDR). Notably, the High SDI region showed an increasing  
195 trend in ASIR (EAPC = 0.038) . Furthermore, compared to other SDI regions, High  
196 SDI exhibited the slowest declines in ASPR (EAPC = -0.069) (S1 Table).

197 Analysis of GBD data from 1990 to 2021 demonstrates a significant negative  
198 correlation ( $R = -0.57$ , 95% CI: -0.61 to -0.51,  $p < 0.001$ ) between the SDI and the  
199 ASDR of POP in PMW. The ASDR is relatively higher in low-SDI regions. As the  
200 SDI increased to approximately 0.5, the ASDR exhibited a transient increase,  
201 followed by a continuous decline. In high-SDI regions, the ASDR is relatively lower,  
202 according to the chart findings (Fig 1 and S1 Fig).

203

204 **Fig 1. Age-standardized DALY rate of POP in postmenopausal women for the 21**

205 **GBD regions by SDI, 1990-2021.** ASDR, age-standardized DALY rate; SDI,

206 sociodemographic index.

207

## 208 **POP burden in all locations**

209           According to GBD 2021 data, the highest ASIR, ASPR, and ASDR for POP  
210 among PMW were observed in Western Sub-Saharan Africa, Andean Latin America,  
211 and Central Latin America. Specifically, Western Sub-Saharan Africa had the highest  
212 ASIR (1,172.23 per 100,000), while the lowest ASIR was observed in High-income  
213 Asia Pacific (582.53 per 100,000). Between 1990 and 2021, ASIR increased in only  
214 11 GBD regions, with Eastern Europe showing the most significant rise  
215 (EAPC=0.669). This region also demonstrated the fastest growth in ASPR  
216 (EAPC=0.739) and ASDR (EAPC=0.723) (Fig 2 and S1 Table).

217

218 **Fig 2. Global POP burden in 204 countries and territories. (A-C) The ASIR,**  
219 **ASPR, and ASDR in 2021; (D-F) The EAPC of ASIR, ASPR, and ASDR between**  
220 **1990 and 2021.** DALYs, disability-adjusted life years; ASIR, age-standardized  
221 incidence rate; ASPR, age-standardized prevalence rate; ASDR, age-standardized  
222 DALY rate; EAPC, estimated annual percentage change.

223

224           In 2021, the location with the highest ASPR and ASDR among PMW was  
225 Niger, the respective rates were 20,227.18 and 62.77 per 100,000. In contrast, Japan  
226 had the lowest ASPR and ASDR of POP globally, with rates of 5039.70 and 15.59 per  
227 100,000, respectively. The three countries with the highest national ASIR of POP  
228 were Niger (1333.55 per 100,000), Chad (1276.53 per 100,000), and Mali (1258.26

229 per 100,000). In contrast, Thailand (536.29 per 100,000), Azerbaijan (553.52 per  
230 100,000), and Armenia (554.08 per 100,000) had the lowest ASIR. Compared with  
231 1990, the EAPC for ASIR, ASPR and ASDR increased in approximately 31 countries  
232 among PMW. Among them, Russian Federation had the highest EAPC increase:  
233 0.829 (ASIR), 0.945 (ASPR), and 0.923 (ASDR); Nepal showed the most significant  
234 decline: -1.577 (ASIR), -2.382 (ASPR), and -2.328 (ASDR) (Fig 2 and S1 Table).

235

### 236 **Health inequality of POP burden**

237 Based on the analysis of global health inequality models for POP among  
238 PMW from 1990 to 2021, the SII for DALYs showed a reduction in its absolute  
239 magnitude. The SII value increased (became less negative) from -20.66 in 1990 to  
240 -7.98 in 2021, representing a 58.30% decrease in absolute inequality magnitude.  
241 Lorenz curve analysis revealed that the CI increased (became less negative) from  
242 -0.07 to -0.03. Both SII and CI values are negative, indicating a disproportionate  
243 concentration of disease burden in low-SDI regions. The reduction in the absolute  
244 magnitude of these negative values demonstrates improvements in both absolute and  
245 relative inequality levels between the highest and lowest SDI groups. For example,  
246 China and India, as the most populous nations, both exhibited declining crude DALY  
247 rates; however, India's crude DALY rate remained notably higher than China's (Fig  
248 3).

249

250 **Fig 3. (A) SII analysis: Absolute income-related healthy inequality in POP**

251 **burden, 1990 vs. 2021. (B) CI analysis: Relative income-related healthy**  
252 **inequality in POP burden, 1990 vs. 2021.** SII: slope index of inequality; CI:  
253 concentration index; SDI, sociodemographic index.

254

## 255 **Frontier analysis of POP burden**

256 We utilized DALYs data and the SDI for POP across different global regions  
257 in 2021 to calculate the effective differences between countries and the frontier.  
258 Bolivia, Iceland, Israel, Mexico, and Norway had the largest effective differences  
259 (range: 29.77–33.28). Conversely, Thailand, North Korea, Somalia, Japan, and Viet  
260 Nam had the lowest DALYs rates for POP, exhibiting the smallest effective  
261 differences (range: 0.00–0.21). Significant effective differences suggest potential  
262 unrealized health benefits or improvement opportunities (the potential reduction space  
263 for global POP-related DALYs) based on a country's developmental stage. In Fig 4,  
264 the frontier is represented by the solid black line, and countries are denoted by dots.  
265 Blue dots indicate an upward trend in DALYs, while red dots signify a downward  
266 trend. Statistical analysis (S2 Fig) revealed a statistically significant but weak  
267 negative correlation between SDI and effective differences (Spearman's  $\rho = -0.034$ ,  $p$   
268  $= 0.0062$ ), with region-specific heterogeneity across SDI tiers (Fig 4 and S2 Table).

269

270 **Fig 4. (A) Frontier analysis based on SDI and POP ASDR from 1990 to 2021. (B)**

271 **Frontier analysis based on SDI and POP ASDR in 2021.** ASDR, age-standardized

272 DALY rate; SDI, sociodemographic index.

273

## 274 **APC analysis**

275 Fig 5 illustrates the annual percentage change in POP incidence rates among  
276 PMW. The overall net drift was significantly positive in high-middle-SDI regions  
277 (0.292%; 95% CI: 0.213% to 0.372%). Conversely, significant negative overall net  
278 drifts were observed in middle-SDI regions (-0.190%; 95% CI: -0.262% to -0.117%),  
279 low-middle-SDI regions (-0.835%; 95% CI: -0.948% to -0.723%), and low-SDI  
280 regions (-0.614%; 95% CI: -0.718% to -0.510%). Globally, the overall net drift was a  
281 slight decreasing trend (-0.063%; 95% CI: -0.143% to 0.017%;  $p = 0.122$ ), although  
282 this was not statistically significant. Similarly, the high-SDI regions exhibited a  
283 nonsignificant slight increasing trend (0.065%; 95% CI: -0.046% to 0.176%;  $p =$   
284 0.254). The local drifts in the global incidence of POP were predominantly negative  
285 across most age groups, indicating declining rates except among the oldest-old (85+  
286 years). Similar downward trends occurred in high-middle and middle-SDI regions.  
287 Notably, high-SDI regions demonstrated positive local drifts in the 65–80 age group,  
288 reflecting a marked increase in POP incidence. Conversely, the 85+ group in these  
289 regions exhibited declining rates. Both low-middle and low-SDI regions showed  
290 consistent downward trends in POP incidence among PMW (Fig 5 and S3 Table).

291

## 292 **Fig 5. The local drifts of POP incidence rate, 1990–2021.**

293

294 Fig 6 illustrates the effects of age, period, and birth cohort on POP incidence

295 among PMW. A consistent pattern was observed globally and across SDI regions:  
296 incidence rates generally peaked around 70 years of age, declined temporarily, and  
297 subsequently increased with advancing age, ultimately reaching a second peak at 90+  
298 years. Among all regions, the middle SDI region demonstrated the steepest  
299 age-dependent increase in overall incidence rates, indicating a pronounced age effect.  
300 Notably, high-SDI regions exhibited higher incidence rates than the global average in  
301 the 65–75 years age group, while low-middle and low-SDI regions showed elevated  
302 rates in the 55–70 years age group compared to more developed regions. Period trends  
303 reached an equilibrium point ( $RR = 1$ ) during 2005–2010 globally. After 2010, a  
304 rising trend emerged in global RR ( $RR > 1$ ), with high SDI and high-middle-SDI  
305 regions displaying similar trajectories. Importantly, high-middle-SDI regions exerted  
306 the strongest period effect on POP incidence among PMW. Conversely, low-middle-  
307 and low-SDI regions exhibited declining trends, with  $RR < 1$  after 2010. For birth  
308 cohort effects, global RR declined to  $< 1$  for cohorts born after 1930. This pattern was  
309 consistent across all SDI regions except high-SDI regions. The steepest decline  
310 occurred in low-middle- and low-SDI regions. Notably, women born between 1935  
311 and 1950 in high-SDI regions faced a progressively increasing disease burden,  
312 although this burden moderated for subsequent birth cohorts.

313

314 **Fig 6. Age, period and cohort effects on POP incidence.**

315

316 **BAPC analysis**

317 BAPC models were utilized to project that the trends of ASIR, ASPR, and  
318 ASDR for POP among PMW will decline between 2022 and 2050. The global  
319 prevalence of POP among PMW is expected to reach 114.67 million by 2050,  
320 representing a 50.02% increase from 2021. The results indicate that the ASIR is  
321 projected to decrease from 816.74 per 100,000 in 2021 to 788.26 per 100,000 in 2050,  
322 representing a decline of approximately 3.49%. Similarly, the ASPR is expected to  
323 decline from 9912.95 per 100,000 in 2021 to 7961.21 per 100,000 in 2050, reflecting  
324 a reduction of approximately 18.04%. Furthermore, the ASDR is projected to decline  
325 from 30.20 per 100,000 in 2021 to 23.35 per 100,000 in 2050, a decrease of  
326 approximately 22.68%. The shaded area in the figure indicates the potential  
327 fluctuation of ASR (Fig 7 and S4 Table).

328

329 **Fig 7. Projected trends in POP among postmenopausal women, 2022–2050: (A)**  
330 **ASIR; (B) ASDR.** ASIR, age-standardized incidence rate; ASDR, age-standardized  
331 DALY rate.

332

### 333 **Primary MR analysis results for POP risk factors**

334 Based on potential mediators identified in prior studies <sup>[12-17]</sup>, we conducted  
335 UVMR analyses to assess their associations with POP (Fig 8). Complete datasets  
336 along with scatter plots, funnel plots, and leave-one-out plots for all results are  
337 presented in S6 Table, and S3-S5 Figs. The analysis revealed significant associations  
338 between obesity-related anthropometric indicators and POP risk: body mass index

339 (BMI) (OR = 1.124, 95% CI = 1.016–1.243), waist circumference (OR = 1.209, 95%  
340 CI = 1.041–1.405), hip circumference (OR = 1.313, 95% CI = 1.056–1.633), body fat  
341 percentage (OR = 1.359, 95% CI = 1.023–1.806), whole body fat mass (OR = 1.138,  
342 95% CI = 1.006–1.287), trunk fat percentage (OR = 1.174, 95% CI = 1.017–1.354).

343       Among the metabolic indicators analyzed, fasting insulin (OR = 1.78, 95% CI  
344 = 1.048–3.023) and diastolic blood pressure (OR = 1.271, 95% CI = 1.069–1.511)  
345 were identified as significant risk factors for POP. Conversely, HDL cholesterol (OR  
346 = 0.905, 95% CI = 0.846–0.968) and total cholesterol levels (OR = 0.905, 95% CI =  
347 0.828–0.991) demonstrated protective effects against POP development.

348       Among disease-related factors, type 2 diabetes (OR = 1.056, 95% CI = 1.007–  
349 1.107) and insomnia (OR = 1.690, 95% CI = 1.029–2.776) were identified as risk  
350 factors, while cognitive performance showed protective effects (OR = 0.815, 95% CI  
351 = 0.702–0.945). Furthermore, the absence of physician-diagnosed conditions,  
352 including blood clots, deep vein thrombosis (DVT), bronchitis, emphysema, asthma,  
353 rhinitis, and eczema (OR = 0.669, 95% CI = 0.468–0.958), was associated with a  
354 reduced risk of POP.

355       Additionally, college completion (OR=0.383, 95% CI = 0.188–0.781)  
356 demonstrated a stronger protective association, consistent with the lower prevalence  
357 of POP in high-SDI regions and among populations with higher cognitive levels.

358

359 **Fig 8. Forest plot of Mendelian randomization analysis.** OR, odds ratio.

360

## 361 **Discussion**

362           This study, utilizing the latest GBD 2021 data, presents the first systematic  
363 integration of the health inequality model, frontier analysis, APC analysis, BAPC  
364 prediction model, and MR analysis. It comprehensively analyzes the global  
365 epidemiological characteristics of POP among PMW and the evolution of disease  
366 burden across multiple dimensions. By comparing data from 1990 to 2021 and  
367 projecting trends up to 2050, the study reveals the spatiotemporal heterogeneity of  
368 POP, socio-economic driving factors, and the challenges of prevention and control in  
369 the context of aging. These findings provide critical evidence-based insights for  
370 global health policy formulation. Although the global ASIR, ASPR, and ASDR  
371 exhibited declines from 1990 to 2021, indicating varying degrees of progress in the  
372 prevention and control of POP across countries, these improvements are strongly  
373 associated with major breakthroughs in pelvic floor rehabilitation and advancements  
374 in diagnostic and treatment systems during the last 31 years <sup>[18]</sup>. However, despite  
375 these declines, the absolute numbers of incidence, prevalence, and DALYs globally  
376 increased by 92.96%, 85.21%, and 83.78%, respectively. Furthermore, high-income  
377 countries continue to experience an increasing burden of POP among PMW. These  
378 trends demonstrate that population aging and demographic expansion remain the  
379 primary drivers of the rising absolute burden.

380           Stratified analysis of the SDI reveals that the global POP burden among PMW  
381 is significantly greater in low-SDI regions. For instance, the ASDR in Niger is 62.77  
382 per 100,000, while in high SDI countries such as Japan, it is only 15.59 per 100,000.

383 A systematic review indicates that the prevalence of stage II-IV POP reaches 58.4%  
384 in low SDI countries, compared to only 20.35% in high SDI countries <sup>[1]</sup>. This  
385 disparity may result from the limited access to prenatal care and pelvic floor  
386 rehabilitation in low-SDI regions, which often results in delayed intervention and  
387 disease progression <sup>[19]</sup>. Furthermore, factors such as higher rates of vaginal  
388 deliveries, lack of professional midwifery services, premature return to manual labor,  
389 and engagement in heavy physical work have been identified as significant  
390 contributors to the occurrence and progression of POP in low SDI countries <sup>[20]</sup>. POP  
391 is often regarded as a “silent epidemic” in low-SDI regions. Due to social taboos and  
392 economic constraints, the rate of medical consultation among affected women  
393 remains low, leading to a higher proportion of severe prolapse cases <sup>[21]</sup>. However, the  
394 burden of POP among PMW is increasing in some developed regions. For instance, in  
395 Eastern and Central Europe, the EAPC for ASDR is remarkably high (0.723 and  
396 0.307, respectively), primarily driven by rapid population aging. Furthermore,  
397 countries such as Poland, Greece, and Japan face critically low fertility rates. As  
398 reported by the World Economic Forum, their working-age populations are projected  
399 to decline by 35% or more by 2060 <sup>[22]</sup>, compounding the challenges posed by  
400 demographic aging.

401 According to the health inequality analysis, the SII improved from -20.66 in  
402 1990 to -7.98 in 2021. This trend highlights a reduction in the gap of POP burden  
403 among PMW between high and low-SDI regions over the past 31 years from a health  
404 equity perspective. However, the burden remains higher in vulnerable groups than in

405 dominant groups. The CI reveals that POP burden is unevenly distributed in low SDI  
406 populations, underscoring structural inequalities in health resource allocation. For  
407 example, in India, POP incidence among elderly women exhibits a steady upward  
408 trend, associated with multiparity and chronic undernutrition [23]. These findings align  
409 with MR analysis results, which suggest that elevated total cholesterol levels  
410 (potentially reflective of nutritional status in specific populations, e.g., chronic disease  
411 or malnutrition [24]) may be associated with reduced risk of POP.

412         Frontier analysis reveals significant disparities in the burden of POP among  
413 PMW across countries stratified by SDI. Notably, the correlation between SDI level  
414 and the effective differences is weak, indicating that specific opportunities for  
415 improvement exist irrespective of national income level. APC analysis further  
416 demonstrates that while PMW in lower-SDI regions exhibit a more pronounced  
417 declining trend in POP incidence, the overall incidence rates remain significantly  
418 higher than the rates in high-SDI regions. Conversely, although PMW in higher-SDI  
419 regions have lower incidence rates across all age groups, these rates exhibit a growth  
420 trend. Consequently, low-SDI regions should prioritize enhancing population health  
421 literacy and strengthening primary care infrastructure, whereas high SDI counterparts  
422 must address aging-driven challenges through optimized chronic disease management  
423 (e.g., obesity, respiratory conditions) and mitigation of demographic transition risks.  
424 Furthermore, standardizing diagnostic protocols using tools like the POP-Q scale  
425 remains essential for improving cross-regional epidemiological data comparability  
426 [25].

427           The prevalence of POP increases with age, leading to a growing clinical  
428 demand for effective treatment strategies [26]. The number of surgical procedures for  
429 POP in individuals aged over 75 in England rose from 1.5 million in 2006–2007 to  
430 2.5 million in 2014–2015 [27]. Abdominal sacrocolpopexy is regarded as the gold  
431 standard treatment for POP. Laparoscopic and robot-assisted surgeries offer better  
432 anatomical outcomes, reduced estimated blood loss, and lower overall postoperative  
433 complications [28]. Although pelvic floor reconstruction surgery is widely utilized,  
434 colpocleisis, with its minimal trauma, is a more suitable option for patients who do  
435 not require vaginal intercourse, decline mesh implantation surgery, and prioritize a  
436 low risk of complications [29]. A retrospective study revealed that the surgical rate for  
437 POP declined from 1987 to 2009. Based on APC analysis, it was determined that the  
438 reduction in instrumental vaginal deliveries and obstetric trauma may be significant  
439 factors contributing to the decline in the surgical volume of POP [30]. Future research  
440 and innovation should focus on optimizing minimally invasive techniques, enhancing  
441 repair materials, advancing the understanding of tissue biomechanics, and integrating  
442 comprehensive pelvic floor treatments to improve surgical outcomes [31]. Currently,  
443 there is no definitive POP prevention strategy; however, potential measures include  
444 weight loss, minimizing heavy physical labor, alleviating constipation, optimizing  
445 delivery methods, and implementing pelvic floor muscle physical therapy [26, 32].

446           The BAPC model predicts that by 2050, the number of POP cases among  
447 PMW worldwide will increase to approximately 114.67 million, representing a  
448 50.02% rise from 2021 levels. Although the ASPR is projected to decline to 7961.21

449 per 100,000 (a reduction of 18.04%), yet the ASIR is expected to decrease by only  
450 3.49% by 2050, with no significant improvement anticipated in the near future. These  
451 apparent contradictions suggest that, despite global aging, the increasing adoption of  
452 laparoscopic surgery, vaginal reconstruction surgery, and the enhanced utilization of  
453 vaginal braces and pelvic floor muscle training have mitigated disease progression [33].  
454 Although the decline in ASPR and ASDR for POP among PMW globally reflects the  
455 combined effects of advancements in medical technology, the widespread  
456 implementation of preventive measures, and socioeconomic development, the  
457 projected increase in the number of patients will still result in a substantial absolute  
458 burden and persistent regional disparities. This prediction model offers valuable  
459 insights for health policymakers. Moving forward, priority should be given to  
460 resource allocation in regions with low SDI and enhanced health management  
461 strategies in aging populations, aiming to achieve a more equitable reduction in the  
462 burden of disease.

463 Our MR analyses confirm and quantify the significant causal impact of overall  
464 and abdominal obesity on POP risk. Elevated body mass index (BMI), waist  
465 circumference, hip circumference, body fat percentage, whole-body fat mass, and  
466 trunk fat percentage all demonstrated consistent positive associations. This aligns with  
467 substantial prior observational evidence by demonstrating that persistent increases in  
468 intra-abdominal pressure and consequent pelvic neurovascular and ligamentous  
469 damage induced by abdominal fat accumulation contribute significantly to the  
470 observed association between obesity and POP [34].

471           Among metabolic traits, fasting insulin and diastolic blood pressure emerged  
472 as significant causal risk factors. This suggests that insulin resistance and potentially  
473 associated hyperglycemia or vascular dysfunction, alongside elevated diastolic  
474 pressure contributing to chronic pelvic floor stress, are important etiological  
475 pathways. Conversely, higher levels of both HDL and total cholesterol exhibited  
476 significant protective effects, possibly mediated by inhibiting degradation and/or  
477 aberrant synthesis of elastin fibers and collagen in pelvic floor connective tissue  
478 remodeling, thereby reducing POP incidence <sup>[35]</sup>. Our MR analysis revealed no  
479 significant causal association between estradiol and POP risk (OR = 1.040, 95% CI =  
480 0.935–1.156, P = 0.468). Existing studies indicate that estrogen may influence pelvic  
481 floor tissues by regulating collagen metabolism and matrix metalloproteinase (MMP)  
482 expression <sup>[36, 37]</sup>. However, most current evidence derives from small-scale or  
483 low-quality studies, with a lack of large-scale randomized controlled trials (RCTs)  
484 definitively supporting the therapeutic efficacy of estrogen for POP <sup>[15]</sup>. Further  
485 high-quality studies are needed to clarify its mechanistic role and clinical  
486 applicability.

487           Among disease-related factors, genetically predicted type 2 diabetes mellitus  
488 (T2DM) and insomnia were causally linked to increased POP risk. Notably,  
489 observational studies suggest that hypertension alone or T2DM alone may not  
490 significantly elevate prolapse risk, but their comorbidity synergistically amplifies the  
491 risk by approximately two-fold <sup>[14]</sup>. The novel identification of insomnia as a risk  
492 factor suggests potential contributions from chronic stress, impaired healing,

493 hormonal fluctuations, or unmeasured mediators affecting pelvic floor tissues. Higher  
494 cognitive performance demonstrated a significant protective effect, reinforcing the  
495 importance of neurological factors and potentially reflecting cognitive reserve  
496 influencing symptom perception, reporting, healthcare-seeking behavior, or even  
497 neuromuscular control mechanisms. Therefore, targeted education on weight control  
498 and lipid management for women with lower educational attainment may hold clinical  
499 significance for reducing POP risk.

500 In terms of disease phenotype definition, POP is a clinically heterogeneous  
501 syndrome that includes distinct anatomical subtypes such as uterine prolapse,  
502 cystocele, and rectocele. Although this study utilized GWAS data on uterine prolapse  
503 from the IEU database (2021 release) for Mendelian randomization analysis, the  
504 phenotypic heterogeneity across subtypes could affect the validity of inferences  
505 regarding POP's overall genetic architecture. Additionally, although the GBD  
506 database contains global population case data, it is challenging to account for  
507 systematic differences in data collection and coding, as well as inconsistencies in data  
508 source quality within this analytical model. Second, regarding population  
509 representativeness, the GWAS data used in this study were primarily derived from  
510 European-ancestry populations. Although this helps control for population  
511 stratification bias, it may limit the generalizability of findings to other ethnic groups.  
512 Finally, in the analysis of exposure factors, the instrumental variables for smoking and  
513 coffee intake included only two nonsynonymous SNPs, which may compromise the  
514 reliability of causal effect estimates. Future studies should incorporate larger-scale

515 GWAS data to enhance the robustness of these findings.

516

## 517 **Conclusion**

518 This study represents the first systematic assessment of the global burden of  
519 POP among PMW, demonstrating that although the overall global burden exhibited a  
520 declining trend from 1990 to 2021, significant disparities persist across SDI regions.  
521 Specifically, high-SDI regions experienced less pronounced burden reduction due to  
522 population aging and lifestyle changes, whereas low-SDI regions exhibited a  
523 downward trend but maintained a severe absolute burden. To address these  
524 challenges, targeted interventions based on disease burden mapping are  
525 recommended: strengthen healthcare infrastructure in low-SDI regions to improve  
526 early screening and surgical capacity; enhance health management for elderly PMW  
527 in high-SDI regions through integrated pelvic floor rehabilitation programs. These  
528 strategies ultimately aim to achieve equitable reductions in POP burden while  
529 advancing global health justice.

530

## 531 **Abbreviations**

532 POP: pelvic organ prolapse

533 GBD: global burden of disease

534 PMW: postmenopausal women

535 MR: Mendelian randomization

536 DALYs: disability-adjusted life years

537 ASIR: age-standardized incidence rate  
538 ASPR: age-standardized prevalence rate  
539 ASDR: age-standardized DALY rate  
540 SDI: socio-demographic index  
541 SII: slope index of inequality  
542 CI: concentration index  
543 APC: Age-Period-Cohort  
544 BAPC: Bayesian age-period-cohort  
545 EAPC: estimated annual percentage change  
546 UI: uncertainty interval

547

## 548 **Acknowledgements**

549 We sincerely acknowledge the contributions of database researchers whose  
550 meticulously developed resources have advanced progress in public health. Their  
551 sustained efforts to improve global health data represent an indispensable asset to the  
552 scientific community.

553

## 554 **Funding**

555 This research was funded by the the Science and Technology Department of Shanxi  
556 Province grants 202104041101035.

557

## 558 **Data availability**

559 All data used in this study were obtained from the GBD 2021 database  
560 (<https://vizhub.healthdata.org/gbd-results/>) and the MRC Integrative Epidemiology  
561 Unit (IEU) OpenGWAS project (<https://gwas.mrcieu.ac.uk/>).

562

## 563 **Ethics declarations**

### 564 **Ethics approval and consent to participate**

565 This is a retrospective, observational cohort study utilizing publicly available database  
566 resources; therefore, the requirement for informed consent was waived. The consent  
567 was not applicable.

### 568 **Consent for publication**

569 All authors have read and agreed to the published version of the manuscript.

570

### 571 **Competing interests**

572 The authors declare no competing interests.

573

## 574 **Supporting information**

575 **S1 Fig. ASIR, ASPR, and ASDR of POP in postmenopausal women for the 21**

576 **GBD regions by SDI, 1990-2021.**

577 **S2 Fig. Correlation between SDI and effective differences.**

578 **S3 Fig. Scatter plots of Mendelian randomization analysis.**

579 **S4 Fig. Funnel plots of Mendelian randomization analysis.**

580 **S5 Fig. Leave-one-out plots of Mendelian randomization analysis.**

581 **S1 Table. ASIR, ASPR, ASDR, and corresponding EAPC of POP in**

582 **postmenopausal women globally and regions in 1990 and 2021.**

583 **S2 Table. All results of frontier analysis.**

584 **S3 Table. Detailed data from Age-Period-Cohort analysis.**

585 **S4 Table. All results of Bayesian age-period-cohort analysis.**

586 **S5 Table. Detailed data of Mendelian randomization analysis.**

587 **S6 Table. All results of Mendelian randomization analysis.**

588 **S1 File. STROBE-MR checklist.**

589

## 590 **Author Contributions**

591 W.S.: Conceptualization, Funding Acquisition, Project Administration, Resources,

592 Supervision, Writing-Review & Editing. Z.W.: Conceptualization, Data Curation,

593 Formal Analysis, Methodology, Software, Visualization, Writing-Original Draft

594 Preparation. Q.W., Y.R., and Y.W.: Writing-Review & Editing.

595

## 596 **References**

597 1. Islam RM, Oldroyd J, Rana J, Romero L, Karim MN. Prevalence of symptomatic pelvic floor  
598 disorders in community-dwelling women in low and middle-income countries: a systematic  
599 review and meta-analysis. *International urogynecology journal*. 2019;30(12):2001-11.

600 2. Vergeldt TF, Weemhoff M, IntHout J, Kluivers KB. Risk factors for pelvic organ prolapse  
601 and its recurrence: a systematic review. *International urogynecology journal*.  
602 2015;26(11):1559-73.

603 3. Zabriskie HA, Drummond MJ, Nygaard IE, Swenson CW. Older Maternal Age at First  
604 Delivery as a Risk Factor for Pelvic Organ Prolapse: What We Know. *American journal of*  
605 *obstetrics and gynecology*. 2025;S0002-9378(25):00151-6.

606 4. Bates AT, Divino C. Laparoscopic surgery in the elderly: a review of the literature. *Aging*  
607 *and disease*. 2015;6(2):149-55.

- 608 5. Collaborators. GD. Global age-sex-specific fertility, mortality, healthy life expectancy  
609 (HALE), and population estimates in 204 countries and territories, 1950-2019: a  
610 comprehensive demographic analysis for the Global Burden of Disease Study 2019. *Lancet*  
611 (London, England). 2020;396(10258):1160-203.
- 612 6. World Health Organization. Ageing and health. 2024 [cited 2025 Jan 25]. Available from:  
613 <https://www.who.int/zh/news-room/fact-sheets/detail/ageing-and-health>.
- 614 7. Mattiuzzi C, Lippi G. Cancer statistics: a comparison between World Health Organization  
615 (WHO) and Global Burden of Disease (GBD). *European journal of public health*.  
616 2020;30(5):1026-7.
- 617 8. García-Tizón Larroca S, Amor Valera F, Ayuso Herrera E, Cueto Hernandez I, Cuñarro  
618 Lopez Y, De Leon-Luis J. Human Development Index of the maternal country of origin and  
619 its relationship with maternal near miss: A systematic review of the literature. *BMC*  
620 *pregnancy and childbirth*. 2020;20(1):224.
- 621 9. Renzi P, Franci A. Inequalities in Health: Definitions, Concepts and Measurements—An  
622 Application in the Regional Health Authority in Italy. *Social Indicators Research*.  
623 2023;169(1):599-627.
- 624 10. Xie Y, Bowe B, Mokdad AH, Xian H, Yan Y, Li T, et al. Analysis of the Global Burden of  
625 Disease study highlights the global, regional, and national trends of chronic kidney disease  
626 epidemiology from 1990 to 2016. *Kidney international*. 2018;94(3):567-81.
- 627 11. Masters RK, Powers DA, Hummer RA, Beck A, Lin SF, Finch BK. Fitting  
628 Age-Period-Cohort Models Using the Intrinsic Estimator: Assumptions and Misapplications.  
629 *Demography*. 2016;53(4):1253-9.
- 630 12. Arslan M, Kozan R. Pelvic floor dysfunction in patients with gestational diabetes mellitus.  
631 *World journal of diabetes*. 2025;16(2):99823.
- 632 13. Gillor M, Saens P, Dietz HP. Demographic risk factors for pelvic organ prolapse: Do  
633 smoking, asthma, heavy lifting or family history matter? *European journal of obstetrics,*  
634 *gynecology, and reproductive biology*. 2021;261:25-8.
- 635 14. Isik H, Aynoglu O, Sahbaz A, Selimoglu R, Timur H, Harma M. Are hypertension and  
636 diabetes mellitus risk factors for pelvic organ prolapse? *European journal of obstetrics,*  
637 *gynecology, and reproductive biology*. 2016;197:59-62.
- 638 15. Jung HY, Kim TR, Han GH, Yuk JS. Relation between pelvic organ prolapse and  
639 menopausal hormone therapy: nationwide cohort study. *Obstetrics & gynecology science*.  
640 2025;68(3):210-20.
- 641 16. Kalata U, Pomian A, Jarkiewicz M, Kondratskyi V, Lippki K, Barcz E. Influence of Stress  
642 Urinary Incontinence and Pelvic Organ Prolapse on Depression, Anxiety, and Insomnia-A  
643 Comparative Observational Study. *Journal of clinical medicine*. 2023;13(1).
- 644 17. Si K, Yang Y, Liu Q, Wang Q, Yin S, Dai Q, et al. Association of Central and General  
645 Obesity Measures With Pelvic Organ Prolapse. *Obstetrics and gynecology*.  
646 2025;145(1):108-14.
- 647 18. Riaz H, Nadeem H, Rathore FA. Recent advances in the pelvic floor assessment and  
648 rehabilitation of Women with Pelvic Floor Dysfunction. *JPMA The Journal of the Pakistan*  
649 *Medical Association*. 2022;72(7):1456-9.
- 650 19. Eloge Ilunga-Mbaya DM, Prosper Lukusa Tshilobo, Kenny Raha Maroyi, Rahma Rashid  
651 Tozin, Dieudonné Sengeyi Mushengezi. Pelvic Organs Prolapse in Low-Resources Countries:

- 652 Epidemiology, Risk Factors, Quality of Life. Narrative Review. Open Journal of Urology.  
653 2023;13(7):238-50.
- 654 20. Borsamo A, Oumer M, Worku A, Asmare Y. Associated factors of pelvic organ prolapse  
655 among patients at Public Hospitals of Southern Ethiopia: A case-control study design. PLoS  
656 one. 2023;18(1):e0278461.
- 657 21. Gupta B. To evaluate the predisposing factors of uterovaginal prolapse in women admitted in  
658 gynaecology ward. Indian Journal of Obstetrics and Gynecology Research. 2023;10:185-8.
- 659 22. World Economic Forum. Aging global population. 2020 [cited 2025 Jan 26]. Available from:  
660 <https://www.weforum.org/agenda/2020/02/ageing-global-population/>.
- 661 23. Singh M, Shekhar C, Shri N. Changes in age at last birth and its determinants in India. Sci  
662 Rep. 2023;13(1):10450.
- 663 24. Minegishi Y, Sato K, Takamura Y, Suzuki Y, Agatsuma Y, Nawa S, et al. Prospective  
664 investigation of the Controlling Nutritional Status (CONUT) score and clinical course of  
665 patients with COPD. Respiratory investigation. 2025;63(5):866-71.
- 666 25. Chen Y, Zhou Y, Tan L, Chen S, Wu C, Liang Y, et al. Comparative analysis of transvaginal  
667 natural orifice transluminal endoscopic surgery versus laparoendoscopic single-site  
668 sacrocolpopexy for pelvic organ prolapse: A propensity score matching study. Heliyon.  
669 2023;9(9):e19698.
- 670 26. Hagen S, Sellers C, Elders A, Glazener C, MacArthur C, Toozs-Hobson P, et al. Urinary  
671 incontinence, faecal incontinence and pelvic organ prolapse symptoms 20-26 years after  
672 childbirth: A longitudinal cohort study. BJOG : an international journal of obstetrics and  
673 gynaecology. 2024;131(13):1815-23.
- 674 27. Turrentine FE, Wang H, Simpson VB, Jones RS. Surgical risk factors, morbidity, and  
675 mortality in elderly patients. Journal of the American College of Surgeons.  
676 2006;203(6):865-77.
- 677 28. Chang CL, Chen CH, Yang SS, Chang SJ. An updated systematic review and network  
678 meta-analysis comparing open, laparoscopic and robotic-assisted sacrocolpopexy for  
679 managing pelvic organ prolapse. Journal of robotic surgery. 2022;16(5):1037-45.
- 680 29. Felder L, Heinzlmann-Schwarz V, Kavvadias T. How does colpopoiesis for pelvic organ  
681 prolapse in older women affect quality of life, body image, and sexuality? A critical review  
682 of the literature. Women's health (London, England). 2022;18:17455057221111067.
- 683 30. Lisonkova S, Lavery JA, Ananth CV, Chen I, Muraca G, Cundiff GW, et al. Temporal trends  
684 in obstetric trauma and inpatient surgery for pelvic organ prolapse: an age-period-cohort  
685 analysis. American journal of obstetrics and gynecology. 2016;215(2):208.e1-.e12.
- 686 31. Tsui WL, Ding DC. Anterior Colporrhaphy and Paravaginal Repair for Anterior  
687 Compartment Prolapse: A Review. Medicina (Kaunas, Lithuania). 2024;60(11):1865.
- 688 32. Jeppson PC, Balgobin S, Wheeler T, Forner L, Caagbay D, Thompson J, et al. Impact of  
689 Lifestyle Modifications on the Prevention and Treatment of Pelvic Organ Prolapse.  
690 International urogynecology journal. 2025;36(1):59-69.
- 691 33. Santoso B, Putra IG, Megadhana W, Mahayasa P, Suardika A, Sanjaya H. The Matrix  
692 Metalloproteinase-1 Gene Polymorphisms as Risk Factor of Pelvic Organ Prolapse in  
693 Balinese Woman. European Journal of Medical and Health Sciences. 2022;4:1-7.
- 694 34. Schulten SFM, Claas-Quax MJ, Weemhoff M, van Eijndhoven HW, van Leijssen SA,  
695 Vergeldt TF, et al. Risk factors for primary pelvic organ prolapse and prolapse recurrence: an

- 696 updated systematic review and meta-analysis. American journal of obstetrics and  
697 gynecology. 2022;227(2):192-208.
- 698 35. Word RA, Pathi S, Schaffer JI. Pathophysiology of pelvic organ prolapse. Obstetrics and  
699 gynecology clinics of North America. 2009;36(3):521-39.
- 700 36. Eckhardt S, Laus K, DeAndrade S, Lee J, Nguyen J. The impact of diabetes mellitus on  
701 pelvic organ prolapse recurrence after robotic sacrocolpopexy. International urogynecology  
702 journal. 2023;34(8):1859-66.
- 703 37. Guler Z, Roovers JP. Role of Fibroblasts and Myofibroblasts on the Pathogenesis and  
704 Treatment of Pelvic Organ Prolapse. Biomolecules. 2022;12(1).

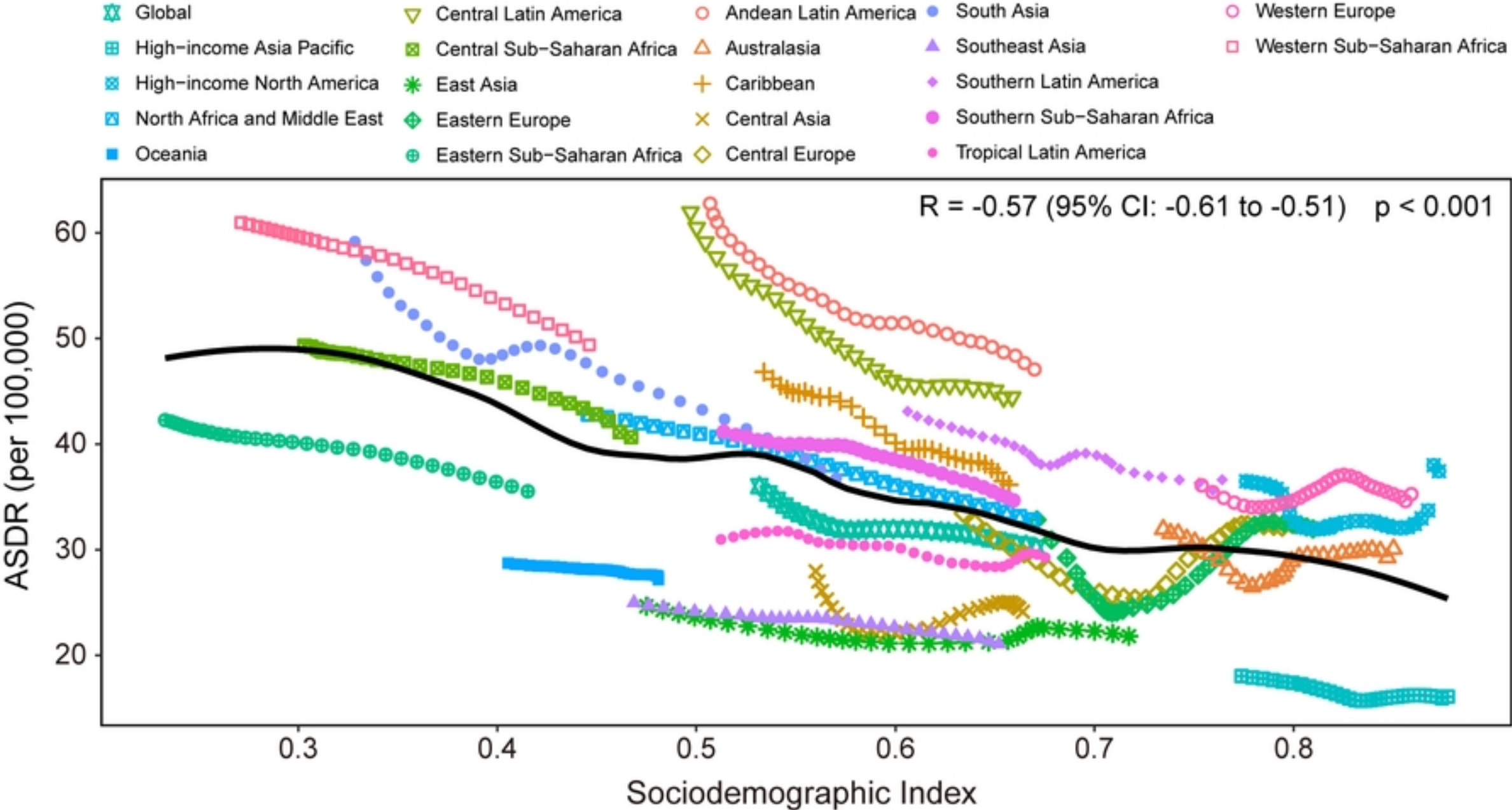


Figure1

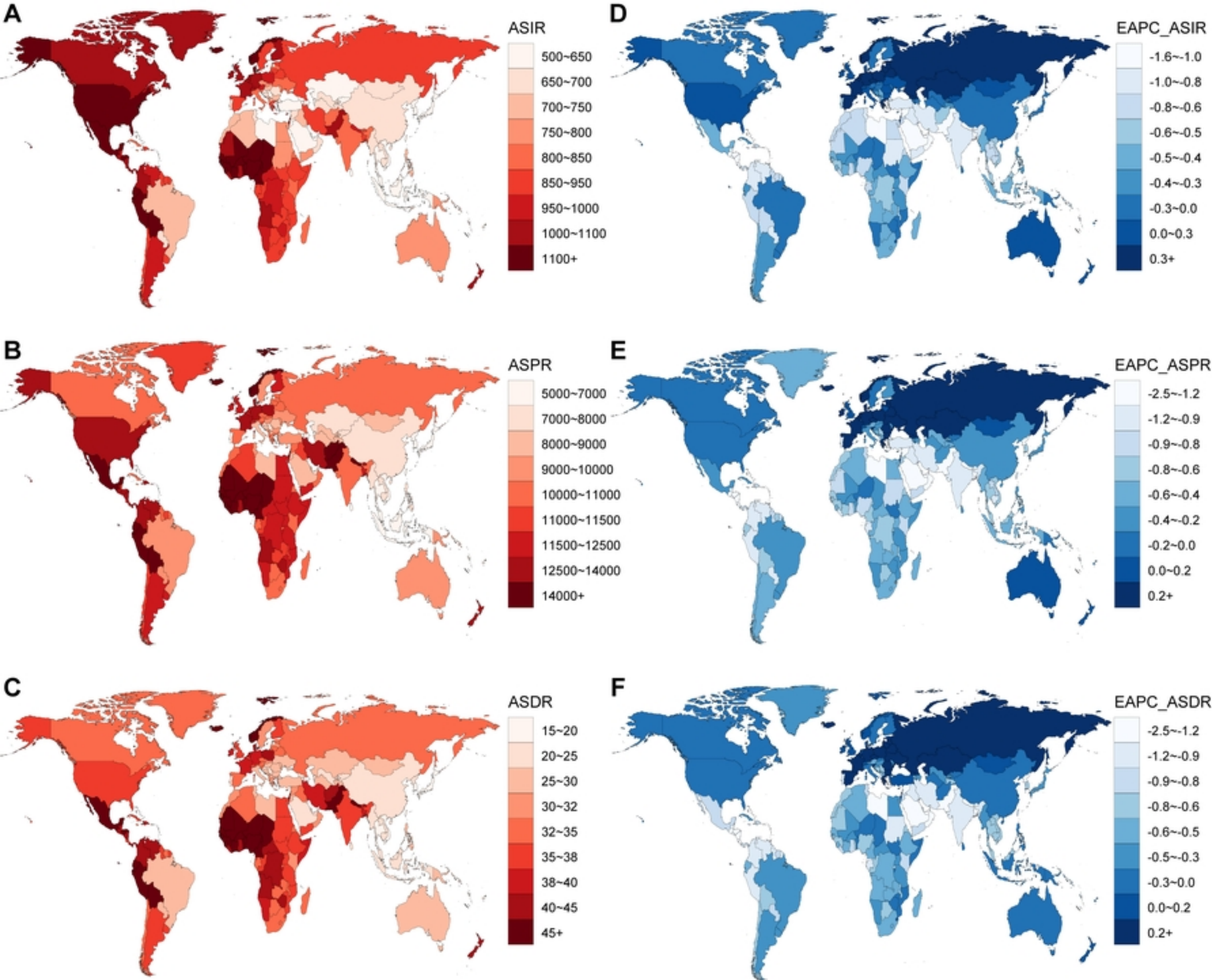


Figure2

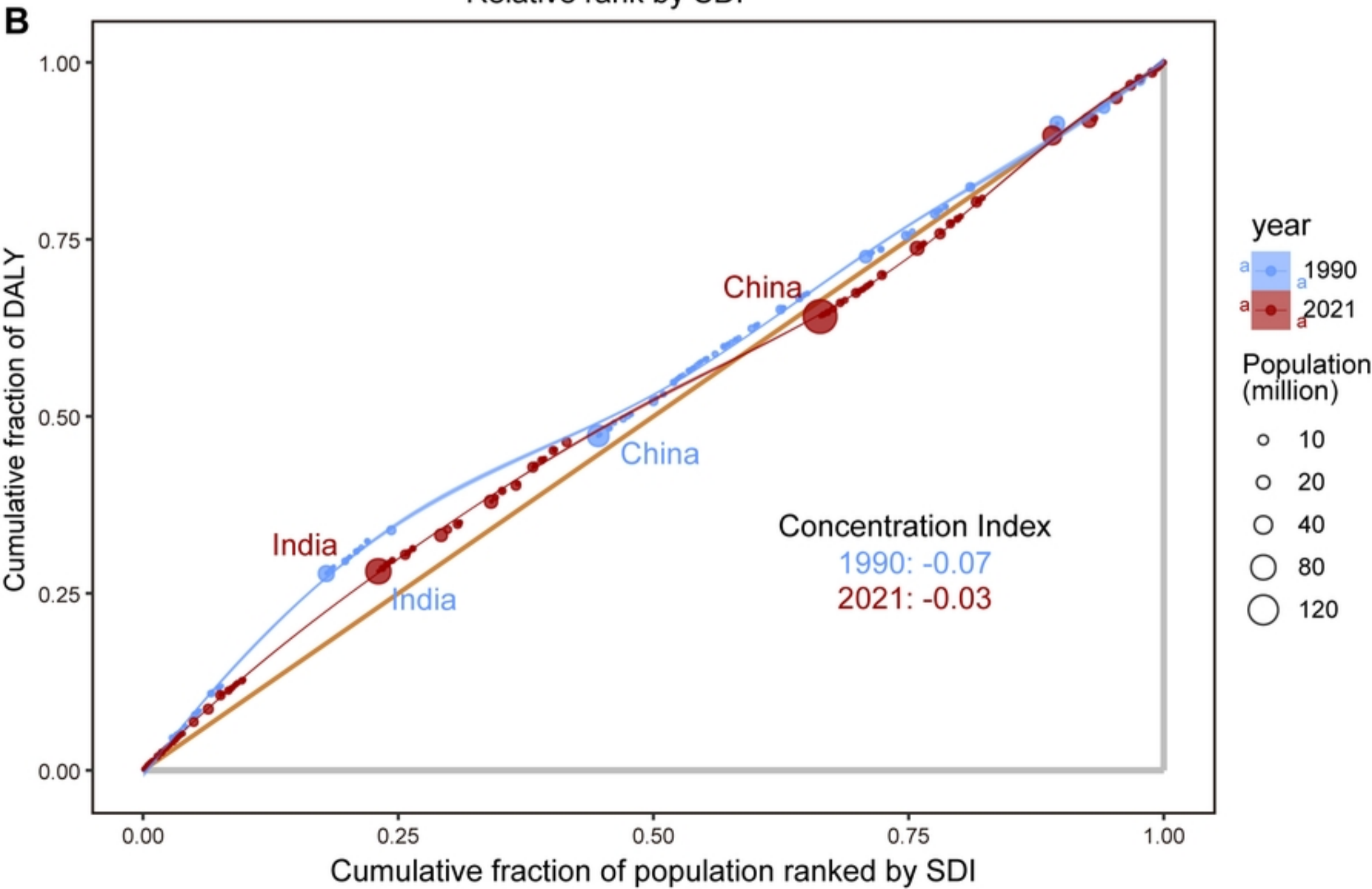
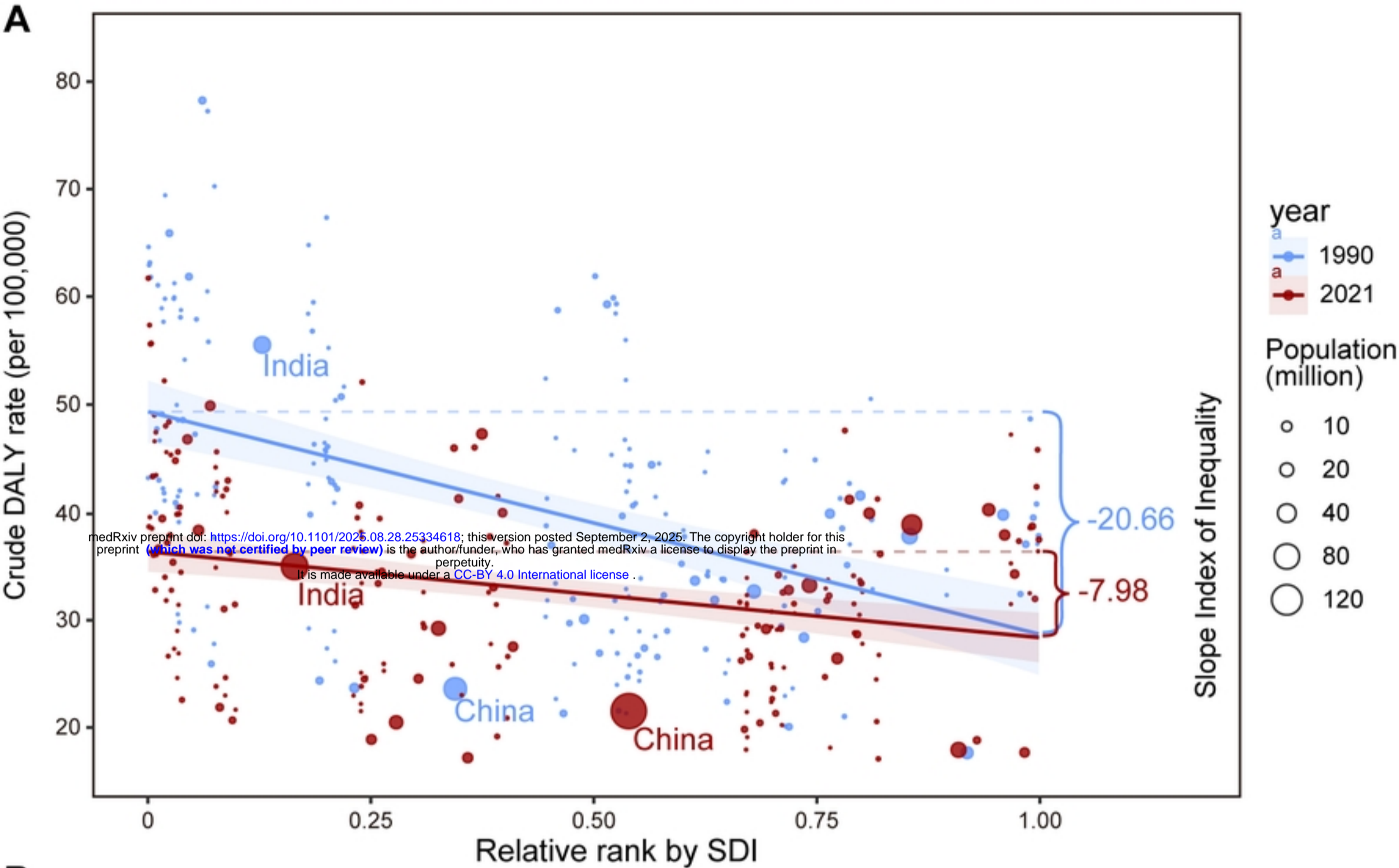


Figure3

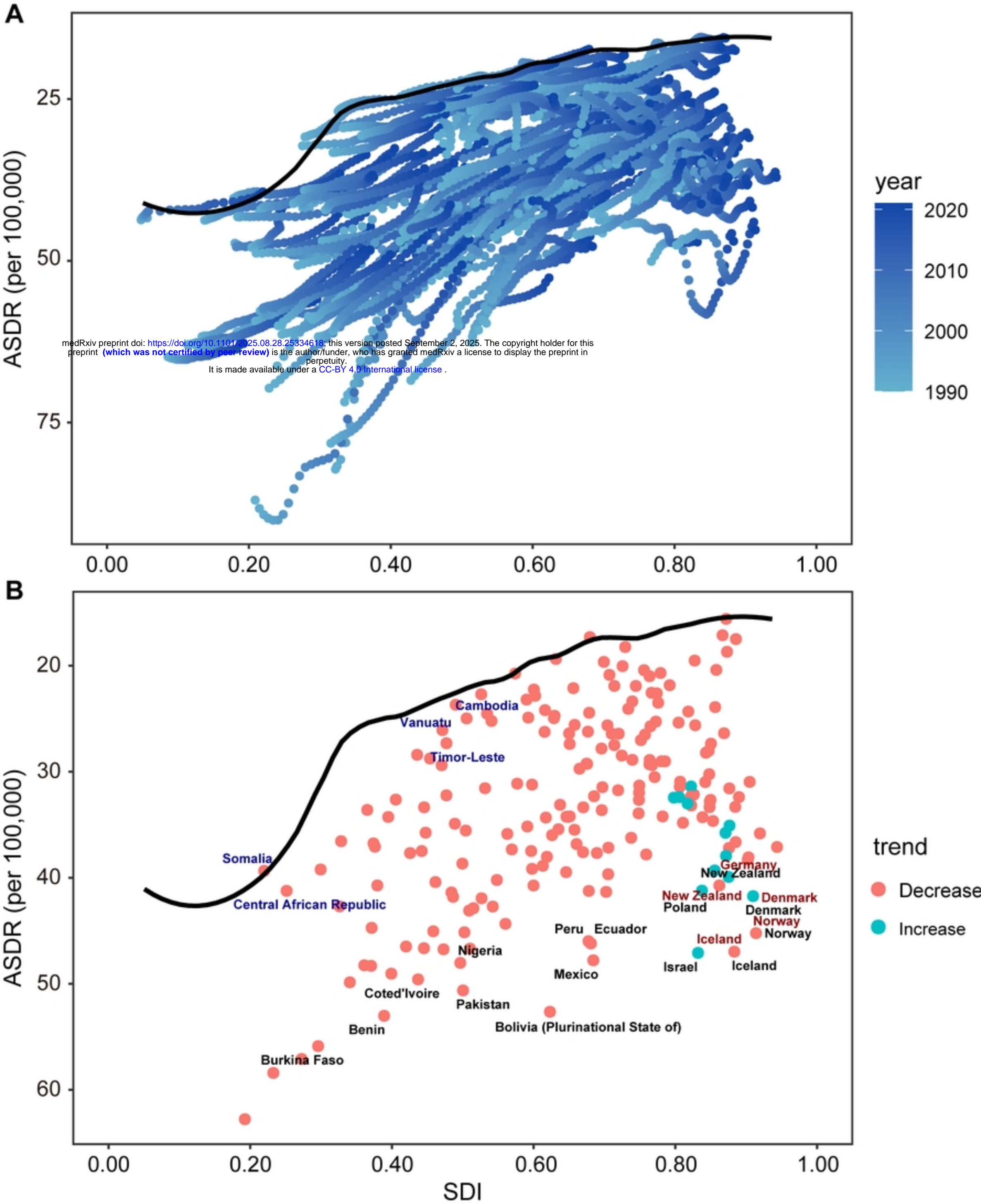


Figure4

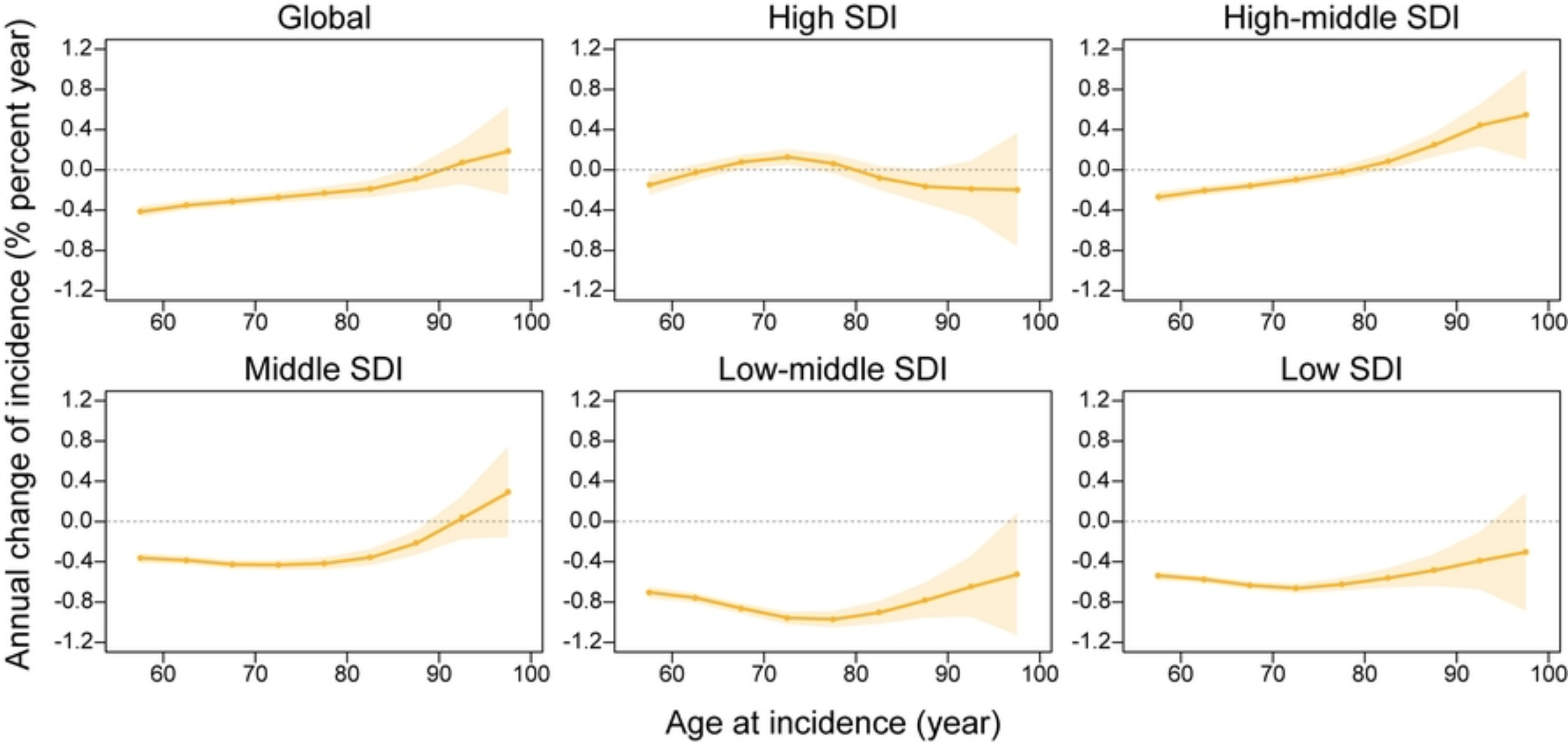


Figure5

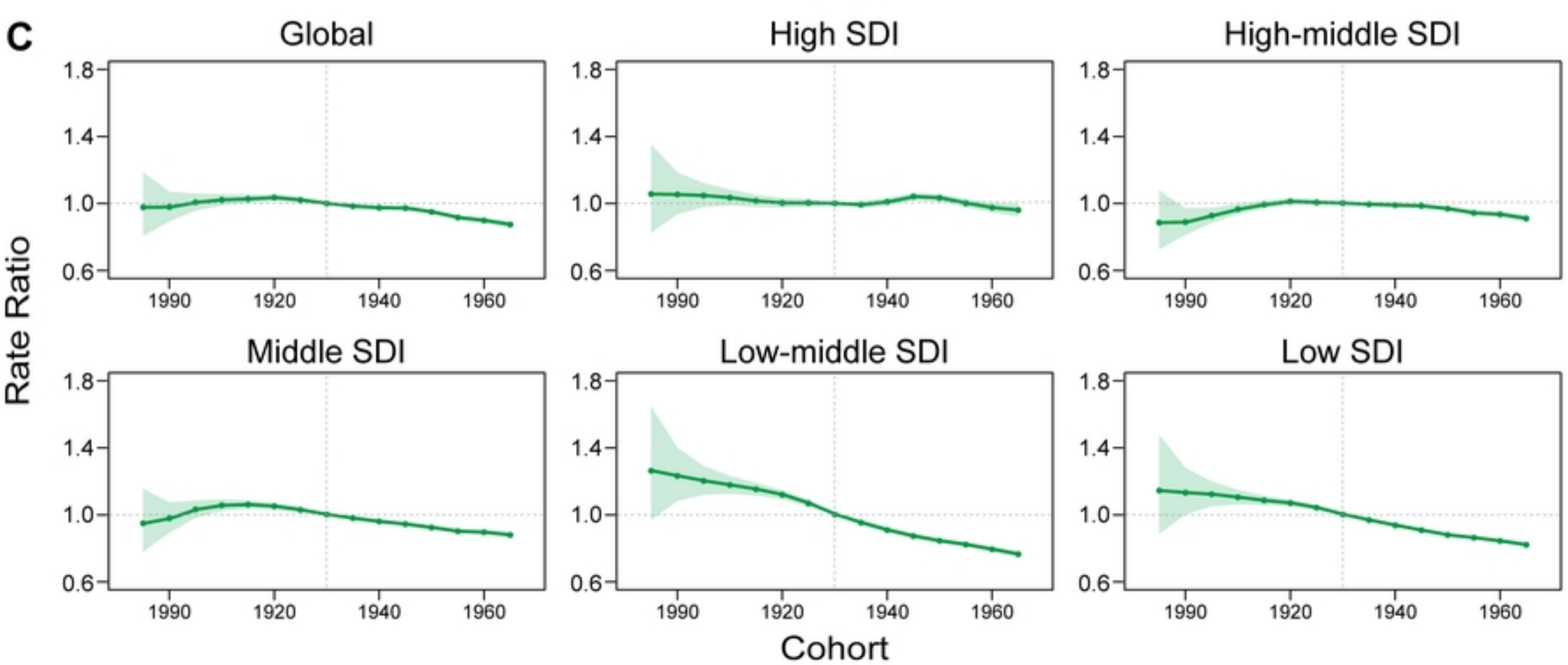
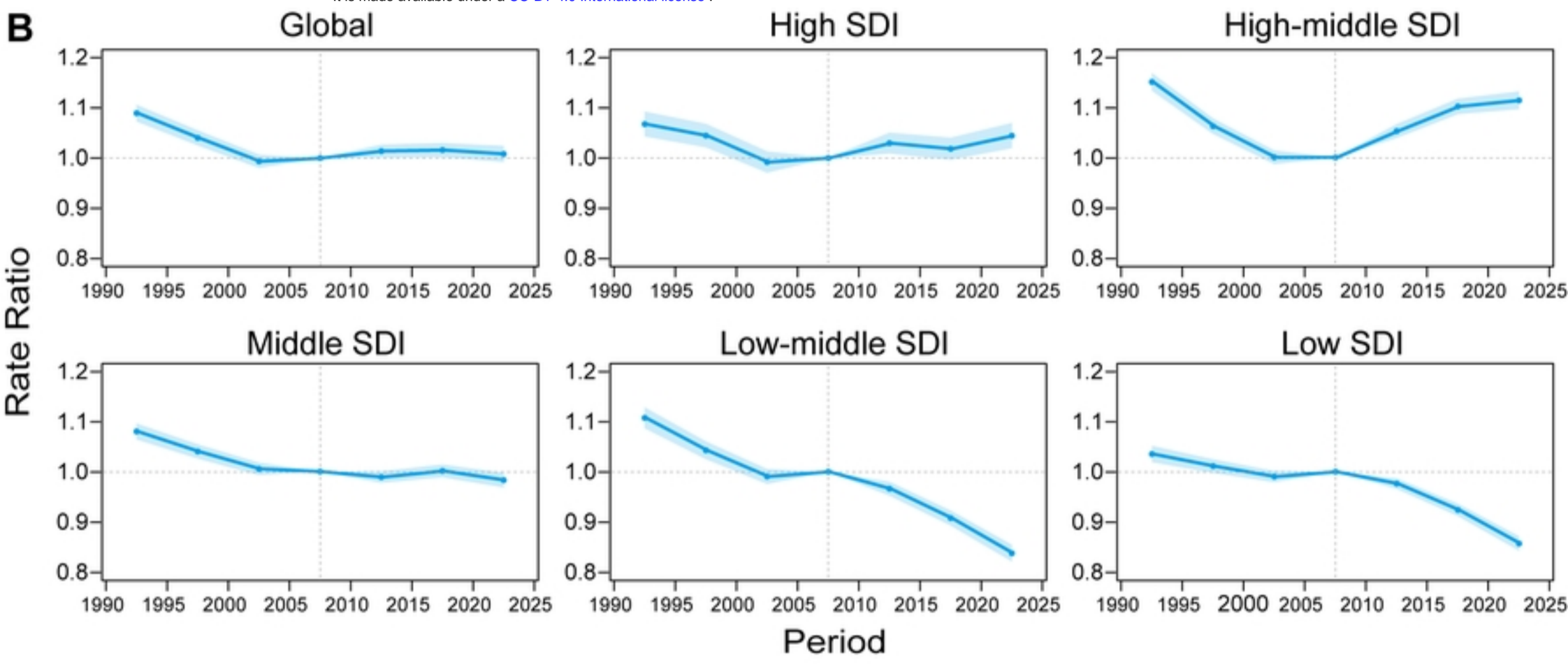
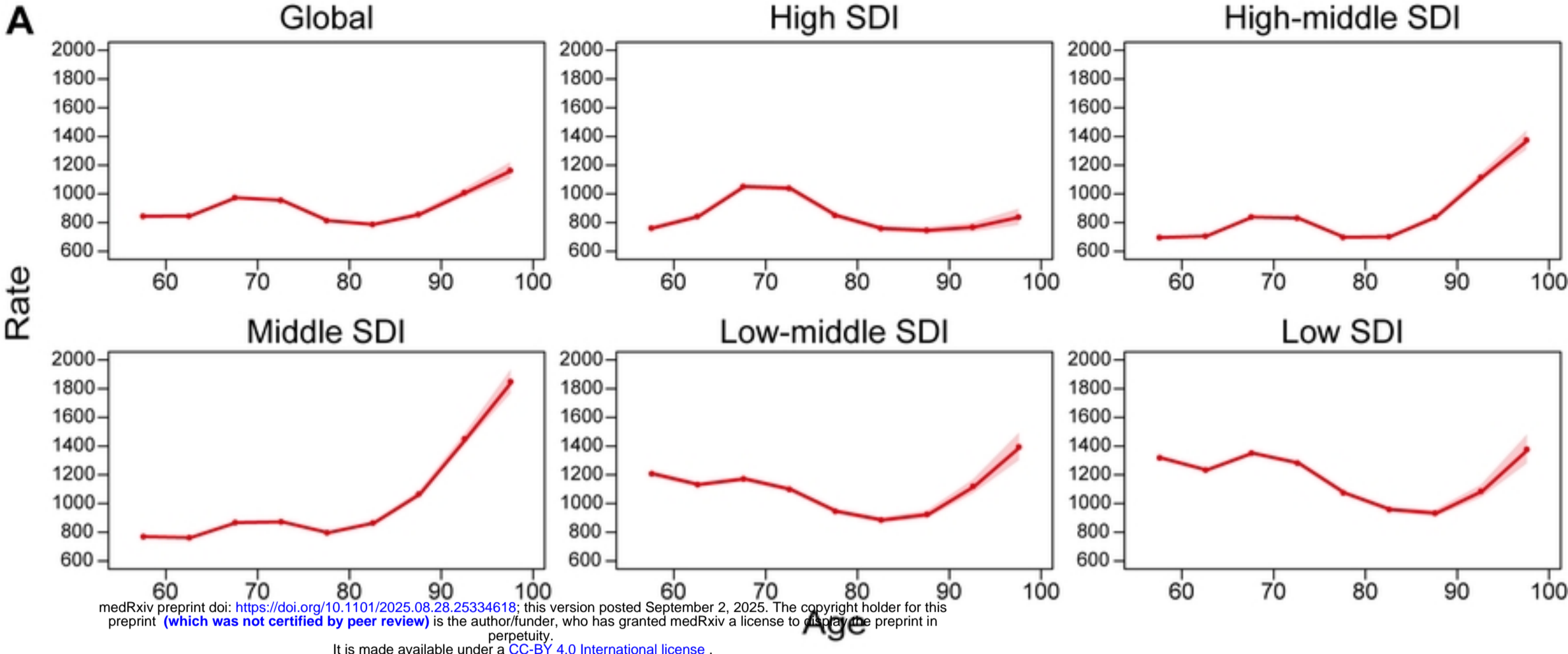


Figure6

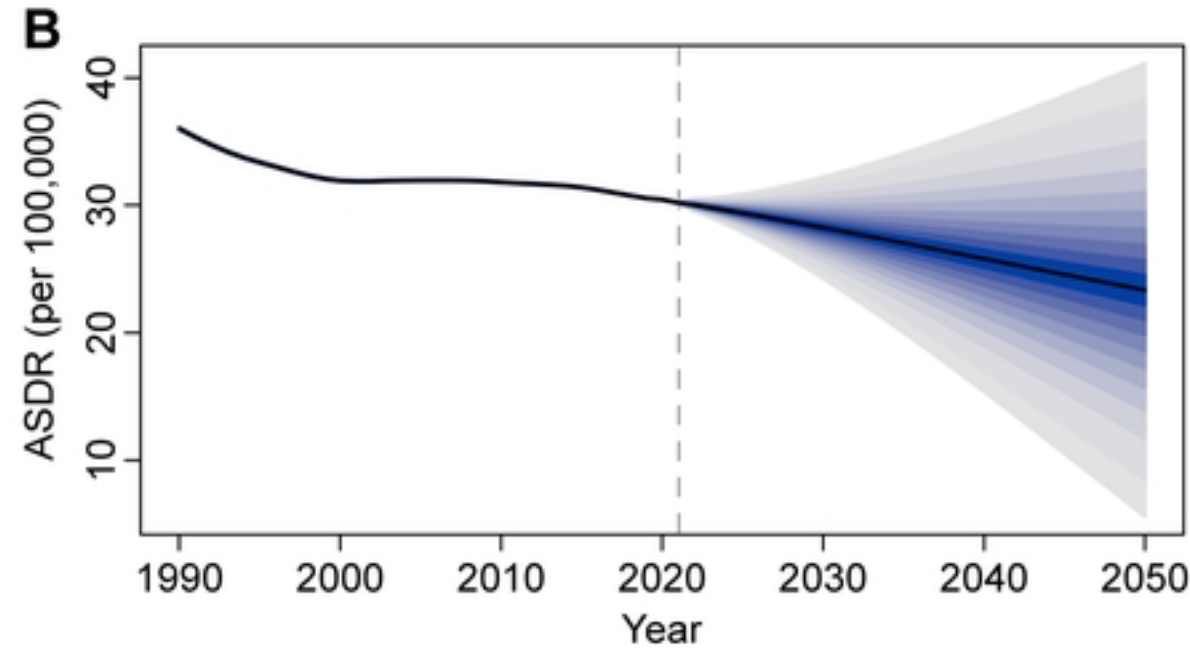
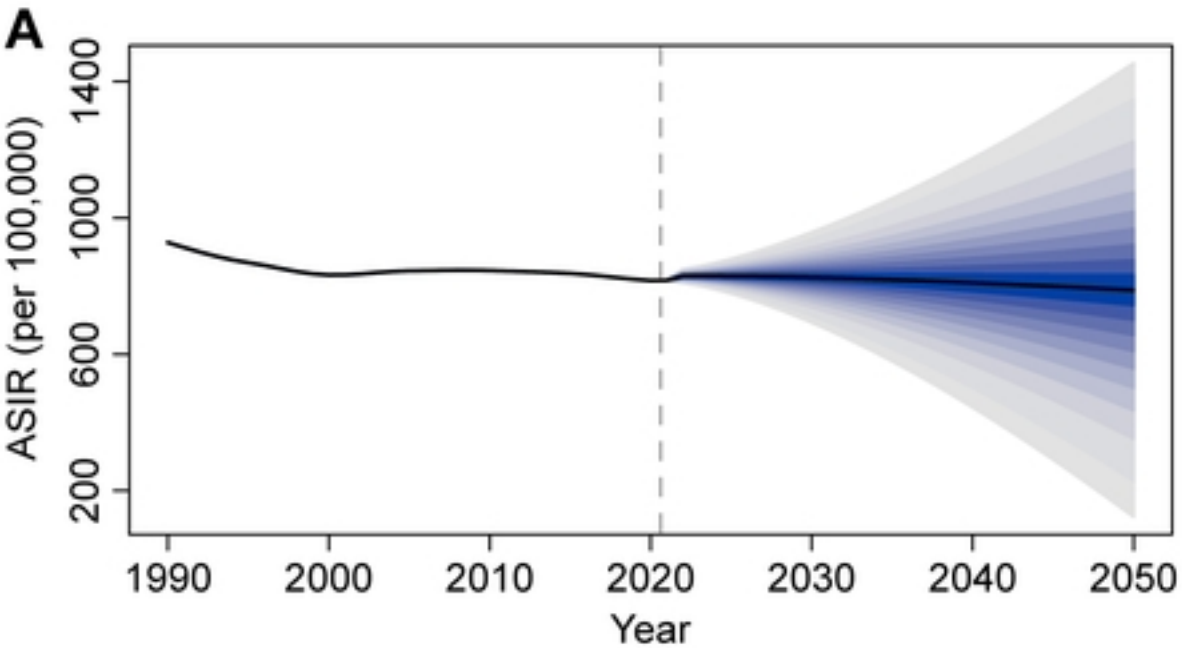


Figure7

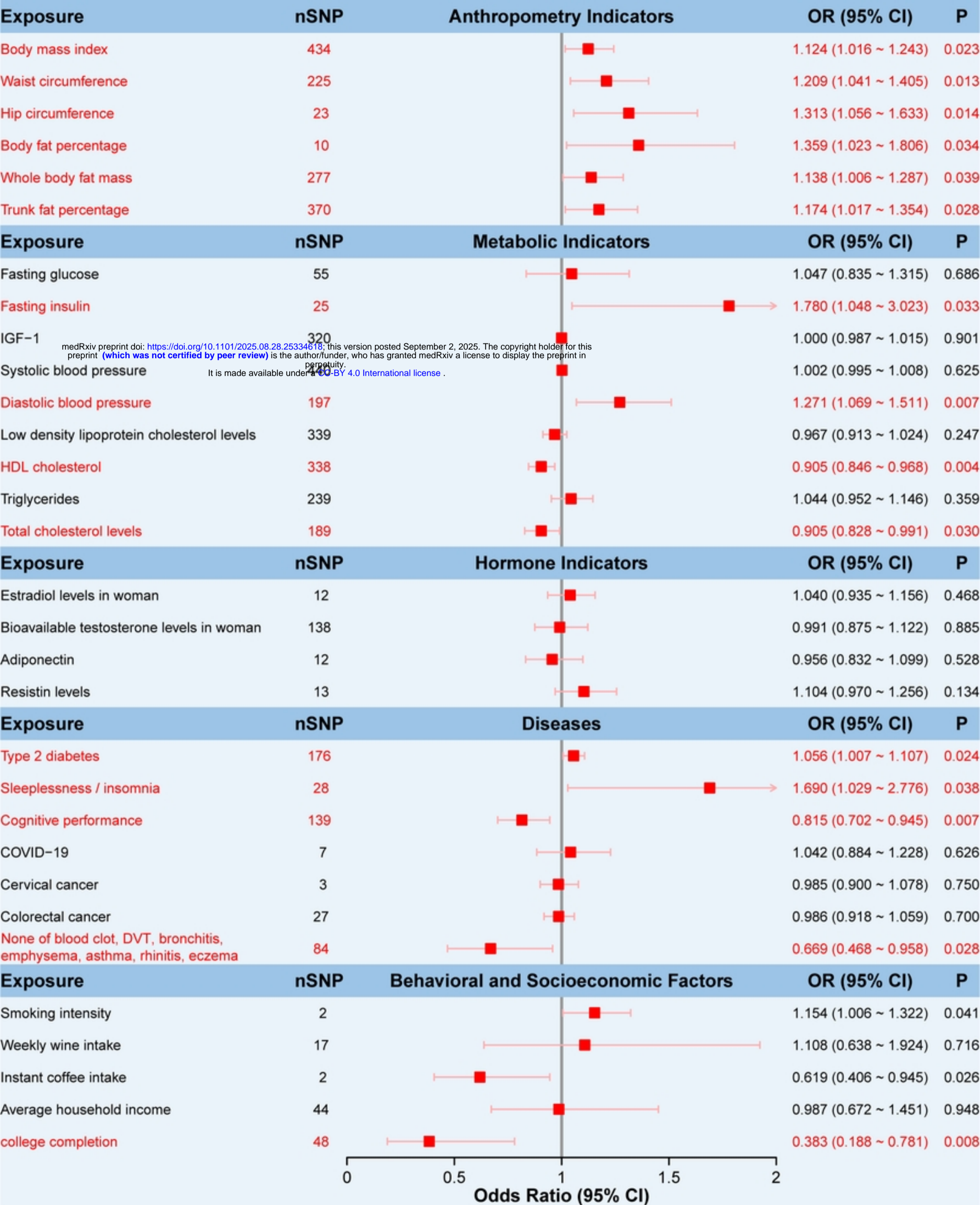


Figure8