

1 **Integrating anamnestic and lifestyle data with sphingolipids levels for risk-based prostate**
2 **cancer screening**

3

4 Caterina Peraldo-Neia^{a§}, Paola Ostano^{a§}, Melissa Savioli^a, Maurizia Mello-Grand^a, Ilaria Gregnanin^a,
5 Francesca Guana^a, Francesca Crivelli^b, Francesco Montagnani^b, Michele Dei-Cas^c, Rita Paroni^c, Antonella
6 Sinopoli^d, Francesco Ferranti^d, Nicolò Testino^d, Marco Oderda^e, Andrea Zitella^e, Chiara Fiameni^e, Amedeo
7 Gagliardi^{f,g}, Alessio Naccarati^{f,g}, Luca Clivio^h, Paolo Gontero^e, Stefano Zaramella^d and Giovanna Chiorino^{a*}

8

9 a. Genomics Lab, Fondazione Edo ed Elvo Tempia, 13900 Biella, Italy

10 b. Clinical Research Division, Ospedale degli Infermi, 13875 Ponderano (BI), Italy

11 c. Department of Health Sciences, University of Milan, 20142 Milano, Italy

12 d. Department of Urology, Ospedale degli Infermi, 13875 Ponderano (BI), Italy

13 e. Division of Urology, Department of Surgical Sciences, Molinette Hospital, University of Turin, 10126
14 Torino, Italy

15 f. Italian Institute for Genomic Medicine, Candiolo Institute, 10060 Candiolo (TO), Italy

16 g. Candiolo Cancer Institute, FPO IRCCS, 10060 Candiolo (TO), Italy

17 h. Unit of Analytics, Research & Communication - Area ICT, Ente Ospedaliero Cantonale, 6900 Lugano,
18 Switzerland.

19

20 § these authors equally contributed

21 * Corresponding author: tel +39 015 351830 4 1; fax +39 015 21116; email

22 giovanna.chiorino@fondazionetempia.org

23

24

NOTE: This preprint reports new research that has not been certified by peer review and should not be used to guide clinical practice.

25

26 **Abstract**

27 **Background:** In the new era of risk-based prostate cancer (PCa) screening, stratifying men by their
28 individual risk is crucial. Our study aims to integrate anamnestic, life-style and molecular data to
29 minimize unnecessary second-level investigations (SLI) and improve detection of clinically
30 significant PCa (ISUP>1).

31 **Methods:** Since 2021, within the DP3 study, we collected plasma samples, recent clinical history,
32 familiarity for cancer, and life-style information from: 421 men who underwent PSA testing and
33 digital rectal examination (longitudinal sampling every 6 months), 421 men with suspected PCa,
34 before diagnostic biopsy and 62 men with PCa diagnosis, before radical prostatectomy. Fifty
35 sphingolipids were tested in the plasma of 393 men by targeted lipidomics. Univariable logistic
36 regression analysis was applied to identify the variables associated with PCa. Multivariable penalized
37 logistic regression analysis with 10-fold cross validation was run on different subgroups of the total
38 cohort to build each time 10 models on 9/10 of the samples and assess their performance on the 10
39 test sets.

40 **Results:** PSA levels, age, cardiovascular diseases (CVD), number of medications, hypertension,
41 sedentariness, and three sphingolipids (Gb3.24, Cer.20, Cer.24.1) showed a significant association
42 with clinically significant PCa in univariable analysis of the entire cohort. Penalized logistic
43 regression modelling consistently selected hypertension, CVD, PSA, age and five sphingolipids
44 (HexCer.20, Cer.20, HexCer.24.1, GM3.24.1, DHCer.24) as key variables to accurately classify PCa
45 (average ROC AUC on the 10 test sets: 0.92 vs 0.85 for PSA). In men recalled for SLI, PSA showed
46 poor discriminatory ability, but PSA, age, CVD, SM.16, HexCer.20, HexCer.24.1, DHS1P, and
47 DHCer.24 were consistently selected by 10/10 models (average ROC AUC: 0.83 vs 0.65 for PSA).
48 Cer.20 and CVD or CVD alone were key variables also for the discrimination of ISUP>1 PCa within
49 the entire cohort or within men recalled for SLI, respectively.

50 **Conclusions:** The evaluation of individual risk factors and circulating sphingolipids may allow for a
51 more accurate identification of PCa in the context of tailored screening.

52

53 **Keywords:** Prostate cancer detection; second level investigations; life-style; circulating
54 sphingolipids; personalized screening; clinical history

55

56 **Introduction**

57 Prostate cancer (PCa) is the most commonly diagnosed cancer and ranks as the fifth leading cause of
58 cancer-related deaths among men in Italy and Austria (<https://gco.iarc.who.int/en>; Globocan 2022,
59 version 1.1). Digital rectal examination (DRE) has low sensitivity in identifying PCa (1). Measuring
60 ematic prostate-specific antigen (PSA) levels enables early PCa detection, but presents some
61 limitations: aggressive tumors can be missed in men with PSA levels below 4 ng/ml and higher PSA
62 levels do not automatically correspond to a PCa diagnosis. This last aspect leads to the significant
63 downside of unnecessary invasive biopsies for a large fraction of men (2). Multiparametric magnetic
64 resonance imaging (MRI) offers high accuracy in detecting clinically significant PCa and can reduce
65 the need for unnecessary biopsies. However, it is resource-intensive, requiring experienced
66 radiologists, considerable time, and significant costs. A set of biomarkers able to complement PSA
67 and DRE in the identification of patients who require further clinical examinations is mandatory to
68 spare patients without PCa from unpleasant, costly, and invasive procedures.

69 Starting from the analysis of plasma samples collected before diagnostic biopsy from nearly 400 men,
70 we previously reported two circulating microRNAs associated with PCa, especially when PSA was
71 lower than 4 ng/ml (3). In parallel, we uncovered a possible role of ceramides in discriminating PCa
72 from benign prostatic hyperplasia (BPH) when PSA was in the so-called “grey zone”, with 40%
73 reduction of PSA false positives (4). Ceramides are structurally defined as sphingoid bases, typically

74 sphingosine with 18 carbons, attached to a fatty acyl chain of variable length (14 to 26 carbons), the
75 most common one being 16 carbons in mammalian cells (5). Ceramides are essential intermediates
76 in the biosynthesis and metabolism of all sphingolipids and regulate many pathways, such as
77 apoptosis, cell cycle, cell senescence and differentiation, through the synthesis and degradation of
78 different sphingolipids (6). Their homeostasis is crucial and their role in regulating biological
79 processes is still partly unexplored, with some species associated with a tumor suppression and other
80 to a tumor promoting function (7). Interestingly, aberrations in circulating species of the sphingolipid
81 pathways have been consistently found in patients with localized PCa that clinically progressed or
82 with metastatic/castration therapy resistant PCa (8–10), in PCa resistant to docetaxel (11) or to
83 androgen receptor signalling inhibitors (12), as well as in neuroendocrine PCa (13) and in prostate
84 cells treated with fatty acid synthase inhibitor, highlighting a role also in mediation of lipid damage
85 (14).

86 Recent advancements in metabolomic profiling have evidenced a dysregulation of amino acids and
87 sphingolipid metabolism during the development of PCa (15). Case-control studies from the
88 European Prospective Investigation into Cancer and Nutrition (EPIC) cohort (16–18) have
89 highlighted patterns of circulating metabolites, including sphingolipids, associated with PCa cancer
90 risk or with the development of aggressive PCa. However, to our knowledge no study has yet
91 exploited samples from men undergoing longitudinal PCa screening or diagnostic biopsy to measure
92 such molecules, alone or in combination with PSA and individual risk factors.

93 In this work, we took advantage of a prospective collection of plasma samples and questionnaire
94 records from men undergoing organized PSA testing and DRE, prostate biopsy for suspected PCa, or
95 radical prostatectomy. Information on lifestyle, cancer familiarity and comorbidities was analyzed in
96 association with PCa diagnosis, to highlight the most important risk factors. We then combined them
97 with PSA, and circulating sphingolipid levels to create models to better identify men who need SLIs

98 and discriminate those who harbor intermediate and high grade PCa (International Society of
99 Urological Pathology – ISUP – higher than 1) from the others.

100

101

102 **Material and methods**

103 *Cohort recruitment, sample and data collection*

104 421 men (age range: 50-69) undergoing organized PSA screening at Fondazione Edo ed Elvo Tempia
105 (FEET) were prospectively recruited between September 2021 and October 2023. Blood sampling
106 was carried out at recruitment and every six months, for at least three times. All the recruited subjects
107 were checked by a urologist and underwent DRE. Those recalled for SLI were followed-up according
108 to the European Association of Urology (EAU) guidelines ([https://uroweb.org/guidelines/prostate-](https://uroweb.org/guidelines/prostate-cancer)
109 [cancer](https://uroweb.org/guidelines/prostate-cancer)). Sixty-two PCa patients were prospectively recruited at the Biella Hospital (BH) between
110 October 2022 and April 2024. Blood sampling was carried out before surgery and at each follow-up,
111 according to the EAU guidelines. 421 men were prospectively recruited at Molinette Hospital (MH)
112 before diagnostic biopsy for suspected PCa, and blood sampling was carried out at recruitment.
113 Subjects with negative DRE and no alteration of PSA for at least 4 consecutive evaluations were
114 named healthy donors, “HD”; these, together with subjects with negative MRI/biopsy, were named
115 “nonPCa”.

116 Self-reported questionnaires on lifestyle (physical activity, body mass index (BMI), diet, smoke and
117 alcohol consumption), familiarity, past prostate biopsies and concurrent pathologies, as well as PSA
118 levels and DRE outcomes, have been collected for each subject recruited at FEET, BH and MH. An
119 online password protected database (<https://www.keyform.eu>) was used to upload the electronic Case
120 Report Forms (eCRF) including questionnaires, urological visit report, PSA dosage and lab analyses
121 at each follow-up, as well as histological and clinical information for PCa. Information on selected
122 records can be downloaded to carry out statistical analyses. Each patient was pseudoanonymized and
123 signed an informed consent.

124 The observational clinical protocol called DP3 coordinated by FEET was approved by the Novara
125 ethical committee (AOU Maggiore della Carità) in September 2020 (Prot. N° 968/CE 07/09/2020,
126 integration Prot. N°263/CE, 10/03/2021), in accordance with the Declaration of Helsinki Ethical

127 Principles for Medical Research involving Human Participants. The MH ethical committee (AOU
128 Città della Salute e della Scienza) in Turin approved the DP3 study in January 2022 (Prot. N°
129 521/2021, 10/01/2022).

130 A summary of the cohorts available is depicted in **Table 1**.

131 **Table 1:** site distribution of patients/samples available, tumor characteristics and analyses
132 performed. CVD: cardiovascular disease.

Sites	FEET	BH	MH	total
Total recruited (Blood sampling at enrolment – Plasma isolation and storage – PSA – DRE)	421	62	421	904
Blood sampling every 6 months for at least 4 times	408	na	na	408
Blood sampling after surgery for at least 4 times	13	62	na	75
Questionnaire filled	421	62	421	904
Complete data for PSA, age, hypertension, CVD, sedentariness, medications	417	60	337	814
Targeted sphingolipid analysis	182	56	155	393
SLI performed	40	62	421	523
PCa diagnosed	13	62	260	335
ISUP > 1	6	56	234	296

133

134

135 *Blood sample processing*

136 Whole blood was collected in 3 EDTA K2 tubes (10 ml each, D.P. MEDICAL s.r.l., Centallo (TO),
137 Italy) by venipuncture. Plasma was isolated within 1 hour from blood sampling. FEET and BH
138 samples were processed at the Genomics Lab of FEET while MH samples were processed at MH.
139 For plasma separation, tubes were centrifuged at 2500 rpm for 10 min at 4°C; supernatant was then
140 collected in new 15 ml tubes and centrifuged at 2500 rpm for 10 min at 4°C again; plasma was then
141 aliquoted in barcoded tubes and stored at -80°C. Frozen plasma samples from MH were then sent to
142 the Genomics Lab of FEET.

143 *PSA evaluation*

144 PSA concentration was centrally evaluated at BH for all the men recruited at FEET and BH using
145 Elecsys total PSA kit IVD (Cobas, Roche Diagnostics, Monza, Italy). For the men recruited at MH,
146 pre-biopsy PSA records were shared with FEET, according to the study protocol and the data transfer
147 agreement.

148 *Targeted sphingolipid analysis and processing*

149 Frozen plasma aliquots were sent to the Department of Health Sciences, University of Milan, where
150 50 species of the sphingolipid metabolism (Ceramides, dihydroCeramides, sphingomyelins,
151 hexosylCeramides, lactosylCeramides, globotriaosylCeramides, gangliosides GM3, sphingosines –
152 see complete list in **Supplementary table 1**) have been analyzed in a subset of 393 plasma samples
153 by mass spectrometry. Briefly, from 25 μ L of plasma, sphingolipids were isolated by monophasic
154 extraction (methanol/chloroform 2:1, Merk Life Science S.r.l., Milan, Italy) coupled to alkaline
155 methanolysis. The extracts were resuspended in pure methanol and injected in a LC-MS/MS
156 apparatus: Dionex 3000 UPLC, (ThermoFisher Scientific, Monza, (MB), Italy), coupled to 3200
157 QTRAP, (AB Sciex S.r.l. Milan, Italy). The chromatographic separation was attained on a C8 column
158 for complex sphingolipids and a C18 column for sphingoid bases.

159 Four species were undetectable in most of the samples and 46 sphingolipids were retained for the
160 analysis. Z-score standardization was performed on raw data, and batch effect was corrected using
161 the ComBat function from the *sva* package in R.

162 *Lifestyle score calculation*

163 A lifestyle score reflecting concordance with the World Cancer Research Fund (WCRF)
164 Recommendations (19) and the indications of the Italian Guidelines for a healthy diet (20) was
165 defined. Starting from questionnaire data available, five parameters were considered: BMI, physical
166 activity, dietary habits, smoking habit and alcohol consumption. A value between -1 and +1, based

167 on a lesser or greater adherence to the WCRF Recommendations and the indications of the Italian
168 Guidelines, was assigned to each parameter, as detailed below. For BMI score, the value of 1 was
169 given to each subject whose BMI was in the range of healthy weight (18.5-24.9), 0.5 for underweight
170 (< 18.5), 0 for overweight (25.0-29.9), -1 for obesity (≥ 30). For physical activity, self-reported
171 engagement in high level physical activity (3 or more times a week) was assigned a value of 1,
172 moderate physical activity (1-2 times a week) a value of 0, while sedentariness a value of -1. For
173 smoking, 1 was assigned to those subjects who reported not smoking or quitting more than 15 years
174 ago, 0 to those who had quit less than 15 years prior and -1 to current smokers. For alcohol, 1 was
175 given for no consumption, 0.5 was given for alcohol consumption frequency of 1-2 times a week, 0
176 for a frequency of 3-4 times a week and -1 for a daily alcohol consumption. For diet, the definition
177 of a score was more complex because of the variety of food items and the requirement to assess the
178 overall dietary pattern of each subject. Calculation details are reported in the supplementary materials.

179 *Statistical analyses*

180 The Shapiro-Wilk normality test was applied to continuous variables in order to test the normality of
181 their distributions. Log transformation was applied when the normality assumption was not satisfied.
182 Univariable and multivariable logistic regression analysis were applied to identify features associated
183 with PCa diagnosis. Least absolute shrinkage and selection operator (LASSO) penalized logistic
184 regression, with 10-fold cross-validation, was applied to retrieve the variables associated with PCa in
185 10/10 penalized regression models. The performance of the 10 models on the test sets was compared
186 with the performance of PSA alone or of the multivariable models combining PSA and age.

187 The area under the Receiver Operator Curve (ROC AUC) was calculated to assess the discriminatory
188 ability of the variables or models, with reported 95% confidence intervals (C.I.), or range when the
189 10 AUCs were averaged. Paired DeLong test was used to compare the discrimination among different
190 variables/models. Youden index was used as the criterion to derive a cut-off point on the predicted
191 probabilities and compute true/false positives/negatives, sensitivity and specificity.

192 Wilcoxon and Chi-square tests were applied to compare continuous and categorical covariates
193 between groups, respectively.

194 All analyses were performed using the *glmnet*, *pROC*, *ggpubr*, and *stats* packages within the statistical
195 computing environment R (version 4.2.1). Associations were considered statistically significant if the
196 p-value of the univariable logistic regression analysis was below 0.001. Differences were considered
197 statistically significant if the p-value of the Wilcoxon, Chi-square or DeLong tests were below 0.01.

198

199

200 **Results**

201 **Sample characteristics**

202 In total, baseline plasma samples were available from 904 men in the DP3 cohorts (FEET+BH+MH)
 203 (**Table 1**). Within the MH cohort, 260 out of 421 subjects (61.8%) had a positive biopsy. Within the
 204 FEET cohort, 13 out of 40 subjects who underwent SLI were classified as PCa (32.5%): of them,
 205 three are under active surveillance (AS), one was treated with radiotherapy (RT), three had
 206 prostatectomy in other hospitals than BH, six were surgically treated at BH and were followed-up
 207 like the 62 PCa patients enrolled before surgery at BH. The clinical, lifestyle and demographic
 208 characteristics of the men enrolled in the DP3 study who filled the questionnaire on life-style habits,
 209 anamnestic information and risk factors are reported in **Table 2**.

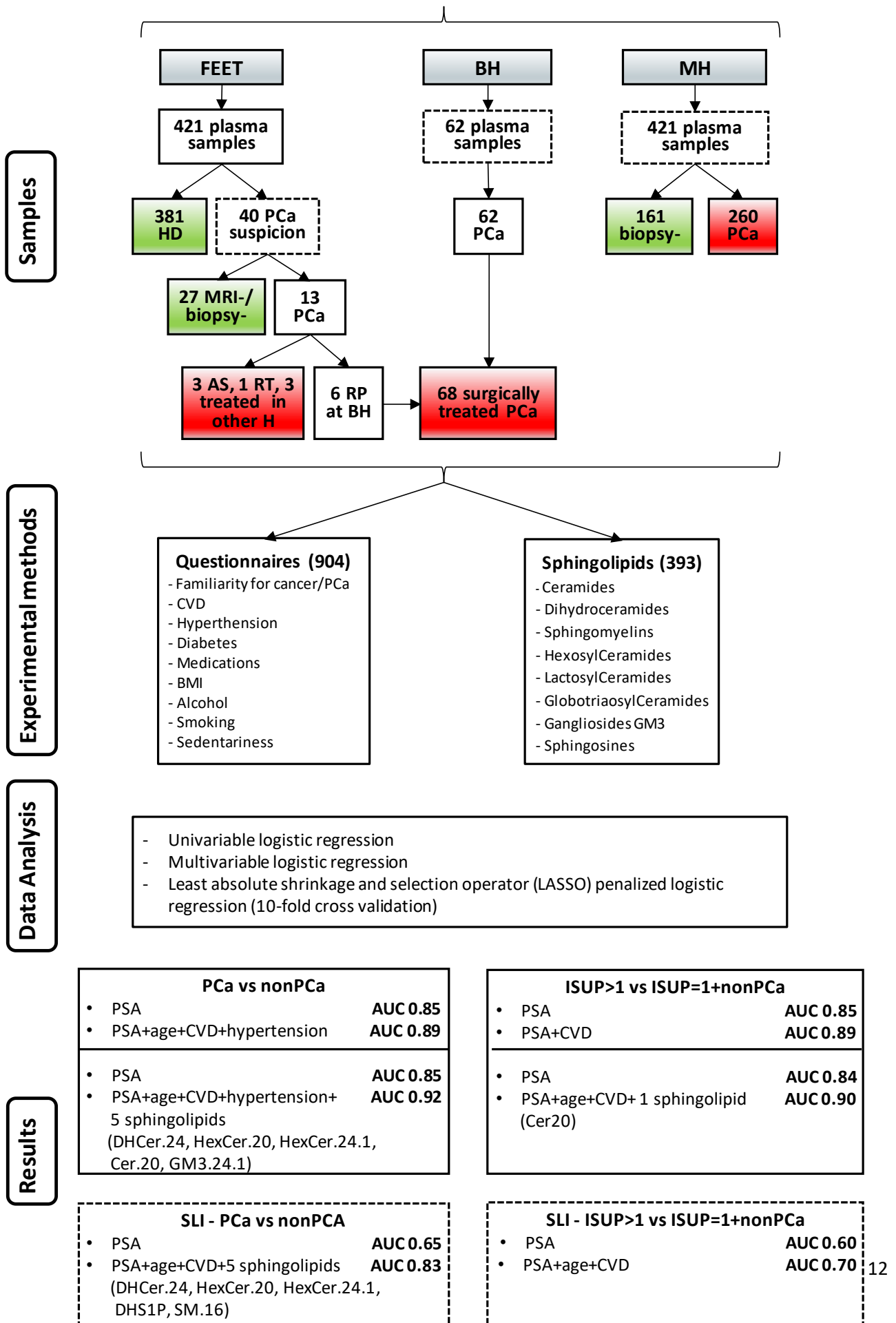
210 **Table 2:** characteristics of the men enrolled who filled the questionnaire on lifestyle habits,
 211 anamnestic information and risk factors. Wilcoxon or Fisher exact tests were carried out according to
 212 the type of variable analyzed.

	Entire cohort	Non-PCa	PCa	P-value
Age (median, range), n=902	64.7 (43.2-88.9)	61.7 (48.96-82.6)	69.7 (43.2-88.9)	<0.00001
PSA (median, range), n=903	4.363 (0.02-1000)	1.96 (0.02-39.4)	7 (0.5-1000)	<0.00001
Familiarity, cancer (%), n=837	53.4	52.6	54.9	0.5662
Familiarity, PCa (%), n=823	12.6	11.3	15.2	0.1367
Cardiovascular diseases (%), n=875	13.6	9.1	21.5	<0.00001
Diabetes (%), n=882	8.05	6.4	10.9	0.0259
Hypertension (%), n=881	44.6	37.97	56.3	<0.00001
Medications (%), n=880	67.3	60.4	79.4	<0.00001
BMI (median, range), n=832	25.6 (14.9-48.2)	25.4 (14.9-48.2)	26.1 (19.3-37.0)	0.0439
Sedentariness (%), n=833	26.9	22.9	34.4	0.000497
Smoke¹ (%), n=848	25.6	26.3	24.3	0.5906
Alcohol² (%), n=833	71.7	75.3	64.8	0.0018

213
 214 ¹ smoker or previous smoker who quit less than 15 years before enrolment; ² consumers, with any frequency.

215
 216 The study workflow is depicted in **Figure 1**.

DP3 study



218 **Figure 1:** Workflow of the study. FEET: Fondazione Edo ed Elvo Tempia; BH: Biella Hospital; MH: Molinette Hospital;
219 SLI: Second level investigation; HD: Healthy donors. CVD: cardiovascular diseases; BMI: Body Mass Index. Black
220 dashed borders: men recalled for SLI. Red rectangulars: PCa. Green rectangulars: non PCa

221

222 Lifestyle and risk factors

223 All the 904 enrolled men within the DP3 cohorts received a questionnaire on lifestyle, familiarity,
224 past biopsies and concurrent pathologies. The analysis of questionnaires revealed that age,
225 pharmacological treatments in general, hypertension, cardiovascular diseases (CVD) and
226 sedentariness were significantly associated with PCa, independently of PSA. Age, CVD and the
227 number of medications were positively associated also with ISUP>1 PCa when ISUP1 tumors were
228 included in the reference group, independently of PSA (**Table 3**).

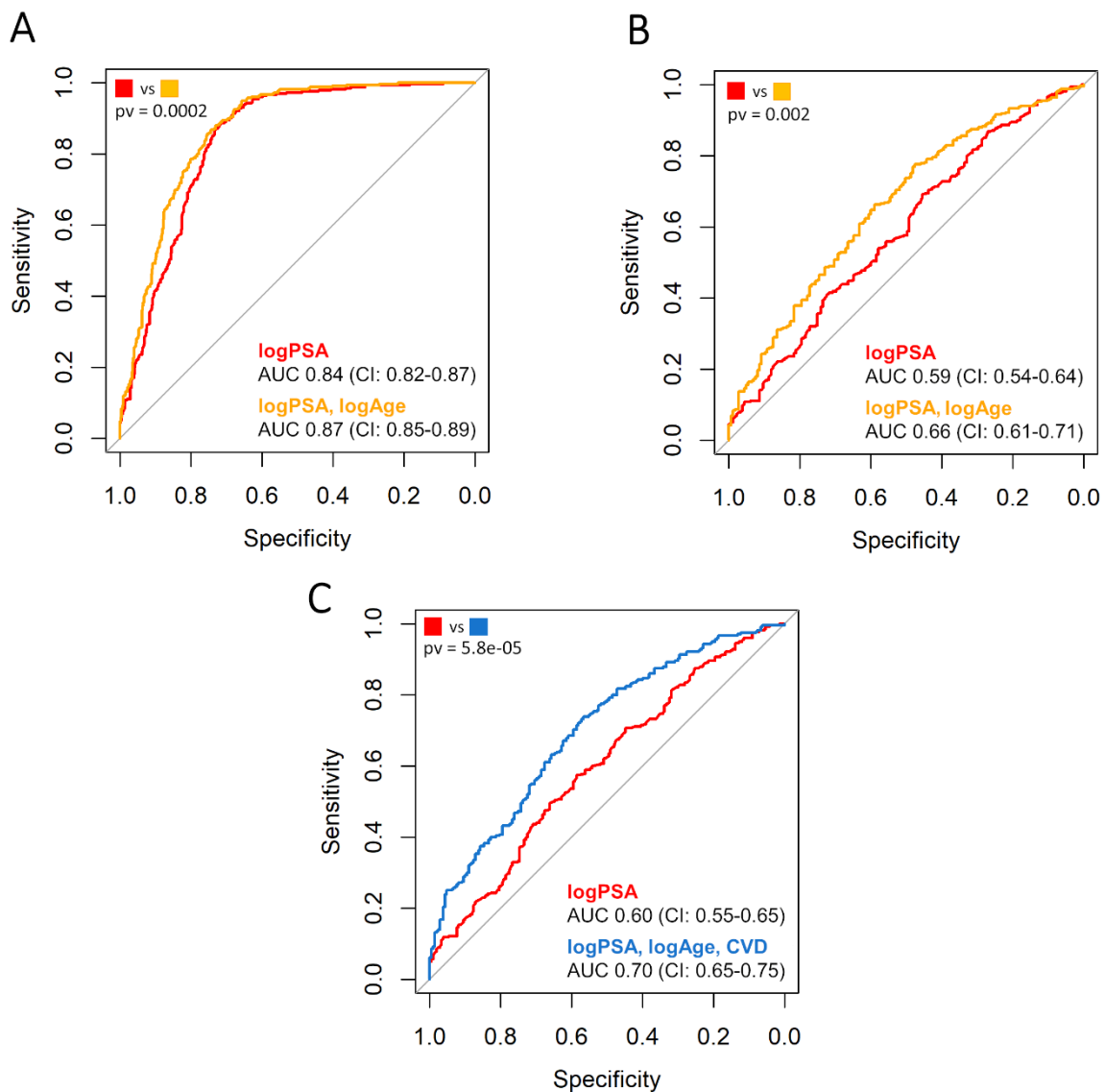
229 **Table 3:** Odds ratios (OR) and p-values of the indicated variables analyzed with univariable or multivariable (with PSA
230 adjustment) logistic regression analysis on the DP3 cohort. Med = number of medications; hypert = hypertension; CVD
231 = cardiovascular disease; sedent = sedentariness; diab = diabetes.

232

Entire DP3 cohort								
	Univariable analysis (any PCa)		PSA adjustment (any PCa)		Univariable analysis (ISUP>1)		With PSA adjustment (ISUP>1)	
	OR	P-value	OR	P-value	OR	P-value	OR	P-value
PSA	1.27	<0.0001				<0.0001		
age	1.14	<0.0001	1.09	<0.0001	1.15	<0.0001	1.11	<0.0001
med	1.24	<0.0001	1.16	0.00014	1.22	<0.0001	1.15	0.0005
hypert	2.10	<0.0001	1.56	0.0102	2.02	<0.001	1.47	0.0279
CVD	2.73	<0.0001	2.86	<0.0001	3.02	<0.0001	3.35	<0.0001
sedent	0.57	0.0004	0.79	0.233	0.60	0.0020	0.86	0.438
Only men recalled for SLI								
	Univariable analysis (any PCa)		PSA adjustment (any PCa)		Univariable analysis (ISUP>1)		With PSA adjustment (ISUP>1)	
	OR	P-value	OR	P-value	OR	P-value	OR	P-value
PSA	1.05	0.0071			1.06	0.0008		
age	1.06	<0.0001	1.06	<0.0001	1.07	<0.0001	1.07	<0.0001
med	1.03	0.4476	1.05	0.2471	1.03	0.3997	1.05	0.1919
hypert	1.33	0.1273	1.29	0.1839	1.28	0.1759	1.24	0.2533
CVD	1.86	0.0179	2.07	0.0066	2.17	0.0021	2.53	0.00037
sedent	0.85	0.4482	0.86	0.4906	0.91	0.6244	0.92	0.6984

233

234 Sedentary men had substantially higher recall rates than those who usually undertake moderate/high-
235 level physical activity (p-value < 0.00001) and PSA was significantly lower in men used to regular
236 physical activity (p-value < 0.001) compared to the others. The final diet score was negatively
237 associated with PCa, but with low statistical significance (OR=0.80; p-value=0.035). As expected,
238 PSA was significantly associated with PCa in the entire prospective cohort (**Table 3**), with an ROC
239 AUC of 0.84 (C.I. = 0.82-0.87) (**Figure 2A**). Combination of age with PSA improved the
240 discrimination (DeLong p-value = 0.0002), with an AUC of 0.87 (C.I. = 0.85-0.89) (**Figure 2A**).



241

242 **Figure 2:** ROC curves for the identification of PCa of any ISUP grade: PSA (red) and the logistic regression model that
243 combines PSA and age (orange) for 904 patients (A) and for the subgroup of patients who underwent SLI (B). ROC curve
244 for the identification of PCa of ISUP>1 among patients who underwent SLI (C): PSA (red) and the logistic regression

245 model that combines PSA, age and CVD (blue). AUCs and their confidence intervals are reported, as well as the p-values
246 of the DeLong test between curve pairs.

247

248 To test whether a model including the clinical covariates with significant association to PCa could
249 improve the discriminatory ability of PSA and age, we considered the subset with complete
250 information on PSA, age, hypertension, CVD, sedentariness and the number of medications (n=814).
251 We applied penalized LASSO logistic regression modelling with 10-fold cross-validation and
252 obtained 10 models, that were tested each time on the 1/10 of samples not used for model
253 construction. The average ROC AUC on the 10 test sets was 0.89 (range: 0.84-0.93), while for PSA
254 it was 0.85 (range: 0.81-0.91). PSA, age, hypertension and CVD were selected by 10/10 models and
255 sedentariness by 9/10, indicating their relevance for the identification of men who really need SLI
256 and for the implementation of targeted prevention actions.

257 When the same analysis was conducted including ISUP1 PCa in the reference set, we obtained an
258 average ROC AUC on the 10 test sets of 0.89 (range: 0.83-0.94), while for PSA it was 0.85 (range:
259 0.79-0.94). Age and CVD were selected by 10/10 models, hypertension by 9/10, sedentariness by
260 6/10.

261 When we considered only the men who underwent SLI (n=523), the ROC AUC of PSA dropped to
262 0.59 (C.I. = 0.54-0.64) showing minimal predictive potential (**Figure 2B**). No covariate except PSA
263 and age resulted associated with PCa in this subgroup in univariable and multivariable analysis.
264 Instead, CVD was significantly associated with ISUP>1 PCa in multivariable analysis (p-value <
265 0.001) and with slightly lower significance in univariable analysis (p-value = 0.0021) (**Table 2**). The
266 combination between age and PSA improved the discrimination of PCa of any ISUP grade from the
267 rest, compared to PSA alone (DeLong p-value = 0.0091), and the inclusion of CVD allowed for a
268 better identification of ISUP>1 PCa (DeLong p-value < 0.001). However, ROC AUCs were still poor
269 (**Figure 2B-C**), indicating the need of stronger predictors.

270 **Targeted sphingolipid analysis**

271 Leveraging our previous findings on ceramide-like metabolites useful for the discrimination of PCa
272 when PSA is in the so called grey-zone (4), we decided to perform targeted sphingolipid analysis.
273 Fifty sphingolipids, including ceramides, dihydro-ceramides, hexosyl-ceramides, sphingomyelins,
274 dihydro-sphingosine, sphingosine and its phosphorylated form, were analyzed on plasma samples
275 using LC-MS/MS. All these molecules are characterized by an 18-carbon sphingoid base but harbor
276 variable number of carbons in the fatty acids, ranging from 14 to 24. 46 sphingolipids were detected
277 in all samples and were retained for the analysis.

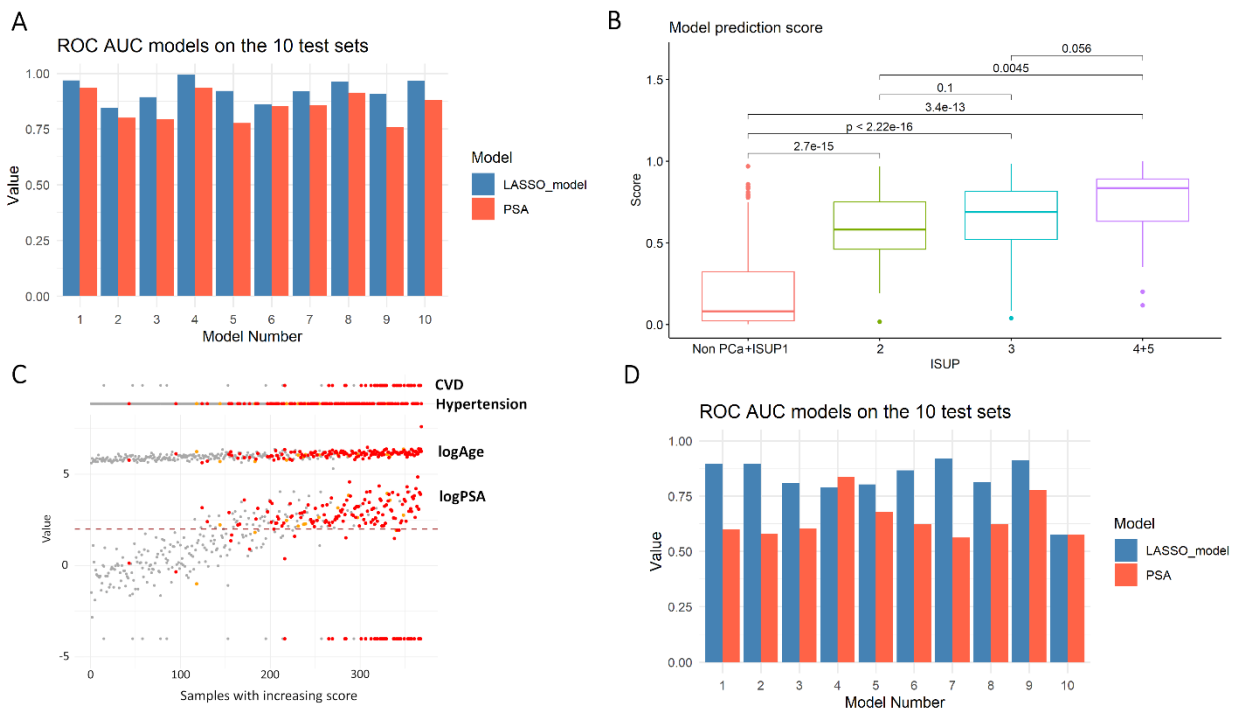
278 Gb3.24, Cer.20, and Cer.24.1 were significantly associated with PCa of any grade and with ISUP>1
279 PCa, in univariable analysis on the samples of the DP3 cohorts.

280 LASSO regression modelling with 10-fold cross-validation was applied to the subset of men with
281 complete information on circulating molecules, lifestyle and clinical data (n=369). The average ROC
282 AUC of the 10 models in the test sets was 0.92 (range: 0.84-0.99), compared to 0.85 (range: 0.76-
283 0.93) and 0.88 (range: 0.80-0.98) for PSA alone and PSA combined with age, respectively (**Figure**
284 **3A**). Hypertension, CVD, PSA, age and five sphingolipids (HexCer.20 and Cer.20 with positive
285 coefficients; HexCer.24.1, GM3.24.1, DHCer.24 with negative coefficient) were selected in 10/10
286 models. PSA, age, CVD and Cer.20 were selected in 10/10 models also when the predicted outcome
287 was ISUP>1 PCa. **Figure 3B** shows the predicted probabilities of harboring ISUP>1 PCa given by
288 the multivariable models built using PSA, age, CVD and Cer.20, with predicted probabilities
289 increasing with increasing ISUP grade. In **Figure 3C**, the samples are ordered by the predicted
290 probabilities from one of the 10 models, which includes PSA, age, CVD, hypertension and 10
291 sphingolipids. Some ISUP >1 PCa cases (red dots) appear below the horizontal dashed line on the
292 right side of the figure, indicating patients with high predicted probabilities despite low PSA levels.

293 The same approach was applied considering only the men who underwent SLI (n=221). In this case,
294 only CVD, PSA and age together with five sphingolipids were selected by 10/10 models. Namely,

295 SM.16 and HexCer.20 had positive coefficients, while HexCer.24.1, DHS1P, and DHCer.24 had
 296 negative coefficients. The improvement in the average ROC AUC of the 10 models on the 10 test
 297 sets not used for model construction was even better, from 0.65 (range: 0.56-0.83) and 0.70 (range:
 298 0.56-0.87) for PSA and PSA combined with age, respectively, to 0.83 (range: 0.57-0.92) for the model
 299 including CVD and sphingolipids (**Figure 3D**).

300



301

302 **Figure 3:** (A) Classification performances of the multivariable models vs PSA alone in the entire cohort with complete
 303 information on sphingolipids and lifestyle/clinical variables. (B) Predicted probabilities of harboring a PCa of ISUP grade
 304 >1 given by the multivariable model built using or PSA, age, CVD and Cer.20. (C) Representation of logPSA, logAge,
 305 sphingolipid levels, hypertension and CVD state in each subject, ordered by the predicted probabilities of harboring an
 306 ISUP>1 PCa. Grey dots correspond to nonPCa, orange to ISUP1 PCa and red to ISUP>1 PCa. (D) Classification
 307 performances of the multivariable models vs PSA alone in the subgroup of men who underwent SLI.

308

309

310 **Discussion**

311 With the implementation of PCa screening policies across European countries, such as PRAISE-U
312 (21), there will be an exponential rise in PSA testing. While this increase enhances early detection, it
313 also raises the risk of dispensable second-level investigations (SLI), which can lead to over diagnosis,
314 patient anxiety, and potential complications from invasive procedures like biopsies (22). To optimize
315 screening benefits and minimize harm, it is crucial to apply risk-stratified approaches and follow
316 evidence-based guidelines to ensure that only high-risk individuals undergo further diagnostic
317 assessments.

318 In this work, we summarized the results of a prospective multicentre study addressed to men
319 undergoing PSA testing and digital rectal examination, sometimes followed by SLI (MRI and/or
320 prostate biopsy), for the early detection of PCa. The study also included men candidate to
321 prostatectomy. The goal was to improve PSA diagnostic accuracy and reduce unnecessary
322 MRIs/biopsies by integrating lifestyle, age, comorbidity, and easily measured blood markers,
323 ultimately informing targeted prevention strategies.

324 PSA dosage remains the milestone for PCa detection, even if with its limitations. However, the
325 predictive value of PSA is drastically reduced in those men with PCa suspicion, candidates for SLI;
326 in this subgroup of subjects, only about 60% really have a confirmed PCa diagnosis, actually making
327 necessary the identification of other complementary biomarkers.

328 One of the findings of our study is that a sedentary lifestyle and cardiovascular diseases (CVD)
329 increase the likelihood of a PCa diagnosis. The association between CVD and PCa should not be
330 considered in the same way that smoking is a risk factor for lung cancer, as both CVD and PCa share
331 some common risk factors, such as age, diet, obesity and lack of exercise. However, a recent study
332 highlighted a causative association between angina pectoris and PCa (23). We also found that
333 combining sedentariness and CVD, along with PSA and age, improves patient selection for SLI.
334 However, the key finding of our research is that analysis of plasma sphingolipids further enhances

335 the precision in detecting PCa among men recalled for suspected PCa (average AUC 0.83). These
336 results are comparable to risk calculators using MRI data (24) (AUC 0.81-0.87 for clinically
337 significant PCa) and significantly better than models without MRI data (2) (AUC 0.66-0.79).

338 While pre-biopsy MRI in suspected PCa can help over 30% of men avoid immediate biopsy and
339 improve cancer detection – identifying about 15% more clinically significant and 40% fewer
340 clinically insignificant cancers (25) – it also increases the demand for MRI equipment, highly trained
341 staff, manpower and (future) AI-based image analysis. Using a pre-MRI risk assessment tool in a
342 clinical cohort could eliminate over a third of prostate MRIs (or biopsies, if MRI is unavailable) (26),
343 with even greater potential in screening populations where the overall risk of PCa is much lower.
344 Therefore, MRI should be prioritized for men at intermediate and high risk based on a reliable
345 stratification tool (27). The drawback is a potential risk of missing some clinically significant PCas
346 in men considered low-risk (26). In our cohort, the combination of clinical/demographic and
347 laboratory covariates allowed the correct classification of ISUP>1 PCa also in some men with very
348 low serum PSA levels.

349 The variables most strongly associated with PCa at enrolment were PSA levels, age, number of
350 medications, hypertension, CVD, and sedentariness. Notably, sedentariness is a modifiable risk factor
351 that can influence the other variables. Our observation of decreased PSA levels proportional to
352 exercise frequency in a subgroup of sedentary men participating in a biweekly Nordic-walking
353 program within the DP3 study (manuscript in preparation) further underscores this point. Exercise
354 impacts overall health, including cardiovascular health, and can even influence biological age (28).
355 These findings highlight the critical importance of stratifying patients for PCa screening and
356 implementing risk-adapted strategies. By considering modifiable risk factors like sedentariness,
357 alongside established factors such as PSA and age, we can more effectively identify individuals who
358 would benefit most from further investigation, reducing unnecessary interventions in lower-risk
359 individuals while ensuring timely diagnosis and treatment for those at higher risk. Critically, risk-

360 adapted strategies could include the prescription of targeted exercise programs for sedentary men,
361 addressing a key modifiable risk factor and potentially impacting both PSA levels and overall health.

362 Interest in circulating sphingolipids as cancer biomarkers has grown rapidly in recent years due to
363 their role as not just structural components of cell membranes, but also active molecules involved in
364 various cellular processes, including cell growth, differentiation, and death. Most of the previous
365 studies on sphingolipids and PCa regard patients with existing PCa diagnoses and have identified
366 sphingolipid signatures associated with cancer progression and therapy resistance (8–13). A
367 prognostic blood-based sphingolipid panel has recently been proposed for men with localized PCa on
368 active surveillance. This panel aims to identify patients at high risk of biopsy Gleason grade
369 upgrading (29). To our knowledge, no blood-based sphingolipid panel exists for the early detection
370 of PCa within a screening context, nor as a pre-MRI/biopsy risk assessment tool for men with
371 suspected PCa.

372 As part of the abovementioned ancillary study within the DP3 project, we investigated the impact of
373 a 6-month biweekly Nordic-Walking program (led by certified instructors) on quality of life, lifestyle,
374 mobility parameters and circulating molecules in a subgroup of sedentary men enrolled in our study.
375 Interestingly, DHCer24, which was negatively associated with PCa in all multivariable models, after
376 six months proportionally increased with the frequency of activity (manuscript in preparation).

377 A limitation of this study is the lack of completeness regarding the different levels of information
378 available for the subjects enrolled. We maximized the use of available data without imputing missing
379 values. In multivariable modelling, we used a 10-fold cross-validation approach on each subset
380 analyzed, to avoid overfitting and identify the most robust variables. We plan in the future to extend
381 our analyses on wider datasets as well as to integrate plasma proteomic and urinary microbiome data
382 to identify additional potential biomarkers and provide a more comprehensive understanding.

383

384 **Conclusion**

385 This study investigated the potential of combining readily available clinical data (PSA, age,
386 hypertension, CVD, sedentariness) with novel circulating biomarkers for improved PCa detection.
387 The research identified specific sphingolipid panels that, when combined with clinical factors,
388 demonstrated strong diagnostic potential for both PCa screening and pre-MRI/biopsy risk assessment.
389 These findings suggest that incorporating sphingolipid analysis could enhance PCa early detection
390 and reduce dispensable invasive procedures.

391 Future research will expand the analysis to include plasma proteomic and urinary microbiome data
392 for an even more comprehensive understanding and identification of additional biomarkers.

393

394 **DECLARATIONS**

395 **Ethics approval and consent to participate:** The observational clinical protocol called DP3
396 coordinated by FEET was approved by the Novara ethical committee (AOU Maggiore della Carità)
397 in September 2020 (Prot. N° 968/CE 07/09/2020, integration Prot. N°263/CE, 10/03/2021), in
398 accordance with the Declaration of Helsinki Ethical Principles for Medical Research involving
399 Human Participants. The MH ethical committee (AOU Città della Salute e della Scienza) in Turin
400 approved the DP3 study in January 2022 (Prot. N° 521/2021, 10/01/2022).

401 **Consent for publication**

402 NA

403 **Availability of data and materials**

404 Upon reasonable request to the corresponding author.

405 **Competing interests:** The authors declare that they have no competing interests

406 **Funding**

407 The DP3 study was funded by Compagnia di San Paolo (CP-N; FG); Rete Oncologica del Piemonte
408 e della Valle d’Aosta; the National Plan for Complementary Investments to the NRRP, project
409 “D34H—Digital Driven Diagnostics, prognostics and therapeutics for sustainable Health care”
410 (project code: PNC0000001), Spoke 4 financed by the Italian Ministry of University and Research
411 (MS); Fondazione CRT (CP-N; MM-G; PO; IG; GC).

412 **Authors' contributions (da adattare):** CPN: Conceptualization, Methodology, Investigation,
413 Resources, Data Curation, Writing - Review & Editing. PO: Conceptualization, Software, Validation,
414 Formal analysis, Data Curation, Writing - Review & Editing, Visualization. MS: Formal analysis,
415 Investigation, Resources, Data Curation, Visualization. MMG: Conceptualization, Investigation,
416 Resources, Writing - Review & Editing. IG: Investigation, Resources. FG: Software, Writing -
417 Review & Editing. FC: Resources. FM: Resources. MDC: Investigation. RP: Supervision. AS:
418 Resources. FF: Resources. NT: Resources. MO: Conceptualization, Resources, Writing - Review &
419 Editing. AZ: Conceptualization, Resources. CF: Resources, Data Curation. AG: Resources. AN:
420 Funding acquisition, Writing - Review & Editing. LC: Data Curation. PG: Resources, Supervision.
421 SZ: Resources, Supervision. GC: conceptualization, methodology, Writing - Original Draft and
422 Review & Editing, Supervision, Project Administration and Funding acquisition.

423 All authors read and approved the final manuscript

424 **Acknowledgements**

425 We thank all patients who agreed to participate in the DP3 study, as well as all the nurses, physicians
426 and students supporting sample collection and processing.

427

428 **Authors' information (optional)**

429

430

431 **References**

- 432 1. Matsukawa A, Yanagisawa T, Bekku K, Kardoust Parizi M, Laukhtina E, Klemm J, et al.
433 Comparing the Performance of Digital Rectal Examination and Prostate-specific Antigen as a

- 434 Screening Test for Prostate Cancer: A Systematic Review and Meta-analysis. *European*
435 *Urology Oncology*. agosto 2024;7(4):697–704.
- 436 2. Louie KS, Seigneurin A, Cathcart P, Sasieni P. Do prostate cancer risk models improve the
437 predictive accuracy of PSA screening? A meta-analysis. *Ann Oncol*. maggio 2015;26(5):848–
438 64.
- 439 3. Mello-Grand M, Gregnanin I, Sacchetto L, Ostano P, Zitella A, Bottoni G, et al. Circulating
440 microRNAs combined with PSA for accurate and non-invasive prostate cancer detection.
441 *Carcinogenesis*. 29 aprile 2019;40(2):246–53.
- 442 4. Mello-Grand M, Bruno A, Sacchetto L, Cristoni S, Gregnanin I, Dematteis A, et al. Two Novel
443 Ceramide-Like Molecules and miR-5100 Levels as Biomarkers Improve Prediction of Prostate
444 Cancer in Gray-Zone PSA. *Front Oncol*. 19 novembre 2021;11:769158.
- 445 5. Pal P, Atilla-Gokcumen GE, Frasor J. Emerging Roles of Ceramides in Breast Cancer Biology
446 and Therapy. *IJMS*. 23 settembre 2022;23(19):11178.
- 447 6. Hannun YA, Obeid LM. Author Correction: Sphingolipids and their metabolism in physiology
448 and disease. *Nat Rev Mol Cell Biol*. ottobre 2018;19(10):673.
- 449 7. Petrusca DN, Lee KP, Galson DL. Role of Sphingolipids in Multiple Myeloma Progression,
450 Drug Resistance, and Their Potential as Therapeutic Targets. *Front Oncol*. 8 giugno
451 2022;12:925807.
- 452 8. Lin HM, Huynh K, Kohli M, Tan W, Azad AA, Yeung N, et al. Aberrations in circulating
453 ceramide levels are associated with poor clinical outcomes across localised and metastatic
454 prostate cancer. *Prostate Cancer Prostatic Dis*. settembre 2021;24(3):860–70.
- 455 9. Cattrini C, Manfredi M, Barboro P, Ghirimoldi M, Mennitto A, Martini V, et al. Untargeted
456 lipidomics reveal association of elevated plasma C18 ceramide levels with reduced survival in
457 metastatic castration-resistant prostate cancer patients. *Sci Rep*. 18 ottobre 2023;13(1):17791.
- 458 10. Scheinberg T, Lin HM, Fitzpatrick M, Azad AA, Bonnitcha P, Davies A, et al. PCPro: a
459 clinically accessible, circulating lipid biomarker signature for poor-prognosis metastatic
460 prostate cancer. *Prostate Cancer Prostatic Dis*. marzo 2024;27(1):136–43.
- 461 11. Finnerty MC, Leach FE, Zakharia Y, Nepple KG, Bartlett MG, Henry MD, et al. Identification
462 of blood lipid markers of docetaxel treatment in prostate cancer patients. *Sci Rep*. 27 settembre
463 2024;14(1):22069.
- 464 12. Lin HM, Mak B, Yeung N, Huynh K, Meikle TG, Mellett NA, et al. Overcoming enzalutamide
465 resistance in metastatic prostate cancer by targeting sphingosine kinase. *eBioMedicine*. ottobre
466 2021;72:103625.
- 467 13. Lee C, Chen Y, Hernandez E, Pong R, Ma S, Hofstad M, et al. The central role of Sphingosine
468 kinase 1 in the development of neuroendocrine prostate cancer (NEPC): A new targeted therapy
469 of NEPC. *Clinical & Translational Med [Internet]*. febbraio 2022 [citato 28 febbraio
470 2023];12(2). Disponibile su: <https://onlinelibrary.wiley.com/doi/10.1002/ctm2.695>
- 471 14. Ribeiro CF, Rodrigues S, Bastos DC, Fanelli GN, Pakula H, Foiani M, et al. Blocking lipid
472 synthesis induces DNA damage in prostate cancer and increases cell death caused by PARP
473 inhibition. *Sci Signal*. 9 aprile 2024;17(831):eadh1922.

- 474 15. Lin X, Lécuyer L, Liu X, Triba MN, Deschasaux-Tanguy M, Demidem A, et al. Plasma
475 Metabolomics for Discovery of Early Metabolic Markers of Prostate Cancer Based on Ultra-
476 High-Performance Liquid Chromatography-High Resolution Mass Spectrometry. *Cancers*
477 (Basel). 23 giugno 2021;13(13):3140.
- 478 16. Breeur M, Ferrari P, Dossus L, Jenab M, Johansson M, Rinaldi S, et al. Pan-cancer analysis of
479 pre-diagnostic blood metabolite concentrations in the European Prospective Investigation into
480 Cancer and Nutrition. *BMC Med.* 19 ottobre 2022;20(1):351.
- 481 17. Schmidt JA, Fensom GK, Rinaldi S, Scalbert A, Appleby PN, Achaintre D, et al. Pre-diagnostic
482 metabolite concentrations and prostate cancer risk in 1077 cases and 1077 matched controls in
483 the European Prospective Investigation into Cancer and Nutrition. *BMC Med.* dicembre
484 2017;15(1):122.
- 485 18. Schmidt JA, Fensom GK, Rinaldi S, Scalbert A, Appleby PN, Achaintre D, et al. Patterns in
486 metabolite profile are associated with risk of more aggressive prostate cancer: A prospective
487 study of 3,057 matched case-control sets from EPIC. *Int J Cancer.* febbraio 2020;146(3):720-
488 30.
- 489 19. World Cancer Research Fund/American Institute for Cancer Research. Continuous Update
490 Project Expert Report 2018. Recommendations and public health and policy implications.
491 Available at dietandcancerreport.org.
- 492 20. Rossi L, Berni Canani S, Censi L, Gennaro L, Leclercq C, Scognamiglio U, et al. The 2018
493 Revision of Italian Dietary Guidelines: Development Process, Novelties, Main
494 Recommendations, and Policy Implications. *Front Nutr.* 25 marzo 2022;9:861526.
- 495 21. Chandran A, Van Harten M, Singh D, Vilaseca J, Patasius A, Tupikowski K, et al. Risk-
496 stratified Approach to Implementing Population-based Prostate Cancer Screening in Five Pilot
497 Sites in the European Union: A Protocol for the PRAISE-U Project. *European Urology Open*
498 *Science.* dicembre 2024;70:8-17.
- 499 22. Osama S, Serboiu C, Taciuc IA, Angelescu E, Petcu C, Priporeanu TA, et al. Current Approach
500 to Complications and Difficulties during Transrectal Ultrasound-Guided Prostate Biopsies. *J*
501 *Clin Med.* 16 gennaio 2024;13(2):487.
- 502 23. Bai T, Wu C. Association of cardiovascular disease on cancer: observational and mendelian
503 randomization analyses. *Sci Rep.* 24 dicembre 2024;14(1):28465.
- 504 24. Mortezaei A, Palsdottir T, Eklund M, Chellappa V, Murugan SK, Saba K, et al. Head-to-head
505 Comparison of Conventional, and Image- and Biomarker-based Prostate Cancer Risk
506 Calculators. *Eur Urol Focus.* maggio 2021;7(3):546-53.
- 507 25. Drost FJH, Osses DF, Nieboer D, Steyerberg EW, Bangma CH, Roobol MJ, et al. Prostate
508 MRI, with or without MRI-targeted biopsy, and systematic biopsy for detecting prostate cancer.
509 *Cochrane Database Syst Rev.* 25 aprile 2019;4(4):CD012663.
- 510 26. Mannaerts CK, Gayet M, Verbeek JF, Engelbrecht MRW, Savci-Heijink CD, Jager GJ, et al.
511 Prostate Cancer Risk Assessment in Biopsy-naïve Patients: The Rotterdam Prostate Cancer
512 Risk Calculator in Multiparametric Magnetic Resonance Imaging-Transrectal Ultrasound
513 (TRUS) Fusion Biopsy and Systematic TRUS Biopsy. *Eur Urol Oncol.* giugno 2018;1(2):109-
514 17.

- 515 27. Moldovan PC, Van den Broeck T, Sylvester R, Marconi L, Bellmunt J, van den Bergh RCN, et
516 al. What Is the Negative Predictive Value of Multiparametric Magnetic Resonance Imaging in
517 Excluding Prostate Cancer at Biopsy? A Systematic Review and Meta-analysis from the
518 European Association of Urology Prostate Cancer Guidelines Panel. *Eur Urol.* agosto
519 2017;72(2):250–66.
- 520 28. Nagata M, Komaki S, Nishida Y, Ohmomo H, Hara M, Tanaka K, et al. Influence of physical
521 activity on the epigenetic clock: evidence from a Japanese cross-sectional study. *Clin*
522 *Epigenetics.* 15 ottobre 2024;16(1):142.
- 523 29. Gregg JR, Newcomb L, Wu R, Dennison J, Davis JW, Pettaway C, et al. Validation of a
524 prognostic blood-based sphingolipid panel for men with localized prostate cancer followed on
525 active surveillance. *Biomark Res.* 9 novembre 2024;12(1):134.
- 526

527 **Supplementary materials**

528 *Lifestyle score calculations*

529 The reported weekly consumption frequencies (“never”, “once”, “2-3 times”, “more than 3 times”)
530 for each food in the questionnaire were therefore assessed, in particular: “Pasta”, “Rice”, “White
531 bread”, “Wholegrain bread”, “White meat”, “Red meat”, “Fish”, “Fried food”, “Cereals”, “Legumes”,
532 “Fruit”, “Vegetables”, “Sweets”, “Eggs”, “Diary products”. To each food or combination of foods,
533 a value between -1 and +1 was given according to the consumption frequencies recommended by the
534 Italian Guidelines and the WCRF Recommendations. By adding the values attributed, an overall score
535 for nutrition was calculated, ranging from 0 to 14.5, where higher scores indicated more adequate
536 dietary habits, while lower scores an unhealthy diet. This score was further categorized into 5 classes:
537 class 1 ($0 \leq \text{score} \leq 7$), class 2 ($7 < \text{score} \leq 8.75$), class 3 ($8.75 < \text{score} \leq 10$), class 4 ($10 < \text{score} \leq 11.5$), class
538 5 ($11.5 < \text{score} \leq 14.5$). Finally, the five scores thus created for BMI, physical activity, smoke, alcohol
539 and diet were summed to obtain the final lifestyle score: higher lifestyle scores reflected a healthier
540 global lifestyle, while lower scores were associated with worse lifestyle habits, predisposing to an
541 increased risk of many pathologies.

542

543 **Supplementary Table 1:** List of sphingolipids analysed.

CERAMIDES	GANGLIOSIDES GM3
Cer.14	GM3.16
Cer.16	GM3.18
Cer.18:1	GM3.18:1
Cer.18	GM3.20
Cer.20	GM3.22
Cer.22	GM3.24:1
Cer.24:1	GM3.24
Cer.24	GLOBOTRIAOSYLCERAMIDES
DIHYDROCERAMIDES	Gb3.16
DHCer.16	Gb3.18
DHCer.18:1	Gb3.18:1
DHCer.18	Gb3.20
DHCer.24:1	Gb3.22
DHCer24	Gb3.24
HEXOSYLCERAMIDES	Gb3.24:1
HexCer.16	SPHINGOSINES
HexCer.18:1	Sph
HexCer.18	S1P
HexCer.20	DHSph
HexCer.22	DHS1P
HexCer.24:1	SPHINGOMYELINS
HexCer.24	SM.16
LACTOSYLCERAMIDES	SM.18:1
LacCer.16	SM.18
LacCer.18:1	SM.24:1
LacCer.18	SM.24
LacCer.20	
LacCer.22	
LacCer.24:1	
LacCer.24	

