
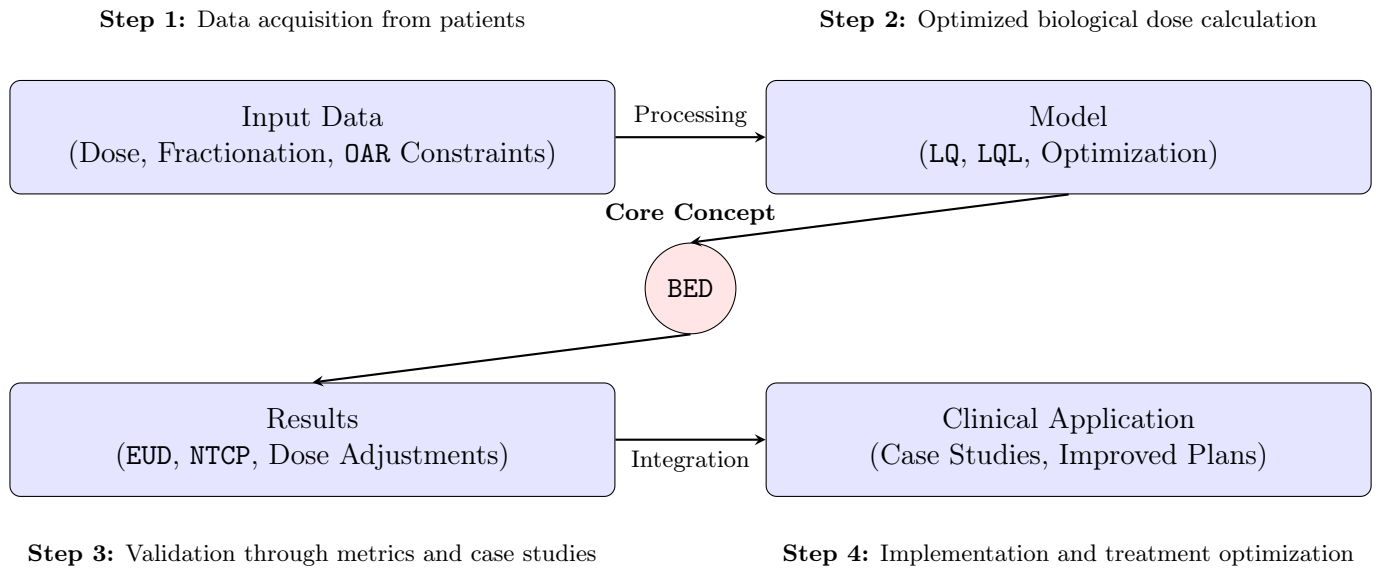


Graphical Abstract

Improving Clinical Decision-Making in Radiotherapy: A Comparative Analysis of LQ and LQL Dose Models

Cyril Voyant , Daniel Julian, Stéphane Muraro, Véronique Bodez, Morgane Pinpin, Delphine Leschi, Rashid Oozer, Wided Guiddi, Marie-Aimée Acquaviva, Severine Prapant, Omar Gahbiche, Noureddine Bouaouina

Workflow of Advanced Dose Modeling in Radiotherapy



Highlights

Improving Clinical Decision-Making in Radiotherapy: A Comparative Analysis of LQ and LQL Dose Models

Cyril Voyant^{ORCID}, Daniel Julian, Stéphane Muraro, Véronique Bodez, Morgane Pinpin, Delphine Leschi, Rashid Oozeer, Wided Guiddi, Marie-Aimée Acquaviva, Severine Prapant, Omar Gahbiche, Nouredine Bouaouina

- ✓ Advanced dose modeling using LQ and LQL frameworks for precise radiotherapy planning.
- ✓ Accurate computation of BED and NTCP to optimize tumor control and minimize toxicity.
- ✓ Patient-specific optimization integrating fractionation schedules and OAR constraints.
- ✓ Clinical validation through case studies, revealing variability in treatment planning decisions.
- ✓ Call for standardized guidelines and training to bridge the gap between theory and practice.

Improving Clinical Decision-Making in Radiotherapy: A Comparative Analysis of LQ and LQL Dose Models

Cyril Voyant^{a,*}, Daniel Julian^b, Stéphane Muraro^b, Véronique Bodez^c, Morgane Pinpin^d, Delphine Leschi^d, Rashid Oozeer^d, Wided Guiddi^e, Marie-Aimée Acquaviva^d, Severine Prapant^d, Omar Gahbiche^e, Nouredine Bouaouina^e

^aMines Paris, PSL University, Centre for observation, impacts, energy (O.I.E.), Sophia-Antipolis, 06904, Antibes, France

^bCentre de Cancérologie du Grand Montpellier, Radiotherapy Unit, Montpellier, 34000, Hérault, France

^cSainte Catherine, Institut du Cancer, Medical Physics Department, Avignon, 84000, Provence, France

^dCH Castelluccio, Radiation Unit, Ajaccio, 20000, Corsica, France

^eCentre Médical IBN Khaldoun, Radiotherapy Unit, Hammam Sousse, 4011, Tunisie

Abstract

Radiotherapy is an essential component of cancer treatment, requiring accurate dose planning to optimize tumor control while sparing healthy tissues. This study investigates advanced dose modeling approaches, focusing on the Linear Quadratic (LQ) and Linear Quadratic Linear (LQL) models, to refine the calculation of biologically effective doses (BED) and improve treatment personalization. Using tools such as LQL-equiv and other BED calculators, we integrated patient-specific data (e.g., fractionation schedules and organ-at-risk (OAR) constraints) to predict outcomes such as normal tissue complication probabilities (NTCP). Through a series of clinical case studies (including treatment interruptions, palliative boosts, and reirradiation scenarios), participant responses were analyzed using the Jaccard similarity index, revealing a significant lack of consensus in treatment planning decisions (mean agreement of 10%). This variability highlights a critical gap between the potential of advanced modeling and its consistent clinical application. While the LQ and LQL models offer promising tools for personalized radiotherapy, their interpretation and implementation remain highly variable. This study emphasizes the need for standardized guidelines, enhanced training programs, and decision-support systems to reduce inter-observer variability and ensure effective clinical adoption, ultimately improving patient care.

Keywords: Radiotherapy, Biologically Effective Dose (BED), Linear Quadratic Model (LQ), Dose Optimization, Personalized Cancer Treatment

1. Introduction

Modern advancements in radiotherapy and dose modeling stem from foundational developments in radiobiology. This study, originating from a workshop on advanced radiotherapy modeling, revisits key milestones to highlight the tools and concepts that have shaped contemporary clinical approaches. The workshop brought together experts in the field to discuss and evaluate the latest advancements, providing a comprehensive overview of current best practices and emerging trends.

1.1. Historical Background in Radiobiology

Radiotherapy has evolved significantly since Lea and Catcheside's work on indirect radiation effects [7]. The Linear Quadratic (LQ) model, pivotal in the 1980s, facilitated fractionation modeling [12] and became a cornerstone for dose calculation due to its simplicity and broad applicability. However, its limitations at high doses, such as overestimating cell survival, led to the development of refined models. Lyman's dose-volume histograms improved the prediction of tissue complications [8], providing a more accurate assessment

*Corresponding author

Email addresses: cyril.voyant@minesparis.psl.eu (Cyril Voyant), Julian@ccgm.fr (Daniel Julian), muraro@ccgm.fr (Stéphane Muraro), v.bodez@isc84.org (Véronique Bodez), morgane.pinpin@ch-castelluccio.fr (Morgane Pinpin), delphine.leschi@ch-castelluccio.fr (Delphine Leschi), rashid.oozeer@ch-castelluccio.fr (Rashid Oozeer), guiddiwided@yahoo.fr (Wided Guiddi), marie_aimée2@hotmail.com (Marie-Aimée Acquaviva), severine.prapant@ch-castelluccio.fr (Severine Prapant), omargahbiche.cmik@gmail.com (Omar Gahbiche), nouredine.bouaouina3@gmail.com (Nouredine Bouaouina)

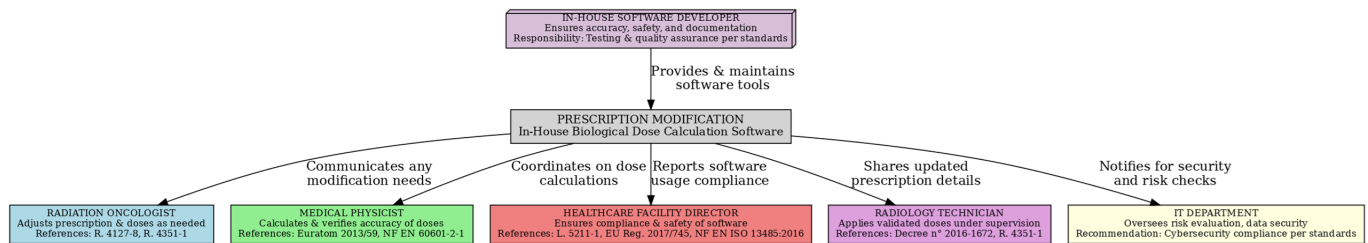


Figure 1: Responsibilities and Workflow in Radiotherapy Dose Calculation, with References to French and European Legal Texts. This diagram outlines the roles of key stakeholders in ensuring safety, accuracy, and regulatory compliance during dose prescription and calculation, referencing legal frameworks such as EU Regulation 2017/745 and French decrees like R. 4127-8 and R. 4351-1.

Table 1: Responsibilities in Case Studies of Software Defects and Misuse in Radiotherapy

Case Study	Defective Software: Patient dies or suffers irreversible harm due to a software defect causing incorrect dose calculations.	Misuse of Software: Patient dies or suffers irreversible harm due to a user error in dose calculation.
Primary Responsibility	Developer: Responsible for testing and safety compliance (e.g., <i>EU Reg. 2017/745</i>). Negligence liability if a defect caused harm.	Physicist/Oncologist: Responsible for accurate data entry and following protocols. Liability if misuse caused harm.
Secondary Responsibility	IT Department: Accountable if risk monitoring was insufficient to catch defects.	Healthcare Facility Director: Responsible if training or guidance was inadequate. Liability for insufficient protocols or oversight.
Shared/Indirect Responsibility	Facility Director: Liable if the software was uncertified or improperly vetted for clinical use.	Developer: Some responsibility if unclear interface contributed to error. Must ensure software is intuitive and provides clear instructions.
Legal Implications	<ul style="list-style-type: none"> - Negligence for the developer or IT if defect was undetected. - Regulatory breach if uncertified software was used, per EU standards. 	<ul style="list-style-type: none"> - Malpractice liability for the healthcare professional if error stemmed from user negligence. - Institutional liability if misuse was due to inadequate training.

of the risk to healthy tissues. Fowler’s Biologically Effective Dose (BED) standardized dose equivalence across different fractionation schemes [5], making it easier to compare different treatment protocols. Dale further enhanced the model by incorporating tumor repopulation effects [3], which are crucial for accurately predicting treatment outcomes. To address the high-dose limitations of the LQ model, Astrahan proposed the Linear Quadratic Linear (LQL) model [1], which better accounts for cell survival at higher doses. This model is particularly useful in scenarios involving high-dose treatments, such as stereotactic radiosurgery. Niemierko’s introduction of the Equivalent Uniform Dose (EUD) provided a framework for handling dose inhomogeneities [9], allowing for more precise treatment planning. Recent advancements have integrated Relative Biological Effectiveness (RBE), particularly for ion and proton therapies, further refining dose calculation accuracy [4, 10]. These models consider the varying biological effects of different types of radiation, improving the precision of dose calculations. Despite these advancements, the clinical application of these models remains inconsistent. This study aims to evaluate the LQ and LQL frameworks in the context of modern radiotherapy, highlighting their strengths, limitations, and potential for standardization.

1.2. Legislation and Responsibility

Modern radiotherapy is governed by stringent guidelines to ensure safety and efficacy. Regulatory frameworks, such as EU Regulation 2017/745 and French decrees (e.g., R. 4127-8 and R. 4351-1), mandate accurate dose calculation and strict adherence to organ-at-risk (OAR) constraints. These regulations require continuous monitoring of patient outcomes and adaptive strategies to address treatment interruptions, evolving patient conditions, and technological advancements. Practitioners must balance clinical responsibilities with legal requirements, as outlined in international safety standards [6]. For a detailed overview of the roles and responsibilities of key stakeholders, see Figure 1 and Table 1. To minimize risks associated with software defects or misuse, healthcare facilities should implement robust quality assurance programs. These programs should include regular software audits, comprehensive training for staff, and clear protocols for dose calculation and verification. Such measures not only ensure compliance with legal standards but also enhance patient safety and treatment efficacy.

1.3. The Importance of BED and NTCP

The Biologically Effective Dose (BED) has become a key element for quantifying the biological impact of different fractionation schemes, enabling direct comparison of diverse protocols [2]. By accounting for dose per fraction, total dose, and tissue-specific parameters, BED provides a unified metric to evaluate and

42 optimize treatment plans. For example, it allows clinicians to compare conventional fractionation (e.g., 2
43 Gy per fraction) with hypofractionated regimens (e.g., 5 Gy per fraction) while maintaining equivalent bi-
44 ological effectiveness. Similarly, the Normal Tissue Complication Probability (NTCP) metric facilitates risk
45 estimation for organ damage, guiding personalized treatment planning. NTCP models integrate dose-volume
46 histograms and radiobiological parameters to predict the likelihood of complications, such as radiation-
47 induced pneumonitis or fibrosis. However, their accuracy depends on the quality of the underlying data and
48 the applicability of the model to specific patient populations. Together, BED and NTCP offer a robust frame-
49 work to optimize treatment outcomes and manage toxicity. Despite their widespread use, challenges remain,
50 including inter-patient variability and the need for standardized implementation across clinical centers. This
51 study aims to address these challenges by evaluating the consistency and applicability of these metrics in
52 concrete scenarios.

53 1.4. Objectives

54 This study, originating from a workshop on advanced radiotherapy modeling, investigates the integration
55 of sophisticated dose models, particularly the Linear Quadratic (LQ) and Linear Quadratic Linear (LQL)
56 frameworks, in radiotherapy planning. One of its key aims is to validate the applicability of Biologically
57 Effective Dose (BED) and Normal Tissue Complication Probability (NTCP) metrics across diverse clinical
58 scenarios. Additionally, it evaluates the consistency of participant responses by employing the Jaccard
59 similarity index [11], revealing potential variability in treatment planning decisions. The study also examines
60 the practical implementation of LQ and LQL models through a series of case studies, including treatment
61 interruptions and reirradiation cases, to assess their real-world relevance. Finally, it advocates for the
62 development of standardized guidelines to facilitate the adoption of advanced dose modeling, aiming to
63 minimize inter-observer variability and enhance clinical decision-making. By addressing these aspects, the
64 study seeks to bridge the gap between theoretical radiobiological models and their practical application,
65 ultimately contributing to improved radiotherapy safety and efficacy.

66 2. Methods

67 LQL-equiv is an open-source tool for dose-equivalence modeling. Built on the Linear Quadratic Linear
68 (LQL) framework, LQL-equiv addresses the limitations of traditional LQ models, particularly for extreme
69 fractionations. The tool was selected for this study due to its integration of advanced radiobiological models
70 (LQ, LQL, and BED), its adoption in over 20 countries, and its ability to comprehensively simulate complex
71 clinical scenarios. While LQL-equiv is a research-oriented tool without clinical certification (a common
72 limitation among dose calculation software), it provides critical insights into dose optimization and model
73 limitations, helping practitioners calibrate and validate clinical protocols used in their respective centers.

74 2.1. Workflow of LQL-equiv

75 Figure 2 outlines the workflow of LQL-equiv. Data acquisition consists of inputting patient-specific
76 data, including total dose, dose per fraction, pause days, and fractionation schedule. The Linear-Quadratic
77 Linear (LQL) model is then applied to compute the Biologically Effective Dose (BED):

$$\text{BED} = n \times d \left(1 + \frac{d}{\alpha/\beta} \right) + \lambda(d - d_t) \quad (1)$$

78 where n is the number of fractions, d is the dose per fraction, α/β is the tissue-specific parameter, λ accounts
79 for treatment breaks, and d_t is the threshold dose. For the target volume (TV), tumor repopulation effects
80 are considered:

$$\text{BED}_{TV} = n \times d \left(1 + \frac{d}{\alpha/\beta} \right) - \frac{\ln(2)}{\alpha} \frac{T - T_k}{T_{pot}} \quad (2)$$

81 where T_k represents the kick-off time for tumor repopulation, T_{pot} is the potential doubling time, and T is
82 the total treatment duration. For the organ at risk (OAR), the BED calculation accounts for repair capacity
83 and dose constraints:

$$\text{BED}_{OAR} = n \times d \left(1 + (1 + H_m) \frac{d}{\alpha/\beta} \right) - D_{rec} \times T \quad (3)$$

Calculation Process and Specific Parameter List for Target Volume (TV), Organ at Risk (OAR) and Global Parameters

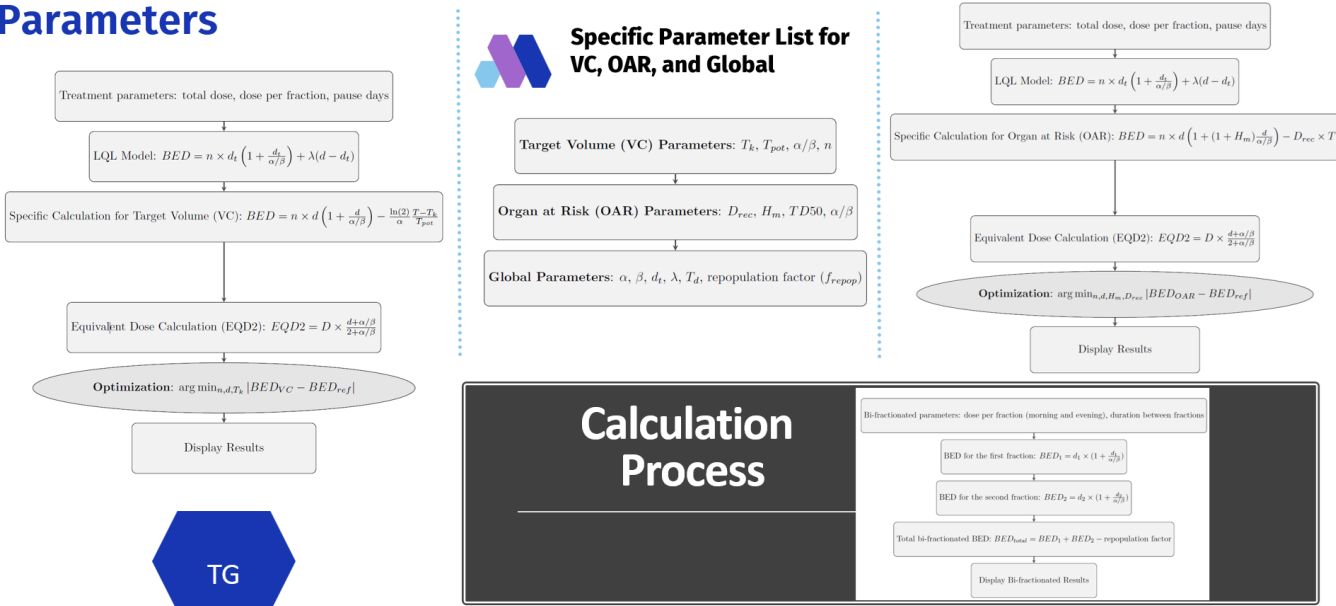


Figure 2: Methodology of LQL-equiv: From data acquisition to dose validation. This workflow includes the radiobiological equations and calculations underpinning the software.

84 where H_m represents the repair factor, D_{rec} is the recommended maximum dose, and T is the treatment
 85 duration. To enable comparisons across fractionation schemes, the Equivalent Dose in 2 Gy Fractions (Eq2Gy)
 86 is computed as:

$$\text{Eq2Gy} = D \times \frac{d + \alpha/\beta}{2 + \alpha/\beta} \quad (4)$$

87 Optimization is performed to adjust treatment parameters and minimize the difference between the calculated
 88 BED and the reference BED:

$$\arg \min_{n,d,T_k} |\text{BED}_{TV} - \text{BED}_{ref}|, \quad \arg \min_{n,d,H_m,D_{rec}} |\text{BED}_{OAR} - \text{BED}_{ref}| \quad (5)$$

89 For bi-fractionated treatments involving two daily dose fractions, the total BED is computed as:

$$\text{BED}_1 = d_1 \times \left(1 + \frac{d_1}{\alpha/\beta}\right) \quad (6)$$

$$\text{BED}_2 = d_2 \times \left(1 + \frac{d_2}{\alpha/\beta}\right) \quad (7)$$

$$\text{BED}_{total} = \text{BED}_1 + \text{BED}_2 - \text{repopulation correction factor} \quad (8)$$

92 Finally, the workflow generates optimized treatment plans, including dose adjustments and NTCP estimates.
 93 This framework integrates tumor-specific and OAR constraints into BED and Eq2Gy calculations, optimizing
 94 treatment personalization and minimizing complications. The use of repopulation correction and fractiona-
 95 tion adjustments allows for precise radiotherapy planning.

96 2.2. Participant Evaluation and Metrics

97 Participants in this study were attendees of the 27th Congrès National de Cancérologie et de Radiothérapie-
 98 2024, held in Sousse, Tunisia, on November 22–23, 2024. This event gathered over 1,000 registrants, with
 99 approximately 20% attending in person and the rest participating virtually. The diversity of attendees,
 100 including radiation oncologists, medical physicists, and radiotherapy technicians, enhanced the analysis by
 101 incorporating a broad range of perspectives and expertise. During the workshop, participants were divided

102 into heterogeneous groups of five, each comprising a mix of physicians, physicists, and technicians. This
103 structure was designed to foster interdisciplinary collaboration and encourage knowledge sharing, promoting
104 a deeper understanding of the challenges and solutions in radiotherapy dose optimization. Each problem
105 (four in total) was first introduced by the facilitators (C. Voyant and D. Julian), providing the necessary
106 context and theoretical background. Groups were then given time to discuss and respond to each case using
107 a provided paper-based booklet. At the end of the session, each participant submitted their own completed
108 booklet, ensuring an individual record of their approach to each clinical scenario. These booklets were
109 then collected for analysis, allowing for an evaluation of the similarities and discrepancies between responses
110 across all cases. Each group had access to a dedicated computer equipped with LQL-equiv and other dose
111 calculation tools¹. These tools were selected to provide a comprehensive comparison of different dose calcula-
112 tion methodologies, enabling participants to explore their respective strengths and limitations. Participants
113 alternated in using the software, fostering a dynamic and interactive approach to problem-solving. Discus-
114 sions within the groups allowed for collaborative decision-making and real-time exploration of complex cases.
115 This interactive format ensured that all participants, regardless of their background, could contribute to
116 the decision-making process. Furthermore, the collaborative environment facilitated the exchange of best
117 practices and reinforced the importance of interdisciplinary teamwork in optimizing radiotherapy treatments.

118 2.3. Data Collection and Analysis

119 The clinical cases used in this study were pre-defined to evaluate participant decision-making in scenarios
120 such as treatment interruptions, palliative boosts, and reirradiation (details in Appendix A). Each case
121 included specific dosimetric constraints (e.g., maximum spinal cord dose, mean cardiac dose) and required
122 participants to propose adjusted treatment plans. Responses were collected via a homemade survey platform
123 (using MATLAB), ensuring independent and anonymized participation. The Jaccard similarity index was
124 used to quantify agreement among participants, with additional summary statistics (e.g., response rates,
125 most frequent adjustments) providing further insights into decision-making patterns. While there are many
126 mathematical tools available to perform this operation, we aimed to keep it very simple and as objective as
127 possible, knowing that the goal was solely to check if the responses (to one decimal place) were homogeneous
128 or not. The global response rate for all answers (3 per clinical case as described in Appendix A) is close to
129 70%. This suggests that some participants either did not have enough time or were unsure of the method to
130 use. For further details on LQL-equiv, including download links and technical documentation, visit:

131 ✓ <https://github.com/cyrilvoyant/LQ-Equiv>

132 ✓ <https://cloud.minesparis.psl.eu/index.php/s/dzoXsjaD9MCc5aw/download>

133 For additional information, see Voyant et al. [14, 13].

134 3. Results

135 The analysis of participant responses demonstrated diverse strategies for addressing clinical challenges,
136 reflecting the variability in decision-making even among experienced practitioners. To illustrate these find-
137 ings, we present detailed case studies, beginning with an interrupted treatment scenario. These examples
138 highlight participant reasoning and adjustments, revealing common trends and deviations. Full details of
139 the clinical scenario and associated question are provided in Appendix A. For reference, a sample solution
140 calculated by the authors using LQL-Equiv is also included.

141 3.1. Case Study 1: Treatment Interruption in Curative Radiotherapy

142 This case involved a patient undergoing curative radiotherapy who experienced a one-week treatment
143 interruption due to radiation-induced skin toxicity. The interruption occurred after two weeks of treatment,
144 with 10 fractions already delivered. Participants were tasked with determining the optimal therapeutic plan
145 to resume treatment while adhering to strict dosimetric constraints. The clinical and dosimetric challenge
146 required maintaining the original number of planned fractions while ensuring the safety of critical organs-at-
147 risk (OAR). Specific criteria included:

¹<https://www.mdapp.co/biologically-effective-dose-bed-calculator-493/>, <https://www.mdcalc.com/calc/10111/radiation-biologically-effective-dose-bed-calculator>, and <https://www.sfjro.fr/ilq/fr/ilq.html?checkbox=1>

148 ✓ Maximum spinal cord dose (PRV): 46 Gy.

149 ✓ Mean cardiac dose (EUD): Below 7 Gy.

150 ✓ Maximum bowel dose (V50): Under 10%.

151 Participants evaluated potential acute and late treatment effects, ensuring that the Normal Tissue Complication Probability (NTCP) remained below 5%. This scenario required individualized dose adjustments for three
152 anatomical regions: head and neck (ORL), breast, and bladder. Adjustments to the prescribed fraction doses
153 were recorded to ensure compliance with clinical and dosimetric constraints for each region. The analysis
154 revealed significant variability in participant responses, with proposed fraction doses ranging from 1.8 Gy to
155 2.5 Gy for the head and neck region, 2.0 Gy to 2.4 Gy for the breast, and 1.9 Gy to 2.3 Gy for the bladder.
156 This variability underscores the challenges of standardizing dose adjustments in complex clinical scenarios,
157 even when using advanced tools like LQL-Equiv. The most frequent adjustments (mode) were 2.2 Gy for the
158 head and neck, 2.1 Gy for the breast, and 2.1 Gy for the bladder, indicating a tendency toward moderate
159 dose escalation to compensate for the interruption.
160

161 3.2. Case Study 2: Palliative Boost for Cerebellar Metastasis

162 This case involved a patient with a symptomatic cerebellar metastasis from breast cancer, undergoing
163 palliative radiotherapy. The standard protocol comprised whole-brain irradiation delivering 30 Gy in 10
164 fractions. Due to severe symptoms, a targeted dose escalation was required for the cerebellar lesion to
165 improve local tumor control and symptom relief while adhering to strict dosimetric constraints. The clinical
166 objectives were:

167 ✓ Deliver at least 45 Gy (Eq2Gy) to the metastasis.

168 ✓ Limit the maximum brain dose to 50 Gy (Eq2Gy).

169 ✓ Protect vision-related OAR, keeping doses below 45 Gy (Eq2Gy).

170 Participants evaluated two therapeutic approaches, Sequential Boost (administered after whole-brain irradiation, requiring specification of the number of fractions and dose per fraction) and simultaneous Integrated Boost (SIB; integrated into whole-brain treatment, requiring only the dose per fraction to be recorded).
171 They were tasked with selecting one of the approaches and providing a global decision. For both strategies, adherence to clinical objectives and prioritization of shorter treatment schedules, where feasible, were emphasized.
172
173
174
175

176 3.3. Case Study 3: Treatment Interruption and Resumption

177 This case involved a metastatic lung cancer patient undergoing radiotherapy targeting the L2-L3 vertebrae. The initial treatment plan prescribed 30 Gy over 10 fractions. After completing 5 fractions, a two-week interruption occurred due to hospitalization. Participants were tasked with proposing a therapeutic plan to resume treatment while maintaining the same biological effectiveness as initially planned. Two resumption strategies were considered:
178
179
180
181

182 ✓ Maintaining the remaining 5 fractions.

183 ✓ Modifying the number of remaining fractions.

184 In both strategies, participants had to ensure that the maximum spinal cord dose remained below 34 Gy
185 (physical dose). For each approach, participants calculated the equivalent biological dose for various fractionation schemes and proposed an updated plan aligned with these constraints. The clinical challenge involved
186 recalculating fractionation to achieve the original therapeutic objectives. For each strategy, the dose per
187 fraction was specified, and participants provided a global decision on whether to maintain or modify the
188 number of fractions.
189

Table 2: Summary of Participant Responses Across Clinical Cases. Key observations are based on an analysis of participant responses, rather than direct feedback

Clinical Cases	Consensus (J Index)	Most Frequent Response (Mode)	Key Observations
Case 1	ORL : 10%	2.2 Gy	Significant dose divergence.
	Breast : 15%	2.1 Gy	Balance between local control and toxicity is crucial.
	Bladder : 15%	2.1 Gy	
Case 2	Sequential : 30%	2 fractions-3Gy	Preference for SIB despite moderate overall consensus.
	SIB : 22%	3.5 Gy	Treatment planning choice is key.
	Choice : 60%	SIB	
Case 3	same # fractions : 17%	3.5 Gy	High heterogeneity in practice.
	Different # fractions : 26%	4.5 Gy	Fraction number and dose vary depending on approach.
	Choice : 60%	5 fractions	
Case 4	5 fractions : 20%	4.2 Gy	Lack of clear consensus.
	6 fractions : 15%	3.5 Gy	Wide range of fractionation schedules considered.
	7 fractions : 20%	3.2 Gy	

190 3.4. Case Study 4: Spinal Cord Dose Limitation in Reirradiation

191 This scenario involved a patient previously treated 10 years ago for breast cancer, receiving a maximum
 192 dose of 23 Gy to the spinal cord over 23 fractions (26 Gy to the planning risk volume, PRV, of the spinal
 193 cord +5 mm) on a volume of 0.03 cc. The patient now requires reirradiation targeting the T3 vertebral
 194 body with a proposed prescription of 5 fractions of 7 Gy each. The clinical challenge was to limit spinal
 195 cord toxicity while ensuring effective tumor control. Participants calculated dose equivalence using the 2
 196 Gy equivalent dose (Eq2Gy) or Biologically Effective Dose (BED) models, accounting for accumulated doses
 197 from prior treatments. Constraints from the International Spine Radiosurgery Consortium Guidelines were
 198 strictly applied:

- 199 ✓ Maximum dose (D_{max}) to the spinal cord: < 28 Gy (0.03 cc).
- 200 ✓ Volume receiving > 22 Gy (V_{22Gy}): < 0.35 cc.

201 Participants were encouraged to use LQ or LQL frameworks to evaluate fractionation schemes and ensure
 202 compliance with dose constraints. They determined the dose per fraction for spinal cord protection under
 203 three fractionation schemes (5, 6, or 7 fractions). Each option required specifying the dose per fraction to
 204 balance therapeutic effectiveness and spinal cord safety.

205 3.5. Discussion

206 The findings of this study highlight the potential of advanced dose modeling in radiotherapy treatment
 207 planning. However, the analysis of participant responses to clinical case studies revealed significant variability
 208 in the proposed solutions. As shown in Table 2, the Jaccard similarity index (J) indicated a mean agreement
 209 of only 25.83% among participants. This low concordance highlights several crucial points. Firstly, it
 210 reveals that even when using dose-equivalence calculation tools such as LQL-equiv and other available BED
 211 calculators, practitioners arrive at divergent therapeutic conclusions. This divergence persists even when
 212 participants use the same tool, suggesting that the interpretation of results and their clinical application vary
 213 considerably. The observed differences are sometimes disconcerting, underscoring the inherent complexity in
 214 applying radiobiological models in real clinical contexts. Analysis of Table 2 allows us to further specify this
 215 observation:

- 216 ✓ Case 1 (Treatment Interruption): The low concordance (10% for ORL, 15% for Breast and Bladder)
 217 associated with similar proposed doses (2.1 Gy and 2.2 Gy) indicates uncertainty regarding the optimal
 218 strategy for compensating for the interruption. Although the doses are numerically close, the biological
 219 impact of this slight difference, particularly in terms of BED, could be significant. This suggests that
 220 even small variations in fraction doses can generate debate regarding the benefit/risk balance.
- 221 ✓ Case 2 (Palliative Boost for Cerebellar Metastasis): A marked preference (60% of choices) for the use of
 222 SIB is observed, despite moderate consensus on specific parameters (30% for sequential fractionation
 223 and 22% for SIB). This preference for SIB could reflect a desire for treatment simplification or a
 224 perception of better clinical efficacy, although the data do not allow us to confirm this.

- 225 ✓ Case 3 (Treatment Interruption and Resumption): This case presents high heterogeneity in practice,
226 with a distribution of choices between maintaining the number of fractions (17%) and modifying it
227 (26%), and an overall preference for 5 fractions (60% of choices). The associated doses (3.5 Gy and 4.5
228 Gy) also demonstrate significant variability. This heterogeneity underscores the difficulty of establish-
229 ing a standardized protocol for managing treatment interruptions and the need for an individualized
230 approach.
- 231 ✓ Case 4 (Spinal Cord Dose Limitation in Re-irradiation): The lack of clear consensus (20% for 5 and
232 7 fractions, 15% for 6 fractions) and the dispersion of proposed doses (between 3.2 Gy and 4.2 Gy)
233 reflect the complexity of re-irradiation, particularly due to strict dose constraints on the spinal cord.
234 Calculating $Eq2Gy$ or BED in this context is crucial, but the results show that even with these tools,
235 interpretation and clinical decisions diverge.

236 Several factors can explain this variability. One key issue is the heterogeneous training received by practi-
237 tioners regarding the use and limitations of LQ and LQL models. While these models are well documented in
238 the literature, their translation into clinical routine remains inconsistent. Additionally, the lack of standard
239 guidelines on their application in specific scenarios, such as treatment interruptions or reirradiation, forces
240 clinicians to rely on individual experience rather than established protocols. Furthermore, although digital
241 tools such as $LQL-equiv$ provide objective calculations, their interpretation remains subjective, particularly
242 in complex cases where multiple fractionation strategies are feasible. The clinical impact of this variability
243 is not trivial. A difference of 0.2 to 0.5 Gy per fraction, though seemingly small, can significantly alter the
244 total biological dose (BED) received by the tumor and organs at risk. In the context of reirradiation, such
245 discrepancies can lead to suboptimal tumor control if the dose is underestimated, or to severe complications
246 if it is overestimated. This highlights an urgent need for standardized reference values and decision-support
247 tools that can guide clinicians towards more consistent and reproducible treatment planning.

248 4. Conclusion

249 This study explored the integration of advanced dose modeling, specifically the LQ and LQL models, into
250 clinical radiotherapy planning. The analysis of participant responses across diverse case studies revealed a
251 concerning lack of agreement in treatment planning decisions, despite the availability of tools like $LQL-equiv$
252 and other BED calculators. This underscores that while advanced modeling offers the potential for personal-
253 ized and optimized treatments, the interpretation of model outputs and their translation into clinical practice
254 remain highly variable. Therefore, successful integration of these models requires a strong emphasis on stan-
255 dardization. We recommend the development of comprehensive guidelines, standardized training programs
256 focusing on both theoretical understanding and practical application, and exploration of AI-based decision
257 support systems to minimize inter-observer variability and ensure consistent, effective clinical adoption of
258 advanced dose modeling in radiotherapy. In addition, this paper presents clinical cases frequently encoun-
259 tered in radiotherapy departments, along with solutions provided using $LQL-equiv$ and its developers. The
260 most probable responses from the sample of clinicians present at the conference are also documented. This
261 allows each radiotherapy team to compare its practice with these results, facilitating reflection on clinical
262 decision-making and potential improvements in treatment planning. To move towards standardization, the
263 next step should be the creation of a practical guide on the use of LQ and LQL models in clinical settings,
264 incorporating best practices derived from this study. Additionally, a working group could be established to
265 foster collaboration between institutions, ensuring a harmonized approach to dose equivalence calculations.
266 Finally, future developments should aim at integrating these models into clinically validated digital tools
267 that facilitate decision-making and minimize subjective interpretation. Given these findings, it is urgent to
268 repeat such workshops to guide practitioners and systematically compare practices. Establishing regular as-
269 sessments would help pave the way toward the harmonization of equivalent dose calculations in the medium
270 term. It is unacceptable that tumor control and radiation-induced effects depend on the treatment center
271 or the individual performing the calculations, especially when technical capabilities are equivalent. Ensuring
272 consistency in radiotherapy protocols should be a priority to guarantee optimal patient care across different
273 institutions.

274 Conflicts of interest/Competing interests

275 The authors declare that they have no conflicts of interest or competing interests related to this work.

276 Ethics approval

277 No ethical approval was required for this study, as no patient data was used. The simulations were based
278 solely on fictitious case studies.

279 Data availability Statement

280 The data used in this study is available upon reasonable request to the corresponding author, within the
281 limits of feasibility.

282 References

- 283 [1] Melvin Astrahan. Some implications of linear-quadratic-linear radiation dose-response with regard to
284 hypofractionation. *Medical Physics*, 35(9):4161–4172, 2008. doi: <https://doi.org/10.1118/1.2969065>.
- 285 [2] Søren M. Bentzen. Towards evidence-based dose escalation in radiation oncology: Bed and isoeffect
286 relationships for late morbidity and tumor control. *International Journal of Radiation Oncology, Biology,*
287 *Physics*, 82:1–6, 2012. doi: 10.1016/j.ijrobp.2010.12.007.
- 288 [3] Roger G. Dale. The application of the linear-quadratic dose-effect equation to fractionated
289 and protracted radiotherapy. *British Journal of Radiology*, 62:201–207, 1989. doi: 10.1259/
290 0007-1285-62-735-201.
- 291 [4] Thilo Elsässer. Quantification of rbe effects in ion beam therapy based on the local effect model (lem).
292 *Physics in Medicine and Biology*, 55:7241–7257, 2010. doi: 10.1088/0031-9155/55/23/004.
- 293 [5] Jack F. Fowler. The linear-quadratic formula and progress in fractionated radiotherapy. *British Journal*
294 *of Radiology*, 62:679–694, 1989. doi: 10.1259/0007-1285-62-740-679.
- 295 [6] International Atomic Energy Agency (IAEA). Radiation protection and safety in med-
296 ical uses of ionizing radiation, 2018. URL [https://www.iaea.org/publications/12290/
297 radiation-protection-and-safety-in-medical-uses-of-ionizing-radiation](https://www.iaea.org/publications/12290/radiation-protection-and-safety-in-medical-uses-of-ionizing-radiation). Safety Standards
298 Series No. SSG-46.
- 299 [7] D. E. Lea and D. G. Catcheside. The mechanism of the indirect action of radiation. *Nature*, 150:
300 493–494, 1942. doi: 10.1038/150493a0.
- 301 [8] J. T. Lyman. Complication probability as assessed from dose-volume histograms. *Radiation Research*,
302 104:S13–S19, 1985. doi: 10.2307/3576620.
- 303 [9] Andrzej Niemierko. A generalized concept of equivalent uniform dose (eud). *Medical Physics*, 27:
304 1101–1106, 2000. doi: 10.1118/1.598935.
- 305 [10] Harald Paganetti. *Proton Therapy Physics*. CRC Press, 2019.
- 306 [11] Renato Real, Rubens Vargas, and M. Costa. Evaluating consistency in medical datasets: The jaccard
307 similarity index. *Journal of Statistical Computation and Simulation*, 83(4):637–651, 2013. doi: 10.1080/
308 00949655.2011.647745. URL <https://doi.org/10.1080/00949655.2011.647745>.
- 309 [12] Howard Thames and Søren M. Bentzen. *Fractionation in Radiotherapy: Mechanisms and Strategies*.
310 Taylor & Francis, 1985.
- 311 [13] Cyril Voyant and Daniel Julian. A short synthesis concerning biological effects and equivalent doses in
312 radiotherapy. *Journal of Radiology and Oncology*, 1(1):039–045, Mar 2017. doi: 10.29328/journal.jro.
313 1001005. URL <https://doi.org/10.29328/journal.jro.1001005>.
- 314 [14] Cyril Voyant, Daniel Julian, Rudy Roustit, Katia Biffi, and Céline Lantieri. Biological effects and
315 equivalent doses in radiotherapy: A software solution. *Reports of Practical Oncology & Radiotherapy*,
316 19(1):47–55, 2014. ISSN 1507-1367. doi: <https://doi.org/10.1016/j.rpor.2013.08.004>. URL <https://www.sciencedirect.com/science/article/pii/S1507136713010249>.

318 Appendix A. Detailed Clinical Cases

319 The clinical cases presented in this section illustrate the challenges posed by the radiotherapy man-
320 agement of patients with brain metastases. We will explore the different therapeutic strategies considered
321 and the decision-making criteria that guided the choice of treatment. Figures A1 and A2 provide visual
322 representations of the cases and the proposed solutions.

323 Appendix B. Algorithm for Jaccard Similarity (J) and Mode Determination

324 The evaluation of participant responses was guided by two complementary metrics: the Jaccard similarity
325 index and the mode. The Jaccard index quantifies the consistency of responses by calculating the proportion
326 of shared elements between pairs of responses relative to the total. Meanwhile, the mode identifies the
327 most frequent response, shedding light on collective tendencies in decision-making. Algorithm 1 outlines the
328 process for computing both metrics. The Jaccard similarity measures agreement, while the mode highlights
329 the dominant adjustment strategy. Together, they provide a comprehensive picture of participant behavior.

Algorithm 1 Jaccard Similarity and Mode Calculation

Require: responses: A vector of numerical responses

Ensure: jaccard: Jaccard similarity index in percentage

Ensure: mode: The most frequent response

Initialize counters: `similarCount = 0`, `numPairs = 0`, `responseCounts = {}`

for each unique pair of responses (i, j) **do**

if `responses[i] == responses[j]` **then**

 Increment `similarCount`

end if

 Increment `numPairs`

end for

for each response r in responses **do**

 Increment `responseCounts[r]` or initialize it to 1

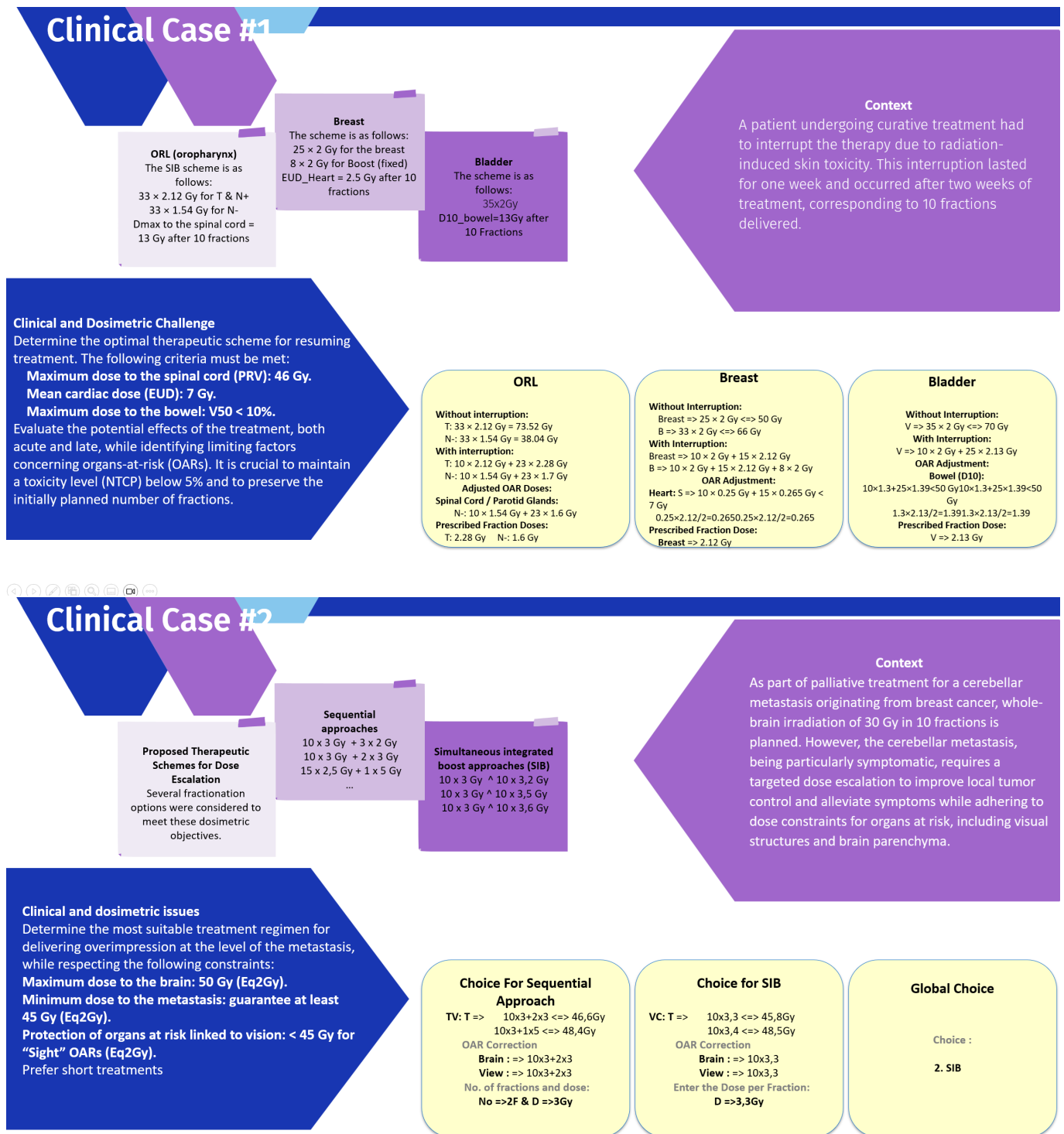
end for

`jaccard = (similarCount / numPairs) * 100`

`mode = response in responseCounts with maximum count`

Return `jaccard`, `mode`

330 The results of these calculations reflect not only the degree of agreement among participants but also the
331 most prevalent adjustment strategy. For example, in the case of interrupted treatments (case 3), the mode
332 revealed that most participants preferred to maintain the duration of treatment while favoring low dose levels
333 per fraction. Such insights are essential for understanding collective decision-making and optimizing future
334 training efforts.



Proposed Therapeutic Schemes for Dose Escalation

Several fractionation options were considered to meet these dosimetric objectives.

Sequential approaches

10 x 3 Gy + 3 x 2 Gy
10 x 3 Gy + 2 x 3 Gy
15 x 2,5 Gy + 1 x 5 Gy
...

Simultaneous integrated boost approaches (SIB)

10 x 3 Gy ^ 10 x 3,2 Gy
10 x 3 Gy ^ 10 x 3,5 Gy
10 x 3 Gy ^ 10 x 3,6 Gy

Context

As part of palliative treatment for a cerebellar metastasis originating from breast cancer, whole-brain irradiation of 30 Gy in 10 fractions is planned. However, the cerebellar metastasis, being particularly symptomatic, requires a targeted dose escalation to improve local tumor control and alleviate symptoms while adhering to dose constraints for organs at risk, including visual structures and brain parenchyma.

Clinical and dosimetric issues

Determine the most suitable treatment regimen for delivering overimpression at the level of the metastasis, while respecting the following constraints:
Maximum dose to the brain: 50 Gy (Eq2Gy).
Minimum dose to the metastasis: guarantee at least 45 Gy (Eq2Gy).
Protection of organs at risk linked to vision: < 45 Gy for "Sight" OARs (Eq2Gy).
 Prefer short treatments

Choice For Sequential Approach

TV: T => 10x3+2x3 <=> 46,6Gy
10x3+1x5 <=> 48,4Gy

OAR Correction
Brain : => 10x3+2x3
View : => 10x3+2x3

No. of fractions and dose:
No =>2F & D =>3Gy

Choice for SIB

VC: T => 10x3,3 <=> 45,8Gy
10x3,4 <=> 48,5Gy

OAR Correction
Brain : => 10x3,3
View : => 10x3,3

Enter the Dose per Fraction:
D =>3,3Gy

Global Choice

Choice :
2. SIB

Figure A1: Clinical cases 1 and 2. The yellow boxes contain proposed solutions for each problem using LQL-equiv, formulated by C. Voyant and D. Julian.



Figure A2: Clinical cases 3 and 4. The yellow boxes contain proposed solutions for each problem using LQL-equiv, formulated by C. Voyant and D. Julian.