

Unravelling Sex Differences in the Genetic Architecture of Anxiety

Jihua Hu, MSc^{1,2}, Michelle K. Lupton, PhD^{1,2,3}, Enda M. Byrne, PhD⁴, Nicholas G. Martin, PhD¹, David C. Whiteman, PhD^{2,5}, Catherine M. Olsen, PhD^{2,5}, Jodi T. Thomas, PhD^{1,2}, Sarah E. Medland, PhD^{1,6,7}, Katrina L. Grasby, PhD^{1,2,3#}, Brittany L. Mitchell, PhD^{1,2,3#}

¹ Brain and Mental Health Program, QIMR Berghofer Medical Research Institute, Brisbane, QLD, Australia

² School of Biomedical Sciences, The University of Queensland, Brisbane, QLD, Australia

³ School of Biomedical Sciences, Queensland University of Technology, Brisbane, QLD, Australia

⁴ Child Health Research Centre, University of Queensland, Brisbane, QLD, Australia

⁵ Population Health Program, QIMR Berghofer Medical Research Institute, Brisbane, QLD, Australia

⁶ School of Psychology, The University of Queensland, Brisbane, QLD, Australia

⁷ School of Psychology and Counselling, Queensland University of Technology, Brisbane, QLD, Australia

equally contributing

Corresponding author: Dr Brittany L. Mitchell; Email: brittany.mitchell@qimrb.edu.au

Jihua Hu; Email: Jihua.hu@qimrb.edu.au

Running title: Sex Differences in the Genetics of Anxiety

Keywords: Anxiety, Sex Differences, Genome-wide association study, Polygenic risk scores, Sex-linked, Genetics

Word count: 4008

39 **Abstract**

40 Anxiety disorders show striking sex differences in prevalence, symptoms, and clinical
41 characteristics, shaping how they manifest and are experienced. Here, we report the first sex-
42 specific meta-analysis of genome-wide association studies (GWAS) of anxiety, leveraging two
43 of the largest biobank datasets, UK Biobank and All of Us, comprising 85,014 female cases with
44 130,817 controls and 36,724 male cases with 117,044 controls. Functional annotation, sex-
45 specific polygenic scores (PGS), and genetic correlations were performed to assess genetic
46 differences and functional implications. In females, 26 lead SNPs were significantly associated
47 with anxiety, compared to six in males. Among these, seven lead SNPs in females and five in
48 males demonstrated significantly different effect sizes across sexes. Although the genetic
49 correlation between sexes was high, it was significantly different from one, indicating partially
50 distinct genetic architectures. In addition, both the SNP-based observed and liability-scale
51 heritabilities (assuming a 2:1 female-to-male prevalence ratio) were significantly higher in
52 females. Gene-based tests and functional prioritization identified different genes associated with
53 anxiety in females and males. Moreover, genetic correlation analyses revealed stronger
54 associations of female anxiety with attention-deficit/hyperactivity disorder (ADHD) and body
55 mass index (BMI), whereas male anxiety showed stronger correlations with waist-hip-ratio
56 adjusted BMI. While the overall genetic architecture of anxiety is largely shared, our findings
57 reveal distinct sex-specific genetic associations and correlations, highlighting the value of
58 analysing the sexes separately to uncover genetic signals that may be masked in sex-combined
59 samples.

60

61

62

63 **Introduction**

64 Anxiety disorders are the most common mental health disorders in the world, and a leading cause
65 of disability-adjusted life years lost. Lifetime prevalence approaches one-third of the population,
66 and demand for treatment is increasing, underscoring their substantial global public health
67 burden (1).

68 Anxiety disorders are characterized by excessive and uncontrollable worry, persistent fear, and
69 heightened perceptions of risk. Genetic factors have been estimated to contribute between 30%
70 and 50% to anxiety disorders (2). Evidence from both twin studies (3) and genome-wide
71 association studies (GWAS) indicates that much of this genetic liability is shared across anxiety
72 disorders (4), including specific phobias, agoraphobia, social anxiety disorder, generalized
73 anxiety disorder, and panic disorder (5). While the clinical diagnostic criteria vary for each
74 disorder, the convergence of core symptoms and genetic liability supports examining anxiety
75 disorders as a collective phenotype, referred to simply as “anxiety” in this study.

76 Striking sex differences have been observed in anxiety, particularly with regard to prevalence.
77 Females are about twice as likely to be diagnosed as males (6). The prevalence difference
78 between sexes has been consistently observed in specific anxiety disorders and across different
79 cultures (7), and when all anxiety disorders are grouped together, the 2:1 prevalence ratio persists
80 (8). Males and females also tend to manifest anxiety differently, with females commonly

81 reporting more internalizing symptoms and comorbid depression, while males are more likely to
82 exhibit externalizing symptoms and are more prone to substance use (7,9).

83 Previous studies have examined multiple underlying reasons for the observed differences in
84 anxiety prevalence between sexes, with many focusing on gender-related influences such as
85 masculinity norms that make men less likely to report anxiety (10), and more prone to using
86 substances as a coping strategy (11). Studies focusing on biological sex differences have
87 highlighted the potential roles of hormonal fluctuations (12), gut–brain axis interactions (13),
88 sex-dimorphic brain activation during emotion processing (14,15), as well as genetic components.
89 The contribution of genetic factors has primarily been examined through twin studies. Several
90 studies have reported higher heritability in girls, including general anxiety symptoms (16),
91 separation anxiety (17), and anxious and/or depressive symptoms (18). At the symptom level,
92 genetic factor loadings on insomnia within the anxiety symptoms were stronger and more
93 specific in females (19), and more recent work further demonstrated that anxiety itself was more
94 heritable in females (20). While a large twin study of multiple anxiety disorders found that
95 genetic contributions were highly similar in males and females (21). Overall, twin studies
96 showed mixed findings, with some evidence for stronger genetic influences in females and sex
97 differences in genetic effects.

98 To move beyond broad heritability estimates from twin studies, large-scale GWAS have begun
99 to elucidate the molecular basis of anxiety, identifying many independent significant SNPs
100 (ranging from 51 to 82 loci across studies) (4,22,23). However, none have focused on sex
101 heterogeneity. In this study, we conducted the first sex-specific GWAS meta-analysis for anxiety
102 to directly explore whether common genetic factors contribute to sex differences in anxiety. By
103 examining sex-specific genetic associations with anxiety, we aimed to comprehensively

104 characterize the genetic architecture of anxiety in females and males, and provide novel insights
105 into the molecular basis of observed sex differences in these disorders.

106 **Materials and methods**

107 **Study Population**

108 This study consists of participants from two of the largest available biobanks, the UK Biobank
109 (UKB) and All of Us (AoU) research program. UKB is a large nationwide cohort recruited
110 across 22 centers in the United Kingdom from 2006, consisting of 488,377 genotyped
111 individuals between the ages of 40 and 69 (24). AoU is an ongoing United States cohort
112 recruited from over 340 sites, currently comprising more than 414,000 genotyped participants
113 (25). Phenotypic information in UKB and AoU is derived from electronic health records (EHRs)
114 and self-reported survey data (24,25). In both cohorts, we excluded individuals without genotype
115 information, those with mismatched self-reported and genetic sex, and those who withdrew
116 consent. This study included participants who were classified as white British within the UKB
117 (26) and of European ancestry in AoU.

118 We identified participants who met DSM-5 criteria for the following anxiety disorders (5):
119 agoraphobia, social phobias, specific phobias, generalized anxiety disorders, panic disorders and
120 other phobic anxiety disorders as cases. In the UK Biobank, anxiety cases were defined by ICD-
121 10, self-reported professional diagnoses, CIDI short-form criteria, or a GAD-7 score ≥ 8 .
122 Controls were participants without any self-reported or clinically recorded psychiatric diagnosis
123 of mental distress. In All of Us, cases were defined by EHR diagnoses of generalized anxiety,
124 panic, or phobic disorders, or by self-reported personal history of anxiety/panic disorder, while
125 controls were participants with EHR and genetic data but no documented diagnoses of major

126 psychiatric disorders. Case and control definitions in each cohort are detailed in the
127 **Supplementary Information and Supplementary Tables S1–S2.**

128 **Genome-wide association analyses**

129 Genome-wide association studies were performed using REGENIE (v 2.2.4) (27). Logistic
130 regressions were conducted on chromosomes 1 to 23 in a combined sample, as well as in females
131 and males separately. We assumed complete dosage compensation in females for testing
132 associations of anxiety and variants in the non-pseudoautosomal region of chromosome X
133 (genotypes in males were coded as 0/2). For UKB analyses, we adjusted for genotype array and
134 the first four genetic principal components (PCs); for AoU analyses, we adjusted for the first 10
135 PCs. In the sex-combined GWAS, we additionally adjusted for genetic sex. Genetic variants with
136 a minor allele frequency less than 1% or an imputation quality score less than 0.6 were excluded
137 from the association test results.

138 **Meta-analysis**

139 Meta-analysis of GWAS summary statistics from UKB and AoU was conducted using METAL
140 (v2020-05-05), using an inverse-variance weighted fixed-effects model. After meta-analysis,
141 ambiguous SNPs and indels with inconsistent allele frequencies were excluded. The final meta-
142 analysis comprised 369,599 participants, including 121,738 lifetime anxiety cases (85,014
143 females; 36,724 males) and 247,861 controls (130,817 females; 117,044 males) across both
144 cohorts. LD Score Regression (LDSC) (v1.0.1) (28) was used to estimate the intercept as a check
145 for inflation due to confounding from cryptic relatedness or population stratification.

146 **Characterisation of loci, functional annotation, and gene-based testing**

147 To identify trait-associated variants within linkage disequilibrium (LD) blocks, we defined lead
148 SNPs as those with $r^2 < 0.1$ and $P < 5 \times 10^{-8}$ using FUMA(v1.6.1) (29).

149 Lead SNPs and their proxies ($r^2 \geq 0.6$) were annotated in FUMA to prioritize genes, excluding
150 the major histocompatibility complex region:

- 151 1. Positional mapping that mapped SNPs to genes within 10 kb;
- 152 2. eQTL mapping used data from the Brain eQTL Almanac (Braineac), GTEx V8 brain and
153 adrenal gland datasets, focusing on significant eQTLs ($FDR \leq 0.05$). The adrenal gland
154 was included due to its role in the fight-or-flight response (30);
- 155 3. Chromatin interactions were mapped using all available Hi-C data in FUMA ($FDR \leq$
156 1×10^{-6}).

157 MAGMA (Multi-marker Analysis of GenoMic Annotation) in FUMA was used for gene-based,
158 gene-set, and gene-expression association tests. Gene-based association, tested with the SNP-
159 wise mean model, included SNPs within 2 kb upstream and 1 kb downstream of genes, with
160 Bonferroni-corrected significance set at $P < 2.493 \times 10^{-6}$. Gene-set analysis explored shared
161 biological functions using curated gene sets and gene ontology (GO) terms from MSigDB
162 (v2023.1). Gene-expression analysis tested tissue-specific expression of associated genes using
163 GTEx V8 data across 54 and 30 tissue types.

164 **Heritability and genetic correlations**

165 SNP-based heritability was estimated using SBayesR (31), with a European-ancestry LD
166 reference panel derived from the UK Biobank. SNP-based heritability was converted to

167 heritability on liability (32) across a range of hypothesised population prevalences separately for
168 females and males.

169 We investigated the genetic correlation between sex-specific anxiety and anxiety associated traits
170 using LDSC, including mental health conditions, gastrointestinal symptoms, substance use,
171 metabolism, some social behaviors, and sex hormones. Where available, we used both combined
172 and sex-specific GWASs. All P-values were adjusted for FDR using the Benjamini-Hochberg
173 approach. To determine significant differences between female- and male-specific genetic
174 correlation with each trait, we calculated a Z-score as the difference between the sex-specific
175 genetic correlations divided by the sum of the squares of their respective standard errors, and a
176 two-tailed P-value from the Z-score (33); the corresponding adjusted P-value was computed
177 using the BH method (34).

178 **Polygenic scores**

179 To test whether our results were able to significantly predict anxiety in independent samples, we
180 calculated polygenic scores (PGS) using SBayesR (31). SBayesR is a Bayesian technique that
181 estimates the effect of SNPs from multi-normal distributions which may reflect the true
182 distribution of genetic variants. The estimated PGS were standardized using the *scale()* function
183 in R (v4.2.0).

184 We tested the association of PGS derived from our meta-analysis results with case-control
185 lifetime anxiety status and current anxiety symptoms (GAD-7) in two population cohorts (QSkin
186 (35) and PISA (36) respectively), as well as a large clinical, comorbid-depression cohort
187 (Australian Genetics of Depression Study; AGDS (37)) (**Supplementary Information, Table 1**).

188 While larger in size, it is important to note that in AGDS all the anxiety cases have comorbid

189 depression. Therefore, this sensitivity analysis may distinguish prediction between population-
190 based cohorts and clinical, comorbid-depression cohorts. To control for potential familial
191 relationships, we conducted a restricted maximum likelihood (REML) analysis using GCTA
192 (v1.91.7) (38), adjusting for the first 10 PCs and sex (combined analysis only).

193 To examine whether our PGS results were influenced by differences in sample sizes, and thus
194 statistical power, across our discovery GWASs, we downsampled the number of cases and
195 controls in the female-specific GWAS to match those in the male-specific GWAS for both UKB
196 and AoU, thereby maintaining the male case–control ratio. These downsampled female GWASs
197 were then meta-analyzed to obtain a downsampled meta-analysis result for females. In the
198 prediction cohorts, we also downsampled female cases and controls to the same numbers as
199 males. Downsampling was performed by random selection using the *sample()* function in R
200 (v4.2.0). We then repeated the above PGS regression analyses using these downsampled results.

201 **Results**

202 **GWAS of lifetime anxiety disorders in the total sample**

203 We conducted a meta-analysis of 369,599 European-ancestry individuals for lifetime anxiety,
204 including 121,738 cases. We identified 62 lead SNPs (**Table S3 and Figure 1A**) associated with
205 anxiety. Among these, 35 were not in LD with variants reported in recent large anxiety
206 GWASs ($R^2 < 0.8$ or $D' < 0.9$) (22,39). Using the same LD criteria and GWAS Catalog (40),
207 seven were not proxies of known mental health–related variants. Quality metrics of each cohort
208 GWAS are presented in Table S4, showing consistent SNP-based heritability with modest
209 genomic inflation, and corresponding Manhattan plots for UKB and AoU are shown in
210 **Supplementary Figures 1 and 2**. Cross-cohort LDSC analysis indicated high genetic correlation

211 between UKB and AoU GWAS ($r_g=0.81$ in females and $r_g=0.93$ in males), supporting their
212 combination in meta-analysis (**Table S4**). The sex-combined GWAS also showed strong genetic
213 correlation with the previously largest anxiety study ($r_g=0.92$, $P < 1 \times 10^{-300}$) (22). The observed
214 heritability of lifetime anxiety was estimated at 0.12 (SE=0.002) (**Table S5**).

215 **Sex-specific GWASs of anxiety disorders**

216 Sex-specific GWAS meta-analyses were performed using 215,831 (85,014 cases) females and
217 153,768 (36,724 cases) males. A total of 26 and six lead SNPs were identified in the female- and
218 male-specific GWAS, respectively (**Table S6, S7** and **Figure 1B**). The strongest association in
219 females was rs1000474011 (nearest gene: *CELF4*) on chromosome 18, and in males was
220 rs113613364 (nearest gene: *NEBL*) on chromosome 10. A single locus on chromosome 19
221 showed evidence of overlap between females and males ($R^2=0.66$), with no other shared lead
222 SNPs identified.

223 Of the 32 sex-specific lead SNPs, 12 exhibited statistically significant differences in effect size,
224 as determined by a Z-score test followed by FDR adjustment (**Figure 2**). Notably, one female
225 lead SNP, rs73460081 (nearest gene: *CCDC102B*), showed an opposite effect direction between
226 sexes, this SNP has also been prioritised to a redox-regulating gene *TMX3* based on chromatin
227 interactions.

228 **Sex-specific heritability and cross-sex genetic correlation**

229 SNP-based heritability of females was estimated as 0.14 (SD=0.003), and that of males was 0.12
230 (SD=0.004) on the observed scale. A Z-score test showed the SNP-based heritability was
231 significantly different between females and males ($Z=5.42$, $P=6.18 \times 10^{-8}$). Males exhibited

232 significantly higher genetic variance ($Z=2.24$, $P=0.025$), but also substantially greater residual
233 variance, resulting in higher heritability estimates in females **Figure 3A (Table S5)**.

234 To further evaluate sex-specific heritability in the context of varying population prevalences, we
235 converted observed-scale estimates to the liability scale across a range of assumed population
236 prevalences (0 to 0.6) (**Figure 3B**). When assuming the same population prevalence for both
237 sexes, males showed significantly higher liability-scale heritability ($Z=2.09$, $P=0.037$), consistent
238 with their greater estimated genetic variance (Figure 3A). In contrast, when assuming the
239 population prevalence of females was 0.30 and of males was 0.15 as reported in the U.S (41),
240 liability-scale heritability was higher in females (Z -test $P=8.9\times 10^{-4}$).

241 The genetic correlation between females and males was 0.90 ($SE=0.04$), with the 95%
242 confidence interval of 0.82 to 0.97 (**Table S5**). A t-test indicated the genetic correlation
243 significantly differs from one ($P=8.8\times 10^{-3}$), suggesting sex differences in the genetic architecture
244 of anxiety.

245 **Gene-level analysis**

246 To identify genes associated with lifetime anxiety, we used FUMA and prioritized 2,203 genes in
247 the combined GWAS, 413 in females, and 62 in males (**Tables S8–S10**). Of these, 25 were
248 shared between sexes (**Figure 3C**). Using MAGMA, 107, 29, and 4 significant genes were
249 identified in the combined, female-specific, and male-specific GWAS, respectively (**Tables**
250 **S11–S13**). Twenty-six female genes and three male genes overlapped with the combined results,
251 with only one gene shared between the sexes (**Figure 3D**).

252 The metabolism-related genes *B3GALTL* and *APOC1* were both prioritized by FUMA and
253 significant in MAGMA in males, and *B3GALTL* showed no association in females. A total of 24
254 genes were highlighted by both MAGMA and FUMA in the female-specific analyses. These
255 included genes involved in neuronal signaling and synaptic function, immune-related
256 butyrophilin family members, and several histone cluster genes. Gene-based scores from females
257 were associated with 13 gene ontology (GO) biological processes of chromatin regulation-related
258 gene sets, and olfactory transduction involved gene sets, while gene-based scores in males were
259 associated with four GO terms related to lipoprotein clearance and efflux (**Table S14**).

260 **Polygenic score associations**

261 Our combined anxiety disorder GWAS-derived PGS_C showed a strong association with self-
262 reported lifetime anxiety in individuals in the QSkin population cohort (pseudo- $R^2=4.6\%$ and P
263 $= 7.54 \times 10^{-51}$). When examining sex-specific PGS predictions, female-derived PGS_F showed the
264 best prediction in both females and males (**Figure 4A, Table S15**). To exclude the potential
265 influence of PGS derived from GWAS with differing power on the predictive ability, we
266 downsized the GWAS for females and the combined sample to match that of males, and further
267 equalized the number of females and males in the prediction cohorts.

268 In the downsampled analyses of lifetime anxiety, the downsized PGS_F (pseudo- $R^2=1.6\%$)
269 predicted significantly more variance in females than PGS_M (pseudo- $R^2 = 0.69\%$), as the Z-test
270 comparing estimates yielded $Z=2.19$ ($P=0.028$). In males, the downsized PGS_F (pseudo- $R^2 =$
271 1.7%) explained slightly more variance than PGS_M ($R^2 = 1.4\%$), although this difference was not
272 statistically significant.

273 We also evaluated predictions of current levels of anxiety using the GAD-7 score in another
274 population cohort, PISA (**Figure 4B, Table S16**). Across both the original and downsized
275 analyses, polygenic scores explained a comparable proportion of variance in males and females.
276 In downsized females, PGS_F explained slightly more variance ($R^2_F = 1.03\%$) than PGS_M ($R^2_M =$
277 0.89%). In males, PGS_M predicted more variance ($R^2_M = 1.95\%$) compared to PGS_F (R^2_F
278 $=1.70\%$). None of these differences in predictive value reached statistical significance.

279 Lastly, we tested the PGS associations in a clinical cohort where anxiety cases were comorbid
280 with depression (**Table S17, Figure S1A**). The trend of the predictive ability of the original PGS
281 was consistent with the QSkin and PISA cohorts. Once downsized, there was no difference in the
282 performance of the PGS derived from the female-specific, or the male-specific GWAS when
283 predicting into either sex (**Table S18, Figure S1B**).

284 **Sex-specific genetic correlations**

285 We tested genetic correlations between our sex-specific GWAS and sex-combined GWAS across
286 28 traits (**Figure 5, Table S19**). Seven traits showed significant sex differences (Z-test $P < 0.05$).
287 Females exhibited stronger correlations with attention deficit hyperactivity disorder (ADHD),
288 metabolic syndrome, body mass index (BMI), and lower educational attainment, while males
289 showed stronger correlations with bipolar disorder (all, type I, and type II). After FDR correction,
290 the sex difference in ADHD remained significant.

291 We further examined the genetic correlation of anxiety with available sex-specific GWAS of
292 BMI and waist-to-hip ratio adjusted for BMI (WHRadjBMI) (**Table S20**). The stronger genetic
293 correlation observed between females and BMI was maintained and remained significantly
294 greater than that in males ($Z=2.42$, $P=0.015$). For WHRadjBMI, which did not differ by sex

295 when using sex-combined GWAS, stratified analyses revealed a stronger correlation in males
296 ($Z=3.05$, $P=0.002$).

297 **Discussion**

298 Our study set out to investigate the genetic basis of sex differences in anxiety disorders by
299 leveraging sex-stratified GWAS and including the often-overlooked X chromosome. To our
300 knowledge, this is the first study to comprehensively examine potential sex-specific genetic
301 influences on anxiety disorders using this methodology.

302 Through sex-specific GWAS, we observed differences in significantly associated SNPs and
303 annotated genes between females and males. Seven female-specific and six male-specific lead
304 SNPs showed statistically significant differences in effect size between the sexes. In addition to
305 differences in specific SNPs, female- and male-stratified GWAS revealed very different
306 prioritized genes and corresponding biological processes. Genes prioritized in females were
307 enriched in chromatin regulation and olfactory transduction, while genes prioritized in males
308 were involved in the regulation of lipoprotein levels. Chromatin regulation, including
309 nucleosome remodeling, chromatin condensation, and histone methylation, influences gene
310 expression and epigenetics (42). Histone modifications have been linked to anxiety, stress
311 responses, and fear memory retrieval (42). The enrichment of chromatin interaction-related GO
312 processes in females, but not males, may suggest greater environmental sensitivity. Olfactory
313 function has been associated with anxiety, depression, and other psychiatric conditions (43), with
314 odor information primarily processed in the amygdala, a key stress-response region of the brain
315 (44). Evolutionarily, olfaction aids threat detection, social communication, and survival. Higher
316 anxiety levels have been linked to increased olfactory sensitivity (45), and women with anxiety

317 report greater odor awareness than men (46), consistent with our findings that olfactory
318 transduction-related genes are enriched only in females.

319 As for the male-specific enrichment in lipoprotein metabolism, both acute and chronic stress lead
320 to elevated levels of lipoprotein in humans. This increase has been explained as a part of the
321 body's response to provide energy for the fight-or-flight stress-coping mechanism (47). Higher
322 lipoprotein levels have been found to be associated with depression in males (48), while females
323 with higher lipoprotein levels were more likely to have lower scores on depression and anxiety
324 tests (49). These differences may be due to the different lipoprotein metabolism in females and
325 males, which is influenced by estrogen and testosterone-specific signaling pathways (50). The
326 gene enrichment results suggest that genetic factors may contribute to these previously observed
327 sex differences.

328 Moreover, the male-specific enrichment of the lipoprotein metabolism pathway aligns with our
329 genetic correlation results, which showed a stronger association between waist-hip-ratio adjusted
330 BMI (WHRadjBMI) and anxiety in males. WHRadjBMI reflects central fat distribution and is
331 more closely linked to insulin-related dysregulation and lipoprotein metabolism than BMI (51),
332 thereby providing a plausible mechanism for male-specific anxiety risk. This interpretation is
333 consistent with findings from a large Norwegian population-based cohort, which reported that
334 WHR was associated with anxiety in men but not women (52). Interestingly, BMI showed a
335 stronger genetic correlation with anxiety in females, consistent with epidemiological studies
336 reporting that obesity and anxiety are more strongly linked in women (53,54). A neuroimaging
337 study further showed that higher BMI was associated with significantly stronger stress-related
338 brain responses in females (55), whereas an epidemiological study of young adults found that
339 higher perceived stress was linked to lower BMI in men (56). Overall, these findings suggest that

340 different adiposity pathways underlie sex-specific genetic overlaps between anxiety and body
341 weight, with overall adiposity being more relevant in females and central fat distribution in
342 males.

343 The genetic correlation between females and males was high but significantly different from one,
344 indicating that the genetic architecture of anxiety is largely shared but not completely identical
345 across sexes. In sex-specific PGS analyses with matched sample size, the only significant
346 difference was that female-derived PGS predicted female anxiety more strongly than male-
347 derived PGS in the population cohort. This finding is consistent with higher SNP heritability
348 observed in females and the expectation that same-sex PGS should align more closely with the
349 target phenotype. In males, female- and male-derived PGS performed similarly, with female-
350 PGS performing slightly better. This may reflect the considerable similarity in genetic effects
351 between sexes and lower SNP-based heritability observed in males. In the QSkin population
352 cohort specifically, anxiety was assessed with a single broad self-report question ('have you
353 been diagnosed, experienced, or treated for anxiety?') (35). Such single-item measures have only
354 moderate sensitivity and specificity compared with multi-item scales (57). Underreporting
355 among men (10) may have further contributed to weaker prediction in males relative to other
356 cohorts. In the clinical depression cohort, where anxiety was assessed using DSM-5 criteria (37),
357 and in the GAD-7 symptom-based analyses, PGS showed the expected pattern of stronger same-
358 sex prediction. Although none of these differences reached statistical significance, this aligns
359 with previous studies of sex-specific PGS in depression, which similarly reported no significant
360 differences despite observing the same pattern (58). Taken together, these findings suggest that
361 while subtle sex-specific patterns can be observed, the sex-specific PGS are comparable in
362 predictive ability.

363 We explored genetic correlations of our sex-specific anxiety GWASs with sex-combined GWAS
364 of other traits, finding that some traits were more strongly correlated in one sex. Bipolar
365 disorders, characterized by alternating manic and depressive episodes, showed a higher genetic
366 correlation with anxiety in type II (depressive episodes are predominant) than type I bipolar
367 disorder (distinguished by manic episodes). While the sex difference in genetic correlation with
368 bipolar disorder did not survive FDR correction (FDR-adjusted $P=0.064$), it was nominally
369 significant, with males showing stronger correlations across both subtypes. These findings
370 suggest a potential sex-specific genetic relationship between anxiety and bipolar disorder. Given
371 that no consistent sex differences have been observed in bipolar disorder (59), our findings may
372 offer a new perspective on the relationship between anxiety and bipolar disorder through a sex-
373 specific approach. ADHD, despite being more prevalent in males and showing a similar genetic
374 architecture across sexes (60,61), displayed a significantly stronger genetic correlation with
375 female anxiety. This finding is consistent with ADHD and anxiety being more frequently
376 comorbid in females (62). It further implies that in females, ADHD risk may be more likely to
377 manifest through anxiety symptoms, which can result in anxiety diagnoses overshadowing
378 ADHD and lead to under-recognition of ADHD in females (63).

379 Overall, this study provides evidence of genetic sex differences in anxiety at many aspects,
380 including sex specific variants, prioritized genes, enriched biological processes, genetic
381 architecture, and genetic correlation with other traits. Our findings indicate that sex not only
382 shapes the genetic architecture of anxiety itself but also influences its genetic overlap with
383 comorbid psychiatric conditions. Standard GWAS often assume a shared genetic architecture
384 across sexes, potentially masking sex-specific effects. This was illustrated in the WHRadjBMI
385 analyses, where sex-specific genetic correlations with anxiety were not detectable in the

386 combined GWAS. Given that sex heterogeneity is common in complex traits, ignoring these
387 differences may oversimplify the underlying biology. Future studies conducting sex-specific
388 GWAS on a larger scale are essential for fully capturing the distinct genetic contributions to
389 anxiety in males and females.

390 Our study is the first to conduct a large-scale sex-stratified GWAS of anxiety, demonstrating
391 significant sex differences in heritability and genetic correlations with other traits. These findings
392 highlight the value of a sex-specific approach for uncovering genetic architecture that may be
393 obscured in combined analyses. However, our results should be considered in light of some
394 limitations. The smaller male sample size reduces statistical power compared to females, and
395 larger samples will be needed to clarify sex differences or commonalities. Additionally, the UK
396 Biobank and All of Us cohorts are not fully representative of the general population, which may
397 limit generalizability. Future sex-specific GWAS in other traits with known heterogeneity could
398 enhance understanding of sex-specific genetic factors and shared genetic architecture across
399 traits.

400 **Acknowledgements**

401 J.H was funded by a QIMR PhD scholarship. B.L.M (APP2017176), K.L.G (APP1173025),
402 S.E.M (APP1172917 and APP2025674), and D.C.W (APP2026567) are supported by
403 Investigator Grants from the National Health and Medical Research Council of Australia
404 (NHMRC). E.M.B are supported by Research Excellence grant (1198304) from NHMRC Centre,
405 and the University of Queensland Health Research Accelerator Program. The QSkin Study is
406 supported by a Clinical Trials and Cohort Grant [APP1185416] from NHMRC. PISA was funded

407 by an NHMRC Dementia Research Team Grant [APP1095227]. This study makes use of data
408 from UK Biobank (Project ID: 25331).

409 We sincerely thank all UKB, All of Us, AGDS, PISA and QSkin participants for their time and
410 contributions to this study. We also appreciate everyone involved in the study's conception,
411 implementation, media campaign, and data cleaning.

412 **Disclosures**

413 The authors declare no conflicts of interest.

414 **Author contributions**

415 J.H performed the analyses, wrote the manuscript and integrated input and feedback from all co-
416 authors. B.L.M and K.L.G designed and supervised the study. Support and input was provided
417 by S.E.M, who along with M.K.L, E.M.B, N.G.M, D.C.W, C.M.O were responsible for the
418 cohort design, genotyping, and data acquisition, processing and quality control. J.T.T provided
419 support with analyses. All authors read and approved the final manuscript.

420 **References**

- 421 1. Szuhany KL, Simon NM. Anxiety Disorders: A Review. *JAMA*. 2022 Dec
422 27;328(24):2431–45.
- 423 2. Craske MG, Stein MB, Eley TC, Milad MR, Holmes A, Rapee RM, et al. Anxiety disorders.
424 *Nat Rev Dis Primer*. 2017 May 4;3(1):1–19.
- 425 3. Tambs K, Czajkowsky N, Røysamb E, Neale MC, Reichborn-Kjennerud T, Aggen SH, et al.
426 Structure of genetic and environmental risk factors for dimensional representations of DSM-
427 IV anxiety disorders. *Br J Psychiatry J Ment Sci*. 2009 Oct;195(4):301–7.
- 428 4. Mitchell BL, Skelton M, Wang R, Kuile AR ter, Murphy AE, Morneau-Vaillancourt G, et al.
429 Genome-wide meta-analysis identifies genetic risk factors and implicates multiple body
430 systems in panic attacks and disorder [Internet]. medRxiv; 2025 [cited 2025 Sept 9]. p.

- 431 2025.06.15.25329656. Available from:
432 <https://www.medrxiv.org/content/10.1101/2025.06.15.25329656v1>
- 433 5. Diagnostic and statistical manual of mental disorders: DSM-5TM, 5th ed. Arlington, VA, US:
434 American Psychiatric Publishing, Inc.; 2013. xliv, 947 p. (Diagnostic and statistical manual
435 of mental disorders: DSM-5TM, 5th ed).
- 436 6. Fisher K, Seidler ZE, King K, Oliffe JL, Robertson S, Rice SM. Men's anxiety, why it
437 matters, and what is needed to limit its risk for male suicide. *Discov Psychol.* 2022;2(1):18.
- 438 7. McLean CP, Asnaani A, Litz BT, Hofmann SG. Gender differences in anxiety disorders:
439 Prevalence, course of illness, comorbidity and burden of illness. *J Psychiatr Res.* 2011 Aug
440 1;45(8):1027–35.
- 441 8. Yeretdzian ST, Sahakyan Y, Kozloff N, Abrahamyan L. Sex differences in the prevalence and
442 factors associated with anxiety disorders in Canada: A population-based study. *J Psychiatr*
443 *Res.* 2023 Aug 1;164:125–32.
- 444 9. Farhane-Medina NZ, Luque B, Taberner C, Castillo-Mayén R. Factors associated with
445 gender and sex differences in anxiety prevalence and comorbidity: A systematic review. *Sci*
446 *Prog.* 2022;105(4):368504221135469.
- 447 10. Clark LauraH, Hudson JenniferL, Haider T. Anxiety Specific Mental Health Stigma and
448 Help-Seeking in Adolescent Males. *J Child Fam Stud.* 2020 July 1;29(7):1970–81.
- 449 11. Harris MG, Baxter AJ, Reavley N, Diminic S, Pirkis J, Whiteford HA. Gender-related
450 patterns and determinants of recent help-seeking for past-year affective, anxiety and
451 substance use disorders: findings from a national epidemiological survey. *Epidemiol*
452 *Psychiatr Sci.* 2016 Dec;25(6):548–61.
- 453 12. Li SH, Graham BM. Why are women so vulnerable to anxiety, trauma-related and stress-
454 related disorders? The potential role of sex hormones. *Lancet Psychiatry.* 2017 Jan
455 1;4(1):73–82.
- 456 13. Holingue C, Budavari AC, Rodriguez KM, Zisman CR, Windheim G, Fallin MD. Sex
457 Differences in the Gut-Brain Axis: Implications for Mental Health. *Curr Psychiatry Rep.*
458 2020 Nov 20;22(12):83.
- 459 14. Gardener EKT, Carr AR, Macgregor A, Felmingham KL. Sex differences and emotion
460 regulation: an event-related potential study. *PloS One.* 2013;8(10):e73475.
- 461 15. Donner NC, Lowry CA. Sex differences in anxiety and emotional behavior. *Pflugers Arch.*
462 2013 May;465(5):601–26.
- 463 16. Ask H, Torgersen S, Seglem KB, Waaktaar T. Genetic and environmental causes of variation
464 in adolescent anxiety symptoms: a multiple-rater twin study. *J Anxiety Disord.* 2014
465 May;28(4):363–71.

- 466 17. Eaves LJ, Silberg JL, Meyer JM, Maes HH, Simonoff E, Pickles A, et al. Genetics and
467 Developmental Psychopathology: 2. The Main Effects of Genes and Environment on
468 Behavioral Problems in the Virginia Twin Study of Adolescent Behavioral Development. *J*
469 *Child Psychol Psychiatry*. 1997;38(8):965–80.
- 470 18. Boomsma DI, Van Beijsterveldt CEM, Hudziak JJ. Genetic and environmental influences on
471 Anxious/Depression during childhood: a study from the Netherlands Twin Register. *Genes*
472 *Brain Behav*. 2005;4(8):466–81.
- 473 19. Kendler KS, Heath AC, Martin NG, Eaves LJ. Symptoms of anxiety and symptoms of
474 depression. Same genes, different environments? *Arch Gen Psychiatry*. 1987
475 May;44(5):451–7.
- 476 20. Burton KLO, Williams LM, Richard Clark C, Harris A, Schofield PR, Gatt JM. Sex
477 differences in the shared genetics of dimensions of self-reported depression and anxiety. *J*
478 *Affect Disord*. 2015 Dec 1;188:35–42.
- 479 21. Hetttema JM, Prescott CA, Myers JM, Neale MC, Kendler KS. The Structure of Genetic and
480 Environmental Risk Factors for Anxiety Disorders in Men and Women. *ARCH GEN*
481 *PSYCHIATRY*. 2005;62.
- 482 22. Friligkou E, Løkhammer S, Cabrera-Mendoza B, Shen J, He J, Deiana G, et al. Gene
483 discovery and biological insights into anxiety disorders from a large-scale multi-ancestry
484 genome-wide association study. *Nat Genet*. 2024 Oct;56(10):2036–45.
- 485 23. Strom NI, Verhulst B, Bacanu SA, Cheesman R, Purves KL, Gedik H, et al. Genome-wide
486 association study of major anxiety disorders in 122,341 European-ancestry cases identifies
487 58 loci and highlights GABAergic signaling [Internet]. medRxiv; 2024 [cited 2025 Sept 10].
488 p. 2024.07.03.24309466. Available from:
489 <https://www.medrxiv.org/content/10.1101/2024.07.03.24309466v1>
- 490 24. Bycroft C, Freeman C, Petkova D, Band G, Elliott LT, Sharp K, et al. The UK Biobank
491 resource with deep phenotyping and genomic data. *Nature*. 2018 Oct;562(7726):203–9.
- 492 25. Bick AG, Metcalf GA, Mayo KR, Lichtenstein L, Rura S, Carroll RJ, et al. Genomic data in
493 the All of Us Research Program. *Nature*. 2024 Mar;627(8003):340–6.
- 494 26. MacGregor S, Ong JS, An J, Han X, Zhou T, Siggs OM, et al. Genome-wide association
495 study of intraocular pressure uncovers new pathways to glaucoma. *Nat Genet*. 2018
496 Aug;50(8):1067–71.
- 497 27. Mbatchou J, Barnard L, Backman J, Marcketta A, Kosmicki JA, Ziyatdinov A, et al.
498 Computationally efficient whole-genome regression for quantitative and binary traits. *Nat*
499 *Genet*. 2021 July;53(7):1097–103.
- 500 28. Bulik-Sullivan BK, Loh PR, Finucane HK, Ripke S, Yang J, Patterson N, et al. LD Score
501 regression distinguishes confounding from polygenicity in genome-wide association studies.
502 *Nat Genet*. 2015 Mar;47(3):291–5.

- 503 29. Watanabe K, Taskesen E, van Bochoven A, Posthuma D. Functional mapping and annotation
504 of genetic associations with FUMA. *Nat Commun.* 2017 Nov 28;8(1):1826.
- 505 30. Hinds JA, Sanchez ER. The Role of the Hypothalamus–Pituitary–Adrenal (HPA) Axis in
506 Test-Induced Anxiety: Assessments, Physiological Responses, and Molecular Details.
507 *Stresses.* 2022 Mar;2(1):146–55.
- 508 31. Lloyd-Jones LR, Zeng J, Sidorenko J, Yengo L, Moser G, Kemper KE, et al. Improved
509 polygenic prediction by Bayesian multiple regression on summary statistics. *Nat Commun.*
510 2019 Nov 8;10(1):5086.
- 511 32. Lee SH, Wray NR, Goddard ME, Visscher PM. Estimating Missing Heritability for Disease
512 from Genome-wide Association Studies. *Am J Hum Genet.* 2011 Mar 11;88(3):294–305.
- 513 33. Blokland GAM, Grove J, Chen CY, Cotsapas C, Tobet S, Handa R, et al. Sex-Dependent
514 Shared and Nonshared Genetic Architecture Across Mood and Psychotic Disorders. *Biol*
515 *Psychiatry.* 2022 Jan 1;91(1):102–17.
- 516 34. Benjamini Y, Hochberg Y. Controlling the False Discovery Rate: A Practical and Powerful
517 Approach to Multiple Testing. *J R Stat Soc Ser B Methodol.* 1995;57(1):289–300.
- 518 35. Olsen CM, Green AC, Neale RE, Webb PM, Cicero RA, Jackman LM, et al. Cohort profile:
519 the QSkin Sun and Health Study. *Int J Epidemiol.* 2012 Aug;41(4):929–929i.
- 520 36. Lupton MK, Robinson GA, Adam RJ, Rose S, Byrne GJ, Salvado O, et al. A prospective
521 cohort study of prodromal Alzheimer’s disease: Prospective Imaging Study of Ageing:
522 Genes, Brain and Behaviour (PISA). *NeuroImage Clin.* 2021 Jan 1;29:102527.
- 523 37. Byrne EM, Kirk KM, Medland SE, McGrath JJ, Colodro-Conde L, Parker R, et al. Cohort
524 profile: the Australian genetics of depression study. *BMJ Open.* 2020 May 1;10(5):e032580.
- 525 38. Yang J, Lee SH, Goddard ME, Visscher PM. GCTA: A Tool for Genome-wide Complex
526 Trait Analysis. *Am J Hum Genet.* 2011 Jan 7;88(1):76.
- 527 39. Purves KL, Coleman JRI, Meier SM, Rayner C, Davis KAS, Cheesman R, et al. A major
528 role for common genetic variation in anxiety disorders. *Mol Psychiatry.* 2020
529 Dec;25(12):3292–303.
- 530 40. Sollis E, Mosaku A, Abid A, Buniello A, Cerezo M, Gil L, et al. The NHGRI-EBI GWAS
531 Catalog: knowledgebase and deposition resource. *Nucleic Acids Res.* 2023 Jan
532 6;51(D1):D977–85.
- 533 41. McLean CP, Asnaani A, Litz BT, Hofmann SG. Gender Differences in Anxiety Disorders:
534 Prevalence, Course of Illness, Comorbidity and Burden of Illness. *J Psychiatr Res.* 2011
535 Aug;45(8):1027–35.
- 536 42. Ell MA, Schiele MA, Iovino N, Domschke K. Epigenetics of Fear, Anxiety and Stress –
537 Focus on Histone Modifications. *Curr Neuropharmacol.* 2023 Sept 1;22(5):843.

- 538 43. Marin C, Alobid I, Fuentes M, López-Chacón M, Mullol J. Olfactory Dysfunction in Mental
539 Illness. *Curr Allergy Asthma Rep.* 2023 Mar 1;23(3):153–64.
- 540 44. Ulrich-Lai YM, Herman JP. Neural regulation of endocrine and autonomic stress responses.
541 *Nat Rev Neurosci.* 2009 June;10(6):397–409.
- 542 45. Galliot E, Laurent L, Hacquemand R, Pourié G, Millot JL. Fear-like behavioral responses in
543 mice in different odorant environments: Trigeminal versus olfactory mediation under low
544 doses. *Behav Processes.* 2012 June 1;90(2):161–6.
- 545 46. Dal Bò E, Gentili C, Castellani A, Tripodi C, Fischmeister FPS, Cecchetto C. Olfactory
546 meta-cognition in individuals with depressive and anxiety symptoms: The differential role of
547 common and social odors. *J Affect Disord.* 2022 July 1;308:259–67.
- 548 47. Brindley DN, McCann BS, Niaura R, Stoney CM, Suarez EC. Stress and lipoprotein
549 metabolism: Modulators and mechanisms. *Metabolism.* 1993 Sept 1;42(9, Supplement 1):3–
550 15.
- 551 48. Bao J, Zheng S, Huang J, Xie X, Zhang J, Yang S, et al. Mental health is correlated with
552 lipoprotein(a) levels in male patients with premature coronary heart disease. *Ann Palliat Med.*
553 2021 June;10(6):6482–92.
- 554 49. Suarez EC. Relations of trait depression and anxiety to low lipid and lipoprotein
555 concentrations in healthy young adult women. *Psychosom Med.* 1999;61(3):273–9.
- 556 50. Palmisano BT, Zhu L, Eckel RH, Stafford JM. Sex differences in lipid and lipoprotein
557 metabolism. *Mol Metab.* 2018 May 16;15:45.
- 558 51. Shungin D, Winkler TW, Croteau-Chonka DC, Ferreira T, Locke AE, Mägi R, et al. New
559 genetic loci link adipose and insulin biology to body fat distribution. *Nature.* 2015
560 Feb;518(7538):187–96.
- 561 52. Rivenes AC, Harvey SB, Mykletun A. The relationship between abdominal fat, obesity, and
562 common mental disorders: Results from the HUNT Study. *J Psychosom Res.* 2009 Apr
563 1;66(4):269–75.
- 564 53. Jorm AF, Korten AE, Christensen H, Jacomb PA, Rodgers B, Parslow RA. Association of
565 obesity with anxiety, depression and emotional well-being: a community survey. *Aust N Z J*
566 *Public Health.* 2003 Aug 1;27(4):434–40.
- 567 54. Barry D, Pietrzak RH, Petry NM. Gender Differences in Associations Between Body Mass
568 Index and DSM-IV Mood and Anxiety Disorders: Results from the National Epidemiologic
569 Survey on Alcohol and Related Conditions. *Ann Epidemiol.* 2008 June;18(6):458–66.
- 570 55. Kühnel A, Hagenberg J, Knauer-Arloth J, Ködel M, Czisch M, Sämann PG, et al. Stress-
571 induced brain responses are associated with BMI in women. *Commun Biol.* 2023 Oct
572 11;6(1):1031.

- 573 56. Suglia SF, Pamplin JR, Forde AT, Shelton RC. Sex differences in the association between
574 perceived stress and adiposity in a nationally representative sample. *Ann Epidemiol*. 2017
575 Oct 1;27(10):626–31.
- 576 57. Turon H, Carey M, Boyes A, Hobden B, Dilworth S, Sanson-Fisher R. Agreement between a
577 single-item measure of anxiety and depression and the Hospital Anxiety and Depression
578 Scale: A cross-sectional study. *PLOS ONE*. 2019 Jan 4;14(1):e0210111.
- 579 58. Silveira PP, Pokhvisneva I, Howard DM, Meaney MJ. A sex-specific genome-wide
580 association study of depression phenotypes in UK Biobank. *Mol Psychiatry*. 2023
581 June;28(6):2469–79.
- 582 59. Diflorio A, Jones I. Is sex important? Gender differences in bipolar disorder. *Int Rev*
583 *Psychiatry*. 2010 Oct;22(5):437–52.
- 584 60. Martin J, Taylor MJ, Rydell M, Riglin L, Eyre O, Lu Y, et al. Sex-specific manifestation of
585 genetic risk for attention deficit hyperactivity disorder in the general population. *J Child*
586 *Psychol Psychiatry*. 2018;59(8):908–16.
- 587 61. Demontis D, Walters GB, Athanasiadis G, Walters R, Therrien K, Nielsen TT, et al.
588 Genome-wide analyses of ADHD identify 27 risk loci, refine the genetic architecture and
589 implicate several cognitive domains. *Nat Genet*. 2023 Feb;55(2):198–208.
- 590 62. Young S, Adamo N, Ásgeirsdóttir BB, Branney P, Beckett M, Colley W, et al. Females with
591 ADHD: An expert consensus statement taking a lifespan approach providing guidance for
592 the identification and treatment of attention-deficit/ hyperactivity disorder in girls and
593 women. *BMC Psychiatry*. 2020 Aug 12;20(1):404.
- 594 63. Martin J. Why are females less likely to be diagnosed with ADHD in childhood than males?
595 *Lancet Psychiatry*. 2024 Apr 1;11(4):303–10.

596

597 **Legends for Tables and Figures**

598 **Fig. 1: Manhattan plots of analyzed genetic variants for lifetime anxiety.** A: Manhattan plot
599 of anxiety disorders in the total sample (cases=121,738; controls=247,861); B: Miami plot of
600 GWAS for females (cases=85,014; controls=130,817) are plotted above the X-axis, for males
601 (cases=36,724; controls=117,044) are shown below the X-axis.

602 **Fig. 2: Forest plot of effect sizes and 95% confidence intervals of lead SNPs from the sex-**
603 **specific GWAS.** Effect size estimates (β) and 95% confidence intervals are shown for lead SNPs

604 identified in sex-stratified GWAS. The top panel presents lead SNPs from the female GWAS
605 with corresponding estimates in two sexes; the bottom panel presents lead SNPs from the male
606 GWAS with corresponding estimates. SNP labels in bold indicate significant differences
607 between female and male effect estimates, based on a Z-test for effect size differences with FDR-
608 adjusted $P < 0.05$.

609 **Figure 3. Sex-specific genetic architecture and gene overlap in anxiety.** A: Observed SNP-
610 based heritability and variance components (genetic and residual) estimated separately for
611 females and males using SBayesR. B: Liability-scale heritability estimates across a range of
612 assumed population prevalences (0–0.6) for each sex, based on observed-scale heritability and
613 case proportions in each sex. C: Overlap of significant genes identified by MAGMA in females
614 and males. D: Overlap of FUMA-prioritized genes across sexes.

615 **Figure 4: Sex-Specific Polygenic Scores (PGS) in Lifetime Anxiety and GAD-7** A: PGS
616 prediction for lifetime anxiety in females and males in the population cohort (QSkin). B: PGS
617 prediction for GAD-7 in the population cohort (PISA).

618 Bars in different colors represent PGS derived from different GWAS. The X-axis indicates the
619 sex of the target sample. P-values for the beta coefficient are shown at the top of the 95%
620 confidence interval bar. To ensure comparability, an additional downsampled prediction was
621 performed in which female-specific GWAS were downsized to match the male-specific GWAS,
622 and the number of females in the target cohorts was also downsampled to equal that of males.

623 **Fig. 5: Forest plot of sex dependent genetic correlation.** Genetic correlation (r_g) estimates are
624 represented by triangles (females) and squares (males). Horizontal bars indicate the 95%
625 confidence intervals. P-values from the Z-tests comparing sex-specific r_g estimates for each trait

626 are shown on the right; significant values ($P < 0.05$) are shown in bold, and those passing the
627 FDR threshold are additionally marked with an asterisk (*).

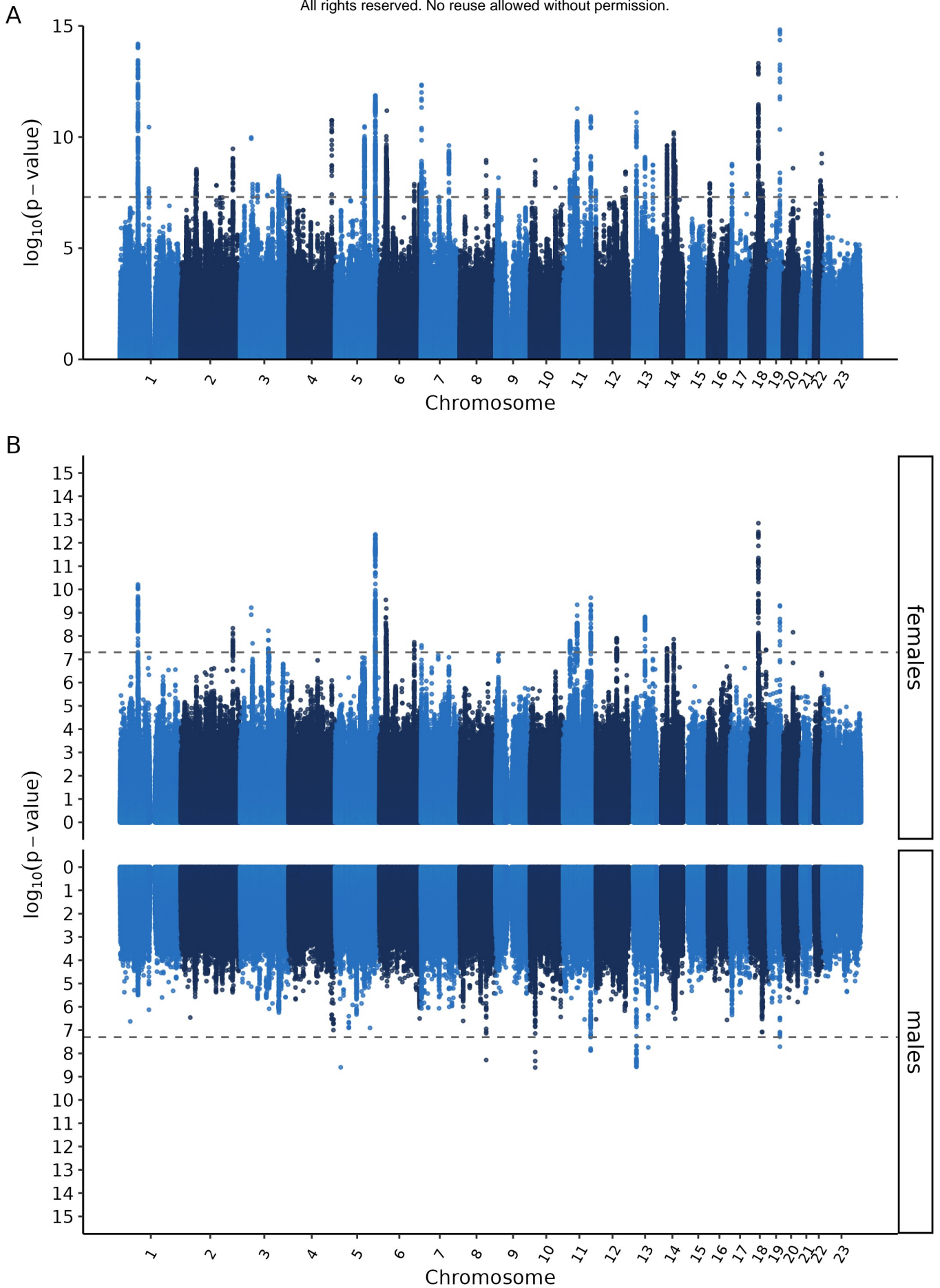
628 **Table 1: Sex Distribution in Cohorts Used for Polygenic Score (PGS) Predictions**

629 **Tables**

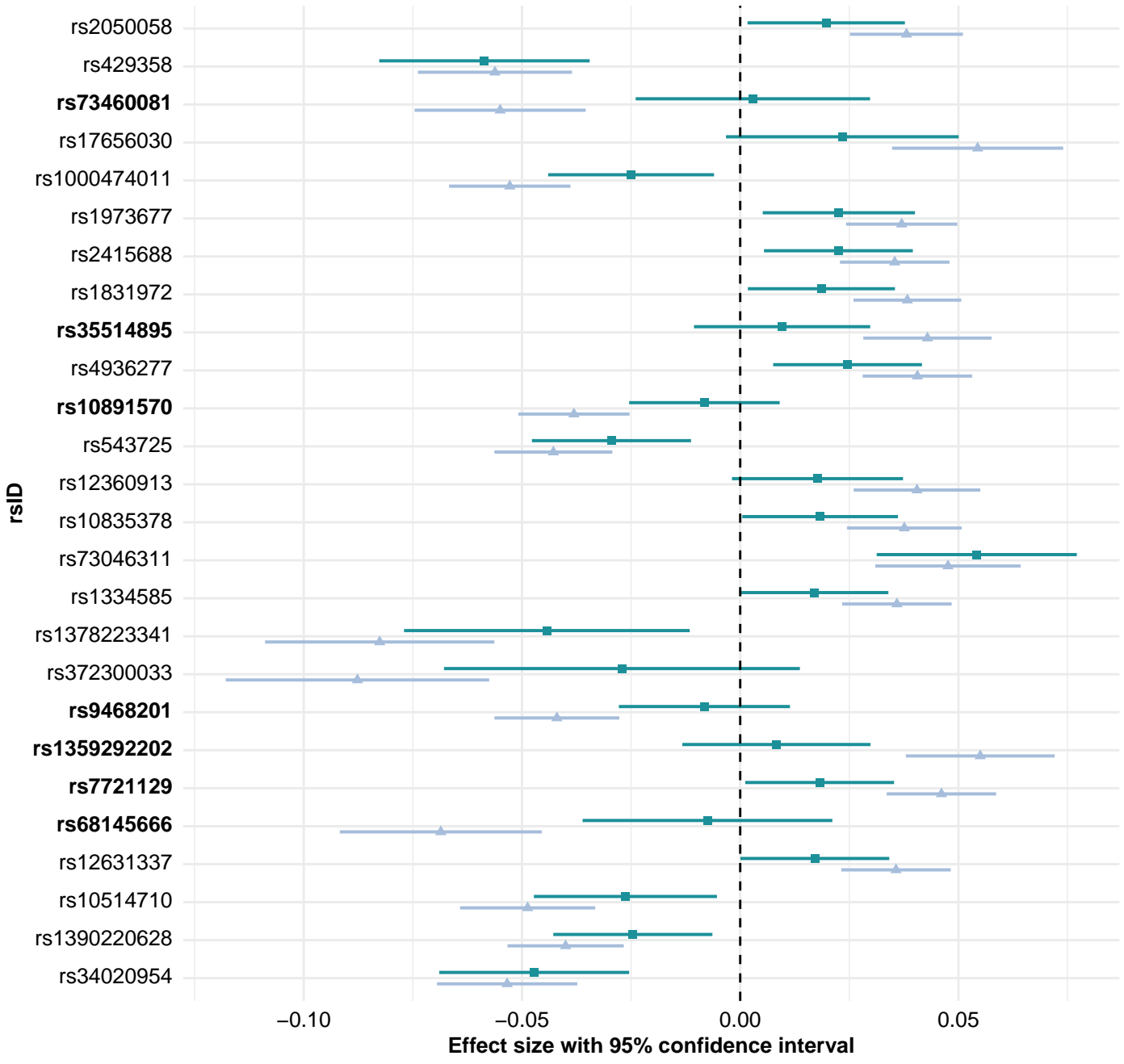
630 **Table 1: Sex Distribution in Cohorts Used for Polygenic Score (PGS) Predictions**

Cohort	Measurement	Nfemales (cases/controls)	Nmales (cases/controls)	Ncombined (cases/controls)
Qskin	Self-report	1,528/6,481	819/6,238	2,347/12,719
PISA	GAD-7	3,263	1,605	4,868
AGDS	Self-report	8,278/6,481	2,902/6,238	11,180/12,719
AGDS	GAD-7	5,556	1,681	7,282

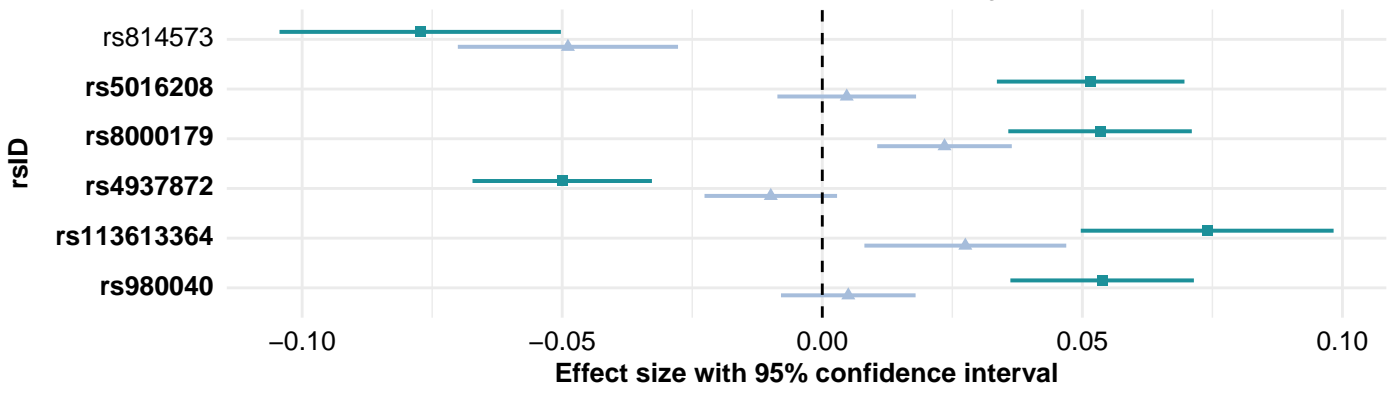
631



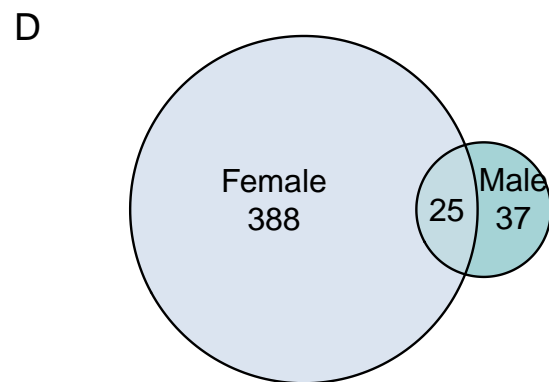
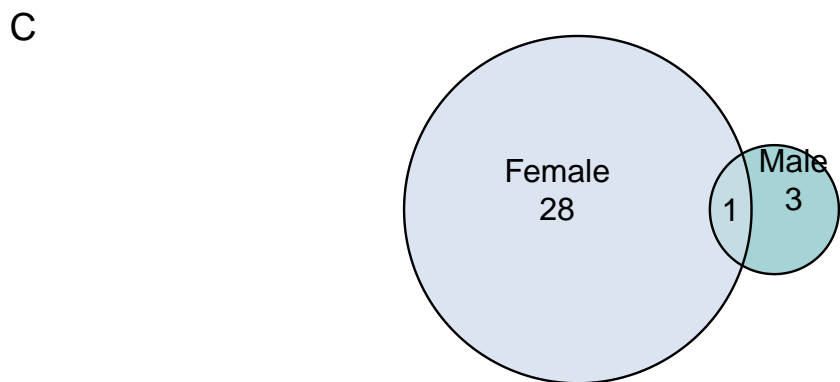
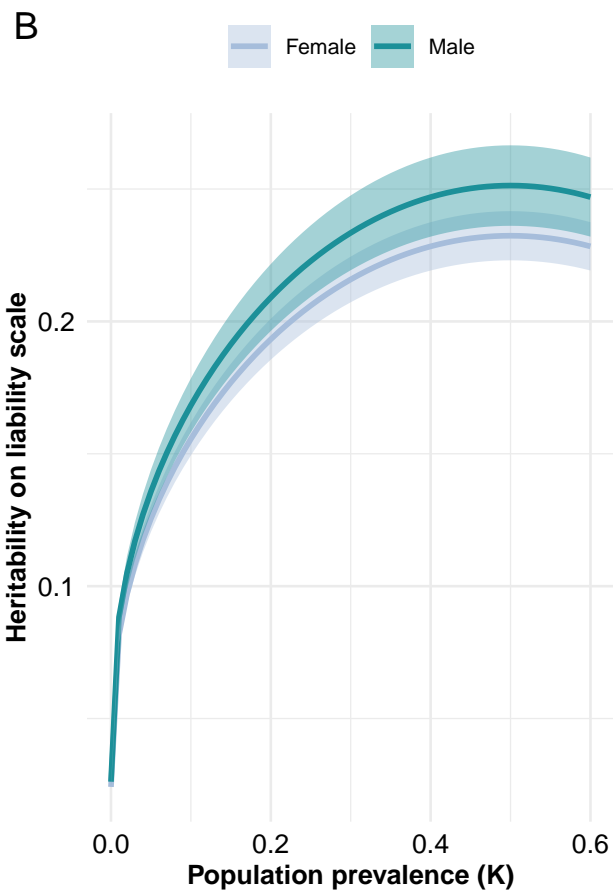
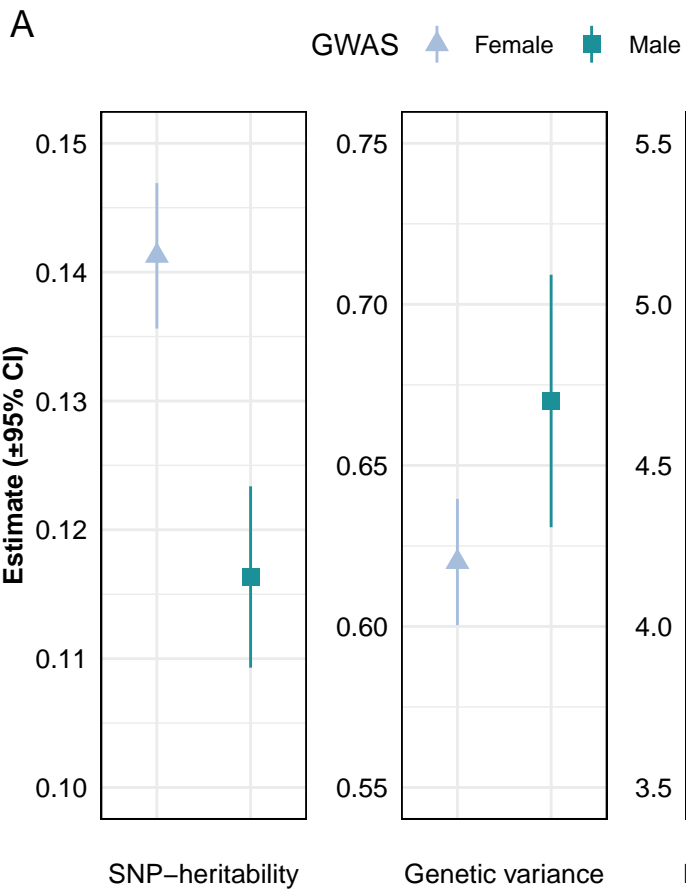
Lead SNPs from GWAS on females and corresponding effect in males



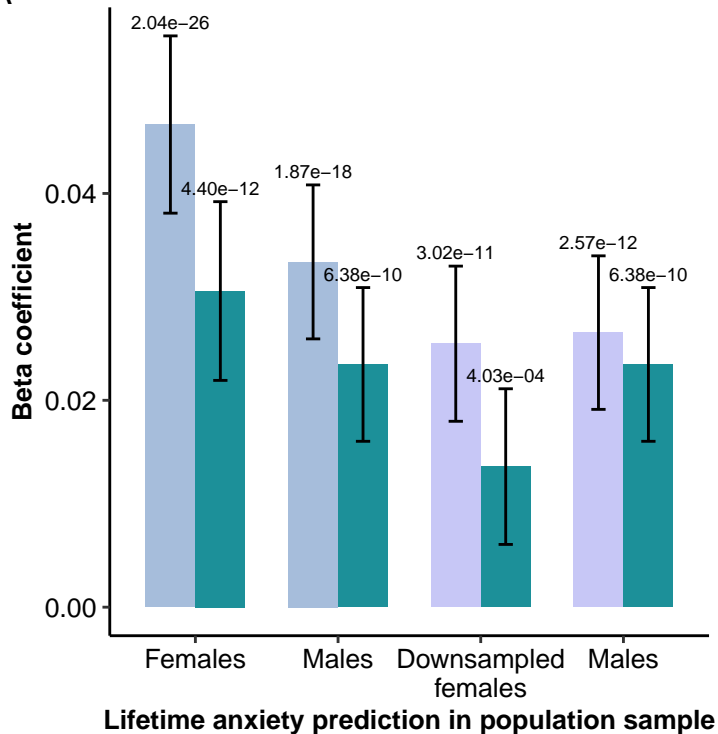
Lead SNPs from GWAS on males and corresponding effect in females



GWAS ↑ Female █ Male



A



PRS Original female PRS Original male PRS Downsized female PRS

B

