

1 **Calpain-mediated sodium channel fragments in the**
2 **monocentric SpasT-SCI-T trial: Biomarkers for central**
3 **nervous system injuries and spasticity prediction**

4
5
6 By
7
8

9
10 Guillaume Baucher^{1,2*}, Sylvie Liabeuf¹, Cécile Brocard¹, Aurélie Ponz³, Karine
11 Baumstarck³, Lucas Troude², Marc Leone⁴, Pierre-Hugues Roche^{1,2}, Frédéric
12 Brocard^{1*}.

- 13
14 1. *Institut de Neurosciences de la Timone, Aix-Marseille Université, CNRS,*
15 *Marseille, France*
16 2. *AP-HM, Hôpital Universitaire Nord, Neurochirurgie adulte, Marseille, France*
17 3. *AP-HM, Direction de la Recherche Santé et Maladies Rares, Marseille, France*
18 4. *AP-HM, Hôpital Universitaire Nord, Service d'Anesthésie et de Réanimation,*
19 *Marseille, France*

20
21 **Corresponding authors**

22 Guillaume Baucher: guillaume.baucher@ap-hm.fr
23 Frédéric Brocard: frederic.brocard@univ-amu.fr
24

25 **Keywords**

26 Spinal cord; Spinal cord injury; Traumatic brain injury; Spasticity; Ionic channels;
27 Sodium channels; Biomarker.

28
29 **Short title**

30 Sodium fragments as biomarkers for central nervous system injuries and spasticity
31

32 **ABSTRACT**

33
34 Spinal cord injury and traumatic brain injury are major causes of long-term
35 disability and are often complicated by spasticity, a motor disorder characterized by
36 increased muscle tone and exaggerated reflexes that significantly impair quality of life.
37 Current diagnostic methods lack the sensitivity needed to accurately predict the
38 severity of injury or the onset and progression of spasticity. Trauma-induced calcium
39 dysregulation activates calpains, a family of proteases that cleave sodium channels,
40 disrupting their inactivation and increasing persistent sodium currents. This cascade
41 drives the overexcitability of motoneurons, contributing to the development of
42 spasticity. Consequently, sodium channel fragments have emerged as promising
43 biomarkers that link injury mechanisms to clinical outcomes.

44 The present SpasT-SCI-T clinical trial protocol aims to evaluate sodium channel
45 fragments as blood biomarkers for assessing the severity of spinal cord and traumatic
46 brain injuries, as well as their potential to predict clinical outcomes, including the
47 development of spasticity. This prospective, multicenter, case-control and cohort study
48 involves 40 participants: 20 individuals with spinal cord injury, 10 individuals with
49 traumatic brain injury, and 10 healthy controls. Blood samples are collected within six
50 hours of injury and at follow-up points over six months. Clinical outcomes, including
51 spasticity (assessed using the Modified Ashworth Scale), neurological recovery
52 (measured by the American Spinal Injury Association Impairment Scale and Glasgow
53 Coma Scale), and quality of life (evaluated using the Short Form-36 Health Survey),
54 are analyzed in correlation with biomarker levels.

55 We anticipate that calpain-mediated sodium channel fragments will transform
56 the management of central nervous system injuries by enabling early diagnosis,
57 improving prognostic accuracy, and guiding personalized therapeutic strategies. The

58 clinical trial is registered on ClinicalTrials.gov (NCT06532760, January 10, 2024), with
59 Assistance Publique–Hôpitaux de Marseille as the sponsor.
60

61 **INTRODUCTION**

62
63 Spinal cord injury (SCI) is a tragic condition with lifelong physical, psychological,
64 and economic consequences, affecting millions of individuals worldwide [1–3].
65 Accurate and timely assessment of its severity is paramount for predicting outcomes
66 and guiding therapeutic interventions. However, current diagnostic methods, which
67 rely primarily on clinical examinations and imaging, lack the sensitivity required for
68 precise evaluation, especially during the critical acute phase [4–6]. This diagnostic gap
69 underscores the urgent need for novel, reliable biomarkers to improve clinical decision-
70 making.

71 One of the most prevalent and disabling complications of SCI is spasticity, which
72 affects up to 75% of patients within the first year post-injury [7,8]. Spasticity, classically
73 defined as hypertonia with a velocity-dependent increase in stretch reflexes [9],
74 encompasses a spectrum of clinical manifestations, including clonus, exaggerated
75 reflexes, muscle spasms, and involuntary leg crossing [10,11]. These symptoms
76 severely disrupt daily activities, quality of life, and rehabilitation efforts. Without early
77 and effective management, spasticity progresses to complications such as muscle
78 shortening, joint contractures, and painful pressure sores [12,13]. The unpredictable
79 onset and variable severity of spasticity, ranging from mild stiffness to severe,
80 uncontrollable spasms, pose significant challenges for clinicians, emphasizing the
81 urgent need for reliable predictive biomarkers [14,15].

82 Advances in our understanding of spasticity pathophysiology have highlighted
83 promising targets for biomarker discovery [16,17]. Secondary injury processes in SCI
84 trigger molecular cascades, including excessive glutamate release, intracellular
85 calcium overload, and calpain activation [18,19]. Calpains, calcium-activated
86 proteases, cleaves Nav1.6 voltage-gated sodium channels [20–22], which are

87 predominantly expressed in spinal motoneurons [23–25]. This proteolysis disrupts the
88 normal inactivation of Nav1.6 channels, leading to an upregulation of persistent
89 sodium currents (I_{NaP}) [20–22]. The pathological I_{NaP} drives motoneuron
90 hyperexcitability and sustained depolarizations (plateau potentials), directly
91 contributing to spasticity in both animals [26–31] and humans [32–34].

92 The identification of sodium channel fragments as products of calpain-mediated
93 cleavage offers a novel biomarker opportunity, linking the molecular pathology of SCI
94 to clinical outcomes. These fragments hold potential not only for assessing SCI
95 severity but also for predicting the onset and magnitude of spasticity [21]. Notably,
96 similar sodium channel cleavage mechanisms have been observed in traumatic brain
97 injury (TBI), suggesting broader applicability of these biomarkers across central
98 nervous system (CNS) injuries [35–37].

99 The present *SpasT-SCI-T* clinical trial protocol aims to evaluate calpain-
100 mediated sodium channel fragments as diagnostic biomarkers for SCI and TBI and as
101 prognostic markers for spasticity. By bridging molecular mechanisms and clinical
102 outcomes, this study seeks to advance the management of CNS injuries and spasticity,
103 paving the way for more accurate diagnoses, enhanced prognostic precision, and
104 personalized therapeutic strategies.

105

106 **METHODS AND ANALYSIS**

107

108 STUDY AIMS

109 The primary objective of the *SpasT-SCI-T* study is to detect and quantify sodium
110 channel fragments in blood samples from patients with SCI or TBI. These fragments

111 will be measured at multiple post-trauma time points, ranging from 6 hours to 6 months
112 after injury.

113

114 The secondary objectives are threefold:

115

116 1. To characterize in SCI and TBI patients the temporal kinetics of sodium channel
117 fragments, providing insight into their dynamic expression and persistence over
118 time.

119 2. To evaluate the relation between plasma fragment levels and the onset,
120 progression, and severity of spasticity in SCI patients.

121 3. To compare plasma fragment levels in SCI and TBI patients with those of
122 healthy controls, establishing baseline values and identifying injury-specific
123 signatures.

124

125 STUDY DESIGN

126 The SpasT-SCI-T study is a prospective, multicenter observational trial performed
127 in France. The study employs a combination of case-control and cohort designs to
128 address its primary and secondary objectives. A total of 40 participants are recruited,
129 divided into three groups:

130

131 1. **Group 1 (Healthy Controls):** Ten healthy volunteers provide baseline blood
132 samples for comparison.

133

134 2. **Group 2 (SCI Patients):** Twenty patients with acute traumatic SCI confirmed
135 by imaging and no associated TBI.

136

137 3. **Group 3 (TBI Patients):** Ten patients with acute TBI confirmed by imaging and
138 no associated SCI.

139

140 The trial consists of three phases:

141

142 1. **Inclusion Phase:** Participants are enrolled into one of the three study groups
143 based on predefined eligibility criteria.

144

145 2. **Acute Phase (0–14 days):** This phase focuses on the immediate response to
146 trauma, capturing rapid changes in sodium channel fragment levels during the
147 critical early period. Blood samples are collected within 6 hours post-trauma and
148 at multiple time points (Days 1, 3, 5, 7, and 14) to monitor early biomarker
149 kinetics.

150

151 3. **Late Follow-Up Phase (3 and 6 months):** The late follow-up phase assesses
152 long-term changes in sodium channel fragment levels and their association with
153 recovery trajectories and clinical outcomes, including the onset and severity of
154 spasticity. Blood samples are collected during follow-up consultations at 3 and
155 6 months post-trauma.

156

157 The CONSORT diagram in Fig 1 provides details on the timeline for enrollment,
158 interventions, and assessments across the participant groups, while the overall study
159 design is summarized in Fig 2.

160
161
162
163
164
165
166
167
168
169
170
171
172
173
174
175
176

177
178
179

180

181
182
183
184
185
186

187

188
189
190
191
192
193

Fig 1 – CONSORT flow diagram of the SpasT-SCI-T study. (SCI: spinal cord injury; TBI: traumatic brain injury; MAS: modified Ashworth scale; ASIA: American Spinal Injury Association; GOS: Glasgow Outcome Scale; H: hour; D: Day; M: Month).

Fig 1 – Graphical overview of SpasT-SCI-T study design. Overview of the three study groups and their respective schedules for blood sample collections and clinical assessments. Group 1 (10 healthy subjects) provides a single baseline blood sample. Group 2 (20 SCI patients) and Group 3 (10 TBI patients) undergo sampling within 6 hours post-trauma, during the early follow-up phase (days 1, 3, 5, 7, and 14), and at late follow-ups (3 and 6 months). Clinical assessments include the American Spinal Injury Association (ASIA) impairment scale, Glasgow Coma Scale (GCS), Glasgow Outcome Scale (GOS), and Modified Ashworth Scale (MAS), depending on the group. These outcome measures are defined and detailed in the “Outcomes” section.

SITES AND RESSOURCES

The trial spans 30 months and is performed within the Assistance Publique–Hôpitaux de Marseille (AP-HM) network, leveraging multiple specialized facilities for recruitment, data collection, and biological sample processing:

- 1. Neurosurgery Department, Hôpital Nord:** Led by Professor Pierre-Hugues Roche, the Neurosurgery Department serves as the primary site for recruiting SCI and TBI patients. It specializes in acute neurological trauma management and advanced imaging (CT and MRI) to confirm eligibility. Follow-up visits at 3 and 6 months, including Modified Ashworth Scale (MAS) evaluations for spasticity in SCI patients, are coordinated here.
- 2. Intensive Care Unit, Hôpital Nord:** Headed by Professor Marc Leone, the center manages sever trauma patients during the acute injury phase and ensures the inclusion of patients unable to provide immediate consent. Baseline blood samples are collected within 6 hours post-trauma, with additional samples taken during early follow-up on Days 1, 3, 5, 7 and 14.

194 3. **Clinical Investigation Center, Hôpital Nord:** Healthy controls are recruited
195 and assessed at this Center. It provides a controlled environment for obtaining
196 informed consent and baseline blood samples. Standardized protocols ensure
197 consistency across participant groups.

198
199 4. **BioMINT Platform, INT UMR7289, Aix-Marseille University la Timone:**
200 Biological sample processing is centralized at the BioMINT platform, part of the
201 Institute of Neurosciences (INT UMR7289). Plasma samples are analyzed
202 using semi-automated Western blot techniques with Pan-Nav antibodies,
203 ensuring high-quality, standardized biomarker data. Samples are stored at -
204 80°C until analysis and transported monthly from clinical sites.

205
206 5. **Rehabilitation Centers for Long-Term Follow-Up:** Patients transitioning to
207 affiliated rehabilitation centers within the AP-HM network participate in long-
208 term follow-up. These centers collaborate with the Neurosurgery Department to
209 ensure the collection of clinical data, including MAS evaluations, at 3 and 6
210 months post-trauma.

211
212 **PARTICIPANTS**

213 The selection of participants is based on strict inclusion and exclusion criteria
214 (Table 1).

215 **Inclusion Criteria:**

- 216 1. Group 1 (Healthy Controls):
- 217 • Adults (male or female) aged 18–75 years.
 - 218 • No history of central or peripheral nervous system trauma.

219 • Absence of any chronic neurological, psychiatric, or systemic diseases.

220 • Ability to provide informed consent prior to inclusion.

221 • Affiliation with a social security system.

222

223 2. Group 2 (SCI Patients):

224 • Adults (male or female) aged 18–75 years

225 • Confirmed acute SCI (C4-T12) based on imaging (CT and MRI).

226 • Neurological assessment using the American Spinal Injury Association
227 Impairment Scale (ASIA): grades A to D.

228 • Inclusion must occur within 6 hours post-trauma.

229 • No concurrent TBI.

230 • Affiliation with a social security system.

231

232 3. Group 3 (TBI Patients):

233 • Adults (male or female) aged 18–75 years

234 • Confirmed acute TBI based on CT imaging (Marshall Grade II or higher).

235 • Neurological assessment using the Glasgow Coma Scale (GCS) ≤ 13 .

236 • Inclusion must occur within 6 hours post-trauma.

237 • No concurrent SCI.

238 • Affiliation with a social security system.

239

240 Exclusion Criteria (All Groups):

241 • Pregnancy or breastfeeding.

242 • Pre-existing neurological disorders, such as multiple sclerosis or Parkinson's
243 disease.

- 244 • History of psychiatric illness or neurodegenerative conditions.
- 245 • Concurrent severe trauma affecting study participation (e.g., multi-organ
- 246 failure).
- 247 • Inability to provide consent, and absence of a legally authorized representative.
- 248 • Pre-existing cardiovascular or pulmonary diseases.

249

| Criteria | Group 1: Healthy Controls | Group 2: SCI Patients | Group 3: TBI Patients |
|-----------------------------|--|--|---|
| Age (years) | 18–75 | 18–75 | 18–75 |
| Type of Trauma | None | Acute spinal cord injury (C4–T12), confirmed by CT/MRI | Acute traumatic brain injury (Marshall Grade II or higher), confirmed by CT |
| Neurological Assessment | None | ASIA Impairment Scale (grades A to D) | Glasgow Coma Scale (GCS ≤13) |
| Inclusion Timeline | - | ≤6 hours post-trauma | ≤6 hours post-trauma |
| Associated Conditions | -See Exclusion Criteria | No concomitant TBI | No concomitant SCI |
| Social Security Affiliation | Required | Required | Required |
| Exclusion Criteria | - Minor, Pregnancy or breastfeeding. - Pre-existing neurological disorders (e.g., multiple sclerosis, Parkinson’s disease), cardiovascular or pulmonary diseases. - Psychiatric illnesses or neurodegenerative conditions- Severe trauma (e.g., multi-organ failure) - Inability to provide consent and absence of a legally authorized representative | -Same as Group 1 | -Same as Group 1 |

250 **Table 1** –SCI - spinal cord injury; GCS: Glasgow Coma Scale; TBI: traumatic brain
251 injury; ASIA: American Spinal Injury Association.

252

253 Informed consent (S3 Supplemental material) is obtained from all participants after

254 verifying their eligibility according to the inclusion and exclusion criteria. Recognizing

255 the urgency of inclusion and the acute medical care context, the consent process is

256 tailored to accommodate the specific needs of SCI and TBI patients. The following

257 procedures ensure compliance with ethical and legal requirements while prioritizing

258 participant autonomy and rights:

259

260 1. **For conscious patients** capable of decision-making, informed consent is
261 obtained directly within the 6-hour inclusion window. The investigator or clinical
262 team provides the patient with a detailed information sheet outlining the study's
263 objectives, procedures, potential risks and benefits. Patients are given the
264 opportunity to ask questions and are encouraged to make an informed decision.
265 Once all concerns are addressed, they sign the consent form, confirming their
266 voluntary participation.

267
268 2. **For unconscious or incapacitated patients**, a legally authorized
269 representative (e.g., a close relative) is approached to provide proxy consent.
270 The representative is provided with the same detailed information about the
271 study, and their consent is carefully documented. Once the patient regains the
272 capacity to decide, they are fully informed about their participation, following the
273 same process as for conscious patients. This includes providing them with the
274 study information sheet, explaining the objectives, procedures, risks, and
275 potential benefits, and addressing any questions they may have. Written
276 continuation consent is then requested to confirm their voluntary agreement to
277 remain in the study. These procedures comply with Article L1122-1-3 of the
278 French Public Health Code, ensuring adherence to legal and ethical standards
279 for proxy and emergency consent.

280
281 3. **Emergency Consent:** In cases where the patient is unconscious and no proxy
282 is available within the inclusion timeframe (6 hours post-trauma), a physician
283 not involved in the study may authorize emergency consent. This process
284 allows for the patient's inclusion while ensuring that: 1) Consent is obtained as

285 soon as possible from the patient or their representative once circumstances
286 allow. Once the patient regains capacity or a relative is available, they are fully
287 informed of their inclusion and written consent is requested, in compliance with
288 Article L1122-1-3 of the French Public Health Code.

289
290 4. For **healthy volunteers**, written informed consent is obtained prior to any study-
291 related procedures. The consent process ensures they understand the study's
292 objectives, any potential risks, and their right to withdraw at any time without
293 consequences.

294
295 All participants, regardless of group, continue to receive standard medical care,
296 including routine imaging, rehabilitation, and clinical follow-ups, without interference
297 from study procedures. Withdrawal from the study, whether initiated by the participant
298 or deemed necessary for medical reasons, does not impact their access to or quality
299 of standard medical care.

300

301 INTERVENTION PROCEDURES

302 The SpasT-SCI-T trial outlines specific intervention procedures for each
303 participant group. These interventions encompass blood sampling, imaging, and
304 clinical assessments aimed at investigating sodium channel fragments as potential
305 biomarkers and correlating their dynamics with clinical outcomes. All procedures are
306 rigorously standardized to ensure reproducibility and protocol adherence.

307

308 Group 1: Healthy Subjects

309

310 Healthy participants are selected from a pre-screened volunteer registry. Upon
311 enrollment, they are invited to the Clinical Investigation Center at Hôpital Nord at their
312 convenience. During the inclusion visit a single venous blood sample of 4 mL is
313 collected in BP100 tubes containing protease inhibitors to prevent biomarker
314 degradation. The sample is processed within 2 hours of collection by centrifugation at
315 1500g to extract plasma, which is then stored at -80°C until analysis at the BioMINT
316 platform. No follow-up visits or additional interventions are required for this group,
317 ensuring minimal participant burden.

318

319 *Group 2: Spinal Cord Injury (SCI) Patients*

320

321 SCI patients are prospectively recruited from the Intensive Care Unit or
322 Neurosurgical Department at Hôpital Nord within 6 hours post-trauma. Upon
323 admission, interventions for these patients begin with clinical and imaging
324 assessments. A computed tomography (CT) scan is performed on admission to
325 confirm vertebral fractures or spinal column instability. Magnetic resonance imaging
326 (MRI) provides detailed characterization of the SCI, documenting patterns such as
327 contusion, compression, hemorrhage, or edema. Injury severity is further classified
328 using the AOSpine fracture classification [38] and BASIC scoring system [39,40].

329 Baseline neurological status is documented using the American Spinal Injury
330 Association (ASIA) Impairment Scale, which evaluates the severity and level of the
331 SCI [38,41]. Additional documentation includes respiratory and hemodynamic stability,
332 renal clearance, liver function, and hemoglobin levels.

333 Blood sampling begins with a 4 mL venous sample collected within the 6 hours
334 of trauma. Additional samples are collected during the acute phase on days 1, 3, 5, 7

335 and 14 to monitor early biomarker kinetics. Further samples are obtained at 3 months
336 (M3) and 6 months (M6) post-trauma, offering insights into long-term biomarker
337 dynamics. As part of the follow-up interventions, at M3 and M6, spasticity is assessed
338 using the **Modified Ashworth Scale** (MAS, table 2), alongside detailed evaluations of
339 neurological recovery and residual deficits. These assessments are complemented by
340 documentation of neurological recovery and residual deficits, enabling correlations
341 between clinical outcomes and sodium channel fragment levels.

342

343 Group 3: Traumatic Brain Injury (TBI) Patients

344

345 Interventions for TBI patients are tailored to intracranial trauma and are similar
346 in structure to those for SCI patients, with modifications to address brain injury
347 specifics. A whole-body CT scan is performed upon admission to confirm intracranial
348 hemorrhage and exclude SCI, ensuring group specificity. Neurological status is
349 assessed using the Glasgow Coma Scale (GCS) to document the severity of brain
350 injury [42]. Trauma-related data, including respiratory and hemodynamic stability, renal
351 clearance, liver function, and hemoglobin levels, are recorded. Blood sampling begins
352 with a 4 mL venous sample collected within the 6 hours of trauma during the routine
353 biological workup. Additional samples are obtained during the acute phase at Days 1,
354 3, 5, 7 and 14 to capture early biomarker dynamics. Further samples are collected
355 during late follow-up visits at M3 and M6 to evaluate the longer-term biomarker
356 behavior. General neurological assessments are performed at M3 and M6 to evaluate
357 recovery. These outcomes are correlated with sodium channel fragment levels to
358 explore potential biomarker-based prognostication.

359

360 For SCI and TBI patients (Groups 2 and 3), detailed records of all medical
361 treatments administered during hospitalization will be maintained. This includes, but is
362 not limited to: anticoagulation therapy, antibiotic regimens, anti-spastic medications,
363 and pain management protocols. This documentation allows for the evaluation of
364 potential confounding factors and ensures that biomarker changes can be interpreted
365 in the context of treatment.
366

367 OUTCOMES

368 **The primary outcome** of the study is the detection and quantification of sodium
369 channel fragments in blood samples. These fragments are quantified using a semi-
370 automated Western blot technique employing the commercial Pan-Nav antibody,
371 which is validated for its high sensitivity in detecting α -subunit cleavage products
372 generated by calpain-mediated proteolysis. Sodium channel fragment levels are
373 compared across SCI, TBI and healthy participants to identify injury-specific biomarker
374 signatures. These data aim to provide valuable insights into the molecular mechanisms
375 underlying SCI and TBI.

376

377 The **secondary outcomes** include:

378

379 1. **Temporal Dynamics of Sodium Channel Fragments:** The temporal kinetics
380 of sodium channel fragments are analyzed to characterize their dynamic
381 expression and persistence during the acute and chronic phases of injury.
382 Longitudinal changes in fragment levels are assessed from the baseline (acute
383 phase) through follow-up visits at 3 months (M3) and 6 months (M6). These
384 data are related with key clinical and functional outcomes to evaluate the role
385 of sodium channel fragments as potential prognostic biomarkers. For SCI
386 patients, changes in neurological function are monitored using the American
387 Spinal Injury Association (ASIA) Impairment Scale, which provides detailed
388 assessments of sensory and motor function recovery. For TBI patients,
389 functional recovery is evaluated using the Glasgow Outcome Scale (GOS) and
390 the more granular Glasgow Outcome Scale-Extended (GOSE), which capture
391 subtle variations in recovery trajectories. For both groups, quality of life is

392 assessed using the Short Form Health Survey (SF-36), a comprehensive tool
393 that evaluates health-related quality of life across physical, mental, and social
394 dimensions. These correlations aim to establish the predictive value of sodium
395 channel fragment levels for neurological recovery, functional outcomes, and
396 overall quality of life, providing a deeper understanding of the molecular
397 mechanisms underlying injury progression and recovery.

398

399 2. **Spasticity and Biomarker Levels in SCI Patients:** The relationship between
400 sodium channel fragment levels and spasticity is specifically investigated in SCI
401 patients. Spasticity is assessed during follow-up visits at M3 and M6 using the
402 Modified Ashworth Scale (MAS), a widely used tool for grading muscle tone.
403 The relationship between MAS scores and fragment levels is evaluated using
404 correlation analyses. This correlation is expected to provide evidence of the
405 prognostic utility of sodium channel fragments in predicting the onset and
406 severity of spasticity. These analyses aim to establish the prognostic utility of
407 sodium channel fragments in predicting the onset, progression, and severity of
408 spasticity, providing a molecular link between injury mechanisms and clinical
409 outcomes. Such insights may inform personalized therapeutic strategies for
410 managing spasticity in SCI patients.

411

412 3. **Injury Severity and Biomarker Associations:** The study investigates the
413 association between sodium channel fragment levels and injury severity in both
414 SCI and TBI patients. For SCI patients, neurological severity is assessed using
415 the ASIA Impairment Scale, which evaluates the level and completeness of
416 spinal cord injury through sensory and motor function tests. For TBI patients,

417 the severity of brain injury is determined using the GCS, which provides a
418 standardized assessment of consciousness based on eye, verbal, and motor
419 responses. By correlating sodium channel fragment levels with these
420 established severity metrics, the study aims to elucidate the relationship
421 between molecular biomarkers and clinical injury severity, enhancing the
422 understanding of the pathophysiology of CNS trauma and informing future
423 diagnostic approaches.

424

425 **Biomarker Levels**

426 Sodium channel fragment levels are quantified using the **Jess system**
427 (ProteinSimple, Bio-technie), a capillary-based automated Western blot platform.
428 Plasma samples are resuspended in 0.1X Sample buffer (SimpleWestern, Bio-technie).
429 Protein concentrations are determined using the DC Protein Assay (Biorad) to ensure
430 consistent loading across all samples. Samples are prepared without reducing agents
431 or heat denaturation to preserve protein integrity. Prepared plasma samples (3 μ L) are
432 loaded into the Jess assay plate along with controls, standards, and molecular weight
433 ladders. Proteins are loaded into the capillary automatically (12–230 kDa range),
434 electrophoresed and separated by size. Antibodies against the α -subunit of sodium
435 channels, and chemiluminescence are used for signal detection. Quantitative data are
436 captured by automated software, and protein band intensities are normalized to either
437 a housekeeping protein or total protein for variability control. The native sodium
438 channel (~250 kDa) and its lower molecular weight fragments are identified and
439 quantified based on band intensity, facilitating the comparison of fragment expression
440 across groups.

441

442 **Spasticity Evaluations**

443 Spasticity is assessed at M3 and M6 follow-up visits using the Modified Ashworth Scale
444 (MAS), which grades muscle tone on a scale from 0 (no increase in muscle tone) to 4
445 (rigid muscle tone) [43]. This score measures the resistance perceived by the rater
446 when passively moving a joint through its full range of movement. All evaluations are
447 performed by a single, trained physiotherapist to minimize inter-observer variability.
448 Associated phenomena, such as clonus and spasms, are also recorded to provide a
449 comprehensive spasticity profile. Factors influencing variability (e.g., patient
450 positioning, medication, and pain) are meticulously documented.

451

| Modified Ashworth score | Clinical findings |
|-------------------------|--|
| 0 | No increase in muscle tone |
| 1 | Slight increase in muscle tone, with a catch and release or minimal resistance at the end of the range of motion when an affected part(s) is moved in flexion or extension |
| 1+ | Slight increase in muscle tone, manifested as a catch, followed by minimal resistance through the remainder (less than half) of the range of motion |
| 2 | A marked increase in muscle tone throughout most of the range of motion, but the affected part(s) are still easily moved |
| 3 | Considerable increase in muscle tone, passive movement difficult |
| 4 | Affected part(s) rigid in flexion or extension |

452 ***Table 2 – Modified Ashworth scale for spasticity assessment [43].***

453

454 **Neurological Evaluations (GCS, ASIA)**

455 **The Glasgow Coma Scale (GCS)** is a widely used, standardized tool for
456 assessing consciousness in patients with TBI. It evaluates three key components: eye-
457 opening, verbal, and motor responses, providing a rapid and reliable measure of
458 neurological status. The Eye-Opening Response is scored from 4 to 1: 4 for
459 spontaneous eye opening, 3 for a response to verbal stimuli, 2 for a response to painful
460 stimuli, and 1 if there is no response. The Verbal Response evaluates the orientation
461 and ability to communicate, scoring 5 for coherent and oriented speech, 4 for

462 confusion, 3 for inappropriate words, 2 for incomprehensible sounds, and 1 for no
463 vocalization. The Motor Response measures movement in response to commands or
464 stimuli, scoring 6 for obeying commands, 5 for localizing pain, 4 for withdrawing from
465 pain, 3 for abnormal flexion (decorticate posturing), 2 for abnormal extension
466 (decerebrate posturing), and 1 for no response. The total GCS score ranges from 3
467 (deep coma) to 15 (full consciousness), allowing clinicians to classify the severity of
468 brain injury and monitor changes in neurological status over time.

469

470 **The American Spinal Injury Association (ASIA) Impairment Scale** is a
471 standardized framework for evaluating and classifying the severity of SCI [38,41]. It
472 assesses sensory and motor functions across key dermatomes and myotomes, as well
473 as sacral sparing, to determine the neurological level and completeness of the injury.
474 Sensory evaluation tests light touch and pinprick sensations across 28 dermatomes
475 bilaterally, from C2 to S4/S5. A cotton swab is used for light touch, and a safety pin for
476 pinprick testing, with scores assigned as 2 for normal sensation, 1 for impaired
477 sensation, and 0 for absent sensation. Special attention is given to the S4/S5
478 dermatome, as sacral sparing is critical for determining whether the injury is complete
479 or incomplete. Motor function is evaluated by testing strength in **10 muscle groups**
480 corresponding to specific myotomes, ranging from **elbow flexion (C5)** to **ankle plantar**
481 **flexion (S1)**, scored from 5 (normal strength) to 0 (no contraction). Sacral motor
482 function is further assessed by voluntary contraction of the **external anal sphincter**.
483 The ASIA Impairment Scale assigns grades based on the completeness of the injury:
484 Grade A indicates complete injury with no sensory or motor function preserved in
485 sacral segments, Grades B-D reflect varying degrees of incomplete injuries with some
486 preserved sensory or motor function below the injury level, and Grade E signifies

487 normal sensory and motor function. The neurological level of injury is defined as the
488 lowest spinal segment with intact sensory and motor function bilaterally.

489

490 **Functional Scales (GOS, GOSE, SF-36)**

491 The **Glasgow Outcome Scale (GOS)** is a widely recognized tool for evaluating
492 functional recovery following TBI [44]. It categorizes outcomes into five levels: death,
493 vegetative state, severe disability, moderate disability, and good recovery. The GOS
494 provides a high-level summary of a patient's ability to reintegrate into daily life post-
495 injury. To enhance its sensitivity, the **Glasgow Outcome Scale-Extended (GOSE)**
496 subdivides each GOS category into upper and lower levels, offering a more nuanced
497 evaluation of recovery trajectories. This refined scale is particularly beneficial for
498 detecting subtle differences in functional outcomes, making it a valuable tool in clinical
499 trials. Both the GOS and GOSE are exclusively applied to TBI patients in this study to
500 monitor recovery.

501

502 The **Short Form Health Survey (SF-36)** is a generic quality-of-life
503 questionnaire used for both SCI and TBI patients. It evaluates health-related quality of
504 life (HRQoL) across eight domains, including physical functioning, pain, general health,
505 vitality, social functioning, and mental health [45]. The SF-36 captures the broader
506 impact of injuries and treatments on physical, emotional, and social well-being.
507 Administered during follow-up visits, it complements the GOS and GOSE for TBI
508 patients by offering additional insights into their quality of life. For SCI patients, it serves
509 as a critical tool for assessing long-term functional impairments and evaluating the
510 effectiveness of rehabilitation strategies.

511

512 **Pain Assessments (VAS, DN4)**

513 Pain assessments are critical for evaluating quality of life and rehabilitation in
514 SCI and TBI patients. The **Visual Analogue Scale (VAS)** is a simple yet effective tool
515 for quantifying pain intensity. Patients rate their pain on a 10-centimeter line, with
516 anchors at “no pain” (0 cm) and “worst imaginable pain” (10 cm). This approach
517 enables longitudinal tracking of pain severity, offering valuable insights into the
518 effectiveness of therapeutic interventions over time. The **DN4 questionnaire (Douleur
519 Neuropathique 4 Questions)** is specifically designed to identify neuropathic pain,
520 which is prevalent among SCI patients [46]. It comprises 10 items: 7 symptom-related
521 questions (e.g., burning, tingling, electric shocks) and 3 clinical examination items
522 (e.g., hypoesthesia, allodynia). A score of ≥ 4 indicates the presence of neuropathic
523 pain. Together, the VAS and DN4 provide a comprehensive evaluation of pain intensity
524 and type, enabling targeted therapeutic strategies and effective monitoring of patient
525 progress.

526

527 **Sphincter Functions**

528 Sphincter function is a crucial outcome in SCI patients, as SCI often
529 compromise bladder and bowel control, significantly affecting quality of
530 life. Assessments include bladder management (permanent or intermittent
531 catheterization, normal urination) and bowel function (fecal incontinence, constipation),
532 focusing on their impact on quality of life.

533

534 The **Table 3** summarizes the main data collected from the patients in the case report
535 forms, from their inclusion in the study to the 6-month follow-up consultation.

536

| Inclusion | Hospital discharge | 3 and 6-month follow-up |
|-------------|--------------------|-------------------------|
| Background: | Spinal surgery: | Motricity: |

| | | |
|--|--|---|
| <ul style="list-style-type: none"> - Gender - Age - Height - Weight <p><u>Medical history:</u></p> <ul style="list-style-type: none"> - Organ failure: heart, lung, kidney - Diabetes and chronic diseases - Cancer - Addiction: smoking, alcoholism | <ul style="list-style-type: none"> - Spinal stabilization - Spinal cord decompression - Levels <p><u>Cranial surgery:</u></p> <ul style="list-style-type: none"> - Intracranial lesion evacuation (craniotomy or craniectomy) - External ventricular drainage - Intracranial pressure monitoring <p><u>Other surgery</u></p> | <ul style="list-style-type: none"> - Bed rest - Wheelchair use - Walking with assistance - Slow walking without assistance - Walking normally |
| <p><u>Usual treatment:</u></p> <ul style="list-style-type: none"> - Antiepileptic - Anticoagulant - Antihypertensive - Antidiabetic... | <p><u>Additional treatments:</u></p> <ul style="list-style-type: none"> - Analgesics - Antispasmodics - Antiepileptics - Antibiotics... | <p><u>Additional treatments:</u></p> <ul style="list-style-type: none"> - Analgesics - Antispasmodics - Antiepileptics - Antibiotics... |
| <p><u>Trauma:</u></p> <ul style="list-style-type: none"> - Date and time - Inclusion time - Type of accident | <p><u>Intensive care stay:</u></p> <ul style="list-style-type: none"> - Duration: stay, mechanical ventilation, sedation, intracranial pressure monitoring - Complications: refractory intracranial hypertension, infections (with treatment > 72 hours), septic shock, acute respiratory distress syndrome, acute renal failure (Kdigo > 3), cardiorespiratory arrest | <p><u>Rehabilitation stay:</u></p> <ul style="list-style-type: none"> - Medical complication - Specific support |
| <p><u>Neurological evaluation:</u></p> <ul style="list-style-type: none"> - ASIA score - GCS score | <p><u>Neurological evaluation:</u></p> <ul style="list-style-type: none"> - ASIA score - GCS score | <p><u>Neurological evaluation:</u></p> <ul style="list-style-type: none"> - ASIA score - GCS score |
| <p><u>Clinical evaluation:</u></p> <ul style="list-style-type: none"> - Heart rate - Blood pressure - Respiratory rate - Oxygen saturation | <p><u>Spasticity:</u></p> <ul style="list-style-type: none"> - Location - Modified Ashworth scale - Spasm, clonus - Treatment: antispastic, antiepileptic | <p><u>Spasticity:</u></p> <ul style="list-style-type: none"> - Location - Modified Ashworth scale - Spasm, clonus - Abnormal posture - Treatment: antispastic, antiepileptic |
| <p><u>Pre-hospitalization management:</u></p> <ul style="list-style-type: none"> - Cardiopulmonary arrest - Hypovolemic shock - Fluid restoration - Vasopressor treatment | <p><u>Pain:</u></p> <ul style="list-style-type: none"> - Location, duration, frequency - Visual analogue scale - DN4 - Treatment: analgesic, antiepileptic | <p><u>Pain:</u></p> <ul style="list-style-type: none"> - Location, duration, frequency - Visual analogue scale - DN4 - Treatment: analgesic, antiepileptic |
| <p><u>Spinal cord injury:</u></p> <ul style="list-style-type: none"> - Level - BASIC score - AOSpine vertebral fracture type <p><u>Traumatic brain injury:</u></p> <ul style="list-style-type: none"> - Intracranial lesions - Rotterdam score | <p><u>Sphincter functions:</u></p> <ul style="list-style-type: none"> - Permanent bladder catheterization - Iterative bladder catheterization - Normal urination - Fecal incontinence - Constipation | <p><u>Sphincter functions:</u></p> <ul style="list-style-type: none"> - Permanent bladder catheterization - Iterative bladder catheterization - Normal urination - Fecal incontinence - Constipation |
| <p><u>Trauma scores:</u></p> <ul style="list-style-type: none"> - AIS and ISS - IGS2 and SOFA | | <p><u>Functional scales:</u></p> <ul style="list-style-type: none"> - GOS, GOSE - SF36 |
| <p><u>Biology:</u></p> <ul style="list-style-type: none"> - Renal clearance - Hepatic function - Hemoglobin - Lactate | <p><u>Biology:</u></p> <ul style="list-style-type: none"> - Renal clearance - Hepatic function - Hemoglobin | <p><u>Biology:</u></p> <ul style="list-style-type: none"> - Renal clearance - Hepatic function - Hemoglobin |

537 **Table 3** – Main data collected from the patients in the case report forms, from their inclusion in the study
538 to the 6-month follow-up consultation (ASIA: American Spinal Injury Association; GCS: Glasgow Coma
539 Scale; BASIC: Brain and Spinal Injury Center[40]; AOSpine[38]; AIS: Abbreviated Injury Score; ISS:
540 Injury Severity Score[47]; SAPS II: Simplified Acute Physiology Score II[48]; SOFA: Sepsis related
541 Organ Faillure Assessment[49]; Kdigo[50]; modified Ashworth scale[43]; DN4[46]; GOS: Glasgow
542 Outcome Scale; GOSE: Glasgow Outcome Scale Extended[44]; SF36: Short Form 36 Health
543 Survey[45]).

544

545 JUSTIFICATION OF SAMPLE SIZE

546 The study includes a total of 40 participants distributed as follows: 20 patients
547 with spinal cord injury (SCI), 10 patients with traumatic brain injury (TBI), and 10
548 healthy controls. The selection of 20 SCI patients is based on the annual admission
549 rates for SCI at the study institution, ensuring a representative sample of the population
550 served. The inclusion of 10 TBI patients is justified to account for potential confounding
551 factors arising from the overlapping but distinct injury mechanisms of SCI and TBI.
552 Furthermore, 10 healthy controls are included to provide a robust baseline for sodium
553 channel fragment levels, facilitating a balanced comparison across the three groups.

554
555 This sample size is sufficient to detect meaningful trends and associations
556 between sodium channel fragments and clinical outcomes, including spasticity, while
557 maintaining feasibility within the scope of a pilot study. The findings will generate
558 preliminary evidence regarding the diagnostic and prognostic utility of sodium channel
559 fragments in neurological injuries and will guide the design of larger-scale clinical trials.

560
561 Given the exploratory nature of this study, no formal interim analyses are
562 planned. As the trial involves minimal-risk procedures, such as blood sampling, no pre-
563 specified stopping rules have been established. In the event of significant deviations
564 from the protocol or unforeseen safety concerns, the trial steering committee will
565 consult the Ethics Committee to determine whether adjustments or study termination
566 are necessary. All such decisions will be transparently documented and communicated
567 to relevant stakeholders, including regulatory authorities, to ensure compliance with
568 ethical standards.

569

570 RANDOMISATION, BLINDING

571 The SpasT-SCI-T trial is an observational study employing a case-control and cohort
572 design; therefore, randomization is not applicable. Participants are allocated to groups
573 based on predefined eligibility criteria rather than random assignment. Consequently,
574 sequence generation, allocation concealment, and implementation of randomization
575 do not apply to this trial. To mitigate bias and maintain data integrity, laboratory
576 personnel conducting biochemical analyses remain blinded to group allocation. This
577 blinding ensures that sodium channel fragment quantification is performed without
578 preconceived assumptions about the samples, enhancing the reliability and validity of
579 the results.

580

581 STATISTICAL METHODS

582 The primary objective of this study is to quantify sodium channel fragments in
583 blood samples and compare their levels across the three participant groups: healthy
584 controls (Group 1), SCI patients (Group 2) and TBI patients (Group 3). To address this
585 objective, statistical analyses will begin with group comparisons.

586

587 1. **Group Comparisons:** For normally distributed data, one-way analysis of
588 variance (ANOVA) will be employed to identify differences in sodium channel
589 fragment levels among the three groups. If data are not normally distributed, the
590 Kruskal-Wallis test will be applied as a non-parametric alternative. Post-hoc
591 analyses will follow these tests to assess pairwise comparisons, using Tukey's
592 test for ANOVA or the Mann-Whitney U test for non-parametric data.

593

594 2. **Effect Size Calculation:** Effect sizes (e.g. Cohen's d for t-tests or η^2 for
595 ANOVA) will be calculated to quantify the magnitude of differences between
596 groups.

597

598 For secondary outcomes, analyses will focus on the temporal kinetics of sodium
599 channel fragments and their correlation with clinical outcomes.

600

601 1. **Temporal Kinetics:** Changes in fragment levels over time, measured at
602 baseline (6 hours), during the acute phase (Days 1, 3, 5, 7), and at follow-up
603 (Months 3 and 6), will be analyzed using repeated-measures ANOVA for
604 normally distributed data. For non-normally distributed data, the Friedman test
605 will be used. Bonferroni corrections will be applied during multiple comparisons.

606

607 2. **Spasticity Correlation:** The relationship between sodium channel fragment
608 levels and spasticity severity in SCI patients will be assessed using Spearman's
609 rank correlation coefficients, with spasticity evaluated at Months 3 and 6 using
610 the Modified Ashworth Scale (MAS).

611

612 3. **Subgroup Analysis (SCI Severity):** Subgroup analyses will investigate
613 whether sodium channel fragment levels differ by injury severity. In SCI patients,
614 severity will be categorized based on the American Spinal Injury Association
615 (ASIA) Impairment Scale grades (A–D). Similarly, spasticity onset will be
616 analyzed as a binary outcome (presence vs. absence). For TBI patients, the
617 Glasgow Coma Scale (GCS) will be used to classify injury severity, enabling

618 comparisons of sodium channel fragment levels across defined severity
619 subgroups.

620

621 Additional statistical methods will include multivariable linear regression models to
622 adjust for potential confounders, such as age, sex, and comorbidities, ensuring that
623 observed associations are robust and not influenced by baseline characteristics.
624 Receiver operating characteristic (ROC) curves will be generated to identify threshold
625 levels of sodium channel fragments that differentiate SCI from TBI or predict spasticity
626 onset. To address missing data, multiple imputation methods will be applied,
627 minimizing bias and preserving the validity of the analyses.

628

629 Continuous variables will be expressed as means with standard deviations for
630 normally distributed data or medians with interquartile ranges for non-normally
631 distributed data. Categorical variables will be summarized as frequencies and
632 percentages. For all primary and secondary analyses, a two-tailed p-value < 0.05 will
633 be considered statistically significant. Patients who die before the 3-month follow-up
634 will be excluded from spasticity-related analyses due to insufficient time for spasticity
635 development, but all data collected up to the time of death will be included in secondary
636 analyses, such as demographic characterization and early biomarker levels.

637

638 **ETHICAL APPROVAL AND DISSEMINATION POLICY**

639 RESEARCH ETHICS APPROVAL

640 The SpasT-SCI-T clinical trial adheres to the ethical principles outlined in the
641 Declaration of Helsinki [63] and complies with the French Public Health Code. The

642 study received the approval from the local ethical committee (CPP number 2024-
643 A00265-42) on October 7, 2024, and the authorization of the National Agency for
644 Medicines and Health Products in France on July 10, 2017. The trial is registered in
645 the French National Clinical Portal and listed on [Clinicaltrials.gov](https://clinicaltrials.gov) under registration n°
646 NCT06532760. All research procedures have been designed to safeguard participant
647 safety, rights, and confidentiality. Under French law, the trial is classified as a category
648 2 interventional study, denoting minimal risk and constraints for participants. Reporting
649 will adhere to the Standard Protocol Items Recommendations for Interventional Trials
650 (SPIRIT) guidelines [64], and both SPIRIT and CONSORT checklists are available as
651 supplementary materials (see S1 and S2 Supplemental Materials, respectively).

652

653 PROTOCOL AMENDMENTS

654 Any modifications to the trial protocol, including changes to eligibility criteria,
655 outcome measures, or analytical methods, will be promptly communicated to all
656 relevant stakeholders. These include the investigators, the Ethics Committee (CPP),
657 regulatory authorities such as the ANSM (Agence Nationale de Sécurité du
658 Médicament), and trial participants, when applicable. Updates will also be reflected in
659 trial registries (e.g., ClinicalTrials.gov) and disseminated through publications and
660 conference presentations as needed. All amendments will undergo prior review and
661 approval by the CPP to ensure continued ethical compliance and transparency.

662

663 DATA CONFIDENTIALITY AND MANAGEMENT

664 Participant confidentiality is prioritized throughout the trial. All data are
665 pseudonymized, and unique patient identifiers are used for sample tracking and clinical
666 data management. Personal identifying information will not be associated with

667 biological samples or research databases. Data will be securely stored in a password-
668 protected electronic Case Report Form (eCRF) developed using REDCap, hosted on
669 encrypted servers at Assistance Publique–Hôpitaux de Marseille (AP-HM). Access to
670 the eCRF is restricted to authorized personnel, including the principal investigators and
671 the designated data management team, through encrypted login credentials. Data
672 integrity is ensured through daily backups, and all procedures comply with the
673 European General Data Protection Regulation (GDPR). At the conclusion of the trial,
674 all biological samples will be destroyed, and the pseudonymized data will be archived
675 securely for 15 years, as mandated by French regulations.

676

677 [DECLARATION OF INTERESTS](#)

678 The trial sponsor, Assistance Publique–Hôpitaux de Marseille (AP-HM), has no
679 financial or commercial interests in this study. All investigators declare the absence of
680 conflicts of interest that could influence the conduct or reporting of the trial. The study
681 is funded through institutional grants and public research funding bodies, with no
682 involvement from private-sector entities.

683

684 [ANCILLARY AND POST-TRIAL CARE](#)

685 As the trial involves minimal-risk procedures, participants are not expected to
686 require ancillary or post-trial care related to their involvement. In the event of harm
687 directly resulting from study participation, liability insurance provided by the sponsor
688 ensures coverage. Participants will retain access to their treating physicians for
689 medical concerns during and after the trial.

690

691 DISSEMINATION PLAN

692 The results of the SpasT-SCI-T clinical trial will be disseminated through peer-
693 reviewed journals, conference presentations, and publicly accessible databases. The
694 findings will adhere to CONSORT guidelines to ensure transparency and rigor in
695 reporting. Participants who express interest in the study's results will be provided with
696 an aggregated summary by the investigators, in compliance with French regulatory
697 requirements. To maintain confidentiality, no individual results will be disclosed.
698 Authorship of publications will follow the guidelines of the International Committee of
699 Medical Journal Editors ([ICMJE](#)), ensuring that all contributors to the study design,
700 conduct, analysis, and reporting are appropriately credited.

701

702 BASELINE DATA

703 Baseline data were systematically collected to characterize the study population
704 and ensure comparability across the three participant groups (healthy controls, SCI
705 patients, and TBI patients). Key baseline variables are presented in a detailed
706 summary table to promote transparency and support balanced comparisons between
707 groups.

708

709 **DISCUSSION**

710 The CNS injury initiates a cascade of molecular events, culminating in the
711 proteolysis of Nav1.6 sodium channels, generating fragments that emerge as
712 accessible biomarkers in blood vessels (Fig 3). The clinical trial builds upon prior
713 evidence that calpain activity is positively correlated with the severity of spasticity [21],
714 leading us to hypothesize that breakdown products of calpain substrates may serve as

715 reliable biomarkers for predicting functional outcomes in SCI and TBI. This aligns with
716 the growing recognition of biomarkers as invaluable tools in CNS injury management,
717 enhancing our understanding of disease progression, clinical decision-making,
718 treatment strategies, and overall patient care [14,15,51].

719
720 **Fig 3 – Calpain activation following spinal cord injury.** Traumatic injury to the spinal cord
721 triggers glutamate release into the extracellular space, causing a sustained increase in
722 intracellular calcium concentrations in motoneurons. This calcium influx activates calpain, a
723 calcium-dependent protease, which cleaves Nav1.6 voltage-gated sodium channels. The
724 cleavage results in an upregulation of persistent sodium currents (I_{NaP}), contributing to
725 motoneuron hyperexcitability and the development of spasticity. Additionally, fragments of
726 cleaved sodium channels accumulate in the sublesional spinal cord and can be detected in
727 the bloodstream. These fragments represent a promising biomarker for assessing SCI severity
728 and predicting spasticity outcomes.

729
730 Previous studies have identified fragments of calpain-mediated α -II spectrin
731 cleavage as potential indicators of calpain activity following SCI [51]. However, several
732 limitations diminish their utility. First, α -II spectrin is also a substrate for caspase-3,
733 activated during apoptosis after CNS trauma, confounding its specificity for calpain
734 activity [52]. Second, spectrin breakdown products are transiently expressed, limiting
735 their utility to the acute phase and precluding their role in monitoring spasticity
736 progression or therapeutic efficacy during the chronic phase [15]. Third, the high
737 expression of spectrin in red blood cells raises concerns about its diagnostic accuracy
738 in polytraumatized patients [51]. These challenges highlight the critical need for novel
739 biomarkers that are both detectable shortly after injury and persist for months,
740 facilitating long-term monitoring. Our preliminary data, combined with evidence that
741 Nav channels are exclusively expressed in the nervous system and are resistant to
742 caspase-3 cleavage [37], suggest that calpain-mediated breakdown products from Nav
743 channels may fulfill this need. These fragments represent a promising biomarker for
744 both CNS trauma and spasticity, providing specificity, sensitivity, and temporal
745 versatility.

746

747 The implications of this research for SCI and TBI management are significant.
748 Current diagnostic methods, which rely heavily on clinical assessments and imaging,
749 often lack the sensitivity to detect molecular changes or predict long-term outcomes
750 and secondary complications. Sodium channel fragments could provide real-time
751 insights into injury dynamics, allowing for the precise monitoring of therapeutic efficacy
752 and the progression of secondary complications like spasticity. This is particularly
753 critical for spasticity, which affects up to 75% of SCI patients and significantly impairs
754 quality of life and rehabilitation outcomes [7,8]. By identifying patients at risk of
755 developing spasticity early, clinicians could implement targeted interventions during
756 the acute phase, potentially reducing its severity and improving recovery trajectories.
757 The inclusion of TBI patients in this study underscores the potential broad applicability
758 of these biomarkers across various CNS injuries. The detection of sodium channel
759 fragments in both SCI and TBI highlights a shared pathological mechanism,
760 underscoring their relevance as universal biomarkers for neural trauma.

761

762 Despite their promise, several challenges must be addressed before sodium
763 channel fragments can be fully integrated into clinical practice. Factors such as patient
764 demographics and comorbidities may influence fragment levels, necessitating
765 extensive studies to establish normative data and clinical thresholds. Additionally,
766 blood sample processing protocols must be standardized to ensure reproducibility and
767 accuracy. Lastly, integrating biomarker analysis into existing clinical workflows
768 requires careful planning, infrastructure adaptation, and validation. Future research
769 should focus on integrating these biomarkers with advanced imaging techniques to
770 enhance diagnostic precision and prognostic modeling. A multimodal approach

771 combining molecular biomarkers and imaging could offer a more comprehensive
772 assessment of injury severity, therapeutic response, and recovery trajectories.

773

774 **CONCLUSIONS**

775 The SpasT-SCI-T trial marks a pivotal step toward bridging molecular
776 mechanisms and clinical outcomes in SCI and TBI. By validating sodium channel
777 fragments as reliable biomarkers, this study has the potential to modernize CNS
778 trauma management, enabling personalized therapeutic strategies and improving
779 long-term recovery prospects. Although challenges remain, the findings from this trial
780 could herald a new era of biomarker-driven approaches in neurology, advancing
781 precision medicine in the management of CNS disorders.

782

783 **ACKNOWLEDGMENTS**

784 We sincerely thank Tiphaine Villaume for her invaluable help in reviewing, correcting,
785 and providing insightful advice on the drafting of the Ethics Committee submission.

786

787 **SUPPORTING INFORMATION**

788 S1 Checklist. The SPIRIT 2013 checklist.

789 S2 Checklist. CONSORT 2010 checklist of information to include when reporting a
790 randomized trial.

791 S3 Model consent form and other related documents given to participants.

792

793 S4 Trial study protocol (English version)

794

795 S5 Trial study protocol (French version).

796

797 **OTHERS INFORMATION**

798 **Registration:** The SpasT-SCI-T clinical trial has been registered on the
799 ClinicalTrials.gov database under the identifier NCT06532760.

800
801 **Protocol Availability:** The full trial protocol for the SpasT-SCI-T study is publicly
802 available on ClinicalTrials.gov under the identifier NCT06532760. The full trial protocol,
803 including all details regarding the study design, objectives, methodology, and ethical
804 considerations are described in the present paper.

805
806 **Funding and Support:** This study was supported by the French National Research
807 Agency (ANR) under grant number ANR-21-CE17-0060, awarded to FB.

808

809 **AUTHOR CONTRIBUTIONS**

810 **Conceptualization**

811 Frédéric Brocard, Pierre-Hugues Roche, Marc Léone

812 **Funding acquisition**

813 Frédéric Brocard

814 **Investigation**

815 Frédéric Brocard, Cécile Brocard, Sylvie Liabeuf , Pierre-Hugues Roche, Marc Léone,
816 Guillaume Baucher, Lucas Troude

817 **Methodology**

818 Frédéric Brocard, Cécile Brocard, Sylvie Liabeuf, Aurélie Ponz, Karine Baumstarck,
819 Pierre-Hugues Roche, Guillaume Baucher

820 **Project administration**

821 Aurélie Ponz

822 **Validation**

823 Frédéric Brocard, Pierre-Hugues Roche, Marc Léone, Aurélie Ponz, Karine
824 Baumstarck

825 **Writing – original draft**

826 Guillaume Baucher, Frédéric Brocard

827 **Writing – reviewing & editing**

828 Frédéric Brocard, Pierre-Hugues Roche, Marc Léone, Karine Baumstarck

829

830 **REFERENCES**

- 831 1. Svensson J, Borg S, Nilsson P. Costs and quality of life in multiple sclerosis
832 patients with spasticity. *Acta Neurol Scand.* 2014;129: 13–20. doi:10.1111/ane.12139
833 2. Ding W, Hu S, Wang P, Kang H, Peng R, Dong Y, et al. Spinal Cord Injury: The
834 Global Incidence, Prevalence, and Disability From the Global Burden of Disease Study
835 2019. *Spine.* 2022;47: 1532–1540. doi:10.1097/BRS.0000000000004417
836 3. Khazaeipour Z, Taheri-Otaghsara S-M, Naghdi M. Depression Following Spinal
837 Cord Injury: Its Relationship to Demographic and Socioeconomic Indicators. *Topics in*
838 *Spinal Cord Injury Rehabilitation.* 2015;21: 149–155. doi:10.1310/sci2102-149
839 4. Ellingson BM, Salamon N, Holly LT. Imaging Techniques in Spinal Cord Injury.
840 *World Neurosurgery.* 2014;82: 1351–1358. doi:10.1016/j.wneu.2012.12.004
841 5. van Middendorp JJ, Goss B, Urquhart S, Atresh S, Williams RP, Schuetz M.
842 Diagnosis and prognosis of traumatic spinal cord injury. *Global Spine J.* 2011;1: 1–8.
843 doi:10.1055/s-0031-1296049
844 6. Krishna V, Andrews H, Varma A, Mintzer J, Kindy MS, Guest J. Spinal cord
845 injury: how can we improve the classification and quantification of its severity and
846 prognosis? *J Neurotrauma.* 2014;31: 215–227. doi:10.1089/neu.2013.2982
847 7. Adams MM, Hicks AL. Spasticity after spinal cord injury. *Spinal Cord.* 2005;43:
848 577–586. doi:10.1038/sj.sc.3101757
849 8. Biering-Sørensen F, Nielsen JB, Klinge K. Spasticity-assessment: a review.
850 *Spinal Cord.* 2006;44: 708–722. doi:10.1038/sj.sc.3101928
851 9. Lance JW. The control of muscle tone, reflexes, and movement: Robert
852 Wartenbeg Lecture. *Neurology.* 1980;30: 1303–1303. doi:10.1212/WNL.30.12.1303
853 10. Sheean G, McGuire JR. Spastic Hypertonia and Movement Disorders:
854 Pathophysiology, Clinical Presentation, and Quantification. *PM&R.* 2009;1: 827–833.
855 doi:10.1016/j.pmrj.2009.08.002
856 11. Pandyan A, Gregoric M, Barnes M, Wood D, Wijck FV, Burridge J, et al.
857 Spasticity: Clinical perceptions, neurological realities and meaningful measurement.
858 *Disability and Rehabilitation.* 2005;27: 2–6. doi:10.1080/09638280400014576
859 12. Vural M, Yalcinkaya EY, Celik EC, Gunduz B, Bozan A, Erhan B. Assessment
860 of quality of life in relation to spasticity severity and socio-demographic and clinical
861 factors among patients with spinal cord injury. *The Journal of Spinal Cord Medicine.*
862 2020;43: 193–200. doi:10.1080/10790268.2018.1543093

- 863 13. Field-Fote EC, Furbish CL, Tripp NE, Zanca JM, Dyson-Hudson T, Kirshblum
864 S, et al. Characterizing the Experience of Spasticity after Spinal Cord Injury: A National
865 Survey Project of the Spinal Cord Injury Model Systems Centers. *Archives of Physical
866 Medicine and Rehabilitation*. 2022;103: 764-772.e2. doi:10.1016/j.apmr.2021.03.040
867 14. De Mello Rieder M, Oses JP, Kutchak FM, Sartor M, Cecchini A, Rodolphi MS,
868 et al. Serum Biomarkers and Clinical Outcomes in Traumatic Spinal Cord Injury:
869 Prospective Cohort Study. *World Neurosurgery*. 2019;122: e1028–e1036.
870 doi:10.1016/j.wneu.2018.10.206
871 15. Rodrigues LF, Moura-Neto V, E Spohr TCLDS. Biomarkers in Spinal Cord
872 Injury: from Prognosis to Treatment. *Mol Neurobiol*. 2018;55: 6436–6448.
873 doi:10.1007/s12035-017-0858-y
874 16. Nielsen JB, Crone C, Hultborn H. The spinal pathophysiology of spasticity –
875 from a basic science point of view. *Acta Physiologica*. 2007;189: 171–180.
876 doi:10.1111/j.1748-1716.2006.01652.x
877 17. Sheean G. The pathophysiology of spasticity. *Euro J of Neurology*. 2002;9: 3–
878 9. doi:10.1046/j.1468-1331.2002.0090s1003.x
879 18. Dingu N, Bras H, Brocard F. Calpain role in the pathophysiology of spasticity
880 after spinal cord injury. *Cellular, Molecular, Physiological, and Behavioral Aspects of
881 Spinal Cord Injury*. Elsevier; 2022. pp. 249–261. doi:10.1016/B978-0-12-822427-
882 4.00021-6
883 19. Alizadeh A, Dyck SM, Karimi-Abdolrezaee S. Traumatic Spinal Cord Injury: An
884 Overview of Pathophysiology, Models and Acute Injury Mechanisms. *Front Neurol*.
885 2019;10: 282. doi:10.3389/fneur.2019.00282
886 20. Plantier V, Sanchez-Brualla I, Dingu N, Brocard C, Liabeuf S, Gackière F, et al.
887 Calpain fosters the hyperexcitability of motoneurons after spinal cord injury and leads
888 to spasticity. *eLife*. 2019;8: e51404. doi:10.7554/eLife.51404
889 21. Brocard C, Plantier V, Boulenguez P, Liabeuf S, Bouhadfane M, Viallat-Lieutaud
890 A, et al. Cleavage of Na⁺ channels by calpain increases persistent Na⁺ current and
891 promotes spasticity after spinal cord injury. *Nat Med*. 2016;22: 404–411.
892 doi:10.1038/nm.4061
893 22. Plantier V, Brocard F. Une nouvelle cible thérapeutique dans le traitement de la
894 spasticité après une lésion de la moelle épinière: la calpaïne. *Med Sci (Paris)*.
895 2017;33: 629–636. doi:10.1051/medsci/20173306020
896 23. Harris-Warrick RM, Pecchi E, Drouillas B, Brocard F, Bos R. Effect of size on
897 expression of bistability in mouse spinal motoneurons. *Journal of Neurophysiology*.
898 2024;131: 577–588. doi:10.1152/jn.00320.2023
899 24. Duflocq A, Le Bras B, Bullier E, Couraud F, Davenne M. Nav1.1 is
900 predominantly expressed in nodes of Ranvier and axon initial segments. *Molecular
901 and Cellular Neuroscience*. 2008;39: 180–192. doi:10.1016/j.mcn.2008.06.008
902 25. Drouillas B, Brocard C, Zanella S, Bos R, Brocard F. Persistent Nav1.1 and
903 Nav1.6 currents drive spinal locomotor functions through nonlinear dynamics. *Cell
904 Reports*. 2023;42: 113085. doi:10.1016/j.celrep.2023.113085
905 26. Li Y, Gorassini MA, Bennett DJ. Role of Persistent Sodium and Calcium
906 Currents in Motoneuron Firing and Spasticity in Chronic Spinal Rats. *Journal of
907 Neurophysiology*. 2004;91: 767–783. doi:10.1152/jn.00788.2003
908 27. Bennett DJ, Li Y, Siu M. Plateau Potentials in Sacrocaudal Motoneurons of
909 Chronic Spinal Rats, Recorded In Vitro. *Journal of Neurophysiology*. 2001;86: 1955–
910 1971. doi:10.1152/jn.2001.86.4.1955
911 28. Bennett DJ, Li Y, Harvey PJ, Gorassini M. Evidence for Plateau Potentials in
912 Tail Motoneurons of Awake Chronic Spinal Rats With Spasticity. *Journal of*

- 913 Neurophysiology. 2001;86: 1972–1982. doi:10.1152/jn.2001.86.4.1972
- 914 29. Harvey PJ, Li X, Li Y, Bennett DJ. 5-HT₂ Receptor Activation Facilitates a
915 Persistent Sodium Current and Repetitive Firing in Spinal Motoneurons of Rats With
916 and Without Chronic Spinal Cord Injury. *Journal of Neurophysiology*. 2006;96: 1158–
917 1170. doi:10.1152/jn.01088.2005
- 918 30. Harvey PJ, Li Y, Li X, Bennett DJ. Persistent Sodium Currents and Repetitive
919 Firing in Motoneurons of the Sacrocaudal Spinal Cord of Adult Rats. *Journal of*
920 *Neurophysiology*. 2006;96: 1141–1157. doi:10.1152/jn.00335.2005
- 921 31. Li Y, Bennett DJ. Persistent Sodium and Calcium Currents Cause Plateau
922 Potentials in Motoneurons of Chronic Spinal Rats. *Journal of Neurophysiology*.
923 2003;90: 857–869. doi:10.1152/jn.00236.2003
- 924 32. Gorassini MA, Knash ME, Harvey PJ, Bennett DJ, Yang JF. Role of
925 motoneurons in the generation of muscle spasms after spinal cord injury. *Brain*.
926 2004;127: 2247–2258. doi:10.1093/brain/awh243
- 927 33. Hornby TG, Rymer WZ, Benz EN, Schmit BD. Windup of Flexion Reflexes in
928 Chronic Human Spinal Cord Injury: A Marker for Neuronal Plateau Potentials? *Journal*
929 *of Neurophysiology*. 2003;89: 416–426. doi:10.1152/jn.00979.2001
- 930 34. Nickolls P, Collins DF, Gorman RB, Burke D, Gandevia SC. Forces consistent
931 with plateau-like behaviour of spinal neurons evoked in patients with spinal cord
932 injuries. *Brain*. 2004;127: 660–670. doi:10.1093/brain/awh073
- 933 35. Schoch KM, von Reyn CR, Bian J, Telling GC, Meaney DF, Saatman KE. Brain
934 injury-induced proteolysis is reduced in a novel calpastatin-overexpressing transgenic
935 mouse. *J Neurochem*. 2013;125: 909–920. doi:10.1111/jnc.12144
- 936 36. Von Reyn CR, Mott RE, Siman R, Smith DH, Meaney DF. Mechanisms of
937 calpain mediated proteolysis of voltage gated sodium channel α -subunits following *in*
938 *vitro* dynamic stretch injury. *Journal of Neurochemistry*. 2012;121: 793–805.
939 doi:10.1111/j.1471-4159.2012.07735.x
- 940 37. Von Reyn CR, Spaethling JM, Mesfin MN, Ma M, Neumar RW, Smith DH, et al.
941 Calpain Mediates Proteolysis of the Voltage-Gated Sodium Channel α -Subunit. *J*
942 *Neurosci*. 2009;29: 10350–10356. doi:10.1523/JNEUROSCI.2339-09.2009
- 943 38. Schnake KJ, Schroeder GD, Vaccaro AR, Oner C. AOSpine Classification
944 Systems (Subaxial, Thoracolumbar). *Journal of Orthopaedic Trauma*. 2017;31: S14–
945 S23. doi:10.1097/BOT.0000000000000947
- 946 39. Guest J, Datta N, Jimshelishvili G, Gater DR. Pathophysiology, Classification
947 and Comorbidities after Traumatic Spinal Cord Injury. *JPM*. 2022;12: 1126.
948 doi:10.3390/jpm12071126
- 949 40. Talbott JF, Whetstone WD, Readdy WJ, Ferguson AR, Bresnahan JC, Saigal
950 R, et al. The Brain and Spinal Injury Center score: a novel, simple, and reproducible
951 method for assessing the severity of acute cervical spinal cord injury with axial T2-
952 weighted MRI findings. *SPI*. 2015;23: 495–504. doi:10.3171/2015.1.SPINE141033
- 953 41. El Masry WS, Tsubo M, Katoh S, El Miligui YHS, Khan A. Validation of the
954 American Spinal Injury Association (ASIA) Motor Score and the National Acute Spinal
955 Cord Injury Study (NASCIS) Motor Score. *Spine*. 1996;21: 614–619.
956 doi:10.1097/00007632-199603010-00015
- 957 42. Gabbe BJ, Cameron PA, Finch CF. The status of the Glasgow Coma Scale.
958 *Emergency Medicine*. 2003;15: 353–360. doi:10.1046/j.1442-2026.2003.00474.x
- 959 43. Harb A, Kishner S. Modified Ashworth Scale. *StatPearls*. Treasure Island (FL):
960 StatPearls Publishing; 2024. Available:
961 <http://www.ncbi.nlm.nih.gov/books/NBK554572/>
- 962 44. McMillan T, Wilson L, Ponsford J, Levin H, Teasdale G, Bond M. The Glasgow

- 963 Outcome Scale — 40 years of application and refinement. *Nat Rev Neurol*. 2016;12:
964 477–485. doi:10.1038/nrneurol.2016.89
- 965 45. Jenkinson C, Coulter A, Wright L. Short form 36 (SF36) health survey
966 questionnaire: normative data for adults of working age. *BMJ*. 1993;306: 1437–1440.
967 doi:10.1136/bmj.306.6890.1437
- 968 46. Bouhassira D, Attal N, Alchaar H, Boureau F, Brochet B, Bruxelle J, et al.
969 Comparison of pain syndromes associated with nervous or somatic lesions and
970 development of a new neuropathic pain diagnostic questionnaire (DN4). *Pain*.
971 2005;114: 29–36. doi:10.1016/j.pain.2004.12.010
- 972 47. Copes WS, Champion HR, Sacco WJ, Lawnick MM, Keast SL, Bain LW. The
973 Injury Severity Score Revisited: The Journal of Trauma: Injury, Infection, and Critical
974 Care. 1988;28: 69–77. doi:10.1097/00005373-198801000-00010
- 975 48. Le Gall J-R. A New Simplified Acute Physiology Score (SAPS II) Based on a
976 European/North American Multicenter Study. *JAMA*. 1993;270: 2957.
977 doi:10.1001/jama.1993.03510240069035
- 978 49. Moreno R, Vincent J-L, Matos R, Mendonça A, Cantraine F, Thijs L, et al. The
979 use of maximum SOFA score to quantify organ dysfunction/failure in intensive care.
980 Results of a prospective, multicentre study. *Intensive Care Medicine*. 1999;25: 686–
981 696. doi:10.1007/s001340050931
- 982 50. Khwaja A. KDIGO Clinical Practice Guidelines for Acute Kidney Injury. *Nephron*
983 *Clin Pract*. 2012;120: c179–c184. doi:10.1159/000339789
- 984 51. Yokobori S, Zhang Z, Moghieb A, Mondello S, Gajavelli S, Dietrich WD, et al.
985 Acute Diagnostic Biomarkers for Spinal Cord Injury: Review of the Literature and
986 Preliminary Research Report. *World Neurosurgery*. 2015;83: 867–878.
987 doi:10.1016/j.wneu.2013.03.012
- 988 52. Pineda JA, Lewis SB, Valadka AB, Papa L, Hannay HJ, Heaton SC, et al.
989 Clinical Significance of α II-Spectrin Breakdown Products in Cerebrospinal Fluid after
990 Severe Traumatic Brain Injury. *Journal of Neurotrauma*. 2007;24: 354–366.
991 doi:10.1089/neu.2006.003789
992

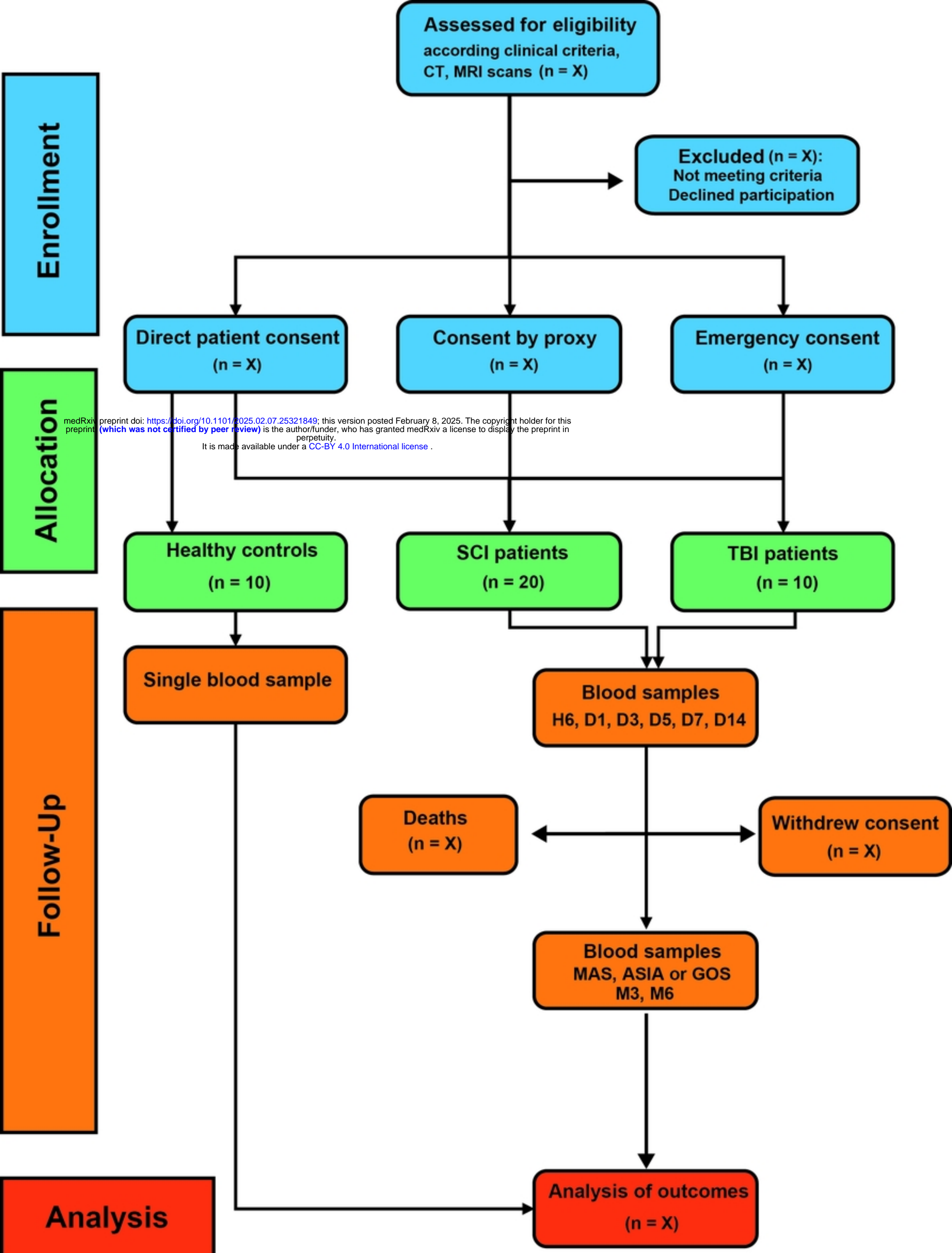


Figure 1

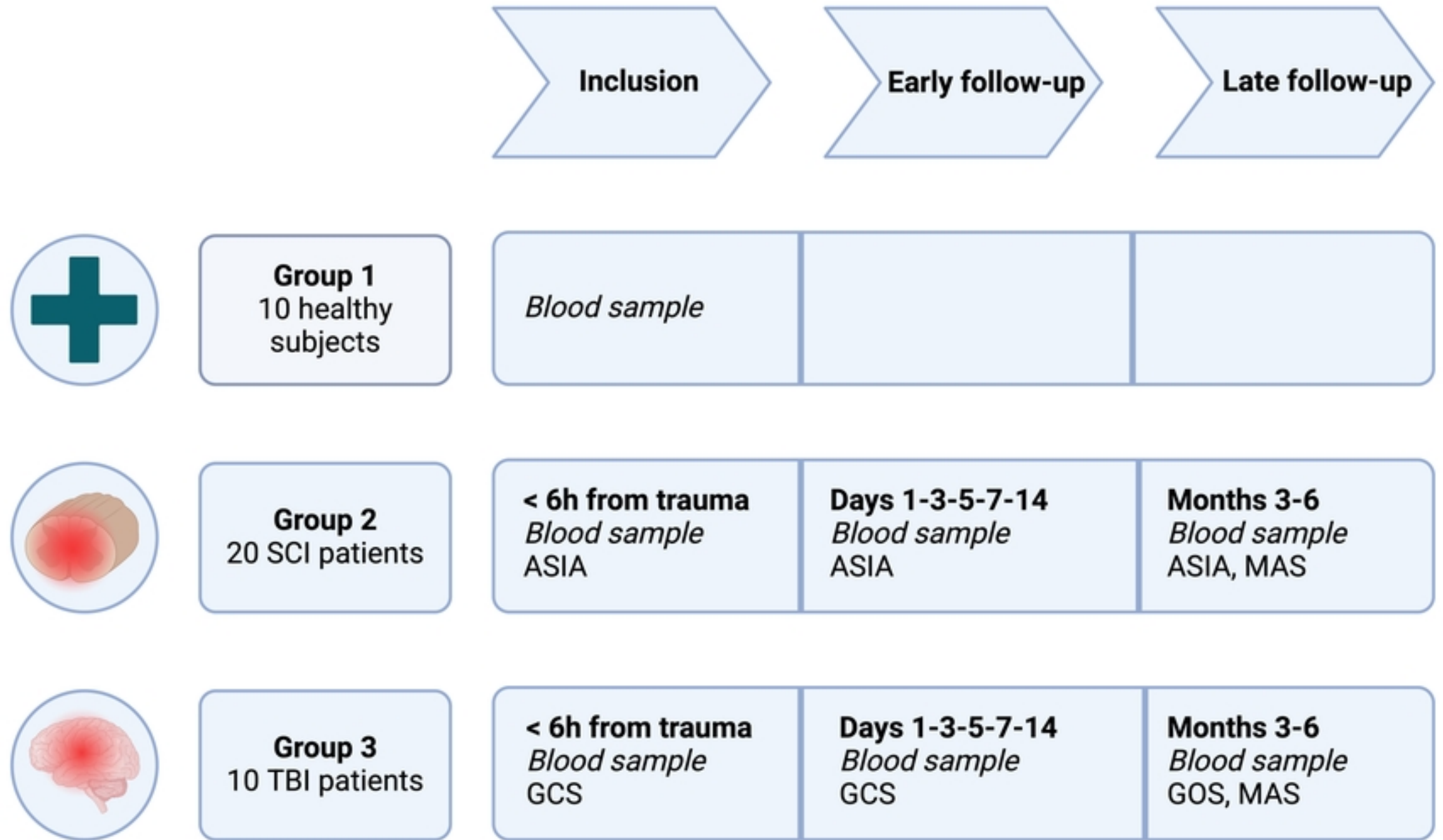


Figure 2

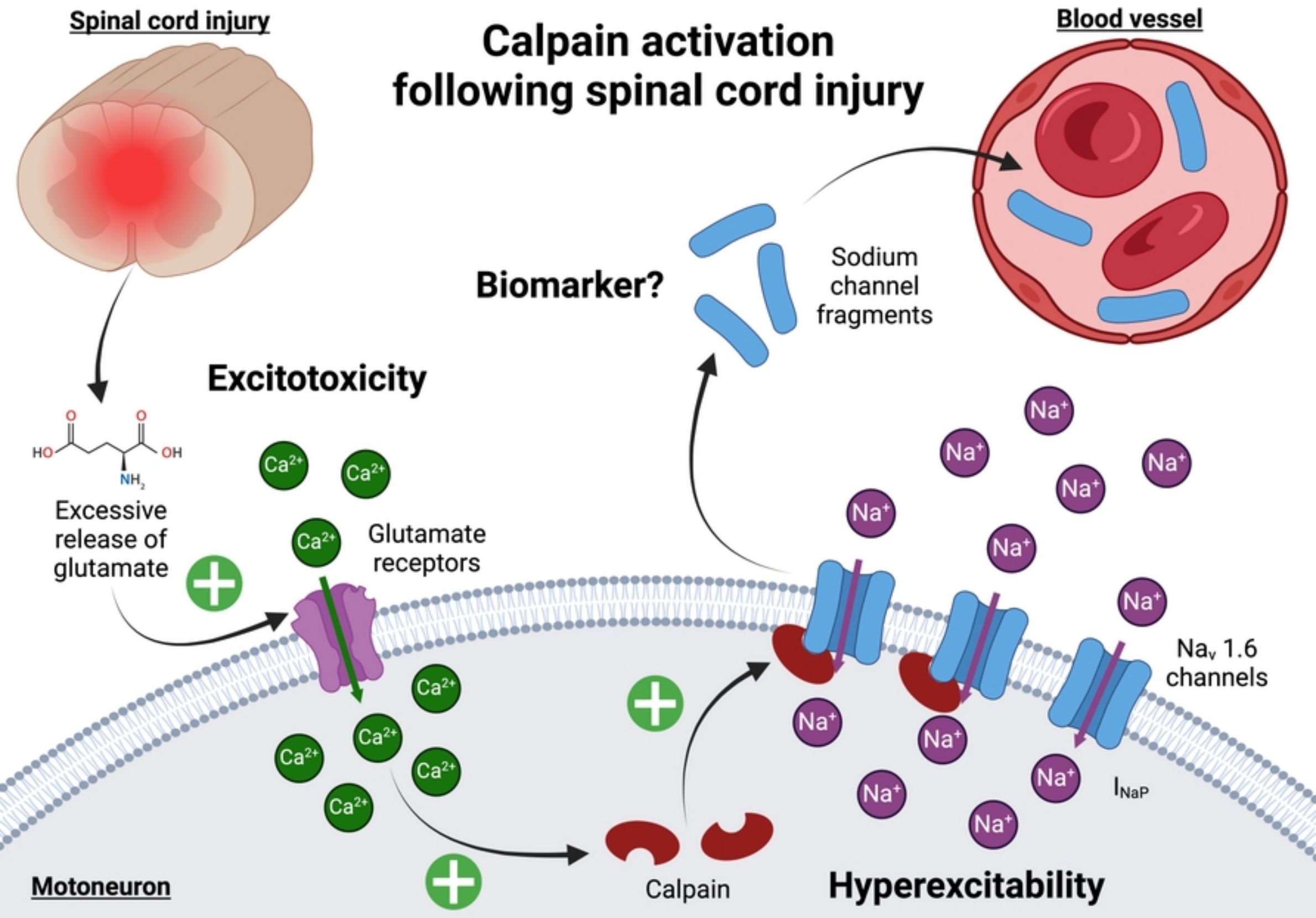


Figure 3