

Explainable advanced electrocardiography at rest for ruling out myocardial ischemia on stress echocardiography

Kevin X Yang^{1,2}, Johan von Scheele³, Maren Maanja³, Daniel E Loewenstein³,
Todd T Schlegel^{3,4}, Martin Ugander^{1,2,3*}, Rebecca Kozor^{1*}

¹ Kolling Institute, Royal North Shore Hospital, and Faculty of Medicine and Health,
University of Sydney, Sydney, Australia

² St Vincent's Clinical School, University of New South Wales, Sydney, Australia

³ Department of Clinical Physiology, Karolinska University Hospital, and Karolinska
Institutet, Stockholm, Sweden

⁴ Nicollier-Schlegel SARL, Trélex, Switzerland

* equal contributions as senior author

Key words: Advanced ECG; Stress echocardiography

Corresponding author:

Dr Rebecca Kozor, BSc (Med) MBBS PhD FRACP FCSANZ

Associate Professor, Faculty of Medicine and Health, University of Sydney

Cardiologist, Royal North Shore Hospital | North Shore Private Hospital

Address: Kolling Building, Level 12 | Royal North Shore Hospital | St Leonards NSW 2065 |

Australia

Email: rebecca.kozor@sydney.edu.au

NOTE: This preprint reports new research that has not been certified by peer review and should not be used to guide clinical practice.

Abstract

Background: Stress echocardiography (SE) is relatively resource intensive and has a low incidence of abnormal tests for detecting coronary artery disease (CAD) in low-to-intermediate risk patients. This study aimed to derive and determine the diagnostic performance of a resting advanced electrocardiography (A-ECG) score for detecting inducible myocardial ischemia on SE in patients with low-to-intermediate risk stable chest pain. **Methods:** Patients were included if they presented with low-to-intermediate risk stable chest pain to the emergency department, had acute coronary syndrome ruled out by electrocardiography (ECG) and high-sensitivity troponin, and subsequently underwent outpatient SE. Patients were excluded if they had known CAD or confounders on resting ECG. A-ECG was retrospectively applied to a standard resting 12-lead ECG and a multivariable logistic regression score was derived to predict myocardial ischemia on SE. **Results:** Among 292 patients (51% male, age 58 ± 14 years), 24 (8%) exhibited inducible myocardial ischemia on SE. A 3-parameter A-ECG score had an area under the receiver-operating characteristic curve (AUC [bootstrapped 95% confidence interval]) of 0.85 [0.75–0.93], sensitivity 92 [67–100]%, specificity 67 [64–94]%, positive predictive value 22 [20–55]%, negative predictive value 99 [96–100]%, positive likelihood ratio 2.8 [2.5–12.0] and inverse negative likelihood ratio 8.1 [2.5–18.0]. **Conclusions:** An A-ECG score had a good overall diagnostic performance and excellent performance for ruling out inducible myocardial ischemia on SE. This supports the use of an A-ECG score to triage and improve the selection of patients with low-intermediate risk stable chest pain that should undergo further testing with SE.

1 **Introduction**

2 Stress echocardiography (SE) is well-validated for diagnostic and prognostic use in coronary
3 artery disease (CAD)^{1,2}. It is routinely performed to investigate stable chest pain in patients
4 with a low-intermediate risk of CAD. However, SE is relatively time and resource-
5 consuming, requiring considerable expertise for reliable interpretation. The incidence of
6 inducible myocardial ischemia on SE and other stress imaging modalities has also declined
7 over time, now as low as 4% in contemporary populations^{3,4}. This incurs unnecessary costs to
8 patients and the healthcare system without substantial clinical utility. As such, there is an
9 unmet need for a triage tool that more accurately predicts which patients will exhibit
10 inducible myocardial ischemia.

11
12 The standard resting 12-lead electrocardiogram (ECG) is simple, low-cost, quickly
13 performed, and widely available. It is ubiquitously conducted for patients presenting to the
14 emergency department with chest pain. However, visual assessment of the resting ECG has
15 poor diagnostic accuracy for detecting CAD⁵. Advanced electrocardiography (A-ECG)
16 involves the measurement of various advanced and conventional ECG measures and
17 subsequently using multivariable statistics to detect heart disease⁶. A-ECG incorporates
18 signal averaging, derived vectorcardiography, and measurement of QRS and T waveform
19 complexity by singular value decomposition^{7,8}. A-ECG analysis can be applied to a standard
20 resting 12-lead digital ECG, providing diagnostic information that cannot be discerned by
21 visual assessment. In one study, A-ECG was shown to rule out significant CAD based on
22 cardiac computed tomography angiography (CCTA) with high specificity⁹. This supports its
23 use as a powerful triaging tool for chest pain by identifying patients who do not require
24 further investigations. However, A-ECG has not yet been validated using SE.

25

26 Therefore, the aim of the study was to derive and determine the diagnostic performance of an
27 A-ECG score for detecting inducible myocardial ischemia on SE in patients with low-to-
28 intermediate risk stable chest pain. We hypothesised that an A-ECG score from the resting
29 12-lead ECG would have a clinically useful diagnostic performance for detecting inducible
30 myocardial ischemia on SE in these patients.

31 **Methodology**

32 *Study participants*

33 The study population consisted of adult patients retrospectively recruited between February
34 2017 and March 2022 who presented with cardiac-suspected chest pain to the emergency
35 department at Royal North Shore Hospital, had myocardial infarction ruled out by resting
36 ECG and blood troponin levels, were deemed low-to-intermediate risk by HEART score¹⁰,
37 and were subsequently referred to the rapid access chest pain clinic (RACC) for SE. Patients
38 were excluded if they had a pacemaker or known CAD defined as having a history of
39 myocardial infarction, percutaneous coronary intervention, coronary artery bypass grafting or
40 documented coronary artery stenosis >50% on invasive angiography or CCTA. Patient data
41 was retrospectively obtained from electronic medical records. The study was approved by the
42 Northern Sydney Local Health District Human Research Ethics Committee
43 (2019/STE10454). All patients provided written informed consent, or a waiver of consent
44 was provided by the ethics committee.

45

46 *Stress echocardiography*

47 All SE tests were performed using an exercise treadmill following the Bruce protocol¹¹.
48 Inducible myocardial ischemia on SE was defined as a stress-induced left ventricular regional
49 wall motion abnormality as determined by the reporting cardiologist in the RACC. Patients

50 were excluded if they had an uninterpretable test or if their peak heart rate was less than 85%
51 of their maximum predicted heart rate (220 – age) without ischemia.

52

53 *Exercise electrocardiography*

54 Treadmill exercise ECG (ExECG) was performed simultaneously alongside SE in all
55 patients. Inducible myocardial ischemia on ExECG was defined as ≥ 1 millimetre of
56 horizontal or down-sloping ST depression in 2 contiguous leads during exercise or recovery.

57 All ST segment measurements were performed 80 milliseconds after the J-point. Patients
58 who tested negative on SE but had equivocal findings on ExECG (horizontal/down-sloping
59 ST segment depression < 1 millimetre) were excluded.

60

61 *Resting ECG Acquisition and Analysis*

62 A 10-second resting digital ECG was performed (Philips, Best, the Netherlands) during
63 RACC visit prior to SE. Patients were excluded if their digital ECG could not be
64 retrospectively retrieved. A large proportion of digital ECGs were not stored due to technical
65 issues in the early establishment of the RACC. Available ECG files were anonymized,
66 reviewed, and excluded if they contained atrial fibrillation or atrial flutter, QRS duration $>$
67 120 milliseconds, missing leads, or excessive noise. Additionally, a large proportion of files
68 contained 50 Hz noise from electrical interference which was not detectable at the time of
69 recording due to a noise filter, and needed to be excluded. Included ECGs were analysed
70 using in-house software to produce conventional and advanced ECG parameters.

71 Conventional parameters included all major intervals, axes, voltages and ST segment levels.

72 Advanced parameters included derived vectorcardiographic measures and waveform
73 complexity measures of the QRS and T wave quantified by singular value decomposition.

74

75 *Statistical Analysis*

76 All statistical analyses were performed using the programming language R 4.1.2 (R Core
77 Team, R Foundation for Statistical Computing, Vienna, Austria). Categorical variables are
78 expressed as frequencies and percentages. Continuous variables are expressed as mean±
79 standard deviation. Baseline characteristics between groups were compared using Fisher's
80 exact test for categorical variables and one-way analysis of variance for continuous variables.
81 A multivariable logistic regression model was trained for inducible myocardial ischemia on
82 SE. Feature selection was performed by first identifying univariately significant parameters
83 using the Mann-Whitney U test. Exhaustive search was then performed on these parameters
84 to identify the best performing model, with the number of parameters included in the model
85 limited to 3 (~1 parameter per 10 events). Performance was measured using the area under
86 the receiver operating characteristic curve (AUC), sensitivity, specificity, predictive values,
87 and likelihood ratios. The multivariate statistical significance of model parameters were
88 evaluated using the likelihood-ratio chi-square test. Multicollinearity between model
89 parameters was evaluated using variance inflation index. The optimal probability threshold
90 was determined as the value that maximised Youden's index. The intercept for the logistic
91 model was adjusted so that the probability threshold for a positive result was set to 50%.
92 Non-parametric percentile bootstrap was performed with 2000 samples to assess the stability
93 of the coefficients and calculate 95% confidence intervals for all performance metrics¹². A
94 two-sided p-value < 0.05 was considered statistically significant.

95

96 **Results**

97 *Study population*

98 The patient inclusion flowchart is shown in Figure 1. From 1,670 patients with chest pain
99 who were managed through the RACC during the time period, 589 underwent SE plus had an
100 available digital clinic ECG, and after exclusions, 292 patients were included as the final
101 study population. The baseline characteristics are presented in Table 1. The mean age was
102 58 ± 14 years and 150 (51%) were males. The majority of patients had a left ventricular
103 ejection fraction (LVEF) $> 50\%$, 6 (2%) had a mildly reduced LVEF (40–50%), and none had
104 an LVEF $< 40\%$. The mean HEART score was 3 ± 1 , reflecting patients had a low-to-
105 intermediate 6-week risk of MACE¹⁰. Both SE and ExECG were negative for inducible
106 myocardial ischemia in 240 patients (82%), forming the negative SE group. Inducible
107 myocardial ischemia was present on SE in 24 patients (8%), forming the positive SE group.
108 The final subgroup were those with a negative SE but a positive ExECG positive (29 patients
109 (10%), forming the discordant ExECG group. Patients in the positive SE and discordant
110 ExECG groups were older than those in the negative group ($p=0.01$), otherwise the three
111 groups were similar in baseline characteristics.

112

113 *Development of the A-ECG Score*

114 The best 3-parameter A-ECG score for predicting inducible myocardial ischemia by SE
115 consisted of one conventional ECG measure and two advanced ECG measures, as follows:
116 (1) the natural log of the R wave duration in lead V6 (R Dur V6), (2) the normalised 4th
117 singular value of the T wave (4th T Eigen), and (3) the azimuth direction at the final eighth of
118 the spatial ST-T loop (ST-T Azimuth). All included measures were minimally correlated by
119 variance inflation factor (< 1.1) and had stable coefficients across bootstrapping. These
120 measures are compared between the negative and positive groups in Table 2. The regression

121 coefficients are reported in *Table 3*. After re-arranging the logit function, the A-ECG score
122 for inducible ischemia on SE was calculated as:

$$123 \quad AECG \text{ Score} = \frac{1}{1 + e^{-[-15 + R \text{ Dur } V6 * 3.5 + 4th \text{ T Eigen} * 0.16 + ST-T \text{ Azimuth} * (-0.013)]}} * 100$$

124

125 *A-ECG Score Performance*

126 The diagnostic performance of the optimal 3-parameter score for detecting inducible
127 myocardial ischemia on SE is presented in *Table 4* and *Figure 2*. The probability cut-off with
128 the highest Youden's index was 0.06, and this was scaled to 50% by adjusting the intercept of
129 the model. Of the 24 patients in the positive SE group, 2 (8%) had scores below the adjusted
130 threshold of 50%, representing false negatives. 78 out of the 239 patients (33%) in the
131 negative group had scores above 50%, representing false positives. As an example, *Figure 3*
132 compares the resting ECGs between two representative patients with high and low A-ECG
133 scores for inducible myocardial ischemia on SE.

134

135 **Discussion**

136 This study demonstrates that a 3-parameter A-ECG score applied to a standard resting 12-
137 lead ECG has a good AUC and excellent negative predictive value and inverse negative
138 likelihood for ruling out inducible myocardial ischemia on SE. This is the first study to
139 investigate the ability of A-ECG to detect inducible myocardial ischemia on SE, and thus
140 could be used as a simple test to help triage low-to-intermediate risk patients into needing a
141 SE or not.

142

143 SE has been validated as an excellent non-invasive test for the diagnosis of significant CAD
144 and is widely performed to investigate stable chest pain^{1,2}. Although invasive angiography is
145 the gold standard for the diagnosis of CAD, SE provides independent prognostic
146 information^{13,14}. For these reasons, SE was chosen as the primary outcome to train the logistic
147 model.

148

149 ***Explainable A-ECG Measures***

150 Measures of waveform complexity are obtained through singular value decomposition, a
151 method of dimensionality reduction. In healthy patients, most of the variance can be
152 explained from a single eigenvalue (the 1st eigenvalue). In patients with cardiac disease,
153 higher numbered eigenvectors account for greater voltage as the signal becomes more
154 complex¹⁵. The normalised 4th singular value of the T wave was included in our model, being
155 elevated in patients with positive SE. This indicates elevated T wave complexity and
156 abnormal repolarisation. Large studies have shown measures of waveform complexity to
157 predict incident heart failure and cardiovascular mortality^{8,16}.

158

159 The QRS complex reflects depolarisation of the ventricular myocardium. The natural log of
160 the R wave duration in lead V6 was included in our model, being elevated in patients with
161 positive SE. This may reflect conduction delay caused by ischemia to the conduction system
162 and myocardium. In general populations, QRS duration is independently associated with
163 CAD, myocardial infarction and cardiovascular mortality^{17,18}. Also, in patients referred to
164 stress echocardiography for suspected CAD, QRS duration is an independent predictor of
165 cardiac death and non-fatal infarction¹⁹.

166

167 Vectorcardiography (VCG) is the representation of the heart's electrical activity in three
168 spatial planes²⁰. In A-ECG analysis, the VCG is derived from the standard 12-lead ECG
169 using validated methods²¹, providing ready access to hundreds of additional VCG parameters.
170 Our model contained one VCG-derived measure: the azimuth direction at the final eighth of
171 the spatial ST-T loop, which was more positively directed in patients with negative SE. The
172 mean values for this measure in our negative SE cohort are similar to those previously
173 reported for healthy men²², whereas those in our positive SE cohort likely diverge from
174 normal²³. However, the mechanisms behind these observed directional differences in T wave
175 orientation require further elucidation.

176

177 ***A-ECG Model Performance***

178 The high NPV and low PPV observed in our model is inherent to the low prevalence of
179 outcome events. If used in a similar population to ours, patients with chest pain that receive
180 an A-ECG score < 50% are highly unlikely to exhibit inducible myocardial ischemia on SE
181 and thus we suggest would not require a SE or further testing for CAD. The poorer PPV
182 indicates that a positive A-ECG score does not guarantee inducible ischemia on SE. At face
183 value, this would greatly reduce its clinical utility. However, the utility of the A-ECG score is

184 not to replace SE, but to optimise its testing population. In our study cohort, if the 163 out of
185 263 patients with an A-ECG score < 50% were discharged without referral to SE, only 2 of
186 these (1.2%) would have gone on to test positive. Doing so would greatly reduce the level of
187 unnecessary testing and associated costs while missing very few patients that would
188 otherwise test positive.

189

190 *Comparison to Clinical Risk Scores*

191 Current triage of patients to SE depends on risk of major adverse cardiovascular events and
192 pre-test probability for CAD based on clinical assessment. Clinical risk scores such as the
193 Diamond-Forrester and Duke clinical cores were developed to estimate pre-test probability
194 for CAD based on easily obtained clinical findings^{24,25}. However, these scores have been
195 shown to overestimate pre-test probability for CAD in contemporary populations^{26,27}. This
196 may contribute to the decrease in incidence of positive SE results over the last decades^{3,4}.

197

198 There is a growing sentiment that the level of cardiac testing is inappropriately high,
199 incurring unnecessary costs to patients and the healthcare system²⁸. One study aimed to
200 identify the clinical factors that specifically predicted inducible myocardial ischemia on
201 nuclear stress testing²⁹. Known CAD, typical angina and reduced LVEF were identified as
202 the strongest independent predictors²⁹. Our study offers an alternative method of estimating
203 risk of CAD, by using advanced and conventional ECG parameters. We did not incorporate
204 any clinical variables into our model in order to specifically assess the predictive power of A-
205 ECG variables alone. While clinical predictors are robust due to their extensive real-world
206 usage and validation²⁶, A-ECG measures have a theoretical basis alongside proven clinical
207 utility in many large studies^{7,8,16,30}.

208

209 *Comparison to Conventional ECG*

210 The resting conventional ECG is readily available and forms a component of many clinical
211 risk scores for CAD. Previous studies have attempted to quantify the diagnostic potential of
212 the resting conventional ECG for CAD outside of STEMI. One cross-sectional study
213 demonstrated that patients with resting ECG abnormalities have a higher prevalence of
214 subclinical atherosclerosis by coronary calcium score³¹. Another study determined that
215 resting ECG abnormalities defined by the Minnesota code could predict myocardial ischemia
216 on stress perfusion magnetic resonance imaging with a hazard ratio of 2.5 (95% CI: 1.4-
217 4.4)³². Our study did not use pre-determined ECG abnormalities to predict myocardial
218 ischemia. Rather, features selection methods were used to select the optimal parameters from
219 a large pool of conventional and advanced ECG parameters. As a result, our A-ECG score
220 can predict myocardial ischemia on SE even on resting ECGs that demonstrate no remarkable
221 findings to the naked eye. An example of this is demonstrated in Figure 3.

223 *Comparison to Other A-ECG Scores*

224 The excellent performance of A-ECG for predicting inducible myocardial ischemia on SE is
225 in alignment with previous studies which have demonstrated its ability to distinguish various
226 cardiac conditions^{6,9,33-35}. A-ECG has been shown to outperform optimized pooled criteria
227 from the conventional ECG. A 7-parameter A-ECG score has been shown to have a
228 sensitivity of 89% and specificity of 94% for predicting pooled CAD, left ventricular
229 hypertrophy, and left ventricular systolic dysfunction⁶. Also, within our same cohort of chest
230 pain patients, A-ECG has been validated with a high specificity of 86% for ruling out
231 significant stenosis on CCTA⁹. A recent study showed that A-ECG can accurately diagnose
232 apical hypertrophic cardiomyopathy while also distinguishing from other cardiac disease

233 using linear discriminant analysis³⁵. This was able to accurately identify CAD with an AUC
234 of 0.99 and specificity of 98%³⁵.

235

236 *Comparison to Artificial Intelligence*

237 There is an emerging body of research addressing the medical applications of machine
238 learning, with the ECG being a prime target due to its raw digital data that is available in
239 large numbers for training³⁶. Multivariable logistic regression itself is a form of supervised
240 machine learning used for regression and classification. Artificial intelligence (AI) usually
241 refers to unsupervised deep learning, which is beneficial in that it does not require human
242 selection of parameters that is limited by current scientific understanding³⁶. Studies have
243 shown that AI can accurately predict various cardiac conditions from a resting ECG^{37,38}.
244 However, the prevailing issue with unsupervised AI is that its decision process cannot be
245 interpreted by humans – a so-called “black box”. Consequently, there exists a sentiment that
246 AI may not be appropriate for guiding medical decisions³⁹. By comparison, the A-ECG score
247 from the current study is comprised of known A-ECG measures and can therefore be
248 considered transparent or explainable, when compared to unsupervised AI methods.

249

250 *Clinical Implications*

251 The current study demonstrates the utility of a resting 12-lead A-ECG score to screen low-to-
252 intermediate risk chest pain patients for those that would exhibit inducible myocardial
253 ischemia on SE. The conventional 12-lead ECG is routinely performed in the emergency
254 department and outpatient clinics as a quick, cost-effective, and simple test for chest pain. An
255 A-ECG score inherits these advantages plus provides diagnostic information that cannot be
256 discerned by the human eye. Automatic A-ECG analysis of a resting 12-lead ECG can
257 quickly identify the probability of testing positive for inducible myocardial ischemia on SE.

258 This analysis can be applied to ECGs acquired from any vendor that stores a digital raw data
259 file that is accessible to the user. Hence, the addition of an A-ECG score may significantly
260 improve triage to SE and reduce unnecessary testing in this patient population.

261

262 ***Limitations***

263 The study was performed retrospectively from a single centre and may not be applicable to
264 other patient populations. It also contains a limited sample size, particularly in the outcome
265 group. There exists the possibility of overfitting, whereby the model trains on noise specific
266 to our patient sample. Consequently, the diagnostic performance of the A-ECG score may
267 decrease when applied to another sample. Due to the limited data, it was not feasible to split
268 patients into a training and test group. Instead, the model was trained on all available data and
269 resampled using non-parametric bootstrapping to obtain 95% confidence intervals. Also, the
270 number of parameters incorporated into the model was limited to 3 to prevent overfitting.
271 We did not correlate the SE results with any further tests such as invasive or CT coronary
272 angiography.

273 Future studies should aim to test the reproducibility of the A-ECG score in an independent
274 validation cohort, the clinical implementation in an emergency department setting, and
275 assessing short and long term clinical and economical outcomes.

276 ***Conclusions***

277 A 3-parameter resting A-ECG score has a good AUC and excellent inverse negative
278 likelihood ratio for detecting inducible myocardial ischemia on SE. This supports the use of
279 A-ECG assessment on a resting 12-lead ECG to effectively identify patients with chest pain
280 at low-to-intermediate risk that do or do not require further investigation for CAD. However,
281 further larger prospective validation in independent cohorts is warranted.

282

283 **Disclosures**

284 Todd T Schlegel is owner and founder of Nicollier-Schlegel SARL, which performs ECG
285 interpretation consultancy using software used in the current study. Todd T Schlegel and
286 Martin Ugander are founders of Advanced ECG Systems, a company that is developing
287 commercial applications of advanced ECG technology used in the current study. Rebecca
288 Kozor has a financial interest in Advanced ECG Systems through being married to Martin
289 Ugander.

290

291 **Funding**

292 Rebecca Kozor was funded in part by a grant from New South Wales Health.

293

294 **Authorship**

295 **Kevin X Yang:** Software, Validation, Formal Analysis, Investigation, Data curation, Writing
296 - Original Draft, Writing – Review & Editing, Visualisation. **Johan von Scheele:** Software,
297 Validation, Formal analysis, Investigation, Data curation, Writing – Original Draft, Writing –
298 Review & Editing, Visualisation. **Maren Maanja:** Software, Formal analysis, Writing –
299 Review & Editing. **Daniel E Loewenstein:** Software, Formal analysis, Resources, Writing –
300 Review & Editing. **Todd T Schlegel:** Software, Formal analysis, Resources, Writing –
301 Review & Editing. **Martin Ugander:** Conceptualisation, Methodology, Resources, Writing -
302 Review & Editing, Supervision, Project Administration, **Rebecca Kozor:** Conceptualisation,
303 Methodology, Resources, Data Curation, Writing - Review & Editing, Supervision, Project
304 Administration.

References

- 1 Pontone, G. *et al.* Diagnostic performance of non-invasive imaging for stable coronary artery disease: A meta-analysis. *Int. J. Cardiol.* **300**, 276-281 (2020).
- 2 Fleischmann, K. E., Hunink, M. G., Kuntz, K. M. & Douglas, P. S. Exercise echocardiography or exercise SPECT imaging? A meta-analysis of diagnostic test performance. *JAMA* **280**, 913-920 (1998).
- 3 Cortigiani, L., Ramirez, P., Coltelli, M., Bovenzi, F. & Picano, E. Drop-off in positivity rate of stress echocardiography based on regional wall motion abnormalities over the last three decades. *Int. J. Cardiovasc. Imaging* **35**, 627-632 (2019).
- 4 Bouzas-Mosquera, A. *et al.* Temporal changes in the use and results of exercise echocardiography. *Eur. Heart J. Cardiovasc. Imaging* **16**, 1207-1212 (2015).
- 5 Mahmoodzadeh, S., Moazenzadeh, M., Rashidinejad, H. & Sheikhvatan, M. Diagnostic performance of electrocardiography in the assessment of significant coronary artery disease and its anatomical size in comparison with coronary angiography. *J. Res. Med. Sci.* **16**, 750-755 (2011).
- 6 Schlegel, T. T. *et al.* Accuracy of advanced versus strictly conventional 12-lead ECG for detection and screening of coronary artery disease, left ventricular hypertrophy and left ventricular systolic dysfunction. *BMC Cardiovasc. Disord.* **10**, 28 (2010).
- 7 Kardys, I. *et al.* Spatial QRS-T angle predicts cardiac death in a general population. *Eur. Heart J.* **24**, 1357-1364 (2003).
- 8 Rautaharju, P. M., Kooperberg, C., Larson, J. C. & LaCroix, A. Electrocardiographic predictors of incident congestive heart failure and all-cause mortality in postmenopausal women: the Women's Health Initiative. *Circulation* **113**, 481-489 (2006).
- 9 Rajamohan, M. *et al.* Advanced Electrocardiography Has A High Negative Predictive Value For Ruling Out Significant Coronary Artery Disease By Cardiovascular CT. *J. Cardiovasc. Comput. Tomogr.* **15**, S1 (2021).
- 10 Six, A. J., Backus, B. E. & Kelder, J. C. Chest pain in the emergency room: value of the HEART score. *Neth. Heart J.* **16**, 191-196 (2008).
- 11 Bruce, R. A. Exercise testing of patients with coronary heart disease. Principles and normal standards for evaluation. *Ann. Clin. Res.* **3**, 323-332 (1971).
- 12 Carpenter, J. & Bithell, J. Bootstrap confidence intervals: when, which, what? A practical guide for medical statisticians. *Stat. Med.* **19**, 1141-1164 (2000).

- 13 Gilchrist, I., Foy, A. & Davidson, W. A FALSE-POSITIVE STRESS ECHOCARDIOGRAM IS NOT THE SAME AS A NEGATIVE RESULT. *J. Am. Coll. Cardiol.* **69**, 1426-1426 (2017).
- 14 Sicari, R., Palinkas, A., Pasanisi, E. G., Venneri, L. & Picano, E. Long-term survival of patients with chest pain syndrome and angiographically normal or near-normal coronary arteries: the additional prognostic value of dipyridamole echocardiography test (DET). *Eur. Heart J.* **26**, 2136-2141 (2005).
- 15 Priori, S. G. *et al.* Evaluation of the Spatial Aspects of T-Wave Complexity in the Long-QT Syndrome. *Circulation* **96**, 3006-3012 (1997).
- 16 Okin, P. M. *et al.* Principal component analysis of the T wave and prediction of cardiovascular mortality in American Indians: the Strong Heart Study. *Circulation* **105**, 714-719 (2002).
- 17 Deen, J. F. *et al.* Comparison of QRS Duration and Associated Cardiovascular Events in American Indian Men Versus Women (The Strong Heart Study). *Am. J. Cardiol.* **119**, 1757-1762 (2017).
- 18 Badheka, A. O. *et al.* QRS Duration on Electrocardiography and Cardiovascular Mortality (from the National Health and Nutrition Examination Survey—III). *Am J Cardiol* **112**, 671-677 (2013).
- 19 Schinkel, A. F. *et al.* Prognostic significance of QRS duration in patients with suspected coronary artery disease referred for noninvasive evaluation of myocardial ischemia. *Am. J. Cardiol.* **104**, 1490-1493 (2009).
- 20 Pérez Riera, A. R. *et al.* Significance of vectorcardiogram in the cardiological diagnosis of the 21st century. *Clin. Cardiol.* **30**, 319-323 (2007).
- 21 Kors, J. A., van Herpen, G., Sittig, A. C. & van Bommel, J. H. Reconstruction of the Frank vectorcardiogram from standard electrocardiographic leads: diagnostic comparison of different methods. *Eur. Heart J.* **11**, 1083-1092 (1990).
- 22 Draper, H. W., Peffer, C. J., Stallmann, F. W., Littmann, D. & Pipberger, H. V. THE CORRECTED ORTHOGONAL ELECTROCARDIOGRAM AND VECTORCARDIOGRAM IN 510 NORMAL MEN (FRANK LEAD SYSTEM). *Circulation* **30**, 853-864 (1964).
- 23 Pipberger, H. V., Arms, R. J. & Stallmann, F. W. Automatic screening of normal and abnormal electrocardiograms by means of digital electronic computer. *Proc Soc Exp Biol Med* **106**, 130-132 (1961).

- 24 Diamond, G. A. & Forrester, J. S. Analysis of probability as an aid in the clinical diagnosis of coronary-artery disease. *N. Engl. J. Med.* **300**, 1350-1358 (1979).
- 25 Pryor, D. B., Harrell, F. E., Jr., Lee, K. L., Califf, R. M. & Rosati, R. A. Estimating the likelihood of significant coronary artery disease. *Am. J. Med.* **75**, 771-780 (1983).
- 26 Genders, T. S. *et al.* A clinical prediction rule for the diagnosis of coronary artery disease: validation, updating, and extension. *Eur. Heart J.* **32**, 1316-1330 (2011).
- 27 Wasfy, M. M. *et al.* Comparison of the Diamond-Forrester method and Duke Clinical Score to predict obstructive coronary artery disease by computed tomographic angiography. *Am. J. Cardiol.* **109**, 998-1004 (2012).
- 28 Ladapo, J. A., Blecker, S. & Douglas, P. S. Physician decision making and trends in the use of cardiac stress testing in the United States: an analysis of repeated cross-sectional data. *Ann. Intern. Med.* **161**, 482-490 (2014).
- 29 Rozanski, A. *et al.* The prevalence and predictors of inducible myocardial ischemia among patients referred for radionuclide stress testing. *J. Nucl. Cardiol.* (2021).
- 30 Yamazaki, T., Froelicher, V. F., Myers, J., Chun, S. & Wang, P. Spatial QRS-T angle predicts cardiac death in a clinical population. *Heart Rhythm* **2**, 73-78 (2005).
- 31 Kang, M., Chang, Y., Kang, J., Kim, Y. & Ryu, S. Electrocardiogram Risk Score and Prevalence of Subclinical Atherosclerosis: A Cross-Sectional Study. *J. Pers. Med.* **12** (2022).
- 32 Kaolawanich, Y., Thongsongsang, R., Songsangjinda, T. & Boonyasirinant, T. Clinical values of resting electrocardiography in patients with known or suspected chronic coronary artery disease: a stress perfusion cardiac MRI study. *BMC Cardiovasc. Disord.* **21**, 621 (2021).
- 33 Johnson, K. *et al.* Advanced Electrocardiography Identifies Left Ventricular Systolic Dysfunction in Non-Ischemic Cardiomyopathy and Tracks Serial Change over Time. *J. Cardiovasc. Dev. Dis.* **2**, 93-107 (2015).
- 34 Fernlund, E., Liuba, P., Carlson, J., Platonov, P. G. & Schlegel, T. T. MYBPC3 hypertrophic cardiomyopathy can be detected by using advanced ECG in children and young adults. *J. Electrocardiol.* **49**, 392-400 (2016).
- 35 Hughes, R. K. *et al.* Accurate diagnosis of apical hypertrophic cardiomyopathy using explainable advanced electrocardiogram analysis. *Europace* **26** (2024).
- 36 Siontis, K. C., Noseworthy, P. A., Attia, Z. I. & Friedman, P. A. Artificial intelligence-enhanced electrocardiography in cardiovascular disease management. *Nat. Rev. Cardiol.* **18**, 465-478 (2021).

- 37 Huang, P. S. *et al.* An Artificial Intelligence-Enabled ECG Algorithm for the Prediction and Localization of Angiography-Proven Coronary Artery Disease. *Biomedicines* **10**, 394 (2022).
- 38 Attia, Z. I. *et al.* An artificial intelligence-enabled ECG algorithm for the identification of patients with atrial fibrillation during sinus rhythm: a retrospective analysis of outcome prediction. *Lancet* **394**, 861-867 (2019).
- 39 Rudin, C. Stop explaining black box machine learning models for high stakes decisions and use interpretable models instead. *Nat. Mach. Intell.* **1**, 206-215 (2019).

Table 1. Patient demographics stratified by stress testing result.

	Total (n = 292)	Negative (n = 239)	Discordant ExECG (n = 29)	Positive SE (n = 24)	p-value
Demographics					
Age, years	58±14	56±14	63±11	61±14	0.01
Male sex, n (%)	150 (51)	122 (51)	15 (52)	13 (54)	0.97
BMI, kg/m ²	27±5	27±5	26±5	28±6	0.27
Resting SBP, mmHg	130±15	129±15	130±16	134±17	0.26
Resting DBP, mmHg	76±10	76±10	76±9	74±11	0.67
HEART Score	3±1	3±1	3±1	4±1	0.17
Peak HR, % of MPHR	100±8	101±8	100±9	100±10	0.80
Baseline LVEF					0.049
>50%, n (%)	286 (98)	236 (99)	28 (97)	22 (92)	
40-50%, n (%)	6 (2)	3 (1)	1 (3)	2 (8)	
Comorbidities, n (%)					
Hypertension	124 (42)	99 (41)	13 (45)	12 (50)	0.71
Diabetes	34 (12)	24 (10)	7 (24)	3 (12)	0.08
Dyslipidemia	142 (49)	113 (47)	17 (59)	12 (50)	0.51
Obesity	76 (26)	64 (27)	4 (14)	8 (33)	0.24
Current Smoker	34 (12)	27 (11)	3 (10)	4 (17)	0.68
Ex-Smoker	81 (28)	66 (28)	6 (21)	9 (38)	0.39
Stroke/TIA	7 (2)	5 (2)	2 (7)	0 (0)	0.24
AF/AFL	12 (4)	8 (3)	2 (7)	2 (8)	0.21
COPD	4 (1)	3 (1)	1 (3)	0 (0)	0.55
Asthma	19 (6)	16 (7)	3 (10)	0 (0)	0.30
GERD	41 (14)	33 (14)	6 (21)	2 (8)	0.46
Medications, n (%)					
Aspirin	23 (8)	16 (7)	4 (14)	3 (12)	0.19
Statin	72 (25)	60 (25)	6 (21)	6 (25)	0.93
ACE/ARB	83 (28)	66 (28)	8 (28)	9 (38)	0.58
CCB	34 (12)	26 (11)	3 (10)	5 (21)	0.33
Beta-blocker	14 (5)	9 (4)	4 (14)	1 (4)	0.07
Insulin	8 (3)	4 (2)	3 (10)	1 (4)	0.03
Oral hypoglycaemic	32 (11)	25 (10)	6 (21)	1 (4)	0.15

Continuous variables are expressed as mean± standard deviation and compared using one way analysis of variance. Categorical variables are expressed as frequencies (percentage) and compared using Fisher's exact test. Abbreviations: SE = stress echocardiography; ExECG = exercise electrocardiography, Discordant ExECG = positive ExECG with negative SE; n = frequency; BMI = body mass index; mmHg = millimetres of mercury; kg/m² = kilograms/metres²; SBP = systolic blood pressure; DBP = diastolic blood pressure; MPHR = maximum predicted heart rate (220 – age); HR = heart rate; LVEF = left ventricular ejection fraction; TIA = transient ischemic attack; AF = atrial fibrillation; AFL = atrial flutter; COPD = chronic obstructive pulmonary disease; GERD = gastroesophageal reflux disease; ACE = angiotensin-converting enzyme inhibitor; ARB = angiotensin II receptor blocker; CCB = calcium channel blockers

Table 2. Parameter Means with Mann Whitney U test.

Parameter	Total (n = 263)	Negative SE (n = 239)	Positive SE (n = 24)	p-value
Natural log of the R wave duration in lead V6 (log ms)	3.9±0.3	3.9±0.3	4.2±0.3	<0.001
Normalised 4 th singular value of the T wave (µV)	8.1±4.7	7.7±3.8	13±8.8	0.001
Azimuth direction at the final eighth of the ST-T loop (degrees)	17±53	20±50	-13±67	0.009

Continuous variables are expressed as mean± standard deviation and compared using Mann Whitney U test. Abbreviations: SE = stress echocardiography.

Table 3. Regression coefficients for the logistic model.

	Coefficient	Chi-square	p-value
Intercept	-15		-
Natural log of the R wave duration in lead V6 (log ms)	3.5	17	<0.001
Normalised 4 th singular value of the T wave (μ V)	0.16	17	<0.001
Azimuth direction at the final eighth of the ST-T loop (degrees)	-0.013	9.3	0.002

Coefficients are assessed using the likelihood-ratio chi-square test.

Table 4. Diagnostic performance of 3-parameter score for inducible myocardial ischemia on stress echocardiography.

Diagnostic performance measure	Estimate [95% confidence interval]
Area under the receiver operating characteristics curve	0.85 [0.75–0.93]
Sensitivity, %	92 [67–100]
Specificity, %	67 [64–94]
Positive predictive value, %	22 [20–55]
Negative predictive value, %	99 [96–100]
Positive likelihood ratio, %	2.8 [2.5–12.0]
Negative likelihood ratio, %	0.12 [0.00–0.39]
Inverse negative likelihood ratio, %	8.1 [2.5-18.0]

Estimates are from the unchanged training data. 95% confidence intervals are from bootstrapped percentiles.

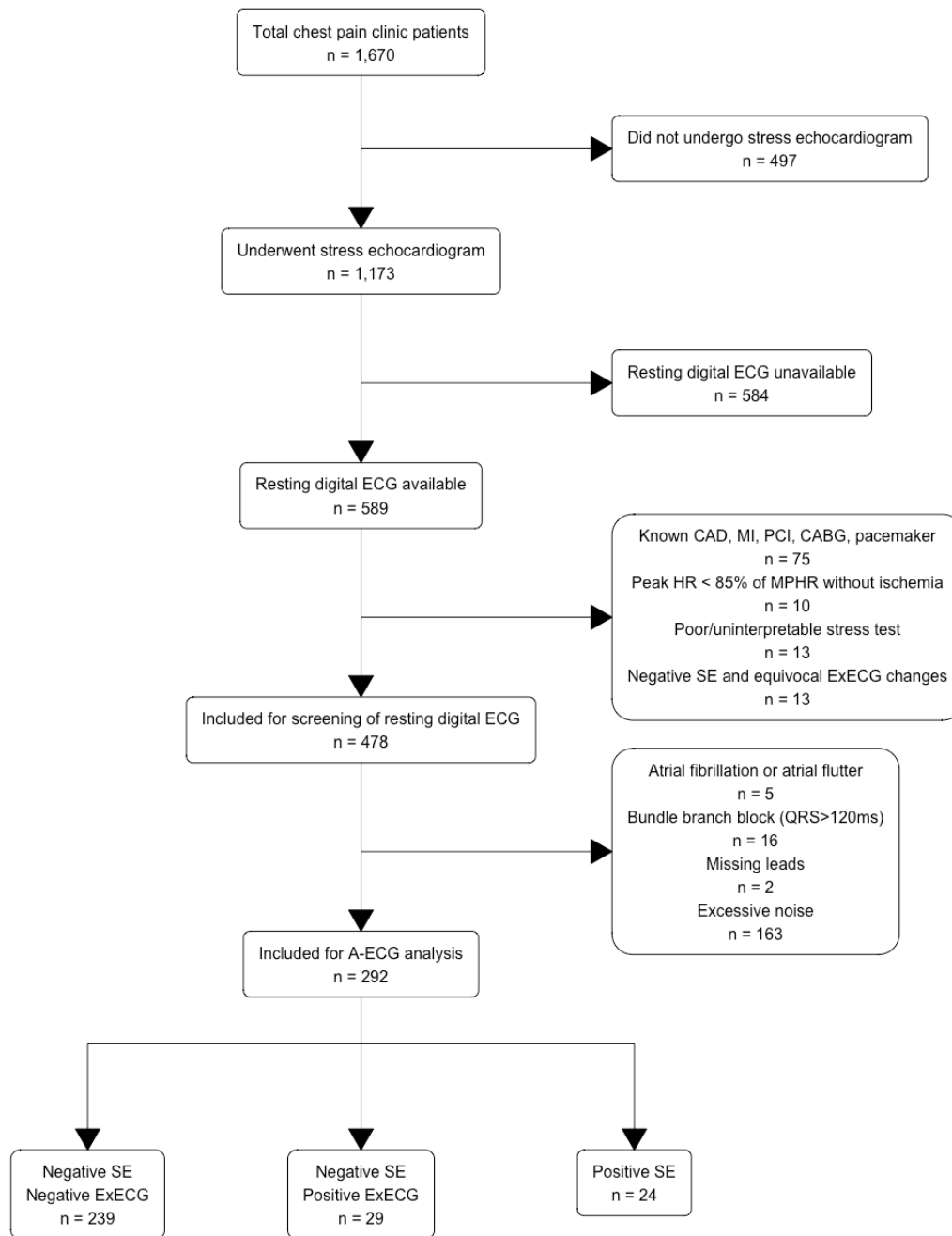


Figure 1. Patient inclusion flow chart and stress testing results.

Abbreviations: ECG = electrocardiogram; SE = stress echocardiography; ExECG = exercise electrocardiography; A-ECG = advanced electrocardiography; CAD = coronary artery disease; MI = myocardial infarction; PCI = percutaneous coronary intervention; CABG = coronary artery bypass grafting; MPHR = maximum predicted heart rate (220-age); Equivocal ExECG changes = horizontal/down-sloping ST segment depression < 1 millimetre

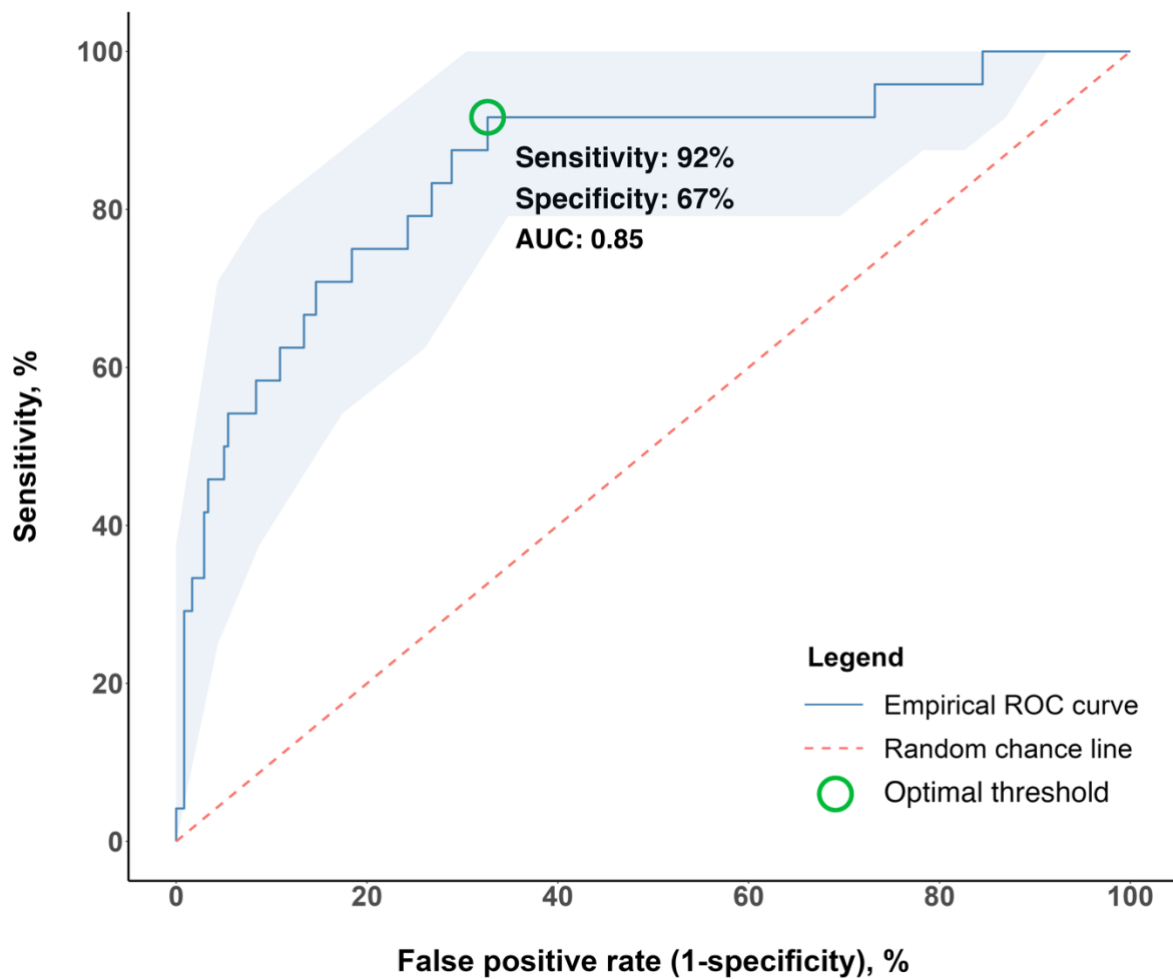


Figure 2. Empirical receiver-operating characteristic (ROC) curve and its 95% confidence interval for the 3-parameter score trained for inducible myocardial ischemia on stress echocardiography. The random chance line is given by: true positive rate (sensitivity) = false positive rate (1- specificity), representing an ROC curve with no discrimination.

Abbreviations: ROC = receiver-operating characteristic

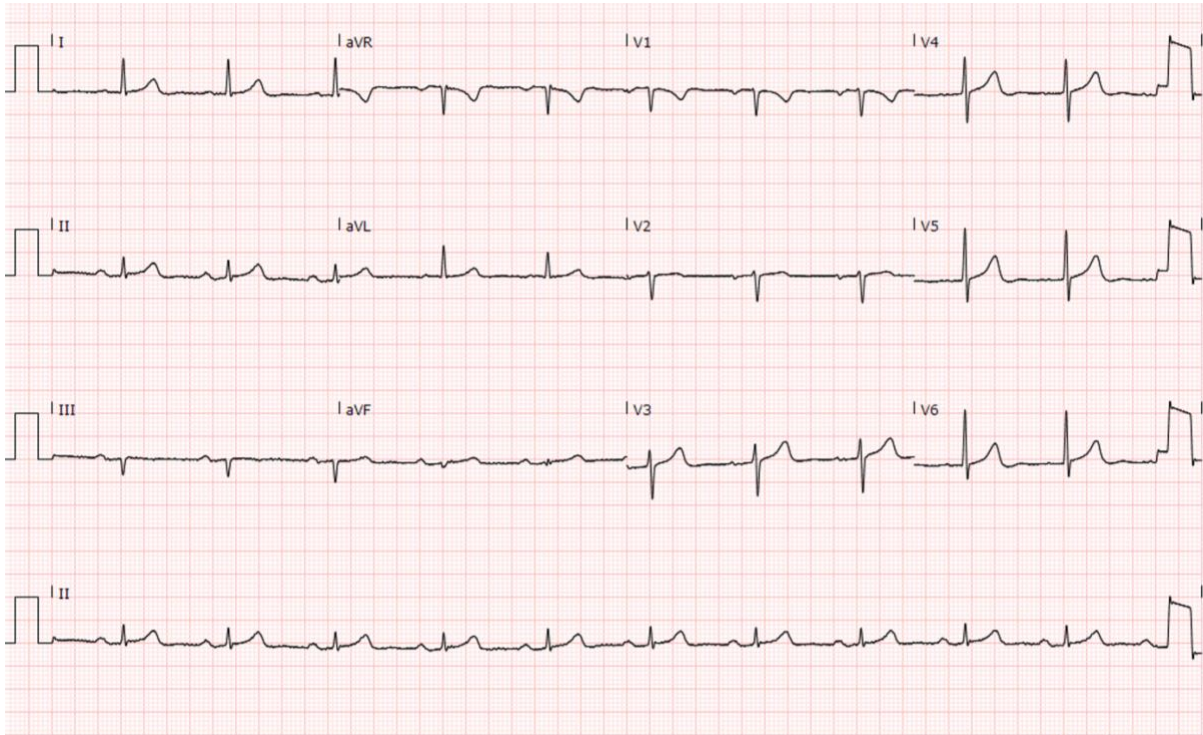


Figure 3a. Patient A

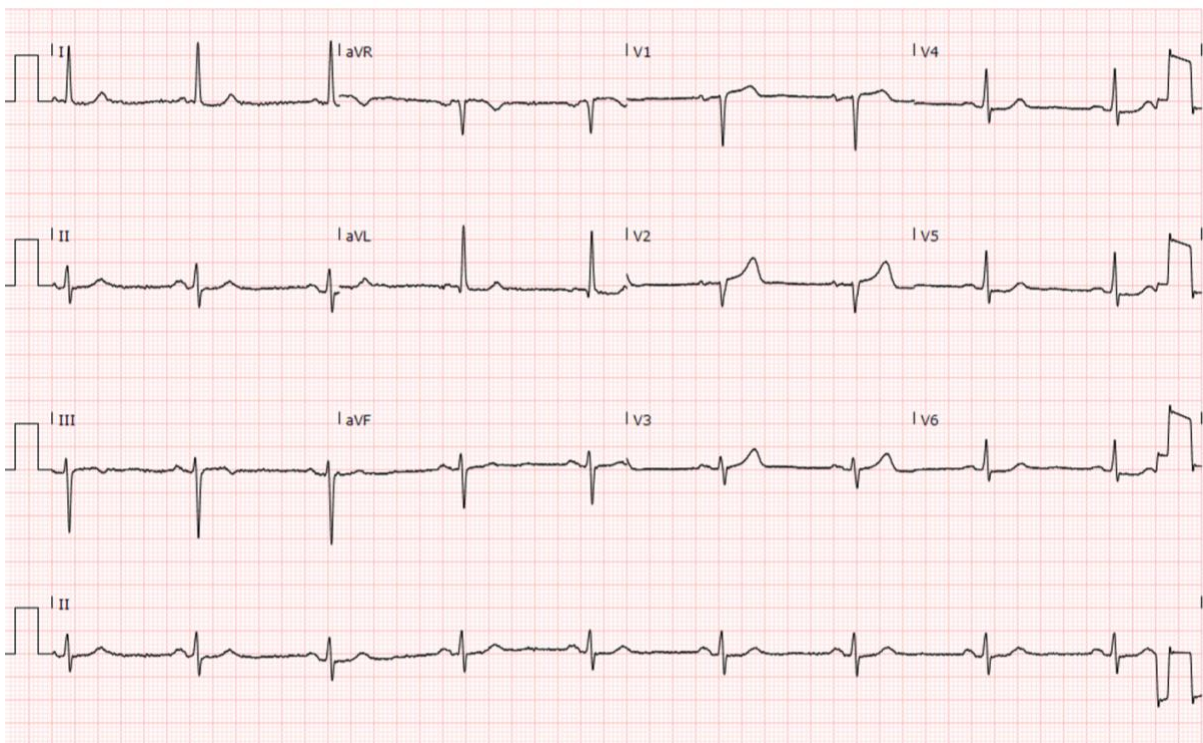


Figure 3b. Patient B

Figure 3. Comparison of A-ECG results of two representative patients.

Both Patient A and Patient B had no signs of ischemia on resting ECGs and normal resting echocardiography. On stress echocardiography, Patient A showed no evidence of inducible myocardial ischemia, with a low corresponding A-ECG score for inducible myocardial ischemia (2%). Patient B developed hypokinesis of the basal-to-mid left ventricular inferior wall, with a high corresponding A-ECG score for inducible myocardial ischemia (95%).

Table 5 – Clinical and ECG information comparison between Patient A and Patient B

	Patient A	Patient B
Myocardial ischemia on SE		
True result	Negative	Positive
A-ECG score	95%	2%
A-ECG measures		
Natural log of the R wave duration in lead V6 (log ms)	3.6	3.8
Normalised 4 th singular value of the T wave (μ V)	5.5	17.7
Azimuth direction at the final eighth of the ST-T loop (degrees)	150.0	-153.78
Clinical Information		
Age, years	66-70	81-85
Sex	Female	Female
BMI, kg/m ²	22.3	22.6
Resting SBP, mmHg	140	142
Resting DBP, mmHg	70	70
HEART Score	3	3
Peak HR, % of MPHR	106	85

Abbreviations: SE = stress echocardiography; A-ECG = advanced electrocardiography; BMI = body mass index; SBP = systolic blood pressure; DBP = diastolic blood pressure; HR = heart rate; MPHR = maximum predicted heart rate (220 – age)