

1 **A mHealth intervention (mTB-Tobacco) for smoking cessation in people with drug-**
2 **sensitive pulmonary tuberculosis: protocol for an adaptive design, cluster**
3 **randomised controlled trial (Quit4TB)**

4 Maham Zahid,¹ Fahmidur Rahman,² Ai Keow Lim,³ Asiful Chowdhury,⁴ Shakhawat Hossain Rana,⁵ Saeed
5 Ansari,⁶ Mahmoud Danaee,⁷ Melanie Boeckmann,⁸ Steve Parrott,⁹ John Norrie,¹⁰ Amina Khan,¹¹ Rumana
6 Huque,¹² Kamran Siddiqi,¹³ on behalf of the RESPIRE collaboration

7
8 **ABSTRACT**

9 ***Introduction:***

10 People with tuberculosis (TB) who continue to smoke are more likely to have poor health
11 outcomes than those who quit. Established smoking cessation approaches such as mHealth
12 may help TB patients quit smoking. This paper summarises the methodology proposed to
13 assess the effectiveness and cost-effectiveness of mTB-Tobacco (an mHealth intervention)
14 in helping TB patients stop smoking and have improved health outcomes.

15 ***Methods and analysis:***

16 A two-arm, parallel, open-label, multi-centre, cluster randomised, two-stage adaptive design
17 trial is proposed to first evaluate the superiority of mTB-Tobacco, compared with usual care
18 and then the non-inferiority of mTB-tobacco compared with face-to-face behaviour support.
19 Study settings include TB treatment centres in Bangladesh and Pakistan. The study
20 population includes adult patients, newly diagnosed (within four weeks) with pulmonary TB
21 disease, daily smokers, willing to quit, and have access to mobile phones. The primary
22 outcome includes biochemically verified continuous smoking abstinence assessed at 6
23 months per Russell Standard. A generalised linear mixed-effects model will be used to
24 assess the impact of mTB-Tobacco intervention on continuous outcomes, incorporating fixed
25 effects for the intervention, random effects for clusters, and relevant covariates. Cost-
26 effectiveness analysis will be done to estimate the cost per quitter and cost per QALY
27 gained, calculate the incremental cost-effectiveness ratios (ICER) to establish the value for
28 money for mTB-Tobacco.

29 ***Ethics and dissemination***

30 This trial will be conducted in compliance with ICH-GCP guidelines and the Declaration of
31 Helsinki. The study has been approved by the ethics committees of the University of
32 Edinburgh Medical School Research Ethics Committee (EMREC) of UK, the Bangladesh
33 Medical Research Council (BMRC) and the National Bioethics Committee (PMRC) of
34 Pakistan.

35 **Funding:**

36 The study is funded by the National Institute of Health Research (NIHR) UK under a
37 research award named NIHR Global Health Research Unit on Respiratory Health
38 (RESPIRE) (Award ID: NIHR132826)

39 **Trial registration number:** ISRCTN86971818 (<https://doi.org/10.1186/ISRCTN86971818>);

40 Submission date:29/08/2023; Registration date:11/09/2023; Last edited:30/04/2024

41 **Keywords:** mHealth, Pulmonary tuberculosis, Short Message Service, Smoking cessation

42 **Strengths and limitations of this study:**

43 ☐ This trial will be the first one to test the effectiveness of mHealth based intervention
44 to help TB patients quit smoking at 6 months.

45 ☐ An effective mTB-Tobacco intervention could be transformational for TB patients who
46 smoke. It will not only benefit the TB patients but will also allow the national TB
47 control programmes to have a less resource-intensive and effective intervention for
48 smoking cessation that can be easily integrated into their system.

49 ☐ The web portal that will be developed under this project can be used by TB
50 programmes with no to minimal extra cost to only account for the SMS text message
51 delivery.

52 ☐ TB disease is more prevalent in vulnerable populations e.g. lower socioeconomic
53 groups, and such population is more likely to have poor literacy as compared to the
54 general population. This can be a challenge as TB patients' ability to read and
55 understand SMS messages may be a barrier.

56

57

58 **INTRODUCTION**

59 Tuberculosis (TB) is an infectious disease with high morbidity, mortality and economic
60 burden. Despite being preventable and curable, TB remains the world's second leading
61 cause of death from a single infectious agent in 2022, the first being coronavirus disease
62 (COVID-19). The Global Tuberculosis Report 2023 states that in 2022, there were 7.5 million
63 reports of newly diagnosed TB, which is highest in the history perhaps due to diagnosis and
64 treatment delays faced during COVID-19 pandemic, followed by 1.3 million deaths.^{1,2} The
65 majority of the TB burden remains concentrated in low and middle-income countries (LMIC),
66 including Pakistan and Bangladesh. A downward trend of TB burden has been noticed in all
67 World Health Organisation (WHO) regions, but the decline is not sufficient to end the global
68 TB epidemic in the context of Sustainable Development Goals (SDGs).³

69

70 Amongst five major attributable risk factors including malnutrition, HIV infection, smoking,
71 alcohol use and diabetes, 0.7 million new TB cases are attributable to smoking alone,
72 especially in males.⁴ A meta-analysis conducted in 2022 to assess the effect of smoking on
73 TB treatment outcome concluded that smoking increases the chances of poor treatment
74 outcome by 51% (OR=1.51, 95% CI 1.30-1.75, I-square 75.1%), where the effect was even
75 higher for LMIC (OR=1.74; 95% CI 1.31-2.30).⁵ Another meta-analysis concluded that
76 smokers had greater odds of unfavourable outcomes (pooled OR=1.23, 95% CI 1.14–1.33),
77 delayed sputum conversion (pooled OR=1.55, 95%CI 1.04–2.07), and loss to follow-up
78 (pooled OR=1.35, 95%CI 1.21–1.50).⁶

79

80 In terms of tobacco use, 1.3 billion people globally use tobacco in one or more forms, and
81 80% of them live in LMIC.⁷ A dual burden of TB and tobacco use in these countries makes it
82 imperative to devise strategies that address both of these conditions. Literature shows that
83 there are significant benefits of quitting smoking on TB treatment outcomes. Those who quit
84 smoking may have better TB cure rates (91% vs 80%, $p < 0.001$), lower TB relapse rates (6%

85 vs 14%, $p < 0.001$), and higher sputum smear conversion at 2-months (91% vs 87%,
86 $p = 0.036$), than as compared to those who continue did not quit smoking, respectively.⁸ This
87 makes smoking cessation in TB patients a public health priority. There is a need for
88 evidence-based smoking cessation approaches⁹ and increasing policy support to help TB
89 patients quit smoking.¹⁰

90

91 Smoking prevalence in TB patients is higher than the general population,¹¹ but the vast
92 majority of TB patients are neither routinely asked about their smoking status nor advised to
93 quit.¹² There are well-established pharmacological and non-pharmacological interventions
94 developed and tested for effectiveness to help TB patients quit smoking. Previous
95 randomised controlled trials (RCT) in Bangladesh and Pakistan have shown that face-to-
96 face behavioural interventions are effective for smoking cessation, reporting 41% quit rate.¹³
97 Despite recognising the benefit of quitting and ownership by policymakers, the integration of
98 the smoking cessation package in routine TB care remains challenging. Due to health
99 system barriers including insufficient human resources, cost, reach and sustainability¹⁴ no
100 TB high-burden countries have so far integrated face-to-face smoking cessation within TB
101 services.

102

103 Recognising the challenges of integrating and scaling up face-to-face interventions, the
104 WHO developed a mHealth smoking cessation package (mTB-Tobacco) that can be
105 delivered as SMS (Short Message Service) messages via mobile phones to TB patients.¹⁵ It
106 is anticipated that delivering mHealth package will cost less than resource-intensive face-to-
107 face behavioural interventions, but it is unknown if this package is as effective and therefore
108 more cost-effective than face-to-face behavioural intervention. Hence, there is a need to first
109 establish the effectiveness of mHealth intervention in terms of helping TB patients to quit
110 smoking. The Quit4TB trial is designed to assess the effectiveness and cost-effectiveness of
111 mTB-Tobacco in achieving continuous abstinence for at least six months and improving
112 health outcomes in people with TB who smoke daily.

113

114

115 **METHODS AND ANALYSIS**

116 **- Trial design**

117 The Quit4TB trial is a two-stage adaptive design, multi-centre, cluster randomised controlled
118 trial consisting of four phases as shown in figure 1:

119 **Phase 1** involves consultations with a Patients and Public Involvement (PPI) group about
120 the study processes. PPI members will review and provide feedback on the SMS text
121 messages translated into local languages as well as the participant information sheet and
122 consent forms. For this, a PPI group of 7-8 members will be formed including TB patients,
123 their family members, health care professionals and public representatives, and translated
124 study materials will be discussed with them individually or as a group. Debriefing will be
125 done after PPI engagement, and necessary adjustments will be made based on the
126 feedback.

127 **Phase 2** consists of a pilot study, which aims to assess the feasibility of the mTB-Tobacco
128 intervention and other trial processes. The mTB-Tobacco web-based intervention will be
129 pilot –tested with a total of 16 participants, 8 each from Bangladesh and Pakistan, where
130 equal half of the participants will belong to the intervention and control groups. The pilot data
131 will be evaluated using two sets of data, users’ self-reported experiences and their real-time
132 engagement with the programme. Users’ experiences will be collected at a 9-week follow-up
133 through face-to-face interactions. Key questions will focus on users’ experience of taking
134 part in the mTB-Tobacco programme; the clarity, quantity, timing and frequency of
135 messages; what was good about the programme and what was not; completion or non-
136 completion of the programme; and any effect on their attitudes or target behaviour(s). Users’
137 real-time engagement will be evaluated using computer records from the programme used
138 for launching mTB-Tobacco. The pilot study will be embedded in the next phase of the
139 study, by continuing the pilot study participant’s follow-up up to 6 months, and will be treated
140 with the same processes and governance as the main trial participant data.

141 **Phase 3** will be the superiority trial, which will last for 12 months (6 months recruitments and
142 6 months follow-ups), to compare mTB-Tobacco (intervention A) with usual care (control).

143 **Phase 4** will be the non-inferiority trial that will be conducted if in phase 3 the mTB-Tobacco
144 intervention turns out to be effective in helping TB patients quit smoking as compared to
145 control. Phase 4 will then last for another 12 months (6 months recruitment and 6 months
146 follow-ups), to compare mTB-Tobacco (intervention A) with the face-to-face behavioural
147 support (intervention B) to assess if it's as effective as the face-to-face behavioural support
148 intervention to help TB patients quit smoking.

149 The trial flow chart is given in Figure 2, followed by a written explanation of various aspects
150 of the trial.

151 - **Study settings**

152 This trial will be conducted in Bangladesh (Dhaka division) and Pakistan (Punjab province)
153 simultaneously. A prespecified number of clusters (TB centres) will be selected from each
154 country to recruit study participants.

155 **Eligibility criteria for inclusion of clusters**

156 All TB centres with a minimum turnover of 50 new TB patients per month will be eligible for
157 selection, to make sure that adequate participant enrolment target is achieved. The included
158 sites must be functioning and designated TB diagnostic centres approved by the National
159 /Provincial TB Control Programme (NTP/PTP). These may include primary, secondary, or
160 tertiary care health centres (HCs), generally known as the District/or Tehsil headquarter
161 hospitals in Pakistan. In Bangladesh, health facilities will be the Directly Observed Therapy
162 (DOTs) corners at Upazila (sub-district) Health Complex and Urban DOTS corners. In
163 addition, the facility must be able to nominate a site focal person (an NTP personnel e.g., the
164 district TB coordinator, or the responsible TB clinician at the site) who assumes
165 responsibility for the proper conduct of the trial at their site; the health facility should have an
166 adequate number of qualified staff and adequate facilities for the foreseen duration of the
167 trial to conduct the trial properly and safely, and the HC should be willing to join the trial and

168 provide required administrative support. Facilities not meeting the inclusion criteria will not
169 be eligible for the trial.

170

171 - **Study participants**

172 TB patients presenting at selected TB centres (clusters) will be screened for inclusion in the
173 trial as per the following eligibility criteria:

174 **Eligibility criteria for inclusion of participants**

175 Participants aged 15 years or older, diagnosed with drug-sensitive pulmonary TB (smear
176 positive or negative) in the last four weeks, currently smoking tobacco daily or have only
177 stopped or reduced smoking (less than daily) since diagnosed with TB, willing to quit
178 tobacco use, have access to personal mobile phone and willing and able to provide written
179 informed consent will be included in the study. Informed consent will be taken from adult
180 participants (18 years and above), while assent along with parent/guardian's consent will be
181 taken for adolescent participants (15-17 years of age). Exclusion criteria include patients
182 anticipated to have adverse effects either due to the study treatment or research burden.
183 These will include those who are/have less than 15 years of age, retreatment TB, MDR TB,
184 miliary or extrapulmonary TB, currently using any pharmacotherapy for tobacco dependence
185 and unwilling or unable to provide written informed consent.

186 - **Randomisation**

187 Since the interventions will be delivered at the group level, this trial is designed as a cluster
188 randomised controlled trial (cRCT) where TB centres will be randomly allocated to the
189 different trial arms. The TB centres (clusters) would be randomised in 2:2:1 ratio to mTB-
190 Tobacco (intervention A), face-to-face (intervention B), or standard care (Control). An
191 independent statistician, blinded to clusters, will identify and use computer-generated
192 random-number lists to generate the allocation sequence. The allocation will be based on
193 using minimisation to ensure balance across the groups on the average number of TB
194 patients seen per month and geographical locations (Bangladesh and Pakistan).

195 - **Blinding**

196 In this study, we utilised a blinding methodology to guarantee that specific key individuals
197 remained uninformed about the allocation of treatments. The allocation sequence will be
198 determined by an independent statistician, who has no knowledge of the participating
199 facilities. Nevertheless, as the SMS receipt is a noticeable component, participants will be
200 able to determine whether they are receiving the SMS or not. Therefore, it is not possible to
201 achieve total blindness at the participant level in this circumstance. In addition, the principal
202 investigator (PI) and the research teams are aware of the specific cluster assigned to each
203 treatment group. However, steps will be taken to potentially prevent the data analyst from
204 knowing the treatment assignments in order to reduce bias during the analysis of the data.
205 Thus, the blinding in our study mostly happened with the independent statistician who
206 randomly assigned the clusters to interventions, and the data analyst as well.

207 - **Treatment and control arms**

208 **1. mHealth based mTB-Tobacco intervention**

209 The mTB-Tobacco is an mHealth intervention, based on a smoking cessation package
210 developed by the WHO that can be delivered as mobile SMS text messages to TB
211 patients.¹⁷ This package comprises two distinct areas of intervention, the first tries to instil
212 behaviour change in patients to quit the habit of tobacco use and the second includes a
213 combination of TB-related supportive motivational and informative messages. The package
214 aims not only to inform TB patients about the hazards of tobacco use and encourage them
215 to quit, but also to enhance treatment adherence, increase healthy behaviours, and reduce
216 potentially harmful behaviours in TB patients to improve their overall health outcomes.

217 The set of SMS text messages included in the mTB-Tobacco package was adapted by
218 research experts to include 134 one-way messages, and a transmission schedule was
219 designed to set the days for each message delivery along with a specified time. Each
220 participant in the intervention group will receive a total of 134 SMS messages over 6
221 months. In the first two months, the frequency of messages would be 4 to 5 messages per
222 day, in the next two months the frequency would reduce to 1 to 2 messages per day and in

223 the last two months there will be 1 message sent after a couple of weeks. The final list of
224 messages and delivery schedule is given as Supplementary Table I.

225 The messages will be translated into local languages including Urdu and Bangla by local
226 research teams, using the translation and validation steps recommended by the WHO.¹⁶ The
227 initial forward translation will be carried out by an independent bilingual translator in local
228 language, the translated content was back-translated into the English language by another
229 independent translator. The conceptual and cultural context will be taken into account. The
230 discrepancies will be discussed with the local principal investigators and research team to
231 make translations satisfactory.

232 A web-based digital application (mTB-Tobacco) will be developed by the local research team
233 to sync the data with the database and send the SMS text messages automatically to the
234 enrolled participant's personal mobile numbers, following the set schedule. The mTB-
235 Tobacco web portal will store the participant's unique ID number and active mobile number
236 for the trial. No other personal or identifiable information will be stored.

237 **2. Face-2-face behavioural support (Intervention B)**

238 This consists of an adapted version of a pre-developed and proven effective intervention to
239 help people quit smoking and smokeless tobacco use.⁹ This consists of two face-to-face
240 sessions delivered on day 0 and day 5 (+2) which last 10 and 5 minutes respectively. The
241 sessions will be structured using an educational flipbook; the session on day 0 will be aimed
242 at encouraging tobacco users to see themselves as non-users and set a plan for a quit date
243 five days later; with a session on the quit date (day 5) to review progress. Further
244 encouragement and support (if needed) will be offered at a subsequent visit in week 5.

245 **3. Standardised usual care (Control)**

246 In the usual care group, the patients will undergo routine TB treatment care. In addition,
247 education leaflets will be given to the control arm participants. The leaflets containing
248 information on the harmful effects of tobacco and advice on stopping smoking will also be
249 given to the participants belonging to the intervention arms A and B.

250 **- Study Outcomes**

251 **Primary outcomes**

252 The primary outcome will be biochemically verified continuous abstinence at 6 months post-
253 randomisation.¹⁸ Abstinence is defined as a self-report of not having used more than 5
254 cigarettes, bidis, water pipe sessions since the quit date, verified biochemically by a breath
255 carbon monoxide (CO) reading of less than 10 ppm at month 6.¹⁸

256 In case of concomitant smokeless tobacco use, biochemical verification will be carried out
257 using COT Rapid Test Cassette (Hangzhou All Test Biotech Co. Ltd.) to detect cotinine (a
258 nicotine metabolite) level in urine samples. The test result will be interpreted as “negative”, if
259 two lines appear (one coloured line in the control line region, and another apparent coloured
260 line in the test line region) or “positive”, if one coloured line appears in the control line region.
261 The negative result will indicate that the cotinine concentration is below the detectable level
262 (200 ng/mL) while the positive result will indicate that the cotinine concentration exceeds the
263 detectable level (200 ng/mL). The RA will perform cotinine dipstick tests on urine samples
264 collected from the patients, which will be discarded after cotinine levels have been recorded
265 on the CRFs.

266 When a patient self-reports abstinence with an elevated CO level of >10ppm (and cotinine
267 levels in concomitant users indicating active tobacco use), the biochemical verification will
268 supersede the self-report and the patient will be defined as a tobacco user.

269 **Secondary outcomes**

270 The secondary outcomes include: Point abstinence, defined as a self-report of not using
271 tobacco in the previous 7 days, assessed at week 9 and month 6; Adherence to TB
272 Treatment: All registered TB patients’ medication logs (for anti-TB medication) are recorded
273 on the ‘Treatment Support Card’; a copy of this card would be requested from the TB
274 paramedic by the RA and attached with the patient CRF; TB Programme outcomes: the
275 proportion of treatment success (including cured and completed treatment), treatment
276 failure, defaulted and died will be recorded from TB register (TB03) at month 6. Table 1
277 gives definitions of TB treatment outcomes.

278 - **Study assessments**

279 All study participants will have assessments on day 0, week 9 and month 6 time points
280 corresponding with routine TB clinic visits. All the trial activities will be performed by field
281 research assistants (one RA per site) who will be hired and trained to take patient consent,
282 collect baseline data, follow up data and perform study assessments. The trial assessment
283 schedule (table 2) outlines the visit dates necessary for data collection, but the patient may
284 be seen more frequently for routine clinical care as needed. During the treatment period, if
285 study participants are unable to attend on the day, every effort would be made to complete
286 the visit within 2 days of the scheduled date. If a scheduled visit is missed without notice,
287 then the RA should endeavour to contact the patient by phone or by home visit.

288 During the follow-up phase, scheduled assessments will be carried out no more than 5 days
289 before the scheduled visit. Scheduled visits will be rescheduled to allow for public holidays
290 or other unavoidable circumstances that affect the scheduled visit date, but the re-scheduled
291 visit should be no more than 5 days from the originally scheduled visit date. Participants will
292 also be given a card with the contact details for the trial RA and the clinical TB care team at
293 their site. If a patient is more than 5 days late for a scheduled study visit, an additional visit
294 will be performed as soon as possible, including the appropriate assessments that were
295 specified in the trial schedule for the visit that was missed.

296 - **Weekly monitoring calls:**

297 For intervention fidelity, the research assistants will be responsible to telephonically call the
298 recruited patients to make sure that they are receiving and reading the messages, or getting
299 the messages read to them, daily. Monitoring calls will be weekly for the first two months,
300 where most of the intervention will be delivered in this period, followed by bi-weekly or
301 monthly calls. This will also build rapport between the patient and the research team which
302 will help in successful follow-ups and outcome assessments.

303 - **Trial data management**

304 REDCap, a secure web platform for building and managing online databases and surveys,
305 will be used for managing the trial data. The REDCap mobile app will be used to collect the
306 required data for the case report form (CRF) designed in the app. Screening forms will be

307 programmed to collect data for differentiating eligible and non-eligible patients. At the
308 screening stage, participants who meet all inclusion criteria and do not meet any exclusion
309 criteria will be eligible to take part in the study. They will be given the participant information
310 sheet and consent form. If they consent to take part in the study, their demographic details
311 (including active mobile number) will be recorded on the REDCap database.

312 The mTB-Tobacco app will be linked to the REDCap server through API (Application
313 Programming Interface) which will capture the patient trial ID along with the mobile numbers
314 to send SMS text messages as per the defined schedule. The eligible and consented
315 participants belonging to the intervention arm will receive the SMS messages, whereas
316 those belonging to the control arm will not receive any SMS. Figure 3 gives a flowchart of
317 data management procedures.

318 The data collection will consist of responses to a set of translated and structured
319 questionnaires in the electronic Case Report Forms (CRF) which will be completed and
320 facilitated by the field research team. The data entered will synchronise with the database on
321 a secured server. De-identified data merged for study sites for separate eCRF and wide
322 format data combining different eCRFs through matching and merging will be shared via
323 Edinburgh DataSync with the trial statistician who will conduct the analysis.

324 Overall data quality will be ensured through training and supervision by the respective
325 country trial team. Quantitative data once synced in the server will also be peer-reviewed by
326 the statistician. The Trial Management Team and Country teams jointly will develop a
327 detailed Data Management Plan to ensure data safety and quality.

328 - **Sample size**

329 The study requires a total of **2,716** smokers newly diagnosed with pulmonary TB (~43
330 recruits from 63 TB centres, the clusters) assuming that 10% might not provide primary
331 outcome data. This sample also includes the first 16 participants taking part in the pilot
332 study, in case the intervention needed major refinement then we would be unable to use
333 their data.

334 The required sample size for the superiority trial (phase 3) was determined by using a power
335 of 90%, a significance level of 5%, and expected abstinence rates of 18% for mTB-Tobacco
336 and 8% for normal treatment after 6 months.¹⁹ The study will comprise a total of 27 TB
337 centres, considering the ratio of intervention to control as 2:1. After considering a 20%
338 attrition rate, it was determined that the sample size would be 704 participants. This would
339 result in an average of around 26 individuals in each cluster. Given that the study will be
340 carried out as a cluster randomised control trial (cRCT) with an intracluster correlation
341 coefficient (ICC) of 0.02,²⁰ the design effect was computed to be 1.50. This results in an
342 effective sample size of around **1080** people (or 40 subjects per site).

343 In the non-inferiority trial (phase 4), considering 90% power, one-sided hypothesis, and 2.5%
344 significance level to establish non-inferiority of mTB-Tobacco intervention to face-to-face
345 behavioural support, comparing 18 clusters in each treatment arm assuming face-to-face
346 achieved 18% abstinence at six months and the non-inferiority margin was 8%. Assuming
347 that just 2% would give up with no intervention at all, the established treatment effect of
348 face-to-face behaviour support over natural cessation over 6 months would then be 16%
349 (18%-2%). The non-inferiority margin of 8% equates to the mTB-Tobacco intervention
350 preserving at least 50% (8/16) of the established treatment effect of the face-to-face
351 intervention. The above-mentioned sample size assumptions will be checked mid-way
352 through the recruitment period and the sample size will be adjusted accordingly. Considering
353 a 20% attrition rate, the final sample size was determined to be 1036 participants, resulting
354 in approximately 29 participants per cluster across 36 clusters (18 in each arm). The design
355 effect was calculated to be 1.56, yielding an effective sample size of approximately **1620**
356 subjects (or 45 subjects for each site). Further adjustments to the sample size assumptions
357 will be made midway through the recruitment period as needed. Sample size details for
358 superiority and non-inferiority trials are given as Supplementary Figures 4a and 4b
359 respectively.

360 - **Statistical analysis**

361 **Descriptive Statistics:**

362 Continuous outcomes will be summarised using means and standard deviations, and
363 categorical outcomes using frequencies and percentages across intervention and control
364 arms.

365 **Inferential Statistics:**

366 A mixed-effects model will be used to assess the impact of mTB-Tobacco on continuous
367 outcomes, incorporating fixed effects for the intervention, random effects for clusters, and
368 relevant covariates. Logistic regression within the mixed-effects framework will be used to
369 analyse categorical outcomes, accounting for cluster-level variability and intervention effects.
370 for the analysis of data in this Cluster Randomised Controlled Trial. At the end of phase 3
371 superiority trial, an interim analysis will be done by an independent statistician to assess
372 effectiveness of mTB-Tobacco intervention, the result will decide whether the trial needs to
373 proceed to phase 4 non-inferiority trial or be terminated early, In this study, the missing data
374 patterns will first be examined to determine whether the missingness adheres to patterns of
375 complete randomness (MCAR), randomness (MAR), or non-randomness (MNAR). Multiple
376 imputation, a robust technique that generates multiple datasets with imputed values for
377 missing observations, will be utilised to address the missing data. As a sensitivity analysis
378 technique, missing data imputation will be used to evaluate the robustness of our findings.²¹
379 The estimates of the intervention effect will next be compared between analyses carried out
380 with complete case analysis and analyses utilising imputed datasets. This will improve the
381 validity of the study's conclusions by enabling an assessment of the effect of missing data on
382 the estimation of intervention effects in this cluster-randomised controlled trial. JASP and R
383 will be employed as our primary tools for data analysis.

384 **Cost-effectiveness analysis**

385 Health economic evaluation will be conducted to establish the value for money afforded by
386 the mTB-Tobacco intervention. The cost of providing the interventions will be recorded and
387 calculated using local cost data. Costs include staff, premises and pharmaceutical products.
388 Patients' wider use of public and private health care will also be recorded, using a self-report
389 service use questionnaire. Patient cost profiles will be calculated by applying country-

390 specific unit cost tariffs to quantities. Total intervention cost, costs of wider health care use
391 and also patients' out-of-pocket expenditure will be derived and a total cost will be applied to
392 each patient in each trial arm.

393 In the superiority trial (phase 3), an incremental cost-effectiveness analysis (CEA) of the
394 mTB-Tobacco intervention will be conducted, over and above usual care. EQ-5D-5L will be
395 used to calculate Quality Adjusted Life Years (QALYs) using the area under the curve.²²
396 Incremental cost-effectiveness ratios will be presented in terms of i) cost per QALY and ii)
397 cost per additional quitter as based on the secondary outcome of the trial. A 12-month time
398 horizon is selected for the CEA to utilise the longer-term window of healthcare use and
399 changes in Health-Related Quality of Life (HRQoL). A full sensitivity analysis will be
400 presented to assess the robustness of the results and the probability that mTB-Tobacco
401 intervention is cost-effective at a range of threshold values.

402 In a non-inferiority trial (phase 4) resource quantities and attribute unit costs will be recorded
403 for the mTB-Tobacco intervention and face-to-face behaviour support, inclusive of wider
404 health system costs following the methodology of phase 3 superiority trial. Costs for each
405 arm will be calculated and compared to a pre-defined acceptable cost difference. A cost-
406 effectiveness analysis will also be done for the non-inferiority trial (phase 4). Differences in
407 costs and QALYs between treatment arms will be estimated to calculate the incremental
408 cost-effectiveness ratio (ICER) for the cost per QALY and cost per additional quitter.

409 Underlying uncertainty around the decision to adopt the intervention will be assessed using
410 non-parametric bootstrap re-sampling technique. Bootstrapping is an efficient method for
411 calculating the confidence limits for the ICER as its validity does not depend on any specific
412 form of underlying distribution. We will perform the bootstrap 5,000 replications and
413 construct the 95% confidence intervals for the ICERs based on the bootstrapping results.
414 Cost-effectiveness acceptability curves (CEACs)²³ will be constructed based on the
415 bootstrap iterations to estimate the probability that the intervention is cost-effective at
416 different threshold values for one QALY.

417 The ICER, calculated in terms of the cost per QALY, will be used to assess the value of
418 money afforded by the intervention over and above the control and draw conclusions with
419 respect to the potential cost-effectiveness of the intervention. To assess the impact of
420 imputing missing data, we will also conduct a complete case analysis based on the
421 participants who have both complete costs and QALYs at all time points, following the same
422 analysis method as the primary analysis above. Sensitivity analyses using pattern mixture
423 modelling will be used to examine the assumptions for multiple imputation methods.

424 **User experience**

425 Intervention fidelity and receipt of the SMS and face-to-face messages included in mTB-
426 Tobacco will be assessed through a brief process evaluation using routinely collected data.

427 Three questions in the Case Report Forms at week 9 follow up address:

- 428 a. whether or not any messages were received
- 429 b. the frequency of messages received and
- 430 c. the content of received messages (educational focus, medical focus, invitation to
431 follow up, etc.)

432 The mTB-Tobacco fidelity data will be collected directly from the digital platform delivering
433 messages. Data will be analysed for frequencies of reported answers, followed by
434 regression analyses to assess:

- 435 1. Whether receiving any SMS is associated with quitting TB
- 436 2. Which frequency of receiving SMS is associated with a greater likelihood of quitting
437 TB
- 438 3. Which type of information is associated with the greater likelihood of quitting TB

439 - **Trial Steering Committee**

440 An independent steering and monitoring committee will be set up to undertake the roles
441 traditionally undertaken by the Trial Steering Committee (TSC) and Data Monitoring and
442 Ethics Committee (DMEC). This committee will comprise independent members including a
443 Chair and two other independent members. The independent members of the committee will
444 be allowed to see unblinded data, but this data will not be reported to the other members of

445 the research team. The responsibility of TSC would be to assist project managers in
446 ensuring that the project is aligned with the objectives, manage risks, maintain project quality
447 and track progress along with proposed timeframes. The committee will meet at least
448 annually or more often as appropriate.

449 - **Confidentiality and data protection**

450 All laboratory specimens, evaluation forms, reports, and other records will be handled in a
451 manner to maintain participant confidentiality. All records will be kept in a secure storage
452 area with limited access. The Principal Investigator and study site staff involved in this study
453 will not disclose or use for any purpose other than the performance of the study, any data,
454 record, or other unpublished information, which is confidential or identifiable.

455 The research teams will comply with the requirements of data protection legislation
456 (including the European Union General Data Protection Regulation, the Data Protection Act
457 2018 in the UK and any relevant Data Protection laws in Bangladesh and Pakistan,
458 respectively with regard to the collection, storage, processing, and disclosure of personal
459 information.

460 - **Ethics and dissemination**

461 Ethics approval was obtained from Edinburgh Medical School Research Ethics Committee,
462 University of Edinburgh (EMREC), United Kingdom. Local ethics approval was obtained from
463 Bangladesh Medical Research Council and the National Bioethics Committee for Research,
464 Pakistan National Institutes of Health. The trial is registered on the ISRCTN registry:
465 <https://www.isrctn.com/ISRCTN86971818>. Protocol amendments were also submitted and
466 approved by all ethics committees. Separate manuscripts with the results of the superiority
467 and non-inferiority phases will be submitted for publication in peer-reviewed journals, where
468 authorship will be decided as per ICMJE criteria. On completion of the trial, de-identified
469 data requests will be deposited in Edinburgh DataShare or DataVault, which are data
470 repositories hosted by the University of Edinburgh. The data will be available to researchers
471 upon reasonable request.

472 - **Trial status:**

473 The latest version of the protocol (version 5.0, dated 25th Jan 2024) was approved by
474 EMREC, and local national ethics committees of Pakistan and Bangladesh. This paper is a
475 structured version of currently approved protocol, complying with SPIRIT guidelines to report
476 protocols of randomised controlled trials.²⁴ Recruitment of participants was started in
477 February 2024 for the superiority trial in Pakistan and Bangladesh, where the recruitment
478 completion date is anticipated to be within the next 6 months for phase 3. The results of
479 phase 3 will be analysed after 6-month follow-up of the last recruited patient, depending on
480 the analysis of the results the principal investigator will decide whether to move to the non-
481 inferiority trial phase or to end the trial early. The total duration of this study is three years
482 (Jun 2022 - June 2025).

483

484 **DISCUSSION**

485 This trial will be the first one to test the effectiveness of mHealth based mTB-Tobacco
486 intervention to help TB patients quit smoking at 6 months. The sample size is appropriately
487 calculated keeping in mind the cluster design and design effect to appropriately power this
488 trial to test the primary objective. The mHealth based interventions are promoted by
489 policymakers due to low resource requirements. An effective mTB-Tobacco intervention
490 could be transformational for TB patients who smoke. It will not only benefit the TB patients,
491 but will also allow the national TB control programmes to have a less resource-intensive and
492 effective intervention for smoking cessation that can be easily integrated in their system. A
493 shift from paper based-record TB recording and reporting system to a digital system in
494 Pakistan and Bangladesh makes it easier to integrate mHealth intervention into the existing
495 system.

496 To date, all evidence-based smoking cessation interventions, face-to-face behaviour
497 interventions, nicotine replacement therapies and pharmacotherapy-based interventions
498 have failed to be integrated into existing TB control programmes. A case study was
499 published where challenges of integrating tobacco cessation interventions in TB programs
500 were explored in the context of Pakistan and Nepal.²⁵ The main challenges that were

501 highlighted in the study included health professionals' doubts about the contextual relevance
502 of interventions, non-conducive environments, political reluctance to change, workload of TB
503 staff, motivation of TB staff and capacity to deliver cessation intervention and inadequate
504 training and support during intervention implementation.²⁵ Several of the above-mentioned
505 issues can be resolved through a digitally delivered intervention. For instance, the TB staff
506 would not have to perform any extra task out of their routine to deliver the intervention as the
507 SMS messages are delivered to the TB patient's personal mobile phone number through an
508 automated system. In future, the digital app can be further improved by making it interactive
509 instead of just one-way delivery. It can also be personalised for every TB patient who wants
510 to quit smoking by using artificial intelligence tools. The cost of the intervention will be one-
511 off, for example, the web portal that will be developed under this project can be used by TB
512 programmes with no to minimal extra cost to only account for the SMS text message
513 delivery.

514 Keeping in mind that TB disease is more prevalent in vulnerable populations e.g. lower
515 socioeconomic groups,²⁶ and such population is more likely to have poor literacy as
516 compared to the general population. This may be a challenge as TB patients' ability to read
517 and understand SMS messages may be a barrier. In this trial, we will take help from a
518 literate family member in such instances. Future studies may test recorded voice messages
519 in the local language. Overall literacy and digital literacy are improving in LMIC which means
520 that there will be literate, tech-savvy societies in the future.

521 In conclusion, this study may lead to a substantial impact if mTB-Tobacco intervention
522 enhances quitting smoking among TB patients, leading to better treatment outcomes and
523 reducing the disease and economic burden of TB and tobacco. The intervention can be
524 scaled up and contribute towards achieving the Sustainable Development Goals (SDG 3.0 -
525 Improving health and well-being, SDG 3.3 - Fighting communicable diseases and SDG 3.A -
526 Implement the WHO Framework Convention on Tobacco Control).

527 **Funding:**

528 This study is funded by the National Institute of Health Research UK under a research award named
529 NIHR Global Health Research Unit on Respiratory Health (RESPIRE) (Award ID: NIHR132826) where
530 the contracting organisation is The University of Edinburgh, while implementing partners include The
531 Initiative (Pakistan) and ARK Foundation (Bangladesh). The funders had no role in the design of the
532 study, data collection, analysis, interpretation or in writing the manuscript

533 **Disclaimer:**

534 The views expressed in this publication are those of the author(s) and not necessarily those of the
535 NIHR or the UK Government. The RESPIRE collaboration comprises the UK and LMIC Grant holders,
536 Partners and research teams as listed on the RESPIRE website (www.ed.ac.uk/usher/respire).

537 **Acknowledgement:**

538 The authors thank the National TB Programs of Pakistan and Bangladesh for facilitating the study.
539 This research was funded by the UK National Institute for Health and Care Research (NIHR) (Global
540 Health Research Unit on Respiratory Health (RESPIRE); NIHR132826) using UK aid from the UK
541 Government to support global health research.

542 **Collaborator/Sponsor:**

543 NIHR Global Health Research Unit on Respiratory Health (RESPIRE) at the University of Edinburgh,
544 UK (www.ed.ac.uk/usher/respire). The Sponsor will assess the study to determine if an independent
545 risk assessment is required. If required, the independent risk assessment will be carried out by the
546 ACCORD Quality Assurance Group to determine if an audit should be performed before/during/after
547 the study and, if so, at what frequency.

548 **Contributors:**

549 MZ compiled the manuscript for publication, and contributed in introduction and discussion writing;
550 FR, AC and SHR contributed to developing the data management section; AKL contributed in
551 manuscript compilation and write-up; SA contributed in the methodology section of mHealth
552 intervention and provided technical input regarding digital appl MD contributed in statistical analysis
553 and sample size calculation section writing; MB contributed in user experience survey section; SP
554 contributed in economic analysis section, AK (PI from Pakistan) and RH (PI from Bangladesh)
555 contributed in manuscript writing, proof-reading and supervision of local research teams, KS (chief PI)
556 contributed in research idea conception, acquiring funding, manuscript proof-reading and overall
557 supervision

558 **Conflict of interest:**

559 There is no conflict of interest to be declared by any author.

560 **Author affiliations and ORCID:**

561 ¹The Initiative, Islamabad; Khyber Medical University, Peshawar, Pakistan (orcid.org/0000-0003-
562 2878-0435)

563 ²ARK Foundation, Bangladesh (orcid.org/0009-0001-3812-6034)

564 ³Usher Institute, University of Edinburgh, UK (orcid.org/0000-0002-3189-0558)

565 ⁴ARK Foundation, Bangladesh (orcid.org/0000-0001-9015-4414)

566 ⁵ARK Foundation, Bangladesh (orcid.org/0009-0009-1127-0720)

567 ⁶The Initiative, Islamabad, Pakistan

568 ⁷ Department of Social and Preventive Medicine, Faculty of Medicine, Universiti Malaya, Kuala
569 Lumpur, Malaysia (orcid.org/0000-0002-5014-5684)

570 ⁸ Department of Global Health, University of Bremen, Bremen, Germany (orcid.org/0000-0001-5909-
571 5508)

572 ⁹Department of Health Sciences, University of York, York, UK (orcid.org/0000-0002-0165-1150)

573 ¹⁰Usher Institute, University of Edinburgh, UK (orcid.org/0000-0001-9823-9252)

574 ¹¹ The Initiative, Islamabad, Pakistan (orcid.org/0000-0002-3733-9011)

575 ¹²ARK Foundation, University of Dhaka, Bangladesh (orcid.org/0000-0002-7616-9596)

576 ¹³Department of Health Sciences, University of York, York, UK (orcid.org/0000-0003-1529-7778)

577

578 **REFERENCES:**

579 1. World Health Organization. Global Tuberculosis Report 2023. 2023. Geneva,
580 Switzerland. [https://iris.who.int/bitstream/handle/10665/373828/9789240083851-](https://iris.who.int/bitstream/handle/10665/373828/9789240083851-eng.pdf?sequence=1)
581 [eng.pdf?sequence=1](https://iris.who.int/bitstream/handle/10665/373828/9789240083851-eng.pdf?sequence=1) (Accessed 30 April 2024)

582 2. Bagcchi S. WHO's global tuberculosis report 2022. *The Lancet Microbe*. 2023 Jan
583 1;4(1):e20

584 3. Marks GB, Teo AK, Wong EB et al. International efforts to reverse and end the
585 tuberculosis pandemic: past, present and future global strategies. *The Challenge of*
586 *Tuberculosis in the 21st Century: ERS Monograph 101*. 2023 Sep 1:1

- 587 4. World Health Organization. Global Tuberculosis Report 2023. 2023. Geneva,
588 Switzerland. [https://iris.who.int/bitstream/handle/10665/373828/9789240083851-](https://iris.who.int/bitstream/handle/10665/373828/9789240083851-eng.pdf?sequence=1)
589 [eng.pdf?sequence=1](https://iris.who.int/bitstream/handle/10665/373828/9789240083851-eng.pdf?sequence=1) (Accessed 30 April 2024)
- 590 5. Burusie A, Enquesilassie F, Addissie A et al. Effect of smoking on tuberculosis
591 treatment outcomes: A systematic review and meta-analysis. PLoS One. 2020 Sep
592 17;15(9):e0239333
- 593 6. Wang EY, Arrazola RA, Mathema B et al. The impact of smoking on tuberculosis
594 treatment outcomes: a meta-analysis. The International Journal of Tuberculosis and Lung
595 Disease. 2020 Feb 1;24(2):170-5
- 596 7. World Health Organization. WHO global report on trends in prevalence of tobacco
597 use 2000–2025. [https://www.who.int/publications/i/item/who-global-report-on-trends-in-](https://www.who.int/publications/i/item/who-global-report-on-trends-in-prevalence-of-tobacco-use-2000-2025-third-edition)
598 [prevalence-of-tobacco-use-2000-2025-third-edition](https://www.who.int/publications/i/item/who-global-report-on-trends-in-prevalence-of-tobacco-use-2000-2025-third-edition) (Accessed 30 April 2024)
- 599 8. Siddiqi K, Keding A, Marshall AM et al. Effect of quitting smoking on health outcomes
600 during treatment for tuberculosis: secondary analysis of the TB & Tobacco Trial. Thorax.
601 2022 Jan 1;77(1):74-8.
- 602 9. Siddiqi K, Khan A, Ahmad M, et al. Action to Stop Smoking In Suspected
603 Tuberculosis (ASSIST) in Pakistan: a Cluster Randomized, Controlled Trial. Ann Intern Med
604 2013; 158: 667–75.
- 605 10. Integrating Tobacco Control into Tuberculosis and HIV Responses. UNDP.
606 [https://www.undp.org/content/undp/en/home/librarypage/hiv-aids/integrating-tobacco-](https://www.undp.org/content/undp/en/home/librarypage/hiv-aids/integrating-tobacco-control-into-tuberculosis-and-hiv-responses.html)
607 [control-into-tuberculosis-and-hiv-responses.html](https://www.undp.org/content/undp/en/home/librarypage/hiv-aids/integrating-tobacco-control-into-tuberculosis-and-hiv-responses.html). (Accessed 30 April 2024)
- 608 11. Marshall AM, Barua D, Mitchell A et al. Smoking prevalence among tuberculosis
609 patients: A cross sectional study in Bangladesh and Pakistan. Tob Induc Dis. 2020 Aug
610 26;18:70.
- 611 12. Warsi S, Elsey H, Boeckmann M, et al. Using behaviour change theory to train health
612 workers on tobacco cessation support for tuberculosis patients: a mixed-methods study in
613 Bangladesh, Nepal and Pakistan. BMC Health Serv Res 2019;19:71.
- 614 13. Dogar OF, Keding A, Gabe R et al. Multicentre Randomised Double-Blind Placebo

- 615 Controlled Trial of Cytisine for Smoking Cessation in Smokers with Tuberculosis. *Lancet*
616 *Glob Health* 2020;8: e1408–17
- 617 14. Dogar O, Eelsey H, Khanal S et al. Challenges of Integrating Tobacco Cessation
618 Interventions in TB Programmes: Case Studies from Nepal and Pakistan. *J Smok Cessat*
619 2016;11:108–15.
- 620 15. World Health Organization, International Telecommunication Union. *Be He@lthy, Be*
621 *Mobile: A handbook on how to implement mTB-Tobacco*. World Health Organization,
622 International Telecommunication Union; 2019.
623 <https://iris.who.int/bitstream/handle/10665/325243/9789241515900-eng.pdf>. (Accessed 30
624 April 2024).
- 625 16. Day SJ, Altman DG. Blinding in clinical trials and other studies. *Bmj*.
626 2000;321(7259):504.
- 627 17. World Health Organization. Process of translation and adaptation of instruments.
628 Geneva: WHO 2016. http://www.who.int/substance_abuse/research_tools/translation/en/.
629 (Accessed 30 April 2024).
- 630 18. West R, Hajek P, Stead L et al. Outcome criteria in smoking cessation trials: proposal for
631 a common standard. *Addiction*. 2005;100:299–303.
- 632 19. Dogar O, Keding A, Gabe R et al. Cytisine for smoking cessation in patients with
633 tuberculosis: a multicentre, randomised, double-blind, placebo-controlled phase 3 trial. *The*
634 *Lancet Global Health*. 2020 Nov 1;8(11):e1408-17.
- 635 20. Haug S, Meyer C, Dymalski A et al. Efficacy of a text messaging (SMS) based smoking
636 cessation intervention for adolescents and young adults: study protocol of a cluster
637 randomised controlled trial. *BMC Public Health*. 2012 Dec;12:1-7.
- 638 21. Thabane L, Mbuagbaw L, Zhang S et al. A tutorial on sensitivity analyses in clinical trials:
639 the what, why, when and how. *BMC medical research methodology*. 2013 Dec;13:1-2.
- 640 22. Richardson G, Manca A. Calculation of quality adjusted life years in the published
641 literature: a review of methodology and transparency. *Health economics*. 2004
642 Dec;13(12):1203-10.

- 643 23. Fenwick E, Claxton K, Sculpher M. Representing uncertainty: the role of
644 cost-effectiveness acceptability curves. *Health economics*. 2001 Dec;10(8):779-87.
- 645 24. Chan AW, Tetzlaff JM, Gøtzsche PC et al. SPIRIT 2013 Explanation and Elaboration:
646 Guidance for protocols of clinical trials. *BMJ*. 2013;346:e7586
- 647 25. Dogar O, Elseiy H, Khanal S et al. Challenges of integrating tobacco cessation
648 interventions in TB programmes: case studies from Nepal and Pakistan. *Journal of Smoking*
649 *Cessation*. 2016 Jun;11(2):108-15.
- 650 26. Litvinjenko S, Magwood O, Wu S, Wei X. Burden of tuberculosis among vulnerable
651 populations worldwide: an overview of systematic reviews. *The Lancet. Infectious Diseases*.
652 2023 Dec;23(12):1395.

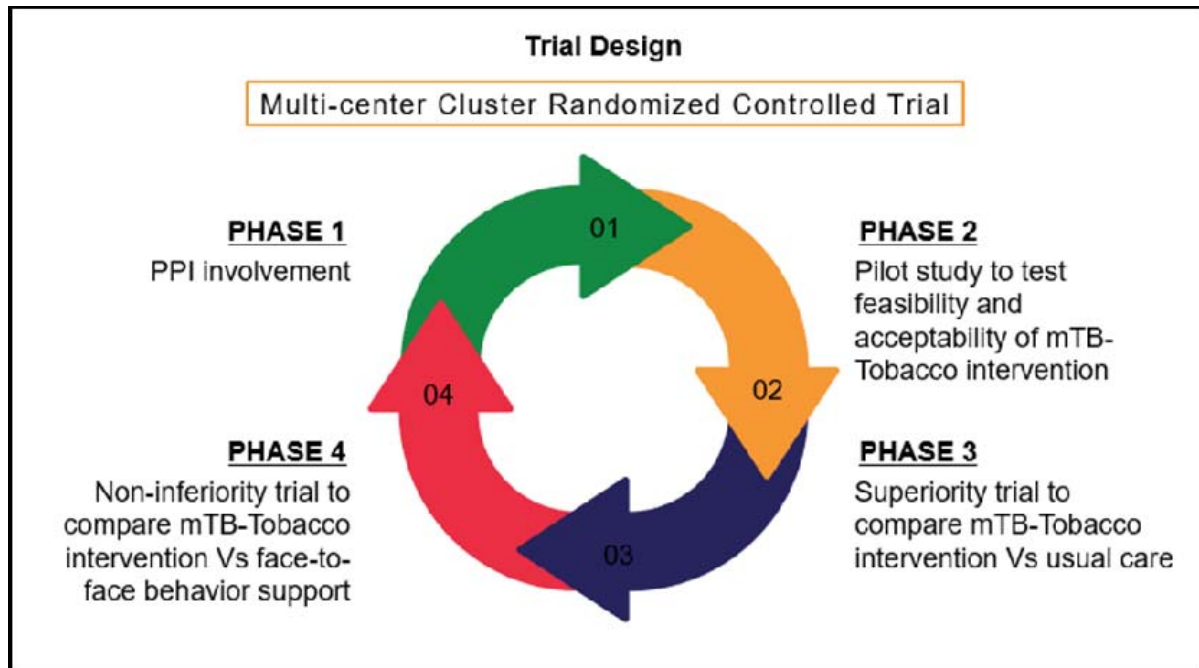


Figure 1: Study design and phases of Quit4TB trial

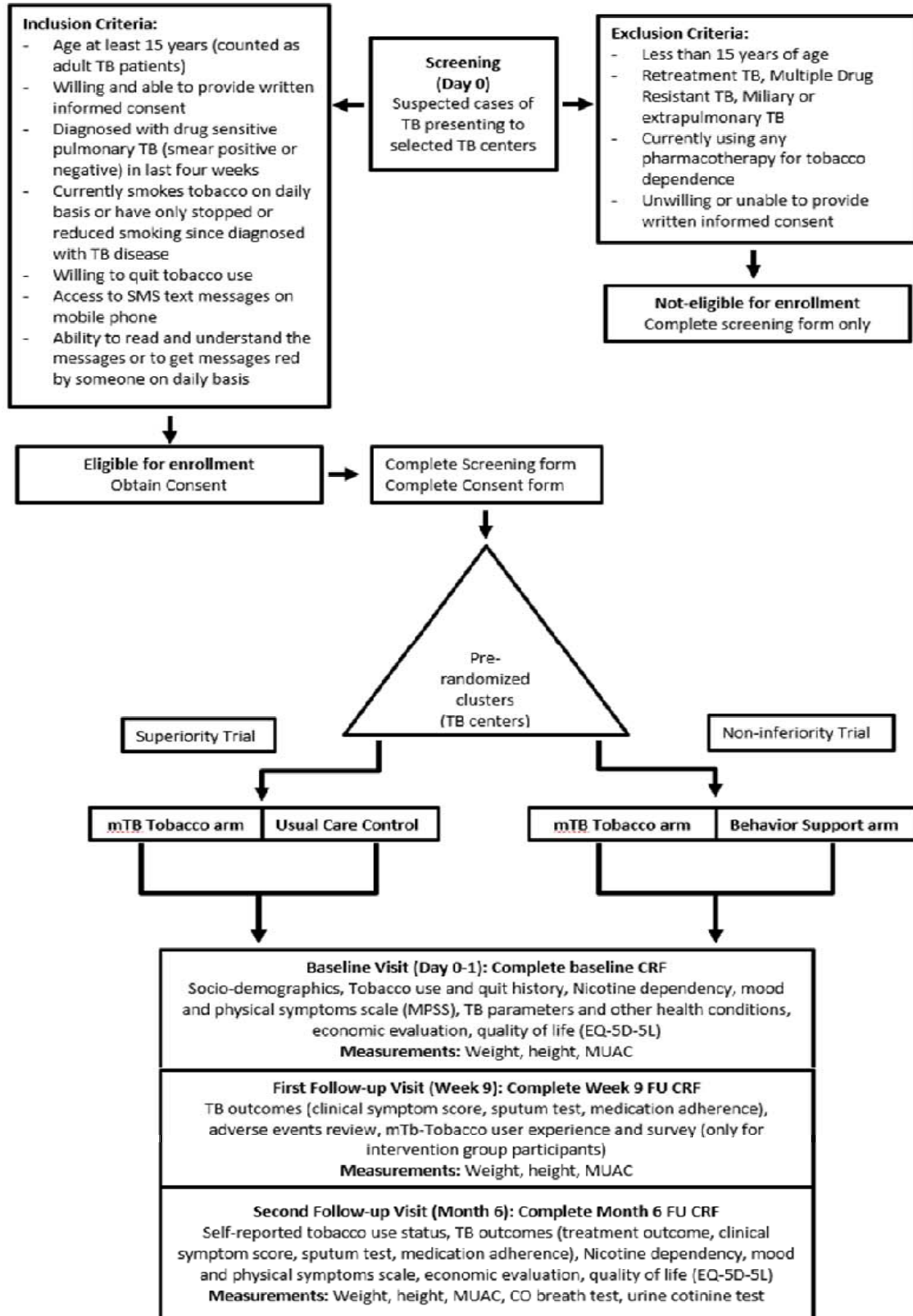


Figure 2: Quit4TB trial flow chart

Table 1: Definitions of TB treatment outcomes as per guidelines

Sr. no.	TB Treatment Outcomes	Definition
1.	Cured	A patient who was initially smear-positive and who was smear-negative in the last month of treatment (at month 6) and on at least one previous occasion
2.	Completed treatment	A patient who completed treatment (at month 6) but did not meet the criteria for cure or failure
3.	Treatment failure	A patient who was initially smear-positive and who remained smear-positive at month 6 or later during treatment
4.	Defaulted	A patient whose treatment was interrupted for 2 consecutive months or more
5.	Died	A patient who died from any cause during treatment
6.	Relapse	A patient who was previously treated for TB, was declared cured or treatment completed at the end of his most recent course of treatment and is now diagnosed with a recurrent episode of TB (either a true relapse or a new episode of TB caused by reinfection).

Table 2: Participant enrolment and follow-up assessment schedule for Quit4TB trial

Assessment	Screening	Day 0 baseline	Week 9	Month 6
Assessment of Eligibility Criteria	<input checked="" type="checkbox"/>	<input type="checkbox"/>	<input type="checkbox"/>	
Written informed consent	<input checked="" type="checkbox"/>	<input type="checkbox"/>	<input type="checkbox"/>	
Face to face / phone-based interaction			<input checked="" type="checkbox"/>	
Self-reported tobacco use/abstinence status		<input checked="" type="checkbox"/>	<input checked="" type="checkbox"/>	<input checked="" type="checkbox"/>
CO measurement			<input type="checkbox"/>	<input checked="" type="checkbox"/>
Socio-Demographic information		<input checked="" type="checkbox"/>	<input type="checkbox"/>	
Tobacco use and quit history		<input checked="" type="checkbox"/>		
Nicotine dependency		<input checked="" type="checkbox"/>	<input checked="" type="checkbox"/>	<input checked="" type="checkbox"/>
Economic outcomes		<input checked="" type="checkbox"/>		<input checked="" type="checkbox"/>
Process outcomes (Fidelity)			<input checked="" type="checkbox"/>	<input checked="" type="checkbox"/>
Medication (TB) compliance			<input checked="" type="checkbox"/>	<input checked="" type="checkbox"/>
Adverse events review			<input checked="" type="checkbox"/>	<input checked="" type="checkbox"/>
TB outcomes				<input checked="" type="checkbox"/>

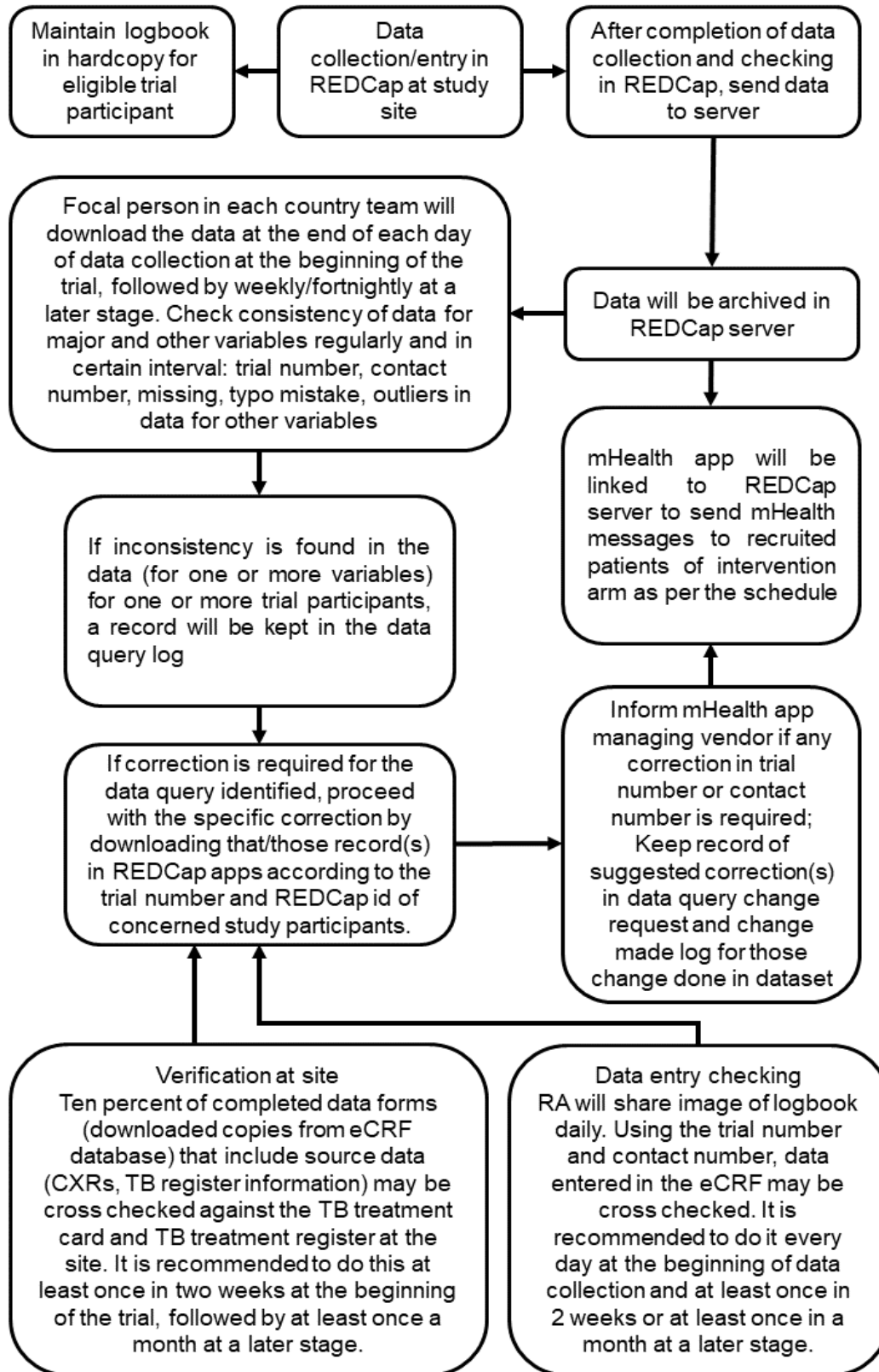


Figure 3. Flowchart of procedure of data management