

1 **A comparison of core temperature at different sites during**
2 **cytoreductive surgery with hyperthermic intraperitoneal**
3 **chemotherapy: A prospective observational study**

4 **Short title:** Core temperature at different sites during cytoreductive surgery with HIPEC

5

6 Jung–Won Kim ^{1,2}, Jin Ho Kim¹, Soojeong Oh¹, So Woon Ahn ^{1,2*}

7

8 ¹Department of Anesthesiology and Pain Medicine, CHA Bundang Medical Center

9 ²CHA University School of Medicine, Seongnam-si, Gyeonggi-do, South Korea.

10

11 * Corresponding author

12 Email: swahn@chauniv.ac.kr (SWA)

13

14

15 **Abstract**

16 **Background**

17 During cytoreductive surgery with hyperthermic intraperitoneal chemotherapy, body
18 temperature rapidly changes due to the hyperthermic agent. Depending on the method used,
19 obtained values may vary, particularly during localized heating of the abdominal cavity. The
20 primary aim of our study was to compare the effectiveness of core temperature monitoring
21 techniques, nasopharyngeal temperature, zero-heat flux cutaneous thermometer device, and
22 esophageal temperature, during hyperthermic intraperitoneal chemotherapy with
23 cytoreductive surgery.

24 **Methods**

25 Body temperature was measured using a zero-heat flux cutaneous thermometer device on the
26 forehead and esophageal and nasopharyngeal probes throughout the surgery. Temperature
27 differences were then calculated for each pair of measurements. We conducted an agreement
28 analysis between the nasopharyngeal temperature and reference core temperature
29 measurements using the 95% Bland–Altman limits of agreement for repeated measurement
30 data. The proportion of all differences that were within 0.5 °C and repeated measures Lin’s
31 concordance correlation coefficient were estimated.

32 **Results**

33 The mean overall difference between nasopharyngeal and forehead temperature was $-0.04 \pm$
34 0.33 °C (95% limits of agreement: -0.69 – 0.62), and esophageal temperature was $0.02 \pm$
35 0.35 °C (95% limits of agreement: -0.66 – 0.71). The proportion of differences within 0.5 °C of
36 TSpotOn was 0.03 (95% CI 0.01–0.04) and that of esophageal temperature was -0.06 (95%
37 CI -0.08 to -0.05). The Lin’s concordance correlation coefficient of both were 0.94 (95% CI

38 0.93–0.94). After the hyperthermic intraperitoneal chemotherapy period, the temperatures
39 rapidly decreased, followed by a noticeable rebound increase, particularly nasopharyngeal
40 and forehead temperatures. The maximum difference between esophageal temperature and
41 other temperatures was 1.5 °C.

42 **Conclusions**

43 Our results reveal a strong correlation between nasopharyngeal, zero-heat flux cutaneous, and
44 esophageal temperatures during surgery. However, consistent temperature differences with
45 the esophageal thermometer were not observed. Post-hyperthermic intraperitoneal
46 chemotherapy, rebound heating occurred at all sites, notably in the nasopharyngeal and zero-
47 heat flux cutaneous areas.

48

49 **Introduction**

50 Hyperthermic intraperitoneal chemotherapy (HIPEC) has emerged as a promising
51 therapeutic modality for patients with peritoneal or metastatic cancer in the abdominal cavity
52 [1], demonstrating significant improvements in survival rates compared with traditional
53 palliative approaches. The high-concentration delivery of heated intraperitoneal
54 chemotherapy, with limited systemic absorption [2], has transformed the management of
55 these patients. Meticulous and vigilant care is essential for anesthesiologists during HIPEC,
56 with or without cytoreductive surgery, including managing blood loss, fluid shift,
57 hypothermia, and hemodynamic changes induced by hyperthermia.

58 Elevations in body temperature lead to physiological changes that manifest as a
59 gradual rise in heart rate and end-tidal carbon dioxide values, accompanied by metabolic
60 acidosis and elevated arterial lactate values [3,4]. The central nervous system, among the
61 major organ systems, is particularly susceptible to hyperthermia [5]. Studies on induced

62 hyperthermia in healthy volunteers showed impaired memory at a core temperature of just
63 38.8°C compared to normothermia [6].

64 Under normal conditions, the body temperature is not uniform, typically exhibiting a
65 2–4 °C difference between core and shell temperatures. Vasomotor thermoregulation is
66 activated in response to environmental temperature changes, facilitating heat redistribution to
67 maintain a stable core temperature. However, variations in core temperatures can occur
68 during rapid cooling or rewarming processes [7].

69 During extensive debulking procedures, body temperature commonly decreases;
70 however, it rapidly increases with the administration of a hyperthermic (42–43 °C) cytostatic
71 agent [8-10]. Accurate and appropriate temperature monitoring is crucial for maintaining
72 normothermia throughout the procedure.

73 Depending on the method used, obtained values may vary, particularly during
74 localized heating of the abdominal cavity. Although the gold standard for core temperature
75 monitoring is the pulmonary arterial catheter, its invasiveness necessitates the use of
76 alternative methods such as esophageal and nasopharyngeal probes and zero-heat flux
77 cutaneous thermometers (ZHF) [11-13].

78 The primary aim of our study was to investigate and compare the effectiveness of
79 nasopharyngeal temperature monitoring with two core temperature measurement techniques,
80 the ZHF device and esophageal temperature, during HIPEC with cytoreductive surgery.

81

82 **Materials and methods**

83 This study received approval from the Ethics Committee for Research with Medicine
84 of CHA Bundang Medical Center, CHA University Hospital, Gyeonggi-do, Korea on August
85 5th, 2019 (approval number: CHAMC-04-050; registration number: KCT0003980). Written

86 informed consent was obtained from all participants.

87 Data were collected from July 04, 2019, to Dec 22, 2022. During this period, 55
88 patients, who had previously signed a written informed consent form, underwent
89 cytoreductive surgery with HIPEC at our hospital.

90 We excluded patients with systemic or local infections of the forehead or any contra-
91 indication to esophageal and nasal probe insertion, as well as those who changed their
92 chemotherapy plan for several reasons. Finally, 41 patients participated in the study. (Fig 1)

93 **Fig 1. Flow chart**

94 Uniform balanced anesthetic techniques and volatile agents were used in all patients.
95 Following anesthesia induction, temperatures were measured at various sites, as follows: on
96 the forehead with the ZHF, via a SpotOn® sensor (3M™ Bair Hugger™ Temperature
97 Monitoring System, 3M, St Paul, MN, USA); at the nasopharynx via a probe (E-temp, Ewha
98 Biomedics, Seoul, Korea) inserted to a depth equal to the distance between the nares and the
99 earlobe and at a distance of 30 cm from the nostrils or 20 cm from the lips; and with an
100 esophageal probe (E-temp, Ewha Biomedics, Seoul, Korea), placed just after tracheal
101 intubation (following the Mekjavic' and Rempel formula [14]). Temperature measurements
102 were simultaneously collected at 5-minute intervals using each device throughout the surgery.
103 Temperature differences were then calculated for each pair of measurements.

104

105 **Statistical analysis**

106 A Bland–Altman analysis, which incorporated multiple observations per individual
107 was used to evaluate the comparability of the temperature readings between nasopharyngeal
108 temperature (T_{naso}) and other measurement sites [15]. If the observed limits of agreement (\pm
109 1.96 SD around the mean difference) were clinically accepted, indicating that 95% of the

110 differences were expected to fall within these limits, the two methods were considered
111 equivalent. A priori, the acceptable limits of agreement were set at ≤ 0.5 °C, a clinically
112 relevant threshold that is based on the usual temperature cycle variations in human beings and
113 is associated with clinical complications [16]. Additionally, a Bland–Altman plot illustrating
114 individual differences between the two measurements versus their average was generated to
115 show agreement with the reference method (the smaller the range between these two limits,
116 the better the agreement). We calculated the proportion of the Tnaso measurements that were
117 within 0.5 °C of the corresponding method of reference, and the 95% confidence interval for
118 the proportion was estimated using bootstrap percentiles based on 10,000 resamples. To
119 assess reproducibility, Lin’s concordance correlation coefficient (LCCC) was computed and
120 interpreted using McBride’s strength-of-agreement criteria for continuous variables (almost
121 perfect: > 0.99 ; substantial: > 0.95 – 0.99 ; moderate: 0.90 – 0.95 ; poor: < 0.90) [17]. The results
122 are presented as mean \pm SD or mean (95% limits of agreement). IBM SPSS Statistics 26
123 (IBM Corp, Armonk, NY, USA) was used for Bland–Altman and bootstrap percentile
124 calculations. Finally, the LCCC was computed using the free Medcalc © software Version
125 17.7.2 (Medcalc software, Ostend, Belgium) (<https://www.medcalc.org/>).

126

127 **Results**

128 Finally, 41 patients participated in the study. The demographic and surgical
129 characteristics of the patients are presented in Table 1.

130 Categorical data are expressed as number and percentage n (%), and quantitative data
131 are reported as median values and [25 to 75th] percentiles.

132

133 **Table 1. Demographic and surgical characteristics**

134

Age (years)	59 [50 to 63]
Sex (Male)	13 (32)
Body Mass Index (kg m ⁻²)	24 [22 to 25]
ASA physical status	
ASA 1	8 (19)
ASA 2	27 (66)
ASA 3	6 (15)
Type of surgery	
Ovary cancer	10 (24)
Colon cancer	7 (17)
Pseudomyxoma	8 (20)
Primary peritoneal carcinoma	3 (7)
Carcinomatosis	13 (32)
Anesthesia Time (min)	545 [465 to 635]
Operation Time (min)	495 [405 to 595]
Blood loss (ml)	600 [320 to 1150]

135 The mean nasopharyngeal temperature (T_{naso}) after anesthetic induction was 35.9 ±
136 0.1 °C (35.7–36.3 °C). The temperature during HIPEC was 37.1 ± 0.7 °C (35.9 °C–37.8 °C),
137 and subsequently, it was 36.8 ± 0.4 °C (36.2–37.7 °C).

138 Fig 2 illustrates the mean temperatures during the operation.

139

140 **Fig 2. Mean temperatures during the operation.**

141

142 The mean overall difference between the T_{naso} and forehead (T_{SpotOn}) temperature

143 was $-0.04 \pm 0.33^{\circ}\text{C}$ (95% limits of agreement -0.69 – 0.62) (Fig 3-1). The proportion of
144 differences within 0.5°C was 0.03 (95% CI 0.01– 0.04) for nasopharyngeal reference. The
145 LCCC was 0.94 (95% CI 0.93–0.94). (Table 2) The mean difference between Tnaso and
146 esophageal temperature (Teso) was $0.02 \pm 0.35^{\circ}\text{C}$ (95% limits of agreement of -0.66 – 0.71)
147 (Fig 3-2). The proportion of differences within 0.5°C was -0.06 (95% CI -0.08 to -0.05) for
148 the nasopharyngeal reference. The LCCC was 0.94 (95% CI 0.93–0.94) (Table 2).

149 **Table 2. Comparison between Tnaso and the reference methods**

	Mean (SD) Temperature (°C)	95% limits of agreement (95% CI)	Proportion of differences within 0.5°C (95% CI)	LCCC (95% CI)
Overall				
Teso	0.02 (0.35)	-0.66 – 0.71	-0.06 (-0.08 – - 0.05)	0.94 (0.93 – 0.94)
TSpotOn	-0.04 (0.33)	-0.69 – 0.62	0.03 (0.01 – 0.04)	0.94 (0.93 – 0.94)
Pre-HIPEC period				
Teso	0.09 (0.26)	-0.42 – 0.60	0.00 (-0.04 – 0.03)	0.85 (0.84 – 0.87)
TSpotOn	-0.07 (0.27)	-0.59 – 0.46	-0.01 (-0.04 – 0.03)	0.85 (0.83 – 0.87)
HIPEC period				
Teso	-0.12 (0.39)	-0.89 – 0.65	-0.03 (-0.06 – 0.00)	0.90 (0.89 – 0.91)
TSpotOn	-0.03 (0.41)	-0.84 – 0.77	0.01 (-0.02 – 0.05)	0.90 (0.88 – 0.91)
Post-HIPEC period				
Teso	0.15 (0.37)	-0.58 – 0.87	-0.01 (-0.07 – 0.04)	0.88 (0.85 – 0.90)

TSpotOn	0.04 (0.30)	-0.55 – 0.63	0.03 (-0.01 – 0.07)	0.93 (0.91 – 0.94)
----------------	-------------	--------------	---------------------	--------------------

150 Tnaso: nasopharyngeal temperature, TSpotOn: temperatures were measured at the forehead using a SpotOn[®] sensor, Teso: esophageal

151 temperature, CI: confidence interval, SD: standard deviation, LCCC: Lin's concordance correlation coefficient

152 **Fig 3. Bland–Altman plot of core temperature measurements comparing the**
153 **nasopharyngeal temperature to the temperature measured by the ZHF (a) and the**
154 **esophageal temperature (b).** Limits of agreement (dotted lines) on the plot indicate where
155 95% of the differences between the two methods are expected to fall.

156
157 We analyzed the agreement between Tnaso and the other monitoring site
158 temperatures (TSpotOn and Teso) separately pre-, during, and post-HIPEC. (Table 2, Figs 4-
159 1, 2 and 5-1, 2)

160
161 **Fig 4. Bland–Altman plot of core temperature measurements during the HIPEC period**
162 **comparing the nasopharyngeal temperature to the temperature measured by the ZHF (a)**
163 **and the esophageal temperature (b).** Limits of agreement (dotted lines) on the plot indicate
164 where 95% of differences between the two methods are expected to fall.

165
166 **Fig 5. Bland–Altman plot of core temperature measurements after the HIPEC period,**
167 **comparing the nasopharyngeal temperature to the temperature measured by the ZHF**
168 **(a) and esophageal temperature (b).** Limits of agreement (dotted lines) on the plot indicate
169 where 95% of differences between the two methods are expected to fall.

170

171 **Discussion**

172 Our study primarily focused on evaluating the reliability of the ZHF method during
173 the HIPEC period. Our findings indicate a strong correlation between nasopharyngeal, ZHF,
174 and esophageal temperatures throughout surgery.

175 However, in our findings, the differences in temperature pairs between Teso and

176 other temperatures were not consistently maintained. Further, during the post-HIPEC period,
177 rebound heating was observed across all monitoring sites, with a predominant effect in the
178 nasopharyngeal and ZHF areas.

179 The nasopharynx is recommended as a reliable core temperature monitoring site in
180 situations with wide-ranging body temperature changes, such as in cardiac surgery [18].
181 Additionally, since brain tissue temperature demonstrates a high correlation with
182 nasopharyngeal temperature, monitoring brain tissue temperature can be considered a rational
183 choice. The ZHF is an alternative non-invasive method for measuring the core temperature
184 using a thermal insulator on the skin surface.

185 A recent systematic review indicated that temperature measurements from the 3M™
186 Bair Hugger™ Temperature Monitoring System could deviate by approximately 1 °C from
187 the core temperature [19]. Nevertheless, our findings demonstrated a good correlation
188 between nasopharyngeal temperature and temperature measured by the ZHF during periods
189 of rapid core temperature changes. Esophageal temperature also showed a good correlation
190 with nasopharyngeal temperature (LCCC 0.90, max 39.2 °C). Furthermore, throughout the
191 pre- and post-HIPEC periods, TSpotOn and Teso exhibited LCCC values exceeding 0.8 when
192 compared to Tnaso. During hyperthermic intraperitoneal perfusate indwelling, the
193 nasopharyngeal core temperature increases to a mean of 37.8 °C; in our data, it rose to a
194 maximum of 39.8 °C.

195 Few studies have focused on the reliability of the ZHF method during HIPEC.
196 Boisson et al. [13] analyzed subgroup data in their observational study to assess the reliability
197 of the ZHF and reported increasing limits of agreements during the period of rapid change in
198 the core temperature caused by HIPEC reaching 0.6 ± 1.8 °C, with absolute differences in
199 temperature pairs ≤ 0.5 °C in less than 40% of cases. However, in our results, the mean
200 difference compared with Teso and Tnaso, respectively, was -0.09 ± 0.46 °C, and $0.03 \pm$

201 0.41 °C, respectively, with absolute differences in temperature pairs over 0.5°C in less than
202 6 %. Nevertheless, in our study, 14% of pairs showed absolute differences in temperature
203 pairs over 0.5 °C between Tnaso and Teso.

204 In our study, temperature data from the esophagus reflected the temperature of the
205 abdominal cavity. During cytoreductive surgery, the overall Teso was lower than Tnaso and
206 TSpotOn, whereas during HIPEC, Teso showed a higher value than the others. This may be
207 explained by adjunctive tissue conduction, blood, and enthalpy of vaporization of the open
208 abdominal cavity. The differences in temperature pairs between Teso and other temperatures
209 were not consistently maintained; they were positive in the pre- and post-HIPEC periods but
210 negative during HIPEC.

211 Interestingly, after the post-HIPEC period, the temperatures rapidly decreased,
212 followed by a noticeable rebound increase, particularly in Tnaso and TSpotOn (Fig 2). The
213 maximum difference between Teso and the other temperatures was 1.5°C for both Tnaso and
214 TSpotOn. Rebound temperature changes observed in cardiac surgical patients can lead to
215 increased cardiovascular load and collapse during rewarming, as peripheral vasodilation may
216 cause after-drop cooling of the core temperature due to sudden return of cold blood from the
217 extremities [20]. While no research on after-rise increase in the core temperature was found, a
218 rebound increase in the core temperature after HIPEC was also observed in secondary
219 cytoreductive surgery and the HIPEC study [21], possibly explaining the reverse rebound
220 cooling process.

221 These discrepancies in esophageal temperature require attention during intraoperative
222 clinical patient management. Determining the timing of cooling or heating based on the site
223 temperature is critical, as our results indicate that Tnaso and TSpotOn were maintained at
224 over 37 °C even after Teso dropped during the post-HIPEC period and cytoreductive surgery.

225 Therefore, anesthesiologists should select the core temperature monitoring site,

226 especially for HIPEC procedures performed during laparotomy, considering the target organ.

227 The limitations of our study include not measuring the pulmonary artery temperature
228 as a standard core temperature and focusing solely on cytoreductive surgery with HIPEC
229 under laparotomy. During laparotomy, the exposed bowel and visceral heat loss through
230 evaporation can cause exaggerated temperature discrepancies throughout the entire operative
231 period.

232 In conclusion, our findings indicate a strong correlation between nasopharyngeal,
233 ZHF, and esophageal temperatures throughout the duration of cytoreductive surgery with
234 HIPEC. However, a considerable number of monitoring sites were required. Notably, the
235 temperature readings in the esophagus did not match those observed in the nasopharynx and
236 the ZHF at the forehead. Additionally, during the post-HIPEC period, rebound heating was
237 observed across all monitoring sites, with a predominant effect in the nasopharyngeal and
238 ZHF areas.

239

240 **Acknowledgments**

241 Dongwook Kim assisted with the statistical analysis for this study.

242

243 **Funding**

244 None of the authors have any personal financial interests in this research.

245

246 **Authors' contributions**

247 ASW: Study design, patient recruitment, data collection, data analysis, drawing up the first
248 draft of the paper and correspondence; JWK: statistical management, drawing up the first

249 draft of the paper; K.JH: patient recruitment, data collection, statistical management; SO:
250 patient recruitment, and data collection. All authors have read and approved the final
251 manuscript.

253 **References**

- 254 1. Elias D, Gilly F, Boutitie F, Quenet F, Bereder J-M, Mansvelt B, et al. Peritoneal
255 colorectal carcinomatosis treated with surgery and perioperative intraperitoneal
256 chemotherapy: Retrospective analysis of 523 patients from a multicentric French
257 study. *J Clin Oncol*. 2010;28: 63-68. doi: [10.1200/JCO.2009.23.9285](https://doi.org/10.1200/JCO.2009.23.9285).
- 258 2. Jacquet P, Averbach A, Stephens AD, Stuart OA, Chang D, Sugarbaker PH. Heated
259 intraoperative intraperitoneal mitomycin C and early postoperative intraperitoneal 5-
260 fluorouracil: Pharmacokinetic studies. *Oncology*. 1998;55: 130-138. doi:
261 [10.1159/000011847](https://doi.org/10.1159/000011847).
- 262 3. Cafiero T, Di Iorio C, Di Minno RM, Sivoletta G, Confuorto G. Non-invasive cardiac
263 monitoring by aortic blood flow determination in patients undergoing hyperthermic
264 intraperitoneal intraoperative chemotherapy. *Minerva Anesthesiol*. 2006;72: 207-215.
- 265 4. Esquivel J, Angulo F, Bland RK, Stephens AD, Sugarbaker PH. Hemodynamic and
266 cardiac function parameters during heated intraoperative intraperitoneal
267 chemotherapy using the open "coliseum technique". *Ann Surg Oncol*. 2000;7: 296-
268 300. doi: [10.1007/s10434-000-0296-2](https://doi.org/10.1007/s10434-000-0296-2).
- 269 5. Walter EJ, Carraretto M. The neurological and cognitive consequences of
270 hyperthermia. *Crit Care*. 2016;20: 199. doi: [10.1186/s13054-016-1376-4](https://doi.org/10.1186/s13054-016-1376-4).
- 271 6. Stubblefield ZM, Cleary MA, Garvey SE, Eberman LE. Effects of active
272 hyperthermia on cognitive performance; 2013.
- 273 7. Akata T, Setoguchi H, Shirozu K, Yoshino J. Reliability of temperatures measured at
274 standard monitoring sites as an index of brain temperature during deep hypothermic
275 cardiopulmonary bypass conducted for thoracic aortic reconstruction. *J Thorac
276 Cardiovasc Surg*. 2007;133: 1559–1565. doi: [10.1016/j.jtcvs.2006.11.031](https://doi.org/10.1016/j.jtcvs.2006.11.031).
- 277 8. Schmidt C, Creutzenberg M, Piso P, Hobbhahn J, Bucher M. Peri-operative

- 278 anaesthetic management of cytoreductive surgery with hyperthermic intraperitoneal
279 chemotherapy. *Anaesthesia*. 2008;63: 389-395. doi: [10.1111/j.1365-
280 2044.2007.05380.x](https://doi.org/10.1111/j.1365-2044.2007.05380.x).
- 281 9. Raspe C, Piso P, Wiesenack C, Bucher M. Anesthetic management in patients
282 undergoing hyperthermic chemotherapy. *Curr Opin Anaesthesiol*. 2012;25: 348-355.
283 doi: [10.1097/ACO.0b013e32835347b2](https://doi.org/10.1097/ACO.0b013e32835347b2).
- 284 10. Raspé C, Flöther L, Schneider R, Bucher M, Piso P. Best practice for perioperative
285 management of patients with cytoreductive surgery and HIPEC. *Eur J Surg Oncol*.
286 2017;43: 1013-1027. doi: [10.1016/j.ejso.2016.09.008](https://doi.org/10.1016/j.ejso.2016.09.008).
- 287 11. Krizanac D, Stratil P, Hoerbinger D, Testori C, Wallmueller C, Schober A, et al.
288 Femoro-iliacal artery versus pulmonary artery core temperature measurement during
289 therapeutic hypothermia: An observational study. *Resuscitation*. 2013;84: 805-809.
290 doi: [10.1016/j.resuscitation.2012.11.022](https://doi.org/10.1016/j.resuscitation.2012.11.022).
- 291 12. Lefrant JY, Muller L, de La Coussaye JE, Benbabaali M, Lebris C, Zeitoun N, et al.
292 Temperature measurement in intensive care patients: Comparison of urinary bladder,
293 oesophageal, rectal, axillary, and inguinal methods versus pulmonary artery core
294 method. *Intensive Care Med*. 2003;29: 414-418. doi: [10.1007/s00134-002-1619-5](https://doi.org/10.1007/s00134-002-1619-5).
- 295 13. Boisson M, Alaux A, Kerforne T, Mimos O, Debaene B, Dahyot-Fizelier C, et al.
296 Intra-operative cutaneous temperature monitoring with zero-heat-flux technique (3M
297 SpotOn) in comparison with oesophageal and arterial temperature: A prospective
298 observational study. *Eur J Anaesthesiol*. 2018;35: 825-830. doi:
299 [10.1097/EJA.0000000000000822](https://doi.org/10.1097/EJA.0000000000000822).
- 300 14. Mekjavić IB, Rempel ME. Determination of esophageal probe insertion length based
301 on standing and sitting height. *J Appl Physiol* (1985). 1990;69: 376-379. doi:
302 [10.1152/jappl.1990.69.1.376](https://doi.org/10.1152/jappl.1990.69.1.376).

- 303 15. Bland JM, Altman DG. Agreement between methods of measurement with multiple
304 observations per individual. *J Biopharm Stat.* 2007;17: 571-582. doi:
305 [10.1080/10543400701329422](https://doi.org/10.1080/10543400701329422).
- 306 16. Winkler M, Akça O, Birkenberg B, Hetz H, Scheck T, Arkiliç CF, et al. Aggressive
307 warming reduces blood loss during hip arthroplasty. *Anesth Analg.* 2000;91: 978-984.
308 doi: [10.1097/00000539-200010000-00039](https://doi.org/10.1097/00000539-200010000-00039).
- 309 17. Mahon GM. A proposal for strength-of-agreement criteria for Lin's concordance
310 correlation coefficient; 2005.
- 311 18. Engelman R, Baker RA, Likosky DS, Grigore A, Dickinson TA, Shore-Lesserson L,
312 et al. The Society of Thoracic Surgeons, The Society of Cardiovascular
313 Anesthesiologists, and The American Society of ExtraCorporeal Technology: Clinical
314 practice guidelines for cardiopulmonary bypass—Temperature management during
315 cardiopulmonary bypass. *J Extra Corpor Technol.* 2015;47: 145-154.
- 316 19. Conway A, Bittner M, Phan D, Chang K, Kamboj N, Tipton E, et al. Accuracy and
317 precision of zero-heat-flux temperature measurements with the 3M™ Bair Hugger™
318 temperature Monitoring System: A systematic review and meta-analysis. *J Clin Monit*
319 *Comput.* 2021;35: 39-49. doi: [10.1007/s10877-020-00543-6](https://doi.org/10.1007/s10877-020-00543-6).
- 320 20. Lloyd EL. Accidental hypothermia. *Resuscitation.* 1996;32: 111-124. doi:
321 [10.1016/0300-9572\(96\)00983-5](https://doi.org/10.1016/0300-9572(96)00983-5).
- 322 21. Sp S, G P. Secondary cytoreductive surgery and hyperthermic intraperitoneal
323 chemotherapy (CRS+HIPEC) for recurrent epithelial ovarian cancer (EOC): Indian
324 experience. *J Mol Genet Med.* 2016;10. doi: [10.4172/1747-0862.1000220](https://doi.org/10.4172/1747-0862.1000220).

325

326

- 327 **1.** Elias D, Gilly F, Boutitie F, Quenet F, Bereder J-M, Mansvelt B, et al. Peritoneal
328 colorectal carcinomatosis treated with surgery and perioperative intraperitoneal
329 chemotherapy: retrospective analysis of 523 patients from a multicentric French
330 study. *J Clin Oncol.* 2010;28(1):63-8.
- 331 **2.** Jacquet P, Averbach A, Stephens AD, Stuart OA, Chang D, Sugarbaker PH. Heated
332 Intraoperative Intraperitoneal Mitomycin C and Early Postoperative Intraperitoneal 5-
333 Fluorouracil: Pharmacokinetic Studies. *Oncology.* 1998;55(2):130-8.
334 <https://doi.org/10.1159/000011847>.
- 335 **3.** Cafiero T, Di Iorio C, Di Minno RM, Sivoletta G, Confuorto G. Non-invasive cardiac
336 monitoring by aortic blood flow determination in patients undergoing hyperthermic
337 intraperitoneal intraoperative chemotherapy. *Minerva Anesthesiol.* 2006;72(4):207-15
338 PMID:16570032.
- 339 **4.** Esquivel J, Angulo F, Bland RK, Stephens AD, Sugarbaker PH. Hemodynamic and
340 cardiac function parameters during heated intraoperative intraperitoneal
341 chemotherapy using the open "coliseum technique". *Ann Surg Oncol.* 2000;7(4):296-
342 300. <https://doi.org/10.1007/s10434-000-0296-2> PMID:10819370.
- 343 **5.** Walter EJ, Carraretto M. The neurological and cognitive consequences of
344 hyperthermia. *Crit Care.* 2016;20(1):199. <https://doi.org/10.1186/s13054-016-1376-4>
345 PMID:27411704.
- 346 **6.** Stubblefield ZM, Cleary MA, Garvey SE, Eberman LE. Effects of active
347 hyperthermia on cognitive performance. 2013.
- 348 **7.** Akata T, Setoguchi H, Shirozu K, Yoshino J. Reliability of temperatures measured at
349 standard monitoring sites as an index of brain temperature during deep hypothermic
350 cardiopulmonary bypass conducted for thoracic aortic reconstruction. *The Journal of*
351 *Thoracic and Cardiovascular Surgery.* 2007;133(6):1559-65.e2.

- 352 <https://doi.org/https://doi.org/10.1016/j.jtcvs.2006.11.031>.
- 353 **8.** Schmidt C, Creutzenberg M, Piso P, Hobbhahn J, Bucher M. Peri-operative anesthetic
354 management of cytoreductive surgery with hyperthermic intraperitoneal
355 chemotherapy. *Anesthesia*. 2008;63(4):389-95. [https://doi.org/10.1111/j.1365-](https://doi.org/10.1111/j.1365-2044.2007.05380.x)
356 [2044.2007.05380.x](https://doi.org/10.1111/j.1365-2044.2007.05380.x) PMID:18336490.
- 357 **9.** Raspe C, Piso P, Wiesenack C, Bucher M. Anesthetic management in patients
358 undergoing hyperthermic chemotherapy. *Curr Opin Anaesthesiol*. 2012;25(3):348-55.
359 <https://doi.org/10.1097/ACO.0b013e32835347b2> PMID:22517311.
- 360 **10.** Raspe C, Flother L, Schneider R, Bucher M, Piso P. Best practice for perioperative
361 management of patients with cytoreductive surgery and HIPEC. *Eur J Surg Oncol*.
362 2017;43(6):1013-27. <https://doi.org/10.1016/j.ejso.2016.09.008> PMID:27727026.
- 363 **11.** Krizanac D, Stratil P, Hoerburger D, Testori C, Wallmueller C, Schober A, et al.
364 Femoro-iliacal artery versus pulmonary artery core temperature measurement during
365 therapeutic hypothermia: an observational study. *Resuscitation*. 2013;84(6):805-9.
366 <https://doi.org/10.1016/j.resuscitation.2012.11.022> PMID:23200998.
- 367 **12.** Lefrant JY, Muller L, de La Coussaye JE, Benbabaali M, Lebris C, Zeitoun N, et al.
368 Temperature measurement in intensive care patients: comparison of urinary bladder,
369 esophageal, rectal, axillary, and inguinal methods versus pulmonary artery core
370 method. *Intensive Care Med*. 2003;29(3):414-8. [https://doi.org/10.1007/s00134-002-](https://doi.org/10.1007/s00134-002-1619-5)
371 [1619-5](https://doi.org/10.1007/s00134-002-1619-5) PMID:12577157.
- 372 **13.** Boisson M, Alaux A, Kerforne T, Mimoz O, Debaene B, Dahyot-Fizelier C, et al.
373 Intra-operative cutaneous temperature monitoring with zero-heat-flux technique (3M
374 SpotOn) in comparison with esophageal and arterial temperature: A prospective
375 observational study. *Eur J Anaesthesiol*. 2018;35(11):825-30.
376 <https://doi.org/10.1097/eja.0000000000000822> PMID:29708906.

- 377 **14.** Mekjavic IB, Rempel ME. Determination of esophageal probe insertion length based
378 on standing and sitting height. *J Appl Physiol* (1985). 1990;69(1):376-9.
379 <https://doi.org/10.1152/jappl.1990.69.1.376> PMID:2394660.
- 380 **15.** Bland JM, Altman DG. Agreement between methods of measurement with multiple
381 observations per individual. *J Biopharm Stat.* 2007;17(4):571-82.
382 <https://doi.org/10.1080/10543400701329422> PMID:17613642.
- 383 **16.** Winkler M, Akça O, Birkenberg B, Hetz H, Scheck T, Arkiliç CF, et al. Aggressive
384 warming reduces blood loss during hip arthroplasty. *Anesth Analg.* 2000;91(4):978-
385 84. <https://doi.org/10.1097/00000539-200010000-00039> PMID:11004060.
- 386 **17.** Mahon GM. A Proposal for Strength-of-Agreement Criteria for Lin's Concordance
387 Correlation Coefficient. 2005.
- 388 **18.** Engelman R, Baker RA, Likosky DS, Grigore A, Dickinson TA, Shore-Lesserson L,
389 et al. The Society of Thoracic Surgeons, The Society of Cardiovascular
390 Anesthesiologists, and The American Society of ExtraCorporeal Technology: Clinical
391 Practice Guidelines for Cardiopulmonary Bypass--Temperature Management during
392 Cardiopulmonary Bypass. *J Extra Corpor Technol.* 2015;47(3):145-54
393 PMID:26543248.
- 394 **19.** Conway A, Bittner M, Phan D, Chang K, Kamboj N, Tipton E, et al. Accuracy and
395 precision of zero-heat-flux temperature measurements with the 3M™ Bair Hugger™
396 Temperature Monitoring System: a systematic review and meta-analysis. *J Clin Monit*
397 *Comput.* 2021;35(1):39-49. <https://doi.org/10.1007/s10877-020-00543-6>
398 PMID:32488679.
- 399 **20.** Lloyd EL. Accidental hypothermia. *Resuscitation.* 1996;32(2):111-24.
400 [https://doi.org/10.1016/0300-9572\(96\)00983-5](https://doi.org/10.1016/0300-9572(96)00983-5) PMID:8896051.
- 401 **21.** Somashekhar SP, Prasanna G. Secondary Cytoreductive Surgery and Hyperthermic

402 Intraperitoneal Chemotherapy (CRS+HIPEC) for Recurrent Epithelial Ovarian Cancer
403 (EOC): Indian Experience. Journal of Molecular and Genetic Medicine. 2016;10.
404 <https://doi.org/10.4172/1747-0862.1000220>.

405

Enrollment

Patients scheduled for HIPEC (n=55)

medRxiv preprint doi: <https://doi.org/10.1101/2024.11.27.24318051>; this version posted November 29, 2024. The copyright holder for this preprint (which was not certified by peer review) is the author/funder, who has granted medRxiv a license to display the preprint in perpetuity. It is made available under a [CC-BY 4.0 International license](https://creativecommons.org/licenses/by/4.0/).

Exclusion

Patients who changed op plan not to perform HIPEC after debulking surgery (n=8)

Lack of Core temperature value at arrival in RR (n= 6)

Analysis

Analyzed (n=41)
None excluded from analysis

Fig 1. Flow chart

Figure 1. Mean temperatures during Operation

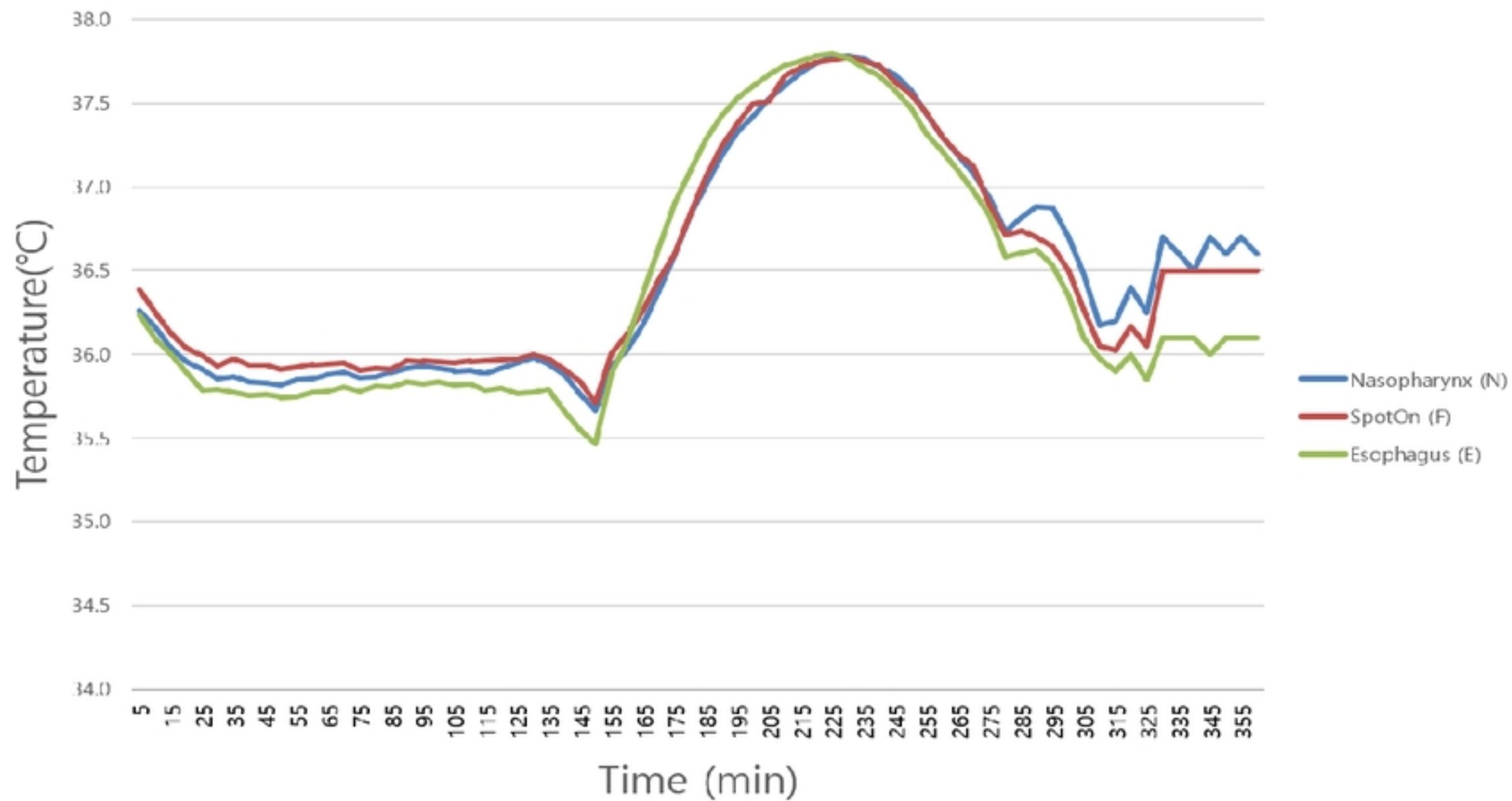


Fig 2.

Bland-Altman agreement plot

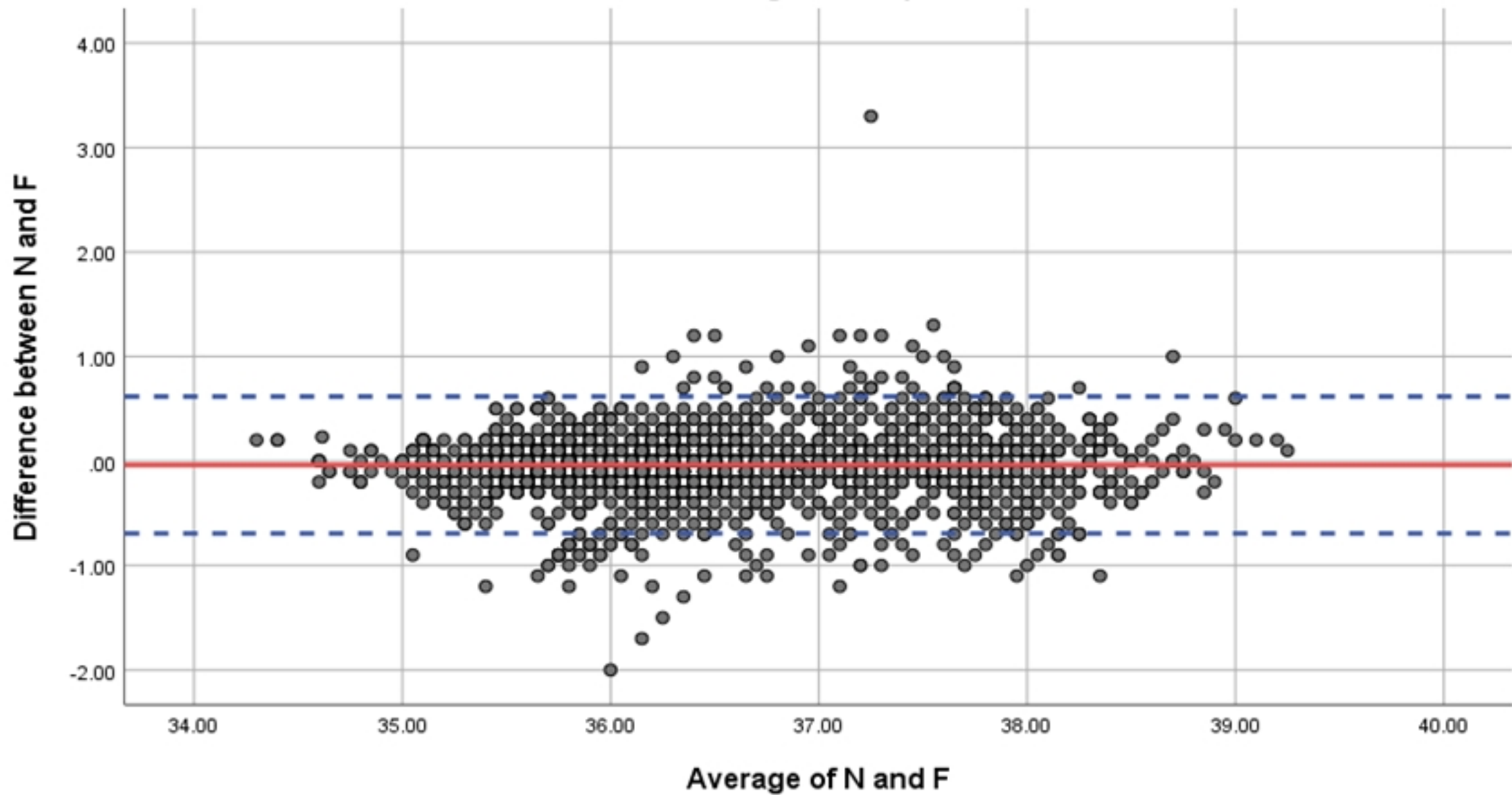


Fig 3-1

Bland-Altman agreement plot

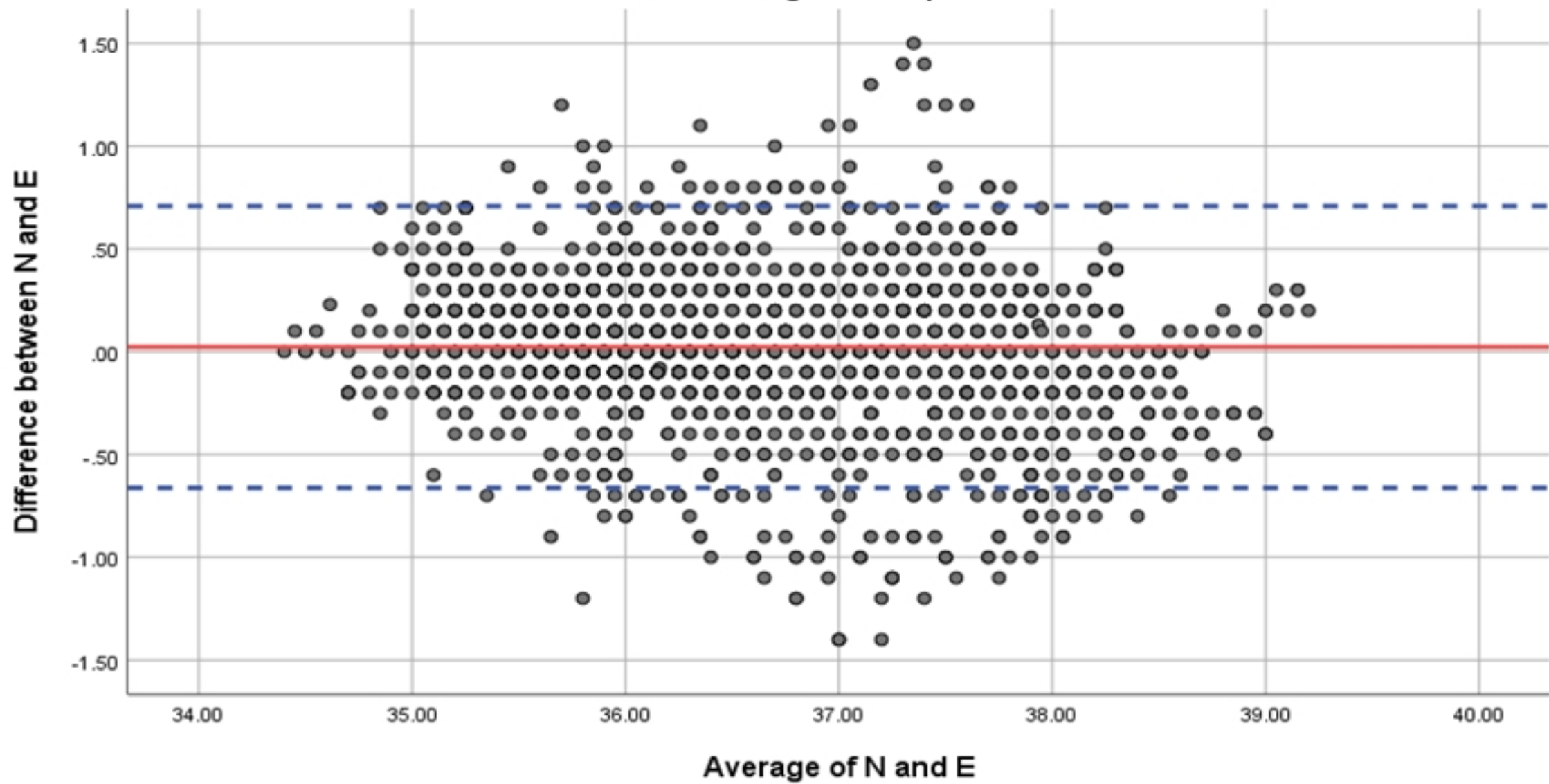


Fig 3-2

Bland-Altman agreement plot

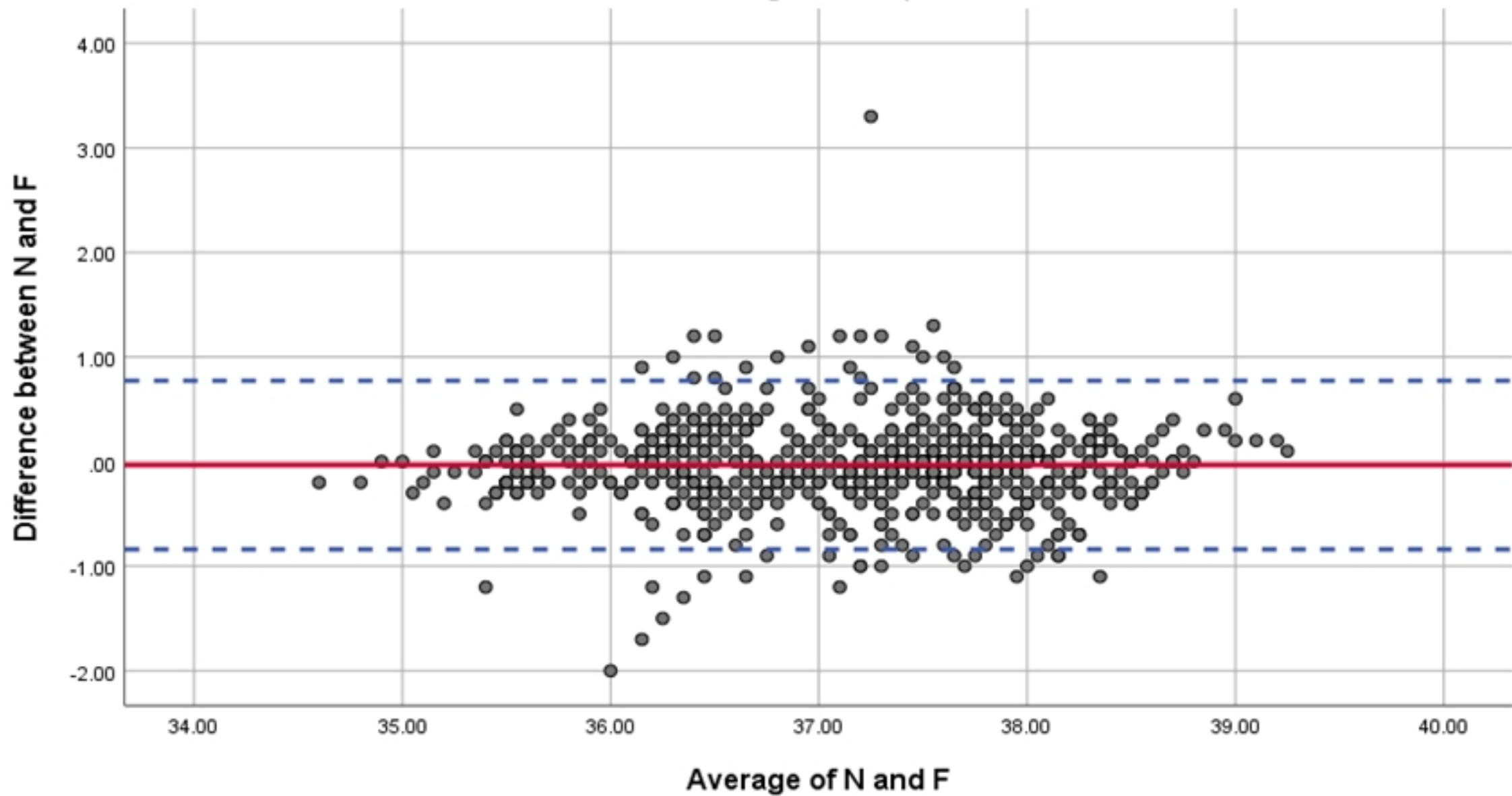


Fig 4-1

Bland-Altman agreement plot

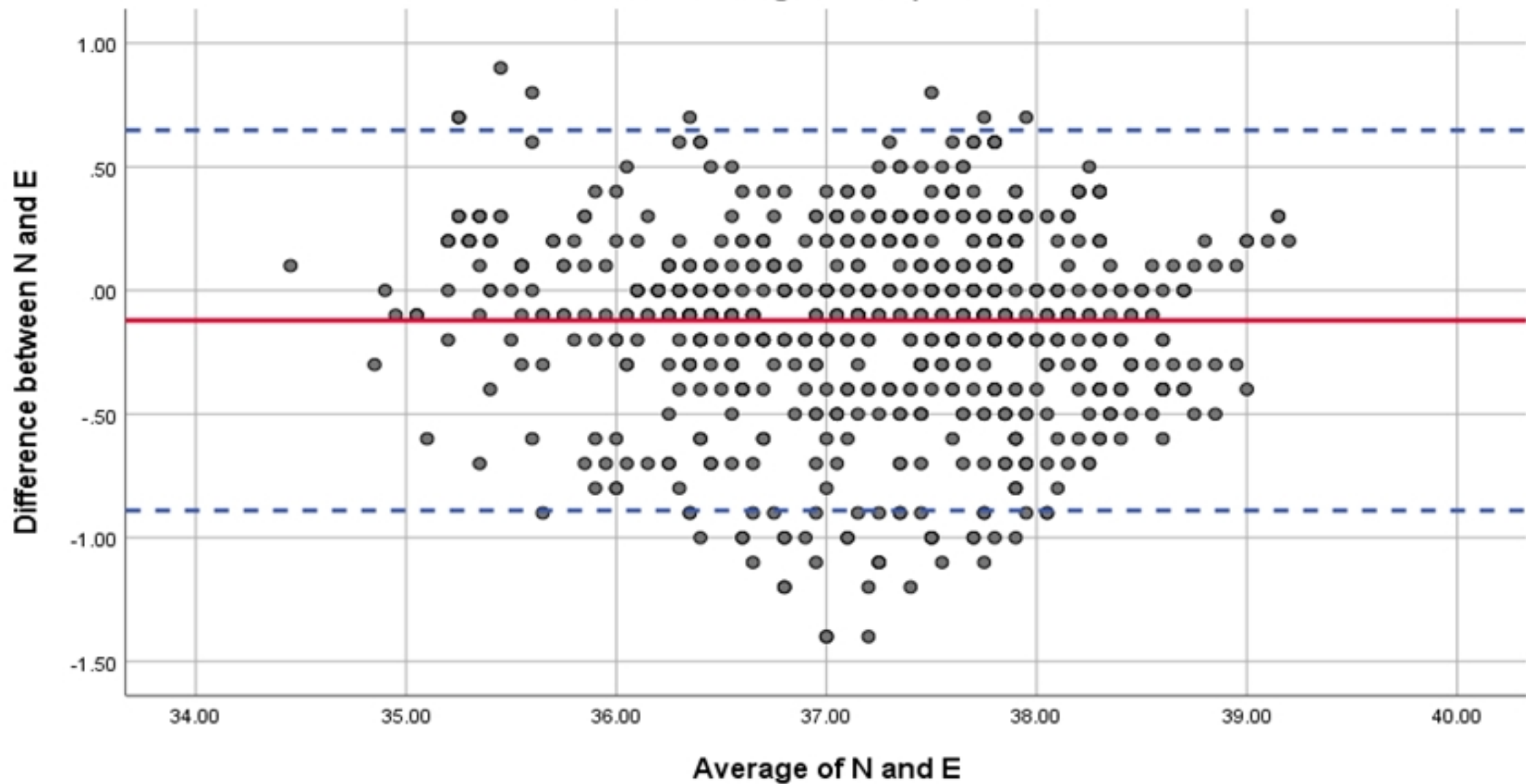


Fig 4-2

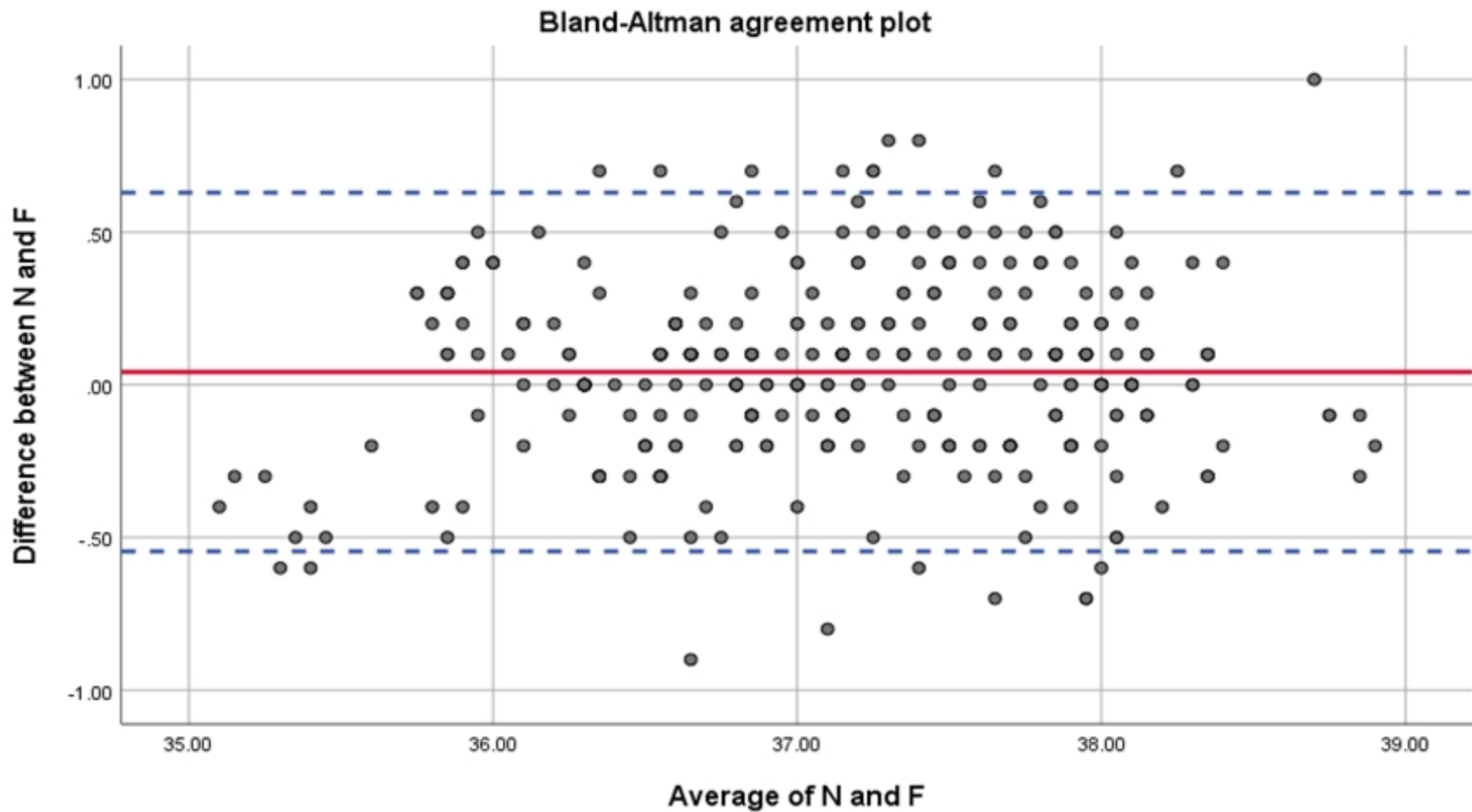


Fig 5-1

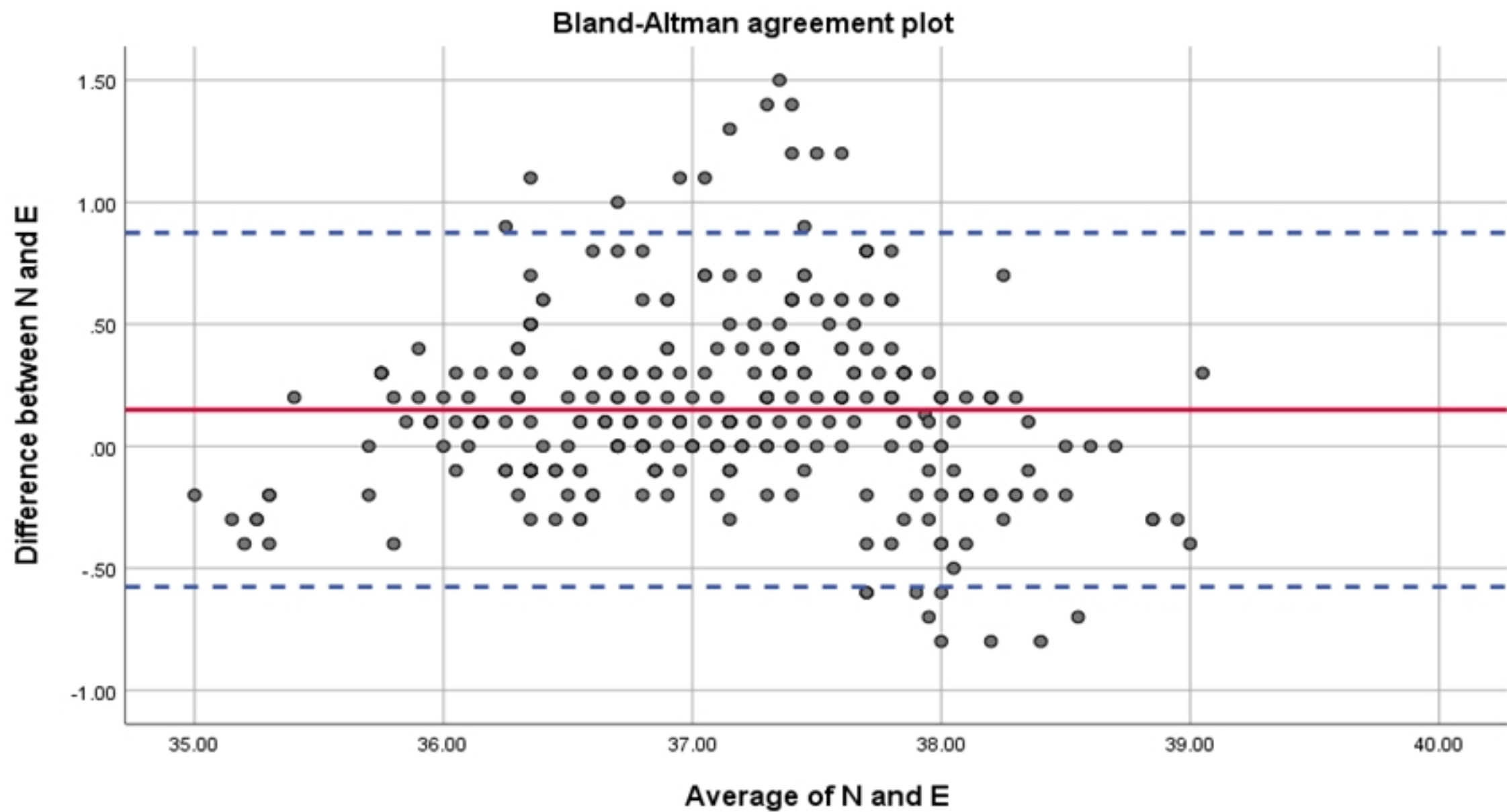


Fig 5-2