

1 Title: Sample size estimates for biomarker-based outcome measures in clinical trials
2 in autosomal dominant Alzheimer's disease

3 David M Cash^{*#a,b}, Katy E Morgan^{*c}, Antoinette O'Connor^a, Thomas D Veale^a, Ian B
4 Malone^a, Teresa Poole^c, Tammie LS Benzinger^d, Brian A Gordon^{d,e}, Laura Ibanez^{f,g},
5 Yan Li^f, Jorge J. Llibre-Guerra^f, Eric McDade^f, Guoqiao Wang^f, Jasmeer P Chhatwal^h,
6 Gregory S Dayⁱ, Edward Huey^j, Mathias Jucker^{k,l}, Johannes Levin^{m,n,o}, Yoshiki Niimi^p,
7 James M Noble^q, Jee Hoon Roh^r, Racquel Sánchez-Valle^s, Peter R Schofield^{t,u},
8 Randall J Bateman^{e,f,v}, Chris Frost^{†c}, Nick C Fox^{†a,b}, The Dominantly Inherited
9 Alzheimer Network (DIAN)

10 Affiliations:

- 11 a. Dementia Research Centre, UCL Queen Square Institute of Neurology, First
12 floor, 8-11 Queen Square, London, WC1N 3AR, UK
- 13 b. UK Dementia Research Institute, 6th Floor, Maple House, Tottenham Court
14 Road, London W1T 7NF, UK
- 15 c. London School of Hygiene and Tropical Medicine, Keppel Street
16 London, WC1E 7HT, UK
- 17 d. Department of Radiology. Washington University School of Medicine, 660 S.
18 Euclid Ave., St. Louis, MO 63110 USA
- 19 e. Knight Alzheimer Disease Research Center, Washington University School of
20 Medicine, 4488 Forest Park Ave., Suite 200, St. Louis, MO 63108 USA
- 21 f. Department of Neurology, Washington University in St Louis, 660 S. Euclid
22 Ave., St. Louis, MO 63110 USA
- 23 g. Department of Psychiatry, Washington University in St Louis, 660 S. Euclid
24 Ave., St. Louis, MO 63110 USA
- 25 h. Brigham and Women's Hospital; Massachusetts General Hospital; Harvard
26 Medical School, 75 Francis St, Boston, MA 02115, USA
- 27 i. Department of Neurology, Mayo Clinic, 4500 San Pablo Rd S, Jacksonville, FL
28 32224, USA
- 29 j. Alpert Medical School of Brown University, Department of Psychiatry and
30 Human Behavior, 222 Richmond St., Providence, RI 02903, USA

1

NOTE: This preprint reports new research that has not been certified by peer review and should not be used to guide clinical practice.

- 1 k. Department of Cellular Neurology, Hertie Institute for Clinical Brain Research,
2 University of Tübingen, Hoppe-Seyler-Straße 3, 72076 Tübingen, Germany
- 3 l. German Center for Neurodegenerative Diseases (DZNE), Otfried-Müller-
4 Straße 23, 72076 Tübingen, Germany
- 5 m. Department of Neurology, LMU University Hospital, Marchioninstr. 15
6 D-81377, Munich, Germany
- 7 n. German Center for Neurodegenerative Diseases (DZNE), Feodor-Lynen-
8 Strasse 17,81377 Munich, Germany;
- 9 o. Munich Cluster for Systems Neurology (SyNergy), Feodor-Lynen-Str. 17,
10 81377 Munich, Germany
- 11 p. Unit for early and exploratory clinical development, The University of Tokyo
12 Hospital, 7-3-1 Hongo, Bunkyo-ku, Tokyo, 113-0033, Japan
- 13 q. Department of Neurology, Taub Institute for Research on Alzheimer's Disease
14 and the Aging Brain, GH Sergievksy Center, Columbia University, 710 W 168th
15 St #3, New York, NY 10032, USA
- 16 r. Departments of Neurology and Physiology, Korea University Anam Hospital,
17 Korea University College of Medicine, 73 goryeodae-ro, Seongbuk-gu, Seoul
18 02841, Republic Of Korea
- 19 s. Alzheimer's disease and other cognitive disorders group. Hospital Clínic de
20 Barcelona. FRCB-IDIBAPS. University of Barcelona, Carrer de Villarroel, 170,
21 L'Eixample, 08036 Barcelona, Spain
- 22 t. Neuroscience Research Australia, Margarete Ainsworth Building
23 Barker Street, Randwick NSW 2031 Australia
- 24 u. School of Biomedical Sciences, University of New South Wales, UNSW
25 Sydney, NSW 2052 Australia
- 26 v. Hope Center for Neurological Disorders, Washington University in St Louis,
27 4370 Duncan Ave., St. Louis, MO 63110, USA

28 # Corresponding author: David M Cash, e-mail: d.cash@ucl.ac.uk, address: Box 16,
29 National Hospital for Neurology and Neurosurgery, Queen Square, London, WC1N
30 3BG UNITED KINGDOM

31 * Joint first authors † Joint senior authors

1 **Abstract**

2 INTRODUCTION: Alzheimer disease (AD)-modifying therapies are approved for
3 treatment of early-symptomatic AD. Autosomal dominant AD (ADAD) provides a
4 unique opportunity to test therapies in presymptomatic individuals.

5 METHODS: Using data from the Dominantly Inherited Alzheimer Network (DIAN),
6 sample sizes for clinical trials were estimated for various cognitive, imaging, and CSF
7 outcomes. Sample sizes were computed for detecting a reduction of either absolute
8 levels of AD-related pathology (amyloid, tau) or change over time in
9 neurodegeneration (atrophy, hypometabolism, cognitive change).

10 RESULTS: Biomarkers measuring amyloid and tau pathology had required sample
11 sizes below 200 participants per arm (examples CSF A β 42/40: 47[95%CI 25,104],
12 cortical PIB 49[28,99], CSF p-tau181 74[48,125]) for a four-year trial in
13 presymptomatic individuals (CDR=0) to have 80% power (5% statistical significance)
14 to detect a 25% reduction in absolute levels of pathology, allowing 40% dropout. For
15 cognitive, MRI, and FDG, it was more appropriate to detect a 50% reduction in rate of
16 change. Sample sizes ranged from 250-900 (examples hippocampal volume:
17 338[131,2096], cognitive composite: 326[157,1074]). MRI, FDG and cognitive
18 outcomes had lower sample sizes when including individuals with mild impairment
19 (CDR=0.5 and 1) as well as presymptomatic individuals (CDR=0).

20 DISCUSSION: Despite the rarity of ADAD, presymptomatic clinical trials with feasible
21 sample sizes given the number of cases appear possible.

22 **Keywords**

1 Alzheimer's disease; clinical trials; autosomal dominant; longitudinal; sample size;

2 MRI; PET; CSF; β -amyloid; linear mixed effects models

3

1 1. Introduction

2 After many unsuccessful trials involving potential disease modifying therapies (DMT)
3 for Alzheimer's disease (AD), recent trials of anti-amyloid treatments[1–3] provide
4 much-needed hope to patients and their families. These DMTs substantially reduced
5 amyloid plaques and slowed cognitive decline compared to placebo in early
6 symptomatic AD[1–3]. As amyloid pathology begins decades before symptom
7 onset[4,5], anti-amyloid DMTs may show the greatest benefit when administered
8 earlier in the disease course before downstream pathological processes gain
9 momentum leading to the onset of symptoms and irreversible neurodegeneration.
10 There are other classes of therapies being developed as well, which may also benefit
11 from early intervention in individuals who are unimpaired or have early impairment.

12 An effective therapy is urgently needed for individuals with Autosomal Dominant forms
13 of AD (ADAD), a rare form comprising less than 1% of all cases. ADAD is caused by
14 the presence of pathogenic mutations in the Presenilin 1 (*PSEN1*), Presenilin 2
15 (*PSEN2*) or Amyloid Precursor Protein (*APP*) genes[6]. These mutations are nearly
16 100% penetrant with a reasonably consistent age at onset within families[7] that
17 typically occurs decades earlier than sporadic AD. Thus, ADAD provides a unique
18 opportunity to test DMTs in the early stages of disease, including presymptomatic
19 carriers, who will almost certainly develop symptoms within a predictable time window
20 and who are highly motivated to participate in trials. Identifying successful treatments
21 in presymptomatic ADAD could increase confidence of efficacy in the biomarker-
22 positive, cognitively unimpaired phase of sporadic AD. However, how to best assess
23 treatment efficacy during this window is not straightforward. Clinical “prevention” trials

1 present design challenges that include identifying appropriate participants,
2 determining meaningful endpoints that are sensitive to change, and powering the trial
3 adequately in terms of enrolment and duration[8,9]. Biomarkers can measure different
4 aspects of AD and could be useful as potential outcomes in trials involving individuals
5 prior to symptom onset. Some biomarkers reflect increased levels of amyloid plaques
6 and neurofibrillary tau tangles, the primary pathologies that define AD and are the
7 target for removal by many DMTs. Recent FDA guidelines[10] have endorsed amyloid
8 biomarkers as outcome measures in trials involving participants where AD pathology
9 is present but cognitive impairment is either absent or subtle. If these therapies are
10 effective, then biomarker levels related to amyloid and tau burden should return
11 towards normal levels. Other measures, such as brain volume and cognitive function,
12 reflect downstream changes caused by neurodegeneration and are usually
13 considered irreversible. For these kinds of biomarkers, progression measured through
14 rate of change (e.g. brain atrophy in % loss/year) is more clinically relevant rather than
15 the absolute level.

16 Biomarker-based evidence of treatment-related reductions in pathological burden, and
17 a clinically meaningful outcome are both required to demonstrate a disease-modifying
18 effect in a classical parallel arm designed randomised controlled trial. When
19 performing prevention trials in a rare population like ADAD, the right design is essential
20 to minimize the number of individuals needed to detect a clinically significant treatment
21 effect with the desired statistical power over a feasible trial duration. There is no clear
22 consensus for a trial duration in presymptomatic trials. A duration that is too short
23 would require too many participants to detect a biological or clinical effect. Durations
24 that are too long would raise concerns about ethics, safety, cost, and participant

1 withdrawal. Recent presymptomatic trials [11,12] have proposed a trial duration of four
2 years.

3 In this study, we used observational study data from the Dominantly Inherited
4 Alzheimer's Network observational study (DIAN-OBS), a large multicentre study of
5 ADAD, to estimate sample sizes for prospective prevention trials in ADAD. Target
6 treatment effects for these estimates were defined based on the type of outcome
7 measure. For candidate outcomes reflecting primary pathologies, such as amyloid
8 positron emission tomography (PET) or soluble measures of cerebrospinal fluid (CSF)
9 amyloid, phospho-tau 181 (p-tau181) and total tau, we estimated sample sizes
10 required to detect a reduction in the absolute level by the end of a four-year trial. For
11 outcomes that reflect downstream neurodegeneration (cognitive scales, FDG PET and
12 volumetric magnetic resonance imaging (MRI)), sample sizes were based on detecting
13 a reduction in rates of change over time.

14 **2. Methods**

15 *2.1 Participants*

16 All data came from participants enrolled in DIAN-OBS - a worldwide, multi-modal study
17 of ADAD mutation carriers and non-carrier family members[13], who serve as a
18 valuable environmentally similar control group, enabling characterisation of the
19 divergence of disease-related changes from normal aging.

20 DIAN-OBS was designed to parallel clinical trials: integrating rigorously collected,
21 longitudinal data across multiple centres and including a wide array of imaging, fluid
22 biomarker, and clinical measures. Indeed, the clinical trial DIAN-TU-001

1 (ClinicalTrials.gov Identifier: NCT04623242, NCT01760005) included many
2 individuals from DIAN-OBS, allowing for the potential of a run-in phase as part of their
3 design[12,14]. Detailed information concerning the DIAN-OBS study protocol,
4 including MRI and PET image acquisition, has been reported previously[15].

5 Participants in DIAN-OBS are from families known to carry a pathological mutation in
6 *PSEN1*, *PSEN2*, or *APP* genes. Data were taken from the 14th semi-annual data
7 freeze (2020), which included cognitive, biomarker and imaging data from 534
8 participants, 372 of whom have longitudinal data. Since age at symptomatic onset is
9 relatively consistent within ADAD families [7] and most mutation carriers in DIAN-OBS
10 are presymptomatic at enrolment, estimated years to expected symptom onset (EYO)
11 can be calculated for individual participants[7] by subtracting the age their affected
12 parent first developed symptoms from the participant's age at their visit. In this way,
13 EYO can be used to determine eligibility for trials amongst presymptomatic mutation
14 carriers. While EYO is not clinically relevant for the non-carriers, estimating it helps
15 ensure that the non-carrier group is demographically similar to the carrier group and
16 helps to account for any age-related changes.

17 From this data freeze, we identified participants who would be eligible for a putative
18 presymptomatic trial according to the following criteria: (1) an EYO from -15 to +10
19 years (i.e., between 15 years before and up to 10 years after predicted onset), which
20 is the same range as used in the DIAN-TU-001 trial, and (2) a global Clinical Dementia
21 Rating® (CDR) scale[16] of 0 (i.e. cognitively unimpaired). 178 (90 carriers and 88
22 non-carriers) of the 372 participants with longitudinal data had a visit that would satisfy
23 these criteria as well as having at least one subsequent follow-up. We refer to these

1 90 carriers as “presymptomatic trial-eligible” participants. In addition, we looked at
2 trials where the CDR eligibility criterion was relaxed to include those with mild
3 impairment (CDR=0 to 1 inclusive), as this provides a benchmark to the recently
4 completed DIAN-TU-001 study. 244 of the participants (the 88 non-carriers together
5 with 156 carriers) met these expanded criteria.

6 *2.2 Informed Consent*

7 The DIAN-OBS study was reviewed and approved by the appropriate Institutional
8 Review Boards and research ethics committees for each participating site. Informed
9 consent was obtained from all participants.

10 *2.3 Image Processing*

11 MRI images were processed by the central imaging core at Washington University
12 using FreeSurfer 5.3[17] as well as an in-house whole brain parcellation technique
13 based on Geodesic Information Flow[18]. For bilateral structures, left and right
14 volumetric measurements were summed. Total intracranial volume (TIV) was also
15 extracted from the T1 image using Statistical Parametric Mapping 12 (SPM12) and
16 served as a proxy for head size[19]. Direct measures of whole brain and ventricular
17 atrophy were calculated using the boundary shift integral (BSI)[20–22]. Follow-up data
18 acquired on different MRI scanners (58 scans from 40 participants) from their first visit
19 were excluded as were data (40 scans from 26 participants) with significant motion,
20 geometric distortion between timepoints, and non-AD pathology (infarcts, traumatic
21 injury).

1 ^{18}F -flouroxyglucose (FDG) and ^{11}C -Pittsburgh compound B (PIB) PET images,
2 measuring glucose metabolism and amyloid accumulation respectively, were
3 processed using the PET Unified Pipeline (PUP) pipeline[23] that provides regional
4 Standard Uptake Value Ratio (SUVR) measures for all FreeSurfer cortical regions of
5 interest (ROIs), where the whole cerebellum served as the reference region. As there
6 has been evidence in some cases of amyloid deposition in the cerebellum in
7 ADAD[24,25], we examined SUVRs with the brainstem as a reference, but there was
8 minimal change in the results. SUVR values were obtained with partial volume
9 correction (PVC) using the geometric transfer matrix approach[26,27], as well as
10 without PVC. The PVC PIB SUVR values were used for sample size analysis as they
11 consistently produced greater differences in mean levels between carriers and non-
12 carriers than the non-PVC PIB values. In contrast, the non-PVC FDG SUVR produced
13 greater differences in mean levels between carriers and non-carriers than the PVC,
14 so these values were included in the sample size analysis instead for the FDG
15 outcome measure. As with the MRI biomarkers, scans acquired on different PET
16 scanners (52 PIB scans from 35 participants and 48 FDG scans from 34 participants)
17 were excluded from analysis.

18 *2.4 Cerebrospinal fluid analysis*

19 Collection of CSF was performed according to a protocol consistent with Alzheimer's
20 Disease Neuroimaging Initiative (ADNI) and analysis was performed by the central
21 biomarker core at Washington University[28]. For this study, we included the $\text{A}\beta$ 1-40,
22 $\text{A}\beta$ 1-42, p-tau181 and total tau measures from two immunoassays: the Luminex bead-
23 based multi-plexed xMAP technology (INNO-BIA AlzBio3, Innogenetics) and the

1 Lumipulse automated immunoassay system (LUMIPULSE G1200; Fujirebio, Malvern,
2 PA, USA). For the CSF XMAP, both the cross-sectional and longitudinal processing
3 (CSF XMAP LONG) pipelines were considered.

4 *2.5 Choosing a target therapeutic effect*

5 An important decision for sample size estimation is how to define a target treatment
6 effect. The specified treatment effect should be large enough to represent a clinically
7 meaningful benefit, but not so large that it would be implausible to achieve and result
8 in the trial being underpowered.

9 Treatment effects are often expressed relative to what a “completely successful”
10 treatment would achieve. In defining such a treatment effect, we believe that there
11 needs to be a distinction between measures of primary pathology (PIB PET and CSF)
12 and outcomes measuring downstream processes reflecting neurodegeneration (MRI,
13 FDG PET, cognitive). For biomarkers of downstream processes, a treatment would be
14 judged completely successful if it were to reduce the average *rate of change* in the
15 biomarker to that observed in normal ageing. This is because current treatments are
16 not (yet) expected either to reverse the course of neurodegeneration (e.g. to restore
17 lost neurones) or to be able also to halt losses associated with normal ageing
18 processes in individuals with no biomarker evidence of AD pathology. However, for
19 biomarkers of primary pathology, there is growing evidence that slowing the rate of
20 pathological accumulation in amyloid and tau will not be sufficient to modify the
21 disease in manner that would be clinically meaningful to patients. Rather, large
22 reductions in the absolute levels of primary pathology by the end of the study would
23 be needed in order to provide a tangible, clinical benefit to patients[29]. In fact, results

1 from recent trials of anti-amyloid therapies have shown it is possible to achieve very
2 substantial reductions in PET and CSF amyloid outcomes[1,3,12,30], and in some
3 cases also to show slowing of cognitive decline[1,2]. Therefore, for PIB PET and CSF
4 outcome measures an effect on amyloid burden would be considered completely
5 (100%) successful if average *absolute levels* were reduced to normal by the end of
6 the study.

7 Other treatment effects can be defined relative to a completely successful one. For
8 example, a 50% effective treatment acting on a marker of neurodegeneration would
9 halve the average excess rate of change (over and above that seen in normal ageing)
10 whereas a 50% effective treatment acting on a measure of amyloid burden would
11 halve the average excess level. Deciding on a clinically relevant target treatment effect
12 is not straightforward. For markers of neurodegeneration we chose a 50% reduction
13 in the rate of change in carriers, relative to the rate of change in non-carriers (Figure
14 1, left panel). A reduction of this magnitude is similar to one thought to be clinically
15 meaningful based on decline in the Preclinical Alzheimer's Cognitive Composite
16 (PACC) in A β + cognitively normal patients compared to those that were A β -[9]. For
17 measures of amyloid burden, we chose a reduction of 25% in excess level (level over
18 and above that in non-carriers; Figure 1, right panel) by the end of the trial, as this
19 would likely be the minimum level that could provide clinical benefit[31] for
20 presymptomatic individuals, who are likely to have lower levels of amyloid burden in
21 comparison to individuals enrolled in current phase III trials. While phase III clinical
22 trials of anti-amyloid DMTs have shown far greater reductions in amyloid PET,
23 our proposed level of 25% reduction has been observed in amyloid PET for some
24 ADAD studies[32] and may be more in line with what is observed in CSF and plasma

12

1 biomarkers. Basing sample size calculations on reductions of greater than 25% might
2 mean that clinically important reductions are missed. Further, if reductions are in truth
3 larger than 25% then basing the sample size on a 25% reduction will be conservative,
4 and the trial will have increased statistical power to demonstrate statistically significant
5 effects. Further details on the definition of the target therapeutic effects are given in
6 the Statistical Appendix found in the Supplementary Material.

7 (FIGURE 1 ABOUT HERE)

8 *2.6 Study Design and Statistical Methods*

9 The methodology for assessing the trial designs is described in full in the Statistical
10 Appendix in the Supplementary Material. Briefly, a two-stage approach was
11 used[33,34]. In stage 1, linear mixed models (LMM) were fitted to the observational
12 repeated measures data from carriers and non-carriers in DIAN-OBS to obtain
13 estimates of parameters that allow us to define plausible target therapeutic effects and
14 to quantify components of variability. In stage 2, estimates from the LMM are used to
15 compute sample size requirements for four-year trials with single measures of
16 candidate outcome measures at baseline and follow-up (or a single direct measure of
17 four-year change).

18 We selected candidate outcome measures from the ADAD literature; ideal outcome
19 measures are sensitive biomarkers that reflect the key disease processes[17,28,35–
20 37]. We selected PIB SUVR from six ROIs (precuneus, posterior cingulate, inferior
21 parietal, interior temporal, middle temporal, and a mean cortical SUVR of the
22 precuneus, prefrontal cortex, gyrus rectus, and lateral temporal regions) and six CSF

1 measures ($A\beta_{1-40}$, $A\beta_{1-42}$, total tau, p-tau181, the $A\beta_{1-42}$ to 1–40 ratio, and the p-
2 tau181 to $A\beta_{1-42}$ ratio) as measures of AD-related pathology. CSF total tau is included
3 in this group although it is regarded variably as a marker of AD pathology and
4 neurodegeneration. For the MRI measures of brain atrophy, volumes from five ROIs
5 (whole brain, lateral ventricle, hippocampus, precuneus, and posterior cingulate), and
6 two direct measures of change (brain and lateral ventricle BSI) were used. Measures
7 of hypometabolism were assessed using six ROIs from FDG PET (precuneus,
8 posterior cingulate, inferior parietal, hippocampus, banks of superior temporal sulcus
9 (banks STS), and a mean cortical SUVR). Finally, cognitive decline was measured
10 from the mini mental state exam (MMSE), the CDR sum-of-box scores (CDR-SB), and
11 a cognitive composite including four scales: MMSE, the Logical Memory delayed recall
12 score from the Wechsler Memory Scale-Revised, animal naming, and the digit symbol
13 score substitution from the Wechsler Adult Intelligence scale-Revised. To generate
14 this composite, each scale was separately z-scored, and the mean of the four z-scores
15 was taken. This composite is designed to capture earlier changes and is very similar
16 to the PACC, as well as composites used in DIAN-OBS[38,39] and DIAN-TU[40]. MRI,
17 PET, and CSF markers were log-transformed to provide outcome measures on a scale
18 representing annual percentage change from baseline. Cognitive scores were left
19 untransformed, as this is common practice in phase 3 trials, and it allows a more
20 intuitive interpretation of the resulting treatment effects.

21 We considered putative placebo-controlled two-arm parallel trials (1:1 randomisation)
22 with a duration of four years. While a trial duration of four years tends to be longer than
23 most phase 3 trials in sporadic AD, a longer duration is likely needed for studies
24 involving presymptomatic participants to allow changes in the outcome that can be

1 detected. This duration also matches the “common close” design of DIAN-TU-001,
2 where all participants were followed up for at least four years. For all outcomes other
3 than “direct” measures of change we assumed that the outcome measure would be
4 obtained at baseline (pre-randomization) and then again at the end of the follow-up
5 period (four years). Based on this design, we assumed that an analysis of covariance
6 (ANCOVA) would be used for the statistical analysis, with MRI, PET and CSF markers
7 log-transformed as in the analysis of DIAN-OBS. For volumetric MRI measures we
8 assumed that TIV would be included as an additional covariate in the ANCOVA model,
9 as TIV serves as a proxy for head size. For “direct” measures of change between the
10 two timepoints, such as those obtained from the BSI, we assumed that between group
11 comparisons would be carried out using a t-test. In addition to considering trial designs
12 where presymptomatic (global CDR score of 0, i.e. cognitively normal) participants
13 from DIAN-OBS would be eligible, we also considered a trial design similar to DIAN-
14 TU-001, enrolling all participants with a global CDR score of 0 to 1, inclusive.

15 To define target therapeutic effects for these trial designs, estimates of the mean
16 rates of change over time in these candidate outcome measures for both carriers and
17 non-carriers are needed, as well as estimates of relevant variances and covariances
18 in carriers. To obtain estimates of these key parameters, we fit LMMs (see
19 Supplementary Materials for details) to the longitudinal data from the full sample and
20 presymptomatic subset of DIAN-OBS. Data from DIAN-OBS participants were
21 included if there were outcome measures available at both a “baseline” visit that
22 satisfied the specified eligibility criteria and at least one subsequent follow-up visit. For
23 volumetric MRI measures, TIV and its interaction with time were included in the LMM.
24 We excluded outcome measures from sample size calculation when the LMM did not
15

1 converge, or when they were not considered to be suitable candidates for a future trial
2 (see Supplementary Materials for more details).

3 We assumed 40% dropout rate at 4 years in our putative trials. This is slightly
4 conservative compared to recent clinical trials: 27% over four years for DIAN-TU-001
5 trials of gantenerumab and solanezumab[12], 23% for the TRAILBLAZER-ALZ-2
6 randomized controlled trial (RCT) of donanemab[2], 17% of 18 months for the Clarity
7 AD RCT of lecanemab[1], and 29% for 4.5 years in the A4 study of solanezumab[41].
8 For all outcome measures, we obtained sample size estimates that would be required
9 to detect a clinically meaningful benefit with 80% statistical power using a two-sided
10 significance level of 5%. Uncertainty in the resulting sample size estimates was
11 quantified using 95% bias-corrected and accelerated (BCa) confidence intervals
12 obtained through bootstrapping. A modified version of the Stata package
13 slopepower[42] was used to implement the sample size calculations (modifications
14 including allowing adjustment for TIV and analysis of direct measures of change).

15 **3. Results**

16 Table 1 shows baseline demographics for trial-eligible participants included in the
17 analysis. 90 carriers would be eligible for a presymptomatic trial, while 156 would be
18 eligible for trials that also enrolled individuals with mild impairment (CDR=0-1). Non-
19 carriers and carriers were well-matched for sex, age, and EYO. There were four non-
20 carriers with a baseline global CDR of 0.5 (very mild impairment); three reverted to a
21 global CDR of 0 at subsequent visits. Most individuals came from *PSEN1* families.
22 The amount of data available for sample size analysis depended on the modality, with
23 the number of participants and number of observations included in the analysis by
16

1 modality also listed in Table 1. Cognitive variables had the most data, followed by CSF
2 and MRI, and finally PET biomarkers.

3 (TABLE 1 ABOUT HERE)

4 Based on the LMM, Figure 2 provides estimated means and 95% CIs for selected
5 outcomes at study start and end (all outcome measures, except for BSI-based
6 measures, are shown in Supplementary Figure 1 and Supplementary Table 1). The
7 LMM did not converge for the following outcomes and trial scenarios: CDR-SB
8 (CDR=0), all cross-sectional CSF XMAP measures (both) except for total tau,
9 longitudinal CSF XMAP measures of p-tau181(CDR=0) and p-tau181/A β 1-42(both),
10 and FDG cortical mean SUVR (CDR=0). These were excluded from subsequent
11 analysis. In addition, the following outcome scenarios were excluded in trials involving
12 CDR=0 carriers as there was insufficient evidence of a substantial difference in slope
13 between carriers and non-carriers (see Supplementary Material): whole brain
14 volume, posterior cingulate volume, and all FDG measures. The FDG SUVR for
15 posterior cingulate and hippocampus also had insufficient evidence for the CDR=0-1
16 trial sample. For most biomarkers, the trajectories of non-carriers over the duration of
17 the trial remained essentially flat, reflecting that there was no evidence from the LMM
18 that the mean rates of change were non-zero. Exceptions were a slight improvement
19 observed on the cognitive composite (presumably practice effects), and slight
20 decreases in cortical FDG SUVR, MRI volumes and BSI, which are expected in normal
21 ageing. There was also a slightly negative rate of change in CSF p-tau181 and A β 1-
22 40 in non-carriers, as well as for carriers when using the XMAP assay. However, the
23 LMMs did provide statistically significant evidence of differences between carriers and

1 non-carriers, both at baseline and by the end of the proposed four-year trial duration.
2 In most cases, these differences were greater by the end of the proposed four-year
3 trial.

4 From the LMM estimates, the target treatment effect for 50% slowing of
5 neurodegeneration represents a slowing of the hippocampal atrophy rate from 0.65%
6 per year to 0.38% per year. The treatment effect of 25% reduction in mean cortical
7 PIB PET represents a decrease from 1.90 (34 centiloids) in the placebo to 1.68 (25
8 centiloids) at the end of a four year trial.

9 (FIGURE 2 ABOUT HERE)

10 The sample size estimates (with 95% BCa confidence intervals) needed to detect a
11 treatment effect of 50% reduction in the rate of neurodegeneration (atrophy, cognitive
12 decline, hypometabolism on FDG PET) compared to non-carriers over a four-year trial,
13 assuming 40% dropout, with 5% significance and 80% power are shown in Figure 3
14 and Supplementary Table 2. For most of these candidate outcome measures, sample
15 sizes were larger for the presymptomatic trials than for trials that would include both
16 unimpaired and mildly impaired participants.

17 (FIGURE 3 ABOUT HERE)

18 The sample size estimates to detect a therapeutic effect of a drug that reduces the
19 final value of the outcome measure by 25% (with respect to the average value in the
20 non-carriers) are shown in Figure 4. Only biomarkers reflecting amyloid or tau
21 pathology were considered in this scenario. For PIB PET measures, sample sizes

1 were similar in both the presymptomatic trial scenario and the one where both
2 unimpaired and mildly impaired participants were eligible.

3 (FIGURE 4 ABOUT HERE)

4 **4. Discussion**

5 Sample size estimates are critical to inform trial designs, particularly in rare diseases
6 like ADAD. To address this, we used data from DIAN-OBS to estimate sample sizes
7 needed to detect clinically relevant treatment effects in individuals with ADAD. We
8 have chosen different levels of target therapeutic effects for biomarkers that measure
9 AD pathology versus those that reflect neurodegeneration. We found that for a trial
10 enrolling only presymptomatic participants, outcome measures of amyloid (via PET
11 and CSF) and tau (via CSF) offered feasible sample sizes for a four-year trial. Sample
12 sizes using MRI and cognitive outcomes in these participants were much larger. When
13 expanding the eligibility criterion based on global CDR scale to align with the DIAN-
14 TU-001 trial, sample size estimates were much smaller, particularly for markers of
15 neurodegeneration. This is likely due to the differences in rates of accumulation
16 between unimpaired participants and those with mild impairment. These reductions in
17 sample size were far less for PIB PET, likely because of the highly consistent amyloid
18 plaque load and growth in both presymptomatic and early symptomatic stages.

19 Trials are underway in presymptomatic ADAD. The original DIAN-TU-001 and a study
20 of crenezumab in *PSEN1 E280A* carriers (NCT01998841) have completed. DIAN-TU
21 is recruiting patients for a trial involving lecanemab and the anti-tau agent E2814
22 (NCT05269394). There is another open label extension of DIAN-TU-001 involving

1 lecanemab (NCT06384573) and a primary prevention study (DIAN-TU-002,
2 NCT03977584). Our results relating to sample sizes for clinical trials in ADAD should
3 be used cautiously when determining sample sizes for future trials in sporadic AD.
4 Some of the outcome measures considered in this paper are more specific to changes
5 observed in ADAD (such as MRI and PET measures in the precuneus). However,
6 many of the outcome measures capture aspects of the disease that are common to
7 both ADAD and sporadic AD (cognitive composite, cortical amyloid accumulation,
8 hippocampal volume, CSF concentrations of A β 42 and pTau181) and for such
9 outcomes it may not be unreasonable to assume that sample sizes carry across.
10 Further work would be needed to verify this.

11 *4.1 Sample sizes to detect a slowing in the rate of neurodegeneration*

12 For four-year trials that include presymptomatic participants (global CDR=0), the
13 sample sizes needed to detect a 50% reduction of slope (relative to non-carriers) in
14 outcomes related to neurodegeneration are likely too high to be feasible in this rare
15 population. The outcomes with the lowest sample size estimates were ventricular
16 volume (246 per arm, 95% CI: [120,980]), the cognitive composite (326 [157, 1074]
17 per arm), and hippocampal volume (338 [131,2096] per arm). No FDG measures had
18 sufficiently different slopes between non-carriers and carriers to include them as a
19 potential outcome measure (see Supplementary Material). Previous results from
20 DIAN-OBS show evidence of increased atrophy and hypometabolism during the
21 presymptomatic stage of the disease. These changes were observed relatively close
22 to expected onset (within five years)[17,37,43], though some ROIs (precuneus,

1 posterior cingulate, banks STS) do show changes as early as 12 years before
2 expected onset.

3 When including participants with CDR=0-1 inclusive, as was done in DIAN-TU-001,
4 sample size estimates were much smaller. This is likely due to the increased rates of
5 neurodegeneration in individuals who have some evidence of mild impairment (CDR
6 global score of 0.5 and 1) compared to those that are unimpaired. Nine outcome
7 measures (Cognitive: composite; MRI: ventricles, ventricular BSI, whole brain,
8 precuneus and hippocampus; FDG PET: banks STS, inferior parietal, and precuneus)
9 had sample size estimates less than 150 participants per arm. However, caution is
10 warranted when making sample size recommendations for two reasons. First, the
11 upper 95% confidence limits for these estimates (see *4.3 Uncertainty in sample size*
12 *estimates*; below) are as high as 430 individuals/arm. Second, when a best-performing
13 biomarker is selected from many, the performance of that biomarker is likely to be
14 worse in a new setting due to effects analogous to the well-known phenomenon of
15 regression to the mean.

16 Ventricular enlargement had some of the lowest sample size requirements across both
17 trial scenarios. Ventricle enlargement can be measured with high precision due to its
18 high-contrast boundaries. The measure is sensitive, but not specific, to pathological
19 atrophy. However, evidence from clinical trials, particularly from anti-amyloid DMTs,
20 indicate that whole brain atrophy and ventricular enlargement may be greater in some
21 treatments compared to placebo[44,45], making its usefulness as an outcome
22 uncertain for this class of DMTs. The biological mechanism driving this phenomenon
23 is unclear. Recently, Belder and colleagues[46] proposed that other mechanisms

1 besides neurodegeneration may result in “amyloid-related pseudo atrophy” (ARPA),
2 and that these excess changes in volume could be caused by reduced inflammation
3 and/or removal of amyloid plaques. It is not yet clear whether similar excess volume
4 changes will occur in other classes of DMTs, such as anti-tau agents.

5 *4.2 Sample sizes to detect a reduction of the outcome at the end of the study*

6 From amyloid PET, we obtained sample size estimates of 40-70 participants per arm
7 to detect a 25% reduction in the overall level of amyloid burden (as measured by PIB
8 PET) with 5% statistical significance and 80% power. However, 95% CIs extended up
9 to around 140 participants per arm. Unlike the outcomes related to neurodegeneration,
10 these sample sizes were not substantially reduced when including participants with
11 mild impairment. Sample sizes were comparable when using CSF measures of A β 42.
12 In both carriers and non-carriers, we found CSF p-tau181 declined over time when
13 using the older XMAP assay, despite substantially increased values in carriers at
14 baseline. This longitudinal decline has been previously observed in symptomatic
15 DIAN-OBS participants[39]. Rates of change in the CSF Lumipulse assay for p-tau181
16 showed increased rates of change in carriers.

17 Recent trials have demonstrated that DMTs show large reductions in amyloid burden
18 as measured by PET in individuals with mild AD. In Clarity AD, lecanemab showed
19 evidence of amyloid removal (59 centiloids (77%) decrease from the baseline value of
20 78 centiloids) [1], while TRAILBLAZER-ALZ 2 reported a reduction of 88 centiloids
21 (87% from the baseline value of 102 centiloids) over 18 months in participants treated
22 with donanemab[2]. These reductions tend to be larger than our proposed target effect
23 and appear to produce a modest cognitive benefit (~20-30% slowing) in mild AD.

1 However, in the DIAN-TU-001 clinical trial of ADAD, amyloid burden was reduced by
2 24% over four years in patients treated with gantenerumab compared to the shared
3 placebo arm[12]. While this trial did not show any evidence of cognitive benefit on the
4 primary endpoint, recent results from the open-label extension suggest that
5 asymptomatic participants treated with gantenerumab for the longest duration (~7-8
6 years) may experience delays in symptom onset[47]. Combined, these results
7 highlight the complex relationship between amyloid reduction and subsequent slowing
8 in cognitive decline, especially as treatments move earlier in the disease process. We
9 chose the target therapeutic effect of 25% to represent a minimum requirement that
10 would provide a conservative estimate of the sample size required, one that would
11 have a reasonable chance of producing a meaningful clinical benefit in trial scenarios
12 at early stages of the disease process, where the amyloid burden at baseline is much
13 lower in comparison to the recent phase 3 trials. This level of treatment effect may be
14 more plausible for CSF and plasma markers of amyloid and tau, which have shown
15 smaller treatment effects. These sample sizes would provide greater statistical power
16 to detect larger treatment effects. It may be possible to detect larger target treatment
17 effects with fewer participants than we report, but this is not guaranteed. Departures
18 from normality might render the use of ANCOVA inappropriate and hence the basis of
19 our sample size calculations suspect. Variability in the numbers of dropouts (which is
20 reasonable to ignore when sample sizes per arm are large, but not when small) would
21 need to be taken account of in the methodological approach in order to give realistic
22 required sample sizes. For these reasons, we advise not to overrely on predictions
23 using our methodology when these are much below 100 (50 per arm). If larger effects
24 are anticipated, it may be more advisable to carry out trials with shorter durations than

1 four years. These choices will depend on the ability to recruit and retain participants
2 in this rare form of AD, and how effectiveness may vary at shorter durations due to
3 titration regimes that aim to avoid amyloid-related imaging abnormalities (ARIA).

4 Other markers will be highly relevant to particular therapies. Tau-specific PET tracers
5 are increasingly being included in trials to determine effects on tau burden. Previous
6 longitudinal tau PET studies in ADAD suggest that changes occur very close to
7 expected symptom onset[48,49]. Hence they may be better suited for anti-tau
8 therapies in carriers close to onset.

9 Recent advances in plasma biomarkers could also serve as potential outcomes.
10 Donanemab reduced plasma concentrations of p-tau217 by about 25% in
11 TRAILBLAZER-ALZ 2[2]. Future work will explore sample sizes required to detect
12 changes in plasma levels of biomarkers such as p-tau217 and neurofilament light.

13 *4.3 Uncertainty in sample size estimates*

14 While some point estimates of sample size appear promising, these estimates come
15 with varying degrees of uncertainty, which must be considered when choosing
16 outcome measures for upcoming clinical trials. One way that we can measure the level
17 of uncertainty is to take the ratio between the upper limit on the confidence interval,
18 which could represent a “worst case” scenario for the number of participants needed
19 to sufficiently statistically power a trial, with the lower limit, which could represent a
20 “best case” scenario. For the sample sizes based on presymptomatic trial eligible
21 subjects (CDR=0), the markers producing largest level of uncertainty (as measured by
22 this ratio) were MMSE (ratio above 30), MRI volumetric measures (ratios ranging from

1 8-40), and CSF A β 1-42 (ratio=8.2 for Lumipulse, 15.9 for XMAP). On the other end,
2 PIB PET measures (CI ratio: 3.3-4.1), Lumipulse CSF measures of ptau-181
3 (ratio=2.6) and A β 1-42/1-40 ratio (CI ratio=4.2) and ventricular BSI (CI ratio: 4.3)
4 provided the lowest levels of uncertainty. For the sample sizes based on all trial
5 eligible subjects (CDR=0-1), the markers producing the largest level of uncertainty (as
6 measured by this ratio) were FDG PET markers (ratios between 4.8 to 12), CSF A β 1-
7 42 (ratio=4.8 for Lumipulse, 5.9 for XMAP), whole brain volume (ratio=5.7), and
8 posterior cingulate volume (ratio=5.2). On the other end, BSI-based measures of
9 whole brain volume (ratio=2.2) and lateral ventricles (ratio=1.9), cognitive
10 composite(ratio=2.8), and PIB measures (ratio range=2.6-3.2) provided the lowest
11 uncertainty. These measures had the greatest precision in measuring rate of change
12 over time, likely making them more viable for shorter duration trials. The stability of
13 these uncertainty ranges for PIB PET across both trial scenarios is likely due to
14 amyloid accumulation being one of the early observed changes in both sporadic AD
15 and ADAD, with accumulation over time being similar for CDR=0 and CDR=0-1
16 participants (nearly parallel slopes in Figure 2 and Supplemental Figure 1).

17 For many outcomes, particularly CDR-SB, CSF protein levels, FDG-PET and some
18 regional PIB SUVR, there are a high number (> 1%) of bootstrap samples where the
19 LMM failed to fit the data. As the number of bootstrap failures increase, more caution
20 should be given to interpreting the level of uncertainty in the sample size estimates,
21 as it is likely that these missing bootstraps more often represent samples with very
22 high sample size estimates.

1 Some of the high levels of uncertainty could be attributed to heterogeneity between
2 individuals with ADAD. While ADAD is considered a “pure” form of AD in terms of
3 fewer co-morbidities, heterogeneous patterns of pathology have been observed
4 between mutations in the *PSEN1* and *APP* genes[50], as well as within *PSEN1*
5 mutations[51], which more frequently have atypical phenotypes[6]. Clinical stage is
6 another source of heterogeneity; symptomatic participants have higher rates of
7 atrophy, cognitive decline and hypometabolism compared to presymptomatic carriers,
8 even at mildly symptomatic stages[5,17,35–37]. If there are clear dependencies of
9 endpoints on variables such as CDR®, then one efficient approach would be to stratify
10 at randomisation according to these variables and account for this stratified design in
11 the statistical analysis[34].

12 This analysis has some limitations. First, there is evidence from the literature [37,39]
13 of non-linear trajectories for some biomarkers in ADAD with respect to EYO, although
14 for the majority of variables, such curvature was not apparent from visual inspection
15 of spaghetti plots of presymptomatic carriers. These non-linearities tend to be
16 observed as individuals approach onset or already have symptoms, so we anticipate
17 that most participants enrolled in presymptomatic trials will be likely to show
18 approximately linear changes over a four-year followup period. Our sample size
19 estimates are theoretically reliant on the assumed linear mixed models being correct.
20 However, small departures from linearity may not materially affect our results.
21 Previous work [52] has shown that in general, these departures have little impact on
22 sample size estimates for clinical trials analysed using mixed models that assume
23 linearity, provided that the treatment effect remains linear and the visit schedule in the
24 observational data and proposed trial are the same. The sensitivity of our findings to
26

1 assumptions of linearity, particularly when individuals with mild levels of impairment
2 are included, could be further explored in future work. Another limitation is the lack of
3 diversity within the DIAN-OBS study that forms the basis of these sample size
4 estimates. For trials that plan to enroll participants that closely resemble those in
5 DIAN-OBS, our sample size estimates will hopefully be fairly reliable, but this may not
6 be the case in future trials in ADAD if they have a very different demographic makeup,
7 as recent data from studies in sporadic AD suggest that there may be some
8 differences in biomarker findings across different ethnic groups[53–55]. Addressing
9 this lack of diversity is a high priority for DIAN, which is expanding the number of sites
10 globally (Japan, Republic of Korea, Latin America). At existing sites, there are efforts
11 to include ADAD families from different backgrounds into studies. These efforts will
12 increase the diversity of the cohort over time.

13 Recruiting individuals with such a rare disease can bring challenges. Raising
14 awareness with families around participation in research is essential. DIAN maintains
15 several outreach activities, including a registry (<https://dian.wustl.edu/registry/>),
16 webinars, and family meetings. While participation in clinical trials can provide a
17 significant burden with potential adverse events, our experience as a local site is that
18 many participants are extremely motivated. Many of these participants begin in DIAN-
19 OBS and then enroll in DIAN-TU. As a result, run-in studies, which have been shown
20 to provide an increase in power[14,33], could be considered. Future work will explore
21 sample size estimates for additional trial designs, such as run-in, common close, and
22 adaptive trials.

1 **5. Conclusion**

2 We estimated sample sizes required to detect a clinically meaningful effect within a
3 clinical trial enrolling individuals with ADAD. For presymptomatic trials, detecting a
4 reduction in the absolute level of amyloid burden using PIB PET and CSF of 25%
5 requires sample sizes of 40-70 participants per arm during a four-year trial. Confidence
6 intervals suggest this sample size could need to be as high as around 140 participants
7 per arm. Sample sizes using markers of neurodegeneration tend to be much larger
8 (250-750 participants per arm) to detect a 50% slowing of neurodegeneration over
9 four years. For studies involving both presymptomatic and mildly impaired individuals,
10 volumetric MRI biomarkers require sample sizes spanning 70-230 participants per arm
11 to detect the same effect of slowing. For outcomes related AD pathology of amyloid,
12 sample sizes were comparable in this population. Caution must be exercised when
13 looking at a single estimate of sample size alone, as the uncertainty in this measure
14 can vary significantly, with uncertainty in sample size estimates for FDG PET and CSF
15 tending to be higher than for MRI and PIB PET. Robust sample size estimates are
16 critical to interpret ongoing prevention trials and inform design of upcoming trials in
17 preclinical AD – a stage at which greatest clinical benefit may potentially be achieved.

18 **References**

- 19 [1] van Dyck CH, Swanson CJ, Aisen P, Bateman RJ, Chen C, Gee M, et al.
20 Lecanemab in Early Alzheimer's Disease. *New England Journal of Medicine*
21 2022;1–13. <https://doi.org/10.1056/NEJMoa2212948>.
- 22 [2] Sims JR, Zimmer JA, Evans CD, Lu M, Ardayfio P, Sparks J, et al. Donanemab
23 in Early Symptomatic Alzheimer Disease. *JAMA* 2023;330:512.
24 <https://doi.org/10.1001/jama.2023.13239>.

- 1 [3] Budd Haeberlein S, Aisen PS, Barkhof F, Chalkias S, Chen T, Cohen S, et al.
2 Two Randomized Phase 3 Studies of Aducanumab in Early Alzheimer's
3 Disease. *J Prev Alzheimers Dis* 2022;9:197–210.
4 <https://doi.org/10.14283/jpad.2022.30>.
- 5 [4] Villemagne VL, Burnham S, Bourgeat P, Brown B, Ellis KA, Salvado O, et al.
6 Amyloid β deposition, neurodegeneration, and cognitive decline in sporadic
7 Alzheimer's disease: a prospective cohort study. *Lancet Neurology*
8 2013;12:357–67. [https://doi.org/10.1016/S1474-4422\(13\)70044-9](https://doi.org/10.1016/S1474-4422(13)70044-9).
- 9 [5] Bateman RJ, Xiong C, Benzinger TLS, Fagan AM, Goate A, Fox NC, et al.
10 Clinical and Biomarker Changes in Dominantly Inherited Alzheimer's Disease.
11 *New England Journal of Medicine* 2012;367:795–804.
12 <https://doi.org/10.1056/NEJMoa1202753>.
- 13 [6] Ryan NS, Nicholas JM, Weston PSJ, Liang Y, Lashley T, Guerreiro R, et al.
14 Clinical phenotype and genetic associations in autosomal dominant familial
15 Alzheimer's disease: a case series. *Lancet Neurol* 2016;15:1326–35.
16 [https://doi.org/10.1016/S1474-4422\(16\)30193-4](https://doi.org/10.1016/S1474-4422(16)30193-4).
- 17 [7] Ryman DC, Acosta-Baena N, Aisen PS, Bird T, Danek A, Fox NC, et al.
18 Symptom onset in autosomal dominant Alzheimer disease: A systematic review
19 and meta-analysis. *Neurology* 2014;83:253–60.
20 <https://doi.org/10.1212/WNL.0000000000000596>.
- 21 [8] Sperling R, Mormino E, Johnson K. The Evolution of Preclinical Alzheimer's
22 Disease: Implications for Prevention Trials. *Neuron* 2014;84:608–22.
23 <https://doi.org/10.1016/j.neuron.2014.10.038>.
- 24 [9] Insel PS, Weiner M, Scott MacKin R, Mormino E, Lim YY, Stomrud E, et al.
25 Determining clinically meaningful decline in preclinical Alzheimer disease.
26 *Neurology* 2019;93:E322–33.
27 <https://doi.org/10.1212/WNL.0000000000007831>.

- 1 [10] US Food and Drug Administration. Early Alzheimer's Disease: Developing
2 Drugs for Treatment; Draft Guidance for Industry. 2018.
- 3 [11] Rafii MS, Sperling RA, Donohue MC, Zhou J, Roberts C, Irizarry MC, et al. The
4 AHEAD 3-45 Study: Design of a prevention trial for Alzheimer's disease.
5 *Alzheimer's & Dementia* 2023;19:1227–33. <https://doi.org/10.1002/ALZ.12748>.
- 6 [12] Salloway S, Farlow M, McDade E, Clifford DB, Wang G, Llibre-Guerra JJ, et al.
7 A trial of gantenerumab or solanezumab in dominantly inherited Alzheimer's
8 disease. *Nat Med* 2021;27:1187–96. [https://doi.org/10.1038/s41591-021-](https://doi.org/10.1038/s41591-021-01369-8)
9 [01369-8](https://doi.org/10.1038/s41591-021-01369-8).
- 10 [13] Moulder KL, Snider BJ, Mills SL, Buckles VD, Santacruz AM, Bateman RJ, et
11 al. Dominantly Inherited Alzheimer Network: facilitating research and clinical
12 trials. *Alzheimers Res Ther* 2013;5:48. <https://doi.org/10.1186/alzrt213>.
- 13 [14] Wang G, Aschenbrenner AJ, Li Y, McDade E, Liu L, Benzinger TLS, et al. Two-
14 period linear mixed effects models to analyze clinical trials with run-in data when
15 the primary outcome is continuous: Applications to Alzheimer's disease.
16 *Alzheimer's and Dementia: Translational Research and Clinical Interventions*
17 2019;5:450–7. <https://doi.org/10.1016/j.trci.2019.07.007>.
- 18 [15] Morris JC, Aisen PS, Bateman RJ, Benzinger TLS, Cairns NJ, Fagan AM, et al.
19 Developing an international network for Alzheimer research: The Dominantly
20 Inherited Alzheimer Network. *Clin Investig (Lond)* 2012;2:975–84.
21 <https://doi.org/10.4155/cli.12.93>.
- 22 [16] Morris JC. The Clinical Dementia Rating (CDR): current version and scoring
23 rules. *Neurology* 1993;43:2412–4.
- 24 [17] Benzinger TLS, Blazey T, Jack Jr. CR, Koeppe RA, Su Y, Xiong C, et al.
25 Regional variability of imaging biomarkers in autosomal dominant Alzheimer's
26 disease. *Proc Natl Acad Sci U S A* 2013;110:E4502-9.
27 <https://doi.org/10.1073/pnas.1317918110>.

- 1 [18] Cardoso MJ, Modat M, Wolz R, Melbourne A, Cash DM, Rueckert D, et al.
2 Geodesic Information Flows: Spatially-Variant Graphs and Their Application to
3 Segmentation and Fusion. *IEEE Trans Med Imaging* 2015;34:1976–88.
4 <https://doi.org/10.1109/TMI.2015.2418298>.
- 5 [19] Malone IB, Leung KK, Clegg S, Barnes J, Whitwell JL, Ashburner J, et al.
6 Accurate automatic estimation of total intracranial volume: A nuisance variable
7 with less nuisance. *Neuroimage* 2015;104:366–72.
8 <https://doi.org/10.1016/j.neuroimage.2014.09.034>.
- 9 [20] Leung KK, Clarkson MJ, Bartlett JW, Clegg S, Jack Jr. CR, Weiner MW, et al.
10 Robust atrophy rate measurement in Alzheimer’s disease using multi-site serial
11 MRI: Tissue-specific intensity normalization and parameter selection.
12 *Neuroimage* 2010;50:516–23.
13 <https://doi.org/10.1016/j.neuroimage.2009.12.059>.
- 14 [21] Prados F, Cardoso MJ, Leung KK, Cash DM, Modat M, Fox NC, et al. Measuring
15 brain atrophy with a generalized formulation of the boundary shift integral.
16 *Neurobiol Aging* 2015;36:S81–S90.
- 17 [22] Freeborough PA, Fox NC. The boundary shift integral: an accurate and robust
18 measure of cerebral volume changes from registered repeat MRI. *IEEE Trans*
19 *Med Imaging* 1997;16:623–9. <https://doi.org/10.1109/42.640753>.
- 20 [23] Su Y, Angelo GMD, Vlassenko AG, Zhou G, Snyder AZ, Marcus DS, et al.
21 Quantitative Analysis of PiB-PET with FreeSurfer ROIs 2013;8.
22 <https://doi.org/10.1371/journal.pone.0073377>.
- 23 [24] Mann DMA, Iwatsubo T, Ihara Y, Cairns NJ, Lantos PL, Bogdanovic N, et al.
24 Predominant deposition of amyloid- β 42(43) in plaques in cases of Alzheimer’s
25 disease and hereditary cerebral hemorrhage associated with mutations in the
26 amyloid precursor protein gene. *American Journal of Pathology* 1996;148:1257–
27 66.

- 1 [25] Ghisays V, Lopera F, Goradia DD, Protas HD, Malek-Ahmadi MH, Chen Y, et
2 al. PET evidence of preclinical cerebellar amyloid plaque deposition in
3 autosomal dominant Alzheimer's disease-causing Presenilin-1 E280A mutation
4 carriers. *Neuroimage Clin* 2021;31:102749.
5 <https://doi.org/10.1016/J.NICL.2021.102749>.
- 6 [26] Rousset OG, Ma Y, Evans AC. Correction for partial volume effects in PET:
7 Principle and validation. *Journal of Nuclear Medicine* 1998;39:904–11.
- 8 [27] Su Y, Blazey TM, Snyder AZ, Raichle ME, Marcus DS, Ances BM, et al.
9 *NeuroImage* Partial volume correction in quantitative amyloid imaging
10 2015;c:55–64. <https://doi.org/10.1016/j.neuroimage.2014.11.058>.
- 11 [28] Fagan AM, Xiong C, Jasielec MS, Bateman RJ, Goate AM, Benzinger TLS, et
12 al. Longitudinal Change in CSF Biomarkers in Autosomal-Dominant Alzheimer's
13 Disease. *Sci Transl Med* 2014;6:226ra30-226ra30.
14 <https://doi.org/10.1126/scitranslmed.3007901>.
- 15 [29] Karran E, Mercken M, Strooper B De. The amyloid cascade hypothesis for
16 Alzheimer's disease: An appraisal for the development of therapeutics. *Nat Rev*
17 *Drug Discov* 2011;10:698–712. <https://doi.org/10.1038/nrd3505>.
- 18 [30] Mintun MA, Lo AC, Duggan Evans C, Wessels AM, Ardayfio PA, Andersen SW,
19 et al. Donanemab in Early Alzheimer's Disease. *New England Journal of*
20 *Medicine* 2021;384:1691–704. <https://doi.org/10.1056/NEJMoa2100708>.
- 21 [31] Toyn JH, Ahljianian MK. Interpreting Alzheimer's disease clinical trials in light of
22 the effects on amyloid- β . *Alzheimers Res Ther* 2014;6.
23 <https://doi.org/10.1186/alzrt244>.
- 24 [32] Salloway S, Farlow M, McDade E, Clifford DB, Wang G, Llibre-Guerra JJ, et al.
25 A trial of gantenerumab or solanezumab in dominantly inherited Alzheimer's
26 disease. *Nat Med* 2021;27:1187–96. [https://doi.org/10.1038/s41591-021-](https://doi.org/10.1038/s41591-021-01369-8)
27 [01369-8](https://doi.org/10.1038/s41591-021-01369-8).

- 1 [33] Frost C, Kenward MG, Fox NC. Optimizing the design of clinical trials where the
2 outcome is a rate . Can estimating a baseline rate in a run-in period increase
3 efficiency? *Stat Med* 2008;27:3717–31. <https://doi.org/10.1002/sim>.
- 4 [34] Frost C, Mulick A, Scahill RI, Owen G, Aylward E, Leavitt BR, et al. Design
5 optimization for clinical trials in early-stage manifest Huntington’s disease.
6 *Movement Disorders* 2017;32:1610–9. <https://doi.org/10.1002/mds.27122>.
- 7 [35] Cash DM, Ridgway GR, Liang Y, Ryan NS, Kinnunen KM, Yeatman T, et al. The
8 pattern of atrophy in familial Alzheimer disease: volumetric MRI results from the
9 DIAN study. *Neurology* 2013;81:1425–33.
10 <https://doi.org/10.1212/WNL.0b013e3182a841c6>.
- 11 [36] Kinnunen KM, Cash DM, Poole T, Frost C, Benzinger TLSS, Ahsan RL, et al.
12 Presymptomatic atrophy in autosomal dominant Alzheimer’s disease: A serial
13 magnetic resonance imaging study. *Alzheimers Dement* 2018;14:43–53.
14 <https://doi.org/10.1016/j.jalz.2017.06.2268>.
- 15 [37] Gordon BA, Blazey TM, Su Y, Hari-Raj A, Dincer A, Flores S, et al. Spatial
16 patterns of neuroimaging biomarker change in individuals from families with
17 autosomal dominant Alzheimer’s disease: a longitudinal study. *Lancet Neurol*
18 2018;17:241–50. [https://doi.org/10.1016/S1474-4422\(18\)30028-0](https://doi.org/10.1016/S1474-4422(18)30028-0).
- 19 [38] Wang G, Berry S, Xiong C, Hassenstab J, Quintana M, McDade EM, et al. A
20 novel cognitive disease progression model for clinical trials in autosomal-
21 dominant Alzheimer’s disease. *Stat Med* 2018;37:3047–55.
22 <https://doi.org/10.1002/sim.7811>.
- 23 [39] McDade E, Wang G, Gordon BA, Hassenstab J, Benzinger TLS, Buckles V, et
24 al. Longitudinal cognitive and biomarker changes in dominantly inherited
25 Alzheimer disease. *Neurology* 2018;10.1212/WNL.0000000000006277.
26 <https://doi.org/10.1212/WNL.0000000000006277>.
- 27 [40] Bateman RJ, Benzinger TL, Berry S, Clifford DB, Duggan C, Fagan AM, et al.
28 The DIAN-TU Next Generation Alzheimer’s prevention trial: Adaptive design and

- 1 disease progression model. *Alzheimer's & Dementia* 2017;13:8–19.
2 <https://doi.org/10.1016/j.jalz.2016.07.005>.
- 3 [41] Sperling RA, Donohue MC, Raman R, Rafii MS, Johnson K, Masters CL, et al.
4 Trial of Solanezumab in Preclinical Alzheimer's Disease. *New England Journal*
5 of *Medicine* 2023;12:1096–107.
6 [https://doi.org/10.1056/NEJMOA2305032/SUPPL_FILE/NEJMOA2305032_DATA-](https://doi.org/10.1056/NEJMOA2305032/SUPPL_FILE/NEJMOA2305032_DATA-SHARING.PDF)
7 [SHARING.PDF](https://doi.org/10.1056/NEJMOA2305032/SUPPL_FILE/NEJMOA2305032_DATA-SHARING.PDF).
- 8 [42] Nash S, Morgan KE, Frost C, Mulick A. Power and sample-size calculations for
9 trials that compare slopes over time: Introducing the slopepower command:
10 *Stata J* 2021;21:575–601. <https://doi.org/10.1177/1536867X211045512>.
- 11 [43] Kinnunen KM, Cash DM, Poole T, Frost C, Benzinger TLS, Ahsan RL, et al.
12 Presymptomatic atrophy in autosomal dominant Alzheimer's disease: A serial
13 magnetic resonance imaging study. *Alzheimers Dement* 2018;14:43–53.
14 <https://doi.org/10.1016/j.jalz.2017.06.2268>.
- 15 [44] Cash DM, Rohrer JD, Ryan NS, Ourselin S, Fox NC. Imaging endpoints for
16 clinical trials in Alzheimer's disease. *Alzheimers Res Ther* 2014;6:87.
17 <https://doi.org/10.1186/s13195-014-0087-9>.
- 18 [45] Schwarz AJ. The Use, Standardization, and Interpretation of Brain Imaging Data
19 in Clinical Trials of Neurodegenerative Disorders. *Neurotherapeutics*
20 2021;18:686–708. <https://doi.org/10.1007/s13311-021-01027-4>.
- 21 [46] Belder CRS, Boche D, Nicoll JAR, Jaunmuktane Z, Zetterberg H, Schott JM, et
22 al. Brain volume change following anti-amyloid β immunotherapy for Alzheimer's
23 disease: amyloid-removal-related pseudo-atrophy. *Lancet Neurol*
24 2024;23:1025–34. [https://doi.org/10.1016/S1474-4422\(24\)00335-1](https://doi.org/10.1016/S1474-4422(24)00335-1).
- 25 [47] Bateman RJ, Li Y, McDade E, Llibre Guerra JJ, Clifford D, Atri A, et al. Amyloid
26 Reduction and Dementia Progression in Dominantly Inherited Alzheimer's
27 Diseaseafter Long-Term Gantenerumab Treatment: Results from the Dian-Tu
28 Trial n.d. <https://doi.org/10.2139/SSRN.4906344>.

- 1 [48] O'Connor A, Cash DM, Poole T, Markiewicz PJ, Fraser MR, Malone IB, et al.
2 Tau accumulation in autosomal dominant Alzheimer's disease: a longitudinal
3 [18F]flortaucipir study. *Alzheimers Res Ther* 2023;15:1–11.
4 <https://doi.org/10.1186/S13195-023-01234-5/FIGURES/3>.
- 5 [49] Gordon BA, Blazey TM, Christensen J, Dincer A, Flores S, Keefe S, et al. Tau
6 PET in autosomal dominant Alzheimer's disease: relationship with cognition,
7 dementia and other biomarkers. *Brain* 2019;142:1063–76.
8 <https://doi.org/10.1093/brain/awz019>.
- 9 [50] Scahill RI, Ridgway GR, Bartlett JW, Barnes J, Ryan NS, Mead S, et al. Genetic
10 Influences on Atrophy Patterns in Familial {A}lzheimer's Disease: A Comparison
11 of {APP} and {PSEN1} Mutations. *J Alzheimers Dis* 2013.
12 <https://doi.org/10.3233/JAD-121255>.
- 13 [51] Chhatwal JP, Schultz SA, McDade E, Schultz AP, Liu L, Hanseeuw BJ, et al.
14 Variant-dependent heterogeneity in amyloid β burden in autosomal dominant
15 Alzheimer's disease: cross-sectional and longitudinal analyses of an
16 observational study. *Lancet Neurol* 2022;21:140–52.
17 [https://doi.org/10.1016/S1474-4422\(21\)00375-6](https://doi.org/10.1016/S1474-4422(21)00375-6).
- 18 [52] Morgan KE, White IR, Frost C. How important is the linearity assumption in a
19 sample size calculation for a randomised controlled trial where treatment is
20 anticipated to affect a rate of change? *BMC Med Res Methodol* 2023;23:1–19.
21 <https://doi.org/10.1186/S12874-023-02093-2/TABLES/1>.
- 22 [53] Gottesman RF, Schneider ALC, Zhou Y, Chen X, Green E, Gupta N, et al. The
23 ARIC-PET amyloid imaging study: Brain amyloid differences by age, race, sex,
24 and APOE. *Neurology* 2016;87:473–80.
25 <https://doi.org/10.1212/WNL.0000000000002914>.
- 26 [54] Wilkins CH, Windon CC, Dilworth-Anderson P, Romanoff J, Gatsonis C, Hanna
27 L, et al. Racial and Ethnic Differences in Amyloid PET Positivity in Individuals
28 With Mild Cognitive Impairment or Dementia: A Secondary Analysis of the
29 Imaging Dementia–Evidence for Amyloid Scanning (IDEAS) Cohort Study.

1 JAMA Neurol 2022;79:1139–47.
2 <https://doi.org/10.1001/JAMANEUROL.2022.3157>.

3 [55] Deters KD, Napolioni V, Sperling RA, Greicius MD, Mayeux R, Hohman T, et al.
4 Amyloid PET Imaging in Self-Identified Non-Hispanic Black Participants of the
5 Anti-Amyloid in Asymptomatic Alzheimer’s Disease (A4) Study. *Neurology*
6 2021;96:E1491–500. <https://doi.org/10.1212/WNL.0000000000011599>.

7

8 **Acknowledgements**

9 Data collection and sharing for this project was supported by The Dominantly Inherited
10 Alzheimer’s Network (DIAN, U19AG032438) funded by the National Institute on Aging
11 (NIA), the Alzheimer’s Association (SG-20-690363-DIAN), the German Center for
12 Neurodegenerative Diseases (DZNE), Raul Carrea Institute for Neurological Research
13 (FLENI), Partial support by the Research and Development Grants for Dementia from
14 Japan Agency for Medical Research and Development, AMED, the Korea Dementia
15 Research Project through the Korea Dementia Research Center (KDRC), funded by
16 the Ministry of Health & Welfare and Ministry of Science and ICT, Republic of Korea
17 (HU21C0066) and the Instituto de Salud Carlos III, Spain (grant n° 20/00448 to RSV).
18 This manuscript has been reviewed by DIAN Study investigators for scientific content
19 and consistency of data interpretation with previous DIAN Study publications. We
20 acknowledge the altruism of the participants and their families and the contributions of
21 the DIAN research and support staff at each of the participating sites for their
22 contributions to this study.

1 **Funding**

2 This work was supported by the National Institute on Aging (DIAN, U19AG032438),
3 the Alzheimer's Association (SG-20-690363-DIAN), the German Center for
4 Neurodegenerative Diseases (DZNE), Raul Carrea Institute for Neurological Research
5 (FLENI), Research and Development Grants for Dementia from Japan Agency for
6 Medical Research and Development, AMED, the Korea Dementia Research Project
7 through the Korea Dementia Research Center (KDRC), funded by the Ministry of
8 Health & Welfare and Ministry of Science and ICT, Republic of Korea (HU21C0066),
9 the Instituto de Salud Carlos III, Spain (grant nº 20/00448 to RSV), the Alzheimer's
10 Society (AS-PG-15-025), the UK Dementia Research Institute which receives its
11 funding from DRI Ltd, funded by the UK Medical Research Council, Alzheimer's
12 Society and Alzheimer's Research UK, the NIHR University College London Hospitals
13 Biomedical Research Centre, and the UKRI Medical Research Council (Skills
14 development fellowship MR/P014372/1).

15

1 **Declaration of Generative AI and AI-assisted technologies in the writing**
2 **process.**

3 I confirm that no generative AI or AI-assisted technology was used in the writing
4 process.

1 **Table 1** Baseline demographics of all participants included in the analysis. A
 2 participant was considered trial eligible if they met the criteria at one “baseline” visit
 3 and at least one subsequent visit. There were five carriers who had a global CDR
 4 score greater than 0 at an earlier visit but reverted to a CDR global score of 0 at a
 5 subsequent visit and had longitudinal data so that they could be included in the
 6 presymptomatic-only trial eligible population.

	Non-carriers	Carriers (CDR=0)	Carriers (CDR= 0 – 1)
Number of participants	88	90	156
Sex, N female (%)	48 (55%)	60 (67%)	92 (59%)
Age (years), mean (SD)	41.2 (7.6)	38.8 (8.1)	41.6 (9.0)
EYO (years), mean (SD)	-5.7 (6.6)	-6.9 (5.3)	-3.7 (6.4)
CDR global (0/0.5/1)	84/4/0	90/0/0	85/54/17
Family mutation, N (<i>PS1/PS2/APP</i>)	55/8/25	67/5/18	121/6/29
Participants (Observations) with:			
Cognitive data	88 (248)	90 (259)	156 (470)
Structural MRI	65 (173)	60 (164)	106 (292)
PIB PET	46 (124)	50 (124)	80 (201)
FDG PET	50 (131)	48 (123)	90 (227)
CSF XMAP	61 (157)	61 (159)	107 (293)
CSF XMAP LONG	36 (85)	39 (98)	71 (185)
CSF LUMIPULSE	63 (166)	64 (174)	113 (320)

7

8

Figure 1 Visual examples of the two types of treatment effects considered in this sample size analysis. (Left) The treatment effect is based on a reduction of the slope, with a 100% therapeutic effect being defined as one that reduces the slope in the treatment arm to the slope observed in the non-carriers. The outcome variable may undergo a transformation before analysis so that trajectories are more linear in nature. (Right) The treatment effect is based on reducing the outcome measure by the end of the study, with a 100% therapeutic effect defined as one that would reduce the absolute level of the outcome measure to the expected outcome in non-carriers. While the analysis may be conducted on the log transformed scale, the treatment effect is defined on the scale of the original outcome variable in order to make the definition of the treatment effect more interpretable.

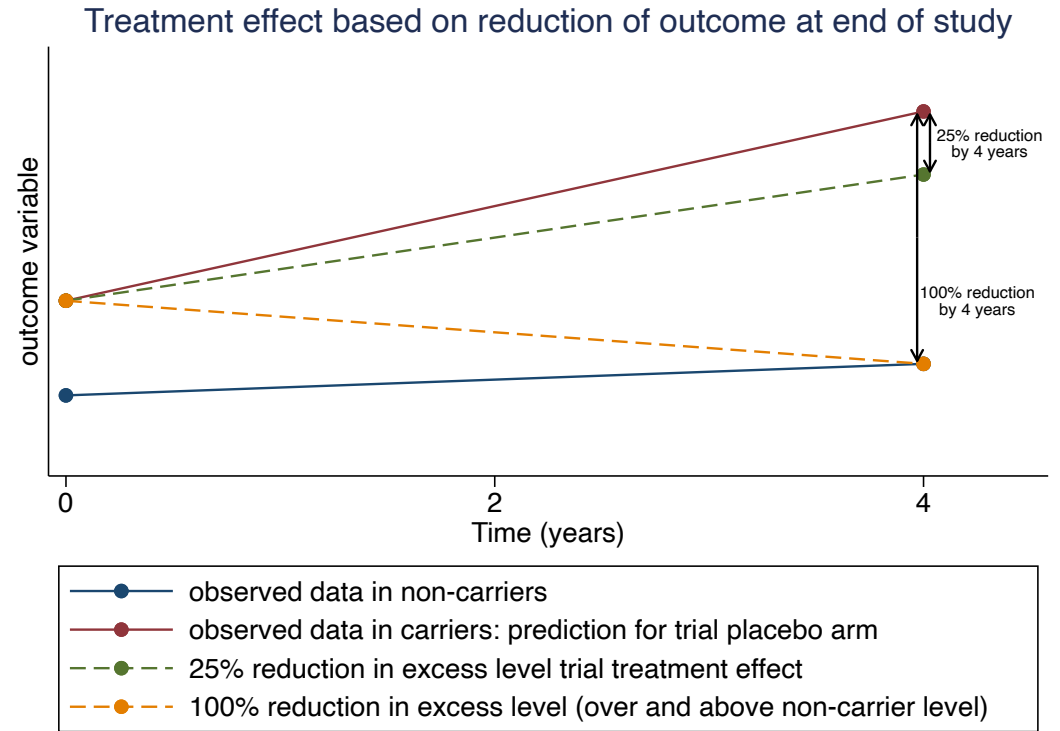
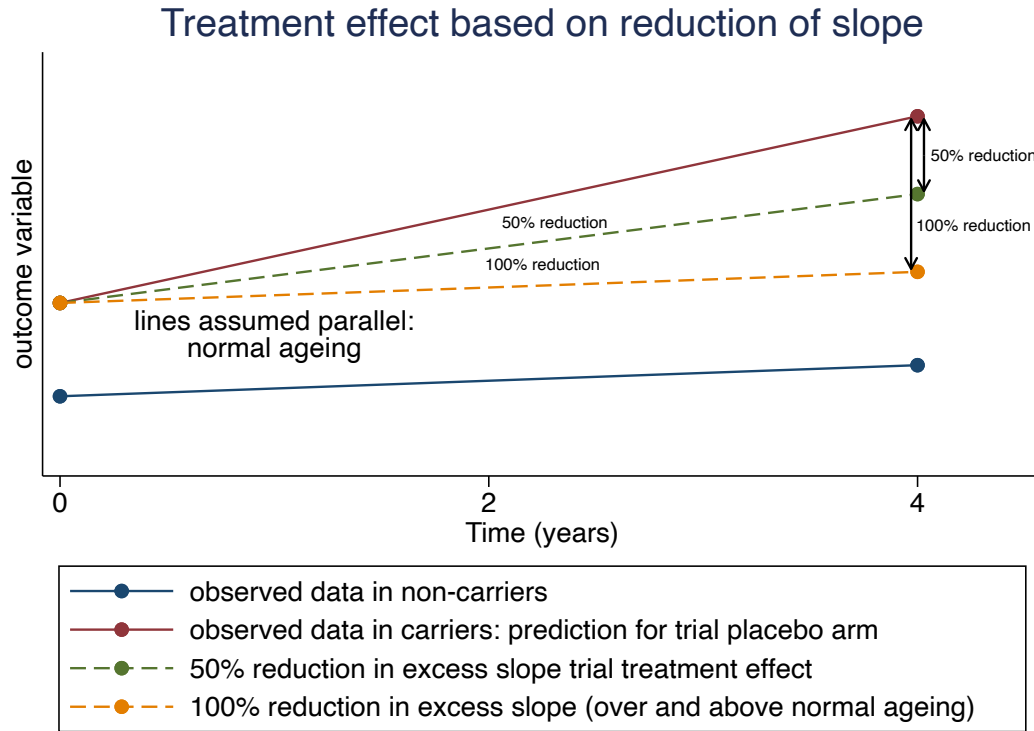


Figure 4 – Sample size estimates (with 95% bootstrap confidence intervals) needed to detect a 25% absolute reduction in the untransformed outcome value at the end of the study (relative to the mean level in non-carriers; four-year duration with 40% dropout rate after four years). Sample size estimates are on a log scale. Dashed intervals indicate that the number of bootstrap samples where the model failed to converge was >1%, and thus the confidence intervals should be treated with caution.

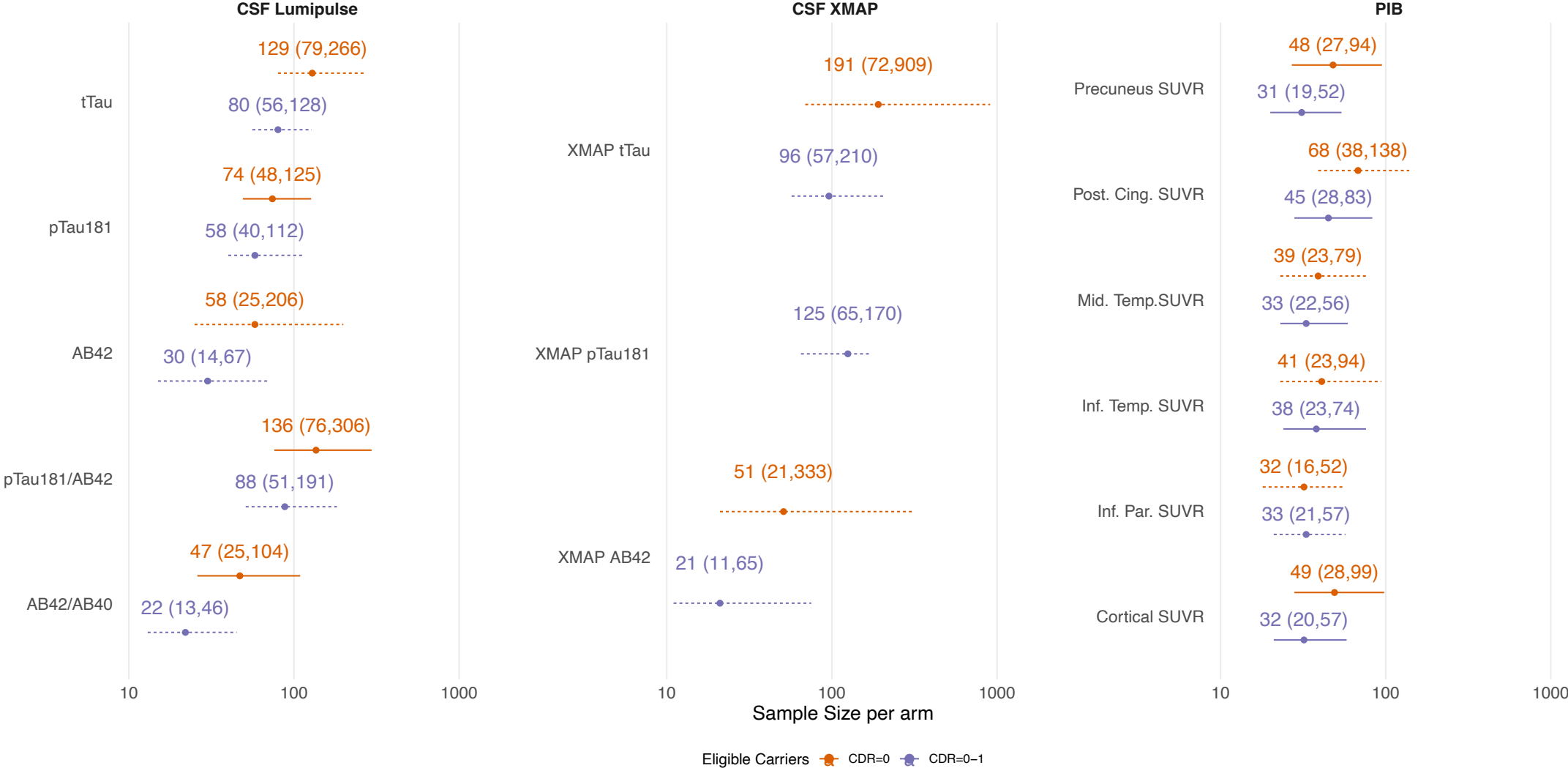


Figure 3 – Sample size estimates (with 95% bootstrap confidence intervals) needed to detect a 50% reduction in excess slope (over and above that in non-carriers) over a four-year trial, assuming 40% dropout after four years. Sample size estimates are on a log scale and censored if the higher confidence interval exceeds 10,000. Dashed intervals indicate that the number of bootstrap samples where the model failed to converge was >1%, and thus the confidence intervals should be treated with caution.

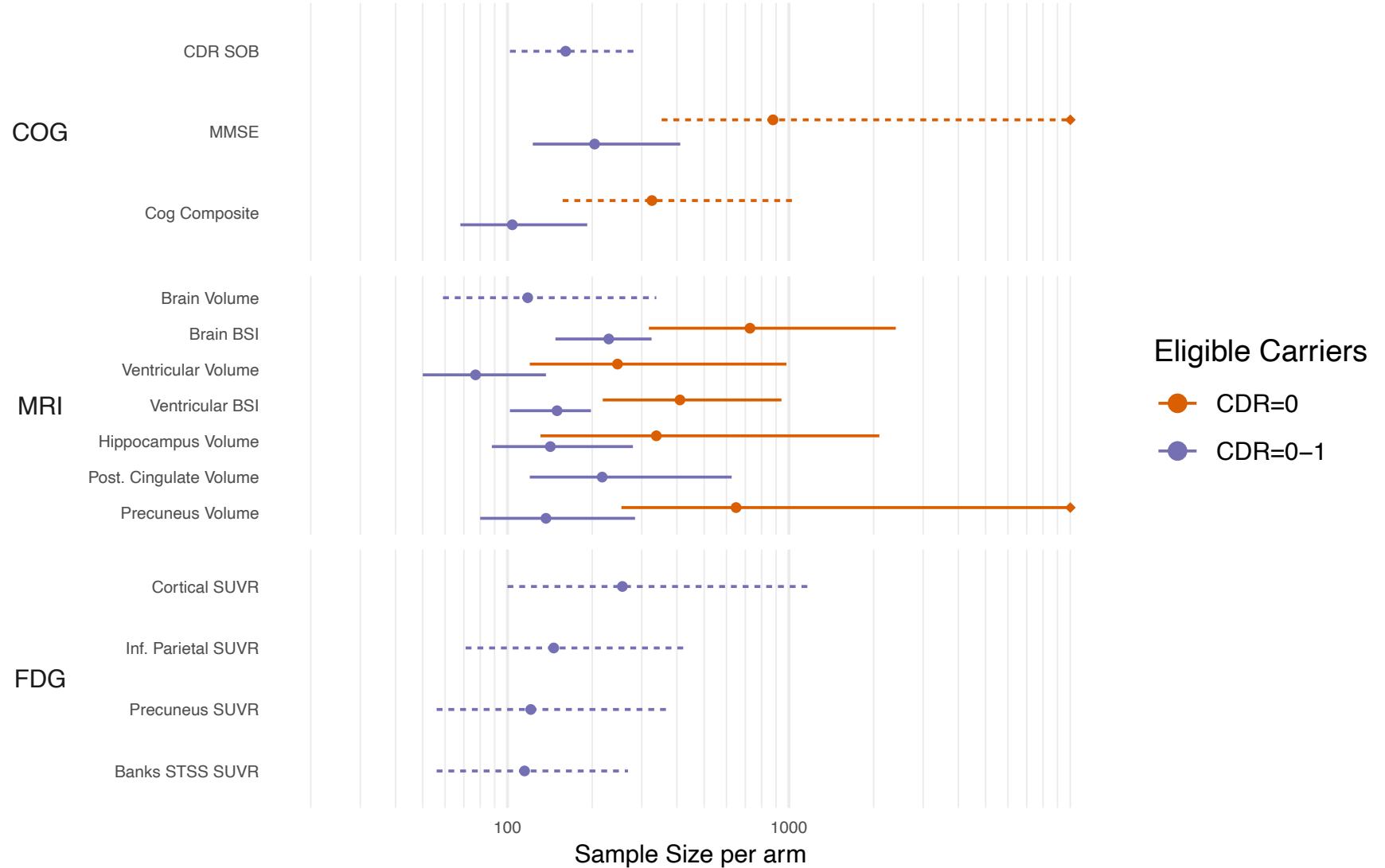


Figure 2 Estimated measures from selected outcomes at baseline and at four-year follow-up (means and 95% confidence intervals) for carriers and non-carriers. These estimates are based on the parameters from fitting the linear mixed effects model to participants in the observational studies who match the trial eligibility criteria. These estimates form the basis of the subsequent sample size estimates. All estimates have been back-transformed, when necessary, to plot the estimated outcome measures on the original scale. Plots for all outcomes can be observed in Supplementary Figure 1.

