

Hypoxia as a predictor of mortality among patients admitted with COVID-19 disease in three referral hospitals in Kenya, October 2020 to December 2021

Authors: Anthony Waruru¹, Jonesmus Mutua Wambua², Frank Victor Otieno³, James Mbai³, Mary Mwangome², Peninah Munyua⁴, Wanjiru Waruiru², Sasi Jonnalagadda¹, Carol Ngunu⁵, Annastacia K. Muange⁶, James Otieno⁶, Dickens Onyango⁷, Nelly Muturi⁸, Anne Njoroge⁹

Affiliations: 1) Division of Global HIV & TB, US Centers for Disease Control and Prevention (CDC), , Nairobi, Kenya; 2) Global Programs for Research and Training, University of California San Francisco, Nairobi, Kenya; 3) Mbagathi County Referral Hospital, Nairobi, Kenya; 4) Division of Global Health Protection, US Centers for Disease Control and Prevention (CDC), Nairobi Kenya; 5) Nairobi County Department of Health, Nairobi, Kenya; 6) Division of Disease Surveillance and Response (DDSR), Kenya; 7) Kisumu County Department of Health, Kisumu, Kenya; 8) AIRBEL Impact Lab, International Rescue Committee (IRC), Nairobi, Kenya; 9) International Training & Education Center for Health (I-TECH), University of Washington, Nairobi, Kenya

Correspondence: Anthony Waruru, awaruru@cdc.gov

Funding: This publication was made possible by support from the American Rescue Plan Act of 2021 and the U.S. President's Emergency Plan for AIDS Relief (PEPFAR) through cooperative agreements [GH002338, GH002266, & GH002339] from the U.S. Centers for Disease Control and Prevention (CDC), Division of Global HIV & TB (DGHT).

Abstract

Introduction: Using peripheral oxygen saturation (SpO₂) measurement is a cost-effective and reliable approach to assess the need for oxygen supplementation in patients admitted with coronavirus disease 2019 (COVID-19). Patients who have a SpO₂ level of <95% are considered hypoxic and, per COVID-19 management guidelines, should receive oxygen supplementation. We sought to determine whether hypoxia at admission predicted adverse COVID-19 outcomes including mortality among patients admitted with COVID-19 disease in Kenya.

Methods: The study was a cross-sectional retrospective medical chart review of patients hospitalized with COVID-19 between October 1, 2020, and December 31, 2021 in three purposively selected health facilities in Kilifi, Nairobi and Kisumu. We explored the differences in proportions of categorical

35 variables using the χ^2 test and assessed predictors (selected *a priori*) of mortality among patients with
36 hypoxia using Cox proportional hazards models. Using the Kaplan-Meier method, we also computed
37 survival probabilities by hypoxia status for patients on room air or oxygen supplementation and
38 produced survival graphs.

39 **Results:** Of the 1,124 COVID-19 patients, 94.8% had documented SpO₂ measurements at admission,
40 and 81.4% were found to have hypoxia, with 39.9% of hypoxic patients not exhibiting dyspnea.
41 Hypoxic patients compared to those with normal oxygen saturation levels were significantly older (60+
42 years: 44.6 vs. 24.4%) and had a higher prevalence of dyspnea (60.1 vs. 36.9%), higher pulse rate (38.2
43 vs. 24.6%), and hypertension (40.4 vs. 25.8%), $p < 0.001$. Oxygen supplementation was provided to only
44 68.6% of hypoxic patients. Mortality was notably higher in hypoxic patients versus those with normal
45 SpO₂ (38.0% vs. 13.6%, $p < 0.001$), with hypoxia being a key predictor of death. Hypoxic, older patients
46 (≥ 60 years), and those with dyspnea had a higher risk of death (adjusted hazard ratio: 1.9 [95%
47 confidence interval (CI): 1.2–2.8], 1.8 [95% CI 1.3–2.6] and 1.5 [95% CI 1.2–2.0], respectively).
48 Regardless of dyspnea or oxygen supplementation, survival probabilities were worse for hypoxic
49 patients ($p < 0.001$).

50 **Conclusions:** Hypoxia was prevalent among hospitalized COVID-19 patients, even without respiratory
51 distress symptoms. These findings underscore the importance early identification and management of
52 hypoxia in COVID-19 patients, thereby guiding clinical care and improving outcomes, particularly for
53 older or sicker patients.

54 **Keywords:** Hypoxia; COVID-19; dyspnea; COVID-19-associated mortality; survival probabilities;
55 Kenya

56

57 **Author summary**

58 Hypoxia (low oxygen levels) is a common complication in severe COVID-19 and can be a key predictor
59 of poor outcomes, including death. In low-resource settings like Kenya, the availability of advanced
60 diagnostic tools is limited, and simple methods like peripheral oxygen saturation (SpO₂) measurements
61 are crucial for early identification and management of hypoxia. Despite the importance of oxygen
62 supplementation for hypoxic patients, data on how hypoxia at admission correlates with COVID-19
63 outcomes in sub-Saharan Africa is limited. We conducted a cross-sectional retrospective study of 1,124
64 COVID-19 patients hospitalized between October 2020 and December 2021 in three Kenyan counties.
65 We found that 81.4% of patients had hypoxia at admission, but 39.9% of these patients did not exhibit
66 signs of respiratory distress (dyspnea). Hypoxia at admission was associated with higher mortality,
67 especially among older patients (≥ 60 years) and those with comorbidities, such as hypertension.
68 Survival probabilities for hypoxic patients were significantly lower, regardless of whether they showed
69 signs of dyspnea or received oxygen supplementation. Hypoxia is highly prevalent among hospitalized
70 COVID-19 patients, even in the absence of respiratory distress, highlighting the need for routine oxygen
71 level screening using simple, cost-effective tools like oxymeters. Early detection and management of
72 hypoxia, especially in older or high-risk patients, is essential to improving clinical outcomes in COVID-
73 19. These findings provide evidence for refining COVID-19 management protocols in resource-limited
74 settings, with an emphasis on early intervention to reduce mortality.

76 **Introduction**

77 Severe acute respiratory syndrome coronavirus type 2 (SARS-CoV-2) virus primarily targets the
78 respiratory system, often leading to pneumonia and acute respiratory distress syndrome (ARDS).
79 Hypoxia in SARS-CoV-2 infection reflects impaired gas exchange in the lungs and results in decreased
80 oxygen levels in the bloodstream.. Studies underscore a strong correlation between hypoxia and the
81 severity of coronavirus disease (COVID-19), with severely affected patients often exhibiting profound
82 hypoxia [1,2]. This hypoxia has been associated with the activation of inflammatory pathways,
83 potentially contributing to the cytokine storm observed in severe COVID-19 cases [3].

84 Early in the COVID-19 pandemic, it became evident that patients with hypoxia were at higher risk of
85 adverse outcomes [4–7], highlighting the critical role of oxygen therapy in managing severe COVID-19
86 cases. The saturation of peripheral oxygen (SpO₂), measured via pulse oximetry, provides crucial
87 information for patient management, aiding in decisions such as hospitalization, especially for elderly
88 patients [8]. SpO₂ measurements help to categorize patients as having hypoxemia, defined using a cutoff
89 point, with normal oxygen saturation levels in the blood ranging from 95% to 100% and low peripheral
90 oxygen saturation being lower than 95% [9]. In Kenya, hypoxia during COVID-19 was defined as SpO₂
91 $\leq 94\%$ on room air [10].

92 Since pulse oximetry is quick, noninvasive, and painless, the World Health Organization (WHO)
93 recommended its use in monitoring patients with COVID-19 [11], and provided guidance for the clinical
94 management of COVID-19 patients [12]. Despite its simplicity and non-invasiveness, pulse oximetry
95 was underutilized in resource-limited settings during the pandemic, where oxygen availability was
96 scarce [13,14]. A notable observation during the pandemic was “silent hypoxia,” where patients
97 exhibited low SpO₂ levels without dyspnea, potentially leading to delayed recognition of hypoxemia if
98 SpO₂ measurements were not routinely performed [6,15,16]. This condition underscores the importance

99 of SpO₂ monitoring in assessing COVID-19 severity, as abnormal chest X-ray findings do not always
100 correlate with SpO₂ levels [17].

101 Silent hypoxia poses a significant challenge in managing COVID-19 patients, as it may indicate early
102 deterioration, and mortality, even in the absence of respiratory symptoms [18–20]. Patients with pre-
103 existing respiratory or cardiovascular conditions, such as chronic obstructive pulmonary disease, or heart
104 disease, are particularly susceptible to hypoxia and face increased risks during COVID-19 infection
105 [21]. Additionally, non-respiratory non-communicable diseases like obesity have been linked to worse
106 COVID-19 outcomes [22,23].

107 This paper describes the availability of pulse oximetry and the prevalence of hypoxia among COVID-19
108 patients hospitalized in Kenya during the pandemic. We characterize the impact of hypoxia on COVID-
109 19 outcomes, including mortality rates among hospitalized patients.

110

111

112

113 **Methods**

114 *Study setting*

115 The first COVID-19 case in Kenya was reported on 13th March 2020. During the period covered by this
116 study Kenya underwent four distinct waves of SARS-CoV-2 infections, driven by different variants *B.1*
117 (2nd wave: October 2020 to January 2021), *Alpha/Beta* (3rd wave: February to May 2021), *Delta* (4th
118 wave: June to November 2021), and *Omicron* (5th wave: December 2021) variants [24]. As of December
119 31, 2021, Kenya had recorded 297,155 confirmed COVID-19 cases and 5,381 deaths, resulting in a
120 case-fatality rate of 1.8% [25].

121 *Study sites*

122 The study was conducted in three purposively selected referral facilities in three counties: Mbagathi
123 County Referral Hospital (Nairobi County), Jaramogi Oginga Odinga Teaching and Referral Hospital
124 (Kisumu County), and Kilifi County Referral Hospital (Kilifi County) . The purposive selection of the
125 three facilities was conducted in collaboration with the Division of Integrated Disease Surveillance and
126 Response (DDSR), Ministry of Health, and was based on the high number of COVID-19 cases reported
127 during the selected study period and the prevalence of HIV in the three counties. Nairobi County has a
128 reported HIV prevalence of 3.8%, Kisumu County 17.5%, and Kilifi County 2.3% [26]. As of the end of
129 2021, the cumulative COVID-19 caseload was 119,538 in Nairobi, 7,368 in Kisumu, and 6,461 in Kilifi
130 County [27].

131 *Data collection and abstraction procedures*

132 The study involved a retrospective cohort analysis of inpatient medical records from hospitalized
133 COVID-19 patients in Kenya spanning October 1, 2020 to December 31, 2021. A team of trained
134 research assistants comprising clinical and health records officers enumerated all the inpatients with a
135 diagnosis of COVID admitted to the three facilities in that time period. Medical charts for these patients

136 were retrieved from the health records departments for abstraction. Data were abstracted using a
137 formatted data abstraction tool programmed in Open Data Kit (ODK), <<https://opendatakit.org>>, and
138 submitted to a central server for processing and analyses. All the data were stripped of all personally
139 identifying information.

140 *Measures*

141 A case **infected with SARS-CoV-2** was defined as a patient with a positive rapid diagnostic test or PCR
142 test result or who was presumptively managed for COVID-19 based on symptomatic presentation.
143 Clinical signs and symptoms were also abstracted, including fever, cough, and chest tightness,. Chest X-
144 ray findings (normal/abnormal), if available, were also abstracted. Co-morbidities such as diabetes and
145 hypertension were abstracted as present if the patient had reported them, even if blood glucose levels or
146 current blood pressure readings were normal. We defined **saturation of peripheral oxygen (SpO₂)** as a
147 measure of how much hemoglobin is bound to oxygen compared to how much hemoglobin remains
148 unbound. **Hypoxia** was defined as SpO₂ less than or equal to 94% on room air at admission [10]. **Fever**
149 was defined as elevated body temperature >37.2°C, and **high respiratory rate (RR)** as ≥30
150 breaths/minute. The outcome variable categories were in-hospital death, discharge, or referral to another
151 facility. Provision of **supplemental oxygen** was captured after admission, and **dyspnea** was
152 symptomatically assessed and documented as a presentation of the patients with respiratory distress or
153 shortness of breath.

154 *Analyses*

155 We tested for the differences in distribution using the Pearson Chi-square (χ^2) test. We assessed
156 predictors for mortality for patients with hypoxia using Cox proportional hazards regression after
157 calculating the time from admission to death in days and censoring the outcome. We included all
158 potential predictors in the crude analyses after testing for the assumption of proportionality using the

159 Schoenfeld test, but only variables with at least 90% completeness and a significance level of $p < 0.1$
160 were included in the multivariable model. In the multivariable model, we controlled for oxygen
161 saturation, age (in years), hypertension, diabetes, cardiovascular disease, and dyspnea. We additionally
162 calculated survival probabilities by hypoxia status at admission for patients on room air and oxygen
163 supplementation using the Kaplan–Meier method, and produced survival graphs by hypoxia status.

164 *Ethical approvals*

165 This activity was reviewed by CDC, deemed not research, and was conducted consistent with applicable
166 federal law and CDC policy.* It was also reviewed by the University of California San Francisco’s
167 Institutional Review Board (UCSF-22-37353) and AMREF’s Ethical and Scientific Review Committee
168 (AMREF-ESRC P1233/2022), the University of California, San Francisco Human Research Protection
169 Program Institutional Review Board (IRB approval number 22-37353), and ethical review committees
170 from the three participating hospitals. The Kenya National Commission for Science, Technology, and
171 Innovation (NACOSTI) permitted this study (License No: NACOSTI/P/22/19903). Due to the study’s
172 retrospective nature and the use of de-identified data, the requirement for individual patient consent was
173 waived.

174

175 *45 C.F.R. part 46.102(l)(2), 21 C.F.R. part 56; 42 U.S.C. Sect. 241(d); 5 U.S.C. Sect. 552a; 44 U.S.C.
176 Sect. 3501 et seq.

177 **Results**

178 *Patient characteristics, clinical presentation, and SpO₂*

179 Among 1,124 patients hospitalized with COVID-19, 1,066 (94.8%) had documented SpO₂
180 measurements at admission, of whom 868 (81.4%) had hypoxia. Hypoxic patients compared to those
181 with normal oxygen saturation levels were significantly older (60+ years: 44.6 vs. 24.4%) and had a

182 higher prevalence of dyspnea (60.1 vs. 36.9%), higher pulse rate (38.2 vs. 24.6%), and hypertension
 183 (40.4 vs. 25.8%) (p<0.001). Among patients with hypoxemia, about 2 in every 5, 346 (39.9%) did not
 184 have dyspnea p<0.001. A higher proportion of patients with hypoxemia died compared to those with
 185 normal SpO₂ (38.0% vs 13.6%) p<0.001 (Table 1).

186 **Table 1: Patients' demographic and clinical characteristics by hypoxia and mortality, Kenya 2020-21**

Characteristics*	Total	Hypoxia [†] , n(%)	Normal SpO ₂ n(%)	p-value [§]
Total	1066	868 (81.4)[‡]	198 (18.6)[‡]	
Sex (n=1062)				0.065
Male	567 (53.4)	474 (54.7)	93 (47.4)	
Female	495 (46.6)	392 (45.3)	103 (52.6)	
Age in years (n=1063)				<0.001
<40	245 (23.0)	152 (17.6)	93 (47.2)	
40 – 59	384 (36.1)	328 (37.9)	56 (28.4)	
≥60	434 (40.8)	386 (44.6)	48 (24.4)	
Occupation (n=665)				0.934
Formal	273 (41.1)	221 (41.1)	52 (40.9)	
Informal	379 (57.0)	307 (57.1)	72 (56.7)	
Other	13 (2.0)	10 (1.9)	3 (2.4)	
County (n=1066)				0.297
Kilifi	146 (13.7)	119 (13.7)	27 (13.6)	
Kisumu	533 (50.0)	443 (51.0)	90 (45.5)	
Nairobi	387 (36.3)	306 (35.3)	81 (40.9)	
HIV status (n=99)				0.936
Positive	88 (88.9)	65 (89.0)	23 (88.5)	
Negative	11 (11.1)	8 (11.0)	3 (11.5)	
Temperature (n=583)				0.990
Elevated body temperature (>37.2 °C)	45 (7.7)	36 (7.7)	9 (7.7)	
Normal (36.5-37.2 °C)	538 (92.3)	430 (92.3)	108 (92.3)	
Cough (n=1066)				<0.001
Yes	269 (25.2)	190 (21.9)	79 (39.9)	
No	797 (74.8)	678 (78.1)	119 (60.1)	
Chest tightness (n=1066)				0.177
Yes	584 (54.8)	467 (53.8)	117 (59.1)	
No	482 (45.2)	401 (46.2)	81 (40.9)	
Hypertension (n=1066)				<0.001
Yes	402 (37.7)	351 (40.4)	51 (25.8)	
No	664 (62.3)	517 (59.6)	147 (74.2)	
Diabetes (n=1066)				0.110
Yes	251 (23.5)	213 (24.5)	38 (19.2)	
No	815 (76.5)	655 (75.5)	160 (80.8)	
Pulse rate (PR) (n=970)				<0.001
Low PR (<60 bpm)	35(3.6)	34 (4.3)	1 (0.5)	
Normal PR (60-100 bpm)	590(60.8)	450 (57.5)	140 (74.9)	
High PR (>100 bpm)	345(35.6)	299 (38.2)	46 (24.6)	
Cardiovascular issues				0.281
With issues	1045 (98.0)	849 (97.8)	196 (99.0)	
No issues	21 (2.0)	19 (2.2)	2 (1.0)	

Dyspnea (n=1066)				<0.001
Dyspnea	595 (55.8)	522 (60.1)	73 (36.9)	
None	471 (44.2)	346 (39.9)	125 (63.1)	
Oxygen supplementation (n=1066)				<0.001
Yes	644(60.4)	595(68.6)	49(24.8)	
No	422(39.6)	273(31.5)	149(75.3)	
Patient Outcome (n=1066)				<0.001
Dead	357(33.5)	330 (38.0)	27 (13.6)	
Discharged	680(63.8)	516 (59.4)	164 (82.8)	
Referred out	29(2.7)	22 (2.5)	7 (3.5)	

187 *Some variables had missing values. The number of included records is indicated against the variable
 188 names.

189 †Hypoxia was defined as SpO₂ reading of ≤94% on room air measured during admission.

190 ‡Row percentages

191 §Chi-square p-values, significance at p<0.05

192 *Dyspnea and hypertension in relation to patient outcomes by SpO₂ at admission*

193 Among all COVID-19 patients without dyspnea, hypoxic patients had three-fold more deaths than those
 194 with normal SpO₂ saturation (29.8% vs. 9.6%), p<0.001. Among all COVID-19 patients with dyspnea,
 195 hypoxic patients had two-fold more deaths than those with normal SpO₂ saturation (43.5% vs. 20.6%),
 196 p=0.002 (Figure 1).

197

198 **Figure 1:** Hypoxia and outcomes for COVID-19 patients with and without dyspnea, Kenya 2020-21

199 Among all COVID-19 patients, those with hypoxia had a higher proportion of deaths than those with
 200 normal SpO₂ saturation (38.0% vs. 13.6%), p<0.001. There were more deaths among COVID-19
 201 patients with hypertension and hypoxia compared to hypertensive patients with normal SpO₂ saturation
 202 (42.5% vs. 7.8%), p<0.001. For COVID-19 patients without hypertension, mortality was higher among
 203 patients who had hypoxia (35.0%) compared to patients with normal SpO₂ saturation (15.6%), p<0.001
 204 (Figure 2).

205

206

207 **Figure 2:** Hypoxia and mortality for all patients with and without hypertension, Kenya 2020-21

208 *Influence of SpO₂ at admission on survival probability*

209 Whether on oxygen supplementation or room air, survival probabilities were better for patients who did
210 not have hypoxia on admission. Survival for non-hypoxic COVID-19 patients on room air plateaued
211 from about two weeks of hospitalization, while survival for hypoxic patients continued to worsen at a
212 more rapid pace (Figure 3a). Both hypoxic and non-hypoxic patients had similar declining survival rates
213 beyond a month of hospitalization. Half of the hypoxic patients on room air survived up to the 20th day,
214 and over half of the non-hypoxic patients on room air survived over the 50th day. For patients on
215 supplemental oxygen (Figure 3b), survival probabilities rapidly worsened, and by around 10 days, over
216 half of the hypoxic patients on admission were dead, compared to non-hypoxic patients on admission
217 who survived a little longer.

218

219 **Figure 3:** Survival probabilities for COVID-19 patients on room air (a) and on oxygen supplementation
220 (b), by oxygen saturation levels, Kenya 2020-21

221 *Predictors of mortality among patients with hypoxia*

222 Out of 1,123 patients admitted with COVID-19, 1122 recorded time-to-outcome data, and 868
223 experienced hypoxia. The median duration of admission was 6 days, interquartile range (IQR) 2-10.
224 Among the 1066 patients with hypoxia data, 357 (33.5%) died. Mortality was significantly higher in
225 hypoxic patients (38.0%) compared to those with normal oxygen levels (13.6%) (p<0.001). Lower
226 mortality rates were observed in non-hypoxic patients, females, those under 40, those with formal
227 employment, HIV negative individuals, and those without hypertension, diabetes, cardiovascular issues,
228 or dyspnea. Crude proportional hazards analysis identified hypoxia, age, hypertension, diabetes,
229 cardiovascular issues, and dyspnea as significant factors affecting survival (p<0.05). In the adjusted

230 model, hypoxia (adjusted hazard ratio (aHR) = 1.9 [95% confidence interval (CI):1.2–2.8]), older age
 231 (60 + years) (aHR) = 1.8 [95% CI:1.3–2.6]), and dyspnea (aHR 1.5 [95% CI: 1.2–2.0]) were associated
 232 with a higher risk of death (Table 2).

233 **Table 2:** Predictors of mortality in hospitalized COVID-19 patients with hypoxia, Kenya 2020-21

Factors	% complete*	Dead, n/N (%)	cHR[†] [95%CI]	aHR[‡] [95%CI]
Total		365 /1122 (32.5)		
Oxygen Saturation	89.9			
Hypoxia		330/868 (38.0)	2.3[1.5-3.4]	1.9[1.2-2.8] [¶]
Normal SpO ₂		27/198 (13.6)	ref.	ref.
Sex	89.9			n.i
Male		200/595 (33.6)	1.0[0.8-1.3]	
Female		165/523 (31.5)	ref.	
Age (years)	94.6			n.i
<40		48/273 (17.6)	ref.	ref.
40 - 59		119/403 (29.5)	1.5[1.1-2.2]	1.1[0.8-1.7]
60+		196/443 (44.2)	2.4[1.7-3.4]	1.8[1.3-2.6] [¶]
Occupation	58.9			n.i
Formal		86/297 (29.0)	ref.	
Informal		136/390 (34.9)	1.3[1.0-1.8]	
Other		6/14 (42.9)	1.7[0.7-4.3]	
HIV status	9.0			n.i
Positive		33/94 (35.1)	3.0[0.4-22]	
Negative		2/11 (18.2)	ref.	
Pulse	82.9			n.i
Low PR (<60bpm)		17/35(48.6)	1.8[1.0-3.1]	
Normal PR (60-100bpm)		169/601(28.1)	ref.	
High PR (>100 bpm)		146/347(42.1)	1.3[1.0-1.7]	
Hypertension	94.7			
No		211/713 (29.6)	ref.	ref.
Yes		154/409 (37.7)	1.2[1.0-1.5]	1.0[0.8-1.2]
Diabetes	94.7			
No		264/864 (30.6)	ref.	ref.
Yes		101/258 (39.1)	1.2[0.9-1.5]	1.1[0.8-1.4]
Cough and chest issues	94.7			n.i
Cough and chest tightness		134/412 (32.5)	ref.	
Only cough		141/418 (33.7)	1.1[0.9-1.5]	
Only chest tightness		18/83 (21.7)	0.7[0.4-1.2]	
No cough or chest tightness		72/209 (34.4)	1.3[0.9-1.8]	
Chest X-ray results	28.6			n.i
Normal		10/35 (28.6)	ref.	
Abnormal		99/298 (33.2)	1.3[0.6-2.5]	
Cardiovascular disease	94.7			
No issues reported		352/1100 (32.0)	ref.	ref.
Cardiovascular issues		13/22 (59.1)	1.7[0.9-3.0]	1.3[0.7-2.4]
Dyspnea	94.7			
None		118/515 (22.9)	ref.	ref.
Dyspnea		247/607 (40.7)	1.7[1.3-2.2]	1.5[1.2-2.0] [¶]

234

235 *Percentage of records with complete time-to-event data

236 †Crude hazard ratios

237 ‡Adjusted hazard ratio (adjusted for hypoxia, age, hypertension, diabetes, cardiovascular issues, and
238 dyspnea)

239 ¶Statistically significant at $p < 0.05$

240 ref. = referent category

241 n.i = not included

242

243 **Discussion**

244 This study highlights the critical role of hypoxia in determining the outcomes of patients hospitalized
245 with COVID-19. Notably, 8 out of 10 patients hospitalized with COVID-19 had hypoxia at admission, a
246 condition that was associated with significantly higher mortality rates compared to those with normal
247 oxygen saturation levels. The prevalence of hypoxia was particularly higher among older patients and
248 those with clinical symptoms consistent with COVID-19, such as cough, chest tightness, low pulse rate,
249 dyspnea, and underlying comorbidities like hypertension and HIV infection. This relationship suggests
250 that symptomatic COVID-19 disease may have a consistent prognosis even in the absence of diagnostic
251 testing, a finding supported by similar studies [5]. Interestingly, about 40% of our patients experienced s
252ilent hypoxia, a proportion that aligns with estimates from other studies, which range between 4.8% and
253 65% [5]. This emphasizes the importance of pulse oximetry at triage or admission, even for patients
254 without apparent respiratory symptoms, to enable timely supplementation and other interventions that
255 can improve outcomes.

256

257 Mortality in our study was over twice as high among patients with hypoxia compared to those with
258 normal SpO₂ saturation (38.0% vs. 13.6%). This underscores the severe consequences of oxygen
259 deprivation in COVID-19, corroborating existing literature that identifies hypoxia as a key predictor of
260 poor prognosis in respiratory infections [18,19,28]. Moreover, older hypoxic patients had twice the risk
261 of death compared with patients under 40, which is consistent with global findings [29]. While

262 hypertension was not independently associated with mortality in our study, it is generally recognized as
263 a risk factor for severe COVID-19 and poor outcomes [30]. SpO₂ has emerged as a crucial predictor of
264 survival in COVID-19 patients [20]. Our findings suggest that normal SpO₂ levels are associated with
265 better survival probabilities, while hypoxia, along with age and dyspnea, independently predicts a higher
266 risk of death. Therefore, oxygen supplementation is essential for hypoxic patients, as studies have shown
267 that higher SpO₂ levels after supplementation are linked to reduced mortality [5], and improved survival
268 probabilities [19]. The observation that patients with hypoxia had over three times the mortality rate
269 underscores the importance of assessing oxygen saturation in all COVID-19 patients, regardless of their
270 symptomatic presentation.

271
272 Oxygen supplementation is recommended for hypoxic patients. However, only for only 3 out of 5
273 (68.6%) of hypoxic patients in our study received oxygen supplementation, indicating insufficient
274 management in our setting. The national guidelines recommend oxygen supplementation for patients
275 with SpO₂ ≤94%, but a more strict target of 92–96% might have been beneficial [31], given that the
276 Kenyan cutoff was less stringent. We also lacked data on whether follow-up SpO₂ readings were taken
277 after initial drops by 3-5%, which is a recommended practice, as has been suggested by Galwankar et al.
278 [32]. Community-level SpO₂ monitoring, such as providing oximeters to households [34], could be
279 beneficial for ongoing patient management post-discharge, though we did not follow patients after
280 discharge.

281
282 Our study had some limitations. First, we lacked COVID-19 diagnostic information for some cases,
283 relying instead on clinician documentation based on symptomatic presentation. Additionally, SpO₂ data
284 were missing for 5.2% of records, but this low proportion is unlikely to bias our findings. The relatively
285 stringent definition of hypoxemia used in this study may have led to the misclassification of some

286 patients as having silent hypoxemia, though we adhered to national guidelines. The study's findings may
287 not be generalized to the broader Kenyan population, as the sites were purposefully selected. We also
288 did not track patient outcomes of COVID-19 patients post-discharge. Finally, we could not determine
289 whether hypertensive patients had a history of hypertension or elevated blood pressure before admission.
290 Despite these limitations, our study provides valuable insights into the utility of SpO₂ monitoring for the
291 clinical management of hospitalized COVID-19 patients.

292
293 Our study suggests that while comorbid conditions like hypertension, diabetes, and cardiovascular
294 disease are important, they did not significantly alter mortality risk after adjusting for hypoxia, age, and
295 dyspnea. This indicates that hypoxia and age are the predominant drivers of mortality in hospitalized
296 COVID-19 patients, with other comorbidities playing a secondary role. The frequent occurrence of
297 hypoxia among hospitalized COVID-19 patients, often without accompanying dyspnea, underscores the
298 importance of using SpO₂ measurements to guide hospitalization decisions and improve outcomes,
299 particularly for older or more critically ill patients. Finally, the higher mortality among patients with
300 silent hypoxia highlights the need for regular SpO₂ monitoring to enhance patient outcomes, especially
301 for those with comorbidities.

302

303 **Acknowledgements**

304 We thank the Kenyan Ministry of Health, the Division of Disease Surveillance and Response (DDSR),
305 the National AIDs and STIs Control Programme, VL laboratories, implementing partners, and patients.
306 This work was supported by the President's Emergency Plan for AIDS Relief (PEPFAR) through the
307 Centers for Disease Control and Prevention (CDC).

308 **Authors contributions**

309 AW analyzed the data and drafted the initial and subsequent drafts of the manuscript, JMW contributed
310 to the analyses. AN, DO, MM, and WW contributed substantially to protocol development, data
311 collection, and critical review of the manuscript. All authors read and approved the final version of the
312 manuscript.

313 **Disclaimer**

314 The findings and conclusions in this manuscript are those of the authors and do not necessarily represent
315 the official position of the funding agencies.

316

317 **References**

- 318 1 Gattinoni L, Chiumello D, Caironi P, Busana M, Romitti F, Brazzi L, Camporota L. COVID-19
319 pneumonia: different respiratory treatments for different phenotypes? *Intensive Care Med*
320 2020;46:1099–102. doi:10.1007/s00134-020-06033-2.
- 321 2 Nitsure M, Sarangi B, Shankar GH, Reddy VS, Walimbe A, Sharma V, Prayag S. Mechanisms of
322 hypoxia in covid-19 patients: A pathophysiologic reflection. *Indian J Crit Care Med* 2020;24:967–
323 70. doi:10.5005/jp-journals-10071-23547.
- 324 3 Robert Cronin Yung Peng, Rose Khavari ND. Pulmonary Vascular Endothelialitis, Thrombosis,
325 and Angiogenesis in Covid-19. *Physiol Behav* 2017;176:139–48. doi:10.1159/000444169.Carotid.
- 326 4 Bepouka B, Odio O, Mayasi N, Longokolo M, Mangala D, Mandina M, Mbula M, Kayembe JM,
327 Situakibanza H. Prevalence and Outcomes of COVID –19 Patients with Happy Hypoxia: A
328 Systematic Review. *Infect Drug Resist* 2022;15:5619–28. doi:10.2147/IDR.S378060.
- 329 5 Xie J, Covassin N, Fan Z, Singh P, Gao W, Li G, Kara T, K. SV. Association Between Hypoxemia
330 and Mortality in Patients With COVID-19. *Mayo Clin Proc* 2020;7:33–48.
- 331 6 Chandra A, Chakraborty U, Pal J, Karmakar P. Silent hypoxia: a frequently overlooked clinical
332 entity in patients with COVID-19. *BMJ Case Rep* 2020;13. doi:10.1136/bcr-2020-237207.
- 333 7 Choi KJ, Hong HL, Kim EJ. The association between mortality and the oxygen saturation and
334 fraction of inhaled oxygen in patients requiring oxygen therapy due to COVID-19–Associated
335 pneumonia. *Tuberc Respir Dis (Seoul)* 2021;84:125–33. doi:10.4046/trd.2020.0126.
- 336 8 De Souza C, C M Miranda E, Hadich D, Nunes M, Masetto D, C P Morato D, Scandiuzzi R, Ferreira
337 M do C, Zambom L, von Zuben A. Peripheral oxygen measurements in suspected elderly COVID-
338 19 patients can be an effective tool for alerting physicians. *MOJ Public Heal* 2021;10:40–2.

- 339 doi:10.15406/mojph.2021.10.00357.
- 340 9 Bhutta Beenish S., Alghoula Faysal, Berim Ilya. Hypoxia. Treasure Island (FL): StatPearls
341 Publishing; 2022.
- 342 10 Ministry of Health Kenya. Guideline on the Management of Covid-19 in Kenya 2021:7–7.
- 343 11 World Health Organization. Interim Guidance for Member States-On the Use of Pulse Oximetry in
344 Monitoring Covid-19 Patients Under Home-Based Isolation and Care. 2021.
- 345 12 World Health Organization. Guideline Clinical management of COVID-19 patients: living
346 guideline, 23 November 2021. 2021.
- 347 13 Starr N, Rebollo D, Asemu YM, Akalu L, Mohammed HA, Menchamo MW, Melese E, Bitew S,
348 Wilson I, Tadesse M, Weiser TG. Pulse oximetry in low-resource settings during the COVID-19
349 pandemic. *Lancet Glob Heal* 2020;8:e1121–2. doi:10.1016/S2214-109X(20)30287-4.
- 350 14 Ayebare RR, Flick R, Okware S, Bodo B, Lamorde M. Adoption of COVID-19 triage strategies for
351 low-income settings. *Lancet Respir Med* 2020;8:e22. doi:10.1016/S2213-2600(20)30114-4.
- 352 15 Ratnayake A, Kumarihamy P, Gunaratne S, Abeysinghe H, Perera S, Ekanayake S. Different
353 Outcomes of “silent Hypoxia” in Patients with COVID-19 Pneumonia: A Case Series and Literature
354 Review. *Case Reports Crit Care* 2021;2021. doi:10.1155/2021/1215274.
- 355 16 Siswanto, Gani M, Fauzi AR, Yuliyanti RE, Inggriani MP, Nugroho B, Agustiningsih D, Gunadi.
356 Possible silent hypoxemia in a COVID-19 patient: A case report. *Ann Med Surg* 2020;60:583–6.
357 doi:10.1016/j.amsu.2020.11.053.
- 358 17 Kim HW, Capaccione KM, Li G, Luk L, Widemon RS, Rahman O, Beylergil V, Mitchell R,
359 D’souza BM, Leb JS, Dumeer S, Bentley-Hibbert S, Liu M, Jambawalikar S, Austin JHM, et al.
360 The role of initial chest X-ray in triaging patients with suspected COVID-19 during the pandemic

- 361 n.d. doi:10.1007/s10140-020-01808-y/Published.
- 362 18 Elijah IM, Amsalu E, Jian X, Cao M, Mibei EK, Kerosi DO, Mwatsahu FG, Wang W, Onyangore
363 F, Wang Y. Characterization and determinant factors of critical illness and in-hospital mortality of
364 COVID-19 patients: A retrospective cohort of 1,792 patients in Kenya. *Biosaf Heal* 2020.
- 365 19 Mejía F, Medina C, Cornejo E, Morello E, Vásquez S, Alave J, Schwalb A, Málaga G. Oxygen
366 saturation as a predictor of mortality in hospitalized adult patients with COVID-19 in a public
367 hospital in Lima, Peru. *PLoS One* 2020;15:1–12. doi:10.1371/journal.pone.0244171.
- 368 20 Alhusain F, Alromaih A, Alhajress G, Alsaghyir A, Alqobaisi A, Alaboodi T, Alsalamah M.
369 Predictors and clinical outcomes of silent hypoxia in COVID-19 patients, a single-center
370 retrospective cohort study. *J Infect Public Health* 2021;14:1595–9. doi:10.1016/j.jiph.2021.09.007.
- 371 21 Farishta M, Sankari. A. Pulmonary Hypertension Due to Lung Disease or Hypoxia. Treasure Island
372 (FL): StatPearls Publishing; 2023.
- 373 22 Vulturar DM, Crivii CB, Orăsan OH, Palade E, Buzoianu AD, Zehan IG, Todea DA. Obesity
374 Impact on SARS-CoV-2 Infection: Pros and Cons “Obesity Paradox”—A Systematic Review. *J*
375 *Clin Med* 2022;11. doi:10.3390/jcm11133844.
- 376 23 Pettit NN, MacKenzie EL, Ridgway JP, Pursell K, Ash D, Patel B, Pho MT. Obesity is Associated
377 with Increased Risk for Mortality Among Hospitalized Patients with COVID-19. *Obesity*
378 2020;28:1806–10. doi:10.1002/oby.22941.
- 379 24 Nasimiyu C, Matoke-Muhia D, Rono GK, Osoro E, Ouso DO, Mwangi JM, Mwikwabe N,
380 Thiong’o K, Dawa J, Ngere I, Gachohi J, Kariuki S, Amukoye E, Mureithi M, Ngere P, et al.
381 Imported SARS-CoV-2 Variants of Concern Drove Spread of Infections across Kenya during the
382 Second Year of the Pandemic. *MedRxiv* 2022;2:586–98. doi:10.3390/covid2050044.

- 383 25 World Health Organization. WHO Health Emergency Dashboard. WHO Homepage 2023.
384 <https://covid19.who.int/region/afro/country/ke>.
- 385 26 National AIDS and STI Control Program (NASCOP). Kenya population-based HIV impact
386 assessment 2018-2019 Preliminary Report. Nascop 2020:1–40.
- 387 27 Ministry of Health Kenya. Covid-19 Outbreak in Kenya: Daily Situation Report - 654 2021;148:1–
388 16.
- 389 28 Sobral MFF, Roazzi A, da Penha Sobral AIG, de Oliveira BRB, Duarte GB, da Silva JF, Nogueira
390 RMTBL. A retrospective cohort study of 238,000 COVID-19 hospitalizations and deaths in Brazil.
391 *Sci Rep* 2022;12:1–11. doi:10.1038/s41598-022-07538-0.
- 392 29 Yang J, Zheng Y, Gou X, Pu K, Chen Z. Prevalence of comorbidities and its effects in patients
393 infected with SARS-CoV-2: a systematic review and meta-analysis. *Int J Infect Dis* 2020;94:91–5.
- 394 30 Mahamat-Saleh Y, Fiolet T, Rebeaud ME, Mulot M, Guihur A, El Fatouhi D, Laouali N, Peiffer-
395 Smadja N, Aune D, Severi G. Diabetes, hypertension, body mass index, smoking and COVID-19-
396 related mortality: A systematic review and meta-analysis of observational studies. *BMJ Open*
397 2021;11. doi:10.1136/bmjopen-2021-052777.
- 398 31 Cajanding R. Oxygen use and saturation targets in patients with COVID-19: Are we giving too
399 much or aiming too low? *Nurs Crit Care* 2022;27:282–5. doi:10.1111/nicc.12709.
- 400 32 Galwankar S, Paladino L, Gaieski D, Nanayakkara K, Somma S, Grover J, Stawicki S. Management
401 algorithm for subclinical hypoxemia in coronavirus disease-2019 patients: Intercepting the “Silent
402 Killer.” *J Emergencies, Trauma Shock* 2020;13:110–3. doi:10.4103/JETS.JETS_72_20.
- 403 33 Josephine N, Fuglebjerg U, Jensen TO, Hoyer N, Rysø CK, Lindegaard B, Harboe ZB. Since
404 January 2020 Elsevier has created a COVID-19 resource centre with free information in English

405 and Mandarin on the novel coronavirus COVID- 19 . The COVID-19 resource centre is hosted on
406 Elsevier Connect , the company ' s public news and information 2020.

407 34 Ngiam JN, Chew NWS, Sia CH, Kong WKF, Poh KK. Silent hypoxia: pulse oximetry and its
408 relation to COVID-19 in Singapore. Singapore Med J 2023;64:222–5.
409 doi:10.11622/smedj.2021134.

410

411 **Figures**

412 **Figure 1: Hypoxia and outcomes for COVID-19 patients with and without dyspnea, Kenya 2020-21**

413 Describes the outcomes for COVID-19 patients by dyspnea.

414

415 **Figure 2: Hypoxia and mortality for all patients with and without hypertension, Kenya 2020-21**

416 Describes mortality proportions for all patients with and without hypertension.

417

418 **Figure 3: Survival probabilities for COVID-19 patients on room air (a) and on oxygen 419 supplementation (b), by oxygen saturation levels, Kenya 2020-21**

420 Shows Kaplan meier survival probabilities for patients who were not on oxygen supplementation (room
421 air) and those who were on oxygen supplementation.

422

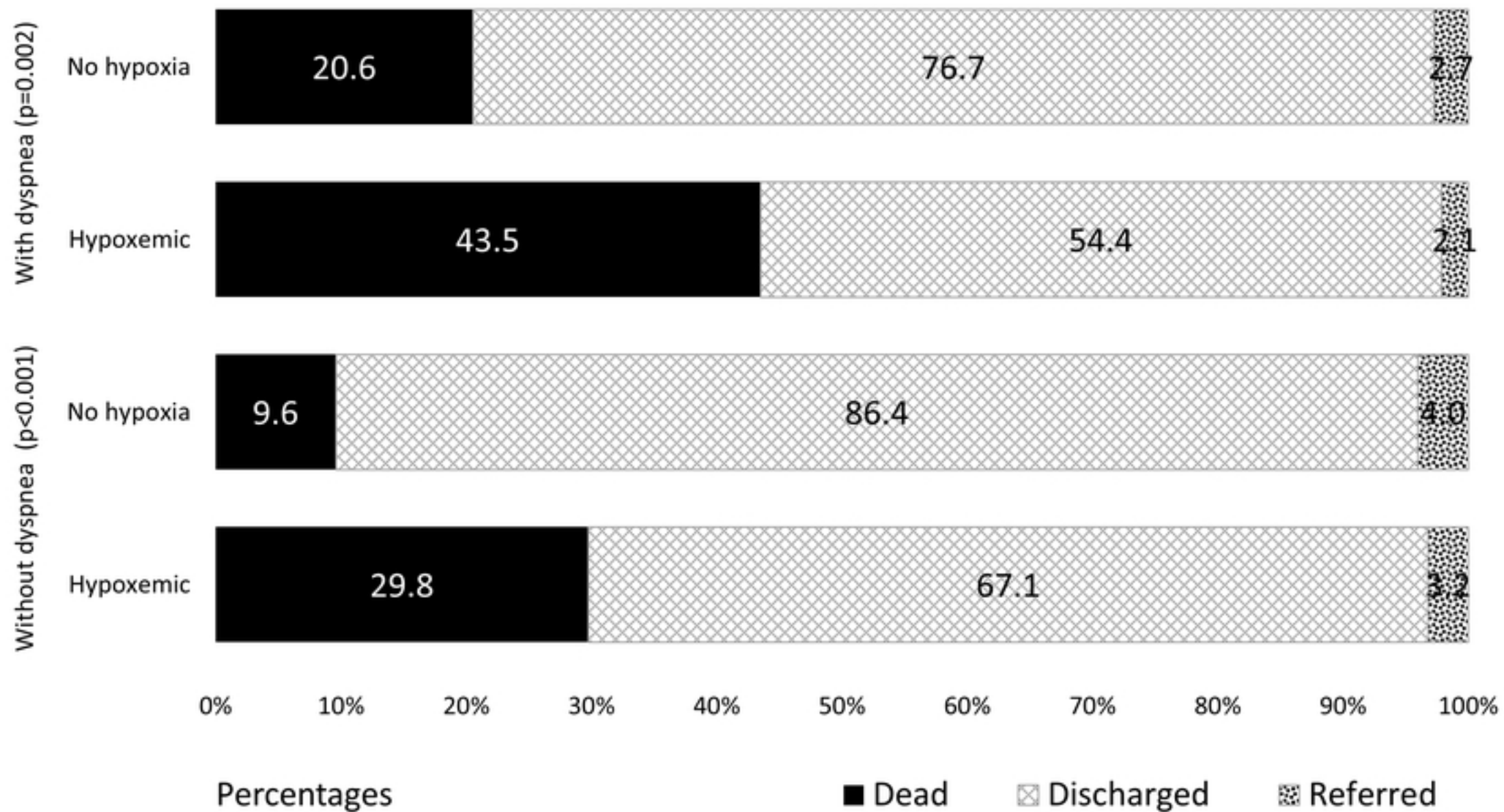
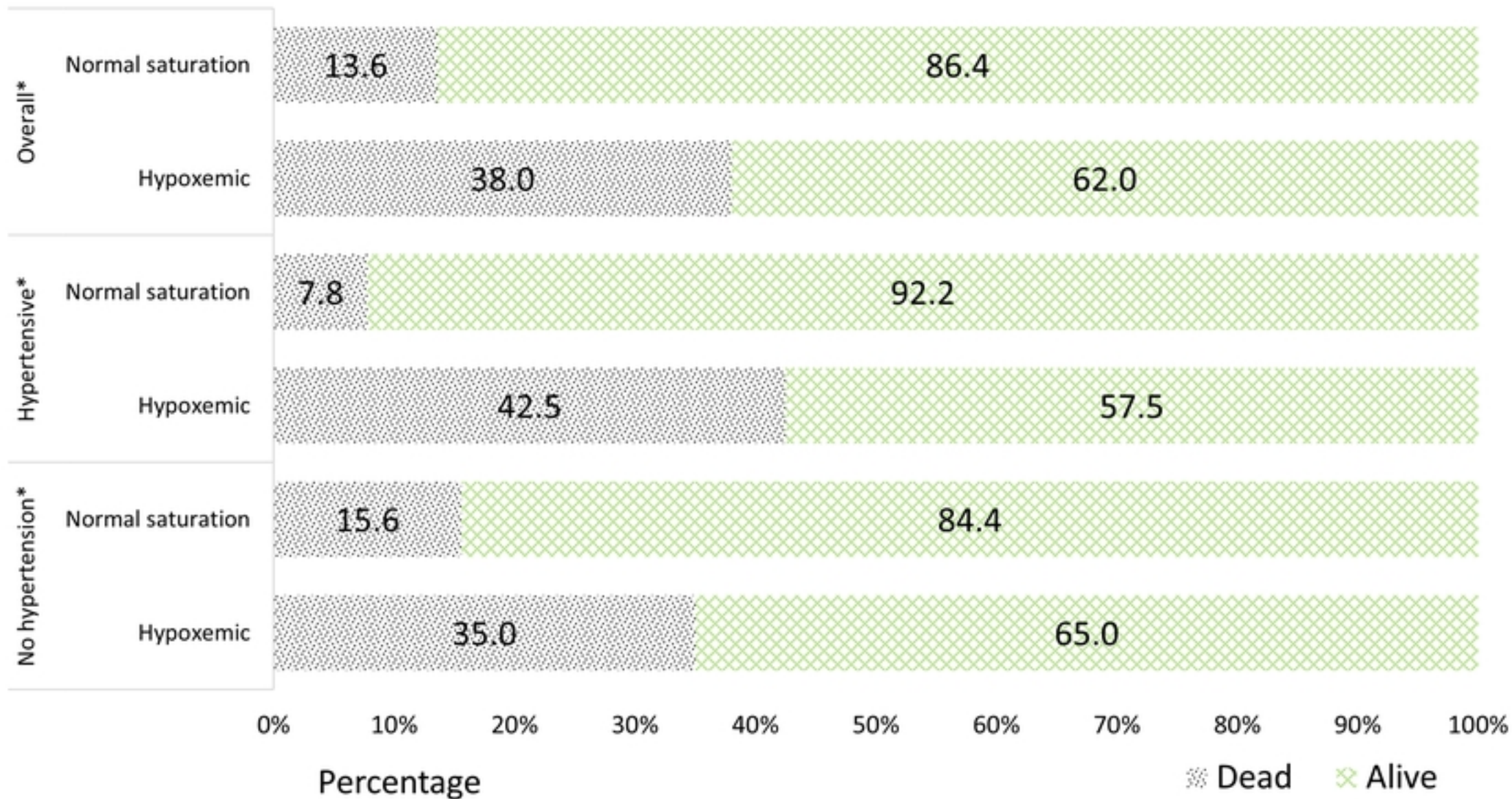


Figure 1



*p<0.001

Figure 2

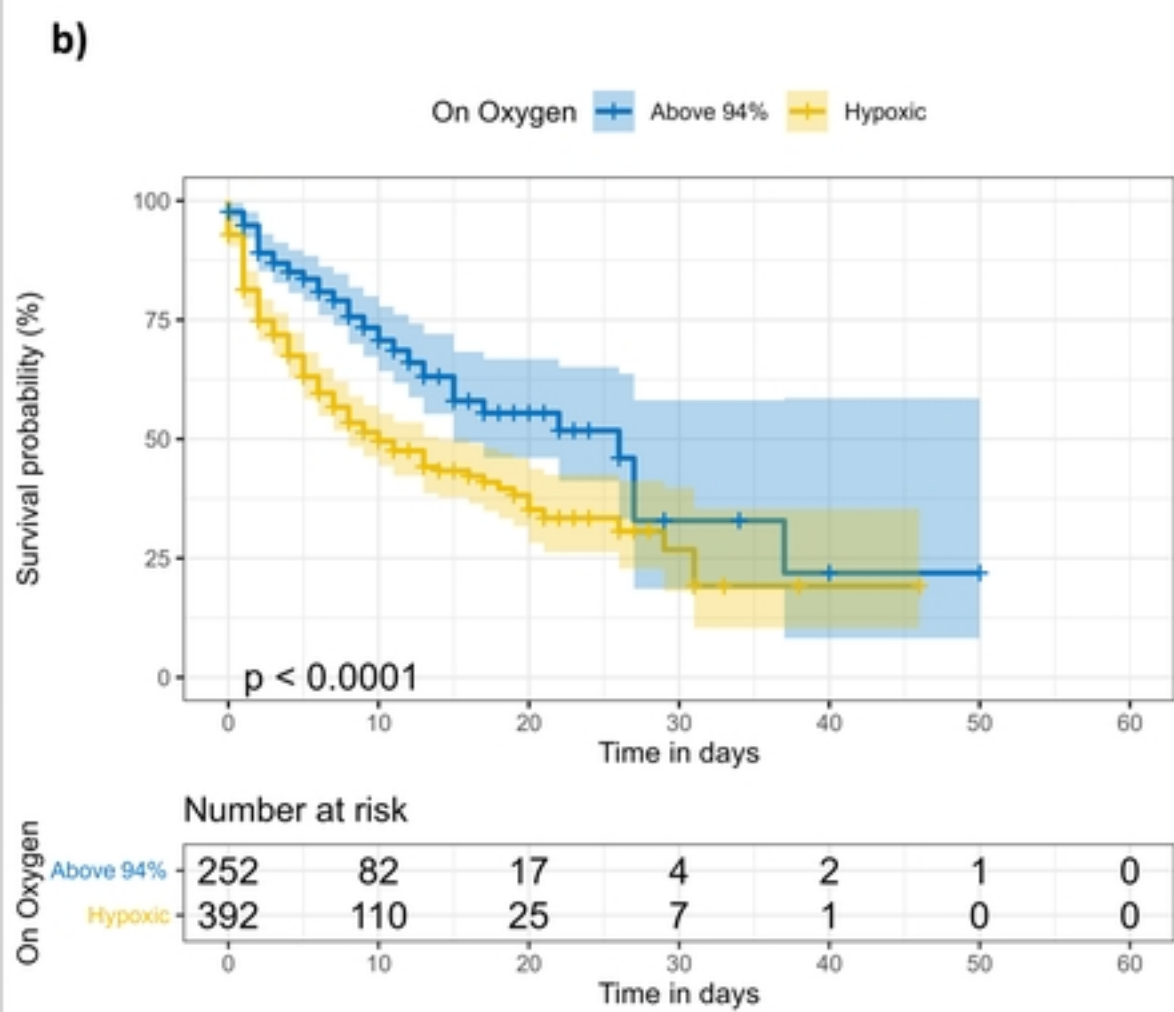
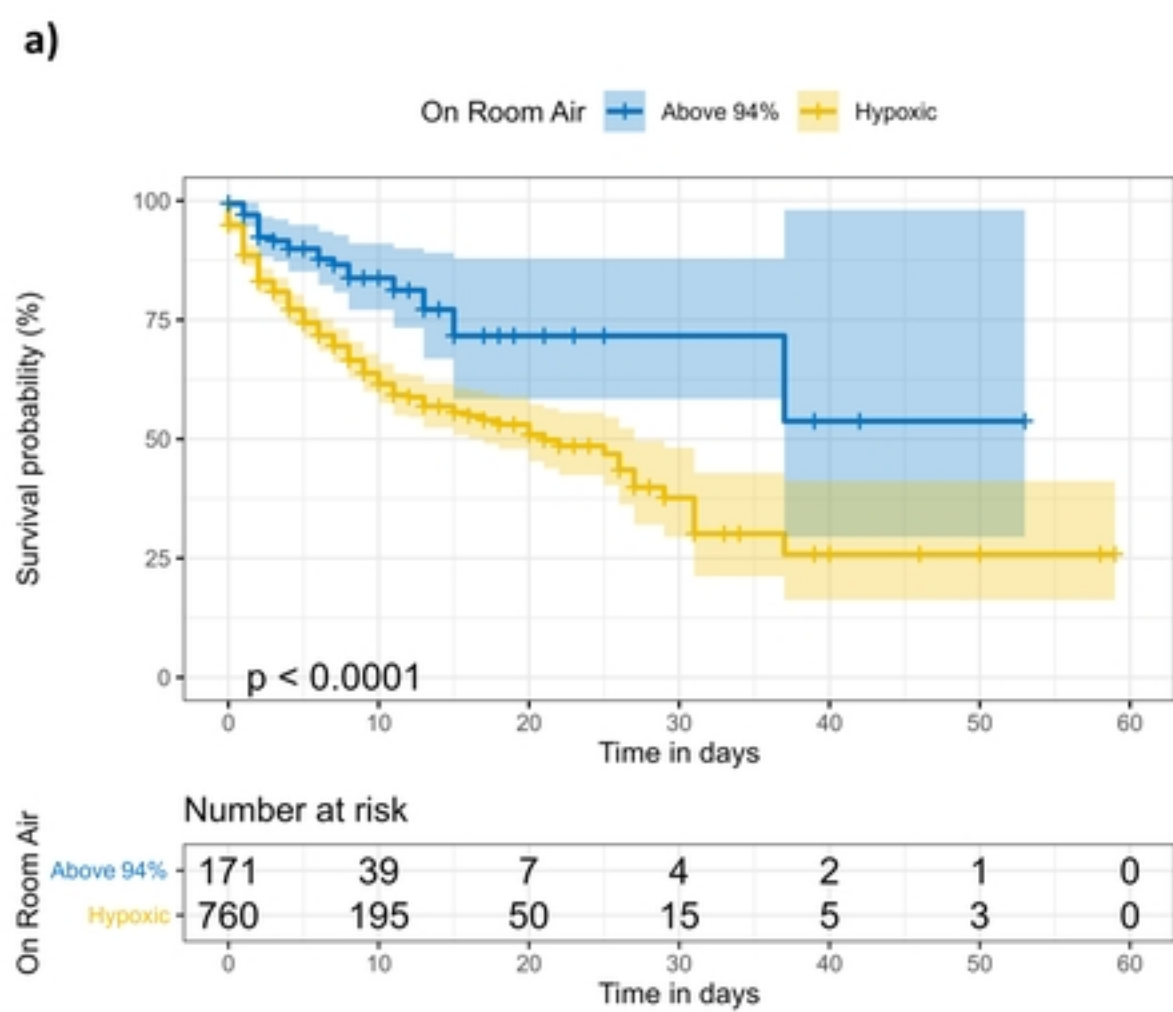


Figure 3