

1 **Modeling the potential impacts of outpatient antiviral treatment in reducing influenza-**  
2 **associated hospitalizations in the United States.**

3 Sinead E. Morris<sup>\*1,2</sup>, Sarabeth M. Mathis<sup>\*1</sup>, Emily Reeves<sup>1</sup>, Jessie R. Chung<sup>1</sup>, Rebecca K. Borchering<sup>1</sup>,  
4 Nathaniel M. Lewis<sup>1</sup>, Svetlana Masalovich<sup>1</sup>, Shikha Garg<sup>1</sup>, Timothy M. Uyeki<sup>1</sup>, A. Danielle Iuliano<sup>1</sup>, Mark  
5 W. Tenforde<sup>1</sup>, Carrie Reed<sup>1</sup>, Matthew Biggerstaff<sup>1</sup>

6  
7 *\*Contributed equally*

8  
9 <sup>1</sup>*Influenza Division, Centers for Disease Control and Prevention, Atlanta, GA, USA, 30329*

10 <sup>2</sup>*Goldbelt Professional Services, Chesapeake, VA, USA, 23320*

11

12 **Corresponding authors:** Sinead E. Morris (run7@cdc.gov) and Sarabeth M. Mathis (nqr2@cdc.gov)

13

14 **Disclaimer:** The findings and conclusions in this report are those of the authors and do not necessarily  
15 represent the views of the Centers for Disease Control and Prevention.

16

17 **Short title:** Modeling influenza antiviral treatment.

18

19 **40 word summary:** We probabilistically modeled influenza antiviral treatment among outpatients with  
20 influenza virus infection in the United States. Antiviral treatment reduced influenza-associated  
21 hospitalizations, with the greatest impacts among adults  $\geq 65$  years and persons with conditions  
22 associated with higher risk of influenza complications.

23

24

25

26

27

28

29

30

31

32

33

34

35

36

37

38

39

40

41 **Abstract**

42

43 **Background** Seasonal influenza causes an estimated 100,000–710,000 hospitalizations annually in the  
44 United States (U.S.). Treatment with antiviral medications, such as oseltamivir, can reduce risks of  
45 hospitalization among people with influenza-associated illness. The U.S. Centers for Disease Control and  
46 Prevention recommends initiating antiviral treatment as soon as possible for outpatients with suspected  
47 or confirmed influenza who have severe or progressive illness or are at higher risk of influenza  
48 complications.

49

50 **Methods** We developed a probabilistic model to estimate the impact of antiviral treatment in reducing  
51 hospitalizations among U.S. outpatients with influenza. Parameters were informed by seasonal influenza  
52 surveillance platforms and stratified by age group and whether individuals had a medical condition  
53 associated with higher risk of influenza complications. We modeled different scenarios for influenza  
54 antiviral effectiveness and outpatient testing and prescribing practices, then compared our results to a  
55 baseline scenario in which antivirals were not used.

56

57 **Results** Across the modeled scenarios, antiviral treatment resulted in 1,215–14,184 fewer influenza-  
58 associated hospitalizations on average compared to the baseline scenario (a 0.2%–2.7% reduction). The  
59 greatest effects occurred among adults  $\geq 65$  years and individuals with conditions associated with higher  
60 risk of influenza complications. Modeling 50% improvements in access to care, testing, prescribing, and  
61 treatment resulted in greater potential impacts, with over 71,000 (13.3%) influenza-associated  
62 hospitalizations averted on average compared to baseline.

63

64 **Conclusions** Our results support recommendations to prioritize outpatient antiviral treatment among  
65 older adults and others at higher risk of influenza complications. Improving access to prompt testing and  
66 treatment among outpatients with suspected influenza could reduce hospitalizations substantially.

67

68

69 **Keywords:** influenza; antivirals; oseltamivir; outpatient treatment; hospitalization

70

71

72 **Introduction**

73

74 Seasonal influenza causes substantial morbidity in the United States, with an estimated 100,000–  
75 710,000 influenza-associated hospitalizations occurring each year<sup>1</sup>. Antivirals, including neuraminidase  
76 inhibitors like oseltamivir, can reduce the risk of hospitalization for those who are ill with influenza,  
77 particularly when administered within 48 hours of symptom onset<sup>2–4</sup>. The U.S. Centers for Disease  
78 Control and Prevention (CDC) recommends starting antiviral treatment as soon as possible for any  
79 outpatient with suspected or confirmed influenza who is at higher risk of influenza complications or has  
80 severe or progressive illness<sup>5</sup>. Those considered at higher risk of influenza complications include children

81 <2 years, adults ≥65 years, pregnant people, and individuals with chronic medical conditions including  
82 asthma, lung disease, and heart disease<sup>6</sup>.

83 Although antiviral prescribing for people with suspected or confirmed influenza is generally high  
84 among hospitalized patients, it can be low in outpatient settings, even among patients at higher risk of  
85 complications<sup>7–9</sup>. Antiviral prescribing also depends on testing practices and individual access to care. For  
86 example, patients seeking care within 48 hours of symptom onset may be more likely to receive an  
87 antiviral prescription than patients seeking care after 48 hours<sup>10,11</sup>. Similarly, patients with a positive  
88 influenza test result may be more likely to receive a prescription than patients with a negative result, or  
89 patients who are not tested<sup>7,10</sup>. It is unclear how these different factors influence the impact of antivirals  
90 in reducing influenza-associated hospitalizations among outpatients.

91 We developed a probabilistic model to estimate the impact of influenza antiviral treatment in  
92 reducing hospitalizations among outpatients with symptomatic influenza virus infection. The model is  
93 stratified by age and risk of influenza complications. We used data from seasonal influenza surveillance  
94 platforms to inform parameter inputs and modeled a range of scenarios that reflected plausible  
95 variations in antiviral effectiveness, and current testing and prescribing practices. We also explored how  
96 the impact of influenza antivirals may change with improvements in individual access to care and clinical  
97 testing and prescribing rates. Our results can be used to identify groups that may benefit most from  
98 influenza antiviral treatment.

99

## 100 **Methods**

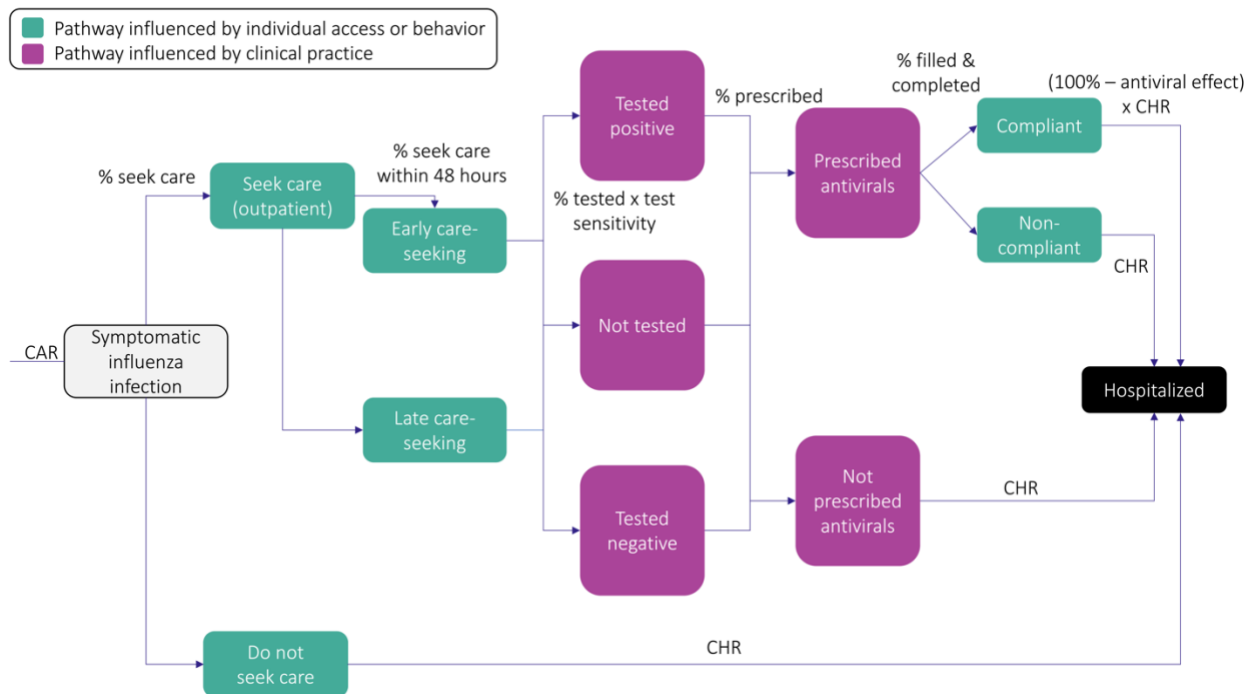
101

### 102 *Model framework*

103

104 We developed a probabilistic model to track care-seeking, testing, antiviral prescribing, and risks of  
105 hospitalization among individuals with symptomatic influenza virus infection in the United States (Figure  
106 1). The model was stratified into five age groups (0–4, 5–17, 18–49, 50–64, and ≥65 years). Within each  
107 age group, individuals were further stratified by risk of hospitalization based on the presence or absence  
108 of a condition associated with increased risk of influenza-associated complications<sup>5</sup>. Within each age  
109 group and risk stratification, individuals with symptomatic infection were partitioned into those who did  
110 or did not seek care in an outpatient clinical setting. For those who did not seek care, the probabilities of  
111 hospitalization were  $p_{LR}$  and  $p_{HR}$  for the low- and high-risk stratifications, respectively. Those that did  
112 seek care were partitioned according to whether they sought care within 48 hours of symptom onset  
113 (referred to as ‘early care-seekers’) or more than 48 hours after symptom onset (‘late care-seekers’).  
114 Both early and late care-seekers had a certain probability of being tested for influenza in the outpatient  
115 setting and, if tested, a certain probability of testing positive that was determined by the sensitivity of  
116 the diagnostic assay. Early and late care-seekers were subsequently partitioned into three groups: those  
117 who tested positive for influenza, those who tested negative, and those who did not receive a test. We  
118 assumed individuals in these groups were then prescribed antivirals with probabilities determined by  
119 their test status, timing of care-seeking, and whether they were in a low- or high-risk stratification. Those  
120 who were not prescribed antivirals were hospitalized with probabilities  $p_{LR}$  and  $p_{HR}$  for the low- and  
121 high-risk stratifications, respectively. Those who were prescribed antivirals but did not fill their  
122 prescription or did not complete the full treatment course were also hospitalized with probabilities  $p_{LR}$

123 and  $p_{HR}$ . Those who did fill their prescription and complete the full course (referred to as ‘full antiviral  
 124 compliance’) were hospitalized with reduced probabilities  $(1 - r) p_{LR}$  and  $(1 - r) p_{HR}$ , where  $r$  is the  
 125 effectiveness of antivirals in reducing the risk of influenza-associated hospitalization. We parameterized  
 126  $r$  based on reported effectiveness of oseltamivir, the most commonly prescribed influenza antiviral in  
 127 outpatient settings<sup>12</sup>, and allowed it to vary with the timing of care-seeking<sup>3,4</sup>.  
 128



129 **Figure 1. Model structure within each age group and risk stratification.** The risk of hospitalization for individuals  
 130 with symptomatic influenza infection depends on whether individuals seek care, the timing of care-seeking, the  
 131 occurrence and result of testing, the prescribing of antiviral treatment, and the filling and completion of any  
 132 treatment course. The number of individuals progressing through each pathway may change by age and/or risk  
 133 stratification (see Figure S7 for a Sankey diagram showing example flows for high-risk adults  $\geq 65$  years<sup>13</sup>). In  
 134 addition, the number progressing through each testing and prescribing pathway will vary by the timing of care-  
 135 seeking (i.e., early vs. late). Similarly, antiviral effectiveness varies by the timing of care-seeking and will lead to  
 136 different numbers progressing through the fully compliant to hospitalized pathway. Finally, the colors indicate  
 137 compartments that are influenced by parameters relating to individual behavior and/or access to medical care and  
 138 treatment (care-seeking, timing of care-seeking, and antiviral compliance) or parameters relating to clinical testing  
 139 and prescribing practices. We investigate the impact of changing these parameters as part of our analyses.  
 140 Abbreviations: CAR = clinical attack rate; CHR = case-hospitalization ratio.  
 141

142  
 143 *Parameterization*

144  
 145 We determined the number of individuals in each age group and risk stratification using 2022 US census  
 146 data and age-specific estimates of the proportion of people at higher risk of influenza complications<sup>14,15</sup>  
 147 (Table S1). The latter estimates included pregnant people and those with chronic medical conditions  
 148 including asthma, heart disease, and lung disease, but did not include people with a body mass index

149 (BMI)  $\geq 40$  or those living in long-term care facilities who are also considered to be at higher risk of  
 150 influenza complications<sup>5</sup>. The number of individuals developing symptomatic influenza virus infection  
 151 was approximated using age-specific clinical attack rates for influenza-associated illness during the 2022–  
 152 2023 influenza season<sup>16</sup>. Age-specific risks of hospitalization were obtained from influenza-associated  
 153 case-hospitalization ratios and adjusted for risk stratification<sup>17–19</sup> (Table S1). Probabilities of seeking care,  
 154 being an early or late care-seeker, and filling and completing an antiviral prescription were informed by  
 155 seasonal influenza surveillance platforms and prior literature<sup>7,11,20–23</sup>. Care-seeking varied by age and risk  
 156 stratification, the timing of care-seeking varied by age but was constant across risk stratifications, and  
 157 antiviral compliance was constant across age and risk stratifications<sup>11</sup>.

158 The remaining parameters of testing, prescribing, and antiviral effectiveness are highly variable  
 159 in outpatient settings. We therefore defined a range of scenarios that reflected plausible values for these  
 160 parameters and were informed by prior literature and unpublished data from seasonal influenza  
 161 surveillance platforms (Table 1). We defined three scenarios ('low', 'intermediate', and 'high') for the  
 162 probability an outpatient with symptomatic influenza virus infection was tested for influenza<sup>21,22</sup>. For  
 163 each scenario, we assumed these probabilities were the same for all age groups and risk stratifications  
 164 but were higher among early care-seekers compared with late care-seekers. To determine the proportion  
 165 of outpatients testing positive for influenza, we multiplied the testing probability by estimates of test  
 166 sensitivity for rapid molecular assays<sup>24,25</sup>. We also defined two scenarios ('low' and 'high') for the  
 167 probability an outpatient was prescribed influenza antiviral medications. We assumed these probabilities  
 168 were constant across age groups, but varied with risk stratification, time of care-seeking, and the result  
 169 of influenza testing<sup>7,10,21,22,26</sup>. Finally, we explored three scenarios for antiviral effectiveness ('low',  
 170 'intermediate', and 'high') that were primarily informed by studies of oseltamivir but could be applicable  
 171 to other existing or novel influenza antivirals given the broad range of values considered<sup>2–4,27–29</sup>. We  
 172 assumed effectiveness varied with the time of care-seeking but was constant across age and risk  
 173 stratifications.

174

175 **Table 1. Initial scenario inputs for antiviral effectiveness and clinical testing and antiviral prescribing practices.**

176 Influenza antiviral effectiveness and testing values are assumed equal among low- and high-risk stratifications. All  
 177 input values are assumed equal across age groups but may differ among early and late care-seekers.

Parameter	Scenario	Influenza test status	Early care-seekers	Late care-seekers
Proportion of care-seekers with symptomatic influenza infection who are tested	Low	N/A	5%	5%
	Intermediate		25%	5%
	High		50%	10%
Proportion prescribed antivirals (High-risk <sup>1</sup> / low-risk)	Low	Positive test	25% / 25%	10% / 10%
		No test	10% / 10%	5% / 5%
		Negative test	5% / 5%	0% / 0%
	High	Positive test	50% / 25%	20% / 10%
		No test	20% / 10%	10% / 5%
		Negative test	10% / 5%	5% / 0%
Reduction in risk of influenza-associated	Low	N/A	20%	0%
	Intermediate		40%	20%
	High		70%	35%

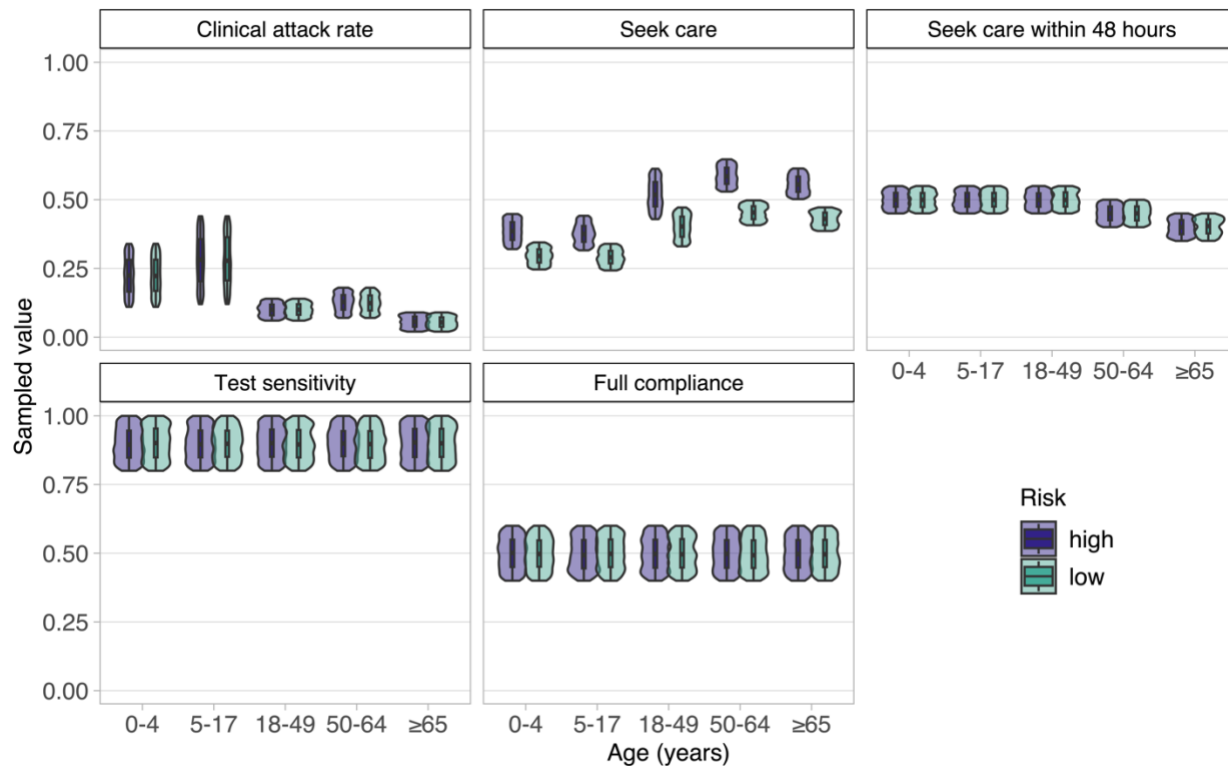
hospitalization following antiviral treatment				
---	--	--	--	--

178 <sup>1</sup>High-risk stratifications reflect people at higher risk of influenza complications, including pregnant people and  
 179 those with chronic medical conditions such as asthma, heart disease, and lung disease<sup>14,15</sup>.

180  
 181 *Model simulation*

182  
 183 Taking all combinations of possible values for testing, prescribing, and antiviral effectiveness resulted in  
 184 18 (3 x 2 x 3) initial scenarios (Table 1). All remaining model inputs were assumed to follow independent  
 185 Uniform probability distributions, except population size and hospitalization risk which were defined by  
 186 age and risk-stratified point estimates (Table S1). For each scenario, we generated 1,000 independent  
 187 samples for the parameters with Uniform probability distributions (Figure 2). We then simulated the  
 188 model for each of the 18,000 resulting combinations and calculated the number of influenza-associated  
 189 hospitalizations that occurred among all symptomatic individuals. We also compared the estimated  
 190 number of hospitalizations to a corresponding baseline scenario without antiviral medications. Results  
 191 are presented as the number, or percent, of all hospitalizations averted relative to this baseline scenario.  
 192 Finally, we tracked the number of antiviral courses prescribed in each simulation and calculated the  
 193 number of prescriptions needed to avert one hospitalization as the total number of prescriptions divided  
 194 by the total number of hospitalizations averted.

195



196  
 197 **Figure 2. Simulated parameter inputs.** Input parameter distributions were generated by taking 1,000 samples from  
 198 their corresponding probability distributions. Risk stratifications refer to groups with high or low risk of influenza-

199 associated hospitalization; full compliance refers to individuals who filled and completed a prescribed course of  
200 antiviral treatment.

201

### 202 *Alternative scenarios*

203

204 In addition to the scenarios defined above, we considered alternative scenarios for improved uptake of  
205 influenza antivirals through increasing upstream levels of care-seeking, early care-seeking, testing,  
206 prescribing for those with a positive test, and the filling and completion of antiviral prescriptions (Figure  
207 1). For each parameter and age group or risk stratification, we increased the initial scenario or sampled  
208 distributions by 50% (Figure S1, Table S2), and investigated the impact of increasing one parameter at a  
209 time or increasing multiple parameters simultaneously. For all alternative scenarios, we used the most  
210 optimistic initial levels of antiviral effectiveness, testing, and prescribing as the starting point (i.e., the  
211 initial scenario with the highest levels of effectiveness, testing, and prescribing).

212

213 All analyses were performed in R 4.0.3 using the `data.table` and `tidyverse` packages<sup>30,31,32</sup>.

214

## 215 **Results**

216

### 217 *Initial scenarios*

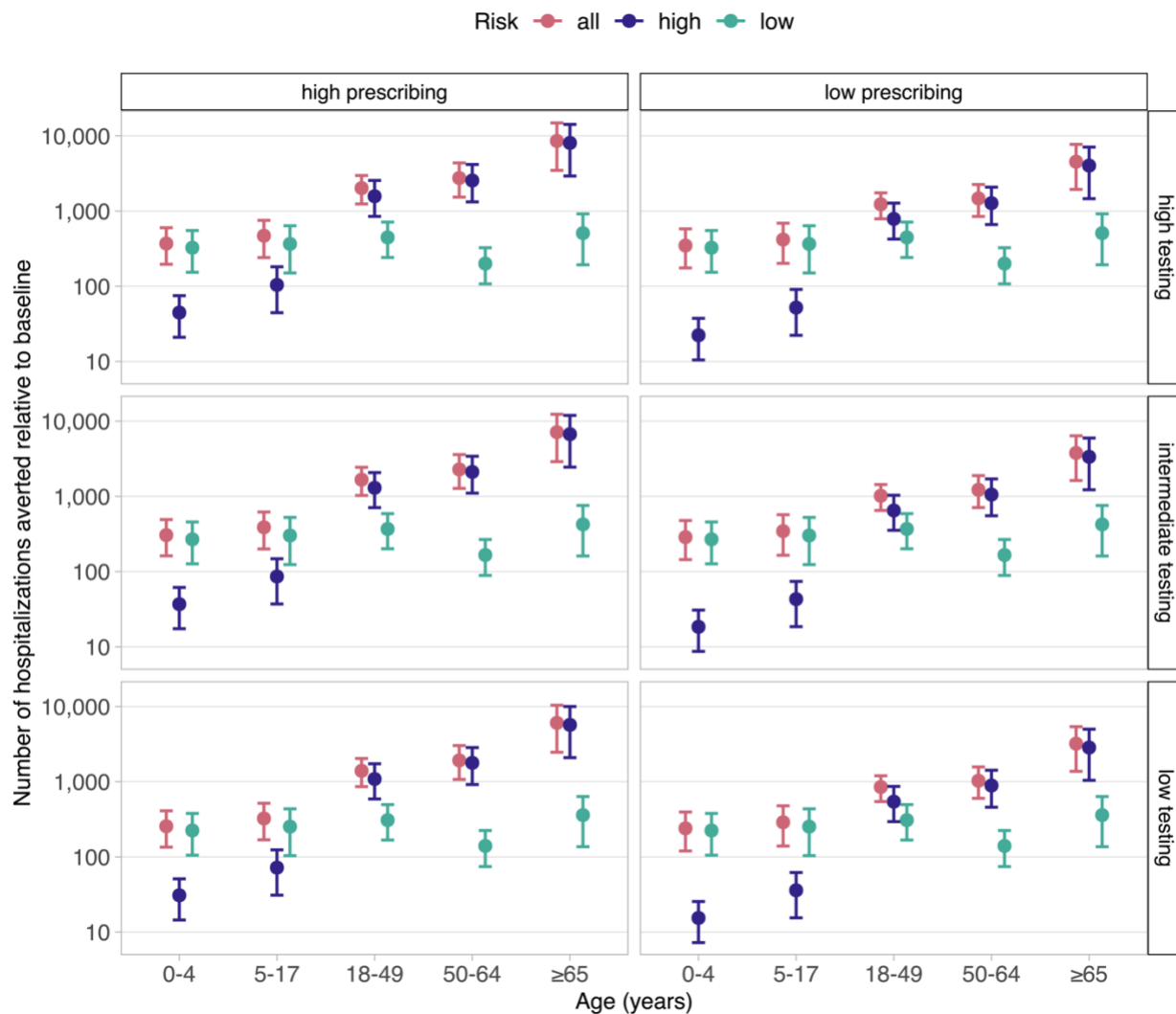
218

219 We estimated there would be an average of 531,920 influenza-associated hospitalizations (95<sup>th</sup>  
220 percentile: 360,353–699,923) in the baseline scenario without influenza antivirals. The use of antivirals  
221 averted an average of 1,215 (802–1,693) hospitalizations in the least optimistic scenario with low testing,  
222 low prescribing, and low antiviral effectiveness, and 14,184 (8,700–20,224) hospitalizations in the most  
223 optimistic scenario with high testing, high prescribing, and high antiviral effectiveness (Figure S2A).  
224 These numbers corresponded to a modest percentage reduction in total hospitalizations: 0.2% (0.2–  
225 0.3%) and 2.7% (2.2–3.2%) in the least optimistic and most optimistic scenarios, respectively. The total  
226 number of prescribed antiviral courses ranged from 1,370,274 (1,073,330–1,700,729) to 2,379,603  
227 (1,914,821–2,879,333) and the number of prescriptions needed to avert one hospitalization ranged from  
228 176 (117–261) to 1,168 (785–1,689) (Figure S2B).

229

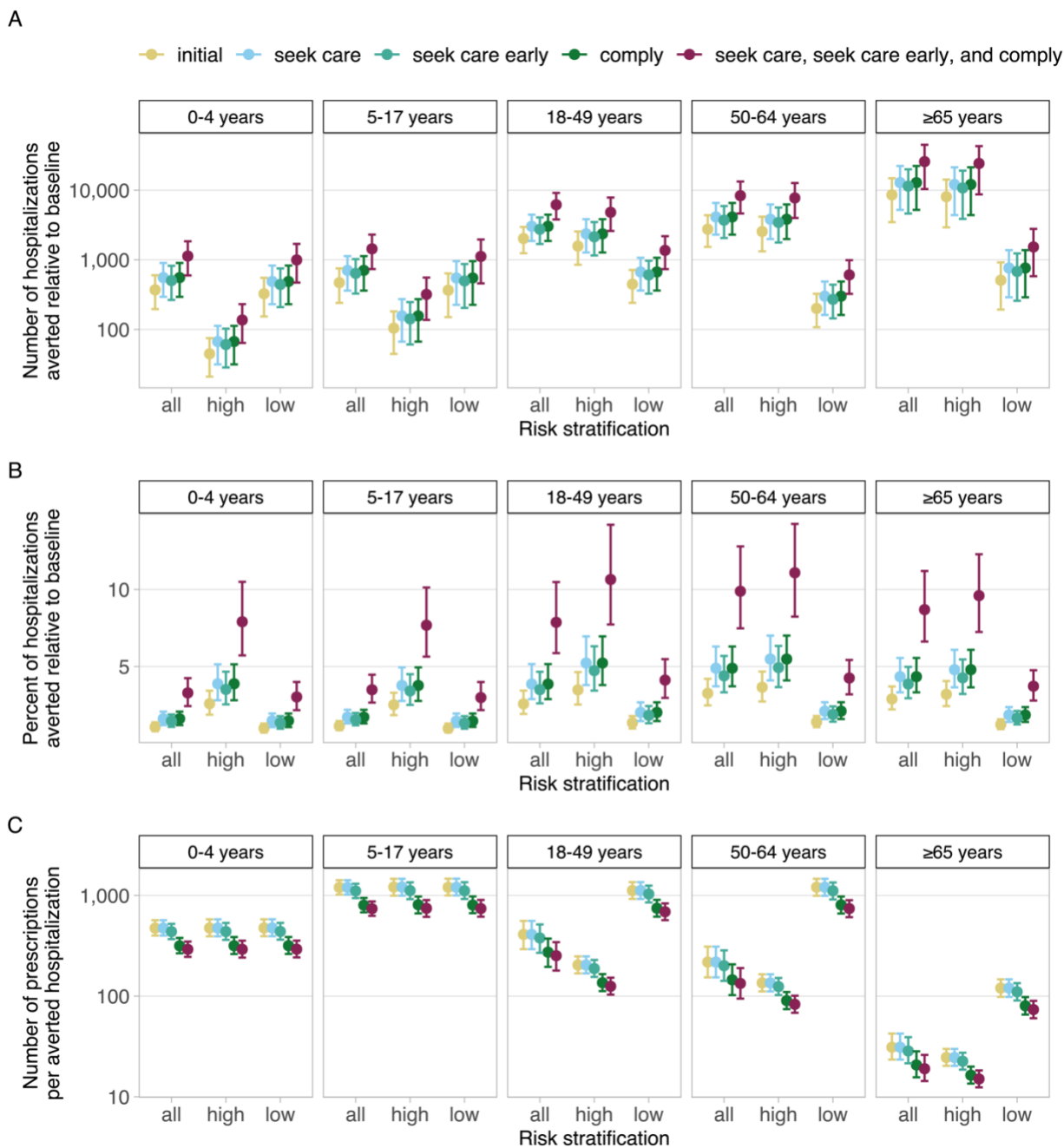
230 Among individuals at higher risk of influenza complications, the number of averted  
231 hospitalizations increased with increasing age group, from an average of 45 (21–75) among children 0–4  
232 years to 8,061 (2,927–14,216) among adults  $\geq 65$  years in the most optimistic scenario with high testing,  
233 high prescribing, and high antiviral effectiveness (Figure 3). When testing and prescribing were instead  
234 fixed at their lowest levels, the number averted ranged from 15 (7–26) among children 0–4 years to  
235 2,849 (1,044–4,996) among adults  $\geq 65$  years. Notably, the percent of hospitalizations averted was  
236 greatest for adults aged 18–49 and 50–64 years, with the latter experiencing an average reduction of  
237 3.7% (2.7–4.7%) in the most optimistic scenario (Figure S3). In all scenarios, the number of prescriptions  
238 needed to avert one hospitalization was highest among children 5–17 years and lowest among adults  
239  $\geq 65$  years (Figure S4).

239



240  
 241 **Figure 3. Estimated number of influenza-associated hospitalizations averted in each initial testing and prescribing**  
 242 **scenario compared with a baseline scenario without antivirals.** Antiviral effectiveness is fixed at its highest value  
 243 (70% reduction in risk of hospitalization for early care-seekers and 35% for late care-seekers). Results are  
 244 partitioned by age group and risk stratification, with points and error bars showing the mean and 95<sup>th</sup> percentiles,  
 245 respectively.  
 246





247  
 248 **Figure 4. Estimated influenza-associated hospitalizations averted in select alternative scenarios compared with a**  
 249 **baseline scenario without antivirals.** (A) Number of hospitalizations averted. (B) Percent of hospitalizations  
 250 averted. (C) Number of prescriptions needed to avert one hospitalization. Scenarios shown are as follows: most  
 251 optimistic initial scenario ('initial'); 50% increase in the fraction of people seeking care ('seek care'); 50% increase in  
 252 the fraction of people seeking care within 48 hours ('seek care early'); 50% increase in the fraction of people  
 253 completing an antiviral treatment course ('comply'); and 50% increase in the fraction of people seeking care,  
 254 seeking care early, and completing a treatment course. Antiviral effectiveness, testing, and prescribing are fixed at  
 255 their highest initial values. Results are partitioned by age group and risk stratification, with points and error bars  
 256 showing the mean and 95<sup>th</sup> percentiles, respectively.

## 257 *Scenarios to improve antiviral impact*

258  
259 Given the relatively modest estimated impact of antivirals in reducing influenza-associated  
260 hospitalizations in the scenarios above, we explored whether this impact could be improved by  
261 increasing upstream levels of care-seeking, timing of care-seeking, testing, prescribing, or antiviral  
262 compliance. First, we considered the parameters with sampled distributions that were broadly  
263 associated with individual behavior and access to care and treatment (care-seeking, timing of care-  
264 seeking, and antiviral compliance) (Figure 1). Increasing either care-seeking or antiviral compliance by  
265 50% resulted in equal improvements in averted hospitalizations compared to the most optimistic initial  
266 scenario. While increasing early care-seeking by 50% also resulted in improvements compared to the  
267 most optimistic initial scenario, these were slightly less than those achieved by increasing care-seeking  
268 or antiviral compliance (Figure 4). Unsurprisingly, the largest improvement was achieved by increasing all  
269 three parameters simultaneously. In this case, the number of averted hospitalizations was greatest  
270 among adults  $\geq 65$  years in the high-risk stratification, reaching up to 24,220 (8,709–42,968) (Figure 4A).  
271 In contrast, the greatest percent of hospitalizations were averted among adults aged 50–64 years in the  
272 high-risk stratification, reaching up to 11.1% (8.2–14.3%) (Figure 4B). The number of antiviral  
273 prescriptions needed to avert one hospitalization decreased in all alternative scenarios compared to the  
274 initial scenario, except when only care-seeking was improved (Figure 4C). The scenarios which resulted in  
275 the greatest decrease were those with increased antiviral compliance and with all parameters increased  
276 simultaneously.

277 We also considered alternative scenarios for the parameters broadly associated with clinical  
278 practices, i.e., the probability of testing and prescribing (Figure 1). Increased antiviral prescribing among  
279 outpatients with a positive test averted more hospitalizations than increased testing and required  
280 slightly fewer prescriptions to avert one hospitalization (Figure S5). Increasing both parameters averted  
281 the most hospitalizations among adults  $\geq 65$  years in the high-risk stratification (up to 12,909 [4,650–  
282 22,834]), and the greatest percent of hospitalizations among adults 50–64 years in the high-risk  
283 stratification (5.9% [4.4–7.6%]).

284 Finally, to explore even greater potential improvements in antiviral impact, we considered an  
285 alternative scenario in which all five parameters were increased simultaneously. Again, the number of  
286 averted hospitalizations was greatest among adults  $\geq 65$  years in the high-risk stratification, at 40,093  
287 (14,332–71,087), whereas the greatest percentage of hospitalizations was averted among adults 50–64  
288 years in the high-risk stratification, at 18.5% (13.5–24.0%) (Figure S6). Across all age and risk groups, the  
289 use of antivirals averted 71,142 (43,581–102,969) hospitalizations, or 13.3% (11.1–16.2%), and the  
290 overall number of prescriptions needed to avert one hospitalization was 107 (71–157).

291

## 292 **Discussion**

293

294 We developed a probabilistic model to estimate the impact of antivirals in reducing hospitalizations  
295 among outpatients with symptomatic influenza virus infection under a range of plausible parameter  
296 values. Antiviral usage reduced hospitalizations compared to a scenario without antivirals. Although the  
297 percentage reduction (0.2–2.7%) was modest, the absolute reduction (1,215–14,184) could be clinically

298 significant and supports the use of antivirals to treat outpatients with suspected or confirmed influenza.  
299 Among age groups and risk stratifications, the greatest impacts occurred among adults  $\geq 65$  years and  
300 individuals with conditions associated with higher risk of influenza complications. Our results align with  
301 CDC recommendations to prioritize these individuals for antiviral treatment. More broadly, our  
302 framework can help identify groups for which treatment could have the greatest impact, particularly in  
303 situations where antiviral resources may be limited.

304 In all our scenarios we assumed a non-zero benefit of antivirals in reducing influenza-associated  
305 hospitalizations among early care-seekers who completed a full treatment course: from 20% in the least  
306 optimistic scenario to 70% in the most optimistic scenario. The variation in these values reflects  
307 underlying challenges in estimating the true impact of antivirals on preventing influenza-associated  
308 hospitalizations, with randomized controlled trials (RCTs) requiring very large sample sizes (e.g., tens of  
309 thousands of patients) for sufficient statistical power. For example, a recent meta-analysis of RCTs for  
310 oseltamivir that reported no significant reduction in hospitalizations among outpatients with influenza  
311 was likely underpowered and, in addition, included trials in which hospitalization was not the primary  
312 endpoint<sup>29,33,34</sup>. Given these challenges, observational studies and RCTs that investigate alternative end  
313 points for disease progression can provide valuable additional evidence to support treatment guidelines.  
314 Examples include a meta-analysis of observational data that demonstrated a significant reduction in the  
315 odds of hospital admission among adults and children treated with neuraminidase inhibitors (including  
316 oseltamivir) during the 2009 H1N1 pandemic<sup>3</sup>, and another meta-analysis of RCTs that found oseltamivir  
317 significantly reduced the risk of lower respiratory tract complications requiring antibiotics among adults  
318 treated within 36 hours of illness onset<sup>2</sup>. These studies suggest that antivirals, like oseltamivir, can  
319 reduce the risk of severe disease progression when treatment is initiated early after influenza symptom  
320 onset. We therefore focused on a positive effect of antivirals in reducing hospitalization risk but did  
321 include a zero benefit among late care-seekers (in the least optimistic scenario) to incorporate the  
322 possibility of no effect when treatment is delayed. Our scenarios were also conservative in assuming no  
323 benefit of antivirals among outpatients who did not complete a full treatment course. Thus, our results  
324 show a positive impact of antivirals in averting hospitalizations across a range of plausible antiviral effect  
325 magnitudes, from conservative to optimistic, and support their use in outpatient settings to reduce  
326 severe influenza disease burden, particularly among patients at higher risk of complications.

327 As antiviral effectiveness was just one parameter influencing averted influenza-associated  
328 hospitalizations, we also explored the effect of improving five other parameters (including care-seeking,  
329 testing, and prescribing) that determined whether someone received, and ultimately completed, an  
330 antiviral prescription. Over 71,000 (13.3%) hospitalizations were averted when all parameters were  
331 increased by 50%, and the number of prescriptions needed to avert one hospitalization was reduced.  
332 Thus, combined improvements in multiple components of the care and treatment pathway could  
333 substantially improve the impact of antivirals in reducing influenza-associated hospitalizations.

334 Our framework has several limitations. First, we modeled the direct effects of antivirals in  
335 reducing the risk of hospitalization among treated outpatients but did not account for indirect effects  
336 that may occur following reductions in the risk of onward influenza transmission. However, these effects  
337 may be small as prior work has shown oseltamivir treatment does not significantly reduce influenza viral  
338 shedding<sup>35,36</sup>. In line with this, a mathematical modeling study that did account for indirect effects still  
339 found modest impacts of antivirals in reducing influenza-associated hospitalizations<sup>37</sup>. Second, we did

340 not consider the prophylactic use of antivirals to reduce infection risk in individuals exposed to an  
341 influenza virus. Such measures may be more important in congregate settings, like long-term care  
342 facilities<sup>38</sup>, which were not the focus of this work. Third, our estimates of the proportion of the  
343 population at higher risk of influenza complications did not include people with a BMI  $\geq 40$  or those living  
344 in long-term care facilities<sup>5,15</sup>. Accounting for these groups would expand the population at increased  
345 risk for influenza complications, among whom antivirals had the greatest impact, and thus increase the  
346 estimated number of averted hospitalizations. Fourth, our test sensitivity inputs were based on  
347 molecular tests (rapid or standard) rather than rapid antigen tests which typically have lower sensitivity  
348 (e.g., 50–70%)<sup>39</sup>. Allowing a fraction of tests to be rapid antigen would reduce the number of tested  
349 individuals who receive a positive result, and thus reduce the number of antiviral medications ultimately  
350 prescribed. However, the magnitude of the reduction would depend on the relative proportions of  
351 antigen and molecular tests, which are highly variable in outpatient settings<sup>21</sup>. Fifth, we assumed that  
352 the risk of influenza-associated hospitalization (in the absence of antiviral treatment) was the same  
353 among people who did and did not seek care. This risk was parameterized using case-hospitalization  
354 ratios that are adjusted for care-seeking behavior and thus reflect an average across all individuals with  
355 influenza-associated illness. More generally, our model inputs will likely vary by many factors, including  
356 location, clinical setting, type of antiviral medication, and access to insurance and medical care. We  
357 included probabilistic ranges or different scenarios to account for this variation, but our results should  
358 not be interpreted as an estimate of the current impact of antivirals on influenza-associated  
359 hospitalizations. Instead, they provide a range of plausible estimates given likely underlying  
360 heterogeneity in individual care-seeking, clinical testing, and antiviral prescribing practices across the  
361 United States.

362 We modeled the potential impact of antiviral treatment in reducing hospitalizations among  
363 outpatients with influenza. In general, we estimated modest overall reductions in hospitalizations, but  
364 found greater benefits among people at higher risk of influenza-associated complications, and when  
365 multiple components of the care and treatment pathway were improved. Our findings align with current  
366 guidance for prioritizing prompt antiviral treatment among persons with suspected or confirmed  
367 influenza who are at higher risk of influenza complications and, more generally, demonstrate the utility  
368 of our framework in assessing the potential impact of influenza antivirals in a large population with  
369 uncertain parameter inputs.

370  
371 **Acknowledgements:** The authors wish to thank Matthew Gilmer, Ryan Threlkel, Daniel Moore, and  
372 Alexandra Mellis for data contributions that informed model inputs and Pragati Prasad for early  
373 contributions to the model code.

374  
375 **Data Availability Statement:** All model inputs and code needed to perform the analysis will be made  
376 available at <https://github.com/CDCgov> upon publication. Data were used solely to inform model inputs  
377 and were the result of secondary analyses; the original sources are cited in the text.

378  
379 **Conflict of Interest Statement:** The authors have no conflicts of interest or funding sources to declare.

380

## 381 References

- 382
- 383 1. CDC. About Estimated Flu Burden. 2024. Accessed October 4, 2024. [https://www.cdc.gov/flu-](https://www.cdc.gov/flu-burden/php/about/index.html)
- 384 [burden/php/about/index.html](https://www.cdc.gov/flu-burden/php/about/index.html)
- 385 2. Dobson J, Whitley RJ, Pocock S, Monto AS. Oseltamivir treatment for influenza in adults: a meta-
- 386 analysis of randomised controlled trials. *Lancet Lond Engl.* 2015;385(9979):1729-1737.
- 387 doi:10.1016/S0140-6736(14)62449-1
- 388 3. Venkatesan S, Myles PR, Leonardi-Bee J, et al. Impact of Outpatient Neuraminidase Inhibitor
- 389 Treatment in Patients Infected With Influenza A(H1N1)pdm09 at High Risk of Hospitalization: An
- 390 Individual Participant Data Metaanalysis. *Clin Infect Dis Off Publ Infect Dis Soc Am.*
- 391 2017;64(10):1328-1334. doi:10.1093/cid/cix127
- 392 4. Hsu J, Santesso N, Mustafa R, et al. Antivirals for treatment of influenza: a systematic review and
- 393 meta-analysis of observational studies. *Ann Intern Med.* 2012;156(7):512-524. doi:10.7326/0003-
- 394 4819-156-7-201204030-00411
- 395 5. CDC. Influenza Antiviral Medications: Summary for Clinicians. 2023. Accessed April 26, 2024.
- 396 <https://www.cdc.gov/flu/hcp/antivirals/summary-clinicians.html>
- 397 6. CDC. People at Increased Risk for Flu Complications. September 11, 2024. Accessed October 8, 2024.
- 398 <https://www.cdc.gov/flu/highrisk/index.htm>
- 399 7. Stewart RJ, Flannery B, Chung JR, et al. Influenza Antiviral Prescribing for Outpatients With an Acute
- 400 Respiratory Illness and at High Risk for Influenza-Associated Complications During 5 Influenza
- 401 Seasons—United States, 2011–2016. *Clin Infect Dis Off Publ Infect Dis Soc Am.* 2018;66(7):1035.
- 402 doi:10.1093/cid/cix922
- 403 8. Tenforde MW, Cummings CN, O’Halloran AC, et al. Influenza Antiviral Use in Patients Hospitalized
- 404 With Laboratory-Confirmed Influenza in the United States, FluSurv-NET, 2015-2019. *Open Forum*
- 405 *Infect Dis.* 2023;10(1):ofac681. doi:10.1093/ofid/ofac681
- 406 9. Appiah GD, Chaves SS, Kirley PD, et al. Increased Antiviral Treatment Among Hospitalized Children and
- 407 Adults With Laboratory-Confirmed Influenza, 2010-2015. *Clin Infect Dis Off Publ Infect Dis Soc Am.*
- 408 2017;64(3):364-367. doi:10.1093/cid/ciw745
- 409 10. Fowlkes AL, Steffens A, Reed C, Temte JL, Campbell AP, Influenza Incidence Surveillance Project
- 410 Working Group. Influenza Antiviral Prescribing Practices and the Influence of Rapid Testing Among
- 411 Primary Care Providers in the US, 2009–2016. *Open Forum Infect Dis.* 2019;6(6):ofz192.
- 412 doi:10.1093/ofid/ofz192
- 413 11. Biggerstaff M, Jhung MA, Reed C, Fry AM, Balluz L, Finelli L. Influenza-like illness, the time to seek
- 414 healthcare, and influenza antiviral receipt during the 2010-2011 influenza season-United States. *J*
- 415 *Infect Dis.* 2014;210(4):535-544. doi:10.1093/infdis/jiu224
- 416 12. CDC. Influenza Antiviral Drug Resistance. 2022. Accessed July 4, 2024.
- 417 <https://www.cdc.gov/flu/treatment/antiviralresistance.html>

- 418 13. SankeyMATIC: Make Beautiful Flow Diagrams. Accessed July 5, 2024. <https://sankeymatic.com/>
- 419 14. US Census Bureau. National Population by Characteristics: 2020-2023. 2024. Accessed April 29,  
420 2024. <https://www.census.gov/data/datasets/time-series/demo/popest/2020s-national-detail.html>
- 421 15. Zimmerman RK, Lauderdale DS, Tan SM, Wagener DK. Prevalence of High Risk Indications for  
422 Influenza Vaccine Varies by Age, Race, and Income. *Vaccine*. 2010;28(39):6470-6477.  
423 doi:10.1016/j.vaccine.2010.07.037
- 424 16. CDC. Preliminary Estimated Flu Disease Burden 2022–2023 Flu Season. November 22, 2023.  
425 Accessed October 14, 2024. <https://www.cdc.gov/flu-burden/php/data-vis/2022-2023.html>
- 426 17. CDC. Influenza Hospitalization Surveillance Network (FluSurv-NET). 2024. Accessed April 29, 2024.  
427 <https://www.cdc.gov/fluview/overview/influenza-hospitalization-surveillance.html>
- 428 18. Matias G, Taylor R, Haguinet F, Schuck-Paim C, Lustig R, Shinde V. Estimates of hospitalization  
429 attributable to influenza and RSV in the US during 1997–2009, by age and risk status. *BMC Public*  
430 *Health*. 2017;17(1):271. doi:10.1186/s12889-017-4177-z
- 431 19. Reed C, Kim IK, Singleton JA, et al. Estimated Influenza Illnesses and Hospitalizations Averted by  
432 Vaccination — United States, 2013–14 Influenza Season. *MMWR Morb Mortal Wkly Rep*.  
433 2014;63(49):1151-1154.
- 434 20. Outbreaks Near Me. Accessed April 29, 2024. <https://outbreaksnearme.org/us/en-US>
- 435 21. CDC. US Flu VE Network. 2023. Accessed March 26, 2024. <https://www.cdc.gov/flu-vaccines-work/php/vaccine-effectiveness/us-flu-ve-network.html>
- 436
- 437 22. CDC. VISION Vaccine Effectiveness Network. 2024. Accessed April 29, 2024.  
438 <https://www.cdc.gov/flu-vaccines-work/php/vaccine-effectiveness/vision-network.html>
- 439 23. CDC. Respiratory Virus Transmission Network. 2024. Accessed April 29, 2024.  
440 <https://www.cdc.gov/flu-vaccines-work/php/vaccine-effectiveness/rtvn-flu.html>
- 441 24. Vos LM, Bruning AHL, Reitsma JB, et al. Rapid Molecular Tests for Influenza, Respiratory Syncytial  
442 Virus, and Other Respiratory Viruses: A Systematic Review of Diagnostic Accuracy and Clinical Impact  
443 Studies. *Clin Infect Dis Off Publ Infect Dis Soc Am*. 2019;69(7):1243-1253. doi:10.1093/cid/ciz056
- 444 25. Merckx J, Wali R, Schiller I, et al. Diagnostic Accuracy of Novel and Traditional Rapid Tests for  
445 Influenza Infection Compared With Reverse Transcriptase Polymerase Chain Reaction: A Systematic  
446 Review and Meta-analysis. *Ann Intern Med*. 2017;167(6):394-409. doi:10.7326/M17-0848
- 447 26. Wesolowski A, Miller JL, Shields M, Dela-Pena J. Antimicrobial prescribing after rapid influenza PCR  
448 implementation in the emergency department. *Am J Emerg Med*. 2023;71:123-128.  
449 doi:10.1016/j.ajem.2023.06.015
- 450 27. Kaiser L, Wat C, Mills T, Mahoney P, Ward P, Hayden F. Impact of oseltamivir treatment on influenza-  
451 related lower respiratory tract complications and hospitalizations. *Arch Intern Med*.  
452 2003;163(14):1667-1672. doi:10.1001/archinte.163.14.1667

- 453 28. Sutton SS, Magagnoli J, Cummings T, Hardin J. Association Between the Use of Antibiotics, Antivirals,  
454 and Hospitalizations Among Patients With Laboratory-confirmed Influenza. *Clin Infect Dis Off Publ*  
455 *Infect Dis Soc Am*. 2021;72(4):566-573. doi:10.1093/cid/ciaa074
- 456 29. Hanula R, Bortolussi-Courval É, Mendel A, Ward BJ, Lee TC, McDonald EG. Evaluation of Oseltamivir  
457 Used to Prevent Hospitalization in Outpatients With Influenza: A Systematic Review and Meta-  
458 Analysis. *JAMA Intern Med*. 2024;184(1):18-27. doi:10.1001/jamainternmed.2023.0699
- 459 30. R Core Team. R: A language and environment for statistical computing. Published online 2022.  
460 <https://www.R-project.org/>
- 461 31. Dowle M, Srinivasan A. data.table: Extension of `data.frame`. Published online 2021. [https://CRAN.R-](https://CRAN.R-project.org/package=data.table)  
462 [project.org/package=data.table](https://CRAN.R-project.org/package=data.table)
- 463 32. Wickham H, Averick M, Bryan J, et al. Welcome to the Tidyverse. *J Open Source Softw*.  
464 2019;4(43):1686. doi:10.21105/joss.01686
- 465 33. Uyeki TM, Hui DSC, Lee N. Oseltamivir May or May Not Reduce Hospitalizations. *JAMA Intern Med*.  
466 2024;184(1):116. doi:10.1001/jamainternmed.2023.4711
- 467 34. Antoon JW, Grijalva CG, Talbot K. Oseltamivir May or May Not Reduce Hospitalizations. *JAMA Intern*  
468 *Med*. 2024;184(1):116-117. doi:10.1001/jamainternmed.2023.4720
- 469 35. Ng S, Cowling BJ, Fang VJ, et al. Effects of oseltamivir treatment on duration of clinical illness and  
470 viral shedding, and household transmission of influenza virus. *Clin Infect Dis Off Publ Infect Dis Soc*  
471 *Am*. 2010;50(5):707-714. doi:10.1086/650458
- 472 36. Cheung DH, Tsang TK, Fang VJ, et al. Association of Oseltamivir Treatment With Virus Shedding,  
473 Illness, and Household Transmission of Influenza Viruses. *J Infect Dis*. 2015;212(3):391-396.  
474 doi:10.1093/infdis/jiv058
- 475 37. Yechezkel M, Ndeffo Mbah ML, Yamin D. Optimizing antiviral treatment for seasonal influenza in the  
476 USA: a mathematical modeling analysis. *BMC Med*. 2021;19(1):54. doi:10.1186/s12916-021-01926-5
- 477 38. Morris SE, Zipfel CM, Peer K, et al. Modeling the Impacts of Antiviral Prophylaxis Strategies in  
478 Mitigating Seasonal Influenza Outbreaks in Nursing Homes. *Clin Infect Dis*. 2024;78(15):1336-1344.  
479 doi:10.1093/cid/ciad764
- 480 39. CDC. Rapid Influenza Diagnostic Tests. 2024. Accessed May 10, 2024.  
481 [https://www.cdc.gov/flu/hcp/testing-methods/clinician\\_guidance\\_ridt.html](https://www.cdc.gov/flu/hcp/testing-methods/clinician_guidance_ridt.html)

482