

Characteristics and care trajectories of older patients in temporary stays in Denmark

Authors: Hanin Harbi^{1,2}, Carina Lundby^{1,2}, Peter Bjødstrup Jensen¹, Søren Post Larsen³, Linda Grouleff Rørbæk⁴, Lene Vestergaard Ravn-Nielsen², Jesper Ryg^{5,6}, Mette Reilev^{1,7,8}, Kasper Edwards⁹, Anton Pottegård^{1,2}

¹Clinical Pharmacology, Pharmacy and Environmental Medicine, Department of Public Health, University of Southern Denmark, Odense, Denmark

²Hospital Pharmacy Funen, Odense University Hospital, Odense, Denmark

³REAGENS, Skårup Fyn, Denmark

⁴Komponent, Copenhagen, Denmark

⁵Geriatric Research Unit, Department of Clinical Research, University of Southern Denmark, Odense, Denmark

⁶Department of Geriatric Medicine, Odense University Hospital, Odense, Denmark

⁷Centre for Suicide Research, Odense, Denmark

⁸The Research Unit in Psychiatry - child and adults, Psychiatry in the Region of Southern Denmark, Aabenraa, Denmark

⁹DTU Engineering Technology, Technical University of Denmark, Ballerup, Denmark

Correspondence: Anton Pottegård, Clinical Pharmacology, Pharmacy and Environmental Medicine, Department of Public Health, University of Southern Denmark, Campusvej 55, 5230 Odense M, Denmark. Tel.: +45 28 91 33 40. Email: apottegaard@health.sdu.dk

Abstract

Background: Temporary stays for patients requiring short-term care outside the home, often following hospital discharge, has gained increasing importance. This study aimed to describe the characteristics and care trajectories of older patients in Danish temporary stays to improve care delivery and patient safety.

Methods: We conducted a descriptive study on a cohort of patients in temporary stays across 14 Danish municipalities from 2016 to 2023, using data from national health registries.

Results: We identified 11,424 patients with a median age of 81 years (interquartile range [IQR] 73-87 years); 54% were women. Patients exhibited a high level of comorbidity, with a median Charlson Comorbidity Index of 1 (IQR 0-2), and a median of 3 hospital admissions (IQR 2-6) in the year preceding their move into temporary care. The majority (70%) transitioned to temporary stays following hospital discharge, while 30% were admitted directly from their homes. The median duration of temporary stays was 24 days (IQR 11-49 days), with 9.1% staying ≥ 90 days. Additionally, 8.2% of patients were hospitalised directly from the temporary stay facility, with a median time to hospital admission of 13 days (IQR 5-28 days). Median survival after admission to a temporary stay was 23 months (IQR 3.6-57 months). Predictors of mortality included male sex, older age, higher comorbidity burden, and increased number of hospital admissions prior to temporary stay.

Conclusion: Patients in temporary stays are generally older individuals with multimorbidity and limited life expectancy. Most patients are admitted following hospital discharge, and their stays are often prolonged.

Keywords: epidemiology, morbidity, mortality, intermediate care facilities, skilled nursing facilities

Introduction

As the life expectancy increases, and population ages, more people are living with chronic diseases and disabilities. This demographic shift places significant strain on healthcare systems, which again has in most settings led to earlier hospital discharges of patients with more complex and fluctuating care needs. To manage these accelerated discharges and reduce hospital (re)admissions, many countries have reorganized their healthcare systems to strengthen patient transitions between different levels of care [1,2]. Globally, various terms describe these transitional services, such as “intermediate care” in Europe, “subacute care”, “postacute care”, or “skilled nursing care” in the United States, “transition care” in Australia, and “transitional care” in Canada [3–5]. Intermediate care services are designed to provide short-term care to individuals who are discharged from the hospital but are not yet ready to return home, or who are at risk of hospital admission. These services can either be home-based or bed-based, with the latter involving temporary stays at designated care facilities [2,6–8].

In Denmark, these bed-based intermediate care services are referred to as “temporary stay facilities”. Temporary stays have become increasingly important in the Danish healthcare system, especially for older patients with frailty, multimorbidity, and complex medication regimens. However, the complexity of the patients’ conditions poses significant challenges for healthcare staff, who may not always have the necessary resources or expertise to meet their specialized needs [9–14].

To improve the care and safety of patients in temporary stays, it is essential to gain deeper understanding of their characteristics and care trajectories. The aim of this study was to provide a detailed description of the characteristics, health profiles, and outcomes of patients in temporary stays in Denmark.

Methods

We established a cohort comprising 14,978 temporary stays from 11,424 patients across 14 Danish municipalities between 2016 and 2023. The cohort was supplemented with individual-level data from Danish national administrative and health registries to describe the characteristics and trajectories of patients in temporary stays.

Data sources

The municipalities provided data on temporary stays from January 1, 2016, to December 31, 2023, including the patient's move-in date and move-out date, along with their Central Person Register (CPR) number, a unique personal identifier assigned by the Civil Registration System to all Danish residents since 1968 [15]. These data were linked to nationwide health registries using the CPR number. Information on hospital admission and diagnoses was obtained from the Danish National Patient Registry, which contains data on all nonpsychiatric hospital admissions since 1977 and both psychiatric and nonpsychiatric outpatient contacts since 1995. Diagnoses have been coded according to the 10th revision of the International Classification of Diseases (ICD-10), from 1994 onwards [16]. We retrieved demographic data (age, sex, death, and migration) from the Civil Registration System [15]. For comorbidity assessment, prescription drug use was obtained from the Danish National Prescription Registry, which contains records of all prescription drugs dispensed by Danish community pharmacies since 1995 [17,18]. We obtained information on care home admissions from a nationwide cohort of care home admissions maintained by the Danish Health Data Authority, covering admissions from 2015 onwards.

Study cohort

Temporary stays were included if both the move-in and move-out dates occurred within the study period. We excluded temporary stays with missing or invalid CPR numbers, move-in dates, or move-out dates and those where the move-out date preceded the move-in date. Patients were required to have resided in Denmark for at least two years prior to their first temporary stay. For individuals with multiple temporary stays, consecutive stays with no gap between move-in and move-out dates were combined into a single continuous stay. Only the first temporary stay for each patient was included in the analyses.

Setting

In Denmark, temporary stays are provided by municipalities for individuals requiring short-term care and support that cannot be managed at home. These stays can be used for care, treatment, or rehabilitation following an illness or hospitalisation, as well as for providing respite care for family caregivers. Access to temporary stays is managed by the municipalities, and the services and organisation can vary across them. Care is delivered by multidisciplinary teams, including nurses, care assistants, physiotherapists, and occupational therapists. Temporary stay facilities are not required to have physicians on staff. Instead, medical responsibility remains with the patient's general practitioner (GP) or the hospital [11].

Analyses

We conducted a series of analyses to describe the study cohort and patient trajectories. First, we described patient characteristics at the time of move-in overall and stratified by sex and age group (< 75, 75-84, and \geq 85 years). Baseline characteristics included sex, age, Charlson Comorbidity Index [19], selected comorbidities (Appendix A), and number of hospital admissions in the year prior to move-in. The Charlson Comorbidity Index and comorbidities were derived from ICD-10 hospital discharge diagnoses and prescription data from the Danish National Patient Registry and Danish National Prescription Registry, using data from 10 years before baseline.

Second, we examined patient locations prior to move-in by categorizing admissions into temporary stays as following hospital discharge (defined as discharge on or the day before move-in date), from home, or from a care home, both overall and by municipality. For hospital admissions leading to temporary stays, the primary diagnosis was identified. Additionally, we calculated the median length of stay overall, by municipality, and by patient location prior to move-in. We assessed destinations after move-in by examining the proportion of patients hospitalised directly from the facility (on the move-out date or the day after), within 30 days of move-in or move-out, and the proportion of patients transferred to a care home within 30 days of move-out. These analyses included only surviving patients. A supplementary analysis extended the window to 90 days. For hospital admissions from temporary stay facilities, we assessed the median time to hospital admission, the timing of admission by hour and the day of the week, and the primary reason for admission, overall and by weekdays and weekends.

Third, to describe the mortality of patients in temporary stays, we estimated median survival after move-in and 30-day, 90-day, and 1-year survival rates, overall and by sex and age group, using the Kaplan-Meier method. We calculated odds ratios (ORs) for 30- and 90-day mortality predictors using logistic regression, with sex, age, Charlson Comorbidity Index, selected comorbidities (Appendix A), and hospital admissions in the year prior to move-in included as potential predictors.

All statistical analyses were conducted using R version 4.3.3.

Data and ethics

The study was registered at the University of Southern Denmark's inventory (record no. 11.436). Ethical approval is not required for registry-based studies in Denmark.

Results

We identified 14,978 temporary stays from 11,424 patients during the study period, including only the first temporary stay for each patient in our analyses (Table 1). More than half of the patients (54%) were women. The median age at move-in was 81 years (interquartile range [IQR], 73-87 years), with women being slightly older than men (median age 83 versus 79 years, $p < 0.001$). The median Charlson Comorbidity Index was 1 (IQR 0-2) and patients had a median of 3 hospital admissions (IQR 2-6) in the year prior to move-in.

Most patients (70%) moved into a temporary stay facility following hospital discharge, while 30% came directly from home and 0.3% came from a care home. Patients entering from home had a higher prevalence of dementia (19% versus 9.4%, $p < 0.001$) and Parkinson disease (6.1% versus 3.4%, $p < 0.001$) but a lower median number of hospital admissions in the prior year (2 versus 4, $p < 0.001$) compared to those coming from hospital (Supplementary Table 1). The distribution of where patients came from before move-in varied across municipalities (Supplementary Table 2), with the proportion of patients coming from home ranging between 10% and 58%. Among those moving in after a hospital discharge, the three most common primary diagnoses were rehabilitation (10%), hip fracture (7.9%), and pneumonia (3.9%) (Supplementary Table 3).

The median length of a temporary stay was 24 days (IQR 11-49 days), with 9.1% of patients staying for 90 days or longer (Figure 1). Patients with stays of at least 90 days were slightly

younger (median age 79 versus 81 years, $p < 0.001$) and had lower prevalences of cancer (21% versus 28%, $p < 0.001$), chronic obstructive pulmonary disease (COPD) (26% versus 33%, $p < 0.001$), and heart failure (34% versus 43%, $p < 0.001$) but higher prevalences of dementia (17% versus 12%, $p < 0.001$) and stroke (34% versus 26%, $p < 0.001$) (Supplementary Table 4). The median length of stay did not vary substantially by prior location (data not shown) or by municipality (Supplementary Figure 1), except for one outlier municipality that showed a higher median length of stay, though with similar patient characteristics (data not shown).

Regarding patient destinations after moving out of temporary stay, 8.2% (805/9,862) were hospitalised directly from the temporary stay facility, with a median time to hospital admission of 13 days (IQR 5-28 days). Hospitalisation rates increased gradually throughout the morning, peaking at 10 a.m., and declining later in the day, with fewer admissions during evenings and nights (Supplementary Figure 2). Hospital admissions were most frequent on weekdays, particularly Mondays and Tuesdays, and least frequent on Sundays (Supplementary Figure 3). The most common reasons for hospitalisation from a temporary stay facility were pneumonia (6.8%), the need for specialised palliative care (6.1%), and radiological examination (4.2%) (Supplementary Tables 5-7). Additionally, 26% (2,522/9,865) were hospitalised within 30 days of moving into the facility, 20% (1,767/9,013) were hospitalised within 30 days of moving out, and 17% (1,495/9,013) were transferred to a care home within 30 days of moving out. Extending the window to 90 days, the corresponding proportions were 36% (3,179/8,747) for hospitalisation after moving in, 29% (2,433/8,326) for hospitalisation after moving out, and 21% (1,766/8,326) for care home transfer.

The median overall survival after moving into a temporary stay facility was 23 months (IQR 3.6-57 months). Survival rates were 86% at 30 days, 77% at 90 days, and 62% at 1 year (Figure 2). Men had shorter median survival than women (20 versus 26 months), as well as lower survival rates at 30 days (85% versus 87%), 90 days (75% versus 78%) and 1-year (59% versus 64%) (Figure 2). Survival also decreased with increasing age. The median survival was 42 months for patients under 75 years, 25 months for those aged 75-84 years, and 14 months for those 85 years and older. The 30-day, 90-day, and 1-year survival rates were 91%, 83%, and 71%, respectively, for patients under 75; 86%, 77%, and 63%, respectively, for those aged 75-84 years; and 83%, 71%, and 53% for those aged 85 or older (Figure 2).

Baseline predictors of 30-day mortality after moving into a temporary stay facility included male sex (OR 1.17, 95% confidence interval [CI] 1.05-1.32), older age (OR 1.60, 95% CI 1.37-1.87 for ages 75-84 and OR 2.29, 95% CI 1.95-2.69 for ages 85 and older compared to those under 75),

higher Charlson Comorbidity Index, more hospital admissions in the year before move-in, and a history of cancer (OR 1.65, 95% CI 1.41-1.93) or heart failure (OR 1.51, 95% CI 1.34-1.71). Conversely, a history of Parkinson disease (OR 0.58, 95% CI 0.40-0.82), dementia (OR 0.72, 95% CI 0.59-0.88), and fall injuries (OR 0.77, 95% CI 0.68-0.86) was associated with decreased 30-day mortality (Table 2). A similar pattern of baseline predictors was observed for 90-day mortality (Supplementary Table 8).

Discussion

This study describes the characteristics and care trajectories of patients in temporary stays in Denmark. Our findings indicate that these patients are generally older adults with multiple chronic conditions, most of whom enter the temporary stay facility following a hospital admission. The median length of stay was 24 days, and many patients had limited life expectancy, with a substantial proportion being hospitalised directly from or shortly after leaving the facility.

The key strength of our study is the use of a large cohort of patients across multiple municipalities in Denmark, linked to highly valid nationwide health registries [15–18], which eliminates the risk of selection bias. Additionally, access to a national cohort of all care home admissions allowed us to identify the substantial number of patients who were transferred to a care home shortly after their temporary stays.

However, this study also has limitations. We lacked data on the specific types of temporary stays (e.g., rehabilitation versus respite stay), which prevented us from investigating differences in patient characteristics and outcomes across stay types, as well as the extent of reentries and transfers (from one type to another). Given that different types of stays target distinct groups (e.g., patients in rehabilitation stays typically come from hospitals, while those in respite stays often come from home) [11], this may explain the municipal differences in the distribution of patient locations prior to move-in. Additionally, our identification of reasons for hospital admission may not have been precise. We relied on primary diagnoses from the Danish National Patient Registry, which included nondiagnostic ICD-10 R and Z codes, while secondary diagnoses were not used due to their optional nature and potential for multiple entries per admission.

This is the first study to systematically describe a large cohort of patients in temporary stays in Denmark. Previous studies from a single Danish municipality, which focused on patients entering temporary stays after hospital discharge, reported similar findings in terms of sex, age, and

comorbidity burden [20,21]. However, one study observed a slightly higher 30-day mortality (17% versus 14% in our study) [21], likely because their cohort included frailer patients discharged from geriatric departments. Internationally, studies on intermediate care units in England reported a similar distribution of sex and age and a similar burden of comorbidities but noted differences in patient origins, with a lower proportion coming from hospitals (46% versus 70%) and a higher proportion from home or care homes (51% versus 30%). They also observed shorter stays (median 17 days, IQR 5-34 days versus 24 days, IQR 11-49 days in our study) and lower 1-year mortality (28% versus 38%). Similar to our findings, poorer survival was associated increasing age, higher Charlson Comorbidity Index, and cancer [22]. In Norway, patients in municipal acute wards typically enter from home and have a median length of stay of three days. However, these intermediate care units are different, as they mainly target patients coming from their home to prevent hospital admissions by managing acute conditions with short-term stays in primary care, as opposed to hospital admissions [23–25].

We observed that a considerable proportion of patients were transferred to care homes shortly after leaving the temporary stay facility. Generally, the morbidity and mortality profile of patients in temporary stays closely resembles that of Danish care home residents, with conditions like heart failure and cancer associated with poorer survival in care home residents [26]. Interestingly, Parkinson disease, dementia, and fall injuries were associated with lower mortality in temporary stays, possibly because these conditions prompt entry into temporary stays for less acute needs compared to conditions such as heart failure or cancer. This may also explain the differences in comorbidities by stay duration and premove-in location.

In conclusion, this study provides a comprehensive overview of the morbidity and mortality of patients in temporary stays, information essential for optimizing care transitions and ensuring better outcomes for patients. The findings underscore the complexity of caring for patients in temporary stays, a challenge that will likely increase as healthcare systems face rising demands and limited resources. It is crucial to consider patients' health status when organizing temporary stays to ensure optimal care.

References

1. WHO (World Health Organization). 2015. World report on aging and health. Accessed October 3, 2024. https://iris.who.int/bitstream/handle/10665/186463/9789240694811_eng.pdf?sequence=1.
2. Mac Arthur I, Hendry A. Inter-American Development Bank. 2017. The “Intermediate Care Hospital”: Facility Bed-Based Rehabilitation for Elderly Patients. Accessed October 4, 2024. <http://dx.doi.org/10.18235/0009360>.
3. McGilton KS, Vellani S, Krassikova A *et al*. Understanding transitional care programs for older adults who experience delayed discharge: a scoping review. *BMC Geriatr* 2021;**21**:210.
4. Cumal A, Colella TJJ, Puts MT *et al*. The impact of facility-based transitional care programs on function and discharge destination for older adults with cognitive impairment: a systematic review. *BMC Geriatr* 2022;**22**:854.
5. Wang Y-C, Chou M-Y, Liang C-K *et al*. Post-Acute Care as a Key Component in a Healthcare System for Older Adults. *Ann Geriatr Med Res* 2019;**23**:54–62.
6. Sezgin D, O’Caoimh R, O’Donovan MR *et al*. Defining the characteristics of intermediate care models including transitional care: an international Delphi study. *Aging Clin Exp Res* 2020;**32**:2399–410.
7. Sezgin D, O’Caoimh R, Liew A *et al*. The effectiveness of intermediate care including transitional care interventions on function, healthcare utilisation and costs: a scoping review. *Eur Geriatr Med* 2020;**11**:961–74.
8. Griffiths PD, Edwards ME, Forbes A *et al*. Effectiveness of intermediate care in nursing-led inpatient units. *Cochrane Database Syst Rev* 2007;**2007**:CD002214.
9. Martinsen B, Norlyk A, Lomborg K. Experiences of intermediate care among older people: a phenomenological study. *Br J Community Nurs* 2015;**20**:74–9.
10. The Danish Organization of General Practitioners and Local Government Denmark. [Definition of temporary 24-hour placements] (in Danish). Accessed August 22, 2024. https://stps.dk/Media/638257904106148719/plo_og_kl_-_definition_af_midlertidige_d-gnd-kkede.pdf.
11. Vinge S, Buch MS, Kjellberg PK. The Danish Center for Social Science Research. 2021. [The municipal emergency area - Experiences and perspectives on the development from 15 municipalities] (in Danish). Accessed August 22, 2024. <https://www.vive.dk/media/pure/16209/5709970>.
12. Danish Ministry of Health and Senior Citizens. 2016. [Enhanced effort for the older medical patient - National action plan 2016] (in Danish). Accessed August 22, 2024. https://sm.dk/Media/637666125515729596/AE_Styrket_indsats_for_den_aeldre_medicinske_patient_national_handlingsplan_2016.pdf.
13. Kayser K, Christensen MR. Municipality of Copenhagen. 2018. [2. discussion of strategy for temporary stays] (in Danish). Accessed August 22, 2024. <https://www.kk.dk/dagsordener-og-referater/Sundheds-%20og%20Omsorgsudvalget/m%C3%B8de-24052018/referat/punkt-7>.

14. Kayser K, Christensen MR. Municipality of Copenhagen. 2021. [Status regarding temporary stays] (in Danish). Accessed August 22, 2024. <https://www.kk.dk/dagsordener-og-referater/Sundheds-%20og%20Omsorgsudvalget/m%C3%B8de-22062021/referat/punkt-3>.
15. Schmidt M, Pedersen L, Sørensen HT. The Danish Civil Registration System as a tool in epidemiology. *Eur J Epidemiol* 2014;**29**:541–9.
16. Schmidt M, Schmidt SAJ, Sandegaard JL *et al*. The Danish National Patient Registry: a review of content, data quality, and research potential. *Clin Epidemiol* 2015;**7**:449–90.
17. Pottegård A, Schmidt SAJ, Wallach-Kildemoes H *et al*. Data Resource Profile: The Danish National Prescription Registry. *Int J Epidemiol* 2017;**46**:798–798f.
18. Harbi H, Pottegård A. Validation of the “Indication for Use” (INDO) Variable in the Danish National Prescription Registry. *Epidemiology* 2024;**35**:1–6.
19. Quan H, Li B, Couris CM *et al*. Updating and validating the Charlson comorbidity index and score for risk adjustment in hospital discharge abstracts using data from 6 countries. *Am J Epidemiol* 2011;**173**:676–82.
20. Ravn-Nielsen LV, Bjork E, Nielsen M *et al*. Challenges related to transitioning from hospital to temporary care at a skilled nursing facility: a descriptive study. *Eur Geriatr Med* 2024, DOI: 10.1007/s41999-024-01003-z.
21. Thomsen K, Fournaise A, Matzen LE *et al*. Does geriatric follow-up visits reduce hospital readmission among older patients discharged to temporary care at a skilled nursing facility: a before-and-after cohort study. *BMJ Open* 2021;**11**:e046698.
22. Evans CJ, Potts L, Dalrymple U *et al*. Characteristics and mortality rates among patients requiring intermediate care: a national cohort study using linked databases. *BMC Med* 2021;**19**:48.
23. Nystrom V, Lurås H, Moger T *et al*. Finding good alternatives to hospitalisation: a data register study in five municipal acute wards in Norway. *BMC Health Serv Res* 2022;**22**:715.
24. Nilsen H, Hunskaar S, Ruths S. Patient trajectories in a Norwegian unit of municipal emergency beds. *Scand J Prim Health Care* 2017;**35**:137–42.
25. Schmidt AK, Lilleeng B, Baste V *et al*. First four years of operation of a municipal acute bed unit in rural Norway. *Scand J Prim Health Care* 2018;**36**:390–6.
26. Reilev M, Lundby C, Jensen J *et al*. Morbidity and mortality among older people admitted to nursing home. *Age Ageing* 2019;**49**:67–73.

Table 1

Baseline characteristics of patients moving into temporary stay facilities in 14 Danish municipalities from 2016 to 2023, overall and stratified by sex and age groups

	Total (n = 11,424)	Women (n = 6,141)	Men (n = 5,283)	< 75 years (n = 3,394)	75-84 years (n = 4,017)	≥ 85 years (n = 4,013)
Sex						
Female	6,141 (54%)	6,141 (100%)	0 (0.00%)	1,470 (43%)	2,120 (53%)	2,551 (64%)
Male	5,283 (46%)	0 (0.00%)	5,283 (100%)	1,924 (57%)	1,897 (47%)	1,462 (36%)
Age						
Median (IQR)	81 (73-87)	83 (75-89)	79 (71-86)	68 (62-72)	80 (78-83)	90 (87-93)
< 75 years	3,394 (30%)	1,470 (24%)	1,924 (36%)	3,394 (100%)	0 (0.00%)	0 (0.00%)
75-84 years	4,017 (35%)	2,120 (35%)	1,897 (36%)	0 (0.00%)	4,017 (100%)	0 (0.00%)
≥ 85 years	4,013 (35%)	2,551 (42%)	1,462 (28%)	0 (0.00%)	0 (0.00%)	4,013 (100%)
Charlson Comorbidity Index (CCI)						
Median (IQR)	1 (0-2)	1 (0-2)	2 (0-3)	1 (0-3)	2 (0-3)	1 (0-2)
0-1	5,752 (50%)	3,338 (54%)	2,414 (46%)	1,712 (50%)	1,948 (48%)	2,092 (52%)
2-3	3,921 (34%)	2,063 (34%)	1,858 (35%)	1,078 (32%)	1,441 (36%)	1,402 (35%)
≥ 4	1,751 (15%)	740 (12%)	1,011 (19%)	604 (18%)	628 (16%)	519 (13%)
Medical history of						
Cancer	3,135 (27%)	1,548 (25%)	1,587 (30%)	884 (26%)	1,172 (29%)	1,079 (27%)
Chronic obstructive pulmonary disease	3,676 (32%)	2,072 (34%)	1,604 (30%)	1,171 (35%)	1,379 (34%)	1,126 (28%)
Dementia	1,428 (12%)	746 (12%)	682 (13%)	254 (7.5%)	635 (16%)	539 (13%)
Parkinson disease	477 (4.2%)	193 (3.1%)	284 (5.4%)	120 (3.5%)	248 (6.2%)	109 (2.7%)
Ischemic heart disease	6,326 (55%)	3,215 (52%)	3,111 (59%)	1,515 (45%)	2,357 (59%)	2,454 (61%)
Heart failure	4,843 (42%)	2,601 (42%)	2,242 (42%)	1,209 (36%)	1,710 (43%)	1,924 (48%)
Atrial fibrillation	2,842 (25%)	1,382 (23%)	1,460 (28%)	464 (14%)	1,086 (27%)	1,292 (32%)
Stroke	3,015 (26%)	1,467 (24%)	1,548 (29%)	922 (27%)	1,169 (29%)	924 (23%)
Diabetes mellitus	2,594 (23%)	1,151 (19%)	1,443 (27%)	901 (27%)	1,010 (25%)	683 (17%)
Alcohol use disorder	735 (6.4%)	246 (4.0%)	489 (9.3%)	535 (16%)	168 (4.2%)	32 (0.80%)
Substance use disorder	558 (4.9%)	280 (4.6%)	278 (5.3%)	324 (9.5%)	172 (4.3%)	62 (1.5%)
Fall injuries	6,499 (57%)	3,902 (64%)	2,597 (49%)	1,744 (51%)	2,190 (55%)	2,565 (64%)
Hospitalizations in the year before move-in						
Median (IQR)	3 (2-6)	3 (2-5)	4 (2-7)	4 (2-7)	3 (2-6)	3 (2-5)
0-2	4,209 (37%)	2,453 (40%)	1,756 (33%)	992 (29%)	1,488 (37%)	1,729 (43%)
3-5	3,939 (34%)	2,158 (35%)	1,781 (34%)	1,152 (34%)	1,351 (34%)	1,436 (36%)
≥ 6	3,276 (29%)	1,530 (25%)	1,746 (33%)	1,250 (37%)	1,178 (29%)	848 (21%)

* Charlson Comorbidity Index and medical history of comorbidities were determined using the 10th revision of the International Classification of Diseases (ICD-10) hospital discharge diagnoses and prescription records from the Danish National Patient Registry and Danish National Prescription Registry, respectively, covering the 10 years prior to move-in.

Supplementary Table 1

Baseline characteristics of patients moving into temporary stay facilities in 14 Danish municipalities from 2016 to 2023, stratified by patient location prior to move-in (hospital or home)

	Hospital (n = 7,985)	Home (n = 3,407)
Sex		
Female	4,369 (55%)	1,752 (51%)
Male	3,616 (45%)	1,655 (49%)
Age		
Median (IQR)	81 (73-87)	82 (74-88)
< 75 years	2,465 (31%)	918 (27%)
75-84 years	2,782 (35%)	1,227 (36%)
≥ 85 years	2,738 (34%)	1,262 (37%)
Charlson Comorbidity Index (CCI)*		
Median (IQR)	1 (0-2)	2 (0-3)
0-1	4,109 (51%)	1,629 (48%)
2-3	2,675 (34%)	1,230 (36%)
≥ 4	1,201 (15%)	548 (16%)
Medical history of*		
Cancer	2,177 (27%)	957 (28%)
Chronic obstructive pulmonary disease	2,583 (32%)	1,086 (32%)
Dementia	752 (9.4%)	660 (19%)
Parkinson disease	269 (3.4%)	207 (6.1%)
Ischemic heart disease	4,387 (55%)	1,918 (56%)
Heart failure	3,371 (42%)	1,462 (43%)
Atrial fibrillation	2,048 (26%)	790 (23%)
Stroke	2,193 (27%)	814 (24%)
Diabetes mellitus	1,814 (23%)	773 (23%)
Alcohol use disorder	542 (6.8%)	192 (5.6%)
Substance use disorder	401 (5.0%)	156 (4.6%)
Fall injuries	4,658 (58%)	1,822 (53%)
Hospitalizations in the year before move-in		
Median (IQR)	4 (2-6)	2 (0-5)
0-2	2,454 (31%)	1,730 (51%)
3-5	3,019 (38%)	917 (27%)
≥ 6	2,512 (31%)	760 (22%)

* Charlson Comorbidity Index and medical history of comorbidities were determined using the 10th revision of the International Classification of Diseases (ICD-10) hospital discharge diagnoses and filled prescriptions from the Danish National Patient Registry and Danish National Prescription Registry, respectively, covering the 10 years prior to move-in.

Supplementary Table 2

Proportion of patients moving into a temporary stay facility after hospital discharge or directly from their homes or a care home, overall and stratified by municipalities

	Overall	1	2	3	4	5	6	7	8	9	10	11	12	13	14
	(n = 11,424)	(n = 975)	(n = 450)	(n = 1,060)	(n = 1,606)	(n = 632)	(n = 1,397)	(n = 349)	(n = 735)	(n = 1,001)	(n = 656)	(n = 804)	(n = 281)	(n = 1,093)	(n = 385)
Hospital admission	7,985 (70%)	800 (82%)	287 (64%)	507 (48%)	1,273 (79%)	435 (69%)	1,175 (84%)	250 (72%)	464 (63%)	532 (53%)	467 (71%)	489 (61%)	253 (90%)	896 (82%)	157 (41%)
Home	3,407 (30%)	175 (18%)	163 (36%)	552 (52%)	332 (21%)	195 (31%)	222 (16%)	99 (28%)	271 (37%)	448 (45%)	189 (29%)	312 (39%)	28 (10%)	197 (18%)	224 (58%)
Care home	32 (0.28%)	0 (0.00%)	0 (0.00%)	n < 5	n < 5	n < 5	0 (0.00%)	0 (0.00%)	0 (0.00%)	21 (2.1%)	0 (0.00%)	n < 5	0 (0.00%)	0 (0.00%)	n < 5

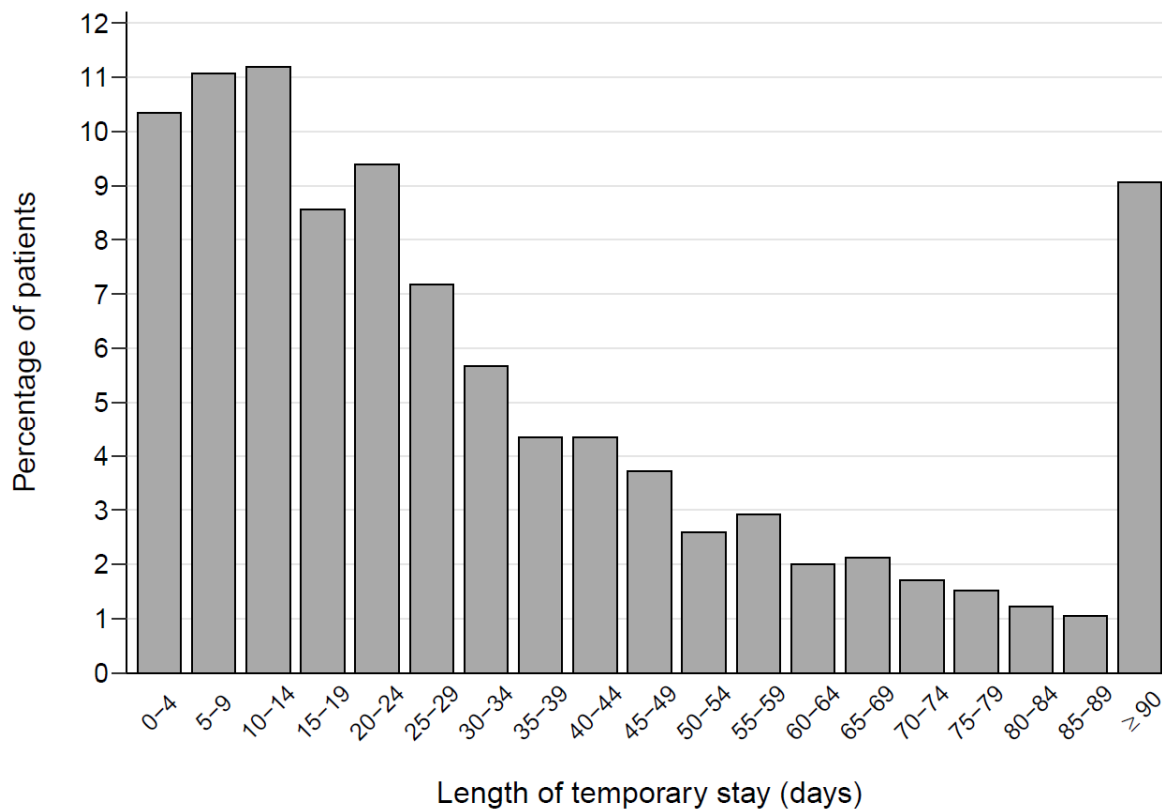
Supplementary Table 3

The 10 most frequently reported primary diagnoses (codes and names) for hospital admissions of patients discharged to temporary stay facilities

Reason for hospital admission, diagnosis code	Reason for hospital admission, diagnosis name	Proportion of hospitalized patients, n (%) (n = 7,985)
Z508	Rehabilitation, other	520 (6.5)
S720	Fracture of head and neck of femur	316 (4.0)
J189	Pneumonia, unspecified organism	312 (3.9)
S721	Pertrochanteric fracture	311 (3.9)
Z509	Rehabilitation, unspecified	285 (3.6)
I639	Cerebral infarction, unspecified	223 (2.8)
R296	Repeated falls	162 (2.0)
E869A	Dehydration	144 (1.8)
N390	Urinary tract infection, site not specified	113 (1.4)
N300	Acute cystitis	91 (1.1)

Figure 1

Distribution of temporary stay lengths



Supplementary Table 4

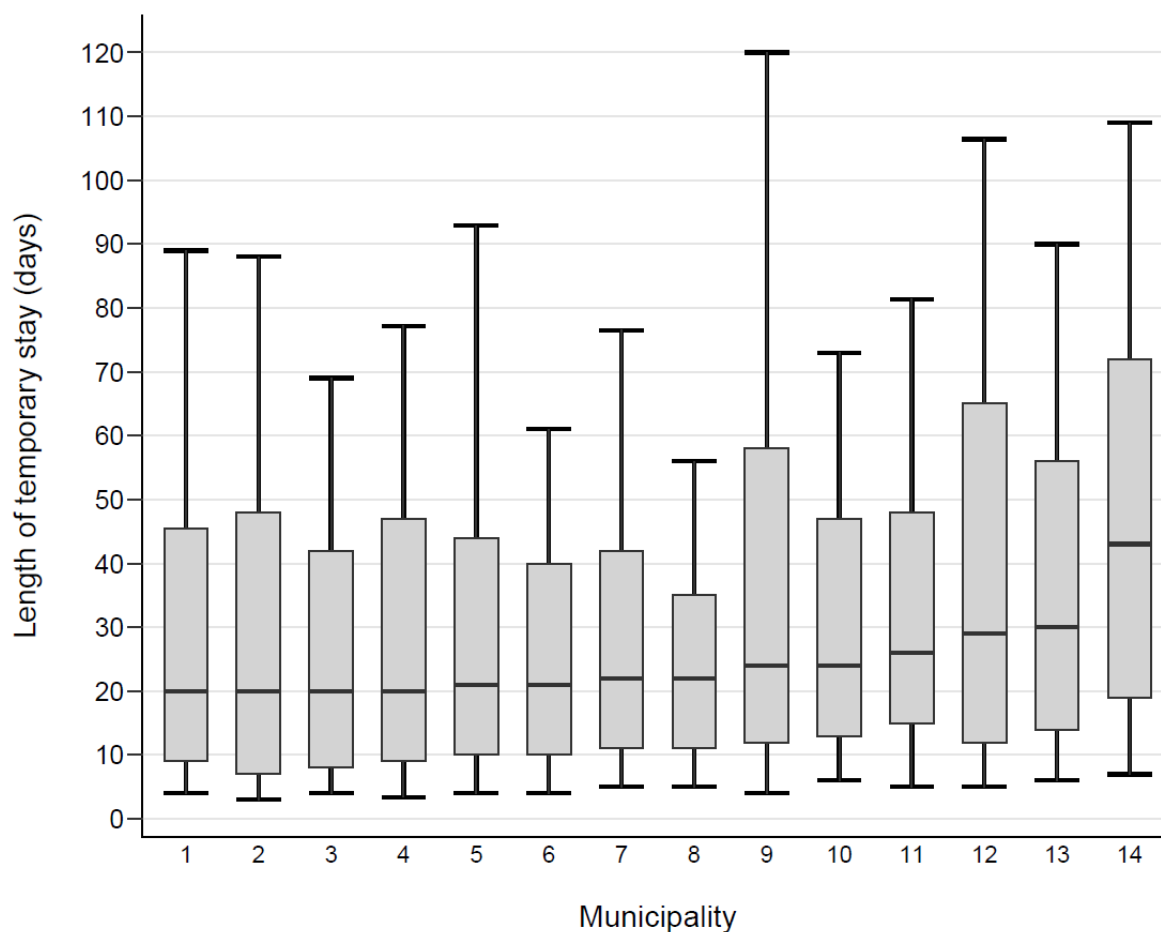
Baseline characteristics of patients moving into temporary stay facilities in 14 Danish municipalities from 2016 to 2023 stratified by temporary stay length

	< 90 days (n = 10,388)	≥ 90 days (n = 1,036)
Sex		
Female	5,573 (54%)	568 (55%)
Male	4,815 (46%)	468 (45%)
Age		
Median (IQR)	81 (74-88)	79 (71-86)
< 75 years	3,015 (29%)	379 (37%)
75-84 years	3,666 (35%)	351 (34%)
≥ 85 years	3,707 (36%)	306 (30%)
Charlson Comorbidity Index (CCI)*		
Median (IQR)	2 (0-3)	1 (0-2)
0-1	5,174 (50%)	578 (56%)
2-3	3,588 (35%)	333 (32%)
≥ 4	1,626 (16%)	125 (12%)
Medical history of*		
Cancer	2,915 (28%)	220 (21%)
Chronic obstructive pulmonary disease	3,406 (33%)	270 (26%)
Dementia	1,254 (12%)	174 (17%)
Parkinson disease	433 (4.2%)	44 (4.2%)
Ischemic heart disease	5,761 (55%)	565 (55%)
Heart failure	4,492 (43%)	351 (34%)
Atrial fibrillation	2,624 (25%)	218 (21%)
Stroke	2,665 (26%)	350 (34%)
Diabetes mellitus	2,396 (23%)	198 (19%)
Alcohol use disorder	673 (6.5%)	62 (6.0%)
Substance use disorder	519 (5.0%)	39 (3.8%)
Fall injuries	5,949 (57%)	550 (53%)
Hospitalizations in the year before move-in		
Median (IQR)	3 (2-6)	3 (2-6)
0-2	3,826 (37%)	383 (37%)
3-5	3,585 (35%)	354 (34%)
≥ 6	2,977 (29%)	299 (29%)

* Charlson Comorbidity Index and medical history of comorbidities were determined using the 10th revision of the International Classification of Diseases (ICD-10) hospital discharge diagnoses and filled prescriptions from the Danish National Patient Registry and Danish National Prescription Registry, respectively, covering the 10 years prior to move-in.

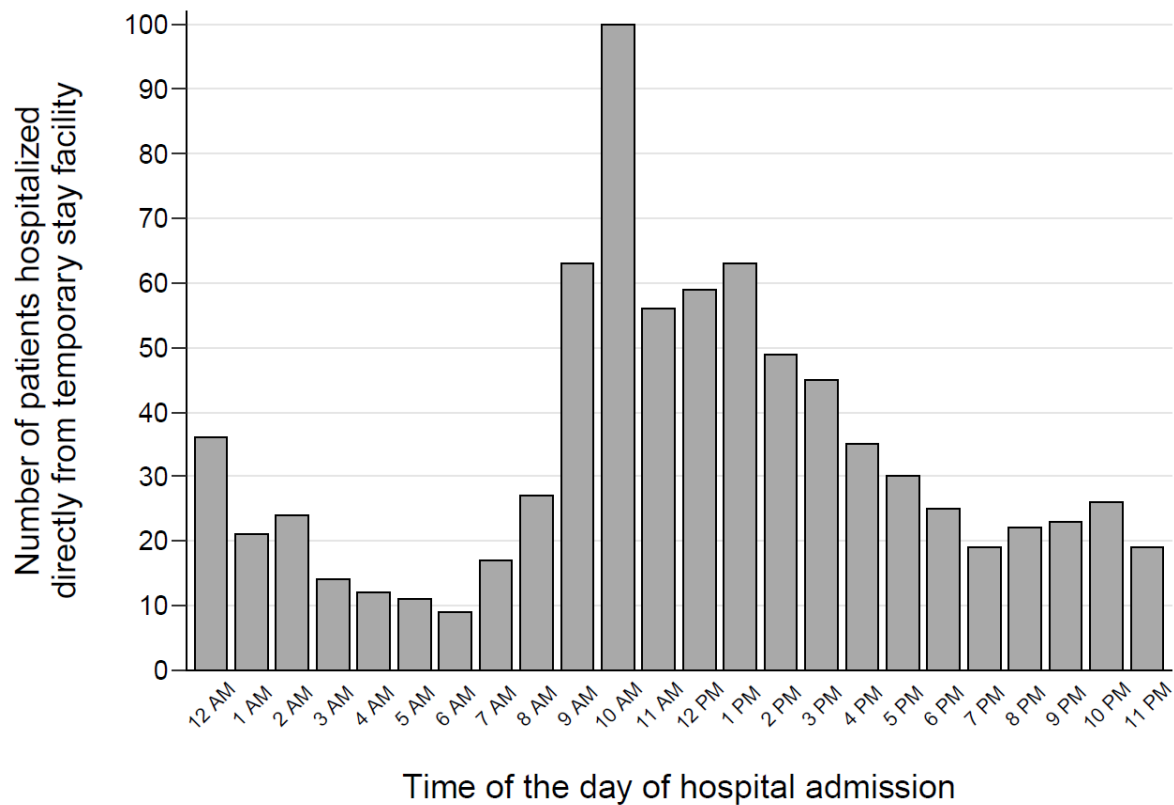
Supplementary Figure 1

Boxplot of temporary stay lengths by municipality. Each box represents the interquartile range (IQR), with the bottom and top edges indicating the first and third quartiles, respectively, and the midline indicating the median. The whiskers extend to the 10th and 90th percentiles.



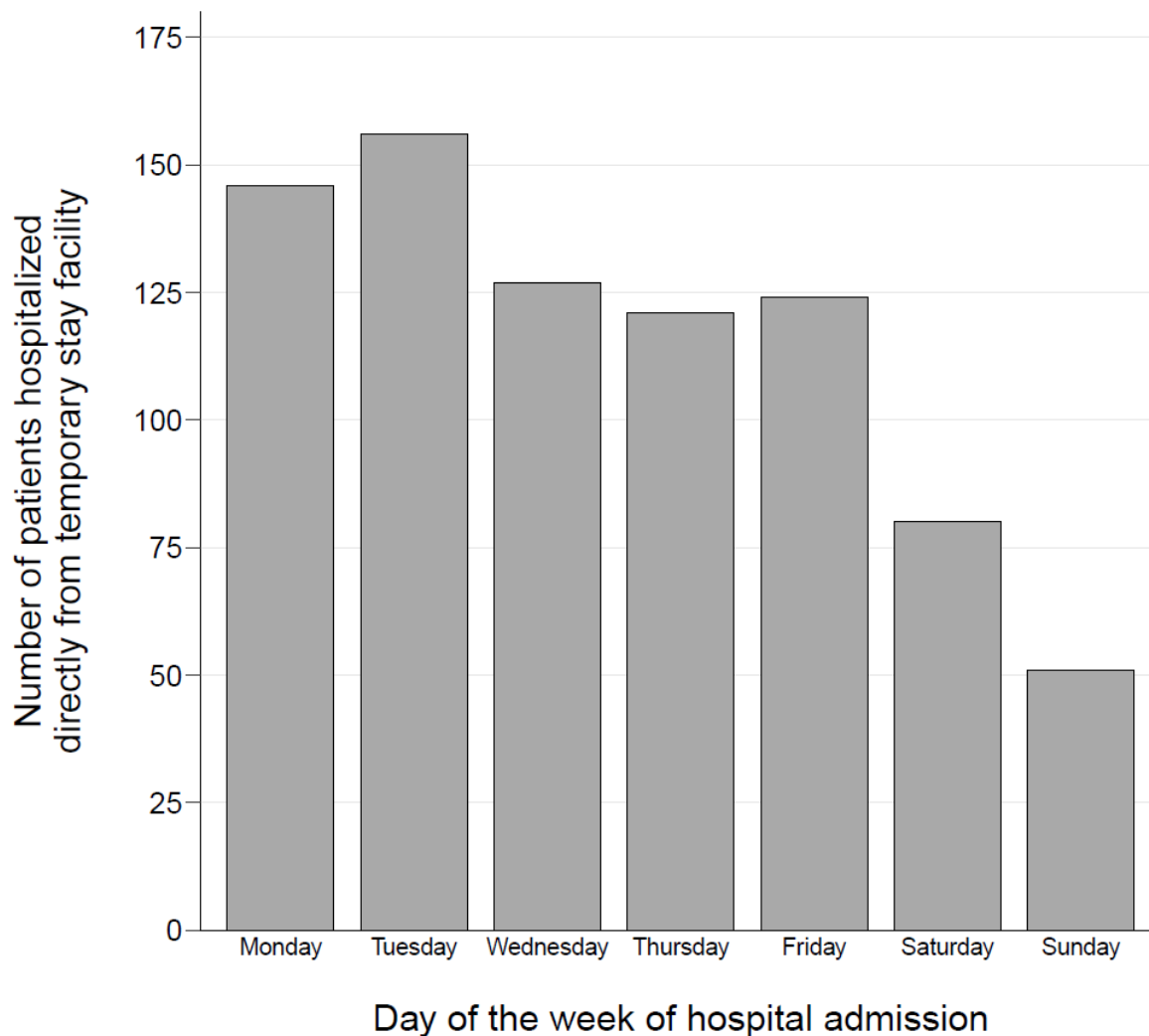
Supplementary Figure 2

Distribution of hospital admissions by hour for patients admitted directly from temporary stay facilities



Supplementary Figure 3

Distribution of hospital admissions by day of the week for patients admitted directly from temporary stay facilities



Supplementary Table 5

The 10 most frequently reported primary diagnoses (codes and names) for hospital admissions of patients hospitalised directly from temporary stay facilities

Reason for hospital admission, diagnosis code	Reason for hospital admission, diagnosis name	Proportion of hospitalized patients, n (%) (n = 805)
J189	Pneumonia, unspecified organism	55 (6.8)
Z515S	Need for specialised palliative care	49 (6.1)
Z016	Radiological examination	34 (4.2)
Z039	Observation for suspected disease or condition, unspecified	26 (3.2)
R060	Dyspnea	23 (2.9)
Z508	Rehabilitation, other	21 (2.6)
A419B	Urosepsis	14 (1.7)
E869A	Dehydration	14 (1.7)
A499	Bacterial infection, unspecified	14 (1.7)
J159	Bacterial pneumonia, unspecified	11 (1.4)

Supplementary Table 6

The 10 most frequently reported primary diagnoses (codes and names) for hospital admissions of patients hospitalised directly from temporary stay facilities on weekdays

Reason for hospital admission, diagnosis code	Reason for hospital admission, diagnosis name	Proportion of hospitalized patients, n (%) (n = 674)
Z515S	Need for specialised palliative care	49 (7.3)
J189	Pneumonia, unspecified organism	42 (6.2)
Z016	Radiological examination	34 (5.0)
Z039	Observation for suspected disease or condition, unspecified	22 (3.3)
Z508	Rehabilitation, other	21 (3.1)
R060	Dyspnea	16 (2.4)
A419B	Urosepsis	12 (1.8)
A499	Bacterial infection, unspecified	12 (1.8)
J159	Bacterial pneumonia, unspecified	10 (1.5)
E869A	Dehydration	9 (1.3)

Supplementary Table 7

The 10 most frequently reported primary diagnoses (codes and names) for hospital admissions of patients hospitalised directly from temporary stay facilities on weekends

Reason for hospital admission, diagnosis code	Reason for hospital admission, diagnosis name	Proportion of hospitalized patients, n (%) (n = 131)
J189	Pneumonia, unspecified organism	13 (9.9)
R060	Dyspnea	7 (5.3)
E869A	Dehydration	5 (3.8)
R509	Fever, unspecified	n < 5
Z039	Observation for suspected disease or condition, unspecified	n < 5
A419	Sepsis, unspecified organism	n < 5
J449	Chronic obstructive pulmonary disease, unspecified	n < 5
N300	Acute cystitis	n < 5
Z038	Observation for other suspected diseases and conditions	n < 5
B342A	COVID-19 infection without localization	n < 5

Figure 2

Kaplan-Meier survival curves for patients moving into temporary stay facilities in 14 Danish municipalities from 2016 to 2023, overall (left panel), stratified by sex group (middle panel), and stratified by age group (right panel)

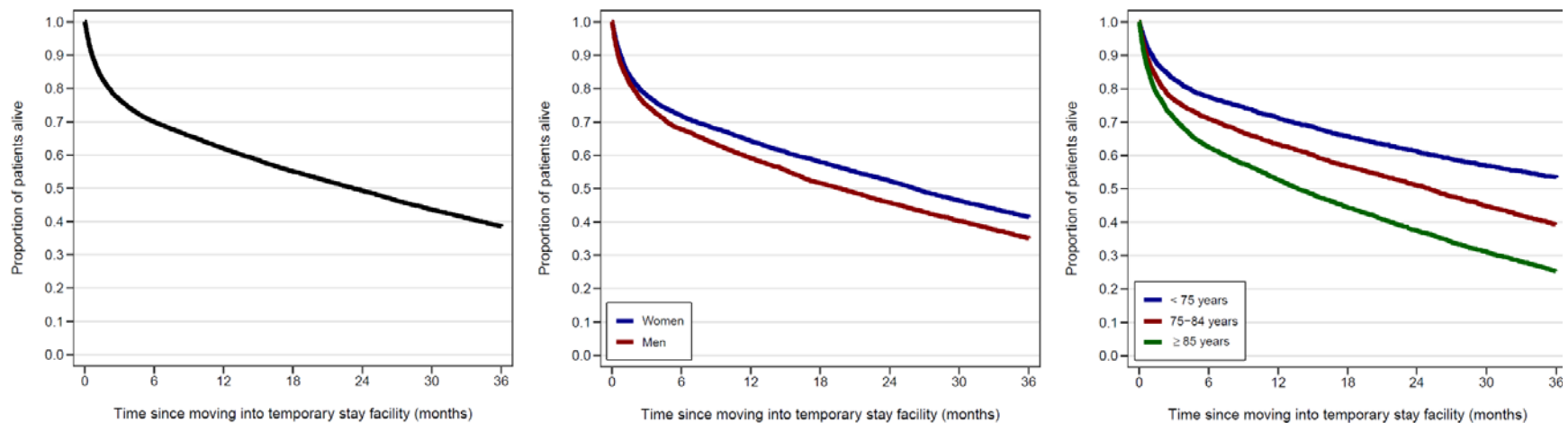


Table 2

Baseline predictors of 30-day mortality after moving into a temporary stay facility

	OR (95% CI)
Sex	
Female	1.00 (ref.)
Male	1.17 (1.05 - 1.32)
Age	
< 75 years	1.00 (ref.)
75-84 years	1.60 (1.37 - 1.87)
≥ 85 years	2.29 (1.95 - 2.69)
Charlson Comorbidity Index (CCI)	
0-1	1.00 (ref.)
2-3	1.36 (1.15 - 1.60)
≥ 4	1.93 (1.56 - 2.40)
Medical history of	
Cancer	1.65 (1.41 - 1.93)
Chronic obstructive pulmonary disease	1.12 (1.00 - 1.27)
Dementia	0.72 (0.59 - 0.88)
Parkinson disease	0.58 (0.40 - 0.82)
Ischemic heart disease	0.97 (0.86 - 1.09)
Heart failure	1.51 (1.34 - 1.71)
Atrial fibrillation	0.97 (0.85 - 1.10)
Stroke	0.82 (0.71 - 0.93)
Diabetes mellitus	0.91 (0.79 - 1.04)
Alcohol use disorder	0.83 (0.62 - 1.08)
Substance use disorder	0.98 (0.75 - 1.28)
Fall injuries	0.77 (0.68 - 0.86)
Hospitalizations in the year before move-in	
0-2	1.00 (ref.)
3-5	1.18 (1.02 - 1.35)
≥ 6	1.59 (1.38 - 1.83)

Supplementary Table 8

Baseline predictors of 90-day mortality after moving into a temporary stay facility

	OR (95% CI)
Sex	
Female	1.00 (ref.)
Male	1.15 (1.05 - 1.27)
Age	
< 75 years	1.00 (ref.)
75-84 years	1.58 (1.39 - 1.79)
≥ 85 years	2.34 (2.05 - 2.67)
Charlson Comorbidity Index (CCI)	
0-1	1.00 (ref.)
2-3	1.25 (1.09 - 1.43)
≥ 4	1.93 (1.62 - 2.31)
Medical history of	
Cancer	1.72 (1.51 - 1.97)
Chronic obstructive pulmonary disease	1.16 (1.05 - 1.28)
Dementia	0.71 (0.60 - 0.83)
Parkinson disease	0.75 (0.57 - 0.96)
Ischemic heart disease	1.05 (0.95 - 1.16)
Heart failure	1.39 (1.26 - 1.54)
Atrial fibrillation	1.04 (0.94 - 1.16)
Stroke	0.83 (0.74 - 0.92)
Diabetes mellitus	1.00 (0.89 - 1.11)
Alcohol use disorder	0.87 (0.70 - 1.07)
Substance use disorder	1.10 (0.88 - 1.35)
Fall injuries	0.78 (0.71 - 0.86)
Hospitalizations in the year before move-in	
0-2	1.00 (ref.)
3-5	1.24 (1.10 - 1.38)
≥ 6	1.67 (1.49 - 1.88)

Appendix A – Definition of comorbidities

A-table 1. ICD-10 and ATC codes used to define comorbidities in Table 1

Comorbidity	ICD-10 code	ATC code
Cancer	C D45 D46 D471 D473 D474 D475	
COPD	J40 J41 J42 J43 J44	R03
Dementia	F00 F01 F02 F03 F1073 F1173 F1273 F1373 F1473 F1573 F1673 F1873 F1973	N06D
Parkinson disease	F023 G20 G21 G22	N04BA
Ischemic heart disease	I20 I21 I22 I23 I24 I25	N02BA C01DA B01AC
Heart failure	I099A I110 I130 I132 I50	C03C
Atrial fibrillation	I48	
Stroke	I60 I61 I62 I63 I64 I69	
Diabetes mellitus	E10 E11 E13 E14	A10
Alcohol use disorder	F101	N07BB
Substance use disorder	F11 F12 F13 F14 F15 F16 F17 F18 F19	N07BC
Fall injuries	S00 S01 S02 S06 S10 S12 S20 S21 S22 S30 S31 S32 S40 S41 S42 S50 S51 S52 S70 S71 S72 S80 S81 S82 S430 S431 S432 S530 S531	

ICD-10 = 10th revision of the International Classification of Disease; ATC = Anatomical Therapeutic Chemical; COPD = Chronic Obstructive Pulmonary Disease