

1 Adverse respiratory events during treatment with gabapentin and opioids among older adults with
2 spine-related conditions: a propensity-matched cohort study in the US Medicare population

3 Laura S. Gold, PhD;^{1,2} Patrick J. Heagerty, PhD;^{2,3} Ryan N. Hansen, PharmD, PhD;⁴ Janna L. Friedly, MD,
4 MPH;^{2,5} Richard A. Deyo, MD, MPH;⁶ Michele Curatolo, MD, PhD;^{2,7} Judith A. Turner, PhD;^{2,5,8} Sean D.
5 Rundell, PhD;^{2,5} Jeffrey G. Jarvik, MD, MPH;^{1,2} Pradeep Suri, MD, MSc^{2,5}

6 ¹Department of Radiology, School of Medicine, University of Washington, Seattle, WA; USA

7 ²Clinical Learning, Evidence, and Research Center, University of Washington, Seattle, WA; USA

8 ³Department of Biostatistics, University of Washington, Seattle, WA, USA

9 ⁴School of Pharmacy, University of Washington, Seattle, Washington, United States

10 ⁵Department of Rehabilitation Medicine, University of Washington, Seattle, WA, USA

11 ⁶Departments of Family Medicine and Internal Medicine, Oregon Health & Science University, Portland,
12 OR, USA

13 ⁷Department of Anesthesiology and Pain Medicine, University of Washington, Seattle WA.

14 ⁸Department of Psychiatry and Behavioral Sciences, University of Washington, Seattle WA.

15 ⁹ Division of Rheumatology, University of Washington, Seattle WA.

16 Corresponding Author: Laura S Gold, PhD, Department of Radiology, School of Medicine, University of
17 Washington. 4333 Brooklyn Ave NE Box 359558. Seattle, WA, USA 98195-9558. Email: goldl@uw.edu.
18 Phone: +1-206-543-2749. Fax: +1-206-543-8609

19 Funding: This work was supported by the University of Washington Clinical Learning, Evidence, And
20 Research (CLEAR) Center for Musculoskeletal Disorders, Administrative, Methodologic and Resource
21 Cores and NIAMS/NIH grant P30AR072572. The funding source had no role in the study design,
22 collection, analysis and interpretation of the data, writing of the report, or the decision to submit this
23 article for publication.

24 Competing Interests: The authors report no conflicts of interest.

25 Keywords: Anti-depressants, duloxetine, gabapentin, opioids, propensity matching, spine pain

26 Author contributions: LSG: data curation, formal analysis, investigation, methodology, validation,
27 visualization, writing (original draft). PJH: conceptualization, funding acquisition, methodology, writing
28 (review & editing). RNH: conceptualization, methodology, writing (review & editing). JLF:
29 conceptualization, funding acquisition, writing (review & editing). RAD: conceptualization, funding
30 acquisition, writing (review & editing). MC: conceptualization, funding acquisition, writing (review &
31 editing). JAT: conceptualization, funding acquisition, writing (review & editing). SDR: conceptualization,
32 funding acquisition, writing (review & editing). JGJ: conceptualization, funding acquisition, project
33 administration, resources, supervision, writing (review & editing). PS: conceptualization, funding
34 acquisition, investigation, methodology, resources, visualization, writing (original draft).

35

1 **Abstract**

2 **Background Context:** Recent work indicates no increased mortality risk with concurrent gabapentin and
3 opioid use when using an active comparator control design. However, concurrent gabapentin and opioid
4 prescriptions have been associated with greater risk of respiratory depression in some studies.

5 **Purpose:** To compare the risk of respiratory events among Medicare enrollees with spine-related
6 diagnoses treated with gabapentin + opioids vs those treated with tricyclic antidepressants (TCA) or
7 duloxetine + opioids. We hypothesized that enrollees treated with gabapentin + opioids would have
8 increased risk of adverse respiratory events compared to those treated with an active control + opioids.

9 **Study Design/Setting:** Propensity score-matched cohort study with an incident user, active comparator
10 (TCA/duloxetine) control design. The primary analysis included those who concurrently (within 30 days)
11 filled ≥ 1 incident gabapentin + ≥ 1 opioid or ≥ 1 incident TCA/duloxetine + ≥ 1 opioid prescription.

12 **Patient Sample:** U.S. Medicare beneficiaries with spine-related diagnoses 2017-2019. People treated
13 with gabapentin + opioids (n=66,580) were matched on demographic and clinical factors to people
14 treated with TCAs/duloxetine + opioids (n=66,580).

15 **Outcome Measures:** Time to a composite respiratory outcome consisting of mechanical ventilation,
16 intubation, respiratory failure, pneumonia, or acute respiratory distress syndrome.

17 **Methods:** Cox proportional hazard regression was used to estimate adjusted hazard ratios (aHRs) and
18 95% confidence intervals (95% CIs).

19 **Results:** Among 133,160 Medicare enrollees (median age 73.3 years; 66.7% female), 6089 (4.6%)
20 experienced respiratory events before the end of follow-up. A total of 3297 (5.0%) of people who were
21 treated with gabapentin + opioids (median initial dose/day of gabapentin was 338 mg) had respiratory
22 events compared to 2792 (4.2%) of those treated with an active control + opioids. The increased risk in
23 those treated with gabapentin + opioids was statistically significant after adjustment (HR 1.14; 95% CI
24 1.09, 1.20; $p < 0.0001$). The most common respiratory events were pneumonia (3.5% of people in the
25 gabapentin + opioids group versus 3.0% of people in the TCA/duloxetine + opioids group) and
26 respiratory failure (2.2% in the gabapentin + opioids group versus 1.8% in the TCA/duloxetine + opioids

1 group). Results were similar in analyses (a) restricted to ≤ 30 -day follow-up and (b) that required ≥ 2 fills
2 of each prescription.

3 **Conclusions:** While recent work has indicated no increased mortality risk with concurrent gabapentin
4 and opioid use, the current findings suggest clinicians should exercise caution in prescribing gabapentin
5 to people experiencing pain who are also being treated with opioids, due to the potentially increased
6 risk of respiratory events.

7 **Key words**

8 Anti-depressants, duloxetine, gabapentin, opioids, propensity matching, spine pain

1 Introduction

2 Given recommendations from the Centers for Disease Control and Prevention [1] and the American
3 Geriatrics Society [2] for caution in prescribing opioids for pain, prescriptions of alternative medications
4 to treat pain, such as gabapentin, have increased [3, 4]. In a large randomized controlled trial of patients
5 with back pain in primary care [4], an epidemiologic intervention that decreased opioid use also resulted
6 in a higher number of prescriptions of tricyclic antidepressants (TCAs) and non-steroidal anti-
7 inflammatory drugs (NSAIDs). Combinations of medications are also commonly used to treat chronic
8 pain in the United States.[5, 6]

9 Although use of gabapentin alone is generally considered safe, some studies show associations with
10 adverse respiratory events when it is used in combination with opioids [7]. One study found an
11 association between gabapentin prescriptions and chronic obstructive pulmonary disease (COPD)
12 exacerbations [8]. Other studies have found that perioperative use of gabapentinoids for pain is
13 associated with postoperative respiratory depression [9], mechanical ventilation [10], and pneumonia
14 compared to patients not exposed to gabapentin perioperatively [11]. On the other hand, some studies
15 have found advantages associated with gabapentin use compared to a placebo, including reduced total
16 morphine consumption when gabapentin was used preoperatively [12], and reduced fentanyl
17 consumption and shorter durations of mechanical ventilation when gabapentin was used in an intensive
18 care population [13].

19 While prior studies have found increased risks of respiratory events among people treated with
20 gabapentin + opioids compared to opioids alone [14], these results may be explained by confounding
21 due to the need for a second pain medication. That is, people taking both gabapentin and opioids may
22 on average have more severe pain and comorbidities than those taking opioids alone. These factors
23 alone might account for greater risk of adverse events. Such confounding may be mitigated in research
24 by using an active control medication as a comparator. TCAs and duloxetine, - like gabapentin, are
25 commonly prescribed to treat chronic pain. Therefore, patients receiving TCAs or duloxetine
26 (TCA/duloxetine) are a reasonable active control group for patients receiving gabapentin.

27 In a recent study of the entire Medicare population with spine-related conditions which used
28 TCAs/duloxetine as an active control group [Gold et al., in press at *PAIN*, [15], we found no increased risk
29 of mortality among Medicare enrollees treated with gabapentin + opioids compared to those treated
30 with TCAs/duloxetine + opioids. However, a secondary analysis found that people treated with

1 gabapentin + opioids were at a slight but statistically significant increased risk of experiencing major
2 medical complications. This raised the question of whether adverse respiratory events might explain the
3 increased risk of major medical complications that were observed in people treated with gabapentin +
4 opioids.

5 The purpose of this study was to compare time to adverse respiratory events among Medicare enrollees
6 with spine-related conditions who were treated with gabapentin + opioids compared to those treated
7 with TCA/duloxetine + opioids. We hypothesized that enrollees treated with gabapentin + opioids would
8 have increased risk of adverse respiratory events compared to those treated with an active control +
9 opioids.

10 **Methods**

11 This manuscript adheres to RECORD-PE[16] and START-RWE[17] guidelines for reporting. This study was
12 determined to be exempt from review by the University of Washington Institutional Review Board.

13 Study Population

14 We identified enrollees from the 100% sample of Centers for Medicare and Medicaid Services (CMS)
15 beneficiaries from 2017-2019 who had International Classification of Diseases, 10th Revision, Clinical
16 Modification (ICD-10-CM) inpatient or outpatient diagnosis codes [18] for spine-related conditions [19-
17 21] (e.g., neck pain, low back pain, spinal stenosis, radiculopathy, others; eTable 1). We excluded
18 individuals with the following on or before their “index” fill date of gabapentin, TCA/duloxetine, or
19 opioids: age <65 years; not enrolled in CMS Part A, Part B and Part D for ≥ 1 year before index; enrolled
20 in a health maintenance organization (HMO) health plan (because we did not have access to data from
21 these plans); or diagnoses of “red flag” spine conditions (e.g., fracture) or seizure disorders (eTable 2).

22 Medication Exposure Groups

23 Medication exposures (filled prescriptions only) were ascertained from Medicare Part D claims. People
24 with incident gabapentin fills (no gabapentin fills during the previous year) (eTable 3) and concurrent
25 opioid fills within 30 days were compared to an active control group of people who had incident TCA or
26 duloxetine fills (no TCA/duloxetine fills in prior year) and concurrent (within 30 days) opioid fills
27 (eFigures 1a-1b). Selective serotonin reuptake inhibitors and serotonin-noradrenaline reuptake
28 inhibitors (besides duloxetine) were not included in the active control group because they are less
29 commonly prescribed for pain [22]. To ensure that opioids and the active comparator treatment were

1 likely to have been taken concurrently, all beneficiaries included in our analysis had an “index fill” and a
2 “qualifying fill.” For people in the gabapentin + opioids group, (1) the index fill could have been the
3 calendar date of an opioid fill and the qualifying fill was the date on which they filled their first
4 gabapentin prescription, or (2) the index fill could have been the calendar date on which they filled their
5 first gabapentin prescription and the qualifying fill was the date of their opioid prescription fill. Similarly,
6 for people in the TCA/duloxetine + opioids group, (1) the index fill could have been the calendar date on
7 which a person filled an opioid prescription and the qualifying fill was the date on which they filled their
8 first TCA/duloxetine prescription, or (2) the index fill could have been the calendar date on which they
9 filled their first TCA/duloxetine prescription and the qualifying fill was the date of their opioid fill.

10 The primary analysis examined people who filled ≥ 1 gabapentin + ≥ 1 opioid prescription within a 30-day
11 period compared to those who filled ≥ 1 TCA/duloxetine + ≥ 1 opioid prescription within 30 days. This
12 analysis was designed to capture early respiratory events based on the putative mechanism of risk (that
13 the medications taken concurrently would increase the likelihood of respiratory depression) [7]. We also
14 conducted a secondary analysis designed to increase the likelihood that people actually consumed the
15 medications from their filled prescriptions. The typical period of time between refills for gabapentin is 1-
16 3 months [23], so this secondary analysis examined people with ≥ 2 gabapentin fills + ≥ 2 opioid fills
17 within a 120-day exposure period and compared them to those with ≥ 2 TCA/duloxetine fills + ≥ 2 opioid
18 fills in 120 days (eFigures 1c-1d).

19 We also calculated the mean daily doses of opioids (in milligram morphine equivalents [MMEs][24]),
20 gabapentin, duloxetine, and each TCA (in milligrams (mg)) for the index fills as well as through the end of
21 follow-up. For the dosages from index through the end of follow-up, we compared the dosages in each
22 drug category among those who did and did not have respiratory events.

23 Outcomes and Censoring Variables

24 Beginning from the day of the qualifying fill, we assessed occurrence of any of five respiratory events at
25 any time and at 30 days, at 1 year, and at 2 years after the qualifying date: intubation, mechanical
26 ventilation, respiratory failure, pneumonia, or acute respiratory distress syndrome (ARDS) (eTable 4).
27 Because the posited mechanism of action of gabapentin + opioids is that the medications may increase
28 risk of respiratory depression, [14] we chose respiratory events associated with respiratory depression
29 and its sequelae as the main study outcomes. We did not include respiratory events that are not
30 associated with respiratory depression (e.g., pulmonary embolism).

1 Censoring events were fills of benzodiazepine or pregabalin after the qualifying fill (because concurrent
2 use of benzodiazepines independently increases respiratory depression among opioid users [25] and
3 pregabalin is pharmacologically similar to gabapentin [26]); no opioid refill for >45 days; TCA/duloxetine
4 fill in comparison groups treated with gabapentin; no gabapentin refill for >180 days in comparison
5 groups treated with gabapentin; gabapentin fill in comparison groups treated with TCA/duloxetine; no
6 TCA/duloxetine refill for >180 days in comparison groups treated with TCA/duloxetine; or the end of the
7 study (December 31, 2019), whichever occurred first.

8 Statistical Analysis

9 To increase internal validity and limit confounding, we used two approaches to ensure that the
10 TCA/duloxetine group was as comparable as possible to the gabapentin group in terms of covariates
11 that could have caused residual confounding. First, we included a wide range of variables in the logistic
12 regression used for propensity score 1:1 matching based on clinical knowledge and prior literature
13 (eTable 5). In particular, given that duloxetine and TCAs are common treatments for mental health
14 conditions, and the same is true for gabapentin (although to a lesser extent), we included several
15 variables indicative of inpatient or outpatient psychiatric diagnoses in the propensity score, including
16 whether people had diagnoses of alcohol abuse and opioid use disorder in the year prior to index, as
17 well as the counts of the number of visit dates (as surrogates for severity) with diagnoses of mood
18 disorders, generalized anxiety disorder (GAD), and post-traumatic stress disorder (PTSD) in the year
19 prior.

20 Second, because we expected certain variables that occurred between the index and qualifying fills to
21 be strongly related to whether people received the prescriptions of interest *and* to respiratory events,
22 we matched on them “exactly” in addition to matching on the propensity score. These included (1)
23 average daily MME [24] of opioid prescriptions filled on/between the index and qualifying fill dates,
24 matched within 9 categories (>0 to 2.1; >2.1 to 5.3; >5.3 to 10.0; >10.0 to 15; >15 to 20; >20 to 30; >30
25 to 40; >40 to 64, and >64) based on MME distribution; (2) the length of time between the index and
26 qualifying fills to make the timing of concurrent opioid treatment comparable between groups; (3) the
27 presence of a respiratory event between the index and qualifying fills (eTable 4); and (4) the presence of
28 non-respiratory complications between index and qualifying fills (eTable 6).

29 We calculated descriptive statistics (numbers, proportions, medians, interquartile ranges (IQRs), and
30 standardized mean differences) to ensure the matched groups were similar. Kaplan-Meier curves were

1 plotted to graphically assess the proportional hazards assumption, which was met for all analyses. Cox
2 proportional hazard regression was used to estimate adjusted hazard ratios (aHRs) and 95% confidence
3 intervals (95% CIs). All regression models were adjusted for the variables in the propensity score model
4 (eTable 5). Two-sided p-values of <0.05 were considered statistically significant and analyses were
5 performed using SAS Enterprise Guide version 7.15 and SAS for Windows version 9.4, SAS Institute Inc.,
6 Cary, NC.

7 **Results**

8 The flow of Medicare beneficiaries in the primary analysis is shown in Figure 1. Of the initial 525,884
9 people who were eligible for matching, 66,580 people treated with gabapentin + opioids matched to
10 66,580 people treated with TCA/duloxetine + opioids. An abbreviated list of cohort characteristics is
11 shown in Table 1 and a complete list (with standardized mean differences) is shown in eTable 7. The
12 median (range) follow-up time was 45 (1-1093) days. Although the unmatched treatment groups
13 differed with respect to various characteristics (eTable 7), the matched groups were closely comparable
14 (Table 1 and eTable 7). All subsequent results refer to the matched groups. The majority of people were
15 female, white, and had a mean (standard deviation) Charlson comorbidity score of 2.7 (2.7). In both
16 treatment groups, mental health diagnoses and fills of medications besides opioids, gabapentin, TCA, or
17 duloxetine that are often prescribed for pain were common. In the TCA/duloxetine group, 62% of
18 Medicare beneficiaries filled duloxetine for their index fill and 38% filled a TCA. The median (IQR) doses
19 of the index fills were: 300 mg (300, 900) for gabapentin, 30 mg (30, 60) for duloxetine and 25 mg (10,
20 30) for amitriptyline, the most common TCA that was filled.

21 We observed a statistically significant increased risk of respiratory events comparing drug treatment
22 groups over the entire follow-up time (eFigure 2; Figure 2) (aHR, 1.14; 95% CI, 1.09, 1.20). Comparing
23 those treated with gabapentin + opioids versus those treated with TCA/duloxetine + opioids, the
24 proportion at risk for respiratory events was very similar at 1-month, but the difference widened by 1-
25 year and 2-years after index (Figure 2).

26 The numbers and percentages of people who experienced each respiratory event are shown in Table 2.
27 Although respiratory events were not uncommon in both drug treatment groups, a greater proportion
28 of people in the gabapentin group experienced a respiratory event (5.0% versus 4.2%). The most
29 common types of respiratory events were pneumonia (3.5% of people in the gabapentin + opioids group
30 versus 3.0% in the TCA/duloxetine + opioids group) and respiratory failure (2.2% in the gabapentin +

1 opioids group versus 1.8% in the TCA/duloxetine + opioids group). People in the gabapentin group were
2 somewhat more likely to have been censored because they did not refill an opioid prescription for >45
3 days (53.0% versus 47.3%) and less likely than people in the TCA/duloxetine + opioids group to have
4 been censored for filling pregabalin prescriptions (2.6% in the gabapentin + opioids group versus 4.6% in
5 the TCA/duloxetine + opioids group) (Table 2). Results were similar when we examined 30-day
6 respiratory events (eTable 8; eFigures 3-4).

7 People with respiratory events had higher median opioid doses per day in both drug treatment groups
8 (Table 3). Among those treated with gabapentin + opioids, the median (IQR) opioid dose was 21.4 (9.2,
9 48.9) MME in those with respiratory events vs 11.6 (4.4, 30.0) MME in those without. Among those
10 treated with TCA/duloxetine + opioids, the median (IQR) MME was 22.4 (9.3, 50.9) in those with
11 respiratory events versus 13.9 (5.0, 34.0) in those without. The median dose of gabapentin in the last fill
12 prior to the end of follow-up was higher than the median dose from index to the end of follow-up
13 among everyone, but the difference was more pronounced among people with respiratory events
14 compared to those without (median (IQR) 600 (300, 900) mg in those with respiratory events versus 400
15 (300, 900) mg in those without). Those who did not have respiratory events tended to have somewhat
16 higher dosages of duloxetine and of each of the TCAs (Table 3).

17 Results of the secondary analysis requiring ≥ 2 fills of each medication of interest were similar to those of
18 the primary analysis. A total of 165,585 people who filled ≥ 2 gabapentin and opioid prescriptions were
19 eligible to be matched with 42,344 people who filled ≥ 2 TCA/duloxetine and opioid prescriptions; among
20 these, 15,522 were in each matched group (eFigure 5). The groups were well-matched (eTable 9). We
21 observed a greater proportion of respiratory events among people treated with gabapentin at any time
22 (eTable 10) and an increased adjusted risk of a respiratory event among people treated with gabapentin
23 + opioids (eFigures 6-7; aHR, 1.19; 95% CI, 1.08, 1.32). Results for 30-day respiratory events in the
24 secondary analysis were similar to the primary analysis (eTable 11; eFigures 8-9).

25 **Discussion**

26 In this analysis of Medicare beneficiaries with spine-related diagnoses, we found that people treated
27 with gabapentin + opioids were at a small but statistically significant increased risk of respiratory events
28 compared to people treated with TCA/duloxetine + opioids, with a 14% greater relative risk of a
29 respiratory event within 1 year and a 1.5% greater absolute risk within 1 year. This relationship was
30 consistent when we examined respiratory events within 30 days, as well as when we required people in

1 the matched cohorts to have filled ≥ 2 prescriptions for gabapentin/active control + opioids and
2 therefore were more likely to have consumed their medications.

3 The combination of gabapentin + opioids may lead to increased risk of respiratory events by causing
4 respiratory depression [27-30]. This hypothesis is supported by studies comparing people exposed to
5 gabapentin versus non-users with respect to outcomes including COPD exacerbations [9], post-operative
6 mechanical ventilation [10], pneumonia [11], and respiratory depression [8, 29]. However, by comparing
7 gabapentin users to non-users without an active control group [9-11], these analyses were subject to
8 substantial residual confounding and it is possible that some unmeasured confounder rather than
9 gabapentin was causing the respiratory events. One of these studies [8] did perform a secondary
10 analysis with an active control group. These authors examined the risk of COPD exacerbations in people
11 in Quebec, Canada with neuropathic or chronic pain who were treated with gabapentinoids versus
12 NSAIDs. They found that those treated with gabapentinoids were at increased risk of COPD
13 exacerbations. Therefore, our study is consistent with and adds to the limited previous work
14 demonstrating increased risk of adverse respiratory events with combined use of gabapentin and opioid
15 medication.

16 The current study also builds on past work by showing that the increased risk of respiratory events with
17 combined opioid and gabapentin applies not only to select groups of people with certain medical
18 conditions (e.g., breast cancer survivors [30], surgical patients [9], those with COPD [8]) but more
19 broadly to people with spinal pain, the most common pain condition associated with office visits that
20 result in opioid prescriptions [31]. This is important given that spine-related diagnoses are the most
21 common diagnoses and are a substantial driver of increasing health care costs in the United States [32].

22 It is important to note that the significantly increased risk of respiratory events with concurrent
23 gabapentin and opioid use in the current analysis was present even though the doses of gabapentin
24 used were quite low, with a median daily gabapentin dose of about 300 mg at the time of gabapentin
25 initiation, increasing to a 400 mg daily gabapentin dose throughout follow-up among people who did *not*
26 have subsequent respiratory events and to a 600 mg daily gabapentin dose among people who *did* have
27 subsequent respiratory events. Opioid doses from the qualifying date to the end of follow-up were also
28 higher among gabapentin users who had subsequent respiratory events versus those who did not, which
29 is not surprising since higher doses of opioids are associated with increased risk of respiratory
30 depression [33]. This highlights that, among older adults who are using opioids, even low doses of
31 gabapentin may increase the likelihood of respiratory events and supports the current recommendation

1 from the Beers criteria [2] that the combination of gabapentin and opioids should be used cautiously in
2 older adults, or avoided.

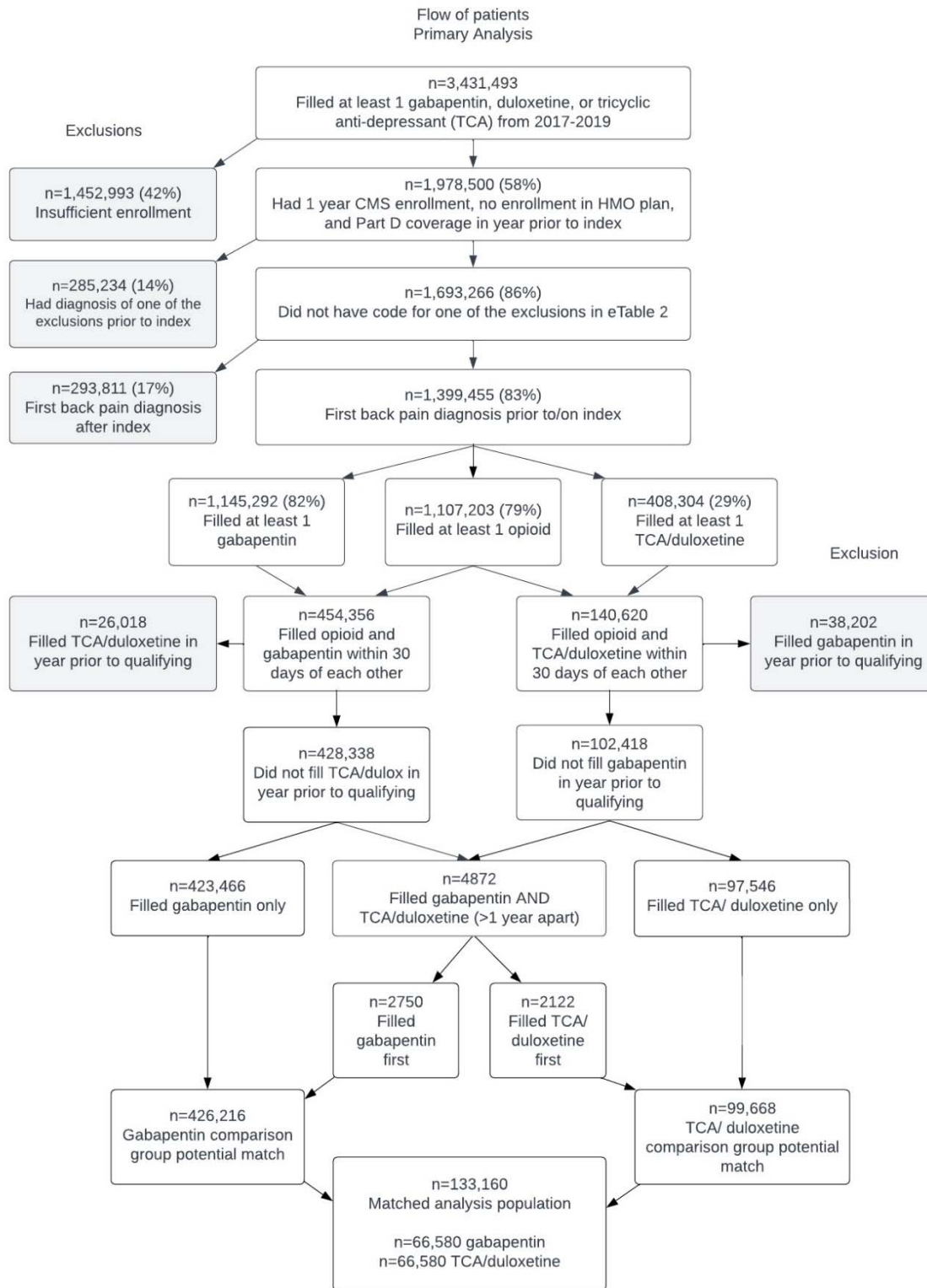
3 The current findings are important to consider in the context of our recent work using nearly identical
4 methods that found no significant difference in the risk of mortality (OR= 0.98 [0.90, 1.06]; p=0.63)
5 among those treated with gabapentin + opioids versus those treated with TCA/duloxetine + opioids
6 [Gold et al. in press at *PAIM*], with a point estimate that did not suggest even a slight tendency towards a
7 detrimental effect on mortality. Together, these results suggest the possibility that adverse respiratory
8 events after gabapentin initiation among older adults using opioids may lead to clinical changes, such as
9 not refilling gabapentin and opioid prescriptions in people who have had respiratory events, that
10 prevent subsequent mortality. This underscores the importance of educating patients and caregivers
11 about the increased risk of respiratory events with opioid use, and potential augmentation of this
12 increased risk when initiating gabapentin, so that patients and their caregivers can be watchful for
13 changes in respiratory status. This also underscores the importance of healthcare professionals asking
14 about shifts in respiratory status when seeing older patients who use opioids who are returning to clinic
15 after recently initiating gabapentin.

16 We emphasize strongly that the current study's findings apply only to gabapentin treatment in the
17 context of concurrent opioid treatment among older adults and do *not* apply to gabapentin when
18 opioids are not being used concurrently. Future studies are needed in samples of people not taking
19 opioids to compare rates of respiratory events and other important outcomes such as falls in those
20 taking gabapentin versus those taking an active control medication. Also, studies conducted in broad
21 populations who do not have pre-existing respiratory diagnoses or other major comorbidities would be
22 invaluable.

23 By using an active comparator group and extensive matching in this large, representative group of older
24 US adults, we evaluated respiratory events in cohorts that were as alike as possible except with respect
25 to their drug treatment regimens. The active comparator group also illustrated the high frequency of
26 respiratory events among older adults using opioids in general, even those who did not use gabapentin.
27 Despite use of an active control group, however, it remains possible that residual confounding by factors
28 not available in claims data such as pain severity and functional limitations remained. Because our study
29 population included only older adults with spine-related conditions, we cannot be certain that our
30 results would apply to younger populations or people with other pain conditions.

1 In summary, among older adults using opioids for spinal conditions, gabapentin initiation, even at low
2 doses, conferred a small but statistically significant risk of adverse respiratory events compared to an
3 active control group. Thus, healthcare professionals should carefully consider whether the benefits of
4 initiating gabapentin in older adults who have already been prescribed opioids outweigh the risks. If
5 gabapentin is prescribed in older adults taking opioids, our findings suggest the importance of informing
6 patients and caregivers of the risk of respiratory events and carefully monitoring them for respiratory
7 depression and other respiratory problems.

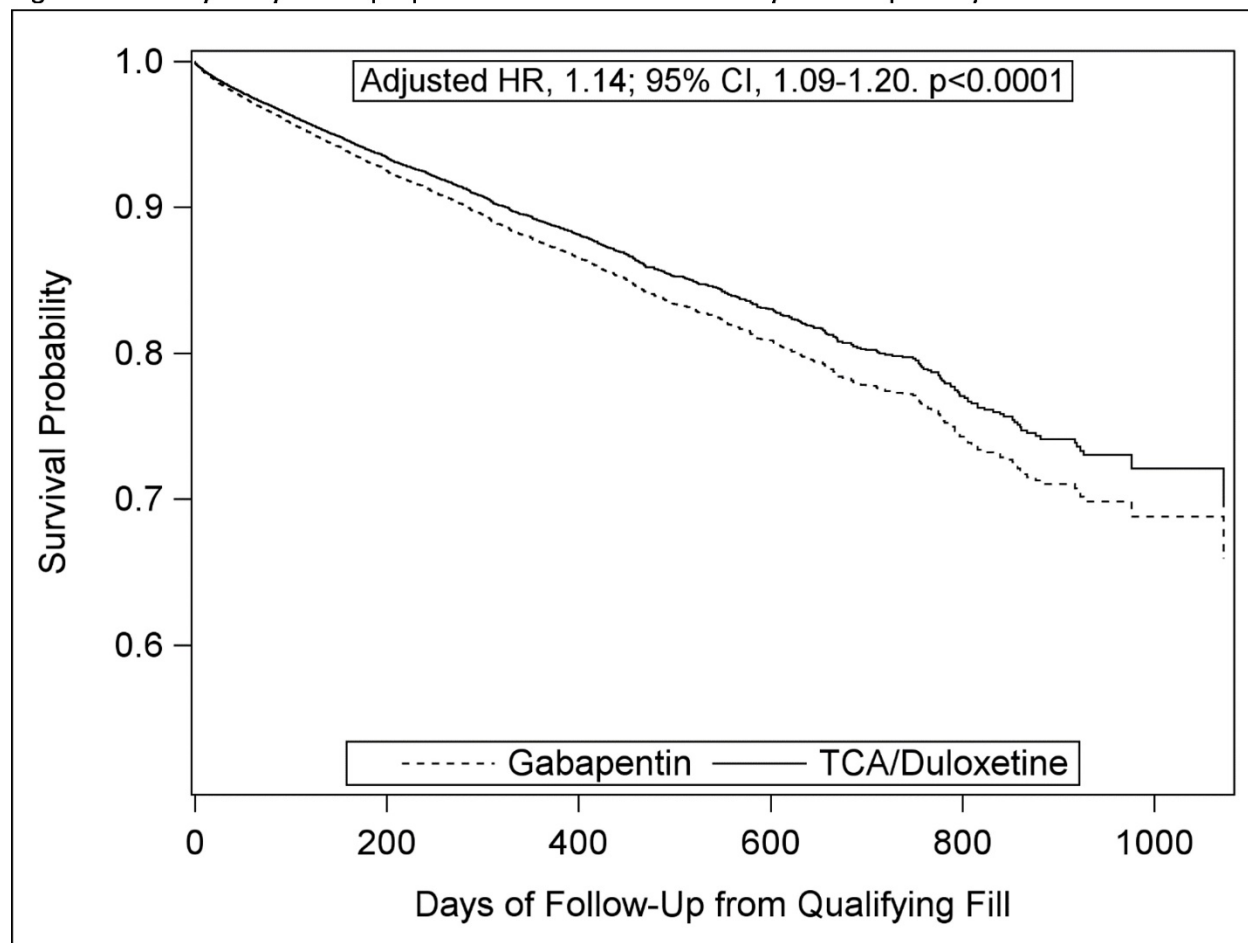
1 Figure 1. Flow of patients for the primary analysis.



2

3

Figure 2. Primary analysis Cox proportional hazard curves for any-time respiratory events.



Proportion still at risk at:	Gabapentin	TCA/Duloxetine	Difference in probability of survival \pm standard error (TCA/Duloxetine - Gabapentin)
1-Month	98.3 (98.2, 98.4)	98.5 (98.4, 98.6)	0.2 \pm 0.04
1-Year	87.5 (86.4, 88.5)	89.0 (88.0, 90.0)	1.5 \pm 0.3
2-Years	77.2 (75.2, 79.3)	79.8 (77.9, 81.7)	2.6 \pm 0.5

Abbreviations

1 95% CI: 95% confidence interval; HR: Hazard ratio; TCA: Tricyclic anti-depressant

2

1 Table 1. Comparison of patients who received gabapentin to those who received TCAs/duloxetine using
 2 1:1 matching in the primary analysis (selected variables).

N (%) unless otherwise indicated	Gabapentin n=66,580 (50%) n (%)	TCA/Duloxetine n=66,580 (50%) n (%)
DEMOGRAPHIC VARIABLES		
Age (mean, standard deviation)	74.9 ± 7.0	74.8 ± 7.2
Female	45,016 (67.6%)	43,791 (65.8%)
<i>Patient race</i>		
Unknown	731 (1.1%)	761 (1.1%)
White	58,097 (87.3%)	57,785 (86.8%)
Black	5,170 (7.8%)	5,334 (8.0%)
Other	582 (0.9%)	604 (0.9%)
Asian	622 (0.9%)	648 (1.0%)
Hispanic	996 (1.5%)	1,036 (1.6%)
North American Native	382 (0.6%)	412 (0.6%)
Buy-in from state	15,093 (22.7%)	14,990 (22.5%)
<i>Index^a year</i>		
2017	27,454 (41.2%)	27,151 (40.8%)
2018	21,577 (32.4%)	21,605 (32.4%)
2019	17,549 (26.4%)	17,824 (26.8%)
CLINICAL VARIABLES		
Number of days from first back pain diagnosis to index (mean, standard deviation)	570 ± 360	560 ± 350
Number of days from most recent spine-related diagnosis to index	130 ± 220	120 ± 200
Charlson co-morbidity score (mean, standard deviation)	2.7 ± 2.7	2.7 ± 2.7
Spine-related neuropathic pain in year prior to index	33,929 (51.0%)	35,009 (52.6%)
Cancer (excluding non-melanoma skin cancer) in year prior to index	9,862 (14.8%)	10,324 (15.5%)
<i>Respiratory events in year prior to index</i>		
# unique dates with diagnoses (mean ± standard deviation)	0.6 ± 3.8	0.7 ± 4.4
Intubation	335 (0.5%)	348 (0.5%)
Mechanical ventilation	438 (0.7%)	462 (0.7%)
Respiratory failure	5,723 (8.6%)	5,840 (8.8%)
Pneumonia	3,059 (4.6%)	3,110 (4.7%)
Acute respiratory distress syndrome	228 (0.3%)	250 (0.4%)
<i>Mental health diagnoses/procedures in year prior to index</i>		
Alcohol abuse	379 (0.6%)	373 (0.6%)
Opioid use disorder	12,578 (18.9%)	12,877 (19.3%)
Insomnia	8,982 (13.5%)	8,680 (13.0%)
Electroconvulsive therapy	17 (0.0%)	14 (0.0%)
Therapeutic repetitive transcranial magnetic stimulation treatment	13 (0.0%)	17 (0.0%)
Number of unique dates with generalized anxiety disorder diagnoses (mean, standard deviation)	0.3 ± 1.9	0.3 ± 1.7
Number of unique dates with post-traumatic stress disorder diagnoses (mean, standard deviation)	0.04 ± 0.9	0.04 ± 0.8
Number of unique dates with depression diagnoses (mean,	1.1 ± 4.0	1.1 ± 3.6

N (%) unless otherwise indicated	Gabapentin n=66,580 (50%) n (%)	TCA/Duloxetine n=66,580 (50%) n (%)
<i>standard deviation)</i>		
<i>Medication fills in year prior to index</i>		
NSAID	25,096 (37.7%)	25,068 (37.7%)
Acetaminophen	698 (1.0%)	691 (1.0%)
Muscle relaxer	14,537 (21.8%)	14,546 (21.8%)
Benzodiazepine	18,974 (28.5%)	18,497 (27.8%)
Pregabalin	3,501 (5.3%)	4,094 (6.1%)
Anti-psychotics	3,053 (4.6%)	3,055 (4.6%)
Selective serotonin/ norepinephrine reuptake inhibitors	20,614 (31.0%)	20,048 (30.1%)
Bupropion	3,431 (5.2%)	3,421 (5.1%)
Trazodone/nefazodone	7,209 (10.8%)	6,999 (10.5%)
Monoamine oxidase inhibitor	2,691 (4.0%)	2,736 (4.1%)
<i>Duration of opioid use (mean, standard deviation days)</i>	160 ± 200	170 ± 190
<i>Average daily milligram morphine equivalents (MME) from index to qualifying dates (median, IQR)</i>	35.8 ± 63.8	36.3 ± 63.7
Average daily milligram morphine equivalents (MME) from qualifying to end of follow-up (median, IQR)	28.9 ± 58.1	32.5 ± 62.1
Days from index to qualifying (median, IQR)	7.6 ± 8.3	7.9 ± 8.4
0-7	39,628 (59.5%)	39,628 (59.5%)
8-30	26,952 (40.5%)	26,952 (40.5%)
<i>Respiratory complications from index to qualifying dates</i>		
Intubation	<11	<11
Mechanical ventilation	<11	<11
Respiratory failure	18 (0.0%)	18 (0.0%)
Pneumonia	43 (0.1%)	43 (0.1%)
Acute respiratory distress syndrome (ARDS)	<11	<11
<i>Non-respiratory complications from index to qualifying dates</i>		
High acute risk ^b	<11	<11
Moderate acute risk ^c	2,004 (3.0%)	2,004 (3.0%)
Low acute risk ^d	1,853 (2.8%)	1,853 (2.8%)

1 ^aIndex=Date person had first fill of gabapentin, TCA, or duloxetine

2 ^bHigh acute risk complications=cardiac arrest, cardiopulmonary resuscitation

3 ^cModerate acute risk complications=sepsis, fluid and electrolyte disorders, weight loss, cancer, acute myocardial
4 infarction, paralysis

5 ^dLow acute risk complications=coagulopathy, gastrointestinal bleed, cardiac arrhythmias, stroke

6
7 Abbreviations

8 MME: Milligram morphine equivalents; NSAID: Nonsteroidal anti-inflammatory drug; TCA: Tricyclic anti-depressant

9

10

11

1 Table 2. Primary analysis respiratory outcomes at any time.

2

	Gabapentin n=66,580 (50%) n (%)	TCA/Duloxetine 3 n=66,580 (50%) n (%) 4
Any respiratory complication	3,297 (5.0%)	2,792 (4.2%)
Days to first respiratory complication (median, IQR)	37 (13, 118)	39 (12, 113)
Intubation	190 (0.3%)	175 (0.3%)
Mechanical ventilation	231 (0.3%)	214 (0.3%)
Respiratory failure	1,476 (2.2%)	1,202 (1.8%)
Pneumonia	2,354 (3.5%)	1,979 (3.0%)
Acute respiratory distress syndrome	51 (0.1%)	38 (0.1%)
Reasons for follow-up end		
Disenrolled	8,806 (13.2%)	9,058 (13.6%)
No opioid refill >45 days	35,268 (53.0%)	31,488 (47.3%)
Pregabalin fill	1,745 (2.6%)	3,043 (4.6%)
Benzodiazepine fill	11,317 (17.0%)	11,576 (17.4%)
TCA/duloxetine fill in gabapentin group	1,820 (2.7%)	--
Gabapentin fill in TCA/duloxetine group	--	3,742 (5.6%)
No gabapentin refill >180 days	4,327 (6.5%)	-
No TCA/duloxetine refill >180 days	--	4,881 (7.3%)
Respiratory complication	3,297 (5.0%)	2,792 (4.2%)

1 Table 3. Median daily doses of opioids, gabapentin, TCA, and duloxetine, stratified by whether person had respiratory complication.

Medication	Timing	Gabapentin				TCA/Duloxetine			
		No respiratory complication		Respiratory complication		No respiratory complication		Respiratory complication	
		n	Median (IQR)	n	Median (IQR)	n	Median (IQR)	n	Median (IQR)
Opioid (MME/day)	Qualifying date to EOF	63,283	11.6 (4.4, 30.0)	3297	21.4 (9.2, 48.9)	63,788	13.9 (5.0, 34.0)	2792	22.4 (9.3, 50.9)
Gabapentin (mg/day)	Index date to EOF	63,283	340 (200, 720)	3297	320 (170, 640)	--	--	--	--
Gabapentin (mg/day)	Last dose before EOF	63,283	400 (300, 900)	3297	600 (300, 900)	--	--	--	--
Duloxetine (mg/day)	Index date to EOF	--	--	--	--	39,758	33.3 (22.3, 60.0)	1836	31.0 (20.0, 50.5)
Amitriptyline (mg/day)	Index date to EOF	--	--	--	--	11,798	22.5 (10.6, 35.7)	463	19.0 (8.9, 36.4)
Imipramine (mg/day)	Index date to EOF	--	--	--	--	670	28.9 (16.7, 53.8)	27	19.2 (8.1, 49.9)
Nortriptyline (mg/day)	Index date to EOF	--	--	--	--	5309	19.4 (10.3, 31.2)	193	15.8 (9.1, 25.9)
Doxepin (mg/day)	Index date to EOF	--	--	--	--	6078	13.3 (6.7, 30.0)	267	10.6 (5.6, 26.1)
Other TCA ^a (mg/day)	Index date to EOF	--	--	--	--	312	26.6 (11.8, 60.1)	13	13.5 (5.1, 45.5)

2 ^aAmoxapine, clomipramine, desipramine, maprotiline, protriptyline, trimipramine maleate

3 Abbreviations

4 EOF: End of follow-up; IQR: Interquartile range; Mg: Milligram; MME: Milligram morphine equivalents; TCA: Tricyclic anti-depressant

References

1. Dowell D, Haegerich TM, Chou R. CDC Guideline for Prescribing Opioids for Chronic Pain--United States, 2016. *JAMA*. 2016;315(15):1624-45. 10.1001/jama.2016.1464.
2. Croke L. Beers Criteria for Inappropriate Medication Use in Older Patients: An Update from the AGS. *Am Fam Physician*. 2020;101(1):56-7.
3. Peet ED, Dana B, Sheng FY, Powell D, Shetty K, Stein BD. Trends in the Concurrent Prescription of Opioids and Gabapentin in the US, 2006 to 2018. *JAMA Intern Med*. 2022. 10.1001/jamainternmed.2022.5268.
4. Marcum ZA, Gold LS, James KT, et al. Effects of Including Epidemiologic Data in Lumbar Spine Imaging Reports on Prescribing Non-Opioid Medications for Pain. *J Gen Intern Med*. 2021;36(8):2237-43. 10.1007/s11606-021-06627-6.
5. Hackbarth G, Christianson J, Miller M, editors. Polypharmacy and opioid use among Medicare Part D enrollees. Report to the Congress: Medicare and the Health Care Delivery System; 2015: MedPAC. gov Washington, DC.
6. Shmagel A, Ngo L, Ensrud K, Foley R. Prescription Medication Use Among Community-Based U.S. Adults With Chronic Low Back Pain: A Cross-Sectional Population Based Study. *J Pain*. 2018;19(10):1104-12. 10.1016/j.jpain.2018.04.004.
7. Food and Drug Administration. FDA warns about serious breathing problems with seizure and nerve pain medicines gabapentin (Neurontin, Gralise, Horizant) and pregabalin (Lyrica, Lyrica CR). Food and Drug Administration; 2019 [cited 2023 Dec 1]; Available from: <https://www.fda.gov/media/133681/download>.
8. Rahman AA, Dell'Aniello S, Moodie EEM, et al. Gabapentinoids and Risk for Severe Exacerbation in Chronic Obstructive Pulmonary Disease : A Population-Based Cohort Study. *Ann Intern Med*. 2024. 10.7326/M23-0849.
9. Cavalcante AN, Sprung J, Schroeder DR, Weingarten TN. Multimodal analgesic therapy with gabapentin and its association with postoperative respiratory depression. *Anesthesia & Analgesia*. 2017;125(1):141-6.
10. McGauvran MM, Ohnuma T, Raghunathan K, et al. Association Between Gabapentinoids and Postoperative Pulmonary Complications in Patients Undergoing Thoracic Surgery. *J Cardiothorac Vasc Anesth*. 2022;36(8 Pt A):2295-302. 10.1053/j.jvca.2021.10.003.
11. Park CM, Inouye SK, Marcantonio ER, et al. Perioperative Gabapentin Use and In-Hospital Adverse Clinical Events Among Older Adults After Major Surgery. *JAMA Intern Med*. 2022;182(11):1117-27. 10.1001/jamainternmed.2022.3680.
12. Menda F, Koner O, Sayin M, Ergenoglu M, Kucukaksu S, Aykac B. Effects of single-dose gabapentin on postoperative pain and morphine consumption after cardiac surgery. *J Cardiothorac Vasc Anesth*. 2010;24(5):808-13. 10.1053/j.jvca.2009.10.023.
13. Salarian S, Memary E, Taheri F, Bagheri B. Gabapentin as Add-On to Fentanyl and Midazolam in Patients Receiving Mechanical Ventilation: A Randomized, Blinded Study. *Turk J Anaesthesiol Reanim*. 2022;50(2):101-6. 10.5152/TJAR.2022.21366.
14. Tambon M, Montarnal B, Lepetit M, Lapeyre-Mestre M. Non-opioid antinociceptive drugs : risk of respiratory depression and death related to concomitant use of gabapentinoids in addition to opioids. *Expert Opin Drug Saf*. 2023;22(3):183-94. 10.1080/14740338.2023.2193397.
15. Gold LS, P. Gabapentin in CMS Patients. Open Science Foundation; 2023 [cited 2024 January 8]; Available from: <https://osf.io/9u6re/>.
16. Langan SM, Schmidt SA, Wing K, et al. The reporting of studies conducted using observational routinely collected health data statement for pharmacoepidemiology (RECORD-PE). *bmj*. 2018;363.

- 1 17. Wang SV, Pinheiro S, Hua W, et al. STaRT-RWE: structured template for planning and reporting
2 on the implementation of real world evidence studies. *Bmj*. 2021;372.
- 3 18. World Health Organization. ICD-10-CM. International Classification of Diseases, 10th revision,
4 Clinical Modification. . 2015 [updated Oct 1 2015; cited 2022 December 1]; Available from:
5 <https://www.cdc.gov/nchs/icd/icd-10-cm.htm>.
- 6 19. Kazberouk A, Martin BI, Stevens JP, McGuire KJ. Validation of an administrative coding algorithm
7 for classifying surgical indication and operative features of spine surgery. *Spine (Phila Pa 1976)*.
8 2015;40(2):114-20. 10.1097/BRS.0000000000000682.
- 9 20. Martin BI, Lurie JD, Tosteson AN, et al. Indications for spine surgery: validation of an
10 administrative coding algorithm to classify degenerative diagnoses. *Spine (Phila Pa 1976)*.
11 2014;39(9):769-79. 10.1097/BRS.0000000000000275.
- 12 21. Cherkin DC, Deyo RA, Volinn E, Loeser JD. Use of the International Classification of Diseases (ICD-
13 9-CM) to identify hospitalizations for mechanical low back problems in administrative databases. *Spine*
14 (Phila Pa 1976). 1992;17(7):817-25. 10.1097/00007632-199207000-00015.
- 15 22. Bonilla-Jaime H, Sanchez-Salcedo JA, Estevez-Cabrera MM, Molina-Jimenez T, Cortes-Altamirano
16 JL, Alfaro-Rodriguez A. Depression and Pain: Use of Antidepressants. *Curr Neuropharmacol*.
17 2022;20(2):384-402. 10.2174/1570159X19666210609161447.
- 18 23. Grauer JS, Cramer JD. Association of State-Imposed Restrictions on Gabapentin with Changes in
19 Prescribing in Medicare. *J Gen Intern Med*. 2022;37(14):3630-7. 10.1007/s11606-021-07314-2.
- 20 24. Centers for Disease Control. CALCULATING TOTAL DAILY DOSE OF OPIOIDS FOR SAFER DOSAGE.
21 2023 [cited 2023 October 1]; Available from:
22 <https://www.cdc.gov/opioids/providers/prescribing/pdf/calculating-total-daily-dose.pdf>.
- 23 25. Xu KY, Hartz SM, Borodovsky JT, Bierut LJ, Grucza RA. Association Between Benzodiazepine Use
24 With or Without Opioid Use and All-Cause Mortality in the United States, 1999-2015. *JAMA Netw Open*.
25 2020;3(12):e2028557. 10.1001/jamanetworkopen.2020.28557.
- 26 26. Bockbrader HN, Wesche D, Miller R, Chapel S, Janiczek N, Burger P. A comparison of the
27 pharmacokinetics and pharmacodynamics of pregabalin and gabapentin. *Clin Pharmacokinet*.
28 2010;49(10):661-9. 10.2165/11536200-000000000-00000.
- 29 27. Hahn J, Jo Y, Yoo SH, Shin J, Yu YM, Ah YM. Risk of major adverse events associated with
30 gabapentinoid and opioid combination therapy: A systematic review and meta-analysis. *Front*
31 *Pharmacol*. 2022;13:1009950. 10.3389/fphar.2022.1009950.
- 32 28. Peckham AM, Fairman KA, Sclar DA. All-Cause and Drug-Related Medical Events Associated with
33 Overuse of Gabapentin and/or Opioid Medications: A Retrospective Cohort Analysis of a Commercially
34 Insured US Population. *Drug Saf*. 2018;41(2):213-28. 10.1007/s40264-017-0595-1.
- 35 29. Bykov K, Bateman BT, Franklin JM, Vine SM, Patorno E. Association of Gabapentinoids With the
36 Risk of Opioid-Related Adverse Events in Surgical Patients in the United States. *JAMA Netw Open*.
37 2020;3(12):e2031647. 10.1001/jamanetworkopen.2020.31647.
- 38 30. Lakkad M, Martin B, Li C, Harrington S, Dayer L, Painter JT. The use of gabapentinoids and
39 opioids and risk of developing opioid-induced respiratory depression among older breast cancer
40 survivors with neuropathic pain. *J Cancer Surviv*. 2024;18(3):917-27. 10.1007/s11764-023-01338-9.
- 41 31. Sherry TB, Sabety A, Maestas N. Documented Pain Diagnoses in Adults Prescribed Opioids:
42 Results From the National Ambulatory Medical Care Survey, 2006-2015. *Ann Intern Med*.
43 2018;169(12):892-4. 10.7326/M18-0644.
- 44 32. Dieleman JL, Baral R, Birger M, et al. US Spending on Personal Health Care and Public Health,
45 1996-2013. *JAMA*. 2016;316(24):2627-46. 10.1001/jama.2016.16885.
- 46 33. Baldo BA, Rose MA. Mechanisms of opioid-induced respiratory depression. *Arch Toxicol*.
47 2022;96(8):2247-60. 10.1007/s00204-022-03300-7.