

# 1 **Effects of Statin Therapy in Patients Treated with Drug-Eluting and Drug-** 2 **Coated Stents for Femoropopliteal Lesions: STAR-FP Study Outcomes**

3 Tatsuro Takei, MD<sup>1</sup>; Takahiro Tokuda<sup>2</sup>, MD; Naoki Yoshioka<sup>3</sup>, MD; Kenji Ogata<sup>4</sup>, MD;

4 Akiko Tanaka<sup>5</sup>, MD; Shunsuke Kojima<sup>6</sup>, MD; Kohei Yamaguchi<sup>7</sup>, MD; Takashi

5 Yanagiuchi<sup>8</sup>, MD; Tatsuya Nakama<sup>6</sup>, MD: On behalf of the LEADers PAD

6 investigators.

7 1. Department of Cardiology, Tenyoukai Central Hospital, Kagoshima, Japan.

8 2. Department of Cardiology, Nagoya Heart Center, Nagoya, Japan

9 3. Department of Cardiology, Ogaki Municipal Hospital, Ogaki, Japan.

10 4. Department of Cardiology, Miyazaki Medical Association Hospital, Miyazaki, Japan

11 5. Department of Cardiology, Sendai Kousei Hospital, Sendai, Japan

12 6. Department of Cardiology, Tokyo Bay Urayasu Ichikawa Medical Center, Urayasu,  
13 Japan

14 7. Department of Cardiology, Saiseikai Yokohama City Eastern Hospital, Yokohama,  
15 Japan

16 8. Department of Cardiology, Rakuwakai Otowa Hospital, Kyoto, Japan

17  
18 Short title: Statin effects on drug-eluting and drug-coated stents

19  
20 CORRESPONDENCE TO:

NOTE: This preprint reports new research that has not been certified by peer review and should not be used to guide clinical practice.

21 Tatsuro Takei, MD

22 6-7 Izumi-cho, Kagoshima, Japan.

23 Postal code 892-0821

24 E-mail: [bamboowell.takei@gmail.com](mailto:bamboowell.takei@gmail.com)

25 Mobile phone number: [+8190-5190-3617](tel:+8190-5190-3617), Fax number: [+8190-224-2752](tel:+8190-224-2752)

26

27 Total word count: 4017

28 **Abstract**

29 **Background**

30 The effects of statins on drug-eluting stents (DESs) and drug-coated stents (DCSs)  
31 for femoropopliteal (FP) lesions are not well known. Therefore, this multicenter  
32 retrospective evaluated the impact of statins on DES and DCS patency.

33 **Methods**

34 Between January 2018 and December 2021, 449 patients were treated with DES  
35 and DCS at eight cardiovascular centers in Japan (LEADers FP registry). These  
36 lesions were divided into statin-treated and non-statin-treated arms. After propensity  
37 score matching, the effects of statins on DES and DCS were evaluated. The 2-year  
38 primary outcome measure was stent patency. The secondary outcomes included  
39 secondary patency, clinically driven target lesion revascularization (CD-TLR), limb  
40 salvage, major adverse limb events (MALE, CD-TLR+ major amputation), and a  
41 composite of overall survival and MALE or all-cause death at 2 years.

42 **Results**

43 After propensity score matching, the baseline and procedural characteristics did not  
44 differ significantly between the 135 patient pairs in the statin and non-statin groups.  
45 The primary patency at two years was significantly better in the statin group than in  
46 the non-statin group (86.9% vs. 75.1%,  $p=0.041$ ). Regarding the secondary

47 endpoints, the statin group demonstrated significantly superior secondary patency  
48 and freedom from MALE or all-cause mortality (95.5% vs. 87.0%,  $p=0.023$  and  
49 73.7% vs. 60.0%,  $p=0.012$ , respectively).

## 50 **Conclusions**

51 The results of this retrospective multicenter study demonstrated the superior primary  
52 patency in the statin group compared with the non-statin group at two years. These  
53 findings suggest that statins improve patency in patients undergoing DES and DCS.

54 **Keywords:** statin, drug-eluting stent, drug-coated stent, primary patency

55

56 **What is known:**

57 • Statins are useful in the development and suppression of atherosclerotic diseases.

58 • Statins improve patency of bare-metal stents implanted for femoropopliteal (FP)

59 lesions.

60 **What this study adds:**

61 • Statin use may improve the patency of drug-eluting and drug-coated stents for FP

62 lesions.

63

64 **Background**

65 The outcomes of endovascular therapy (EVT) using drug-eluting stents (DESs,  
66 ELUVIA, Boston Scientific, MA, USA) and drug-coated stents (DCSs, Zilver PTX,  
67 Cook Medical, Bloomington, IN) in femoropopliteal lesions have been reported and  
68 are widely applied in real-world practice.<sup>1-3</sup> The drugs applied to these stents  
69 improve patency compared with bare nitinol stents. However, restenosis has not  
70 been completely resolved.<sup>4,5</sup> While statins reportedly improve the patency of stents  
71 implanted in femoropopliteal lesions,<sup>6-10</sup> previous studies assessed bare nitinol  
72 stents, which differ from the current situation in which paclitaxel devices, such as  
73 DES and DCS, are used. These studies were also limited by their small sample  
74 sizes, single-center analysis, and lack of propensity score matching. In addition to  
75 reducing low-density lipoprotein (LDL) cholesterol levels, statins reportedly to  
76 improve the prognosis of patients with coronary artery disease and lower extremity  
77 arterial disease.<sup>11,12</sup> Statins also relieve ischemic symptoms in the lower  
78 extremities.<sup>13</sup> In the present study, we retrospectively analyzed multicenter real-world  
79 data on femoropopliteal lesions in which DES or DCS was implanted to assess the  
80 clinical impact of statins. The main objective was to investigate the effect of DES with  
81 or without statins on DES and DCS patency rates. Also, as described above, as

82 statins have a variety of effects, the secondary endpoints included limb and life

83 expectancies to assess the impact of statins.

84

## 85 **Materials and Methods**

### 86 ***Ethical considerations***

87 This study was approved by the medical ethics committees of the investigators'

88 respective hospitals and was conducted in accordance with the principles of the

89 Declaration of Helsinki. Because this was a retrospective observational study that did

90 not require intervention, the requirement for written informed consent was waived.

91 Consent for publication in this retrospective study was obtained from the enrolled

92 patients before the interventional procedure.

93

### 94 ***Patient population***

95 The LEADers registry enrolled 2173 patients who underwent EVT for de novo femoropopliteal

96 lesions between January 2018 and December 2021 at eight Japanese institutions (Sendai Kosei

97 Hospital, Tokyo Bay Medical Center, Saiseikai Yokohama Eastern Hospital, Nagoya Heart

98 Center, Ogaki Municipal Hospital, Miyazaki Medical Association Hospital, Rakuwakai Otowa

99 Hospital, and Tenyokai Central Hospital). The Effects of **S**tatin **T**herapy in **P**Atients Treated with

100 **D**Rug-Eluting and Drug-Coated Stents for **F**emoro**P**opliteal Lesions (STAR-FP) study

101 retrospectively analyzed data from 449 patients from the registry who underwent implantation of  
102 an ELUVIA stent or Zilver PTX for femoropopliteal lesions. All enrolled patients had intermittent  
103 claudication, rest pain, or ischemic foot wounds (Rutherford classification 1–6). This cohort also  
104 included patients treated with ELUVIA or Zilver PTX combined with other devices (drug-coated  
105 balloons, bare nitinol stents, and stent-grafts). The patients were divided into statin and non-  
106 statin groups based on their statin therapy status at the time of EVT. The first lesion was used as  
107 the reference lesion for patients whose bilateral limbs were treated. In addition, propensity-  
108 matched analyses were performed to adjust for patient and lesion characteristics and  
109 background.

110 Independent investigators collected patient-specific, angiographic, procedural, and  
111 follow-up data from individual hospital databases. Follow-up after EVT was  
112 performed according to the protocols of the individual hospitals and physicians and  
113 included ankle-brachial index (ABI), duplex ultrasound, or lower-extremity  
114 angiography.

115

### 116 ***Interventional procedures***

117 Interventional procedures were performed with a 5-7 Fr sheath inserted into the  
118 common femoral artery via a crossover or ipsilateral approach. Immediately before  
119 the procedure, 5,000 U of heparin was administered intra-arterially. Guidewires with



120 diameters of 0.014, 0.018, and 0.035 inches were used. The treatment strategy was  
121 determined at the discretion of each operator. The need for antithrombotic therapy or  
122 statin administration was determined by the respective physicians and operators.

### 123 ***Outcome assessments***

124 Restenosis was defined as a peak systolic velocity ratio of  $\geq 2.4$  by duplex  
125 ultrasound, a decrease in ABI of 0.15 or more, and  $\geq 50\%$  stenosis or obstruction on  
126 lower extremity angiography. Target lesion revascularization (TLR) was defined as  
127 the need for reintervention or surgical revascularization.

128 Primary patency was defined as the absence of restenosis or recanalization of the  
129 treated lesion. Secondary patency was defined as the absence of re-occlusion.

130 Major adverse limb events (MALEs) included a composite of clinically driven TLR  
131 (CD-TLR) and major amputations.

132

### 133 ***Statistical analysis***

134 The statistical analyses were performed using JMP Pro version 16 (SAS Institute,  
135 Inc., Cary, NC, USA). SAS version 9.4 (SAS Institute, Inc., Cary, NC, USA) was used  
136 to perform the interaction analyses. Data on the baseline patient and lesion  
137 characteristics are presented as means  $\pm$  standard deviation for continuous variables  
138 and as frequencies (percentages) for categorical variables, unless otherwise noted.

139 Only one dataset was represented by median values, as noted. Statistical  
140 significance was set at  $p < 0.05$ . Differences in baseline characteristic categories  
141 between the groups were analyzed using t-tests and chi-square tests for continuous  
142 and categorical variables, respectively. When comparing clinical outcomes between  
143 the statin and non-statin groups, propensity score matching was used to minimize  
144 the effect of group differences on baseline characteristics. The propensity scores  
145 were calculated using a logistic regression model. Logistic analysis was performed  
146 and matched according to age, sex, symptoms, body mass index, ambulatory status,  
147 smoking, hypertension, diabetes, chronic kidney disease, medications, history of  
148 coronary artery disease, ankle-brachial pressure ratio, lesion location, reference  
149 vessel diameter, lesion length, chronic total occlusion (CTO), peripheral artery  
150 calcium scoring system classification, and below-knee outflow. A caliper cutoff of 0.2  
151 was used for propensity score matching.

## 152 **Results**

### 153 ***Baseline characteristics***

154 As shown in the study flowchart (Figure 1), 135 pairs (statin and non-statin groups)  
155 were evaluated for clinical outcomes after propensity score matching. Baseline  
156 characteristics of the patients are shown in Table 1. The overall population (n=449)  
157 demonstrated significant differences between the statin (n=264) and non-statin

158 groups (n=185) in terms of age, ambulatory status, diabetes, coronary artery  
159 disease, dialysis, symptoms, ABI, and lesion length. Baselines between the two  
160 matched groups were analyzed, and all p-values were >0.05. Regarding the  
161 standardized differences, the CTO length was only slightly longer in the statin group.

## 162 ***Outcome measures***

163 Table 2 shows cholesterol levels and procedural characteristics in the matched  
164 population. Total and LDL cholesterol levels differed significantly between the two  
165 groups ( $159 \pm 37$  mg/dl vs.  $174 \pm 41$  mg/dl,  $p=0.0027$ , and  $84 \pm 31$  mg/dl vs.  $99 \pm 31$   
166 mg/dl,  $p=0.0002$ , respectively). High-density lipoprotein (HDL) levels did not differ  
167 significantly between the groups. In the statin group, 95.6% and 4.4% of patients  
168 were on strong and standard statins, respectively. The use of ELUVIA and Zilver  
169 PTX and drug-coated balloons or other scaffold devices in combination therapy did  
170 not differ significantly between the two groups. Regarding drug-coated balloon types,  
171 the Ranger (Boston Scientific, MA, USA) was more frequently used in the non-statin  
172 group (0% vs. 2.2%,  $p=0.04$ , respectively), while the IN.PACT (Medtronic, MN, USA)  
173 and LUTONIX (BD, NJ, USA) were statistically equivalent (9.6% vs. 14.1%,  $p=0.25$ ,  
174 7.4% vs. 3.0%,  $p=0.81$ , respectively). Regarding scaffold devices, the use of bare  
175 nitinol stents and VIABAHN (Gore, Flagstaff, AZ) did not differ significantly between  
176 the two groups. The nitinol stents used in this study were the S.M.A.R.T. (Cordis

177 Corporation, Miami Lakes, Florida) and Supera (Abbott Vascular, Santa Clara, CA).

178 Residual stenosis, stent size diameter, and stent length also did not differ

179 significantly between the two groups.

180 Figure 2 shows the 2-year primary patency rates for the statin and non-statin

181 groups. Primary patency was significantly higher in the statin group than in the non-

182 statin group (86.9% vs. 75.1%,  $p=0.041$ ). The mean follow-up period was  $460 \pm 265$

183 days, and 36 patients in the matched population developed restenosis at the treated

184 site.

185 Figure 3 shows each clinical outcome, including the 2-year secondary patency. The

186 two-year secondary patency rate was significantly higher in the statin group than in

187 the non-statin group (95.5% vs. 87.0%,  $p=0.023$ ). However, freedom from CD-TLR,

188 limb salvage, freedom from MALE, and overall survival rates did not differ

189 significantly between the two groups (85.5% vs. 84.2%,  $p=0.37$ ; 97.4% vs. 95.5%,

190  $p=0.42$ ; 86.9% vs. 79.9%,  $p=0.17$ ; and 80.9% vs. 72.3%,  $p=0.07$ , respectively). One

191 of the composite outcomes, freedom from MALE or all-cause death, was significantly

192 superior in the statin group than in the non-statin group (73.7% vs. 60.0%,  $p=0.012$ ).

193 Evaluation of freedom from acute limb ischemia due to stent thrombosis using

194 Kaplan–Meier estimates showed no significant difference between the two groups

195 (98.4% vs. 97.5%,  $p=0.62$ ).

196 Interactions in each subgroup with respect to primary patency are shown in Figure  
197 4. No interaction was observed in any of the subgroups ( $p \geq 0.05$ ). Regarding sex,  
198 male patients tended to benefit more from statin therapy compared with female  
199 patients ( $p=0.06$ ).

200

201

## 202 **Discussion**

203 In this study, based on LEADers registry data, the statin group showed significantly  
204 better primary patency compared with the non-statin group. The Kaplan–Meier  
205 curves for primary and secondary patency showed differences between the two  
206 groups starting around 12 and 6 months, respectively. This finding may be attributed  
207 to the effect of statins in preventing atherosclerosis and the progression of in-stent  
208 restenosis.<sup>14,15</sup> In addition to lowering LDL cholesterol levels and inhibiting  
209 atherosclerosis progression, statins also have anti-inflammatory and endothelial  
210 function-improving effects, which may improve the patency rates of DES and DCS.<sup>16</sup>  
211 However, statins are not effective in preventing perioperative patency loss in bypass  
212 grafts after DES or DCS implantation.<sup>17</sup> Unfortunately, the results of the present  
213 study also showed no effect of statins on improving freedom from CD-TLR, limb  
214 salvage, or MALE.

215 The statin group in the present study demonstrated superior primary and secondary  
216 patency rates compared with the non-statin group. The incidence of stent occlusion  
217 is relatively high among recurrent ELUVIA-treated lesions.<sup>18</sup> Moreover, the incidence  
218 of cumulative stent occlusion does not plateau and continues to increase in Zilver  
219 PTX.<sup>19</sup> As completely occluded stent restenosis is associated with increased risks of  
220 recurrent refractory stent restenosis and surgical revascularization, the clinical utility  
221 of statins, which may improve secondary patency, may be significant.<sup>20</sup> The results  
222 of a study examining the mechanism of in-stent reocclusion using angioscopy  
223 suggested the potential influence of organic stenosis in the stent or at the edge.<sup>21</sup>  
224 Therefore, the better secondary patency in the statin group in the present study may  
225 have been due to the inhibition of organic stenosis progression.

226 European, United States, and Japanese guidelines strongly recommend the  
227 administration of statins to patients with lower extremity arterial disease (LEAD) to  
228 improve life expectancy.<sup>22,23</sup> In the present study, the administration of statins to only  
229 58.8% of patients may have resulted in an underestimation of LEAD. The log-rank  
230 test results of the 2-year overall survival rate in this study showed a better trend in  
231 the statin group ( $p=0.07$ ). The results of the Wilcoxon test showed a significantly  
232 better prognosis in the statin group than in the non-statin group ( $p=0.036$ ).  
233 Evaluation of the composite of MALE or all-cause death, which was assessed as the

234 best endovascular versus surgical therapy in patients with chronic limb-threatening  
235 ischemia.<sup>24</sup> showed that freedom from MALE or all-cause death was significantly  
236 higher in the statin group than in the non-statin group, suggesting the efficacy of  
237 statins.

238 The results of the interaction analysis showed no significant differences between  
239 the subgroups ( $p>0.05$ ). Although not statistically significant, a trend toward an  
240 interaction between sexes was observed. A meta-analysis on the effects of statins  
241 reported no significant differences between men and women,<sup>25</sup> possibly due to the  
242 high proportion of men (approximately 70%) and low number of women in this  
243 cohort.

244 In addition to the aforementioned reports of statins improving patency in the  
245 femoropopliteal region, statins also reportedly improve patency in iliac artery stents  
246 and bypass grafts.<sup>26-28</sup> Future studies should examine the effects and long-term  
247 outcomes of statin use in other cohorts.

248

## 249 **Limitations**

250 This study has several limitations. For instance, while information on statin dosing  
251 was available at the time of EVT, compliance with subsequent dosing was unknown.  
252 Additionally, the LEADers registry is a retrospective study and it is difficult to assess

253 compliance with statin medications. This study also performed propensity score  
254 matching using lesion length and CTO presence or absence; however, the  
255 standardized difference was slightly >10% for CTO lesion length ( $p=0.38$ ). Stuart  
256 reported that a standardized difference of <25% is a balanced matching model; thus,  
257 a value of 10.8 should not significantly affect the results.<sup>29</sup> As this study used real-  
258 world data, it included cases in which the device was used in combination with other  
259 devices. Therefore, an interaction analysis was performed, which showed no  
260 interaction in the subgroups treated with DCB plus DES or DCS versus DCS or DES  
261 alone.

262

## 263 **Conclusion**

264 The results of this retrospective multicenter study demonstrated superior primary  
265 and secondary patency in the statin group compared with the non-statin group at 2  
266 years. These findings suggest that statins may be effective in improving DES and  
267 DCS patency. Freedom from a composite of MALE and all-cause death at 2 years  
268 was also higher in the statin group than in the non-statin group.

## 269 **Availability of data and materials**

270 The datasets used and/or analyzed in this study are available from the  
271 corresponding author upon reasonable request.



272

273 **Non-standard Abbreviations and Acronyms**

274 EVT: endovascular therapy

275 DES: drug-eluting stent

276 DCS: drug-coated stent

277 FP: femoropopliteal

278 CD-TLR: clinically driven-target lesion revascularization

279 MALE: major adverse limb event

280 CTO: chronic total occlusion

281 LEAD: lower extremity arterial disease

282

283 **Acknowledgments:**

284 We thank Editage for editing and reviewing the manuscript for English language.

285

286 **Sources of Funding**

287 This study received no funding to support the research.

288

289 **Disclosures**

290 Conflicts of interest: None

291

292 Consent for publication

293

294 ORCID id

295 Tatsuro Takei

296 <https://orcid.org/0000-0001-8733-473X>

297

298

299 **References**

300 1. Iida O, Fujihara M, Kawasaki D, Mori S, Yokoi H, Miyamoto A, Kichikawa K,

301 Nakamura M, Ohki T, Diaz-Cartelle J, et al. 24-Month efficacy and safety results

302 from Japanese patients in the IMPERIAL randomized study of the Eluvia drug-

303 eluting stent and the Zilver PTX drug-coated stent. *Cardiovasc Intervent Radiol*

304 2021;44:1367–1374. doi: 10.1007/s00270-021-02901-6.

305 2. Müller-Hülsbeck S, Benko A, Soga Y, Fujihara M, Iida O, Babaev A, O'Connor D,

306 Zeller T, Dulas DD, et al. Two-Year Efficacy and Safety Results from the

307 IMPERIAL randomized study of the Eluvia polymer-coated drug-eluting stent and

308 the Zilver PTX polymer-free drug-coated stent. *Cardiovasc Intervent Radiol*.

309 2021;44:368–375. doi: 10.1007/s00270-020-02693-1.

- 310 3. Shibata T, Iba Y, Shingaki M, Yamashita O, Tsubakimoto Y, Kimura F, Hatada A,  
311 Kasashima F, Ueno K, Nakanishi K, et al. One year outcomes of Zilver PTX  
312 versus Eluvia for femoropopliteal disease in real-world practice: REALDES Study.  
313 *J Endovasc Ther.* 2023:15266028231179861. doi: 10.1177/15266028231179861.
- 314 4. Kurata N, Iida O, Takahara M, Asai M, Okamoto S, Ishihara T, Nanto K, Tsujimura  
315 T, Hata Y, Toyoshima T, et al. Comparing predictors influencing restenosis  
316 following high-dose drug-coated balloon angioplasty and fluoropolymer-based  
317 drug-eluting stenting in femoropopliteal artery lesions. *J Endovasc Ther.*  
318 2023:15266028231209234. doi:10.1177/15266028231209234.
- 319 5. Soga Y, Fujihara M, Tomoi Y, Iida O, Ishihara T, Kawasaki D, Ando K. One-year  
320 late lumen loss between a polymer-coated paclitaxel-eluting stent (Eluvia) and a  
321 polymer-free paclitaxel-coated stent (Zilver PTX) for femoropopliteal disease. *J*  
322 *Atheroscler Thromb.* 2020:164–171. doi: 10.5551/jat.50369.
- 323 6. Kim W, Gandhi RT, Peña CS, Herrera RE, Scherthaner MB, Acuña JM, Becerra  
324 VN, Katzen BT. The influence of statin therapy on restenosis in patients who  
325 underwent nitinol stent implantation for de novo femoropopliteal artery disease:  
326 two-year follow-up at a single center. *J Vasc Interv Radiol.* 2016:1494–501. doi:  
327 10.1016/j.jvir.2016.05.037.

- 328 7. de Grijns D, Teixeira P, Katz S. The association of statin therapy with the primary  
329 patency of femoral and popliteal artery stents. *J Vasc Surg* 2018:1472–1479. doi:  
330 10.1016/j.jvs.2017.09.022.
- 331 8. Siracuse JJ, Gill HL, Cassidy SP, Messina MD, Catz D, Egorova N, Parrack I,  
332 McKinsey JF. Endovascular treatment of lesions in the below-knee popliteal  
333 artery. *J Vasc Surg*. 2014:356–361. doi: 10.1016/j.jvs.2014.02.012. Epub 2014  
334 Mar 18.
- 335 9. Aiello FA, Khan AA, Meltzer AJ, Gallagher KA, McKinsey JF, Schneider DB.  
336 Statin therapy is associated with superior clinical outcomes after endovascular  
337 treatment of critical limb ischemia. *J Vasc Surg*. 2012:371–379; discussion 380.  
338 doi: 10.1016/j.jvs.2011.08.044.
- 339 10. Braun SK, Jorge DW, Bortolanza G, da Rocha JBT. Effects of statin use on  
340 primary patency, mortality, and limb loss in patients undergoing lower-limb arterial  
341 angioplasty: a systematic review and meta-analysis. *Int J Clin Pharm*. 2023:17–  
342 25. doi: 10.1007/s11096-022-01513-5.
- 343 11. Westin GG, Armstrong EJ, Bang H, Yeo KK, Anderson D, Dawson DL, Pevec  
344 WC, Amsterdam EA, Laird JR. Association between statin medications and  
345 mortality, major adverse cardiovascular event, and amputation-free survival in

- 346 patients with critical limb ischemia. *J Am Coll Cardiol* 2014;682–690. doi:  
347 10.1016/j.jacc.2013.09.073.
- 348 12. Orkaby AR, Driver JA, Ho YL, Lu B, Costa L, Honerlaw J, Galloway A, Vassy JL,  
349 Forman DE, Gaziano JM, et al. Association of statin use with all-cause and  
350 cardiovascular mortality in US veterans 75 years and older. *JAMA*. 2020;68–78.  
351 doi: 10.1001/jama.2020.7848. Erratum in: *JAMA*. 2020;324:1468.
- 352 13. Mohler ER 3rd, Hiatt WR, Creager MA. Cholesterol reduction with atorvastatin  
353 improves walking distance in patients with peripheral arterial disease. *Circulation*.  
354 2003 (12):1481–1486. doi: 10.1161/01.CIR.0000090686.57897.F5.
- 355 14. Watts GF, Lewis B, Brunt JN, Lewis ES, Coltart DJ, Smith LD, Mann JI, Swan AV.  
356 Effects on coronary artery disease of lipid-lowering diet, or diet plus  
357 cholestyramine, in the St Thomas' Atherosclerosis Regression Study (STARS).  
358 *Lancet*. 1992;339:563–599. doi: 10.1016/0140-6736(92)90863-x.
- 359 15. Walter DH, Schächinger V, Elsner M, Mach S, Auch-Schwelk W, Zeiher AM.  
360 Effect of statin therapy on restenosis after coronary stent implantation. *Am J*  
361 *Cardiol*. 2000;85:962–968. doi: 10.1016/s0002-9149(99)00910-8
- 362 16. Momin A, Melikian N, Wheatcroft SB, Grieve D, John LC, El Gamel A, Marrinan  
363 MT, Desai JB, Driver C, Sherwood R, et al. The association between saphenous  
364 vein endothelial function, systemic inflammation, and statin therapy in patients

- 365       undergoing coronary artery bypass surgery. *J Thorac Cardiovasc Surg.*  
366       2007;134:335–341. doi: 10.1016/j.jtcvs.2006.12.064.
- 367   17. Scali ST, Beck AW, Nolan BW, Stone DH, De Martino RR, Chang CK, Rzucidlo  
368       EM, Walsh DB. Completion duplex ultrasound predicts early graft thrombosis  
369       after crural bypass in patients with critical limb ischemia. *J Vasc Surg.*  
370       2011;54:1006–1110. doi: 10.1016/j.jvs.2011.04.021.
- 371   18. Iida O, Takahara M, Soga Y, Yamaoka T, Fujihara M, Kawasaki D, Ichihashi S,  
372       Kozuki A, Nanto S, Sakata Y, et al. 1-Year outcomes of fluoropolymer-based  
373       drug-eluting stent in femoropopliteal practice: predictors of restenosis and  
374       aneurysmal degeneration. *JACC Cardiovasc Interv.* 2022;15:630–638. doi:  
375       10.1016/j.jcin.2022.01.019.
- 376   19. Iida O, Takahara M, Soga Y, Nakano M, Yamauchi Y, Zen K, Kawasaki D, Nanto  
377       S, Yokoi H, Uematsu M, et al. 1-Year results of the ZEPHYR Registry (Zilver PTX  
378       for the femoral artery and proximal popliteal artery): Predictors of Restenosis.  
379       *JACC Cardiovasc Interv.* 2015;8:1105–1112.
- 380   20. Tosaka A, Soga Y, Iida O, Ishihara T, Hirano K, Suzuki K, Yokoi H, Nanto S,  
381       Nobuyoshi MI. Classification and clinical impact of restenosis after  
382       femoropopliteal stenting. *J Am Coll Cardiol.* 2012 3;59:16–23. doi:  
383       10.1016/j.jacc.2011.09.036.

- 384 21. Ishihara T, Iida O, Okamoto S, Fujita M, Masuda M, Nanto K, Shiraki T, Kanda T,  
385 Tsujimura T, Okuno S, et al. Potential mechanisms of in-stent occlusion in the  
386 femoropopliteal artery: an angioscopic assessment. *Cardiovasc Interv Ther.*  
387 2017;32:313–317. doi: 10.1007/s12928-016-0411-3.
- 388 22. Aboyans V, Ricco JB, Bartelink MEL, Björck M, Brodmann M, Cohnert T, Collet  
389 JP, Czerny M, De Carlo M, Debus S, et al. 2017 ESC Guidelines on the  
390 Diagnosis and Treatment of Peripheral Arterial Diseases, in collaboration with the  
391 European Society for Vascular Surgery (ESVS): Document covering  
392 atherosclerotic disease of extracranial carotid and vertebral, mesenteric, renal,  
393 upper and lower extremity arteries Endorsed by: the European Stroke  
394 Organization (ESO), The Task Force for the Diagnosis and Treatment of  
395 Peripheral Arterial Diseases of the European Society of Cardiology (ESC) and of  
396 the European Society for Vascular Surgery (ESVS). *Eur Heart J.* 2018;39:763–  
397 816. doi: 10.1093/eurheartj/ehx095.
- 398 23. Gerhard-Herman MD, Gornik HL, Barrett C, Barshes NR, Corriere MA, Drachman  
399 DE, Fleisher LA, Fowkes FG, Hamburg NM, Kinlay S, et al. 2016 AHA/ACC  
400 Guideline on the Management of Patients With Lower Extremity Peripheral Artery  
401 Disease: Executive Summary: A Report of the American College of  
402 Cardiology/American Heart Association Task Force on Clinical Practice

- 403 Guidelines. *J Am Coll Cardiol*. 2017;69:1465–1508. doi:
- 404 10.1016/j.jacc.2016.11.008. Epub 2016 Nov 13. Erratum in: *J Am Coll Cardiol*.
- 405 2017;69:1520. doi: 10.1016/j.jacc.2017.02.003.
- 406 24. Farber A, Menard MT, Conte MS, Kaufman JA, Powell RJ, Choudhry NK, Hamza
- 407 TH, Assmann SF, Creager MA, Cziraky MJ, et al. Surgery or endovascular
- 408 therapy for chronic limb-threatening ischemia. *N Engl J Med*. 2022;387:2305–
- 409 2316. doi: 10.1056/NEJMoa2207899. Epub 2022 Nov 7.
- 410 25. Kostis WJ, Cheng JQ, Dobrzynski JM, Cabrera J, Kostis JB. Meta-analysis of
- 411 statin effects in women versus men. *J Am Coll Cardiol*. 2012;59:572–582. doi:
- 412 10.1016/j.jacc.2011.09.067. Erratum in: *J Am Coll Cardiol*. 2012 Apr
- 413 17;59(16):1491.
- 414 26. Haraguchi T, Masanaga T, Fujita T, Otake R, Hachinohe D, Kaneko U, Kashima
- 415 Y, Sato K. Comparative 2-year outcomes of the Misago stent versus other self-
- 416 expandable nitinol stents for the endovascular treatment of aortoiliac disease. *J*
- 417 *Cardiovasc Surg (Torino)*. 2023;64:422–429. doi: 10.23736/S0021-
- 418 9509.23.12500-6.
- 419 27. Henke PK, Blackburn S, Proctor MC, Stevens J, Mukherjee D, Rajagopalin S,
- 420 Upchurch GR Jr, Stanley JC, Eagle KA. Patients undergoing infrainguinal bypass
- 421 to treat atherosclerotic vascular disease are underprescribed cardioprotective



422 medications: effect on graft patency, limb salvage, and mortality. *J Vasc Surg.*

423 200439:357–65. doi: 10.1016/j.jvs.2003.08.030.

424 28. Klingelhofer E, Bergert H, Kersting S, Ludwig S, Weiss N, Schönleben F,

425 Grützmann R, Gäbel G. Predictive factors for better bypass patency and limb

426 salvage after prosthetic above-knee bypass reconstruction. *J Vasc Surg.* 2016

427 Aug;64(2):380-388.e1. doi: 10.1016/j.jvs.2016.02.059.

428 29. Stuart EA. Matching methods for causal inference: A review and a look forward.

429 *Stat Sci.* 2010;25:1–21. doi: 10.1214/09-STS313.

430

### 431 **Table and Figure Legends**

432 Table 1. Baseline characteristics before and after matching

433 Values are expressed as means  $\pm$  standard deviations or numbers (percentages).

434 CKD, chronic kidney disease; PACSS, peripheral artery calcium scoring

435

436 Table 2. Cholesterol levels and procedural characteristics after matching

437 Values are expressed as means  $\pm$  standard deviations or numbers (percentages).

438 LDL, low-density lipoprotein; HDL, high-density lipoprotein; DCB, drug-coated

439 balloon.

440

441 **Figure 1.** Study flowchart

442 DES, drug-eluting stent; DCS, drug-coated stent; FP, femoropopliteal; CD-TLR,  
443 clinically driven target lesion revascularization; MALE, major adverse limb event

444 **Figure 2.** Primary patency in the matched population

445 **Figure 3.** Secondary outcome

446 **Figure 4.** Interaction analysis for each subgroup with respect to primary patency

447 CLTI, chronic limb-threatening ischemia; ABI, ankle-brachial index; CTO, chronic  
448 total occlusion; PACSS, peripheral artery calcium scoring system; DES, drug-eluting  
449 stent; DCS, drug-coated stent; DCB, drug-coated balloon.

450

449 patients treated with  
DES or DCS for de novo FP lesions.  
(From January 2018 to December 2021, 8 institutions)

264 patients  
Use of Statins

185 patients  
Nonuse of Statins

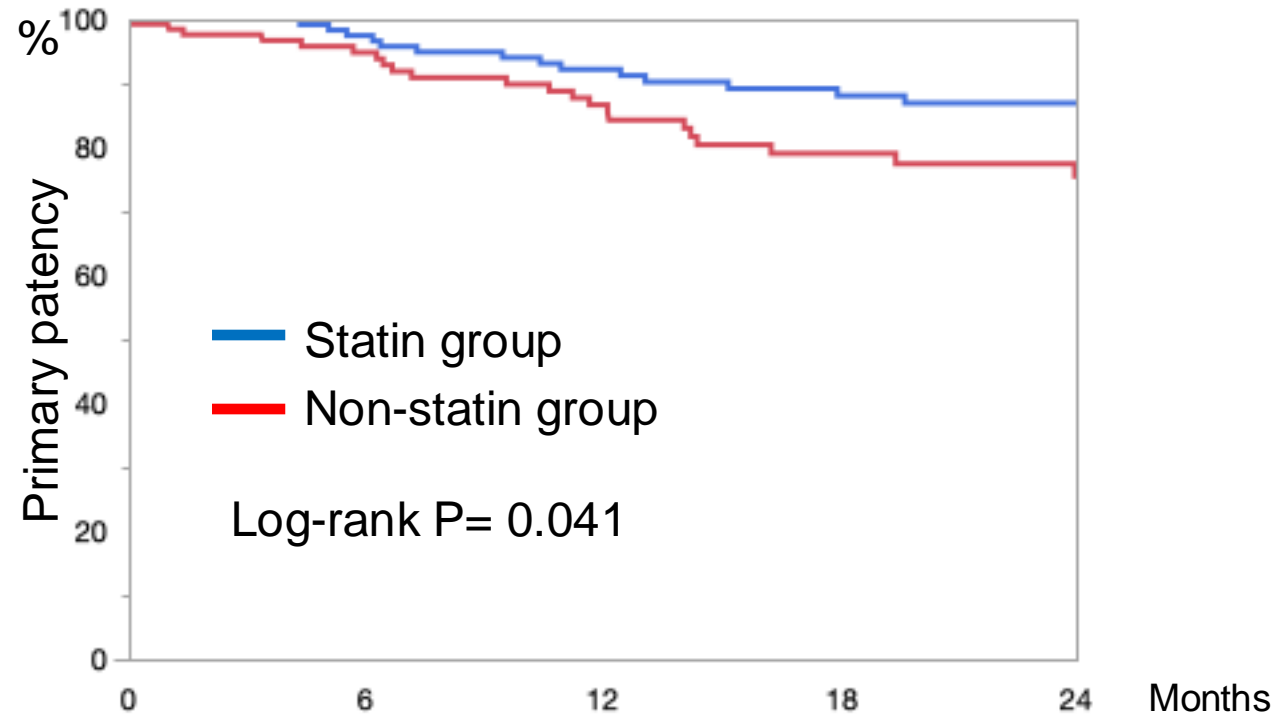
Propensity score matching

135 patients  
Statin group

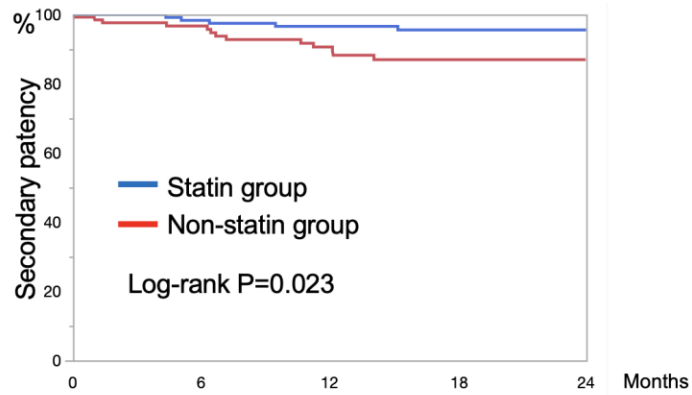
135 patients  
Non-statin group

**Primary outcome: Two-year primary patency**

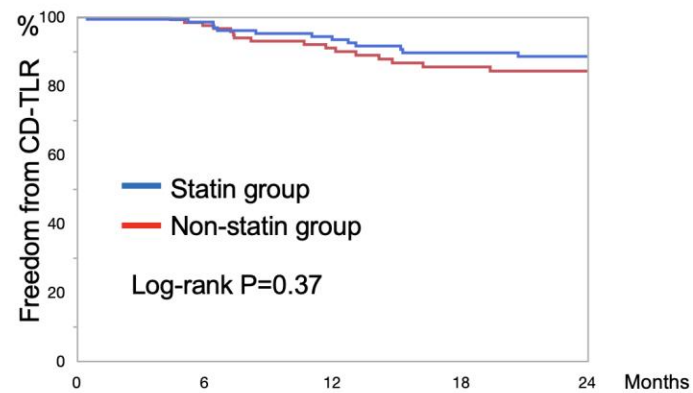
Secondary outcome: Two-year secondary patency, Two-year freedom from CD-TLR, Limb salvage, MALE, overall survival rate, freedom from MALE or all-cause death



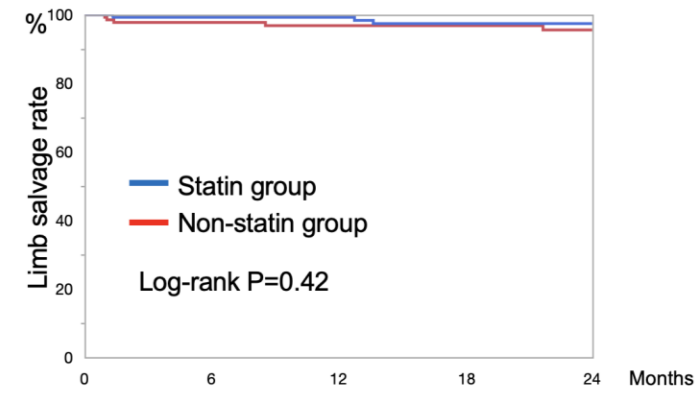
		0	6	12	18	24
Statin group	%	100	97.5	92.2	88.1	86.9
	No. at risk	135	115	100	81	63
Non-statin group	%	100	94.8	86.6	79.0	75.1
	No. at risk	135	100	78	54	32



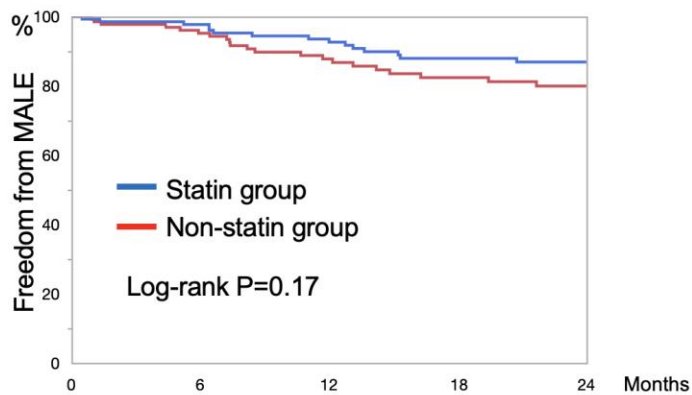
		0	6	12	18	24
Statin group	%	100	98.3	96.6	95.5	95.5
	No. at risk	135	116	105	88	71
Non-statin group	%	100	96.7	90.6	87.0	87.0
	No. at risk	135	100	81	60	39



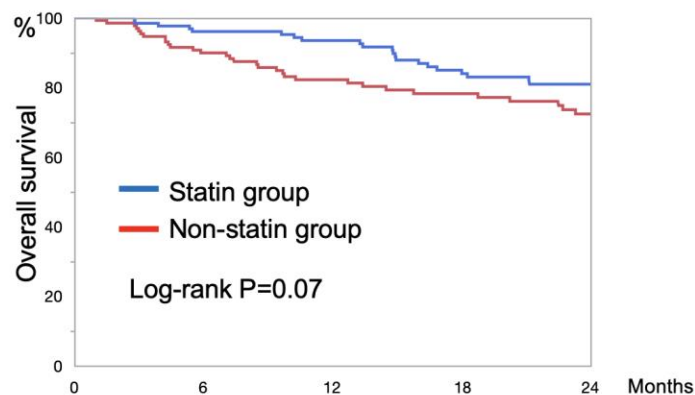
		0	6	12	18	24
Statin group	%	100	98.5	93.3	89.5	88.5
	No. at risk	135	121	105	89	73
Non-statin group	%	100	97.4	90.9	85.4	84.2
	No. at risk	135	113	90	73	58



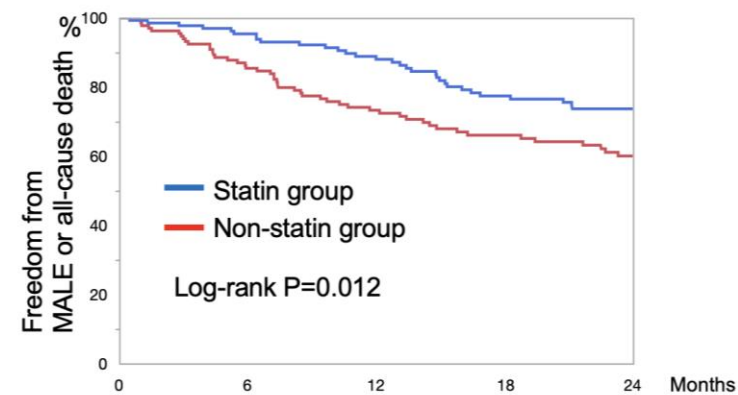
		0	6	12	18	24
Statin group	%	100	99.2	99.2	97.4	97.4
	No. at risk	135	122	112	98	83
Non-statin group	%	100	97.2	96.8	96.8	95.5
	No. at risk	135	114	97	85	69



		0	6	12	18	24
Statin group	%	100	97.7	92.6	87.9	86.9
	No. at risk	135	121	105	89	73
Non-statin group	%	100	95.2	87.8	82.4	79.9
	No. at risk	135	111	88	73	56



		0	6	12	18	24
Statin group	%	100	96.1	93.5	84.0	80.9
	No. at risk	135	122	105	86	71
Non-statin group	%	100	89.9	82.2	78.2	72.3
	No. at risk	135	113	90	73	58



		0	6	12	18	24
Statin group	%	100	95.4	88.0	77.4	73.7
	No. at risk	135	121	105	86	71
Non-statin group	%	100	85.4	73.2	66.0	60.0
	No. at risk	135	110	79	71	56

# Hazard ratio for restenosis

P for interaction

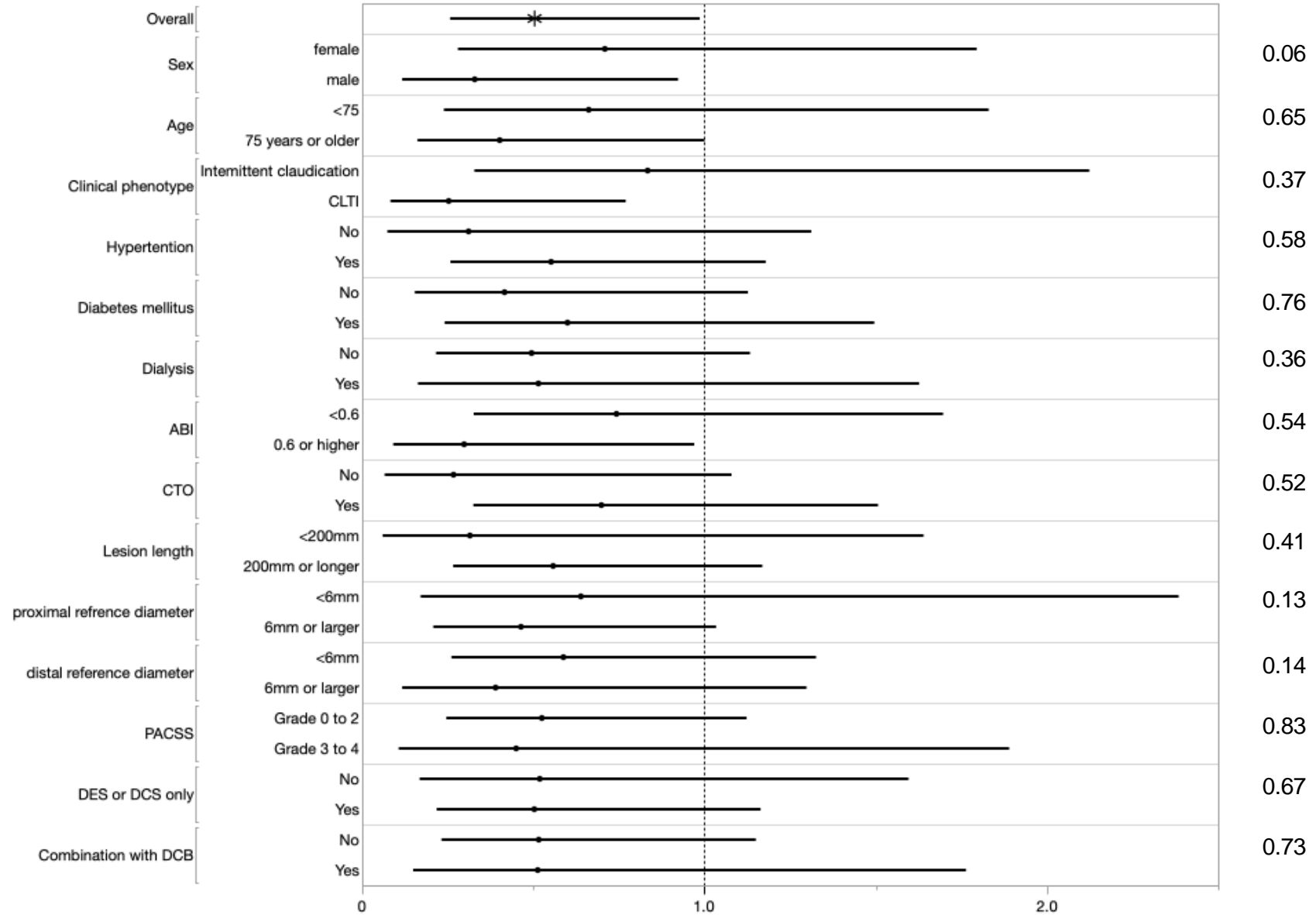


Table 1. Baseline characteristics before and after matching

	Overall population (before matching)			Matched population			
	Statin	Non-statin	P value	Statin	Non-statin	P value	Standardized
	(n=264)	(n=185)		(n=135)	(n=135)		difference (%)
Male	189 (71.6)	125 (67.6)	0.36	94 (69.6)	91(67.4)	0.69	4.8
Age, y	73.9 ± 8.4	76.3 ± 10.6	0.0055	75.1± 7.7	75.5 ± 11.0	0.70	5.3
Body mass index <18 (kg/m <sup>2</sup> )	31 (11.7)	27 (14.6)	0.38	18 (13.3)	21 (15.6)	0.60	6.3
Non-ambulatory	39 (14.8)	50 (27.0)	0.0015	22 (16.3)	26 (19.3)	0.52	7.7
Current smoker	72 (27.3)	49 (26.5)	0.85	38 (28.2)	37 (27.4)	0.90	2.2
Diabetes mellitus	175 (66.3)	105 (56.8)	0.04	78 (57.8)	80 (59.3)	0.80	3.0
Hypertension	233 (88.3)	152 (82.2)	0.07	113 (83.7)	116 (85.9)	0.61	6.2
History of coronary artery disease	137 (51.9)	60 (32.4)	<0.0001	48 (35.6)	54 (40.0)	0.45	9.2
CKD (eGFR <60 ml/min/1.73m <sup>3</sup> )	186 (70.5)	138 (74.6)	0.33	95 (70.4)	100 (74.1)	0.50	8.2
CKD without dialysis	114 (43.2)	68 (36.8)	0.17	46 (34.1)	49 (36.3)	0.80	3.0
CKD with dialysis	72 (27.3)	71 (38.4)	0.013	49 (36.3)	51 (37.8)	0.7	4.7
Antiplatelet drug use	260 (98.5)	181 (97.8)	0.61	131 (97.0)	132 (97.8)	0.7	4.7
Cilostazol use	28 (10.6)	24 (13.0)	0.44	19 (14.1)	15 (11.1)	0.46	8.9
Direct oral anticoagulant use	31 (11.7)	26 (14.1)	0.47	17 (12.6)	16 (11.9)	0.85	2.2
Chronic limb-threatening ischemia	93 (35.2)	102 (55.1)	<0.0001	60 (44.4)	61 (45.2)	0.90	1.5
Intermittent claudication	171 (64.8)	83 (44.9)	<0.0001	75 (55.6)	74 (54.8)	0.90	1.5
Ankle-brachial index	0.57 ± 0.26	0.46± 0.28	<0.0001	0.52 ± 0.29	0.50 ± 0.26	0.54	7.5
Missing data	15 (5.7)	15 (8.1)	0.31	0 (0)	0 (0)	1.0	0.0
Lesion length (mm)	204 ± 101	229 ± 100	0.0092	215 ± 99	223 ± 95	0.51	7.9
Chronic total occlusion	151 (57.2)	115 (62.2)	0.29	77 (57.0)	82 (60.1)	0.54	7.5
Length of chronic total occlusion (mm)	122 ± 104	127 ± 112	0.59	132 ± 106	119 ± 108	0.38	10.8
Involving popliteal lesion	84 (31.8)	69 (37.3)	0.23	47 (34.8)	48 (35.6)	0.90	1.6
PACSS grade 0/1/2	161 (61.0)	113 (61.1)	0.98	84 (62.2)	82 (60.7)	0.80	3.0
PACCS grade 3/4	103 (39.0)	72 (38.9)	0.98	51 (37.8)	53 (39.3)	0.80	3.0
Proximal reference diameter (mm)	6.2 ± 0.9	6.3 ± 0.8	0.40	6.2 ± 1.0	6.2 ± 0.8	0.78	6.5
Distal reference diameter (mm)	5.8 ± 0.8	5.6 ± 0.9	0.10	5.7 ± 0.7	5.7 ± 0.8	0.67	5.1
Intravascular ultrasound use	217 (87.5)	162 (89.0)	0.63	115 (88.5)	118 (88.7)	0.95	1.0
No runoff	19 (7.2)	13 (7.1)	0.95	9 (6.7)	10 (7.4)	0.81	2.9
1-2 runoffs	200 (75.8)	144 (77.8)	0.61	106 (78.5)	103 (76.3)	0.66	5.3
3 runoffs	45 (17.0)	28 (15.1)	0.59	20 (14.8)	22 (16.3)	0.7370	4.1

Values are expressed as the means ± standard deviations or numbers (percentages). CKD, chronic kidney disease; PACSS, peripheral artery calcium scoring system.

Table 2. cholesterol level and procedural characteristics after matching

	Statin (n=135)	Non-statin (n=135)	P value
Total cholesterol (mg/dl)	159 ± 37	174 ± 41	0.0027
Missing data	3 (2.2)	6 (4.5)	0.30
LDL cholesterol (mg/dl)	84 ± 31	99 ± 31	0.0002
Missing data	2 (1.5)	5 (3.7)	0.20
HDL cholesterol (mg/dl)	48 ± 15	49 ± 19	0.77
Missing data	2 (1.5)	6 (4.5)	0.14
Strong statin	129 (95.6)	-	-
Standard statin	6 (4.4)	-	-
Zilver PTX stent	14 (10.4)	10 (7.4)	0.39
ELUVIA stent	121 (89.6)	126 (93.3)	0.27
Combination with DCB	23 (17.0)	31 (23.0)	0.22
Use of IN.PACT	13 (9.6)	19 (14.1)	0.25
Use of Ranger	0 (0)	3 (2.2)	0.04
Use of Lutonix	10 (7.4)	4 (3.0)	0.81
Combination with other scaffold device	7 (5.2)	4 (3.0)	0.35
Use of Bare nitinol stent (Supera or S.M.A.R.T.)	5 (3.7)	2 (1.5)	0.24
Use of VIABAHN	2 (1.5)	2 (1.5)	1.0
Residual stenosis after stent implantation	0 (0, 50)	0 (0, 40)	0.74
Stent size (mm)	6.4 ± 0.5	6.4 ± 0.5	0.91
Stent length (mm)	219 ± 102	210 ± 102	0.49

Values are expressed as the means ± standard deviations or numbers (percentages). The residual stenosis after stent implantation was expressed as median (minimum, maximum). LDL, low density lipoprotein; HDL, high density lipoprotein, DCB, drug coating balloon.