

1 **Different treatment durations of loperamide in preventing pyrotinib-induced**
2 **diarrhea: A randomized, parallel-group sub-study of the phase II PHAEDRA**
3 **trial**

4

5 **Running title:** Prophylaxis for pyrotinib-induced diarrhea

6

7 Changjun Wang^{#1}, Yan Lin^{#1}, Ying Xu¹, Feng Mao¹, Jinghong Guan¹, Xuejing Wang¹,
8 Yanna Zhang¹, Xiaohui Zhang¹, Songjie Shen¹, Ying Zhong¹, Bo Pan¹, Li Peng¹, Xin
9 Huang¹, Xi Cao¹, Ru Yao¹, Xintong Zhou¹, Zecheng He¹, Yuhan Liu¹, Jie Lang²,
10 Chenggang Li³, Yidong Zhou*¹, Qiang Sun*¹

11

12 ¹ Department of Breast Surgery, Peking Union Medical College Hospital, Beijing,
13 China

14 ² Department of Breast Surgery, Beijing Longfu Hospital, Beijing, China

15 ³ State Key Laboratory of Medicinal Chemical Biology and College of Pharmacy,
16 Nankai University, Tianjin, China

17

18 [#]These authors contributed equally to this work.

19

20 ***Corresponding authors:**

21 Prof. Yidong Zhou, Department of Breast Surgery, Peking Union Medical College
22 Hospital, No. 41, DaMuCang Lane, XiCheng District, Beijing 100041, China. Email:
23 zhouyd@pumch.cn

24 Prof. Qiang Sun, Department of Breast Surgery, Peking Union Medical College
25 Hospital, No. 41, DaMuCang Lane, XiCheng District, Beijing 100041, China. Email:
26 sunqiangpumch@sina.com

27

28

29 **NOTE:** This preprint reports new research that has not been certified by peer review and should not be used to guide clinical practice.

30

31

32 **Abstract**

33 **Background:** Pyrotinib, a pan-HER tyrosine kinase inhibitor, demonstrates efficacy
34 in the treatment of HER2-positive breast cancer. However, the frequent occurrence of
35 treatment-emergent diarrhea necessitating discontinuation, impacts patient outcomes.

36 **Methods:** In this multicenter, open-label, phase II PHAEDRA study enrolling early
37 stage HER2-positive patients for postoperative treatment with nab-paclitaxel and
38 pyrotinib, 120 patients were included for a sub-study and randomly divided into two
39 groups to receive 21 days and 42 days of loperamide for primary prophylaxis of
40 diarrhea, followed by as-needed usage. The primary outcome was the incidence of
41 grade ≥ 3 diarrhea.

42 **Results:** Fifty-eight patients in the 21-day group and 59 patients in the 42-day group
43 received at least one dose of pyrotinib. With a median follow-up of 12.1 months, all
44 patients experienced diarrhea of any grade, with grade ≥ 3 events in 39.7% of the
45 21-day group and 42.4% of the 42-day group (relative risk: 0.94; 95% confidence
46 interval: 0.61-1.45). The most common treatment-emergent adverse events, other than
47 diarrhea, were hypoesthesia, vomiting, nausea, and rash, mostly grade 1-2, except for
48 one case of grade ≥ 3 decreased neutrophil count in each group.

49 **Conclusion:** No significant differences were observed between 21-day and 42-day
50 loperamide durations in preventing grade ≥ 3 diarrhea. Considering the economic cost
51 and patient compliance, 21-day loperamide prophylaxis might represent a more
52 pragmatic and appropriate approach for clinical application.

53 **Trial registration:** ClinicalTrials.gov, NCT04659499

54 **Keywords:** Breast cancer, tyrosine kinase inhibitor, pyrotinib, diarrhea

55

56

57

58

59

60

61

62 **Introduction**

63 Pyrotinib is a pan-human epidermal growth factor receptor (HER) tyrosine
64 kinase inhibitor (TKI) targeting HER1, HER2, and HER4 independently developed in
65 China. Since its introduction, pyrotinib has demonstrated significant survival benefits
66 in patients with HER2-positive breast cancer. In the Phase III PHENIX trial, pyrotinib
67 in combination with capecitabine achieved a median progression-free survival (PFS)
68 of 11.1 months for HER2-positive metastatic breast cancer, showing a risk reduction
69 of 82% for disease progression or death compared with the control group (placebo
70 plus capecitabine).¹ Similarly, in the Phase III PHOEBE trial, pyrotinib combined
71 with capecitabine obtained a median PFS of 12.5 months in HER2-positive metastatic
72 breast cancer, reducing the risk of disease progression or death by 61% compared to
73 lapatinib combined with capecitabine.² In the PHILA trial, pyrotinib in combination
74 with trastuzumab and docetaxel had a median PFS of 24.3 months in the first-line
75 treatment of HER2-positive metastatic breast cancer, demonstrating significant
76 superiority compared to trastuzumab combined with docetaxel plus placebo (median
77 PFS=10.4 months).³ The Phase III PHEDRA study on the neoadjuvant treatment of
78 early stage HER2-positive breast cancer, revealed a significant improvement in the
79 total pathologic complete response (tpCR) rate with the combination of pyrotinib,
80 trastuzumab, and docetaxel beyond that of placebo, trastuzumab, and docetaxel (41%
81 vs. 22%, $p < 0.0001$).⁴

82 However, similar to other TKIs, diarrhea remains a significant adverse event
83 frequently occurring during pyrotinib treatment, with an incidence rate exceeding 95%
84 in these studies.¹⁻⁴ Specifically, the incidences of grade ≥ 3 treatment-emergent
85 diarrhea were 30.8% and 30.5% in the PHENIX and PHOEBE studies with the

86 treatment of pyrotinib plus capecitabine,^{1, 2} respectively, and an even more
87 pronounced 46.5% in the PHILA study and 44.4% in the PHEDRA study with the
88 treatment of pyrotinib combined with trastuzumab plus docetaxel.^{3,4} Severe diarrhea
89 can necessitate discontinuation of pyrotinib, subsequently impacting its anti-tumor
90 efficacy, posing a clinical safety concern that warrants attention.

91 In the CONTROL study, the cohort receiving loperamide as a primary
92 prophylaxis for diarrhea over the initial 56 days documented a grade ≥ 3 diarrhea
93 incidence rate of 31% during neratinib administration.⁵ In contrast, the ExteNET study,
94 which did not employ any diarrhea prophylactic strategies, reported a 40% rate of
95 grade ≥ 3 diarrhea.⁶ Consequently, the Chinese Society of Clinical Oncology (CSCO)
96 guideline recommends the prophylactic use of loperamide starting with the first dose
97 of neratinib, continuing for 56 days.⁷ In the NALA study, a 21-day loperamide of
98 primary prophylaxis similarly reduced the incidence of grade ≥ 3 diarrhea during
99 combined neratinib and capecitabine therapy to 24.4%.⁸

100 Currently, there are no clinical studies on the prevention of pyrotinib-induced
101 diarrhea. For patients whose pyrotinib therapy was interrupted due to diarrhea, the
102 CSCO guidelines suggest a 21-day prophylactic treatment with loperamide upon
103 re-initiating pyrotinib. To explore the feasibility of loperamide's primary prophylaxis
104 for pyrotinib-induced diarrhea and to further optimize diarrhea prophylactic strategies,
105 this study evaluated the incidence of diarrhea in patients with early stage
106 HER2-positive breast cancer receiving albumin-bound paclitaxel combined with
107 pyrotinib, employing both 42-day and 21-day primary prophylaxis with loperamide.

108

109 **Methods**

110 **Study design and patients**

111 This was a sub-study of the multicenter, open-label, single-arm phase II
112 PHAEDRA study (NCT04659499) designed to investigate different prophylactic
113 strategies for treatment-emergent diarrhea that occurred during pyrotinib treatment.

114 The study was approved by the institutional ethics committee of Peking Union
115 Medical College Hospital (approval number: HS-2617) and was conducted in
116 accordance with the 2008 Declaration of Helsinki. The PHAEDRA study included
117 patients with tumors ≤ 3 cm, lymph node-negative (N0) or micro-metastatic (N1mi),
118 HER2 positive breast cancer from Peking Union Medical College Hospital, Beijing
119 Longfu Hospital, Weihai Municipal Hospital, and Weihai Municipal Hospital in China
120 to receive adjuvant treatment with nab-paclitaxel and pyrotinib within 90 days after
121 tumor resection. In this sub-study, 120 patients from the main study who signed the
122 sub-study informed consent were 1:1 randomly assigned to two groups to receive
123 21-days (the 21-day group) and 42-days (the 42-day group) of loperamide as primary
124 prophylaxis for treatment-emergent diarrhea (Figure 1). The full eligibility criteria for
125 the main study and this sub-study have been previously reported.⁹

126

127 **Treatment procedure**

128 All patients were administered intravenous nab-paclitaxel (260 mg/m^2 once
129 every 21-days cycle for 4 cycles and oral pyrotinib (400 mg) once daily for 1 year as
130 adjuvant therapy. For primary prophylaxis of treatment-emergent diarrhea, the 21-day
131 group additionally received loperamide during cycle 1 of adjuvant therapy at a dose of
132 4 mg three times a day on days 1–7 and 4 mg twice a day on days 8–21; the 42-day
133 group received loperamide during cycles 1 and 2 of adjuvant therapy at a dose of 4
134 mg three times a day on days 1–7 and 4 mg twice a day on days 8–42. Once the
135 primary prophylaxis was completed, loperamide was administered as needed for
136 treatment-emergent diarrhea management during the remaining treatment duration
137 with pyrotinib. When grade 1–2 treatment-emergent diarrhea with complications
138 (including but not limited to abdominal cramping, grade ≥ 2 nausea/vomiting, fever,
139 pyemia, decreased neutrophil count, bleeding, and dehydration) or grade 3
140 treatment-emergent diarrhea occurs, pyrotinib treatment is interrupted and resumed
141 until recovery to grade 0–1 without complications. Dose reduction is not required

142 after recovery for the first time, but should be reduced to 320 mg at the next time and
143 to 240 mg at most. If the continuous interruption time was more than 28 days, patients
144 were withdrawn from the study. When grade 4 treatment-emergent diarrhea occurs,
145 pyrotinib is permanently discontinued. Patients were assessed at the study center
146 every 3 weeks ± 7 days for the initial 10 weeks and subsequently every 3 months ± 14
147 days until a full year of pyrotinib treatment was completed. Follow-up continued for
148 28 days after the last dose of pyrotinib.

149

150 **Outcomes**

151 The primary endpoint of the sub-study was the incidence of grade ≥ 3
152 treatment-emergent diarrhea from the first dose to 28 days after the last dose of the
153 study drug.

154 The secondary endpoints of this study included the incidence and severity of
155 treatment-emergent diarrhea during the first two cycles (42 days) of adjuvant therapy;
156 the incidence and severity of constipation; the onset time, frequency, and duration of
157 grade ≥ 3 treatment-emergent diarrhea; the relationship between treatment-emergent
158 diarrhea and study drugs; the incidence of dose reduction, discontinuation, and
159 hospitalization due to treatment-emergent diarrhea; all treatment-emergent adverse
160 events (TEAEs) during the study duration; and the quality of life (QoL) questionnaire
161 score using the Functional Assessment of Cancer Therapy-Breast (FACT-B). The
162 severity of treatment-emergent diarrhea was graded for consistency with the National
163 Cancer Institute Common Terminology Criteria for Adverse Events (NCI CTCAE),
164 version 5.0, assuming that the subjects had one stool per day at baseline.

165

166 **Statistical analysis**

167 All the safety analyses were descriptive. Kaplan–Meier curves are shown for the
168 percentage of subjects in each group who did not develop diarrhea of any grade, and
169 for those who did not have diarrhea of grade ≥ 3 . The two groups were compared

170 using the log-rank test. QoL analyses were descriptive and carried out in all patients,
171 including the safety population who underwent baseline and one post-baseline QoL
172 assessment. The mean (standard error) of the observed scores over time was
173 calculated. Statistical analyses were performed using R (version 4.1.2).

174

175 **Results**

176 **Baseline characteristics**

177 Between June 8, 2021, and November 22, 2022, 120 patients completed
178 enrollment and randomization. Three patients did not follow the scheduled
179 loperamide administration, and 117 patients received at least one dose of pyrotinib: 58
180 in the 21-day group and 59 in the 42-day group. All of them were included in the
181 sub-study analysis set and the safety analysis set. At the cut-off date on September 27,
182 2023, two patients withdrew from the 21-day group for intolerable diarrhea and
183 received other anti-tumor therapies for liposarcoma on the face. In the 42-day group,
184 1 patient was lost to follow-up and 2 withdrew from the study for intolerable diarrhea
185 and bone metastases. The baseline characteristics are summarized in Table 1. The
186 median follow-up time was 12.1 months (interquartile range [IQR]: 9.5, 12.8).

187

188 **Treatment-emergent diarrhea**

189 All 117 patients developed treatment-emergent diarrhea (Table 2). At 1 year and
190 28 days after the first dose of pyrotinib, 76 episodes of grade ≥ 3 treatment-emergent
191 diarrhea occurred in 23 patients (39.7%) in the 21-day group and 96 episodes
192 occurred in 24 patients (40.7%) in the 42-day group. The relative risk for developing
193 grade ≥ 3 treatment-emergent diarrhea was 0.97 (95% confidence interval [CI]: 0.63,
194 1.52). The median number of episodes for each patient who developed grade ≥ 3
195 treatment-emergent diarrhea were 2 (IQR: 1, 5) and 1 (IQR: 1, 3) in groups A and B,
196 respectively. The median duration per grade ≥ 3 treatment-emergent diarrhea episodes
197 was 2 (IQR: 2, 2) days for the 21-day group and 2 (IQR: 2, 3) days for the 42-day

198 group. In the 21-day group, the median cumulative duration of grade ≥ 3
199 treatment-emergent diarrhea per patient, accounting for the total duration of all
200 individual episodes, was 5 days (IQR: 2, 12). Meanwhile, the 42-day group had a
201 median of 2.5 days (IQR: 2, 6.8). Most cases of grade ≥ 3 diarrhea developed in the
202 first 3 months (Figure 2). In the 21-day group, the median time to the first occurrence
203 of grade ≥ 3 diarrhea was 9 days (IQR: 7–22) after the initial dose of pyrotinib. In
204 contrast, for the 42-day group, this event was observed at a median time of 16 days
205 (IQR: 7.3, 75.3). In the first 42 days, 43 episodes of grade ≥ 3 treatment-emergent
206 diarrhea occurred in 21 patients (36.2%) in the 21-day group with each episode lasting
207 2 days (IQR: 2, 3), whereas 32 episodes occurred in 16 patients (27.1%) in the 42-day
208 group, with each episode lasting 2 days (IQR: 2, 3).

209 From the Kaplan–Meier curves, 42-days loperamide prophylaxis did not reduce
210 the proportion of patients who developed treatment-emergent diarrhea of any grade
211 (Figure 3a) or grade ≥ 3 (Figure 3b).

212 One patient in both groups discontinued pyrotinib treatment for intolerant
213 diarrhea. The proportion of patients interrupting pyrotinib treatment due to diarrhea
214 was 3.4% in each group (Table 2). Pyrotinib was discontinued in one patient with
215 diarrhea in the 42-day group, while there were no discontinuations in the 21-day
216 group. Two patients in the 21-day group and one patient in the 42-day group required
217 a dose reduction of pyrotinib due to diarrhea. Despite the high incidence of diarrhea in
218 the first two cycles of treatment, only one patient (1.7%) in the 21-day group
219 interrupted pyrotinib, and there was no pyrotinib discontinuation or nab-paclitaxel
220 reduction or discontinuation, probably due to continuous administration of
221 loperamide.

222 In the 21-day group, the incidence of treatment-related diarrhea of any grade and
223 grade ≥ 3 during the combination treatment of nab-paclitaxel plus pyrotinib (1-3
224 months) was 91.4% and 34.5%, respectively, whereas those of pyrotinib alone (3-12
225 months) were 94.8% and 13.8%, respectively. In the 42-day group, treatment-related

226 diarrhea of any grade occurred in 88.1% of patients during combination treatment
227 versus 94.9% during pyrotinib monotherapy. Furthermore, 28.8% of patients during
228 combination treatment and 25.4% of patients during pyrotinib monotherapy
229 experienced treatment-related diarrhea of grade ≥ 3 .

230

231 **Non-diarrhea TEAEs**

232 The most common TEAEs, other than diarrhea, were hypoesthesia, vomiting,
233 nausea, and rash in both groups. The safety profile in this study was similar to that in
234 previous reports on pyrotinib and nab-paclitaxel (Table 3). Most TEAEs were of grade
235 1-2. However, in each group, there was one case (1.7%) of grade ≥ 3 neutrophil count
236 decrease, and one case of grade ≥ 3 white blood cell count decrease. Only 1 patient
237 across the groups required granulocyte colony-stimulating factor administration to
238 manage these adverse events. In one patient, the administration of nab-paclitaxel and
239 pyrotinib was modified with dose reductions due to hepatic function abnormalities.
240 Four patients (6.9%) in the 21-day group and five (8.5%) in the 42-day group
241 developed grade 1 constipation during the primary prophylaxis period, leading to a
242 reduction of loperamide in three patients. Intestinal obstruction or more serious
243 sequelae of constipation have not yet been reported. No serious TEAE have been
244 reported. No death occurred.

245

246 **QoL**

247 Based on the designated follow-up regimen, QoL assessment utilizing the
248 FACT-B questionnaire was administered tri-weekly for the initial 3-month period and
249 subsequently on a quarterly basis thereafter. In both the 21-day group and the 42-day
250 group, a discernible decline from baseline in FACT-B aggregate scores was observed
251 during the preliminary two months (Figure 4). This decline was consistent with a
252 clinically significant difference (7-8 points). However, a resurgence in scores was
253 evident from the third month. The score trajectories of the two groups displayed

254 marked divergence in the ninth month. Notably, only 31 questionnaires were collected
255 in the 12th month.

256

257 **Discussion**

258 The ErbB receptor plays a pivotal role in the maintenance of intestinal barrier
259 integrity. Inhibition of the epidermal growth factor receptor (EGFR) results in
260 diminished proliferation of intestinal mucosal epithelial cells, augmented apoptosis,
261 and heightened endoplasmic reticulum stress. This compromises the healing capacity
262 of the intestinal epithelium, leading to mucosal atrophy and impaired intestinal
263 absorption. Furthermore, both HER2 and EGFR are expressed on the membranes of
264 intestinal epithelial cells. Their synergistic action modulates chloride ion secretion
265 through the phosphoinositide 3-kinase and protein kinase C pathways. Upon
266 inhibition of these receptors, there is an excess of chloride ions in the intestinal lumen,
267 which reduces water absorption and predisposes the patient to aqueous diarrhea.
268 Additional mechanisms contributing to TKI-induced diarrhea include inflammatory
269 responses,¹⁰ aberrant bile acid secretion,¹¹ and dysbiosis of the intestinal microbiota.
270 Given these mechanisms, diarrhea is inevitable and is one of the most frequent and
271 significant TEAEs during TKIs treatment.

272 The incidence of diarrhea varies among TKIs. For lapatinib, the probability of
273 diarrhea ranges from 45% to 79.7%, with grade 3 or higher diarrhea occurring in 6%
274 to 20.7% of cases.¹²⁻¹⁴ In contrast, the incidence of diarrhea during neratinib treatment
275 reaches up to 95.3%, with grade 3 or higher observed in 40% of cases.⁶ Pyrotinib has
276 a diarrhea incidence rate similar to neratinib, ranging between 94.8% and 98.4%, with
277 approximately 31% of these cases being grade 3 or above.^{1, 2} Thus, the CSCO
278 guideline, referencing the CONTROL study which investigated prophylaxis strategies
279 for neratinib-induced diarrhea, recommends that for patients who discontinued
280 pyrotinib due to diarrhea, a 21-day prophylactic treatment with loperamide should be
281 administered once pyrotinib re-initiates. As grade 3 diarrhea predominantly occurs

282 during the first cycle of pyrotinib administration,^{2, 15} it is hypothesized that using
283 loperamide as primary prophylaxis during the initial 21 days might mitigate the onset
284 of pyrotinib-induced diarrhea. Nonetheless, a notable incidence of grade 3 diarrhea
285 was still observed during the second cycle.² In the PHEDRA study, prophylactic
286 diarrhea management with loperamide reduced the incidence of grade 3 diarrhea to
287 36.1% (26/72) compared with 50.0% (53/106) in those without such management.
288 Specifically, there was a 15.1% reduction during the first cycle (29.2% vs. 44.3%) and
289 an 11.7% reduction in the second cycle (10.1% vs. 21.8%).⁴ In this context, our study
290 explored two regimens of loperamide: a 21-day and a 42-day course, initiated
291 concurrently with the first dose of pyrotinib, as primary prophylaxis for diarrhea. The
292 results indicated no significant differences between the 21-day and 42-day
293 prophylaxis regimens in terms of overall diarrhea incidence (100% vs.100%) or the
294 occurrence of grade 3 or higher diarrhea (39.7% vs. 42.4%). Achieving a balance
295 between constipation and diarrhea has been a clinical challenge when using
296 loperamide to manage TKI-induced diarrhea. However, in this study, the incidence of
297 constipation remained low for both the 21-day (6.9%) and 42-day (8.5%) loperamide
298 regimens, with a severity of only grade 1.

299 Severe diarrheal symptoms can prompt dose reduction or discontinuation of
300 pyrotinib, which may potentially affect therapeutic outcomes. In the PHOEBE study,
301 one patient (1%) discontinued pyrotinib due to diarrhea.² Meanwhile, in another phase
302 II study, diarrhea did not result in pyrotinib discontinuation, but it did lead to dose
303 reductions in two patients (3%).¹⁵ In the present study, both the 21-day and 42-day
304 loperamide groups had only one patient (1.7%) who discontinued treatment. In each
305 group, two patients (3.4%) interrupted pyrotinib, while dose reductions were observed
306 in two patients (3.4%) in the 21-day group and one case (1.7%) in the 42-day group.

307 Frequent episodes of diarrhea can compromise a patient's quality of life and
308 affect medication adherence. In the current study, there was a decline in the patients'
309 FACT-B scores during the initial two months. This decrease is potentially attributable

310 to the early onset of diarrhea, commonly observed with the concurrent administration
311 of nab-paclitaxel and pyrotinib during the early stages of treatment. As the treatment
312 proceeded, the quality-of-life scores gradually improved.

313 In this study, a combination of pyrotinib and nab-paclitaxel was used as an
314 anti-tumor therapeutic regimen. These TEAEs were consistent with previously
315 reported profiles associated with both pyrotinib and albumin-bound paclitaxel. Given
316 that nab-paclitaxel can also induce diarrhea, the frequency of diarrhea in this study,
317 when co-administered with pyrotinib and nab-paclitaxel, was elevated compared to
318 that in previous studies combining pyrotinib with capecitabine. The lower incidence
319 of neutropenia compared with that reported in previous study involving nab-paclitaxel
320 (34%), probably due to the fact that the breast cancer patients in that study were all in
321 advanced stages with poorer overall health conditions, resulted in fewer use of
322 leukocyte-raising agents. Notably, the hematological toxicity observed with the
323 combination of nab-paclitaxel and anti-HER2 TKI in our study was lower than that
324 observed with paclitaxel combined with an anti-HER2 antibody in the APT trial.

325 This study has several limitations. First, as the main study has currently
326 completed patient enrollment, but is still ongoing, the data are not yet mature;
327 therefore, there is a lack of patients who have not received prophylactic treatment for
328 diarrhea to serve as a control group. Second, although the study incorporated
329 randomization for group allocation, blinding was not employed. Finally, in the later
330 stages of follow-up, numerous patients did not submit their quality-of-life
331 questionnaires, rendering this portion of the scoring potentially imprecise.

332 In conclusion, no significant differences were observed between 21-day and
333 42-day loperamide durations in preventing grade ≥ 3 diarrhea. Considering the
334 economic cost and patient compliance, 21-day loperamide prophylaxis might
335 represent a more pragmatic and appropriate approach for clinical application.

336 **Acknowledgments**

337 We would like to acknowledge the patients and their families, the study investigators,

338 and the clinical site staff. We thank Xiaoyue Wu (Department of Medical Affairs,
339 Jiangsu Hengrui Pharmaceuticals Co., Ltd.) for her input in study design and data
340 interpretation, Yitao Wang (Department of Medical Affairs, Jiangsu Hengrui
341 Pharmaceuticals Co., Ltd.) for statistical support, and Yilan Wu (Department of
342 Medical Affairs, Jiangsu Hengrui Pharmaceuticals Co., Ltd.) for medical writing
343 assistance.

344

345 **Ethics approval and consent to participate**

346 The study was approved by the institutional ethics committee at the Peking Union
347 Medical College Hospital (approval number: HS-2617) with informed consent
348 obtained from all patients in accordance with the Declaration of Helsinki. This trial
349 was registered at ClinicalTrials.gov, number NCT04659499.

350

351 **Consent for publication**

352 Not applicable.

353

354 **Availability of data and materials**

355 The raw clinical data were protected and not available owing to data privacy laws.
356 The de-identified datasets supporting the findings of this study are available for
357 academic purposes on request from the corresponding author, Qiang Sun
358 (sunqiangpunch@sina.com), for five years, with the approval of the Institutional
359 Ethical Committees.

360

361 **Competing interest**

362 The authors have no competing interest to declare.

363

364 **Funding**

365 The study drugs pyrotinib and nab-paclitaxel were provided by Jiangsu Hengrui

366 Pharmaceuticals Co., Ltd. This study was funded by the National High-Level Hospital
367 Clinical Research Funding (No. 2022-PUMCH-B-038 and No. 2022-PUMCH-C-066)
368 and TSC China Allicace (#LAM001-202205).

369

370 **Author contributions**

371 We had full access to all data in the trial and took responsibility for the integrity of the
372 data and accuracy of the data analysis. Y.D.Z. and Q.S. contributed to the
373 conceptualization and design of the trial. C.J.W., Y.L., Y.X., F.M., J.H.G, X.J.W.,
374 Y.N.Z, X.H.Z., S.J.S., Y.Z., B.P., L.P., X.H., X.C., R.Y., X.T.Z, Z.C.H., Y.H.L, C.G.L.,
375 J.L. collected and assembled the data. C.J.W. and Y.L. performed the statistical
376 analyses and wrote the manuscript. All the authors participated in writing the paper
377 and approved the final version of the manuscript.

378

379 **References**

- 380 1 Yan M, Bian L, Hu X et al. Pyrotinib plus capecitabine for human epidermal
381 factor receptor 2-positive metastatic breast cancer after trastuzumab and
382 taxanes (PHENIX): a randomized, double-blind, placebo-controlled phase 3
383 study. *Translational Breast Cancer Research* 2020; 1: 13.
- 384 2 Xu B, Yan M, Ma F et al. Pyrotinib plus capecitabine versus lapatinib plus
385 capecitabine for the treatment of HER2-positive metastatic breast cancer
386 (PHOEBE): a multicentre, open-label, randomised, controlled, phase 3 trial.
387 *Lancet Oncol* 2021; 22 (3): 351-360.
- 388 3 Xu B, Yan M, Ma F et al. LBA19 Pyrotinib or placebo in combination with
389 trastuzumab and docetaxel for HER2-positive metastatic breast cancer
390 (PHILA): A randomized phase III trial. *Annals of Oncology* 2022; 33: S1387.
- 391 4 Wu J, Jiang Z, Liu Z et al. Neoadjuvant pyrotinib, trastuzumab, and docetaxel
392 for HER2-positive breast cancer (PHEDRA): a double-blind, randomized
393 phase 3 trial. *BMC medicine* 2022; 20 (1): 498.
- 394 5 Barcenas CH, Hurvitz SA, Di Palma JA et al. Improved tolerability of
395 neratinib in patients with HER2-positive early-stage breast cancer: the
396 CONTROL trial. *Ann Oncol* 2020; 31 (9): 1223-1230.
- 397 6 Martin M, Holmes FA, Ejlertsen B et al. Neratinib after trastuzumab-based
398 adjuvant therapy in HER2-positive breast cancer (ExteNET): 5-year analysis
399 of a randomised, double-blind, placebo-controlled, phase 3 trial. *Lancet Oncol*
400 2017; 18 (12): 1688-1700.

- 401 7 Biyun wang, Rui Ge, Jiang Z. Expert consensus on the management of
402 adverse events of ErbB family tyrosine kinase inhibitors in breast cancer.
403 *Zhonghua Zhong Liu Za Zhi* 2020; 42 (10): 798-806.
- 404 8 Saura C, Oliveira M, Feng Y-H et al. Neratinib Plus Capecitabine Versus
405 Lapatinib Plus Capecitabine in HER2-Positive Metastatic Breast Cancer
406 Previously Treated With ≥ 2 HER2-Directed Regimens: Phase III NALA
407 Trial. *J Clin Oncol* 2020; 38 (27): 3138-3149.
- 408 9 Wang C, Zhou Y, Lin Y et al. Rationale and design of a phase II trial of
409 pyrotinib in combination with nab-paclitaxel as adjuvant therapy for N0/N1mi,
410 HER2 + early breast cancer (PHAEDRA). *BMC Cancer* 2022; 22 (1): 269.
- 411 10 Hong S, Gu Y, Gao Z et al. EGFR inhibitor-driven endoplasmic reticulum
412 stress-mediated injury on intestinal epithelial cells. *Life Sci* 2014; 119 (1-2):
413 28-33.
- 414 11 Saran C, Sundqvist L, Ho H et al. Novel Bile Acid-Dependent Mechanisms of
415 Hepatotoxicity Associated with Tyrosine Kinase Inhibitors. *J Pharmacol Exp*
416 *Ther* 2022; 380 (2): 114-125.
- 417 12 Geyer CE, Forster J, Lindquist D et al. Lapatinib plus capecitabine for
418 HER2-positive advanced breast cancer. *N Engl J Med* 2006; 355 (26):
419 2733-2743.
- 420 13 Pivot X, Manikhas A, Żurawski B et al. CEREBEL (EGF111438): A Phase III,
421 Randomized, Open-Label Study of Lapatinib Plus Capecitabine Versus
422 Trastuzumab Plus Capecitabine in Patients With Human Epidermal Growth
423 Factor Receptor 2-Positive Metastatic Breast Cancer. *Journal of Clinical*
424 *Oncology : Official Journal of the American Society of Clinical Oncology*
425 2015; 33 (14): 1564-1573.
- 426 14 Diéras V, Miles D, Verma S et al. Trastuzumab emtansine versus capecitabine
427 plus lapatinib in patients with previously treated HER2-positive advanced
428 breast cancer (EMILIA): a descriptive analysis of final overall survival results
429 from a randomised, open-label, phase 3 trial. *Lancet Oncol* 2017; 18 (6):
430 732-742.
- 431 15 Ma F, Ouyang Q, Li W et al. Pyrotinib or Lapatinib Combined With
432 Capecitabine in HER2-Positive Metastatic Breast Cancer With Prior Taxanes,
433 Anthracyclines, and/or Trastuzumab: A Randomized, Phase II Study. *J Clin*
434 *Oncol* 2019; 37 (29): 2610-2619.

435

436

437

438

439

440

441

442

443

444

445 **Figure legends**

446 **Figure 1.** Patient flow.

447 **Figure 2.** Incidence of diarrhea of any grade (a) or grade ≥ 3 (b) by month.

448 **Figure 3.** Percentage of patients who did not develop a diarrhea of any grade (a) or
449 grade ≥ 3 (b) after pyrotinib administration.

450 **Figure 4.** Mean change from baseline in Functional Assessment of Cancer Therapy
451 (Breast) total scores.

452

453 **Table 1. Baseline characteristics**

Characteristics	21-day loperamide (N=58)	42-day loperamide (N=59)
Age (years), median (IQR)	50 (27, 72)	52 (29, 68)
Female, n (%)	58 (100)	59 (100)
ECOG performance status, n (%)		
0	29 (50.0)	37 (62.7)
1	29 (50.0)	22 (37.3)
Hormone receptor status, n (%)		
ER+ and/or PR+	40 (69.0)	33 (55.9)
ER- and PR-	18 (31.0)	26 (44.1)
Stage, n (%)		
IA	49 (84.5)	47 (79.7)
IB	3 (5.2)	1 (1.7)
IIA	6 (10.3)	11 (18.6)

Menopausal, n (%)	25 (43.1)	30 (50.8)
--------------------------	-----------	-----------

454 IQR, interquartile range; ECOG, Eastern Cooperative Oncology Group; ER, estrogen
455 receptor; PR, progesterone receptor.

456

457

458

459 **Table 2. Characteristics of treatment-emergent diarrhea**

Characteristics	21-day loperamide (N=58)	42-day loperamide (N=59)
Treatment-emergent diarrhea incidence, n (%)		
Any grade	58 (100)	59 (100)
Grade \geq 3	23 (39.7)	24 (40.7)
Other grade \geq3 diarrhea events		
Median episodes/patient (IQR)	2 (1, 5)	1 (1, 3)
Median duration of episode, days (IQR)	2 (2, 2)	2 (2, 3)
Median time to first episode, days (IQR)	9 (7, 22)	16 (7.3, 75.3)
Median cumulative duration, days (IQR)	5 (2, 12)	2.5 (2, 6.8)
Treatment-emergent diarrhea leading to		
Pyrotinib, n (%)		
Dose interruption	2 (3.4)	2 (3.4)
Dose reduction	2 (3.4)	1 (1.7)
Treatment discontinuation	0	1 (1.7)
Nab-paclitaxel, n (%)		
Dose interruption	0	0
Dose reduction	0	0
Treatment discontinuation	0	0

460 IQR, interquartile range.

461

462

463

464

465

466

467

468 **Table 3. Treatment-emergent non-diarrhea adverse events with an incidence**
469 **of >10%**

Adverse events, n (%)	21-day loperamide (N=58)		42-day loperamide (N=59)	
	Any grade	Grade \geq 3	Any grade	Grade \geq 3
Hypoesthesia	36 (62.1)	0	37 (62.7)	0
Vomiting	37 (63.8)	0	33 (55.9)	0
Nausea	30 (51.7)	0	35 (59.3)	0
Rash	31 (53.4)	0	33 (55.9)	0
Pain	23 (39.7)	0	29 (49.2)	0
Fatigue	17 (29.3)	0	21 (35.6)	0
Limb pain	16 (27.6)	0	22 (37.3)	0
Fever	16 (27.6)	0	15 (25.4)	0
Arthralgia	15 (25.9)	0	16 (27.1)	0
Abdominal pain	14 (24.1)	0	15 (27.1)	0
Oral ulceration	10 (17.2)	0	12 (20.3)	0
Dizziness	6 (10.3)	0	16 (27.1)	0
Bone pain	12 (20.7)	0	8 (13.6)	0
Palmar-plantar				
Erythrodysesthesia	7 (12.1)	0	8 (13.6)	0
syndrome				
Abdominal discomfort	7 (12.1)	0	4 (6.8)	0

Neutrophil decreased	count	8 (13.8)	1 (1.7%)	3 (5.1)	1 (1.7%)
---------------------------------	--------------	----------	----------	---------	----------

Figure 1

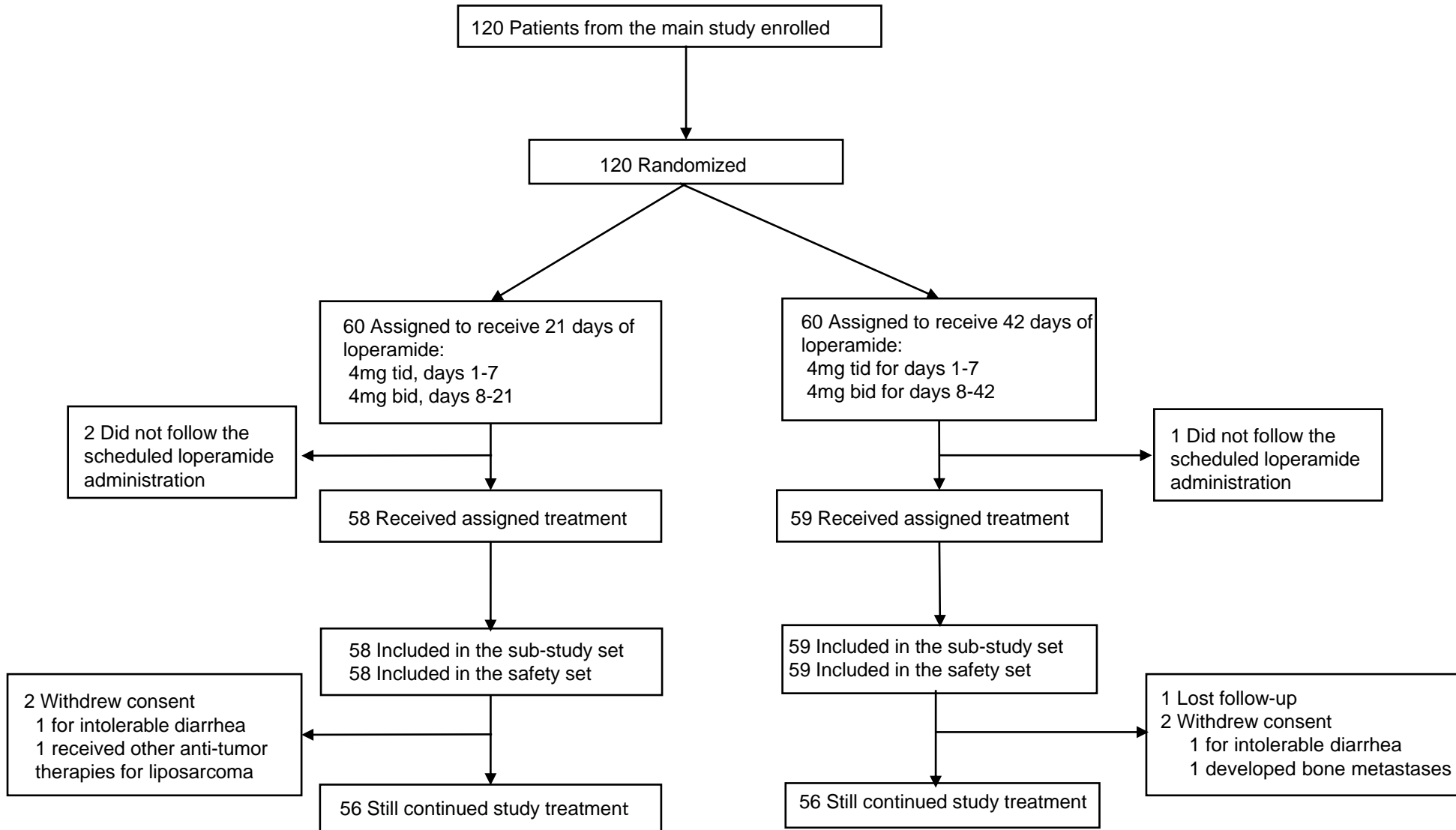


Figure 2

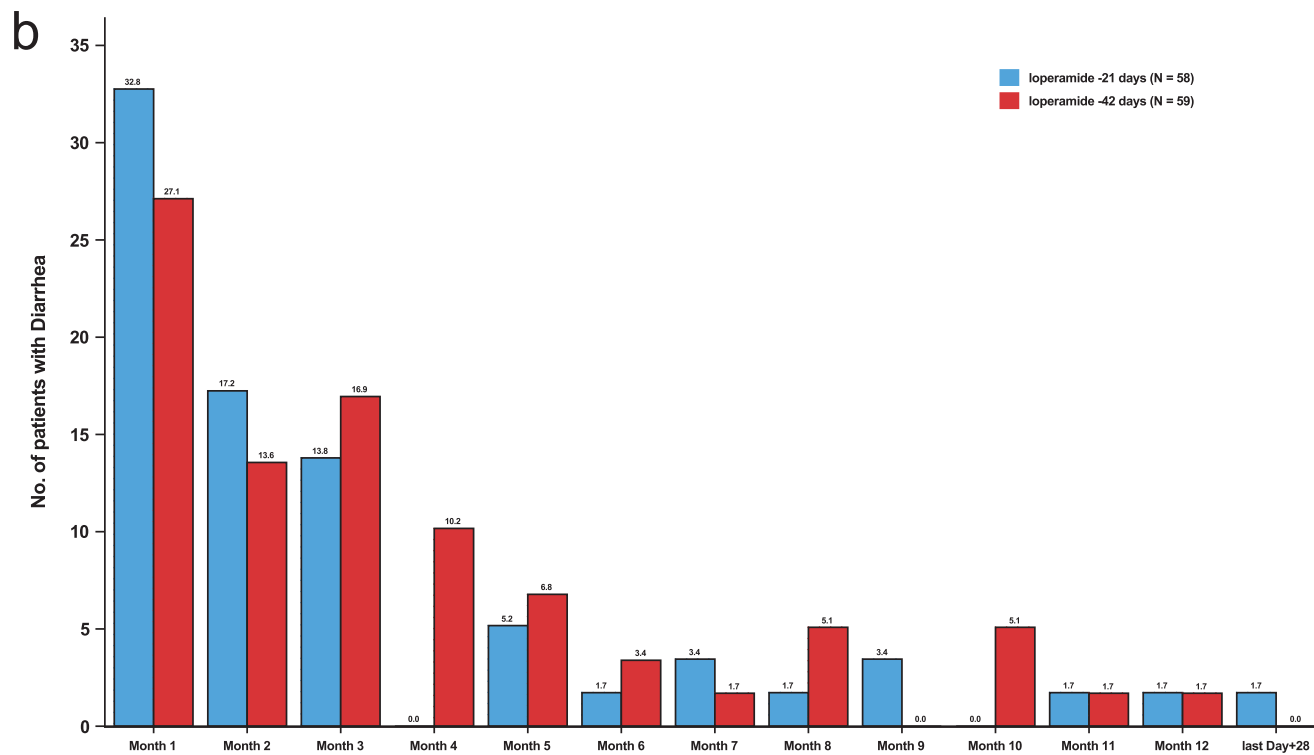
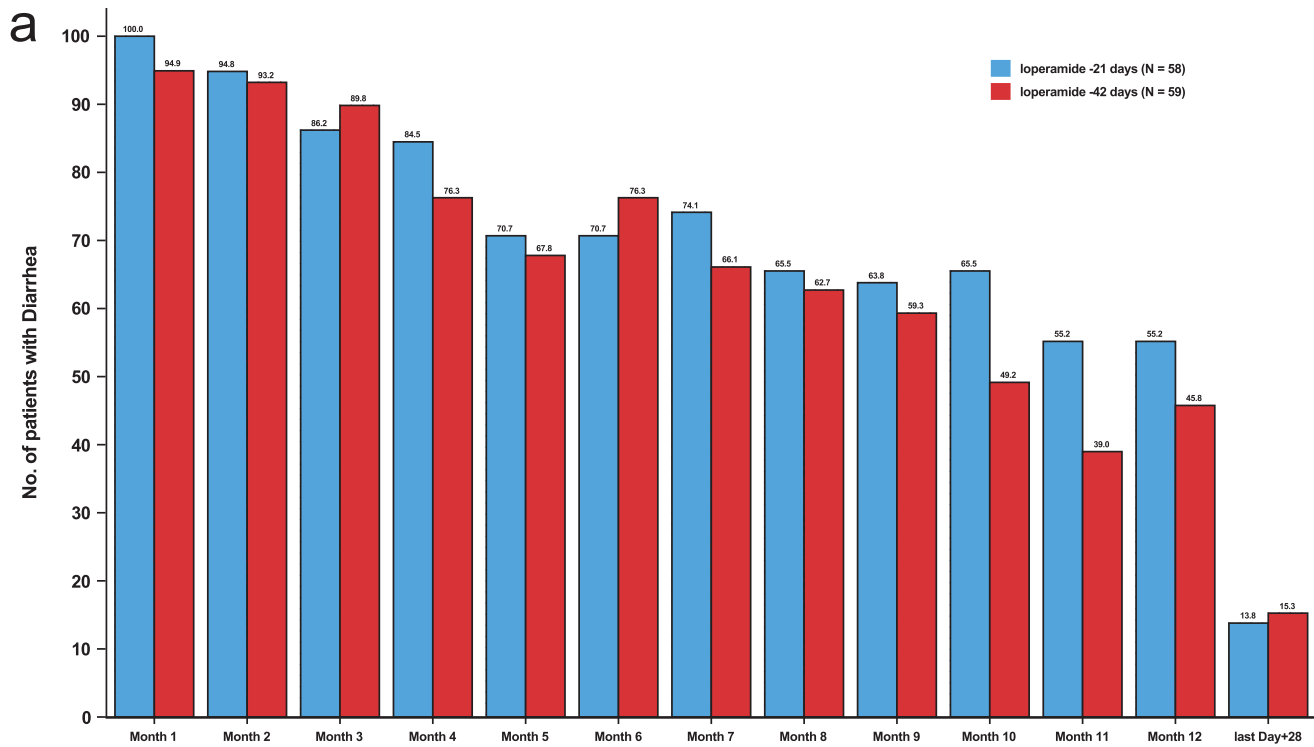
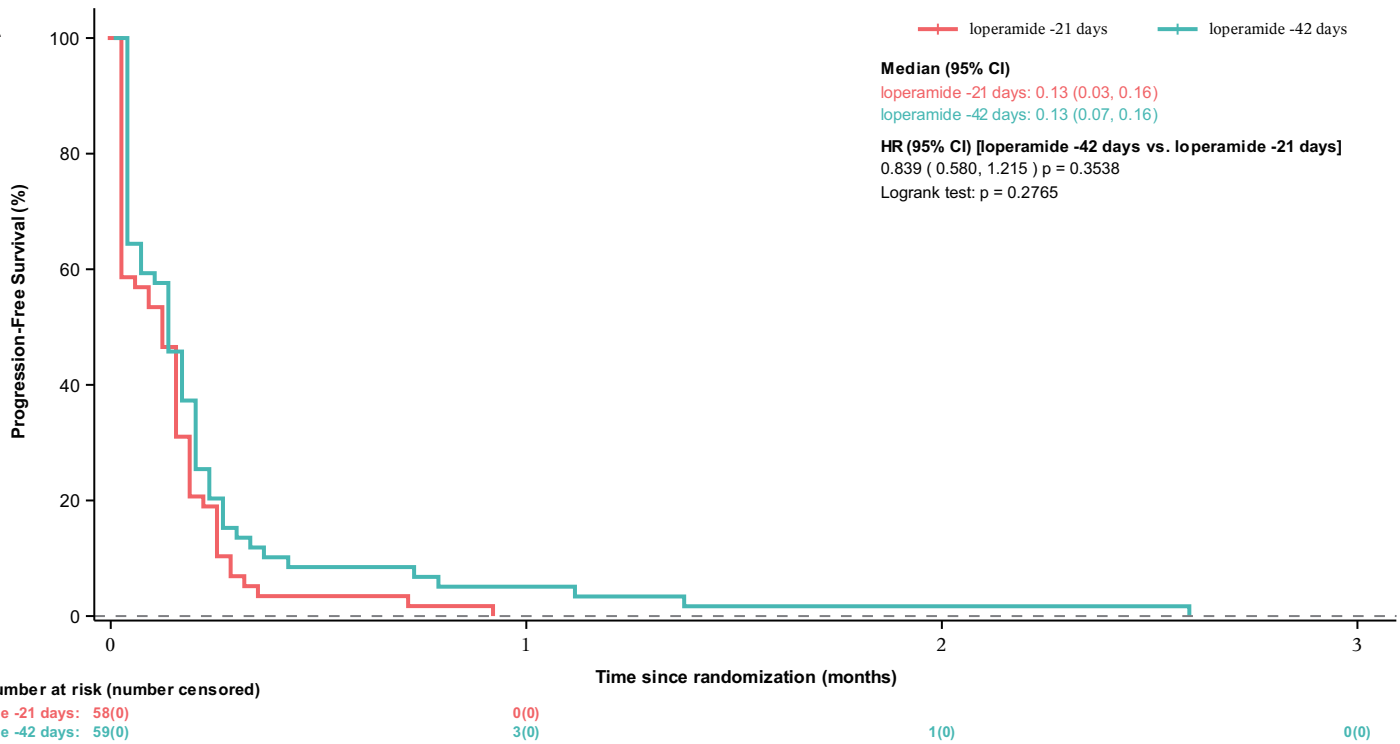


Figure 3

a



b

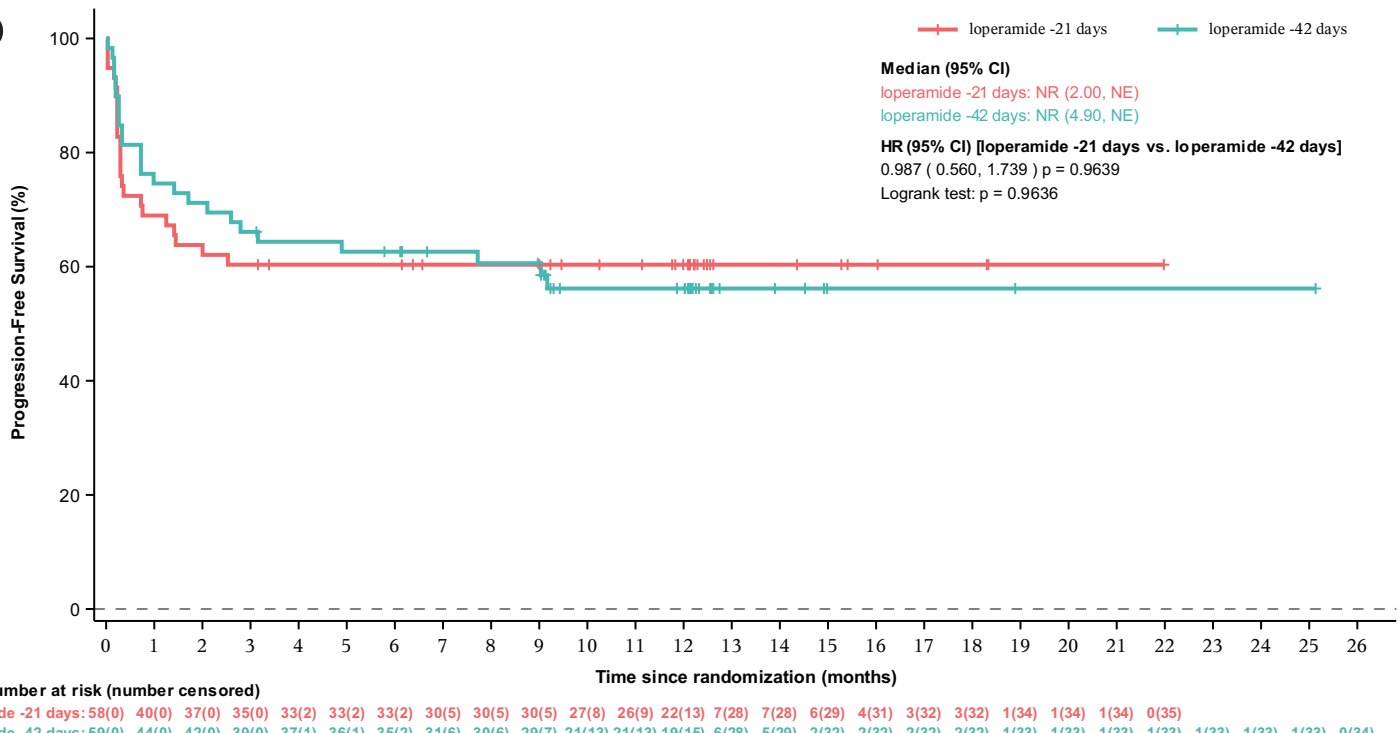


Figure 4

