

1 **Resting-State EEG Reveals Regional Brain Activity Correlates in Alzheimer's**
2 **and Frontotemporal Dementia**

3
4

5 *Ali Azargoonjahromi*^{1*}, *Hamide Nasiri*², *Fatemeh Abutalebian*³

6

7 ¹ Shiraz University of Medical Sciences, Shiraz, Iran. aazargoonj@gmail.com

8 ² School of Medicine, Zanzan University of Medical Sciences, Zanzan, Iran. hnasiri@sina.zums.ac.ir

9 ³ Department of Biotechnology and Medicine, Islamic Azad University of Tehran Central Branch,
10 Tehran, Iran. fatemeh.abutalebian@gmail.com

11

12 ***Corresponding author:** Ali Azargoonjahromi

13 E-mail: aazargoonj@gmail.com

14 ORCID: 0000-0002-6997-9419

15

16

17

18

19

20

21

22 **Abstract**

23 Resting-state EEG records brain activity when awake but not engaged in tasks, analyzing frequency bands
24 linked to cognitive states. Recent studies on Alzheimer’s disease (AD) and frontotemporal dementia
25 (FTD) have found a link between EEG activity, MMSE scores, and age, though some findings are
26 conflicting. This study aimed to explore EEG regional differences among AD and FTD, thereby
27 improving diagnostic strategies. We analyzed EEG recordings from 88 participants in OpenNeuro Dataset
28 ds004504, collected at AHEPA General Hospital using a Nihon Kohden 2100 EEG device. The study
29 used preprocessed recordings, classification algorithms, and cognitive function assessments (MMSE) to
30 identify significant predictors and correlations between EEG measures and cognitive variables. The study
31 revealed that cognitive function, age, and brain activity show distinct relationships in AD and FTD. In
32 AD, MMSE scores significantly predicted brain activity in regions like C3, C4, T4, and Fz, with better
33 cognitive performance linked to higher EEG power in frontal and temporal areas. Conversely, age had a
34 major influence on brain activity in FTD, particularly in regions like C3, P3, O1, and O2, while MMSE
35 scores did not significantly predict brain activity. In FTD, higher EEG power in regions like P3, P4, Cz,
36 and Pz correlated with lower cognitive function. Thus, the findings suggest that EEG biomarkers can
37 enhance diagnostic strategies by highlighting different patterns of brain activity related to cognitive
38 function and age in AD and FTD.

39 **Keywords:** Electroencephalography; Alzheimer’s disease; Resting-state EEG; Frontotemporal Dementia;
40 Age; Cognitive Function.

41

42

43

44

45

46

47

48

49

50 **1. Introduction**

51 Resting-state EEG (electroencephalography) records brain activity when an individual is awake but not
52 engaged in specific tasks, analyzing delta, theta, alpha, beta, and gamma frequency bands linked to
53 various cognitive and physiological states [1-3]. It uses electrodes placed on the scalp according to the
54 international 10-20 system (e.g., Fp1, Fp2, F7, F3, Fz, F4, F8, T3, C3, Cz, C4, T4, T5, P3, Pz, P4, T6, O1,
55 O2) to detect microvolt-range electrical signals from neurons. These signals are amplified and analyzed to
56 study brain activity patterns, aiding in neurological diagnosis and monitoring changes over time. Indeed,
57 this non-invasive approach—resting-state EEG—is used to study the brain’s baseline neural activity and
58 can provide valuable insights into various neurological and psychiatric conditions [4-6].

59 In recent times, the use of resting-state EEG for studying neurodegenerative diseases like Alzheimer’s
60 disease (AD) [7-10] and frontotemporal dementia (FTD) [11-13] has gained prominence. Indeed, it
61 provides insights into the brain’s electrical activity patterns associated with these conditions, potentially
62 revealing biomarkers that aid in diagnosis and monitoring disease progression. Studies have shown that
63 EEG can detect abnormalities in frequency bands alpha power and altered connectivity patterns in
64 patients with AD and FTD compared to healthy individuals. These findings contribute to understanding
65 how these diseases affect brain function and may help in developing new diagnostic tools and treatment
66 strategies [14-16].

67 The Mini-Mental State Examination (MMSE) is a widely used tool for assessing cognitive function and
68 screening for cognitive impairment. It evaluates various cognitive domains, including orientation,
69 attention, memory, language, and visuospatial skills. Research has shown significant correlations between
70 MMSE scores and EEG activity at specific electrodes in patients with AD and FTD. These correlations
71 help identify how cognitive functions are linked to brain activity patterns in these neurodegenerative
72 diseases [17, 18].

73 In AD and FTD patients, frontal electrodes (Fp1, Fp2, F7, F3, Fz, F4, F8) have been found to correlate
74 with MMSE scores, where lower scores are often associated with reduced EEG activity in these regions.
75 These regions are crucial for executive functions, attention, and working memory, which are assessed by
76 several MMSE tasks [19]. Similarly, temporal electrodes (T3, T4, T5, T6) show significant correlations
77 with MMSE scores due to their involvement in memory and language functions [20]. Other EEG
78 electrodes such as parietal (P3, Pz, P4), occipital (O1, O2), and central (C3, Cz, C4) electrodes are also
79 linked to MMSE scores, with activity in these regions correlating with cognitive functions such as

80 visuospatial skills, calculation, visual processing, and motor control. In most studies, reduced activity in
81 these areas is associated with lower MMSE scores, indicating potential cognitive decline [21-23].

82 Another factor is age, which plays a crucial role in modulating brain activity and cognitive function [24].
83 Aging can impact EEG patterns, leading to changes in frequency band power and connectivity that are
84 distinct from those observed in neurodegenerative diseases [25-27]. In both AD and FTD, age-related
85 changes in brain activity can complicate the interpretation of EEG findings. For instance, age-related
86 atrophy and functional decline can mask or exacerbate the abnormalities typically associated with these
87 conditions [28, 29]. Noteworthy, studies have shown that age-related effects on EEG include decreased
88 alpha and beta power and altered connectivity patterns, which can be seen across various brain regions.
89 These changes may overlap with or confound the pathological changes observed in AD and FTD, making
90 it important to consider age when interpreting EEG data in these populations [30-32].

91 However, other research finds that age-related changes in brain activity are not always consistent across
92 different neurodegenerative conditions. For instance, in AD, age may interact with disease-specific
93 pathology, leading to complex and sometimes conflicting results about how age influences cognitive
94 function and brain activity compared to other conditions or in combination with other factors like genetic
95 predispositions and lifestyle [33-36].

96 Despite these findings, EEG recordings can still be influenced by patient population heterogeneity,
97 technical variability, inconsistent electrode placement, and comorbid conditions. The current study on
98 EEG recordings addressed these limitations by including participants with AD and FTD and using
99 standardized EEG protocols in a clinical setting. Differences in cognitive assessments and the absence of
100 longitudinal data pose challenges to tracking disease progression accurately. To minimize technical
101 variability, the current study implemented meticulous electrode placement, signal quality checks, and
102 robust preprocessing techniques, including Butterworth filtering, artifact removal via ASR and ICA, and
103 baseline correction.

104 The study aimed to explore the correlation between EEG measures across brain regions, cognitive
105 performance, and age in AD and FTD patients, aiming to identify EEG biomarkers to enhance diagnostic
106 strategies for neurodegenerative diseases.

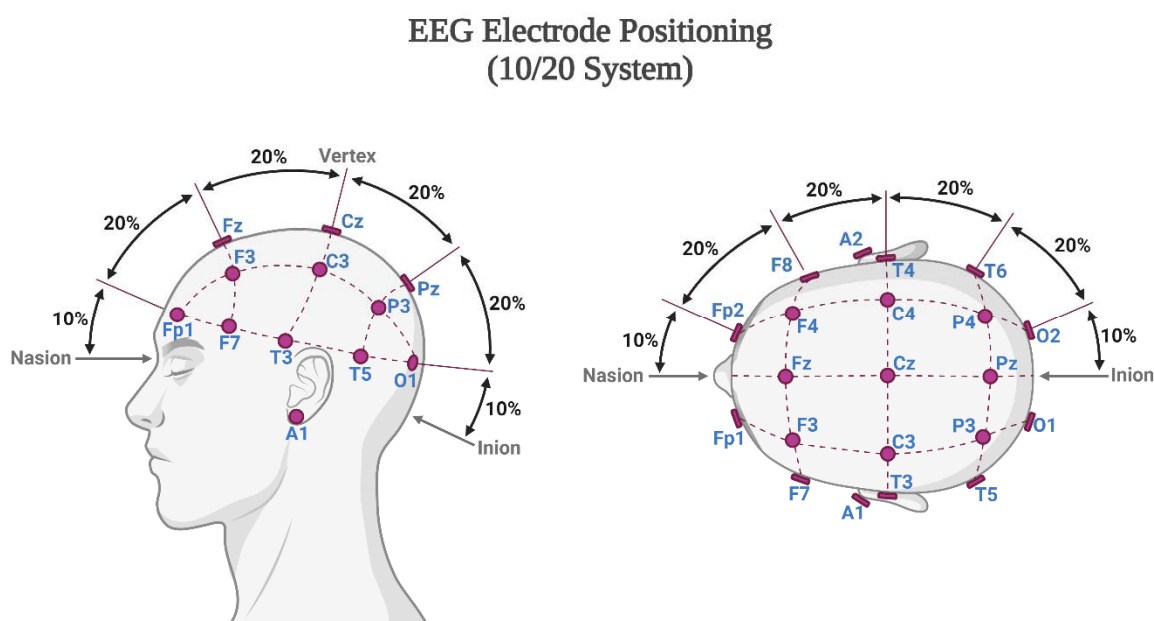
107 **2. Methods and Materials**

108 The data presented in this article originates from the OpenNeuro Dataset ds004504, accessible via DOI:
109 <https://doi.org/10.18112/openneuro.ds004504.v1.0.7>. As detailed by [37], this dataset encompasses EEG

110 resting state recordings with eyes closed from a total of 88 participants. Within this cohort, 36 individuals
111 were diagnosed with AD, 23 with FTD, and 29 were classified as CN. In the current study, we analyzed
112 the data obtained from individuals with AD and FTD.

113 2.1. EEG Recording

114 The dataset recordings were conducted to explore functional differences in EEG activity among AD, CN,
115 and FTD groups. These recordings were carried out in a clinical routine setting at the 2nd Department of
116 Neurology, AHEPA General Hospital of Thessaloniki, by a team of experienced neurologists. Using a
117 Nihon Kohden 2100 clinical EEG device, recordings were made with 19 scalp electrodes (Fp1, Fp2, F7,
118 F3, Fz, F4, F8, T3, C3, Cz, C4, T4, T5, P3, Pz, P4, T6, O1, and O2) and 2 electrodes (A1 and A2) placed
119 on the mastoids for impedance checking and as reference electrodes. The electrodes followed the 10–20
120 international system. (Figure 1)



121

122 **Figure 1.:** EEG electrodes positioning in followed the 10–20 international system.

123 Recordings adhered to the clinical protocol, with participants sitting with their eyes closed. The referential
124 montage used Cz for common mode rejection, a sampling rate of 500 Hz, and a resolution of 10 μ V/mm.
125 The recording durations varied: 13.5 minutes on average for the AD group (range: 5.1–21.3 minutes), 12
126 minutes for the FTD group (range: 7.9–16.9 minutes), and 13.8 minutes for the CN group (range: 12.5–

127 16.5 minutes). In total, the dataset comprises 485.5 minutes of AD recordings, 276.5 minutes of FTD
128 recordings, and 402 minutes of CN recordings.

129 This study received approval from the Scientific and Ethics Committee of AHEPA University Hospital,
130 Aristotle University of Thessaloniki (protocol number 142/12-04-2023). The investigations conformed to
131 the principles outlined in the Declaration of Helsinki (1975), revised in 2008
132 (<http://www.wma.net/en/30publications/10policies/b3/>, accessed March 2019).

133 **2.2. Preprocessing**

134 The preprocessing of the EEG signals in this study focused exclusively on the derivatives folder, where
135 the preprocessed data is stored. Initially, a Butterworth band-pass filter with a frequency range of 0.5 to
136 45 Hz was applied to the signals. Following this, the signals were re-referenced to the average value of
137 electrodes A1 and A2. To handle artifacts, the ASR (Automatic Subspace Reconstruction) routine was
138 employed to remove segments of data that exceeded a conservative threshold, specifically a 0.5-second
139 window with a standard deviation of 17. Subsequently, Independent Component Analysis (ICA) was
140 used, specifically the RunICA algorithm, to decompose the 19 EEG signals into 19 ICA components [38].
141 Components identified as “eye artifacts” or “jaw artifacts” by the ICLabel method in the EEGLAB
142 platform were automatically excluded. Despite the recordings being in a resting state with participants’
143 eyes closed, eye movement artifacts were still detected in some EEG recordings. Figure 2 in the original
144 document visually demonstrates the difference between a raw signal and its preprocessed counterpart,
145 highlighting the removal of high-frequency artifacts and the application of baseline correction.

146 **2.3. Classification Benchmark**

147 To benchmark the classification performance of the EEG dataset for distinguishing between AD vs. CN
148 and FTD vs. CN, a set of straightforward and reproducible feature extraction and classification techniques
149 were employed. This approach ensures that the methods can be easily validated and extended by other
150 researchers.

151 **2.3.1. Feature Extraction**

152 One of the primary features extracted for EEG classification tasks is the Relative Band Power (RBP)
153 across five key frequency bands [39]: Delta (0.5–4 Hz), Theta (4–8 Hz), Alpha (8–13 Hz), Beta (13–25
154 Hz), and Gamma (25–45 Hz). The EEG signals were divided into 4-second epochs with a 50% overlap,
155 and each epoch was labeled as AD, FTD, or CN. The Power Spectral Density (PSD) for each frequency
156 band was calculated using the Welch method [40], which involves segmenting the signal, computing the

157 squared magnitude of the discrete Fourier transform for each segment, and averaging the results. The
158 relative PSD for each band was then computed, resulting in a feature matrix with five features per epoch.
159 Figure 3 illustrates scalp heatmaps of PSD averaged across the AD, FTD, and CN groups, providing a
160 visual comparison of the PSD distribution for each frequency band.

161 **2.3.2. Classification**

162 To classify the EEG data for AD vs. CN and FTD vs. CN, several machine learning algorithms were
163 utilized. These included LightGBM, Multilayer Perceptron (MLP), Random Forests, Support Vector
164 Machine (SVM), and k-Nearest Neighbors (kNN). The classification performance was evaluated using
165 the Leave-One-Subject-Out (LOSO) validation method [39]. In this method, all epochs from one subject
166 are used as the test set, while epochs from the remaining subjects form the training set. This process is
167 repeated iteratively for each subject, and the average performance metrics—accuracy, sensitivity,
168 specificity, and F1 score—are calculated from the confusion matrix. This comprehensive benchmarking
169 provides a solid foundation for evaluating and comparing the performance of various classification
170 techniques on this EEG dataset.

171 **2.4. Cognitive Assessment**

172 The cognitive and neuropsychological status of the participants was assessed using the international
173 MMSE [41]. This test evaluates various cognitive domains, including arithmetic, memory, orientation,
174 language, and visuospatial skills. During the assessment, participants are asked a series of questions and
175 given simple tasks to perform, such as naming objects, recalling a list of words, following basic
176 instructions, and copying a design. The MMSE score ranges from 0 to 30, with higher scores indicating
177 better cognitive function and lower scores indicating more severe cognitive decline.

178 **2.5. Statistical Analysis**

179 We used Python 3.11 to conduct a comprehensive analysis of EEG data from patients with AD and FTD.
180 Our approach involved perform linear regression analyses, examining the relationships between log-
181 transformed EEG measures and cognitive variables such as the MMSE, age, and gender. We assessed the
182 impact of these variables on various EEG electrode sites by calculating adjusted R-squared values, beta
183 coefficients, standard errors, 95% confidence intervals, and p-values. A p-value of less than 0.05 was
184 considered statistically significant. Additionally, we employed correlation analysis to explore the strength
185 of relationships between the MMSE scores and EEG measures, reporting p-values to determine statistical

186 significance. This analysis enabled us to identify significant predictors and correlations, providing
187 insights into how cognitive and demographic factors influence EEG patterns in AD and FTD patients.

188 3. Results

189 In the current study, participants were categorized into two groups: AD and FTD. The AD group
190 consisted of individuals diagnosed with AD without additional dementia-related comorbidities. The
191 average age of participants was 66.4 years (SD = 7.9) for the AD group and 63.6 years (SD = 8.2) for the
192 FTD group. There was no significant age difference between the groups. The analysis revealed a notable
193 difference in gender distribution, with a higher proportion of females in the AD group (66.7%) compared
194 to the FTD group (39.1%). EEG measurements indicated a significant difference in log power at the O2
195 electrode, with FTD patients showing lower values than their AD counterparts. All participant data was
196 anonymized in accordance with GDPR regulations to ensure the confidentiality and privacy of personal
197 information. (Table 1)

198 **Table 1.:** Demographic characteristics of the participants.

| | AD (n= 36) | FTD (n= 23) | P value |
|-----------|--------------|--------------|------------------|
| Age | 66.39± 7.89 | 63.95± 8.22 | 0.206 |
| Gender, F | 24 (66.7) | 9 (39.1) | 0.038 |
| MMSE | 17.75± 4.5 | 22.17± 2.64 | <0.001 |
| Log Fp1 | -18.34± 2.48 | -18.86± 2.31 | 0.42 |
| Log Fp2 | -18.53± 2.48 | -18.93± 2.18 | 0.525 |
| Log F3 | -17.66±2.48 | -17.95± 2.37 | 0.655 |
| Log F4 | -17.94± 2.47 | -17.58± 2.43 | 0.586 |
| Log C3 | -18.06± 2.47 | -18.88± 2.09 | 0.19 |
| Log C4 | -17.96± 2.48 | -18.58± 2.43 | 0.346 |
| Log P3 | -18.30± 2.52 | -18.82± 2.13 | 0.411 |
| Log P4 | -18.22± 2.52 | -19.09± 2.25 | 0.184 |
| Log O1 | -18.12± 2.46 | -18.63± 2.45 | 0.434 |
| Log O2 | -17.80± 2.52 | -19.08± 2.15 | 0.049 |
| Log F7 | -18.02± 2.62 | -18.19± 2.51 | 0.816 |
| Log F8 | -18.28± 2.62 | -18.25± 2.51 | 0.965 |
| Log T3 | -18.02± 2.52 | -18.19± 2.39 | 0.792 |
| Log T4 | -18.06± 2.56 | -18.91± 2.47 | 0.215 |
| Log T5 | -18.30± 2.49 | -18.39± 2.56 | 0.894 |
| Log T6 | -17.91±2.43 | -18.45± 2.62 | 0.422 |
| Log Fz | -17.74± 2.48 | -18.13± 2.04 | 0.53 |
| Log Cz | -18.14± 2.48 | -18.22± 2.16 | 0.903 |
| Log Pz | -18.20± 2.47 | -18.44±2.18 | 0.696 |

199 AD: Alzheimer's Disease; FTD: Frontotemporal Dementia; MMSE: Mini-Mental State Examination.

200

201 We then employed a correlation coefficient among various EEG log-transformed power measurements
202 and MMSE scores for individuals with AD. The correlations reflect how different EEG power
203 measurements relate to each other and to cognitive function as assessed by the MMSE. Significant
204 correlations are indicated by asterisks, with * representing $p < 0.05$ and ** representing $p < 0.01$.

205 The MMSE scores show positive correlations with several EEG regions, particularly Log Fp1, Log Fp2,
206 Log F4, Log T3, Log T4, and Log Fz. These correlations, ranging from 0.361 to 0.379, suggest that
207 higher cognitive function, as measured by the MMSE, is associated with increased EEG power in these
208 areas. Notably, Log Fp1, Log T4, and Log Fz have significant correlations with MMSE scores ($p < 0.05$),
209 indicating that better cognitive performance is related to higher EEG power in these regions.

210 In terms of EEG power measures, the correlations are predominantly strong and significant across various
211 brain regions. For example, Log Fp1 shows robust positive correlations with Log Fp2 (0.764**), Log F3
212 (0.698**), and Log C3 (0.731**), highlighting a strong interrelationship among different EEG regions.
213 These high correlations suggest a coordinated pattern of EEG activity across the brain, which is consistent
214 in AD patients. (Table 2) (Figure 1)

215

216

217

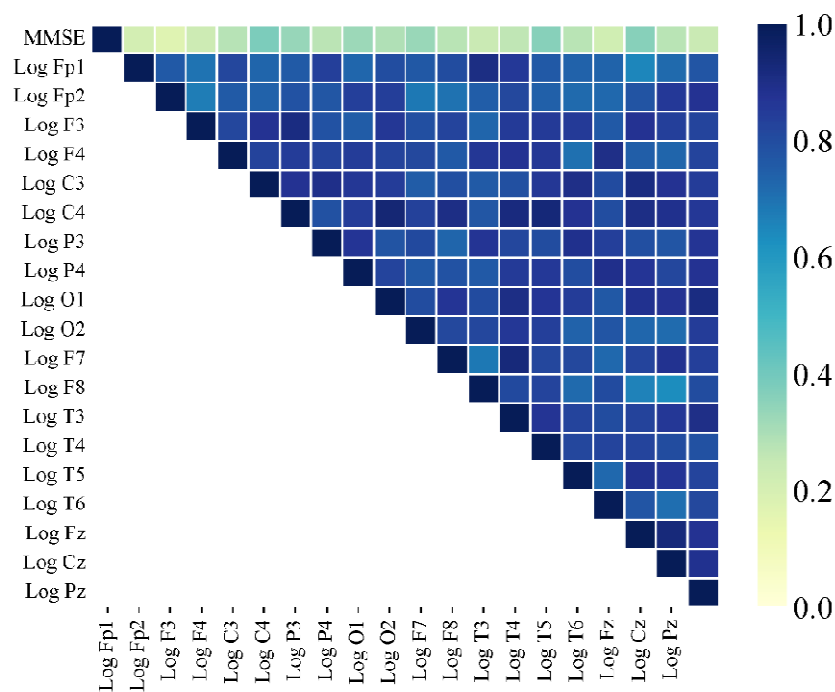
218

219

220 **Table 2.:** A correlation coefficient between various EEG electrodes and MMSE scores for individuals with AD.

| | 1 | 2 | 3 | 4 | 5 | 6 | 7 | 8 | 9 | 10 | 11 | 12 | 13 | 14 | 15 | 16 | 17 | 18 | 19 | 20 |
|------------|-------|--------|--------|--------|--------|--------|--------|--------|--------|--------|--------|--------|--------|--------|--------|--------|--------|--------|--------|--------|
| 1. MMSE | 1.000 | 0.214 | 0.173 | 0.232 | 0.280 | .379* | 0.335 | 0.270 | 0.328 | 0.291 | 0.331 | 0.274 | 0.242 | 0.265 | .361* | 0.277 | 0.221 | .360* | 0.277 | 0.239 |
| 2. Log Fp1 | 0.214 | 1.000 | .764** | .698** | .820** | .731** | .758** | .836** | .730** | .798** | .767** | .802** | .910** | .856** | .765** | .741** | .736** | .651** | .722** | .774** |
| 3. Log Fp2 | 0.173 | .764** | 1.000 | .672** | .760** | .739** | .783** | .771** | .838** | .843** | .684** | .702** | .752** | .813** | .746** | .719** | .723** | .781** | .856** | .878** |
| 4. Log F3 | 0.232 | .698** | .672** | 1.000 | .818** | .877** | .911** | .783** | .754** | .867** | .793** | .825** | .734** | .855** | .854** | .855** | .762** | .876** | .839** | .824** |
| 5. Log F4 | 0.280 | .820** | .760** | .818** | 1.000 | .830** | .851** | .830** | .851** | .829** | .815** | .764** | .865** | .876** | .864** | .705** | .900** | .748** | .734** | .826** |
| 6. Log C3 | .379* | .731** | .739** | .877** | .830** | 1.000 | .877** | .898** | .866** | .849** | .755** | .793** | .759** | .791** | .864** | .901** | .808** | .912** | .877** | .849** |
| 7. Log C4 | 0.335 | .758** | .783** | .911** | .851** | .877** | 1.000 | .788** | .850** | .941** | .833** | .904** | .771** | .918** | .931** | .878** | .797** | .906** | .887** | .861** |
| 8. Log P3 | 0.270 | .836** | .771** | .783** | .830** | .898** | .788** | 1.000 | .868** | .778** | .810** | .734** | .873** | .820** | .801** | .887** | .837** | .795** | .774** | .873** |
| 9. Log P4 | 0.328 | .730** | .838** | .754** | .851** | .866** | .850** | .868** | 1.000 | .827** | .766** | .782** | .762** | .854** | .857** | .800** | .893** | .869** | .818** | .877** |
| 10. Log O1 | 0.291 | .798** | .843** | .867** | .829** | .849** | .941** | .778** | .827** | 1.000 | .801** | .869** | .808** | .903** | .868** | .848** | .769** | .884** | .878** | .912** |
| 11. Log O2 | 0.331 | .767** | .684** | .793** | .815** | .755** | .833** | .810** | .766** | .801** | 1.000 | .816** | .818** | .862** | .836** | .739** | .775** | .728** | .716** | .851** |
| 12. Log F7 | 0.274 | .802** | .702** | .825** | .764** | .793** | .904** | .734** | .782** | .869** | .816** | 1.000 | .685** | .927** | .818** | .816** | .723** | .826** | .880** | .837** |
| 13. Log F8 | 0.242 | .910** | .752** | .734** | .865** | .759** | .771** | .873** | .762** | .808** | .818** | .685** | 1.000 | .812** | .822** | .722** | .807** | .661** | .636** | .803** |
| 14. Log T3 | 0.265 | .856** | .813** | .855** | .876** | .791** | .918** | .820** | .854** | .903** | .862** | .927** | .812** | 1.000 | .874** | .824** | .803** | .832** | .861** | .900** |
| 15. Log T4 | .361* | .765** | .746** | .854** | .864** | .864** | .931** | .801** | .857** | .868** | .836** | .818** | .822** | .874** | 1.000 | .817** | .825** | .822** | .801** | .787** |
| 16. Log T5 | 0.277 | .741** | .719** | .855** | .705** | .901** | .878** | .887** | .800** | .848** | .739** | .816** | .722** | .824** | .817** | 1.000 | .723** | .883** | .868** | .824** |
| 17. Log T6 | 0.221 | .736** | .723** | .762** | .900** | .808** | .797** | .837** | .893** | .769** | .775** | .723** | .807** | .803** | .825** | .723** | 1.000 | .775** | .710** | .815** |
| 18. Log Fz | .360* | .651** | .781** | .876** | .748** | .912** | .906** | .795** | .869** | .884** | .728** | .826** | .661** | .832** | .822** | .883** | .775** | 1.000 | .929** | .876** |
| 19. Log Cz | 0.277 | .722** | .856** | .839** | .734** | .877** | .887** | .774** | .818** | .878** | .716** | .880** | .636** | .861** | .801** | .868** | .710** | .929** | 1.000 | .884** |
| 20. Log Pz | 0.239 | .774** | .878** | .824** | .826** | .849** | .861** | .873** | .877** | .912** | .851** | .837** | .803** | .900** | .787** | .824** | .815** | .876** | .884** | 1.000 |

221



222

223 **Figure 1.:** The heatmap reveals several variables with strong correlations to MMSE scores, a key measure of
224 cognitive performance in AD. The strongest correlations are with Log Fp1, Log Fp2, Log Fp3, Log Fp4, Log F3,
225 Log F4, Log F7, and Log F8, indicating that these EEG channels or frontal lobe regions are significant. Negative
226 correlations, shown in dark blue, suggest that higher EEG values in these frontal regions are linked to worse
227 cognitive performance or lower MMSE scores. This indicates that increased activity or abnormalities in the frontal
228 lobe might signal cognitive decline in AD. In contrast, variables with weaker correlations to MMSE scores include
229 Log Cz, Log Pz, Log T5, Log T6, Log O1, and Log O2, which relate to central, parietal, and occipital lobes. This
230 suggests that the frontal lobe is more crucial in cognitive performance and decline in AD patients.

231

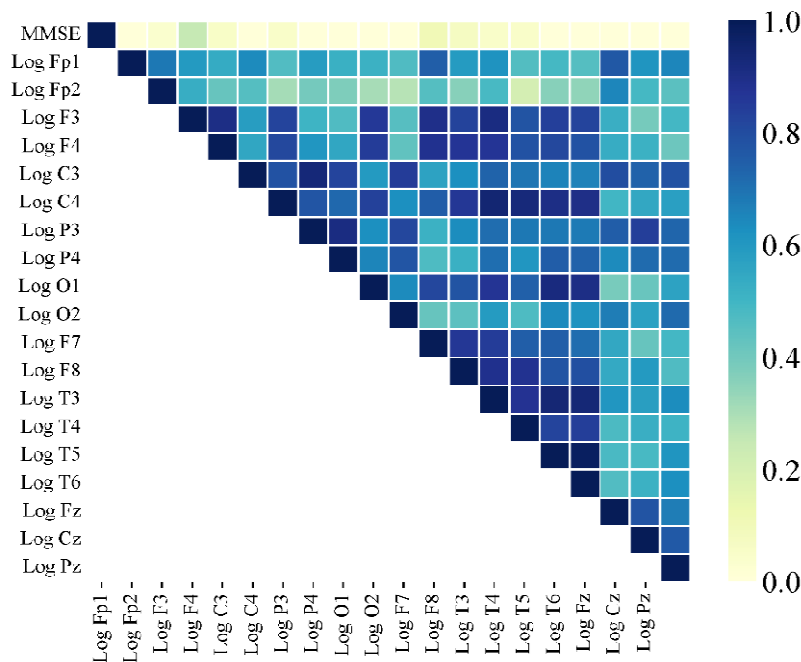
232 For the FTD group, MMSE scores generally showed weak positive correlations with most EEG regions,
233 but there were significant negative correlations with Log P3 (-0.234), Log P4 (-0.311), Log Cz (-0.376),
234 and Log Pz (-0.344). These negative correlations suggest that higher EEG power in these specific regions
235 is linked to lower cognitive function. In other words, increased activity in Log P3, Log P4, Log Cz, and
236 Log Pz corresponds to poorer performance on the MMSE, indicating that these regions are particularly
237 important for understanding cognitive decline.

238

239 Additionally, the results revealed strong positive correlations among various EEG regions, indicating a
240 coordinated pattern of brain activity. For example, Log Fp1 showed significant positive correlations with
241 Log Fp2 (0.687**), Log F3 (0.594**), and Log C3 (0.637**), reflecting a high level of synchrony
242 between these areas. Likewise, Log C3 and Log C4 demonstrated robust positive correlations with
243 regions such as Log P3 (0.931**) and Log P4 (0.726**), suggesting a cohesive and interconnected
244 network of EEG activity across these brain regions. The significant correlations are denoted by asterisks:
245 ** $p < 0.01$ and * $p < 0.05$. (table 3) (figure 2)

246 **Table 3.:** A correlation coefficient between various EEG electrodes and MMSE scores for individuals with FTD.

| | 1 | 2 | 3 | 4 | 5 | 6 | 7 | 8 | 9 | 10 | 11 | 12 | 13 | 14 | 15 | 16 | 17 | 18 | 19 | 20 |
|------------|--------|--------|--------|--------|--------|--------|--------|--------|--------|--------|--------|--------|--------|--------|--------|--------|--------|--------|--------|--------|
| 1. MMSE | 1.000 | -0.030 | 0.039 | 0.250 | 0.057 | -0.041 | 0.054 | -0.234 | -0.311 | -0.014 | -0.138 | 0.109 | 0.071 | 0.051 | 0.052 | -0.054 | -0.028 | -0.064 | -0.376 | -0.344 |
| 2. Log Fp1 | -0.030 | 1.000 | .687** | .594** | .536* | .637** | .468* | .586** | .523* | .518* | .472* | .748** | .593** | .621** | .463* | .490* | .460* | .769** | .613** | .649** |
| 3. Log Fp2 | 0.039 | .687** | 1.000 | .529* | 0.423 | .458* | 0.309 | 0.395 | 0.377 | 0.307 | 0.278 | .460* | 0.363 | .487* | 0.210 | 0.360 | 0.347 | .650** | .491* | .448* |
| 4. Log F3 | 0.250 | .594** | .529* | 1.000 | .906** | .584** | .823** | .507* | .469* | .856** | .456* | .896** | .830** | .911** | .778** | .838** | .824** | .524* | 0.394 | .496* |
| 5. Log F4 | 0.057 | .536* | 0.423 | .906** | 1.000 | .553** | .813** | .607** | .551** | .850** | .435* | .885** | .870** | .868** | .784** | .815** | .785** | .532* | .517* | 0.413 |
| 6. Log C3 | -0.041 | .637** | .458* | .584** | .553** | 1.000 | .785** | .931** | .825** | .594** | .847** | .568** | .625** | .735** | .695** | .658** | .661** | .797** | .741** | .783** |
| 7. Log C4 | 0.054 | .468* | 0.309 | .823** | .813** | .785** | 1.000 | .775** | .726** | .835** | .626** | .753** | .864** | .942** | .929** | .905** | .901** | .499* | .550** | .578** |
| 8. Log P3 | -0.234 | .586** | 0.395 | .507* | .607** | .931** | .775** | 1.000 | .912** | .626** | .818** | .518* | .634** | .714** | .686** | .685** | .682** | .750** | .841** | .733** |
| 9. Log P4 | -0.311 | .523* | 0.377 | .469* | .551** | .825** | .726** | .912** | 1.000 | .654** | .774** | .474* | .523* | .708** | .609** | .753** | .742** | .639** | .718** | .716** |
| 10. Log O1 | -0.014 | .518* | 0.307 | .856** | .850** | .594** | .835** | .626** | .654** | 1.000 | .638** | .820** | .778** | .872** | .743** | .921** | .904** | 0.388 | 0.421 | .570** |
| 11. Log O2 | -0.138 | .472* | 0.278 | .456* | .435* | .847** | .626** | .818** | .774** | .638** | 1.000 | 0.422 | .445* | .592** | .473* | .642** | .621** | .675** | .573** | .720** |
| 12. Log F7 | 0.109 | .748** | .460* | .896** | .885** | .568** | .753** | .518* | .474* | .820** | 0.422 | 1.000 | .864** | .849** | .749** | .748** | .711** | .549** | 0.424 | .496* |
| 13. Log F8 | 0.071 | .593** | 0.363 | .830** | .870** | .625** | .864** | .634** | .523* | .778** | .445* | .864** | 1.000 | .887** | .881** | .781** | .794** | .546* | .596** | .471* |
| 14. Log T3 | 0.051 | .621** | .487* | .911** | .868** | .735** | .942** | .714** | .708** | .872** | .592** | .849** | .887** | 1.000 | .877** | .941** | .934** | .606** | .581** | .633** |
| 15. Log T4 | 0.052 | .463* | 0.210 | .778** | .784** | .695** | .929** | .686** | .609** | .743** | .473* | .749** | .881** | .877** | 1.000 | .825** | .841** | .479* | .527* | .509* |
| 16. Log T5 | -0.054 | .490* | 0.360 | .838** | .815** | .658** | .905** | .685** | .753** | .921** | .642** | .748** | .781** | .941** | .825** | 1.000 | .984** | .484* | .485* | .610** |
| 17. Log T6 | -0.028 | .460* | 0.347 | .824** | .785** | .661** | .901** | .682** | .742** | .904** | .621** | .711** | .794** | .934** | .841** | .984** | 1.000 | .468* | .516* | .627** |
| 18. Log Fz | -0.064 | .769** | .650** | .524* | .532* | .797** | .499* | .750** | .639** | 0.388 | .675** | .549** | .546* | .606** | .479* | .484* | .468* | 1.000 | .778** | .674** |
| 19. Log Cz | -0.376 | .613** | .491* | 0.394 | .517* | .741** | .550** | .841** | .718** | 0.421 | .573** | 0.424 | .596** | .581** | .527* | .485* | .516* | .778** | 1.000 | .765** |
| 20. Log Pz | -0.344 | .649** | .448* | .496* | 0.413 | .783** | .578** | .733** | .716** | .570** | .720** | .496* | .471* | .633** | .509* | .610** | .627** | .674** | .765** | 1.000 |



247

248 **Figure 2.:** The figure is a correlation matrix heatmap illustrating the relationships between MMSE scores and
249 various logarithmic EEG measures from different brain regions in FTD patients. The top row shows that the
250 strongest correlations with MMSE scores are found in the frontal lobe regions (Log Fp1, Log Fp2, Log F3, Log F4,
251 Log F7, Log F8), indicated by lighter colors, suggesting these areas are critical for cognitive performance. In
252 contrast, weaker correlations are observed in central, parietal, and occipital regions (Log C3, Log C4, Log P3, Log
253 P4, Log O1, Log O2, Log T3, Log T4, Log T5, Log T6, Log Fz, Log Cz, Log Pz), shown by darker colors,
254 indicating these areas are less influential in cognitive decline as measured by the MMSE. High inter-correlations
255 within the frontal lobe regions further emphasize their importance in cognitive function, potentially serving as
256 biomarkers for assessing cognitive health in FTD patients.

257

258 Using linear regression, we examined the relationship between EEG data from various brain channels and
259 cognitive scores (MMSE), while accounting for age and gender. This analysis aimed to identify whether
260 specific EEG patterns are associated with cognitive decline and how well these patterns predict changes
261 in cognitive performance. (Table 4)

262 **Table 4.:** Linear Regression Analysis of EEG Channels and MMSE Scores, Age, and Gender.

| Model | AD | | | | | | FTD | | | | | |
|---------|-------------------------|----------------|--------|--------|-------|--------------|-------------------------|----------------|--------|--------|-------|--------------|
| | Adjusted R ² | B (S.E.) | β | 95% CI | | P value | Adjusted R ² | B (S.E.) | β | 95% CI | | P value |
| | | | | lower | Upper | | | | | lower | Upper | |
| Log Fp1 | 0.025 | | | | | | 0.012 | | | | | |
| MMSE | | 0.118 (0.095) | 1.241 | -0.076 | 0.312 | 0.223 | | -0.028 (0.21) | -0.133 | -0.467 | 0.412 | 0.896 |
| Gender | | -0.784 (0.87) | -0.9 | -2.557 | 0.99 | 0.375 | | -0.285 (1.11) | -0.257 | -2.61 | 2.039 | 0.8 |
| Age | | -0.074 (0.054) | -1.363 | -0.184 | 0.036 | 0.182 | | 0.103 (0.06) | 1.732 | -0.22 | 0.228 | 0.099 |
| Log Fp2 | -0.028 | | | | | | -0.032 | | | | | |
| MMSE | | 0.098 (0.098) | 0.994 | -0.102 | 0.297 | 0.328 | | 0.034 (0.202) | 0.169 | -0.389 | 0.458 | 0.868 |
| Gender | | -0.751 (0.897) | -0.838 | -2.578 | 1.075 | 0.408 | | -0.917 (1.07) | -0.857 | -3.156 | 1.323 | 0.402 |
| Age | | -0.032 (0.056) | 0.58 | -0.146 | 0.081 | 0.556 | | -0.068 (0.058) | 1.173 | -0.053 | 0.188 | 0.255 |
| Log F3 | -0.034 | | | | | | -0.07 | | | | | |
| MMSE | | 0.133 (0.098) | 1.351 | -0.067 | 0.333 | 0.186 | | 0.253 (0.224) | 1.126 | -0.217 | 0.732 | 0.274 |
| Gender | | 0.052 (0.899) | 0.058 | -1.778 | 1.883 | 0.954 | | -1.127 (1.187) | -0.949 | -3.612 | 1.358 | 0.354 |
| Age | | -0.026 (0.056) | -0.471 | -0.14 | 0.088 | 0.641 | | -0.014 (0.064) | -0.22 | -0.148 | 0.12 | 0.828 |
| Log F4 | 0.044 | | | | | | -0.097 | | | | | |
| MMSE | | 0.155 (0.094) | 1.653 | -0.036 | 0.347 | 0.108 | | 0.058 (0.233) | 0.248 | -0.429 | 0.545 | 0.806 |
| Gender | | -0.58 (0.859) | -0.676 | -2.329 | 1.169 | 0.504 | | -1.122 (1.231) | -0.911 | -3.699 | 1.456 | 0.374 |
| Age | | -0.075 (0.053) | -1.409 | -0.184 | 0.034 | 0.169 | | -0.032 (0.066) | -0.479 | -0.17 | 0.107 | 0.638 |
| Log C3 | 0.089 | | | | | | 0.183 | | | | | |
| MMSE | | 0.213 (0.0920) | 2.319 | 0.026 | 0.4 | 0.027 | | -0.031 (0.173) | -0.18 | -0.394 | 0.331 | 0.859 |
| Gender | | -0.525 (0.841) | -0.624 | -2.237 | 1.188 | 0.537 | | -0.704 (0.916) | -0.768 | -2.621 | 1.213 | 0.452 |
| Age | | -0.054 (0.052) | -1.029 | -0.16 | 0.053 | 0.311 | | 0.126 (0.049) | 2.559 | 0.023 | 0.229 | 0.019 |
| Log C4 | 0.118 | | | | | | -0.1 | | | | | |
| MMSE | | 0.19 (0.095) | 2.012 | -0.002 | 0.383 | 0.053 | | 0.055 (0.233) | 0.238 | -0.432 | 0.543 | 0.815 |
| Gender | | -0.131 (0.865) | -0.151 | -1.893 | 1.632 | 0.881 | | -0.704 (1.231) | -0.572 | -3.281 | 1.873 | 0.574 |
| Age | | -0.042 (0.054) | -0.787 | -0.152 | 0.067 | 0.437 | | 0.052 (0.066) | 0.788 | -0.086 | 0.191 | 0.441 |
| Log P3 | 0.086 | | | | | | 0.236 | | | | | |
| MMSE | | 0.149 (0.094) | 1.586 | -0.042 | 0.34 | 0.123 | | -0.179 (0.17) | -1.051 | -0.536 | 0.178 | 0.306 |
| Gender | | -1.331 (0.858) | -1.551 | -3.079 | 0.418 | 0.131 | | -0.725 (0.902) | -0.804 | -2.612 | 1.162 | 0.431 |
| Age | | -0.064 (0.053) | -1.194 | -0.172 | 0.045 | 0.241 | | 0.117 (0.048) | 2.408 | 0.015 | 0.218 | 0.026 |
| Log P4 | 0.073 | | | | | | 0.135 | | | | | |
| MMSE | | 0.186 (0.094) | 1.966 | -0.007 | 0.378 | 0.058 | | -0.273 (0.192) | -1.424 | -0.674 | 0.128 | 0.171 |
| Gender | | -0.881 (0.964) | -1.02 | -2.64 | 0.878 | 0.315 | | 0.068 (1.013) | 0.067 | -2.052 | 2.189 | 0.947 |
| Age | | -0.055 (0.054) | -1.022 | -0.164 | 0.055 | 0.314 | | 0.102 (0.054) | 1.876 | -0.012 | 0.216 | 0.076 |
| Log O1 | 0.008 | | | | | | -0.154 | | | | | |
| MMSE | | 0.164 (0.095) | 1.724 | -0.03 | 0.358 | 0.094 | | -0.015 (0.241) | -0.063 | -0.519 | 0.489 | 0.951 |
| Gender | | -0.229 (0.871) | -0.263 | -2.002 | 1.545 | 0.794 | | 0.253 (1.273) | 0.199 | -2.411 | 2.918 | 0.845 |
| Age | | -0.04 (0.054) | -0.744 | -0.151 | 0.07 | 0.462 | | 0.013 (0.068) | 0.184 | -0.131 | 0.156 | 0.856 |
| Log O2 | 0.139 | | | | | | 0.095 | | | | | |
| MMSE | | 0.181 (0.091) | 1.983 | -0.005 | 0.367 | 0.056 | | -0.113 (0.187) | -0.606 | -0.504 | 0.278 | 0.552 |
| Gender | | -1.128 (0.835) | -1.351 | -2.828 | 0.572 | 0.186 | | 0.462 (0.988) | 0.467 | -1.606 | 2.53 | 0.646 |
| Age | | -0.098 (0.052) | -1.883 | -0.203 | 0.008 | 0.069 | | 0.116 (0.053) | 2.191 | 0.005 | 0.228 | 0.041 |
| Log F7 | 0.001 | | | | | | -0.144 | | | | | |
| MMSE | | 0.165 (0.102) | 1.614 | -0.043 | 0.373 | 0.116 | | 0.118 (0.246) | 0.48 | -0.397 | 0.633 | 0.637 |
| Gender | | -0.234 (0.933) | -0.251 | -2.135 | 1.666 | 0.803 | | -0.28 (1.301) | -0.215 | -3.004 | 2.443 | 0.832 |

| | | | | | | | | | | | | |
|--------|-------|----------------|--------|--------|--------|--------------|--------|-----------------|--------|--------|-------|-------|
| Age | | -0.051 (0.058) | -0.881 | -0.169 | 0.067 | 0.385 | | -0.001 (0.07) | -0.015 | -0.148 | 0.145 | 0.988 |
| Log F8 | 0.101 | | | | | | -0.112 | | | | | |
| MMSE | | 0.136 (0.097) | 1.411 | -0.061 | 0.333 | 0.168 | | 0.075 (0.242) | 0.308 | -0.433 | 0.582 | 0.761 |
| Gender | | -0.793 (0.884) | -0.898 | -2.594 | 1.007 | 0.376 | | -1.089 (1.28) | -0.85 | -3.772 | 1.594 | 0.406 |
| Age | | -0.121 (0.055) | -2.206 | -0.233 | -0.009 | 0.035 | | -0.019 (0.069) | -0.278 | -0.163 | 0.125 | 0.784 |
| Log T3 | 0.02 | | | | | | -0.116 | | | | | |
| MMSE | | 0.151 (0.097) | 1.552 | -0.047 | 0.348 | 0.13 | | 0.052 (0.231) | 0.224 | -0.432 | 0.536 | 0.825 |
| Gender | | -0.718 (0.887) | -0.809 | -2.525 | 1.09 | 0.425 | | -1.011 (1.223) | -0.827 | -3.571 | 1.549 | 0.419 |
| Age | | -0.05 (0.056) | -0.912 | -0.163 | 0.062 | 0.369 | | -0.002 (0.066) | -0.027 | -0.139 | 0.136 | 0.979 |
| Log T4 | 0.072 | | | | | | -0.144 | | | | | |
| MMSE | | 0.211 (0.096) | 2.19 | 0.015 | 0.406 | 0.036 | | 0.054 (0.242) | 0.225 | -0.452 | 0.56 | 0.825 |
| Gender | | 0.06 (0.879) | 0.068 | -1.731 | 1.85 | 0.946 | | 0.242 (1.278) | 0.19 | -2.433 | 2.918 | 0.852 |
| Age | | -0.79 (0.055) | -1.441 | -0.19 | 0.033 | 0.159 | | 0.021 (0.069) | 0.301 | -0.123 | 0.165 | 0.767 |
| Log T5 | 0.027 | | | | | | -0.142 | | | | | |
| MMSE | | 0.156 (0.096) | 1.629 | -0.039 | 0.351 | 0.113 | | -0.059 (0.25) | -0.237 | -0.582 | 0.464 | 0.815 |
| Gender | | -0.852 (0.875) | -0.974 | -2.635 | 0.93 | 0.337 | | -0.374 (1.321) | -0.238 | -3.139 | 2.392 | 0.78 |
| Age | | -0.21 (0.054) | -0.386 | -0.132 | 0.09 | 0.702 | | -0.009 (0.071) | -0.132 | -0.158 | 0.139 | 0.896 |
| Log T6 | 0.067 | | | | | | -0.131 | | | | | |
| MMSE | | 0.117 (0.091) | 1.285 | -0.069 | 0.303 | 0.208 | | -0.031 (0.255) | -0.122 | -0.565 | 0.502 | 0.904 |
| Gender | | -1.031 (0.834) | -1.236 | -2.73 | 0.669 | 0.226 | | -0.645 (-0.479) | -0.479 | -3.468 | 2.177 | 0.638 |
| Age | | -0.084 (0.052) | -1.619 | -0.19 | 0.022 | 0.115 | | -0.023 (0.073) | -0.318 | -0.175 | 0.129 | 0.754 |
| Log Fz | 0.096 | | | | | | 0.059 | | | | | |
| MMSE | | 0.2 (0.092) | 2.18 | 0.013 | 0.387 | 0.037 | | -0.05 (0.1810) | -0.278 | -0.429 | 0.329 | 0.784 |
| Gender | | -0.934 (0.839) | -1.113 | -2.644 | 0.776 | 0.274 | | -1.237 (0.958) | -1.291 | -3.243 | 0.768 | 0.212 |
| Age | | -0.045 (0.052) | -0.863 | -0.151 | 0.061 | 0.394 | | 0.061 (0.052) | 1.189 | -0.047 | 0.169 | 0.249 |
| Log Cz | 0.006 | | | | | | 0.273 | | | | | |
| MMSE | | 0.157 (0.096) | 1.628 | -0.039 | 0.353 | 0.113 | | -0.299 (0.169) | -1.769 | -0.652 | 0.055 | 0.093 |
| Gender | | -0.458 (0.88) | -0.52 | -2.251 | 1.335 | 0.606 | | -1.073 (0.892) | -1.203 | -2.941 | 0.795 | 0.244 |
| Age | | -0.005 (0.055) | -0.097 | -0.117 | 0.106 | 0.923 | | 0.07 (0.048) | 1.461 | -0.03 | 0.171 | 0.16 |
| Log Pz | 0.041 | | | | | | 0.183 | | | | | |
| MMSE | | 0.131 (0.094) | 1.393 | -0.061 | 0.323 | 0.173 | | -0.288 (0.180) | -1.599 | -0.666 | 0.089 | 0.126 |
| Gender | | -1.069 (0.86) | -1.244 | -2.821 | 0.682 | 0.223 | | -0.268 (0.954) | -0.281 | -2.264 | 1.728 | 0.782 |
| Age | | -0.056 (0.053) | -1.049 | -0.165 | 0.053 | 0.302 | | 0.095 (0.051) | 1.85 | -0.012 | 0.202 | 0.08 |

263 In AD, the EEG data analysis revealed that most channels do not show significant correlations with
264 MMSE scores, indicating that cognitive decline as measured by MMSE may not strongly influence EEG
265 patterns in this dataset. Notably, channels like Log C3 (B=2.319 and p=0.027), Log C4 (B=2.012 and
266 p=0.053), Log T4 (B = 2.19, p = 0.036), and Log Fz (B = 2.18, p = 0.037) showed marginally significant
267 or significant associations with MMSE scores. Besides, Log C3 (B = 2.319, p = 0.027) showed a
268 significant positive correlation, suggesting that lower MMSE scores (indicating worse cognitive
269 performance) are associated with increased activity in this channel. However, age had mixed effects, with
270 only a few channels like Log F8 (B = -2.206, p = 0.035) showing significant negative correlations,
271 implying that age-related changes in EEG patterns are not uniform across all channels.

272 In FTD, there was a consistent and significant negative relationship between age and EEG activity across
273 most channels. This suggests that as patients age, there is a marked decline in EEG activity, reflecting the
274 progressive nature of the disease. Channels such as Log Fp1, Log Fp2, Log C3, and Log O2 showed
275 significant negative correlations with age, meaning that older age is associated with reduced EEG activity
276 in these regions. This widespread negative association underscores how aging can impact EEG patterns in
277 FTD patients, potentially reflecting disease-related alterations in brain function.

278 **4. Discussion**

279 Our study highlighted the distinct relationships between cognitive function, age, and brain activity in AD
280 and FTD. We found that cognitive function using MMSE has a more significant relationship with brain
281 activity in AD, whereas age has a more prominent impact on brain activity in FTD.

282 As per findings, in AD, the MMSE was a significant predictor of brain activity in regions such as C3, C4,
283 T4, and Fz, indicating a close relationship between cognitive function and activity in these areas.
284 Correlation analysis supported this, showing significant positive associations between MMSE scores and
285 EEG power in Log Fp1, Log T4, and Log Fz, suggesting that better cognitive performance is related to
286 higher EEG power in frontal and temporal regions. Additionally, age was a significant predictor of brain
287 activity in the F8 region, indicating age-related changes in brain activity.

288 Nonetheless, in FTD, age was a significant predictor of brain activity in regions such as C3, P3, O1, and
289 O2, indicating a more consistent and widespread impact compared to AD. MMSE was not a significant
290 predictor in any region for FTD, suggesting that cognitive function is less related to brain activity in FTD
291 patients. Correlation analysis showed significant negative correlations between MMSE scores and EEG
292 power in Log P3, Log P4, Log Cz, and Log Pz, indicating that higher EEG power in these regions is
293 linked to lower cognitive function in FTD patients.

294 Our findings align with previous research indicating that cognitive decline in AD is associated with
295 specific changes in brain activity, particularly in the frontal and temporal regions [42-47]. Cognitive
296 decline in AD is characterized by a progressive deterioration of cognitive functions, which can be
297 measured using techniques such as EEG. Research has consistently shown that the frontal and temporal
298 regions of the brain are crucial for various cognitive functions [48]. For instance, the frontal regions are
299 involved in executive functions, such as planning, decision-making, problem-solving, and controlling
300 behavior [49, 50], while the temporal regions play a significant role in memory and language processing,
301 containing structures like the hippocampus, which is critical for forming and retrieving memories [51-53].

302 In AD, the frontal and temporal regions are among the first to show significant pathological changes,
303 including the accumulation of amyloid plaques and neurofibrillary tangles. These pathological changes
304 lead to neuron damage and death, resulting in impairments in memory, executive function, and language.
305 Patients struggle with forming new memories and recalling past events, face difficulties with tasks
306 requiring planning and organization, and experience challenges with word finding and understanding
307 language [54-56].

308 Our study found significant positive correlations between MMSE scores and EEG power in regions such
309 as Fp1 (frontal pole 1), T4 (right temporal lobe), and Fz (midline frontal). These findings reinforce the
310 understanding that specific changes in brain activity, detectable through EEG, are related to cognitive
311 decline in AD. Researchers, by identifying these correlations, can better understand the neural
312 mechanisms underlying cognitive decline and potentially develop targeted interventions to slow or
313 mitigate the effects of AD.

314 Another study found that Neurometric QEEG measures, particularly increased theta power and delta
315 power in later stages, are sensitive indicators of cognitive impairment, especially significant in a bilateral
316 temporo-parietal arc, suggesting their potential utility in the early evaluation of dementia and estimation
317 of cognitive deterioration in Alzheimer's type dementia patients [57]. Likewise, cognitive impairment in
318 patients with epilepsy (PWE) was significantly associated with QEEG measures, particularly
319 interhemispheric delta and beta coherences, suggesting that QEEG may be useful in understanding the
320 pathophysiological basis of cognitive alterations in epilepsy [58]. Notably, a former study found that there
321 are significant gender differences in brain organization and functioning, with women displaying higher
322 interhemispheric synchronization and lower hemispheric differentiation than men. This means that, in
323 women, higher interhemispheric correlation was positively associated with abstract and spatial aptitude
324 scores in the central cortex, whereas in men, it was negatively associated with spatial, abstract, and verbal
325 aptitude scores across most recorded brain regions [59].

326 Our results in FTD align with earlier studies that indicate a broader impact of age on brain activity [24,
327 60]. Unlike AD, where specific brain regions were primarily affected, FTD showed a more diffuse pattern
328 of brain activity changes. This broader impact may reflect the different underlying mechanisms of FTD
329 compared to AD, where the disease pathology is not confined to specific areas but rather spreads more
330 widely across the brain.

331 In FTD, we did not observe a significant relationship between MMSE scores and brain activity. This
332 finding is consistent with the understanding that FTD affects the brain more diffusely, disrupting
333 cognitive functions in a less region-specific manner. The MMSE, while useful in assessing general
334 cognitive function, may not be as effective in capturing the complex and widespread brain changes
335 occurring in FTD. Interestingly, we found negative correlations between MMSE scores and EEG power
336 in the parietal regions (P3, P4, Cz, Pz). These regions are involved in various cognitive processes,
337 including spatial orientation, sensory perception, and integration of sensory information. The negative
338 correlations suggest that higher cognitive impairment in FTD is associated with increased EEG power in
339 these areas. This could indicate compensatory neural activity or pathological overactivation in response to
340 neurodegenerative changes.

341 Aging contributes to the development and progression of dementia through a combination of cellular and
342 molecular mechanisms [24, 61, 62]. At the cellular level, increased oxidative stress [63-65],
343 mitochondrial dysfunction [66, 67], and impaired autophagy [68] lead to the accumulation of damaged
344 proteins and organelles, causing neuronal damage. Chronic inflammation and immune response
345 dysregulation further exacerbate neurodegeneration [68-70]. Thus, understanding these mechanisms
346 provides insights into the complex relationship between aging and dementia, potentially guiding the
347 development of targeted therapies to mitigate age-related cognitive decline.

348 The implications of the current study are twofold. First, it emphasizes the importance of specific brain
349 regions in cognitive performance, suggesting potential targets for neurostimulation or other therapeutic
350 interventions aimed at enhancing cognitive function. Second, it underscores the need for a nuanced
351 approach in analyzing EEG data, recognizing that not all brain regions equally contribute to cognitive
352 abilities as measured by global scales like the MMSE.

353 Future studies should consider several key limitations and confounders when investigating the
354 relationship between EEG activity and cognitive function, as observed in this study. These include
355 potential constraints related to sample size and generalizability, given the need for larger and more
356 diverse participant cohorts to ensure robust findings across different populations. Notice that addressing
357 selection biases in participant recruitment and standardizing electrode placement and signal interpretation

358 methods are crucial to minimize variability in EEG data. Moreover, considering the influence of
359 medications, comorbidities, and participant characteristics on EEG readings and cognitive outcomes is
360 essential for accurate interpretation. Methodologically, future research could benefit from integrating
361 multimodal imaging techniques such as fMRI or PET and advanced statistical analyses to explore
362 network dynamics and uncover nuanced associations between brain regions and specific cognitive
363 domains. Thus, by addressing these factors, future studies can enhance the reliability and applicability of
364 findings in understanding the neural underpinnings of cognitive function across various neurological
365 conditions.

366 **5. Conclusion**

367 This study aimed to investigate regional differences in EEG patterns among AD and FTD cases to
368 enhance diagnostic strategies. It highlighted distinct relationships between cognitive function, age, and
369 brain activity in AD and FTD. In AD, cognitive function measured by MMSE scores significantly
370 predicted brain activity, particularly in the frontal and temporal regions, indicating a close relationship
371 between cognitive performance and EEG power in these areas. Conversely, in FTD, age was a more
372 significant predictor of brain activity, with a consistent and widespread impact across multiple brain
373 regions. The findings suggest that EEG biomarkers can enhance diagnostic strategies by highlighting
374 different patterns of brain activity related to cognitive function and age in AD and FTD.

375

376

377

378

379

380

381

382

383

384

385

386

387

388

389 **Abbreviations**

390 **EEG:** electroencephalography; **AD:** Alzheimer’s disease; **FTD:** frontotemporal dementia; **MMSE:** Mini-
391 Mental State Examination.

392

393

394

395 **Declarations section:**

396 **Acknowledgments:** We acknowledge data descriptor (<https://doi.org/10.3390/data8060095>) and
397 OpenNeuro that provided this data.

398 **Ethical Approval and Consent to Participate:** The study was conducted in accordance with the
399 Declaration of Helsinki and approved by the Scientific and Ethics Committee of AHEPA University
400 Hospital, Aristotle University of Thessaloniki, under protocol number 142/12-04-2023.

401 **Consent for Publication:** Not applicable.

402 **Authors’ Contributions:** All authors listed have made a substantial, direct, and intellectual contribution
403 to the work, and approved it for publication. A.A and H.N. contributed to developing research ideas and
404 analysis. A.A., H.N., and F.A. contributed to interpretation of data, writing the draft, and revising it. All
405 authors read and approved the final manuscript.

406 **Availability of Data and Materials:** The data for this article were obtained from OpenNeuro Dataset
407 ds004504. Dataset DOI is <https://doi.org/10.18112/openneuro.ds004504.v1.0.7>.

408 **Funding:** Not applicable.

409 **Competing Interests:** There are no conflicting interests to be stated.

410

411

412

413

414

415 **References**

- 416 1. Popov T, Tröndle M, Baranczuk-Turska Z, Pfeiffer C, Haufe S, Langer N. Test–retest reliability of
417 resting-state EEG in young and older adults. *Psychophysiology*. 2023;60(7):e14268.
- 418 2. Da Silva FL. EEG: origin and measurement. *EEG-fMRI: physiological basis, technique, and applications*.
419 Springer; 2023. p. 23-48.
- 420 3. Perez V, Duque A, Hidalgo V, Salvador A. EEG Frequency Bands in Subjective Cognitive Decline: A
421 Systematic Review of Resting State Studies. *Biological Psychology*. 2024:108823.

- 422 4. Ward D, Jones R, Bones PJ, Carroll G. Enhancement of deep epileptiform activity in the EEG via 3-D
423 adaptive spatial filtering. *IEEE transactions on bio-medical engineering*. 1999;46:707-16. doi:
424 10.1109/10.764947.
- 425 5. Babiloni C, Triggiani AI, Lizio R, Cordone S, Tattoli G, Bevilacqua V, et al. Classification of Single Normal
426 and Alzheimer's Disease Individuals from Cortical Sources of Resting State EEG Rhythms. *Frontiers in*
427 *Neuroscience*. 2016;10. doi: 10.3389/fnins.2016.00047.
- 428 6. Kim S-E, Shin C, Yim J, Seo K, Ryu H, Choi H, et al. Resting-state electroencephalographic
429 characteristics related to mild cognitive impairments. *Frontiers in Psychiatry*. 2023;14. doi:
430 10.3389/fpsy.2023.1231861.
- 431 7. Zheng X, Wang B, Liu H, Wu W, Sun J, Fang W, et al. Diagnosis of Alzheimer's disease via resting-state
432 EEG: integration of spectrum, complexity, and synchronization signal features. *Frontiers in Aging*
433 *Neuroscience*. 2023;15. doi: 10.3389/fnagi.2023.1288295.
- 434 8. Cassani R, Estarellas M, San-Martin R, Fraga FJ, Falk TH. Systematic Review on Resting-State EEG for
435 Alzheimer's Disease Diagnosis and Progression Assessment. *Dis Markers*. 2018;2018:5174815. doi:
436 10.1155/2018/5174815.
- 437 9. Aoki Y, Takahashi R, Suzuki Y, Pascual-Marqui RD, Kito Y, Hikida S, et al. EEG resting-state networks in
438 Alzheimer's disease associated with clinical symptoms. *Scientific Reports*. 2023;13(1):3964. doi:
439 10.1038/s41598-023-30075-3.
- 440 10. Kopčanová M, Tait L, Donoghue T, Stothart G, Smith L, Flores-Sandoval AA, et al. Resting-state EEG
441 signatures of Alzheimer's disease are driven by periodic but not aperiodic changes. *Neurobiol Dis*.
442 2024;190:106380. doi: 10.1016/j.nbd.2023.106380.
- 443 11. Nardone R, Sebastianelli L, Versace V, Saltuari L, Lochner P, Frey V, et al. Usefulness of EEG
444 Techniques in Distinguishing Frontotemporal Dementia from Alzheimer's Disease and Other Dementias.
445 *Dis Markers*. 2018;2018:6581490. doi: 10.1155/2018/6581490.
- 446 12. Lal U, Chikkankod AV, Longo L. A Comparative Study on Feature Extraction Techniques for the
447 Discrimination of Frontotemporal Dementia and Alzheimer's Disease with Electroencephalography in
448 Resting-State Adults. *Brain Sciences*. 2024 doi: 10.3390/brainsci14040335.
- 449 13. Si Y, He R, Jiang L, Yao D, Zhang H, Xu P, et al. Differentiating Between Alzheimer's Disease and
450 Frontotemporal Dementia Based on the Resting-State Multilayer EEG Network. *IEEE Transactions on*
451 *Neural Systems and Rehabilitation Engineering*. 2023;31:4521-7. doi: 10.1109/TNSRE.2023.3329174.
- 452 14. Moretti DV, paternicò d, Binetti G, Zanetti O, Frisoni gb. EEG upper/low alpha frequency power ratio
453 relates to temporo-parietal brain atrophy and memory performances in mild cognitive impairment.
454 *Frontiers in Aging Neuroscience*. 2013;5. doi: 10.3389/fnagi.2013.00063.
- 455 15. Lejko N, Larabi DI, Herrmann CS, Aleman A, Čurčić-Blake B. Alpha Power and Functional Connectivity
456 in Cognitive Decline: A Systematic Review and Meta-Analysis. *J Alzheimers Dis*. 2020;78(3):1047-88. doi:
457 10.3233/jad-200962.
- 458 16. Jiao B, Li R, Zhou H, Qing K, Liu H, Pan H, et al. Neural biomarker diagnosis and prediction to mild
459 cognitive impairment and Alzheimer's disease using EEG technology. *Alzheimer's Research & Therapy*.
460 2023;15(1):32. doi: 10.1186/s13195-023-01181-1.
- 461 17. Arevalo-Rodriguez I, Smailagic N, Roqué-Figuls M, Ciapponi A, Sanchez-Perez E, Giannakou A, et al.
462 Mini-Mental State Examination (MMSE) for the early detection of dementia in people with mild
463 cognitive impairment (MCI). *Cochrane Database Syst Rev*. 2021;7(7):Cd010783. doi:
464 10.1002/14651858.CD010783.pub3.
- 465 18. Arevalo-Rodriguez I, Smailagic N, Roqué IFM, Ciapponi A, Sanchez-Perez E, Giannakou A, et al. Mini-
466 Mental State Examination (MMSE) for the detection of Alzheimer's disease and other dementias in
467 people with mild cognitive impairment (MCI). *Cochrane Database Syst Rev*. 2015;2015(3):Cd010783. doi:
468 10.1002/14651858.CD010783.pub2.

- 469 19. Torabinikjeh M, Asayesh V, Dehghani M, Kouchakzadeh A, Marhamati H, Gharibzadeh S. Correlations
470 of frontal resting-state EEG markers with MMSE scores in patients with Alzheimer's disease. The
471 Egyptian Journal of Neurology, Psychiatry and Neurosurgery. 2022;58(1):31. doi: 10.1186/s41983-022-
472 00465-x.
- 473 20. Lee SJ, Park MH, Park SS, Ahn JY, Heo JH. Quantitative EEG and medial temporal lobe atrophy in
474 Alzheimer's dementia: Preliminary study. Ann Indian Acad Neurol. 2015;18(1):10-4. doi: 10.4103/0972-
475 2327.145284.
- 476 21. Xu M, Zhang Y, Zhang Y, Liu X, Qing K. EEG biomarkers analysis in different cognitive impairment
477 after stroke: an exploration study. Front Neurol. 2024;15:1358167. doi: 10.3389/fneur.2024.1358167.
- 478 22. Araújo T, Teixeira J, Rodrigues P. Smart-Data-Driven System for Alzheimer Disease Detection through
479 Electroencephalographic Signals. Bioengineering. 2022;9:141. doi: 10.3390/bioengineering9040141.
- 480 23. Caravaglios G, Muscoso EG, Blandino V, Di Maria G, Gangitano M, Graziano F, et al. EEG Resting-
481 State Functional Networks in Amnesic Mild Cognitive Impairment. Clinical EEG and Neuroscience.
482 2022;54(1):36-50. doi: 10.1177/15500594221110036.
- 483 24. Lee J, Kim H-J. Normal Aging Induces Changes in the Brain and Neurodegeneration Progress: Review
484 of the Structural, Biochemical, Metabolic, Cellular, and Molecular Changes. Frontiers in Aging
485 Neuroscience. 2022;14. doi: 10.3389/fnagi.2022.931536.
- 486 25. Pavlov AN, Pitsik EN, Frolov NS, Badarin A, Pavlova ON, Hramov AE. Age-Related Distinctions in EEG
487 Signals during Execution of Motor Tasks Characterized in Terms of Long-Range Correlations. Sensors
488 (Basel). 2020;20(20). doi: 10.3390/s20205843.
- 489 26. Javaid H, Kumarnsit E, Chatpun S. Age-Related Alterations in EEG Network Connectivity in Healthy
490 Aging. Brain Sci. 2022;12(2). doi: 10.3390/brainsci12020218.
- 491 27. He M, Liu F, Nummenmaa A, Hämläinen M, Dickerson BC, Purdon PL. Age-Related EEG Power
492 Reductions Cannot Be Explained by Changes of the Conductivity Distribution in the Head Due to Brain
493 Atrophy. Frontiers in Aging Neuroscience. 2021;13. doi: 10.3389/fnagi.2021.632310.
- 494 28. Hou Y, Dan X, Babbar M, Wei Y, Hasselbalch SG, Croteau DL, Bohr VA. Ageing as a risk factor for
495 neurodegenerative disease. Nat Rev Neurol. 2019;15(10):565-81. doi: 10.1038/s41582-019-0244-7.
- 496 29. Kesidou E, Theotokis P, Damianidou O, Boziki M, Konstantinidou N, Taloumtzis C, et al. CNS Ageing in
497 Health and Neurodegenerative Disorders. J Clin Med. 2023;12(6). doi: 10.3390/jcm12062255.
- 498 30. Kopčanová M, Tait L, Donoghue T, Stothart G, Smith L, Sandoval AAF, et al. Resting-state EEG
499 signatures of Alzheimer's disease are driven by periodic but not aperiodic changes. bioRxiv. 2023. doi:
500 10.1101/2023.06.11.544491.
- 501 31. Merkin A, Sghirripa S, Graetz L, Smith AE, Hordacre B, Harris R, et al. Do age-related differences in
502 aperiodic neural activity explain differences in resting EEG alpha? Neurobiology of Aging. 2023;121:78-
503 87. doi: <https://doi.org/10.1016/j.neurobiolaging.2022.09.003>.
- 504 32. Fröhlich S, Kutz DF, Müller K, Voelcker-Rehage C. Characteristics of Resting State EEG Power in 80+
505 Year-Olds of Different Cognitive Status. Frontiers in Aging Neuroscience. 2021;13. doi:
506 10.3389/fnagi.2021.675689.
- 507 33. Toepper M. Dissociating Normal Aging from Alzheimer's Disease: A View from Cognitive
508 Neuroscience. J Alzheimers Dis. 2017;57(2):331-52. doi: 10.3233/jad-161099.
- 509 34. Gao S, Hendrie HC, Hall KS, Hui S. The Relationships Between Age, Sex, and the Incidence of
510 Dementia and Alzheimer Disease: A Meta-analysis. Archives of General Psychiatry. 1998;55(9):809-15.
511 doi: 10.1001/archpsyc.55.9.809.
- 512 35. Qiu C, Fratiglioni L. Aging without dementia is achievable: current evidence from epidemiological
513 research. Journal of Alzheimer's Disease. 2018;62(3):933-42.
- 514 36. Nelson PT, Head E, Schmitt FA, Davis PR, Neltner JH, Jicha GA, et al. Alzheimer's disease is not "brain
515 aging": neuropathological, genetic, and epidemiological human studies. Acta neuropathologica.
516 2011;121:571-87.

- 517 37. Miltiadous A, Tzamourta KD, Afrantou T, Ioannidis P, Grigoriadis N, Tsalikakis DG, et al. A Dataset of
518 Scalp EEG Recordings of Alzheimer's Disease, Frontotemporal Dementia and Healthy Subjects from
519 Routine EEG. Data. 2023 doi: 10.3390/data8060095.
- 520 38. Delorme A, Sejnowski T, Makeig S. Enhanced detection of artifacts in EEG data using higher-order
521 statistics and independent component analysis. *Neuroimage*. 2007;34(4):1443-9. doi:
522 10.1016/j.neuroimage.2006.11.004.
- 523 39. Miltiadous A, Tzamourta KD, Giannakeas N, Tsiouras MG, Afrantou T, Ioannidis P, Tzallas AT.
524 Alzheimer's Disease and Frontotemporal Dementia: A Robust Classification Method of EEG Signals and a
525 Comparison of Validation Methods. *Diagnostics (Basel)*. 2021;11(8). doi: 10.3390/diagnostics11081437.
- 526 40. Solomon Jr OM. PSD computations using Welch's method. NASA STI/Recon Technical Report N.
527 1991;92:23584.
- 528 41. Kurlowicz L, Wallace M. The Mini-Mental State Examination (MMSE). *J Gerontol Nurs*. 1999;25(5):8-
529 9. doi: 10.3928/0098-9134-19990501-08.
- 530 42. Beason-Held LL, Goh JO, An Y, Kraut MA, O'Brien RJ, Ferrucci L, Resnick SM. Changes in brain
531 function occur years before the onset of cognitive impairment. *J Neurosci*. 2013;33(46):18008-14. doi:
532 10.1523/jneurosci.1402-13.2013.
- 533 43. Chouliaras L, O'Brien JT. The use of neuroimaging techniques in the early and differential diagnosis
534 of dementia. *Molecular Psychiatry*. 2023;28(10):4084-97. doi: 10.1038/s41380-023-02215-8.
- 535 44. Ribarič S. Detecting Early Cognitive Decline in Alzheimer's Disease with Brain Synaptic Structural and
536 Functional Evaluation. *Biomedicines*. 2023 doi: 10.3390/biomedicines11020355.
- 537 45. Talwar P, Kushwaha S, Chaturvedi M, Mahajan V. Systematic review of different neuroimaging
538 correlates in mild cognitive impairment and Alzheimer's disease. *Clinical neuroradiology*.
539 2021;31(4):953-67.
- 540 46. Zhang H, Wang Y, Lyu D, Li Y, Li W, Wang Q, et al. Cerebral blood flow in mild cognitive impairment
541 and Alzheimer's disease: A systematic review and meta-analysis. *Ageing research reviews*.
542 2021;71:101450.
- 543 47. Sun J, Wang B, Niu Y, Tan Y, Fan C, Zhang N, et al. Complexity analysis of EEG, MEG, and fMRI in mild
544 cognitive impairment and Alzheimer's disease: a review. *Entropy*. 2020;22(2):239.
- 545 48. Jung J, Cloutman LL, Binney RJ, Lambon Ralph MA. The structural connectivity of higher order
546 association cortices reflects human functional brain networks. *Cortex*. 2017;97:221-39. doi:
547 10.1016/j.cortex.2016.08.011.
- 548 49. Friedman NP, Robbins TW. The role of prefrontal cortex in cognitive control and executive function.
549 *Neuropsychopharmacology*. 2022;47(1):72-89. doi: 10.1038/s41386-021-01132-0.
- 550 50. Takeuchi H, Taki Y, Sassa Y, Hashizume H, Sekiguchi A, Fukushima A, Kawashima R. Brain structures
551 associated with executive functions during everyday events in a non-clinical sample. *Brain Struct Funct*.
552 2013;218(4):1017-32. doi: 10.1007/s00429-012-0444-z.
- 553 51. Ullman MT. Contributions of memory circuits to language: the declarative/procedural model.
554 *Cognition*. 2004;92(1):231-70. doi: <https://doi.org/10.1016/j.cognition.2003.10.008>.
- 555 52. Busch RM, Yehia L, Blümcke I, Hu B, Prayson R, Hermann BP, et al. Molecular and subregion
556 mechanisms of episodic memory phenotypes in temporal lobe epilepsy. *Brain Commun*.
557 2022;4(6):fcac285. doi: 10.1093/braincomms/fcac285.
- 558 53. Wiltgen BJ, Zhou M, Cai Y, Balaji J, Karlsson MG, Parivash SN, et al. The hippocampus plays a
559 selective role in the retrieval of detailed contextual memories. *Curr Biol*. 2010;20(15):1336-44. doi:
560 10.1016/j.cub.2010.06.068.
- 561 54. Perry R, Hodges J. Differentiating frontal and temporal variant frontotemporal dementia from
562 Alzheimer's disease. *Neurology*. 2000;54(12):2277-84.

- 563 55. Kumfor F, Irish M, Hodges JR, Piguet O. Frontal and temporal lobe contributions to emotional
564 enhancement of memory in behavioral-variant frontotemporal dementia and Alzheimer's disease.
565 *Frontiers in behavioral neuroscience*. 2014;8:225.
- 566 56. Berron D, van Westen D, Ossenkoppele R, Strandberg O, Hansson O. Medial temporal lobe
567 connectivity and its associations with cognition in early Alzheimer's disease. *Brain*. 2020;143(4):1233-48.
- 568 57. Pritchard LS, John ER, Ferris SH, Reisberg B, Almas M, Alper K, Cancro R. Quantitative EEG correlates of
569 cognitive deterioration in the elderly. *Neurobiology of Aging*. 1994;15(1):85-90. doi:
570 [https://doi.org/10.1016/0197-4580\(94\)90147-3](https://doi.org/10.1016/0197-4580(94)90147-3).
- 571 58. Tedrus GM, Negreiros LM, Ballarim RS, Marques TA, Fonseca LC. Correlations Between Cognitive
572 Aspects and Quantitative EEG in Adults With Epilepsy. *Clinical EEG and Neuroscience*. 2018;50(5):348-
573 53. doi: 10.1177/1550059418793553.
- 574 59. Corsi-cabrera M, Herrera P, Malvido M. Correlation Between Eeg and Cognitive Abilities: Sex
575 Differences. *International Journal of Neuroscience*. 1989;45(1-2):133-41. doi:
576 10.3109/00207458908986226.
- 577 60. Savva GM, Wharton SB, Ince PG, Forster G, Matthews FE, Brayne C. Age, neuropathology, and
578 dementia. *New England Journal of Medicine*. 2009;360(22):2302-9.
- 579 61. Gonzales MM, Garbarino VR, Pollet E, Palavicini JP, Kellogg DL, Kraig E, Orr ME. Biological aging
580 processes underlying cognitive decline and neurodegenerative disease. *The Journal of clinical*
581 *investigation*. 2022;132(10).
- 582 62. Wu JW, Yaqub A, Ma Y, Koudstaal W, Hofman A, Ikram MA, et al. Biological age in healthy elderly
583 predicts aging-related diseases including dementia. *Scientific reports*. 2021;11(1):15929.
- 584 63. Mecocci P, Boccardi V. The impact of aging in dementia: It is time to refocus attention on the main
585 risk factor of dementia. *Ageing research reviews*. 2021;65:101210.
- 586 64. Fang X, Crumpler RF, Thomas KN, Mazique JN, Roman RJ, Fan F. Contribution of cerebral
587 microvascular mechanisms to age-related cognitive impairment and dementia. *Physiology international*.
588 2022;109(1):20-30.
- 589 65. Ton AMM, Campagnaro BP, Alves GA, Aires R, Côco LZ, Arpini CM, et al. Oxidative stress and
590 dementia in Alzheimer's patients: effects of synbiotic supplementation. *Oxidative medicine and cellular*
591 *longevity*. 2020;2020(1):2638703.
- 592 66. Ashleigh T, Swerdlow RH, Beal MF. The role of mitochondrial dysfunction in Alzheimer's disease
593 pathogenesis. *Alzheimer's & Dementia*. 2023;19(1):333-42.
- 594 67. Sharma C, Kim S, Nam Y, Jung UJ, Kim SR. Mitochondrial dysfunction as a driver of cognitive
595 impairment in Alzheimer's disease. *International Journal of Molecular Sciences*. 2021;22(9):4850.
- 596 68. Karabiyik C, Frake RA, Park SJ, Pavel M, Rubinsztein DC. Autophagy in ageing and ageing-related
597 neurodegenerative diseases. *Ageing Neurodegener Dis*. 2021;1(2).
- 598 69. Wang X-X, Zhang B, Xia R, Jia Q-Y. Inflammation, apoptosis and autophagy as critical players in
599 vascular dementia. *European Review for Medical & Pharmacological Sciences*. 2020;24(18).
- 600 70. Lutshumba J, Nikolajczyk BS, Bachstetter AD. Dysregulation of systemic immunity in aging and
601 dementia. *Frontiers in Cellular Neuroscience*. 2021;15:652111.

602

603

604