

1 **Title:** Social Determinants of Cardiovascular Disease in US Women with and without Breast
2 Cancer

3
4 **Authors:** Elena Wadden, MD^a, Vidhushei Yogeswaran, MD^b, Roberta M Ray^c, MS, Alexi
5 Vasbinder, PhD, RN^d, Aladdin H Shadyab, PhD^e, Qian Xiao, PhD^f, Phyllis A Richey, PhD^g,
6 Nazmus Saquib, MBBS, MPH, PhD^h, Yangbo Sun, PhD^g, Su Yon Jung, PhDⁱ, Margaret S.
7 Pichardo, MD, PhD^j, MPH, JoAnn E Manson, MD, DRPH^k, Garnet Anderson, MD^c, Michael
8 Simon, MD^l, Marcia Stefanick, PhD^m, Kerry Reding, PhD, MPH, RN^d, Ana Barac, MD PhDⁿ,
9 Richard K Cheng, MD MS^b

10
11 **Institutional Affiliations:**

- 12 a. Department of Medicine, University of Washington, Seattle, Washington, United States
13 b. Division of Cardiology, University of Washington, Seattle, Washington, United States
14 c. Fred Hutchinson Cancer Center, Seattle, Washington, United States
15 d. Department of Biobehavioral Nursing and Health Informatics, University of Washington
16 School of Nursing, Seattle, Washington, United States
17 e. Herbert Wertheim School of Public Health and Human Longevity Science and Division
18 of Geriatrics, Gerontology, and Palliative Care, Department of Medicine, University of
19 California, San Diego, La Jolla, California, United States
20 f. Department of Epidemiology, Human Genetics and Environmental Sciences, University
21 of Texas Health Science Center at Houston, United States
22 g. Department of Preventive Medicine, University of Tennessee Health Science Center,
23 Memphis, Tennessee, United States

- 1 h. College of Medicine, Sulaiman AlRajhi University, Al Bukayriyah, Saudi Arabia
- 2 i. Translational Sciences Section, School of Nursing, Department of Epidemiology,
- 3 Fielding School of Public Health, Jonsson Comprehensive Cancer Center, University of
- 4 California Los Angeles, CA, United States
- 5 j. Department of Surgery, Hospital of the University of Pennsylvania, Penn Medicine,
- 6 Philadelphia, PA, United States
- 7 k. Department of Medicine, Brigham and Women's Hospital, Harvard Medical School,
- 8 Boston, MA, United States
- 9 l. Karmanos Cancer Institute, Detroit, Michigan, United States
- 10 m. Department of Medicine, Stanford University, Stanford, California, United States
- 11 n. Inova Schar Heart and Vascular Institute, Fairfax Falls Church, Virginia, United States

12

13 **Declarations of interest:** none

14

15 **Funding:** The WHI program is funded by National Heart, Lung, and Blood Institute, National

16 Institutes of Health, U.S. Department of Health and Human Services through contracts,

17 HHSN268201600018C, HHSN268201600001C, HHSN268201600002C,

18 HHSN268201600003C, and HHSN268201600004C. The authors have reported that they have

19 no relationships relevant to the contents of this paper to disclose.

20

21 **Corresponding Author:**

22 Richard K Cheng MD MS

23 1959 NE Pacific Street

1 Health Sciences Building, Suite #A506D Box 356422
2 Seattle, WA 98195
3 Office phone: 206-221-6507
4 Fax: 206-616-8188
5 Email: rkcheng@uw.edu or rkcheng@cardiology.washington.edu

6

7

8

9

10

11

12

13

14

15

16

17

18

19

20

21

22

1 **Abstract:**

2 *Background:* Social determinants of health (SDOH) may be related to CV risk in women with
3 and without breast cancer (BC).

4 *Methods:* In 153,401 women without prevalent CV disease in the Women’s Health Initiative
5 (WHI), SDOH factors included geographic region, rurality, insurance status, and household
6 income. Cox proportional hazard models were used to assess associations between SDOH factors
7 and a composite CV outcome (myocardial infarction, stroke, hospitalization for heart failure, or
8 CV death). Effect modification by BC was assessed between BC status and SDOH.

9 *Results:* The final cohort included 10,954 (mean age 62 ± 7 years) women who subsequently
10 developed BC and 142,144 (mean age 63 ± 7) women without BC. During a median follow-up of
11 13 years, 18,148 women had an incident composite CV outcome. Rurality, low household
12 income, and non-private insurance were associated with an increased risk of composite CV
13 outcome and mortality in both women with and without BC. There was no effect modification by
14 BC status for associations with rurality, insurance, or household income. By geographic region,
15 there was no difference in composite CV outcome in women without BC. However, there was a
16 significant interaction by BC status for geographic region and the composite endpoint ($p=0.009$).
17 Women with BC in the South had a lower risk of the composite outcome (HR 0.68, 95% CI
18 0.54-0.87).

19 *Conclusions:* SDOH are associated with an increased risk of CV events and mortality among
20 women. There were no differential associations based on BC status, suggesting that women with
21 BC face similar vulnerabilities related to SDOH.

22

23

1 **Key Words:** breast cancer, coronary artery disease, epidemiology, women's oncology
2

1 **Introduction:**

2 Cardiovascular (CV) events and breast cancer (BC) are major causes of disease in
3 postmenopausal women, sharing risk factors and underlying pathophysiologic mechanisms.¹ In
4 the United States, CV disease is the leading cause of death in women. Women with BC face
5 increased CV risks due to cardiometabolic changes of malignancy, adverse effects of cancer
6 therapeutics, and indirect treatment effects.² This elevated CV risk in postmenopausal women
7 with BC is most pronounced several years after BC diagnosis.³

8 Disparities persist in CV outcomes despite advancements in healthcare, often driven by
9 complex interactions with social determinants of health (SDOH).^{2,4} SDOH, as defined by Centers
10 for Disease Control and Prevention, encompass the conditions under which individuals are born,
11 grow, work, live, and age, and the wider set of forces and systems shaping the conditions of daily
12 life.”⁵ In the general population, CV outcomes exhibit significant variation by socioeconomic
13 status, region of residence, and rurality.⁶⁻⁸ In the United States, regional variability in insurance
14 coverage further exacerbate these differences, leading to variability in access and ultimately
15 outcomes.⁹ For women in particular, prior research has highlighted an increased CV risk
16 associated with lower income, rural residence, and lower educational attainment.¹⁰⁻¹²

17 Despite our understanding of CV and BC risk, there is a critical gap in our knowledge on
18 how SDOH and regional variations affect CV risk in women with BC.¹³ While both women with
19 and without BC have a high burden of CV disease, the extent to which BC status modifies the
20 risk of CV disease remains unanswered. Therefore, we sought to better characterize the
21 associations of SDOH and geographic regions with CV disease outcomes and determine whether
22 BC status modifies the risk of CV disease. In this study, we utilize longitudinal data from the
23 Women’s Health Initiative (WHI) to evaluate the association of geographic differences and

1 SDOH with CV outcomes in both women with and without BC. Understanding associations
2 between SDOH, geographic regions, and CV outcomes may better identify women at higher CV
3 risk for targeted clinical and public health initiatives.

4 **Methods:**

5 *Study Population*

6 The WHI is a longitudinal study of postmenopausal women aged 50 to 79 years who
7 were recruited from 40 US clinical centers between October 1, 1993, and December 31, 1998,
8 with ongoing, longitudinal follow-up.¹⁴⁻¹⁶ We included women who participated in either the
9 WHI Clinical Trial (n=68,132) or enrolled in an observational study (n=93,676). Participants
10 were followed through March 2005 and had the option to continue follow up in two extension
11 studies through 2022.^{17,18} The institutional review boards from all WHI-affiliated institutions
12 approved this study. All participants provided informed consent. During Extension Study II,
13 cardiovascular outcomes were adjudicated in a subset of participants, referred to as the Medical
14 Records Cohort (MRC n=22,316), which consisted of all women who participated in the
15 hormone trial component of the original clinical trial, as well as all African American and
16 Hispanic women from any study component. The remaining participants comprised the Self-
17 Report Cohort (SRC n=71,251). Cancer was adjudicated in both the MRC and the SRC. The
18 present analysis excluded women with self-reported history of myocardial infarction, coronary
19 revascularization, stroke, or heart failure at baseline (n=7,757). We further excluded women with
20 no follow-up after baseline (n=650) (Figure I).

1 *Outcomes & Adjudication process*

2 The primary outcome was a composite of incident CV events (non-fatal myocardial
3 infarction, stroke, and hospitalization for heart failure) and CVD death (excluding fatal
4 pulmonary embolism). Cause of death was determined by trained physician adjudicators for all
5 reports of a participant death through Extension Study I.¹⁹ In Extension Study II, cause of death
6 was adjudicated only in the Medical Record Cohort. Deaths in the Self-Report Cohort were
7 identified, and cause of death determined by annual linkage to the National Death Index.¹⁹ We
8 also considered CVD mortality, breast cancer mortality, and all-cause mortality, separately, as
9 secondary outcomes. Incident CV events and breast cancer were initially ascertained by self-
10 report, then documented by medical record review. CVD cases were evaluated by local trained
11 WHI-physician adjudicators for evaluation and classification, with locally adjudicated cases sent
12 to WHI Clinical Coordinating Center for central adjudication.¹⁷ Events were defined
13 prospectively using established criteria. Using methods from the National Cancer Institute
14 Surveillance, Epidemiology, and End Results guidelines, breast cancer cases were centrally
15 coded.²⁰

16 *Primary Exposures*

17 Exposures of interest included region in the United States, rural-urban commuting area
18 codes (RUCA), insurance status, and household income. These were obtained at the time of WHI
19 study enrollment.

20 Geographic region of residence was divided into the 4 US Census Bureau regions 1)
21 Northeast included Pennsylvania, New Jersey, New York, Connecticut, Massachusetts, Vermont,
22 New Hampshire, and Maine. 2) South included Texas, Oklahoma, Louisiana, Arkansas,
23 Mississippi, Alabama, Tennessee, Kentucky, West Virginia, Virginia, Maryland, Delaware,

1 North Carolina, South Carolina, Georgia, and Florida. 3) Midwest included Kansas, Nebraska,
2 South Dakota, North Dakota, Missouri, Iowa, Minnesota, Illinois, Wisconsin, Indiana, Ohio, and
3 Michigan. 4) West included Montana, Idaho, Wyoming, Nevada, Utah, Colorado, Arizona, New
4 Mexico, California, Oregon, Washington, Alaska, and Hawaii.

5 RUCA codes were used to classify United States census tracts into 1 of 10 main
6 categories based on rural-urban core and extent of commuting. Based on methodology used from
7 previously published WHI studies looking at the rural-urban classification and based on the
8 distribution of WHI participants across the country, we classified women in our study into one of
9 three classes at time of WHI study entry: 1) urban area, 2) large rural city/town, and 3) small
10 rural town or isolated small rural town.²¹

11 Insurance status was divided into participants with Medicare or Medicaid; HMO or other
12 private; combination of public and private; military, VA, or other insurance only; no insurance;
13 or unknown. Household income was evaluated in four categories, similar to previously published
14 studies in the WHI: 1) < \$20,000, 2) \$20,000-\$34,999, 3) \$35,000-\$49,999, and 4) \geq \$50,000.²²

15 *Covariates*

16 Baseline characteristics were obtained at WHI study enrollment as previously
17 described.^{17,23} In addition to the primary exposures listed above, self-reported information on
18 demographics (race and ethnicity, age at enrollment, and education were collected), lifestyle
19 factors (smoking history and physical activity), comorbidities (history of hypertension, diabetes,
20 and hyperlipidemia), and family medical history (myocardial infarction and stroke) were
21 collected. Smoking history was self-defined as either current, former, or never smoker. Physical
22 activity was measured as total metabolic equivalent (MET) hours per week calculated from self-

1 report questionnaires. Body mass index was collected through in-person clinic visits at
2 enrollment and was calculated as weight (kg) divided by the square of the body height (m²).

3 *Statistical Analysis*

4 Baseline characteristics were stratified by RUCA code and geographic region and
5 described as mean values \pm standard deviation for continuous variables and as frequencies and
6 percentages for categorical variables. We used Cox proportional hazard regression models to
7 assess the associations between SDOH and outcomes in stepwise models. Model 1 included age
8 at enrollment and all SDOH variables (i.e., geographic region of residence, RUCA, insurance
9 status, and household income). Model 2 included the variables in model 1 in addition to physical
10 activity, smoking status, diabetes, hypertension, hyperlipidemia, and family history of
11 myocardial infarction and stroke. Lastly, model 3 included all variables in model 2 plus
12 adjustment for race, ethnicity, and body mass index. Associations were presented as hazard ratios
13 (HRs) and 95% confidence intervals. Invasive BC during follow-up was included in all models
14 as a time-varying covariate in order to identify BC relative to the timing of the CV outcome.
15 Effect modification by BC status (BC vs non-BC) was assessed by including interaction terms
16 between BC status and each SDOH variables, in separate fully adjusted models (i.e., model 3).
17 HRs were estimated from the interaction models and BC mortality was modeled as competing
18 risk in the Cox PH analyses. The time scale was defined as time since the enrollment in the WHI.
19 For the primary endpoint, follow-up was censored in SRC participants at the end of Extension I
20 when adjudication of non-fatal CV events ended. Follow-up for MRC participants continued to
21 the last documented follow-up time or death from other cause, as of February 19, 2022. For the
22 secondary endpoint of CV death, all participants without the endpoint were censored at last
23 documented follow-up time or death from other cause, as of February 19, 2022. We conducted

1 additional analyses for BC specific mortality, death from other causes, and all-cause death
2 separately.

3 Final models were conducted on participants with complete covariate and exposure data.

4 All statistical analyses were 2-sided and completed using SAS version 9.4 software (SAS
5 Institute Inc., Cary, NC, USA). P values of <0.05 were considered statistically significant.

6 **Results:**

7 *Baseline characteristics of study cohort*

8 In our final cohort of 153,401 participants, there were 10,954 (mean age at baseline 62 ± 7
9 years) women who subsequently developed incident invasive BC during the study period. From
10 enrollment to the end of their follow-up, 94% of women resided in the same broad geographic
11 region since baseline collection, and 84% of women had no RUCA category change. Among
12 women who developed BC, the mean (\pm SD) age at BC diagnosis was 73 ± 8 years, 90% were
13 White, 6% Black, 2% Asian/Pacific Islander, and 2% more than one race/unknown. There was a
14 higher prevalence of women with BC living in small rural and large rural areas in the Midwest
15 (52% and 37.6% respectively) compared to the Northeast (Table I). Compared to those in urban
16 areas, women with BC in large rural and small rural areas were more likely to be uninsured (3%
17 versus 5-7%), have a high school diploma or less (17% versus 27-29%), and have an income
18 level <\$20,000 (10% versus 14-15%). When stratified by geographic region, there were no
19 differences in baseline demographics, socioeconomic status, or health behaviors (Table 2).

20 *Risk of CV events*

21 There were 18,148 participants (11.8%) in the total cohort with the primary endpoint of
22 composite CV event or CV death during a median of 13 years of follow-up. In Table 3, the
23 multivariable associations between geographic region, rural-urban residence, insurance status,

1 and annual household income and the composite of CV events and CVD death are shown. There
2 was no difference, after multivariable adjustment, in the association of geographic region with
3 the primary endpoint of composite CV event or CV mortality when comparing participants in the
4 Midwest (HR 0.97, 95% CI 0.92-1.02), West (HR 1.01, 95% CI: 0.97-1.06), or South (HR 1.02,
5 95% CI 0.98-1.08) to those in the Northeast in the total cohort. However, there was a significant
6 interaction by BC status for geographic region and the composite endpoint (p-interaction=0.009).
7 For example, for participants with BC, individuals in the South had the lowest risk of the
8 composite outcome (HR 0.68, 95% CI 0.54-0.87) as compared to those in the Northeast. For
9 individuals with BC, comparing those in the Midwest or the West with the Northeast was not
10 significant. For individuals without BC, there was no difference in the composite outcome by
11 geographic region.

12 In the total cohort of women, rurality, non-private insurance status or no insurance, and
13 household incomes <\$50,000 were each associated with higher risk of CVD. In detail, for
14 rurality (RUCA), participants in large rural areas (HR 1.11, 95% CI: 1.02-1.20) had higher risk
15 of CV events or death compared to those in urban areas. Participants with public
16 (Medicare/Medicaid) (HR 1.12, 95% CI 1.06-1.19), public/private combination insurance (HR
17 1.07, 95% CI 1.02-1.13) or no insurance (HR 1.22, 95% CI 1.11-1.34) had higher risk of CVD
18 compared to those with private insurance. Categories of lower annual household income were
19 linearly associated with increased risk of the composite CV outcome: \$35,000-49,999 (HR 1.12,
20 95% CI 1.06-1.18), \$20,000-34,999 (HR 1.22, 95% CI: 1.16-1.28), and <\$20,000 (HR 1.33, 95%
21 CI 1.26-1.40) compared to those in the reference group of \geq \$50,000 (p-trend across
22 categories=0.0002). However, we observed no effect modification by BC status for RUCA
23 status, insurance, or household income (p = 0.92, p=0.69, and p=0.60, respectively).

1 *Risk of Mortality*

2 As secondary endpoints, we evaluated CV mortality, BC mortality, and all-cause
3 mortality in relation to geographic and (Socioeconomic status) SES factors (Table 4). For CV
4 mortality in US regions, the South (HR 1.08 95% CI 1.02-1.14) and West (HR 1.13 95% CI
5 1.08-1.19) had higher CV mortality risk compared to the Northeast. Similarly, the South (HR
6 1.10, 95% CI 1.06-1.13) and West (HR 1.06, 95% CI 1.03-1.09) had an increased all-cause
7 mortality risk compared to the Northeast. In contrast, the Midwest (HR 1.23, 95% CI 1.04-1.45),
8 and South (HR 1.18, 95% CI 1.00-1.39) had a higher BC mortality risk compared to the
9 Northeast but no significant BC mortality differences were found when comparing the West
10 (HR 1.16, 95% CI 0.99-1.36) to the Northeast. Based on rural status, no significant differences in
11 risk were observed between large rural and small rural areas compared to urban areas for CV
12 mortality, BC mortality, or all-cause mortality (Table 4). When examining insurance status, we
13 found that compared to private insurance, all other forms of insurance were associated with an
14 increased risk of CV mortality and all-cause mortality. However, insurance status was not
15 associated with BC mortality. When assessing household income and CV mortality, each income
16 bracket below \leq \$50,000 was associated with a higher risk of CV mortality and all-cause
17 mortality. In contrast, when assessing household income and BC mortality, aside from a higher
18 risk in individuals with an income $<$ \$20,000 (HR 1.26, 95% CI 1.04-1.53), no mortality
19 differences were observed across other income brackets.

1 **Discussion:**

2 To our knowledge, this is the largest study to evaluate how geography and the SDOH are
3 associated with CV risk in both women with and without BC. Our findings can be summarized
4 as follows: (1) We observed no difference in the composite endpoint of incident CV events or
5 CV mortality in the total cohort by large geographic regions; however, there appeared to be
6 effect modification by BC status. For individuals without BC, geographic region was not
7 associated with the composite endpoint. However, women with BC living in the South appeared
8 to have decreased risk of primary endpoint of composite CV event or CV mortality compared to
9 those in the Northeast. (2) The risk for BC mortality was higher in the South and Midwest as
10 compared to the Northeast. These findings underscore the importance of considering competing
11 risk as the increased risk for other causes of mortality may impact accrued exposure time for CV
12 events. (3) Independent of geographic region, the SDOH which included rurality, socioeconomic
13 status, and insurance status appear to drive the increased risk for CV mortality. Participants in
14 rural areas had higher CV risk compared to those in urban areas, those with public insurance had
15 higher risk compared to those with private insurance, and those with lower household income
16 had higher CV risk than those with higher income with a stepwise increased hazard by income
17 strata. For RUCA, insurance status, and household income, there was no effect modification by
18 BC status suggesting that individuals with BC are as vulnerable when they are
19 socioeconomically disadvantaged. (4) Our findings suggest that regardless of geographic region,
20 similar SDOH drive individual CV risk regardless of BC status.

21 In the US general population, the highest CV mortality rates are concentrated across
22 Southern states, such as Mississippi, Kentucky, Oklahoma, Tennessee, Arkansas, Louisiana,
23 Georgia, Texas, Alabama, and Missouri.²⁴ Geographic concentrations in CVD risk have also

1 shifted over time. A spatiotemporal study from 1873 to 2010 observed an overall CV mortality
2 shift from Northeast to the South, with higher CV hospitalizations in Oklahoma, Kentucky, and
3 West Virginia.²⁵ For women, CV disease burden increased in Indiana, Kentucky, Michigan,
4 Mississippi, Missouri, New Mexico, and South Dakota from 2010 to 2016.²⁶ Multiple factors are
5 responsible for these trends, including the higher prevalence of CV risk factors across Southern
6 states as well as socioeconomic, healthcare environment, and health status factors.^{27,28} In our
7 study, there was no difference across the composite CV event or CV mortality when comparing
8 participants in the Midwest or West to those in the Northeast. Additionally, individuals with BC
9 living in the South had a lower association of CV mortality risk compared with the Northeast.
10 However, all-cause mortality, BC mortality, as well as CV mortality was found to be higher in
11 the South compared to the Northeast similar to that seen in other studies.²⁶ From our analysis, the
12 higher BC mortality rates observed in the South may offer a possible explanation for why
13 women with BC had decreased CV event risk, as the increased risk for BC mortality may impact
14 accrued exposure time for CV events.

15 Differences between our study and prior large scale geographic studies may be attributed
16 to differences in the WHI participant population and surveillance methods. The WHI enrolled
17 healthy postmenopausal women volunteers from 40 major academic centers and may not reflect
18 the general population. Additionally, the WHI surveillance methods did not include small-area
19 surveillance data (i.e., county).²⁹ We believe this should be highlighted, given that important
20 CVD variations can be observed at the county-level.^{30,31} County-level data represent complex
21 environments with variable distribution of community-level risk factors. Consequently, our lack
22 of regional geographic differences across women with BC may be due to variations accounted
23 for in a smaller scale including county-level data or rural-urban status.^{32 2930,3132} When stratified

1 by rural/urban status, participants in rural areas had higher risk of CV events compared to those
2 in urban areas. BC status did not confer increased CV mortality, but may be due to the relatively
3 smaller number of women in BC located in large rural and small rural areas, resulting in a small
4 sample size and null findings. When examining rural/urban status for BC mortality and all-cause
5 mortality, no differences were found. Our finding is consistent with similar studies which
6 observed that CV mortality rate was significantly higher in rural areas compared to urban
7 locations.³³ Rural regions have variations in access for the mentioned social factors which may
8 contribute to adverse CV outcomes.³⁴ Rural regions tend to have substandard housing, more
9 limited transportation options, lower food access, and lower rates of health literacy, all which
10 have been implicated in poorer CV outcomes.^{34–38} In a study of BC survivors, the most rural
11 counties had a 31% increased CV mortality risk compared with the most urban counties.³² Rural
12 areas may significantly contribute to these outcomes, given limited access to health care
13 compared to urban areas. One study identified travel distance to treatment centers as a substantial
14 barrier to women with BC in rural areas.³⁹

15 Independent of geographic region and BC status, we observed that SDOH drive an
16 increased risk for CV events and CV mortality in our cohort. While the stratified results for those
17 with BC did not reach significance, the point estimates were generally similar, and the lack of
18 significance may have been driven by the limited sample size for the BC-only cohort. Therefore,
19 it is possible that the stratified analyses for BC status may be underpowered. However, the lack
20 of effect modification of the SDOH by BC status suggests that individuals with BC remain a
21 vulnerable population even though women with cancer may be more likely to be established in
22 the medical system for their oncologic care. Beyond CV mortality, we found that SDOH,
23 including insurance status and household income, was associated with an increased risk for all-

1 cause mortality. The SDOH encompasses the characterization of access to medical care in
2 regards to neighborhood quality, housing, education, healthcare, transportation, and food, and
3 has been implicated by others in adverse CV outcomes.⁴⁰ SDOH has been associated with worse
4 cardiovascular health in adult cancer survivors in the U.S.⁴¹ Across women with BC, lack of
5 private insurance and low socioeconomic status has been associated with a higher CV
6 mortality.⁴²⁻⁴⁴ In a recent analysis, CV mortality was 41% higher among women with BC in the
7 counties with the lowest SES compared with the wealthiest counties.³² Future studies should
8 explore the association between SDOH and mortality to further examine possible drivers of these
9 disparities.

10 In our study, we emphasize the impact of socioeconomic factors on CV risk in both
11 women with and without BC. The increased risk of SDOH on adverse CV outcomes may be
12 explained by lower SES, financial barriers, and limited access to medical care. For women with
13 BC, BC clinical guidelines outline CV screening and monitoring before, during and after receipt
14 of cardiotoxic cancer treatment. However, women with BC lacking insurance or with lower
15 financial resources may receive less medical care and attention and access, despite complex
16 survivorship needs.⁴⁵ The findings in our study underscore the need for patient-centered
17 approaches that consider the interplay between social and economic factors to optimize CV
18 outcomes in women with poor SDOH. Further research is warranted to elucidate the mechanisms
19 underlying the observed differences in CV risk and to develop targeted interventions for women
20 with and without BC.

21 *Limitations*

22 This study has several limitations. The WHI cohort is predominantly White, age 50-79
23 years, and participants were primarily recruited from major academic health centers in 24 states

1 and the District of Columbia.^{29,46} Although recruitment areas included rural, suburban, and rural
2 populations, rural areas included fewer women compared to larger density population areas. In
3 addition, SDOH factors, such as income levels and insurance status, may have changed to
4 varying degrees over time and follow up period, especially as participants entered retirement.
5 However, despite this, one major strength of this study is that we demonstrated in the WHI
6 population, that poor socioeconomic status, defined by lower income, public insurance, as well
7 as rurality are all associated with health outcomes, an important finding that can impact
8 individuals in all sectors of the country. Further research is needed to further evaluate the long-
9 term association between SES, CV risk, and cancer across the United States.

10 **Conclusions:**

11 In this population of postmenopausal women with and without BC, we found that CV
12 risk and mortality is highest in individuals in rural areas, from lower income status and with
13 public or no insurance regardless of geographic region. Further studies are needed to evaluate
14 population-level interventions to improve CV outcomes among underserved women with BC.
15 Future public health initiatives need to account for these disparities in communities across the
16 country.

17

18

19

20

21

22

23

1 **Acknowledgements:** The authors would like to thank the WHI investigators and staff for their
2 dedication, and the study participants.

3

4

1 **References**

- 2 1. Mehta LS, Watson KE, Barac A, et al. Cardiovascular Disease and Breast Cancer: Where
3 These Entities Intersect: A Scientific Statement From the American Heart Association.
4 *Circulation*. 2018;137(8). doi:10.1161/CIR.0000000000000556
- 5 2. Ohman RE, Yang EH, Abel ML. Inequity in Cardio-Oncology: Identifying Disparities in
6 Cardiotoxicity and Links to Cardiac and Cancer Outcomes. *J Am Heart Assoc*.
7 2021;10(24). doi:10.1161/JAHA.121.023852
- 8 3. Bradshaw PT, Stevens J, Khankari N, Teitelbaum SL, Neugut AI, Gammon MD.
9 Cardiovascular Disease Mortality among Breast Cancer Survivors. *Epidemiology*.
10 2016;27(1):6-13. doi:10.1097/EDE.0000000000000394
- 11 4. Coughlin SS. Social determinants of breast cancer risk, stage, and survival. *Breast Cancer*
12 *Res Treat*. 2019;177(3):537-548. doi:10.1007/s10549-019-05340-7
- 13 5. Hacker K, Auerbach J, Ikeda R, Philip C, Houry D. Social Determinants of Health—An
14 Approach Taken at CDC. *Journal of Public Health Management and Practice*.
15 2022;28(6):589-594. doi:10.1097/PHH.0000000000001626
- 16 6. Gebreab SY, Davis SK, Symanzik J, Mensah GA, Gibbons GH, Diez-Roux A V.
17 Geographic Variations in Cardiovascular Health in the United States: Contributions of
18 State- and Individual-Level Factors. *J Am Heart Assoc*. 2015;4(6).
19 doi:10.1161/JAHA.114.001673
- 20 7. Rachoin JS, Olsen P, Gaughan J, Cerceo E. Racial differences in outcomes and utilization
21 after cardiac arrest in the USA: A longitudinal study comparing different geographical
22 regions in the USA from 2006-2018. *Resuscitation*. 2021;169:115-123.
23 doi:10.1016/j.resuscitation.2021.10.038

- 1 8. Son H, Zhang D, Shen Y, et al. Social Determinants of Cardiovascular Health: A
2 Longitudinal Analysis of Cardiovascular Disease Mortality in US Counties From 2009 to
3 2018. *J Am Heart Assoc.* 2023;12(2):e026940. doi:10.1161/JAHA.122.026940
- 4 9. Lindley KJ, Aggarwal NR, Briller JE, et al. Socioeconomic Determinants of Health and
5 Cardiovascular Outcomes in Women: JACC Review Topic of the Week. *J Am Coll*
6 *Cardiol.* 2021;78(19):1919-1929. doi:10.1016/j.jacc.2021.09.011
- 7 10. Schultz WM, Kelli HM, Lisko JC, et al. Socioeconomic Status and Cardiovascular
8 Outcomes: Challenges and Interventions. *Circulation.* 2018;137(20):2166-2178.
9 doi:10.1161/CIRCULATIONAHA.117.029652
- 10 11. Shaw LJ, Merz CNB, Bittner V, et al. Importance of socioeconomic status as a predictor
11 of cardiovascular outcome and costs of care in women with suspected myocardial
12 ischemia. Results from the National Institutes of Health, National Heart, Lung and Blood
13 Institute-sponsored Women's Ischemia Syndrome Evaluation (WISE). *J Womens Health*
14 *(Larchmt).* 2008;17(7):1081-1092. doi:10.1089/jwh.2007.0596
- 15 12. Villapiano N, Iwashyna TJ, Davis MM. Worsening Rural-Urban Gap in Hospital
16 Mortality. *J Am Board Fam Med.* 2017;30(6):816-823.
17 doi:10.3122/jabfm.2017.06.170137
- 18 13. White-Williams C, Rossi LP, Bittner VA, et al. Addressing Social Determinants of Health
19 in the Care of Patients With Heart Failure: A Scientific Statement From the American
20 Heart Association. *Circulation.* 2020;141(22). doi:10.1161/CIR.0000000000000767
- 21 14. Anderson GL, Manson J, Wallace R, et al. Implementation of the Women's Health
22 Initiative study design. *Ann Epidemiol.* 2003;13(9 Suppl):S5-17. doi:10.1016/s1047-
23 2797(03)00043-7

- 1 15. Langer RD, White E, Lewis CE, Kotchen JM, Hendrix SL, Trevisan M. The Women's
2 Health Initiative Observational Study: baseline characteristics of participants and
3 reliability of baseline measures. *Ann Epidemiol.* 2003;13(9 Suppl):S107-21.
4 doi:10.1016/s1047-2797(03)00047-4
- 5 16. Anderson G, Cummings S, Freedman LS, et al. Design of the Women's Health Initiative
6 clinical trial and observational study. *Control Clin Trials.* 1998;19(1):61-109.
7 doi:10.1016/S0197-2456(97)00078-0
- 8 17. Curb JD, McTiernan A, Heckbert SR, et al. Outcomes ascertainment and adjudication
9 methods in the Women's Health Initiative. *Ann Epidemiol.* 2003;13(9 Suppl):S122-8.
10 doi:10.1016/s1047-2797(03)00048-6
- 11 18. Simon MS, Hastert TA, Barac A, et al. Cardiometabolic risk factors and survival after
12 cancer in the Women's Health Initiative. *Cancer.* 2021;127(4):598-608.
13 doi:10.1002/cncr.33295
- 14 19. Curb JD, Mctiernan A, Heckbert SR, et al. Outcomes ascertainment and adjudication
15 methods in the women's health initiative. *Ann Epidemiol.* 2003;13(9 SUPPL.).
16 doi:10.1016/S1047-2797(03)00048-6
- 17 20. Hankey BF, Ries LA, Edwards BK. The surveillance, epidemiology, and end results
18 program: a national resource. *Cancer Epidemiol Biomarkers Prev.* 1999;8(12):1117-1121.
- 19 21. Sealy-Jefferson S, Roseland ME, Cote ML, et al. Rural-Urban Residence and Stage at
20 Breast Cancer Diagnosis Among Postmenopausal Women: The Women's Health
21 Initiative. *J Womens Health (Larchmt).* 2019;28(2):276-283. doi:10.1089/jwh.2017.6884

- 1 22. Beasley JM, Lacroix AZ, Neuhaus ML, et al. Protein Intake and Incident Frailty in the
2 Women's Health Initiative Observational Study. *J Am Geriatr Soc.* 2010;58(6):1063.
3 doi:10.1111/J.1532-5415.2010.02866.X
- 4 23. Design of the Women's Health Initiative clinical trial and observational study. The
5 Women's Health Initiative Study Group. *Control Clin Trials.* 1998;19(1):61-109.
6 doi:10.1016/s0197-2456(97)00078-0
- 7 24. Roth GA, Johnson C, Abajobir A, et al. Global, Regional, and National Burden of
8 Cardiovascular Diseases for 10 Causes, 1990 to 2015. *J Am Coll Cardiol.* 2017;70(1):1-
9 25. doi:10.1016/j.jacc.2017.04.052
- 10 25. Casper M, Kramer MR, Quick H, Schieb LJ, Vaughan AS, Greer S. Changes in the
11 Geographic Patterns of Heart Disease Mortality in the United States: 1973 to 2010.
12 *Circulation.* 2016;133(12):1171-1180. doi:10.1161/CIRCULATIONAHA.115.018663
- 13 26. Global Burden of Cardiovascular Diseases Collaboration, Roth GA, Johnson CO, et al.
14 The Burden of Cardiovascular Diseases Among US States, 1990-2016. *JAMA Cardiol.*
15 2018;3(5):375-389. doi:10.1001/jamacardio.2018.0385
- 16 27. Glynn PA, Molsberry R, Harrington K, et al. Geographic Variation in Trends and
17 Disparities in Heart Failure Mortality in the United States, 1999 to 2017. *J Am Heart*
18 *Assoc.* 2021;10(9):e020541. doi:10.1161/JAHA.120.020541
- 19 28. Patel SA, Ali MK, Narayan KMV, Mehta NK. County-Level Variation in Cardiovascular
20 Disease Mortality in the United States in 2009-2013: Comparative Assessment of
21 Contributing Factors. *Am J Epidemiol.* 2016;184(12):933-942. doi:10.1093/aje/kww081

- 1 29. Hays J, Hunt JR, Hubbell FA, et al. The Women's Health Initiative recruitment methods
2 and results. *Ann Epidemiol.* 2003;13(9 Suppl):S18-77. doi:10.1016/s1047-2797(03)00042-
3 5
- 4 30. Zuma BZ, Parizo JT, Valencia A, et al. County-Level Factors Associated With
5 Cardiovascular Mortality by Race/Ethnicity. *J Am Heart Assoc.* 2021;10(6):e018835.
6 doi:10.1161/JAHA.120.018835
- 7 31. Rao S, Hughes A, Segar MW, et al. Longitudinal Trajectories and Factors Associated
8 With US County-Level Cardiovascular Mortality, 1980 to 2014. *JAMA Netw Open.*
9 2021;4(11):e2136022. doi:10.1001/jamanetworkopen.2021.36022
- 10 32. Ho KL, Shiels MS, Ramin C, et al. County-level geographic disparities in cardiovascular
11 disease mortality among US breast cancer survivors, 2000-2018. *JNCI Cancer Spectr.*
12 2023;7(1). doi:10.1093/jncics/pkac083
- 13 33. Garcia MC, Faul M, Massetti G, et al. Reducing Potentially Excess Deaths from the Five
14 Leading Causes of Death in the Rural United States. *MMWR Surveillance Summaries.*
15 2017;66(2):1-7. doi:10.15585/mmwr.ss6602a1
- 16 34. Harrington RA, Califf RM, Balamurugan A, et al. Call to Action: Rural Health: A
17 Presidential Advisory From the American Heart Association and American Stroke
18 Association. *Circulation.* 2020;141(10):e615-e644. doi:10.1161/CIR.0000000000000753
- 19 35. Henning-Smith C, Evenson A, Corbett A, Kozhimannil K, Moscovice I. *Rural*
20 *Transportation: Challenges and Opportunities.*; 2017.
- 21 36. Dutko P, Ver Ploeg M, Farrigan T. *Characteristics and Influential Factors of Food*
22 *Deserts.*; 2012.

- 1 37. Buck-McFadyen E. Rural homelessness: how the structural and social context of small-
2 town living influences the experience of homelessness. *Can J Public Health*.
3 2022;113(3):407-416. doi:10.17269/s41997-022-00625-9
- 4 38. Aljassim N, Ostini R. Health literacy in rural and urban populations: A systematic review.
5 *Patient Educ Couns*. 2020;103(10):2142-2154. doi:10.1016/j.pec.2020.06.007
- 6 39. Sprague BL, Ahern TP, Herschorn SD, Sowden M, Weaver DL, Wood ME. Identifying
7 key barriers to effective breast cancer control in rural settings. *Prev Med (Baltim)*.
8 2021;152(Pt 2):106741. doi:10.1016/j.ypmed.2021.106741
- 9 40. Havranek EP, Mujahid MS, Barr DA, et al. Social Determinants of Risk and Outcomes for
10 Cardiovascular Disease: A Scientific Statement From the American Heart Association.
11 *Circulation*. 2015;132(9):873-898. doi:10.1161/CIR.0000000000000228
- 12 41. Satti DI, Chan JSK, Dee EC, et al. Associations Between Social Determinants of Health
13 and Cardiovascular Health of US Adult Cancer Survivors. *JACC CardioOncol*. Published
14 online October 2023. doi:10.1016/j.jacc.2023.07.010
- 15 42. Shi T, Jiang C, Zhu C, Wu F, Fotjhad I, Zarich S. Insurance disparity in cardiovascular
16 mortality among non-elderly cancer survivors. *Cardiooncology*. 2021;7(1):11.
17 doi:10.1186/s40959-021-00098-8
- 18 43. Abdalla SM, Yu S, Galea S. Trends in Cardiovascular Disease Prevalence by Income
19 Level in the United States. *JAMA Netw Open*. 2020;3(9):e2018150.
20 doi:10.1001/jamanetworkopen.2020.18150
- 21 44. Bittoni MA, Wexler R, Spees CK, Clinton SK, Taylor CA. Lack of private health
22 insurance is associated with higher mortality from cancer and other chronic diseases, poor

- 1 diet quality, and inflammatory biomarkers in the United States. *Prev Med (Baltim)*.
2 2015;81:420-426. doi:10.1016/j.ypmed.2015.09.016
- 3 45. Islami F, Guerra CE, Minihan A, et al. American Cancer Society's report on the status of
4 cancer disparities in the United States, 2021. *CA Cancer J Clin*. 2022;72(2):112-143.
5 doi:10.3322/caac.21703
- 6 46. Leedy DJ, Reding KW, Vasbinder AL, et al. The association between heart failure and
7 incident cancer in women: an analysis of the Women's Health Initiative. *Eur J Heart Fail*.
8 2021;23(10):1712-1721. doi:10.1002/ejhf.2207
9

1 Table 1. Baseline characteristics by RUCA

	Overall (n=153,401)		Urban (n=134,506)		Large rural (n=5523)		Small rural (n=4014)		Unknown (n=9358)	
	Breast Cancer (n=10,954)	Non-Breast Cancer (n=142,447)	Breast Cancer (n=9,677)	Non-Breast Cancer (n=124,829)	Breast Cancer (n=383)	Non-Breast Cancer (n=5140)	Breast Cancer (n=269)	Non-Breast Cancer (n=3745)	Breast Cancer (n=625)	Non-Breast Cancer (n=8733)
	N (%)	N(%)	N(%)	N(%)	N(%)	N(%)	N(%)	N(%)	N(%)	N(%)
Age at screening, years (mean \pm SD)	62.32 \pm 6.85	63.11 \pm 7.23	62.37 \pm 6.86	63.14 \pm 7.25	62.39 \pm 6.56	63.48 \pm 6.67	62.11 \pm 6.53	63.55 \pm 6.81	61.61 \pm 6.98	62.24 \pm 7.24
Age at breast cancer diagnosis, years (mean \pm SD)	72.73 \pm 8.28	NA	72.78 \pm 8.29	NA	72.80 \pm 8.10	NA	72.92 \pm 7.82	NA	71.74 \pm 8.35	NA
Race										
American Indian/Alaska Native	23 (0.2)	458 (0.3)	21 (0.2)	374 (0.3)	1 (0.3)	21 (0.4)	1 (0.4)	31 (0.8)	0 (0.0)	32 (0.4)
Asian/Pacific Islander	212 (1.9)	3785 (2.7)	198 (2.0)	3504 (2.8)	0 (0.0)	19 (0.4)	0 (0.0)	4 (0.1)	14 (2.2)	258 (3.0)
Black/African American	669 (6.1)	12421 (8.7)	567 (5.9)	10360 (8.3)	3 (0.8)	176 (3.4)	2 (0.7)	69 (1.8)	97 (15.5)	1816 (20.8)
White	9826 (89.7)	121286 (85.1)	8691 (89.8)	106563 (85.4)	374 (97.7)	4806 (93.5)	262 (97.4)	3589 (95.8)	499 (79.8)	6328 (72.5)
More than one race	122 (1.1)	1647 (1.2)	108 (1.1)	1457 (1.2)	3 (0.8)	54 (1.1)	3 (1.1)	34 (0.9)	8 (1.3)	102 (1.2)
Unknown/Not reported	102 (0.9)	2850 (2.0)	92 (1.0)	2571 (2.1)	2 (0.5)	64 (1.2)	1 (0.4)	18 (0.5)	7 (1.1)	197 (2.3)
Hispanic/Latina	295 (2.7)	6596 (4.6)	271 (2.8)	6114 (4.9)	6 (1.6)	115 (2.2)	1 (0.4)	47 (1.3)	17 (2.7)	320 (3.7)
BMI (mean \pm SD)	28.13 \pm 5.86	27.88 \pm 5.91	28.07 \pm 5.86	27.81 \pm 5.87	28.54 \pm 5.66	28.08 \pm 5.70	29.78 \pm 5.93	28.57 \pm 5.73	28.14 \pm 5.86	28.48 \pm 6.53
Insurance Status										
Public (Medicare/Medicaid)	768 (7.0)	12851 (9.0)	676 (7.0)	11093 (8.9)	28 (7.3)	501 (9.7)	17 (6.3)	389 (10.4)	47 (7.5)	868 (9.9)
Private (HMO or other private)	6723 (61.4)	78761 (55.3)	5959 (61.6)	69545 (55.7)	222 (58.0)	2469 (48.0)	152 (56.5)	1716 (45.8)	390 (62.4)	5031 (57.6)
Public/Private combination	2762 (25.2)	39106 (27.5)	2451 (25.3)	34444 (27.6)	104 (27.2)	1676 (32.6)	76 (28.3)	1263 (33.7)	131 (21.0)	1723 (19.7)

Only military/VA sponsored/other	258 (2.4)	3701 (2.6)	225 (2.3)	3150 (2.5)	6 (1.6)	185 (3.6)	6 (2.2)	97 (2.6)	21 (3.4)	269 (3.1)
No insurance	371 (3.4)	6613 (4.6)	300 (3.1)	5406 (4.3)	21 (5.5)	271 (5.3)	18 (6.7)	251 (6.7)	32 (5.1)	685 (7.8)
Unknown	72 (0.7)	1415 (1.0)	66 (0.7)	1191 (1.0)	2 (0.5)	38 (0.7)	0 (0.0)	29 (0.8)	4 (0.6)	157 (1.8)
Education										
High school diploma/GED, or less	1894 (17.3)	31772 (22.3)	1607 (16.6)	27170 (21.8)	103 (26.9)	1513 (29.4)	79 (29.4)	1191 (31.8)	105 (16.8)	1898 (21.7)
School after high school	3946 (36.0)	53501 (37.6)	3459 (35.7)	46592 (37.3)	141 (36.8)	1993 (38.8)	113 (42.0)	1485 (39.7)	233 (37.3)	3431 (39.3)
College degree or higher	5036 (46.0)	56099 (39.4)	4546 (47.0)	50140 (40.2)	135 (35.2)	1605 (31.2)	76 (28.3)	1048 (28.0)	279 (44.6)	3306 (37.9)
Unknown	78 (0.7)	1075 (0.8)	65 (0.7)	927 (0.7)	4 (1.0)	29 (0.6)	1 (0.4)	21 (0.6)	8 (1.3)	98 (1.1)
Household income										
< \$20,000	1144 (10.4)	21778 (15.3)	975 (10.1)	18476 (14.8)	53 (13.8)	955 (18.6)	39 (14.5)	848 (22.6)	77 (12.3)	1499 (17.2)
\$20,000-\$34,999	2327 (21.2)	32125 (22.6)	2011 (20.8)	27739 (22.2)	110 (28.7)	1409 (27.4)	87 (32.3)	1119 (29.9)	119 (19.0)	1858 (21.3)
\$35,000-\$49,999	2196 (20.0)	27367 (19.2)	1926 (19.9)	23886 (19.1)	89 (23.2)	1052 (20.5)	65 (24.2)	787 (21.0)	116 (18.6)	1642 (18.8)
≥ \$50,000	4646 (42.4)	51614 (36.2)	4192 (43.3)	46286 (37.1)	112 (29.2)	1409 (27.4)	65 (24.2)	810 (21.6)	277 (44.3)	3109 (35.6)
Unknown	641 (5.9)	9563 (6.7)	573 (5.9)	8442 (6.8)	19 (5.0)	315 (6.1)	13 (4.8)	181 (4.8)	36 (5.8)	625 (7.2)
US Region										
Northeast	2622 (23.9)	32471 (22.8)	2547 (26.3)	31567 (25.3)	23 (6.0)	351 (6.8)	15 (5.6)	185 (4.9)	37 (5.9)	368 (4.2)
South	2644 (24.1)	36937 (25.9)	2264 (23.4)	31683 (25.4)	127 (33.2)	1939 (37.7)	66 (24.5)	1008 (26.9)	187 (29.9)	2307 (26.4)
Midwest	2441 (22.3)	31233 (21.9)	1975 (20.4)	24377 (19.5)	144 (37.6)	1850 (36.0)	140 (52.0)	1925 (51.4)	182 (29.1)	3081 (35.3)
West	3247 (29.6)	41806 (29.3)	2891 (29.9)	37202 (29.8)	89 (23.2)	1000 (19.5)	48 (17.8)	627 (16.7)	219 (35.0)	2977 (34.1)
Recreational physical activity, MET-hours/week (mean ± SD)	12.37 ± 13.04	12.56 ± 13.85	12.49 ± 13.03	12.65 ± 13.86	10.78 ± 11.86	11.62 ± 13.42	10.49 ± 12.30	11.13 ± 13.16	12.29 ± 14.14	12.35 ± 14.23
History of hypertension										
Untreated hypertensive	732 (6.7)	10807 (7.6)	637 (6.6)	9438 (7.6)	27 (7.0)	408 (7.9)	22 (8.2)	288 (7.7)	46 (7.4)	673 (7.7)

Treated hypertensive	2443 (22.3)	33114 (23.2)	2135 (22.1)	28802 (23.1)	93 (24.3)	1218 (23.7)	70 (26.0)	892 (23.8)	145 (23.2)	2202 (25.2)
Family history of MI	5390 (49.2)	69723 (48.9)	4771 (49.3)	61017 (48.9)	197 (51.4)	2739 (53.3)	143 (53.2)	1952 (52.1)	279 (44.6)	4015 (46.0)
Family history of stroke	3828 (34.9)	51208 (35.9)	3365 (34.8)	44731 (35.8)	141 (36.8)	1975 (38.4)	92 (34.2)	1434 (38.3)	230 (36.8)	3068 (35.1)
Treated diabetes (pills or shots)	334 (3.0)	5553 (3.9)	285 (2.9)	4778 (3.8)	13 (3.4)	196 (3.8)	11 (4.1)	150 (4.0)	25 (4.0)	429 (4.9)
History of high cholesterol requiring pills	1252 (11.4)	17230 (12.1)	1109 (11.5)	15130 (12.1)	44 (11.5)	606 (11.8)	25 (9.3)	430 (11.5)	74 (11.8)	1064 (12.2)
History of breast cancer	450 (4.1)	4725 (3.3)	399 (4.1)	4096 (3.3)	18 (4.7)	164 (3.2)	13 (4.8)	101 (2.7)	20 (3.2)	364 (4.2)
Smoking status										
Past	4840 (44.2)	58420 (41.0)	4335 (44.8)	51721 (41.4)	146 (38.1)	1808 (35.2)	86 (32.0)	1236 (33.0)	273 (43.7)	3655 (41.9)
Current	675 (6.2)	9747 (6.8)	584 (6.0)	8480 (6.8)	23 (6.0)	338 (6.6)	15 (5.6)	252 (6.7)	53 (8.5)	677 (7.8)
Alcohol intake										
<1 drink per week	3604 (32.9)	46817 (32.9)	3201 (33.1)	41290 (33.1)	120 (31.3)	1548 (30.1)	85 (31.6)	1202 (32.1)	198 (31.7)	2777 (31.8)
1 to 6 drinks per week	3029 (27.7)	36701 (25.8)	2726 (28.2)	32783 (26.3)	77 (20.1)	1084 (21.1)	63 (23.4)	766 (20.5)	163 (26.1)	2068 (23.7)
7+ drinks per week	1576 (14.4)	16520 (11.6)	1419 (14.7)	14768 (11.8)	55 (14.4)	486 (9.5)	21 (7.8)	288 (7.7)	81 (13.0)	978 (11.2)

- 1
- 2 BMI = body mass index, HMO = Health Maintenance Organization, VA = Veterans Affairs, GED = General Educational
- 3 Development, MET = Metabolic equivalent of task

1 Table 2. Baseline characteristics of WHI cohort by geographic region

	Overall (n=153,401)		Northeast (n=35,093)		South (n=39,581)		Midwest (n=33,674)		West (n=45,053)	
	Breast Cancer (n=10,954)	Non-Breast Cancer (n=142,447)	Breast Cancer (n=2,622)	Non-Breast Cancer (n=32,471)	Breast Cancer (n=2,644)	Non-Breast Cancer (n=36,937)	Breast Cancer (n=2,441)	Non-Breast Cancer (n=31,233)	Breast Cancer (n=3,247)	Non-Breast Cancer (n=41,806)
	N(%)	N(%)	N(%)	N(%)	N(%)	N(%)	N(%)	N(%)	N(%)	N(%)
Age at screening, years (mean \pm SD)	62.32 \pm 6.85	63.11 \pm 7.23	62.52 \pm 6.56	63.37 \pm 6.94	61.44 \pm 6.76	62.25 \pm 7.24	62.21 \pm 6.74	63.06 \pm 7.03	62.96 \pm 7.15	63.71 \pm 7.49
Age at breast cancer diagnosis, years (mean \pm SD)	72.73 \pm 8.28		73.46 \pm 8.14		71.76 \pm 8.24		72.59 \pm 8.26		73.01 \pm 8.35	
Race										
American Indian/Alaska Native	23 (0.2)	458 (0.3)	4 (0.2)	43 (0.1)	5 (0.2)	117 (0.3)	6 (0.2)	36 (0.1)	8 (0.2)	262 (0.6)
Asian/Pacific Islander	212 (1.9)	3785 (2.7)	9 (0.3)	195 (0.6)	9 (0.3)	242 (0.7)	10 (0.4)	161 (0.5)	184 (5.7)	3187 (7.6)
Black/African American	669 (6.1)	12421 (8.7)	110 (4.2)	2132 (6.6)	343 (13.0)	5936 (16.1)	150 (6.1)	2961 (9.5)	66 (2.0)	1392 (3.3)
White	9826 (89.7)	121286 (85.1)	2463 (93.9)	29429 (90.6)	2245 (84.9)	29524 (79.9)	2253 (92.3)	27631 (88.5)	2865 (88.2)	34702 (83.0)
More than one race	122 (1.1)	1647 (1.2)	19 (0.7)	251 (0.8)	24 (0.9)	334 (0.9)	15 (0.6)	239 (0.8)	64 (2.0)	823 (2.0)
Unknown/Not reported	102 (0.9)	2850 (2.0)	17 (0.6)	421 (1.3)	18 (0.7)	784 (2.1)	7 (0.3)	205 (0.7)	60 (1.8)	1440 (3.4)
Hispanic/Latina	295 (2.7)	6596 (4.6)	38 (1.4)	870 (2.7)	101 (3.8)	2592 (7.0)	12 (0.5)	288 (0.9)	144 (4.4)	2846 (6.8)
BMI (mean \pm SD)	28.13 \pm 5.86	27.88 \pm 5.91	28.32 \pm 5.82	27.96 \pm 5.82	28.06 \pm 5.85	27.96 \pm 6.05	28.54 \pm 5.92	28.33 \pm 5.99	27.74 \pm 5.83	27.41 \pm 5.75
BMI \geq 30	3403 (31.1)	41646 (29.2)	866 (33.0)	9631 (29.7)	796 (30.1)	11068 (30.0)	836 (34.2)	10031 (32.1)	905 (27.9)	10916 (26.1)
Insurance Status										
Public (Medicare/Medicaid)	768 (7.0)	12851 (9.0)	210 (8.0)	3323 (10.2)	202 (7.6)	3765 (10.2)	146 (6.0)	2496 (8.0)	210 (6.5)	3267 (7.8)
Private (HMO or other private)	6723 (61.4)	78761 (55.3)	1638 (62.5)	18368 (56.6)	1569 (59.3)	19431 (52.6)	1490 (61.0)	16885 (54.1)	2026 (62.4)	24077 (57.6)
Public/Private combination	2762 (25.2)	39106 (27.5)	654 (24.9)	9124 (28.1)	592 (22.4)	8912 (24.1)	698 (28.6)	9980 (32.0)	818 (25.2)	11090 (26.5)

Only military/ VA sponsored/ other	258 (2.4)	3701 (2.6)	36 (1.4)	473 (1.5)	119 (4.5)	1686 (4.6)	31 (1.3)	482 (1.5)	72 (2.2)	1060 (2.5)
No insurance	371 (3.4)	6613 (4.6)	68 (2.6)	931 (2.9)	137 (5.2)	2527 (6.8)	60 (2.5)	1156 (3.7)	106 (3.3)	1999 (4.8)
Unknown	72 (0.7)	1415 (1.0)	16 (0.6)	252 (0.8)	25 (0.9)	616 (1.7)	16 (0.7)	234 (0.7)	15 (0.5)	313 (0.7)
Education										
High school diploma/GED, or less	1894 (17.3)	31772 (22.3)	511 (19.5)	8291 (25.5)	461 (17.4)	8411 (22.8)	475 (19.5)	7472 (23.9)	447 (13.8)	7598 (18.2)
School after high school	3946 (36.0)	53501 (37.6)	847 (32.3)	10910 (33.6)	970 (36.7)	13948 (37.8)	865 (35.4)	11155 (35.7)	1264 (38.9)	17488 (41.8)
College degree or higher	5036 (46.0)	56099 (39.4)	1245 (47.5)	13057 (40.2)	1191 (45.0)	14209 (38.5)	1083 (44.4)	12376 (39.6)	1517 (46.7)	16457 (39.4)
Unknown	78 (0.7)	1075 (0.8)	19 (0.7)	213 (0.7)	22 (0.8)	369 (1.0)	18 (0.7)	230 (0.7)	19 (0.6)	263 (0.6)
Household income										
< \$20,000	1144 (10.4)	21778 (15.3)	282 (10.8)	4687 (14.4)	305 (11.5)	6272 (17.0)	240 (9.8)	4558 (14.6)	317 (9.8)	6261 (15.0)
\$20,000-\$34,999	2327 (21.2)	32125 (22.6)	504 (19.2)	7183 (22.1)	519 (19.6)	7843 (21.2)	604 (24.7)	7548 (24.2)	700 (21.6)	9551 (22.8)
\$35,000-\$49,999	2196 (20.0)	27367 (19.2)	492 (18.8)	6080 (18.7)	513 (19.4)	6911 (18.7)	512 (21.0)	6305 (20.2)	679 (20.9)	8071 (19.3)
≥ \$50,000	4646 (42.4)	51614 (36.2)	1155 (44.1)	12146 (37.4)	1151 (43.5)	13128 (35.5)	946 (38.8)	10736 (34.4)	1394 (42.9)	15604 (37.3)
Unknown	641 (5.9)	9563 (6.7)	189 (7.2)	2375 (7.3)	156 (5.9)	2783 (7.5)	139 (5.7)	2086 (6.7)	157 (4.8)	2319 (5.5)
Rural-Urban Residence (RUCA)										
Urban	9677 (88.3)	124829 (87.6)	2547 (97.1)	31567 (97.2)	2264 (85.6)	31683 (85.8)	1975 (80.9)	24377 (78.0)	2891 (89.0)	37202 (89.0)
Large rural	383 (3.5)	5140 (3.6)	23 (0.9)	351 (1.1)	127 (4.8)	1939 (5.2)	144 (5.9)	1850 (5.9)	89 (2.7)	1000 (2.4)
Small rural	134 (1.2)	1996 (1.4)	5 (0.2)	90 (0.3)	30 (1.1)	580 (1.6)	78 (3.2)	1048 (3.4)	21 (0.6)	278 (0.7)
Isolated small rural	135 (1.2)	1749 (1.2)	10 (0.4)	95 (0.3)	36 (1.4)	428 (1.2)	62 (2.5)	877 (2.8)	27 (0.8)	349 (0.8)
Missing (no address)	625 (5.7)	8733 (6.1)	37 (1.4)	368 (1.1)	187 (7.1)	2307 (6.2)	182 (7.5)	3081 (9.9)	219 (6.7)	2977 (7.1)
Recreational physical activity, MET-hours/week (mean ± SD)	12.37 ± 13.04	12.56 ± 13.85	11.99 ± 12.66	12.21 ± 13.63	11.99 ± 13.37	11.66 ± 13.61	11.70 ± 11.87	12.25 ± 13.28	13.48 ± 13.83	13.84 ± 14.55
History of hypertension										
Untreated hypertensive	732 (6.7)	10807 (7.6)	169 (6.4)	2501 (7.7)	171 (6.5)	2702 (7.3)	150 (6.1)	2244 (7.2)	242 (7.5)	3360 (8.0)

Treated hypertensive	2443 (22.3)	33114 (23.2)	622 (23.7)	7537 (23.2)	593 (22.4)	8863 (24.0)	577 (23.6)	7594 (24.3)	651 (20.0)	9120 (21.8)
Family history of MI	5390 (49.2)	69723 (48.9)	1333 (50.8)	16596 (51.1)	1292 (48.9)	17952 (48.6)	1255 (51.4)	15612 (50.0)	1510 (46.5)	19563 (46.8)
Family history of stroke	3828 (34.9)	51208 (35.9)	885 (33.8)	11256 (34.7)	939 (35.5)	13484 (36.5)	909 (37.2)	11526 (36.9)	1095 (33.7)	14942 (35.7)
Treated diabetes (pills or shots)	334 (3.0)	5553 (3.9)	78 (3.0)	1269 (3.9)	95 (3.6)	1623 (4.4)	77 (3.2)	1173 (3.8)	84 (2.6)	1488 (3.6)
History of high cholesterol requiring pills	1252 (11.4)	17230 (12.1)	322 (12.3)	4069 (12.5)	321 (12.1)	4664 (12.6)	268 (11.0)	3645 (11.7)	341 (10.5)	4852 (11.6)
History of breast cancer	450 (4.1)	4725 (3.3)	108 (4.1)	889 (2.7)	121 (4.6)	1517 (4.1)	120 (4.9)	1181 (3.8)	101 (3.1)	1138 (2.7)
Smoking status										
Past	4840 (44.2)	58420 (41.0)	1293 (49.3)	14662 (45.2)	1093 (41.3)	13993 (37.9)	1009 (41.3)	12466 (39.9)	1445 (44.5)	17299 (41.4)
Current	675 (6.2)	9747 (6.8)	136 (5.2)	2289 (7.0)	170 (6.4)	2705 (7.3)	159 (6.5)	2171 (7.0)	210 (6.5)	2582 (6.2)
Alcohol intake										
<1 drink per week	3604 (32.9)	46817 (32.9)	903 (34.4)	11612 (35.8)	814 (30.8)	10886 (29.5)	884 (36.2)	11245 (36.0)	1003 (30.9)	13074 (31.3)
1 to 6 drinks per week	3029 (27.7)	36701 (25.8)	799 (30.5)	9246 (28.5)	614 (23.2)	7971 (21.6)	689 (28.2)	8406 (26.9)	927 (28.5)	11078 (26.5)
7+ drinks per week	1576 (14.4)	16520 (11.6)	405 (15.4)	3978 (12.3)	345 (13.0)	3662 (9.9)	303 (12.4)	3097 (9.9)	523 (16.1)	5783 (13.8)
Missing	74 (0.7)	1073 (0.8)	22 (0.8)	200 (0.6)	21 (0.8)	420 (1.1)	9 (0.4)	169 (0.5)	22 (0.7)	284 (0.7)

- 1
- 2 BMI = body mass index, HMO = Health Maintenance Organization, VA = Veterans Affairs, GED = General Educational
- 3 Development, MET = Metabolic equivalent of task
- 4

Table 3. Association of Primary Endpoint (Composite CV event or CV mortality) with SES factors in Multivariable-Adjusted Analysis, overall and by incident breast cancer during follow-up.

	Overall cohort		Breast Cancer		No Breast Cancer		P-Value*
US Region	Composite outcome (n)	HR (95% CI)	Composite outcome (n)	HR (95% CI)	Composite outcome (n)	HR (95% CI)	
Northeast	4365	1.0 (reference)	199	1.0 (reference)	4166	1.0 (reference)	0.009
South	4605	1.02 (0.98, 1.08)	160	0.68 (0.54, 0.87)	4445	1.04 (0.99, 1.10)	
Midwest	4055	0.97 (0.92, 1.02)	173	0.81 (0.64, 1.01)	3882	0.98 (0.93, 1.03)	
West	5123	1.01 (0.97, 1.06)	206	0.81 (0.65, 1.00)	4917	1.02 (0.98, 1.07)	
Rural-Urban residence (RUCA class)							
Urban	15806	1.0 (reference)	640	1.0 (reference)	15166	1.0 (reference)	0.92
Large rural	759	1.11 (1.02, 1.20)	31	1.07 (0.71, 1.59)	728	1.11 (1.02, 1.20)	
Small rural	570	1.08 (0.98, 1.18)	22	0.99 (0.63, 1.57)	548	1.08 (0.99, 1.19)	
Insurance							
Private (HMO or other private)	6925	1.0 (reference)	305	1.0 (reference)	6620	1.0 (reference)	0.69
Public (Medicare/Medicaid)	2479	1.12 (1.06, 1.19)	87	1.14 (0.86, 1.51)	2392	1.12 (1.05, 1.19)	
Public/Private combination	7452	1.07 (1.02, 1.13)	309	1.10 (0.92, 1.32)	7143	1.07 (1.02, 1.12)	
Only military/VA sponsored/other	376	1.05 (0.93, 1.19)	8	0.74 (0.35, 1.56)	368	1.06 (0.94, 1.20)	
No insurance	756	1.22 (1.11, 1.34)	21	0.94 (0.56, 1.58)	735	1.23 (1.12, 1.35)	
Annual household income							
≥\$50,000	4504	1.0 (reference)	213	1.0 (reference)	4291	1.0 (reference)	0.6
\$35,000-\$49,999	3449	1.12 (1.06, 1.18)	150	1.00 (0.78, 1.27)	3299	1.12 (1.07, 1.19)	
\$20,000-\$34,999	5009	1.22 (1.16, 1.28)	199	1.17 (0.94, 1.45)	4810	1.22 (1.16, 1.28)	
<\$20,000	4012	1.33 (1.26, 1.40)	127	1.24 (0.96, 1.61)	3885	1.33 (1.26, 1.41)	
Unknown	1174	1.15 (1.07, 1.24)	49	1.36 (0.96, 1.93)	1125	1.14 (1.06, 1.24)	

Multivariable model variables: Age, Insurance Type, Education Level, Region, Rural/Urban setting, Income, physical activity, smoking status, diabetes, hypertension, hyperlipidemia, family history (MI, stroke), race, ethnicity, BMI, and time-varying breast cancer. HRS and 95% CI for breast cancer/no breast cancer were estimated from models that included an interaction term between breast cancer and the SES variable being considered.

* P-value for interaction between breast cancer and the SES variable being considered.

Composite outcome includes MI, CVA, hospitalization for HF, and CV death. Follow-up is censored in Self-Report Cohort (SRC) participants at the end of Extension 1 when adjudication of non-fatal CV events ended.

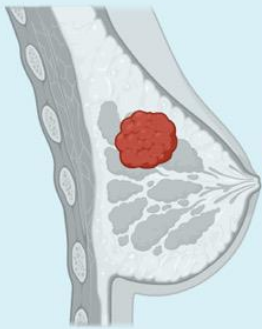
Table 4. Cause-specific mortality: CV, Breast cancer, other cause, and all-cause Mortality in relation to geographic and SES factors in the Overall Cohort

US Region	CV death		Breast Cancer Death		Other Death		All Death	
	N	HR (95% CI)	N	HR (95% CI)	N	HR (95% CI)	N	HR (95% CI)
Northeast	3518	1.0 (reference)	343	1.0 (reference)	7936	1.0 (reference)	11797	1.0 (reference)
South	3294	1.08 (1.02, 1.14)	382	1.18 (1.00, 1.39)	7578	1.10 (1.06, 1.14)	11254	1.10 (1.06, 1.13)
Midwest	3087	0.97 (0.92, 1.02)	379	1.23 (1.04, 1.45)	7182	1.03 (0.99, 1.06)	10648	1.02 (0.99, 1.05)
West	4545	1.13 (1.08, 1.19)	449	1.16 (0.99, 1.36)	9398	1.02 (0.99, 1.06)	14392	1.06 (1.03, 1.09)
Rural-Urban residence (RUCA class)								
Urban	12733	1.0 (reference)	1375	1.0 (reference)	28242	1.0 (reference)	42350	1.0 (reference)
Large rural	568	1.04 (0.95, 1.14)	47	0.77 (0.56, 1.06)	1224	0.97 (0.91, 1.04)	1839	0.98 (0.93, 1.04)
Small/isolated rural	396	0.96 (0.86, 1.08)	32	0.69 (0.47, 1.01)	925	1.02 (0.95, 1.09)	1353	0.99 (0.93, 1.05)
Insurance								
Private (HMO or other private)	4835	1.0 (reference)	825	1.0 (reference)	13624	1.0 (reference)	19284	1.0 (reference)
Public (Medicare/Medicaid)	2067	1.20 (1.13, 1.29)	141	1.03 (0.81, 1.29)	3783	1.14 (1.08, 1.19)	5991	1.15 (1.11, 1.19)
Public/Private combination	6784	1.14 (1.08, 1.20)	485	1.07 (0.91, 1.27)	12695	1.10 (1.06, 1.13)	19964	1.10 (1.07, 1.13)
Only military/VA sponsored/other	260	1.21 (1.05, 1.39)	44	1.29 (0.92, 1.82)	662	1.12 (1.02, 1.23)	966	1.15 (1.07, 1.24)
No insurance	393	1.47 (1.31, 1.67)	51	0.78 (0.54, 1.12)	1079	1.23 (1.14, 1.33)	1523	1.27 (1.19, 1.35)
Annual household income								
≥\$50,000	3861	1.0 (reference)	550	1.0 (reference)	10078	1.0 (reference)	14489	1.0 (reference)
\$35,000-\$49,999	2822	1.12 (1.06, 1.18)	318	1.07 (0.92, 1.25)	6426	1.08 (1.04, 1.12)	9566	1.09 (1.06, 1.12)
\$20,000-\$34,999	3994	1.25 (1.18, 1.32)	350	1.05 (0.89, 1.23)	8275	1.16 (1.12, 1.20)	12619	1.18 (1.14, 1.21)
<\$20,000	2836	1.39 (1.31, 1.48)	236	1.26 (1.04, 1.53)	5419	1.28 (1.23, 1.34)	8491	1.31 (1.27, 1.36)
Unknown	931	1.20 (1.10, 1.31)	99	1.16 (0.90, 1.49)	1896	1.09 (1.03, 1.16)	2926	1.12 (1.07, 1.18)

Multivariable model variables: Age, Insurance Type, Education Level, Region, Rural/Urban setting, Income, physical activity, smoking status, diabetes, hypertension, hyperlipidemia, family history (MI, stroke), race, ethnicity, and BMI.

Women's Health Initiative Study

153,401 post-menopausal women in the United States



Breast Cancer Survivors
(n=10,954)



Women without Cancer
(n=142,447)



Household Income

Household Income	HR(95% CI)
>\$50,000	Reference
\$35,000-49,999	1.12 (1.06, 1.18)
\$20,000-34,999	1.22 (1.16, 1.28)
<\$20,000	1.33 (1.26, 1.40)

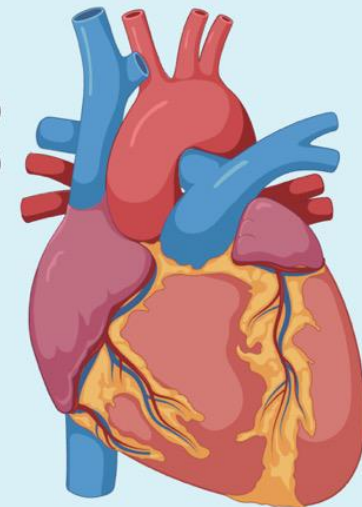
Rurality

Rurality	HR(95% CI)
Urban	Reference
Large Rural	1.11 (1.02, 1.20)

Insurance

Insurance	HR(95% CI)
Private	Reference
Public/Private	1.12 (1.06, 1.19)
Public	1.07 (1.02, 1.13)
Uninsured	Reference

Increased risk of cardiovascular events and cardiovascular mortality



Through the Women's Health Initiative study, 153,401 post-menopausal women in the United States were evaluated for CVD risk stratified by geography, rural status, and social determinants of health. Risk factors associated with increased risk for cardiovascular events and cardiovascular mortality included having an annual income less than \$50,000, rurality, and having non-private insurance.