

# Inequalities in Compliance with the Two-Dose Measles Vaccination in Peruvian Children Aged 12 to 59 Months in 2023

Claudio Intimayta-Escalante<sup>(1)</sup>, Gustavo Tapia-Sequeiros<sup>(2)</sup>, Luis E. Cueva-Cañola<sup>(3)</sup>

1. Facultad de Medicina de San Fernando, Universidad Nacional Mayor de San Marcos, Lima, Peru.

2. Centro de Investigación de Estudiantes de Medicina, Universidad Privada de Tacna, Tacna, Peru.

3. Facultad de Medicina Humana, Universidad Nacional de Piura, Piura, Peru.

## ABSTRACT

**Introduction:** Inadequate measles vaccination coverage leads to outbreaks that affect the pediatric population in Peru. The aim of this study was to evaluate sociodemographic inequalities related to the coverage and compliance in the two-dose measles vaccination schedule among Peruvian children in 2023. **Methods:** An analytical cross-sectional study was conducted using data from a national Peruvian survey. Mothers aged 15 to 49 with children aged 12 to 59 months were included. Sociodemographic and health characteristics of the mother and child were considered sources of inequality. Prevalence ratios (PR) were calculated to measure the characteristics associated with adherence to the measles vaccination schedule. Inequality analysis was assessed using the Erreygers Concentration Index (ECI). **Results:** A total of 8,148 households were evaluated. Vaccination coverage was identified as 85.9% (95%CI: 94.7 – 87.1) for the first dose and 53.9% (95%CI: 52.1 – 55.7) for the second dose. In the inequality analysis, mothers with no education (CI: -0.57), aged 15 to 17 years (CI: -0.38), residing in the jungle (CI: -0.41) or highlands (CI: -0.26), and without health insurance (CI: -0.01) showed greater inequality in adherence to the vaccination schedule. Additionally, adherence to growth and development check-ups in infants was a source of inequality (CI: -0.09). **Conclusion:** Measles vaccination coverage did not reach the minimum values required to prevent outbreaks in Peru. The factors contributing to inequality in vaccination coverage included education level, age, region of residence, area of residence, health insurance status, and adherence to growth and development check-ups.

**Keywords:** Measles; Measles Vaccine; Healthcare Disparities; Health Inequities; Socioeconomic Factors; Peru.

## INTRODUCTION

Immunizations are one of the most effective measures for preventing diseases, as they prevent between 2 and 3 million deaths annually worldwide (1-3). Measles is highly contagious among the pediatric population and presents with symptoms such as diarrhea, ear infections, blindness, pneumonia, encephalitis, and, in some cases, can lead to death (4). In many countries, including the United States and the United Kingdom, the measles, mumps, and rubella (MMR) vaccine is distributed free of charge (5). The first dose is typically administered at 12 months of age, with a booster dose given at 6 years of age, following the recommended vaccination schedule.

In 2019, the World Health Organization (WHO) estimated 869,770 cases and 207,500 deaths due to measles (7). The global immunization rate declined by 5% from 2019 to 2021, possibly due to factors such as vaccine hesitancy, disruptions in healthcare services, or logistical challenges. This situation, exacerbated by the COVID-19 pandemic, primarily affected low- and middle-income countries (8). Only 7 out of 40 countries attained a minimum coverage of 95% to prevent measles outbreaks in 2024, highlighting the persistent risk of widespread outbreaks in regions with low vaccination rates.

In Peru, immunization coverage against measles was estimated at 70.2% and 52% for the first and second doses, respectively, in 2017 (11). However, due to reduced immunization coverage

during the pandemic, measles cases became more frequent (12, 13). Low vaccination rates can be attributed to public unawareness, such as misinformation spread on social media. In addition, inadequate healthcare supplies, like shortages of vaccines or insufficient training of healthcare personnel, can lead to errors in vaccine administration (14). However, there is no specific evidence regarding how sociodemographic conditions influence inequality in completing the immunization schedule. Therefore, the aim of this study was to evaluate sociodemographic inequalities associated with coverage and adherence to the two-dose measles vaccination schedule among Peruvian children aged 12 to 59 months in 2023.

## METHODS

### Study Design

We conducted an analytical cross-sectional study using data from the 2023 Demographic and Family Health Survey (or ENDES, in Spanish acronym) (15). The National Institute of Statistics and Informatics (or INEI, in Spanish acronym) conducts the ENDES survey every year since 2004 in urban and rural areas throughout Peru's regions, including the constitutional province of Callao. Mothers aged 15 to 49 years with Peruvian children aged 12 to 59 months who responded to questions about sociodemographic characteristics and health issues like insurance affiliation, prenatal care visits, and immunization were also evaluated.

## Variables Related to the Mothers

Sociodemographic and health characteristics were evaluated, such as age group (18 to 24, 25 to 34, 35 to 49 years), educational level (no education, primary, secondary, or higher), wealth index (first, second, third, fourth, and last quintile), area of residence (rural and urban), and natural region of residence (Lima, rest of the coast, highlands, and jungle). Additionally, health-related aspects, including insurance affiliation (yes or no) and receipt of tetanus vaccination during pregnancy, were examined. The assessment included identifying if the childbirth took place at a health center (yes or no).

## Variables Related to the Child

Additionally, the evaluation included determining if children received the initial dose of measles vaccination and the booster or second dose of measles vaccination. A child was considered to have completed both doses if the vaccination was recorded on the card, with the date documented, or if the mother reported the immunization. The child's age in months was assessed in ranges (12 to 23 months, 24 to 35 months, 36 to 47 months, and 48 to 59 months), along with evaluating if they received growth and development check-ups (yes or no).

## Statistical Analysis

The statistical analysis was conducted using STATA version 17.0, incorporating the complex sample design of the ENDES. Categorical variables were described using frequencies and percentages, along with their respective 95% confidence intervals weighted by the design effect. The study used the Rao-Scott chi-square test to analyze differences in the proportion of children who completed both doses of measles vaccination across different categories of the study variables. The analysis aimed to explore the connection between the assessed characteristics of mothers and children and the completion of both measles vaccination doses. We used Poisson regression models with strong variances to find the crude prevalence ratio (cPR) and the adjusted prevalence ratio (aPR), taking into account all the others characteristics.

## Inequality Analysis

The inequality analysis was conducted using concentration curves to assess the compliance of the doses of measles vaccination based on socioeconomic status, ranging from the poorest to the richest. The concentration index (CI) was calculated by evaluating the area above or below the concentration curve. Poverty-related inequality is associated with situations that lean toward accumulation above the curve (16). Additionally, the Erreygers Concentration Index (ECI) was used to ensure a fairer calculation by considering the extremes of the evaluated health service distribution. Also, maps were generated to depict the inequality in immunization coverage among the regions of Peru.

## Ethical Aspects

The study was conducted by analyzing data from ENDES, a national survey administered with informed consent from participants. Additionally, the study did not have information that would allow the identification of participants included in the research.

## RESULTS

Among the 8,148 households included in the study, a coverage of 85.9% (95%CI: 84.7 – 87.1) for the first dose and 53.9% (95%CI: 52.1 – 55.7) for the booster dose of the measles vaccine was identified. Evaluating maternal characteristics revealed that sociodemographic factors (age group, educational level, wealth index, natural region, and area of residence) and health factors during pregnancy (prenatal care, receipt of tetanus vaccine, and institutional childbirth) mediated significant differences in the proportion of vaccinated infants ( $p < 0.05$ ). Similarly, infant age and participation in growth and development check-ups were found to determine significant differences in the proportion of vaccinated infants ( $p < 0.05$ ).

Additionally, it was identified that 52.1% (95%CI: 50.3 – 54.0) of infants completed both doses of vaccination. Evaluating maternal characteristics revealed that maternal age group, educational level, natural region, and area of residence, as well as receiving prenatal care, tetanus vaccination during pregnancy, and institutional childbirth, mediated significant differences in the proportion of infants vaccinated with the first dose ( $p < 0.05$ ). Furthermore, infant age and participation in growth and development check-ups were found to mediate differences in vaccination proportion among these infants ( $p < 0.05$ ). However, this was not the case for the proportion of infants vaccinated with the booster dose, among whom only certain maternal characteristics such as age group, area of residence, receiving prenatal care, tetanus vaccination during pregnancy, and institutional childbirth mediated significant differences ( $p < 0.05$ ). Similarly, this was observed for infant age in months within this group (Table 1).

In the analysis of inequality in the completion of the two doses of measles vaccination mediated by wealth quintile (Figure 1), it was identified that mothers without education (CI: -0.57), aged 15 to 17 years (CI: -0.38), residing in the jungle region (CI: -0.41) and highlands (CI: -0.26), as well as rural areas (CI: -0.73) and without health insurance (CI: -0.01) showed greater inequality (Table 2). Meanwhile, infants without growth and development monitoring exhibited higher inequality in completing the two doses of measles vaccination (CI: -0.09).

In assessing the prevalence of measles immunization, it was identified that children of women who had six or more prenatal care visits during pregnancy had a higher prevalence of 13.0% for vaccination with the first dose (aPR: 1.13, 95%CI: 1.07 –

1.19,  $p < 0.001$ ), as well as those children of mothers who had a higher prevalence of 7.8% for vaccination with the first dose during pregnancy (aPR: 1.08, 95%CI: 1.04 – 1.12,  $p < 0.001$ ). On the other hand, it was identified that children of mothers who had institutional childbirth had a higher prevalence of 10% (aPR: 1.10, 95%CI: 1.04 – 1.17,  $p = 0.004$ ) for measles immunization with the first dose. Similarly, it was found that the prevalence of immunization with the first dose increased as children got older, as well as among those who had growth and development check-ups (Table 3).

In evaluating the prevalence of measles booster immunization, it was identified that children of women who had six or more prenatal care visits during pregnancy had a higher prevalence of 18.4% for vaccination (aPR: 1.18, 95%CI: 1.06 – 1.33,  $p = 0.004$ ), compared to children of women with fewer than six prenatal care visits. On the other hand, it was found that children of women who had institutional childbirth and received tetanus vaccination during pregnancy had a higher prevalence of 9.9% and 7.7%, respectively, for vaccination with the booster dose. Additionally, it was observed that the prevalence of immunization with the booster dose increased with children's age, as well as among those who had growth and development check-ups (Table 3).

In assessing the prevalence of measles immunization with both doses, it was found that children of women who had six or more prenatal care visits during pregnancy had a higher prevalence of 19.7% for vaccination (PR: 1.20, 95%CI: 1.07 – 1.35,  $p = 0.002$ ), compared to children of women with fewer than six prenatal care visits. On the other hand, it was identified that children of women who had institutional childbirth and received tetanus vaccination during pregnancy had a higher prevalence of 32.4% and 14.2%, respectively, for vaccination with both doses. Additionally, it was observed that the prevalence of immunization with both doses increased with children's age, as well as among those who had growth and development check-ups (Table 3).

In the assessment of inequality in measles immunization with one and/or two doses using the Erreygers Concentration Index (ECI), it was found that vaccination was concentrated in the lower wealth quintiles among children of women residing in the jungle region, without education, and who received tetanus vaccination during pregnancy. This pattern was also observed for children with growth and development monitoring. Conversely, the inequality in vaccination with both doses concentrated in the lower wealth quintiles was lower among children of women without education, with secondary education, and health insurance. Similarly, this was the case for children without growth and development monitoring (Table 4).

In the assessment of measles immunization coverage across the 25 regions in Peru, it was identified that the departments of Apurímac, Ancash, Piura, and Tumbes had the highest im-

munization coverage. Conversely, the departments of Ucayali, Madre de Dios, Puno, and Amazonas had the lowest immunization coverage rates. Regarding inequality in immunization coverage with both doses of measles vaccine, it was found that the departments of Moquegua, Huancavelica, and Puno had higher inequality, whereas regions like Amazonas, Loreto, and Ucayali exhibited lower inequality (Figure 2).

## DISCUSSION

This study examined inequalities in measles vaccination rates based on sociodemographic factors among Peruvian children aged 12 to 59 months. Our findings demonstrate inequality in both the first and second doses of vaccination, primarily mediated by sociodemographic factors such as maternal education level, age, and area of residence. Similarly, health-related factors such as the number of prenatal and growth and development check-ups for the child were associated with vaccination disparity.

Access to healthcare services in Peru is difficult, which worsens disparities in measles vaccination (18). In rural areas of the highlands and rainforests, the distance to vaccination centers forces the population to endure long journeys through strenuous walks or inadequate transportation means (19,20). This entails direct costs such as fares and consultation fees, as well as indirect costs like loss of income due to time spent traveling to vaccination sites (21). Therefore, this situation, coupled with poverty and low education levels, contributes to the abandonment of vaccination programs (22,23).

In contrast, urban areas enjoy privileged access to private healthcare services and have higher levels of health literacy (24,25). Moreover, due to the population density in these areas, they are the primary target of immunization campaigns (26,27). However, it is necessary to implement strategies such as verifying immunization in educational centers and disseminating information through social networks with clear messages in multiple languages to raise awareness among the population and improve vaccination coverage (28,29).

Mothers with higher formal education have children with less inequality in the coverage of both doses of measles vaccination. Mothers with higher education tend to better understand the importance of vaccination and have more resources available to vaccinate their children (30,31). Additionally, this group can more easily discern misinformation about vaccination risks in children (32). Therefore, education influences individual and collective decisions about vaccination, which can be improved through the implementation of educational strategies and policies that ensure equitable access to vaccines for the entire population (33).

Mothers with health insurance showed less inequality in completing measles vaccination doses. This is because the national

immunization strategy for children under six years ensures free vaccine administration at all health facilities (34). Therefore, insured mothers can ensure completing their children's vaccination schedule at different stages of their lives (35). However, some studies indicate that having health insurance may still lead to increased disparities in vaccination access, potentially because of differences in healthcare coverage and quality in countries like Peru (36-38).

Children enrolled in the Growth and Development Monitoring Program showed less inequality in completing the two doses of measles vaccination in Peru. This program offers child health assessments and emphasizes the importance of vaccination (39). Thus, even under unfavorable sociodemographic conditions, participation in this program can lead to higher immunization rates (40). However, conducting multiple activities during consultations and their limited duration may hinder discussions about the vaccination schedule (41). Strategies such as providing personalized information and sending reminders via phone calls or text messages have been shown to increase visits to health centers to complete the vaccination schedule (42,43).

In Peru, the average age of first pregnancy ranges from 21 to 23 years (44). Thus, a lack of experience and information among young pregnant women may reduce adherence to the immunization schedule (45,46). Additionally, young pregnant women are more exposed to biased information regarding the negative effects of vaccination on their children (47). An effective strategy has been training on infant health topics during prenatal check-ups (48). This setting is ideal due to the number of sessions and attentiveness provided by healthcare personnel (49), which enhances trust and satisfaction among pregnant women and increases their participation in postpartum vaccination programs (50).

Challenges such as insufficient supplies, healthcare system gaps, and poor monitoring limit childhood immunization (51,52). Therefore, prioritizing vaccination in areas with low coverage or outbreaks is crucial for preventing outbreaks (53). In low- and middle-income countries, knowledge of the vaccination schedule is often deficient due to a lack of records (54). Thus, informative sessions and a surveillance system can enhance immunization in healthcare centers (55). Therefore, assessing the effectiveness of these interventions in Peru is recommended to decrease the incidence of measles and other preventable diseases.

The study had some limitations because it was not possible to address mothers' perceptions for not vaccinating their children or the difficulties they faced when seeking to complete the immunization schedule. Also, the regional level scope of the DHS prevents us from assessing coverage at the provincial and district levels to address the areas at highest risk of measles outbreaks in Peru.

In conclusion, inequalities in vaccination coverage with the first dose and booster dose against measles were greater among children aged 12 to 59 months of women living in rural areas or outside Lima Metropolitan area, lower education, and without health insurance. Additionally, vaccination rates were primarily concentrated among children whose mothers during pregnancy had six or more prenatal check-ups, received tetanus vaccines, and had institutional deliveries.

**Corresponsal Author:**

**Claudio Intimayta-Escalante**

**E-mail:** [claudio.intimayta@unmsm.edu.pe](mailto:claudio.intimayta@unmsm.edu.pe)

**ORCID:** <https://orcid.org/0000-0003-2552-9974>

**Conflict of interests:** None.

**Funding:** Self-funded

**Acknowledgements:** None.

## REFERENCES

1. United Nations. Vaccines prevent between 2 and 3 million deaths annually, according to the WHO. New York: UN;2016. Available from: <https://news.un.org/es/story/2016/04/1355531>
2. Cáceres Bermejo GG. A Moment of Reflection on Vaccines. *Sanid. Mil.* 2012;68(2):109-14. doi: 10.4321/S1887-85712012000200009
3. Pan American Health Organization, World Health Organization. Immunization. Washington DC: PAHO/WHO; 2024. Available from: <https://www.paho.org/es/temas/inmunizacion>
4. Pan American Health Organization, World Health Organization. Measles. Washington DC: PAHO/WHO;2024. Available from: <https://www.paho.org/es/temas/sarampion>
5. Costa-Alcalde JJ, Trastoy-Pena R, Barbeito-Castiñeiras G, Navarro de la Cruz D, Mejuto B, Aguilera A. Seroprevalence of Antibodies Against Measles Virus in Galicia: Trends Over the Last Ten Years by Age and Sex. *Rev Esp Quimioter.* 2020;33(2):116-21. doi: 10.37201/req/108.2019
6. Schwarz Chavarri G, Sánchez Hernández C, Moreno Millán N, Morató Agustí ML, Martín Martín S, Javierre Miranda AP, et al. Prevention of Infectious Diseases: Vaccine Update, 2020. *Aten Primaria.* 2020;52(Suppl 2):70-92. doi: 10.1016/j.aprim.2020.08.001
7. World Health Organization. Global measles mortality increased by 50% from 2016 to 2019, claiming more than 207,500 lives in 2019. Ginebra: WHO; 2020. Available from: <https://bit.ly/3X2mftr>
8. Local Burden of Disease Vaccine Coverage Collaborators. Mapping routine measles vaccination in low- and middle-income countries. *Nature.* 2021;589:415-19. doi: 10.1038/s41586-020-03043-4
9. Pan American Health Organization, World Health Organization. Epidemiological Alert: Measles in the Region of the

- Americas. Washington, DC: PAHO/WHO;2024. Available from: <https://bit.ly/3yIoPKR>
10. Minta AA, Ferrari M, Antoni S, et al. Progress Toward Measles Elimination — Worldwide, 2000–2022. *MMWR Morb Mortal Wkly Rep* 2023;72:1262–68. doi: 10.15585/mmwr.mm7246a3
  11. Vásquez-Urriarte K, Ninatanta Ortiz JA, Romani F, Roque-Henriquez JC. Coverage and factors associated with measles vaccination in children aged 12-59 months in Peru: estimate based on the 2017 demographic and family health survey. *Rev. peru. med. exp. salud publica.* 2019;36(4):610-19. doi: 10.17843/rpmesp.2019.360.4456
  12. Loayza-Alarico MJ, De La Cruz-Vargas JA. Measles: reemerging threat of epidemic in peru. *Rev. Fac. Med. Hum.* 2019;19(3):7-8. doi: 10.25176/RFMH.v19i3.2176
  13. Pacheco FC, França GVA, Elidio GA, Leal MB, de Oliveira C, Guilhem DB. Measles-containing vaccines in Brazil: Coverage, homogeneity of coverage and associations with contextual factors at municipal level. *Vaccine.* 2020;38(8):1881-7. doi: 10.1016/j.vaccine.2020.01.030
  14. Ropero Alvarez AM, Vilajeliu A, Magariños M, Jauregui B, Guzmán L, Whittombury A, et al. Enablers and barriers of maternal and neonatal immunization programs in Latin America. *Vaccine.* 2021;39:B34-43. doi: 10.1016/j.vaccine.2020.07.051
  15. National Institute of Statistics and Informatics. Demographic and Family Health Survey - ENDES 2022. Lima: INEI; 2023. Available from: <https://bit.ly/3VoBX0x>
  16. Wagstaff A, Paci P, van Doorslaer E. On the measurement of inequalities in health. *Soc Sci Med.* 1991;33(5):545-57. doi: 10.1016/0277-9536(91)90212-u
  17. Erreygers G. Correcting the concentration index. *J Health Econ.* 2009;28(2):504-15. doi: 10.1016/j.jhealeco.2008.02.003
  18. National Institute of Statistics and Informatics. Characteristics of the population accessing and not accessing health services in Peru. Lima: INEI; 2023. Available from: <https://bit.ly/3V9ZVLI>
  19. Lazo-Porras M, Penniecook T. Health equity: access to quality services and caring for underserved populations. *Health Policy Plan.* 2023;38(Supplement-2):221-2. doi: 10.1093/heapol/czad073
  20. Chung-Delgado K, Valdivia Venero JE, Vu TM. Vaccine Hesitancy: Characteristics of the Refusal of Childhood Vaccination in a Peruvian Population. *Cureus.* 2021;13(3):e14105. doi: 10.7759/cureus.14105
  21. Hernández-Vásquez A, Vargas-Fernández R, Rojas-Roque C. Geographic and Socioeconomic Determinants of Full Coverage COVID-19 Vaccination in Peru: Findings from a National Population-Based Study. *Vaccines (Basel).* 2023;11(7):1195. doi: 10.3390/vaccines11071195
  22. Ali HA, Hartner AM, Echeverria-Londono S, Roth J, Li X, Abbas K, et al. Vaccine equity in low and middle income countries: a systematic review and meta-analysis. *Int J Equity Health.* 2022;21(1):82. doi: 10.1186/s12939-022-01678-5
  23. Castro A, Sáenz R, Avellaneda X, Cáceres C, Galvão L, Mas P, et al. The Health Equity Network of the Americas: inclusion, commitment, and action. *Rev Panam Salud Publica.* 2021;45:e79. doi: 10.26633/RPSP.2021.79
  24. Carrasco-Escobar G, Manrique E, Tello-Lizarraga K, Miranda JJ. Travel Time to Health Facilities as a Marker of Geographical Accessibility Across Heterogeneous Land Coverage in Peru. *Front Public Health.* 2020;8:498. doi: 10.3389/fpubh.2020.00498
  25. Aljassim N, Ostini R. Health literacy in rural and urban populations: A systematic review. *Patient Educ Couns.* 2020;103(10):2142-2154. doi: 10.1016/j.pec.2020.06.007
  26. Joe P, Majgi SM, Vadiraja N, Khan MA. Influence of Sociodemographic Factors in Measles-Rubella Campaign Compared with Routine Immunization at Mysore City. *Indian J Community Med.* 2019;44(3):209-212. doi: 10.4103/ijcm.IJCM-236-18
  27. Pan American Health Organization. Urban health. Washington DC: PAHO;2024. Available from: <https://www.paho.org/es/temas/salud-urbana>
  28. Stanescu A, Ruta SM, Cernescu C, Pistol A. Suboptimal MMR Vaccination Coverages-A Constant Challenge for Measles Elimination in Romania. *Vaccines (Basel).* 2024;12(1):107. doi: 10.3390/vaccines12010107
  29. Ganczak M, Kalinowski P, Pasek O, Duda-Duma L, Sobieraj E, Go lawski J, et al. Health System Barriers to Child Mandatory and Optional Vaccination among Ukrainian Migrants in Poland in the Context of MMR and HPV Vaccines-A Qualitative Study. *Int J Environ Res Public Health.* 2022;20(1):712. doi: 10.3390/ijerph20010712
  30. Griffith BC, Ulrich AK, Becker AB, Nederhoff D, Koch B, Awan FA, et al. Does education about local vaccination rates and the importance of herd immunity change US parents' concern about measles? *Vaccine.* 2020;38(50):8040-8048. doi: 10.1016/j.vaccine.2020.09.076
  31. Gowda C, Schaffer SE, Kopec K, Markel A, Dempsey AF. A pilot study on the effects of individually tailored education for MMR vaccine-hesitant parents on MMR vaccination intention. *Hum Vaccin Immunother.* 2013;9(2):437-45. doi: 10.4161/hv.22821
  32. Bethke N, O'Sullivan JL, Keller J, von Bernuth H, Gellert P, Seybold J. Increasing vaccinations through an on-site school-based education and vaccination program: A city-wide cluster randomized controlled trial. *Appl Psychol Health Well Being.* 2024. doi: 10.1111/aphw.12528
  33. Haeder SF. U.S. public support and opposition to vaccination mandates in K-12 education in light of the COVID-19 pandemic. *Vaccine.* 2023;41(48):7103-7115. doi: 10.1016/j.vaccine.2023.10.016
  34. Ministry of Health of Peru. Immunization is completely free in health facilities in all regions. Lima: MINSa; 2012. Available from: <https://bit.ly/3X51woE>
  35. D'Ardenne KK, Darrow J, Furniss A, Chavez C, Hernandez H, Berman S, et al. Use of rapid needs assessment as a tool to identify vaccination delays in Guatemala and Peru. *Vaccine.* 2016;34(14):1719-25. doi: 10.1016/j.vaccine.2016.01.060

36. Cotter JC. Napa Immunization Study: Immunization Rates for Children with Publicly Funded Insurance Compared with those with Private Health Insurance in a Suburban Medical Office. *Perm J*. 201;15(4):12-22. doi: 10.7812/TPP/11-122
37. Blewett LA, Davidson G, Bramlett MD, Rodin H, Messonnier ML. The impact of gaps in health insurance coverage on immunization status for young children. *Health Serv Res*. 2008;43(5):1619-36. doi: 10.1111/j.1475-6773.2008.00864.x
38. González-Block MÁ, Arroyo-Laguna J, Rodríguez-Zea B, Pelcastre-Villafuerte BE, Gutiérrez-Calderón E, Díaz-Portillo SP, et al. The importance of confidence, complacency, and convenience for influenza vaccination among key risk groups in large urban areas of Peru. *Hum Vaccin Immunother*. 2021;17(2):465-474. doi: 10.1080/21645515.2020.1777821
39. Ministry of Health of Peru. Growth and Development Monitoring for children under 11 years old. Lima: MINSa; 2024. Available from: <https://www.gob.pe/32588>
40. Gonzales-Achuy E, Huamán-Espino L, Aparco JP, Pillaca J, Gutiérrez C. Factors associated with fulfillment of growth and development monitoring for children  $\leq$  1 year of age in health centers in Amazonas, Loreto and Pasco. *Rev Peru Med Exp Salud Publica*. 2016;33(2):224-32. doi: 10.17843/rpmesp.2016.332.2187
41. Ramlawi S, Muldoon KA, Dunn SI, et al. Worries, beliefs and factors influencing perinatal COVID-19 vaccination: a cross-sectional survey of preconception, pregnant and lactating individuals. *BMC Public Health*. 2022;22:2418. doi: 10.1186/s12889-022-14617-4
42. Sato R, Titus T. Effect of tailored information of vaccination schedule on vaccine uptake in northern Nigeria. *Hum Vaccin Immunother*. 2021;17(10):3818-3822. doi: 10.1080/21645515.2021.1936861
43. Jacobson Vann JC, Jacobson RM, Coyne-Beasley T, Asafu-Adjei JK, Szilagyi PG. Patient reminder and recall interventions to improve immunization rates. *Cochrane Database Syst Rev*. 2018;1(1):CD003941. doi: 10.1002/14651858.CD003941.pub3
44. National Institute of Statistics and Informatics. In Peru, more than eight million 777 thousand women are mothers. Lima: INEI; 2022. Available from: <https://bit.ly/4aQI6am>
45. Atuyambe L, Mirembe F, Tumwesigye NM, Annika J, Kirumira EK, Faxelid E. Adolescent and adult first time mothers' health seeking practices during pregnancy and early motherhood in Wakiso district, central Uganda. *Reprod Health*. 2008;5:13. doi: 10.1186/1742-4755-5-13
46. Weiner JL, Fisher AM, Nowak GJ, Basket MM, Gellin BG. Childhood Immunizations: First-Time Expectant Mothers' Knowledge, Beliefs, Intentions, and Behaviors. *Am J Prev Med*. 2015;49(6 Suppl 4):S426-34. doi: 10.1016/j.amepre.2015.07
47. Bradshaw AS, Shelton SS, Wollney E, Treise D, Augustine K. Pro-Vaxxers Get Out: Anti-Vaccination Advocates Influence Undecided First-Time, Pregnant, and New Mothers on Facebook. *Health Commun*. 2021;36(6):693-702. doi: 10.1080/10410236.2020.1712037
48. Hu Y, Chen Y, Wang Y, Song Q, Li Q. Prenatal vaccination education intervention improves both the mothers' knowledge and children's vaccination coverage: Evidence from randomized controlled trial from eastern China. *Hum Vaccin Immunother*. 2017;13(6):1-8. doi: 10.1080/21645515.2017.1285476
49. World Health Organization. The WHO states that pregnant women should have access to appropriate care at the right time. Ginebra: WHO;2016. Available from: <https://bit.ly/3KnNFT0>
50. Ley K, Hoq M, Leask J, Perrett KP, O'Keefe J, Giles ML, et al. Vaccine decision-making begins in pregnancy: Correlation between vaccine concerns, intentions and maternal vaccination with subsequent childhood vaccine uptake. *Vaccine*. 2018;36(44):6473-6479. doi: 10.1016/j.vaccine.2017.08.003
51. Hardt K, Bonanni P, King S, Santos JI, El-Hodhod M, Zimet GD, Preiss S. Vaccine strategies: Optimising outcomes. *Vaccine*. 2016;34(52):6691-6699. doi: 10.1016/j.vaccine.2016.10.078
52. Aslam F, Babar ZU, Madni A, Asghar M, Yue Y. Unveiling and addressing implementation barriers of vaccination communication strategy: Perspectives from government officials at national and provincial levels. *Hum Vaccin Immunother*. 2022;18(7):2153513. doi: 10.1080/21645515.2022.2153513
53. Bonanni P, Sacco C, Donato R, Capei R. Lifelong vaccination as a key disease-prevention strategy. *Clin Microbiol Infect*. 2014 May;20 Suppl 5:32-6. doi: 10.1111/1469-0691.12537
54. Mokdad AH, Gagnier MC, Colson KE, Dansereau E, Zúñiga-Brenes P, Ríos-Zertuche D, et al. Missed Opportunities for Measles, Mumps, and Rubella (MMR) Immunization in Mesoamerica: Potential Impact on Coverage and Days at Risk. *PLoS One*. 2015;10(10):e0139680. doi: 10.1371/journal.pone.0139680
55. Reifferscheid L, Kiely MS, Lin MSN, Libon J, Kennedy M, MacDonald SE. Effectiveness of hospital-based strategies for improving childhood immunization coverage: A systematic review. *Vaccine*. 2023;41(36):5233-5244. doi: 10.1016/j.vaccine.2023.07.036

## TABLES Y FIGURES

**Table 1.** Characteristics of mothers and children according to coverage of the first and second doses of measles vaccine

Variables	First Doses (n=6802)			Second Doses (n=4095)		
	Proportion according to characteristics	First dose coverage* (12 to 59 months)	P-value**	Proportion according to characteristics	Second dose coverage* (12 to 59 months)	P-value**
	%* (95%CI)	%* (95%CI)		%* (95%CI)	%* (95%CI)	
<b>Mother's Characteristics</b>						
<b>Age Group</b>						
15 to 17 years old	0.63 (0.4 a 0.9)	67.2 (46.2 a 83.0)	<0.001	0.4 (0.2 a 0.9)	27 (13.0 a 47.8)	<0.001
18 to 29 years old	37.2 (35.4 a 39.0)	82.3 (80.2 a 84.3)		36.4 (34.2 a 38.6)	50.5 (47.7 a 53.2)	
30 to 49 years old	62.2 (60.4 a 64.0)	88.5 (87.1 a 89.7)		63.2 (61.0 a 65.4)	56.4 (54.2 a 58.6)	
<b>Educational Level</b>						
No Education	0.8 (0.6 a 1.1)	79 (65.7 a 88.0)	<0.001	0.9 (0.6 a 1.3)	54.9 (41.1 a 67.9)	0.605
Elementary	11.4 (10.4 a 12.5)	82.2 (78.9 a 85.0)		11.9 (10.6 a 13.3)	53.5 (49.5 a 57.5)	
High School	45.6 (43.7 a 47.6)	84.4 (82.5 a 86.0)		45.7 (43.3 a 48.2)	52.9 (50.4 a 55.4)	
University	42.2 (40.3 a 44.2)	88.9 (87.0 a 90.6)		41.5 (39.1 a 44.0)	55.1 (52.1 a 58.1)	
<b>Wealth Index</b>						
Q5 (Last Quintile)	18.5 (17.5 a 19.7)	81.2 (78.8 a 83.3)	0.001	18.5 (17.1 a 19.9)	50.5 (47.7 a 53.3)	0.32
Q4	23.1 (21.7 a 24.6)	85.1 (82.8 a 87.2)		23.2 (21.5 a 25.1)	53.6 (50.5 a 56.6)	
Q3	20.1 (18.6 a 21.7)	86.4 (83.5 a 88.9)		20.1 (18.2 a 22.2)	54.2 (50.6 a 57.8)	
Q2	20.3 (18.7 a 22.0)	87.7 (84.5 a 90.3)		20.4 (18.4 a 22.5)	55.6 (51.3 a 59.7)	
Q1 (First Quintile)	18.0 (16.3 a 19.8)	89.7 (86.1 a 92.5)		17.8 (15.9 a 19.9)	55.9 (50.4 a 61.3)	
<b>Natural Region</b>						
Metropolitan Lima	36.0 (34.3 a 37.8)	87.7 (85.0 a 90.1)	0.008	35.4 (33.0 a 37.9)	54.3 (50.1 a 58.4)	0.216
Rest of the Coast	26.1 (24.8 a 27.5)	86.8 (84.6 a 88.7)		27 (25.2 a 28.9)	56.2 (53.4 a 59.0)	
Highlands	23.8 (22.5 a 25.2)	84.9 (83.0 a 86.6)		23.6 (21.9 a 25.4)	52.6 (50.1 a 55.1)	
Jungle	14.0 (13.1 a 15.0)	81.8 (79.5 a 83.8)		14 (12.7 a 15.3)	51 (48.1 a 54.0)	
<b>Area of Residence</b>						
Urban	83.5 (82.52 a 84.40)	86.7 (85.3 a 88.0)	<0.001	83.9 (82.6 a 85.1)	54.7 (52.6 a 56.8)	0.01
Rural	16.5 (15.60 a 17.48)	82.3 (80.0 a 84.3)		16.1 (14.9 a 17.4)	50.1 (47.3 a 52.9)	
<b>Health Insurance</b>						
Yes	93.4 (92.3 a 94.3)	86.2 (85.0 a 87.4)	0.037	93.6 (92.2 a 94.8)	54.3 (52.4 a 56.1)	0.137
No	6.6 (5.7 a 7.7)	81.7 (76.6 a 85.8)		6.4 (5.2 a 7.8)	48.9 (42.0 a 55.8)	
<b>Antenatal Care Visits</b>						
Less than Six	12.1 (10.8 a 13.5)	77 (72.5 a 80.9)	<0.001	11.4 (9.9 a 13.0)	45.9 (40.9 a 51.0)	<0.001
Six or More	87.9 (86.6 a 89.2)	89.1 (87.9 a 90.3)		88.6 (87.0 a 90.1)	56.7 (54.8 a 58.7)	
<b>Received Tetanus Vaccine</b>						
No	19.8 (18.3 a 21.5)	80.9 (77.6 a 83.8)	<0.001	18.3 (16.4 a 20.3)	47.1 (43.3 a 50.9)	<0.001
Yes	80.2 (78.5 a 81.7)	89.1 (87.8 a 90.3)		81.7 (79.7 a 83.6)	57.4 (55.4 a 59.5)	
<b>Institutional Labor</b>						
No	3.8 (3.2 a 4.6)	70.3 (63.2 a 76.5)	<0.001	3.2 (2.6 a 3.9)	36.6 (30.5 a 43.3)	<0.001
Yes	96.2 (95.4 a 96.8)	86.7 (85.5 a 87.8)		96.8 (96.1 a 97.4)	54.7 (52.9 a 56.5)	
<b>Children's Characteristics</b>						
<b>Age (months)</b>						
12 to 23	20.4 (19.0 a 21.8)	78.7 (75.7 a 81.4)	<0.001	12.3 (10.9 a 13.8)	29.9 (26.8 a 33.2)	<0.001
24 to 35	23.1 (21.6 a 24.7)	86.8 (84.3 a 89.0)		26.6 (24.7 a 28.7)	62.7 (59.1 a 66.1)	
36 to 47	27.9 (26.2 a 29.6)	88.8 (86.7 a 90.6)		30.3 (28.1 a 32.6)	60.6 (57.4 a 63.7)	
48 to 59	28.6 (27.0 a 30.3)	88.2 (86.2 a 89.9)		30.8 (28.6 a 33.0)	59.2 (56.0 a 62.4)	
<b>Growth and Development</b>						
<b>Control</b>						
No	39.2 (37.3 a 41.1)	83.3 (81.1 a 85.4)	<0.001	39.8 (37.4 a 42.3)	53.1 (50.2 a 56.0)	0.456
Yes	60.8 (58.9 a 62.7)	87.6 (86.2 a 88.9)		60.2 (57.7 a 62.6)	54.4 (52.3 a 56.6)	

\*Weighted estimate for the complex survey sample.

\*\*p-value calculated using the Rao-Scott test.

**Table 2.** Characteristics of mothers and children and inequality in compliance with the two doses of measles vaccination

Variables	Complete Vaccination Doses (n=3935)		Inequality in compliance with the two doses of measles vaccination against measles	
	%* (95%CI)	P-value	CI (95%CI)	P-value
<b>Mother's Characteristics</b>				
<b>Age Group</b>				
15 to 17 years old	27 (13.0 a 47.8)	<0.001	-0.376 (-0.665 a -0.086)	0.011
18 to 29 years old	47.5 (44.7 a 50.4)		-0.116 (-0.16 a -0.071)	<0.001
30 to 49 years old	55.5 (53.2 a 57.7)		0.067 (0.043 a 0.091)	<0.001
<b>Educational Level</b>				
No Education	54.6 (40.8 a 67.7)	0.380	-0.573 (-0.763 a -0.383)	<0.001
Elementary	52.1 (48.1 a 56.2)		-0.515 (-0.576 a -0.455)	<0.001
High School	50.8 (48.2 a 53.4)		-0.163 (-0.198 a -0.128)	<0.001
University	53.7 (50.6 a 56.7)		0.331 (0.3 a 0.361)	<0.001
<b>Natural Region</b>				
Metropolitan Lima	53.3 (49.0 a 57.5)	0.257	0.299 (0.26 a 0.339)	<0.001
Rest of the Coast	53.5 (50.7 a 56.3)		-0.023 (-0.081 a 0.036)	0.449
Highlands	51.1 (48.6 a 53.7)		-0.261 (-0.319 a -0.204)	<0.001
Jungle	48.7 (45.7 a 51.8)		-0.414 (-0.469 a -0.359)	<0.001
<b>Area of Residence</b>				
Urban	53.1 (50.9 a 55.2)	0.004	0.118 (0.101 a 0.134)	<0.001
Rural	47.8 (45.0 a 50.6)		-0.725 (-0.774 a -0.676)	<0.001
<b>Health Insurance</b>				
Yes	52.4 (50.5 a 54.3)	0.300	0.198 (0.091 a 0.305)	<0.001
No	48.6 (41.8 a 55.6)		-0.014 (-0.023 a -0.005)	0.002
<b>Antenatal Care Visits</b>				
Less than Six	44.3 (39.3 a 49.3)	<0.001	-0.078 (-0.163 a 0.007)	0.073
Six or More	55.7 (53.7 a 57.6)		0.01 (-0.001 a 0.02)	0.063
<b>Received Tetanus Vaccine</b>				
No	46.1 (42.2 a 49.9)	<0.001	-0.003 (-0.006 a 0.001)	0.152
Yes	56.2 (54.1 a 58.3)		-0.003 (-0.006 a 0.001)	0.152
<b>Institutional Labor</b>				
No	34.3 (28.4 a 40.7)	<0.001	0.022 (0.016 a 0.027)	<0.001
Yes	53 (51.2 a 54.9)		0.022 (0.016 a 0.027)	<0.001
<b>Children's Characteristics</b>				
<b>Age (months)</b>				
12 to 23	29.1 (26.0 a 32.4)	<0.001	-0.061 (-0.133 a 0.011)	0.098
24 to 35	59.8 (56.2 a 63.4)		-0.033 (-0.087 a 0.02)	0.226
36 to 47	58.7 (55.3 a 62.0)		0.012 (-0.034 a 0.059)	0.600
48 to 59	57.7 (54.4 a 60.9)		0.042 (-0.005 a 0.088)	0.079
<b>Growth and Development Control</b>				
No	52.1 (49.1 a 55.0)	0.823	-0.094 (-0.124 a -0.064)	<0.001
Yes	52.5 (50.3 a 54.7)		0.132 (0.091 a 0.173)	<0.001

**CI:** Concentration Index

\*Weighted estimate for the complex survey sample.



**Table 3.** Association between mothers' and children's characteristics and compliance with two doses of measles vaccination

Variables	Received First Dose		Received Second Dose		Received Both Doses	
	aPR (95%CI)	P-value	aPR (95%CI)	P-value	aPR (95%CI)	P-value
<b>Mother's Characteristics</b>						
<b>Age Group</b>						
15 to 17 years old	REF		REF		REF	
18 to 29 years old	0.954 (0.927 a 0.982)	0.002	0.939 (0.882 a 1.001)	0.053	0.918 (0.859 a 0.981)	0.012
30 to 49 years old	0.86 (0.683 a 1.084)	0.202	0.736 (0.397 a 1.367)	0.332	0.751 (0.404 a 1.394)	0.364
<b>Educational Level</b>						
No Education	REF		REF		REF	
Elementary	0.974 (0.944 a 1.004)	0.090	0.992 (0.914 a 1.076)	0.842	0.988 (0.907 a 1.077)	0.792
High School	0.971 (0.928 a 1.016)	0.204	1.051 (0.95 a 1.162)	0.337	1.059 (0.954 a 1.175)	0.281
University	0.935 (0.831 a 1.052)	0.265	1.083 (0.846 a 1.388)	0.526	1.101 (0.858 a 1.414)	0.449
<b>Wealth Index</b>						
Q5 (Last Quintile)	REF		REF		REF	
Q4	0.978 (0.932 a 1.026)	0.360	0.991 (0.875 a 1.122)	0.884	0.999 (0.881 a 1.134)	0.989
Q3	0.982 (0.937 a 1.029)	0.444	1.011 (0.891 a 1.147)	0.863	1.002 (0.881 a 1.14)	0.973
Q2	0.976 (0.931 a 1.023)	0.313	1.014 (0.893 a 1.15)	0.832	1.005 (0.884 a 1.143)	0.939
Q1 (First Quintile)	0.95 (0.899 a 1.004)	0.068	0.98 (0.849 a 1.132)	0.786	0.978 (0.845 a 1.132)	0.762
<b>Natural Region</b>						
Metropolitan Lima	REF		REF		REF	
Rest of the Coast	1.006 (0.969 a 1.044)	0.765	1.035 (0.948 a 1.13)	0.446	1.026 (0.936 a 1.125)	0.586
Highlands	0.988 (0.949 a 1.028)	0.541	0.95 (0.865 a 1.044)	0.290	0.968 (0.878 a 1.067)	0.514
Jungle	0.991 (0.951 a 1.033)	0.683	0.99 (0.897 a 1.093)	0.845	1.001 (0.903 a 1.109)	0.990
<b>Area of Residence</b>						
Urban	REF		REF		REF	
Rural	0.997 (0.96 a 1.035)	0.870	0.975 (0.899 a 1.059)	0.552	0.963 (0.886 a 1.046)	0.373
<b>Health Insurance</b>						
Yes	REF		REF		REF	
No	1.043 (0.992 a 1.097)	0.097	1.099 (0.958 a 1.261)	0.180	1.076 (0.937 a 1.236)	0.300
<b>Antenatal Care Visits</b>						
Less than Six	REF		REF		REF	
Six or More	1.13 (1.071 a 1.193)	<0.001	1.184 (1.056 a 1.327)	0.004	1.197 (1.066 a 1.345)	0.002
<b>Received Tetanus Vaccine</b>						
No	REF		REF		REF	
Yes	1.078 (1.036 a 1.121)	<0.001	1.139 (1.046 a 1.241)	0.003	1.142 (1.045 a 1.247)	0.003
<b>Institutional Labor</b>						
No	REF		REF		REF	
Yes	1.1 (1.031 a 1.173)	0.004	1.319 (1.068 a 1.629)	0.010	1.324 (1.07 a 1.639)	0.010
<b>Children's Characteristics</b>						
<b>Age (months)</b>						
12 to 23	REF		REF		REF	
24 to 35	1.15 (1.099 a 1.203)	<0.001	2.461 (2.155 a 2.811)	<0.001	2.44 (2.133 a 2.792)	<0.001
36 to 47	1.174 (1.124 a 1.225)	<0.001	2.423 (2.122 a 2.766)	<0.001	2.41 (2.107 a 2.757)	<0.001
48 to 59	1.153 (1.101 a 1.207)	<0.001	2.352 (2.054 a 2.692)	<0.001	2.342 (2.043 a 2.686)	<0.001
<b>Growth and Development Control</b>						
No	REF		REF		REF	
Yes	1.098 (1.062 a 1.136)	<0.001	1.209 (1.125 a 1.299)	<0.001	1.194 (1.11 a 1.284)	<0.001

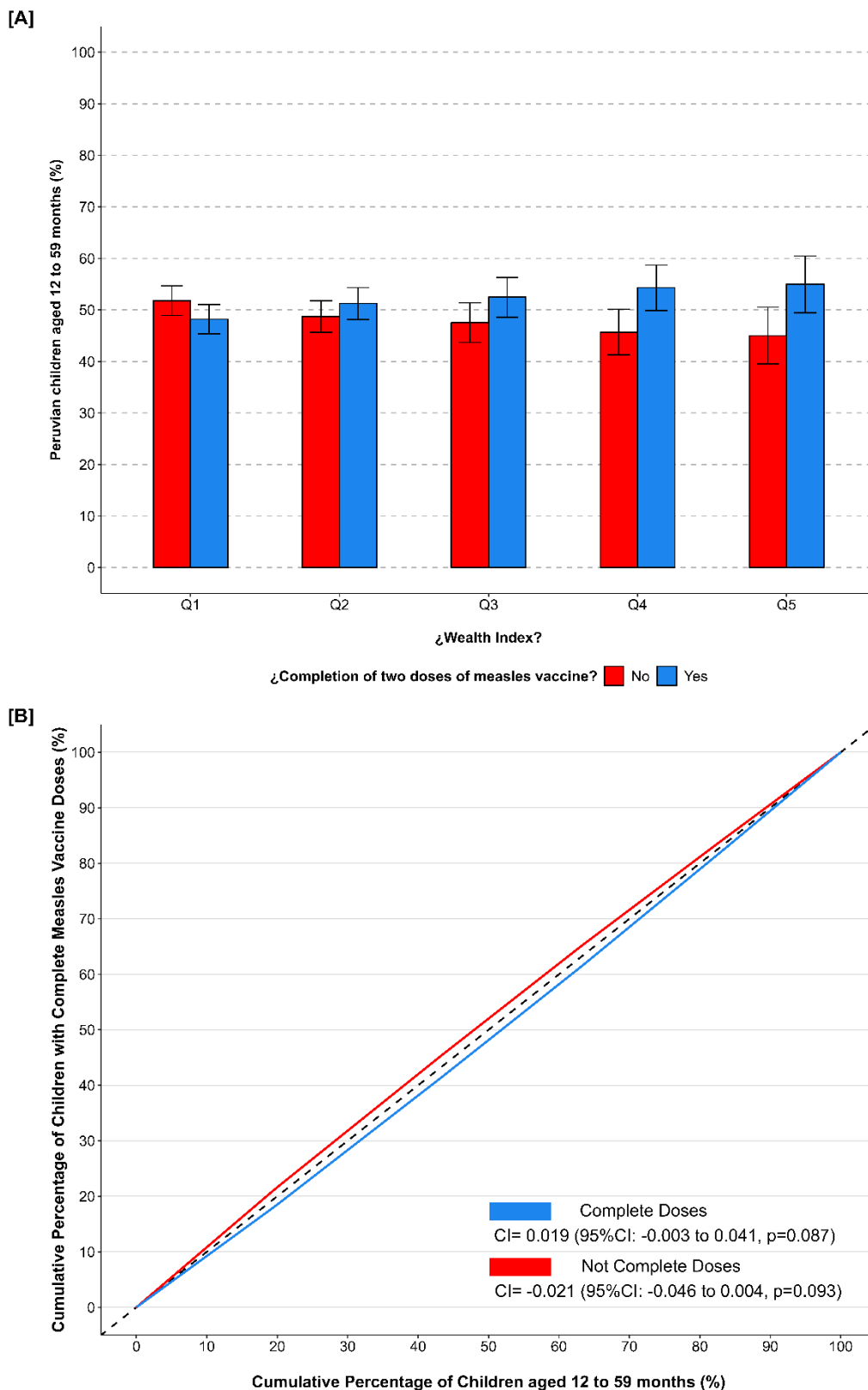
aPR: adjusted Prevalence Ratio, REF: Category used as a reference for estimating the measure of effect.

**Table 4.** Inequality in compliance with the two doses of measles vaccination in children between 12 and 59 months of age

Variables	Received First Dose		Received Second Dose		Received Both Doses	
	ECI (95%CI)	P-value	ECI (95%CI)	P-value	ECI (95%CI)	P-value
<b>Mother's Characteristics</b>						
<b>Age Group</b>						
15 to 17 years old	-0.267 (-0.705 a 0.171)	0.237	0.022 (-0.336 a 0.379)	0.905	0.022 (-0.336 a 0.379)	0.905
18 to 29 years old	0.062 (0.012 a 0.112)	0.015	0.062 (-0.003 a 0.128)	0.061	0.076 (0.009 a 0.143)	0.026
30 to 49 years old	0.045 (0.016 a 0.073)	0.002	0.005 (-0.047 a 0.058)	0.843	0.008 (-0.045 a 0.062)	0.763
<b>Educational Level</b>						
No Education	0.168 (0.044 a 0.292)	0.010	0.31 (0.133 a 0.486)	0.001	0.313 (0.136 a 0.49)	0.001
Elementary	0.048 (-0.019 a 0.115)	0.161	0.03 (-0.064 a 0.124)	0.535	0.044 (-0.051 a 0.139)	0.366
High School	0.049 (0.01 a 0.089)	0.014	0.053 (-0.005 a 0.111)	0.074	0.064 (0.005 a 0.123)	0.033
University	0.009 (-0.029 a 0.048)	0.635	0.019 (-0.046 a 0.085)	0.565	0.029 (-0.038 a 0.096)	0.394
<b>Natural Region</b>						
Metropolitan Lima	0.041 (-0.016 a 0.097)	0.158	0.029 (-0.057 a 0.115)	0.508	0.033 (-0.053 a 0.119)	0.448
Rest of the Coast	0.026 (-0.017 a 0.07)	0.236	-0.026 (-0.099 a 0.047)	0.481	0.006 (-0.055 a 0.067)	0.839
Highlands	0.024 (-0.017 a 0.066)	0.252	0.052 (-0.004 a 0.108)	0.070	0.048 (-0.01 a 0.105)	0.106
Jungle	0.136 (0.089 a 0.182)	<0.001	0.114 (0.052 a 0.176)	<0.001	0.133 (0.069 a 0.197)	<0.001
<b>Area of Residence</b>						
Urban	0.049 (0.018 a 0.079)	0.002	0.025 (-0.024 a 0.074)	0.324	0.036 (-0.01 a 0.083)	0.128
Rural	0.04 (0.008 a 0.071)	0.013	0.023 (-0.023 a 0.07)	0.330	0.028 (-0.02 a 0.077)	0.247
<b>Health Insurance</b>						
Yes	0.052 (0.024 a 0.08)	<0.001	0.138 (-0.02 a 0.296)	0.087	0.136 (-0.022 a 0.294)	0.093
No	0.221 (0.128 a 0.315)	<0.001	0.036 (-0.007 a 0.08)	0.102	0.048 (0.005 a 0.091)	0.028
<b>Antenatal Care Visits</b>						
Less than Six	0.143 (0.055 a 0.23)	0.001	0.003 (-0.114 a 0.121)	0.956	0.015 (-0.102 a 0.132)	0.800
Six or More	0.038 (0.012 a 0.064)	0.004	0.027 (-0.019 a 0.072)	0.251	0.033 (-0.011 a 0.077)	0.141
<b>Received Tetanus Vaccine</b>						
No	0.102 (0.034 a 0.17)	0.003	0.092 (0.003 a 0.181)	0.043	0.099 (0.011 a 0.188)	0.028
Yes	0.047 (0.02 a 0.074)	0.001	0.018 (-0.03 a 0.066)	0.463	0.026 (-0.022 a 0.074)	0.293
<b>Institutional Labor</b>						
No	0.035 (-0.154 a 0.225)	0.716	-0.056 (-0.202 a 0.09)	0.451	-0.032 (-0.177 a 0.113)	0.667
Yes	0.048 (0.021 a 0.074)	<0.001	0.03 (-0.011 a 0.072)	0.155	0.041 (0 a 0.081)	0.051
<b>Children's Characteristics</b>						
<b>Age (months)</b>						
12 to 23	0.029 (-0.042 a 0.1)	0.425	0.005 (-0.066 a 0.076)	0.890	0.02 (-0.051 a 0.091)	0.575
24 to 35	0.052 (0.002 a 0.102)	0.044	0.028 (-0.057 a 0.113)	0.524	0.05 (-0.038 a 0.137)	0.265
36 to 47	0.072 (0.025 a 0.118)	0.003	0.04 (-0.038 a 0.119)	0.317	0.045 (-0.036 a 0.125)	0.275
48 to 59	0.069 (0.032 a 0.107)	<0.001	0.028 (-0.048 a 0.104)	0.471	0.038 (-0.041 a 0.116)	0.347
<b>Growth and Development Control</b>						
No	0.133 (0.084 a 0.182)	<0.001	0.145 (0.073 a 0.218)	<0.001	0.142 (0.069 a 0.215)	<0.001
Yes	0.025 (-0.004 a 0.055)	0.091	-0.025 (-0.075 a 0.025)	0.330	-0.012 (-0.063 a 0.039)	0.644

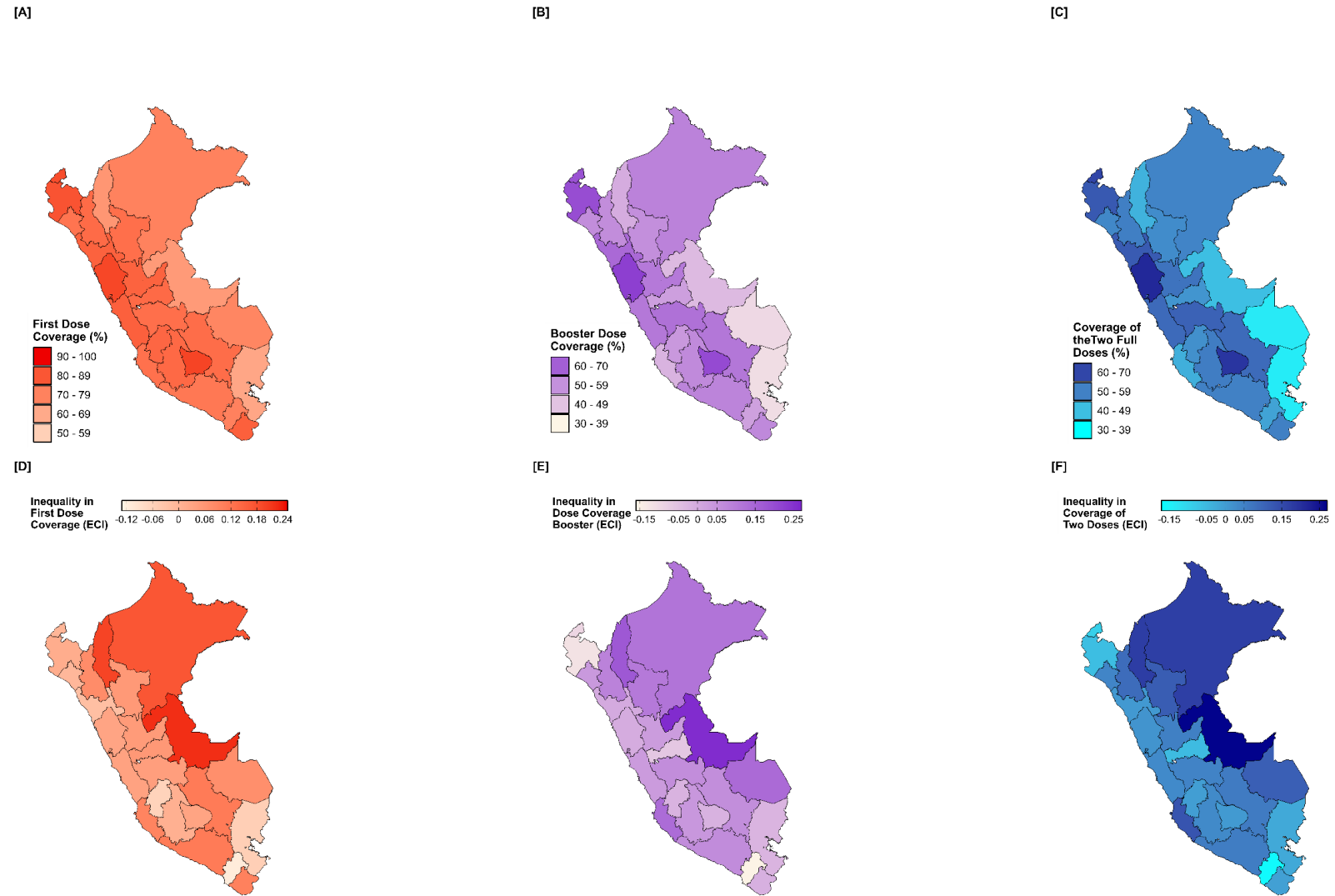
ECI: Erreyger Concentration Index

**Figure 1.** Inequalities in compliance with the two doses of measles vaccination in Peruvian children aged 12 to 59 months in 2023



CI: Concentration Index.

**Figure 2.** Geographical distribution of inequality in compliance with the two doses of measles vaccination in Peruvian children aged 12 to 59 months



ECI: Erreygers Concentration Index