

1 **Degree of Cyclooxygenase-2 Inhibition Modulates Blood Pressure Response to**
2 **Celecoxib and Naproxen**

3 Katherine N. Theken, PharmD, PhD;^{1,2*} Soumita Ghosh, PhD;¹ Carsten Skarke, MD;^{1,3} Susanne
4 Fries, MD;¹ Nicholas F. Lahens, PhD;¹ Dimitra Sarantopoulou, MS;^{1,4} Gregory R. Grant, PhD;^{1,5}
5 Garret A. FitzGerald, MD;^{1,3} Tilo Grosser, MD^{1,3,6*}

6 ¹ Institute for Translational Medicine and Therapeutics, Perelman School of Medicine, University
7 of Pennsylvania, Philadelphia, PA, United States

8 ² Department of Oral and Maxillofacial Surgery and Pharmacology, School of Dental Medicine,
9 University of Pennsylvania, Philadelphia, PA, United States

10 ³ Department of Medicine, University of Pennsylvania, Philadelphia, PA, United States

11 ⁴ Current address: National Institute on Aging, National Institutes of Health, Baltimore, MD,
12 United States

13 ⁵ Department of Genetics, University of Pennsylvania, Philadelphia, PA, United States

14 ⁶ Department of Translational Pharmacology, EWL School of Medicine, Bielefeld University,
15 Bielefeld, Germany

16 **Short Title:** COX2 Inhibition and Hypertensive Effects of NSAIDs

17 ***Corresponding Authors:**

18 Katherine N. Theken, PharmD, PhD
19 Department of Oral and Maxillofacial Surgery and Pharmacology
20 School of Dental Medicine, University of Pennsylvania
21 240 S 40th St
22 Room 531 Levy
23 Philadelphia, PA 19104
24 Phone: +1 215 898-7470
25 Email: ktheken@pennmedicine.upenn.edu

26
27 Tilo Grosser, MD
28 Department of Translational Pharmacology
29 EWL School of Medicine
30 Bielefeld University
31 Universitätsstrasse 25
32 Bielefeld, Germany
33
34 Phone: +49 521 106-86800
35 Email: tilo.grosser@uni-bielefeld.de

36
37 **Word Count:** 4701

38 **Abstract:**

39 **Background:** Non-steroidal anti-inflammatory drugs (NSAIDs) increase the risk of adverse
40 cardiovascular events via suppression of cyclooxygenase (COX)-2-derived prostacyclin (PGI₂)
41 formation in heart, vasculature, and kidney. The Prospective Randomized Evaluation of
42 Celecoxib Integrated Safety versus Ibuprofen Or Naproxen (PRECISION) trial and other large
43 clinical studies compared the cardiovascular risk of traditional NSAIDs (i.e. naproxen), which
44 inhibit both COX isozymes, with NSAIDs selective for COX-2 (i.e. celecoxib). However, whether
45 pharmacologically equipotent doses were used - that is, whether a similar degree of COX-2
46 inhibition was achieved - was not considered. We compared drug target inhibition and blood
47 pressure response to celecoxib at the dose used by most patients in PRECISION with the
48 lowest recommended naproxen dose for osteoarthritis, which is lower than the dose used in
49 PRECISION.

50 **Methods:** Sixteen healthy participants (19-61 years) were treated with celecoxib (100 mg every
51 12h), naproxen (250 mg every 12h), or placebo administered twice daily for seven days in a
52 double-blind, crossover design randomized by order. On Day 7 when drug levels had reached
53 steady state, the degree of COX inhibition was assessed *ex vivo* and *in vivo*. Ambulatory blood
54 pressure was measured throughout the final 12h dosing interval.

55 **Results:** Both NSAIDs inhibited COX-2 activity relative to placebo, but naproxen inhibited
56 COX-2 activity to a greater degree (62.9±21.7%) than celecoxib (35.7±25.2%; p<0.05).
57 Similarly, naproxen treatment inhibited PGI₂ formation *in vivo* (48.0±24.9%) to a greater degree
58 than celecoxib (26.7±24.6%; p<0.05). Naproxen significantly increased blood pressure
59 compared to celecoxib (differences in least-square means of mean arterial pressure: 2.5 mm Hg
60 (95% CI: 1.5, 3.5); systolic blood pressure: 4.0 mm Hg (95% CI: 2.9, 5.1); diastolic blood
61 pressure: 1.8 mm Hg (95% CI: 0.8, 2.8); p<0.05 for all). The difference in systolic blood
62 pressure relative to placebo was associated with the degree of COX-2 inhibition (p<0.05).

63 **Conclusions:** Celecoxib 200 mg/day inhibited COX-2 activity to a lesser degree than naproxen
64 500 mg/day, resulting in a less pronounced blood pressure increase. While the PRECISION
65 trial concluded the non-inferiority of celecoxib regarding cardiovascular risk, this is based on a
66 comparison of doses that are not equipotent.

67 ClinicalTrials.gov identifier: NCT02502006 (<https://clinicaltrials.gov/study/NCT02502006>)

68

69 **Clinical Perspective**

- 70 • Naproxen 250 mg twice a day inhibited COX-2 activity to a greater degree than
71 celecoxib 100 mg twice a day.
- 72 • The degree of COX-2 inhibition was associated with the increase in systolic blood
73 pressure with NSAID treatment relative to placebo.
- 74 • Dose and its pharmacological potency achieved *in vivo* should be considered when
75 evaluating the relative cardiovascular safety of COX-2-selective vs. non-selective
76 NSAIDs.

77 Introduction

78 Non-steroidal anti-inflammatory drugs (NSAIDs) are among the most commonly used
79 medications worldwide and the opioid crisis has placed a new emphasis on their use.^{1,2}
80 Approximately 20% of adults in the United States receive at least one NSAID prescription per
81 year³, and 12% of adults in the United States reported using NSAIDs chronically, i.e. more than
82 three times weekly for more than three months.⁴ Consumption of NSAIDs in individuals at risk
83 for musculoskeletal injuries is even more common.⁵⁻⁷ Given the high prevalence of chronic pain
84 in the United States – more than 100 million Americans suffer from chronic pain⁸ – NSAIDs are
85 an important non-addictive option for pain relief. Optimizing NSAID therapy is one strategy to
86 address the current opioid crisis,² and rates of NSAID use have increased in recent years as
87 opioid prescriptions have declined.⁹ Although they lack the addictive potential of opioids,
88 NSAIDs have the potential to cause serious, and in some cases, life-threatening adverse
89 events, including gastrointestinal bleeding, renal dysfunction, hypertension, and thrombotic
90 cardiovascular events.¹⁰ Undetected blood pressure (BP) increases that may impact
91 cardiovascular morbidity and mortality at the population level are a particular concern.¹¹

92 NSAIDs exert their analgesic and anti-inflammatory effects via inhibition of
93 cyclooxygenase (COX)-1 and/or COX-2, enzymes that catalyze the first committed step in
94 prostaglandin (PG) synthesis. PGs produce a diverse array of biologic effects via activation of
95 prostanoid receptors and play important roles in a variety of pathologic and homeostatic
96 processes.¹² The risk of thrombotic events associated with the use of NSAIDs, particularly those
97 selective for COX-2, is mediated via suppression of COX-2-derived prostacyclin (PGI₂)
98 formation in endothelial and vascular smooth muscle cells.^{13,14} PGI₂ possesses potent anti-
99 thrombotic and vasodilatory effects, and thus acts as a general inhibitor of platelet activation *in*
100 *vivo*.¹² Non-selective NSAIDs also inhibit COX-2 in the vasculature, but the associated risk of
101 thrombosis is mitigated to some extent by inhibition of formation of thromboxane A₂ (TxA₂), a
102 COX-1-derived PG released by activated platelets that promotes platelet activation and
103 aggregation.^{10,15} In addition to their effects on vascular PG production, NSAIDs inhibit renal PG
104 formation, resulting in sodium retention and BP increases, which may further augment
105 cardiovascular risk.^{10,15,16}

106 One of the largest (N=24,081) outcome studies to date, the Prospective Randomized
107 Evaluation of Celecoxib Integrated Safety versus Ibuprofen Or Naproxen trial (PRECISION),
108 compared the safety of the COX-2 selective NSAID, celecoxib (100 to 200 mg twice a day), and
109 two traditional NSAIDs, naproxen (375 to 500 mg twice a day) and ibuprofen (600 to 800 mg

110 three times a day), in osteoarthritis (90%) and rheumatoid arthritis (10%) patients. PRECISION
111 concluded that the cardiovascular safety of moderate doses of celecoxib (average dose:
112 209±37 mg/day) was noninferior to naproxen (average dose: 852±103 mg/day) or ibuprofen
113 (average dose: 2045±246 mg/day).¹⁷ However, a secondary on-treatment analysis of
114 PRECISION showed a lower risk of cardiorenal events in the celecoxib group than the ibuprofen
115 and naproxen groups.¹⁸ Similarly, a pre-specified substudy (PRECISION-ABPM) reported that
116 the percentage of patients with normal baseline blood pressure who developed hypertension
117 was significantly greater in patients treated with naproxen (19%) or ibuprofen (23%), than with
118 celecoxib (10%).¹⁹ However, the degree of COX-2 inhibition attained has never been assessed
119 in clinical outcome trials, and thus it is unknown whether the doses employed in PRECISION
120 were equipotent. Here, we compared the pharmacologic potency of celecoxib, 200 mg/day (the
121 highest dose allowed for osteoarthritis and roughly the average daily dose in PRECISION), with
122 naproxen, 500 mg/day (the lowest recommended dose for osteoarthritis and approximately 40%
123 lower than the average daily dose in PRECISION), and how this relates to blood pressure
124 response to NSAIDs in a highly controlled study in apparently healthy volunteers.

125

126 **Methods**

127 *Participants*

128 Men and women (≥18 years of age) who were in good health based on medical history,
129 physical examination, vital signs, and laboratory tests were enrolled. Participants were
130 excluded if they were pregnant or nursing a child, smoked or used nicotine-containing products,
131 were obese (body mass index (BMI) > 30 kg/m²), had a history of significant cardiovascular,
132 gastrointestinal, renal, hepatic, respiratory, immune, endocrine, hematologic, or neurological
133 disease, a history of cancer within the last 5 years, or a coagulation or bleeding disorder, were
134 sensitive or allergic to celecoxib, naproxen, aspirin, or other NSAIDs, or had used NSAIDs
135 (including acetaminophen), dietary or herbal supplements containing salicylates, Vitamin E, fish
136 oil, or any other herbal supplements, within 14 days of study drug administration.

137 *Study procedures*

138 The study protocol was approved by the University of Pennsylvania Institutional Review
139 Board (IRB#820715; ClinicalTrials.gov: NCT02502006), and all participants provided informed
140 consent. The study was a randomized, double-blind, three-way crossover study comparing the
141 degree of COX inhibition and the blood pressure response at steady state following treatment

142 with celecoxib (100 mg twice daily), naproxen (250 mg twice daily), or placebo (twice daily) for 7
143 days. Prior to beginning treatment, all participants attended a screening visit to obtain a
144 complete medical history and confirm eligibility. They were asked to abstain from analgesics,
145 including products containing NSAIDs (including aspirin and acetaminophen), high dose
146 vitamins, and nutritional supplements until study completion.

147 On the first day of each treatment phase, baseline blood and urine samples were
148 collected, and participants were given a blisterpack with blinded study medication to be taken by
149 mouth twice daily on an outpatient basis. Study medication was blinded by over-encapsulation
150 by the University of Pennsylvania Investigational Drug Service. On the morning of day 7,
151 participants returned to clinic for a 12-hour visit for pharmacokinetic-pharmacodynamic (PK-PD)
152 sampling. An ambulatory blood pressure monitor (ABPM, Spacelabs 90207), which recorded
153 blood pressure every 15 minutes throughout the study visit, was placed on the non-dominant
154 upper arm. Blood and urine samples were collected (T=0), and the final dose of study
155 medication was administered. Additional samples were collected 0.5 (blood only), 1, 2, 4, 8,
156 and 12 hours after study medication administration. Participants were discharged after the 12-
157 hour sample collection. These study visits were repeated for the next two treatment phases,
158 with a washout period of at least 2 weeks between each treatment phase.

159 Study data were collected and managed using REDCap (Research Electronic Data
160 Capture) hosted at the University of Pennsylvania Perelman School of Medicine.^{20,21}

161 *Quantification of COX activity and plasma drug concentrations*

162 COX-1 activity *ex vivo* was evaluated by quantifying serum thromboxane B₂ levels, as
163 previously described.²² Briefly, whole blood was collected into vacuum tubes containing clot
164 activator and incubated in a water bath at 37°C for 1 hour. Serum was separated by
165 centrifugation and stored at -80°C until analysis by liquid chromatography-tandem mass
166 spectrometry (LC-MS/MS).

167 COX-2 activity *ex vivo* was evaluated by quantifying plasma PGE₂ levels following
168 lipopolysaccharide (LPS) stimulation in whole blood, as previously described.²³ Briefly,
169 heparinized whole blood was treated with aspirin (1 mM) and incubated at room temperature for
170 15 minutes. LPS (E. coli, serotype O111:B4, 10 µg/ml whole blood) was added, and the sample
171 was incubated in a water bath at 37°C for 24 hours. Plasma was separated by centrifugation
172 and stored at -80°C until analysis by LC-MS/MS.

173 COX activity *in vivo* was determined by quantification of urinary prostanoid metabolites
174 by LC-MS/MS as previously described.¹⁴ Systemic production of PGI₂, PGE₂, PGD₂, and

175 thromboxane (Tx) A₂ was determined by quantifying their major urinary metabolites: 2,3-dinor 6-
176 keto-PGF_{1α} (PGIM), 7-hydroxy-5,11-diketotetranorprostane-1,16-dioic acid (PGEM), 11,15-
177 dioxo-9α-hydroxy-2,3,4,5-tetranorprostan-1,20-dioic acid (PGDM), and 2,3-dinor TxB₂ (TxM),
178 respectively. Results were normalized to urinary creatinine measured by LC-MS/MS.

179 Plasma concentrations of celecoxib and naproxen were quantified by LC-MS/MS as
180 previously described.²⁴

181 *Statistical analysis*

182 Measurements of COX activity *ex vivo* and urinary PG metabolite levels were normalized
183 to the mean value during the placebo phase for each subject to calculate the percent of COX
184 inhibition relative to placebo. Area-under-the-curve from T=0 to T=12 hours (AUC) was
185 calculated as a measure of the degree of COX inhibition throughout the dosing interval. The
186 degree of COX inhibition was compared by paired t-test. The effect of treatment on COX
187 activity and ABP over time was analyzed by linear mixed effect modeling using the lme4 R
188 package,²⁵ including time and treatment as main effects and participant as a random effect.
189 The relationship between change in SBP and COX inhibition over the 12-hour dosing interval
190 was evaluated by linear regression. P<0.05 was considered statistically significant. Statistical
191 analyses were performed in R (version 4.3.1).

192

193 **Results**

194 The study cohort included 16 healthy adults (9 men, 7 women) with a mean age of
195 34.7±13.4 years. Baseline demographic and clinical characteristics are shown in Table 1.
196 Biochemical measures were evaluated in all participants. One participant was excluded from
197 ABP analysis due to ABPM malfunction and incomplete data.

198 Naproxen 250 mg twice daily inhibited COX-1 activity and COX-2 activity *ex vivo* by
199 95.3±4.4% and 62.9±21.7%, respectively, while celecoxib 100 mg twice daily had minimal
200 effects on COX-1 activity *ex vivo* and inhibited COX-2 activity *ex vivo* by 35.7±25.2% over the
201 12-hour dosing interval (Figure 1). Similar results were observed for COX activity *in vivo*,
202 assessed by urinary PG metabolite concentrations. TxM (an index of COX-1 activity) was
203 inhibited by 68.2±18.7% with naproxen treatment and 8.9±35.7% with celecoxib treatment.
204 PGIM (an index of COX-2 activity *in vivo*) was inhibited by 48.0±24.9% with naproxen treatment
205 and 26.7±24.6% with celecoxib treatment. With all functional parameters, the degree of COX
206 inhibition was significantly greater with naproxen treatment than celecoxib treatment (p<0.05).
207 The maximum plasma concentration (C_{max}) of naproxen was 228±45.1 μM, and the time to

208 maximum plasma concentration (t_{\max}) was 1.8 ± 1.2 h after administration. For celecoxib, C_{\max}
209 was 1.28 ± 0.55 μM , and t_{\max} was 2.3 ± 1.2 h.

210 During the placebo phase, average MAP, SBP, and DBP were 89.7 ± 8.7 mmHg,
211 124.1 ± 11.2 mm Hg, and 73.3 ± 8.7 mm Hg, respectively. NSAID treatment affected MAP and
212 SBP over the 12-hour dosing interval (Figure 2). Naproxen treatment significantly increased
213 MAP (Difference in LS means: 3.1 mm Hg (95% CI: 2.1, 4.1); $p<0.05$), SBP (Difference in LS
214 means: 2.9 mm Hg (95% CI: 1.8, 4.0); $p<0.05$) and DBP (Difference in LS means: 3.2 mm Hg
215 (95% CI: 2.2, 4.2); $p<0.05$) relative to placebo. In contrast, celecoxib treatment did not affect
216 MAP (Difference in LS means: 0.6 mm Hg (95% CI: -0.3, 1.6); $p=0.28$), but significantly
217 decreased SBP (Difference in LS means: -1.1 mm Hg (95% CI: -2.2, 0.04); $p<0.05$) and
218 increased DBP (Difference in LS means: 1.4 mm Hg (95% CI: 0.4, 2.4); $p<0.05$) relative to
219 placebo. Compared to celecoxib, naproxen significantly increased MAP (Difference in LS
220 means: 2.5 mm Hg (95% CI: 1.5, 3.5); $p<0.05$), SBP (Difference in LS means: 4.0 mm Hg (95%
221 CI: 2.9, 5.1); $p<0.05$), and DBP (Difference in LS means: 1.8 mm Hg (95% CI: 0.8, 2.8);
222 $p<0.05$).

223 Linear regression was performed to determine whether the degree of COX-1 or COX-2
224 inhibition *ex vivo* predicted the difference in SBP with NSAID treatment relative to placebo
225 (Figure 3). COX-2 inhibition *ex vivo* was a predictor of difference in SBP ($\beta=-10.38$, 95%
226 confidence interval=-19.27 to -1.482, $R^2=0.1694$, $F(1,28)=5.710$, $p=0.0238$), but COX-1
227 inhibition *ex vivo* was not significantly associated with difference in SBP ($\beta=-2.194$, 95%
228 confidence interval=-6.068 to 1.680, $R^2=0.04587$, $F(1,28)=1.346$, $p=0.2558$).

229

230 Discussion

231 Given the high prevalence of chronic pain in the United States,²⁶ NSAIDs are an
232 important non-addictive option for pain relief.² Currently, it is recommended that NSAIDs be
233 avoided or used only for a limited duration at the lowest possible dose in patients considered at
234 high cardiovascular risk.²⁷ As COX-2 inhibition mechanistically underlies the cardiovascular
235 risk, a key question remains whether differences in the cardiovascular safety profile exist
236 between traditional NSAIDs (i.e. naproxen) which inhibit both COX-1 and COX-2, and selective
237 inhibitors of COX-2 (i.e. celecoxib).²⁸ The largest comparator trial to address this question,
238 PRECISION, indicated that celecoxib is noninferior to naproxen and ibuprofen with regard to
239 cardiovascular risk.¹⁷ Importantly, the dose of celecoxib was limited to 200 mg/day in
240 osteoarthritis patients enrolled in PRECISION, which made up the vast majority of the study

241 population. Limiting the dose in osteoarthritis patients had been a regulatory response to the
242 cardiovascular hazard detected in previous randomized controlled trials. Although the
243 pharmacological potency of celecoxib measured with isolated COX-2 enzyme or cellular
244 preparations *in vitro* is higher than that of naproxen,²⁹ here we demonstrate that the average
245 daily dose of celecoxib used in the PRECISION trial inhibited COX-2 activity *in vivo* to a lesser
246 degree than a low dose of naproxen and that this impacted the blood pressure response to
247 NSAID treatment. Our results underscore the importance of considering dose and
248 pharmacoequivalence *in vivo* in comparisons of safety among drugs of the same class.

249 Only a small number of clinical trials have prospectively assessed the effects of COX
250 inhibition on BP control. Based on these studies, increases of 3-5 mmHg in SBP can be
251 expected.¹⁶ In our cohort, naproxen treatment increased SBP relative to placebo (2.9 mm Hg
252 (95% CI: 1.8,4.0)) to a greater extent than celecoxib treatment (-1.1 mm Hg (95% CI: -2.2,-
253 0.04)) over the 12-hour dosing interval. This difference is similar to what was observed in
254 PRECISION-ABPM, where the change in SBP from baseline after 4 months of treatment was -
255 0.18±9.400 mm Hg among celecoxib-treated patients and 1.91±9.796 mm Hg among naproxen-
256 treated patients.¹⁹ Notably, we observed that the difference in SBP was associated with the
257 degree of COX-2 inhibition on NSAID treatment, consistent with the inhibition of COX-2-
258 mediated PGI₂ formation as the primary mechanism underlying the increased cardiovascular
259 risk associated with NSAID use.

260 Although naproxen increased SBP to a greater extent than celecoxib in our study cohort,
261 the blood pressure response to NSAID treatment was heterogeneous among individual patients.
262 The effects of COX inhibition on blood pressure control are complex, which may contribute to
263 the variable occurrence of hypertension on NSAIDs.^{10,15,16,30} In the renal cortex, the production
264 of vasodilatory PGE₂ and PGI₂ maintain the patency of adjacent afferent arterioles,^{16,31} and
265 COX-2 expression in renal medullary interstitial cells play an important role in the adaptive
266 regulation of blood pressure in response to high salt diet and dehydration.³²⁻³⁴ COX inhibition in
267 these regions of the kidney contributes to the decline in glomerular filtration rate and elevations
268 in blood pressure observed in patients who take NSAIDs. However, dynamic expression of
269 COX-2 in the macula densa system is a component of the tubuloglomerular feedback
270 mechanism which promotes renin release.³⁵⁻³⁷ Inhibition of COX-2 in these cells would
271 counteract the hypertensive effects of renin-angiotensin system activation. Thus, the effect of
272 NSAID treatment on blood pressure reflects the complex interplay among these regulatory
273 systems. Interestingly, we observed that an individual participant's response was similar to both
274 drugs, suggesting that patient-specific factors may contribute to interindividual heterogeneity in

275 the response to NSAIDs. Future studies are necessary to elucidate the factors that contribute to
276 an individual patient's risk of hypertension and other cardiovascular adverse effects with NSAID
277 treatment.

278 There are limitations to our study. The small sample size limits our ability to
279 comprehensively investigate the factors that contribute to the blood pressure response to
280 NSAIDs. The study cohort included only healthy adults, most of whom were relatively young.
281 Although this limits potential confounding due to effects of age and comorbidities, it precludes
282 interrogation of the influence of these factors on the blood pressure response to NSAID
283 treatment. Finally, we compared only one dose level of naproxen and celecoxib, which limits
284 our ability to extrapolate our results to higher doses or other NSAIDs. Despite these limitations,
285 our results provide mechanistic insight into the outcome of PRECISION.

286 In conclusion, our results demonstrate that naproxen 500 mg/day inhibits COX-2 activity
287 to a greater degree than celecoxib 200 mg/day and that the degree of COX-2 inhibition is
288 associated with the blood pressure response to NSAID treatment. While PRECISION
289 concluded non-inferiority of celecoxib compared to naproxen with regard to cardiovascular risk,
290 this is based on a comparison of doses that are not equipotent.

291

292 **Table 1.** Baseline characteristics of study participants.

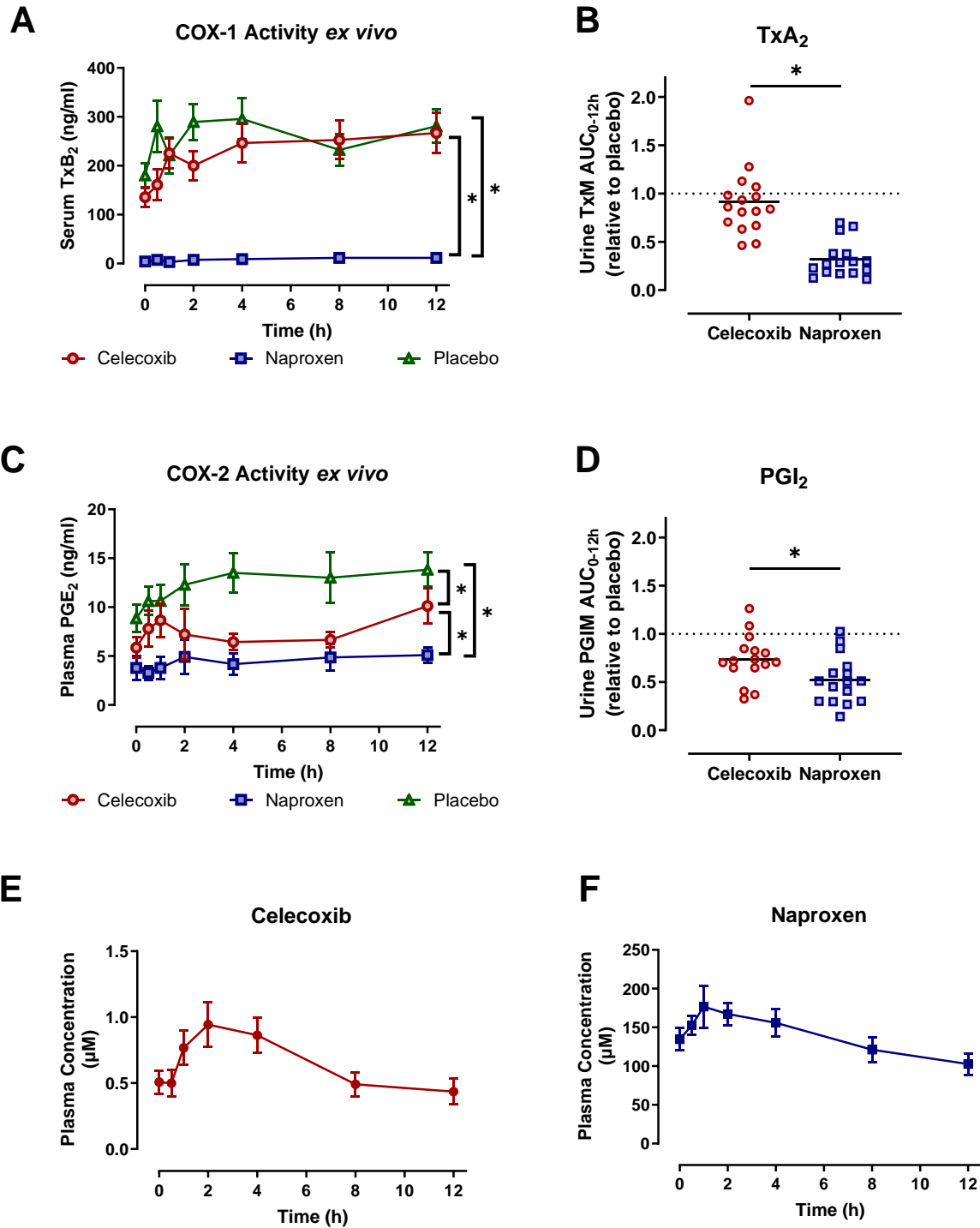
Characteristic	Study Cohort
N (Men/Women)	16 (9/7)
Age	34.7±13.4 years (range: 19-61 years)
Race	
White	9
Black/African American	4
Asian	1
Other	2
Ethnicity	
Non-Hispanic	13
Hispanic	3
Body mass index	22.6±1.9 kg/m ²
Lab values	
Total cholesterol	166.9±27.6 mg/dl
Triglycerides	70.9±24.4 mg/dl
LDL	94.7±22.9 mg/dl
HDL	58.1±13.3 mg/dl
Serum creatinine	0.83±0.14 mg/dl
Systolic blood pressure	115.3±8.9 mm Hg
Diastolic blood pressure	69.8±9.5 mm Hg
Heart rate	65.7±9.8 bpm

293

294

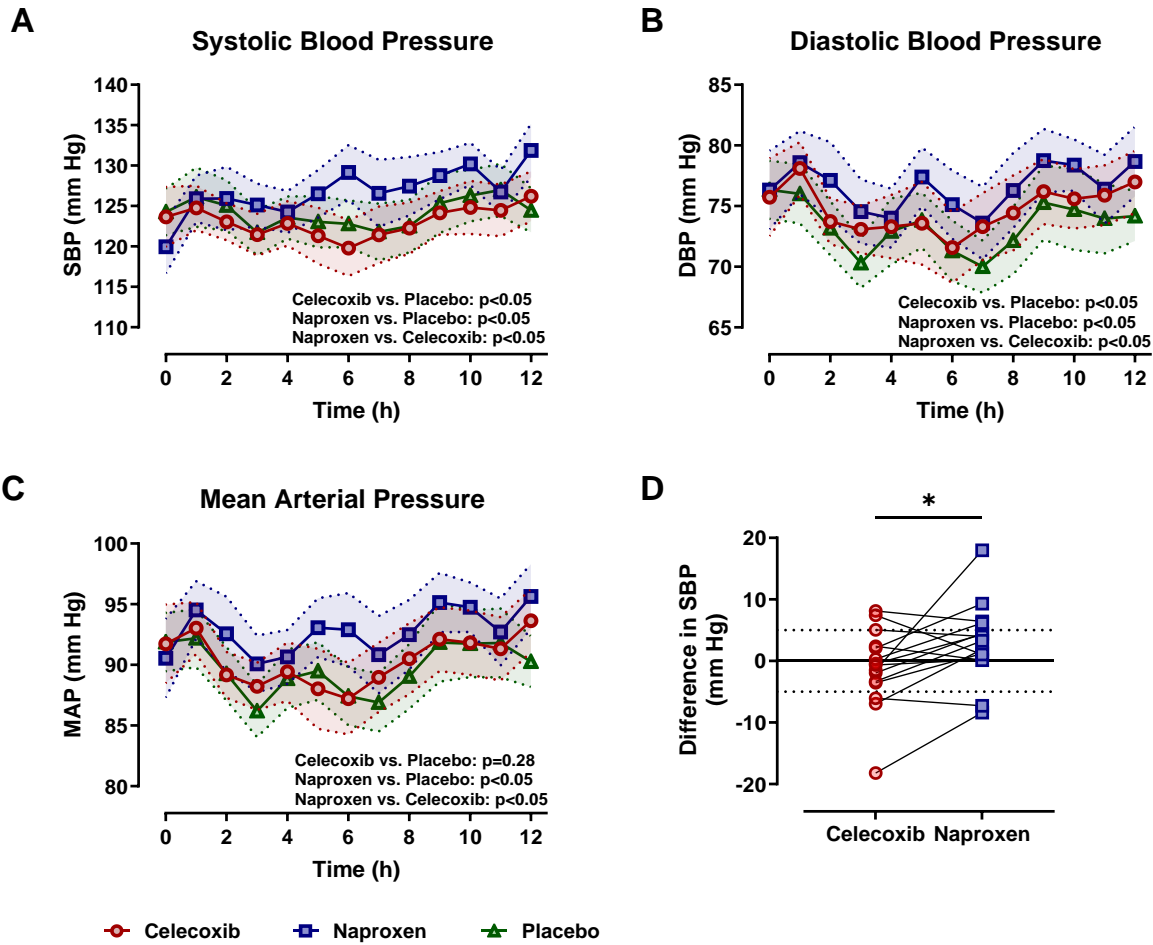
295 **Figures**

296 **Figure 1.** Comparison of (A) COX-1 inhibition *ex vivo* and (B) *in vivo* and (C) COX-2 inhibition
297 *ex vivo* and (D) *in vivo* by treatment. Plasma concentrations of (E) celecoxib and (F) naproxen
298 over time. Dosing occurred at 8:00 AM \pm 15 min. Data are shown as mean \pm SEM. * $p < 0.05$

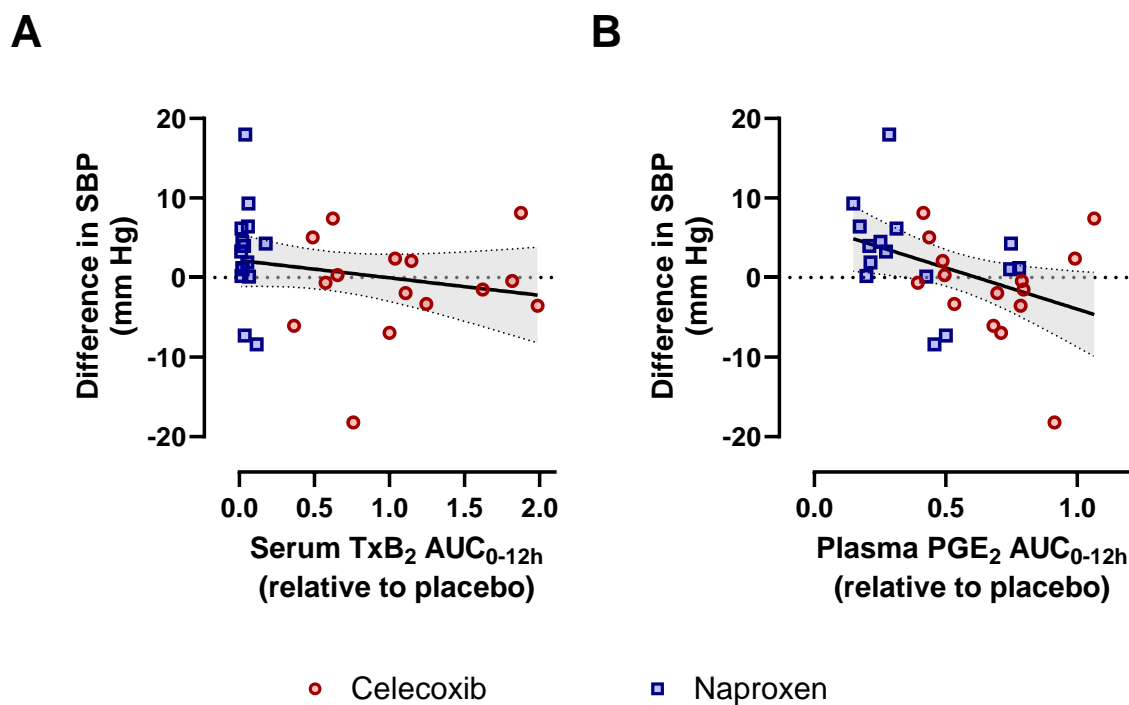


299
300

301 **Figure 2.** Comparison of (A) SBP, (B) DBP, and (C) MAP over 12-hour dosing interval by
302 treatment. Data are shown as mean \pm SEM. (D) Change in SBP relative to placebo with
303 celecoxib and naproxen treatment. Dosing occurred at 8:00 AM \pm 15 min. *p<0.05



305 **Figure 3.** Relationship between degree of COX-1 and COX-2 inhibition *ex vivo* and change in
306 systolic blood pressure.



307

308

309 **Sources of Funding**

310 Research reported in this publication was supported by a Translational Medicine and
311 Therapeutics Postdoctoral Fellowship from the PhRMA Foundation, and funding from the
312 National Heart, Lung, and the Blood Institute (HL117798) and National Center for Advancing
313 Translational Sciences of the National Institutes of Health (UL1TR001878). The content is solely
314 the responsibility of the authors and does not necessarily represent the official views of the
315 National Institutes of Health.

316 **Acknowledgements**

317 Dr. FitzGerald is the McNeil Professor of Translational Medicine and Therapeutics and held a
318 Merit Award from the American Heart Association. C.S. is the Robert L. McNeil Jr. Fellow in
319 Translational Medicine and Therapeutics.

320 **Disclosures**

321 K.N.T., S.G., C.S., S.F., N.F.L., D.S., G.R.G., G.A.F., and T.G. have nothing to disclose.

322 References

- 323 1. In: Phillips JK, Ford MA, Bonnie RJ, eds. *Pain Management and the Opioid Epidemic: Balancing*
324 *Societal and Individual Benefits and Risks of Prescription Opioid Use*. Washington (DC); 2017.
- 325 2. Grosser T, Woolf CJ, FitzGerald GA. Time for nonaddictive relief of pain. *Science*. 2017;355:1026-
326 1027. doi: 10.1126/science.aan0088
- 327 3. Stagnitti MN. Trends in Outpatient Prescription Analgesics Utilization and Expenditures for the
328 U.S. Civilian Noninstitutionalized Population, 1996 and 2006. Medical Expenditure Panel Survey.
329 https://meps.ahrq.gov/data_files/publications/st235/stat235.shtml. 2009. Accessed 1/5/2024.
- 330 4. Zhou Y, Boudreau DM, Freedman AN. Trends in the use of aspirin and nonsteroidal anti-
331 inflammatory drugs in the general U.S. population. *Pharmacoepidemiology and drug safety*.
332 2014;23:43-50. doi: 10.1002/pds.3463
- 333 5. Gorski T, Cadore EL, Pinto SS, da Silva EM, Correa CS, Beltrami FG, Krueel LF. Use of NSAIDs in
334 triathletes: prevalence, level of awareness and reasons for use. *British journal of sports*
335 *medicine*. 2011;45:85-90. doi: 10.1136/bjism.2009.062166
- 336 6. Kuster M, Renner B, Oettel P, Niederweis U, Brune K. Consumption of analgesics before a
337 marathon and the incidence of cardiovascular, gastrointestinal and renal problems: a cohort
338 study. *BMJ open*. 2013;3. doi: 10.1136/bmjopen-2012-002090
- 339 7. Walker LA, Zambraski EJ, Williams RF. Widespread Use of Prescription Nonsteroidal Anti-
340 Inflammatory Drugs Among U.S. Army Active Duty Soldiers. *Military medicine*. 2017;182:e1709-
341 e1712. doi: 10.7205/MILMED-D-16-00183
- 342 8. Institute of Medicine (US) Committee on Advancing Pain Research C, and Education. . *Relieving*
343 *Pain in America: A Blueprint for Transforming Prevention, Care, Education, and Research*. 2011.
344 doi: NBK91497 [bookaccession]
- 345 9. Keshwani S, Smith SM, Brown J, Lo-Ciganic WH, Yang S, Smolinski NE, Hincapie-Castillo JM.
346 Trends in Prescribing of Non-steroidal Anti-inflammatory Medications in the US Ambulatory
347 Care Setting From 2006 to 2016. *The journal of pain : official journal of the American Pain*
348 *Society*. 2023. doi: 10.1016/j.jpain.2023.06.008
- 349 10. Grosser T, Yu Y, Fitzgerald GA. Emotion recollected in tranquility: lessons learned from the COX-
350 2 saga. *Annu Rev Med*. 2010;61:17-33. doi: 10.1146/annurev-med-011209-153129
- 351 11. Krum H, Swergold G, Gammaitoni A, Peloso PM, Smugar SS, Curtis SP, Brater DC, Wang H, Kaur
352 A, Laine L, et al. Blood pressure and cardiovascular outcomes in patients taking nonsteroidal
353 antiinflammatory drugs. *Cardiovasc Ther*. 2012;30:342-350. doi: 10.1111/j.1755-
354 5922.2011.00283.x
- 355 12. Smyth EM, Grosser T, Wang M, Yu Y, FitzGerald GA. Prostanoids in health and disease. *J Lipid*
356 *Res*. 2009;50 Suppl:S423-428. doi: 10.1194/jlr.R800094-JLR200
- 357 13. Cheng Y, Austin SC, Rocca B, Koller BH, Coffman TM, Grosser T, Lawson JA, FitzGerald GA. Role
358 of prostacyclin in the cardiovascular response to thromboxane A2. *Science*. 2002;296:539-541.
359 doi: 10.1126/science.1068711
- 360 14. Yu Y, Ricciotti E, Scalia R, Tang SY, Grant G, Yu Z, Landesberg G, Crichton I, Wu W, Pure E, et al.
361 Vascular COX-2 modulates blood pressure and thrombosis in mice. *Sci Transl Med*.
362 2012;4:132ra154. doi: 10.1126/scitranslmed.3003787
- 363 15. Grosser T, Fries S, FitzGerald GA. Biological basis for the cardiovascular consequences of COX-2
364 inhibition: therapeutic challenges and opportunities. *J Clin Invest*. 2006;116:4-15. doi:
365 10.1172/JCI27291
- 366 16. Catella-Lawson F, McAdam B, Morrison BW, Kapoor S, Kujubu D, Antes L, Lasseter KC, Quan H,
367 Gertz BJ, FitzGerald GA. Effects of specific inhibition of cyclooxygenase-2 on sodium balance,
368 hemodynamics, and vasoactive eicosanoids. *J Pharmacol Exp Ther*. 1999;289:735-741.

- 369 17. Nissen SE, Yeomans ND, Solomon DH, Luscher TF, Libby P, Husni ME, Graham DY, Borer JS,
370 Wisniewski LM, Wolski KE, et al. Cardiovascular Safety of Celecoxib, Naproxen, or Ibuprofen for
371 Arthritis. *N Engl J Med*. 2016;375:2519-2529. doi: 10.1056/NEJMoa1611593
- 372 18. Obeid S, Libby P, Husni E, Wang Q, Wisniewski LM, Davey DA, Wolski KE, Xia F, Bao W, Walker C,
373 et al. Cardiorenal risk of celecoxib compared with naproxen or ibuprofen in arthritis patients:
374 insights from the PRECISION trial. *Eur Heart J Cardiovasc Pharmacother*. 2022;8:611-621. doi:
375 10.1093/ehjcvp/pvac015
- 376 19. Ruschitzka F, Borer JS, Krum H, Flammer AJ, Yeomans ND, Libby P, Luscher TF, Solomon DH,
377 Husni ME, Graham DY, et al. Differential blood pressure effects of ibuprofen, naproxen, and
378 celecoxib in patients with arthritis: the PRECISION-ABPM (Prospective Randomized Evaluation of
379 Celecoxib Integrated Safety Versus Ibuprofen or Naproxen Ambulatory Blood Pressure
380 Measurement) Trial. *European heart journal*. 2017. doi: 10.1093/eurheartj/ehx508
- 381 20. Harris PA, Taylor R, Thielke R, Payne J, Gonzalez N, Conde JG. Research electronic data capture
382 (REDCap)--a metadata-driven methodology and workflow process for providing translational
383 research informatics support. *J Biomed Inform*. 2009;42:377-381. doi: 10.1016/j.jbi.2008.08.010
- 384 21. Harris PA, Taylor R, Minor BL, Elliott V, Fernandez M, O'Neal L, McLeod L, Delacqua G, Delacqua
385 F, Kirby J, et al. The REDCap consortium: Building an international community of software
386 platform partners. *J Biomed Inform*. 2019;95:103208. doi: 10.1016/j.jbi.2019.103208
- 387 22. Patrignani P, Filabozzi P, Patrono C. Selective cumulative inhibition of platelet thromboxane
388 production by low-dose aspirin in healthy subjects. *J Clin Invest*. 1982;69:1366-1372.
- 389 23. Panara MR, Renda G, Sciulli MG, Santini G, Di Giamberardino M, Rotondo MT, Tacconelli S, Seta
390 F, Patrono C, Patrignani P. Dose-dependent inhibition of platelet cyclooxygenase-1 and
391 monocyte cyclooxygenase-2 by meloxicam in healthy subjects. *J Pharmacol Exp Ther*.
392 1999;290:276-280.
- 393 24. Li X, Fries S, Li R, Lawson JA, Propert KJ, Diamond SL, Blair IA, FitzGerald GA, Grosser T.
394 Differential impairment of aspirin-dependent platelet cyclooxygenase acetylation by
395 nonsteroidal antiinflammatory drugs. *Proc Natl Acad Sci U S A*. 2014;111:16830-16835. doi:
396 10.1073/pnas.1406997111
- 397 25. Bates D, Mächler M, Bolker B, Walker S. Fitting Linear Mixed-Effects Models Using lme4. *Journal*
398 *of Statistical Software*. 2015;67:1 - 48. doi: 10.18637/jss.v067.i01
- 399 26. Institute of Medicine (U.S.). Committee on Advancing Pain Research Care and Education.
400 *Relieving pain in America : a blueprint for transforming prevention, care, education, and*
401 *research*. Washington, D.C.: National Academies Press; 2011.
- 402 27. Antman EM, Bennett JS, Daugherty A, Furberg C, Roberts H, Taubert KA. Use of nonsteroidal
403 antiinflammatory drugs: an update for clinicians: a scientific statement from the American Heart
404 Association. *Circulation*. 2007;115:1634-1642. doi: 10.1161/CIRCULATIONAHA.106.181424
- 405 28. Grosser T, Ricciotti E, FitzGerald GA. The Cardiovascular Pharmacology of Nonsteroidal Anti-
406 inflammatory Drugs. *Trends Pharmacol Sci*. 2017;38:(in press).
- 407 29. Warner TD, Giuliano F, Vojnovic I, Bukasa A, Mitchell JA, Vane JR. Nonsteroid drug selectivities
408 for cyclo-oxygenase-1 rather than cyclo-oxygenase-2 are associated with human gastrointestinal
409 toxicity: a full in vitro analysis. *Proc Natl Acad Sci U S A*. 1999;96:7563-7568.
- 410 30. Snowden S, Nelson R. The effects of nonsteroidal anti-inflammatory drugs on blood pressure in
411 hypertensive patients. *Cardiol Rev*. 2011;19:184-191. doi: 10.1097/CRD.0b013e31821ddcf4
- 412 31. Terragno NA, Terragno DA, McGiff JC. Contribution of prostaglandins to the renal circulation in
413 conscious, anesthetized, and laparotomized dogs. *Circulation research*. 1977;40:590-595.
- 414 32. Perazella MA, Tray K. Selective cyclooxygenase-2 inhibitors: a pattern of nephrotoxicity similar
415 to traditional nonsteroidal anti-inflammatory drugs. *Am J Med*. 2001;111:64-67.

- 416 33. Qi Z, Hao CM, Langenbach RI, Breyer RM, Redha R, Morrow JD, Breyer MD. Opposite effects of
417 cyclooxygenase-1 and -2 activity on the pressor response to angiotensin II. *J Clin Invest.*
418 2002;110:61-69.
- 419 34. Zewde T, Mattson DL. Inhibition of cyclooxygenase-2 in the rat renal medulla leads to sodium-
420 sensitive hypertension. *Hypertension.* 2004;44:424-428.
- 421 35. FitzGerald GA, Hossmann V, Hummerich W, Konrads A. The renin--kallikrein--prostaglandin
422 system: plasma active and inactive renin and urinary kallikrein during prostacyclin infusion in
423 man. *Prostaglandins Med.* 1980;5:445-456.
- 424 36. Peti-Peterdi J, Komlosi P, Fuson AL, Guan Y, Schneider A, Qi Z, Redha R, Rosivall L, Breyer MD,
425 Bell PD. Luminal NaCl delivery regulates basolateral PGE2 release from macula densa cells. *J Clin*
426 *Invest.* 2003;112:76-82.
- 427 37. Stichtenoth DO, Marhauer V, Tsikas D, Gutzki FM, Frolich JC. Effects of specific COX-2-inhibition
428 on renin release and renal and systemic prostanoid synthesis in healthy volunteers. *Kidney Int.*
429 2005;68:2197-2207.

430