

1 **Impact of Cerebrospinal Fluid Leukocyte Infiltration and Neuroimmune Mediators on**
2 **Survival with HIV-Associated Cryptococcal Meningitis**

3 Samuel Okurut ^{1,2*}, David R. Boulware ³, Yukari C. Manabe ^{1,4}, Lillian Tugume ¹, Caleb P.
4 Skipper ³, Kenneth Ssebambulidde ¹, Joshua Rhein ³, Abdu K. Musubire ¹, Andrew Akampurira
5 ^{1,2}, Elizabeth Okafor ³, Joseph O. Olobo ⁵, Edward N. Janoff ^{6,7}, and David B. Meya ^{1,3,8} for
6 ASTRO Trial Team.

7 ¹ Research Department, Infectious Diseases Institute, Makerere University, Kampala, Uganda

8 ² Department of Medical Microbiology, School of Biomedical Sciences, College of Health
9 Sciences, Makerere University, Kampala, Uganda

10 ³ Division of Infectious Diseases and International Medicine, Department of Medicine,
11 University of Minnesota, Minneapolis, MN, USA

12 ⁴ Division of Infectious Diseases, Department of Medicine, John Hopkins University School of
13 Medicine, Baltimore, Maryland, MD, USA

14 ⁵ Department of Immunology and Molecular Biology, School of Biomedical Sciences, College
15 of Health Sciences, Makerere University, Kampala, Uganda

16 ⁶ Mucosal and Vaccine Research Program Colorado, Department of Medicine, Division of
17 Infectious Diseases, University of Colorado Denver, Aurora, Colorado, CO. USA

18 ⁷ Rocky Mountain Regional Veterans Affairs Medical Center, Aurora CO, USA

19 ⁸ Department of Medicine, School of Medicine, College of Health Sciences, Makerere
20 University, Kampala, Uganda

21 **Correspondence to:** Samuel Okurut, Infectious Diseases Institute, College of Health Sciences,
22 Makerere University, Box 22418, Kampala, Uganda. Email: okuruts@gmail.com, Mobile:
23 +256 782, 003931

24 **Word count: 3,121 words**

25 **Abstract (220 words)**

26 **Introduction:** Cryptococcal meningitis remains a prominent cause of death in persons with
27 advanced HIV disease. CSF leukocyte infiltration predicts survival at 18 weeks; however, how
28 CSF immune response relates to CSF leukocyte infiltration is unknown.

29 **Methods:** We enrolled 401 adults with HIV-associated cryptococcal meningitis in Uganda
30 who received amphotericin and fluconazole induction therapy. We assessed the association of
31 CSF leukocytes, chemokine, and cytokine responses with 18-week survival.

32 **Results:** Participants with CSF leukocytes $\geq 50/\mu\text{L}$, had higher probability 68% (52/77) of 18-
33 week survival compared with 52% (151/292) 18-week survival in those with ≤ 50 cells/ μL
34 (Hazard Ratio=1.63, 95% confidence intervals 1.14-2.23; $p=0.008$). Survival was also
35 associated with higher expression of T helper (Th)-1, Th17 cytokines, and immune regulatory
36 elements. CSF levels of Programmed Death-1 Ligand, CXCL10, and Interleukin (IL)-2
37 independently predicted survival. In multivariate analysis, CSF leukocytes were inversely
38 associated with CSF fungal burden and positively associated with CSF protein, interferon-
39 gamma (IFN- γ), IL-17A, tumor necrosis factor (TNF)- α , and peripheral blood CD4⁺ and CD8⁺
40 T cells expression.

41 **Conclusion:** 18-week survival after diagnosis of cryptococcal meningitis was associated with
42 higher CSF leukocytes at baseline with greater T helper 1 (IFN- γ , IL-2 and TNF- α cytokines),
43 T helper 17 (IL-17A cytokine) and CXCR3⁺ T cell (CXCL10 chemokine) responses. These
44 results highlight the interdependent contribution of soluble and cellular immune responses in
45 predicting survival with HIV-associated cryptococcal meningitis.

46 **Keywords:** CSF white cells, cerebrospinal fluid, chemokines, cytokines, HIV-associated
47 cryptococcal meningitis, survival, fungal burden, antifungal therapy, immune response

48
49
50
51
52
53
54
55
56

57 1. Background

58 Cryptococcal meningitis (CM) remains one of the leading causes of AIDS-related death
59 worldwide[1–3]. Cryptococcal infection of the central nervous system (CNS) leads to
60 activation of CNS-resident and patrolling immune cells [4–6]. Activated leukocytes in
61 cerebrospinal fluid (CSF) produce chemokines, cytokines, and other immune-mediating
62 factors responsible for shaping infection, CNS inflammation and disease outcome [7,8]. The
63 evoked immune response contributes to cryptococcal killing by anti-fungal medications and
64 influences cryptococcal fungal burden and host survival [9–11]. Low numbers of leukocytes
65 in CSF are a harbinger of immune suppression and cryptococcal-related mortality [12,13].
66 Monocytes, the precursors of macrophages that harbor intracellular replication machinery for
67 *Cryptococcus*, show impaired immune activation and function among patients with
68 cryptococcal meningitis with lower probability of survival [14,15]. Increased cryptococcal
69 phagocytosis by macrophages is associated with increased intracellular fungal replication,
70 leading to high CSF cryptococcal fungal burden and lower probability of survival [15]. These
71 earlier observations suggest an influence of cryptococcal and/or other underlying immune
72 suppressive factors that selectively evade T helper (Th) -mediated defense. The evasion of the
73 T cell helper function allows unchecked intracellular fungal replication leading to high fungal
74 burden among patients and a lower probability of recovery.

75 The immune-activated cytokine, chemokine, and checkpoint regulatory responses are
76 important in orchestrating sequestration of *Cryptococci* in the CNS. The Th1 cytokine
77 interferon (IFN)- γ elicits signal transduction to activate intracellular pathogen killing by
78 infected macrophages [16]. The CXCL10-interferon inducible protein 10 (IP-10) supports the
79 recruitment of activated CXCR3⁺ T cells and Natural killer (NK) and NK T cells to mediate a
80 Th1-induced immune response [17]. Women with low CSF levels of the CXCR3⁺ T cell
81 chemoattractant chemokine, CXCL10 and Th17 T cell-activating cytokine, IL-17A were more
82 likely to die on anti-fungal therapy [18]. These observations suggest immune-mediated evasion
83 pressure by such factors that impair cryptococcal host recovery, as seen among patients with
84 high fungal burden and diminished immune response.

85 Casadevall and Pirofski's immune-pathogen damage response framework suggests that
86 an optimal treatment strategy for infectious pathogens should enhance pathogen killing and
87 control the potential detrimental effect of host-induced immune response to infection[19].
88 However, striking a balance between immune- and antifungal-mediated cryptococcal killing
89 while limiting bystander neuroimmunopathology is a challenge, especially among individuals

90 with severe immune deficiency [20–22]. To understand immune-associated survival
91 mechanisms with infiltrating CSF leukocytes, we examined whether the expression of CSF
92 Th1, Th17 cytokines, and chemokine responses correlate with levels of CSF infiltrating
93 leukocytes, CSF fungal burden, and host 18-week survival after diagnosis or study enrolment.

94

95 **2. Methods**

96 **2.1. Parent trial, participants, site, and setting**

97 We enrolled 401 consenting adults, 241 males and 160 females, with a median age of
98 35 years, (interquartile range (IQR); 29–40 years) with cryptococcal meningitis from Mulago
99 and Kiruddu Hospitals in Kampala and Mbarara Regional Referral Hospital in Mbarara,
100 Uganda between March 2015 and May 2017. Participants were recruited during the Adjunctive
101 Sertraline for the Treatment of CM trial (ClinicalTrials.gov: NCT 01802385) [23,24]. The
102 CSF cryptococcal antigen (CrAg) lateral flow assay was used to diagnose enrolled patients
103 (Immy Inc., Norman, Oklahoma, USA)[25–27]. Participants or their surrogates provided
104 written informed consent. The Mulago Hospital Research Ethics committee and University of
105 Minnesota institutional review board approved the study.

106 The CSF was collected by lumbar puncture. CSF leukocytes were counted in fresh CSF
107 using a hemocytometer. CSF was centrifuged at 500g for 5 minutes and the supernatant
108 separated and cryopreserved at -80 °C before thawing for batch testing.

109

110 **2.2. Study design**

111 This was an exploratory study, designed to investigate the association between the
112 levels of CSF leukocyte infiltration demonstrated by the CSF white cell counts and the
113 associated immune responses at CM diagnosis and 18-week survival after diagnosis or
114 enrolment. Participants were systematically selected and stratified by CSF leukocyte number:
115 $\leq 50/\mu\text{L}$, 51–200 cells/ μL , and 201–500 cells/ μL .

116

117 **2.4. Luminex cytokine and chemokine immunophenotyping**

118 The baseline CSF cytokine and chemokine levels were measured using 1:2 dilutions with a
119 human XL cytokine discovery kit per the manufacturer’s instructions (R&D, Minneapolis,

120 MN). The Luminex CSF data acquisition was performed at the University of Minnesota earlier
121 explained[18,28]. Briefly, the Th1 cytokines regulated through T-bet and STAT1 transcription
122 factors were TNF- α , IFN- γ , IL-2, and IL-12p70. The Th2 cytokines regulated through Gata 3
123 and STAT 6 transcription factor-modulated cytokines were IL-4 and IL-13. The T follicular
124 helper adaptive cells activating cytokines regulated through Bcl-6 and STAT 3 transcription
125 factors were IL-6 and IL-10. The Th17 cytokines include IL-17A. The innate-like cytokines
126 were IL-15, IL-8/CXCL8 or CXCL8, IL-1RA or IL-1F3 produced by innate lymphoid and
127 myeloid cells among neutrophils, monocytes, macrophages, dendritic cells to mediate cellular
128 chemoattraction to neuroinflammation.

129 The chemokines that work in synergy with induced cytokines and among activated cells
130 to attract B cells, T cells, and innate lymphoid cells resulting in neuroinflammation were:
131 CXCR3⁺ T cell activating chemokine CXCL10/IP-10 secreted by monocytes, macrophages,
132 dendritic cells, and in the CNS secreted by microglia cells and astrocytes for lymphocyte
133 chemoattraction to neuroinflammation. The CCL11/Eotaxin for myelocyte chemoattraction to
134 neuroinflammation. The IL-8/CXCL8 for neutrophil activation and chemoattraction to
135 neuroinflammation. The immune checkpoint inhibitor was PD-L1/B7-H1 for control of the
136 resultant immune response.

137

138 **2.5. Statistical analysis.**

139 Data were analyzed using GraphPad Prism version 9.3.0 (San Diego, California, USA).
140 In the univariate analyses, continuous variables were analyzed using the Mann-Whitney non-
141 parametric unpaired t-test for comparison of sample medians. The difference in survival
142 (binary outcome) was determined using univariate Log-Rank test and multivariate Logistics
143 Regression analysis. The 7.9% (32/401) missingness in survival were systematically imputed
144 using either all alive or dead approach. Kruskal Wallis test (Analysis of variance; ANOVA)
145 was used for simple linear group-wise analysis. Principal Component Analysis (PCA),
146 Multivariate Linear and Logistic Regression and Person Correlation was used for complex
147 multivariate data analysis and data stratification and among the outcome models. The p-value
148 <0.050 at 95% confidence interval (CI) was reported as statistically significant.

149

150 **3. Results**

151 **3.1. CSF leukocyte infiltration negatively correlates with CSF cryptococcal fungal burden**
152 **and positively correlate with CSF protein and peripheral CD4⁺ and CD8⁺ T cell counts.**

153 We defined the baseline participant demographics, clinical, microbiologic, and
154 immunological features that correlated with CSF leukocyte counts (Table 1 and Figure 1).
155 Among participants, 51.5% (206/400) were antiretroviral therapy (ART) experienced, with
156 median CD4⁺ T cells/ μ L of 16 (interquartile range [IQR]; 6-43). The CSF leukocytes were
157 generally low (median of <5 [IQR; <5-45] cells/ μ L). The CSF cryptococcal fungal colony
158 forming units (CFUs) were at a median of 52,000 (IQR; 1195 to 335,000) CFU/mL.

159 The baseline participant demographics, clinical, and laboratory features (Table 1) and
160 peripheral blood white blood cells (Figure 1) did not differ by CSF leukocyte stratification
161 (Figure 1 (i)). However, both CSF protein (Figure 1A (ii)) and peripheral CD4⁺ and CD8⁺ T
162 cells (Figure 1B (i-ii) respectively) correlated positively with CSF WBC number, whereas
163 fungal burden was lower and correlated negatively (Figure 1C) (Pearson r, correlation data not
164 shown). The peripheral white blood cells only had a trend to increasing with CSF white cell
165 stratification (Figure 1 D).

166

167 **3.2. CSF cytokines and chemokine concentration positively correlate with CSF** 168 **leukocytes infiltration**

169 Next, we determined the association of CSF cytokine and chemokine concentration in
170 relation to CSF leukocyte infiltration. The level of Th1 cytokines (IL-2, IFN- γ and TNF- α
171 correlated with the levels of CSF leukocytes infiltration (Figure 2A (i-iii)). Similarly, levels of
172 Th17 cytokine IL-17, the immune regulatory element, IL-10 cytokine and immune checkpoint
173 PD-L1 correlated with CSF leukocytes infiltration (Figure 2A-C), as did the CXCR3⁺ T cell
174 chemoattractant chemokine CXCL10/IP-10 and myeloid cells chemoattractant chemokine
175 CCL11/Eotaxin (Figure 2C-D).

176

177 **3.3. Paucity of cellular and soluble immune activated response is associated with low** 178 **probability of 18-week survival**

179 The 18-week survival was 55% (203/369 participants). Survival at 18-weeks of
180 observation was associated with CSF leukocyte infiltration (Figure 3). The probability of
181 survival was lowest (151/292 participants; 51.7%) among individuals with CSF leukocytes
182 \leq 50 cells/ μ L (median <5) compared with those with 51-200 (median 110) and 201-500 (median
183 268) cells/ μ L (51% vs. 67.3% vs. 68%, respectively) (Log Rank p=0.028) (Figure 3B). This
184 association of CSF WBC number and survival was consistent with fewer (Figure 3C) and more

185 WBC strata (Figure 3A) (stratified adjusted Hazard Ratio, (HR= 1.634, 95% CI; 1.140 to
186 2.343) and $p=0.008$) (Figure 3C).

187 Survivors had significantly lower levels of CSF fungal burden/CFUs/mL, (Figure 3 D
188 (i), high levels of CD4⁺ and CD8⁺ T cells and CSF white cells (Figure 3 D (ii)), high levels of
189 CXCL10, and IL-17A (Figure 3 D (iii) compared to those who died. Other variables IFN- γ ,
190 CSF protein tended to be lower with survival. (Figure 3D (i)). In contrast, PD-L1, TNF- α and
191 IL-2 tended to be high with survival (Figure 3D (iii)).

192

193 **3.4. Principal component analysis shows clustering of CSF fungal burden, and host** 194 **survival with circulating immune response**

195 To integrate putative survival-related variables, we visualized the associated data
196 clusters among all participants by Eigenvector projections on principal components (PC) 1 and
197 PC2, respectively (Figure 4). The principal component analysis (PCA) showed three clusters
198 of the cellular and soluble immune factors with fungal burden and host survival by Eigenvector
199 projections on the PCA model (Figure 4A). A diagonal clustering was observed between CSF
200 cryptococcal CFUs/mL and host survival (PCA cluster (i)) and with (CSF white cells, CD4⁺
201 and CD8⁺ T cells, white blood cells and CSF protein (PCA cluster (ii) (Figure 4A (i-ii)). Two
202 orthogonal clusters were observed for CSF cryptococcal CFUs/mL and host survival with CSF
203 cytokines (PCA cluster (i) and (iii); Figure 4A) and CSF cytokines with CSF and peripheral
204 blood features (PCA cluster (ii) and (iii); Figure 4A) respectively. Cumulatively, the CSF
205 leukocytes Eigenvector projection on PC1 had a 35.7% effect size, and the CSF cryptococcal
206 CFUs/mL Eigenvector projection on PC2 with a 12.8% effect size, contributing the greatest
207 variability to the PCA model (Figure 4B). The principal component with highest effect sizes
208 are those with the most likelihood that to predict the model outcome for within component,
209 between components and among components interactions. In this case fungal CFU and CSF
210 WBC was demonstrated to have the greatest prediction power on survival.

211

212 **3.5. CSF leukocyte infiltration correlates with circulating CD4⁺ and CD8⁺ T cells, and** 213 **CSF fungal burden and levels of IL-17A and TNF- α**

214 Next, we determined the contribution of the cellular and soluble immune factors that
215 independently determine CSF white cells and host survival. After adjusting for PCA
216 components in cluster (ii) with the CSF white cell counts, CSF cryptococcal, Log₁₀ CFUs/mL;

217 (p=0.0022), CD4⁺ T cells counts; (p=0.0119), CD8⁺ T cells counts; (p=0.0015), and CSF
218 protein, mg/dL; (p=0.0143), each independently predicted CSF leukocyte infiltration among
219 all patients, (Table 2; Model 1). This observation was consistent even with substitution of 7.9%
220 (32 of 401) missingness in survival (all alive or all dead) (data not shown). After adjusting for
221 PCA components in cluster (iii) with the levels of CSF leukocyte infiltration, the levels of IL-
222 17A; (p<0.0001) a Th17 cytokine, and TNF- α ; (p=0.0261) a Th1 cytokine, independently
223 predicted the levels of CSF leukocyte infiltration among all patients, (Table 2; Model 2).

224 The CSF white cell infiltration during cryptococcal meningitis (cryptococcal CFU/mL)
225 is associated with the number of peripheral circulating CD4⁺ and CD8⁺ T cells and
226 concentration of CSF protein. These immune modulators together predict the level of IL-17A
227 and TNF- α cytokine concentration in CSF with cryptococcal meningitis.

228

229 **3.6. PD-L1, CXCL10 and IL-2 independently predict survival**

230 After adjusting for all components in the PCA outcome model, elevation in levels of
231 B7-H1 / PD-L1 in both linear and logistic regression analysis consistently predicted higher
232 probability of survival (Table 3; Model 1). The higher levels of CXCL10 / IP-10 (model 1-2)
233 consistently and independently predicted higher probability of survival among all patients.
234 (Table 3; Model 1). This observation was consistent even after adjusting for 7.9% missingness
235 in survival (data not shown). The elevation in the levels of IL-2 in both linear and logistic
236 regression analysis (Model 1-2) consistently and independently predicted higher probability of
237 survival among all patient (Table 3; Model 1-2) respectively. Each of the soluble immune
238 factors IFN- γ , IL-2, TNF- α , and IL-17A cytokines and CXCL10 / IP-10 chemokine were
239 independently associated with levels of PD-L1, (in all factors multivariate linear regression
240 analysis p<0.020 and data not shown).

241

242 **4. Discussion**

243 Survival with HIV-associated cryptococcal meningitis is associated with lower CSF
244 fungal burden, greater CSF leukocyte infiltration and higher levels of neuroimmune factors in
245 CSF. We found that individuals with CSF leukocytes <50 cells/ μ L had the poorest clinical and
246 immunological profile associated with the highest CSF fungal burden, lowest number of
247 peripheral CD4⁺ and CD8⁺ T cells, CSF cytokines and the lowest probability of 18-week
248 survival than individuals compared with those with >50 CSF leukocytes/ μ L. Among cytokines

249 in CSF, individuals with CSF leukocytes <50 cells/ μ L had the lowest levels of the Th1 cellular
250 growth activating cytokine IL-2, cellular activating cytokines IFN- γ , cell death activating
251 cytokine TNF- α , and CXCR3⁺ T cell chemoattractant chemokine CXCL10 and Th17 T cell-
252 activating cytokine IL-17A. In multivariate analysis, infiltrating CSF leukocyte numbers were
253 negatively associated with CSF cryptococcal fungal burden, but positively associated with CSF
254 protein concentration and peripheral circulating CD4⁺ and CD8⁺ T cells. Moreover, elevated
255 concentrations of CXCL10, IL-2 and PD-L1 independently predicted a higher probability of
256 18-week survival.

257 In cryptococcal meningitis, nearly 80% of the baseline CD45⁺ WBC in CSF are T cells,
258 among which 70% are CD8⁺ and a minority are CD4⁺ [8]. Other mononuclear cells central to
259 the CSF exudate included NK cells, monocytes [8] and B cells [7]. Critical to the outcome of
260 cryptococcal infection is the balance of an activated cellular immune response with a poly-
261 functional soluble immune profile that function in synergy [29–31]. The primary cells infected
262 are tissue resident macrophages that provide an intracellular niche for cryptococcal replication
263 [29–31]. To prevent intracellular cryptococcal replication requires an activated T cell response.
264 Cytotoxic CD8⁺ T cells and NK T cells are modulated by Th1 CD4⁺ T cell stimulation [32]. It
265 is notable that evasion of multiple components of innate and adaptive immune system
266 collectively predispose hosts to virulent and lethal cryptococcal disease [29–31]. In this regard,
267 the immune damage response framework suggests that antifungal therapy alone without
268 immune modulatory therapy is not sufficient to cure the infection and modulate host immune-
269 mediated injury and death.—Thus, multivariate linear and logistic regression models that
270 integrate cytokine, chemokine, and cellular responses, as described herein, reveal the potential
271 role of poly-functional immune modulated responses to influence fungal burden and host
272 survival.

273 The inverse association of the CSF fungal burden with the levels of cellular and soluble
274 immune response and host survival implicates the selective evasion of Th1- and Th17-mediate
275 control of intracellular *Cryptococcus* replication. We showed that upregulation of IL-17A is
276 associated with lower CSF cryptococcal fungal burden and improved survival. In the mouse
277 lung model, elevated IL-17 modulates cryptococcal yeast differentiation to limit spread across
278 the blood-brain barrier [33–35]. The adaptive immune clearance of *Cryptococcus* requires
279 precise activation and recruitment of cytokine- and chemokines-producing T cells that serve as
280 the cornerstones of protection[6]. The evasion of cryptococcal fungal immune control
281 mechanisms with down-regulated Th1 (IFN- γ , TNF- α , IL-2) and Th17 T cell cytokines (IL-

282 17A) and CXCR3⁺ T cell chemoattractant chemokine (CXCL10) responses, allows more
283 vigorous replication of *Cryptococcus* and overwhelming infection. Here we report that fatal
284 instances of cryptococcal meningitis are associated with a paucity of CSF CXCR3⁺ T cell
285 activating chemokine CXCL10, growth activating cytokine IL-2 and immune checkpoint
286 regulatory element PD-L1. The down regulated expression of these neuroimmune modulatory
287 molecules in cryptococcal disease selectively likely impairs recruitment and maturation of
288 adaptive T cell function in response to the CNS intracellular fungal replication.

289 In this context, *Antonia et al., (2019)* showed that low concentrations of CXCL10 in
290 circulation were associated with glycoprotein proteolytic cleavage of the CXCL10 chemokine
291 terminal domain by glycoprotein[33]. The effect of the extracellular cleavage of CXCL10
292 ligand also affected other members of the CXCR3⁺ receptor family of activating chemokines.
293 These members include CXCL11 and CXCL9 that impair T cell recruitment in response to
294 intracellular evading class of pathogens [33]. Consistent with our results, patients with low
295 levels of CSF CXCL10 and a low probability of survival demonstrate impaired fungal
296 clearance [34] with a high fungal burden [12]. These observations are consistent with a T cell
297 evasion hypothesis in which impaired immune control of intracellular cryptococcal replication
298 is associated with paucity of T cell activated response [31]. Th1 T cell produce IFN- γ , TNF-
299 α IL-2 activation cytokines and CXCR3⁺ T cells CXCL10 chemoattractant enable infiltration
300 of CSF by T, NK, NK-T and myeloid cell lineages [35]. The decrement in CXCR3⁺ receptor
301 family chemoattractant chemokines impairs CSF T cell recruitment and cytokine activation at
302 the site of infection, which allows intracellular replication of *Cryptococcus* resulting in high
303 fungal burden and impaired host recovery.

304 Among Th-1 cytokines, induction of IFN- γ facilitates activation and recruitment of
305 effector cellular responses needed to control infection [43]. IFN- γ induces the chemokine
306 CXCL10/IP-10, a chemoattractant ligand which recruits activated lymphocytes in response to
307 CNS infection [37,38]. The disruption of IFN- γ -encoding genes increased the susceptibility to
308 infection and rapid progression to death [36,39]. Whether mutations in IFN- γ encoding genes
309 observed in other infections contribute to the high in hospital mortality rates with Cryptococcal
310 infection has not been investigated [12,13]. Barber et al., demonstrated the importance of IFN-
311 γ responses in modulating immune activation among intracellular *M. tuberculosis*-infected
312 macrophages [40]. The absence of an IFN- γ activating response limited production of reactive
313 oxygen species needed to fully activate intracellular/phagosome killing in infected
314 macrophages with increased mycobacterial burden [40].

315 Clinically, the low peripheral CD4⁺ T cell count despite ART treatment at CM
316 diagnosis potentially implicates the role of ART failure or failed immune reconstitution with
317 unmasking and/or progression of cryptococcal infection. The use of high dose of antifungals
318 early can constitute effective pre-emptive therapy to improve outcomes before patients get
319 severely ill with high CSF cryptococcal fungal burden. However, early diagnosis or staging of
320 cryptococcal infection is a challenge where patients present late with overt disease 1-2 weeks
321 after the onset of symptoms [13,41].

322

323 **5. Conclusion**

324 Multiple cellular and soluble immune elements appear to mediate adaptive-innate
325 immune crosstalk to control intracellular cryptococcal replication and modulate host recovery.
326 A paucity of CSF white cells is associated with higher fungal burden, lower levels of
327 neuroimmune cytokines, chemokines and checkpoint inhibitors and a lower frequency of
328 survival at 18-weeks. The decrement in these factors likely conspire to limit T cell-mediated
329 control of intracellular cryptococcal replication in macrophages with resultant serious infection
330 and death. The levels of evoked Th1 and Th17A cytokines and CXCR3⁺ activating chemokine
331 CXCL10 and PD-L1 immune checkpoint responses are potentially modifiable to enhance
332 clinical outcomes. These variables also serve as diagnostic, prognostic, and survival indicators
333 required to advance immune based therapy to control *Cryptococcus* and improve survival.
334 Given that antifungal therapy alone is not sufficient to cure cryptococcal meningitis. Immune
335 modulatory treatment may hold promise going forward.

336

337 **6. Funding**

338 This work was supported in part by the National Institutes of Health and National
339 Institute of Allergy and Infectious Diseases (R01AI078934, R21NS065713, R01AI108479,
340 T32AI055433 - DBM, DRB, and R01 AI108479 – JR), National Institute of Neurologic
341 Diseases and Stroke; (R01NS086312 and R25TW009345, and K24AI096925 - JR). Fogarty
342 International Center training grant; (D43TW009771 – YCM and PhD training scholarship –
343 SO; R01NS086312 – JR and Northern Pacific Global Health Fellowship Program award
344 (D43TW009345 - LT). GlaxoSmithKline Trust in Science Africa (COL100044928 - SO).
345 DELTAS Africa Initiative grant (DEL-15-011 to THRiVE-2 - DBM), Wellcome Trust grant
346 (107742/Z/15/Z - DBM), and Veterans Affairs Research Service; (I01CX001464 - ENJ), the
347 Wellcome Trust (Training Health Researchers into Vocational Excellence (THRiVE) in East

348 Africa, grant number (087540-DBM). United Kingdom Medical Research Council/Wellcome
349 Trust/Department for International Development (MRC MR/M007413/1 - JR) and the Grand
350 Challenges Canada (S4-0296-01 - JR). Funding agencies had no role in study design, data
351 collection, data analysis, preparation of the manuscript, or the decision to publish.

352

353 **7. Conflict of interest**

354 Authors have declared no substantial conflict of interest. Authors with funding support have
355 declared and acknowledged sources of funding. SO – was a Fogarty and GlaxoSmithKline-
356 Trust in Science Africa funded doctoral scholar at Infectious Diseases Institute, Makerere
357 University. Part of the work contributed to the doctoral successful doctoral thesis examination
358 at the Department of Medical Microbiology, School of Biomedical Sciences, College of Health
359 Sciences, Makerere University [42]. AMK - was a member of a data safety monitoring board.

360

361 **8. Author contribution**

362 SO - conceptualized the study, framed the hypothesis, designed statistical models,
363 performed statistical analyses, compiled the results, drafted the first version of the manuscript,
364 edited the manuscript, managed the publication review process, and sourced and contributed
365 research funding. DBM - conceptualized the study, framed the hypothesis, supported
366 experiment design, guided data analysis, guided manuscript writing, contributed to the first
367 draft version of the manuscript, edited the manuscript, sourced, and contributed research
368 funding. ENJ - conceptualized the study, framed the hypothesis, guided data analysis, guided
369 manuscript writing, edited the manuscript, sourced, and contributed research funding. YCM -
370 conceptualized the study, framed the hypothesis, edited the manuscript, and sourced and
371 contributed research funding. DRB - designed parent cohort studies, guided data analysis,
372 edited the manuscript, sourced, and contributed research funding. JR - conceptualized the
373 study, framed the hypothesis, edited the manuscript contributed to the research funding. OOOJ -
374 conceptualized the study, framed the hypothesis, and edited the manuscript. LT, CPS EK,
375 AKM, ECO, managed the patients, contributed data, and reviewed the manuscript. AA
376 managed patients' diagnostics, contributed data, and reviewed the manuscript.

377

378 **9. Acknowledgments**

379 We thank study participants for their involvement in the parent study. We thank the
380 ASTRO trial team for the clinical management of patients and data collection including Jane
381 Francis Ndyetukira, Cynthia Ahimbisibwe, Florence Kugonza, Alisat Sadiq, Catherine

382 Nanteza, Kiiza Tadeo Kandole, Darlisha Williams, Edward Mpoza, Apio Alison, Radha
383 Rajasingham, Mahsa Abassi, Enock Kagimu, Morris K. Rutakingirwa, Fiona Cresswell, and
384 John Kasibante. We thank the doctoral committee mentorship support from Makerere
385 University, especially from Bernard S. Bagaya, Freddie Bwanga, and Henry Kajumbula. We
386 thank institutional support from IDI from Bosco Kafufu, Andrew Kambugu. We thank the
387 Ph.D. program mentorship support received from; the IDI Research Capacity Building Unit
388 especially from Barbara D. Castelnuovo, Aidah Nanvuma, Stephen Okoboi, and the Statistics
389 unit especially Agnes Kiragga. Johns Hopkins University, School of Medicine and Bloomberg
390 School of Public Health, Department of Molecular Microbiology, and Immunology, especially
391 from Robert R. Bollinger and Arturo Casadevall. From the University of Colorado, Denver,
392 Anschutz Medical Campus Aurora, Division of Infectious Disease, Department of Medicine
393 and Veteran Affairs Research Services especially from Brent Palmer, Tina Powell, and Jeremy
394 Rakhola. We thank the statistical data analysis mentorship received from the University of
395 Minnesota, especially from Ananta S. Bangdiwala and Kathy Huppler Hullsiek.

396

397 **10. References**

- 398 1. Molloy SF, Kanyama C, Heyderman RS, Loyse A, Kouanfack C, Chanda D, et al.
399 Antifungal combinations for treatment of cryptococcal meningitis in Africa. *New*
400 *England Journal of Medicine*. 2018;378: 1004–1017. doi:10.1056/NEJMoa1710922
- 401 2. Wake RM, Govender NP, Omar T, Nel C, Mazanderani AH, Karat AS, et al.
402 Cryptococcal-related Mortality Despite Fluconazole Preemptive Treatment in a
403 Cryptococcal Antigen Screen-and-Treat Program. *Clin Infect Dis*. 2020;70: 1683–1690.
404 doi:10.1093/cid/ciz485
- 405 3. Rajasingham R, Smith RM, Park BJ, Jarvis JN, Govender NP, Chiller TM, et al. Global
406 burden of disease of HIV-associated cryptococcal meningitis: an updated analysis.
407 *Lancet Infect Dis*. 2017;17: 873–881. doi:10.1016/S1473-3099(17)30243-8
- 408 4. Nielsen K, Cox GM, Litvintseva AP, Mylonakis E, Malliaris SD, Benjamin DK, et al.
409 *Cryptococcus neoformans* α strains preferentially disseminate to the central nervous
410 system during coinfection. *Infect Immun*. 2005;73: 4922–4933.
411 doi:10.1128/IAI.73.8.4922-4933.2005
- 412 5. Santiago-Tirado FH, Onken MD, Cooper JA, Klein RS, Doering TL. Trojan horse transit
413 contributes to blood-brain barrier crossing of a eukaryotic pathogen. *mBio*. 2017;8.
414 doi:10.1128/mBio.02183-16
- 415 6. Okurut S, Boulware DR, Olobo J, Meya DB. Landmark clinical observations and
416 immunopathogenesis pathways linked to HIV and *Cryptococcus* fatal central nervous
417 system co-infection. *Mycoses*. 2020;63: 840–853. doi:10.1111/myc.13122
- 418 7. Okurut S, Meya DB, Bwanga F, Olobo J, Eller MA, Cham-Jallow F, et al. B cell
419 Compartmentalization in Blood and Cerebrospinal Fluid of HIV-Infected Ugandans
420 with Cryptococcal Meningitis. Noverr MC, editor. *Infect Immun*. 2020;88: e00779-19.
421 doi:10.1128/IAI.00779-19
- 422 8. Meya DB, Okurut S, Zziwa G, Rolfes MA, Kelsey M, Cose S, et al. Cellular immune
423 activation in cerebrospinal fluid from ugandans with cryptococcal meningitis and

- 424 immune reconstitution inflammatory syndrome. *Journal of Infectious Diseases*.
425 2015;211: 1597–1606. doi:10.1093/infdis/jiu664
- 426 9. Esher SK, Zaragoza O, Alspaugh JA. Cryptococcal pathogenic mechanisms: A
427 dangerous trip from the environment to the brain. *Mem Inst Oswaldo Cruz*. 2018;113:
428 1–15. doi:10.1590/0074-02760180057
- 429 10. Mora DJ, Fortunato LR, Andrade-Silva LE, Ferreira-Paim K, Rocha IH, Vasconcelos
430 RR, et al. Cytokine profiles at admission can be related to outcome in AIDS patients
431 with cryptococcal meningitis. *PLoS One*. 2015;10: 1–17.
432 doi:10.1371/journal.pone.0120297
- 433 11. Wiesner DL, Moskalenko O, Corcoran JM, McDonald T, Rolfes MA, Meya DB.
434 Cryptococcal Genotype Influences Immunological Response and Human Clinical
435 Outcome after Meningitis. *MbioAsmOrg*. 2012;3: 1–10. doi:10.1128/mBio.00196-
436 12.Updated
- 437 12. Jarvis JN, Bicanic T, Loyse A, Namarika D, Jackson A, Nussbaum JC, et al.
438 Determinants of mortality in a combined cohort of 501 patients with HIV-associated
439 cryptococcal meningitis: Implications for improving outcomes. *Clinical Infectious
440 Diseases*. 2014;58: 736–745. doi:10.1093/cid/cit794
- 441 13. Boulware DR, Meya DB, Muzoora C, Rolfes MA, Huppler Hullsiek K, Musubire A, et
442 al. Timing of Antiretroviral Therapy after Diagnosis of Cryptococcal Meningitis. *New
443 England Journal of Medicine*. 2014;370: 2487–2498. doi:10.1056/nejmoa1312884
- 444 14. Scriven JE, Graham LM, Schutz C, Scriba TJ, Wilkinson KA, Wilkinson RJ, et al. A
445 glucuronoxylomannan-associated immune signature, characterized by monocyte
446 deactivation and an increased interleukin 10 level, is a predictor of death in cryptococcal
447 meningitis. *Journal of Infectious Diseases*. 2016;213: 1725–1734.
448 doi:10.1093/infdis/jiw007
- 449 15. Sabiiti W, Robertson E, Beale MA, Johnston SA, Brouwer AE, Loyse A, et al. Efficient
450 phagocytosis and laccase activity affect the outcome of HIV-associated cryptococcosis.
451 *J Clin Invest*. 2014;124: 2000–2008. doi:10.1172/JCI72950
- 452 16. Barber DL, Andrade BB, Sereti I, Sher A. Immune reconstitution inflammatory
453 syndrome: the trouble with immunity when you had none. *Nat Rev Microbiol*. 2012;10:
454 150–156. doi:10.1038/nrmicro2712
- 455 17. Campanella GSV, Lee EMJ, Sun J, Luster AD. CXCR3 and heparin binding sites of the
456 chemokine IP-10 (CXCL10). *Journal of Biological Chemistry*. 2003;278: 17066–17074.
457 doi:10.1074/jbc.M212077200
- 458 18. Okurut S, Boulware DR, Okafor E, Rhein J, Kajumbula H, Bagaya BS, et al. Divergent
459 neuroimmune signatures in the cerebrospinal fluid predict differential gender-specific
460 survival among patients with HIV-associated cryptococcal meningitis. *Front Immunol*.
461 2023;14. doi:10.3389/fimmu.2023.1275443
- 462 19. Casadevall A, Pirofski L. The damage-response framework of microbial pathogenesis.
463 *Nat Rev Microbiol*. 2003;1: 17–24. doi:10.1038/nrmicro732
- 464 20. Casadevall A, Pirofski LA. Host-pathogen interactions: Basic concepts of microbial
465 commensalism, colonization, infection, and disease. *Infect Immun*. 2000;68: 6511–
466 6518. doi:10.1128/IAI.68.12.6511-6518.2000
- 467 21. Casadevall A, Pirofski LA. Host-pathogen interactions: Redefining the basic concepts
468 of virulence and pathogenicity. *Infect Immun*. 1999;67: 3703–3713.
469 doi:10.1128/iai.67.8.3703-3713.1999
- 470 22. Shourian M, Qureshi ST. Resistance and tolerance to cryptococcal infection: An
471 intricate balance that controls the development of disease. *Front Immunol*. 2019;10: 1–
472 11. doi:10.3389/fimmu.2019.00066

- 473 23. Rhein J, Huppler Hullsiek K, Tugume L, Nuwagira E, Mpoza E, Evans EE, et al.
474 Adjunctive sertraline for HIV-associated cryptococcal meningitis: a randomised,
475 placebo-controlled, double-blind phase 3 trial. *Lancet Infect Dis.* 2019;19: 843–851.
476 doi:10.1016/S1473-3099(19)30127-6
- 477 24. Rhein J, Morawski BM, Hullsiek KH, Nabeta HW, Kiggundu R, Tugume L, et al.
478 Efficacy of adjunctive sertraline for the treatment of HIV-associated cryptococcal
479 meningitis: an open-label dose-ranging study. *Lancet Infect Dis.* 2016;16: 809–818.
480 doi:10.1016/S1473-3099(16)00074-8
- 481 25. Boulware DR, Rolfes MA, Rajasingham R, von Hohenberg M, Qin Z, Taseera K, et al.
482 Multisite validation of cryptococcal antigen lateral flow assay and quantification by
483 laser thermal contrast. *Emerg Infect Dis.* 2014;20: 45–53. doi:10.3201/eid2001.130906
- 484 26. Meya DB, Kiragga AN, Nalintya E, Morawski BM, Rajasingham R, Park BJ, et al.
485 Reflexive Laboratory-Based Cryptococcal Antigen Screening and Preemptive
486 Fluconazole Therapy for Cryptococcal Antigenemia in HIV-Infected Individuals With
487 CD4 <100 Cells/microL: A Stepped-Wedge, Cluster-Randomized Trial. *J Acquir*
488 *Immune Defic Syndr.* 2019;80: 182–189. doi:10.1097/QAI.0000000000001894
- 489 27. Dyal J, Akampurira A, Butler E, Kiggundu R, Nabeta H, Musubire A, et al.
490 Reproducibility of CSF quantitative culture methods for *Cryptococcus neoformans*.
491 *International Journal of Infectious Diseases.* 2014;21: 286.
492 doi:10.1016/j.ijid.2014.03.1013
- 493 28. Stadelman AM, Ssebambulidde K, Tugume L, Pastick KA, Hullsiek KH, Lofgren S, et
494 al. Impact of biological sex on cryptococcal meningitis mortality in Uganda and South
495 Africa. *Med Mycol.* 2021;59: 712–719. doi:10.1093/mmy/myaa108
- 496 29. Rohatgi S, Pirofski LA. Host immunity to *Cryptococcus neoformans*. *Future*
497 *Microbiology.* Future Medicine Ltd.; 2015. pp. 565–581. doi:10.2217/fmb.14.132
- 498 30. Ma H, May RC. Chapter 5 Virulence in *Cryptococcus* Species. *Advances in Applied*
499 *Microbiology.* 2009. pp. 131–190. doi:10.1016/S0065-2164(08)01005-8
- 500 31. Gibson JF, Johnston SA. Immunity to *Cryptococcus neoformans* and *C. gattii* during
501 cryptococcosis. *Fungal Genetics and Biology.* 2015;78: 76–86.
502 doi:10.1016/j.fgb.2014.11.006
- 503 32. Barb AW. Fc γ receptor compositional heterogeneity: Considerations for
504 immunotherapy development. *Journal of Biological Chemistry.* American Society for
505 Biochemistry and Molecular Biology Inc.; 2021. doi:10.1074/jbc.REV120.013168
- 506 33. Antonia AL, Gibbs KD, Trahair ED, Pittman KJ, Martin AT, Schott BH, et al. Pathogen
507 Evasion of Chemokine Response Through Suppression of CXCL10. *Front Cell Infect*
508 *Microbiol.* 2019;9. doi:10.3389/fcimb.2019.00280
- 509 34. Chang CC, Omarjee S, Lim a, Spelman T, Gosnell BI, Carr WH, et al. Chemokine levels
510 and chemokine receptor expression in the blood and the cerebrospinal fluid of HIV-
511 infected patients with cryptococcal meningitis and cryptococcosis-associated immune
512 reconstitution inflammatory syndrome. *J Infect Dis.* 2013;208: 1604–1612.
513 doi:10.1093/infdis/jit388
- 514 35. Chung SH, Ye XQ, Iwakura Y. Interleukin-17 family members in health and disease.
515 *International Immunology.* Oxford University Press; 2021. pp. 723–729.
516 doi:10.1093/intimm/dxab075
- 517 36. Kak G, Raza M, Tiwari BK. Interferon-gamma (IFN- γ): Exploring its implications in
518 infectious diseases. *Biomol Concepts.* 2018;9: 64–79. doi:10.1515/bmc-2018-0007
- 519 37. Vazirinejad R, Ahmadi Z, Arababadi MK, Hassanshahi G, Kennedy D. The biological
520 functions, structure and sources of CXCL10 and its outstanding part in the
521 pathophysiology of multiple sclerosis. *Neuroimmunomodulation.* 2014;21: 322–330.
522 doi:10.1159/000357780

- 523 38. Oslund KL, Zhou X, Lee B, Zhu L, Duong T, Shih R, et al. Synergistic up-regulation of
524 CXCL10 by virus and IFN γ in human airway epithelial cells. PLoS One. 2014;9: 1–8.
525 doi:10.1371/journal.pone.0100978
- 526 39. Naik B, Ahmed SMQ, Laha S, Das SP. Genetic Susceptibility to Fungal Infections and
527 Links to Human Ancestry. Front Genet. 2021;12: 1–12. doi:10.3389/fgene.2021.709315
- 528 40. Daniel L. Barber. Immune reconstitution inflammatory syndrome: the trouble with
529 immunity when you had none. Nat Rev Microbiol. 2013;23: 1–7.
530 doi:10.1038/nrmicro2712.Immune
- 531 41. Poplin V, Boulware DR, Bahr NC. Methods for rapid diagnosis of meningitis etiology
532 in adults. Biomarkers in Medicine. Future Medicine Ltd.; 2020. pp. 459–479.
533 doi:10.2217/bmm-2019-0333
- 534 42. Okurut S. B cell responses, immune modulation, and survival among patients with HIV-
535 associated cryptococcal meningitis. Doctoral thesis, Makerere University. 2023.
536
- 537
- 538

539 **Tables**

540 **Table 1. Participants Baseline Demographics and Clinical Features by CSF Leukocytes**

541

| Baseline Demographics | ≤50 white cells/μL CSF | 51-200 white cells/μL CSF | 201-500 white cells/μL CSF | P-value |
|---------------------------------|-------------------------------|----------------------------------|-----------------------------------|----------------|
| N | 318 | 57 | 26 | |
| Age, years | 35 (29-41) | 32 (29-38) | 33 (28-39) | 0.227 |
| Females, n (%) | 127 (39.9) | 22 (39.6) | 11 (42.3) | 0.950 |
| Weight, kg | 51.5 (50-60) | 55 (50-60) | 50 (49.5-60) | 0.428 |
| Months on ART* | 10.0 (1.3-39.5) | 6.4 (1.2-38.6) | 2.7 (0.4-4.5) | 0.132 |
| Headache duration, days | 14 (7-30) | 14 (7.5-30) | 14 (7-23.3) | 0.924 |
| GCS <15, n (%) | 146 (67.3) | 29 (50.9) | 17 (65.4) | 0.149 |
| Hemoglobin, g/dL | 11.7 (10.1-13.3) | 11.4 (10.1-13.6) | 10.5 (9.2-12.4) | 0.127 |
| Platelets, x10 ³ /μL | 192 (132-251) | 203 (145-254) | 225.5 (136 -329) | 0.258 |
| CSF opening pressure, mm Hg | 19.7 (14.7-22.1) | 17.7 (13.2-20.9) | 19.1 (15.3-20.1) | 0.653 |

542

543 Values are median (IQR). Statistic: Kruskal Wallis test (ANOVA) comparing the variables
544 among participants across the three CSF white cell class intervals. Not statistically significant
545 were variables with p-value ≥ 0.05 at a 95% confidence interval. ART* experience -
546 antiretroviral therapy; reported among 165 participants with ≤ 50 cells/μL white cells, 32
547 participants with 51-200 white cells/μL, and 14 participants with 201-500 white cells/μL. GCS
548 - Glasgow Coma Scale. CFU –colony forming units in CSF cryptococcal fungal growth culture.
549 Normal adults CSF opening pressure is <10-15 mmHg that shows generally high CSF opening
550 pressure above normal among patients with cryptococcal meningitis.

551 **Table 2. Multivariate Linear Regression of Independent Predictors of CSF Leukocytes**
 552 **Infiltration**

| Independent adjusted variables | Estimated Risk Ratios (95% CI; asymptotic) | Dependent | P value |
|---|--|-----------------|---------|
| Model 1: (PC1; (ii)) CSF white cell dependent and matched independent colinear predictor variables. Adjusted for PCA cluster (ii) components; (CSF cryptococcal, log10 CFUs/mL, CD4 ⁺ T cells / μ L, CD8 ⁺ T cells / μ L, CSF protein, mg/dL, and blood white cells / μ L). | | | |
| CSF cryptococcal, log10 CFUs/mL | -8.11 (-13.28 to -2.94) | CSF white cells | 0.002 |
| CD4 ⁺ T cells / μ L | 0.28 (0.06 to 0.50) | CSF white cells | 0.012 |
| CD8 ⁺ T cells / μ L | 0.05 (0.02 to 0.078) | CSF white cells | 0.002 |
| CSF protein, mg/dL | 0.09 (0.02 to 0.16) | CSF white cells | 0.014 |
| Model 2: PC1; (iii) CSF white cell dependent and matched independent colinear predictor variables. Adjusted for PCA cluster (iii) components; (B7-H1 / PD-L1, CCL11 / Eotaxin, CXCL10 / IP-10, IFN- γ , IL-10, IL-17A, IL-2 and TNF- α) | | | |
| IL-17A | 3.04 (1.97 to 4.12) | CSF white cells | <0.0001 |
| TNF- α | -0.16 (-0.29 to -0.02) | CSF white cells | 0.026 |

553

554 Statistic: Multivariate Linear Regression (least squares) models among all participants.
 555 Cytokines; (pg/mL). The values (Risk Ratios) - shown model transformed and normalized
 556 imputed values (not actual measurements) of variables. P values, p<0.0500 are statistically
 557 significant. Other variables including peripheral white blood cells, PD-L1, CXCL10, CCL11,
 558 IFN- γ , IL-2 and IL-10 did not independently predict the levels of CSF white cells with
 559 cryptococcal meningitis.

560

561

562

563

564 **Table 3. Multivariate Linear and Logistic Regression of Independent Predictors of**
 565 **Survival.**

| Independent adjusted variables | Estimated Risk Ratios (95% CI) | Linear regression, P value | Logistic regression; Odds Ratios (95% CI) |
|---|---------------------------------------|-----------------------------------|--|
| Model 1: All Principal Components survival dependent and matched independent predictor of survival. Adjusted for CSF white cells / μ L, CSF cryptococcal log ₁₀ CFUs /mL, CD4 T cells / μ L, CD8 ⁺ T cells / μ L, CSF protein, mg/dL, B7-H1 / PD-L1, CCL11 / Eotaxin, CXCL10 / IP-10, IFN- γ , IL-10, IL-17A, IL-2, TNF- α and blood white cells / μ L. | | | |
| B7-H1 / PD-L1 | 0.0010 (4.1e-005 to 0.0021) | 0.0414 | 1.0060 (1.0010 to 1.0110) |
| CXCL10 / IP-10 | -0.0001 (-0.0001 to -5.4e-006) | 0.0320 | 0.9997 (0.9995 to 1.0000) |
| IL-2 | 0.0280 (0.0054 to 0.0507) | 0.0155 | 1.1430 (1.0330 to 1.2720) |
| Model 2: PC2: PCA cluster (iii) survival dependent and matched independent predictor variables. Adjusted for (B7-H1 / PD-L1, CCL11 / Eotaxin, CXCL10 / IP-10, IFN- γ , IL-10, IL-17A, IL-2 and TNF- α) | | | |
| CXCL10 / IP-10 | -0.0001 (-0.0001 to -2.1e-005) | 0.0045 | 0.9997 (0.9995 to 0.9999) |
| IL-2 | 0.0207 (0.0014 to 0.0399) | 0.0353 | 1.0920 (1.0080 to 1.1870) |

566
 567 Statistic: Multivariate Linear Regression (Least Squares) and Multivariate Logistic Regression
 568 Survival outcome dependent predictor variables among all participants. Interpretation: the
 569 values (Risk Ratios and Odds Ratios) - shown model transformed and normalized imputed
 570 values (not actual measurements) of variables. In Linear regression, the p-values, $p < 0.0500$
 571 were statistically significant. CI – confidence interval. The confidence interval values not
 572 crossing through zero on either direction (positive or negative) are statistically significant. The
 573 PCA cluster (ii) adjusted components including (CSF white cells, CSF cryptococcal log₁₀
 574 CFUs, CD4⁺ T cells, CD8⁺ T cells, CSF protein, and blood white cells) and other variables did
 575 not predict or match survival in either analyses (model analysis data not shown).

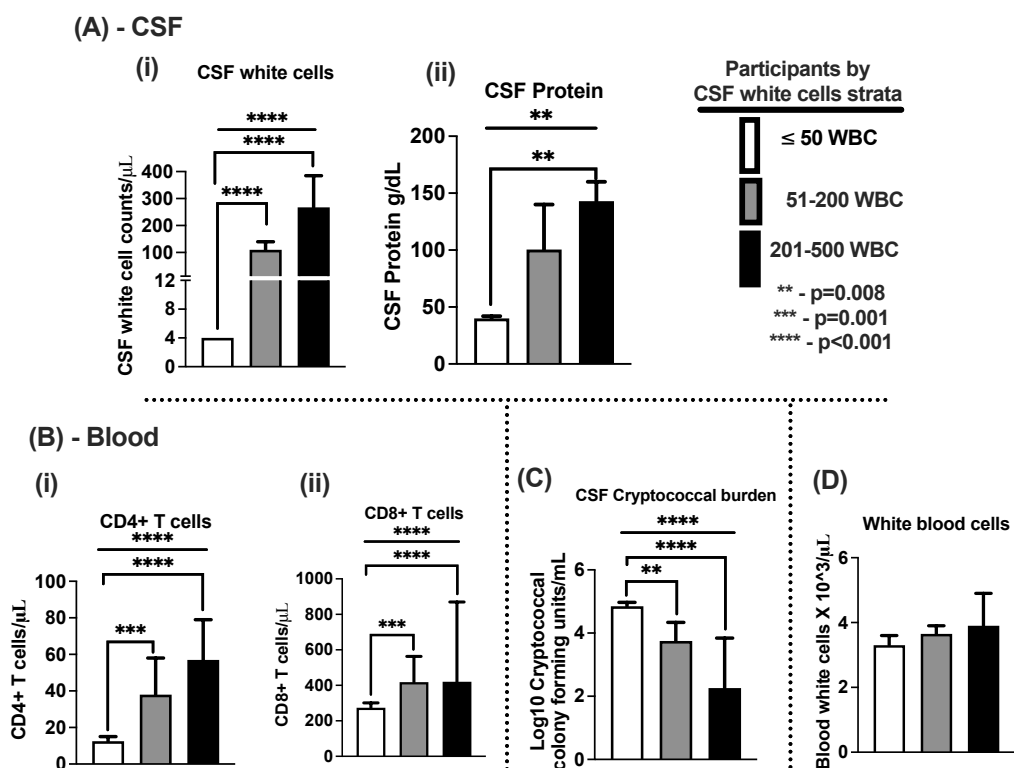
576

577

578 **Figure and Figure Legends**

579 **Figure 1**

580



581

582

583 **Figure 1. the correlation of CSF and blood clinical features.** A - correlation of CSF features
 584 with 18 weeks survival by levels of CSF white cells. A (i) – CSF white cells, A (ii) – CSF
 585 proteins and A (iii) CSF cryptococcal fungal burden. B – correlation of peripheral blood
 586 features with 18 weeks survival by levels of CSF white cells. B (i) – peripheral blood white
 587 cells, B (ii) - CD4⁺ T cells, and B (iii) - CD8⁺ T cells. Error bars – median and 95% confidence
 588 intervals. * - statistically significant variables reported at p-value <0.050, at 95% confidence
 589 intervals.

590

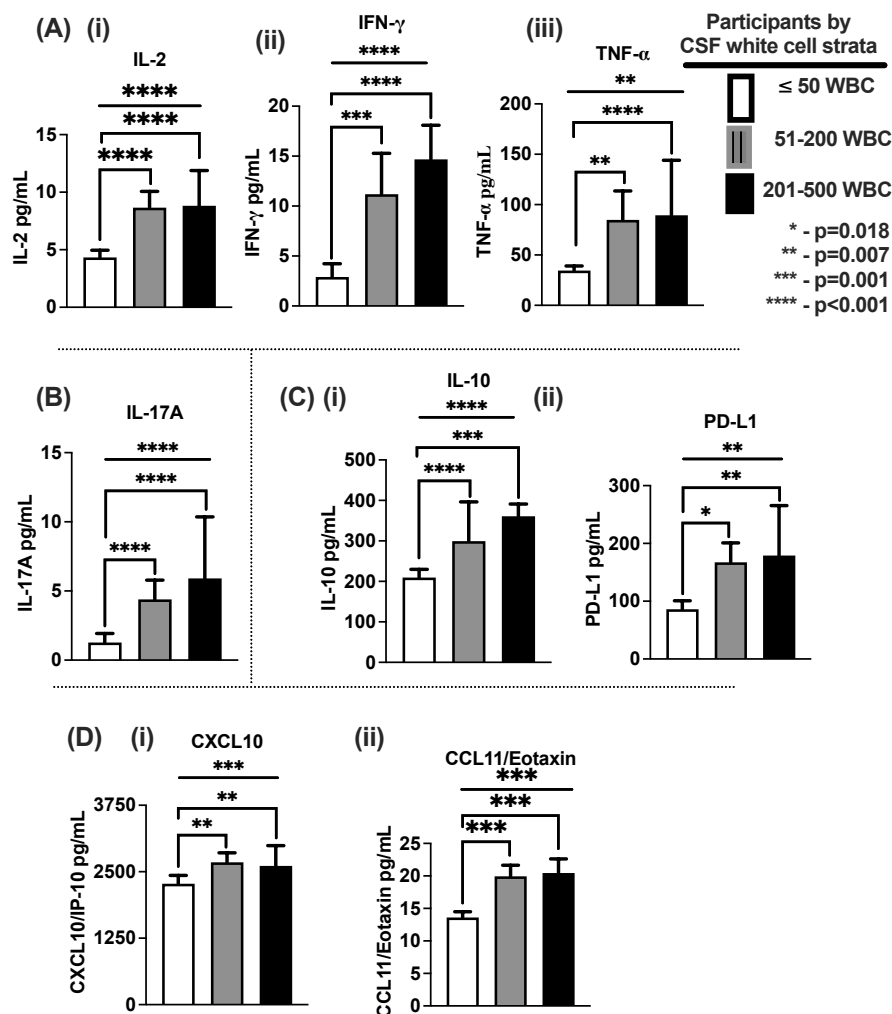
591

592

593

594 **Figure 2**

595



596

597

598 **Figure 2. Correlation of CSF cytokines and chemokine levels with CSF leukocyte counts**

599 A- Th1 cytokines; A (i) - Interleukin 2, A (ii) - Interferon gamma, A (iii) - Tumor necrosis

600 factor alpha. B - Th17 cytokine, IL-17A. C – Immune regulatory elements; (i) – Interleukin 10,

601 and programmed death 1 ligand. D Chemokines; D (i) CXCL10/IP-10 and D (ii) –

602 CCL11/Eotaxin. The CSF white cells; (≤ 50 cells/ μ L; n=318), (51-200 cells/ μ L; n=57) and

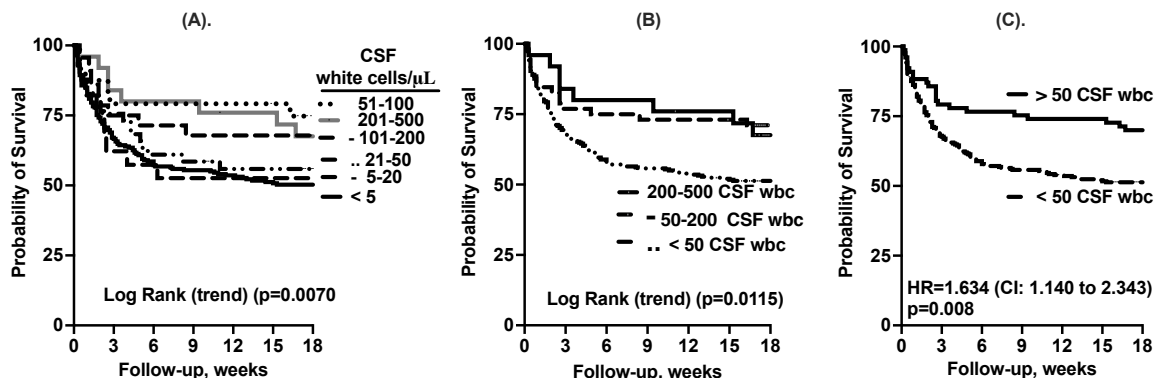
603 (201-500 cells/ μ L; n=26) participants. Error bars – median and 95% confidence intervals. * -

604 statistically significant variables reported at p-value < 0.050 , at 95% confidence intervals.

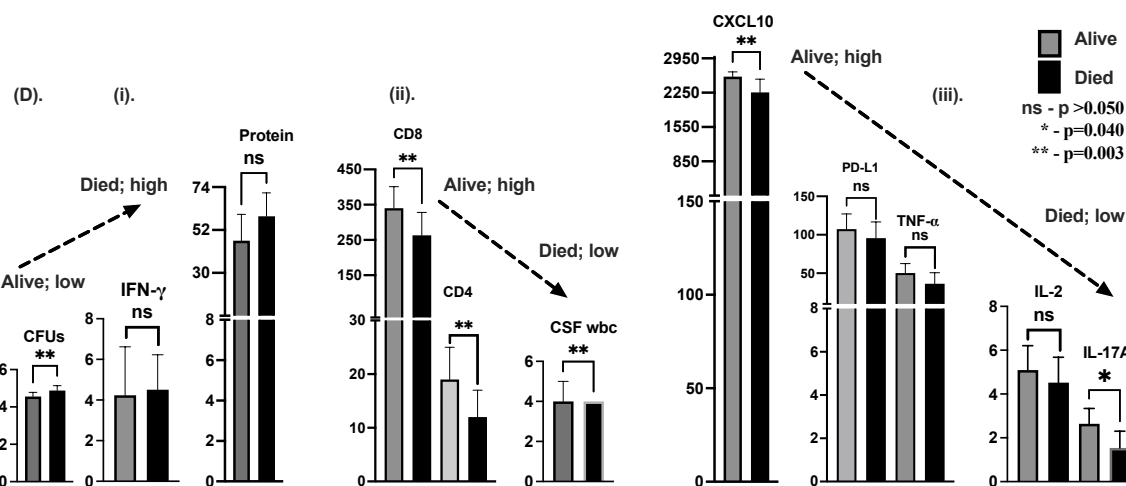
605

606 **Figure 3**

607



608

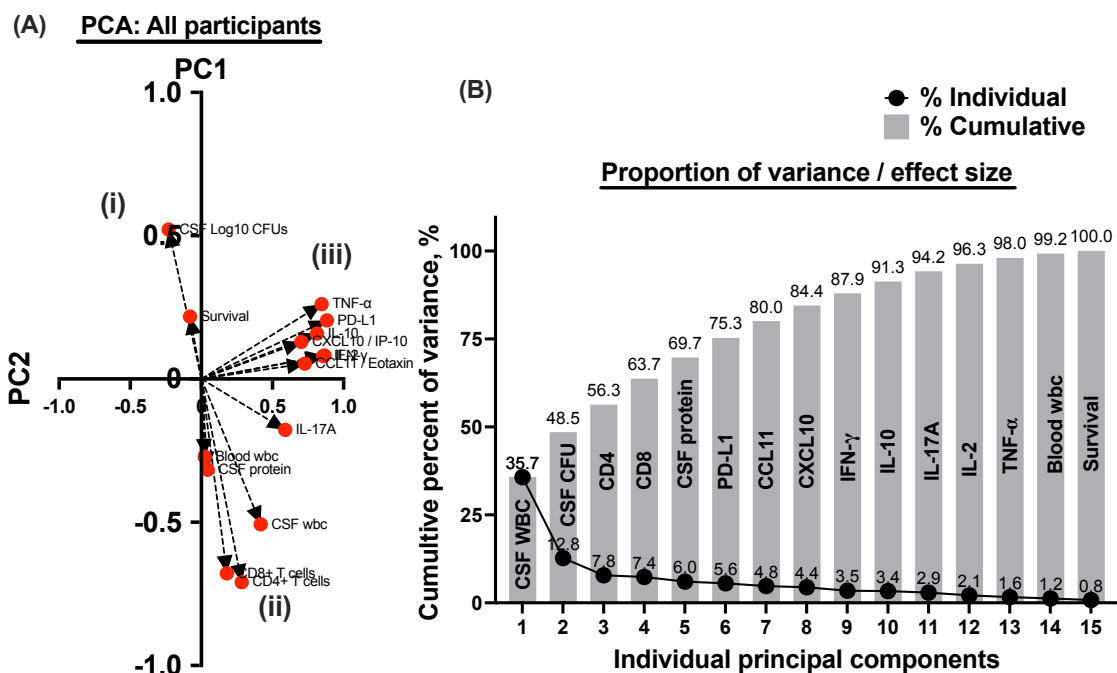


609

610 **Figure 3. correlation of CSF white cells with 18-week survival.** A –survival by CSF white
 611 cell intervals (<5; n=245), (5-20; n=31), (21-50; n=42), (51-100; n=26), (101-200; n=31), and
 612 (201-500; n=26). B - 18 weeks survival by CSF white cells; (<50 cells; n=318), (51-200
 613 cells/μL; n=57) and (201-500 cells/μL; n=26) participants. C – 18-week survival with CSF <50
 614 cells/μL. D (i-iii) –illustrates univariate immune responses associated with survival between
 615 survivors and those who died during 18-weeks of follow-up. Statistics - Mann-Whitney
 616 unpaired t-test. * - show statically significant variables. NS- not significant. Error bars – show
 617 95% confidence intervals. p-values, p<0.050 were statistically significant.

618

619 **Figure 4**



620

621 **Figure 4. Principal Component Analyses showing Eigenvector projection (A) and**
 622 **cumulative effect size contributed by each covariate the PCA model (B) examined among**
 623 **all participants.** The three planes demonstrated by the Eigenvector projects are; (i-ii) -
 624 diagonal plane between CSF fungal burden and host survival and CSF white cells, CSF protein,
 625 peripheral white cells, CD4⁺ and CD8⁺ T cells. (i-iii) orthogonal plane between CSF fungal
 626 burden and host survival and the cytokine/chemokine profile. (ii-iii) orthogonal plane between
 627 CSF fungal burden and host survival and CSF white cells, CSF protein, peripheral white cells,
 628 CD4⁺ and CD8⁺ T cells. Eigenvectors >5 shows greater power and association with the
 629 outcome variable among interacting covariates.

630