

1 **Application of RNA-sequencing based predictive model for**
2 **endometrial WOI in patients with recurrent implantation**
3 **failure: a prospective cohort study**

4
5 Aihua He^{1,2,3†}, Tianli Yang^{1,2†}, Sijia Lu⁴, Yangyun Zou⁴, Cheng Wan⁴, Jing Zhao^{1,2},
6 Nenghui Liu^{1,2}, Dongge Liu^{1,2}, Yumei Li^{1,2}, Yonggang Wang^{1,2}, Bin Xu^{1,2}, Jie Hao^{1,2},
7 Shi Xie^{1,2}, Jing Fu^{1,2}, Hui Li^{1,2}, Hong Wu⁵, Qiong Zhang^{1,2*}, Yanping Li^{1,2*}

8
9 ¹Reproductive Medicine Center, Xiangya Hospital of Central South University,
10 Changsha, 410008, Hunan, P.R. China. ²Clinical Research Center for Women's
11 Reproductive Health in Hunan Province, Changsha, 410008, Hunan, P.R. China.

12 ³Reproductive Medicine Center, the Third Xiangya Hospital of Central South
13 University, Changsha, 410013, Hunan, P.R. China. ⁴Department of Clinical
14 Research, Yikon Genomics Company, Ltd., Suzhou, 215123, Jiangsu, P.R. China.

15 ⁵Department of Otolaryngology-Head and Neck Surgery, Xiangya Hospital of Central
16 South University, Changsha, 410008, Hunan, P.R. China.

17
18 *For correspondence: liyanp@csu.edu.cn and Chuangq@csu.edu.cn.

19 †These authors contributed equally to this work.

20

21 **Abstract:**

22 **Background:** Accurate prediction for endometrial window of implantation (WOI)
23 would maximize the effectiveness of assisted reproductive technology. Previously, we
24 have established a predictive model for endometrial WOI (rsERT) by three-time
25 points sampling from the same patient at 48-hour intervals during one menstrual cycle.
26 However, it is imperative to build a modified rsERT by single time point sampling in
27 order to prevent multiple sampling and collateral harm.

28 **Methods:** A two-phase study was conducted. In the first phase, patients with
29 successful clinical pregnancy after personalized embryo transfer (pET) guided by
30 three-time points rsERT were recruited. Endometrial tissues obtained from single time
31 point were used for the modified rsERT establishment. In the second phase, recurrent
32 implantation failure (RIF) patients were recruited and assigned to experimental group
33 underwent pET guided by modified rsERT' or control group underwent conventional
34 ET. Pregnant outcomes were recorded and analyzed.

35 **Results:** The modified rsERT was established using 91 eligible participants and could
36 provide hour-based predictive result of endometrial WOI with an average accuracy of
37 94.51% with sensitivity and specificity being 92.73% and 96.27% using 10-fold CV.
38 176 RIF patients were recruited in the second phase (experimental group: n=88;
39 control group: n=88). 40 of 88 (45.45%) patients showed WOI displacement, and 5.00%
40 (2/40) of them were with advanced WOI, and the remaining 95.00% (38/40) with
41 delayed WOI. The β -hCG positive rate, intrauterine pregnancy rate (IPR) and
42 implantation rate (IR) of the experimental group were significantly improved (β -hCG
43 positive rate: 67.05% vs. 39.77%, P=0.000; IPR: 61.36% vs. 31.82%, P=0.000; IR:
44 42.86% vs. 24.66%, P=0.001). While, pregnancy outcomes were not significantly
45 different using different endometrial preparation protocols (β -hCG positive rate: 42.86%
46 vs. 35.90%, P=0.508; IPR: 38.78% vs. 23.08%, P=0.116; IR: 30.12% vs. 17.46%,
47 P=0.085).

48 **Conclusions:** The modified rsERT allowed WOI prediction using a single time point

49 endometrial biopsy and pregnancy outcomes were significantly improved. This could
50 provide an enhanced endometrial receptivity test as an alternative, requiring only a
51 single time point sampling for RIF patients.

52 **Funding:** Research grants from Hunan Provincial Natural Science Foundation
53 General Program (2023JJ30823) and Postdoctoral Fellowship Program of CPSF
54 (GZC20233157).

55 **Keywords:** Window of implantation, Endometrial receptivity, RNA-sequencing,
56 Recurrent implantation failure, Personalized embryo transfer

57

58 **Introduction**

59 A potentially developed embryo, endometrium in the receptive state and the
60 synchronized molecular dialogue between them are three key processes for the
61 successful pregnancy establishment (Teh, McBain, and Rogers 2016). In assisted
62 reproductive technology (ART) scenario, about one-third of implantation failures can
63 be ascribed to embryonic factor (Achache and Revel 2006). Maternal factors and
64 endometrial-embryonic dysynchrony should be also considered when embryos fail to
65 implant (Garneau and Young 2021). Even though there is heterogeneity in the
66 definition of recurrent implantation failure (RIF), the asynchrony between embryo
67 and endometrium may give rise to RIF (Sebastian-Leon et al. 2018).

68 After ovulation, the human endometrium transits from proliferation to secretory
69 morphology and culminates with a spatially and temporally restricted period called
70 the “window of implantation” (WOI). This self-limited period usually coincides with
71 the 20th to 24th day of a regular menstrual cycle (Achache and Revel 2006), when the
72 uterine milieu is favorable to blastocyst acceptance and implantation. However, the
73 optimal duration of WOI is restrictedly short and only continues about 24-48 hours in
74 human (Galliano et al. 2015). Profound evidences demonstrated that
75 blastocyst-endometrial asynchrony would result in defective implantation or
76 implantation failure (Ming et al. 2012; Healy et al. 2017; Omid et al. 2021).
77 Unsatisfactory pregnancy outcomes among RIF patients might be ascribed to the
78 displacement of the WOI, in which embryos were transferred to the non-receptive
79 endometrium at conventional timing (Hashimoto et al. 2017). Hence, accurate
80 identification and prediction of WOI are essential to maximize the effectiveness of
81 ART among infertile women who experienced RIF.

82 Currently, there are no reliable techniques to determine whether the endometrium
83 is in synchrony with the embryo at the time of embryo transfer (ET). Since the advent
84 of high-throughput “omics” techniques, series of genomic and transcriptomic
85 diagnostic tools aiming to identify WOI have gained in popularity, including

86 endometrial receptivity array (ERA) (Diaz-Gimeno et al. 2011), ER Map/ER Grade
87 (Enciso et al. 2018) and the Win-Test (Haouzi et al. 2021). Previously, we have
88 developed a novel RNA-sequencing-based endometrial receptivity test (rsERT)
89 containing 175 genetic biomarkers to predict the WOI accurately (He et al. 2021). The
90 three-time points sampling method from the same subject at 48-hour intervals during
91 the same menstrual cycle (LH+5/LH+7/LH+9) allows a more precise identification of
92 the optimal WOI. Subsequently, personalized embryo transfer (pET) guided by rsERT
93 significantly improved the pregnancy outcomes of patients with RIF, especially those
94 with WOI displacement (He et al. 2021). However, the three-time points sampling
95 method can be costly and time-consuming, and more importantly, this invasive
96 method renders patients more sensitive to pain.

97 To avoid multiple sampling and build an efficient WOI predictive tool, we first
98 recruited participants to construct and optimize the rsERT and successfully
99 established an estimation method by single time point sampling. Subsequently, a
100 prospective controlled trial was conducted to validate its clinical benefit among RIF
101 patients. This current study aims to provide a simpler and less invasive alternative
102 method to identify the optimal time for embryo transfer among RIF patients.

103

104 **Materials and methods**

105 **Study design and participants**

106 This study was conducted at the Reproductive Medicine Center at the Xiangya
107 Hospital of Central South University (CSU) in Changsha, Hunan, People's Republic
108 of China. All participants were undergoing ART between September 2018 and
109 December 2021. This study involved two separate phases.

110 In the first phase (September 2018-June 2020), participants were recruited to
111 optimize our previous predictive model for endometrial WOI, i.e., rsERT (He et al.
112 2021). Specifically, the inclusion criteria for allocated populations were as follows:
113 20-39 years of age; body mass index (BMI) 18-25 kg/m²; more than one
114 cryopreserved transplantable cleavage-stage embryo or blastocyst. Endometrial
115 tissues from three-time points sampling on days 5, 7 and 9 after the LH surge (LH+5,
116 LH+7 and LH+9) or days 3, 5 and 7 after progesterone supplementation (P+3, P+5
117 and P+7) respectively were applied for endometrial WOI determination of the
118 participants by our previous rsERT method (He et al. 2021). Patients with intrauterine
119 pregnancy were recruited for the prototype of single time point model construction.
120 Afterwards, we used this prototype model to predict the receptive time of additional
121 participants by single time point sampling at LH+7 or P+5. Those who successfully
122 obtained intrauterine pregnancy after pET were further included to optimize the
123 modified rsERT model. Here, intrauterine pregnancy was defined as the presence of a
124 gestational sac with or without fetal heart activity in uterine cavity as evaluated by
125 ultrasound 4-5 weeks after ET. Flowchart of phase 1 study was depicted in Figure 1.

126 In the second phase (June 2020-December 2021), participants were recruited to
127 validate the clinical efficiency of modified rsERT among patients with RIF. This study
128 was designed as a prospective controlled trial. Before recruitment, the sample size
129 calculation in this part was performed under the condition of PASS software (version
130 15.0.5). Based on the results of the previous study (He et al. 2021), we assumed that
131 the intrauterine pregnancy rate (IPR) was 60% in the experimental group and 30% in

132 the control group. A two-sided P value is deemed statistically significant at $P < 0.05$
133 and a power of 90%. Therefore, 53 subjects were required in each group. Considering
134 a 10% loss-to-follow-up rate, 60 subjects in each group would be appropriate.

135 The inclusion criteria were as follows: 20-39 years of age; BMI 18-25kg/m²; and
136 a history of RIF. RIF was defined as failure to achieve an intrauterine pregnancy after
137 two consecutive cycles of fresh or frozen ET, in which the cumulative number of
138 morphologically high-quality transferred embryos was no less than four for
139 cleavage-stage embryos or two for blastocysts (Polanski et al. 2014). The criteria for
140 high-quality embryos were as follows: cleavage-stage embryos: ≥ 7 blastomeres and
141 $< 20\%$ fragmentation on day 3 after fertilization (Alpha Scientists in Reproductive and
142 Embryology 2011); blastocysts: ≥ 3 BB on day 5 and day 6, graded based on the
143 Gardner system (Gardner et al. 2019).

144 The exclusion criteria were as follows: endometrial abnormalities (e.g.,
145 intrauterine adhesions, endometrial polyps, endometrial hyperplasia, untreated chronic
146 endometritis, and a thin endometrium); severe hydrosalpinx and did not receive tubal
147 ligation or salpingectomy; submucous myoma, intramural hystero myoma, or
148 adenomyoma protruding towards the uterine cavity; endometriosis (stages III-IV);
149 genital tuberculosis; uterine malformations; and other severe comorbidities (e.g.,
150 hypertension, diabetes mellitus, or malignant tumor).

151 After providing informed consent, patients who chose to receive the modified
152 rsERT and subsequently performed pET were assigned to the experimental group.
153 Those who decided not to receive rsERT and only underwent conventional ET
154 belonged to the control group. Details of the phase 2 study were depicted in Figure 2.

155 **Ethical approval**

156 The study was approved by the Reproductive Medicine Ethics Committee of Xiangya
157 Hospital, Central South University (CSU) (No. 2017002), and was registered in the
158 Chinese Clinical Trial Registry (No. ChiCTR-DDD-17013375). Written informed
159 consent was obtained from all participants and we conducted it according to the tenets

160 of the Declaration of Helsinki.

161 **Endometrial biopsy, sample collection and processing**

162 Written informed consent was obtained before sample collection. Endometrial tissues
163 were collected using an endometrial sampler (AiMu Medical Science & Technology
164 Co.; Liaoning, China). Timing of three-time points sampling method in natural cycle
165 was on day 5, 7 and 9 after the LH surge (LH+5, LH+7 and LH+9) respectively. For
166 hormone replacement therapy (HRT) cycle, estradiol administration was started on the
167 third day of the menstrual cycle. Progesterone supplementation was started after at
168 least 12 days of estrogen usage if the endometrium was >7mm and the endogenous P
169 serum level was close to zero. The day of starting progesterone supplementation was
170 considered P+0, and endometrial tissue was collected on day 3, 5 and 7 after
171 progesterone supplementation (i.e., P+3, P+5 and P+7) respectively. The endometrium
172 was only collected on LH+7 (nature cycle) or on P+5 (HRT cycle) if patient
173 underwent single time point sampling.

174 Before sampling, the cervix was cleansed with saline. The tip of the endometrial
175 sampler was placed into the uterine fundus, and 5-10mm³ of endometrial tissues were
176 aspirated into the sampler. The collected endometrial tissues were immediately placed
177 into 1.5ml RNAlater buffer (AM7020; Thermo Fisher Scientific, Waltham, MA, USA)
178 for RNA stabilization, sealed, and cryopreserved at -20°C. Sequencing analysis was
179 carried out within 7 days after sampling.

180 **RNA extraction, library construction and sequencing**

181 The RNA-sequencing of endometrial biopsy samples was performed following the
182 protocol described in previous study (He et al. 2021). In brief, total RNA extraction,
183 quality control of RNA, reverse transcription and amplification, and (next-generation
184 sequencing) NGS library construction were carried out by using commercial reagent
185 kits. Then, under relevant parameters, single-end sequencing was performed on the
186 HiSeq 2500 platform (Illumina, San Diego, CA, USA). The read length was set to 140
187 bp. The volume of raw data was approximately 5M reads.

188 **Candidate marker genes selection and predictive tool construction**

189 Differentially expressed genes (DEGs) in different endometrial receptive conditions
190 were screened according to the method in previous rsERT modeling (He et al. 2021).
191 The expression values of these DEGs were then inputted as features for the random
192 forest machine learning method to train the regression pattern of endometrial WOI
193 time from each sample. Boruta R package (version 7.0.0) was applied to measure the
194 importance of each feature (gene expression) (Kursa 2010). The features (genes) with
195 confirmed importance were used for further model training and construction.

196 For optimal WOI point prediction, we applied the samples from three-time points
197 sampling and single time point samples as training datasets for model construction
198 and optimization. With the timing of endometrial biopsy, the corresponding predictive
199 receptive results and subsequent clinical pregnancy outcomes, numerical value with
200 hour precision of presumably optimal WOI in these training samples was defined. For
201 example, if three samples from LH+5, LH+7 and LH+9 in one patient were predicted
202 as pre-receptive, post-receptive and post-receptive by previous rsERT, blastocyst
203 would be transferred on LH+6 (or day 3 cleavage embryo on LH+4). If patient
204 obtained an intrauterine pregnancy afterwards, in this case, the numerical hour value
205 for these three samples were roughly appointed as 24h, -24h and -72h, respectively.
206 Different combinations lead to 0h, 24h, -24h, 48h, -48h, 72h, -72h, 96h and -96h with
207 24-hour intervals. The random forest regression model from ranger R package
208 (version 0.12.1) was therefore used to predict the optimal implantation timing with
209 hour precision (Wright 2017). Infinitesimal jackknife resampling method was used to
210 estimate the standard errors based on out-of-bag predictions of random forest strategy.
211 The R-square value of model fitting and the 10-fold cross-validation approach was
212 used to select model and evaluate the predictive performance of the model.

213 **pET guided by the modified rsERT and outcome measures**

214 In the experimental group, pET was performed at the optimal WOI hour time
215 predicted by the modified rsERT, corresponding to the timing of blastocysts transfer.

216 Day 3 cleavage-stage embryos were transferred two days earlier accordingly. In the
217 control group, conventional ET was performed as usually routine protocol without
218 endometrial sampling. In this case, frozen-thawed cleavage-stage embryos were
219 transferred on LH+5 or P+3, and blastocysts were transferred on LH+7 or P+5.

220 Patients were followed up to assess pregnancy outcomes as described below.
221 Plasma β -human chorionic gonadotropin (β -hCG) was measured 12 days after ET.
222 The intrauterine pregnancy and number of gestational sacs were assessed by
223 ultrasound visualization 28 days after ET among patients with β -hCG positivity. The
224 primary outcome measure was the IPR. A secondary outcome was the implantation
225 rate (IR). IPR refers to the number of patients with intrauterine pregnancy per ET
226 cycle. IR refers to the number of gestational sacs observed divided by the number of
227 embryos transferred. Biochemical pregnancy was defined as a very early spontaneous
228 abortion after a positive pregnancy had been determined and with a fall in plasma
229 β -hCG concentration before the ultrasonic detection of gestational sacs (Bhatt et al.
230 2021).

231 **Statistical analysis**

232 Statistical analysis was performed using IBM SPSS software (version 25.0, IBM
233 Corp.). Continuous variables were described as the mean \pm standard deviation (SD),
234 or median and interquartile range (IQR) according to the distribution. Categorical
235 variables were presented as frequency and percentage. The between-group differences
236 among variables were analyzed by Student's t-test or Mann-Whitney test, and
237 Pearson's chi-squared test or Fisher's exact test for continuous and categorical
238 variables, respectively. Values of $P < 0.05$ for two-sided tests were considered
239 statistically significant.

240

241 **Results**

242 **Participants**

243 In the first phase, from September 2018 to June 2020, endometrial biopsies from 91
244 eligible participants (mean \pm SD, age 31.32 \pm 3.59 years; BMI 20.93 \pm 1.96kg/m²) were
245 finally recruited to construct and optimize the modified rsERT. The baseline
246 characteristics of these 91 patients were shown in Table 1.

247 In the second phase, considering the outpatient visit rate for RIF in our clinic,
248 176 eligible patients were finally enrolled during the clinical practice: 88 patients
249 were included in the experimental group and 88 in the control group (Figure 2). The
250 sample size in each group was more than that estimated by the PASS software (i.e., 60
251 vs. 60). Detailed clinical baseline characteristics were portrayed in Table 2. Baseline
252 parameters, including age, BMI, infertility duration, types of infertility, number of
253 previous failed cycles, main aetiology of infertility, the proportion of pre-implantation
254 genetic screening/diagnosis (PGS/PGD) were all comparable in the experimental and
255 control group ($P > 0.05$). All patients were scheduled for cryopreserved embryo
256 transfer in natural cycle or HRT cycle. There were no significant differences in the
257 types of transferred cycle, endometrial thickness and endometrial types ($P > 0.05$).

258 **Model optimization and validation**

259 The cut-off q-value of 0.001 was used to determine the DEGs among different
260 endometrial statuses. After feature selection by random forest model, 201 biomarkers
261 were finally selected for further model training and construction. Using the top 20
262 genes of high correlation between gene expression and different endometrial receptive
263 statuses, we observed gradual (not sharp) genetic expression changes in the secretory
264 phase of menstrual cycle (Figure 3). Therefore, the random forest regression model
265 was fitted to predict optimal WOI time with hour precision. In other words, the
266 modified rsERT could provide hour-based results. For instance, the 14 hours later,
267 which indicates the timing of 14 hours later than endometrial biopsy time might be

268 appropriate for ET to obtain a relatively higher possibility of embryo implantation. By
269 adopting infinitesimal jackknife resampling method, the standard error and 95%
270 confidence interval (CI) of predicted WOI time was obtained by the model.
271 Accordingly, the method is available to provide the window or range of optimal
272 implantation time and guide clinical practice.

273 10-fold cross-validation was then applied to assess the performance of modified
274 rsERT. A mean R-squared value of 0.92 was achieved, showing that 92% of the data
275 fit the regression model. We found that the medians of the predicted mean WOI time
276 in pre-receptive, receptive and post-receptive samples are approximately 48 hours, 0
277 hours and -48 hours respectively (Figure 4). Deviation points in Figure 4 are mostly
278 from samples with WOI displacement. These data supported the notion that the
279 modified rsERT had good performance in WOI prediction. With the cut-off values of
280 -24 and 24 hours, we defined samples with predicted WOI time larger than 24 hours
281 and less than -24 hours as pre-receptive and post-receptive status, respectively.
282 Receptive samples were those predicted mean WOI time between -24 and 24 hours.
283 Based on such standard, we obtained a mean 94.51% accuracy of this newly
284 optimized rsERT model with sensitivity and specificity being 92.73% and 96.29%,
285 respectively (Table 3). The current method allowed optimal WOI prediction by
286 endometrial biopsy at single timing, thus avoiding second biopsy in the next
287 menstrual cycle if the endometrial sample did not represent a receptive status.
288 Therefore, compared to the conventional ET, a more patient-friendly and
289 cost-efficient individualized ET could be achieved by single time point sampling.

290 **Characteristics of WOI indicated by the modified rsERT and transferred** 291 **embryos in the experimental and control group**

292 During the second phase, a total of 88 NGS were constructed for RNA-sequencing by
293 using endometrial biopsy samples from RIF patients in the experimental group, with a
294 qualification rate of 100% (88 of 88). The results indicated WOI displacement in 40
295 of 88 (45.45%) (Table 4). Among them, advanced WOI occurred in two patients (2/40,
296 5.00%), and delayed WOI occurred in 38 patients (38/40, 95.00%).

297 There were no significant differences with respect to developmental stage of the
298 transferred embryos (for D3: 37.41% vs. 40.41%; for D5 or D6: 62.59% vs. 59.59%,
299 $P=0.599$), good-quality embryo transferred rate (53.06% vs. 52.05%, $P=0.863$) and
300 number of transferred embryos (1.67 ± 0.47 vs. 1.66 ± 0.48 , $P=0.874$) between the two
301 groups (Table 4).

302 **Clinical efficiency of the modified rsERT-guided pET on pregnancy outcomes**

303 Participants from the experimental group underwent pET according to the modified
304 rsERT results and those from the control group conducted conventional ET
305 respectively (Table 4). The β -hCG positive rate, IPR and IR of the experimental group
306 were significantly higher than those in the control group (for β -hCG positive rate:
307 67.05% vs. 39.77%, $P=0.000$; for IPR: 61.36% vs. 31.82%, $P=0.000$; for IR: 42.86%
308 vs. 24.66%, $P=0.001$). Biochemical pregnancy rate and ectopic pregnancy rate were
309 comparable between the two groups (for biochemical pregnancy rate: 5.68% vs.
310 6.82%, $P=0.755$; for ectopic pregnancy rate: 0.00% vs. 1.14%, $P=1.000$) (Table 4).

311 **Effects of endometrial preparation protocols on pregnancy outcomes of pET** 312 **guided by the modified rsERT**

313 To determine whether the natural cycle is superior to the HRT cycle, we performed a
314 subgroup analysis of the experimental group. There were 40 populations in the natural
315 cycle group and 48 in the HRT group. Baseline characteristics and pregnancy
316 outcomes of these women are shown in Table 5. Age, BMI, infertility duration, types
317 of infertility, number of previous failed cycles, main aetiology of infertility, the
318 proportion of PGS or PGD, endometrial thickness, endometrial types, transferred
319 embryo stage, good-quality embryo transferred and number of transferred embryos
320 were comparable between the two groups ($P > 0.05$). Moreover, there was no
321 statistically significant difference regarding pregnancy outcomes between the two
322 groups ($P > 0.05$).

323 Genetic expression patterns were also explored between samples obtained from
324 the natural and HRT cycles. With the same cut-off q-value as 0.001, no DEGs were

325 observed (Figure 5), implying little influences of endometrial preparation protocols on
326 the efficiency of this modified model.

327 **Effects of endometrial preparation protocols on pregnancy outcomes of**
328 **conventional ET**

329 We further evaluated the effects of different endometrial preparation regimens on
330 pregnancy outcomes after conventional ET. There were 39 participants who
331 underwent FET in the natural cycle and 49 in the HRT cycle. Baseline characteristics
332 including age, BMI, infertility duration, types of infertility, number of previous failed
333 cycles, main aetiology of infertility, and others were comparable between the two
334 groups ($P > 0.05$, Table 6). With respect to individuals who performed conventional
335 ET without endometrial sampling, the β -hCG positive rate, IPR and IR in the HRT
336 group were slightly higher than those in the natural cycle group, whereas differences
337 were not statistically significant (for β -hCG positive rate: 42.86% vs. 35.90%,
338 $P=0.508$; for IPR: 38.78% vs. 23.08%, $P=0.116$; for IR: 30.12% vs. 17.46%, $P=0.085$;
339 Table 6).

340

341 **Discussion**

342 For nearly 20 years, transcriptomic analysis on ER has been developed drastically
343 (Messaoudi et al. 2019). Several diagnostic tools for endometrial dating have been
344 commercialized to personalize the FET, e.g., ERA (Diaz-Gimeno et al. 2011), ER
345 Map/ER Grade (Enciso et al. 2018) and the Win-Test (Haouzi et al. 2021). Previously,
346 we established an RNA-sequencing-based endometrial receptivity test (rsERT) via
347 three-time points sampling and demonstrated its clinical effectiveness afterwards (He
348 et al. 2021). However, either multiple time points sampling of previous rsERT or
349 potential second sampling risk in another menstrual cycle of other WOI predictive
350 models may impede their clinical applications. In order to identify endometrial WOI
351 more simply and accurately, this current study modified the rsERT which recently
352 allows optimal WOI estimation via single time point endometrial sampling.

353 Based on classifications of rsERT from three-time points biopsies and their
354 corresponding clinical outcomes, we constructed an endometrial WOI diagnostic tool
355 (i.e., the modified rsERT) for single time point sampling. The three-time points'
356 sequencing data in the same cycle showed varied endometrial transcriptomic profiles
357 from pre-receptive to the post-receptive phase, providing a fundamental basis for
358 available predictive results which were accurate to the hour. By adopting
359 RNA-sequencing and random forest algorithm, 201 biomarker genes were selected for
360 the modified rsERT model. Interestingly, the variation trend of these genes during the
361 sampling period was mainly continuous. Only a tiny number of genes showed abrupt
362 change. According to the single-cell transcriptomic study, human endometrial WOI
363 opens with an abrupt and discontinuous transcriptomic activation, and closes with
364 continuous transitions (Wang et al. 2020). The discrepancies might be due to the
365 varied interval of endometrial biopsy and interference from other types of cells in our
366 tissue samples.

367 Herein, we listed top 20 genes among the 201 biomarkers as they revealed
368 significant differences in expression among different endometrial receptivity statuses.

369 Those genes are mainly involved in immune response and inflammatory process
370 (PAEP, CXCL14, OPRK1 and NUPR1)(Pathare, Zaveri, and Hinduja 2017; Yu et al.
371 2020), anti-oxidative stress (GPX3), cellular proliferation, apoptosis and
372 differentiation (G0S2, CSRP2)(Welch et al. 2009; Kihara et al. 2011), osteogenesis
373 (ALPL, GREM2)(Wang et al. 2017), cytoskeletal anchor activity (ANK3)(Wang et al.
374 2016) and glutamate transportation (SLC1A1). Half of the top 20 genes, namely
375 ALPL, ANK3, CSRP2, CXCL14, GPX3, GREM2, IER3, SLC1A1, OPRK1 and
376 PEAP, overlap with the 238 biomarkers identified by the study of ERA (Diaz-Gimeno
377 et al. 2011). This result showed that there was biologically significant consistency of
378 biomarkers identified in both ERA and the modified rsERT.

379 It is acknowledged that there are differences between ERA and rsERT with
380 respect to the study design, sample collection and detection methods as we previously
381 described (He et al. 2021). For example, samples were obtained from the same patient
382 at 48-hour intervals within the same menstrual cycle to build the rsERT model, in
383 contrast to the ERA where samples were obtained from different women on different
384 cycle days (Diaz-Gimeno et al. 2011). Besides, we defined the receptive period as day
385 LH+7 or P+5 combining with a subsequent intrauterine pregnancy, which is more
386 reliable than the previous determination with LH+7 or P+5 alone. In this case, the
387 DEGs and biomarkers might vary from different studies, and their biological
388 functions have not been fully explained yet. Much effort will put into the functional
389 investigation of these genes by using cutting-edge technologies (e.g., single-cell RNA
390 sequencing) in the near future.

391 Aiming to demonstrate its clinical efficiency, the modified rsERT-guided pET
392 was performed among RIF patients. The proportion of a displaced WOI identified by
393 the modified rsERT was 45.45% (40/88), similar to the result determined by ERA
394 reported elsewhere (Saxtorph et al. 2020), indicating a higher WOI displacement rate
395 in this specific populations. Moreover, the modified rsERT model also enables
396 predictive statement accurate to hours for blastocyst transfer, e.g., the recommended
397 optimal time for ET is 36 (95% CI 30-42) hours after sampling. As such, β -hCG

398 positivity rate, IPR, and IR were significantly higher in the experimental group
399 compared with the control group. Although some studies challenged the clinical utility
400 of pET among patients with a history of failed transfers or RIF (Cozzolino et al. 2020;
401 Eisman et al. 2021), significantly improved pregnancy rate and implantation rate were
402 observed when the timing of ET was properly adjusted according to the displaced
403 WOI (Ruiz-Alonso et al. 2013; He et al. 2021; Haouzi et al. 2021). Some aspects
404 including experimental design, inclusion and exclusion criteria of the recruitment and
405 the testing platform may explain the inconsistencies.

406 In addition, it is worth noting that differential expression analysis of biomarker
407 genes reveals no significant difference between the endometrial samples from natural
408 and HRT cycles (Figure 5). This suggests that the feature selection using a machine
409 learning algorithm could eliminate the discrepancy between these two groups. Altmäe
410 et al. demonstrated that when compared to the HRT-FET cycle among women with
411 RIF, the whole endometrial gene expression profile of RIF patients at the WOI in
412 natural cycle was more similar to the pattern of the fertile controls (Altmäe et al.
413 2016). One possible reason for yielding a contradictory result is that the cutoff value
414 in Altmäe's study is 0.05, whereas ours is stricter, i.e., 0.001. Besides, Altmäe et al.
415 did not report the clinical results of the two groups. Interestingly, in the present study,
416 pregnancy outcomes did not differ significantly between natural cycle and HRT cycle
417 among RIF patients. Therefore, this predictive model would be appropriate for
418 patients undergoing both natural and HRT cycles. Meanwhile, we noticed a slightly
419 higher rates of β -hCG positivity, clinical pregnancy and embryo implantation among
420 participants underwent an HRT-FET protocol in the control group, and the
421 between-group difference was not significant partly due to the relatively small sample
422 size.

423 Even though the mechanism of embryo implantation during WOI remains a
424 "black box" (Franasiak et al. 2016), rsERT provides an optimal timing for pET
425 strategy. In fact, except for WOI displacement, the duration of WOI is a critical but
426 easily overlooked factor. For people with narrower WOI, the endometrium allows a

427 shorter time window for embryo implantation, in which case the timing of ET seems
428 more crucial. For patients with an extremely narrow WOI, the modified rsERT could
429 provide an optimal timing (to the hour) for ET, in case embryos were transferred
430 beyond the duration of their WOI. In other words, rsERT offered individualized ET
431 according to their personal WOI, whether it was displaced or not.

432 Nevertheless, caution is warranted due to the non-randomized design and limited
433 sample size. Even though baseline characteristics and other parameters were
434 comparable between the two cohorts, a more valid conclusion should be drawn from
435 the randomized controlled trial (RCT) accomplishment. Our preliminary clinical
436 results from this prospective cohort study would lay the foundation of future RCT.
437 Besides, embryonic factors should be taken into consideration as well. In fact, we
438 have already designed a multi-center RCT of the modified rsERT in combination with
439 PGT to validate its clinical application value further.

440

441 **Conclusions**

442 To sum up, we modified our previous predictive model for endometrial WOI (rsERT),
443 allowed WOI prediction via single time point endometrial biopsy. When compared to
444 the RIF participants underwent conventional ET, pregnancy outcomes had been
445 improved among patients after pET guided by the modified rsERT. The results
446 indicate that we could provide patients with an improved effective endometrial
447 receptivity test that only requires single time point sampling.

448

449 **Abbreviations**

450 ART: assisted reproductive technology; AMH, anti-Mullerian hormone; AFC, antral
451 follicle count; BMI, body mass index; CI: confidence interval; DEGs: differentially
452 expressed genes; ER: endometrial receptivity; ERA: endometrial receptivity array; ET:
453 embryo transfer; E2, estradiol; FSH, follicle-stimulating hormone; FET: frozen
454 embryo transfer; HRT: hormone replacement therapy; IPR: intrauterine pregnancy
455 rate; IR: implantation rate; IQR: interquartile range; IVF: in vitro fertilization; LH:
456 luteinizing hormone; P: progesterone; pET: personalized embryo transfer; PSM:
457 propensity score matching; PGS: pre-implantation genetic screening; PGD:
458 pre-implantation genetic diagnosis; RIF: recurrent implantation failure; rsERT:
459 RNA-sequencing based endometrial receptivity test; SD: standard deviation; T:
460 testosterone; WOI: window of implantation; β -hCG: β -human chorionic
461 gonadotropin.

462

463 **Acknowledgements**

464 The authors are extremely grateful to all the volunteers for participation in this study.

465 **Authors' contributions**

466 QZ and YL designed research and carefully revised the manuscript; AH and TY wrote
467 the paper; SL, YZ and CW participated in the model optimization; JZ, NL, DL, YL,
468 YW, BX, JH and SX executed the trial. JF, HL and HW collected and analyzed the
469 data. All authors read and approved the final manuscript.

470 **Funding**

471 This study was supported by the Hunan Provincial Natural Science Foundation
472 General Program (2023JJ30823) and Postdoctoral Fellowship Program of CPSF
473 (GZC20233157).

474 **Availability of data and materials**

475 The datasets used and/or analysed during the current study are available from the
476 corresponding author upon reasonable request.

477 **Declarations**

478 **Ethics approval and consent to participate**

479 The study was approved by the Reproductive Medicine Ethics Committee of Xiangya
480 Hospital, Central South University (CSU) (No. 2017002), and was registered in the
481 Chinese Clinical Trial Registry (No. ChiCTR-DDD-17013375). Written informed
482 consent was obtained from all participants and we conducted it according to the tenets
483 of the Declaration of Helsinki.

484 **Consent for publication**

485 Not applicable.

486 **Competing interests**

487 The authors declare that they have no potential conflicts of interest.

488

489 **References**

- 490 Achache, H., and A. Revel. 2006. 'Endometrial receptivity markers, the journey to successful embryo
491 implantation', *Hum Reprod Update*, 12: 731-46.
- 492 Alpha Scientists in Reproductive, Medicine, and Eshre Special Interest Group of Embryology. 2011.
493 'The Istanbul consensus workshop on embryo assessment: proceedings of an expert meeting',
494 *Hum Reprod*, 26: 1270-83.
- 495 Altnae, S., K. Tamm-Rosenstein, F. J. Esteban, J. Simm, L. Kolberg, H. Peterson, M. Metsis, K.
496 Haldre, J. A. Horcajadas, A. Salumets, and A. Stavreus-Evers. 2016. 'Endometrial
497 transcriptome analysis indicates superiority of natural over artificial cycles in recurrent
498 implantation failure patients undergoing frozen embryo transfer', *Reprod Biomed Online*, 32:
499 597-613.
- 500 Bhatt, S. J., N. M. Marchetto, J. Roy, S. S. Morelli, and P. G. McGovern. 2021. 'Pregnancy outcomes
501 following in vitro fertilization frozen embryo transfer (IVF-FET) with or without
502 preimplantation genetic testing for aneuploidy (PGT-A) in women with recurrent pregnancy
503 loss (RPL): a SART-CORS study', *Hum Reprod*, 36: 2339-44.
- 504 Cozzolino, M., P. Diaz-Gimeno, A. Pellicer, and N. Garrido. 2020. 'Evaluation of the endometrial
505 receptivity assay and the preimplantation genetic test for aneuploidy in overcoming recurrent
506 implantation failure', *J Assist Reprod Genet*, 37: 2989-97.
- 507 Diaz-Gimeno, P., J. A. Horcajadas, J. A. Martinez-Conejero, F. J. Esteban, P. Alama, A. Pellicer, and C.
508 Simon. 2011. 'A genomic diagnostic tool for human endometrial receptivity based on the
509 transcriptomic signature', *Fertil Steril*, 95: 50-60, 60 e1-15.
- 510 Eisman, L. E., M. D. Pisarska, S. Wertheimer, J. L. Chan, A. L. Akopians, M. W. Surrey, H. C. Danzer,
511 S. Ghadir, W. Y. Chang, C. J. Alexander, and E. T. Wang. 2021. 'Clinical utility of the
512 endometrial receptivity analysis in women with prior failed transfers', *J Assist Reprod Genet*,
513 38: 645-50.
- 514 Enciso, M., J. P. Carrascosa, J. Sarasa, P. A. Martinez-Ortiz, S. Munne, J. A. Horcajadas, and J.
515 Aizpurua. 2018. 'Development of a new comprehensive and reliable endometrial receptivity
516 map (ER Map/ER Grade) based on RT-qPCR gene expression analysis', *Hum Reprod*, 33:
517 220-28.
- 518 Franasiak, J. M., M. Ruiz-Alonso, R. T. Scott, and C. Simon. 2016. 'Both slowly developing embryos
519 and a variable pace of luteal endometrial progression may conspire to prevent normal birth in
520 spite of a capable embryo', *Fertil Steril*, 105: 861-6.
- 521 Galliano, D., J. Bellver, C. Diaz-Garcia, C. Simon, and A. Pellicer. 2015. 'ART and uterine pathology:
522 how relevant is the maternal side for implantation?', *Hum Reprod Update*, 21: 13-38.
- 523 Gardner, D. K., M. Lane, J. Stevens, T. Schlenker, and W. B. Schoolcraft. 2019. 'Reprint of: Blastocyst
524 score affects implantation and pregnancy outcome: towards a single blastocyst transfer', *Fertil
525 Steril*, 112: e81-e84.

- 526 Garneau, A. S., and S. L. Young. 2021. 'Defining recurrent implantation failure: a profusion of
527 confusion or simply an illusion?', *Fertil Steril*, 116: 1432-35.
- 528 Haouzi, D., F. Entezami, A. Torre, C. Innocenti, Y. Antoine, C. Mauries, C. Vincens, S.
529 Bringer-Deutsch, A. Gala, A. Ferrieres-Hoa, J. Ohl, B. Gonzalez Marti, S. Brouillet, and S.
530 Hamamah. 2021. 'Customized Frozen Embryo Transfer after Identification of the Receptivity
531 Window with a Transcriptomic Approach Improves the Implantation and Live Birth Rates in
532 Patients with Repeated Implantation Failure', *Reprod Sci*, 28: 69-78.
- 533 Hashimoto, T., M. Koizumi, M. Doshida, M. Toya, E. Sagara, N. Oka, Y. Nakajo, N. Aono, H. Igarashi,
534 and K. Kyono. 2017. 'Efficacy of the endometrial receptivity array for repeated implantation
535 failure in Japan: A retrospective, two-centers study', *Reprod Med Biol*, 16: 290-96.
- 536 He, A., Y. Zou, C. Wan, J. Zhao, Q. Zhang, Z. Yao, F. Tian, H. Wu, X. Huang, J. Fu, C. Hu, Y. Sun, L.
537 Xiao, T. Yang, Z. Hou, X. Dong, S. Lu, and Y. Li. 2021. 'The role of transcriptomic
538 biomarkers of endometrial receptivity in personalized embryo transfer for patients with
539 repeated implantation failure', *J Transl Med*, 19: 176.
- 540 Healy, M. W., M. Yamasaki, G. Patounakis, K. S. Richter, K. Devine, A. H. DeCherney, and M. J. Hill.
541 2017. 'The slow growing embryo and premature progesterone elevation: compounding factors
542 for embryo-endometrial asynchrony', *Hum Reprod*, 32: 362-67.
- 543 Kihara, T., S. Shinohara, R. Fujikawa, Y. Sugimoto, M. Murata, and J. Miyake. 2011. 'Regulation of
544 cysteine-rich protein 2 localization by the development of actin fibers during smooth muscle
545 cell differentiation', *Biochem Biophys Res Commun*, 411: 96-101.
- 546 Kursa, MB, Rudnicki, WR. 2010. 'Feature selection with the Boruta package', *J. Stat. Softw*, 36: 1-13.
- 547 Messaoudi, S., I. El Kasmi, A. Bourdieu, K. Crespo, L. Bissonnette, C. Le Saint, F. Bissonnette, and I. J.
548 Kadoch. 2019. '15 years of transcriptomic analysis on endometrial receptivity: what have we
549 learnt?', *Fertil Res Pract*, 5: 9.
- 550 Ming, L., P. Liu, J. Qiao, Y. Lian, X. Zheng, X. Ren, J. Huang, and Y. Wu. 2012. 'Synchronization
551 between embryo development and endometrium is a contributing factor for rescue ICSI
552 outcome', *Reprod Biomed Online*, 24: 527-31.
- 553 Omid, M., I. Halvaei, F. Akyash, M. A. Khalili, A. Agha-Rahimi, and L. Heydari. 2021. 'The exact
554 synchronization timing between the cleavage embryo stage and duration of progesterone
555 therapy-improved pregnancy rates in frozen embryo transfer cycles: A cross-sectional study',
556 *Int J Reprod Biomed*, 19: 227-34.
- 557 Pathare, A. D. S., K. Zaveri, and I. Hinduja. 2017. 'Downregulation of genes related to immune and
558 inflammatory response in IVF implantation failure cases under controlled ovarian stimulation',
559 *Am J Reprod Immunol*, 78.
- 560 Polanski, L. T., M. N. Baumgarten, S. Quenby, J. Brosens, B. K. Campbell, and N. J. Raine-Fenning.
561 2014. 'What exactly do we mean by 'recurrent implantation failure'? A systematic review and
562 opinion', *Reprod Biomed Online*, 28: 409-23.
- 563 Ruiz-Alonso, M., D. Blesa, P. Diaz-Gimeno, E. Gomez, M. Fernandez-Sanchez, F. Carranza, J. Carrera,

- 564 F. Vilella, A. Pellicer, and C. Simon. 2013. 'The endometrial receptivity array for diagnosis
565 and personalized embryo transfer as a treatment for patients with repeated implantation
566 failure', *Fertil Steril*, 100: 818-24.
- 567 Saxtorph, M. H., T. Hallager, G. Persson, K. B. Petersen, J. O. Eriksen, L. G. Larsen, T. V. Hviid, and N.
568 Macklon. 2020. 'Assessing endometrial receptivity after recurrent implantation failure: a
569 prospective controlled cohort study', *Reprod Biomed Online*, 41: 998-1006.
- 570 Sebastian-Leon, P., N. Garrido, J. Remohi, A. Pellicer, and P. Diaz-Gimeno. 2018. 'Asynchronous and
571 pathological windows of implantation: two causes of recurrent implantation failure', *Hum
572 Reprod*, 33: 626-35.
- 573 Teh, W. T., J. McBain, and P. Rogers. 2016. 'What is the contribution of embryo-endometrial
574 asynchrony to implantation failure?', *J Assist Reprod Genet*, 33: 1419-30.
- 575 Wang, C. L., F. Xiao, C. D. Wang, J. F. Zhu, C. Shen, B. Zuo, H. Wang, D. Li, X. Y. Wang, W. J. Feng,
576 Z. K. Li, G. L. Hu, X. Zhang, and X. D. Chen. 2017. 'Gremlin2 Suppression Increases the
577 BMP-2-Induced Osteogenesis of Human Bone Marrow-Derived Mesenchymal Stem Cells Via
578 the BMP-2/Smad/Runx2 Signaling Pathway', *J Cell Biochem*, 118: 286-97.
- 579 Wang, T., H. Abou-Ouf, S. A. Hegazy, M. Alshalalfa, K. Stoletov, J. Lewis, B. Donnelly, and T. A.
580 Bismar. 2016. 'Ankyrin G expression is associated with androgen receptor stability,
581 invasiveness, and lethal outcome in prostate cancer patients', *J Mol Med (Berl)*, 94: 1411-22.
- 582 Wang, W., F. Vilella, P. Alama, I. Moreno, M. Mignardi, A. Isakova, W. Pan, C. Simon, and S. R.
583 Quake. 2020. 'Single-cell transcriptomic atlas of the human endometrium during the menstrual
584 cycle', *Nat Med*, 26: 1644-53.
- 585 Welch, C., M. K. Santra, W. El-Assaad, X. Zhu, W. E. Huber, R. A. Keys, J. G. Teodoro, and M. R.
586 Green. 2009. 'Identification of a protein, G0S2, that lacks Bcl-2 homology domains and
587 interacts with and antagonizes Bcl-2', *Cancer Res*, 69: 6782-9.
- 588 Wright, M, Ziegler, A. 2017. 'ranger: A Fast Implementation of Random Forests for High Dimensional
589 Data in C++ and R', *J. Stat. Softw*, 77: 1-17.
- 590 Yu, J., H. Zhu, R. Li, Q. Jiang, W. Luan, J. Shi, and P. Liu. 2020. 'Oncogenic Role of NUPR1 in
591 Ovarian Cancer', *Onco Targets Ther*, 13: 12289-300.
- 592

593 **Table 1. Demographic clinical characteristics of the participants for the modified**
 594 **rsERT establishment.**

Characteristics	The first phase study N=91
Age, mean±SD, y	31.32±3.59
BMI, mean±SD, kg/m ²	20.93±1.96
Infertility duration, mean±SD, y	4.01±3.12
Types of infertility, n (%)	
Primary infertility	46/91 (50.55%)
Secondary infertility	45/91 (49.45%)
AMH, median (IQR), ng/ml	3.22 (1.98, 4.68)
FSH, mean±SD, mIU/ml	5.84±1.16
LH, mean±SD, mIU/ml	5.59±2.17
E2, median (IQR), pg/ml	38.51 (30.87, 56.99)
T, median (IQR), ng/ml	0.22 (0.17, 0.30)
AFC, median (IQR), n	14 (11, 19.25)
Endometrial thickness, mean±SD, mm	10.20±1.90
IVF indication, n (%)	
Tubal factor	40/91 (43.96%)
Male factor	51/91 (56.04%)

595 BMI, body mass index; AMH, anti-Mullerian hormone; FSH, follicle-stimulating hormone; LH,
 596 luteinizing hormone; E2, estradiol; T, testosterone; AFC, antral follicle count; IVF, in vitro
 597 fertilization; SD: standard deviation; IQR: interquartile range.
 598

599 **Table 2. Baseline characteristics of RIF patients in the experimental and control**
 600 **group.**

Characteristics	Experimental group N=88	Control group N=88	P value
Age (y)	31.17±3.54	32.01±3.42	0.111
BMI (kg/m ²)	20.71±1.82	21.25±2.24	0.078
Infertility duration (y)	4.69±3.12	4.85±3.45	0.749
Types of infertility n (%)			0.216
Primary infertility	58/88 (65.91%)	50/88 (56.82%)	
Secondary infertility	30/88 (34.09%)	38/88 (43.18%)	
No. of previous failed cycles (n)	2.92±1.10	2.75±1.02	0.287
Main aetiology of infertility n (%)			0.158
Tubal	48/88 (54.55%)	64/88 (72.73%)	
Ovulation disorder	7/88 (7.95%)	4/88 (4.55%)	
Endometriosis	6/88 (6.82%)	3/88 (3.41%)	
Diminished ovarian reserve	7/88 (7.95%)	8/88 (9.09%)	
Male	15/88 (17.05%)	7/88 (7.95%)	
Unexplained	2/88 (2.27%)	0/88 (0.00%)	
Recurrent spontaneous abortion	0/88 (0.00%)	0/88 (0.00%)	
Chromosomal or genetic abnormalities	3/88 (3.41%)	2/88 (2.27%)	
PGS or PGD n (%)	7/88 (7.95%)	3/88 (3.41%)	0.329
Types of transferred cycle n (%)			0.880
Natural cycle	40/88 (45.45%)	39/88 (44.32%)	
HRT cycle	48/88 (54.55%)	49/88 (55.68%)	
Endometrial thickness (mm)	9.58±1.92	9.89±1.67	0.265
Endometrial types n (%)			0.286
A	21/88 (23.86%)	28/88 (31.81%)	
B	64/88 (72.73%)	54/88 (61.36%)	
C	3/88 (3.41%)	6/88 (6.83%)	

601 BMI, body mass index; PGS, pre-implantation genetic screening; PGD, pre-implantation genetic
 602 diagnosis; HRT, hormone replacement therapy.

603

604 **Table 3. The performance of modified rsERT model with classification standard.**

Receptive status	Accuracy	Sensitivity	Specificity
Pre-receptivity	94.53%	89.06%	100.00%
Receptivity	93.56%	95.70%	91.43%
Post-receptivity	95.44%	93.42%	97.45%

605

606 **Table 4. Characteristics of WOI indicated by modified rsERT and pregnancy**
 607 **outcomes in the experimental and control group.**

Characteristics	Experimental group N=88	Control group N=88	P value
WOI n (%)			/
Advanced	2/88 (2.27%)	/	
Delayed	38/88 (43.18%)	/	
On-time	48/88 (54.55%)	/	
Transferred embryo stage n (%)			0.599
D3 cleavage-stage embryos	55/147 (37.41%)	59/146 (40.41%)	
D5 or D6 blastocysts	92/147 (62.59%)	87/146 (59.59%)	
Good-quality embryo transferred rate n (%)	78/147 (53.06%)	76/146 (52.05%)	0.863
No. of transferred embryo n	1.67±0.47	1.66±0.48	0.874
β-hCG positive rate n (%)	59/88 (67.05%)	35/88 (39.77%)	0.000
Biochemical pregnancy rate n (%)	5/88 (5.68%)	6/88 (6.82%)	0.755
IPR n (%)	54/88 (61.36%)	28/88 (31.82%)	0.000
IR n (%)	63/147 (42.86%)	36/146 (24.66%)	0.001
Ectopic pregnancy rate n (%)	0/88 (0.00%)	1/88 (1.14%)	1.000

608 WOI, window of implantation; β-hCG, β-human chorionic gonadotropin; IPR, intrauterine
 609 pregnancy rate; IR, implantation rate.
 610

611 **Table 5. Baseline characteristics and pregnancy outcomes of natural and HRT**
 612 **cycle in the experiment group.**

Characteristics	Natural cycle N=40	HRT cycle N=48	P value
Age (y)	31.90±3.51	30.56±3.49	0.078
BMI (kg/m ²)	20.49±1.89	20.89±1.75	0.311
Infertility duration (y)	4.65±3.45	4.73±2.86	0.908
Types of infertility n (%)			0.870
Primary infertility	26/40 (65.00%)	32/48 (66.67%)	
Secondary infertility	14/40 (35.00%)	16/48 (33.33%)	
No. of previous failed cycles (n)	3.08±1.23	2.79±0.97	0.240
Main aetiology of infertility n (%)			0.504
Tubal	23/40 (57.50%)	25/48 (52.08%)	
Ovulation disorder	2/40 (5.00%)	5/48 (10.42%)	
Endometriosis	2/40 (5.00%)	4/48 (8.33%)	
Diminished ovarian reserve	2/40 (5.00%)	5/48 (10.42%)	
Male	7/40 (17.50%)	8/48 (16.67%)	
Unexplained	1/40 (2.50%)	1/48 (2.08%)	
Recurrent spontaneous abortion	0/40 (0.00%)	0/48 (0.00%)	
Chromosomal or genetic abnormalities	3/40 (7.50%)	0/48 (0.00%)	
PGS or PGD n (%)	5/40 (12.50%)	2/48 (4.17%)	0.238
Endometrial thickness (mm)	10.01±2.20	9.23±1.59	0.065
Endometrial types n (%)			0.778
A	11/40 (27.50%)	10/48 (20.83%)	
B	28/40 (70.00%)	36/48 (75.00%)	
C	1/40 (2.50%)	2/48 (4.17%)	
Transferred embryo stage n (%)			0.069
D3 cleavage-stage embryos	30/66 (45.45%)	25/81 (30.86%)	
D5 or D6 blastocysts	36/66 (54.55%)	56/81 (69.14%)	
Good-quality embryo transferred rate n (%)	39/66 (59.09%)	39/81 (48.15%)	0.186
No. of transferred embryo n	1.65±0.48	1.69±0.47	0.102
β-hCG positive rate n (%)	26/40 (65.00%)	33/48 (68.75%)	0.709
Biochemical pregnancy rate n (%)	2/40 (5.00%)	3/48 (6.25%)	1.000
IPR n (%)	24/40 (60.00%)	30/48 (62.50%)	0.810
IR n (%)	28/66 (42.42%)	35/81 (43.21%)	0.924

613 BMI, body mass index; PGS, pre-implantation genetic screening; PGD, pre-implantation genetic
 614 diagnosis; β-hCG, β-human chorionic gonadotropin; IPR, intrauterine pregnancy rate; IR,
 615 implantation rate.

616

617 **Table 6. Baseline characteristics and pregnancy outcomes of natural and HRT**
 618 **cycle in the control group.**

Characteristics	Natural cycle N=39	HRT cycle N=49	P value
Age (y)	32.67±3.18	31.49±3.54	0.109
BMI (kg/m ²)	20.95±2.20	21.50±2.27	0.254
Infertility duration (y)	4.39±2.92	5.22±3.80	0.258
Types of infertility n (%)			0.945
Primary infertility	22/39 (56.41%)	28/49 (57.14%)	
Secondary infertility	17/39 (43.59%)	21/49 (42.86%)	
No. of previous failed cycles (n)	2.67±0.93	2.82±1.09	0.497
Main aetiology of infertility n (%)			0.123
Tubal	30/39 (76.92%)	34/49 (69.39%)	
Ovulation disorder	0/39 (0.00%)	4/49 (8.17%)	
Endometriosis	0/39 (0.00%)	3/49 (6.12%)	
Diminished ovarian reserve	3/39 (7.69%)	5/49 (10.20%)	
Male	4/39 (10.26%)	3/49 (6.12%)	
Unexplained	0/39 (0.00%)	0/49 (0.00%)	
Recurrent spontaneous abortion	0/39 (0.00%)	0/49 (0.00%)	
Chromosomal or genetic abnormalities	2/39 (5.13%)	0/49 (0.00%)	
PGS or PGD n (%)	3/39 (7.69%)	0/49 (0.00%)	0.083
Endometrial thickness (mm)	10.05±1.82	9.76±1.55	0.424
Endometrial types n (%)			0.271
A	11/39 (28.21%)	17/49 (34.69%)	
B	27/39 (69.23%)	27/49 (55.10%)	
C	1/39 (2.56%)	5/49 (10.21%)	
Transferred embryo stage n (%)			0.402
D3 cleavage-stage embryos	23/63 (36.51%)	36/83 (43.37%)	
D5 or D6 blastocysts	40/63 (63.49%)	47/83 (56.63%)	
Good-quality embryo transferred rate n (%)	33/63 (52.38%)	43/83 (51.81%)	0.945
No. of transferred embryo n	1.62±0.49	1.69±0.47	0.446
β-hCG positive rate n (%)	14/39 (35.90%)	21/49 (42.86%)	0.508
Biochemical pregnancy rate n (%)	5/39 (12.82%)	1/49 (2.04%)	0.084
IPR n (%)	9/39 (23.08%)	19/49 (38.78%)	0.116
IR n (%)	11/63 (17.46%)	25/83 (30.12%)	0.085

619 BMI, body mass index; PGS, pre-implantation genetic screening; PGD, pre-implantation genetic
 620 diagnosis; β-hCG, β-human chorionic gonadotropin; IPR, intrauterine pregnancy rate; IR,
 621 implantation rate.

622

623 **Figure Legends**

624 **Figure 1. The flowchart of phase 1 study.** Endometrial tissues from three-time
625 points sampling on days 5, 7 and 9 after the LH surge (LH+5, LH+7 and LH+9) or
626 days 3, 5 and 7 after progesterone supplementation (P+3, P+5 and P+7) respectively
627 were applied for endometrial WOI determination of the participants by our previous
628 rsERT method. Then, personalized embryo transfer guided by rsERT was conducted
629 for each participant and 70 patients with intrauterine pregnancy were recruited for the
630 prototype of single time point model construction. Then, 21 additional participants by
631 single time point sampling at LH+7 or P+5 we used by this prototype model to predict
632 the receptive time and those who successfully obtained intrauterine pregnancy after
633 pET were further included to optimize the modified rsERT model.

634 **Figure 2. The flowchart of phase 2 study.** 412 patients with RIF were initially
635 recruited during June 2020-December 2021. Following careful inclusion criteria, 180
636 RIF patients were eligible to participate in the second phase to validate the clinical
637 efficiency of modified rsERT. Then, the 180 patients were nonrandomized grouping
638 into subgroup based on patient's intention: the experimental group with 88 patients
639 underwent modified rsERT and personalized embryo transfer (pET) and the control
640 group with 88 patients underwent conventional embryo transfer (ET).

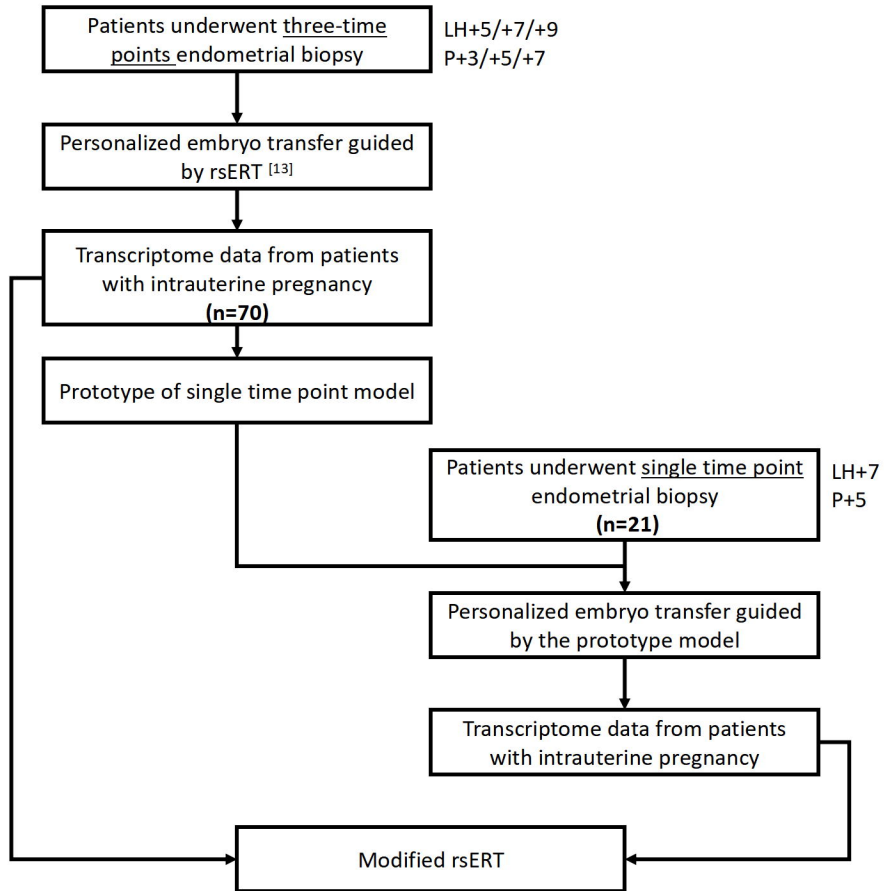
641 **Figure 3. Gene expression pattern of the top 20 DEGs among different**
642 **endometrial statuses.** Gradual genetic expression changes were observed in the
643 secretory phase of menstrual cycle.

644 **Figure 4 Correlation between predicted WOI time distribution and the**
645 **corresponding endometrial receptive statuses.** Medians of the predicted mean WOI
646 time in pre-receptive, receptive and post-receptive samples are approximately 48
647 hours, 0 hour and -48 hours respectively. Deviation points are mostly from samples
648 with WOI displacement.

649 **Figure 5. Volcano plot of differential transcriptomic profile between samples**

650 **obtained from the natural cycle and HRT cycle.** No differentially expressed genes
651 were observed between samples obtained from natural and HRT cycle.

Phase 1



Phase 2

