

Incidence of prostate cancer in Medicaid beneficiaries with and without HIV in 2001-2015 in 14 states

Filip Pirsl^{1*}, Keri Calkins^{1,2}, Jacqueline E. Rudolph¹, Eryka Wentz¹, Xiaoqiang Xu³, Bryan Lau^{1,4,5}, Corinne E. Joshu^{1,4}

¹Department of Epidemiology, Johns Hopkins Bloomberg School of Public Health, Baltimore, Maryland, United States

²Mathematica, Ann Arbor, Michigan, United States

ⁿDepartment of Psychiatry and Behavioral Sciences, Johns Hopkins School of Medicine, Baltimore, Maryland, United States

⁴Department of Oncology, Sidney Kimmel Comprehensive Cancer Center at Johns Hopkins, Baltimore, Maryland, United States

⁵Department of Medicine, Division of General Internal Medicine, Johns Hopkins School of Medicine, Baltimore, Maryland, United States

Corresponding author:

Corinne E. Joshu, PhD MPH

Department of Epidemiology, Bloomberg School of Public Health

Johns Hopkins University

615 N. Wolfe Street

Baltimore, MD 21205

cjoshu1@jhu.edu

Running head: Prostate Cancer Incidence by HIV in Medicaid

Keywords: HIV, prostate cancer; Medicaid; non-AIDS-defining cancer

Abstract

Background

Prostate cancer is projected to be the most common cancer among people living with HIV; however, incidence of prostate cancer has been reported to be lower in men with HIV compared to men without HIV with little evidence to explain this difference. We describe prostate cancer incidence by HIV status in Medicaid beneficiaries, allowing for comparison of men with and without HIV who are similar with respect to socioeconomic characteristics and access to healthcare.

Methods

Medicaid beneficiaries (N=15,167,636) aged 18-64 with ≥ 7 months of continuous enrollment during 2001-2015 in 14 US states were retained for analysis. Diagnoses of HIV and prostate cancer were identified using inpatient and other non-drug claims. We estimated cause-specific (csHR) and sub-distribution hazard ratios comparing incidence of prostate cancer by HIV status, adjusted for age, race-ethnicity, state of residence, year of enrollment, and comorbid conditions. Models were additionally stratified by age and race-ethnicity.

Results

There were 366 cases of prostate cancer observed over 299,976 person-years among beneficiaries with HIV and 17,224 cases over 22,298,914 person-years in beneficiaries without HIV. The hazard of prostate cancer was lower in men with HIV than men without HIV (csHR=0.89; 95% CI: 0.80, 0.99), but varied by race-ethnicity, with similar observations among non-Hispanic Black (csHR=0.79; 95% CI: 0.69, 0.91) and Hispanic (csHR=0.85; 95% CI: 0.67, 1.09), but not non-Hispanic white men (csHR=1.17; 95% CI: 0.91, 1.50). Results were similar in

models restricted to ages 50-64 and 40-49, except for a higher hazard of prostate cancer in Hispanic men with HIV in their 40s, while the hazard of prostate cancer was higher in men with HIV across all models for men aged 18-39.

Conclusion

Reported deficits in prostate cancer incidence by HIV status may be restricted to specific groups defined by age and race-ethnicity.

Introduction

People living with HIV (PLWH) are projected to age considerably, with increasing morbidity and mortality due to age-related conditions, including cardiovascular disease, cognitive decline, and cancer, with the latter estimated to currently account for up to one third of deaths in this population (1-7). PLWH are at elevated risk for numerous cancers compared to the general United States (US) population, including cancers of the anus, cervix, liver, and lung as well as lymphoma and Kaposi sarcoma (1,8-11). Conversely, it has been reported that incidence of breast and prostate cancer is lower among PLWH than in the general population (8-14). Despite these observations, prostate cancer is projected to account for the greatest proportion of cancer burden among PLWH as this population continues to age (1).

Multiple differences exist between men with and without HIV that may contribute to the observed differences in incidence of prostate cancer. Several physiologic processes that have been reported to differ by HIV status, including testosterone metabolism and replacement (15-17), diabetes (18-21), and chronic inflammation (22), may influence pathophysiology of prostate cancer. Testosterone is believed to be necessary for development of prostate cancer, although neither testosterone deficiency nor replacement have been associated with prostate cancer (23-26). Diabetes has been associated with reduced risk of aggressive prostate cancer (27-29), and intraprostatic inflammation may promote development of prostate cancer (30), although it is unknown how HIV-related inflammation influences the prostate, if at all.

Differences by HIV status also exist in demographic characteristics that influence health outcomes. HIV disproportionately affects minority and socioeconomically disadvantaged communities (31,32), resulting in differences in racial composition and healthcare coverage by HIV status. In 2019, an estimated 40% of PLWH in the US were non-Hispanic Black

individuals, who account for only 12% of the general population (33,34). Non-Hispanic Black men are also subject to numerous prostate cancer disparities, including greater incidence of any and advanced prostate cancer (35,36), lower likelihood of receiving appropriate treatment (37,38), and greater prostate cancer-specific mortality (39-41) compared to other men, although differences are attenuated in settings of equal access to care. Racial disparities in prostate cancer in the general population may influence differences observed by HIV status. Moreover, healthcare for approximately 40% of PLWH is covered by Medicaid compared to 13% of the general population, where private insurance is most common (70%) (42,43), reflecting socioeconomic differences which may affect access to or engagement with healthcare.

Lastly, prostate cancer screening is a significant driver of detection of prostate cancer and extent of screening influences observed incidence rates (44,45). Prostate cancer screening has been reported to be higher among privately-insured men with HIV (12) but not in lower income men with AIDS (13) compared to men without HIV. Current understanding is unable to explain lower incidence of prostate cancer in men with HIV, and the hypotheses described here may act in concert to yield these observations.

The objective of this study is to describe incidence of prostate cancer by HIV status in a large sample of Medicaid beneficiaries, allowing for comparison of men with HIV to men without HIV who are otherwise similar by socioeconomic characteristics and access to healthcare, effectively adjusting for these factors. We are also able to conduct comparisons stratified by race-ethnicity, which is implicated in multiple prostate cancer disparities in the general population, to describe any heterogeneity that exists by this characteristic. Findings of this study will complement the existing literature and contribute previously unreported descriptions of prostate cancer incidence accounting for key demographic characteristics of men with HIV,

providing additional evidence for consideration of mechanisms underlying differences in prostate cancer incidence by HIV status.

Methods

Study Sample

Medicaid Analytic eXtract (MAX) data were obtained from the Centers for Medicare and Medicaid Services (CMS) for 2001-2015 for 14 US states. MAX data were available through 2015 for California, Georgia, New York, and Pennsylvania; through 2014 for Massachusetts, Ohio, Texas, and Washington; and through 2013 for Alabama, Colorado, Florida, Illinois, Maryland, and North Carolina. Data available for analysis included enrollment data and claims for inpatient care, outpatient care, and long-term therapy for beneficiaries aged 18-64. Beneficiaries with dual eligibility for Medicare or private insurance coverage were excluded to ensure all care received was captured in Medicaid claims. Enrollment was defined at the month level and beneficiaries were considered to be eligible in a month with at least 15 days of Medicaid coverage. Follow-up for states with MAX data through 2015 was administratively censored at the end of September 2015, immediately preceding the transition to ICD-10, and only ICD-9 codes were used to identify claims of interest.

Only beneficiaries' first enrollment periods were considered, and beneficiaries could not re-enter and continue contributing person-time if re-enrollment was observed, as measures of interest could not be observed during a lapse in coverage. A six-month run-in period of continuous enrollment was implemented to exclude prevalent cases of any cancer, meaning beneficiaries needed at least seven months of continuous enrollment and to be cancer-free to be included in this analysis. The Johns Hopkins Bloomberg School of Public Health Institutional Review Board

determined that this study represented a secondary analysis of existing Medicaid claims data and that it met criteria for exempt status.

Study Measures

HIV and covariates of interest were measured during the run-in period and tabulated at the start of the seventh month of continuous enrollment, henceforth referred to as baseline. Age, race-ethnicity, sex, and state of residence were obtained from the MAX personal summary file. Race-ethnicity was categorized as non-Hispanic white, non-Hispanic Black, Hispanic, and other or unknown race-ethnicity. Only beneficiaries for whom male sex was recorded were retained for this analysis. State was defined at baseline and fixed.

Men with HIV were identified using a modified version of the CMS chronic condition definition for HIV of at least one inpatient claim or at least two long-term or other care claims within a one-year period with ICD-9 code indicating diagnosis of HIV (042, 042.X, 079.53, 795.71, V08). The service start date of the first claim was used as the date of diagnosis of HIV. Prostate cancer, the outcome of interest, was identified using a similar algorithm, with ICD-9 codes indicating prostate cancer diagnosis (185.X, V10.46). We also identified diagnoses of comorbid conditions, specifically those included in the Charlson comorbidity index (48-50). Codes used to identify the conditions are provided in Supplemental Materials.

Statistical Analysis

Men contributed follow-up time at risk beginning on the first day of the seventh month of continuous enrollment in Medicaid until earliest of diagnosis of prostate cancer, diagnosis of any other cancer, age 65, lapse in enrollment, recorded date of death, or end of data coverage for state of residence. We calculated incidence rates of prostate cancer per 100,000 person-years at

risk, stratified by age and race-ethnicity. Age-stratified analyses used cutoffs of ages 40 and 50 years. The United States Preventive Services Task Force recommended initiation of prostate cancer screening at age 50 for most of the study period (51-53), whereas the American Cancer Society had suggested initiation of screening in the 40s for high-risk men, namely Black men and men with family history of prostate cancer (54-56). For age-stratified analyses, person-time contributed was additionally constrained by aging into and out of age strata.

Cox proportional hazard models were used to estimate the cause-specific hazard ratio (csHR) of prostate cancer in men with HIV compared to men without HIV. Due to the considerable difference in risk of death due to any cause by HIV status, we also estimated sub-distribution hazard ratios (sdHR) using a Fine and Gray model, to compare incidence of prostate cancer by HIV status allowing for death as a competing risk to occur. Lastly, we estimated and plotted cumulative incidence curves of prostate cancer by HIV status and 95% confidence intervals using the Aalen-Johansen estimator and Greenwood's formula, respectively. All models used age as the time scale. The distribution of age in men with HIV differs from that of men without HIV in the general population (1,46) as well as men without HIV enrolled in Medicaid (47), requiring careful adjustment for age in analyses of cancer incidence in this population. Using age as the time scale is one way to control for these differences. HRs were estimated in all men, omitting men of other or unknown race-ethnicity, and separately among non-Hispanic white, non-Hispanic Black, and Hispanic men.; We additionally ran models stratified by age (18-39, 40-49, and 50-64). All models were adjusted for race-ethnicity, state of residence, calendar year of enrollment, and comorbid conditions (none, one, or two or more). All hazard ratio estimates presented henceforth are from adjusted models.

Results

Men with HIV were older at baseline (median age 43 (IQR: 36, 50) vs. 30 (IQR: 20, 44)), were more frequently non-Hispanic Black (43.1% vs. 18.2%), and had more often been diagnosed with at least one comorbid condition (32.0% vs. 10.7%) than men without HIV (**Table 1**). Over one quarter of men with HIV (26.2%) were aged 50 or older at enrollment compared to 16.7% of men without HIV.

We observed 366 cases of prostate cancer over 299,976 person-years among men with HIV and 17,224 cases over 22,298,914 person-years in men without HIV. Prostate cancer cases were predominantly observed among men aged 50-64, followed by men aged 40-49 and 18-39, and more frequently observed among non-Hispanic Black men, followed by Hispanic and non-Hispanic white men.

The cause-specific hazard of prostate cancer was lower among men with HIV compared to men without HIV (csHR=0.89; 95% CI: 0.80, 0.99); however, this association varied by age and race-ethnicity (**Figure 1, Table 2**). The hazard of prostate cancer was lower among non-Hispanic Black (csHR=0.79; 95% CI: 0.69, 0.91) and to a lesser extent among Hispanic (csHR=0.85; 95% CI: 0.67, 1.09) men with HIV compared to men without HIV. Conversely, non-Hispanic white men with HIV had a slightly higher (but not significantly different) hazard of prostate cancer compared to non-Hispanic White men without HIV (csHR=1.17; 95% CI: 0.91, 1.50). Results were consistent when estimating the sdHR, with minimal changes in estimates (**Table 2**).

In analyses stratified by age, similar results were observed among men aged 50-64 to those estimated among men aged 18-64, as most events occurred in this age category (**Table 3, Supplemental Figure 1**). Overall, the hazard of prostate cancer was lower among men with HIV

(csHR=0.89; 95% CI: 0.80, 0.99). When stratified by race-ethnicity, the hazard of prostate cancer was lower among non-Hispanic Black (adjusted csHR=0.81; 95% CI: 0.70, 0.94) and Hispanic (csHR=0.80; 95% CI: 0.61, 1.06), but not non-Hispanic white (csHR=1.15; 95% CI: 0.88, 1.50), men with HIV compared to men without HIV (**Table 3**). The sdHR results remained similar.

Among men aged 40-49, hazard of prostate cancer was also lower among men with HIV compared to men without HIV; however, this difference was attenuated compared to men aged over 50 (csHR=0.92; 95% CI: 0.68, 1.26) (**Table 4, Supplemental Figure 2**). When stratified by race-ethnicity, men with HIV had a lower hazard of prostate cancer compared to men without HIV among non-Hispanic Black men (csHR=0.68; 95% CI: 0.43, 1.06), while the hazard of prostate cancer was higher among men with HIV compared to men without HIV among non-Hispanic white (csHR=1.12; 95% CI: 0.53, 2.37) and Hispanic men (csHR=1.24; 95% CI: 0.69, 2.21). None of the differences by HIV status in this age group were statistically significant. No changes in results were observed when estimating the sdHR.

Lastly, very few prostate cancer cases (n=7) were observed among men aged 18-39, resulting in imprecise model estimates. Overall, the hazard of prostate cancer was elevated among men with HIV compared to men without HIV (csHR=2.02; 95% CI: 0.93, 4.39), with similar results observed among non-Hispanic Black (csHR=1.81; 95% CI: 0.64, 5.10) and non-Hispanic white men (csHR=csHR=4.15; 95% CI: 0.99, 17.43) (**Supplemental Table 1, Supplemental Figure 3**). Due to the small number of cases, a Cox model could not be run among Hispanic men, nor could we run the Fine-Gray model among any race-ethnicity group.

Discussion

Men with HIV were found to have lower hazard of prostate cancer; however, heterogeneity in this association was observed by age and race-ethnicity. Among men aged 40 or older, the hazard of prostate cancer was largely lower in non-Hispanic Black, but higher in non-Hispanic white men with HIV compared to men without HIV. The relative hazard of prostate cancer by HIV status in Hispanic men varied by age category. Our results are congruent with previous reports of lower incidence of prostate cancer in men with HIV compared to men without HIV (8-14), although the estimates we report indicate a smaller difference. We additionally report model estimates stratified by race-ethnicity and describe previously unreported differences in the association between HIV and incidence of prostate cancer by race-ethnicity.

Differences observed by HIV status and race-ethnicity may be explained in part by prostate cancer screening, a significant driver of the detection of prostate cancer (44, 45). For most of the study period, guidelines recommended screening for men aged 50 or older, with some guidelines suggesting initiation of screening in the 40s for Black men and men with family history of prostate cancer (51-56). It is possible that, among men in whom screening is not yet recommended, men with HIV are more likely to be screened and have prostate cancer detected due to increased engagement in HIV care. At ages for which screening is recommended, this difference due to care engagement is abrogated or even reversed by broad uptake of screening in men without HIV. The recommendation of earlier initiation of screening in Black men may contribute to a lower hazard of prostate cancer observed in non-Hispanic Black men with HIV beginning already in men in their 40s. In contrast, among Hispanic men with HIV, the hazard of prostate cancer was higher in the 40s, but lower beyond age 50, than in men without HIV. This

explanation is not supported by findings in non-Hispanic white men, in whom the hazard of prostate cancer was consistently comparable by HIV status across age categories, although this may reflect different patterns of screening uptake or cancer detection in either or both HIV groups compared to non-Hispanic Black and Hispanic men.

Biological mechanisms may explain the reduced incidence of prostate cancer in men with HIV compared to men without HIV, such as those mediated by inflammatory processes or hormonal perturbations. However, further refinements may be needed to explain the heterogeneity in associations by race-ethnicity observed in this analysis. It is possible that prostate cancer disparities by race-ethnicity described in the general population exert an influence on and potentially interact with biological processes and characteristics that differ by HIV status, although what these interactions are is unclear.

This study was not without limitations, and findings of these analyses should be interpreted with the following considerations. This analysis was conducted in men aged 18-64 whereas approximately 60% of prostate cancer cases in the US are diagnosed in men aged 65 or older (57). However, the proportion of PLWH in the US aged 65 or older was below 10% for much of the study period and only in more recent years have greater numbers of PLWH aged beyond 65 years (1). Nevertheless, the findings of this study are not generalizable to individuals aged 65 and older in whom prostate cancer burden is highest.

The outcome of interest in this study was incidence of any prostate cancer, as neither stage nor grade at diagnosis could be determined from administrative claims data. Results of this analysis should be interpreted solely in the context of total prostate cancer. Prostate cancer-specific mortality in the first five years following diagnosis increases with grade and almost exclusively occurs among men with regional or distant disease at diagnosis. While prostate cancer is most

commonly diagnosed at the local stage, (57,58) men with HIV have previously been found to be diagnosed with prostate cancer at more advanced stages (59,60), which are associated with adverse outcomes.

A six-month run-in period was implemented to exclude beneficiaries with prevalent cancer at enrollment, and only beneficiaries with evidence of HIV observed during this period were considered to have HIV for analysis. Inclusion of beneficiaries diagnosed with HIV later in enrollment in analysis as not having HIV likely attenuated our estimates, assuming these individuals experienced risks indicated by our results after being diagnosed with HIV. It is also possible that the run-in period did not exclude all prevalent cancers and that some events did not represent first primary cancers. Lastly, we were unable to measure and account for cancer risk factors, such as obesity and smoking, although these have been associated with fatal prostate cancer, not any prostate cancer (61-65); we also could not control for HIV-related factors, such as viral suppression and immune status.

This study was conducted among Medicaid beneficiaries enrolled in 14 US states over the period of 2001-2015. Approximately 40% of PLWH in the US are enrolled in Medicaid (45); thus, the results of this analysis reflect the experience of a significant proportion of men with HIV in the US. Our study benefits from comparing men with HIV to men without HIV who are otherwise similar with respect to socioeconomic characteristics and access to care, complementing prior congruent reports of lower incidence (8-14), some of which were unable to make such direct comparisons. We were also able to estimate differences in prostate cancer incidence by HIV status stratified by race-ethnicity and identified heterogeneity in this association not previously reported. These results extend our understanding of prostate cancer in men with HIV to the Medicaid-insured population; however, existing evidence remains insufficient to identify

underlying causes and potential targets of intervention to address differences in prostate cancer incidence and disparities in outcomes by HIV status. Further investigation, with particular emphasis on stage and grade at diagnosis, may provide sufficient evidence to support or exclude hypotheses explaining the differences by HIV status related to prostate cancer screening and detection, as well as biological mechanisms of prostate cancer development.

Author statement:

The data that support the findings of this study are available from Research Data Assistance Center (ResDAC). Restrictions apply to the availability of these data, which were used under license for this study. The Johns Hopkins Bloomberg School of Public Health Institutional Review Board determined that this study represented a secondary analysis of existing Medicaid claims data and that it met criteria for exempt status. The authors have no conflicts of interest to disclose.

Acknowledgements

This work was supported in part by NIH grants R01 CA250851, U01 AI069918, P30 CA006973, and by a 2018 and 2021 development grant from the Johns Hopkins University Center for AIDS Research, an NIH-funded program (1P30AI094189), which is supported by the following NIH Co-Funding and Participating Institutes and Centers: NIAID, NCI, NICHD, NHLBI, NIDA, NIA, NIGMS, NIDDK, NIMHD. F PirsI was supported by the NCI Cancer Epidemiology, Prevention, and Control Grant (T32 CA0093140). This content does not necessarily represent the official views of the NIH and is the sole responsibility of the authors.

References

1. Shiels MS, Islam JY, Rosenberg PS, Hall HI, Jacobson E, Engels EA. Projected Cancer Incidence Rates and Burden of Incident Cancer Cases in HIV-Infected Adults in the United States Through 2030. *Ann Intern Med*. 2018;168(12):866-879
2. Althoff KN, McGinnis KA, Wyatt CM, et al. Comparison of risk and age at diagnosis of myocardial infarction, end-stage renal disease, and non-AIDS-defining cancer in HIV-infected versus uninfected adults. *Clin Infect Dis*. 2015;60(4):627-638
3. Wong C, Gange SJ, Moore RD, et al. Multimorbidity Among Persons Living with Human Immunodeficiency Virus in the United States. *Clin Infect Dis*. 2018;66(8):1230-1238
4. Saylor D, Dickens AM, Sacktor N, et al. HIV-associated neurocognitive disorder – pathogenesis and prospects for treatment. *Nat Rev Neurol*. 2016;12(4):234-248
5. Engels EA, Yanik EL, Wheeler W, et al. Cancer-Attributable Mortality Among People With Treated Human Immunodeficiency Virus Infection in North America. *Clin Infect Dis*. 2017;65(4):636-643
6. Morlat P, Roussillon C, Henard S, et al. Causes of death among HIV-infected patients in France in 2010 (national survey): trends since 2000. *AIDS*. 2014;28(8):1181-1191
7. Goehringer F, Bonnet F, Salmon D, et al. Causes of Death in HIV-Infected Individuals with Immunovirologic Success in a National Prospective Survey. *AIDS Res Hum Retroviruses*. 2017;33(2):187-193
8. Bedimo RJ, McGinnis KA, Dunlap M, et al. Incidence of non-AIDS-defining malignancies in HIV-infected versus noninfected patients in the HAART era: impact of immunosuppression. *J Acquir Immune Defic Syndr*. 2009;52:203-208
9. Robbins HA, Pfeiffer RM, Shiels MS, Li J, Hall HI, Engels EA. Excess cancers among HIV-infected people in the United States. *J Natl Cancer Inst*. 2015;107(4):dju503
10. Patel P, Hanson DL, Sullivan PS, et al. Incidence of types of cancer among HIV-infected persons compared with the general population in the United States, 1992-2003. *Ann Intern Med*. 2008;148(10):728-736
11. Hernandez-Ramirez RU, Shiels MS, Dubrow R, Engels EA. Cancer risk in HIV-infected people in the USA from 1996 to 2012: a population-based, registry-linkage study. *Lancet HIV*. 2017;4(11):e495-e504
12. Marcus JL, Chao CR, Leyden WA, et al. Prostate cancer incidence and prostate-specific antigen testing among HIV-positive and HIV-negative men. *J Acquir Immune Defic Syndr*. 2014;66(5):495-502
13. Shiels MS, Goedert JJ, Moore RD, et al. Reduced risk of prostate cancer in U.S. Men with AIDS. *Cancer Epidemiol Biomarkers Prev*. 2010;19(11):2910-2915
14. Coghill AE, Engels EA, Schymura MJ, Mahale P, Shiels MS. Risk of Breast, Prostate, and Colorectal Cancer Diagnoses Among HIV-Infected Individuals in the United States. *J Natl Cancer Inst*. 2018.110(9):959-966
15. Wunder DM, Bersinger NA, Fux CA, et al. Hypogonadism in HIV-1-infected men is common and does not resolve during antiretroviral therapy. *Antivir Ther*. 2007;12(2):261-265

16. Rochira V, Zirilli L, Orlando G, et al. Premature decline of serum total testosterone in HIV-infected men in the HAART-era. *PLoS One*. 2011;6(12):e28512
17. Bhatia R, Murphy AB, Raper JL, et al. Testosterone replacement therapy among HIV-infected men in the CFAR Network of Integrated Clinical Systems. *AIDS*. 2015;29(1):77-81
18. Brown TT, Cole SR, Li X, et al. Antiretroviral therapy and the prevalence and incidence of diabetes mellitus in the multicenter AIDS cohort study. *Arch Intern Med*. 2015;165(10):1179-1184
19. Rasmussen LD, Miathiesen ER, Kronborg G, Pederson C, Gerstoft J, Obel N. Risk of diabetes mellitus in persons with and without HIV: a Danish nationwide population-based cohort study. *PLoS One*. 2012;7(9):e44575
20. Brown TT, Li X, Cole SR, et al. Cumulative exposure to nucleoside analogue reverse transcriptase inhibitors is associated with insulin resistance in the Multicenter AIDS Cohort Study. *AIDS*. 2005;19(13):1375-1383
21. Tien PC, Schneider MF, Cole SR, et al. Antiretroviral therapy exposure and insulin resistance in the Women's Interagency HIV study. *J Acquir Immune Defic Syndr*. 2008;49(4):369-376
22. Zicari S, Sessa L, Cotugno N, et al. Immune Activation, Inflammation, and Non-AIDS Co-Morbidities in HIV-Infected Patients under Long-Term ART. *Viruses*. 2019;11(3):200
23. Pienta KJ, Bradley D. Mechanisms Underlying the Development of Androgen-Independent Prostate Cancer. *Clin Cancer Res*. 2006;12(6):1665-1671
24. Mohr BA, Feldman HA, Kalish LA, Longcope C, McKinlay JB. Are serum hormones associated with risk of prostate cancer? Prospective results from the Massachusetts Male Aging Study. *Urology*. 2001;57(5):930-935
25. Roddam AW, Allen NE, Appleby P, Key TJ. Endogenous sex hormones and prostate cancer: a collaborative analysis of 18 prospective studies. *J Natl Cancer Inst*. 2008;100(3):170-183
26. Cui Y, Zong H, Yan H, Zhang Y. The effect of testosterone replacement therapy on prostate cancer: a systematic review and meta-analysis. *Prostate Cancer Prostatic Dis*. 2014;17(2):132-143
27. Waters KM, Henderseon BE, Stram DO, Wan P, Kolonel LN, Haiman CA. Association of Diabetes With Prostate Cancer Risk in the Multiethnic Cohort. *Am J Epidemiol*. 2009;169(8):937-945
28. Fall K, Garmo H, Gudbjornsdottir S, Stattin P, Zethelius B. Diabetes mellitus and prostate cancer risk; a nationwide case-control study within PCBaSe Sweden. *Cancer Epidemiol Biomarkers Prev*. 2013;22(6):1102-1109
29. Miller EA, Pinsky PF, Pierre-Victor D. Differences in the relationship between diabetes and prostate cancer among Black and White non-Hispanic men. *Cancer Causes Control*. 2021;32(12):1385-1393
30. Sfanos KS, De Marzo AM. Prostate cancer and inflammation: the evidence. *Histopathology*. 2012;60(1):199-215

31. El-Sadr WM, Mayer KH, Hodder SL. AIDS in America- -forgotten but not gone. *N Engl J Med*. 2010;362(11):967-970
32. Denning P, DiNenno E. Communities in Crisis: Is There a Generalized HIV Epidemic in Impoverished Urban Areas of the United States? <https://www.cdc.gov/hiv/group/poverty.html>. Page last reviewed December 2019. Accessed January 20, 2022
33. Centers for Disease Control and Prevention. Estimated HIV incidence and prevalence in the United States, 2015-2019. HIV Surveillance Supplemental Report 2021;26(1). <http://www.cdc.gov/hiv/library/reports/hiv-surveillance.html>. Published May 2021. Accessed January 20, 2022.
34. Racial and Ethnic Diversity in the United States: 2010 Census and 2020 Census. <http://www.census.gov/library/visualizations/interactive/racial-and-ethnic-diversity-in-the-united-states-2010-and-2020-census.html>. Published August 2021. Accessed January 20, 2022
35. Giaquinto AN, Miller KD, Tossas KY, Winn RA, Jemal A, Siegel RL. Cancer statistics for African American/Black People 2022. *CA Cancer J Clin*. 2022;72(3):202-229
36. Siegel DA, O'Neil ME, Richards TB, Dowling NF, Weir HK. Prostate Cancer Incidence and Survival, by Stage and Race/Ethnicity – United States, 2001-2017. *MMWR Morb Mortal Wkly Repo*. 2020;69(41):1473-1480
37. Wang EH, Yu JB, Aboussally R, et al. Disparities in Treatment of Patients With High-risk Prostate Cancer: Results From a Population-based Cohort. *Urology*. 2016;95:88-94
38. Krishna S, Fan Y, Jarosek S, Adejoro O, Chamie K, Konety B. Racial Disparities in Active Surveillance for Prostate Cancer. *J Urol*. 2016;197(2):342-349
39. Williams VL, Awasthi S, Fink AK, et al. African-American men and prostate cancer-specific mortality: a competing risk analysis of a large institutional cohort, 1989-2015. *Cancer Med*. 2018;7(5):2160-2171
40. Dess RT, Hartman HE, Mahal BA, et al. Association of Black Race With Prostate Cancer-Specific and Other-Cause Mortality. *JAMA Oncol*. 2019;5(7):975-983
41. McKay RR, Sarkar RR, Kumar A, et al. Outcomes of Black men with prostate cancer treated with radiation therapy in the Veterans Health Administration. *Cancer*. 2021;127(3):403-411
42. Kaiser Family Foundation. Health Insurance Coverage of the Population. <https://www.kff.org/other/state-indicator/total-population>. Accessed March 10, 2020
43. Kaiser Family Foundation. An Update on Insurance Coverage Among People with HIV in the United States. <https://www.kff.org/report-section/an-update-on-insurance-coverage-among-people-with-hiv-in-the-united-states-findings/>. Accessed March 10, 2020
44. Kearns JT, Holt SK, Wright JL, Lin DW, Lange PH, Gore JL. PSA screening, prostate biopsy, and treatment of prostate cancer in the years surrounding the USPSTF recommendation against prostate cancer screening. *Cancer*. 2018;124(13):2733-2739
45. Magnani CJ, Li K, Seto T, et al. PSA Testing Use and Prostate Cancer Diagnostic Stage After the 2012 U.S. Preventive Services Task Force Guideline Changes. *J Natl Compr Canc Netw*. 2019;17(7):795-803

46. Shiels MS, Pfeiffer RM, Engels EA. Age at cancer diagnosis among persons with AIDS in the United States. *Ann Intern Med.* 2010;153(7):452-460
47. Medicaid. Who Enrolls in Medicaid & CHIP? <https://www.medicaid.gov/state-overviews/scorecard/who-enrolls-medicaid-chip/index.html>. Accessed September 10, 2022
48. Charlson ME, Pompei P, Ales KL, MacKenzie CR. A new method of classifying prognostic comorbidity in longitudinal studies: development and validation. *J Chronic Dis.* 1987;40(5):373-383
49. Quan H, Bing L, Couris CM, et al. Updating and validating the Charlson comorbidity index and score for risk adjustment in hospital discharge abstracts using data from 6 countries. *Am J Epidemiol.* 2011;173(6):676-682
50. Quan H, Sundararajan V, Halfon P, et al. Coding algorithms for defining comorbidities in ICD-9-CM and ICD-10 administrative data. *Med Care.* 2005;43(11):1130-1139
51. Screening for prostate cancer: commentary on the recommendations of the Canadian Task Force on the Periodic Health Examination. The U.S. Preventive Services Task Force. *Am J Prev Med.* 1994;10(4):187-193
52. Lin K, Lipsitz R, Miller T, et al. Benefits and harms of prostate-specific antigen screening for prostate cancer: an evidence update for the U.S. Preventive Services Task Force. *Ann Intern Med.* 2008;149(3):192-199
53. Moyer VA; U.S. Preventive Services Task Force. Screening for Prostate Cancer: U.S. Preventive Services Task Force Recommendation Statement. *Ann Intern Med.* 2012;157(2):120-134
54. Moyer VA; U.S. Preventive Services Task Force. Screening for Prostate Cancer: U.S. Preventive Services Task Force Recommendation Statement. *Ann Intern Med.* 2012;157(2):120-134
55. von Eschenbach A, Ho R, Murphy, GP, Cunningham M, Lins N. American Cancer Society guideline for the early detection of prostate cancer: update 1997. *CA Cancer J Clin.* 1997;47(5):261-264
56. Wolf AMD, Wender RC, Etzioni RB, et al. American Cancer Society guideline for the early detection of prostate cancer: update 2010. *CA Cancer J Clin.* 2010;60(2):70-98
57. National Cancer Institute Surveillance, Epidemiology, and End Results Program. Cancer Stat Facts: Prostate Cancer. Last updated 2021. <https://www.seer.cancer.gov/statfacts/html/prost.html>. Accessed: September 21, 2020
58. Siegel DA, O'Neil ME, Richards TB, Dowling NF, Weir HK. Prostate Cancer Incidence and Survival, by Stage and Race/Ethnicity – United States, 2001-2017. *MMWR Morb Mortal Wkly Rep.* 2020;69:1473-1480
59. Coghill AE, Han X, Suneja G, Lin CC, Jemal A, Shiels MS. Advanced stage at diagnosis and elevated mortality among US patients with cancer infected with HIV in the National Cancer Data Base. *Cancer.* 2019;125(16):2868-2876
60. Shiels MS, Copeland G, Goodman MT, et al. Cancer stage at diagnosis in patients infected with the human immunodeficiency virus and transplant recipients. *Cancer.* 2015;121(12):2063-2071

61. Rodriguez C, Tatham LM, Thun MJ, Calle EE, Heath Jr CW. Smoking and fatal prostate cancer in a large cohort of adult men. *Am J Epidemiol.* 1997;145(5):466-475
62. Giovannucci E, Liu Y, Platz EA, Stampfer MJ, Willett WC. Risk factors for prostate cancer incidence and progression in the health professionals follow-up study. *Int J Cancer.* 2007;121(7):1571-1578
63. Calle EE, Rodriguez C, Walker-Thurmond K, Thun MJ. Overweight, obesity, and mortality from cancer in a prospectively studied cohort of U.S. adults. *N Engl J Med.* 2003;348(17):1625-1638
64. Wright ME, Chang S-C, Schatzkin A, et al. Prospective study of adiposity and weight change in relation to prostate cancer incidence and mortality. *Cancer.* 2007;109(4):675-684
65. Cao Y, Ma J. Body mass index, prostate cancer-specific mortality, and biochemical recurrence: a systematic review and meta-analysis. *Cancer Prev Res (Phila).* 2011;4(4):486-501

Tables

Table 1: Beneficiary Characteristics at Baseline

Characteristic	HIV N=112,498	No HIV N=15,055,138
Enrollment year		
2001 or earlier	30.4%	13.2%
2002	5.9%	6.0%
2003	5.0%	5.5%
2004	4.6%	5.5%
2005	4.3%	5.2%
2006	3.8%	4.8%
2007	3.3%	4.7%
2008	4.4%	5.6%
2009	5.0%	6.6%
2010	5.0%	6.8%
2011	4.8%	6.9%
2012	4.4%	6.8%
2013	4.0%	6.3%
2014	13.0%	13.1%
2015	2.0%	3.0%
Age		
Median (IQR)	43 (36, 50)	30 (20, 44)
18-24	5.7%	37.1%
25-29	6.3%	11.7%
30-34	10.3%	10.2%
35-39	15.8%	9.0%
40-44	18.6%	8.1%
45-49	17.1%	7.1%
50-54	12.1%	6.3%
55-59	6.8%	5.2%
60-64	7.3%	5.3%
Race-ethnicity		
Non-Hispanic white	27.0%	33.7%
Non-Hispanic Black	43.1%	18.2%
Hispanic	20.5%	33.1%
Other/Unknown	9.4%	15.0%
State		
Alabama	0.8%	1.0%
California	21.7%	43.4%

Colorado	0.5%	0.9%
Florida	10.4%	4.3%
Georgia	3.9%	2.2%
Illinois	4.5%	4.3%
Maryland	3.5%	2.1%
Massachusetts	3.4%	3.4%
New York	35.1%	19.0%
North Carolina	3.5%	2.4%
Ohio	2.9%	5.0%
Pennsylvania	2.9%	4.9%
Texas	4.8%	4.0%
Washington	2.2%	3.1%
Comorbid condition		
0	68.0%	89.3%
1	22.2%	7.5%
2+	9.8%	3.2%

Baseline defined as first day of seventh month of enrollment following six-month run-in period; characteristics tabulated during run-in period; comorbid conditions considered listed in Supplemental Materials; abbreviations: IQR-interquartile range

Table 2: Cause-Specific, Sub-Distribution Hazard Ratios of Prostate Cancer by HIV Status in Men Aged 18-64

	Cases	Person-time (PY)	IR ^a	Beneficiaries	Crude ^b		Adjusted ^c	
					csHR (95% CI)	sdHR (95% CI)	csHR (95% CI)	sdHR (95% CI)
Overall								
No HIV	17,224	22,298,914.31	77.24	15,055,138	1.00 (reference)	1.00 (reference)	1.00 (reference)	1.00 (reference)
HIV	382	299,976.15	127.34	112,498	1.23 (1.11, 1.36)	1.19 (1.08, 1.32)	0.89 (0.80, 0.99)	0.87 (0.87, 0.96)
NHW, NHB, Hispanic								
No HIV	15,130	19,014,049.38	79.57	12,798,610	1.00 (reference)	1.00 (reference)	1.00 (reference)	1.00 (reference)
HIV	357	281,072.75	127.01	101,941	1.14 (1.03, 1.26)	1.11 (1.00, 1.23)	0.85 (0.77, 0.95)	0.83 (0.75, 0.92)
Non-Hispanic white								
No HIV	5,333	8,168,577.87	65.29	5,076,975	1.00 (reference)	1.00 (reference)	1.00 (reference)	1.00 (reference)
HIV	64	72,883.66	87.81	30,324	1.21 (0.95, 1.55)	1.19 (0.93, 1.52)	1.17 (0.91, 1.50)	1.14 (0.89, 1.46)
Non-Hispanic Black								
No HIV	6,826	4,614,123.25	147.94	2,736,867	1.00 (reference)	1.00 (reference)	1.00 (reference)	1.00 (reference)
HIV	226	136,837.93	165.16	48,503	0.83 (0.73, 0.95)	0.80 (0.70, 0.91)	0.79 (0.69, 0.91)	0.76 (0.67, 0.87)
Hispanic								
No HIV	2,971	6,231,348.25	47.68	4,984,768	1.00 (reference)	1.00 (reference)	1.00 (reference)	1.00 (reference)
HIV	67	71,351.16	93.90	23,114	1.05 (0.83, 1.34)	1.03 (0.81, 1.32)	0.85 (0.67, 1.09)	0.83 (0.65, 1.07)

^aper 100,000 person-years; ^badjusted for age (time metric), ^cadjusted for age (time metric), race-ethnicity, state of residence, enrollment year, and comorbid conditions; abbreviations: CI-confidence interval, csHR-cause-specific hazard ratio, IR-incidence rate, NHB-non-Hispanic Black, NHW-non-Hispanic white, PY-person-years, sdHR-sub-distribution hazard ratio

Table 3: Cause-Specific, Sub-Distribution Hazard Ratios of Prostate Cancer by HIV Status in Men Aged 50-64

	Cases	Person-time (PY)	IR ^a	Beneficiaries	Crude ^b		Adjusted ^c	
					csHR (95% CI)	sdHR (95% CI)	acsHR (95% CI)	asdHR (95% CI)
Overall								
No HIV	16,007	5,418,742.81	295.40	2,945,505	1.00 (reference)	1.00 (reference)	1.00 (reference)	1.00 (reference)
HIV	332	108,867.34	304.96	41,603	1.22 (1.09, 1.36)	1.17 (1.05, 1.31)	0.89 (0.80, 0.99)	0.85 (0.77, 0.95)
NHW, NHB, Hispanic								
No HIV	14,012	4,446,608.25	315.12	2,341,829	1.00 (reference)	1.00 (reference)	1.00 (reference)	1.00 (reference)
HIV	311	102,146.14	304.47	37,923	1.14 (1.01, 1.27)	1.09 (0.98, 1.22)	0.85 (0.76, 0.96)	0.82 (0.73, 0.92)
Non-Hispanic white								
No HIV	4,974	2,233,446.25	222.71	1,153,935	1.00 (reference)	1.00 (reference)	1.00 (reference)	1.00 (reference)
HIV	55	25,097.74	219.14	10,732	1.19 (0.91, 1.55)	1.16 (0.89, 1.52)	1.15 (0.88, 1.50)	1.12 (0.86, 1.46)
Non-Hispanic Black								
No HIV	6,308	1,228,129.00	513.63	559,478	1.00 (reference)	1.00 (reference)	1.00 (reference)	1.00 (reference)
HIV	202	52,880.52	381.99	18,890	0.85 (0.74, 0.98)	0.81 (0.70, 0.93)	0.81 (0.70, 0.94)	0.77 (0.67, 0.89)
Hispanic								
No HIV	2,730	985,033.00	277.15	628,416	1.00 (reference)	1.00 (reference)	1.00 (reference)	1.00 (reference)
HIV	54	24,167.88	223.44	8,301	0.97 (0.74, 1.27)	0.94 (0.72, 1.23)	0.80 (0.61, 1.06)	0.78 (0.59, 1.02)

^aper 100,000 person-years, ^badjusted for age (time metric), ^cadjusted for age (time metric), race-ethnicity, state of residence, enrollment year, and comorbid conditions; abbreviations: CI-confidence interval, csHR-cause-specific hazard ratio, IR-incidence rate, NHB-non-Hispanic Black, NHW-non-Hispanic white, PY-person-years, sdHR-sub-distribution hazard ratio

Table 4: Cause-Specific, Sub-Distribution Hazard Ratios of Prostate Cancer by HIV Status in Men Aged 40-49

	Cases	Person-time (PY)	IR ^a	Beneficiaries	Crude ^b		Adjusted ^c	
					csHR (95% CI)	sdHR (95% CI)	csHR (95% CI)	sdHR (95% CI)
Overall								
No HIV	1,062	4,376,172.00	24.27	2,736,466	1.00 (reference)	1.00 (reference)	1.00 (reference)	1.00 (reference)
HIV	43	116,470.90	36.92	49,401	1.43 (1.05, 1.93)	1.39 (1.03, 1.89)	0.92 (0.68, 1.26)	0.90 (0.66, 1.23)
NHW, NHB, Hispanic								
No HIV	973	3,656,230.88	26.61	2,276,711	1.00 (reference)	1.00 (reference)	1.00 (reference)	1.00 (reference)
HIV	40	109,660.72	36.48	45,392	1.28 (0.93, 1.75)	1.25 (0.91, 1.71)	0.88 (0.64, 1.21)	0.86 (0.62, 1.19)
Non-Hispanic white								
No HIV	312	1,672,119.12	18.66	982,198	1.00 (reference)	1.00 (reference)	1.00 (reference)	1.00 (reference)
HIV	7	29,985.88	23.34	13,768	1.23 (0.58, 2.59)	1.20 (0.57, 2.54)	1.12 (0.53, 2.37)	1.09 (0.52, 2.31)
Non-Hispanic Black								
No HIV	456	883,193.50	51.63	490,435	1.00 (reference)	1.00 (reference)	1.00 (reference)	1.00 (reference)
HIV	20	51,005.41	39.21	21,177	0.72 (0.46, 1.13)	0.71 (0.45, 1.10)	0.68 (0.43, 1.06)	0.66 (0.42, 1.03)
Hispanic								
No HIV	205	1,100,918.25	18.62	804,078	1.00 (reference)	1.00 (reference)	1.00 (reference)	1.00 (reference)
HIV	13	28,669.43	45.34	10,447	2.15 (1.22, 3.76)	2.12 (1.21, 3.71)	1.24 (0.69, 2.21)	1.22 ^c

^aper 100,000 person-years, ^badjusted for age (time metric), ^cadjusted for age (time metric), race-ethnicity, state of residence, enrollment year, and comorbid conditions, ^cunable to estimate standard error and confidence interval; abbreviations: CI-confidence interval, csHR-cause-specific hazard ratio, IR-incidence rate, NHB-non-Hispanic Black, NHW-non-Hispanic white, PY-person-years, sdHR-sub-distribution hazard ratio

Figures

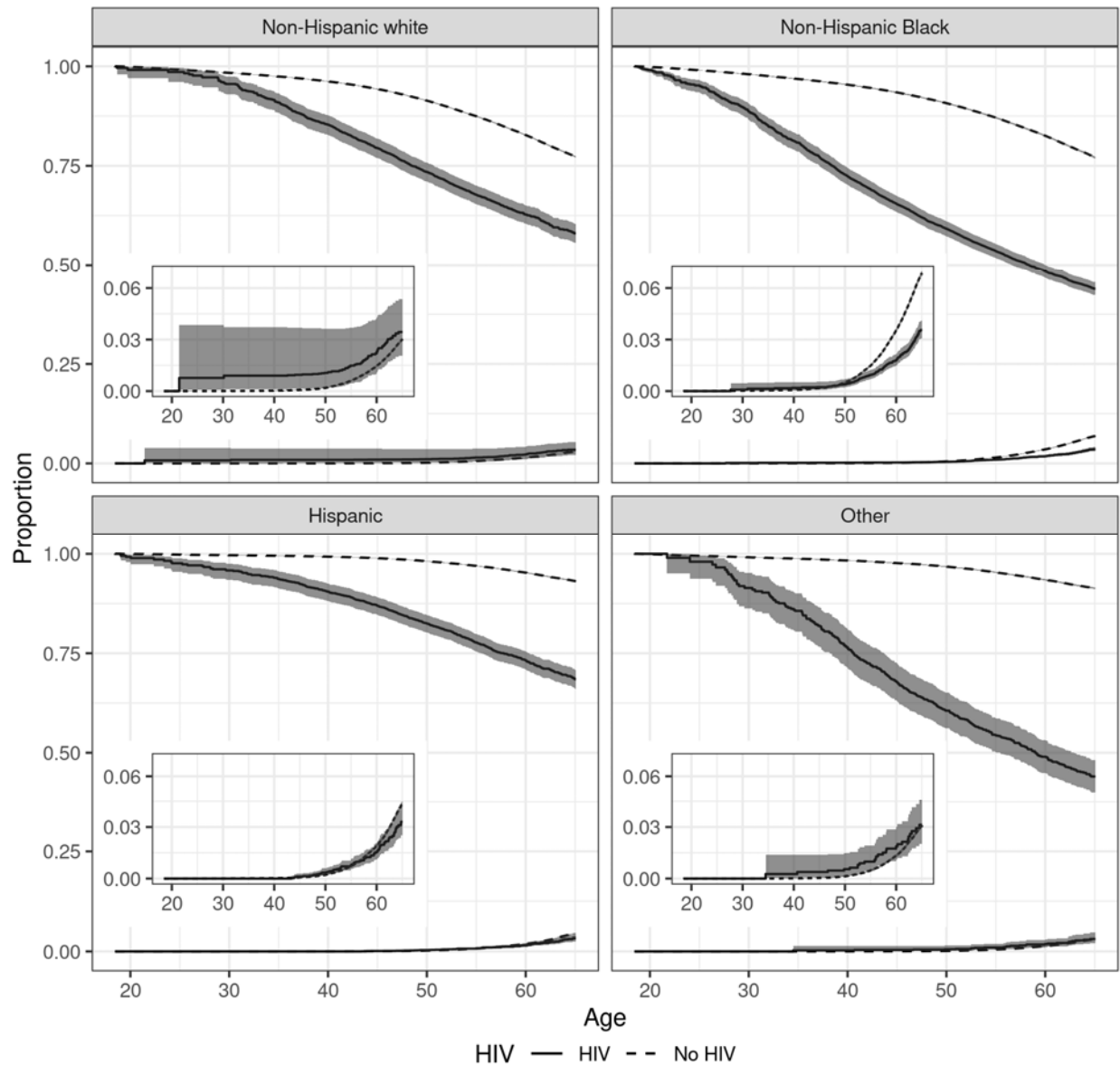


Figure 1: Cumulative Incidence of Prostate Cancer and Overall Survival by HIV Status in Men Aged 18-64 Stratified by Race-Ethnicity; insets are magnified curves for cumulative incidence of prostate cancer