

1

1
2
3
4 **Effects of the COVID-19 pandemic on individuals with Chemical Intolerance**
5

6
7 Raymond F. Palmer^{1*}, David Kattari², Monica Verduzco-Gutierrez³
8

9 ¹Department of Family and Community Medicine, University of Texas Health Science Center San
10 Antonio, 7703 Floyd Curl Drive, San Antonio, TX 78229, USA

11 ²Kattari Consulting, Cayucos, CA 93430, USA; dkattari13@gmail.com

12 ³Department of Rehabilitation Medicine, University of Texas Health Science Center at San Antonio, 7703
13 Floyd Curl Drive, San Antonio, TX 78229, USA

14 * Correspondence: Raymond F. Palmer, Email: Palmer@uthscsa.edu
15
16
17
18
19
20
21
22
23
24

25 **Keywords and Abbreviations**

26 Chemical Intolerance (CI), Quick Environmental Exposure and Sensitivity Inventory (QEESI), Environmental
27 House Calls (EHCs), Indoor Air Quality (IAQ), COVID-19, Multiple chemical sensitivity (MCS)
28

2

29 Abstract

30 *Background:* The Center for Disease Control has estimated that over 24 million have been infected with
31 COVID-19 in the US with over 6,700,000 being hospitalized, and over 1,174,000 deaths. Several other
32 industrialized countries show similar numbers (CSSE, 2021). Chemical Intolerance (CI) is characterized by
33 multi-system symptoms initiated by a one-time high dose or persistent low-dose exposure to environmental
34 toxins including chemicals, foods and drugs. With an estimated 20% prevalence in the US, the symptoms of CI
35 include fatigue, headache, weakness, rash, mood changes, musculoskeletal pain, gastrointestinal issues,
36 difficulties with memory, concentration, and respiratory problems which are similar to COVID-19 and its
37 sequelae. The purpose of this study was to determine if the pandemic had differential effects on those
38 individuals with CI.

39 *Methods:* A large U.S. population-based survey was launched involving 7,500 respondents asking if
40 they ever had COVID-19, what the severity of it was, and if they have long COVID-19. Respondents were also
41 assessed for CI using the Quick Environmental Exposure and Sensitivity Inventory (QEESI), a 50-item
42 validated questionnaire designed to assess intolerances to inhaled chemicals, foods, and/or drugs.
43 Respondents were classified as Low, Medium, or High CI.

44 *Results:* Those in the High Chemical Intolerance class reported a greater COVID-19 prevalence,
45 symptom severity, and long COVID-19 than in the Medium and Low CI classes ($P < .0001$). These associations
46 were independent of race, ethnicity, income, age, and gender. However, there was significantly increased odds
47 of COVID-19 severity among females and those over 45 years old. Asian individuals were least likely to have
48 severe symptoms compared to White individuals (OR = 0.60). Black/African American individuals reported a
49 lower prevalence of COVID-19 than Non-Hispanic Whites (NHW), but African American individuals with
50 high CI reported 2.2 greater odds of reporting COVID-19 prevalence. Further, African American individuals
51 had significantly greater odds of increased symptom severity.

52 *Discussion:* Prior studies showed that higher risk for COVID-19-19 infection include the elderly, male
53 sex, those with pre-existing comorbidities (e.g., challenged immunities) and those from minoritized
54 racial/ethnic groups. The results of this study suggest that those with CI be included in a high risk group.
55 Various risk subsets may exist and future investigations could identify different risk subsets. Understanding
56 these subgroups would be helpful in mounting targeted prevention efforts.

57

58 1.0 Introduction

59 The SARS-CoV-2 virus that causes COVID-19 infection first emerged in December 2019. By March 2020,
60 the World Health Organization declared the outbreak a global pandemic [1]. The CDC has estimated that 78%
61 of Americans have been infected at least once and that 97% of adults had antibodies to the virus from either
62 infection, vaccination, or a combination of the two [2]. Estimates to date indicate that over 24 million have been
63 infected in the US with over 6,700,000 being hospitalized, and over 1,174,000 deaths [2,3]. Several other
64 industrialized countries show similar numbers [3].

65 Those infected with COVID-19 have a considerable heterogeneity of symptoms, from no symptoms at
66 all to mild to severe symptoms. Symptoms usually last several days after exposure and can include fever,
67 cough, shortness of breath or difficulty breathing, chills, fatigue, muscle pain, body aches, headache, sore
68 throat, new loss of taste or smell, congestion, runny nose, nausea, vomiting, and/or diarrhea [4].

69 Persistent symptoms lasting three or more months after the initial infection is referred to as Long
70 COVID-19, with persistent long-term health issues involving cardiovascular, pulmonary, renal, neurologic,
71 and psychological functions. [5,6]. “Brain fog” (unusual forgetfulness, word finding deficits, and inability to
72 concentrate) has been cited as a “particularly frustrating persistent symptom” [6]. It is estimated that up to
73 13% of those infected with COVID-19 will develop long COVID-19, and account for 30% of COVID-19 related
74 hospitalizations [7].

75 Individuals with the greatest risk of serious illness include the elderly, those with chronic medical
76 conditions such as diabetes, cancer, heart disease, and those with weakened immune systems [8,9]. Individuals
77 with Chemical Intolerance (CI) may also be especially vulnerable to infection and to have more severe
78 symptoms. As such, not only do people with CI need to take extra measures to avoid exposure to COVID-19,
79 but they have remained vulnerable when workplaces and public spaces were re-opened, and disinfectant
80 chemicals were widely used to sanitize the environment [6]. The purpose of this paper is to investigate the
81 association between CI and COVID-19.

82 **1.1 Chemical Intolerance:** CI, also known as Multiple Chemical Sensitivity (MCS), is characterized by
83 multi-system symptoms initiated by a one-time high dose or persistent low-dose exposure to environmental
84 toxins [10]. New-onset intolerances may occur when an individual is subsequently exposed to structurally
85 unrelated chemicals, foods, and/or drugs [10,11]. Similar to the symptoms of COVID-19, the symptoms of CI
86 include fatigue, headache, weakness, rash, mood changes, musculoskeletal pain, gastrointestinal issues,
87 difficulties with memory, concentration, and respiratory problems [12-15].

88 Assessing CI most often involves the use of the Quick Environmental Exposure and Sensitivity
89 Inventory (QEESI), a 50-item validated questionnaire designed to assess intolerances to inhaled chemicals,
90 foods, and/or drugs. The QEESI offers high sensitivity and specificity that differentiates CI individuals from
91 the general population [16-18]. The QEESI has been well received by the international scientific community
92 [15] with several language translations used in over 16 countries around the world in over 90 publications (see
93 www.TILTresearch.org for a comprehensive list).

94 Estimates of CI prevalence in separate population-based surveys differ by whether it is clinically
95 diagnosed (0.5–6.5%), or self-reported (averaging ~ 20%) [19-23]. Two nationally representative U.S.
96 population surveys, conducted in 2002 and 2006 [24,25], found a prevalence of 11.1% and 11.6% (respectively)
97 for self-reported chemical sensitivity and 2.5% and 3.9% medically diagnosed MCS. More recent nationally
98 representative U.S. population studies conducted in 2016 found a prevalence of 25.9% self-reported chemical
99 sensitivity and 12.8% reported medically diagnosed “multiple chemical sensitivities” or MCS (Steinemann,
100 2018). Based on these data, the prevalence of chemical sensitivity may have increased by over 200%, and
101 diagnosed MCS by over 300%, in the past decade [26]. Further, Hojo et al., 2018 provide evidence of similar
102 prevalence increases over a 10-year period in Japan. Using the QEESI they report that the scores for chemical
103 intolerances, other intolerances, and life impacts increased significantly. These increases may be attributed to
104 modern lifestyle exposures and industrialized food consumption [18].

105 Increasing numbers of patients and researchers attribute CI to well-defined exposure events, such as
106 indoor air contaminants (e.g., fragranced personal care and cleaning products), exposures to pesticides, new
107 construction or remodeling, or a flood- or water-damaged building resulting in mold and bacterial growth (12,
108 25, 27, 28).

109 **1.2 Study purpose:** At the beginning of the COVID-19 pandemic (6/2020), a population survey called
110 the Personal Exposure Inventory (PEI 1) was launched. [22]. The prevalence of CI was reported to be 19.3% -
111 commensurate with other population estimates in the literature. Two years later in June 2022, the PEI2 current
112 survey was launched involving questions concerning the impact of COVID-19. (see Figure 1, CDC 2024). In
113 this manuscript, we report the results of the PEI2 investigating the following research questions and
114 corresponding hypotheses to determine if the pandemic had differential effect on those individuals with CI.

- 115 1. Did the overall prevalence rate of reported CI increase from PEI1 to PEI2?

116 *Hypothesis 1:* The prevalence of CI will be higher in PEI2 compared to PEI1.

- 117 2. Did those with CI report higher COVID-19 rates than those without CI?

119 *Hypothesis 2:* The prevalence of CI will be higher among those with CI.

- 120 3. Are those with CI more severely affected by COVID-19?

121 *Hypothesis 3:* Those with CI will be more severely affected by COVID-19.

- 122 4. Are those with CI more likely to experience Long COVID-19?

123 *Hypothesis 4:* The prevalence of CI will be higher among those with CI.

- 124 5. Are those with CI more likely to experience reactions to the COVID-19 vaccine?

125 *Hypothesis 5:* The prevalence of vaccine reactions will be higher among those with CI.

126 In addition, the effects age, ethnicity, race and gender associated on COVID-19 outcomes are analyzed.

127 **2.0 Methods**

128 This observational study involved a population-based survey of U.S. adults aged 18 years and older. SurveyMonkey recruitment procedures are available here: www.surveymonkey.com. The survey was deployed on 6/15/2022 and ended 6/25/2022. There were 7504 respondents that were randomly selected from nearly 3 million online users of the SurveyMonkey platform. The survey had an abandonment rate of 12.6% and took an average of 12.5 minutes to complete.

130 The modeled error estimate for this survey was $\pm 1.189\%$. Respondents were selected from online panels based on the population sizes of all 50 states plus the District of Columbia, as well as by sex, age, race/ethnicity, and educational level within each census region to match the U.S. Census Bureau's 2015 American Community Survey (ACS) targets.

132 We had previously deployed a similar survey on 6/1/2020. Details of that earlier survey are previously described [22]. In the current study, respondents were classified into high, medium, or low CI groups, and self-reported COVID-19 prevalence, severity, and long COVID-19. Note that the associations identified in this study are not considered causal.

134 **2.1. Survey:** Respondents answered an 80-item survey called the Personal Exposure Inventory 2 (PEI 2), which included items concerning individuals' demographics, medical diagnoses, and CI. Age and income were captured as part of SurveyMonkey's panel. Age was reported as a four-level categorical variable, with age increasing roughly every 15 years. Income was reported as a ten-level categorical variable, with income increasing by roughly USD 25,000 per level. Race and ethnicity were collected following federal guidelines.

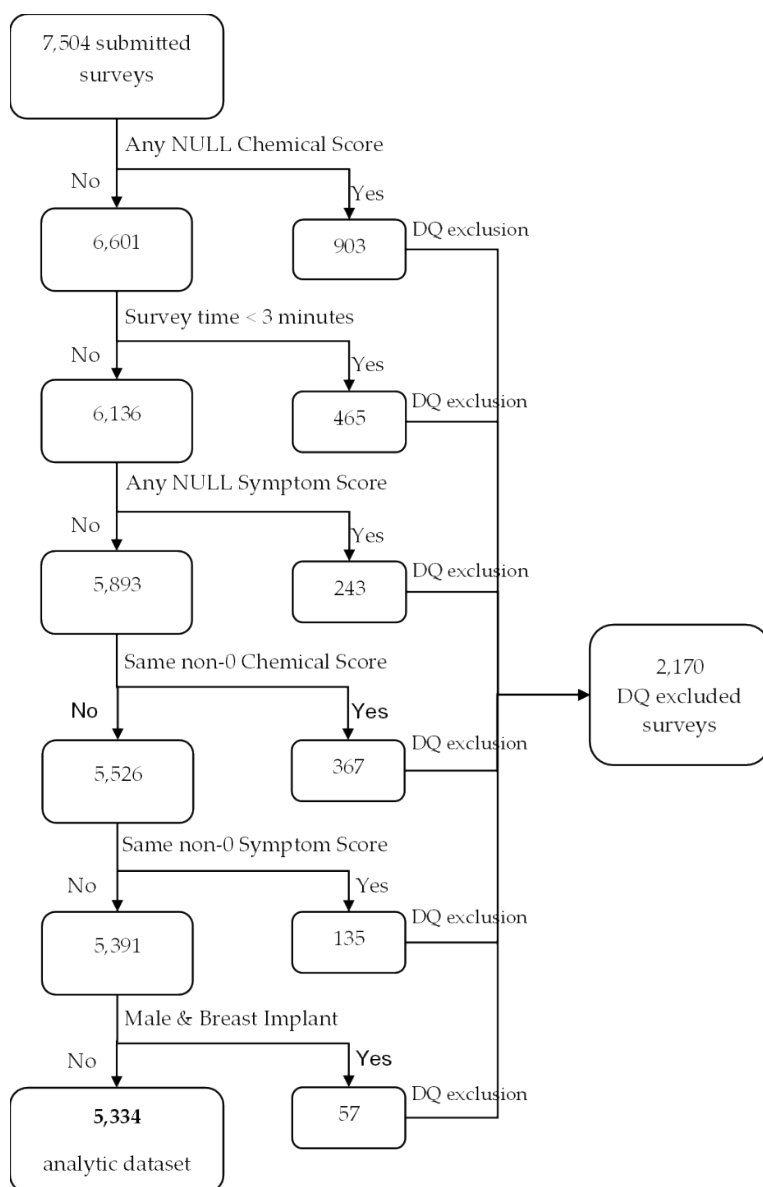
136 Respondents were asked three primary questions to assess COVID-19 infection: "Have you been diagnosed with, or do you think you have had COVID-19?" Respondents could answer one of five responses:

1) “Yes, I believe I have had COVID-19 (no test),” 2) “Yes, I tested positive for COVID-19 with a home test,” 3) “Yes, I tested positive for COVID-19 by a health professional,” 4) “No,” and 5) “I am not sure.” The second question was: “If yes, please rate the severity of your COVID-19 symptoms on a 0-10 scale. [0 = no symptoms] [5 = moderate symptoms] [10 = disabling symptom].” The third question was “Did your COVID-19 symptoms last for more than 12 weeks (long COVID-19)?” We also ask about vaccination status and if there were reactions to the vaccine (See Appendix 1).

2.2. Chemical intolerance assessment using QEESI classification scoring: CI was assessed using the QEESI Chemical Exposures and Symptoms scales [16,17]. These scales are used to classify participants into CI severity groups [16,17]. Each scale contains 10 items that are rated from 0 to 10 on a Likert scale: 0 = “not at all a problem” to 10 = “severe/disabling symptoms.”. Total scores for each scale range from 0 to 100. The cut-off criteria for “High CI” are scores greater than or equal to 40 on both the Chemical Exposures and Symptoms scales. This is regarded as “very suggestive” of CI. Scores from 20 to 39 on one or both scales are considered “Medium CI.” Scores less than 20 on both scales are classified as “Low CI”.

2.3. Data Quality Control Checks: The 7504 survey records were assessed for data quality (DQ) encompassing completeness, validity, or accuracy concerns; six measures were required to exclude all surveys indicating one or more DQ concerns. Records with these concerns were excluded from the analytic data set. Figure 2 depicts the flow of data exclusions leading to the final analytic dataset. Some of the DQ measures might technically be accurate (e.g., “male and breast implants”), but with an abundance of caution, they were excluded. The same could be said for the survey time measure: with a survey containing a minimum of 53 questions, it is unlikely that a respondent could read and respond accurately to all questions in under three minutes. By omitting any records that violated one or more DQ measures, 2170 records were excluded (28.9%). We have taken this approach to help ameliorate some well-known DQ concerns associated with web-based surveys, including response probabilities and biases [29,30]. After applying both the data quality, our final analytic sample was N = 5334 (see Figure 2).

Figure 2. Total survey sample size and final analytic sample after Data Quality Assessment.



2.4. Statistical Modeling: COVID-19

Prevalence: A binary logistic regression was conducted to determine if there was a relationship between CI and COVID-19 prevalence. The binary dependent variable, “Reported COVID-19,” was defined as any positive response to the question pertaining to having been diagnosed with COVID-19. We included six independent variables: CI as defined by QEESI (low, medium, high), Sex, Age, Income, Race, and Ethnicity.

Long COVID-19: A similar logistic regression was conducted to determine if there was a relationship between CI and Long COVID-19. The binary dependent variable, “Long COVID-19,” was defined as a positive response to the question “Did your COVID-19 symptoms last for more than 12 weeks (long COVID-19)?” We also include the aforementioned CI and covariates.

COVID-19 Severity Score: A Standard Least Squares linear regression was conducted to determine the relationship between CI and COVID-19 severity. The dependent variable was normally distributed and ranged between 0 and 10. We included six independent variables: CI as defined by QEESI (low, medium, high), Sex, Age, Income, Race, and Ethnicity.

Odds Ratios for COVID-19 severity was further modeled as a logistic regression with the binary dependent variable as any COVID-19 severity score equal to or greater than 8. We also conducted a sensitivity analysis on cut points between COVID-19 severity scores of 5+ and 8+. Odds ratios varied little between the candidates with the 8+ cut point demonstrating significant effects for Age and Race. The 8+ cut point further fit the data and reduced the critical population to 22.6% (only the most severe reports of COVID-19).

A p-value of 0.05 and 95% confidence intervals were used to determine statistical significance for all models. Analyses were conducted using SAS and JMP statistical software [31,32]. Respondents needed to be at least 18 years old. Participation consent was obtained online before survey was administered. This research program was approved by the University of Texas Health Science Center at San Antonio Internal Research Board protocol number 20220246EX.

3.0 Results

Table 1 depicts the distribution of the study variables. Non-Hispanic White respondents were more prevalent in the sample than other ethnic or racial group. Nearly one third (31.3%) of the sample reported having tested positive for COVID-19. The percentage increases to 42.7 by including those who report they believed they had COVID-19 but were not tested.

Table 1. Sample Demographics

		Sample % N = 5334
Age	18 to 29	19.6%
	30 to 44	25.7%
	45 to 60	28.2%
	61 +	22.7%
	Missing	3.8%
Sex	Male	43.5%
	Female	52.7%
	Missing	3.8%
Household Income	\$0-\$24,999	14.5%
	\$25,000-\$49,999	18.5%
	\$50,000-\$74,999	17.8%
	\$75,000-\$99,999	13.1%
	\$100,000-\$149,999	14.1%
	\$150,000+	9.6%
	Missing	12.4%
Ethnicity	Hispanic or Latino	10.4%
	Not Hispanic or Latino	89.1%
	Missing	0.6%
Race		

	American Indian or Alaskan Native	1.9%
	Asian	9.7%
	Black/African American	6.8%
	Native Hawaiian or Pacific Islander	0.8%
	White or Caucasian	80.2%
	Missing	0.6%
COVID-19	I believe I had COVID-19 (no test)	11.4%
	Tested positive with home test	11.0%
	Tested positive by health professional	20.3%
	No COVID-19	51.2%
	I am not sure	5.9%
	Missing	0.2%
COVID-19 (simple)	Yes	42.7%
	No	51.2%
	Missing	6.1%
COVID-19 Cases with Long COVID-19	Yes	12.5%
	No	20.8%
	Missing	66.7%
COVID-19 Vaccination	No COVID-19 vaccination(s)	18.9%
	Vaccinated with no reaction	21.0%
	Mild symptoms	33.2%
	Moderate symptoms	23.0%
	Severe (disabling symptoms)	3.8%
	Missing	0.2%

221

222

223

224

225

226

227

Table 2. shows the study variables by CI class. All percents are presented as row percents. Compared to the Low CI group, those in the High CI group include significantly fewer individuals over 60, incomes under 25k per year, and Female sex. Further, 43.5% of Hispanic respondents where in the High CI class compared to 29% of Non-Hispanic White respondents. Black and Asian respondents reported significantly higher rates of CI compared to NHW.

Table 2. Study variables by Chemical Intolerance category

Study Variables*	Response Categories	Low CI	Mid CI	High CI
------------------	---------------------	--------	--------	---------

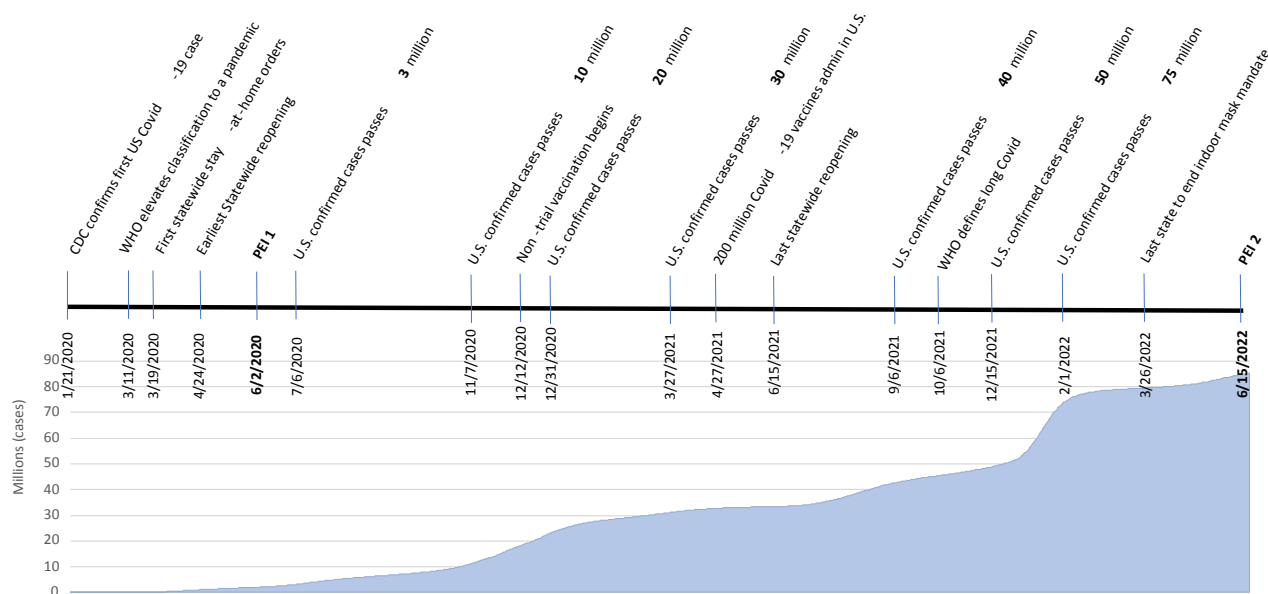
		N= 864 (16.2 %)	N= 2863 (53.7 %)	N= 1607 (30.1 %)
	18 to 29	14.2%	53.9%	31.8%
	30 to 44	13.2%	50.1%	36.7%
	45 to 60	12.2%	53.9%	33.9%
	61 +	24.4%	56.0%	19.6%
	<i>Missing</i>	27.1%	61.1%	11.8%
Sex				
	Male	19.7%	51.5%	28.8%
	Female	12.5%	55.0%	32.6%
	<i>Missing</i>	27.1%	61.1%	11.8%
Household Income				
	\$0-\$24,999	9.2%	55.0%	36.4%
	\$25,000-\$49,999	14.0%	55.0%	31.0%
	\$50,000-\$74,999	17.7%	51.3%	30.9%
	\$75,000-\$99,999	16.1%	54.0%	29.9%
	\$100,000-\$149,999	16.8%	53.7%	29.4%
	\$150,000+	19.3%	46.7%	34.1%
<i>Missing</i>	22.4%	59.2%	18.4%	
Ethnicity				
	Hispanic or Latino	11.6%	45.0%	43.5%
	Not Hispanic or Latino	16.7%	54.7%	28.6%
	<i>Missing</i>	20.0%	60.0%	20.0%
Race				
	American Indian/Alaskan Native	10.9%	46.5%	42.6%
	Asian	12.6%	51.8%	35.6%
	Black/African American	12.1%	46.4%	41.5%
	Native Hawaiian/ Pacific Islander	19.1%	52.4%	28.6%
	White or Caucasian	17.1%	54.7%	28.3%
	<i>Missing</i>	20.0%	60.0%	20.0%
COVID-19				
	I believe I had COVID-19 (no test)	10.2%	53.6%	36.1%
	Tested positive with home test	11.9%	51.9%	36.2%
	Tested positive by health professional	15.2%	51.7%	33.2%
	No COVID-19	19.2%	55.3%	25.5%
	I am not sure	13.3%	50.0%	36.7%
	<i>Missing</i>	20.0%	40.0%	40.0%
COVID-19 (simple)				
	Yes	13.0%	52.2%	34.8%
	No	19.2%	55.3%	25.5%
	<i>Missing</i>	13.5%	49.7%	36.8%
COVID-19 Symptom Severity	Rated 0=no symptoms, 10=disabling Mean and standard deviation	4.0 (SD)	5.1 (SD)	6.3 (SD)
COVID-19 Cases with Long COVID-	Yes	8.2%	14.5%	34.7%
	No	78.8	73.4	52.1

19	<i>missing</i>	12.9	12.1	13.2
COVID-19 Vaccination	No COVID-19 vaccination(s)	13.8%	55.4%	30.8%
	Vaccinated with no reaction	19.7%	55.4%	25.0%
	Mild symptoms	18.7%	55.1%	26.2%
	Moderate symptoms	10.6%	49.2%	40.2%
	Severe (disabling symptoms)	9.2%	42.7%	48.2%
	<i>Missing</i>	25.0%	43.8%	31.3%

*Comparisons between groups across all study variables were significantly different at $P < .0001$.

3.1 COVID-19 Prevalence, Hypothesis 1: This hypothesis tested if the survey estimates of CI administered in 2022 were higher than our baseline survey CI estimates taken in 2020. The prevalence of QEESI criteria for CI significantly increased from 20.6% to 30.1% between the 2-year study period ($p < .0001$) (see fig 1).

Figure 1. Timeline and trajectory of COVID-19 and our population-based surveys

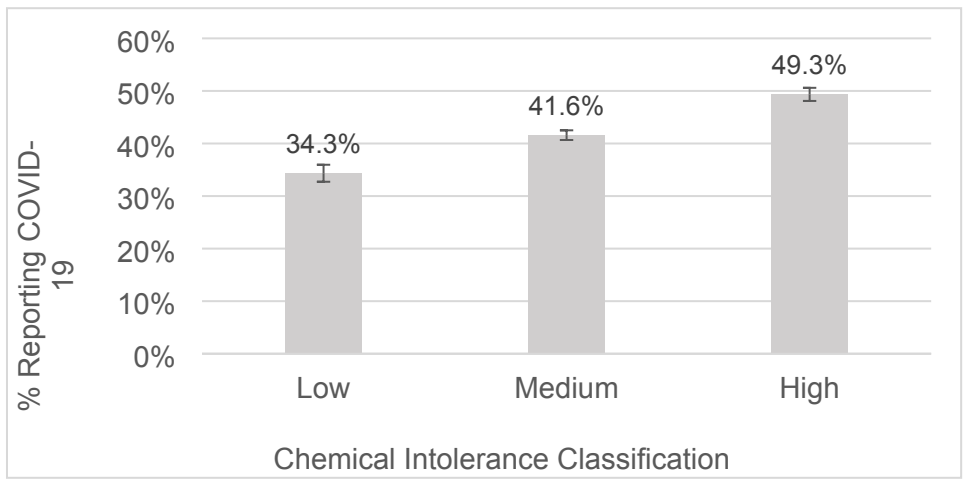


3.2 COVID-19 Prevalence by CI group, Hypothesis 2: We found that 49% of those in the highest CI group reported ever having COVID-19, whereas those reporting low CI group 34% ($P < .0001$). This represents an odds ratio of 1.8 for the high CI group compared to the Mid group (95% confidence interval = 1.5 – 2.2); and an OR of 3.3 (95% confidence interval = 2.2 – 4.9) comparing the High to Low CI group (see Figure 3).

12

239
240
241
242
243
244
245
246
247
248
249
250
251
252
253
254
255
256
257
258
259
260
261
262
263
264
265
266
267

Figure 3. Percent Reporting COVID-19 by Chemical Intolerance Classification



Forty Eight percent (48%) of those younger than 60 years old reported having COVID-19. In contrast, only 26% who were older than 60 reported COVID-19—corresponding to an OR of 2.4 (95% confidence interval = 2.1 – 2.8).

Hispanic/Latino

respondents reported 1.6 higher odds of COVID-19 than non-Hispanic or Latino respondents. Younger respondents reported 2.5 higher odds of COVID-19 than older respondents. High CI respondents reported 3.3 higher odds of having COVID-19 than Low CI respondents. Black or African American respondents reported 0.66 lower odds (33% lower) of COVID-19 than non-Black/African American respondents.

Testing for interactions between CI groups and race, we found a significant interaction among the Black /African American group. Black/African American respondents with High CI show a 2.2 higher odds of reporting COVID-19 than non-Black or African Americans with High CI. (95% confidence interval 1.6 – 3.2).

The final logistic model described above demonstrated good fit to the data (lack of fit index $\chi^2 p = .10$).

3.3 COVID-19 Severity, Hypothesis 3: The COVID-19 Severity outcome measure ranged from 0 (none), 5 (Moderate), and 10 (Severe disabling symptoms). With a mean score of 5.3 (standard deviation = 2.6) and an acceptable normal distribution.

OLS regression was run on the sample who reported having COVID-19 (n = 2044). CI categories were the strongest predictor of COVID-19 severity. Each increment from Low, to Mid, to High CI corresponded to a 1.1 increase in severity score (p < .0001). This can be observed in Figure 4.

13

268

269

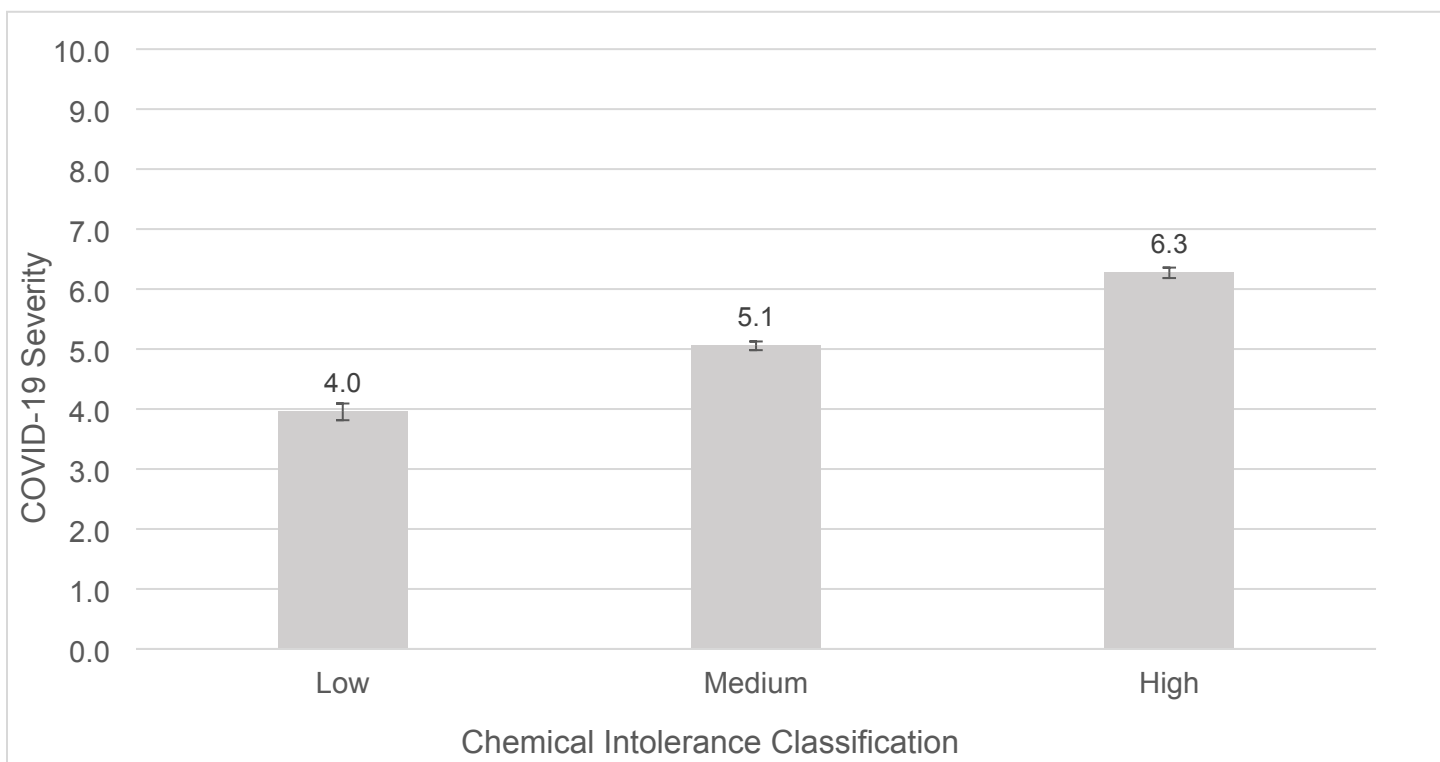
270

271

272

273

Figure 4. COVID-19 severity by chemical intolerance classification.



274

275

276

277

278

279

280

281

282

283

284

285

Males had a 0.23 lower COVID-19 Severity score than females ($p < .001$). Those 60 or older had a 0.16 higher COVID-19 Severity scores than younger respondents ($p < .05$). Model R^2 was 0.10 with a good lack of fit index ($p = 0.37$). Ethnicity, Income, and Race were not significant predictors of the COVID-19 severity score.

We also tested various logistic regression models for severity, where severity was dichotomized into either 5 and above (scored 1) and below 5 (scored = 0). A sensitivity analysis was done with other severity cutoff points above moderate severity (6, 7, and 8 cutoffs). Table 3 summarizes these results. In all models, those with High CI had at least 5 times the likelihood of COVID-19 severity above the 8+ cut point compared to those with low CI. Those with Mid CI had at least 2.2 times the likelihood of COVID-19 severity above the 8+ cut point compared to those with low CI.

286 **Table 3. Logistic regression models of different COVID-19 severity cut points**

	COVID-19 Severity Score Cut Points for logistic model			
	5+	6+	7+	8+ ^a
High vs. Low CI	4.5***	6.0***	5.3***	5.0***
Medium vs. Low CI	1.7***	1.9***	2.0***	2.5***
Female Gender	1.5***	1.3***	Ns	1.3***
Age 45	ns	ns	Ns	1.3***
Race	ns	ns	Ns	0.6***
Model Lack of fit (LoF)	0.002	0.005	0.004	0.23+
N	1473 (64.7%)	1083 (47.6%)	780 (34.3%)	516 (22.6%)

287 ^a The model with 8+ severity cutoff is the best fitting model to the data.

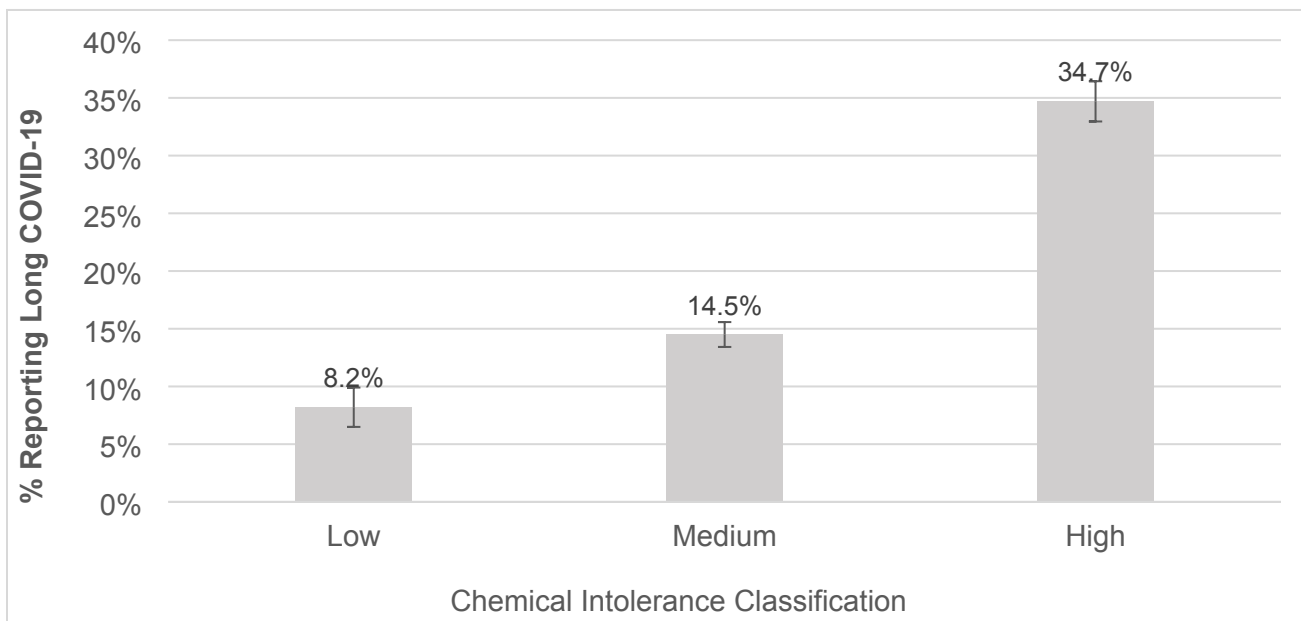
288 ***P < .0001; ns = not significant

289
290 **3.4 Long COVID-19, Hypothesis 4:** QEESI Class, Ethnicity and Race were significant predictors of Long
291 COVID-19. Gender, Income, and Age were not significant predictors.

292 Respondents in the high CI class had 7.7 times the odds of reporting Long COVID-19 relative to Low
293 classification (95% confidence interval 5.5 – 10.9). Respondents with Mid CI classifications had 2.8 times the
294 odds of reporting Long COVID-19 relative to Low CI classification (95% confidence interval = 2.3 – 3.3) (See
295 Figure 5).

296
297
298
299
300
301
302
303
304
305

306 **Figure 5. Percent reporting long-COVID-19 by chemical intolerance classification**



307
308 A significantly higher percentage of Long COVID-19 is reported by those with the highest level of CI
309 compared to the mid-level ($p < .01$) or low-level CI ($p < .001$).

310 Hispanic or Latino respondents had 1.6 times the odds of reporting Long COVID-19 than non-Hispanic
311 or Latino respondents (95% confidence interval 1.2 – 2.1). Using White/Caucasian as a base, Black/African
312 American respondents had 1.7 times the odds of reporting Long COVID-19 than White/Caucasian respondents
313 (95% confidence interval 1.2 – 2.5). The logistic model demonstrated good model fit (lack of fit $P \chi^2 = 0.07$).

314 Table 4 summarizes the three aforementioned logistic models. In Summary, those in the High Chemical
315 Intolerance class reported a greater COVID-19 prevalence, severity, and long COVID-19 than those in the
316 Medium and Low CI classes. These associations were independent of race, ethnicity, income, age, and gender.
317 There were significantly increased odds of severity for females and those over 45 years old. The only
318 significant racial coefficient was the comparison between Asian and Whites in the 8+ severity cutoff model,
319 where Asian respondents were least likely to have severe symptoms compared to White respondents (OR =
320 0.60)

321 Black/African American individuals had an overall lower prevalence of COVID-19 than NHW in this
322 survey, but African American respondents with high CI reported 2.2 greater odds of reporting COVID-19
323 prevalence. Further, Black, African American respondents had a greater odds of increased symptom severity.
324

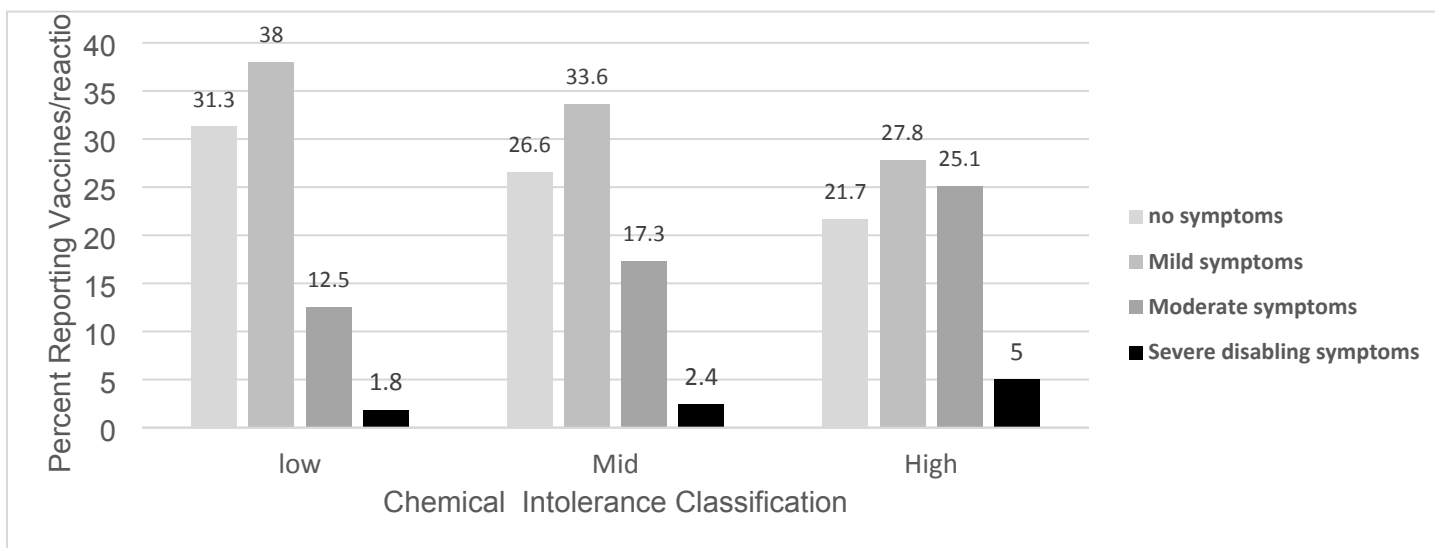
326 **Table 4. Summary of the Odds ratios for the three logistic regression models**

	Model Odds Ratios		
	Prevalence	Severity 8+	Long COVID-19
High CI vs. Low CI	3.3***	5.0***	7.7***
Mid CI vs. Low CI	1.8***	2.2***	2.7***
Hispanic / Latino	1.6***	0.7***	1.6***
Older than 60	0.4***	ns	ns
Female	ns	1.3***	ns
Race (Black)	0.7***	ns	1.7***
Race (Asian)	ns	0.5	ns
Race (Black) x High CI interaction ^a	2.2***	ns	ns

327 ^a Black/African American people with High CI
 328 ***P < .0001; ns = not significant

329 **3.5 Reactions to the COVID-19 Vaccine, Hypothesis 5:** From table 2, compared to the low CI group,
 330 those in the High_CI group were less likely to have received a COVID-19 vaccination, and to report a
 331 significantly greater percentage of moderate and/or severe symptoms (p < .001) (See Figure 6).
 332

Figure 6. Percent reporting vaccines and vaccine reactions by chemical intolerance group.



333

334

335 **Discussion**

336 This study found that those with CI reported significantly higher rates of COVID-19 compared to those
 337 without CI. They also report significantly greater COVID-19 symptom severity and higher rates of long
 338 COVID-19. One plausible explanation for these findings is that those with CI have a greater number of
 339 preexisting medical conditions than those with low CI [33]. This greater disease burden may further

340 compromise an already taxed immunity response against viruses [9] and/or invoke differential mast cell
341 activation among those with CI [34,35].

342 It may also be plausible that being infected with COVID-19 somehow initiates CI. However, the current
343 study has insufficient data to make that determination. There is no evidence in the literature that COVID-19
344 would initiate CI, this would be a matter for further study.

345 We found that females report worse COVID-19 symptom severity than males. However, this is
346 contrary to other reports indicating that males have worse COVID-19 symptomatology than females [36],
347 however, CI had not been assessed in those studies, so its plausible that CI was a confounder of the prior
348 reports of sex differences in COVID-19 symptomatology. On the otherhand, females have consistently been
349 reported to have higher CI than males (11, 22, 37). This suggests a potential subgroup connection between CI
350 and COVID-19 severity in females, but our analysis did not find any significant gender interactions with the
351 COVID-19 outcome variables.

352 We found ethnic and racial group differences related to COVID-19 prevalence, COVID-19 reaction
353 severity, and long COVID-19 status. Compared to NHWs, Hispanic individuals reported increased COVID-19
354 infection and long COVID-19 prevalence. Hispanic individuals were 1.6 times more likely to report COVID-19
355 than NHWs. This is highly consistent with prior research using the Household Pulse Survey showing similar
356 results [38]. Kreutzer et al., (1999) report Hispanic ethnicity was associated with physician-diagnosed multiple
357 chemical sensitivity (MCS)(OR = 1.82, 95% confidence interval (CI) 1.21-2.73) [21]. Concomitantly, we also
358 found that Hispanic individuals reported higher CI rates than NHW (49% vs. 29% respectively) ($P < .0001$)

359 Given known racial disparities in occupational and other environmental toxic exposures [39], it is
360 plausible to suspect that exposure to toxins may at least partially explain the disproportionate impact of
361 COVID-19 among racial and ethnic minoritized populations [40].

362 Wong et al., (2022) [40] used the United States Environmental Protection Agency's Risk-Screening
363 Environmental Indicators (RSEI) Model US EPA(2021) to determine if environmental toxins mediate the
364 association between COVID-19 hospitalizations and race and ethnicity. The RSEI is a measure that considers
365 the amount of toxic chemicals released, the route of exposure, individual chemical toxicity, and the number of
366 people potentially exposed. Higher scores indicate higher risk of toxic exposure [41]. They report that higher
367 RSEI scores were associated with increased COVID-19 hospitalization rates and that all racial and ethnic
368 minority groups had higher odds of hospitalization compared with the non-Hispanic White group. They

369 showed that RSEI decile scores mediated the racial and ethnic COVID-19 hospitalization disparities among
370 Hispanic and non-Hispanic Black individuals [40].

371 Disparities among Hispanic Women might also be accounted for by marked differences in occupational
372 exposures to pesticides and cleaning agents [42]. According to the Economic Policy Institute, women make up
373 the vast majority of domestic house cleaning workers, and 63% of those women are Hispanic [40,43].
374 Domestic housecleaners are exposed to a myriad of chemical cleaners. Future research would further
375 investigate the connection between occupational exposures, CI, COVID-19-risk, and ethnicity.

376 In this study, we found that Black/African American respondents reported an increased risk for Long
377 COVID-19 despite having a lower COVID-19 prevalence. However, taking into account the significant
378 interaction term, we found that Blacks with High CI are at twice the risk of reporting having COVID-19. This is
379 consistent with the literature showing that African Americans and Hispanics are about twice as likely to need
380 to stay in the hospital due to COVID-19 than non-Hispanic whites [44].

381 Individuals of Asian race reported a lower COVID-19 severity score than the other ethnic groups. This
382 may be due to an increased willingness among the Asian culture to take greater precaution against infectious
383 disease (e.g., mask wearing) than other cultures [45]. The relatively low number of Asian respondents in this
384 study precluded investigating CI subset interactions between the COVID-19 outcomes.

385 Another plausible cultural explanation of lower COVID-19 severity scores among Asian individuals
386 may be due to the fact that Asian individuals tend to demonstrate lower extreme response scores than other
387 cultures—believing it is more important to be modest and respond cautiously (46-48). Studies of cross-cultural
388 differences in response styles show that ordinal response formats (e.g., Likert scales) differ across cultures.
389 Asian cultures tend to choose more middle-level items on Likert scales than other cultures [49-50].

390 Biological plausibility: In prior work we have demonstrated a strong association between Chemical
391 Intolerance and mast cell proliferation. Approximately 50% of patients with mast cell activation syndrome
392 (MCAS) also have CI, with MCAS patients having similar symptoms as those with CI [34,35]. This suggests
393 that those with CI may more readily respond to environmental insults with greater and a more sustained mast
394 cell immune response. This may include responses to viruses themselves or to vaccinations. Indeed, we
395 demonstrated that those with High CI in this study reported significantly more severe adverse reactions to the
396 COVID-19 vaccine.

397 Indoor air and COVID-19: Several studies indicate that proper indoor air ventilation can mitigate the
398 risk of COVID-19 [51,52] However, the COVID-19 quarantine may have posed more risk for those who are

399 chemically intolerant. The quarantine may have affected indoor air quality (IAQ) by increasing adverse
400 exposures for longer periods of time– enduring higher levels of indoor air pollutants than before the
401 pandemic. In the face of poorly ventilated spaces, the risk of infectious disease can be compounded through
402 accumulated volatile organic compound (VOC) by everyday product use including scented cleaning or
403 personal care products, pesticide use, combustion through use of gas stove or burning candles, and plug in air
404 fresheners [53]. It is the collective activities of the individual’s comprising households that affect indoor air
405 quality [54].

406 To sanitize the indoor environment against COVID-19, the use of these toxic cleaning “air-freshener”
407 products may have increased during the lock down period, therefore potentially triggering CI symptoms.
408 Fragranced cleaning and/or personal care products have been found to be the principal triggers people with CI
409 report [25,55]. This is consistent with other reports in the literature involving the association between poor
410 indoor air quality, systemic, health, and risk of COVID-19 [54,56,57]. This has become a new challenge for
411 physicians and health care providers [58].

412 Interventions: In prior work, we demonstrated that substantial improvements in the symptoms of those
413 with CI were achieved through “Environmental House Calls” (EHC) [59,60]. In these EHCs, indoor air quality
414 was assessed in the homes of 37 persons with CI. VOC sources were identified using home air samples
415 analyzed by gas chromatography/ Mass spectrometry (GC/MS). Through a series of home visits, the
416 intervention team taught each person and their families how to reduce their exposures. Pre-post symptom
417 assessments were made. Fragrances were present in every home and the symptoms of those who were able to
418 eliminate household VOC sources including fragrances improved, corresponding with reduced indoor air
419 levels which were measured a second time, post-intervention. Practical advice for physicians and patients on
420 ways to improve indoor air quality and how it affects health are shared in Supplemental materials file.

422 **Study Limitations**

423 As indicated in the Section 2, the overall study design is observational, and no causality can be
424 established without further research. The survey was conducted via a paid, computerized survey platform
425 (SurveyMonkey). As such, all respondent answers were self-reported and therefore prone to several biases,
426 including social acceptability, honesty, differing interpretations of questions, and recall bias. Payments to
427 participants were small (less than USD 10) and did not constitute “undue influence”. To address both payment

20

428 and self-report concerns, extensive data quality procedures were employed to remove surveys completed too
429 quickly or illogically.

430 Although the survey was balanced to reflect state population sizes, participants' sex, age, race, and
431 education, selection bias in computer-based surveys can be marked. Our computerized surveys suggest under-
432 sampling of Blacks/African American and Hispanics/Latino respondents, both by nearly 50%. Lack of access
433 to the internet, a computer, or a smartphone, as well as language limitations, may have also reduced the
434 generalizability of our findings for low-income and minoritized populations [61].

435 **Conclusion:** Prior studies show that individuals at higher risk for COVID-19 infection include the
436 elderly, male sex, those with pre-existing comorbidities (e.g., challenged immunities) and racial/ethnic
437 disparities [62]. The results of this study suggest that those with CI be included in a high risk group. Future
438 investigations could identify various risk subsets. Understanding risk subgroups would be helpful in
439 mounting effective targeted prevention efforts.

440

References

1. Centers for Disease Control and Prevention (2024a). CDC Museum Covid Timeline. <https://www.cdc.gov/museum/timeline/Covid19.html>
2. Centers for Disease Control and Prevention. Covid Data Tracker. Atlanta, GA: U.S. Department of Health and Human Services, CDC; 2024b, February 04. <https://Covid.cdc.gov/Covid-data-tracker>.
3. Center for Systems Science and Engineering (CSSE) at Johns Hopkins University (JHU) <https://coronavirus.jhu.edu/map.html> 2021.
4. National Foundation for Infectious Diseases. (2024) <https://www.nfid.org/infectious-diseases/Covid/>
5. Monje M, and Iwasaki A. The neurobiology of long Covid. *Neuron*. 2022; 110(21), 3484–3496. <https://doi.org/10.1016/j.neuron.2022.10.006>
6. Wickert K, Romeo JM, Rumrill P, Sheppard-Jones K, McCurry S. Return to work considerations in the lingering Covid Era: Long Covid, multiple chemical sensitivity, and universal design. *Work* (Reading, Mass.), 2022; 73(2), 355–360. <https://doi.org/10.3233/WOR-223641>
7. Centers for Disease Control and Prevention. Long Covid or post-Covid conditions [Internet]. Centers for Disease Control and Prevention. (2022) May. Available from: <https://www.cdc.gov/coronavirus/2019-ncov/long-term-effects/index.html>
8. Chow N , Fleming-Dutra K , Gierke R , Hall A , Hughes M , Pilishvili T , Ritchey M , Roguski K , Tami Skoff T , Ussery E . Preliminary estimates of the prevalence of selected underlying health conditions among patients with coronavirus disease 2019—United States, February 12–March 28, 2020. *Morbidity and Mortality Weekly Report*. 2020; 69:(13):382.
9. Ochani R, Asad A, Yasmin F, Shaikh S, Khalid H, Batra S, Sohail MR, Mahmood SF, Ochani R, Hussham Arshad M, Kumar A, Surani S. Covid pandemic: from origins to outcomes. A comprehensive review of viral pathogenesis, clinical manifestations, diagnostic evaluation, and management. *Le infezioni in medicina*. 2021; 29(1), 20–36.
10. Ashford and Miller C (1998) *Chemical Exposures: Low Levels and High Stakes*. New York: Von Nostrand Reingold.
11. Dantoft TM, Nordin S, Andersson L, Petersen MW, Skovbjerg S, and Jørgensen T. Multiple chemical sensitivity described in the Danish general population: Cohort characteristics and the importance of screening for functional somatic syndrome comorbidity—The DanFunD study. *PLoS One*. 2021; 16(2): p.e0246461.
12. Miller CS and Mitzel HC. Chemical sensitivity attributed to pesticide exposure versus remodeling. *Archives of Environmental Health*. 1997; 50(2):119-129.
13. Miller CS. The compelling anomaly of chemical intolerance. *Ann NY Acad Sci*. 2001; 933: 1-23.

- 474 14. Genuis SJ. Sensitivity-related illness: The escalating pandemic of allergy, food intolerance and chemical
475 sensitivity. *Science of The Total Environment*. 2010; 408 (24): 6047-6061.
- 476 15. Zucco GM and Doty RL. Multiple chemical sensitivity. *Brain Sciences*. 2022; 12(1):46.
477 <https://doi.org/10.3390/brainsci12010046>
- 478 16. Miller CS and Prihoda T. The Environmental Exposure and Sensitivity Inventory (EESI): a standardized
479 approach for measuring chemical intolerances for research and clinical applications. *Toxicology and*
480 *Industrial Health*. 1999a; 15: 370-385.
- 481 17. Miller CS, Prihoda TJ. A controlled comparison of symptoms and chemical intolerances reported by Gulf
482 War veterans, implant recipients and persons with multiple chemical sensitivity. *Toxicol Ind Health*.
483 1999b; 15(3-4):386-397.
- 484 18. Hojo S, Mizukoshi A, Azuma K, Okumura J, Ishikawa S, Miyata M, Mizuki M, Ogura H, Sakabe K.
485 Survey on changes in subjective symptoms, onset/trigger factors, allergic diseases, and chemical
486 exposures in the past decade of Japanese patients with multiple chemical sensitivity. *International*
487 *Journal of Hygiene and Environmental Health*. 2018; 221(8):1085-1096.
- 488 19. Azuma K, Uchiyama I, Katoh T, Ogata H, Arashidani K, Kunugita N. Prevalence and characteristics of
489 chemical intolerance: A Japanese population-based study. *Arch Environ Occup Health*. 2015; 70:341–353.
- 490 20. Caress SM and Steinemann AC Prevalence of multiple chemical sensitivities: a population-based study in
491 the southeastern United States. *Am J Public Health*. 2004; 94(5): 746-747.
- 492 21. Kreuzer R, Neutra RR, Lashuay N Prevalence of people reporting sensitivities to chemicals in a
493 population-based survey. *Am J Epidemiol*. 1999;150(1): 1-12.
- 494 22. Palmer RF, Walker T, Kattari D, Rincon R, Perales RB, Jaén CR, Grimes C, Sundblad DR, Miller CS.
495 Validation of a brief screening instrument for chemical intolerance in a large U.S. national sample. *Int J*
496 *Environ Res Public Health*. 2021; 18(16):8714. <https://doi.org/10.3390/ijerph18168714>
- 497 23. Pigatto PD, Guzzi G. Prevalence and risk factors for multiple chemical sensitivity in Australia. *Prev Med*
498 *Rep.* (2019) 29;14:100856. doi: 10.1016/j.pmedr.2019.100856. PMID: 31193443.
- 499 24. Caress S and Steinemann A.) National prevalence of asthma and chemical hypersensitivity: an
500 examination of potential overlap. *J Occup Environ Med*. 2005; 47(5):518–522.
- 501 25. Caress S and Steinemann A. Prevalence of fragrance sensitivity in the American population. *Journal of*
502 *environmental health*. 2009; 1;71(7):46-50.
- 503 26. Steinemann A. National prevalence and effects of multiple chemical sensitivities. *J Occup Environ Med*.
504 2018; 60(3): e152–e156
- 505 27. Proctor SP. Chemical sensitivity and gulf war veterans' illnesses. *Occupational Medicine*. 2000; 15(3):587-
506 599.

- 507 28. Masri S, Miller CS, Palmer RF, Ashford N. Toxicant-induced loss of tolerance for chemicals, foods, and
508 drugs: assessing patterns of exposure behind a global phenomenon. *Environ Sci Eur*. 2021; 33, 65.
509 <https://doi.org/10.1186/s12302-021-00504-z>
- 510 29. Biffignandi S, Bethlehem J. *Handbook of web surveys*. Wiley, Hoboken, NJ. 2021.
- 511 30. Couper M. Web surveys: a review of issues and approaches. *Public Opin Q*. 2000; 64(4):464–494.
- 512 31. JMPR Pro, Version 15.0.0 1989–2019; SAS Institute Inc.: Cary, NC, USA, 2019. Available online:
513 <https://www.scirp.org/reference/referencespapers?referenceid=2843737> (accessed on 17 February 2024).
- 514 32. SAS Institute Inc. SAS/STATR 15.3 User’s Guide; SAS Institute Inc.: Cary, NC, USA, 2023. Available
515 online:
516 [https://documentation.sas.com/api/collections/pgmsascdc/9.4_3.5/docsets/statug/content/intro.pdf?locale](https://documentation.sas.com/api/collections/pgmsascdc/9.4_3.5/docsets/statug/content/intro.pdf?locale=en)
517 [=en](https://documentation.sas.com/api/collections/pgmsascdc/9.4_3.5/docsets/statug/content/intro.pdf?locale=en) (accessed on 17 February 2024).
- 518 33. Palmer RF, Walker T, Perales RB, Rincon R, Jaén CR, Miller CS. Disease comorbidities associated with
519 chemical intolerance. *Environmental Disease*. 2021;6(4):134. https://doi.org/10.4103/ed.ed_18_21
- 520 34. Palmer RF, Dempsey TT, Afrin, LB. Chemical Intolerance and Mast Cell Activation: A Suspicious
521 Synchronicity. *Journal of Xenobiotics*. 2023; 13(4), 704–718. <https://doi.org/10.3390/jox13040045>
- 522 35. Miller CS, Palmer RF, Dempsey TT, Ashford N, Afrin LB. Mast cell activation may explain many cases of
523 chemical intolerance. *Environ Sci Eur*. 2021; 33,129 <https://doi.org/10.1186/s12302-021-00570-3>
- 524 36. Patel JR, Amick BC, Vyas KS, Bircan E, Boothe D, Nembhard WN. Gender disparities in symptomology
525 of COVID-19 among adults in Arkansas. *Prev Med Rep*. 2023; 35:102290.
526 <https://doi.org/10.1016/j.pmedr.2022.101840>
- 527 37. Hojo S, Ishikawa S, Kumano H, Miyata M, & Sakabe K. Clinical characteristics of physician-diagnosed
528 patients with multiple chemical sensitivity in Japan. *International journal of hygiene and environmental*
529 *health*. 2008; 211(5-6), 682–689. <https://doi.org/10.1016/j.ijheh.2007.09.007>
- 530 38. Kim D. Associations of race/ethnicity and socioeconomic factors with vaccination among US adults
531 during the COVID-19 pandemic, January to March 2021. *Preventive Medicine Reports*. 2023; 31,
532 102021, <https://doi.org/10.1016/j.pmedr.2022.102021>
- 533 39. Ash M, Boyce JK. Racial disparities in pollution exposure and employment at US industrial facilities.
534 *Proc Natl Acad Sci U S A*. 2018; 115(42):10636-10641. <https://doi.org/10.1073/pnas.1721640115>
- 535 40. Wong MS, Steers WN, Frochen S, Washington DL. Assessment of Exposure to Environmental Toxins and
536 Racial and Ethnic Disparities in COVID-19 Hospitalizations Among US Veterans. *JAMA Netw Open*.
537 2022 Jul 1;5(7):e2224249. <https://doi.org/10.1001/jamanetworkopen.2022.24249>
- 538 41. United States Environmental Protection Agency. Learn about RSEI. United States Environmental
539 Protection Agency. Updated July 14, 2021. Accessed December 13, 2021. [https://www.epa.gov/rsei/learn-](https://www.epa.gov/rsei/learn-about-rsei)
540 [about-rsei](https://www.epa.gov/rsei/learn-about-rsei)

- 541 42. Quandt SA, Grzywacz JG, Talton JW, et al. Evaluating the effectiveness of a lay health promoter-led,
542 community-based participatory pesticide safety intervention with farmworker families. *Health Promot*
543 *Pract.* 2013;14(3):425-432. doi:10.1177/1524839912459652
- 544 43. Economic Policy Institute. *Economic Policy Institute EPI*. United States. [Web Archive] Retrieved from the
545 Library of Congress, <https://www.loc.gov/item/lcwaN0000169/>. (2001) (accessed 4/16/2024)
- 546 44. Duong KNC, Le LM, Veettil SK, Saidoung P, Wannaadisai W, Nelson RE, Friedrichs M, Jones BE, Pavia
547 AT, Jones MM, Samore MH, Chaiyakunapruk N. Disparities in COVID-19 related outcomes in the United
548 States by race and ethnicity pre-vaccination era: an umbrella review of meta-analyses. *Front Public*
549 *Health.* 2023; Sep 7;11:1206988. <https://www.doi:10.3389/fpubh.2023.1206988>.
- 550 45. Zhao X, and Knobel P. Face mask wearing during the COVID-19 pandemic: comparing perceptions in
551 China and three European countries. *Transl. Behav. Med.* 2021; 11, 1199–1204.
552 <https://doi.org/10.1093/tbm/ibab043>
- 553 46. Cheung GW, Rensvold RB. Assessing extreme and acquiescence response sets in cross-cultural research
554 using structural equations modeling. *J Cross Cult Psychol.* 2000; 31(2):187–212.
- 555 47. Roster CA, Rogers R, Albaum G. A cross-cultural use of extreme categories for rating scales. *Proceedings*
556 *of Ninth Annual Cross-Cultural Research Conference, Las Vegas.* 2003.
- 557 48. Stening BW and Everett JE Response styles in a cross-cultural managerial study. *J Soc Psychol.* 1984;
558 122(2):151–156
- 559 49. Clarke I. Extreme response style in cross-cultural research. *Int Mark Rev.* 2001; 18(3):301–324
- 560 50. Wang R, Hempton B, Dugan JP, Komives SR Cultural differences: why do Asians avoid extreme
561 responses? *Surv Pract.* 2008;1:3 <https://doi.org/10.29115/SP-2008-0011>
- 562 51. Piscitelli P, Miani A, Setti L, De Gennaro G, Rodo X, Artinano B, Vara E, Rancan L, Arias J, Passarini F,
563 Barbieri P, Pallavicini A, Parente A, D'Oro EC, De Maio C, Saladino F, Borelli M, Colicino E, Gonçalves
564 LMG, Di Tanna, G. RESCOP Commission established by Environmental Research. The role of outdoor
565 and indoor air quality in the spread of SARS-CoV-2: Overview and recommendations by the research
566 group on COVID-19 and particulate matter (RESCOP commission). *Environmental research*, 211, 113038
567 <https://doi.org/10.1016/j.envres.2022.113038>
- 568 52. Braggion A, Dugerdil A, Wilson O, Hovagemyan F, Flahault A. Indoor Air Quality and COVID-19: A
569 Scoping Review. *Public Health Rev.* 2024;44:1605803. <http://doi:10.3389/phrs.2023.1605803>
- 570 53. Ninyà N, Vallecillos L, Marcé RM, Borrull F. Evaluation of air quality in indoor and outdoor
571 environments: Impact of anti-COVID-19 measures. *The Science of the total environment.*
572 2022; 836:155611. <https://doi.org/10.1016/j.scitotenv.2022.155611>
- 573 54. Zhu C, Maharajan K, Liu K, Zhang Y. Role of atmospheric particulate matter exposure in Covid and
574 other health risks in human: A review. *Environmental Research.* 2021;198:111281.
575 <https://doi.org/10.1016/j.envres.2021.111281>

- 576 55. Damiani G, Alessandrini M, Caccamo D, Cormano A, Guzzi G, Mazzatenta A, Micarelli A, Migliore A,
577 Piroli A, Bianca M, Tapparo O, Pigatto PDM. Italian Expert Consensus on Clinical and Therapeutic
578 Management of Multiple Chemical Sensitivity (MCS). *Int J Environ Res Public Health*. 2021; Oct
579 27;18(21):11294. <https://www/doi:10.3390/ijerph182111294>
- 580 56. Tran VV, Park D, Lee Y-C. Indoor Air Pollution, Related Human Diseases, and Recent Trends in the
581 Control and Improvement of Indoor Air Quality. *International Journal of Environmental Research and Public
582 Health*. 2020; 17(8):2927. <https://doi.org/10.3390/ijerph17082927>
- 583 57. Zang ST, Luan J, Li L, Yu HX, Wu QJ, Chang Q, et al. Ambient air pollution and Covid risk: Evidence
584 from 35 observational studies. *Environ Res*. 2022;204(Pt B):112065.
585 <https://doi.org/10.1016/j.envres.2021.112065>
- 586 58. Di Ciaula A, Moshammer H, Lauriola P, Portincasa P. Environmental health, Covid, and the syndemic:
587 internal medicine facing the challenge. *Intern Emerg Med*. 2022; Nov;17(8):2187-98.
588 <https://www/doi:10.1007/s11739-022-03107-5>
- 589 59. Perales RB, Palmer RF, Rincon R, et al. Does improving indoor air quality lessen symptoms associated
590 with chemical intolerance? *Prim Health Care Res Dev*. 2022;23:e3. doi:10.1017/S1463423621000864
- 591 60. Rincon R, Perales R, Forster JV, Palmer RF, Hernandez J, Bayles B, Grimes C, Jaén, CR, Miller CS.
592 Environmental House Calls Can Reduce Symptoms of Chemical Intolerance: A Demonstration of
593 Personalized Exposure Medicine. *Primary Health Care Research and Development*. 2024 (in press).
- 594 61. Litchfield I, Shukla D, Greenfield S. Impact of COVID-19 on the digital divide: a rapid review. *BMJ Open*.
595 2021; Oct 12;11(10):e053440. <https://www/doi:10.1136/bmjopen-2021-053440>
- 596 62. Zhang JJ, Dong X, Liu GH, Gao YD. Risk and Protective Factors for COVID-19 Morbidity, Severity, and
597 Mortality. *Clinical reviews in allergy & immunology*. 2023; 64(1), 90–107. [https://doi.org/10.1007/s12016-
598 022-08921-5](https://doi.org/10.1007/s12016-022-08921-5)
- 599

600 APPENDIX 1

601 1. Did the overall prevalence rate of reported CI increase from PEI1 to PEI2?

602 *Hypothesis 1:* The prevalence of CI will be higher in PEI2.

603 Comparison of PEI1 v PEI2 rates

604

605 2. Did those with CI have higher rates of Covid than those without CI?

606 *Hypothesis 2:* The prevalence of CI will be higher among those with CI.

607 **Have you been diagnosed with, or do you think you have had Covid?**

608 __Yes, I believe I have had Covid (no test)

609 __Yes, I tested positive for Covid with a home test

610 __Yes, I tested positive for Covid by a health professional

611 __No

612 __I am not sure

613 3. Are those with CI more severely affected by Covid?

614 *Hypothesis 3:* Those with CI will be more severely affected by Covid.

615 **If yes, please rate the severity of your Covid symptoms on a 0-10 scale.**

616 [0 = no symptoms] [5 = moderate symptoms] [10 = disabling symptoms]

617 0 1 2 3 4 5 6 7 8 9 10

618

619 4. Are those with CI more likely to experience Long Covid?

620 *Hypothesis 4:* The prevalence of CI will be higher among those with CI.

621 **Did your Covid symptoms last for more than 12 weeks (long Covid)?**

622 __Yes

623 __No

624

625 5. Are those with CI more likely to experience reactions to the Covid vaccine?

626 *Hypothesis 5:* The prevalence of CI will be higher among those with CI.

627 **Please rate the severity of your symptoms after a Covid vaccination(s).**

628 __N/A – I have not had any Covid vaccinations

629 __None – I have had Covid vaccination(s) and had no reaction to them

630 __Mild symptoms

631 __Moderate symptoms

632 __Severe (disabling symptoms)

633