

Title Page

Full title: Spatial variation in housing construction material in low- and middle-income countries: a Bayesian spatial prediction model of a key infectious diseases risk factor and social determinant of health

Short title: A Bayesian model of housing construction material in LMICs

Author names and affiliations:

Josh M Colston¹, Bin Fang², Malena K Nong³, Pavel Chernyavskiy⁴, Navya Annapareddy⁵, Venkataraman Lakshmi², Margaret N Kosek¹

1. Division of Infectious Disease and International Health, School of Medicine, University of Virginia, Charlottesville, VA, USA
2. Department of Civil and Environmental Engineering, University of Virginia, Charlottesville, Virginia, USA
3. College of Arts and Sciences, University of Virginia, Charlottesville, Virginia, USA
4. Department of Public Health Sciences, University of Virginia School of Medicine, Charlottesville, Virginia, USA
5. School of Data Science, University of Virginia, Charlottesville, Virginia, Charlottesville, Virginia, USA

Corresponding author: Margaret N. Kosek - Division of Infectious Diseases and International Health, University of Virginia School of Medicine, Charlottesville, VA, 22903, USA, mkosek@virginia.edu

Abstract:

Housing infrastructure and quality is a major determinant of infectious disease risk and other health outcomes in regions of the world where vector borne, waterborne and neglected tropical diseases are endemic. It is important to quantify the geographical distribution of improvements to the major dwelling components to identify and target resources towards populations at risk. The aim of this study was to model the sub-national spatial variation in housing materials using covariates with quasi-global coverage and use the resulting estimates to map the predicted coverage across the world's low- and middle-income countries (LMICs). Data relating to the materials used in dwelling construction were sourced from nationally representative household surveys conducted since 2005. Materials used for construction of flooring, walls, and roof were reclassified as improved or unimproved. Households lacking location information were georeferenced using a novel methodology, and a suite of environmental and demographic spatial covariates were extracted at those locations for use as model predictors. Integrated nested Laplace approximation (INLA) models were fitted to obtain and map predicted probabilities for each dwelling component. The dataset compiled included information from households in 283,000 clusters from 350 surveys. Low coverage of improved housing was predicted across the Sahel and southern Sahara regions of Africa, much of inland Amazonia, and areas of the Tibetan plateau. Coverage of improved roofs and walls was high in the Central Asia, East Asia and Pacific and Latin America and the Caribbean regions, while improvements in all three components, but most notably floors, was low in Sub-Saharan Africa. Human development was by far the strongest determinant of dwelling component quality, though vegetation greenness and land use were also relevant markers. These findings are made available to the reader as files that can be imported into a GIS for integration into relevant analysis to derive improved estimates of preventable health burdens attributed to housing.

1 **Introduction:**

2 The United Nations' Sustainable Development Goals (SDGs) include ambitious
3 commitments to fight communicable diseases (target 3.3) and provide adequate, safe and
4 affordable housing (target 11.1) throughout its member states [1]. Although they fall under
5 separate goals, housing quality has long been recognized as a social determinant of health
6 and epidemiological evidence is now elucidating the mechanisms by which this
7 relationship operates [2]. Many endemic infectious diseases of global public health concern,
8 including several named in SDG3, are transmitted within and between households with the
9 majority of infections occurring while the susceptible individual is at home [3], and
10 consequently features of the built peridomestic environment and infrastructure play a role
11 in promoting or impeding the spread of pathogens and their insect vectors [4]. This is
12 particularly true of tropical and rural regions of Africa, Asia and Latin America where
13 numerous vector borne and neglected tropical diseases circulate and where dwellings are
14 often constructed using locally available, naturally occurring materials and traditional
15 techniques such as wattle and daub, dried or burnt bricks, adobe, woven reed or bamboo
16 and thatch [4]. These construction methods often require great skill and community
17 mobilization to implement and are adapted over generations to suit local climate, ecology
18 and topography, however numerous disease-causing insects and microbes are also well
19 adapted to take advantage of the ecological niches that such buildings provide [5,6].

20 Infants and young children are particularly vulnerable to the health effects of
21 housing construction material due to the high proportion of time spent in the family
22 dwelling and behaviors common to early life such as crawling or playing on the floor [7–9].
23 Floors that are finished with wood, tiles or cement may protect against transmission of

24 some diarrhea-causing enteric pathogens compared to those made of packed earth or sand
25 either because they are easier to clean, or because they are less hospitable to pathogen
26 survival outside the host [9].

27 As childhood mortality continues to decline globally, becoming concentrated in
28 subnational hotspots it will be increasingly necessary to target interventions ever more
29 specifically both geographically and to particular causes [10]. Several household-level
30 determinants of health have been mapped at continental or global scale using survey data
31 and spatial interpolation methods including water source and sanitation facility type [11],
32 crowded living space [12], educational attainment [13], and relative wealth [14]. Tusting
33 and colleagues have applied a similar approach to mapping houses built with finished
34 materials across Sub-Saharan Africa for 2000 and 2015, defining such households as those
35 having at least two out of three of the materials for the walls, roof and floor were finished,
36 though they did not separate out these three components [15]. Building on these efforts,
37 the aim of this study, a project of the Planetary Child Health & Enterics Observatory (Plan-
38 EO, www.planeo.earth) [16] was to model the sub-national spatial variation in housing
39 materials using covariates with quasi-global coverage and use the resulting estimates to
40 map the predicted coverage across low- and middle-income countries (LMICs). The guiding
41 hypothesis was that coverage of improved housing materials varies spatially as a function
42 of environmental, and socio-demographic factors in a way that can be modelled using
43 publicly available global datasets and state-of-the-art geostatistical methods.

44 **Materials and Methods:**

45 ***Objective and scope:***

46 The objective of this analysis was to estimate the percent coverage of each category
47 of materials used in dwelling component construction at all locations throughout the
48 world's LMICs (as defined by the Organisation for Economic Co-operation and
49 Development [17], excluding those in Europe).

50 ***Outcome variables:***

51 The categories of housing materials used in this analysis were those proposed by
52 Florey and Taylor, who classify materials used for construction of flooring, walls, and roofs
53 into natural, rudimentary, and finished types, and then further into improved and
54 unimproved [18]. Data relating to these variables were compiled from nationally
55 representative, population-based household surveys with two-stage cluster-randomized
56 sample designs such as the Demographic and Health Surveys (DHS) [19], the Multiple
57 Indicator Cluster Surveys (MICS) [20] and others. These programs collect information on
58 coverage of health and development indicators and make the resulting microdata publicly
59 available through their websites. All Standard DHSs, Malaria and AIDS Indicator Surveys
60 (MIS and AIS) and MICS that collected information on housing material dating back to 2005
61 from all LMICs were included. For countries where no such surveys were available, either
62 similar surveys from the 2000-2004 period or country-specific surveys were sourced
63 where available. The unit of analysis was the household, and these were classified into
64 three, mutually exclusive categories (natural, rudimentary, and finished) based on the

65 housing material recorded by the survey interviewer for each of the three dwelling
 66 components (floors, walls, and roof) as shown in **Table 1**.

Table 1: Classification of construction materials for the three components of the dwelling used as three-category outcome variables (adapted from Florey and Taylor 2016 [18])

Category	Flooring	Walls	Roof
Unimproved	Natural	Earth, sand, dung etc.	Mud, sticks, cane, palm, tin, cardboard, paper, thatch, straw etc. No walls Grass, thatch, palm leaves, sod, straw etc. No roof
	Rudimentary	Wood planks, palm, bamboo etc.	Bamboo, stone, or trunks with mud, uncovered adobe, plywood, cardboard, reused wood, unburnt bricks etc. Palm, bamboo, wood planks, cardboard, tarpaulin, plastic etc.
Improved	Finished	Parquet or polished wood, vinyl or asphalt strips, cement, carpet etc.	Cement or cement blocks, stone with lime or cement, bricks, covered adobe, wood planks/shingles, burnt bricks etc. Metal, wood, ceramic tiles, cement, shingles, slate etc.

67 **Georeferencing households:** For this spatial analysis it was necessary to assign
 68 coordinates to each household representing its approximate location. Cluster-randomized
 69 surveys have a hierarchical design such that households are nested within clusters, the
 70 census enumeration areas that serve as the primary sampling unit, which are in turn
 71 nested within survey strata (sub-national region and urban/rural status). The DHS
 72 Program provides coordinates of the cluster centroids for most of the surveys they carry
 73 out [21] (though these are randomly “displaced” – systematically shifted up to a certain
 74 distance to preserve confidentiality [22]). However, these are not available for all clusters
 75 and surveys and equivalent coordinates have been made available only for a handful of

76 MICS and no country-specific surveys. For this analysis, households were georeferenced to
77 their displaced cluster centroid coordinates where available, otherwise their clusters were
78 randomly assigned to populated settlement locations taken from the Humanitarian
79 OpenStreetMap database [23] that fell within the same survey stratum (sub-national region
80 and urban/rural status) with probability proportional to the population density of the
81 settlement (extracted from the WorldPop [24] database at settlement coordinates).
82 OpenStreetMap settlements were reclassified such that cities and towns were categorized
83 as urban, and villages, hamlets, and isolated dwellings as rural. This novel cluster location
84 assignment process was automated in ArcGIS Pro ModelBuilder [25] and Stata 18 [26].

85 ***Covariates:***

86 A suite of time-static environmental and demographic spatial covariates available in
87 raster format were compiled based on their hypothesized associations with the outcome
88 variables. Definitions and sources of each covariate are shown in **Table 2**. Variable values
89 were extracted at the georeferenced cluster locations in Python. In addition, time was
90 calculated in continuous months since January 1st, 2005, based on the date of survey
91 interview and log-transformed based on the assumption that changes in household
92 material over time would be non-linear but unidirectional. Countries were grouped into the
93 six regions used for administrative purposes by the World Bank [27], and this categorical
94 variable was also treated as a covariate so that, for countries with no available survey data,
95 estimates would be based partly on regional averages.

96 ***Analysis:***

97 To reduce the database size and computational demands, and to neutralize the issue
98 of within-cluster correlation, one household with non-missing outcome value was
99 randomly sampled per cluster and retained for analysis (this selection was done separately
100 for each of the three outcomes). Due to the computational demands of performing
101 geospatial analysis at the global scale, we recoded all outcomes to be binary, by collapsing
102 two of the response categories together (“rudimentary” was grouped with “natural”) to
103 give “improved” / “unimproved” response categories as shown in **Table 1**, and in a
104 modification of the schema proposed by Florey and Taylor (those authors grouped
105 rudimentary and finished walls and roofs into the improved category, but not floors,
106 however we opted for a consistent categorization across components to facilitate
107 comparison between outcome variables [18]).

108 **Exploratory spatial data analysis:** We first assessed the presence of spatial
109 autocorrelation by generating semi-variograms of the Pearson residuals from a non-spatial
110 logistic regression that included all explanatory variables listed in **Table 2** (Supplementary
111 Figure S1). We fit spherical spatial correlation models to each semi-variogram and
112 estimated the nugget, range, and sill for each outcome. The semi-variograms and respective
113 models were estimated using the **gstat** R package [28]. Together with the nugget:sill ratio
114 and the estimated range, we determined that an explicitly spatial modeling approach was
115 required to account for the non-trivial spatial correlation in the Pearson residuals.

116 **Model fitting:** Given the massive spatial scale of the database, with hundreds of
117 thousands of points spanning most of the globe, incorporating spatial correlation into the
118 models presented computational challenges. We used the **inlabru** R package to implement

119 an integrated nested Laplace approximation (INLA) modeling approach in which all
120 locations are projected onto a coarsened grid or “mesh” containing several thousand
121 vertices that carry the spatial information and can be reprojected onto the observed data
122 [29,30]. INLA models approximate Bayesian models by constructing the posterior
123 distribution and then applying Laplace approximations, thus bypassing the need for time-
124 consuming Markov chain Monte Carlo sampling and making global-scale computation
125 feasible. All coordinates were transformed via the Mollweide projection and scaled into
126 kilometers prior to analysis. The mesh used for modelling had 18,352 vertices, placed
127 within continental boundaries. Further details on the implementation of the INLA model
128 are provided in **Supplementary File 1**.

129 **Model predictions:** Predicted probabilities for each outcome were made for all
130 locations in the domain of interest (the LMICs) at 5 km² resolution and exported in
131 Georeferenced Tag Image File format (GeoTIFF). The spatial covariates from Table 2 along
132 with the time variable were used to generate predicted logistic distribution probability of
133 the finished class of each building material from the INLA model. A value for time
134 corresponding to the first of January 2023 was used for making predictions. Missing pixel
135 values were filled by performing imputation using k-Nearest Neighbors method by Python
136 Scikit-learn package [31].

137 **Model evaluation:** The predictive performance of the spatial models was assessed
138 by calculating common metrics of recall (sensitivity), precision (positive predictive value),
139 accuracy (the proportion correctly classified), F1-score (mean of precision and recall), and
140 area under the receiver operating characteristic curve (ROC-AUC). For each performance

141 metric, two multiclass averaging metrics (macro and weighted average) were calculated,
142 including macro averaging and weighted macro averaging, given by:

$$Pr_{macro} = \frac{1}{n} \sum_{i=1}^n Pr_i \quad (1)$$

$$Pr_{weighted-macro} = \frac{1}{n} \sum_{i=1}^n Pr_i * Obs_i \quad (2)$$

143 Where Pr_i is the precision calculated from the multiple class predictions and Obs_i is
144 the number of observations of one class. n is the total number of observations of all classes.
145 To assess the relative contribution of each covariate to the models, feature importance
146 values for the input raster covariates were calculated by running parallel non-spatial linear
147 regression models (since the **inlabru** package does not provide feature importance output)
148 that were otherwise identically specified and scaling the output coefficients to the 0 – 1
149 range using the Scikit-learn Python package. These feature importance values can be
150 interpreted as conditional associations, quantifying the responded variation of the output
151 when only the given feature is allowed to vary while all other features are held constant.

152 ***Ethics statement:***

153 All human subject information used in this analysis was anonymized, publicly
154 available secondary data, and therefore ethical approval was not required or sought. For
155 data provided by the DHS Program, data access requests (including for the displaced
156 cluster coordinates) were submitted and authorized through the Program’s website. A
157 completed checklist of Guidelines for Accurate and Transparent Health Estimates
158 Reporting (GATHER [32]) is included in **Supplementary File S1**.

Table 2: Definitions and sources of variables included as covariate predictors in the model

Variable	Definition	Units/ Categories¹	Source
Accessibility to cities	Travel time to nearest settlement of >50,000 inhabitants.	Minutes	MAP [33]
Aridity index	Mean annual precipitation / Mean annual reference evapotranspiration, 1970-2000.	Ratio	CGIAR-CSI [34]
Climate zone	First level Köppen-Geiger climate classification.	Tropical; arid; temperate; cold; polar	Beck et al. 2018 [35]
Cropland areas	Proportion of land given over to cropland, 2000.	Proportion	CIESIN [36]
Distance to major river	Distance to major perennial river (derived from rivers and lakes centerlines database).	Decimal degrees	Natural Earth [37]
Elevation	Elevation above sea level.	Meters	NOAA [38]
Economic development	Sub-national unit-level Gross Domestic Production (GDP) per capita, 2015	Constant 2011 int. USD	Kummu et al. 2018 [39]
Enhanced Vegetation Index	Vegetation greenness corrected for atmospheric conditions and canopy background noise.	Ratio	USGS [40]
Growing season length	Reference length of annual agricultural growing period (baseline period 1961-1990).	Days	FAO, IIASA [41]
Human development	Sub-national unit-level Human Development Index (HDI), 2015	Scale from 0 to 1	Kummu et al. 2018 [39]
Human Footprint Index	Human Influence Index (HII) normalized by biome and realm.	Percentage	CIESIN [42]
Irrigated areas	Percentage of land equipped for irrigation around the year, 2000.	Percentage	FAO [43]
Land cover and use	General class of vegetation, tree, and ice cover or purpose of land use, 2020 (resampled and reclassified from Global Land Cover and Land Use)	Built up; cropland; desert; semi-arid; short vegetation; snow or ice; tree cover; wetland	GLAD [44]
Land Surface Temperature	Interannual averages of daily land surface temperature estimates for daytime, nighttime, and day/nighttime range, 2003-2020.	K	MOD21A1N v006 [45,46]

Table 2: Definitions and sources of variables included as covariate predictors in the model

Variable	Definition	Units/ Categories¹	Source
Nighttime light	The surface upward radiance from artificial light emissions extracted from at-sensor nighttime radiances at top-of-atmosphere.	nWatts·cm ⁻² ·sr ⁻¹	NASA Black Marble [47]
Pasture areas	Proportion of land given over to pasture, 2000.	Proportion	CIESIN [36]
Population density	Human population density per 1km ² .	Inhabitants per km ²	WorldPop [24]
Potential evapotranspiration	8-day sum of the water vapor flux under ideal conditions of complete ground cover by plants.	kg/m ² /8-day	NASA EOSDIS [48]
Region	Region of the globe as defined by the World Bank	East Asia & Pacific; Europe & Central Asia; Latin America & the Caribbean; Middle East & North Africa; South Asia	World Bank [27]
Urbanicity	Urbanicity status at georeferenced location (reclassified from Global Human Settlement database).	Urban; peri-urban; rural; remote	GHS [49]

159 **Results:**

160 350 nationally representative household surveys (together containing data from more than
161 6 million households in 283,000 clusters) met the inclusion criteria, reported information
162 on construction material types for one or more of the dwelling components and were
163 included in the model training dataset. **Figure 1** shows the number of surveys contributed
164 by each LMIC, while **Supplementary File S2** gives the national level distribution of each of
165 the three housing construction variables in each survey (before within-cluster sub-
166 sampling, and without sample weights applied). All eligible surveys included information
167 on floor material; however, wall and roof material information were only available from
168 328 and 324 surveys respectively. No relevant data from household surveys could be found
169 for several LMICs with large geographies and populations, most notably China, Iran,
170 Venezuela, Libya, and Malaysia, as well as the smaller countries of Eritrea, North Korea,
171 Lebanon, Equatorial Guinea, and numerous island nations such as Sri Lanka.

172 ***Figure 1:** Number of nationally representative household surveys included in input*
173 *dataset by country for included LMICs (small countries represented by circles). Base map*
174 *compiled from shapefiles obtained from U.S. Department of State—Humanitarian*
175 *Information Unit [50] and Natural Earth free vector map data @ naturalearthdata.com that*
176 *are made available in the public domain with no restrictions.*

177 **Figure 2** shows the geographical distribution of the coverage of improved
178 materials predicted by the INLA models for each of the three binary dwelling component
179 variables across the domain of included LMICs. These predictions are also provided as
180 raster TIFF files available on the Dryad data repository. There are some similarities across

181 the variables, with low coverage predicted for all three across a wide belt of the Sahel and
182 southern Sahara regions of Africa, much of inland Amazonia, and areas of the Tibetan
183 plateau, as well as individual countries including the Democratic Republic of the Congo,
184 Mozambique, Madagascar, Pakistan, and Papua New Guinea. High coverage of all three
185 improved components coincided across much of the Middle East, Mediterranean North
186 Africa, the coast of the Bight of Benin, the Caribbean, sub-Amazonian Brazil, southern
187 Argentina, and South Africa. However, divergence in coverage of the three variables is
188 evident across many locations. Across Kazakhstan, Mongolia, Azerbaijan, Cambodia and
189 Laos, low coverage of improved floors, but high coverage of walls and roofs were predicted,
190 while in Afghanistan, the reverse was the case. Yemen has mostly high improved floor
191 coverage predicted, but low improved roof and mixed improved wall coverage, while on
192 the island of Borneo, that pattern is reversed. Importantly, sub-national patterns are clearly
193 visible, for example, with respect to improved floors, walls, and roofs in India, China,
194 Mexico, and Brazil.

195 **Figure 2:** Coverage of improved material for three dwelling components - a. floors, b.
196 walls, c. roofs – in LMICs predicted by integrated nested Laplace approximation (INLA)
197 models fitted to household survey data. Base maps compiled from shapefiles obtained from
198 U.S. Department of State—Humanitarian Information Unit [50] and Natural Earth free vector
199 map data @ [naturalearthdata.com](https://www.naturalearthdata.com) that are made available in the public domain with no
200 restrictions.

201 Figure 3 shows ridge plots visualizing the distribution of predicted values for the
202 coverage of improved status for each of the three dwelling components and stratified by

203 the six world regions. The distribution of improved roofs was highly concentrated at values
204 very close to 100% in the Central Asia region, findings which are borne out by the input
205 data, in which most surveys recorded a coverage of finished roofs greater than 97%
206 (**Supplementary File S2**). This was true to a far lesser extent for other regions - with the
207 exception of Sub-Saharan Africa, which had predicted values much more evenly dispersed
208 along the range of values – and for improved walls, though the South Asia region and had a
209 much more dispersed, bimodal distribution for the latter variable. For improved floors,
210 predicted values were highly concentrated at the low extreme of Sub-Saharan Africa.

211 **Figure 3:** *Distribution of values predicted for coverage of improved dwelling*
212 *components by INLA models, stratified by component and world region.*

213 **Figure 4** visualizes the feature importance values for each covariate in each of the
214 three models. More than half (eleven) of the variables did not contribute to any of the
215 models. Feature importance was dominated by the same single variable (human
216 development index), accounting for more than 50% of the variation in all three models. For
217 the walls and to a lesser extent the floors models, the next most important feature was
218 provided by the enhanced vegetation index (EVI), whereas for the roofs model, cropland
219 and pasture areas contributed more to the model prediction, with EVI ranking fourth.

220 **Figure 4:** *Feature importance for each covariate included in the final model for each*
221 *of the dwelling components (HDI – Human Development Index; EVI – Enhanced Vegetation*
222 *Index; LST – Land Surface Temperature; ET – Evapotranspiration; GDP – Gross Domestic*
223 *Product).*

224 **Table 3** gives statistics that evaluate the models' performance in classifying
225 household construction material types for the three dwelling components. Across the
226 whole database, floors were the dwelling component for which coverage of improved
227 construction material was lowest at 57.9%, the equivalent coverage for walls and roofs
228 being 67.1% and 80.3% respectively. While precision, recall and F1-score statistics were
229 generally high for the unimproved category in all models, they varied considerably for the
230 improved category, particularly for the roofs model, for which recall, and F1-score were
231 just 0.4 and 0.5 respectively. However, the roofs model was the one with the highest
232 weighted average for those three statistics (a precision of 0.84, recall of 0.85 and F1-score
233 of 0.83, compared with 0.78, 0.79, and 0.78 respectively for the walls and 0.77 for all three
234 statistics for the floors model). All three models demonstrated similarly strong
235 discriminatory power and performance in distinguishing between households with
236 improved and unimproved construction materials in the respective dwelling components,
237 with ROC-AUC statistics of 0.85 – 0.87.

238

Table 3: Evaluation statistics for models of construction materials for three dwelling components

		Observations (%)	Precision	Recall	F1-score	ROC-AUC
Floors	Total	258,472 (100.0)	-	-	-	0.85
	Unimproved	108,931 (42.1)	0.73	0.74	0.73	-
	Improved	149,541 (57.9)	0.81	0.80	0.80	-
	Macro-average	-	0.77	0.77	0.77	-
	Weighted average	-	0.77	0.77	0.77	-
Walls	Total	248,421 (100.0)	-	-	-	0.85
	Unimproved	81,621 (32.9)	0.71	0.59	0.65	-
	Improved	166,800 (67.1)	0.82	0.88	0.85	-
	Macro-average	-	0.77	0.74	0.75	-
	Weighted average	-	0.78	0.79	0.78	-
Roofs	Total	235,024 (100.0)	-	-	-	0.87
	Unimproved	46,272 (19.7)	0.76	0.38	0.50	-
	Improved	188,752 (80.3)	0.86	0.97	0.91	-
	Macro-average	-	0.81	0.67	0.71	-
	Weighted average	-	0.84	0.85	0.83	-

Discussion:

239 Housing infrastructure and quality are major determinants of infectious disease risk and
240 other health outcomes, particularly in regions of the world where vector borne,
241 waterborne and neglected tropical diseases are endemic. Although, the nature of this
242 relationship is complex and multifaceted and varies depending on the specific pathogen
243 and vector species, it highlights the importance of targeting interventions to mitigate these
244 adverse health outcomes, particularly in LMICs where the overwhelming majority of
245 childhood mortality occurs. As attention turns to improving housing quality in low-
246 resource settings as a strategy for controlling infectious diseases, it is important to quantify
247 the geographical distribution of improvements to the major dwelling components to
248 identify and target resources towards populations at risk. This study is the first attempt to
249 meet this objective.

250 The importance of housing materials is clearly not restricted to vectorborne
251 diseases. Finished floors have been associated with decreases of 0.89 in Log_{10} *E. coli*
252 contamination in Peru [51], 78% in intestinal parasite prevalence in Mexican children [52],
253 and 9% for diarrheal disease risk, 11% for both enteric bacteria and enteric protozoa risk
254 [8], and 17% for *Shigella* spp. infection probability in meta-analyses of children under 5
255 years across multiple LMIC surveillance sites [53]. Traditional roof material has also been
256 shown to be associated with childhood diarrhea [54], even after adjusting for floor material
257 [55]. Pooled analyses of household survey data from multiple countries have found
258 associations of living in improved housing on numerous child health outcomes, including
259 cognitive and social-emotional development [7], and nutritional status [56], in addition to
260 malaria infection [18,57]. Additionally, there is evidence of increased acute respiratory

261 illness (ARI) in children in Pakistan, with unimproved flooring increasing ARI risk by 18%,
262 and unimproved walling materials also increasing the risk of ARI in children under the age
263 of five [58]. These findings are supported by similar findings with different studies in India,
264 Nigeria, and Lao PDR [59–61].

265 This study is subject to several limitations. Our characterization of housing was
266 constrained by the availability of data from household surveys, which generally only ask
267 about just three components, and don't include questions about other relevant features of
268 the built household environment, such as screens covering openings [62] elevation of
269 sleeping areas or improvements to windows and ventilation [63]. Although the variables
270 were originally in three-class ordinal categorical format, we had to combine categories and
271 model them as dichotomous, because there is currently no way to address adjacent
272 categories and parallel odds using the INLA modeling approach. Additionally, our spatial
273 models assume a stationary (i.e., global) covariance structure that does not vary across the
274 globe. This is likely an oversimplification of the latent spatial effects; however, estimating a
275 non-stationary spatial model at the global scale falls outside the scope of the current article
276 and presents a worthwhile future direction. Likewise, improving the precision of the mesh
277 used by INLA may improve predictions, but with ROC-AUC values already relatively high,
278 this is likely to yield only marginal gains.

279 Despite these limitations, the product developed fills an important gap in spatially
280 characterizing determinants of the principal causes of infectious disease burden in LMICs.
281 Many types of mosquitoes such as those that transmit malaria (*Anopheles* spp.), dengue
282 (*Aedes* spp.), filariasis and Japanese encephalitis (*Culex* spp.) enter the home through eaves

283 and other openings [64] and rest on walls and ceilings after ingesting a blood meal (the
284 basis behind indoor residual spraying [IRS] of these surfaces as a malaria control
285 intervention). Indeed, in Africa, 80% of malaria transmission occurs indoors [3] and houses
286 with roofs and walls constructed of natural material provide more points of entry [64,65]
287 and preferred resting places [66] for malaria-transmitting mosquitoes, insights which are
288 increasingly putting housing improvements on the research agendas as potential disease
289 control strategies [63,65]. In rural Gambia, studies have found reductions in
290 intradomiciliary mosquito vector abundance and survival through installing plywood
291 ceilings [67], closing eaves in thatched roofs [68,69], and replacing thatch with ventilated
292 metal roofing [70]. In rural Uganda, living in a house constructed of traditional materials
293 (thatched roof, mud walls, earth floor etc.) has been associated with increased clinical
294 malaria incidence [71] and parasitemia in children [72] and pregnant women [73], and
295 decreased effectiveness of IRS in reducing *Anopheles* biting rates [72]. Similar protective
296 effects of improved housing construction material on entomological and clinical malaria
297 outcomes have been documented separately in Burkina Faso [74], Ethiopia [75], Laos [76],
298 Malawi [77], South Africa [78], and Tanzania [79], while pooled effects from systematic
299 reviews have been reported on the order of a 32% reduction in mosquito-borne diseases,
300 47% for malaria infection and 85% for indoor vector densities [65,80]. Aside from
301 mosquito-borne illnesses, living in households with walls made of mud or thatch carries an
302 increased risk of leishmaniasis infection and indoor abundance of sandfly vectors [81],
303 while in the Americas, Chagas Disease vectors (triatomine bugs) are drawn to houses with
304 thatched palm roofs and mud walls [82]. In a Guatemalan community, for example, the
305 odds of triatomine presence were 3.85 times higher in houses with walls that lacked

306 plastering [83], while in rural Paraguay, an intervention to provide houses with smooth,
307 flat and crack-free walls, reduced triatomine infestation by 96.4%, a comparable effect to
308 that of fumigation [84].

Conclusions:

309 In conclusion, this study applies a relatively computationally efficient and spatially
310 explicit modeling approach to a very large dataset, representative of but standardized
311 across diverse geographies, and collected through rigorous and standardized
312 methodologies. The findings allow us to assess the predictive performance of the models as
313 well as the relative contribution of particular covariate variables, and the resulting
314 predictions are made available to the reader in a readily useable format (available from
315 www.datadryad.org). Human development is by far the strongest determinant of dwelling
316 component quality, though vegetation greenness and land use (cropland and pasture) are
317 also relevant markers. Prevalence of improved roofs and walls is high in the Central Asia,
318 East Asia and Pacific and Latin America and the Caribbean regions, while coverage of
319 improvements in all three components, but most notably floors, is low in Sub-Saharan
320 Africa.

321 **References:**

- 322 1. United Nations. 17 Goals - Learn About the SDGs. [cited 26 Oct 2018]. Available:
323 <http://17goals.org/>
- 324 2. Krieger J, Higgins DL. Housing and health: time again for public health action. *Am J*
325 *Public Health*. 2002;92: 758–768. doi:10.2105/ajph.92.5.758
- 326 3. Haines A, Bruce N, Cairncross S, Davies M, Greenland K, Hiscox A, et al. Promoting
327 health and advancing development through improved housing in low-income settings.
328 *J Urban Health*. 2013;90: 810–831. doi:10.1007/s11524-012-9773-8
- 329 4. Knudsen J, von Seidlein L. *Healthy homes in tropical zones: improving rural housing in*
330 *Asia and Africa*. London: Axel Menges; 2014.
- 331 5. Costantini C, Sagnon N, della Torre A, Coluzzi M. Mosquito behavioural aspects of
332 vector-human interactions in the *Anopheles gambiae* complex. *Parassitologia*.
333 1999;41: 209–217.
- 334 6. Trpis M, Hausermann W. Genetics of house-entering behaviour in East African
335 populations of *Aedes aegypti* (L.) (Diptera: Culicidae) and its relevance to speciation.
336 *Bulletin of Entomological Research*. 1978;68: 521–532.
337 doi:10.1017/S0007485300009494
- 338 7. Gao Y, Zhang L, Kc A, Wang Y, Zou S, Chen C, et al. Housing environment and early
339 childhood development in sub-Saharan Africa: A cross-sectional analysis. *PLoS Med*.
340 2021;18: e1003578. doi:10.1371/journal.pmed.1003578
- 341 8. Colston JM, Faruque ASG, Hossain MJ, Saha D, Kanungo S, Mandomando I, et al.
342 Associations between Household-Level Exposures and All-Cause Diarrhea and
343 Pathogen-Specific Enteric Infections in Children Enrolled in Five Sentinel Surveillance
344 Studies. *International Journal of Environmental Research and Public Health*. 2020;17:
345 8078. doi:10.3390/ijerph17218078
- 346 9. Schiaffino F, Rengifo Trigoso D, Colston JM, Paredes Olortegui M, Shapiama Lopez WV,
347 Garcia Bardales PF, et al. Associations among Household Animal Ownership,
348 Infrastructure, and Hygiene Characteristics with Source Attribution of Household
349 Fecal Contamination in Peri-Urban Communities of Iquitos, Peru. *Am J Trop Med Hyg*.
350 2021;104: 372–381. doi:10.4269/ajtmh.20-0810
- 351 10. Perin J, Mulick A, Yeung D, Villavicencio F, Lopez G, Strong KL, et al. Global, regional,
352 and national causes of under-5 mortality in 2000–19: an updated systematic analysis
353 with implications for the Sustainable Development Goals. *The Lancet Child &*
354 *Adolescent Health*. 2022;6: 106–115. doi:10.1016/S2352-4642(21)00311-4
- 355 11. Deshpande A, Miller-Petrie MK, Lindstedt PA, Baumann MM, Johnson KB, Blacker BF,
356 et al. Mapping geographical inequalities in access to drinking water and sanitation

- 357 facilities in low-income and middle-income countries, 2000–17. *The Lancet Global*
358 *Health*. 2020;8: e1162–e1185. doi:10.1016/S2214-109X(20)30278-3
- 359 12. Chipeta MG, Kumaran EPA, Browne AJ, Hamadani BHK, Haines-Woodhouse G,
360 Sartorius B, et al. Mapping local variation in household overcrowding across Africa
361 from 2000 to 2018: a modelling study. *The Lancet Planetary Health*. 2022;6: e670–
362 e681. doi:10.1016/S2542-5196(22)00149-8
- 363 13. Graetz N, Woyczynski L, Wilson KF, Hall JB, Abate KH, Abd-Allah F, et al. Mapping
364 disparities in education across low- and middle-income countries. *Nature*. 2019.
365 doi:10.1038/s41586-019-1872-1
- 366 14. Data For Good at Meta. Relative Wealth Index. 2022 [cited 2 Sep 2022]. Available:
367 <https://dataforgood.facebook.com/dfg/tools/relative-wealth-index#methodology>
- 368 15. Tusting LS, Bisanzio D, Alabaster G, Cameron E, Cibulskis R, Davies M, et al. Mapping
369 changes in housing in sub-Saharan Africa from 2000 to 2015. *Nature*. 2019 [cited 17
370 Oct 2019]. doi:10.1038/s41586-019-1050-5
- 371 16. Colston JM, Chernyavskiy P, Gardner LM, Fang B, Houpt E, Swarup S, et al. The
372 Planetary Child Health and Enterics Observatory (Plan-EO): a Protocol for an
373 Interdisciplinary Research Initiative and Web-Based Dashboard for Climate-Informed
374 Mapping of Enteric Infectious Diseases and their Risk Factors and Interventions in
375 Low- and Middle-Income Countries. 18 Apr 2023 [cited 24 Apr 2023].
376 doi:10.21203/rs.3.rs-2640564/v2
- 377 17. Organisation for Economic Co-operation and Development. DAC List of ODA
378 Recipients. In: OECD [Internet]. 2020 [cited 10 Dec 2021]. Available:
379 [https://www.oecd.org/dac/financing-sustainable-development/development-](https://www.oecd.org/dac/financing-sustainable-development/development-finance-standards/daclist.htm)
380 [finance-standards/daclist.htm](https://www.oecd.org/dac/financing-sustainable-development/development-finance-standards/daclist.htm)
- 381 18. Florey L, Taylor C. Using household survey data to explore the effects of improved
382 housing conditions on malaria infection in children in Sub-Saharan Africa. Rockville,
383 Maryland, USA: ICF International; 2016 Aug. Available:
384 <https://dhsprogram.com/publications/publication-AS61-Analytical-Studies.cfm>
- 385 19. ICF International. Demographic and Health Surveys (various, 2000-2021). Rockville,
386 Maryland, USA: ICF International; 2021.
- 387 20. UNICEF. Multiple Indicator Cluster Surveys (various, 2000-2021). New York, NY:
388 UNICEF; 2021.
- 389 21. Perez-Haydrich C, Warren JL, Burgert CR, Emch ME. Guidelines on the use of DHS GPS
390 data. 2013 [cited 22 Jul 2022]. Available:
391 [https://dhsprogram.com/publications/publication-SAR8-Spatial-Analysis-](https://dhsprogram.com/publications/publication-SAR8-Spatial-Analysis-Reports.cfm)
392 [Reports.cfm](https://dhsprogram.com/publications/publication-SAR8-Spatial-Analysis-Reports.cfm)

- 393 22. Burgert C, Colston J, Roy T, Zachary B. Geographic displacement procedure and
394 georeferenced data release policy for the Demographic and Health Surveys. Calverton,
395 MD, USA: MEASURE DHS; 2013 Sep. Available:
396 <http://dhsprogram.com/publications/publication-SAR7-Spatial-Analysis-Reports.cfm>
- 397 23. OpenStreetMap© contributors. Humanitarian OpenStreetMap Populated Places
398 Datasets (OpenStreetMap Export). 2022 [cited 22 Jul 2022]. Available:
399 <https://data.humdata.org/organization/hot>
- 400 24. Tatem AJ. WorldPop, open data for spatial demography. Scientific Data. 2017;4:
401 170004. doi:10.1038/sdata.2017.4
- 402 25. ESRI. ArcGIS Desktop: Release 10.8. Redlands, CA: Environmental Systems Research
403 Institute; 2019. Available: <https://desktop.arcgis.com/en/desktop/>
- 404 26. StataCorp. Stata Statistical Software: Release 18. College Station, TX: StataCorp LLC;
405 2023.
- 406 27. The World Bank. The world by region. In: SDG Atlas 2017 [Internet]. 2017 [cited 10
407 Dec 2021]. Available: [https://datatopics.worldbank.org/sdgatlas/archive/2017/the-](https://datatopics.worldbank.org/sdgatlas/archive/2017/the-world-by-region.html)
408 [world-by-region.html](https://datatopics.worldbank.org/sdgatlas/archive/2017/the-world-by-region.html)
- 409 28. Pebesma EJ. Multivariable geostatistics in S: the gstat package. Computers &
410 Geosciences. 2004;30: 683–691. doi:10.1016/j.cageo.2004.03.012
- 411 29. Bachl FE, Lindgren F, Borchers DL, Illian JB. inlabru: an R package for Bayesian spatial
412 modelling from ecological survey data. Methods in Ecology and Evolution. 2019;10:
413 760–766. doi:10.1111/2041-210X.13168
- 414 30. Lindgren F, Bachl FE, Borchers DL, Simpson D, Scott-Howard L, Andy S, et al. inlabru:
415 Bayesian Latent Gaussian Modelling using INLA and Extensions. 2023. Available:
416 <https://cran.r-project.org/web/packages/inlabru/index.html>
- 417 31. Pedregosa F, Varoquaux G, Gramfort A, Michel V, Thirion B, Grisel O, et al. Scikit-learn:
418 Machine Learning in Python. Journal of Machine Learning Research. 2011;12: 2825–
419 2830.
- 420 32. Stevens GA, Alkema L, Black RE, Boerma JT, Collins GS, Ezzati M, et al. Guidelines for
421 Accurate and Transparent Health Estimates Reporting: the GATHER statement. The
422 Lancet. 2016;388: e19–e23. doi:10.1016/S0140-6736(16)30388-9
- 423 33. Weiss DJ, Nelson A, Gibson HS, Temperley W, Peedell S, Lieber A, et al. A global map of
424 travel time to cities to assess inequalities in accessibility in 2015. Nature. 2018;553:
425 333–336. doi:10.1038/nature25181

- 426 34. Trabucco A, Zomer R J. Global Aridity Index and Potential Evapo-Transpiration (ET0).
427 CGIAR Consortium for Spatial Information (CGIAR-SCI); 2018. Report No.: 2. Available:
428 <https://cgiarcsi.comunity>
- 429 35. Beck HE, Zimmermann NE, McVicar TR, Vergopolan N, Berg A, Wood EF. Present and
430 future Köppen-Geiger climate classification maps at 1-km resolution. *Sci Data*. 2018;5:
431 180214. doi:10.1038/sdata.2018.214
- 432 36. Ramankutty N, Evan AT, Monfreda C, Foley JA. Farming the planet: 1. Geographic
433 distribution of global agricultural lands in the year 2000. *Global Biogeochemical*
434 *Cycles*. 2008;22: n/a-n/a. doi:10.1029/2007GB002952
- 435 37. Natural Earth. Rivers and Lakes Centerlines 4.1.0. 2021. Available:
436 [https://www.naturalearthdata.com/downloads/10m-physical-vectors/10m-rivers-](https://www.naturalearthdata.com/downloads/10m-physical-vectors/10m-rivers-lake-centerlines/)
437 [lake-centerlines/](https://www.naturalearthdata.com/downloads/10m-physical-vectors/10m-rivers-lake-centerlines/)
- 438 38. Hastings DA, Dunbar PK. Global Land One-kilometer Base Elevation (GLOBE) Digital
439 Elevation Model, Documentation, Volume 1.0. Boulder, Colorado: National Oceanic and
440 Atmospheric Administration, National Geophysical Data Center; 1999.
- 441 39. Kumm M, Taka M, Guillaume JHA. Gridded global datasets for Gross Domestic
442 Product and Human Development Index over 1990–2015. *Sci Data*. 2018;5: 180004.
443 doi:10.1038/sdata.2018.4
- 444 40. U.S. Geological Survey. Landsat Enhanced Vegetation Index. In: *Landsat Missions*
445 [Internet]. 2021 [cited 14 Dec 2021]. Available: [https://www.usgs.gov/landsat-](https://www.usgs.gov/landsat-missions/landsat-enhanced-vegetation-index)
446 [missions/landsat-enhanced-vegetation-index](https://www.usgs.gov/landsat-missions/landsat-enhanced-vegetation-index)
- 447 41. The Food and Agriculture Organization (FAO), International Institute of Applied
448 Systems Analysis. *Global Agro-ecological Zones (GAEZ v3.0)*. Rome, Italy and
449 Laxenburg, Austria: FAO & IIASA; 2012.
- 450 42. Wildlife Conservation Society, Center for International Earth Science Information
451 Network - CIESIN. Last of the Wild Project, Version 2, 2005 (LWP-2): Global Human
452 Footprint Dataset (Geographic). Palisades, NY: NASA Socioeconomic Data and
453 Applications Center (SEDAC); 2005. Available:
454 [https://sedac.ciesin.columbia.edu/data/set/wildareas-v2-human-footprint-](https://sedac.ciesin.columbia.edu/data/set/wildareas-v2-human-footprint-geographic)
455 [geographic](https://sedac.ciesin.columbia.edu/data/set/wildareas-v2-human-footprint-geographic)
- 456 43. Siebert S, Döll P, Hoogeveen J, Faures J-M, Frenken K, Feick S. Development and
457 validation of the global map of irrigation areas. *Hydrology and Earth System Sciences*.
458 2005;9: 535–547. doi:10.5194/hess-9-535-2005
- 459 44. Potapov P, Hansen MC, Pickens A, Hernandez-Serna A, Tyukavina A, Turubanova S, et
460 al. The Global 2000-2020 Land Cover and Land Use Change Dataset Derived From the
461 Landsat Archive: First Results. *Front Remote Sens*. 2022;3.
462 doi:10.3389/frsen.2022.856903

- 463 45. Hulley, Glynn, Hook, Simon. MOD21A1D MODIS/Terra Land Surface Temperature/3-
464 Band Emissivity Daily L3 Global 1km SIN Grid Day V006. NASA EOSDIS Land
465 Processes DAAC; 2017. doi:10.5067/MODIS/MOD21A1D.006
- 466 46. Hulley, Glynn, Hook, Simon. MOD21A1N MODIS/Terra Land Surface Temperature/3-
467 Band Emissivity Daily L3 Global 1km SIN Grid Night V006. NASA EOSDIS Land
468 Processes DAAC; 2017. doi:10.5067/MODIS/MOD21A1N.006
- 469 47. Román MO, Wang Z, Sun Q, Kalb V, Miller SD, Molthan A, et al. NASA's Black Marble
470 nighttime lights product suite. Remote Sensing of Environment. 2018;210: 113–143.
471 doi:10.1016/j.rse.2018.03.017
- 472 48. Running, Steve, Mu, Qiaozhen, Zhao, Maosheng. MOD16A2 MODIS/Terra Net
473 Evapotranspiration 8-Day L4 Global 500m SIN Grid V006. NASA EOSDIS Land
474 Processes DAAC; 2017. doi:10.5067/MODIS/MOD16A2.006
- 475 49. Pesaresi M, Ehrlich D, Stefano F, Florczyk A, Freire SMC, Halkia S, et al. Operating
476 procedure for the production of the Global Human Settlement Layer from Landsat
477 data of the epochs 1975, 1990, 2000, and 2014 | EU Science Hub. Publications Office of
478 the European Union; 2016. Available:
479 [https://ec.europa.eu/jrc/en/publication/operating-procedure-production-global-](https://ec.europa.eu/jrc/en/publication/operating-procedure-production-global-human-settlement-layer-landsat-data-epochs-1975-1990-2000-and)
480 [human-settlement-layer-landsat-data-epochs-1975-1990-2000-and](https://ec.europa.eu/jrc/en/publication/operating-procedure-production-global-human-settlement-layer-landsat-data-epochs-1975-1990-2000-and)
- 481 50. U.S. Department of State - Humanitarian Information Unit. Global LSIB Polygons
482 Detailed - Humanitarian Data Exchange. Humanitarian Data Exchange (HDX);
483 Available: <https://data.humdata.org/dataset/global-lsib-polygons-detailed>
- 484 51. Exum NG, Olórtegui MP, Yori PP, Davis MF, Heaney CD, Kosek M, et al. Floors and
485 Toilets: Association of Floors and Sanitation Practices with Fecal Contamination in
486 Peruvian Amazon Peri-Urban Households. Environmental Science & Technology.
487 2016;50: 7373–7381. doi:10.1021/acs.est.6b01283
- 488 52. Cattaneo M, Galiani S, Gertler P, Martinez S, Titiunik R. Housing, Health and Happiness.
489 CEDLAS, Working Papers. 2008 [cited 25 Apr 2019]. Available:
490 <https://ideas.repec.org/p/dls/wpaper/0074.html>
- 491 53. Badr HS, Colston JM, Nguyen N-LH, Chen YT, Ali SA, Rayamajhi A, et al. Spatiotemporal
492 variation in risk of Shigella infection in childhood: a global risk mapping and
493 prediction model using individual participant data. medRxiv; 2022. p.
494 2022.08.04.22277641. doi:10.1101/2022.08.04.22277641
- 495 54. Getachew A, Tadie A, G.Hiwot M, Guadu T, Haile D, G.Cherkos T, et al. Environmental
496 factors of diarrhea prevalence among under five children in rural area of North
497 Gondar zone, Ethiopia. Italian Journal of Pediatrics. 2018;44: 95. doi:10.1186/s13052-
498 018-0540-7

- 499 55. Paul P. Socio-demographic and environmental factors associated with diarrhoeal
500 disease among children under five in India. *BMC Public Health*. 2020;20: 1886.
501 doi:10.1186/s12889-020-09981-y
- 502 56. Tusting LS, Gething PW, Gibson HS, Greenwood B, Knudsen J, Lindsay SW, et al.
503 Housing and child health in sub-Saharan Africa: A cross-sectional analysis. *PLoS Med*.
504 2020;17: e1003055. doi:10.1371/journal.pmed.1003055
- 505 57. Tusting LS, Bottomley C, Gibson H, Kleinschmidt I, Tatem AJ, Lindsay SW, et al.
506 Housing Improvements and Malaria Risk in Sub-Saharan Africa: A Multi-Country
507 Analysis of Survey Data. von Seidlein L, editor. *PLOS Medicine*. 2017;14: e1002234.
508 doi:10.1371/journal.pmed.1002234
- 509 58. Aftab A, Noor A, Aslam M. Housing quality and its impact on Acute Respiratory
510 Infection (ARI) symptoms among children in Punjab, Pakistan. *PLOS Glob Public*
511 *Health*. 2022;2: e0000949. doi:10.1371/journal.pgph.0000949
- 512 59. Mengersen K, Morawska L, Wang H, Murphy N, Tayphasavanh F, Darasavong K, et al.
513 The effect of housing characteristics and occupant activities on the respiratory health
514 of women and children in Lao PDR. *Sci Total Environ*. 2011;409: 1378–1384.
515 doi:10.1016/j.scitotenv.2011.01.016
- 516 60. Islam F, Sarma R, Debroy A, Kar S, Pal R. Profiling Acute Respiratory Tract Infections in
517 Children from Assam, India. *J Glob Infect Dis*. 2013;5: 8–14. doi:10.4103/0974-
518 777X.107167
- 519 61. Akinyemi JO, Morakinyo OM. Household environment and symptoms of childhood
520 acute respiratory tract infections in Nigeria, 2003-2013: a decade of progress and
521 stagnation. *BMC Infect Dis*. 2018;18: 296. doi:10.1186/s12879-018-3207-5
- 522 62. Furnival-Adams J, Olanga EA, Napier M, Garner P. House modifications for preventing
523 malaria. *Cochrane Database Syst Rev*. 2020;10: CD013398.
524 doi:10.1002/14651858.CD013398.pub2
- 525 63. Mshamu S, Mmbando A, Meta J, Bradley J, Bøjstrup TC, Day NPJ, et al. Assessing the
526 impact of a novel house design on the incidence of malaria in children in rural Africa:
527 study protocol for a household-cluster randomized controlled superiority trial. *Trials*.
528 2022;23: 519. doi:10.1186/s13063-022-06461-z
- 529 64. Lwetoijera DW, Kiware SS, Mageni ZD, Dongus S, Harris C, Devine GJ, et al. A need for
530 better housing to further reduce indoor malaria transmission in areas with high bed
531 net coverage. *Parasites Vectors*. 2013;6: 57. doi:10.1186/1756-3305-6-57
- 532 65. Kua KP, Lee SWH. Randomized trials of housing interventions to prevent malaria and
533 *Aedes*-transmitted diseases: A systematic review and meta-analysis. *PLoS One*.
534 2021;16: e0244284. doi:10.1371/journal.pone.0244284

- 535 66. Msugupakulya BJ, Kaindoa EW, Ngowo HS, Kihonda JM, Kahamba NF, Msaky DS, et al.
536 Preferred resting surfaces of dominant malaria vectors inside different house types in
537 rural south-eastern Tanzania. *Malar J.* 2020;19: 22. doi:10.1186/s12936-020-3108-0
- 538 67. Lindsay SW, Jawara M, Paine K, Pinder M, Walraven GEL, Emerson PM. Changes in
539 house design reduce exposure to malaria mosquitoes. *Tropical Medicine &*
540 *International Health.* 2003;8: 512–517. doi:10.1046/j.1365-3156.2003.01059.x
- 541 68. Jatta E, Jawara M, Bradley J, Jeffries D, Kandeh B, Knudsen JB, et al. How house design
542 affects malaria mosquito density, temperature, and relative humidity: an experimental
543 study in rural Gambia. *The Lancet Planetary Health.* 2018;2: e498–e508.
544 doi:10.1016/S2542-5196(18)30234-1
- 545 69. Kirby MJ, West P, Green C, Jasseh M, Lindsay SW. Risk factors for house-entry by
546 culicine mosquitoes in a rural town and satellite villages in The Gambia. *Parasites &*
547 *Vectors.* 2008;1: 41. doi:10.1186/1756-3305-1-41
- 548 70. Lindsay SW, Jawara M, Mwesigwa J, Achan J, Bayoh N, Bradley J, et al. Reduced
549 mosquito survival in metal-roof houses may contribute to a decline in malaria
550 transmission in sub-Saharan Africa. *Sci Rep.* 2019;9: 7770. doi:10.1038/s41598-019-
551 43816-0
- 552 71. Snyman K, Mwangwa F, Bigira V, Kapisi J, Clark TD, Osterbauer B, et al. Poor Housing
553 Construction Associated with Increased Malaria Incidence in a Cohort of Young
554 Ugandan Children. *The American Journal of Tropical Medicine and Hygiene.* 2015;92:
555 1207–1213. doi:10.4269/ajtmh.14-0828
- 556 72. Rek JC, Alegana V, Arinaitwe E, Cameron E, Kanya MR, Katureebe A, et al. Rapid
557 improvements to rural Ugandan housing and their association with malaria from
558 intense to reduced transmission: a cohort study. *The Lancet Planetary Health.* 2018;2:
559 e83–e94. doi:10.1016/S2542-5196(18)30010-X
- 560 73. Okiring J, Olwoch P, Kakuru A, Okou J, Ochokoru H, Ochieng TA, et al. Household and
561 maternal risk factors for malaria in pregnancy in a highly endemic area of Uganda: a
562 prospective cohort study. *Malaria Journal.* 2019;18: 144. doi:10.1186/s12936-019-
563 2779-x
- 564 74. Yé Y, Hoshen M, Louis V, Séraphin S, Traoré I, Sauerborn R. Housing conditions and
565 *Plasmodium falciparum* infection: protective effect of iron-sheet roofed houses. *Malar*
566 *J.* 2006;5: 8. doi:10.1186/1475-2875-5-8
- 567 75. Ghebreyesus TA, Haile M, Witten KH, Getachew A, Yohannes M, Lindsay SW, et al.
568 Household risk factors for malaria among children in the Ethiopian highlands.
569 *Transactions of the Royal Society of Tropical Medicine and Hygiene.* 2000;94: 17–21.
570 doi:10.1016/S0035-9203(00)90424-3

- 571 76. Hiscox A, Khammanithong P, Kaul S, Sananikhom P, Luthi R, Hill N, et al. Risk factors
572 for mosquito house entry in the Lao PDR. *PLoS One*. 2013;8: e62769.
573 doi:10.1371/journal.pone.0062769
- 574 77. Wolff CG, Schroeder DG, Young MW. Effect of improved housing on illness in children
575 under 5 years old in northern Malawi: cross sectional study. *BMJ*. 2001;322: 1209–
576 1212. doi:10.1136/bmj.322.7296.1209
- 577 78. Coleman M, Coleman M, Mabaso MLH, Mabuza AM, Kok G, Coetzee M, et al. Household
578 and microeconomic factors associated with malaria in Mpumalanga, South Africa.
579 *Transactions of The Royal Society of Tropical Medicine and Hygiene*. 2010;104: 143–
580 147. doi:10.1016/j.trstmh.2009.07.010
- 581 79. Liu JX, Bousema T, Zelman B, Gesase S, Hashim R, Maxwell C, et al. Is Housing Quality
582 Associated with Malaria Incidence among Young Children and Mosquito Vector
583 Numbers? Evidence from Korogwe, Tanzania. *PLOS ONE*. 2014;9: e87358.
584 doi:10.1371/journal.pone.0087358
- 585 80. Tusting LS, Ippolito MM, Willey BA, Kleinschmidt I, Dorsey G, Gosling RD, et al. The
586 evidence for improving housing to reduce malaria: a systematic review and meta-
587 analysis. *Malar J*. 2015;14: 209. doi:10.1186/s12936-015-0724-1
- 588 81. Calderon-Anyosa R, Galvez-Petzoldt C, Garcia PJ, Carcamo CP. Housing Characteristics
589 and Leishmaniasis: A Systematic Review. *Am J Trop Med Hyg*. 2018;99: 1547–1554.
590 doi:10.4269/ajtmh.18-0037
- 591 82. Peña-García VH, Gómez-Palacio AM, Triana-Chávez O, Mejía-Jaramillo AM. Eco-
592 Epidemiology of Chagas Disease in an Endemic Area of Colombia: Risk Factor
593 Estimation, *Trypanosoma cruzi* Characterization and Identification of Blood-Meal
594 Sources in Bugs. *Am J Trop Med Hyg*. 2014;91: 1116–1124. doi:10.4269/ajtmh.14-
595 0112
- 596 83. Bustamante DM, Monroy C, Pineda S, Rodas A, Castro X, Ayala V, et al. Risk factors for
597 intradomiciliary infestation by the Chagas disease vector *Triatoma dimidiata*
598 Jutiapa, Guatemala. *Cad Saúde Pública*. 2009;25: S83–S92. doi:10.1590/S0102-
599 311X2009001300008
- 600 84. Rojas de Arias A, Ferro EA, Ferreira ME, Simancas LC. Chagas disease vector control
601 through different intervention modalities in endemic localities of Paraguay. *Bull*
602 *World Health Organ*. 1999;77: 331–339.

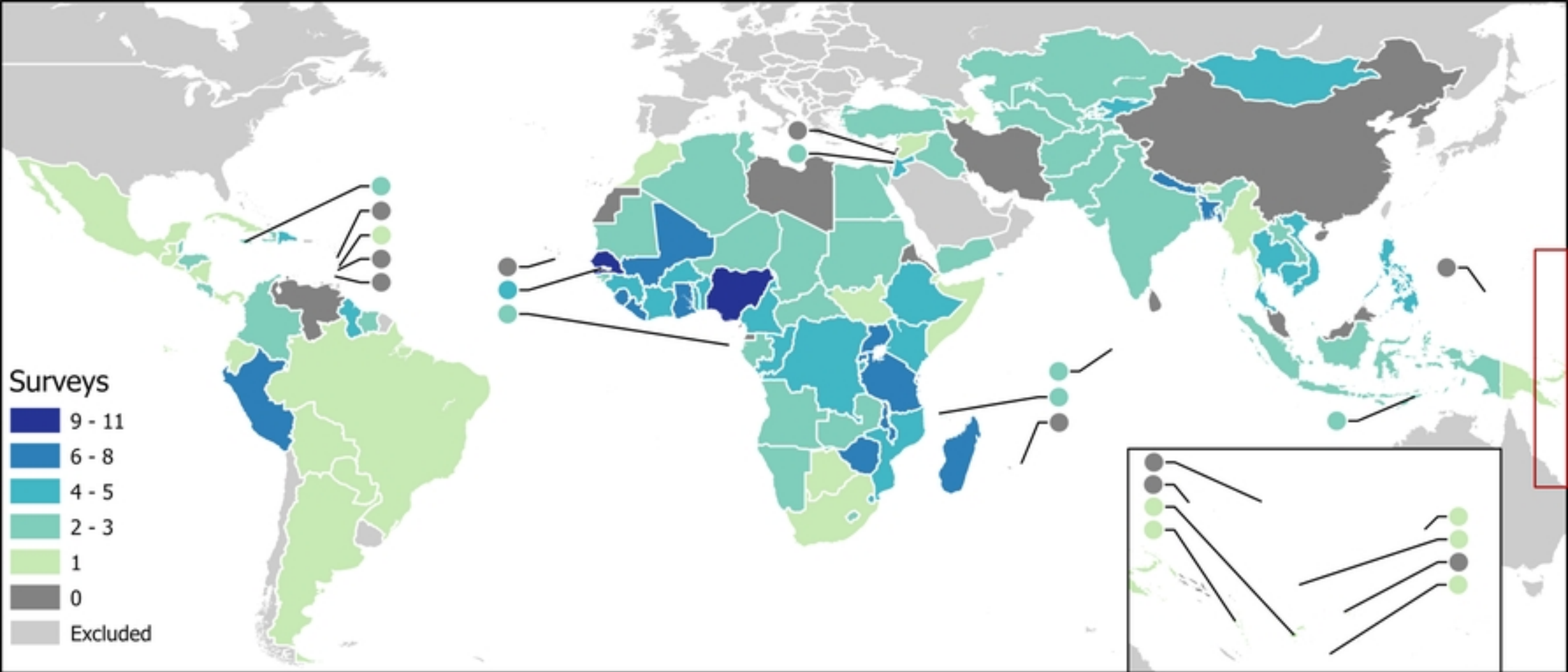


Figure 1

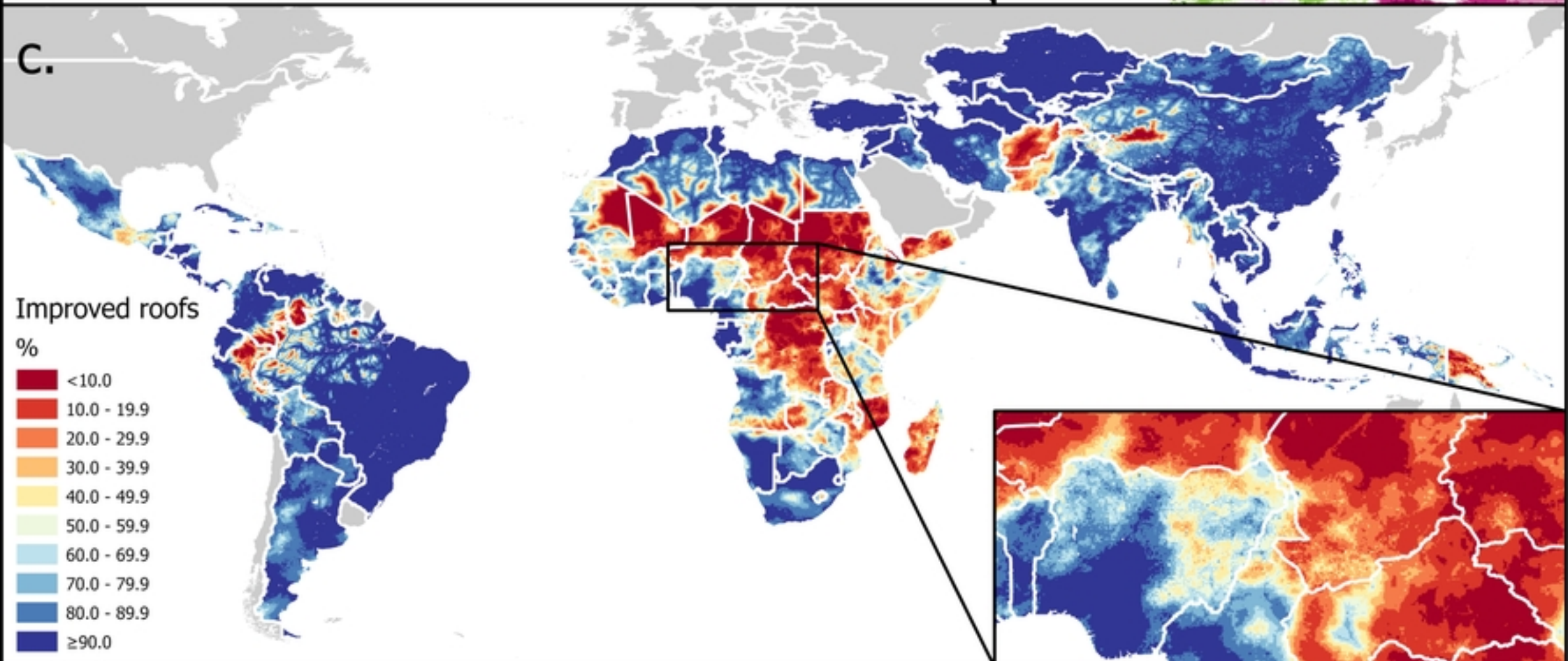
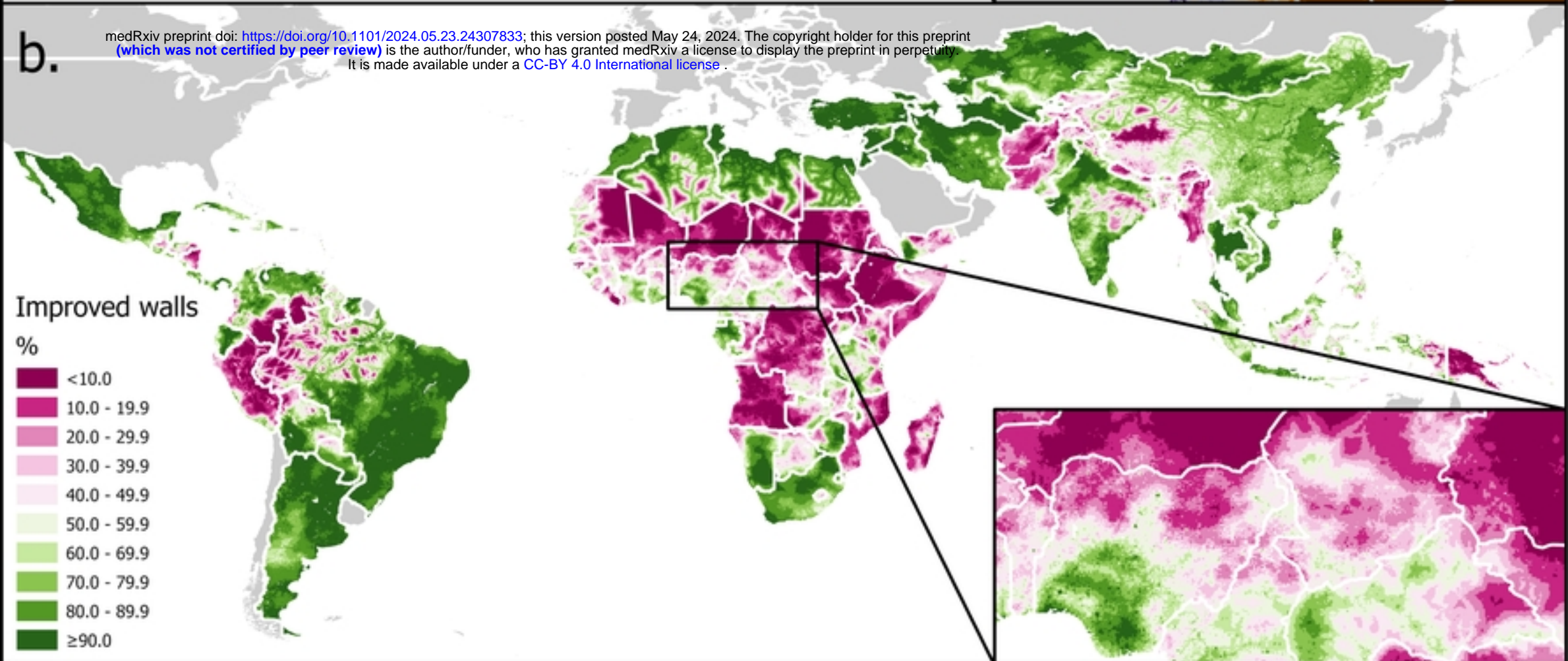
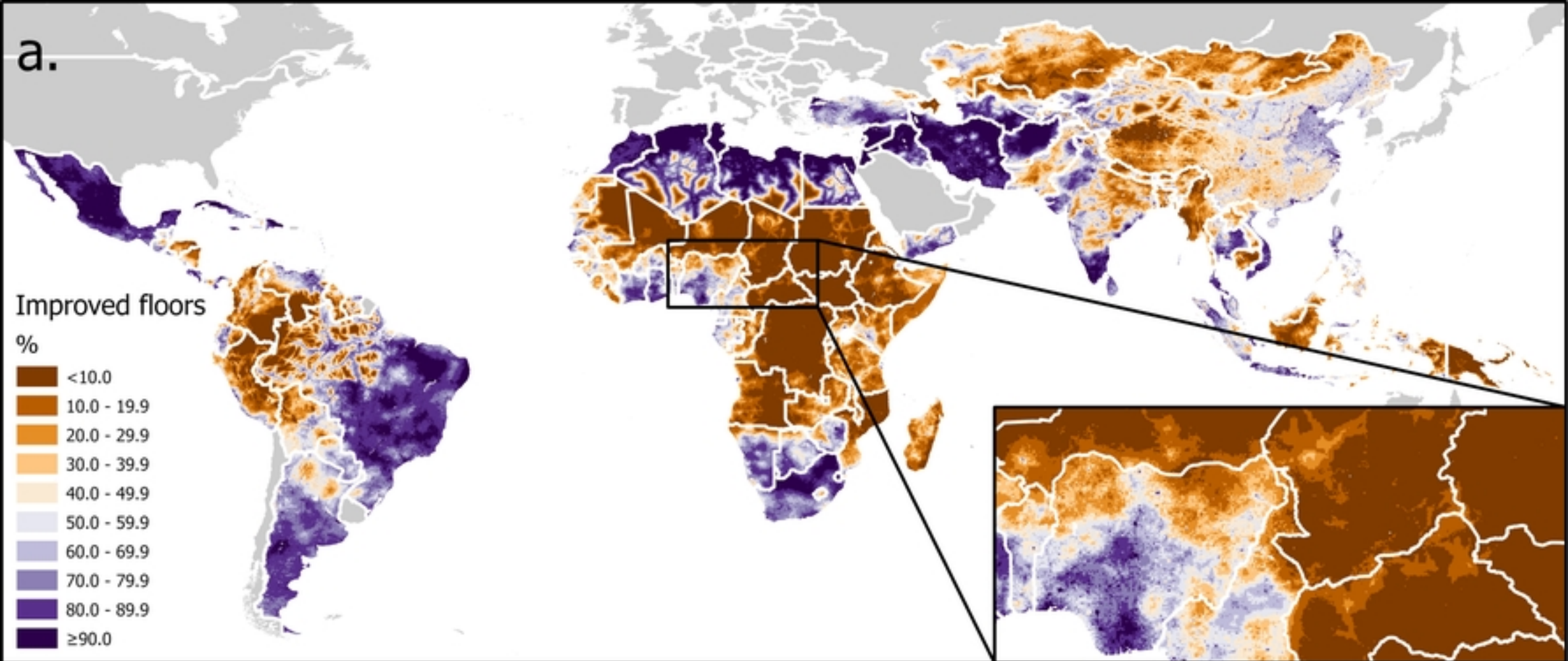


Figure 2

Improved Floors

Improved Roofs

Improved Walls

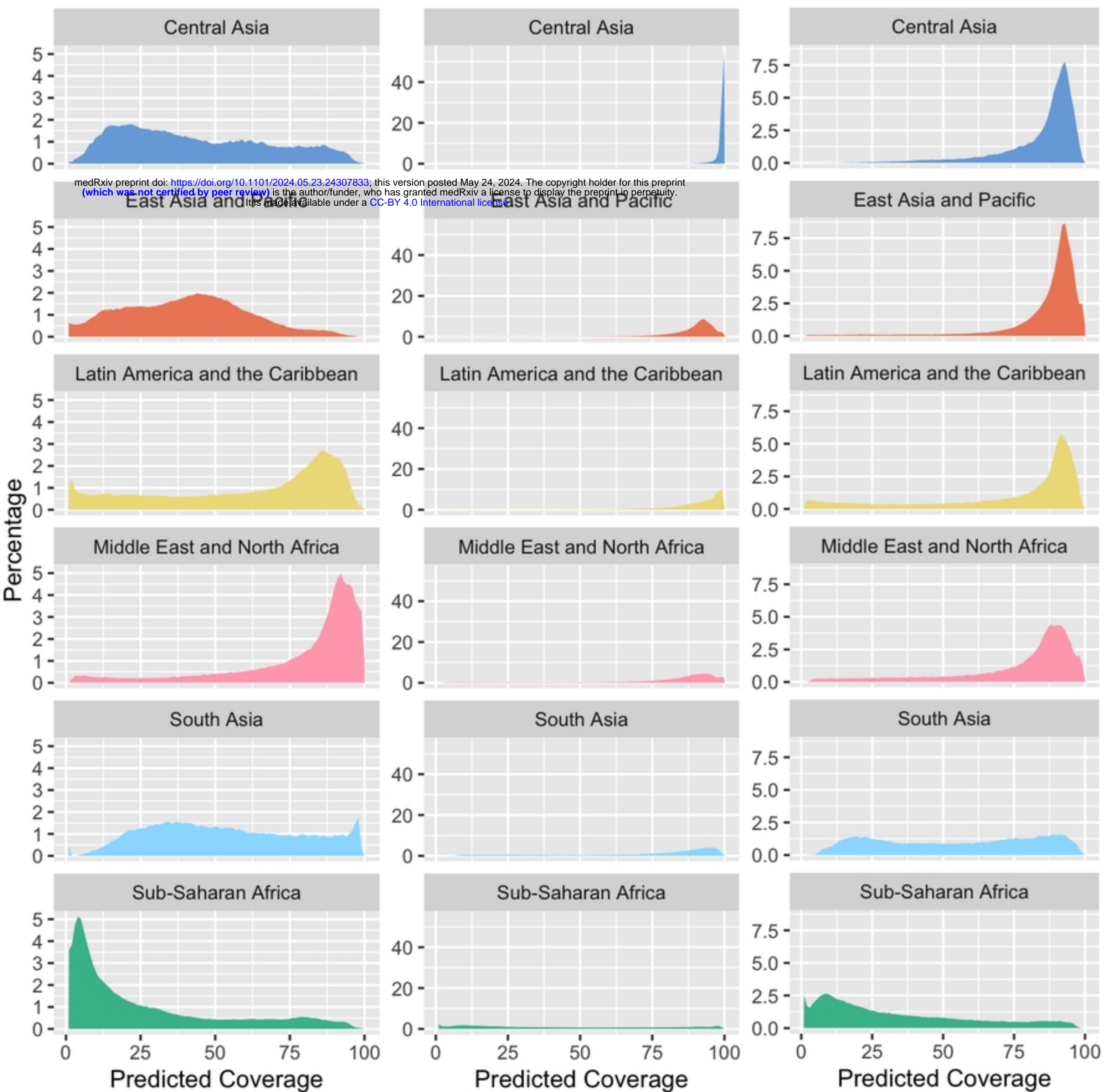


Figure 3

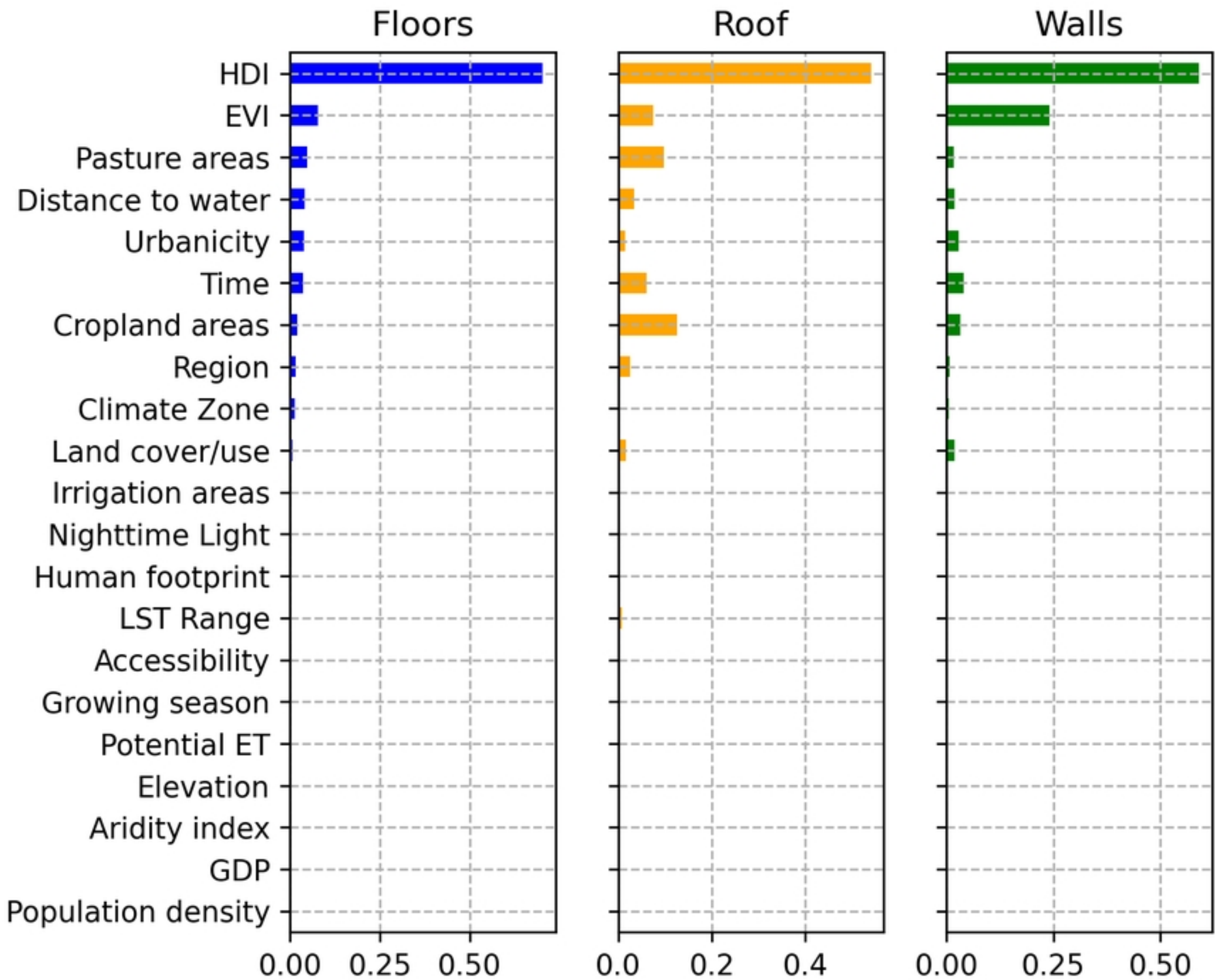


Figure 4