

Plasma p-tau₂₁₇ in a population-based sample

Cross-sectional study of plasma phosphorylated Tau 217 in persons without dementia

Toni T. Saari, PhD¹, Teemu Palviainen, MSc¹, Mikko Hiltunen, PhD², Sanna-Kaisa Herukka, MD, PhD^{3,4}, Tarja Kokkola, PhD³, Sari Kärkkäinen, MSc³, Mia Urjansson, BSAC¹, Aino Aaltonen, MA¹, Aarno Palotie, MD, PhD^{1,5,6}, Heiko Runz, MD, PhD^{1,7}, Jaakko Kaprio, MD, PhD¹, Valter Julkunen, MD, PhD^{1,3,4}, Eero Vuoksimaa, PhD¹ for FinnGen*

¹ Institute for Molecular Medicine Finland (FIMM), Helsinki Institute of Life Science, University of Helsinki, Finland.

² Institute of Biomedicine, University of Eastern Finland, Kuopio, Finland.

³ Institute of Clinical Medicine/Neurology, University of Eastern Finland, Kuopio, Finland.

⁴ Department of Neurology, Neurocenter, Kuopio University Hospital, Kuopio, Finland.

⁵ Analytic and Translational Genetics Unit, Department of Medicine, Department of Neurology and Department of Psychiatry Massachusetts General Hospital, Boston, MA, USA.

⁶ The Stanley Center for Psychiatric Research and Program in Medical and Population Genetics, The Broad Institute of MIT and Harvard, Cambridge, MA, USA.

⁷ European Molecular Biological Laboratories (EMBL), Heidelberg, Germany

Corresponding author: Eero Vuoksimaa, Institute for Molecular Medicine Finland (FIMM), Helsinki Institute of Life Science, University of Helsinki, Finland. P.O. Box 20 (Tukholmankatu 8), 00014 University of Helsinki, Finland. tel. +358294127586. email: eero.vuoksimaa@helsinki.fi

*see Supplementary Material for FinnGen author list

Original investigation

Manuscript word count: 2980

38 references

3 tables and 2 figures

Key words: Alzheimer's disease, Apolipoprotein E, genome-wide association study, plasma biomarkers, twins

Plasma p-tau₂₁₇ in a population-based sample

Key points

Question To what extent are individual differences and abnormality in plasma p-tau₂₁₇ associated with age, sex, and genetic factors in a population-based sample without a diagnosis of Alzheimer's disease (AD)?

Findings In this cross-sectional observational study of 697 twins (65-85-year-olds), older age and carrying an *Apolipoprotein E (APOE)* ε4-allele were associated with higher plasma p-tau₂₁₇; abnormal levels were evident in 39% of participants. The twin-based heritability estimate was 56% and genome-wide association study implicated genes around *APOE* region.

Meaning Results support using blood-based plasma p-tau₂₁₇ biomarker for preclinical or prodromal AD and explain parts of its variability in aging population.

Plasma p-tau₂₁₇ in a population-based sample

Abstract

Importance Blood levels of phosphorylated tau 217 (p-tau₂₁₇) as measured by commercially available immunoassays are an emerging tool to assess Alzheimer's disease (AD) pathology. Little is known about the performance of p-tau₂₁₇ and contributors to its variability in aged individuals without AD.

Objective To determine plasma p-tau₂₁₇, its associations with age, sex, education and genetic risk, to estimate heritability, and to conduct a genome-wide association study (GWAS).

Design Cross-sectional observational clinical biobank recall study called TWINGEN.

Setting Recall of participants in the older Finnish Twin Cohort study without AD and other diagnoses affecting cognition based on health registry data. Sample collection in March 2023–December 2023 in six study sites across Finland. Biomarkers were determined in January 2024 and data were analyzed in March–April 2024.

Participants A population-based sample of 65-85 years old twins.

Exposures Age, sex, education, *Apolipoprotein E (APOE)* genotype and polygenic risk score of AD (ADPRS). Monozygosity (MZ) versus dizygosity (DZ) in heritability estimation.

Main outcomes and measures Plasma p-tau₂₁₇ (ALZpath pTau₂₁₇ assay): continuous and >0.42 pg/mL cut-off. Heritability. Single nucleotide polymorphisms (SNP's) in the GWAS.

Results The study included 697 participants (mean [SD] age, 76.2 [4.6] years); 398 [57%] women and 299 [43%] men; 240 MZ [81 full pairs], 450 DZ [73 full pairs]; and 203 [29%] *APOE* ε4-allele carriers. P-tau₂₁₇ was higher as a function of age (means [SDs] from 0.32 [0.20] pg/mL in 65-69 year-olds to 0.53 [0.36] pg/mL in 80-85 year-olds). Twin-based heritability was 0.56 (95%CI 0.36-0.79). *APOE* ε4-allele carriers (mean [SD]= 0.58 [0.35] pg/mL) had higher p-tau₂₁₇ than non-carriers (mean [SD]= 0.39 [0.27] pg/ml, $P < .001$). Abnormal p-tau₂₁₇ levels of >0.42 pg/mL were evident in 39% and predicted by higher age (OR=1.15 [95%CI, 1.10-1.20]) and having *APOE* ε4-allele (OR=4.53 [95%CI, 3.10-6.62]). Sex, education and ADPRS were not related to p-tau₂₁₇ levels or abnormality. GWAS indicated 45 SNPs associated with p-tau₂₁₇ plasma levels ($P < 5 \times 10^{-8}$) centered around the *APOE* locus.

Conclusions and relevance Our results support the use of plasma p-tau₂₁₇ as a biomarker in detecting preclinical or prodromal AD and in genome-wide association studies of biologically defined AD.

Plasma p-tau₂₁₇ in a population-based sample

Advances in blood-based plasma biomarkers of Alzheimer's disease (AD) hold a promise for cost-effective early risk evaluation and diagnosis. Recently, phosphorylated tau₂₁₇ (p-tau₂₁₇) has been reported to have comparable accuracy to cerebrospinal fluid biomarkers for determination of abnormal PET amyloid.¹ However, there is less information about plasma p-tau₂₁₇ in population-based samples² and the role of genetic effects in accounting for interindividual differences of the plasma protein among persons without dementia is not known.

Apolipoprotein E (APOE) gene – with $\epsilon 4$ as a risk allele – and polygenic risk score of AD (ADPRS) based on genome wide association study explains only a fraction of the genetic variance of clinically defined AD.³ Twin studies can estimate the relative contribution of genetic and environmental effects by comparing the similarity between monozygotic (MZ, genetically identical at the sequence level) and dizygotic (DZ, genetically full siblings) twin pairs. Only one twin study has investigated the heritability of AD plasma biomarkers and found that about half of the variance in beta-amyloid (A β)₄₂ and A β ₄₀ was explained by additive genetic effects whereas A β _{42/40} had zero heritability; also plasma total tau had 50% heritability.⁴ However, twin studies have not investigated the heritability of plasma p-tau₂₁₇ despite its promise as an accurate cost-effective biomarker of both amyloid and tau positivity.¹

The large case-control genome-wide association studies (GWAS) of AD have indicated over 80 loci.⁵ However, large samples have been reached by relaxing the criteria of clinical diagnosis and using proxy cases with familial history of dementia; thus resulting in more general dementia findings than AD specific hits.⁶ There is a paradigm shift from studying the genetics of AD based on clinical symptom diagnostics to an increased use of the biological classification of amyloid and tau pathology, correspondingly requiring new GWAS studies.⁷ Compared to clinical or proxy cases, biomarkers are more objective and reproducible measures that capture the biological process of AD. They have the added benefit of improved statistical power using continuous measures with less measurement error compared to binary clinical diagnoses.⁵ GWAS's of AD plasma biomarkers have identified *APOE*, beta-secretase 1 (*BACE1*), presenilin 2 (*PSEN2*) and amyloid-beta precursor protein (*APP*) for plasma amyloid beta⁸ and *microtubule associated protein tau (MAPT)* gene for plasma total tau.⁹ Earlier GWAS studies on plasma p-tau using p-tau₁₈₁ in less than 2000 individuals have implicated only *APOE* locus^{10,11} and there are no reported GWAS data of p-tau₂₁₇.

Here, we conducted a population-based twin study of plasma p-tau₂₁₇ to i) investigate the associations with age, sex, and education, ii) estimate the relative importance of genetic and environmental effects, iii) investigate its associations with *APOE* and ADPRS, iv) study the prevalence and predictors of abnormal levels indicative of AD pathology, and v) conduct genome-wide association study of plasma p-tau₂₁₇.

Methods

Participants and measures

We identified twins born in 1938-1957 and included in the biobank of the Finnish Institute for Health and Welfare (THL) from the population-based older Finnish Twin Cohort (FTC) study.¹² After excluding those individuals with AD, other neurodegenerative disease or other cognition-affecting disease based on medical records from all hospitals in Finland, 2718 individuals (66-85 years old) were invited to participate in the TWINGEN study (see Supplement 1 for details).¹³ A total of 830 participants (31%) returned signed informed consent for participation in TWINGEN

Plasma p-tau₂₁₇ in a population-based sample

and they were contacted by phone to verify the suitability and availability for an in-person visit to one of the six study sites across Finland. Finally, 697 individuals (84% of those who returned signed consent) had an in-person study visit in March 2023 – November 2023 yielding a participation rate of 26% (697/2718).

Education was based on self-report by questionnaire. Cognitive status was based on validated telephone assessment of dementia (TELE) instrument.¹⁴ Genome-wide genotyping was used to define *Apolipoprotein E (APOE)* genotype,¹⁵ and to calculate ADPRS.¹⁶ See eMethods in Supplement 1 for details. We chose the ADPRS balancing the proportion of variance explained, total sample size and the proportion of clinically confirmed cases and controls.⁶ To date there is no AD PRS based on biologically defined cases.

After ethical approval, all participants gave written informed consent (see eMethods for details in Supplement 1). We followed Strengthening the Reporting of Observational Studies in Epidemiology (STROBE) and Strengthening the Reporting of Genetic Association Studies (STREGA) guidelines.

Blood sample and biomarker determination

Non-fasting blood samples were drawn at one of the six study sites mostly between 9:00 and 15:00. Plasma was collected to vacutainer 10ml K2EDTA tube and then centrifuged at 1500g for ten minutes. After centrifugation, plasma was apportioned into 0.5ml aliquots and first stored at -20°C and then moved to -80°C. These aliquots were sent to the Biomarker Laboratory of the University of Eastern Finland for the biomarker analyses. P-tau₂₁₇ was quantified in January 2024 using ALZpath Simoa pTau-217 v2 Assay Kit (Quanterix, Ref# 104371).¹ Prior to analyses, EDTA plasma samples were thawed, mixed and centrifuged (10,000xg, 5 min, +20 °C).

Genotyping

DNA was extracted from blood/saliva samples. Chip genotyping (genotype calling algorithms in parentheses) was performed using Illumina Human610-Quad v1.0 B and Human670-QuadCustom v1.0 A (Illuminus), Illumina HumanCoreExome 12 v1.0 A, 12 v1.1 A, 24 v1.0 A, 24 v1.1 A, 24 v1.2 A (GenCall), or Affymetrix FinnGen Axiom arrays (AxiomGT1). Genotype quality control was done in three batches.¹⁷ Prephasing was performed with Eagle v2.3¹⁸ and imputation with Minimac3 v2.0.1 using the University of Michigan Imputation Server.¹⁹ Genotypes were imputed to Haplotype Reference Consortium release 1.1 reference panel.²⁰

Statistical analyses

All analyses were done with R statistical software (version 4.3.2) in March-April 2024. Linear mixed models (*lme4* package)²¹ were used to investigate the associations of age, sex, education and *APOE* ($\epsilon 4$ carriers vs. non-carriers and sub-groups in post-hoc analyses) or ADPRS with p-tau₂₁₇. We used logistic regression model (*survey* package)²² by including all these factors in predicting AD pathology based on previously published >0.42pg/ml cut-off for beta-amyloid positivity,¹ and cut-offs based on three range approach (multinomial regression with *svyVGAM* package)²³ and tau positivity (binary) as secondary outcomes.¹ Models with ADPRS included 10 first principal components (PC) of genetic ancestry. Family structure was adjusted for in all models. See eMethods in Supplement 1 for details.

Twin data including MZ and DZ twin pairs can be used to estimate the relative contribution of additive genetic (A) and common (C) and unique (E) environmental effects by decomposing

Plasma p-tau₂₁₇ in a population-based sample

phenotypic variance into these components. The A effects presents a narrow sense heritability ($h^2 = \text{additive genetic variance} / \text{phenotypic variance}$), C effects are all non-genetic effects that make twins within a pair similar, and E effects denote environmental effects that make twins within a pair different including measurement error. We used *OpenMx* structural equation package (2.21.8) in R (eMethods in Supplement 1).²⁴

The genome-wide association analyses were performed using mixed linear model using age and sex as covariates with sparse genetic relationship matrix as the random effect of the model controlling for familial and more distant genetic relatedness. The association testing were performed regressing out the covariates from the phenotype and using the adjusted phenotype for the analyses which were performed using genetic complex trait analysis (GCTA)'s²⁵ fastGWA function.²⁶ After analysis, we filtered out all variants with effect allele frequency < 1%, HWE-p-value < 1e-06 and imputation quality < 0.7. The extended Simes test, GATES,²⁷ was used to perform gene-based analyses. Thresholds for statistical significance were $P > 5 \times 10^{-8}$ in the GWAS and $P > 5 \times 10^{-6}$ in the gene-based tests. The regional plot was generated with LocusZoom.²⁸

Results

Descriptive statistics and associations of age, sex, and education with p-tau₂₁₇

Mean age (SD) of participants was 76.2 (4.6) years, 57% (n=398) were women, 44% (n=308) were from full twin pairs and 389 were studied without their co-twin. P-tau₂₁₇ (n=696) ranged from 0.02 to 2.84, the mean (SD) being 0.45 (0.31) pg/mL (Table 1, eFigure1 in Supplement 1). Age was positively associated with p-tau₂₁₇ ($r = 0.24$, $p < 0.001$) (Figure 1, eTable1 in Supplement 1). Sex and education were not associated with p-tau₂₁₇ (Table 1, eTable 2 in Supplement 1).

ACE models for estimating the heritability and APOE and ADPRS associations with p-tau₂₁₇

Intra-pair correlations were 0.55 (95%CI, 0.37-0.69) in MZ and 0.24 (95%CI, 0.02-0.46) in DZ pairs. AE model with a heritability estimate of 0.56 (95%CI, 0.36-0.79) was the best fitting model (Table 2). *APOE* $\epsilon 4$ -carriers had significantly higher p-tau₂₁₇ (mean [SD]= 0.58 [0.35] pg/mL) compared to non-carriers (mean [SD]= 0.39 [0.27] pg/mL) ($b = 0.41$; 95%CI, 0.32-0.51, $P < 0.001$, $R^2 = 0.08$) (Figure 1, eTables 2&4 in Supplement 1). ADPRS's with *APOE* ($b = 0.03$; 95%CI, (-0.02)-0.08, $P = .193$, $R^2 = 0.001$) or without *APOE* ($b = 0.02$; 95%CI, (-0.02-0.07, $P = .307$, $R^2 = 0.0005$) were not significantly related to p-tau₂₁₇ (eTables 3&4 in Supplement 1).

Prevalence and predictors of AD pathology based on abnormal p-tau₂₁₇

We used categorical p-tau₂₁₇ to indicate AD pathology based on previously published cut-offs for beta-amyloid and tau positivity.¹ The prevalence of AD pathology was 38.6% using >0.42pg/mL cut-off indicative of beta-amyloid positivity and was higher as a function of older age from 20.7% in 65-69 year-olds to 50.7% in 80-85 year-olds (Table 1, eTable 1 in Supplement 1). Older age (OR= 1.15; 95% CI, 1.10-1.20, $P < 0.001$) and having *APOE* $\epsilon 4$ -allele (OR=4.53; 95%CI, 3.10-6.62) were predictors of amyloid positivity (eTables 5&6). ADPRS's with (OR=1.12; 95%CI, 0.95-1.33) or without *APOE* (OR= 1.09; 95%CI, 0.91-1.30 (eTables 5&6 in Supplement 1) were not related to greater odds of amyloid positivity.

The association of *APOE* was even greater when using three range approach (OR=7.22 (95%CI, 4.50-11.59, $P < 0.001$) contrasting those with low (p-tau₂₁₇ <0.40 pg/mL) and high (p-tau₂₁₇ >0.63 pg/ml) probability of amyloid positivity, and when using >0.64pg/mL binary cut-off indicative of tau positivity (OR=5.13 (95%CI, 3.32-7.91, $P < 0.001$) (eTables 7&8 in Supplement 1). The

Plasma p-tau₂₁₇ in a population-based sample

prevalence of tau positivity was 19.6% when using >0.64pg/mL cut-off (eTable 1 in Supplement 1). Sex and education were not associated with abnormal levels of p-tau₂₁₇ with any cut-offs (eTables 5-8 in Supplement 1).

Genome-wide association analysis of p-tau₂₁₇ plasma protein levels

Genomic inflation factor λ was 1.01 indicating no inflation in p-values caused by population stratification or sample relatedness (eFigure 2 in Supplement 1). We found a total of 45 lead variants with genome-wide significant ($P > 5 \times 10^{-8}$) associations with p-tau₂₁₇ blood levels (Figure 2A, Table 3, eTable 9 in Supplement 1), more than a third (17/45) were in chromosome 19 in the *APOE* region (Figure 2B). Top hit was rs429358, a SNP that is used to define *APOE* $\epsilon 4$ carrier status (presence of C-allele, $b=0.19$, $SE=0.02$, $P=5 \times 10^{-16}$). In contrast, rs7412 (T-allele indicating presence of AD protective $\epsilon 2$ -allele, $b=-0.10$, $SE=0.04$, $P=0.005$) was not among the top SNPs. Gene-based tests indicated five genes ($P > 5 \times 10^{-6}$) in the *APOE* region including *APOE*, translocase of outer mitochondrial membrane 40 (*TOMM40*), apolipoprotein C1 (*APOC1*), nectin cell adhesion molecule 2 (*NECTIN2*), and apolipoprotein C1 pseudogene 1 (*APOC1P1*) (eTable 10 in Supplement 1). GCTA based heritability estimate of p-tau₂₁₇ was 49.2% (SE 43%).

Post-hoc analyses on APOE genotype subgroups

We investigated the associations of *APOE* risk allele $\epsilon 4$ ($\epsilon 3/\epsilon 4$ and $\epsilon 4/\epsilon 4$ groups separately), protective $\epsilon 2$ allele (combining four individuals with $\epsilon 2/\epsilon 2$ and 52 individuals with $\epsilon 2/\epsilon 3$) and the combination of risk and protective alleles $\epsilon 2/\epsilon 4$ on p-tau₂₁₇ ($\epsilon 3/\epsilon 3$ as a reference group and age, sex, and education as covariates). Those with one ($n=174$, $b=0.40$ [95%CI, 0.30-0.50], $P<0.001$) or two ($n=12$, $b=0.80$ [95%CI, 0.49-1.15], $P<0.001$) $\epsilon 4$ -alleles had significantly higher p-tau₂₁₇ than those with two $\epsilon 3$ -alleles ($n=436$). Having $\epsilon 2$ -allele was not associated with p-tau₂₁₇ ($n=56$, $b=-0.11$ [95%CI, -0.27-0.05], $P=0.182$). Finally, $\epsilon 2/\epsilon 4$ group did not differ ($n=17$, $b=0.11$ [95%CI, -0.17-0.40], $P=0.435$) from $\epsilon 3/\epsilon 3$ group.

Discussion

We found that a substantial proportion of the variance in p-tau₂₁₇ was explained by additive genetic effects with a heritability estimate of 56%. To our knowledge, only one twin study – not including p-tau₂₁₇ – has investigated the heritability of blood-based AD biomarkers.⁴ We found that age and *APOE* genotype, but not ADPRS (based on cases having clinical diagnosis of AD), were significant predictors of continuous p-tau₂₁₇ levels but also AD pathology as indicated by abnormal levels of plasma p-tau₂₁₇ using published cut-offs for amyloid and tau positivity.¹ For the ADPRS, we chose to use the score based on Lambert et al. (2013).¹⁶ The larger sample sizes in later genome-wide association studies of AD – all with smaller r-squared than the 0.09 in Lambert et al. – have included also proxy cases where AD status is not based on clinical diagnosis but on family history, thus PRS's from these studies reflect a more general dementia phenotype that is not specific to AD.⁶

To our knowledge, this was the first genome-wide association study of plasma p-tau₂₁₇ where we found a total of 45 significant SNP's. These implicated *APOE* gene but also other chromosome 19 genes in the same region: *TOMM40*, *APOC1*, *NECTIN2* and *APOC1P1*. Except for *APOC1P1*, these genes are protein coding with *APOE* and *APOC1* involved in lipid/cholesterol metabolism, *TOMM40* involved in protein transport into mitochondria and *NECTIN2* as entry for herpesvirus and involved in cell to cell spreading of viruses. *APOE*, *APOC1* and *TOMM40* are in high linkage disequilibrium, but there is evidence that having additional risk alleles in *APOC1* and *TOMM40*

Plasma p-tau₂₁₇ in a population-based sample

increases the risk of AD over and above the risk of *APOE* $\epsilon 4$ -allele.²⁹ Together, *APOE*, *APOC1* and *NECTIN2* haplotypes confirm a risk of AD over and above *APOE*.³⁰ Our results suggest broader haplotype in the *APOE* region in association with plasma p-tau₂₁₇.

The association of *APOE* gene with AD and its cognitive and biomarkers is well-established, but largest GWAS studies using case-control designs including proxy cases have not implicated other *APOE* region genes that were associated with p-tau₂₁₇ in our study.³¹⁻³³ However, a case-control GWAS study (with family history of dementia as an exclusion criteria in cases) with 9 out of 13 significant SNPs in the *APOE* region implicated *APOE*, *APOC1*, *TOMM40* and *NECTIN2* in prediction of clinical diagnosis of AD in Chinese population.³⁴ GWAS of p-Tau determined from cerebrospinal fluid samples (CSF) indicated four loci including *APOE*.³⁵ *APOE* $\epsilon 4$ -allele determining rs429358-C was associated with higher CSF p-Tau levels whereas rs7412-T was associated with lower p-tau.³⁵ In our study, rs429358-C was associated with higher p-tau₂₁₇ but rs7412-T was not related to p-tau₂₁₇ levels.

Earlier GWASs of plasma p-tau₁₈₁ have indicated no significant SNPs other than in the *APOE* gene.^{10,11} In line with our results, GWAS on plasma ApoE found significant SNP's in the same *APOE* region genes than our study and gene-based tests indicated that *APOE*, *APOC1*, *TOMM40* and *NECTIN2* were related to plasma ApoE concentration and risk of AD.³⁶ GWAS study of possible preclinical neurodegenerative disease blood biomarkers of caspase-3-cleaved (TAU-C) and ADAM-10 cleaved tau (TAU-A) found only one significant SNP for each of these biomarkers: *APOC1* (rs10414043) for TAU-A and *APOE* (rs429358) for TAU-C.³⁷ These SNPs were our third and first top SNP's in relation to p-tau₂₁₇, respectively.

In the biological AT(N)-classification, biomarker classification and cognitive staging are independent and AD is simply defined on biomarker status of amyloid and tau positivity.⁷ Probability for amyloid positivity of 39% in our study was very similar to the prevalence of PET-amyloid positivity in a population-based sample of cognitively healthy persons.³⁸ Using biological definition of A+T+, the prevalence of AD pathology in our sample was estimated to be about 20% based on the three range and tau positivity cut-offs. Given our sample excluding individuals with a clinical diagnosis of AD, the substantial proportion of amyloid and tau positive individuals indicate that plasma p-tau₂₁₇ is useful biomarker for determining AD biological continuum independent of cognitive staging and can guide in screening, diagnosis and prognosis of AD. Together with cognitive staging p-tau₂₁₇ may help in detecting preclinical (biomarker positive and normal cognition) and prodromal (biomarker positive and mild cognitive impairment) AD.

Limitations and strengths

Despite our exclusion based on health care registries, about 4% of our sample had cognitive impairment according to telephone screening. Individuals with cognitive impairment may have undiagnosed clinical AD despite not having the diagnosis yet, but we note that scores below the cut-off for cognitive impairment in this telephone-administered instrument may also arise from other reasons than dementia (e.g., hearing problems or environmental disturbances during the interview).

Participation rate of our study was 26%, which can be considered adequate for a clinical biobank recall study requiring participants to travel to the study site for an in-person visit. Strengths included a population-based sample with the expected approximately 30% prevalence of *APOE* $\epsilon 4$ -carriership¹⁵ and health care register-based exclusion of those diagnosed with clinical AD and many other medical conditions affecting the central nervous system. We chose the ADPRS balancing the

Plasma p-tau₂₁₇ in a population-based sample

sample size, proportions of variance explained and criteria of clinically confirmed cases and controls.⁶ To date there is no ADPRS based on biologically defined cases. We did not detect significant associations of ADPRS and *APOE* ϵ 2-allele with p-tau₂₁₇ (although the direction of association was as expected) which is likely due to relatively sample size. Considering our GWAS, despite multiple significant SNPs associated with p-tau₂₁₇, our sample was relatively small even for a biomarker study, and we did not have access to a replication sample. However, our results encourage the use of plasma p-tau₂₁₇ in future GWAS as it is easily scalable measure that captures the biology of AD.

Conclusions

This cross-sectional population-based study indicated that over half of the variance in p-tau₂₁₇ was explained by additive genetic effects in individuals without dementia. Age and *APOE*, but not sex were associated with p-tau₂₁₇ and abnormal levels indicative of AD pathology. Based on previously published cut-offs, many – especially those who were 75-85 years old – had a high probability of AD pathology even though they had no diagnosis of AD. Our GWAS was able to detect polygenic signal for plasma p-tau₂₁₇ and findings implicated genes in the *APOE* region. Our results support the use of commercially available p-tau₂₁₇ immunoassay in detecting preclinical or prodromal AD, in large-scale screening of participants for drug trials and lifestyle interventions, and in genome-wide association studies for biologically defined AD.

Data sharing statement

TWINGEN data is stored at the THL Biobank for those participants who gave consent for transferring their data to the biobank. Data is available to qualified applicants from academia and companies, for details see <https://thl.fi/en/research-and-development/thl-biobank/for-researchers/application-process>.

Acknowledgements

We thank the participants of the older Finnish Twin Cohort study who participated in TWINGEN study. We thank Sabrina Belgasem, Tarja Hallaranta, Henna Palin, Minttu Virolainen, Anna-Kaisa Pohjonen, Anu Outinen-Tuuponen, Marja-Leena Kytökangas, Riikka-Mari Siiro-Virtanen, Senni Lipponen, Nina Hurula, Heidi Kalve, Anniina Friman and biomedical laboratory scientist students from the Turku University of Applied Sciences' clinical laboratory for collecting the data and processing the blood samples. We thank Finnish Clinical Biobank Tampere, Arctic Biobank, Biobank Borealis of Northern Finland, Central Finland Biobank, Biobank of Eastern Finland and Turku University of Applied Sciences for conducting data collection in Tampere, Oulu, Jyväskylä, Kuopio and Turku, respectively. We thank Auli Toivola and Aija Kyttälä from the THL biobank for study coordination and participant recall, and Anu Jalanko, Huei-Yi Shen, Steffi Besserlink and Jyrki Tammerluoto from the University of Helsinki for study administration and contracting.

Plasma p-tau₂₁₇ in a population-based sample

Author contributions

Responsibility for the integrity of the work as a whole, from inception to published article:
Vuoksima

Concept and design: Runz, Kaprio, Julkunen, Vuoksima

Acquisition, analysis or interpretation of data: Saari, Palviainen, Hiltunen, Herukka, Kokkola, Kärkkäinen, Urjansson, Aaltonen, Palotie, Runz, Kaprio, Julkunen, Vuoksima

Administrative, technical or material support: Urjansson, Palotie, Kaprio, Julkunen, Vuoksima

Drafting of the manuscript: Vuoksima

Statistical analysis: Saari, Palviainen

Critical review of the manuscript for important intellectual content: Saari, Palviainen, Hiltunen, Herukka, Kokkola, Kärkkäinen, Urjansson, Aaltonen, Palotie, Runz, Kaprio, Julkunen, Vuoksima

Obtained funding: Julkunen, Kaprio, Vuoksima

Supervision: Vuoksima

Conflict of interests

AP is the scientific director of the FinnGen project that is in part funded by 13 pharmaceutical companies (finngen.fi). HR is a former employee of Biogen and holds stocks at Merck & Co and Biogen.

Funding/support

TWINGEN study was funded by the FinnGen project that is funded by two grants from Business Finland (HUS 4685/31/2016 and UH 4386/31/2016) and the following industry partners: AbbVie, AstraZeneca UK, Biogen, Bristol Myers Squibb (and Celgene Corporation & Celgene International II), Genentech, Merck Sharp & Dohme LLC, a subsidiary of Merck & Co., Inc., Rahway, NJ, USA, Pfizer, GlaxoSmithKline Intellectual Property Development, Sanofi US Services, Maze Therapeutics, Janssen Biotech, Novartis, and Boehringer Ingelheim. Eero Vuoksima was supported by the Sigrid Jusélius senior researcher funding and the Research Council of Finland (grants 314639 and 345988). Jaakko Kaprio has been supported by the Research Council of Finland Centre of Excellence in Complex Disease Genetics (grant 352792). Data collection in the twin cohort has been supported by ENGAGE – European Network for Genetic and Genomic Epidemiology, FP7-HEALTH-F4-2007, grant agreement number 201413, the Academy of Finland Center of Excellence in Complex Disease Genetics (grant numbers: 213506, 129680), and the Academy of Finland (grants 265240, 263278 and 264146 to Kaprio). Mikko Hiltunen was supported by the Research Council of Finland (grant numbers 338182 and 353053); Sigrid Jusélius Foundation; the Strategic Neuroscience Funding of the University of Eastern Finland.

Plasma p-tau₂₁₇ in a population-based sample

References

1. Ashton NJ, Brum WS, Di Molfetta G, et al. Diagnostic Accuracy of a Plasma Phosphorylated Tau 217 Immunoassay for Alzheimer Disease Pathology. *JAMA Neurol.* Mar 1 2024;81(3):255-263. doi:10.1001/jamaneurol.2023.5319
2. Mielke MM, Dage JL, Frank RD, et al. Performance of plasma phosphorylated tau 181 and 217 in the community. *Nat Med.* Jul 2022;28(7):1398-1405. doi:10.1038/s41591-022-01822-2
3. Karlsson IK, Escott-Price V, Gatz M, et al. Measuring heritable contributions to Alzheimer's disease: polygenic risk score analysis with twins. *Brain Commun.* 2022;4(1):fcab308. doi:10.1093/braincomms/fcab308
4. Gillespie NA, Elman JA, McKenzie RE, et al. The heritability of blood-based biomarkers related to risk of Alzheimer's disease in a population-based sample of early old-age men. *Alzheimers Dement.* Jan 2024;20(1):356-365. doi:10.1002/alz.13407
5. Andrews SJ, Renton AE, Fulton-Howard B, Podlesny-Drabiniok A, Marcora E, Goate AM. The complex genetic architecture of Alzheimer's disease: novel insights and future directions. *EBioMedicine.* Apr 2023;90:104511. doi:10.1016/j.ebiom.2023.104511
6. Escott-Price V, Hardy J. Genome-wide association studies for Alzheimer's disease: bigger is not always better. *Brain Commun.* 2022;4(3):fcac125. doi:10.1093/braincomms/fcac125
7. Jack CR, Jr., Bennett DA, Blennow K, et al. NIA-AA Research Framework: Toward a biological definition of Alzheimer's disease. *Alzheimers Dement.* Apr 2018;14(4):535-562. doi:10.1016/j.jalz.2018.02.018
8. Damotte V, van der Lee SJ, Chouraki V, et al. Plasma amyloid beta levels are driven by genetic variants near APOE, BACE1, APP, PSEN2: A genome-wide association study in over 12,000 non-demented participants. *Alzheimers Dement.* Oct 2021;17(10):1663-1674. doi:10.1002/alz.12333
9. Sarnowski C, Ghanbari M, Bis JC, et al. Meta-analysis of genome-wide association studies identifies ancestry-specific associations underlying circulating total tau levels. *Commun Biol.* Apr 8 2022;5(1):336. doi:10.1038/s42003-022-03287-y
10. Stevenson-Hoare J, Hesgrave A, Leonenko G, et al. Plasma biomarkers and genetics in the diagnosis and prediction of Alzheimer's disease. *Brain.* Feb 13 2023;146(2):690-699. doi:10.1093/brain/awac128
11. Lord J, Zettergren A, Ashton NJ, et al. A genome-wide association study of plasma phosphorylated tau181. *Neurobiol Aging.* Oct 2021;106:304 e1-304 e3. doi:10.1016/j.neurobiolaging.2021.04.018
12. Kaprio J, Bollepalli S, Buchwald J, et al. The Older Finnish Twin Cohort - 45 Years of Follow-up. *Twin Res Hum Genet.* Aug 2019;22(4):240-254. doi:10.1017/thg.2019.54
13. Vuoksima E, Saari TT, Aaltonen A, et al. TWINGEN - protocol for an observational clinical biobank recall and biomarker study to identify individuals with high risk of Alzheimer's disease. *medRxiv.* Nov 7 2023;doi:10.1101/2023.11.03.23298018
14. Jarvenpaa T, Rinne JO, Raiha I, et al. Characteristics of two telephone screens for cognitive impairment. *Dement Geriatr Cogn Disord.* 2002;13(3):149-55. doi:10.1159/000048646
15. Vuoksima E, Palviainen T, Lindgren N, Rinne JO, Kaprio J. Accuracy of Imputation for Apolipoprotein E epsilon Alleles in Genome-Wide Genotyping Data. *JAMA Netw Open.* Jan 3 2020;3(1):e1919960. doi:10.1001/jamanetworkopen.2019.19960
16. Lambert JC, Ibrahim-Verbaas CA, Harold D, et al. Meta-analysis of 74,046 individuals identifies 11 new susceptibility loci for Alzheimer's disease. *Nat Genet.* Dec 2013;45(12):1452-8. doi:10.1038/ng.2802
17. Kujala UM, Palviainen T, Pesonen P, et al. Polygenic Risk Scores and Physical Activity. *Med Sci Sports Exerc.* Jul 2020;52(7):1518-1524. doi:10.1249/MSS.0000000000002290
18. Loh PR, Danecek P, Palamara PF, et al. Reference-based phasing using the Haplotype Reference Consortium panel. *Nat Genet.* Nov 2016;48(11):1443-1448. doi:10.1038/ng.3679

Plasma p-tau₂₁₇ in a population-based sample

19. Das S, Forer L, Schonherr S, et al. Next-generation genotype imputation service and methods. *Nat Genet.* Oct 2016;48(10):1284-1287. doi:10.1038/ng.3656
20. McCarthy S, Das S, Kretzschmar W, et al. A reference panel of 64,976 haplotypes for genotype imputation. *Nat Genet.* Oct 2016;48(10):1279-83. doi:10.1038/ng.3643
21. Bates D, Maechler M, Bolker B, Walker S. Fitting Linear Mixed-Effects Models Using lme4. *Journal of Statistical Software.* 2015;67(1):1-48. doi:10.18637/jss.v067.i01.
22. Lumley T. Analysis of complex survey samples. *Journal of Statistical Software.* 2004;9(1):1-19.
23. *svyVGAM: Design-Based Inference in Vector Generalised Linear Models. R package version 1.2.* 2023. <https://CRAN.R-project.org/package=svyVGAM>
24. Neale MC, Hunter MD, Pritikin JN, et al. OpenMx 2.0: Extended Structural Equation and Statistical Modeling. *Psychometrika.* Jun 2016;81(2):535-49. doi:10.1007/s11336-014-9435-8
25. Yang J, Lee SH, Goddard ME, Visscher PM. GCTA: a tool for genome-wide complex trait analysis. *Am J Hum Genet.* Jan 7 2011;88(1):76-82. doi:10.1016/j.ajhg.2010.11.011
26. Jiang L, Zheng Z, Qi T, et al. A resource-efficient tool for mixed model association analysis of large-scale data. *Nat Genet.* Dec 2019;51(12):1749-1755. doi:10.1038/s41588-019-0530-8
27. Li MX, Gui HS, Kwan JS, Sham PC. GATES: a rapid and powerful gene-based association test using extended Simes procedure. *Am J Hum Genet.* Mar 11 2011;88(3):283-93. doi:10.1016/j.ajhg.2011.01.019
28. Boughton AP, Welch RP, Flickinger M, et al. LocusZoom.js: interactive and embeddable visualization of genetic association study results. *Bioinformatics.* Sep 29 2021;37(18):3017-3018. doi:10.1093/bioinformatics/btab186
29. Kulminski AM, Philipp I, Shu L, Culminskaya I. Definitive roles of TOMM40-APOE-APOC1 variants in the Alzheimer's risk. *Neurobiol Aging.* Feb 2022;110:122-131. doi:10.1016/j.neurobiolaging.2021.09.009
30. Zhou X, Chen Y, Mok KY, et al. Non-coding variability at the APOE locus contributes to the Alzheimer's risk. *Nat Commun.* Jul 25 2019;10(1):3310. doi:10.1038/s41467-019-10945-z
31. Bellenguez C, Kucukali F, Jansen IE, et al. New insights into the genetic etiology of Alzheimer's disease and related dementias. *Nat Genet.* Apr 2022;54(4):412-436. doi:10.1038/s41588-022-01024-z
32. de Rojas I, Moreno-Grau S, Tesi N, et al. Common variants in Alzheimer's disease and risk stratification by polygenic risk scores. *Nat Commun.* Jun 7 2021;12(1):3417. doi:10.1038/s41467-021-22491-8
33. Wightman DP, Jansen IE, Savage JE, et al. A genome-wide association study with 1,126,563 individuals identifies new risk loci for Alzheimer's disease. *Nat Genet.* Sep 2021;53(9):1276-1282. doi:10.1038/s41588-021-00921-z
34. Jia L, Li F, Wei C, et al. Prediction of Alzheimer's disease using multi-variants from a Chinese genome-wide association study. *Brain.* Apr 12 2021;144(3):924-937. doi:10.1093/brain/awaa364
35. Jansen IE, van der Lee SJ, Gomez-Fonseca D, et al. Genome-wide meta-analysis for Alzheimer's disease cerebrospinal fluid biomarkers. *Acta Neuropathol.* Nov 2022;144(5):821-842. doi:10.1007/s00401-022-02454-z
36. Aslam MM, Fan KH, Lawrence E, et al. Genome-wide analysis identifies novel loci influencing plasma apolipoprotein E concentration and Alzheimer's disease risk. *Mol Psychiatry.* Oct 2023;28(10):4451-4462. doi:10.1038/s41380-023-02170-4
37. Axelsen TM, Bager C, Bihlet A, Karsdal MA, Henriksen K, Tang MHE. A Genetic Validation of the Neurodegeneration Biomarkers Tau-A and Tau-C - A Mendelian Randomization Study. *J Prev Alzheimers Dis.* 2023;10(3):536-542. doi:10.14283/jpad.2023.36
38. Roberts RO, Aakre JA, Kremers WK, et al. Prevalence and Outcomes of Amyloid Positivity Among Persons Without Dementia in a Longitudinal, Population-Based Setting. *JAMA Neurol.* Aug 1 2018;75(8):970-979. doi:10.1001/jamaneurol.2018.0629

Plasma p-tau217 in a population-based sample

Table 1. Sample demographics.

	All	Men	Women	MZ	DZ ^c	Uncertain zygosity
N (full twin pairs)	697 (154)	299 (55)	398 (99)	240 (81)	450 (73)	7 (0)
Age, M (SD), years	76.17 (4.57)	76.65 (4.38)	75.81 (4.68)	75.24 (5.13)	76.63 (4.17)	78.47 (3.50)
Education, Median (IQR), years	10 (7–13)	10 (7–18)	10 (7–13)	10 (7–13)	10 (7–13)	7 (7–10)
TELE, M (SD), score	18.87 (1.17)	18.7 (1.22)	18.99 (1.12)	18.79 (1.13)	18.9 (1.2)	18.93 (0.45)
TELE <16 ^a , No. (%)	27 (3.9)	13 (4.4)	14 (3.5)	11 (4.6)	16 (3.6)	0 (0)
APOE ε4 carriers, No. (%)	203 (29.2)	87 (29.2)	116 (29.1)	75 (31.4)	127 (28.2)	1 (14.3)
p-tau217, M (SD), pg/mL	0.45 (0.31)	0.47 (0.32)	0.43 (0.31)	0.43 (0.3)	0.46 (0.32)	0.42 (0.40)
p-tau217 >0.42 ^b , No. (%)	269 (38.6)	125 (41.9)	144 (36.2)	85 (35.6)	182 (40.4)	2 (28.6)
p-tau217 <0.40 ^b , No. (%)	407 (58.5)	162 (54.4)	245 (61.6)	144 (60.3)	258 (57.3)	5 (71.4)
p-tau217 = 0.40 – 0.63 ^b , No. (%)	148 (21.3)	65 (21.8)	83 (20.9)	58 (24.3)	90 (20)	0 (0)
p-tau217 >0.63 ^b , No. (%)	141 (20.3)	71 (23.8)	70 (17.6)	37 (15.5)	102 (22.7)	2 (28.6)

Abbreviations. TELE = telephone assessment of dementia, APOE = Apolipoprotein E, p-tau217 = phosphorylated tau 217 immunoassay, MZ = monozygotic, DZ = dizygotic.

^a cut-point of cognitive impairment from Järvenpää et al. 2002. ^b cut-points from Ashton et al. 2024: >0.42 is a threshold for amyloid positivity, <0.40, 0.40 – 0.63, and >0.63 are thresholds for three range approach for classifying individuals into low, intermediate and high probability of amyloid positivity. ^c DZ twins included 313 (53 full pairs) from same-sex twin pairs and 137 (20 full pairs) from opposite-sex twin pairs. One participant had missing data in p-tau217, one participant had missing data in APOE, and two participants had missing data in TELE.

Plasma p-tau217 in a population-based sample

Table 2. Model fitting results for estimating the relative proportion of genetic and environmental effects on phosphorylated tau 217.

Model	ep	-2LL	df	Δ df	Δ -2LL	P	AIC	A (95% CI)	C (95% CI)	E (95% CI)
Saturated	10	796.18	284	NA	NA	NA	816.18	NA	NA	NA
ACE	4	801.98	290	6	5.8	0.446	809.98	0.69 (0.19–1.28)	-0.11 (-0.6–0.3)	0.43 (0.32–0.61)
AE	3	802.25	291	1	0.27	0.599	808.25	0.56 (0.36–0.79)	NA	0.45 (0.33–0.61)
CE	3	809.25	291	1	7.27	0.007	815.25	NA	0.39 (0.23–0.58)	0.61 (0.49–0.77)
E	2	833.33	292	2	31.35	< 0.001	837.33	NA	NA	1 (0.85–1.18)

Abbreviations. ep = number of estimated parameters, -2LL = minus two log likelihood, df = degrees of freedom, Δ df = change in degrees of freedom, Δ -2LL = change in minus two log likelihood; AIC = Akaike’s information criterion, A = additive genetic effects, C = common environmental effects, E = unique environmental effects. CI = Confidence interval, NA = not applicable. Note that estimate can be negative because we estimated A, C and E components directly from the variances/covariances without any constraints. ACE model was compared against the saturated model. AE, CE, and E models were tested against the ACE model. Models included 77 full monozygotic and 70 full dizygotic twin pairs.

Plasma p-tau217 in a population-based sample

Table 3. Single nucleotide polymorphisms (SNPs) with $P < 5 \times 10^{-08}$ from the genome-wide association analysis of p-tau217 (n=695).

CHR	BP	SNP	A1	A2	β (95% CI)	SE	P	EAF	HWE P value	Info-score
19	45411941	rs429358	C	T	0.19 (0.14–0.24)	0.02	6.790×10^{-16}	0.15	0.431	0.996
19	45410002	rs769449	A	G	0.19 (0.15–0.24)	0.02	7.525×10^{-16}	0.15	0.386	0.998
19	45415713	rs10414043	A	G	0.19 (0.14–0.24)	0.02	1.233×10^{-15}	0.15	0.353	0.993
19	45415935	rs7256200	T	G	0.19 (0.14–0.24)	0.02	1.233×10^{-15}	0.15	0.353	0.993
16	54004229	rs116290784	T	C	0.52 (0.37–0.68)	0.08	2.627×10^{-11}	0.01	0.820	0.882
11	1653718	rs115553322	A	G	0.44 (0.31–0.57)	0.07	3.731×10^{-11}	0.01	0.696	0.915
19	45408836	rs405509	T	G	0.11 (0.08–0.15)	0.02	1.565×10^{-10}	0.43	0.390	0.996
19	45406673	rs10119	A	G	0.12 (0.08–0.16)	0.02	8.966×10^{-10}	0.26	0.321	0.985
11	1650080	rs140772159	A	G	0.38 (0.26–0.51)	0.06	9.320×10^{-10}	0.02	0.580	0.933
7	24971877	rs147827528	C	T	0.51 (0.35–0.67)	0.08	1.177×10^{-09}	0.01	0.516	0.893
20	16447628	rs183298906	A	G	0.49 (0.33–0.65)	0.08	1.231×10^{-09}	0.01	0.317	0.926
11	1493389	rs749878214	T	C	0.38 (0.26–0.51)	0.06	1.255×10^{-09}	0.02	0.716	0.988
11	1536741	rs146099176	A	G	0.38 (0.26–0.51)	0.06	1.255×10^{-09}	0.02	0.704	0.900
20	16595515	rs150906525	G	A	0.45 (0.30–0.59)	0.07	1.330×10^{-09}	0.01	0.317	0.904
19	45396665	rs59007384	T	G	0.12 (0.08–0.16)	0.02	2.209×10^{-09}	0.21	0.506	0.994
11	1614455	rs143478050	G	A	0.30 (0.20–0.40)	0.05	2.556×10^{-09}	0.03	0.649	0.989
17	38840826	rs117627297	A	G	0.42 (0.28–0.56)	0.07	2.672×10^{-09}	0.01	0.457	0.932
14	31181415	rs75349909	C	T	0.38 (0.25–0.50)	0.06	2.927×10^{-09}	0.02	0.369	0.896
19	45407788	rs7259620	A	G	-0.10 (-0.14–0.07)	0.02	3.741×10^{-09}	0.53	0.425	0.994
19	45403412	rs1160985	T	C	-0.10 (-0.14–0.07)	0.02	4.602×10^{-09}	0.53	0.467	0.996
19	45403858	rs760136	G	A	-0.10 (-0.14–0.07)	0.02	4.602×10^{-09}	0.53	0.471	0.996
19	45404431	rs741780	C	T	-0.10 (-0.14–0.07)	0.02	4.602×10^{-09}	0.53	0.471	0.996
19	45404972	rs1038025	C	T	-0.10 (-0.14–0.07)	0.02	4.602×10^{-09}	0.53	0.471	0.996
19	45405062	rs1038026	G	A	-0.10 (-0.14–0.07)	0.02	4.602×10^{-09}	0.53	0.471	0.995
5	133599786	rs11742455	T	C	0.42 (0.28–0.56)	0.07	4.833×10^{-09}	0.01	0.661	0.920
13	20936498	rs17080846	T	C	0.42 (0.28–0.56)	0.07	5.309×10^{-09}	0.01	0.317	0.967

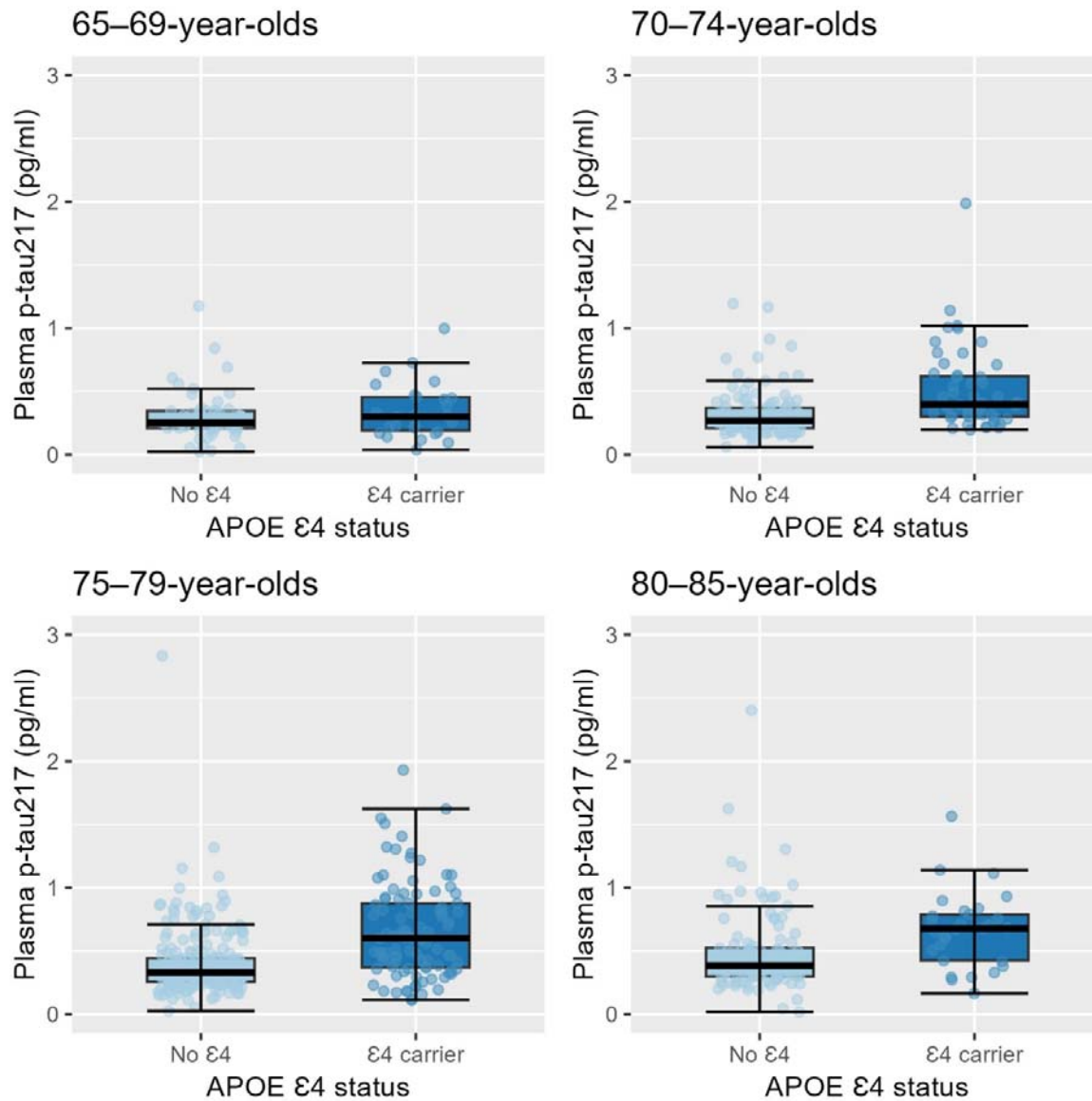
Plasma p-tau217 in a population-based sample

11	1491298	rs554200731	T	C	0.36 (0.23–0.48)	0.06	8.231×10^{-09}	0.02	0.704	0.963
4	134053110	rs115976772	A	G	0.45 (0.29–0.60)	0.08	1.056×10^{-08}	0.01	0.439	0.845
14	31110189	rs77863412	A	G	0.28 (0.18–0.38)	0.05	1.838×10^{-08}	0.03	0.350	0.904
12	56724591	rs147236029	G	T	0.30 (0.20–0.41)	0.05	2.758×10^{-08}	0.02	0.403	0.938
19	45396899	rs157584	T	C	0.10 (0.06–0.13)	0.02	2.970×10^{-08}	0.46	0.585	0.995
19	45397512	rs157585	A	C	0.10 (0.06–0.13)	0.02	2.970×10^{-08}	0.46	0.626	0.995
19	45398264	rs157588	C	T	0.10 (0.06–0.13)	0.02	2.970×10^{-08}	0.46	0.622	0.995
19	45398716	rs157590	A	C	0.10 (0.06–0.13)	0.02	2.970×10^{-08}	0.46	0.599	0.993
6	129633534	rs9402117	C	T	0.28 (0.18–0.37)	0.05	3.389×10^{-08}	0.02	0.468	0.992
6	129635800	rs2306942	A	G	0.28 (0.18–0.37)	0.05	3.389×10^{-08}	0.02	0.470	0.992
6	129638768	rs9321160	A	G	0.28 (0.18–0.37)	0.05	3.389×10^{-08}	0.02	0.470	0.992
6	129640374	rs3798660	C	G	0.28 (0.18–0.37)	0.05	3.389×10^{-08}	0.02	0.470	0.992
6	129667406	rs9372925	A	T	0.28 (0.18–0.37)	0.05	3.389×10^{-08}	0.02	0.389	0.998
6	129673689	rs9385488	C	T	0.28 (0.18–0.37)	0.05	3.389×10^{-08}	0.02	0.388	0.999
6	129674757	rs3813367	T	G	0.28 (0.18–0.37)	0.05	3.389×10^{-08}	0.02	0.388	0.998
6	129700998	rs17057200	T	C	0.28 (0.18–0.37)	0.05	3.389×10^{-08}	0.02	0.431	0.988
11	1457099	rs568790642	G	C	0.33 (0.21–0.44)	0.06	4.803×10^{-08}	0.02	0.585	0.959
4	134009465	rs79072289	G	A	0.41 (0.27–0.56)	0.08	4.973×10^{-08}	0.01	0.437	0.836
6	129628090	rs73585572	T	G	0.28 (0.18–0.38)	0.05	4.982×10^{-08}	0.02	0.522	0.991

Abbreviations: A1 = effect allele, A2 = non-effect allele, BP = base-pair position, CHR = chromosome, EAF = effect allele frequency, HWE = Hardy-Weinberg Equilibrium. Genome positions are in build 37 (hg19/GRCh37).

Plasma p-tau₂₁₇ in a population-based sample

Figure 1. Phosphorylated tau 217 immunoassay levels in *Apolipoprotein E* (*APOE*) ϵ 4-carriers versus non-carriers by age group (n=695).



Plasma p-tau217 in a population-based sample

Figure 2. Genome-wide association analysis of p-tau217. A) Manhattan plot for the genome-wide association analysis of p-tau217. B) Regional plot in the apolipoprotein E locus in Chromosome 19 for the single nucleotide polymorphism associations with p-tau217 with rs429358 as a reference.

