

1 **Post-Acute Cardiovascular Outcomes of COVID-19 in Children and Adolescents: An EHR**
2 **Cohort Study from the RECOVER Project**
3

4 **Author list**

5 Bingyu Zhang, MS^{1,2}, Deepika Thacker, MD³, Ting Zhou, MD, PhD^{1,4}, Dazheng Zhang, MS^{1,4},
6 Yuqing Lei, MS^{1,4}, Jiajie Chen, PhD^{1,4}, Elizabeth Chrischilles, PhD⁵, Dimitri A. Christakis, MD,
7 MPH⁶, Soledad Fernandez, PhD⁷, Vidu Garg, MD^{8,9}, Susan Kim, MD, MMSc¹⁰, Abu S. M.
8 Mosa, PhD, MS, FAMIA¹¹, Marion R. Sills, MD, MPH^{12,13}, Bradley W. Taylor, MBA, FAMIA¹⁴,
9 David A. Williams, PhD¹⁵, Qiong Wu, PhD^{1,4}, Christopher B. Forrest, MD, PhD^{16*}, and Yong
10 Chen, PhD^{1,2,4,17,18,19*} on behalf of the RECOVER Initiative
11

12 **Affiliations**

- 13 1. The Center for Health AI and Synthesis of Evidence (CHASE), University of Pennsylvania,
14 Philadelphia, PA, USA
15 2. The Graduate Group in Applied Mathematics and Computational Science, School of Arts and
16 Sciences, University of Pennsylvania, Philadelphia, PA, USA
17 3. Nemours Cardiac Center, Nemours Children's Health System, Wilmington, DE, USA
18 4. Department of Biostatistics, Epidemiology, and Informatics, University of Pennsylvania
19 Perelman School of Medicine, Philadelphia, PA, USA
20 5. Department of Epidemiology, College of Public Health, The University of Iowa, Iowa City,
21 IA, USA
22 6. Center for Child Health, Behavior and Development, Seattle Children's Research Institute,
23 Seattle, WA, USA
24 7. Department of Biomedical Informatics and Center for Biostatistics, Ohio State University,
25 Columbus, OH, USA
26 8. Heart Center and Center for Cardiovascular Research, Nationwide Children's Hospital,
27 Columbus, OH, USA
28 9. Department of Pediatrics, The Ohio State University, Columbus, OH, USA
29 10. Division of Pediatric Rheumatology, Benioff Children's Hospital, University of California
30 San Francisco, San Francisco, CA, USA
31 11. Department of Biomedical Informatics, Biostatistics and Medical Epidemiology, University
32 of Missouri School of Medicine, Columbia, MO, USA
33 12. Department of Research, OCHIN, Inc., Portland, OR, USA
34 13. Department of Pediatrics, University of Colorado School of Medicine and Children's
35 Hospital Colorado, Aurora, CO, USA
36 14. Clinical and Translational Science Institute, Medical College of Wisconsin, Milwaukee, WI,
37 USA

- 38 15. Department of Anesthesiology, University of Michigan, Ann Arbor, MI, USA
39 16. Applied Clinical Research Center, Department of Pediatrics, Children's Hospital of
40 Philadelphia, Philadelphia, PA, USA
41 17. Leonard Davis Institute of Health Economics, Philadelphia, PA, USA
42 18. Penn Medicine Center for Evidence-based Practice (CEP), Philadelphia, PA, USA
43 19. Penn Institute for Biomedical Informatics (IBI), Philadelphia, PA, USA
44

45 *: Senior authors

46 **Corresponding authors:** Yong Chen, Ph.D.
47 University of Pennsylvania
48 Blockley Hall 602, 423 Guardian Drive
49 Philadelphia, PA 19104
50 Office: 215-746-8155
51 E-mail: ychen123@pennmedicine.upenn.edu
52

53 Christopher B. Forrest, MD, Ph.D.
54 Applied Clinical Research Center
55 Department of Pediatrics, Children's Hospital of Philadelphia
56 Philadelphia, PA 19104
57 E-mail: forrestc@chop.edu
58

59 **Authorship Statement**

60 Authorship has been determined according to ICMJE recommendations.
61

62 **Word Count** (does not include the title page, abstract, references, tables, and figure legends):
63 3158
64

65 **Total Word Count** (including Title Page, Abstract, Text, References, Tables and Figures
66 Legends):
67 5611

68 **Abstract**

69 **Background** The risk of cardiovascular outcomes in the post-acute phase of SARS-CoV-2
70 infection has been quantified among adults and children. This paper aimed to assess a multitude
71 of cardiac signs, symptoms, and conditions, as well as focused on patients with and without
72 congenital heart defects (CHDs), to provide a more comprehensive assessment of the post-acute
73 cardiovascular outcomes among children and adolescents after COVID-19.

74 **Methods** This retrospective cohort study used data from the RECOVER consortium comprising
75 19 US children's hospitals and health institutions between March 2020 and September 2023.
76 Every participant had at least a six-month follow-up after cohort entry. Absolute risks of incident
77 post-acute COVID-19 sequelae were reported. Relative risks (RRs) were calculated by
78 contrasting COVID-19-positive with COVID-19-negative groups using a Poisson regression
79 model, adjusting for demographic, clinical, and healthcare utilization factors through propensity
80 scoring stratification.

81 **Results** A total of 1,213,322 individuals under 21 years old (mean[SD] age, 7.75[6.11] years;
82 623,806 male [51.4%]) were included. The absolute rate of any post-acute cardiovascular
83 outcome in this study was 2.32% in COVID-19 positive and 1.38% in negative groups. Patients
84 with CHD post-SARS-CoV-2 infection showed increased risks of any cardiovascular outcome
85 (RR, 1.63; 95% confidence interval (CI), 1.47-1.80), including increased risks of 11 of 18 post-
86 acute sequelae in hypertension, arrhythmias (atrial fibrillation and ventricular arrhythmias),
87 myocarditis, other cardiac disorders (heart failure, cardiomyopathy, and cardiac arrest),
88 thrombotic disorders (thrombophlebitis and thromboembolism), and cardiovascular-related
89 symptoms (chest pain and palpitations). Those without CHDs also experienced heightened

90 cardiovascular risks after SARS-CoV-2 infection (RR, 1.63; 95% CI, 1.57-1.69), covering 14 of
91 18 conditions in hypertension, arrhythmias (ventricular arrhythmias and premature atrial or
92 ventricular contractions), inflammatory heart disease (pericarditis and myocarditis), other
93 cardiac disorders (heart failure, cardiomyopathy, cardiac arrest, and cardiogenic shock),
94 thrombotic disorders (pulmonary embolism and thromboembolism), and cardiovascular-related
95 symptoms (chest pain, palpitations, and syncope).

96 **Conclusions** Both children with and without CHDs showed increased risks for a variety of
97 cardiovascular outcomes after SARS-CoV-2 infection, underscoring the need for targeted
98 monitoring and management in the post-acute phase.

99 **Clinical Perspective section**

100 **What is new?**

- 101 • We investigated the risks of 18 post-acute COVID-19 cardiovascular outcomes in the
102 pediatric population without Multisystem Inflammatory Syndrome in Children (MIS-C)
103 in over 1 million patients, stratified by congenital heart defects (CHD) status.
- 104 • We extended the follow-up period beyond previous pediatric studies, ensuring every
105 participant had at least a six-month follow-up after cohort entry.
- 106 • We included a comprehensive cross-section of the US pediatric population across various
107 healthcare settings including primary, specialty, and emergency care, as well as testing
108 and inpatient facilities.

109 **What are the clinical implications?**

- 110 • Within the post-acute phase, children and adolescents previously infected with SARS-
111 CoV-2 are at statistically significant increased risk of incident cardiovascular outcomes,
112 including hypertension, ventricular arrhythmias, myocarditis, heart failure,
113 cardiomyopathy, cardiac arrest, thromboembolism, chest pain, and palpitations. These
114 findings are consistent among patients with and without CHDs.
- 115 • Awareness of the heightened risk of cardiovascular disorders after COVID-19 can lead to
116 a timely referral, investigations, and management of these conditions in children and
117 adolescents.

118 **Introduction**

119 Recent research has highlighted the post-acute sequelae of SARS-CoV-2 (PASC), or “long
120 COVID”, which appears after the initial four weeks of acute infection.¹ This condition
121 encompasses a spectrum of symptoms affecting multiple organ systems, including cardiovascular
122 outcomes.^{2,3} A few studies have reported increased long-term cardiovascular effects of COVID-
123 19 in adults.⁴⁻¹¹

124 Compared to adults, the incidence of long COVID is low in the pediatric population, including
125 conditions such as myocarditis and general cardiorespiratory signs and symptoms.^{3,12} However,
126 increased cardiovascular complications post-COVID-19 in the pediatric population were found
127 in several studies, though these were limited by short follow-up periods and focused mainly on
128 specific outcomes like myocarditis, pericarditis, and multisystem inflammatory syndrome in
129 children associated with COVID-19 (MIS-C).¹³⁻¹⁶ In adults, those with pre-existing
130 cardiovascular risk factors or established cardiovascular disease face a higher risk of severe
131 COVID-19 and cardiovascular PASC.^{17,18} In children and adolescents, congenital heart disease
132 (CHD) constitutes the most common congenital disorder¹⁹, but its effect on the risk of
133 developing cardiovascular PASC has not been reported.

134 Our study utilizes data from the Researching COVID to Enhance Recovery (RECOVER)
135 electronic health records (EHR) system to conduct a thorough evaluation of cardiovascular signs,
136 symptoms, and conditions in children and adolescents with and without CHDs, to understand the
137 post-acute cardiovascular impacts of COVID-19. This study has several strengths. First, this is
138 the first and largest study to provide a comprehensive analysis of post-acute cardiovascular
139 COVID-19 sequelae in the pediatric population. Second, the study extended the follow-up period

140 beyond previous pediatric studies. Third, the study included a comprehensive cross-section of the
141 US pediatric population across various healthcare settings including primary, specialty, and
142 emergency care, as well as testing and inpatient facilities. Finally, our analysis incorporates
143 CHDs as a key variable to enhance the precision of our findings, recognizing its prevalence as
144 the most common congenital disorder in pediatrics.

145 **Methods**

146 **Data Sources and Cohort Construction**

147 This study is part of the National Institutes of Health (NIH) funded RECOVER Initiative
148 (<https://recovercovid.org/>), which aims to learn about the long-term effects of COVID-19. This
149 study included nineteen US children's hospitals and health institutions. The EHR data was
150 standardized to the PCORnet Common Data Model (CDM) and extracted from the RECOVER
151 Database Version s10. More details are available in the Supplementary Materials.

152 We conducted a retrospective study from March 1, 2020, to September 1, 2023, with a cohort
153 entry period extending from March 1, 2020, to March 6, 2023, ensuring at least a 179-day
154 follow-up for observing post-acute COVID-19 outcomes. We included patients under 21, who
155 had at least one healthcare visit within the baseline period, defined as 24 months to 7 days before
156 the index date, and at least one encounter within the follow-up period, defined as 28 to 179 days
157 after the index date.

158 In our study, documented SARS-CoV-2 infections were defined by positive polymerase-chain-
159 reaction (PCR), serology, antigen tests, or diagnoses of COVID-19, or diagnoses of PASC. For
160 the comparator group, we required all tests to be negative, no evidence or diagnosis of COVID-
161 19 or PASC during the study period, and at least one negative COVID-19 test within the cohort

162 entry period. The index date for COVID-19 patients was set as either the earliest date of positive
163 tests, COVID-19 diagnoses, or 28 days before a PASC diagnosis. For COVID-19-negative
164 patients, the index date was a randomly selected date from their negative tests to align the
165 distribution of index dates between the two groups, controlling for time effects.

166 Patients diagnosed with MIS-C, Kawasaki disease, chronic kidney disease (CKD), or end-stage
167 kidney disease (ESKD) were excluded.^{20–25} Although MIS-C is considered a PASC, it was not
168 included in this study’s post-acute cardiovascular outcomes for two reasons: children with MIS-
169 C can be effectively treated with minimal post-acute cardiac sequelae,²⁶ and MIS-C has been and
170 continues to be extensively studied with significantly declining incidence over the past year.²⁷
171 **Figure 1** summarizes the participant selection for both COVID-19 positive and negative groups.

172 **Defining Cardiovascular Outcomes**

173 We identified 18 post-acute cardiovascular outcomes for our study, including hypertension, atrial
174 fibrillation, ventricular arrhythmias, atrial flutter, premature atrial or ventricular contractions,
175 pericarditis, myocarditis, heart failure, cardiomyopathy, cardiac arrest, cardiogenic shock,
176 pulmonary embolism, deep vein thrombosis, thrombophlebitis, thromboembolism, chest pain,
177 palpitations, and syncope. These outcomes were assessed during the follow-up period in patients
178 without a history of the specific condition during the baseline period. We used validated
179 diagnostic codes (ICD10CM, ICD10, ICD9CM, SNOMED) confirmed by two board-certified
180 pediatricians (DT, CF), with details of the code sets available in the Supplementary Materials.

181 We also grouped related cardiovascular outcomes into categories, including arrhythmias (atrial
182 fibrillation, ventricular arrhythmias, atrial flutter, and premature atrial or ventricular
183 contractions), inflammatory heart disease (pericarditis and myocarditis), other cardiac disorders

184 (heart failure, cardiomyopathy, cardiac arrest, and cardiogenic shock), thrombotic disorders
185 (pulmonary embolism, deep vein thrombosis, thrombophlebitis, and thromboembolism),
186 cardiovascular-related symptoms (chest pain, palpitations, and syncope), and any cardiovascular
187 outcome (any incident cardiovascular condition studied).

188 **Covariates**

189 We examined a comprehensive set of patient characteristics as measured confounders collected
190 before cohort entry, to be adjusted through propensity score stratification²⁸ to balance the
191 comparison groups. These included demographic factors, including age at index date, gender
192 (female, male), and race/ethnicity (Non-Hispanic White (NHW), Non-Hispanic Black (NHB),
193 Hispanic, Asian American/Pacific Islander (AAPI), Multiple, Other/Unknown); clinical factors,
194 including obesity status, a chronic condition indicator defined by the Pediatric Medical
195 Complexity Algorithm²⁹ (PMCA, no chronic condition, non-complex chronic condition, complex
196 chronic condition), and a list of pre-existing chronic conditions^{3,30}; health care utilization factors
197 collected 24 months to 7 days before index date, including the number of inpatient visits,
198 outpatient visits, emergency department (ED) visits, unique medications, and negative COVID-
199 19 tests (0, 1, 2, ≥ 3); vaccine information, including dosage of COVID-19 vaccine before index
200 date (0, 1, ≥ 2) and interval since the last COVID-19 immunization (no vaccine, < 4 months, ≥ 4
201 months); year-month of cohort entry (from March 2020 to March 2023); indicators from the 19
202 data-contributing sites.

203 **Statistical Analysis**

204 We calculated the incidence of post-acute cardiovascular outcomes in COVID-19-positive and
205 negative cohorts, stratified by CHD status. For each outcome, incidence rates were calculated by

206 dividing new cases during the follow-up period by the total number of patients, excluding those
207 with the specific outcome at baseline.

208 We presented distributions of preference scores—a transformation of propensity scores
209 accounting for prevalence differences between populations—to assess empirical equipoise³¹.
210 Empirical equipoise is achieved for COVID-19 positive and negative patients when the majority
211 of individuals in both groups have preference scores ranging from 0.3 to 0.7.^{28,31} To mitigate the
212 effects of confounding, we used propensity score stratification²⁸ to adjust for a large number of
213 measured confounders collected before index date. After stratification, we assessed the
214 standardized mean difference (SMD) of each covariate between COVID-19 positive and
215 negative patients, with an SMD of 0.1 or less indicating acceptable balance.^{28,32}

216 We used the stratified Poisson regression model to estimate the relative risk (RR) for each
217 outcome between comparison groups for patients with and without CHD. RR is a collapsible
218 measure, meaning the measure of association conditional on some factors remains consistent
219 with the marginal measure collapsed over strata, which is crucial for accurate interpretation in
220 clinical research.^{33,34}

221 We also conducted subgroup analyses by age (0-4, 5-11, 12-20 years), race/ethnicity (NHW,
222 NHB, Hispanic), gender (male and female), obesity status (obese and non-obese), severity of
223 acute COVID-19³⁵ (“non-severe” including asymptomatic and mild, “severe” including moderate
224 and severe), and estimated time frames corresponding to dominant virus variants (pre-Delta,
225 Delta, Omicron). Specifically, the pre-Delta variant spanned March 1, 2021, to June 30, 2021;
226 Delta from July 1, 2021, to December 31, 2021; and Omicron from January 1, 2022, to March 6,
227 2023, with a minimum 179-day follow-up to observe long COVID outcomes.³⁶

228 **Sensitivity Analysis**

229 We conducted extensive sensitivity analyses to examine the robustness of our findings. Negative
230 control outcome experiments^{28,37,38} were performed to calibrate the residual study bias from
231 unmeasured confounders and systematic sources, in which the null hypothesis of no effect was
232 believed to be true utilizing a list of 36 negative control outcomes determined by two board-
233 certified pediatricians (DT, CF). The empirical null distribution and calibrated risks were
234 reported in Supplementary Materials **Section S3**. Additional analyses were performed excluding
235 patients included solely based on a PASC diagnosis (**Section S4**) and those without any
236 cardiovascular outcomes within the baseline period (**Section S5**). Given limited SARS-CoV-2
237 testing availability during the first wave of COVID-19 (March to May 2020), we conducted
238 analyses excluding patients whose index dates fell within this period (**Section S6**). Furthermore,
239 we excluded data from site L where the population is truncated at the ambulatory level (**Section**
240 **S7**). All analyses were performed using R version 4.0.2.

241 **Results**

242 **Cohort Identification**

243 A total of 297,920 children and adolescents with COVID-19 (24.6%; 13,646 with CHDs,
244 284,274 without) and 915,402 without COVID-19 (75.4%; 46,962 with CHDs, 868,440 without)
245 in the RECOVER Database were included. Among these patients, 623,806 (51.4%) were male
246 with a mean (SD) age of 7.75 (6.11) years. Baseline characteristics by COVID-19 and CHD
247 status are detailed in **Table 1**.

248 **Incidence of Post-acute Cardiovascular Events**

249 **Table 2** presents the incidence of 18 individual and 6 composite post-acute cardiovascular
250 outcomes for COVID-19-positive compared to COVID-19-negative patients, stratified by CHD
251 status. The data indicate that COVID-19-positive patients generally have higher incidences in
252 both CHD and non-CHD groups. For example, the absolute risk of heart failure was 1.61% in
253 COVID-19-positive patients with CHD, compared to 1.18% in their COVID-19-negative
254 counterparts. Similarly, chest pain incidence was 1.23% in COVID-19-positive patients without
255 CHD, versus 0.61% in COVID-19-negative patients. Overall, the CHD group showed higher
256 absolute risks of any post-acute cardiovascular outcomes than the non-CHD group, with 5.57%
257 for positive and 4.00% for negative patients with CHD, compared to 2.19% and 1.26%
258 respectively in those without CHD.

259 **Adjusted Relative Risk of post-acute Cardiovascular Outcomes**

260 The COVID-19 positive and negative patients achieved empirical equipoise (**Figure S2**), with
261 well-balanced characteristics after propensity score stratification (**Figure S3**). **Figure 2**
262 highlights that post-acute cardiovascular outcomes are higher in both CHD and non-CHD groups
263 among patients with COVID-19 compared to negative ones.

264 Composite outcomes demonstrated increased risks in both groups. For CHD patients, there were
265 increases across any cardiovascular outcome (RR, 1.63; 95% CI, 1.47-1.80), arrhythmias (RR,
266 1.52; 95% CI, 1.22-1.89), other cardiac disorders (RR, 1.69; 95% CI, 1.46-1.96), thrombotic
267 disorders (RR, 1.42; 95% CI, 1.13-1.78), and cardiovascular-related symptoms (RR, 1.95; 95%
268 CI, 1.66-2.31). For non-CHD patients, increases were noted in any cardiovascular outcome (RR,
269 1.63; 95% CI, 1.57-1.69), arrhythmias (RR, 1.47; 95% CI, 1.24-1.75), inflammatory heart
270 disease (RR, 2.92; 95% CI, 2.25-3.78), other cardiac disorders (RR, 1.50; 95% CI, 1.26-1.78),

271 thrombotic disorders (RR, 1.26; 95% CI, 1.09-1.45), and cardiovascular-related symptoms (RR,
272 1.68; 95% CI, 1.62-1.75).

273 Individual outcomes also showed increased risks. CHD patients experienced higher risks in
274 hypertension (RR, 1.58; 95% CI, 1.32-1.89), atrial fibrillation (RR, 2.64; 95% CI, 1.15-6.05),
275 ventricular arrhythmias (RR, 1.50; 95% CI, 1.18-1.89), myocarditis (RR, 3.82; 95% CI, 1.35-
276 10.78), heart failure (RR, 1.77; 95% CI, 1.48-2.10), cardiomyopathy (RR, 1.78, 95% CI, 1.33-
277 2.38), cardiac arrest (RR, 1.45; 95% CI, 1.06-1.98), thrombophlebitis (RR, 2.65; 95% CI, 1.18-
278 5.96), thromboembolism (RR, 1.44; 95% CI, 1.14-1.81), chest pain (RR, 2.01; 95% CI, 1.64-
279 2.46), and palpitations (RR, 2.14; 95% CI, 1.57-2.92). Non-CHD patients saw increased risks in
280 hypertension (RR, 1.47; 95% CI, 1.35-1.60), ventricular arrhythmias (RR, 1.49; 95% CI, 1.23-
281 1.81), premature atrial or ventricular contractions (RR, 1.77; 95% CI 1.07-2.95), pericarditis (RR,
282 1.85; 95% CI, 1.22-2.81), myocarditis (RR, 3.66; 95% CI, 2.67-5.01), heart failure (RR, 1.76; 95%
283 CI, 1.24-2.48), cardiomyopathy (RR, 1.50; 95% CI, 1.19-1.90), cardiac arrest (RR, 1.56; 95% CI,
284 1.19-2.03), cardiogenic shock (RR, 3.15; 95% CI, 1.54-6.43), pulmonary embolism (RR, 1.61;
285 95% CI, 1.15-2.24), thromboembolism (RR, 1.30; 95% CI, 1.12-1.52), chest pain (RR, 1.84; 95%
286 CI, 1.75-1.92), palpitations (RR, 1.98; 95% CI, 1.83-2.16), and syncope (RR, 1.30; 95% CI,
287 1.21-1.40).

288 **Figure 3** demonstrated that the risks of post-acute cardiovascular composite outcomes were
289 evident across age groups, race/ethnicity, gender, obesity status, severity of acute COVID-19,
290 and dominant virus variants.

291 **Sensitivity Analysis**

292 Negative control experiments (**Section S3**) indicated a slight systematic error, as shown by a
293 minor shift in point estimates with wider CIs. Analyses excluding patients solely based on PASC
294 (**Section S4**), those without prior cardiovascular history within the baseline period (**Section S5**),
295 those from the first COVID-19 wave (March to May 2020, **Section S6**), and those at site L
296 (**Section S7**), all gave similar results as in the primary analyses. Adolescents over 12 and
297 children aged 5 to 11 displayed higher risks of any cardiovascular outcomes compared to
298 children under 5 (**Section S8**). NHW patients exhibited the highest risks of any cardiovascular
299 outcome, followed by Hispanic and NHB groups (**Section S9**). Gender differences were noted:
300 females showed higher risks for hypertension, deep vein thrombosis, and cardiac arrest, whereas
301 males were more prone to premature atrial or ventricular contractions, pulmonary embolism, and
302 thrombophlebitis (**Section S10**). Obesity was associated with increased risks of ventricular
303 arrhythmias, premature atrial or ventricular contractions, cardiogenic shock, pulmonary
304 embolism, and thrombophlebitis, but lower risks of cardiovascular-related symptoms (**Section**
305 **S11**). Patients with severe COVID-19 during the acute phase had higher risks across all
306 composite cardiovascular outcomes compared to the non-severe group (**Section S12**). The pre-
307 Delta period saw the highest risk of any cardiovascular outcome, with consistent risks observed
308 across all dominant virus variants (**Section S13**).

309 **Discussion**

310 Our study involved 297,920 children and adolescents with COVID-19 and 915,402 without
311 COVID-19. We found that those infected with SARS-CoV-2 exhibited increased risks for a
312 range of post-acute cardiovascular outcomes, with RR between 1.26 and 2.92. These outcomes
313 included hypertension, ventricular arrhythmias, myocarditis, heart failure, cardiomyopathy,
314 cardiogenic shock, thromboembolism, chest pain, and palpitations, compared to non-infected

315 controls. These findings applied to patients both with and without CHDs, although children with
316 CHD showed a notably higher risk of atrial fibrillation. Especially noteworthy was the increased
317 risk of myocarditis in both groups consistent with prior studies showing an increased occurrence
318 of myocarditis in the months following the diagnosis of COVID-19, across different ages and
319 genders^{3,39-43}. Risks were consistently observed regardless of age, gender, race/ethnicity, obesity
320 status, severity of acute COVID-19, or virus variant. Even children and adolescents without a
321 history of any cardiovascular outcomes before SARS-CoV-2 infection showed increased risks,
322 suggesting a broad potential impact on those previously considered at low risk of cardiovascular
323 disease. Our results were robust through extensive sensitivity analyses and negative control
324 experiments.

325 Our study has several strengths. First, we used the RECOVER EHR database to build a large
326 cohort with and without COVID exposure, providing longitudinal follow-up throughout the post-
327 acute period, which extended past findings in both populations and outcomes definitions. Second,
328 propensity score stratification, accommodating hundreds of covariates while balancing the
329 covariates in the two comparative groups, improved confounder adjustment over traditional
330 linear regression, and reduced non-linear confounder effects⁴⁴. Third, all analyses were stratified
331 by CHD status, a unique consideration in the pediatric setting. We also employed RR as our
332 comparative measure, important for its collapsibility³⁴ and accurate interpretation in clinical
333 research³³. Lastly, we conducted negative control experiments^{37,38} to address systematic bias and
334 control unmeasured confounders.

335 The COVID-19 pandemic prompted the widespread use of social distancing, masking,
336 subsequently vaccines, and medications. As acute cases declined, attention shifted towards long-
337 term sequelae like cardiovascular PASC, particularly significant in pediatric patients, including

338 competitive athletes with a history of COVID-19 and any subsequent cardiac complications^{45,46}.
339 The substantial risks of post-acute cardiovascular effects of SARS-CoV-2 in pediatrics call for
340 dedicated healthcare resource allocation and long-term monitoring focused on cardiovascular
341 health.

342 **Limitations**

343 This study has several limitations. First, selecting high-quality COVID-19 controls is challenging
344 due to potential misclassification⁴⁷; to mitigate this, we incorporated a combination of PCR,
345 antigen, and serology tests, along with diagnosis codes for COVID-19 and long COVID, to
346 define our COVID-19 control group more accurately. On the other hand, although historical or
347 pre-pandemic controls have been suggested, this introduces distinct difficulties for pediatric
348 research due to the dynamic nature of rapid physical growth and physiological, cognitive,
349 emotional, and social development in children and adolescents, which may not align with pre-
350 pandemic benchmarks and could potentially lead to misleading results. Therefore, we used
351 contemporary controls in our primary analyses for a valid comparison. In addition, the increased
352 use of at-home rapid antigen tests later in the pandemic may have resulted in underreported
353 testing frequencies in EHRs. Nonetheless, our sensitivity analyses across different pandemic
354 phases were consistent, showing resilience to the influence of viral variants and mitigating
355 concerns about data capture completeness.

356 Second, observational studies inherently face the challenge of confounding bias. To mitigate this,
357 we used a propensity-score-based stratification approach and included a large number of
358 potential confounders. We also incorporated the negative control experiments^{37,38} in our
359 sensitivity analyses to adjust for unmeasured confounders. However, EHR data may still suffer

360 from misclassification biases, such as incorrect documentation of SARS-CoV-2 infection status
361 or incomplete follow-up data. Some efforts to lessen these biases have been made.^{37,38,48,49}

362 Third, the frequency of hospital visits⁵⁰ by COVID-19-positive patients might bias the observed
363 post-acute cardiovascular outcomes upward, as these patients may visit hospitals more frequently.
364 We tried to address this by including healthcare utilization factors such as hospital visits and
365 tests as confounders to balance the comparison groups.

366 Fourth, our analysis did not account for reinfection or COVID-19 vaccinations during the study
367 period, which could affect outcomes like myocarditis or pericarditis.^{13,51-53} We included the
368 dosage of COVID-19 vaccines and the interval since the last immunization as confounders to
369 partially adjust for these variables, but vaccinations and tests conducted outside hospital systems
370 may not be captured accurately in the EHR.

371 Lastly, cardiovascular diagnoses were based on ICD or SNONED codes without chart review
372 confirmation, which can lead to misclassification. Also, the absence of family history data in our
373 EHR limits understanding of the predisposition of patients to cardiovascular conditions due to
374 familial trends.

375 In summary, this study shows a heightened risk of cardiovascular disease in children following
376 SARS-CoV-2 infection, with similar risks observed in those with and without pre-existing
377 congenital heart disease. Awareness of cardiovascular complications in the post-acute phase will
378 improve timely diagnosis and treatment of these conditions.

379 **Acknowledgments**

380 This study is part of the NIH Researching COVID to Enhance Recovery (RECOVER) Initiative,
381 which seeks to understand, treat, and prevent the post-acute sequelae of SARS-CoV-2 infection
382 (PASC). For more information on RECOVER, visit <https://recovercovid.org/>.

383 We would like to thank the National Community Engagement Group (NCEG), all patients,
384 caregivers, and community Representatives, and all the participants enrolled in the RECOVER
385 Initiative. We would like to thank the patient representatives Megan Carmilani, Nick Guthe, and
386 Leah Baucom for their helpful suggestions and comments.

387 **Source of Funding**

388 This work was supported in part by National Institutes of Health (OT2HL161847-01,
389 1R01LM014344, 1R01AG077820, R01LM012607, R01AI130460, R01AG073435,
390 R56AG074604, R01LM013519, R56AG069880, U01TR003709, RF1AG077820, R21AI167418,
391 R21EY034179). This work was supported partially through Patient-Centered Outcomes
392 Research Institute (PCORI) Project Program Awards (ME-2019C3-18315 and ME-2018C3-
393 14899). All statements in this report, including its findings and conclusions, are solely those of
394 the authors and do not necessarily represent the views of the Patient-Centered Outcomes
395 Research Institute (PCORI), its Board of Governors or Methodology Committee.

396 **Disclosures**

397 This content is solely the responsibility of the authors and does not necessarily represent the
398 official views of the RECOVER Initiative, the NIH, or other funders.

399 All authors have no conflicts of interest to report.

400 **Supplemental Material**

401 Protocol and Statistical Analysis Plan

402 Supplemental Methods/Dataset/Tables S1-S3/Figures S1_S15

403 **References**

- 404 1. Toepfner N, Brinkmann F, Augustin S, Stojanov S, Behrends U. Long COVID in
405 pediatrics—epidemiology, diagnosis, and management. *Eur J Pediatr*. Published online
406 2024.
- 407 2. Al-Aly Z, Xie Y, Bowe B. High-dimensional characterization of post-acute sequelae of
408 COVID-19. *Nature*. 2021;594(7862):259-264.
- 409 3. Rao S, Lee GM, Razzaghi H, et al. Clinical features and burden of postacute sequelae of
410 SARS-CoV-2 infection in children and adolescents. *JAMA Pediatr*. 2022;176(10):1000-
411 1009.
- 412 4. Xie Y, Xu E, Bowe B, Al-Aly Z. Long-term cardiovascular outcomes of COVID-19. *Nat*
413 *Med*. 2022;28(3):583-590.
- 414 5. Ayoubkhani D, Khunti K, Nafilyan V, et al. Post-covid syndrome in individuals admitted to
415 hospital with covid-19: retrospective cohort study. *bmj*. 2021;372.
- 416 6. Daugherty SE, Guo Y, Heath K, et al. Risk of clinical sequelae after the acute phase of
417 SARS-CoV-2 infection: retrospective cohort study. *Bmj*. 2021;373.
- 418 7. Carfi A, Bernabei R, Landi F. Persistent symptoms in patients after acute COVID-19.
419 *JAMA*. 2020;324(6):603-605.
- 420 8. Huang C, Huang L, Wang Y, et al. 6-month consequences of COVID-19 in patients
421 discharged from hospital: a cohort study. *The Lancet*. 2021;397(10270):220-232.
- 422 9. Raman B, Bluemke DA, Lüscher TF, Neubauer S. Long COVID: post-acute sequelae of
423 COVID-19 with a cardiovascular focus. *Eur Heart J*. 2022;43(11):1157-1172.
- 424 10. Wang W, Wang CY, Wang SI, Wei JCC. Long-term cardiovascular outcomes in COVID-
425 19 survivors among non-vaccinated population: a retrospective cohort study from the
426 TriNetX US collaborative networks. *EClinicalMedicine*. 2022;53.

- 427 11. Lim JT, Liang En W, Tay AT, et al. Long-term Cardiovascular, Cerebrovascular, and
428 Other Thrombotic Complications in COVID-19 Survivors: A Retrospective Cohort Study.
429 *Clinical Infectious Diseases*. 2024;78(1):70-79.
- 430 12. Rao S, Gross RS, Mohandas S, et al. Postacute Sequelae of SARS-CoV-2 in Children.
431 *Pediatrics*. Published online 2024:e2023062570.
- 432 13. Block JP, Boehmer TK, Forrest CB, et al. Cardiac complications after SARS-CoV-2
433 infection and mRNA COVID-19 vaccination—PCORnet, United States, january 2021–
434 January 2022. *Morbidity and Mortality Weekly Report*. 2022;71(14):517.
- 435 14. Abi Nassif T, Fakhri G, Younis NK, et al. Cardiac manifestations in COVID-19 patients: a
436 focus on the pediatric population. *Canadian Journal of Infectious Diseases and Medical
437 Microbiology*. 2021;2021.
- 438 15. Chakraborty A, Johnson JN, Spagnoli J, et al. Long-term cardiovascular outcomes of
439 multisystem inflammatory syndrome in children associated with COVID-19 using an
440 institution based algorithm. *Pediatr Cardiol*. 2023;44(2):367-380.
- 441 16. Wu Q, Tong J, Zhang B, et al. Real-World Effectiveness of BNT162b2 Against Infection
442 and Severe Diseases in Children and Adolescents. *Ann Intern Med*. Published online
443 2024.
- 444 17. Liu PP, Blet A, Smyth D, Li H. The science underlying COVID-19: implications for the
445 cardiovascular system. *Circulation*. 2020;142(1):68-78.
- 446 18. Bozkurt B, Das SR, Addison D, et al. 2022 AHA/ACC key data elements and definitions
447 for cardiovascular and noncardiovascular complications of COVID-19: a report of the
448 American College of Cardiology/American Heart Association Task Force on Clinical Data
449 Standards. *Circ Cardiovasc Qual Outcomes*. 2022;15(7):e000111.
- 450 19. Van Der Bom T, Zomer AC, Zwinderman AH, Meijboom FJ, Bouma BJ, Mulder BJM. The
451 changing epidemiology of congenital heart disease. *Nat Rev Cardiol*. 2011;8(1):50-60.

- 452 20. Chavers BM, Li S, Collins AJ, Herzog CA. Cardiovascular disease in pediatric chronic
453 dialysis patients. *Kidney Int.* 2002;62(2):648-653.
- 454 21. Sharma C, Ganigara M, Galeotti C, et al. Multisystem inflammatory syndrome in children
455 and Kawasaki disease: a critical comparison. *Nat Rev Rheumatol.* 2021;17(12):731-748.
- 456 22. Harahsheh AS, Shah S, Dallaire F, et al. Kawasaki Disease in the Time of COVID-19 and
457 MIS-C: The International Kawasaki Disease Registry. *Canadian Journal of Cardiology.*
458 2024;40(1):58-72.
- 459 23. Peco-Antić A, Paripović D. Renal hypertension and cardiovascular disorder in children
460 with chronic kidney disease. *Srp Arh Celok Lek.* 2014;142(1-2):113-117.
- 461 24. Weaver DJ, Mitsnefes M. Cardiovascular disease in children and adolescents with
462 chronic kidney disease. In: *Seminars in Nephrology.* Vol 38. Elsevier; 2018:559-569.
- 463 25. Pawar SM. Multi system inflammatory syndrome in children and adolescents temporally
464 related to COVID-19. *GFNPSS-Int J Multidiscip Res.* 2020;1(3):97-102.
- 465 26. Matsubara D, Kauffman HL, Wang Y, et al. Echocardiographic findings in pediatric
466 multisystem inflammatory syndrome associated with COVID-19 in the United States. *J*
467 *Am Coll Cardiol.* 2020;76(17):1947-1961.
- 468 27. Centers for Disease Control and Prevention. COVID Data Tracker. Atlanta, GA: U.S.
469 Department of Health and Human Services, CDC. Published December 15, 2023.
470 <https://covid.cdc.gov/covid-data-tracker>
- 471 28. Suchard MA, Schuemie MJ, Krumholz HM, et al. Comprehensive comparative
472 effectiveness and safety of first-line antihypertensive drug classes: a systematic,
473 multinational, large-scale analysis. *The Lancet.* 2019;394(10211):1816-1826.
- 474 29. Simon TD, Haaland W, Hawley K, Lambka K, Mangione-Smith R. Development and
475 validation of the Pediatric Medical Complexity Algorithm (PMCA) version 3.0. *Acad*
476 *Pediatr.* 2018;18(5):577-580.

- 477 30. Woodruff RC, Campbell AP, Taylor CA, et al. Risk factors for severe COVID-19 in
478 children. *Pediatrics*. 2022;149(1):e2021053418.
- 479 31. Walker AM, Patrick AR, Lauer MS, et al. A tool for assessing the feasibility of
480 comparative effectiveness research. *Comparative effectiveness research*. Published
481 online 2013:11-20.
- 482 32. Austin PC. Balance diagnostics for comparing the distribution of baseline covariates
483 between treatment groups in propensity-score matched samples. *Stat Med*.
484 2009;28(25):3083-3107.
- 485 33. Whitcomb BW, Naimi AI. Defining, quantifying, and interpreting “noncollapsibility” in
486 epidemiologic studies of measures of “effect.” *Am J Epidemiol*. 2021;190(5):697-700.
- 487 34. Greenland S, Pearl J, Robins JM. Confounding and collapsibility in causal inference.
488 *Statistical science*. 1999;14(1):29-46.
- 489 35. Forrest CB, Burrows EK, Mejias A, et al. Severity of acute COVID-19 in children < 18
490 years old March 2020 to December 2021. *Pediatrics*. 2022;149(4):e2021055765.
- 491 36. GISAID, via CoVariants.org – Last updated 26 February 2024 – processed by Our World
492 in Data. [https://ourworldindata.org/grapher/covid-variants-area?time=earliest..2023-03-](https://ourworldindata.org/grapher/covid-variants-area?time=earliest..2023-03-06&country=~USA)
493 [06&country=~USA](https://ourworldindata.org/grapher/covid-variants-area?time=earliest..2023-03-06&country=~USA)
- 494 37. Schuemie MJ, Hripcsak G, Ryan PB, Madigan D, Suchard MA. Empirical confidence
495 interval calibration for population-level effect estimation studies in observational
496 healthcare data. *Proceedings of the National Academy of Sciences*. 2018;115(11):2571-
497 2577.
- 498 38. Schuemie MJ, Ryan PB, DuMouchel W, Suchard MA, Madigan D. Interpreting
499 observational studies: why empirical calibration is needed to correct p-values. *Stat Med*.
500 2014;33(2):209-218.
- 501 39. Daugherty SE, Guo Y, Heath K, et al. Risk of clinical sequelae after the acute phase of
502 SARS-CoV-2 infection: retrospective cohort study. *bmj*. 2021;373.

- 503 40. Murk W, Gierada M, Fralick M, Weckstein A, Klesh R, Rassen JA. Diagnosis-wide
504 analysis of COVID-19 complications: an exposure-crossover study. *Cmaj*.
505 2021;193(1):E10-E18.
- 506 41. Boehmer TK, Kompaniyets L, Lavery AM, et al. Association between COVID-19 and
507 myocarditis using hospital-based administrative data—United States, March 2020–
508 January 2021. *Morbidity and Mortality Weekly Report*. 2021;70(35):1228.
- 509 42. Barda N, Dagan N, Ben-Shlomo Y, et al. Safety of the BNT162b2 mRNA Covid-19
510 vaccine in a nationwide setting. *New England Journal of Medicine*. 2021;385(12):1078-
511 1090.
- 512 43. Rathore SS, Rojas GA, Sondhi M, et al. Myocarditis associated with Covid-19 disease: a
513 systematic review of published case reports and case series. *Int J Clin Pract*.
514 2021;75(11):e14470.
- 515 44. Amoah J, Stuart EA, Cosgrove SE, et al. Comparing propensity score methods versus
516 traditional regression analysis for the evaluation of observational data: a case study
517 evaluating the treatment of gram-negative bloodstream infections. *Clinical Infectious
518 Diseases*. 2020;71(9):e497-e505.
- 519 45. Chowdhury D, Fremed MA, Dean P, et al. Return to activity after SARS-CoV-2 infection:
520 cardiac clearance for children and adolescents. *Sports Health*. 2022;14(4):460-465.
- 521 46. Daniels CJ, Rajpal S, Greenshields JT, et al. Prevalence of clinical and subclinical
522 myocarditis in competitive athletes with recent SARS-CoV-2 infection: results from the big
523 ten COVID-19 cardiac registry. *JAMA Cardiol*. 2021;6(9):1078-1087.
- 524 47. Davis HE, McCorkell L, Vogel JM, Topol EJ. Long COVID: major findings, mechanisms
525 and recommendations. *Nat Rev Microbiol*. 2023;21(3):133-146.
- 526 48. Chen Y, Wang J, Chubak J, Hubbard RA. Inflation of type I error rates due to differential
527 misclassification in EHR-derived outcomes: empirical illustration using breast cancer
528 recurrence. *Pharmacoepidemiol Drug Saf*. 2019;28(2):264-268.

- 529 49. Duan R, Cao M, Wu Y, et al. An empirical study for impacts of measurement errors on
530 EHR based association studies. In: *AMIA Annual Symposium Proceedings*. Vol 2016.
531 American Medical Informatics Association; 2016:1764.
- 532 50. Asch DA, Sheils NE, Islam MN, Chen Y, Werner RM, Buresh J. Variation in US Hospital
533 Mortality Rates for Patients Admitted With COVID-19 During the First 6 Months of the
534 Pandemic. *JAMA Intern Med*. 2021; 181 (4): 471–8. Published online 2020.
- 535 51. Truong DT, Dionne A, Muniz JC, et al. Clinically suspected myocarditis temporally related
536 to COVID-19 vaccination in adolescents and young adults: suspected myocarditis after
537 COVID-19 vaccination. *Circulation*. 2022;145(5):345-356.
- 538 52. Kohli U, Desai L, Chowdhury D, et al. mRNA coronavirus disease 2019 vaccine-
539 associated myopericarditis in adolescents: a survey study. *J Pediatr*. 2022;243:208-213.
- 540 53. Stowe J, Miller E, Andrews N, Whitaker HJ. Risk of myocarditis and pericarditis after a
541 COVID-19 mRNA vaccine booster and after COVID-19 in those with and without prior
542 SARS-CoV-2 infection: A self-controlled case series analysis in England. *PLoS Med*.
543 2023;20(6):e1004245.
- 544
- 545

546 **Table 1.** Baseline characteristics of patients, stratified by COVID-19 status and CHD status.

	<i>COVID-19-positive</i>			<i>COVID-19-negative</i>		
	CHD (N=13,646)	Non-CHD (N=284,274)	Overall (N=297,920)	CHD (N=46,962)	Non-CHD (N=868,440)	Overall (N=915,402)
Age						
Median [Q1, Q3]	3.0 [1.0, 8.0]	8.0 [2.0, 14.0]	8.0 [2.0, 14.0]	3.0 [1.0, 8.0]	7.0 [2.0, 13.0]	6.0 [2.0, 13.0]
Year of Age, no. (%)						
0	3,126 (22.9)	35,297 (12.4)	38,423 (12.9)	11,632 (24.8)	90,104 (10.4)	101,736 (11.1)
1	1,879 (13.8)	22,792 (8.0)	24,671 (8.3)	5,486 (11.7)	80,038 (9.2)	85,524 (9.3)
2	1,214 (8.9)	16,011 (5.6)	17,225 (5.8)	3,765 (8.0)	60,131 (6.9)	63,896 (7.0)
3	1,007 (7.4)	13,679 (4.8)	14,686 (4.9)	3,547 (7.6)	54,274 (6.2)	57,821 (6.3)
4	810 (5.9)	13,439 (4.7)	14,249 (4.8)	3,111 (6.6)	52,261 (6.0)	55,372 (6.0)
5	725 (5.3)	12,248 (4.3)	12,973 (4.4)	2,856 (6.1)	50,846 (5.9)	53,702 (5.9)
6	588 (4.3)	11,603 (4.1)	12,191 (4.1)	2,292 (4.9)	44,811 (5.2)	47,103 (5.1)
7	491 (3.6)	11,270 (4.0)	11,761 (3.9)	1,839 (3.9)	39,620 (4.6)	41,459 (4.5)
8	429 (3.1)	11,105 (3.9)	11,534 (3.9)	1,513 (3.2)	35,983 (4.1)	37,496 (4.1)
9	410 (3.0)	11,229 (4.0)	11,639 (3.9)	1,358 (2.9)	33,960 (3.9)	35,318 (3.9)
10	370 (2.7)	11,820 (4.2)	12,190 (4.1)	1,213 (2.6)	32,537 (3.7)	33,750 (3.7)
11	374 (2.7)	12,532 (4.4)	12,906 (4.3)	1,174 (2.5)	32,381 (3.7)	33,555 (3.7)
12	282 (2.1)	10,969 (3.9)	11,251 (3.8)	989 (2.1)	31,364 (3.6)	32,353 (3.5)
13	276 (2.0)	11,583 (4.1)	11,859 (4.0)	993 (2.1)	32,054 (3.7)	33,047 (3.6)
14	275 (2.0)	12,273 (4.3)	12,548 (4.2)	974 (2.1)	33,222 (3.8)	34,196 (3.7)
15	277 (2.0)	13,051 (4.6)	13,328 (4.5)	962 (2.0)	33,911 (3.9)	34,873 (3.8)
16	278 (2.0)	13,268 (4.7)	13,546 (4.5)	896 (1.9)	34,232 (3.9)	35,128 (3.8)
17	275 (2.0)	13,181 (4.6)	13,456 (4.5)	825 (1.8)	33,998 (3.9)	34,823 (3.8)
18	225 (1.6)	9,695 (3.4)	9,920 (3.3)	615 (1.3)	24,962 (2.9)	25,577 (2.8)
19	160 (1.2)	8,725 (3.1)	8,885 (3.0)	480 (1.0)	19,826 (2.3)	20,306 (2.2)
20	175 (1.3)	8,504 (3.0)	8,679 (2.9)	442 (0.9)	17,925 (2.1)	18,367 (2.0)
Gender, no. (%)						
Female	6,333 (46.4)	141,868 (49.9)	148,201 (49.7)	22,066 (47.0)	419,249 (48.3)	441,315 (48.2)
Male	7,313 (53.6)	142,406 (50.1)	149,719 (50.3)	24,896 (53.0)	449,191 (51.7)	474,087 (51.8)
Race/Ethnicity, no. (%)						
NHW	6,247 (45.8)	118,054 (41.5)	124,301 (41.7)	23,067 (49.1)	395,378 (45.5)	418,445 (45.7)
NHB	2,307 (16.9)	51,139 (18.0)	53,446 (17.9)	7,294 (15.5)	147,576 (17.0)	154,870 (16.9)
Hispanic	3,197 (23.4)	70,834 (24.9)	74,031 (24.8)	9,662 (20.6)	187,025 (21.5)	196,687 (21.5)
AAPI	586 (4.3)	13,573 (4.8)	14,159 (4.8)	2,124 (4.5)	41,659 (4.8)	43,783 (4.8)
Multiple	400 (2.9)	7,493 (2.6)	7,893 (2.6)	1,486 (3.2)	26,357 (3.0)	27,843 (3.0)
Other/Unknown	909 (6.7)	23,181 (8.2)	24,090 (8.1)	3,329 (7.1)	70,445 (8.1)	73,774 (8.1)

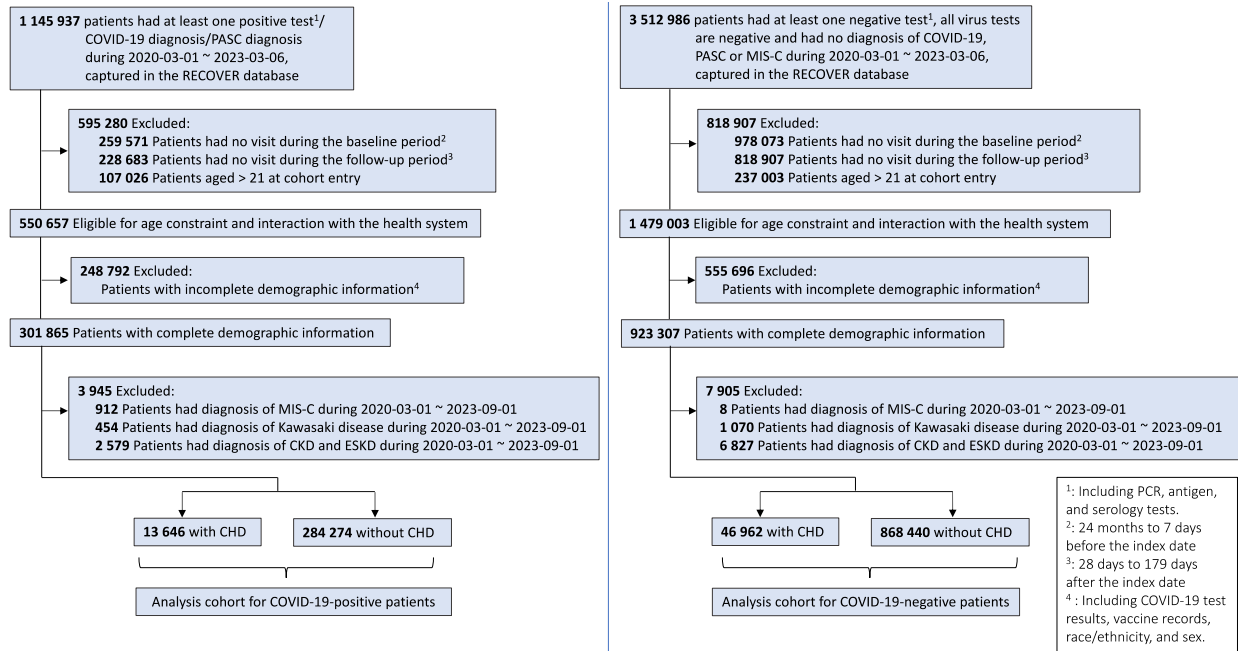
Health System, no. (%)						
A	1,212 (8.9)	26,724 (9.4)	27,936 (9.4)	4,259 (9.1)	86,746 (10.0)	91,005 (9.9)
B	1,730 (12.7)	52,598 (18.5)	54,328 (18.2)	6,099 (13.0)	134,278 (15.5)	140,377 (15.3)
C	1,251 (9.2)	13,977 (4.9)	15,228 (5.1)	4,890 (10.4)	61,282 (7.1)	66,172 (7.2)
D	99 (0.7)	5,222 (1.8)	5,321 (1.8)	255 (0.5)	10,480 (1.2)	10,735 (1.2)
E	838 (6.1)	7,171 (2.5)	8,009 (2.7)	3,234 (6.9)	35,653 (4.1)	38,887 (4.2)
F	702 (5.1)	12,351 (4.3)	13,053 (4.4)	2,806 (6.0)	47,709 (5.5)	50,515 (5.5)
G	431 (3.2)	6,942 (2.4)	7,373 (2.5)	872 (1.9)	16,838 (1.9)	17,710 (1.9)
H	606 (4.4)	9,178 (3.2)	9,784 (3.3)	1,816 (3.9)	28,694 (3.3)	30,510 (3.3)
I	344 (2.5)	5,121 (1.8)	5,465 (1.8)	1,041 (2.2)	13,666 (1.6)	14,707 (1.6)
J	1,165 (8.5)	22,316 (7.9)	23,481 (7.9)	4,845 (10.3)	102,912 (11.9)	107,757 (11.8)
K	1,154 (8.5)	23,754 (8.4)	24,908 (8.4)	4,048 (8.6)	85,730 (9.9)	89,778 (9.8)
L	593 (4.3)	55,135 (19.4)	55,728 (18.7)	1,180 (2.5)	116,396 (13.4)	117,576 (12.8)
M	539 (3.9)	8,408 (3.0)	8,947 (3.0)	1,259 (2.7)	14,638 (1.7)	15,897 (1.7)
O	8 (0.1)	673 (0.2)	681 (0.2)	27 (0.1)	1,693 (0.2)	1,720 (0.2)
P	593 (4.3)	4,143 (1.5)	4,736 (1.6)	2,359 (5.0)	24,422 (2.8)	26,781 (2.9)
Q	502 (3.7)	7,947 (2.8)	8,449 (2.8)	2,069 (4.4)	24,457 (2.8)	26,526 (2.9)
R	10 (0.1)	402 (0.1)	412 (0.1)	7 (0.0)	317 (0.0)	324 (0.0)
S	798 (5.8)	10,723 (3.8)	11,521 (3.9)	2,638 (5.6)	34,231 (3.9)	36,869 (4.0)
T	1,071 (7.8)	11,489 (4.0)	12,560 (4.2)	3,258 (6.9)	28,298 (3.3)	31,556 (3.4)
Entry time, no. (%)						
03/2020 - 05/2020	167 (1.2)	2,708 (1.0)	2,875 (1.0)	1,545 (3.3)	15,812 (1.8)	17,357 (1.9)
06/2020 - 08/2020	308 (2.3)	9,681 (3.4)	9,989 (3.4)	4,028 (8.6)	56,525 (6.5)	60,553 (6.6)
09/2020 - 11/2020	588 (4.3)	16,600 (5.8)	17,188 (5.8)	4,305 (9.2)	78,031 (9.0)	82,336 (9.0)
12/2020 - 02/2021	1,025 (7.5)	28,124 (9.9)	29,149 (9.8)	3,761 (8.0)	75,910 (8.7)	79,671 (8.7)
03/2021 - 05/2021	729 (5.3)	16,304 (5.7)	17,033 (5.7)	4,316 (9.2)	79,840 (9.2)	84,156 (9.2)
06/2021 - 08/2021	726 (5.3)	16,924 (6.0)	17,650 (5.9)	4,466 (9.5)	78,411 (9.0)	82,877 (9.1)
09/2021 - 11/2021	1,140 (8.4)	26,733 (9.4)	27,873 (9.4)	5,259 (11.2)	120,200 (13.8)	125,459 (13.7)
12/2021 - 02/2022	3,736 (27.4)	82,586 (29.1)	86,322 (29.0)	4,243 (9.0)	89,917 (10.4)	94,160 (10.3)
03/2022 - 05/2022	1,188 (8.7)	20,014 (7.0)	21,202 (7.1)	3,770 (8.0)	67,148 (7.7)	70,918 (7.7)
06/2022 - 08/2022	1,889 (13.8)	32,369 (11.4)	34,258 (11.5)	3,172 (6.8)	52,367 (6.0)	55,539 (6.1)
09/2022 - 11/2022	956 (7.0)	15,140 (5.3)	16,096 (5.4)	4,291 (9.1)	83,680 (9.6)	87,971 (9.6)
12/2022 - 03/2023	1,194 (8.7)	17,091 (6.0)	18,285 (6.1)	3,806 (8.1)	70,599 (8.1)	74,405 (8.1)
Obesity, no. (%)						

No	8,861 (64.9)	149,365 (52.5)	158,226 (53.1)	31,985 (68.1)	495,600 (57.1)	527,585 (57.6)
Yes	4,425 (32.4)	110,883 (39.0)	115,308 (38.7)	13,057 (27.8)	288,267 (33.2)	301,324 (32.9)
Unknown	360 (2.6)	24,026 (8.5)	24,386 (8.2)	1,920 (4.1)	84,573 (9.7)	86,493 (9.4)
PMCA, no. (%)						
0	3,172 (23.2)	202,897 (71.4)	206,069 (69.2)	12,383 (26.4)	619,127 (71.3)	631,510 (69.0)
1	2,544 (18.6)	48,078 (16.9)	50,622 (17.0)	8,759 (18.7)	146,594 (16.9)	155,353 (17.0)
2	7,930 (58.1)	33,299 (11.7)	41,229 (13.8)	25,820 (55.0)	102,719 (11.8)	128,539 (14.0)
Number of negative COVID-19 tests before index date, no. (%)						
0	5,633 (41.3)	169,814 (59.7)	175,447 (58.9)	29,732 (63.3)	649,004 (74.7)	678,736 (74.1)
1	2,855 (20.9)	60,909 (21.4)	63,764 (21.4)	8,764 (18.7)	141,107 (16.2)	149,871 (16.4)
2	1,605 (11.8)	25,685 (9.0)	27,290 (9.2)	3,637 (7.7)	44,266 (5.1)	47,903 (5.2)
≥3	3,553 (26.0)	27,866 (9.8)	31,419 (10.5)	4,829 (10.3)	34,063 (3.9)	38,892 (4.2)
Dosage of COVID-19 vaccine, no. (%)						
0	9,995 (73.2)	175,674 (61.8)	185,669 (62.3)	34,796 (74.1)	566,168 (65.2)	600,964 (65.7)
1	773 (5.7)	17,218 (6.1)	17,991 (6.0)	2,336 (5.0)	46,143 (5.3)	48,479 (5.3)
≥2	2,878 (21.1)	91,382 (32.1)	94,260 (31.6)	9,830 (20.9)	256,129 (29.5)	265,959 (29.1)
Number of unique medications, no. (%)						
0	1,458 (10.7)	61,432 (21.6)	62,890 (21.1)	7,221 (15.4)	224,089 (25.8)	231,310 (25.3)
1	768 (5.6)	31,344 (11.0)	32,112 (10.8)	3,397 (7.2)	100,046 (11.5)	103,443 (11.3)
2	646 (4.7)	26,711 (9.4)	27,357 (9.2)	2,580 (5.5)	80,440 (9.3)	83,020 (9.1)
≥3	10,774 (79.0)	164,787 (58.0)	175,561 (58.9)	33,764 (71.9)	463,865 (53.4)	497,629 (54.4)

548 **Table 2.** Absolute risks (in %, incident/total patients) of individual and composite cardiovascular
 549 outcomes, stratified by COVID-19 status and CHD status.

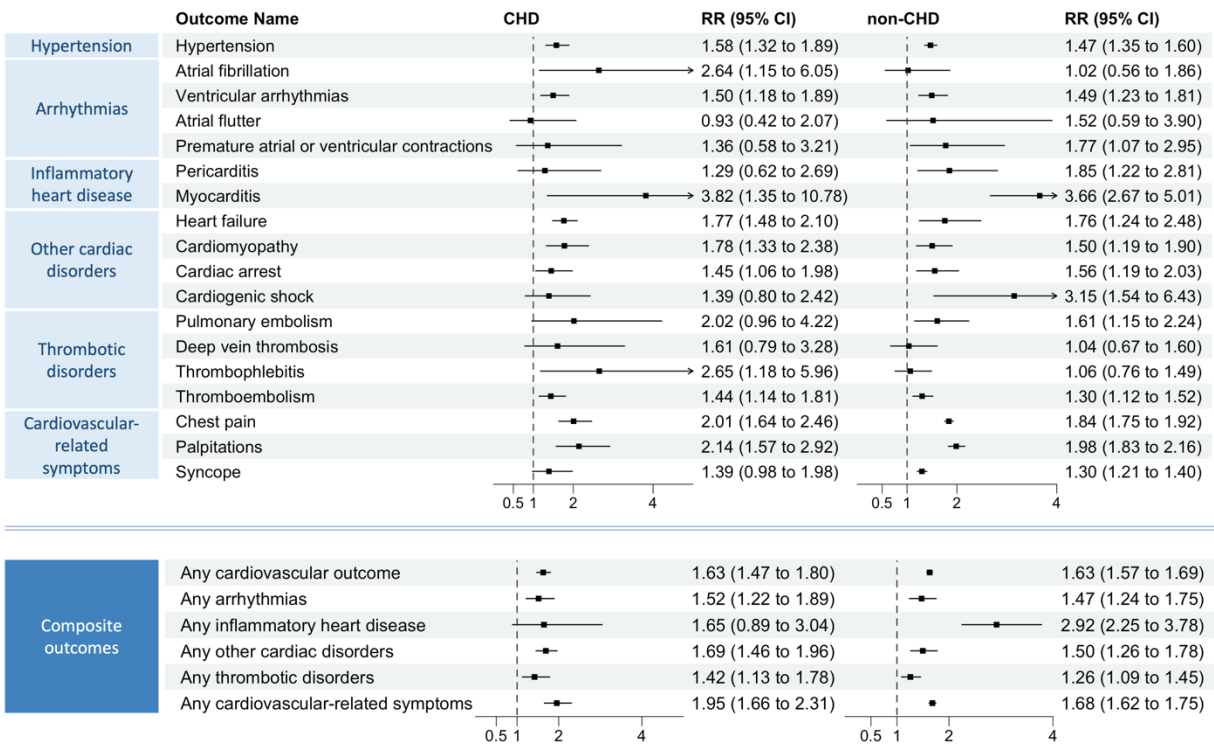
550	<i>COVID-19-positive</i>			<i>COVID-19-negative</i>		
	CHD (N=13,646)	Non-CHD (N=284,274)	Overall (N=297,920)	CHD (N=46,962)	Non-CHD (N=868,440)	Overall (N=915,402)
Any cardiovascular outcome	5.566 (601/10797)	2.19 (5895/269210)	2.32 (6496/280007)	3.998 (1529/38248)	1.261 (10481/831098)	1.381 (12010/869346)
Hypertension	1.531 (195/12736)	0.333 (936/281427)	0.384 (1131/294163)	1.08 (481/44548)	0.209 (1801/861469)	0.252 (2282/906017)
Any arrhythmias	0.967 (126/13029)	0.073 (208/283655)	0.113 (334/296684)	0.79 (355/44955)	0.053 (461/866011)	0.09 (816/910966)
Atrial fibrillation	0.081 (11/13619)	0.006 (16/284233)	0.009 (27/297852)	0.038 (18/46896)	0.005 (46/868329)	0.007 (64/915225)
Ventricular arrhythmias	0.863 (113/13089)	0.06 (171/283757)	0.096 (284/296846)	0.695 (314/45159)	0.044 (378/866270)	0.076 (692/911429)
Atrial flutter	0.059 (8/13577)	0.002 (7/284243)	0.005 (15/297820)	0.092 (43/46754)	0.002 (17/868365)	0.007 (60/915119)
Premature atrial or ventricular contractions	0.059 (8/13619)	0.009 (26/284206)	0.011 (34/297825)	0.058 (27/46862)	0.006 (52/868245)	0.009 (79/915107)
Any inflammatory heart disease	0.125 (17/13603)	0.044 (126/284132)	0.048 (143/297735)	0.094 (44/46828)	0.015 (134/868141)	0.019 (178/914969)
Pericarditis	0.081 (11/13628)	0.014 (39/284198)	0.017 (50/297826)	0.077 (36/46886)	0.007 (64/868296)	0.011 (100/915182)
Myocarditis	0.059 (8/13620)	0.034 (97/284185)	0.035 (105/297805)	0.019 (9/46902)	0.01 (83/868259)	0.01 (92/915161)
Any other cardiac disorders	2.236 (281/12565)	0.079 (225/283615)	0.171 (506/296180)	1.632 (710/43513)	0.055 (474/866289)	0.13 (1184/909802)
Heart failure	1.609 (208/12930)	0.02 (57/284114)	0.089 (265/297044)	1.179 (527/44688)	0.012 (106/868010)	0.069 (633/912698)
Cardiomyopathy	0.578 (77/13331)	0.042 (118/283824)	0.066 (195/297155)	0.361 (166/46046)	0.028 (245/867069)	0.045 (411/913115)
Cardiac arrest	0.483 (65/13461)	0.032 (91/284122)	0.052 (156/297583)	0.356 (165/46303)	0.022 (194/867807)	0.039 (359/914110)
Cardiogenic shock	0.155 (21/13526)	0.006 (17/284233)	0.013 (38/297759)	0.12 (56/46554)	0.002 (18/868332)	0.008 (74/914886)
Any thrombotic disorders	0.913 (119/13029)	0.102 (288/283427)	0.137 (407/296456)	0.737 (332/45039)	0.084 (728/865935)	0.116 (1060/910974)
Pulmonary embolism	0.103 (14/13618)	0.022 (62/284178)	0.026 (76/297796)	0.047 (22/46872)	0.013 (110/868175)	0.014 (132/915047)
Deep vein thrombosis	0.096 (13/13585)	0.011 (31/284188)	0.015 (44/297773)	0.062 (29/46848)	0.01 (86/868264)	0.013 (115/915112)
Thrombophlebitis	0.096 (13/13591)	0.018 (51/284141)	0.021 (64/297732)	0.036 (17/46817)	0.017 (151/867965)	0.018 (168/914782)
Thromboembolism	0.896 (117/13064)	0.091 (258/283513)	0.126 (375/296577)	0.72 (325/45113)	0.074 (639/866229)	0.106 (964/911342)
Cardiovascular-related symptoms	2.002 (259/12938)	1.748 (4772/272941)	1.76 (5031/285879)	1.028 (463/45035)	0.959 (8071/842021)	0.962 (8534/887056)
Chest pain	1.345 (177/13160)	1.229 (3401/276688)	1.234 (3578/289848)	0.637 (292/45810)	0.611 (5202/851857)	0.612 (5494/897667)
Palpitations	0.564 (76/13474)	0.378 (1067/282181)	0.387 (1143/295655)	0.274 (127/46402)	0.181 (1566/863436)	0.186 (1693/909838)
Syncope	0.371 (50/13482)	0.42 (1181/281122)	0.418 (1231/294604)	0.271 (126/46454)	0.298 (2563/860375)	0.297 (2689/906829)

551 **Figure 1.** Selection of participants for both COVID-19-positive and COVID-19-negative
 552 patients, stratified by CHD status.



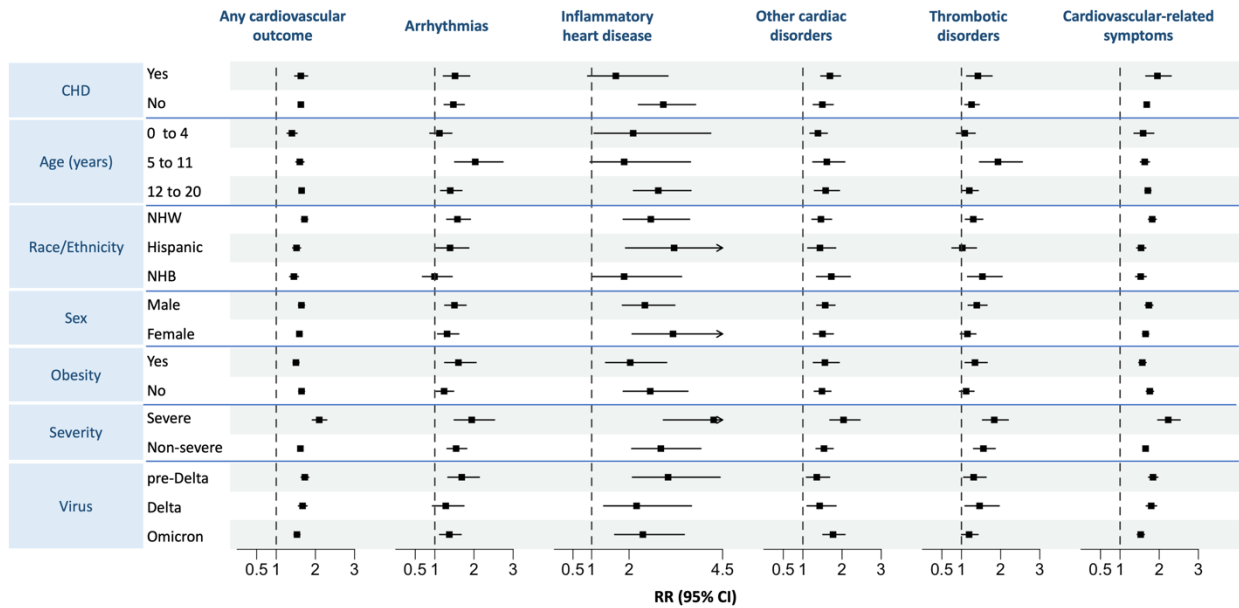
553

554 **Figure 2.** Relative Risk (RR) of incident post-acute COVID-19 cardiovascular outcomes
 555 compared with the COVID-19-negative cohort, stratified by CHD status. Composite outcomes
 556 consisted of arrhythmias (atrial fibrillation, ventricular arrhythmias, atrial flutter, and premature
 557 atrial or ventricular contractions), inflammatory heart disease (pericarditis and myocarditis),
 558 other cardiac disorders (heart failure, cardiomyopathy, cardiac arrest, and cardiogenic shock),
 559 thrombotic disorders (pulmonary embolism, deep vein thrombosis, thrombophlebitis, and
 560 thromboembolism), cardiovascular-related symptoms (chest pain, palpitations, and syncope), and
 561 any cardiovascular outcome (incident occurrence of any cardiovascular outcome studied).



562

563 **Figure 3.** Subgroup analyses of Relative Risk (RR) of incident post-acute COVID-19 composite
 564 cardiovascular outcomes compared with the COVID-19-negative cohort, according to CHD
 565 status, age, race/ethnicity, sex, obesity, severity during the acute phase of COVID-19, and the
 566 dominant variant.



567