

Prenatal Pyrethroid Exposure, Placental Gene Network Modules, and Neonatal Neurobehavior

Yewei Wang¹, Karen Hermetz¹, Amber Burt¹, Corina Lesseur², Parinya Panuwet¹, Nancy Fiedler³, Tippawan Prapamontol⁴, Panrapee Suttiwan⁵, Supattra Sittiwang⁵, Warangkana Naksen⁶, Dana Boyd Barr¹, Ke Hao⁷, Jia Chen², Carmen J. Marsit¹

1 Gangarosa Department of Environmental Health, Rollins School of Public Health, Emory University, Atlanta, GA, USA

2 Department of Environmental Medicine and Public Health, Icahn School of Medicine at Mount Sinai, New York, NY, USA

3 Rutgers University School of Public Health, Environmental and Occupational Health Sciences Institute, Piscataway, NJ, USA

4 Research Institute for Health Sciences, Chiang Mai University, Chiang Mai, Thailand

5 Life Di Center, Faculty of Psychology, Chulalongkorn University, Bangkok, Thailand

6 Faculty of Public Health, Chiang Mai University, Chiang Mai, Thailand

7 Department of Genetics and Genomic Sciences, Icahn School of Medicine at Mount Sinai, New York, NY, USA

Abstract

Prenatal pesticide exposure may adversely affect child neurodevelopment, and this may partly arise from impairing the placenta's vital role in fetal development. In a cohort of pregnant farmworkers from Thailand (N=248), we examined the links between urinary metabolites of pyrethroid pesticides during pregnancy, placental gene expression networks derived from transcriptome sequencing, and newborn neurobehavior assessed using the NICU Network Neurobehavioral Scales (NNNS) at 5 weeks of age. The urinary concentrations of cis-3-(2,2-dichlorovinyl)-2,2-dimethylcyclopropane carboxylic acid (cis-DCCA) during pregnancy were found to be significantly positively correlated with the NNNS scores for attention ($\beta = 0.49$, $p = 0.005$), handling ($\beta = 1.04$, $p = 0.04$), and excitability ($\beta = 0.15$, $p = 0.02$). The urinary concentrations of trans-3-(2,2-dichlorovinyl)-2,2-dimethylcyclopropane carboxylic acid (trans-DCCA) also showed a significant positive association with attention ($\beta = 0.49$, $p = 0.01$). Focusing on the 21 gene network modules in the placenta identified by Weighted Gene Co-expression Network Analysis (WGCNA), our analysis revealed significant associations between metabolites and nine distinct modules, and between thirteen modules and NNNS, with eight modules showing overlap. Notably, stress was negatively associated with the middleblue module (interferon alpha response) and the salmon module (Myc target). The middleblue module was correlated with attention, arousal, and quality of movement. The analysis also highlighted the first and third trimesters as critical periods for the influence of exposures on placental function, with pyrethroid metabolites measured early in pregnancy significantly negatively associated with the turquoise module (protein secretion), and those measured later in pregnancy having negative associations with modules related to Oxidative Phosphorylation (OXPHOS) and DNA repair. Additionally, the cumulative sum of 3PBA across pregnancy was significantly negatively associated with the lightyellow module (OXPHOS). These findings suggest that prenatal exposure to pyrethroid pesticides may influence neonatal neurobehavior through specific placental mechanisms that impact gene expression and metabolic pathway, and that the effects of environmental pyrethroid exposures on fetal neurodevelopment varies throughout pregnancy. These results offer valuable insights for future risk assessment and intervention strategies.

Keywords: Pyrethroid insecticides, Placenta Transcriptome, Gene networks, Thailand birth cohort, NNNS

Introduction

The pervasive use of pyrethroid insecticides in agriculture and residential areas has raised concerns regarding their potential neurotoxic effects, particularly during vulnerable developmental stages such as gestation [1-5]. Pyrethroids, recognized for their efficacy in pest control, possess neurotoxic potential at elevated doses, warranting an examination of their impact on fetal development from the prenatal dysthyroid exposures [6-9]. The neurobehavioral effects are particularly alarming due to their implications for long-term health [6, 10, 11]. Although much of the evidence for neurotoxic effects on offspring originates from animal studies [12-14], a growing number of epidemiologic investigations also support these findings [15, 16]. Several studies have linked pyrethroids to behavioral disorders [17], cognitive deficits [18], learning disorders and attention deficit hyperactivity disorder [19, 20], further emphasizing the potential risks associated with these exposures.

Recent studies reveal a complex picture of the potential effects of prenatal exposure to pyrethroids on infants, particularly when evaluated using the Neonatal Intensive Care Unit Network Neurobehavioral Scale (NNS). This scale serves as a crucial tool for evaluating early developmental outcomes affected by prenatal exposures [9, 21]. Research into the impact of prenatal pyrethroid exposure on infant neurodevelopment has yielded heterogeneous results based on the NNS measurement. Several studies document associations between exposure and compromised neural and mental development at one year of age, underscoring the need to minimize such exposures during pregnancy [22]. Paradoxically, other research suggests that exposure during the first and second trimester might adversely affect motor and adaptive behavior in one-year-old children, although the underlying mechanisms remain elusive and could be influenced by confounding factors [23]. In contrast, certain studies report no significant effects on motor development at three months [7]. Beyond the NNS measurements, another child cohort study suggests that pyrethroid exposure during gestation may not adversely impact early language development, potentially reducing the risk of low vocabulary scores [24]. These findings may indicate either positive effects or the influence of unmeasured confounders. The varied outcomes highlight the complexity of definitively linking prenatal pyrethroid exposure to specific neurodevelopmental trajectories and emphasize the need for further research to clarify these effects and inform public health guidelines.

The environmental health field increasingly recognizes gestation as a period of significant vulnerability and importance for human health [25, 26]. The placenta is a crucial organ during gestation, garnering considerable research interest for its roles in supporting fetal development and its potential influence on infant neurodevelopment and behavior [27-30]. Studies have indicated a notable link between various aspects of placental function—ranging from placental miRNA expression to genetic and epigenetic variation, including the expression of imprinted genes—and early neurobehavioral outcomes, as measured by the NNS [31-33]. These findings propose that the placenta could play a central role in shaping the early neurodevelopmental pathways of infants. Nonetheless, the research into prenatal exposures and their impact on fetal development must inherently consider placental function, given its mediatory role in fetal exposure to various substances [34-37]. Our recent investigations demonstrate the intricate interactions between environmental pyrethroids exposures and placental function, revealing these placental alterations may have significant implications for fetal development and other pathologic processes[38]. Still, significant gaps persist in understanding how these interactions influence NNS outcomes in subsequent generations.

This research explores the implications between environmental exposures, specifically pyrethroid metabolites, and neurobehavioral outcomes in neonates during critical developmental windows. We make use of the NNNS as an early comprehensive measure of developmental outcomes, and examine the pyrethroid urinary metabolites at the early middle and late stages of pregnancy: 3-phenoxybenzoic acid (3PBA), a principal metabolite of permethrin, cypermethrin, and deltamethrin, as well as cis-DCCA and trans-DCCA, primarily derived from cyfluthrin and beta-cyfluthrin, respectively. By employing a comprehensive analytical framework, this study is designed to offer insights into the interactions among exposure metabolites, placental gene expressions, and NNNS outcomes. Our research is dedicated to establishing a foundational comprehension of the potential risks and underlying mechanisms at play, thereby contributing to the burgeoning understanding within environmental health sciences.

Methods

2.1. Study population

The SAWASDEE study aimed to examine the health of pregnant women involved in agricultural activities in Thailand and their newborn children. Recruitment took place between July 2017 and June 2019. Strict eligibility criteria were defined for participation, with detailed criteria available in Baumert et al. [39]. Participants were primarily recruited in their first trimester during antenatal care visits at district hospitals and community health clinics in Chiang Mai Province, Thailand. A total of 394 women were enrolled, 333 participants delivered live infants, and pyrethroid exposures were assessed in 332 of those women. Additionally, 253 participants had placenta samples available suitable for transcriptomic analysis. Based on health assessments, 320 of these infants, at 5 weeks of age, underwent the NNNS procedure at the SAWASDEE clinic. When paired datasets of infants and their mothers were considered, the total study sample was finalized at 248 pairs. All research protocols and procedures were rigorously reviewed and approved by the Institutional Review Board of Emory University and the Ethical Review Board of the Institute of Health Sciences, Chiang Mai University.

2.2. Urine collection and pyrethroid metabolites measurement

Urine samples were procured and processed as outlined by Baumert et al. (2022) [39]. The samples were diluted (1000-fold), creatinine analogs isotope-labeled, and analyzed via LC-MS/MS. Adopting a composite sampling strategy, samples were randomized using the Fisher-Yates shuffle [40] and assessed for pyrethroid metabolites, including 3-phenoxybenzoic acid (3PBA), cis- or trans-3-(2,2-dichlorovinyl)-2,2-dimethylcyclopropane carboxylic acid (cis-DCCA, trans-DCCA). Target analytes were measured using negative-mode electrospray ionization (ESI)-tandem mass spectrometry (MS/MS) with isotope dilution quantitation. The method's validity was confirmed through participation in the GEQUAS scheme. Further details on sample preparation, analysis, and quality control, consistent with the approach outlined in Baumert et al. (2022), can be found therein. To normalize metabolite concentrations, urinary creatinine was measured in each sample. The quantification and validation data were provided in the previous publication [38]. Quality assurance was maintained through semi-annual GEQUAS certification and the inclusion of NIST SRM 3667 standards.

2.3. Placenta collection and RNA extraction

Placental collection and RNA extraction were consistent with Baumert et al. (2022) [39]. Post-delivery, within a 2-hour window, five circular slices approximately 1 inch in diameter were excised from regions

free of maternal decidua and around 2 cm from the umbilical cord insertion site. These sections underwent a rinse and were promptly immersed in RNALater solution (Invitrogen). After a minimum of 72 hours at 4°C, they were snap frozen using liquid nitrogen, and then homogenized into a powdered form. The freeze-dried samples were allocated into 2 mL cryovials and stored at -80°C until subsequent analysis. RNA extraction was performed using the Norgen Animal Tissue RNA Purification Kit. Concentrations of the resultant RNA were determined with a NanoDrop 2000 spectrophotometer, while RNA quality was ascertained through gel electrophoresis on an Agilent 2100 Bioanalyzer system.

2.4. Transcriptome analysis

Our approach to transcriptome analysis adhered to the method described by Li et al. (2023) [41]. Briefly, RNA-Seq libraries were prepared after rRNA depletion using the RNase H protocol from New England Biolabs (NEB). Sequencing was carried out with DNBseq™ technology, targeting approximately 20 million paired-end 100 bp reads for each sample. Over 85% of these reads aligned to the human genome (GRCh38). Fastq file quality was assessed using MultiQC. Alignment and quantification were executed using STAR and the GenCode v33 annotation, respectively [42]. Gene-level read counts were derived from FeatureCounts. Post filtering, which removed genes with low expression, genes from sex chromosomes, and non-protein-coding genes, normalization was executed using the DESeq2 R package [43]. The removeBatchEffect function from the limma R package addressed technical variances from RIN values [44]. After specific exclusions, the refined dataset incorporated 253 samples.

2.5. NICU Network Neurobehavioral Scale (NNNS) assessment

At five weeks post-birth, mothers and infants visited the SAWASDEE clinics as detailed in Baumert et al [39]. Infants' weight, length, and head circumference were documented, while mothers completed the Depression Anxiety Stress Scale (DASS). The NNNS, tailored for at-risk infants, was used to evaluate infants' neurological functions and behaviors. Suitable for infants aged 30-46 weeks (adjusted for conceptional age), the NNNS is both internally and externally valid. Study nurses, accredited by a Brown University trainer and unaware of infants' exposure details, conducted the tests. These nurses participated in monthly reliability sessions. Assessments were conducted in a quiet, temperature-regulated room, starting with baseline observations, and progressing through habituation tests, reflex examinations, and other neurological evaluations. For the analysis, measurements associated with stress were aggregated under the "Stress" category. The NNNS data were then organized into 13 distinct categories, including Arousal, Asymmetric Reflexes, Attention, Excitability, Handling, Hypertonicity, Hypotonicity, Lethargy, Non-optimal Reflexes, Quality of Movement, Self-regulation, and Stress. Statistical summaries for each category were calculated, encompassing the mean, standard deviation (SD), minimum (Min), 25th percentile, median, 75th percentile, maximum (Max), and interquartile range (IQR), providing a comprehensive overview of the distribution and variability of each NNNS characteristic.

2.6 Association analysis between metabolites and NNNS

Regression analyses were conducted to investigate the relationships between the NNNS scores and aggregated metabolites across three trimesters, namely 3PBA, cis-DCCA, and trans-DCCA. Linear regression models were employed for linear variables, which included 'Attention', 'Handling', 'Self-Regulation', 'Arousal', 'Excitability', 'Stress', 'Hypertonicity', and 'Hypotonicity'. Poisson regression models were utilized for the count variable, 'Lethargy'. Coefficients, p-values, and correlations for each

regression model were calculated and presented in a summarized table with a significance level set at $p < 0.05$. For a comprehensive visual representation, a heatmap was designed using the `ggplot2` package in R, highlighting the Pearson correlations between summed metabolite variables and NNNS measures. The heatmap employed a color gradient ranging from blue (for correlations of -0.3) to red (for correlations of 0.3), with white signifying no correlation. Cells with statistically significant correlations ($p < 0.05$) were marked with asterisks for easy identification.

2.7. Association analysis between placental genes and NNNS

To examine gene-specific associations between transcript level and NNNS measurement, we used linear regression to investigate the associations between each gene counts with each NNNS measurements. Genes demonstrating significant associations at a nominal threshold ($P < 0.05$) were cataloged. The comprehensive gene list, alongside a frequency analysis of the genes correlated with NNNS, was visually presented. Bar charts illustrated the overall gene associations, and a heatmap provided a detailed visualization of the gene frequencies in relation to NNNS measurements.

To examine functional networks of co-regulated genes, we utilized the weighted gene co-expression network analysis (WGCNA), previously reported in Qian's paper [22] resulting in 21 gene modules. The first principal component of the genes counts within each module is used to define a module eigengene, which was then examined for correlation with each NNNS measurement using the Pearson correlation, incorporating a false discovery rate (FDR) correction. A heatmap was constructed to visually represent these associations.

2.8. Association analysis between metabolites, gene modules, and NNNS

To elucidate the interconnections among exposures, modules, and outcomes within our study, we utilized a structured Sankey diagram, crafted with the `plotly` library in R. Within the diagram, nodes symbolize the exposures, modules, and outcomes, while the connecting links denote the correlations between them. For a focused trimester-based analysis, three composite variables, T1, T2, and T3, were formulated by grouping metabolites from the respective early, middle, and late pregnancy periods. Pearson correlation was employed to determine the correlations.

Result

Characteristics of the Study Population and NNNS Outcomes at Five Weeks Postpartum

In this study, 248 pregnant women from the SAWASDEE cohort, with complete pyrethroid exposure data across three pregnancy periods and available placenta transcriptomics, had children who completed the NNNS at five weeks postpartum (Fig. 1). Demographics of the population are reported in Table 1. The study population comprised participants with a mean maternal age of 25.86 years ($SD = 5.31$) an average weight of 64.77 kg ($SD = 10.75$) and a height of 153.98 cm ($SD = 6.06$). The gestational age at birth was on average 269.56 days ($SD = 7.90$ days) or 38.5 weeks, ranging from 37.3 to 39.7 weeks. Infant demographics showed a balanced sex distribution, with males accounting for 50.8% of the sample. Neonatal metrics revealed an average weight of 3.01 kg ($SD = 0.41$), a body length of 48.37 cm ($SD = 2.57$), and a head circumference of 32.86 cm ($SD = 1.93$). Additionally, the average placental weight was recorded at 546.06 g ($SD = 108.49$). These parameters of this subcohort align closely with the physical characteristics reported in prior studies of the parent cohort [38, 41]. Statistics for the NNNS summary scores, assessed at 5 weeks of age for 248 infants are presented in Table 2. Compared to the normal

ranges for NNNS as outlined in reference [45], most candidates fell within the normal range for the majority of NNNS measurements. Exceptions included Arousal, Attention, Excitability, Quality of Movement, and Stress/Abstinence, where some proportion of infants deviated from the normative values.

Statistical Associations Between Metabolites and NNNS Measures

Table 3 reports the coefficients and P-values of the linear regression between the pyrethroid metabolites and NNNS scales; the majority of the observed β values ranged from -0.06 to 0.10. The metabolite cis-DCCA, which showed frequent significant associations across different NNNS. Specifically, cis-DCCA was positively associated with the NNNS scales of attention ($\beta = 0.49$, $p = 0.005$) and handling ($\beta = 0.03$, $p = 0.006$). trans-DCCA also showed a positive association with attention, with $\beta = 0.08$ ($p = 0.003$). In contrast, 3PBA did not reveal any significant associations with NNNS scores.

Associations Between Placental Gene Expressions and NNNS Measurements

Across all associations between individual gene transcripts and NNNS, we identified a total of 153 unique placental genes (Fig 2A) demonstrating an association with an NNNS score ($P < 0.05$). Notably, measurements pertaining to self-regulation (92 genes), arousal (84 genes), and attention (84 genes) emerged with the most associations with gene expression, exhibiting (Fig 2A). The heatmap illuminates the frequency of associations between the top ten placental genes with the most significant associations with the NNNS domains (Fig 2B). Ubiquitin Specific Peptidase 25 (USP25) emerged as have the most relationships, followed by Tudor Domain Containing 3 (TDRD3), Nemo Like Kinase (NLK), Tubulin Folding Cofactor C (TBCC), tRNA Methyltransferase 61A (TRMT61A), RFNG O-Fucosylpeptide 3-Beta-N-Acetylglucosaminyltransferase (RFNG), and Generic Kinase Activity 6 Precursor (GKA6P) (Fig 2B). These genes were primarily associated with self-regulation and arousal.

Associations Between Placental Gene Modules and NNNS Measurements

Pearson correlations were used to describe the relationships between placental gene modules as previously delineated by WGCNA, and NNNS domains. Out of the 21 characterized placental gene modules, 12 modules showed significant associations with NNNS domains ($p < 0.05$). Quality of movement exhibited the highest number of significant modules, totaling eight, followed by attention and asymmetric reflexes, each with three modules, and Stress with two modules. Although these NNNS domains demonstrated both positive and negative associations with various modules, NNNS stress was distinctly negatively associated with the middleblue module (Interferon Alpha Response) and the salmon module (Myc Target). The middleblue module, representing the Interferon Alpha Response, was the most frequently associated module, affecting Attention, Arousal and Quality of Movement. This was followed by the pink (Unfolded Protein Response), Tan (DNA Repair), and Yellow (Oxidative Phosphorylation) modules, each influencing two measurements.

Associations Between Metabolites, Gene Modules, and NNNS

A comprehensive Sankey diagram (Fig 4) visually elucidates the complex interrelationships among metabolites, placental gene modules, and the NNNS using Pearson correlations to quantify the relationships. Notably, two pronounced significant negative correlations were observed within the -0.3 to -0.2 range: the red module, critical for mitotic spindle operations, and the tan module, linked to DNA repair, both with movement quality. The analysis revealed that nine modules were significantly

associated with metabolites, while thirteen modules were significantly linked to NNS measurements, with eight overlapping modules identified. Of these eight modules, five showed consistent associations: lightcyan (apical surface, positive), grey (undefined, positive), turquoise (protein secretion, negative), lightyellow (OXPHOS, negative), and green (spermatogenesis, negative). However, three modules—cyan (DNA repair), red (mitotic spindle), and yellow (OXPHOS)—demonstrated complex associations. Furthermore, segmenting metabolite data across the first (T1), second (T2), and third (T3) trimesters revealed that both the first and third trimesters demonstrated strong correlations between pyrethroid metabolites and placental modules. Metabolites in the first trimester were significantly negatively associated with protein secretion, while third trimester metabolites showed significant negative associations with modules related to OXPHOS and DNA repair. Notably, only the cumulative sum of 3PBA across pregnancy revealed a significant negative association with lightyellow (OXPHOS).

Discussion

Our study explores the associations of prenatal exposure to pyrethroids, quantified as urinary metabolites (3PBA, cis-DCCA, and trans-DCCA) during early, middle, and late pregnancy, on placental function and the subsequent associations with neonatal neurobehavioral development. We found significant associations between pyrethroid metabolites and nine placental gene modules, as well as thirteen modules correlated with NNS measurements, including eight overlapping modules where five showed consistent associations and three displayed complex interactions. Specifically, stress was negatively associated with modules related to the interferon alpha response and Myc targets, with the interferon alpha response module also significantly associated with attention, arousal, and quality of movement. Additionally, our analysis highlighted the first and third trimesters as critical periods for placental function, demonstrating significant negative associations of early pregnancy pyrethroid metabolites with protein secretion, later pregnancy metabolites with OXPHOS and DNA repair, and a persistent negative correlation of cumulative 3PBA with OXPHOS throughout pregnancy.

Our study elucidates how the placenta, as a critical organ for fetal development, mediates the impact of pyrethroid metabolite exposure on fetal neurodevelopment health. Extant research highlights the placenta's integral role in fetal neurodevelopment, particularly its capacity to modulate epigenetic responses to environmental and maternal stimuli that significantly shape the developmental trajectory of the fetus. Epigenetic modifications within placental genes profoundly affect infant neurobehavior, affirming the placenta's role as a vital intermediary in neurodevelopment [29]. Additionally, structural changes and inflammatory responses within the placenta contribute to adverse developmental outcomes, reinforcing its critical position in developmental processes [46]. Studies also expose the placenta's susceptibility to endocrine-disrupting chemicals, which compromise its endocrine functionality and immune interactions, potentially leading to neurodevelopmental disorders [47]. Furthermore, variations in CpG methylation within the placenta associated with cognitive functions in children born prematurely support the hypothesis that early placental adaptations can have enduring effects on child health [48]. Our findings build upon this framework by demonstrating that pyrethroid metabolites are related with differences in pivotal placental functions—specifically protein secretion, OXPHOS, and DNA repair—through co-regulated gene signatures. These pathways are critical during pregnancy, influencing conditions such as preeclampsia and fetal growth restriction, which are characterized by substantial oxidative damage and impaired repair mechanisms. Additionally, external factors like maternal smoking intensify the adverse effects of oxidative stress on both placental and fetal health, underscoring the crucial role of oxidative stress and mitochondrial dysfunction within the

placenta across a spectrum of pregnancy outcomes [49, 50]. Our analysis also identified 153 unique placental genes significantly associated with NNNS measures, particularly affecting self-regulation, arousal, and attention. Notably, genes such as Ubiquitin Specific Peptidase 25 (USP25), which are linked to the migration and invasion of trophoblast cells as well as neurodegeneration, highlight potential areas for further investigation [49, 50]. These findings reinforce the importance of the placenta in fetal neurodevelopment and suggest that understanding the multifaceted roles of placental genes could provide valuable insights into mitigating adverse prenatal exposures.

Our findings also introduce a critical perspective on the temporal dimension of prenatal pyrethroid exposures and their relationship to placental functional pathways, highlighting a potential elevated susceptibility during the first and third trimesters. During these critical periods, our analysis revealed significant adverse correlations between the concentrations of pyrethroid metabolites and differences in placental gene modules. Specifically, the first trimester showed strong negative correlations between summed metabolites and protein secretion module, while in the third trimester, metabolites negatively affected modules associated with OXPHOS and DNA repair. Although 3PBA showed no significant associations with NNNS, we observed a consistent negative correlation between its cumulative levels throughout pregnancy and placental OXPHOS. These patterns highlight the placenta's complex role in mediating the impact of environmental pyrethroid exposures on fetal neurodevelopment, which varies throughout different stages of pregnancy. Despite some inconsistent findings in the literature, the majority of research, including ours, supports a significant correlation between prenatal pyrethroid exposure and developmental effects, particularly during sensitive periods of gestation, with variability in effects across different pregnancy stages [7, 51-54]. For instance, elevated maternal urinary concentrations of 3PBA during the third trimester have been linked to reduced mental development index scores at 24 months [51], underscoring the importance of later gestational exposure. Conversely, significant exposure during the first trimester has been associated with decreased motor and adaptive behavior scores in 2-year-old children [53], affirming its criticality in early fetal development. Further supporting this, increased risk ratios for autism spectrum disorders with higher second-trimester 3PBA concentrations [54], and significant inverse relationships between 3PBA levels and serum free triiodothyronine (FT3) in pregnant women, suggest potential disruptions in thyroid function [55]. These diverse outcomes underscore the complex interplay between pyrethroid exposure and neonatal thyroid hormone status and development. Building on these observations, our study not only reaffirms the importance of timing in pyrethroid exposure but also highlights the placenta's pivotal role in mediating these effects, contributing to the growing body of evidence supporting the critical windows identified in epidemiological studies. This emphasizes the need for ongoing research into the specific mechanisms through which pyrethroids influence fetal development and suggests further exploration into protective strategies during vulnerable periods.

This study has its limitations. Despite being one of the largest of its kind to examine the placenta transcriptome and pyrethroid exposures, the sample size is still limited, especially given the extensive number of analyses performed. Furthermore, while our results indicate that metabolites like cis-DCCA may be predictors of neurodevelopmental outcomes, the specificity with which these metabolites reflect actual neurobehavioral impacts requires additional investigation with longer follow-up. The placenta is a heterogeneous organ consisting of a variety of cell types, and our use of bulk transcriptomics does not account for cell specific effects. Additionally, the homogeneity of our study cohort and the lack of covariate adjustment in our regression models may restrict the generalizability of

our findings and impact the precision of our effect estimates. Importantly, our goal here was not to demonstrate causality, but instead to describe relationships between pyrethroid exposures, placental functional impacts, and early neurobehavioral performance, to drive the development of more specific hypotheses which can be assessed in a causal framework. This suggests that prenatal exposure to pyrethroid pesticides can specifically alter placental gene expression and metabolic pathways, influencing neonatal neurobehavior. These insights lay a foundation for future research into the causal mechanisms underlying these effects.

Conclusion

This study illuminates the comprehensive links between prenatal pyrethroid pesticide exposure, placental gene expression, and neonatal neurobehavioral development. It uncovers the complex interplay between environmental exposures and placental functional outputs at pivotal stages of neurodevelopment. These findings underscore the critical need for monitoring environmental pyrethroid exposures during pregnancy and demand a deeper exploration of how these exposures, in conjunction with other factors, shape the neurodevelopmental pathway from the earliest stages of life. Consequently, this work calls for a comprehensive research approach that includes environmental interventions and a focus on placental health to protect fetal development amidst growing concerns over environmental pyrethroid exposures.

Reference

1. Gyawali, K., *Pesticide uses and its effects on public health and environment*. Journal of Health Promotion, 2018. **6**: p. 28-36.
2. Bhardwaj, K., et al., *Pyrethroids: A natural product for crop protection*. Natural Bioactive Products in Sustainable Agriculture, 2020: p. 113-130.
3. Richardson, J.R., et al., *Neurotoxicity of pesticides*. Acta neuropathologica, 2019. **138**: p. 343-362.
4. Andersen, H.R., et al., *Pyrethroids and developmental neurotoxicity - A critical review of epidemiological studies and supporting mechanistic evidence*. Environ Res, 2022. **214**(Pt 2): p. 113935.
5. Elser, B.A., B. Hing, and H.E. Stevens, *A narrative review of converging evidence addressing developmental toxicity of pyrethroid insecticides*. Crit Rev Toxicol, 2022. **52**(5): p. 371-388.
6. Imanishi, S., et al., *Prenatal exposure to permethrin influences vascular development of fetal brain and adult behavior in mice offspring*. Environ Toxicol, 2013. **28**(11): p. 617-29.
7. Fluegge, K.R., M. Nishioka, and J.R. Wilkins, 3rd, *Effects of simultaneous prenatal exposures to organophosphate and synthetic pyrethroid insecticides on infant neurodevelopment at three months of age*. J Environ Toxicol Public Health, 2016. **1**: p. 60-73.
8. Donauer, S., et al., *Prenatal exposure to polybrominated diphenyl ethers and polyfluoroalkyl chemicals and infant neurobehavior*. J Pediatr, 2015. **166**(3): p. 736-42.
9. Velez, M.L., et al., *Prenatal buprenorphine exposure and neonatal neurobehavioral functioning*. Early Hum Dev, 2018. **117**: p. 7-14.
10. Colborn, T., *A case for revisiting the safety of pesticides: a closer look at neurodevelopment*. Environmental Health Perspectives, 2006. **114**(1): p. 10-17.
11. Grandjean, P. and P.J. Landrigan, *Neurobehavioural effects of developmental toxicity*. The lancet neurology, 2014. **13**(3): p. 330-338.
12. Scollon, E.J., et al., *Correlation of tissue concentrations of the pyrethroid bifenthrin with neurotoxicity in the rat*. Toxicology, 2011. **290**(1): p. 1-6.

13. Vences-Mejía, A., et al., *Effect of mosquito mats (pyrethroid-based) vapor inhalation on rat brain cytochrome P450s*. Toxicology mechanisms and methods, 2012. **22**(1): p. 41-46.
14. Imanishi, S., et al., *Prenatal exposure to permethrin influences vascular development of fetal brain and adult behavior in mice offspring*. Environmental toxicology, 2013. **28**(11): p. 617-629.
15. Roberts, J.R., et al., *Pesticide exposure in children*. Pediatrics, 2012. **130**(6): p. e1765-e1788.
16. Burns, C.J. and T.P. Pastoor, *Pyrethroid epidemiology: a quality-based review*. Critical reviews in toxicology, 2018. **48**(4): p. 297-311.
17. Viel, J.-F., et al., *Behavioural disorders in 6-year-old children and pyrethroid insecticide exposure: the PELAGIE mother-child cohort*. Occupational and environmental medicine, 2017. **74**(4): p. 275-281.
18. Viel, J.-F., et al., *Pyrethroid insecticide exposure and cognitive developmental disabilities in children: The PELAGIE mother-child cohort*. Environment international, 2015. **82**: p. 69-75.
19. Wagner-Schuman, M., et al., *Association of pyrethroid pesticide exposure with attention-deficit/hyperactivity disorder in a nationally representative sample of US children*. Environmental Health, 2015. **14**: p. 1-9.
20. Dalsager, L., et al., *Maternal urinary concentrations of pyrethroid and chlorpyrifos metabolites and attention deficit hyperactivity disorder (ADHD) symptoms in 2-4-year-old children from the Odense Child Cohort*. Environmental research, 2019. **176**: p. 108533.
21. Zhang, X., et al., *The association of prenatal exposure to intensive traffic with early preterm infant neurobehavioral development as reflected by the NICU Network Neurobehavioral Scale (NNNS)*. Environ Res, 2020. **183**: p. 109204.
22. Xue, Z., et al., *Effect of synthetic pyrethroid pesticide exposure during pregnancy on the growth and development of infants*. Asia Pac J Public Health, 2013. **25**(4 Suppl): p. 72s-9s.
23. Qi, Z., et al., *Effects of prenatal exposure to pyrethroid pesticides on neurodevelopment of 1-year-old children: A birth cohort study in China*. Ecotoxicol Environ Saf, 2022. **234**: p. 113384.
24. Andersen, H.R., et al., *Prenatal exposure to pyrethroid and organophosphate insecticides and language development at age 20-36 months among children in the Odense Child Cohort*. Int J Hyg Environ Health, 2021. **235**: p. 113755.
25. Choi, H., et al., *Fetal window of vulnerability to airborne polycyclic aromatic hydrocarbons on proportional intrauterine growth restriction*. PLoS One, 2012. **7**(4): p. e35464.
26. Rice, D. and S. Barone, Jr., *Critical periods of vulnerability for the developing nervous system: evidence from humans and animal models*. Environ Health Perspect, 2000. **108 Suppl 3**(Suppl 3): p. 511-33.
27. Shallie, P.D. and T. Naicker, *The placenta as a window to the brain: A review on the role of placental markers in prenatal programming of neurodevelopment*. International Journal of Developmental Neuroscience, 2019. **73**: p. 41-49.
28. Barker, D., et al., *Fetal and placental size and risk of hypertension in adult life*. British Medical Journal, 1990. **301**(6746): p. 259-262.
29. Lester, B.M. and C.J. Marsit, *Epigenetic mechanisms in the placenta related to infant neurodevelopment*. Epigenomics, 2018. **10**(3): p. 321-333.
30. Kratimenos, P. and A.A. Penn, *Placental programming of neuropsychiatric disease*. Pediatr Res, 2019. **86**(2): p. 157-164.
31. Marsit, C.J., et al., *Placenta-imprinted gene expression association of infant neurobehavior*. J Pediatr, 2012. **160**(5): p. 854-860.e2.
32. Maccani, M.A., et al., *Placental miRNA expression profiles are associated with measures of infant neurobehavioral outcomes*. Pediatric Research, 2013. **74**(3): p. 272-278.
33. Paquette, A.G., et al., *Placental FKBP5 genetic and epigenetic variation is associated with infant neurobehavioral outcomes in the RICHS cohort*. PLoS One, 2014. **9**(8): p. e104913.

34. Syme, M.R., J.W. Paxton, and J.A. Keelan, *Drug transfer and metabolism by the human placenta*. Clin Pharmacokinet, 2004. **43**(8): p. 487-514.
35. Prouillac, C. and S. Lecoecur, *The role of the placenta in fetal exposure to xenobiotics: importance of membrane transporters and human models for transfer studies*. Drug Metab Dispos, 2010. **38**(10): p. 1623-35.
36. Bulgaroni, V., et al., *Environmental pesticide exposure modulates cytokines, arginase and ornithine decarboxylase expression in human placenta*. Reprod Toxicol, 2013. **39**: p. 23-32.
37. Souza, M.S., et al., *Prenatal exposure to pesticides: analysis of human placental acetylcholinesterase, glutathione S-transferase and catalase as biomarkers of effect*. Biomarkers, 2005. **10**(5): p. 376-89.
38. Wang, Y., et al., *Placental transcriptome variation associated with season, location, and urinary prenatal pyrethroid metabolites of Thai farm-working women*. Environmental Pollution, 2024: p. 123873.
39. Baumert, B.O., et al., *Investigation of Prenatal Pesticide Exposure and Neurodevelopmental Deficits in Northern Thailand: Protocol for a Longitudinal Birth Cohort Study*. JMIR Res Protoc, 2022. **11**(2): p. e31696.
40. Moore, P.G., *Statistical Tables for Biological, Agricultural and Medical Research*. By Sir Ronald Fisher and F. Yates. [Pp. x + 146. Edinburgh: Oliver & Boyd Ltd., 1963. 30s.]. Journal of the Institute of Actuaries, 1964. **90**(3): p. 370-370.
41. Li, Q., et al., *Associations between prenatal organophosphate pesticide exposure and placental gene networks*. Environmental Research, 2023. **224**: p. 115490.
42. Dobin, A., et al., *STAR: ultrafast universal RNA-seq aligner*. Bioinformatics, 2013. **29**(1): p. 15-21.
43. Love, M.I., W. Huber, and S. Anders, *Moderated estimation of fold change and dispersion for RNA-seq data with DESeq2*. Genome Biology, 2014. **15**(12): p. 550.
44. Ritchie, M.E., et al., *limma powers differential expression analyses for RNA-sequencing and microarray studies*. Nucleic Acids Res, 2015. **43**(7): p. e47.
45. Provenzi, L., et al., *NICU Network Neurobehavioral Scale: 1-month normative data and variation from birth to 1 month*. Pediatric Research, 2018. **83**(6): p. 1104-1109.
46. Hodyl, N.A., et al., *Child neurodevelopmental outcomes following preterm and term birth: What can the placenta tell us?* Placenta, 2017. **57**: p. 79-86.
47. Marinello, W.P. and H.B. Patisaul, *Endocrine disrupting chemicals (EDCs) and placental function: Impact on fetal brain development*. Adv Pharmacol, 2021. **92**: p. 347-400.
48. Tilley, S.K., et al., *Placental CpG methylation of infants born extremely preterm predicts cognitive impairment later in life*. PLoS One, 2018. **13**(3): p. e0193271.
49. Bouhours-Nouet, N., et al., *Maternal smoking is associated with mitochondrial DNA depletion and respiratory chain complex III deficiency in placenta*. Am J Physiol Endocrinol Metab, 2005. **288**(1): p. E171-7.
50. Marschalek, J., et al., *Maternal serum mitochondrial DNA (mtDNA) levels are elevated in preeclampsia - A matched case-control study*. Pregnancy Hypertens, 2018. **14**: p. 195-199.
51. Watkins, D.J., et al., *Urinary 3-phenoxybenzoic acid (3-PBA) levels among pregnant women in Mexico City: Distribution and relationships with child neurodevelopment*. Environmental research, 2016. **147**: p. 307-313.
52. Eskenazi, B., et al., *Prenatal exposure to DDT and pyrethroids for malaria control and child neurodevelopment: the VHEMBE cohort, South Africa*. Environmental health perspectives, 2018. **126**(04): p. 047004.
53. Qi, Z.Y., et al., *[Prenatal pyrethroid pesticides exposure and neurodevelopment of 2-year-old children: a birth cohort study]*. Zhonghua Yu Fang Yi Xue Za Zhi, 2022. **56**(3): p. 270-279.

54. Hu, Y., et al., *Environmental pyrethroid exposure and thyroid hormones of pregnant women in Shandong, China*. Chemosphere, 2019. **234**: p. 815-821.
55. Guimarães, J., et al., *Association of 3-Phenoxybenzoic Acid Exposure during Pregnancy with Maternal Outcomes and Newborn Anthropometric Measures: Results from the IoMum Cohort Study*. Toxics, 2023. **11**(2).

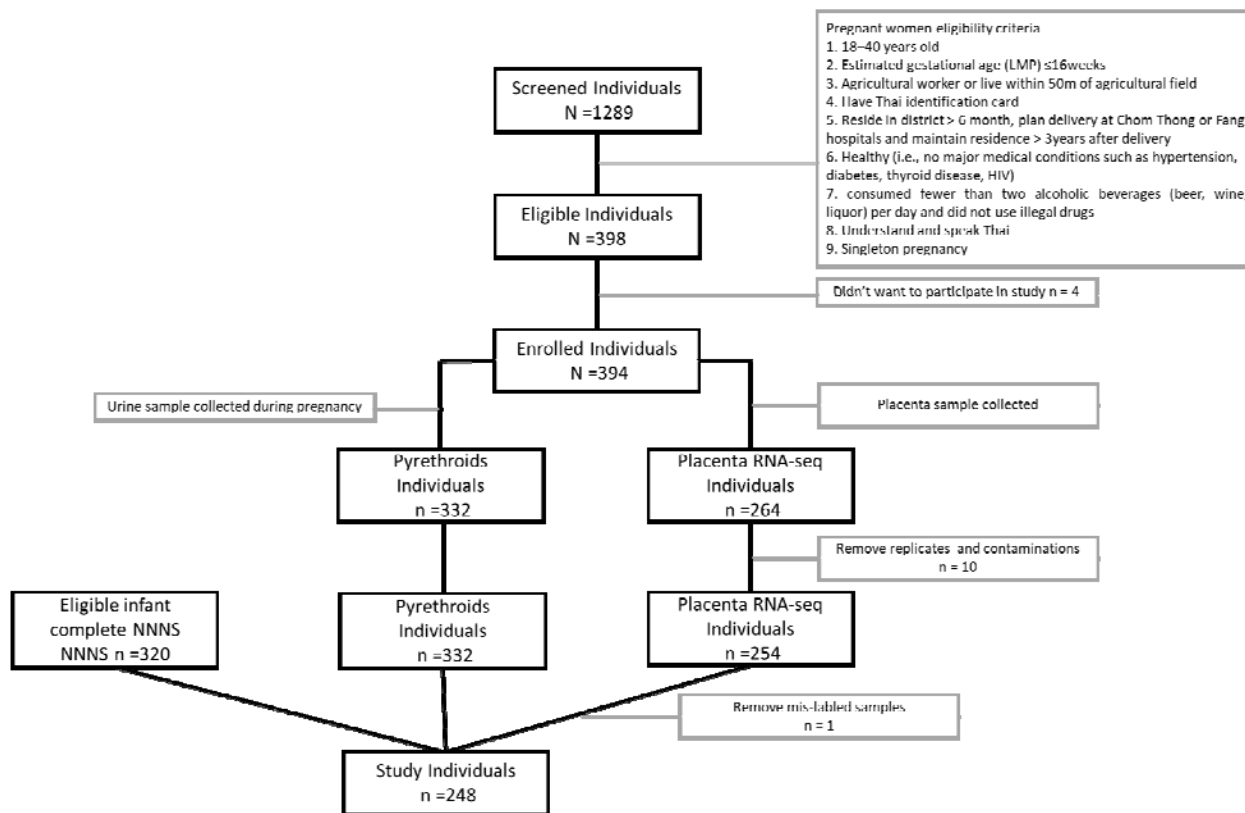


Figure 1. Participant selection in the SAWASDEE Study.

This figure delineates the selection procedure for the study population in the SAWASDEE study, which investigates prenatal exposure to pyrethroid insecticides. Initially, 1289 pregnant individuals engaged in agricultural activities were identified within Chiang Mai Province, Thailand, between July 2017 and June 2019. Upon applying the inclusion criteria, 394 participants were selected for preliminary screening. Due to challenges in sample collection and quality, 62 individuals were excluded, resulting in 332 participants with pyrethroid exposure data. Additionally, 254 participants with placental RNA-seq data were identified. Subsequent steps were taken to align the 320 eligible infants with their respective mothers, leading to the acquisition of complete NNNS measurements. The final analysis included 248 mother-infant pairs.

Characteristics	n (%) / Mean ± SD
Maternal age (years)	25.86 ± 5.31
Maternal weight (kg)	64.77 ± 10.75
Maternal length (cm)	153.98 ± 6.06
Gestational age (days)	269.56 ± 7.90
Infant weight (kg)	3.01 ± 0.41
Infant length (cm)	48.37 ± 2.57
Infant head length (cm)	32.86 ± 1.93
Infant gender	126 (50.8%)
Placenta weight (g)	546.06 ± 108.49

Table 1. Descriptive characteristics of the study population (N = 248), Study of Asian Women and their Offspring's Development and Environmental Exposures, 2017–2019.

	Mean	SD	Min	25th	Median	75th	Max	IQR	Count and Percentage Within Normal Range (n/%)*
Arousal	3.69	0.54	2.71	3.29	3.57	4.14	5.29	0.86	135/54.4%
Asymmetric Reflexes	0.47	0.71	0	0	0	1	4	1	245/98.8%
Attention	5.71	0.76	2.14	5.29	5.71	6.14	7.29	0.86	196/79%
Excitability	1.27	1.65	0	0	0	2	7	2	119/48%
Handling	0.19	0.23	0	0	0.13	0.25	1	0.25	235/94.8%
Hypertonicity	0.04	0.22	0	0	0	0	2	0	247/99.6%
Hypotonicity	0.07	0.26	0	0	0	0	1	0	248/100%
Lethargy	3.19	1.13	1	2	3	4	8	2	227/91.5%
Non-Optimal Reflexes	4.27	1.35	0	3	4	5	8	2	243/98%
Quality of Movement	5.52	0.23	4.6	5.5	5.5	5.67	6.2	0.17	20/8.1%
Self-Regulation	6.07	0.59	4.58	5.66	6.15	6.54	7.33	0.88	211/85.1%
Stress /Abstinence	0.56	0.36	0	0.28	0.52	0.8	1.74	0.52	194/78.2%

Table 2. Characteristics of NNNS Measurements. The table summarizes the distribution statistics of the 12 NNNS measurements obtained from the study population. For each measurement, the table delineates the mean, standard deviation (SD), minimum (Min), 25th percentile (25th), median, 75th percentile (75th), maximum (Max), interquartile range (IQR). These statistics elucidate the range and distribution of neurobehavioral responses observed among the neonates evaluated in this study. *Normal range was used from Livio's paper.

	Sum_3-PBA		Sum_cis-DCCA		Sum_trans-DCCA	
Linear Regression	coefficient	p-value	coefficient	p-value	coefficient	p-value
Attention	0.06	0.48	0.49	0.005	0.49	0.01
Handling	-0.21	0.39	1.04	0.04	0.42	0.45
Self Regulation	0.09	0.45	0.06	0.81	-0.16	0.56
Arousal	-0.12	0.55	-0.09	0.82	-0.19	0.69
Excitability	0.07	0.25	0.20	0.10	0.14	0.31
Hypertonicity	0.05	0.82	0.51	0.25	0.74	0.14
Hypotonicity	0.07	0.73	0.20	0.61	0.74	0.09
Stress /Abstinence	1.43	0.35	-5.50	0.08	-4.97	0.16
Poisson Regression	coefficient	p-value	coefficient	p-value	coefficient	p-value
Lethargy	0.003	0.95	-0.003	0.16	-0.027	0.2

Table 3. Regression Analysis of Summarized Metabolites and NNNS Measurements. This table presents the results of regression analyses conducted to investigate the associations between summarized metabolites and NNNS measurements. For nine of the NNNS measurements, linear regression models were utilized, while a Poisson regression model was employed for the lethargy measurement. Each entry displays the coefficient estimate and the corresponding p-value, with significant associations ($p < 0.05$) highlighted in red.

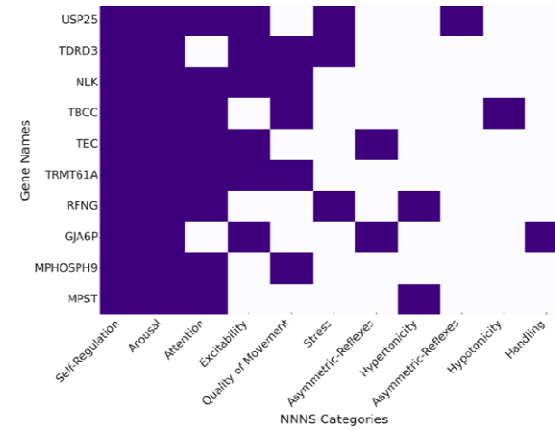
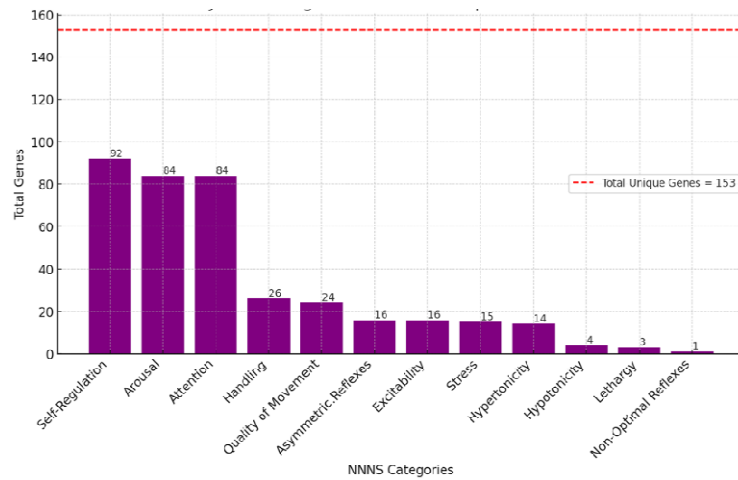


Figure 2. Significant Gene Associations with NNNS Measurements. This composite figure illustrates the association of significant genes with NNNS measurements. *Left Panel:* A bar chart displaying the total number of specific genes associated with each NNNS measurement, with a total of 153 unique genes identified across all measurements. Each bar represents an NNNS measurement (x-axis) against the total number of associated genes (y-axis), with the exact number of genes denoted on each bar. *Right Panel:* The heatmap showcases the associations of the top ten most frequently occurring genes with each NNNS measurement. The x-axis delineates the NNNS measurements, while the y-axis enumerates the names of these genes. Cells are shaded in dark purple when a gene is associated with the respective NNNS measurement, visually encapsulating the gene-neurobehavioral correlations.

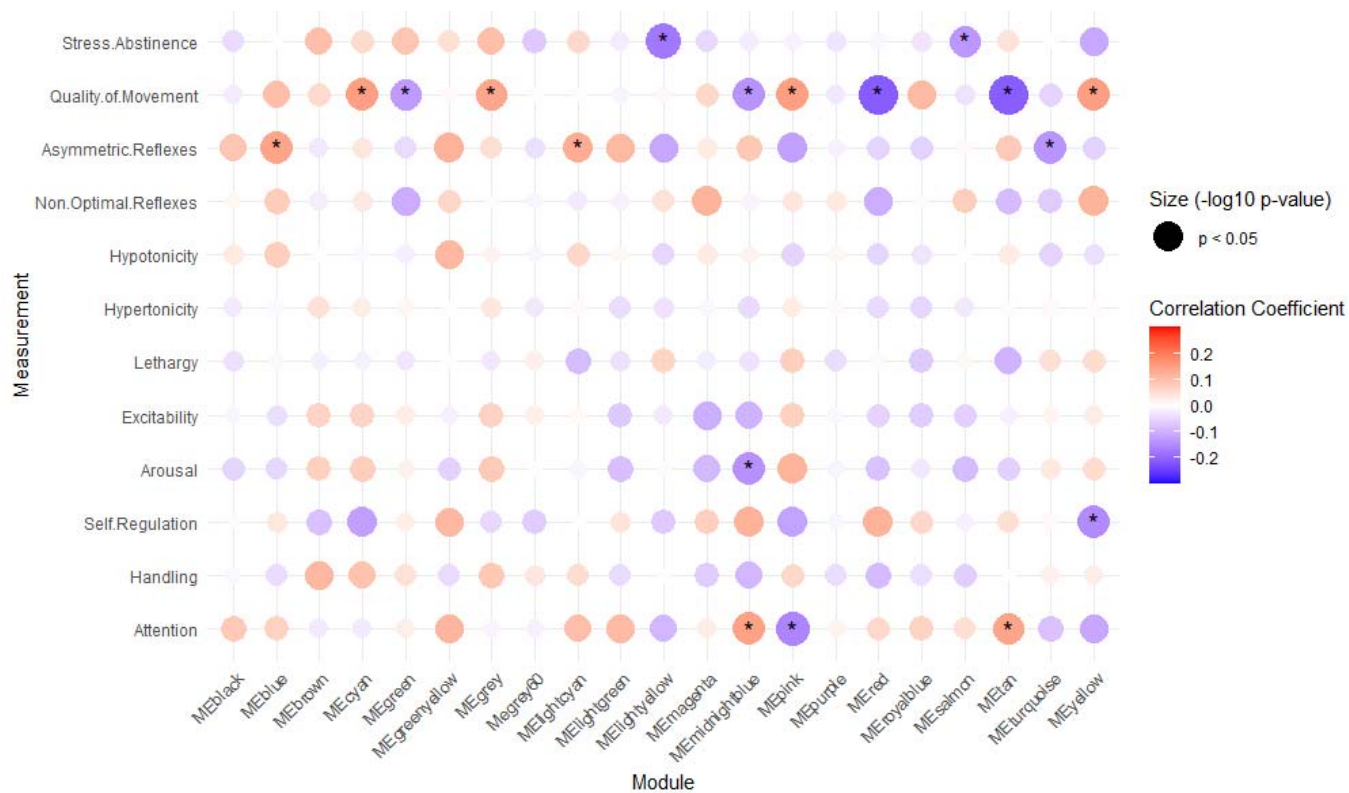


Figure 3. Correlations and Associations between NNS, Metabolites, and Gene Modules. A modified heatmap exhibits the coefficients of association between gene modules and NNS measurements. The color intensity of each circle corresponds to the magnitude of the coefficient values, with darker shades indicating stronger associations. Red indicates positive associations and blue signifies negative associations. The size of the circles represents the $-\log_{10}$ p-value, which is inversely related to the p-values; thus, larger circles indicate lower p-values. Circles corresponding to statistically significant coefficients ($p < 0.05$) are marked with an asterisk (*).

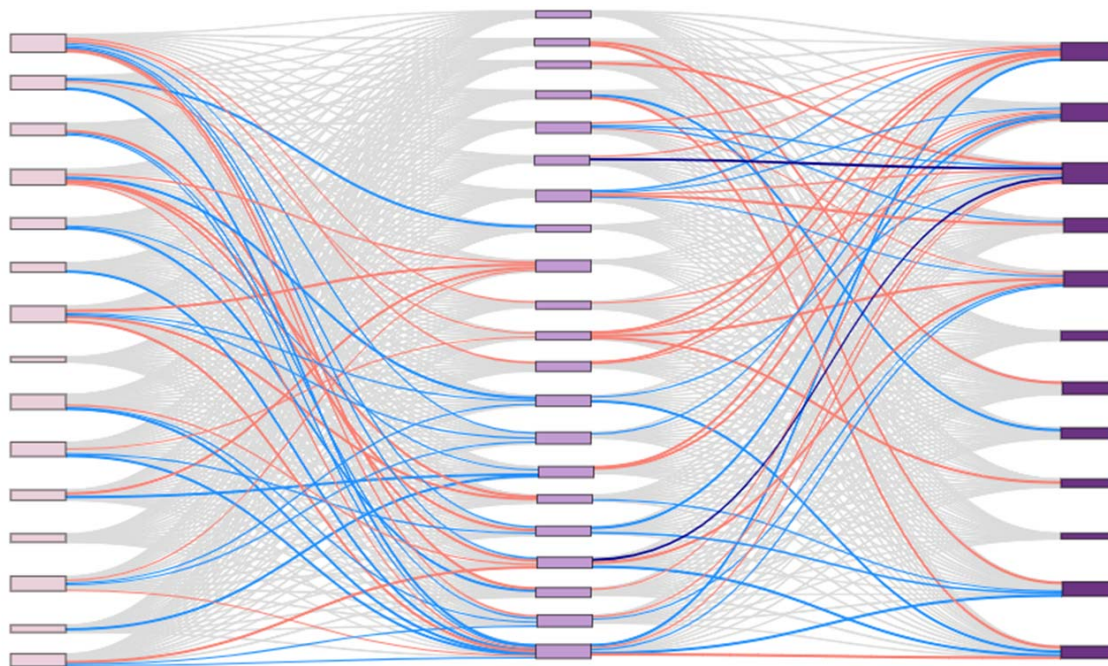


Figure 4. Sankey Diagram of Relationships Among Metabolites, Placental Gene Modules, and NNNS

This figure presents a Sankey diagram that illustrates the complex relationships among metabolites, placental gene modules, and NNNS metrics. Relationships between these variables are quantitatively assessed using Pearson correlation coefficients. Additionally, three derived variables, T1, T2, and T3, are computed by aggregating specific exposure data within corresponding trimester windows to enhance the analysis of temporal associations with placental gene modules. The diagram employs varying color intensity and hue to represent the strength and direction of these correlations. Correlation values are visually encoded with a color-coding scheme indicating different ranges: significant positive correlations (0.1 to 0.2, $p < 0.05$) are shown in red; significant negative correlations are depicted in shades of blue—light blue for -0.1 to -0.2 and dark blue for -0.2 to -0.3 ($p < 0.05$); correlations deemed negligible (-0.1 to 0.1) or statistically non-significant ($p > 0.05$) are represented in grey. For clarity, metabolites are marked on the left side with pink nodes, listed in the following order: 3PBA1, 3PBA2, 3PBA3, cis-DCCA1, cis-DCCA2, cis-DCCA3, trans-DCCA1, trans-DCCA2, trans-DCCA2, sum_3PBA, sum_cis-DCCA, sum_trans-DCCA, T1, T2, and T3. The central placental gene modules are shown as lavender nodes, ordered as midnightblue, lightgreen, tan, lightcyan, blue, cyan, pink, grey, turquoise, red, grey60, greenyellow, black, lightyellow, royalblue, yellow, brown, green, purple, magenta, and salmon. On the right, the NNNS outcomes are highlighted in dark purple, categorizing neurobehavioral variables such as Attention, Asymmetric Reflexes, Quality of Movement, Arousal, Self-Regulation, Lethargy, Handling, Excitability, Hypotonicity, Hypertonicity, Stress/Absistence, and Non-Optimal Reflexes.