

1 **Exposure-Response to High PM_{2.5} Levels for Cardiovascular Events in High-risk Older**
2 **Adults in Taiwan**

3 Shu-Ping Huang MS ^{1,2}, Chien-Chou Su PhD ³, Chuan-Yao Lin PhD ⁴, Rachel Nethery PhD ⁵,
4 Kevin Josey PhD ⁵, Benjamin Bates MD ^{6,7}, David Robinson PhD ⁸, Poonam Gandhi MS ⁶,
5 Melanie Rua PharmD ⁶, Ashwaghosha Parthasarathi MBBS ⁶, Soko Setoguchi MD^{6,7}, Yea-
6 Huei Kao Yang BS Pharm ^{2,9}

7

8 *¹Department of Pharmacy, Changhua Christian Hospital, Changhua, Taiwan*

9 *²Institute of Clinical Pharmacy and Pharmaceutical Sciences, College of Medicine, National*
10 *Cheng Kung University, Tainan, Taiwan*

11 *³Clinical Innovation and Research Center, National Cheng Kung University Hospital,*
12 *College of Medicine, National Cheng Kung University, Tainan, Taiwan*

13 *⁴Research Center for Environmental Changes, Academia Sinica, Taipei, Taiwan*

14 *⁵Department of Biostatistics, Harvard T.H. Chan School of Public Health, Boston, MA USA*

15 *⁶Rutgers University Institute for Health, Healthcare Policy, and Aging Research, New*
16 *Brunswick, NJ USA*

17 *⁷Department of Medicine, Rutgers Robert Wood Johnson Medical School, One Robert Wood*
18 *Johnson Pl., New Brunswick, NJ 08901*

19 *⁸Department of Geography, Rutgers University, New Brunswick, NJ USA*

20 *⁹Health Outcome Research Center, National Cheng Kung University, Tainan, Taiwan*

21

22 **Abstract**

23 Background: Multiple studies from countries with relatively lower PM_{2.5} level demonstrated
24 that acute and chronic exposure even at lower than recommended level, e.g., 9 µg/m³ in the
25 US increased the risk of cardiovascular (CV) events. However, limited studies using

26 individual level data exist from countries with a wider range of PM levels to illustrate shape
27 of the exposure-response curve throughout the range including $> 20 \mu\text{g}/\text{m}^3$ PM_{2.5}
28 concentrations. Taiwan with its policies reduced PM_{2.5} over time provide opportunities to
29 illustrate the dose response curves and how reductions of PM_{2.5} over time correlated with CV
30 events incidence in a nationwide sample.

31

32 Methods: Using data from the 2009-2019 Taiwan National Health Insurance Database linked
33 to nationwide PM_{2.5} data. We examined the shape and magnitude of the exposure-response
34 curve between seasonal average PM_{2.5} level and CV events-related hospitalizations among
35 older adults at high-risk for CV events. We used history-adjusted marginal structural models
36 including potential confounding by individual demographic factors, baseline comorbidities,
37 and health service measures. To quantify the risk below and above $20 \mu\text{g}/\text{m}^3$ we conducted
38 stratified Cox regression. We also plotted PM_{2.5} and CV events from 2009-2019 as well as
39 average temperature as a comparison.

40

41 Findings: Using the PM_{2.5} concentration $<15 \mu\text{g}/\text{m}^3$ (Taiwan regulatory standard) as a
42 reference, the seasonal average PM_{2.5} concentration ($15\text{-}23.5\mu\text{g}/\text{m}^3$ and $> 23.5 \mu\text{g}/\text{m}^3$) were
43 associated with hazard ration of 1.13 (95%CI 1.09-1.18) and 1.19 (95%CI 1.14-1.24), 1.07
44 (95%CI 1.03-1.11) and 1.14 (95%CI 1.10-1.18), 1.22 (95%CI 1.08-1.38) and 1.31 (95%CI
45 1.16-1.48), 1.04 (95%CI 0.98-1.10) and 1.10 (95%CI 1.04-1.16) respectively for HF,
46 IS/TIA,PE/DVT and MI/ACS. A nonlinear relationship between PM_{2.5} and CV events
47 outcomes was observed at PM_{2.5} levels above $20 \mu\text{g}/\text{m}^3$.

48

49 Interpretation: A nonlinear exposure-response relationship between PM_{2.5} concentration
50 and the incidence of cardiovascular events exists when PM_{2.5} is higher than the levels

51 recommended by WHO Air Quality Guidelines. Further lowering PM_{2.5} levels beyond
52 current regulatory standards may effectively reduce the incidence of cardiovascular events,
53 particularly HF and DVT, and can lead to tangible health benefits in high-risk elderly
54 population.

55

56

57 **Introduction**

58 In recent years, the global cardiology communities have increasingly recognized air pollution
59 as a critical factors for cardiovascular health. Particulate matter with a diameter of less than
60 2.5 micrometers (PM_{2.5}) is of particular concern due to its ability to penetrate deep into the
61 lung tissue and enter the bloodstream, thereby posing significant risks to cardiovascular
62 health. A growing body of evidence from multiple countries, predominantly those with
63 relatively lower levels of PM_{2.5}, has highlighted the adverse health effects associated with
64 both acute and chronic exposure to PM_{2.5} concentrations¹⁻¹⁰, even at levels below the current
65 standards recommended by various health organizations, such as the 9 µg/m³ threshold set by
66 the United States Environmental Protection Agency.

67

68 Despite the extensive research documenting the association between PM_{2.5} exposure and an
69 increased risk of cardiovascular events¹¹⁻¹⁴, there remains a gap in our understanding the
70 exposure-response relationship across a wider range of PM_{2.5} concentrations in high-risk
71 older adults. Most existing studies rely on aggregate data, which do not allow focusing on
72 high risk groups defined by individual level factors such as having a chronic disease or age.

73

74 Taiwan presents a unique context for studying the effects of PM_{2.5} on cardiovascular events.
75 Over recent years, Taiwan has implemented a series of policies aimed at reducing air
76 pollution, thereby offering an invaluable opportunity to investigate the dose-response
77 relationship between PM_{2.5} exposure and CV events in a setting where environmental policies
78 have tangibly altered exposure levels over time. This study aims to leverage individual-level
79 data from a nationwide sample of high-risk older adults in Taiwan to explore how seasonal
80 exposure to moderate versus unhealthy levels of PM_{2.5} concentrations correlates with the
81 incidence of CV events. Our study seeks to fill a critical gap in the literature by providing

82 empirical evidence from a region characterized by a wide range of PM_{2.5} levels¹⁵, thereby
83 offering a comprehensive understanding of the exposure-response curve throughout this
84 spectrum.

85 The impacts of elevated levels of fine particulate matter (PM_{2.5}, particles with diameter ≤ 2.5
86 μm) on health outcomes have been continuously and extensively studied. In recent years,
87 studies examining the relationship between PM_{2.5} and health outcomes have utilized
88 individual-level healthcare databases, deepening our understanding of the association
89 between PM_{2.5} exposure and mortality as well as various hospitalizations including
90 cardiovascular (CV) events.

91

92 **Methods**

93 Data Sources

94 Our study used data from the Taiwan National Health Insurance Database (NHID) covering
95 the period from 2009 to 2019. The NHID is a comprehensive health insurance program that
96 provides coverage for 99.9% of the country's population. The database includes beneficiary
97 registries, ambulatory care claims, inpatient claims, and prescription dispensing claims from
98 pharmacies. Diagnosis codes based on the International Classification of Diseases, Ninth
99 Edition, Clinical Modification (ICD-9-CM) and Tenth Edition, Clinical Modification (ICD-
100 10-CM) were used to identify outcomes and comorbidities, along with National Health
101 Insurance Codes identifying procedures and drug treatment. A more detailed description of
102 the NHID has been reported elsewhere.¹⁶

103

104 Cohort Definition

105 The study cohort consisted of patients with chronic conditions who are at high risk for CV
106 events, including patients with atrial fibrillation (AF), heart failure (HF), carotid stenosis,

107 coronary artery disease (CAD), cancer, peripheral vascular disease (PVD), cerebrovascular
108 accidents (CVA), and venous thromboembolisms (VTE), as well as those who underwent
109 recent total hip or knee arthroplasty (THA or TKA). These conditions were identified from
110 inpatient records based on at least one code within the 12 months preceding the index date.
111 The index date referred to the first outpatient or inpatient medical record between 2009 and
112 2018 in the NHID for individuals aged 65 years or older. For THA/TKA, the index date was
113 determined as the first hospital discharge date by a post-orthopedic or major surgery inpatient
114 code (81·54, 81·51). A detailed definition of the high-risk cohort is available in Table S-1.

115

116 Cardiovascular Events

117 Cardiovascular (CV) events were defined as events with at least one inpatient diagnosis
118 identified by an ICD-9/10 code in the first or second position. The five CV events measured
119 in the study were acute coronary syndrome (including myocardial infarction) (ACS/MI),
120 ischemic stroke/transient ischemic attack (IS/TIA), atrial fibrillation (AF), deep vein
121 thrombosis (DVT), and heart failure (HF). Specific criteria and details of the CV events
122 definitions are provided in Table S-2 of the Supplemental Material. The date of the outcome
123 event was recorded as the first date of diagnosis after the index date. Censoring occurred due
124 to death, end of the study period, or loss of National Health Insurance eligibility

125

126 Seasonal PM_{2.5} Exposure

127 Seasonal average PM_{2.5} concentrations were obtained from the Data Bank for Atmospheric
128 and Hydrologic Research and linked to the NHID based on postcode. The seasons of Winter,
129 Spring, Summer, and Fall were defined as occurring from December to February, March to
130 May, June to August, and September to November, respectively. Nationwide estimates of
131 seasonal average PM_{2.5} concentrations were calculated based on hourly data collected at 85

132 monitoring stations. Hourly PM_{2.5} concentrations were then averaged within each
133 combination of postcode and seasons to obtain postcode-level seasonal average
134 concentrations. For areas with no monitoring station, the PM_{2.5} concentration at the nearest
135 monitoring station was used.

136 To identify each patient's postcode of residence, we employed a residence estimation
137 algorithm developed by Lin et al.,¹⁷ which had been validated against census data (Pearson
138 correlation coefficient 0.960). The rule of residence estimation was based on the
139 classification of beneficiaries in the NHI program and the location of hospital or clinic visits.

140 This estimation was composed of four steps: (1) if the employment status of a beneficiary
141 belongs to a certification requiring a professional license (such as accountant, lawyer, health
142 care personnel), farmers, fishermen, veterans, or low-income citizens, whose residence can be
143 designated as identical to the one registered in the NHI registry, as professional practice or
144 veteran, and social benefit is restricted to the location of a city or county. The employment
145 status can be identified from the database of beneficiary registry with the code numbers of "2
146 (62 prior to 2006)," "3," "5," or "6"; (2) for those who did not belong to the above categories,
147 we retrieved the ambulatory care for upper respiratory tract infection (URI) in NHID, and
148 assigned the location of hospital/clinic they visited as their residence area; (3) if the persons
149 had no records for ambulatory URI, we checked for other ambulatory visits in the
150 hospital/clinic and selected the one with highest visits as their residence location; (4) for
151 those who had no claims record of ambulatory care other than the six defined chronic
152 illnesses, the residence information in the most recent registry was considered to be their
153 residence location. The residence estimation algorithm is shown in Figure S-1, which shows
154 the validated results of residence estimation positive predictive value (PPV) by linking NHID
155 and the National Health Interview Survey (NHIS). The overall residence estimation PPV was
156 84.3%.¹⁸

157 Covariates

158 Demographics including age, sex, and insurance premium (a proxy for socioeconomic status)
159 were obtained from the NHID. Information on the presence or absence of baseline
160 comorbidities and health behaviors was obtained using outpatient and inpatient diagnosis
161 codes from the NHID. These variables were considered as time-invariant confounders (see
162 Table S-3 in the Supplemental Material). Measures of healthcare utilization during the
163 baseline period including the number of hospitalizations, total hospitalization days, number
164 of emergency department visits, number of outpatient visits, and number of medications
165 dispensed were also taken from the NHID. Region of residence, season, and year were treated
166 as time-varying confounders.

167

168 Statistical Analysis

169 Descriptive statistics were used to summarize baseline characteristics, with continuous
170 variables presented as means with standard deviations (SD) and categorical variables as
171 counts and proportions. The incidence of CV events was calculated as the number of cases
172 divided by the number of individuals in the cohort by season.

173

174 Age- and sex-adjusted incidence was estimated using Poisson regression. Marginal structural
175 Cox models (MSM), which adjust for confounding through inverse probability of exposure
176 weights (IPWs), were fit separately for each type of CV events hospitalization in order to
177 estimate the effect of PM_{2.5} on the time to the first event. Following the approach used by our
178 prior study¹⁷ the MSM in this study estimated the effect of PM_{2.5} exposure at a specific time
179 point per season rather than the cumulative exposure history up to that point, as in standard
180 MSM. Random forest models fit to the PM_{2.5} measurements, with all confounding variables
181 as predictors, were used to estimate the IPWs for each person-season. The estimated IPWs

182 were stabilized and truncated at the 1st and 99th percentiles. To adjust for death as a
183 competing event, censoring-by-death weights (CDWs) were also estimated by fitting a
184 random forest to an indicator of death, with PM_{2.5} and the confounders as predictors. CDWs
185 were also stabilized and truncated. The final inverse probability weights deployed in the
186 MSMs were generated by multiplying the IPWs and CDWs for each person-season.

187

188 To illustrate the exposure-response curves, we first conducted an inverse probability weighted
189 Cox regression with a restricted cubic spline on PM_{2.5}. For the restricted cubic spline models,
190 we plot the estimated spline curves across the range of observed PM_{2.5} concentrations to
191 evaluate the shape of the exposure-response curve for each outcome, with 15 µg/m³ – the
192 Taiwan Environmental Protection Agency air quality standard concentration of PM_{2.5} – used
193 as the reference PM_{2.5} level. To quantify the impact of PM_{2.5} on CV events at moderate vs.
194 high levels, we estimated hazard ratio of average seasonal PM_{2.5} level of moderate (15-
195 23.5ug/m3) and high (> 23.5 ug/m3) using PM_{2.5} level < 15ug/m3 as reference.

196

197 All statistical analyses were conducted using SAS 9.4 (SAS Institute Inc., Cary, NC, USA)
198 and R software (version 4.2.1). The study was approved by the National Cheng Kung
199 University Hospital Institutional Review Board (IRB no: B-EX-108-056).

200

201 **Results**

202 Among 373,402 older adults with high-risk conditions in Taiwan, the average age was 73.6
203 years, and 57.7% of cohort members were female with the majority with hypertension (72%)
204 or osteoarthritis (58%). The mean PM_{2.5} concentration observed in our study was 28.3 µg/m³
205 (standard deviation 17.4 µg/m³) (Table 1). The median PM_{2.5} concentration during the study
206 period was 23.5 µg/m³ with minimum of 0.1 µg/m³ and maximum of 72.65 µg/m³ with

207 significant seasonal variation (Figure 1).

208

209 Figure 2 shows the time series of seasonal PM_{2.5} concentrations and the age- and sex-adjusted
210 incidence rates of the five CV events (DVT, ACS/MI, HF, IS/TIA, and AF). PM_{2.5} levels
211 showed clear seasonal patterns and declined gradually over time. Incidence of HF and IS/TIA
212 were high among Taiwanese older adults with a range of 0.2-2.7% and 0.2-1%, respectively.
213 The age and sex-adjusted incidence of HF, ACS/MI, DVT/PE and IS/TIA have also declined
214 over time with HF and ACS/MI showing clear seasonal patterns synchronous with PM_{2.5}
215 concentrations.

216

217 Restricted cubic spline curves showed that the risk of HF, DVT, IS/TIA, and ACS/MI all
218 increased as PM_{2.5} concentrations increased (Figure 3). For DVT and HF, the slope of the
219 curve was steeper at concentrations below 20 µg/m³ and leveled off at higher concentrations.
220 The curve for IS/TIA was linear up to at approximately 45 µg/m³ before it started to level off.
221 For ACS/MI, the slope was less steep at lower concentrations but more steep at higher PM_{2.5}
222 concentration, approximately at 35 µg/m³. We observed no between PM_{2.5} concentrations and
223 AF.

224

225 Compared to the PM_{2.5} concentration <15 µg/m³ (the current Taiwan regulatory standard) as a
226 reference, the adjusted hazard ratio (HR) for moderate (15-23.5µg/m³) on HF, IS/TIA, and
227 PE/DVT were 1.13 (95%CI 1.09-1.18), 1.07 (95%CI 1.03-1.11), and 1.22 (95%CI 1.08-1.38),
228 respectively (Figure 4) but was much smaller and not statistically significant for MI/ACS
229 (HR=1.04, 95%CI 0.98-1.10). HR for PM_{2.5} on AF was almost null. The adjusted HR for
230 high (> 23.5µg/m³) on HF, IS/TIA, PE/DVT and MI/ACS were 1.19 (95%CI 1.14-1.24), 1.14
231 (95%CI 1.10-1.18), 1.31 (95%CI 1.16-1.48) and 1.10 (95%CI 1.04-1.16), respectively. These

232 findings were consistent with the exposure-response curves illustrated by cubic spline curves
233 in Figure 3.

234

235 **Discussion**

236 In the national sample of older adults in Taiwan, we observed a decrease over time in both air
237 pollution (PM_{2.5}) levels and the age and gender adjusted rates of CV events from 2009-2019,
238 with HF and MI/ACS showing clear seasonal changes that matched the PM_{2.5} patterns.

239 Among older adults with high-risk conditions for CV events and frequent exposure to high
240 levels of PM_{2.5} in Taiwan, we observed non-linear exposure response relationship between
241 PM_{2.5} and CV events. For DVT, HF, and IS/TIA, exposure to PM_{2.5} was associated with
242 elevated risk of DVT, HF, IS/TIA with steeper slopes of the PM_{2.5} exposure-response curves
243 at lower exposure levels. For MI/ACS, in contrast, the PM_{2.5} effect was more pronounced at
244 higher exposure level.

245

246 The incidence of CV events in Taiwan and the levels of PM_{2.5} both exhibited decreasing
247 trends over time. In previous literature, decreasing trends of incidences of HF and strokes
248 were reported during 2010-2015¹⁹ and 2004-2011²⁰, respectively, while AMI incidence
249 remained constant during 2009-2015²¹⁻²². The patterns of our findings are consistent with
250 results from previous studies that have reported improvements in air quality due to the
251 implementation of various air pollution control measures in Taiwan over the past several
252 decades.²³ For instance, Taiwan's Air Pollution Control Act, which has been continuously
253 strengthened since its introduction in 1975, has played a significant role in regulating and
254 reducing air pollution levels. The Air Pollution Prevention and Control Strategy, implemented
255 since 2017, has further contributed to air quality improvement through a combination of
256 incentives and constraints.

257 American Heart Association (AHA) scientific statement on PM air pollution and
258 cardiovascular disease in 2010 concluded that PM_{2.5} increases the risk of cardiovascular
259 events and death, but there are few quantitative summaries available that synthesize and
260 compare the magnitudes of these effects. A meta-analysis which included 42 studies, focus on
261 long-term PM_{2.5} exposure and risks of ischemic heart disease and stroke events shows that
262 long-term PM_{2.5} exposure is associated with increased risks of IHD mortality, cerebrovascular
263 mortality, and incident stroke. However, this study does not provide the level of PM_{2.5} and
264 assumes that the effect of PM_{2.5} exposure on CV risk is linear.²⁴

265

266 Our spline models enabled us to characterize the shape of the relationships between PM_{2.5}
267 and each CV events across exposure levels ranging from 0.1 µg/m³ to 72.65µg/m³. For DVT,
268 HF, MI/ACS and AF, a plateau was observed in the curve between levels of 20 µg/m³ and 40
269 µg/m³. At PM_{2.5} concentrations below 20µg/m³, increasing PM_{2.5} exposure was associated
270 with increased risk of DVT, HF, MI/ACS and AF. Conversely, above 20 µg/m³, there were
271 smaller positive but not statistically significant associations between PM_{2.5} concentrations
272 and most CV events. This provides important evidence about the complex non-linear
273 relationships between PM_{2.5} exposure and CV events at higher PM_{2.5} concentrations. Our
274 study showed biphasic concentration-response relationships between PM_{2.5} levels and CV
275 events. This pattern is consistent with results from studies conducted in areas with high PM_{2.5}
276 levels,²⁵⁻²⁸ as well as with the American Heart Association's consensus that associations
277 between PM_{2.5} concentration and CV events risk appear to be monotonic below 15 µg/m³.¹¹

278

279 Our results differ somewhat from those of Lo et al., who investigated the association between
280 PM_{2.5} and cardiopulmonary disease in the Taiwanese population.²⁹ They found that each 10
281 µg/m³ increase in 5-year average exposure to PM_{2.5} was associated with a 4.8% increased

282 risk of incident ischemic heart disease (95% confidence interval [CI] -3·3, 13·6) and a 3·9%
283 increased risk of incident stroke (95% confidence interval [CI] -2·9, 11·1). However, they did
284 not detect any evidence of non-linearity for most outcomes examined, with the exception of
285 ischemic heart disease. However, Lo et al. used 5-year average PM_{2.5} concentrations whereas
286 we used more granular, seasonal average values. PM_{2.5} concentrations vary substantially by
287 season and by year in Taiwan as shown in our analyses. Thus, seasonal averages reflect
288 patient exposures to fine PM more precisely than 5-year averages. Also, the study populations
289 are different between the two studies; Taiwan National Health Interview Survey (62,694
290 individuals from general older adults) in Lo et al. vs. NHID (373,402 individuals who are at
291 high risk for CV events). Our study population was larger, more nationally representative but
292 also focused on high risk individuals.

293

294 The mechanisms by which PM_{2.5} influences cardiovascular outcomes involve both direct and
295 indirect pathways. Animal studies have demonstrated that PM_{2.5} can be directly distributed
296 through the bloodstream to remote target organs, leading to local oxidative stress,
297 inflammation, and atherosclerotic plaques, ultimately resulting in thrombus formation.³⁰
298 Indirectly, PM_{2.5} deposited in the lungs can trigger oxidative stress and inflammation, leading
299 to increased circulating levels of pro-inflammatory cytokines, a known risk factor for
300 atherosclerosis.^{11,25} A study conducted in Beijing found that exposure to higher levels of air
301 pollution led to acute inflammatory and prothrombotic response in the early lag period,
302 followed by a gradual decrease in effect over time, potentially due to compensatory
303 mechanisms.²⁶

304

305 Our study utilized seasonal average exposures in part to provide actionable insights for policy
306 makers, clinicians and individuals. This approach was chosen in light of distinct and

307 predictable seasonal patterns in PM_{2.5} concentrations, which offer opportunities for clinicians
308 to advise high-risk patients regarding exposure reduction during periods of elevated ambient
309 PM_{2.5} levels, As the high-risk individuals in our study had multiple outpatient visits per
310 season, clinicians can prescribe personal air purifiers and frequent use, and/or recommend
311 limiting outdoor activities during seasons with high ambient PM_{2.5}.¹⁵

312

313 Several limitations to our study should be noted. First, exposure data were obtained from
314 fixed monitoring stations, and patient residence was indirectly estimated from claims data,
315 introducing the potential for exposure misclassification. To mitigate this bias, we used the
316 most frequently visited clinic as a surrogate for patient residence. Additionally, the lack of
317 socioeconomic data in the NHID limited our ability to account for individual-level measures
318 taken to mitigate air pollution exposure, such as the use of air purifiers or reducing outdoor
319 exposure during periods of poor air quality. The use of air purifiers in Taiwan was about 10%
320 between 2009 and 2014, increasing from 11% to 23% between 2015 and 2019³¹. We were
321 able to address this limitation to some extent by using insurance premium (which reflects
322 income) as a proxy for health behavior.

323

324 In conclusion, our study contributes to the existing knowledge regarding PM_{2.5} and
325 cardiovascular events by demonstrating nonlinear exposure- response relationship between
326 PM_{2.5} concentrations and incidence of CV events underscores the importance of reducing
327 PM_{2.5} levels even below the current regulatory standard of 15 µg/m³ and the potential for
328 such a policy change to effectively decrease the incidence of DVT and HF further in high-risk
329 individuals. Accordingly, further reduction of PM_{2.5} levels beyond Taiwan's regulatory
330 standards (<15 µg/m³) may effectively reduce the incidence of DVT and HF. We also showed
331 that the incidence of most CV events and PM_{2.5} concentrations in Taiwan fell significantly

332 between 2009 and 2019, supporting the potential effectiveness of comprehensive air pollution
333 control measures.

334

335 **Acknowledgments:** Funding for this study was provided by the National Institute on Aging,
336 National Institutes of Health (R01 #1R01AG060232-01A1). Gabriel D. Shapiro provided
337 editorial support for this manuscript and was paid by Rutgers University.

338

339 **Sources of Funding:** This study was funded by the National Institutes of Health (NIA R01
340 #1R01AG060232-01A1).

341

342 **Disclosures:** The authors declare that they have no competing interests.

343

344 **Contributors:** Conceptualization (AV, SS, DR), data curation (SH, CS), formal analysis (SH,
345 CS), funding acquisition (SS), investigation (DR, RN, SS), methodology (RN, KJ, SS, CS,
346 CL), project administration (SS, MR), resources (YY), software (CS), supervision (DR, SS,
347 RN, BB, YY), validation (SS, BB, YY), visualization (SH, CS), writing – original draft (SH,
348 CS), writing – review and editing (all authors)

349

350 **Data Sharing:** The datasets generated and analyzed for the conduct of this study are not
351 publicly available and are restricted to authorized users of the Taiwan Health and Welfare
352 Data Science Center .

353

354

355

356

357 **References**

- 358 1. Lelieveld J, Pozzer A, Pöschl U, Fnais M, Haines A, Münzel T. Loss of life expectancy
359 from air pollution compared to other risk factors: a worldwide perspective.
360 *Cardiovascular Research*. 2020; 116 (11):1910–1917.
- 361 2. Park S, Allen RJ, Lim CH. A likely increase in fine particulate matter and premature
362 mortality under future climate change. *Air Qual Atmosphere Health*. 2020;13(2):143-
363 151.
- 364 3. Di Q, Dai L, Wang Y, Zanobetti A, Choirat C, Schwartz JD, Dominici F. Association of
365 Short-term Exposure to Air Pollution With Mortality in Older Adults. *JAMA*.
366 2017;318(24):2446-2456.
- 367 4. Di Q, Wang Y, Zanobetti A, Wang Y, Koutrakis P, Choirat C, Dominici F, Schwartz D.
368 Air Pollution and Mortality in the Medicare Population. *N Engl J Med*.
369 2017;376(26):2513-2522.
- 370 5. Wang B, Eum KD, Kazemiparkouhi F, Li C, Manjourides J, Pavlu V, Suh H. The
371 impact of long-term PM_{2.5} exposure on specific causes of death: exposure-response
372 curves and effect modification among 53 million U.S. Medicare beneficiaries. *Environ*
373 *Health*. 2020;19(1):20.
- 374 6. Wei Y, Yazdi MD, Di Q, Requia WJ, Dominici F, Zanobetti A, Schwartz J. Emulating
375 causal dose-response relations between air pollutants and mortality in the Medicare
376 population. *Environ Health*. 2021;20(1):53.
- 377 7. Wu X, Braun D, Schwartz J, Kioumourtzoglou MA, Dominici F. Evaluating the impact
378 of long-term exposure to fine particulate matter on mortality among the elderly. *Sci Adv*.
379 Published online June 26, 2020:eaba5692.
- 380 8. Chen J, Hoek G. Long-term exposure to PM and all-cause and cause-specific mortality:
381 A systematic review and meta-analysis. 2020;143:105974.

- 382 9. Rhee J, Dominici F, Zanobetti A, Schwartz J, Wang Y, Di Q, Balmes J, Christiani DC.
383 Impact of Long-Term Exposures to Ambient PM_{2.5} and Ozone on ARDS Risk for Older
384 Adults in the United States. *Chest*. 2019;156(1):71-79.
- 385 10. Yitshak-Sade M, Bobb JF, Schwartz JD, Kloog I, Zanobetti A. The association between
386 short and long-term exposure to PM_{2.5} and temperature and hospital admissions in New
387 England and the synergistic effect of the short-term exposures. *Sci Total Environ*.
388 2018;639:868-875.
- 389 11. Brook RD, Rajagopalan S, Pope CA 3rd, Brook JR, Bhatnagar A, Diez-Roux AV,
390 Holguin F, Hong Y, Luepker RV, Mittleman MA, et al. Particulate matter air pollution
391 and cardiovascular disease: An update to the scientific statement from the American
392 Heart Association. *Circulation*. 2010;121(21):2331-78.
- 393 12. Pope CA 3rd, Burnett RT, Turner MC, Cohen A, Krewski D, Jerrett M, Gapstur SM,
394 Thun MJ. Lung cancer and cardiovascular disease mortality associated with ambient air
395 pollution and cigarette smoke: shape of the exposure-response relationships. *Environ*
396 *Health Perspect*. 2011;119(11):1616-1621.
- 397 13. Dominici F, Peng RD, Bell ML, Pham L, McDermott A, Zeger SL, Samet JM. Fine
398 Particulate Air Pollution and Hospital Admission for Cardiovascular and Respiratory
399 Diseases. *JAMA*. 2006;295(10):1127-1134.
- 400 14. Joshi SS, Miller MR, Newby DE. Air pollution and cardiovascular disease: the Paul
401 Wood Lecture, British Cardiovascular Society 2021. *Heart*. 2022;108:1267–1273.
- 402 15. Nethery RC, Josey K, Gandhi P, Kim JH, Visaria A, Bates B, Schwartz J, Robinson D,
403 Setoguchi S. Air Pollution and Cardiovascular and Thromboembolic Events in Older
404 Adults With High-Risk Conditions. *American Journal of Epidemiology*
405 2023;192(8):1358-1370. <https://doi.org/10.1093/aje/kwad089>

- 406 16. Hsieh CY, Su CC, Shao SC, Sung SF, Lin SJ, Kao YH, Lai CC. "Taiwan's national
407 health insurance research database: past and future." *Clinical epidemiology* 11 (2019):
408 349.
- 409 17. Lin MH, Yang AC, Wen TH. Using regional differences and demographic
410 characteristics to evaluate the principles of estimation of the residence of the population
411 in National Health Insurance Research Databases (NHIRD). *Taiwan Journal of Public*
412 *Health*. 2011;30(4):347.
- 413 18. Su CC, Lee KJ., Yen CT. Wu LH, Huang CH, Lu MZ, Cheng CL. Use of spatial panel-
414 data models to investigate factors related to incidence of end-stage renal disease: a
415 nationwide longitudinal study in Taiwan. *BMC Public Health* 23, 247 (2023).
416 <https://doi.org/10.1186/s12889-023-15189-7>
- 417 19. Wang TD, Huang ST, Wang CY, Lin FJ, Chen HM, Hsiao FY. Nationwide trends in
418 incidence, healthcare utilization, and mortality in hospitalized heart failure patients in
419 Taiwan. *ESC Heart Fail*. 2020 Dec;7(6):3653-3666. doi: 10.1002/ehf2.12892. Epub
420 2020 Sep 13. PMID: 32924330; PMCID: PMC7755001.
- 421 20. Tsai CF, Wang YH, Teng NC, Yip PK, Chen LK. Incidence, subtypes, sex differences
422 and trends of stroke in Taiwan. *PLoS One*. 2022 Nov 16;17(11):e0277296. doi:
423 10.1371/journal.pone.0277296. PMID: 36383604; PMCID: PMC9668115.
- 424 21. Lee CH, Cheng CL, Yang YH, Chao TH, Chen JY, Liu PY, Lin CC, Chan SH, Tsai LM,
425 Chen JH, Lin LJ, Li YH. Trends in the incidence and management of acute myocardial
426 infarction from 1999 to 2008: get with the guidelines performance measures in Taiwan.
427 *J Am Heart Assoc*. 2014 Aug 11;3(4):e001066. Doi: 10.1161/JAHA.114.001066. PMID:
428 25112555; PMCID: PMC4310397.

- 429 22. Lee CH, Fang CC, Tsai LM, Gan ST, Lin SH, Li YH. Patterns of Acute Myocardial
430 Infarction in Taiwan from 2009 to 2015. *Am J Cardiol.* 2018 Dec 15;122(12):1996-
431 2004. doi: 10.1016/j.amjcard.2018.08.047. Epub 2018 Sep 13. PMID: 30301543.
- 432 23. Hung, Cw., Shih, MF. Air quality changes in Taiwan over the past decades and during
433 the COVID-19 crisis. *Terr Atmos Ocean Sci* 34, 5 (2023).
434 <https://doi.org/10.1007/s44195-023-00036-4>
- 435 24. Alexeeff SE, Liao NS, Liu X, Van Den Eeden SK, Sidney S. Long-Term PM2.5
436 Exposure and Risks of Ischemic Heart Disease and Stroke Events: Review and Meta-
437 Analysis. *J Am Heart Assoc.* 2021 Jan 5;10(1):e016890. doi:
438 10.1161/JAHA.120.016890. Epub 2020 Dec 31. PMID: 33381983; PMCID:
439 PMC7955467.
- 440 25. Hamanaka RB, Mutlu GM. Particulate Matter Air Pollution: Effects on the
441 Cardiovascular System. *Front Endocrinol (Lausanne).* 2018 Nov 16;9:680. doi:
442 10.3389/fendo.2018.00680. PMID: 30505291; PMCID: PMC6250783.
- 443 26. Xie W, Li G, Zhao D, Xie X, Wei Z, Wang W, Wang M, Li G, Liu W, Sun J, Jia Z,
444 Zhang Q, Liu J. Relationship between fine particulate air pollution and ischaemic heart
445 disease morbidity and mortality. *Heart.* 2015 Feb;101(4):257-63. doi: 10.1136/heartjnl-
446 2014-306165. Epub 2014 Oct 23. PMID: 25341536.
- 447 27. Apte JS, Marshall JD, Cohen AJ, Brauer M. Addressing global mortality from ambient
448 PM2.5. *Environ Sci Technol.* (2015) 49:8057–66. doi: 10.1021/acs.est.5b01236
- 449 28. Pope CA III, Burnett RT, Krewski D, Jerrett M, Shi Y, Calle EE, Thun MJ.
450 Cardiovascular mortality and exposure to airborne fine particulate matter and cigarette
451 smoke: shape of the exposure-response relationship. *Circulation* (2009) 120:941–8. doi:
452 10.1161/CIRCULATIONAHA.109.857888

- 453 29. Lo WC, Ho CC, Tseng E, Hwang JS, Chan CC, Lin HH. Long-term exposure to ambient
 454 fine particulate matter (PM_{2.5}) and associations with cardiopulmonary diseases and lung
 455 cancer in Taiwan: a nationwide longitudinal cohort study *International Journal of*
 456 *Epidemiology*, 2022, 1230–1242.
- 457 30. Du Y, Xu X, Chu M, Guo Y, Wang J. Air particulate matter and cardiovascular disease:
 458 the epidemiological, biomedical and clinical evidence. *J Thorac Dis.* 2016;8(1):E8-E19.
- 459 31. National Statistics Republic of China (Taiwan). Report on The Survey of Family Income
 460 and Expenditure. National Statistics Republic of China (Taiwan); 2024. Accessed April
 461 19, 2024. <https://eng.stat.gov.tw/News.aspx?n=4218&sms=11711>

462
 463 **Table 1. Baseline characteristics of the high CV events risk cohort (N=373,402)**

	Mean (or N)	SD (or %)
Exposure		
PM _{2.5} µg/m ³	28·31	17·41
Individual Characteristics		
Age	73·61	7·22
Male	157948	42·3
Area-Level Characteristics		
Population density	2494·95	3187·88
National Health Insurance premium	22907·41	20382·02
Individual Comorbidities, Behavioral Risk Factors, and Health Service		

Measures

Smoking	838	0·22
Obesity	1345	0·36
Diabetic nephropathy	23400	6·27
Diabetic neuropathy	13813	3·7
Diabetes retinopathy	7321	1·96
Diabetes with peripheral circulatory disorders	5328	1·43
Diabetes overall (uncomplicated + complicated; Type I or II)	129975	34·81
Hypertension	272363	72·94
Hypercholesterolemia	116000	31·07
Stroke	68782	18·42
Transient ischemic attack	20681	5·54
Myocardial infarction	13096	3·51
Heart failure	70066	18·76
Chronic kidney disease	30167	8·08
Renal insufficiency (non-CKD related)	22847	6·12
Stable angina	29725	7·96
Unstable angina	18426	4·93
Other ischemic heart disease	93347	25
Peripheral vascular disease	10502	2·81
Atrial fibrillation	33885	9·07
Other dysrhythmias	42987	11·51
Cardiac conduction disorder	3844	1·03

Other cardiovascular diseases	23647	6.33
Asthma	34232	9.17
Chronic obstructive pulmonary disease	38641	10.35
Chronic pulmonary disease (includes bronchiectasis)	59130	15.84
Obstructive sleep apnea	194	0.05
Pneumonia	47709	12.78
Acute renal disease	9222	2.47
Chronic renal insufficiency	43336	11.61
Edema	29899	8.01
Liver disease	65157	17.45
Hypothyroidism	5560	1.49
Hyperthyroidism	4487	1.2
Depression	22211	5.95
Anxiety	43833	11.74
Sleep disorder	69053	18.49
Dementia	28312	7.58
Psychosis	4353	1.17
Obesity	1640	0.44
Smoking	2178	0.58
Alcohol use	2763	0.74
Drug abuse	807	0.22
Congenital anomalies of the heart and great arteries	1055	0.28
Cardiomyopathy	3957	1.06

Ventricular arrhythmia	1887	0·51
Disorders of mineral and electrolyte imbalance	32119	8·6
Diarrhea	23142	6·2
Hyperparathyroidism	731	0·2
Angioneurotic edema	184	0·05
Diseases and dysfunctions of GI/GU	183849	49·24
Food allergy	1265	0·34
Drug allergy	4025	1·08
Glaucoma	1635	0·44
Myocarditis	183	0·05
Neutropenia	3311	0·89
Cancer	102415	27·43
Epilepsy	2902	0·78
HIV	58	0·02
Anemias	63297	16·95
Any mental disorder	110321	29·54
Bipolar disorder	2093	0·56
Dyskinesia	15	0
Diverticulosis of intestine	2063	0·55
Pancreatitis	2649	0·71
Osteoarthritis	215556	57·73
Disc disorder	29296	7·85
Hip fracture	8411	2·25
Self-harm	26	0·01

Number of outpatient visits	36·09	21·82
Number of hospital visits	1·74	1·61
Days hospitalized	15·82	25·54
Number of emergency department visits	1·01	1·65
Number of medications dispensed	13·58	5·79

464

465 Figure 1 Maps of postcode-level seasonal average PM_{2.5} concentrations (ug/m³) over the

466 study period.

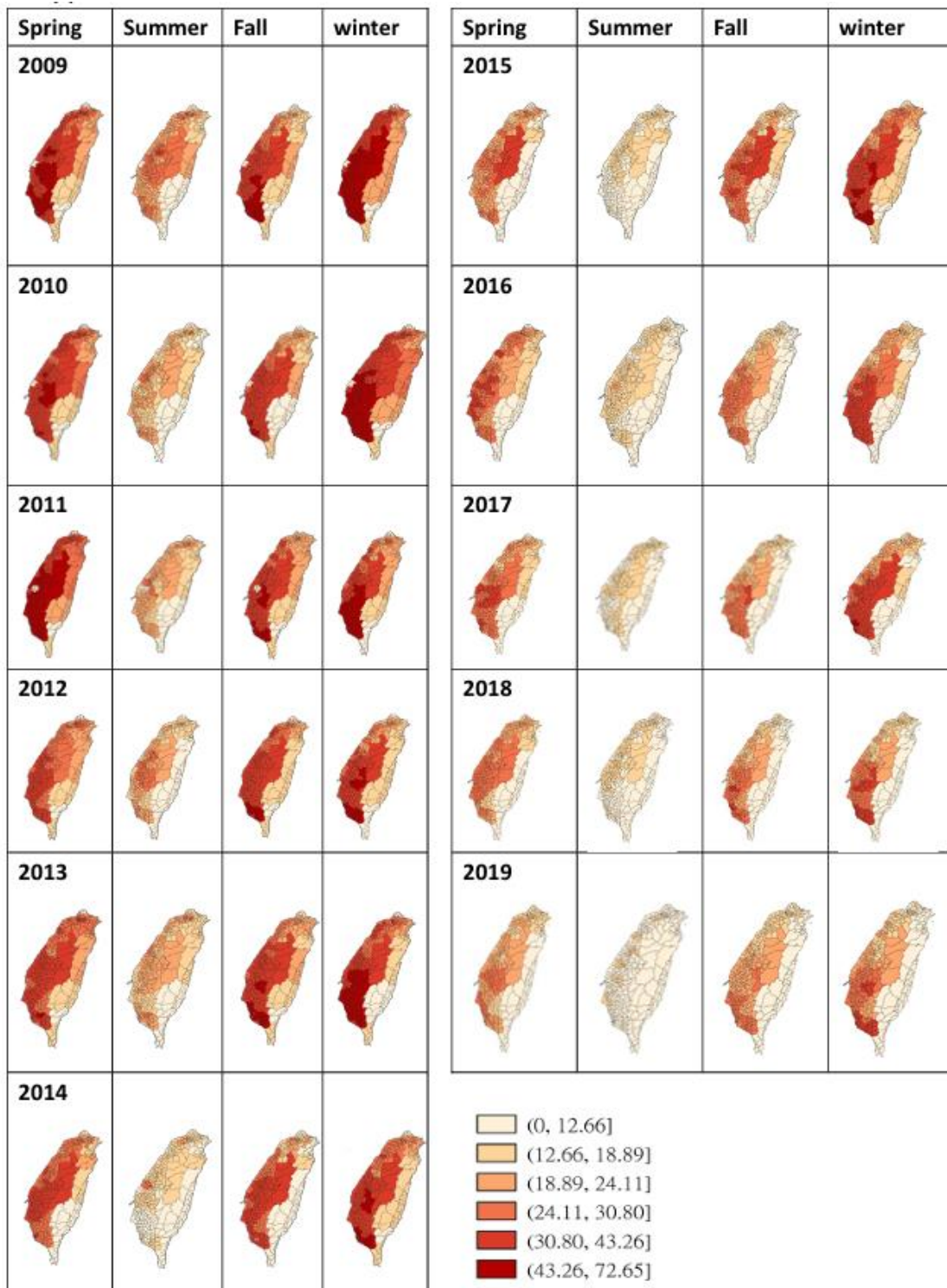
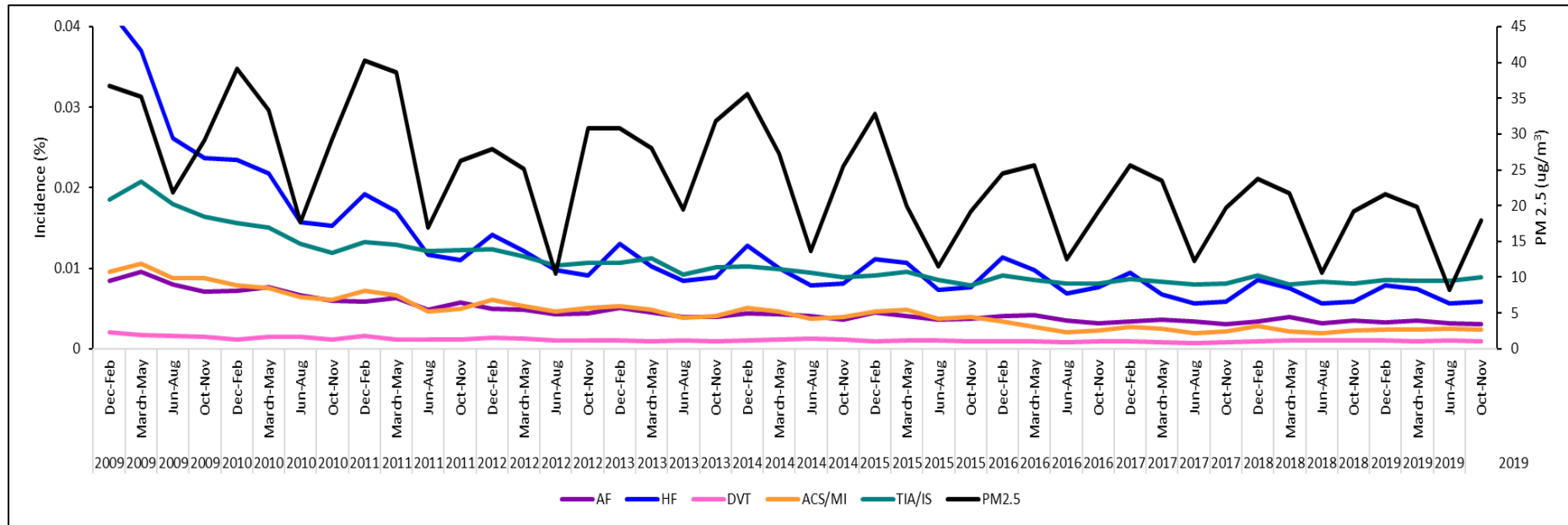


Figure 2 Seasonally adjusted incidence of cardiovascular events



Taiwan started to set the PM2.5 threshold regulation in 2012. It has been set at 15 $\mu\text{g}/\text{m}^3$ from the beginning and remains unchanged. Taiwan began implementing the Air Pollution Prevention and Control Action Plan in December 2017 to reduce the national annual average PM2.5 concentration from 20 $\mu\text{g}/\text{m}^3$ in 2016 to 12.4 $\mu\text{g}/\text{m}^3$ in 2022. (For a detailed report, please refer to the press release of the Ministry of Environment <https://www.moenv.gov.tw/en/AD00D74F752160/b7a33398-f7e6-4938-b868-36204b1c8270>).

Figure 3 Hazard ratios estimated by MSM with restricted cubic spline Cox models to evaluate associations between PM_{2.5} and cardiovascular events (reference point 15 $\mu\text{g}/\text{m}^3$)

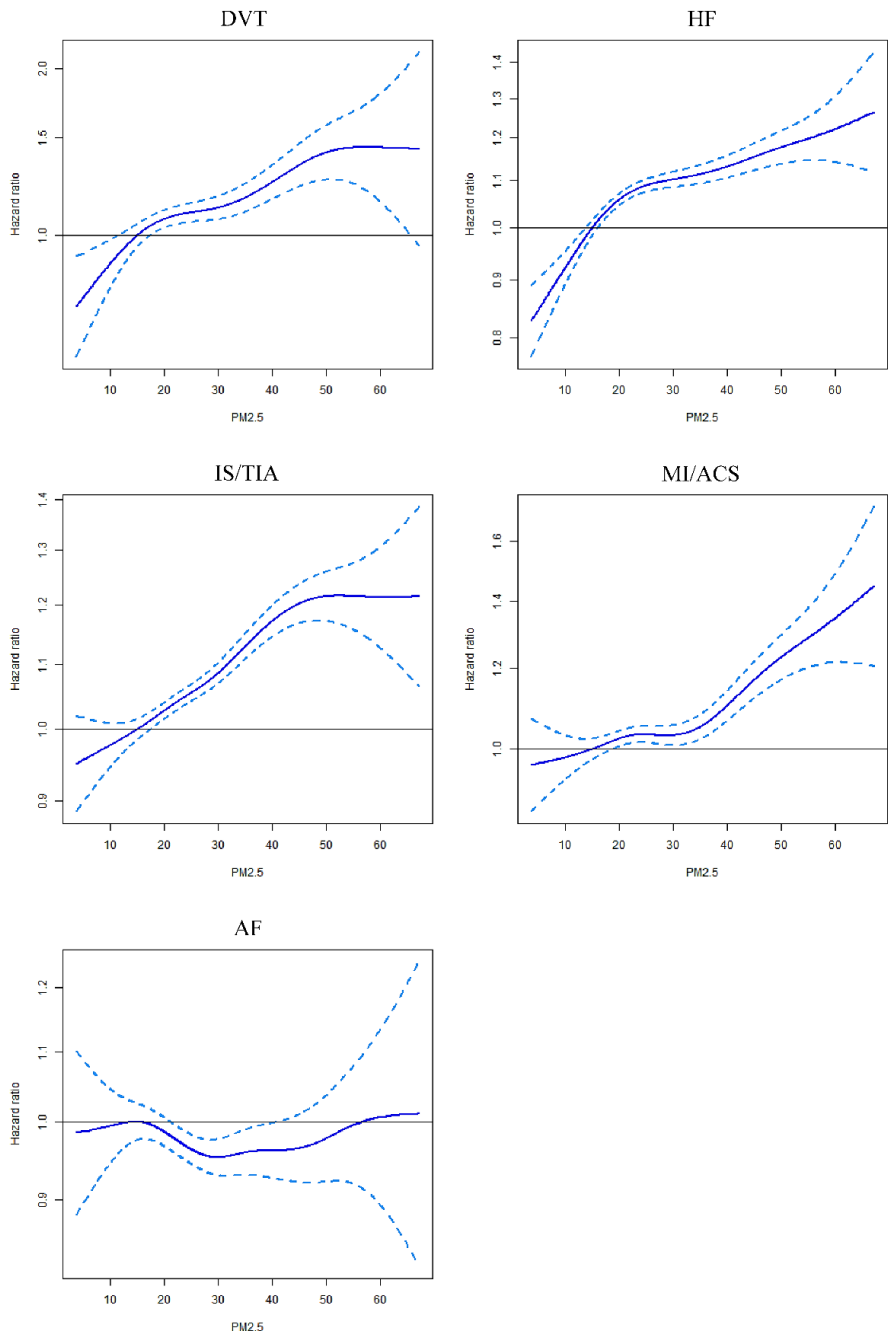


Figure 4. Forest plot of adjusted hazard ratio of average seasonal PM_{2.5} level (< 15ug/m³, 15-23.5ug/m³ and > 23.5 ug/m³) as categorical variable for each CV events outcome. Average seasonal PM_{2.5} level < 15ug/m³ was used as reference.

