

1 **Racial and Ethnic Disparities in the Utilization and Outcomes with WATCHMAN FLX: A**  
2 **SURPASS analysis of the NCDR LAAO Registry**

3 **Authors:** Oluseun O Alli, MD,<sup>a</sup> Jalaj Garg, MD,<sup>b</sup> Brian C. Boursiquot, MD, MS<sup>c</sup>, Samir R  
4 Kapadia, MD,<sup>d</sup> Robert W Yeh, MD, MSc,<sup>e</sup> Matthew J Price, MD,<sup>f</sup> Jonathan P Piccini, MD,  
5 MHS,<sup>g</sup> Devi G Nair, MD,<sup>h</sup> Jonathan C Hsu, MD,<sup>i</sup> Douglas N Gibson, MD,<sup>j</sup> TDominic Alloco  
6 MD,<sup>k</sup> Thomas Christen, MD PhD,<sup>k</sup> Brad Sutton, MD,<sup>k</sup> and James V Freeman, MD, MPH, MS<sup>l</sup>

7 <sup>a</sup>Division of Cardiology, Novant Health Heart and Vascular Institute, Charlotte, NC; <sup>b</sup>Division of  
8 Cardiology, Cardiac Arrhythmia Service, Loma Linda University Health, Loma Linda, MN;  
9 <sup>c</sup>Department of Medicine Columbia University Irving Medical Center New York NY;  
10 <sup>d</sup>Department of Cardiovascular Medicine, Heart, Vascular, and Thoracic Institute, Cleveland  
11 Clinic, Cleveland, Ohio, USA; <sup>e</sup>Richard A. and Susan F. Smith Center for Outcomes Research in  
12 Cardiology, Beth Israel Deaconess Medical Center, Boston, MA; <sup>f</sup>Division of Cardiovascular  
13 Diseases, Scripps Clinic, La Jolla, CA; <sup>g</sup>Division of Cardiology, Duke University Medical  
14 Center, Durham, North Carolina, USA; <sup>h</sup>Department of Cardiac Electrophysiology, St. Bernard's  
15 Heart and Vascular Center, Jonesboro, Arkansas, USA; <sup>i</sup>Cardiac Electrophysiology Section,  
16 Division of Cardiology, Department of Medicine, University of California, San Diego,  
17 California, USA; <sup>j</sup>Division of Cardiovascular Diseases, Scripps Clinic, La Jolla, California,  
18 USA; <sup>k</sup>Boston Scientific Corp, Marlborough, Massachusetts, USA; <sup>l</sup>Section of Cardiovascular  
19 Medicine, Yale University School of Medicine, New Haven, Connecticut and Center for  
20 Outcomes Research and Evaluation, Yale-New Haven Hospital, New Haven, Connecticut, USA

21 **Short Title:** Racial Disparities in Use and Outcomes after LAAO

22 **Address for Correspondence:**

23 Oluseun O Alli  
24 Division of Cardiology  
25 Novant Heart and Vascular Institute  
26 Charlotte NC 28204  
27 Email: [seunnalli@gmail.com](mailto:seunnalli@gmail.com)  
28

29 **Total Word Count:** 6156 (including Title Page, Abstract, Text, References, Tables and Figures  
30 Legends)

31

32

1 **Abstract (N=250 words; currently N=267)**

2 **Background:** Left atrial appendage occlusion (LAAO) is increasingly used as an alternative to  
3 oral anticoagulation for stroke prevention in select patients with atrial fibrillation. Data on  
4 outcomes in racial and ethnic minority individuals are limited. This analysis assessed differences  
5 in the utilization and outcomes of LAAO by race and ethnicity in a large national registry.

6 **Methods:** This analysis acquired data on WATCHMAN FLX patients from the National  
7 Cardiovascular Data Registry (NCDR) LAAO Registry through September 2022. All patients  
8 with an attempted WATCHMAN FLX implantation and known race and ethnicity were  
9 included. Baseline characteristics and 1 year event rates were compared.

10 **Results:** A total of 97,185 patients were analyzed; 87,339 were White (90%), 3,750 Black  
11 (Black/African American 3.9%), and 2,866 Hispanic ([Hispanic/Latinx] 2.9%). Black and  
12 Hispanic patients were younger with a higher incidence of prior stroke and significant bleeding  
13 compared to White patients. Black and Hispanic patients were treated with LAAO in smaller  
14 numbers relative to their proportion of the US population. Rates of procedural success were  
15 similar between groups. Though direct oral anticoagulants were prescribed in most patients  
16 across the groups, dual and single antiplatelet therapy were prescribed more often in Black  
17 patients. Black patients had significantly higher rates of 1-year death and bleeding compared to  
18 White and Hispanic patients.

19 **Conclusions:** Patients from racial and ethnic minority groups comprise a disproportionately  
20 small fraction of all patients who undergo LAAO. Black and Hispanic patients were younger but  
21 had significantly higher comorbidities compared to White patients. Procedural success was  
22 similar amongst the groups but Black patients experienced higher rates of death and bleeding at 1  
23 year.

1 **Keywords (up to 6)**

2 Racial disparity, left atrial appendage occlusion, atrial fibrillation, bleeding, stroke

3

4 **Abbreviations list (up to 10)**

5 ACC = American College of Cardiology

6 LAAO = left atrial appendage occlusion

7 NCDR = National Cardiovascular Data Registry

8 AF = atrial fibrillation

9 OAC = oral anticoagulation

10 DAPT = dual antiplatelet therapy

11 DOAC = direct oral anticoagulant

12

13 **Introduction**

14 Transcatheter left atrial appendage occlusion (LAAO) is an increasingly utilized alternative

15 therapy to long-term anticoagulation for stroke prevention in selected patients with nonvalvular

16 atrial fibrillation (AF). Stroke is the most devastating complication of AF, and the use of oral

17 anticoagulation or LAAO has been shown to be effective at reducing stroke risk.<sup>1,2</sup> Despite the

18 effectiveness of anticoagulation, racial and ethnic minority patients, and particularly Black

19 patients diagnosed with AF, are less likely to be discharged on oral anticoagulants, while also

20 having a higher risk of stroke compared to White patients.<sup>3,4</sup> Similarly, it has been shown that

21 there are significant racial and ethnic disparities in structural heart disease interventions,

22 including LAAO<sup>5</sup>, with one study showing that racial and ethnic minority patients comprised less

1 than 4% of those treated with these advanced interventions between 2011 and 2016.<sup>5</sup> Racial and  
2 ethnic minority individuals have also been consistently shown to be undertreated in terms of  
3 other cardiovascular procedures like transcatheter aortic valve replacement (TAVR), mitral valve  
4 replacement, and implantation of implantable cardioverter-defibrillators.<sup>6-9</sup>

5 In published clinical trials and real-world experience with transcatheter LAAO, non-  
6 Hispanic White patients have represented over 90% of cases; it is not clear that the efficacy in  
7 the overall population is generalizable to all racial and ethnic groups. Studies of racial and ethnic  
8 disparities in transcatheter LAAO outcomes have shown higher rates of in-hospital  
9 complications among non-Hispanic Black and Hispanic patients compared to non-Hispanic  
10 White patients.<sup>10</sup> However, there is a paucity of data comparing post-discharge outcomes across  
11 racial and ethnic groups.

12 The SURPASS registry is an analysis of patients who underwent LAAO with the  
13 WATCHMAN FLX device as part of the American College of Cardiology (ACC) Foundation's  
14 National Cardiovascular Data Registry (NCDR) LAAO Registry. The aim of this current  
15 analysis is to examine the utilization of and outcomes after WATCHMAN FLX LAAO across  
16 racial and ethnic groups in a large national registry.

## 17 **Methods**

### 18 *Data Source*

19 This analysis included data on patients implanted with the WATCHMAN FLX device  
20 (Boston Scientific, Marlborough, MA, USA) and included in the NCDR LAAO Registry. This  
21 registry was initiated in December 2015 after FDA approval of the first WATCHMAN device.<sup>11</sup>  
22 The NCDR LAAO Registry serves as the formal post-market surveillance vehicle required by

1 the FDA for the WATCHMAN device, and it is the only registry approved by CMS to satisfy the  
2 coverage decision data submission requirement.<sup>12</sup> As of April 2016, U.S. hospitals were required  
3 to submit data for all WATCHMAN procedures into the LAAO Registry to qualify for Medicare  
4 reimbursement. Hospitals are encouraged to submit data on all device recipients regardless of  
5 insurance status.

6 The LAAO Registry data collection methods have been detailed previously.<sup>11</sup> In brief, the  
7 LAAO Registry collects approximately 220 data elements from the implant hospitalization, 60  
8 for each follow-up visit, and 15 data elements to support the adjudication of adverse events. Data  
9 are collected at discharge, and follow-up visits over the first year occur at 45 days ( $\pm 14$  days),  
10 180 days (-30 days/+60 days), and 365 days ( $\pm 60$  days). The NCDR Data Quality Reporting  
11 process is designed to ensure that submissions are complete, valid, and accurate; it involves an  
12 annual audit of about 5% of sites that are randomly selected during which submitted data are  
13 compared with source documentation and billing data.<sup>13</sup> The LAAO Registry developed and  
14 validated a novel process to adjudicate adverse clinical events over follow-up. A computer-based  
15 algorithm uses discrete combinations of registry data elements based on standard event  
16 definitions to adjudicate adverse events.<sup>14</sup> Cases are manually adjudicated when registry data  
17 elements are incomplete or conflicting. Adjudicated adverse events in the registry include  
18 ischemic stroke, hemorrhagic stroke, undetermined stroke, transient ischemic attack, intracranial  
19 hemorrhage, systemic arterial embolism (other than stroke), major bleeding, and major vascular  
20 complications.

### 21 *Study Population*

22 This analysis utilized patient data collected between August 5, 2020 to September 30, 2022. All  
23 patients with attempted WATCHMAN FLX implantation were included. The data collection

1 form of the NCDR LAAO registry has a racial category question and a Hispanic or Latinx  
2 ethnicity question. Analysis cohorts were based on the selections within these two questions.  
3 Race and/or Hispanic or Latinx ethnicity was determined by the patient/family and site-reported.  
4 Groups were then defined as White [non-Hispanic White], Black [non-Hispanic Black/African  
5 American], Asian [non-Hispanic Asian], Native American/Pacific Islander [non-Hispanic  
6 American Indian/Alaska Native/Native Hawaiian/Pacific Islander] and Hispanic [Hispanic or  
7 Latinx]. Additional groups included: multiple selections (if multiple categories were selected),  
8 other (one of the two questions was not answered), and no race or ethnicity reported (neither  
9 question was answered). Patient and procedure characteristics and outcomes in patients with  
10 multiple selections, other or no selection can be found in **Supplemental Tables 1-4**.

#### 11 *Study Endpoints*

12 All-cause death, stroke [ischemic and/or hemorrhagic], and major bleeding [any bleeding  
13 requiring hospitalization, and/or causing a decrease in hemoglobin level > 2g/dL, and/or  
14 requiring blood transfusion that was not hemorrhagic stroke <sup>11</sup>] were evaluated at 45 days and 1  
15 year. Additional endpoints evaluated at 45 days include major vascular complications,  
16 pericardial effusion, device embolization, device migration, and peridevice leak.

#### 17 *Statistical Analysis*

18 Data were summarized using descriptive statistics for continuous variables and frequency tables  
19 or proportions for discrete variables. P-values were from the Fisher exact or chi square test, as  
20 appropriate. Clinical event rates at 45 days and 1 year were estimated using the Kaplan-Meier  
21 method with p-values from the log-rank test. Adjustment or differences in baseline  
22 characteristics was performed in the three largest groups. Cox proportional hazards regression  
23 was performed for the comparisons between White and Black and White vs Hispanic patients.

1 Candidate variables are included in the **Supplement**. The following variables, based on clinical  
2 relevance and with a  $p < 0.02$  in univariate analyses were included: age, gender, components of  
3 the CHA<sub>2</sub>DS<sub>2</sub>-VASc and/or HAS-BLED scores, type of AF, fall risk, chronic lung disease, sleep  
4 apnea, cardiomyopathy, coronary artery disease, prior ablation, and left ventricular ejection  
5 fraction. Statistical analyses were conducted using SAS version 9.4 (SAS Institute, Cary, North  
6 Carolina).

## 7 **Results**

8 A total of 97,185 patients were implanted with WATCHMAN FLX between August 5, 2020 and  
9 September 30, 2022 at 772 sites in the United States. Most patients were White (90%, n=87339);  
10 Black patients comprised 3.9% (n=3750), Hispanic 2.9% (n=2866), Asian 1.1% (n=1082), and  
11 American Indian/Pacific Islander 0.3% (n=274) of the patient population. Data from other groups  
12 can be found in the **Supplement (Supplemental Tables 1-3, 5 and 7)** including 297 patients  
13 with multiple races/ethnicities selected (0.3%), 1255 (1.3%) who did not have data for both race  
14 and ethnicity and 322 who did not have data for either race or ethnicity (0.3%).

### 15 *Baseline Characteristics*

16 Overall, there were significant differences in baseline characteristics between racial and ethnic  
17 groups. Black and Native American/Pacific Islander patients were several years younger than  
18 other groups and had the largest ratio of women to men (**Table 1**). The CHA<sub>2</sub>DS<sub>2</sub>-VASc score  
19 was highest in Black, Hispanic and Native American/Pacific Islander patients; and HAS-BLED  
20 was highest in Black patients. Prior stroke was highest in Black and Asian patients and prior  
21 bleeding highest in Black patients.

1 *Procedural Characteristics*

2 Indications for LAAO were consistent across the groups and mainly related to risk of bleeding  
3 and/or stroke (**Table 2**). Device size tended to be larger in Black and Asian patients. Same day  
4 discharge rates ranged from 21.5% to 38.2%. The rates of successful implantation and complete  
5 seal at post-procedure were high in all groups. Direct oral anticoagulation (DOAC) alone and  
6 DOAC + aspirin were prescribed in the majority of patients across all groups. Dual antiplatelet  
7 therapy (DAPT) and single antiplatelet therapy (SAPT) were prescribed more often in Black  
8 patients than other groups (**Table 3**).

9 *Outcomes at 45 days*

10 Outcomes at 45 days, unadjusted for differences in baseline characteristics, are shown in **Figure**  
11 **1** and **Supplemental Table 4**. Death occurred in 0.81% of patients overall at 45 days and was  
12 not statistically different across racial and ethnic groups ranging from 0.41% in Native  
13 American/Pacific Islanders to 1.10% in Black patients. Stroke occurred in 0.29% of patients  
14 overall and was highest in Asian patients (0.80%) at 45 days. The rate of major bleeding in all  
15 patients combined was 3.11% at 45 days. There were significant statistical differences overall,  
16 the highest rates were found in Black patients (4.92%) and Native American/Pacific Islanders  
17 (4.89%) . Peridevice leak at 45 days was similar across groups.

18 Cox proportional hazard regression analysis to adjust for differences in baseline  
19 characteristics, was performed in the three largest racial and ethnic groups using White patients  
20 as the reference group (**Table 4, Figure 2**). After adjustment, the risk of bleeding was  
21 significantly higher at 45 days in Black compared to White patients (HR 1.30, 95% confidence  
22 interval 1.10, 1.54). Death and stroke were similar between Black and White patients after  
23 adjustment. No differences in death, stroke or bleeding were found in White vs Hispanic patients



1 at 45 days after adjustment.

## 2 *Outcomes at 1 year*

3 Outcomes at 1 year are show in **Figure 1 and 2, Supplemental Table 6**. At 1 year, the rate of  
4 unadjusted mortality was 8.15% and was significantly different across the racial and ethnic  
5 groups. Native American/Pacific Islanders (15.79%) and Black (11.24%) had the highest rates of  
6 death at 1 year. Major bleeding in the overall patient cohort was 6.37% at 1 year and varied  
7 significantly among racial and ethnic groups. Major bleeding was highest in Native  
8 American/Pacific Islanders (10.32%) and Black (10.91%) patients compared to the other groups  
9 (**Figure 1 and 2, Supplemental Table 6**). Stroke overall at 1 year was 1.48% and, though not  
10 statistically significantly different, ranged from 1.37% in Asian patients to 2.28% in Black  
11 patients.

12 After adjustment, the risk of death and bleeding was significantly higher in Black  
13 compared to White patients at 1 year (death: 1.26 [1.06, 1.50]; bleeding: HR 1.36 [1.15, 1.60]).  
14 Hispanic and White patients had similar risk of death and bleeding at 1 year. The risk of stroke  
15 was similar between groups in each comparison (White vs Black or White vs Hispanic) after  
16 adjustment at 1 year.

## 17 **Discussion**

18 This study is the largest analysis of racial and ethnic differences in utilization and outcomes of  
19 LAAO procedures in the US to date including almost 100,000 patients. We demonstrated the  
20 following key findings: 1) significant racial and ethnic disparities exist, less than 4% Black and  
21 less than 3% and Hispanic patients comprise patients receiving LAAO ; 2) Black patients  
22 undergoing LAAO are significantly younger but with more comorbidities than White patients

1 undergoing the procedure; and 3) the risk of death at 1 year and major bleeding at 45 days and 1  
2 year was higher for Black patients compared to White patients.

### 3 *Disparities in Access to LAAO*

4 The racial and ethnic representation among WATCHMAN FLX recipients in this study  
5 mirrors the low enrollment of racial and ethnic minority patients in clinical trials involving these  
6 devices. The PROTECT-AF and PREVAIL trials that that led to US FDA approval for the  
7 WATCHMAN device had very few minority patients with 1.3% and 2.2% Black enrollment,  
8 respectively, as compared to >90% White enrollment in both trials.<sup>15,16</sup> Similar disparities in real  
9 world LAAO utilization have been previously described in other observational studies.<sup>10,17-19</sup> An  
10 important consideration that affects access of racial and ethnic minority patients to LAAO  
11 procedures is the location of hospitals/centers that perform the procedures. An analysis of  
12 Medicare fee-for-service claims (2016 to 2019) by Reddy and colleagues revealed that between  
13 2016 and 2019, 97.4% of new LAAO programs opened in the US were in metropolitan areas.<sup>7</sup>  
14 The authors found that LAAO centers, as compared to non-LAAO centers, provided care to  
15 patients with higher median household incomes. After adjustment for socioeconomic markers,  
16 age, and clinical comorbidities, LAAO procedures were less likely to be performed in zip codes  
17 with higher proportions of Black and Hispanic patients.<sup>7</sup> Another important consideration that  
18 affects the demographic composition of those who undergo LAAO procedures is that White  
19 patients have a higher risk of AF than other racial and ethnic groups.<sup>4</sup> However, this only  
20 explains some of the underrepresentation of racial and ethnic minority groups among LAAO  
21 patients. In one analysis using the National Inpatient Sample (NIS, a 20% random, stratified  
22 sample of hospital discharges in the US), there were racial and ethnic differences in adult  
23 admissions related to a diagnosis of AF where more than 80% were White, 9.3% were Black,

1 5.7% were Hispanic, 2% were Asian American and Pacific Islander, and 2.4% were of other  
2 races and ethnicities.<sup>18</sup> However, the proportions of racial and ethnic minority patients  
3 undergoing LAAO procedures was still lower than their proportions among AF admissions.  
4 Examining the racial and ethnic make-up of the patients who underwent LAAO in this study,  
5 Black patients made up only 4.2% and Hispanic patients 5.0% of LAAO patients.<sup>18</sup> Similar  
6 underrepresentation was seen in other NIS analyses.<sup>10,17,19</sup>

### 7 *Disparities in LAAO Outcomes*

8 Prior analyses have focused on short-term outcomes and found differences in major adverse  
9 events between White patients and racial and ethnic minority patients regarding intra-procedural  
10 or immediate postprocedural complications even after adjusting for differences in baseline  
11 characteristics.<sup>10,17-19</sup> SURPASS patients were followed up to a year and the rates of major  
12 adverse events at 45 days and 1 year were similar in White and Hispanic patients. However, the  
13 risk of death at 1 year and major bleeding at 45 days and 1 year was higher for Black patients  
14 compared to White patients even after adjustment for differences in baseline comorbidities.

15 The differences in outcomes in this study may be related to differences in medical  
16 comorbidities. Black and Hispanic patients had higher CHA<sub>2</sub>DS<sub>2</sub>-VASc and HAS-BLED scores.  
17 Additionally, Black patients had the highest incidence of prior bleeding and more than twice the  
18 incidence of abnormal renal function compared to White patients. This increase in bleeding in  
19 Black patients may be driven by worse renal function in this patient population. These data echo  
20 other studies focusing on the impact of race and ethnicity after LAAO. Compared with White  
21 patients, more Black patients, Hispanic patients, and patients of Asian, Asian American, or  
22 Pacific Islander ancestry had diabetes mellitus, chronic kidney disease, previous stroke, and  
23 deficiency anemias.<sup>18</sup>

1 Black patients were more commonly discharged on anticoagulation plus aspirin or DAPT  
2 instead of anticoagulation alone, which has been previously been reported to be associated with  
3 higher rates of bleeding after LAAO.<sup>20</sup> The increased use of antiplatelet agents may be indicated  
4 in this population with a higher burden of cardiovascular and renal comorbidities but could  
5 impact the difference in outcomes that were found between White and Black patients. Residual  
6 confounding due to unreported patient characteristics, disparities in access to LAAO, and post-  
7 procedural care may also account for some of the differences in bleeding and mortality observed.

### 8 *Future Directions*

9 Disparities leading to inadequate access to structural heart interventions remains a challenge in  
10 other areas as well, as similar single digit representation of African American and Hispanic  
11 patients were found in the TAVR population.<sup>5,9,21</sup> An analysis of the Transcatheter Valve  
12 Therapy Registry of patients undergoing TAVR in the US revealed only 3.8% of patients were  
13 African American compared to 91.3% White patients.<sup>9</sup> Similar findings have been found for  
14 other cardiovascular procedures including mitral valve replacement, and implantation of  
15 implantable cardioverter-defibrillators.<sup>6,8,9</sup> There is a pressing need to increase enrollment of  
16 minority patients into clinical trials either by way of mandated enrollment targets, broadening the  
17 clinical trial sites to include hospitals serving predominantly racial and ethnic minoritized  
18 patients and including investigators who also serve this patient population in clinical trials.  
19 Strategies to improve access should also include efforts to train providers and help develop  
20 infrastructure at centers that provide care to mainly minority patients. Interestingly, hospitals in  
21 urban centers with a large minority population still have low treatment rates of minority  
22 patients<sup>7</sup>, suggesting that low enrollment rates are not just a location issue. Efforts must be made  
23 to address barriers to care even in hospitals serving predominantly minority communities. Even

1 if trial enrollment of minority populations improves, the absolute numbers of minority patients  
2 may remain relatively modest, particularly for device trials which tend to be smaller, precluding  
3 detailed assessments of differences in outcomes. Real-world registry data serves as a  
4 complement to smaller trials for the study of these important patient subgroups.

#### 5 *Limitations*

6 As with all observational registries there are limitations to this analysis including unmeasured or  
7 residual confounders. Both race and ethnicity were defined by the subject but are social  
8 constructs that may encompass a variety of genetic and cultural backgrounds. Cancelled  
9 procedures are not included in the data received from the NCDR LAAO registry and hospital  
10 location or region are not known. Dialysis status is unknown and adjusting for eGFR stage may  
11 not capture different degrees of abnormal renal function. There is no control group, so it is  
12 difficult to determine if disparities are inherent to differences in efficacy versus differences in  
13 baseline risk. Only patients treated with WATCHMAN FLX are included and patients are being  
14 followed for more than 2 years but this analysis is limited to 1 year follow-up. The reporting of  
15 events relies on site-reported data although algorithmic adjudication of adverse events is  
16 employed by the NCDR LAAO registry.

#### 17 **Conclusions**

18 This study is the largest analysis of racial and ethnic disparities in LAAO procedures in the US  
19 to date and it revealed that minorities remain significantly under-represented despite increasing  
20 procedural volumes nationally. Black patients were younger but had higher baseline  
21 comorbidities and experienced higher rates of bleeding at 45 days and 1 year and higher 1-year  
22 mortality

1 **Acknowledgements**

2 **Funding/Support**

3 This analysis was supported by the Boston Scientific Corporation. The authors thank and  
4 Kristine Roy, PhD for writing/editing assistance, and Yanrong Zhu, PhD for assistance with  
5 statistical analysis (paid employees of Boston Scientific Corporation).

6 **Disclosures**

7 The views expressed here represent those of the authors, and do not necessarily represent the  
8 official views of the American College of Cardiology Foundation’s National Cardiovascular  
9 Data Registry (NCDR) or its associated professional societies identified at  
10 CVQuality.ACC.org/NCDR. The authors interpreted the data and had final control over  
11 manuscript content. The lead author (OOA) had full access to the analyzed data and attests to the  
12 integrity and accuracy of the data. All authors reviewed and approved the manuscript.

13 The authors disclose the following conflicts of interest related to this manuscript. OOA:  
14 Consulting, honoraria, speaking fees and proctoring fees from Boston Scientific and Edwards  
15 Life Sciences; RWY: Research funding and consulting fees from Abbott Vascular, Boston  
16 Scientific, and Medtronic, and research funding from Bard, Cook, and Philips; MJP: Consulting  
17 honoraria, speaker’s fees, and proctoring fees from Abbott Vascular and Boston Scientific,  
18 consulting honoraria from W.L. Gore, Baylis Medical, Biotronik, and Philips, consulting  
19 honoraria and speaker’s fees from Medtronic, consulting honoraria from Biosense Webster and  
20 Shockwave, and equity in Indian Wells, Inc.; JPP: Supported by R01AG074185 from the  
21 National Institutes of Aging; receives grants for clinical research from Abbott, the American  
22 Heart Association, the Association for the Advancement of Medical Instrumentation, Bayer,

1 Boston Scientific, iRhythm, and Philips and serves as a consultant to Abbott, Abbvie, ARCA  
2 biopharma, Bayer, Boston Scientific, Bristol Myers Squibb (Myokardia), Element Science,  
3 Itamar Medical, LivaNova, Medtronic, Milestone, ElectroPhysiology Frontiers, ReCor, Sanofi,  
4 Philips, and Up-to-Date; JCH: Honoraria from Medtronic, Abbott, Boston Scientific, Biotronik,  
5 Janssen Pharmaceuticals, Bristol-Myers Squibb, Pfizer, Sanofi, Zoll Medical, iRhythm, Acutus  
6 Medical, Galvanize Therapeutics, and Biosense-Webster, research grants from Biotronik and  
7 Biosense-Webster, and equity interest in Vektor Medical; JVF: Research funding from the  
8 NIH/NHLBI and the American College of Cardiology National Cardiovascular Data Registry  
9 and consulting/advisory board fees from Medtronic, Boston Scientific, Biosense Webster,  
10 PaceMate, and equity in PaceMate; BS and TC: Full-time employees and stockholders of Boston  
11 Scientific. All other authors report no relationships relevant to the contents of this paper to  
12 disclose.

## 1   **References**

- 2   1.   Ruff CT, Giugliano RP, Braunwald E, Hoffman EB, Deenadayalu N, Ezekowitz MD,  
3       Camm AJ, Weitz JI, Lewis BS, Parkhomenko A, Yamashita T, Antman EM. Comparison  
4       of the efficacy and safety of new oral anticoagulants with warfarin in patients with atrial  
5       fibrillation: a meta-analysis of randomised trials. *The Lancet*. 2014;383:955–962.
- 6   2.   Holmes DR, Reddy VY, Turi ZG, Doshi SK, Sievert H, Buchbinder M, Mullin CM, Sick P.  
7       Percutaneous closure of the left atrial appendage versus warfarin therapy for prevention of  
8       stroke in patients with atrial fibrillation: a randomised non-inferiority trial. *Lancet*.  
9       2009;374:534–542.
- 10  3.   Essien UR, Chiswell K, Kaltenbach LA, Wang TY, Fonarow GC, Thomas KL, Turakhia  
11       MP, Benjamin EJ, Rodriguez F, Fang MC, Magnani JW, Yancy CW, Piccini JP Sr.  
12       Association of Race and Ethnicity With Oral Anticoagulation and Associated Outcomes in  
13       Patients With Atrial Fibrillation: Findings From the Get With The Guidelines–Atrial  
14       Fibrillation Registry. *JAMA Cardiol*. 2022;7:1207–1217.
- 15  4.   Ugowe FE, Jackson LR, Thomas KL. Racial and ethnic differences in the prevalence,  
16       management, and outcomes in patients with atrial fibrillation: A systematic review. *Heart*  
17       *Rhythm*. 2018;15:1337–1345.
- 18  5.   Alkhouli M, Alqahtani F, Holmes DR, Berzinger C. Racial Disparities in the Utilization and  
19       Outcomes of Structural Heart Disease Interventions in the United States. *J Am Heart Assoc*.  
20       2019;8:e012125.
- 21  6.   Ismayl M, Abbasi MA, Al-Abcha A, El-Am E, Walters RW, Goldsweig AM, Alkhouli M,  
22       Guerrero M, Anavekar NS. Racial and Ethnic Disparities in the Use and Outcomes of  
23       Transcatheter Mitral Valve Replacement: Analysis From the National Inpatient Sample  
24       Database. *J Am Heart Assoc Cardiovasc Cerebrovasc Dis*. 2023;12:e028999.
- 25  7.   Reddy KP, Eberly LA, Halaby R, Julien H, Khatana SAM, Dayoub EJ, Coylewright M,  
26       Alkhouli M, Fiorilli PN, Kobayashi TJ, Goldberg DM, Santangeli P, Herrmann HC, Giri J,  
27       Groeneveld PW, Fanaroff AC, Nathan AS. Racial, Ethnic, and Socioeconomic Inequities in  
28       Access to Left Atrial Appendage Occlusion. *J Am Heart Assoc*. 2023;12:e028032.
- 29  8.   Kiernan K, Dodge SE, Kwaku KF, Jackson LR, Zeitler EP. Racial and ethnic differences in  
30       implantable cardioverter-defibrillator patient selection, management, and outcomes. *Heart*  
31       *Rhythm O2*. 2022;3:807–816.
- 32  9.   Alkhouli M, Holmes DR, Carroll JD, Li Z, Inohara T, Kosinski AS, Szerlip M, Thourani  
33       VH, Mack MJ, Vemulapalli S. Racial Disparities in the Utilization and Outcomes of  
34       TAVR: TVT Registry Report. *JACC Cardiovasc Interv*. 2019;12:936–948.
- 35  10.  Sparrow R, Sanjoy S, Choi Y-H, Elgendy IY, Jneid H, Villablanca PA, Holmes DR,  
36       Pershad A, Alraies C, Sposato LA, Mamas MA, Bagur R. Racial, ethnic and socioeconomic  
37       disparities in patients undergoing left atrial appendage closure. *Heart Br Card Soc*.



- 1 2021;heartjnl-2020-318650.
- 2 11. Freeman JV, Varosy P, Price MJ, Slotwiner D, Kusumoto FM, Rammohan C, Kavinsky CJ,  
3 Turi ZG, Akar J, Koutras C, Curtis JP, Masoudi FA. The NCDR Left Atrial Appendage  
4 Occlusion Registry. *J Am Coll Cardiol*. 2020;75:1503–1518.
- 5 12. Centers for Medicare & Medicaid Services. Decision Memo for Percutaneous Left Atrial  
6 Appendage (LAA) Closure Therapy (CAG-00445N) [Internet]. 2016. Available from:  
7 [https://www.cms.gov/medicare-coverage-database/view/ncacal-decision-](https://www.cms.gov/medicare-coverage-database/view/ncacal-decision-memo.aspx?proposed=N&NCAId=281)  
8 [memo.aspx?proposed=N&NCAId=281](https://www.cms.gov/medicare-coverage-database/view/ncacal-decision-memo.aspx?proposed=N&NCAId=281)
- 9 13. Messenger JC, Ho KKL, Young CH, Slattery LE, Draoui JC, Curtis JP, Dehmer GJ, Grover  
10 FL, Mirro MJ, Reynolds MR, Rokos IC, Spertus JA, Wang TY, Winston SA, Rumsfeld JS,  
11 Masoudi FA. The National Cardiovascular Data Registry (NCDR) Data Quality Brief: The  
12 NCDR Data Quality Program in 2012. *J Am Coll Cardiol*. 2012;60:1484–1488.
- 13 14. Friedman DJ, Pierre D, Wang Y, Gambone L, Koutras C, Segawa C, Farb A, Vemulapalli  
14 S, Varosy PD, Masoudi FA, Lansky A, Curtis JP, Freeman JV. Development and validation  
15 of an automated algorithm for end point adjudication for a large U.S. national registry. *Am*  
16 *Heart J*. 2022;254:102–111.
- 17 15. Holmes DR, Kar S, Price MJ, Whisenant B, Sievert H, Doshi SK, Huber K, Reddy VY.  
18 Prospective Randomized Evaluation of the Watchman Left Atrial Appendage Closure  
19 Device in Patients With Atrial Fibrillation Versus Long-Term Warfarin Therapy: The  
20 PREVAIL Trial. *J Am Coll Cardiol*. 2014;64:1–12.
- 21 16. Reddy VY, Sievert H, Halperin J, Doshi SK, Buchbinder M, Neuzil P, Huber K, Whisenant  
22 B, Kar S, Swarup V, Gordon N, Holmes D. Percutaneous Left Atrial Appendage Closure vs  
23 Warfarin for Atrial Fibrillation: A Randomized Clinical Trial. *JAMA*. 2014;312:1988.
- 24 17. Vincent L, Grant J, Ebner B, Potchileev I, Maning J, Olorunfemi O, Olarte N, Colombo R,  
25 Marchena E de. Racial disparities in the utilization and in-hospital outcomes of  
26 percutaneous left atrial appendage closure among patients with atrial fibrillation. *Heart*  
27 *Rhythm*. 2021;18:987–994.
- 28 18. Lopez J, Duarte G, Colombo RA, Ibrahim NE. Temporal Changes in Racial and Ethnic  
29 Disparities in the Utilization of Left Atrial Appendage Occlusion in the United States. *Am J*  
30 *Cardiol*. 2023;204:53–63.
- 31 19. Khan MZ, Munir MB, Darden D, Pasupula DK, Balla S, Han FT, Reeves R, Hsu JC. Racial  
32 Disparities in In-Hospital Adverse Events Among Patients With Atrial Fibrillation  
33 Implanted With a Watchman Left Atrial Appendage Occlusion Device: A US National  
34 Perspective. *Circ Arrhythm Electrophysiol*. 2021;14:e009691.
- 35 20. Freeman JV, Higgins AY, Wang Y, Du C, Friedman DJ, Daimee UA, Minges KE, Pereira  
36 L, Goldsweig AM, Price MJ, Reddy VY, Gibson D, Doshi SK, Varosy PD, Masoudi FA,  
37 Curtis JP. Antithrombotic Therapy After Left Atrial Appendage Occlusion in Patients With  
38 Atrial Fibrillation. *J Am Coll Cardiol*. 2022;79:1785–1798.

1 21. Holmes DR, Mack MJ, Alkhouli M, Vemulapalli S. Racial disparities and democratization  
2 of health care: A focus on TAVR in the United States. *Am Heart J.* 2020;224:166–170.

3

## Tables

**Table 1 Baseline Characteristics**

<b>Description</b>	<b>White (N = 87339)</b>	<b>Black/African American (N = 3750)</b>	<b>Hispanic/ Latinx Ethnicity (N = 2866)</b>	<b>Asian (N = 1082)</b>	<b>American Indian/ Alaska Native or Native Hawaiian/ Pacific Islander (N = 274)</b>
Age, years	76.6 ± 7.6 (87339)	72.3 ± 9.5 (3750)	75.0 ± 9.1 (2866)	75.5 ± 9.0 (1082)	73.5 ± 9.1 (274)
Age group					
<70	14958 (17.1%)	1352 (36.1%)	698 (24.4%)	263 (24.3%)	85 (31.0%)
70-80	44684 (51.2%)	1658 (44.2%)	1332 (46.5%)	483 (44.6%)	129 (47.1%)
>80	27697 (31.7%)	740 (19.7%)	836 (29.2%)	336 (31.1%)	60 (21.9%)
Female	35762 (41.0%)	1834 (48.9%)	1240 (43.3%)	443 (40.9%)	120 (43.8%)
CHA <sub>2</sub> DS <sub>2</sub> -VASc Score	4.7 ± 1.5 (87088)	4.9 ± 1.6 (3745)	4.9 ± 1.6 (2861)	4.8 ± 1.5 (1077)	4.9 ± 1.5 (274)
Congestive heart failure	32477 (37.2%)	1835 (49.0%)	1101 (38.4%)	347 (32.1%)	116 (42.3%)
LV dysfunction	7471 (8.6%)	528 (14.1%)	310 (10.8%)	77 (7.1%)	28 (10.2%)

<b>Description</b>	<b>White (N = 87339)</b>	<b>Black/African American (N = 3750)</b>	<b>Hispanic/ Latinx Ethnicity (N = 2866)</b>	<b>Asian (N = 1082)</b>	<b>American Indian/ Alaska Native or Native Hawaiian/ Pacific Islander (N = 274)</b>
Hypertension	79721 (91.3%)	3597 (95.9%)	2689 (93.8%)	1000 (92.6%)	256 (93.4%)
Diabetes Mellitus	29429 (33.7%)	1775 (47.4%)	1462 (51.0%)	508 (47.0%)	122 (44.5%)
Stroke	17298 (19.8%)	1134 (30.3%)	760 (26.5%)	343 (31.8%)	73 (26.6%)
Transient ischemic attack	10015 (11.5%)	377 (10.1%)	297 (10.4%)	108 (10.0%)	44 (16.1%)
Thromboembolic event	12183 (14.0%)	738 (19.7%)	470 (16.4%)	183 (16.9%)	44 (16.1%)
Vascular disease	46108 (52.8%)	1808 (48.2%)	1394 (48.7%)	491 (45.5%)	148 (54.0%)
HAS-BLED Score	2.8 ± 1.1 (87081)	3.0 ± 1.2 (3742)	2.8 ± 1.2 (2861)	2.8 ± 1.1 (1077)	2.8 ± 1.2 (273)
Uncontrolled hypertension	25081 (28.7%)	1314 (35.1%)	904 (31.5%)	270 (25.0%)	70 (25.6%)
Abnormal renal function	11315 (13.0%)	1079 (28.8%)	495 (17.3%)	210 (19.4%)	51 (18.7%)
Abnormal liver function	2598 (3.0%)	136 (3.6%)	148 (5.2%)	39 (3.6%)	14 (5.1%)
Stroke	18051 (20.7%)	1162 (31.0%)	774 (27.0%)	361 (33.4%)	82 (30.0%)
Bleeding	56949 (65.3%)	2829 (75.5%)	1929 (67.3%)	745 (69.0%)	194 (71.1%)

<b>Description</b>	<b>White (N = 87339)</b>	<b>Black/African American (N = 3750)</b>	<b>Hispanic/ Latinx Ethnicity (N = 2866)</b>	<b>Asian (N = 1082)</b>	<b>American Indian/ Alaska Native or Native Hawaiian/ Pacific Islander (N = 274)</b>
Labile INR	4277 (4.9%)	173 (4.6%)	145 (5.1%)	35 (3.2%)	14 (5.1%)
Alcohol	4415 (5.1%)	145 (3.9%)	92 (3.2%)	26 (2.4%)	14 (5.1%)
Drugs – Antiplatelet	29970 (34.4%)	1325 (35.4%)	879 (30.7%)	305 (28.2%)	101 (37.0%)
Drugs – NSAIDS	11418 (13.1%)	498 (13.3%)	288 (10.1%)	106 (9.8%)	24 (8.8%)
Increased Fall Risk	36969 (42.4%)	1256 (33.6%)	1187 (41.5%)	394 (36.5%)	109 (39.9%)
Clinically relevant bleeding event	48158 (55.3%)	2712 (72.4%)	1732 (60.5%)	690 (63.8%)	162 (59.1%)
Atrial fibrillation pattern					
Paroxysmal	53806 (62.1%)	2598 (69.9%)	1782 (62.9%)	635 (59.2%)	182 (66.9%)
Persistent	18019 (20.8%)	640 (17.2%)	568 (20.0%)	217 (20.2%)	47 (17.3%)
Long-standing persistent	10189 (11.8%)	322 (8.7%)	312 (11.0%)	137 (12.8%)	30 (11.0%)
Permanent	4677 (5.4%)	159 (4.3%)	173 (6.1%)	84 (7.8%)	13 (4.8%)
Attempt at AF termination of patients	40546 (46.5%)	1325 (35.4%)	1018 (35.6%)	368 (34.0%)	102 (37.2%)

<b>Description</b>	<b>White (N = 87339)</b>	<b>Black/African American (N = 3750)</b>	<b>Hispanic/ Latinx Ethnicity (N = 2866)</b>	<b>Asian (N = 1082)</b>	<b>American Indian/ Alaska Native or Native Hawaiian/ Pacific Islander (N = 274)</b>
with AF					
Atrial flutter	15980 (18.3%)	720 (19.2%)	425 (14.9%)	163 (15.1%)	46 (16.8%)
Attempt at atrial flutter termination of patients with atrial flutter	10834 (68.2%)	436 (60.8%)	282 (66.8%)	103 (63.2%)	34 (73.9%)
Cardiac structural intervention	6824 (7.8%)	240 (6.4%)	218 (7.6%)	73 (6.8%)	18 (6.6%)
Hypertrophic cardiomyopathy	880 (1.0%)	70 (1.9%)	25 (0.9%)	15 (1.4%)	4 (1.5%)
Chronic lung disease	17303 (19.8%)	799 (21.3%)	415 (14.5%)	115 (10.6%)	67 (24.5%)
Coronary artery disease	38750 (44.4%)	1464 (39.1%)	1183 (41.4%)	429 (39.7%)	126 (46.0%)
Sleep apnea	26587 (30.5%)	1071 (28.6%)	667 (23.3%)	195 (18.0%)	86 (31.4%)
Sleep apnea treatment	19489 (22.5%)	727 (19.6%)	434 (15.3%)	139 (12.9%)	61 (22.3%)
LAA orifice maximal width, mm	20.9 ± 4.3 (85401)	22.0 ± 4.5 (3683)	20.7 ± 4.4 (2797)	21.5 ± 4.3 (1064)	21.2 ± 4.7 (270)

<b>Description</b>	<b>White (N = 87339)</b>	<b>Black/African American (N = 3750)</b>	<b>Hispanic/ Latinx Ethnicity (N = 2866)</b>	<b>Asian (N = 1082)</b>	<b>American Indian/ Alaska Native or Native Hawaiian/ Pacific Islander (N = 274)</b>
Left ventricular ejection fraction, %	54.3 ± 9.6 (56095)	52.5 ± 12.1 (2532)	53.7 ± 10.8 (1801)	55.7 ± 10.0 (668)	53.5 ± 10.6 (185)

Numbers are n (%) or Mean±SD (N); Abbreviations: AF=atrial fibrillation; INR=international normalized ratio; NSAIDS=Non-steroidal anti-inflammatory drugs

**Table 2 Procedural Characteristics**

<b>Description</b>	<b>White (N = 87339)</b>	<b>Black/African American (N = 3750)</b>	<b>Hispanic/ Latinx Ethnicity (N = 2866)</b>	<b>Asian (N = 1082)</b>	<b>American Indian/ Alaska Native or Native Hawaiian/ Pacific Islander (N = 274)</b>
Successful implantation	85149 (97.5%)	3688 (98.4%)	2797 (97.6%)	1053 (97.3%)	264 (96.4%)
Indication for procedure*					

<b>Description</b>	<b>White (N = 87339)</b>	<b>Black/African American (N = 3750)</b>	<b>Hispanic/ Latinx Ethnicity (N = 2866)</b>	<b>Asian (N = 1082)</b>	<b>American Indian/ Alaska Native or Native Hawaiian/ Pacific Islander (N = 274)</b>
Increased thromboembolic stroke risk	55482 (63.6%)	2348 (62.6%)	1844 (64.3%)	723 (66.8%)	182 (66.7%)
History of major bleed	44915 (51.4%)	2562 (68.3%)	1612 (56.3%)	631 (58.3%)	151 (55.3%)
High fall risk	33484 (38.4%)	1116 (29.8%)	1081 (37.7%)	359 (33.2%)	95 (34.8%)
Labile INR	3200 (3.7%)	145 (3.9%)	109 (3.8%)	34 (3.1%)	7 (2.6%)
Patient preference	37599 (43.1%)	1322 (35.3%)	1118 (39.0%)	479 (44.3%)	117 (42.9%)
Non-compliance with anticoagulation therapy	2806 (3.2%)	145 (3.9%)	128 (4.5%)	23 (2.1%)	12 (4.4%)
Average number of devices used per patient	1.2 ± 0.5 (87339)	1.1 ± 0.4 (3750)	1.1 ± 0.4 (2866)	1.2 ± 0.4 (1082)	1.2 ± 0.55 (274)
Device size, mm					
20	10604 (12.5%)	253 (6.9%)	340 (12.2%)	79 (7.5%)	28 (10.6%)
24	26669 (31.3%)	859 (23.3%)	915 (32.7%)	279 (26.5%)	75 (28.4%)



<b>Description</b>	<b>White (N = 87339)</b>	<b>Black/African American (N = 3750)</b>	<b>Hispanic/ Latinx Ethnicity (N = 2866)</b>	<b>Asian (N = 1082)</b>	<b>American Indian/ Alaska Native or Native Hawaiian/ Pacific Islander (N = 274)</b>
27	27026 (31.7%)	1242 (33.7%)	875 (31.3%)	360 (34.2%)	85 (32.2%)
31	15163 (17.8%)	898 (24.4%)	475 (17.0%)	212 (20.1%)	54 (20.5%)
35	5687 (6.7%)	436 (11.8%)	192 (6.9%)	123 (11.7%)	22 (8.3%)
Procedure time, minutes	78.0 ± 66.2 (87336)	84.9 ± 57.5 (3750)	88.9 ± 274.1 (2866)	84.7 ± 86.6 (1081)	75.2 ± 37.2 (274)
Contrast volume, mL	37.9 ± 33.2 (84440)	36.5 ± 33.9 (3558)	43.6 ± 37.1 (2736)	38.9 ± 34.8 (1039)	40.6 ± 31.2 (267)
General anesthesia	82633 (94.8%)	3544 (94.8%)	2736 (95.8%)	1033 (95.8%)	265 (96.7%)
Concomitant procedure performed	1776 (2.0%)	86 (2.3%)	59 (2.1%)	18 (1.7%)	8 (2.9%)
Length of stay, days	2.0 ± 6.76 (87339)	2.6 ± 9.05 (3750)	2.6 ± 10.19 (2866)	2.2 ± 2.75 (1082)	1.8 ± 1.19 (274)
Same day discharge	30301 (34.7%)	940 (25.1%)	652 (22.8%)	287 (26.5%)	114 (41.6%)

<b>Description</b>	<b>White (N = 87339)</b>	<b>Black/African American (N = 3750)</b>	<b>Hispanic/ Latinx Ethnicity (N = 2866)</b>	<b>Asian (N = 1082)</b>	<b>American Indian/ Alaska Native or Native Hawaiian/ Pacific Islander (N = 274)</b>
Residual leak post procedure					
0 mm	81155 (96.4%)	3466 (94.8%)	2661 (96.7%)	980 (94.6%)	242 (94.5%)
>0 mm to ≤3 mm	2414 (2.9%)	165 (4.5%)	77 (2.8%)	43 (4.2%)	11 (4.3%)
>3 mm to ≤5 mm	571 (0.7%)	24 (0.7%)	13 (0.5%)	11 (1.1%)	3 (1.2%)
>5 mm	19 (0%)	1 (0.03%)	0 (0%)	2 (0.2%)	0 (0%)
Patients with missing leak data	3180	94	115	46	18

Numbers are n (%) or Mean±SD (N); \*patients can have more than one indication; Abbreviations: INR=international normalized ratio

**Table 3 Discharge Medication Regimens**

<b>Description</b>	<b>White (N = 87339)</b>	<b>Black/African American (N = 3750)</b>	<b>Hispanic/ Latinx Ethnicity (N = 2866)</b>	<b>Asian (N = 1082)</b>	<b>American Indian/ Alaska Native or Native Hawaiian/ Pacific Islander (N = 274)</b>
DOAC alone	13623 (22.7%)	604 (23.0%)	581 (30.7%)	206 (20.2%)	39 (20.4%)
DOAC + ASA	29245 (48.7%)	1248 (47.5%)	785 (41.5%)	317 (43.4%)	98 (51.3%)
DOAC + P2Y12 inhibitor	3005 (5.0%)	90 (3.4%)	103 (5.5%)	41 (5.6%)	9 (4.7%)
Warfarin alone	1496 (2.5%)	58 (2.2%)	41 (2.2%)	13 (1.8%)	11 (5.8%)
Warfarin + ASA	4521 (7.5%)	148 (5.6%)	92 (4.9%)	37 (5.1%)	11 (5.8%)
Warfarin + P2Y12 inhibitor	408 (0.68%)	11 (0.42%)	14 (0.74%)	6 (0.82%)	3 (1.6%)
DAPT	4805 (8.0%)	296 (11.3%)	132 (7.0%)	66 (9.0%)	11 (5.8%)
SAPT	1482 (2.5%)	110 (4.2%)	65 (3.4%)	25 (3.4%)	2 (1.1%)
Triple Therapy	1.5% (1.5%)	37 (1.4%)	34 (1.8%)	14 (1.9%)	3 (1.6%)
Other	233 (0.39%)	10 (0.38%)	19 (1.0%)	3 (0.41%)	0 (0.0%)
No OAC or APT	403 (0.67%)	16 (0.61%)	24 (1.3%)	2 (0.27%)	4 (2.1%)

Numbers are n (%) or Mean±SD (N); Other=[Warfarin + DOAC + P2Y12 inhibitor] or [Warfarin + DOAC + ASA] or [Warfarin + DOAC

Abbreviations: APT=antiplatelet therapy, DAPT=dual antiplatelet therapy, DOAC=direct oral anticoagulant, OAC=oral anticoagulant,  
SAPT=single antiplatelet therapy

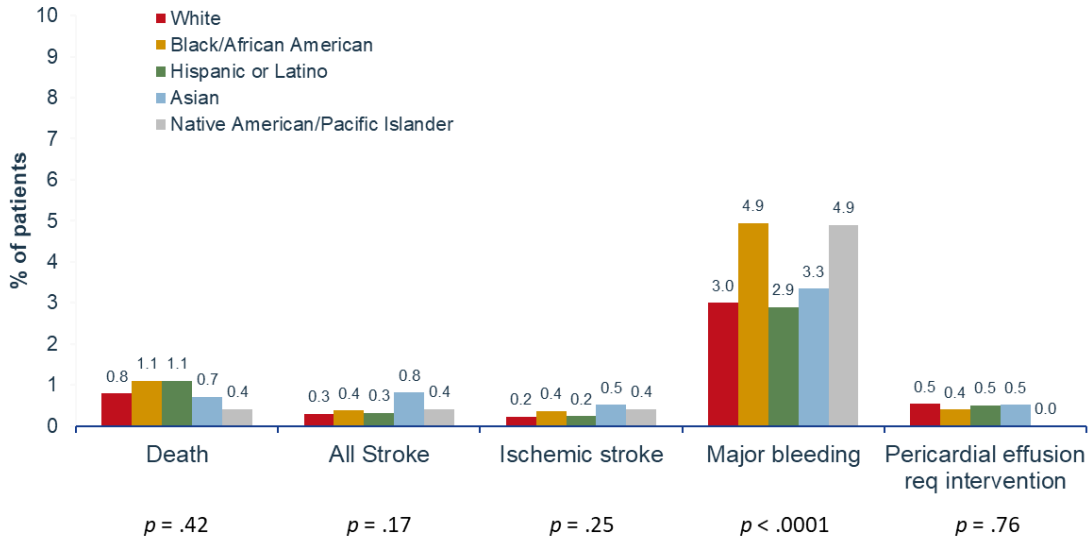
**Table 4. Outcomes in the adjusted cohorts through 45 day and 1 year follow-up visits**

	Black/African American		Hispanic/Latinx Ethnicity	
	Univariate HR [95% CI]	Multivariate HR [95% CI]	Univariate HR [95% CI]	Multivariate HR [95% CI]
<b>45 days</b>				
All Death	1.39 [1.00, 1.94]	1.18 [0.83, 1.67]	1.11 [0.72, 1.70]	1.15 [0.75, 1.77]
All Stroke	1.30 [0.74, 2.28]	1.15 [0.65, 2.02]	1.10 [0.54, 2.23]	1.04 [0.51, 2.12]
Ischemic Stroke	1.69 [0.96, 2.98]	1.50 [0.85, 2.64]	1.07 [0.48, 2.43]	1.06 [0.47, 2.40]
Major Bleeding*	1.64 [1.39, 1.92]	1.30 [1.10, 1.54]	0.99 [0.79, 1.25]	0.90 [0.71, 1.15]
<b>1 year</b>				
All Death	1.37 [1.17, 1.61]	1.26 [1.06, 1.50]	1.04 [0.83, 1.29]	0.99 [0.79, 1.25]
All Stroke	1.38 [0.97, 1.96]	1.12 [0.77, 1.63]	1.06 [0.65, 1.73]	1.09 [0.67, 1.79]
Ischemic Stroke	1.57 [1.08, 2.28]	1.24 [0.83, 1.85]	1.12 [0.66, 1.92]	1.13 [0.66, 1.94]
Major Bleeding*	1.75 [1.50, 2.04]	1.36 [1.15, 1.60]	0.99 [0.78, 1.25]	0.89 [0.69, 1.14]

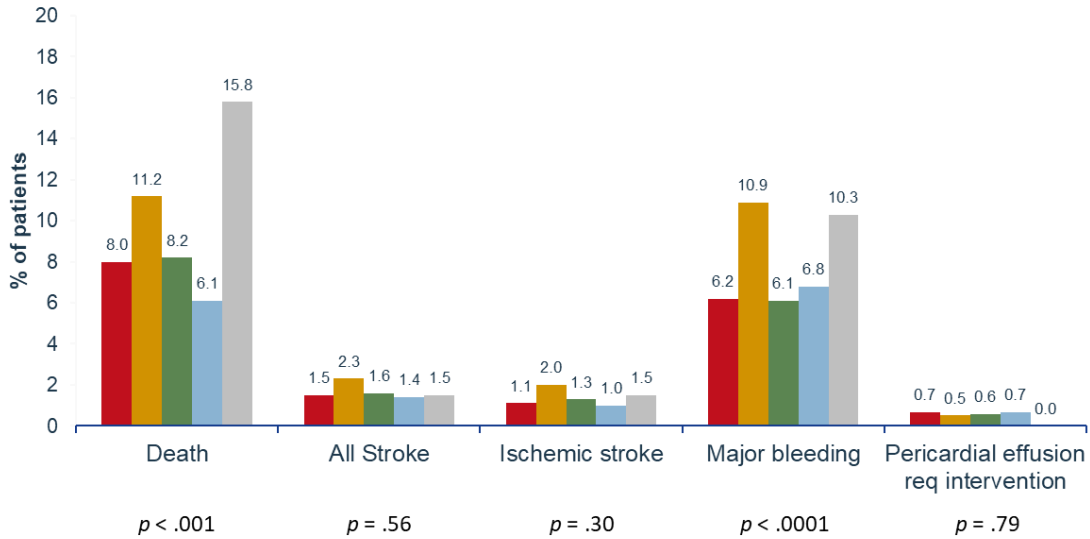
Hazard ratio (HR) [95% confidence interval]; reference White patients; \*any bleeding requiring hospitalization, and/or causing a decrease in hemoglobin level > 2g/dL, and/or requiring blood transfusion that was not hemorrhagic stroke. Multivariable models adjusted for age, gender, CHA<sub>2</sub>DS<sub>2</sub>-VASc and HAS-BLED score components, type of atrial fibrillation, diabetes, fall risk, history of bleeding, chronic lung disease, sleep apnea, cardiomyopathy, coronary artery disease, prior ablation, left ventricular ejection fraction and post implant device margin residual leak.

## Figures

A. 45 Days

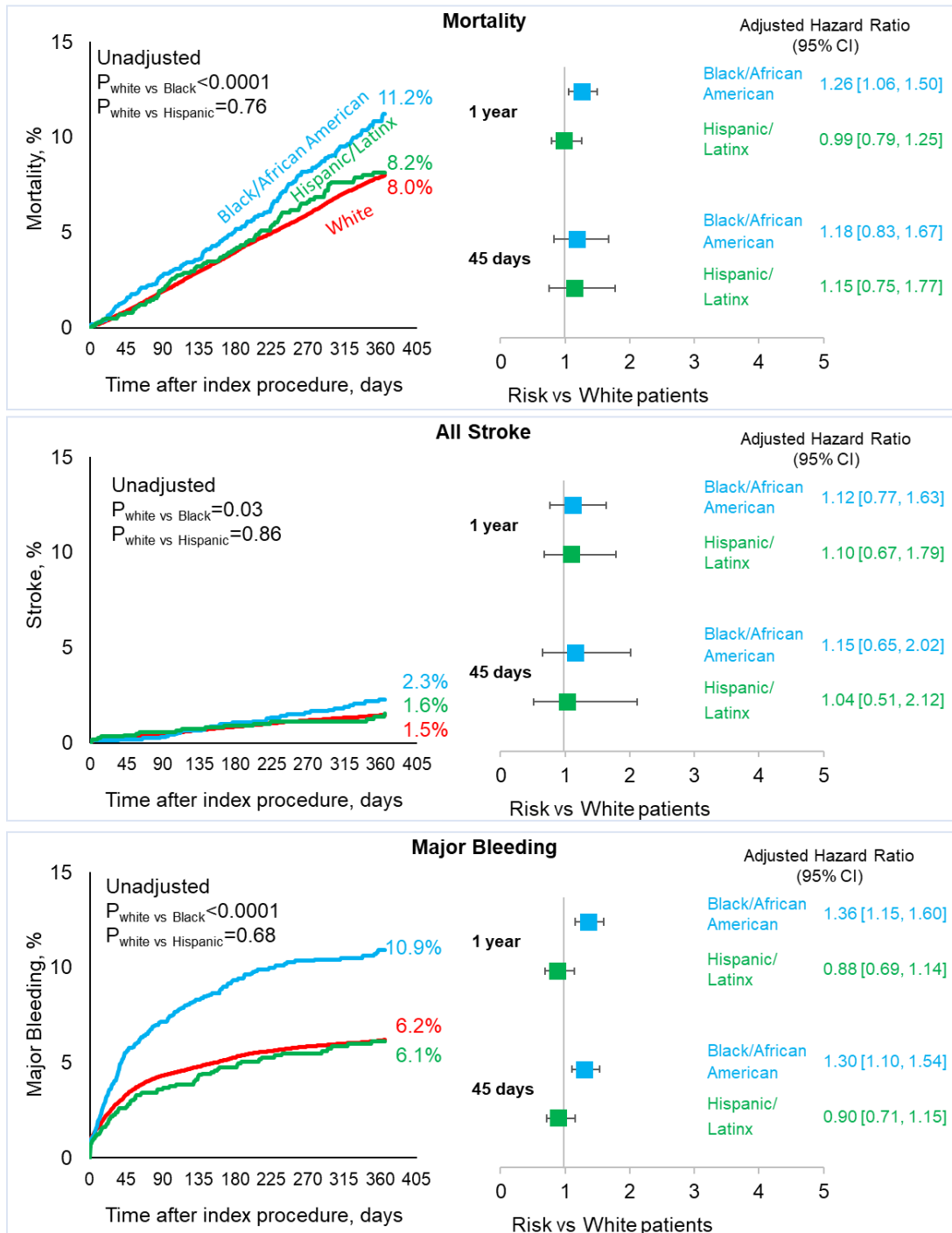


B. 1 year



**Figure 1. Outcomes at 45 day and 1 year by race and ethnicity**

Time-to-event outcomes at (A) 45 days and (B) 1 year by race and ethnicity in patients implanted with WATCHMAN FLX.



**Figure 2. Unadjusted and Adjusted Outcomes of Adverse Events for White, Black/African American, and Hispanic/Latinx Patients Receiving WATCHMAN FLX**

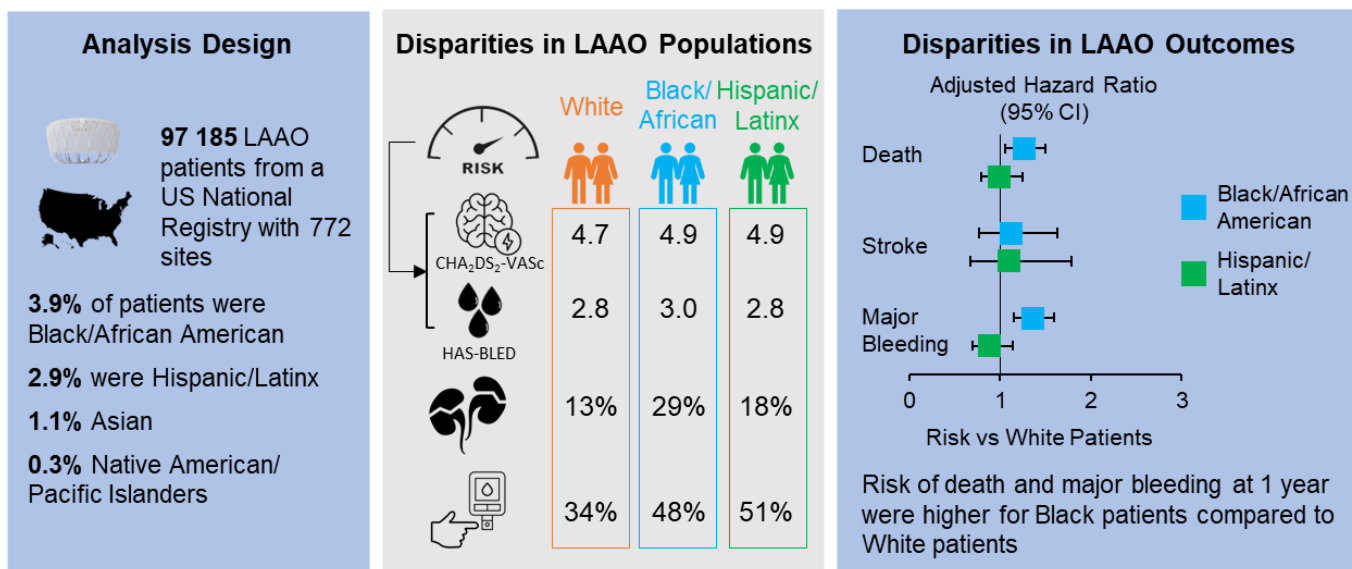
P-value from the log-rank test. Hazard ratio (HR) [95% confidence interval]; reference White patients;

\*Major bleeding defined as bleeding requiring hospitalization, and/or causing a decrease in hemoglobin

level > 2g/dL, and/or requiring blood transfusion that was not hemorrhagic stroke. Multivariable models adjusted for age, gender, CHA<sub>2</sub>DS<sub>2</sub>-VASc and HAS-BLED score components, type of atrial fibrillation, diabetes, fall risk, history of bleeding, chronic lung disease, sleep apnea, cardiomyopathy, coronary artery disease, prior ablation, left ventricular ejection fraction and post implant device margin residual leak.



**Racial and Ethnic Disparities in the Utilization and Outcomes with WATCHMAN  
FLX: A SURPASS analysis of the NCDR LAAO Registry**



**Graphic Abstract**

**What is known:**

There is underutilization of LAAO among racial and ethnic minority patients with AF and there are racial and ethnic differences in periprocedural outcomes.

**What this study adds:**

In this study from a large US national registry of patients undergoing LAAO, Black patients were younger but had higher baseline comorbidities and experienced higher rates of bleeding at 45 days and 1-year and higher 1-year mortality. Further work is needed to enroll diverse patients into research trials and to provide equitable AF-related access to advanced care and intra-procedural and post-procedural care in US real-world practice.

