

1 **Clinical safety and pharmacokinetics of a novel oral niclosamide formulation compared**  
2 **with marketed niclosamide chewing tablets in healthy volunteers: a three-part**  
3 **randomized, double-blind, placebo-controlled trial**

4 Niklas Walther<sup>1, 2</sup>, Robert Schultz-Heienbrok<sup>2\*</sup>, Heino Staß<sup>3</sup>, Victor M. Corman<sup>4,5</sup>, Nils C.  
5 Gassen<sup>4,6</sup>, Marcel A. Müller<sup>4,5</sup>, Christian Drosten<sup>4,5</sup>, Martin Witztenrath<sup>7,8</sup>, Hweeling Lee<sup>2</sup>,  
6 Maximilian G. Posch<sup>1</sup>

7 <sup>1</sup> Charité – Universitätsmedizin, Berlin, Germany

8 <sup>2</sup> Charité Research Organisation GmbH, Berlin, Germany

9 <sup>3</sup> Bayer AG, Research & Development, Pharmaceuticals, Wuppertal, Germany

10 <sup>4</sup> Institute of Virology, Charité-Universitätsmedizin Berlin, corporate member of Freie  
11 Universität Berlin, Humboldt-Universität zu Berlin, Germany,

12 <sup>5</sup> German Center for Infection Research (DZIF),

13 <sup>6</sup> Research Group Neurohomeostasis, Department of Psychiatry and Psychotherapy,  
14 University Hospital Bonn, Bonn, Germany

15 <sup>7</sup> Charité – Universitätsmedizin Berlin, corporate member of Freie Universität Berlin and  
16 Humboldt-Universität zu Berlin, Department of Infectious Diseases, Respiratory Medicine  
17 and Critical Care, Charitéplatz 1, 10117 Berlin, Germany

18 <sup>8</sup> German Center for Lung Research (DZL), Berlin, Germany

19

20 \* Corresponding author

21 E-Mail: [Robert.Schultz-Heienbrok@charite-research.org](mailto:Robert.Schultz-Heienbrok@charite-research.org)

22

23

NOTE: This preprint reports new research that has not been certified by peer review and should not be used to guide clinical practice.

## 24 Abstract

### 25 Aim

26 Niclosamide is an established anthelmintic substance and a promising candidate for treating  
27 cancer, viral infections, and other diseases. However, its solubility in aqueous media is low,  
28 and the systemic bioavailability of the commercially available chewing tablet is poor, limiting  
29 the use of niclosamide for systemic treatment. A liquid oral formulation using polyethylene  
30 glycol 400 was developed and investigated in healthy volunteers to assess safety, tolerability,  
31 and pharmacokinetics in comparison to the marketed tablet. (ClinicalTrials.gov:  
32 NCT04644705)

### 33 Methods

34 The study consisted of three parts: Part A was a double-blind placebo-controlled single  
35 ascending dose trial in three dose groups (200, 600, and 1600 mg) with four participants  
36 receiving either the investigational niclosamide formulation or placebo (3:1) under fasted  
37 and/or fed conditions. Part B was a crossover study comparing 1600 mg investigational  
38 niclosamide solution with the marketed 2000 mg chewing tablet in four healthy volunteers.  
39 Part C was a double-blind placebo-controlled multiple-dose trial comparing 1200 mg and  
40 1600 mg (verum: placebo 4:2) in two dose groups with six subjects each, who received daily  
41 doses for seven days.

### 42 Results

43 No serious or severe adverse events occurred. The most frequent adverse events were mild  
44 to moderate gastrointestinal reactions. There was also no apparent dependence between  
45 drug exposure levels (AUC, C<sub>max</sub>) and the severity and incidence of adverse events detectable.  
46 A relevant food effect was observed with a mean AUC<sub>last</sub> about 2-fold higher in fed condition  
47 compared to fasted condition. In Part B, dose-normalized C<sub>max</sub> and AUC<sub>last</sub> were similar for  
48 niclosamide solution and tablet. Absorption of niclosamide solution was highly variable. Some  
49 individuals showed high absorption (C<sub>max</sub> >2µg/ml) whereas others did absorb only marginally.  
50 Importantly, there was no dose linearity in the range of 200 mg – 1600 mg. No signs of  
51 relevant systemic drug accumulation after multiple administrations were observed.

## 52 Conclusion

53 Overall safety and tolerability observed in healthy subjects were benign. This is also true for  
54 individual “high absorbers” (C<sub>max</sub> >2µg/ml), encouraging further research into niclosamide as  
55 a potential therapeutic agent. Galenic optimization, however, will remain challenging as  
56 evident from the observed exposure variability and non-linear PK. Non-linearity, if confirmed  
57 by additional data, might make niclosamide more suitable for multi-dose rather than high  
58 single dose regimens. The observed food effect should also be considered when further  
59 investigating systemic niclosamide exposures.

60

61

## 62 Introduction

63 Niclosamide is a chlorinated salicylanilide approved to treat tapeworm infections and  
64 marketed for human use since 1962 [1]. In recent years, various studies indicated that  
65 niclosamide could also be a therapeutic option for other non-infectious diseases, including  
66 malignancies, neurological diseases, metabolic diseases, and skin diseases [2, 3, 4, 5, 6, 7].

67 Interestingly, recent experimental data also indicate that niclosamide may be effective  
68 against SARS-CoV-2 infection through inhibition of BECN1-targeting E3 ligase SKP2 and  
69 activation of cellular autophagy processes [8]. A major hurdle in using the potentially  
70 beneficial pharmacological properties of the substance is its low aqueous solubility which  
71 limits bioavailability and systemic exposure. For COVID-19 as well as for other diseases,  
72 relevant plasma levels cannot be reached [9].

73 Currently, niclosamide (Yomesan®) is marketed as chewing tablets, a formulation developed  
74 to hold a topical effect in the gastrointestinal tract. As a result, the bioavailability of  
75 Yomesan® is intentionally low. Plasma level concentrations vary between 0.25– 6.0 µg/mL  
76 according to the summary of product characteristics (SmPC) for a once daily administration  
77 of 2 grams Yomesan®. This variability further limits the value of Yomesan® for clinical use in  
78 other indications that require systemic exposure. Other formulations like niclosamide-loaded  
79 nanoparticles or inhalable/intranasal formulations are being developed and tested [10, 11, 12,  
80 13, 14].

81 We developed the drug as a drinking solution consisting of polyethyleneglycol 400 g/mol (PEG  
82 400) as a solvent for niclosamide, aiming to increase intestinal absorption and to ensure more  
83 reproducible uptake [15, 16]. We hypothesized that the niclosamide solution would reduce

84 the high variability of plasma levels and increase systemic availability, making it more suitable  
85 for the clinical treatment of systemic diseases.

86 The primary objectives of this study were to evaluate the safety, tolerability, and  
87 pharmacokinetic (PK) profiles of single ascending doses (SAD) of the niclosamide solution in  
88 healthy volunteers. The secondary objectives were to assess the safety, tolerability, and PK  
89 profiles of multiple ascending doses (MAD) and to evaluate the PK of a single dose of the  
90 niclosamide solution under fed and fasted conditions. Furthermore, the relative  
91 bioavailability of the niclosamide solution compared to the marketed chewing tablet was  
92 assessed. We utilized an adaptive trial design that enabled us to adjust the dose based on the  
93 safety and PK data obtained throughout the study (S1 Protocol).

## 94 **Methods**

### 95 **Study Design**

96 This trial was a single-centre, 3-part (Parts A, B, C) randomized phase 1 trial to investigate the  
97 safety and pharmacokinetics of an investigational niclosamide solution in 28 healthy  
98 volunteers. A Data Safety Monitoring Board (DSMB) continuously monitored subject safety  
99 and decided on dose escalation in part A and initiation of parts B and C.

100 Part A was a randomized, double-blind, placebo-controlled SAD study with three consecutive  
101 dose cohorts including 4 participants (verum: placebo 3:1). Furthermore, subjects enrolled in  
102 cohort A3 received the drug first under fasted and later under fed conditions after a washout  
103 period to investigate differences in bioavailability with regard to the fasted status.

104

105 Part B consisted of one randomized, open-label, two-sequence, two-period crossover cohort  
106 comparing the treatment achieving the highest exposure tested to be safe and tolerable of  
107 the niclosamide solution in part A with the marketed chewing tablets.

108 Part C was a randomized, double-blinded, placebo-controlled multiple ascending dose study  
109 investigating the safety and pharmacokinetics of the niclosamide solution over a treatment  
110 period of seven days. This part consisted of two dose groups.

## 111 Ethical conduct

112 The study was conducted at the Phase 1 Study Unit of Charite Research Organisation GmbH  
113 in Berlin, Germany following Good Clinical Practices (ICH-GCP) and the Declaration of Helsinki.  
114 An independent Ethics Committee (Landesamt für Gesundheit und Soziales [LAGeSo]) and the  
115 German competent authority (Bundesinstitut für Arzneimittel und Medizinprodukte [BfArM])  
116 reviewed and approved the study before initiation. The study is registered with  
117 ClinicalTrials.gov, NCT04644705, and EU Clinical Trials Register, EudraCT 2020-003451-15.

## 118 Participants

119 The study was conducted from November 17, 2020, to May 3, 2021. Healthy male and female  
120 volunteers confirmed by medical history, physical examination, vital signs, and safety  
121 laboratory at screening between 18 and 45 years understanding the content of informed  
122 consent were eligible to participate in the trial. Key exclusion criteria were clinically relevant  
123 medical conditions and pregnant or lactating women. Before any screening activities,  
124 volunteers gave written informed consent to participate in the study (see S1 Protocol for the  
125 complete list of inclusion and exclusion criteria).

## 126 Randomization and blinding

127 Niclosamide investigational solution, chewing tablets, and placebo solution were provided by  
128 Bayer AG, Germany, prepared and dispensed by an unblinded pharmacist of the clinical trial  
129 supply (CTS) team at Charité Research Organization GmbH, and subsequently administered  
130 by a blinded investigator. The placebo for the solution contained diluent (PEG) and  
131 levomenthol as flavour. Levomenthol was also part of the niclosamide solution, thus providing  
132 the same taste and volume as the placebo solution. Since the investigational solution and  
133 placebo were different in colour, CTS prepared the medicinal product in identical syringes  
134 covered with a non-transparent foil to sustain blinding. The administration of investigational  
135 medicinal product (IMP, which could be either treatment or placebo) was randomized in a 3  
136 (treatment): 1 (placebo) in part A (SAD), 4 (treatment):0 in part B (cross-over treatment) and  
137 4 (treatment) 2 (placebo) in Part C. Eligible participants were randomized according to a  
138 randomization list generated with SAS® 9.4 (SAS Institute Inc., USA). The randomization list  
139 was not accessible by blinded staff; however, sealed emergency code break envelopes were  
140 available for the investigators in case of emergency. The IMP was provided to the investigator  
141 by the pharmacist in a blinded manner. A sentinel dosing approach was used in part A,  
142 meaning that the first subject in each cohort received an open-label administration of the  
143 niclosamide solution, followed by three double-blinded subjects in each cohort. In parts A and  
144 C, investigators, study staff, and participants were blinded throughout the trial.

145

## 146 Study Interventions

147 In part A, the IMP was administered on study day 1 under fasted conditions in cohorts A1 (200  
148 mg niclosamide or placebo) and A2 (600 mg niclosamide or placebo) after safety and  
149 tolerability of 200 mg have been confirmed by the DSMB. Participants were fasting for at least  
150 9 hours before and at least 4 hours after IMP intake. In cohort A3 (1600 mg or placebo), the  
151 IMP was first administered once in fasted condition and then, after a washout phase of 16 to  
152 18 days, administered again in the same subjects under fed condition, at the same dose level.  
153 Under fed condition, a high-fat, high-calorie breakfast (Guidance for Industry: Food-Effect  
154 Bioavailability and Fed Bioequivalence Studies, 2001) following an overnight fast of at least 9  
155 hours starting 30 minutes before treatment was consumed. Water intake was not permitted  
156 from 2 hours before to 2 hours after receiving the IMP. In all parts, administration was once  
157 daily (QD), orally in the morning in an upright position with 240 ml of non-sparkling water. All  
158 subjects were informed about dietary/activity requirements and restrictions and adhered to  
159 them.

160 Parts B and C were conducted under fed conditions, as cohort A3 showed that systemic  
161 exposure of the niclosamide solution was higher and safe with prior food intake. In part B, the  
162 highest tolerated and safe dose of niclosamide investigational solution in part A was  
163 compared with the approved dose of 2000 mg of the marketed niclosamide chewing tablet.  
164 Each subject received treatment with 1600 mg niclosamide as an oral solution and 2000 mg  
165 niclosamide as a chewing tablet on study days 1 and 3 (the first day of period 2). On day 1 of  
166 treatment period 1, either a single dose of the solution or the chewing tablet was  
167 administered. After a one-day wash-out between each period, the other treatment variant  
168 was administered on day 3.



169 Part C consisted of two dose groups with six subjects each. Each subject in cohort 1 received  
170 treatment with 1200 mg niclosamide or placebo and subjects enrolled in cohort 2 received  
171 1600 mg niclosamide or placebo once daily orally from study day 1 to 7 under fed condition.

## 172 173 Bioanalytical methods

174  
175 In part A and part B, blood samples for measuring plasma niclosamide concentrations were  
176 collected predose and at 0.5, 1.0, 1.5, 2, 4, 6, 8, 12 hours, post-dose on day 1, as well as on  
177 day 2, 24 hours after dose administration. In part B, plasma levels were also measured on day  
178 3 at the same timepoints. In part C, PK samples were collected at predose, and 0.5, 1.0, 1.5,  
179 2, 4, 6, 8, 12 hours, and 24 h post-dose after first and last dose administration (study days 1  
180 and 7), as well as predose on days 2 to 6 (trough levels). Blood was collected and centrifuged;  
181 plasma was separated for bioanalytical analyses, frozen within 85 minutes of collection, and  
182 stored at -80°C until shipment. BIOTEZ Berlin-Buch GmbH measured niclosamide  
183 concentration by HPLC method.

## 184 185 Pharmacokinetic evaluation

186 Pharmacokinetics (PK) were evaluated using Phoenix WinNolin® software version 8.3  
187 (Certara, USA). The individual and mean plasma level versus time curves were evaluated  
188 using non-compartmental method. The  $AUC_{last}$  was calculated as the area under the plasma  
189 concentration-time curve from time zero up to the time of the last quantifiable  
190 concentration calculated by linear up / log down method. Food effect was evaluated using  
191 non-linear mixed effect modelling.

192

## 193 Safety assessments

194 Safety was assessed by clinical laboratory tests, physical examinations, 12-lead  
195 electrocardiograms (ECG), vital signs, and monitoring of adverse events (AEs). At screening  
196 and each visit to the research unit, safety assessments were performed. Investigators  
197 assessed subjects throughout the study for the occurrence of AEs and their severity and their  
198 relationship to the IMP. The DSMB continuously monitored subjects' safety and made  
199 decisions on dose escalation. Stopping rules included, occurrence of a related SAE in at least  
200 one subject, related severe AEs in two subjects in the same cohort or relevant and confirmed  
201 safety laboratory deviations in two or more subjects. Dose escalation would have been  
202 stopped if plasma levels of the niclosamide solution exceed specific thresholds  
203 (approximately 1.6 µg/ml) at 8 hours post-dosing in all subjects. For the high dose group of  
204 1600 mg in Part C, dosing may have been discontinued if moderate to severe gastrointestinal  
205 side effects occurred.

206

## 207 Outcomes

208 Primary safety outcome was monitored by the number of treatment-emergent (serious)  
209 Adverse Events (TEAE), and the recording of vital signs, ECG, and safety laboratory parameters.  
210 Secondary outcomes included the effect of food on rate and extent of absorption and various  
211 PK parameters after multiple dosing. PK profiles included the maximum plasma concentration  
212 of niclosamide ( $C_{max}$ ) and the area under the plasma concentration time curve from predose

213 until the last detectable concentration of niclosamide ( $AUC_{last}$ ). These parameters were also  
214 used to assess relative bioavailability of the solution as compared to the tablets.

215

## 216 Sample size

217 The number of subjects was considered adequate to investigate safety and was not based on  
218 considerations of statistical power due to the exploratory and descriptive nature of the study.  
219 In parts A and B, each dose group consisted of four subjects, with three subjects randomly  
220 assigned to receive niclosamide solution. In part C, each dose group included six subjects, with  
221 four subjects randomized to receive the solution.

222

## 223 Statistical methods

224 The primary objective was to evaluate the safety and PK of single ascending doses of the oral  
225 solution. The data obtained were descriptive since the trial was not designed for inferential  
226 statistics. A safety analysis was done in all participants who received at least one dose of study  
227 treatment. AEs and SAEs were coded according to the Medical Dictionary for Regulatory  
228 Activities (MedDRA) and recorded by system organ class (SOC) and preferred term. ECGs,  
229 Physical examinations, and clinical laboratory abnormalities were summarized.

230 Descriptive statistics were calculated for the plasma concentration of niclosamide at each  
231 applicable time point specified and for the derived plasma PK parameters ( $C_{max}$ ,  $AUC_{last}$ , C8h,  
232 C12h, C24h,  $t_{max}$ ,  $t_{1/2}$ ). Geometric means (GM) and standard deviations (SD) were described  
233 for  $C_{max}$ , AUC and  $t_{1/2}$ . Medians and ranges were used for  $T_{max}$ .

234 The food effect evaluation in part A and the relative bioavailability compared to the chewing  
 235 tablets in part B were performed using a linear fixed-effect model containing fixed effects for  
 236 sequence, treatment, period, and subjects within sequence for log-transformed  $C_{max}$  and  
 237  $AUC_{last}$ , respectively. Only subjects with evaluable data for both periods were included.  
 238 All outcomes were analyzed based on per-protocol analysis (all subjects who completed the  
 239 trial without major protocol deviations).

## 240 Results

### 241 Subjects

242 Twenty-eight healthy subjects were enrolled in part A (12 subjects), part B (4 subjects), and  
 243 part C (12 subjects), all completed the study according to protocol. Of all participants, 21  
 244 received niclosamide and 7 received placebo (Fig 1). The demographic and clinical  
 245 characteristics of the subjects are summarised in Table 1.

246

247 **Fig 1. Study CONSORT flowchart.**

**Table 1: Demographic and Baseline Characteristics of Participants**

Characteristic	Part A (200 mg)	Part A (600 mg)	Part A (1600 mg)	Part A (Placebo)	Part B	Part C (1200 mg)	Part C (1600 mg)	Part C (Placebo)
Gender: Female (n, %)	3 (100.0%)	3 (100.0%)	3 (100.0%)	3 (100.0%)	4 (100.0%)	4 (100.0%)	4 (100.0%)	4 (100.0%)
Age: Mean, SD [y]	28.7, 9.7	28.0, 2.0	23.7, 2.5	31.0, 7.8	28.8, 2.9	30.3, 5.7	33.8, 6.4	32.8, 6.3
Race: White/Caucasian, (n, %)	3 (100.0%)	3 (100.0%)	3 (100.0%)	3 (100.0%)	4 (100.0%)	4 (100.0%)	4 (100.0%)	4 (100.0%)

Smoking History: Current (n, %)	0 (0.0%)	0 (0.0%)	0 (0.0%)	0 (0.0%)	3 (75.0%)	1 (25.0%)	0 (0.0%)	1 (25.0%)
Smoking History: Former (n, %)	2 (66.7%)	0 (0.0%)	0 (0.0%)	1 (33.3%)	N/A	1 (25.0%)	3 (75.0%)	1 (25.0%)
Smoking History: Never (n, %)	1 (33.3%)	3 (100.0%)	3 (100.0%)	2 (66.7%)	1 (25.0%)	2 (50.0%)	1 (25.0%)	2 (50.0%)
Weight: Mean, SD [kg]	58.07, 0.8	65.77, 13.23	61.0, 2.15	64.63, 14.51	70.50, 16.02	63.70, 16.56	70.75, 7.10	62.45, 7.31
Height: Mean, SD [cm]	168.3, 3.1	173.7, 3.8	170.7, 2.1	165.7, 11.6	169.5, 6.7	166.8, 5.7	164.8, 4.4	164.8, 5.1
BMI: Mean, SD [kg/m <sup>2</sup> ]	20.47, 0.47	21.7, 3.36	20.93, 1.01	23.33, 1.97	24.33, 3.59	22.70, 4.65	26.00, 1.26	23.08, 3.06

SD = standard deviation; n= number of subjects

248

## 249 Safety outcome

250 No serious or severe AEs occurred throughout the study, and no clinically relevant changes  
 251 from baseline were observed in any subject in physical examination, vital signs, ECGs, or  
 252 safety laboratory parameters. None of the stopping criteria were met in any subject during  
 253 the trial.

254 During the trial, 58 TEAEs occurred in 21 subjects, meaning 75% of all subjects experienced at  
 255 least one or more AEs. Of these, 54 were of mild intensity and four of moderate intensity.

256 Under "gastrointestinal disorders", 45 (78 %) TEAEs were grouped, with "diarrhoea"  
 257 (including fluid stool), (16), "nausea" (12), and "vomiting" (4) as the most frequent events.

258 For this System Organ Class (SOC), events were experienced by 14 out of 21 subjects (67%)

259 who received treatment and by 6 out of 10 (60%) subjects who received placebo. Overall,

260 seven (58%) subjects in part A, two (50%) subjects in part B and twelve (100%) subjects in part

261 C reported at least one AE. The occurrence of suspected drug-related AEs was 18 in 7 subjects

262 (58.2%) in part A, 3 AEs in 2 (50%) subjects in part B, and 28 AEs in 12 (100%) subjects in part

263 C.

264 In part A, only one subject 1/9 (11%) in the treatment cohort and none in the placebo cohort  
 265 experienced a moderate TEAE “abdominal pain”, which was considered to be related to the  
 266 IMP by the investigator. All other AEs were of mild intensity (Table 2).

267

268 **Table 2 Adverse Events by MedDRA SOC and PT – Part A**

MedDRA System organ class Preferred term	Cohort A1			Cohort A2			Cohort A3			Placebo			Part A Overall					
	(N = )			(N = )			(NFast		(NFed		(N = )			(N = 12)				
	n	(%)	m	n	(%)	m	n	(%)	m	n	(%)	m	n	(%)	m			
Any	0	(0.0)	0	2	(66.7)	7	3	(100.0)	7	2	(66.7)	3	2	(66.7)	2	7	(58.3)	19
Gastrointestinal disorders	0	(0.0)	0	1	(33.3)	4	3	(100.0)	6	2	(66.7)	3	2	(66.7)	2	6	(50.0)	15
Diarrhoea	0	(0.0)	0	1	(33.3)	1	1	(33.3)	1	1	(33.3)	1	0	(0.0)	0	3	(25.0)	3
Nausea	0	(0.0)	0	1	(33.3)	1	2	(66.7)	2	1	(33.3)	1	0	(0.0)	0	3	(25.0)	4
Faeces soft	0	(0.0)	0	0	(0.0)	0	1	(33.3)	1	0	(0.0)	0	1	(33.3)	1	2	(16.7)	2
Oral disorder	0	(0.0)	0	0	(0.0)	0	1	(33.3)	1	1	(33.3)	1	1	(33.3)	1	2	(16.7)	3
Abdominal pain	0	(0.0)	0	1	(33.3)	1	0	(0.0)	0	0	(0.0)	0	0	(0.0)	0	1	(8.3)	1
Dyspepsia	0	(0.0)	0	0	(0.0)	0	1	(33.3)	1	0	(0.0)	0	0	(0.0)	0	1	(8.3)	1
Vomiting	0	(0.0)	0	1	(33.3)	1	0	(0.0)	0	0	(0.0)	0	0	(0.0)	0	1	(8.3)	1
Musculoskeletal and connective tissue disorders	0	(0.0)	0	0	(0.0)	0	1	(33.3)	1	0	(0.0)	0	0	(0.0)	0	1	(8.3)	1
Back pain	0	(0.0)	0	0	(0.0)	0	1	(33.3)	1	0	(0.0)	0	0	(0.0)	0	1	(8.3)	1
Respiratory, thoracic and mediastinal disorders	0	(0.0)	0	1	(33.3)	2	0	(0.0)	0	0	(0.0)	0	0	(0.0)	0	1	(8.3)	2
Dry throat	0	(0.0)	0	1	(33.3)	1	0	(0.0)	0	0	(0.0)	0	0	(0.0)	0	1	(8.3)	1
Throat clearing	0	(0.0)	0	1	(33.3)	1	0	(0.0)	0	0	(0.0)	0	0	(0.0)	0	1	(8.3)	1
Skin and subcutaneous tissue disorders	0	(0.0)	0	1	(33.3)	1	0	(0.0)	0	0	(0.0)	0	0	(0.0)	0	1	(8.3)	1
Erythema	0	(0.0)	0	1	(33.3)	1	0	(0.0)	0	0	(0.0)	0	0	(0.0)	0	1	(8.3)	1

269 N: Number of subjects in respective cohort; n: Number of subjects with at least one adverse event in respective  
 270 category; %: Percentage based on N; m: Number of events; TEAE: Treatment-emergent adverse events; Cohort  
 271 A1: 200 mg oral dose niclosamide; Cohort A2: 600 mg oral dose niclosamide; Cohort A3: 1600 mg oral dose  
 272 niclosamide; NFast/ NFed: Treatment in cohort A3 was applied under fasting and fed conditions in the same  
 273 subjects.

274

275 In part B, the three AEs, "nausea," "diarrhoea" and "vomiting," occurred on the same day  
 276 after ingestion of the niclosamide solution and were judged as related, whereas no AEs were  
 277 observed after intake of the chewing tablet (Table 5).

278 **Table 5 Adverse Events by MedDRA SOC and PT – Part B**

MedDRA System organ class Preferred term	Solution 1600mg (N = 4)			Chewing tablet 2000mg (N = 4)			Part B Overall (N = 4)		
	n	(%)	m	n	(%)	m	n	(%)	m
Any	2	(50.0)	3	0	(0.0)	0	2	(50.0)	3
Gastrointestinal disorders	2	(50.0)	3	0	(0.0)	0	2	(50.0)	3
Diarrhoea	1	(25.0)	1	0	(0.0)	0	1	(25.0)	1
Nausea	1	(25.0)	1	0	(0.0)	0	1	(25.0)	1
Vomiting	1	(25.0)	1	0	(0.0)	0	1	(25.0)	1

279 N: Number of subjects in respective cohort; n: Number of subjects with at least one adverse event in respective  
 280 category; %: Percentage based on N; m: Number of events; TEAE: Treatment-emergent adverse events; Part B  
 281 was a crossover design.  
 282

283 In part C, all subjects of the 1200 mg group, the 1600 mg group, and the placebo group  
 284 experienced TEAEs. Most TEAEs were mild in severity, except for three moderate TEAEs,  
 285 specifically two incidences of "diarrhoea" experienced in two participants in each of the  
 286 1200 mg group and placebo group, and "nausea" reported in one participant from the 1600  
 287 mg group. Three events of nausea and one event of vomiting were rated as not related, as  
 288 the subjects could credibly attribute them to the high-fat breakfast. A dose-dependent  
 289 increase in TEAEs among subjects in part C was not observed (Table 6). All subjects had at  
 290 least one or more events.

291 **Table 6 Adverse Events by MedDRA SOC and PT – Part C**

	n	(%)	m	n	(%)	m	n	(%)	m	n	(%)	m
Any	4	(100.0)	13	4	(100.0)	14	4	(100.0)	9	12	(100.0)	36
Gastrointestinal disorders	4	(100.0)	9	4	(100.0)	11	4	(100.0)	7	12	(100.0)	27
Diarrhoea	4	(100.0)	4	4	(100.0)	5	3	(75.0)	3	11	(91.7)	12
Nausea	2	(50.0)	2	4	(100.0)	4	1	(25.0)	1	7	(58.3)	7
Flatulence	1	(25.0)	1	0	(0.0)	0	2	(50.0)	2	3	(25.0)	3
Vomiting	0	(0.0)	0	2	(50.0)	2	0	(0.0)	0	2	(16.7)	2
Dry mouth	1	(25.0)	1	0	(0.0)	0	0	(0.0)	0	1	(8.3)	1
Faeces soft	0	(0.0)	0	0	(0.0)	0	1	(25.0)	1	1	(8.3)	1
Rectal haemorrhage	1	(25.0)	1	0	(0.0)	0	0	(0.0)	0	1	(8.3)	1
Nervous system disorders	2	(50.0)	2	1	(25.0)	2	1	(25.0)	1	4	(33.3)	5
Headache	2	(50.0)	2	1	(25.0)	2	1	(25.0)	1	4	(33.3)	5
General disorders and administration site conditions	1	(25.0)	1	0	(0.0)	0	1	(25.0)	1	2	(16.7)	2
Fatigue	0	(0.0)	0	0	(0.0)	0	1	(25.0)	1	1	(8.3)	1
Puncture site pain	1	(25.0)	1	0	(0.0)	0	0	(0.0)	0	1	(8.3)	1
Infections and infestations	0	(0.0)	0	1	(25.0)	1	0	(0.0)	0	1	(8.3)	1
Rhinitis	0	(0.0)	0	1	(25.0)	1	0	(0.0)	0	1	(8.3)	1
Respiratory, thoracic and mediastinal disorders	1	(25.0)	1	0	(0.0)	0	0	(0.0)	0	1	(8.3)	1
Cough	1	(25.0)	1	0	(0.0)	0	0	(0.0)	0	1	(8.3)	1

292  
 293 N: Number of subjects in respective cohort; n: Number of subjects with at least one adverse event in respective  
 294 category; %: Percentage based on N; m: Number of events; TEAE: Treatment-emergent adverse events;  
 295

## 296 Pharmacokinetic Results

### 297 Plasma concentrations niclosamide solution

298  $C_{max}$  and  $AUC_{last}$  showed a non-linear absorption behaviour of the niclosamide solution,  
 299 except for  $AUC_{last}$  in cohorts A1 to A2 suggesting no deviation from dose proportionality in  
 300 the range of 200 to 600 mg. The mean concentration-time profiles of each cohort remained  
 301 similar throughout the study, showing a rapid increase and decline in plasma concentration  
 302 (Fig 2). Variability continued to be very high across dose groups for  $C_{max}$  and  $AUC_{last}$ , especially  
 303 in fasting conditions and for higher doses. The highest values for  $C_{max}$  and  $AUC_{last}$  were 2.77



304  $\mu\text{g/ml}$  and  $19.15 \mu\text{g}\cdot\text{h/ml}$ , respectively, and were achieved with the solution under fed  
 305 conditions.

306

307 **Fig 2. Geometric Mean Niclosamide Plasma-Concentration vs Time Curves following oral**  
 308 **administration per cohort.** (A) Single ascending doses (200 mg - Cohort A1, 600 mg - A2, 1600  
 309 mg - A3) under fasted conditions (A3 also in fed state). (B) 1600 mg solution and 2000 mg  
 310 tablets under fed conditions. (C) 1200 mg and 1600 mg solution over 7 days in fed state.

311

312 In the SAD part A, median  $T_{\text{max}}$  ranged from 0.5 to 1.5 h across (fasted) cohorts and trended  
 313 toward longer times with increasing doses. Individual plasma concentrations followed first-  
 314 order kinetics, declining exponentially over elimination phase. Half-lives (GM) increased with  
 315 increasing dose levels, from 3.43 h for the 200 mg dose to 4.15 h for the 1600 mg dose.  $C_{\text{max}}$   
 316 (GM) increased 2.0 -fold from A1 to A2 and only 1.3- fold from A2 to A3.  $\text{AUC}_{\text{last}}$  (GM)  
 317 levels for the same cohorts increased 3.4 -fold (A1 to A2) and 1.2- fold (A2 to A3) (Table 7).

318 **Table 7: Niclosamide Pharmacokinetics for ascending single oral doses in Fasted and Fed**  
 319 **conditions - Part A**

Parameters	Cohort A1 fasted	Cohort A2 fasted	Cohort A3 fasted	Cohort A3 fed
	200 mg	600 mg	1600 mg	1600 mg
	n=3	n=3	n=3	n=3
$C_{\text{max}}$ , $\mu\text{g/mL}$	0.41 [2.31]	0.84 [1.53]	1.08 [4.11]	1.28 [1.64]
$\text{AUC}_{\text{last}}$ , $\mu\text{g}\cdot\text{h/mL}$	1.17 [1.09]	3.99 [1.71]	4.86 [3.38]	9.9 [1.78]
$t_{\text{max}}$ , h	0.5 [0.5-1.0]	1.5 [1.5-2.0]	1.5 [1.5-1.5]	4.0 [2.0-4.0]
C8h, $\mu\text{g/mL}$	0.03 [2.40]	0.12 [1.94]	0.14 [2.48]	0.52 [1.88]
C12h, $\mu\text{g/mL}$	BQL	0.07 [2.31]	0.08 [3.19]	0.29 [1.49]
C24h, $\mu\text{g/mL}$	BQL	BQL	0.01 [1.88]	0.06 [1.32]
$t_{1/2}$ , h	3.43 [2.95]	4.15 [1.15]	4.77 [1.14]	5.28 [1.34]

320  $C_{\text{max}}$ : Max plasma concentration;  $\text{AUC}_{\text{last}}$ : Area under plasma conc-time curve to last quantifiable conc;  $t_{\text{max}}$ :  
 321 Time to reach  $C_{\text{max}}$  (median [range]); C8h, C12h, C24h: Plasma conc at 8, 12, 24 hrs post-dose;  $t_{1/2}$ : Terminal  
 322 half-life; n: Subjects; BQL: Below quantifiable limit. Geometric mean and standard deviation presented.

323

324 Food effect

325 A relevant effect of food intake on the absorption of niclosamide was observed as the median  
 326  $t_{max}$  was prolonged under fed conditions compared to fasted conditions (4 vs. 1.5 h).  $T_{1/2}$  was  
 327 only slightly higher fasted compared to fed conditions (4.77 vs. 5.28 h) (Fig 2A).

328 GM  $C_{max}$  was 1.2-fold higher for fed than fasting, and the GM  $AUC_{last}$  doubled for fed  
 329 compared to fasting conditions with lower variability (9.90 [1.78] vs. 4.86 [3.38]  $\mu\text{g}\cdot\text{h}/\text{mL}$ )  
 330 (Table 7) suggesting a substantially increased extent of absorption when niclosamide is  
 331 administered after a high-fat, high-calorie meal.

332

333 Relative Bioavailability of niclosamide solution

334 In part B, the median  $t_{max}$  was 1.5 h for the chewing tablet compared with 1 h for the solution,  
 335 in line with expectations for each formulation.  $T_{1/2}$  was slightly shorter for the tablet cohort  
 336 than the solution cohort and considerably shorter than in the Fed part A3 (Table 8). Notably,  
 337 the variability in PK parameters was lower for the chewing tablet.

338 **Table 8 Comparison of Niclosamide PK parameters for solution and chewing tablet**  
 339 **formulations under Fed conditions - Part B**

340

PK-Parameters	Niclosamide solution	Niclosamide chewing tablets
	1600 mg fed n=4	2000 mg fed n=4
$C_{max}$ , $\mu\text{g}/\text{mL}$	0.78 [3.00]	0.91 [1.45]
$AUC_{last}$ , $\mu\text{g}\cdot\text{h}/\text{mL}$	3.47 [2.99]	5.16 [1.22]
$C_{max}/D$ , $\mu\text{g}/\text{mL}$	0.49 [3.00]	0.45 [1.45]
$AUC_{last}/D$ , $\mu\text{g}\cdot\text{h}/\text{mL}$	2.17 [2.99]	2.58 [1.22]
$t_{max}$ , h	1.0 [0.5-2.0]	1.5 [1.0-4.0]
$C_8h$ , $\mu\text{g}/\text{mL}$	0.12 [2.29]	0.18 [1.88]
$C_{12h}$ , $\mu\text{g}/\text{mL}$	BQL	0.06 [5.44]
$C_{24h}$ , $\mu\text{g}/\text{mL}$	BQL	BQL
$t_{1/2}$ , h	3.99 [1.49]	3.66 [1.93]

341 C<sub>max</sub>: Max plasma concentration; AUC<sub>last</sub>: Area under plasma conc-time curve to last quantifiable conc; C<sub>max</sub>/D,  
 342 AUC<sub>last</sub>/D: C<sub>max</sub>, AUC<sub>last</sub> normalized to dose; t<sub>max</sub>: Time to reach C<sub>max</sub> (median [range]); C<sub>8h</sub>, C<sub>12h</sub>, C<sub>24h</sub>:  
 343 Plasma conc at 8, 12, 24 hrs post-dose; t<sub>1/2</sub>: Terminal half-life; n: Subjects; D: Dose (1.6g solution, 2g tablet);  
 344 BQL: Below quantifiable limit. Geometric mean and standard deviation presented.

345

346 Dose-normalized AUC<sub>last</sub> and C<sub>max</sub> were comparable between niclosamide solution and  
 347 niclosamide chewing tablets (C<sub>max</sub>/D 0.49 [3.00] vs. 0.45 [1.45] µg/mL per g and AUC<sub>last</sub>/D 2.17  
 348 [2.99] vs. 2.58 [1.22] µg\*h/mL per g) indicating that the solution did not lead to an increased  
 349 bioavailability.

350

351 Plasma concentrations multiple dosing

352 In the MAD part C, the GM of t<sub>1/2</sub> increased in dose group 1200 mg from day 1 (5.26 h) to day  
 353 7 (5.76 h). On the other hand, the GM t<sub>1/2</sub> in dose group 1600 mg was overall slightly shorter  
 354 than in the 1200 mg group, with 4.15 h on day 1 and 5.49 h on day 7 (Table 9).

355 **Table 9 Niclosamide PK parameters for multiple doses of 1200 mg and 1600 mg solution**  
 356 **over 7 days under Fed conditions - Part C**

Parameters	N	Cohort 1	N	Cohort 2
		1200 mg fed		1600 mg fed
C <sub>max</sub> , µg/mL	4	D1: 0.68 [1.57] D7: 0.67 [1.26]	4	D1: 1.39 [1.61] D7: 0.90 [1.22]
AUC <sub>last</sub> , µg*h/mL	4	D1: 2.48 [3.40] D7: 3.97 [1.59]	4	D1: 8.18 [1.46] D7: 4.34 [1.39]
t <sub>max</sub> , h	4	D1: 2.0 [1.0-4.0] D7: 1.75[0.5-4.0]	4	D1: 1.75 [1.0-2.0] D7: 1.5 [1.0-2.0]
C <sub>8h</sub> , µg/mL	4	D1: BQL D7: 0.14 [2.06]	4	D1: 0.41 [1.93] D7: 0.16 [1.27]
C <sub>12h</sub> , µg/mL	4	D1: BQL D7: 0.10 [2.31]	4	D1: 0.16 [1.76] D7: 0.08 [1.64]
C <sub>24h</sub> , µg/mL	4	D1: BQL D7: 0.05 [2.78]	4	D1: 0.03 [1.43] D7: 0.03 [1.46]
t <sub>1/2</sub> , h	3	D1: 5.26 [1.06]	4	D1: 4.15 [1.11]
	2	D7: 5.76 [1.01]	3	D7: 5.49 [1.24]

357 C<sub>max</sub>: Max plasma concentration; AUC<sub>last</sub>: Area under plasma conc-time curve to last quantifiable conc; t<sub>max</sub>:  
 358 Time to reach C<sub>max</sub> (median [range]); C<sub>8h</sub>, C<sub>12h</sub>, C<sub>24h</sub>: Plasma conc at 8, 12, 24 hrs post-dose; t<sub>1/2</sub>: Terminal  
 359 half-life; n: Subjects; BQL: Below quantifiable limit. Geometric mean and standard deviation presented.

360

361

362  $C_{\max}$  (GM) between day 1 (0.68  $\mu\text{g}/\text{ml}$ ) to day 7 (0.67  $\mu\text{g}/\text{ml}$ ) in dose group 1200 mg was similar  
363 on both days. For dose group, 1600 mg  $C_{\max}$  (GM) was higher overall than in the 1200 mg  
364 group but declined between day 1 (1.39  $\mu\text{g}/\text{ml}$ ) and day 7 (0.90  $\mu\text{g}/\text{ml}$ ).

365  $\text{AUC}_{\text{last}}$  (GM) had increasing trends from day 1 (2.48  $\mu\text{g}\cdot\text{h}/\text{ml}$ ) to day 7 (3.97  $\mu\text{g}\cdot\text{h}/\text{ml}$ ) in dose  
366 group 1200 mg. In contrast, in the dose group 1600 mg,  $\text{AUC}_{\text{last}}$  (GM) decreased 47 % in the  
367 same interval yet exceeded the dose group 1200 mg 3.3-fold on day 1 (8.18  $\mu\text{g}\cdot\text{h}/\text{ml}$ ) and was  
368 only slightly higher on day 7 (4.34  $\mu\text{g}\cdot\text{h}/\text{ml}$ ).

369 Mean and individual trough concentrations of niclosamide measured on days 3 to 7 were all  
370 below the quantifiable limit for the 1200 mg and 1600 mg groups, suggesting no accumulation  
371 after multiple dosing.

372 The high variability, the poor bioavailability and the decrease in AUC after multiple dosing  
373 might all be connected to the side effects experienced from the PEG carrier solution. The  
374 correlation between adverse events and pharmacokinetics was therefore further analyzed.

375

### 376 Correlation between adverse events and plasma concentrations

377 From the AE summaries (Tables 4-6), after nausea, diarrhoea was the most frequent preferred  
378 term for AE classification. Diarrhoea impacts intestinal passage time and might therefore  
379 reduce absorption.

380 To analyze the relationship between exposure variability and diarrhoea further, we compared  
381 the subjects with diarrhoea and the subjects without diarrhoea to dose-normalized  $C_{\max}$  and  
382 AUC, pooling the 1600 mg groups (A3 fed/fast, B, C) and 1200 mg Part C group. We considered  
383 AEs on day 1 for all groups, and additionally on day 7 for group C, because  $C_{\max}$  and AUC  
384 were only measured on these days. Groups A1 and A2 showed no diarrhoea on day 1. There  
385 is a pattern suggesting that subjects with diarrhoea had a lower  $C_{\max}$  and  $\text{AUC}_{\text{last}}$  compared to

386 subjects who did not experience diarrhoea after drug intake (Fig 3). However, even in subjects  
387 without diarrhoea, variability in exposure remained high with a roughly fourfold increase  
388 from lowest to highest value.

389

390 **Fig 3. Diarrhoea Incidence vs. Dose-normalized Cmax (A) and AUC (B) in Niclosamide-**  
391 **treated Subjects.** This figure presents the comparison of individual dose-normalized (A) Cmax  
392 ( $\mu\text{g}/\text{mL}$  per g) and (B) AUC ( $\mu\text{g}/\text{mL}$  per g) data in relation to the incidence of diarrhoea (no  
393 diarrhoea vs. diarrhoea) after niclosamide solution administration.

394

395 To inform the relationship between exposure and AEs, we plotted the number of any TEAE  
396 reported against a group of “high absorbers” and a group of “regular absorbers”. High  
397 absorption was here arbitrarily defined as being at least  $2 \mu\text{g}/\text{ml}$  (Fig 4). Interestingly, we did  
398 not find a clear correlation between niclosamide exposure and TEAS. Two of the high  
399 absorbers did not report any adverse event and three high absorbers reported two adverse  
400 events which were all mild. Overall, the analysis suggests that number and severity of AEs is  
401 independent of the niclosamide exposure level reached in the individual.

402

403 **Fig 4. TEAEs Comparison between High Absorbers ( $C_{\text{max}} > 2\mu\text{g}/\text{ml}$ ) and Regular Absorbers**  
404 **( $C_{\text{max}} < 2\mu\text{g}/\text{ml}$ ).** This figure compares the number of treatment-emergent adverse events  
405 (TEAEs) in high absorbers and regular absorbers after niclosamide administration, highlighting  
406 the differences in TEAE distribution between the two groups.

407

## 408 Discussion

409 The primary objective of this Phase 1 trial was to assess the safety and pharmacokinetics of a  
410 novel niclosamide solution. The study included a single ascending dose (SAD) consecutive  
411 group design (Part A) including assessment of the effect of food on oral absorption of  
412 niclosamide, a crossover comparison of bioavailability with a marketed chewing tablet (Part  
413 B), and a multiple ascending dose (MAD) design (Part C). Cohort A3 was repeated under fed  
414 conditions to study whether food was affecting systemic exposure of the niclosamide solution.  
415 The study protocol allowed for dosing in parts B and C to be performed under either fasting  
416 or fed conditions, depending on the bioavailability data obtained.

417 To evaluate the relative bioavailability of the niclosamide solution compared with the chewing  
418 tablet, a crossover part (Part B) was performed to exclude inter-individual differences in  
419 absorption and thus minimize the variability of PK parameters. The niclosamide solution's  
420 highest tolerated and safe dose in part A was compared to the marketed chewing tablet at  
421 the highest approved dose of 2000 mg. Due to the higher exposure of niclosamide solution  
422 observed in cohort A3, the IMP was administered with prior food intake.

423 An MAD design (Part C) was chosen to investigate safety and PK after repeated drug  
424 administration. Since multiple gastrointestinal AEs were observed at the 1600 mg dose in the  
425 single dose parts, two different dose levels, 1600 mg, and 1200 mg, were chosen. Dosing in  
426 the 1600 mg could have been stopped if intolerable gastrointestinal AEs prevented further  
427 intake. In that case, dosing could have been continued with the 1200 mg niclosamide solution  
428 in these discontinued subjects, in addition to the four other subjects in the 1200 mg group.

429 In cohorts A and C, a placebo control was included that allowed differentiation between drug-  
430 related AEs and AEs that may occur without active treatment.

431 In 28 healthy volunteers, the investigational niclosamide solution was reasonably well-  
432 tolerated in doses up to 1600 mg, with no severe TEAEs reported. The overall frequency of  
433 suspected related TEAEs was 18 TEAEs in 7 (58.2%) subjects in part A, 3 TEAEs in 2 (50%)  
434 subjects in part B, and 28 TEAEs in 12 (100%) subjects in part C. The most common related  
435 TEAE were gastrointestinal symptoms such as diarrhoea (including liquid stool), nausea, and  
436 vomiting shortly after IMP administration. No trends were observed in hematologic and  
437 clinical chemistry parameters, vital signs, or ECG during the study.

438 TEAEs reported across the SAD and MAD parts were mild to moderate intensity. There were  
439 no discontinuations, and no TEAE needed medical intervention, except for "abdominal pain"  
440 in cohort A2, which was treated with oral ibuprofen. The proportion of gastrointestinal events  
441 increased with increasing dose and volume of solution, with no TEAEs in cohort A1, 66% in  
442 cohort A2, 100% in the fasted part of cohort A3, 67% in the fed part (2/3 subjects), 50% in  
443 part B after receiving solution and 100% in both treatment groups of part C. A relationship  
444 between TEAEs frequency and exposure was not found. Since subjects receiving placebo also  
445 had the same proportion of AEs and the frequency of AEs was independent of AUC or  $C_{max}$ ,  
446 but incidence increased with solution volume, the excipient PEG 400, an osmotic agent, likely  
447 led to these gastrointestinal events. This is corroborated by the fact that the volume of the  
448 excipient also increases with the dose of the drug. The volume of niclosamide solution was 5  
449 ml for 200 mg, 15 ml for 600 mg, 30 ml for 1200 mg, 40 ml for 1600 mg, and 20 ml in part C  
450 for the placebo. PEG-400 was used here as a solvent to increase absorption in the intestine.  
451 However, PEG has an osmotic effect and is the basis of some laxatives used in  
452 gastroenterology, known to cause GI side effects that could affect absorption [15, 17].  
453

454 Comparison of  $C_{\max}$  and  $AUC_{\text{last}}$  versus dose revealed a non-linear increase in exposure over  
455 the dose range investigated, while deviation from dose proportionality was not evident  
456 between cohort A1 (200mg) and cohort A2 (600mg). This pattern could be explained by poor  
457 solubility, which could potentially limit the oral bioavailability of this niclosamide formulation  
458 at higher doses. At higher oral doses, the undissolved niclosamide might precipitate in some  
459 subjects. Furthermore, a positive food effect after a standard high-fat, high-calorie breakfast  
460 was observed; Fed GM  $C_{\max}$  and  $AUC_{\text{last}}$  were 1.2-fold and 2-fold higher for fed compared to  
461 fasting conditions. Compared with fasting, the median  $t_{\max}$  of mean plasma concentrations  
462 was prolonged under fed conditions, with individual plasma concentrations showing a  
463 delayed decline after  $C_{\max}$  and measurable niclosamide plasma concentrations up to 12 hours  
464 after administration. It is noted, however, that the food effect might also – at least in part –  
465 be explained by the fewer observed gastro-intestinal AEs in the fed as compared to the fasted  
466 subjects.

467 Subsequent cohorts A3 and parts B and C were conducted under fed conditions, as the  
468 systemic exposure of the niclosamide solution was increased prior to food intake.

469 The variability of the PK parameters remained very high in all dose groups, especially under  
470 fasting conditions and at higher doses. The high variability could partly be explained by the  
471 gastrointestinal side effects like diarrhoea or vomiting which reduce resorption.

472 In part A, high variability in exposure was observed with even higher variability under fasting  
473 conditions and at increasing dose levels. The geometric coefficient of variation (Geo CV) for  
474  $C_{\max}$  in Cohort A1, A2, A3 fasted, and A3 fed, was 101%, 44%, 253%, and 53% and for  $AUC_{\text{last}}$   
475 it was 8%, 58%, 185%, and 62%, respectively. After a high-fat,/high- calorie meal, PK variability  
476 was almost 2-fold lower for this treatment speaking for a dose recommendation under fed  
477 conditions in clinical practice. Variability was also high in part B, especially for the niclosamide



478 solution. The Geo CV for  $C_{\max}$  was 153% and 38%, and for the  $AUC_{\text{last}}$  was 152% and 20% for  
479 the solution and chewable tablets, respectively, making the chewing tablet more favourable  
480 for clinical use due to more predictable pharmacokinetics. In Part C, variability was less  
481 pronounced, decreasing from day 1 to day 7, with similar values in both dose groups, with  
482 Geo CV for  $C_{\max}$  ranging from min. 20% to max. 60% and  $AUC_{\text{last}}$  ranging from min. 10% to  
483 max. 39%.

484 Contrary to our expectations, the novel formulation did not significantly improve intestinal  
485 absorption compared to the marketed chewing tablet. Data obtained from part B of our study  
486 indicate that the niclosamide solution may not hold a significant advantage over the chewing  
487 tablet with regard to bioavailability. However, it is important to consider that the FDA-  
488 standard breakfast consumed during the trial might have been excessively large, thereby also  
489 influencing absorption. This sizeable, high-fat meal can independently contribute to  
490 gastrointestinal side effects. Moreover, it is possible that bioavailability could be further  
491 optimized by adjusting the ratio of niclosamide to PEG, specifically by reducing the amount of  
492 PEG utilized, as it was likely causatively responsible for the observed gastro-intestinal side  
493 effects.

494 Following multiple, once-daily doses of 1600 mg over 7 days,  $AUC_{\text{last}}$  was 3,3-fold and 1,1-fold  
495 higher on day 1 and 7, respectively, compared to the 1200 mg group. Exposure decreased  
496 from day 1 to day 7 in the 1600 mg group, most strikingly with  $AUC_{\text{last}}$  decreasing by 47 %.  
497 Whereas 1200 mg  $AUC_{\text{last}}$  increased by 38%. Gastrointestinal symptoms occurred more  
498 frequently with multiple dosing than single dosing of parts A and B, possibly affecting  
499 niclosamide plasma levels. Following multiple doses QD over 7 days, niclosamide showed no  
500 accumulation.

501 There is a pattern suggesting that diarrhoea after study drug ingestion results in reduced  
502 absorption, as reflected by a lower  $C_{max}$  and  $AUC_{last}$  compared with subjects who did not have  
503 diarrhoea after drug administration (Fig 3). The mean concentration-time profiles of each  
504 cohort remained similar throughout the study, showing a rapid increase and decline in plasma  
505 concentration. There were individual high absorbers (with  $C_{max}$  values > 2  $\mu\text{g}/\text{ml}$ ) with the  
506 highest values for  $C_{max}$  and  $AUC_{last}$  of up to 2.77  $\mu\text{g}/\text{ml}$  and 19.15  $\mu\text{g}\cdot\text{h}/\text{ml}$ , respectively,  
507 showing only mild TEAEs and no moderate or severe TEAEs. No clear pattern could be  
508 identified by comparing the counts of TEAEs from high absorbers with those from regular  
509 absorbers (Fig 4), indicating that high plasma levels of niclosamide do not result in acute  
510 toxicity which might encourage further exploration of pharmacologically active niclosamide  
511 exposure levels. Obviously, the small sample size of our study does not allow any firm  
512 conclusions on safe exposure levels.

513 Up to now, there is only scarce public information on the pharmacokinetics of niclosamide. A  
514 phase I study by M. T. Schweizer et al. of niclosamide as a chewing tablet in combination with  
515 enzalutamide in men with castration-resistant prostate cancer that enrolled 3 patients in a  
516 500-mg TID cohort and 2 patients in a 1000-mg TID cohort for 4 weeks showed a niclosamide  
517 range for  $C_{max}$  from 0.04 to 0.18  $\mu\text{g}/\text{mL}$  (Dose normalized:  $C_{max}/D$  0.07 to 0.36  $\mu\text{g}/\text{mL}$  per g),  
518 for  $t_{max}$  from 1 to 6 h and for  $t_{1/2}$  from 1.27 to 5.61 h [18]. We showed a  $C_{max}/D$  ranging from  
519 0.13  $\mu\text{g}/\text{mL}$  per g in the 1600 mg group to 4.90  $\mu\text{g}/\text{mL}$  per g in the 200 mg group. Except for  
520 three individuals (RND: 132 in A3 fasted, 214 in B, and 319 in C on day 1), every  $C_{max}$  was  
521 higher in our study than in the aforementioned study. When only comparing the identical  
522 formulation (chewing tablet), it is noticeable that in our study Part B  $C_{max}/D$  was still twice as  
523 high ( $C_{max}/D$  0.30 to 0.62  $\mu\text{g}/\text{mL}$  per g) than in Schweizer et al.'s study. This could be due to  
524 the high-fat breakfast. Unfortunately, in the study published previously patients were allowed

525 to take niclosamide fasting or non-fasting, so it cannot be clearly determined whether the  
526 high-fat breakfast resulted in the difference in PK.

527 Schweizer et al. showed that  $C_{max}$ , AUC, and  $t_{max}$  exhibited large individual variability in both  
528 dose groups, which is confirmed by our study. Also, the  $C_{max}$  values determined in the study  
529 including cancer patients were lower than the range of 0.25- 6.0  $\mu\text{g/ml}$  described in the SmPC.

530 Niclosamide acts on multiple highly conserved signalling pathways including, but not limited  
531 to, the inhibition of several inflammasomes [19], the inhibition of Signal transducer and  
532 activator of transcription protein 3 (STAT3) [20], the upregulation of autophagy via S-phase  
533 kinase-associated protein 2 (SKP2) inhibition [21], inhibition of TMEM16A [22] and the  
534 inhibition of the Wnt/ $\beta$ -catenin pathway [23]. Interfering with these signalling pathways  
535 could have many beneficial effects, but could also pose certain risks. Potential benefits and  
536 risks of interfering with these pathways are described in the public domain.

537 By inhibiting inflammasomes, the immune system may be compromised, which could lead to  
538 opportunistic infections caused by fungi and certain bacteria [24]. Similarly, inhibition of  
539 STAT3 could lead to humoral immunodeficiency, promoting the reactivation of viruses and  
540 impaired ability to fight infections [25].

541 Inhibition of SKP2 by niclosamide reduces the degradation of Beclin1, which promotes  
542 autophagic flux. Although there is evidence that activation of autophagy may limit tumor  
543 development, there is also suggestive evidence that inhibition of autophagy restricts the  
544 growth of preexisting tumours and enhances the response to tumor therapies [26].

545 Furthermore, Beta cells in human type 2 diabetes show signs of increased autophagic flux,  
546 which may promote the loss of beta cell mass [27]. Increased autophagy could also be harmful  
547 in certain cardiovascular diseases and contribute to disease progression suggesting that  
548 modulations of autophagic flux need to be well balanced [28].

549 Numerous therapeutic strategies are being developed to inhibit the Wnt/ $\beta$ -catenin pathway,  
550 which may be effective against several malignancies [29]. Activation and overexpression of  
551 this pathway are frequently observed in malignant tumours. However, the Wnt/ $\beta$ -catenin  
552 pathway also regulates embryonic development and tissue homeostasis in adulthood,  
553 maintaining bone, hair, skin, gastrointestinal tract, liver, and lung, and is involved in  
554 hematopoiesis and neurogenesis in adulthood [30, 31]. Expected adverse effects of inhibition  
555 of this pathway could include, for example, wound healing disorders, bone loss or fractures,  
556 hair loss, elevated liver enzymes, and anaemia.

557 However, none of these potential side effects were observed in our study, but they should be  
558 considered in future studies that might involve prolonged use of niclosamide.

559 A limitation of our study is the low number of subjects, which restricts the generalizability of  
560 the PK parameters. Our study was conducted under the circumstances of the COVID-19  
561 pandemic, which necessitated expedited timelines to explore potential antiviral treatments  
562 and explains the lower number of subjects. Moreover, interindividual variability was high,  
563 limiting the interpretation of results. Furthermore, a notable limitation is the lack of  
564 pharmacodynamic and surrogate parameters, as the study was conducted in healthy  
565 volunteers rather than a target patient population. Consequently, assessing the potential  
566 therapeutic effect and underlying mechanisms of action of the novel formulation in treating  
567 malignancies or viral infections remains challenging.

568 However, even with a higher number of subjects, the argument would not change. Based on  
569 the existing number of subjects, the study offers a reasonable evaluation of the niclosamide  
570 solution. The results suggest that it has not demonstrated clear benefits over the tablet form  
571 in aspects such as bioavailability, safety, tolerability, and controllability.

572 Overall, this study showed that administering the niclosamide solution up to 1600 mg for 7  
573 days QD was reasonably well-tolerated and exhibited an acceptable safety profile in healthy  
574 subjects. While diarrhoea and vomiting were not considered clinically relevant in healthy  
575 subjects and were not otherwise of concern to the DSMB, it could likely pose patients with  
576 serious conditions at risk because of exsiccosis, electrolyte disturbances, or impaired  
577 absorption of essential concomitant medications; thus, the risk would outweigh the benefit.  
578 Moreover, contrary to our expectations, the new formulation did not improve niclosamide  
579 absorption. The variability in exposure remained high, and sufficiently higher plasma  
580 concentrations were not achieved. In fact, according to our data, the chewable tablet is  
581 probably equally efficient to reach systemic exposure with fewer adverse effects with similar  
582 exposure.

## 583 Conclusions

584 This study added to the understanding of niclosamide pharmacokinetics in humans. The  
585 tested niclosamide solution was reasonably well-tolerated, but bioavailability did not meet  
586 expectations, indicating that the niclosamide solution is not superior to treat systemic  
587 conditions compared to the established one. Consequently, the data do not support further  
588 clinical investigation of this particular niclosamide solution, but two key findings resulted and  
589 could have important implications for further clinical research with niclosamide.

590 First, individual high absorbers tolerated the study drug well, suggesting that potentially  
591 pharmacologically active plasma levels of niclosamide do not lead to acute toxicity, which  
592 might be relevant for potential dose escalation in subsequent studies. Secondly, a positive  
593 food effect of up to 2-fold after a standardized high-fat breakfast was observed.

594 Potential applications for niclosamide through multiple drug mechanisms addressing multiple  
595 pathways and drug targets show the broad spectrum of potential applications for this drug  
596 and underline the need for novel formulations of niclosamide.

597

## 598 Supporting information

599 **S1 Table.** Summary of individual niclosamide PK parameters and Adverse Events.

600 **S1 CONSORT** checklist.

601 **S1 Protocol.** Study protocol.

602

## 603 Acknowledgments

604 The authors would like to thank the volunteers participating in the study as well as their  
605 clinical and nursing staff at the Charité Research Organisation GmbH.

## 606 References

607 1. Singh S, Weiss A, Goodman J, Fisk M, Kulkarni S, Lu I, et al.. Niclosamide—A promising  
608 treatment for COVID-19. *British Journal of Pharmacology*. 2022;179: 3250–3267.  
609 doi:10.1111/bph.15843

610 2. Chen W, Mook RA, Premont RT, Wang J. Niclosamide: Beyond an antihelminthic drug.  
611 *Cellular Signalling*. 2018;41: 89–96. doi:10.1016/j.cellsig.2017.04.001

612 3. Burock S, Daum S, Keilholz U, Neumann K, Walther W, Stein U. Phase II trial to investigate  
613 the safety and efficacy of orally applied niclosamide in patients with metachronous or

- 614 synchronous metastases of a colorectal cancer progressing after therapy: the NIKOLO trial.  
615 BMC Cancer. 2018;18. doi:10.1186/s12885-018-4197-9
- 616 4. Kortüm B, Radhakrishnan H, Zincke F, Sachse C, Burock S, Keilholz U, et al.. Combinatorial  
617 treatment with statins and niclosamide prevents CRC dissemination by unhinging the MACC1-  
618  $\beta$ -catenin-S100A4 axis of metastasis. Oncogene. 2022;41: 4446–4458. doi:10.1038/s41388-  
619 022-02407-6
- 620 5. Wu S-Y, Wu H-T, Wang Y-C, Chang C-J, Shan Y-S, Wu S-R, et al.. Secretory autophagy  
621 promotes RAB37-mediated insulin secretion under glucose stimulation both in vitro and in  
622 vivo. Autophagy. 2022;: 1–19. doi:10.1080/15548627.2022.2123098
- 623 6. Sennoune SR, Nandagopal GD, Ramachandran S, Mathew M, Sivaprakasam S, Jaramillo-  
624 Martinez V, et al. Potent inhibition of macropinocytosis by niclosamide in cancer cells: A novel  
625 mechanism for the anticancer efficacy for the antihelminthic. Cancers. 2023;15: 759.  
626 doi:10.3390/cancers15030759
- 627 7. Zhang W, Ran J, Shang L, Zhang L, Wang M, Fei C, et al. Niclosamide as a repurposing drug  
628 against gram-positive bacterial infections. Journal of Antimicrobial Chemotherapy. 2022;77:  
629 3312–3320. doi:10.1093/jac/dkac319
- 630 8. Gassen NC, Papies J, Bajaj T, Emanuel J, Dethloff F, Chua RL, et al. SARS-COV-2-mediated  
631 dysregulation of metabolism and autophagy uncovers host-targeting antivirals. Nature  
632 Communications. 2021;12. doi:10.1038/s41467-021-24007-w

- 633 9. Jeon S, Ko M, Lee J, Choi I, Byun SY, Park S, et al.. Identification of Antiviral Drug Candidates  
634 against SARS-CoV-2 from FDA-Approved Drugs. *Antimicrobial Agents and Chemotherapy*.  
635 2020;64. doi:10.1128/aac.00819-20
- 636 10. Sutar Y, Nabeela S, Singh S, Alqarihi A, Solis N, Ghebremariam T, et al.. Niclosamide-loaded  
637 nanoparticles disrupt *Candida* biofilms and protect mice from mucosal candidiasis. *PLOS*  
638 *Biology*. 2022;20: e3001762. doi:10.1371/journal.pbio.3001762
- 639 11. Backer V, Sjöbring U, Sonne J, Weiss A, Hostrup M, Johansen HK, et al.. A randomized,  
640 double-blind, placebo-controlled phase 1 trial of inhaled and intranasal niclosamide: A broad  
641 spectrum antiviral candidate for treatment of COVID-19. *The Lancet Regional Health - Europe*.  
642 2021;4: 100084. doi:10.1016/j.lanepe.2021.100084
- 643 12. Parikh M, Liu C, Wu C-Y, Evans CP, Dall'Era M, Robles D, et al. Phase Ib trial of reformulated  
644 niclosamide with abiraterone/prednisone in men with castration-resistant prostate cancer.  
645 *Scientific Reports*. 2021;11. doi:10.1038/s41598-021-85969-x
- 646 13. Weiss A, Bischof RJ, Landersdorfer CB, Nguyen T-H, Davies A, Ibrahim J, et al. Single-dose  
647 pharmacokinetics and lung function of nebulized niclosamide ethanalamine in Sheep.  
648 *Pharmaceutical Research*. 2023;40: 1915–1925. doi:10.1007/s11095-023-03559-0
- 649 14. Schulze JD, Waddington WA, Ell PJ, Parsons GE, Coffin MD, Basit AW. Concentration-  
650 dependent effects of polyethylene glycol 400 on gastrointestinal transit and drug absorption.  
651 *Pharmaceutical Research*. 2003;20: 1984–1988. doi:10.1023/b:pham.0000008046.64409.bd
- 652 15. Jara MO, Warnken ZN, Sahakijpipjarn S, Thakkar R, Kulkarni VR, Christensen DJ, et al. Oral  
653 delivery of niclosamide as an amorphous solid dispersion that generates amorphous



- 654 nanoparticles during dissolution. Pharmaceutics.  
655 2022;14:2568.doi:10.3390/pharmaceutics14122568
- 656 16. Ma B-L, Yang Y, Dai Y, Li Q, Lin G, Ma Y-M. Polyethylene Glycol 400 (PEG400) affects the  
657 systemic exposure of oral drugs based on multiple mechanisms: Taking berberine as an  
658 example. RSC Advances. 2017;7: 2435–2442. doi:10.1039/c6ra26284h
- 659 17. Hammer HF, Santa Ana CA, Schiller LR, Fordtran JS. Studies of osmotic diarrhoea induced  
660 in normal subjects by ingestion of polyethylene glycol and lactulose.. Journal of Clinical  
661 Investigation. 1989;84: 1056–1062. doi:10.1172/jci114267
- 662 18. Schweizer MT, Haugk K, Mckiernan JS, Gulati R, Cheng HH, Maes JL, et al.. A phase I study  
663 of niclosamide in combination with enzalutamide in men with castration-resistant prostate  
664 cancer. PLOS ONE. 2018;13: e0198389. doi:10.1371/journal.pone.0198389
- 665 19. de Almeida L, da Silva AL, Rodrigues TS, Oliveira S, Ishimoto AY, Seribelli AA, et al.  
666 Identification of immunomodulatory drugs that inhibit multiple inflammasomes and impair  
667 SARS-COV-2 infection. Science Advances. 2022;8. doi:10.1126/sciadv.abo5400
- 668 20. Wu M, Zhang Z, Tong C, Yan VV, Cho W, To K. Repurposing of niclosamide as a STAT3  
669 inhibitor to enhance the anticancer effect of chemotherapeutic drugs in treating colorectal  
670 cancer. Life Sciences. 2020;262: 118522. Doi:10.1016/j.lfs.2020.118522
- 671 21. Gassen NC, Niemeyer D, Muth D, Corman VM, Martinelli S, Gassen A, et al.. SKP2  
672 attenuates autophagy through Beclin1-ubiquitination and its inhibition reduces MERS-  
673 Coronavirus infection. Nature Communications. 2019;10. doi:10.1038/s41467-019-13659-4

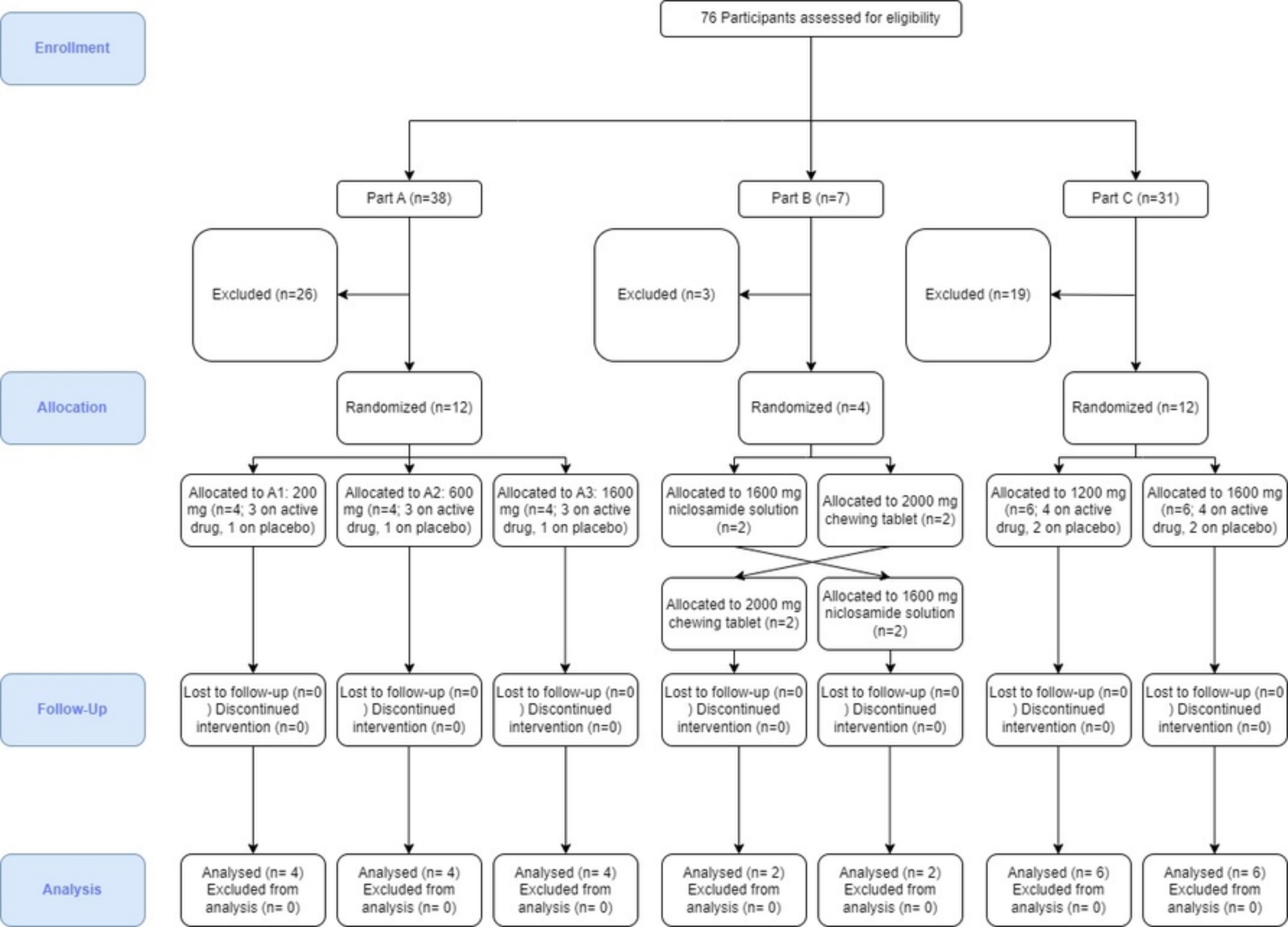
- 674 22. Miner K, Labitzke K, Liu B, Wang P, Henckels K, Gaida K, et al. Drug repurposing: The  
675 Anthelmintics Niclosamide and nitazoxanide are potent TMEM16A antagonists that fully  
676 Bronchodilate Airways. *Frontiers in Pharmacology*. 2019;10. doi:10.3389/fphar.2019.00051
- 677 23. Arend RC, Londoño-Joshi AI, Samant RS, Li Y, Conner M, Hidalgo B, et al. Inhibition of  
678 wnt/ $\beta$ -catenin pathway by niclosamide: A therapeutic target for ovarian cancer. *Gynecologic*  
679 *Oncology*. 2014;134: 112–120. doi:10.1016/j.ygyno.2014.04.005
- 680 24. Menu P, Vince JE. The NLRP3 inflammasome in health and disease: the good, the bad and  
681 the ugly. *Clinical and Experimental Immunology*. 2011;166: 1–15. doi:10.1111/j.1365-  
682 2249.2011.04440.x
- 683 25. McIlwain DR, Grusdat M, Pozdeev VI, Xu HC, Shinde P, Reardon C, et al.. T-cell STAT3 is  
684 required for the maintenance of humoral immunity to LCMV. *European Journal of*  
685 *Immunology*. 2015;45: 418–427. doi:10.1002/eji.201445060
- 686 26. Amaravadi RK, Kimmelman AC, Debnath J. Targeting Autophagy in Cancer: Recent  
687 Advances and Future Directions. *Cancer Discovery*. 2019;9: 1167–1181. doi:10.1158/2159-  
688 8290.cd-19-0292
- 689 27. Masini M, Bugliani M, Lupi R, Del Guerra S, Boggi U, Filipponi F, et al.. Autophagy in human  
690 type 2 diabetes pancreatic beta cells. *Diabetologia*. 2009;52: 1083–1086.  
691 doi:10.1007/s00125-009-1347-2
- 692 28. Schiattarella GG, Hill JA. Therapeutic targeting of autophagy in cardiovascular disease.  
693 *Journal of Molecular and Cellular Cardiology*. 2016;95: 86–93.  
694 doi:10.1016/j.yjmcc.2015.11.019

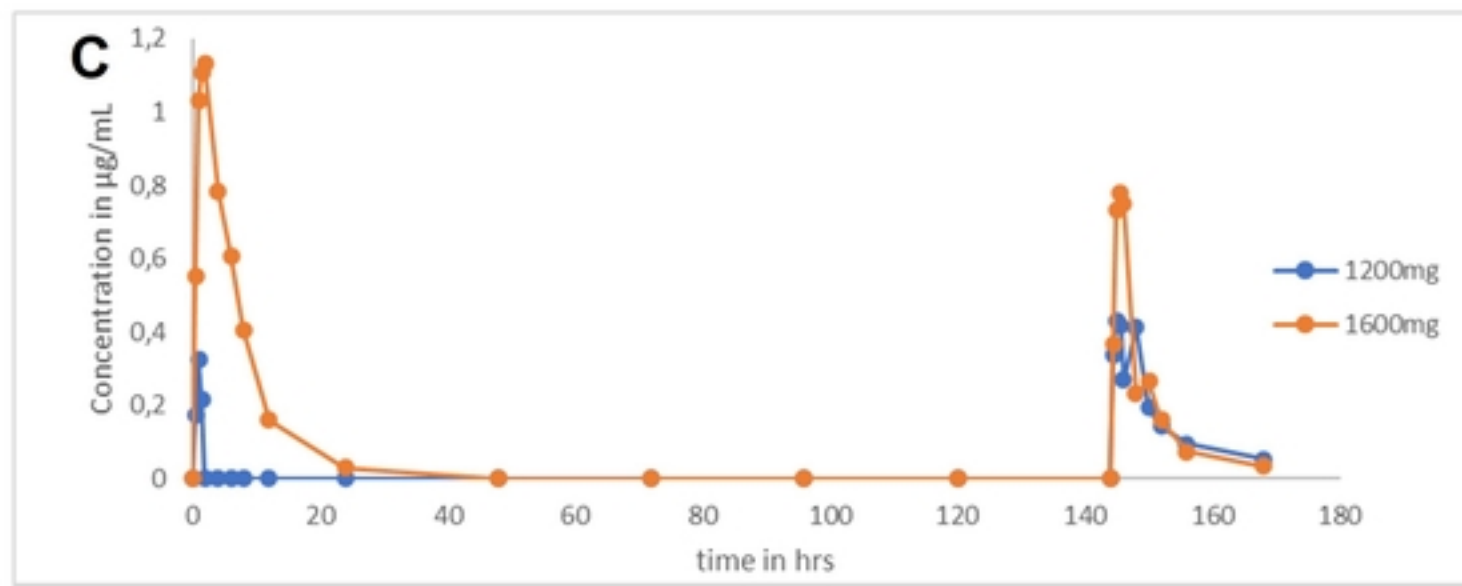
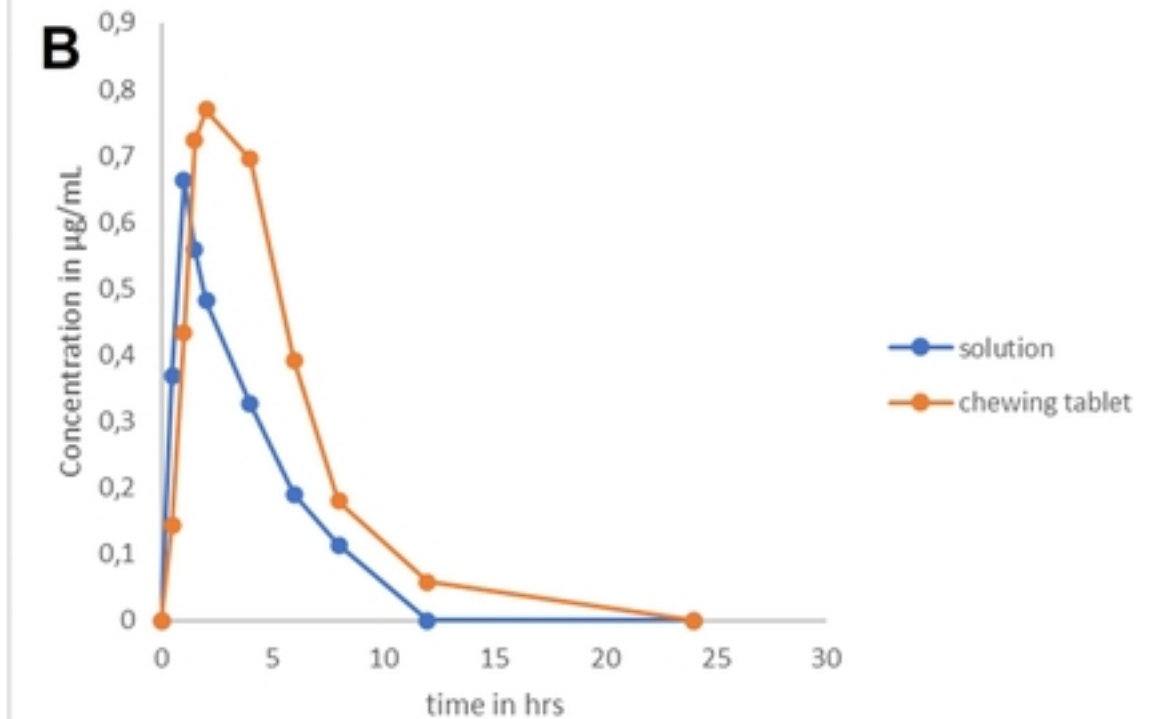
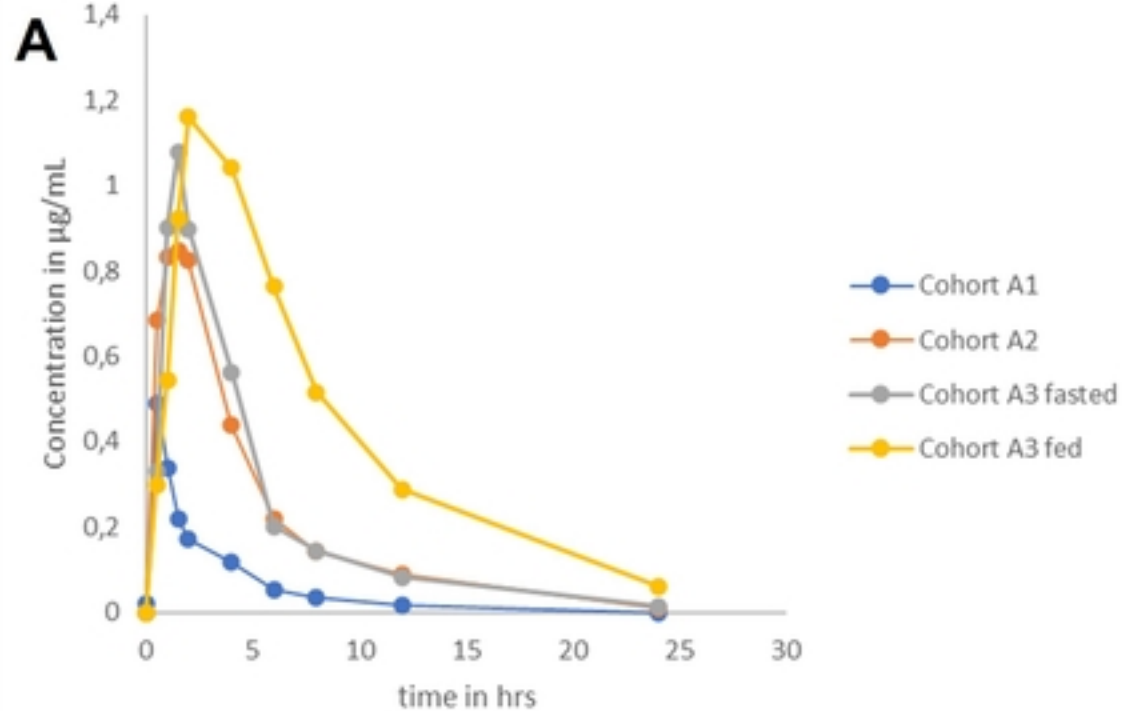
695 29. Liu J, Xiao Q, Xiao J, Niu C, Li Y, Zhang X, et al.. Wnt/ $\beta$ -catenin signalling: function, biological  
696 mechanisms, and therapeutic opportunities. *Signal Transduction and Targeted Therapy*.  
697 2022;7. doi:10.1038/s41392-021-00762-6

698 30. Zhang Y, Wang X. Targeting the Wnt/ $\beta$ -catenin signaling pathway in cancer. *Journal of*  
699 *Hematology & Oncology*. 2020;13. doi:10.1186/s13045-020-00990-3

700 31. Kahn M. Can we safely target the WNT pathway?. *Nature Reviews Drug Discovery*.  
701 2014;13: 513–532. doi:10.1038/nrd4233

702







# High vs. regular absorbers

