

2
3 **Risk scores and coronary artery disease in patients with**
4 **suspected acute coronary syndrome and intermediate**
5 **cardiac troponin concentrations**

6
7 Daniel Perez-Vicencio, MSc,^{1,2*} Alexander JF Thurston, BMBCh,^{3*}
8 Dimitrios Doudesis, PhD,^{1,2} Rachel O'Brien, BN,⁴ Amy V. Ferry, PhD,¹
9 Takeshi Fujisawa, PhD,¹ Michelle C. Williams, MBCHB,^{1,5} Alasdair J. Gray, MD,^{2,4}
10 Nicholas L Mills, MD,^{1,2} Kuan Ken Lee, MD^{1,3}

11
12 ¹ BHF/University Centre for Cardiovascular Science, University of Edinburgh, Edinburgh, UK

13 ² Usher Institute, University of Edinburgh, Edinburgh, UK

14 ³ Edinburgh Heart Centre, Royal Infirmary of Edinburgh, Edinburgh, UK

15 ⁴ Department of Emergency Medicine, Emergency Medicine Research Group, Royal Infirmary of
16 Edinburgh, Edinburgh, UK

17 ⁵ Edinburgh Imaging Facility, University of Edinburgh, Edinburgh, UK

18
19 *Contributed equally

20
21
22
23
24
25 **Corresponding Author:**

26 Dr Kuan Ken Lee

27 BHF/University Centre for Cardiovascular Science

28 The University of Edinburgh

29 Edinburgh EH16 4SA

30 United Kingdom

31 Telephone: 0044 131 242 6515

32 E-mail: ken.lee@ed.ac.uk

33
34
35
36 **Abstract:** 250

37 **Word count:** 4,370

38 **References:** 36

1 **Abstract**

2 **Background:** Guidelines recommend the use of risk scores to select patients for further
3 investigation after myocardial infarction has been ruled out but their utility to identify those
4 with coronary artery disease is uncertain.

5 **Methods:** In a prospective cohort study, patients with intermediate high-sensitivity cardiac
6 troponin I concentrations (5 ng/L to sex-specific 99th percentile) in whom myocardial
7 infarction was ruled out were enrolled and underwent coronary computed tomography
8 angiography (CCTA) after hospital discharge. HEART, EDACS, GRACE, TIMI, SCORE2
9 and PCE risk scores were calculated and the odds ratio (OR) and diagnostic performance for
10 obstructive coronary artery disease determined using established thresholds.

11 **Results:** In 167 patients enrolled (64±12 years, 28% female), 29.9% (50/167) had obstructive
12 coronary artery disease. The odds of having obstructive disease was increased for all scores
13 with the lowest and highest increase observed for an EDACS score ≥ 16 (OR 2.2 [1.1-4.6])
14 and a TIMI risk score ≥ 1 (OR 12.9 [3.0-56.0]), respectively. The positive predictive value
15 (PPV) was low for all scores but was highest for a GRACE score >88 identifying 39% as
16 high-risk for a PPV of 41.9% (30.4-54.2%). The negative predictive value (NPV) varied from
17 77.3% to 95.2% but was highest for a TIMI score of 0 identifying 26% as low-risk for a NPV
18 of 95.2% (87.2-100%).

19 **Conclusions:** In patients with intermediate cardiac troponin concentrations in whom
20 myocardial infarction has been ruled out, clinical risk scores can help identify patients with
21 and without coronary artery disease, but the performance of established risk thresholds
22 requires optimisation for this purpose.

23 **Clinical Trial Registration:** <https://clinicaltrials.gov/study/NCT04549805>

- 1 **Key words:** acute coronary syndrome, cardiac troponin, risk scores, CT coronary
- 2 angiography, coronary artery disease

1 **Non-standard Abbreviations and Acronyms**

- | | | |
|---|-----------|--|
| 2 | CCTA | Coronary Computed Tomography Angiography |
| 3 | HEART | History, Electrocardiogram, Age, Risk factors, and Troponin |
| 4 | EDACS | Emergency Department Assessment of Chest Pain Score |
| 5 | TIMI | Thrombolysis in Myocardial Infarction |
| 6 | GRACE 2.0 | Global Registry of Acute Coronary Events version 2.0 |
| 7 | ASCVD-PCE | Atherosclerosis Cardiovascular Disease – Pooled Cohort Equations |
| 8 | SCORE2 | Systematic COronary Risk Evaluation 2 |
| 9 | MACE | Major Adverse Cardiac Events |

1 **Introduction**

2 Current strategies to assess patients with suspected acute coronary syndrome in the
3 Emergency Department primarily utilise high-sensitivity cardiac troponin testing and the
4 electrocardiogram to rule in and rule out myocardial infarction [1, 2]. Single measurement
5 rule-out pathways are optimised to identify patients with low cardiac troponin concentrations
6 who can be safely discharged from the Emergency Department without further testing and
7 those with elevated concentrations who require admission for further assessment [3-8].
8 However, 1 in 4 patients have intermediate cardiac troponin concentrations and whilst they
9 can be ruled out or ruled in with a second troponin measurement, they remain at higher risk
10 of future adverse cardiac events [5, 9-11]. Similarly serial testing pathways with cardiac
11 troponin measurement at 0/1- and 0/2-hours stratify patients into three groups including an
12 observe zone group with intermediate concentrations [12, 13]. Guidelines recommend further
13 investigation is considered in these patients but the optimal approach to select these patients
14 for investigation is unknown [2, 14].

15
16 Clinical risk scores are widely used in the Emergency Department to risk stratify patients
17 with suspected acute coronary syndrome [15-18]. However, the utility of these risk scores is
18 uncertain, particularly following the widespread adoption of high-sensitivity cardiac troponin
19 as a risk stratification tool [19]. Derived from historical cohorts, risk scores may lack external
20 validity when applied to contemporary practice [20], and some include elements of the
21 history or clinician gestalt, that may be subjective or vulnerable to bias. Nevertheless, recent
22 guidelines continue to recommend the use of clinical risk scores to select patients with
23 intermediate cardiac troponin concentrations for further testing [1, 2].

24

1 In a secondary analysis of the PRECISE-CTCA study [21], we evaluate the performance of
2 clinical risk scores to identify coronary artery disease in patients with intermediate cardiac
3 troponin concentrations in whom myocardial infarction has been ruled out.

4

1 **Methods**

2 **Study design and population**

3 PRECISE-CTCA (Troponin to Risk Stratify Patients with Acute Chest Pain for Computed
4 Tomography Coronary Angiography) was a prospective cohort study conducted at the Royal
5 Infirmary of Edinburgh, United Kingdom, between December 4, 2018, and October 6, 2020,
6 that has previously reported (ClinicalTrials.gov, number NCT04549805) [21]. Patients >30
7 years old presenting with suspected acute coronary syndrome, in whom myocardial infarction
8 had been ruled out and peak cardiac troponin concentrations were within the normal
9 reference range, were recruited in the Emergency Department [21]. Patients who were unable
10 to undergo CCTA due to severe renal failure (estimated glomerular filtration rate <30
11 mL/min/1.73 m²) or major allergy to iodinated contrast media, clear alternative diagnosis,
12 requirement for in-patient investigation, CCTA or invasive coronary angiogram within the
13 past 1 year, pregnancy or breast feeding and inability to give informed consent were
14 excluded. The South East Scotland Research Ethics Committee 01 approved this study, and
15 all participants provided written informed consent.

16
17 Only patients with intermediate cardiac troponin concentrations (between 5 ng/L and the sex-
18 specific 99th percentile) were included in this secondary analysis. Cardiac troponin was
19 measured using the ARCHITECT_{STAT} high-sensitivity cardiac troponin I assay (Abbott
20 Laboratories, Abbott Park, Illinois). This assay has a limit of detection of 1.2 ng/L and an
21 inter-assay co-efficient of variation of <10% at 4.7 ng/L, with a sex-specific upper reference
22 limit or 99th percentile of 16 ng/L in females and 34 ng/L in males [22]. According to current
23 national and international recommendations, symptoms of angina were classified as typical,
24 atypical, or nonanginal chest pain using the Diamond and Forrester questions [23].

25

1 **Coronary Computed Tomography Angiography**

2 All participants underwent CCTA as an outpatient as soon as possible after their initial
3 hospital attendance. CCTA was performed using a 128-detector row scanner (Biograph mCT,
4 Siemens Healthcare, Germany) with iodine-based contrast media, as per Society of
5 Cardiovascular Computed Tomography (SCCT) guidelines [24]. All CCTA images were
6 analysed by trained observers who performed a per-segment analysis using a 15-segment
7 model to assess coronary artery stenoses. Luminal cross-sectional area stenoses were
8 classified as normal (<10%), mild non-obstructive (10%-49%), moderate non-obstructive
9 (50%-70%), or obstructive (>70% in the ≥ 1 major epicardial artery or >50% in the left main
10 stem). Patients were classified according to the most significant stenosis identified on CCTA
11 irrespective of whether the vessel has been stented. Coronary stenoses that were bypassed by
12 a vascular graft were not considered in the classification.

13

14 **Clinical risk scores**

15 We calculated the HEART, EDACS, GRACE 2.0, TIMI, PCE, and SCORE2 risk scores in
16 all patients and used established thresholds for each to stratify patients as low or high risk
17 (*Supplemental Text 1 and Supplemental Figure 1*) [17, 25-31]. The HEART score assesses
18 risk of major adverse cardiac events at 6 weeks in patients presenting with chest pain to the
19 Emergency Department using a threshold of <3 to identify those who are low-risk [25]. The
20 EDACS score assesses risk of major adverse cardiac events at 30 days in patients presenting
21 with chest pain to the Emergency Department using a threshold of <16 to identify those who
22 are low-risk [17]. The GRACE 2.0 score assesses risk of death or recurrent myocardial
23 infarction at 6 months in patients with acute coronary syndromes identifying patients with a
24 score >88 at increased risk [17]. TIMI score assess the risk of death, re-infarction or ischemic
25 events at 14 days in patients with acute coronary syndrome with as score of ≥ 1 associated

1 with increased risk [27]. The PCE predicts risk of a first atherosclerotic cardiovascular
2 disease event at 10 years with the score associated with a <5% selected as low risk [28, 29].
3 SCORE2 and SCORE2-OP estimates the risk of fatal cardiovascular disease at 10 years in
4 adults aged 40-69 and 70 years or older, respectively. The SCORE2 and SCORE2-OP risk
5 scores are used together in this analysis and were calibrated for low-risk regions with the
6 score associated with a <5% selected as low risk [30, 31] (*Supplemental Text 1*).

7

8 **Statistical analysis**

9 Baseline characteristics were presented as mean \pm standard deviation or median [interquartile
10 range] for continuous variables and as count (%) for categorical variables. The Welch two-
11 sample *t*-test test and one-way ANOVA were used to compare continuous variables while
12 Fisher's exact test was used to compare categorical variables. Multiple imputation by chained
13 equation or Markov chain Monte Carlo method was performed to account for missing
14 variables [32]. We multiple-imputed all missing values in the variables required to calculate
15 clinical risk scores except for cardiac troponin concentrations (*Supplemental Figure 2*). We
16 evaluated the association between the clinical risk scores and presence of any coronary artery
17 disease and obstructive coronary artery disease separately using binomial logistic regression
18 modelling by obtaining the exponential of the logistic regression coefficient. We calculated
19 the diagnostic performance for each clinical risk score with 95% confidence intervals of the
20 sensitivity, specificity, negative predictive value, and positive predictive value based on the
21 rule-in/rule-out thresholds. Overall diagnostic accuracy was evaluated by receiver operating
22 characteristic (ROC) curve and area under the curve analyses. All calculations were
23 performed for any coronary artery disease and obstructive disease separately. We
24 subsequently performed a sensitivity analysis restricted to patients who were not previously

- 1 known to have coronary artery disease (*Supplemental Table 1*). All data analysis were
- 2 conducted in R (version 4.3.0, R Foundation for Statistical Computing).

1 **Results**

2 **Study population**

3 In this secondary analysis 167 patients (64±12 years, 28% female) were included with
4 intermediate cardiac troponin I concentrations and a median maximal concentration of 8 ng/L
5 (inter-quartile range 6-12 ng/L). Of these patients, 120 (72%) had coronary artery disease and
6 50 (30%) had obstructive coronary artery disease on CCTA (*Table 1*).

7
8 Patients with coronary artery disease were older than those without (67±10 years *versus*
9 56±13 years, respectively; P<0.001) and more likely to be current or previous smokers (59%
10 [71/120] *versus* 38% [18/47]; P=0.017). Patients with coronary artery disease were also more
11 likely to have hypertension (57% [68/120] *versus* 23% [11/47]; P=0.017), diabetes mellitus
12 (23% [27/120] *versus* 6.4% (3/47); P=0.014) and chronic kidney disease (14% [17/120]
13 *versus* 4.3% [2/47]; P=0.010) compared to those without (*Table 1*). Similarly, patients with
14 coronary artery disease were also more likely to have symptoms of typical angina (27%
15 [32/120] *versus* 4.3% [2/47]; P=0.001) and to have both previous myocardial infarction (31%
16 [37/120] *versus* 6.4% [3/47]; P<0.001) and percutaneous coronary intervention (31%
17 [37/120] *versus* 6.4% [3/47]; P<0.001) than those without (*Table 1*). Similar findings were
18 observed when stratified according to the presence or absence of obstructive coronary artery
19 disease (*Supplemental Table 2*).

21 **Distribution of clinical risk scores**

22 The median scores for patients with obstructive disease were significantly higher than those
23 without coronary artery disease for all risk scores, HEART (5 ([inter-quartile range 4-5]
24 *versus* 3 [2-4.5]; P<0.001), EDACS (18 [14-24] *versus* 14 [10.8-17]; P=0.002), GRACE (88
25 [77-108] *versus* 62 [45-73]; P<0.001), TIMI (2 [1-3] *versus* 0 [0-1]; P<0.001), PCE (0.32

1 [0.16-0.45] *versus* 0.09 [0.04-9]; P<0.001), and SCORE2 (15 ([8.5-18.8] *versus* 5 [4-9];
2 P<0.001), respectively (**Figure 1 & Supplemental Table 2**). Similarly, patients with
3 obstructive coronary artery disease had higher median scores than those with non-obstructive
4 disease (**Supplemental Table 2**).

5

6 **Diagnostic performance of clinical risk scores**

7 Patients with risk scores above the established risk threshold were more likely to have
8 coronary artery disease than those below the risk threshold (**Figure 2**). The odds ratio of
9 having any coronary artery disease or obstructive disease was increased for all scores
10 comparing those with increased scores to those with scores below the risk threshold. The
11 odds ratio for obstructive coronary artery disease varied with the lowest increase observed for
12 an EDACS score ≥ 16 (OR 2.2 [1.1-4.6]) and the highest increase for a TIMI risk score ≥ 1
13 (OR 12.9 [3.0-56.0]). Similarly, the odds ratio for any coronary artery disease varied with the
14 lowest increase observed for an EDACS score ≥ 16 (OR 2.7 [1.3-5.3]) and the highest
15 increase for a TIMI risk score ≥ 1 (OR 8.8 [4.0-19.2]), respectively (**Figure 3**).

16

17 The positive predictive value (PPV) was low for all scores and the negative predictive value
18 varied widely. Across all clinical risk scores, a GRACE 2.0 score of >88 had the highest
19 positive predictive value for obstructive coronary artery disease identifying 39% as high-risk
20 with a PPV of 41.9% (30.4-54.2% confidence interval). The negative predictive value (NPV)
21 varied from 77.3% to 95.2% but was highest for a TIMI score of 0 identifying 26% as low
22 risk with a NPV of 95.2% (87.2-100%) (**Figure 4 & Supplemental Table 3**). Similar findings
23 were observed when considering any coronary artery disease (**Supplementary Table 4**).

24

25 **High sensitivity troponin I *versus* clinical risk scores**

1 All clinical risk scores had a higher discriminatory performance than high-sensitivity cardiac
2 troponin alone (area under receiver operator curve [AUC] 0.481 [0.383-0.580 confidence
3 interval] and 0.533 [0.440 – 0.625] for any coronary artery disease and obstructive disease,
4 respectively). The TIMI risk score had the highest discrimination for coronary artery disease
5 and obstructive disease (0.784 [0.713 - 0.854] and 0.730 [0.653 - 0.808], respectively). The
6 lowest performing clinical risk score was EDACS for both coronary artery disease and
7 obstructive disease (0.684 [0.597 - 0.772] and 0.649 [0.555 - 0.743], respectively) (*Figure 5*).

8
9

10 **Patients without previous diagnosis of coronary artery disease**

11 In a sensitivity analysis restricted to the 103 (62%) patients not previously known to have
12 coronary artery disease, the discrimination for coronary artery disease and obstructive disease
13 of all risk scores was higher than cardiac troponin alone (cardiac troponin, AUC = 0.472
14 [0.383–0.580] and 0.584 [0.440–0.625], respectively). Discrimination was greatest for
15 SCORE2 for the outcome of any coronary artery disease (0.753 [0.659 - 0.846] and for the
16 PCE for the outcome of obstructive disease (0.747 [0.639 - 0.856]). EDACS again had the
17 lowest discrimination for coronary artery disease and obstructive disease (0.658 [0.551-
18 0.764] and 0.641 [0.488-0.795], respectively) (*Supplemental Figure 3 and Supplemental*
19 *Tables 5 & 6*).

20

1 **Discussion**

2 In this study, we evaluated the performance of six established clinical risk scores to
3 determine whether they could help to identify patients with intermediate troponin levels who
4 are more likely to have coronary artery disease after myocardial infarction has been ruled out
5 in the Emergency Department. We found that all risk scores improve the odds of identifying
6 patients with coronary artery disease on CCTA. Using the existing risk threshold for each
7 score, the positive predictive value is low for all, with the best performing being the GRACE
8 2.0 score which correctly identified 4 in 10 patients with obstructive disease. The negative
9 predictive value was also low, with the best performing score being TIMI which correctly
10 identifies 19 of 20 patients as not having obstructive disease.

11

12 Patients with suspected acute coronary syndrome are at risk of future myocardial infarction
13 or cardiac death even after myocardial infarction has been ruled out therefore clinical
14 guidelines recommend further non-invasive investigations to identify potential underlying
15 coronary artery disease [5, 14]. CCTA has been suggested as the non-invasive investigation
16 modality of choice due to its ability to accurately assess coronary artery plaque burden and
17 characteristics to guide use of secondary preventative therapies such as antiplatelets and
18 statins to modify their risk of future major adverse cardiovascular outcomes [2, 33-35].
19 However, given resource constraints and the large volume of patients presenting with
20 suspected acute coronary syndrome, it would be valuable to develop strategies to select
21 patients with a higher pre-test probability of coronary artery disease to avoid unnecessary
22 CCTA. In our previous analysis, we demonstrated that high-sensitivity cardiac troponin I can
23 help identify patients with a higher prevalence of coronary artery disease for further testing
24 after myocardial infarction has been ruled out. Those with intermediate cardiac troponin
25 concentrations had 3-times higher odds of having coronary artery disease compared to those

1 with very low troponin concentrations. However, this remains a substantial group of patients,
2 comprising approximately 1 in 4 of all patients with suspected acute coronary syndrome in
3 whom cardiac troponin testing alone does not further discriminate those who are likely to
4 have coronary artery disease. Strategies to refine risk in this group of patients could therefore
5 help target further investigations more judiciously.

6

7 Multiple risk scores have been developed and validated for the initial triage of patients with
8 suspected acute coronary syndrome and for the risk stratification of apparently healthy
9 individuals [5, 17, 21, 25-31]. These risk scores are recommended by clinical guidelines to
10 guide early referral for specialist investigation such as invasive coronary angiography or
11 initiation of preventative medications [2, 14]. Given that these risk scores incorporate known
12 cardiovascular risk factors and were primarily developed to predict risk of major adverse
13 cardiovascular outcomes, it is perhaps not surprising that they also improve the identification
14 of patients with coronary artery disease in the Emergency Department. Nevertheless, none of
15 the risk scores we have evaluated had optimal rule-in and rule-out performance for any or
16 obstructive coronary artery disease and implementing multiple risk scores for this purpose
17 would be challenging in practice. Developing novel risk stratification tools specifically for
18 this group of patients could overcome this current limitation of existing risk scores.

19

20 We acknowledge there are limitations to our analysis. We did not have high-sensitivity
21 cardiac troponin T measurements for this cohort and so could not include an analysis of the
22 Troponin-only Manchester Acute Coronary Syndromes score [36]. The EDACS and TIMI
23 scores use a previous history of varying degrees of coronary artery disease as components of
24 the score, which may inflate their performance. However, in a sensitivity analysis restricted
25 to patients without previously known coronary artery disease, the negative predictive value

1 and positive predictive value for these scores remained similar. While the risk scores
2 evaluated here were designed to predict risk of short- or long-term clinical outcomes rather
3 than to diagnose coronary artery disease, this is the underlying pathophysiological basis of
4 the majority of adverse cardiovascular events, and the diagnosis of coronary artery disease is
5 important to patients with chest pain and can facilitate the targeting of preventative therapies
6 that could reduce risk of these outcomes.

7

8 **Conclusions**

9 In patients with intermediate cardiac troponin concentrations in whom myocardial infarction
10 has been ruled out, clinical risk scores can help identify patients with and without obstructive
11 coronary artery disease, but the performance of established risk thresholds requires
12 optimisation for this purpose.

1 **Funding**

2 Dr Williams is supported by the British Heart Foundation (FS/ICRF/20/26002). Dr Mills is
3 supported by a Chair Award (CH/F/21/90010), Programme Grant (RG/20/10/34966), and
4 Research Excellence Award (RE/18/5/34216) from the British Heart Foundation. Dr Lee is
5 supported by a British Heart Foundation Clinical Research Training Fellowship
6 (FS/18/25/33454).

7

8 **Disclosures**

9 Dr Williams has received speaker fees from Cannon Medical Systems, Siemens Healthineers
10 and Novartis. Dr Mills reports research grants awarded to the University of Edinburgh from
11 Abbott Diagnostics, Siemens Healthineers and Roche Diagnostics outside the submitted
12 work, and honoraria from Abbott Diagnostics, Siemens Healthineers, Roche Diagnostics,
13 LumiraDx and Psyros Diagnostics. All other authors have no interests to declare.

14

15 **Acknowledgements**

16 The authors gratefully acknowledge the BHF Cardiovascular Biomarker Laboratory,
17 University of Edinburgh, for their assistance with this work.

1 **References:**

- 2
- 3 1. Collet, J.P., et al., *2020 ESC Guidelines for the management of acute coronary*
4 *syndromes in patients presenting without persistent ST-segment elevation*. Eur Heart
5 J, 2021. **42**(14): p. 1289-1367.
 - 6 2. Writing Committee, M., et al., *2021 AHA/ACC/ASE/CHEST/SAEM/SCCT/SCMR*
7 *Guideline for the Evaluation and Diagnosis of Chest Pain: A Report of the American*
8 *College of Cardiology/American Heart Association Joint Committee on Clinical*
9 *Practice Guidelines*. J Am Coll Cardiol, 2021. **78**(22): p. e187-e285.
 - 10 3. Shah, A.S.V., et al., *High-sensitivity troponin in the evaluation of patients with*
11 *suspected acute coronary syndrome: a stepped-wedge, cluster-randomised*
12 *controlled trial*. Lancet, 2018. **392**(10151): p. 919-928.
 - 13 4. Body, R., et al., *Rapid exclusion of acute myocardial infarction in patients with*
14 *undetectable troponin using a high-sensitivity assay*. J Am Coll Cardiol, 2011. **58**(13):
15 p. 1332-9.
 - 16 5. Shah, A.S., et al., *High-sensitivity cardiac troponin I at presentation in patients with*
17 *suspected acute coronary syndrome: a cohort study*. Lancet, 2015. **386**(10012): p.
18 2481-8.
 - 19 6. Chapman, A.R., et al., *Comparison of the Efficacy and Safety of Early Rule-Out*
20 *Pathways for Acute Myocardial Infarction*. Circulation, 2017. **135**(17): p. 1586-1596.
 - 21 7. Anand, A., et al., *High-Sensitivity Cardiac Troponin on Presentation to Rule Out*
22 *Myocardial Infarction: A Stepped-Wedge Cluster Randomized Controlled Trial*.
23 Circulation, 2021. **143**(23): p. 2214-2224.
 - 24 8. Jaffe, A.S., et al., *Single Troponin Measurement to Rule Out Myocardial Infarction:*
25 *JACC Review Topic of the Week*. J Am Coll Cardiol, 2023. **82**(1): p. 60-69.
 - 26 9. Allen, B.R., et al., *Diagnostic Performance of High-Sensitivity Cardiac Troponin T*
27 *Strategies and Clinical Variables in a Multisite US Cohort*. Circulation, 2021. **143**(17):
28 p. 1659-1672.
 - 29 10. Chapman, A.R., et al., *Association of High-Sensitivity Cardiac Troponin I*
30 *Concentration With Cardiac Outcomes in Patients With Suspected Acute Coronary*
31 *Syndrome*. JAMA, 2017. **318**(19): p. 1913-1924.
 - 32 11. Bularga, A., et al., *High-Sensitivity Troponin and the Application of Risk Stratification*
33 *Thresholds in Patients With Suspected Acute Coronary Syndrome*. Circulation, 2019.
34 **140**(19): p. 1557-1568.
 - 35 12. Cullen, L., et al., *Validation of high-sensitivity troponin I in a 2-hour diagnostic*
36 *strategy to assess 30-day outcomes in emergency department patients with possible*
37 *acute coronary syndrome*. J Am Coll Cardiol, 2013. **62**(14): p. 1242-1249.
 - 38 13. Reichlin, T., et al., *One-hour rule-out and rule-in of acute myocardial infarction using*
39 *high-sensitivity cardiac troponin T*. Arch Intern Med, 2012. **172**(16): p. 1211-8.
 - 40 14. Byrne, R.A., et al., *2023 ESC Guidelines for the management of acute coronary*
41 *syndromes*. Eur Heart J Acute Cardiovasc Care, 2023.
 - 42 15. Mahler, S.A., et al., *The HEART Pathway randomized trial: identifying emergency*
43 *department patients with acute chest pain for early discharge*. Circ Cardiovasc Qual
44 Outcomes, 2015. **8**(2): p. 195-203.
 - 45 16. Than, M.P., et al., *Effectiveness of EDACS Versus ADAPT Accelerated Diagnostic*
46 *Pathways for Chest Pain: A Pragmatic Randomized Controlled Trial Embedded Within*
47 *Practice*. Annals of Emergency Medicine, 2016. **68**(1): p. 93-102.

- 1 17. Than, M., et al., *Development and validation of the Emergency Department*
2 *Assessment of Chest pain Score and 2 h accelerated diagnostic protocol*. Emergency
3 *Medicine Australasia*, 2014. **26**(1): p. 34-44.
- 4 18. Flaws, D., et al., *External validation of the emergency department assessment of*
5 *chest pain score accelerated diagnostic pathway (EDACS-ADP)*. Emergency Medicine
6 *Journal*, 2016. **33**(9): p. 618-625.
- 7 19. Chapman, A.R., et al., *High-Sensitivity Cardiac Troponin I and Clinical Risk Scores in*
8 *Patients With Suspected Acute Coronary Syndrome*. *Circulation*, 2018. **138**(16): p.
9 1654-1665.
- 10 20. Balasubramanian, R.N., et al., *Role and relevance of risk stratification models in the*
11 *modern-day management of non-ST elevation acute coronary syndromes*. *Heart*,
12 2023. **109**(7): p. 504-+.
- 13 21. Lee, K.K., et al., *Troponin-Guided Coronary Computed Tomographic Angiography*
14 *After Exclusion of Myocardial Infarction*. *J Am Coll Cardiol*, 2021. **78**(14): p. 1407-
15 1417.
- 16 22. Shah, A.S., et al., *High sensitivity cardiac troponin and the under-diagnosis of*
17 *myocardial infarction in women: prospective cohort study*. *BMJ*, 2015. **350**: p. g7873.
- 18 23. Diamond, G.A. and J.S. Forrester, *Analysis of Probability as an Aid in the Clinical-*
19 *Diagnosis of Coronary-Artery Disease*. *New England Journal of Medicine*, 1979.
20 **300**(24): p. 1350-1358.
- 21 24. Abbara, S., et al., *SCCT guidelines for the performance and acquisition of coronary*
22 *computed tomographic angiography: A report of the society of Cardiovascular*
23 *Computed Tomography Guidelines Committee Endorsed by the North American*
24 *Society for Cardiovascular Imaging (NASCI)*. *Journal of Cardiovascular Computed*
25 *Tomography*, 2016. **10**(6): p. 435-449.
- 26 25. Mahler, S.A., et al., *The HEART Pathway Randomized Trial: Identifying Emergency*
27 *Department Patients with Acute Chest Pain for Early Discharge*. *Circulation*, 2014.
28 **130**.
- 29 26. Elbarouni, B., et al., *Validation of the Global Registry of Acute Coronary Event*
30 *(GRACE) risk score for in-hospital mortality in patients with acute coronary syndrome*
31 *in Canada*. *American Heart Journal*, 2009. **158**(3): p. 392-399.
- 32 27. Scirica, B.M., et al., *Validation of the thrombolysis in myocardial infarction (TIMI) risk*
33 *score for unstable angina pectoris and non-ST-elevation myocardial infarction in the*
34 *TIMI III registry*. *Am J Cardiol*, 2002. **90**(3): p. 303-5.
- 35 28. Goff, D.C., Jr., et al., *2013 ACC/AHA guideline on the assessment of cardiovascular*
36 *risk: a report of the American College of Cardiology/American Heart Association Task*
37 *Force on Practice Guidelines*. *J Am Coll Cardiol*, 2014. **63**(25 Pt B): p. 2935-2959.
- 38 29. Rana, J.S., et al., *Accuracy of the Atherosclerotic Cardiovascular Risk Equation in a*
39 *Large Contemporary, Multiethnic Population*. *J Am Coll Cardiol*, 2016. **67**(18): p.
40 2118-2130.
- 41 30. Hageman, S., et al., *SCORE2 risk prediction algorithms: new models to estimate 10-*
42 *year risk of cardiovascular disease in Europe*. *European Heart Journal*, 2021. **42**(25):
43 p. 2439-2454.
- 44 31. de Vries, T.I., et al., *SCORE2-OP risk prediction algorithms: estimating incident*
45 *cardiovascular event risk in older persons in four geographical risk regions*. *European*
46 *Heart Journal*, 2021. **42**(25): p. 2455-2467.

- 1 32. Jakobsen, J.C., et al., *When and how should multiple imputation be used for handling*
2 *missing data in randomised clinical trials - a practical guide with flowcharts.* BMC
3 *Medical Research Methodology*, 2017. **17**.
- 4 33. Williams, M.C., et al., *Coronary Artery Plaque Characteristics Associated With*
5 *Adverse Outcomes in the SCOT-HEART Study.* *J Am Coll Cardiol*, 2019. **73**(3): p. 291-
6 301.
- 7 34. Andelius, L., et al., *Impact of statin therapy on coronary plaque burden and*
8 *composition assessed by coronary computed tomographic angiography: a systematic*
9 *review and meta-analysis.* *Eur Heart J Cardiovasc Imaging*, 2018. **19**(8): p. 850-858.
- 10 35. Haase, R., et al., *Diagnosis of obstructive coronary artery disease using computed*
11 *tomography angiography in patients with stable chest pain depending on clinical*
12 *probability and in clinically important subgroups: meta-analysis of individual patient*
13 *data.* *BMJ*, 2019. **365**: p. l1945.
- 14 36. Body, R., et al., *Troponin-only Manchester Acute Coronary Syndromes (T-MACS)*
15 *decision aid: single biomarker re-derivation and external validation in three cohorts.*
16 *Emerg Med J*, 2017. **34**(6): p. 349-356.
17
18

Table 1. Baseline characteristics of patients with intermediate cardiac troponin concentrations stratified by findings on coronary computed tomography angiography.

	All participants (n = 167)	No coronary artery disease (n = 47)	Any coronary artery disease (n = 120)	P-value ¹
Female sex	46 (28%)	19 (40%)	27 (23%)	0.033
Age, years	64 (12)	56 (13)	67 (10)	<0.001
Presenting symptom				
Chest pain	143 (86%)	37 (79%)	106 (88%)	0.14
Anginal symptoms	76 (46%)	21 (45%)	55 (46%)	0.99
Cardiovascular risk factor				
BMI, kg/m ²	29.3 (5.8)	29.6 (5.2)	29.2 (6.0)	0.73
Current or previous smoker	89 (53%)	18 (38%)	71 (59%)	0.017
Hypertension	79 (47%)	11 (23%)	68 (57%)	<0.001
Diabetes	30 (18%)	3 (6.4%)	27 (23%)	0.014
Hyperlipidaemia	33 (20%)	10 (22%)	23 (19%)	0.83
Family history	64 (38%)	17 (36%)	47 (39%)	0.86
Chronic kidney disease	19 (11%)	2 (4.3%)	17 (14%)	0.010
Medical history				
Angina	34 (20%)	2 (4.3%)	32 (27%)	0.001
Myocardial infarction	40 (24%)	3 (6.4%)	37 (31%)	<0.001
Stroke	13 (7.8%)	2 (4.3%)	11 (9.2%)	0.36
Peripheral vascular disease	6 (3.6%)	0 (0%)	6 (5.0%)	0.19
Previous revascularization				
PCI	40 (24%)	3 (6.4%)	37 (31%)	<0.001
CABG	10 (6.0%)	0 (0%)	10 (8.3%)	0.064
Physiology and investigations				
Ischemia on ECG	8 (4.8%)	3 (6.4%)	5 (4.2%)	0.69
T-wave inversion	24 (15%)	5 (11%)	19 (16%)	0.62
Heart rate, bmp	76 (18)	77 (20)	76 (18)	0.87
Systolic BP, mm Hg	151 (27)	152 (22)	151 (29)	0.90
Haemoglobin, g/L	143 (15)	143 (16)	143 (14)	0.95
Creatine	82 (19)	79 (19)	83 (19)	0.25
eGFR, mL/min/1.73 m ²	82 (18)	87 (18)	80 (17)	0.022
Total cholesterol, mmol/L	4.82 (1.18)	5.18 (0.95)	4.67 (1.23)	0.005
LDL cholesterol, mmol/L	2.96 (1.18)	3.30 (0.94)	2.84 (1.24)	0.011
Peak cardiac troponin I, ng/L	8 (6, 12)	8 (7, 13)	8 (6, 12)	0.70
Clinical risk scores				
HEART	4 (3, 5)	3 (2, 4.5)	5 (4, 5)	<0.001
EDACS	17 (12, 21)	14 (10.8, 17)	18 (13, 21.3)	<0.001
GRACE	78 (64, 96)	62 (45, 73)	86 (69, 102)	<0.001
TIMI	1 (0, 2)	0 (0, 1)	2 (1, 2)	<0.001

Table 1. Baseline characteristics of patients with intermediate cardiac troponin concentrations stratified by findings on coronary computed tomography angiography.

	All participants (n = 167)	No coronary artery disease (n = 47)	Any coronary artery disease (n = 120)	P-value¹
PCE	0.19 (0.08, 0.36)	0.09 (0.04, 0.16)	0.26 (0.13, 0.38)	<0.001
SCORE2/OP	10.5 (5, 16)	5 (4, 9)	12.5 (7, 18)	<0.001

Values are median (interquartile range), n (%) or mean \pm SD. ¹ Pearson's Chi-squared test; Wilcoxon rank sum test; Fisher's exact test. BMI = body mass index; BP = blood pressure; bmp = beats per minute; CABG = coronary artery bypass grafting; CAD = coronary artery disease; ECG = electrocardiogram; EDACS = Emergency Department Assessment of Chest Pain Score; eGFR = estimated glomerular filtration rate; GRACE 2.0 = Global Registry of Acute Coronary Events version 2.0; HEART = History, ECG, Age, Risk factors, Troponin; LDL = low-density lipoprotein; PCE = pooled cohort equations; PCI = percutaneous coronary intervention; SCORE2/OP = Systematic COronary Risk Evaluation 2/Older Population; TIMI = Thrombolysis In Myocardial Infarction.

1
2

1 **Figure Legends**

2

3 **Figure 1. Distribution of risk scores in patients with suspected acute coronary syndrome**
4 **and intermediate cardiac troponin concentrations stratified using established risk score**
5 **thresholds as low-, moderate-, or high-risk.**

6 * When EDACS and SCORE2/OP are applied further criteria are recommended (Supplement
7 Text 1) (8).

8

9 **Figure 2. Proportion of patients with suspected acute coronary syndrome and**
10 **intermediate cardiac troponin concentrations found to have any coronary artery disease**
11 **(panel a) or obstructive disease (panel b) on CCTA below or above established low-risk**
12 **thresholds for each risk score.**

13 * When EDACS and SCORE2/OP are applied further criteria are recommended
14 (Supplemental Text 1). CAD = coronary artery disease, CCTA = coronary computer
15 tomography angiography.

16

17 **Figure 3. Odds ratio of having any or obstructive coronary artery disease on CCTA in**
18 **patients with suspected acute coronary syndrome and intermediate cardiac troponin**
19 **concentrations stratified by risk scores.**

20 Odds ratios for any coronary artery disease and obstructive disease on CCTA in patients with
21 intermediate cardiac troponin concentrations comparing those with scores above and below
22 established risk thresholds.

23

24 **Figure 4. Radar plot comparing diagnostic performance of risk scores for any coronary**
25 **artery disease (panel a) and obstructive disease (panel b) in patients with suspected**
26 **acute coronary syndrome and intermediate cardiac troponin concentrations.**

1 AUC = area under the curve, NPV = negative predictive value, PPV = positive predictive
2 value.

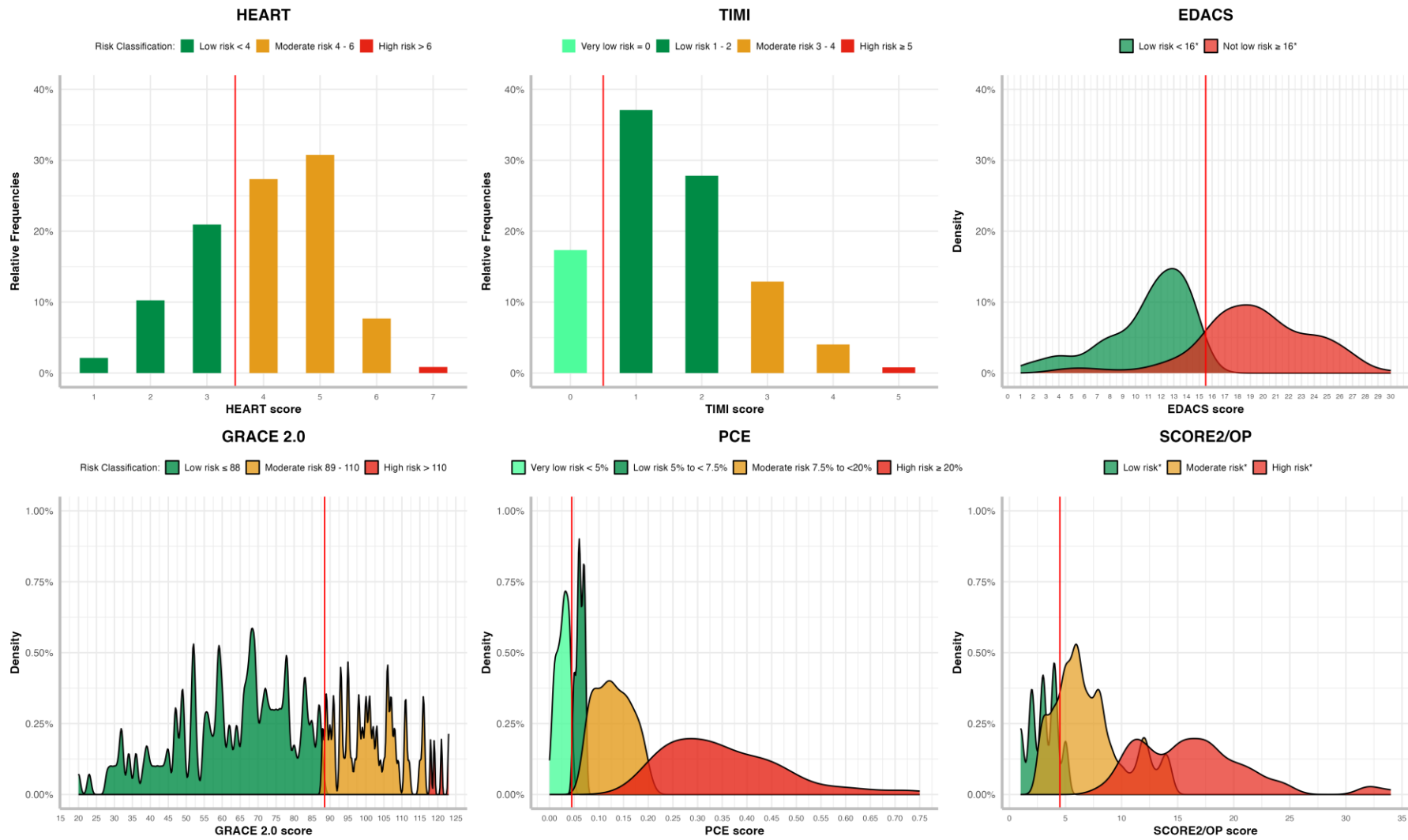
3

4 **Figure 5. Discrimination of cardiac troponin and clinical risk scores for any coronary**
5 **artery disease (panel a) and obstructive disease (panel b) in patients with suspected**
6 **acute coronary syndrome and intermediate cardiac troponin concentrations.**

7 Receiver-operating-characteristic curves illustrating discrimination of cardiac troponin and
8 clinical risk scores for coronary artery disease (panel a) and obstructive disease (panel b) in
9 patients with suspected acute coronary syndrome and intermediate cardiac troponin
10 concentrations.

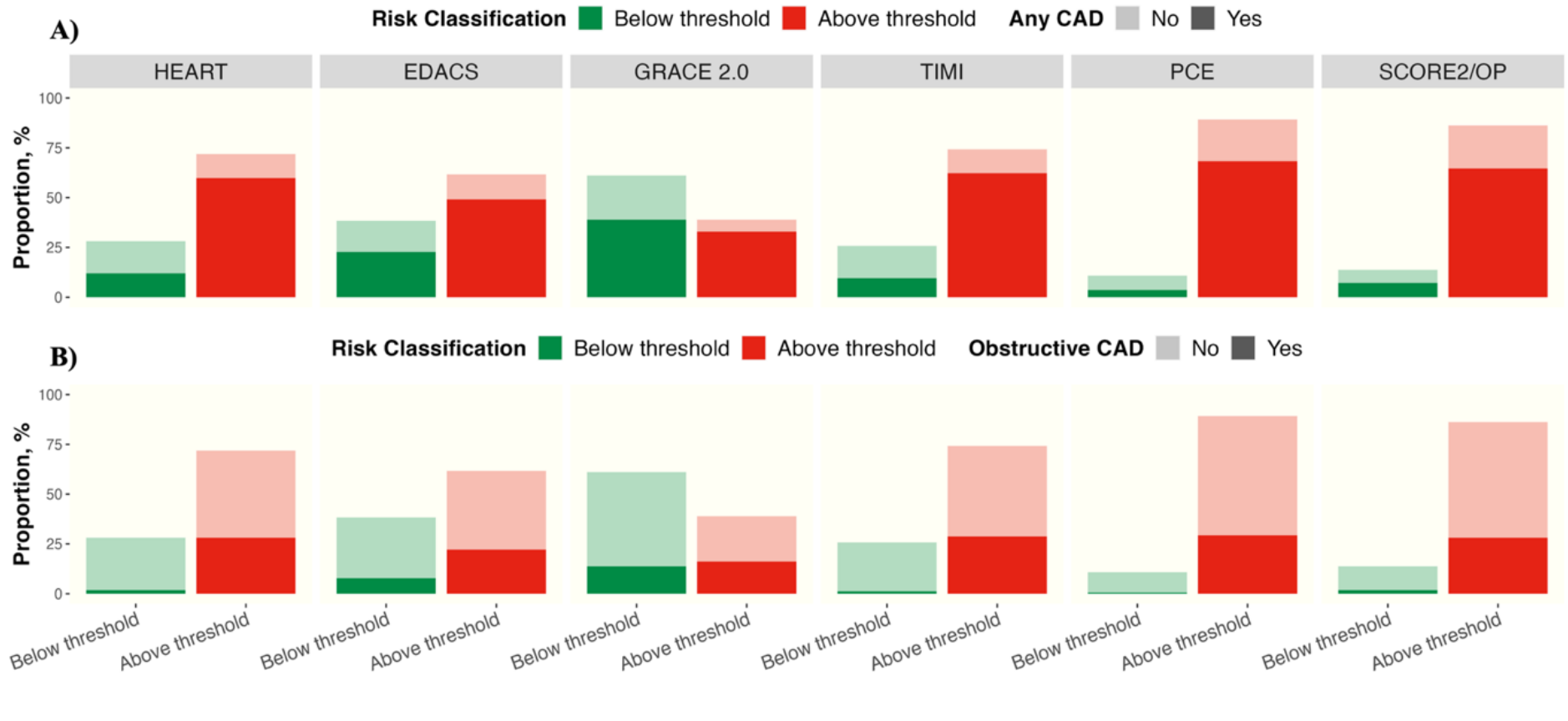
11

1 **Figure 1.**

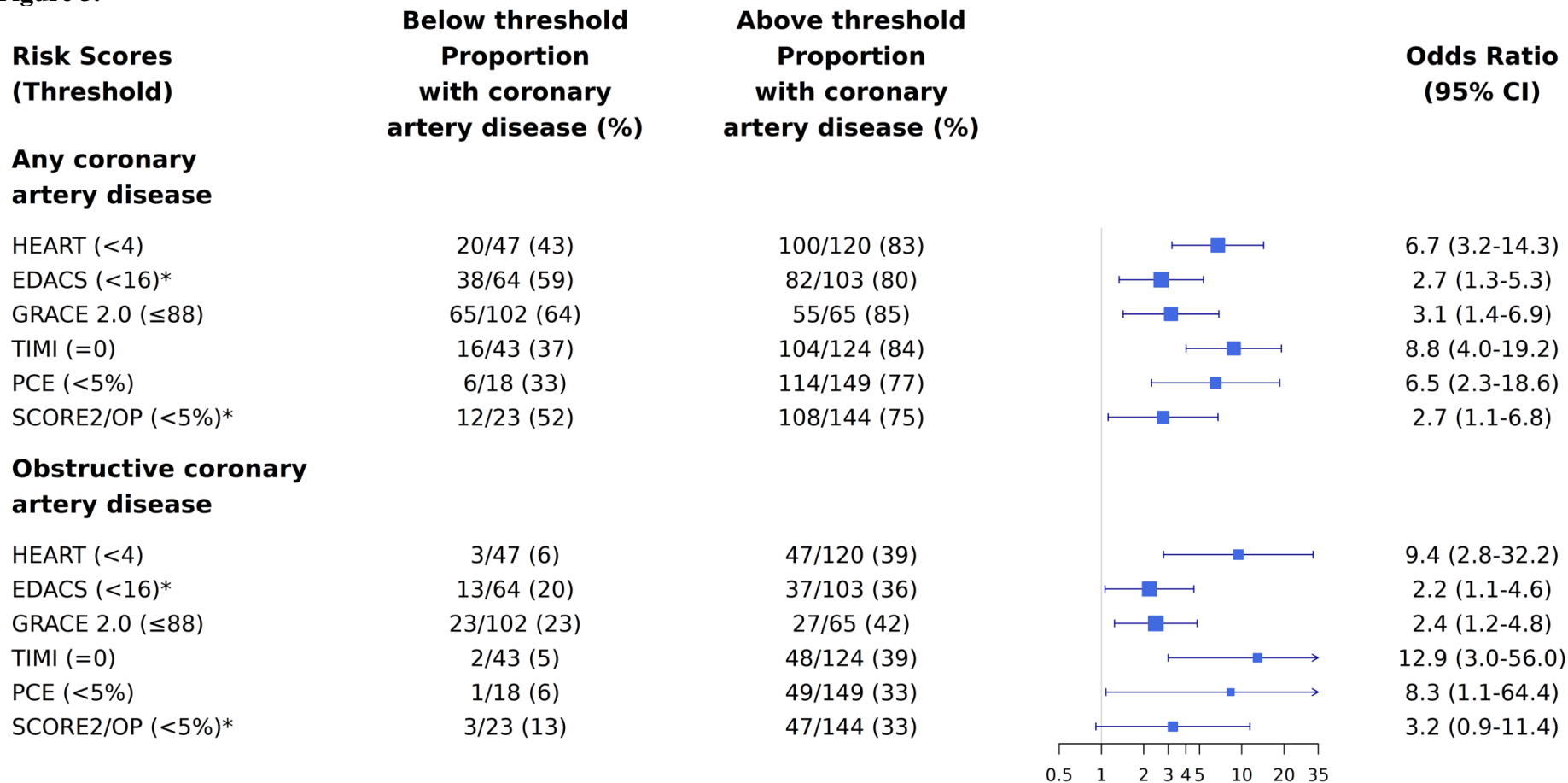


2
3

1 **Figure 2.**

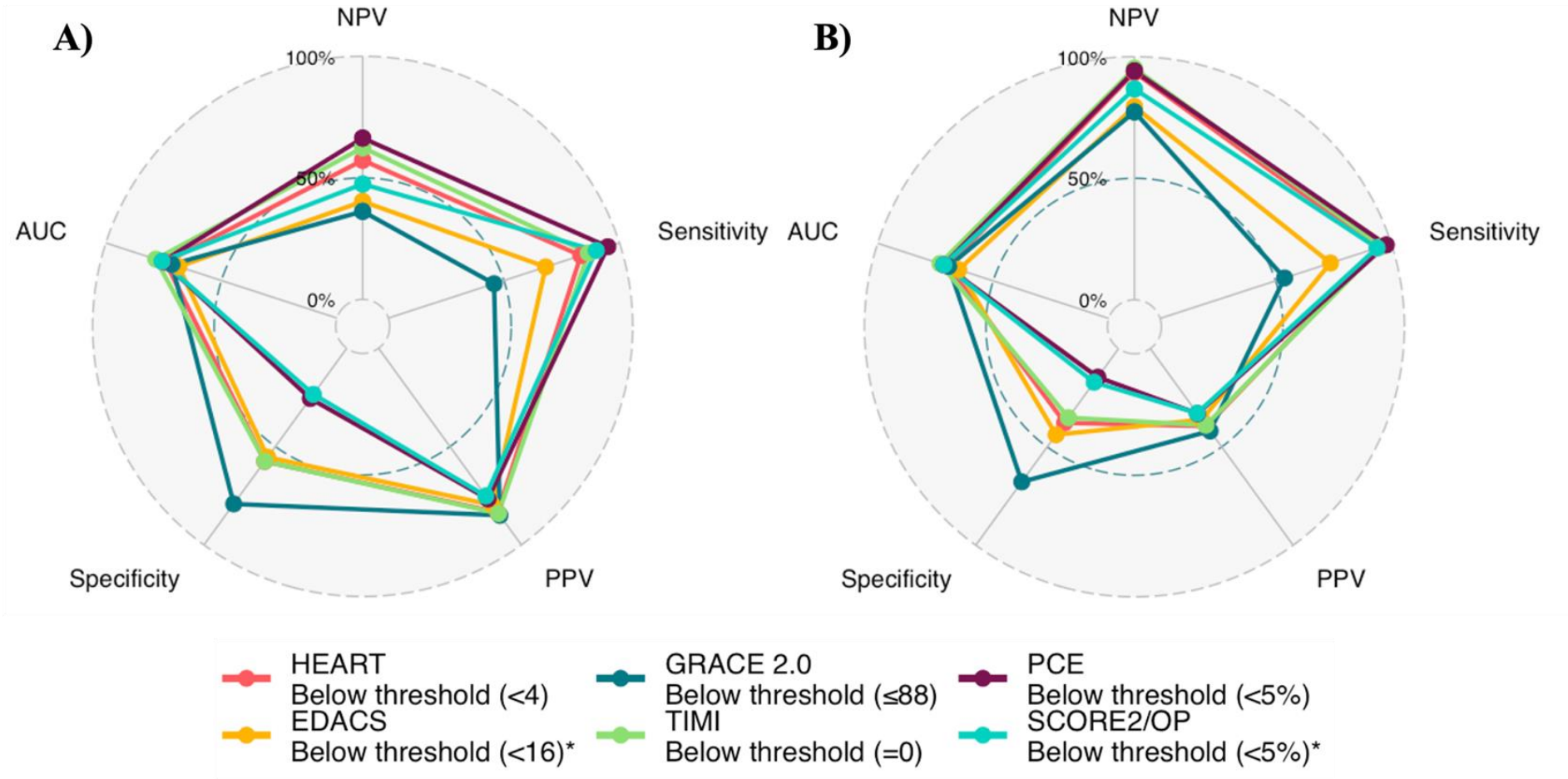


1 **Figure 3.**



2
3

1 **Figure 4.**



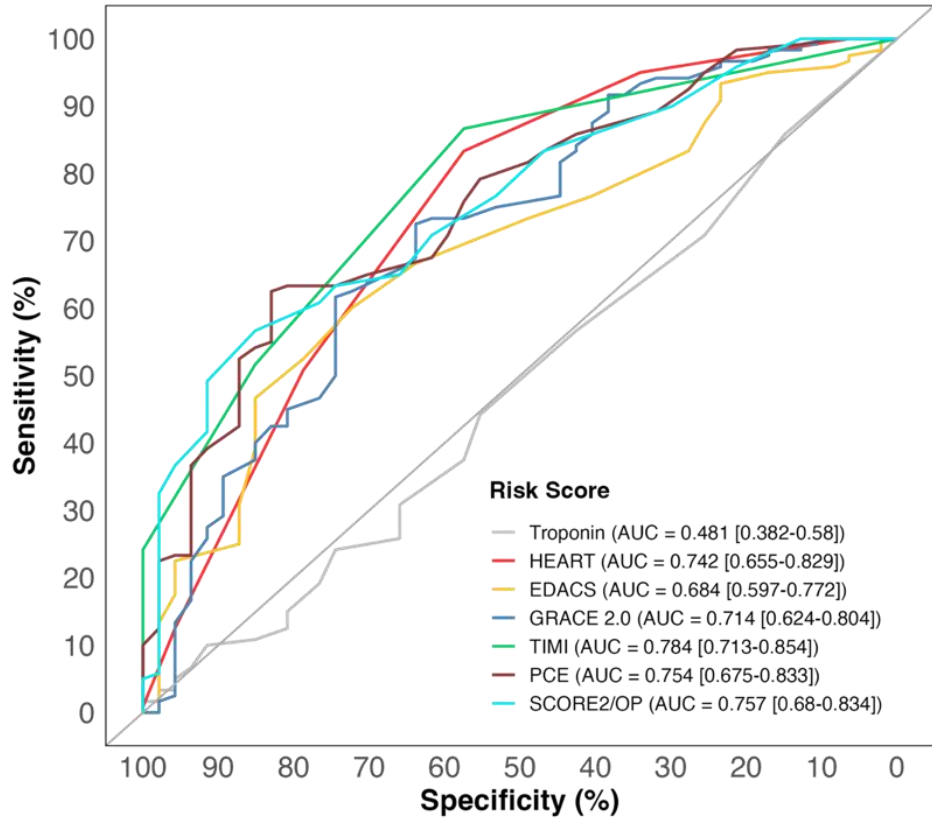
2
3

1 **Figure 5.**

2

3

A)



4

B)

