

1 **The prognostic, predictive and clinicopathological impact of KRT81 / HNF1A- and**
2 **GATA6- based transcriptional subtyping in pancreatic cancer**

3 Michael Guenther ^{1,2}, Sai Agash Surendran ¹, Volker Heinemann ³, Michael Haas ^{3,4}, Stefan
4 Boeck ^{3,4} and Steffen Ormanns ^{1,2*}

5
6 1: Innpath Institute of Pathology, Tirol Kliniken, Innsbruck, Austria

7 2: Institute of Pathology, Faculty of Medicine, Ludwig-Maximilians-University, Munich,
8 Germany

9 3: Department of Internal Medicine III, Grosshadern University Hospital, Ludwig-Maximilians-
10 University, Munich, Germany

11 4: Department of Hematology and Oncology, München Klinik Neuperlach, Munich, Germany

12 *: corresponding author

13
14 Figures: 3
15 Tables: 3
16 Supplementals: 6 figures, 12 tables
17 References: 34
18 Word count
19 Abstract: 175
20 Article: 2745

21
22 Correspondence:

23 Steffen Ormanns, MD (ORCID 0000-0002-0754-9034)

24 Innpath Institute of Pathology – Tirol Kliniken

25 Anichstraße 35

26 6020 Innsbruck

27 Austria

28 steffen.ormanns@innpath.at

1 **ABSTRACT**

2

3 **BACKGROUND**

4 Transcriptional subtypes of pancreatic ductal adenocarcinoma (PDAC) have prognostic
5 implications and potential predictive functions. This study aimed to determine their
6 clinicopathological impact in large cohorts of advanced and resected PDAC and their
7 evolution during disease progression.

8

9 **METHODS**

10 The clinicopathological and prognostic implications of transcriptional subtypes determined by
11 the expression of KRT81, HNF1A and GATA6 were examined using immunohistochemistry
12 in advanced (n=139) and resected (n=411) PDAC samples as well as in 57 matched primary
13 tumors and corresponding metastases. RNAseq data of 316 resected PDAC patients was
14 analyzed for validation.

15

16 **RESULTS**

17 Both subtyping systems were highly interrelated. Subtypes switched during disease
18 progression in up to 31.6% of patients. Transcriptional subtyping had a modest prognostic
19 impact in both unstratified cohorts, but strongly improved outcomes in patients with KRT81
20 positive / GATA6 negative tumors treated with palliative or adjuvant gemcitabine-based
21 chemotherapy. RNAseq expression data confirmed the findings.

22

23 **CONCLUSIONS**

24 Transcriptional subtypes have differential responses on palliative and adjuvant gemcitabine-
25 based chemotherapy, but they may change during disease progression. Both employed
26 subtyping systems are equivalent and can be used to inform clinical therapy decisions.

27

28 **CLINICAL TRIAL REGISTRY**

29 The clinical trial registry identifier is NCT00440167.

30

31

32

33

34

35

36

37

1 **INTRODUCTION**

2 Although modest improvements in the prognosis of pancreatic ductal adenocarcinoma
3 (PDAC) patients were achieved in the past years, mainly through innovative randomized
4 control trials (RCT) on novel chemotherapy (CTX) regimens, the survival probability of the
5 average PDAC patients remains desperately low ¹, even for patients in early disease stages².
6 For the minority of patients diagnosed with resectable disease, adjuvant therapy has become
7 standard of care, with the active but toxic regimen FOLFIRINOX as 1st choice for the clinically
8 fit patient and the less active but less toxic gemcitabine for the less fit³. Large sequencing
9 studies have revealed the molecular background of the disease on the genetic as well as the
10 transcriptional level, which resulted in the identification of transcriptional subtypes, based on
11 the expression of specific hallmark genes⁴. Thus, several transcriptional subtyping systems
12 were proposed, each of which showed a differential prognostic impact of the subtypes
13 identified⁴. Some studies even proposed prognostic implications of transcriptional subtyping,
14 which largely relied on complex, RNA-based methodologies such as RNA-sequencing
15 (RNAseq), which are hard to establish in routine diagnostics. Therefore, efforts were made to
16 break down complex subtyping systems to simpler approaches applicable in routine clinical
17 practice by detecting the expression of each subtypes' hallmark genes through
18 immunohistochemistry (IHC)^{5,6}. Although these approaches resulted in valuable information
19 on the potential clinical implications of the subtypes identified, their meaning to inform clinical
20 decision making was modest at best^{6,7}. Moreover, most studies did not examine the clinical
21 significance of transcriptional subtypes with respect to clinicopathological parameters such
22 as disease stage or the therapies applied -specifically in the adjuvant setting- and no study to
23 date compared the different subtyping systems with each other in the same set of samples.
24 Thus, in the present study, we examined the prognostic and potentially predictive impact of
25 the two most employed IHC-based subtyping systems, i.e. the expression of KRT81 and
26 HNF1A or GATA6 respectively, in large cohorts of advanced PDAC and resected PDAC
27 patients, compared both subtyping systems and determined how the metastatic process may
28 affect the predominant subtype.

29
30 **MATERIALS and METHODS**

31 The study cohorts and the inclusion and exclusion criteria were described previously⁸.
32 Archival formalin-fixed paraffin embedded (FFPE) histologically confirmed tumor tissue of
33 primary tumors and metastatic tissue was collected from the pathology laboratories where
34 the diagnosis of PDAC was first established. Patients' overall survival (OS), disease free
35 survival (DFS) as well as progression free survival (PFS) was calculated as described
36 before⁸. Written informed consent for the use of tumor material and clinical data was
37 obtained from advanced PDAC patients upon study enrollment or before palliative

1 chemotherapy initiation. The ethics committee of the medical faculty LMU approved the use
2 of patient material and data in the resected PDAC cohort (project 20-081). Tissue microarray
3 (TMA) construction was described before⁸. GATA6 expression was detected on four µm thick
4 sections by immunohistochemistry using an anti-GATA6 polyclonal rabbit antibody (PA1-104,
5 Thermo Fisher, Germering, Germany) at a 1:200 dilution. Immunohistochemical detection of
6 KRT81 and HNF1A was performed as described previously⁹. Appropriate positive controls
7 were included in each staining run (human normal tonsil for KRT81, duodenal mucosa for
8 HNF1A and normal exocrine pancreas for GATA6, suppl. figure S1 A - C). The expression
9 pattern and expression strength were independently evaluated by two pathologists (MG, SO)
10 blinded to the patient outcome and discrepant cases were discussed until agreement was
11 reached. Tumors were classified as follows: samples with ≥ 30% KRT81- or HNF1A-positive
12 tumor cells were considered positive for each marker. For GATA6 expression, tumors with
13 distinct nuclear staining were considered GATA6 positive. Microphotographs were acquired
14 as described previously⁸. Kaplan-Meier curves, Cox regression analyses and cross
15 tabulations were computed using SPSS software (IBM, Ehningen, Germany), considering a
16 p-value of ≤ 0.05 as statistically significant. Propensity score matching, as well as the
17 analysis of publicly available gene expression data and the patients' corresponding clinical
18 data was carried out as described before⁸. RNA sequencing data and clinical information of
19 the ICGC-CA cohort were downloaded from International Cancer Genome Consortium
20 (ICGC) data portal¹⁰. Genomic analysis and data visualization was conducted using
21 cBioPortal for Cancer Genomics¹¹.

22

23 **RESULTS**

24 **Transcriptional subtypes according to the expression of KRT81, HNF1A and GATA6** 25 **widely overlap but may change during metastatic progression**

26 Of the 139 samples in the advanced PDAC (aPDAC) cohort, 36.0% (n=50) were KRT81+,
27 36.0% (n=50) were double negative and 28.0% (n=39) were HNF1A+, whereas 60.4%
28 (n=84) were GATA6- and 39.6% (n=55) were positive for GATA6. In the resected PDAC
29 (rPDAC) cohort, 39.9% (n=164) were KRT81+, 43.6% (n=179) were double negative and
30 16.5% (n=68) were HNF1A+, whereas 41.1% (n=169) displayed GATA6 expression and
31 58.9% (n=242) were GATA6- (figure 1A). Tumors displaying expression of both KRT81 and
32 HNF1A (double positive), which was the case in 16.5% of the samples in the aPDAC cohort
33 and 7.1% in the rPDAC cohort, were categorized according to the marker showing a
34 predominant expression pattern. This approach was backed by highly similar prognostic
35 implications of the thus assessed subtypes in the double positive cases compared to the
36 single positive ones (suppl. table S1). Both subtyping systems overlapped widely in both
37 cohorts (χ^2 p<0.001 each), with the HNF1A+ subtype being mostly GATA6+ (suppl. table

1 S2). However, a significant proportion of KRT81+ samples displayed GATA6 expression in
2 both cohorts and no clear trend towards a GATA6-based subtype was observed for the
3 double negative samples, which were rather GATA6- in the aPDAC cohort and rather
4 GATA6+ in the rPDAC cohort (figure 1B and C). For both systems, the assessment of each
5 tumors subtype remained remarkably stable when several tumor tissue punches from
6 different FFPE blocks were compared separately (suppl. table S3).

7 To assess how metastatic progression may affect the tumors subtype, we examined to which
8 extent the primary tumors' and the metastatic tissues' subtypes were interrelated in
9 synchronous and metachronous metastases to its corresponding primary in 57 cases. There
10 was a strong correlation between the primaries' and the metastases' subtype ($p=0.001$), but
11 we observed a subtype switch according to KRT81 / HNF1A expression in 18 cases (31.6%).
12 This was not associated to synchronous or metachronous metastasis (suppl. table S4) but
13 came with a highly significant trend towards a prognostically more favorable subtype (suppl.
14 Table S5). More than half ($n=28$) of the $n=41$ KRT81+ cases remained KRT81+ in their
15 corresponding metastasis, the rest was mostly double negative and only three cases
16 switched to HNF1A+. Double negative cases mostly remained double negative during
17 metastasis, whereas the few ($n=3$) HNF1A+ cases split between KRT81 positivity and
18 HNF1A positivity in their metastatic tissue (figure 1 D, suppl. table S6). In contrast, the
19 transcriptional subtype according to GATA6 expression remained stable in most cases with 9
20 of 34 cases switching from GATA6- to GATA6+ and 7 of 23 cases switching from GATA6+ to
21 GATA6- (figure 1 E, suppl. table S6). Here, subtype switching occurred more frequently in
22 synchronous metastases (suppl. table S4). Neither the primary tumors' nor the metastases
23 'subtype or the occurrence of a subtype switch was associated with metastasis localization
24 (suppl. table S7).

25

26 **Transcriptional subtypes affect patient outcome dependent on palliative therapy in** 27 **advanced PDAC patients**

28 The baseline characteristics, outcome and clinicopathological variables of the aPDAC patient
29 cohort were previously described⁸. In the unstratified cohort, transcriptional subtypes
30 according to KRT81/HNF1A expression implied a statistically non-significant trend for patient
31 OS, with HNF1A+ cases having the best, double negative cases an intermediate and
32 KRT81+ the worst outcome (OS 6.8 vs. 9.1 vs. 10.7 months, $p=0.08$, HR=1.27 95% CI 1.02
33 – 1.59, suppl. figure S2 A), which was not reflected in PFS times (PFS 3.6 vs. 4.1 vs. 6.4
34 months, $p=0.42$, HR=1.16 95% CI 0.91 – 1.48, suppl. figure S2 B). Similarly, subtyping
35 based on GATA6 expression had no prognostic impact in the unstratified patient cohort (PFS
36 4.2 vs 4.3 months, $p=0.43$, HR 1.16 95%CI 0.80 – 1.69; OS 7.8 vs. 9.2 months, $p=0.76$, HR
37 1.06, 95% CI 0.74 – 1.51, suppl. figure S2 C, D). As expected, only KRT81/ HNF1A based

1 subtypes showed a trend towards statistical significance in multivariate analyses ($p=0.07$,
2 suppl. table S8) and transcriptional subtypes were not associated with the patients'
3 clinicopathological variables (table 1). Stratification of patient subgroups according to the
4 applied type of 1st line palliative treatment, revealed a significant impact of the tumors
5 transcriptional subtype on patient outcome, as patients with double negative tumors derived
6 the most benefit from palliative gemcitabine-based chemotherapy (pGC) compared to
7 palliative non-gemcitabine-based chemotherapy (pnGC, PFS 6.3 vs 2.4 months, $p<0.001$,
8 HR 0.26, 95%CI 0.13 – 0.52; OS 9.6 vs 5.7 months, $p=0.04$, HR 0.53, 95%CI 0.29 – 0.97,
9 figure 2 A,B). Similarly, patients with KRT81+ tumors showed favorable PFS times with pGC
10 compared to pnGC (PFS 4.5 vs. 2.2 months, $p=0.02$, HR 0.43, 95%CI 0.21 – 0.90 figure 2
11 A), but no significant impact of palliative chemotherapy on OS times (OS 6.8 vs 4.7 months,
12 $p=0.47$, HR 0.78 95%CI 0.40 – 1.52, figure 2 B). Interestingly, the type of palliative
13 chemotherapy had no significant prognostic impact in patients with HNF1A+ tumors (pnGC
14 vs. pGC, PFS 6.6 vs. 2.7 months, $p=0.28$, HR 0.65 95%CI 0.30 – 1.42; OS 13.2 vs. 9.3
15 months, $p=0.60$, HR 0.82, 95%CI 0.38 – 1.75 figure 2 A, B), which was also confirmed in
16 multivariate analyses (suppl. table S9). Applying the GATA6-based subtypes paralleled these
17 findings, as patients with GATA6- tumors profited from pGC compared to pnGC, whereas no
18 significant prognostic impact of the type of palliative chemotherapy was detected for patients
19 with GATA6+ tumors (GATA6- PFS 9.3 vs 2.4 months, $p<0.001$, HR 0.27, 95%CI 0.15 –
20 0.48; OS 9.7 vs 7.2 months, $p=0.04$, HR 0.60, 95%CI 0.38 – 0.97; GATA6+ 5.0 vs 2.7
21 months, $p=0.21$, HR 0.65 95%CI 0.33 – 1.29; OS 7.8 vs 4.9 months, $p=0.34$, HR 0.72 95%CI
22 0.37 – 1.42, figure 2 C,D), which was confirmed for PFS in multivariate analyses (suppl. table
23 S9).

24

25 **Transcriptional subtypes affect patient outcome dependent on adjuvant therapy in** 26 **resected PDAC patients**

27 In the unstratified rPDAC cohort, there was a statistically non-significant impact of the
28 tumors' subtype on outcome, with KRT81 positivity conferring the worst, double negative an
29 intermediate and HNF1A positivity the best outcome (OS 17.1 vs. 19.3 vs. 22.3 months,
30 $p=0.34$, HR 0.87, 95% CI 0.81 – 0.94; DFS 9.7 vs. 12.1 vs. 12.4 months, $p=0.47$, HR 1.08,
31 95%CI:0.90 – 1.28, suppl. figure S3 A, B), which turned out as independent prognostic
32 marker for OS in multivariate analyses (suppl. table S 10). Similarly, GATA6 expression was
33 associated with a statistically not significant trend towards better prognosis (OS 20.7 vs. 15.2
34 months, $p=0.20$, HR 0.87, 95% CI 0.69 – 1.08, suppl. figure S3 C) but showed no tendency
35 for differences in DFS (suppl. figure S3 D) although it turned out as independent
36 prognosticator for OS in multivariate analyses ($p=0.006$, HR 0.73, 95%CI 0.58 – 0.91, suppl.
37 table S10). Transcriptional subtypes were not associated to the patients' clinicopathological

1 parameters (table 2). To test the impact of subtyping on response to adjuvant chemotherapy
2 we calculated DFS and OS times in each subtype according to the application of adjuvant
3 gemcitabine-based chemotherapy (aGC) compared to no or non-gemcitabine-based
4 adjuvant chemotherapy (naGC). Interestingly, the prognostically worst KRT81+ subtype, had
5 the strongest prognostic impact of adjuvant gemcitabine-based chemotherapy (DFS 5.0 vs.
6 13.7 months, $p < 0.001$, HR 0.37, 95% CI 0.25 – 0.55; OS 8.3 vs. 31.6 months, $p < 0.001$, HR
7 0.26 95%CI 0.18 – 0.37), whereas this was not the case for the double negative subtype
8 (DFS 10.1 vs. 13.5 months, $p = 0.52$, HR 0.88, 95%CI 0.59 – 1.32; OS 17.7 vs. 21.0 months,
9 $p = 0.08$, HR 0.76, 95%CI 0.54 – 1.07) or the HNF1A+ subtype (DFS 12.8 vs. 9.5 months,
10 $p = 0.39$, HR 1.32, 95%CI 0.70 – 2.49; OS 20.4 vs. 23.4 months, $p = 0.38$, HR 0.78, 95%CI
11 0.45 – 1.36, figure 3 A,B). Similar results were obtained for GATA6-based subtyping, where
12 the GATA6- subtype profited significantly from adjuvant gemcitabine-based chemotherapy
13 (DFS 4.8 vs. 15.1 months, $p < 0.001$, HR 0.30, 95%CI 0.19 – 0.46; OS 7.0 vs. 32.2 months,
14 $p < 0.001$, HR 0.21, 95%CI 0.66 – 1.18), whereas it was not beneficial in the GATA6+ subtype
15 (DFS 10.5 vs. 10.0 months, $p = 0.62$, HR 1.09, 95%CI 0.78 – 1.51; OS 18.9 vs. 21.5 months,
16 $p = 0.42$, HR 0.87, 95%CI 0.66 – 1.18, figure 3 C,D). These findings were also reflected in 5-
17 year-survival rates (suppl. table S11). We confirmed these findings in multivariate analyses
18 which also demonstrated the prognostic impact of the patients' clinicopathological
19 characteristics in each subtype. Interestingly, the R-status was most important for DFS and
20 OS in the KRT81+ and GATA6- subtypes, whereas in the HNF1A+ and the GATA6+
21 subtypes pN-stage had the strongest prognostic influence (suppl. table S11).

22 We validated these findings in two independent publicly available PDAC cohorts ($n = 138$ and
23 $n = 178$) with corresponding RNAseq-based gene expression data. In both datasets, just as in
24 our cohort, patients with KRT81+ or GATA6- tumors derived the most benefit from
25 gemcitabine-based adjuvant chemotherapy, whereas in the other subtypes the impact of
26 aGC was minor (suppl. figure S4).

27 To explore a potential mechanistic background for the observed gemcitabine-resistance in
28 the patients with HNF1A+ / GATA6+ tumors, we tested the association of the expression of
29 HNF1A, KRT81 and GATA6 with the expression of gemcitabine-resistance associated genes
30 in the same RNAseq-based gene expression datasets. In both cohorts, there was a strong
31 positive correlation with HNF1A and GATA6 expression and an inverse correlation for KRT81
32 with the expression of *ABCC3* and *MVP*, both known to cause gemcitabine-resistance *in vitro*
33 and *in vivo*^{12,13} (suppl. figure S5). Of note, after adjusting for multiple testing, transcriptional
34 subtypes did not correlate with specific molecular alterations on the genomic level (suppl.
35 figure S6).

36

37 **DISCUSSION**

1 Transcriptional subtyping in pancreatic cancer using different systems of hallmark genes and
2 detection techniques and its potential clinical or biological impact has been reported several
3 times to date ^{5-7,9,14-25} (table 3). There is a certain consensus that there are at least two
4 subtypes, mostly termed “basal” or “quasi-mesenchymal” and “classical”²⁶. Whereas the first
5 one is often associated with poorer outcome and sometimes higher tumor grade, exemplified
6 by the adenosquamous subtype of PDAC, the latter is associated with better prognosis and
7 better therapy response to FOLFIRINOX (FFX)^{14,27}. Other previously proposed transcriptional
8 subtypes, such as the so called “immunogenic” or “ADEX” subtype by Bailey et al (QUOTE),
9 could not be reproduced entirely by other groups ²⁸. Thus, their existence remains a matter of
10 debate to date. None of the previously published studies on transcriptional subtyping in
11 PDAC examined their predictive impact on currently still widely employed therapies.
12 Moreover, none of the IHC-based subtyping systems were compared in the same set of
13 patient samples as yet and a potential subtype switch during metastatic progression -which
14 eventually occurs in the majority of PDAC patients- has not been examined either. In this
15 study, we employed and compared the two most widespread subtyping systems based on
16 the robust immunohistochemical detection of KRT81, HNF1A or GATA6. We show that both
17 systems overlap widely and can be employed equally, which offers a cost efficient approach
18 to personalized cancer therapy as specific subtypes respond differentially to therapy. For
19 instance, patients with KRT81+ / GATA6- tumors profit better from gemcitabine-based
20 chemotherapy in the palliative but also the adjuvant setting compared to their KRT81-/
21 GATA+ counterparts in our cohorts, which is backed by previously published data ^{6,29}. Thus,
22 transcriptional subtyping by IHC could be used to inform therapy decisions in the routine
23 clinical setting, even in cases with scarce or low-quality tumor material in which RNA-based
24 approaches tend to fail. Our approach to categorize according to the most dominant subtype
25 in the KRT81/HNF1A system, resolved the issue of double positive cases, which were
26 excluded from analysis in previously published studies ^{5,7,22,23}. Our novel finding that
27 transcriptional subtypes may switch during metastatic progression may explain differential
28 therapy responses of primary tumors and metastases and implies a rationale to re-biopsy
29 metastatic tissue to inform a subtype-based therapy choice. We also show that the R-status
30 has a much stronger prognostic impact in KRT81+ / GATA6- tumors. Thus, in this subtype, it
31 is much more important to achieve a wide R0-resection compared to others, which should be
32 considered during resection and may justify a more aggressive surgical approach.
33 Its retrospective nature and the fact that no patients treated with more active regimens like
34 FFX were included in the analyses are limitations of our study. However, not only in the
35 adjuvant setting but also in advanced disease, most patients are still treated with
36 gemcitabine-based chemotherapy regimens to date, as co-morbidities and frailty preclude
37 the application of potentially more efficient but more toxic regimens like FFX ³⁰, which in real

1 world data not necessarily prove to be superior to gemcitabine-based regimens^{31,32}. Thus, in
2 the present study we propose a simple and robust diagnostic tool for therapeutic decision
3 making in routine clinical practice. Physicians should be aware of a potential subtype switch
4 during disease progression, which justifies a re-biopsy of metastatic lesions.

9 **ADDITIONAL INFORMATION**

10 **Ethics approval and consent to participate**

11 Each patient gave written informed consent for the use of its tumor material and clinical data
12 for academic research purposes upon study enrollment. Ethical approval by the local ethics
13 committee was given for each study^{33,34} and they were carried out according to the
14 Declaration of Helsinki. The non-commercial academic use of anonymized patient data and
15 corresponding tumor material was approved by the ethics committee of the medical faculty of
16 Ludwig-Maximilians-University without obtaining the patients' informed consent (project
17 numbers 554-11, 401-15, 20-081, 23-0222 and 23-0224).

19 **Availability of data and materials**

20 The expression datasets used for validation are publicly accessible on

21 <https://portal.gdc.cancer.gov/> and <https://dcc.icgc.org/>.

22 Raw data on the patient cohorts employed in this study can be obtained from the
23 corresponding author upon reasonable request.

25 **Competing interests**

26 All authors declare no conflict of interest related to the present study.

28 **Funding**

29 This study did not receive any funding.

31 **Author contributions**

32 MG and SO read and scored immunohistochemical stainings, performed statistical analyses,
33 drafted figures and wrote the manuscript. SAS analyzed bioinformatic data and drafted
34 figures. VH, MH and SB provided clinical patient data and /or patient material. All authors
35 read and reviewed the manuscript.

37 **Acknowledgments**

1 We thank Andrea Sendelhofert and Anja Heier for excellent technical assistance and all
2 study participants and their families for supporting our research.

4 **References**

- 5 1 Park, W., Chawla, A. & O'Reilly, E. M. Pancreatic cancer: a review. *Jama* **326**, 851-
6 862 (2021).
- 7 2 Guenther, M. *et al.* The impact of adjuvant therapy on outcome in UICC stage I
8 pancreatic cancer. *International Journal of Cancer* **151**, 914-919 (2022).
- 9 3 Tempero, M. A. *et al.* Pancreatic adenocarcinoma, version 2.2021, NCCN clinical
10 practice guidelines in oncology. *Journal of the National Comprehensive Cancer*
11 *Network* **19**, 439-457 (2021).
- 12 4 Collisson, E. A., Bailey, P., Chang, D. K. & Biankin, A. V. Molecular subtypes of
13 pancreatic cancer. *Nature reviews Gastroenterology & hepatology* **16**, 207-220
14 (2019).
- 15 5 Noll, E. M. *et al.* CYP3A5 mediates basal and acquired therapy resistance in different
16 subtypes of pancreatic ductal adenocarcinoma. *Nature medicine* **22**, 278-287 (2016).
- 17 6 Martinelli, P. *et al.* GATA6 regulates EMT and tumour dissemination, and is a marker
18 of response to adjuvant chemotherapy in pancreatic cancer. *Gut* **66**, 1665 (2017).
- 19 7 Muckenhuber, A. *et al.* Pancreatic Ductal Adenocarcinoma Subtyping Using the
20 Biomarkers Hepatocyte Nuclear Factor-1A and Cytokeratin-81 Correlates with
21 Outcome and Treatment Response. *Clin Cancer Res* **24**, 351-359 (2018).
- 22 8 Guenther, M. *et al.* TPX2 expression as a negative predictor of gemcitabine efficacy
23 in pancreatic cancer. *British Journal of Cancer*, 1-8 (2023).
- 24 9 Kruger, S. F. *et al.* Prognosis and tumor biology of pancreatic cancer patients with
25 isolated lung metastases: translational results from the German multicenter AIO-
26 YMO-PAK-0515 study. *ESMO Open* **7**, 100388 (2022).
- 27 10 Zhang, J. *et al.* The international cancer genome consortium data portal. *Nature*
28 *biotechnology* **37**, 367-369 (2019).
- 29 11 Cerami, E. *et al.* The cBio cancer genomics portal: an open platform for exploring
30 multidimensional cancer genomics data. *Cancer discovery* **2**, 401-404 (2012).
- 31 12 Zhao, Y. *et al.* ABCC3 as a marker for multidrug resistance in non-small cell lung
32 cancer. *Scientific reports* **3**, 3120 (2013).
- 33 13 Yu, X. *et al.* CD73 induces gemcitabine resistance in pancreatic ductal
34 adenocarcinoma: A promising target with non-canonical mechanisms. *Cancer Letters*
35 **519**, 289-303 (2021).
- 36 14 O'Kane, G. M. *et al.* GATA6 Expression Distinguishes Classical and Basal-like
37 Subtypes in Advanced Pancreatic Cancer. *Clin Cancer Res* **26**, 4901-4910 (2020).
- 38 15 Duan, K. *et al.* The value of GATA6 immunohistochemistry and computer-assisted
39 diagnosis to predict clinical outcome in advanced pancreatic cancer. *Sci Rep* **11**,
40 14951 (2021).
- 41 16 de Andrés, M. P. *et al.* GATA4 and GATA6 loss-of-expression is associated with
42 extinction of the classical programme and poor outcome in pancreatic ductal
43 adenocarcinoma. *Gut* (2022).
- 44 17 Beutel, A. K. *et al.* A Prospective Feasibility Trial to Challenge Patient-Derived
45 Pancreatic Cancer Organoids in Predicting Treatment Response. *Cancers (Basel)* **13**
46 (2021).
- 47 18 Shoucair, S. *et al.* GATA6 and Keratin5 Expression Profile is a Reliable Biomarker for
48 Prediction of Improved Survival with Adjuvant Chemotherapy after Surgical Resection
49 in PDAC. *HPB* **24**, S75 (2022).
- 50 19 Heredia-Soto, V. *et al.* The Relationship between the Expression of GATA4 and
51 GATA6 with the Clinical Characteristics and Prognosis of Resectable Pancreatic
52 Adenocarcinoma. *Biomedicines* **11**, 252 (2023).

- 1 20 Park, E. *et al.* Combined tumor epithelial and stromal histopathology with keratin 81
2 expression predicts prognosis for pancreatic ductal adenocarcinoma. *J Hepatobiliary*
3 *Pancreat Sci* **29**, 250-261 (2022).
- 4 21 Lu, Y. *et al.* HNF1A inhibition induces the resistance of pancreatic cancer cells to
5 gemcitabine by targeting ABCB1. *EBioMedicine* **44**, 403-418 (2019).
- 6 22 Kaissis, G. *et al.* A machine learning algorithm predicts molecular subtypes in
7 pancreatic ductal adenocarcinoma with differential response to gemcitabine-based
8 versus FOLFIRINOX chemotherapy. *PloS one* **14**, e0218642 (2019).
- 9 23 Kaissis, G. A. *et al.* Multiparametric Modelling of Survival in Pancreatic Ductal
10 Adenocarcinoma Using Clinical, Histomorphological, Genetic and Image-Derived
11 Parameters. *Journal of Clinical Medicine* **9**, 1250 (2020).
- 12 24 Peng, L. *et al.* Urokinase-Type Plasminogen Activator Receptor (uPAR) Cooperates
13 with Mutated KRAS in Regulating Cellular Plasticity and Gemcitabine Response in
14 Pancreatic Adenocarcinomas. *Cancers* **15**, 1587 (2023).
- 15 25 de Andrés, M. P. *et al.* GATA4 and GATA6 loss-of-expression is associated with
16 extinction of the classical programme and poor outcome in pancreatic ductal
17 adenocarcinoma. *bioRxiv* (2021).
- 18 26 Singh, S., Hasselluhn, M. C. & Neesse, A. A tangled tale of molecular subtypes in
19 pancreatic cancer. *Gut* **68**, 953-954 (2019).
- 20 27 Birnbaum, D. J., Finetti, P., Birnbaum, D., Mamessier, E. & Bertucci, F. Validation and
21 comparison of the molecular classifications of pancreatic carcinomas. *Molecular*
22 *cancer* **16**, 1-7 (2017).
- 23 28 Maurer, C. *et al.* Experimental microdissection enables functional harmonisation of
24 pancreatic cancer subtypes. *Gut* **68**, 1034-1043 (2019).
- 25 29 Collisson, E. A. *et al.* Subtypes of pancreatic ductal adenocarcinoma and their
26 differing responses to therapy. *Nat Med* **17**, 500-503 (2011).
- 27 30 Hegewisch-Becker, S. *et al.* Results from the prospective German TPK clinical cohort
28 study: treatment algorithms and survival of 1,174 patients with locally advanced,
29 inoperable, or metastatic pancreatic ductal adenocarcinoma. *International journal of*
30 *cancer* **144**, 981-990 (2019).
- 31 31 Santucci, J. *et al.* Impact of first-line FOLFIRINOX versus Gemcitabine/Nab-Paclitaxel
32 chemotherapy on survival in advanced pancreatic cancer: Evidence from the
33 prospective international multicentre PURPLE pancreatic cancer registry. *European*
34 *Journal of Cancer* **174**, 102-112 (2022).
- 35 32 Riedl, J. M. *et al.* Gemcitabine/nab-Paclitaxel versus FOLFIRINOX for palliative first-
36 line treatment of advanced pancreatic cancer: A propensity score analysis. *European*
37 *Journal of Cancer* **151**, 3-13 (2021).
- 38 33 Haas, M. *et al.* Extended RAS analysis and correlation with overall survival in
39 advanced pancreatic cancer. *British journal of cancer* **116**, 1462 (2017).
- 40 34 Heinemann, V. *et al.* Gemcitabine plus erlotinib followed by capecitabine versus
41 capecitabine plus erlotinib followed by gemcitabine in advanced pancreatic cancer:
42 final results of a randomised phase 3 trial of the 'Arbeitsgemeinschaft Internistische
43 Onkologie'(AIO-PK0104). *Gut* **62**, 751-759 (2013).

44

45 **Figure legends and table titles**

46 **Figure 1**

47 *Differential expression of KRT81, HNF1A and GATA6 in pancreatic cancer*

48 Immunohistochemical detection of *KRT81, HNF1A and GATA6* expression in exemplary
49 PDAC samples. 200-fold magnification. Scale bar indicates 50 µm (A). Comparison of the
50 tumors' transcriptional subtypes based on the expression of *KRT81 / HNF1A* or *GATA6* in
51 advanced (B) and resected PDAC (C) as well as between the primary tumor and its

1 corresponding metastasis using subtyping based on KRT81 / HNF1A-expression (D) or
2 GATA6-expression (E).

3

4 **Figure 2**

5 *Transcriptional subtypes are associated with therapy response in 1st line gemcitabine treated*
6 *advanced pancreatic cancer patients*

7 Univariate analyses (Kaplan–Meier curves and log-rank tests) for PFS and OS in the
8 subtypes based on KRT81 / HNF1A - expression stratified by 1st line chemotherapy (A, B) as
9 well as in the subtypes based on GATA6 - expression stratified by 1st line chemotherapy (C,
10 D). Crossed lines indicate censored cases.

11

12 **Figure 3**

13 *Transcriptional subtypes are associated with therapy response in resected pancreatic cancer*
14 *patients treated with adjuvant gemcitabine-based chemotherapy*

15 Univariate analyses (Kaplan–Meier curves and log-rank tests) for DFS and OS in the
16 subtypes based on KRT81 / HNF1A - expression stratified by gemcitabine-based adjuvant
17 treatment (A, B) and in the subtypes based on GATA6 - expression stratified by gemcitabine-
18 based adjuvant treatment (C, D). Crossed lines indicate censored cases.

19

20

21 **Table titles**

22 **Table 1**

23 Clinicopathological patient characteristics according to KRT81 / HNF1A - expression and
24 GATA6 - expression in the aPDAC cohort.

25

26 **Table 2**

27 Clinicopathological patient characteristics according to KRT81 / HNF1A - expression and
28 GATA6 - expression in the rPDAC cohort.

29

30 **Table 3**

31 Study overview on transcriptional subtyping in PDAC

32

33

34 **Supplemental figure legends**

35 **Figure S1**

36 *Expression of KRT81, HNF1A and GATA6 in non-neoplastic tissues*

1 KRT81 expression in normal human tonsil (A), HNF1A expression in normal human small
2 bowel mucosa (B) and GATA6 expression in normal human non-neoplastic pancreatic ducts
3 (C). 200-fold magnification. Scale bars indicate 50 μ m.

4
5 **Figure S2**

6 *Transcriptional subtypes are associated with prognosis in advanced pancreatic cancer*
7 *patients*

8 Univariate analyses (Kaplan–Meier curves and log-rank tests) for PFS and OS in the
9 subtypes based on KRT81 / HNF1A expression (A, B) as well as in the subtypes based on
10 GATA6 expression (C, D). Crossed lines indicate censored cases.

11
12 **Figure S2**

13 *Predominance of the transcriptional subtype affects prognosis in resected pancreatic cancer*
14 *patients*

15 Univariate analyses (Kaplan–Meier curves and log-rank tests) for OS and DFS in the
16 subtypes based on KRT81 and HNF1A (a, b)

17
18 **Figure S3**

19 *Transcriptional subtypes are associated with prognosis in resected pancreatic cancer*
20 *patients*

21 Univariate analyses (Kaplan–Meier curves and log-rank tests) for PFS and OS in the
22 subtypes based on KRT81 / HNF1A expression (A, B) as well as in the subtypes based on
23 GATA6 expression (C, D). Crossed lines indicate censored cases.

24
25 **Figure S4**

26 *Transcriptional subtype is associated with therapy response in resected pancreatic cancer*
27 *patients treated with adjuvant gemcitabine-based chemotherapy*

28 Univariate analyses (Kaplan–Meier curves and log-rank tests) for DFS and OS stratified by
29 gemcitabine-based adjuvant treatment of the subtypes based on KRT81 / HNF1A -
30 expression and GATA6 - expression in the TCGA-PAAD cohort (A-D) and in the PACA-CA
31 cohort (E-H). Crossed lines indicate censored cases.

32
33 **Figure S5**

34 *Transcriptional subtypes show differential expression of gemcitabine-resistance promoting*
35 *genes*

36 Spearman correlations (scatter plots) of log₂ mRNA expression between GATA6, HNF1A
37 and KRT81 with ABCC3 or MVP across the TCGA-PAAD firehose dataset (A - F) as well as

1 the ICGC-CA firehose dataset (G - L, *P < 0.05; **P < 0.01,***P < 0.0001; n.s., not
2 significant; Spearman (two-tailed)).

3

4 **Figure S6**

5 *KRT81 / HNF1A- or GATA6-based transcriptional subtypes are not associated with specific*
6 *molecular alterations in pancreatic cancer*

7 Oncoprint for the ten most common genetic alterations in the subtypes based on KRT81 /
8 HNF1A - expression (A) and GATA6 - expression (B).

9

10

11 **Supplemental table titles**

12

13 **Table S1**

14 Prognostic impact of the predominant transcriptional subtype in advanced and resected
15 PDAC patients.

16

17 **Table S2**

18 Comparison of both subtyping systems in the advanced and the resected PDAC cohorts.

19

20 **Table S3**

21 Assessment of transcriptional subtypes in different tissue samples for KRT81 / HNF1A (A)
22 and GATA6 (B).

23

24 **Table S4**

25 Subtype changes during disease progression.

26

27 **Table S5**

28 Comparison of primary tumor subtype with metastatic occurrence and subtype changes for
29 KRT81 / HNF1A and GATA6.

30

31 **Table S6**

32 Transcriptional subtypes in primary tumors and corresponding metastasis.

33

34 **Table S7**

35 Metastatic localization, primary tumor subtype and occurrence of subtype change.

36

37 **Table S8**

1 Multivariate Cox regression analysis of PFS- and OS-associated factors in the advanced
2 pancreatic cancer study cohort.

3

4 **Table S9**

5 Multivariate Cox regression analysis of PFS- and OS-associated factors in the aPDAC cohort
6 stratified for subtypes.

7

8 **Table S10**

9 Multivariate Cox regression analysis of DFS- and OS-associated factors in the resected
10 PDAC cohort.

11

12 **Table S11**

13 Five-year survival rates in the rPDAC cohort for subtypes based on KRT81 / HNF1A- and
14 GATA6- expression according to adjuvant gemcitabine treatment.

15

16 **Table S12**

17 Multivariate Cox regression analysis of DFS- and OS-associated factors in the rPDAC cohort
18 stratified for transcriptional subtypes.

Figure 1

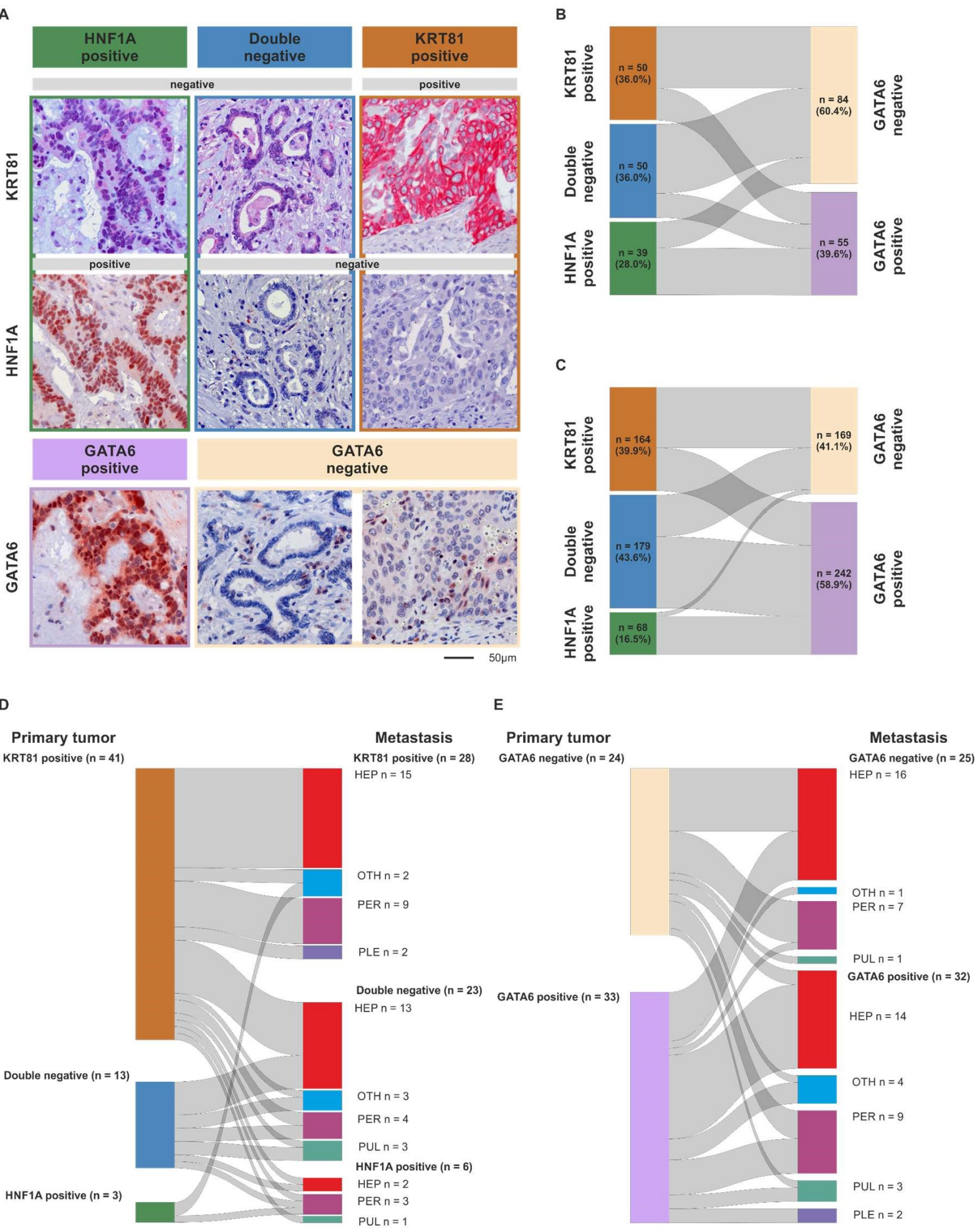


Figure 2

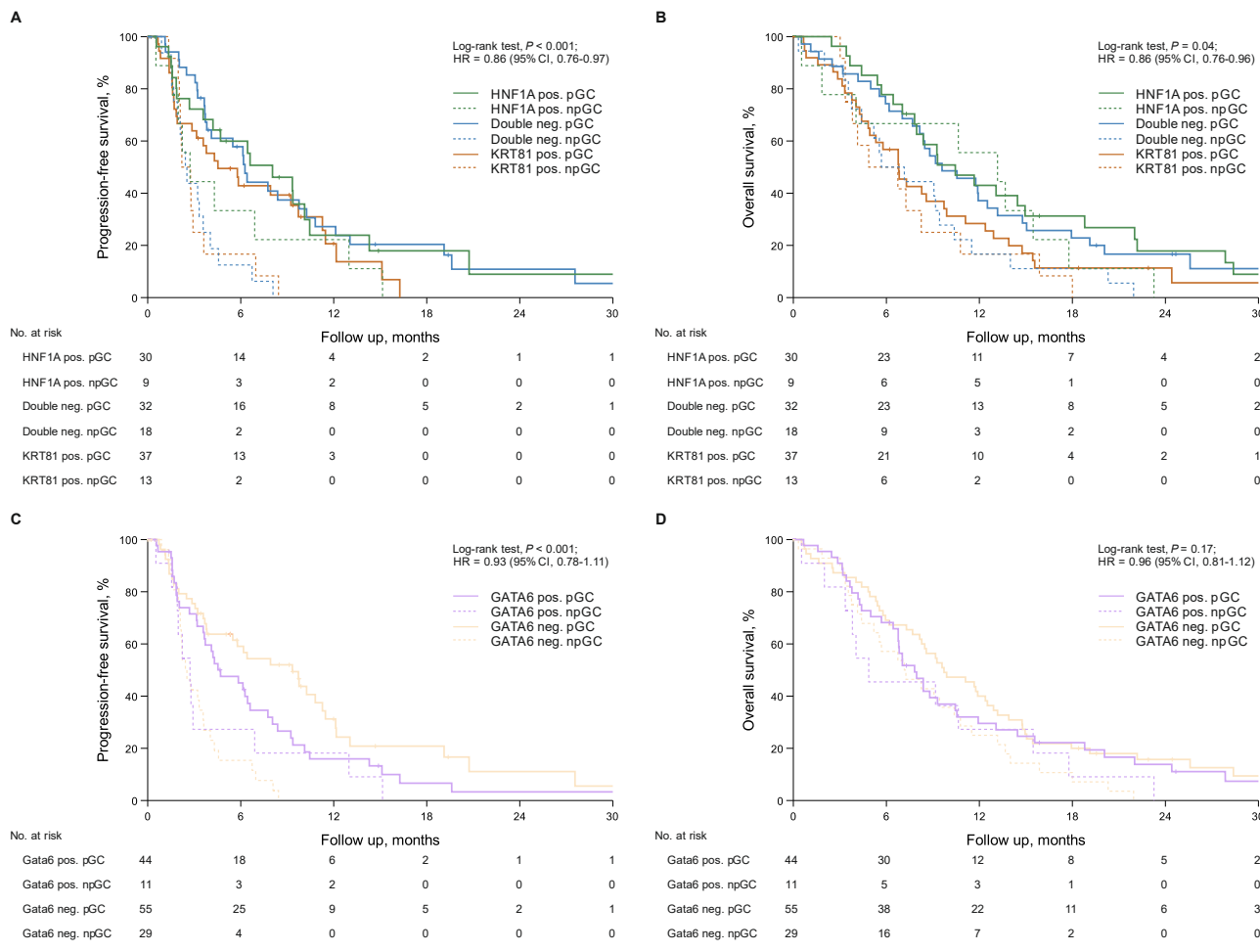


Figure 3

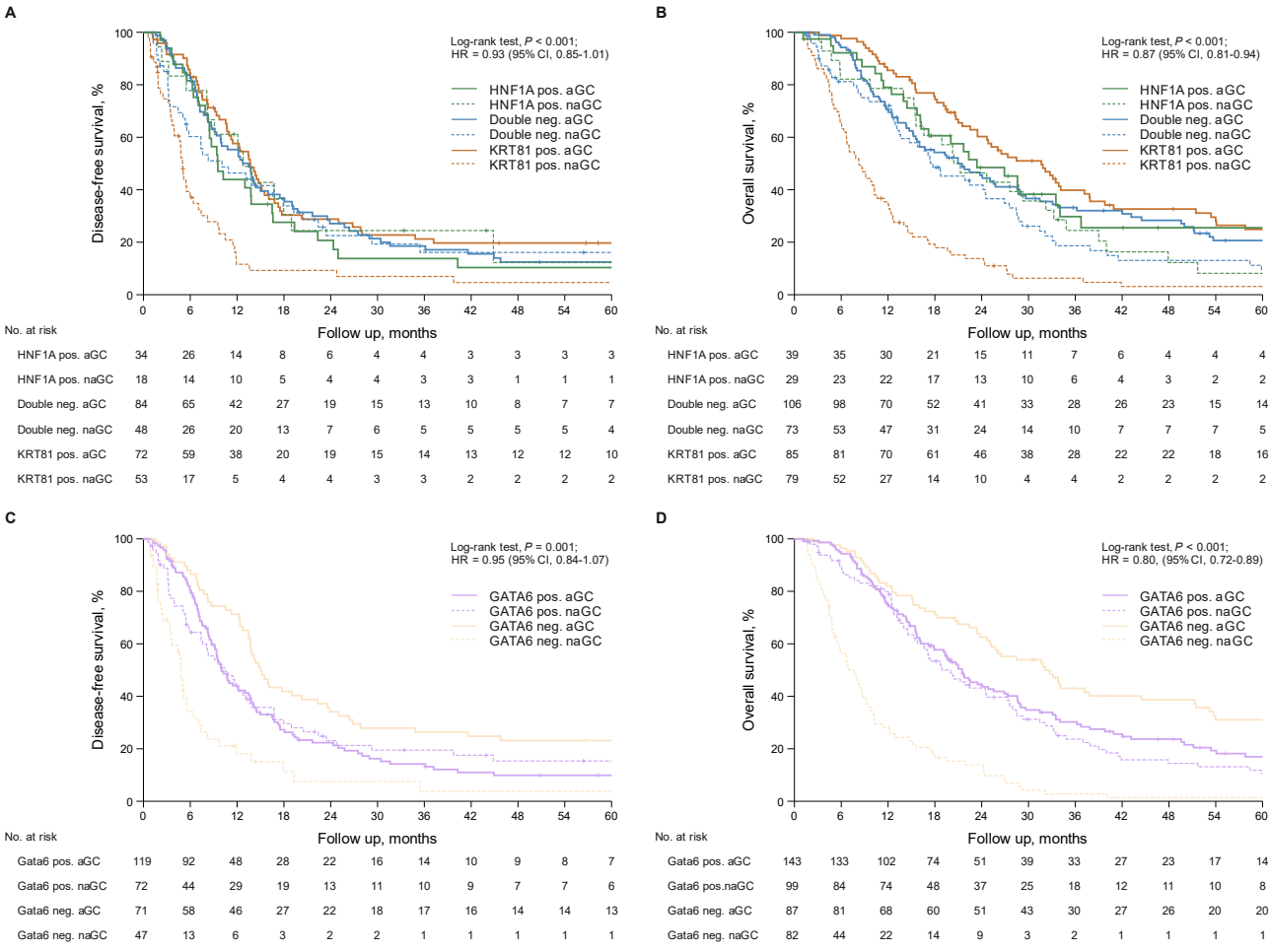


Table 1

Patients clinicopathological variables and transcriptional subtypes in the aPDAC cohort.

	subtype, no (%)			p-value (χ^2 -test)	subtype, no (%)		
	KRT81 pos. (n = 50)	double neg. (n = 50)	HNF1A pos. (n = 39)		GATA6 neg. (n = 84)	GATA6 pos. (n = 55)	p-value (χ^2 -test)
sex							
female	30 (60.0)	29 (58.0)	20 (51.3)	0.70	38 (45.2)	22 (40.0)	0.54
male	20 (40.0)	21 (42.0)	19 (48.7)		46 (54.8)	33 (60.0)	
age group							
≤ 60	20 (40.0)	19 (38.0)	18 (46.2)	0.73	33 (39.3)	24 (43.6)	0.61
> 60	30 (60.0)	31 (62.0)	21 (53.8)		51 (60.7)	31 (56.4)	
treatment arm							
non-gemcitabine based	13 (26.0)	18 (36.0)	9 (23.1)	0.35	29 (34.5)	11 (20.0)	0.06
gemcitabine based	37 (74.0)	32 (64.0)	30 (76.9)		55 (65.5)	44 (80.0)	
KPS							
≤ 80	18 (36.0)	19 (38.8)	14 (35.9)	0.95	32 (38.1)	19 (35.2)	0.73
> 80	32 (64.0)	30 (61.2)	25 (64.1)		52 (61.9)	35 (64.8)	
grade group							
G1-G2	17 (34.0)	23 (46.0)	21 (53.8)	0.16	33 (39.3)	28 (50.9)	0.18
G3-G4	33 (66.0)	27 (54.0)	18 (46.2)		51 (60.7)	27 (49.1)	
stage at therapy start							
locally advanced	9 (18.0)	8 (16.0)	7 (17.9)	0.96	15 (17.9)	9 (16.4)	0.82
metastatic	41 (82.0)	42 (84.0)	32 (82.1)		69 (82.1)	46 (83.6)	

Table 2

Patients clinicopathological variables and transcriptional subtypes in the rPDAC cohort.

	subtype, no (%)			P value (χ^2)	subtype, no (%)		P value (χ^2)
	KRT81-positive (n=164)	Double-negative (n=179)	HNF1A-positive (n=68)		GATA6 neg.(n=169)	GATA6 pos. (n=242)	
sex							
female	72 (43.9)	99 (55.3)	29 (42.6)	0.06	72 (42.6)	128 (52.9)	0.04
male	92 (56.1)	80 (44.7)	39 (57.4)		97 (57.4)	114 (47.1)	
age group							
≤ 68	91 (55.5)	93 (52.0)	29 (42.6)	0.20	73 (43.2)	125 (51.7)	0.09
> 68	73 (44.5)	86 (48.0)	39 (57.4)		96 (56.8)	117 (48.3)	
treatment arm, no (%)							
non-gemcitabinebased	79 (48.2)	73 (40.8)	29 (42.6)	0.38	82 (48.5)	99 (40.9)	0.13
gemcitabinebased	85 (51.8)	106 (59.2)	39 (57.4)		87 (51.5)	143 (59.1)	
UICC stage (2017)							
stage IA	6 (3.7)	12 (6.7)	6 (8.8)	0.37	8 (4.7)	16 (6.6)	0.92
stage IB	33 (20.1)	32 (17.9)	16 (23.5)		33 (19.5)	48 (19.8)	
stage IIA	16 (9.8)	14 (7.8)	5 (7.4)		16 (9.5)	19 (7.9)	
stage IIB	64 (39.0)	54 (30.2)	18 (26.5)		56 (33.1)	80 (33.1)	
stage III	25 (15.2)	41 (22.9)	16 (23.5)		32 (18.9)	50 (20.7)	
stage IV	20 (12.2)	26 (14.5)	7 (10.3)		24 (14.2)	29 (12.0)	
pT (2017)							
pT1a	1 (0.6)	0 (0.0)	2 (2.9)	0.06	0 (0.0)	3 (1.2)	0.36
pT1b	1 (0.6)	4 (2.2)	0 (0.0)		2 (1.2)	3 (1.2)	
pT1c	11 (6.7)	26 (14.5)	8 (11.8)		14 (8.3)	31 (12.8)	
pT2	104 (63.4)	99 (55.3)	40 (58.8)		106 (62.7)	137 (56.6)	
pT3	46 (28.0)	46 (25.7)	18 (26.5)		46 (27.2)	64 (26.4)	
pT4	1 (0.6)	4 (2.2)	0 (0.0)		1 (0.6)	4 (1.7)	
pN (2017)							
pN0	62 (37.8)	71 (39.7)	31 (45.6)	0.18	69 (40.8)	95 (39.3)	0.88
pN1	68 (41.5)	62 (34.6)	17 (25.0)		61 (36.1)	86 (35.5)	
pN2	34 (20.7)	46 (25.7)	20 (29.4)		39 (23.1)	61 (25.2)	
R-status							
0	106 (64.6)	121 (67.7)	48 (70.6)	0.66	108 (63.9)	167 (69.0)	0.28
1	58 (35.4)	58 (32.4)	20 (29.4)		61 (36.1)	75 (31.0)	
grade group							
G1-G2	45 (27.4)	53 (29.6)	23 (33.8)	0.62	51 (30.2)	70 (28.9)	0.78
G3-G4	119 (72.6)	126 (70.4)	45 (66.2)		118 (69.8)	172 (71.1)	

Table 3

Study overview on transcriptional subtyping in PDAC

marker	author	year	cohort	clinical situation	n#	TNM version	detection method	antibodies, dilution	issue type	scoring method	cutoff definition	results	cohort stratification based on therapy	clinical relevance/conclusion								
GATA6	Martinielli	2017	1	resected	313	7th	IHC	polyclonal goat anti-GATA6 antibody (catalog no. AF1700, R&D Systems) dilution 1:1000	TMA	high, medium, low	NR	GATA6 high: 155 (49%) GATA6 medium: 121 (39%) GATA6 low: 37 (12%)	5FU / leucovorin vs. gemcitabine	borderline predictive for 5FU / leucovorin, not for gemcitabine correlates with tumor differentiation.								
												score 1: weak nuclear staining in at least 5% tumor cells score 2: moderate nuclear staining in the tumor score 3: strong nuclear immunopositivity score 4: very strong and diffuse staining			GATA6 High: 78 (74%)	NR	prognostic IHC correlates with ISH					
	O'Kane	2021	1	advanced stage	106	NA	ISH, IHC	polyclonal goat anti-GATA6 antibody (catalog no. AF1700, R&D Systems) dilution 1:1000	resections, biopsies	semiquantitative score (1-4)	low; semiquantitative score 1-2 high; semiquantitative score 3-4	GATA6 High: 73 (56%)	modified FOLFIRINOX vs. gemcitabine+ nab-paclitaxel. 10 patients did not receive any treatment	predictive for mFOLFIRINOX but not for gemcitabine/nab-paclitaxel digital assessment may improve scoring.								
	Duan	2021	1	advanced stage	130 (106 patients already reported by O'Kane et al.)	NA	IHC	polyclonal goat anti-GATA6 antibody (catalog no. AF1700, R&D Systems) dilution 1:1000	biopsies, whole mount	low / high	low; semiquantitative score 1-2 high; semiquantitative score 3-4	GATA6 High: 380 (51%)	NR	prognostic								
	de Andrés	2021	1	resected	745 (292 patients from the ESPAC-3 trial already reported by Martinielli et al. 2017)	7th	IHC	polyclonal goat anti-GATA6 antibody (R&D systems, AF1700, 0.2ug/mL) dilution NR	TMA	low / high	histoscore quantification (proportion of positive tumor cells multiplied by intensity from 0 to 3) low: Histoscore < 150 high: Histoscore ≥ 150	GATA6 high tissue: 18 (86.7%) GATA6 high PDO: 19 (76.0%)	NR	not prognostic (PFS) differential expression between tissue and PDO in 4/21 (19%).								
	Beutel	2021	1	advanced stage	25 PDO and 21 corresponding tissue from liver metastases	NA	IHC	monoclonal rabbit anti-GATA6 antibody (clone D61E4, Cell Signaling Technology) dilution 1:100	PDO's, biopsies	NR	NR	GATA6 high: 36 (47.3%)	adjunct treatment vs. no adjunct treatment	predictive for adjunct therapy								
	Shoucair	2022	1	resected	76	NR	IHC	NR	NR	low/high	NR	GATA6 high: 169 (41.1%)	gemcitabine-based vs. non gemcitabine-based	prognostic (DFS) correlates with CA19-9 levels influences the role of clinicopathological variables such as R-status Parth and tumor tissue comparable no relevant associations to clinicopathological variables prognostic in resected PDAC predictive for gemcitabine-based adjunct treatment								
	Heredia-Soto	2023	1	resected	89	7th	IHC	polyclonal goat anti-GATA6 antibody (catalog no. AF1700, R&D Systems) dilution NR	TMA	low/high	histoscore quantification (proportion of positive tumor cells multiplied by intensity from 0 to 3) low: Histoscore < 30 high: Histoscore ≥ 30	GATA6 high: 72 (81%)	only adjunct gemcitabine treated patients included	not prognostic. Predictive for gemcitabine-based palliative treatment no associations to clinicopathological variables. may change during metastatic progression.								
	Quentner	2024	1	resected	411	8th	IHC	polyclonal rabbit anti-GATA6 antibody (PA1-104, Thermo Fisher, Germering, Germany) dilution 1:200	TMA	negative / positive	tumors with distinct nuclear staining were considered GATA6 positive	GATA6 positive 169 (41.1%)	gemcitabine-based vs. non gemcitabine-based	prognostic in resected PDAC predictive for gemcitabine-based adjunct treatment influences the role of clinicopathological variables such as R-status								
2															advanced stage	139	NA	TMA	GATA6 positive 55 (39.9%)	gemcitabine-based vs. non gemcitabine-based	not prognostic. Predictive for gemcitabine-based palliative treatment no associations to clinicopathological variables.	
3															resected	57	8th	TMA	GATA6 positive 33 (57.9%)	NA	may change during metastatic progression.	
KRT81	Park	2022	1	resected	108	8th	IHC	mouse monoclonal anti-keratin 81 antibody (catalog no. SC-100929, Santa Cruz Biotechnology Inc.) dilution 1:500	TMA	negative / positive	"KRT81-positive": >30% KRT81 expressing tumor cells	KRT81+: 30 (28%) DP: NR KRT81+: 24 (4.4%) NA: 18 (33%)	NR	prognostic correlates with reduced gland formation associated with remaining residual tumor prognostic								
															2	resected	68	8th	TMA	HNF1A low: 70 (55%) HNF1A moderate: 37 (29%) HNF1A high: 21 (16%)	NA	predictive for gemcitabine, correlates with stage and Pn1
															3	resected	55	8th	IHC	HNF1A+: 35 (32%) DP: NR	NR	not prognostic correlates with increased gland formation not associated with remaining residual tumor
	Lu	2019	1	resected	128	8th	IHC	rabbit anti-HNF1A antibody (catalog no. ab96777, Abcam) dilution 1:200	NR	semiquantitative score according to IBS	low: 0-2 moderate: 3-6 high: 8-12	HNF1A low: 70 (55%) HNF1A moderate: 37 (29%) HNF1A high: 21 (16%)	NA	predictive for gemcitabine, correlates with stage and Pn1								
	Park	2022	2	resected	68	8th	IHC	anti-HNF1A antibody (catalog no. ab96777, Abcam), dilution 1:500	TMA	negative / positive	"HNF1A-positive": nuclear expression, any intensity, moderate or strong intensity, ≥ 5% of cells	NR	NR	NR								
3															resected	55	8th	TMA	NR	NR	NR	
3															resected	55	8th	TMA	NR	NR	NR	
	HNF1a + KRT81	Noll	2016	1	resected	231	7th	IHC	mouse monoclonal anti-keratin 81 antibody (catalog no. sc-100929, Santa Cruz Biotechnology Inc.) dilution NR rabbit polyclonal anti-HNF1A antibody (catalog no. sc-8986, Santa Cruz Biotechnology Inc) dilution NR	TMA	negative / positive	"KRT81-positive": detectable staining regardless of signal strength / number of positive cells, strong expression, >10% KRT81 expressing tumor cells "HNF1A-positive": detectable staining regardless of signal strength / number of positive cells, double positive cases excluded	DN: 92 (40%) KRT81+: 79 (34%) HNF1A+: 46 (20%) DP: 14 (6%) DN: 165 (63%)	NR	prognostic (HNF1A / KRT81), correlates with grading.							
1																resected	262	7th	TMA	negative / positive	"KRT81-positive": >30% KRT81 expressing tumor cells "HNF1A-positive": medium to strong nuclear staining of HNF1A double positive cases excluded	KRT81+: 59 (23%) HNF1A+: 35 (13%) DP: 3 (1%) DN: 41 (32%) KRT81+: 21 (16%) HNF1A+: 50 (39%) DP: 18 (13%) DN: 62 (50%) KRT81+: 11 (9%) HNF1A+: 47 (38%) DP: 5 (3%)
	Muckenhuber	2018	1	resected	130	7th	IHC	mouse monoclonal anti-keratin 81 antibody (catalog no. sc-100929, Santa Cruz Biotechnology Inc.) dilution 1:500 rabbit polyclonal anti-HNF1A antibody (catalog no. sc-8986, Santa Cruz Biotechnology Inc) dilution 1:100	TMA	NR	NR	NR	adjunct treatment vs. no adjunct treatment	prognostic (HNF1A / KRT81) no correlation to clinicopathological variables								
1															advanced stage	125	NA	TMA	NR	NR	gemcitabine-based vs. FOLFIRINOX-based	prognostic (HNF1A / KRT81) no correlation to clinicopathological variables HNF1A+ increased initial tumor control in folfox-based treatment
	Kalissis	2019	1	resected	55 (21 Patients derived from Muckenhuber et al.)	7th	IHC	according to Muckenhuber et al.	NR/TMA	according Muckenhuber et al.	according to Muckenhuber et al. double negative and double positive cases were excluded	KRT81+: 16 (15.5%) DN: NR HNF1A+: 28 (51%) DP: NR	FOLFIRINOX-based palliative treatment vs. gemcitabine-based palliative treatment	prognostic no correlation with clinicopathological variables KRT81+ predictive for palliative FOLFIRINOX KRT81+ predictive for palliative gemcitabine								
	Kalissis	2020	1	resected	103 (patients derived from Muckenhuber et al.)	7th	IHC	according to Muckenhuber et al.	NR/TMA	according Muckenhuber et al.	according to Muckenhuber et al.	NR	NR	prognostic								
	Kruger	2022	1	resected	71	7th	IHC	anti-KRT81, (clone 3B10-SB10, LS Bio, Seattle, WA) dilution 1:120 polyclonal rabbit anti-HNF1A (Atlas antibodies, Stockholm, Sweden) dilution 1:100	resections	negative / positive	"HNF1A-positive": strong and specific nuclear staining "KRT81-positive": strong and specific membranous and cytoplasmic staining	M1-PUL: KRT81+: 11 (29%) DN: 19 (50%) HNF1A+: 8 (21%) DP: 0 (0%) M1-ANY: KRT81+: 8 (24%) DN: 20 (61%) HNF1A+: 5 (15%) DP: 0 (0%)	NR	no significant differences between isolated lung and other metastatic patterns								
1															resected	57	not stat	IHC	mouse monoclonal anti-keratin 81 antibody (catalog no. sc-100929, Santa Cruz Biotechnology Inc.) dilution 1:200 mouse monoclonal anti-HNF1A antibody (catalog no. sc-39925, Santa Cruz Biotechnology Inc) dilution 1:200	resections	negative / positive	NR
	Quentner	2024	1	resected	411	8th	IHC	anti-KRT81, (clone 3B10-SB10, LS Bio, Seattle, WA) dilution 1:120 polyclonal rabbit anti-HNF1A (Atlas antibodies, Stockholm, Sweden) dilution 1:100	TMA	negative / positive	samples with ≥ 30% KRT81+ or HNF1A-positive tumor cells: positive for each marker double positive samples categorized according to predominant marker	KRT81+: 154 (37.5%) HNF1A+: 49 (11.9%) DP: 29 (7.0%) DN: 173 (42.6%)	gemcitabine-based vs. non gemcitabine-based	prognostic in PDAC (KRT81 / HNF1A) no associations to clinicopathological variables predictive for adjunct gemcitabine influences clinicopathological risk factors such as R-status								
2															advanced stage	139	NA	IHC	KRT81+: 38 (27.3%) HNF1A+: 28 (20.1%) DP: 23 (16.6%) DN: 50 (36.0%)	gemcitabine-based vs. non gemcitabine-based	not prognostic in PDAC predictive for gemcitabine no relevant associations to clinicopathological variables	
3															resected	57	8th	TMA	KRT81+: 39 (68.4%) HNF1A+: 0 (0.0%) DP: 5 (8.8%) DN: 13 (22.8%)	NA	subtype may change during metastasis no association between changes in tumor differentiation and changes in subtype	