

1 **RSV-Related Healthcare Burden: A Prospective Observational Study in a resource-constrained**
2 **setting**

3

4 **Authorship contributors**

5

6 Senjuti Saha PhD^{1#}, Sudipta Saha SM^{1,2}, Naito Kanon MSc¹, Yogesh Hooda PhD¹, Mohammad
7 Shahidul Islam PhD¹, Shuborno Islam BSc¹, Zabed Bin Ahmed MSc¹, Md Jahangir Alam FCPS³,
8 Ataul Mustufa Anik MSc¹, Probir K Sarkar FCPS³, Mohammed Rizwanul Ahsan, DCH⁴, Md. Ruhul
9 Amin FCPS¹, Samir K Saha PhD^{1,5}

10

11 1. Child Health Research Foundation, Dhaka, Bangladesh

12 2. Department of Social and Behavioural Sciences, Harvard T. H. Chan School of Public Health,
13 Boston, USA

14 3. Department of Pediatric Respiratory Medicine (Pulmonology), Bangladesh Shishu Hospital
15 and Institute, Dhaka, Bangladesh

16 4. Department of Emergency, Observatory and Referral, Bangladesh Shishu Hospital and
17 Institute, Dhaka, Bangladesh

18 5. Department of Microbiology, Bangladesh Shishu Hospital and Institute, Dhaka, Bangladesh

19

20 Correspondence to

21

22 Senjuti Saha, PhD

23 Deputy Executive Director

24 Child Health Research Foundation

25 23/3 Khilji Road, Mohammadpur

26 Dhaka 1207, Bangladesh

27 Email: senjutisaha@chrfd.org

28

29 **Abstract**

30 **Background:** Respiratory syncytial virus (RSV) is a leading cause of pediatric hospitalizations
31 globally, impacting overstretched health systems. Comprehensive data is vital for informing RSV
32 vaccination policies.

33
34 **Methods:** From January to December 2019, a prospective study was conducted at Bangladesh's
35 largest pediatric hospital to evaluate RSV's burden on the health system. We analyzed
36 hospitalization rates, lengths of stay, and outcomes for children under five using WHO criteria
37 and qPCR testing. We also examined survival probability for children denied admission due to
38 bed shortages, compared with those admitted using the Kaplan-Meier method, and estimated
39 the effects of a maternal vaccine using Monte-Carlo simulations.

40
41 **Findings:** Out of 40,664 children admitted, 31,692 were under five. Of these, 19,940 were
42 eligible for study inclusion with 7,191 meeting inclusion criteria; 6,149 (86%) had samples
43 taken, with 1,261 (21%) testing positive for RSV. The hospital incidence rate was 465 per 10,000
44 admissions. The median age of RSV patients was 3 months, with a median stay of 5 days. RSV
45 accounted for 8,274 bed days of the total 151,110 observed bed days. In-hospital mortality was
46 1.9%, increasing to 9.9% during a 90-day follow-up over telephone. Additionally, 9,169 children
47 were denied admission during the study period; of these, 5,969 under-five children were
48 approached, and outcomes of 2,850 admitted versus 3,928 refused were followed. The hazard
49 ratio for death was 1.37 for refused versus admitted children, highest within neonates at 1.7. A
50 70% efficacious vaccine would equate to adding 50 hospital beds and averting 195 deaths.

51
52 **Interpretation:** RSV significantly contributes to pediatric hospitalizations in Bangladesh,
53 exacerbating healthcare burdens and increasing mortality risks. Maternal vaccination could
54 significantly reduce both direct and indirect RSV burdens, enhancing healthcare capacity and
55 benefiting overall child health in resource-limited settings.

56
57 **Funding:** Bill and Melinda Gates Foundation

58 Introduction

59

60 Respiratory syncytial virus (RSV) is the leading cause of acute lower respiratory infection in
61 young children. Annually, RSV infections are estimated to result in 33 million episodes, 3.6
62 million hospitalizations, and 26,300 deaths¹. Low- and middle-income countries (LMICs) bear a
63 disproportionate burden of the disease, where over 95% of RSV infections and more than 97%
64 of RSV-attributable deaths occur¹.

65

66 Emerging interventions, such as maternal vaccines and long-acting monoclonal antibodies,
67 promise to reduce RSV-related morbidity and mortality²⁻⁴. There is also growing evidence
68 suggesting that these interventions might have broader benefits, like reducing respiratory
69 illnesses caused by other pathogens, decreasing recurrent hospitalizations, and improving lung
70 health⁵⁻⁷. Policymakers across countries are grappling with decisions about introduction, and
71 which groups should be prioritized for these interventions. Making informed decisions
72 necessitates up-to-date and locally relevant epidemiological data. However, there exist large
73 data gaps from LMICs.

74

75 In Bangladesh, a densely populated lower-middle income country, with a birth cohort of almost
76 3 million⁸ the healthcare system faces unique challenges due to the high burden of
77 communicable and non-communicable diseases⁹. Data from the country's largest pediatric
78 hospital indicate that approximately 20% of children needing hospitalization—whether for
79 communicable or non-communicable diseases—have to be turned away due to bed shortages
80¹⁰. Timely and appropriate care is vital for child survival and well-being. In settings where
81 healthcare resources are stretched thin, a high RSV burden can exacerbate capacity issues,
82 potentially leading to adverse health outcomes for children who cannot be admitted for various
83 reasons. Thus, it is imperative to consider both the direct and indirect effects of RSV infections
84 on child health and the broader health system when making informed policy decisions.

85

86 Two prominent multi-country studies, Aetiology of Neonatal Infections in South Asia (ANISA)¹¹,
87 and Pneumonia Etiology Research for Child Health (PERCH)¹², have highlighted RSV as a
88 primary etiological agent in sepsis and respiratory tract infections in Bangladesh and other
89 countries in Asia and Africa. While these studies underscore RSV's role in community-based
90 child morbidity, gaps remain in understanding the extent of RSV-associated hospitalizations and
91 the broader impact on the healthcare capacity in resource-constrained settings.

92

93 To address the current gaps in data and estimate the potential impact of RSV vaccines, we
94 conducted a prospective, observational study at Bangladesh's largest pediatric hospital. We
95 aimed to quantify RSV-associated hospitalizations, bed usage, and outcomes. We also assessed
96 the wider health implications for children denied admission due to bed shortages, providing
97 crucial data to inform policy and intervention strategies.

98

99 **Methods**

100

101 Ethical considerations

102 This study was approved by the ethical review board of the Bangladesh Shishu Hospital and
103 Institute (BSHI). We obtained written informed consent from guardians of children admitted in
104 the hospital from whom nasopharyngeal samples were collected. We obtained informed verbal
105 consent from caregivers when they were registered in the study after hospital admission refusal
106 for telephone follow up. We also obtained informed verbal consent from caregivers of admitted
107 patients selected for follow-up over telephone.

108

109 Study Design and Setting

110 From January to December 2019, we conducted a prospective observational surveillance at the
111 BSHI, previously known as Dhaka Shishu Hospital (DSH), located in Dhaka, Bangladesh. BSHI,
112 with its 653-bed capacity (2019), is Bangladesh's largest pediatric hospital. It offers primary to
113 tertiary care for patients up to 18 years old. Admission decisions for the in-patient department
114 (IPD) are made by physicians in the Emergency Room (ER).

115

116 This study had two main components: (i) active surveillance within the IPD to detect RSV
117 infections; and (ii) active surveillance of health outcomes of patients who had to be denied
118 hospitalization due to bed shortages in the IPD, despite needing hospitalization, and a control
119 group of patients who were admitted in the IPD.

120

121 RSV Surveillance in the IPD

122 Children aged 0–59 months admitted to the wards selected for the study with 414 beds were
123 evaluated by study physicians using the WHO RSV hospital-based surveillance case definition¹³
124 (Text S1, appendix page 3). The remaining 239 beds of the total 653 were not selected because
125 they were in wards that do not admit patients with possible infectious diseases (surgery,
126 nephrology, oncology and cardiology wards). Eligible children were enrolled in the study after
127 obtaining written consent from caregivers and obtaining a nasopharyngeal swab sample.
128 Nasopharyngeal swabs were collected by trained nurses and tested using established qPCR
129 methods (Text S2, appendix page 3).

130

131 Refusal Surveillance in the ER

132 Upon arrival at BSHI, families with children potentially needing hospitalization are triaged to the
133 Emergency Room (ER). Here, a physician evaluates the child's condition to determine if
134 immediate hospitalization is necessary. Beds are available on a first come first serve basis. If the
135 physician decides that the child requires hospitalization, but no beds are available, families are
136 referred or advised to seek care elsewhere. During this study, when a child was refused
137 admission due to bed shortages despite requiring hospitalization, trained research assistants
138 documented the ER physician's diagnosis for the patients, and upon obtaining verbal consent
139 from the caregiver, they collected basic details, including the child's age, family address, and
140 contact numbers.

141

142 Health Outcome Follow-Up

143 Among the <5 y children refused admission due to shortage of beds and whose contact
144 information was obtained, families were selected using a computer-based randomization
145 algorithm, and contacted via telephone approximately 2 weeks after hospital-refusal, and the
146 child's health status ("alive" or "deceased"), and date of death (if applicable) was recorded
147 based on caregivers' response. If the child was alive during the 2-week follow-up, a second
148 follow-up call was made three months post refusal. In parallel, from the cohort of children <5
149 years who were admitted during the same time, children were randomly chosen for follow-up
150 in the same manner. Additional information on in-hospital mortality was obtained from hospital
151 records.

152
153 Survival curves were computed using the Kaplan-Meier method. Date of death was collected
154 during follow-up, or from hospital records for admitted cases. Conservative censoring
155 assumptions were made – children refused admission and not followed-up at 14-days were
156 considered censored at day 0, and those not followed up at 90-days were considered censored
157 at 14-days (last successful contact). Admitted children's censoring time was dealt with similarly,
158 except that hospital discharge (either alive or through mortality) was additional information.
159 Multivariate Cox Proportional-Hazards models were used to estimate hazard ratios adjusted for
160 diagnosis cluster (Table S1, appendix page 5), age in months, and sex. We also obtained
161 stratified estimates of hazard ratios.

162
163 *Estimated impact of RSV maternal vaccine impact analysis (Monte Carlo Simulation)*

164
165 A Monte Carlo simulation was conducted to estimate the direct and indirect effects of RSV
166 vaccination on hospital admissions and 90-day mortality. The simulation used empirical data on
167 the total number of children requiring admission in 2019 across all age groups and diagnoses,
168 length of stay, and estimated 90-day survival probabilities among refused and admitted cases
169 based on follow-up. We explored the impact on total deaths within 3 months of hospital
170 admission or refusal when a fixed number of beds were occupied under a baseline scenario
171 reflecting the empirical data. Additionally, scenarios with various reductions in the number of

172 RSV cases were simulated. The median value across 1000 simulations and the 95% prediction
173 intervals are reported. Further methodological details are provided in Text S3, appendix page 4.

174

175 Role of funding source

176 The funder had no role in study design, data collection, data analysis, data interpretation,
177 writing of the report, or the decision to submit this manuscript. The corresponding authors had
178 full access to all the data in the study and had final responsibility for the decision to submit for
179 publication.

180

181 **Results**

182

183 Cases hospitalized with RSV:

184

185 In 2019, a total of 49,833 children sought care at BSHI and were advised admission, of whom
186 40,664 could be admitted based on the available beds (Figure 1, Table 1). 31,692 of them were
187 <5, and of them 19,940 were admitted in the screening wards. Of them, 7,191 met the inclusion
188 criteria of the study, and a sample was successfully collected from 6,149 (86%) of these
189 children. Samples could not be collected from the remaining 1,042 eligible cases due to various
190 reasons including the guardian's refusal to participate in the study, use of oxygen mask, and
191 discharge before enrollment or sample collection (Table S2, appendix page 5)). 92%
192 (5658/6149) of all samples were collected within 72 hours of hospitalization (Table S3, appendix
193 page 6).

194

195 All 6,149 samples were tested for the presence of RSV using qPCR, and of them 1,261 (21%)
196 samples tested positive. Assuming 1,042 untested eligible cases among 7191 had the same
197 positivity as those tested, the overall proportion of all hospital admissions that were RSV
198 positive was 4.65% or 465 RSV cases per 10,000 <5 hospitalizations (95% CI: 443 to 489).

199

200 The highest number of patients were enrolled in the study between June and September
201 (Figure 2A), and these four months accounted for over 70% of the total RSV-positive cases
202 (882/1261) (Figure 2B). During July, August and September, more than 20% of the 414 beds
203 were due to RSV positive cases (Figure 2C).

204
205 Of the positive cases, 30.6% were females. The median age of PCR-confirmed RSV cases was 3
206 months (IQR 1.3, 8.3 days) and 70% (881 of 1261) of the cases were within the first six months
207 (Fig 3A, Table 1)). Notably, 17% of infections occurred in the first 4 weeks of life, highlighting
208 the vulnerability of very young babies to RSV. Median hospital stay of RSV cases was 5 days (IQR
209 4 – 8), and medial stay of all RSV-negative cases and non-tested cases were 4 days (IQR 2 – 7).
210 Throughout the year, RSV cases accounted for 8,274 (5.5%) of the total 151,110 bed days
211 observed.

212 Of the positive cases, 24 cases (1.9%) died during their stay at the hospital (Table 1). Median
213 age of these cases was 130 days (IQR 77 - 175) and died between 0 - 26 days of hospitalization.

214

215 *Impact of Bed Shortages on Non-Admitted Patients*

216

217 During the study period, of the total 49,833 children requiring hospitalization, the hospital was
218 unable to admit 9,169 (18.4%) patients requiring admission due to lack of beds (Figure 1). Of
219 them, we were able to approach and collect contact information of 5,969 families for follow-up;
220 3,200 patients were not approached because they either came to the hospital at night when
221 the study research assistants were absent (n = 2,324) or were >5 years of age (n = 876). Of the
222 families who provided verbal consent and contact information for telephone follow-up, a
223 random selection of 3,928 (43%) patients were chosen for follow-up. Out of these, 3,435 (87%)
224 could be successfully contacted and followed up at 2 weeks. The primary reasons for missing
225 follow-up included switched-off mobile phones, incorrect phone numbers, or no response to
226 the call (Table S4, appendix page 6). During the first follow up, 2931 (85.3%) children were
227 reported to be alive by their guardian, and 504 (14.7%) were reported to have died. Of the
228 2,931 patients alive, 2631 (89.8%) could be subsequently contacted during the 3-month follow

229 up, and 2525 (96%) were reported to be alive, and an additional 106 (4%) had died. The survival
230 probability at the end of follow up was 0.805 [95% CI: 0.791, 0.819] for refused patients (Figure
231 4a).

232
233 During the same time, 2,850 admitted <5-year children were randomly selected for follow-up.
234 Of them, 2,527 (89%) were successfully followed up at 2 weeks. Reasons for unsuccessful follow
235 up included those above, in addition to missing contact information in the hospital records
236 (Supplementary table 6). During the first follow up, 2302 (91.1%) children were reported to be
237 healthy, and 225 (8.9%) were reported to have died. Of the 2,302 patients alive 1,965 (85.3%)
238 could be subsequently contacted during the 3-month follow up, of which 1,883 (95.8%) were
239 alive, and an additional 82 (4.2%) had died (Figure 4). The survival probability at the end of
240 follow up was 0.874 [95% CI: 0.861, 0.887] among those admitted (Figure 4a).

241
242 Overall comparison between the two groups revealed a hazard ratio (HR) of 1.69 (CI 1.48 - 1.94)
243 of death in children who were refused admission compared to children who were admitted
244 (Table 3). The HR was 1.37 (CI 1.56 - 1.79) in models adjusted for age, diagnosis and sex. Models
245 stratified by age groups showed that HR of death was significantly greater for refused cases
246 among babies in their first month of life (neonates) (HR 1.93 [CI 1.62 - 2.30]) but not in other
247 age groups. When stratified by diagnosis, HR of death was significantly greater among those
248 with perinatal asphyxia (HR 2.22 [1.68, 2.92]), systemic infections (HR 1.79 [1.13, 2.85]), and
249 preterm low-birth weight 1.85 [1.32, 2.59].

250

251 Post-hospitalization RSV-associated mortality

252 While the study was not designed to specifically follow-up RSV positive cases, of the 2,527
253 admitted children randomly selected and successfully followed up, there were 205 RSV positive
254 cases. Of these, 18 children died within the 90-day follow-up period. Their median age was
255 107.5 days (IQR 44.75 - 157) Considering both in-hospital mortality of all RSV admissions and
256 mortality during follow-up of a subset of cases revealed that survival decreased substantially

257 over time, with a 90-day survival probability of 0.901 [95% CI: 0.865, 0.938] at the end of the
258 follow-up period (Figure 4b).

259

260 Potential Impact of Maternal RSV Vaccination

261

262 In a Monte Carlo simulation of hospital admissions and refusals for the baseline scenario, based
263 on the empirical data and a 650-bed capacity, on average, 49,968 children required admissions
264 (95% prediction intervals (PI): 49,500, 50,379), and 9,221 (95% PI: 8,869, 9,760) cases were
265 refused admission over the course of the year. This was in concordance with the true burden of
266 total cases requiring admission and refusals – 49,833 and 9,169 respectively. In the vaccine
267 scenario with 70% reduction in RSV cases requiring admission, 48,895 (95% PI: 48,514, 49,315)
268 cases required admission, and 8,103 cases were refused (7,728, 8,695) – a 16.6% refusal rate.
269 Even though total cases requiring admissions in this scenario remained as high as 97.9%
270 (48895/49968) of the baseline scenario, the number of refused cases was 87.8% (8103/9221),
271 due to the freeing up of bed spaces. Figure 5 demonstrates the effects of a 70% reduction in
272 RSV admissions through vaccination, showing its impact on deaths and hospital bed utilization.
273 The plot compares mortality with increase in available beds, demonstrating how reducing RSV
274 cases is akin to increasing bed capacity. Overall, there were 7,002 deaths (6829, 7167) in the
275 baseline scenario, and 6807 deaths (6629, 6930) in the vaccine scenario, a difference of 195
276 deaths. A reduction in RSV cases was found to decrease both hospital RSV incidence and the
277 overall number of RSV cases seeking admission at the hospital. The estimated reduction in
278 deaths with the 70% efficacious vaccine would be equivalent of adding roughly 50 beds to the
279 hospital although, there is considerable overlap of the variability in the estimates from the
280 different scenarios.

281

282 **Discussion**

283 Informed decision-making on interventions to prevent RSV infections in young infants requires
284 contemporary and locally relevant epidemiological data. Our study demonstrates the significant

285 impact of RSV on healthcare resources in Bangladesh, a country characterized by a high burden
286 of infectious diseases and a substantial demand for pediatric care amidst resource limitations.

287
288 Our study recorded an overall RSV positivity rate of 21% among the 6,149 patients admitted to
289 the largest pediatric hospital of Bangladesh with respiratory illnesses, corresponding to an RSV
290 hospital incidence of 465 per 10,000 <5 admissions. The median age of confirmed RSV cases
291 was 3 months. These findings are concordant with those of the PERCH study that reported that
292 in Bangladesh 31.2% of children hospitalized with respiratory tract infections tested positive for
293 RSV¹².

294 The in-hospital mortality rate for RSV-positive cases was 1.6%, which escalated to 9.9% during
295 the 90-day follow-up of discharged patients. The median age of recorded RSV-associated
296 deaths was 4.2 months. These data are comparable to a Zambian study that found RSV in 9% of
297 community deaths and 5% of in-hospital deaths¹⁴. In Child Health and Mortality Prevention
298 Surveillance (CHAMPS) study, RSV was found in 5.5% of all deaths, with variability across
299 countries: 9.7% in Mali, 10.7% in Ethiopia, and a lower 2% in Bangladesh¹⁵. Half of the deaths in
300 the CHAMPS study occurred in infants younger than six months.

301
302 These findings underscore the critical need for maternal immunization strategies, such as
303 vaccines like ABRYOVO™, which has demonstrated 81.8% efficacy in preventing RSV infections
304 within the first three months of life¹⁶. Our estimates suggest that maternal immunization could
305 potentially reduce the hospital incidence from 465 to 140 cases per 10,000 <5 admissions.

306
307 Beyond the direct impact of RSV infections, our findings also demonstrate the considerable
308 burden infections impose on the healthcare system. For a minimum of three months during the
309 study year, RSV cases occupied more than 20% of the beds under observation, with a median
310 hospital stay for RSV-positive cases at 5 days—longer than the overall median length of stay of
311 4 days for all admitted patients. In 2019, RSV cases accounted for 8,274 of the total 151,110
312 bed days observed. As the largest pediatric tertiary hospital in Bangladesh, BSHI, even with its
313 total of 653 beds, is insufficient. Consequently, clinicians often must refuse admission due to

314 bed unavailability¹⁰. We followed over 5,000 admitted and refused children up to 90 days to
315 determine the difference in health outcomes and the wider effects of high-burden infections
316 like RSV on the healthcare system. The cumulative mortality proportion for children denied
317 admission was 19.4%, significantly higher than the 14% among those admitted. This
318 discrepancy in mortality risk is quantified by a hazard ratio (HR) of 1.69 across all children under
319 five.

320
321 The HR for death was 1.37 among children refused admission compared to those admitted,
322 adjusted for age, diagnosis, and sex. The highest mortality risk was observed in neonates
323 requiring hospitalization within their first month of life, with a HR of 1.93. This disparity
324 highlights the essential role of healthcare access in determining child survival outcomes. Monte
325 Carlo simulation using a 70% efficacious vaccine is estimated to be equivalent to adding
326 approximately 50 beds to the hospital, and averting 195 deaths in only one hospital, each year.

327
328 The issue of bed shortages, a prevalent concern across many LMICs, is pressing. In Bangladesh,
329 the rate of 0.8 beds per 1,000 population is markedly lower than in developed nations such as
330 2.9 in the USA and 2.5 in the UK¹⁷. With limited infrastructure, preventative strategies become
331 even more vital. Over the past decades, the introduction of multiple vaccines in Bangladesh and
332 improved health systems have led to a decrease in under-5, yet the rate 33 death in 1,000 live
333 birth remain high, underscoring the need for further disease prevention measures¹⁸. Given the
334 considerable proportion of hospital beds occupied by RSV cases during peak periods,
335 introducing an RSV vaccine could significantly impact bed availability for critically ill infants.
336 Other interventions like administration of monoclonal antibodies in neonates and infants can
337 also be considered. However, the cost and logistical hurdles associated with monoclonal
338 antibody treatments, such as nirsevimab, highlight the need for affordable, scalable, and
339 equitable solutions, particularly in LMICs like Bangladesh where 69% of health expenditures are
340 out-of-pocket¹⁹.

341

342 While our 2019 study centered on RSV, a significant dengue outbreak during the same period
343 compounded the strain on hospital resources²⁰. In addition, other infectious etiologies of
344 respiratory infections remain to be explored, as evidenced by the high number of cases meeting
345 the inclusion criteria for RSV October to December, despite the absence of RSV detection.

346
347 The findings of this study must be viewed considering certain limitations. Primary among them
348 is the necessity to conduct the study in a single hospital due to the high volume of cases and
349 the extensive follow-up required for thousands of patients. While the authors' lived
350 experiences suggest that similar circumstances are likely in other resource-limited settings, a
351 multi-site research would be helpful in developing a more detailed understanding of the RSV
352 burden among children throughout Bangladesh and potentially the wider region. Furthermore,
353 the study's duration was constrained to one year, shortened by the COVID-19 pandemic in the
354 following year. A longitudinal study spanning multiple years could provide more information on
355 the patterns of RSV seasonality, but previous reports from Bangladesh suggest an unpredictable
356 pattern of RSV seasonality²¹. And the overall high burden of RSV in the study hospital aligns
357 with previous studies^{11,12}. This study also did not investigate concurrent infections alongside
358 RSV, nor was it set up to confirm deaths directly attributable to RSV. Lastly, potential biases due
359 to human factors may have influenced the clinicians' admissions decisions during times of
360 resource scarcity, even though such decisions should theoretically be unaffected by bed
361 availability constraints.

362
363 The broader context and global health implications of our study are significant. The challenges
364 highlighted related to shortage of hospital beds in places with high burden of disease are
365 common in many LMICs and the global health community can learn from these findings
366 particularly regarding resource allocation and estimate potential impact of preventive
367 strategies like vaccination. This study also contributes to the growing body of evidence
368 supporting the development and distribution of RSV vaccines or other interventions, which
369 could significantly impact child health globally, specifically in low-resource countries where
370 burden is the highest.

371 **Declaration of Interests**

372 The authors declare no conflict of interest.

373

374 **Author contributions**

375 S.S. contributed to conceptualization, funding acquisition, study design, implementation,
376 monitoring, data analysis, drafting the initial manuscript, and preparation of figures. S.Sa. was
377 involved in data analysis, preparation of figures, and manuscript editing. N.K. contributed to
378 data analysis and editing. Y.H. participated in data analysis, preparation of figures, and
379 manuscript editing. M.S.I. was responsible for analysis and coordination of the study, and also
380 contributed to editing. S.I. carried out specimen extraction and PCR testing. Z.B.A. coordinated
381 and trained doctors and nurses, assisted in the implementation of the study, in addition to
382 contributing to manuscript editing. M.J.A. was involved in monitoring and management
383 activities, as well as editing. A.M.A. performed data cleaning. P.K.S. contributed to management
384 and patient data analysis. M.R.A. was involved in implementation and management. M.R.A.
385 contributed to editing. S.K.S. contributed to conceptualization, funding acquisition, study
386 design, implementation, monitoring, and manuscript editing. All authors reviewed the
387 manuscript and agreed on the contents.

388

389 **Declaration of Generative AI and AI-assisted technologies in the writing process**

390 During the preparation of this work the authors used ChatGPT to check grammar, spellings, and
391 improve readability of the manuscript. After using this tool/service, the authors reviewed and
392 edited the content as needed and take full responsibility for the content of the publication.

393

394

395 **References**

396

- 397 1 Li Y, Wang X, Blau DM, *et al.* Global, regional, and national disease burden estimates of acute
398 lower respiratory infections due to respiratory syncytial virus in children younger than 5
399 years in 2019: a systematic analysis. *Lancet* 2022; **399**: 2047–64.
- 400 2 Baral R, Higgins D, Regan K, Pecenka C. Impact and cost-effectiveness of potential
401 interventions against infant respiratory syncytial virus (RSV) in 131 low-income and middle-
402 income countries using a static cohort model. *BMJ Open* 2021; **11**: e046563.
- 403 3 Muller William J., Madhi Shabir A., Seoane Nuñez Beatriz, *et al.* Nirsevimab for Prevention of
404 RSV in Term and Late-Preterm Infants. *New England Journal of Medicine* 2023; **388**: 1533–4.
- 405 4 Commissioner O of the. FDA Approves First Vaccine for Pregnant Individuals to Prevent RSV
406 in Infants. FDA. 2023; published online Aug 22. [https://www.fda.gov/news-events/press-](https://www.fda.gov/news-events/press-announcements/fda-approves-first-vaccine-pregnant-individuals-prevent-rsv-infants)
407 [announcements/fda-approves-first-vaccine-pregnant-individuals-prevent-rsv-infants](https://www.fda.gov/news-events/press-announcements/fda-approves-first-vaccine-pregnant-individuals-prevent-rsv-infants)
408 (accessed April 13, 2024).
- 409 5 Zar HJ, Nduru P, Stadler JAM, *et al.* Early-life respiratory syncytial virus lower respiratory tract
410 infection in a South African birth cohort: epidemiology and effect on lung health. *The Lancet*
411 *Global Health* 2020; **8**: e1316–25.
- 412 6 Abreo A, Wu P, Donovan BM, *et al.* Infant Respiratory Syncytial Virus Bronchiolitis and
413 Subsequent Risk of Pneumonia, Otitis Media, and Antibiotic Utilization. *Clin Infect Dis* 2020;
414 **71**: 211–4.
- 415 7 Feikin DR, Karron RA, Saha SK, *et al.* The full value of immunisation against respiratory
416 syncytial virus for infants younger than 1 year: effects beyond prevention of acute
417 respiratory illness. *The Lancet Infectious Diseases* 2023; **0**. DOI:10.1016/S1473-
418 3099(23)00568-6.
- 419 8 Bangladesh | Gavi, the Vaccine Alliance. 2018; published online Nov 29.
420 <https://www.gavi.org/programmes-impact/country-hub/south-east-asia/bangladesh>
421 (accessed April 13, 2024).

- 422 9 Islam SMS, Uddin R, Das S, *et al.* The burden of diseases and risk factors in Bangladesh, 1990–
423 2019: a systematic analysis for the Global Burden of Disease Study 2019. *The Lancet Global*
424 *Health* 2023; **11**: e1931–42.
- 425 10 Saha S, Santosham M, Hussain M, Black RE, Saha SK. Rotavirus Vaccine will Improve Child
426 Survival by More than Just Preventing Diarrhea: Evidence from Bangladesh. *Am J Trop Med*
427 *Hyg* 2018; **98**: 360–3.
- 428 11 Saha SK, Schrag SJ, El Arifeen S, *et al.* Causes and incidence of community-acquired serious
429 infections among young children in south Asia (ANISA): an observational cohort study. *The*
430 *Lancet* 2018; **392**: 145–59.
- 431 12 O'Brien KL, Baggett HC, Brooks WA, *et al.* Causes of severe pneumonia requiring hospital
432 admission in children without HIV infection from Africa and Asia: the PERCH multi-country
433 case-control study. *The Lancet* 2019; **394**: 757–79.
- 434 13 Case definitions. [https://www.who.int/teams/global-influenza-programme/global-](https://www.who.int/teams/global-influenza-programme/global-respiratory-syncytial-virus-surveillance/case-definitions)
435 [respiratory-syncytial-virus-surveillance/case-definitions](https://www.who.int/teams/global-influenza-programme/global-respiratory-syncytial-virus-surveillance/case-definitions) (accessed Jan 6, 2024).
- 436 14 Gill CJ, Mwananyanda L, MacLeod WB, *et al.* Infant deaths from respiratory syncytial virus in
437 Lusaka, Zambia from the ZPRIME study: a 3-year, systematic, post-mortem surveillance
438 project. *The Lancet Global Health* 2022; **10**: e269–77.
- 439 15 Blau DM, Baillie VL, Els T, *et al.* Deaths Attributed to Respiratory Syncytial Virus in Young
440 Children in High-Mortality Rate Settings: Report from Child Health and Mortality Prevention
441 Surveillance (CHAMPS). *Clin Infect Dis* 2021; **73**: S218–28.
- 442 16 Fleming-Dutra KE, Jones JM, Roper LE, *et al.* Use of the Pfizer Respiratory Syncytial Virus
443 Vaccine During Pregnancy for the Prevention of Respiratory Syncytial Virus-Associated Lower
444 Respiratory Tract Disease in Infants: Recommendations of the Advisory Committee on
445 Immunization Practices - United States, 2023. *MMWR Morb Mortal Wkly Rep* 2023; **72**:
446 1115–22.

- 447 17 World Bank Open Data. World Bank Open Data. <https://data.worldbank.org> (accessed April
448 21, 2024).
- 449 18 SDG Tracker. <https://sdg.gov.bd/page/indicator-wise/1/30/3/0#1> (accessed April 21, 2024).
- 450 19 2023-05-31-17-02-bed461250ff1b439a0338ab3ddfea682.pdf.
451 [https://heu.portal.gov.bd/sites/default/files/files/heu.portal.gov.bd/page/364480c2_26f9_4](https://heu.portal.gov.bd/sites/default/files/files/heu.portal.gov.bd/page/364480c2_26f9_4bbb_bf71_8b4ac613d96a/2023-05-31-17-02-bed461250ff1b439a0338ab3ddfea682.pdf)
452 [bbb_bf71_8b4ac613d96a/2023-05-31-17-02-bed461250ff1b439a0338ab3ddfea682.pdf](https://heu.portal.gov.bd/sites/default/files/files/heu.portal.gov.bd/page/364480c2_26f9_4bbb_bf71_8b4ac613d96a/2023-05-31-17-02-bed461250ff1b439a0338ab3ddfea682.pdf)
453 (accessed April 14, 2024).
- 454 20 Yesmin S, Sarmin S, Ahammad AM, Rafi MdA, Hasan MJ. Epidemiological Investigation of the
455 2019 Dengue Outbreak in Dhaka, Bangladesh. *J Trop Med* 2023; **2023**: 8898453.
- 456 21 Hossain ME, Rahman MZ, Islam MdM, *et al.* Pre COVID-19 molecular epidemiology of
457 respiratory syncytial virus (RSV) among children in Bangladesh. *Heliyon* 2022; **8**: e11043.
- 458
459
460

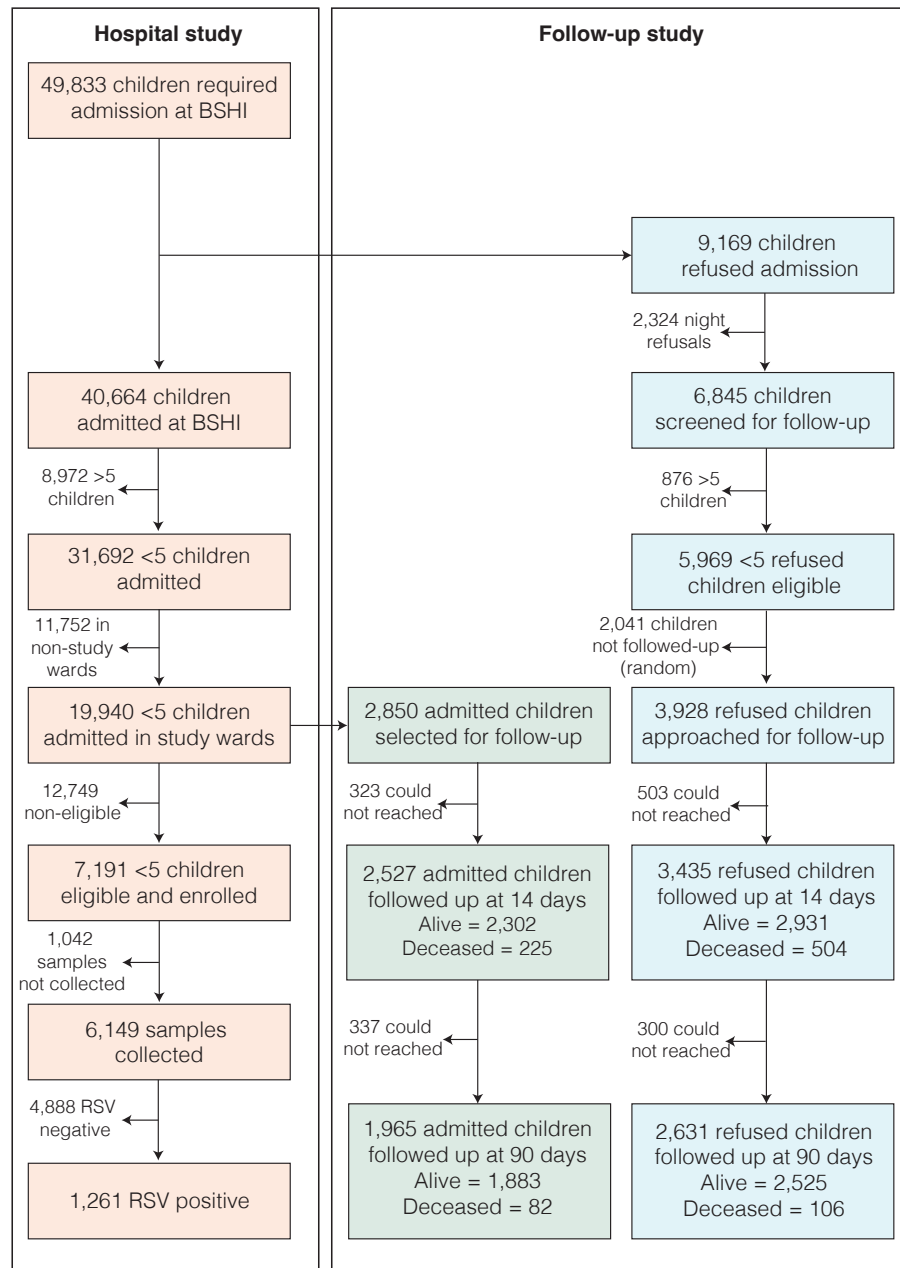


Figure 1. Flowchart of Sample Collection and Patient Follow-Up.

The figure illustrates the process of sample collection and subsequent patient follow-up for children under five admitted to BSHI or refused admission due to unavailability of bed. Reasons for failures of sample collection and details on those lost to follow-up are provided in Supplementary Appendix Tables S2, S4 - S7.

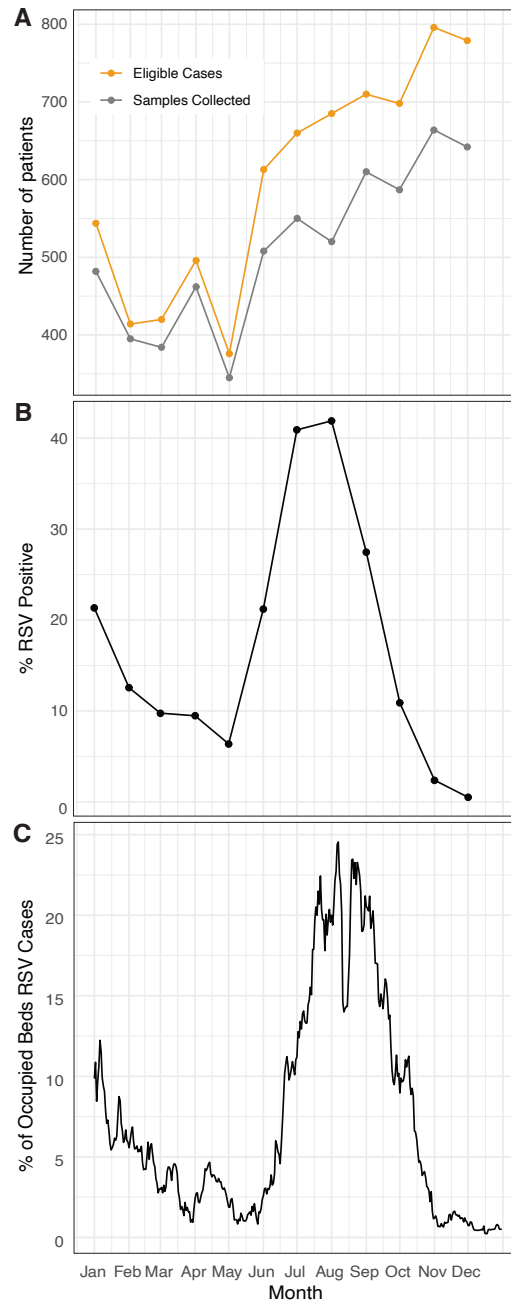


Figure 2. RSV Infections and Bed Occupancy in BSHI in 2019.

A. The total number of patients enrolled into the study each month, and the number of samples collected from these patients. B. Percentage of RSV positive cases detected each month. C. Percentage of occupied beds with RSV positive cases across different months. The dip in bed occupancy seen in mid-August is because of Eid-ul-Adha holidays.

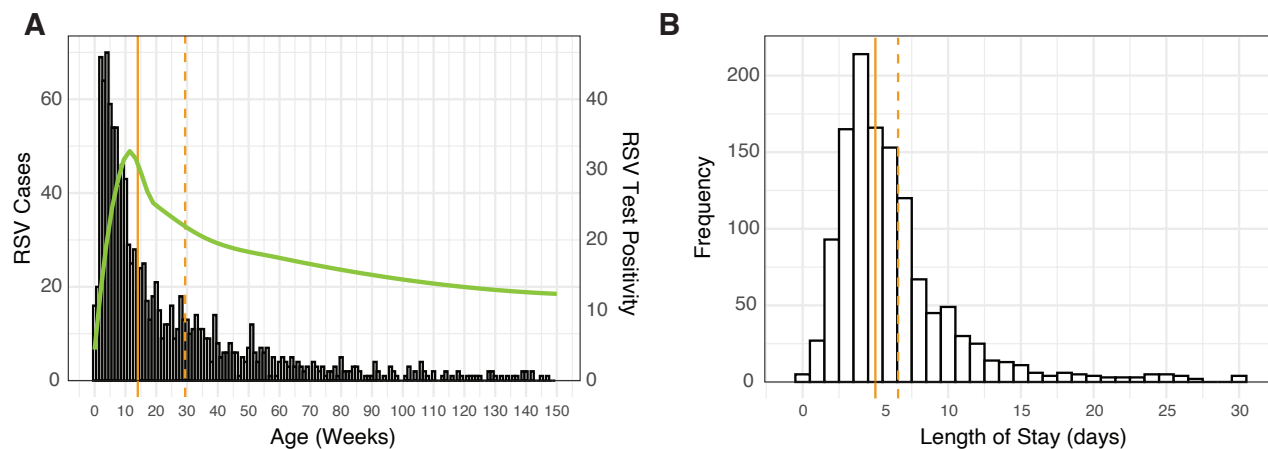


Figure 3. Age distribution of RSV cases and length of hospital stay. A. Age distribution of RSV cases ($n = 1,261$) in weeks, where the green line represents RSV test positivity in different age groups, the solid orange line indicates the median age, and the dotted orange line shows the mean age. B. Length of hospital stay in days of RSV cases ($n = 1,261$), with the solid orange line representing the median length of stay and the dotted orange line the mean.

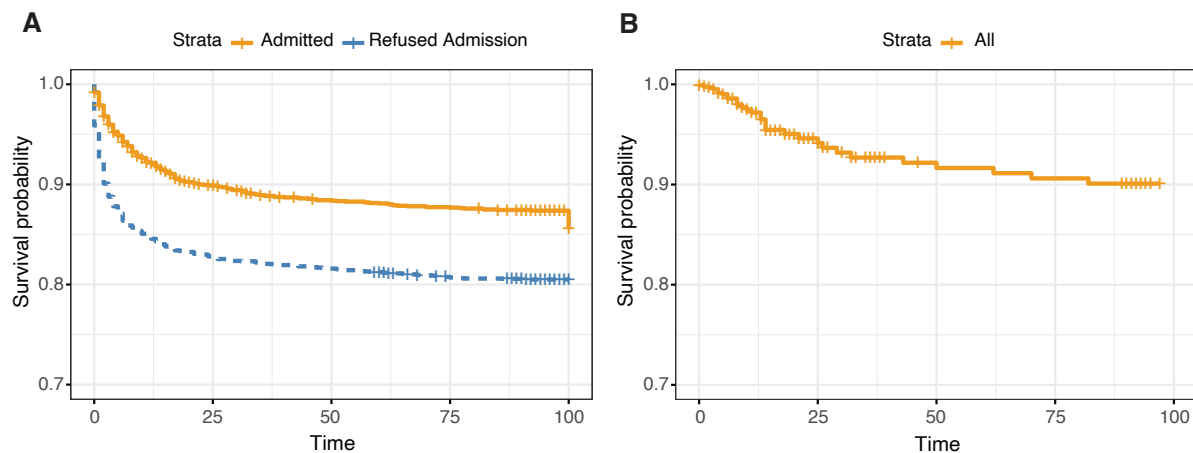


Figure 4. Survival Analysis of Patients followed-up.

A. Survival probabilities of patients who were refused admission with those who were admitted. Cases were censored at discharge if there was no follow-up or at the last successful follow-up.

B. Survival curve for only RSV-positive cases: the 24 cases that resulted in in-hospital deaths, alongside the additional 205 cases that were followed up, of whom 18 subsequently died.

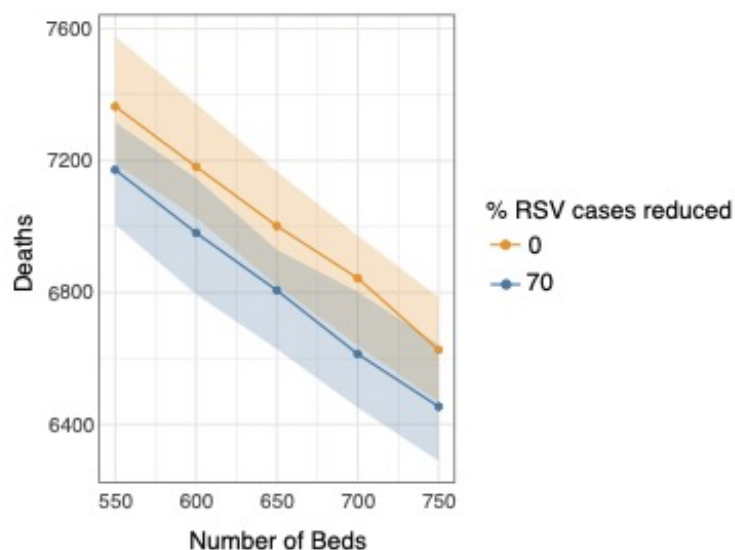


Figure 5. Impact of RSV Vaccination on Hospital Utilization and 90-day Mortality Rates of all children who require admission at BSHI. Effects of a 70% reduction in RSV admissions through vaccination, showing its impact on deaths and hospital bed utilization among children under five. The plot compares mortality against the effective increase in available beds, demonstrating how reducing RSV cases is akin to increasing bed capacity.

Table 1: Clinical attributes study participants enrolled in the study stratified by RSV status.

	Overall	RSV Negative/ Not Tested	RSV Positive	p
Number of Patients	19940	18679	1261	
Sex - Female (%)	7582 (38.0)	7196 (38.5)	386 (30.6)	<0.001
Age in months (median [IQR])	5.00 [0.00, 16.00]	5.00 [0.00, 17.00]	3.00 [1.00, 8.00]	<0.001
< 2 wks	5364 (26.9)	5293 (28.3)	71 (5.6)	
2 wks - 3 mnths	4039 (20.3)	3413 (18.3)	626 (49.6)	
4 - 6 mnths	1648 (8.3)	1464 (7.8)	184 (14.6)	
7 mnths - 2 yrs	5693 (28.6)	5381 (28.8)	312 (24.7)	
2 - 5yrs	3196 (16.0)	3128 (16.7)	68 (5.4)	
In-hospital mortality (%)	1266 (6.3)	1242 (6.6)	24 (1.9)	<0.001
Length of Stay (median [IQR])	4.00 [2.00, 7.00]	4.00 [2.00, 7.00]	5.00 [4.00, 8.00]	<0.001
Diagnosis Cluster (%)				<0.001
Respiratory Manifestation	5026 (25.2)	4065 (21.8)	961 (76.2)	
Gastrointestinal Manifestation	2192 (11.0)	2178 (11.7)	14 (1.1)	
Perinatal Asphyxia	2178 (10.9)	2164 (11.6)	14 (1.1)	
Febrile Illness	1464 (7.3)	1445 (7.7)	19 (1.5)	
Systemic Infections	1421 (7.1)	1352 (7.2)	69 (5.5)	
Preterm low-birth weight	899 (4.5)	887 (4.7)	12 (1.0)	
Other	6758 (33.9)	6586 (35.3)	172 (13.6)	

Table 2: Clinical attribute and outcome of participants admitted or refused admissions who were followed-up.

The table represents data of participants for whom data could be collected. Diagnoses was could not be collected for 18% of participants, 14-day mortality was missing for 12% and 90-day mortality was missing for 21%.

	Overall	Admitted	Refused	p-value
Number of Patients	6772	2845	3927	
Sex - Female (%)	2582 (38.1)	1071 (37.6)	1511 (38.5)	0.502
Age in months (median [IQR])	3.00 [0.00, 12.00]	4.00 [0.00, 15.00]	3.00 [0.00, 11.00]	0.006
< 2 wks	2017 (29.8)	804 (28.3)	1213 (30.9)	<0.001
2 wks - 3 mnths	1430 (21.1)	600 (21.1)	830 (21.1)	
4 - 6 mnths	622 (9.2)	226 (7.9)	396 (10.1)	
7 mnths - 2 yrs	1869 (27.6)	764 (26.9)	1105 (28.1)	
2 - 5yrs	834 (12.3)	451 (15.9)	383 (9.8)	
ER Diagnosis Cluster (%)				
Respiratory Manifestation	1463 (26.5)	351 (20.1)	1112 (29.4)	
Gastrointestinal Manifestation	475 (8.6)	182 (10.4)	293 (7.8)	
Perinatal Asphyxia	702 (12.7)	211 (12.1)	491 (13.0)	
Febrile Illness	207 (3.7)	101 (5.8)	106 (2.8)	<0.001
Systemic Infections	496 (9.0)	145 (8.3)	351 (9.3)	
Preterm low-birth weight	382 (6.9)	78 (4.5)	304 (8.0)	
Other	1799 (32.6)	677 (38.8)	1122 (29.7)	
14-day Mortality (%)	729 (12.2)	225 (8.9)	504 (14.7)	<0.001
90-day Mortality (%)	917 (17.2)	307 (14.0)	610 (19.4)	<0.001

Table 3: Hazard ratio (HR) of refused vs admitted participants adjusted by age, sex, and diagnosis.

Adjusted by	Strata	HR [95% CI]
		1.69 [1.48, 1.69]
Age, Sex, Diagnosis		1.56 [1.36, 1.79]
Sex, Diagnosis	< 1 mnth	1.93 [1.62, 2.3]
Sex, Diagnosis	2-3 mnths	1.19 [0.89, 1.58]
Sex, Diagnosis	4 mnths - 1 yr	1.47 [0.87, 2.48]
Sex, Diagnosis	1-5 yrs	1.05 [0.66, 1.68]
Age, Diagnosis	Male	1.59 [1.34, 1.9]
Age, Diagnosis	Female	1.49 [1.2, 1.84]
Age, Sex	Respiratory Manifestation	0.96 [0.7, 1.31]
Age, Sex	Perinatal Asphyxia	2.22 [1.68, 2.92]
Age, Sex	Systemic Infections	1.79 [1.13, 2.85]
Age, Sex	Preterm low-birth weight	1.85 [1.32, 2.59]
Age, Sex	Febrile Illness	0.79 [0.14, 4.37]
Age, Sex	Gastrointestinal Manifestation	1.37 [0.51, 3.71]
Age, Sex	Other	1.32 [1.02, 1.71]