
Electroconvulsive Therapy Modulates Loudness Dependence of Auditory Evoked Potentials: A Pilot MEG Study

Michael Dib¹, Jeffrey D. Lewine^{2,3}, Christopher C. Abbott^{3,†}, Zhi-De Deng^{4,†,*}

¹*Fischell Department of Bioengineering, University of Maryland, College Park, MD, USA*

²*The Mind Research Network, University of New Mexico, Albuquerque, NM, USA*

³*Department of Psychiatry and Behavioral Sciences, University of New Mexico School of Medicine, Albuquerque, NM, USA*

⁴*Computational Neurostimulation Research Program, Noninvasive Neuromodulation Unit, Experimental Therapeutics and Pathophysiology Branch, National Institute of Mental Health Intramural Research Program, National Institutes of Health, Bethesda, MD, USA*

† *These authors share senior authorship*

Correspondence*:

Zhi-De Deng

zhi-de.deng@nih.gov

2 ABSTRACT

3 Electroconvulsive therapy (ECT) remains a critical intervention for treatment-resistant
4 depression (MDD), yet its neurobiological underpinnings are not fully understood. This pilot study
5 utilizes high-resolution magnetoencephalography (MEG) in nine depressed patients receiving right
6 unilateral ECT, to investigate the changes in loudness dependence of auditory evoked potentials
7 (LDAEP), a proposed biomarker of serotonergic activity, following ECT. We hypothesized that
8 ECT would reduce the LDAEP slope, reflecting enhanced serotonergic neurotransmission.
9 Contrary to this, our findings indicated a significant increase in LDAEP post-ECT ($t_8 = 3.17$,
10 $p = .013$). The increase in LDAEP was not associated with changes in depression severity or
11 cognitive performance, as assessed by the Hamilton Depression Rating Scale (HAM-D-24) and
12 Repeatable Battery for the Assessment of Neuropsychological Status (RBANS). We discussed
13 potential mechanisms for the observed increase, including ECT's impact on serotonergic,
14 dopaminergic, glutamatergic, and GABAergic receptor activity, neuroplasticity involving brain-
15 derived neurotrophic factor (BDNF), and inflammation modulators such as TNF-*alpha*. Our results
16 suggest a complex interaction between ECT and these neurobiological systems, rather than a
17 direct reflection of serotonergic neurotransmission.

18 **Keywords:** Electroconvulsive therapy, Loudness dependence of auditory evoked potentials, major depressive disorder,
19 magnetoencephalography, serotonin

1 INTRODUCTION

20 Major depressive disorder (MDD) remains a pervasive global health challenge, affecting millions worldwide
21 and ranking among the leading causes of disability. MDD leads to substantial healthcare costs and
22 contributing heavily to the overall disease burden (1). Despite the widespread use of antidepressant
23 medications, many patients do not achieve sustained relief. As an alternative, neuromodulation therapies
24 such as electroconvulsive therapy (ECT) play a vital role. ECT is a well-established intervention that
25 demonstrates exceptional efficacy in multiple psychiatric disorders, including MDD. It involves the
26 administration of electrical currents, either unilateral or bilateral electrode placements on the patient's
27 head, to induce a brief, controlled seizure. Ultimately, this process is thought to elicit reorganization of
28 key cortical networks involved with mood and cognition. However, ECT can cause significant adverse
29 effects, such as memory loss and confusion, rendering ECT to be reserved for severely treatment resistant
30 patients (2, 3). Identifying the specific neurophysiological changes induced by ECT could lead to the
31 development of safer and more effective treatments. While the optimal stimulation methods and parameters
32 are still being investigated, ECT remains essential for managing treatment-resistant depression.

33 More than eight decades have passed since its introduction as a clinical intervention, the precise
34 neurobiological mechanisms underpinning ECT's therapeutic effect remain elusive. Current research
35 suggests that ECT's benefits are likely achieved through multiple mechanisms. These include, but are
36 not limited to, changes in neurotransmitter transmission, enhancement of neurotrophic and neuroplastic
37 activities, modulation of cortical networks, reduction of neuroinflammation, and regulation of the endocrine
38 system. (3, 4, 5, 6, 7, 8, 9, 10). Given the historical precedence of the monoaminergic theory of depression,
39 a plethora of studies in both animals and humans have sought out to determine whether ECT's efficacy
40 is related to changes in serotonergic activity (11, 12). While the evidence remains inconclusive, ECT
41 appears to have some notable effect on serotonergic neurotransmission (3). A significant challenge in this
42 area is that peripheral biomarker measurements do not reliably reflect neurotransmitter levels in the brain.
43 Advanced neuroimaging techniques can be employed to gather insight into the effect of treatments such as
44 ECT on neurotransmitter activity.

45 Loudness dependence of auditory evoked potentials (LDAEP) is a method used to measure the response of
46 cortical potentials to variations in the intensity (i.e., loudness) of auditory stimuli. The relationship between
47 stimuli loudness and evoked potential amplitudes in the primary auditory cortex has been suggested as
48 an indicator of serotonergic neurotransmission (13). Initial studies in animal models reported that higher
49 serotonin activity was correlated with less dependence on stimulus intensity (i.e., similar amplitudes in
50 cortical evoked potentials regardless of loudness). Conversely, lower serotonin activity was correlated
51 with loudness-dependent changes in evoked potential amplitudes (13, 14). Furthermore, LDAEP has been
52 proposed to be a protective mechanism in auditory processing, which helps prevent overstimulation and
53 excitotoxicity (15). Within the primary auditory cortex, the neurobiological mechanisms of a reduced
54 LDAEP being associated with high serotonin activity is proposed to rely on serotonergic modulation
55 of cortical excitability. This modulation occurs indirectly via GABA-ergic interneurons, which express
56 excitatory 5-HT_{2A} receptors, and directly via pyramidal cells, which express both excitatory 5-HT_{2A} and
57 inhibitory 5-HT_{1A} receptors (13, 14, 16, 17).

58 An abundance of literature now exists exploring the relationship between the LDAEP and other
59 neurotransmitter systems and biomarkers (18, 19). While evidence for the LDAEP's relationship with
60 serotonin is controversial, it is clear serotonergic activity serves a critical role in the functioning of the
61 primary auditory cortex (18, 20, 21, 22, 23, 24). Numerous studies provide robust support for the influence
62 of serotonergic activity on neuronal functioning across auditory processing pathways (25, 26, 27, 28).

63 Notably, a recent positron emission tomography (PET) study on the molecular mechanisms underlying
64 the LDAEP reported that this biomarker is strongly and positively correlated with 5-HT1A binding in the
65 temporal cortex, specifically in the location of the primary auditory cortex (29).

66 Additionally, studies have demonstrated that serotonin plays a crucial role at the intersection of psychiatric
67 disorders and auditory conditions, including tinnitus and hearing loss (25, 26). In particular, MDD has
68 been reported to be associated with impaired auditory processing. Studies indicate that deviations in
69 serotonergic activity are evident in the auditory cortices of individuals with depression compared to
70 controls (23, 30, 31, 32, 33). For example, increased 5-HT1A binding and decreased 5-HT2A binding
71 specifically within the primary auditory cortex in depressed patients has been reported (23). Moreover,
72 treatments for depression, including ECT, have been shown to have a significant effect on auditory
73 processing, demonstrated via increased activity, excitability, and intrinsic connectivity within the auditory
74 cortices (30, 31, 34, 35, 36). Additionally, ECT has shown a pronounced impact on auditory evoked
75 potentials, further underscoring the complex interplay between serotonergic modulation and auditory
76 functions in psychiatric contexts (37, 38).

77 Given the efficacy of serotonergic agents such as selective serotonin reuptake inhibitors, and more recently
78 psychedelics like psilocybin, in the treatment of depression, it is likely regulation of this monoamine
79 system serves a pivotal role in ECT's efficacy (39). Studies show mixed results regarding ECT's impact
80 on serotonergic receptors. For instance, some reports indicate that electroconvulsive stimuli result in
81 decreased binding and activity of both 5-HT1A and 5-HT2A receptors (12, 40, 41, 42). However, other
82 studies reveal no change in 5-HT1A activity, an increase in 5-HT2 activity, and enhanced serotonin
83 transporter (SERT) receptor levels following ECT (43, 44, 45, 46). Despite these discrepancies, there
84 is broad consensus that ECT has a robust impact on serotonergic receptors in the treatment of multiple
85 psychiatric disorders (8, 12, 47, 48).

86 This study utilizes high-resolution magnetoencephalography (MEG) to measure cortical activity and
87 determine the LDAEP in individuals before and after ECT. The primary aim is to explore the changes in
88 the central serotonergic neurotransmission attributable to ECT, by analyzing variations in LDAEP. We
89 hypothesize that ECT will decrease LDAEP, indicative of enhanced serotonergic neurotransmission. This
90 approach not only promises to deepen our understanding of the neurochemical environment in patients
91 undergoing ECT but also sheds light on the neurobiological mechanisms that underpin ECT's effectiveness.

2 METHODS

92 Study participants and ECT treatment Ethical approval was obtained from the Human Research Protections
93 Office at the University of New Mexico (UNM) before study initiation. The research was conducted in full
94 compliance with the ethical standards outlined in the Declaration of Helsinki. Patients were recruited from
95 the UNM Mental Health Center's inpatient and outpatient services. All patients either had the decisional
96 capacity to consent or, where necessary, provided assent with a surrogate decision-maker giving formal
97 consent. Prior to receiving treatment, the average score on the 24-item Hamilton Depression Rating Scale
98 (HAMD-24) for these patients was 37.2 (12.8). Additionally, the mean score on the total Repeatable Battery
99 for the Assessment of Neuropsychological Status (RBANS) was 82.9 (19.4). All patients completed a
100 full course of electroconvulsive therapy (ECT) using the ultra-brief pulse width, right unilateral electrode
101 placement as previously described (49). During the initial session, the seizure threshold was determined
102 using a dose titration method, which then guided the dosage for subsequent treatments. Specifically, the
103 stimulus dosage was set at six times the threshold. Treatments were administered thrice weekly, and

104 continued until an adequate clinical response was achieved or a decision was made to cease treatment due
105 to non-response.

106 2.1 MRI

107 All MRI scans were conducted using the 3-Tesla Siemens Trio scanner at the Mind Research Network
108 (MRN). High-resolution T1-weighted structural images were acquired using a 5-echo MPRAGE sequence
109 with the following parameters: echo times (TE) of 1.64, 3.5, 5.36, 7.22, and 9.08 ms; repetition time (TR)
110 of 2.53 s; inversion time (TI) of 1.2 s; a flip angle of 7° ; a single excitation; a slice thickness of 1 mm; a
111 field of view of 256 mm; and a resolution of 256×256 . Structural MRI preprocessing and the delineation
112 of structural images were conducted using FreeSurfer 4.5.0 software (<https://surfer.nmr.mgh.harvard.edu>) (50).

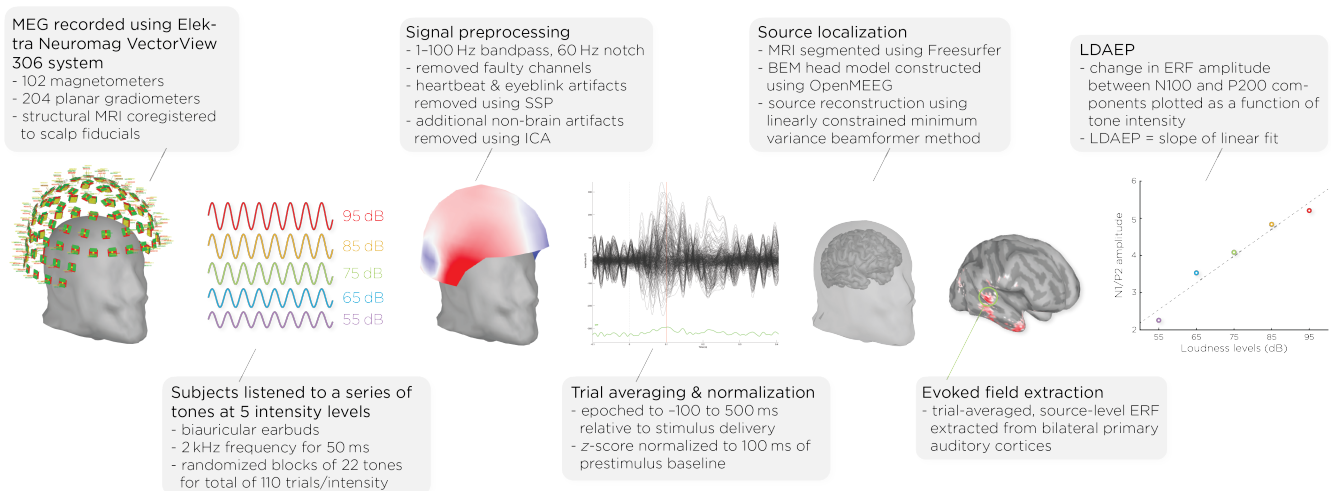


Figure 1. Workflow of MEG acquisition and data processing, detailing the steps from signal acquisition to data analysis. It shows the MEG setup, signal preprocessing, auditory stimulus presentation, data normalization, brain activity source localization, and the quantification of auditory evoked potentials (AEPs) across different sound intensity levels.

114 2.2 MEG acquisition and data processing

115 Prior to and following the ECT course, patients underwent MEG scans (see Figure 1). MEG recordings
116 were captured using the Elektra Neuromag VectorView 306 system, which is equipped with 102
117 magnetometers and 204 planar gradiometers. To ensure accurate alignment, the MRIs were coregistered
118 with scalp fiducial markers. While seated inside the MEG helmet, patients were exposed to a series of
119 auditory tones at five different intensity levels: 55, 65, 75, 85, and 95 dB. The tones were emitted through
120 biauricular earbuds at a frequency of 2 kHz, lasting 50 ms each. The tones were presented in a random
121 sequence, with each intensity block comprising 22 tones, resulting in a total of 110 trials per intensity level.

122 Data analysis was performed with Brainstorm 3 (51), which is documented and freely available
123 for download online under the GNU general public license (<http://neuroimage.usc.edu/brainstorm>). The MEG data was filtered using a 1–100 Hz bandpass filter and a 60 Hz notch filter to
124 eliminate electrical line noise. Malfunctioning channels were identified and excluded. Artifacts arising
125 from cardiac activity and eye blinks were removed via signal-space projection, and independent component
126 analysis was used to eliminate other non-brain artifacts. Auditory events were defined for a time window
127

128 from -100 to 500 ms around the tone's presentation. The data was normalized using the Z-transformation
 129 relative to the 100 ms pre-stimulus baseline.

130 Cortical structures were derived from each subject's MRI scans using FreeSurfer, and aligned with
 131 a standard brain atlas for cortical reconstruction. The head model for the forward model utilized the
 132 symmetric boundary element method (BEM) implemented in OpenMEEG, provided by the INRIA institute.
 133 This model established a computational link between the neuronal activity in the source space and the
 134 recorded MEG data in the sensor space, considering the conductive properties of head tissues. The inverse
 135 model, which infers neural activity from the MEG data, was computed using a data covariance matrix
 136 through the linearly constrained minimum variance (LCMV) beamforming technique, focusing on auditory
 137 evoked potentials. Trial-averaged, source-level event-related fields (ERFs) were extracted from the bilateral
 138 primary auditory cortices. Finally, the LDAEP was calculated by evaluating the change in normalized
 139 ERF amplitude between the N100 and P200 components from the trial-averaged epochs. The LDAEP is
 140 represented by the slope of the linear regression line fitted to these data points.

141 2.3 Statistical analysis

142 We evaluated the distribution of our data for normality using the Shapiro-Wilk test. The tests indicated
 143 normality in the changes in the LDAEP slope ($p = 0.098$), HAMD scores ($p = 0.263$), and total
 144 RBANS scores ($p = 0.105$). To investigate longitudinal differences in LDAEP slopes, depression scores,
 145 and cognitive functioning scores, we employed paired t -tests. Additionally, we explored correlations
 146 among the pre-treatment and post-treatment LDAEP slopes, the degree of their changes, and the baseline,
 147 post-treatment, and changes in HAMD-24 and RBANS scores.

3 RESULTS

148 3.1 Demographics and clinical outcomes

149 Six of nine patients responded ($> 50\%$ reduction in HAMD-24 from baseline) to ECT with an average
 150 post-ECT HAMD-24 score of 9.1 ± 7.6 ($t_8 = 5.60$, $p < .001$). We collected seven of the nine patients'
 151 RBANS data, and found, on average, their cognitive functioning did not change with ECT ($t_6 = 0.358$,
 $p = .73$). Demographics and clinical measures before and after ECT treatment are summarized in Table 1.

Table 1. Demographics and clinical measures before and after ECT treatment

Measure	Pre-ECT (Mean \pm SD)	Post-ECT (Mean \pm SD)	t	p -value
N (no. female)	9 (6)	-	-	-
Age, years	68.1 ± 10.7	-	-	-
LDAEP	0.41 ± 0.64	0.75 ± 0.74	3.17	.013
HAMD-24	37.2 ± 12.8	9.1 ± 7.6	5.60	< 0.001
RBANS Scores				
Total	82.9 ± 19.4	84.4 ± 18.0	0.36	.73
Immediate memory	78.0 ± 25.4	83.1 ± 24.2	0.84	.44
Visuospatial/Constructional	84.7 ± 26.1	90.7 ± 17.7	0.79	.46
Language	92.6 ± 8.9	89.7 ± 8.0	0.79	.46
Attention	92.4 ± 14.7	89.6 ± 17.9	1.05	.34
Delayed memory	85.3 ± 22.1	85.7 ± 22.2	0.08	.94

153 3.2 Change in LDAEP

154 Figure 2 shows the auditory evoked potentials before and after ECT treatment, with responses at varying
 155 stimulus loudness levels. The LDAEP slope significantly increased following ECT treatment from $0.41 \pm$
 0.64 to 0.75 ± 0.74 (Cohen's $d = 0.49$, $t_8 = 3.17$, $p = .013$) (Figure 3).

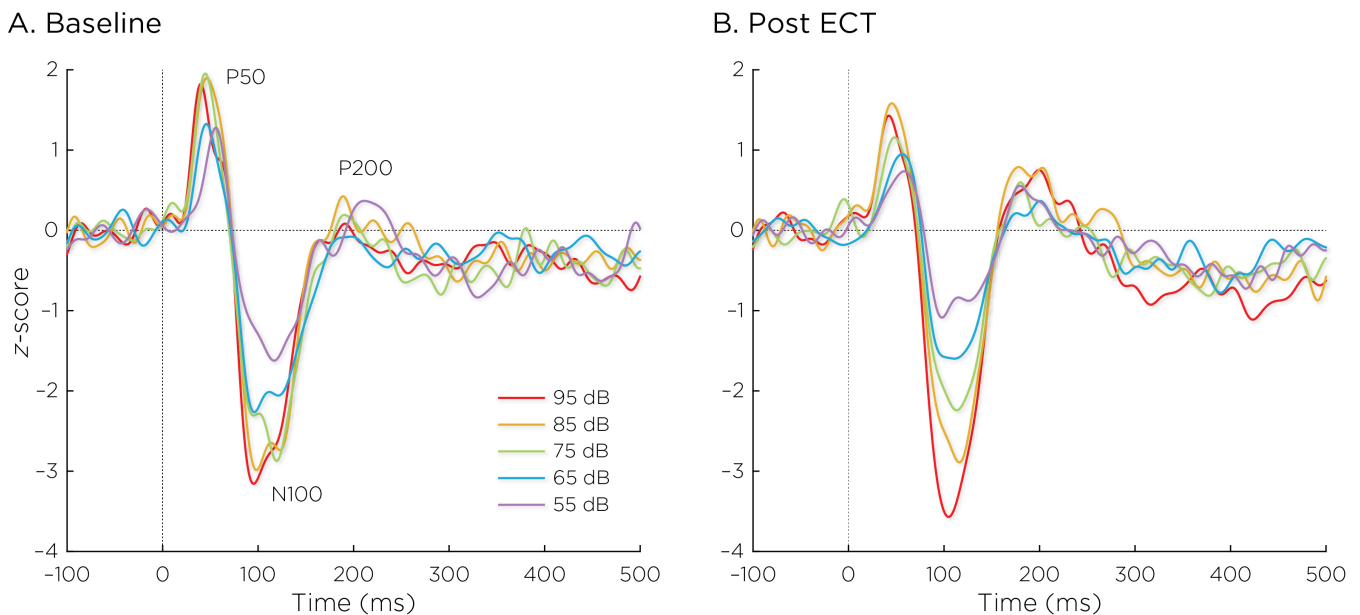


Figure 2. Auditory evoked potentials (A) before and (B) after ECT treatment, with responses at sound pressure levels of 55–95 dB. The change in normalized AEP amplitude between the N100 and P200 (N1/P2) components of the trial-averaged epochs was calculated. The LDAEP is calculated as the slope of linear regression line that best fits the N1/P2 amplitudes at each sound pressure level.

156

157 3.3 Correlations between LDAEP and depression and cognition scores

158 The change in the LDAEP slope was not significantly correlated with baseline ($r = -0.079$, $p = .84$),
 159 post-treatment ($r = 0.066$, $p = .87$), or changes in HAMD-24 scores ($r = 0.101$, $p = .80$). The pre-ECT
 160 LDAEP slope was not significantly correlated with baseline ($r = -0.194$, $p = .62$) nor changes in
 161 HAMD-24 scores ($r = 0.339$, $p = .37$).

162 We focused on assessing correlations with RBANS total scores. The change in LDAEP slope was not
 163 significantly correlated with the baseline ($r = 0.208$, $p = .66$), post-treatment ($r = 0.403$, $p = .37$), or
 164 changes ($r = 0.276$, $p = .55$) in the RBANS total score. The pre-ECT LDAEP slope was significantly
 165 correlated with the baseline RBANS total score ($r = 0.855$, $p = .014$), but not correlated with changes in
 166 the RBANS total score ($r = -0.352$, $p = .44$).

4 DISCUSSION

167 In this study, we used LDAEP as a cortical activity biomarker to monitor changes in neurotransmitter
 168 activity induced by ECT. Our initial hypothesis posited that ECT would mitigate symptoms of depression
 169 by boosting serotonergic neurotransmission, which would manifest as a reduced LDAEP, reflected by
 170 weakening of the response amplitude as a function of sound intensity levels. However, our findings revealed

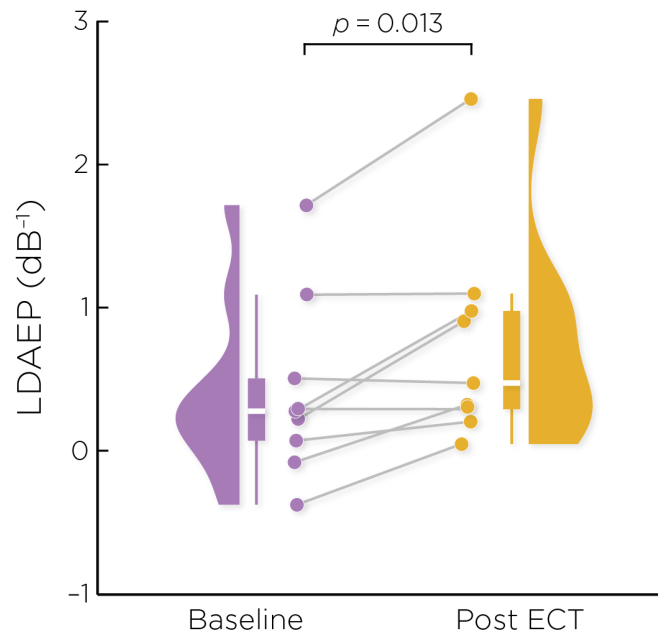


Figure 3. Individual changes in the pre- and post-ECT LDAEP slope measure. There was a significant increase post-ECT compared to baseline (Cohen's $d = 0.49$, $t_8 = 3.17$, $p = .013$).

171 a significant increase in LDAEP post-ECT. Interestingly, the alterations in LDAEP did not correlate with
 172 changes in depression severity or cognitive performance.

173 The neurochemical underpinnings of LDAEP suggest that ECT should lead to a reduction in serotonergic
 174 tone within the primary auditory cortex, but this assumption is subject to debate. Studies on the relationship
 175 between LDAEP and serotonergic activity have harbored conflicting evidence and perspectives (19, 24,
 176 52, 53). While numerous studies have found that the LDAEP is sensitive to acute changes in serotonergic
 177 activity, such as following administration of serotonergic-reuptake inhibitors, other studies have presented
 178 contrasting findings (54, 55, 56, 57, 58, 59, 60). A recent narrative review by Kangas et. al stated that
 179 LDAEP studies have generally yielded no consistent difference between depressed and non-depressed
 180 controls, though there appears to be a relationship with depression-subtypes (18). Given this context, a
 181 possible explanation for our results not supporting the original hypothesis could be that the LDAEP does
 182 not precisely mirror serotonergic tone in the primary auditory cortex.

183 Our findings did reveal a significant modulation of the LDAEP after ECT treatment. Intriguingly, the
 184 observed increase in LDAEP may indicate that ECT prompted a reduction in serotonergic receptor activity
 185 within the primary auditory cortex, particularly 5-HT1A and 5-HT2 receptors. This aligns with multiple
 186 studies demonstrating a reduction in 5-HT2 and 5-HT1A receptors in humans and non-human primates
 187 following ECT (40, 41, 42, 61, 62). The initial LDAEP studies in animal models bolster the plausibility of
 188 ECT-induced reduction in serotonergic receptors, in that a 5-HT1A agonist decreased the LDAEP and a
 189 5-HT2A antagonist increased the LDAEP, suggesting that decreased serotonin receptor activity results in a
 190 strengthened LDAEP (13, 63). However, pre-clinical studies have largely found an upregulation of 5-HT1A
 191 and 5-HT2A receptors after electroconvulsive stimuli in animal models (44, 46, 64). This discrepancy
 192 underscores the need for further research to understand ECT's impact on serotonergic receptor activity in
 193 humans more comprehensively.

194 Several alternative explanations as to why the LDAEP increased following ECT may be plausible. The
195 LDAEP has been shown to covary with symptom severity in disorders such as ADHD, schizophrenia, and
196 Parkinson's disease, all of which are strongly linked to dopaminergic dysregulation (65, 66, 67). Given
197 that ECT has been found to significantly alter dopaminergic neurotransmission (44, 68, 69, 70, 71), one
198 possible explanation for the heightened LDAEP could be ECT's direct influence on dopamine receptor
199 and transporter activities. Furthermore, considering that the LDAEP results from both excitatory and
200 inhibitory post-synaptic potentials within the primary auditory cortex, the altered LDAEP could reflect
201 changes in glutamatergic and GABAergic functions. Indeed, ECT has been shown to increase GABA
202 concentration, normalize glutamate deficits, and alter excitation/inhibition ratios (26, 72, 73, 74, 75). For
203 instance, the administration of a glutamatergic NMDA antagonist has been reported to blunt LDAEP,
204 suggesting that increased glutamatergic activity correlates with a heightened LDAEP (76). On the other
205 hand, a study reported that the LDAEP is not associated with GABA levels (77). Further exploration of the
206 relationships between ECT, auditory cortical activity, and excitatory and inhibitory neurotransmitters could
207 yield valuable insights.

208 Beyond neurotransmitter effects, there is a consistent body of evidence indicating that ECT is associated
209 with increased gray matter volume in the temporal lobes, including the superior temporal gyrus (5, 78, 79,
210 80), where the primary auditory cortex is situated. It is possible that neurotrophic effects are related to
211 the increased LDAEP following ECT in this study. A recent meta-analysis concluded that ECT directly
212 increases concentrations of brain-derived neurotrophic factor (BDNF) (81). Similarly, the LDAEP has been
213 found to be significantly positively correlated with serum BDNF levels (82). One possibility is that ECT's
214 robust neuroplastic effects within the temporal lobe are related to the modulation of the LDAEP. Moreover,
215 systematic reviews found that ECT has consistently been reported to decrease levels of inflammatory
216 biomarkers, tumor necrosis factor alpha (TNF- α) and interleukin-6 (IL-6) (83, 84). Notably, one study
217 demonstrated that the LDAEP was negatively correlated with TNF- α (85). This could suggest that a
218 reduction in TNF- α might contribute to the LDAEP increase seen after ECT. Given these multifaceted
219 biological interactions, further research is indeed warranted to unravel the complexities of ECT's impact
220 on the LDAEP and underlying neurobiological mechanisms.

221 In terms of cognitive performance, our study found that the pre-ECT LDAEP correlated with baseline
222 RBANS total scores. However, change in LDAEP was not associated with changes in cognitive performance
223 post-ECT. While the reasons for these findings warrant further investigation, our preliminary data does
224 suggest a link between LDAEP and cognitive performance metrics.

225 Finally, it is crucial to acknowledge the limitations inherent in this pilot study. The small sample size of
226 nine participants may not fully represent the broader patient population; these findings must be regarded
227 as exploratory. The impact of the patients' ongoing psychotropic medication on the LDAEP results also
228 cannot be overlooked. Unlike conventional LDAEP studies that employ EEG, this study utilized MEG,
229 which might affect comparability with existing literature. Despite these limitations, this study provides
230 meaningful insights into the changes in LDAEP following ECT and signals the importance of conducting
231 larger-scale, more controlled research to elucidate these preliminary observations.

5 CONCLUSION

232 Contrary to our initial hypothesis, ECT paradoxically led to an increase in LDAEP, implying a reduction
233 in serotonergic activity. Given the complex roles ECT plays in the brain's neurochemistry and the multi-
234 faceted nature of LDAEP as a biological marker, our results might not signal a straightforward suppression

235 of serotonin. They could reflect compensatory adjustments in serotonergic receptor activity or broader
236 changes encompassing other neurotransmitter systems, neuroplasticity, and neuro-immune interactions.
237 This unexpected outcome opens avenues for multiple lines of inquiry: the intricate interplay between ECT
238 and LDAEP, and how they might influence 1) the activity of serotonergic, dopaminergic, glutamatergic,
239 and GABAergic receptors and transporters; 2) neuroplasticity and BDNF levels in the temporal cortex; and
240 3) levels of the pro-inflammatory cytokine TNF- α . Looking forward, further investigation is needed to
241 validate the LDAEP as a biomarker of serotonergic neurotransmission and to elucidate ECT's effect on
242 serotonergic activity in the human brain.

CONFLICT OF INTEREST STATEMENT

243 Z.-D. Deng is inventor on patents and patent applications on electrical and magnetic brain stimulation
244 therapy systems held by the National Institutes of Health (NIH), Columbia University, and University of
245 New Mexico. C. C. Abbot is inventor on patents and patent applications on electrical brain stimulation
246 therapy systems held by University of New Mexico.

FUNDING

247 Z.-D. Deng is supported by the National Institute of Mental Health Intramural Research Program
248 (ZIAMH002955).

REFERENCES

- 249 1 .Bains N, Abdijadid S. *Major Depressive Disorder* (Treasure Island, FL: StatPearls Publishing) (2024).
250 Available from: <http://www.ncbi.nlm.nih.gov/books/NBK559078/> [Accessed April 9,
251 2024].
- 252 2 .Hsieh MH. Electroconvulsive therapy for treatment-resistant depression. *Prog Brain Res* **281** (2023)
253 69–90. doi:10.1016/bs.pbr.2023.01.004.
- 254 3 .Subramanian S, Lopez R, Zorumski CF, Cristancho P. Electroconvulsive therapy in treatment resistant
255 depression. *J Neurol Sci* **434** (2022) 120095. doi:10.1016/j.jns.2021.120095.
- 256 4 .Deng ZD, Robins PL, Regenold W, Rohde P, Dannhauer M, Lisanby SH. How electroconvulsive
257 therapy works in the treatment of depression: is it the seizure, the electricity, or both?
258 *Neuropsychopharmacology* **49** (2024) 150–162. doi:10.1038/s41386-023-01677-2.
- 259 5 .Chen X, Yang H, Cui LB, Li X. Neuroimaging study of electroconvulsive therapy for depression. *Front*
260 *Psychiatry* **14** (2023) 1170625. doi:10.3389/fpsy.2023.1170625.
- 261 6 .Rojas M, Ariza D, Ortega A, Riaño Garzón ME, Chávez-Castillo M, Pérez JL, et al. Electroconvulsive
262 therapy in psychiatric disorders: A narrative review exploring neuroendocrine-immune therapeutic
263 mechanisms and clinical implications. *Int J Mol Sci* **23** (2022) 6918. doi:10.3390/ijms23136918.
- 264 7 .Ousdal OT, Brancati GE, Kessler U, Erchinger V, Dale AM, Abbott C, et al. The neurobiological
265 effects of electroconvulsive therapy studied through magnetic resonance: What have we learned, and
266 where do we go? *Biol Psychiatry* **91** (2022) 540–549. doi:10.1016/j.biopsych.2021.05.023.
- 267 8 .Maffioletti E, Carvalho Silva R, Bortolomasi M, Baune BT, Gennarelli M, Minelli A. Molecular
268 biomarkers of electroconvulsive therapy effects and clinical response: Understanding the present to
269 shape the future. *Brain Sci* **11** (2021) 1120. doi:10.3390/brainsci11091120.

- 270 **9** .Belge JB, Mulders P, Van Diermen L, Sienaert P, Sabbe B, Abbott CC, et al. Reviewing the neurobiology
271 of electroconvulsive therapy on a micro-, meso-, and macro-level. *Prog Neuropsychopharmacol Biol*
272 *Psychiatry* **127** (2023) 110809. doi:10.1016/j.pnpbp.2023.110809.
- 273 **10** .Cano M, Camprodon JA. Understanding the mechanisms of action of electroconvulsive therapy:
274 Revisiting neuroinflammatory and neuroplasticity hypotheses. *JAMA Psychiatry* **80** (2023) 643–644.
275 doi:10.1001/jamapsychiatry.2023.0728.
- 276 **11** .Delgado PL. Depression: The case for a monoamine deficiency. *J Clin Psychiatry* **61 Suppl 6** (2000)
277 7–11.
- 278 **12** .Baldinger P, Lotan A, Frey R, Kasper S, Lerer B, Lanzenberger R. Neurotransmitters and
279 electroconvulsive therapy. *J ECT* **30** (2014) 116–121. doi:10.1097/YCT.000000000000138.
- 280 **13** .Juckel G, Hegerl U, Molnár M, Csépe V, Karmos G. Auditory-evoked potentials as indicator of
281 brain serotonergic activity—first evidence in behaving cats. *Biol Psychiatry* **41** (1997) 1181–1195.
282 doi:10.1016/s0006-3223(96)00240-5.
- 283 **14** .Juckel G, Hegerl U, Molnár M, Csépe V, Karmos G. Auditory evoked potentials reflect serotonergic
284 neuronal activity—a study in behaving cats administered drugs acting on 5-HT_{1A} autoreceptors in the
285 dorsal raphe nucleus. *Neuropsychopharmacology* **21** (1999) 710–716. doi:10.1016/S0893-133X(99)
286 00074-3.
- 287 **15** .Buchsbaum M. Individual differences in stimulus intensity response. *Psychophysiology* **8** (1971)
288 600–611. doi:10.1111/j.1469-8986.1971.tb00496.x.
- 289 **16** .Manjarrez G, Hernandez E, Robles A, Hernandez J. N1/P2 component of auditory evoked potential
290 reflect changes of the brain serotonin biosynthesis in rats. *Nutr Neurosci* **8** (2005) 213–218. doi:10.
291 1080/10284150500170971.
- 292 **17** .Hegerl U, Gallinat J, Juckel G. Event-related potentials. do they reflect central serotonergic
293 neurotransmission and do they predict clinical response to serotonin agonists? *J Affect Disord* **62**
294 (2001) 93–100. doi:10.1016/s0165-0327(00)00353-0.
- 295 **18** .Kangas ES, Vuoriainen E, Lindeman S, Astikainen P. Auditory event-related potentials in separating
296 patients with depressive disorders and non-depressed controls: A narrative review. *Int J Psychophysiol*
297 **179** (2022) 119–142. doi:10.1016/j.ijpsycho.2022.07.003.
- 298 **19** .Roser P, Kawohl W, Juckel G. *Chapter 20 - The loudness dependence of auditory evoked potentials as*
299 *an electrophysiological marker of central serotonergic neurotransmission: Implications for clinical*
300 *psychiatry and psychopharmacotherapy* (Elsevier), *Handbook of Behavioral Neuroscience*, vol. 31
301 (2020), 361–374. doi:10.1016/B978-0-444-64125-0.00020-7.
- 302 **20** .Pan W, Pan J, Zhao Y, Zhang H, Tang J. Serotonin transporter defect disturbs structure and function of
303 the auditory cortex in mice. *Front Neurosci* **15** (2021) 749923. doi:10.3389/fnins.2021.749923.
- 304 **21** .Rao D, Basura GJ, Roche J, Daniels S, Mancilla JG, Manis PB. Hearing loss alters serotonergic
305 modulation of intrinsic excitability in auditory cortex. *J Neurophysiol* **104** (2010) 2693–2703. doi:10.
306 1152/jn.01092.2009.
- 307 **22** .Lee KKY, Soutar CN, Dringenberg HC. Gating of long-term potentiation (LTP) in the thalamocortical
308 auditory system of rats by serotonergic (5-HT) receptors. *Brain Res* **1683** (2018) 1–11. doi:10.1016/j.
309 brainres.2018.01.004.
- 310 **23** .Steinberg LJ, Underwood MD, Bakalian MJ, Kassir SA, Mann JJ, Arango V. 5-HT_{1A} receptor, 5-HT_{2A}
311 receptor and serotonin transporter binding in the human auditory cortex in depression. *J Psychiatry*
312 *Neurosci* **44** (2019) 294–302. doi:10.1503/jpn.180190.

- 313 **24** .O'Neill BV, Croft RJ, Nathan PJ. The loudness dependence of the auditory evoked potential (LDAEP)
314 as an in vivo biomarker of central serotonergic function in humans: Rationale, evaluation and review of
315 findings. *Hum Psychopharmacol* **23** (2008) 355–370. doi:10.1002/hup.940.
- 316 **25** .Zhang M, Siegle GJ. Linking affective and hearing sciences-affective audiology. *Trends Hear* **27**
317 (2023) 23312165231208377. doi:10.1177/23312165231208377.
- 318 **26** .Keesom SM, Hurley LM. Silence, solitude, and serotonin: Neural mechanisms linking hearing loss and
319 social isolation. *Brain Sci* **10** (2020) 367. doi:10.3390/brainsci10060367.
- 320 **27** .Tang ZQ, Trussell LO. Serotonergic modulation of sensory representation in a central multisensory
321 circuit is pathway specific. *Cell Rep* **20** (2017) 1844–1854. doi:10.1016/j.celrep.2017.07.079.
- 322 **28** .Papesh M, Hurley L. Modulation of auditory brainstem responses by serotonin and specific serotonin
323 receptors. *Hear Res* **332** (2016) 121–136.
- 324 **29** .Pillai R, Bartlett E, Ananth M, Zhu Z, Yang J, Hajcak Gea. Examining the underpinnings of loudness
325 dependence of auditory evoked potentials with positron emission tomography. *Neuroimage* **213** (2020)
326 116733.
- 327 **30** .Christ M, Michael N, Hihn H, Schüttke C, Konrad C, Baune BT, et al. Auditory processing of sine tones
328 before, during and after ECT in depressed patients by fMRI. *J Neural Transm* **115** (2008) 1199–1211.
329 doi:10.1007/s00702-008-0036-5.
- 330 **31** .Zwanzger P, Zavorotnyy M, Diemer J, Ruland T, Domschke K, Christ M, et al. Auditory processing in
331 remitted major depression: A long-term follow-up investigation using 3T-fMRI. *J Neural Transm* **119**
332 (2012) 1565–1573. doi:10.1007/s00702-012-0871-2.
- 333 **32** .Zweerings J, Zvyagintsev M, Turetsky BI, Klasen M, König AA, Roecher E, et al. Fronto-parietal and
334 temporal brain dysfunction in depression: A fMRI investigation of auditory mismatch processing. *Hum*
335 *Brain Mapp* **40** (2019) 3657–3668. doi:10.1002/hbm.24623.
- 336 **33** .Opitz B, Schröger E, von Cramon DY. Sensory and cognitive mechanisms for preattentive change
337 detection in auditory cortex. *Eur J Neurosci* **21** (2005) 531–535. doi:10.1111/j.1460-9568.2005.03839.
338 x.
- 339 **34** .Cervantes-Ramírez V, Canto-Bustos M, Aguilar-Magaña D, Pérez-Padilla EA, Góngora-Alfaro JL,
340 Pineda JC, et al. Citalopram reduces glutamatergic synaptic transmission in the auditory cortex
341 via activation of 5-HT1A receptors. *Neuroreport* **30** (2019) 1316–1322. doi:10.1097/WNR.
342 0000000000001366.
- 343 **35** .Timmermann C, Spriggs MJ, Kaelen M, Leech R, Nutt DJ, Moran RJ, et al. LSD modulates effective
344 connectivity and neural adaptation mechanisms in an auditory oddball paradigm. *Neuropharmacology*
345 **142** (2018) 251–262. doi:10.1016/j.neuropharm.2017.10.039.
- 346 **36** .Ampuero E, Cerda M, Härtel S, Rubio FJ, Massa S, Cubillos P, et al. Chronic fluoxetine treatment
347 induces maturation-compatible changes in the dendritic arbor and in synaptic responses in the auditory
348 cortex. *Front Pharmacol* **10** (2019) 804. doi:https://doi.org/10.3389/fphar.2019.00804.
- 349 **37** .Griskova I, Dapsys K, Andruskevicius S, Ruksenas O. Does electroconvulsive therapy (ECT) affect
350 cognitive components of auditory evoked P300? *Acta Neurobiol Exp* **65** (2005) 73–77. doi:10.55782/
351 ane-2005-1541.
- 352 **38** .Nurminen M, Valkonen-Korhonen M, Mervaala E, Pääkkönen A, Partanen J, Viinamäki H. Enhanced
353 attention-dependent auditory processing by electroconvulsive therapy in psychotic depression. *J ECT*
354 **21** (2005) 19–24. doi:10.1097/01.yct.0000158015.88677.bc.
- 355 **39** .Carhart-Harris RL, Nutt DJ. Serotonin and brain function: A tale of two receptors. *J Psychopharmacol*
356 **31** (2017) 1091–1120. doi:10.1177/0269881117725915.

- 357 **40** .Yatham LN, Liddle PF, Lam RW, Zis AP, Stoessl AJ, Sossi V, et al. Effect of electroconvulsive
358 therapy on brain 5-HT₂ receptors in major depression. *Br J Psychiatry* **196** (2010) 474–478.
359 doi:10.1192/bjp.bp.109.069567.
- 360 **41** .Lanzenberger R, Baldinger P, Hahn A, Ungersboeck J, Mitterhauser M, Winkler D, et al. Global
361 decrease of serotonin-1A receptor binding after electroconvulsive therapy in major depression measured
362 by PET. *Mol Psychiatry* **18** (2013) 93–100. doi:10.1038/mp.2012.93.
- 363 **42** .Strome E, Clark C, Zis A, Doudet D. Electroconvulsive shock decreases binding to 5-HT₂ receptors
364 in nonhuman primates: an in vivo positron emission tomography study with [¹⁸F]setoperone. *Biol*
365 *Psychiatry* **57** (2005) 1004–1010. doi:10.1016/j.biopsych.2005.01.025.
- 366 **43** .Saijo T, Takano A, Suhara T, Arakawa R, Okumura M, Ichimiya T, et al. Effect of electroconvulsive
367 therapy on 5-HT_{1A} receptor binding in patients with depression: a PET study with [¹¹C]WAY 100635.
368 *Int J Neuropsychopharmacol* **13** (2010) 785–791. doi:10.1017/S1461145709991209.
- 369 **44** .Landau AM, Alstrup AKO, Noer O, Winterdahl M, Audrain H, Møller A, et al. Electroconvulsive
370 stimulation differentially affects [¹¹C]MDL100,907 binding to cortical and subcortical 5HT_{2A}
371 receptors in porcine brain. *J Psychopharmacol* **33** (2019) 714–721. doi:10.1177/0269881119836212.
- 372 **45** .Hvilsom AST, Lillethorup TP, Iversen P, Doudet DJ, Wegener G, Landau AM. Cortical and striatal
373 serotonin transporter binding in a genetic rat model of depression and in response to electroconvulsive
374 stimuli. *Eur Neuropsychopharmacol* **29** (2019) 493–500. doi:10.1016/j.euroneuro.2019.02.009.
- 375 **46** .Burnet PW, Sharp T, LeCorre SM, Harrison PJ. Expression of 5-HT receptors and the 5-HT transporter
376 in rat brain after electroconvulsive shock. *Neurosci Lett* **277** (1999) 79–82. doi:10.1016/s0304-3940(99)
377 00857-5.
- 378 **47** .Li XK, Qiu HT. Current progress in neuroimaging research for the treatment of major depression with
379 electroconvulsive therapy. *World J Psychiatry* **12** (2022) 128–139. doi:10.5498/wjp.v12.i1.128.
- 380 **48** .Jiang J, Wang J, Li C. Potential mechanisms underlying the therapeutic effects of electroconvulsive
381 therapy. *Neurosci Bull* **33** (2016) 339–347. doi:10.1007/s12264-016-0094-x.
- 382 **49** .Abbott CC, Lemke NT, Gopal S, Thomas RJ, Bustillo J, Calhoun VD, et al. Electroconvulsive therapy
383 response in major depressive disorder: a pilot functional network connectivity resting state fMRI
384 investigation. *Front Psychiatry* **4** (2013) 10. doi:10.3389/fpsy.2013.00010.
- 385 **50** .Fischl B, Salat DH, Busa E, Albert M, Dieterich M, Haselgrove C, et al. Whole brain segmentation:
386 automated labeling of neuroanatomical structures in the human brain. *Neuron* **33** (2002) 341–355.
387 doi:10.1016/S0896-6273(02)00569-X.
- 388 **51** .Tadel F, Baillet S, Mosher JC, Pantazis D, Leahy RM. Brainstorm: A user-friendly application for
389 MEG/EEG analysis. *Comput Intell Neurosci* **2011** (2011) 879716. doi:10.1155/2011/879716.
- 390 **52** .Ostermann J, Uhl I, Köhler E, Juckel G, Norra C. The loudness dependence of auditory evoked
391 potentials and effects of psychopathology and psychopharmacotherapy in psychiatric inpatients. *Hum*
392 *Psychopharmacol* **27** (2012) 595–604. doi:10.1002/hup.2269.
- 393 **53** .Obermanns J, Flasbeck V, Steinmann S, Juckel G, Emons B. Investigation of the serotonergic activity
394 and the serotonin content in serum and platelet, and the possible role of the serotonin transporter in
395 patients with depression. *Behav Sci* **12** (2022) 178. doi:10.3390/bs12060178.
- 396 **54** .Uhl I, Gorynia I, Gallinat J, Mulert C, Wutzler A, Heinz A, et al. Is the loudness dependence of
397 auditory evoked potentials modulated by the selective serotonin reuptake inhibitor citalopram in healthy
398 subjects? *Hum Psychopharmacol* **21** (2006) 463–471. doi:10.1002/hup.803.
- 399 **55** .Guille V, Croft RJ, O’Neill BV, Illic S, Phan KL, Nathan PJ. An examination of acute changes in
400 serotonergic neurotransmission using the loudness dependence measure of auditory cortex evoked

- 401 activity: effects of citalopram, escitalopram and sertraline. *Hum Psychopharmacol* **23** (2008) 231–241.
402 doi:10.1002/hup.922.
- 403 **56** .Oliva J, Leung S, Croft RJ, O’Neill BV, O’Kane J, Stout J, et al. The loudness dependence auditory
404 evoked potential is insensitive to acute changes in serotonergic and noradrenergic neurotransmission.
405 *Hum Psychopharmacol* **25** (2010) 423–427. doi:10.1002/hup.1133.
- 406 **57** .O’Neill BV, Guille V, Croft RJ, Leung S, Scholes KE, Phan KL, et al. Effects of selective and
407 combined serotonin and dopamine depletion on the loudness dependence of the auditory evoked
408 potential (LDAEP) in humans. *Hum Psychopharmacol* **23** (2008) 301–312. doi:10.1002/hup.926.
- 409 **58** .Nathan PJ, Segrave R, Phan KL, O’Neill B, Croft RJ. Direct evidence that acutely enhancing serotonin
410 with the selective serotonin reuptake inhibitor citalopram modulates the loudness dependence of the
411 auditory evoked potential (LDAEP) marker of central serotonin function. *Hum Psychopharmacol* **21**
412 (2006) 47–52. doi:10.1002/hup.740.
- 413 **59** .Wutzler A, Winter C, Kitzrow W, Uhl I, Wolf RJ, Heinz A, et al. Loudness dependence of
414 auditory evoked potentials as indicator of central serotonergic neurotransmission: simultaneous
415 electrophysiological recordings and in vivo microdialysis in the rat primary auditory cortex.
416 *Neuropsychopharmacology* **33** (2008) 3176–3181. doi:10.1038/npp.2008.42.
- 417 **60** .Simmons JG, Nathan PJ, Berger G, Allen NB. Chronic modulation of serotonergic neurotransmission
418 with sertraline attenuates the loudness dependence of the auditory evoked potential in healthy
419 participants. *Psychopharmacology* **217** (2011) 101–110. doi:10.1007/s00213-011-2265-9.
- 420 **61** .Plein H, Berk M. Changes in the platelet intracellular calcium response to serotonin in patients
421 with major depression treated with electroconvulsive therapy: State or trait marker status. *Int Clin*
422 *Psychopharmacol* **15** (2000) 93–98. doi:10.1097/00004850-200015020-00005.
- 423 **62** .Ishihara K, Sasa M. Mechanism underlying the therapeutic effects of electroconvulsive therapy (ECT)
424 on depression. *Jpn J Pharmacol* **80** (1999) 185–189. doi:10.1254/jjp.80.185.
- 425 **63** .Juckel G, Gallinat J, Riedel M, Sokullu S, Schulz C, Möller HJ, et al. Serotonergic dysfunction in
426 schizophrenia assessed by the loudness dependence measure of primary auditory cortex evoked activity.
427 *Schizophr Res* **64** (2003) 115–124. doi:10.1016/s0920-9964(03)00016-1.
- 428 **64** .Vetulani J, Lebrecht U, Pilc A. Enhancement of responsiveness of the central serotonergic system and
429 serotonin-2 receptor density in rat frontal cortex by electroconvulsive treatment. *Eur J Pharmacol* **76**
430 (1981) 81–85. doi:10.1016/0014-2999(81)90012-1.
- 431 **65** .Wyss C, Hitz K, Hengartner MP, Theodoridou A, Obermann C, Uhl I, et al. The loudness dependence
432 of auditory evoked potentials (LDAEP) as an indicator of serotonergic dysfunction in patients with
433 predominant schizophrenic negative symptoms. *PLoS One* **8** (2013) e68650. doi:10.1371/journal.pone.
434 0068650.
- 435 **66** .Pauletti C, Mannarelli D, Locuratolo N, Maffucci A, Currà A, Marinelli Lea. Serotonergic central
436 tone in parkinson’s disease with fatigue: Evidence from the loudness dependence of auditory evoked
437 potentials (ldaep). *Neurosci Lett* **764** (2021) 136242.
- 438 **67** .Park E, Park YM, Lee SH, Kim B. The loudness dependence of auditory evoked potentials is associated
439 with the symptom severity and treatment in boys with attention deficit hyperactivity disorder. *Clin*
440 *Psychopharmacol Neurosci* **20** (2022) 514–525.
- 441 **68** .Saijo T, Takano A, Suhara T, Arakawa R, Okumura M, Ichimiya T, et al. Electroconvulsive therapy
442 decreases dopamine D₂ receptor binding in the anterior cingulate in patients with depression: A
443 controlled study using positron emission tomography with radioligand [¹C]FLB 457. *J Clin Psychiatry*
444 **71** (2010) 793–798. doi:10.4088/JCP.08m04746blu.

- 445 **69** .Strome EM, Zis AP, Doudet DJ. Electroconvulsive shock enhances striatal dopamine D1 and D3
446 receptor binding and improves motor performance in 6-OHDA-lesioned rats. *J Psychiatry Neurosci* **32**
447 (2007) 193–202.
- 448 **70** .Masuoka T, Tateno A, Sakayori T, Tiger M, Kim W, Moriya H, et al. Electroconvulsive therapy
449 decreases striatal dopamine transporter binding in patients with depression: A positron emission
450 tomography study with [18F]FE-PE2I. *Psychiatry Res Neuroimaging* **301** (2020) 111086. doi:10.1016/
451 j.ppsychresns.2020.111086.
- 452 **71** .Okamoto T, Yoshimura R, Ikenouchi-Sugita A, Hori H, Umene-Nakano W, Inoue Y, et al. Efficacy
453 of electroconvulsive therapy is associated with changing blood levels of homovanillic acid and
454 brain-derived neurotrophic factor (BDNF) in refractory depressed patients: a pilot study. *Prog*
455 *Neuropsychopharmacol Biol Psychiatry* **32** (2008) 1185–1190. doi:10.1016/j.pnpbp.2008.02.009.
- 456 **72** .Ciranna L. Serotonin as a modulator of glutamate- and GABA-mediated neurotransmission:
457 implications in physiological functions and in pathology. *Curr Neuropharmacol* **4** (2006) 101–114.
458 doi:10.2174/157015906776359540.
- 459 **73** .Zhang J, Narr KL, Woods RP, Phillips OR, Alger JR, Espinoza RT. Glutamate normalization with ECT
460 treatment response in major depression. *Mol Psychiatry* **18** (2013) 268–270. doi:10.1038/mp.2012.46.
- 461 **74** .Sanacora G, Mason GF, Rothman DL, Hyder F, Ciarcia JJ, Ostroff RB, et al. Increased cortical
462 GABA concentrations in depressed patients receiving ECT. *Am J Psychiatry* **160** (2003) 577–579.
463 doi:10.1176/appi.ajp.160.3.577.
- 464 **75** .Esel E, Kose K, Hacımusalar Y, Ozsoy S, Kula M, Candan Z, et al. The effects of electroconvulsive
465 therapy on GABAergic function in major depressive patients. *J ECT* **24** (2008) 224–228. doi:10.1097/
466 YCT.0b013e31815cbaa1.
- 467 **76** .Teichert T. Loudness- and time-dependence of auditory evoked potentials is blunted by the NMDA
468 channel blocker MK-801. *Psychiatry Res* **256** (2017) 202–206. doi:10.1016/j.psychres.2017.06.047.
- 469 **77** .Wyss C, Tse DHY, Boers F, Shah NJ, Neuner I, Kawohl W. Association between cortical GABA and
470 loudness dependence of auditory evoked potentials (LDAEP) in humans. *Int J Neuropsychopharmacol*
471 **21** (2018) 809–813. doi:10.1093/ijnp/pyy056.
- 472 **78** .Deng ZD, Argyelan M, Miller J, Quinn DK, Lloyd M, Jones TR, et al. Electroconvulsive therapy,
473 electric field, neuroplasticity, and clinical outcomes. *Mol Psychiatry* **27** (2022) 1676–1682. doi:10.
474 1038/s41380-021-01380-y.
- 475 **79** .Argyelan M, Oltedal L, Deng ZD, Wade B, Bikson A, Mand Joanlanne, Sanghani S, et al. Electric field
476 causes volumetric changes in the human brain. *Elife* **8** (2019) e49115. doi:10.7554/eLife.49115.
- 477 **80** .Pirnia T, Joshi SH, Leaver AM, Vasavada M, Njau S, Woods RP, et al. Electroconvulsive therapy and
478 structural neuroplasticity in neocortical, limbic and paralimbic cortex. *Transl Psychiatry* **6** (2016) e832.
479 doi:10.1038/tp.2016.102.
- 480 **81** .Pelosof R, dos Santos LA, Farhat LC, Gattaz WF, Talib L, Brunoni AR. BDNF blood levels after
481 electroconvulsive therapy in patients with mood disorders: An updated systematic review and meta-
482 analysis. *World J Biol Psychiatry* **24** (2023) 24–33. doi:10.1080/15622975.2022.2058083.
- 483 **82** .Park YM, Lee BH, Um TH, Kim S. Serum BDNF levels in relation to illness severity, suicide attempts,
484 and central serotonin activity in patients with major depressive disorder: A pilot study. *PLoS One* **9**
485 (2014) e91061. doi:10.1371/journal.pone.0091061.
- 486 **83** .Gay F, Romeo B, Martelli C, Benyamina A, Hamdani N. Cytokines changes associated with
487 electroconvulsive therapy in patients with treatment-resistant depression: A meta-analysis. *Psychiatry*
488 *Res* **297** (2021) 113735. doi:10.1016/j.psychres.2021.113735.

-
- 489 **84** .Desfossés CY, Peredo R, Chabot A, Carmel JP, Tremblay PM, Mérette C, et al. The pattern of change in
490 depressive symptoms and inflammatory markers after electroconvulsive therapy: A systematic review.
491 *J ECT* **37** (2021) 291–297. doi:10.1097/YCT.0000000000000782.
- 492 **85** .Lee BH, Park YM, Lee SH, Shim M. Serum levels of tumor necrosis factor- α and loudness dependence
493 of auditory evoked potentials at pretreatment and posttreatment in patients with major depressive
494 disorder. *Brain Sci* **9** (2019) 253. doi:10.3390/brainsci9100253.