

1 **Unveiling the threat: Characterization of *Clostridioides difficile* Infection in the**
2 **Northwest Region of Buenos Aires between 2019-2023 and Associated Risk**
3 **Factors redefined through a Meta-Analysis**

4 Angela María Barbero^{1,2,#}, Nicolás Diego Moriconi^{1,#}, Sabina Palma^{1,2,#}, Josefina
5 Celano¹, María Gracia Balbi³, Lorenzo Sebastián Morro¹, María Martina Calvo
6 Zarlenga⁴, Jorgelina Suárez^{3,5}, María Guadalupe Martínez³, Mónica Graciela
7 Machain³, Carlos Gabriel Altamiranda⁴, Gabriel Erbiti^{4,5}, Rodrigo Emanuel
8 Hernández Del Pino^{1,2,ζ}, Virginia Pasquinelli^{1,2,*}, ζ.

9 1 Centro de Investigaciones Básicas y Aplicadas (CIBA), Universidad Nacional del
10 Noroeste de la Provincia de Buenos Aires (UNNOBA). B6000DNE, Buenos Aires,
11 Argentina.

12 2 Centro de Investigaciones y Transferencias del Noroeste de la Provincia de
13 Buenos Aires (CIT NOBA), UNNOBA-Universidad Nacional de San Antonio de
14 Areco (UNSAAdA)-Consejo Nacional de Investigaciones Científicas y Técnicas
15 (CONICET). Buenos Aires, Argentina.

16 3 Servicio de Laboratorio, Sala de Microbiología, Hospital Interzonal General de
17 Agudos (HIGA) Dr. Abraham F. Piñeyro, Junín, Buenos Aires, Argentina

18 4 Clínica Centro Médico Privado SRL, Junín, Buenos Aires, Argentina

19 5 Universidad Nacional del Noroeste de la Provincia de Buenos Aires (UNNOBA).
20 B6000DNE, Buenos Aires, Argentina.

21 # Angela María Barbero, Nicolás Diego Moriconi and Sabina Palma share first
22 authorship.

23 ζ Rodrigo Emanuel Hernández Del Pino Rodrigo and Virginia Pasquinelli share the
24 last authorship.

25 *Corresponding author: virpasquinelli@gmail.com, Tel: +5492364582417, Address:
26 Coronel Borges 379, Junín (Postal Code 6000), Buenos Aires, Argentina.

27 **Conflict of interest.** *The authors declare that the research was conducted in the*
28 *absence of any commercial or financial relationships that could be construed as a*
29 *potential conflict of interest.*

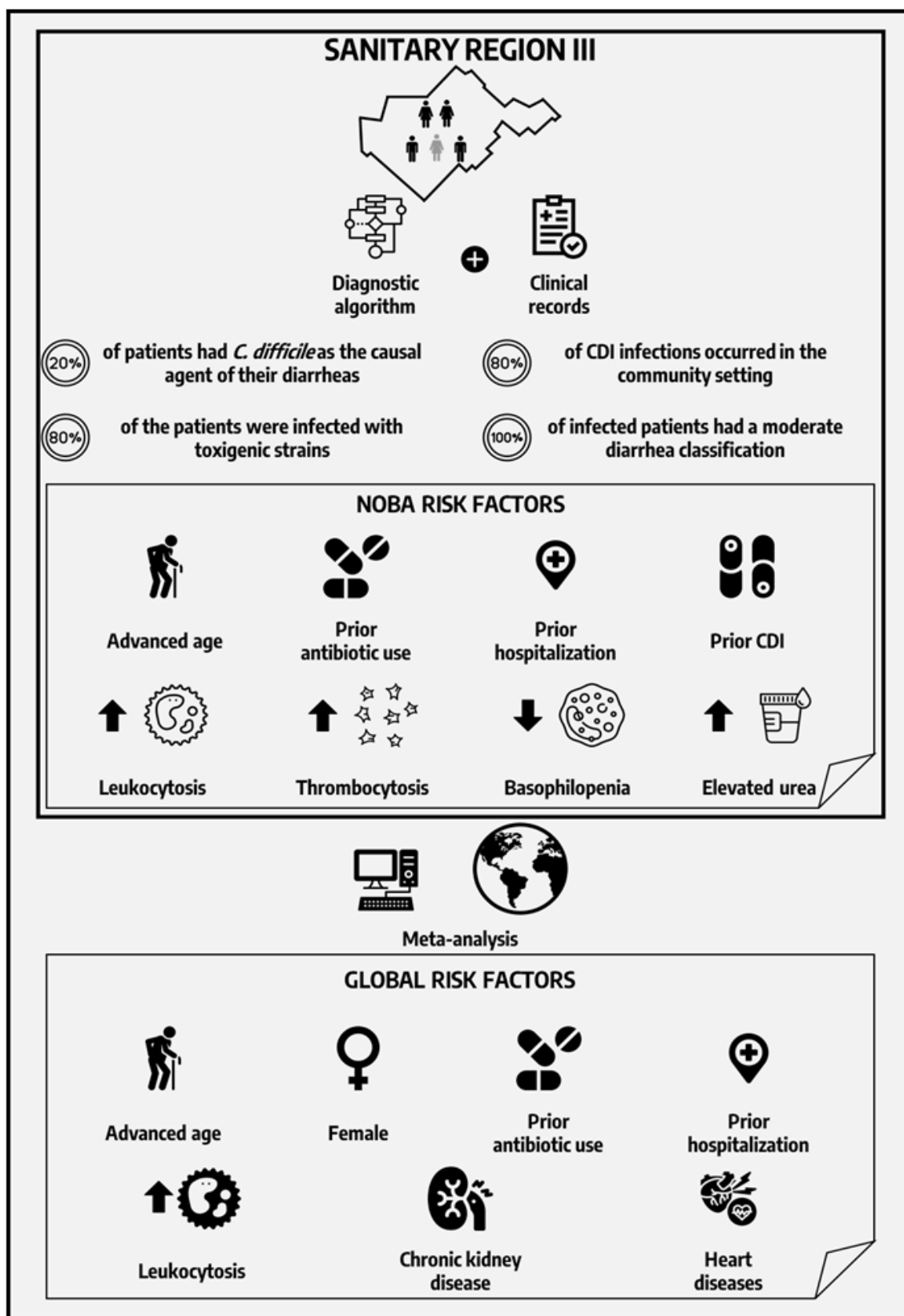
30 1 in 5 diarrheas is caused by *C. difficile* in the Northwest region of Buenos Aires,
31 Argentina. More than the 65% of the cases were community-acquired and involved
32 toxigenic strains. Comparison through meta-analysis identified known and also new
33 risk factors.

34 **Abstract**

35 *Clostridioides difficile* stands as the leading cause of hospital acquired enteric
36 infection in developed countries. In Argentina, the epidemiology of *Clostridioides*
37 *difficile* infection (CDI) is currently poorly characterized. Therefore, we conducted a
38 retrospective case-control study evaluating the prevalence of CDI in 249 stool
39 samples collected between 2019 and 2023 in the Northwest region of Buenos Aires.
40 The presence of *C. difficile* was detected by combining three techniques (EIA, PCR
41 and toxigenic culture) in a diagnostic algorithm. Clinical and demographic data from
42 patients was also analyzed to identify CDI-associated risk factors. 1 in 5 patients
43 presented *C. difficile* as the etiological agent of diarrhea and the 80% of CDI+ cases
44 carried toxigenic strains, most of which had been acquired in the community. Age
45 ≥ 69 years, previous use of antibiotics, previous hospitalization and previous
46 episodes of CDI emerged as predisposing factors for CDI in our study cohort. Blood
47 parameters such as an elevated number of leukocytes and platelets, a decreased
48 basophil count, and an increased urea concentration were identified as indicators of
49 CDI. We also carried out a systematic review and a meta-analysis where we
50 contrasted our results with 39 studies selected from different countries around the
51 world. At the global level, the meta-analysis highlighted advanced age, previous
52 consumption of antibiotics and previous hospitalization as CDI risk factors and the
53 leukocyte count as an indicator of CDI. These results emphasize the importance of
54 epidemiological studies and reveal crucial information for healthcare decision-
55 making regarding CDI.

56 Keywords: *C. difficile*, epidemiology, risk factors, meta-analysis

57 Running title: Risk factors and meta-analysis of CDI



59 Introduction

60 *Clostridioides difficile* infection (CDI) is considered as the most frequent hospital-
61 acquired disease ^{1,2}. Since 2019, the Centers for Disease Control (CDC) have
62 identified *C. difficile* as an “urgent threat”, with the immediate need to implement
63 prevention and control actions ³. *C. difficile* is a Gram positive, anaerobic and spore-
64 forming bacterium that causes intestinal damage primarily through the production of
65 two main toxins: toxin A (TcdA) and toxin B (TcdB) ⁴. These toxins play a crucial role
66 in the pathogenesis of CDI by damaging the cells lining the gut. CDI can be life-
67 threatening, ranging from mild diarrhea to pseudomembranous colitis and causing
68 nearly 500,000 cases per year in the United States ⁵.

69 CDI is also a major economic burden to the health care systems, which is closely
70 linked to the high recurrence rates of this infection. Although standard treatments
71 resolve CDI in most cases, up to 35% of CDI-treated patients will experiment a
72 recurrence of the disease with aggravated symptoms ⁵. Common therapy for CDI
73 includes antibiotics such as metronidazole for mild cases and vancomycin or
74 fidaxomicin for moderate to severe cases ⁶. Therapies with the human antibody
75 bezlotoxumab against *C. difficile* toxin B or Fecal Microbiota Transplant (FMT) to
76 restore the balance of the microbiome have been recommended to treat or prevent
77 recurrences ^{7,8}.

78 Regarding global epidemiology, while healthcare-associated CDI has declined in
79 recent years, the incidence of community-acquired CDI is on the rise ^{9–14}. The main
80 transmission route for *C. difficile* is through direct Person-to-Person contact by the
81 fecal-oral route ¹⁵. *C. difficile* spores constitute the main form of resistance and can
82 persist in the environment for long periods ^{16,17}. Then, contaminated surfaces, food
83 or water, as well as asymptomatic carriers, are typical sources of community
84 transmission ^{18–20}.

85 Several risk factors are associated with the development of CDI. The use of
86 antimicrobials with emphasis on broad-spectrum antibiotics, has been described as
87 the most significant risk factor for CDI ^{21,22}. These antibiotics can disrupt the normal
88 balance of bacteria in the gastrointestinal tract, generating dysbiosis and so allowing
89 *C. difficile* overgrow in the gut. Hospitalization in healthcare facilities and advanced
90 age, which can be related to weakened immune systems and a higher likelihood of
91 residing in healthcare settings, also constitute important risk factors ²². The use of
92 stomach acid regulators, such as proton pump inhibitors (PPIs) and H2 blockers,
93 has been associated with an increased risk of CDI ²³; however, this is still under
94 debate. Previous episodes of CDI increase the risk of recurrence ²⁴. Finally, several
95 underlying health conditions that could compromise the immune system could
96 contribute to increased susceptibility or severity of the infection. Comorbidities such
97 as Inflammatory Bowel Disease (IBD) ²⁵, Crohn's disease ²⁵, ulcerative colitis ²⁵,
98 diabetes ²⁶ and chronic kidney disease (CKD) ²⁷ can enhance the risk of CDI.

99 Certain clinical procedures (e.g. chemotherapy treatments and gastrointestinal
100 surgery), malnutrition or enteral nutrition, organ transplantation along with
101 immunosuppressive medications and blood disorders may also elevate the risk of
102 CDI ^{28,29}.

103 Understanding geographical variations in prevalence by studying CDI epidemiology
104 and risk factors is essential for preventing, controlling, and managing the infection.
105 In Latin America, and particularly in Argentina, comprehensive epidemiological data
106 on CDI are limited. It has been reported that patients with diarrhea are not routinely
107 tested for *C. difficile* in developing countries and, when tested, very often only the
108 enzyme immunoassay (EIA) is used ³⁰⁻³². This could lead to an underestimation in
109 the diagnosis and high economic burdens for the health system. Our retrospective
110 study (2019-2023) assesses the prevalence of *C. difficile* among health care centers
111 of the Northwest region of Buenos Aires, Argentina. Furthermore, with the aim to
112 characterize our study cohort, we analyzed the demographic and clinical data of the
113 patients and we conducted a meta-analysis to compare our findings with global
114 reports.

115 Methodology

116 Human Samples and Participating Institutions

117 The research was carried out in accordance with the Declaration of Helsinki (2013)
118 and approved by the UNNOBA (Universidad Nacional del Noroeste de la Provincia
119 de Buenos Aires) Ethics Committee (COENOBA).

120 Fecal samples from hospitalized adult patients with diarrhea were collected after
121 obtaining informed consents and frozen at -20 °C until use. The samples were
122 derived from the following health-care centers: Hospital Interzonal General de
123 Agudos (HIGA) Abraham Félix Piñeyro, Clínica Centro Médico Privada SRL and
124 Clínica IMEC. Samples received between January 1, 2019 and December 31, 2023
125 from Sanitary Region III of Buenos Aires, Argentina (**Supplementary Fig. 1**) were
126 included in this analysis.

127 Patients characterization

128 The presence of *C. difficile* was determined in the fecal samples using a diagnostic
129 algorithm (**Supplementary Fig. 2**) as recommended by Crobach et al. in 2016³³.
130 Briefly, three tests were used in a retrospective approach: Enzyme immunoassay
131 (EIA, CoproStrip™ *C. difficile* GDH + Toxin A + Toxin B (Savyon® Diagnostics Ltd)),
132 Polymerase Chain Reaction from stool samples (PCR, Taq Phire Tissue Direct PCR
133 Master Mix (Thermo Fisher)) and Toxigenic culture (stool culture in CHROMAgar™
134 *C. difficile* plates + PCR from isolated *C. difficile* colonies).

135 Patients were defined as CDI+ or CDI- and clinical, demographic and blood
136 parameters were evaluated (**Table 1**).

137 CDI classifications by setting of acquisition and severity were defined according to
138 the Infectious Diseases Society of America (IDSA) criteria³⁴.

Clinical-demographical parameters	Blood parameters
Age	Leukocytes (cells/mm ³)
Biological Sex	Neutrophils (cells/mm ³)
Previous hospitalization	Monocytes (cells/mm ³)
Previous consumption of Antibiotics	Lymphocytes (cells/mm ³)
Antibiotics use during hospitalization	Eosinophils (cells/mm ³)
Presence of comorbidities	Basophils (cells/mm ³)

Previous consumption of Proton Pump Inhibitors	Platelets (cells/mm ³)
Previous CDI	Urea (mg/dl)
Place of hospitalization	Creatinine (mg/dl)
Need for Intensive Care Unit (ICU)	Albumin (g/dl)
Origin	
Diarrhea classification	
Shock	
Death	

139

140 **Table 1.** Clinical, demographic and blood parameters evaluated in CDI+ and CDI-
141 patients.

142 **Meta-analysis design**

143 A bibliographic search was carried out using PubMed and Google Scholar databases
144 in addition to the AI SciSpace tool. The reports that fulfilled the definition criteria of
145 cases and controls were selected. The meta-analysis workflow is summarized in **Fig.**
146 **4.**

147 **Statistical Analysis**

148 For clinical, demographic and blood parameters comparisons, parametric t-test or
149 non-parametric Mann-Whitney test for unpaired samples were used. Fisher's exact
150 test was used to analyze the frequency distribution of qualitative/nominal variables.
151 Data was analyzed using GraphPad Prism 8.0.1 software (San Diego, CA, USA) and
152 p values <0.05 were considered statistically significant.

153 For the meta-analysis, the “Metafor” package from RStudio (2023.06.1+524 version)
154 was used ³⁵. The Odds Ratio (OR, for categorical variables) and the Standardized
155 Mean Difference (SMD, for continuous variables) were calculated and a REML
156 (Random Effect Maximum Likelihood) model was employed. Models with a p value
157 <0.05 were considered as potential predictors of CDI incidence risk.

158 Results and Discussion

159 CDI prevalence in Northwest Buenos Aires

160 In Argentina, studies and reports on CDI are scarce and heterogeneous^{36–39}. In
161 order to contribute to a better understanding of the disease, we conducted a
162 retrospective analysis of 249 fecal samples received between 2019–2023 from
163 Sanitary Region III of Buenos Aires.

164 We determined *C. difficile* as the causal agent of one in five diarrheas (21.29%) (**Fig.**
165 **1 a**) and we detected that more than the 80% of the patients were infected with
166 toxigenic strains; indicated by the presence of *C. difficile* Toxin B in the stool samples
167 (**Fig. 1 b**). This percentage was similar to the worldwide reported prevalence, where
168 CDI is the underlying cause of 15 to 20% of diarrhea associated with the use of
169 antibiotics⁴⁰.

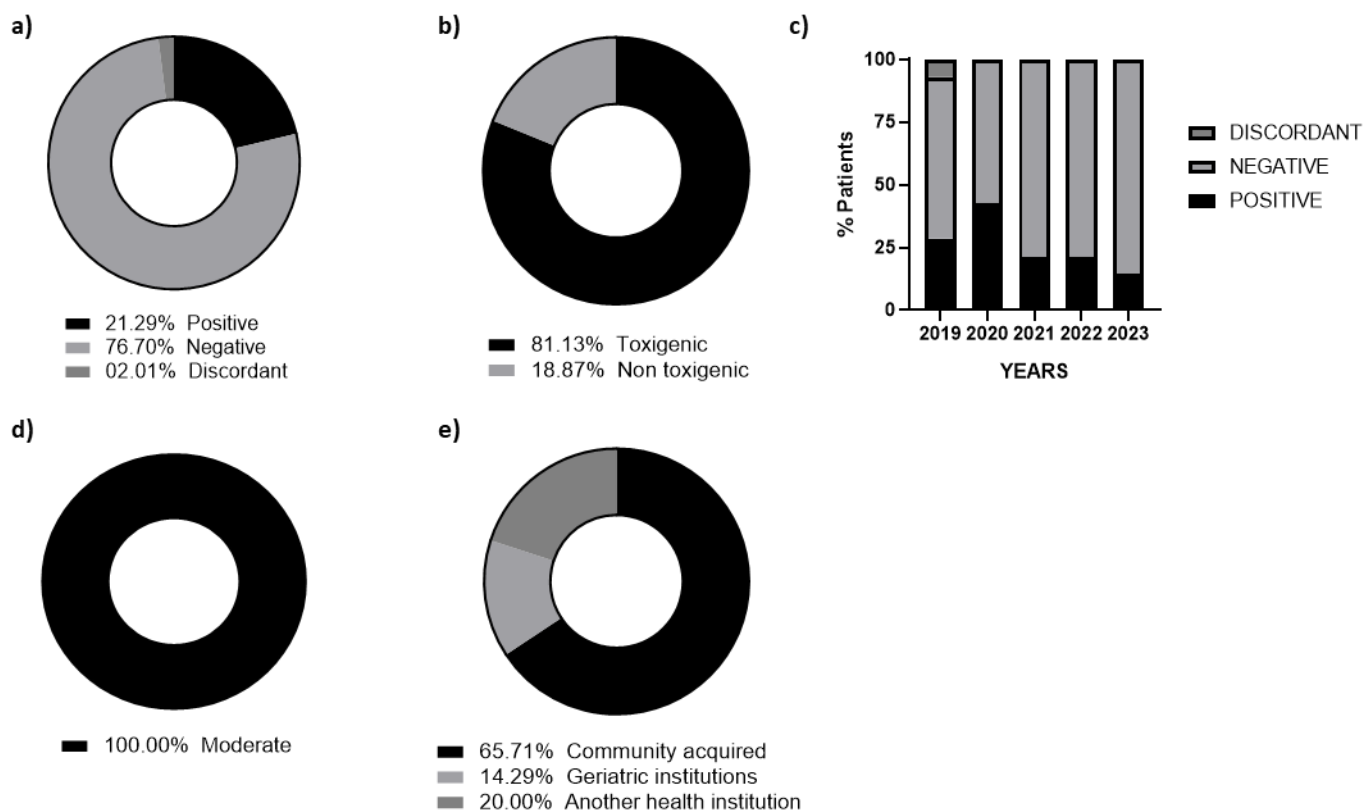
170 When analyzing the cases on an annual basis, the frequency of CDI ranged around
171 20% from 2019 to 2023 (**Fig. 1 c**). Interestingly, the highest incidence in our study
172 cohort was observed during 2020, duplicating the percentage of CDI+ cases
173 compared to the rest of the years (**Fig. 1 c**). In relation to this, the COVID-19
174 pandemic brought about the preventive use of broad-spectrum antibiotics to avoid
175 bacterial coinfections; which could be associated with the increase in detection^{41–44}.
176 Nevertheless, CDI detection could have been impacted by the decrease in the
177 number of tests, a fact that was corroborated in multiple studies carried out during
178 the early stages of the pandemic^{45–47}. Additionally, there could also be an
179 underestimation of CDI cases^{48,49} since SARS-CoV-2 frequently causes
180 gastrointestinal symptoms similar to those of *C. difficile*⁵⁰.

181 Regarding the severity of the diarrhea, all infected patients had a moderate
182 classification (**Fig. 1 d**). Importantly, the majority of CDI infections occurred in the
183 community setting (**Fig. 1 e**). 65.71% of the patients presented community-acquired
184 CDI, 14.29% in geriatric institutions and only the remaining 20% occurred in a
185 hospital environment (**Fig. 1 e**). This is particularly notable, since the epidemiology
186 of CDI has changed in the last two decades. The 027 strain, responsible for clinical
187 outbreaks in the early 2000s⁵¹, has recently decreased its incidence in part due
188 fluoroquinolones restriction, prevention measures and to improvements in detection
189 tests that have allowed a better characterization of the circulating ribotypes^{52–56}.
190 Additionally, an increase in strains associated with community infection (e.g. 078,
191 014 in Europe and 106 in the US) has been reported in recent years, with community-
192 acquired cases rising above 40%^{11,57–59}.

193

194

195



196

197 **Figure 1.** CDI prevalence in Northwestern Buenos Aires.

198 249 stool samples were evaluated using the diagnostic algorithm. a) Donut graph
199 showing positive, negative and discordant results for the presence of *C. difficile*. b)
200 Donut graph showing the percentage of toxigenic strains (presence of Toxin B)
201 detected in the stool samples. c) CDI+ and CDI- results classified on an annual basis
202 from 2019 to 2023. d) CDI classification. e) Origin of the CDI+ patients at the time of
203 diagnosis.

204

205 Risk factors

206 After classifying the patients as CDI+ or CDI-, we determined the risk factors that
207 could be involved in the prevalence of CDI.

208 As seen in **Fig. 2 a**, we found significant differences in the age of CDI+ and CDI-
209 populations, with the CDI+ patients presenting a higher average age (CDI+: mean =
210 72 years vs. CDI-: mean = 65 years). By using a ROC curve analysis, we established
211 a cut-off point of 69 years for advanced age as a risk factor in our cohort (**Fig. 2 b**).
212 Elderly patients have a greater probability of receiving broad-spectrum antibiotics,
213 being hospitalized or staying longer in hospital settings partly due to the presence of
214 comorbidities^{60,61}.

215 With age, the immune system decreases its functions and also older individuals
216 develop inflammaging, which could impact in the resolution of the infection; a fact
217 that was observed for neutrophils⁶² and serum IgG against *C. difficile* toxins^{63–65}.

218 Regarding biological sex, no differences were found for the proportion of males and
219 females between both patient populations (**Fig. 2 c**).

220 Consumption of antibiotics in the 3 months prior to the diagnosis of CDI, as well as
221 previous hospitalizations and infections with *C. difficile*, could be considered risk
222 factors that predisposes to CDI in our study cohort (**Fig. 2 d, e and f**). Hospitals and
223 healthcare facilities are common environments for *C. difficile* transmission since they
224 can be easily colonized by spores that persist on surfaces for months^{66,67}. Previous
225 consumption of antibiotics is directly related to the dysbiosis of the microbiota that
226 enables the colonization of *C. difficile* and is typically considered as the main risk factor
227 for CDI^{68,69}. Some antibiotics, such as clindamycin, broad-spectrum penicillins,
228 cephalosporins and fluoroquinolones alter the microbiota to a greater extent than
229 others^{68,70,71}. When analyzing the families of antibiotics consumed by CDI+ patients,
230 we observed that 56.52% had taken some kind of penicillin prior to diagnosis (**Fig.**
231 **2 g**).

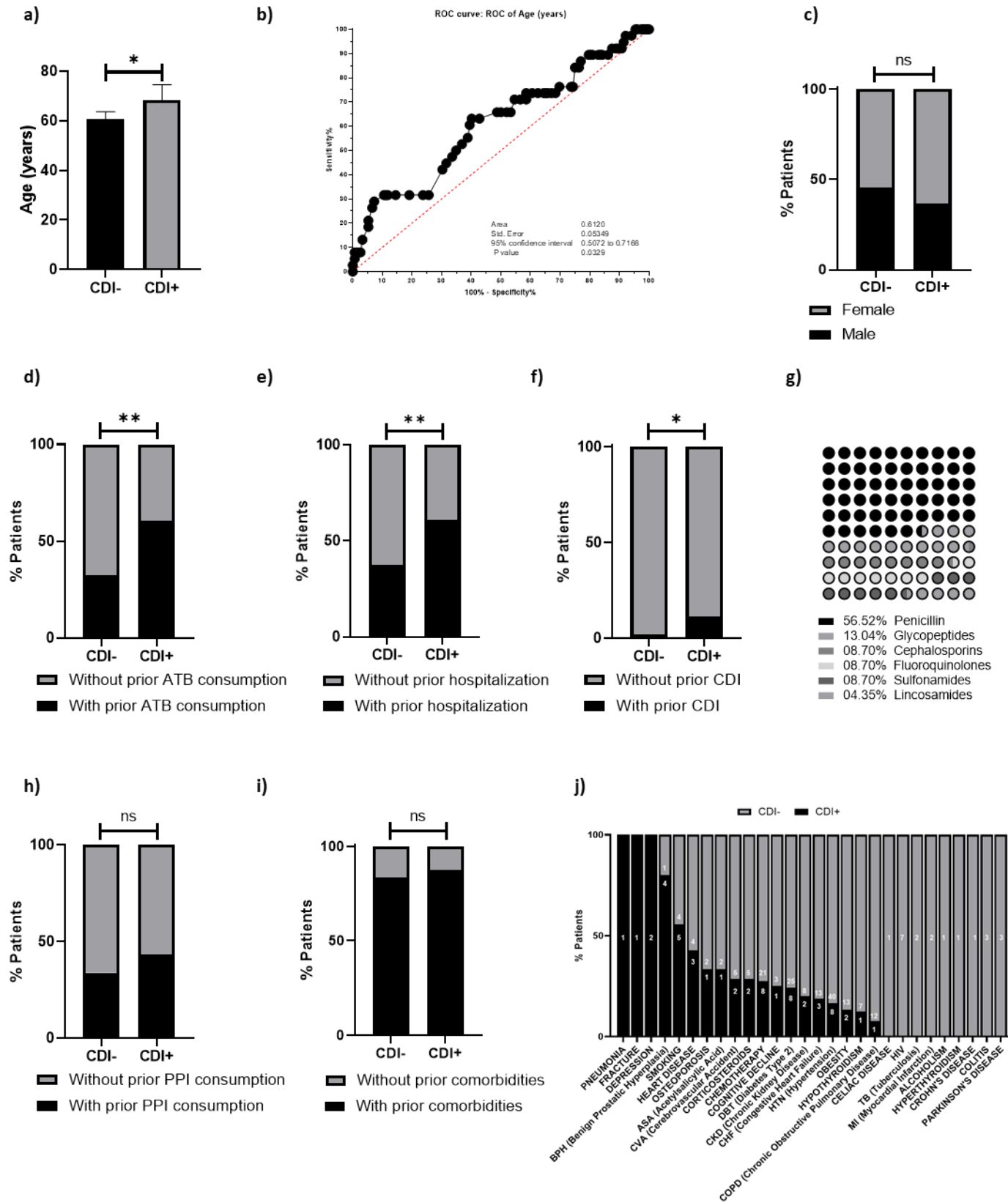
232 On the other hand, the consumption of proton pump inhibitors (PPI) prior to diagnosis
233 and the presence of comorbidities did not show significant differences between CDI-
234 and CDI+ patients (**Fig. 2 h and i**). **Fig. 2 j** shows a breakdown of the comorbidities
235 reported in the patients under study. Although they were analyzed individually, no
236 substantial variations were found between the CDI+ and CDI- population for any of
237 them.

238 No differences were found regarding the variables referring to the evolution of
239 patients during admission to health centers such as *hospitalization in common floor*
240 *or ICU, need for ICU, shock and death* (**Supplementary Fig. 3**).

241

242

243



244

245 **Figure 2.** CDI associated risk factors.

246 Evaluation of risk factors associated with CDI. a) Age (years), b) ROC curve to
247 establish the age cut-off point, c) biological sex, d) prior antibiotics (ATB)
248 consumption, e) prior hospitalization, f) prior CDI, g) antibiotic breakdown by family,
249 h) prior PPI consumption, i) comorbidities, j) breakdown of specific comorbidities (the
250 white number inside the bars represents the number of patients with the
251 comorbidity).

252 a) Mann-Whitney test. c, d, e, f, h, and i) Fisher's exact test. Stacked bars represent
253 the percentage of patients for each parameter. ns= non-significant; *, p

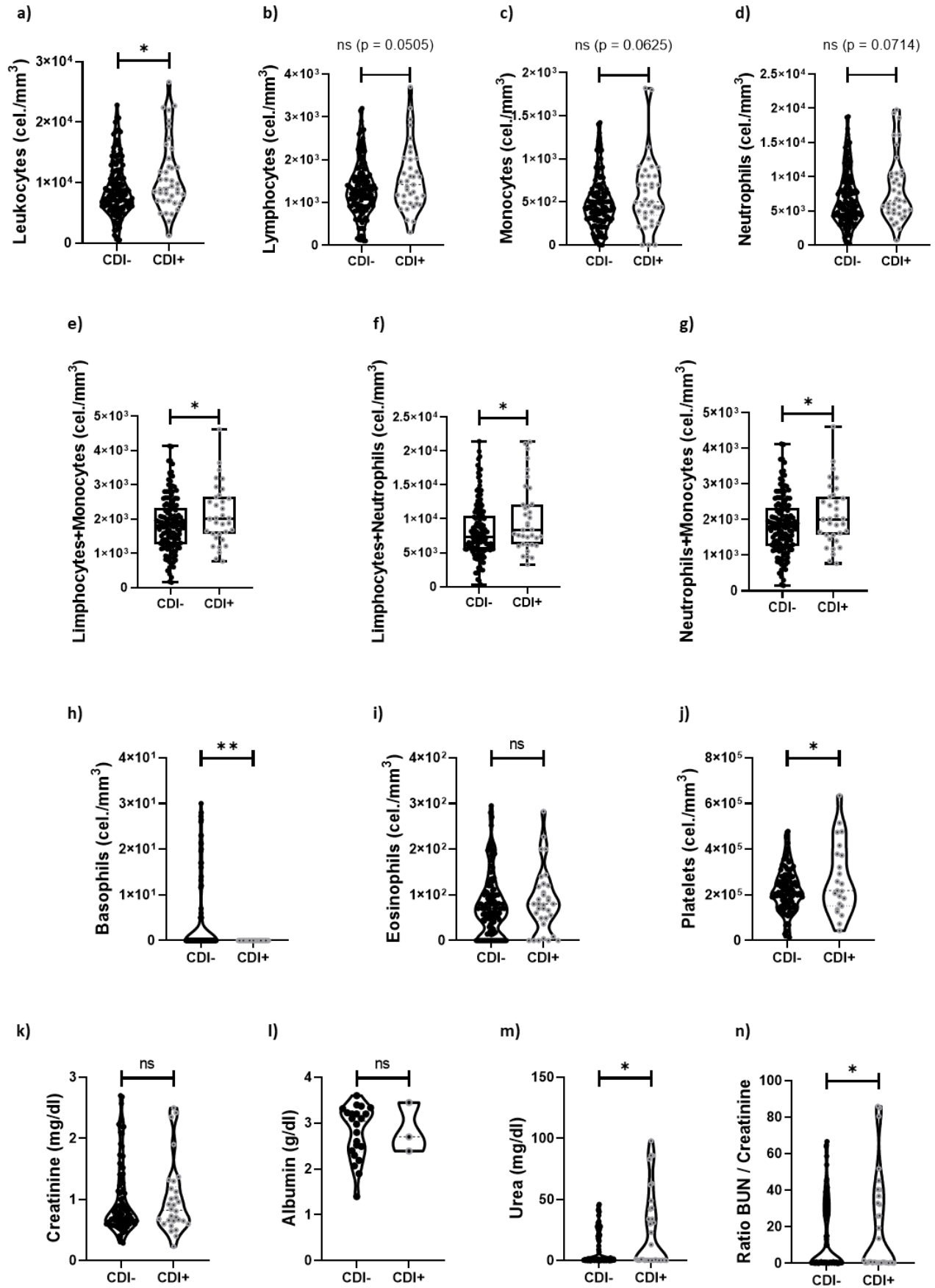
254 **Blood and serum parameters**

255 We also analyzed the patients' blood counts and serum parameters that were
256 measured on the day of fecal sample collection.

257 We observed a significant increase in the number of leukocytes (**Fig. 3 a**) and
258 platelets (**Fig. 3 j**) in patients infected with *C. difficile*. When analyzing the count of
259 lymphocytes, monocytes and neutrophils individually between both patient
260 populations, although an increase was evident, we did not find significant differences
261 (**Fig. 3 b, c and d**). However, it is important to note that CDI+ patients had increased
262 at least two of these leukocyte populations compared to CDI- patients at the time of
263 diagnosis (**Fig. 3 e, f and g**). Although some studies have highlighted that an
264 elevated white blood cell (WBC) count is frequently observed in the context of CDI
265 ^{72 73 74}, little has been explored in using elevated WBC count as a predictor of this
266 infection. In this regard, we agree with Vargas et al. ⁷⁵ in that the total leukocyte
267 count alone is not a specific indicator for CDI. Previous work evaluating platelet count
268 in CDI episodes reported controversial results, assigning them both a beneficial and
269 detrimental role in relation to clinical symptoms ⁷⁶⁻⁸⁵. We have recently shown that
270 platelets bind to *C. difficile* and promote its uptake by human macrophages using
271 macropinocytotic pathways ⁸⁶. Therefore, we consider that platelets in CDI could be
272 fundamental for the resolution of the infection and that further studies are needed to
273 unravel their role during CDI.

274 Regarding the rest of the blood parameters evaluated, while a significant decrease
275 in basophils count was observed (**Fig. 3 h**), the eosinophil count was not affected by
276 the presence of *C. difficile* (**Fig. 3 i**). To the best of our knowledge, to date there are
277 no reports on the role of basophils in CDI. Nevertheless, the potential role of CCL-5,
278 a basophilic recruiter chemokine, has been highlighted in CDI ^{87,88}

279 No differences were evident for creatinine and albumin levels (**Fig. 3 j and k**), but
280 an elevated urea concentration stood out in patients infected with *C. difficile* (**Fig. 3**
281 **m**). Moreover, the BUN (Blood Urea Nitrogen)/Creatinine ratio was significantly
282 elevated in CDI patients (**Fig. 3 n**). Elevated BUN ratios have been associated with
283 complications of CDI ⁸⁹ as well as with higher mortality rates ⁹⁰ and high urea levels
284 were also proposed as a risk factor for severe CDI ⁹¹.



286 **Figure 3.** Blood and serum parameters in CDI+ and CDI- patients.

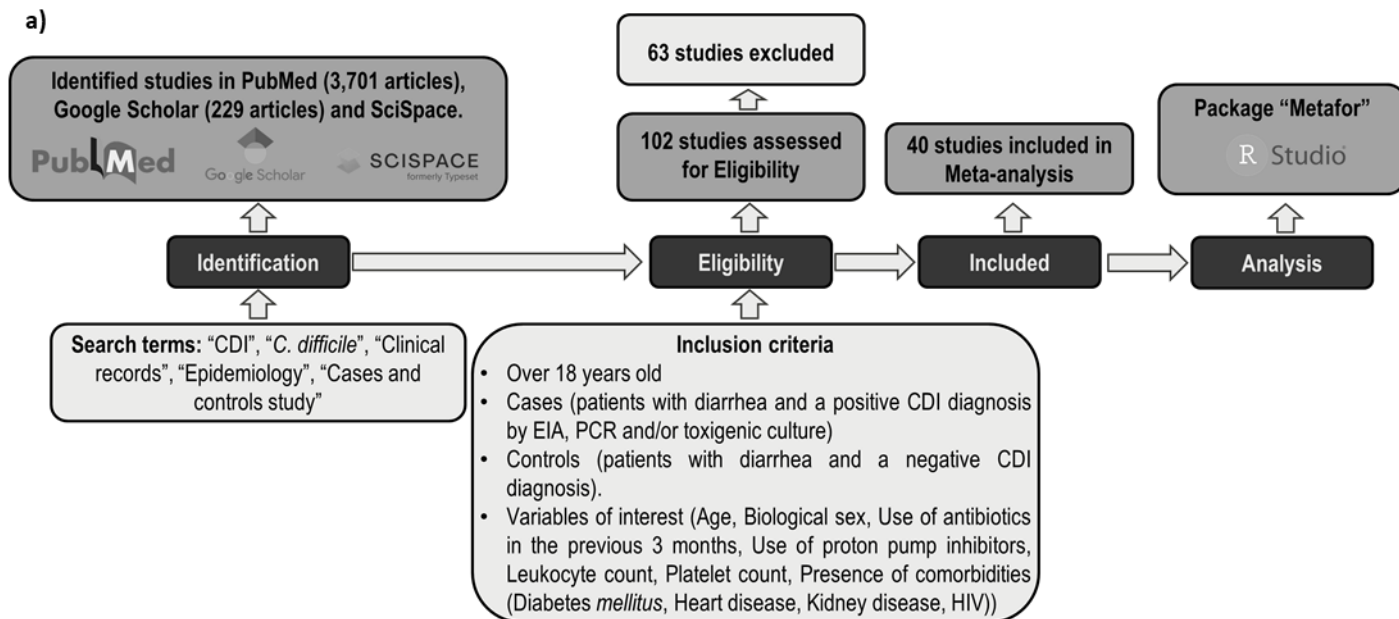
287 Number of a) Leukocytes (cells/mm³), b) lymphocytes (cells/mm³), c) monocytes
288 (cells/mm³), d) neutrophils (cells/mm³), e) lymphocytes plus monocytes (cells/mm³),
289 f) lymphocytes plus neutrophils (cells/mm³), g) neutrophils plus monocytes
290 (cells/mm³), h) basophils (cells/mm³), i) eosinophils (cells/mm³) and j) platelets
291 (cells/mm³). Levels of k) creatinine (mg/dl), l) albumin (g/dl) and m) urea (mg/dl). n)
292 BUN (blood urea nitrogen)/creatinine ratio.

293 a-i and k-n) Mann-Whitney test. j) unpaired t test. Violin plots show the distribution
294 of the data. ns= non-significant; *, p<0.05; **, p<0.01.

295 **Meta-analysis**

296 We finally performed a meta-analysis to obtain more robust and reliable conclusions
297 about the CDI associated parameters evaluated in our cohort. We defined the
298 selection criteria (**Fig. 4 a**) and carried out a systematic review that allowed us to
299 select 40 independent case/control type studies (**Table 2**) from the countries shown
300 in light grey in **Fig. 4 b**.

301



302

303

304

305

306

307



308

309

310 **Figure 4.** Flow chart of the studies and countries screened and included in the Meta-
311 analysis.

312 a) The obtained results regarding clinical and demographic characteristics of the
313 CDI+ and CDI- patients in our cohort were contrasted against findings of other
314 studies through a meta-analysis by RStudio package “Metafor”. After initial
315 identification, eligibility criteria were applied and 39 reports were included in the
316 meta-analysis along with our data. CDI- patients were considered as the control
317 group.

318 b) World map showing the countries from which the studies included in the meta-
319 analysis come (light gray). The circles contain the number of studies selected per
320 country.

321

322

323

324

325

Countries	Studies
Argentina	Lopardo, G. et al, 2015 ³⁹ OUR study
Brazil	Lopes Cançado, G. G. et al, 2018 ⁹²
Canada	Lowe, D. O. et al, 2006 ⁹³
China	Dai, W. et al, 2020 ⁹⁴
	Li, Y. et al, 2016 ⁹⁵
	Lv, Z. et al, 2014 ⁹⁶
	Tang, C. et al, 2018 ⁹⁷
	Zhou, F, F, et al, 2014 ⁹⁸
Colombia	Carvajal, C. et al, 2017 ⁹⁹
	Salazar, C, L. et al, 2017 ¹⁰⁰
Denmark	Soes, L. M. et al, 2014 ¹⁰¹
France	Le Monnier, A. et al, 2022 ¹⁰²
Hungary	Kurti, Z. et al, 2015 ¹⁰³
Iceland	Vesteinsdottir, I. et al, 2012 ¹⁰⁴
India	Ingle, M. et al, 2011 ¹⁰⁵
	Ingle, M. et al, 2013 ¹⁰⁶
Japan	Mori, N. et al, 2015 ¹⁰⁷
Mexico	Morfin-Otero, R. et al, 2016 ¹⁰⁸
Poland	Czepiel, J. et al, 2014 ¹⁰⁹
South Africa	Legenza, L. et al, 2018 ¹¹⁰
	Rajabally, N. et al, 2013 ¹¹¹
South Korea	Han, S. H. et al, 2014 ¹¹²
Taiwan	Lee, Y. C. et al, 2012 ¹¹³ ; Lin C. Y. et al, 2022 ¹¹⁴
	Thipmontree, W. et al, 2011 ¹¹⁵
Turkey	Ergen, E. K. et al, 2009 ¹¹⁶
United Kingdom	Dial, S. et al, 2005 ¹¹⁷
	Dial, S. et al, 2008 ¹¹⁸
	Marwick, C. A. et al, 2013 ¹¹⁹
	Suissa, D. et al, 2012 ¹²⁰
	Wilcox, M. H. et al, 2008 ¹²¹
	Baxter, R. et al, 2008 ¹²²
United States	Haddad, F. G. et al, 2019 ¹²³
	Kuntz, J. L. et al, 2011 ¹²⁴
	Kutty, P. K. et al, 2010 ¹²⁵
	Kwon, S. et al, 2017 ¹²⁶
	Naggie, S. et al, 2011 ¹²⁷
	Tabak, P. Y. et al, 2015 ¹²⁸
	Tartof, S. Y. et al, 2015 ¹²⁹

326

327

328 **Table 2.** Countries and studies included in the meta-analysis.

329 The effects for each of the variables evaluated in the meta-analysis are summarized
330 in **Table 3**.

	RISK PREDICTOR	OR
331	Age	1,19 **
332	Biological sex	0,89 *
	Prior ATB consumption	3,02 ***
333	Prior PPI consumption	1,29 ns
	Prior hospitalization	2,45 ***
334	Prior CDI	1,76 ns
	WBC (10^9 cel/mm ³)	1,35 *
335	Platelets (10^9 cel/ mm ³)	1,54 ns
	Comorbidities	
336	Diabetes <i>mellitus</i>	1,26 ns
	Heart disease	1,41 *
337	Kidney disease	2,23 ***
338	HIV	1,00 ns

339 **Table 3.** Summary of risk predictors from the meta-analysis.

340 The dataset included 11,596 individuals with CDI and 536,467 matched controls
341 (**Table 4**). Overall, the distribution of biological sex was 40.06% male vs. 59.94%
342 female, being 44.33% vs. 55.67% in the CDI+ population and 39.98% vs. 60.02% in
343 the control group. The demographic parameters Age (OR= 1.19; 95% CI, 1.06 to
344 1.35) and Biological Sex (OR= 0.89; 95% CI, 0.81 to 0.99) obtained significant
345 models, which implies that, globally, advanced age and female biological sex are
346 associated with a higher risk of CDI (**Fig. 5 a and b**).

347 9.11% of the included individuals were previously exposed to antibiotics and 22.18%
348 to PPI. Both antibiotic (CDI+ 39.95% vs. CDI- 8.52%) and PPI (CDI+ 29.87% vs.
349 CDI- 21.76%) consumption was higher among those patients infected with *C. difficile*
350 (**Table 4**). In this analysis, which ignored antibiotic subclasses, we found that the
351 pooled impact of any antibiotic exposure (OR= 3.02; 95% CI, 2.32 to 3.94) increased
352 the risk of CDI by a multiple of 3 (**Fig. 5 c**). A longer duration of antibiotic therapy,
353 as well as a greater number of antibiotics administered increase the probability of
354 CDI ⁷⁰. The risk of acquiring CDI could be 8 to 10 times higher during antibiotic
355 therapy, even three months after its completion, with the first month being the one
356 with the highest risk ¹³⁰.

357 Regarding PPIs as risk factors for CDI, there is an arduous discussion with some
358 reports showing around 40-71.4% of hospitalized patients received PPI therapy
359 during hospitalization ¹³¹⁻¹³³ and others supporting the idea that PPIs could trigger
360 long-term adverse effects through changes on the microbiota composition ^{134,135}. In
361 our meta-analysis, there was no evidence of the impact of PPI on CDI risk (**Fig. 5**
362 **d**).

363 Previous hospitalization emerged as the second most influential predictor for CDI
 364 risk (OR= 2.46; 95% CI, 1.90 to 3.17) (**Fig. 5 e**). Among the CDI+ patients included
 365 in the meta-analyses, 27.88% had been hospitalized prior to diagnosis (**Table 4**)
 366 while only 16.80% in the control group.

367 Previous episodes of CDI are widely reported as a risk factor for subsequent cases
 368 and/or recurrences in patients. However, in this meta-analysis previous CDI was not
 369 a predictor of risk (**Fig. 5 f**) which could be attributed to the fact that only 4 of the 40
 370 included studies provided this type of data^{56,103,120,123}. Actually, when evaluating the
 371 Forest Plot for this variable in detail, the studies show the same trend as our
 372 epidemiological study when considering previous CDI as a risk factor.

373 When evaluating comorbidities, both heart diseases (OR= 1.41; 95% CI, 1.02 to
 374 1.94) and chronic kidney disease (OR= 2.23; 95% CI, 1.38 to 3.61) exhibited models
 375 with significant effects (**Fig. 5 g and h**), indicating that these pathologies increase
 376 the risk of CDI. The rest of the tested comorbidities were not associated with a higher
 377 risk of infection (**Fig. 5 i and j**). The presence of comorbidities has been widely
 378 reported as a condition that facilitates colonization and infection by *C. difficile*¹³⁶. A
 379 previous meta-analysis found IBD, diabetes, leukemia or lymphoma, kidney failure
 380 and solid cancer as the CDI risk-related comorbidities¹³⁷.

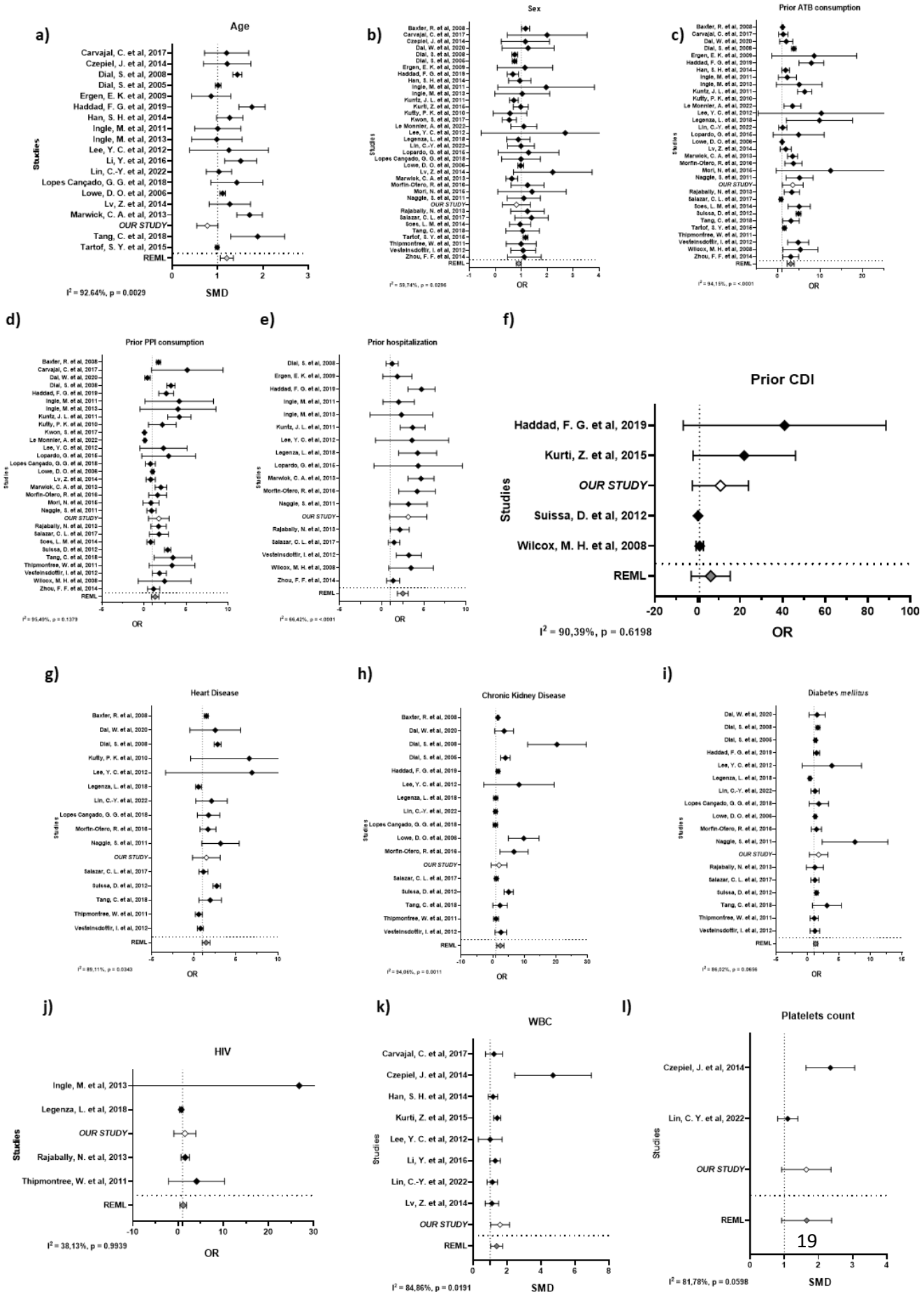
381 Finally, blood parameters were analyzed. Increased leukocytes count was also a
 382 potential predictor of CDI according to our comparative analysis (OR= 1.36; 95% CI,
 383 1.05 to 1.75) (**Fig. 5 k**). Although the number of platelets did not show a statistically
 384 significant effect (**Fig. 5 l**), it is important to note that only 2 studies apart from ours
 385 evaluated this parameter.

386

		CDI+	CDI-	TOTAL
N° of individuals		11596	536467	548467
Sex	Male	44.33%	39.98%	40.06%
	Female	55.67%	60.02%	59.94%
Prior ATB consumption	With	39.95%	8.52%	9.11%
	Without	60.05%	91.48%	90.89%
Prior PPI consumption	With	29.87%	21.76%	22.18%
	Without	70.13%	78.24%	77.82%
Prior hospitalization	With	27.88%	16.80%	17.07%
	Without	72.12%	83.20%	82.93%

394 **Table 4.** Meta-analysis dataset.

395



397 **Figure 5** Forest plots of risk predictors.

398 Forest plots representative of each variable evaluated in the meta-analysis. a) Age,
399 b) biological sex, c) previous ATB consumption, d) previous PPI consumption, e)
400 prior hospitalization, f) prior CDI, g) heart disease, h) chronic kidney disease, i)
401 diabetes *mellitus*, j) HIV, k) white blood cells (WBC) count (cells/mm³), l) platelets
402 count (cells/mm³).

403 A REML (Random Effect Maximum Likelihood, gray diamond) random effects model
404 was applied. Models with $p < 0.05$ (OR/SMD \pm CI values less or greater than 1) were
405 considered as potential risk predictors for CDI. Black diamonds represent the means
406 of each of the variables in each study. Bars indicate the lower and upper confidence
407 extremes. Our study (white diamond) is mentioned as *OUR STUDY*.

408 OR= odds ratio. SMD= standard media deviation. CI= confidence interval

409

410 **Conclusions**

411 We have defined risk factors associated with CDI and detected modulations in
412 different blood parameters in our study cohort in Argentina. We have also explored
413 the relevance of our findings at a global level by a systematic review and meta-
414 analysis. Our results emphasize the need to detect *C. difficile* as a causal agent of
415 infectious diarrhea in a country where testing is not standardized or routinely
416 performed in the health institutions. Our report provides valuable insights that could
417 contribute to a more efficient surveillance of CDI, diagnosis and follow-up of patients.

418 **Author contributions**

419 Conceptualization: all authors

420 Formal analysis: AMB, NDM, JC, SP, LSM and REHDP.

421 Funding acquisition: AMB, SP, REHDP and VP.

422 Investigation: AMB, NDM, SP, REHDP and VP.

423 Methodology: all authors.

424 Software: NDM and REHDP.

425 Supervision: REHDP and VP.

426 Writing: AMB wrote the original draft. All authors contributed to the review & editing
427 of this manuscript.

428 **Role of the funding source**

429 This work was supported by Universidad Nacional del Noroeste de la Provincia de
430 Buenos Aires [grant numbers SIB 0618/2019, SIB 2113/2022 and “Proyectos de
431 Investigación Interdisciplinarios de la UNNOBA” Res. CS 2190/2022, to VP].
432 Agencia Nacional de Promoción Científica y Tecnológica, Fondo para la
433 Investigación Científica y Tecnológica [ANPCyT-FONCyT, grant numbers PICT A
434 2017-1896 and PICT-2021-I-A-01119 to VP; PICT 2018-03084 IB to RHDP, PICT-
435 2021-I-INVI-00584 to AB and PICT-2021-I-INVI-00208 to SP]. UNNOBA FONCyT
436 [grant number PICTO 2019-00007 to RHDP and VP]. Consejo Nacional de
437 Investigaciones Científicas y Técnicas [CONICET, grant number PIP 2021
438 11220200103137CO to VP and RHDP].

439 **Acknowledgements**

440 We thank all the patients who voluntarily participated of this study. We also thank
441 Natalia Menite, Lucia Romano and Gastón Villafañe for their technical assistance.
442 We acknowledge the laboratory personnel, medical staff and biochemists who have
443 collaborated in the collection of samples and data during the study period of this
444 report. Finally, we thank Flaticon for the icons used in the graphical abstract of this
445 work.

446 References

- 447 1. Brazier JS. . 1998;47–57.
- 448 2. Zhang S, Palazuelos-Munoz S, Balsells EM, et al. . *BMC Infect Dis*;16 . Epub
449 ahead of print 2016. DOI: 10.1186/s12879-016-1786-6.
- 450 3. Center for Disease Control and Prevention. . *CDC*;10 . Epub ahead of print
451 2019. DOI: 10.1186/s13756-020-00872-w.
- 452 4. Smits WK, Lyras D, Lacy DB, et al. . DOI: 10.1038/nrdp.2016.20.
- 453 5. Feuerstadt P, Theriault N, Tillotson G. . *BMC Infect Dis*. 2023;23:1–8.
- 454 6. Di X, Bai N, Zhang X, et al. . *Brazilian J Infect Dis*. 2015;19:339–349.
- 455 7. Bainum TB, Reveles KR, Hall RG, et al. . *Microorganisms*. 2023;11:1–22.
- 456 8. Phanchana M, Harnvoravongchai P, Wongkuna S, et al. . *World J*
457 *Gastroenterol*. 2021;27:7210–7232.
- 458 9. Burke KE, Lamont JT. . *Gut Liver*. 2014;8:1–6.
- 459 10. Freeman J, Bauer MP, Baines SD, et al. . *Clinical Microbiology Reviews*.
460 2010;23:529–549.
- 461 11. Goorhuis A, Bakker D, Corver J, et al. . *Clin Infect Dis*. 2008;47:1162–1170.
- 462 12. Chitnis AS, Holzbauer SM, Belflower RM, et al. . *JAMA Intern Med*.
463 2013;173:1359–1367.
- 464 13. Ruiten-Ligeti J, Vincent S, Czuzoj-Shulman N, et al. . *Obstet Gynecol*.
465 2018;131:387–391.
- 466 14. Gupta A, Khanna S. . *Infect Drug Resist*. 2014;7:63–72.
- 467 15. Alice Y. Guh, MD, MPH and Preeta K. Kutty, MD M. . *Physiol Behav*.
468 2019;169:248–256.
- 469 16. Lawler AJ, Lambert PA, Worthington T. . *Trends Microbiol*. 2020;28:744–
470 752.
- 471 17. Paredes-Sabja D, Shen A, Sorg JA. . *Trends Microbiol*. 2014;22:1–15.
- 472 18. Hernández Del Pino RE, Barbero AM, Español LÁ, et al. . *J Leukoc Biol*.
473 2021;109:195–210.
- 474 19. Lim SC, Knight DR, Riley T V. . *Clin Microbiol Infect*. 2020;26:857–863.
- 475 20. Donskey CJ. . *Clin Infect Dis*. 2010;50:1458–1461.
- 476 21. Dicks LMT. . *Microorganisms*;11 . Epub ahead of print 2023. DOI:
477 10.3390/microorganisms11092161.
- 478 22. Czepiel J, Drózdź M, Pituch H, et al. . *Eur J Clin Microbiol Infect Dis Off*
479 *Publ Eur Soc Clin Microbiol*. 2019;38:1211–1221.

- 480 23. Huang CH, Tseng YH, Tsai WS, et al. . *Infect Dis Ther* . Epub ahead of print
481 2024. DOI: 10.1007/s40121-024-00922-5.
- 482 24. Song JH, Kim YS. . *Gut Liver*. 2019;13:16–24.
- 483 25. Nitzan O, Elias M, Chazan B, et al. . *World J Gastroenterol*. 2013;19:7577–
484 7585.
- 485 26. Qu H-Q, Jiang Z-D. . *Diabetes Res Clin Pract*. 2014;105:285–294.
- 486 27. Dudzicz S, Wiecek A, Adamczak M. . *J Clin Med*. 2021;10:1–13.
- 487 28. Sartelli M, Malangoni MA, Abu-Zidan FM, et al. . *World J Emerg Surg*.
488 2015;10:1–23.
- 489 29. Khanna S, Pardi DS. . *Mayo Clin Proc*. 2012;87:1106–1117.
- 490 30. Curcio D, Cané A, Fernández FA, et al. . *Infect Dis Ther*. 2019;8:87–103.
- 491 31. Roldan GA, Cui AX, Pollock NR. . *J Clin Microbiol*;56 . Epub ahead of print
492 March 2018. DOI: 10.1128/JCM.01747-17.
- 493 32. Acuña-Amador L, Quesada-Gómez C, Rodríguez C. . *Anaerobe*;74 . Epub
494 ahead of print 2022. DOI: 10.1016/j.anaerobe.2022.102547.
- 495 33. Crobach MJT, Planche T, Eckert C, et al. . *Clin Microbiol Infect*.
496 2016;22:S63–S81.
- 497 34. Johnson S, Lavergne V, Skinner AM, et al. . *Clin Infect Dis*. 2021;73:e1029–
498 e1044.
- 499 35. Viechtbauer W. . *J Stat Softw*. 2010;36:1–48.
- 500 36. Fernandez Canigia L, Nazar J, Arce M, et al. . *Rev Argent Microbiol*.
501 2001;33:101–107.
- 502 37. Legaria MC, Lumelsky G, Rosetti S. . *Anaerobe*. 2003;9:113–116.
- 503 38. Goorhuis A, Legaria MC, van den Berg RJ, et al. . *Clin Microbiol Infect*.
504 2009;15:1080–1086.
- 505 39. Lopardo G, Morfin-Otero R, Moran-Vazquez II, et al. . *Brazilian J Infect Dis*.
506 2015;19:8–14.
- 507 40. Bartlett JG, Gerding DN. . *Clinical Infectious Diseases*;46 . Epub ahead of
508 print January 2008. DOI: 10.1086/521863.
- 509 41. Pan L, Mu M, Yang P, et al. . *Am J Gastroenterol*. 2020;115:766–773.
- 510 42. Granata G, Petrosillo N, Al Moghazi S, et al. . *Anaerobe*. 2022;74:102484.
- 511 43. Huttner BD, Catho G, Pano-Pardo JR, et al. . *Clin Microbiol Infect Off Publ*
512 *Eur Soc Clin Microbiol Infect Dis*. 2020;26:808–810.
- 513 44. Chen N, Zhou M, Dong X, et al. . *Lancet (London, England)*. 2020;395:507–

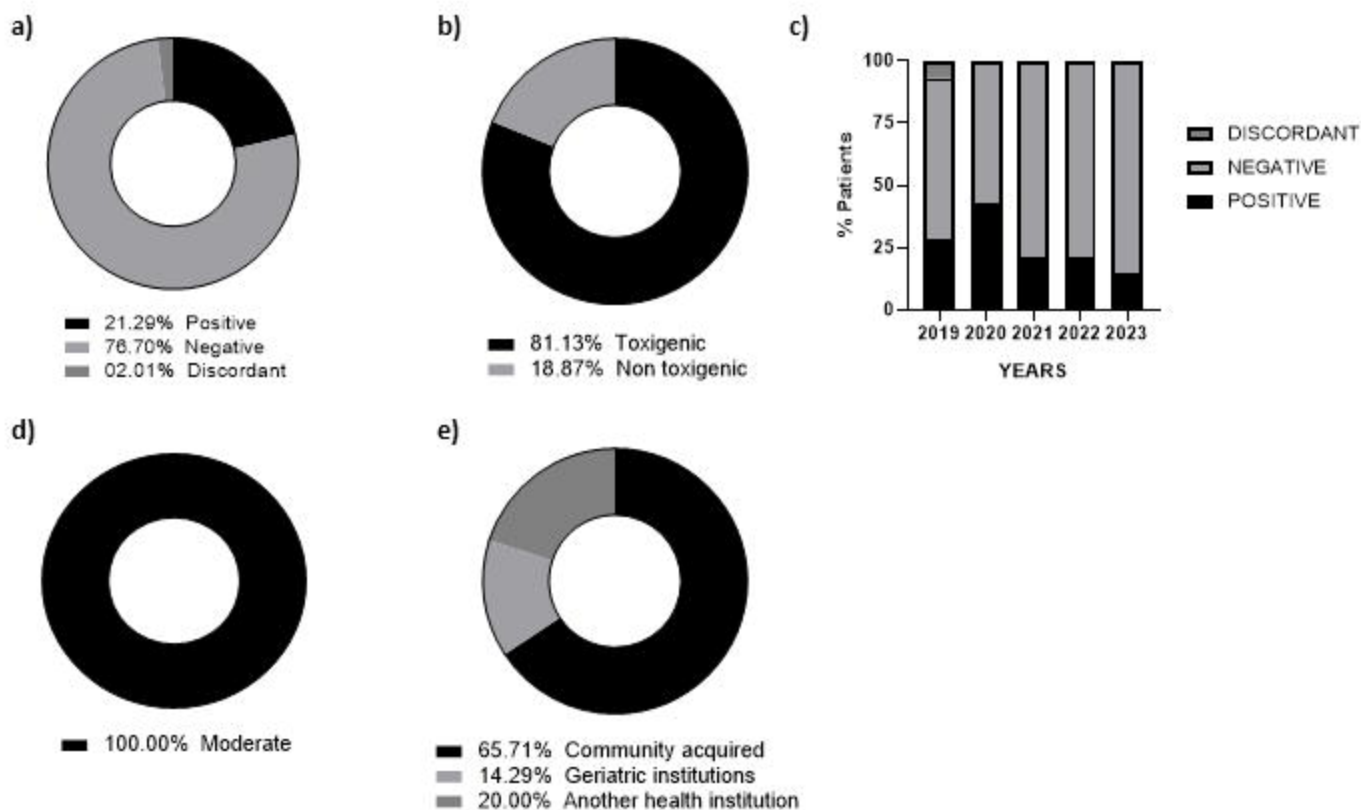
- 514 513.
- 515 45. Adams-Sommer V, Fu Y, Grinspan LT, et al. . *Infect Control Hosp Epidemiol.*
516 2021;42:1165–1166.
- 517 46. Laszkowska M, Kim J, Faye AS, et al. . *Dig Dis Sci.* 2021;66:4398–4405.
- 518 47. Hawes AM, Desai A, Patel PK. . *Anaerobe.* 2021;70:102384.
- 519 48. Luo M, Liu Y, Wu P, et al. . 8 . Epub ahead of print 2017. DOI:
520 10.3389/fphys.2017.00822.
- 521 49. Khanna S, Kraft CS. . *Future Microbiol.* 2021;16:439–443.
- 522 50. Tariq R, Saha S, Furqan F, et al. . *Mayo Clin Proc.* 2020;95:1632–1648.
- 523 51. Louie TJ, Cannon K, Byrne B, et al. . *Clin Infect Dis an Off Publ Infect Dis*
524 *Soc Am.* 2012;55 Suppl 2:S132-42.
- 525 52. Guh AY, Mu Y, Winston LG, et al. . *N Engl J Med.* 2020;382:1320–1330.
- 526 53. Gentry CA, Williams RJ 2nd, Campbell D. . *Diagn Microbiol Infect Dis.*
527 2021;100:115308.
- 528 54. McDermott LA, Thorpe CM, Goldstein E, et al. . *Open Forum Infect Dis.*
529 2022;9:ofac492.1299.
- 530 55. Dingle KE, Didelot X, Quan TP, et al. . *Lancet Infect Dis.* 2017;17:411–421.
- 531 56. Wilcox MH, Shetty N, Fawley WN, et al. . *Clin Infect Dis.* 2012;55:1056–
532 1063.
- 533 57. Khanna S, Pardi DS, Aronson SL, et al. . *Am Coll Gastroenterol*;107.
- 534 58. European Centre for Disease Prevention and Control. . *Annu Epidemiol Rep*
535 *Commun Dis Eur.* 2016;40:335–348.
- 536 59. Carlson TJ, Blasingame D, Gonzales-Luna AJ, et al. . *Anaerobe.*
537 2020;62:102142.
- 538 60. Kincaid SE. . *Consult Pharm J Am Soc Consult Pharm.* 2010;25:834–836.
- 539 61. Owens RC. . *Drugs.* 2007;67:487–502.
- 540 62. Bassaris HP, Lianou PE, Legakis NJ, et al. . *Med Microbiol Immunol.*
541 1984;173:49–55.
- 542 63. Nakamura S, Mikawa M, Nakashio S, et al. . *Microbiol Immunol.*
543 1981;25:345–351.
- 544 64. Bacon AE, Fekety R. . *Diagn Microbiol Infect Dis.* 1994;18:205–209.
- 545 65. Simor AE, Bradley SF, Strausbaugh LJ, et al. . *Infect Control Hosp*
546 *Epidemiol.* 2002;23:696–703.
- 547 66. Guerrero DM, Nerandzic MM, Jury LA, et al. . *Am J Infect Control.*

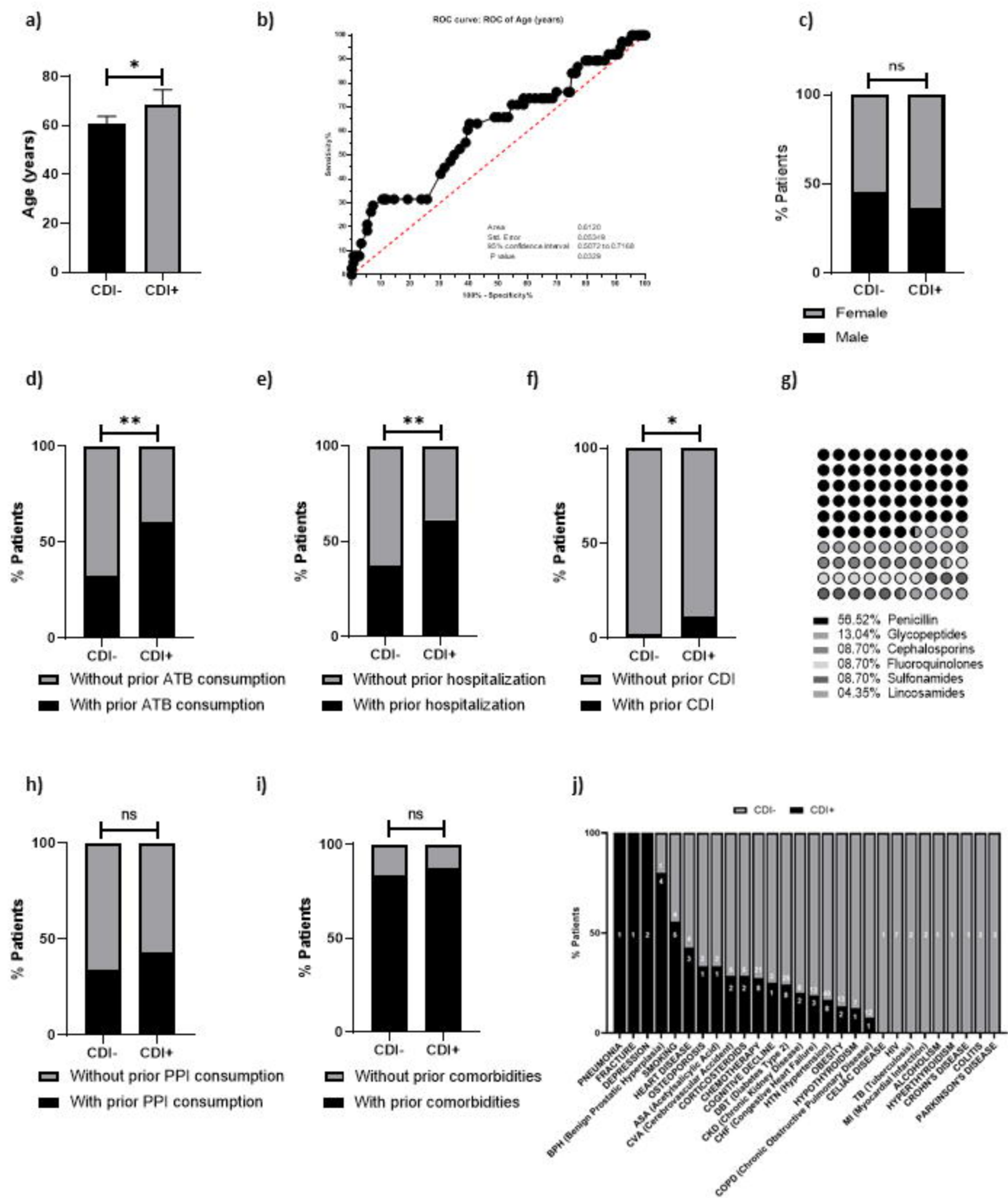
- 548 2012;40:556–558.
- 549 67. Edwards AN, Karim ST, Pascual RA, et al. . *Front Microbiol.* 2016;7:1698.
- 550 68. Clark T, Wiselka M. . *Clin Med.* 2008;8:544–547.
- 551 69. Schroeder MS. . *Am Fam Physician.* 2005;71:921–928.
- 552 70. Hessen MT. . *Ann Intern Med.* 2010;153:ITC41-15; quiz ITC416.
- 553 71. Dubberke ER, Wertheimer Al. . *Infect Control Hosp Epidemiol.* 2009;30:57–
554 66.
- 555 72. Wanahita A, Goldsmith EA, Marino BJ, et al. . *Am J Med.* 2003;115:543–546.
- 556 73. Wanahita A, Goldsmith EA, Musher DM. . *Clin Infect Dis an Off Publ Infect*
557 *Dis Soc Am.* 2002;34:1585–1592.
- 558 74. Bulusu M, Narayan S, Shetler K, et al. . *Am J Gastroenterol.* 2000;95:3137–
559 3141.
- 560 75. Vargas E, Apewokin S, Madan R. . *Anaerobe.* 2017;45:101–105.
- 561 76. Mihăilă RG, Cătană C, Olteanu AL, et al. . *Biomarkers.* 2019;24:389–393.
- 562 77. Buchrits S, Gafter-Gvili A, Bishara J, et al. . *J Clin Med*;10 . Epub ahead of
563 print July 2021. DOI: 10.3390/jcm10132957.
- 564 78. Lee DY, Chung EL, Guend H, et al. . *Ann Surg.* 2014;259:148–156.
- 565 79. Byrn JC, Maun DC, Gingold DS, et al. . *Med Hist.* 2012;143:150–154.
- 566 80. Nseir W, Khamisy-Farah R, Amara A, et al. . *Isr Med Assoc J.* 2019;21:658–
567 661.
- 568 81. Allegretti JR, Marcus J, Storm M, et al. . *Dig Dis Sci.* 2020;65:1761–1766.
- 569 82. Zhao L, Luo Y, Bian Q, et al. . *Infect Drug Resist.* 2020;13:171–181.
- 570 83. Pant C, Madonia PN, Jordan P, et al. . *J Investig Med.* 2009;57:40–42.
- 571 84. Yan D, Chen Y, Lv T, et al. . *J Med Microbiol.* 2017;66:1483–1488.
- 572 85. Phanchana M, Phetruen T, Harnvoravongchai P, et al. . *Sci Rep.* 2020;10:1–
573 8.
- 574 86. Barbero AM, Hernández Del Pino RE, Fuentes F, et al. . 2024;1–14.
- 575 87. Rao K, Erb-Downward JR, Walk ST, et al. . *PLoS One.* 2014;9:e92578.
- 576 88. Abhyankar MM, Ma JZ, Scully KW, et al. . *Am Soc Microbiol.* 2020;11:1–10.
- 577 89. Abou Chakra CN, McGeer A, Labbe AC, et al. . *Clin Infect Dis.*
578 2015;61:1781–1788.
- 579 90. Sartelli M, Di Bella S, McFarland L V., et al. . *World J Emerg Surg.*
580 2019;14:1–29.

- 581 91. Bermejo Boixareu C, Tutor-Ureta P, Ramos Martínez A. . *Rev Esp Geriatr*
582 *Gerontol.* 2020;55:225–235.
- 583 92. Lopes Cançado GG, Silveira Silva RO, Rupnik M, et al. . *Anaerobe.*
584 2018;54:65–71.
- 585 93. Lowe DO, Mamdani MM, Kopp A, et al. Proton Pump Inhibitors and
586 Hospitalization for Clostridium Difficile-Associated Disease: A Population-
587 Based Study.
- 588 94. Dai W, Yang T, Yan L, et al. . *BMC Infect Dis*;20 . Epub ahead of print April
589 2020. DOI: 10.1186/s12879-020-05014-6.
- 590 95. Li Y, Huang Y, Li Y, et al. . *Pakistan J Med Sci.* 2016;32:736–741.
- 591 96. Lv Z, Peng GL, Su JR. . *Brazilian J Med Biol Res.* 2014;47:1085–1090.
- 592 97. Tang C, Li Y, Liu C, et al. . *Am J Infect Control.* 2018;46:285–290.
- 593 98. Zhou FF, Wu S, Klena JD, et al. . *Eur J Clin Microbiol Infect Dis.*
594 2014;33:1773–1779.
- 595 99. Carvajal C, Pacheco C, Jaimes F. . *Biomedica.* 2017;37:53–61.
- 596 100. Salazar CL, Reyes C, Atehortua S, et al. . *PLoS One*;12 . Epub ahead of
597 print September 2017. DOI: 10.1371/journal.pone.0184689.
- 598 101. Soes LM, Holt HM, Böttiger B, et al. . *Epidemiol Infect.* 2014;142:1437–1448.
- 599 102. Le Monnier A, Candela T, Mizrahi A, et al. . *J Hosp Infect.* 2022;129:65–74.
- 600 103. Kurti Z, Lovasz BD, Mandel MD, et al. . *World J Gastroenterol.*
601 2015;21:6728–6735.
- 602 104. Vesteynsdottir I, Gudlaugsdottir S, Einarsdottir R, et al. . *Eur J Clin Microbiol*
603 *Infect Dis.* 2012;31:2601–2610.
- 604 105. Ingle M, Deshmukh A, Desai D, et al. . *Indian J Gastroenterol.* 2011;30:89–
605 93.
- 606 106. Ingle M, Deshmukh A, Desai D, et al. . *Indian J Gastroenterol.* 2013;32:179–
607 183.
- 608 107. Mori N, Aoki Y. . *J Infect Chemother.* 2015;21:864–867.
- 609 108. Morfin-Otero R, Garza-Gonzalez E, Aguirre-Diaz SA, et al. . *Brazilian J Infect*
610 *Dis.* 2016;20:8–13.
- 611 109. Czepiel J, Biesiada G, Brzozowski T, et al. . *J Physiol Pharmacol an Off J*
612 *Polish Physiol Soc.* 2014;65:695–703.
- 613 110. Legenza L, Barnett S, Rose W, et al. . *BMJ Glob Heal*;3 . Epub ahead of
614 print July 2018. DOI: 10.1136/bmjgh-2018-000889.
- 615 111. Rajabally N, Pentecost M, Pretorius G, et al. . *South African Med J.*

- 616 2013;103:168–172.
- 617 112. Han SH, Kim H, Lee K, et al. . *J Med Microbiol*. 2014;63:1542–1551.
- 618 113. Lee YC, Wang JT, Chen AC, et al. . *J Microbiol Immunol Infect*.
619 2012;45:287–295.
- 620 114. Lin C-Y, Cheng H-T, Kuo C-J, et al. . *Microbiol Spectr*;10 . Epub ahead of
621 print August 2022. DOI: 10.1128/spectrum.00486-22.
- 622 115. Thipmontree W, Kiratisin P, Manatsathit S, et al. Epidemiology of Suspected
623 *Clostridium difficile*-Associated Hospital-Acquired Diarrhea in Hospitalized
624 Patients at Siriraj Hospital. 2011.
- 625 116. Ergen EK, Akalin H, Yilmaz E, et al. . *Med Mal Infect*. 2009;39:382–387.
- 626 117. Dial S, Delaney JAC, Barkun AN, et al. . *JAMA*. 2005;294:2989–2995.
- 627 118. Dial S, Kezouh A, Dascal A, et al. . *C Can Med Assoc J*. 2008;179:767–772.
- 628 119. Marwick CA, Yu N, Lockhart MC, et al. . *J Antimicrob Chemother*.
629 2013;68:2927–2933.
- 630 120. Suissa D, Delaney JAC, Dial S, et al. . *Br J Clin Pharmacol*. 2012;74:370–
631 375.
- 632 121. Wilcox MH, Mooney L, Bendall R, et al. . *J Antimicrob Chemother*.
633 2008;62:388–396.
- 634 122. Baxter R, Ray GT, Fireman BH. . *Infect Control Hosp Epidemiol*.
635 2008;29:44–50.
- 636 123. Haddad FG, Zaidan J, Polavarapu A, et al. . *Z Gastroenterol*. 2019;57:1183–
637 1195.
- 638 124. Kuntz JL, Chrischilles EA, Pendergast JF, et al. . *BMC Infect Dis*;11 . Epub
639 ahead of print July 2011. DOI: 10.1186/1471-2334-11-194.
- 640 125. Kutty PK, Woods CW, Sena AC, et al. . *Emerg Infect Dis*. 2010;16:197–204.
- 641 126. Kwon SS, Gim JL, Kim MS, et al. . *Anaerobe*. 2017;48:42–46.
- 642 127. Naggie S, Miller BA, Zuzak KB, et al. . *Am J Med*;124 . Epub ahead of print
643 March 2011. DOI: 10.1016/j.amjmed.2010.10.013.
- 644 128. Tabak YP, Johannes RS, Sun X, et al. . *Infect Control Hosp Epidemiol*.
645 2015;36:695–701.
- 646 129. Tartof SY, Rieg GK, Wei R, et al. . *Infect Control Hosp Epidemiol*.
647 2015;36:1409–1416.
- 648 130. Hensgens MPM, Goorhuis A, Dekkers OM, et al. . *J Antimicrob Chemother*.
649 2012;67:742–748.
- 650 131. Nardino RJ, Vender RJ, Herbert PN. . *Am J Gastroenterol*. 2000;95:3118–

- 651 3122.
- 652 132. Herzig SJ, Howell MD, Ngo LH, et al. . *JAMA*. 2009;301:2120–2128.
- 653 133. Pham CQD, Regal RE, Bostwick TR, et al. . *Ann Pharmacother*.
654 2006;40:1261–1266.
- 655 134. Freedberg DE, Lebwohl B, Abrams JA. . *Clin Lab Med*. 2014;34:771–785.
- 656 135. Singh A, Cresci GA, Kirby DF. . *Nutr Clin Pract Off Publ Am Soc Parenter*
657 *Enter Nutr*. 2018;33:614–624.
- 658 136. van Prehn J, Reigadas E, Vogelzang EH, et al. . *Clin Microbiol Infect*.
659 2021;27:S1–S21.
- 660 137. Furuya-Kanamori L, Stone JC, Clark J, et al. . *Infect Control Hosp Epidemiol*.
661 2015;36:132–141.
- 662





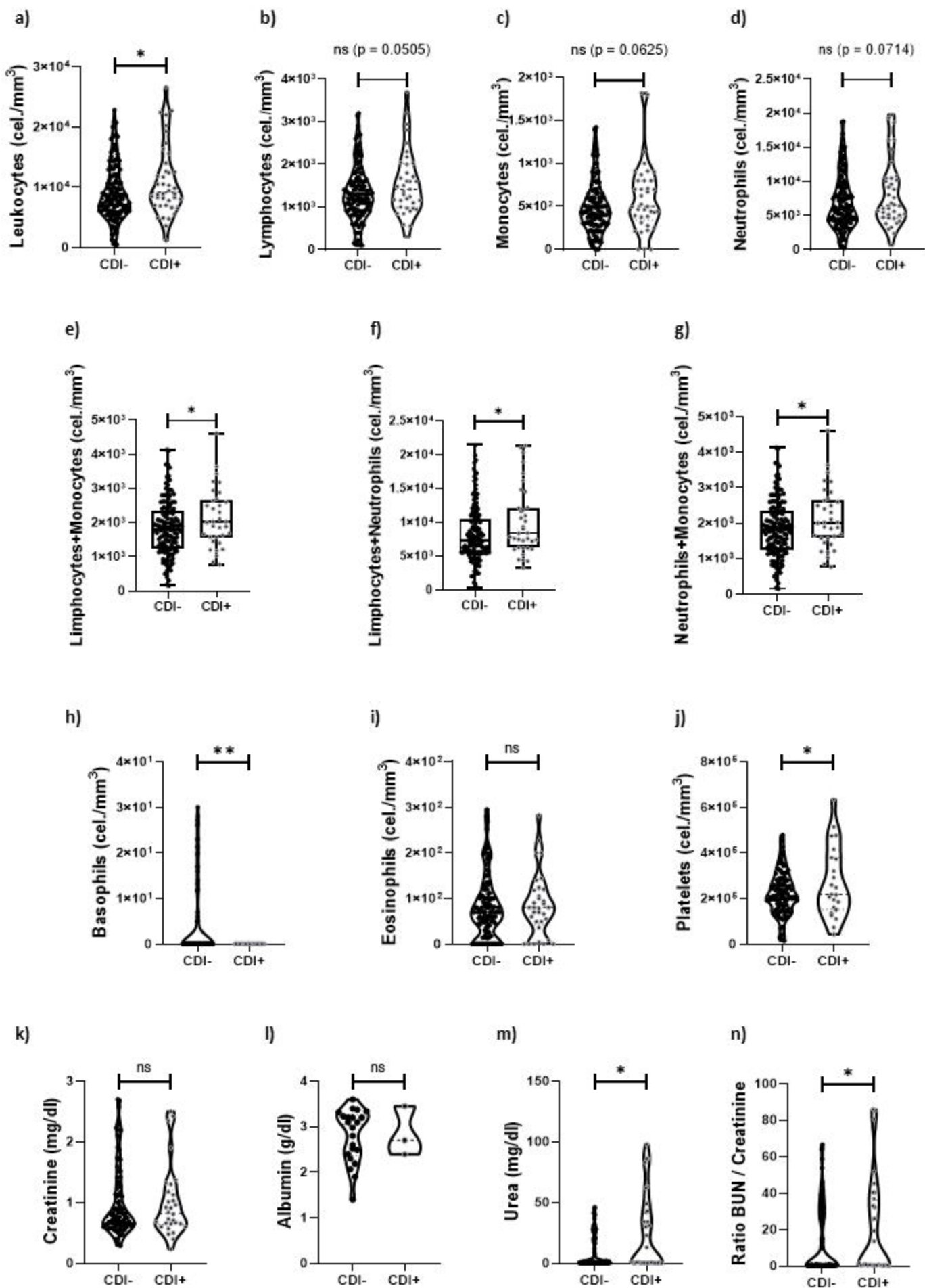
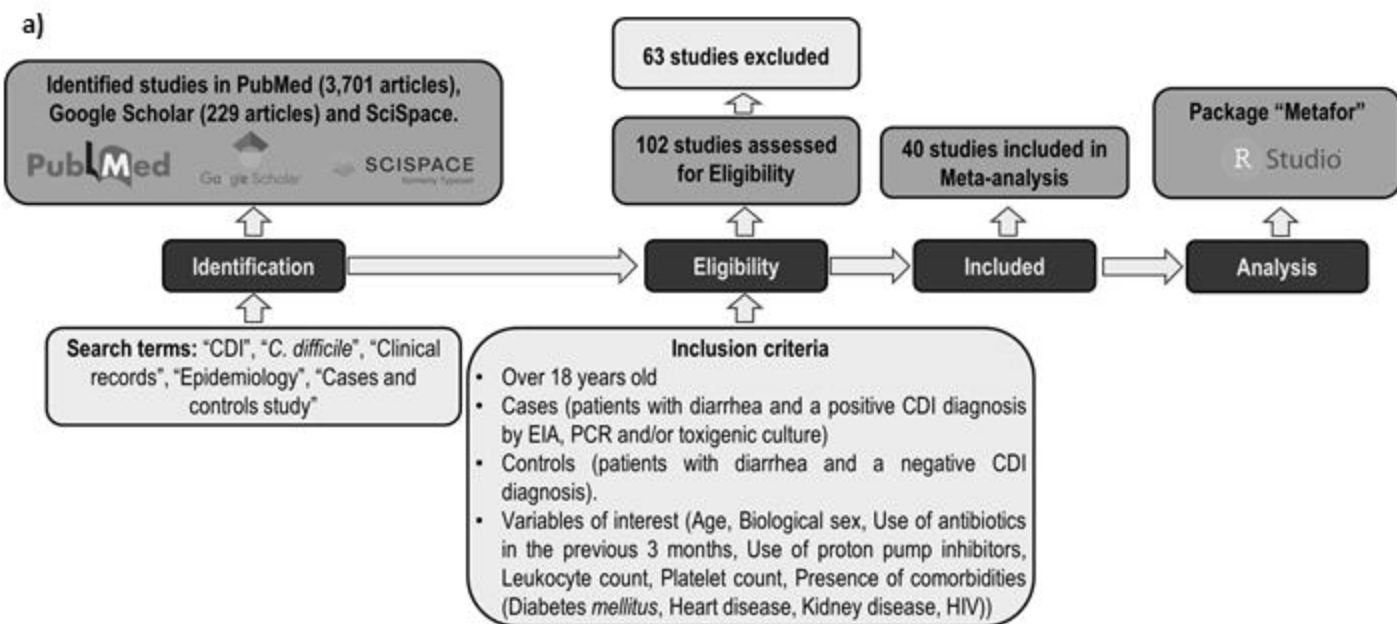
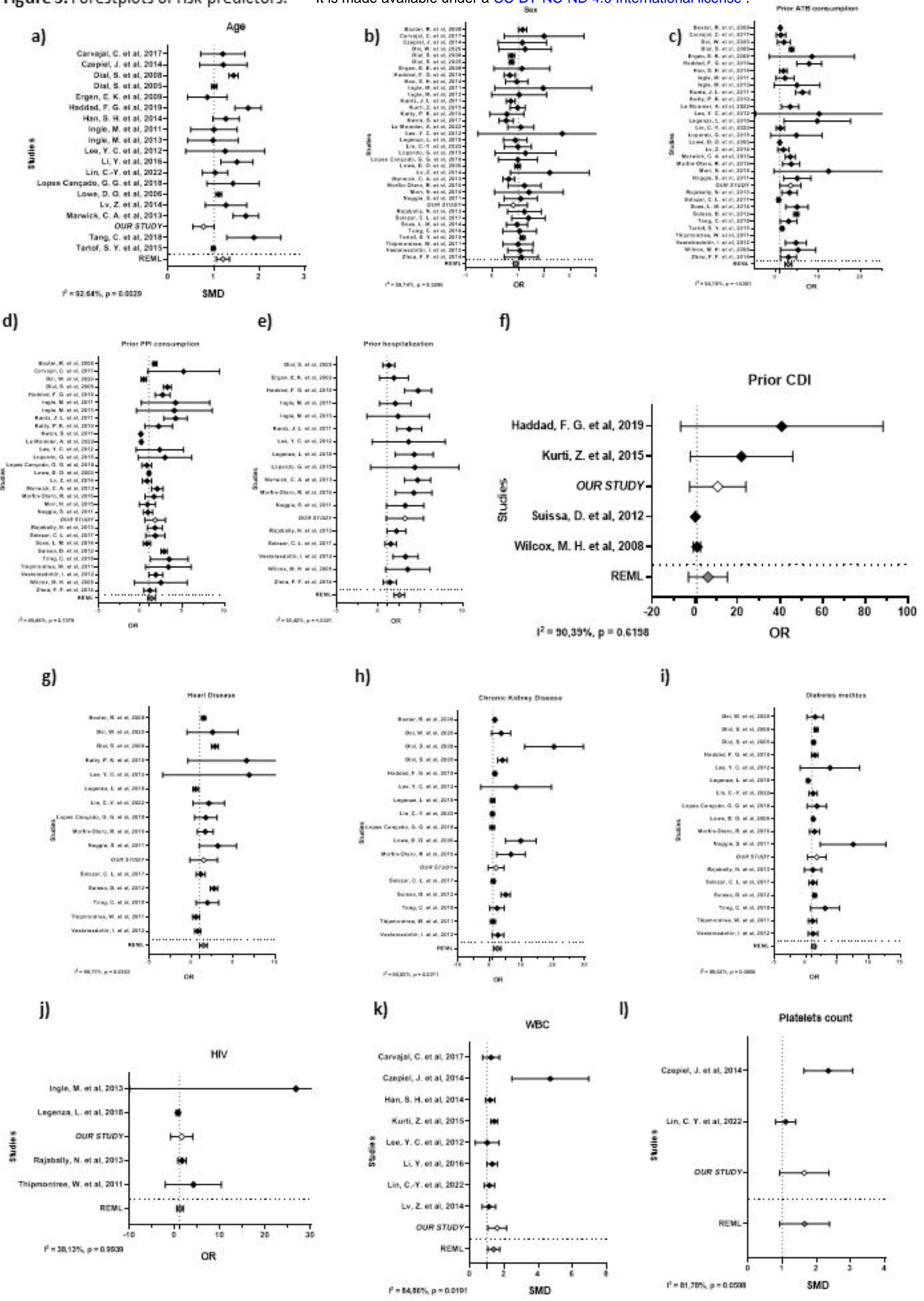
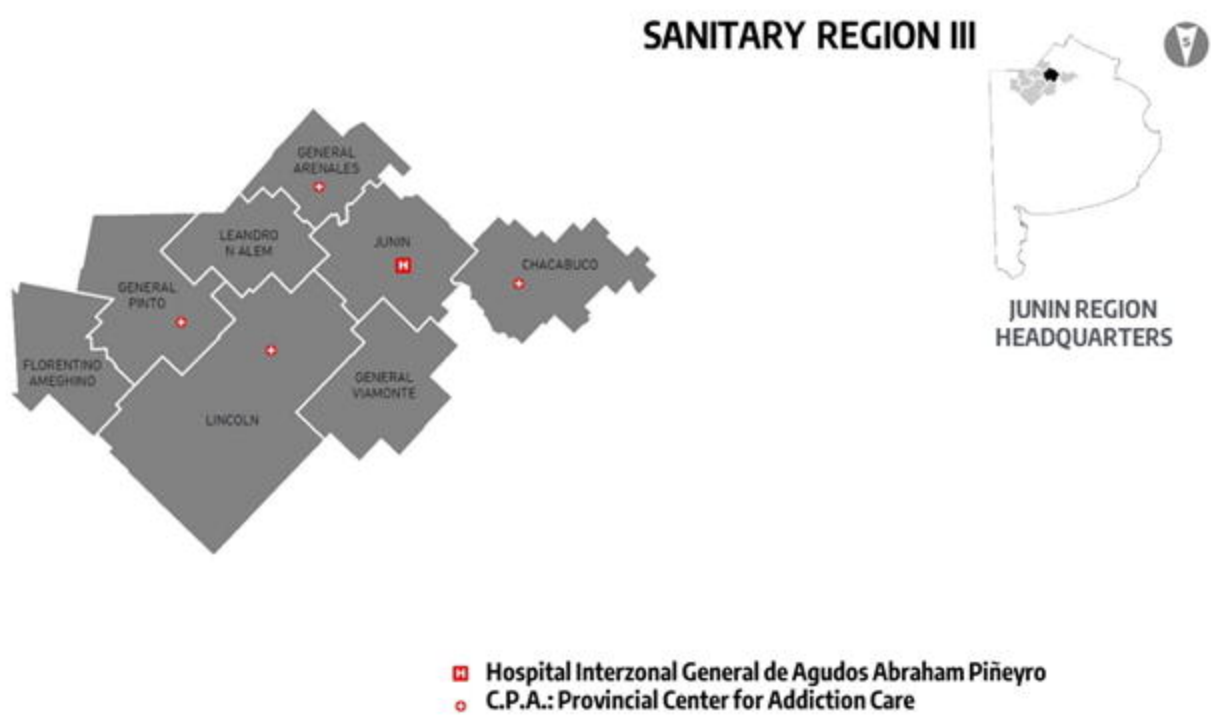


Figure 4. Flow chart of studies screened and included in the meta-analysis.



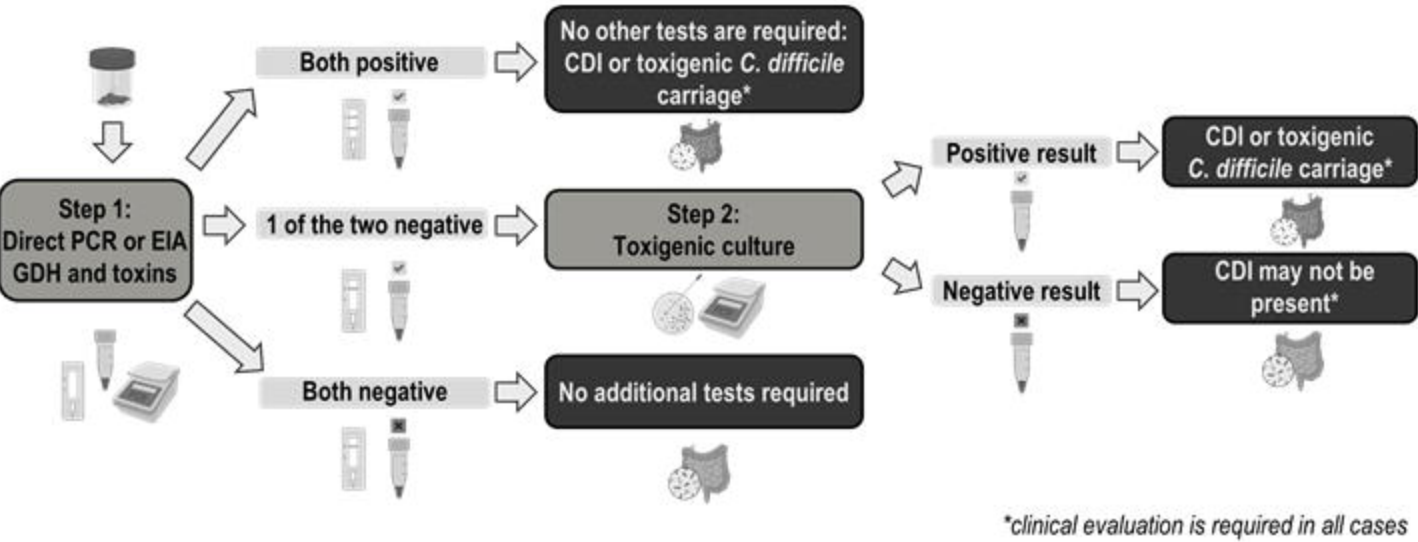




Supplementary Figure 1. Sanitary Region III of Buenos Aires, Argentina.

Sanitary region from the northwest of Buenos Aires province (Argentina) comprised of the municipalities of: Chacabuco, F. Ameghino, General Arenales, General Pinto, General Viamonte, Junín, Leandro N. Alem and Lincoln.

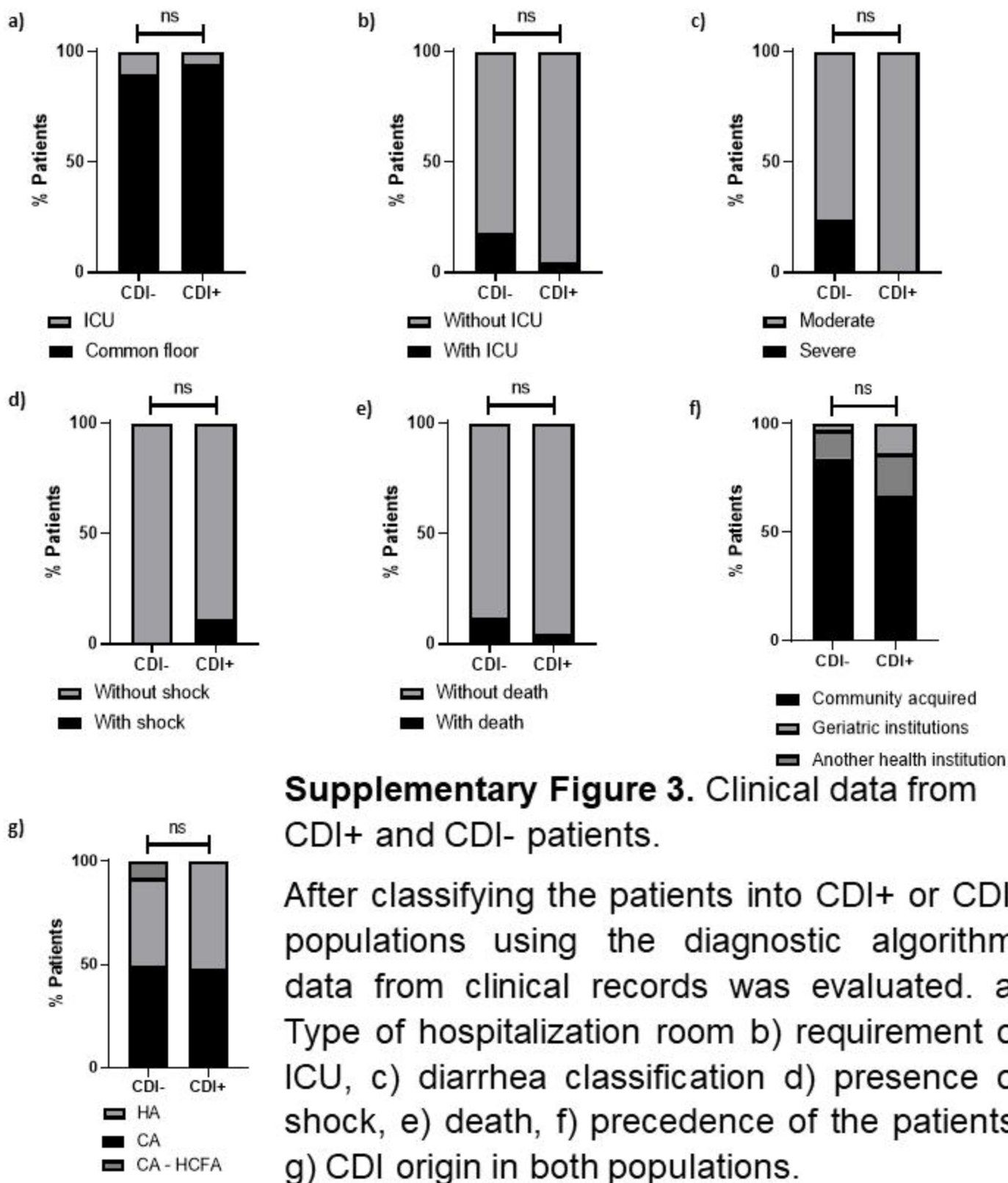
Supplementary figure 2. Diagnostic algorithm to determine *C. difficile* presence in stool samples.



Supplementary Figure 2. Diagnostic algorithm to determine *C. difficile* presence in stool samples.

A cohort of 249 patients with gastrointestinal symptoms and diarrhea was evaluated. The presence of *C. difficile* within stool samples was ascertained by an algorithm that includes 3 tests (EIA, PCR, and toxigenic culture), accompanied by an exhaustive analysis of the patients' medical records. This algorithm was designed based on Crobach et al. recommendations ¹.

GDH, glutamate dehydrogenase from *C. difficile*.



Supplementary Figure 3. Clinical data from CDI+ and CDI- patients.

After classifying the patients into CDI+ or CDI- populations using the diagnostic algorithm, data from clinical records was evaluated. a) Type of hospitalization room b) requirement of ICU, c) diarrhea classification d) presence of shock, e) death, f) precedence of the patients, g) CDI origin in both populations.

ICU= Intensive Care Unit. HO= Hospital-acquired CDI. CO= Community-acquired CDI. CO-HCFA= Community-acquired CDI associated to hospital environments.

a, b, c, d, e) Fisher's exact test; f, g) Chi-square test with Kruskal Wallis test. ns= non-significant

Table 1. Clinical, demographic and blood parameters available under a CC-BY-NC 4.0 International license.

Clinical-demographical parameters	Blood parameters
Age	Leukocytes (cells/mm ³)
Biological Sex	Neutrophils (cells/mm ³)
Previous hospitalization	Monocytes (cells/mm ³)
Previous consumption of Antibiotics	Lymphocytes (cells/mm ³)
Antibiotics use during hospitalization	Eosinophils (cells/mm ³)
Presence of comorbidities	Basophils (cells/mm ³)
Previous consumption of Proton Pump Inhibitors	Platelets (cells/mm ³)
Previous CDI	Urea (mg/dl)
Place of hospitalization	Creatinine (mg/dl)
Need for Intensive Care Unit (ICU)	Albumin (g/dl)
Origin	
Diarrhea classification	
Shock	
Death	

Countries	Studies
Argentina	Lopardo, G. et al, 2015 ³⁹ OUR study
Brazil	Lopes Cançado, G. G. et al, 2018 ⁹²
Canada	Lowe, D. O. et al, 2006 ⁹³
China	Dai, W. et al, 2020 ⁹⁴
	Li, Y. et al, 2016 ⁹⁵
	Lv, Z. et al, 2014 ⁹⁶
	Tang, C. et al, 2018 ⁹⁷
	Zhou, F, F, et al, 2014 ⁹⁸
Colombia	Carvajal, C. et al, 2017 ⁹⁹
	Salazar, C, L. et al, 2017 ¹⁰⁰
Denmark	Soes, L. M. et al, 2014 ¹⁰¹
France	Le Monnier, A. et al, 2022 ¹⁰²
Hungary	Kurti, Z. et al, 2015 ¹⁰³
Iceland	Vesteinsdottir, I. et al, 2012 ¹⁰⁴
India	Ingle, M. et al, 2011 ¹⁰⁵
	Ingle, M. et al, 2013 ¹⁰⁶
Japan	Mori, N. et al, 2015 ¹⁰⁷
Mexico	Morfin-Otero, R. et al, 2016 ¹⁰⁸
Poland	Czepiel, J. et al, 2014 ¹⁰⁹
South Africa	Legenza, L. et al, 2018 ¹¹⁰
	Rajabally, N. et al, 2013 ¹¹¹
South Korea	Han, S. H. et al, 2014 ¹¹²
Taiwan	Lee, Y. C. et al, 2012 ¹¹³ ; Lin C. Y. et al, 2022 ¹¹⁴
Thailand	Thipmontree, W. et al, 2011 ¹¹⁵
Turkey	Ergen, E. K. et al, 2009 ¹¹⁶
United Kingdom	Dial, S. et al, 2005 ¹¹⁷
	Dial, S. et al, 2008 ¹¹⁸
	Marwick, C. A. et al, 2013 ¹¹⁹
	Suissa, D. et al, 2012 ¹²⁰
	Wilcox, M. H. et al, 2008 ¹²¹
	Baxter, R. et al, 2008 ¹²²
	Haddad, F. G. et al, 2019 ¹²³
United States	Kuntz, J. L. et al, 2011 ¹²⁴
	Kutty, P. K. et al, 2010 ¹²⁵
	Kwon, S. et al, 2017 ¹²⁶
	Naggie, S. et al, 2011 ¹²⁷
	Tabak, P. Y. et al, 2015 ¹²⁸
	Tartof, S. Y. et al, 2015 ¹²⁹

Table 3. Summary of risk predictors from the meta-analysis

RISK PREDICTOR	OR
Age	1,19 **
Biological sex	0,89 *
Prior ATB consumption	3,02 ***
Prior PPI consumption	1,29 ns
Prior hospitalization	2,45 ***
Prior CDI	1,76 ns
WBC (10^9 cel/mm ³)	1,35 *
Platelets (10^9 cel/ mm ³)	1,54 ns
Comorbidities	
Diabetes <i>mellitus</i>	1,26 ns
Heart disease	1,41 *
Kidney disease	2,23 ***
HIV	1,00 ns

Table 4. Meta-analysis dataset.

		CDI+	CDI-	TOTAL
N° of individuals		11596	536467	548467
Sex	Male	44.33%	39.98%	40.06%
	Female	55.67%	60.02%	59.94%
Prior ATB consumption	With	39.95%	8.52%	9.11%
	Without	60.05%	91.48%	90.89%
Prior PPI consumption	With	29.87%	21.76%	22.18%
	Without	70.13%	78.24%	77.82%
Prior hospitalization	With	27.88%	16.80%	17.07%
	Without	72.12%	83.20%	82.93%