

# Age and gender profiles of HIV infection burden and viraemia: novel metrics for HIV epidemic control in African populations with high antiretroviral therapy coverage

Andrea Brizzi<sup>1\*</sup>, Joseph Kagaayi<sup>2\*</sup>, Robert Ssekubugu<sup>2\*</sup>, Lucie Abeler-Dörner<sup>3</sup>, Alexandra Blenkinsop<sup>1</sup>, David Bonsall<sup>3,4</sup>, Larry W. Chang<sup>5,2,6</sup>, Christophe Fraser<sup>3,7</sup>, Ronald M. Galiwango<sup>2</sup>, Godfrey Kigozi<sup>2</sup>, Imogen Kyle<sup>1</sup>, Mélodie Monod<sup>1</sup>, Gertrude Nakigozi<sup>2</sup>, Fred Nalugoda<sup>2</sup>, Joseph G. Rosen<sup>8</sup>, Oliver Laeyendecker<sup>9,10</sup>, Thomas C. Quinn<sup>9,5,6</sup>, M. Kate Grabowski<sup>2,5,11\*</sup>, Steven J. Reynolds<sup>2,5,9\*§</sup>, Oliver Ratmann<sup>1\*§</sup>, on behalf of the Rakai Health Sciences Program

1 Department of Mathematics, Imperial College London, London, United Kingdom

2 Rakai Health Sciences Program, Kalisizo, Uganda

3 Big Data Institute, University of Oxford, Oxford, United Kingdom

4 Wellcome Centre for Human Genomics, Nuffield Department of Medicine, University of Oxford, Oxford, United Kingdom

5 Division of Infectious Diseases, Johns Hopkins School of Medicine, Baltimore, Maryland, USA

6 Department of Epidemiology, Johns Hopkins Bloomberg School of Public Health, Baltimore, Maryland, USA

7 Pandemic Sciences Institute, University of Oxford, Oxford, United Kingdom

8 Department of International Health, Johns Hopkins Bloomberg School of Public Health, Baltimore, Maryland, USA

9 Division of Intramural Research, National Institute of Allergy and Infectious Diseases, National Institutes of Health, Bethesda, Maryland, USA

10 Department of Medicine, Johns Hopkins School of Medicine, Baltimore, Maryland, USA

11 Department of Pathology, Johns Hopkins School of Medicine, Baltimore, Maryland, USA

§ Corresponding author: Steven Reynolds

NIH ICER Program Uganda  
Plot 1577 Ggaba Road  
Kampala, Uganda  
+256772138650  
[sireynolds@niaid.nih.gov](mailto:sireynolds@niaid.nih.gov)

\*These authors have contributed equally to the work.

E-mail addresses of authors:

ABr: [ab1820@ic.ac.uk](mailto:ab1820@ic.ac.uk)  
JK: [jkagaayi@rhsp.org](mailto:jkagaayi@rhsp.org)  
RS: [rssekubugu@rhsp.org](mailto:rssekubugu@rhsp.org)  
LAD: [lucie.abeler-dorner@bdi.ox.ac.uk](mailto:lucie.abeler-dorner@bdi.ox.ac.uk)  
ABl: [a.blenkinsop@imperial.ac.uk](mailto:a.blenkinsop@imperial.ac.uk)  
DB: [david.bonsall@bdi.ox.ac.uk](mailto:david.bonsall@bdi.ox.ac.uk)  
LWC: [lchang8@jhmi.edu](mailto:lchang8@jhmi.edu)  
CF: [christophe.fraser@bdi.ox.ac.uk](mailto:christophe.fraser@bdi.ox.ac.uk)  
RG: [rmgaliwango@rhsp.org](mailto:rmgaliwango@rhsp.org)  
GK: [gkigozi@rhsp.org](mailto:gkigozi@rhsp.org)  
IK: [imogenkyle@gmail.com](mailto:imogenkyle@gmail.com)  
MM: [melodie.monod18@imperial.ac.uk](mailto:melodie.monod18@imperial.ac.uk)  
GN: [gnakigozi@rhsp.org](mailto:gnakigozi@rhsp.org)  
FN: [fnalugoda@rhsp.org](mailto:fnalugoda@rhsp.org)  
JGR: [jrosen72@jhu.edu](mailto:jrosen72@jhu.edu)  
OL: [olaeyen1@jhmi.edu](mailto:olaeyen1@jhmi.edu)  
TG: [tquinn2@jhmi.edu](mailto:tquinn2@jhmi.edu)  
KG: [mgrabow2@jhu.edu](mailto:mgrabow2@jhu.edu)  
SR: [sjr@jhmi.edu](mailto:sjr@jhmi.edu)  
OR: [oliver.ratmann@imperial.ac.uk](mailto:oliver.ratmann@imperial.ac.uk)

Keywords: population-based study, prospective cohort, viral load suppression, viraemia, Universal Test and Treat, sub-Saharan Africa

## 1 **Abstract**

2 **Introduction:** To prioritize and tailor interventions for ending AIDS by 2030 in Africa, it is  
3 important to characterize the population groups in which HIV viraemia is concentrating.

4  
5 **Methods:** We analysed HIV testing and viral load data collected between 2013-2019 from the  
6 open, population-based Rakai Community Cohort Study (RCCS) in Uganda, to estimate HIV  
7 seroprevalence and population viral suppression over time by gender, one-year age bands and  
8 residence in inland and fishing communities. All estimates were standardized to the underlying  
9 source population using census data. We then assessed 95-95-95 targets in their ability to  
10 identify the populations in which viraemia concentrates.

11  
12 **Results:** Following the implementation of Universal Test and Treat, the proportion of  
13 individuals with viraemia decreased from 4.9% (4.6%-5.3%) in 2013 to 1.9% (1.7%-2.2%) in  
14 2019 in inland communities and from 19.1% (18.0%-20.4%) in 2013 to 4.7% (4.0%-5.5%) in  
15 2019 in fishing communities. Viraemia did not concentrate in the age and gender groups furthest  
16 from achieving 95-95-95 targets. Instead, in both inland and fishing communities, women aged  
17 25-29 and men aged 30-34 were the 5-year age groups that contributed most to population-level  
18 viraemia in 2019, despite these groups being close to or had already achieved 95-95-95 targets.

19  
20 **Conclusions:** The 95-95-95 targets provide a useful benchmark for monitoring progress towards  
21 HIV epidemic control, but do not contextualize underlying population structures and so may  
22 direct interventions towards groups that represent a marginal fraction of the population with  
23 viraemia.

## 24 **1 Introduction**

25 The human immunodeficiency virus (HIV) continues to be a deadly infection. In 2022, there  
26 were an estimated 630,000 (480,000-880,000) deaths worldwide and 1.3 million new infections  
27 globally, of which more than half occurred in Eastern and Southern Africa (ESA) [1].  
28 Combination antiretroviral treatment (ART) effectively suppresses HIV viraemia and is highly  
29 effective in reducing HIV-associated mortality[2-4] and preventing onward HIV  
30 transmission[5,6]. Consequently, treatment has been adopted as a public health strategy to  
31 prevent new HIV infections (treatment as prevention, TasP)[1,7,8]. Progress in the  
32 implementation of TasP programs is primarily measured through the Joint United Nations  
33 Programme on HIV/AIDS (UNAIDS) “95-95-95” targets, with the aim that 95% of people living  
34 with HIV (PLHIV) are aware of their status, 95% of those aware are on antiretroviral therapy,  
35 and 95% of those on ART achieve viral suppression. All countries in ESA have committed to  
36 achieving these targets by 2025[9], as part of the UN Sustainable Development Goals[10,11].

37 With the expansion of HIV testing and treatment services, many countries in ESA have either  
38 attained or are close to attaining the “95-95-95” targets at a population level[12,13]. Thus,  
39 determining novel effective methods to measure HIV epidemic control and direct future efforts  
40 to accelerate epidemic decline in such contexts is required. While stratification of “95-95-95”  
41 targets by age and gender represents one approach, current evidence suggests that these metrics  
42 may not be predictive of incidence declines[14-17]. Although populations stratifications of  
43 existing targets are useful in highlighting important inequalities in treatment coverage[18], they  
44 do not account for underlying demographic structures or distributions of HIV burden in the  
45 population. Consequently, they may not provide a complete understanding of the people most at  
46 risk of HIV-related mortality and onward transmission, which is necessary to tailor and  
47 implement effective prevention interventions.

48 In this study, we consider an alternative metric for assessing HIV control, one that integrates  
49 demographic information, specifically the age and gender profiles of the population burdens of  
50 HIV infection and HIV viraemia. Using longitudinal data from the Rakai Community Cohort  
51 Study (RCCS), a large population-based HIV surveillance cohort in southern Uganda, we  
52 compare the proposed profiles against the HIV seroprevalence and the prevalence of viraemia  
53 among PLHIV implied by the “95-95-95” targets. Our analyses were conducted across two  
54 distinct geographic settings with unique demographic compositions, including agrarian villages

55 and semi-urban trading centres with population pyramids typical of most ESA communities and  
56 hyper endemic Lake Victoria fishing communities with atypical population structures. The study  
57 timeframe, spanning 2013 to 2019, coincided with the national expansion of ART programs.

58

## 59 **2 Methods**

### 60 **2.1 Study population**

61 The RCCS is a population-based cohort of individuals aged 15 to 49 years established in 1994 by  
62 the Rakai Health Sciences Program (RHSP). The RCCS is implemented in communities in and  
63 around Rakai District[19], bordering Lake Victoria to the east and Tanzania to the south.  
64 Between July 2013 and May 2019, four survey rounds (survey rounds 16, 17, 18 and 19) were  
65 conducted in four Lake Victoria fishing and 36 inland agrarian and semi-urban communities.  
66 RCCS survey methods have been described previously[20]. In brief, at each survey round, the  
67 RCCS conducted a household census and subsequently invited all individuals aged 15-49 years  
68 and residing in the communities with intention to stay for at least 1 month to participate. Consent  
69 was obtained privately by a trained RCCS interviewer. Following consent, participants were  
70 interviewed in a private location, typically a tent, for demographic characteristics as well as  
71 behavioral and healthcare behavior and asked to provide a blood sample for HIV testing and  
72 future laboratory studies. All participants were offered pre-test and post-test counseling, and  
73 referrals to ART services if living with HIV.

74

### 75 **2.2 Population sizes**

76 Age and gender-specific population sizes in each survey round were estimated from line-list data  
77 of census-eligible individuals that were reported by household heads during the census. The  
78 reported ages tended to reflect grouping patterns around multiples of 5, which we disaggregated  
79 by smoothing population sizes over age (Supplementary Text S1.1 and Supplementary Figure  
80 S2[21]).

81

### 82 **2.3 Measurement of HIV serostatus and viraemia**

83 All RCCS participants were offered free HIV testing. Testing was performed through a  
84 combination of three rapid tests with confirmation of positive, faintly positive, and discordant  
85 results by at least two EIAs and Western Blot or DNA PCR[22]. Overall, 99.7% of participants

86 accepted HIV testing across survey rounds. Among participants living with HIV, HIV-1 viral  
87 load was measured on stored serum samples using the Abbott real-time m2000 assay (Abbott  
88 Laboratories, IL, USA). Overall, viral load measurements were obtained from nearly all (99.4%)  
89 participants living with HIV [23–25]. Viral suppression was defined as a viral load measurement  
90 below 1,000 HIV RNA copies/mL plasma, following recommendations of the World Health  
91 Organization (WHO)[26] at the time. People who did not achieve viral suppression were defined  
92 as viraemic. From these data, we first estimated the population-level HIV seroprevalence (i.e.,  
93 probability for an individual to be living with HIV) with a non-parametric Bayesian model over  
94 the age of individuals stratifying by gender, survey round and community type (i.e., fishing vs.  
95 inland), using the data from first-time participants as proxy for non-participating individuals  
96 (Supplementary Text, S1.2)[21]. Then, the same model was used to estimate the proportion of  
97 individuals exhibiting viraemia among people living with HIV (Supplementary TextS1.3) and  
98 among all individuals (Supplementary Text S1.4).

99

#### 100 **2.4. HIV infection burden and burden of viraemia profiles**

101 We further characterized the HIV burden profile, i.e., the contribution of each gender and age  
102 subgroup to the total number of PLHIV. First, we estimated the number  $I_{g,a}$  of individuals of  
103 gender  $g$  and age  $a$  living with HIV in the population by multiplying the estimated age and  
104 gender specific seroprevalence of HIV  $\pi_{g,a}^{HIV-pop}$  with the estimated number of census-eligible  
105 individuals  $N_{g,a}$ , specifically  $I_{g,a} = N_{g,a}\pi_{g,a}^{HIV-pop}$ . We then computed the HIV burden profile  
106 by taking the ratio of the number  $I_{g,a}$  of individuals of gender  $g$  and age  $a$  living with HIV  
107 against the sum over all age and gender groups:

$$108 \gamma_{g,a}^{HIV} = \frac{I_{g,a}}{\sum_{g',a'} I_{g',a'}}. \quad (1)$$

109 We analogously described the burden profile of HIV viraemia, i.e., the contribution of each  
110 gender and age subgroup to the total number of individuals exhibiting viraemia. First, we  
111 estimated the number  $V_{g,a}$  of individuals of gender  $g$  and age  $a$  exhibiting viraemia by  
112 multiplying the age and gender specific prevalence of viraemia  $\pi_{g,a}^{vir-pop}$  by  $N_{g,a}$  the estimated  
113 number of census-eligible individuals  $N_{g,a}$ , specifically  $V_{g,a} = N_{g,a}\pi_{g,a}^{vir-pop}$ . We then computed

114 the profile of viraemia by taking the ratio of the number  $V_{g,a}$  of individuals of gender  $g$  and age  
115  $a$  against the sum over all age and gender groups:

$$116 \gamma_{g,a}^{vir} = \frac{V_{g,a}}{\sum_{g',a'} V_{g',a'}}. \quad (2)$$

117  
118 **2.5 Ethics**  
119 The study was independently reviewed and approved by the Ugandan Virus Research Institute,  
120 Research and Ethics Committee, protocol GC/127/13/01/16; the Ugandan National Council for  
121 Science and Technology; and the Western Institutional Review Board, protocol 200313317. All  
122 study participants provided written informed consent at baseline and follow-up visits using  
123 institutional review board approved forms. This project was reviewed in accordance with CDC  
124 human research protection procedures and was determined to be research, but CDC investigators  
125 did not interact with human subjects or have access to identifiable data or specimens for research  
126 purposes. RCCS participants received 10,000UGX (approximately 2.50USD) in compensation  
127 for their time and costs to participate in each survey.

128  
129 **3 Results**

### 130 3.1 Age and gender burden profiles of HIV infection

131 From July 2013 to May 2019, across the four survey rounds, a total of 37,743 individuals  
132 participated in the RCCS at least once (see Supplementary Table S1 for participation rates and  
133 Supplementary Figure S1 for study flowchart). Of these, 22,215 (58.86%) participated for the  
134 first time (Supplementary Table S2). Inland communities were characterized by expansive  
135 population pyramids with a predominantly young population, consistent with rapid population  
136 growth across Uganda and ESA[27]. In contrast, fishing communities were characterized by  
137 constrictive population pyramids comprising primarily working-age adults (20-40 years) and  
138 substantially fewer children or families than in inland communities (Figure 1b). Gender  
139 distributions also differed, with women accounting for 52.2% of the population in inland  
140 communities and 44.3% in fishing communities (Table 1).

141 To describe the burden of HIV infection, we initially followed the typical approach to reporting  
142 HIV seroprevalence and estimated the proportion of individuals with HIV infection (i.e., positive

143 HIV serostatus) in each 1-year age band (Figure 1c, orange). Despite close geographical  
144 proximity, HIV seroprevalence was higher in fishing communities along Lake Victoria than in  
145 the inland communities[19]. In 2019, HIV seroprevalence was 32.8% (95% posterior credible  
146 interval: 31.5%-34.2%) in fishing communities, versus 11.0% (10.5%-11.5%) in inland  
147 communities (Table 1), and it was larger among first-time participants (Supplementary Figure  
148 S3).

149 The distinct population pyramids of these communities also prompted us to characterize the HIV  
150 infection burden profile (Figure 1c). We found that this profile centered more strongly on  
151 younger populations than statistics of HIV seroprevalence within each 1-year age band might  
152 suggest, such that some younger populations with relatively lower HIV seroprevalence  
153 accounted for a higher fraction of the HIV infection burden. For example, by 2019, in inland  
154 communities half (51.4% (49.3%-53.5%)) of all women with HIV were 27-39 years old and half  
155 (53.1% (49.5%-56.3%)) of all men with HIV were 34-45 years old.

156 Differences in the gender burden of HIV infection across community types depended both on  
157 differences in seroprevalence and population structures. In 2019, HIV seroprevalence among  
158 women was 1.53 (1.40-1.66) fold higher than among men in fishing communities and 1.78 (1.61-  
159 1.98) fold higher among women than among men in inland communities. Further, as women  
160 accounted for a smaller proportion of the population in fishing communities (44.3%) as opposed  
161 to in inland communities (52.2%), women made up a smaller fraction of the PLHIV in fishing  
162 communities (55.2% (53.1%-57.3%)) rather than in inland communities (66.2% (63.8%-68.4%)).



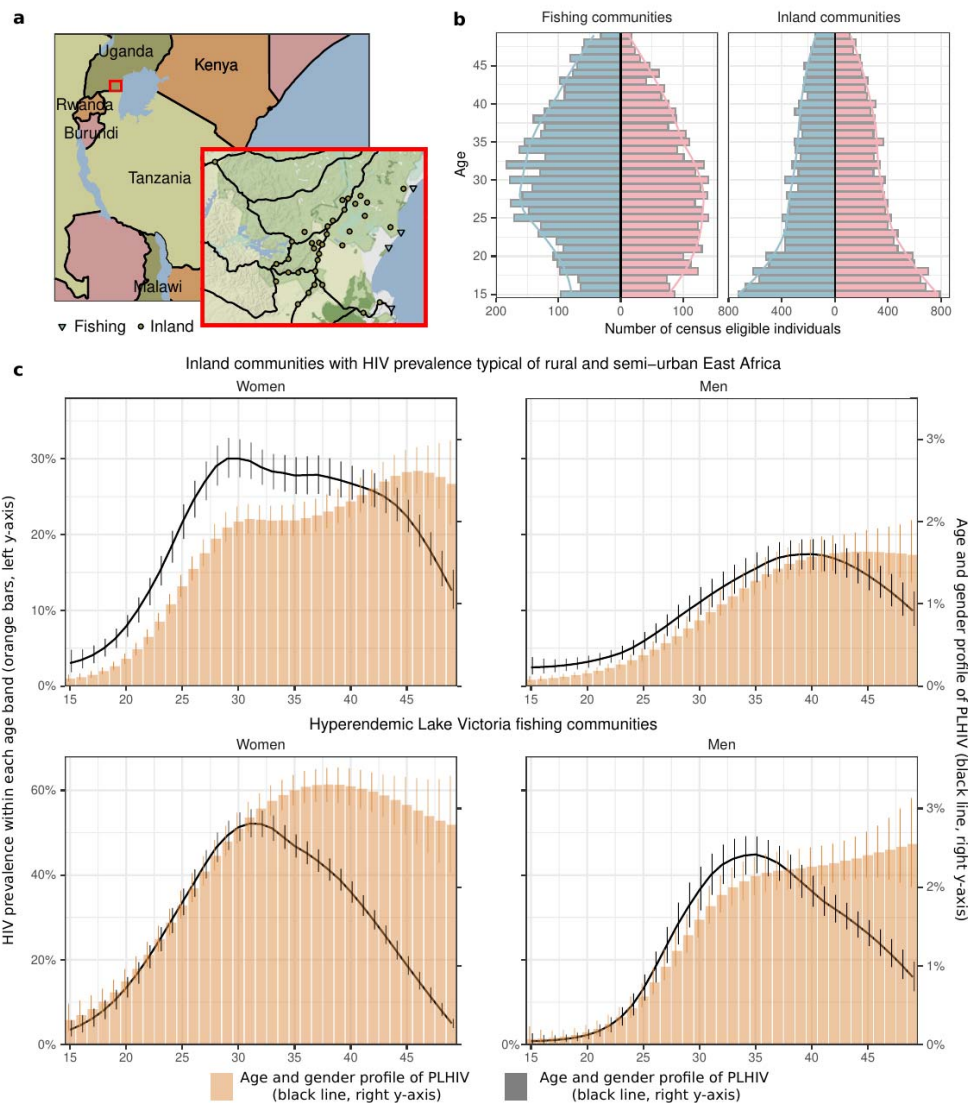
1

2 **Table 1. Characteristics of populations with and without HIV in the Rakai Community Cohort Study, June 2018-May 2019**  
 3 **(round 19)**

Location	Gender	Age group	Census-eligible individuals, in each age group	Proportion of PLHIV, in each age group	Proportion of PLHIV who have unsuppressed viraemia, in each age group	Proportion of all persons who have unsuppressed viraemia, in each age group	Age profile of people with HIV	Age profile of people with unsuppressed HIV
			(n, (% of total population))	(Posterior median estimate, (95%CrI))	(Posterior median estimate, (95%CrI))	(Posterior median estimate, (95%CrI))	(Posterior median estimate, (95%CrI))	(Posterior median estimate, (95%CrI))
Inland communities	Women	Total	12,893 (52.35%)	13.9% (13.2%-14.6%)	13.2% (11.5%-15.0%)	1.8% (1.6%-2.1%)	66.2% (63.8%-68.4%)	49.7% (43.6%-55.8%)
		15-19	3,418 (13.88%)	1.6% (1.2%-2.1%)	29.6% (20.2%-40.9%)	0.7% (0.4%-1.0%)	2.0% (1.5%-2.6%)	4.9% (3.0%-7.3%)
		20-24	2,372 (9.63%)	6.6% (5.8%-7.6%)	24.8% (19.8%-31.2%)	1.7% (1.3%-2.2%)	5.9% (5.1%-6.7%)	8.4% (6.5%-11.2%)
		25-29	1,927 (7.82%)	17.3% (15.7%-18.9%)	18.2% (14.4%-21.7%)	2.8% (2.2%-3.5%)	12.2% (11.2%-13.3%)	11.3% (9.0%-14.0%)
		30-34	1,619 (6.57%)	22.0% (20.2%-23.7%)	13.9% (11.3%-16.8%)	3.0% (2.3%-3.8%)	13.4% (12.4%-14.4%)	10.6% (8.2%-13.0%)
		35-39	1,527 (6.20%)	22.6% (20.6%-24.7%)	10.3% (8.1%-13.7%)	2.5% (1.8%-3.2%)	12.7% (11.6%-13.7%)	7.9% (6.0%-10.2%)
		40-44	1,234 (5.01%)	26.0% (23.8%-28.2%)	6.8% (4.8%-9.0%)	1.6% (1.1%-2.2%)	11.7% (10.8%-12.7%)	4.1% (2.9%-5.7%)
		45-49	796 (3.23%)	28.1% (25.0%-31.3%)	5.3% (3.2%-8.2%)	1.2% (0.7%-2.0%)	8.2% (7.3%-9.1%)	2.0% (1.1%-3.3%)
	Men	Total	11,736 (47.65%)	7.8% (7.1%-8.5%)	26.3% (22.2%-30.8%)	2.0% (1.7%-2.4%)	33.8% (31.6%-36.2%)	50.3% (44.2%-56.4%)
		15-19	3,070 (12.46%)	1.1% (0.8%-1.5%)	39.2% (25.2%-54.8%)	0.5% (0.3%-0.8%)	1.3% (0.9%-1.7%)	3.0% (1.7%-5.0%)
		20-24	2,013 (8.17%)	2.5% (2.0%-3.1%)	49.1% (38.0%-60.6%)	1.2% (0.9%-1.8%)	1.9% (1.5%-2.3%)	5.4% (3.9%-7.4%)
		25-29	1,719 (6.98%)	5.8% (4.9%-7.1%)	47.3% (37.9%-57.4%)	2.9% (2.1%-3.9%)	3.7% (3.1%-4.4%)	10.5% (8.0%-13.8%)
		30-34	1,523 (6.18%)	10.8% (9.3%-12.7%)	33.8% (26.6%-41.6%)	3.6% (2.7%-4.9%)	6.0% (5.2%-6.9%)	11.6% (8.9%-14.9%)
		35-39	1,367 (5.55%)	15.3% (13.4%-17.5%)	20.5% (14.9%-27.0%)	3.0% (2.1%-4.3%)	7.6% (6.8%-8.5%)	8.6% (6.2%-11.6%)
		40-44	1,156 (4.69%)	17.4% (15.2%-19.7%)	15.0% (10.3%-20.9%)	2.3% (1.5%-3.4%)	7.6% (6.7%-8.5%)	5.9% (4.0%-8.3%)
		45-49	888 (3.61%)	17.6% (14.7%-20.8%)	16.6% (10.9%-24.1%)	2.5% (1.6%-3.9%)	5.7% (4.8%-6.7%)	4.7% (3.0%-7.1%)
	Total	Total	24,629 (100.00%)	11.0% (10.5%-11.5%)	17.6% (15.8%-19.6%)	1.9% (1.7%-2.2%)	100.00%	100.00%
Fishing communities	Women	Total	3,236 (44.71%)	40.5% (38.6%-42.5%)	11.4% (9.3%-13.8%)	4.6% (3.7%-5.6%)	55.2% (53.1%-57.3%)	43.7% (36.5%-51.1%)
		15-19	474 (6.55%)	9.0% (6.5%-12.2%)	24.0% (13.1%-40.7%)	3.7% (1.8%-5.7%)	1.8% (1.3%-2.4%)	5.1% (2.5%-7.8%)
		20-24	605 (8.36%)	21.8% (19.1%-24.6%)	21.0% (15.0%-28.7%)	4.9% (3.6%-7.2%)	5.6% (5.0%-6.3%)	9.0% (6.6%-12.8%)

	25-29	657 (9.08%)	40.6% (37.4%-44.0%)	12.2% (8.0%-16.8%)	4.5% (3.0%-6.1%)	11.3% (10.4%-12.1%)	8.7% (5.9%-11.5%)
	30-34	586 (8.10%)	55.2% (51.8%-58.6%)	10.5% (7.6%-14.0%)	5.1% (3.8%-7.4%)	13.7% (12.9%-14.5%)	8.9% (6.7%-12.6%)
	35-39	467 (6.45%)	61.2% (57.4%-64.8%)	9.6% (6.5%-13.9%)	5.1% (3.6%-7.7%)	11.6% (11.0%-12.3%)	6.7% (4.9%-10.1%)
	40-44	313 (4.32%)	60.1% (55.5%-64.6%)	6.4% (3.7%-10.1%)	3.7% (2.1%-5.4%)	7.9% (7.4%-8.5%)	3.4% (2.0%-4.9%)
	45-49	134 (1.85%)	55.3% (47.2%-63.0%)	5.4% (1.8%-10.8%)	3.1% (1.1%-5.2%)	3.2% (2.7%-3.6%)	1.3% (0.4%-2.1%)
<b>Men</b>	Total	4,002 (55.29%)	26.5% (24.7%-28.5%)	18.1% (14.5%-22.3%)	4.8% (3.8%-5.9%)	44.8% (42.7%-46.9%)	56.3% (48.9%-63.5%)
	15-19	428 (5.91%)	1.7% (0.7%-3.5%)	21.2% (8.1%-44.2%)	0.8% (0.2%-2.4%)	0.3% (0.1%-0.6%)	1.0% (0.3%-3.0%)
	20-24	563 (7.78%)	5.5% (3.8%-7.6%)	25.2% (14.6%-40.7%)	1.7% (0.9%-3.0%)	1.4% (1.0%-1.9%)	3.0% (1.6%-5.2%)
	25-29	796 (11.00%)	18.6% (15.5%-22.5%)	26.5% (18.3%-36.1%)	5.2% (3.6%-7.5%)	6.2% (5.2%-7.3%)	12.2% (8.8%-16.4%)
	30-34	776 (10.72%)	34.5% (30.5%-39.0%)	25.7% (18.3%-38.0%)	8.6% (6.1%-12.3%)	11.1% (10.0%-12.3%)	19.6% (14.8%-25.9%)
	35-39	666 (9.20%)	40.9% (36.7%-45.0%)	15.0% (10.2%-20.4%)	5.8% (4.0%-8.3%)	11.4% (10.3%-12.4%)	11.4% (7.9%-15.3%)
	40-44	469 (6.48%)	42.9% (38.6%-47.3%)	9.7% (5.8%-14.3%)	3.6% (2.3%-5.5%)	8.7% (7.8%-9.5%)	5.2% (3.3%-7.6%)
	45-49	304 (4.20%)	45.8% (39.3%-52.8%)	9.6% (5.2%-16.3%)	3.5% (1.8%-6.4%)	5.7% (4.9%-6.6%)	3.0% (1.6%-5.5%)
<b>Total</b>	<b>Total</b>	<b>7,238 (100.00%)</b>	<b>32.8% (31.5%-34.2%)</b>	<b>14.4% (12.4%-16.7%)</b>	<b>4.7% (4.0%-5.5%)</b>	<b>100.0%</b>	<b>100.0%</b>

5



6

7 **Figure 1. Age and gender profiles of HIV burden in the Rakai Community Cohort Study,**  
 8 **June 2018-May 2019 (round 19).** (a) Map of the fishing (triangles) and inland (circles) study  
 9 communities within the Rakai region in south-central Uganda, produced using the `ggmap`  
 10 package version 3.0.2[28] in R (©Stadia Maps ©Stamen Design ©OpenMapTiles ©  
 11 OpenStreetMap contributor) (b) Population pyramids in fishing and inland communities. For  
 12 each 1-year age band, the number of census-eligible individuals (colored bars) are shown for  
 13 men (blue) and women (pink). Colored lines represent smoothed population size estimates. (c)  
 14 The profile for the burden of HIV in the population is shown in black (line: posterior median  
 15 estimate, linerange: 95% credible interval) and values shown on the right y-axis, for both  
 16 community types (top, bottom) and both genders (left, right). For comparison, HIV  
 17 seroprevalence within each 1-year age band is shown in orange (bars: posterior median  
 18 estimates, error bar: 95% credible interval), and values shown on the left y-axis.

19

### 20 **3.2 Progress towards 95-95-95 targets**

21 We next characterized progress towards “95-95-95” targets between 2013 and 2019 in the high-  
22 prevalence fishing communities that have since 2013 been prioritized for TasP, and in the inland  
23 communities where Universal Test and Treat was implemented beginning in late 2016. In total,  
24 13,844 viral load measurements were taken in 6,677 of 6,705 (99.6%) survey participants with  
25 HIV over the four survey rounds. The number of people with viraemia decreased substantially  
26 from 2013 to 2019 (Table 2). Specifically, in inland communities, the proportion of women with  
27 HIV exhibiting viraemia decreased from 34.7% (32.3%-37.1%) in 2013 to 13.2% (11.5%-  
28 15.0%) in 2019, while the proportion of men with HIV exhibiting viraemia decreased from  
29 50.7% (46.5%-54.8%) in 2013 to 26.3% (22.2%-30.8%) in 2019. In fishing communities, the  
30 proportion of women with HIV exhibiting viraemia decreased from 44.0% (40.9%-47.0%) in  
31 2013 to 11.4% (9.3%-13.8%) in 2019, while the proportion of men with HIV exhibiting viraemia  
32 decreased from 64.7% (60.8%-68.5%) in 2013 to 18.1% (14.5%-22.3%) in 2019.

33 Considering the number of people exhibiting viraemia in the entire population, by 2019, there  
34 were 233 (200-270) women and 236 (193-286) men with viraemia in inland communities,  
35 corresponding to 1.8% (1.6%-2.1%) and 2.0% (1.7%-2.4%) of the census-eligible female and  
36 male populations, respectively. In fishing communities, there were 148 (120-180) women and  
37 190 (152-237) men exhibiting viraemia in 2019, corresponding to 4.6% (3.7%-5.6%) and 4.8%  
38 (3.8%-5.9%) of census-eligible women and men, respectively (Tables 1, 2). Thus, while  
39 suppression levels among PLHIV were higher in fishing communities compared to inland  
40 communities in both men and women, suppression levels in the population, i.e. among census-  
41 eligible individuals, were lower in fishing communities rather than inland communities due to  
42 the overall higher HIV prevalence.

1 **Table 2. People exhibiting viraemia in the Rakai Community Cohort Study, from July 2013-January 2015 (round 16) to June 2018-May**  
 2 **2019 (round 19)**

Location	Gender	Round	Census-eligible individuals	People with HIV	People with viraemia	Proportion of people with viraemia among PLHIV	Proportion of people with viraemia among entire population	Percent reduction in the absolute number of people with viraemia, relative to round 16	Male-female difference in the proportion of people with HIV exhibiting viraemia
			(n)	(n) posterior median estimate and (95%CrI)	(n) posterior median estimate and (95%CrI)	(%) posterior median estimate and (95%CrI)	(%) posterior median estimate and (95%CrI)	(%) posterior median estimate and (95%CrI)	(difference in %) posterior median estimate and (95%CrI)
Fishing communities	Women	Round 16	2,757	1,225 (1,170-1,282)	537 (493-583)	44.0% (40.9%-47.0%)	19.4% (17.8%-21.1%)	--	--
		Round 17	3,224	1,315 (1,257-1,374)	363 (324-404)	27.8% (25.2%-30.6%)	11.2% (10.1%-12.5%)	32.4% (22.4%-41.2%)	--
		Round 18	3,359	1,347 (1,290-1,406)	240 (209-274)	18.0% (15.8%-20.4%)	7.2% (6.2%-8.2%)	55.2% (47.4%-61.8%)	--
		Round 19	3,236	1,312 (1,250-1,375)	148 (120-180)	11.4% (9.3%-13.8%)	4.6% (3.7%-5.6%)	72.4% (65.8%-78.0%)	--
	Men	Round 16	3,546	1,052 ( 984-1,121)	673 (615-735)	64.7% (60.8%-68.5%)	18.9% (17.3%-20.7%)	--	20.7% (15.7, 25.5)
		Round 17	4,068	1,187 (1,111-1,264)	573 (512-639)	49.2% (44.9%-53.3%)	14.0% (12.6%-15.7%)	14.8% (1.9%-26.1%)	21.3% (16.3, 26.3)
		Round 18	4,224	1,197 (1,132-1,265)	347 (305-392)	29.6% (26.3%-33.0%)	8.2% (7.2%-9.2%)	48.4% (40.0%-55.9%)	11.6% (7.6, 15.6)
		Round 19	4,002	1,064 ( 989-1,143)	190 (152-237)	18.1% (14.5%-22.3%)	4.8% (3.8%-5.9%)	71.7% (64.0%-77.8%)	6.7% (2.4, 11.4)
Inland communities	Women	Round 16	11,346	1,729 (1,651-1,809)	588 (539-640)	34.7% (32.3%-37.1%)	5.2% (4.8%-5.6%)	--	--
		Round 17	11,990	1,876 (1,797-1,957)	451 (409-496)	24.0% (22.0%-26.1%)	3.8% (3.4%-4.1%)	23.2% (12.7%-32.6%)	--
		Round 18	12,193	1,728 (1,647-1,811)	336 (298-378)	19.3% (17.3%-21.4%)	2.8% (2.4%-3.1%)	42.7% (33.9%-50.7%)	--
		Round 19	12,893	1,789 (1,705-1,875)	233 (200-270)	13.2% (11.5%-15.0%)	1.8% (1.6%-2.1%)	60.3% (53.0%-66.6%)	--
	Men	Round 16	10,541	1,003 ( 927-1,083)	490 (434-551)	50.7% (46.5%-54.8%)	4.7% (4.1%-5.2%)	--	16.0% (11.0, 20.8)
		Round 17	10,939	995 ( 919-1,077)	399 (346-457)	39.9% (35.9%-44.0%)	3.7% (3.2%-4.2%)	18.5% (2.5%-32.2%)	15.9% (11.3, 20.5)
		Round 18	11,076	912 ( 836- 992)	306 (260-359)	34.3% (30.1%-38.8%)	2.8% (2.4%-3.2%)	37.4% (23.6%-48.8%)	15.0% (10.2, 19.9)
		Round 19	11,736	915 ( 834-1,002)	236 (193-286)	26.3% (22.2%-30.8%)	2.0% (1.7%-2.4%)	51.8% (39.4%-61.8%)	13.1% (8.6, 17.8)

### 1 **3.3 Age and gender profiles of the burden of HIV viraemia**

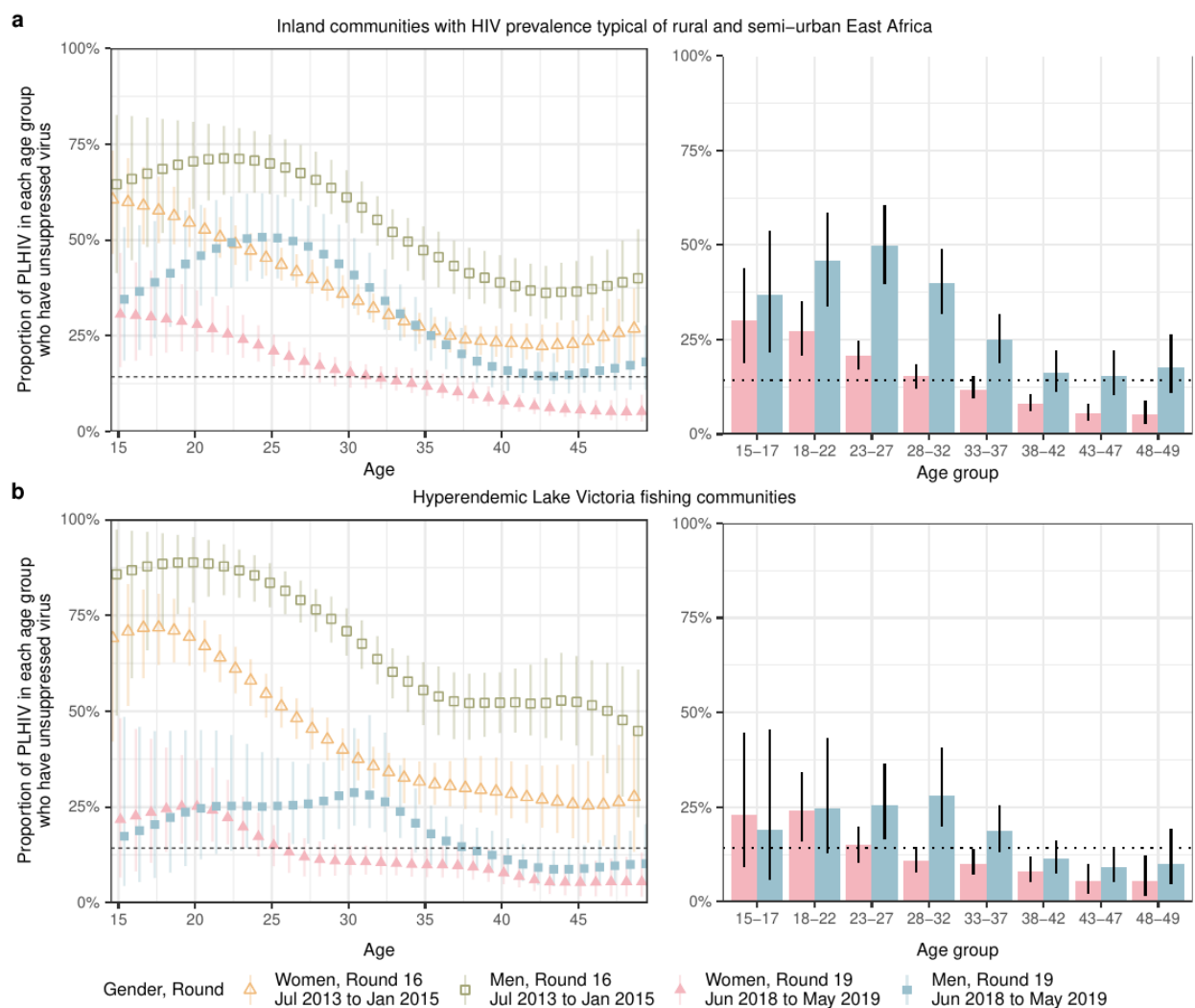
2 To characterize the age and gender-specific populations in which viraemia concentrates, we first  
3 considered the proportion of PLHIV exhibiting viraemia stratified by age and gender. By 2019, in  
4 inland communities, the proportion of PLHIV exhibiting viraemia was highest in men aged 23-27  
5 years (49.8% (39.9%-60.3%)) (Figure 2), showing also that conventional 5-year age banding (15-  
6 19 years, 20-24 years ...) can mask the actual age groups in which prevalence of viraemia peaks.  
7 In fishing communities, the proportion of PLHIV exhibiting viraemia in 2019 was highest in men  
8 aged 28-32 years (28.2% (20.0%-41.2%)) (Figure 2). Across all age groups, the proportion of  
9 PLHIV exhibiting viraemia was larger in first-time participants (Supplementary Figures S4-5), and  
10 lower, or equal in women than men. By 2019, among women, this proportion was highest in  
11 women aged 15-17 years in inland communities (30.3% (18.7%-44.0%)) and in women aged 18-  
12 22 years in fishing communities (23.9% (16.2%-34.0%)).

13 Then, we accounted for the distinct population structure in inland and fishing communities to  
14 characterize the population subgroups in which viraemia is concentrating. Figure 3a compares  
15 the age and gender specific prevalence of viraemia among PLHIV to the viraemia burden profile  
16 in the population. We found that viraemia did not center in the age groups currently furthest  
17 from achieving “95-95-95” targets. Specifically, in inland communities, women aged 15-19 years  
18 were furthest from achieving the “95-95-95” targets in 2019, but we estimate they contributed  
19 only 4.9% (3.0%-7.3%) to people exhibiting viraemia. Instead, women aged 20-24 years and 25-  
20 29 years each contributed approximately 10% to people exhibiting viraemia in 2019, although  
21 these age groups were either close to or had already exceeded the “95-95-95” targets. Similarly,  
22 in inland communities, men aged 20-24 years were furthest from achieving “95-95-95” targets  
23 in 2019, but we estimate they contributed only 5.4% (3.9%-7.4%) to the burden of viraemia.  
24 Rather, men aged 25-29 years and 30-34 years each contributed approximately 10% to the  
25 burden of viraemia in 2019. Similar patterns were observed in fishing communities. In 2019,  
26 women aged 15-19 were one of the few groups that had not yet met “95-95-95” targets, but  
27 this group only contributed 5.1% (2.5%-7.8%) to the burden of viraemia. Instead, women aged  
28 30-34 had met the targets but contributed 8.9% (6.7%-12.6%) to the burden of viraemia. Among  
29 men, age groups from 20 to 34 years exhibited similar levels of viral suppression among PLHIV.  
30 However, there were more men aged 30-34 exhibiting viraemia as compared to men aged 20-

31 24. The former amounted to 19.6% (14.8%-25.9%) of the burden of viraemia as compared to  
32 3.0% (1.6%-5.2%) in the latter group.

33 Figure 3b depicts temporal changes in absolute suppression levels, as well as shifts in the profile  
34 of the burden of viraemia. Even though we found a steady increase in the median age of PLHIV  
35 by gender and community strata, the age profile of people exhibiting viraemia remained  
36 relatively stable over time (Supplementary Table S3).

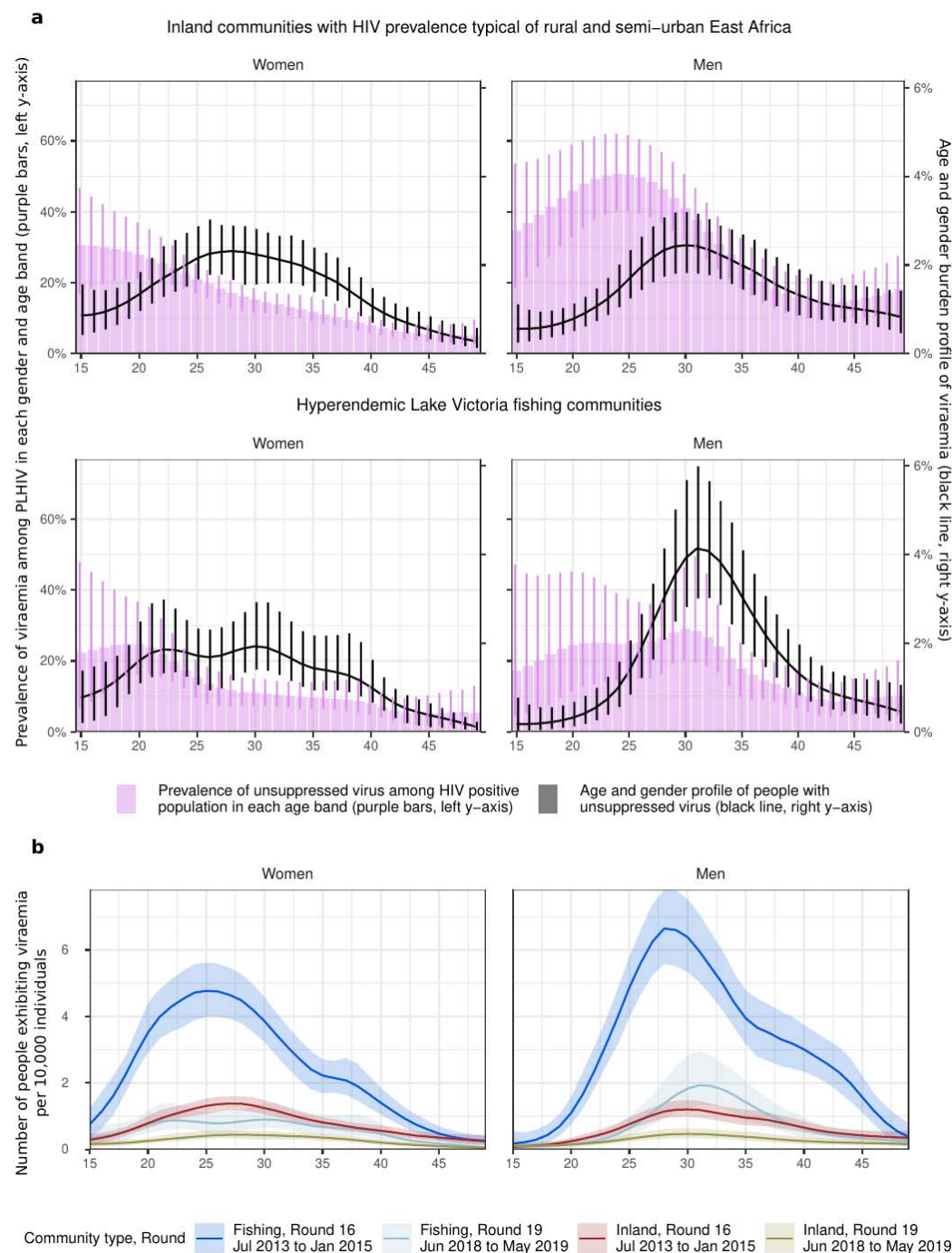
37



38

39 **Figure 2: Trends in the proportions of PLHIV who have unsuppressed viraemia in the**  
 40 **Rakai Community Cohort Study. (a)** Estimated proportions of people with HIV in 1-year age  
 41 age bands who have unsuppressed viraemia, in men and women of inland communities. On the left,  
 42 time trends in the proportion of PLHIV with unsuppressed viraemia from round 16 (July 2013-  
 43 January 2015) to round 19 (June 2018 to May 2019) are shown for men and women by 1-year  
 44 age bands (points: posterior median estimates, linerange: 95% CrIs). On the right, posterior  
 45 median estimates in the proportion of PLHIV with unsuppressed viraemia in round 19 are shown  
 46 for men and women by 5-year age bands (bars: posterior median estimates, linerange: 95% CrIs).  
 47 The horizontal dotted line represents the 14% suppression threshold implied by 95-95-95 targets.  
 48 **(b)** Same for PLHIV in fishing communities.





49  
 50 **Figure 3. Age and gender metrics for people exhibiting viraemia.** (a) Estimates for the  
 51 prevalence of viraemia among PLHIV (median: purple bars, lines: 95% CrI, right y-axis) in each  
 52 gender and age band are compared to the burden profile of viraemia (median: black curve, lines:  
 53 95% CrI, left y-axis) for inland (top row) and fishing communities (bottom row). (b) Time trends  
 54 in the burden profiles of viraemia for both men and women (facets), colored by community type  
 55 (inland or fishing) and survey round (16 or 19) colors (line: posterior median estimate, ribbon:  
 56 95% credible interval). The profiles were multiplied by the population prevalence of viral  
 57 suppression to visualize shifts in the size of the population exhibiting viraemia.

## 58 **4. Discussion**

59 This study estimated the age and gender burden profiles of HIV infection and HIV viraemia in  
60 south-central Uganda using data from communities with HIV risk and demographic profiles  
61 typical of rural and semi-urban ESA and data from Lake Victoria fishing communities with high  
62 HIV seroprevalence and atypical demographic profiles. Overall, the burden profiles revealed  
63 important differences by geographic location, gender and age group. Following the earlier  
64 expansion of TasP programs, fishing communities witnessed faster increases in suppression  
65 levels among PLHIV than in inland communities, with overall levels surpassing the “95-95-95”  
66 targets by 2019. However, the burden of HIV viraemia remained larger in fishing communities,  
67 where the proportion of individuals exhibiting viraemia was approximately 2.5 times larger than  
68 in inland communities, reflecting higher HIV prevalence in fishing communities. When analyzing  
69 the burden of viraemia by gender, we found that in both community types, most individuals  
70 exhibiting viraemia were men, although fewer men have HIV than women. When also  
71 considering age, we found that the age groups that contributed most to the burden of viraemia  
72 were not necessarily the ones that were furthest from achieving the “95-95-95” targets. For  
73 example, in inland communities, individuals aged 25-34 contributed to approximately 40% of the  
74 burden of viraemia but had higher suppression levels than younger age groups.

75 Overall, our results show that the metrics considered by the “95-95-95” targets are insufficient to  
76 characterize the population exhibiting viraemia, and hence at risk of transmitting HIV. For  
77 example, by 2019, fishing communities had an overall prevalence of suppression among PLHIV  
78 that surpassed “95-95-95” targets, while inland communities had not yet achieved them.  
79 However, individuals exhibiting viraemia represented a larger proportion of the population in  
80 fishing communities as opposed to inland communities, consistent with HIV incidence remaining  
81 higher in the former communities despite additional interventions such as PrEP[29]. This is  
82 largely explained by differences in HIV prevalence and implies that reaching “95-95-95” by 2025  
83 may be insufficient to lower incidence below elimination threshold[30], especially in countries  
84 with elevated burden of HIV[31].

85 Moreover, since 2020 the updated UNAIDS targets recommend the “95-95-95” goals to be met  
86 within subpopulations stratified by age and gender[32]. In practice, this supports the prioritization  
87 of interventions to those subgroups that are furthest from achieving the targets and improving

88 barriers and inequalities in treatment coverage[18]. However, these subgroups may not  
89 disproportionately contribute to the burden of HIV viraemia. For example, in inland  
90 communities, we found that young individuals aged 15-24 constituted approximately two fifths  
91 of the census-eligible population, but only one fifth of the population exhibiting viremia. In fact,  
92 the lower suppression levels commonly reported among young PLHIV[12,33–40] are  
93 counterbalanced by the small absolute number of young PLHIV. This observation is typically  
94 missing from studies supporting prioritization of younger age-groups in ESA based on the  
95 UNAIDS targets<sup>45</sup>. However, there are instances in which higher suppression levels and HIV  
96 seroprevalence lead to balanced profiles. For instance, although most PLHIV are women, there  
97 are similar numbers of men and women exhibiting viraemia in inland communities. Taken  
98 together, these findings support the need to reach and treat a wide subset of the population: men  
99 aged 25-34 and women aged 20-39, who disproportionately contribute to unsuppressed viraemia.

100 The longitudinal nature of the study further allowed us to analyze temporal dynamics in the age  
101 profile for the burden of HIV. From 2013 to 2019, we found an increase in the median age of  
102 PLHIV of at least 2 years across community types and genders. Although incidence and HIV  
103 mortality are decreasing, a shift in this direction is not guaranteed. In inland communities,  
104 younger individuals constitute an increasing proportion of the population, and therefore small  
105 reductions in incidence may still be consistent with increasing numbers of PLHIV in these age  
106 groups. More generally, the population is expected to grow at an exponential rate in Sub-Saharan  
107 Africa[41], implying that stagnating incidence rates may potentially shift the age profile to  
108 younger age groups. Continued efforts to track the changing demographics of countries in the  
109 region, for example through population censuses, would provide helpful in planning long-term  
110 HIV interventions, as well as generalizing to other Sustainable Development Goals[42].

111 While we assessed both age and gender burden profiles of HIV infection and HIV viraemia in  
112 this study, the latter metric provides a cross-sectional description of individuals at most at risk of  
113 HIV mortality and onward transmission. Hence, we propose the viraemia burden profile as a new  
114 metric for HIV control. Critically we observed that the burden profiles of viraemia revealed  
115 similar relative contributions of men and women, and larger relative contributions of middle-aged  
116 individuals (25-34) than younger individuals (15-24). We further show that these important  
117 observations are obscured by age-gender stratified “95-95-95” targets. Furthermore, unlike the

118 “95-95-95” targets[14,15], population burden of HIV viraemia has been shown to be strongly  
119 predictive of population HIV incidence[17,43].

120 This study has several limitations. First, due to the RCCS definition of census-eligible individuals  
121 in the study period, our study population is limited to individuals aged 15-49 years. Accordingly,  
122 we are not able to quantify the growing seroprevalence of HIV among individuals aged 50 or  
123 more, nor viral suppression outcomes in children (<15 years) living with HIV. Importantly, the  
124 reported age and gender specific percentages in the burden profiles in the census-eligible  
125 population aged 15-49 years should not be interpreted as fractions of the entire population, as  
126 they would be overestimates. Second, our study only considered data from Uganda, and our  
127 results may not directly generalize to other settings. However epidemiological patterns reported  
128 here are typical of ESA, such as: expansive population pyramids[27], patterns in HIV prevalence  
129 by age and gender[44], and gender gaps in suppression levels[12,33–40]. These observations  
130 suggests that the major contributions of individuals aged 25-34 to the burden of viraemia may  
131 generalize across the subcontinent. Third, to generalize our results to the entire census-eligible  
132 population, we assumed that first-time study participants were representative of non-participants  
133 in terms of age and gender-specific prevalence and viral suppression levels. Despite similar HIV  
134 seroprevalence estimates, our estimates of viral suppression among first-time participants were  
135 lower than for all participants. Generalizing the results to the census-eligible population avoided  
136 overestimation of viral suppression levels and allowed us to match our analyses' denominators to  
137 the ones defined in the UNAIDS goals. Fourth, the age profile of the population exhibiting  
138 viraemia may not match the age profile of the sources of HIV infections, but rather the potential  
139 sources of HIV transmission. The difference between the two populations can be explained by  
140 heterogeneities in transmission risk among individuals exhibiting viraemia. For example,  
141 phylogenetic studies in Uganda[21], Zambia[45], and Botswana[46] have estimated highest  
142 transmission risks in men aged 30-34 and women aged 20-24, and much lower for example  
143 among individuals aged more than 50. These results hence reinforce the importance of the  
144 subpopulations contributing most strongly to the burden of viraemia described in this paper.

## 145 **5. Conclusions**

146 In summary, prioritizing HIV prevention interventions across age and gender subgroups solely  
147 based on the “95-95-95” targets may not be the most effective way to reduce the number of

148 people exhibiting viraemia, and hence at risk of HIV mortality and transmitting HIV.  
149 Importantly, these metrics ignore underlying population structures and differences in HIV  
150 seroprevalence by subgroups, which are integral to the calculation of the age and gender profile  
151 for the burden of HIV viraemia. Future surveillance efforts should prioritize population censuses  
152 and population-level measures of HIV viraemia to better direct HIV control and elimination  
153 efforts, particularly in settings at or achieving the “95-95-95” targets.

154 **Competing interests**

155 MKG, LCW report grants from the National Institutes of Health during the conduct of this study.  
156 ABr, MM report an EPSRC PhD studentship during the conduct of this study. OR acknowledges  
157 grants from the Bill and Melinda Gates Foundation (OPP1175094 to C.Fraser., OPP1084362 to  
158 D. Pillay), the Engineering and Physical Sciences Research Council (EP/X038440/1), and the  
159 Moderna Charitable Foundation during the conduct of this study. This arrangement has been  
160 reviewed and approved by the Johns Hopkins University in accordance with its conflict-of-  
161 interest policies.

162 **Authors' contributions**

163 OR, MKG, SJR, RS designed the study. OR, MKG, SJR, JK oversaw the study. RG, RS, GK,  
164 OL, TQ, FN, LWC, SJR, JK, GN, MKG oversaw and performed data collection. ABr, IK, ABl,  
165 MM, MKG, OR contributed to the analysis. ABr, MKG, OR wrote the first draft. All authors  
166 discussed the results and contributed to the revision of the final manuscript.

167 **Author information** [Optional]

168 **Acknowledgements**

169 We thank all contributors, program staff and participants to the Rakai Community Cohort Study;  
170 all members of the PANGEA-HIV consortium, the Rakai Health Sciences Program; the Imperial  
171 College Research Computing Service (<https://doi.org/10.14469/hpc/2232>) the Office of  
172 Cyberinfrastructure and Computational Biology at the National Institute for Allergy and  
173 Infectious Diseases for data management support, and Zulip for sponsoring team communications  
174 through the Zulip Cloud Standard chat app.

175 **Funding:**

176 This study was supported by the National Institute of Allergy and Infectious Diseases  
177 [U01AI075115 to RHG, R01AI087409 to RHG, U01AI100031 to RHG, ZIAAI001040 to TCQ,  
178 R01AI43333 to LWC]; the National Institute of Mental Health [F31MH095649 to Dr Jennifer  
179 Wagman, R01MH099733 to Ned Sacktor and MJW, R01MH107275 to LWC]; the Division of  
180 Intramural Research of the National Institute for Allergy and Infectious Diseases [TCQ, OL,  
181 SJR], NIAID [K01AA024068 to Dr Jennifer Wagman]; the Johns Hopkins University Center for  
182 AIDS Research [2P30AI094189 to Dr Richard Chaisson]; the U.S. President's Emergency Plan  
183 for AIDS Relief (PEPFAR) through the Centers for Disease Control and Prevention

184 [NU2GGH000817 to RHSP]; the Engineering and Physical Sciences Research Council through  
185 the EPSRC Centre for Doctoral Training in Modern Statistics and Statistical Machine Learning at  
186 Imperial and Oxford [EP/S023151/1 to Prof Axel Gandy]. The funders had no role in study  
187 design, data collection and analysis, decision to publish or preparation of the manuscript. The  
188 findings and conclusions in this report are those of the author(s) and do not necessarily represent  
189 the official position of the Centers for Disease Control and Prevention.

## 190 **Disclaimer**

191 For the purpose of open access, the author has applied a ‘Creative Commons Attribution’  
192 (CCBY) license to any Author Accepted Manuscript version arising.

## 193 **Data Availability Statement**

194 Data necessary to reproduce the analyses are available on Zenodo  
195 (<https://doi.org/10.5281/zenodo.10955672>) as open access dataset under the CC-BY-4.0 license.  
196 Code to reproduce all analyses is freely available on GitHub version 1.1.2 under the CC-BY-4.0  
197 license at the repository ([https://github.com/MLGlobalHealth/longi\\_viral\\_loads](https://github.com/MLGlobalHealth/longi_viral_loads)).

198

## 199 **Supporting Information [Optional]**

200 **Supporting Information file 1: Title of Supporting Information file**  
201 **Information on file format. Brief description of file content.**

202

203

## 204 **List of abbreviations**

205 ART: Antiretroviral Therapy.  
206 HIV: Human Immunodeficiency Virus.  
207 PLHIV: People living with HIV.  
208 RCCS: Rakai Community Cohort Study.  
209 RHSP: Rakai Health Sciences Program.  
210 UNAIDS: Joint United Nations Programme on HIV/AIDS.  
211 WHO: World Health Organization.

## 212 References

- 213 1 UNAIDS. The path that ends AIDS: UNAIDS Global AIDS Update 2023.  
214 2023. <https://www.unaids.org/en/resources/documents/2023/global-aids-update-2023>
- 215 2 Mills EJ, Bakanda C, Birungi J, Chan K, Ford N, Cooper CL, *et al.* **Life Expectancy of Persons Receiving**  
216 **Combination Antiretroviral Therapy in Low-Income Countries: A Cohort Analysis From Uganda.**  
217 *Ann Intern Med* 2011; **155**:209.
- 218 3 Herbst AJ, Cooke GS, Bärnighausen T, KanyKany A, Tanser F, Newell M. **Adult mortality and**  
219 **antiretroviral treatment roll-out in rural KwaZulu-Natal, South Africa.** *Bull World Health Org* 2009;  
220 **87**:754–762.
- 221 4 Reniers G, Slaymaker E, Nakiyingi-Miiro J, Nyamukapa C, Crampin AC, Herbst K, *et al.* **Mortality**  
222 **trends in the era of antiretroviral therapy: evidence from the Network for Analysing Longitudinal**  
223 **Population based HIV/AIDS data on Africa (ALPHA).** *AIDS* 2014; **28**:S533–S542.
- 224 5 Attia S, Egger M, Müller M, Zwahlen M, Low N. **Sexual transmission of HIV according to viral load**  
225 **and antiretroviral therapy: systematic review and meta-analysis.** *AIDS* 2009; **23**:1397–1404.
- 226 6 Cohen MS, Chen YQ, McCauley M, Gamble T, Hosseinipour MC, Kumarasamy N, *et al.* **Prevention of**  
227 **HIV-1 Infection with Early Antiretroviral Therapy.** *N Engl J Med* 2011; **365**:493–505.
- 228 7 Stover J, Glaubius R, Teng Y, Kelly S, Brown T, Hallett TB, *et al.* **Modeling the epidemiological impact**  
229 **of the UNAIDS 2025 targets to end AIDS as a public health threat by 2030.** *PLoS Med* 2021;  
230 **18**:e1003831.
- 231 8 Godfrey-Faussett P, Frescura L, Abdool Karim Q, Clayton M, Ghys PD, (on behalf of the 2025  
232 prevention targets working group). **HIV prevention for the next decade: Appropriate, person-**  
233 **centred, prioritised, effective, combination prevention.** *PLoS Med* 2022; **19**:e1004102.
- 234 9 UNAIDS. Countries. <https://www.unaids.org/en/regionscountries/countries> (accessed 1 Nov2022).
- 235 10 United Nations. Sustainable Deveopment Goals. United Nations Sustainable Development.  
236 <https://www.un.org/sustainabledevelopment/sustainable-development-goals/> (accessed 13  
237 Mar2024).
- 238 11 Sachs JD. **From Millennium Development Goals to Sustainable Development Goals.** *The Lancet*  
239 2012; **379**:2206–2211.
- 240 12 Mine M, Stafford KA, Laws RL, Marima R, Lekone P, Ramaabya D, *et al.* **Progress towards the**  
241 **UNAIDS 95-95-95 targets in the Fifth Botswana AIDS Impact Survey (BAIS V 2021): a nationally**  
242 **representative survey.** *The Lancet HIV* 2024; **0**. doi:10.1016/S2352-3018(24)00003-1
- 243 13 Maheu-Giroux M, Mishra S. **Evidence with 95-95-95 that ambitious is feasible.** *The Lancet HIV* 2024;  
244 **0**. doi:10.1016/S2352-3018(24)00028-6
- 245 14 Miller WC, Powers KA, Smith MK, Cohen MS. **Community viral load as a measure for assessment of**  
246 **HIV treatment as prevention.** *The Lancet Infectious Diseases* 2013; **13**:459–464.



- 247 15 Solomon SS, Mehta SH, McFall AM, Srikrishnan AK, Saravanan S, Laeyendecker O, *et al.* **Community**  
248 **viral load, antiretroviral therapy coverage, and HIV incidence in India: a cross-sectional,**  
249 **comparative study.** *The Lancet HIV* 2016; **3**:e183–e190.
- 250 16 Tanser F, Vandormael A, Cuadros D, Phillips AN, De Oliveira T, Tomita A, *et al.* **Effect of population**  
251 **viral load on prospective HIV incidence in a hyperendemic rural African community.** *Sci Transl Med*  
252 2017; **9**:eaam8012.
- 253 17 Larmarange J, Bachanas P, Skalland T, Balzer LB, Iwuji C, Floyd S, *et al.* **Population-level viremia**  
254 **predicts HIV incidence at the community level across the Universal Testing and Treatment Trials in**  
255 **eastern and southern Africa.** *PLOS Glob Public Health* 2023; **3**:e0002157.
- 256 18 Frescura L, Godfrey-Faussett P, Feizzadeh A. A, El-Sadr W, Syarif O, Ghys PD, *et al.* **Achieving the 95**  
257 **95 95 targets for all: A pathway to ending AIDS.** *PLoS ONE* 2022; **17**:e0272405.
- 258 19 Chang LW, Grabowski MK, Ssekubugu R, Nalugoda F, Kigozi G, Nantume B, *et al.* **Heterogeneity of**  
259 **the HIV epidemic in agrarian, trading, and fishing communities in Rakai, Uganda: an observational**  
260 **epidemiological study.** *The Lancet HIV* 2016; **3**:e388–e396.
- 261 20 Grabowski MK, Serwadda DM, Gray RH, Nakigozi G, Kigozi G, Kagaayi J, *et al.* **HIV Prevention Efforts**  
262 **and Incidence of HIV in Uganda.** *N Engl J Med* 2017; **377**:2154–2166.
- 263 21 Monod M, Brizzi A, Galiwango RM, Ssekubugu R, Chen Y, Xi X, *et al.* Longitudinal population-level  
264 HIV epidemiological and genomic surveillance highlights growing gender disparity of HIV  
265 transmission in Uganda. *Epidemiology*; 2023. doi:10.1101/2023.03.16.23287351
- 266 22 Galiwango RM, Musoke R, Lubyayi L, Ssekubugu R, Kalibbala S, Ssekweyama V, *et al.* **Evaluation of**  
267 **current rapid HIV test algorithms in Rakai, Uganda.** *Journal of Virological Methods* 2013; **192**:25–27.
- 268 23 Ssempijja V, Chang LW, Nakigozi G, Ndyanabo A, Quinn TC, Cobelens F, *et al.* **Results of Early**  
269 **Virologic Monitoring May Facilitate Differentiated Care Monitoring Strategies for Clients on ART,**  
270 **Rakai, Uganda.** *Open Forum Infectious Diseases* 2018; **5**:ofy212.
- 271 24 Ssempijja V, Nason M, Nakigozi G, Ndyanabo A, Gray R, Wawer M, *et al.* **Adaptive Viral Load**  
272 **Monitoring Frequency to Facilitate Differentiated Care: A Modeling Study From Rakai, Uganda.**  
273 *Clin Infect Dis* 2020; **71**:1017–1021.
- 274 25 Grabowski MK, Patel EU, Nakigozi G, Ssempijja V, Ssekubugu R, Ssekasanvu J, *et al.* **Prevalence and**  
275 **Predictors of Persistent Human Immunodeficiency Virus Viremia and Viral Rebound After**  
276 **Universal Test and Treat: A Population-Based Study.** *The Journal of Infectious Diseases* 2021;  
277 **223**:1150–1160.
- 278 26 *Consolidated Guidelines on the Use of Antiretroviral Drugs for Treating and Preventing HIV Infection:*  
279 *Recommendations for a Public Health Approach.* 2nd ed. Geneva: World Health Organization; 2016.  
280 <http://www.ncbi.nlm.nih.gov/books/NBK374294/> (accessed 20 Oct2023).
- 281 27 Population Pyramids of the World from 1950 to 2100. PopulationPyramid.net.  
282 <https://www.populationpyramid.net/uganda/2020/> (accessed 9 Aug2023).
- 283 28 Kahle D, Wickham H. **ggmap: Spatial Visualization with ggplot2.** *The R Journal* 2013; **5**:144–161.

- 284 29 Ssempijja V, Nakigozi G, Ssekubugu R, Kagaayi J, Kigozi G, Nalugoda F, *et al.* **High Rates of Pre-**  
285 **exposure Prophylaxis Eligibility and Associated HIV Incidence in a Population With a Generalized**  
286 **HIV Epidemic in Rakai, Uganda.** *JAIDS Journal of Acquired Immune Deficiency Syndromes* 2022;  
287 **90**:291–299.
- 288 30 Granich RM, Gilks CF, Dye C, De Cock KM, Williams BG. **Universal voluntary HIV testing with**  
289 **immediate antiretroviral therapy as a strategy for elimination of HIV transmission: a mathematical**  
290 **model.** *The Lancet* 2009; **373**:48–57.
- 291 31 Dimitrov D, Moore JR, Deborah J. Donnell, Marie-Claude Boily. Achieving 95-95-95 may not be  
292 enough to end the AIDS epidemic in South Africa. [2020.croiconference.org/wp-](https://2020.croiconference.org/wp-content/uploads/sites/2/posters/2020/1430_6_Dimitrov_01095.pdf)  
293 [content/uploads/sites/2/posters/2020/1430\\_6\\_Dimitrov\\_01095.pdf](https://2020.croiconference.org/wp-content/uploads/sites/2/posters/2020/1430_6_Dimitrov_01095.pdf) (accessed 11 Mar2024).
- 294 32 UNAIDS. Understanding Fast-Track: accelerating action to end the AIDS epidemic by 2030. ; 2015.  
295 [https://www.unaids.org/sites/default/files/media\\_asset/201506\\_JC2743\\_Understanding\\_FastTrack](https://www.unaids.org/sites/default/files/media_asset/201506_JC2743_Understanding_FastTrack_en.pdf)  
296 [\\_en.pdf](https://www.unaids.org/sites/default/files/media_asset/201506_JC2743_Understanding_FastTrack_en.pdf)
- 297 33 Lesotho Summary Sheet 2020. [https://phia.icap.columbia.edu/wp-](https://phia.icap.columbia.edu/wp-content/uploads/2021/08/53059_14_LePHIA_Summary-sheet_with-coat-of-arms_WEB_v2.pdf)  
298 [content/uploads/2021/08/53059\\_14\\_LePHIA\\_Summary-sheet\\_with-coat-of-arms\\_WEB\\_v2.pdf](https://phia.icap.columbia.edu/wp-content/uploads/2021/08/53059_14_LePHIA_Summary-sheet_with-coat-of-arms_WEB_v2.pdf)
- 299 34 Eswatini Summary Sheet 2021. [https://phia.icap.columbia.edu/wp-](https://phia.icap.columbia.edu/wp-content/uploads/2022/12/53059_14_SHIMS3_Summary-sheet-Web.pdf)  
300 [content/uploads/2022/12/53059\\_14\\_SHIMS3\\_Summary-sheet-Web.pdf](https://phia.icap.columbia.edu/wp-content/uploads/2022/12/53059_14_SHIMS3_Summary-sheet-Web.pdf)
- 301 35 Malawi Summary Sheet 2020-2021. [https://phia.icap.columbia.edu/wp-](https://phia.icap.columbia.edu/wp-content/uploads/2022/03/110322_MPHIA_Summary-sheet-English.pdf)  
302 [content/uploads/2022/03/110322\\_MPHIA\\_Summary-sheet-English.pdf](https://phia.icap.columbia.edu/wp-content/uploads/2022/03/110322_MPHIA_Summary-sheet-English.pdf)
- 303 36 Mozambique Summary Sheet 2021. [https://phia.icap.columbia.edu/wp-](https://phia.icap.columbia.edu/wp-content/uploads/2022/12/53059_14_INSIDA_Summary-sheet-Web.pdf)  
304 [content/uploads/2022/12/53059\\_14\\_INSIDA\\_Summary-sheet-Web.pdf](https://phia.icap.columbia.edu/wp-content/uploads/2022/12/53059_14_INSIDA_Summary-sheet-Web.pdf)
- 305 37 Uganda Summary Sheet 2020-2021. [https://phia.icap.columbia.edu/wp-](https://phia.icap.columbia.edu/wp-content/uploads/2022/08/UPHIA-Summary-Sheet-2020.pdf)  
306 [content/uploads/2022/08/UPHIA-Summary-Sheet-2020.pdf](https://phia.icap.columbia.edu/wp-content/uploads/2022/08/UPHIA-Summary-Sheet-2020.pdf)
- 307 38 Pathmanathan I, Nelson R, De Louvado A, Thompson R, Pals S, Casavant I, *et al.* **High Coverage of**  
308 **Antiretroviral Treatment With Annual Home-Based HIV Testing, Follow-up Linkage Services, and**  
309 **Implementation of Test and Start: Findings From the Chókwè Health Demographic Surveillance**  
310 **System, Mozambique, 2014–2019.** *JAIDS Journal of Acquired Immune Deficiency Syndromes* 2021;  
311 **86**:e97–e105.
- 312 39 Pillay T, Cornell M, Fox MP, Euvrard J, Fatti G, Technau K-G, *et al.* **Recording of HIV Viral Loads and**  
313 **Viral Suppression in South African Patients Receiving Antiretroviral Treatment: A Multicentre**  
314 **Cohort Study.** *Antiviral Therapy* 2020; **25**:257–266.
- 315 40 Nyaboke R, Ramadhani HO, Lascko T, Awuor P, Kirui E, Koech E, *et al.* **Factors associated with**  
316 **adherence and viral suppression among patients on second-line antiretroviral therapy in an urban**  
317 **HIV program in Kenya.** *SAGE Open Medicine* 2023; **11**:205031212311623.
- 318 41 Musa SS, Zhao S, Wang MH, Habib AG, Mustapha UT, He D. **Estimation of exponential growth rate**  
319 **and basic reproduction number of the coronavirus disease 2019 (COVID-19) in Africa.** *Infect Dis*  
320 *Poverty* 2020; **9**:96.

- 321 42 Sankoh O, on behalf of the INDEPTH Network and partners. **Why population-based data are crucial**  
322 **to achieving the Sustainable Development Goals.** *International Journal of Epidemiology* 2017; **46**:4–  
323 7.
- 324 43 Patel EU, Solomon SS, Lucas GM, McFall AM, Srikrishnan AK, Kumar MS, *et al.* **Temporal change in**  
325 **population-level prevalence of detectable HIV viraemia and its association with HIV incidence in**  
326 **key populations in India: a serial cross-sectional study.** *The Lancet HIV* 2021; **8**:e544–e553.
- 327 44 Dwyer-Lindgren L, Cork MA, Sligar A, Steuben KM, Wilson KF, Provost NR, *et al.* **Mapping HIV**  
328 **prevalence in sub-Saharan Africa between 2000 and 2017.** *Nature* 2019; **570**:189–193.
- 329 45 Hall M, Golubchik T, Bonsall D, Abeler-Dörner L, Limbada M, Kosloff B, *et al.* Demographics of people  
330 who transmit HIV-1 in Zambia: a molecular epidemiology analysis in the HPTN-071 PopART study.  
331 *HIV/AIDS*; 2021. doi:10.1101/2021.10.04.21263560
- 332 46 Magosi LE, Zhang Y, Golubchik T, DeGruttola V, Tchetgen Tchetgen E, Novitsky V, *et al.* **Deep-**  
333 **sequence phylogenetics to quantify patterns of HIV transmission in the context of a universal**  
334 **testing and treatment trial – BCPP/Ya Tsie trial.** *eLife* 2022; **11**:e72657.
- 335