

The causal role of adiposity in mental illness: A systematic review and meta-analysis of Mendelian randomization studies

Authors

Min Gao^{1,2,5*}, Paul J Doody^{1,2}, Dimitrios A Koutoukidis^{1,3}, Yebo Yu⁴, Paul Aveyard^{1,2,3,5}, Richard Stevens^{1,2}, Padraig C Dixon^{1*}

Affiliations

¹ University of Oxford, Nuffield Department of Primary Care Health Sciences, Radcliffe Observatory Quarter, Oxford, UK

² NIHR Applied Research Collaboration Oxford and Thames Valley, Oxford University Hospitals, NHS Foundation Trust, Oxford, UK

³ NIHR Oxford Biomedical Research Centre, Oxford University Hospitals, NHS Foundation Trust, Oxford, UK

⁴ Peking University Health Science Centre, School of Public Health, Beijing, China

⁵ NIHR Oxford Health Biomedical Research Centre, Warneford Hospital, Oxford, UK

* **MG** and **PCD** are guarantors of the study.

Words count : 3631

Key Points

Question Is adiposity causally associated with mental illnesses?

Findings In this systematic review of 41 Mendelian randomization studies, with 184 MR estimates, and meta-analysis of 30 MR estimates, general adiposity was causally associated with depression. There was no evidence of sex differences. Evidence of causal associations between adiposity and other mental illnesses was unclear.

Meaning The findings suggest that higher adiposity can cause depression, which highlights the psychological importance of weight management.

Abstract

Importance Excess adiposity is associated with mental illnesses, but the causality of these associations remains equivocal.

Objective To examine the causal effect of adiposity on mental illnesses by summarizing and assessing evidence from Mendelian randomization (MR) studies.

Study Selection Searches were conducted on Embase, Medline, and Web of Science from database inception to January 8th 2024.

Data Extraction and Synthesis Studies using MR study designs that estimated adiposity measures including body mass index, abdominal adiposity, peripheral adiposity, or body composition in relation to mental illnesses were included. Study quality was assessed with a scoring system reflecting MR study guidelines. Data were pooled in meta-analyses using random-effects models. Subgroup analyses were conducted by sex.

Main Outcomes and Measures Outcomes were the presence or severity of depression, anxiety, eating disorders, bipolar disorder, obsessive compulsive disorder, post-traumatic stress disorder, schizophrenia, and related psychotic disorders.

Results Forty-one studies with 184 MR estimates were included in the systematic review; and 16 studies with 30 MR estimates were included in meta-analysis. Pooled estimates suggested that general adiposity was causally associated with depression (OR: 1.05, 95% CI, 1.00-1.10, $p < 0.001$; $I^2 = 82.8\%$), though the effect size was modest and there was high heterogeneity. Subgroup difference by sex in the causal relationship was not **observed** ($p = 0.382$). No evidence of causal associations was found between adiposity and other mental illnesses, though these analyses were characterized by high imprecision and heterogeneity.

Conclusion and Relevance General adiposity appears to be causally associated with depression, suggesting psychological benefits of weight management. Evidence for causal associations between adiposity and other mental illnesses remains uncertain.

Introduction

One in eight people live with a mental illness worldwide, accounting for nearly one billion people¹. The association between adiposity and mental illness is well established. Approximately 20%-60% of people with obesity experience at least one form of mental illness². Adipose tissue is an endocrine organ that releases cytokines and other molecules that influence immune activation, insulin resistance, and lipid metabolism³, which are theorized to cause, or exacerbate, mental illness⁴. Psychological factors (e.g., weight stigma) may also explain the association⁵. Evidence from cross-sectional and longitudinal studies indicates that body mass index (BMI) is strongly associated with depression⁶, anxiety⁷, eating disorders and serious mental illness (i.e., bipolar disorder, schizophrenia, and psychosis)⁸. The distribution of adipose tissue in the body may also influence mental health. Abdominal adiposity produces a greater effect on systemic inflammation and homeostatic functions than other sites of excess adiposity and may have a stronger effect on health outcomes⁹. Indeed, co-occurrence of mental illness with excess abdominal fat and metabolic disorders has been reported in epidemiological research¹⁰.

However, previous evidence on the association between adiposity and mental illness may be confounded by reverse causation, bias, and residual confounding. Mental illness could lead to adiposity, partly through side effects of medication used to treat mental illness (i.e., weight gain), or through low motivation for weight control¹¹. Moreover, obesity co-occurs with many other risk factors which can confound the association between obesity and mental illness. For example, socioeconomic deprivation, social adversity, reduced physical activity, and unhealthy diet are associated with both obesity and mental illness¹². Therefore, assessing the causal association between adiposity and mental illness is challenging but is nonetheless crucial to understanding disease etiology and to develop effective diagnostic, therapeutic, and preventative interventions. Such knowledge also has major public health implications because, despite the introduction of psychological therapy and medication, many patients respond poorly to these current treatments^{13,14}, and many psychotherapeutic agents increase the risk of weight gain^{15,16}.

Mendelian randomization (MR) analyses use genetic variants as instrumental variables, which - in principle - overcome the reverse causation and confounding that affects traditional or conventional observational study designs¹⁷. Mendelian randomization permits a robust assessment of the causal relationship between adiposity and mental illness. Recent MR studies have explored the causal role of adiposity in multiple mental illnesses, but results are yet to be summarized and assessed. We conducted a systematic review and meta-analysis of MR studies to appraise and summarize evidence on causality between adiposity and mental illnesses.

Methods

This systematic review was conducted in accordance with the Preferred Reporting Items for Systematic Reviews and Meta-Analysis (PRISMA) statement and the recent STROBE-MR guideline^{18,19}. The protocol for the systematic review was prospectively registered with the International Prospective Register of Systematic Reviews (PROSPERO) on 31st May, 2022 (CRD42022336439).

Search strategy

Searches were conducted on Embase, Medline, and Web of Science from database inception to January 8th 2024, using search terms that included synonyms of “*adiposity*” AND “*mental illness*” AND “*Mendelian randomization*”. This study was designed to include causal evidence that performed analyses referred to as “*Mendelian randomization*” (or closely related methods such as “*genetic instrumental variable regression*”) as detailed in **Supplementary material 1** and

Supplementary material 2. We included studies that investigated the causal associations of adiposity (e.g., body mass index, body fat percentage), abdominal adiposity (e.g., waist circumference, waist-to-hip ratio), peripheral adiposity (e.g., arm fat mass) and body composition (e.g., fat mass index) with depression, anxiety, eating disorders, bipolar disorder, obsessive compulsive disorder (OCD), post-traumatic stress disorder (PTSD), schizophrenia and other related disorders. The lead reviewer (MG) and one other reviewer (PJD, DAK, or YY) independently screened potentially eligible studies based on title and abstract, followed by full text where applicable.

Data extraction

Data were extracted and entered in predefined data extraction tables independently by the lead reviewer (MG) and one of the other three reviewers (PJD, DAK, or YY) and finalized after discussion (**Appendix**). A third reviewer (PCD) was consulted in case of disagreement. For each included study, the following information was extracted: information on the exposure and outcome of interest; sample size; the genetic instrument; the MR design (one-sample and/or two-sample); population ancestry; and the MR analysis results. Following the Mendelian randomization dictionary²⁰, we defined one-sample MR studies as those we interpreted as measuring the instrumental variable-exposure and instrumental variable-outcome associations in the same sample²¹, and two-sample Mendelian randomization studies as those which measured these associations in different samples²². Inverse variance weighted models were regarded as the main analysis^{23,24}. Individual-level (usually associated with one-sample MR) and summary-level approaches (usually two-sample MR) can be conducted in the same population. We extracted both sets of results where studies explicitly reported both one- and two-sample results (e.g., Casanova et al 2021²⁵).

Quality assessment

We developed a scoring system incorporating factors relating to the validity of MR studies, that reflected the recently developed STROBE-MR guidelines¹⁹. Important indices of quality are measurement of exposure and outcome (two items), selection of genetic variants (three items), results of MR analysis (five items for one-sample MR, seven items for two-sample MR). Each item was given a score of “-”, “+”, or “+” corresponding to higher, moderate, or low risk of bias respectively. For example, regarding the type of measure for the exposure, we rated this “-” if unclear or self-reported, “+” if a mix of self-reported and measured, and “+” if objectively measured. Additional details are presented in **Supplementary material 3**. Categories were given an overall score based on the most frequently occurring score, or the even score where two scores occurred at the same frequency as detailed in **Supplementary material 4**. For example, for “*selection of genetic variants*”, which was measured by three items, we chose the modal score (i.e., the score that appeared most frequently) to indicate quality of selection of genetic variants; for scores that occurred at the same frequency, we chose the higher rounded even score i.e., “+” was chosen between “+” and “+”, “+” was chosen between “+” and “-”, “+” was chosen between “-” and “+”. For MR studies that did not describe p-value threshold, we calculated this from the F statistic, % variance explained, or the variance from related MR studies that used similar/closely related sets of genetic variants as instruments. The lead reviewer (MG) and another reviewer (PJD, DAK, or YY) scored included studies independently, after which they compared their scores and any inconsistencies were resolved by discussion, or referral to a third reviewer (PCD).

Statistical analysis

Most studies reported the odds ratio (OR) for a 1 standard deviation (SD) increase in adiposity indices, such as body mass index (BMI). Where this was not the case, we rescaled the units of the

outcome and corresponding standard errors to 1 SD. Where the unit of exposure was not reported, we assumed it to be 1 SD, as this is how Mendelian randomization studies with continuous exposure typically report outcomes when using adiposity-related exposures. Exposures defined categorically were not included for meta-analyses due to their inherent limitations in capturing the full spectrum of exposure data and potentially introducing bias. Where the exposure-outcome was expressed as a regression coefficient for a continuous outcome, we used the Chinn equation to produce corresponding ORs to facilitate meta-analysis²⁶. Probit regression coefficients were converted into approximated logit coefficients by multiplying the probit coefficient by 1.6²⁷. We found that many included papers used the same cohorts to derive the genetic instruments, so when more than one MR estimate was published on the same outcome and study population, the MR estimate based on the largest number of cases, or if cases were identical, the largest number of genetic variants was retained for meta-analysis. For outcomes reported as continuous or binary on the same scale (e.g., Patient Health Questionnaire-9) among the same cohort, number of cases, and number of genetic instruments we retained the binary clinical outcome for meta-analysis (similar to Larsson & Burgess, 2021²³) (**Supplementary material 5**).

Random-effects models were used to produce summary effect sizes with 95% confidence intervals (CIs) from individual study data^{28,29}. The percentage of variability in effect estimates that due to heterogeneity between studies was quantified using the I^2 statistic. For this, values <25%, 25-75%, and >75% were considered to indicate low, moderate, and high heterogeneity respectively³⁰. Pre-specified subgroup analyses by sex were conducted if sex-specific estimates were provided. Where studies did not explicitly report ancestry, we examined the exposure and outcome genome-wide association studies (GWASs) to infer likely ancestry. Sensitivity analyses were conducted to investigate the equivalence of a meta-analysis of odds ratios and beta coefficients; thus, the main analysis was repeated including only studies reporting ORs with 95% CI and, separately, the main analysis with beta coefficients and 95% CI. All statistical analyses were conducted in Stata 14 SE (StataCorp, College Station, TX, USA) using the *metan* commands.

Results

The search strategy resulted in 1,935 articles, of which 41 eligible Mendelian randomization studies with 184 estimates were included in this review (**Figure 1, Supplementary material 1 and Supplementary material 2**). Among them, nineteen studies reported 1 estimate³¹⁻⁴⁹, five studies reported 2 estimates⁵⁰⁻⁵⁴, two studies reported 3 estimates^{55,56}, three studies reported 4 estimates⁵⁷⁻⁵⁹, and twelve studies reported 5+ estimates^{25,60-70}. Study characteristics and reported associations of the included studies are given in **Table 1**, and additional details are presented in **Appendix**. Twenty-eight studies reported 98 estimates of the association between adiposity and depression^{25,32-35,37,40,42-45,47,48,50,53,55-59,62-64,66-70}, three studies reported 9 estimates for anxiety^{25,41,67}, three studies reported 8 estimates for anorexia nervosa^{61,67,68}, five studies reported 13 estimates for bipolar disorder^{31,53,55,65,67}, three studies reported 7 estimates for OCD^{61,67,68}, three studies reported 23 estimates for PTSD^{49,60,67}, and twelve studies reported 26 estimates for schizophrenia^{36,38,39,46,51,52,54,55,61,65,67,68}. One-sample MR design was conducted in six studies^{33,34,43,56,57,62}, two-sample MR design was conducted in thirty-two studies^{31,32,35-42,44-55,58,60,61,63-69}, both one-sample MR and two-sample MR were conducted in three studies^{25,59,70}. Thirty unique MR estimates out of 184 total estimates were included in meta-analyses (details as shown in “Yes” under “For meta-analysis” column in Appendix).

Table 1 The characteristics of included Mendelian randomization studies of adiposity measures on mental illnesses

Study	Exposure	Outcomes	Exposure source	Exposure data collection	Outcome source	Outcome data collection	MR design	Number of estimates	Ancestry
Amin 2020 ⁵⁷	Adiposity (BMI)	Depression	GIANT	Self-reported or measured	HRS, Add health	Self-reported (by CES-D)	One-sample	4	European
Aoki 2022 ⁵²	Adiposity (BMI)	Schizophrenia	JENGER	Measured onsite	Ikeda 2019 and PGC Asia	Clinical diagnosis	Two-sample	2	Asian/ European
Byg 2022 ³¹	Adiposity (BMI)	Bipolar disorder	UKB	Measured onsite	GWAS (Mullins et al, 2021)	Clinical diagnosis	Two-sample	1	European
Carvalho 2021 ⁶⁰	Adiposity (BMI, body fat percentage, fat mass)	PTSD	UKB, GIANT	Self-reported or measured	PGC-PTSD (Nievergelt et al., 2019), PGC-MVP (Stein et al., 2021)	Self-report or clinical diagnosis	Two-sample	20	European and African
	Abdominal adiposity (hip, waist, trunk fat percentage, trunk fat mass)	PTSD	UKB	Measured onsite	PGC-PTSD (Nievergelt et al., 2019), PGC-MVP (Stein et al., 2021)	Self-report or clinical diagnosis	Two-sample		
	Peripheral adiposity (arm/leg fat mass and fat percentage)	PTSD	UKB	Measured onsite	PGC-PTSD (Nievergelt et al., 2019), PGC-MVP (Stein et al., 2021)	Self-report or clinical diagnosis	Two-sample		European and African
Casanova 2021 ²⁵	Adiposity (BMI)	Depression	UKB, GIANT	Self-reported or measured	UKB	Self-reported (CIDI-SF and PHQ9)	One-sample, two-sample	19	European
	Adiposity (BMI)	Anxiety	UKB, GIANT	Self-reported or measured	UKB	Self-reported (GAD)	One-sample, two-sample		European

Chen 2023 ⁶⁷	Adiposity (BMI)	Depression	GIANT (Pulit. et al., 2019)	Self-reported or measured	PGC (Howard,2019)	Clinical diagnosis	Two-sample	14	European
	Adiposity (BMI)	Anxiety	GIANT (Pulit. et al., 2019)	Self-reported or measured	PGC (Otowa,2016)	Self-report or clinical diagnosis	Two-sample		European
	Adiposity (BMI)	PTSD	GIANT (Pulit. et al., 2019)	Self-reported or measured	PGC (Nievergelt,2019)	Clinical diagnosis	Two-sample		European
	Adiposity (BMI)	Anorexia nervosa	GIANT (Pulit. et al., 2019)	Self-reported or measured	PGC (Watson,2019)	Clinical diagnosis	Two-sample		European
	Adiposity (BMI)	Schizophrenia	GIANT (Pulit. et al., 2019)	Self-reported or measured	PGC (Trubetskoy,2022)	Clinical diagnosis	Two-sample		European
	Adiposity (BMI)	OCD	GIANT (Pulit. et al., 2019)	Self-reported or measured	PGC (Arnold,2018)	Clinical diagnosis	Two-sample		European
	Adiposity (BMI)	Bipolar disorder	GIANT (Pulit. et al., 2019)	Self-reported or measured	PGC (Mullins,2021)	Clinical diagnosis	Two-sample		European
	Abdominal adiposity (WHR)	Depression	GIANT (Pulit. et al., 2019)	Self-reported or measured	PGC (Howard,2019)	Clinical diagnosis	Two-sample		European
	Abdominal adiposity (WHR)	Anxiety	GIANT (Pulit. et al., 2019)	Self-reported or measured	PGC (Otowa,2016)	Self-report or clinical diagnosis	Two-sample		European
	Abdominal adiposity (WHR)	Bipolar disorder	GIANT (Pulit. et al., 2019)	Self-reported or measured	PGC (Mullins,2021)	Clinical diagnosis	Two-sample		European
	Abdominal adiposity (WHR)	Anorexia nervosa	GIANT (Pulit. et al., 2019)	Self-reported or measured	PGC (Watson,2019)	Clinical diagnosis	Two-sample		European
	Abdominal adiposity (WHR)	OCD	GIANT (Pulit. et al., 2019)	Self-reported or measured	PGC (Arnold,2018)	Clinical diagnosis	Two-sample		European

	Abdominal adiposity (WHR)	PTSD	GIANT (Pulit. et al., 2019)	Self-reported or measured	PGC (Stein,2021)	Clinical diagnosis	Two-sample		European
	Abdominal adiposity (WHR)	Schizophrenia	GIANT (Pulit. et al., 2019)	Self-reported or measured	PGC (Trubetskoy,2022)	Clinical diagnosis	Two-sample		European
Day 2018 ³²	Adiposity (BMI)	Depression	GIANT	Self-reported or measured	23andMe	Self-report or clinical diagnosis	Two-sample	1	European
Ding 2022 ⁶⁸	Adiposity (Class I obesity, Class II obesity, Class III obesity)	Depression	Berndt et al., 2013	Self-reported or measured	PGC (Howard)	Clinical diagnosis	Two-sample	10	European
	Adiposity (Class I obesity, Class II obesity, Class III obesity)	Anorexia nervosa	Berndt et al., 2013	Self-reported or measured	PGC (Watson)	Clinical diagnosis	Two-sample		European
	Adiposity (Class I obesity, Class II obesity, Class III obesity)	Schizophrenia	Berndt et al., 2013	Self-reported or measured	PGC (Pardinas)	Clinical diagnosis	Two-sample		European
	Adiposity (Class I obesity, Class II obesity, Class III obesity)	OCD	Berndt et al., 2013	Self-reported or measured	PGC (Arnold)	Clinical diagnosis	Two-sample		European
Hartwig 2016 ⁵⁵	Adiposity (BMI)	Depression	GIANT	Self-reported or measured	PGC (Ripke,2013)	Clinical diagnosis	Two-sample	3	European
	Adiposity (BMI)	Bipolar disorder	GIANT	Self-reported or measured	PGC (Sklar,2011)	Clinical diagnosis	Two-sample		European
	Adiposity (BMI)	Schizophrenia	GIANT	Self-reported or measured	PGC (Ripke,2014)	Clinical diagnosis	Two-sample		European
He ML 2023 ⁵³	Adiposity (BMI)	Depression	UKB	Measured onsite	PGC (Howard,2019)	Self-report or clinical diagnosis	Two-sample	2	European
	Adiposity (BMI)	Bipolar disorder	UKB	Measured onsite	PGC (Stahl,2019)	Clinical diagnosis	Two-sample		European

He RX 2023 ⁴⁷	Adiposity (BMI)	Depression	GIANT	Self-reported or measured	PGC (Howard) without 23andMe	Self-report or clinical diagnosis	Two- sample	1	European
Hubel 2019 ⁶¹	Adiposity (BMI, body fat percentage, fat mass)	Anorexia nervosa	UKB	Measured onsite	GWAS (Watson,2019)	Self-report or clinical diagnosis	Two- sample	9	European
	Adiposity (BMI, body fat percentage, fat mass)	Obsessive compulsive disorder	UKB	Measured onsite	GWAS (Mattheisen,2015)	Clinical diagnosis	Two- sample		European
	Adiposity (BMI, body fat percentage, fat mass)	Schizophrenia	UKB	Measured onsite	PGC (Ripke,2014)	Clinical diagnosis	Two- sample		European
Hung 2014 ³³	Adiposity (BMI)	Depression	Speliotes et al	Self-reported or measured	RADIANT study	Clinical diagnosis	One- sample	1	European
Jokela 2012 ³⁴	Adiposity (BMI)	Depression	Young Finns	Measured onsite	Young Finns	Self-reported (by BDI)	One- sample	1	European
Kappelman 2021 ³⁵	Adiposity (BMI)	Depression	GIANT	Self-reported or measured	PGC (Howard et al., 2019)	Self-report or clinical diagnosis	Two- sample	1	European
Karageorgi ou 2023 ⁵⁶	Adiposity (BMI)	Depression	UKB	Measured onsite	UKB	Clinical diagnosis	One- sample	3	European
Khandaker 2020 ⁶²	Adiposity (BMI)	Depression	UKB	Measured onsite	UKB	Self-reported (few questions)	One- sample	6	European
	Abdominal adiposity (WHR)	Depression	GIANT	Self-reported or measured	UKB	Self-reported (few questions)	One- sample		European
Khani 2023 ⁷¹	Adiposity (BMI)	Schizophrenia	GIANT	Self-reported or measured	PGC (Trubetskoy,2022)	Clinical diagnosis	Two- sample	2	European

	Abdominal adiposity (WHR)	Schizophrenia	GIANT	Self-reported or measured	PGC (Trubetskoy,2022)	Clinical diagnosis	Two-sample		European
Kivimaki 2011 ⁵⁰	Adiposity (BMI)	Depression	Whitehall II	Measured onsite	Whitehall II	Self-reported (by GHQ)	Two-sample	2	Primarily European
Lawlor 2011 ⁶³	Adiposity (BMI)	Depression	CGPS	Measured onsite	CGPS	Self-reported	Two-sample	7	European (Danish)
	Abdominal adiposity (WHR)	Depression	CGPS	Measured onsite	CGPS	Self-reported	Two-sample		European (Danish)
Martin 2022 ⁵⁸	Adiposity (BMI, body fat percentage)	Depression	GIANT	Self-reported or measured	FinnGen, PGC (Wray et al., 2018)	Hospital discharge register and/or causes of death register	Two-sample	4	European
Meng 2024 ⁶⁹	Adiposity (BMI)	Depression	GIANT, UKB	Self-reported or measured	African Summary data, East Asian Summary data, GWAS (Meng), Hispanic/Latin American Summary data, South Asian Summary data	Clinical diagnosis	Two-sample	5	European
O'Loughlin 2023 ⁷⁰	Adiposity (BMI)	Depression	GIANT, UKB, CKB	Self-reported or measured	CKB	Self-report or clinical diagnosis	One-sample, two-sample	6	East Asian
	Abdominal adiposity (WHR)	Depression	GIANT, UKB, CKB	Self-reported or measured	CKB	Self-report or clinical diagnosis	One-sample, two-sample		East Asian
Palmos 2023 ⁴⁸	Adiposity (BMI)	Depression	GIANT, UKB, CKB	Self-reported or measured	PGC&23andMe	Self-report or clinical diagnosis	Two-sample	1	European
Perry 2021 ⁵¹	Adiposity (BMI)	Schizophrenia	GIANT	Self-reported or measured	PGC (Pardinas, 2018)	Clinical diagnosis	Two-sample	2	Primarily European

Peters 2020 ³⁶	Abdominal adiposity (WHR)	Schizophrenia	GWAS (Pulit. et al., 2019)	Self-reported or measured	PGC (Pardinas, 2018)	Clinical diagnosis	Two-sample	1	European
Pistis 2021 ⁶⁴	Adiposity (BMI)	Depression	GWAS (Yengo. et al., 2018)	Self-reported or measured	CoLaus PsyCoLaus, NESDA NTR, C P N N	Diagnostic Interview	Two-sample	12	European
	Abdominal adiposity (WHR)	Depression	GWAS (Pulit. et al., 2019)	Self-reported or measured	CoLaus PsyCoLaus, NESDA NTR, C P N N	Diagnostic Interview	Two-sample		European
Polimanti 2017 ⁴⁹	Abdominal adiposity (WHR)	PTSD	GIANT	Self-reported or measured	PGC-PTSD (Duncan, 2018)	Clinical diagnosis	Two-sample	1	European
Qi 2019 ³⁷	Adiposity (BMI)	Depression	GWAS (Yengo. et al., 2018)	Self-reported or measured	PGC (Wray, 2018)	Self-report or clinical diagnosis	Two-sample	1	European
Rees 2019 ³⁸	Adiposity (BMI)	Schizophrenia	GIANT	Self-reported or measured	PGC (Ripke,2014)	Clinical diagnosis	Two-sample	1	Primarily European
Richardson 2019 ³⁹	Adiposity (BMI)	Schizophrenia	UKB	Measured onsite	PGC (Ripke,2014)	Clinical diagnosis	Two-sample	1	European
So 2019 ⁶⁵	Adiposity (BMI, body fat percentage)	Bipolar disorder	GIANT, GWAS (Lu et al., 2016)	Self-reported or measured	GWAS (Hou, 2016)	Interview and clinical diagnosis	Two-sample	16	Primarily European
	Adiposity (BMI, body fat percentage)	Schizophrenia	GIANT, GWAS (Lu et al., 2016)	Self-reported or measured	PGC (Ripke,2013)	Clinical diagnosis	Two-sample		Primarily European
	Abdominal adiposity (WHR)	Bipolar disorder	GIANT (Shungin. et al., 2015)	Measured onsite	GWAS (Hou, 2016)	Interview and clinical diagnosis	Two-sample		Primarily European
	Abdominal adiposity (WHR)	Schizophrenia	GIANT (Shungin.	Measured onsite	PGC (Ripke,2013)	Clinical diagnosis	Two-sample		Primarily European

			et al., 2015)						
	Adipose tissue	Bipolar disorder	GWAS (Chu et al., 2017)	Measured onsite	GWAS (Hou, 2016)	Interview and clinical diagnosis	Two-sample		Primarily European
	Adipose tissue	Schizophrenia	GWAS (Chu et al., 2017)	Measured onsite	GWAS (Hou, 2016)	Clinical diagnosis	Two-sample		Primarily European
Speed 2019 ⁶⁶	Adiposity (BMI, fat mass, body fat percentage)	Depression	UKB	Measured onsite	PGC (Wray, 2018)	Self-report or clinical diagnosis	Two-sample	13	European
	Abdominal adiposity (trunk fat percentage, trunk fat mass)	Depression	UKB	Measured onsite	PGC (Wray, 2018)	Self-report or clinical diagnosis	Two-sample		European
	Peripheral adiposity (arm/leg fat mass and fat percentage)	Depression	UKB	Measured onsite	PGC (Wray, 2018)	Self-report or clinical diagnosis	Two-sample		European
Tyrrell 2019 ⁵⁹	Adiposity (BMI)	Depression	UKB	Measured onsite	UKB, PGC (Wray, 2018)	Self-report or clinical diagnosis	One-sample, two-sample	4	European
vandenBroek 2018 ⁴⁰	Adiposity (BMI)	Depression	GIANT	Self-reported or measured	23andMe	Clinical diagnosis	Two-sample	1	European
Willage 2018 ⁴³	Adiposity (BMI)	Depression	Speliotes et al	Self-reported or measured	Add Health	Self-reported (by CES)	One-sample	1	European and African
Walter 2015a ⁴¹	Adiposity (BMI)	Anxiety	Speliotes et al	Self-reported or measured	NHS and HPFS	Self-reported (CCI)	Two-sample	1	Primarily European
Walter 2015b ⁴²	Adiposity (BMI)	Depression	Speliotes et al	Self-reported or measured	NHS	Self-reported (GDS)	Two-sample	1	Primarily European

Wray 2018 ⁴⁵	Adiposity (BMI)	Depression	GIANT (Locke et al., 2015)	Self-reported or measured	Multiple	Self-reported and clinical diagnosis	Two-sample	1	European
Yu 2023 ⁴⁶	Adiposity (BMI)	Schizophrenia	UKB	Measured onsite	PGC (Trubetsky et al., 2022)	Clinical diagnosis	Two-sample	1	European
Zhang 2021 ⁴⁴	Abdominal adiposity (waist)	Depression	GIANT (Shungin et al., 2015)	Self-reported or measured	UKB and PGC	Self-report or clinical diagnosis	Two-sample	1	Primarily European

Note: Some studies/estimates were used in meta analysis because of the rules for avoiding overlapping samples/picking the studies with the largest N of genetic variants as set out in the Methods section.

Add Health: National Longitudinal Study of Adolescent to Adult Health; BMI: Body mass index; C|P| N | N: CoLaus|PsyCoLaus combined NESDA | NTRBMI: Body mass index ; CCI: the validated phobic anxiety subscale of the Crown Crisp Index (CCI); CKB: China Kadoorie Biobank; CES-D: Center for Epidemiologic Studies Depression Scale (CES-D); CGPS: Copenhagen General Population Study; CIDI-SF: Composite International Diagnostic Interview Short Form; JENGER: Biobank Japan; GAD: Generalised Anxiety Disorder Assessment (GAD-7); GDS: Geriatric Depression Scale 15 (GDS-15); GIANT: The Genetic Investigation of ANthropometric Traits consortium; GWAS: Genome-wide association study; HRS: Health and Retirement Study; NHS: Nurses' Health Study; HPFS: Nurses' Health Study (NHS) and Health Professionals Follow-up Study; PGC: Psychiatric Genomics Consortium; PHQ9: Patient Health Questionnaire-9; UKB: UK Biobank; WHR: waist-to-hip ratio; Young Finns: Cardiovascular Risk in Young Finns; 23andMe: also named Social Science Genetic Association Consortium; Multiple: PGC29 (29 samples of European ancestry), deCODE, GenScotland (Generation Scotland: Scottish Family Health Study), GERA (Genetic Epidemiology Research on Adult Health and Aging cohort), iPSYCH (Integrative Psychiatric Research consortium), UK Biobank and 23andMe.

Quality assessment of included studies

The quality assessment of studies included in this review is presented in **Table 2** and **Supplementary material 4**. For the assessment of exposure and outcome, 86% of studies used adiposity data from the UK Biobank and mental illness data from Psychiatric Genomics Consortium. For the selection of genetic variants, most studies selected a genetic variant p-value threshold below 5E-08 (n=32 studies) ^{25,31,32,35,37-40,43-49,51-61,64-70}, but an F-statistic ≥ 10 (n=27 studies) ^{25,32-36,38,44,47-49,51,53,55-60,62-65,67,68,70}, and had a high percentage ($\geq 3\%$) of explained variance (n=11 studies) ^{32,35,38,51,55,58,60,62,64,66}, providing good evidence that the chosen instrument was robust.

Among the 35 studies using two-sample MR design, 31 studies scored “+” in the analysis category ^{25,31,32,35-40,44-49,51-55,58-61,64-70}, and only four studies scored “-” in the analysis category ^{41,42,50,63}, meaning that most studies tested the majority of: bidirectional effects, non-linearity assessed for continuous exposures, heterogeneity, reported data on pleiotropy-robust sensitivity analysis, similar results amongst all MR analyses, and for two-sample MR SNP harmonization across samples, and estimates SNP-exposure and SNP-outcome from comparable populations. Among the nine included studies using a one-sample MR design, two studies scored “+” in the analysis category ^{56,70}, with the remaining seven studies scoring “-” ^{25,33,34,43,57,59,62}.

Table 2 Methodological quality assessment of the included Mendelian randomization studies

Author	Measurement of exposure and outcome	Selection of genetic variants	Analysis (One-sample MR)	Analysis (Two-sample MR)
Amin 2020 ⁵⁷	- +	+	-	
Aoki 2022 ⁵²	+	-		+
Byg 2022 ³¹	+	- +		+
Carvalho 2021 ⁶⁰	- +	+		+
Casanova 2021 ²⁵	- +	+	-	+
Chen 2023 ⁶⁷	+	+		+
Day 2018 ³²	- +	+		+
Ding 2022 ⁶⁸	+	+		+
Hartwig 2016 ⁵⁵	+	+		+
He ML 2023 ⁵³	+	+		+
He RX 2023 ⁴⁷	- +	+		+
Hubel 2019 ⁶¹	+	-		+
Hung 2014 ³³	+	- +	-	
Jokela 2012 ³⁴	+	- +	-	
Kappelmann 2021 ³⁵	- +	+		+
Karageorgiou 2023 ⁵⁶	+	+	+	
Khandaker 2020 ⁶²	- +	+	-	
Khani 2023 ⁵⁴	+	-		+
Kivimaki 2011 ⁵⁰	+	-		-
Lawlor 2011 ⁶³	- +	-		-
Martin 2022 ⁵⁸	+	+		+
Meng 2024 ⁶⁹	- +	-		+
O'Loughlin 2023 ⁷⁰	- +	+	+	+
Palmos 2023 ⁴⁸	- +	+		+
Perry 2021 ⁵¹	+	+		+

Peters 2020 ³⁶	+	- +		+
Pistis 2021 ⁶⁴	+	+		+
Polimanti 2017 ⁴⁹	+	+		+
Qi 2019 ³⁷	- +	-		+
Rees 2019 ³⁸	+	+		+
Richardson 2019 ³⁹	+	-		+
So 2019 ⁶⁵	+	+		+
Speed 2019 ⁶⁶	+	+		+
Tyrrell 2019 ⁵⁹	+	+	-	+
vandenBroek 2018 ⁴⁰	+	- +		+
Walter 2015a ⁴¹	- +	-		-
Walter 2015b ⁴²	- +	-		-
Willage 2018 ⁴³	- +	-	-	
Wray 2018 ⁴⁵	- +	-		+
Yu 2023 ⁴⁶	+	+		+
Zhang 2021 ⁴⁴	- +	-		+

Note: Green colour indicates low risk of bias, yellow colour indicates moderate risk of bias, pink colour indicates high risk of bias, grey colour indicates not applicable.

Meta-analyses results for general adiposity and mental illnesses

Thirty-eight studies with 123 estimates provided data for the association between general adiposity and mental illnesses^{25,31-35,37-43,45-48,50-70}, and sixteen studies with 23 estimates were included in meta-analysis^{25,33,34,41,42,46,50,52,57,58,60,63,64,67,69,70}, as shown in **Figure 2A** and **Figure 2B**. Most studies presented data for the association with depression. There was generally consistent, but imprecise, evidence that genetically predicted higher adiposity was associated with an increased risk of depression, with a combined OR of 1.07 (95% CI 1.00-1.13, n=16 estimates) per SD of general adiposity, but with high heterogeneity ($I^2 = 83.4%$) between studies. However, there was no evidence of a causal association between genetically predicted adiposity and anxiety (OR 1.12, 95% CI 0.97-1.29, n=3 estimates)^{25,41,67}, PTSD (OR 1.15, 95% CI 0.87-1.54, n=2 estimates)^{60,67}, schizophrenia (OR 0.95, 95% CI 0.73-1.23, n=2 estimates)^{46,52}. Most of these analyses showed high heterogeneity.

Meta-analyses results of abdominal adiposity with mental illnesses

Twelve studies with 12 estimates reported the causal relationship between abdominal adiposity and mental illness^{36,44,49,54,60,62-67,70}, and 5 studies with 7 estimates were included in meta-analyses after excluding overlapped study populations^{60,63,64,67,70}, as shown in **Figure 3**. There was no evidence of a causal association between abdominal adiposity and depression (OR 0.95, 95% CI 0.84-1.08, n=5 estimates)^{63,64,67,70} or abdominal adiposity and PTSD (OR 1.12, 95% CI 0.93-1.34, n=2 estimates)^{60,67}.

Description of the associations between adiposity indices and other mental illnesses

One study with 6 estimates on the associations of adipose tissue and bipolar disorder and schizophrenia was not included for meta-analyses because estimates were derived from a single cohort (**Appendix**)⁶⁵. For general adiposity, five studies examined the relationship with bipolar disorder, but their study cohorts overlapped, with the largest study reporting a risk of bipolar

disorder of 0.96 (95% CI 0.89-1.03)⁶⁷. Similar overlaps were observed for the association between general adiposity and anorexia nervosa, with the largest study reporting a risk of 1.43 (95% CI 1.30-1.58)⁶⁷, and for associations between general adiposity and OCD with the largest study reporting a risk of 0.68 (95% CI 0.54-0.85)⁶⁷. For peripheral adiposity, two studies with 17 estimates reported the casual relationship between peripheral adiposity and mental illnesses^{60,66}. Associations for major depression were not included in the meta-analysis due to overlapped cohorts. However, most studies demonstrated a significant causal association. Associations for PTSD were not included in the meta-analysis because this study only reported significant results from European ancestry, results from African ancestry were eligible but not included in the meta-analysis due to overlapped cohorts. For abdominal adiposity, one study reported the associations of abdominal adiposity with anxiety (1.23 [95% CI 0.98-1.56]), anorexia nervosa (1.29 [95% CI 1.15-1.45]), and OCD (0.59 [95% CI 0.44-0.78])⁶⁷.

Subgroup analyses

A pre-specified subgroup analysis was performed to estimate the associations of genetically predicted adiposity measures with mental illnesses stratified by sex. In **Appendix**, seven studies with 76 estimates provided the associations of genetically predicted BMI with depression and anxiety by sex^{25,43,57,59,70}. In **Figure 4A**, there is no evidence from a meta-analysis including 18 MR estimates that the causal relationship between BMI and depression differed by sex (P=0.313). Similar results were also found for anxiety (P=0.287) as shown in **Figure 4B**^{25,41}.

Sensitivity analyses for clinical diagnosis of depression

We repeated the main analyses estimating the association of genetically predicted adiposity with depression including only studies that reported results with binary outcomes. In **Appendix**, nine studies with 15 estimates provided results with binary outcomes (OR 1.06, 95% CI 1.00-1.13)^{33,50,57,58,63,64,67,69,70}. The findings were similar to the main analysis which included binary and continuous outcomes (**Figure 5**).

Discussion

This systematic review and meta-analysis of Mendelian randomization studies regarding adiposity and mental illnesses found a causal relationship between general adiposity and depression, although effect sizes were modest. No sex difference was observed in this causal relationship. Evidence was uncertain for the association between different measures of adiposity and PTSD, schizophrenia, bipolar disorder, anorexia nervosa, and OCD. The findings from this review and meta-analysis are timely and address an important evidence gap. Presently, 39% and 12.5% of adults worldwide live with obesity and mental illness respectively^{72,73}, our findings suggests that higher general adiposity can cause depression.

A systematic review of 8 MR studies on obesity and depression with a last literature search in October 2021 found consistent evidence, with a higher depression risk associated with per SD in BMI (OR:1.33, 95% CI 1.19-1.48)⁷⁴. Compared to that review, we selected studies with the largest GWAS data available for more types of mental illnesses and avoided selecting the same or overlapping cohorts where larger studies were available. This accounts for a large proportion of MR associations that were not included for meta-analysis. For example, we selected studies that utilized the PGC (Howard) dataset for depression over those using the PGC (Wray) dataset (**Supplementary material 5**). Our results are in line with a meta-analysis of randomized trials of behavioral weight loss

programs found modest improvements in depression at 12 months from baseline, but with insufficient data for symptoms of other mental illnesses⁷⁵.

Apart from depression, the causal effect of adiposity on other mental illnesses has been less studied using MR study designs, and findings are less certain but do not exclude meaningful causal associations. Meta-analyses from conventional epidemiological research designs reported that obesity is associated with an increased likelihood of anxiety disorder (OR 1.30, 95% CI 1.20-1.41)⁷⁶, and an increased prevalence of bipolar disorder (OR 1.77, 95% CI 1.40-2.23)⁷⁷. In our meta-analyses, we did not find evidence of a causal role of adiposity in anxiety, PTSD, bipolar disorder, schizophrenia, anorexia nervosa, or OCD, but data were imprecise, so more data would aid in further elucidating this relationship. Similarly, the small number of MR studies that assessed evidence of a causal relationship specifically between abdominal adiposity and mental illnesses, including depression, produced imprecise evidence compatible with either no risk or moderate-sized increased risks. Conventional study designs have indicated that fat distribution (abdominal adiposity vs general adiposity) is associated with depressive symptoms independent of general adiposity⁷⁸. Given the small number of MR studies that reported abdominal adiposity and mental illness, further MR research with different and larger samples is needed to explore the causality of abdominal adiposity for mental illnesses.

Assessing the quality of analyses in MR is challenging due to the complexity and interrelationships between different elements of study design and the type of analysis used. A limitation of our review is that we attempted to characterize some of the main sources of possible bias, but arguably did not characterize all potential sources. For example, it was difficult, given reporting standards in some of the included literature, to fully characterize any sample overlap and the extent to which this may have biased two-sample analysis. A similar issue arose with characterizing the genetic ancestries included in each study. To guide our quality assessment, we developed a checklist that reflected STROBE MR guidance. Using this quality assessment tool, we observed differences in methodological quality between the included studies. We focused on potential violations of the instrumental variable assumptions that underlie MR analyses, particularly the quality of analysis reported in each study. For example, a critical issue that may introduce bias is violations of the exclusion restriction due to pleiotropy. Newer studies tended to perform better when assessed against criteria relating to the quality of analysis, whereas older studies were undertaken before methods for pleiotropy sensitivity analysis were fully developed.

This review has several other limitations. First, statistical heterogeneity in most meta-analyses was moderate to high. This suggests that more evidence may be needed to investigate or strengthen the causal association of more indices of adiposity with mental illness. Second, selection bias should be considered. For example, participants from cohorts such as the UK Biobank are relatively healthier than the general population and studies relying on evidence from volunteer cohorts of healthy and relatively affluent populations may be affected by collider bias associated with self-selection⁷⁹. Third, although this analysis provides evidence for the causal relationship between general adiposity and depression, we were unable to assess the mechanisms that may underlie this causal relationship. Fourth, most studies pertained to populations of predominantly European ancestry. Fifth, as noted, our quality assessment did not capture all aspects of potential bias in MR studies. For example, we did not identify studies that relied wholly on within-family designs, which may provide more robust estimates of causal associations in the presence of dynastic biases and cryptic population stratification⁸⁰. We did not formally assess studies for whether they relied on samples of unrelated individuals, and this appears to be an area where reporting could be improved in future MR research.

Conclusions

Adiposity appears to be causally associated with depression. Evidence for associations with other mental health phenotypes remains unclear. Future studies are needed to elucidate the mechanistic causal links between adiposity and depression.

Data sharing

All the data supporting the conclusions of this article are included within the article and its supplementary files.

Declaration of interests

DAK and PA are investigators in two investigator-led publicly funded (NIHR) trials where the weight loss intervention was donated by Nestle Health Science and Oviva to the University of Oxford outside the submitted work. The remaining authors declare no competing interests.

Author contributions

MG: Conceptualization, Methodology, Software, Formal analysis, Investigation, Writing - Original Draft, Writing - Review & Editing. **PJD:** Methodology, Investigation, Writing - Review & Editing. **DAK:** Methodology, Investigation, Writing - Review & Editing. **YY:** Investigation, Writing - Review & Editing. **PA:** Conceptualization, Methodology, Writing - Review & Editing. **RS:** Statistical Methodology, Writing - Review & Editing. **PCD:** Methodology, Investigation, Writing - Review & Editing, Supervision. **MG** and **PCD** are guarantors of the study.

Acknowledgements

We thank Nia Roberts for helping with the search strategy and the participants and investigators of all the cohorts and consortiums included in our study.

Funding

This review was supported by funding from the NIHR Oxford and Thames Valley Applied Research Collaboration (ARC). DAK is supported by an NIHR Advanced Fellowship (NIHR302549). PA is an NIHR senior investigator and supported by NIHR Oxford Health Biomedical Research Centre and NIHR Oxford Biomedical Research Centre. The funders had no role in the design and conduct of the study; collection, management, analysis, and interpretation of the data; preparation, review, or approval of the manuscript; and decision to submit the manuscript for publication. The views expressed herein are those of the authors and do not reflect the official policy or position of the National Health Service, the National Institute for Health Research, or the Department of Health and Social Care.

References

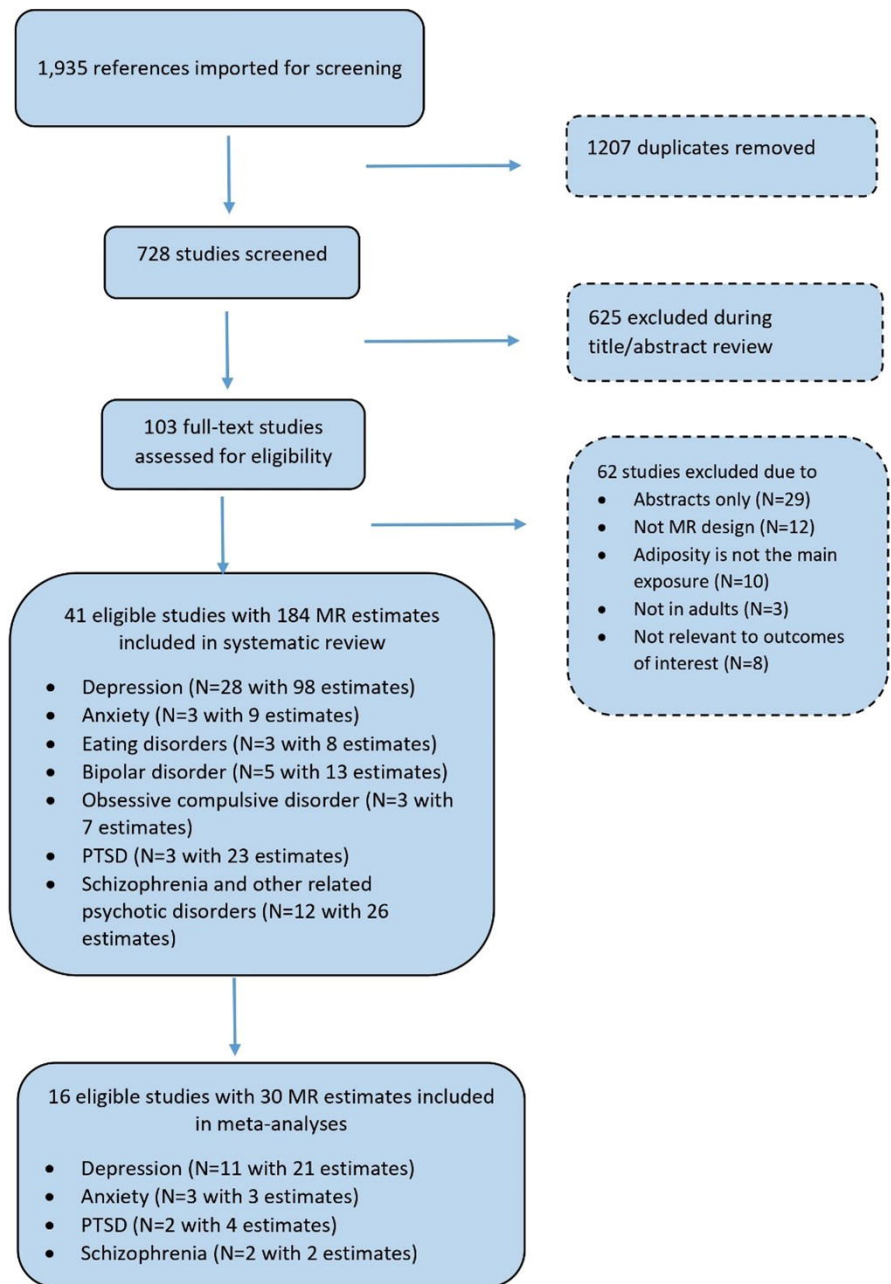
1. Evaluation IoHMa. Global Health Data Exchange (GHDx). <https://vizhub.healthdata.org/gbd-results/>
2. Sarwer DB, Polonsky HM. The Psychosocial Burden of Obesity. *Endocrinol Metab Clin North Am*. 2016;45(3):677-688. doi:10.1016/j.ecl.2016.04.016
3. Mechanick JI, Zhao S, Garvey WT, JotACoC. The adipokine-cardiovascular-lifestyle network: Translation to clinical practice. 2016;68(16):1785-1803.
4. Fulton S, Décarie-Spain L, Fioramonti X, Guiard B, Nakajima S. The menace of obesity to depression and anxiety prevalence. *Trends in Endocrinology & Metabolism*. 2022;33(1):18-35. doi:10.1016/j.tem.2021.10.005
5. Almutairi BF, Alsaygh KW, Altamimi MM, et al. Internalized Weight Stigma: Prevalence and Association With Psychiatric Disorder Among Overweight and Obese Individuals. *Cureus*. Oct 2021;13(10):e18577. doi:10.7759/cureus.18577
6. Milaneschi Y, Simmons WK, van Rossum EF, Penninx BW. Depression and obesity: evidence of shared biological mechanisms. *Molecular psychiatry*. 2019;24(1):18-33.
7. Baker KD, Loughman A, Spencer SJ, Reichelt AC. The impact of obesity and hypercaloric diet consumption on anxiety and emotional behavior across the lifespan. *Neuroscience & Biobehavioral Reviews*. 2017/12/01/ 2017;83:173-182. doi:<https://doi.org/10.1016/j.neubiorev.2017.10.014>
8. Avila C, Holloway AC, Hahn MK, et al. An Overview of Links Between Obesity and Mental Health. *Current Obesity Reports*. 2015/09/01 2015;4(3):303-310. doi:10.1007/s13679-015-0164-9
9. Shoelson SE, Herrero L, Naaz AJG. Obesity, inflammation, and insulin resistance. 2007;132(6):2169-2180.
10. Vancampfort D, Correll CU, Wampers M, et al. Metabolic syndrome and metabolic abnormalities in patients with major depressive disorder: a meta-analysis of prevalences and moderating variables. *Psychological medicine*. Jul 2014;44(10):2017-28. doi:10.1017/s0033291713002778
11. Konttinen H, van Strien T, Männistö S, Jousilahti P, Haukka A. Depression, emotional eating and long-term weight changes: a population-based prospective study. *Int J Behav Nutr Phys Act*. Mar 20 2019;16(1):28. doi:10.1186/s12966-019-0791-8
12. Firth J, Solmi M, Wootton RE, et al. A meta-review of "lifestyle psychiatry": the role of exercise, smoking, diet and sleep in the prevention and treatment of mental disorders. *World psychiatry : official journal of the World Psychiatric Association (WPA)*. Oct 2020;19(3):360-380. doi:10.1002/wps.20773
13. Al-Harbi KS. Treatment-resistant depression: therapeutic trends, challenges, and future directions. *Patient preference and adherence*. 2012;6:369-88. doi:10.2147/ppa.S29716
14. Arroll B, Moir F, Kendrick T. Effective management of depression in primary care: a review of the literature. *BJGP open*. Jun 28 2017;1(2)doi:10.3399/bjgpopen17X101025
15. Gafoor R, Booth HP, Gulliford MC. Antidepressant utilisation and incidence of weight gain during 10 years' follow-up: population based cohort study. 2018;361:k1951. doi:10.1136/bmj.k1951 %J BMJ
16. Ye W, Xing J, Yu Z, Hu X, Zhao Y. Mechanism and treatments of antipsychotic-induced weight gain. *Int J Obes (Lond)*. Jun 2023;47(6):423-433. doi:10.1038/s41366-023-01291-8
17. Davies NM, Holmes MV, Davey Smith G. Reading Mendelian randomisation studies: a guide, glossary, and checklist for clinicians. 2018;362:k601. doi:10.1136/bmj.k601 %J BMJ
18. Page MJ, McKenzie JE, Bossuyt PM, et al. The PRISMA 2020 statement: an updated guideline for reporting systematic reviews. *Bmj*. Mar 29 2021;372:n71. doi:10.1136/bmj.n71
19. Skrivankova VW, Richmond RC, Woolf BAR, et al. Strengthening the reporting of observational studies in epidemiology using mendelian randomisation (STROBE-MR): explanation and elaboration. *BMJ*. 2021;375:n2233. doi:10.1136/bmj.n2233 %J BMJ
20. Dictionary M. The definitive list of terms for Mendelian randomization research. <https://mr-dictionary.mrcieu.ac.uk/>

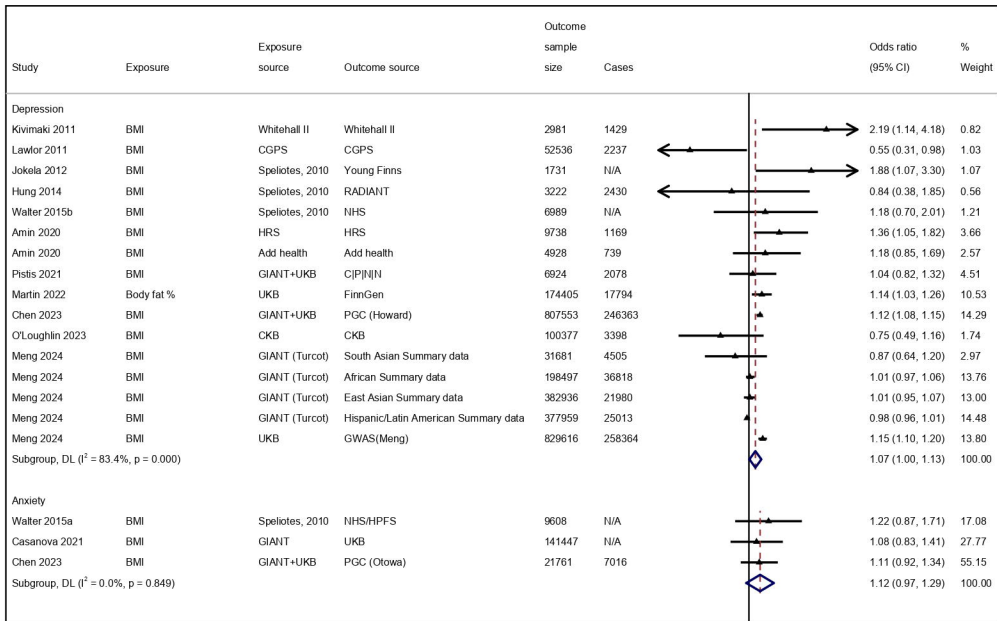
21. Dictionary M. OneSampleMR. <https://mr-dictionary.mrcieu.ac.uk/term/onesamplemr/>
22. Dictionary M. Two-sample MR methods. <https://mr-dictionary.mrcieu.ac.uk/section/two-sample/>
23. Larsson SC, Burgess S. Causal role of high body mass index in multiple chronic diseases: a systematic review and meta-analysis of Mendelian randomization studies. *BMC Medicine*. 2021/12/15 2021;19(1):320. doi:10.1186/s12916-021-02188-x
24. Larsson SC, Burgess S. Appraising the causal role of smoking in multiple diseases: A systematic review and meta-analysis of Mendelian randomization studies. *eBioMedicine*. 2022/08/01/ 2022;82:104154. doi:<https://doi.org/10.1016/j.ebiom.2022.104154>
25. Casanova F, O'Loughlin J, Martin S, et al. Higher adiposity and mental health: causal inference using Mendelian randomization. *Human molecular genetics*. Nov 30 2021;30(24):2371-2382. doi:10.1093/hmg/ddab204
26. Chinn SJSim. A simple method for converting an odds ratio to effect size for use in meta - analysis. 2000;19(22):3127-3131.
27. Gelman A, Hill J. *Data analysis using regression and multilevel/hierarchical models*. Cambridge university press; 2006.
28. IntHout J, Ioannidis JPA, Borm GF. The Hartung-Knapp-Sidik-Jonkman method for random effects meta-analysis is straightforward and considerably outperforms the standard DerSimonian-Laird method. *BMC Medical Research Methodology*. 2014/02/18 2014;14(1):25. doi:10.1186/1471-2288-14-25
29. Kim MS, Kim WJ, Khera AV, et al. Association between adiposity and cardiovascular outcomes: an umbrella review and meta-analysis of observational and Mendelian randomization studies. *Eur Heart J*. Sep 7 2021;42(34):3388-3403. doi:10.1093/eurheartj/ehab454
30. Higgins JP, Thompson SG, Deeks JJ, Altman DG. Measuring inconsistency in meta-analyses. *Bmj*. Sep 6 2003;327(7414):557-60. doi:10.1136/bmj.327.7414.557
31. Byg LM, Speed M, Speed D, Østergaard SD. Genetic liability to bipolar disorder and body mass index: A bidirectional two-sample mendelian randomization study. *Bipolar disorders*. 2022:2022.01.31.22270154. doi:10.1101/2022.01.31.22270154 %J medRxiv
32. Day FR, Ong KK, Perry JRB. Elucidating the genetic basis of social interaction and isolation. *Nature communications*. Jul 3 2018;9(1):2457. doi:10.1038/s41467-018-04930-1
33. Hung CF, Rivera M, Craddock N, et al. Relationship between obesity and the risk of clinically significant depression: Mendelian randomisation study. *The British journal of psychiatry : the journal of mental science*. Jul 2014;205(1):24-8. doi:10.1192/bjp.bp.113.130419
34. Jokela M, Elovainio M, Keltikangas-Järvinen L, et al. Body mass index and depressive symptoms: instrumental-variables regression with genetic risk score. *Genes, brain, and behavior*. Nov 2012;11(8):942-8. doi:10.1111/j.1601-183X.2012.00846.x
35. Kappelmann N, Arloth J, Georgakis MK, et al. Dissecting the Association Between Inflammation, Metabolic Dysregulation, and Specific Depressive Symptoms: A Genetic Correlation and 2-Sample Mendelian Randomization Study. *JAMA psychiatry*. Feb 1 2021;78(2):161-170. doi:10.1001/jamapsychiatry.2020.3436
36. Peters T, Nüllig L, Antel J, et al. The Role of Genetic Variation of BMI, Body Composition, and Fat Distribution for Mental Traits and Disorders: A Look-Up and Mendelian Randomization Study. *Frontiers in genetics*. 2020;11:373. doi:10.3389/fgene.2020.00373
37. Qi G, Chatterjee N. Mendelian randomization analysis using mixture models for robust and efficient estimation of causal effects. *Nature communications*. Apr 26 2019;10(1):1941. doi:10.1038/s41467-019-09432-2
38. Rees JMB, Wood AM, Dudbridge F, Burgess S. Robust methods in Mendelian randomization via penalization of heterogeneous causal estimates. *PloS one*. 2019;14(9):e0222362. doi:10.1371/journal.pone.0222362

39. Richardson TG, Harrison S, Hemani G, Davey Smith G. An atlas of polygenic risk score associations to highlight putative causal relationships across the human phenome. *eLife*. Mar 5 2019;8doi:10.7554/eLife.43657
40. van den Broek N, Treur JL, Larsen JK, Verhagen M, Verweij KJH, Vink JM. Causal associations between body mass index and mental health: a Mendelian randomisation study. *Journal of epidemiology and community health*. Aug 2018;72(8):708-710. doi:10.1136/jech-2017-210000
41. Walter S, Glymour MM, Koenen K, et al. Do genetic risk scores for body mass index predict risk of phobic anxiety? Evidence for a shared genetic risk factor. *Psychological medicine*. Jan 2015;45(1):181-91. doi:10.1017/s0033291714001226
42. Walter S, Kubzansky LD, Koenen KC, et al. Revisiting Mendelian randomization studies of the effect of body mass index on depression. *American journal of medical genetics Part B, Neuropsychiatric genetics: the official publication of the International Society of Psychiatric Genetics*. Mar 2015;168b(2):108-15. doi:10.1002/ajmg.b.32286
43. Willage B. The effect of weight on mental health: New evidence using genetic IVs. *Journal of health economics*. Jan 2018;57:113-130. doi:10.1016/j.jhealeco.2017.11.003
44. Zhang M, Chen J, Yin Z, Wang L, Peng L. The association between depression and metabolic syndrome and its components: a bidirectional two-sample Mendelian randomization study. *Translational psychiatry*. Dec 13 2021;11(1):633. doi:10.1038/s41398-021-01759-z
45. Wray NR, Ripke S, Mattheisen M, et al. Genome-wide association analyses identify 44 risk variants and refine the genetic architecture of major depression. *Nature Genetics*. 2018/05/01 2018;50(5):668-681. doi:10.1038/s41588-018-0090-3
46. Yu Y, Fu Y, Yu Y, et al. Investigating the shared genetic architecture between schizophrenia and body mass index. *Molecular psychiatry*. 2023/06/01 2023;28(6):2312-2319. doi:10.1038/s41380-023-02104-0
47. He R, Zheng R, Zheng J, et al. Causal Association Between Obesity, Circulating Glutamine Levels, and Depression: A Mendelian Randomization Study. *The Journal of Clinical Endocrinology & Metabolism*. 2022;108(6):1432-1441. doi:10.1210/clinem/dgac707
48. Pamos AB, Hübel C, Lim KX, Hunjan AK, Coleman JRI, Breen G. Assessing the Evidence for Causal Associations Between Body Mass Index, C-Reactive Protein, Depression, and Reported Trauma Using Mendelian Randomization. *Biol Psychiatry Glob Open Sci*. Jan 2023;3(1):110-118. doi:10.1016/j.bpsgos.2022.01.003
49. Polimanti R, Amstadter AB, Stein MB, et al. A putative causal relationship between genetically determined female body shape and posttraumatic stress disorder. *Genome Med*. Nov 27 2017;9(1):99. doi:10.1186/s13073-017-0491-4
50. Kivimäki M, Jokela M, Hamer M, et al. Examining overweight and obesity as risk factors for common mental disorders using fat mass and obesity-associated (FTO) genotype-instrumented analysis: The Whitehall II Study, 1985-2004. *American journal of epidemiology*. Feb 15 2011;173(4):421-9. doi:10.1093/aje/kwq444
51. Perry BI, Burgess S, Jones HJ, et al. The potential shared role of inflammation in insulin resistance and schizophrenia: A bidirectional two-sample mendelian randomization study. *PLoS medicine*. Mar 2021;18(3):e1003455. doi:10.1371/journal.pmed.1003455
52. Aoki R, Saito T, Ninomiya K, et al. Shared genetic components between metabolic syndrome and schizophrenia: Genetic correlation using multipopulation data sets. *Psychiatry Clin Neurosci*. Aug 2022;76(8):361-366. doi:10.1111/pcn.13372
53. He M, Zhou J, Li X, Wang R. Investigating the causal effects of smoking, sleep, and BMI on major depressive disorder and bipolar disorder: a univariable and multivariable two-sample Mendelian randomization study. *Front Psychiatry*. 2023;14:1206657. doi:10.3389/fpsy.2023.1206657
54. Khani N, Cotic M, Wang B, et al. Schizophrenia and cardiometabolic abnormalities: A Mendelian randomization study. *Frontiers in genetics*. 2023;14:1150458. doi:10.3389/fgene.2023.1150458

55. Hartwig FP, Bowden J, Loret de Mola C, Tovo-Rodrigues L, Davey Smith G, Horta BL. Body mass index and psychiatric disorders: a Mendelian randomization study. *Scientific reports*. Sep 7 2016;6:32730. doi:10.1038/srep32730
56. Karageorgiou V, Casanova F, O'Loughlin J, et al. Body mass index and inflammation in depression and treatment-resistant depression: a Mendelian randomisation study. *BMC Med*. Sep 14 2023;21(1):355. doi:10.1186/s12916-023-03001-7
57. Amin V, Flores CA, Flores-Lagunes A. The impact of BMI on mental health: Further evidence from genetic markers. *Economics and human biology*. Aug 2020;38:100895. doi:10.1016/j.ehb.2020.100895
58. Martin S, Tyrrell J, Thomas EL, et al. Disease consequences of higher adiposity uncoupled from its adverse metabolic effects using Mendelian randomisation. *eLife*. Jan 25 2022;11doi:10.7554/eLife.72452
59. Tyrrell J, Mulugeta A, Wood AR, et al. Using genetics to understand the causal influence of higher BMI on depression. *International journal of epidemiology*. Jun 1 2019;48(3):834-848. doi:10.1093/ije/dyy223
60. Carvalho C, Wendt FR, Pathak GA, et al. Disentangling sex differences in the shared genetic architecture of posttraumatic stress disorder, traumatic experiences, and social support with body size and composition. *Neurobiology of stress*. Nov 2021;15:100400. doi:10.1016/j.ynstr.2021.100400
61. Hübel C, Gaspar HA, Coleman JRI, et al. Genetic correlations of psychiatric traits with body composition and glycemic traits are sex- and age-dependent. *Nature communications*. Dec 18 2019;10(1):5765. doi:10.1038/s41467-019-13544-0
62. Khandaker GM, Zuber V, Rees JMB, et al. Shared mechanisms between coronary heart disease and depression: findings from a large UK general population-based cohort. *Molecular psychiatry*. Jul 2020;25(7):1477-1486. doi:10.1038/s41380-019-0395-3
63. Lawlor DA, Harbord RM, Tybjaerg-Hansen A, et al. Using genetic loci to understand the relationship between adiposity and psychological distress: a Mendelian Randomization study in the Copenhagen General Population Study of 53,221 adults. *Journal of internal medicine*. May 2011;269(5):525-37. doi:10.1111/j.1365-2796.2011.02343.x
64. Pistis G, Milaneschi Y, Vandeleur CL, et al. Obesity and atypical depression symptoms: findings from Mendelian randomization in two European cohorts. *Translational psychiatry*. Feb 4 2021;11(1):96. doi:10.1038/s41398-021-01236-7
65. So HC, Chau KL, Ao FK, Mo CH, Sham PC. Exploring shared genetic bases and causal relationships of schizophrenia and bipolar disorder with 28 cardiovascular and metabolic traits. *Psychological medicine*. Jun 2019;49(8):1286-1298. doi:10.1017/s0033291718001812
66. Speed MS, Jepsen OH, Børglum AD, Speed D, Østergaard SD. Investigating the association between body fat and depression via Mendelian randomization. *Translational psychiatry*. Aug 5 2019;9(1):184. doi:10.1038/s41398-019-0516-4
67. Chen W, Feng J, Jiang S, et al. Mendelian randomization analyses identify bidirectional causal relationships of obesity with psychiatric disorders. *Journal of Affective Disorders*. 2023/10/15/ 2023;339:807-814. doi:<https://doi.org/10.1016/j.jad.2023.07.044>
68. Ding H, Ouyang M, Wang J, et al. Shared genetics between classes of obesity and psychiatric disorders: A large-scale genome-wide cross-trait analysis. *Journal of Psychosomatic Research*. 2022/11/01/ 2022;162:111032. doi:<https://doi.org/10.1016/j.jpsychores.2022.111032>
69. Meng X, Navoly G, Giannakopoulou O, et al. Multi-ancestry genome-wide association study of major depression aids locus discovery, fine mapping, gene prioritization and causal inference. *Nature Genetics*. 2024/02/01 2024;56(2):222-233. doi:10.1038/s41588-023-01596-4
70. O'Loughlin J, Casanova F, Fairhurst-Hunter Z, et al. Mendelian randomisation study of body composition and depression in people of East Asian ancestry highlights potential setting-specific causality. *BMC Medicine*. 2023/02/01 2023;21(1):37. doi:10.1186/s12916-023-02735-8

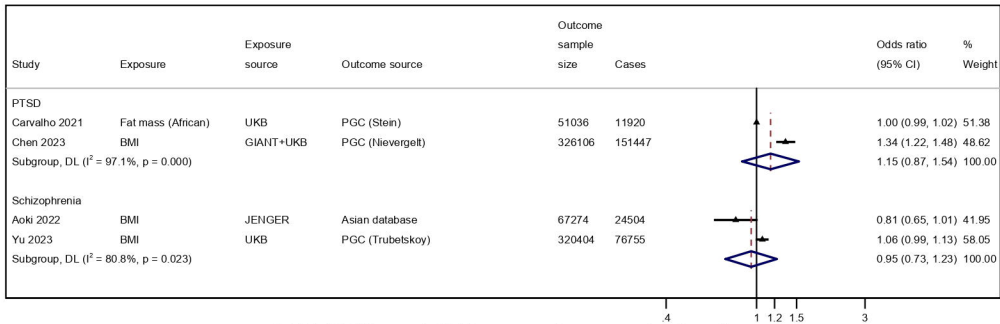
71. Saadullah Khani N, Cotic M, Wang B, et al. Schizophrenia and cardiometabolic abnormalities: A Mendelian randomization study. *Frontiers in genetics*. 2023;14:1150458. doi:10.3389/fgene.2023.1150458
72. Organization WH. Obesity and overweight. <https://www.who.int/news-room/fact-sheets/detail/obesity-and-overweight>
73. Organization WH. Mental disorders. <https://www.who.int/news-room/fact-sheets/detail/mental-disorders>
74. Jokela M, Laakasuo M. Obesity as a causal risk factor for depression: Systematic review and meta-analysis of Mendelian Randomization studies and implications for population mental health. *Journal of Psychiatric Research*. 2023/07/01/ 2023;163:86-92. doi:<https://doi.org/10.1016/j.jpsychires.2023.05.034>
75. Jones RA, Lawlor ER, Birch JM, et al. The impact of adult behavioural weight management interventions on mental health: A systematic review and meta-analysis. *Obesity Reviews*. 2021;22(4):e13150. doi:<https://doi.org/10.1111/obr.13150>
76. Amiri S, Behnezhad S. Obesity and anxiety symptoms: a systematic review and meta-analysis. *Neuropsychiatrie : Klinik, Diagnostik, Therapie und Rehabilitation : Organ der Gesellschaft Osterreichischer Nervenarzte und Psychiater*. Jun 2019;33(2):72-89. Adipositas und Angstsymptome: systematische Review und Metaanalyse. doi:10.1007/s40211-019-0302-9
77. Zhao Z, Okusaga OO, Quevedo J, Soares JC, Teixeira ALJload. The potential association between obesity and bipolar disorder: a meta-analysis. 2016;202:120-123.
78. Vogelzangs N, Kritchevsky SB, Beekman AT, et al. Depressive symptoms and change in abdominal obesity in older persons. *Archives of general psychiatry*. Dec 2008;65(12):1386-93. doi:10.1001/archpsyc.65.12.1386
79. Fry A, Littlejohns TJ, Sudlow C, et al. Comparison of Sociodemographic and Health-Related Characteristics of UK Biobank Participants With Those of the General Population. *American journal of epidemiology*. 2017;186(9):1026-1034. doi:10.1093/aje/kwx246 %J American Journal of Epidemiology
80. Brumpton B, Sanderson E, Heilbron K, et al. Avoiding dynastic, assortative mating, and population stratification biases in Mendelian randomization through within-family analyses. *Nature communications*. 2020/07/14 2020;11(1):3519. doi:10.1038/s41467-020-17117-4



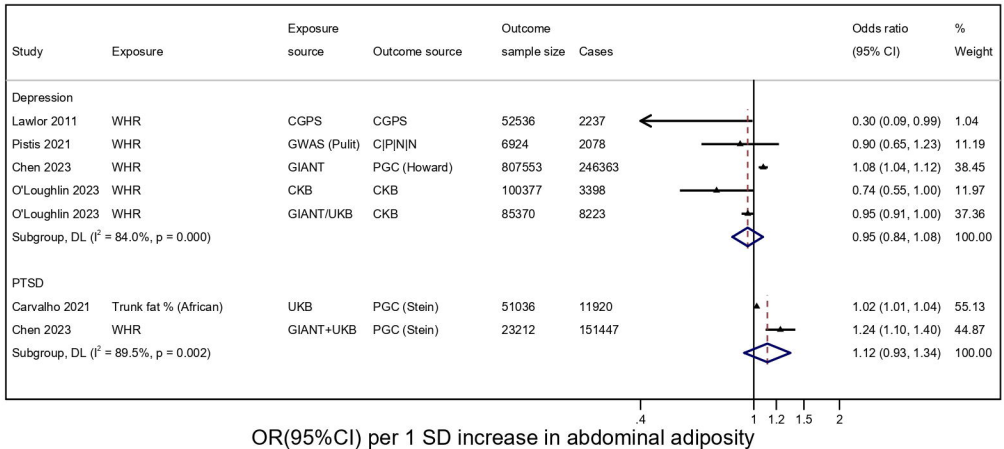


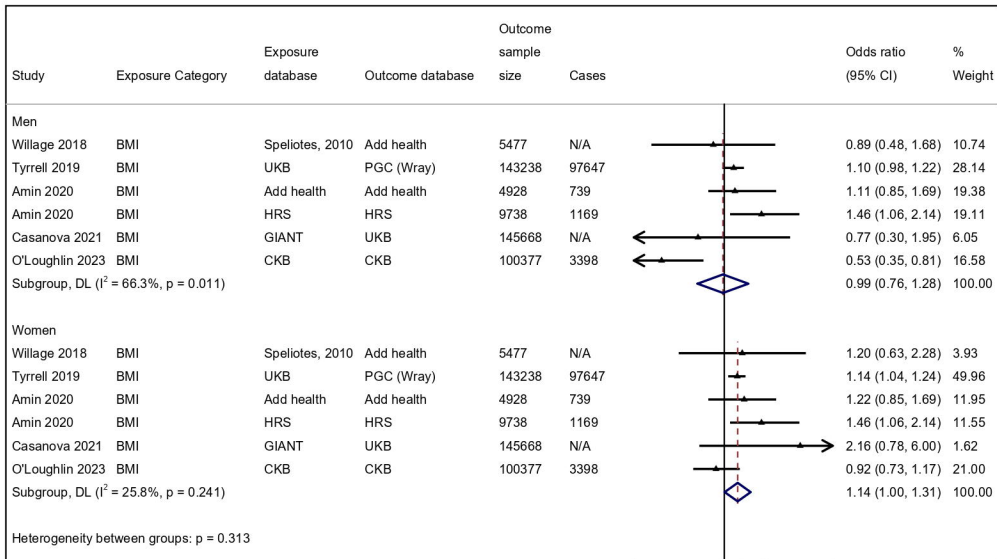
OR(95%CI) per 1 SD increase in general adiposity

4 1 1.2 1.5 3



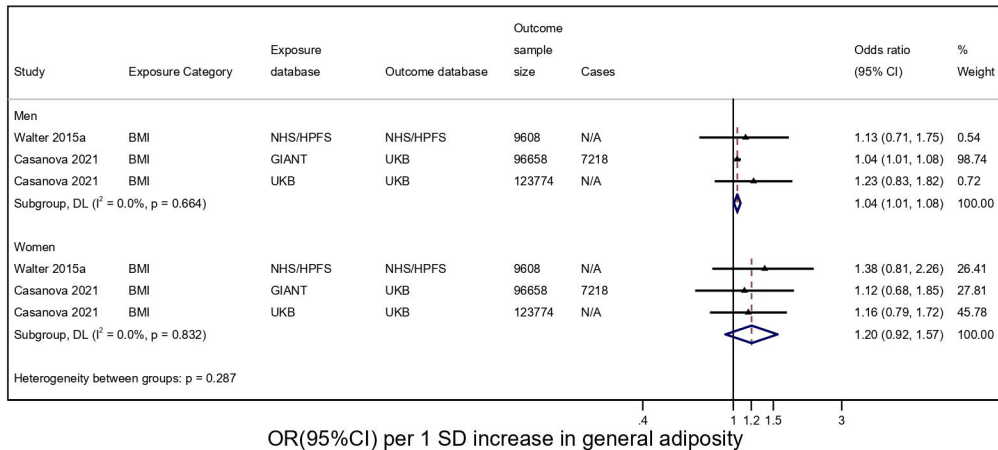
OR(95%CI) per 1 SD increase in general adiposity

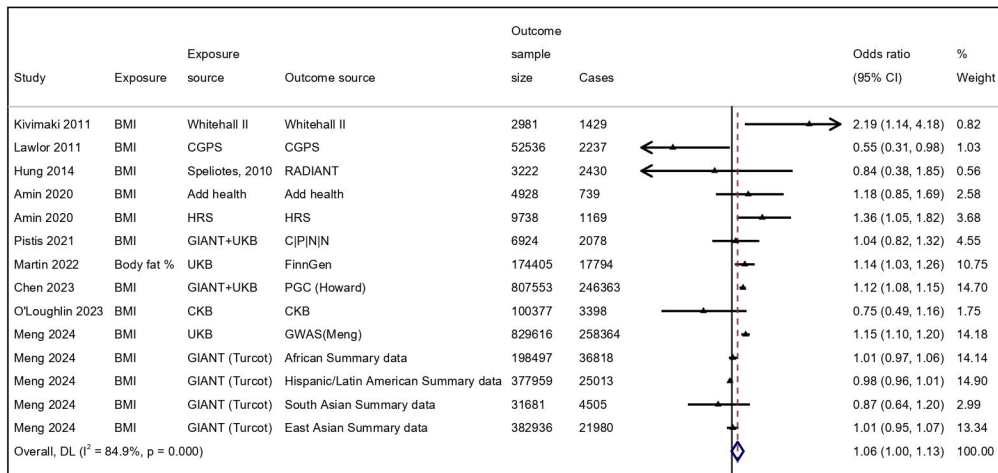




OR(95%CI) per 1 SD increase in general adiposity

.4 1 1.2 1.5 3





OR(95%CI) per 1 SD increase in general adiposity