

1 Outcome of community onset severe sepsis, Sepsis-3 sepsis,
2 and bacteremia in Sweden – a prospective population-based
3 study.

4

5

6

7

8 Lars Ljungström^{1,2*}, Rune Andersson^{1,3,4}, Gunnar Jacobsson^{1,2,3}

9

10 ¹Department of Infectious Diseases, Institute of Biomedicine, Sahlgrenska Academy,
11 Gothenburg University, Gothenburg, Sweden

12 ²Region Västra Götaland, Skaraborg Hospital, Department of Infectious Diseases, Skövde,
13 Sweden

14 ³CARe – Center for Antibiotic Resistance Research, Gothenburg University, Gothenburg,
15 Sweden

16 4. Department of Clinical Microbiology, Sahlgrenska University Hospital, Gothenburg,
17 Sweden

18

19

20 * Corresponding author

21 Email address: lars.ljungstrom@vgregion.se (LL)

22

23 **Corresponding author:** Lars Ljungström, Department of Infectious Diseases, Skaraborg
24 Hospital Skövde, 541 85 Skövde, Sweden. lars.ljungstrom@vgregion.se

25 **Conflict of interest:** All authors declare no conflict of interest.

26 **Funding:** The project received funding from the Research Fund at Skaraborg Hospital,
27 Skövde, Sweden; the Skaraborg Institute for Research and Development and from The
28 Healthcare sub-committee, Region Västra Götaland.

29

30

31 Abstract

32 Background

33 Register-based studies are common in sepsis epidemiology. Chart review is considered gold
34 standard but is time consuming. This is one of few such studies.

35 Methods

36 In a 9-month prospective and consecutive study conducted in 2011-12, chart review was used
37 to investigate outcomes in patients with severe sepsis, Sepsis-3 sepsis, and bacteremia in a
38 population of 256,700 inhabitants in southwest Sweden. All adult patients aged ≥ 18 years
39 admitted to hospital and given intravenous antibiotic treatment within 48 hours were evaluated,
40 $N=2,196$. Cohort mortality was calculated up to 10 years after admission.

41 Results

42 Among 2,072 adults with any infection, 429 patients had severe sepsis of which 59 had septic
43 shock. The 28-day case fatality rate (CFR) was 25%, 41% in those with septic shock. Sepsis-3
44 sepsis was diagnosed in 1,299 patients. The 28-day CFR was 12%. Among the 1,299, 393 also
45 had severe sepsis. In 906 patients with Sepsis-3 sepsis but not severe sepsis, the 28-day CFR
46 was 6%. For both sepsis definitions, the 28-day CFR increased 10-fold between the youngest
47 and the oldest age groups. Age >75 years, and renal dysfunction were the strongest independent
48 risk factors for 28-day case fatality. Bacteremia occurred in 283/2,072 (13%) patients. The 28-
49 day CFR was 13% overall, 25% in severe sepsis and 4% in non-severe sepsis. Even 10 years
50 after admission, the mortality rate was higher in sepsis patients by either definition.

51 Conclusions

52 The 28-day case fatality rate (CFR) in patients with Sepsis-3 sepsis, 12%, is the result of a large
53 group of patients with a low 28-day CFR, 6%, camouflaging a group with severe sepsis and a
54 high 28-day CFR, 25%. Age >75 years is an independent risk factor for case fatality. The 28-
55 day CFR in patients with bacteremia is a function of severe sepsis, not bacteremia *per se*. Even
56 after ten years, mortality is increased in both sepsis groups.

57 Key words: bacteremia, epidemiology, community onset sepsis, Sepsis-2, Sepsis-3, severe
58 sepsis, respiratory, infection.

59

60 Introduction

61 In an American consensus meeting in 1991, sepsis (Sepsis-1) was defined as the presence of
62 two of four criteria for the systemic inflammatory reaction syndrome (SIRS), if caused by an
63 infection (1). Sepsis with organ dysfunction was called “severe sepsis”, but organ dysfunction
64 was not clearly defined. A second international consensus meeting on sepsis definitions in 2001
65 (Sepsis-2), expanded the criteria for sepsis, but could not present unanimous criteria for severe
66 sepsis either (2). Thus, similar yet different criteria for organ dysfunction in severe sepsis have
67 been used in studies up until 2016, and in some cases later. In 2011, a work group within the
68 Swedish Infectious Disease Society published criteria for severe sepsis and septic shock that
69 were used in this study (3) ([S 1 Table](#)). These are similar to the criteria presented in 2012 by
70 the Surviving Sepsis Campaign (4). The main difference from mostly used criteria for organ
71 dysfunction in sepsis studies is the stricter criteria for respiratory dysfunction. In the Swedish
72 definition, fulfilling two out of four SIRS criteria could be replaced by “documented infection”.
73 The Sepsis-2 definition of septic shock in adults was severe sepsis together with persistent
74 arterial hypotension. Hypotension was defined as “systolic arterial pressure below 90 mmHg,
75 mean arterial pressure lower than 60, or a reduction in systolic blood pressure of more than
76 40 mmHg from baseline, despite adequate volume resuscitation” (2).

77 In 2016 a new sepsis definition, commonly called Sepsis-3, was launched. Sepsis is now defined
78 as “organ dysfunction caused by a dysregulated host response to infection” (5). The criterion
79 for sepsis according to Sepsis-3 is a 2-point increase from a patient’s base line values in the
80 Sequential Organ Failure Assessment (SOFA) score. At the same time, septic shock was
81 redefined. The clinical criterion in adult patients is now “hypotension requiring vasopressor
82 therapy to maintain a mean arterial blood pressure (MAP) of 65 mm Hg or greater and having
83 a serum lactate level greater than 2 mmol/L after adequate fluid resuscitation” (6).

84 For studies on sepsis epidemiology, chart review is considered gold standard (7). Chart reviews
85 are time consuming and are rarely used for whole populations. In this 9-month prospective
86 study in 2011-2012, chart review was used to investigate the incidence of community onset
87 severe sepsis in a well-defined population of 256,700 inhabitants in southwest Sweden. The
88 incidence was 279/100,000/year. After the new Sepsis-3 definition was published in 2016, the
89 Sepsis-3 criteria were retrospectively applied to this cohort. The incidence of community onset
90 Sepsis-3 sepsis was 846/100,000/year. The differing incidences were mainly due to the milder
91 criteria for respiratory dysfunction used in Sepsis-3 (8). In Sepsis-3 the criterion for lung
92 dysfunction corresponds to a saturation level of $\leq 91\%$ in otherwise healthy patients, but in
93 severe sepsis it is $\leq 86\%$ or $\leq 78\%$ if the lung is the focus of the infection.

94 Both severe sepsis and Sepsis-3 sepsis are associated with high case-fatality rates (CFR)
95 ranging between 5-55% (9-11). The large variation can be explained by differences in methods
96 of data abstraction, populations studied, criteria used, definitions of infection, and application
97 of these variables (12).

98 Bacteremia, often referred to as “blood stream infection”, is highly associated with sepsis,
99 having a CFR of approximately 10-15% (13, 14). Bacteremia studies are mostly retrospective,
100 performed on laboratory databases of positive blood cultures, and can therefore be said to
101 represent bacteremia in whole populations. On the other hand, data on organ dysfunction is
102 generally not available, so the relationship between CFR and organ dysfunction has not been
103 evaluated comprehensively.

104 Among factors affecting outcome, early appropriate antibiotic treatment is said to be of key
105 importance (15). This has been shown for patients with septic shock (16), but is more widely
106 debated concerning patients with severe sepsis.

107 Increasing age is a risk factor for case fatality in sepsis patients (17). Some studies even show
108 age to be an independent risk factor for sepsis-related CFR (18-20), but the age factor is not
109 often discussed in sepsis studies.

110 Elevated body temperature is one of the hallmarks of infection. Yet not all patients with sepsis
111 are febrile at initial presentation. Low temperature on arrival has been described as an
112 independent risk factor for case fatality in patients with bacteremia (21) and in patients with
113 severe sepsis treated in the ICU (22, 23).

114 Long-term mortality is increased following sepsis, indicating that sepsis may cause lasting
115 injury to the individual even several years after the insult (24-26).

116 The aim of this study was to describe short-term outcomes in patients with severe sepsis, Sepsis-
117 3 sepsis, and bacteremia in this population. We also investigated risk factors for case fatality,
118 focusing on time to antibiotic treatment, age, and temperature at presentation. Finally, we
119 briefly describe the long-term mortality in those who had sepsis by either definition compared
120 to those who did not have sepsis.

121 **Methods**

122 The original study was approved by the Ethical Review Board at the University of Gothenburg
123 (permit 376/2011). The 10-year follow up was approved by the Swedish Ethical Review
124 Authority (2022-04814-02).

125 In a 9-month prospective and consecutive study chart review was used to investigate the
126 incidences of community onset severe sepsis, Sepsis-3 sepsis, and bacteremia in a 256,700
127 population in southwest Sweden. All adult patients aged ≥ 18 years admitted to the hospital
128 between September 8, 2011 - June 7, 2012, and treated with intravenous antibiotics within 48
129 hours were evaluated, N=2,196 (8).

130 This cohort was analysed for patient risk factors and outcomes in those with severe sepsis,
131 Sepsis-3 sepsis, and bacteremia. Data from the hospital electronic health record were used for
132 patient risk factors. The 28-day, 1-year, and 10-year case fatality rates (CFR) were calculated
133 by use of the unique Swedish personal identification number and the Swedish death registry.
134 Data for septic shock could only be evaluated for septic shock using Sepsis-2 criteria. Septic
135 shock according to sepsis-3 criteria could not be evaluated since lactate measurements at the
136 time of the study were performed on a local instrument in the ICU and the results were not
137 entered into the electronic health record. For bacteremia, only the 28-day CFR was calculated.
138 Base-line data refers to the most deviating laboratory values or vital signs registered by the
139 Emergency Medical Services (EMS) or in the Emergency Department (ED), or in the ward
140 within 48 hours after admission, when sepsis was first suspected. Dependent as well as
141 independent risk factors for case fatality were calculated.

142 Definitions

143 Appropriate empirical antibiotic treatment refers to antibiotic treatment according to current
144 national guidelines. Appropriate etiological treatment refers to antibiotic treatment according
145 to antibiotic susceptibility pattern.

146 Statistical analyses

147 Descriptive statistics as mean and standard deviation for continuous data and frequencies and
148 percentages for categorical data are presented. For ordinal data or skewed distributed data
149 median with quartiles are presented. Both parametrical and non-parametrical tests were used
150 for univariate comparisons, depending on data type.

151 In a univariate analysis, age groups, empiric antibiotic treatment, time to appropriate antibiotic
152 treatment, co-morbidities, gender, vital signs at baseline, biochemistry at baseline and
153 individual organ dysfunctions were evaluated for association with 28-day case fatality. All

154 variables with a p-value <0.2 in univariate comparisons were included in a multivariate
155 regression analysis.

156 Logistic regression was used as model to explore in which degree severe sepsis, Sepsis-3 and
157 other factors are associated with 28-day CFR. One- and 10-years survival was analysed, and
158 different groups were compared by Kaplan-Meier analysis and log-rank test. Two-sided testing
159 was used for all analyses, and a p-value <0.05 was regarded as statistically significant. Data
160 were analysed using IBM SPSS version 25.0 (Inc, Chicago, IL).

161 Results

162 Baseline characteristics

163 Baseline characteristics in 28-day survivors versus non-survivors by either sepsis definition are
164 displayed in **Table 1**. Organ dysfunction in Sepsis-3 sepsis was defined for each organ system
165 as a ≥ 2 point increase in the SOFA score from baseline. The 173 patients with Sepsis-3 sepsis
166 having only 1-point increases in any organ system were excluded in this calculation. In
167 summary, non-survivors were significantly older than survivors, had significantly more organ
168 dysfunctions and significantly more comorbidities. For baseline characteristics of the whole
169 cohort, see [S2 Table](#).

170 **Table 1. Baseline characteristics in 28-day survivors versus non survivors having severe**
171 **sepsis or Sepsis-3-sepsis respectively.**

	Severe sepsis, N=429			Sepsis-3 sepsis, N=1,299		
	Survivors n=322	Non- survivors n=107	p-value	Survivors n=1,144	Non- survivors n=155	p-value
Age years, mean (SD)	73 (16)	80 (11)	<0.001	73 (16)	81 (10)	<0.001
Age years, median (IQR)	75 (65-84)	82 (73-87)	<0.001	77 (66-84)	83 (76-88)	<0.001
Male sex, n (%)	174 (54)	57 (53)	0.890	627 (55)	81 (52)	0.550
Age-group, n (%)			<0.001			<0.001
18-49 years	28 (9)	1 (1)		94 (8)	2 (1)	
50-64 years	46 (15)	7 (6)		168 (15)	8 (5)	
65-74 years	79 (25)	20 (19)		249 (22)	24 (16)	

75-84 years	92 (29)	35 (33)		350 (31)	49 (32)	
≥85 years	77 (24)	44 (41)		283 (25)	72 (46)	
Any co-morbidity, n (%)	288 (89)	104 (97)		1,031 (90)	149 (96)	
Cardiovascular	200 (62)	74 (69)	0.189	713 (62)	111 (72)	0.024
Chronic pulmonary disease	56 (17)	19 (18)	0.931	236 (21)	27 (17)	0.351
Chronic renal disease	21 (7)	8 (8)	0.733	75 (7)	12 (8)	0.579
Chronic hepatic disease	1 (0.3)	1 (0.9)	0.412	6 (0.5)	2 (1)	0.253
Diabetes mellitus	78 (24)	27 (25)	0.833	227 (20)	30 (19)	0.886
Malignancy, any	50 (16)	30 (28)	0.004	198 (17%)	43 (28%)	0.002
Immunosuppression	14 (4)	6 (6)	0.592	47 (4)	8 (5)	0.541
No comorbidity	34 (11)	3 (3)	0.013	113 (10)	6 (4)	0.015
Average co-morbidity, mean (SD)	1.7 (1.0)	2.0 (1.0)	0.005	1.6 (1.0)	1.9 (1.0)	0.001
Bacteremia, n (%)	94 (29)	29 (27)	0.679	180 (16)	31 (20)	0.177
Organ dysfunction						
Hypotension, n (%)	130 (40)	49 (47)	0.235	131 (20)	48 (41)	<0.001
Hypoperfusion, n (%)	165 (51)	58 (54)	0.222	138 (21)	56 (48)	<0.001
Lactate mg/L, mean (SD)	4.6 (1.8)	5.5 (2.9)	0.047	4.6 (1.9)	5.5 (2.9)	0.062
Pulmonary dysfunction, n (%)	103 (32)	57 (55)	<0.001	104 (16)	58 (50)	<0.001
Renal dysfunction, n (%)	54 (18)	40 (44)	<0.001	55 (9)	40 (39)	<0.001
Hepatic dysfunction, n (%)	3 (1)	5 (5)	0.010	3 (0.5)	5 (4)	<0.001
Coagulation dysfunction, n (%)	30 (10)	17 (17)	0.037	30 (5)	17 (15)	<0.001
Cerebral dysfunction, n (%)	82 (26)	45 (42)	0.001	157 (14)	55 (36)	<0.001
Septic shock, n (%)	35 (12%)	24 (25%)	0.001	n.d.	n.d.	n.d.
Average dysfunctioning organs, mean (SD)	1.8 (1.0)	2.5 (1.6)	<0.001	1.2 (0.6)	1.5 (0.8)	<0.001
Treatment in the ICU, n (%)	83 (26)	24 (22)	0.488	102 (9)	28 (18)	<0.001
Biochemistry on arrival, median (IQR)						
Hemoglobin, g/L	130 (118-145)	123 (111-141)	0.016	130 (117-142)	124 (108-140)	<0.001
WBC x 10⁹/L	13.1 (10-17)	13.1 (8-18)	0.566	12.3 (9-16)	13.0 (9-18)	0.170
Neutrophils, x 10⁹/L	11.4 (7.1-15.8)	11.6 (5.7-17.3)	0.830	10.0 (7-14)	11.0 (6-17)	0.106
Lymphocytes, x 10⁹/L	0.7 (0.4-1.1)	0.8 (0.4-1.3)	0.198	0.8 (0.5-1.2)	0.8 (0.5-1.3)	0.672
NLCR	16.2 (9-28)	14.6 (6-21)	0.039	11.4 (7-21)	14.4 (7-22)	0.465
CRP, mg/L	164 (102-253)	201 (108-302)	0.047	138 (80-200)	192 (90-280)	<0.001
Lactate, mmol/L	3.3 (2-4)	3.3 (2-4.6)	0.093	1.9 (1.4-2.6)	2.6 (1.9-3.8)	<0.001
Temperature, °C, mean (SD)	38.0 (1.2)	37.4 (1.0)	<0.01	38.1 (1.1)	37.4 (1.2)	<0.01
SIRS ≥2 n (%)	289 (90)	91 (85)	0.185	955 (83)	128 (83)	0.778

172 ICU = Intensive Care Unit; WBC = White Blood cell Count; NLCR = Neutrophil to Lymphocyte Count Ratio;
 173 SIRS = Systemic Inflammatory Response Syndrome.

175 Case fatality rates in severe sepsis and Sepsis-3 sepsis

176 The 28-day CFR in the 2,196 individual patients in the study was 8.6% (188/2,196). In
177 124/2,196 of the patients (6%) no infection could be diagnosed. The 28-day CFR was 12%
178 (15/124). In 429 patients having severe sepsis the 28-day CFR was 25% (107/429). In those
179 with infection but not severe sepsis, it was 4% (66/1,643). **Fig 1.**

180 In 1,299 patients with Sepsis-3 sepsis, the 28-day CFR was 12% (155/1,299), and among those
181 with infection but not Sepsis-3 sepsis it was 2% (18/773). **Fig 1.**

182
183 **Fig 1.** The 28-day case fatality rates in severe sepsis and Sepsis-3 sepsis within a cohort of
184 2,196 consecutive patients with suspected community onset infection treated with intravenous
185 antibiotics within 48 hours after admission.

186 The Sepsis-3 group of 1,299 patients consisted of subgroups with varying 28-day CFRs. One
187 subgroup of 393 patients (30%) also had severe sepsis and a 28-day CFR of 26%. Another
188 subgroup of 173 patients (13%) obtained a ≥ 2 -point increase in the SOFA score by addition of
189 1-point organ dysfunction values only. The 28-day CFR was 2.9% (5/173). When adjusted for
190 age, there was no statistical difference in the 28-day CFR between these patients and those
191 having infection but not Sepsis-3 sepsis. Of these 173 patients, 27 also had severe sepsis.
192 Among those 27 with severe sepsis were 4 of the 5 deaths. All 4 had elevated lactate levels >4
193 mmol/L. In the remaining 760 patients with Sepsis-3 sepsis, (1,299-393-173+27) the 28-day
194 CFR was 7%. **Fig 2, Table 2.**

195
196 **Fig 2.** The distribution of subgroups with 28-day CFRs within a cohort of 1,299 patients with
197 Sepsis-3 sepsis. Among the 173 who got a Sepsis-3 diagnosis by addition of 1-point changes in
198 the SOFA score only, 27 also had severe sepsis.

199

200 **Table 2. The odds ratio for 28-day CFR in subgroups of 1,299 patients with Sepsis-3**
 201 **sepsis and for patients with infection but not Sepsis-3 sepsis.** Adjusted for age by logistic
 202 regression analysis.

	Infection but not Sepsis-3 sepsis N=773	Sepsis-3 sepsis N=1,299	Addition of 1-point values only N=173	At least 2 points in any organ system but NOT severe sepsis N=760	At least 2 points in any organ system AND severe sepsis N=366
Age years, Mean (SD)	60 (20)	74 (15)	66 (18)	75 (15)	76 (13)
Age years, Median (IQR)	64 (46-76)	78 (67-85)	69 (57-81)	78 (68-86)	79 (69-86)
28-day CFR, N (%)	18 (2.3)	155 (11.9)	5 (2.9)	51 (6.7)	99 (27.0)
OR for death	reference	1.06	1.0	3.02	15.55
95 % CI	reference	1.04-1.07	0.36-2.75	1.75-5.21	9.23-26.19
p-value	reference	<0.001	=0.99	<0.001	<0.001

203 CFR = Case Fatality Rate. OR = Odds Ratio. CI = Confidence Interval. SD = Standard Deviation. IQR
 204 = Interquartile Range

205 In 59 patients with septic shock according to Sepsis-2 criteria, the 28-day CFR was 41%
 206 (24/59). **Fig 1.** Thirty-five were men and 24 were women.

207

208 Risk factors for 28-day case fatality in severe sepsis

209 Out of 429 patients with severe sepsis, 25% (107/429) died within 28 days. In the univariate
 210 analysis, age ≥ 85 years, respiratory dysfunction, renal dysfunction and low temperature on
 211 arrival were the strongest risk factors for case fatality. Notably, bacteremia did not turn out as
 212 a risk factor for case fatality. Since the p-value was $>0,2$ it is not in the table.

213 In the multivariate regression analysis, only age group >85 years, age group 75-84 years, renal
 214 dysfunction, cerebral dysfunction (RLS), elevated CRP level, and low temperature on arrival,
 215 remained as independent risk factors for case fatality. **Table 3.**

216 **Table 3. Risk factors for 28-day case fatality in 429 patients with community onset**
 217 **severe sepsis.**

Variable	Univariate analysis OR with 95% CI	p-value	Multivariate analysis ¹ OR with 95% CI	p-value
Age group, years				
<65	reference			
65-74	2.31 (0.96-5.57)	0.062	1.63 (0.41-6.46)	0.490
75-84	3.47 (1.52-7.94)	0.003	4.08* (1.10-15.15)	0.036
≥85	5.21 (2.30-11.82)	<0.001	8.23* (2.18-31.0)	0.002
Any co-morbidity	4.09 (1.23-13.61)	0.022	1.27 (0.30-5.34)	0.740
Respiratory dysfunction	2.57 (1.63-4.05)	<0.001	1.70 (0.76-3.81)	0.199
Renal dysfunction	3.69 (2.21-6.14)	<0.001	3.20* (1.44-7.10)	0.004
Hematologic dysfunction	1.96 (1.03-3.74)	0.040	0.81 (0.28-2.33)	0.698
Cerebral dysfunction	2.12 (1.34-3.36)	0.001	2.04 (0.60-6.91)	0.253
Hepatic dysfunction	5.50 (1.29-23.45)	0.021	1.17 (0.12-11.27)	0.890
RLS	2.21 (1.35-3.36)	0.002	5.37* (1.45-19.90)	0.012
Temperature	0.65 (0.53-0.80)	<0.001	0.66* (0.49-0.91)	0.011
Saturation	0.97 (0.95-0.99)	0.005	0.99 (0.95-1.02)	0.486
History of fever/rigors	0.62 (0.40-0.97)	0.036	1.08 (0.54-2.16)	0.827
Hemoglobin	0.99 (0.98-0.998)	0.020	0.99 (0.98-1.01)	0.386
Lymphocytes	1.06 (0.97-1.16)	0.190	1.09 (0.85-1.39)	0.500
NLCR	0.99 (0.97-1.003)	0.133	0.99 (0.97-1.01)	0.163
CRP	1.003 (1.001-1.005)	0.002	1.005* (1.002-1.008)	0.001
INR	1.19 (0.93-1.15)	0.157	1.01 (0.71-1.45)	0.945
Lactate	1.11 (1.02-1.23)	0.023	1.12 (0.95-1.32)	0.162

218 ¹Multivariate logistic regression analysis with 28-day case fatality rate as outcome. RLS,
 219 Reaction Level Scale. NLCR, Neutrophil to lymphocyte count ratio. CRP, C-reactive protein.
 220 INR, International Normalized Ratio.

221

222 Risk factors for 28-day case fatality in sepsis-3 sepsis

223 Out of 1,299 patients with sepsis-3 sepsis, 155 (12%) died within 28 days. In the multivariate
 224 regression analysis, only age group 75-84 years, >85 years, respiratory dysfunction, renal
 225 dysfunction, CRP, and low temperature on arrival, remained as independent risk factors for case
 226 fatality. Age ≥85 years, respiratory dysfunction, renal dysfunction, and CRP, were the variables
 227 with the highest statistical significance. **Table 4.**

228 **Table 4. Risk factors for 28-days case fatality in 1,299 patients with sepsis-3 sepsis.**

Variable	Univariate model		Multivariate model	
	OR with 95% CI	p-value	OR with 95% CI	p-value

Age group, years				
<65	ref	-		
65-74	2.52 (1.18-5.37)	0.017	1.65 (0.52-5.20)	0.392
75-84	3.65 (1.82-7.35)	<0.001	3.44* (1.18-10.01)	0.024
≥85	6.64 (3.35-13.14)	<0.001	6.97* (2.41-20.18)	<0.001
Any co-morbidity	2.72 (1.18-6.30)	0.019	1.46 (0.38-5.60)	0.583
Respiratory dysfunction	5.24 (3.44-7.99)	<0.001	3.15* (1.61-6.19)	<0.001
Renal dysfunction	6.58 (4.06-10.67)	<0.001	3.55* (1.73-7.29)	<0.001
Hematological dysfunction	3.63 (1.93-6.84)	<0.001	0.92 (0.32-2.67)	0.881
Cerebral dysfunction	3.46 (2.39-5.00)	<0.001	0.97 (0.35-2.74)	0.959
Hepatic dysfunction	9.77 (2.30-41.47)	0.002	1.39 (0.21-9.15)	0.729
Vital signs at baseline				
RLS baseline	3.16 (2.12-4.70)	<0.001	2.90 (0.96-8.71)	0.058
Temperature	0.56 (0.47-0.67)	<0.001	0.72* (0.55-0.93)	0.011
Saturation	0.95 (0.93-0.97)	<0.001	0.98 (0.95-1.02)	0.360
History of fever/rigors	0.45 (0.30-0.67)	<0.001	0.93 (0.52-1.66)	0.819
Laboratory results at baseline				
Hemoglobin	0.99 (0.98-1.00)	0.005	0.99 (0.98-1.01)	0.567
Lymphocytes	1.01 (0.99-1.02)	0.234	n.s.	
NLCR	1.004 (0.99-1.01)	0.396	n.s.	
CRP	1.004 (1.002-1.006)	<0.001	1.005* (1.002-1.007)	<0.001
INR	0.88 (0.59-1.30)	0.512	n.s.	
Lactate	1.38 (1.26-1.52)	<0.001	1.12 (0.96-1.31)	0.154

229

230 Age and sex

231 In patients with severe sepsis or septic shock, the 28-day CFR increased more than 10-fold from
 232 3-36% between the youngest and the oldest age group. In patients with Sepsis-3 sepsis, the 28-
 233 day CFR also increased 10-fold, from 2-20%, with increasing age group. In the age group 18-
 234 49 years, the 28-day CFR was 2%. In the age-group 50-64 it was 5%, in the age-group 65-74 it
 235 was 9%, in the age-group 75-84 it was 12% and in those >85 years it was 20%. **Fig 3.** For
 236 number of patients in each group, see [S3 Table](#). There was no statistically significant difference
 237 in 28-day CFR between men and women in any age group.

238

239 **Figure 3.** The 28-day case fatality rate related to age and sex in 1,299 patients having Sepsis-
 240 3 sepsis and 429 patients having severe sepsis. For numbers, see [S3 Table](#).

241 Appropriate antibiotic treatment

242 Considering the suspected focus of infection on admission, more than 98% of all patients were
 243 evaluated as having received appropriate empirical antibiotic treatment. In 952/2,072 (46%)
 244 patients with infection, a bacterial diagnosis was verified by culture. Of the 952 patients, 760
 245 (80%) received appropriate etiological antibiotic treatment and 192 did not. The 28-day CFR
 246 was 7.8% and 5.7% respectively. The difference was not statistically significant (p-value 0,34),
 247 not even when adjusted for age (p-value 0.27).

248 Time to appropriate antibiotic treatment

249 The 28-day case fatality rates in relation to time to start of antibiotic treatment is shown in
 250 **Table 5**. None of the differences in the 28-day CFRs are statistically significant. This data was
 251 not adjusted for age groups.

252 **Table 5. The 28-day case fatality rate in relation to time to start of antibiotic treatment.**

	Severe sepsis N=429	Infection but not severe sepsis N=1,643	Sepsis-3 sepsis N=1,299	Infection but not Sepsis-3 sepsis N=773
Time to start of antibiotics, hours	28-day CFR, % (N)	28-day CFR, % (N)	28-day CFR, % (N)	28-day CFR, % (N)
0-0.99	23.1 (21)	4.9 (8)	14.5 (29)	0 (0)
1-1.99	20.6 (27)	2.2 (10)	8.9 (35)	1 (2)
2-3.99	33.0 (36)	3.6 (22)	12.8 (53)	1.6 (5)
4-11.99	21.8 (12)	5.6 (16)	10.5 (20)	5.4 (8)
>12	25.6 (11)	8.5 (10)	17.5 (18)	5.3 (3)
All	24.9 (107)	4.0 (66)	11.9 (155)	2.3 (18)

253

254 There was a tendency towards shorter median length of hospital stay (LoS) for all patients with
 255 infection who received appropriate antibiotic treatment within 12 hours after admission. The
 256 difference was most pronounced in patients with severe sepsis, 11 versus 8 days. The
 257 calculations included only patients who survived 28 days but were not adjusted according to
 258 age group. **Table 6**.

259 **Table 6. Length of hospital stay, LoS, (days) related to time to start of antibiotic**
 260 **treatment in patients with community onset infection.**

	Time to start of antibiotic treatment, hours.	Patients, N	Mean LoS, days (SD)	Median LoS, days (IQR)	p-value¹
Severe sepsis N=322	0–0.99	69	11.1 (9.3)	8 (4–15)	0.045
	1–1.99	104	8.1 (5.4)	7 (4–11)	<0.001
	2–3.99	73	14.2 (14.6)	9 (5–16)	0.150
	4–11.99	42	12.3 (8.5)	10.5 (7–14)	0.419
	>12	32	16.6 (16.8)	11 (8–19)	ref.
Infection, not severe sepsis N=1,577	0–0.99	159	6.6 (9.1)	4 (3–7)	0.002
	1–1.99	469	6.1 (5.8)	4 (3–8)	<0.001
	2–3.99	630	6.4 (6.8)	4 (3–8)	<0.001
	4–11.99	303	7.0 (6.8)	5 (3–9)	0.014
	>12	120	8.6 (9.1)	5 (4–11)	ref.
Sepsis-3 sepsis N=1,144	0–0.99	170	8.6 (7.8)	6 (4–11)	0.007
	1–1.99	357	7.6 (6.2)	6 (3–10)	<0.001
	2–3.99	359	8.9 (9.5)	6 (4–11)	0.004
	4–11.99	169	9.8 (8.0)	8 (4–12)	0.371
	>12	85	11.6 (12.2)	8 (4–14)	ref.
Infection, not sepsis-3 sepsis N=755	0–0.99	53	4.4 (3.5)	3 (2–5)	0.003
	1–1.99	198	4.4 (3.9)	3 (2–5)	<0.001
	2–3.99	306	5.3 (6.1)	3.5 (2–6)	0.003
	4–11.99	141	5.3 (5.2)	4 (2–6)	0.011
	>12	54	7.2 (6.8)	5 (3–10)	ref.

261 ¹p-values consider pairwise comparisons to reference category.

262 Temperature

263 Low temperature on arrival was an independent risk factor for 28-day case fatality regardless
 264 of sepsis category or not, but most pronounced in those having severe sepsis. **Table 3 and 4.**

265 Treatment in the intensive care unit

266 Out of 2,072 patients with infection of any severity, 170 (8%) were treated in the intensive care
 267 unit (ICU). The 28-day CFR was 21% (36/170). Severe sepsis or septic shock was diagnosed
 268 in 122/170. The 28-day CFR was 21% (25/122). Sepsis-3 sepsis was diagnosed in 163/170. The
 269 28-day CFR was 22% (36/163).

270

271 The accumulated case fatality rates up to 10 years after the first 272 admission

273 The accumulated 1-year mortality rate for all 2,072 patients with infection was 23%
274 (482/2,072), being up to twice as high for any age group as the 28-day CFR. The 1-year
275 mortality in either the severe sepsis or the Sepsis-3 sepsis group was more than twice as high
276 in each year group compared to those who had infection but not severe sepsis or Sepsis-3-sepsis.

277 **Fig 4.** For patients with septic shock, the 1-year mortality was 64%.

278 **Figure 4.** Accumulated 1-year mortality in different age-groups in patients with either severe
279 sepsis or Sepsis-3 sepsis or not.

280 These differences remained during the whole follow up period of 10 years after first
281 admission and were more pronounced in those with severe sepsis, regardless of age group. [S1](#)
282 [Fig.](#)

283

284 Bacteremia

285 In 283 patients with a clinically relevant bacteremia the 28-day CFR was 12% (35/283). The
286 28-day CFR increased with increasing age in those having severe sepsis as well as in those
287 having Sepsis-3 sepsis. **Table 7, 8.** Most of the 28-day case fatalities were seen in the 75-84
288 and ≥ 85 -year age groups, 76% (22/29) among those with severe sepsis and 74% (23/31) among
289 those with Sepsis-3 sepsis. The 28-day CFR was dependent on whether the patient had organ
290 dysfunction or not. In patients with no organ dysfunction, it was not higher than in patients with
291 no bacteremia. It also varied with etiology, but these figures are not adjusted for age. Bacteremia
292 with *Staphylococcus aureus* had the highest 28-day CFR, 24%, followed by *non-pneumococcal*
293 *streptococcus spp.*, 18%. For the most found bacteria, *Escherichia coli*, the 28-day CFR was
294 8%. The highest 28-day CFR was seen in those with *S. aureus* and severe sepsis, 53% (10/19).

295 **Table 7. Patient characteristics and 28-day case fatality rates in 2,072 patients with**
 296 **infection depending on bacteremia or no bacteremia, severe sepsis or no severe sepsis. Due**
 297 **to small numbers, the 28-day CFRs according to etiology have not been adjusted for age.**

	Severe sepsis, N=429		No severe sepsis N=1,643	
	Bacteremia N=123	No bacteremia N=306	Bacteremia N=160	No bacteremia N=1,483
Age, years, mean (SD)	77 (13)	73 (16)	72 (15)	67 (19)
Age, years, median (IQR)	80 (68-87)	76 (67-85)	76 (65-83)	71 (57-81)
28-day CFR, % (N)	24 (29/123)	25 (78/306)	4 (6/160)	4 (60/1,483)
28-day CFR per age group, % (N)				
18-49 years, N=310	0 (0/5)	4 (1/24)	7 (1/14)	0 (0/267)
50-64 years, N=360	13 (2/16)	14 (5/37)	0 (0/26)	1 (3/281)
65-74 years, N=432	21 (5/24)	20 (15/75)	0 (0/36)	2 (5/297)
75-84 years, N=545	25 (9/36)	29 (26/91)	2 (1/53)	5 (18/365)
≥85 years, N=425	31 (13/42)	39 (31/79)	13 (4/31)	13 (34/273)
28-day CFR according to etiology, % (N)				
<i>E. coli</i>	14 (6/44)	n.a.	4 (2/54)	n.a.
<i>K. pneumoniae</i>	13 (1/8)	n.a.	0 (0/12)	n.a.
<i>S. aureus</i>	53 (10/19)	n.a.	6 (2/32)	n.a.
<i>S. pneumoniae</i>	25 (3/12)	n.a.	0 (0/8)	n.a.
<i>Non-pneumococcal streptococci</i>	33 (6/18)	n.a.	3 (1/29)	n.a.

298

299 **Table 8. Patient characteristics and 28-day case fatality rates in 2,072 patients with**
 300 **infection depending on bacteremia or no bacteremia, Sepsis-3- sepsis or not Sepsis-3**
 301 **sepsis. Due to small numbers, the 28-day CFRs according to etiology have not been adjusted**
 302 **for age.**

	Sepsis-3 sepsis, N=1,299		Not sepsis-3 sepsis, N=773	
	Bacteremia N=211	No bacteremia N=1,088	Bacteremia N=72	No bacteremia N=701
Age, years, mean (SD)	76 (14)	74 (16)	69 (16)	60 (20)
Age, years, median (IQR)	79 (68-86)	77 (66-85)	71 (62-81)	63 (45-75)
28-day CFR, % (n/N)	15% (31/211)	11% (124/1088)	6% (4/72)	2% (14/701)
28-day CFR per age group, % (n/N)				
18-49 years, N=310	8% (1/12)	1% (1/84)	0% (0/7)	0% (0/207)
50-64 years, N=360	9% (2/23)	4% (6/153)	0% (0/19)	2% (3/165)
65-74 years, N=432	11% (5/44)	8% (19/229)	0% (0/16)	1% (1/143)
75-84 years, N=545	13% (9/69)	12% (40/330)	5% (1/20)	5% (6/126)

≥85 years, N=425	22% (14/63)	20% (58/292)	30% (3/10)	7% (4/60)
28-day CFR according to etiology, % (n/N)				
<i>E. coli</i> (N=250)	10% (7/73)	n.a.	4% (1/23)	n.a.
<i>K. pneumoniae</i> (N=36)	6% (1/18)	n.a.	0% (0/2)	n.a.
<i>S. aureus</i> (N=105)	29% (10/35)	n.a.	14% (2/14)	n.a.
<i>S. pneumoniae</i> (N=73)	19% (3/16)	n.a.	0% (0/4)	n.a.
<i>Non-pneumococcal streptococci</i> (N=109)	19% (6/32)	n.a.	8% (1/13)	n.a.

303

304 Discussion

305 In this chart-based population study, the 28-day CFR in patients with severe sepsis was 25%
306 and in patients with Sepsis-3 sepsis it was 12%. This is in line with the results in many previous
307 studies. When comparing the groups, we found that the lower 28-day CFR in Sepsis-3 sepsis
308 was achieved by adding to a group of patients with severe sepsis (393/429) and a high 28-day
309 CFR (26%) a large group of equally old patients with a low 28-day CFR (6%). Thus, the lower
310 28-day CFR seen in Sepsis-3 sepsis was achieved by diluting the high 28-day CFR in patients
311 having severe sepsis with a more than twice as large and equally old group of patients with a
312 low 28-day CFR. Further, the 28-day CFR in the age-group 18-49 years was only 2%, not higher
313 than in those with infection but not sepsis. In the age-groups 50-64 and 65-74 it was less than
314 the 10% postulated by *Singer et.al.* for Sepsis-3 (5). It should be debated whether these patient
315 groups with a 28-day CFR less than 10% really qualify for the Sepsis-3 definition of sepsis
316 (“life-threatening organ dysfunction”) and if not the SOFA score should be revised, as
317 suggested by *Szczeklik and Fronczek* (27). Especially the respiratory criterion for organ
318 dysfunction should be stricter.

319 An increase of 1-point in the SOFA score can be obtained by mild organ dysfunction, in some
320 cases for values that lie within the normal reference values for each parameter. In 173 patients

321 with Sepsis-3 sepsis (13%), the diagnosis was achieved by addition of 1-point changes only.
322 These patients had the same low 28-day CFR (3%) as those with infection but no organ
323 dysfunction. This raises the question whether the 1-point values have any place in diagnosing
324 organ dysfunction in Sepsis-3. From a clinical viewpoint it is difficult to appreciate that these
325 patients should have “life-threatening organ dysfunction”.

326 The stricter criteria for respiratory dysfunction in the Swedish severe sepsis criteria from 2011
327 and in the Surviving Sepsis Campaign (SSC) criteria from 2012, seem to perform better in
328 separating those having a truly “life-threatening organ dysfunction”, 25% 28-day CFR, from
329 those having not, 4% 28-day CFR than the Sepsis-3 criteria. Though the 28-day CFR is high in
330 patients with severe sepsis, it is so mainly because of the high CFR in the age groups >65 years
331 old.

332 Increasing hospital mortality with increasing age in patients with severe sepsis was described
333 in 2001 by Angus *et.al.* (17). Martin-Loechse *et.al.* found age to be an independent risk factor
334 for case fatality, though only analyzing patients ≥ 65 years of age and only two age groups (19).
335 Martin *et.al.* found age >65 years to be an independent risk factor for death from severe sepsis
336 (18). In our population, both age groups 75-84 years and >85 years were independent risk
337 factors for case fatality. We did not specifically study why there is an increase in CFRs with
338 increasing age but believe that age is a surrogate marker for an ageing immune system,
339 immunosenescence and reduced reserve capacity in organ functions. This view is to some extent
340 supported by the fact that the average number of co-morbidities did not increase with increasing
341 age-group (8). Interestingly, patients under the age of 50 years rarely died from community
342 onset severe sepsis or Sepsis-3 sepsis. This is important knowledge but not so much high-
343 lighted in the literature. Though our cohort may be too small for such a conclusion, it is well in
344 line with our more than 30-year experience from serving this population. In sepsis studies, case
345 fatality rates should always be accounted for according to age or age groups.

346 Mortality rates depending on sex have varied in previous studies. We found a higher incidence
347 of severe sepsis in men than in women (8) but no difference between the sexes in the 28-day
348 CFR. Thus, men seem to be more prone to develop severe sepsis, but when severe sepsis is
349 manifest, there is no difference in the 28-day CFR between the sexes. This supports the findings
350 in the nationwide study on severe sepsis in the US by Angus *et.al.* in 2001 (20) but differs from
351 the seasonal excess mortality seen for example in the Covid-19 pandemic where the case fatality
352 rates among men are higher than in women, as described by *Nielsen et.al.* (28).

353 Bacteremia is a serious condition given the high CFRs in population studies, 10-13% (14, 29).
354 In our study it was 12%. However, an increased CFR was seen only in those having organ
355 dysfunction. Using severe sepsis criteria, only 43% of patients with bacteremia had organ
356 dysfunction. Using Sepsis-3 criteria it was 75%. In non-sepsis patients the CFRs were not
357 higher in patients with bacteremia than in those with infection but no bacteremia. Increasing
358 age was also a significant risk factor for a high 28-day CFR. Another important factor affecting
359 the CFR in bacteremia is the bacterial species. Thus, *E. coli* bacteremia is associated with a
360 lower overall CFR (8%) (30) than *S. aureus* (20%) (31). Our study confirmed this. The highest
361 CFR was seen in patients with *S. aureus* bacteremia and severe sepsis, 53%, compared to
362 patients with *E. coli* bacteremia and severe sepsis, 14%. Most population studies on bacteremia
363 are register-based, with no information about organ dysfunction. In a chart-based study like
364 this, we see that it is not bacteremia per se that is associated with a high 28-day CFR, but
365 whether the patient has organ dysfunction or not.

366 Is time to appropriate antibiotic treatment important for survival? In patients with septic shock,
367 it probably is, as well as in certain cases of severe sepsis, but in this cohort, it could not be
368 demonstrated. This may seem reasonable, since the median age of sepsis patients is high, and
369 many have significant co-morbidities. In two studies from southern Sweden by *Rosenqvist et.al.*
370 on a subgroup of patients with severe sepsis, not even appropriate antibiotic treatment within

371 one hour after arrival affected the in-hospital mortality (32, 33). In a meta-analysis of studies
372 on patients with bacterial infections, Naucler *et. al.* found that apart from patients with septic
373 shock and acute bacterial meningitis, in-hospital mortality was not increased if antibiotic
374 treatment was started up to 12 hours after hospital admission (34). In one study, Rhee *et. al.*
375 estimated that only 11 out of 300 sepsis-associated deaths may have been prevented by more
376 timely antibiotic treatment (35). This raises the question whether mortality is the most relevant
377 outcome measure in sepsis studies. Most sepsis patients survive, and to them morbidity may be
378 a better outcome measure, though difficult to define. In this study, we could see a tendency
379 towards shorter length of hospital stay (LoS) in all patient groups with infection if appropriate
380 empirical antibiotic treatment was started within two to four hours after arrival. This effect was
381 most pronounced in patients with severe sepsis.

382 Temperature on arrival has been shown to correlate inversely to in-hospital mortality in a cohort
383 of Swedish sepsis patients treated in the ICU, Sundén-Cullberg *et.al.* (22). In this population
384 we found this to be true for all patients with infection, though most pronounced in those with
385 severe sepsis.

386 The long-term CFR was higher in those having severe sepsis, versus those having not, and
387 higher in those having Sepsis-3 sepsis versus those having not. Thus, this population-based
388 study verifies the results of previous studies done on different cohorts reaching the same
389 conclusion (36).

390 Conclusion

391 This is to our knowledge the only chart-based prospective and consecutive study on the outcome
392 of community onset severe sepsis in adults in a whole population.

393 In this single center study on community onset sepsis

- 394 • Sepsis-2 criteria with stricter criteria for respiratory dysfunction are better for separating
395 those with a truly life-threatening organ dysfunction from those having not, than the
396 Sepsis-3 criteria.
- 397 • there is a ten-fold difference in the 28-day CFR between the youngest and the oldest age
398 groups.
- 399 • age is an independent risk factor for case fatality in sepsis.
- 400 • the lower CFR seen in Sepsis-3 sepsis is due to a dilution of a group of patients with
401 severe sepsis and a high CFR with a twice as large, equally old, group of patients with
402 a low CFR.
- 403 • patients who obtain ≥ 2 points in the SOFA score by addition of 1-point values only,
404 have the same low CFR as patients who do not have Sepsis-3 sepsis.
- 405 • the 28-day CFR in patients with bacteremia, or “blood stream infection”, is related to
406 organ dysfunction, not to bacteremia *per se*.
- 407 • time to appropriate antibiotic treatment does not affect the 28-day CFR but tends to
408 shorten the LoS for all patient groups with infection, mainly for those with severe sepsis.
- 409 • temperature on arrival is inversely associated with the 28-day CFR for all groups with
410 infection.
- 411 • the long-term mortality in patients with sepsis is increased for each age group up to ten
412 years after the first episode and is more pronounced in those with severe sepsis.

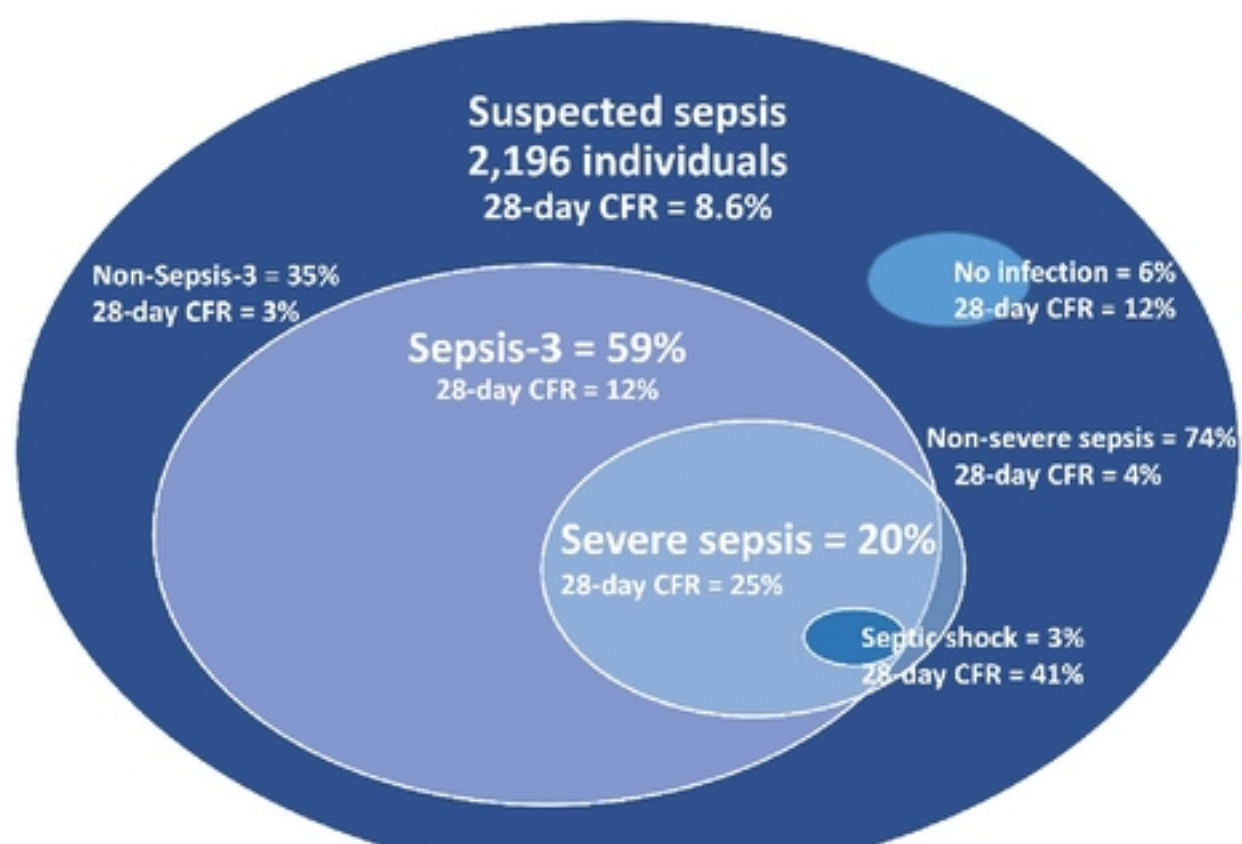
413

414 References:

- 415 1. Bone RC, Balk RA, Cerra FB, Dellinger RP, Fein AM, Knaus WA, et al. Definitions for
416 sepsis and organ failure and guidelines for the use of innovative therapies in sepsis. *Chest*.
417 1992;101(6):1644-55.
- 418 2. Levy MM, Fink MP, Marshall JC, Abraham E, Angus D, Cook D, et al. 2001
419 sccm/esicm/accp/ats/sis international sepsis definitions conference. *Intensive care medicine*.
420 2003;29(4):530-8.
- 421 3. Ljungström LR, Steinum O, Brink M, Gårdlund B, Martner J, Sjölin J. Diagnostik och
422 diagnoskodning av svår sepsis och septisk chock. *Läkartidningen*. 2011;108(8):276-8.
- 423 4. Dellinger RP, Levy MM, Rhodes A, Annane D, Gerlach H, Opal SM, et al. Surviving
424 Sepsis Campaign: international guidelines for management of severe sepsis and septic shock, 2012.
425 *Intensive care medicine*. 2013;39(2):165-228.
- 426 5. Singer M, Deutschman CS, Seymour CW, Shankar-Hari M, Annane D, Bauer M, et al.
427 The third international consensus definitions for sepsis and septic shock (sepsis-3). *Jama*.
428 2016;315(8):801-10.
- 429 6. Shankar-Hari M, Phillips GS, Levy ML, Seymour CW, Liu VX, Deutschman CS, et al.
430 Developing a new definition and assessing new clinical criteria for septic shock: for the Third
431 International Consensus Definitions for Sepsis and Septic Shock (Sepsis-3). *Jama*. 2016;315(8):775-87.
- 432 7. Rhee C, Dantes R, Epstein L, Murphy DJ, Seymour CW, Iwashyna TJ, et al. Incidence
433 and trends of sepsis in US hospitals using clinical vs claims data, 2009-2014. *Jama*.
434 2017;318(13):1241-9.
- 435 8. Ljungström L, Andersson R, Jacobsson G. Incidences of community onset severe sepsis,
436 Sepsis-3 sepsis, and bacteremia in Sweden—A prospective population-based study. *PloS one*.
437 2019;14(12):e0225700.
- 438 9. Gille-Johnson P, Hansson KE, Gårdlund B. Severe sepsis and systemic inflammatory
439 response syndrome in emergency department patients with suspected severe infection.
440 *Scandinavian journal of infectious diseases*. 2013;45(3):186-93.
- 441 10. Hatfield KM, Dantes RB, Baggs J, Sapiano MR, Fiore AE, Jernigan JA, et al. Assessing
442 variability in hospital-level mortality among US medicare beneficiaries with hospitalizations for
443 severe sepsis and septic shock. *Critical care medicine*. 2018;46(11):1753.
- 444 11. Luhr R, Cao Y, Soederquist B, Cajander S. Trends in sepsis mortality over time in
445 randomised sepsis trials: a systematic literature review and meta-analysis of mortality in the control
446 arm, 2002–2016. *Critical Care*. 2019;23(1):1-9.
- 447 12. Kempker JA, Martin GS. The changing epidemiology and definitions of sepsis. *Clinics in*
448 *chest medicine*. 2016;37(2):165-79.
- 449 13. Laupland K. Incidence of bloodstream infection: a review of population-based studies.
450 *Clinical microbiology and infection*. 2013;19(6):492-500.
- 451 14. Holmbom M, Giske CG, Fredrikson M, Balkhed ÅÖ, Claesson C, Nilsson LE, et al. 14-
452 Year Survey in a Swedish County Reveals a Pronounced Increase in Bloodstream Infections (BSI).
453 Comorbidity-An Independent Risk Factor for Both BSI and Mortality. *PloS one*.
454 2016;11(11):e0166527.
- 455 15. Evans L, Rhodes A, Alhazzani W, Antonelli M, Coopersmith CM, French C, et al.
456 Surviving sepsis campaign: international guidelines for management of sepsis and septic shock 2021.
457 *Intensive care medicine*. 2021;47(11):1181-247.
- 458 16. Kumar A, Roberts D, Wood KE, Light B, Parrillo JE, Sharma S, et al. Duration of
459 hypotension before initiation of effective antimicrobial therapy is the critical determinant of survival
460 in human septic shock. *Critical care medicine*. 2006;34(6):1589-96.

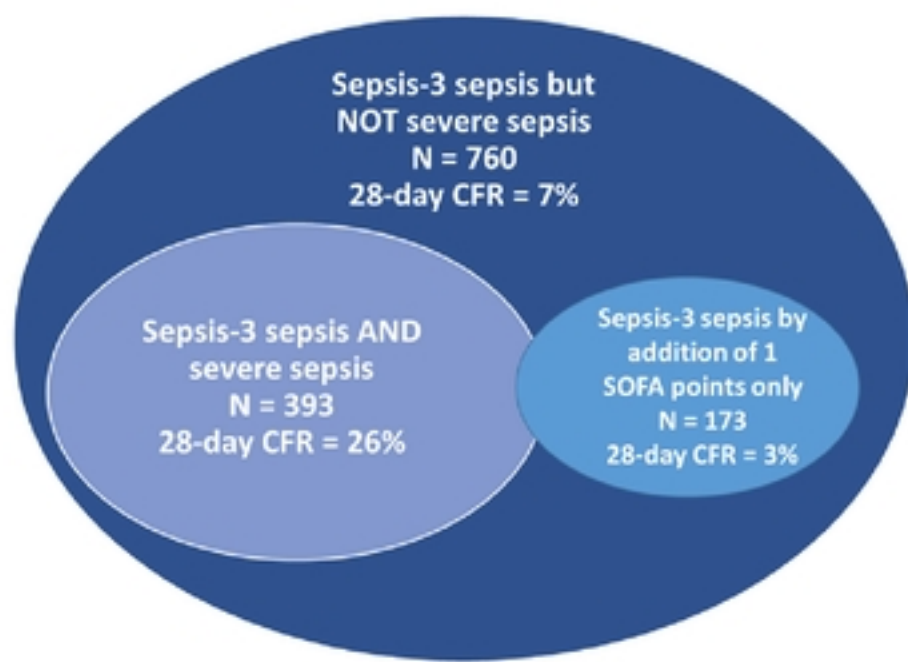
- 461 17. Angus DC, Linde-Zwirble WT, Lidicker J, Clermont G, Carcillo J, Pinsky MR.
462 Epidemiology of severe sepsis in the United States: analysis of incidence, outcome, and associated
463 costs of care. *Critical care medicine*. 2001;29(7):1303-10.
- 464 18. Martin GS, Mannino DM, Moss M. The effect of age on the development and outcome
465 of adult sepsis. *Critical care medicine*. 2006;34(1):15-21.
- 466 19. Martin-Loeches I, Guia MC, Vallecocchia MS, Suarez D, Ibarz M, Irazabal M, et al. Risk
467 factors for mortality in elderly and very elderly critically ill patients with sepsis: a prospective,
468 observational, multicenter cohort study. *Annals of intensive care*. 2019;9(1):1-9.
- 469 20. Baek MS, Kim JH, Kwon YS. Cluster analysis integrating age and body temperature for
470 mortality in patients with sepsis: a multicenter retrospective study. *Scientific Reports*. 2022;12(1):1-
471 9.
- 472 21. Weinstein MP, Towns ML, Quartey SM, Mirrett S, Reimer LG, Parmigiani G, et al. The
473 clinical significance of positive blood cultures in the 1990s: a prospective comprehensive evaluation
474 of the microbiology, epidemiology, and outcome of bacteremia and fungemia in adults. *Clinical
475 Infectious Diseases*. 1997;24(4):584-602.
- 476 22. Sundén-Cullberg J, Rylance R, Svefors J, Norrby-Teglund A, Björk J, Inghammar M.
477 Fever in the Emergency Department Predicts Survival of Patients With Severe Sepsis and Septic Shock
478 Admitted to the ICU. *Critical care medicine*. 2017;45(4):591-9.
- 479 23. Park S, Jeon K, Oh DK, Choi EY, Seong GM, Heo J, et al. Normothermia in patients with
480 sepsis who present to emergency departments is associated with low compliance with sepsis bundles
481 and increased in-hospital mortality rate. *Critical Care Medicine*. 2020;48(10):1462-70.
- 482 24. Lemay AC, Anzueto A, Restrepo MI, Mortensen EM. Predictors of long-term mortality
483 after severe sepsis in the elderly. *The American journal of the medical sciences*. 2014;347(4):282-8.
- 484 25. Wang HE, Szychowski JM, Griffin R, Safford MM, Shapiro NI, Howard G. Long-term
485 mortality after community-acquired sepsis: a longitudinal population-based cohort study. *BMJ open*.
486 2014;4(1):e004283.
- 487 26. Prescott HC, Osterholzer JJ, Langa KM, Angus DC, Iwashyna TJ. Late mortality after
488 sepsis: propensity matched cohort study. *bmj*. 2016;353.
- 489 27. Szczeklik W, Fronczek J. Should we revise the SOFA score? Yes. *Acta Anaesthesiologica
490 Scandinavica*. 2022;n/a(n/a).
- 491 28. Nielsen J, Nørgaard SK, Lanzieri G, Vestergaard LS, Moelbak K. Sex-differences in
492 COVID-19 associated excess mortality is not exceptional for the COVID-19 pandemic. *Scientific
493 reports*. 2021;11(1):20815.
- 494 29. Kontula KSK, Skogberg K, Ollgren J, Järvinen A, Lyytikäinen O. Population-Based Study
495 of Bloodstream Infection Incidence and Mortality Rates, Finland, 2004-2018. *Emerging infectious
496 diseases*. 2021;27(10):2560-9.
- 497 30. MacKinnon MC, McEwen SA, Pearl DL, Lyytikäinen O, Jacobsson G, Collignon P, et al.
498 Mortality in *Escherichia coli* bloodstream infections: a multinational population-based cohort study.
499 *BMC Infectious Diseases*. 2021;21(1):1-10.
- 500 31. Tom S, Galbraith JC, Valiquette L, Jacobsson G, Collignon P, Schøheyder HC, et al. Case
501 fatality ratio and mortality rate trends of community-onset *Staphylococcus aureus* bacteraemia.
502 *Clinical Microbiology and Infection*. 2014;20(10):O630-O2.
- 503 32. Rosenqvist M, Fagerstrand E, Lanbeck P, Melander O, Åkesson P. Sepsis Alert—a triage
504 model that reduces time to antibiotics and length of hospital stay. *Infectious diseases*.
505 2017;49(7):507-13.
- 506 33. Rosenqvist M, Bengtsson-Toni M, Tham J, Lanbeck P, Melander O, Åkesson P.
507 Improved outcomes after regional implementation of sepsis alert: a novel triage model. *Critical care
508 medicine*. 2020;48(4):484-90.
- 509 34. Nauclér P, Huttner A, Van Werkhoven C, Singer M, Tattevin P, Einav S, et al. Impact of
510 time to antibiotic therapy on clinical outcome in patients with bacterial infections in the emergency
511 department: implications for antimicrobial stewardship. *Clinical Microbiology and Infection*.
512 2021;27(2):175-81.

- 513 35. Rhee C, Jones TM, Hamad Y, Pande A, Varon J, O'Brien C, et al. Prevalence, underlying
514 causes, and preventability of sepsis-associated mortality in US acute care hospitals. JAMA network
515 open. 2019;2(2):e187571-e.
- 516 36. Schmidt K, Gensichen J, Fleischmann-Struzek C, Bahr V, Pausch C, Sakr Y, et al. Long-
517 Term Survival Following Sepsis: Results of a Single-Center Registry Study with 4-Year Follow-Up.
518 Deutsches Ärzteblatt International. 2020;117(46):775.
- 519

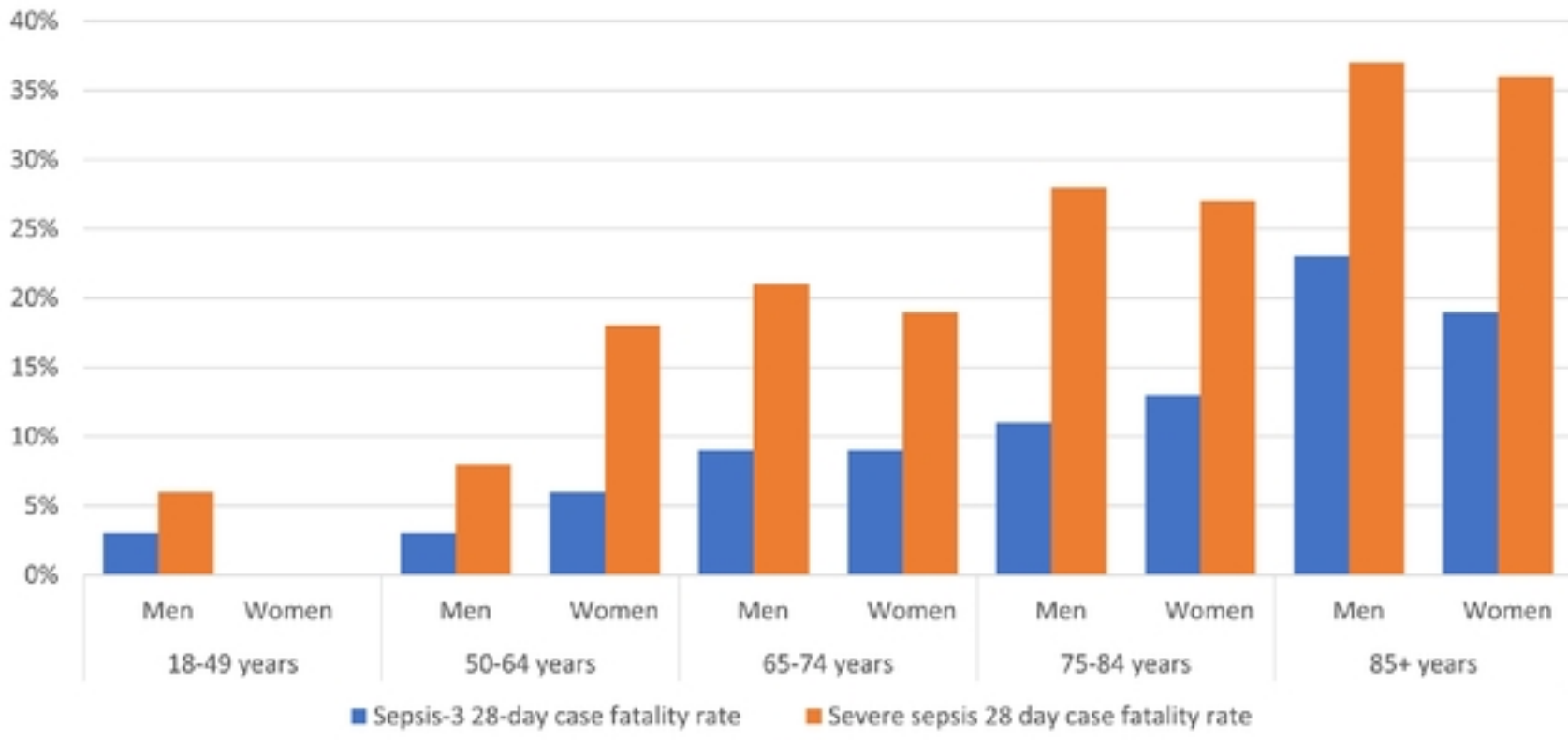


medRxiv preprint doi: <https://doi.org/10.1101/2024.04.18.24300009>; this version posted April 22, 2024. The copyright holder for this preprint (which was not certified by peer review) is the author/funder, who has granted medRxiv a license to display the preprint in perpetuity. It is made available under a [CC-BY 4.0 International license](https://creativecommons.org/licenses/by/4.0/).

Figure 1

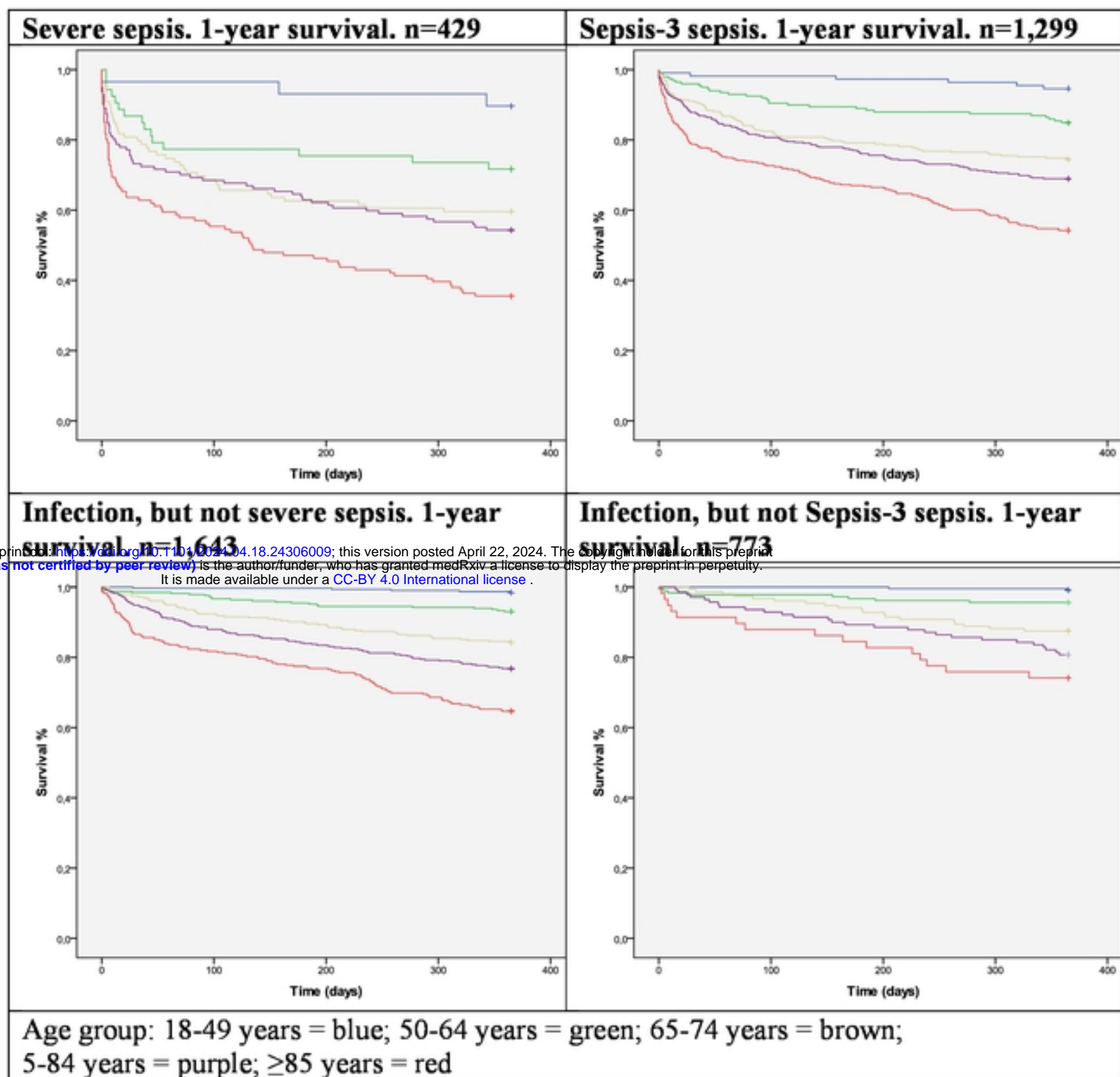


medRxiv preprint doi: <https://doi.org/10.1101/2024.04.18.24306009>; this version posted April 22, 2024. The copyright holder for this preprint (which was not certified by peer review) is the author/funder, who has granted medRxiv a license to display the preprint in perpetuity. It is made available under a [CC-BY 4.0 International license](https://creativecommons.org/licenses/by/4.0/).



medRxiv preprint doi: <https://doi.org/10.1101/2024.04.18.24306009>; this version posted April 22, 2024. The copyright holder for this preprint (which was not certified by peer review) is the author/funder, who has granted medRxiv a license to display the preprint in perpetuity. It is made available under a [CC-BY 4.0 International license](https://creativecommons.org/licenses/by/4.0/).

Figure 3



medRxiv preprint doi: <https://doi.org/10.1101/2024.04.18.24306009>; this version posted April 22, 2024. The copyright holder for this preprint (which was not certified by peer review) is the author/funder, who has granted medRxiv a license to display the preprint in perpetuity. It is made available under a [CC-BY 4.0 International license](https://creativecommons.org/licenses/by/4.0/).

Figure 4